

WEATHER FORECAST FOR TODAY—Light trades and fair weather. Last 24 hours' rainfall 0.0; temperature, max. 80, minimum, 72.

SUGAR—96° Centrifugals, 3.73—Per Ton \$74.60. 88 Analysis Beets, 9s 3d. Parity with Centrifugals, \$79.80 Per Ton.

Established July 2, 1856.

VOL. XXXIX., NO. 6791.

HONOLULU, HAWAII TERRITORY, FRIDAY, MAY 12, 1904.

PRICE FIVE CENTS

## FIGHTING IS REPORTED NEAR PORT ARTHUR AGAIN



THE BOMBARDMENT OF PORT ARTHUR.

From sketches supplied by a correspondent who was present at the scene of the engagement.

## Russia Admits That Communication Has Been Broken—The Russian Wounded Are Being Removed To Harbin.

(ASSOCIATED PRESS CABLEGRAMS.)

ST. PETERSBURG, May 13.—Communication with Port Arthur has been broken again. Fighting is reported.

MAIL MUST GO VIA EUROPE.

WASHINGTON, May 13.—The State Department has been notified that mail for Manchuria and Siberian points must hereafter go via Europe.

CARRYING WOUNDED TO HARBIN.

MUKDEN, May 13.—A hospital train carrying 253 wounded passed here en route to Harbin.

AFTERNOON REPORT.

TOKIO, May 12.—The Japanese war officials deny the Russian report that railway communication with Port Arthur has been restored. The Japanese claim that the Russian naval base is practically isolated.

LONDON, May 12.—The Japanese war loan floated on the British market has been oversubscribed twenty times.

ST. PETERSBURG, May 12.—The Russians have practically dismantled the city of Dalny. All the structures, including the piers and docks, that could be of use to the enemy have been blown up. Splendid shipping facilities, costing thousands of dollars, have been wrecked by dynamite.

COSSACKS DRIVEN OFF.

WASHINGTON, May 12, 1904.

To SAITO, Honolulu:

On the morning of the 10th of May 200 Russian cavalry attacked Anju. The Japanese garrison stubbornly resisted. One company of reinforcements arrived by afternoon from Pingyang. The enemy fled in the morning of the 11th, when further Japanese reinforcements arrived from north and south. The Japanese casualties were four killed and six wounded. The enemy's casualties were over fifty. The non-commissioned officers taken prisoner said that the enemy consisted of 500 Cossacks.

TAKAHIRA.

## CHAMBERLAIN REOPENS CAMPAIGN.

BIRMINGHAM, England, May 13.—Chamberlain has resumed his campaign.

## 電海報戦露日の朝今

●旅順愈々隔離せらる  
セント・ピータースブルグ五月十三日發  
順への通信は再び断絶せられたり該方面に於て交戦中ある旨報せらる

●郵便物は歐洲を經由  
ワシントン五月十三日發、今後滿洲及サイベリヤ行の郵便物は凡て歐洲を経由せざるべからざる旨の通知國務省に達せり

●負傷者をハービンに送る  
奉天五月十三日發、負傷兵二百五十三名を搭載せる病院列車ハービンに向け當地を通過せり

## JUDGE GRAY CHAIRMAN OF NATIONAL CIVIC FEDERATION

PHILADELPHIA, May 13.—Judge George Gray has been selected to succeed the late Senator Hanna as chairman of the National Civic Federation.



JUDGE GEORGE GRAY.

Judge George Gray was a member of the Paris Peace Commission of 1898, a member of the Joint High Commission at Quebec in 1898, and a member of the International Commission of Arbitration under the Hague convention in November, 1900.

## CUSTOMS AND NAVAL MEN LOCK HORNS AGAIN

Stackable Places Inspectors to Watch New York  
and Bennington and Admiral Terry  
Doesn't Like it.

The Customs and Navy Departments have locked horns again. Collector Stackable has placed customs inspectors outside the naval wharves to prevent dutiable articles from being taken off the New York and Bennington, and Admiral Terry, naval commandant, doesn't like it. The right of the customs authorities to patrol the naval docks when naval vessels are in port has long been in dispute, and it has never been settled to the satisfaction of Admiral Terry. The old trouble broke out again when Admiral Class' squadron came into port.

Collector Stackable is said to insist that the Navy Department has no more rights than any other department of the government, and that he is compelled to see that treasury regulations are carried out. On the other hand Admiral Terry claims that all naval vessels are under the jurisdiction of the Navy Department and that the customs men have no right on the naval wharves without his permission. When Admiral Evans' fleet was in port last December, the customs inspection was not enforced, the admiral himself issuing an order for carrying out the customs regulations and promising to deal very severely with any offender. Consequently dutiable articles were turned over to the custom authorities by the naval men and the values appraised in regular form.

The New York and Bennington are from foreign territory, Acapulco and Panama, and there are said to be Panama hats aboard, which are required to pay a high duty in addition to which naval vessels are not permitted by law to carry dutiable articles. Collector Stackable yesterday would not discuss the controversy with the naval authorities. Neither would Admiral Terry.

## A BLUEJACKET FROM THE ADAMS CUT BY SHIPMATE

A bluejacket, his clothes torn and blood streaming from several wounds on his head and breast, staggered into the police station about ten o'clock last evening and asked for a doctor. The man was faint from loss of blood and was hurriedly taken to Queen's Hospital in the ambulance.

"A ship-mate cut me up," he told the officers as he leaned against the railing and exhibited his wounds. "We were fighting in lower town there and I was fighting fair with my fists, when he used a knife." The bluejacket showed a deep gash in the breast and one long gash and a smaller one on his head, from which the blood was streaming.

The man said his name was William Bush, and that he was a fireman, first class, on the training ship Adams. He said he knew who the man was that had knifed him, but had forgotten his name. From his manner it appeared as if the two men were settling some differences, with their fists, using an isolated spot in Iwilei as the battleground. Bush didn't seem to be very anxious to give information to the police so as to enable them to locate his assailant. Bush was apparently sober. After he was wounded he sought out a Japanese hackman who brought him to the police station.

W. J. Glenn, the alleged assailant of Bush, was later arrested. He admitted using a knife, saying that Bush was getting the best of him with his fists and he had to use the weapon.

## MASSACRE IN BORNEO.

VICTORIA, B. C., May 12.—Reports were received here today of a terrible massacre in British Borneo. Rebels have overpowered the foreign colony at Kwang Station and slaughtered 150 of the residents. The scenes of the massacre were most horrible, men, women and children being sacrificed.

## HEARST LOSES INDIANA.

INDIANAPOLIS, May 12.—The Democratic State Convention held here today elected a delegation to the national convention pledged to vote for the nomination of Judge Parker of New York. The unit rule was adopted.

## RAPID FIRE GUNS FOR GUARDSMEN

Two Hotchkiss rapid fire guns were received from the War Department by the National Guard last week on the transport Thomas. On the transport due the eighth of next month Krag-Jorgensen guns for the equipment of the entire regiment, are expected. The regiment will then be as well equipped as any in the United States. There was drill and parade by the First Regiment last evening, the guardsmen parading the down streets headed by the government band. The regiment was under command of Colonel Jones.

## DEMOCRATS WILL PUT UP A TICKET

According to a leading organizer of the party, it is the intention of the Democrats of Oahu to put a full ticket in the field in November. While there is not great expectation of electing Democratic candidates, it is hoped that the coming contest will be the funeral of the Home Rule party. When the corpse has been buried the Democrats, by making a straight fight this time, count on having an organization well-defined for future building upon.



# THE LETTER WHICH PRINCE KUHIO COMPLAINED OF

Nothing to Get Excited About—A Reasonable Statement of How Things Have Been Going in Hawaii.

Following is "Kamehameha's" letter in the Washington Star of April 26, which brought out a reply from the Delegate:

HONOLULU, April 12, 1904.—Governor Carter seems after all, to the general surprise and gratification, to be having things entirely his own way with the newly met legislature. This is only their fifth day of session, and if all things run as smoothly as they have begun, they will finish their very important work within one week more. The territory has been and is in a most severe financial strait. The governor has been giving himself most resolutely, and it is believed with skill, to devise the best financial methods to solve its difficulties. Having elaborated his plan he has convened the legislature in extra session to give it legal authority. It is the same body of men who a year ago recklessly squandered time and money for four months fruitlessly. A majority then displayed the greatest disregard for legislative propriety and honesty. It was naturally felt that neither reasonable nor efficient dealing could be expected from the same men in acting upon the difficult financial conditions.

## THE FINANCIAL CONDITIONS.

To state briefly what these are: The revenue of this territory was, by annexation, cut in half, in consequence of the transfer to the federal government of all revenue from the customs and post office, leaving the territorial government only the taxes to depend upon, besides a number of sources of income, such as waterworks and rent of wharves and public lands. The treasury was in a somewhat plethoric condition when annexation came, and for the past four years we have been living upon our own accumulated fat. But this has come to an end, and the government has been finding itself confronted with a monthly expenditure of say \$70,000, and an income of only \$40,000.

For the past six weeks Gov. Carter has been diligently applying himself, with the aid of the several heads of departments, to the almost desperate task of cutting down expenditures nearly one-half. This task he has accomplished after a fashion, and probably as judiciously as was possible. A large number of salaried positions have been struck out. There has been a general reduction in the amount of salaries, especially of the larger ones.

The appropriation to volunteer military is abolished, dispensing with such display. The band is dismissed, with its music, which for over thirty years has delighted the public on all occasions. The subsidy to the Queen's Hospital is withdrawn, threatening to leave much suffering unrelieved. The costly system of education is sorely cut into. The board of health is largely cut down. Road and street improvements are remorselessly contracted, except as some of them are provided for under a liberal loan act. Altogether the whole public system is placed on short commons.

## WARNED AGAINST LEGISLATURE.

Such is the governor's scheme, all elaborated in full schedule, published and submitted to the legislature. The business community regarded it with favor, as an unavoidable economic necessity, but how would the legislature, largely composed of Hawaiian natives, receive it? Their treatment of such matters in previous sessions had been largely irrational and might be described as "monkeying." What ground was there for hoping now for reasonable and efficient dealing? The young governor was earnestly warned against trusting the business to the legislature. There was another method possible of managing it. It grew out of a provision in the organic act enabling the executive in the absence of appropriations to fall back on older appropriations. It had resulted from the legal invalidity of the county act, that

all the appropriations adapted to the neutralized county system had become invalidated, and the way seemed open to let the executive arrange his own system of expenditures. This he was earnestly by many counseled to do, in distrust of the legislature.

Wisely, as it would appear, the governor discarded that policy of distrust, and summoned the legislature to act. He has preferred to trust to the popular will, even if the people are largely incompetent. Polynesians. In any case, within a year a new set of men from the same constituency would have to come together with full powers. It seemed better to act in accord from the beginning, with the popular body, however defective their past record.

## THE LEGISLATURE RESPONSIVE.

And they seem to be answering very nobly and worthily to his confidence. These same men, who a year ago in the lower house, both republicans and home rulers, pursued a course of both unreason and gross corruption, came together last week with full purpose to accept entire the governor's financial schedule and railroad it through without discussion or alteration. This they are actually carrying out. There are two or three dissentients, men who were prominent evil workers last year. But now these malcontents are promptly overridden and silenced by the overwhelming majority of the governor's supporters. It is a remarkable phenomenon. The only tendency to difficulty is in the senate, where is a majority of very intelligent whites. These men naturally see points where the governor's figures and plans might be amended, and incline to make such amendments. But rather than arrest or interfere with the wholesome disposition of the lower house, the senate will probably forego urging their amendments.

## NATIVES WON BY GOV. CARTER.

Altogether it is a phenomenon. I incline to account for it by what is a peculiar Hawaiian trait, to gather enthusiastically about a leader who gains their confidence. Soon after assuming the office of governor George R. Carter made an active political tour of the large islands of Hawaii and Maui. There he diligently and very successfully got himself in rapport with the native voters and their leading men. He evidently exercised a large personal magnetism, and fully got the confidence of the people at large. Now they are enthusiastic in his support, answer eagerly to his voice and are ready to do just what he tells them. I do not know how else to account for it. I have myself lacked any full confidence in Carter, not from any serious fault in him, but from his youth and hastiness. It is now growing evident that there is certainly something importantly valuable in the young man. In Washington he succeeded in gaining the warm confidence of President Roosevelt, and we may be glad that he seems not likely to discredit it.

## CASE OF THE LEPER COLONY.

Among the heaviest of these public expenses which it is impossible greatly to abridge is that of maintaining in due comfort the leper colony on Molokai. The site of their settlement is on the island nearest to this one, and is fairly in sight from the eastern end of the electric road, not over fifty miles away. It occupies a low peninsula of about eight square miles area, at the foot of a nearly impassable precipice of 1,500 feet, which wholly isolates it from the rest of the island. It is a lovely spot, swept by the bracing trade winds. A copious supply of water for gardens and the culture is led by pipes from a neighboring valley. Here dwell in great comfort nearly 900 victims of leprosy, the great majority of whom are nearly or quite free from serious suffering. The disease of leprosy is not attended with pain, except in its later stages, when the vital organs begin to be seriously invaded. It is anaesthetic,

# REGISTRAR THURM RETIRES AFTER SIXTEEN YEARS' SERVICE

Thomas G. Thurm, the veteran Registrar of Conveyances, has resigned his office after over sixteen years of faithful service. The following correspondence passed between him and the Governor:

Bureau of Conveyances,  
Honolulu, May 3rd, 1904.  
His Ex. G. R. Carter, Governor Territory of Hawaii.

Sir: Upon due consideration of your desire to make applicable at once the reduction of expenditures in the various departments of the Government service, in accordance with the recent appropriations of the Legislature, I beg respectfully to resign my position as Registrar of Conveyances to take effect on the 16th inst., believing this to best conform to your policy of retrenchment instead of waiting for the expiration of my commission.

And in thus severing my official connection with the Government, extending now over sixteen years through its various changes, I would take this opportunity to express my due appreciation of the cordial relations and co-operative support accorded me by my superiors in office, and others, in my efforts to conduct this Bureau in the best interests of the public.

Faithfully yours,  
THOS. G. THURM.

Executive Chamber,  
Honolulu, Hawaii, May 11th, 1904.  
Mr. Thos. G. Thurm, Registrar of Conveyances, Honolulu.

Dear Sir: Your letter of the 3rd inst. has reached me today, upon my arrival from Kauai, and I regret the cause that necessitates the resignation of your position, after so many years of

or painless, in its disfiguring ravages. Among its earlier manifestations are portions of the skin becoming insensible to pain. Swellings appear on the face, ears, hands and feet, parts exposed to the light. These are followed in time by numerous ulcerations. Joints of the fingers and toes ultimately separate. But at all the time there is no pain, and the maimed hands and feet clearize and heal. Death usually comes from disease of lungs or bowels, which the malady has impaired in their action.

## A LIFE OF EASE AND COMFORT.

Thus a colony of lepers is not characterized by any general distress. They live in great ease and comfort. Perhaps one-tenth of their number are weak or ill enough to be in hospital, where they are well cared for. The rest lead lives of comfort greater than that of a majority of their fellow Hawaiians. Rations are abundant. All necessities and housing are amply supplied. There are a few score of well persons among them who have been permitted to live there as kokuas, or helpers, of feeble relatives. These kokuas often try to pass as lepers in order to remain after the death of their relatives and enjoy the easy life. The villages are very attractive with nice cottages and pretty gardens. A liberal and judicious expenditure by the government for forty years has developed a very perfect system of management. The present very capable head of the settlement, "Jack" McVeigh, reports great interest of late in athletic exercises. A race track is much in vogue. Numbers practice forming pyramids, climbing on each others' shoulders.

## CARELESSNESS OF THE NATIVES.

Most of the lepers are native Hawaiians. Not five per cent belong to other races, although Hawaiians form only one-fourth of the inhabitants of this group. This is doubtless due in part to a less tendency in Europeans and Asiatics to contract the malady which has for ages existed among those races, so that they are comparatively immune. But it is much more the effect of the utter absence among Hawaiians of any precaution against communicable diseases. A Hawaiian always mingles with infected persons of any sort with absolute carelessness. They seem incapable of grasping the idea that contact with a diseased person can impair one's safety. I have personally witnessed the strangest carelessness in the matter of leprosy. I have seen at a receiving station visiting friends passing pipes from mouth to mouth through the pallings between the well outside and the hideously disfigured faces within. I have seen in their homes lepers and well persons eating with their hands from the same dishes. I have seen children in a remote country school with arms entwined with a leprosy

child, whom neither parents nor teacher had thought to segregate.

Yours sincerely,  
G. R. CARTER,  
Governor.

Mr. Thurm first entered the government service in January, 1888, as Registrar of Conveyances under L. A. Thurston, then Minister of the Interior. Kalakaua was then King. Mr. Thurm has remained in charge of his office through four successive changes of government. He served under the following Ministers of Interior: L. A. Thurston, Charles N. Spencer, G. N. Wilcox, John F. Colburn and J. A. King; also under J. A. McCandless as Superintendent of Public Works. Soon after annexation the registrar's department was placed under the Treasurer, and Mr. Thurm served under T. F. Lansing, W. H. Wright and A. N. Kepolka.

During his sixteen years' service Mr. Thurm had but one vacation, and that was taken primarily at the request of the government. When annexation was under discussion in the United States, Mr. Thurm appeared before the New York Board of Trade and explained the benefits likely to accrue through annexation from a commercial standpoint. Otherwise, aside from a few weeks' lay-off due to illness, Mr. Thurm has been continuously in service for sixteen years.

## THE ONLY SALVATION.

The only salvation from leprosy is rigorous segregation of the afflicted ones. Yet we find to this day apparently learned writers maintaining that it is not a contagious or communicable disease, although its peculiar bacillus is well known, and its presence is a common test for incipient leprosy, whose symptoms are often simulated by other maladies. To one like myself who has watched the development of a large number of cases it seems strange that its communicableness should be thought open to the slightest doubt. Between thirty and fifty years ago the writer was located at Lahaina, which was the chief center from which the infection spread. Lahaina was the home of the native chief who contracted the malady, in China about sixty years ago and brought it home with him. In that place I could trace its transmission from person to person, and its often rapid spread in individual households. It was not until about 1858 that the name of the strange malady became known through the visit of a physician to China, although before that time it had attracted attention, and I had noticed the peculiar tubercles on the faces and ears of pupils in a school which I taught.

## COMMUNICATED BY KISSING.

I am well satisfied that the chief method of communicating leprosy among natives is by kissing, which they are fond of practicing. Hence the frequent infection of young children. The saliva of a leper abounds in the bacillus leprae more than any other secretion of the body. There have been notorious cases where white infants have thus been infected by native nurses. Apparently the danger is small of being infected by ordinary contact with a leper. Else a majority of our foreign population would have fallen victims during the period when lepers were but slightly segregated here. Leprosy is doubtless a much less readily communicated disease than pulmonary tuberculosis. Segregation is now enforced with much strictness, and the few lepers not at the settlement are carefully hidden away. I have met none for many years.

KAMEHAMEHA.  
IT WORKS LIKE MAGIC.—The relief obtained from Chamberlain's Pain Balm when applied to a burn or scald is so nearly instantaneous that it seems almost magical in its effect. An injury of this kind heals without maturation when this remedy is applied and unless the wound is very severe does not leave a scar. For sale by all Dealers. Benson, Smith & Co., Ltd., Agents for Hawaii.

# TWO BIG BARGAINS FOR THIS WEEK ONLY

You might wait many months for another such bargain as this and not find it. This is for one week only.

FANCY STRIPED P. K. REGULAR 20c.  
FANCY STRIPED DIMITY REGULAR 20c.  
Both reduced to 10c per yard.

## NEW GOODS JUST OPENED.

Figured Lawn, 10c and 15c per yard.  
White Lawn, 10 yard pieces at 75c and \$1.00.  
India Linon width 40 inches, 25c yard.  
Dotted Swiss, Regular 60c now 40c.

**A. BLOM, Progress Bldg.**  
Fort Street.

# An Excellent Opportunity

is now offered the public to supply their wants in



**Cocoa**  
AND  
**Wire Door**  
**Mats**  
**Garden Hose**  
AND  
**Garden Tools**

The stock of the Hawaiian Hardware Co. must be closed out at once and genuine bargains can be secured.

L. E. PINKHAM, Trustee.

**Fort near Queen Street.**

# ARE YOU GOOD AT GUESSING?

Our \$12,000.00 Guessing Contest is worth trying for. Many Honolulu people have entered with a good prospect of winning.

If you don't know about the \$12,000.00 guessing contest call and get booklet free, explaining all about it.

**MANUFACTURERS' SHOE COMPANY**  
Limited.

1051 FORT STREET.

**MENNEN'S BORATED TALCUM TOILET POWDER**  
Beautifies the Complexion DELIGHTFUL AFTER BATHING. A LUXURY AFTER SHAVING.  
A Positive Relief for Prickly Heat, Chafing, Sunburn and Aching Feet, and all afflictions of the Skin. Recommended by eminent Physicians and Nurses as the most perfectly hygienic Toilet Powder for Infants and Adults.  
Get Mennen's (the original); it is entirely different from all other toilet, infant and complexion powders. It contains no starch, rice or other irritants to common in ordinary face powder. The many merits of Mennen's Borated Talcum TOILET POWDER and its great success have ensured countless imitations, many of which are dangerous. To be sure of getting the genuine, look for Mennen's face on the cover of the box.  
FOR SALE BY ALL DRUGGISTS.  
GERHARD MENNEN CHEMICAL CO., Newark, N. J., U. S. A.  
Depot: HOBSON DRUG COMPANY.

# Fresh Goods

BY EVERY STEAMER.

Fresh Salmon, Sea Bass, Halibut, Crabs, Roasters, Frozen Oysters, Cauliflower, Celery, Rhubarb, Asparagus, Sunrise Butters, Fruits and all kinds of fancy Groceries, etc.

BEST SELECTION.

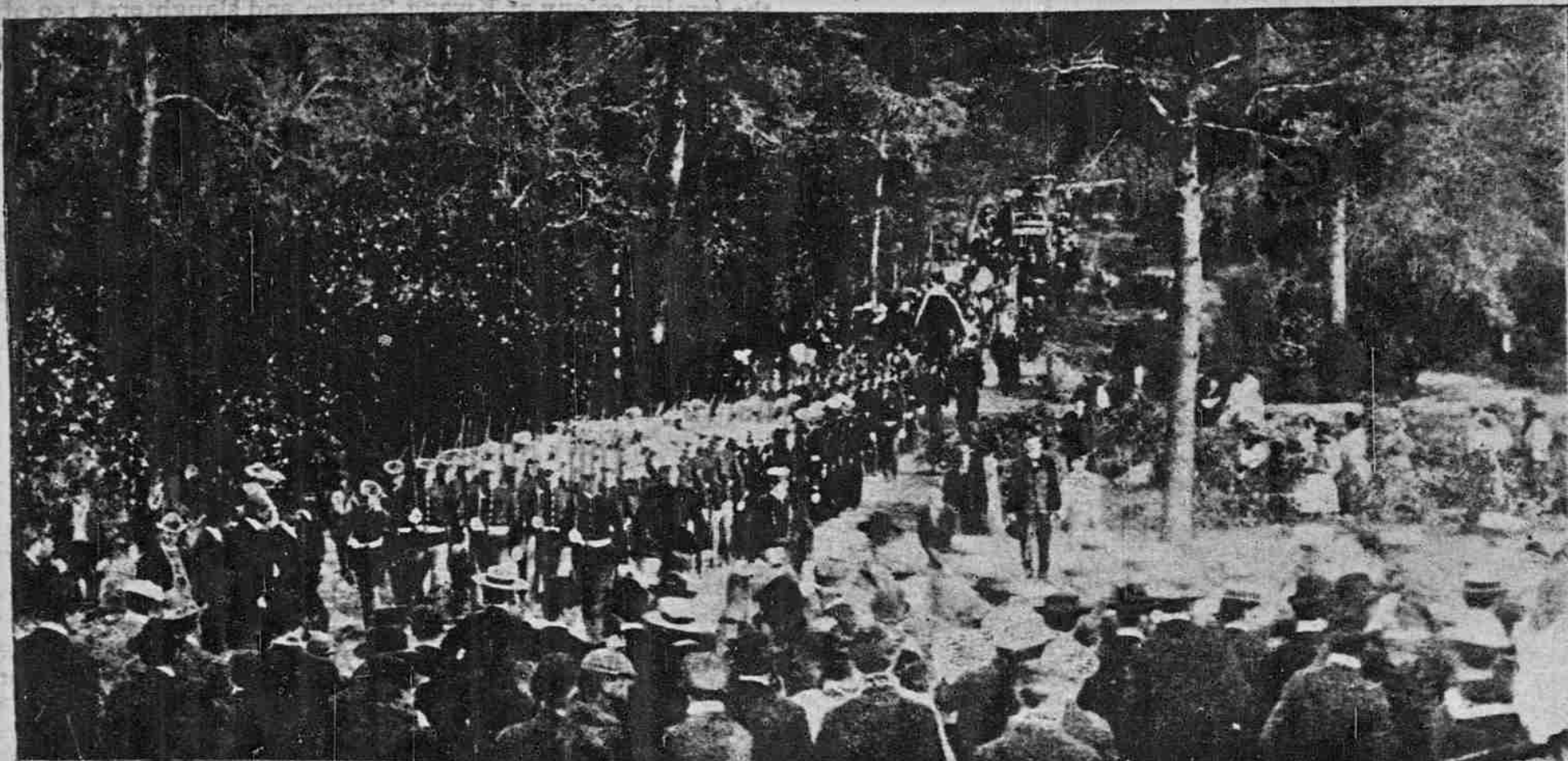
**C. Q. Yee Hop & Co.**  
Telephone Blue 2511.

**BE IN THE SWIM** and have a home in  
**P A W A A**

Don't be too late to own a home among 20 of the most artistic homes in Honolulu.

Best and healthiest location. Electric cars on all sides. Always pleased to talk shop.

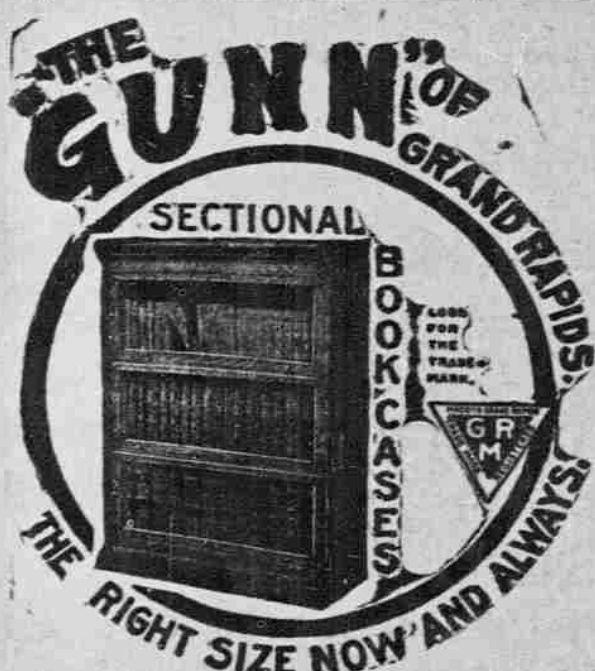
**W. MATLOCK CAMPBELL.**  
Call at office 1634 Young Street near Punahou.



BURYING THE HEROES OF THE PENSACOLA NAVAL TRAGEDY.

Bearing the remains of the sailor victims of the explosion on the Battleship "Missouri" to the National Cemetery at Pensacola.





COYNE FURNITURE COMPANY, LTD.  
HONOLULU.

**AT AUCTION**  
**WILL E. FISHER**  
**AUCTIONEER**  
**TODAY**

FRIDAY, MAY 13, 1904  
At 10 a. m., at my salesroom, 180  
Merchant street,

### Household Furniture

Consisting of Refrigerator, Elegant  
Brass Bedstead, Bureaus, Washstands,  
Tables, Wire Mattresses, Sideboard,  
Fine Center Table, Chairs, New Domest-  
ic Sewing Machines, Oak Bedsteads,  
Rugs, Grape Crusher or Cider Press,  
Ribbons, Dry Goods, Chiffonier, Oil  
Stoves, etc., etc.

**WILL E. FISHER,**  
**AUCTIONEER.**

### At Auction

**TODAY! FRIDAY!**

At 10 a. m. at my salesroom, 180 Mer-  
chant street,  
25 SACKS RICE, in lots to suit.

**WILL E. FISHER,**  
**AUCTIONEER.**

### AT AUCTION

**TODAY**  
At 10 a. m., at my salesrooms, Alakea  
and Merchant streets,  
**ONE MONKEY**  
With fine large cage.

**WILL E. FISHER,**  
**AUCTIONEER.**

### Books at Auction

SATURDAY, MAY 14, 1904.  
At 10 a. m., at salesroom, 180 Mer-  
chant Street.

A partial list: Eggleston's History of  
United States, Bible Quotations, set of  
Queen Victoria's Life, 8 vols. Rose-  
velt's, 8 vols. Shakespeare, 7 vols. Haw-  
thorne, 12 vols. Eliot, 1 vol. Webster's  
Great Speeches, 8 vols. Dumas's Cele-  
brated Crimes, 9 vols. History of Paris,  
16 vols. Prescott, 15 vols. Americanized  
Encyclopaedia, Encyclopaedia of Law  
Forms and many others, and many  
books of Fiction by standard authors.  
Wernicke Book Cases, Elegant Cher-  
ry Round Card Table, Fine Large Rug.  
Also, Fountain Pens, M. K. McClellan,  
1/2 doz. Dictionary Stands, etc., etc.

**WILL E. FISHER,**  
**AUCTIONEER.**

### AT AUCTION

MONDAY, MAY 16, 1904,  
At 12 o'clock noon, at my salesroom,  
130 Merchant street, I will sell the

### Waikiki Inn

WITH ALL ITS APPURTENANCES.

The Inn is open for inspection Tues-  
day and Thursday. Further particulars  
at office of

**WILL E. FISHER,**  
**AUCTIONEER.**

### At Auction

MONDAY, MAY 16, 1904,  
At 12 o'clock noon, at my salesroom,  
Lots 1, 2, 3, 4, 5, Block 47, and Lots  
11, 12, 14, Block 31.

### Kaimuki Tract

Under foreclosure.

**WILL E. FISHER,**  
**Auctioneer.**

### To Let.

Cottage at Waikiki; 6 rooms; rent, \$35.00  
Cottage on Anapuni near Wilder... 20.00  
Cottage on Piikoi, makai of King... 20.00  
Cottage on Piikoi, mauka of King... 30.00  
Cottage on Young St., between  
Piikoi and King... 20.00  
2-story House (McCully Home-  
stead)... 10 rooms; large  
grounds, stable, etc... 50.00  
Cottage on lane off Liliha St... 15.00

**WILL E. FISHER,**  
**Real Estate Agent and Auctioneer.**

Roller-bearing, non-binding doors,  
removable (to clean or replace brok-  
en glass) by simply unhooking. No  
unsightly iron bands or protruding  
shelves. Sections so nicely joined  
together the appearance is that of  
a solid case. The only Sectional  
Book-case entitled to use the trade-  
mark of the Grand Rapids Furni-  
ture Association, which means the  
best.

We are agents for the GUNN  
PATENT SECTIONAL BOOK-  
CASE, and shall be pleased to show  
and explain the workings of the  
perfect system.

### WREN TO PITCH FOR THE MAILES

The Maile (Marines) baseball team  
may be further strengthened by the ad-  
dition of Cusick, of the new artillery  
battalion at Camp McKinley. Cusick is  
a crack shortstop player. One of the  
marines aboard the New York, who  
formerly played in the Marine team  
when it was stationed at Manila, may  
play this week with the Mailes. Wenn,  
the Maile pitcher, has been practicing  
this week, and will undoubtedly give  
some surprise pitching in the game  
against the Elks on Saturday.



Is compounded with the greatest of  
care and contains nothing injurious.  
It is a safe and reliable remedy for  
stomach complaints and has a record  
of fifty years of cure to its credit.  
Many prominent physicians prescribe  
and recommend it as a cure for dys-  
pepsia, indigestion, flatulency, belch-  
ing, nervousness and insomnia. Try  
it. The genuine must have our Pri-  
vate Die Stamp over the neck of the  
bottle.

### HOSTETTER'S STOMACH -- BITTERS

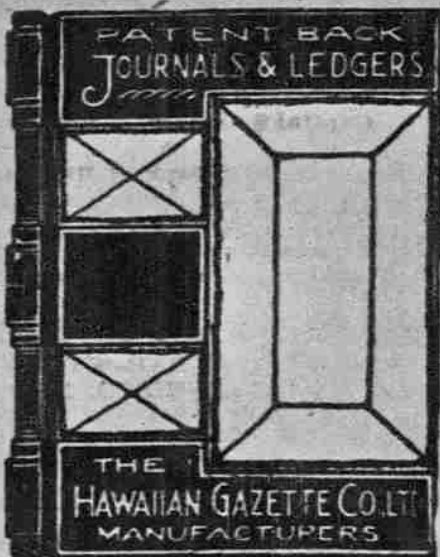


### A Perfect Combination.

When we show you papers we can  
give you an idea of how they will look  
on your rooms. No chances are taken,  
the way we show goods. Some of the  
best things on the market this season  
will be made by the firm that supplies  
us and we have the best of their prod-  
uct.

### Stanley Stephenson

The King St. Painter.



### The Lewin-Meyer Co.

Epicurean and Palace Goods  
WATERHOUSE & WALKER  
932 Fort Street.

## COTTON IN HAWAII

### The Plant Suitable To Climate and Soil.

People will want cotton just as long  
as they will want cane sugar, and per-  
haps longer. A few months ago, when  
the price of cotton was soaring upwards  
and the wise ones in America and Eu-  
rope said there was no danger of a re-  
versal for two years many sugar planters  
of the southern states began to consider  
the feasibility of turning a part of their  
cane fields into cotton fields. They were  
encouraged by the cotton buyers of New  
Orleans, Galveston and Mobile, who  
agreed to furnish them with gins, and  
by the cotton-seed mill men, who offered  
to take their seed at high figures. If  
the slump had not come when it did  
thousands of acres of land in Louisiana  
and other states would now be covered  
with cotton plants where cane lately  
grew. What the commercial effect would  
have been to the planters it is difficult  
to estimate. If the planters of Hawaii  
could suddenly change their sugar in-  
terests into fields of growing cotton with  
gins and other necessary machinery, to-  
gether with facilities for shipping their  
cotton to Japan, they might be better off.  
This conjecture may sound like treason  
in a land that sugar has so bountifully  
enriched and if it be treason it comes  
of the change of mood that the existing  
low sugar values have engendered.

Cotton is one of the abandoned indus-  
tries of Hawaii. In 1836 it was planted  
at Hana, Maui, and in parts of Hawaii.  
In 1837 Governor Kuakini erected a  
stone cotton factory at Kailua and some  
very durable fabrics were produced by  
the simple machinery of that period. Dur-  
ing the civil war, forty years ago, when  
the seaports of the southern states were  
blockaded and cotton was made a very  
costly staple, the Hawaiian growers ex-  
ported hundreds of bales to Boston. Gins  
were located near the present postoffice  
in Honolulu. The Sea Island, Georgia  
and Peruvian varieties were cultivated  
then. It was not long after this, how-  
ever, when sugar asserted almost com-  
plete sway over the planting interests  
of the Islands and fields of cotton be-  
came only a memory.

A gentleman residing in this city pro-  
cured some Sea Island cotton seeds at the  
coast about five years ago and has been  
experimenting with cotton in his garden  
ever since. His land is at a low eleva-  
tion, not far from the center of town,  
and the soil in which the plants grow  
is rich. In four months after the seeds  
sprout cotton may be picked from the  
plant. First comes the white blossom,  
which bears the appearance of a half-  
grown hibiscus. This gradually turns  
to a purple hue and then the fluffy little  
white ball of cotton takes the place of  
the flower. He has not discovered any  
serious blight. Occasionally he finds  
ladybugs on the leaves, and these he be-  
lieves are combating what insectaneous  
blight may exist. His five years' experi-  
ence gives some weight to his views of  
cotton growing. He is of the opinion  
that half a ton of cotton per annum can  
be grown on an acre anywhere on the  
lowlands of the Islands, unless the loca-  
tion is subjected to extraordinary strong  
winds. "It will grow at an elevation of  
3,000 feet, if necessary," said he, "and  
there are vast tracts of land covered with  
lantana and other useless shrubbery all  
over the Islands that could be turned into  
cotton fields. It could be made the  
ideal occupation for the small farmer.  
The gin is a simple matter of \$400 or  
\$500 and a ready market for the seeds  
can be secured at home. Absorbing con-  
siderable nitrogen from the atmosphere  
they make, when ground, capital food for  
dairy and beef stock, as every stockman  
will tell you. They are put to many  
other uses. Yet while there might be a  
very rosy prospect observed in one di-  
rection we are confronted by the shipping  
problem. Steamers calling here on their  
way to Yokohama are always loaded and  
have no room for bales of cotton. San  
Francisco would not be a profitable mar-  
ket; neither would Sydney. Japanese  
buyers in Yokohama are now paying 16  
cents U. S. gold per pound for a medium  
quality, and there would be our market.  
I am not a steamboat man and cannot  
surmise what could be practically effected  
in the way of speedy transportation. If  
the cotton industry should attain even a  
quarter of the present proportions of the  
sugar business doubtless ways and means  
would be provided for facilitating the  
export to Japan or any other country.  
At first there would not be much diffi-  
culty in securing sailing vessels for the  
traffic. The Fiji cotton merchants ship  
to Japan via Sydney. They produce a  
superior quality of cotton in a hotter  
country than ours, you must know. Our  
temperature is something between that  
of Mississippi and Fiji and I am con-  
fident there is nothing the matter with  
our climate."

It would require an expenditure of  
\$10,000 to start and equip an ordinary  
plantation. A cleaner, gin, press, cer-  
tain other machinery, miscellaneous tools  
and warehouses would be needed. A  
water supply would have to be secured  
and irrigating ditches constructed. Cot-  
ton will thrive with far less water than  
sugar, but it would suffer during the  
summer months without irrigation. The  
farmer with a few acres of cotton would  
be better off in a certain respect than  
the small cane cultivator, though the  
latter is disappearing from the land. He  
would be independent of the mill, and  
if the buyer refused to pay his price he  
could warehouse his product till the  
market reached the right figure. The  
cane grower must dispose of his cane  
when it is ripe or let it spoil. One ad-  
vantage of raising this staple in Hawaii  
is that it will grow all the year round.  
The matured cotton and the blossoms  
appear on the same plant at the same  
time and the plant will continue to yield  
for several years.

The individual planter in the cotton  
belt of America generally variegates his  
resources. Besides cotton he will have  
corn, hogs and sorghum and sometimes  
sugar. If he has no more than three  
acres in cotton he will realize from them  
this season \$140 or probably a net profit

of \$90. Cotton has always paid him and  
he is contented. He is a factor in one  
of the nation's greatest industries. Did  
one ever think what it means to pick out  
one of the ten-million bale crops of the  
United States? Fifteen billion pounds  
of raw cotton must be picked from the  
bolls by hand. That is an almost in-  
calculable amount, yet that is what the crop  
means and what the manual labor is that  
gets it out a lock at a time. The limits  
of the cotton crop are to a great extent  
fixed by the ability to get it out and  
ready for the market—not only to get it  
ready in time, but to get as much of it  
out as possible during good weather,  
before the cold and wet of winter injure  
the staple and interfere with the work  
of picking it out. In Hawaii there are  
no inimical elements of nature to inter-  
fere with planting, cultivating and pick-  
ing every month in the year.—Paradise  
of the Pacific.

### OFFICIALS OF THE FLOWER CARNIVAL

Captain George McK. Williamson will  
be Grand Marshal at the Flower Car-  
nival to held next Saturday afternoon  
from 2 to 6 on the St. Clement's church  
grounds. He will be assisted by C. R.  
Frazier, C. F. Clemons, H. McK. Har-  
rison and E. B. Clarke. John Guild,  
assisted by E. Heard Cocke and B. H.  
Clarke and J. Clarke, will have charge  
of the entries of contestants in the sev-  
eral classes. Allan Dunn has consented  
to take charge of the voting contest for  
the selection of the "Queen of the Car-  
nival."

All persons taking part in the car-  
nival contests should go into the  
grounds by the Makiki street gate. The  
general public will go in by the Wilder  
avenue gate. There are no fees charg-  
ed to enter any of the contests, but all  
contestants must present regular ad-  
mittance tickets at the gate. There  
are no formalities to be observed in  
making entries for the various classes.  
All that is necessary is to be at the  
grounds at 2 o'clock ready to enter the  
class chosen.

The grounds have been so arranged  
that there is a thousand feet of drive-  
way within the gates on which to dis-  
play the ground procession; the judges  
stand has been so placed as to give  
a splendid view of the procession as  
it advances.

Considerable rivalry has already de-  
veloped as to who shall be "Queen  
of the Carnival." The selection will be  
from among those taking part in the  
carnival contests, and will be by bal-  
lot. Every person present may take  
part in the selection of the Queen,  
voting as often as they want to at ten  
cents a vote.

The Queen selected will receive the  
handsome oxidized chateau watch and  
pin given by M. R. Counter. The one  
receiving the next highest number of  
votes will receive the beautiful bride  
doll dressed by Mrs. E. M. Boyd. This  
doll with her seven attendant dolls will  
be on exhibition in Wichman's window  
this forenoon. These seven attendant  
dolls were dressed by Mrs. Rittenhouse,  
Mrs. Dr. High, Mrs. Allan Dunn, Miss  
Burns and Mrs. J. C. Cohen.

The judges are the Princess Kawa-  
nanakoa, Mrs. Samuel Parker, Mrs. E.  
D. Tenney, Mrs. F. M. Hatch, Admiral  
Terry, Rev. William Morris, Kincaid  
Terry, Dr. Clive Davies. The Princess Ka-  
wanakoa will present the prizes as  
they are awarded, and will open the  
carnival by throwing the first con-  
fetti.

### Ignorance of the Bible.

Ignorance of the Bible seems to be—  
if one may venture the bull—the chief  
attainment of the modern college  
student. Bishop Potter has wept over  
the conditions at Yale, President Harper  
is suffering from chronic melancholy be-  
cause his favorite book is so little re-  
garded in Chicago; and President Hyde  
finds that even the piously bred sons  
of Maine do not enter Bowdoin with  
any too much biblical lore. The last  
college to be heard from is Johns Hop-  
kins, where, if anywhere, life and learn-  
ing are taken seriously. President Rem-  
sen read to a class of eighty an edi-  
torial which alluded to the Ethiopian  
changing his skin and to the shadow  
moving backward on the dial. Of the  
eighty young gentlemen but one could  
identify the allusions, and he is a can-  
didate for the ministry. The rest of the  
class are doubtless sustained by St.  
Paul's comfortable exhortation to the  
Corinthians: "If any man be ignorant,  
let him be ignorant."—New York Post.

### Ladies' New Summer Waists.

Matchless display of Ladies' Lawn India Linon and White  
Wash Silk Dress Waists now on display and all are popularly  
priced. 25 new styles Ladies' Waists to make selections.

#### EXTRA SPECIAL

Ladies' White Waists worth  
\$2.50 for \$1.75.

Fine Lawn Waists with 5 rows  
of tucking, 2 rows lace insertion  
and embroidered front, full in  
front and sleeves; \$1.75.

#### MATCHLESS VALUE.

Ladies' White Linon Waists  
tucked back, tucked sleeves and  
cuffs, embroidered front, the  
latest Summer Waist. On special  
sale \$3.00.

#### LADIES' WHITE WASH SILK WAISTS

Styles up to the minute. On sale  
at popular prices. We invite in-  
spection.

High Novelties in Ladies'  
Dress Waists only ONE of each  
size.

#### BULLETIN OF NEW ARRIVALS.

We are now showing great varieties of choicest Lace Allovers,  
for waist covering—yokes and sleeves; new lines of Laces. Ladies'  
Wash Neckwear over 50 styles to select from.

#### JUST OPENED.

Large stock of Summer Wash Fabrics. This week on sale a  
new line Wash Fabric Silk Effect at 20c yard.

**Pacific Import Co., Ltd.**  
PROGRESS BLOCK FORT STREET



Subscribe for the Sun-  
day Advertiser. 25 cents  
a month, delivered by  
carrier.

### Crabs, Shrimps,

SALMON, HALIBUT, ROCK-COD,  
SMELT, SOLE, SHAD.

All fresh on Sierra.

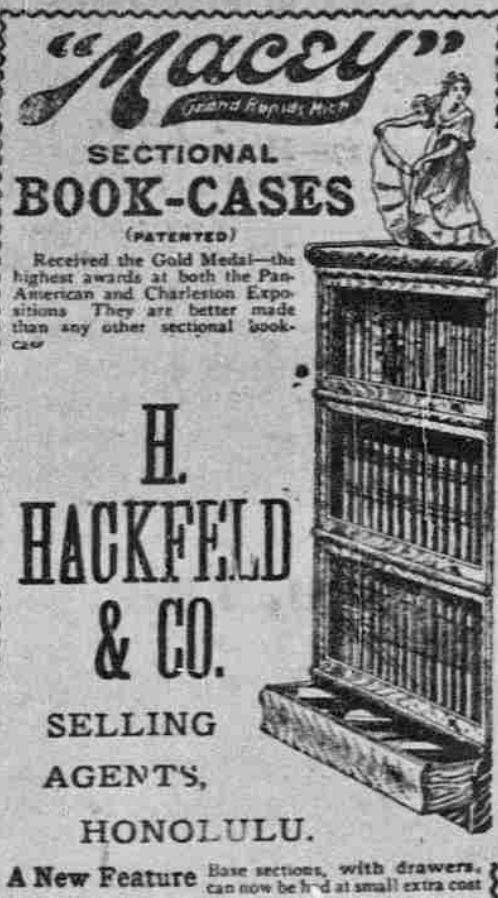
### Also Crystal Springs Butter

At the vegetable stand are:

Cauliflower, Artichokes, Rhubarb, Cabbage, Green Peas,  
Asparagus, Oranges, Apples and all California fruits  
and vegetables in season.

### Metropolitan Meat Co., Ltd.

Telephone Main 45.



People desiring the very best Sectional Bookcase must buy a "Macey."  
Any sectional bookcase without the "Macey" non-binding, self-disap-  
pearing door will, in time, prove a disappointment.

When the door is raised to a horizontal position it auto-  
matically recedes into the case. No care is required in open-  
ing or closing the door—it cannot be made to stick or bind  
in any climate.

We guarantee more than satisfaction. It must be seen to be ap-  
preciated, and once seen, people are not satisfied with any other door hang-  
ing device. The device is covered by patents owned and controlled by  
us exclusively and no other manufacturer can offer a Sectional Bookcase  
with an absolutely "non-binding, self-disappearing" door.

Made in four grades—Mahogany, Imitation Mahogany,  
Quartered Oak and Plain Oak.

JUST RECEIVED a line of the new LEADED GLASS  
BOOKCASES in mahogany.



## THE PACIFIC

## Commercial Advertiser

WALTER G. SMITH, EDITOR

FRIDAY : : : : : MAY 13

## THE PROGRESS OF THE WAR.

Dalny, which the Russians have now destroyed, was to have been the crack town of Russia in the Far East. The original purpose was to make it the commercial entrepot of Manchuria, the ice-free port which could not be found on the Siberian panhandle. Accordingly some 60,000,000 roubles were spent in laying out a new town, in building wharves and drydocks and providing railway terminals. Now, in pursuance of the Kuropatkin policy of "masterly retreat," Dalny has been given over to dynamite.

The Japanese deny that railway communication with Port Arthur has been restored, but they hardly needed to do so as the Russian claim of having got through a year's supplies for the garrison on one train, threw enough suspicion on the main story to kill it. It may be assumed that a Japanese army as near the railroad as Pitz-ze-wo and Port Adams is near enough to make it improbable that the Russians would expose any valuable trains to its attack.

The army of the Yalu is advancing to Haiseng, a place on the railroad northeast of Newchwang and not far from Liaoyang. The second army, the one which landed at Pitz-ze-wo, is probably represented by an advance division or two which is now awaiting, behind intrenchments and under the guns of the fleet, the arrival of reinforcements. Unless the Russians perform a miracle the situation should resolve itself in the next few days into a siege of Port Arthur on the one hand and an advance against Liaoyang on the other. It is at Liaoyang where Kuropatkin has promised to deliver battle.

So far everything favors the Japanese. The Russians have shown no boldness or fertility on land and their fleet is locked up. Korea is Japanese and Togo commands the sea approaches. From the beginning the Japanese campaign has run as well as did Napoleon's invasion of Italy and it promises, at this outlook, to have as fair a result.

## A DYING CAUSE.

The Governor found no interest on Kauai in the elaborate scheme, under the name of County government, to increase the taxes of the people for the sake of supporting new bodies of officeholders. Sentiment for County government is now chiefly confined to Hilo and even there it is mitigated by the rigors of hard times. Here in Honolulu the Advertiser has had a standing and as yet unanswered challenge to produce ten representative taxpayers, not connected with politics, who are in favor of County government. The ten are not to be found.

There has been, in fact, a great revolution of sentiment since the original County Act was passed, a revolution due to three facts:

- (1) The unsatisfactory workings of the act during the short time it was before the people.
- (2) The hard times, which have made it difficult to support one government here, to say nothing of two.
- (3) The change of Territorial administration.

While it is admitted that the time will eventually come to subdivide the Government, it is logically held that such a change should be brought about by growth in population as it was in the early history of the United States, and not by the mere growth of greed among the office-holding class. When there are people enough settled in Hawaii to require a variety of governments, the variety will naturally come. But while the responsible population barely exceeds ten or twelve thousand, the vast majority being nomadic, one government, economically administered, is enough. Even that is having a hard time trying to make both ends meet.

The general desire to have the President see George Davis and gauge the kind of men who are trying to break down the reputable judges of the Supreme Court of Hawaii, has been gratified. Senator Foster piloted the freak attorney to the White House and there he broke loose. Evidently the breakage was violent as Davis expressed his "sorrow" for it afterwards. It is a pity that the rest of the anti-Frear, anti-Perry hui can't be induced to show themselves at Washington, for that would clinch the reappointment of the two judges beyond a doubt. Still if Davis is left there he will do a great deal.

There is no doubt that cotton would grow abundantly in Hawaii. It already does so in gardens and before sugar came it was raised for export. The Paradise of the Pacific is probably correct in saying that Japan would afford a market for all the cotton that Hawaii could produce.

## MUSICAL DEMAND AND SUPPLY.

In the Twentieth Century, so far, great voices are scarce, and are much in demand by the leading managers of the world. They are usually found in obscure places and by accident. In Italy, in Germany, in Sweden and Norway, in Great Britain, or in the United States, some humble person, to whom vocal music is a recreation, occasionally attracts the attention of a noted manager or singer and, in a few years, a new star is added to the musical firmament. Discoveries of this sort, however, are scarce in these days of material activity, while the demand is intermittent.

It would be impossible to enumerate the musical celebrities of the last century, most of whom were revealed by apparent chance. Jenny Lind, afterwards Madame Goldschmidt, was simply incomparable. In her song of the nightingale, it seemed as if the bird of the evening, was soaring above her head, as she stood on the stage, and realizing the pure fancy of Shelley, by warbling and trilling those transcendent notes that were the very ecstasy of sentiment. Grisi, in her operatic character, notably as Norma, raised the human soul to the level of sublimity. Alboni, Vestris and a host of others thrilled vast audiences with exquisite modulation and expressiveness. Madame Anna Bishop sang ballads in such a manner, to the accompaniment of Bochs's harp, that the memory of her vocalization never can die. Her rendering of "Angels Ever Bright and Fair," or of "John Anderson My Jo," or of "Home Sweet Home" would have penetrated the epidermis of a Washoe millionaire. Kate Hayes was only less effective. The tenor, Mario, Grisi's second husband, was a prodigy of range and richness and kept his voice almost to the end of his prolonged life. Henry Russell, who sang almost entirely in concerts and composed many popular ballads, possessed such subdued intensity of expression that he produced an effect upon an audience that was some times painful. The basso profundo, Lablache, had a voice like the roll of an organ, that was above all instrumental or choral accompaniments, and was so powerful and so deep that it was said he could break a piece of plate glass by the mere exhalation of his breath. It may not be generally known that Thomas Moore was a fine singer and used in private to sing his own songs with great effect.

These are scattering reminiscences of a past age. There were many others: Adelaide Phillips, Etelka Gerster, Adeline Patti and a few of their contemporaries were fine contraltos and sopranos in their day, although it is doubtful whether they equalled their predecessors of the nineteenth century. Still, if it be admitted that there was a decline in vocal talent or genius in the last years of that century, the subsequent depreciation is more distinct. Now the earth is being rummaged for new singers, who can realize the inspiration of Shelley's verse:

"I pant for the music that is divine,  
My heart in its thirst is a dying flower.  
Four forth the sounds like enchanted wine;  
Loosen the notes in a silver shower."

It would be to the interest of managers, searching for new material, to devote some attention to the Hawaiian Islands. Melody, which is akin to harmony, is the birthright of the Hawaiian people. Some of the native music is filled with the delicate minor tones of transmitted sensibilities. There are native singers, who if they had the benefit of training in the best European schools, would be heard with rapture upon all the continents. There is at least one basso here, who should be prepared for the proper use of his remarkable gift. Such a tenor as John S. Ellis, such a baritone as William S. Ellis, with a brief access to the technical schools of vocal music, would soon reach the hearts of the masses and shed the arrows of the critics. It is doubtful whether there is any spot on the globe that could be so profitably used as a recruiting ground for singers as the Hawaiian Islands. The examples mentioned are within the male sex, but there are women, both natives and hapa-haoles, who require only extrication from their surroundings and the gift of opportunity to charm the lovers of music in the most advanced centers of the divine art.

A Japanese publication says that a criminal, under sentence of death at Tokio, was lately called before the court to receive the short notice, given in such cases, of his execution. The judge, after fixing the hour of death, said that the relatives of the condemned man had put into his hands the sum of two yen which the prisoner might spend for choice food. This the man refused to do. He said he wanted his last act to be one of patriotism so he contributed the two yen to the war fund.

Leigh Hunt, who is well-remembered in Hawaii, is one of those soldiers of fortune who "makes the world his oyster." One hears of him now on the Sound, making and losing a fortune in the newspaper business; then in Korea, developing gold mines; and for the present in the Sudan, where he is

experimenting with cotton. If he doesn't become the Saharan cotton King he may next organize an Argentine beef trust. All things are possible to Leigh Hunt.

The New Yorker who has bought two armored cruisers of Chile is the one who bought the old Esmeralda of her ten years ago and transferred the vessel, under the Ecuadorian flag, to Japan. The chances are that the recent purchases will come travelling this way in the next five or six weeks, bound to the same destination.

Triplets 80 years old celebrated their birthday a few days ago in Hillsdale, parish of Upland, near Monticton, N. B. The three have lived in the same place all their lives. They are Richard, James and Deborah De Bow, the children of William De Bow. A number of relatives and friends waited upon the triplets and presented to them a purse of money. The triplets are all in good health and appear to have a good chance of reaching the century mark.

The ribbon sale continues.

## Among The New Silks

is the beautiful Burlingham Shantung Pongee which promises to take the place of the soft, fine pongee of last year. It is coarse and heavy and more like the silk that men use for suits in China.

Colors Navy Blue and Royal.  
\$2.50 a yard.

From New York comes the soft Luisine silk. It is very fashionable this season and wears exceedingly well. Patterns are in small checks.

\$1.00 and \$1.25 a yard.

## New Neck Fixings For Summer

About the most popular are the Bulgarian (some say Russian) cross stitch patterns for collars and cuffs.

Patterns are only 25c. and 35c. each.

The ribbon sale continues.

## Ehlers

Fort Street.

## Orpheum Theatre

J. C. COHEN, Manager.

STARTING FRIDAY, MAY 13

MR. HARRY JAMES PRESENTS

## The American Travesty Stars

Now Touring the World with the Following Cast:

Koib & Dill, Barney Bernard, Winfield Blake, Maud Amber, Charlotte Vidot, Lillie Southerland, Richard Goodale and a BEVY OF BEAUTIFUL SHOW GIRLS in WEBBER & FIELD'S LATEST AND MOST SUCCESSFUL BURLESQUES.

## ONLY 10 PERFORMANCES

May 13—Fiddle-Dee-Dee.  
May 14—Fiddle-Dee-Dee.  
May 16—Hoity Toity.  
May 17—Hoity Toity.  
May 19—Whirl I Gig and Big Little Princess.  
May 21—Whirl I Gig and Big Little Princess.  
May 23—Fiddle-Dee-Dee.  
May 24—Hoity Toity.  
May 26—Whirl I Gig and Big Little Princess.  
May 28—Fiddle-Dee-Dee.  
Prices:—\$1.00, 75c., 50c. and 25c.

## Luau, Fair and Fancy Ball

at PROGRESS HALL.

Under the auspices of the Naniola Club.

Tuesday, May 17 and Wednesday May 18.

In aid of the Homeless and Needy. Luau at noon, Fair at 2 p. m. and Ball at 8 p. m.

## All Stuffed Up

That's the condition of many sufferers from catarrh, especially in the morning. Great difficulty is experienced in clearing the head and throat.

No wonder catarrh causes headache, impairs the taste, smell and hearing, pollutes the breath, deranges the stomach and affects the appetite.

To cure catarrh, treatment must be constitutional—alterative and tonic.

"I was afflicted with catarrh. I took medicines of different kinds, giving each a fair trial; but gradually grew worse until I could hardly hear, taste or smell. I then concluded to try Hood's Sarsaparilla, and after taking five bottles I was cured and have not had any return of the disease since." EUGENE FORBES, Lebanon, Kan.

**Hood's Sarsaparilla**  
Cures catarrh—it soothes and strengthens the mucous membrane and builds up the whole system

## Eastman's

## KODAKS

AND

## FILMS The Latest Dates

Seeds Dry Plates and Photographic Materials of every description.

## DEVELOPING and PRINTING

A Specialty.

Good Work Guaranteed

## Hollister Drug Co.

FORT STREET.

## Eye Glass Superiority

Our glasses have firmly established themselves as the standard in glasses. They possess individuality, comfort giving properties, and their neatness of appearance is a daily comment.

It costs no more to have them, than those less satisfactory.

H. F. Wichman & Co., Ltd.  
Optical Department.  
Fort Street.

## Learn to Save Money

... We offer Guaranteed Investments For those of Small means.

For particulars call at the office of....

## Phoenix Savings, Building and Loan Association,

Judd Building.

H. E. POOCK, General Agent.  
R. CAMPBELL, Cashier.

## The Pacific Hardware Co.,

LIMITED.

SOLE AGENTS FOR THE CELEBRATED

All Sizes and Prices



Every Stove

Guaranteed

Best of material and workmanship. Made in every style and size known to modern stove construction.

Repairs always on hand.

## Sold On Easy Terms

PRICES RANGE FROM \$9.00 UPWARD.

Cor. Fort and Merchant Streets



Have You Decided on the Light Question?

When it comes to buying kerosene lamps or electric light fixtures the question is about a stand off. When it comes to choosing the best light the balance is decidedly in favor of electricity.

For further information call at

## HAWAIIAN ELECTRIC Co., Ltd.

Office King near Alakea. Phone Main 390.

J. F. Morgan, President; C. J. Campbell, Vice-President; J. L. McLean, Secretary; A. F. Clark, Treasurer; N. E. Gedge, Auditor; W. M. Hoogs, Manager.

## Hustace-Peck Co., Ltd.

WHOLESALE AND RETAIL DEALERS IN

Firewood, Stove, Steam, Blacksmith's Coal  
Also Black and White Sand. Special Attention Given to Draying and Express Work. Telephone Main 295.

## Grass Linen

in different colors. Fine assortment just received. Tea cloths, table covers, doilies in all sizes. Call and see them. No trouble to show goods.

## ORIENTAL : BAZAAR

King Street : : : Opposite Advertiser Office.

## FRED PHILP &amp; BRO.

Practical, reliable and up-to-date  
Harnessmakers and saddlers.



Waverley Bldg., Bethel St.

## What Have You to Offer Investors?

SEND PARTICULARS TO

## THEO. F. LANSING,

Insurance and Commission.

15 Kaahumanu Street.

P. O. Box 351.

## THE BANK OF HAWAII, LTD.

Capital \$600,000. Reserve and Undivided Profits, \$286,838.63.

AGENTS FOR: First Bank of Hilo, Ltd. The First National Bank of Waikuku. The Libus Branch.  
CORRESPONDENTS: Wells, Fargo & Co's Banks, San Francisco, New York, Portland, Or., Lake City; The Nat. Bank of Commerce, New York; Glyn Mills Currie & Co., London, Hongkong and Shanghai Banking Co., throughout the Orient, etc., etc.

Transact a General Banking Business, Both Commercial and Savings.  
Issue Money Orders Guaranteed by the Bankers Money Order Association; ARE WORTH PAR EVERYWHERE, AND REDEEMABLE IN NEW YORK, SAN FRANCISCO, NEW ORLEANS, BOSTON, CHICAGO, DENVER, DALLAS, CANADA, MEXICO CITY, HAVANA, CUBA, ETC. THESE MONEY ORDERS ARE AS CONVENIENT AS POSTAL ORDERS. CALL FOR SLIPS TO FILL OUT IN OFFICES OR AT HOME.

## Alexander Young Building

## STORES

70 x 30 feet.—Absolutely dry cellar 80 x 30 feet.

## OFFICES

Second Floor.—All modern conveniences. Rental includes janitor service, electric lights and water rates. \$20.00 per month up.

## THE VON HAMM-YOUNG CO., LTD.





THE "HOBSON JOBSON" PROCESSION AT THE ALBERT DOCKS.

For this curious annual ceremonial, the Peninsular and Oriental Company give the Lascars and other Oriental seamen a day's holiday. The men are grotesquely dressed, and carry a flimsy temple made of cardboard and paper. In front of the temple three tapers are borne, and when these have burnt out, the temple, which is believed to contain the devil, is conveyed on a tug to midstream, and is there solemnly sunk. This act is held to be expiatory of sin.

—London Illustrated News.

## THE ELECTORAL VOTES OF 1904.

The electoral votes of the forty-five states of the Union, under the apportionment act of 1900, aggregate 476. A majority of these necessary to elect a president is 239 votes.

The electoral vote of Southern states which may surely be counted for the Democratic candidate for president number 151. The states of Delaware and Maryland, having together eleven electoral votes, may also be given to the Democrats with reasonable confidence, making a total of 162 Democratic votes.

To get a majority of the electoral votes, seventy-seven more will be required by the Democrats.

States which may be set down as doubtful are Connecticut, New Jersey, New York, Rhode Island, West Virginia, with an aggregate of sixty-nine electoral votes. If New York, with its thirty-nine votes, is carried by the Democracy, it is possible that Connecticut, with seven votes, will go in the same way, and that New Jersey also will return to its old Democratic allegiance. Nor can either Rhode Island or West Virginia be safely counted for the Republicans.

Even if the Democrats secure the electoral votes of all the five states we have classed as doubtful, they will still need eight votes to get the required majority of the whole number, 239.

It is plain, therefore, that the Democrats cannot elect a president without securing, in addition, either in New England or the West, eight electoral votes at least.

Unless there comes a political revolution of the most extensive

sort, the Democrats will have no chance of winning any other of the New England states than Connecticut and Rhode Island, and they must get the additional votes required from some one or from a combination of these Western and Pacific coast states:

California . . . . .	10	Nebraska . . . . .	8
Colorado . . . . .	5	Nevada . . . . .	3
Idaho . . . . .	3	North Dakota . . . . .	3
Illinois . . . . .	27	South Dakota . . . . .	4
Indiana . . . . .	15	Ohio . . . . .	23
Iowa . . . . .	13	Oregon . . . . .	4
Kansas . . . . .	10	Utah . . . . .	3
Michigan . . . . .	14	Washington . . . . .	4
Minnesota . . . . .	11	Wisconsin . . . . .	12
Montana . . . . .	3	Wyoming . . . . .	3

It needs only a glance at these indubitable facts of our political federation to forecast a presidential campaign for 1904 which will be one of the fiercest in our history. The Democrats to win will not only have to make a hard fight to resume political control of New York, New Jersey, Connecticut and West Virginia, but must push the war successfully in the West also.—New York Sun.

## BELT OF CALM AT PACIFIC END OF CANAL.

At the eastern extremity of the canal the difficulties which a sailing vessel may expect to encounter will arise from a superabundance of wind rather than a lack of it. At the western extremity, on the other hand, these conditions will be completely reversed.

Upon emerging from the canal into the Pacific Ocean a vessel will enter an extensive belt of calms and light airs, which render navigation by sail more tedious than in any other frequented portion of the sea. The width of this region varies—at some points wide, at others narrow. In that portion of the North Pacific included between the American coast and the meridian of 120 degrees west it reaches a maximum, extending in latitude from a point one or two degrees north of the equator to Cape San Lucas, the southern extremity of Lower California. In both approaching and leaving Panama, irrespective of the port from which or toward which bound, a sailing vessel must of necessity navigate a greater or less width of the belt of calms, and in estimating for a given voyage the saving of time effected by the use of the canal the delay arising from this cause must not be neglected.—National Geographic Magazine.

## "PIKE'S PEEK" AND "PEEK'S PIKE."

First Lieutenant Rudolph E. Sniper, of the Fourteenth cavalry, is believed to be the youngest commissioned officer in the United States army. He was born December 5, 1882. The tallest officer is Lieutenant Ernest D. Peck, first lieutenant, corps of engineers, a native of Wisconsin. Lieutenant Peck stands 6 feet 4 1/2 inches and was a star graduate at West Point, where the other boys used to call him "Pike's Peek." He has given especial attention to road construction and soon after his graduation supervised the building of a military road which is now known as "Peek's Pike."

## MEN, I'LL CURE YOU!



Let any man who is weak, broken down, old and decrepit in physical weakness, full of pains and aches, gloomy, despondent and cheerless—any man who wants to be stronger and younger than he feels—let him come and tell me how he feels, and if I say that I can cure him I will forfeit \$1,000 if I fail. I don't want money that I don't earn. I don't need it, and am not after it. But I am after the dollars that are now going wrong in the quest of health. Look at all these poor wrecks of humanity that are spending all they earn on drugs—drugs that are paralyzing their vital organs—that have spent all they have earned for years without gaining a pound of strength for the hundreds of dollars wasted.

That is the money that I am after, because for every dollar I take I can give a thousand per cent interest. I have cured so many cases right here that I can prove my claims to you, but if that proof is not enough I'll give you the names of men right near you—where you are. Is that fair?

Most of the belts that I am selling now are to men who have been sent here by their friends whom I have cured. I think that is the best evidence that my business is a success from the standpoint of cures, as well as on the dollar side.

Just lately I have received letters of praise from these men: James P. Daniels, 709 Divisadero street, San Francisco. He was cured of a back trouble of 12 years' standing.

J. M. Gaskill, 230 Chestnut Ave., Santa Cruz, Cal., who says I cured him of Indigestion, Constipation, Nervousness and Lumbago from which he had suffered 15 years.

Wherever you are, I think I can give you the name of a man in your town that I have cured. Just send me your address and let me try. This is my twenty-fourth year in the business of pumping new vim into wornout humanity and I've got cures in nearly every town on the map.

Write to me. I've got a nice book on men that I'll send sealed, free, if you inclose this ad.

DR. M. G. M'LAUGHLIN, 906 Market St., San Francisco.

## Historical Honolulu

OR A CENTURY OF  
HAWAIIAN EVOLUTION.



This valuable record of the most important events in the History of Honolulu for the past hundred years was compiled and published at great expense in 1899.

Its historical and descriptive articles are by the very best recognized authorities on Island matters and are handed from absolutely impartial standpoints.

It is finely illustrated and contains portraits and biographical sketches of the principal business and professional men of the Islands.

This is a publication that no student of Hawaiian History can afford to be without. A limited number of copies still for sale by The Hawaiian Gazette Co., Ltd.

## Substantial Cloth Binding

50 cents per Copy

POSTAGE : : : 30 CENTS EXTRA.

## Six Prize Stories

FROM THE LITERARY BRANCH OF

## The KILOHANA ART LEAGUE

A neat and interesting souvenir of Hawaii, neatly gotten up and handsomely bound.

The stories are ALL HAWAIIAN, having a distinct Island flavor and apart from its value as a souvenir the book is an interesting one.

FOR SALE BY

The Hawaiian Gazette Co.

PRICE 25 CENTS.

POSTAGE 10 CENTS EXTRA.

## WALTHAM WATCHES

Emerson, the Eminent Philosopher, in an Essay on Eloquence said, in speaking of a man whom he described as a Godsend to his town, "He is put together like a Waltham Watch."

MANUFACTURED AND GUARANTEED BY  
AMERICAN WALTHAM WATCH COMPANY  
WALTHAM, MASS., U. S. A.

READ THE ADVERTISER  
World's News Daily.



## SAVE MORE THAN HALF ON DIAMONDS



### Easy Payments

Don't buy a Diamond Ring, stud or other article until you have seen the wonderful *Zambesi Diamond*. We are selling them at a fraction of the price of Trust Diamonds, and on *Easy Monthly Payments*. Order one on approval for inspection. If you like it and want to keep it, you can make a small payment, then send the balance to us at the rate of two dollars monthly. Illustrated Catalogue answers every question—send for a copy today. Only the finest solid gold mountings used and written guarantee given with every sale. We are a responsible incorporated company with a capital of \$100,000.00 and take all the risk of submitting our goods on trial. We have put diamonds within the reach of any person who can pay a dollar or two monthly. Delivery guaranteed within one week. Please write for Catalogue; it's worth its weight in gold to anyone interested in Diamonds.

**BOYLSTON DIAMOND CO.**  
511 Boylston Building,  
CHICAGO, ILL.



## Get Your Kodak Ready

There's a vacation all the year 'round for the kodaker and good healthy recreation out of doors. Honolulu is steadily and rapidly changing and your kodak book of views will increase in interest as the years roll on. Get your kodak ready and come out doors.

**HONOLULU PHOTO SUPPLY CO.**  
FORT ST., AGENTS.



## TURBINE A CLUETT COLLAR

QUARTER EACH, QUARTER SIZES  
CLUETT, PEABODY & CO.  
MAKERS OF CLUETT AND MONARCH SHIRTS

## GLASS

### Has Many Attractions.

Although looked upon a few years ago as a luxury, nothing so adorns the home at so slight a cost as plate glass windows, built in China closets, etc. We have glass for every use as the following kinds will show.

Figured rolled glass—white and colors.  
Ground glass for artists use.  
Glass for windows.  
Circular glass cut to order.  
Skylight glass with wire.  
Florentine glass, white and wine colors.  
Plain colors, in red, blue, yellow and orange.

## LEWERS & COOKE, LIMITED

177 South King Street.

## DRIVING AND SADDLE HORSES

of the best to be had at the

## CLUB STABLES

Rigs with or without drivers.  
Fort above Hotel. Phone Main 109.  
C. H. BELLINA, Manager.

25c  
per  
month.  
**Sunday  
Advertiser**

## Subscribe Now

We employ experienced men to clean  
**Panama Hats**

## GLOBE CLOTHING COMPANY

Fine new line of gents' clothing and  
furnishing goods.  
Hotel St. near Bethel.

# FIRST MUSIC FESTIVAL OF HAWAIIAN ISLANDS

A Grand Assembly of Local Singers—Hundreds  
of Voices at Opera House on the  
27th of May.

A "Congress of Song" on an elaborate scale has been arranged by the combined musical talent of Honolulu to take place at the Hawaiian Opera House May 27, and plans have been completed in which all the schools of the higher branches will participate. The event will be the greatest musical assembly ever held in this city and will be under the auspices of Oahu College. It will be styled "First Music Festival" and will include choruses of male, female and mixed voices and a combined ensemble of over three hundred singers under the directorship of Prof. Gerard Barton, with separate choruses under their individual leaders.

The "Congress of Song" is an outgrowth of the ancient Elsteddfod, or national music festival of Wales, which was instituted as far back as the twelfth century for the purpose of fostering and maintaining the music of the people. The first account of which there is any record tells of Maelgwn Gwynedd, Prince of Wales, and how he undertook to prove the superiority of vocal song over instrumental music. Maelgwn on this occasion offered a reward to such bards and minstrels as should swim over the Conway. There were several competitors, but upon their arrival on the opposite shore, the harpers found themselves unable to play owing to the injury their harps had sustained from the water, while the bards were in as good tune as ever, thus giving them an easy victory.

The "Congress of Song" should be heard to better advantage in Honolulu perhaps than in any other part of the world as the people of Hawaii are not only music loving, but also music producing and it is high time that something of the kind should be brought out. The recent operatic performances by local talent have amply demonstrated the wealth of latent musical talent among the people, which, although not absolutely neglected, has never been developed to its highest possibilities. The song festival will bring out the full power in regular oratorio style, and in time it will undoubtedly be one of Hawaii's greatest attractions, as it is the intention of the promoters to make the occasion an annual one and add to its scope each year by bringing special artists from the States.

The "Congress of Song" carries out the old educational idea of the Welsh and will give a fresh impetus to the music of the schools, where the foundation of a Nation's musical taste is always laid. To the average listener there is nothing more inspiring than that of trained voices singing in unison and these will be under the leadership of Honolulu's finest musicians, making a combination that will be truly magnificent.

One of the problems that confronted the leaders was how to get 300 people on the Opera House stage at one time but this has been solved most satisfactorily as will be seen the night of the event. Not only will this immense chorus be on the stage singing at one time but they will present a most striking appearance wearing their college and school colors and the whole auditorium will be decorated as it has never been before, class colors predominating.

Those who will lead the separate choruses are: Miss Byington, Kamehameha Girls' School; Mrs. Yarnley, High School; Mrs. Tucker, Normal School; Miss Cooledge, Kawaiahao; Stanley Livingston, Kamehameha Manual; Mr. Merrill, Mills' Institute, and Prof. Barton, Punahou. Preparations for the big event are going on rapidly at all the schools and the program will be in part as follows:

Wedding March...arr. from Soderman  
"By the Waters of Babylon".....Niedlinger  
Kawaiahao Seminary.  
"Spring Revel".....Cursch-Buhrn  
Mills' Institute.  
"Stars in Heaven".....Rheinberger  
"Hallelujah".....Beethoven  
Normal School.  
"The Lost Chord".....Sullivan  
"Gypsy Rondo".....Becker  
High School.  
"Gloria from Twelfth Mass".....Mozart  
"Bridal Chorus from Lohengrin".....Wagner  
United Chorus (200 voices).  
"Country Dances".....Farmer  
Oahu College.  
Selections by Kamehameha Schools.

The usual Opera House prices will prevail and tickets are now being sold. Following the Music Festival at the Opera House will be a Children's Con-

test and Carnival at the Boys' Field on Liliha street Saturday afternoon, May 28. In this contest six hundred voices of the grammar school children will be heard under the leadership of Mrs. Tucker and the plan has the hearty support of the Board of Public Instruction. These have been selected out of an attendance of over 2000 pupils from Kaahumanu, Royal, Kailua and Pahukaina schools. For the contest Mr. E. A. P. Newcomb is making a beautiful velvet trophy with an illuminated border and there is great enthusiasm among the schools as to who will carry off the prize. Besides singing there will also be gymnastic events and the judges of the entire contest will be Mrs. Annis Montague-Turner, Miss Margaret Hopper, Miss Caroline D. Castle, Prof. W. D. Alexander, A. B. Ingalls, E. A. P. Newcomb, Rev. J. Usborne and Capt. H. Berger. The proceeds from both events will be used for the erection of an immense sounding board and pavilion for concerts of like nature in the

## IS BEET SUGAR A FAILURE IN THE UNITED STATES?

Two years ago, during the heat of the Cuban reciprocity campaign, the American beet sugar industry was set before us, by those interested in it, as radiant with promise of an abundant supply for all our home requirements, and as certain to become an important item of export. The recent annual report of the Beet Sugar Trust, otherwise the American Beet Sugar Company, seems to indicate that there was a large amount of artificial rainbow about the statements made and the assurances given. Instead of the predicted increase of the industry, there has been a very marked decline in output.

This cannot be attributed to the influence of reciprocity with Cuba. The proprietors of the American industry, after making one of the most vigorous fights on record in Washington, at last withdrew their opposition to reciprocity with Cuba, and admitted that the small reduction conceded by the treaty would not prove in any way detrimental to their interests. For the cause of the present condition of the industry, therefore, it is necessary to look in other directions.

It has been demonstrated beyond any question that sugar beets, rich in saccharine qualities, can be grown over a very considerable area of the United States, and that the acreage yield is quite up to that of other countries in which the industry has proved a financial success. The mechanical conversion of the beet juices into sugar is no more difficult than it is elsewhere, and is little if any more expensive. Theoretically, there is no reason why the United States should not produce beet sugar in very large quantity.

Two features appear as important factors in the comparative failure of the industry thus far. One is that the American farmer does not take kindly to the sort of work required for beet culture. While beets for the sugar mills make a fairly profitable crop, most of our farmers are not sufficiently hard up to be willing to do that kind of work for what money there is in it. Hence the sugar mills, dependent upon farm supply, are not provided with a stock of raw material which is up to their working capacity. This is the second factor: In order to be profitable, the mills must receive a supply of beets approximating their operating capacity. Thus far, few have been able to obtain such a supply.

The industry remains in the domain of possibilities. The time may come when the invention of suitable tools will enable the farmer to plant his field of beets and to cultivate and gather his crop with horse-drawn apparatus which he can ride while doing his work. Until the labor is thus simplified, the beet sugar industry may be able to compete with imported cane sugar in certain areas in the West and far West, but the country at large must depend chiefly on the cane of the tropics.—New York Sun.



## Beer must be pure

to be good; must be brewed only from the best materials; must be scientifically filtered, thoroughly aged, bottled at the brewery and sterilized after bottling. It must always be shipped in the bottle, for beer shipped in bulk and bottled at supply depots is sure to absorb impurities.

## The Famous A.B.C. Beers

are guaranteed absolutely pure  
and free from all preservatives and chemicals

used in other brands of bottled beers, which are injurious to the health. They are never sold in bulk—are the only beers bottled exclusively at the brewery. Made from the finest Bohemian hops, they are aged for months, then filtered and piped direct from the brewery vaults into bottles by means of hermetically closed filling machines. This prevents the beer from coming in contact with the outside air, and insures absolute freedom from bacteria. It also preserves its natural effervescence and zest.

### Six Points of A.B.C. Excellence

- 1—Purity. We absolutely guarantee the purity of all our beers.
- 2—Flavor. This is the distinctive, individual characteristic of any beverage, peculiar to it alone, and is the quality that has made A. B. C. Bohemian Beer famous.
- 3—Brilliance, clearness and polish, proving perfect brewing and fermentation.
- 4—Clean Taste. No disagreeable foreign or aftertaste, proving scrupulous cleanliness during brewing process.
- 5—Keeping Quality. The most trying test for bottled beer. A. B. C. Bohemian will keep and retain all of its qualities under varying conditions.
- 6—Solid, Creamy Foam, denoting body age and excellence of brewing materials.

**W. C. PEACOCK & CO., Wholesale Dealers**

P. O. Box 428 Telephone 4 HONOLULU, H. I.

future which will accommodate over six hundred singers.

### UNNA DEFINES A CAUSE.

European Skin Specialist Says Dandruff is Caused by Parasites.

Upon that theory, proved beyond a doubt, a cure for dandruff was sought after. Scientists, chemists, druggists and physicians all "took a hand" and the successful issue is the present product known as "Newbro's Herpicide."

This remedy actually kills the parasites that infest the hair bulb, does its work most effectively and contains not an atom of substance injurious to anything else than the germ alone. Herpicide causes the hair to grow as nature intended it should, soft and abundant.

Sold by leading druggists. Send 10c. in stamps for sample to The Herpicide Co., Detroit, Mich. Hollister Drug Co., Special Agents.

## FIRE HYDRANTS FOR WAILUKU

The Honolulu Iron Works Co., Ltd., has received the contract for supplying 24 Mathews fire hydrants, with fittings and connections, for the town of Wailuku, Maui, the price being \$1271.20.

Wailuku thus stands fair to obtain, without much longer waiting, the necessary complement of hydrants to its means of protection from fire. Besides the constantly increasing value of private buildings in Maui's chief town, there will soon be valuable public structures there which it is in the interest of the whole Territory to have protected.

## AN ACTOR PARROT

Big Travesty Stars Lose  
Their Feathered  
Mascot.

Patsy, the most accomplished parrot in the world, is missing, and there is a reward out for his recovery, a substantial one if alive and recompense even for his dead body. Anyone confronted with a green and yellow parrot with a red top knot, possessing unusual accomplishments along gymnastic and vocal lines, will not only reap a monetary harvest from bringing him back to the American Travesty Stars Company but will earn the everlasting gratitude of Harry James and the rest of the brilliant company whose achievements are only overshadowed by Patsy.

Patsy is no ordinary parrot. His sayings are not mere echoes, they are apropos and he is always ready with repartee that discomfits even his master on occasions. He is a gymnast also of the first order and if he was only big enough to make a showing could command a big salary as a vaudeville artist. Then he has another talent never known to be possessed by another bird. He chews gum, literally takes the tasteful mastic and rolls it under his tongue until he has a wad of plastic material that will last him all day unless he is disturbed. Then, so says the story, he carefully deposits his gum on his perch and talks back at his interrupter. He has yet another charm, he is the mascot of the American Travesty Stars and if he is lost in Hawaii the Weberfeldians will feel that they have made but a poor beginning of their triumphal Australasian tour.

Patsy's troubles began on Wednesday morning when the Sierra docked. A member of the company started to carry Patsy down the gang plank, intent on his duty, stopped the movement. "You can't bring that bird ashore here," said the guard. "Why not?" asked the Thespian. "What's the matter?" said Patsy.

"That may be one of those blooming mutton birds," said the customs man, "and we don't want any more of them Brigham birds around here." "Mutton bird be blowed," replied the actor. "This is a member of the American Travesty Stars. He's the whole show. Kolb gets all his inspirations from this bird. You can't stop Patsy. No bird no show."

"What does he do in the show?" asked the official, who had tickets for tonight and didn't want to miss anything. "Acts as call boy, prompter and chaperon to the chorus ladies," answered the actor man. "He's one of the company; you can't stop him." And Patsy came ashore.

But some one, attracted by the talents of Patsy who is, it is said, the original model of the talking parrot in the San Francisco Sunday colored supplements, has annexed the cage and Patsy, and there is mourning in the company. They are afraid his present owner will not know how to treat him and may even refuse him gum. The reward will be a liberal one, however, as all the company are willing to chip in a dollar apiece if Patsy comes to their ranks again.

### The Story of the War.

A. K. Ozawa has supplied the Advertiser with an excellent history of the Russo-Japanese war brought up nearly to date, in a pamphlet of 150 pages. Other pamphlets with the rest of the story will follow. These handy volumes are issued in Tokyo and are well printed and illustrated. They will be sold by the Hawaiian News Co., and those who buy will have a record of the war in hand which may be bound later into thick volumes.

## Bishop & Co., Bankers

ESTABLISHED IN 1858.

### BANKING DEPARTMENT

Transact business in all departments of banking.  
Collections carefully attended to.  
Exchange bought and sold.

Commercial and Travelers Letters of Credit issued on the Bank of California and N. M. Rothschild & Son, London.

Correspondents: The Bank of California, Commercial Banking Co. of Sydney, Ltd., London.

Drafts and cable transfers on China and Japan through the Hongkong and Shanghai Banking Corporation and Chartered Bank of India, Australia and China.

Interest allowed on term deposits at the following rates per annum, viz:  
Seven days' notice, at 2 per cent.  
Three months, at 3 per cent.  
Six months, at 3½ per cent.  
Twelve months, at 4 per cent.

### TRUST DEPARTMENT.

Act as Trustees under mortgages. Manage estates, real and personal. Collect rents and dividends. Valuable papers, wills, bonds, etc., received for safe keeping.

### ACCOUNTANT DEPT.

Auditors for corporations and private firms.  
Books examined and reported on. Statements of affairs prepared. Trustees on bankrupt or insolvent estates.

Office, 924 Bethel street.

### SAVINGS DEPARTMENT.

Deposits received and interest allowed at 4½ per cent per annum, in accordance with rules and regulations, copies of which may be obtained on application.

### INSURANCE DEPARTMENT

Agents for FIRE, MARINE, LIFE, ACCIDENT, and EMPLOYERS' LIABILITY INSURANCE COMPANIES.  
Insurance Office, 924 Bethel Street.



## THE PRUDENTIAL INSURANCE CO. OF AMERICA.

Write for Rates and Particulars.

## HAWAIIAN TRUST CO., Ltd.

Managers for  
Territory of Hawaii.



923  
Fort St. Tel. Main 134

## WM. G. IRWIN & CO., LTD.

Wm. G. Irwin, President and Manager  
Claus Spreckels, First Vice-President  
W. M. Giffard, Second Vice-President  
H. M. Whitney, Jr., Treasurer and Sec.  
George W. Ross, Auditor  
Sugar Factors and Commission Agents

### AGENTS FOR THE

## Oceanic Steamship Company

Of San Francisco, Cal.

### AGENTS FOR THE

## Scottish Union & National Insurance

Company of Edinburgh.

Wilhelms of Magdeburg General Insurance Company.

Associated Assurance Company of Munich & Berlin.

Alliance Marine & General Assurance Co., Ltd., of London.

Royal Insurance Company of Liverpool, Alliance Assurance Company of London.

Rochester German Insurance Company of N. Y.

## WM. G. IRWIN & CO., LTD.

### AGENTS FOR

Western Sugar Refining Co., San Francisco, Cal.

Baldwin Locomotive Works, Philadelphia, Pa.

Newell Universal Mill Co., Manufacturers of National Cane Shredder, New York, N. Y.

Paraffine Paint Company, San Francisco, Cal.

Ohlandt & Co., San Francisco, Cal.

Pacific Oil Transportation Co. San Francisco, Cal.

## C. BREWER & CO., LTD.

Sugar Factors and Commission

Merchants.

### LIST OF OFFICERS.

C. M. Cooke, President; George B. Robertson, Manager; E. F. Bishop, Treasurer and Secretary; Col. W. F. Allen, Auditor; P. J. Jones, C. H. Cooke, G. R. Carter, Directors.

## HAWAII SHINPO SHA.

THE PIONEER JAPANESE PRINTING

office. The publisher of Hawaii Shinpo, the only daily Japanese paper published in the Territory of Hawaii.

C. SHIOZAWA, Proprietor.

Y. SOGA, Editor.

Editorial and Printing Office—1024

Smith St., above King. Phone Main 48.

## Honolulu Candy Co.

New England Bakery

J. OSWALD LUTED,

Manager.

Bethel Street.



## Debility

Perhaps you eat enough, yet you do not get much benefit from your food. You keep thin and weak; are tired all the time, and your nerves are in a bad way. Why not strengthen your digestion and get rid of your debility?



Read these words from Mrs. E. G. Munro, of Coburg, Victoria. Mrs. Munro also sends her photograph.

"I suffered greatly with indigestion and acidity for a long time. Sleep did not refresh me, and I was in a very bad state. One of my friends strongly recommended Ayer's Sarsaparilla, and after a good deal of hesitation I made up my mind to try it. To my great surprise, I had not taken one-half a bottle before I felt greatly improved in every way. I only took three bottles, and I can now honestly say that I am entirely free from all of my old troubles, and consider myself perfectly cured. Ayer's Sarsaparilla is certainly a wonderful blood medicine."

## AYER'S Sarsaparilla

There are many imitation Sarsaparillas. Be sure you get "Ayer's." Prepared by Dr. J. C. Ayer & Co., Lowell, Mass., U.S.A.

HOLLISTER DRUG CO.

## THE Aquarium

NOW OPEN!

AT Kapiolani Park

THE AQUARIUM WILL BE OPEN on Week days from 10 o'clock a. m. to 5 p. m. and from 7 to 9:30 o'clock p. m. On Sundays it will open at 1 p. m.

ADMISSION will be FREE on Thursdays. On other days a charge will be made of 10 cents to adults and 5 cents to children under fourteen years of age.

**SMOKE GENERAL ARTHUR CIGARS**  
GUNT-EAKIN CIGAR CO.  
DISTRIBUTORS

## BUSINESSMEN AND HOUSEWIVES

are saving time and trouble daily by ordering help from us.

### WANTED TODAY.

- 1 Carpenter,
- 2 Waiters,
- 1 Cashier,
- 1 Clerk for general office work,
- 1 Waitress and
- 1000 men and women to apply at our office for all kinds of jobs.

**HONOLULU EMPLOYMENT AGENCY.**  
958 Fort St.

**BEAUTIFUL LILIES**  
AND FRESH SEEDS AT  
**MRS. TAYLOR'S,**  
THE FLORIST



## REMOVE THE CAUSE

And the effect will be a renewed growth of luxuriant hair. PACHECO'S DANDRUFF KILLER does it. Sold by all Druggists and at the Union Barber Shop. Tel. Main 232.

## SURE CURE FOR FRECKLES AND TAN.

A new and wonderful discovery recommended strongly by medical authorities. Non-irritating cure.

MISS M. E. WYNN.  
Local Agent. Hair Dressing Parlor, Richards street.

## Expert Piano Tuning.

Pianos tuned and repaired promptly by an expert at Bergstrom Music Co.  
Tel. Main 321.

## GOO KIM

Cer. Hotel and Nuuanu Sts.  
**Dry Goods,**  
Fancy Goods, Grass Linen, etc. All goods sold at a small profit.

## FORESTS ON KAUAI

Hosmer Gives the Results of Visit.

Plantation Men Work For More Forest Reserves.

Wilcox and Isenberg Have Imported Many Trees—Some Fine Ironwood Forests.

Ralph S. Hosmer, Superintendent of Forestry, who made the tour of Kauai with Governor Carter, is enthusiastic over the forestry possibilities of the Garden Isle.

"The island of Kauai is in many ways one of the most interesting of the group," said Mr. Hosmer yesterday. "Because of its broken and mountainous topography Kauai is wonderfully attractive from a scenic point of view, and being the home of many of the owners of the larger sugar plantations is a delightful island to visit."

"On Kauai there is an exceptionally good opportunity for forestry work. On the higher mountains in the center of the island the original forests are still intact, and although there has been encroachment on those on the lower levels, the plantation owners are awake to the desirability of preserving them and setting them aside as forest reserves."

"Several private forest reserves already exist, notably the one above the Lihue plantation, where the Isenbergs have maintained for a number of years a forest fence some eight miles in length, shutting off the cattle from the upper lands. As a consequence the trees are coming back on the partly denuded slopes and before long a dense stand of native trees and shrubs will be the result."

"This reserve should be increased by the extension of the fence in either direction. Propositions in regard to this have already been submitted and it is practically only a question of the arrangement of details when the work will be done."

"Elsewhere on Kauai there are other propositions looking to the reservation of the upper forest lands, from which comes the water used in irrigating the cane fields and which is also potentially valuable because of its power. Among those looked into on this trip were the proposed reserves on the lands of Hanalei and Kailikua in Halealea, that above the Kilauea sugar plantation in Koolau, and the mountain slopes behind the Kealia plantation of the Makee Sugar Co."

"Beside the natural forests on Kauai there is a considerable area of planted forest, especially on the Lihue plantation. On the slopes of the old crater of Kilauea, over 600 acres have been planted with forest trees—ironwood, and native koa being the two species most used although there are a number of other sorts in the forest, including monkey-pod, black wattle and silver oak. This plantation was started some twenty years ago by a professional forester, brought out by the Isenbergs from Germany, and has been continued and cared for up to the present time. Many of the trees in the forest have now reached a large enough size to be of merchantable value; and all the fuel for the plantation is now supplied from the thinnings which are made in the places where the trees stand too densely for their own good. The better trees are allowed to remain while the poorer specimens are cut and utilized, at once putting the forest in better shape and bringing in a return on the money invested. The iron-woods make a good growth and are thrifty trees, especially at the lower elevations, for above 600 or 700 feet they do not grow so well as nearer the sea."

"Besides the upland forest there have been a number of good sized areas of iron-woods planted makai. These plantations are primarily made as wind breaks to protect the sugar cane growing near the sea. They are highly successful examples of what can be accomplished by intelligent effort in the right direction."

"About a number of the homes of the leading men of Kauai can be found specimens of rare and valuable trees, some of which may one day be of great importance in this Territory."

"Especially active in the importation of new and untried trees have been Mr. Geo. N. Wilcox and the Rev. Hans Isenberg. The experiments made by these gentlemen will, I believe, be of lasting influence."

"There is one other point I should like to mention—that is the interest which is taken by some of the teachers in beautifying their school grounds. Especially noteworthy is the work done by Mr. L. C. Davis, principal of the Hanalei school. During the last five years Mr. Davis has set out on his school grounds a considerable variety of palms and crotons, as well as surrounding the place with a wind break of kamani trees. The lawns are well kept and altogether the grounds are as attractive as any one could desire, comparing

favorably with those in Honolulu itself. A well cared for school vegetable garden, where each of the pupils has his own plot, and baseball and croquet grounds bear testimony to the fact that the Hanalei teachers believe in all around development of mind and body."

"If all our school yards were as well provided for and taken care of as the one at Hanalei it would add much to the attractiveness of the islands and could not but exert a good influence on the rising generation."

"In this connection it may be in place to say that although the general free distribution of plants has been discontinued at the Government Nursery, there may still be obtained, free, upon application, plants and trees for use in school yards and on other government grounds."

"Personally, the trip to Kauai was a delightful one to me. One might travel very far before seeing anything to compare with the beautiful scenery in the vicinity of Hanalei, while the warm hearted hospitality of the people of Kauai makes a visit to that island a treat long to be remembered."

### The Conemaugh's Cargo.

Reports from San Francisco by cable yesterday state that reinsurance on the Conemaugh has been placed at forty per cent. The vessel has been posted as overdue. The Conemaugh sailed from Honolulu with 2,503 tons of sugar. The sugar, which is all insured, was allotted as follows: Castle & Cooke, 1305 tons; Brewer & Co., 170 tons; Hackfeld & Co., 429 tons; Davies & Co., 203 tons; Schlegel & Co., 61 tons, and Alexander & Baldwin, 22 tons. The vessel is now out 108 days. She is said to have listed badly at the time she sailed from Honolulu.

## TACOMA'S SEARCH FOR DOUBTFUL ISLAND

The Army and Navy Journal has the following concerning the mission of the cruiser Tacoma, assisted by Mr. Hague, in searching for a lost island between Honolulu and San Francisco:

Acting upon the suggestion of Mr. J. D. Hague, the distinguished geologist, the Navy Department has undertaken a surveying expedition to determine the question of the existence of an island in the North Pacific on which the United States sailing sloop of war Levant (23) is supposed by some to have been wrecked in 1880 while en route from Hawaii to Panama. The last letter received from the commanding officer of the vessel, Commander William E. Hunt, U. S. N., stated that he proposed to follow a course which would take him in a direction where the island in question is supposed to be located. It seems to have appeared and disappeared, as it has been reported at times, and then again could not be found. Mr. Hague, who has given much study to the subject, is confident of its existence and he will accompany the U. S. S. Tacoma, which will go in search of it, after making a practice cruise from Tacoma to Honolulu, and then to San Francisco, searching for the island on the return trip. It is supposed to be a volcanic peak, such as is found in the Pacific and in the Mediterranean, appearing and disappearing at intervals. Admiral Henry Erben, U. S. N., in surveying for a cable route from San Francisco to Honolulu found the water in this vicinity shoaling off within thirty miles from some 3,000 fathoms to 800 fathoms, and then within three or four miles more to 500 fathoms, and 200 fathoms. The Albatross sailed over the point where the island is supposed to be located, finding a great depth of water, yet reports have come to the Department that breakers and other indications of an obstruction have been seen in that vicinity, and an effort is to be made to obtain something accurate concerning what is now known as a "doubtful danger."

The island sought for, if it exists, is probably on a line east or E. N. E. from Hawaii. The Levant, en route from Honolulu to Panama would endeavor to make all the easting possible to get over to the coast of America. Possibly a northeast trade wind, well to the eastward, would have driven the ship somewhat to the northward, and she may have been wrecked on a shoal to the N. E. of Hawaii. Admiral Erben met at Honolulu in 1873 men who claimed to have seen such an island. This was after the Admiral had sounded over the spot in the Tuscarora showing the existence of a volcanic peak or peak.

The Levant was an 18-gun sloop of war of 737 tons, 132.3 feet in length, 55.2 feet beam, drawing 16 1-2 feet of water. She is described as a comfortable but not weatherly sea boat; very stiff, steering badly, and very slow and uncertain in stays. She was overhauled and the conclusion at the time was that she had capsized in a gale. Her officers at the time she disappeared were: Commander, William E. Hunt; Lieutenants, W. E. B. S. Porter, E. C. Stout, Colville Terret and R. T. Bowen; passed assistant surgeon, J. S. Gilliam; assistant surgeon, William Bradley; purser, Andrew J. Watson; master, James C. Mosely; first lieutenant, marines, R. L. Browning, acting boatswain, Harrison Edmonston; acting gunner, Robert S. King; carpenter, John Jarvis; sail-maker, Charles S. Frost. They were a fine set of officers and their loss, especially just at the time the Civil War was breaking out, was greatly deplored. Of the lieutenants in the Naval Register of 1860, in which the names of Porter, Stout, Terret and Bowen are found, Henry Erben, James H. Gillis, John H. Upshur, Stephen B. Luce and David R. Harmony survive, all admirals on the retired list.

T. Maddock and B. Pike were given permission yesterday to leave town, the trial on the charge of vagrancy being postponed for a week in order to give them the necessary opportunity.



## SHIP SEWALL COMES FOR SUGAR

The ship Edward Sewall, one of the handsome deep sea vessels of the Sewall fleet, arrived last evening from San Francisco. The Sewall did not come in last night, but anchored outside. She will load sugar for Delaware Breakwater.

The Sewall is a sister ship of the William P. Frye, lately in port, and both were built of steel at the famous Sewall yards at Bath, Me. The Edward Sewall, named after a member of the firm, was built in 1899, and has a length of 330 feet, breadth of 45 feet and depth of 27.3, with a net tonnage of 2916. Her capacity is 5000 tons dead weight, and under full sail she spreads 13,000 yards of canvas. The ship has made many good passages, on one occasion covering 305 knots in a day while bound from Port Townsend to Honolulu, a trip that was accomplished in twelve days. She carries a crew of thirty-four, including twenty-two men before the mast and four boys.

Captain Quick is a typical down East skipper, whose rise to the command of a big ship has been rapid. Fourteen years ago, as a boy, he entered the employ of the Sewalls as a foremast hand on a schooner, and had never been to school because his parents had died when he was young and he had been left to hustle for himself. He hustled with such good effect that today he has command of one of the best ships in the world. His wife and six-year-old son, Randall R. Quick, always travel with him in the Edward Sewall, which has accommodations superior to those found on most passenger steamships.

## WANT A NEW BOAT LANDING

Men who are compelled to use the boatlanding frequently complain that it is too far out of the way, and that it should be removed to a more central and convenient place. The old Fort street wharf is suggested as a site where the boatlanding could be established with better results both to the public and the boat-boys. This would be convenient to the street car and also to the shipping in the harbor which is generally at the Waikiki end. When warships are out in the bay launches and row boats are compelled to come around to Brewer's wharf to discharge their passengers. The point between the Oceanic and the lumber wharf is also suggested as a suitable place for the boatlanding. It is pointed out that if such a change were made, so that boats would be easily accessible to the public, launch and boat parties in the harbor would be much more frequent.

### Shipping Notes.

The Adams will sail some time Monday.

The Tacoma is expected from Seattle tomorrow.

The Mikahala sailed yesterday for Kapiolani.

The America Maru sailed yesterday from San Francisco for Honolulu. She is on her last trip.

The Mongolia will bring two days' later mails. She will probably not sail before tomorrow morning.

The squadron does not expect to get away before June 1st, and may remain longer if Admiral Glass desires.

The S. G. Wilder sailed at 10:30 yesterday morning for San Francisco. She carried quite a number of passengers.

The schooner David Evans and the Aurora sailed yesterday afternoon, the former to Portland and the latter to the Sound.

The revenue cutter Thetis is still being overhauled. She is having her boilers cleaned at present. The Thetis may go to Hilo next week.

The statement that the Bennington was short of coal during her cruise is denied on board that vessel. Officers say that she had two days' supply still in her bunkers upon arrival in Honolulu.

Plans and specifications for the new immigration station were forwarded to Washington on the Sonoma this week. The plans were drawn by Mr. Trapagan, and must be approved by the supervising architect.

Four watchmen in the immigration service received their salaries yesterday for the first time, since last October. Five months' salaries had accumulated and had been held up by the Treasury department for some reason or other.

A cablegram has been received from the colonies which would indicate that the steamer Manuka, of the Canadian Australian line, will be filled with through passengers. Davies & Co. were asked to arrange for the laundrying of 7,000 pieces of linen while the Manuka is in port.

## MAKING WAY FOR THE MONGOLIA

Hackfeld & Co. expect the big steamship Mongolia to arrive some time before noon today. If she draws not more than 25 feet 6 inches she can come inside and will be docked at the naval wharf. It is not known how deep in the water the Mongolia is.

The New York and the Bennington were shifted over to Naval wharf No. 2 yesterday, and the Adams was also brought over to make way for the liner.

### Missing Buoy Restored.

San Francisco, Cal., May 5, 1904. NOTICE TO MARINERS—PIEDRAS BLANCAS—CALIFORNIA.

(List of Lights, Buoys and Daymarks, Pacific Coast, 1904, page 17.) Notice is hereby given that Piedras Blancas Whistling Buoy, painted red and lettered "P. B." in white, three-fourths of a mile S. W. by W. 1/2 W. from Piedras Blancas Light House, southeast of California, which recently went adrift, was replaced May 4th in its old position.

By order of the Light-House Board, W. P. DAY, Commander, U. S. N., Inspector 12th Light-House Dist.

## BY AUTHORITY.

### NOTICE TO WATER CONSUMERS.

The consumption of water has increased to such extent during the past few days, that the rules and regulations with regard to use of water for purposes of irrigation, must be rigidly enforced.

Holders of water privileges, or those paying water rates are hereby notified that the use of water for purposes of irrigation is confined between the hours of 6 and 8 a. m. and between the hours of 4 and 6 p. m.

Any violation of the above notice, shall subject the consumer to immediate cut-off from supply without further notice, and the service will not be turned again until all costs and expenses connected therewith shall have been first paid.

Honolulu, May 12, 1904. (Signed) J. H. HOWLAND, Supt. Honolulu Water Works.

Approved by: (Signed) C. S. HOLLOWAY, Superintendent of Public Works. 6791

## BOUNDARY COMMISSIONER'S NOTICE.

Proper application having been made to me by the Oahu Railway & Land Co. for the settlement of the boundaries of the Ill of Kooloana, Manana, Ewa, Oahu, notice is hereby given to all owners of adjoining lands and all persons interested in said boundaries, that there will be a hearing for the settlement of the boundaries at my office, Campbell block, Honolulu, on Saturday, May 14, 1904, at 10 a. m.

M. D. MONSARRAT, Commissioner of Boundaries First Judicial Circuit.

Honolulu, April 22, 1904. 6773—Apr. 22, 23, May 6, 13.

## NOTICE OF SPECIAL MEETING.

KIPAHULU SUGAR CO. Notice is hereby given that a special meeting of the stockholders of the Kipahulu Sugar Company will be held at the office of H. Hackfeld & Co., Ltd., in Honolulu on Thursday, May 19th, 1904, at 9 o'clock a. m. for the purpose of amending the By-Laws.

F. KLAMP, Secretary. 6790

## ELECTION OF OFFICERS.

YEE KING TONG PAUOA CEMETERY.

At a meeting of the stockholders of the Yee King Tong Pauoa Cemetery held on April 30th the following officers were elected to serve for the ensuing year:

President.....M. C. Amana  
Vice-President.....So Young  
Secretary.....H. A. Heen  
Treasurer.....Kl Chong  
Sub-Treasurer.....Tong Wo Chong  
Board of Directors (.....) Wong You,  
(.....) H. A. Heen,  
(.....) Dr. Ahina,  
H. A. HEEN, Secretary.

Honolulu, April 30, 1904. 6787

## ASSIGNEE'S NOTICE.

### LAM TOI

All claims against Lam Toi for accounts owing previous to January 20, 1904, must be presented immediately to the undersigned. If not presented within 30 days from date, they will be forever barred.

M. S. GRINFAM & CO., LTD., Assignee.  
Honolulu, T. H., May 9, 1904. 6787

## NOTICE OF INTENTION TO FORECLOSE AND OF SALE.

JOHN D. HOLT, JR.

Notice is hereby given that pursuant to the power of sale contained in that certain mortgage dated the 1st day of July, 1899, made by John D. Holt, Junior, of Honolulu, Island of Oahu, Territory of Hawaii, as Mortgagor, to August Dreier, of Honolulu aforesaid, as Mortgagee, and of record in Liber 136, on pages 80, 81 and 82, Hawaiian Registry of Conveyances, the said August Dreier intends to foreclose the said mortgage for conditions broken, to-wit: the non-payment by the said John D. Holt, Junior, of interest on the principal sum of Twelve Thousand and Five Hundred Dollars (\$12,500.00) secured by the said mortgage when due and of the taxes on the land and improvements conveyed by the said mortgage when due.

Notice is hereby likewise given that the said land and improvements conveyed by the said mortgage will be sold at public auction at the Auction Rooms of James F. Morgan, Kaahumanu street, Honolulu, on Saturday, the 21st day of May, 1904, at twelve o'clock noon.

The property conveyed by the said mortgage consists of:

First: All that certain lot situate at the south corner of Queen and Richards streets, and described as

Beginning at a point on the new south side of Richards street, 10 1-10 feet southwest from the present south corner of Queen and Richards streets, and running by true bearings:

S. 35° 10' E. 8 2-10 feet parallel to, and 10 feet distant from the present south side of Queen street;

S. 62° 42' W. 157 feet along L. C. A. 285, Namakeha;

N. 21° 00' W. 17 4-10 feet along government lot "Waikahalulu";

N. 54° 33' E. 178 7-10 feet along the new south side of Richards street to the initial point.

Containing an area of 5435 square feet, and further described as being the same premises conveyed to the said John D. Holt, Junior, by an Exchange Deed of the Minister of the Interior, dated June 29th, A. D. 1899, and recorded in Liber 198, page 67, in the said Registry.

Second: All that certain parcel of land situate at Kaikahulu, Honolulu aforesaid, being a portion of the land described in Royal Patent Number 1763, Land Commission Award Number 377, to William Buckle, and described as

Beginning at a point on the Ewa side of Fort street at the south corner of the Fort Street School Premises; thence running

S. 42° 06' W., 90 feet; thence

N. 52° W., 123 5-12 feet; thence

N. 41° E., 31 feet; thence

S. 44° E., 79 2-12 feet; thence

S. 44° E., 91 feet; thence

S. 47° E., 25 feet, to the place of beginning, and further described as being the same premises conveyed to the said John D. Holt, Junior, by Deed of William McCandless, dated June 29th, A. D. 1899, and recorded in Liber 198 on page 66 in the said Registry.

AUGUST DREIER, Mortgagee.

Terms: Cash, United States Gold Coin; deeds at expense of purchaser. For further particulars, apply to Holmes & Stanley, attorneys for Mortgagee.

Dated April 21, 1904.

6773—Apr. 22, 23, May 6, 13, 20, 21.

## NOTICE OF INTENTION TO FORECLOSE AND OF SALE.

Under or by virtue of the power of sale contained in that certain indenture of mortgage, dated the 2nd day of February, 1901, made by M. Aona of Honolulu, Island of Oahu, Territory of Hawaii, as Mortgagor, to Abigail K. Campbell, as Mortgagee, and recorded in Liber 220 on pages 9 to 11 Hawaiian Registry of Conveyances; and pursuant to Chapter XXXIII of the Session Laws of 1874 entitled "An Act to provide for the sale of mortgaged property without suit and Decree of Sale" and the Act (Chapter IX of the Session Laws of 1896) amending same, the said Abigail K. Campbell, now Abigail K. Campbell-Parker, hereby gives notice that she intends to foreclose the said indenture of mortgage for condition broken, to-wit: the non-payment of the principal and interest of the promissory note referred to in and secured by the said indenture of mortgage when due.

Notice is hereby likewise given that the property conveyed by the said mortgage will be sold at public auction at the auction rooms of James F. Morgan, Kaahumanu street, Honolulu, on Saturday, the 21st day of May, 1904, at twelve o'clock noon.

The property conveyed by the said mortgage consists of:

All that lot, piece or parcel of land (part of the land mentioned and described in L. C. A. 1285 as Apana 1 and part of land mentioned in L. C. A. 2072 to Kapahulu) situate on the Waikiki side of Dowsett lane, Keonela, Honolulu, aforesaid and thus bounded and described:

Commencing at the north corner of this lot on the southerly line of Dowsett lane at a point thereon 240.4 feet from the southerly line of King street and running thence:

1. S. 27° 50' E. true 253 feet along section A of this property.

2. S. 78° 10' W. true 108 feet along L. C. A. 2440 and L. C. A. 1083 to Kapahue to the end of fence at the top of a bank.

3. N. 19° 15' W. true 220.8 feet along L. C. A. 1083 to Kapahue and L. C. A. 571 to Paakue to Dowsett lane.

4. N. 57° 50' E. true 71.4 feet along the southerly line of Dowsett lane to the initial point.

Containing an area of 48-100 acre, and being all the land set apart to the said M. Aona in deed of partition made between the said M. Aona and A. K. Aona, dated August 27, 1897, and of record in Liber 172, page 352, Hawaiian Registry of Conveyances, together with all buildings, improvements, rights, privileges, easements, rents and appurtenances to the same belonging or appertaining or held and enjoyed therewith.

A. K. CAMPBELL-PARKER, By her attorney in fact,

J. O. CARTER, Mortgagee.

Terms: Cash, United States Gold Coin; deeds at expense of purchaser. For further particulars, apply to Holmes & Stanley, attorneys for mortgagee.

Dated April 20, 1904.

6772—Apr. 22, 23, May 6, 13, 20, 21.



## Home Pleasures

Have an added charm where all the family enjoy the drinking of a good beer.

# Rainier BEER

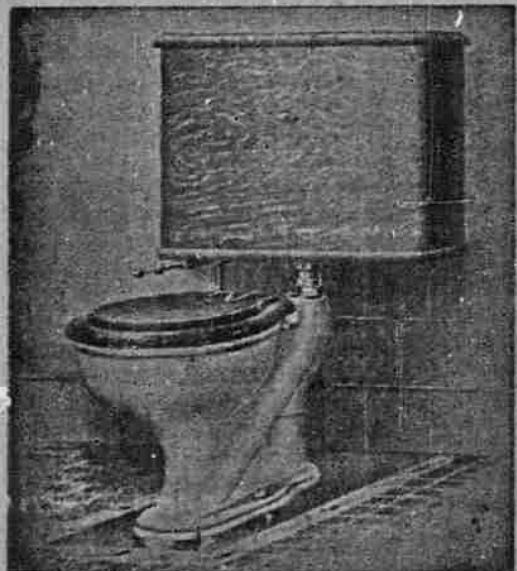
It is a healthy, wholesome family drink—there's new strength and vigor in every drop.

**Rainier Bottling Works,**  
AGENTS FOR HAWAII  
Phone White 1881. P. O. Box 517

## MONOLULU IRON WORKS COMPANY.

STEAM ENGINES.  
BOILERS, SUGAR MILLS, COOLERS, BRASS AND LEAD CASTINGS and machinery of every description made to order. Particular attention paid to ship's blacksmithing. Job work scouted on shortest notice.

## THE DOUGLAS



## BATH, THE PLUMBER

155 King Street, opposite Young Hotel.  
PHONE 61.

# A.B.C. BEERS

Guaranteed Pure.  
None So Good.

Sold Everywhere.

## TRAVELING CONVENIENCES.

DRESS SUIT CASES, in Bamboo and Willow, reinforced with Leather corners.

TRAVELER'S TOOTH POWDER BOTTLES, and the Powder too.

RUBBER SPONGE BAGS, so handy on the steamship.

SOAP BOXES, in Nickel, Aluminum and Celluloid.

And then we have also Shaving Sticks and Collapsible Shaving Brushes.

GET OUR PRICES.

**LEWIS & CO., LTD.**

169 KING STREET.  
240-2 Telephones-240.

## HORSE SHOEING!

**W. W. Wright Co., Ltd.**

have opened a horse-shoeing department in connection with their carriage shop, etc. Having secured the services of a first-class shoer, they are prepared to do all work entrusted to them in a first-class manner.

## New Restaurant

JUST OPENED.  
Everything New and First Class.  
**THE KAUULANI**  
1185 Fort St., oppo. Club Stables.

The Famous  
**A.B.C. Beers**  
are guaranteed absolutely pure.

## P. L. ON TAI

At 1188 Nuuanu near Beretania street, two doors above old stand.

**Fashionable Dressmaker**  
Ladies' and Children's Underwear made to order.

## NOTICE.

All persons who have made application for membership in the Honolulu Mutual Burial Association through Manuel Silva, and who are in arrears for their certificates, will please call at the office of the secretary and arrange for the same. Manuel Silva is no longer authorized to act as an agent for the Association. By order of the Board.  
J. H. TOWNSEND, Sec.

**Y. MAN SING**  
117 NUUANU STREET.  
**FASHIONABLE DRESS-MAKER.**  
**LADIES' UNDERWEAR**  
Dresses made to order. Sewing guaranteed. If the stitches break I will repair without extra charge.

# \$1000 FOR J. C. AXTELL

## The Second Trial of Famous Suit.

### Ashford's Damage Case Taken to Circuit Court.

#### Large Bond in Guardianship Matter—Injunction Suits in Progress.

After an absence of an hour and twenty minutes, the jury last night found a verdict for J. C. Axtell, plaintiff, against H. E. Hendrick, defendant, assessing the damages at one thousand dollars.

Mr. Robertson noted exceptions to the verdict and gave notice of motion for a new trial.

The plaintiff sued for \$10,000 damages on account of malicious prosecution for alleged embezzlement.

The trial had lasted seven days and a night. Following are the names of the jurors: James Armstrong, foreman; B. F. Vickers, Douglas Kaona, Sam. Nowlin, F. H. Armstrong, E. B. Clark, J. J. Sullivan, H. A. Parmelee, J. J. Egan, E. R. Biven, Jas. Brown, and Emil A. Berndt.

Mr. Robertson began his closing address for the defendant to the jury at 4 p. m., concluding in one and three-quarter hours. Recess was then taken until 7:30.

Mr. Bitting began his address for the plaintiff at the opening of the evening session and spoke for an hour and twenty minutes.

Judge Gear occupied ten minutes in delivering the instructions to the jury, exceptions to portions of which were noted by both sides.

At 9:07 the jury retired to consider the verdict, which was returned at 10:27.

A jury before Judge Robinson found a verdict of \$5000 damages for Axtell, which was set aside as excessive and a new trial ordered by the Judge.

S. M. Damon filed a \$25,000 bond yesterday, as guardian of the estate of T. R. Keyworth, an insane person. The surety is the United States Fidelity and Guaranty Co., signing by R. W. Shingle and A. Lewis Jr., its attorneys in fact. Judge Gear approved the bond, also allowed the guardian \$2037.35 on account of advances by T. H. Davies & Co., Ltd., legal expenses, etc. An inventory of the estate shows the following property, besides two boxes of silverware not valued:

Hawaiian Government bond...	\$1,000.00
20 shares Sachs' Dry Goods Co.	2,000.00
25 shares Oukala Sugar Co.	500.00
30 shares Oahu Sugar Co.	3,000.00
Certain mortgage	4,000.00
Cash in Bishop & Co.'s bank	10,723.24
Note and savings bank deposits	1,412.35
<b>Total</b>	<b>\$22,635.59</b>

## INJUNCTION SUITS.

Judge Robinson gave a final hearing yesterday, promising a decision as early as possible, of the injunction suit of William McCandless against Lee Chew. It is to restrain defendant from removing buildings off of a leasehold at Palama. J. A. Magoon and J. Lightfoot appeared for the plaintiff, and R. W. Breckons for the defendant. In the course of the hearing court and counsel visited the premises in question.

Castle & Withington, attorneys for American Hawaiian Engineering Co., file an exception to Judge Robinson's decision that ordered certain passages struck out of the answer to the bill for injunction brought by John Lucas to enjoin the Brewer's wharf contract.

## APPEALS SENT UP.

The following appeals from the Honolulu District Court were filed in the Circuit Court yesterday:

Albert Ludloff vs. A. F. Franca, claim of \$75 on a horse deal. Defendant admitted a debt of \$40 and no more. District Magistrate Lindsay gave judgment for plaintiff with costs, a total of \$82.

Partners in Hop Wo Chong vs. A. Morimoto, judgment for plaintiffs in \$105.40, full amount claimed with costs. C. W. Booth vs. Ah Wai et al., judgment for plaintiff for summary possession of land at Kamoli, together with rent due and costs amounting to \$123.55.

Clarence W. Ashford vs. Honolulu Rapid Transit & Land Co., suit for the statutory penalty of \$100 on each of three counts, or \$300 in all, on account of alleged refusal of defendant to carry plaintiff, after demanding and receiving his fare, to his destination on a King street car. Judgment was given for defendant.

## ESTATES OF MINORS.

John P. Dias, guardian of Antonio

## MOTHERS

should know. The troubles with multitudes of girls is a want of proper nourishment and enough of it. Now-a-days they call this condition by the learned name of Anemia. But words change no facts. There are thousands of girls of this kind anywhere between childhood and young ladyhood. Disease finds most of its victims among them. Some of them are passing through the mysterious changes which lead up to maturity and need especial watchfulness and care. Alas, how many break down at this critical period; the story of such losses is the saddest in the history of home. The proper treatment might have saved most of these household treasures, if the mothers had only known of **WAMPOLE'S PREPARATION** and given it to their daughters, they would have grown to be strong and healthy women. It is palatable as honey and contains all the nutritive and curative properties of Pure Cod Liver Oil, extracted by us from fresh cod livers, combined with the Compound Syrup of Hypophosphites and the Extracts of Malt and Wild Cherry. In building up pale, puny, emaciated children, particularly those troubled with Anemia, Scrofula, Rickets, and Bone and Blood diseases, nothing equals it; its tonic qualities are of the highest order. A Medical Institution says: "We have used your preparation in treating children for coughs, colds and inflammation; its application has never failed us in any case, even the most aggravated bordering on pneumonia." The more it is used the less will be the ravages of disease from infancy to old age. It is both a food and a medicine,—modern, scientific, effective from the first dose, and never deceives or disappoints. "There is no doubt about it." Sold by all chemists here and throughout the world.

Botelho, minor, files an inventory valuing the ward's estate at \$701.90. Theresa d' Aguiar, guardian of Guilherme Botelho, minor, values the ward's estate at \$701.85. More than half the amount in each case came from a death benefit on the membership of the minors' father in the Portuguese Mutual Benefit Society.

## DREDGING CASE APPEALED.

Judge De Bolt denied the motion of H. Hackfeld & Co., Ltd., for a new trial of the Pearl Harbor dredging case. An exception was noted to the Supreme Court.

## GAY'S MONARCH OF ALL HE SURVEYS

Charles Gay's overlordship of the Island of Lanai is now complete. Frederick H. Hayselden, administrator with the will annexed and trustee under the will of Walter Murray Gibson, deceased, by a deed just recorded conveys to Mr. Gay all of the right, title and interest which the grantor may have, either in the above-mentioned capacity or in any other way, in or to all of the remaining unsold and undisposed of chattels, property and effects of the Maunalei plantation's quarters on the Island of Lanai, covering more specifically everything included within the two-thirds interest conveyed to him in the capacity mentioned by bill of sale of Charles Gay dated April 30, 1903, but excepting and reserving from the material so sold a quarter of a mile of fluming and flume material to be removed by him (Hayselden) within three months after the date of the deed, which is April 18, 1904.

The consideration named is \$2000. It is said that, possibly barring some little kuleanas, the ownership of Lanai is made complete to Mr. Gay by the transaction here described. The bill of sale mentioned in the deed released and quitclaimed to Mr. Hayselden a two-thirds interest in the ahupuaa of Palawai theretofore owned by the Maunalei Sugar Co., excepting the telegraph station buildings provided that they should be removed within twelve months.

## What Chinese Names Mean.

A few definitions of Chinese geographical prefixes and suffixes may be of service in elucidating the nomenclature of current war news. First, prefixes: Ta, as in Taku, means great, and slao, as in Siao-Ping-Thou, means small. Pei or pe, nan, tung and si are respectively north, south, east and west. Thus the Pei-Ho is the North river, etc. Shang and hai are upper and lower. Pai, hei and whang are white, black and yellow. Suffixes are more numerous and familiar. Kiang, ho, tohuan, ula, muren and tohu each and all mean river. Thus Yalu Kiang and Liao Ho are simply Yalu river and Liao river. Shui, kou, thsuan, khi, gol and usu are unfamiliar terms, meaning a brook or small river. Hu, nor and omo mean lake, as in the well known Lob Nor and Kossol Gol. Po, tse and tien mean a small lake or swamp, or a town situated near such a place. Hal means sea; thus Whang-Hai is the Yellow sea, Tung-Hai is the Eastern sea and Nan-Hai is the Southern sea. Tao and sometimes shan means island, but shan riore often means a mountain range. Ling is a pass over a mountain range.—Boston Transcript.

# MOST POPULAR PUBLICATION IN HONOLULU

# THE SUNDAY ADVERTISER

WAR NEWS, CHURCH NEWS, SPORTING NEWS, GENERAL NEWS AND ALL THE LATEST WORLD'S NEWS BY CABLE.

MISCELLANEOUS, LITERARY AND HUMOROUS SELECTIONS, AND A CONTINUATION OF THOMAS FITCH'S INTERESTING ARTICLES ON HIS FOREIGN TRAVELS. PUNGENT PARAGRAPHS OF THE BYSTANDER.

INTERESTING READING TO SUIT EVERY TASTE, AND WITHAL, A CLEAN PUBLICATION ADMISSABLE TO THE FAMILY CIRCLE.

Published by the

## Hawaiian Gazette Co., Limited.

65 S. King St., Honolulu, Hawaii.



## Announcement of Auctions

## A Splendid Opportunity for Investment!

There will be sold at public auction at the salesrooms of Jas. F. Morgan, 847-857 Kaahumanu street,

ON SATURDAY, MAY 14, 1904,

AT 12 O'CLOCK NOON,

Lands, Leases and Machinery and Live Stock, comprising the rice plantation of Theodore F. Lansing at Wai-ahole and Waikane, Koolau, Oahu.

There is a very large tract of land owned in fee simple and suitable for rice culture and other agricultural uses. Valuable lands under reasonable leaseholds are included in the sale. All Buildings, Rice Mill, Machinery, Animals and Wagons, and all interest of said Theodore F. Lansing in growing crop of Rice, goes with the above freeholds and leaseholds.

There is an increasing demand for property in the Koolau District, and this sale offers an opportunity to procure a very valuable lot of land in fee simple that will command ready sale and assured profits when sold in subdivisions, for Agricultural, Grazing and County Residence Sites.

The lands are well watered.

Further particulars at my office.

**JAS. F. MORGAN,**  
Auctioneer.

## VALUABLE PROPERTIES

Near Kapiolani Park  
**AT AUCTION**

ON SATURDAY, MAY 14, 1904,  
AT 12 O'CLOCK NOON,

At my salesroom, 847 Kaahumanu street, I will sell at public auction: 14 FINE LOTS SITUATED ON KAPAHULU ROAD, corner of Hobron street, and lying between the Park and Beretania street.

The lots are mostly of a uniform size, 50x100 each, each having a frontage of 50 feet on a main road.

These lots will be sold on easy payments of one-half cash and balance on time.

Upset price per lot, \$200.

Adjoining lots have been sold at the rate of \$400 each.

Map and further particulars at my office, 847 Kaahumanu street.

**JAS. F. MORGAN,**  
AUCTIONEER.

## A VALUABLE RESIDENCE

On Kinau Street  
**At Auction.**

ON SATURDAY, MAY 14, 1904,  
AT 12 O'CLOCK NOON,

At my salesroom, 857 Kaahumanu street, I will sell at Public Auction, a valuable residence on Kinau street, between Alapai and Kapiolani streets. Property adjoins the large Boardman lot and has a frontage of 66 2-3 feet on Kinau street and a depth of 160 feet. The grounds are nicely improved and planted with valuable trees. The house contains large Parlor, Dining-room, 3 Bedrooms, Kitchen, Bath, etc.

There is a commodious carriage house and stable on the place. Part of the purchase price can remain on mortgage at a moderate rate of interest.

For further particulars apply to

**JAS. F. MORGAN,**  
AUCTIONEER.



## AT AUCTION

**Castle & Cooke, Ltd.**  
HONOLULU.

Commission Merchants

SUGAR FACTORS.

—AGENTS FOR—

The Ewa Plantation Co.  
The Waiwala Agricultural Co., Ltd.  
The Kohala Sugar Co.  
The Waimea Sugar Mill Co.  
The Fulton Iron Works, St. Louis.  
The Standard Oil Co.  
The George F. Blake Steam Pump & Weston's Centrifugals.  
The New England Mutual Life Insurance Co., of Boston.  
The Aetna Fire Insurance Co., of Hartford, Conn.  
The Alliance Assurance Co., of London.

**M. S. Grinbaum & Co.**  
LIMITED.

Importers and Commission Merchants

SOLE AGENTS FOR

## Little Jack

Smoking Tobacco, 5c. and less. Packages.

Agents for  
**BRITISH AMERICAN ASSURANCE COMPANY**, of Toronto, Ontario.  
**DELAWARE INSURANCE CO.**, Philadelphia.

**W. W. AHANA & CO.**  
Limited

Merchant Tailors

Waity Building, King St.

Phone Blue 2741

Opposite Advertiser Office

American and Foreign  
Worsteads

## Panama Hats

From \$9 and up.

Also fine line of plain Straw Hats made at our factory.

**K. Fukuroda's**

TWO STORES.

No. 28-32 Hotel Street.

**Roofs Repaired**

BY

**WM. T. PATY.**

Carpentry of all kinds attended to

Give us a call.

When you want anything good in the

baking line go to

PERFECTION

**Home Bakery**

Beretania near Emma St.

Tel. blue 211.

**AH PAT & CO.**

182 South King, near Alakes.

MERCHANT TAILORS.

Expert cutter, formerly with J. D.

Fregon. Cleaning and repairing a specialty.

Phone Blue 446. P. O. Box 865

**Kwong Yuen Hing Co.**

36 and 38 N. King street.

Importers and Dealers in Chinese

Silks, Fine Mattings, Teas, Ebony Fur-

niture, Bamboo Stools, Rattan Arm

Chairs.

Grass Linens, any color, at very low

prices.

HOME MADE CAKES, PIES,

BUNS, ROLLS, AND BREAD;

HOT MINCE PIES EVERY SAT-

URDAY AT

**GILLER'S on Hotel St.**

Courteous treatment.

Prompt attention.

Best Quality and lots more at

**CONSOLIDATED SODA WATER WORKS**

Phone Main 71.

**COTTON BROS. & CO.**

ENGINEERS AND GENERAL CON-

TRACTORS.

Plans and Estimates furnished for all

classes of Contracting Work.

Boston Block, Honolulu.

ALL KINDS OF

**Rubber Goods**

**Goodyear Rubber Co.**

R. H. PEASE, President,

San Francisco, Cal., U. S. A.

**PACIFIC HOTEL.**

Union Street, oppo. Pacific Club.

First Class Accommodations for Board

and Lodging.

1180 and 1182 Union Street



## CONCERT FOR THE MONGOLIA TONIGHT

Berger's band will give a concert this evening at the Hawaiian Hotel, complimentary to the passengers on the new steamship Mongolia. The following program has been arranged:

### PART I.

March—"Greetings".....Hall  
Overture—"Welcome".....Rollinson  
Selection—"Musical Review".....Riviere  
Vocal Selections—  
(a) "Hooheho."  
(b) "Lili Kai o Ohele."  
(c) "Miss J. Kelliaa."  
(d) "Wai Mapuna."  
(e) "Ahea Oe."  
Mrs. N. Alapal.

### PART II.

Selection—"American Airs".....Conterno  
Intermezzo—"Dixie Land".....Haines  
Waltz—"Zingaro".....Dalbey  
March—"Stars and Stripes Forever".....Sousa  
"The Star Spangled Banner."

## BUSINESS LOCALS.

Today household furniture will be sold by Will E. Fisher.

A saleslady is wanted at B. F. Ehlers & Co.'s dry goods store.

White Rock Mineral Water is sold at all first class bars, drug stores and hotels.

Elegant whist, eucher and pedro games will be sold by Fisher at auction Saturday.

Rubber stamps made every day at Hawaiian Gazette Co. Send in your orders at once.

A monkey, with fine large cage, will be sold at auction today at 10 a. m. at Fisher's salesrooms.

Agents wanted for the Fay-Sholes, Sun and Postal typewriters. See our classified advertisements.

The Waikiki Inn auction sale takes place Monday. See Will E. Fisher's column today for particulars.

Twenty-five sacks rice will be sold at auction in lots to suit at Fisher's auction rooms today at 10 a. m.

Special prices in Panama hats will be given to members of the American Travesty Stars at K. Fukuroda's, 23 Hotel street.

On account of departure party offers his home for rent furnished or furniture for sale at a bargain. See our classified advertisements.

The most popular new books of the day have just been received at the Young building store of Hawaiian News Co. and are now ready for book-lovers.

Stanley Stephenson would like to show you his excellent designs of wall paper received from the most progressive manufacturers on the mainland. No trouble to show goods.

Will E. Fisher will sell a choice lot of household furniture today at 10 o'clock at his salesrooms on Merchant street. See list of articles to be sold advertised elsewhere in these columns.

The Honolulu Employment Agency is saving time and trouble daily for business men and housewives in the city by securing help on short notice. They can do this for you. Office, 923 Fort street. Phone Main 358.

Honolulu has entered into the spirit of the big \$12,000 guessing contest at Manufacturers' Shoe Co. with a good prospect of winning. If you don't know about the \$12,000 contest call and get a booklet free giving full explanations.

## LOCAL BREVITIES.

Whistles will be blown today when the Mongolia is sighted.

Albert Chambers, late manager of the Chambers Drug Co., intends leaving for the Coast.

Edward Gilsey was sentenced to six months in prison yesterday for throwing a lamp at his wife.

The police raided a Chinese card game on Liliha street last evening and brought in a dozen of the players.

The police are looking for a gang of chicken thieves said to be operating in Pauoa. Warrants have been issued for the arrest of a couple of boys charged with the larceny.

Supt. Holloway has issued an order providing for the rigid enforcement of the rules relative to the use of water for irrigation purposes. Consumers can use water for irrigation only between 6 and 8 a. m. and 4 and 6 p. m.

The valuable rice plantation of Theo. F. Lansing, at Waihole and Waikane, this island, is to be sold at public auction by Jas. F. Morgan tomorrow at his salesrooms. This is a rare opportunity for investment. See Morgan's column today for particulars.

### Exchange of Calls.

Admiral Glass, with Captain Hunker of the New York and Commander Niles of the Bennington, paid official calls on Governor Carter yesterday morning. Captain Nox of the Adams also called on the Governor during the morning.

In the afternoon Governor Carter returned the call. He was accompanied by his father-in-law, Mr. H. A. Strong, and Secretary Atkinson, and by Major Wall and Captain Johnson as aides. Admiral Glass was first visited on the cruiser New York, and the officials then after half an hour's stay called upon Commander Niles of the Bennington. An official salute was fired from both the New York and the Bennington.

### Evangelistic Services.

Evangelist O. E. Hamilton and his singer, Mr. Wilkinson, will conduct their first service in the Christian church Sunday morning at the 11 o'clock service. It is the desire of the evangelists to organize a large chorus choir, and all who have at any time been connected with the choir of the church are requested to meet Mr. Wilkinson at the church at 7:30 tomorrow for practice.

## LOCAL BREVITIES.

The fish at the Aquarium are fed each day about four o'clock.

The grand jury was investigating Chinese gambling cases yesterday.

Dr. W. A. Schwalle has sued the Kamao Sugar Co. for \$652.70 on a promissory note.

Senator Brown, wife and daughter are expected home from the Orient on May 21 in the Siberia.

Prospects of the organization of a golf club, with house and links in Manoa valley, are improving daily.

R. T. Halsey, immigration inspector, has gone to look over the Chinese inhabitants of Hawaii and Maui.

If the lawyers come to time, three Circuit Court juries ought to be bucking into the calendar next week.

John A. Cummins is reported as recovering from his serious illness of which the public was informed by this paper on Monday.

There will be a special meeting of the Kamehameha Alumni Association this Friday evening at 7:30 o'clock at their club house on Fort street.

The Naniloa Club will give a luau, fair and ball at Progress Hall on May 17th and 18th. The proceeds will be given to homeless and needy Hawaiians.

The management of the Moana Hotel will give the usual informal dance tonight, the Ellis Quintet furnishing the music. There will be a special car leaving the hotel for down town at 1 a. m.

Home Rule party stayers are credited with an intention to keep the proceedings of party councils secret, as the revelation of desertions is working havoc with the spirit of the party on the other islands.

Captain Underwood of the schooner Robert Lewers is reported by an evening paper as holding the opinion that the submerged rocks in the sailing route between Honolulu and San Francisco are mythical.

Captain Hamlet of the Thetis is in consultation with Collector E. R. Stackable relative to the services to which the revenue cutter may be put in Hawaiian waters now that she is here. Both gentlemen called on Governor Carter yesterday.

The concert announced by the Honolulu Symphony Club at the home of S. M. Ballou in aid of the Chinese Hospital was set for May 23. As that is the date of the Song Festival a postponement of the Symphony event has been made until September.

Miss Crockett's scholars will give their first recital this evening at the Y. M. C. A. hall. Piano solos, recitations, fancy dances, pantomime recitations with music and a one-act comedy in which seven well known young ladies will take part, will form a program of fifteen numbers. Tickets can be had at the door.

Robertson & Wilder, attorneys for the insurance companies, have filed uniform answers in the twenty-nine fire claim cases in the Federal court. The form of the divided awards of the Fire Claims Commission is set forth, to show the subrogation to the insurer's claim in each instance. This day week is set for the trial of the first case.

Six streets are being macadamized and road-working gangs are engaged at twenty-five different places in Honolulu this week. Supervisor Sam. Johnson has adopted the plan of employing smaller gangs on distinct jobs than formerly, to which he attributes in part the result of getting more work done at a third of the outlay, as compared with the old system.

Professor Brigham, it is said, obtained a temporary respite for the kea birds sent to him by the Governor of New Zealand for the Bishop Museum, upon his representation to the trustees that for the taxidermist's purpose the plumage of the condemned birds was immature. Some of the keas are reported to have died and there is no reason to fear that the Museum trustees will allow any of the birds to live long enough to kill any sheep.

## MORE NEW GOODS Have Just Been Opened

Among the new lot received in the last steamer are the new Summer wash materials. You'll like these—they're in prettier patterns than ever.

See the Silk Finished Mull in regular silk designs. Colorings and patterns are simply beautiful.

NEW PONGEE PARASOLS WITH PERSIAN EFFECTS.

Exquisite Laces, Embroideries and Trimmings.

IN THE READY-TO-WEAR DEPARTMENT.

Look into this department each time you come to the store. You'll always find something new. Among the new things just opened is a handsome lot of

SILK SHIRTWAIST SUITS.

They are new, nobby and inexpensive—only one suit of each kind. Also a sample line of the latest cut Cravante Coats.

**N. S. SACHS DRY GOODS CO.**

LIMITED.

Corner Fort and Beretania Streets.

## BRUSHES!

You are nearly always needing one OF SOME KIND OR THE OTHER

Tooth } BRUSH } Nail  
Hair } } Clothes

Our line in all these is invariably of selected stock from the best manufacturers.

The bristles are solid,  
The goods durable,  
The assortment large,  
The prices reasonable.

You can rely on the article if purchased from

**Kabron Drug Co.**

## AGATE WARE

The good housekeeper wants a perfect Kitchen. However small the household may be the greatest comfort and pride always lies in a well-equipped and well-kept Kitchen.

AGATE WARE is therefore indispensable. It has no equal in appearance and cleanliness.

### We Have 4 Lines:

THE GREY single coated.  
THE GRANITE double coated.  
THE WHITE triple coated, and  
THE ELITE quadruple coated.  
No more complete lines carried in Honolulu.

**W. W. Dimond & Co., Ltd.**

Sole Agents for: GURNEY REFRIGERATOR, JEWEL STOVES, MONARCH BLUE FLAME OIL STOVES, PURITAN BLUE FLAME OIL STOVES and U. S. CREAM SEPARATORS.

## FLOWER FESTIVAL

—AT—  
**St. Clement's CHAPEL GROUNDS**  
May 14, 1934

2 P. M. to 6 P. M.  
Doll Booth, Refreshment Booth, etc.  
Tickets: Adults, 25c; Children, 10c.

### EAGLE CLEANING AND DYEING WORKS

Fort St., Opposite Star Block.  
Have your old SUITS MADE TO LOOK LIKE NEW. Dyeing and pressing. Tailoring. The renewing of ladies' clothing a specialty. Prices very low Phone White 2362.

## Bicycles

Good Weather and Good Roads.  
Get Out Your Wheels.

We are in line with an assortment of  
**New and Second Hand Wheels**  
IMPERIAL, BARNES, B. & H., STEARNS, ETC., ETC.  
Ladies' and Gents—Boys' and Girls'.  
Prices to suit everybody.

**PEARSON & POTTER CO., LTD.**  
931 FORT STREET.

## J. Lando . . .

**HAS MOVED to the Oregon Block, 152 Hotel St.,**

opposite Young Bldg., where he will be located until the completion of his new store in the Odd Fellows' building.

QUALITY.

ECONOMY.

**SOAP**  
Honolulu Soap Works Co

FRED. L. WALDRON,

Spreckels Block.

Sales Agent.

## FRENCH LAUNDRY

TOURISTS' WORK PROMPTLY ATTENDED TO.

**J. ABADIE, Prop.**

158 Beretania Street. Phone Blue 3552. Opposite Hawaiian Hotel.



Particular kind

For Particular People.

There is individuality in your glasses, the same as in your tie or your shoe. Your personal quality is often indicated by the quality of your glasses. Here, the right sort costs no more than the wrong sort elsewhere.

**A. N. SANFORD, OPTICIAN**

BOSTON BLDG., FORT ST.,

Over May & Co.

Eyeglass Testing and Spectacle Fitting are our Exclusive Work.

### New Books Received.

The most popular books of the day have just been received and are now ready for booklovers at Young Building Store of

**HAWAIIAN NEWS CO., LTD.**

**OAHU ICE & ELECTRIC CO.**

Ice delivered to any part of the city. Island orders promptly filled. Tel. Blue 5151. P. O. Box 600. Office: Kewalo.

**Gillman House Boquet Cigars**  
**BEAVER LUNCH ROOMS**  
E. J. HOLZER.

## Fire Insurance

**The B. F. Dillingham Co., Ltd.**  
General Agents for Hawaii  
Atlas Assurance Company of London,  
Phoenix Assurance Company of London.

New York Underwriters' Agency.  
Provident Washington Insurance Company.  
Phoenix Insurance Company of Brooklyn.

**ALBERT RAAS, Manager.**  
Insurance Department office, fourth floor, Stangenwald Building.

## MILLINERY

Always the latest at  
**Miss Power's Millinery Parlors**  
BOSTON BLDG., FORT STREET.  
(First floor.)

### NOTICE.

ANY WOMAN OR GIRL NEEDING help or advice, is invited to communicate, either in person or by letter, with Ensign Nora M. Underhill, matron of the Salvation Army Woman's Industrial Home, Young street, between Artesian and McCully streets, mauka side, Honolulu.

## That is it!

**We Are Still Giving Bargains**

There is no let up in OUR REDUCTION SALE. Have you taken advantage of our offer?

IF NOT, WHY WAIT?

**Bedspreads** .....\$3.25; now \$2.50  
.....3.00; now 2.00  
.....2.25; now 1.75  
**Curtains** .....4.50; now 3.50  
.....2.00; now 1.65  
.....1.25; now .65  
.....1.50; now 1.00  
.....3.25; now 2.50  
.....4.00; now 2.25  
.....7.00; now 4.50  
.....7.50; now 4.75

KID GLOVES, BELTS, WHITE SHIRTS, FANCY NECK-WEAR, RIBBONS.

**E. W. Jordan & Co., Ltd.**

Temporary Quarters 1137 Fort St.

## Gordon & Dilworth Extra Quality Goods

These celebrated goods have just been received and we recommend them to those of our customers who enjoy the very best quality at reasonable prices. Among these goods are:

Brandy Peaches, Brandy Cherries, Sweet Spiced Cherries, Sweet Spiced Currants, Red Currant Jelly, Assorted Wine and Calvesfoot Jelly.

**Henry May & Co., Ltd.**

Retail Main 22 TELEPHONES Wholesale Main 92.

## Savory Roasts, TENDER BOILING MEAT, JUICY BROILING BITS—WE HAVE THEM ALL.

For special occasions or for the daily menu, we furnish the meats that fill the need completely. Telephone orders are carefully filled and promptly delivered. Main 76.

ISLAND MEAT CO., FORT ST.

Drink to your own health with  
**WHITE ROCK WATER**

Sparkling and pure with a delightful smack of its own.

Sold at all

HOTELS, SALOONS and DRUG STORES.



## Vest Pocket Safety . . . Razor

Convenient and reliable. Something new and handy. These razors are entirely free of all defects heretofore found in other safety razors. Price \$1 Complete

**THEO. H. DAVIES & CO., LTD.**

Sole Agents for Hawaiian Islands. Hardware Department.

GOLD CROWNS - - - \$5.00

WHITE CROWNS - - - \$5.00

BRIDGE WORK - \$5.00 per tooth

Why let your teeth go.

We buy all our material at Wholesale cost and therefore can give you good work at low prices. All our work fully guaranteed. Lady assistant. No charge for examination.

**THE EXPERT DENTISTS.**

Hours, 8 to 5. Sundays, 9 to 12. 215 Hotel St., opp. Young Hotel.



# Canadian-Australian Royal Mail Line

Steamers running in connection with the Canadian-Pacific Railway Co. at Honolulu on or about the following dates:

FOR FIJI AND AUSTRALIA.		FOR VANCOUVER.	
1904		1904	
MIOWERA	JUNE 4	MANUKA	JUNE 1
MANUKA	JUNE 2	AORANGI	JUNE 23
AORANGI	JULY 30	MIOWERA	JULY 27

Through tickets issued to all points in Canada, United States and Europe.

THEO. H. DAVIES & CO., LTD.  
GENERAL AGENTS.

## Pacific Mail S. S. Co., Occidental & Oriental S. S. Co.

Steamers of the above companies will call at Honolulu and leave this port on or about the dates below mentioned:

FROM SAN FRANCISCO.		FOR SAN FRANCISCO.	
MONGOLIA	MAY 14	SIBERIA	MAY 21
CHINA	MAY 26	COPTIC	JUNE 2
ALAMEDA	JUNE 8	KOREA	JUNE 14
SIBERIA	JUNE 18	GABLIC	JUNE 25
COPTIC	JUNE 29	MONGOLIA	JULY 8

For further information apply to  
H. HACKFELD & COMPANY, LTD., AGENTS.

## Oceanic Steamship Co. TIME TABLE

The fine passenger steamers of this line will arrive and leave this port as hereunder:

FROM SAN FRANCISCO.		FOR SAN FRANCISCO.	
ALAMEDA	MAY 20	SONOMA	MAY 10
SONOMA	JUNE 1	ALAMEDA	MAY 25
ALAMEDA	JUNE 1	VENTURA	MAY 21
VENTURA	JUNE 22	ALAMEDA	JUNE 15

In connection with the sailing of the above steamers, the agents are prepared to issue, to intending passengers, Coupon Through Tickets by any Railroad, from San Francisco to all points in the United States, and from New York by any steamship line to all European ports.

FOR FURTHER PARTICULARS, APPLY TO  
WM. G. IRWIN & CO., LTD.

## American-Hawaiian Steamship Company.

Direct Monthly Service Between New York and Honolulu via Pacific Coast.

THE SPLENDID NEW STEEL STEAMERS—

FROM NEW YORK.		And each month thereafter.	
S. S. Hawaiian, to sail about	May 19	Freight received at Company's wharf.	Greenwich street.
Freight received at all times at the		FROM HONOLULU TO SAN FRANCISCO VIA KAHULULU.	
Company's wharf, 41st street, South		S. S. Nevada, to sail	June 7
Brooklyn.		FROM SEATTLE AND TACOMA.	
FROM SAN FRANCISCO TO HONOLULU.		S. S. Arizona, to sail about	June 10
S. S. Nevada, to sail	May 28		

H. HACKFELD & COMPANY, LTD., AGENTS.  
C. P. MORSE, General Freight Agent.

## Pacific Transfer Co.

WILL CALL FOR YOUR BAGGAGE.

We pack, haul and ship your goods and save you money.  
Dealers in stove wood, coal and kindlings.

Storage in Brick Warehouse, 126 King Street. Phone Main 58.

## THE PACIFIC Commercial Advertiser

Entered at the Post Office at Honolulu, T. H., as second class matter.

SUBSCRIPTION RATES:  
Per Year.....\$12.00  
Six months.....6.00  
Advertising rates on application.

Published every morning except Sunday by the  
HAWAIIAN GAZETTE CO., LTD.,  
100 Holt Block, No. 65 South King St.  
A. W. PEARSON, Manager.

## OAHU RAILWAY & LAND CO. TIME TABLE

May 1st, 1903.

OUTWARD.

For Waianae, Waiolu, Kahuku and  
Way Stations—9:15 a. m., 3:30 p. m.  
For Pearl City, Ewa Mill and Way  
Stations—7:30 a. m., 9:15 a. m.,  
11:15 a. m., 2:15 p. m., 3:30 p. m.,  
4:15 p. m., 5:15 p. m., 7:30 p. m.,  
7:45 p. m.  
INWARD.  
Arrive Honolulu from Kahuku, Waiolu  
and Waianae—8:36 a. m., 5:31  
p. m.  
Arrive Honolulu from Ewa Mill and  
Pearl City—10:50 a. m., 7:40 p. m.,  
8:36 a. m., 10:38 a. m., 2:05 p. m.,  
4:31 p. m., 5:31 p. m., 7:40 p. m.  
Daily.  
† Sunday Excepted.  
‡ Sunday Only.  
M. P. DENISON, Supt.  
F. C. SMITH, G. P. & T. A.

## CHAS. BREWER & CO'S. NEW YORK LINE

Bark Footing Suey sailing from  
New York to Honolulu about  
Aug. 15. FREIGHT TAKEN AT  
LOWEST RATES.

For Freight Rates apply to  
CHAS. BREWER & CO.,  
27 Kilby St., Boston.  
Or C. BREWER & CO., Ltd.,  
Honolulu.

## TRENT & CO.

Accountants  
and  
Auditors

938 Fort St., Honolulu.  
Tel. Main 201.

## METEOROLOGICAL RECORD.

By the Government Survey, Published Every Monday.

Day	BAROM.		THERM.		Humidity	Clouds	Wind	Force
	Am.	Pm.	Am.	Pm.				
May 12	30.10	30.04	89	78	77	7-4	NE	1-2
May 13	30.10	30.02	71	74	60	2-7	NE	1-2
May 14	30.10	30.04	70	78	11	1-1	NE	1-2
May 15	30.10	30.05	71	78	68	4	NE	1-2
May 16	30.13	30.05	70	79	68	3-1	NE	2
May 17	30.13	30.07	69	78	22	0-2	NE	2
May 18	30.13	30.05	72	78	00	71	NE	1-2

\* 1-10-2.  
Barometer corrected to 32 F. and sea level, and for standard gravity of Lat. 45. This correction is—0.6 for Honolulu.

## TIDES, SUN AND MOON.

Days	High Tide		Low Tide		Sun rises		Sun sets	
	Large.	Small.	Large.	Small.	Small.	Large.	Small.	Large.
May 12	9 11.47	1.3	12.24	5.42	6.06	5.24	6.28	1.49
May 13	10 1.13	1.2	1.17	6.17	7.05	5.24	6.28	2.02
May 14	11 1.40	1.4	0.38	6.50	7.15	5.23	6.29	2.84
May 15	12 2.17	1.6	1.18	7.27	8.40	5.23	6.30	3.40
May 16	13 2.15	1.5	2.09	8.01	9.32	5.23	6.30	4.21
May 17	14 2.24	1.9	3.33	8.38	10.07	5.23	6.31	5.02
May 18	15 4.00	1.9	3.17	9.06	10.52	5.22	6.31	5.85
May 19	16 4.39	2.0	4.00	9.30	11.40	5.21	6.32	6.01

New moon May 15th, at 0:27 a. m.

Times of the tide are taken from the United States Coast and Geodetic Survey tables.

The tides at Kahului and Hilo occur about one hour earlier than at Honolulu.

Hawaiian standard time is 10 hours 30 minutes slower than Greenwich time, being that of the meridian of 157 degrees thirty minutes. The time whistle blows at 1:30 p. m., which is the same as Greenwich, 0 hours 0 minutes. Sun and moon are for local time for the whole group.

## WEATHER BUREAU.

Honolulu, Alexander Street.  
May 12, 10 p. m.

Mean Temperature—75.3.  
Minimum Temperature—72.  
Maximum Temperature—80.  
Barometer at 9 p. m.—30.08, steady.  
Rainfall, 24 hours up to 9 a. m.—.00.  
Mean Absolute Moisture—5.7 grs. per cubic foot.  
Mean Relative Humidity—61.  
Winds—NE; force, 2.  
Weather—Fair.  
Forecast for May 13—Light trades, fair weather.

R. C. LYDECKER,  
Territorial Meteorologist.

## ENGRAVINGS

HAWAIIAN GAZETTE CO. LTD.

## SCHOOLHOUSES UNDER CONTRACT

W. J. Moody has been awarded the contract, by Superintendent of Public Works Holloway, for building a three-room schoolhouse at Makawao, Maui, and A. Evensen that for a schoolhouse of the same description at Kalaheo, Kauai. The contract prices are close together, but the bidding in each case was somewhat wide. Following are the bids:

Three-room schoolhouse at Makawao, Maui:	
J. A. Ahcong	\$385
Thos. L. Andrews	3473
Henry De Fries	3300
Cyrus T. Green	3393
Otto Oss	3050
Herbert Kendall	2903
W. J. Moody	2950

Three-room schoolhouse at Kalaheo, Kauai:

C. B. Holgaard & Co., Ltd.	\$3849
J. H. Craig	3600
J. A. Ahcong	3485
Thos. L. Andrews	3374
Peter P. Davis	3200
Herbert Kendall	3184
Otto Oss	3148
W. J. Moody	2850
Henry De Fries	3074
John Cook	2770
A. Evensen	2703

## NEPTUNE WILL BOARD THE ADAMS

When the training ship Adams crosses the equator on her way to her station at Pago Pago, Father Neptune will board the vessel and initiate the novices who have never before been so far south. Father Neptune, attended by various gods and goddesses, after boarding the vessel, will assume charge for the time being. It is understood that the names of the novices have been furnished to Neptune and each has been inserted in a certificate which will be duly signed by the father of oceans. After the initiation a certificate will be presented, after payment of toll, to each seaman. A stock of big razors, made of strap iron and other accessories to the initiating paraphernalia of Neptune have been taken aboard at this port.

## GERMANY'S SUGAR CROP.

Acres of Beets Will Be 308,000

Across Less Than Last Year.

A report has just been received at the Department of Commerce and Labor from Consul Diederich at Berlin, Germany, in which he says that the German manufacturers of sugar are satisfied that nothing short of a positive reduction in acreage all over Europe will bring the beet sugar business back to a paying basis. The consul states that in consequence of the Russo-Japanese war there will be a greater scarcity of field labor in Germany than ever before. The police regulations will be more strictly enforced along the borders of Russia and Prussia, and it is reported that no passes will be issued to the 300,000 Russian Poles that usually come into Germany early in the spring, cultivate the sugar beet fields all season and then return to their Russian homes late in the fall. Mr. Diederich says the authorities of the province of Saxony are taking steps to get substitutes for them from Galicia. The consul closes his report by saying that the acreage will be about 308,000 acres less, but, on the other hand, there is no doubt that the production of cane sugar will be increased by at least 150,000 tons. The world's consumption will be about 500,000 tons. Mr. Mahin, United States consul at Nottingham, England, says a Liverpool expert has been making a thorough investigation into the practicability of attempting to raise sugar beets in that country, and now announces that 1,000,000 acres of land in the United Kingdom are suitable for the purpose.

CHAMBERLAIN'S COUGH REMEDY is the mother's favorite. It is pleasant and safe for children to take and always cures. It is intended especially for coughs, colds, croup and whooping cough, and is the best medicine made for these diseases. There is not the least danger in giving it to children for it contains no opium or other injurious drug and may be given as confidently to a babe as to an adult. For sale by all Dealers. Benson, Smith & Co., Ltd., Agents for Hawaii.

## SHIPPING INTELLIGENCE.

### ARRIVED.

Thursday, May 12.

Ship Edward Sewall, Quick, from San Francisco, at 7 p. m.

### DEPARTED.

Thursday, May 12.

Bktn. S. G. Wilder, Jackson, for San Francisco, at 10:30 a. m.  
Am. schr. David Evans, White, for the Sound, at 2:30 p. m.  
Am. bktn. Aurora, Jorgensen, for Portland, Oregon, at 2:30 p. m.  
Stmr. Mikahala, Gregory, for Kauai ports, at 5 p. m.  
Schr. C. L. Woodbury, for Hilo and way ports, at 6 p. m.

### DUE TODAY.

P. M. S. S. Mongolia, Rinder, from San Francisco, about noon.

### PASSENGERS.

Departed.  
Per barkentine S. G. Wilder, May 12, for San Francisco—Mrs. H. Warner, Mrs. F. H. Jordan, 2 children and maid, M. F. Bacon, W. S. Gage, O. G. Schleicher, Mrs. C. Johnson and boy.  
Per stmr. Mikahala, for Kauai ports, May 12—M. A. Rego, Mrs. W. C. Wilder, J. A. Palmer, John Bento, Shimamoto, Sam Kaeo, Mrs. J. B. Hanaika, Mrs. Malle.  
Booked.  
Per stmr. Mongolia, May 14, for Shanghai—Mr. and Mrs. John J. Wash and 2 children, E. M. Webster, A. F. Miles.

## NO SMOKING IN GRAND STAND

No quorum was present at the meeting of the baseball league yesterday. Drawings for practice nights for next week resulted as follows: Monday, Elks; Tuesday, Malles; Wednesday, H. A. C.s; Thursday, Kamehamehas; Friday, Punahous.

It was decided at the meeting to offer twenty-five cents and admission to the grounds, for the return of each ball knocked over the fences. Last Saturday the clubs used twelve balls.

All the posts have been removed from in front of the grand stand, and patrons now can get an unobstructed view.

The trustees have decided to strictly enforce the rule against smoking. Only the section especially reserved for smokers in the grand stand can be used for that purpose.

### Tales Out of School.

Editor Advertiser: In your issue of this morning you were kind enough to publish a report of the meetings of the Bricklayers' Union last evening and the evening before. In that report, however, occur inaccuracies which I know you will be only too pleased to set right. The statement that our union condemned the "employment of Oriental laborers in the Territory" is not correct. We are not laborers; we are mechanics. As far as Mr. Whitehouse is concerned, and the report that he is working Japanese bricklayers, we know nothing of our own selves, having merely heard a report to that effect and intend to investigate the same.

As to the remainder of the report, it seems to me that some one has been telling stories out of school and has made a bad and unreliable job of it.  
FRANK REMILLARD.

## Classified Advertisements.

### WANTED.

A SALESLADY is wanted at B. F. Ehlers & Co. 6791

AGENTS WANTED for the Fay-Sholes, Sun and Postal Typewriters, Cunningham, Curtiss & Welch, San Francisco.

A THREE-ROOM cottage in good location. Address "K. C. H." Advertiser, giving location and price. 6790

HORSE and buggy for two or three months for its keep. Address "Modoc," this office. 6789

### SITUATIONS WANTED.

BY a young man as assistant book-keeper or clerk, understands stenography and typewriting. Address "E," this office. 6791

### ROOMS AND BOARD.

SINGLE or en suite at 1490 Nuuanu street, above Vineyard street. 6782

AT WAHIAWA, ten dollars per week, two dollars per day. Stage meets 3:15 p. m. train from Honolulu at Pearl City, on Tuesdays and Fridays. Address Mrs. Caroline Rhodes, at Pearl City. Phone King 57.

### FOR RENT.

E. B. McCLANAHAN'S Manoa home for rent furnished for six months or a year, electric lights, hot and cold water, beautiful swimming pool. Will rent with or without horses and cow. Apply Room 303 Judd building. 6790

THREE-room cottage, Artesian street, convenient to Rapid Transit cars; rent, \$7.50; artesian water furnished. Enquire Room 5 McIntyre Bldg. 6790

COMPLETELY furnished house, for 4 to 6 months, on line of Rapid Transit cars; beautiful grounds; milch cow and poultry left for tenant. Enquire Room 5 McIntyre Bldg. 6790

DESIRABLE furnished house, Wilder avenue, 6 rooms. For 4 months. Address "J," P. O. Box 298.

FURNISHED room, with or without board; electric lights; centrally located. Address "Comfort," Advertiser office. 6782

COTTAGE No. 664, King street, opposite South street. Inquire H. W. Green, No. 823 Fort street. 6773

COOL, mosquito-proof rooms; central location; Helen's Court, Adams Lane, rear Elite Ice Cream Parlors. 6749

A COTTAGE with 3 bedrooms, hall, etc. Apply 1317 Beretania. 6723

COTTAGES; Christley lane, off Fort St. Rent reasonable. Apply Wong Kwai. 6248

### FOR SALE.

HORSES, buckboard, phaeton, trap, light spring wagon and cow. E. B. McClanahan, Judd building, Room 303. 6790

FURNITURE six rooms, reasonable; leaving city. Location, central. "X," this office. 6782

### OFFICES FOR RENT.

"THE STANGENWALD," only fire-proof office building in city.

### FOR SALE OR LEASE.

FURNITURE of 9 rooms (5 bedrooms) will be sold reasonable, or house to let furnished. Apply on the premises, 1257 Kinau street. 6778

FOR SALE—Some good income property. Price, \$10,000. Nets 10 per cent. FOR SALE at a bargain—Lots in upper Makiki.

FOR RENT—In upper Makiki, large furnished front room. Apply at 1337 College street.

Apply to  
J. H. CUMMINGS,  
Real Estate Agent, 79 Merchant St.

## HONOLULU STOCK EXCHANGE.

Honolulu, May 12, 1904.

NAME OF STOCK	Capital	Val.	Bid.	Ask
MERCANTILE.				
C. Brewer & Co.	\$1,000,000	100		
SUGAR.				
Ewa	5,000,000	20	19 1/2	20 1/4
Haw. Agricultural	1,300,000	100		
Haw. Com. & Sugar Co.	2,312,750	100	45	50
Hawaiian Sugar Co.	2,300,000	30	2 1/2	2 3/4
Honolulu	750,000	100		
Honokaa	2,000,000	20		14
Kahuku	500,000	100		
Kihikihi	2,500,000	50		
Kipahulu	100,000	100		
Koloa	500,000	20	18 1/2	
McBryde Sug. Co., Ltd.	3,500,000	20		2
Oahu Sugar Co.	3,000,000	100		82
Onomea	1,000,000	100		
Ookala	500,000	20		
Olaa Sugar Co., Ltd.	5,000,000	20		
Olowalu	150,000	100		
Panama Sug. Plan Co.	5,000,000	50		
Pacific	900,000	100		
Pala	750,000	100		145
Pepeskee	750,000	100		77 1/2
Pioneer	2,750,000	100		40
Waialua Agri. Co.	4,500,000	100		40
Waikuku	750,000	100		
Waianalae	252,000	100		