

The Pacific Commercial Advertiser

U. S. WEATHER BUREAU, August 7.—Last 24 Hours' Rainfall, .00
Temperature, Max. 81; Min. 73. Weather, fair, valley showers.

ESTABLISHED JULY 2, 1856.

SUGAR.—96 Degree Test Centrifugals, 4.125c. Per Ton, \$82.50.
88 Analysis Beets, 10s. Per Ton, \$82.20.

VOL. XLVIII, NO. 8112.

HONOLULU, HAWAII TERRITORY, SATURDAY, AUGUST 8, 1908.

PRICE FIVE CENTS.

CONVENTIONS ARE TO BE HELD ON SAME DAY

Democratic Territorial Meet Called for September 14, Even Date With That of the Republicans.

On Monday, September 14, Honolulu will be humming with politics, for not only will the city be filled with the delegates to the Republican Territorial convention, but the Democrats have decided to have their Territorial convention in the city on the same day. This date was chosen at a meeting of the Democratic central committee last night and a committee appointed to formulate the call and pave the way for a successful gathering of the untried.

This committee consists of Ed. Ingham, chairman of the central committee, and John Emmeluth, the secretary, who will select the dates for the precinct nominations and elections and arrange all the preliminaries for the Territorial and county convention both. It is probable that the nominations will be called for August 31, three days after the G. O. P. names are known, with the elections of delegates a week later.

RATIFICATION MEETING.

The Democrats do not intend to let any grass grow under their feet and will evidently push the fighting in the campaign from the start. Following the meeting in Aala Park last Saturday, where the slim attendance was thought to be due to the short notice given of the meeting, it was arranged last night to hold a ratification meeting on Thursday night next at the same place, to have the band out and to advertise the affair thoroughly. At this meeting the nomination of Bryan is to be ratified and the delegates' course endorsed, while the local campaign will be started. Among the speakers will be W. A. Kinney, Judge Quarles, Frank Harvey, Allan Herbert, E. M. Watson, Rev. Kekipi of Maui, and others. Possibly L. L. McCandless will be called upon.

WILL INVADE MAUI.

All arrangements have been made for an invasion of Maui for organization purposes by Chairman Ingham and Nominee-to-be McCandless, who will leave for the Valley Isle on Friday next. The two will tour the island and bring the scattered sheep into the fold, while McCandless will study the land question from the other side and gather some material for his campaign.

The Democrats on Maui are said to be in bad shape. It is acknowledged by the Republicans that the Democrats have a majority of the votes, when combined with the Home Rule and Labor elements, but have no available candidates for office. Thus, with any kind of a solid front the Republicans stand a good chance to land their men.

The Republicans have no solid front to present at present, however, their ranks being badly split in the fight between the Wailuku crowd and the forces of H. P. Baldwin. This fight has been of long standing, with the Baldwin forces always having the

edge over the Wailuku malecontents. The first Kepoikai fight was between these factions, although time has seemed to show that in winning the Baldwin forces made a losing. The latest Kepoikai dilemma is hailed with glee by the Coke-Case wing, which, however, had to submit to being pushed to one side at the last precinct club election in their own camp.

It is to take advantage of this factional strife that the Democratic leaders are hastening to Maui.

NEW REPUBLICAN CANDIDATE.

Political gossipers about the fishmarket, where the political pulse is supposed to beat, had a new candidate for the mayoralty to talk about yesterday. This time it is Fred Beckley whom the office is to seek, a small but busy bunch circulating the news in hoarse whispers that at last the Moses had been found who could lead the Hawaiians to the promised land of political patronage. It was stated that Beckley was only waiting for a boom to be headed past him to hop on and ride into office.

His boosters are the members of the Hawaiian Sons' Voters' club, who claim that Beckley is the only man who can go into the fight and beat Harvey at his own game among the Labor party voters. Harvey, by the way, is denying that he has any idea of getting into any contest with anybody for the big civic job, being satisfied at the prospect of going back again as a Democratic supervisor.

In order, probably, to magnify Beckley's chances it was also talked about yesterday that Beckley would be a candidate as Delegate in the event of Cupid withdrawing for any reason but would not consider any nomination, no matter how much the popular demand for him to go to Washington, so long as his friend, the present Delegate, wanted the post. This was referred to as being particularly magnanimous on his part.

In response to the story published yesterday that A. M. Brown still harbored a shriveled bee in his bonnet, there were many denials from many sources, various representatives of various factions all uniting in their statements of belief that Brown was out of it entirely. The use that Viera, Vincent, Willie Crawford and Clark and some others in the Fifth were making of Brown's name was declared to be entirely without authority and without the knowledge of the former sheriff. All of which may be so. It is a fact, anyway, that the ones in the Republican party now looking for nomination for the more important county offices do not want Brown to run, however much they may urge him to his face, for while Brown has strength yet in one or two precincts, in the county (Continued on Page Seven.)

A SUCCESSFUL RAID.

Inspector Fennell, Assistant Chief of Detectives Luahiwa and Officer Ahi raided Wong Sar's store at Wai-pahu last evening. They caught Wong Sar's wife, Chung See, in the act of selling a bottle of gin and a bottle of samshu to a Chinese. She was arrested and gave \$100 bail. In a search of the premises, the Inspector found nearly 200 bottles of assorted liquors, which were left in the Pearl City jail.

FIRST HINDU TO ASK FOR CITIZENSHIP IN HAWAII

Nihal Singh George, a Hindu, yesterday made application for naturalization as an American citizen.

Nihal is the first of his race so far as is known, who has ever applied for naturalization in Hawaii. He arrived here from the Orient on the Mongolia, June 14, 1908.

Nihal describes himself as a carpenter, 18 years of age, born in Calcutta, India, September 15, 1889. He speaks and writes English excellently, and is

said to be the son of an officer in the British army in India.

He swore allegiance to Edward VII as Emperor of the Empire of India.

William Ninian Stewart, another subject of Edward VII, but a subject of that monarch in his capacity of King of Great Britain and Ireland, also swore allegiance to that potentate and declared his intention of becoming a citizen of the United States of America. He is a bookkeeper and was born in Aberdeen, Scotland. He came to New York in 1900.

CHILDREN'S HOSPITAL

Already acknowledged	\$ 99,000
Mrs. S. C. Allen	1,000
Cash	70
Total	\$100,070

RELIGIOUS EDITORS AT ODDS OVER SUNDAY OBSERVANCE

Dr. Gulick Would Have the Puritan Sunday and Dr. Scudder Contents for a More Reasonable One.

Rev. Dr. Oramel H. Gulick contributes the following to The Friend:

In The Friend of July, over the signature of D. S. Dr. Scudder gives his views upon Sunday baseball, in the following language:

"A stroll in God's open air, a horse back ride, a drive, a refreshing swim, a game of golf itself the acme of quiet exercise, baseball, who will dare to set a limit and declare one to be a sin and the others innocent? We live in a day when honest men will endure no befogging of issues. The Church can no longer say 'this or that is tabu' unless there is a clear moral distinction between the thing forbidden and those tolerated. Sunday has two reasons for being, both fundamental. The first is the need for rest. The second is the necessity for social worship. If a man is confined closely within doors six days every week, the physical demand for rest will force him to take outdoor recreation on Sunday."

It is a matter of deep regret to me that Dr. Scudder should feel himself called upon to use the columns of The Friend for setting forth the views indicated in the above quotation. I do not think them to be in accord with the commands of God as given in the Old Testament, or in harmony with the teachings of the New Testament. They are subversive of the teachings of those who so effectually planted the Gospel seed upon these islands. It is especially unfitting that The Friend, established and maintained by the Board of the Hawaiian Evangelical Association for the conserving and up-building of the Gospel Kingdom, should be thus used for the pulling down rather

than for the upbuilding. The manner of observance of the Sabbath is one of the vital questions of the hour, vital to Christian living, and to Christian civilization.

In a later sentence of the above article Dr. Scudder says: "Innocent Sunday recreations will appeal to members of all the above groups. And the Church does not oppose them. We remember to have heard no voice publicly raised against them in Honolulu." That the Doctor's memory may never again permit him to repeat this assertion, is the hope of

ORAMEL H. GULICK.

July 20th, 1908.

In a later sentence of the above article's good-natured rejoinder: "It were well worth the effort of a hundred editorials to evoke such a splendid little bunch of hot shot as that contained in the communication from Fellow Editor Oramel H. Gulick on another page. At a recent meeting of our Editorial Board one of the most ardent of our number suggested that The Friend would improve with more matter in a lighter or livelier vein. All the rest said 'Amen.' For liveliness Mr. Gulick's communication fills the bill. It also gives the occasion for saying a bit more on the Sunday question."

That little editorial of last month which gets such a hasting could hardly be expected to cover the whole ground. It had but one objective, namely to show that while the Church does not (and should not) bother itself with laying down rules as to how individuals must act on Sunday in contradistinction with other days, it is tremendously interested together with labor organizations and men lovers generally in demanding that business shall not rob (Continued on Page Seven.)

ALL IRRIGATION ABOVE SCHOOL STREET MAY STOP

The water supply situation for the higher levels of the city is reaching a very serious crisis. All that now stands between the residences on the higher levels supplied by the Honolulu water system and absolute drought is a little less than six feet of water in Reservoir No. 1, with all the other reservoirs absolutely dry.

The remainder of the city can be taken care of by the various pumping

plants, but for these higher levels it is Nuanu water or nothing.

Superintendent of Public Works Marston Campbell was on the point yesterday of issuing an order shutting off all irrigation above School street, on both sides of Nuanu, as far as Pensacola street, and it may have to be done yet, or run the risk, for that part of the city, of leaving it absolutely without water for domestic purposes or fire protection.

Nothing but rain in the upper Nuanu Valley can save the situation now.

KULA SUFFERING FROM DROUGHT

No Rain Since Last November and Great Suffering Results.

The following letter describing the drought situation in Kula, Maui, was received yesterday by Governor Frear. It was referred by the Governor to Superintendent of Public Works Marston Campbell. Mr. Campbell has kept in touch with the situation there, and had expected to go there this week himself to investigate, but the accident he met with prevented him. Assistant Superintendent Kneigel will go up next week.

It is hard to see what relief the government can give. There is no appropriation for any such relief as the letter suggests. There seems no way of bringing relief.

However, Mr. Kluegel will go and will make a thorough study of the situation and if there is any way by which relief can be brought he will suggest it. In addition he will secure such information, as embodied in a report will furnish the legislature with complete knowledge of conditions.

Among those who have signed the communication to the Governor are H. P. Baldwin, H. A. Baldwin, F. F. Baldwin and W. O. Aiken. Many Chinese and Portuguese are among the petitioners.

The petition is as follows:

"To the Honorable W. F. Frear, Governor of the Territory of Hawaii.

"The petition of the undersigned citizens, voters, residents and taxpayers of Kula, County of Maui, respectfully represents:

"That since the month of November last there have been no rains in that section of Kula between Makawao and Keokea;

"That animals are dying daily in great numbers;

"That almost all your petitioners are now without water for domestic purpose;

(Continued on Page Seven.)

THE GRAND JURY AND LAUKEA CASE

Inquisitorial Body Has a Number of Witnesses Before It.

The Territorial grand jury spent yesterday trying to find out whether Isoi tried to bribe Laukea, or Laukea solicited a bribe from Isoi, or whether Townsend was trying to entrap both of them.

It had before it Laukea, Townsend, Mrs. Isoi, James Hakuole, Editor Sheba, and Isoi himself. It was nearly four o'clock in the afternoon before the last of the witnesses was examined.

No action was taken by the grand jury as the result of the testimony heard, but the grand jury adjourned to Monday morning and will deliberate then on what to do.

No additional information to what has already been published was adduced, though the grand jury, having the whole matter before it at one time and the power of cross-examination, was able to get the testimony in better shape for comparison.

THE LICENSE BOARD AS READY LETTER-WRITERS

A meeting of the Board of License Commissioners was held yesterday afternoon at which the subject of restaurants with the Sunday privilege, and the way they ought to conduct their business, was discussed at much length. The draft of a letter to be sent to the proprietor of the Palace restaurant was discussed in detail, but was not fully determined on though the main features of it were. This letter will be completed and sent today.

ROOSEVELT SAYS TAFT IS NOT TO BLAME FOR ROW

Brownsville Negroes Should Not Feel Sore at Republican Candidate---Railroads Will Not Favor Bryanites.

(Associated Press Cablegrams.)

OYSTER BAY, August 8.—President Roosevelt has issued a statement to the effect that Taft was not responsible for the order being issued for the disbanding of the companies of negro troops implicated in the shooting up of Brownsville.

RAILROADS IGNORE STRIKE LEADERS.

WINNIPEG, Manitoba, August 8.—The railroads are preparing for a long contest with their striking employees. They are importing men to take the places of the strikers and have made no attempt to arrange a conference with the strike leaders.

M'FARLAND IN THE SEVENTH.

LOS ANGELES, August 8.—Packy McFarland, of Chicago, was given the decision in his fight here last night with Phil Brock, of Cleveland. The fight went to the seventh round, when it was stopped by the referee.

SQUIRES AND BURNS AGAIN.

SYDNEY, Australia, August 8.—Tommy Burns and Bill Squires have signed articles for a contest for the world's heavyweight championship to be fought on August 24, during the visit of the American Pacific fleet.

DEMOCRATS MUST PAY FULL FARE.

CHICAGO, August 8.—The railroads centering here have refused to grant any reductions in the fares for delegates to be present at the Bryan notification meeting.

PYTHIANS SELECT MILWAUKEE.

BOSTON, August 8.—The Pythian convention in session here has selected Milwaukee as the next gathering place for their convention delegates.

HARRY THAW A BANKRUPT.

PITTSBURG, August 8.—Harry Thaw has filed a petition in bankruptcy. He places his liabilities at two hundred thousand dollars.

GRAFTING IN LONDON CITY.

LONDON, August 8.—Ten of the officers of the municipality in the Mile End parish were yesterday convicted of grafting.

EX-PREMIER OF ITALY DEAD.

ROME, August 8.—Marquis di Rudini, a former Premier of Italy, is dead.

FLEET CLOSE TO AUCKLAND.

AUCKLAND, New Zealand, August 7.—The Otago has arrived here in advance of the American fleet. The fleet is now 360 miles away and is in stormy weather.

NEW AIRSHIP MODELS.

FRIEDRICKSHAFEN, August 7.—Count Zeppelin, aeronaut, has two different models of airships with which to continue his experiments.

SHAH RAISING FUNDS.

TEHERAN, August 7.—The Shah has borrowed \$250,000 from a Russian bank, on the crown jewels.

NATIONAL SHOOT HAS BEGUN.

CHICAGO, August 7.—The army shooting in the National matches has begun at Fort Sheridan.

BUSINESS FIRMS TO CLOSE AUGUST 12

The following corporations and business houses have agreed to close their offices on Wednesday, August 12, in commemoration of the tenth anniversary of the raising of the American flag here. The Governor states that it is his intention to close the government offices on that day: Alexander & Baldwin, Bank of Hawaii, Bishop & Co., First National Bank, Claus Spreckels & Co., Henry Waterhouse Trust Co., Castle & Cooke, B. F. Dillingham Co., H. Hackfeld & Co., Ltd., C. Brewer & Co., T. H. Davies & Co., Metropolitan Meat Co., F. A. Schaefer & Co., E. O. Hall & Son, Hawaiian Trust Co., Lewers & Cooke, von Hamm-Young Co., Yokohama Specie Bank, Honolulu Iron Works,

LO SUN WILL EDIT THE "LIBERTY"

Lo Sun, who was editor of the Man Sang Yat Bo, a leading Chinese newspaper, and who recently severed his connection with the paper owing to political differences between himself and members of the corporation, has been persuaded to remain in Honolulu, instead of returning to Japan, and edit a new Chinese newspaper to be called Liberty. It will cooperate with revolutionary elements in China. Lo Sun acquired considerable notoriety some time ago on account of his fight to stay in Hawaii, with the help of the Advertiser, winning out, after a strenuous battle for his rights. Allen & Robinson, Wm. G. Irwin & Co., M. Phillips & Co., Trent Trust Co., Bishop Trust Co.

One Stein-Bloch

try-on before our long looking glass will do you more good and prove to you more clothes facts than a column of advertising argument—

and a try-on is so simple and so short

M. McINERNEY,

Merchant and Fort Streets.

DORSET

For wear with walking and street gowns, the Dorset is entirely correct, and will be a standard style among the wearers of

WOMEN'S REGALS THIS SEASON

The characteristic points of this model are a semi-round toe, flat tread sole with extension edge, Cuban heel, and blucher-cut uppers.

The vamp and quarter are of Black King Calf, tanned to give the fashionable dull finish.

There is a "Thoroughbred" snap and attractiveness in the Dorset that will commend it to careful dressers.

Ask to see this model.

Have your old shoes repaired while you wait.

REGAL SHOE STORE

McCandless Building, King and Bethel Sts.

Anything bought at our store is a guarantee that
You Get What You Pay for
If you don't

We Will Pay for What You Get.

WAFFLE IRONS

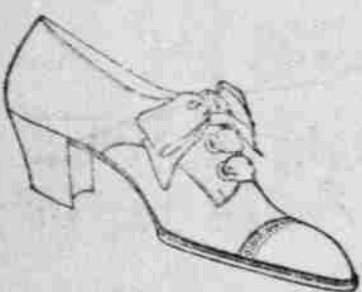


No. 7 \$1.00 No. 8 \$1.25 No. 9 \$1.35
FOR GAS STOVE \$1.50

E. O. Hall & Son, Ltd.

HOUSEHOLD DEPT. TAKE ELEVATOR

A popular new tan
selling for \$3.50
at



Manufacturers' Shoe Co., Ltd.

TRAMPING OVER WINDWARD OAHU AND SEEING THINGS

Lumber vs. Stone---Prevailing Pests of Agriculture---Mongoose, Japanese Beetle and Corporation.

By Alexander Hume Ford.
(Continued from Yesterday.)

Everyone on the windward ridge brings lumber at high freight rates to build with when a far cheaper material for building lies all about. I heard my companion many times telling the residents of a rough stone house in Palolo valley built by one Williams, that is artistic, attractive to the eye, will last for centuries and cost less than would a wooden house of equal dimensions. A few barrels of cement, plenty of sand, which is always within a moment's walk on the windward side, as rocks for building are ever under foot, and labor that may be trained in a few days to accomplish effective work, is all that is needed. I believe that James B. Castle is going to set an example in this direction to demonstrate to himself and others what can be done. Italy is made attractive by peasants who build their own stone houses, so why not Hawaii?

I have faith in the man who attempted to plant an American colony at Ewa

scientists to spread contagious disease among the mongooses until they are exterminated, so that the birds may return to lay and the toad live to devour insects; but he shakes his head over the corporation problem. I informed him, however, that there is hope there too, for I was in the outer office of the Governor of Hawaii when the chairman of the Land Commission came out from the Governor with his appointment. He stopped to ask me how he could get from New Zealand a copy of its land laws. I promised that a copy giving a gist of the laws should be on his desk the following morning and it was placed there. The land laws of New Zealand give the state the right to purchase, at assessed valuation, I believe, any large estate, that it may be cut up into small farms which the purchasers are loaned money by the state at a low rate of interest to pay for.

"Australasia for the White Man" is the cry south of us, and the Australasians live up to their principles. Shacks are no longer built for tenants



WORKING ON KAHUKU ROAD.

a decade ago, saw it go to pieces, tried again and again, lost thousands helping to home the Molokans and looked upon each failure as but one more step toward success. And success will come; it must come to a man who works hard enough and long enough to accomplish a good thing.

On the mainland I saw a colony start out to Idaho, a cooperative organization, and helped them to secure land. Each member of the colony was permitted to purchase from ten to twenty acres; each acre gave him a vote in the affairs of the colony. Each colonist owned also an acre in the little town in the center of the colony lands. Here were built, not shacks or magnified dry goods boxes, but real tasteful homes. Vines, trees and flowers were planted about them and each man had his home acre in which to raise vegetables for his table and stable a cow. In the little town hall-church-theater in the center of the park around which the little town was built, the colonists met and voted on matters to their interest; they selected and sent one of their number to Chicago to create a market for their output, and he was successful. The mortar of united interests bound the colony together and it was a success, and that is a fact worth remembering in Hawaii.

THE PREVALENT PESTS.

My friend, the sage from the Coast, is of the opinion that there are three pests we must rid ourselves of before we can invite the small farmer to Hawaii; first there is the Japanese beetle; then the mongoose and last of all the corporations. He would bring bats from the mainland to devour the night-flying Japanese beetle, as they do in California; he would ask farmers to prepare poison and ground-glass and

at will. The Australasians now build their homes on their own land, and are contented with themselves and their laws with a contentment that passes understanding.

ON THE ROAD AGAIN.

We left Hauula early in the morning, stopping only long enough to make a picture of the only real Hawaiian grass house we saw on our journey. Two others had been burned recently to make way for a cane field, a field of green that stretches for miles and miles now, seemingly from the mountains to the sea and from horizon to horizon. The hills become bare after leaving Hauula, but forty years ago, before cattle were ranches here, there were dense forests. Now lantana creeps everywhere, surrounds the few clumps of native trees that are left and smothers them. The cocoanut is seen but seldom, and the nut scarcely at all. Even the algaroba declines to thrive on the windward side. Companion Leckenby says it is land for peanut crops, and the Chinese farmers seem to agree with him, for they raise acres and acres of the little goober.

Leckenby knows something of peanuts; he grows them in his yard; he has a machine for turning them into peanut butter, which costs about one-fourth as much as the article derived from the cow, is more nutritious, and children seem to like it as well. He advocates a mill for extracting the oil, which has a ready sale on the mainland at a good price. Everywhere on the windward side the soil seems adapted to the growing of the pindar, and it will be interesting to watch the results from a homestead planted in peanuts instead of pines.

As we footed it over the ties and made way for the section hands who were pulling up the weeds, my companion told me of an experiment he had tried in Dakota that proved so successful that the plan has been adopted by all the railways of the Northwest. Accustomed to do some of his wedding by gasoline torch power, he suggested a handcar with four torches to run over the tracks and send down their flames. It was tried, killed the grass, hardened the ties, and was adopted as a permanent means of keeping down weeds along the railway.

Just out of Kahuku is an old ruin of a church, four splendid stone walls, firm and strong, owned by the government. A little change at slight expense and it would make a splendid rest-house that would, without doubt, pay the expense of its upkeep and prove a boon to travelers from Honolulu and elsewhere. Sometimes walking parties of sixteen or more tramp around the island, dependent on the openhanded hospitality of friends or strangers. It is a humiliation that some responsible body should eliminate. New Zealand's Tourist Bureau makes her rest-houses pay. They cost little and are almost as easy to erect as to talk about. The time seems ripe now for several of these at convenient stages on the windward side, and I believe they will be either built or provided.

We stopped briefly at Kahuku and trudged on to the Reform School Agricultural Station at Waialea, for we were still enthusiastic about returning to the Punaluu trail with an adequate camera.

GRAND Clearance Sale

NOW IN PROGRESS

A. Blom

Fort Street, opp. Catholic Church.

Silk Fans and Parasols

Very pretty creations and some beautiful CHINA TEA SETS suitable for use and decoration. These are fine goods and selling cheap.

JAPANESE BAZAR

FORT STREET, NEAR THE CONVENT.

SAN FRANCISCO HOTEL.

FAIRMONT HOTEL

SAN FRANCISCO

The most superbly situated hotel in the World

OVERLOOKING THE ENTIRE BAY OF SAN FRANCISCO, THE GOLDEN GATE, AND THE RAPIDLY REBUILDING CITY.

CONVENIENT TO SHOPPING, THEATER, BUSINESS, AND RAILROAD CENTERS.

THE EPITOME OF HOTEL EXCELLENCE

Combining all the conveniences and luxuries a good hotel should have, with many unique, original and exclusive features. Entirely refurnished and refitted at a cost of over three million dollars. Social center of the city—headquarters of the Army and Navy—Scene of most of the social festivities.

ACCOMMODATIONS FOR 1000 GUESTS.

EUROPEAN PLAN.

Single rooms with bath, \$2.50, \$3.50, \$4.00, \$4.50, \$5.00 upwards. Suites, with bath, \$10.00, \$12.50, \$15.00, \$20.00, \$25.00 upwards.

MANAGEMENT

PALACE HOTEL COMPANY

In Principal Gibson of the Reform School, Mr. Leckenby found a congenial companion. They visited field after field, Leckenby explaining how an indigenous alfalfa could be successfully bred from that growing on the grounds. In support of his statement he pointed to two rows of beans, one completely devoured by the Japanese beetle, the other green and immune from this pest, the first grown from imported seed, the other from home seed. According to Leckenby, by selecting from each crop the strongest, largest and healthiest plants to breed from, a vigorous lot of plants can be secured that, after a generation or two, may be relied upon to breed true and largely resist the native insects.

Leckenby is also a great advocate of every labor-saving farm implement even for hand use. Mr. Gibson grows pepper for the tobacco factory in Honolulu and has plenty of the dried product left over, but at the prevailing San Francisco rate, eight to twelve cents a pound, it does not pay to cure it, but in the mainland off season, when pepper brings twenty-five cents a pound, there is a handsome profit.

At Waialea, I made my first acquaintance with taro, as did Leckenby. Neither of us had ever been able to swallow more than one mouthful of either poi or poi-cocktail, but taro tickled our palates so that we asked for more. Why, this delicate flour and delicious breakfast porridge should not have a large sale on the mainland if properly pushed, I cannot understand. We drove out to the homesteads near Waimea, and here prosperity seemed to have tarried a bit. The holdings, from one to two hundred acres each, were mostly under cultivation in pineapples, tomatoes and vegetables, which grew even on the stretches of land near the seashore and some creditable homes have been built, while others are in course of erection.

We still longed for a return to our mountain trail, so boarded a train, spun by the wonderful bits of scenery between Haleiwa and Ewa, which we shall do later on the wheel, stopped for an hour or so at Sinal to see the big fiber plantation and the mill at work. If the leaf could be fully stripped it would mean large annual dividends to the company, so my companion's time was spent examining the fiber and the machinery in hopes of being able to solve the problem.

Of course there was a visit to Ewa. Everyone does that, and then—Honolulu, rested and no longer footsore, ready for another tramp or any grind of work. The Punaluu trail is the bit of real Hawaii that every visitor should see. It is easily accessible any day of the week, and a walk among the mountains above the clouds must rest any person who has a soul. God bless Castle and will the Promotion Committee please take a hint?

JAPANESE FLEECE BY A COUNTRYMAN

Several ignorant Japanese laborers are bewailing the sudden defection of a Japanese named Kimura, because he had several hundred dollars of their money in his possession and by this time he is enjoying the cash in San Francisco.

Kimura was stopping at a hotel near Iwilei where he met several Japanese who were strangers in the country. He persuaded them to give him money on the promise that he would procure passports for them to go to the mainland. He said the Consul was about to leave for Japan, and he, Kimura, being a friend of that official, could make a present to the consul, and in turn for this kindness he would make out passports. The strangers swallowed the yarn, gave up their money and Kimura departed.

THE JAPANESE RED CROSS DOING WELL

The Japanese Red Cross Society branch of Hawaii has reported to the main office in Japan for the year ending June 30, 1908. The report shows a large increase in membership, 477 new members being added for the year, bringing the total up to 2500, of whom 307 are life members. The amount of money sent to Japan during the year was 8950 yen. The average membership of the Red Cross in Japan is one man in every 50, while in Hawaii the average is one man in every 24. Consul General Saito was chairman of the local branch.

MURAKAMI'S ESTATE WORTH NEARLY \$40,000

Kunihei Fujimura and Hyosaku Shimizu, administrators of the estate of T. Murakami, have filed an inventory of the estate in the Circuit Court. They give the invoice value of the merchandise on hand as \$10,113.47; cash on hand \$980.53; furniture and fixtures, \$1068.80; and outstanding accounts at face value, \$24,518.57; a total of \$36,681.37.

AMUSEMENTS.

ORPHEUM THEATER

COMMENCING AUGUST 6TH

Henri French,
Hallen and Fuller
ALL STAR

Advanced Vaudeville Co.

10 BIG ACTS BY
WORLD RENOWNED

HEAD LINERS

—POPULAR PRICES—

TICKETS NOW ON SALE, 75-50-25c.

ART THEATRE

Hotel Street
BETWEEN BETHEL AND FORT

Extraordinary attractions. Changes
Monday and Thursday. Matinee, 2:30
to 4. Evening, 7 to 8:30; 8:40 to
10:15. Two Big Shows. Fine Music
and Illustrated Songs.

MOVING PICTURES

EMPIRE THEATRE

HOTEL AND BETHEL STREETS.

New Moving Pictures

TONIGHT! TONIGHT!

NEW FILMS.

FRANK VIERRA, Pianist.

Admission 10 cents
Children 5 cents

1908 STYLES

—AND—

SPRING PATTERNS

NOW TO BE SEEN AT

W. W. AHANA & CO., LTD.

FASHIONABLE TAILORS.
62 KING STREET. PHONE 521.

BOTTLED

COCA COLA

HAWAIIAN SODA WORKS

Phone 516

Furniture

"PAY-A-LITTLE-AT-A-TIME."

J. Hopp & Co.

185 KING STREET.

Automobile

Fine new one—

Club Stables

Telephone 109

On call day or night.

PARCEL DELIVERY

As reliable as the letter delivery by boy. Try us.

Territorial Messenger Service

Phone 361

CHOICE KANEHOE BEEF

Always on Hand.

YOUNG PIGS, POULTRY, EGGS,

FRESH BUTTER AND CHEESE.

SAM WO MEAT CO.

King Street Market, next C. Q. Yee

Hop & Co. Tel. 238.

YOUNG TIM, Manager.

C. BREWER & CO., LTD.

SUGAR FACTORS AND

COMMISSION MERCHANTS

List of Officers—

C. M. Cooke, President; George M.

Robertson, Manager; E. F. Bishop,

Treasurer and Secretary; F. W. Mac-

farlane, Auditor; P. C. Jones, C. M.

Cooke, J. R. Galt, Directors.

Souvenir
Postals

Exquisite Postals of

the Volcano.

Mats, Tapes, Fans,

Baskets.

Teco Pottery and Rus-

sian Brasses.

HAWAII & SOUTH SEAS CURIO CO.

Alexander Young Building

SPORTS

PICKED TEAMS MEET TODAY

Santa Claras Return From Hilo to Play Keios in First Game.

BASEBALL TODAY.

Santa Claras vs. Keios.
Punahou-Diamond Heads vs. Kameha-

mebas-St. Louis.

About the time this paper is being
opened at the breakfast table and the
wily fan is searching the sport page for
the right dope, the seashore kids will
be filing down the gangway from the
Mauna Kea and wondering how they
are to unscrow their sea-legs and get
into the base-running five-leaguers.

The boys have a hard job in front
of them when they go against the
Keios this afternoon. The little Japa-
nese have been training more faith-
fully than ever and they may be de-
pendent on to put up an even better
exhibition than they did last Sunday
against the explorers.

The boys from Santa Clara will just
about have time to walk round a little
and loosen up before they have to
change their clothes and go out on the
field. But they are sturdy youths ev-
eryone of them and there is little rea-
son to suppose that they will suffer at
all from the effects of the short sea
voyage.

We may expect to see big Byrnes
at third keeping unconscious time to
the movements of the steamer while
he replies in a stentorian voice to the
directions of coach or captain. "Aye
aye, sir, starboard he says, starboard it
is, sir." Merv Shafer will give signals
from behind the bat by peculiarly nau-
tical hitchings of his trousers and the
course from home to first will doubt-
less be covered in zig-zag style as the
heaving deck rises to the rolling swells.

The picked team game is going to
be a hummer. The batteries will not
be announced until the men walk out
on the field, but there will be something
doing from then on and the fans are
going to have the roofest of their lives
if they take every opportunity that will
be open to them.

Shout it not from the housetops nor
speak it from the gates of Cawnpore,
but the boys of the good pathfinding
saint have been training and practising
very hard for their game with the San-
ta Claras on Sunday. They have been
out every day this week and they have
shaken down to excellent team work
judging by the showing they made on
the field yesterday. The Santa Claras
will have no easy game on their hands
and we may be surprised to find the
St. Louis boys put up a fine exhibition
and make the game the most attractive
of the four very attractive games sched-
uled for this week-end.

DINGHY RACES ARE DISCUSSED

The local yachtsmen are all agog
over the suggestion, made in yester-
day's Advertiser, that a mosquito fleet
should be started. One of the most
enthusiastic is Ray Rietow. He said:
"I have been figuring and working on
some kind of a one-design class for a
long time and I think the small boat
class is the real thing. I have been
thinking over what kind of a craft of
this description would suit my fancy
and I have come to the conclusion that
a boat that is just large enough to carry
two men would be the most successful."
"One man cannot very well steer,
manage his main sheet and set the bal-
loon or spinnaker at the same time.
With two men aboard one could handle
the light sails and the other do the
steering."

Several of the yachtsmen are engaged
on rough plans of a design for a small
sailing dinghy and it is expected that
the local builders will be asked for
estimates so that everybody will know
just how much it is going to cost him.

One advantage of these boats is that
they need practically no up-keep. They
are hauled out of the water very easily
and can be painted or pot-leaded for a
race in a very short time.

The suggestion is to have a series of
races with a cup for the winner and
other prizes for the best average of
starts, the fastest work to windward
and the best time running before the
wind. A series of this kind opens up
unlimited possibilities and the winner
will have to do some corinthian work.
The state of the boat's bottom amounts
to quite a lot. The wood must be kept
smoothed off, especially if the grain
runs so that splinters will point for-
ward. Then any amount of elbow
grease may be spread on the pot-lead
and the craft with the smoothest sur-
face under the water has an excellent
chance of being the winner.

The set of the sail is another very
absorbing matter. The man who is
most careful in furling and caring for
his sail, in stretching and loosening it
properly on the mast and spars, will
gain a great advantage in windward
work.

The sailing of the boat is, of course,
the main thing and many of the yachts-
men who are clever at the stick will
find that they can learn a great deal
from sailing a small boat in a closely
contested race.

The beauty of these races from a
spectator's point of view is that the
boats are always well in sight and it
is always easy to see which is the
leader. The starts are bound to be
very close and the jockeying before the
gun will bring out some very clever
work on the part of the skippers.

NIBLICKS OUT FOR SUNDAY

It looks as though there would be a
large turnout for the medal play tour-
nament at the Country club tomorrow.
The knights of the tee and club are
enthusiastic about it and there is con-
siderable talk around town as to the
possibilities of the opening round.

Entries will close at the club house
at 10:30 and then the first of the two-
somes will lead off from the start and
head a mighty procession of ball-
whackers round the links.

Every possible convenience has been
arranged for members and their friends.
There will be a special lunch served at
the club house and the buses will run
regularly and at frequent intervals to
take players from the end of the car
line.

"Spectators are very welcome on the
links," said J. D. McNerny yesterday.
"The more interest there is taken in
the game, the better. People are just
beginning to realize that a very pleas-
ant holiday may be spent on the links,
watching the players and enjoying the
air up on the hillside. There is no
pleasanter game to watch in a leisurely
way than golf. There is interest in
every move and the walking necessary
to follow the players is just sufficient
exercise to make the sport healthful as
well as enjoyable."

"I was astonished in looking through
an English paper the other day, to see
pictures of golf matches in which the
greens were surrounded by regular
crowds of spectators. The people of
Honolulu will soon take to the game
if they will take the trouble to go out
and watch it played once or twice.
There are comparatively few technicalities
in the game and the method of
each stroke and play is easily under-
stood by the veriest novice."

The Country club authorities are in
great hopes that it will not be long
before the cars run directly to the club
house. At present players have a long
walk during the week when the buses
are not running and this prevents many
of them from turning out for practice
during the week. There is a general
feeling that it would more than pay the
Rapid Transit company to extend one
of the lines and run cars to the club
house at intervals. It would, at any
rate, be a great thing for the club and
would do much to advance the interests
of golf and sport generally.

NO WEIGHT YET AGREED UPON

No actual agreement as to the
weight at which Jack McFadden and
Charlie Reilly will meet has yet been
arrived at, but there is a general feel-
ing in both camps that there will be
no difficulty and both lads are doing
light preparatory work.

McFadden has not yet selected train-
ing quarters but he does the steam roller
act in the morning and does his best
to pound the roads to a good level.
Yesterday morning he was out along
the Beach road to Waikiki with a
thick sweater on and came back ring-
ing with perspiration, but breathing
easily.

Jack states that he will have very
little difficulty in getting fit for the
fight, he is thoroughly acclimatized and
keeps in fair shape all the time, so that
he will have to do only a little boxing
and stomach exercising to be fit for
a hard go.

It is expected that the articles will
be signed up some time early next
week. There are several matters that
must be gone into carefully before this
is done and Eddie Tait is taking great
care that everything shall be absolute-
ly ship-shape and above board.

Reilly did his usual work-out stunts
yesterday under the direction of Pete
Baron. The grand old man of trainers
is letting up a trifle on the work and
allowing Reilly less strenuous exer-
cising as there is some time before the
bout is pulled off and he is taking no
chances of letting his charge go stale.

Both boys are properly confident as
to the outcome of the battle and neither
one can see where he has a chance to
lose. This is the spirit that makes
good fights and they may be depended
on for a hammer and tongs bout when
they step into the ring.
It is understood from those on the

CUT PRICES

Soda Water Prices have been cut from 35c to 30c a dozen

(60c per case)

Although our soda is known to be far superior to any
other made in this city, we have met the cut, and will supply
any of our popular flavors at 30c per dozen until further notice.

NO ONE can beat this offer---the BEST QUALITY
at the LOWEST PRICE. This is your chance---don't miss it.

Fountain Soda Works

TRY OUR
DISTILLED WATER
PHONE 270
SPECIAL SODA MADE FROM
DISTILLED WATER,
FIFTY CENTS PER DOZEN

Inside that the only trouble there is
liable to be as to weight is the time
of weighing. One of the lads wants
to make the weight at the ringside
while the other is looking for a leeway
of a few hours to gain strength in and
asks for six o'clock as the time for
weighing in. This is a small difference,
however, and there is no reason to
think that a satisfactory arrangement
will not be reached when the managers
and principals get together to discuss
the situation.

SPORT SPLUTTERS.

Diamond, Ring, Track, Field,
Wave.

It was suggested yesterday by a
prominent local sportsman who does not
wish his name mentioned, that the
Keios should be invited to play a game
with the C. A. Cs at Aala park. There
is no doubt that if this game were
brought off it would be in the nature
of a grand celebration.

Every member of the Japanese and
Chinese population would turn out to
root and it is safe to say that, with all
of its attendance records, Aala park
would go the limit in this case.

Jack Johnson, the big colored fighter
whom Tommy Burns has been side-
stepping very assiduously, took a les-
son from that same Thomasaso and
dragged in a little easy coin at Ply-
mouth, England, the other night. He
boxed one Ben Taylor who is reported
as being a star British heavyweight.
Jack Johnson played with him for sev-
en rounds and, in the eighth sent over
a curtain-dropper that brought the
shining stars out for Ben and handed
him a Brock's benefit that had the
Crystal Palace shaded to a fog.

The Starlights and Pacifics will play
the second of a triple series for the
championship of the Seaside League
tomorrow at Aala park. The game is
called for ten o'clock in the morning
and the park is hardly large enough
for the footers and stars who will turn
out for the game. The last game will
be played on Sunday, August 16. The
first game was won by the Starlights
who batted the Pacific pitcher nearly
out of the box. Peter Louis, the South
Paw, will do the twirling for the Star-
lights with M. Lee at the receiving end.
Ah Young and Kuf Far will form the
Pacific battery.

The Coast papers' report of the Ket-
chel-Kelly go have been read with
great interest by the local fight fans.
It is interesting to note in Bill Naugh-
ton's account that the second round
was all Kelly and that the Chicago
dago was landing things to the ladder-
climber. In the third Stanley used his
famous left shift and landed where it
would do good. Kelly is not properly
awake yet. That left shift of Ketchel's
must be a classy piece of work Sam
Langford is a man who has that down
to a fine point. He has a wonderful
way of changing his feet with lightning
rapidity so that you have to look very
carefully to see which foot is in front.
This shift, has the advantage of giving
a left lead a long swing that a man
expects from a right but is not likely
to look for from the left.

SHOULD BE KEPT IN EVERY HOUSEHOLD.

As a result of saving my child I re-
gard Chamberlain's Colic, Cholera and
Diarrhoea Remedy as a medicine which
should be in every household.—John
Adams, Merchant, Gold River, Nova
Scotia. For sale by Bensop, Smith &
Co., Ltd., agents for H. L.

ROYAL HAWAIIAN GARAGE

Opposite Hawaiian Hotel
STEVENS-DURYEA, STUDEBAKER,
POPE-HARTFORD and BUICK
Five and Seven-Seaters For Hire
GEO. WELLS, Manager

Honolulu Scrap Iron Co.

C. H. BROWN - Manager
HALEKAUWILA STREET
Highest price paid for Old Brass,
Scrap Iron and all metals.
Telephone 642 P. O. Box 547

HAWAIIAN DETECTIVE AGENCY

ROOM 7 WAITY BUILDING,
KING STREET
PRIVATE AND CONFIDENTIAL
DETECTIVE WORK

ROYAL ANNEX

AL. THURLOW, Manager

Steaks Chops Lobsters

Cooked to a Turn and Served to the
Queen's Taste
A Royal Welcome Here
CORNER NUUANU AND
MERCHANT STREETS

Merchants' Lunch
With Tea and Coffee
25cts
Beer Served, 10c. a Glass.
OPEN SUNDAYS

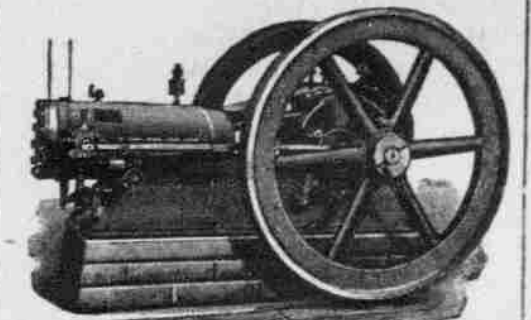
MAY'S Old Kona Coffee

PHONE 22 FOR IT

JOHN NEILL, ENGINEER

135 MERCHANT STREET.

Has just received a few of the finest
gasoline engines ever brought to this
Territory, and would be pleased to have
experts in that line call and examine
the F008. We would further inform



our patrons that our machine shop has
just been equipped with the latest im-
proved tools, and that we are prepared
to take in a wider range of work. Steam
and gasoline engines, automobiles and
all kinds of fine machinery repaired.
Ship and general blacksmithing. We
have also quite a variety of second-
hand machinery, tools, implements, belt-
ing, etc., which will be sold cheap, at

NEILL'S WORKSHOP,
135 Merchant St. P. O. Box 381.
Telephone 116.

Pictures

HOLLYWOOD PHOTOGRAVURES
COPLEY PRINTS

Pacific Picture Framing Co.

1059 NUUANU STREET



"1835"

R. Wallace

IS THE KIND OF

Flat Ware

THAT RESISTS WEAR
Our stock is made up of four
beautiful patterns.

J. A. R. Vieira & Co.
113 HOTEL STREET

BANZAI!

We have the best Japanese importa-
tions in
SILKS AND CREPES, NOVELTIES,
Etc.

AMERICAN AND PANAMA HATS—
For Ladies and Gentlemen.

IWAKAMI, Hotel Street

FLORIST

MRS. E. M. TAYLOR

YOUNG BUILDING

Bicycles for Rent

BY THE HOUR OR DAY

Y. YOSHIKAWA

153 KING STREET

Associated Garage

LTD.

Merchant Street

AUTOMOBILES and AUTO SUPPLIES

REPAIRING

AGENTS FOR—

Pierce, Great Arrow, Franklin,
Kissel Kar, Thomas, Cadillac.

HARRY E. MURRAY, Manager

American & European Plan

HOTEL

A "HOME" HOTEL FOR PERMANENT AND
TRANSIENT GUESTS, IN THE HEART OF THE
CITY, WITH MANY SUNNY SUITES AND SINGLE
ROOMS ALL CONNECTED WITH BATHS.

Special Summer Rates. Cuisine Unexcelled

NORMANDIE

CORN SUTTER AND GOUGH STREETS

SAN FRANCISCO

AUTOS AND

CARRIAGES REPAIRED

Schuman Carriage Co., Ltd.

Forcegrowth

MAKES PLANTS GROW

Hawaiian Fertilizer Co., Ltd.

E. O. HALL & SON, LTD.,

Selling Agents

THE Pacific Commercial Advertiser

A MORNING PAPER.

WALTER G. SMITH

EDITOR

SATURDAY

AUGUST 8

SUNDAY OBSERVANCE.

Two members of the editorial staff of The Friend are at outs in print over the question of Sunday amusements. Last month, the editor-in-chief, Dr. Scudder, ventured to say that "A stroll in God's open air, a horseback ride, a drive, a refreshing swim, a game of golf, itself the acme of quiet exercise, baseball, who will dare to set a limit and declare one to be a sin and the others innocent? We live in a day when honest men will endure no befogging of issues. The Church can no longer say 'this or that is tabu' unless there is a clear moral distinction between the things forbidden and those tolerated. Sunday has two reasons for being, both fundamental. The first is the need of rest. The second is the necessity for social worship. If a man is confined closely within doors six days every week, the physical demand for rest will force him to take outdoor recreation on Sunday."

This does not sound incendiary but it has drawn from the Rev. Oramel H. Glick, associate editor of The Friend, an expression of "deep regret" that Dr. Scudder should have been guilty of teachings so contrary to the "commands of God as given in the Old Testament" and so out of harmony "with the teachings of the New Testament" and so "subversive of the teachings of those who so effectually planted the gospel seed upon these islands."

We are inclined to think that the Christian laity of this generation will agree with Dr. Scudder. To them the Old Testament, as a repository of faith and morals and especially of doctrine, is chiefly interesting as a milestone from which Christian progress may be measured. The Old Testament, with its precept of an eye for an eye and a tooth for a tooth; its glorification of strong drink for those who would "forget their poverty"; its God of human imperfections; its superstition and barbarism, gave way, did it not, to the religious dispensation which is embraced in the New Testament? To cite it as a guide of conduct now, save in respect to the ten commandments of Moses, is dangerous business; and even these commandments as rules of discipline governing a nomadic tribe of the desert must not now be taken, outside of certain inhibitions which rest upon basic principles of right and wrong, too seriously. It was necessary for Moses as lawgiver of his wandering people, to forbid crime, to promote health and to secure a specified and regular day of rest, hence his code of rules; but we no longer believe that any harm to religion, to Christianity or to one's prospects of future life, could come through a broad and liberal interpretation of such commandments as are not essential to a life different from that which it was best for the followers of Moses to lead. For example, it was not wise, in view of Israelitish superstitions, to let the tribe make any graven image or any likeness of anything in heaven, earth or sea. That was because the tribe might kneel and worship it; but we of modern times are in no such peril and may surround ourselves, without harm to our conceptions of the Deity, with statues, paintings and carved wood. As to Sunday observance, if we do not work at our usual occupations on that day, we do not violate the commandment; though even if we should so labor, we might find warrant for it in the newer gospel dispensation of a Sabbath for which man is not made but which is made for man.

As for the theology of those who planted the gospel in these islands, it could not be preached today in its entirety without closing every evangelical church in Honolulu for lack of support. No minister worth hearing could be found to teach it; no audience in full possession of its senses could be gathered to receive it. The higher criticism, following the instinct of both pew and pulpit, and the beliefs of men of modern education, has done away with a theology which came of the Roundheads of England and had little more relation to the spirit of the Christian religion, as Christ taught it, than had the Old Dispensation itself.

STILL DODGING THE ISSUE.

The Star is frank to say that a question of etymology beats the question of Press accounts; and as that paper has thrown no light on either of them, its anxiety to retire from the debate need not be interfered with. After all, the matter is chiefly one for the chairman of the Press committee, whose eagerness not to let the public know what actually became of the funds entrusted to him becomes more apparent daily.

In answer to the specific question of what was done with the money which he groups under such entries as "feet postage," incidentals," and the names of his fellow-committeemen, this callow critic of other people's honesty, retires, like a squid, behind a cloud of ink. In lieu of facts and figures one gets dirty water. It is the usual recourse of the cornered "financier" of this man's shifty type, but it is enough to warn the public against ever again leaving the accused person in the custody of financial trusts, however small. Evasion is confession; subterfuge, in dealing with the misuse of other people's money, but underscores the offense. In this particular case when the chairman of the Press committee is accused of official misfeasance and can say nothing in reply but "sourball" and "spite against the editor of the Bulletin," he stands convicted of an act which should forever disqualify him, not only from handling public moneys but from passing even his feeble judgment on the fiduciary acts of other men.

The "Press committee," so-called, is still in existence, but a decent respect to common honesty should induce the chairman and his silent but restive coparceners, to resign.

HAWAII FOR SPORTS.

Alexander Hume Ford has an interesting article in the current (August) number of St. Nicholas, "A Boy's Paradise in the Pacific." The article is profusely illustrated with the best surfing pictures that have appeared in print, as well as a number of other cuts illustrating the old Hawaiian sports that have come down to the hale boy of today. Many youngsters of our leading old families may here be recognized sliding upon the leaves down the steep slopes of Manoa valley, others fluming in cane chutes, and still others standing on the tops of the waves at Waikiki or paddling outrigger canoes before the onrushing surf.

St. Nicholas is a magazine that is read by both children and their parents, and an article of this sort so well illustrated should do much to call attention to Hawaii as a land of both summer and winter sports, more health-giving and exhilarating than any usually indulged in on the mainland.

The Supervisors, in the Haukea "investigation," have closed their doors to reporters. One can hardly blame them. Not a mother's son in that crowd knows what there is anything to investigate save charges against Isoi and the Board's jurisdiction does not extend to him. They are in the thing simply to find out if some politics-can't be done and they don't want the public to see the machinery working. It is a pity, though, that people can't get admission, for the spectacle of those bulging-eyed solons groping around in their intellectual darkness trying to find a side to they don't know what, to use they don't know how, would be worth at least ten cents admission with two bits for a private box.

The most unhappy thing about the Fleet business is that the only committee emerging from the battleship festivities without clean hands is the one representing the press. If there is any committee which ought to have walked circumspectly in the financial zone it is this one. The only solace to be had in the matter is that but one paper of Honolulu and that one the least competent and reputable, was consulted about the personnel of the committee in the first place. Carelessness of choice in naming a committee which would have money to spend was inexcusable of itself though it did not lighten the individual blame for whatever petty graft might follow.

The charge made by Mr. Thomas in this paper of discrimination by the State Fruit Inspector of San Francisco against Hawaiian pines, is rather heatedly denied by the parties at interest on the coast. Whatever the merits of the case may be, if there is no further complaint of discrimination, the matter may be allowed to drop. But California will do well, in its warfare on foreign fruits, not to forget that Hawaii is not only in the Union, but is the Golden State's best customer.

The New York Sun thinks that the boilers of the battleship fleet will be practically useless when the cruise is completed. Why more so than those of trans-Atlantic steamers that make higher speed and accomplish 72,000 miles a year? The Sun must have peewees.

Consul Saito, during his long official residence here, was useful to his own country and Hawaii. He left here with the good will and good wishes of the community and with prospects of deserved promotion.

CONSUL SAITO SAILS FOR HOME

Before Consul-General Miki Saito, His Imperial Japanese Majesty's representative in Hawaii until yesterday, departed for Yokohama last evening on the S. S. America Maru, he distributed nearly \$15,000 among various charity and educational institutions of the local Japanese colony as follows:

\$4000 to the Japanese Charity Society;
\$3000 to the Japanese School, for purchase of site;
\$2000 for the buildings;
\$3000 towards an educational endowment fund for the Buddhist Mission;
\$2000 towards the fund for purchase of a Japanese cemetery site.

This money forms the accumulation of funds during the entire period of Mr. Saito's official residence in Honolulu, being deposits of Japanese, various realizations from steamship companies and the local government, with no claimants. Mr. Saito laid a report of all the sums before the foreign office



CONSUL GENERAL SAITO.

at Tokio and recommended a distribution of the moneys to the various philanthropic societies here, and the foreign office acceded to the request by issuing an order to that effect.

The departure of Mr. Saito and Madame Saito and children was the occasion for an outpouring of Japanese and when the America Maru steamed out of the harbor the retiring official was followed by enthusiastic banquets. After ten years of service in Hawaii as Consul-General, Mr. Saito left Honolulu regretted by the great circle of friends he has formed here, Japanese and others. He will be appointed as the head of the Immigration Bureau, on arrival at Tokio. His post here is temporarily filled by Mr. K. Abe, the vice consul, awaiting the arrival of Mr. Uyeno, successor to Mr. Saito.

Mr. Saito wore recently, for the first time, the new tropical uniform for consuls-general and consuls. It is of white material, the cuffs and collar overlaid with gold braid. The cap, similar to the Russian military headgear, bears in the front the national emblem—the chrysanthemum.

A MESSAGE FROM AUSTRALIA.

Messrs. Williamson & Co., Jundah, Queensland, writes: "Chamberlain's Colic, Cholera and Diarrhoea Remedy enjoys a great reputation in these parts. It has effected some really remarkable cures, and there is scarcely a home without a bottle." For sale by Benson, Smith & Co., Ltd., agents for H. I.



We are the exclusive agents for Hawaii for

The Little Tudor Play Suits

The Little Tudor Sleepers

These are ideal garments for the little ones for both day and night wear. They are sensible and satisfactory in all respects.

Ages 1 to 8 years.
Price, 65c. garment.

EHLERS

Real Ice Cream

Not a flat imitation, made of condensed milk and corn starch.

Our Ice Cream is made of the best Pond's Dairy cream and milk.

You can tell it by its rich, creamy taste.

If you haven't tried our Soda Fountain, there's a treat in store for you.

Hollister Drug Co. Limited.
Fort Street, Honolulu

H. F. Wichman & Co. LIMITED

OPTICIANS

OF MERIT

OUR METHODS

ARE SURE

We make a specialty of difficult prescription work, lens-grinding, frame-fitting and adjusting.

H. F. WICHMAN & CO., LTD.

Optical Department

DR. F. SCHURMANN

Graduate Optician



A Good Fountain Pen

MAKES WRITING A PLEASURE
We Carry a Complete Line of the Best

CALL AND INSPECT OUR STOCK

H. F. Wichman & Co., Ltd.

LEADING JEWELERS

Alligator Pear Ice Cream

EVER TRY IT?

IT'S GOOD

Ask for it at the

A. Y. CAFE

HOTEL ST. FRANCIS
SAN FRANCISCO.

This hostelry possesses all the best features of the world's finest caravansaries, and has added many ideas to the sum of hotel happiness.

It has introduced to Pacific Coast Hoteldom, the Electric Grill, Pneumatic Tube service, Magneta Clock system and today represents the farthest advance of science in hotel service in America.

Rates—European—from \$2 upward.

Under the Management of
JAMES WOODS.

Why use either a dim or unsteady light?
Why use too strong a light?
Why let spots or streaks of light fall on work or book?
Why, indeed, do any of these things when eyes are too precious to be endangered and electric light permits you to avoid them all?

The Hawaiian Electric Co., Ltd.
King St., near Alakea. P. O. Box 144.

Gunther's

The candy that is in demand everywhere on account of its excellent flavor and variety. We have it fresh today.

We also have a superior quality of the kind made at home. Fresh every day.

PALM CAFE

Hotel Street, near Fort Street.

HALL'S SAFES

are dependable. They have defied the fiercest heat and the cleverest cracksmen.

That's the kind of a safe you want to keep your valuable papers and money in.

We are agents for Hall's Safes.

H. Hackfeld & Compn'y, Ltd.
HARDWARE DEPARTMENT.

IT'S TEN TO ONE

that, when a house looks clean and fresh three or four years after being painted, the paint used was W. P. Fuller & Co.'s

Pure Prepared Paint

It is the kind that lasts and keeps its freshness in all kinds of weather.

It comes ready-mixed, so there is no chance of spoiling it with poor oil or lead.

Insist that your painter use it.

LEWERS & COOKE, LTD.

Agents.

177 S. King Street.

Phone 775.

THE NEW

No. 3 Bull's Eye Kodak

PRICE \$8.00

It is always ready for instant use—no setting of shutters, no focusing necessary.

Simple to operate, yet available for almost every class of work. The film numbers are on the margin of the black paper, and cannot show on the films.

It is the popular old-style Bull's Eye Kodak with the rectangle shape—3¼ x 4¼.

Honolulu Photo-Supply Co.

"EVERYTHING PHOTOGRAPHIC."

FORT STREET.

NOTICE

On and after AUGUST 1st I will be located in the ELITE BUILDING, corner of Adams Lane, where I shall give my personal attention to all branches of work in the

PAINTING BUSINESS and shall be pleased to have both old and new friends call on me. And, as usual,

A SIGN from the SHARP SIGN SHOP will still have the merit so well known.

Yours for Trade,
TOM SHARP.
Phone 397

SPERRY FLOUR CO.

Offer to the Trade Their Mill Products, including the following Celebrated Brands:

"GOLDEN GATE," "SPERRY," "DRIFTED SNOW," "MAPLE LEAF," "SOUND RING," "RED SHIELD,"

and other Family and Baker Flour. Also BRAN, SHORTS, MIDDINGS, ROLLED BARLEY, and the famous CAPITOL MILLS CEREALS.

The Sperry Products have been for over fifty years the standard of quality for the Pacific Coast.

Ask your Grocer for them.

Robert Innes Lillie,
RESIDENT MANAGER.

Honolulu Office: Robinson Bldg., Queen St. Hilo Office: Spreckels Bldg., King St.

BEST Sheets, Pillow Slips, Comforters and Spreads

Every article guaranteed to be as represented. The quality of the material and the workmanship is unexcelled.

L. AHOY,

1033 NUUANU STREET.

Haleiwa

A most delightful spot for a day or a week. Everything to make life comfortable and the days pass pleasantly. Mosquito-proof rooms, fine cuisine excellent service. Golf links, boating and fine roads for automobiling or driving.

ST. CLAIR BIDGOOD, Manager.

Special Sale—Crockery and Glassware

1 — 33 1-3rd% OFF 33 1-3rd% — 1
3rd THIS WEEK ONLY 3rd

Lewis & Company,

HOUSEHOLD EMPORIUM

169 KING STREET.

TELEPHONE 240.

Hawaiian Souvenirs and Jewelry

You have frequently had difficulty with your jewelry work, and have often been told "it can't be done." Such work goes into the hands of a competent workman if entrusted to me, and it will be turned out to give you satisfaction.

H. Culman, 1064 Fort St.

PRESIDENT WAKES UP TWO OF THE BIG DEPARTMENTS

The Newport Naval Conference and What It Means—The Landis Reversal in Its Effect at Washington—The Coming Dreadnoughts.

(Mail Special to the Advertiser.)

WASHINGTON, D. C., July 26.—A homelike feeling has prevailed among Washington residents and officials of late. It has helped them to forget the great hot waves that have surged back and forth. If anyone became too worn because of meteorological conditions, he had only to make tracks for the Navy Department or the Department of Justice. There he could witness the throbbing of government machinery that recalls old times when Theodore Roosevelt, President, was in town.

For, although he is far away at his summer home in Oyster Bay, the President's two pronouncements of recent date, have waked up two departments of the government. True, few of the "big uns" are at their desks. Big officials do not worry much about working when the President is away. But plenty of understrappers are about. When the President began calling expert navy officers over to Newport for a big conference at the War College where he was to attend, every bureau chief and all his assistants began to take notice. People over at the Navy Department have been talking about little else of late than that big Newport powwow and the President's speech for a large and a hard hitting navy. It came right in the middle of the dull season, when the navy officers at the department had almost nothing to do except plan how they could get a vacation. The Newport conference took a number of the department experts on construction, ordinance and equipment who hastened away gladly although with some wonder as to whether the President was going to swing his big stick at any of the bureau chiefs. Of course there was no particular danger of that, although the possibility of it has kept many on the qui vive.

Then, just as the Navy Department was waking up, the Department of Justice received a jolt from the decision of the United States Court of Appeals, reversing the verdict of Judge Landis' District Court in the \$29,500,000 Standard Oil cases. There was really but little that the Department of Justice could do. The orders to retreat or to go ahead must come from the Attorney General, Mr. Bonaparte, who like other cabinet officers is out of town, or from the President. The orders did come from the President and it set a lot of the department lawyers to studying various phases of the cases, which promise at this stage to have some political as well as legal importance.

In spite of the President's announcement that the Standard Oil Company is undoubtedly guilty and his reflections upon the United States Court of Appeals which resulted in much unfriendly criticism of him in the newspapers—there is a feeling here that the Standard will hardly ever be convicted on these particular rebate cases. There is other litigation, of course, against the trust but many old timers here will be surprised if the trust does not escape on the cases which were tried before Judge Landis. They predict that it will be the Beef Trust over again and that after a little spurge, just to show that the government's law officers are on the ramparts, the cases will be dropped.

THE NAVAL CONFERENCE.

Officers in the Navy Department say President Roosevelt's utterances at the Newport conference a few days ago are only a part of his program for a big navy campaign this winter. They say it is to be not alone a campaign for freer criticism of battleship defects and the adoption of more progressive ideas about construction, but a campaign again with Congress for a big navy bill and for large authorization of ships.

Long after the Senate Naval Committee last winter had concluded its hearings the President had not tired of sarcastic comments about the committee's work. In his private conversations he did not spare the Senators of the committee. Some of his pithiest remarks about them were made before such officers as Commander William S. Sims, his naval aide, who is inspector of target practice and the champion of latter day battleship criticism, and also Lieutenant Commander A. L. Key, who wrote the paper about the designs of the North Dakota, which was instrumental in bringing about the Newport conference.

That committee, on the evidence presented, accepted the judgment of Admiral George Converse, retired, and others of the board of construction that our ships are as well built, ship for ship, as those of any navy in the world. The President never accepted that verdict without some reservations to the effect that there is opportunity for improvement and that the Navy Department bureaus are not doing their best possible work in turning out fighting ships of advanced design and efficiency.

His immediate purpose, however, is to have the Utah and the Florida, the latest of the four Dreadnoughts already authorized, built on the most modern lines possible, and, incidentally, to have as many changes as possible in the North Dakota and the Delaware, which ships are already well under way. But changes of any importance in the two latter would affect their structures down to the very keels and therefore are not likely to be feasible in any striking degree. Work on the designs for the Utah and the Florida has been suspended, pending conclusions of the Newport conference.

But the President also wants two more battleships of advanced type authorized by Congress the coming winter, so as to make a fleet of six Dreadnoughts. It is quite possible

that those ships would become eventually the nucleus of the Atlantic fleet, much discussed of late on the supposition that hereafter a considerable number of the battleships now in commission will be kept in the Pacific. In spite of the proclamations after the last Navy appropriation bill passed the Senate, that the Senate leaders had acquiesced in the two-new-battleships-a-year program, there are good reasons for believing that two ships will not be granted at the next session without another big struggle. Senators of the Navy Committee denied stoutly that they had agreed to any such thing, but they were too weary over the long wrangle with the White House to emphasize their attitude then. They reasoned that there would be time enough for that when the next Navy bill reached them.

The General Board of the Navy will be starting work on their estimates in about a month, when the admirals have returned from their midsummer rest. There is no doubt but what they will recommend to Secretary Metcalf the authorization forthwith of at least two giant fighting ships, and perhaps more. The President will see that this recommendation reaches Congress. Then it is expected the whole question as to whether or not there was any agreement about two new ships a year will be threshed out. For the leaders of Senate and House are opposed to a big Navy program and the shortness of the national purse will afford them an unusually effective argument.

It is not believed that the President will favor, at least will not champion, any reorganization of the Navy Department's bureaus. Such legislation has been suggested in bills introduced at the Capitol, some of them growing out of the criticisms of Reuterbach, who recently visited the President at Oyster Bay and criticized the navy. He gave out an interview, which the President probably authorized him to do. However, officers are expecting that there will be virtually a new regime in the department for the remainder of the President's term. He has been constantly giving more power to Commander Sims and Lieutenant Commander Sims in minor ways that bureau chiefs are not slow to recognize. All men at the Navy Department stand around when those favorites appear.

The day for pigeonholing reports from junior officers and frowning down recommendations has probably passed, as far as this administration is concerned. The Bureau of Construction complains that the seagoing officers differ so widely in their views and recommendations about what a battleship should be that it is impossible to reach any conclusion satisfactory to competent critics. The President, none the less, is determined that these criticisms shall be most thoroughly considered, whether they pertain to the Bureau of Construction, Ordnance, Equipment or Engineering. He has only seven months more to serve, but during that time he proposes that the younger blood of the Navy shall have full recognition at the department. It is taken for granted at the department already that the President is going to have his way.

ERNEST G. WALKER.

A DEAL IN ADDERS

The Burroughs Adding Machine Co. Buys the Universal.

The purchase of the Universal Adding Machine Company of St. Louis by interests identified with the Burroughs Adding Machine Company of Detroit, a former St. Louis concern, was announced yesterday. The principals in the purchasing syndicate are Joseph Boyer, president of the Burroughs Company; Alvan Macauley, its general manager; E. P. Wenger and J. O. Lauer of Detroit; J. O. Kroeger and G. A. Buder of St. Louis.

It was given out that the syndicate acquired about three-fourths of the \$1,000,000 capital stock of Universal Company and bought up a \$300,000 bond issue which was outstanding. The consideration was withheld, but the statement was made that the figure did not approach the total capitalization of the Universal Company, which has not been a financial success. It operates a plant in a leased building at 3807 Laclede avenue.

Mr. Boyer said that while the intention of the purchasers was to continue the plant in operation at St. Louis much depended on the result of an examination of the books and assets which is being made. He said no plans had been made for moving the business to Detroit or annexing it to the Burroughs Company, which is a \$5,000,000 concern, with a factory employing 1600 men.

NEW OFFICERS ELECTED.

The deal was consummated Tuesday, and was followed by the resignation of the old officers and directors and the election of a new board and a new set of officers, who are: Mr. Buder, president; Mr. Macauley, vice president; H. A. Hoagland, secretary; J. O. Kroeger, treasurer; C. H. L. Flint, Jr., F. C. Rinsche, St. Louis, directors. Mr. Hoagland, Mr. Flint, Mr. Rinsche and Mr. Buder were with the Universal.

The principal stockholders in the old company whose holdings were bought in were Ben T. Cable of Rock Island, Ill.; P. A. Valentine, Chicago; Charles F. Bates and G. Lacy Crawford, St. Louis. Mr. Bates was president of the company since a reorganization about a year ago. The other officers included Mr. Hoagland as secretary and Harry M. Coudrey as treasurer.

YEE CHAN & CO.

We have just received a new line of

Boy's White Washable Suits

all sizes and prices. Also Boys' Woolen Suits in different styles. We can fit a boy from 3 to 15 years old. These suits are made of a very splendid shape and pure wool, as they are very low prices.

Bed Spreads, Sheets, Pillow Cases and a Fine Assortment of Ready-Made Mosquito Nets.

Come to see our window displays.

Yee Chan & Co.

Corner of King and Bethel Streets.

WRAPPING PAPER, PAPER BAGS, TWINES

American-Hawaiian Paper & Supply Co., Ltd.

CORNER FORT AND QUEEN STREETS.

GEO. G. GUILD, General Manager.

TELEPHONE 410.

FRENCH LAUNDRY

J. ABADIE - - - Proprietor.

Ladies' and Gents' Washing Done First-class. Gloves and Ostrich Feathers. Wool and Silk Made Cleaner by a New French Process. Charges reasonable. Give us a trial.

258 BERETANIA STREET : : : PHONE 1491

Salmon, Geese and Turkey

Good combination at any season. This time we have something unusual in these and can recommend them to the man who enjoys a good meal. They came to us on the Lurline.

Metropolitan Meat Company, Ltd.

Telephone 45.

USE



THAT IS THE BUTTER FOR YOUR TABLE.

MAY WE SUPPLY YOU WITH IT?

SOLD AND GUARANTEED BY

C. Q. Yee Hop & Co.

TELEPHONE 251.

Great Values

We have just received newer varieties of silk and fine cotton crepe kimonos, grass handbags and framed silk pictures.

Sayegusa Store

Nuuanu Street above Hotel.

GO TO LANDO'S STORE

152 HOTEL STREET, OPPOSITE YOUNG HOTEL

FOR YOUR TRUNKS, VALISES AND SUIT CASES His stock of Shirts, Collars, Cuffs, Ties and Underwear is complete. Also Hats and Caps of a large variety. Panamas and Straw a specialty. Prices are right and no trouble to show goods. Don't forget he has moved from Fort street to the Oregon block, 152 Hotel street, opposite Young Hotel.

Oahu Railway TIME TABLE

OUTWARD.

For Wailana, Wailua, Kahuku and
Way Stations—9:15 a. m., *3:20 p. m.
For Pearl City, Ewa Mill and Way
Stations—17:30 a. m., *9:15 a. m., *11:05
a. m., *2:15 p. m., *3:20 p. m., *5:15 p.
m., *9:30 p. m., 11 p. m.
For Wahiawa—9:15 a. m. and *5:15
p. m.

INWARD.

Arrive Honolulu from Kahuku, Wailua
and Wailana—*8:35 a. m., 5:31
p. m.
Arrive Honolulu from Ewa Mill and
Pearl City—17:45 a. m., *8:35 a. m.,
*10:38 p. m., *1:40 p. m., *4:31 p. m.,
5:31 p. m., *7:30 p. m.
Arrive Honolulu from Wahiawa—
*8:35 a. m. and *5:31 p. m.
*Daily. *Ex. Sunday. *Sunday Only.
The Haleiwa Limited, a two-hour
train (only first-class tickets honored),
leaves Honolulu every Sunday at 8:22
a. m.; returning, arrives in Honolulu
at 10:10 p. m. The Limited stops only
at Pearl City and Wailana.
G. P. DENISON, F. C. SMITH,
Superintendent. G. P. & T. A.

KOOLAU RAILWAY

KAHUKU EAST.

Station.	Distance.	Time.
Kahuku	0.00	Leave 12:35
Laie	2.55	12:46
Kaipapau	4.73	12:55
Hauula	6.11	1:01
Haleaha	8.00	1:11
Kahana	11.00	Arrive 1:25

KAHANA WEST.

Station.	Distance.	Time.
Kahana	0.00	Leave 1:27
Haleaha	3.00	1:42
Hauula	4.89	1:51
Kaipapau	6.27	2:06
Laie	8.45	2:17
Kahuku	11.00	Arrive 2:17

In effect August 1.
Connecting at Kahuku with the O.
R. & L. Co.'s 9:15 a. m. train from
Honolulu.

Returning, leaves Kahana at 1:27 p.
m., connecting with the afternoon train
for the city which leaves Kahuku at
2:20.

JAMES J. DOWLING, Supt.
R. S. POLLISTER, G. P. & T. Agent.

WM. G. IRWIN & CO., LTD.

SUGAR FACTORS AND COMMISSION AGENTS

Wm. G. Irwin, President
John D. Spreckels, First Vice President
W. M. Giffard, Second Vice President
H. M. Whitney, Treasurer
Richard Iversen, Secretary
D. G. May, Auditor

AGENTS FOR

Oceanic Steamship Co., San Fran-
cisco, Cal.
Baldwin Locomotive Works, Philadel-
phia, Pa.
Hakalua Plantation Co.
Hilo Sugar Company.
Honolulu Plantation Co.
Hutchinson Sugar Plantation Co.
Kilauea Sugar Plantation Co.
Olowalu Company.
Paahau Plantation Co.
Waimanalo Sugar Co.

Wm. G. Irwin & Co., Ltd.

AGENTS FOR THE

Royal Insurance Co., of Liverpool, Eng-
land.
Scottish Union & National Insurance
Co., of Edinburgh, Scotland.
The Upper Rhine Insurance Co., Ltd.
Commercial Assurance Co., Ltd., of
London.

Fire Insurance

THE B. F. DILLINGHAM CO., LTD.

General Agents for Hawaii:
Atlas Assurance Company of London.
New York Underwriters' Agency.
Providence Washington Insurance Com-
pany.

HONOLULU IRON WORKS COMPANY.

Machinery, Black Pipe, Galvanized
Pipe, Boiler Tubes, Iron and Steel, En-
gineers' Supplies.
OFFICE—Nuuanu Street.
WORKS—Kakako.

At Thrum's Book Store

Commercial, Official and
Society Stationery,
Best Typewriter Papers,
Many Books by Good Writers.

HAWAIIAN FOLK TALES—Free only

collection of local legends, finely
illustrated, price \$1.75.
HAWAIIAN ANNUAL—The recog-
nized reference book of island in-
formation, price 75 cents.

LAWRENCE BARRETT

Mild Havana Cigar

THE 10-CENT FAVORITE

REMOVAL NOTICE.

The New Oahu Carriage Manufac-
turing Co. has removed to Queen
street, at the easterly side of Nuuanu
stream. 8024

REDUCTION SALE

LADIES' AND GENTLEMEN'S

HATS

K. UYEDA

Nuuanu Ave. near Hotel St.

HONOLULU IS THEIRS FOR A HONEYMOON

The Call—"I want a bridesmaid
and a best man," exclaimed G. T.
Cline, cashier of Bauer's bank at
Manoos, Colo., as he surveyed the
crowded lobby at the St. Francis last
evening. "I am going to ask for vol-
unteers. My bride is waiting and the
minister is at hand. I must have a
bridesmaid and a best man."

And he would have called for vol-
unteers had he not been deterred by
Captain Tim O'Neil, house detective
and Chinatown guide, who overheard
the spoken plaint of the about to be
husband. O'Neil pacified the enthu-
siastic groom and promised to provide
the necessary witnesses. He looked
over the list of availables and his eye
rested on the courtly figure of W. G.
Thigpen, late assistant manager of the
Hotel Vendome, San Jose. Thigpen
accepted the invitation with alacrity,
although he was not sure whether he
was to be best man or bridesmaid.

Captain O'Neil was the other witness.
In a prettily decorated apartment
on the sixth floor Rev. J. E. Squires,
pastor of the Centenary Methodist
church, performed the ceremony.
O'Neil says that Thigpen made a most
worthy attendant to the bride, and on
the other hand Thigpen swears that he
only accepted the invitation on the
assurance that he was to be best man.
Cline arrived in this city last night.
He found that his bride, Miss Jessie
Baker, was awaiting him. They are
both residents of Manoos. The bride
has relatives in San Mateo and has
been staying with her grandmother,
Mrs. H. B. Dinnick, in that place for
the last two weeks. The bridal party
will go on an extended honeymoon to
Honolulu, and after returning to this
country will enjoy a stay in southern
California.

Sunday Church Services

CENTRAL UNION.

Corner of Beretania avenue and
Richards street. Doremus Scudder,
minister; Amos A. Ebersole, assistant
minister.

Services on Sunday, August 9, as
follows:
Bible school—Clifton H. Tracy, su-
perintendent—with classes for all ages,
at 9:45 a. m.

Morning worship at 11 o'clock. The
assistant minister will preach; subject,
"The Eternal Word." Mr. Stanley
Livingston, conductor, will
lead the congregation in the singing.
The Christian Endeavor Society will
meet at 6:30 p. m. Subject, "Why
and How to be Healthy"; leader, Mr.
Russell Tulloch.

Evening worship at 7:30 o'clock.
Sermon by assistant minister; subject,
"Life Motives."

A cordial invitation is hereby ex-
tended to strangers, seamen, travelers,
visiting friends and the public gener-
ally to attend all these services.

METHODIST.

First Methodist Episcopal church,
408 Beretania avenue. David W.
Crane, pastor.

Sunday school, 9:45 a. m.; Richard
H. Trent, superintendent. Internation-
al lesson, "David and Goliath."
Morning worship, 11 o'clock. Ser-
mon by the pastor, "A Glimpse at
Heaven."

Epworth League, 6:30 p. m.; M. G.
Johnston, president. Topic for study,
"Unselfishness for the Sake of
Christ."

Evening worship, 7:30. Sermon by
the pastor, "Law and Grace."
Prof. Lewis will preside at the
organ and direct the chorus choir.
Special music will be rendered.

Those having no other church obli-
gations are cordially invited to meet
and worship with us.

REALTY TRANSACTIONS

Entered of Record Aug 7, 1908.
Noa W. Aluli to Manuel S. Mar-
tin. \$100. King and Beretania Streets.

Queen's Hospital to First Am Sav-
ing & Trust Co. of H. Ltd. \$100. A M
S. C. Allen Trust Est by Trs to H
Waterhouse Tr Co Ltd. \$100. A M
Susie F. Cartwright by Tr to John
Miguel. \$100. Kealahua Kanoa (w) et al to Lam
Wo Sing. \$100. D

Recorded June 18, 1908.
Onomea Sugar Co to Shrimazua Kat-
sushiro et al. Contract; to furnish
11-2a land for cane planting, Pihau,
Hilo, Hawaii. \$1. B 306, p 69. Dated
May 18, 1908.

Waikayama Tetsuji to Onomea Sugar
Co. Contract; to plant and sell cane on
21-2a land, Nahoa, etc, Hilo, Hawaii.
\$1. B 308, p 117. Dated May 18, 1908.

Onomea Sugar Co to Waikayama Tetsuji.
Contract; to furnish 21-2a land for
cane planting, Nahoa, etc, Hilo, Ha-
waii. \$1. B 308, p 117. Dated May 18, 1908.

Kawai Ihei et al to Onomea Sugar
Co. Contract; to plant and sell cane
on 61-2a land, Nahoa, etc, Hilo, Ha-
waii. \$1. B 309, p 21. Dated May 18, 1908.

Onomea Sugar Co to Kawai Ihei et al.
Contract; to furnish 61-2a land for
cane planting, Nahoa, etc, Hilo, Ha-
waii. \$1. B 309, p 21. Dated May 18, 1908.

Truth and Quality

appeal to the Well-Informed in every
walk of life and are essential to permanent
success and creditable standing. Accord-
ingly, it is not claimed that Syrup of Figs
and Elixir of Senna is the only remedy of
known value, but one of many reasons
why it is the best of personal and family
laxatives is the fact that it cleanses,
sweetens and relieves the internal organs
on which it acts without any debilitating
after effects and without having to increase
the quantity from time to time.

It acts pleasantly and naturally and
truly as a laxative, and its component
parts are known to and approved by
physicians, as it is free from all objection-
able substances. To get its beneficial
effects always purchase the genuine—
manufactured by the California Fig Syrup
Co., only, and for sale by all leading druggists.

43-4a land, Kalaea, etc, Hilo, Hawaii.
\$1. B 308, p 121. Dated May 18, 1908.
Onomea Sugar Co to Iwashita Shizataro.
Contract; to furnish 43-4a land for
cane planting, Kalaea, etc, Hilo, Ha-
waii. \$1. B 308, p 121. Dated May 18, 1908.

Ota Chikazo to Onomea Sugar Co.
Contract; to plant and sell cane on
13-4a land, Pihau, etc, Hilo, Hawaii.
\$1. B 308, p 123. Dated May 18, 1908.

Onomea Sugar Co to Ota Chikazo.
Contract; to furnish 13-4a land for
cane planting, Pihau, etc, Hilo, Ha-
waii. \$1. B 308, p 123. Dated May 18, 1908.

Mayahara Kishimatsu to Onomea
Sugar Co. Contract; to plant and sell
cane on 51-2a land, Pihau, Hilo, Ha-
waii. \$1. B 308, p 125. Dated May 18, 1908.

Onomea Sugar Co to Mayahara Ki-
shimatsu. Contract; to furnish 51-2a
land for cane planting, Pihau, Hilo,
Hawaii. \$1. B 308, p 125. Dated May 18, 1908.

Taketa Nisuke to Onomea Sugar Co.
Contract; to plant and sell cane on
11-2a land, Pihau, etc, Hilo, Hawaii.
\$1. B 308, p 127. Dated May 18, 1908.

Onomea Sugar Co to Taketa Nisuke.
Contract; to furnish 11-2a land for
cane planting, Pihau, etc, Hilo, Ha-
waii. \$1. B 308, p 127. Dated May 18, 1908.

Amikugenoski to Onomea Sugar Co.
Contract; to plant and sell cane on 2a
land, Pihau, Hilo, Hawaii. \$1. B 308,
p 129. Dated May 18, 1908.

Onomea Sugar Co to Amikugenoski.
Contract; to furnish 2a land for cane
planting, Pihau, Hilo, Hawaii. \$1. B
308, p 127. Dated May 18, 1908.

Kakesako Kikutaro to Onomea Su-
gar Co. Contract; to plant and sell cane
on 3a land, Nahoa, etc, Hilo, Hawaii.
\$1. B 308, p 131. Dated May 18, 1908.

Mori Hinakichi to Onomea Sugar Co.
Contract; to plant and sell cane on
1a land, Pihau, etc, Hilo, Hawaii. \$1.
B 308, p 133. Dated May 18, 1908.

Onomea Sugar Co to Mori Hinakichi.
Contract; to furnish 1a land for cane
planting, Pihau, etc, Hilo, Hawaii. \$1.
B 308, p 133. Dated May 18, 1908.

Havashi Torakichi to Onomea Sugar
Co. Contract; to plant and sell cane
on 151-2a land, Mahulu, Hilo, Ha-
waii. \$1. B 308, p 135. Dated May 18, 1908.

WAILUA AGRICULTURAL CO.,
LTD.
The directors of this corporation
having declared a dividend of 1-2 of
1 per cent. Dividend No. 4 is due and
payable on Saturday, August 15, 1908,
to stockholders of record at the close
of the stocktransfer books, Saturday,
August 8, 1908, at 12 m.

The stocktransfer books will be re-
opened on Monday, August 17, 1908.
CHAS. H. ATHERTON,
Treasurer, Wailua Agricultural Co.,
Ltd.
Honolulu, Hawaii, August 7, 1908.
8112

NOTICE.

Moto Taro Yamada is no longer in
the employ of the undersigned and has
no authority to collect money or trans-
act any business for our account.
R. MIYATA & CO.,
\$109 King and Beretania Streets.

NOTICE OF SALE OF GENERAL
LEASES OF PASTORAL LANDS
ON THE ISLANDS OF HAWAII
AND MOLOKAI.

At twelve o'clock noon, Monday,
August 17, 1908, at the front entrance
of the Judiciary building, Honolulu,
there will be sold at public auction,
under the provisions of Part 5, Land
Act 1895 (Sections 278-285, inclusive,
Revised Laws of Hawaii), general
leases of the following described lands:

1. The land of Holoakawai, Hama-
kua, Hawaii, containing an area of
1035.5 acres, a little more or less, to be
used for pastoral purposes.
Upset rental, \$248.50 per annum,
payable semi-annually in advance.

Term of lease, nineteen (19) years
from September 8, 1909.

2. The land of East Ohaia, Molokai,
containing an area of 284 acres, a little
more or less, to be used for pastoral
purposes.
Upset rental, \$25.00 per annum, pay-
able semi-annually in advance.

Term of lease, fifteen (15) years from
August 17, 1908.

By Authority

NOTICE OF SALE OF BUILDINGS AND TANKS ON GOVERNMENT LAND IN KAU, HAWAII.

On Friday, August 14, 1908, at and
after ten o'clock a. m., on the grounds
at Kaunamano, Kau, Hawaii, there will
be sold at public auction the following
buildings and water tanks at the upset
prices stated herein:

MAKINO CAMP, LOT NO. 5.
House No. 1 \$225.00
House No. 2 60.00
House No. 3 125.00
Bath house 15.00
Cottage at flume 50.00

IOHELO CAMP, LOT NO. 7.
House No. 1 \$ 80.00
House No. 2 75.00

BETWEEN CAMP AND TOM LEE
HOUSE.
House No. 1 \$450.00
House No. 2 125.00
House No. 3 25.00
Houses Nos. 4 and 5 15.00
Cook House No. 1 50.00
Cook House No. 2 50.00
Tank 100.00

TOM LEE CAMP, LOT NO. 13.
Tom Lee House \$500.00
Cook House 100.00
House No. 1 100.00
House No. 2 125.00
House No. 3 75.00
Stables 10.00
Old Bath House 5.00
Tank 40.00

CROZIER CAMP, LOT NO. 24.
Crozier House \$115.00
House No. 1 15.00
House No. 2 90.00
House No. 3 250.00
House No. 4 10.00
House No. 5 10.00
House No. 6 110.00
House No. 7 115.00
House No. 8 100.00
Houses Nos. 9 and 10 15.00
House No. 11 35.00
Square Tank 25.00
Round Tank 60.00

KAUNAMANO CAMP, LOT NO. 21.
House No. 2 55.00
House No. 3 45.00
House No. 4 15.00
Square Tank 20.00

Fifteen days' time will be allowed
following the date of sale for removal
of above improvements from the lands.
Terms: Cash, United States gold coin.

Particulars regarding conditions of
above structures may be obtained from
T. C. White, sub-agent, Third Land Dis-
trict, Kealahou, Hawaii.

JAS. W. PRATT,
Commissioner of Public Lands.
Honolulu, Oahu, July 14, 1908.
8091—July 15, 18, 25; August 1, 8, 14.

REGISTRATION NOTICE.

The Board of Registration for the
Island of Oahu will meet at the places
hereinbelow named at the times given
for the purpose of examining applica-
tions for registration as voters at the
coming election, and determining their
eligibility:

In the Magoon building, on the cor-
ner of Alakea and Merchant streets,
in Honolulu between the hours of 8 to
10 o'clock a. m., 12 to 1 o'clock p. m.,
and 4 to 7 o'clock p. m. of each day
except 7 o'clock p. m. beginning September
1st, 1908, and continuing until and in-
cluding Saturday the 19th day of Sep-
tember, 1908:

ON MONDAY, September 21, 1908:
At Paula R. R. Station from 7:45
o'clock a. m. to 9:30 o'clock.
At Aiea R. R. Station, 9:40 o'clock
a. m. to 11:25 o'clock a. m.

At Pearl City R. R. Station, 3 o'clock
p. m. to 6 p. m.

ON TUESDAY, September 22:
Waipahu Mill, 8:15 o'clock a. m.
to 11:30 o'clock a. m.
Ewa Mill from 1 o'clock a. m. to
3:30 o'clock p. m.

Waianae Court House, 5 o'clock to
o'clock p. m.

WEDNESDAY, September 23:
Makua Railroad Station, 10 to 11
o'clock a. m.

Waialua Court House, 1 to 3
o'clock p. m. and 5 to 8 o'clock p. m.

THURSDAY, September 24:
Kahuku Mill, 1 to 3 p. m.
Laie Dance Hall, 3:30 to 8 p. m.

FRIDAY, September 25:
Hauula Court House, 8 to 9 a. m.
Waikane Church, 12 to 1 p. m.
Kaneohe Court House, 6 to 8 p. m.

SATURDAY, September 26:
Waimanalo Plantation Office, 9 to
12 o'clock a. m.

The Board of Registration will re-
turn to Honolulu Monday, October 1,
1908, for the purpose of registering
voters between the hours of 8 to 10
o'clock a. m., 12 to 1 o'clock p. m., and
4 to 7 o'clock p. m. daily except Sun-
days, up to and including October 9,
1908.

SAMUEL F. CHILLINGWORTH,
Chairman.
JOHN D. HOLT, JR.
A. ST. C. PHILANEA.
Honolulu, July 21, 1908.
8106—Aug. 1, 8, 15, 22, 29.

MORTGAGEE'S NOTICE OF INTEN- TION TO FORECLOSE AND OF SALE.

Notice is hereby given that pursuant
to the power of sale contained in that
certain mortgage, dated the 5th day of
July, 1905, made by Ellen Fanny
Simpson, and T. A. Simpson, both
of Honolulu, Island of Oahu, Terri-
tory of Hawaii to Joseph Alfred
Colbron, of said Honolulu, Mortgagee,
and recorded in the office of the Reg-
istrar of Conveyances in Honolulu
aforesaid in Liber 275 on Pages 11 to 13
inclusive, the said Mortgagee intends
to foreclose said mortgage for condition
broken, to-wit: the non payment of
principal and interest when due.

Notice is likewise given here-
y that the property conveyed by said mortgage
will be sold at Public Auction by James
F. Morgan, Auctioneer, at his office, 857
Kaahumanu Street, Honolulu aforesaid,
on Saturday, the 15th day of August,
1908, at 12 o'clock noon of said day.

The property covered by said mort-
gage and intended to be sold as afore-
said consists of the following:

All of that certain piece of parcel of
land situate at Pawa, Punahe, Hono-
lulu, County of Oahu, Territory of Ha-
waii, being known as Lot Number
Seventy-two (72) of the Punahe Col-
lege Tract, and bounded and particular-
ly described as follows, to-wit:—

Beginning at the North East corner
of the lot adjoining Anapuni Street and
Judd Place, and running thence
N. 42° W., 110 feet along Judd
premises; thence
S. 44° 15' W., 71 feet along Lot 73;
S. 42° 15' E., 109 feet along Lot 71;
N. 45° 00' E., 72 feet along Anapuni
street to the place of beginning, con-
taining an area of 7829 Square Feet,
and further described as being a portion
of the same premises conveyed to the
said Ellen Fanny Simpson by deed of
George Ford, dated May 11th, 1898, and
recorded in Liber 177, Page 452, and
also by quit-claim deed of C. S. Desky
and wife, dated June 10th, 1901, and
duly recorded in Liber 225, Pages 71
and 72.

Together with all the improvements,
rights, easements, privileges and appur-
tenances thereto belonging.

Terms: Cash, United States gold coin.
Deeds at the expense of the pur-
chaser.

For further particulars apply to Wade
Warren Thayer, 602, 603 and 604,
Stangenwald Building, Honolulu, at-
torney for mortgagee, or James F.
Morgan, Auctioneer, 857 Kaahumanu
Street, Honolulu.

Dated at Honolulu, this 18th day of
July, 1908.
JOSEPH ALFRED COLBRON,
Mortgagee.
8094—July 18, 25; Aug. 1, 8, 15.

MORTGAGEE'S NOTICE OF INTEN- TION TO FORECLOSE AND OF SALE.

Notice is hereby given that, pur-
suant to the power of sale contained
in that certain mortgage, dated the 31st
day of December, 1906, made by Car-
oline K. Silva and P. Silva, her hus-
band, both of Honolulu, Island of Oahu,
Territory of Hawaii, to Pamela J.
Francis, of said Honolulu, mortgagee,
and recorded in the office of the Reg-
istrar of Conveyances, in Honolulu
afo

Fraternal Meetings

HAWAII CHAPTER NO. 1, ORDER OF KAMEHAMEHA.
Meets every first and third Thursday evening of each month at 7:30 o'clock in Fraternity Hall, Odd Fellows' Building on Fort Street.
N. FERNANDEZ, Kuanahu.

SONS OF ST. GEORGE LODGE NO. 533.
Meets every second and fourth Thursday at 7:30 p. m. in Fraternity Hall, Odd Fellows' Building on Fort Street.
J. E. COLLINS, W. P. & C. K. KIRBY, Secs.

Now that it is over
Don't Worry

GET A GAS STOVE

before the cruisers
come in

Honolulu Gas Co.,

LIMITED
Bishop Street

Wah Ying Chong Co.

King Street, Ewa of Fishmarket
DRY GOODS AND FURNISHING
GOODS OF EVERY DESCRIPTION.

PINEAPPLES and BANANAS

FRESH EVERY MORNING
FROM WAHIAWA
Wholesale and Retail
KAPOLANI BUILDING
Alakea Street Near King

Shirts

In All Sizes Made to Order by
B. YAMATOYA
Pauahi Street, off Nuuanu Street.

BO WO

Hotel Near Smith Street.
MANUFACTURER OF
Jade Jewelry

Vickers' Repair Shop

—now with the—
REGAL SHOE STORE

Smith Premier

The Perfect Typewriter—At
Hawaiian News Co., Ltd.

J. M. LEVY & CO.,

FAMILY GROCERS
King Street near Bethel. Phone 76.

Your Picture

Have it Taken by
R. W. Perkins
Studio on Hotel near Fort

Distilled Water

Delivered to Offices and Residences
Consolidated Soda Water Works Co.
Telephone 71

Sing Fat & Co.

1009-1013 NUUANU
Children's and Ladies' Stockings,
Petticoats, Corset Covers, Table Covers,
Velvet Embroidery and Lace
Yoking.

Union Electric Co.
69 BERETANIA STREET.
Telephone 315.
House Wiring - Bells - Dry Cells
Special attention to installing private
telephones and general repair work.

Fraternal Meetings

POLYNESIA ENCAMPMENT NO. 1, I. O. O. F.
Meets every first and third Friday of the month, at 7:30 p. m., in Odd Fellows' Hall, Fort Street.
E. MENAUGH, C. P.
L. L. LA PIERRE, Secs.

EXCELSIOR LODGE NO. 1, I. O. O. F.
Meets every Tuesday evening, at 7:30, in Odd Fellows' Hall, Fort Street.
H. B. BROWN, N. G.
L. L. LA PIERRE, Sec.

HARMONY LODGE NO. 3, I. O. O. F.
Meets every Monday evening, at 7:30, in Odd Fellows' Hall, Fort Street.
J. LIGHTFOOT, N. G.
E. R. HENDRY, Sec.

PACIFIC REBEKAH LODGE NO. 1, I. O. O. F.
Meets every second and fourth Thursday, at 7:30 p. m., in Odd Fellows' Hall, Fort Street.
FLORENCE LEE, N. G.
ALICE NICHOLSON, Sec.

OLIVE BRANCH REBEKAH LODGE NO. 2, I. O. O. F.
Meets every first and third Thursday, at 7:30 p. m., in Odd Fellows' Hall, Fort Street.
FRANCIS BINDY, N. G.
SALLIE L. WILLIAMS, Sec.

OCEANIC LODGE NO. 571, F. & A. M.
Meets on the last Monday of each month, at Masonic Temple, at 7:30 p. m. Visiting brethren are cordially invited to attend.
M. M. JOHNSON, W. M.
W. H. GOETZ, Secretary.

LEAHY CHAPTER NO. 2, O. E. S.
Meets every third Monday of each month, at 7:30 p. m., in the Masonic Temple, Fort Street.
Visiting sisters are cordially invited to attend.
CLARA M. SCHMIDT, W. M.
ADELAIDE M. WEBSTER, Sec.

LEI ALOHA CHAPTER NO. 3, O. E. S.
Meets at the Masonic Temple every second Saturday of each month, at 7:30 p. m. Visiting sisters and brothers are cordially invited to attend.
MINNIE PRAZEE, W. M.
LOUISE A. TRUE, Sec.

LADIES' AUXILIARY, A. O. H., DIVISION NO. 1.
Meets every first and third Tuesday, at 8 p. m., in O. H. Hall, Fort Street.
Visiting sisters are cordially invited to attend.
MRS. K. COWES, Pres.
JOSEPHINE DILLON, Sec.

MYSTIC LODGE NO. 2, K. of P.
Meets on the second and fourth Tuesdays of each month at 7:30 o'clock in K. of P. Hall, corner Fort and Beretania. Visiting brothers cordially invited to attend.
W. L. LYLE, C. O.
F. WALDRON, K. R. S.

HONOLULU TEMPLE NO. 1, PYTHIAN SILENTS.
Meets every first and third Monday, at 7:30 p. m., in Pythian Hall, Fort and Beretania streets. All visitors cordially invited to attend.
MARTHA ARKENS, M. E. C.
SALLIE L. WILLIAMS, of E. & S.

OAHU LODGE NO. 1, K. of P.
Meets every first and third Friday at 7:30 o'clock in Pythian Hall, corner Beretania and Fort streets. Visiting brothers cordially invited to attend.
J. W. WHITE, K. R. S.

WILLIAM MCINLEY LODGE NO. 8, K. of P.
Meets every second and fourth Saturday evening at 7:30 o'clock, in Pythian Hall, corner Beretania and Fort streets. Visiting brothers cordially invited to attend.
W. L. FRAZEE, C. O.
E. A. JACOBSON, K. R. S.

COURT CAMOES NO. 8110, A. O. F.
Meets every second and fourth Tuesday of each month, at 7:30 p. m., in San Antonio Hall, Vineyard street. Visiting brothers cordially invited to attend.
H. PEREIRA, C. P.
M. C. PACHECO, F. S.

CAMOES CIRCLE NO. 240, C. O. F.
Meets every second and fourth Thursday of each month, at 7:30 p. m., in San Antonio Hall, Vineyard street. Visiting companions are cordially invited to attend.
MRS. HELEN M. PERRY, C. C.
MR. L. A. PERKY, F. S.

COURT LUNALLOO NO. 8600, A. O. F.
Meets every first and third Wednesday evenings of each month, at 7:30 p. m., in Pythian Hall, corner Fort and Beretania streets. Visiting brothers cordially invited to attend.
T. C. BLACKWELL, C. R.
JAS. K. KAULIA, P. C. F. S.

HONOLULU AERIE 140, F. O. E.
Meets on second and fourth Wednesday evenings of each month, at 7:30 o'clock, in Pythian Hall, corner Beretania and Fort streets. Visiting Eagles are invited to attend.
W. L. FRAZEE, W. P.
H. T. MOORE, Secy.

HONOLULU HARBOR NO. 54, A. A. of M. M. & P.
Meets on the first Sunday evening of each month, at 7 o'clock, at Odd Fellows' Hall. All sojourning brethren are cordially invited to attend.
By order of the President,
A. TULLETT.
FRANK C. POOR, Secy.

THEODORE ROOSEVELT CAMP NO. 1, U. S. W. V.
Department of Hawaii.
Meets every first and third Wednesday of each month in Waverley Hall, corner Bethel and Hotel Sts., at 7:30 p. m.
By order of the Camp Commander,
J. K. BROWN, Adjutant.

MARINE ENGINEERS BENEFICIAL ASSOCIATION.
Meets second and fourth Mondays of each month at the new K. of P. Hall, corner Fort and Beretania streets.
E. HUGHES, Pres.
H. G. WOOTEN, Secy.

HAWAIIAN TRIBE NO. 1, I. O. E. M.
Meets every first and third Thursday of each month, in K. of P. Hall, corner Fort and Beretania streets. Visiting brothers cordially invited to attend.
B. ARLIGHT, Sachem.
A. E. MURPHY, C. O. E.

HONOLULU LODGE 616, B. P. O. E.
Honolulu Lodge No. 616, B. P. O. E., will meet in their hall, King street near Fort, every Friday evening. By order of the E. E.
W. H. MCINERNEY, E. R.
H. C. EASTON, Secy.

HONOLULU SCOTTISH THISTLE CLUB.
Meets on the first and third Fridays, at 8 o'clock in rooms in the Green Block entrance on Union Street.
J. M. MACKINNON, Chief.
JOHN MACAULAY, Secy.

WONG WAI LODGE NO. 4, K. of P.
Meets every second and last Tuesday at the hall, Vineyard street, at 7:30 p. m. Visiting brothers are cordially invited to attend.
SAMUEL L. WONG, C. O.
WONG KIM CHONG, K. of E. & S.

LANAI CASE TO BE HEARD SOON

L. L. McCandless Will Be Represented by A. B. Brown.

Attorney General Hemenway is at work on the brief for the Territory in the case of the Territory against Cotton Brothers for the recovery of damages for the loss of the Territory's dredger, which is before the Supreme Court of the United States and is likely to be heard early in the October term.

The Lanai case is also likely to be heard early in the October term. L. L. McCandless will be represented before the Supreme Court in that case by A. B. Brown of the Washington law firm of Britton & Gray, one of the best known firms in Washington. Mr. Brown is at present in Honolulu, and will return to the mainland on the Manchuria. He will also represent the Honolulu Rapid Transit & Land Co. in the Liliha street matter, on appeal from the Supreme Court of Hawaii.

FINE INSTRUMENTS FOR AGRICULTURAL COLLEGE

Theodolites and levels for the engineering department of the Hawaii College of Agriculture and Mechanic Arts arrived by the Alameda and were unpacked and examined by Marston Campbell at the Public Works Department yesterday.

These instruments are all of splendid workmanship and of the latest design in such things. One of the theodolites is probably the finest instrument of its class ever brought to these islands. Its vernier readings can be made as fine as ten seconds. It has a gradient attachment giving a gradient of one in a thousand, and it has adjusting and correcting levels. The two other theodolites are less expensive instruments, though excellent ones.

A SILLY SAYING.

"It is a common but silly opinion prevailing among a certain class of people that the worse a remedy tastes, smells or hurts, the more efficacious it is." So says a well-known English physician. He further adds: "For example, let us consider cod liver oil. As it is extracted from the fish this oil is so offensive to the taste and smell that many cannot use it at all, no matter how badly they need it. Yet cod liver oil is one of the most valuable drugs in the world and it is the greatest pity that we have not thus far been able to free it from those peculiarities which so seriously interfere with its usefulness." This was written years ago; the work of civilizing and redeeming it has since been triumphantly accomplished; and as a leading ingredient in the remedy called WAMPOLE'S PREPARATION the oil retains all its wonderful curative properties with no bad smell or taste whatever. It is palatable as honey and contains all the nutritive and curative properties of Pure Cod Liver Oil, extracted by us from fresh cod livers, combined with the Compound Syrup of Hypophosphites and Extracts of Malt and Wild Cherry; creating a medicine of unequalled power for the diseases most prevalent and fatal among men, women and children. There is no other remedy to compare with it. It increases the digestive power of the stomach and in Blood Impurities, Throat and Lung Troubles, Nervous Dyspepsia and Scrofulous Affections it gives quick and certain relief and cure. Dr. G. C. Shannon, of Canada, says: "I shall continue its use with my patients and satisfaction to myself." Has all the virtues of cod liver oil; none of its faults. You may trust it fully; it cannot disappoint you. At all chemists.

PRODUCTS OF

Love's Bakery

Machine-manufactured Goods; Baked Daily

Saloon Pilot
Pilot and
Soda Crackers

are for sale by the following firms.

HENRY MAY & CO.,
J. M. LEVY & CO.,
T. H. DAVIES & CO.,
H. HACKFELD & CO.,
C. J. DAY & CO.,
GONSALVES & CO.

PINEAPPLE TAX APPEAL CASES

Oahu Tax Appeal Court Gives Act of 1907 Widest Construction.

The Tax Appeal Court for Oahu yesterday rendered a decision in the five pineapple exemption cases. By stipulation the appeals by each of the taxpayers claiming exemption under the Act of 1907, were to be decided by one decision applying to each. This decision was rendered yesterday. It holds that the exemption Act of 1907 exempted all property used in the production of pineapples.

The decision is in line with the decisions of Tax Appeal Courts on the other islands in similar cases. All the cases have been appealed on behalf of the Territory. The following is the decision:

"The wording of the law is clear and the court cannot go back of the law itself to find intentions not expressed therein. Section 1223 of Revised Laws, as amended by Act of April, 1907, provides that for five years from December 31, 1907, all property real and personal solely and actually in use for the cultivation and production of pineapples (and other specified products) shall be exempt from property taxes thereon; the only exception to this is in the proviso: 'That such exemption shall not apply to any land in the excess of forty acres so used by any one person, firm or corporation in the cultivation and production of pineapples.' Whatever the Legislature meant this is what is said, and the only question that appears necessary for further consideration is whether the exemption applies as claimed by the Tax Assessor only to the raw product, and not to canneries and machinery used for the later disposition of the raw product.

"The tenor of these exemption acts, and the Legislative discussions in connection with them, leaves no doubt that they were meant to encourage new and diversified industries for which manufacturing machinery might be as useful and necessary as any machinery for cultivation; nor does the term pineapple as found in the law appear to demand a restriction to any particular stage of production short of a finished product in the marketable form that may best suit or be necessary to the producers.

"Counsel of the appellants states the purpose of these appeals to be to secure a construction of the Amendment of 1907, and it is therefore not necessary to consider whether the original Act of April 23, 1903, creating tax exemptions for five years from that date, was repealed upon the passage of the Act."

WILL IS PROBATED.
The will of the late S. W. Keawemahi was admitted to probate by Judge De Bolt yesterday, and William Sayridge was appointed administrator with the will annexed. In this will the testator makes provision for the care and maintenance of his dogs.

ASKS FOR DIVORCE.
Toku Rokuta has filed a libel for divorce from her husband Nihachi Rokuta. They were married in Japan in 1894 but have lived in Hawaii for nine years, and there is one child of the marriage, a girl thirteen years of age, living in Japan. Desertion is the ground.

BURGLAR SHOOTER GOES UP FOR TRIAL

Lee Hong, the Kaimuki Chinaman who shot and beat Ah Poon a week ago, claiming that the latter was caught in the act of attempted robbery, was yesterday committed for trial at the Circuit Court by Judge Andrade, having been up for a hearing on a charge of assault with a deadly weapon. Ah Poon, the man in the hospital, is to be arrested before his leg knits on a charge of attempted robbery.

The police court yesterday had a slow session. The three charges of malicious injury brought against Furuso, it having been charged that he chopped up three sets of harness, were all not pressed and the only two other cases of importance went over until Tuesday next. These were the cases against D. C. Kamuhia, for automobile speeding, and J. A. Gonsalves for exhibiting obscene pictures for sale.

PROFESSORS COMING FOR NEW COLLEGE

Recent cable advices from Professor Gilmore, president-elect of the College of Hawaii, indicate that the faculty of the college has been largely secured. The faculty will be organized with Professor Gilmore as head of the department of agriculture and animal industry, the department of horticulture in charge of Professor Pope, department of mathematics in charge of Professor Donaghio, department of chemistry and physics in charge of Professor J. J. Morgan, with Mr. Raymond C. Severance as assistant. Professors have also been secured for the department of engineering, department of domestic science, department of biology and department of modern languages. Professor Donaghio, accompanied by seven of the heads of departments, will leave San Francisco on the China, August 18.



Auction Sale

Monday, August 10, 1908,

10 O'CLOCK A. M.,

on the premises, 1616 Nuuanu street, next door but one to corner of School street, opposite the Afong premises, I will sell the whole of the

Household Furniture

consisting of—
Methusek Piano, Rockers, Chairs, Parlor Tables, Carpets, Pictures, Draperies, Portieres, Dining Table and Eight Chairs, Center Rugs, Full Set Encyclopaedia Britannica, Quarter-sawn Bedroom Sets, Bed Linen, Pillows, Couch, Box Couch, Mosquito Nets, Mirrors, Chests of Drawers, Bedroom Crockery, Lady's Desk, Filter, Ice Box, Kitchen Crockery, etc., Garden Hose, Tools, etc.

JAS. F. MORGAN, AUCTIONEER.

AUCTION SALE

WEDNESDAY, AUGUST 12, 1908,

10 O'CLOCK A. M., at my Salesroom.

Orchids

Wholesale Auction Sale

Of Varied Orchids

In Lots of Twelve or More
I am instructed by Mrs. Taylor to dispose of her large assortment of orchids on above date. A first-class opportunity to stock a part of your green house at a low figure. A successful orchidist is always an envied person.

JAS. F. MORGAN, AUCTIONEER.

NOW GET A HOME

IN THE BEST SECTION OF

KAIMUKI

12TH AVENUE, immediately in front of the handsome residences of Messrs. Taggart and Z. K. Myers.

One Whole Block

Divided Into Sixteen Lots of 15,000 Square Feet Each

View is Unsurpassed

Sweeping as it does from Diamond Head down and over Waikiki, the harbor and city, out to Barber's Point, Ewa plantation, Waianae Mountains, over Moanalua, Manoa and Palolo valleys.

Rich soil; water piped to the block.

Fine Macadamized Road

To be sold at the low upset price of \$200; one-half cash, balance one year. These lots are easily worth \$500.

Ask the car conductor to put you off at 12th avenue, then walk three blocks to the signboards, or come to me and I will send you out.

ALL I WANT is for you to see them. I know you will be a bidder. This is the best bargain in years. There is not a medical man in Honolulu but who endorses this location for a healthy residence.

In addition to the low price at which you will be able to buy these lots, I will, if you own one of these lots, build you a pretty little bungalow, to cost

\$1,200.00

you paying only \$200 down, the balance in monthly instalments.

You can build on your own plan if you wish. Now, get a home.

JAS. F. MORGAN, AUCTIONEER.

For Sale

the

Glade Property

NUUANU

JAS. F. MORGAN,

Castle & Cooke, Ltd.

SHIPPING AND COMMISSION MERCHANTS.

Sugar Factors and General Insurance Agents.

— REPRESENTING —

New England Mutual Life Insurance Company of Boston.
Aetna Fire Insurance Co.
National Fire Insurance Co.
Citizens' Insurance Co. (Hartford Fire Insurance Co.).
Protector Underwriters of the Phoenix of Hartford.

BIG STOCK ENAMELED IRON BEDSTEADS

All Sizes

Coyne Furniture Co., Ltd.

YOUNG BUILDING

KWONG HING CHONG CO.

1024 NUUANU AVENUE.

GRASS CLOTH TABLE COVERS

GRASS LINEN DOYLIES

Oahu Ice & Electric Co.

ICE delivered at any part of the city.

Island orders promptly filled.

Telephone 528; P. O. Box 600. Office, Kewalo.

KOA DESKS and FOUR POSTERS

WING CHONG CO.

King and Bethel

Sun Lee Tai Co.

Contractors, Builders, Painters

KOA FURNITURE TO ORDER.

King Street, near Nuuanu.

The most complete and attractive curio

is

STEINER'S

Island Curio Store

Elite Building, Hotel street. Visitors always welcome.

W. H. THOENE

CONTRACTOR

House Painting General Jobbing

Carpentering

Repairing Furniture a Specialty

124 UNION ST. Telephone 422

Great Reduction

in price of

FILLING AND ROAD MATERIAL

Naniwa & Co.

Room 180 Magoon Block

T. KUNIKIYO

FLORIST.

Fort Street, next Kash Store.

Fresh flowers daily. Violets, Carnations, Asters, Roses and an assortment of decorative plants. Orders for table flowers promptly filled. Telephone 691.

For Kimonos

SEE

K. Fukuroda

ALL COLORS AND PRICES.

Plumbing

We do the best work at the lowest prices. Satisfaction to the expert inspector.

Sing Chan Co.

Opposite Aala Park.

A. A. WILSON.

General Contractor

Office, 58 Young Bldg. Tel. 159.

Gatton, Neill & Company, Ltd.

ENGINEERS AND MACHINISTS.

QUEEN AND RICHARDS STREETS.

Boilers re-tubed with charcoal-iron or steel tubes. General ship work.

"YAMATOYA,"

ALL KINDS OF

SHIRTS, PAJAMAS and KIMONOS

MADE TO ORDER.

1246 Fort St., just above Orpheum.

Money

We buy your Diamonds, Watches, and Old Jewelry for Spot Cash.

J. Carlo

1018 Nuuanu Ave., and Fort Street, near Hotel.

TRENT TRUST CO., Ltd.



FOR SALE.

New cottage of five rooms; electric lights; all modern improvements; close to car line. Price.....\$1675

TRENT TRUST CO., Ltd.

\$25 Reward

Will be paid by the HAWAIIAN GAZETTE CO., LTD., for the arrest and conviction of any person found stealing copies of the Advertiser from addresses of subscribers.

C. S. CRANE,
Manager.

Meals Day and Night

Every Day, Including Sunday.

Try Our

Short-Order Lunch

With cool, sparkling Beer.

Palace Cafe

Corner of Merchant and Richards

CHINESE SENDING RELIEF
MONEY BACK HOME.

Editor Advertiser: It is well known that very recently a most disastrous typhoon struck Hongkong and Canton, China. Much property was destroyed and many lives lost. Not long before this heavy floods did great damage to many towns and villages in South China, bringing destruction, want and death to many.

The Chinese of Honolulu are doing their best to help in this time of need. They have united in sending the \$5000 of an old and troublesome fund to the aid of their countrymen in distress. It was cable. The Chinese merchants and others of the city have raised \$2000 gold additional. The Chinese Christians are also giving.

The Chinese Consul, Hon. Tseng Hai, would like to have us say that anyone who wishes to contribute anything for this needy relief work may send to his care at the Chinese Consulate.

E. W. THWING.

BUSINESS LOCALS.

See our swell wash goods. Whitney & Marsh.

The Honolulu Scrap Iron Co. will pay highest prices for scrap iron, brass and all metals.

Manufacturers' Shoe Co. show an illustration of a popular new tan for \$3.50 in their ad space.

Gomes Express Co. kindly solicits the handling of baggage of all intending passengers going away by the Hawaiian.

The most marvelous bargains ever offered in Honolulu are to be seen at Blom's grand clearance sale. Bargains in every line of goods.

The City Transfer Co. (Jas. H. Love), phone 152, will place your trunks in sealed room or cabin on Manurewa, due Sunday.

Remember that May's old Kona coffee is still the best that you can get in Honolulu. Roasted and ground fresh every day. Phone 22.

Always have a few bottles of Coca-Cola in your refrigerator and you won't mind sultry, close days so much. Hawaiian Soda Works, phone 516.

The Dorset shoe at the Regal Shoe Store is going to be a standard style for women for wear with smart walking and street gowns this season. Call and see it.

The optical department of Wichman & Co. is now under the charge of Dr. F. Schurman, graduate optician, who will be pleased to give you expert advice on all eye trouble.

Sunday meals at the Royal Annex include the best merchants' lunch, 25 cents, and a full course dinner, with poultry, 50 cents. Wines and liquors at all times.

The Hawaiian Detective Agency has opened an office in the Waity building, King street. They have experienced detectives employed and are prepared to undertake all classes of private detective work at reasonable prices.

LOCAL BREVITIES.

Governor Frear has reappointed W. M. Giffard a park commissioner.

The band will play this and tomorrow afternoon at the baseball games. Lei Aloha Chapter No. 3, O. E. S., will meet in Masonic Temple this evening at 7:30.

John Guild of Alexander & Baldwin, Ltd., left on the Claudine yesterday for Maui and Hawaii to spend a few weeks' vacation.

William McKinley Lodge No. 8, K. of P., will meet this evening at 7:30 at K. of P. Hall, corner Beretania avenue and Fort street.

George B. Curtis, who for several years was with L. B. Kerr & Co., Ltd., and who went to Goldfield two years ago, has returned to Honolulu and again entered the employ of Kerr & Co.

W. O. Smith is agent for a number of properties, some of which are for rent and others for sale. You may obtain all information relative to real estate in Honolulu on inquiry at his office.

Mrs. Lloyd Osbourne has sued her husband, the stepson of Robert Louis Stevenson, for maintenance. She is getting \$75 a month, but wants \$300. Both parties are well known in Honolulu.

Mrs. J. M. Grant of Los Angeles arrived on the Korea to spend a few months with her sister, Mrs. Thos. G. Ballentyne, Anapuni street. Mrs. Grant has just completed a two years' tour of Europe.

L. L. McCandless and Edward Ingham of the Democratic Territorial Central Committee will shortly make a political tour of Maui, organizing Democratic clubs where there are none, and strengthening the faith of those that are organized.

The Kona Tobacco Company has sent a formal inquiry to Collector of Internal Revenue Drake for instructions as to the handling of leaf tobacco to conform with the revenue regulations. A copy of the revenue regulations has been sent in reply.

The contract for the construction of the buildings of the Academy of the Sacred Hearts, at Kaimuki, was yesterday awarded to the Hawaiian Ballasting Company, a Japanese concern, which was the lowest bidder. The company bid \$55,750, but as some modifications of the plan have been made to bring the cost within the amount available, the contract was awarded for a sum less than that amount.

Bishop Hamilton of the Methodist church, who spent several weeks in Honolulu with his family, has been transferred from California to Boston, where he will take charge of the bishopric of the New England States. At a farewell function in San Francisco the Bishop was presented with a magnificent chest of silver containing 140 pieces. A gold necklace was presented to Mrs. Hamilton by the ladies of the Woman's Home Missionary Society. Bishop Hughes of Indiana succeeds Bishop Hamilton.

A WELL-KNOWN REMEDY.

There are few people in this country who have not used, or at least heard of, Chamberlain's Colic, Cholera and Diarrhoea Remedy. It is the first thing they think of when they or any member of the family are stricken with diarrhoea, pain in the stomach or cramp colic. It has probably saved the lives of more people than any other medicine in use, and once it has been used in a home and its valuable properties become known, they rely upon it as confidently as on their family physician. For sale by Benson, Smith & Co., Ltd., agents for H. I.

NEW SPORTING EDITOR.

Mr. J. D. Densham, one of the most accomplished of the California sporting writers, has become the sporting editor of the Advertiser, in succession to Mr. Ayres, who has resigned that post after a long period of useful service.

CHARGES NON-SUPPORT.

Mercedes L. Duvauchelle has begun proceedings for divorce against Eugene K. Duvauchelle. She says they were married in 1898 and have two children—Elizabeth, aged eight years, and Annette, aged nineteen months. She charges that for three years her husband has not contributed to her support or that of her children.

SHOPEARLY
TODAY

WE CLOSE AT 1 P. M.

Useful specials at tempting prices for early buyers.

SHELL HAIR PINS

15c a card of twelve, till 1 p. m., 2 cards for 15c.

TWILLED COTTON TOWELING

till 1 p. m., 5c a yard.

MERCERIZED WHITE GOODS

40c quality, till 1 p. m., 25c a yard.

TUXEDO VEILINGS

white, black and colors, 30c quality, till 1 p. m., 20c a yard.

SILK CUSHION CORDS

all colors and combination of colors, 20c quality, till 1 p. m., 15c a yard.

LADIES' WHITE COTTON HOSE

lace ankle and all lace, 35c quality, till 1 p. m., 20c a pair.

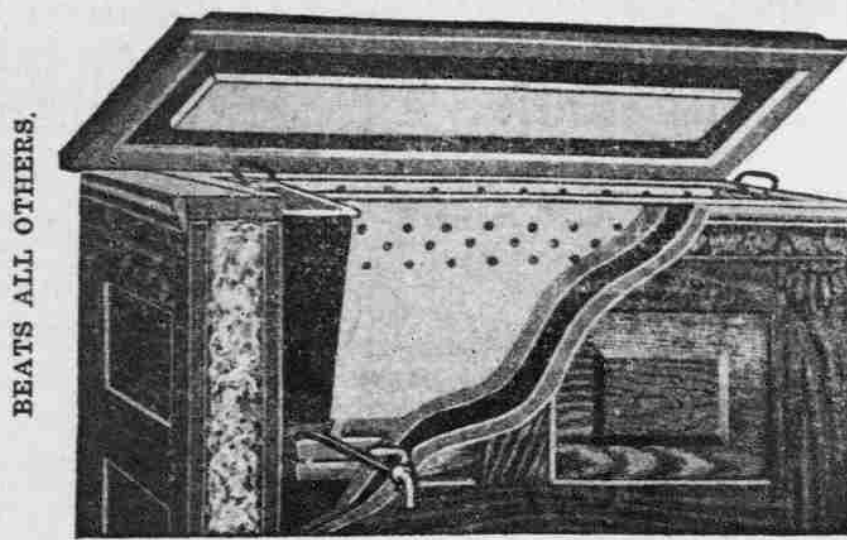
FRENCH CHALLIE

pretty floral designs, 60c quality, till 1 p. m., 37½c a yard.

INFANTS' MUSLIN BONNETS

50c quality, till 1 p. m., 30c each.

N. S. Sachs Dry Goods Co., Ltd.
Cor. Beretania and Fort Streets.



THE FAMOUS GURNEY

IT IS THE GREATEST ICE-SAVER KNOWN. NOTE THE REMOVABLE ICE-COMPARTMENT. SOLD ON THE INSTALLMENT PLAN.

W. W. DIMOND & COMPANY, LTD.
53-55-57 KING STREET, HONOLULU.

FASHION PERMITS JUST ENOUGH VARIETY IN SHAPE AND WEAVE OF STRAW HATS TO SUIT EVERY MAN'S REQUIREMENTS, BUT IT FORBIDS EXTREMES. OF COURSE, THE ONLY WAY TO BE SURE OF STYLE IS TO GET A

KNOX HAT

And that is not the only reason you should purchase a hat with a Knox trade-mark in it—quality and durability must be present if you want a fresh looking hat all season.

QUALITY, DURABILITY AND STYLE—only the KNOX TRADE-MARK will guarantee all three.

We have the Straws, Felts, Derbys, and Silk Hats.

Silva's Toggerery

ELKS' BUILDING, KING NEAR FORT ST. TELEPHONE 651.

--MEN'S--

White Shoes

A favorite is the White Calf Balmoral (called by some dealers "Buckskin").

It is as cool, pliable, and comfortable as an Indian moccasin, yet will always retain its shape. Price, \$5.00.

White Genuine Buckskin Oxfords, \$6.50 and \$7.00. White canvas shoes, high and low, at all prices.

McINERNY SHOE STORE

FORT STREET ABOVE KING

TRUE BOARDMAN'S
MOTHER IS DEAD

The following item of the death of Mrs. True Boardman, recalls the visits of her son, True Boardman, to Honolulu as a member of the Elleford company which played at the Orpheum:

Mrs. Carro True Boardman, one of old San Francisco's stage favorites, and for the last twenty-two years one of the most prominent elocutionists and dramatic instructors of this city, passed away last evening at 5 o'clock at her home, 810 Turk street, where she lived with Mrs. L. S. Coffey.

In her early days Mrs. Boardman was one of the prominent figures in the city's theatrical life. She was for some time leading lady at the old Morosco theater, and starred in "Sapho" and other dramas. After her husband died she turned her theatrical training to good account. Mrs. Boardman in recent years had turned her talents to writing and has contributed to many publications. She died at the age of 51 years.

True Boardman, her only surviving child, well known on the Coast as an actor of merit, was with his mother at her bedside yesterday.—Chronicle, July 31.

WAS LODGED IN THE
COUNTY TOOL HOUSE

It was discovered yesterday by the police that Ah On, an ex-convict with a record for chicken swiping, had been living since his last release from jail in the county tool house at the park in Nuuanu, in which neighborhood for the past week or two there have been many complaints of robbed hen roosts. Chief Kalakiela has taken the man into custody, although so far there has been nothing to connect him with the hen roosts except the fact that he appears to be particularly well fed and in good condition. Just now he is booked as a suspect for investigation but it is probable that a charge of vagrancy will be made against him this morning.



Hawaiian Hotel
For MEALS

TRY ALEXANDER YOUNG HOTEL
or CAFE

Always New Millinery
at
MISS POWER'S
Millinery Parlors:
BOSTON BLDG. - FORT ST.

Quick
Repairs

We duplicate simple and complicated lenses.



Hand and
Toilet
Mirrors

All sorts and sizes, with Hardwood and Metal Backs.

Honolulu Drug Co., Ltd.

Fort Street, above King

New and Complete Line

of

WASH GOODS

BATISTES
GALATES
LAWNS
SWISSES
MULLS

WHITNEY & MARSH

"The Badger"

Fire Extinguisher

J. A. GILMAN, - - - Agent

Soda Quality

makes us leaders in dispensing this popular beverage, 3517 persons at the fountain during fleet week support our claim to superiority of soda water and service.

Benson, Smith & Co., Ltd.

HOTEL AND FORT STREETS.

THE DRIVE OF THE YEAR

A regular round up of good things for men. Prices have no comparison with the values we offer this time. We have never done so much for our customers as we are going to do during the big drive which IS NOW ON.

Men's Suits

Light weight, stylish patterns and cut so you will be in the fashion wherever you go.

Men's Cut-Away Coats

For any occasion, cut from good material.

Men's Blue Serge Suits

Splendid value, fashionable cut and made in tailored style.

Men's Trousers

Men's single breasted coats, men's double breasted coats, all in latest cut and finished as well as made to order goods are finished.

ALL AT THE LOWEST PRICES EVER HEARD OF IN HONOLULU.

L. B. Kerr & Comp'y, Ltd.

Alakea Street

Canadian-Australian Royal Mail Line

Steamers running in connection with the Canadian Pacific Railway Co. call at Honolulu on or about the following dates:

FOR FIJI AND AUSTRALIA.	FOR VANCOUVER.
AORANGI..... AUGUST 22	MANUKA..... AUGUST 19
MANUKA..... SEPTEMBER 16	MARAMA..... SEPTEMBER 14
MARAMA..... OCTOBER 16	MOANA..... OCTOBER 11
AORANGI..... NOVEMBER 14	MAKURA..... NOVEMBER 8
MOANA..... DECEMBER 12	AORANGI..... JANUARY 6

*Will call at Fanning Island.
THEO. H. DAVIES & CO., LTD.,
GENERAL AGENTS.

Oceanic Steamship Co. Time Table

On and after June 24, 1908, the SALOON RATES will be: Single Fare, \$65; Round Trip, \$110. Family rooms extra.

FROM SAN FRANCISCO.	FOR SAN FRANCISCO.
ALAMEDA..... AUGUST 21	ALAMEDA..... AUGUST 24
ALAMEDA..... SEPTEMBER 11	ALAMEDA..... SEPTEMBER 16
ALAMEDA..... OCTOBER 2	ALAMEDA..... OCTOBER 7
ALAMEDA..... OCTOBER 23	ALAMEDA..... OCTOBER 28
ALAMEDA..... NOVEMBER 13	ALAMEDA..... NOVEMBER 18

In connection with the sailings of the above steamers, the agents are prepared to issue, to intending passengers, Coupon Through Tickets by any railroad, from San Francisco to all points in the United States, and from New York by any steamship line to all European ports.

For further particulars apply to
WM. G. IRWIN & CO., LTD.,
AGENTS.

PACIFIC MAIL S. S. CO., OCCIDENTAL & ORIENTAL S. S. CO., AND TOYO KISEN KAISHA.

Steamers of the above companies will call at Honolulu and leave this port on or about the dates mentioned below:

FOR THE ORIENT.	FOR SAN FRANCISCO.
AMERICA MARU..... AUGUST 8	MANCHURIA..... AUGUST 10
SIBERIA..... AUGUST 17	NIPPON MARU..... AUGUST 14
CHINA..... AUGUST 24	ASIA..... AUGUST 23
MANCHURIA..... AUGUST 31	MONGOLIA..... AUGUST 29

H. HACKFELD & CO., LTD., Agents.

MATSON NAVIGATION CO.

Vessels of the above company will ply between Honolulu and San Francisco on or about the dates mentioned below:

Arrive Honolulu.	Leave Honolulu.
HILONIAN..... Aug. 5	Aug. 11
LURLINE..... Aug. 19	Sept. 1
HILONIAN..... Sept. 2	Sept. 8
LURLINE..... Sept. 22	Oct. 5

Passenger Rates to San Francisco—First Cabin, \$60. Round Trip, First Class, \$110.
CASTLE & COOKE, LTD., Agents.

AMERICAN-HAWAIIAN STEAMSHIP COMPANY.

FROM NEW YORK TO HONOLULU. WEEKLY SAILINGS VIA TEHUANTEPEC.

Freight received at all times at the Company's Wharf, 41st Street, South Brooklyn.

FROM HONOLULU TO SAN FRANCISCO.

ALASKAN..... AUGUST 8
ARIZONAN..... AUGUST 29
FROM SAN FRANCISCO TO HONOLULU.

COLUMBIAN..... JULY 29
MEXICAN..... AUGUST 12
Freight received at Company's wharf, Greenwich Street.

FROM SEATTLE AND TACOMA TO HONOLULU.

ARIZONAN..... AUGUST 9
ALASKAN..... AUGUST 30
For further information apply to
H. HACKFELD & CO., LTD.,
Agents, Honolulu.
C. P. MORSE,
General Freight Agent.

Phone 295. 63 Queen Street.
HUSTACE-PECK COMPANY, LTD.,
GENERAL CONTRACTORS.
Dealers in

Crushed Rock, White and Black Sand, Fire Wood, Stove and Steam Coal, Blacksmith Coal, Hay, Grain, Garden Soil and Manure.

Draying and Heavy Teaming a Specialty.

Union-Pacific Transfer Co., Ltd.

BAGGAGE SHIPPING
STORAGE WOOD
PACKING COAL
Phone 58

126 KING ST. FURNITURE AND PIANO MOVING.

PASSENGERS FOR

Manchuria

The City Transfer Co. JAS. H. LOVE.

will see that your baggage goes RIGHT Phone 152

Entrust your Baggage with

GOMES' EXPRESS CO.

FOR THE S. S. HILONIAN

Phone 298

Honolulu Construction and Draying Co., Ltd.

GENERAL CONTRACTORS.

'Phone Office 287. P. O. Box 154.

Fort St., Opp. W. G. Irwin & Co., Ltd.

We do all kinds of Teaming; also deal in Crushed Rock, White and Black Sand, Broken Coral, Garden Soil, Etc.

SAFE MOVING A SPECIALTY.

HENRY H. WILLIAMS

HONOLULU.

The leading FUNERAL DIRECTOR and only LICENSED EMBALMER in Hawaii.

All work, goods and paraphernalia up to date.

LOVE BUILDING.

1142 and 1144 Fort Street. Residence, 240 S. King Street.

Phone 64. Phone 1020.

THE PACIFIC

Commercial Advertiser

Entered at the Postoffice at Honolulu, T. H., as second-class matter.

SUBSCRIPTION RATES.

One year.....\$12.00

Advertising Rates on Application.

Published every morning except Sunday by the

HAWAIIAN GAZETTE CO., LTD.

Von Holt Block, No. 65 South King St.

C. S. ORANE : : Manager

REMO

THE NEW

stream, at t

RED

LADIES'

K.

Nuau

A GREAT SHOW ON THE ORPHEUM BOARDS

The vaudeville show at the Orpheum is one to be enjoyed by young and old. If you have little ones at home send them to the matinee this afternoon for it will be a treat to them. They will enjoy the bicycle riding, the great act of Adonis and above all the little dog Lottie.

The price is only a quarter for children and they will get the full program.

Tonight is the last performance of the present bill and as there are only a few good seats left don't waste your time but ring up the box office and get your order in. The seats will be held until 8 o'clock—no later. It is a great show. Don't miss it.

The Norwegian steamer Orland arrived yesterday from Pleasant Island, of the South Seas, with 2000 tons of fertilizer. The crew comprises Chinese only. The voyage up was uneventful.

MARINE REPORT.

(From San Francisco Merchants Exchange.)

Friday, August 7.
San Francisco—Arrived, Aug. 6, P. M. S. S. China, hence July 31.
Seattle—Arrived, Aug. 6, S. S. Arizona, from San Francisco.
Port San Luis—Sailed, July 31, S. S. Lansing, for Honolulu.

PORT OF HONOLULU.

ARRIVED.

Friday, August 7.
Str. Mauna Loa, Simerson, from Kona ports, 5 a. m.
T. K. K. S. S. America Maru, Filmer, from San Francisco, 7:45 a. m.
S. S. Orland, Lie, from Pleasant Island, 8 a. m.
U. S. A. T. Buford, from Manila, via Nagasaki, a. m.

DEPARTED.

T. K. K. S. S. America Maru, Filmer, for the Orient, 4 p. m.
Str. Claudine, Bennett, for Maui and Hawaii, 5 p. m.
U. S. A. T. Buford, for San Francisco, 5:20 p. m.

PASSENGERS.

Arrived.
Per str. Mauna Loa, from Kona ports, August 7.—Miss A. Varson, Miss C. A. Baker, C. G. Livingston, Miss S. E. Hall, Miss E. D. Wolte, Wm. A. Brown, W. S. Bowen, L. C. Howland, Mrs. J. H. Craig, Miss N. Craig, C. Apo, Mrs. M. Souza, Miss L. Souza, Miss A. Lyett, Mrs. W. H. Gill and child, Mrs. C. Cottrell, Miss E. Cottrell, F. J. Lindeman, R. M. Overend, C. L. Beal, Y. Van Hing, K. Yokogama, Agawa, Miss L. Yates, Mrs. John Leslie and child, R. Ivers. Departed.

Per str. Claudine, for Maui and Hawaii ports, August 7.—Miss A. Hopper, Miss L. E. Perkins, Miss Amy Anderson, Miss E. Nuton, Mrs. B. H. Rohe, Miss O. Crewes, Miss M. MacWown, C. G. Bartlett, C. S. Moses, Mrs. L. A. Thurston, Miss Annie Dunn, M. D. S. Spanola, E. S. Capelas, M. and O. Sullivan, Miss Mary Mitchell, Miss D. Smith, Miss E. Smith, A. B. Ingalls, John Guild, Miss Helen Rose, Mrs. J. H. Kuewa, Miss Elina Hart, Gertrude Hart, J. A. Aheong, A. Kekuewa, Miss Kelsey, M. Schartlin, L. Schmidt, Dr. Norgaard, Lizzie Spencer, Mrs. J. H. Bunker, H. W. Kinney, E. F. Weinert, Sakai, Sin Kea, Joe Bento, Geo. Apo, Mrs. Lilly Apo, Mrs. Daimura, Agnes Kaleipuna, Mrs. S. E. Lucas, Robt. Hughes, Miss Anderson, Miss D. Guild, Mrs. Lum Sui and two children, Mrs. Fastina Anin. Per T. K. K. S. S. America Maru, for the Orient, August 7.—Alfredo Ferreyra, Dr. Kobayashi and wife, Jos. H. Feaster, Consul Saito and wife, Mrs. G. E. Gelm and child. Booked to Depart.

Per M. N. S. S. Hilonian, for San Francisco, August 11.—Eugene Duvauchelle, E. F. Nichols, H. A. White, Miss M. L. Moyer, F. R. Werthmiller, Miss Charlotte Baker, H. B. Christian, D. L. Withington, J. E. Higgins, A. B. Browne, Harold Giles, Miss C. A. Tisdale, Sam Wright, Mrs. H. T. Moore, S. C. Kennedy, Miss Eaton, Miss N. Eaton, Misses Olsen (2), C. Nunes, John Vivichaves, J. R. Parker, Miss J. C. Shaw, A. A. P. Reid, Mrs. A. A. P. Reid, Miss Reid, F. B. West, Chas. Mayhugh, Mrs. C. M. Webster, Harold Gavigan, Mrs. James Miller, G. A. Riggs, Mrs. G. A. Riggs. Booked to Depart.

Per P. M. S. S. Manchuria, for San Francisco, Aug. 9 (Sunday).—Mrs. S. E. Halstead, Mrs. A. H. Lackland, Miss C. Clowe, Edmund Hedemam, W. J. Kyle, Mrs. Kyle, Miss Cassie Deoy, D. L. Withington, Miss Juliette Atherton, Wm. Carden, J. J. Carden, Mrs. S. I. Alexander, A. B. Brown, J. A. Vogt, Miss Jessie Goodwin, Mrs. E. Frazier, Louis Rosenthal, Mrs. McCune, Miss McCune, Master McCune, Mrs. R. J. Mefford, W. A. Mills, J. L. Fisher, J. A. Gilman, Miss Cordelia Gilman, Miss Margery Gilman, Mr. and Mrs. H. S. Neamans, Miss Julia Klumpke, Arthur F. Gay, C. Du Roi, J. L. P. Robinson, Mrs. Brooke, Mrs. Lewis and 2 children, F. R. Werthmiller, Mrs. W. E. Dodd, Miss L. Gertz, S. R. Parker, Miss Elsie Child, W. C. Achi Jr., Mrs. B. Howe, Miss F. Ball, F. B. Angus, Mr. and Mrs. Ball, Miss Violet Damon, Miss Tordie, Miss Y. Perrin, Mrs. E. C. Morgan, Capt. and Mrs. S. H. Wadhams, M. Green, E. Parker, Mrs. F. S. Johnson, Helen Johnson, Francis Johnson, Miss Helen Gibbs, Miss Mary Gibbs, S. E. Slade, F. Slade, Spencer Slade, R. C. Slade, F. M. Johnson, Mrs. W. A. Sheridan, J. D. Dole, A. W. Nolte, Mrs. John Coleman, Miss Coleman, Mrs. Orkenburgh, S. McCall and wife, Mrs. L. H. Daggy, Miss A. L. Carroll, Miss Dora Anderson, Mr. Margaret McLean, Mrs. McLean and daughter, Miss M. Coulter, C. M. Cooke, Mr. Perry, H. B. Christian, Dr. A. J. Derby, Miss Julia Gulick, L. E. Pinkham.

DIED.

GANDALL—In Honolulu, August 6, 1908, Keneocina Gandall, aged 44 years.



FOR SALE

Building lots in the Puupueo Tract.

Size and price of lots to suit purchasers.

If you are contemplating building, do not fail to consider this tract before deciding.

Here are fine marine and mountain views, good soil and drainage, and location convenient to the car line.

We are ready to assist in building homes on these lots.

Corner of Fort and Merchant Sts.

"Waterhouse Trust"

Corner of Fort and Merchant Streets

THE VALUE OF WIRE-

LESS COMMUNICATION

WITH THE OTHER IS-

LANDS CANNOT BE OVER-

ESTIMATED.

Remember that we can get

instant word to any Island

for you.

TRENT TRUST CO., Ltd.

TO LET

Morris Lane..... 2 bedrooms \$10.00

Rose St..... 2 " 10.00

Fort St..... 2 " 13.00

School St..... 2 " 13.00

Gandall Lane..... 3 " 15.00

Young St..... 3 " 15.00

Pensacola St..... 3 " 18.00

Gandall Lane..... 3 " 18.00

Middle St..... 3 " 22.00

Young St..... 2 " 22.50

Emma St..... 3 " 25.00

Alexander St..... 3 " 30.00

Alexander St..... 2 " 30.00

Alakea St..... 2 " 30.00

FURNISHED

We have several furnished

houses in different parts

of the city—Waikiki, College

Hills, Young St. and Kua-

kinii St.

TRENT TRUST CO., Ltd.

Classified Advertisements

Cash must accompany the

copy. No deviation from this rule.

SITUATIONS WANTED.

BY WELL recommended Japanese as

school boys, cooks, yard boys, office

janitors. Holy Trinity Mission, Tel.

1212. \$110

TRANSPORT SERVICE.

Buford sailed from Honolulu for San

Francisco, Aug. 7.

Dix at Manila.

Sheridan at San Francisco.

Sheridan en route from San Francisco

for Honolulu, sailed Aug. 5.

Thomas at Manila.

VESSELS IN PORT.

(Army and Navy.)

Iroquois, U. S. S., Moses, Pearl Har-

bor, July 2.

(Merchant Vessels.)

Carradale, Br. sp., Smith, Newcastle,

July 20.

Columbian, A. H. S. S., Colگرد, San

Francisco, August 5.

Gamble, Am. schr., Knudsen, Port

Gamble, July 20.

Hilonian, Am. S. S., Johnson, San

Francisco, August 5.

Hollywood, Br. bk., Smith, Junin,

May 7.

Kaulani, Am. bk., Colly, S. F., Aug. 4.

Mary E. Foster, Am. schr., Johnson,

Taltal, July 25.

Orland, Nor. s.s., Lie, Pleasant Island,

Aug. 7.

THE MAILS.

Mails are due from the following

points as follows:

San Francisco—Per Sheridan, Aug. 12.

Yokohama—Per Manchuria, August 9.

Victoria—Per Aorangi, August 22.

Mails will depart for the following

points as follows:

San Francisco—Per Manchuria, Aug. 9.

Yokohama—Per Siberia, Aug. 17.

Colonies—Per Aorangi, August 22.

HONOLULU STOCK EXCHANGE

Honolulu, Friday, August 7, 1908.

N. ME O STOCK	Val.	Bid	Ask
MERRILL & TILL			
O. Brewer & Co.	\$2,000.00	\$100	
SEAS			
Bwa.	5,000.00	20	25
Haw. Agricultural	1,200.00	100	180
Haw. Com. & Sugar	2,512.75	100	180
Haw. Sugar Co.	2,000.00	20	25
Honolulu	250.00	100	
Honolulu	2,000.00	20	3
Honolulu	500.00	100	
Hutchinson Sug. Pla.	5,000.00	50	
Koko	500.00	100	25
Koko	500.00	100	
McBryde Sug. Co. Ltd.	4,500.00	20	3 1/2
Oahu Sugar Co.	1,500.00	20	4
Onomea	1,000.00	20	3 1/2
Ookala	500.00	20	4
Ola Sugar Co. Ltd.	5,000.00	20	4 1/2
Panama	150.00	100	
Panama Sug. Plan Co.	5,000.00	50	19 1/2
Pacific	500.00	100	
Pioneer	750.00	100	
Pioneer	2,750.00	100	45
Pioneer	4,500.00	100	84
Waialua Agr. Co.	1,500.00	100	
Waialua	250.00	100	
Waialua	125.00	100	
Waialua Sugar Mill	1,500.00	100	
MISCELLANEOUS			
Inter-Island S. S. Co.	1,500.00	100	
Island	500.00	100	
H. R. T. & L. Co. Pfd.	1,500.00	100	
H. R. T. & L. Co. Com.	150.00	10	66
Honolulu	100.00	100	
Nabiku Rubber Co.	50.00	100	
Nabiku Rubber Co.	Assess.	100	27 1/2
Nabiku Rubber Co.	4,000.00	100	101
Hilo & R. Co.	1,000.00	30	
Honolulu's Brewing & Malting Co. Ltd.	400.00	20	19
Haw. Fire Ins. Co.	4,000.00	mi. Cal.	
BONDS			
Haw Ter 4 p c (Pine Claims).		landline	
Haw Ter 4 p c (Funding 1898).	\$15.50		
Haw Ter 4 1/2 p c	500.00		
Haw Ter 4 1/2 p c	1,000.00		
Haw Ter 3 1/2 p c	1,044.00		
Haw Ter 3 1/2 p c	\$1.90		
Cal. Bees Sugar & Ref Co 5 p c	1,000.00		
Hail 6 p c	500.00	100	
Hamakua Litch Co.			
Upper Ditch 5 p c.	300.00		99
Haw Com. & Sugar Co 5 p c	1,871.00		
Haw Sugar 5 p c	475.00		100
Hilo R. & O 6 p c	1,000.00		
Hilo R. & O 6 p c	1,300.00		
Sakuku 8 p c	200.00		
McBryde Sug. Co 5 p c	2,000.00		95
Oahu Sugar 5 p c	800.00		99 1/2
Oahu Sugar 5 p c	900.00		
Ola Sugar Co 5 p c	1,250.00		
Pac. Hl. Sugar Mill	350.00	100	
Pine 8 p c	450.00	100	
Pioneer Mill Co 8 p c.	1,250.00		
Panama & C. Co 8 p c.	1,300.00		
Honokaa Sug. Co 8 p c	600.00		