

STEAMER TABLE. From San Francisco: Alameda... Feb. 26. China... Mar. 4. For San Francisco: Alameda... Mar. 2. Siberia... Mar. 5. From Vancouver: Mlowers... Mar. 12. For Vancouver: Moana... Mar. 16.

PUBLICITY PAYS THE WAY TO EVENING BULLETIN 3:30 O'CLOCK PROSPERITY EDITION

ONE-HALF THE WORLD WOULD NEVER KNOW WHAT THE OTHER HALF HAD TO SELL IF IT DIDN'T ADVERTISE.

VOL. XV. No. 2707 HONOLULU, TERRITORY OF HAWAII, MONDAY, MARCH 7, 1904 PRICE 5 CENTS

Famous Filipino Scouts En Route To St. Louis Exposition

The United States Army transport Thomas arrived from Manila this morning after a pleasant and uneventful voyage, and was docked at Naval wharf No. 1 at about 7:30 o'clock. On her way over, the Thomas touched at Nagasaki, where she remained three days, coaling. Those aboard the Thomas did not see any great signs of military activity during their stay in Japan. Great numbers of troops had embarked from Nagasaki just prior to the Thomas' arrival but while she was there only horses and commissariat were shipped. The Thomas is of especial interest this trip on account of the fact that she has on board 415 men of the famous Filipino Scouts who are going to the St. Louis Exposition. This battalion is under command of Major F. de L. Carrington, 1st Inf., Lieut. W. C. Johnson is the battalion adjutant and Lieut. J. C. Brady, 4th Inf., is the battalion quartermaster. Four Different Tribes. No less than four different tribes of Filipinos are represented in this battalion. The fourth company is made up of Macabebes, the twenty-fourth of Ilocanos, the thirtieth company of Tagalogs, and the forty-seventh company of Visayans. Most of the men have been in the service for about three years. The Filipino Scouts were first paid as employees of the U. S. Quartermaster's Department, doing scouting service. In July, 1901, they were enlisted in the regular army and have since then served in various parts of the archipelago in what was known as the "Philippine Squadron."

SWORE TO DROWN MEN OF THE CREW This Alleged Reason Took Hands From Ivanhoe.

BRITISH BARK LIBEL ON BEFORE JUDGE DOLE SAILOR SAID TO HAVE BOUGHT DEATH RATHER THAN SUFFER FURTHER TORMENT. Systematic cruelty on the part of officers of the vessel to the extent of causing one desperate follower of the sea to slash his wrist and let out the life drops upon the deck, seeking forgetfulness in death, rather than further suffer torment at the hands of his masters—such is one of the allegations in the case of four seamen against the British bark Ivanhoe, libel for wages and damages, hearing in which commenced before Judge Dole in Federal Court this morning. A. S. Humphreys and J. J. Dunne for libellants, Dyer et al., and Holmes & Stanley for the Ivanhoe. According to the story of the complaining sailors the Ivanhoe's voyage from Port Townsend to Iquique to Honolulu was a continual course of suffering for nearly all of the crew. From the witness stand today came assertions that, if true, would brand the Ivanhoe as a "hell-ship" in the parlance of deep water men. The mate of the vessel is accused of foul and insulting language to members of the crew and it is said that he planted his fist in the face of unconscious Franz, a blow on either side of the jaw, while the sailor lay on the starboard side of the deck, amidst bleeding to death from the self-inflicted wound in his wrist. The mate also pinched the dying man in the face according to the testimony of a young sailor, seemingly intelligent and apparently with some degree of education. This sailor witness testified that the Ivanhoe's voyage was the first trip he had ever made to sea. He had been a second cook and a waiter ashore in a restaurant before he yearned for a life on the ocean wave. He testified to having seen men struck and to having heard foul epithets hurled at the crew. He was afraid, he said, to venture further in the Ivanhoe, for the mate had sworn to drown some of the crew after Honolulu was left behind, if any rough weather came on. For this reason he had left the vessel here and joined with others in bringing action against the bark. He had kept a log of the happenings aboard the Ivanhoe, but, he presumed, this was now in the possession of the British consul at Iquique, with whom he and others had lodged a complaint. Upon application of H. B. M. Consul Hoare today, Judge Gear having decided that he had no jurisdiction in the matter, U. S. Commissioner Judd examined alleged deserters from the British bark Clan Buchanan, whose apprehension was desired, ordering them turned over to the consul. The three sailors are German citizens.

MAUI MEN COME WITH ORDERS TO WORK FUSION

There are fifteen wild-eyed Home Rulers from Maui in Honolulu today and it is said they are looking for the scalp of the leaders of the Home Rule party who failed to notify them of a change in plans which was instituted at the warm meeting of Thursday last at which the laukae matter was brought up. Some time ago, a convention of Home Rulers was called for this week and Home Rulers all over the islands were instructed to that effect. On Thursday last, the chairman of the Central Committee of the Home Rulers announced that there would be nothing to come before the convention at the time mentioned and that therefore it would be well to postpone the meeting until some time in July, the exact date to be decided on later. This was put in the form of a motion by one of the members and the wish of the chairman went through. In the meantime, the Maui men were preparing for a trip to Honolulu and not receiving any inkling of a change in the plans of the party, fifteen men, headed by Thomas Clark, who is said to stand a good chance for a senatorial nomination among the Home Rulers and Democrats on Maui, came to Honolulu in the steamers of Saturday and Sunday. These were instructed to vote for fusion between the Democrats and Home Rulers and the carried in their pockets the proxies of the other delegates, some ten in all, who were unable to come to town to attend the convention that it was expected would be held. When they arrived in the city and found that the convention had been postponed, they went on the war path immediately for they had paid their expenses and were out just so much because of a failure on the part of the responsible heads to notify them of the change in plans. Besides the Maui men, there are six delegates from Hawaii who came up for the same purpose and who are just as indignant as the Maui men. They also, it is understood, are out for fusion. There is absolutely no mistake as to the stand of the Maui men. They are pledged in favor of fusion and will make a big fight for it in the convention that has now been postponed until July. They will all return by the steamer Kinau tomorrow but in the meantime, it is understood, they are looking around for some of the responsible heads to pay their passage.

Korean Soldiers Kill Russians

[Associated Press Special Cable.] SEOUL, Korea, March 7.—A body of Korean soldiers are reported to have had an encounter with a party of Russians. Thirty of the Russians were killed.

Japan's Warships In Usuri Bay

[Associated Press Special Cable.] ST. PETERSBURG, Russia, March 7.—Seven Japanese warships are reported to have maneuvered today in Usuri Bay, north of Vladivostok in the Amur river district.

Squadron Covers Moving Troops

[Associated Press Special Cable.] TOKIO, Japan, March 7.—It is believed that the Vladivostok squadron is near the Tumen river, southwest of Vladivostok along the Korean border. These ships are believed to be covering the movements of troops. Russia is steadily increasing its military force north of the Yalu river.

Vladivostok Escapes Serious Damage

[Associated Press Special Cable.] VLADIVOSTOK, Siberia, March 7.—No serious damage was done by the bombardment of the city by the Japanese squadron. The Japanese ships appear to have withdrawn.

Pingyang Railway To Be Completed In September

[Associated Press Special Cable.] SEOUL, Korea, March 7.—The railway to Pingyang will, it is expected, be completed in September. Work on this road has been hastened with all possible dispatch, a rush order for locomotives having been recently placed in the United States.

REFINED SUGAR ADVANCES. [Associated Press Special Cable.] NEW YORK, N. Y., March 7.—Refined sugar was advanced five cents a hundred pounds today. SAN FRANCISCO, Cal., March 5.—SUGAR: 88-analysis 8c 3d.

Men's Shoes That Wear

Here are a few guaranteed values in men's footwear. The famous Heywood shoes. To the man who is particular about having up-to-date and serviceable shoes at the least cost these will strongly appeal. Heywood Oxford "Somerset" Velours calf, light extension sole, newest style, \$4.50. Heywood Blucher "Amsterdam" Velours calf balmoral, light extension sole, \$4.50. Heywood "Patrol" With waterproof sole. Just right for plantation men. \$5.00. Heywood "Bunion Last" For men with enlarged joints or bunions. \$5.00. Manufacturers' Shoe Company, Ltd.

COUNTY ACT MIGHT GROW OUT FINANCE

Territorial Secretary A. L. C. Atkinson stated this morning that, in his opinion, if an extra session of the Legislature was called, the law makers would go to work on a new County Act and forget all about financial matters. The Secretary says he certainly believes in county government, but believes that much time will be necessary to prepare a successful act, especially in view of the decision of the Supreme Court killing the original act. Finances must first be considered and the county cannot afford to call the Legislature and then have the time taken up with other matters.

MEDALS GIVEN FOR GOOD WORK

Lusitana Society Honors Three Of Its Members. MEETING YESTERDAY IN HALL ON PUNCHBOWL. WORK OF BENEVOLENT ORDER. SECURED OVER 150 MEMBERS LAST YEAR — HAS \$50,000. A special meeting of the Sociedade Lusitana Beneficente de Hawaii, the Portuguese organization that has risen to great prominence during the past few years and over which J. M. Vivas presides, as president, was held in the regular meeting place Sunday afternoon. The call was issued for the express purpose of presenting medals to the three members of the society who during the past year succeeded in securing at least fifteen new members for the society. The lucky men were as follows: M. G. Santos, editor of the Portuguese paper "Setta," of Hilo, and agent of the

PANAMA TREATY SIGNED FOR GOOD

PANAMA HATS

GO TO Levingston & Co., Young Bldg., 1071 Bishop Street. That is the specialty at the R. & P. Studio—the best paper in conjunction with the best work. Progress in our art every day, yet you would say that there is no room for improvement.

Flower and Vegetable Seeds

We have added a line of Flower and Vegetable Seeds. When in need of seeds remember ours are all fresh and you can be certain of best results in your garden. It will be our aim to sell always good seeds and "money back" if they do not come up after being properly planted. You will therefore take no risk in buying our seeds and depend on their being good. Have your Goods Shipped by WELLS, FARGO & CO. EXPRESS. Tel. Blue 581.

電海報戰露日. 浦港砲撃後報. 浦港砲撃の在る. 北柴比亞攻撃. 京釜鐵道の速成.

SUITS THAT SUIT. the season, the wearer, and the wearer's purse bear this famous mark. Alfred Benjamin & Co. MAKERS NEW YORK. A BENJAMIN ready-to-wear suit MUST fit you perfectly because it is measured on a model of your figure, exactly as though made to your order. The fabrics are rich, exclusive, and all-wool, well-shrunk in the BENJAMIN plant by special process before they are cut. The tailoring is executed in sanitary workrooms by salaried artisans—not by hasty, slovenly piece-workers. A guarantee with every garment. We are Sole Sellers here. (Agent) The Kash Co. Ltd.



Is your house insured? And your furniture?

Henry Waterhouse Trust Co., Limited, Insurance Department,

Will be glad to write policies for you.

## MASONIC TEMPLE



WEEKLY CALENDAR.

**MONDAY**  
Hawaiian—Regular.  
**TUESDAY**  
Honolulu Chapter—Mark Master.  
**WEDNESDAY**  
**THURSDAY**  
Honolulu Commandery—Order Temple.  
**FRIDAY**  
Le Progres—Third Degree.  
**SATURDAY**

All visiting members of the order are cordially invited to attend meetings of local lodges.

### HARMONY LODGE, No. 3, I. O. O. F.

Meets every Monday evening at 7:30 in Harmony Hall, King street.  
W. F. HALL, N. G.  
E. R. HENDRY, Secretary.  
All visiting brothers very cordially invited.

### MYSTIC LODGE, No. 2, K. of P.

Meets every Tuesday evening at 7:30 o'clock in Harmony Hall, King street. Visiting brothers cordially invited to attend.  
JOHN WALKER, C.C.  
F. WALDRON, K.R.S.

### OAHU LODGE, No. 1, K. of P.

Meets every Friday evening at Harmony Hall, King street, at 7:30. Members of Mystic Lodge, No. 2, Wm. McKinley Lodge, No. 8, and visiting brothers cordially invited.  
C. M. WHITE, C.C.  
E. M. COLEMAN, K.R.S.

### HONOLULU LODGE 616, B. P. O. E.

Honolulu Lodge No. 616, B. P. O. E., will meet in their new hall, on Miller and Beretania streets, every Friday evening.

By order of the E. R.  
HARRY H. SIMPSON, Secretary.  
F. E. THOMPSON, E.R.

### Wm. M'KINLEY LODGE No. 8, K. of P.

Meets every Saturday evening at 7:30 o'clock in Harmony Hall, King street. Visiting brothers cordially invited to attend.

Work in Third Rank.  
H. T. MOORE, C.C.  
A. S. PRESCOTT, K.R.S.

### HONOLULU HARBOR, No. 54, A. A. of M. & P.

Meets on first and third Sunday evenings of each month at 7 o'clock at Harmony Hall. All sojourning brethren are cordially invited to attend.

By order Worthy Captain:  
FRED. MOHRER, C.C.



### WHITE BRONZE MONUMENTS

Are endorsed by the Scientific American as being strictly everlasting. They are also more artistic and 40 per cent. cheaper than any stone. Call at office, corner King and Bethel Sts., and see samples, with some 500 beautiful designs. H. Cannon, agent for Haw. Is.

### DR. ARCHIBALD N. SINCLAIR.

Office—Rooms 208-209 Boston building, Fort Street.  
Telephones—Office Main 385; Residence, White 2861.  
Hours—11 a. m. to 1 p. m.; 4 to 5 p. m.; 7 to 8 p. m.; Sundays, 12 to 2 p. m. P. O. Box 801.

### P. H. Burnette,

Attorney-at-Law and Notary Public. Agent to Grant Marriage Licenses. Real Estate, Insurance, Collections. Office, 79 Merchant Street, Honolulu.

"For Sale" cards at Bulletin office.

## NEW ENGLAND BAKERY



### In Baking Bread

there is a great deal of discontent. The hot fires make it unpleasant, and the chance of having bad bread makes it very trying. We take all the work and worry off your hands, and you have first-class bread as a result.

## Special Sale

—OF—

## LADIES' HAIR COMBS

10c and 15c each

Exceedingly good values at a very low figure. See our window display

THE

## Hollister Drug Co., Limited, Fort Street.

## KAVAK

**TONIC TABLETS**  
are prepared from an extract derived from the root of a shrub which grows in the South Sea Islands. This ingredient has wonderful tonic properties acting on the stomach, liver and kidneys and curing headache, dizziness, nervousness, indigestion and all kindred ailments. 50 doses for 50c.

**SOUTH SEA ISLAND DRUG CO., Ltd.**  
San Francisco, New York, Honolulu.

**HOBSON DRUG COMPANY**  
Distributors for the Hawaiian Islands.

## PURE APPLE CIDER

75c per Gal.

Warranted to be pure Apple Juice made from Pajaro Valley Apples.

### LIQUOR DEPARTMENT.

## Hoffschlaeger Co LIMITED.

25 King St., 'Phone 7

## ICE Manufactured from pure distilled water

Delivered to any part of city by courteous drivers.

## Oahu Ice and Electric Co.,

Kewalo. Telephone Blue 5181

## Geo. A. Davis,

Counselor-at-Law, member United States Supreme Court bar. Deeds, Wills, Leases and Agreements Drawn. Collections made. Room 10, Spreckels Building. HONOLULU. 2701-15t.

Fine Job Printing at the Bulletin office.

## LOCAL AND GENERAL

Yesterday was the third Sunday in Lent.

Get the habit, TRADE at Wall, Nichols.

Mr. and Mrs. C. D. Lufkin are here from Maui.

A monogram silver watch has been lost. See ad, page 8.

Mr. and Mrs. A. S. Wilcox arrived from Kauai in the Hall Sunday.

Have your old Panama hat made like new. Globe Clothing House.

Clinton J. Hutchins is expected back from San Francisco in the Sierra.

Dr. Huddy has resumed practice at room 305 Boston Building, Fort St.

Lyon's exchange library continued by Arleigh & Co., cor. Fort and Hotel Sts.

Harmony Lodge, No. 3, I. O. O. F., meets tonight at 7:30 in Harmony Hall.

Honolulu Investment Co., Ltd., now located at their new offices, 932 Fort street.

Senator D. P. R. Isenberg returned from Kauai in the W. G. Hall on Sunday last.

A few second hand sewing machines cheap for cash. Watson & West, Oregon building.

A small gold pin has been lost. Reward if returned to Hawaiian Hotel. See Lost column.

The sudden stoppage of the rain here has increased the demand for "Rainier Beer" at the Pantheon.

On Saturday, March 12 at 12 o'clock noon Morgan will sell at his salesroom a lot of delinquent stocks in the I. I. Telegraph Co.

The band will give a concert in Emma Square this evening at the usual time. A splendid program has been arranged.

C. H. Dickey, W. H. Cornwell, Jr., L. M. Vetlesen and D. H. Kahaula were among the arrivals from Maui in the Claudine Sunday.

Marshal Hendry, who returned from Japan in the Siberia, reports that B. P. Dillingham, whom he saw while there, was improving rapidly in health.

The steamer Claudine arrived from Maui ports yesterday with 4000 bags sugar, 141 bags corn, 27 hogs, 23 head cattle, 3 calves and 155 packages sundries.

Among the arrivals from Kauai ports in the Hall Sunday were the following: C. M. Lovested, H. E. Pickett, G. N. Wilcox, H. G. Isenberg and F. J. Heger.

Captain Niblack and Lieut. Slattery returned from Kauai Sunday after having inspected the lighthouses of the island and the buoys in the surrounding waters.

Call at Honolulu Photo-Supply Co. and see the kodak developing machines. These wonderful contrivances do away entirely with the dark room in kodakery.

In several instances from roofs covered with other preparations have been removed, and the iron turned over and "Arabic" applied to the entire satisfaction of the owners.

The Moana hotel people are thinking of enlarging the dining hall seaward by the addition of a circular lanai far out over the water. This will also be carried out on the Diamond Head side, along the entire length, connecting the present approach to the dining room with the extension. The windows will be cut down to the floor so that each will become a doorway.

The Honolulu police force—both mounted and foot—was inspected by Governor Carter at the police station Sunday morning. High Sheriff Brown was in command and with him were Deputy Sheriff Chillingworth, Senior Captain Parker and Lieut. Leslie. The men were put through their paces in both dress and mountain uniforms. The mounted men, armed with carbines, were reviewed on Merchant street, outside the police station. Governor Carter complimented High Sheriff Brown on the efficiency of the force.

### PACIFICS WIN.

The Pacifics and Iolani played a game of association football on the grounds at Maiki Saturday afternoon, the former having only eight men on the field and the latter having its full quota. Despite the handicap of the Pacifics they made a very brave showing. In the beginning they had but five men but went on the field anyway. The Iolani made three goals in the first half and failed to score in the second. The score stood 3 to 0 to the end of the game.

There was some misunderstanding as to which team should play against the Iolani. It was given out that the Pacifics might not play and for that reason the Iolani went out on the field, eleven strong, ready to play. However, the few Pacifics who did turn out, decided to play.

### DIED.

BAILEY—In this city, March 6, 1964, Willie A., beloved grandson of Mrs. Ella Bailey; aged 20 years, 2 months and 16 days. Remains cremated. Funeral services at 3 p. m. today at the residence of his grandmother, No. 1 Cottage Grove, corner King street. Interment at St. Helens, Oregon. (San Francisco papers please copy.)

### BORN.

WARD—In Honolulu, March 6th, 1964, to the wife of L. de L. Ward, a daughter.

ATCHERLEY—At Homelani, Kamuela, South Kohala, Hawaii, March 4, 1964, to the wife of Dr. John Atcherley, a boy.

## WORLD NEWS BY CABLE

(Associated Press Cable.)

**REFUGEES ARRIVE.**  
Seoul, March 6.—Foreign refugees from Songchin have arrived here.

**CONSPIRATORS ARRESTED.**  
Seoul, March 6.—Twenty conspirators against pro-Japanese Koreans have been arrested.

**RUSSIA PROTESTS.**  
Rome, March 6.—Russia has protested to the Vatican against the tone of the Catholic press.

**NO INTERVENTION.**  
London, March 6.—The reported intervention of the powers is baseless. Japan would regard such intervention as an unfriendly act. Russia is thought to be sincere in her desire to maintain good relations with Great Britain.

**WAR JUST STARTING.**  
St. Petersburg, March 6.—War is considered to have hardly begun. Heavy fighting is expected about the end of April. Russia counts on overwhelming the Japanese by numbers and rolling them back through Korea.

**FORTIFYING ANTUNG.**  
Tokio, March 7.—The Russians are reported to be fortifying Antung.

**SQUADRON SEEN.**  
Port Arthur, March 7.—The Japanese squadron was seen from her Friday night. A heavy snow storm is prevailing.

**FORTIFICATIONS WORK.**  
Port Arthur, March 7.—Thousands of coolies are employed in the construction of new fortifications here and at Dalny.

**COUNTRY IMPASSABLE.**  
Chefoo, March 7.—The country between Ping Yang and Chinampas is rendered impassable by the heavy thaw of snow.

**RUSSIANS LOSE HEAVILY.**  
Kronstadt, March 7.—The Russians were victorious in skirmishes with Japanese infantry and cavalry between the Yalu river and Ping Yang, but their losses were heavy.

**JAPANESE ADVANCING.**  
Vladivostok, March 7.—Twenty-five hundred Japanese are advancing to Alusan with the intention of ultimately reaching Hun Chun to threaten the Russian flank. Fifteen hundred Russians are advancing Koyong to checkmate the movement.

**VLADIVOSTOK ATTACKED.**  
Vladivostok, March 7.—Five Japanese battleships and two cruisers bombarded the town and shore from a range of a mile and a half. The bombardment lasted for fifty-five minutes, resulting in damage to the town. Five Russians were killed and two hundred wounded.

The Lydite shells failed to explode. The batteries in the forts did not respond. The Japanese vessels were covered with ice.

### EMMA SQUARE CONCERT.

The band will play the following selections at a concert to be given in Emma Square this evening, beginning at 7:30 o'clock:

**PART I.**  
Overture—"Isabella" ..... Suspe  
Hallel—"Pilgrims of the Night" Liddle  
Selection—"The Martyrs" ..... Donizetti  
Vocal—"By request—Four new American Songs.  
**PART II.**  
Suite—"Coppelia" ..... Delibes  
Intermezzo—"Dixie Land" ..... Haines  
Waltz—"The Source" ..... Waldteufel  
Polka—"Black and Red" ..... Coote  
"The Star Spangled Banner."

### BUY A HOME.

We have for sale on easy terms several residences in Honolulu, which it will pay you to investigate. Among them is an acre and a half near the Rapid Transit at Punahou for \$1600; an acre and a third, with dwelling, on Kanehameha Road near King street for \$4500; a quarter of an acre, with dwelling, on Azilian street Punahou for \$2,500; and a quarter of an acre with cottage at Kalihl near Rapid Transit for \$2,000. Any of these will be sold on monthly installments, if preferred. Further information furnished at the office of the Pioneer Building and Loan Association, 122 King street. A. V. Gear, secretary.

### PASSENGERS BOOKED.

For San Francisco, per S. S. Sonoma, March 8.—Mrs. Stack, Miss Taft, Simon Davis, J. B. Williamson, Miss Etta Baldwin, Mr. and Mrs. S. H. Boardman, William W. Bierce and wife, Miss Grozeller, Dr. S. D. Presbrey, Miss C. B. Presbrey, Miss F. B. Presbrey, W. J. Lerch, H. C. Dennison, Mrs. Robert Smith, Chalmers Graham, Mr. and Mrs. C. W. Kellogg, Mr. and Mrs. K. E. Morgan, W. S. Reid, wife and son; Mr. Borriman, Mr. Mockmeyer, Mr. and Mrs. West, Mrs. Norrenburg, Clay Linch, A. Blom, Mrs. William Donnelly, Philip Miller.

Two white men, supposed to have unlawfully interested themselves in the unwilling departure of S. Adachi for Japan, necessitating Marshal Hendry's extradition trip, were arrested by the Federal authorities on Saturday.

Read "Wants" on page 6.



## Eye Base

How many are so fortunate as to have perfect eye base?

Very few, judging from the scowling brows and weak, inflamed eyes one sees daily and hourly.

Yet this ease which may be unknown to you, can be obtained by having the exact amount of glass help, properly adjusted.

Our examinations are thorough. We fit glasses—the right glasses—to all defects of vision, and guarantee such eye ease as you have never before known.

## A. N. SANFORD,

OPTICIAN.  
BOSTON BUILDING, FORT STREET, Over May & Co.  
Eyesight Testing and Spectacle Fitting are our Exclusive Work.

## TO NUUANU PROPERTY OWNERS.

We will do your sewer connections for Thirty Cents a Foot. See us on the work.

## Lord & Belser,

GENERAL CONTRACTORS.  
**Bamboo Furniture**

—AND—  
PICTURE FRAMES.  
All kinds of fancy work made to order.

### S. SAIKI.

536 South Beretania St., nr. Punchbowl

### T. Masuda

Hats cleaned; Clothes cleaned and dyed.  
Employment Office.

### 1416 FORT ST. NEAR VINEYARD.

**Yokomizo & Kashiwabara,**  
Contractors as follows: Stone and cement work of all kinds.  
Firewood and second-hand lumber.  
Macadam, sands and all kinds of solid materials for fillings.  
Office Emma Hall, cor. Nuuanu and Beretania St.; Tel. Blue 1211.

P. O. Box 961. Tel. White 931.

### SANG CHAN,

MERCHANT TAILOR.  
HOTEL STREET, HONOLULU.  
Suits made to order in the latest styles. Perfect fit guaranteed. Clothing cleaned, dyed and repaired.

P. O. Box 990. Tel. Blue 546.  
PAUANI STREET, NEAR RIVER.

Get our prices for fine furniture first. Beautiful for a holiday gift.

### River Mill Co.

### PASSENGERS ARRIVED.

From Maui ports, per str. Claudine, March 6.—C. D. Lufkin and wife, J. G. Smith, R. Pursey, Miss Dickey, Miss Wilcox, Mrs. Herbert, A. Louis, Rev. A. H. R. Viera, wife and two children, Mrs. L. Halaualani, Miss M. A. Griffiths, Tam Yick and wife, Mrs. I. Souza and three children, Chun See, A. Young, Hong Kee, Tan Sing, Wong See, Ah See, Ah Tong, Mrs. Alencastro, Mrs. Tellos, Mrs. Drummond, C. H. Dickey, W. H. Cornwell, Jr., S. M. Kamakau, E. C. Campbell, Chas. Tetzel, H. Hineke, L. M. Vetlesen, D. H. Kahaulaile.

From Kauai ports, per str. W. G. Hall, March 6.—D. P. R. Isenberg, Mrs. A. S. Wilcox, A. S. Wilcox, H. G. Isenberg, C. M. Lovested, P. C. Buzzell, Capt. Niblack, U. S. N.; Mrs. O'Hara, H. E. Pickett, Wong Feat, G. N. Wilcox, W. Wenrich, F. J. Heger, Lieut. J. R. Slattery, U. S. N., and 19 deck.

### BOOKED TO ARRIVE.

From San Francisco, per S. S. Sierra, March 9.—J. H. Lehman and wife, Miss Wright, Miss Cummins, L. H. Ross and wife, G. L. Grimes, Miss M. A. Williams, Dixwell Hewitt and wife, J. Gilman, Mrs. Campbell, Master Campbell, Miss Cullender, Miss Heppner, Master Lenehan, Master Alan Nichols, Mrs. McNewton, W. H. Kilpatrick and wife, Misses Kilpatrick, L. H. McFadden, Mr. Appleton and wife, Mrs. Jewell, Miss Jewel, Mr. Risley and wife, Mrs. High, Miss High, Mrs. Morez, J. A. Wood, Miss Wood, Mr. Morgan and wife, C. Duroi, Mr. Lishman, S. Rebbel and wife, Alexander Young, W. G. Moore, Rev. C. C. Tiffany and valet, Miss M. Sturbud, Mrs. S. H. Clark, Mrs. C. T. Littlejohn and two children, C. J. Hutchins, Mrs. Newell, Miss Newell, Miss Hutchins, Miss Ida Quinton, C. F. Lynch, H. C. Brum, Mr. Dully and wife.

Weekly Edition of the Bulletin, \$1 per year.

## OUR LATEST

## The "Korowa" Table and Hanging Lamp of 100 c.p.

Consumes ordinary kerosene oil and is absolutely safe; two quarts of oil will last forty hours. By far the cheapest lamp on the market. It makes a beautiful reading lamp, giving out a soft, bright and steady light with no heat or noise.

No valves, needles or tips to change, so simple that a child can operate them without any trouble.

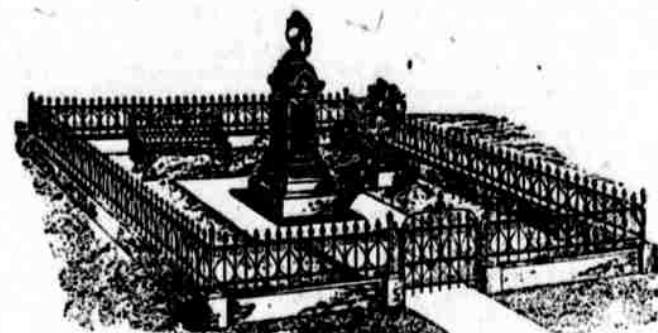
The lamp can be turned up or down, as required. Can be seen working in our store. For further particulars inquire of

## Washington Light Co., Sole Agents,

143 Merchant Street

C. W. Macfarlane, Mgr.

## Granite and Bronze Monuments At Prices To Suit.



Hawaiian Iron Fence and Monument Works, Ltd.  
176-180 KING STREET.

## NOW WE'RE OFF?

We are prepared to supply the People of Honolulu with Freshest of

## ISLAND MEATS

Also, GARDEN PRODUCE of all kinds. BUTTER, EGGS, CHICKENS, TURKEYS, SUCKLING PIGS, BACON, HAM, in fact everything that

## A FIRST CLASS MARKET is called upon to furnish.

## The ISLAND MEAT CO.,

HERBERT E. GARES, Manager, FORT ST., OPP. LOVE BLDG.  
HIND, ROLPH & CO., AGENTS.

## Territory Harness Shop,

TURF GOODS HARNESS HOSPITAL HORSE BOOTS

Practical, Experienced and Up-To-Date Manufacturers.

TELEPHONE 35.

### BISMARCK STABLE CO., LTD.

WAILUKU, MAUI.

TELEPHONE 226.

### BISMARCK BRANCH STABLES

LAHAINA, MAUI.

Hacks, Carriages, Buggies and Saddle Horses on short notice.

Carriages meet all steamers. Competent drivers, reasonable rates, new vehicles and live stock.

### THE CLUB STABLES,

618 FORT STREET.

### NOTICE TO DOCTORS.

Hacks all night; Main 109.  
Hacks Nos. 3, 7, 24, 32, 53, 87, 124 and 182.

Stable 'Phone: 109 Main.  
Hack-stand 'Phone: 319 and 32.  
C. H. BELLINA.

### BUILDING MATERIALS

OF ALL KINDS.

Dealers in Lumber and Coal  
ALLEN & ROBINSON,  
Queen St., Honolulu.

Weekly Edition of the Bulletin, \$1 per year.

## \$50.00 for \$1.00

AT THE

## Ladysmith Shooting Gallery,

TOP OF PUNCHBOWL.





## The Knickerbocker Shirt Waists Styles 1904

Favorites in New York—favorites in Honolulu. These are correct in style, of perfect fit and well made. Our assortment is wonderfully extensive and handsome. All the leading fine materials used in their making, in pure white, dainty colors and black and white.

Full line of sizes from 32 to 44.

Prices lower than ever before on first styles.

**At \$1.25**

Fine percale waist in black and white; small neat figures.

**At \$1.25**

Fancy stripes in red, pink and blue.

**At \$1.50**

Fine white lawn with fancy plaited front.

**At \$1.75**

Fine lawn with all-over embroidered front.

**At \$2.00**

Fine lawn handsomely trimmed with embroidery and plaits.

**At \$2.25**

Fine broadened mercerized material, plaited front.

**At \$3.00**

Really swell waist made of pure white fine linen, plaited front and trimmed with pearl buttons.

### Some Attractive New Belts

In Silk and Leather

The popular new soft leather belts in white, brown, tan and dove grey. New silk belts in black and white. All these in handsome assortment.

### Indian Beads

New lot just opened in gold, silver and steel. Also silver and gold-lined beads.

### New Embroideries

Persian, Applique and Medallion Trimmings

### Lace Collars and Lace Stocks

These will engage your attention as soon as you see them—the line is so new, so complete and so handsome; many unique designs. Also black spangle collars and stocks.

**N. S. Sachs Dry Goods Company, Ltd.**

## Mattresses

Made to order.

You see just what goes into them when you have them made here. We make our mattresses on the premises at our store. You select the hair and we have sample mattresses to show the ticking and workmanship. We make them to your order and ready to suggest the best kinds to those who are unfamiliar with mattress construction.

**PORTER FURNITURE COMPANY,**  
YOUNG BUILDING, HOTEL STREET.

### DO YOU WANT A FINE, DELICIOUS

**GINGER ALE, LEMON SODA,  
ROOT BEER,  
CREAM SODA or ORANGE CIDER?**

THEN RING UP TELEPHONE MAIN 71

Our goods are known everywhere as being the most palatable and the best manufactured in the Territory

**Consolidated Soda Water Works Co.,**  
LIMITED. Tel. Main 71

### WHY THE

**U. S. Washing Machine Is the Best.**

### BECAUSE

It is the only Rotary Washer that has revolving steel ball gearing, reducing the friction and thus making the machine light running and almost noiseless. The gear wheel turns right or left, the pin wheel or dasher reverses automatically, turning the clothes back and forth through the hot soap suds and cleaning them without rubbing them to pieces. Over One Hundred Thousand in use. The U. S. Machine have no equal because they wash clean.

**THEO. H. DAVIES & Co., Limited,**

SOLE AGENTS FOR HAWAIIAN ISLANDS.

## CONVENTION FOR HILO

There were twenty present at the meeting of the Territorial Central Committee in headquarters Saturday night. J. M. Fisher presided during the early part of the meeting. Chairman Crabbe not arriving until later.

### Wanted Old Convention.

The matter of holding a convention for the choice of delegates to the National Convention in Chicago was brought up first of all. In order to get the matter before the meeting, Mr. Gilman moved that the old convention which adjourned sine die, be called by the Central Committee to decide on delegates to the National Convention. He stated that he had heard talk of a contesting delegation in case a new convention should not be called for the purpose, but the National Committee had given the assurance that he would make no contest whatever. This being the case, there would be no trouble in seating delegates chosen by the old convention.

Money was the great thing to be thought of at the present time. New primaries would cost several thousand dollars and money was very hard to secure.

Senator Achi wanted to know where the money proposition came in. He had never heard of primaries costing any money. If any money had been dealt out for the carrying on of primaries, his precinct in the Fifth District had certainly seen none of it.

### Some Views.

Mr. Keen said he was doubtful as to the legality of this action. The functions of the old convention ended with the nomination of a delegate and legislators. Mr. Achi said that by calling the old convention, there would be a number of Home Rulers in line to vote for Republican delegates for some of the members had gone over to the enemy since the sitting nearly two years ago. Under the circumstances, he had his doubts as to the seating of the delegates from Hawaii in the convention. Mr. Watkins contended that, if the proper credentials were given to the delegates by the Territorial Central Committee, they certainly would be seated. Mr. Gilman said the principal difficulty was in getting men who would be willing to pay their own way to the convention. Mr. Fisher said he was of the same opinion. The committee could settle any technical objections.

### No Cost Attached.

Mr. Aylett said there should be a new convention. The primaries would not cost anything, statements to the contrary notwithstanding. He did not want to take any chances whatever. Mr. Achi again made the statement that there would be no cost attached to the carrying on of the primaries and Chairman Crabbe took exception, saying that the precinct clubs had got fifty and a hundred dollars apiece the last time. Mr. Achi reiterated the statement that he did not see any of this money in his precinct. If the committee wished to save expense, where was the necessity of calling the old convention at all. The chairman might appoint six delegates to go to the convention. This action would be just as legal as the calling of the old convention.

### Outsiders Speak.

The committeemen having expressed their opinions, outsiders were given a chance to get in a word and J. C. Cohen made the statement that there were more people about town who wanted to go to the convention than the committee had any idea of, and they were all willing to pay their own expenses. If the old convention was called upon to act in the matter, there would certainly be a contesting delegation in Chicago at the time of the convention and they would very probably be seated. He had knowledge of three cases where the choice of the regular party organization had been turned down and the opposing delegations seated on account of some irregularities that were brought before the convention.

### Rules Require It.

Mr. Stewart said that the rules of the party required that a new convention be called. If a contesting delegation did not go from here, in the event of the old convention acting, there certainly would go forward a protest. He thereupon read the rules of the party bearing on the point.

### Change of Mind.

Messrs. McCandless and Fisher thereupon changed their minds as to the matter of a convention and decided that new primaries should be called. There was but very little more discussion on the point and Mr. Fisher himself moved that the chairman be authorized to call the primaries. The motion carried unanimously and Chairman Crabbe stated that he would call the primaries for March 28th. The date of the convention would be announced later on.

The place for holding the convention was next taken up. Chairman Crabbe stated that the party had virtually pledged itself to hold the next convention in Hilo and it was incumbent upon the committee to name that place. Mr. Achi said Walluku was the more convenient place although he would like to see it in Honolulu. Hilo was finally chosen as the place.

### Committee Reports.

The report of the special committee of five appointed to look into the matter of the status of members of the Executive Committee holding proxies, was next taken up and Chairman Fisher stated that he had left the report at home. However, he would substitute therefore a copy of the same from one of the newspapers and would turn in the original copy later. Chairman Crabbe stated that he was disposed to rule the report out of order, whereupon Mr. Fisher stated that if neces-

sary he would get the committee to sign the substitute report. Chairman Crabbe stated that he would make no further objection.

The report, the same that had been presented at the last meeting of the committee, was thereupon read and unanimously adopted. It calls for the removal from the councils of the Executive Committee of Messrs. Gilman (proxy for Baldwin, of Maui), Hoogs (proxy for McStocker, of Oahu), and Wm. Aylett (proxy for Parker, of Hawaii).

After the adoption of the resolution, Mr. Fisher explained that the committee in its deliberations had been governed by nothing but the law in the case. The rules of the party were plain in the matter and the committee could not act otherwise.

### Amendment Introduced.

Mr. Watkins introduced the following amendment to the rules and regulations of the party, previous notice of which he had already given:

"Any member of the Executive Committee absenting himself from or not residing at or near Honolulu, Oahu, shall give his proxy in writing to a member of the Territorial Central Committee or member of any Republican precinct club, and in the event of his failure to give such proxy, the chairman shall appoint a member of the Territorial Central Committee to act until the return of such absentee member to Honolulu. If there are other members of the Executive Committee or Territorial Central Committee in Honolulu representing the district of the absentee member, then such appointee shall be chosen from their number upon their nomination. Provided always, however, that no member of the Territorial Central Committee or any member of any Republican precinct club shall hold more than one proxy for the Executive Committee, nor shall any member of the Executive Committee hold the proxy of another member thereof or be appointed to act for him during his absence."

Mr. Lane introduced an amendment to the amendment, of similar tenor, but limiting the membership of the committee to members of the Central Committee and the old convention. This with the amendment of Mr. Watkins were finally referred to a committee consisting of Messrs. Fisher, Watkins and Lane.

Mr. Lane introduced the following resolution, which was referred to the same committee:

Resolved, That it is not good policy for any committee of the Republican party to indorse any person for an office held by another, unless the person in office shall first, upon a fair hearing, having been condemned by such committee.

### Acts Endorsed.

E. G. Keen introduced the following resolution, which was adopted:

"That all the acts and proceedings of the Executive Committee of the Republican Central Committee up to and including March 5th be and hereby is confirmed."

### For Roosevelt.

The following resolution by Mr. Lane was unanimously adopted:

Resolved, That it is the sense of this committee, that all delegates and alternates chosen from this Territory to the Republican National Convention should be men who favor the nomination of President Roosevelt, and that the Territorial Convention should receive from each of such delegates and alternates upon his nomination and before his election a pledge in writing, that, if elected, he will work earnestly for the nomination of the President.

Mrs. Mabel Wing Castle will give a talk on "Modern Short Story Writing," illustrated by manuscript reading of Hawaiian stories, before the Kiloheana Art League on Saturday afternoon next at 3 o'clock in the League rooms.

No sham about the hot lunch at the Sham Rock Saloon, Nuuanu St.

**Bartlett's Water**

The finest table and medicinal water known. Delicious for lemonades.

Sold by all druggists or by

**LOVEJOY & CO., Agents.**

Telephone Main, 308.

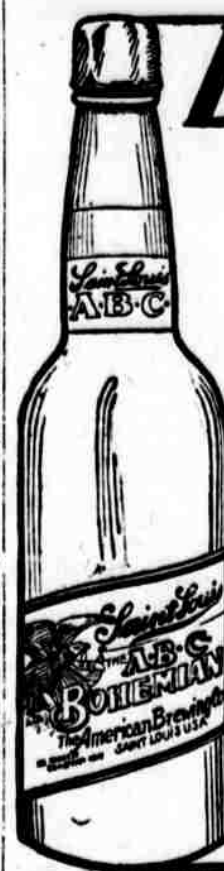
**Union Express Co., Ltd., 63 Queen Street,**

Having baggage contracts with the following Steamship Co.'s lines:  
Oceanic Steamship Co. Pacific Mail Steamship Co.  
Occidental & Oriental Steamship Co.

We check your outgoing baggage at your homes, saving you the trouble and annoyance of checking on the wharf. Incoming baggage checked on steamers of above companies and delivered with quickness and dispatch at your homes.  
TELEPHONE MAIN 86.

**J. LANDO**

Is now established in the Oregon Block, Hotel Street, where he will be pleased to welcome his friends. His stock of Gents' Furnishings is complete and he will assist in selling his goods by making the prices fit the times.



## Beer must be pure

to be good; must be brewed only from the best materials; must be scientifically filtered, thoroughly aged, bottled at the brewery and sterilized after bottling. It must always be shipped in the bottle, for beer shipped in bulk and bottled at supply depots is sure to absorb impurities.

The Famous **A.B.C. Beers**

are guaranteed absolutely pure and free from all preservatives and chemicals

used in other brands of bottled beers, which are injurious to the health. They are never sold in bulk—are the only beers bottled exclusively at the brewery. Made from the finest Bohemian hops, they are aged for months, then filtered and piped direct from the brewery vaults into bottles by means of hermetically closed filling machines. This prevents the beer from coming in contact with the outside air, and insures absolute freedom from bacteria. It also preserves its natural effervescence and zest.

### Six Points of A.B.C. Excellence

- 1—Purity. We absolutely guarantee the purity of all our beers.
- 2—Flavor. This is the distinctive, individual characteristic of any beverage, peculiar to it alone, and is the quality that has made A. B. C. Bohemian Beer famous.
- 3—Brilliance. Clearness and polish, proving perfect brewing and fermentation.
- 4—Clean Taste. No disagreeable foreign or aftertaste, proving scrupulous cleanliness during brewing process.
- 5—Keeping Quality. The most trying test for bottled beer. A. B. C. Bohemian will keep and retain all of its qualities under varying conditions.
- 6—Solid, Creamy Foam, denoting body age and excellence of brewing materials.

**W. C. PEACOCK & CO., Wholesale Dealers**

P. O. Box 428 Telephone 4

HONOLULU, H. I.

### MAUI JURIES DRAWN

Walluku, March 5.—Jurors for the March term of the Second Circuit Court to convene at Walluku Court House next Wednesday morning have already started arriving in town. It may be noticed that the name of C. H. G. Braun appears in both juror lists. This is done because the Commissioners furnished to the clerk two such names, yet there is only one such person in the entire Second Judicial Circuit.

Among the trial jurors may be found the name of C. Kole Konohe Hani, which is intended for Chas. Kelekomau Hani, principal of the Nahiku school, and some of his friends seem to think that Charles will spend many waking nights to find out how on earth the Jury Commissioners got his name twisted around so as not to be recognized even by the owner. List of grand and trial jurors follows:

Grand Jurors—C. H. G. Braun, Geo. O. Cooper, A. G. Dickins, Manuel Enos, Manuel Faustino, W. A. Hardy, Wm. Kauwenaele, W. B. Keane, E. R. Lindsey, H. A. Peterson, W. F. Pogue, Henry Reuter, Hugh Robertson, A. J. Rodriguez, Geo. Arripp, W. Von Seggern, L. Von Tempisky, J. J. Walsh.  
Trial Jurors—Wm. Ayres, Henry Parker, Geo. H. Baldwin, Frank F. Baldwin, C. H. G. Braun, Chas. Cockett, C. B. Cockett, Manuel Duto, John de Freitas, Guy S. Goodness, Henry Hoewaa, C. Kole Konohe Hani, John V. Kerr, D. H. Makekau, W. L. Mossman, Freddie Robock, John W. Rickard, Henry Saffery, Geo. B. Schrader, W. E. Shaw, Frank Sommerfeld, Geo. White, J. M. Whitford, A. J. Wilson.

### WILCOX IN FISH INDUSTRY.

Walluku, March 5.—Captain Chas. Wilcox is at present at Kalepolepo, Kihel, Maui, with his family. He came to Walluku twice this week to get medicine for a sick child. Mr. Wilcox will go into the fishing industry and it is expected he will flood the Kihel and Walluku markets with all kinds of fish.

A meeting of the principals and chorus of "Pirates of Penzance" will be held at the home of Princess Kawana-nakoa, Pensacola street, on Tuesday evening next. The parts will then be distributed.

### THE LIGHT OF THE HOME

SHOULD BE THE

## Incandescent Light

The incandescent electric light in the home certainly serves to increase the comfort of the occupants.

For general illumination a wide choice of electrically lighted ceiling pendants, side brackets, piano or decorative lamps is presented, or the lamps may be so disposed that their glow will adequately light the room while they themselves are hidden from direct view.

Call at our office for estimate, or telephone.

**Hawaiian Electric Company, Limited.**

OFFICE KING STREET, NEAR ALAKEA.

## California Rose Creamery Butter

Is the best—Now 35c per pound. Less the usual 5 per cent. Quality guaranteed the best. Delivered hard and cold on ice.

CALIFORNIA DAIRY BUTTER AT 30c per pound.

**Henry May & Co., Ltd.,**

RETAIL 22

TELEPHONES.

WHOLESALE 92.

The fresh Spring churning just arrived in the "Alameda" of the famous

**Crystal Springs Butter**  
At 35c the lb.

**White Clover Butter**  
At 30c the lb.

**Metropolitan Meat Company,**  
Tel. Main 45 Limited. Tel. Main 45

Nature freshens up outdoors in the spring time. The good housekeeper follows suit indoors. Here are some helps:

### Linoleum

Large Shipment. Inlaid and Printed. All Grades.

### Window Shades

All Sizes.

Don't overlook our REPAIR and UPHOLSTERING DEPARTMENTS. It is our aim to keep a Furniture Stock COMPLETE in all lines.

**J. HOPP & CO.,**  
KING AND BETHEL STREETS, 'PHONE MAIN 111.

### Our Rug Department

Is Complete in every detail.

**Wicker Chairs, Rockers and Settees**  
A Large Assortment.



# EVENING BULLETIN

Published Every Day Except Sunday,  
at 120 King Street, Honolulu,  
T. H., by the

BULLETIN PUBLISHING CO., LTD.  
WALLACE R. FARRINGTON, Editor

Entered at the Postoffice at Honolulu  
as second-class matter.

## SUBSCRIPTION RATES.

Evening Bulletin,  
Per month, anywhere in U. S. . . . \$1.75  
Per quarter, anywhere in U. S. . . . 5.00  
Per year, anywhere in U. S. . . . 18.00  
Per year, postpaid, foreign . . . 21.00  
Weekly Bulletin.

Six months . . . . . \$10.00  
Per year, anywhere in U. S. . . . 18.00  
Per year, postpaid, foreign . . . 21.00  
Telephone . . . . . 256  
Postoffice Box . . . . . 718

MONDAY, MARCH 7, 1904.

Roosevelt can mark up six delegates  
from Hawaii on the right side at the  
National Convention.

The less money Republicans use in  
the primaries the more the result will  
tally with the real sentiment of rank  
and file.

The morning paper stratoquist  
should have its lid fastened down  
more securely. At the present rate of  
fermentation it will blow up before  
Port Arthur.

Russian warships did exceedingly  
well to cruise in northern waters when  
the Japanese fleet was so close upon  
Vladivostok. Russian naval com-  
manders have learned one lesson and  
will have themselves to blame if  
caught napping again.

"Russia hopes to overwhelm Japan  
by superior force."—Advertiser strat-  
oquist.

This is important if true. The gen-  
eral supposition has been that Japan  
would succumb under the weight of the  
morning paper's stratoquist. Possibly  
the stratoquist is aware that the Dutch  
have taken Holland.

Dreyfus' success in securing a re-  
vision of his trial is a reminder that  
Justice sometimes moves with halting  
steps but cannot forever be brought to  
a standstill even in France. Hawaii  
has been furnished a marked example  
of a court as prejudiced as any Dreyfus  
ever met. If justice is not eventually  
secured American justice and liberty  
will become a misnomer in Hawaii.

Characterizing the rest of the Ad-  
ministration as an aggregation of kids,  
the Maui News says, "Now we have  
Kepoikai as a sheet anchor." This  
was doubtless meant as a compliment,  
but the Territory is more in need of  
energetic motive-power just at the  
present time. It is anchored beyond a  
doubt. The call is for a pilot who  
can up anchor and carry the ship of  
state through the reefs to calm, work-  
ing waters.

Bulletin recommendations were given  
the unanimously favorable action  
deserved by the Republican Com-  
mittee. There was no logical alternative  
to the proposal for primaries and a new  
convention to name our National Con-  
vention delegation. The selection of  
Hilo as the convention city was a very  
proper recognition of the Territory's  
second city. There is no doubt that the  
progressive citizens of Hilo will see to  
it that the convention is properly cared  
for and the best men put to the front.

The Maui News refers to California  
experience as applied to Hawaiian af-  
airs. This is sometimes good but local  
experience in which the News partici-  
pated is better. The News has taken  
part in three political campaigns.  
In two it advocated a split ticket and  
lost. In one, it was whipped into line  
for a straight ticket and the Republi-  
cans won. The second Territorial cam-  
paign when the Republicans of Maui  
got down to business, worked earnestly  
for the straight ticket and elected  
its men all the experience needed to  
size up the signs of the times. Unity  
means victory. The wavering support  
preached by the News means defeat.

The Administration of Governor Car-  
ter's predecessor furnished an exam-  
ple of what constant reversions to  
makeshifts for getting around the law  
will do towards promoting the wel-  
fare of this Territory. The record was  
one of constant friction and the price  
of failure is now being paid in the con-  
ditions that face the present Adminis-  
tration. Governor Carter has started  
out with a policy of holding strictly  
to legal methods and working with  
the people. In other words, promoting  
honest Americanism which recognizes  
the rights of the people and the limi-  
tations of executive authority under  
the law. Acting upon this principle  
the Governor has inspired confidence.  
He will hold it by sticking to his text  
in the present crisis.

The report of Hilo agriculturalists  
on the pineapple prospects is highly  
reassuring to those in search of a new  
industry that will fit Hawaii's condi-  
tions of climate and labor. There is  
every reason why this industry should  
prove one of first importance in these  
islands and once developed give the  
much discussed small farmer a field  
for operations in which he can work  
without serious disadvantage in pro-  
duction and market. Pineapple grow-  
ing and pineapple canning presents no

labor that the white man cannot per-  
form. This is what the Territory  
claims to be looking for, and as a  
pure matter of business and sound  
civil development the opportunities  
presented should not be cast aside.

The attitude of the Manchurian popu-  
lation toward the Russians is sensibly  
detailed by a writer in the Shanghai  
Times. He explains Russia's ability  
to secure the cooperation of a naturally  
hostile people in this wise: "Although  
the bulk of the native population of  
Manchuria detests the Muscovite and  
favors the Japanese, there are many  
thousands and even tens of thousands  
of Chinese who, so long as the Peking  
government remains neutral will be  
eager to earn the huge profits war al-  
ways offers. Thus, supposing Russian  
commanders were empowered to hire  
native carts at double rates and to  
pay so much down for every cart  
killed or injured, tens of thousands of  
desperate characters would come for-  
ward and there would be plenty of  
native contractors to find draft ani-  
mals and wagons. Similarly by ex-  
panding large sums Chinese dealers can  
be found who would accumulate food-  
stuffs by the ten thousand tons at  
points beyond the actual area of active  
warfare; for there are Chinese who  
would be willing to go to the gates of  
hell and beyond providing the game is  
worth the candle and that spot cash is  
to be had." Having no country to in-  
spire a lurking suspicion of patriotism,  
the average Chinese accepts the  
Almighty dollar as his God and fol-  
lows wherever it beckons.

## CHALLENGE FAILS TO MOVE JUROR

Edward Mitchell Jones' second trial  
on a charge of murder came on be-  
fore Judge Robinson at 10 o'clock this  
morning.

Acquitted last term of the murder  
of Mrs. Sarah Parmenter, his mother-  
in-law, Jones has now to answer for the  
alleged murder of Linda K. Jones, his  
wife, in August of last year.

Jones, the accused, sat between his  
counsel and a police officer. He seems  
to have aged, somewhat, during his in-  
carceration. The court room was  
crowded with trial jurors and spec-  
tators.

Judge Gear has given up his large  
court room to Judge Robinson during  
the trial of this case, which promises  
to be a very long affair. Gear now oc-  
cupies Robinson's room.

Attorneys A. G. M. Robertson and  
J. J. Dunne appeared for defendant, as  
at the former trial.  
Deputy Attorney General E. C. Pet-  
ers, assisted by M. F. Prosser, recently  
appointed a deputy in the Attorney  
General's department, represents the  
Territory; Col. J. W. Jones, stenog-  
rapher; M. T. Simonton, clerk; C.  
Quinn, bailiff.

The following twelve men were called  
to the box to be examined on their voir  
dire as trial jurors: H. A. Parmelee,  
S. W. Spencer, Wm. Dunbar, W. L.  
Fletcher, J. M. Dowsett, Edward De-  
kun, S. L. Kamakou, Jos. F. Clyne, E.  
R. Bivens, Clarence H. Cooke, J. F.  
Soper and J. C. Cohen.

Examination of jurors as to their  
qualifications was made in the order  
named.

At the noon hour, when a recess was  
taken until this afternoon, half of those  
first called had been excused from ser-  
vice, as follows: Spencer, Fletcher,  
Dowsett, Dekun, Clyne and Kamakou.  
As these were challenged for cause  
they were excused for the term; their  
services will not again be required.

With the places of those excused  
filled as soon as a seat in the box was  
vacated for cause, the jury, at 12  
o'clock, stood as follows: H. A. Parme-  
lee, E. R. Bivens, C. H. Cooke, J. F.  
Soper, J. C. Cohen, Wm. Dunbar, J. J.  
Egan, J. C. Lane, John Coffey, J. D.  
Dougherty, Albert Lucas and Samuel  
Nowlein.

Bivens was under examination when  
recess was taken.

Attorney General Peters, addressing  
the original twelve, speaking of the al-  
leged shooting to death of Mrs. Linda  
K. Jones by the defendant, said "These  
are the facts of the case, gentlemen."

Robertson, for defendant, objected to  
Peters making any such statement.

"You mean the alleged facts," said  
he, addressing Peters.

Peters had said what he had said  
and left the matter to the court. On  
the court's advice, Peters modified his  
statement and used the term "alleged  
facts."

Parmelee was first examined. Pet-  
ers occupied over half an hour inter-  
rogating the juror as to his qualifica-  
tions to try the case.

"How long have you resided in the  
Islands?"

"Twenty-six years."

"Are you married?"

"I am."

"Is your present wife the only wife  
you have had?"

"Yes."

"Has your wife ever instituted di-  
vorce proceedings against you, or have  
you ever brought such proceedings  
against your wife?"

"No" (with emphasis).

"Have you any conscientious scruples  
against the infliction of the death pen-  
alty in a proper case?"

"I have not."

Such were some of the questions  
asked all who were examined, as asked  
and answered in Parmelee's case.

Parmelee stated that he had known  
defendant's father in a business way.  
He knew members of the Jones fam-  
ily much in the same manner. Did not  
know defendant. Had known the Par-

menters and the Mrs. Sarah Parmenter  
who was shot. The names "Parmenter"  
and "Parmelee" had sometimes  
become mixed in the mail. Hence the  
acquaintance.

Parmelee said he had read of the  
shooting of Mrs. Parmenter and Mrs.  
Jones and had formed an opinion as to  
the guilt or innocence of the accused.  
It would take evidence to remove this  
opinion, but, at the same time, if sworn  
as a juror, he would reject any opinion  
he might now have and decide the  
case on the evidence.

On examination by Robertson, for  
defendant, Parmelee answered that if  
sufficient evidence to remove his pre-  
sent opinion was not forthcoming at the  
trial he would retain the opinion he  
now possessed.

Hereupon Robertson challenged the  
juror for cause, saying he could not  
act impartially.

Peters denied the challenge, holding  
that the juror had modified his state-  
ment as to an opinion by saying that  
he would reject it altogether and de-  
cide according to the evidence.

"Supposing there were no evidence  
in the case," asked Judge Robinson of  
the juror, "what then?"

"Then I'd know nothing of the case,"  
was the reply. Judge Robinson over-  
ruled Robertson's challenge and Parme-  
lee remained in the box.

Dunbar said he had been in Hono-  
lulu during the time of the alleged  
murder and had seen the newspapers.  
He had formed no opinion, however.  
In fact, he had read little or nothing of  
the case, merely glancing at the news-  
paper articles. All he had gathered  
from what his eyes had seen in the  
press was that Mrs. Jones was dead  
and that somebody had shot her.

Dunbar said he did not know that  
Jones was accused of killing his wife  
until he saw it on a court bulletin an-  
nouncing the day of trial, posted out-  
side the court-room door.

Kamakou was asked if he believed  
in the death penalty and answered in  
the affirmative. Asked if he knew  
what was meant by the term, he an-  
swered that it meant "make" (death).  
Further questions apparently muddled  
him for his answers failed to agree and  
he was excused.

But two names remain on the pre-  
sent panel, to be called, and it is prob-  
able that a special venire for fifty  
names will be ordered issued this af-  
ternoon, returnable tomorrow or Wed-  
nesday morning.

## INSPECTIONS MADE.

Reports of officers under the Board  
of Health for the month of February  
were as follows:

City Physician—32 patients visited,  
184 patients treated at office and 110  
prescriptions filled.

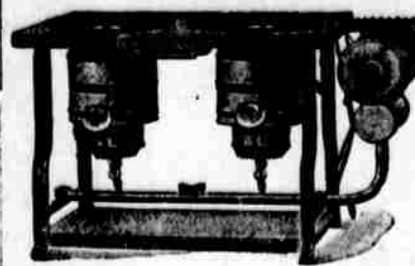
Food Commissioner—80 samples of  
milk tested, 21 samples of food tested,  
1 chemical analysis made and 14 adul-  
terations detected.

Bacteriologist—4 post mortem exam-  
inations made.

Plumbing Inspector—40 plans filed,  
40 permits issued, 181 inspections  
made, 38 final certificates issued, and  
15 sewerage connections approved.

Meat and Fish Inspectors—2,263 ani-  
mals examined, 188 fiske livers, 5 ex-  
amined for tuberculosis, 203,825 fish  
examined and 1,392 condemned.

Weekly Edition of the Bulletin, \$1  
per year



The Latest and Best  
**Perfection Blue Flame  
OIL STOVES**  
Absolutely Safe, Reliable

STANDARD FLOOR DRESSING—The Dust Exterminator; Protects  
Health; Preserves Floors; Saves Labor; Saves Money.  
STANDARD OILER—For applying the above Dressing; the flow of oil  
regulated; economical and labor-saving. Call and examine the above.

**Pacific Hardware Company, Limited.**  
Fort and Merchant Streets

## HARROLD'S - HOOF - OINTMENT

Never Fails!

Best known remedy for  
BRITTLE and SHELLY FEET, QUARTER CRACK,  
THRUSH, CRACKED HEELS, FEVERISH FEET,  
CONTRACTION and ALL FOOT AILMENTS  
Guaranteed to give best satisfaction. Try a tin and be convinced.

Also carry in stock a fresh line of  
GENUINE CHAMOIS SKINS, CUBIAN CARRIAGE  
SPONGES,  
BOSTON HARNESS SOAP and DRESSINGS.

**Schuman Carriage Co.,**  
Limited  
YOUNG BUILDING

ASK YOUR GROCER FOR  
LEWIN-MEYER CO.'S  
**'Palace and Epicurean Goods.'**

Represented by  
**E. J. Walker.**

It's a Good Sign

If it's painted by  
**S. STEPHENSON,**  
Sign Shop, King Street.

**THE BULLETIN. 75c per month**

The first care of the smoker, whether he  
is on business or pleasure bent, is to make  
sure that his supply of cigars is sufficient.  
If they run out everything goes wrong.  
The first care of the smoker who has a  
due regard for his health should be that  
his cigars are.

**General Arthur  
Cigars.**

No man can expect to have a clear head,  
a steady hand and good digestion who  
habitually smokes strong, imported cigars.  
The General Arthur has the true, rich,  
perfect Havana flavor, but it is mild and  
benign—it gives you satisfaction without  
injurious results.

**GUNST-EAKIN CIGAR CO., Agents.**  
KERRS, WERTHEIM & SCHIFFER, Manufacturers.

## FAMOUS FILIPINO SCOUTS

(Continued from Page 1.)  
parts to different islands of the Philip-  
pines. All three divisions saw active  
service. One part was stationed on  
the island of Leyte, where it took an  
active part in quelling the Leyte insur-  
rection. Some companies were station-  
ed on Samar and participated in  
General Smith's famous campaign on  
that island. Finally, one part of the  
regiment was stationed on Mindanao,  
where some fighting was done.  
Last Active Service.

The last active service seen was  
last April, when two companies of this  
regiment were sent to Suragao, a town  
on Mindanao, to help out the civil au-  
thorities in their fight with the la-  
drones who had at that time become  
exceedingly troublesome. They had  
sacked the constabulary post and were  
very strong. The two companies of  
the 11th together with two compa-  
nies of the 29th U. S. Infantry suc-  
ceeded in destroying or capturing the  
bands which infested the place, and  
restored peace in that part of the is-  
land.

The companies remained at Suragao  
from April 1 until the latter part of  
July, 1903. Since that time, the re-  
giment was stationed at Manila until its  
departure for home.

To Different Stations.

The regiment will on its arrival on  
the mainland, be split up and sent to  
different stations. The headquarters  
and two battalions are to be sent to  
Fort D. A. Russell. The remainder  
is to be stationed at Washakie, an In-  
dian reservation about 160 miles from  
the railroad. Both these stations are  
in Wyoming.

To Take No Coal.

The Thomas will take no coal in this  
port and will consequently only make  
a short stay. She is scheduled to sail  
for San Francisco at 5 o'clock this af-  
ternoon. The Thomas will take away  
the famous Austrian field pieces which  
for many years past have been one of  
the sights on the Capitol grounds.

Passengers in Thomas.

The full list of passengers on board  
the Thomas is as follows: Capt. Robt.  
Alexander, wife and two children; Dr.  
Ira A. Allen, wife and child; Major R.  
M. Blatchford, Major J. E. Baxter,  
Capt. J. S. Battle, Lieut. J. C. Brady  
and wife, Lieut. C. D. Buck, Lieut. H.  
T. Bull, Mr. Felipe Bustos, Major F.  
DeL. Carrington, Capt. S. G. Chiles,  
Lieut. N. E. Cook, Lieut. O. R. Cole,  
Mr. John L. Clem, O. F. Campbell,  
Lieut. F. R. de Funak Jr., Lieut. E.  
Dworak, Lieut. C. E. Delaplane, Lieut.  
L. B. Dannemiller, Lieut. Robert Dick-  
son, Dr. Mills Dennis, Frederick Don-  
nelly, S. E. de Rackin, wife and child;  
J. J. Desky, Mrs. Geo. Denny, A. L.  
Davis, Lieut. C. H. Errington, Miss V.  
Eschridge, Lieut. J. W. Furlow, Lieut.  
C. C. Finch, Lieut. F. H. Farnum,  
Dr. Jno. M. Feeney, F. S. Ferguson,  
E. G. Fischer, Major G. H. G. Gale,  
wife and daughter; Chaplain J. C.  
Granville, Dr. A. P. Goff, T. J. Gor-  
man, W. A. Gourley, Capt. J. W. Hea-  
very, Lieut. Ray Hooper, S. W. Hill,  
Thaddeus Herder, Major J. B. Jack-  
son, Lieut. W. C. Johnson, Lieut. G. L.  
Johnson, Lieut. W. C. Jones, E. V.  
Johnson and wife, Chas. Jarman, Lieut.  
W. King, Lieut. J. C. Kay, Major L. A.  
Lovering, Capt. H. R. Lee and wife,  
Capt. R. E. Longon, Lieut. R. M. Ly-  
on, Miss Virginia Lewis, Dr. M. E.  
Lando, W. W. Leathe, Col. A. L. My-  
er and wife, Lieut. Col. H. P. Mc-  
Cain, Capt. M. L. McGrew, Lieut. E.  
A. Macklin, wife and child; Lieut. E.  
A. Myer, Lieut. S. T. Mackall, Lieut.  
Geo. McCue, Mrs. J. A. Murtagh and  
child, Miss Bessie McNaughton, H. R.  
McClelland, L. Manning, Lieut. F. B.  
Nelson, wife and child; Dr. B. P. Nor-  
vell, W. T. Nolting, Chas. P. New-  
berry, Lieut. W. M. Parker, Nat. Pontz,  
Mrs. Phater and two children, Lieut.  
G. S. Richards, Lieut. F. W. Rowell,  
Lieut. Boss Reese, W. C. M. Ryan,  
Capt. R. E. L. Spence, Chaplain G. C.  
Stull, Capt. G. H. Shelton, Lieut. W.  
C. Stoll, Mrs. G. McK. Saltzman and  
infant, Lieut. Andrew Shea, Miss E.  
Shorb, Miss Agnes Sweet, Master  
Stull, W. F. Sands, Major P. B. M.  
Travis, wife and daughter; Lieut. W.  
Twyman, wife and infant; E. C. Tut-  
tle, Capt. Z. B. Vance, Lieut. Hugo  
von Shuster, Col. Henry Wygant, Capt.  
W. T. Wilder, Capt. F. L. Wells,  
Lieut. E. R. Wilson, Lieut. B. Willits,  
A. W. Whitehead, Dr. A. D. Williams,  
Hargraves Wood, Chas. Wall.

Steering passengers: Enlisted men  
11th U. S. Infantry, 612; enlisted men  
Filipino Scouts, 415; casuals, 340; dis-  
charged soldiers and civilians, 63. To-  
tal, 1,430.

Otto Schmidt, formerly chemist at  
Lihue plantation, leaves in the W. G.  
Hall for Kauai tomorrow. He went  
down the road to Ewa on business this  
morning.

## A Guarantee

We are issuing Cer-  
tificates of Stock  
guaranteed to mature  
in 10 years and in  
addition proportion  
of Surplus Earnings.

For particulars see  
**PHOENIX SAVINGS, BLDG.,  
AND LOAN ASS'N.,**  
JUDD BUILDING, HONOLULU.

Guarantee Capital against  
loss . . . . . \$200,000 00  
Subscribed Capital . . . \$8,500,000 00  
Paid-up Capital . . . . . \$1,000,000 00  
R. CAMPBELL, Cashier.  
H. E. POCOCK, General Agent

## B. F. EHLERS & CO.

### NEW ARRIVALS

We have just received a complete  
invoice of new things in

**Rugs, Curtains**

—AND—

**Art Draperies**

SMYRNA RUGS  
AXMINSTER RUGS  
VELVET RUGS  
BRUSSELS RUGS

An immense line of styles and color-  
ings. Sizes from 18 in. x 24 in. to  
the size to cover the whole floor.

**Art Draperies**

SILKOLINES  
DENIMS  
BURLAPS  
CRETONNES  
TICKINGS

## Expert Paper Hanging

When you want the very best  
work we will do it for you.  
It takes intelligence and skill  
to properly match paper and put  
it on without wrinkles.  
We have the skill, experience  
and intelligence necessary.

**J. D. JEWETT,**  
HOTEL ST. PHONE MAIN 419.

## HORSE SHOEING. W. W. Wright Co. La.

have opened a horse-shoe-  
ing department in con-  
nection with their carriage  
shop, etc. Having secured  
the services of a first-  
class shoer, they are pre-  
pared to do all work in-  
trusted to them in a first-  
class manner.

## Merchants' HOT LUNCH.

THE CRITERION SALOON will  
serve a Merchants' Hot Lunch, com-  
mencing MONDAY, March 7th, from  
11 a. m. to 2 p. m.

## THE HONOLULU SOAP HOUSE

1016 SMITH ST., one door from King.  
\$3.35 per case of 42, 48 and 63 bars  
each, of Mainland Laundry Soap, 100  
lb per case, delivered to any part of  
this city. Also 16 bars of soap for \$1.

### SOFT SOAP A SPECIALTY.

Island orders F. O. B. at wharf in  
Honolulu. In ordering be careful to  
state number of bars.

## First Grand Ball

GIVEN BY  
**DIVISION NO. 1, A. O. H.,**  
AT PROGRESS HALL,  
ST. PATRICK'S DAY, March 17, 1904.

Entertainment begins at Eight.

Dancing at Nine.

Tickets admitting Gentleman and  
Lady (including supper), \$2.00.

## HOME ENJOYMENTS

A piano in the home increases happiness.  
We sell the best makes on easy payments.

**Bergstrom Music Company, Ltd.**

**Jos. Schwartz,**

Watchmakers' Materials and  
Jewelers' Supplies.

COR. FORT and KING ST.

**J. Kumalae & Co.**

Grocers

208 BERETANIA STREET.







**RATES FOR WANT ADS.**

Ads in this column will be inserted at—  
 Per line, one insertion . . .15c  
 Per line, two insertions . . .25c  
 Per line, one week . . . . .30c  
 Per line, two weeks . . . . .40c  
 Per line, one month . . . . .60c  
 This is the cheapest advertising ever offered the people of Honolulu.

# EVERYDAY WANTS AND BUSINESS DIRECTORY

HAWAII'S GREATEST OPPORTUNITY FOR LARGE RETURNS ON SMALL INVESTMENTS

Some men try advertising as the Indian tried feathers. He had heard the white man got a great deal of comfort by sleeping on feathers; so he took one, laid it on a board, and slept on it all night. In the morning he remarked: "White man says feathers heap soft; white man big fool!"

## WANTS

See Page 8, NEW TO-DAY, for New Ads.

**SITUATIONS WANTED.**

**SPECIAL NOTICES.**

Bicycles and all light machinery repaired at short notice. Pioneer Motor Car Co., Merchant and Alakea Streets. 2630-1f

**WANTED**

A bright, bustling, neat and gentlemanly messenger and office boy (no Asiatic wanted). Address with references, "Secretary," care of Carrier Delivery. 2702-Mar. 1, 5, 7, 12, 14, 19, 21, 26

Party wishes small cottage, furnished or unfurnished, in good location near town; state rent, etc. Address "T," Bulletin office. 2700-1w

Bring your will-will and other seeds suitable for less to the WOMAN'S EXCHANGE and have them drilled. 2703-1w

**FOR SALE.**

Fine corner lot in Makiki. Curbing, water, fruit and ornamental trees and all improvements. Two minutes' walk from cars and Punahou College. Address R. F., this office. 2516-1f

Young lady who speak German and English desires a position as companion or nurse to elderly lady; no objection to traveling. Address K. C. B. Bulletin. 2705-1w

Reliable driving horse, sound and strong; also canopy-top buggy and harness, both in good condition. Address A. D. Larnach, City. 2703-1w

**TO LET.**

A two-story residence at 1286 Boretania St., between Pihoko and Keenau-moku Sts. Rent \$45.00 per month. Apply to C. J. McCarthy. 2650-1f

Brick building, suitable for manufacturing plant; store in connection if desired. Rent very reasonable. Bishop & Co., bankers. 2621-1f

Furnished rooms at No. 9 Garden lane. Mrs. McConnell. 2563

**COUNTY AND LEGISLATURE**

Editor Evening Bulletin:—I have always understood that "Count Mazuma" is the man who carries "the bag" in our legislative lobby, and exerts a baneful influence there. If your correspondent, "Mazuma," in a recent issue is the same person, I hope that he will stand absolutely alone by his plan to hold up financial legislation with a county bill, if an extra session of the Legislature should be called.

All citizens pay taxes. The rent-payer as well as the freeholder contributes to the public purse. It is, therefore, to the interest of all to have taxes low and government economical and honestly administered. If we create and maintain a healthy public sentiment in this respect, we shall fare well even under the much-abused county government.

Dated, March 4th, 1964.  
 T. MCANTS STEWART.

**TO LET.**

At Kaimuki, the cottage lately occupied by J. W. A. Redhouse, on Eighth Avenue, near Kaimuki Avenue, and near the property of Mrs. Hendricks. A few minutes' walk from the Electric Cars. For information, apply to Cecil Brown, Merchant Street. 2669-1f

A nice front mosquito-proof room in a private family; on car line; rent reasonable. Apply N. E. corner Victoria and Lunallilo Sts. 2656-1f

Furnished house of six rooms and servants' quarters, on car line; rent \$40.00. Apply to B. F. Dillingham Co. 2704-1f

Furnished Rooms—Nice, cool, mosquito-proof rooms. Alakea House, Alakea St. bet. Hotel and King. 2265-1f

1 cottages on River street, four rooms, kitchen and bath room. J. W. Podmore, Bethel and King. 2621-1f

Furnished Rooms, all modern conveniences, with or without board, 727 Lunallilo St. 2639-1w

Two large furnished front rooms; \$7 and \$8 per month. 1071A Likilike St. 2705-1w

**ROOM AND BOARD.**

Room and board in private family. Address H. R., this office, or call at 1490 Nuuanu Ave. 2670-1f

Room and Board for gentleman; private family; Makiki. Apply Box 652. 2656-1f

**LOST.**

Many thousands of dollars through neglecting to have stock sufficiently insured. Honolulu Investment Co. represent four of the strongest fire insurance companies.

A white fox terrier bitch; black and tan marks; has collar with small rope attached. Return to A. R. Rowat, D. V. S., and receive reward. 2701-1f

"For Rent" cards on sale at Bulletin office.

## LAZARRE

MARY HARTWELL CATHERWOOD

(Based Upon the Mystery Surrounding the Fate of the Dolphin, Son of Louis XVI. and Marie Antoinette)

Copyright, 1961, by the BOWEN-MERRILL COMPANY

"But she was still a wife—the wife of an old man—in the Pigeon Roost settlement."

"Her father married her to a cousin nearly as old as himself when she was a child. Her husband was reported dead while she was in hiding. She herself thought, and so did her friends, that he was dead."

"I see. Eh! These girls married to old men! Mme. Jordan told me Madeleine's husband was very fretful. He kept himself like silk and scarcely let the wind blow upon him for fear of injuring his health. When other men were out toiling at the clearings he sat in his house to avoid getting chilled and fever in the sun. It was well for her that she had a faithful servant, Madeleine and the servant kept the family with their garden and cornfield. They never tasted wild meat unless the other settlers brought them venison. Mme. Jordan said they always returned a present of herbs and vegetables from their garden. It grew for them better than any other garden in the settlement. Once the old man did go out with a hunting party and got lost. The men searched for him three days and found him curled up in a hollow tree, waiting to be brought in. They carried him home on a litter and he popped his head into the door and said: 'Here I am, child! You can't kill me!'"

"What did Mme. de Ferrier say?" "Nothing. The Indian went away like a scared hound. And none of the others would touch her."

After I heard this story I was thankful every day that Eagle could not remember, that natural happiness had its way with her elastic body. Mme. Ursule told me the family learned to give her liberty. She rowed alone upon the river and went where she pleased. The men in La Baye would step aside for her. Strangers disturbed her by bringing the consciousness of something unusual. Once I surprised Marie and Katarina sitting close to the fire at twilight talking about lovers. Eagle was near them on a stool.

"That girl," exclaimed Katarina, speaking of the absent with strong disapproval, "is one of the kind that will let another girl take her sweetheart and then sit around and look injured! Now if she could get him from me she might have him! But she'd have to get him first!"

Eagle listened in the attitude of a young sister, giving me to understand by a look that wisdom flowed and she was learning.

We rose one morning to find the world buried in snow. The river was frozen and its channel padded thick. As for the bay, stretches of snow fields with dark pools and broken gray ridges met ice at the end of the world.

It was so cold that paper stuck to the fingers like feathers and the nails tingled with frost. The white earth creaked underfoot, and when a sled went by the snow cried out in shrill resistance, a spirit complaining of being trampled. Explosions came from the river and elm limbs and timbers of the house started up. White fur cloaked the inner keyholes. Tree trunks were black as ink against a background of snow. The eaks alone kept their dried foliage, which rattled like many skeletons, instead of rustling in its faded redness, because there was no life in it.

But the colder it grew the higher Grignon's log fires mounted. And when channels were cut in the snow both along the ridge above Green Bay and across country in every direction [French trains moved out with jangling bells, and maids and men uttered voice sounds which spread as by miracle on the diffusing air from horizon to horizon. You could hear the officers speaking across the river, and dogs were like to shake the sky down with their barking. Echoes from the smallest noises were born in that magnified, glaring world.

The whole festive winter spun past. Marie and Katarina brought young men to the peaks of hope in the "twining" seat and plunged them down to despair, quite in the American fashion. Christmas and New Year's day were great festivals, when the settlement ate and drank at Pierre Grignon's expense and made him glad as if he fathered the whole post. Mme. Grignon spun and looked to the house. And a thousand changes passed over the landscape. But in all that time no one could see any change in my cloud mother. She sewed like a child. She laughed and danced gavots. She trod the snow, and muffled in robes with Mme. Ursule and the girls flew over it in a French train—a sliding box with two or three horses hitched tandem. Every evening I sat by her side at the fire while she made little cents and trousseaus for me. But remembrance never came into her eyes. The cloud stood round about her as it did when I first tried to penetrate it.



"It was dreadful to hear her."

"Oh, she'll come to her senses some time, and he'll marry her, of course," was the conclusion they invariably reached; for the thing must turn out well to meet their approval. How could they foresee what was to happen to people whose lives held such contrasts?

"Father Pierre says he's nearly twenty-eight; I call him an old bachelor," declared Katarina; "and she was a married woman. They are really very old to be in love."

"You don't know what would do when you are old," said Marie. "Ah, I dread it," groaned Katarina. "So do I."

"But there is grandmother. She doesn't mind it. And beaus never trouble her now."

"No," sighed the other. "Beaus never trouble her now."

(To be Continued.)

laughed and danced gavots. She trod the snow, and muffled in robes with Mme. Ursule and the girls flew over it in a French train—a sliding box with two or three horses hitched tandem. Every evening I sat by her side at the fire while she made little cents and trousseaus for me. But remembrance never came into her eyes. The cloud stood round about her as it did when I first tried to penetrate it.

My own dim days were often in mind. I tried to recall sensations. But I had lived a purely physical life. Her blunders of judgment and delusion of bodily shrinking were no part of my experience. The thinking self in me had been paralyzed, while the thinking self in her was alive, in a cloud. Both of us were memories, excepting her recollection of Paul.

After March sent the ice out of river any bay spring came with a rush as it comes in the north. Perhaps many days it was silently rising from tree roots. In February we used to say, "This air is like spring." But after such bold speech the arctic region descended upon us again and we were snowed in to the ears. Yet when the end of March unlocked us it seemed we must wait for the month of May to give us soft air and blue water. Then suddenly it was spring, and every living soul knew it. Life revived with passion. Longings when you had forgotten came and took you by the throat, saying: "You shall no longer be satisfied with negative peace. Rouse and live!" Then, fitting, exquisite, purple flava struck across mile opal water in the bay. Fishing boats lifted themselves in mirage, sailing lightly above the water, and islands sat high, with a cushion of air under them.

The girls manifested increasing interest in what they called the Pigeon Roost settlement affair. Mme. Ursule had no doubt told them what I said. They pitied my cloud mother and me with the condescending pity of the very young, and unguardedly talked where they could be heard.

"Oh, she'll come to her senses some time, and he'll marry her, of course," was the conclusion they invariably reached; for the thing must turn out well to meet their approval. How could they foresee what was to happen to people whose lives held such contrasts?

"Father Pierre says he's nearly twenty-eight; I call him an old bachelor," declared Katarina; "and she was a married woman. They are really very old to be in love."

"You don't know what would do when you are old," said Marie. "Ah, I dread it," groaned Katarina. "So do I."

"But there is grandmother. She doesn't mind it. And beaus never trouble her now."

"No," sighed the other. "Beaus never trouble her now."

(To be Continued.)

**A RAPID TRANSIT EPISODE.**

This morning about half past ten, a tall lady with a half-sized husband, boarded a King street car, the lady was wearing her husband on her right hand, when they entered the husband looked up, and said to his wife: "You're tall enough to reach a strap, but what can I hold," she said, "If I was as short as you are, I'd hold my tongue," so he took hold of his tongue, the car started and he fell down, whereupon his dutiful spouse followed, "What's the matter, can't you stand up?" Said hubby, "They both slipped."

"Both what," said the wife. "Both my feet and my tongue," said the little husband, but let's get off the car and go and see Bath the plumber and have a look at that new line of Douglas Patent Closets that have just arrived. His telephone is 61 Main.

**LAKE-BENNETT.**

Hilo, March 4.—H. T. Lake and Marion Bennett were married Wednesday evening at the parsonage of the First Foreign Church, Rev. Curtis E. Shields officiating. The only guests present were J. McIntosh and Miss Fyfe, who stood up with the bride pair. Mr. and Mrs. Lake will reside in Hilo. Mr. Lake has resided in Hilo over two years and is best known as Captain Lake, late of the Hilo police force. The bride has been in Hilo a shorter time. During the absence of Miss Grubb, she had charge of the Hilo hospital and has many friends in Hawaii.

**SMITH-RICHARDSON.**

Hilo, March 4.—The wedding of W. H. Smith and Miss Elvira Richardson occurred at the home of the bride on Church street last Tuesday morning at 8 o'clock. The marriage ceremony was performed by Rev. S. L. Desha, using the Episcopal service. Only the immediate relatives of the bride and the law partner of the groom were present. After the congratulations Mr. and Mrs. Smith took a carriage and drove to the Richardson place at 22 miles. They will reside in Hilo.

Since the campaign entered upon by the health authorities against the hordes of rats at the London docks, 255,372 have been destroyed.

## BUSINESS DIRECTORY

**ATTORNEYS.**  
 G. C. Hewitt, Waiohiau, Kau. Hawaii.—Collections made, all business attended to; licensed to practice law in District Courts. 2669-3m

**BALLASTING.**  
 Hawaiian-Japanese Ballasting Co.—Best black sand from \$2 to \$3 a load according to distance hauled. Coral rocks for stable, roads and sidewalks. Third door below King, Maunakea St.; P. O. box 820. Telephone Main 396.

**CLEANING AND DYEING.**  
 T. Hayashi—Clothes cleaned, repaired and dyed. 637 Boretania St.

**DENTISTS.**  
 Dr. Derby—Dentist; Fort and Hotel Sts.; Hours, 9 to 4.  
 Fine Job Printing at the Bulletin office.  
 "For Rent" cards on sale at Bulletin office.

**EXPRESS.**  
 Moana Express, 810 Alakea St.; Tel. 511 Blue; good service; moderate rates. 2655-1f

**MUSIC.**  
 Piano and organ tuning and repairing. Mr. Jas. Sheridan, resident piano tuner, for many years an expert in this business. All orders carefully attended to if left at Hawaiian News Co., Young building, or Wall, Nichols Co., Residence 343 King street, near Opera House.  
 Annis Montague Turner—Vocal Instructor; "Mignon," 1024 Boretania St.  
 Ernest Kaal—Music Teacher. Studio, Room 69 Young Bldg.

**MESSENGERS.**  
 Territorial Messenger Service—Union St. near Hotel; Tel. 361 Main.

**MASSAGE.**  
 S. Ochlal—Expert massage treatment for sick people. 64 Kukui lane.

**Claus Spreckels. Wm. G. Irwin.**  
**Claus Spreckels & Co**  
**BANKERS.**  
 Established in 1858.  
**BANKING DEPARTMENT.**  
 Transact business in all departments of Banking.  
 Collections carefully attended to. Exchange bought and sold. Commercial and Travelers' Letters of Credit issued on the Bank of California and N. M. Rothschild & Sons, London.  
 Correspondents—The Bank of California, Commercial Banking Co. of Sydney, Ltd., London.  
 Drafts and cable transfers on China, Japan and throughout the Hongkong & Shanghai Banking Corporation and Chartered Bank of India, Australia and China.  
 Interest allowed on term deposits at the following rates per annum, viz: Seven days' notice, at 2 per cent. Three months, at 3 per cent. Six months, at 3 1/2 per cent. Twelve months, at 4 per cent.  
**TRUST DEPARTMENT.**  
 Act as Trustees under mortgages. Manage estates (real and personal). Collect rents and dividends. Valuable papers, Wills, Bonds, etc., received for safe-keeping.  
**ACCOUNTANT DEPARTMENT.**  
 Auditors for Corporations and Private Firms.  
 Books examined and reported on. Statements of Affairs prepared. Trustees on Bankrupt or Insolvent Estates.  
**OFFICE, 924 BETHEL ST.**  
**SAVINGS DEPARTMENT.**  
 Deposits received and interest allowed at 4 1/2 per cent per annum, in accordance with Rules and Regulations, copies of which may be obtained on application.  
**INSURANCE DEPARTMENT.**  
 Agents for Fire, Marine, Life, Accident and Employers' Liability Insurance Companies.  
 Insurance Office, 924 Bethel St.

**The First AMERICAN SAVINGS AND TRUST CO.**  
 OF HAWAII, LTD.  
 CAPITAL, \$250,000.00.  
 President.....Cecil Brown  
 Vice President.....M. P. Robinson  
 Cashier.....W. G. Cooper  
 Office: Corner Fort and King Sts.  
**SAVINGS DEPOSITS** received and interest allowed for yearly deposits at the rate of 4 1/2 per cent per annum. Rules and regulations furnished upon application.  
**The Yokohama Specie Bank, Ltd.**  
 ESTABLISHED 1880.  
 Capital Subscribed.....Yen 24,000,000  
 Capital Paid Up.....Yen 18,000,000  
 Reserved Fund.....Yen 9,210,000  
**HEAD OFFICE, YOKOHAMA.**  
**BRANCHES**—Bombay, Hongkong, Honolulu, Kobe, London, Lyons, Nagasaki, Newchwang, New York, Peking, San Francisco, Shanghai, Tientsin, Tokio.  
 The bank buys and receives for collection Bills of Exchange, issues Drafts and Letters of Credit and transacts a general banking business.  
**HONOLULU BRANCH, 67 KING ST.**  
 "For Rent" cards on sale at Bulletin office.

**Sugar Factors and . . . . . Commission Agents**  
 AGENTS for Hawaiian Commercial & Sugar Co., Haku Sugar Co., Paia Plantation Co., Niihau Sugar Co., Kihel Plantation Co., Hawaiian Sugar Co., Kahului Railroad Co.  
**CASTLE & COOK**  
 IMPORTERS.  
**LIFE and FIRE Insurance - Agents**  
 —AGENTS FOR—  
**NEW ENGLAND MUTUAL LIFE INSURANCE CO. OF BOSTON.**  
**AETNA FIRE INSURANCE COMPANY OF HARTFORD.**  
**FIRE INSURANCE**  
**The B. F. DILLINGHAM CO., Ltd.**  
 General Agent for Hawaii  
 Atlas Assurance Company of London. Phoenix Assurance Co. of London. New York Underwriters' Agency. Providence Washington Insurance Co. Phoenix Insurance Co. of Brooklyn.  
**ALBERT RAAS**  
 MANAGER INSURANCE DEPT'MT.  
 Office 4th floor, Stangenwald Bldg.  
 The Evening Bulletin, 75 cents per month.

**TO CURE A COLD IN ONE DAY**

Take Laxative Bromo Quinine Tablets All druggists refund the money if it fails to cure. E. W. Grove's signature is on each box; 25 cents.

**BOWERS' MERCHANT PATROL AND CONFIDENTIAL AGENCY.**

Competent watchmen furnished for business houses and residences. Office, Boretania and McCully Streets. P. O. Box 264.



## Commendador, Port Wine

This wine is guaranteed by the ship-  
pers, Messrs. D. M. FEUERHERD,  
JR. & CO., of Oporto, to have been 25  
years in wood.

It is light, delicate and of exquisite  
bouquet and flavor.  
Its quality is always maintained.  
It is dry and forms no crust, and  
therefore is always ready for use.  
It is especially valuable as a restora-  
tive and stimulant in cases of sickness.  
Imported and for sale by

### W. C. PEACOCK & CO. LD.

HONOLULU, H. T.

Telephone Main 72

P. O. BOX 868

## VOLCANO MINERAL WATER

ALL ORDERS DELIVERED FREE OF CHARGE.  
Represented by R. L. SCOTT. MAIN OFFICE 857 KAANUMANU STREET

BY AUTHORITY

Corporation Notices.

## PUBLIC LANDS NOTICE

On Saturday, March 12th, 1904, at 12 o'clock noon, at the front entrance to the Judiciary Building, Honolulu, T. H., there will be offered for sale at Public Auction, a License for a period of fifty (50) years, for the privilege of entering upon certain public lands on the Island of Hawaii, Territory of Hawaii, to confine, conserve, collect, impound, divert and sell all the RUNNING NATURAL SURFACE WATER, and power produced therefrom, (subject to existing vested rights of private parties in such water, and to the rights of the United States therein), upon and from all the said public lands situated on the Island of Hawaii, in the Territory of Hawaii, within the following described area, to-wit:

Bounded on the North by the sea, on the East by Waipio Valley, on the South by Waipio Valley, the Puukapu-Laupahoehoe boundary until such boundary line reaches an elevation of 4,200 feet, from which point the contour line of 4,200 feet elevation shall form the balance of the South boundary, and on the West by the Honokahua-Awili boundary as shown by green border on the sketch plan subjoined to license, the whole of such area being hereafter called the Kaha-Hamakua Water-Shed.

Stated Annual Fee, \$1,000.00.  
Upset 1 per cent. of Gross Revenue, but in no event, after expiration of 18 months from date of license, shall the revenue received by the Government through this clause amount to less than \$1,200.00 per annum.

Any bid other than on percentage of Gross Revenue will be rejected.

Upon fall of the hammer the successful bidder will signify his acceptance of the license and of all the terms thereof by his written endorsement thereon, and the payment of the first One Thousand (\$1,000) Dollar Fee.

For full particulars, in regard to conditions of said license, apply at the office of Commissioner of Public Lands, Honolulu.

JAS. W. PRATT,  
Commissioner of Public Lands,  
Honolulu, T. H., Feb. 23, 1904.  
2670-1f

## A Home Company

CAPITAL, \$50,000.  
Organized under the laws of the Territory of Hawaii.

## THE HAWAIIAN REALTY AND MATURITY CO., LTD.

Loans, Mortgages, Securities, Investments and Real Estate.  
HOMES BUILT ON THE INSTALLMENT PLAN.  
Home Office — McIntyre Bldg., Honolulu, T. H.

## THE HAWAIIAN REALTY AND MATURITY CO., LTD.

L. K. KENTWELL,  
General Manager.

Blank books of all sorts, ledgers, etc., manufactured by the Bulletin Publishing Company.

## DESTINY OF PINEAPPLE

### INDUSTRY PROMISES ONE OF BEST FOR THE ISLANDS

#### REPORT OF HILO INVESTIGATING COMMITTEE—SPLENDID OP- PORTUNITIES FOR PROFIT.

Hilo, March 4.—At the meeting of the Hilo Agricultural Society last Saturday, the committee appointed to report on a pineapple cannery for Hilo submitted the following:

Your committee appointed for this purpose, prepared and to a certain extent circulated the following paper, to-wit:

"We the undersigned, pineapple planters and others, desiring to make the pineapple industry a success in Hilo, and feeling that united action is necessary to accomplish it, do hereby signify our willingness to unite, and form a company to establish and operate a pineapple cannery at Hilo, Hawaii."

Though not many signatures were obtained it was clearly demonstrated that capital for the purpose is ready when a sufficient supply of pines is at hand. But we found it to be the opinion of wise business men that establishing a plant to can the few pines now grown, would be very unwise.

The only Hawaiian cannery that has paid a profit, has 800,000 plants, and no profit has been realized until this year. The Tropic Fruit Co. has 400 acres available for pines, and 37 acres planted, but they have not yet erected a cannery. We do not know the area of the Hawaiian Pineapple Co., whose cannery was erected the past season, but it is probably larger than that of the Tropic Fruit Co. Their leasehold is 530 acres.

It is estimated by a man of experience now in the business on Oahu that a cannery can be run on the product of 100 to 200 acres. We doubt if the product of 25 acres would be available in Hilo this season. We therefore recommend delay in the establishment of a cannery until at least 100 acres in pines shall be available. We have abundant evidence that pineapple raising and canning will both be very profitable as soon as enough are raised to supply a cannery of reasonably large size. The advantages possessed by these islands for the raising of this fruit are superlative. No sheds are required, whereas in Florida, where over 7,500,000 pines are raised annually (see report of Com. of Agriculture for 1901-2) hundreds of acres have been covered with protecting sheds at an expense of from \$325 to \$600 per acre. From \$20 to \$150 per acre is required for fertilizer (see Farmers' Bulletin No. 140). Cultivation is expensive on account of the price of labor (\$2 to \$2.50 per day of six hours) and the myriads of mosquitoes that infest that pineapple region. And yet Jared Smith remarked to this society, "these pines which are canned extensively in the vicinity of Baltimore, have a greatly inferior flavor as compared with ours. The flavor of our pines is unequalled in the world. The canned pines from Oahu are admitted to be the finest in flavor of any on the market. Mr. Bentley, representing the largest cannery combine in the world, admitted this fact in the presence of this society. What then is there to prevent Hawaii from becoming paramount in this industry? It is promised that the Tropic Fruit Packing Company at Wailua, which already has a building erected adjoining the railroad shops, will use for jam, etc., the surplus pines of this year and next, therefore not even present loss will be occasioned by growers while preparing support for a cannery."

As this industry is destined to become great at Hilo growers should be awake to the danger of placing themselves at the mercy of an outside corporation. They should control the cannery when established and should now make every effort to extend the pineapple area near Hilo.

Respectfully submitted,  
H. E. KELSEY,  
F. S. LYMAN,  
T. O. MITCHELL,  
Committee.

#### BUSINESS NOTICES.

##### PUBLIC NOTICE.

The manager of the Merry-go-Round hereby warns all persons to keep clear of the cable and machinery of said Merry-go-Round when in motion, as he will not be responsible for accidents caused by the same. If anyone is caught destroying or mutilating the Merry-go-Round or its cover he will be prosecuted according to law.

J. A. VICTOR,  
Proprietor.

##### NOTICE.

Notice is hereby given that Mr. Joe Fernandez is no longer connected with the Territorial Messenger Service and has no authority to collect or contract bills on our account.

M. F. PETER, Manager.  
Honolulu, March 1st, 1904. 2706-3f

##### NOTICE.

Mr. John Estrella is no longer authorized to collect moneys due the Kalia Store, he having severed his connection with said store on this date.

KALII STORE.  
March 1, 1904. 2702-1w

##### TO VIOLET LOVERS.

Beautiful fresh Mountain Violets, long-stemmed and very fragrant, for sale at reasonable prices at the corner of Hotel and Fort streets, Saturday and Tuesday afternoons. 2656-1f

## C. Brewer & Co., Ltd.

Queen Street, Honolulu, T. H.

#### Agents for—

Hawaiian Agricultural Co., Ooka Sugar Plant Co., Onomaea Sugar Co., Honoum Sugar Co., Wailuku Sugar Co., Makee Sugar Co., Haleakala Ranch Co., The Planters' Line of San Francisco Packets, Chas. Brewer & Co.'s line of Boston Packets.

List of Officers:  
C. M. Cooke, President; George Robertson, Manager; E. F. Bishop, Treasurer and Secretary; Col. W. F. Allen, Auditor; P. C. Jones, C. H. Cooke and Geo. R. Carter, Directors.

Get your "To Let" signs at the Bulletin office.

## Legal Notices.

### MORTGAGEE'S NOTICE OF INTENTION TO FORECLOSE AND OF SALE.

In pursuance of the power of sale contained in that certain mortgage from Charles S. Desky to C. W. Booth, dated September 22nd, 1900, recorded in the Register Office, Oahu, in Book 217, pages 9 to 11, notice is hereby given that the mortgagee intends to foreclose said mortgage for condition broken, to-wit: the non-payment of principal and interest when due, and will, on Monday, the 28th day of March, 1904, at 12 o'clock noon of said day, expose for sale and sell at the auction rooms of Will E. Fisher, No. 180 Merchant Street, Honolulu, the lands and property described in said mortgage, not before this time released from the operation thereof. The lands and property to be so sold, as also the portions released, are described in the schedule hereto attached, to which reference is hereby made.

The terms of the sale are cash in United States Gold Coin. Deeds are to be at the expense of purchasers. For further particulars and for the inspection of Maps showing the location of said property as subdivided in lots, apply to J. Alfred Magoon, offices corner Merchant and Alakea Streets, Magoon Building, Honolulu, or to Will E. Fisher, auctioneer.

C. W. BOOTH,  
Mortgagee.  
Dated Honolulu, February 24th, 1904.  
Schedule.

The property to be sold is as follows: All those tracts or parcels of land situated between Pauoa Valley and Nuuuanu Valley in the District of Honolulu, Island of Oahu, Territory of Hawaii, as follows:

FIRST: All of Apana One of Land Commission Award No. 10,605 to Kamakee Pihiki, containing an area of eight acres and 9.39 square chains, as recorded in the Record of Awards in the Public Land Office in said Honolulu in Volume 10 of said Awards at page 60.

SECOND: All of Apana One of Land Commission Award No. 273 to Joseph Booth, of record in the Public Land Office in Honolulu in Volume 1 of Awards at page 457, upon which Royal Patent No. 302 was issued May 14, 1851, as appears by Volume One of Royal Patents at page 302; containing an area of 208.3 acres.

THIRD: All of that portion of Grant No. 524 to Joseph Booth, of record in Volume 5 of Royal Patent Grants at page 524, lying on the Ewa side of the Waikiki border of the base of the stone wall on the Waikiki border of Kalaniana'olani Avenue; being the main driveway from Pauoa Valley road to the upper table lands known as "Pacific Heights".

FOURTH: All that narrow strip of land bounded on the North by the Waikiki border of Apana 1, Land Commission Award No. 273, Royal Patent No. 302, on the East or mauka side by the land of the Estate of B. P. Bishop, deceased, on the South by the Government Road on the Ewa side of Pauoa Valley, and on the West or makai side by the land of Laka; excepting a strip of land belonging to Hoolani.

FIFTH: All that portion of Land Commission Award No. 1661, Royal Patent No. 5634, to Waiwale, known as the Punanalo Spring Lot, more particularly described as follows: Beginning at the North corner of this Lot, from which point, the Main Valve, below the Masonry Dam, on Pipeline bears: S. 53° 05' W. distant 46.2 feet, and running by true Meridian:

1. S. 26° 55' E. 33.0 feet to stake;  
2. S. 65° 50' W. 49.5 feet to stake;  
3. N. 23° 39' W. 36.8 feet to stake;  
4. N. 71° 05' E. 47.5 feet to the initial point, and containing an area of 1680 square feet, a little more or less. And also the right, title and interest of said mortgagor in the spring of water on said portion of L. C. A. 1661, R. P. 5634, known as the Punanalo Spring, and in the water flowing therefrom.

SIXTH: A permanent right of way over all land belonging to C. S. Desky along the course of the present pipe line for the conveyance of water from the spring described in paragraph five hereof to the lands hereinabove described.

The lands and premises described in paragraphs one to four both inclusive being that certain tract known as "Pacific Heights".

A portion of the above described lands has been surveyed and platted into lots, of which there are 98 Lots unreleased and to be sold. The entire lands including these lots will be sold as a whole, subject to the exceptions and reservations herein contained.

The above described lands will be sold less the following described parcels, which are hereby excepted, reserved and deducted therefrom.

FIRST:

(Lot 30) Area 28,400 square feet sold to Mary Castle.  
(Lot 13) Area 19,225 square feet, sold to Cordella F. Allen.  
(Lot 12) Area 45,000 square feet, sold to A. S. Parke.

(Lot 38) Area 18,900 square feet, sold to S. B. Pratt.  
(Lot 39) Area 21,800 square feet, sold to H. L. Kerr and Martin L. Smith.

(Lot 41) sold to J. M. Atherton.  
(Lot 48) sold to F. E. Nichols; gross area of Lots 41 and 48, 34,000 square feet.

(T. Clive Davies' Lot) Area 610-100 acres.  
(C. W. Booth Lot) Area 137-100 acres.

Being the parcels of land excepted and reserved in deed from Charles W. Booth to Charles S. Desky, dated September 22nd, 1900, recorded in said

Office in Book 217, pages 9 to 11, and being exceptions and reservations therein numbered one to eight, both inclusive.

#### SECOND:

(Lot 5) Area 12,400 square feet.  
(Lot 6) Area 14,400 square feet.  
(Lot 11½) Area 1 & 43,400 acres.  
(Lot 14) Area 15,760 square feet, sold to John T. Moir.

(Lot 18) Area 24,500 square feet, sold to E. O. White.  
(Lot 19) Area 20,900 square feet, sold to E. O. White.

(Lot 20) Area 24,400 square feet, sold to H. P. Baldwin.  
(Lot 21) Area 28,500 square feet, sold to H. P. Baldwin.

(Lot 23) Area 19,300 square feet, sold to G. P. Castle.  
(Lot 24) Area 18,400 square feet, sold to G. P. Castle.

(Lot 34) Area 20,200 square feet, sold to W. J. Lowrie.  
(Lot 35) Area 23,300 square feet, sold to W. J. Lowrie.

(Lot 36) Area 24,150 square feet, sold to W. J. Lowrie.  
(Lot 37) Area 22,400 square feet, sold to W. J. Lowrie.

(Lot 42) Area 17,900 square feet, sold to Juliette M. Atherton.  
(Lot 49) Area 26,500 square feet, sold to Percy M. Pond.

(Lot 54) Area 24,500 square feet, sold to Frederic J. Amweg.  
(Lot 55) Area 23,400 square feet, sold to Frederic J. Amweg.

(Lot 63) Area 23,500 square feet, sold to Thomas E. Wall.  
(Lot 92) Area 25,000 square feet, sold to John Cassidy.

(Ripley Lot) Area 2 & 4-10 acres. Being the parcels of land excepted and reserved in said mortgage, dated September 22nd, 1900, recorded in Liber 214, pages 218, &c., and being exceptions and reservations therein, numbered one to twenty-one both inclusive.

#### THIRD:

(Lot 25) Area 24,383 square feet, sold to P. A. Parmalee.  
(Lot 22A) Area 66,258 square feet, sold to G. P. Castle.

(Lot 22) Area about 23,000 square feet, sold to G. P. Castle.  
(Lot 33) Area 84,707 square feet, sold to Alexander Young.

(West half of Lot 40) Area 9550 square feet, sold to Juliette M. Atherton.  
(Lot 21A) Area 51,200 square feet, sold to H. P. Baldwin.

(Lot 32) Area 20,800 square feet, sold to G. T. Kluge.  
(Lot 7 and Lot 8) About 36,000 square feet, sold to C. M. Walton.

(Lot 1 East Slope Pauoa Valley) Area 10,485 square feet, sold to Heinrich Voss.  
(Lot 28 East Slope Pauoa Valley) Area 6360 square feet, sold to S. Fowler.

(Lot 4 East Slope Pauoa Valley) Area 6075 square feet, sold to F. De Melo.  
FOURTH:

The land on which is located the power house of the Pacific Heights Electric Railway Company, Limited, area 2500 square feet, and the right-of-way for electric railway tract as set forth in partial release of mortgage dated December 3rd, 1902, in Book 239, page 457.

The lands will be sold subject to the right-of-way granted by C. S. Desky and wife to C. W. Booth by deed dated September 22nd, 1900, recorded in Book 210, pages 284-5, being right-of-way for pipe-line on the Pauoa Valley side.

In case the lands hereinabove described to be sold do not bring enough to pay the amount due, and costs of this foreclosure, the following Lots hereinabove referred to, heretofore sold, but not released from the operation of said mortgage will be sold in the order named.

(Lot 22).  
(West half of Lot 40).  
(Lot 21A).  
(Lot 52).  
(Lots 7 and 8).

WILL E. FISHER,  
Auctioneer.  
Feb. 27, 28, Mar. 5, 7, 12, 14, 26.

IN THE CIRCUIT COURT OF THE First Circuit, Territory of Hawaii, At Chambers, in Probate. In the Matter of the Estate of Constant Sterling, Deceased. Order of Notice of Hearing Petition for Administration. On reading and filing the petition of Lewers & Cooke, Ltd., of Honolulu, a creditor, alleging that Constant Sterling, of Honolulu, died intestate at Colombo, Ceylon, on the 9th day of February, A. D. 1904, leaving property in the Hawaiian Islands necessary to be administered upon, and praying that letters of administration issue to J. H. Craig, It is ordered that Monday, the 21st day of March, A. D. 1904, at 10 o'clock a. m., be and hereby is appointed for hearing said petition in the court room of this court at Honolulu, at which time and place all persons concerned may appear and show cause, if any they have, why said petition should not be granted, and that notice of this order be published in the English language for three successive weeks in the Evening Bulletin, a newspaper in Honolulu.

Dated at Honolulu, Hawaii, Feb. 13, 1904.

W. J. ROBINSON,  
3d Judge of the Circuit Court of the First Circuit.

Attest: J. A. THOMPSON,  
Clerk of the Circuit Court of the First Circuit.

Atkinson, Judd & Mott-Smith, attorneys for petitioner.  
2687—Feb. 13, 20, 27; Mar. 6.

There is no Family Medicine so favorably known as PAIN-KILLER. For sixty years it has been used by Missionaries in all parts of the world, not only to counteract the climatic influences on their families, but for the cure of all diseases of the bowels, and for wounds, burns, bruises, etc. Avoid substitutes, there is but one Pain-Killer, Perry Davis'. Price 25c and 50c.

"For Rent" cards on sale at Bulletin office.

## Oceanic Steamship Company

### TIME TABLE

The steamers of this line will arrive and leave this port as hereunder:

FROM SAN FRANCISCO.	FOR SAN FRANCISCO.
SIERRA . . . . . MAR. 9	SONOMA . . . . . MAR. 6
ALAMEDA . . . . . MAR. 18	ALAMEDA . . . . . MAR. 23
SONOMA . . . . . MAR. 30	VENTURA . . . . . MAR. 29
ALAMEDA . . . . . APR. 8	ALAMEDA . . . . . APR. 13
VENTURA . . . . . APR. 20	SIERRA . . . . . APR. 19
ALAMEDA . . . . . APR. 29	

In connection with the sailing of the above steamers, the agents are prepared to issue, to intending passengers, coupon through tickets, by any railroad from San Francisco to all points in the United States, and from New York by any steamship line to all European ports.

FOR FURTHER PARTICULARS APPLY TO

## Wm. G. Irwin & Co., Ltd.

OCEANIC S. S. CO. GENERAL AGENTS.

## Pacific Mail Steamship Co. Occidental and Oriental Steamship Co. and Toyo Kisen Kaisha

Steamers of the above companies will call at Honolulu and leave this port on or about the dates below mentioned.

FOR JAPAN AND CHINA.	FOR SAN FRANCISCO.
DORIC . . . . . MAR. 12	COPTIC . . . . . MAR. 19
SIBERIA . . . . . MAR. 30	KOREA . . . . . MAR. 31
COPTIC . . . . . APR. 7	GAELIC . . . . . APR. 9
KOREA . . . . . APR. 23	CHINA . . . . . APR. 26
GAELIC . . . . . MAY 6	DORIC . . . . . MAY 8
CHINA . . . . . MAY 19	SIBERIA . . . . . MAY 21
DORIC . . . . . MAY 27	COPTIC . . . . . MAY 28

For general information apply to

## H. Hackfeld & Co., Ltd., Agents.

## AMERICAN-HAWAIIAN S. S. CO.

Direct Service between New York and Hawaiian Islands, via Pacific Coast From New York

S.S. "ARIZONAN" . . . . . to sail about MAR. 10  
S.S. "AMERICAN" . . . . . to sail about APR. 1  
Freight received at all times at the Company's Wharf, 41st Street, South Brooklyn.

From San Francisco  
S.S. "NEVADAN" . . . . . to sail on MAR. 18  
S.S. "NEVADAN" . . . . . to sail on APR. 18  
and each month thereafter.

Freight received at Company's Wharf, Greenwich Street.

From Honolulu to San Francisco.  
S.S. "NEVADAN" . . . . . to sail on FEB. 25

From Seattle and Tacoma  
S.S. "TEXAN" . . . . . to sail about FEB. 25

For further information apply to  
G. P. MORSE, General Freight Agent.

H. Hackfeld & Co., Ltd.  
AGENTS, HONOLULU.

## Canadian-Australian Royal Mail Steamship Company.

Steamers of the above line, running in connection with the CANADIAN PACIFIC RAILWAY CO. between Vancouver, B. C., and Sydney, N. S. W., and calling at Victoria, B. C., Honolulu, Suva, Fiji and Brisbane, are DUE AT HONOLULU on or about the dates below stated, viz:

From Vancouver and Victoria, B. C.	From Sydney and Brisbane.
(For Brisbane and Sydney.)	(For Victoria and Vancouver, B. C.)
MIOWERA . . . . . MAR. 12	MOANA . . . . . MAR. 19
MOANA . . . . . APR. 9	AORANGI . . . . . APR. 6
AORANGI . . . . . MAY 7	MIOWERA . . . . . MAY 4

Through Tickets issued from Honolulu to Canada, United States and Europe. For Freight and Passage and all general information, apply to

Theo. H. Davies & Co., Ltd. General Agents.

## O. R. & L. Co.

TIME TABLE  
May 1st, 1903.

### OUTWARD.

For Wailanae, Wailua, Kahuku and Way Stations—9:15 a. m., \*3:20 p. m.  
For Pearl City, Ewa Mill and Way Stations—7:30 a. m., \*9:15 a. m., \*11:05 a. m., \*2:15 p. m., \*3:20 p. m., \*4:15 p. m., \*5:15 p. m., \*9:30 p. m., \*11:15 p. m.

### INWARD.

Arrive Honolulu from Kahuku, Wailua and Wailanae—\*8:30 a. m., \*5:30 p. m.  
Arrive Honolulu from Ewa Mill and Pearl City—16:50 a. m., \*7:46 a. m., \*8:36 a. m., \*10:38 a. m., \*2:05 p. m., \*4:31 p. m., \*5:31 p. m., \*7:40 p. m.

\* Daily.  
† Sunday Excepted.  
‡ Sunday Only.

G. P. DENISON, Supt. F. C. SMITH, G. P. & T. A.

## THE ELITE ICE CREAM PARLORS

Pies  
Cakes  
Candies  
Confections

HART & CO., LTD.

## MOANA HOTEL

WAIKIKI BEACH  
Rapid Transit Electric Cars arrive at, and depart from, the main entrance of the Moana Hotel every ten minutes.

MOANA HOTEL CO., LTD.

Improved and Modern SUGAR MILL



## Baseball Goods, Football Goods, Tennis Goods, Golf Goods

A FINE LINE OF  
Lambs' Wool Sweaters,  
Combination Billiard and Pool Tables,  
Folding Card Tables

The Largest Stock of SPORTING GOODS carried in the Islands. Bicycles, Guns, Revolvers and Ammunition of all sorts. Bicycles and Fire arms repaired by capable workmen.

**E. O. HALL & SON, Ltd.**

### NEW SHIPMENT OF LATEST STYLES

## DOMESTIC SEWING MACHINES

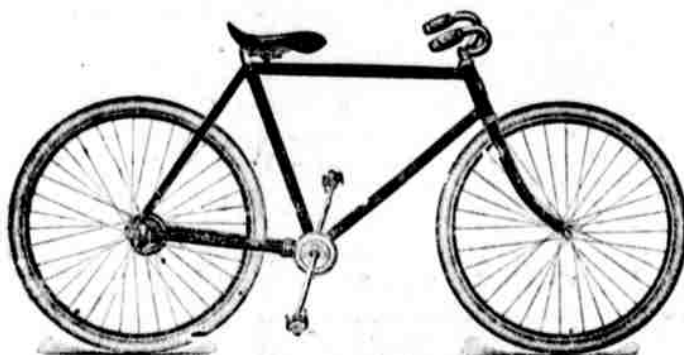
Drophead, Chain and Lockstitch  
4 Drawers, - - \$40

Box Top, Chain Stitch, 4  
Drawers, - - \$25

**The Von Hamm-Young Company, Ltd.**

**\$20 DOWN  
\$10 MONTHLY**

Will Buy a  
"TRIBUNE"  
In Three Months



A GENTLEMAN'S WHEEL.

REPAIRING  
PROMPTLY AND PROPERLY DONE

**Wood & Sheldon**  
SPORTING GOODS

91 KING STREET.

### REPRESENTATIVES

#### TALK ON EXTRA SESSION

Members of the House of Representatives were seen by a Bulletin reporter this morning with reference to the calling of a special session of the Legislature. This question was put to each of the Representatives: "Do you favor a special session of the Legislature if the scope of the work is confined solely to financial matters?" The replies were as follows:

S. F. Chillingworth—"Yes."  
W. W. Harris—"I certainly would be in favor of the calling of the Legislature under such circumstances. I do not see any other way out of it."  
Carlos A. Long—"I would not be in favor of calling a special session of the Legislature for the sole purpose of considering financial matters. I would include county government. If the work of the session could be confined to these two matters, I would certainly be in favor of that session being called. I would exclude everything else. I went into the Legislature at the last session, pledged to county government. We have promised it to the people and I am for it at any time and at all times."  
Wm. Aylett—"By all means, if the work can be confined to financial matters, call a special session of the Legislature. It is the only lawful way of dealing with the present financial crisis."

#### CHALLENGE STRICKEN.

Pleas of Solomon Mehenia, Enoch Johnson and Jonah Kumale, charged with fraud in connection with "House vouchers," have gone over in Judge Robinson's court until tomorrow morning.  
On motion of Deputy Attorney General Peters, C. W. Ashford's challenges against the make-up of the grand jury which returned indictments in these cases, were ordered stricken from the records, as being out of place.

Frank Bertelman was this morning sentenced to thirty days' imprisonment by Judge Dickey for assault and battery on his wife.

### Gasoline Lamps For Sale.

#### THE LATEST IMPROVED



100 to 800 Candle Power.  
The Cheapest and Brightest Light.  
All Lamps guaranteed.

#### AGENTS WANTED

#### CALL ON

**HAWAIIAN TRADING CO., Ltd.**  
1142 Fort Street, Love Building.

The Weekly Edition of the Evening Bulletin gives a complete summary of the news of the day.

### SHIPPING INTELLIGENCE

TIDES.									
Hour.	High T.	Low T.	High T.	Low T.	High T.	Low T.	High T.	Low T.	High T.
10 a.m.	11.1	10.1	11.1	10.1	11.1	10.1	11.1	10.1	11.1
11 a.m.	11.2	10.2	11.2	10.2	11.2	10.2	11.2	10.2	11.2
12 m.	11.3	10.3	11.3	10.3	11.3	10.3	11.3	10.3	11.3
1 p.m.	11.4	10.4	11.4	10.4	11.4	10.4	11.4	10.4	11.4
2 p.m.	11.5	10.5	11.5	10.5	11.5	10.5	11.5	10.5	11.5
3 p.m.	11.6	10.6	11.6	10.6	11.6	10.6	11.6	10.6	11.6
4 p.m.	11.7	10.7	11.7	10.7	11.7	10.7	11.7	10.7	11.7
5 p.m.	11.8	10.8	11.8	10.8	11.8	10.8	11.8	10.8	11.8
6 p.m.	11.9	10.9	11.9	10.9	11.9	10.9	11.9	10.9	11.9
7 p.m.	12.0	11.0	12.0	11.0	12.0	11.0	12.0	11.0	12.0

Last quarter of moon on Tuesday, 8th.  
Tides from the United States Coast and Geodetic Survey Tables.

Weather Bureau, Honolulu, March 7.  
Temperature—Morning minimum, 67; midday maximum, 79.  
Barometer at 9 a. m., 30.03, steady.  
Rainfall, .00.  
Absolute moisture at 9 a. m., 6.8 grains per cubic foot.  
Humidity at 9 a. m., 70 per cent.  
Wind, light N. E.; weather, fair.  
R. C. LYDECKER,  
Territorial Meteorologist.

#### ARRIVED.

Sunday, March 6.  
Stmr. W. G. Hall Thompson, from Kaula ports.  
Stmr. Claudine, Parker, from Maui ports.  
Stmr. Helene, Nelson, from Hawaii and Maui ports.  
Monday, March 7.  
U. S. A. T. Thomas, from Manila, via Nagasaki, at 7:30 a. m.  
Am. bk. Andrew Welch, Drew, 30 days from San Francisco, at 10:30 a. m.

#### DEPARTED.

Saturday, March 5.  
P. M. S. S. China, Friele, for the Orient.  
Am. bkt. Chelalis, Simpson, for the Sound.

#### TO SAIL TODAY.

U. S. A. T. Thomas, for San Francisco, at 5 p. m.  
Stmr. Lehua, Napala, for Molokai ports, at 5 p. m.  
Stmr. Ke Au Hou, Tullett, for Kapa, Anahola, Kilauea, Kalihiwai and Hanaie, at 5 p. m.  
Stmr. Naeau, Pedersen, for Honolulu, Kaaupali, Lahaina, Kukuhaele and Honokaa, at 5 p. m.  
Gasco. schr. Eclipse, Gahan, for Anahola, p. m.

#### MAENNERCHOR STARTED.

There met in the Symphony Club's room last Saturday night about sixteen young men who, under the direction of A. B. Ingalls, formed the nucleus of what promises to be a most splendid maennerchor. The voices were exceptionally good, from the deepest bass to the highest tenor, and without doubt this organization, as a branch of the Symphony Association, will be the means of bringing out many excellent singers with more than usual ability and musical education. This was shown by the rendering "by sight" of a difficult composition with which the singers were unfamiliar.

The regular rehearsals will be every Wednesday a 7 till 8 in the club rooms and it is to be hoped that many more singers will join.

#### MINISTERIAL UNION.

At the meeting of the Ministerial Union this morning an interesting paper on "Juvenile Courts" was read by Theo. Richards. Mr. Richards described the system now in use in several States of having special courts for youthful offenders, recommending the system.

At the meeting of the Hawaiian Evangelical Association held last Friday the Board decided to send an invitation to Rev. O. P. Emerson to be stationed at Wailuku. No answer has as yet been received from Mr. Emerson.

#### NAMES KEPT SECRET.

The names of the two white men arrested by the Federal authorities for alleged interference with S. Adachi, a "ten dollar club" witness, are still kept secret, although the men have been released on bond.

It is known that other names are included in the warrant, hence it has not been removed from the secret file. It is also said that the accused "wish" that their names be kept "secret" until the matter comes before the next grand jury.

Fine Job Printing at the Bulletin office.

### Coming

through the rye is an old song but we have an old whiskey called

### 'Herald Rye'

A trial will convince you of its merits. Take a bottle home and enjoy a good eyepener or nightcap during the unsettled climatic condition. It's an excellent preventive for colds and a sure cure for that tired feeling.

**Thos. F. McTigue & Co.,**

SOLE AGENTS.  
TELEPHONE MAIN 140.  
93 and 95 King St.

### NEW - TO-DAY

#### BARRY

VS.

#### MURPHY

15 Rounds—Marquis of Queensbury Rules.

### The Orpheum Saturday Evening, March 12.

Also the following preliminaries:

MODLIN vs. CASTRO.

6 Rounds.

SILVA vs. ALLEN.

4 Rounds.

The Giant Heavyweights  
GARDNER vs. ACKERMAN  
200 lb—4 Rounds—200 lb.

Popular Prices: Stage, \$2.00; Orchestra, \$1.50; Dress Circle, \$1.00; Gallery, 50c.

Box office open Thursday, March 10.

### WANTS

For Want Column See Page Six

#### LOST.

Small gold pin with pendant pearl. Return Hawaiian Hotel. Reward. 2707-1w

A monogram silver watch with the name "Lettie" on the inside, between Emma Square and Punahou College. Return to J. F. Morgan and receive reward. 2707-3f

The Laraine party did not go to Pearl Harbor on Saturday as was reported in the morning paper.

### Photographers' Notice.

On and after this date a deposit will be required at time of sitting from all persons having their photos taken by the undersigned.

**J. J. WILLIAMS  
RICE & PERKINS**

#### PASSENGERS ARRIVED.

From Hawaii and Maui ports, per stmr. Helene, March 6—C. Taylor, Mrs. R. Nelson, J. S. Low, W. Berlowitz, J. F. Woods, W. P. Miller, Mrs. C. Smith, T. A. Hays and 31 deck.

Bergen, Norway, boasts a paper church large enough to seat 1,000 persons. The building is rendered "water-proof" by a solution of quicklime, curdled milk and white of eggs.

J. S. Low returned from Hawaii in the Helene Sunday.

### Have your Teeth Fixed by our PAINLESS METHOD.

BRIDGE WORK, \$5.00 per tooth  
WHITE CROWNS, 5.00  
GOLD " 5.00  
PLATES 5.00 full set.  
GOLD FILLINGS, \$2.00 and up  
AMALGAM " 1.00  
CEMENT " .50  
SILVER " .50

No charge for examinations. All our work fully guaranteed. See samples of our modern work at our entrance. Lady Assistant.

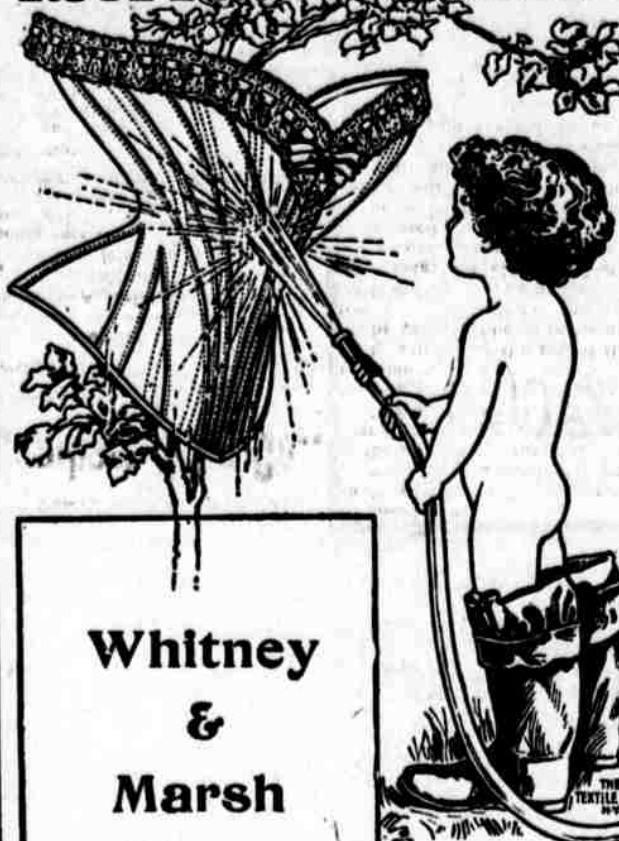
**THE EXPERT DENTISTS,**

HOURS, 8 to 5; Sundays, 9 to 12.



TEETH  
Without Plates.  
215 HOTEL ST., Cor. Young Hotel.

## WARNER'S RUST-PROOF CORSETS



Whitney  
&  
Marsh

EVERY PAIR GUARANTEED

#### TRY

### HEINZ BAKED BEANS

ONE OF THE "57 VARIETIES"



The most delicious dainty you can imagine is a dish of Heinz Baked Beans with Tomato Sauce.

Ask your grocer for a can—if he is up to date he has a full line of Heinz good things for the table.

**H. HACKFELD & CO., LTD.,**  
WHOLESALE AGENTS.

### 'KRESO' TO HOLD BONES

OF EIGHT

#### DEPARTED CHIEFS

The New Disinfectant.

KILLS THE GERMS  
PREVENTS DISEASE  
PURIFIES THE HOME

KRESO is the most ideal Disinfectant for use at this season. It is easy to use and very effective.

50 CENTS PINT BOTTLE AT

**Chambers Drug Co.,**  
Cor. Fort and King Streets.

HONOLULU MUTUAL BURIAL ASSOCIATION.

Members in Association.....2,200  
Associations in U. S.....7,000  
All it costs to join.....\$3.50  
Benefits received.....\$100.00  
Phone Main.....411  
Office Beretania St.....124

The steamer Helene arrived from Hawaii and Maui ports yesterday with sugar and cattle. She stopped at all the way ports usually touched by the steamer Kinau and took from there ten passengers who had intended to come to Honolulu in the flagship which, owing to her delayed departure from Hilo last trip, came to Honolulu direct.

Work was started today on a new vault which is to be constructed in the mauka grounds in Nuuanu valley for the purpose of accommodating the remains of the nine Kamehamehas who were formerly in the mauka mauka chapel. The vault will be built in the mauka-Ewa corner of the grounds, between the Bernice Pauahi Bishop monument and the street. The work is in charge of Thomas Gil, the architect. It is expected that it will be completed in about six or seven weeks.

The new structure will be a very handsome and spacious one. The vault, which will be underground, will be crowned by a handsome monument in the form of a large dome upheld by four square piers. Broad steps will lead from the ground to the monument proper. The royal emblem of the Kamehamehas, the pulo'u'u, or tabu stick, will crown the top of the dome. The vault will be 25 feet long and 18 feet wide. It will be nine feet deep while the top of the monument will rise to a height of eight feet above the ground. Concrete will be the material used.

The remains of nine persons altogether will be placed in this vault. They are all, with the exception of R. C. Wyllie, descendants or relations of the Kamehamehas, and are as follows: Kamakui Rooke, Queen Emma's aunt and her adopted mother.  
Dr. Rooke, Queen Emma's uncle and her adopted father.  
Kekelaakalani, Queen Emma's mother.  
Bennett Namakeha, Queen Emma's uncle.

### JAS. F. MORGAN

Auctioneer and Broker.  
847-857 Kaahumanu Street.  
P. O. BOX 894. TELEPHONE 72.

### Auction Sale —OF— DELINQUENT STOCKS

ON SATURDAY, MARCH 12,  
AT 12 O'CLOCK NOON.

At my salesroom, 357 Kaahumanu St., Honolulu, I will sell at Public Auction, by order of the Treasurer, Mr. R. H. Trent, the following certificates of stock in the Inter-Island Telegraph Co., Ltd., unless the delinquent assessments, with interest thereon and advertising expenses be paid on or before the day and hour of sale:

Certif.	Shares.	Assess.
4—H. J. Craft	10	6-13
4—W. A. McKay	5	9-13
26—W. A. McKay	10	9-13
13—W. A. McKay	10	9-13
66—W. A. McKay	10	9-13
8—W. T. Bray	20	2-13
18—J. H. Fisher, Trust	40	2-13
21—J. R. Burns	40	4-13
23—Margaret B. Richardson	5	2-13
26—Oceanic Gas & Electric Co.	150	3-13
30—R. B. Reedy	2	5-13
32—H. W. Howard	30	3-13
35—E. H. P. Wolters	5	5-13
37—Wong Kwai	10	5-13
53—Gear, Lansing & Co.	10	2-13
57—H. W. Dang	5	1-13
63—F. D. Greany	10	2-13
65—F. D. Greany	5	3-13
119—W. M. Campbell	10	12-13
122—D. F. Morton	40	5-13
123—D. F. Morton	10	5-13
43—Chong Hop	5	6-13

R. H. TRENT, Treasurer.  
Honolulu, March 3, 1904.

**JAS. F. MORGAN,**  
Auctioneer.

### Across the Continent

on the  
**NEW OVERLAND LIMITED**  
CHICAGO to  
LESS THAN 3 DAYS  
NEW YORK

3 DAYS 19 HOURS  
LUXURIOUS  
EVERY DAY TRAIN

Bath, Barber, Buffet, Library,  
Electric Reading Lamps in every  
Booth, Observation Car,  
Telephone Service, "\*\*\*\*\*"

### SOUTHERN PACIFIC

E. O. McCORMICK,  
Passenger Traffic Manager.  
T. H. GOODMAN,  
General Passenger Agent.  
SAN FRANCISCO to CALIFORNIA  
5-10-03

### WM. G. IRWIN & CO., LTD.

Agents for  
Western Sugar Refining Co.,  
San Francisco, Cal.  
Baldwin Locomotive Works,  
Philadelphia, Pa.  
Newell Universal Mill Co.,  
Manufacturers of National Cane  
Shredder, New York, N.Y.  
Paraffin Paint & Company,  
San Francisco, Cal.  
Oilandt & Co.,  
San Francisco, Cal.  
Pacific Oil Transportation Co.,  
San Francisco, Cal.

Jane Lahilahi, Queen Emma's aunt and the mother of Albert Kuniakale and Peter Kekuakalani.  
Albert Kuniakale, Queen Emma's cousin.  
Peter Kekuakalani, Queen Emma's cousin.  
John K. Young, Queen Emma's uncle.  
R. C. Wyllie, the premier and close friend of the Kamehamehas.

#### REAL ESTATE TRANSACTIONS.

Filed for Record Mar. 5.  
T M Louison—Bishop & Co.....PA  
O H Gulick—Supt Pub Inst.....Ack  
T Masuda et al—H Renjes.....Affid  
T Masuda—F A Schaefer.....Affid  
L K Henriques—H K Lowe.....Rel  
H K Lowe—L K Henriques.....M  
Hilo Mett Co—Jno Fitzgerald.....AM  
A Furtado—A D Furtado.....D  
O Inokichi—D E Wilson.....D  
Filed for Record Mar. 7.  
Francisco da Cambrá—Joe M Pires.....D  
Jao C Gilman—Z McKeague.....D