



PROFESSIONAL CARDS

ATTORNEYS

JOHN RICHARDSON
ATTORNEY AT LAW
AND NOTARY PUBLIC
LAHAINA, MAUI

W. F. CROCKETT
ATTORNEY AT LAW
WAILUKU, MAUI

CROOK & CROOK
ATTORNEYS AT LAW
WAILUKU, MAUI

C. W. ASHFORD
ATTORNEY & COUNSELLOR
AT LAW
HONOLULU, HAWAII

WM. G. ROGERS, M. D.
OCULIST AND AURIST
Office, 1146 ALAKEA STREET
HONOLULU, H. T.

DANIEL H. CASE
ATTORNEY AT LAW
WAILUKU, MAUI
Tel. 392.

A. N. HAYSELDEN
ATTORNEY AT LAW
AND NOTARY PUBLIC
General Business & Collection Agent
LAHAINA, MAUI
Telephone 220

PHYSICIANS

DR. JOHN WEDDICK,
WAILUKU.
OFFICE HOURS:
9 to 10 A. M.,
2 to 4 P. M.,
7 to 8 P. M.
HOSPITAL 10 A. M.

DR. ROBT DINEGAR
PHYSICIAN & SURGEON
PUUNENE, MAUI

W. F. MCCONKEY, M. D.
PHYSICIAN & SURGEON
PAIA, MAUI

Pukalani Milk Dairy

If you want a daily supply of fresh, pure milk, or fresh milk, butters, apply

PUKALANI DAIRY
Tel. 166 Makawao

DENTISTS

A. H. CLARK, D.D.S. P. F. FREAR, D.D.S.
CLARK & FREAR
DENTISTS
McIntyre Bldg. Fort and King.
Hours, 9 A. M. to 4 P. M. Honolulu, H. T.

W. RUSSELL BOOTH, D.D.S.
DENTIST
Office, MAIN AND MARKET
WAILUKU, MAUI

GEO. S. AIKEN, D.D.S.
DENTIST
Office, SUNNYSIDE AND PUUNENE
Telephone, SUNNYSIDE
Hours, 9 A. M. to 4 P. M.

HENRY DICKENSON,
NOTARY PUBLIC.
LAHAINA, MAUI

GEO. H. DUNN
NOTARY PUBLIC
LAHAINA, MAUI

Candy
Send 75c \$1.00 \$1.25
or \$1.50 for a nice box of Chocolates
and confections, sent post or freight
free to any part of the Island's.

Hart & Co., Ltd.
Honolulu, H. T.

KAHULUI & WAILUKU
Transportation Co.
C. T. GREEN, PROP.
Hauling of all kinds at reason-
able rates
Office at Kahului & Wailuku
Storage at Kahului if desired.

ANTONIO FAUSTINO
Competent Guide to Iao Valley
TERMS REASONABLE
Address and Reference Maui Hotel.

Side Light
A MONTHLY
ILLUSTRATED JOURNAL
DEVOTED TO
DIVERSIFIED INDUSTRIES
AND AGRICULTURE
IN
HAWAII.
Almost every known fruit
and vegetable of temperate
and tropical countries can
be successfully grown here.
TWELVE INTERESTING NUMBERS FOR
\$1.00 POST PAID.
557 SIDE LIGHTS, HIO.
Church St. - SAMPLE COPIES - HAWAII.

K. MATSUDA
Photograph Gallery
OPPOSITE ALOHA SALOON
MARKET STREET, WAILUKU
New-Up-to-Date High Class
Work. Kodak Pictures De-
veloped and Printed.

FINE OFFICE DESKS

Write to us for prices and description of desks and other office furniture. We can give you the finest goods at the lowest prices. If you prefer to see the goods before buying come to our salesrooms and you will find a very superior stock here.



BOOKKEEPERS SINGLE & DOUBLE STANDING DESKS
sizes 5, 6, 8, 10 and 12 feet.

ROLL TOP DESKS all sizes
FLAT TOP DESKS all sizes

OFFICE CHAIRS, cane bottom and strongly made

If you want a good piano for little money, write us about our famous Seiler Pianos and Hegeler & Ehler Pianos.

H. Hackfeld & Co., Ltd.,
HONOLULU, T. H.

FOREIGN NEWS.

London, England, Feb. 2.—Parliament was opened today by King Edward with the usual imposing ceremony. The halls were crowded, unusual interest being felt in the King's attitude toward the critical conditions in the Far East. The King in his speech from the throne promised to aid in the promotion of peace in the Orient.

St. Petersburg, Russia, Feb. 2.—Czar Nicholas is considering the Russian Government's reply prepared by his Council. It is stated that Russia's reply will be transmitted to the Japanese authorities February 6.

St. Petersburg, Russia, Feb. 3.—Reports received from Russian sources of information in the Far East are decidedly disquieting. It is stated that the Seoul-Fusan Railway has been occupied by the Japanese, who had taken guns to Seoul ostensibly to protect the Legation.

It is also reported that war will inevitably follow a refusal to accept Russia's response to Japan. Viceroy Alexieff is said to have the authority to declare war.

Tokio, Japan, Feb. 3.—The situation in Japanese circles has taken a decidedly critical turn in consequence of Russia's delay.

The Japanese Emperor has held an important conference with his officials and it is possible that Russia's dilatory tactics may result in an ultimatum from Japan.

NEW
KAHULUI
SALOON

Your Brand of
Ice Cold Beer

Always On Tap

Choice Wine for Bar and Table Use
Cold Drinks and All Varieties of
Aerated and Mineral Waters

A. K. STENDER PROPRIETOR
Kahului Maui

Lee Hop

Market Street, Wailuku

Dealer in
Hardware, Furniture, Etc.

Especial attention given to
resilvering regilding and re-
framing old mirrors and
looking glasses

Mirrors of all sizes
made to order



IAO STABLES
LAHAINA STABLES

Hacks, Carriages, Buggies and Saddle Horses
at all hours. Meet all Steamers and Trains.

Mail Stage Leaves {Lahaina 8 a. m.} Daily
{Wailuku 12 a. m.} **A. DO REGO,** Manager

TELEGRAPHIC ITEMS

Colombia intends to send an expedition against Panama.

The Korean Minister at Peking has been recalled to Seoul.

The Japanese are buying horses in Vancouver, B. C., for the army.

Seven Turkish battalions have been ordered to the Bulgarian frontier.

It is stated that Japan does not intend to fortify the Straits of Korea.

Russian troops have moved into the interior of Korea from the frontier.

It is reported that the Japanese fleet sailed on January 23 for Mesempho.

At an election riot in Cuba, one man was killed and four seriously injured.

Prayer was offered in churches at Los Angeles, California, last Sunday for rain.

The Russian reply to Japan is conciliatory in tone but unchanged in essentials.

Placards have been posted at Canton, China, inciting natives to attack foreigners.

A son of the President of Switzerland committed suicide at Dijon, France, this week.

The native tribes of South Western Africa are hard pressing the German military garrisons.

In a great wind storm, a passenger train on a Colorado railroad was blown off the track.

The San Domingo insurgents have recaptured San Pedro and Demacoras, after desperate fighting.

Governor Peabody has revoked the order declaring Teller County, Colorado, in a state of insurrection.

J. Pierpont Morgan will hereafter make his home in England. His son will succeed him in New York.

The Sugar Makers' Union is preparing to make a demand upon the refiners for an increase of wages.

The Anglo-Italian Arbitration Treaty was signed by the representatives of the Powers at Rome, Feb. 1.

The Uruguan insurgents repulsed a force of 1,500 government troops at San Roman, capturing their ammunition.

Both Russia and Japan have sent to the Powers complete statements of their respective positions on the Far Eastern questions.

W. A. McKowen, defaulting secretary of the Berkeley University Board of Regents pleaded guilty to a charge of embezzlement.

Commissioner Degateau, the representative of Porto Rico in Congress has been given a place on the Committee on Insular Affairs.

William C. Whitely, Secretary of the Navy during the Cleveland administration died in New York, Feb. 2, from the effects of an operation for appendicitis.

Florence Maybrick has been released from prison upon strict conditions not to write a book, appear upon the stage or otherwise invite public attention.

Cotton advanced an average of 70 points on the New York Stock Exchange, January 30, and there are reports of heavy losses by firms who had taken large orders.

The mobilization of the Manchurian reserves has been announced by the Russian Minister of War, and it is expected that 50,000 troops will reinforce the Vladivostok garrison.

Governor Luke E. Wright and Vice-Governor Ide of the Philippines were inaugurated February 1, with imposing ceremonies, and a general holiday was celebrated throughout the city of Manila.

An order was issued by the Russian Government that transportation of supplies over the Siberian railway was to cease on February 2. This action was taken to have the road clear for the transportation of troops to the Far East.

MAKAWAO
STORE

T. AWANA
PROPRIETOR and MANAGER



General Merchandise

Dry Goods

Fancy Goods

Hardware

Groceries

Chinese and

Japanese Goods

BUTCHERS.—Choice Fresh
and Salt Beef and Pork Con-
stantly on hand.

Blacksmithing, Gen'l Jobbin,
Repair and new work at right
Prices. Shoeing.

Charcoal in Quantities to Suit

Produce of All Kinds

Delivered in Wholesale Lots

Goods Delivered at Olinda
Kula and all points on the Ka-
hului Railroad.

TELEPHONE No. 88.

1904

Excelsior

Diaries Now Ready

If you haven't experienced the
pleasure of keeping a diary why
not begin the new year and keep
a record of interesting events.

Excelsior 1904 diaries are more
convenient than ever and in spe-
cial letters.

We fill mail orders as prompt-
ly and satisfactorily as if you
came to our STORE.

Hawaiian News Co.
Honolulu, H. T.



Waihuli Market

W. H. CORNWELL, Jr., Prop.

Beef, Mutton, Pork, Turkeys & Chickens
Sausage, Fresh & Smoked, a Specialty

Tel. No. 382

Market St., Wailuku

LOCALS

Send your job work to the News Job Office.

Work will shortly be begun on the schoolhouse at Wailuku.

Business has been dull and travel light in Wailuku all week.

The weather has been showery on Central Maui all this week.

Eggs are becoming very abundant and quite cheap in the Wailuku market.

Rain has seriously interfered with the handling of sugar at Kahului harbor this week.

Some very fine mullet has recently been brought to Wailuku from Lahaina and also from Kahului.

Be on hand at the meeting of the Maui Athletic Association at the courthouse on Monday evening.

The roads are becoming very muddy on Maui, and travel along the up country roads is well nigh impossible.

Don't forget the match races at Kahului next Saturday afternoon. Two exciting finishes are expected.

Special attention is being given to industrial work for girls at the Wailuku school, and encouraging results are being obtained.

The Territory is negotiating with the Wailuku Plantation for an armory site in the rear of T. B. Lyons' residence in Wailuku.

The Wailuku markets are now well supplied with fat beef and mutton, but fish are scarce, owing to the stormy weather prevailing.

FIREWOOD—Orders left at the Wailuku Market will have prompt attention.

KAONOULU RANCH.

Wailuku's 1st class Barber Shop. U. Luke U. Sea.

There will be a meeting of the Ladies' Guild of Wailuku at the residence of Mrs. G. B. Robertson on next Tuesday afternoon at the usual hour.

Jim, the deputy manager of the Maui Hotel, suggests to the News man that the finest brands of cigars in town can be found at the Maui Hotel office.

FOR SALE—A freak, three-legged bull calf, born in October. For price and particulars, apply to R. C. SEARLE, Honolulu, Lahaina.

FOR SALE—One Brunswick and Balke Standard Billiard Table and outfit. Almost new. Apply to M. McCANN, Lahaina.

A special cablegram to the Advertiser states that the artillery command at Honolulu will be transferred to San Diego, Cal., in April, and infantry will be assigned to their place in Honolulu.

The mail which reached Kahului by Wednesday morning's Maui was delivered at the Wailuku post office at 1:30 o'clock on Wednesday afternoon. Explanations are in order. A couple of weeks ago, Jan. 27, it came up at 11:35.

All parties indebted to Macfarlane & Co., Wailuku, are hereby notified to settle their accounts before January 15, or same will be placed in the hands of Attorney Jas. L. Coke for collection by suit.

MACFARLANE & CO.

Dr. George S. Aiken, the Paia dentist will be at Punene from Feb. 9 to Feb. 16, where those in Wailuku and Kahului who need his services can reach him by train. Hereafter Dr. Aiken will maintain an office at Punene, although his telephone call will still be Sunnyside.

NOTICE—I will sell at public auction the household effects of Mrs. C. D. Loveland, at her residence, at Hamakua, Maui, on Saturday, February 13, 1904, beginning at ten o'clock A. M. sharp.

W. O. AIKEN, Auctioneer.

During the year 1902 we occupied in St. Louis 465,000 square feet of floor space, or nearly 11 acres. We employed in St. Louis 3700 people. We paid for help \$2,170,400.00. We cut 1,761,633 animal skins. We shipped \$7,030,143.77 worth of shoes.

Engine Capacity 1600 horse-power. St. Louis factory output—A shoe a second.

Gents Country Club Bal \$3.50 Shoes Bbx Calf and Vici.

HAMILTON, BROWN SHOE CO. MANUFACTURERS' SHOE CO., Sole, Port Street, Honolulu, H. T.

GUAVA JELLY FACTORY

AT KAHULUI.

Several times recently the News has hinted at the establishment of a guava jelly factory on Maui, and now has the pleasure of announcing that during the next week it will begin active operations.

Mr. Hugh Coke of Waihee and Mr. Thomas Church of Paia are the leading spirits in the enterprise. Machinery was ordered some time since, and has been installed at Kahului. A special label has been prepared for the firm, and 600 dozen jelly jars and covers have been ordered and received. The full capacity of the factory will be 200 cases per day, but it will not be run to its full capacity at first. The jelly manufactured by this firm holds a high rank among Coast grocerymen, and one wholesale grocery house has agreed to contract for 5,000 cases every season. Success to the new enterprise.

Baseball on Maui.

On next Monday evening, there will be a special meeting of the Maui Athletic Association at Wailuku Courthouse, at seven o'clock sharp to discuss the coming baseball league season, and every member of the Association, as well as outsiders who are interested in the game are requested to be present.

Last season's league games were quite successful, and there is now material on Maui for a still more successful league season this year. Wailuku and Waikeke can put two strong teams, Kahului should be good for another, and Makawao promises a fourth. If Lahaina plays, as it probably will, the league will include five teams this season.

In Honolulu the league season will be from April to October, and the Maui league schedule should cover a like period of time.

There is some talk that the Morning Stars are to go to Hilo some time this summer to play a Hilo team.

Busy Times at Kahului

Owing to the number of vessels in Kahului harbor, work is being pushed as fast as the stormy weather will permit. The sugar mills on central Maui are all running to their full capacity, and long trains of sugar cars daily reach Kahului. The Paia Mill has 25,000 bags of sugar on hand, all of which will be shipped on the Nevada. Large amounts of sugar from the other mills are on hand, and the Nevada will probably take a full cargo, about 8,000 tons when she sails.

The new passenger depot at Kahului is a little gem, and is a pleasant waiting place for the trains. The lawn surrounding it have been set out to grass, and will soon present a charming appearance. The railroad office building which stood near the wharf has moved back about fifty feet, and carpenters are busy this week refitting the interior of the building, so that when finished it will be quite an up-to-date office. During the past few months Superintendent Miller has largely remodeled the yards and buildings, the result being a very decided improvement.

LAHAINA LINES.

Last Saturday afternoon and evening, Mr. and Mrs. Waiakoho gave a bountiful luau, on the first anniversary of the birth of their infant daughter, Florence Eliza. The festivities took place at the residence of Chief of Police Keanu. A beautiful pavilion was constructed for the occasion, and the decorations were very tasteful. A large number of invitations were sent out. One cow, four pigs, and fish in profusion were required for the numerous guests. The coconut pudding was delicious.

Mrs. Olsen has recently entertained Mr. Hofgaard and Miss McRoy, of Kihel.

Mrs. Kia and her son George have been visiting their Lahaina friends. Henry Kia has found employment in San Francisco.

Miss Rachel Hayselden has enjoyed a trip to the Island of Hawaii.

Mrs. Halvorsen is away, on a short journey to the mainland.

Preparations are being made for a brilliant wedding.

The average attendance at the Kindergarten is about 60. Extra chairs have arrived from Honolulu. Five tables are now used daily, and another table is needed.

Mrs. Taylor has returned from a pleasant visit in Honolulu.

No. 5094.
REPORT OF THE CONDITION OF
The First National Bank of Wailuku, at Wailuku, Maui, in the Ter. of Hawaii, at the close of business, January 22, 1904.

RESOURCES	DOLLARS
Loans and Discounts	64,822.18
Overdrafts secured and unsecured	282.00
U. S. Bonds to secure circulation	16,500.00
Premiums on U. S. Bonds	1,000.00
Banking house, furniture and fixtures	1,050.00
Due from State Banks and Bankers	352.67
Internal Revenue Stamps	3.35
Checks and other cash items	550.68
Fractional paper currency, nickels and cents	138.45
LAWFUL MONEY RESERVE IN BANK, VIZ:	
Specie	11,639.25
Redemption fund with U. S. Treasurer, (5 per cent of circulation)	825.00
Total	97,163.57
LIABILITIES	DOLLARS
Capital stock paid in	25,000.00
Surplus Fund	3,000.00
Undivided profits, less expenses and taxes paid	749.84
National Bank note outstanding	16,500.00
Due to State Bank and Bankers	1,112.40
Dividends unpaid	96.00
Individual deposits subject to check	32,890.99
Demand certificates of deposit	6,909.34
Time certificates of deposit	9,905.00
Total	97,163.57
Ter. of Hawaii, Island of Maui, ss: I. C. D. Lufkin, Cashier of the above-named bank do solemnly swear, that the above statement is true to the best of my knowledge and belief.	
C. D. LUFKIN, Cashier.	
CORRECT—Attest:	
W. T. Robinson	Directors
R. A. Wadsworth	
D. C. Lindsay	
Subscribed and sworn to before me this 5th day of February, 1904.	
JAS. N. K. KEOLA, Notary Public.	

BY AUTHORITY

NOTICE.

TO ALL WHO ARE CONCERNED.
Notice is hereby given that a petition has been filed by the Territory of Hawaii for adjudication of water rights of the Valley of Kanaha, in a controversy has arisen between the said Territory and the Pioneer Mill Company, Ltd., therefore the hearing of said case is set for the 4th day of March, 1904, at two o'clock, P. M., and all parties interested in the water rights of said Valley of Kanaha are ordered to appear before me at the premises of the Lahaina Seminary, Lahaina, Maui, at the above said time, failing which the case will be adjudicated ex parte by default.
LYLE A. DICKEY,
Commissioner of Private Ways and Water Rights for the Island of Maui.

NOTICE.

At the annual meeting of the stockholders of the Maui Wine & Liquor Co., Ltd., held on Jan. 27th, 1904, the following officers and directors were elected to serve for the ensuing year:
W. T. Robinson, President
G. B. Robertson, Vice-President
C. D. Lufkin, Treasurer
J. Garcia, Secretary
Directors: W. T. Robinson, C. D. Lufkin, R. A. Wadsworth, E. M. Keeney, J. J. Walsh, H. Streubek and W. G. Scott.
J. GARCIA, Secretary.

LEGAL NOTICE.

NOTICE OF ASSESSMENT.

HANA PLANTATION COMPANY. Location of principal place of business, San Francisco, California. Location of works, Hana, Maui, Territory of Hawaii.
Notice is hereby given, that at a meeting of the Board of Directors, held on the 9th day of January, 1904, an assessment No. 4, of ten (10) cents per share, was levied upon the capital stock of the Corporation, payable immediately in United States gold coin to the Treasurer of the Company, Louis Sarani, at his office, No. 601 Fulton Street, San Francisco, California.
Any stock upon which this assessment shall remain unpaid on the first day of March, 1904, will be delinquent, and advertised for sale at public auction; and unless payment before, will be sold on FRIDAY, the 5th day of March, 1904, to pay the delinquent assessment, together with the costs of advertising and expenses of sale.
By order of the Board of Directors,
D. C. BATES, Secretary.
Office—No. 215 Front Street, San Francisco, California.

BY AUTHORITY

SEALED TENDERS.

Sealed Tenders will be received by the Superintendent of Public Works until 12 M. of Monday the 1st of February, for constructing school house at Wailuku, Maui.

Plans and specifications on file in office of Superintendent of Public Works, Honolulu; also in office of school Agent Mrs. E. L. Austin, Wailuku, Maui.

The Superintendent reserves the right to reject any and all bids. Tenders to be endorsed on envelope "Proposals for school-house, Wailuku."

C. S. HOLLOWAY,
Superintendent of Public Works,
Department of Public Works,
January 13, 1904.

SEALED TENDERS.

Sealed Tenders will be received by the Superintendent of Public Works until 12 M. of Wednesday the 17th, of February for constructing school building and two dormitories, Lahainaluna, Maui.

Plans and specifications on file in office of Superintendent of Public Works, Honolulu; in office of the Principal of Lahainaluna School, Maui, and in office of Mr. L. M. Baldwin, Sheriff of Wailuku, Maui.

Contractors will state in proposals specific sum for which they will furnish all material and labor and erect the school and dormitories. Proposals to be endorsed on envelope, "Proposal for constructing school and dormitories, Lahainaluna."

The Superintendent reserves the right to reject any and all bids.

C. S. HOLLOWAY,
Superintendent of Public Works,
Jan. 20, 1904.

EXECUTIVE NOTICE

Notice is hereby given that the Governor has appointed Lyle A. Dickey, Esq., Commissioner of Private Ways and Water Rights for the Island of Maui.

A. L. C. ATKINSON,
Secretary of the Territory.
Capitol, Honolulu, January 19, 1904.

POUND NOTICE.

I have this day appointed Thomas K. Pa, Esq., Pound Master for the Government Pound at Huelo, Island of Maui, Territory of Hawaii.
C. S. Holloway,
Superintendent of Public Works,
Jan. 25, 1904.

NOTICE

On and after January 1, 1904, through rates on parcels and packages up to 100 pounds from Honolulu to all termini of the Kahului Railroad will be 25 cents.

WILDER S. S. CO.,
KAHULUI R. R. CO.

LEGAL NOTICE.

Notice to Creditors

Notice is hereby given that the undersigned was on the 21st day of December, 1903, duly appointed the executor of the last Will and Testament of KAHAKAUWILA, late of Pauwela, Maui, deceased, by order of the Judge of the Circuit Court, Second Judicial Circuit, Territory of Hawaii.
Therefore, all creditors of said estate and said deceased are notified hereby to present their claims, duly authenticated and with the proper vouchers, if any exist, even if the claim is secured by mortgage upon real estate to the undersigned at Pauwela, Maui, or with Jas. L. Coke, Wailuku, Maui, within six months from the date of this notice, said date being the first publication of this notice; otherwise such claims if any, will be forever barred.
Wailuku, Maui, January 2, 1904.
KAAUANA.

Executor of the last Will and Testament of Kahakauwila, late of Pauwela, Maui, Maui, deceased.

APPRECIATE THE FACT

That we have bought Shoes for cash direct from the factories in the East, hence are able to sell you shoes at bedrock prices. We offer a Ladies' latest style, patent leather shoe, French heels, for \$4.50, such as cost you \$6.00 in Honolulu and for you, gentlemen, we have a patent leather shoe that costs you \$6.50 in Honolulu, and we let you have it for \$5.00. You can have your choice of shoes from \$1.50 up to \$5.00; there is no middle-man with us; everything is bought direct, hence you save over 25 per cent by buying from us.

MAUI DRUG STORE

Y. A. VEIENSEN, Proprietor

TO CUT

A LONG TALE SHORT



We have now removed to our new quarters in the old Lewis & Cooke Building, 931 Fort Street, where with our increased facilities we hope to see all our old customers and many new ones.

PEARSON & POTTER CO., Ltd
P. O. Box 784. Honolulu, H. T.

MISSION FURNITURE FOR LONG SERVICE

No furniture constructed now-a-days will give longer service than the Mission pattern. Sound, solid wood only is used, formed and joined in the most substantial and secure manner. It seems almost impossible that it should be worn out with any kind of use.

Come and see our stock—you will find some excellent suggestions in it.

Mail orders given prompt attention.

PORTER FURNITURE CO., Ltd.

Young Building, Corner Hotel Street, Honolulu

HYMAN BROS.

WITH THEIR THIRTY-FIVE YEARS EXPERIENCE IN THE

Dry Goods and General Merchandise

Business Carry the best Selected Stock for ISLAND TRADE, Which They Offer and Sell TO THE TRADE ONLY, at Prices and Terms Most Favorable.

We Fear No Competition

SOLE AGENTS FOR

LITTLE JOKER and CROSS CUT TOBACCO and CYCLE CIGARETTES.

Orders Will Receive the Best and MOST PROMPT ATTENTION

MAUI COFFEE

Recommended by the Manager of Maui Hotel as being equal to Kona Coffee in Taste and Aroma.

Two Years Old, Sold by the Bag, or less Quantities.

Fresh Crop Sold by the Ton or Less Quantities.

Give Our Maui Coffee a Fair Chance in the Local Market.

For prices and particulars, apply to

CHAS. COPP, Makawao, Maui.

If you want any of the following articles write to the **PACIFIC HARDWARE CO. Ltd.,** P. O. Box 246, Honolulu, T. H., for prices

Stoves and Ranges, Crockery and Glassware, Kitchen Utensils, Agate Ware, Tin Ware, Ice Boxes and Refrigerators, Carrara Paint, which lasts for years.

SPORTING GOODS—Guns, Revolvers, Cartridges, etc., etc. Art Goods and Pyrography Outfits. Correspondence solicited

THE MAUI BAZAAR

Hawaiian Curios, Ivory Wreaths, Lahala Hats, Mats and Baskets of Hawaiian Manufacture, and Hawaiian Quilts. Hawaiian Tapes and Koa Calabashes, Birds' Nest Fern Work, Such as Napkin Rings, etc.

We Also Receive Articles on Consignments.

Order Will Receive Prompt and Careful Attention.

K. OF P. HALL BUILDING WAILUKU, MAUI
Mrs. J. K. Kahookale, Business Manager

New Shipment Coming

Italian Marble, Scotch and American Granite, Ornamental Figures in Italian Marble on Granite Bases.

Memorials in any material known to the trade, including bronze. Photographs of all designs cheerfully furnish on application. Safe of any known make furnished.

J. C. AXTELL

O. Box 612, 1913-1939 ALAKEA St., BET. KING AND HOTEL Sts.

Stationery OF ALL KINDS

can be had at the office of the

Maui News

PUBLISHED WEEKLY

Foreign and Island News

We also have a complete and up-to-date line of Job Type and are prepared to do

FINE ARTISTIC JOB WORK PRINT

Letter Heads
Bill Heads
Statements
Envelopes
Programmes
Invitations
Cards
Circulars
Posters
Etc., Etc.

All work executed in a
NEAT AND
SATISFACTORY
MANNER

When in need of Printing
of any kind

GIVE US A CALL

THE Maui News

And the Moral Is This

WHEN YOU DISCOVER A GOOD
THING LET THE WORLD KNOW IT

Here's some good things:—

Poi Containers
in agateware, from 1 to 24 quarts

Roasting Pans
"Brown Beauty," Self Basting;
neat, simple and durable; never
burns

Filters And Coolers
in the latest stoneware, all sizes.

Moulds for Jellies
in Tin, Porcelain and Brownware.
KITCHEN AND HOUSEHOLD
SPECIALTIES.

LEWIS & CO., LTD.

THE BIG GROCERS

169 King St. Honolulu,
The Lewers & Cooke Bldg.

**The FIRST NATIONAL BANK
OF WAILUKU**

Charles M. Cooke, President
W. T. Robinson, Vice President
C. D. Lufkin, Cashier
Directors—R. A. Wadsworth,
D. C. Lindsay.

Transacts a general banking business.
Draws Exchange on the United
States, England, France, Germany,
Canada, China, Japan and Honolulu.
Makes collections promptly and at
reasonable rates.
ALLOWS INTEREST ON DE-
POSITS.
Loans money on approved personal
securities.
Special arrangements with out of
town depositors whereby their checks
will be paid in Honolulu at par.

FIRE INSURANCE! FIRE INSURANCE!

**The Bank of Hawaii
LIMITED.**

Incorporated Under the Laws of
the Republic of Hawaii.
CAPITAL \$600,000.00
SURPLUS \$200,000.00
UNDIVIDED PROFITS \$70,000.00

OFFICERS.
Chas. M. Cooke, President
P. C. Jones, Vice-President
F. W. Macfarlane, 2nd Vice-President
C. H. Cooke, Cashier
F. C. Atherton, Assistant Cashier
DIRECTORS.
Henry Waterhouse, E. D. Tenney,
J. A. McCandless, C. H. Atherton,
E. F. Bishop.
Transact a General Commercial
and Savings Business.
Correspondence Solicited.

Hollister Drug Co.

HONOLULU, H. T.

This name on a Package
of Drugs or Medicine is a
guarantee of the SUPERIOR
QUALITY of the Article.

All first class stores handle
our goods.

**Crown Pianos
FOR
Lively Music.**

Some people like serious music,
some prefer it otherwise.

If you like good, lively, frisky
ragtime, with a pinky-pinky-poo
suggestion of a banjo accompaniment,
the Crown piano, with ban-
jo, harp and mandolin effects, is
the one for you.

It is a good, sound, sensible
piano, not to be told from others
in its class, but press the lever
and it immediately gives forth
a tone that sets your feet tapping,
and your lips puckering for a
whistle.

Bergstrom Music Co.

Box 576, HONOLULU

Personal Mention.

O. M. Atwood of Hoffschlager & Co.
is expected on Maui today.

Court Clerk Coelho was a visitor to
Honolulu by last Saturday's Claudine.

John Camara, formerly with A.
Enos is now manager of the Iao
Stables.

Attorney James L. Coke was called
over to Lahaina yesterday on pro-
fessional business.

Mr. and Mrs. A. A. Braymer visited
Waikuku last Saturday, leaving the
same day for Honolulu.

U. S. Marshal E. H. Hendry left
for the Orient by Saturday's America
Maru, in quest of Adachi.

A. Gomez, A. E. Carter and wife
and A. B. Stabell were booked for
Maui on Wednesday's boat.

Attorney John Richardson of Lahai-
na was in Waikuku several days this
week, on professional business.

Mrs. F. F. Baldwin and child will
leave for the coast via Honolulu to-
day for a visit of some months.

Manager James Kirkland of the
Kahului Store returned from Hon-
olulu on Wednesday morning's Maui.

Mr. D. Forbes of Kukuihaele, Ha-
waii, came over on Monday night's
Mauna Loa and spent several days on
Maui this week.

The Carmen brothers will have
charge of the gauva jelly factory at
Kahului, where none but white labor
will be employed.

V. A. Vetlesen of the Post Office
store received a lot of interesting
reading matter this week. Call and
look over his stock.

Governor Carter and party are
still on Hawaii and will probably pro-
ceed directly to Honolulu on their
return, visiting Maui later.

General Passenger and Freight
Agent Weller of the Kahului R. R. Co.
take a run over to Honolulu today,
to see friends off to the coast.

F. H. Jordan of Honolulu was the
lowest bidder for the construction of
the Wailuku Schoolhouse, and will
doubtless be awarded the contract.

Mr. T. W. Duncan, formerly on the
Examiner staff came over on last
Wednesday to accept the position of
stenographer for the Kahului R. R. Co.

H. T. Hayselden of the David Law-
rence Tobacco Co. arrived from Ha-
waii by last night's Kinau, and will
probably remain on Maui for a week
or ten days.

Mr. George Castle and Mr. J.
Spindle who spent some days as
guests at the Maui Hotel, Wailuku,
left for Hawaii by last Tuesday
night's Kinau.

Treasurer A. N. Kopoikai stopped
off at Wailuku last Saturday morn-
ing on his return from Hawaii, leav-
ing for Honolulu the same afternoon,
accompanied by his wife.

George Copp of Makawao has been
appointed Deputy Assessor of Mak-
awao District to succeed W. O. Aiken,
who resigned to accept the position of
Customs Inspector at Kanului.

Mrs. S. T. Alexander, Miss Anna
Alexander, Miss Edna Wemple and
Hon. C. W. Dickey arrived from Ha-
waii by last Friday night's Kinau, and
have spent this week up country.

Mrs. G. B. Robertson resumed
active management of the Maui Hotel
Tuesday morning, and the former
manager left the same day for Kahu-
lui to get a job "hiking" sugar sacks.

Mr. M. M. O'Shaughnessy Super-
intendent of work on the new big ditch
came overland to Wailuku on Tues-
day, and reports rapid progress on
the tunnels. He leaves for Honolulu
today.

Miss Lizzie Cockett of Waikapu
went to Honolulu by Monday's Mauna
Loa to attend the death bed of her
sister, Mrs. Daniel Vida. She re-
turned last night, accompanied by
the remains which will be interred on
Maui.

Police Officer William Morris of
Lahaina was on trial yesterday be-
fore the District Court at Lahaina on
the charge of a dastardly outrage
against a girl fifteen years old. Sheriff
Baldwin of Wailuku went over to
assist in the prosecution.

C. H. Brown, more familiarly
known as "Klondike" Brown, came
over on Wednesday's Maui on gov-
ernment business, his mission being
to gather up and take back to Hon-
olulu the county books and supplies
furnished by the Territory to the late,
lamented Maui County.

SHIPPING NEWS

Office Asst. Light-House Inspector,
Twelfth District,

Honolulu, T. H. February, 2, 1904.

**NOTICE TO MARINERS—HONOLULU
HARBOR—ISLAND OF OAHU.**

Notice is hereby given that, owing
to the dredging operations now in
progress in HONOLULU HARBOR, the
MID CHANNEL BUOY, now marking
the fairway entrance to HONOLULU
HARBOR, T. H., will this day be re-
moved. It will be replaced at the
earliest date practicable.

By order of the Light-House Board,
A. P. NIBLACK,
Lieut.-Commander, U. S. A.,
Assistant Inspector, 12th Light-
House District.

The old bark Alden Besse which left
this port with a cargo of sugar about
a week ago, returned in distress yester-
day. The vessel was leaking badly and
her commander, Captain Kiessel,
had considered it wiser to return to
port for repairs than to proceed on
the voyage and run the risk of losing
his vessel or of arriving at San Fran-
cisco with his cargo damaged by
water.—Advertiser.

The American-Hawaiian steamer
Nebraskan, Captain Weeden, was
ready late yesterday afternoon to sail
on her long trip of 13,000 miles for
New York, using oil as fuel instead
of coal. There is little doubt in the
minds of the American Hawaiian
officials as to the successful outcome
of the Nebraskan's trip, which is look-
ed upon as the forerunner of regular
voyages between this port and New
York by large oil-burning steamers.
She will not make a stop at interven-
ing ports.—Chronicle.

The officers of the America Maru
state that the passenger bookings on
the Korea are exceptionally large.
The America Maru carried but a
small passenger list owing to the call-
ing off the vessel by the Japanese gov-
ernment, and intending passengers
by the America Maru who could de-
lay their voyage, did so until the sail-
ing of the Korea.—Advertiser.

San Francisco, Jan. 23.—The
French bark Paris was quoted for re-
insurance yesterday at 90 per cent
net, the highest rate offered since the
lost German ship H. F. Glade figured
on the overdue list.

Washington, Feb. 2.—The Euro-
pean squadron has been ordered to
Culebra for maneuvers. Culebra is
a small island at the eastern end of
Puerto Rico.

The Kinau is laid off for repairs
this week, and the Claudine has taken
the Kinau's run. The Maui has tak-
en the Claudine's run, and did not reach
Kahului till nine o'clock on Wednes-
day morning.

Vessels in Port—Kahului

Am. Sch. Rosamond, Fernald, from
Tacoma, lumber.

Arrivals

Feb. 3, S. S. Maui, Bennet, from
Honolulu.

Feb. 6, S. S. Maui, Bennet, from
Hana.

Departures

Feb. 3, Am. Sch. Mahukona, Mars-
ters, for S. F.

Feb. 3, S. S. Maui, Bennett, for
Hana.

Feb. 6, S. S. Nevada, Green, for
S. F., 8,000 tons sugar.

Feb. 6, S. S. Maui, Bennett, for
Honolulu.

Oceanic Time Table.

DATE	NAME	FROM
Feb. 1	America Maru	S. F.
" 5	Alameda	S. F.
" 8	Korea	S. F.
" 9	China	Yokohama
" 13	Aorangi	Victoria; B. C.
" 16	Sierra	Colonies
" 17	Ventura	S. F.
" 17	Gaelic	S. F.
" 19	Doric	Yokohama
" 24	Hongkong Maru	S. F.
" 26	Alameda	S. F.
" 26	Nevadan	S. F.
" 27	Nippon Maru	Yokohama

FOR

Feb. 1	American Maru	Yokohama
" 2	Nevadan	S. F.
" 8	Korea	Yokohama
" 9	China	S. F.
" 10	Alameda	S. F.
" 13	Aorangi	Colonies
" 16	Sierra	S. F.
" 17	Ventura	Colonies
" 17	Gaelic	Yokohama
" 19	Doric	S. F.
" 24	Hongkong Maru	Yokohama
" 27	Nippon Maru	S. F.

STIRLING

Water-Tube Boilers.

Burt's Bagasse Furnace

**THE VON HAMM-YOUNG CO., LTD, Agents
HONOLULU**

BEFORE INSURING

It would pay you to investigate the mutual investment contract
of the

**PACIFIC MUTUAL LIFE INSURANCE CO.
OF CALIFORNIA**

whose policies provide for an ANNUAL DIVIDEND which may be
used to reduce the premium or to increase the face value of the
policy, at the option of the insured.

Other Leading Features Are

Guaranteed cash loans after two years.—Guaranteed paid up in-
surance, and guaranteed cash surrender values.

CLINTON J. HUTCHINS, Honolulu, General Agent, Ter. of Hawaii.
H. E. PICKER, Travelling Representative.

The ATTENTION of the The Maui
trade is specially invited to the full
line of HACKS, BUGGIES, RUN-
ABOUTS and two-wheelers carried
by



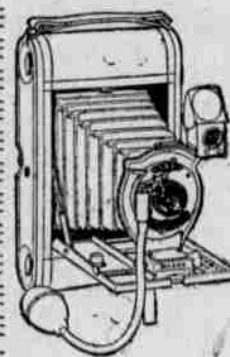
G. Schumann, Ltd.

Now located in the Alexander Young Building, and having by far the
finest Carriage Repository in the Islands.

AGENTS FOR STUDEBAKER MFG Co.

G. SCHUMANN, Ltd.

BISHOP ST., HONOLULU



**A POCKET KODAK
FOR 1904**

Get a KODAK and join the fresh air
society.

The one represented by illustration is
Pocket-Folding No. 3. Price \$17.50.
It takes you out of doors for good,
healthy exercise and is a pleasure that
will live after you have ceased taking
pictures. All sizes and all kinds at

Honolulu Photo Supply Co.
NEW STORE ON FORT STREET, HONOLULU.

Bismark Stable Company, Ltd
Successor to

THE BISMARK STABLES OF WAILUKU

NEW BUILDINGS, NEW RIGS, NEW TEAMS, NEW MANAGEMENT.

The BISMARK STABLES Co. propose to run
the Leading Livery Stable Business on Maui.

LIVERY, BOARD and SALES STABLES

HACKS, Carriages, Buggies and Saddle Horses
at all hours. A New System of Press Buttons.

New and first class rigs and teams, and competent driver.

FIRE! FIRE! FIRE!

IS YOUR PROPERTY, HOUSEHOLD,
GOODS OR MERCHANDISE INSURED?

IF NOT? WHY NOT?

IN CASE OF FIRE, WOULD YOU BE A HEAVY
LOSER? WITHOUT A FIRE INSURANCE POLICY.

THE HONOLULU INVESTMENT CO., LTD.

General Agents of The Insurance Co. of North America,
The New Zealand Insurance Co., The Westchester Fire
Insurance Co., The Canton Marine Insurance Co., Jud
Honolulu, H. T.