

EVERYBODY BUYS SOMETHING AT CHRISTMAS TIME---THAT MAKES THE HOLIDAY RUSH

# EVENING BULLETIN

2:30 O'CLOCK

BULLETIN ADS ARE READ BY EVERYBODY

EDITION

## STEAMER TABLE.

From San Francisco:  
Alameda ..... Dec. 8  
Doric ..... Dec. 16  
Sonoma ..... Dec. 20  
For San Francisco:  
Korea ..... Dec. 12  
Alameda ..... Dec. 13  
From Vancouver:  
Aorangi ..... Dec. 16  
For Vancouver:  
Mowera ..... Dec. 13

VOL. XVII No. 3245

16 PAGES--HONOLULU, TERRITORY OF HAWAII, SATURDAY, DECEMBER 2, 1905--16 PAGES

PRIOR 5 CENTS

## Planters' President Enthusiastic Over Roosevelt's Support

MAN CHOSEN TO GET LABOR

Hon. H. P. Baldwin, President of the Hawaiian Sugar Planters' Association, arrived in the city this morning from Puanene, Maui, in the steamer Kinau. He was at once engulfed in a swirl of work and enthusiasm over the good news wired from Washington by A. L. C. Atkinson, Territory's Secretary and chairman of the Board of Immigration, in regard to Hawaii's right to go ahead in the matter of European immigration.

Mr. Baldwin attended a meeting of the Sugar Factors in the Judd building, where a protracted discussion was held, and was later closeted with J. P. Cooke of the Board of Immigration.

Mr. Cooke was also present at the Sugar Factors' meeting and had something to say in relation to the immigration proposition.

While the Sugar Planters' Association has as yet come to no definite understanding as to the first step to be taken to secure labor, it is practically settled that a business man of this city will be dispatched, probably to the Azores, to secure some 2,000 or 3,000 Portuguese for the Territory of Hawaii, with power, of course, to charter a steamship for their transportation and make all other required arrangements.

Said one closely associated with the affairs of the planters this morning: "Now is the time to get the labor and the planters will act quick."

Another sugar man declared that the business man chosen to go after the labor was expected in the city tomorrow. A proposition will be made to him. If he accepts he will leave Honolulu on his mission in a very short time. The informant stated that it would not be fair to mention the name of the proposed missionary, until the proposition had been broached to him.

"We want about 2000 laborers, all told, to fill out the plantation labor lists," said an authority, "and we are going to get them. We have the opportunity—we could not wish for a better opportunity—and we are going to take full advantage of it."

H. P. Baldwin said today that he was exceedingly gratified over President Roosevelt's attitude in Hawaii's immigration matter. Mr. Baldwin thought the President's deep interest in the welfare of Hawaii from an American standpoint meant a great deal for this Territory. He believes that the President's anxiety to see Hawaii flourish as a home land, counted much for the islands' good prospects.

Mr. Baldwin stated it as his opinion that the news from Washington to the effect that Hawaii has full power to proceed to work out her own salvation by the free handling of immigration matters, is the greatest piece of good news received here in years. He believes that the planters should at once fall into the spirit of the occasion and hasten the importation of labor.

Mr. Baldwin's attitude in the premises is largely shared by other planters and there is no doubt that the planters will take immediate action.

Mr. Baldwin informed a Bulletin reporter this morning that nothing definite had been decided by the planters.

With the President of the Association in the city, having come here for the special purpose of working on the immigration plans, arrangements will soon be effected.

## TODAY'S EVENTS

- 2 p. m.—Y. M. C. A. Field Meeting, Boys' Field.
- 2:15 p. m.—Orpheum matinee.
- 3 p. m.—Paul Revere.
- 4:30 p. m.—Basketball, Richards and Hotel streets: Normals vs. High School.
- 7:30 p. m.—Farmers' Institute meets at Agriculture and Forestry Hall, King street.
- 7:30 p. m.—Territorial Central Committee meets at Republican headquarters on Fort street.
- 7:30 p. m.—Japanese theater.
- 8:15 p. m.—Orpheum theater.
- Last performance of "Paul Revere."

## ELKS' MEMORIAL

TOMORROW AFTERNOON

## AT OPERA HOUSE

The first Sunday in December of each year is by the Benevolent and Protective Order of Elks designated and dedicated as a day on which is commemorated, by every lodge of Elks in sacred sessions, the memories of departed brothers, and is known as Elks' Memorial Day.

It is incumbent upon the Exalted Ruler of each subordinate lodge to require that the memorial service be held upon the first Sunday in December of each year, and upon no other day.

Tomorrow is the first Sunday of December and, therefore, Honolulu Lodge, No. 516, B. P. O. E., holds a sacred session in the Hawaiian Opera House, at 3:30 in the afternoon. Ladies are invited.

The program is as herewith:  
Dirge, "Funeral March".....Chopin  
Hawaiian Band.

Ritual.  
Baritone Solo, "Crossing the Bar"  
.....Dudley Buck  
Mr. Stanley Livingston.

Ritual.  
Prayer.....Rev. A. Macintosh  
Vocal Solo, "O Saviour, Hear Us"  
.....Gluck  
Miss Marion Bell.

Address.....Bro. W. J. Robinson  
Orchestra, "Pilgrim Chorus from Tannhauser".....Wagner  
Hawaiian Band.

Tenor Solo, "Selected"  
Mr. Raymond C. Brown.  
Oration.....Bro. C. J. Hutchins  
Orchestra, "Intermezzo from Cavalleria Rusticana".....Mascagni  
Hawaiian Band.

Ritual.  
Doxology.....Audience  
Benediction.....Rev. A. Macintosh  
C. M. Caceres—Organist.

Memorial services committee—A. E. Murphy, chairman; H. E. Murray, Chas. A. Musgrave, Hugo Herzer, H. H. Simpson, S. A. Walker, W. S. Fleming.

L. R. Crook, accompanied by Mrs. Crook, child and maid, returned from a trip to Hawaii this morning.

## JACK DIDN'T GET WHAT HE WENT FOR

Says Senator McCandless  
With Much Vigor  
Of Assertion

## SAYS SECRETARY WAS FORCED BY THE PRESIDENT

RECALLS WHAT ROOSEVELT SAID  
TO SECRETARY IN PRESENCE  
OF FATHER VALENTIN.  
ALL SEEM PLEASED.

"He didn't get what he went after. He was not successful in his original mission and I know it," said Senator L. I. McCandless this morning in speaking of Secretary Atkinson's mission to Washington.

"No, sir, Jack didn't get what he went after. He went for Asiatic labor, more of it, and he got an order to get Europeans or people who would make American citizens."

"Have you heard Father Valentín's account of what the President said last May. When talking with the President, Father Valentín said European laborers could be obtained. The President then turned to Secretary Atkinson and said, 'Do you hear that Mr. Secretary? Do you understand what he says? He says the labor can be obtained. Now I want it to be obtained. I want citizens growing up in Hawaii.'"

"That's what the President said last May. In other words he gave the order that European labor should be obtained, way back the first of the year."

"Jack went on to get more Japanese. That's what he went for. I saw a document sent to him which said that he must tell the President that more Japanese must be allowed Hawaii or Hawaii would fight the President's Philippine policy."

"I think more European immigrants are a great thing for the Territory. There's no doubt about it, but when they talk about Jack getting them they are talking of what he was forced to do."

Another gentleman said this morning that the ruling of the Federal authorities was nothing new. As long ago as when Powderly was Immigration Commissioner a ruling was obtained from Washington that the Territory could bring in laborers but individuals could not. The law passed at the last Legislature was based on this old ruling. Sargent on his first trip here is also said to have remarked at a dinner given in his honor that the Territory could secure labor but the individuals could not make a business of it.

Regardless of whose the glory the general sentiment is that Hawaii will see some of its most serious national and local problems solved if immediate steps are taken to enlist thousands of Portuguese laborers and bring them to the islands.

In a letter from Geo. Lycurgus, manager of the Volcano House, received here this morning by the Kinau, he tells of an incident that shows the terrific power in the heat of the volcano. Three miles from the main crater of the volcano, heat contraction caused the earth to break and give away, causing a high water tank to tumble down.

Purser Beckley of the steamer Kinau reports 2900 bags of Honokaa sugar awaiting shipment on Hawaii.

Garter attends luau to Bishop.

Governor Carter attended the luau given at home today at the Catholic Mission Home in honor of the return of Bishop Libert and Father Valentín from Rome.

Per. S. S. ALAMEDA  
DECEMBER 13th.

Will carry the Christmas shipment of choice bananas to the Coast. Leave your order for a bunch at the WELLS, FARGO OFFICE, King Street.

Your Wife  
As Executor

In the administration of an estate we act with another appointee if desired. For example, your wife can be made one of your executors, and as the other we would relieve her of the arduous part of the work and keep the estate clear of legal entanglements. Consultation about it will cost you nothing.

Hawaiian  
Trust Co., Ltd  
Fort Street, Honolulu

## Disbarment Case Note, Says Court, Was Of Privileged Character

ROBINSON RULES IN MAGOON LIBEL SUIT

The plea in bar of the respondent in the libel suit brought by J. A. Magoon against S. M. Ballou as a result of the charges Ballou made against him before the Supreme Court in order to start the recent disbarment proceedings against him, was argued at length before Judge Robinson this morning. Magoon appeared in person, filing a demurrer to the plea, while Mr. Robbins Anderson appeared for Ballou. Ballou in his plea in bar held that as the alleged libel was contained in his motion to the Supreme Court, which contained nothing irrelevant to the matter at issue, namely the causing of an investigation in connection with a case in which Ballou himself was counsel, it could not be the basis of an action for libel.

Magoon said that Ballou could not proceed in a matter of irregularity on the part of a brother attorney and claim exemption from the libel law. In this matter the Attorney General's department has refused to appear, as it did not think that there was anything in it.

The Court interrupted that it did not so appear.

Magoon continued that such matters should be referred to the Attorney General's Department. Ballou's demurrer against him had certainly not been a pleading. He was not authorized to make charges against him unless he was himself aggrieved, in which case, of course, he would have been exempt from civil libel. In this case, however, Ballou's document against him was merely a letter, even if it was addressed to the Supreme Court justices, and it was published by being filed. If this sort of thing were allowed, it would open the courts as a door for every person who had a grievance against another. Ballou in this matter was a mere interloper, who had no interest in the case and had no business to interfere. No man could go into a matter in that manner and claim exemption from libel action, unless he was a party in the case.

"Or if he does it in the discharge of his official duty," said the Court.

"It could certainly not be claimed that Ballou was doing it in discharge of his official duty," answered Magoon.

"Ballou had actual knowledge and as a member of the bar had he not a grievance?" inquired the Court.

Magoon held that Ballou had no actual knowledge of the matter and had no business to interfere anyhow, enforcing his argument with the quotation of many authorities. At about 11 o'clock Anderson argued in his turn, also producing a great number of authorities. Finally a little before noon Judge Robinson gave his ruling, overruling Magoon's demurrer to the plea in bar on the grounds that Ballou's communication in the disbarment matter was of a privileged character.

Robinson ruled that Ballou's communication in the disbarment matter was of a privileged character.

Robinson ruled that Ballou's communication in the disbarment matter was of a privileged character.

Robinson ruled that Ballou's communication in the disbarment matter was of a privileged character.

Robinson ruled that Ballou's communication in the disbarment matter was of a privileged character.

Robinson ruled that Ballou's communication in the disbarment matter was of a privileged character.

Robinson ruled that Ballou's communication in the disbarment matter was of a privileged character.

Robinson ruled that Ballou's communication in the disbarment matter was of a privileged character.

Robinson ruled that Ballou's communication in the disbarment matter was of a privileged character.

Robinson ruled that Ballou's communication in the disbarment matter was of a privileged character.

Robinson ruled that Ballou's communication in the disbarment matter was of a privileged character.

Robinson ruled that Ballou's communication in the disbarment matter was of a privileged character.

Robinson ruled that Ballou's communication in the disbarment matter was of a privileged character.

Robinson ruled that Ballou's communication in the disbarment matter was of a privileged character.

Robinson ruled that Ballou's communication in the disbarment matter was of a privileged character.

Robinson ruled that Ballou's communication in the disbarment matter was of a privileged character.

Robinson ruled that Ballou's communication in the disbarment matter was of a privileged character.

Robinson ruled that Ballou's communication in the disbarment matter was of a privileged character.

Robinson ruled that Ballou's communication in the disbarment matter was of a privileged character.

Robinson ruled that Ballou's communication in the disbarment matter was of a privileged character.

Robinson ruled that Ballou's communication in the disbarment matter was of a privileged character.

Robinson ruled that Ballou's communication in the disbarment matter was of a privileged character.

Robinson ruled that Ballou's communication in the disbarment matter was of a privileged character.

Robinson ruled that Ballou's communication in the disbarment matter was of a privileged character.

## HAWAIIANS AFTER BIG ISLAND LANDS

Settlement Associations  
Send Petitions To  
Pratt

## LAST OF PUKELE LANDS WILL BE SOLD MONDAY

ONE CARPENTER, THREE HOUSE-KEEPERS, FIVE FARMERS AND 21 LABORERS APPLY FOR LANDS.

In spite of the numerous kicks from Hawaii regarding the land laws, there seems still to be many people on the Big Island who are anxious to try their luck with public lands. The Kinau mail this morning brought Land Commissioner Pratt two applications from intending settlement associations which want certain lands on the windward side of Hawaii opened for settlement for their benefit.

The first of these, the William Keolu Settlement Association, numbers thirteen persons, all Hawaiians. One of these is a carpenter. The rest describe themselves in the petition as being "hard labor." These people want the lands at Kulaimano, which are at present under a lease to the Pepee Sugar Co., which expires in 1909, opened for their benefit. There are 247 acres in this piece. Each of the intending settlers wants 23 acres.

The second petition is from the Kailua Settlement Association, consisting of fifteen members, all Hawaiians, of whom three are ladies and twelve men. Of these five show that they are farmers, seven designate themselves as laborers, while the ladies modestly style themselves housekeepers. These people ask that the Hakalau lands, which are now under a lease to Hakalau Plantation Co., which expires Oct. 15, 1908, be opened for their association. There are 577 acres in the whole piece. Each of the prospective settlers wants 40 acres. These lands will, under the law relating to settlement associations, be opened on either the right of purchase lease or the cash freehold systems.

On Monday morning the remaining lots of the Pukele makai subdivision of the Palolo valley lands will be disposed of at public auction in front of the Judiciary building.

Of the original twenty lots there are six left to be disposed of. They are all on the Ewa side of the new Palolo road, and are as follows:

Lot 4, area, 2.01 acres; upset price, \$200.

Lot 5, area, 2.02 acres; upset price, \$190.

(Continued on Page 4.)

## GARTER ATTENDS LUAU TO BISHOP

Governor Carter attended the luau given at home today at the Catholic Mission Home in honor of the return of Bishop Libert and Father Valentín from Rome.

Garter attends luau to Bishop.

Garter attends luau to Bishop.

Garter attends luau to Bishop.

Garter attends luau to Bishop.

Garter attends luau to Bishop.

Garter attends luau to Bishop.

Garter attends luau to Bishop.

Garter attends luau to Bishop.

Garter attends luau to Bishop.

Garter attends luau to Bishop.

Garter attends luau to Bishop.

Garter attends luau to Bishop.

Garter attends luau to Bishop.

Garter attends luau to Bishop.

Garter attends luau to Bishop.

## ARMY AND NAVY IN THE GAME

(Associated Press Special Cable)

PRINCETON, Dec. 2.—The annual football game between West Point and Annapolis Naval Academy was played here today. President Roosevelt was an enthusiastic spectator. The score was a tie, Annapolis 6, West Point 6.

## POWERS RESUME MOVE ON TURKEY

PARIS, Dec. 2.—The Powers have rejected the Sultan of Turkey's counter proposals and have decided to resume the joint naval demonstration on Monday.

## Democrats Keep Williams As Leader

WASHINGTON, Dec. 2.—The Democratic members of the House of Representatives caucused today and named John Sharp Williams of Mississippi as their candidate for Speaker. This means that Williams will again lead the minority forces of Congress.

## Alameda Sails

SAN FRANCISCO, Dec. 2.—The Oceanic steamer Alameda sailed for Honolulu on time today.

ROANOKE ARRIVES.  
SAN FRANCISCO, Cal., Dec. 2.—The steamer Roanoke arrived today.

MINERS BURIED ALIVE.  
CHEYENNE, Wyo., Dec. 2.—An explosion in the Diamondville coal mine has imprisoned 18 workmen. It is believed all have been killed. One body has been recovered.

SAN FRANCISCO, Cal., Dec. 1.—SUGAR: 88 analysis Beets, 8s 3d., or \$74.20 a ton. Previous quotation, 8s 4 1/2d. Parity for Centrifugals, 3.71 cts.

## HAWAII TAX FUNDS

Hilo, Nov. 20.—Tax Assessor William has kindly allowed the Herald to make extracts from his books showing the amount of taxes collected in this taxation division from August 31st to November 30th. The statement covers the amounts turned in to him by the collectors in the various districts.

Sept. 30. Oct. & Nov. For 1904 the total taxes collected amounted to \$351,802.48. For 1905, (\$1 months), \$362,437.21. Increase, \$10,634.73.

North Hilo ..... \$ 193.65 \$ 15,985.20  
South Hilo ..... 2,896.90 102,428.30  
Puna ..... 279.80 36,390.65  
Kau ..... 201.04 23,187.75  
South Kona ..... 708.50 4,397.48  
North Kona ..... 252.50 7,670.10  
S. Kohala ..... 36.05 6,403.34  
N. Kohala ..... 124.80 24,874.75  
Hamakua ..... 480.40 60,331.49

\$281,668.79  
This amount is divided between the Territory and County as follows, the amount from each district being given:

Territory. County.  
N. Hilo ..... \$ 8,153.01 \$ 8,945.84

A small furnished cottage is wanted, Address G. E., this office.

Bills—"Doyou believe a tree is known by its fruit?" Will—"If it is, some people don't want to brag too much about their family trees."

WANTED.  
WANTED—Small furnished cottage, good neighborhood. Answer immediately. Address G. E., Bulletin. 1t

## A Big Advance In The Quality

of shoes as well as lowness of price. The greatest of satisfaction is expressed by all of our patrons, who appreciate the fact that The Quality in our shoes is maintained. A dignified and strong Gun Metal Leather Bal. suitable for all walks of life.

Island orders solicited  
Price \$3.50 and \$4.00  
in all leathers

Manufacturers Shoe Co., Ltd.  
PHONE MAIN 282. 1051 FORT STREET.



## TUXEDOS DINNER JACKETS

Ready-to-wear, but impressive; absolutely irreproachable in fabrics, style, fit and finish. Made for critical men for particular occasions. None other compare with those bearing this label.

Alfred Benjamin & Co.  
MAKERS NEW YORK

FOR SALE ONLY BY  
The KASH Company, Ltd.

Hawaiian  
Trust Co., Ltd  
Fort Street, Honolulu

Globe Wernicke  
"ELASTIC" BOOKCASES  
An Ideal XMAS Present  
Just the thing for father, mother, brother, sister, relative or friend—something that fits any library or any purse. The Globe Wernicke "Elastic" Bookcase encourages good reading and the collecting of good books. It's the corner stone of a good library and a higher education. The original and only perfect sectional bookcase made and sold at the lowest price. Call and examine our stock now while the assortment is complete.  
J. A. M. JOHNSON CO., LTD.,  
931 FORT STREET. PHONE MAIN 143.





## MASONIC TEMPLE



WEEKLY CALENDAR.

**MONDAY**  
Le Progres—Regular—7 p. m.  
Oceanic—States—7:30 p. m.

**TUESDAY**  
Pacific—Third Degree.

**WEDNESDAY**  
Honolulu Commandery—Order of the Temple.

**THURSDAY**

**FRIDAY**  
Oceanic—Second Degree.

**SATURDAY**  
Shrine—Election of Officers.

All visiting members of the order are cordially invited to attend meetings of local lodges.

### HAWAII CHAPTER No. 1, ORDER OF KAMEHAMEHA.

Meets every first and third THURSDAY of each month in Fraternity Hall, Odd Fellows' Building, Fort Street, at 7:30 o'clock p. m. A full attendance is desired at every meeting.

N. FERNANDEZ,  
Kuanahu.

### HARMONY LODGE, No. 3, I. O. O. F.

Meets every Monday evening at 7:30 I. O. O. F. Hall, Fort street.

E. R. HENDRY, Secretary.  
CHARLES G. BARTLETT, N. G.

All visiting brothers very cordially invited.

### MYSTIC LODGE, No. 2, K. of P.

Meets every Tuesday evening at 7:30 o'clock in K. of P. Hall, King street. Visiting brothers cordially invited to attend.

Q. H. BERRY, C. C.  
F. WALDRON, K. R. S.

### TAHU LODGE, No. 1, K. of P.

Meets every Friday evening at 8 p. m. Hall, King street, at 7:30. Members of Mystic Lodge, No. 2, Wm. McKinley Lodge, No. 8, and visiting brothers cordially invited.

General Business,  
W. E. MAC, C. C.  
E. M. COLEMAN, K. R. S.

### HONOLULU LODGE 616, B. P. O. E.

Honolulu Lodge No. 616, B. P. O. E., will meet in their new hall, on Miller and Beretania streets, every Friday evening.

By order of the E. R.  
HARRY H. SIMPSON, Secretary.

GEO. H. ANGUS, E. R.

### Wm. M'KINLEY LODGE No. 8, K. of P.

Meets every Saturday evening at 7:30 o'clock in K. of P. Hall, King street. Visiting brothers cordially invited to attend.

E. FARMER, C. C.  
E. A. JACOBSON, K. R. S.

### HONOLULU HARBOR, No. 54, A. A. of M. & P.

Meets on first and third Sunday evenings of each month at 7 o'clock at K. of P. Hall. All sojourning brethren are cordially invited to attend.

By order Worthy Captain:  
F. MCJHER.

### J. M. RADWAY, C. C.

### HONOLULU AERIE 140 F. O. E.

Meets on the 2nd and 4th WEDNESDAY evenings of each month at 7:30 o'clock in K. of P. Hall, King street. Visiting Eagles are invited to attend.

M. ROSENBERG, W. P.  
H. T. MOORE, W. Secy.

### BOUR CAMOES No. 8110, A. O. F.

Meets every 2d and 4th Tuesday of each month at 7:30 p. m., in San Antonio Hall, Vineyard street. Visiting brothers cordially invited to attend.

A. O. ROSA, C. R.  
M. C. PACHECO, F. S.

### TELEPHONE 35.

### BISMARCK STABLE CO., LTD.

WAILUKU, MAUI.

### TELEPHONE 226.

### BISMARCK BRANCH STABLES

LAHAINA, MAUI.

Hacks, Carriages, Buggies and Saddle Horses on short notice.

Carriages meet all steamers. Convenient drivers, reasonable rates, new vehicles and live stock.

Blank books of all sorts, ledgers, etc., manufactured by the Bulletin Publishing Company.

## WESTERMAYER'S CELEBRATED PIANOS

Musical Instruments

Cottage Safes

Baby Carriages

Sewing Machines

Hoffschlaeger Co.,  
LIMITED

King and Bethel Streets.

JUST RECEIVED

Per S. S. ENTERPRISE

ALFALFA HAY

\$1.10 per bale; Ajax Hay, \$1.00 per bale.

KALINI STORE. Phone 3161 White.

Alexander & Baldwin  
LIMITED.

J. D. COOKE, Manager

OFFICERS.

H. F. Baldwin, President  
J. B. Castle, Vice President  
W. M. Alexander, Second Vice Pres.  
L. T. Peck, Third Vice Pres.  
J. Waterhouse, Treasurer  
G. M. Rolph, Secretary  
W. O. Smith, Auditor

SUGAR FACTORS,  
COMMISSION MERCHANTS and  
INSURANCE AGENTS

Agents for

Hawaiian Commercial & Sugar Co.  
Hauiku Sugar Company.  
Paia Plantation.  
Maui Agricultural Company.  
Kihikihi Plantation Company.  
Hawaiian Sugar Company.  
Kahuku Plantation Company.  
Kahului Railroad Company.  
Haleakala Ranch Company.

Hawaiian Carriage  
Manufacturing Co.

427 QUEEN ST. TEL. MAIN 42.

P. O. BOX 103.

Manufacturers of all kinds of Carriages and Vehicles, Wagons, Wagon Materials of all descriptions supplied; Rubber Tires put on at reasonable prices; Repainting, Painting and Trimming; satisfaction guaranteed; estimates given.

C. W. ZIEGLER, Manager.

Our \$65 White  
Bronze Monuments

are marvels of beauty and durability. They stand 5 feet 8 inches, the four sides are fitted with removable tablets with raised letters. Endorsed by "The Scientific American" as most-proof and strictly everlasting.

FRED. HARRISON,  
Sole Agent for Islands. Box 184.

### Horse Shoeing.

W. W. Wright Co.  
LIMITED.

have opened a horse-shoeing department in connection with their carriage shop, etc. Having secured the services of a first-class shoer, they are prepared to do all work entrusted to them in a first-class manner.

CAMARA & CO.,  
LIQUOR DEALERS.

QUEEN AND ALAKEA STREETS.

TEL. MAIN 492.

FAMILY TRADE SOLICITED.

Orders delivered to all parts of city.

Catton, Neill & Co.,  
Limited.

ENGINEERS AND MACHINISTS

QUEEN AND RICHARDS STS.

Boilers re-tubed with charcoal iron or steel tubes; general ship work.

"For Rent" cards on sale at Bulletin.

## LOCAL AND GENERAL

\*\*\*\*\*  
A Christmas Present that carries with it a year of pleasure is a subscription to the Weekly Edition of the Evening Bulletin. For One Dollar the Weekly will be sent one year to any address in the United States and Canada; for \$2.00 it will be sent to any other address on Earth. The paper will be greatly appreciated by anyone who has ever lived in Hawaii and will prove an acceptable remembrance throughout the year.  
\*\*\*\*\*

Miss Power has just received new millinery for the holiday season and invites the ladies to the opening, Monday, October 4th, and following days, Millinery Parlors, Boston Building, Fort street.

George B. Kluegel came in this morning on the steamer Kinau.

The steamer Maui arrived early this morning from Hawaii ports.

The bark Rithet will sail for San Francisco about the middle of next week.

The S. S. Nevada leaves Kahului today for the Sound and then to San Francisco.

Wall, Nichols Co., the big emporium of Santa Claus, will be open evenings until Christmas.

Go and see the assortment of Japanese and Chinese goods at Wing Wo Tai & Co., 941 Nuanuan street.

Judge Robinson yesterday denied a motion for non-suit by defendant in the case of Nicholas Bros. Co. vs. Honolulu Brooming & Maltin Co.

The S. S. Enterprise will arrive in San Francisco tomorrow with 6500 bunches of bananas and 30 cases of pineapples from Hilo. She left the Hawaii port last Saturday.

The steamer Ke Au Hou came in this morning from Kaula. The W. G. Hall was at Kaula yesterday. Owing to rough weather the Ke Au Hou was unable to discharge her freight at Kaula.

One of the greatest strides in kodakery is the Kodak Developing Tank. It follows the idea of the kodak developing machine but is a great improvement. Come and have a look at it at Honolulu Photo-Supply Co.

Entries for the poultry show may be made at the exhibition rooms, Merchant street, on Monday and Tuesday, December 4 and 5 between the hours of 10 a. m. and 5 p. m. Blankets may be had at any time by applying at the exhibition rooms, or at Mr. Wilder's office.

An affidavit has been filed by S. M. Ballou to support a motion to advance the appeal of John Richardson, who was convicted of embezzlement at Wailuku. The defendant is stricken with paralysis and likely to die and his counsel believes there is good ground to reverse the verdict.

The following jury was finally secured yesterday to try the Frank C. Bertelmann case: E. O. White, Archie Smithies, Allan Walker, H. J. Johnson, John Coffee, E. E. Hingley, J. B. Herrick, L. H. Dee, G. G. Fuller, C. W. Macfarlane, Fred Armstrong and L. Tenney Peck. The case was continued until Monday.

\*\*\*\*\*

\*\*\*\*\*

\*\*\*\*\*

\*\*\*\*\*

\*\*\*\*\*

\*\*\*\*\*

\*\*\*\*\*

\*\*\*\*\*

\*\*\*\*\*

\*\*\*\*\*

\*\*\*\*\*

\*\*\*\*\*

\*\*\*\*\*

\*\*\*\*\*

\*\*\*\*\*

\*\*\*\*\*

\*\*\*\*\*

\*\*\*\*\*

\*\*\*\*\*

\*\*\*\*\*

\*\*\*\*\*

\*\*\*\*\*

\*\*\*\*\*



A. N. SANFORD

Optician

Boston Building, Fort St.,  
over May & Co.

## WORLD NEWS BY CABLE

(Associated Press Cable.)

### MOBILIZING COSSACKS.

St. Petersburg, Dec. 1.—Because of the lack of Imperial confidence in the household guards, the mobilization of the 400,000 Cossacks in the empire has been decided upon.

It is stated that none of the multi-ethnics will be executed.

A three-cornered negotiation between the Czar and De Witte and the workmen ended with the decision to reopen government and private establishments.

The election laws are completed. Direct suffrage is not granted but what is given will be universal.

LIGHTING COMPANIES SELL OUT.  
San Francisco, Dec. 1.—The local gas and electric lighting companies of this city have virtually passed into the control of W. Halsey & Co., bankers of New York, for \$3,500,000.

KOREAN OFFICIAL'S SUICIDE.  
Seoul, Dec. 1.—Min Yung Whan, the Emperor's personal aide, has committed suicide over the result of the fruitless protest against a Japanese protectorate. The gendarmes fired a volley yesterday at a Korean mob. Many were arrested.

PALMA FOR PRESIDENT.  
Havana, Dec. 1.—The Cuban elections have resulted in the choice of Palma for President without opposition or disorder.

POWERS STAND PAT.  
Constantinople, Dec. 1.—The powers have refused to modify their demands.

Fine Job Printing at The Bulletin

\*\*\*\*\*

\*\*\*\*\*

\*\*\*\*\*

\*\*\*\*\*

\*\*\*\*\*

\*\*\*\*\*

\*\*\*\*\*

\*\*\*\*\*

\*\*\*\*\*

\*\*\*\*\*

\*\*\*\*\*

\*\*\*\*\*

\*\*\*\*\*

\*\*\*\*\*

\*\*\*\*\*

\*\*\*\*\*

\*\*\*\*\*

\*\*\*\*\*

\*\*\*\*\*

\*\*\*\*\*

\*\*\*\*\*

\*\*\*\*\*

\*\*\*\*\*

\*\*\*\*\*

\*\*\*\*\*

\*\*\*\*\*

\*\*\*\*\*

\*\*\*\*\*

\*\*\*\*\*

## POPULAR CIGARS

### Special Packages for the Holiday Season

"Van Dyck"—Granadas. Havana Cigars	packed 12 in a box.	\$1.50
"Stanford"—Palo Alto. Havana Cigars.	" 12 "	1.50
"Principe de Gales"—Bismarck. Havana Cigars.	" 12 "	1.50
"General Arthur"—Holiday Greetings.	" 12 "	1.00
"General Arthur"—Conchas Elegantes Ex.	" 25 "	1.75
"General Arthur"—Panatelas.	" 25 "	1.75
"Robert Burns"	" 25 "	2.00
"Arthurettes"	" 25 "	1.00
"Owl Cigars"	" 25 "	1.00

(We also have the above brands packed in boxes of 25, 50 and 100.)  
We have in stock an exceptionally fine line of cigars imported from Cuba, Porto Rico and the Philippines.  
These cigars are all staple brands of the highest grade.  
Fine line of imported pipes, single and in sets; also smoking articles of every description.

## Gunst-Eakin Cigar Co.

### "The House of Staples"

Honolulu

## Business And Pleasure

### Good Things For Everybody

Order your bread, crackers and cookies from the Perfection Home Bakery.

Teacher—What is an ultimatum? Tommy—It's what pa cuts off o' the peach tree after he's called me three times and I ain't got up yet.—Cleveland Leader.

Have C. Farla make your new suit of French or English tweeds.

Send your clothes to the Honolulu Renovating Co., to have them cleaned and pressed.

"Do you regard the political future of this country as secure?" "Yes," answered Senator Sorghum. "I have thought the matter over and I still consider politics an entirely safe investment."—Washington Star.

Have F. D. Wicke do your carpentry work.

Send a box of Island preserves to your friend in the States for a holiday present.

"Why do you select a family doctor who lives so far from your home?" "If any of my family are taken sick I want them to have a chance to recover before the doctor gets there."—Cleveland Plain Dealer.

Twenty per cent interest would be sure. Although it is your privilege to save that amount on building material when you buy from C. B. Reynolds.

The W. J. England Co. have had years of experience as plumbers.

Said the burglar: "This town may be slow, but I don't much mind having it so; though some find it dry. I'm contented, for I do a cracking good business, y' know."—Cleveland Leader.

An imitation will not do for a gift. If purchased of Vierra & Co. it will be pure.

"Do you think that the bicycle is becoming more popular?" "Yes," answered the man who always walks. "People are beginning to realize that it isn't as bad as the automobile."—Washington Star.

For a moderate rate hotel go to the Majestic.

"He has bought an absolutely noiseless automobile." "I suppose he offsets it with that extremely loud automobile suit I saw him in yesterday."—Cleveland Plain Dealer.

The Tuxedos sold by the Kash company are absolutely irreplaceable in fabrics, style, fit and finish.

"I think Wigby's an awful pessimist, don't you?" "Why so?" "Here winter's coming on, he boasts of a good overcoat, and yet he says there isn't much in life to live for."—Milwaukee Sentinel.

Good board can be secured by either day, week or month at the Millerton house.

"Does he pay his alimony promptly?" "No. He has to be urged and threatened every pay day. But then, of course, I got used to that when we were living together."—Cleveland Plain Dealer.

"What qualifications have you for a

\*\*\*\*\*

\*\*\*\*\*

\*\*\*\*\*

\*\*\*\*\*

\*\*\*\*\*

## PIANOS!

### THAYER PIANO CO.,

156 and 158 Hotel Street

## New Piano Warehouse of

## STEINWAY PIANOS

### THE BEST IN THE WORLD

## Starr Pianos

A high-grade instrument first built by James and Benjamin Starr in Richmond, Ind., in 1872. The factory now turns out 25 pianos daily. It is the third largest factory in the country.

KRANICH & BACH and Other Pianos of Different Styles. Come and see us and we will show you the finest stock of pianos ever displayed in Honolulu.

### THAYER PIANO COMPANY.

## RIDPATH'S HISTORY OF THE WORLD

New up-to-date Edition, 9 large volumes, illustrated, 1-2 Morocco binding, sold at New York price, \$39.00, complete set, delivered on payment of \$3.00; balance \$3.00 monthly; no interest. Encyclopaedia, Standard Dictionary, Scientific Books and Complete Works of all standard authors sold on same plan.

We furnish Law and Medical Books and give careful attention to special orders. Call and examine our books, or write.

### Wm. C. Lyon Co., Ltd.

COR. HOTEL AND FORT STREETS—UPSTAIRS.

## For Christmas

Nothing will give such pleasure as a Victor Talking Machine. Big new stock at

### BERGSTROM MUSIC CO., LTD.,

ODD FELLOWS' BLDG.

## Special Sale

FISHNETS, TWINE and BRONZE WIRE CLOTH at

### A. FERNANDEZ & SON,

Nos. 44-50 King St., Katsey Block, bet. Nuuanu and Smith Sts.; Tel. ain 189.

### FRENCH AND ENGLISH TWEEDS

FOR MEN'S SUITS.  
— REASONABLE PRICES —

## C. FARIA

HOTEL opp. BISHOP STREET.  
3222-1f

## HONOLULU IRON WORKS

Improved and Modern SUGAR MACHINERY of every capacity and description made to order. Boiler work and RIVETED PIPES for irrigation purposes a specialty. Particular attention paid to JOB WORK, and repairs executed at shortest notice.

## SCHUMAN CARRIAGE CO., LTD.

Garage, Merchant St.

Fine Job Printing at The Bulletin Office.



## Extraordinary Values In Holiday Handkerchiefs

Positively the Best Values ever  
Offered in Honolulu

THOUSANDS OF THEM, ALL NEW DESIGNS; THE LARGEST ASSORTMENT EVER SHOWN

**LADIES' WHITE HEMSTITCHED EMBROIDERED HANDKERCHIEFS**  
AT 10c EACH. Fine cambric, hemstitched and nicely embroidered all around the border; 25 different styles to select from.

AT 15c—All linen, in different patterns; would be cheap at 20c.

AT 20c—All pure linen hemstitch ed, new designs. Equal to any 25c values.

AT 25c—Extra fine sheer linen, hemstitched, very finely embroidered, fully worth 35c.

AT 35c—Extra fine and sheer Shamrock Linen, hemstitched and very finely embroidered.

Still finer and more elaborate patterns from 40c to \$1.25.

Ask to see our new hand embroidered Handkerchiefs.

**LADIES' INITIAL HANDKERCHIEFS**  
At 15c or \$1.50 a dozen. All pure linen, hand embroidered, with initial and wreath.

At 25c or \$1.50 a box. An extra fine, sheer linen with initial and wreath embroidered in corner. Put up 6 in a box.

**FANCY BORDER HANDKERCHIEFS**  
A fine assortment to select from, at 50c, 65c, 75c and \$1.00 per dozen.

**HANDKERCHIEF CENTERS.**  
Sheer fine linen, neat, tiny hemstitch in plain and embroidered patterns, from 20c, up.

**AN EXTRA SPECIAL BOX OF 6 HANDKERCHIEFS 50c.**

An opportunity that came to us and we pass it right along to you. Fine cambric, hemstitched border, dainty embroidered initials with wreath. Put up 6 in a pictured box for 50c.

### CHILDREN'S INITIAL HANDKERCHIEFS

At 25c a box. Colored hemstitched border, embroidered initial, 3 in box, regular 35c value.

At 35c a box. Extra sheer, hemstitched, daintily embroidered initial with wreath, put up 3 in a pictured box.

At 15c a box. Fancy border handkerchiefs, 3 in a pictured box.

### MEN'S HANDKERCHIEFS

At 25c or \$2.75 a dozen. All pure linen, hemstitched, embroidered initial, splendid value.

At \$2.50 a box. Extra fine linen, hemstitched, with fine embroidered initial, put up 6 in a box.

Men's plain hemstitched handkerchiefs at 10c, 12 1/2c, 15c, 20c, 25c and upward.

### THE TELEPHONE HANDKERCHIEF BOX

Latest novelty. Just like a telephone, with bell, mouthpiece, and receiver. Contains 12 dozen hemstitched handkerchiefs, 75c a box.

We feel positive that our Handkerchiefs are the best ever offered and we want to convince you of it. In order to get you interested we make the following offer:

**FREE FREE FREE**  
Monday and Tuesday

A HANDSOME NOVELTY FAN

Given away with every dollar purchase of Handkerchiefs.

## N. S. SACHS

Dry Goods Company  
CORNER FORT AND BERTANIA STREETS.

## Crystal Springs Butter

However nice the rest of the meal may be, bad butter will spoil it all. The quality of CRYSTAL SPRINGS BUTTER is absolutely uniform. It is always good and unfailingly reliable. It costs no more than ordinary butter, but, oh, the difference in the taste! We pack it in neat Cardboard Cartons, which keep it firm and protect its delicate flavor.

**Metropolitan Meat Co., Ltd.**  
Telephone Main 45

## Automobile Parts

We keep in stock everything that you may need for your automobile, no matter what make machine it is. We carry parts and fixtures of all kinds, lamps, spark plugs, etc., and have the best facilities for making quick and expert repairs.

**Schuman Carriage Company, Ltd.,**  
AUTOMOBILE GARAGE, MERCHANT STREET.

## BETHESDA

Waukesha's ORIGINAL Mineral Water  
HEALTHFUL . . . . . STIMULATING  
A New Man In Every Bottle.  
—FOR SALE EVERYWHERE—

McFARLANE & Co., Sole Agents.

Bulletin 75c per. month

## AMERICANS LIKE SUGAR

EAT OVER THREE OUNCES  
EACH DAY OF THE YEAR

IN 1922 PEOPLE CONSUMED 90,000,000 POUNDS — NOW AVERAGE OVER TWO MILLION TONS.

The per capita consumption of sugar in the United States has increased until now it is figured at 75.7 pounds per annum. This is considered a remarkable expansion. The Boston News Bureau has published statistics concerning the consumption of sugar which will be of particular interest to the people of Hawaii. During the year 1904, from which the figures are taken, the enormous total of 2,767,162 tons of sugar was eaten by the American people.

In 1822, the first date at which accurate sugar statistics are available, the total consumption of sugar in the United States amounted to only 90,970,880 pounds, or 9.09 pounds for every man, woman and child in the population of 10,000,000 people at that time.

The following table shows the number of tons, the number of pounds and the per capita consumption of sugar in the United States by decades since 1822 and also in 1904:

Year.	Tons.	Pounds.	Per capita.
1804 . . . . .	2,767,162	6,198,412,880	75.7
1890 . . . . .	2,219,847	4,972,457,280	64.5
1899 . . . . .	1,522,731	3,388,917,440	54.1
1889 . . . . .	956,784	2,033,196,160	40.5
1879 . . . . .	607,834	1,361,548,160	35.3
1869 . . . . .	428,785	960,478,400	29.8
1859 . . . . .	239,409	536,276,160	22.1
1849 . . . . .	107,177	240,976,800	14.0
1839 . . . . .	69,711	156,152,640	12.1
1822 . . . . .	40,612	90,970,880	9.09

The table shows that the per capita consumption increased by about 5 lbs. each decade up to 1880. Since that time the gain has been more rapid, averaging about 12 pounds each decade. Since 1890 the increase has been still further accelerated, indicating a gain for the present 10-year period of more than 20 pounds.

The amount of sugar consumed in this country in 1904 was equal to 39 per cent. of the entire reported sugar production of the world in that year, and to nearly 24 per cent. of this year's record-breaking crop.

Practically 82 per cent. of the sugar consumed in this country in 1904 was imported. The balance represents the American output of cane and beet sugar. The production of beet sugar is running very close to the Louisiana output of cane sugar, the only source of cane sugar in the United States. Up to 1890 the production of beet sugar in the United States did not amount to over 500 tons a year. Since that date the gain has been very rapid.

The following table shows production of beet sugar, the production of Louisiana cane sugar and the percentage of the two combined to the total sugar consumed in the United States for 1890, 1895, 1900 and 1904 (in lbs.).

	Beet sugar.	Cane sugar.	Ratio beet and cane to tot. cons.
1904 . . . . .	459,777,280	729,200,000	19.4%
1900 . . . . .	172,164,160	601,560,120	15.3
1895 . . . . .	65,452,800	532,492,800	13.6
1890 . . . . .	6,352,000	483,488,320	14.4

The above table is chiefly significant for the showing it affords of the extent to which the increased production of beet sugar in this country coupled with the Louisiana output, has served to reduce the percentage of imported sugar to gross consumption. The country is annually consuming 5 per cent. less of foreign sugar than it was 14 years ago, and at the same time the per capita consumption has increased 21 pounds.

## METHODIST CHURCH TEMPERANCE RALLY

A grand platform meeting is planned in the interests of temperance reform in the First M. E. church tomorrow evening, at 7:30:

**PROGRAM.**  
Opening Exercises . . . . . P. Tosh  
Introductory Remarks . . . . . The Pastor  
Vocal Solo . . . . . Harry Turner  
Address—"Present Legal Conditions" . . . . . R. H. Trent  
Vocal Solo . . . . . Miss M. Bell  
"Present Saloon Conditions" . . . . . Rev. W. D. Westcott  
Violin Solo . . . . . Dr. West  
"An Appeal to the Young People's Societies" . . . . . Judge Lyle Dickey  
Vocal Solo . . . . . Mrs. Jensen  
"A Mother's Plea for the Home" . . . . . Mrs. S. E. Damon  
Choir . . . . . J. M. Martin  
Closing.  
Each speaker limited to ten minutes. All welcome.

### CATHOLIC CHURCHES.

The Catholic Church of St. John the Baptist, Kalihiwaena, in charge of Rev. Father Clement: Tomorrow, Dec. 2d, 1st Sunday of Advent—8:30 a. m., high mass, sermon, collection, Sunday school; 4 p. m., Rosary.

The Catholic Church of the Sacred Heart, Marquessville (Punahou), in charge of Rev. Father Clement: Tomorrow, Dec. 3d, 1st Sunday of Advent—11 a. m., high mass, sermon, collection, Sunday school; 3 p. m., Rosary.

Key West sent to the North the first six months of this year about 16,000, 900 cigars; Porto Rico threw into the United States during the same period about 40,000,000 cigars, while there came from Cuba during that time 25,000,000 cigars.

## ASK FOR PATHOLOGIST FROM WASHINGTON

Entomologist Kotinsky yesterday afternoon drew the attention of the Board of Agriculture and Forestry to a scale pest, known as the "green bug," infesting coffee and citrus trees in Kona. Kotinsky had investigated.

The entomologist recommends that the Secretary of Agriculture be asked to detail a plant pathologist to Hawaii for at least temporary service. His suggestion was approved.

Dr. H. B. Elliott was appointed live stock inspector at Hilo, and Dr. Egan at San Francisco so that owners will be saved the expense of transportation of animals that might on arrival here fail to pass inspection.

President Thurston reported the injunction proceedings taken against a Japanese fruit importer and Deputy Sheriff Kalakela. Inspector Crow would probably at once proceed with his inspection of the oranges in question.

E. E. Oldins's resignation as consulting forester for North Kohala on account of departure was accepted with regret. Forester Hosmer was authorized to offer the position to Dr. B. D. Bond.

Mr. Hosmer reported the acceptance of J. M. Ross of Hakalan, Hawaii; Frank Scott of Kilauea, Kauai; George W. McDougall of South Kona, and Eric H. Edwards of South Kona, of their respective appointments as district foresters. Mr. Hosmer presented a report of the division of forestry and a report from Gerrit P. Wilder on his visit to Midway Island, which will be printed in the Forester and Agriculturist; also a report on a proposed forest reservation at Mahua, Oahu.

Forester Hosmer submitted rules for prevention of forest fires, printed on cloth.

Mr. Haugs gave the following figures of trees supplied for Arbor Day:

	Schools	Plants
Oahu . . . . .	24	425
Hawaii . . . . .	36	1490
Kauai . . . . .	7	121
Mau . . . . .	13	478
Molokai . . . . .	4	206
Lanai . . . . .	1	26
Parks, Private schools, etc. . . . .		708
Total of trees . . . . .		3554

### KAU COURT TERM

Hilo, Nov. 28.—Owing to the absence of a juror, Edward Macomber, court proceedings at the Kau term of the Third Circuit Court were suspended. Judge Matthewsman issued a bench warrant for the tardy juror, who was found at the mountain house several miles distant. He gave as an excuse illness and ignorance of the time set for convening. The judge fined him \$25 and excused him from the panel. H. H. Renton is foreman of the Grand Jury. Two indictments were returned yesterday morning, one in the Kohala Japanese murder case and one against the Porto Rican who killed a Chinese in Kau. Owing to a defect in drawing the Kohala indictment the prisoner was released, but subsequently arrested and re-indicted. County Attorney Williams is prosecuting for the government.

The following are the Grand Jurors summoned to appear last Friday, November 25th: J. Wright Atkins, John Kaelemakule Jr., Elias C. Bond, Geo. W. Smith, George Bell, Ernest Lane, Samuel Parker Jr., Rudolph von S. Domkovicz, Adam Kenakaki, James Upchurch, Philip Kepilino, Basil Apili, Charles Melnecke Jr., Samuel P. Woods, Henry Renton, Robert Laine, R. L. Wilhelm, Amos K. Eldredge, Edward D. Macomber, Albert Perlinas, G. G. Kinney, Edward D. Quinn, Samuel E. Rogers.

The trial jurors are as follows: Chas. T. Simerson, Benjamin H. Zabin, P. R. Nielson, Elmer E. Conant, Harry Gregson, William H. Greenwell, Thomas Martin, Sam Kanahane, Ross Spencer, Henry G. Bertelmann, Samuel Mahuka Spencer, George W. Doucail, John Hind, John Wise, G. G. Arneemann, E. Bader, Fred L. Leslie, Joseph Hayes, George Kimball, G. J. Becker, John D. Paris Jr., W. G. Ogs, James Ontai, W. E. Wright, William Wassman, Maximilian Campbell.

Paraguay has only 150 miles of railway.

## TO GET TO WASHINGTON

FURTHER ARGUMENT IN FAMOUS MEHEULA CASE

HEARING BEFORE JUDGE KEPOL-KAI—HE OVERRULES DEMURRER OF THE DEFENDANT MEHEULA.

(Special to The Bulletin)

Waialuku, Maui, Nov. 29.—All day Monday, the 27th Inst., Judge A. N. Kepolikai heard argument by Attorneys McClanahan and H. E. Cooper for plaintiff and C. W. Ashford and J. L. Coke for defendant in re temporary injunction by plaintiffs praying for a restraining order preventing the issuance of a writ of possession by the Circuit Judge of the Second Circuit Court in the case of Pioneer Mill Co. vs. Meheula, which the Supreme Court decided in favor of defendant, sustaining the decision of Judge Kepolikai. A writ of error was denied the other day by the Supreme Court and, pending an appeal by plaintiffs to the Federal Supreme Court, a restraining order was served on defendant until the Supreme Court of the United States decides whether the Supreme Court of Hawaii was in error in denying the writ of error.

The original of the plaintiff's writ of injunction was sent by the Sheriff's department to Lahaina for service on Meheula, who resides at Kaanapali, but by some unexplained reason the original and copy sent has not yet turned up at Lahaina, and in order to bring the matter before court on Monday, the copy of bill of complaint served on E. H. Hart, clerk of the Second Circuit Court, was filed in court as original of the defendants admitting service on defendant Meheula.

Attorney Ashford filed a motion to dissolve the temporary injunction prayed for, which motion the court promptly denied. The plaintiffs then moved for a continuance. The defendant's attorney then interposed that last motion by filing a demurrer alleging lack of equity in the bill of complaint, a ground for allowing the said demurrer.

During the afternoon attorneys Ashford and McClanahan argued pro and con for quite a length of time. Attorneys Coke and Cooper now and then joining in by making vital suggestions to the pleadings. The court overruled the demurrer, which the defendants will appeal to the Supreme Court. The hearing of the injunction as prayed for will take place at Waialuku court house on December 6th, 1905.

### IMPEACH POLICE

Hilo, Nov. 28.—Word comes from Honolulu of the institution of impeachment proceedings against Wm. J. Rickard, deputy sheriff of the Hamakua district. A petition numerously signed, it is claimed, will be filed with the Board of Supervisors charging Deputy Sheriff Rickard with malfeasance in office and misadministration. Some of the charges are to the effect that Rickard was present at a barroom brawl, in which the bartender jumped over the counter and slapped John Correa in the face. He refused to arrest the offender, who happened to be his own cousin. He is accused of drunkenness, gambling and having frequented resorts where liquor is illicitly sold. It is stated there is a long line of witnesses to be summoned.

A report comes from North Kona of complaints against Policeman J. W. Keilika of Kailua, who is charged among other things by Dr. Goodhue, of having permitted the escape of thirty-eight out of forty lepers entrusted to his custody. Both cases will probably be investigated by the County Supervisors.

Washington, Nov. 15.—Orders have been given by the Navy Department for the return of the battleship Oregon from the Philippines to the United States at an early date. There is no indication that any battleship will be sent to the Asiatic station to replace the Oregon. It is stated, however, that two cruisers of the Denver class will be sent to the Philippines later on. The Oregon will bring back to the United States a crew of men whose enlistments are about to expire.

## AN AUTO VALET

Is The Real Thing

For the man who likes convenience in the hanging of his clothes and having shirts, collars, cuffs, ties, shoes, underwear, collar buttons and various articles of apparel where he can lay his hand on them, there is nothing to equal the AUTO VALET.

It is almost human in the way it will take care of your clothes. Here is a side apartment with adjustable coat and trousers hangers. On the inside of the door you hang the ties you are using every day. On the other side is a place for a whisk broom. At the bottom is a place for shoes.

On the other side is the chiffonier arrangement containing drawers for underwear, a drawer for white shirts; one each for collars, cuffs, neckties, etc., all just the right size. Then there's a drawer for collar buttons where the buttons are placed in a little till like a cash drawer. An adjustable shaving mirror is always ready for use.

Every bit of space is made available for one thing or another and the whole makes a piece of furniture that should be in every man's possession.

Finished in solid quarter-sawn oak with hand-made drawers. Piano polished.

Price Complete \$112.00  
Cheaper grades from \$50 upward

## Porter Furniture Co.

Young Building Cor. Hotel and Bishop Sts.

## GOOD HOUSEKEEPING

A HANDSOME ILLUSTRATED MONTHLY MAGAZINE, FASCINATING HELFUL

REACHES 200,000 HOMES OVER A MILLION READERS

## The Home Magazine of America

Good Housekeeping is bright, helpful, practical, and full of good cheer. Each month it brings the whole family together in the enjoyment of everything that is good. Good stories and good pictures to amuse the grown-ups and their children, good articles about the serious and the lighter problems of the home, the bringing up of children, education, higher thought, music art, etc. Artistically, it is one of the choicest magazines. The illustrations delight the soul of the lover of art. Beautiful cover designs in colors are a special feature.

This splendid magazine will be sent for one year absolutely free to any new subscriber who will pay \$2.00 for a three months subscription to the EVENING BULLETIN.

## The Relief and Burial Association.

BENEFITS PAYABLE BY THE ASSOCIATION TO ITS MEMBERS.

- (1) We pay for plot in the cemetery;
- (2) We pay for 3 cabs to the funeral;
- (3) We pay the undertaker's bill;
- (4) We provide the surviving family with \$50.00 or more in cash for any immediate want.

Take notice, that the money your family will receive is more and above that you ever will be able to put in the funds of the Association during life. For \$4.50 you receive all these benefits. Come and be a member and have your family protected.

## RELIEF AND BURIAL ASS'N.

1120 Fort Street.

Weekly Bulletin \$1 Per Year

## GREAT HOLIDAY DISPLAY

OUR ENTIRE XMAS STOCK IS NOW OPEN. GRAND ASSORTMENT OF THE LATEST NOVELTIES IN USEFUL ARTICLES ARE NOW ON SALE AT THE RIGHT PRICES.

## Headquarters For DOLLS! DOLLS!

We have imported this season a large stock of all kinds of dolls and you will find the largest assortment at the lowest PRICES. We invite inspection.

## PACIFIC IMPORT CO.



## EVENING BULLETIN

Published Every Day Except Sunday,  
at 120 King Street, Honolulu,  
T. H., by the

BULLETIN PUBLISHING CO., LTD.  
WALLACE R. FARRINGTON, Editor

Entered at the Postoffice at Honolulu  
as second-class matter.

## SUBSCRIPTION RATES.

Payable in Advance.

Evening Bulletin.  
Per month, anywhere in U. S. \$ .75  
Per quarter, anywhere in U. S. 2.00  
Per year, anywhere in U. S. 8.00  
Per year, postpaid, foreign, 11.00  
Weekly Bulletin.  
Six months, anywhere in U. S. \$ .50  
Per year, anywhere in U. S. 1.00  
Per year, postpaid, foreign, 2.00

C. G. BOCKUS, Business Manager of  
the Bulletin Publishing Company, Ltd.,  
being first duly sworn, on oath, deposes  
and says: That the following is a  
true and correct statement of  
circulation for the week ending De-  
cember 1st, 1905, of the Daily and  
Weekly Editions of the Evening Bul-  
letin:

Circulation of Evening Bulletin.  
Saturday, Nov. 25, 1905, 2421  
Monday, Nov. 27, 2116  
Tuesday, Nov. 28, 2123  
Wednesday, Nov. 29, 2117  
Friday, Dec. 1, 2122  
Average Daily Circulation, 2160  
Circulation of Weekly Bulletin.  
Tuesday, Nov. 14th, 1905, 2369  
Number of Weeklies delivered on  
the island of Hawaii alone, 1044  
Combined guaranteed average  
circulation, 4548  
BULLETIN PUBLISHING CO., LTD.  
By C. G. BOCKUS,  
Business Manager.

Subscribed and sworn to be  
before me this 24 day of  
[SEAL] December, A. D. 1905,  
P. H. FARRINGTON,  
Notary Public, Honolulu, County  
of Oahu, Territory of Hawaii.

SATURDAY, DEC. 2, 1905.

If Secretary Atkinson did not get  
what he went after, he at least knew  
a good thing when he saw it.

Porto Rico has good cause to expect  
Hawaii's cooperation for a tariff on  
coffee, and Hawaii greater cause to  
give it.

We trust that all will at least agree  
in the statement that the President is  
positive in his opinions of what he  
wants.

Notice that Cossacks have come to  
the rescue of the Czar does not in-  
crease public confidence in the prospect  
of early peace in Russia.

It is gratifying to learn that Tom  
Fitch is quite in sympathy with any-  
thing that may be done, either for  
Chinese or for Europeans.

Senator Foraker will undoubtedly  
look after Porto Rico if the trend of  
elections in Ohio has not made it nec-  
essary to first look out for himself.

Willett & Gray are quite safe in  
predicting bedrock reached by sugar  
prices. Continued reduction will be  
evidence that the bottom has dropped  
out.

Senator Platt in publicly stating aside  
a bossship the other day stated that  
Oleli was down and out. Platt seems  
not to have recalled how many times  
he was put out of action in his young  
days, and still revived.

Shortly after the denial that Mr.  
Cody had resigned from the life in-  
surance company, came the announce-  
ment that his resignation had been ac-  
cepted. This gives rise to the problem  
of whether he went or was fired.

Governor Carter is right. It isn't  
the game so much as the rules that is  
to be criticized in football. When bru-  
tality and general cussedness is prop-  
erly penalized, the game will either be  
played right or brought to a standstill.

Japan's paternal and peaceful oc-  
cupation of Korea would be horrible if  
the same thing were done under Rus-  
sian auspices. Civilization has made  
very slight variation in the ancient ag-  
gressiveness of the victor to take posses-  
sion of the spoils.

Hearst has landed one corrupt elec-  
tion official in prison. Strangely  
enough his success gives rise to the  
supposition that he has a greater anx-  
iety to prove corruption than attain  
the position of mayor of New York.  
As he will do good work in either case,  
it is a mystery why alleged good citi-  
zens so strenuously object to his activi-  
ties.

## PROMPT AND CONTINUOUS ACTION

Hawaii needs 100,000 European lab-  
orers as well as 100,000 tourists, and  
there is every reason why the Terri-  
tory should grid up its loins and go  
after the laborers, especially when the  
way is without prospect of interfer-  
ence.

It is not necessary at this time to  
enter into a discussion of whether Sec-  
retary Atkinson got something he did  
not go after or the door has been open  
all the time and it remained only for  
Hawaii to go ahead.

The duty of the hour is to act on  
the facts as they exist, whether they  
be newly discovered or not.

It is possible to obtain a class of  
labor that is universally desired. The  
money for the transportation of lab-  
orers has been said to be ready and  
waiting. There is nothing further to  
wait for. The sooner Hawaii begins  
to add to its labor population from  
classes that appeal to the American

people, the sooner will the dawn of  
American progress with prosperity be-  
come real rather than imaginary.

Appreciation indicate that the tele-  
gram from the head of the Immigra-  
tion Board found the local people wait-  
ing but not ready. These same gentle-  
men in days gone by have proved them-  
selves able to make up for lost time.

The work is here to be done. The  
laborers will come. The Federal gov-  
ernment does not look with favor upon  
the increase of the present proportion  
of Oriental labor. It does approve the  
increase of the Europeans that have  
been tried and found good workers and  
good citizens.

Hawaii's honesty of intention, ability  
to move quickly and sympathy with  
the spirit of Federal authority will be  
given a thorough test. This Territory  
can absorb 100,000 European immi-  
grants and never know the difference  
except in increased prosperity and  
greater stability of all agricultural in-  
dustry.

The action should be prompt and  
continuous.

## PORTO RICO'S FIGHT FOR COFFEE

Mention of the great advantages of  
Hawaii over the insular possessions  
of the country is already received  
attention in these columns. With the  
Philippines there is no basis of com-  
parison as these islands are yet in a  
state of semi-rebellion, say what they  
may of the pacification.

Porto Rico has, however, been  
brought to attention as having some-  
things superior to Hawaii. The Bul-  
letin has never been able to appreciate  
wherein this superiority existed. Porto  
Rico is much of the same mind,  
judging from their most recent utter-  
ances. For instance, one of the meas-  
ures for which their Commissioner at  
Washington will urge at the forthcom-  
ing session of Congress is the settle-  
ment of the citizenship status of Porto  
Ricans. At present they have no na-  
tionality that is recognized. There is  
nothing in this condition of affairs to  
arouse Hawaii's envy.

The Commissioner in outlining his  
program for the coming session, pre-  
sents one feature which is of especial  
interest to this Territory and should  
elicit its vigorous cooperation. In a  
recent interview he says:

"When I return to Washington I  
shall draft a bill to be introduced into  
the House calling for a duty of five  
cents a pound on all imported coffee.  
As Senator Foraker is the father of  
the Porto Rico Constitution and as he  
has always taken a deep interest in  
Porto Rican affairs I shall first request  
him to frame the law and ask one of  
his friends in the House to introduce  
it."

"This nonsense about taxing the poor  
man's breakfast is an old-fashioned  
idea and Congress must be made to ap-  
preciate this fact. I shall try to in-  
terest the newspapers in this thing and  
I shall work indefatigably to have Con-  
gress impose a duty on coffee and I  
shall insist upon five cents."

Hawaii ought to be willing and any-  
body to second any and every move  
made by Porto Rico or any other sec-  
tion or possession of the country that  
is making an earnest fight for the  
coffee industry. Porto Rico is right. It  
should have Hawaii's aid.

HAWAIIANS AFTER BIG ISLAND  
LANDS

(Continued from Page 1.)

Lot 6, area, 2.91 acres; upset price,  
\$150.  
Lot 8, area, 1.99 acres; upset price,  
\$175.  
Lot 9, area, 1.98 acres; upset price,  
\$175.  
Lot 10, area, 2.17 acres; upset price,  
\$175.

These lots will be disposed of on the  
cash freehold basis. The successful  
bidder has to pay down one-fourth of  
the price offered, and pays the remain-  
ing three-fourths in equal payments  
during the three successive years.

The Rev. Mr. Wadman preaches at  
11 o'clock tomorrow morning at the  
First M. E. Church on "Paul's Pro-  
gram in the Progress of Christian  
Life." Communion service and a recep-  
tion to the members follows the ser-  
mon.

Real Estate  
and Rental  
Department

List your "For Sales" and "For  
Rents" with us. Our charges  
are reasonable. No charge un-  
less the work is accomplished.

Henry Waterhouse  
Trust Co., Limited.

FOR FORT AND MERCHANT STS.,  
HONOLULU.

CRUISER LENA SAILS AS  
QUIETLY AS SHE CAME

Without anything unusual happening  
the Russian auxiliary cruiser Lena,  
after a stay here of more than two  
weeks, left the Naval wharf shortly  
after 6 o'clock this morning and put  
to sea. Steadily she steamed out  
through the channel until deep water  
was reached. Then she turned her  
nose toward the southwest. Finally she  
was lost to sight among Barber's  
Point. She is bound for Vladivostok.  
She has aboard a full amount of sup-  
plies, her tanks filled with water and  
something like 3,500 tons of coal, most  
of which was taken on here.

The schooner Aloha left at noon to-  
day for the Coast with the first load  
of sugar of the season from this port.  
Captain Combe of the cable ship Res-  
torer has given the striking Japanese  
a chance to return to work at the same  
salary they had been receiving. There  
will be a meeting at 2 o'clock this af-  
ternoon when the twenty-six firemen  
and others will decide what they will  
do. Most of them are anxious to re-  
turn, but none will be reengaged unless  
the crew goes back to a man.

Maria Freitas and Manuel Silva were  
before Judge Whitney this morning on  
a charge of adultery on complaint of  
the husband of the first named party.  
Fred, Freitas, the husband, is a bread  
wagon driver. His wife is suing him  
for a divorce and asks for alimony.  
They have three children.

A switch has been built by the Rapid  
Transit Co. near the railroad wharves  
for the purpose of allowing cars to  
stand and be filled with oil from ships.  
The oil will then be distributed about  
town to the different concerns.

## IS LIPTON MARRIED.

London, Nov. 12.—It is reported  
among those who know Sir Thomas  
Lipton well that he is a benedict, hav-  
ing secretly married a Scotch girl in  
humble circumstances years ago, be-  
fore he dreamed of reaching his pres-  
ent condition of prosperity. People  
who knew Sir Thomas in his youth say  
that the facts are well known to cer-  
tain people. Sir Thomas himself has  
nothing to say on the subject. The  
announcement is made that he is seek-  
ing a country seat in Ireland, either in  
Wicklow or Meath county.

The Bosnian is as celebrated in  
Europe for the firearms, sabres and  
knives which he manufactures as the  
inhabitants of Toledo were for their  
fine-edged blades.

## TO LET

Furnished Cottage, Kalihi ..... \$12.50  
Kinau St., 3 Bedrooms ..... 25.00  
Beretania St., 4 Bedrooms ..... 30.00  
Middle & Rose Sts., 2 Bedrooms ..... 8.25  
Lunalilo St., 3 Bedrooms ..... 50.00  
Puuhui Ave., 3 Bedrooms ..... 15.00  
Christley Lane, 3 Bedrooms ..... 15.00  
Emma St., 2 Bedrooms ..... 18.00  
Beckley Ave., 2 Bedrooms ..... 12.00  
Young St., 3 Bedrooms ..... 22.50  
Young St., 3 Bedrooms ..... 25.00  
Lunalilo St., 5 Bedrooms ..... 27.50  
Young St., 2 Bedrooms ..... 27.50  
Kalihi (nr Gulick Ave.) 2 Bdrms ..... 20.00  
The "Melrose" (King St.) ..... 50.00  
2 Furnished Houses, \$22.50 and 75.00

## STORES AND OFFICES.

Trent & Co.,  
225 FORT STREET (NEAR KING).

We are now showing a beautiful  
new lot of  
REAL LACE AND  
REAL LACE ARTICLES

from which any number of most ac-  
ceptable Christmas presents can be  
selected.  
Nothing imparts that air of distinc-  
tion to a woman's costume so much as  
a bit of real lace. Either used in the  
piece as a trimming or in the finished  
article as an accessory, there is noth-  
ing to equal it.

REAL LACE by the YARD  
PER  
YARD.  
Point d'Alost, edge and inser-  
tion ..... \$2.00 to \$7.00  
Point d'Alost, all over ..... 15c  
Valenciennes, edge and insertion ..... 50c to \$5.00  
Duchess, edge and insertion ..... \$2.50 to \$12.00

Real Lace Handkerchiefs  
Edged in Valenciennes, \$2.50 to \$5.00  
Edged in Duchess, \$3.00 to \$15.00

Real Lace Scarfs, Ties, Etc.  
EACH.  
Point Applique Ties, \$2.00 to \$12.00  
White or Black Spanish Lace  
Scarfs ..... \$3.50 to \$6.50  
Point d'Alost Berthas, \$5.00 to \$10.00  
Point Applique Berthas, \$5.00 to \$35.00  
Rose Point Duchess Berthas ..... \$15.00 to \$50.00  
Point Applique Fichus, \$25.00 to \$35.00  
Point d'Alost Chemisettes ..... \$5.00  
Duchess Lace Scarfs ..... \$35.00

Chiffon Pompadour Scarfs  
These are the very latest scarfs for  
evening wear, are made of plain and  
flowered chiffon in all the evening  
shades.

Plain ..... \$1.25 to \$3.00  
Dresden Flowered ..... \$6.00 to \$15.00

EHLERS'  
Good Goods.

FOR FORT AND MERCHANT STS.,  
HONOLULU.

## ITALIAN VS. JAP

FISHERMEN INDULGE IN  
BATTLE ON HIGH SEAS

JAPANESE MIX-UP IN NETS AND  
LEAVE ITALIANS OARLESS.  
POLICE COURT AFTER-  
MATH.

Jealousy aroused by opposition upon  
their field of the fishing industry,  
caused a fight at sea several days ago  
between a number of Japanese fisher-  
men and three Italians, new arrivals  
in the business, who were this morn-  
ing locked up at the police station on  
complaint of their opponents and  
charged with malicious mischief. Dur-  
ing the fight out beyond the heads one  
of the Japanese sampans was damaged  
slightly and the Italians lost their  
oars, had their nets almost ruined and  
had to call for assistance from a Ha-  
waiian boatman who happened to pass  
their way. Otherwise they might have  
floated out to sea and been lost. Their  
names are Junta Joseph, Gerolamo Ra-  
randino and Angelo Lucio. The com-  
plainant is Innada.

Japanese do not like Italians and  
Italians do not fancy Japanese, just  
naturally. Trouble has been brewing  
ever since the new arrivals engaged  
boats and went into the fishing busi-  
ness. The Japanese looked at their riv-  
als and talked the affair over amongst  
themselves. But when a number of  
sampans happened to drift toward the  
Italians' craft Thursday trouble was in  
evidence everywhere.

The Japanese allege that the Ital-  
ians threw shrimp and other bait into  
the water, set their nets and when  
hundreds of the funny tribe were feed-  
ing they would draw the cords and cap-  
ture enough to pay them for their  
trouble. The Japanese did not like  
this idea; it interfered with the busi-  
ness, they say.

With anchor drawn, Innada, the Ital-  
ians say, approached their boat and  
tossed it into the net which was all  
set for a big catch. Then the real  
trouble began, and continued a while.  
For a time it looked as though some-  
one might lose his life in addition to  
his fish, boat and fishing tackle. The  
boat clashed with the sampan and the  
sampler rolled against the boat. Mean-  
while the men were talking, each being  
unable to understand the other, but  
each knew what the other meant. When  
they were close enough the Japanese  
struck at their opponents with sticks  
and rods and to protect themselves the  
others fought back. The net was nearly  
ruined by the anchor claws.

Finally the Japanese, being satisfied  
with tearing the Italians' net, having  
their own boat damaged, left the three  
men in a boat without means of row-  
ing or sailing, hoping that they would  
give up fishing for a livelihood or drift  
out to the unknown. But fortune was  
with the Italians until they landed,  
then the law took charge of them and  
they will be tried in the Police court  
Monday morning. They will fight the  
case.

When Toma Abe, the Japanese special  
policeman, traveled through the  
United States some thirty years ago,  
he attracted much attention. Toma  
struck with a circus and later a sailor  
out of eastern ports. Many people in  
the towns he visited with the circus  
had never seen a Japanese before and  
when he walked about the streets im-  
mense crowds, young and old people  
as well, followed him everywhere.

## KUNKEL AT TIVOLI

George Kunkel, well known in Ho-  
nolulu, is playing the comedy part in  
"The Highwayman" at the Tivoli. Ash-  
ton Stevens says of him:  
"The new comedian was, for a Ti-  
voli comedian, nothing short of a sen-  
sation, for he was quiet almost to the  
point of legitimacy. I hasten to pub-  
lish his name—George Kunkel. His  
work on the soft pedal is delightful; in  
his whole long of tricks there is not  
a single slapstick, and he does not  
kick the other comedian where the other  
comedian should not be kicked. Yet  
for all this moderation Mr. Kunkel is  
a virile man with a not uncompanion-  
able voice and much effortless fun. His  
idea of Foxy Quiller is the funniest  
I know."

## It Is Cool

THESE DAYS  
AT HALEIWA.  
JUST THE PLACE TO SPEND  
YOUR VACATION.

The best of everything  
ALL SORTS OF AMUSEMENT,  
ALL KINDS OF RECREATION,  
ALL THE COMFORTS OF HOME.

Tickets and information at Oahu  
Railway station and Trent & Co., or  
ring up Haleiwa Hotel, King St.

On Sundays the Haleiwa Limited, a  
two-hour tr. n. leaves at 8:22 a. m.;  
returning, arrives in Honolulu at 10:10  
p. m.

## The Petaluma

Incubators and  
Brooders are  
the Best

Awarded Gold Medals  
at Lewis & Clark Ex-  
position, 1905, at St.  
Louis Exposition, 1904

Pacific Hardware Co., Ltd.  
SOLE AGENTS

FOR FORT AND MERCHANT STS.,  
HONOLULU.

## BURN POSTOFFICE

MAKE AWAY WITH \$500 AND  
TRY TO COVER UP TRACKS

KAWAIIHAE'S MAIL BUILDING IS A  
TOTAL LOSS AS A RESULT OF  
THE THURSDAY CON-  
FLAGRATION.

It develops according to reports  
brought by the steamer Maui this  
morning that the postoffice at Kawai-  
hae, which burned Thursday night,  
had been robbed beforehand and then  
a match applied to the building to  
cover up the work of the thieves. A  
small safe was broken open and some-  
thing like \$500 is missing.

The postoffice is built on piles just  
over the water's edge and during the  
progress of the fire the floor gave way  
and the safe fell through onto the  
beach. An investigation has so far  
failed to reveal whether the safe was  
blown open with dynamite or the  
hinges broken off with a crowbar or  
hammers. The safe was badly disfig-  
ured by the hot fire.

The safety box contained about \$470  
in gold and silver, a sack full of \$15  
in dimes and another bag full of  
nickels, about \$5 worth.

With the exception of a few dollars  
in dimes found on the sand and evi-  
dently overlooked by the thieves when  
searching the safe, all the locked up  
money was taken. The dimes fell  
through onto the beach sands togeth-  
er with the safe and later were found  
scattered around, having been washed  
about by the waves. Only part of the  
amount was recovered, the others hav-  
ing been washed away in all probabili-  
ty.

Postmaster C. B. Wells sleeps not a  
great distance away from the postof-  
fice, but he heard no sounds of an ex-  
plosion. The first he knew of the  
robbery was the next morning when  
the empty safe was inspected lying in  
the water under where the office had  
stood. At first it was thought the  
blaze had originated there. The fire  
was discovered Thursday night short-  
ly before midnight. Immediately  
there was a cry of fire but the flames  
had gained such a headway before  
warning hands arrived that all efforts  
at saving the structure were fruitless.

The thieves evidently were wise  
enough to leave a smoldering fire  
behind so as to give them plenty of time  
to make their escape. From what can  
be learned about the affair, the intrud-  
ers must have gained an entrance to  
the postoffice building about 11  
o'clock that night. It probably took  
them half an hour to complete their  
work. Then they left the smoldering  
fire and made away for parts un-  
known. The fire was discovered,  
the building being all ablaze, about 11:45.

The authorities were delayed in get-  
ting to work on the case because of  
the distance they had to travel before  
arriving at Kawaihae. However, from  
the latest reports there is no clue to  
the guilty party. No one seems to  
have remembered seeing any suspi-  
cious characters hanging around town  
lately, and so far as is known the offi-  
cers are at a loss in just which direc-  
tion to look for the robbers. Postmas-  
ter Wells is also in the dark.

## KUNKEL AT TIVOLI

George Kunkel, well known in Ho-  
nolulu, is playing the comedy part in  
"The Highwayman" at the Tivoli. Ash-  
ton Stevens says of him:  
"The new comedian was, for a Ti-  
voli comedian, nothing short of a sen-  
sation, for he was quiet almost to the  
point of legitimacy. I hasten to pub-  
lish his name—George Kunkel. His  
work on the soft pedal is delightful; in  
his whole long of tricks there is not  
a single slapstick, and he does not  
kick the other comedian where the other  
comedian should not be kicked. Yet  
for all this moderation Mr. Kunkel is  
a virile man with a not uncompanion-  
able voice and much effortless fun. His  
idea of Foxy Quiller is the funniest  
I know."

## CHRISTIAN CHURCH.

Christian Church, corner Alakea and  
King streets.—All the regular services  
tomorrow, C. E., Jun., 9 a. m.; C. E.  
Sen., 6:30 p. m.; Bible school, 9:45  
a. m.; preaching, 11 a. m. and 7:30  
p. m.; morning, "Salvation Vital," by  
Rev. Pier of California; evening, "A  
Bird's-eye View of What We as a Peo-  
ple Stand For," the pastor. There  
will be special music at the evening  
service rendered by a double quartet  
from Kawaihae Seminary.  
You are cordially invited to attend  
all services.

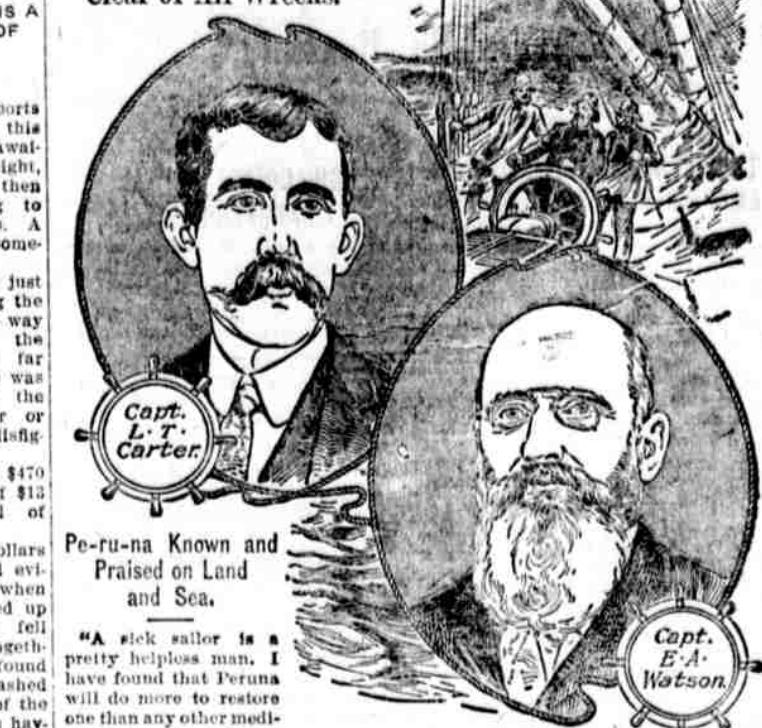


Pacific Hardware Co., Ltd.  
SOLE AGENTS

FOR FORT AND MERCHANT STS.,  
HONOLULU.

CAPTAINS ON MANY SEAS  
NEVER WITHOUT PE-RU-NA.

"Give Me My Compass and  
Pe-ru-na and I Will Steer  
Clear of All Wrecks."



Pe-ru-na Known and  
Praised on Land  
and Sea.

"A sick sailor is a  
pretty helpless man. I  
have found that Peru-na  
will do more to restore  
one than any other medi-  
cine I know, and I have  
carried a couple of bottles on board for  
many seasons. Seven years ago Peru-na  
cured me of bronchial trouble in a few  
weeks and gave me such new life and  
nerve force that I certainly believe in  
telling you of it."

"Give me my compass and Peru-na  
and I will steer clear of wrecks of all  
kinds and land in port safe and well  
with vessel and men."—Capt. L. T.  
Carter, 123 10th Avenue, Pensacola,  
Florida.

Capt. E. A. Watson, M. E., 48 Elizabeth  
street, Ottawa, Ont., writes:  
"Peru-na has my heartiest endorse-  
ment. If there is any place that you  
are helpless when it is on board a  
steamer, at sea, miles away from any  
assistance. Sometimes two or three of  
my men would be sick at one time and  
seriously cripple the force, but since we  
have learned of the value of Peru-na, by  
taking a few doses they recuperate very  
quickly. We use it for colds, lung,  
trouble and kidney diseases, and have  
also found it very fine for a gripper."

"Peru-na is always one of the most im-  
portant supplies of my steamer."—E. A.  
Watson.

With a bottle of Peru-na aboard sailors  
have a remedy on which they can rely.

Commodore U. S. Navy,  
Commodore Sumnerville Nicholson, of  
the United States Navy, in a letter from  
1877 St. N. W., Washington, D. C.,  
says:

"I unhesitatingly recommend Pe-  
ru-na to all persons suffering from cas-  
tarrh."—S. Nicholson.

If you do not derive prompt and satis-  
factory results from the use of Peru-na,  
write at once to Dr. Hartman, giving a  
full statement of your case and he will  
be pleased to give you his valuable ad-  
vice gratis.

Address Dr. Hartman, President of  
The Hartman Sanitarium, Columbus,  
Ohio.

For special directions everyone should read "The Ills of Life," a copy of  
which surrounds each bottle. Peru-na is for sale by all chemists and drug-  
gists at one dollar per bottle, or six bottles for five dollars.

Those wishing direct correspondence with Dr. Hartman and can wait the  
necessary delay in receiving a reply should address Dr. S. B. Hartman, Col-  
umbus, Ohio, U. S. A.

Benson, Smith & Co. will supply the retail drug trade in Honolulu.

## Honolulu Clothes Cleaning Co.

will lessen your expenditure for the cleaning, repairing and pressing of your  
clothes, if you become one of their monthly customers. By doing so you re-  
ceive the minimum charge. Telephone Main 147 for full information. J. F.  
COLBURN III, Manager. Office, KAPOLANI BUILDING.

Kerr's Annual  
Christmas Fair

BEGINS MONDAY NEXT—DECEMBER 4th.  
AMONGST THE MANY ATTRACTIONS WILL BE FOUND

A Grand Display of  
NEW ENGLISH SUITINGS

IN THE  
TAILORING DEPARTMENT

ORDER YOUR HOLIDAY SUIT NOW.  
HAVE IT BUILT FROM START TO FINISH

By WHITE LABOR

Our Standing Guarantee  
First Class Materials  
Fine Grade of Linings  
Superior Workmanship

PRICE NOT MORE THAN SOME CHARGE WHO EMPLOY CHEAP  
LABOR.

IN FACT, IN SOME CASES NOT SO MUCH.

L. B. KERR & CO., LTD.







# WANTS

The Little Ads with the Big Results

See Page 8, NEW TO-DAY, for New Ads.

## SITUATIONS WANTED

### WANTED

**CARPENTERS WANTED.**  
For Military Post at Kahauiki. Only first-class men with modern tools need apply. Long job and going wages. Address applications to H. H. Burrell, Box 633, Honolulu. 3213-4f

Stranger desires room near town. F. Andrews, care P. O. Box 254. 1243-1w

### SPECIAL NOTICES.

### FOR RENT.

**HOUSE**—On Vineyard St. **HOUSE**—On Broadway at Walkiki. **OFFICES**—In Waiwai Building. **STORE**—On Fort Street, opposite Catholic Church.

**WAREHOUSES**—On Queen Street.

### FOR SALE.

Improved and Unimproved Properties. Houses in all parts of the City. **BISHOP & CO.,** Merchant Street.

### TO LET.

14-room 2-story cottage, 9 rooms furnished; corner Fort St. and Christy Lane; sewer connections. Rent \$15. A bargain. Apply E. H. F. Wolter, "Occidental Hotel." 3240-1m

**Furnished Rooms**—Housekeeping allowed; cool and mosquito proof. Alakoa House, Alakoa St. bet. Hotel and King. 2265-4f

**Cottages in Christy Lane.** Apply Wong Kwai, Smith St., mauka Hotel 3071-4f

**Cheapest, coolest furnished rooms in city.** Helen's Court, Adams Lane. 3222-4f

**5-room furnished cottage at Cottage Grove.** Inquire at No. 8. 3228-4f

**At 1415 Alapai nr. Quarry St.** 5-room cottage; electric lights. 3221-4f

**Newly furnished mosquito proof rooms.** At 54 Vineyard St. 2728-4f

**Furnished rooms at 1223 Emma street.** Mrs. McDonald. 2563

### FOR RENT, LEASE OR SALE.

**Large fireproof two-room warehouse.** Cement floors. Makai room is fitted with traveling crane. For further information, apply to M. S. Grinbaum & Co., Ltd. 3229-2w

### FOUND.

A bicycle. Owner can have same by calling at office of Kapiolani Estate, Ltd., proving property and paying all expenses. 3244-4f

Blank books of all sorts, ledgers, etc., manufactured by the Bulletin Publishing Company.

# BUSINESS DIRECTORY

### BALLASTING.

**Honolulu Ballasting Company.**—Best black sand from \$2 to \$5 a load according to distance hauled. Coral reefs for stable, roads and sidewalks; dredged. Third door below King, Maanaka St.; P. O. box 820. Telephone Main 355.

### DYEING AND CLEANING.

**Manure dyes (any color) and cleans clothes;** repairs bicycles and furnishes supplies. 520 King St.

**Mayani—Clothes cleaned, repaired and dyed.** 537 Beretania St.

### EMPLOYMENT OFFICE.

For house-help, phone White 2891, Maikai. General Employment Office, cor. Pensacola and Beretania. 3160-4f

### REPAIRING.

**Showerheads repaired and brass polished.** Takata, 1254 Fort St. 3085-4f

### BARBER SHOP.

For nice smooth shave call at the **Criterion Barbers**, 1111 Fort St.

### MONEY TO LEND.

On jewelry and merchandise. The J. Carlo Fava Co., Hotel and Union. 2190-4f

## Social Side of Life

Although it was a bit strange to attend a theatrical performance at 10 o'clock in the morning, yet it did not seem to dampen the ardor of those who were there, for it was a typical Honolulu audience, and one could safely judge one's neighbor and find a friend. The four-act problem play by Sudemann called out a vast and fashionable audience who were interested or amused according to their temperaments. The trials of Marie were more or less convincing and there were many in the audience weeping, for Nance O'Neil can certainly play upon the emotional side of one's nature, but it was rather a strain to imagine so talented and charming a young woman so desperately in love with George. However, it passed the morning and gave one something to talk about. The stage box was occupied by Miss Jennie Giffard and her guests were Mrs. Helen Noonan, Mrs. S. G. Wilder, Mrs. A. M. Brown, Miss Helen Kimball and Miss Marion Scott. In another box were seen Judge and Mrs. Dole with the Eben Lowe. The two boxes were taken by Mr. Barbour Lathrop, and he entertained Mr. and Mrs. Gerritt Wilder, Dr. and Mrs. Murray, Mr. and Mrs. Byron Baird, Mrs. Percy Benson, Dr. and Mrs. Cooper, Mrs. A. G. Hawes and Miss Kitchen. There were many luncheons given at the hotel after the theatre. The chandeliers were lit and the long oval table, the center of which was artistically decorated with a cut glass bowl of la France roses and maidenhair ferns, was scattered over the cloth and malle and ferns were interspersed in a charming fashion. The chandeliers were lit and the long oval table, the center of which was artistically decorated with a cut glass bowl of la France roses and maidenhair ferns, was scattered over the cloth and malle and ferns were interspersed in a charming fashion. The chandeliers were lit and the long oval table, the center of which was artistically decorated with a cut glass bowl of la France roses and maidenhair ferns, was scattered over the cloth and malle and ferns were interspersed in a charming fashion.

Among the arrivals in the Sonoma were Mrs. J. H. Richards, the mother of Mr. Theodore Richards, and Mr. Robinson, advance agent of the Westminister Jubilee Singers. A very pretty bridge dinner was given on Monday evening by Judge and Mrs. Stanley. The place cards were bridge scores and the table was uniquely decorated with cards. La France roses further enhanced the effect of a very artistic table setting. Among those present were Mr. and Mrs. Raymond de B. Layard, Dr. and Mrs. F. H. Humphris, Mr. and Mrs. Danford from Kauai, Mr. and Mrs. A. G. Hawes, Miss Higford and Mr. E. Hartmann.

Mrs. Alexander Young, Miss Bertha Young and Mrs. Howard, who are living at Waikiki, are at home the first Tuesday in the month. Miss Nana E. Mighell became the bride of A. W. Spivalek yesterday at high noon, the ceremony taking place at the home of the bride's father, W. E. Mighell, 1533 Oxford street, Berkeley. Only the families and a very few close friends were present at the service, performed by the Rev. Dr. Clamphett of this city, and after a wedding breakfast, Mr. and Mrs. Spivalek departed immediately for their new home, which has just been completed at Belmont, near the paternal Spivalek home. The groom, a widely-known man, holds a remarkable record for the championship in athletic sports; he is a Stanford graduate and a fine polo and tennis player, also holding medals for horsemanship, being the initiator of fox-hunting in San Mateo county. Call, Nov. 23.

Mr. Spivalek is quite well known in Honolulu and his bride was a guest at the Alexander Young hotel not long since. Mr. and Mrs. C. Hedemann were arrivals on the Sierra after an extensive trip. They are occupying Dr. Wood's house, corner of Wilder and Thurston avenues. Miss Alice Hedemann is fast recovering from the sprained ankle which she received while playing basketball.

Dr. and Mrs. Cooper entertained at dinner for Mr. Barbour Lathrop on Saturday evening last. Mr. and Mrs. Fred Bush entertained at dinner for Mr. and Mrs. C. Graham on Thursday evening.

Among the delightful festivities of the week was the "at home" given by Mrs. Raymond de B. Layard on Thursday afternoon at the British Consulate on King street, which took the form of a garden party. Miss Higford, a cousin of the hostess from England, assisted in receiving and both Mrs. Layard and Miss Higford greeted the guests on the lawn, which was beautifully decorated with maidenhair ferns. They were then conducted to the garden, where twenty little tables were scattered about the extensive grounds and delicious refreshments were served. Chrystabel Layard, Ruth Soper and Russell Walbridge were very charming as they flitted about the grounds attending to the wants of the guests. Those who assisted were Mrs. F. M. Humphris, Mrs. Stanley, Mrs. Walbridge, Mrs. Hawes, Miss Marion Scott, Miss Annie Parke poured tea and Mrs. Atwood Stevens looked after the coffee. A garden party is certainly a delightful way of entertaining and the beautiful frocks were very well displayed on Thursday afternoon. Mrs. Layard wore a lovely imitated frock with touches of Paris about it, now becoming to her style of beauty. Miss Margaret Higford was in blue and wore a charming hat. Among those present were Princess Kawananakoa, Princess Kalaniana'ole, Mrs. George Davies, Mrs. F. H. Humphris, Mrs. Stanley, Mrs. Niblack, Mrs. Saito, Mrs. McGrew, Mrs. Walker, Misses Walker, Mrs. Gerritt Wilder, Mrs. McIntyre, Mrs. Osborne, Mrs. Mays, Mrs. Porteous, Mrs. Podmore, Mrs. Soper, Miss Soper, Mrs. Crabbe, Mrs. Schmidt, Miss Ward, Mrs. Baird, Mrs. Fuller, Mrs. McCandless, Mrs. Booth, Mrs. King, Mrs. Gales, Misses Parke, Withington, Ballentyne, Mrs. C. Wilder, Mrs. Campbell, Mrs. C. W. C. Deering, Mrs. Ryeroff, Mrs. Bottomley, Mrs. West, Fordham, Mrs. Bickerton, Mrs. Schaefer, Mrs. Schaefer, Mrs. Robertson, Mrs. Swany, Mrs. Harrison, Mrs. H. Macfarlane, Mrs. F. Manfaring, Mrs. Harloe, Mrs. Hays, Mrs. Focke, Mrs. Pfotenbauer, Mrs. A. M. Brown, Mrs. Spalding, Mrs. Dodge, Mrs. Alexander Scott, Mrs. Judd, Miss Judd, Mrs. M. M. Scott, Mrs. Adams, Mrs. C. Kimball, Miss Kimball, Mrs. C. Wight, Mrs. H. Lyon, Mrs. J. S. Walker, Mrs. Claire Williams, Miss Castle, Mrs. James Castle, Miss Nellie White, Mrs. C. Hedemann, Mrs. Gillick, Mrs. Jordan, Mrs. Murray, Mrs. Waldron, Misses Jordan, Mrs. Macfarlane, Mrs. Bertha Young, Mrs. Holmes, Miss Giffard.

### A Society Item.

"After the party at Lady L's things were kept going until a late hour," notes Sketch.

The Weekly Edition of the Evening Bulletin gives a complete summary of the news of the day.

ESTABLISHED 1780

## Walter Baker & Co's CHOCOLATES and COCOAS

For eating, drinking, and cooking Pure, Delicious, Nutritious

"THE LAST DROP IS AS GOOD AS THE FIRST."



REGISTERED U. S. PAT. OFFICE

Breakfast Cocoa, 1-2 lb. tins  
Baker's Chocolate (unsweetened), 1-2 lb. cakes  
German Sweet Chocolate, 1-4 lb. cakes

For Sale by Leading Grocers in Honolulu

**WALTER BAKER & CO. LTD**  
DORCHESTER, MASS., U. S. A.  
45 HIGHEST AWARDS IN EUROPE AND AMERICA

Mr. and Mrs. Noonan, Mrs. Smith, Mrs. Waterhouse, Mrs. Jones, Mrs. Wright, Mrs. Cooper, Mrs. Freeth, Mrs. Peck, Mrs. F. Church, Mrs. Lanz, Miss K. Cartwright, Miss Nellie Judd, Mrs. Basil Combe, Miss Oynes, Mrs. Humphreys, Mrs. Slattery, Mrs. Edward Watson, Mrs. Van Vleet, Mrs. Schofield, Mrs. Shuman, Mrs. Gartenberg, Mrs. Erick, Mrs. Cunha, Mrs. Hannah, Mrs. Clive Davies, Mrs. Emerson, Mrs. Grinbaum and Mrs. Davis.

The picture show at the Art League closes today and it has been most successfully attended. The rooms have always been well filled and many orders have been given. This is most gratifying to those who have labored so hard to make it a success.

Beginning Monday at St. Clement's there will be a sale of articles left over at the recent bazaar. There are some beautiful pictures and fancy work besides useful articles of all kinds. Rustle the flower stands and objects d'art will be offered for sale most reasonably. Mrs. Osborne and the ladies interested will conduct the affair. It is hoped that many will turn out and open their pocket books for the occasion.

It will be highly pleasing for the ladies who have been attending Miss Tracy's cooking school in the Hawaiian hotel to learn that the clever lecturer will continue her lessons until January owing to the fact that a new manager has taken charge at the Gas Co's office. Miss Tracy has been an acquisition to Honolulu whose influence in the art of good cooking has been felt by the whole community. Delicate and dainty new dishes have crept in to the household menus and there has been a decided improvement in the manner and style of cooking even the most commonplace dishes as a result of her instructions. The lesson for next Tuesday morning will be made up of some of the numerous requests that have come from her auditors and will be as follows: Fruit cake, lamb cutlets and rice, fried and boiled ham, and tea cakes. The lecture begins promptly at 10 a. m. and is free.

The following had charge of the various booths at the Hilo Boarding school loan and concert held on Thanksgiving day: **Hawaiian Wood Works**—Mrs. Clara Hitchcock, Miss Nellie Pomeroy, Miss Mina Maby, Mrs. Tom Cook. **The Art Gallery**—Miss M. F. Potter, Mrs. Gurney, Miss Ruth Richardson. **Hawaiian Curios**—Mrs. Rowland, Mrs. Siemsen, Mrs. Norman Lyman, Mrs. Enoch Brown, Mrs. Ewaliko, Mrs. King, Mrs. Henry Akiu, Miss Chong. **Candy**—Miss Esther Lyman, Miss Harriet Hapai, Miss Amy Hill, Mrs. Austin. **Fancy oWrk**—Mrs. Henry Lyman, Miss Howard, Miss Kalei Ewaliko. **Ice Cream**—Miss Clara Shipman. **Miss Trumbull**—Miss Masasayo Alakawa, Mrs. Nakapuuhi. **Coffee**—Mrs. Bert Loebenstein, Mrs. Morehead, Mrs. Stone, Miss Sarah Canario, Miss Annie Chalmers, Miss Bessie Searle. **Flowers**—Mrs. Weight, Miss Catherine Westervelt, Miss Edna Curtis, Miss Linde Vannatta, Miss Kulei Hapai, Miss Alice Weight, Mr. Harry Hapai. **Lemonade**—Miss Franc Eaton, Miss Hannah Akamu, Miss Anita Canario. **Memory Gifts from Old Students**—Hon. F. S. Lyman, Hon. G. W. A. Hapai, Mr. George Manu, Mr. David Keawahano.

Mr. and Mrs. Eric Knudsen are expected to arrive in Honolulu in time for Christmas.

A pretty little informal luncheon was given by Miss E. Wight for Miss Chapman on Friday at the Waikiki villa of her grandmother, Mrs. E. Wilder. The table was spread under the trees overlooking the sea, and over each chair was a red lei. The table had a centerpiece of maidenhair ferns and red carnations. Those present besides the guest of honor were Mrs. Clifford Kimball, Mrs. E. G. Wilder, Mrs. Gerritt Wilder, Mrs. Baggis, Mrs. Laura Wight and Mrs. A. G. Hawes. Miss Chapman and Mrs. Baggis are en route for Guam where Dr. Baggis is stationed. They are from Los Angeles.

Mrs. Damon and Miss May Damon are expected on the 22nd of December. Miss Damon has quite recovered her health. Mrs. Laura Wight and Miss Ella Wight are returning to Esbark today after a sojourn at the beach of a few days. Mr. Voa has a pleasant visit with his friends during his short stay in Honolulu. He is looking well, and is on his way to paint the Empress Dowager of China.

On Tuesday evening a delightful reception was tendered Bishop and Mrs. Restarick by the Guild of St. Andrew's. The Sunday school rooms were elaborately decorated. The annual elections will take place next Tuesday. Her Majesty, Queen Liliuokalani, is president of the Guild and Princess Kalaniana'ole is vice president.

Mrs. George Lycouris, from the volcano house, has been seen in town this week.

The sale of Mrs. Couzens, which came off this week at her residence, off Nuanu, was a very successful affair. The articles offered were artistically and useful. Mrs. Couzens, as well as Harry Couzens, has done some very acceptable work and Honolulu is only too glad to have an opportunity of getting it.

Mrs. Helen Noonan entertained at dinner in honor of Miss Jennie Giffard, on Tuesday evening, whose engagement to Judge Arthur Wilder was announced this week by Mrs. Giffard. The table was uniquely decorated with superb fruits of all sizes and colors, maidenhair ferns being artistically intertwined, and blending perfectly with the centerpiece. At the dinner, besides the guests of honor, were Mr. and Mrs. Holloway, Mrs. Alice Hastings, Mr. and Mrs. Benson, Miss Helen Kitchen, Mr. H. Walker, Mr. I. Dillingham and Mr. Frank Armstrong. Miss Giffard is one of the prettiest girls in Honolulu and one of the best liked and her engagement to the brilliant young attorney, Judge Wilder, has delighted every body.

The luncheon given to Miss Nance O'Neil by Mrs. Holloway at the Royal Hawaiian Hotel on Tuesday was a brilliant success. Miss O'Neil, notwithstanding her strenuous effort of the morning, which came to her as a surprise from her manager on arriving at Honolulu, was in great form. She is a remarkably handsome woman and a delightful company. The black wig

looking the sea, and over each chair was a red lei. The table had a centerpiece of maidenhair ferns and red carnations. Those present besides the guest of honor were Mrs. Clifford Kimball, Mrs. E. G. Wilder, Mrs. Gerritt Wilder, Mrs. Baggis, Mrs. Laura Wight and Mrs. A. G. Hawes. Miss Chapman and Mrs. Baggis are en route for Guam where Dr. Baggis is stationed. They are from Los Angeles.

Mrs. Damon and Miss May Damon are expected on the 22nd of December. Miss Damon has quite recovered her health.

Mrs. Laura Wight and Miss Ella Wight are returning to Esbark today after a sojourn at the beach of a few days.

Mr. Voa has a pleasant visit with his friends during his short stay in Honolulu. He is looking well, and is on his way to paint the Empress Dowager of China.

On Tuesday evening a delightful reception was tendered Bishop and Mrs. Restarick by the Guild of St. Andrew's. The Sunday school rooms were elaborately decorated. The annual elections will take place next Tuesday. Her Majesty, Queen Liliuokalani, is president of the Guild and Princess Kalaniana'ole is vice president.

Mrs. George Lycouris, from the volcano house, has been seen in town this week.

The sale of Mrs. Couzens, which came off this week at her residence, off Nuanu, was a very successful affair. The articles offered were artistically and useful. Mrs. Couzens, as well as Harry Couzens, has done some very acceptable work and Honolulu is only too glad to have an opportunity of getting it.

Mrs. Helen Noonan entertained at dinner in honor of Miss Jennie Giffard, on Tuesday evening, whose engagement to Judge Arthur Wilder was announced this week by Mrs. Giffard. The table was uniquely decorated with superb fruits of all sizes and colors, maidenhair ferns being artistically intertwined, and blending perfectly with the centerpiece. At the dinner, besides the guests of honor, were Mr. and Mrs. Holloway, Mrs. Alice Hastings, Mr. and Mrs. Benson, Miss Helen Kitchen, Mr. H. Walker, Mr. I. Dillingham and Mr. Frank Armstrong. Miss Giffard is one of the prettiest girls in Honolulu and one of the best liked and her engagement to the brilliant young attorney, Judge Wilder, has delighted every body.

The luncheon given to Miss Nance O'Neil by Mrs. Holloway at the Royal Hawaiian Hotel on Tuesday was a brilliant success. Miss O'Neil, notwithstanding her strenuous effort of the morning, which came to her as a surprise from her manager on arriving at Honolulu, was in great form. She is a remarkably handsome woman and a delightful company. The black wig

"There was a small musical party at Mrs. Stone de Lamuray's on the 10th,"—London Sketch.

Miss Louise Lemon and Miss Grace Carle, both of Los Angeles, are registered at the Youngs. The young ladies expect to remain in Honolulu for some time.

Governor General Luke E. Wright, who was one of the many distinguished personages on the Manchuria on her last stop here, together with his wife and other members of his party including his secretary, Carl Remington, Mr. and Mrs. Tidwell and Mrs. Judge Welborn, took advantage of the big liner's stay over night in Honolulu by giving a very enjoyable dinner party in the Young Hotel banquet room. Covers were laid for sixteen. The table was very prettily decorated and the menu a work of art. The party spent the night at the Young and the Governor was very enthusiastic in his praise of the big hostelry, and says Honolulu has reason to be proud of her magnificent hotel. Mr. Wright will return to the Philippines in about four months.

Miss Plankington of Milwaukee, a daughter of J. H. Plankington of hotel fame in the middle West, is registered at the Young Hotel. She is accompanied by Miss Hilands of Pittsburg, Pa.

About seventy of the young friends of Miss Pearl Belser entertained her at a farewell reception and ball at the Young Hotel last evening and the affair was a most delightful one in every way. From 8:30 until midnight the young people tripped the light fantastic and every moment of it was enjoyed to the utmost. A dainty lunch was served on the roof garden during the evening. Those present were Miss Jennie McCauley, Miss Annie McCauley, Miss Alice Green, Miss Flora Oss, Miss Ella Zeigler, Miss Mamie Chillingworth, Miss May Gonzales, Miss A. Simpson, the Misses Maud Johnstone, Bertha Lyett, Annie Dow, Mable Bruns, K. McCorriston, Pearl Belser, Eva McLane, Hazel Heilbron, Mabel Lee, Florence Lee, Belle McCorriston, Mable McCandless, Molly Grace, Lily Grace and Edna Lloyd; Messrs. Chris. Jenkins, Louis Underwood, Irving Hurd, Robert McCorriston, Mervin Simpson, Herbert Simpson, Charlie Simpson, Alfred Blackman, Charlie Lee, John Myatt, E. M. Brown E. Childs, Mr. McAlpine, Ted. Schlieff C. Wright, Ralph Johnstone, Sam Chillingworth Charles Reynolds, Wm. Heilbron, Paul Schmidt, G. Gonzales, Bert Lloyd and Roscoe Persons; Mr. and Mrs. J. J. Belser, Mr. and Mrs. G. W. R. King, Mr. and Mrs. Sam Johnson, Mr. and Mrs. Jules Levy, Mr. and Mrs. C. H. Smith.

Mrs. Edward Tenney, who was taken so suddenly ill at Byron Springs, is now in San Francisco and on the road to recovery. Dr. Wolters, who was in San Francisco at the time, was telegraphed for, and took charge of the case.

Mrs. William G. Irwin and Miss Helene Irwin, who were to have left today for the East and Europe, will not depart until December 15, having delayed their journey on account of Mrs. Irwin's slight indisposition. They will remain in the East for several weeks, most of the time with Mrs. Irwin's sister, Mrs. Edward Moore Robinson, in Philadelphia. They will also visit New York, sailing thence to Europe, where they will travel for a year.—Chronicle.

The reception tendered to Bishop Libert and Father Valentin was a most elaborate affair. From the arrival at the dock until late in the evening of yesterday he was being constantly entertained. A luau was given him in the afternoon by the Hawaiian ladies of the Sacred Heart Society, and a large reception in the evening. Next week there will be a banquet in his honor at the Alexander Young hotel, and on Monday the St. Louis College has planned a reception.

It has been decided to have the Floral Parade on February 22nd, Washington's birthday. The Promotion Committee has chosen Messrs. A. Young, Gerritt Wilder and A. Gartley for the committee. If all goes well, as it doubtless will in such good hosts, Honolulu will see a most unique and brilliant affair.

The attractive roof garden and ball room of the Young Hotel was a scene



Keep a bottle of the Bitters handy if you would save a lot of suffering. When the Stomach, Liver or Kidneys are unable to perform their work a few doses will help wonderfully. It never fails in cases of Dyspepsia, Indigestion, Constipation, Sour Stomach, Poor Appetite, Liver or Kidney ills or Malaria.

of much gaiety on Thanksgiving night. The guests of the house, together with a host of their friends about town, enjoyed a concert on the roof garden, after which dancing was held until a late hour. The music for the occasion was furnished by the Young Hotel orchestra under the leadership of Ernest Kaai and was of the highest order.

Major and Mrs. Fuller plan taking a cottage at the Hawaiian Annex.

Mr. George Lynch, the noted war correspondent, on his way to Japan, was entertained at dinner by Dr. and Mrs. Humphris on Friday evening.

Thanksgiving was celebrated by quiet reunions and family dinners. Services were held in the churches and there was a delightful hop at the Alexander Young hotel.

Mrs. McGarvey and daughter are guests at the Alexander Young. Miss McGarvey was at school with Miss Kathleen Cartwright in California.

Among recent prominent arrivals at the Young are Dr. C. P. Baggis and family, accompanied by Miss Anna Chapman of Los Angeles. The Doctor has been assigned to the naval station at Guam, but will spend several weeks in Honolulu before leaving for there.

Miss Louise Lemon and Miss Grace Carle, both of Los Angeles, are registered at the Youngs. The young ladies expect to remain in Honolulu for some time.

Governor General Luke E. Wright, who was one of the many distinguished personages on the Manchuria on her last stop here, together with his wife and other members of his party including his secretary, Carl Remington, Mr. and Mrs. Tidwell and Mrs. Judge Welborn, took advantage of the big liner's stay over night in Honolulu by giving a very enjoyable dinner party in the Young Hotel banquet room. Covers were laid for sixteen. The table was very prettily decorated and the menu a work of art. The party spent the night at the Young and the Governor was very enthusiastic in his praise of the big hostelry, and says Honolulu has reason to be proud of her magnificent hotel. Mr. Wright will return to the Philippines in about four months.

Miss Plankington of Milwaukee, a daughter of J. H. Plankington of hotel fame in the middle West, is registered at the Young Hotel. She is accompanied by Miss Hilands of Pittsburg, Pa.

About seventy of the young friends of Miss Pearl Belser entertained her at a farewell reception and ball at the Young Hotel last evening and the affair was a most delightful one in every way. From 8:30 until midnight the young people tripped the light fantastic and every moment of it was enjoyed to the utmost. A dainty lunch was served on the roof garden during the evening. Those present were Miss Jennie McCauley, Miss Annie McCauley, Miss Alice Green, Miss Flora Oss, Miss Ella Zeigler, Miss Mamie Chillingworth, Miss May Gonzales, Miss A. Simpson, the Misses Maud Johnstone, Bertha Lyett, Annie Dow, Mable Bruns, K. McCorriston, Pearl Belser, Eva McLane, Hazel Heilbron, Mabel Lee, Florence Lee, Belle McCorriston, Mable McCandless, Molly Grace, Lily Grace and Edna Lloyd; Messrs. Chris. Jenkins, Louis Underwood, Irving Hurd, Robert McCorriston, Mervin Simpson, Herbert Simpson, Charlie Simpson, Alfred Blackman, Charlie Lee, John Myatt, E. M. Brown E. Childs, Mr. McAlpine, Ted. Schlieff C. Wright, Ralph Johnstone, Sam Chillingworth Charles Reynolds, Wm. Heilbron, Paul Schmidt, G. Gonzales, Bert Lloyd and Roscoe Persons; Mr. and Mrs. J. J. Belser, Mr. and Mrs. G. W. R. King, Mr. and Mrs. Sam Johnson, Mr. and Mrs. Jules Levy, Mr. and Mrs. C. H. Smith.

### THE SALVATION ARMY.

There is a meeting every night at the Salvation Army hall, corner of King and Nuuanu streets. On Sunday morning at 10:30 there will be a holiness meeting, especially for Christmas. The young people conduct the service at 4 p. m., and at 8 p. m. a salvation meeting for all. Besides these services in the hall there will be the regular open-air services. Adjutant and Mrs. Hambery will be in charge, assisted by English Haynes and Lieutenant McClelland. Everybody is invited.

The Weekly Edition of the Evening Bulletin gives a complete summary of the news of the day.



## IMAGINATION SUPPLIES

A great part of the pleasures of life. In no case is this so well illustrated as in the fact that many men will pay outrageously high prices to have their clothes made to measure because they imagine they get a sort superior to ready made. Possibly this was true once, but it is not so now. We can sell you clothes of the best quality for half the money you would pay a tailor.

## Globe Clothing Co.

64 HOTEL STREET.

Do You Want To See The  
**Grandest  
Scenery  
In America?**

Be sure your ticket is good  
over the

**Denver and  
Rio Grande  
R.R.**

The scenic line of the world.

Through Sleepers, Dining Cars  
on all fast trains of the Southern  
Pacific Co. to All Principal  
Points.

All your questions fully and  
correctly answered by return  
mail. Profusely illustrated travel-  
ers' book free on application  
to

W. E. SHOTWELL,  
General Agent, 625 Market St.,  
Palace Hotel, San Francisco.

## O. R. &amp; L. Co.

## TIME TABLE

October 5, 1904.

## OUTWARD.

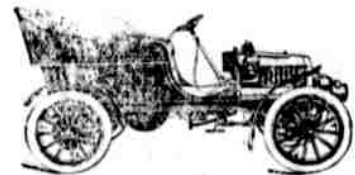
For Waianae, Waialua, Kahuku and  
Way Stations—9:15 a. m., 3:20 p. m.  
For Pearl City, Ewa Mill and Way  
Stations—7:30 a. m., 9:15 a. m.,  
11:05 a. m., 2:15 p. m., 3:20 p. m.,  
5:15 p. m., 9:30 p. m., 11:15 p. m.

## INWARD.

Arrive Honolulu from Kahuku, Wa-  
ialua and Waianae—8:35 a. m., 6:55  
p. m.  
Arrive Honolulu from Ewa Mill and  
Pearl City—7:46 a. m., 8:36 a. m.,  
10:38 a. m., 1:40 p. m., 4:31 p. m.,  
5:31 p. m., 7:30 p. m.

\* Daily.  
† Sunday Excepted.  
‡ Sunday Only.  
The Haleiwa Limited, a two-hour  
train, leaves Honolulu every Sunday  
at 8:22 a. m.; returning arrives in Ho-  
nolulu at 10:10 p. m. The Limited  
stops only at Pearl City and Waianae.

G. P. DENISON, Supt.  
F. C. SMITH,  
G. P. & T. A.



Headquarters for automobiles with  
a splendidly equipped fireproof garage.  
VON HAMM-YOUNG COMPANY, Ltd.

## DAVID DAYTON

137 MERCHANT STREET.

## Lots for Sale

In KAPOLANI PARK ADDITION,  
KALIHU, and other desirable localities

Also 1 JUMP-SEAT BUCKBOARD,  
second-hand; good as new.

## DR. J. T. McDONALD,

Office REMOVED to Rooms 21-24,  
The Alexander Young Building. Hours:  
10:10; 24; 7-8. Residence, The Alex-  
ander Young Hotel, Telephone Call:  
"Young Hotel."

## Alexander Young Hotel

Absolutely fire-proof, finest culi-  
nary, elegantly furnished and the  
best of service.

NOAH W. GRAY, Manager,  
Honolulu, T. H.

ALLIGATOR PEAR,  
GOLDEN SHOWER,  
ROYAL PALM, and  
COCOS PLUMOSIS  
PLANTS FOR SALE AT  
MRS. E. M. TAYLOR, FLORIST,  
YOUNG BUILDING.  
TEL. MAIN 339.

THE HAWAIIAN REALTY AND MA-  
TURITY CO., LTD.

Real Estate, Mortgage, Loans and In-  
vestment Securities.  
Office: McIntyre Bldg., Honolulu, T. H.,  
P. O. BOX 265. PHONE MAIN 141.  
Blank books of all sorts, ledgers,  
etc., manufactured by the Bulletin Pub-  
lishing Company.

## Business Man's Handy Index

## Probate Notices.

## Petitions for Administration.

William J. Forbes petitions that let-  
ters of administration issue to him on  
estate of Annie Isabelle Forbes, inter-  
state. Hearing Dec. 26, 9 a. m. Judge  
De Bolt.

A. Hiram petitions that letters of  
administration issue to Charles F.  
Chillingworth on estate of Hattie K.  
Hiram, interstate. Hearing Dec. 26, 9  
a. m. Judge De Bolt.

C. Ah Hip petitions that letters of  
administration issue to him on estate  
of Ah Wo, interstate. Hearing Dec. 12  
10 a. m. Judge De Bolt.

Henry Aki petitions that letters of  
administration issue to Harry T. Mills  
on estate of Wong Kee, interstate.  
Hearing December 19, 12 m. Judge  
Mathewman.

Virginia R. Ribeiro petitions that  
letters of administration issue to John  
P. Dias on estate of Francisco Alves  
Ribeiro, interstate. Hearing Dec. 4,  
9 a. m. Judge De Bolt.

Rebecca Hall petitions that letters  
of administration issue to her on es-  
tate of Peter P. Davis, interstate. Hear-  
ing Dec. 4, 9 a. m. Judge De Bolt.

Mrs. Anna A. Zimmerman petitions  
for probate of will of Albert A. Zim-  
merman and that letters testamentary  
issue to her. Hearing Dec. 12, 10 a. m.  
Judge Parsons.

Heleen Kamalopili petitions for pro-  
bate of will of Keakalani Ohule and  
that letters testamentary issue to  
Samuel K. Kamalopili. Hearing Dec.  
18, 9 a. m. Judge De Bolt.

## Notices to Creditors.

## By Administrator.

Achin Akana, administrator with the  
will annexed of estate of N. S. Akana,  
advertisers for claims to be filed with  
H. Y. Mills before May 23.

George Gibb, administrator estate  
of John Gibb, advertisers for claims to  
be filed with Jas. L. Coke before  
May 9.

C. Ako, administrator estate of  
Asiu, advertisers for claims to be filed  
with H. T. Mills before May 23.

Julian D. Yates, administrator estate  
of Emma D. Yates, advertisers for  
claims to be filed with Harry T. Mills  
before May 23.

W. Protenhauer, administrator es-  
tate of Franz C. W. Buchholz, adver-  
tises for claims to be filed with him  
before May 25.

Meaal Kekuewa, administratrix es-  
tate of Kaupulua (k), advertisers for  
claims to be filed with Henry Smith  
before May 18.

Meaal Kekuewa, administratrix es-  
tate of Kamaka Iakapa (w), adver-  
tises for claims to be filed with Henry  
Smith before May 18.

A. H. R. Vieira, administrator es-  
tate of M. R. A. Vieira, advertisers for  
claims to be filed with him before  
April 27.

S. Ehrlich, administrator estate of  
M. S. Levy, advertisers for claims to  
be filed with him before May 1.

Lilia Souza, executrix estate of  
Annie Beasing, advertisers for claims to  
be filed with J. Alfred Magoon before  
April 31.

Alice Kapuna, administratrix estate  
of Kapuna (k), advertisers for claims  
to be filed with J. J. Dunne before  
April 31, 1906.

H. G. Middleditch, administrator es-  
tate of Gustave Broman, advertisers  
for claims to be filed with him before  
April 1.

Cecil Noar, administratrix estate of  
Isaac Noar, advertisers for claims to  
be filed with him at the office of C.  
W. Ashford before March 21, 1906.

Edward G. Beckwith, administrator  
estate of Caroline Porter Beckwith, ad-  
vertisers for claims to be filed with him  
before March 23.

Lyle A. Diekey, administrator estate  
of Samuel T. Alexander, advertisers for  
claims to be filed with him before  
March 18.

W. W. Thayer, administrator estate  
of Hanakaulano Holt, advertisers for  
claims to be filed with him before  
March 11.

Sam Chillingworth, administrator  
estate of Manohelli Kaunane, adver-  
tises for claims to be filed with him  
before March 7.

C. Akuna, administrator estate of  
Kanaia, advertisers for claims to be  
filed with him or Jas. L. Coke before  
Feb. 24.

J. Kaupuni, administrator estate of  
Charles Allen, advertisers for claims  
to be filed with him before Feb. 4.

Hawaiian Trust Company, Ltd., ad-  
ministrators estate of James Dean, ad-  
vertisers for claims to be filed with it  
before Feb. 16.

James L. Coke, administrator estate  
of J. Kamakele, advertisers for claims  
to be filed with him before Feb. 1.

Evangelino da Silva, administrator  
estate of Joao M. Jardine, advertisers  
for claims to be filed with him before  
Jan. 6.

J. C. Searle, administrator estate of  
Peter Lewis, advertisers for claims to be  
filed with him before January 6.

John D. Paris, administrator estate  
of Isaac Sherwood, advertisers for  
claims to be filed with him before  
January 17.

H. Schultz, administrator with will  
annexed of estate of Baldwin Mehner,  
advertisers for claims to be filed with  
him before Jan. 12.

Jose De Camara, administrator es-  
tate of Bernardo De Camara, adver-  
tises for claims to be filed with him  
at office of Ridgway & Ridgway be-  
fore January 3.

Elizabeth H. Travis, administratrix  
estate of Isaac J. Robinson, adver-  
tises for claims to be filed at the office  
of J. A. Magoon before December 13.

A. N. Hayselden, administrator es-  
tate of Henry B. Wilkins, advertisers  
for claims to be filed with him before  
December 24.

Henry Smith, administrator estate of  
Maul (k), advertisers for claims to be  
filed with him before December 19.

John Mokuohai, administrator estate  
of Solomon A. Kuaimoku, advertisers  
for claims to be filed with J. A. Ma-  
agoon before December 13.

J. Alfred Magoon, administrator es-  
tate of S. K. Kihikina, advertisers for  
claims to be filed with him before De-  
cember 13.

M. I. Thomas, administratrix estate  
of Manuel Thomas, advertisers for  
claims to be filed with her at the of-  
fice of Frank Andrade, Stangenwald  
building, before December 18.

By Executor.  
Minnie H. Gilson, Jacob F. Brown  
and Arthur M. Brown, executors es-  
tate of Cordelia Hastings Brown, ad-  
vertisers for claims to be filed with A.  
M. Brown before April 24.

J. A. Lyle, executor estate of Louis  
Busbush, advertisers for claims to be  
filed with him at the office of Trent  
& Co. before March 21, 1906.

Richard H. Trent, executor estate of  
Thomas Christie, advertisers for  
claims to be filed with him before  
March 12.

John G. Rothwell, executor estate of  
Lumiah Wey, advertisers for claims to  
be filed with him before Feb. 29.

Joana P. Pico, executrix estate of  
Manoel P. Pico, advertisers for claims  
to be filed with J. M. Vivas before  
December 24.

J. Alfred Magoon, executor under  
will of Hana Kapukahi, advertisers for  
claims to be filed with him before De-  
cember 13.

Joana P. Pico, executrix estate of  
Manoel P. Pico, advertisers for claims  
to be filed with J. M. Vivas before  
January 24.

## Petitions for Hearing

Administrators' Petition.  
Bruce Cartwright, administrator es-  
tate of Albert K. Kuniake, petitions  
for final accounting and discharge.  
Hearing Dec. 27, 9 a. m. Judge De  
Bolt.

Charles Swain, administrator estate  
of L. E. Swain, petitions to sell real  
estate, located at Waipulani, North  
Hilo, Hawaii. Hearing Dec. 5, 10 a. m.  
Judge Parsons.

H. G. Middleditch petitions for final  
accounting and discharge as adminis-  
trator estate of Harriet P. Taylor.  
Hearing Dec. 4, 10 a. m. Judge Lind-  
say.

Executors' Petition.  
H. M. Whitney and W. W. Goodale,  
executors estate of H. M. Whitney, pe-  
tition for final accounting and dis-  
charge. Hearing Dec. 11, 9 a. m.  
Judge De Bolt.

In Bankruptcy.  
Mortgage Sale.  
Mortgage made by Lavinia Kapu to  
the Waialua Agricultural Co., Ltd.,  
recorded in Liber 196, pages 238-49,  
covering land in Honolulu and Ewa,  
will be sold at public auction at Fish-  
er's auction rooms, Dec. 18, 12 m.

Mortgage made by T. S. Kalama and  
wife to Andrew Dempster, recorded in  
Liber 227, pages 118-20, covering land  
at Punalu, Oahu, will be sold at pub-  
lic auction at Morgan's auction rooms  
Dec. 18, 12 m.

Mortgage made by Angus P. Mac-  
donald and wife to W. O. Smith, re-  
corded in Liber 262, pages 295-7, cov-  
ering land at Punalu, Oahu, will be  
sold at public auction at Morgan's  
auction rooms, Dec. 18, 12 m.

Mortgage made by William L. Pe-  
tersen to T. S. Kalama Estate, re-  
corded in Liber 262, pages 1-4, cov-  
ering land at Punalu, Oahu, will be  
sold at public auction at Morgan's  
auction rooms Dec. 18, 12 m.

Mortgage made by H. M. Dow to  
trustees under will of S. C. Allen, re-  
corded in Liber 260, pages 1-2, covering  
land on Merchant street and Punalu,  
will be sold at public auction at  
Morgan's auction rooms, December 2,  
12 m.

Mortgage made by Lokenahama Ka-  
hali to trustees of S. C. Allen estate,  
recorded in Liber 262, pages 408-9, cov-  
ering land near Queen and Punchbowl  
streets will be sold at public auction  
at Morgan's auction rooms, December  
2, 12 m.

At Capitol Building Dec. 16, 12 m.  
Interest of John Richardson in leases  
at Lahaina and land at Kalihi will be  
sold at public auction for judgment  
for \$550.29, interest and costs.

At Police Station Dec. 14, 12 m., in-  
terest of Hawaiian Trading Co., Ltd.,  
in lamps, etc., will be sold at public  
auction for judgment for \$238.20, in-  
terest and costs.

Land Sales.  
At Judiciary building, Dec. 22, 12 m.,  
Commissioner of Public Lands will  
sell at public auction license for fifty  
years of right of way for tunnel, etc.,  
across Napali lands at Kaunapali,  
Maui.

At Judiciary building, Dec. 9, 12 m.,  
Commissioner of Public Lands will  
sell at public auction Pacific Heights rail-  
way.  
Awa License.

For awa licenses will be sold on Oa-  
hu and at court houses of other dis-  
tricts Dec. 7, 12 m.

Land Court

Tenders.

For construction of masonry walls,  
etc., at head of Hilo water supply will  
close at Superintendent of Public  
Works office Dec. 11, 12 m.

For furnishing road building machin-  
ery for County of Kauai will close at  
office of Supervisors Jan. 24, 9 a. m.

## Corporation Notices.

## NOTICE

Notice is hereby given by Fong Hing,  
acting under authority of Wing Fong  
Company, of San Francisco, California,  
and Lee Chong Lung Company, of  
Hongkong, China, principal owners in  
the business known as Kwong Lee Yuen  
Company of 69 King Street, Honolu-  
lu, Territory of Hawaii, that from and  
after December 1st, 1905, Yan  
Kee Gan is no longer authorized to act  
as manager of said Kwong Lee Yuen  
Company, and is not authorized to  
sign the firm name of Kwong Lee Yuen  
Company to any promissory notes  
or any other evidence of indebtedness  
whatsoever, either as maker or endorser,  
and said Yan Kee Gan is not au-  
thorized to bind or obligate the firm of  
Kwong Lee Yuen Company in any  
manner whatsoever.

And all persons are hereby notified  
that the firm of Kwong Lee Yuen Com-  
pany will not be responsible, from and  
after the 1st day of December, 1905,  
for any act or acts of said Yan Kee  
Gan, formerly manager of Kwong Lee  
Yuen Company wherein or whereby  
said Yan Kee Gan may attempt to bind  
or obligate the said Kwong Lee Yuen  
Company, the authority heretofore con-  
ferred said Yan Kee Gan to act as  
manager for said Kwong Lee Yuen  
Company having been this day revoked  
and cancelled.

All persons heretofore or now in-  
debted to said Kwong Lee Yuen Com-  
pany are hereby notified to pay the  
amount of their indebtedness to Fong  
Hing, at the office of said Kwong Lee  
Yuen Company, and not to Yan Kee  
Gan, former manager.

WING FONG COMPANY,  
of San Francisco;  
LEE CHONG LUNG COMPANY,  
of Hongkong, China.

By FONG HING, their duly accredi-  
ted Attorney-in-fact and Agent.  
Dated Dec. 1, 1905.  
3244-2w

For construction of road to McGreg-  
or's landing will close at office of Supt.  
of Public Works, December 4, 12 m.

## Judgments.

Nov. 27—Quintus H. Berrey, plain-  
tiff, vs. C. K. Stillman, defendant;  
judgment for plaintiff, \$14.33.

M. A. Silva, Santo Antonio Grocery  
Co., plaintiffs, vs. Lazaro Salananza,  
defendant; judgment for plaintiff,  
\$15.15.

E. G. Ferreira, plaintiff, vs. Harry  
Espindola, defendant; judgment for  
plaintiff, \$1200.

H. Hackfeld & Co., Ltd., plaintiff,  
vs. W. Crawford, defendant; judgment  
for plaintiff, \$23.12.

Wm. F. Heilbron, plaintiff, vs. Da-  
vid Kawanamaka, defendant; judg-  
ment for plaintiff, \$272.24.

Nov. 28—J. G. Serrao, plaintiff, vs.  
Coyne Furniture Co., defendant; judg-  
ment for plaintiff, \$83.72.

D. L. Akwai, plaintiff, vs. Lee Sing,  
defendant; judgment for plaintiff,  
\$46.82.

Nov. 29—Quong Loy Sing, plaintiff,  
vs. Kapolea, defendant; judgment for  
plaintiff, \$19.30.

Dec. 1—Lowery & Cooke, Ltd., plain-  
tiff, vs. Mrs. E. K. Freeth, defendant;  
judgment for plaintiff, \$108.93.

Honolulu's Floral Parade is to be  
held on Washington's birthday, Feb-  
ruary 22, according to the decision  
reached yesterday at a meeting of a  
young, Gerrit Wilder and A. Gartley,  
the committee selected by the Prom-  
otion Committee to handle the business.  
The committee decided on three divi-  
sions, as follows:

1—Automobiles;  
2—Carriages and other vehicles;  
3—Horseback riders.

PASSENGERS DEPARTED.

Per str. Claudine, Dec. 1.—For  
Hana: M. S. Gribbaum, Miss E. M.  
Anderson, H. M. Gittel, For Kahulu:  
P. F. Rosecrans, Geo. W. Carr,  
Mrs. C. H. Fitzpatrick, John Smeaton,  
Father Stephen, Mrs. Geo. D. White  
and Infant, Mrs. Lewthwaite, E. O.  
Born, Miss De Rego, Mrs. F. L. Ly-  
nos, Miss Awana, Mr. and Mrs. Shi-  
mata, C. Crowell, Mrs. Tallant, Lum  
Sing, Miss M. O'Sullivan, Miss B. Ka-  
hakaulla, Master C. O'Sullivan. For  
Huelo: W. F. Pogue, For Lahaina:  
W. Williamson, Mrs. and Miss Hen-  
ning.

Per str. Mikahala, Dec. 1.—For  
Elesee: Chas. Healey and wife, A.  
C. Aubrey. Other ports: Francis  
Gay and wife, S. Decker, R. Frickie,  
and J. W. Bergstrom.

Per S. S. China, Dec. 2, for the  
Orient.—C. A. Graham, Mrs. G. G.  
Rice, Dr. H. Kozaki, A. H. Coates, S.  
Painter and wife, Dr. W. Abegg.

PASSENGERS ARRIVED.

Per str. Kinau, from Hilo and way  
ports, Dec. 2.—Miss B. K. Dwight,  
Mrs. A. N. Locke, Mrs. H. G. Alex-  
ander, Mrs. J. F. C. Abel, child and  
nurse, Master Frank Abel, Mrs. C. J.  
Schoonover, Daniel Thomas, F. S. Holt,  
M. F. Curran, W. G. Hall, Wm. T.  
Thompson, A. Ritchey, Miss E. Web-  
ster, H. B. Gehr, J. A. Thompson, Y.  
Sasaki, Ernest Bell, Rev. Alfred J.  
Bell, Geo. T. Kluge, D. Glass, Miss  
H. Glass, Mrs. Inoue, High Sheriff  
Wm. Henry, F. Waldron, C. D. Luf-  
kin, T. Kozaki, Hon. H. P. Baldwin,  
L. R. Crook, Mrs. R. Crook, child  
and maid, Father Thomas, J. H. Mac-  
lenzie, Bruce Cartwright Jr.

The Kinau arrived early this morn-  
ing from Hilo and way ports. She  
brought a large number of volcano vi-  
sitors. She had an uneventful voyage  
and a pleasant trip. The Kinau  
brought a cargo as follows: 1 automo-  
bile, 4 crates chickens, 7 bags cocoa-  
nuts, 8 bags corn, 9 bag potatoes, 9  
Hill pilions, 10 empty gas tanks, 13  
bags bottles, 15 pieces Jap. oars, 22  
cords wood, 21 empty kegs, 144 pack-  
ages sundries.

Oceanic Steamship Company  
TIME TABLE

The steamers of this line will arrive and leave this port as hereunder:

FROM SAN FRANCISCO:	FOR SAN FRANCISCO:
ALAMEDA . . . . . DEC. 8	ALAMEDA . . . . . DEC. 18
WONOMA . . . . . DEC. 20	VENTURA . . . . . DEC. 22
ALAMEDA . . . . . DEC. 29	ALAMEDA . . . . . JAN. 6
VENTURA . . . . . JAN. 10	

In connection with the sailing of the above steamers, the agents are  
prepared to issue, to intending passengers, coupon through tickets, by way  
railroad from San Francisco to all points in the United States, and from  
New York by any steamship line to all European ports.  
FOR FURTHER PARTICULARS APPLY TO

## Wm. G. Irwin &amp; Co., Ltd.

OCEANIC S. S. CO., GENERAL AGENTS.

Pacific Mail Steamship Co.  
Occidental and Oriental Steamship  
Company.

AND TOYO KISEN KAISHA.

Steamers of the above companies will call at Honolulu and  
leave this port on or about the dates below mentioned:

FOR JAPAN AND CHINA.	FOR SAN FRANCISCO.
*DORIC . . . . . DEC. 16	KOREA . . . . . DEC. 13
MANCHURIA . . . . . DEC. 23	COPTIC . . . . . DEC. 22
	AMERICA MARU . . . . . DEC. 26
KOREA . . . . . JAN. 6	
*COPTIC . . . . . JAN. 13	SIBERIA . . . . . JAN. 5
	MONGOLIA . . . . . JAN. 18

For general information apply to

## H. Hackfeld &amp; Co., Ltd., Agents

## AMERICAN-HAWAIIAN S. S. CO.

Direct Service between New York and Hawaiian Islands, Via Pacific Coast

## From New York

S.S. "ARIZONAN" . . . . . to sail NOV. 29  
S.S. "HAWAIIAN" . . . . . to sail DEC. 23  
Freight received at all times at the Company's Wharf, 41st Street, South  
Brooklyn.

## From San Francisco to Honolulu Direct.

S.S. "NEBRASKAN" . . . . . to sail DEC. 9  
S.S. "NEVADAN" . . . . . to sail DEC. 21  
Freight received at Company's Wharf, Greenwich Street,  
and each month thereafter.

## From Honolulu to San Francisco.

S.S. "NEVADAN" . . . . . to sail DEC. 15  
S.S. "NEBRASKAN" . . . . . to sail JAN. 7  
From Seattle and Tacoma  
Via San Francisco.

S.S. "CALIFORNIAN" . . . . . to sail DEC. 23  
For further information apply to  
G. P. MORSE, General Freight Agent.

## H. Hackfeld &amp; Co., Ltd.

AGENTS, HONOLULU.

Canadian-Australian Royal Mail  
Steamship Company.



# A Matter of Mats

Hear the would-be Little Farmer  
Walking down the muddy street  
Swear and say things that sound  
warmer  
'Cause he can only plant his feet.

But his language cannot match for forceful verbosity the remarks of his wife when he plants his mud-laden boots on her new hall carpet. Mud is plentiful these days and door mats are most essential to the preservation of kindly domestic relations. We SELL DOOR MATS. We have Wire Mats in three sizes, also in rolls so that we can make up a mat either 18 or 22 inches wide and any length you desire. Any part of these mats wearing out can be easily replaced as we have the extras and can put in a new section of any width.

COCOA MATS we have from \$1.00 each up to \$7.00.  
Foot-scrapers go with mats and we have a good assortment.

# E. O. Hall & Son, Ltd.

Do you Appreciate Good Style?  
Style. Quality. Fit.

A combination guaranteed in all garments made by us, for the same money as you pay for cheap, inferior clothes.  
Sack Suits (coat, vest and trousers) of fancy worsteds and serges, \$25.  
Tuxedo Suits (silk lined), \$35.

Geo. A. Martin Hotel Street  
Open Saturday Evenings until 9 p. m.

## MERRIAM MANDAMUS

DECIDED BY DOLE

Judge Dole yesterday rendered decision in the mandamus case instituted by the United States against Registrar Merriam to compel him to record the deed following the condemnation judgment of certain land at Waikiki. Merriam had refused to do this, as the judgment was accompanied by a map, which the local law prevents the recording of.

The decision after discussing the matter at length, concludes as follows: "In regard to the deed referred to in the petition as having been returned registry by the respondent, this court would be without authority to issue a writ of mandamus to compel the registrar thereof if it was an independent transaction without relation to the proceedings of condemnation. Inasmuch as in that case such a process would be an original writ of mandamus. With the obvious connection of the deed in this case with the said proceedings, it is still a question in my mind whether a writ of mandamus to compel its registry would not be an original writ, and therefore beyond the power of this court. Mr. Hughes says, in his Federal Procedure, page 266, 'The jurisdiction is conferred by reason of the principle that it is necessary as an incident to the main case and in order to carry out the objects of the main case and give complete relief or to settle all questions necessarily dependent upon the main case.' Is the deed referred to necessary to the main case in order to carry out its objects? I think not. It would appear from the Hawaiian statutes of eminent domain that a judgment of condemnation, upon being recorded in the office of the Registrar of Conveyances, vests the property condemned in the plaintiff. This result, so far as the transfer of the title is concerned, is complete, and no further section, conveyance or relief is required.

"If this view is correct, a writ of mandamus to require the respondent to record the deed in this case, would be an original writ and therefore beyond the authority of this court.

"In view of the foregoing authorities and considerations, the plea to the jurisdiction is allowed as to the deed of conveyance referred to in the petition and overruled as to the judgment of condemnation, and the defendant may have five days in which to show cause or make further plea."

## REAL ESTATE TRANSACTIONS.

Entered for Record Dec. 1, 1905.  
From 10:30 a. m. to 4 p. m.  
C. P. Benton adv Jas T Taylor, Jdgmt Cyrus T Green to J T Taylor, JHS Isaac Waihoiahi to Pioneer Mill Co Ltd. . . . Lease Pioneer Mill Co Ltd to R P Hoser. . . Mrs Marie Henning to H Waterhouse. . . Tr Co Ltd tr. . . AM A Lewis Jr to W J Forbes et al. . . PA Francisco Marques to Maria Ramo. . . Geo M Rupp and wf to W W Goodale. . . D Fakhumakalani. . . Affdt S C Allen to Malie Pao and hsb. . . Rel E Kehaanau Pratt to John Keahipaka tr. . . Wm C Cummings et al by com to John R Farquon. . . D Wm C Cummings et al by com to Antonio Gouveia. . . D Wm C Cummings et al by com to Manuel S Moraes. . . D Kulukuiulani and wf to Bishop & Co. . . Mtg Walkiki Seaside Hotel Ltd by shift to Trs of B P Bishop Est. . . Shft Sale Mary K Dwyer by shift to City Mill Co Ltd. . . ShftFD Emma M Nakulua and hsb to Ter of Hawaii. . .

Entered for Record Dec. 2, 1905.  
From 9 a. m. to 10:30 a. m.  
From 10:30 a. m. to 12:30 p. m.  
Kaleo (K) to P K Halemann. . . D Juan P Martin and wf to Pauline Borger. . . D Thos McKinley and wf by atty to Francisco A de Silva. . . D Joao Gouveia and wf to Manuel P Freitas. . . D John do Rego and wf to William L Decoto. . .

## WAIHEE IS AROUSED

OVER NEW TEACHER

Waikuku, Maui, Nov. 29. — Since the appointment of Mrs. H. Z. Austin as principal of the Waikuku school in place of H. M. Coke, promoted to be editor of the Maui News, the otherwise gentle citizens of Waikuku have risen to arms and threaten to protest to the Governor at the action of the Board of Education in appointing a lady instead of either Kaulimahu or Keilimol, men whom they wanted. This feeling has risen so much among the parents of the Waikuku school children on the ground that Mr. Austin, husband of Mrs. Austin, was ousted from Waikuku years ago for some reason best known to Waikuku citizens. From one corner of Waikuku to the other, the natives are talking of the matter and, like their neighbors at Kahakuloa, they will not rest until their wishes are carried out by the commissioners of education.

## FARMERS MEET TONIGHT

The Farmers' Institute of Hawaii will this evening at 7:30 hold a meeting at the rooms of the Bureau of Agriculture and Forestry, King street.

The following program will be presented: "The Balanced Ration and Stock Feeding," F. G. Krauss, "Forestry Work in Hawaii During 1905," R. S. Hosmer, "Agriculture in Hawaii," Jared G. Smith, "The Coffee Industry in Hawaii," A. Louison.

## HONOLULU HEALTH REPORT

I have the honor to report the number of deaths which have occurred at this place from the following contagious diseases, from November 18th to November 30th, 1905: Diphtheria, 0; plague, 0; smallpox, 0; tuberculosis, 1; typhoid fever, 1.

Respectfully,  
D. P. LAWRENCE,  
Registrar General, Vital Statistics,  
Honolulu, Dec. 2.

## PLUMBING PERMITS.

Mahole Moanau, Cecil Brown, agt., outhouse, Liliha St., San Yuen Kee, Lam Leong, restaurant, King St., Ke-lik, Lin Ping Kee.  
Kong Chung, 2 cottages, Kaulauea Lane, Wm Louis Co.  
J. A. Magoon, agt., Twile Road near rice mill, Gehring & Butzke.  
Edward K. Ayon, cottage, Ania lane, mauka of Beretania St.; Chee Hoon Kee.  
E. P. Patton, cottage, Palolo road; E. R. Bath.  
Mrs. C. D. Dwight, residence, Descha lane; E. R. Bath.  
Hawaiian Board of Missions, Palama Chapel; W. G. Let.

## BUILDING PERMITS.

Y. Fenkuya, change front photo gallery, Mendonca block, Nuananu and Hotel Sts.

At the Y. M. C. A. tomorrow at 4:30 Archdeacon Jeffries will speak on "Business in Religion." The Brotherhood of St. Andrew joins with the association in this service, and will furnish extra music.

## BY AUTHORITY

NOTICE.  
Notice is hereby given that G. MA-SUDA has filed an application for a 5th Class Liquor License at Honokawa, District of Lahaina, Maui, and any protest against the issuance of this license should be filed in this office by Saturday, December 16th, 1905.  
A. J. CAMPBELL,  
Treasurer, Territory of Hawaii,  
Treasurer's Office, Honolulu, T. H.,  
Dec. 1, 1905. 3245-3t

# It's Delicious!

If you have never tried

GORDON GIN

do so at once. It is superior to any gin in the market and finds favor wherever sold.

For sale at all leading hotels and bars.

Thos. F. McTighe & Co.

SOLE AGENTS.

101 TO 105 N. KING STREET.  
TELEPHONE MAIN 140.

# Hawaiian Poultry Show

Thursday Friday and Saturday  
Dec. 7, 8 and 9

MERCHANT STREET, BETWEEN FORT AND ALAKEA STS.

ADMISSION 25c

Saturday December 9

Children 10c

TICKETS AT THE DOOR.

# SI FARMER ALAMEDA

AFTER REPAIRS

RESUMES HER RUN

The Oceanic S. S. Alameda, wrecked off Fort Point, in the Golden Gate, on the morning of September 30th, and after being practically remodeled, left San Francisco this morning at 11 o'clock to resume her regular run between Honolulu and the Coast. Quite a number of Honolulu people are aboard. She will arrive here on the 8th.

A large crowd will greet the vessel upon her arrival here on the morning of her landing. In all probability the Hawaiian band will play at the dock. Hundreds of people who have missed the old reliable steamer's regular visits and who have made the Coast trip on her many times will gather at the wharf to see the Alameda steam along side the Oceanic wharf.

The half a hundred people, Honolulu citizens, who were on her when the wreck took place will also want a look at the crew and the ship. Dr. Rice, who went through on the Sonoma, will probably resume his old run on the next trip of the Alameda.

At the end of her trial trip several days ago, the Alameda sprung several plates while tying up at her wharf. The damage, which was above the water line, was only slight and was repaired within a few hours. It did not interfere with the loading of cargo, which was started the following day.

## BARK HAS ROUGH VOYAGE

After a 52-day trip from Newcastle with 1,870 tons of coal for W. G. Irwin & Co., the bark Adderly, Captain Berquist, arrived in port this morning, having encountered several severe storms during the voyage. During a particularly heavy gale the ship captain's right leg was broken by being thrown from one side of the vessel to the other. While the same storm was in progress the cabin boy was also badly bruised about the body by being tossed about the decks. The ship was not damaged to any great extent by the storms.

## NEW - TO-DAY

CHOICE SELECTION

OF CHRISTMAS GOODS

NOW ON DISPLAY

THOS LINDSAY

MANUFACTURING JEWELER,

FORT STREET.

## WANTS

For Want Column See Page Six

FOR SALE.

400,000 business cards at \$2 per 1000. All work and material. Mercantile General Printing House, Alakea and Merchant, Phone Main 173. 3245-3t

FOR RENT.

Furnished front rooms reduced to \$6 per month. Australia House, 1281 Fort St. 3245-1m

## SHIPPING INTELLIGENCE

TIDES.									
November 1	High Tide	Low Tide	High Tide	Low Tide	High Tide	Low Tide	High Tide	Low Tide	Mean Bar and Sets
	A. M.	P. M.	A. M.	P. M.	A. M.	P. M.	A. M.	P. M.	Sets
27	4 05	1 15	4 47	1 10	5 10	5 7			
28	4 50	1 05	5 10	1 00	5 35	5 17		7 43	
29	5 34	0 50	5 55	10 12	6 10	5 7		8 4	
30	6 18	1 13	6 40	0 45					
1	7 13	1 24	—	0 35	6 31	5 17		12 40	
2	7 40	1 51	0 51	0 31	6 38	5 33		11 43	
3	8 07	2 13	0 50	0 43					
4	8 42	1 11	1 05	0 50	6 33	5 15			

First quarter of the moon Dec. 5. Hawaiian Standard Time is 10h 30m slower than Greenwich time, being that of the meridian of 157.30. The time whistle blows at 1:30 p. m., which is the same as Greenwich. Oh 9m.

## ARRIVED.

Saturday, Dec. 2.  
Stmr. Ke Au Hou, Tulett, from Kauai ports, 6 a. m.  
Stmr. Kinan, Freeman, from Hilo and way ports, 8:15 a. m.  
Stmr. Maui, Bennett, from Hawaii ports, 5:30 a. m.  
Bark Adderly, Berquist, from Newcastle, 9 a. m.

## DEPARTED.

Friday, Dec. 1.  
Stmr. Claudine, Parker, for Maui ports, 5 p. m.  
Stmr. Mikahala, Gregory, for Kauai ports, 5 p. m.  
Saturday, Dec. 2.  
P. M. S. S. China, Friele, for the Orient, 6 a. m.  
Stmr. Noeau, Pedersen, for Mahukona and Hawaii ports, 12 m.  
Rus. aux. cruiser Lena, Glinther, for Vladivostok, 6 a. m.  
U. S. N. S. S. Supply, Dyer, for San Francisco, 9 a. m.  
Am. schr. Aloha, Dabel, for San Francisco.  
Schr. Aloha, Dabel, for San Francisco, noon, with sugar.

## SAIL TODAY.

Stmr. Likilike, Naopala, from Maui county ports.  
U. S. A. T. Logan from San Francisco.

## DUE TOMORROW.

Stmr. W. G. Hall, from Kauai ports, a. m., early.

## TAX OFFICE AFTER

INTER-ISLAND

STEAMER OFFICERS

The tax office are this year trying a new method by which they expect to be able to collect taxes from the officers of the steamships of the inter-island line. Last year the tax officials simply garnished these men's wages in the original suit for the taxes. The case was brought up into the United States District Court, where Judge Dole held that seamen's wages were exempt from garnishment in an original suit.

The result of this decision was that the officers, most of them at least, did not pay their personal and income taxes, feeling secure from the assaults of the tax assessor. This year the same thing occurred. Out of the officers of the fleet, numbering about sixty, only six or eight paid their taxes. In the meantime the tax officials, with the aid of the Attorney General's Department, devised a scheme by means of which they hope to be able to get the taxes. In every case judgment has been obtained, and execution issued and returned unsatisfied. The Government now claims that after this proceeding attachment can issue against a seaman's wages, as it is no longer an original suit.

To test the efficacy of this contention a suit will be brought against Captain E. H. Parker, the master of the steamer Claudine, for \$125, this being the amount of his poll and income taxes for five years past, together with interest and penalties. If the tax office is successful in this case, the wages of all the other officers, who have not as yet paid their taxes, will be attached. It is estimated that the total amount of taxes thus due from the steamship officers amounts to between \$4,000 and \$5,000.

## WEATHER REPORT

U. S. Weather Bureau, Local Office, Dec. 2, 1905.  
Temperatures—6 a. m., 70; 8 a. m., 74; 10 a. m., 78; noon, 79; morning minimum, 70.  
Barometer, 8 a. m., 30.07; absolute humidity, 8 a. m., 6.618 grains per cubic foot; relative humidity, 8 a. m., 73 per cent; dew point, 8 a. m., 65.  
Wind—6 a. m., velocity 5, direction E; 8 a. m., velocity 6, direction E; 10 a. m., velocity 5, direction E; noon, velocity 10, direction E.  
Rainfall during 24 hours ended 8 a. m., .05 inch.  
Total wind movement during 24 hours ended at noon, 205 miles.  
ALEX. McC. ASHLEY,  
Section Director, U. S. Weather Bureau.

Secretary P. H. Burnette of the Hawaiian Rifle Association has received word from Washington that the Hawaiian association had been admitted to affiliation with the national organization and that the regulation club medal was being sent as one of the trophies to be shot for next New Year's day.

# Whitney & Marsh

LIMITED

# GRAND DISPLAY OF HOLIDAY GOODS

OF ALL DESCRIPTIONS FOR ALL AGES. WE MAY MENTION:

## Childs Handkerchiefs

3 Fancy Bordered, in a pretty box for .....15c  
3 Fancy Bordered Linen, with initials, also in a pretty box, for.....25c

## Childs Bags Purses

AT 10c 25c 435c EACH.  
ALSO A LARGE VARIETY OF LADIES' & GENTS' HANDKCHFS.

## New Wash Neckwear

in Heavy Embroidery and openwork designs from ...25c to 60c

## New Silks

in dainty Dresden effects for fancy work .....\$1 YD.  
All the new fashionable PLAIDS, SUITINGS, ETC.  
KIMONO SILKS for fancy work.

## New Ribbons

We can safely say that these are the best in town.

## NEW PARASOLS

# ORPHEUM THEATRE

J. C. COHEN.....Manager

The Eminent Young Actor,

# RICHARD BUHLER

Supported by the  
National Stock Company

Presenting a Repertoire of High Class Plays.

TONIGHT AND TOMORROW EVENING

"Paul Revere"

MONDAY, TUESDAY and WEDNESDAY

"QUO YADIS"

POPULAR PRICES: 25c, 50c, 75c.

# JOHN POTTIE & SONS

Australian HORSE

and CATTLE

REMEDIES.

Testimonials have been received from Alexander & Baldwin Stock Ranch, Parker Ranch Co., J. M. Horner Ranch and all the leading planters managers bear witness to wonderful cures wrought by these remedies.

# Washington Light Co.

C. W. MACFARLANE,  
MANAGER.

FOR FRESH  
BREAD, CAKES AND PIES,  
GO TO THE

# VIENNA BAKERY

WEDDING CAKES A SPECIALTY.  
FORT STREET.

# Fresh Bakings

OF BREAD, CAKES, COOKIES, ETC.,  
EVERY DAY AT THE

# PERFECTION HOME BAKERY

Cor. BERETANIA and EMMA STS.

Clothes Cleaned and Pressed by the  
HONOLULU RENOVATING CO.,  
J. J. Fern, Manager.

Ribbards near Queen Sts. All telephone messages promptly attended to. We call for and deliver. Dyeing extra.

# A HAVEN OF REST

For the poor weary deferred dividend policy holder.

920 FORT STREET

CLINTON J. HUTCHINS

General Agent

FOR THE GREAT

ANNUAL DIVIDEND LIFE

INSURANCE COMPANY,

THE

PACIFIC

MUTUAL

We are in line with a fresh lot

Gruenhagen's  
Chocolates and  
French Mixed  
CANDIES

# CHAMBERS DRUG CO.,

Cor. Fort and King Sts.  
PHONE MAIN 13

## A CHOICE SELECTION OF

Holiday Souvenirs

SUITABLE FOR MAILING, AT

HILL'S CURIO STORE

1054 FORT ST.

# THAYER PIANO COMPANY,

156 and 158 HOTEL ST.,  
opposite Young Hotel.

STEINWAY PIANOS,  
STARR and OTHER PIANOS.  
Lookers as welcome as buyers.



847-857 Kaahumanu Street.  
P. O. BOX 594. TEL. MAIN 75

THIS SPACE

RESERVED

FOR

JAS. F. MORGAN, AUCTIONEER.

AT 11 A.M. DAILY

the finest train going east.

# OVERLAND LIMITED

leaves San Francisco

Chicago In 3 Days

Call on agent at Irwin & Co.

office and secure information

about rates.

# Information Bureau,

615 MARKET ST., SAN FRANCISCO,  
CALIFORNIA, U



# EVENING BULLETIN

Occasionally a man is heard to say that he is not sure that advertising pays. He is the exception that proves the rule. John Wanamaker, Marshall Field, R. H. Macy, Altman, Bloomingdale, Montgomery Ward and a host of other American merchants have shown the world the only way to establish a business is by devoting just as much time and money to advertising as to any other branch of trade. " " " "

Advertising is not a fad; it is a business fact. Bulletin advertising is the best in Hawaii. " " " "

PRICE 5 CENTS

# Carter Defends Football

where the free dispensary was, and their parents would not take them. At times he would take the children himself or send them in care of one of the other pupils. When a child's parents refused to do anything toward keeping a child cleanly, he had the child stay away from school, for those who care for themselves have a right to have their associates free from dirt and extra population in the hall.

"The lack of rules for the proper selection of umpires is, I think, to a great measure responsible for the

"The lack of rules for the proper selection of umpires is, I think, to a great measure, responsible for the present agitation against football," said Governor Carter yesterday. The Governor is, as it is well known, a veteran football player himself, and has on several occasions shown his interest in the local exponents of the noble sport.

"It needs a strong man to umpire a football game," continued the Governor. "Such a man must see strictly to it that the twenty-two struggling men live up to the rules of the game and that they are enforced. It is where this is not done that there is trouble, and I have myself seen many games which illustrated that."

"As a rule the men who get hurt in football are the ones who are not fitted to play the game. When a man is soft or has not had sufficient training he gets hurt in scrimmages where the man who is in perfect condition escapes without injury. This applies especially to the players on the teams of minor colleges and those on the small elevens of the larger ones as well. These men play the game without having been hardened by sufficient training."

"Another thing which, I think, would tend to make the game less dangerous and more interesting would be the changing of the five-yard line distance to one of ten yards. As you know, if a side does not make a gain of five yards in three downs the ball passes to the opponents. By making it ten

yards it would practically be rendered impossible to buck the ball the entire distance and the result would be that the third attempt would generally be made by a kick, as it is always better to kick and have the chance of not having your own side get the ball through its end rushes. In this way the heavy mass plays, in which most

Football is certainly a valuable sport because it gives the player a fine training in acting quickly and coolly while under intense excitement. It also gives him the confidence in his own strength, which no man can have unless he has measured his strength against that of some of his fellows.

"I and a friend, who was a more physically powerful man than I, but who had devoted himself to boating instead of football, were walking together one night when a crowd of toughs came up behind us, joshing and insulting. I turned around on them and faced them. My friend did the same.

and they scattered. After that my friend said to me that he had noticed that men who played football were always ready to face an emergency. They had measured their strength and relied on it. He had never measured his strength with other men and would not have dared to turn on those men who had been alone. Since then I have found that this is really a fact about football.

"These crusades against football occur quite occasionally, and I am inclined to think that they are beneficial. On the other hand statistics have shown that there are less accidents at football than in any other

game with the exception, of course, of tennis and such games. I have not followed football closely of late, but I remember that in the eighties there was a wave of agitation against football and at that time statistics were pub-

lished, which showed that there were more accidents in yachting, la crosse and other such sports than there were in football."

---

**POINTED PARAGRAPHS.**

A pessimist doesn't enjoy life unless he doesn't.  
He who deliberately deceives himself is hopelessly foolish.  
Virtue becomes a vice as soon as you

What can't be cured is cheerfully endured—by the undertaker.

An egotist thinks he has as many rights as the other fellow has wrongs.

When a man falls in love he proceeds to give his intelligence a vacation.

An average woman considers her marriage certificate a license to rue the roost.

A woman's idea of heaven is a place where she won't have to spend half her time in tucking her short back hair under the long strands.

# DISSATISFIED

NO SHORE LEAVE

## AT HONOLULU

Never before in her career has the transport Buford brought into port a disgruntled a crowd of troops as arrived this morning, and all because shore leave was granted the men at Honolulu, says the San Francisco Daily News of November 23. Through some order of the Department of Commerce and Labor in this city, the Buford was denied the right to land either freight or passengers at the island port. Hence the general dissatisfaction.

districts. On this account it is impossible to reach the interior where yearlings will pass before there is any improvement. Five years will be required before a railroad can be constructed into these districts."

Mr. Welborn's reason in going to Washington is for the purpose of reducing duty on Philippine sugar, as well as other products. As it is at present most of their sugar is shipped to China and Japan. The exportation amount to something like 100,000 tons annually. Mr. Welborn could see no reason to fear the Philippines when the consumption of sugar all over the world has increased so much more rapidly.

Many members of the Taft party who visited the islands are in favor of reducing the duty on Philippine sugar. Mr. Weilbold did not mention the rate which was estimated somewhat higher than was the case. On the other hand he slightly suggested there were others who did not favor the idea. But the impression seems to prevail that those in favor of reducing the duty are in the majority to a certain extent and after having visited the new possessions and with well posted representatives for the islands present at the session something will be done in their favor.

According to general conversations with Manila people, were in favor of doing away with the duties altogether for the good of the people there. They figured that the Philippines were of such small acreage that their outputs could in no way hurt other countries.

Mr. Welborn and Mr. de La Lama expect to spend some time in Washington, perhaps remain there until spring, in case Congress does not act favorably to them before that time. It was Mr. Welborn's idea to keep his mission secret but not for any particular purpose.

## Appointing Paymasters According To Merit

which, showing Hearst leading, suddenly were intermitted and showed McClellan in the majority, are being looked over. The reason for holding back 139 districts of Manhattan at the moment when McClellan was running a thousand behind and keeping them unannounced for two hours is also being investigated."

Julius Henry Cohen, a prominent lawyer and one of Jerome's principal supporters, said this afternoon: "I did not vote for Mr. Hearst for mayor. I voted for Mr. Ivins, but I confidently believe that a careful re-count will show that Mr. Hearst is elected. If this is so and he has been defeated by the returns, a greater principle is at stake than municipal ownership or stock-

Hearst's personal vindication. What ever one may think about the personnel of candidates or the principles which they represent, this government cannot proceed unless the choice of the people, whether right or wrong.

"I believe that Mr. Hearst will make the fight for a recount and that the American people will again assert their sense of fair play and insist that this

"The fight against boss domination is only beginning. However the people voted they must be stirred to indignation by the stories of brutality

The complete returns give McClellan a plurality of 14,847 against the

a plurality of 5485 votes, the smallest ever recorded for a successful mayoralty candidate, and a result which might readily be reversed by a recount of the ballots. Mr. Hearst today announced his intention of taking an im-

his managers having declared that they had secured evidence of illegal act against 1,000 inspectors of elections and that 20,000 Hearst men, who went to the polls to vote for Mr. Hearst, had

found that their names had already been voted on. Most of this fraudulent voting is said to have been done in eighteen assembly districts, especially. It is claimed, in the eighteenth, Charles E. Murray's home district, and in the

Mr. Hearst's proposed action meets with approval in many quarters, even

# Use Excellent Flour

Sold by all leading grocers.

CALIFORNIA FEED CO., Agents



**Claus Spreckels & Co.**  
BANKERS  
HONOLULU, T. H.  
San Francisco Agents—The Nevada National Bank of San Francisco  
Draw Exchange on the Nevada National Bank of San Francisco.  
London—The Union of London and Smith's Bank, Ltd.  
New York—American Exchange National Bank.  
Chicago—Corn Exchange National Bank.  
Paris—Credit Lyonnais.  
Hongkong and Yokohama—Hongkong Shanghai Banking Corporation.  
New Zealand and Australia—Bank of New Zealand and Bank of Australia.  
Victoria and Vancouver—Bank of British North America.  
Deposits received. Loans made on approved security. Commercial and Travelers' Credits issued. Bills of exchange bought and sold.  
Collection promptly accounted for.

## The First AMERICAN SAVINGS AND TRUST CO.

OF HAWAII, LTD.  
SUBSCRIBED CAPITAL, \$200,000.00  
PAID UP CAPITAL, \$100,000.00  
President, Cecil Brown  
Vice President, M. P. Robinson  
Cashier, L. T. Peck  
Office: Corner Fort and King Sts.  
SAVINGS DEPOSITS received and interest allowed for yearly deposits at the rate of 4 1/2 per cent. per annum.  
Rules and regulations furnished upon application.

**Bishop & Co.**  
BANKERS.  
Commercial and Travelers' Letters of Credit issued on the Bank of California and N. M. Rothschild & Sons, London.  
Correspondents for the American Express Company, and Thos. Cook & Son.  
Interest allowed on term and Savings Bank Deposits.

**The Yokohama Specie Bank, Ltd.**  
ESTABLISHED 1880.  
Capital Subscribed, Yen 24,000,000  
Capital Paid Up, Yen 18,000,000  
Reserved Fund, Yen 9,940,000

HEAD OFFICE, YOKOHAMA.  
BRANCH AGENCIES—Bombay, Hongkong, Honolulu, Kobe, London, Lyons, Nagasaki, Newchwang, New York, Peking, San Francisco, Shanghai, Tientsin, Tokyo, Osaka.  
The bank buys and receives for collection Bills of Exchange, Issues Drafts and Letters of Credit and transacts a general banking business.  
HONOLULU BRANCH, 67 KING ST.

**W. M. G. IRWIN & CO., LTD.**  
Agents for the  
Royal Insurance Co. of Liverpool, Eng.  
Alliance Assurance Co. of London, Eng.  
Scottish Union & National Ins. Co. of Edinburgh, Scotland.  
Five Association of Philadelphia.  
Alliance Insurance Corporation Ltd.  
Wilhelmina of Magdeburg General Ins. Co.

**William T. Paty,**  
CONTRACTOR AND BUILDER,  
Alakea Street.  
All classes of Building Work promptly and carefully executed.  
Office Phone Blue 1801.  
Residence Phone Blue 2332

**Y. Wo Sing & Co.**  
FRUITS AND GROCERIES.  
Fresh provisions and fruit by every California steamer. Fresh Island butter from Hawaii.  
1123 Fort St. and 1188 Nuuanu St.  
P. O. Box 961. Tel. White 93.

**SANG CHAN,**  
MERCHANT TAILOR,  
HOTEL STREET, HONOLULU.  
Suits made to order in the latest styles. Perfect fit guaranteed. Cloth fast cleaned, dyed and repaired.

**S. ICHICI**  
General Employment Office, cor. Emma and Beretania Sts. Japanese and Chinese Laborers Supplied. Contract Work of Every Kind Undertaken. Telephone Blue 2181.

**S. SAIKI,**  
Dealer in Bamboo Furniture and Picture Frames. Also Cabinet Maker.  
TELEPHONE BLUE 881.

**Castle & Cooke, Ltd.**  
HONOLULU.  
Commission Merchants  
Sugar Factor.

—AGENTS FOR—  
The Ewa Plantation Co.  
The Waialua Agricultural Co.  
The Kona Sugar Co.  
The Waimea Sugar Mill Co.  
The Fulton Iron Works, St. Louis, Mo.  
The Standard Oil Co.  
The Geo. F. Blake Steam Pumps.  
Weston's Centrifugals.  
The New England Life Insurance Co. of Boston.  
The Aetna Fire Ins. Co. of Hartford, Conn.  
The Alliance Assurance Co. of London.

**Wm. G. Irwin & Co., Ltd.**  
W. M. G. IRWIN, President and Mgr.  
J. N. D. SPRECKELS, 1st Vice Pres.  
W. M. GIFFARD, 2nd Vice Pres.  
H. M. WHITNEY, Treasurer.  
RICHARD IVERS, Secretary.  
E. I. SPAULDING, Auditor.

SUGAR FACTORS  
and  
COMMISSION AGENTS.  
Agents for  
Oceanic Steamship Co., San Francisco, Cal.  
Western Sugar Refining Co., San Francisco, Cal.  
Baldwin Locomotive Works, Philadelphia, Pa.  
Newall Universal Mill Co. (Manufacturers of National Cane Shredder), New York, N. Y.  
Pacific Oil Transportation Co., San Francisco, Cal.

**C. Brewer & Co., Ltd.**  
Queen Street, Honolulu, T. H.

Agents for  
Hawaiian Agricultural Co., Oahu  
Sugar Plant, Co. Onomea Sugar Co.  
Honolulu Sugar Co., Waialua Sugar Co., Pepee Sugar Co., The Planters' Line of San Francisco Packets, Chas. Brewer & Co.'s line of Boston Packets.  
List of Offices:  
C. M. Cooke, President; George Robertson, Vice President and Manager; E. F. Bishop, Treasurer and Secretary; F. W. Macfarlane, Auditor; P. C. Jones, C. M. Cooke and J. R. Galt, Directors.

**Castle & Cooke**  
IMPORTERS

**Life and Fire Insurance-Agents**

—AGENTS FOR—  
NEW ENGLAND MUTUAL LIFE INSURANCE CO. OF BOSTON.  
AETNA FIRE INSURANCE COMPANY OF HARTFORD.

**FIRE INSURANCE**

**THE B. F. DILLINGHAM CO. LIMITED.**

General Agent for Hawaii:  
Atlas Assurance Company of London  
Phoenix Assurance Co. of London.  
New York Underwriters' Agency.  
Provident Washington Insurance Co.  
4th floor, Stangenwald Bldg.

**COTTON BROS. & CO.**  
ENGINEERS AND GENERAL CONTRACTORS.  
Plans and estimates furnished for all classes contracting work.  
Tel. Main 245.  
ROOM 300, BOSTON BLK., Honolulu.

**M. Phillips & Co.**  
Wholesale Importers and Jobbers.  
EUROPEAN AND AMERICAN DRY GOODS  
Fort and Queen Sts.

**Best Meal in Town**  
CALIFORNIA RESTAURANT  
ON HOTEL ST. near NUUANU.  
OPEN ALL NIGHT.

**T. ODA, Manager.**

**P. H. Burnette.**  
Attorney-at-Law and Notary Public  
Real Estate, Loans, Collections.  
Agent to Grant Marriage Licenses.  
Phones: Office, Main 310; Res. Wh. 1341  
Office, 79 Merchant St., Honolulu.

**BUILDING MATERIAL**  
other dealers. Doors, screen doors, sash and builders' hardware.  
C. B. REYNOLDS,  
Alakea St., mauka Sailors Home.

## ODD FELLOWS

Odd Fellowship is reported to be very much alive in Alaska. In January an I. O. O. F. hall was dedicated recently that cost \$14,000 and is as fine a building as one can find anywhere. In Douglas all branches of the order are reported in prosperous and harmonious condition.

The grand secretary of Quebec recently reported a membership of 3,524 in his jurisdiction.

There is at present an encampment membership of 177,820 and a Rebekah membership of 474,050.

A resolution was adopted by the S. G. L. allowing subordinate and Rebekah lodges and encampments to expend money from their general funds for the purchase of flowers for their sick or deceased members.

The official train bearing the deputy grand chief, Parthenius Militant and others to the convention of the S. G. L. was wholly composed of Odd Fellows, even the engineer, conductor and trainmen. It was said, being Odd Fellows.

Grand Chaplain John W. Venable, owing to the infirmities of age, being in his eighty-third year, was unable to attend the session of the sovereign grand lodge.

During the past year 124,210 candidates were initiated. Since 1880 the order has initiated 2,927,293 candidates.

The report of Grand Secretary John U. Perkins of Massachusetts jurisdiction shows that the receipts of the subordinate lodges last year from all sources were \$2,104,122.05 and the amount paid for relief \$219,844.04.

## OFFICER ANSWERS REPORTER'S QUESTIONS BUT THAT'S ALL

"Is this Captain I. M. Helms of the United States Navy?" asked a reporter of a tall good natured looking gentleman at the Hawaiian Hotel Tuesday evening.

"Yes, sir," was the reply.

"What do you think of the present situation in China—the boycott in particular? Can you offer any solution for the settlement of affairs? What will the Americans do finally if the boycott is kept up, say for two or three years?"

"I know nothing about the situation."

"Have you been in China?"

"Yes, and no."

"Perhaps it would suit you better, Captain, to talk about Japan relative to the war just over? In your opinion will trade conditions between the United States and Japan improve since the war has ended?"

"I have nothing to say on that question, either."

The reporter was about to give up when he thought of another question.

"Have you been investigating affairs in China or Japan for the United States government?"

"I have not."

"I'm a newspaper reporter, Captain."

"You needn't have told me that."

"It finally developed that Captain Helms has been stationed at Manila and is en route by the Manchuria to his home at Memphis, Tenn., on a leave of absence. He is just as good natured as he looks but will talk on any subject not concerning foreign affairs. He has been in the navy thirty years. This is his first visit to the States in five years. At that time he has been pretty much all over the world."

**HIS EXCUSE.**

Mrs. Bender: "Do you mean, sir, to stand there and tell me you got intoxicated from smoking a cornucopia pipe?"

Mr. Bender: "Yes, Maria; you see, the cob had been acting as a stopper for a demijohn of moonshine for five years."—Chicago Daily News.

**CABLEGRAM**

Sydney, Dec. 22.  
Greenhood.  
San Fran.  
Incerbas.  
Podcspides.  
Diabetes.  
Podolopide.  
Brights.  
Benjamin.

**TRANSLATION.**

Benjamin Bros. are manufacturers' agents in Sydney, Australia. Greenhood is H. O. Greenhood, the exporter of 326 Sansome St., San Francisco.

Concerning the report that cures for Bright's Disease and Diabetes have been discovered in San Francisco, Benjamin Bros. wrote Greenhood to send a small order, and if it really did the business they would send an important order. The trial lot was sent.

The above cable is the reply. It did the business. They couldn't wait for a letter, but cabled. Translated it calls for the immediate shipment of nearly \$400 worth of Fulton's Compound for Bright's Disease and Diabetes. The whole world is waking up to the wonder of the discovery. You don't have to cable 6000 miles. It's right at your doors. Send for literature.  
Honolulu Drug Co., agents.  
When to suspect Bright's Disease—weakness or loss of weight; puffy ankles, hands or eyelids; dropsy; kidney trouble after the third month; urine may show sediment; failing vision; drowsiness; one or more of these.

## Women at Home And Out of It

What Economy Means  
Women Are Growing  
More Capable.

"What on earth have you done to that new skirt of yours?"

"Oh, that is only mud. I hope it will come off," remarked the woman as she brushed vigorously a handsome brown broadcloth skirt bearing a damp and soggy band around its lower edge.

"You see, I had to wear it downtown this afternoon. It is the only costume I have, and there was that sale of blouses at Cashmere's. Only \$4.95!"

"And you ruined a thirty-five dollar suit for a four ninety-eight blouse!" murmured the friend.

"I have seen women walk blocks in bad weather," she went on, "when they wore their best patent leather shoes. They were laboring under the mistaken impression that they were saving car fare."

**False Economy.**

"I have seen them 'economize' by attempting to make their best clothes at home and incidentally ruining yards of material and having to buy expensive lace and trimmings to hide their crooked seams."

"I have seen women hire a 'cheap' servant, when she wasted exactly twice as much as a capable one."

"I have seen women 'skimp' on the quality of their street tailor made in order that they might have an extra evening hat."

"I have seen friends of mine fighting around the bargain counter for bits of old lace and ribbon because they were cheap (although useless), and I have seen the same ones needing the money for a pair of clean white gloves. Don't



BARGAIN HUNTING IN THE RAIN.

talk to me of the sense of economy of the feminine sex. I am ashamed of it!"

But all this time her audience of one had kept on vigorously brushing. Finally she laid down the whisk broom and walked off, but it was taken the color out and left a little streak. I'll have to take this skirt to the tailor and have him put on a band of braid. And the suit will never be the same again!"

**Idleness is Not Fashionable.**

The time has come at last when idleness among women has ceased to be fashionable, and the woman who cannot go into her own kitchen and cook a meal under stress of circumstance is an object of pity. And just see how much more clever women are becoming with their needles! They may not do such fine embroidery and such microscopic drawn work as their grandmothers, but they make their own blouses—make them well too. And they trim their own hats.

Look at the counters in the shops filled with materials for hats. Each year this department becomes more varied and extensive.

"We milliners have had to put down our prices," said a member of the trade to me the other day. "Our customers are becoming wise. Where one woman trimmed her own hats five years ago there are ten or twenty doing it now. And the phrase, 'She trims her own hats,' is no longer one of contempt—far from it!"

**"Business" Housekeepers.**

Who says business women make poor housekeepers? They may not be able to cook—no man even has ability for everything—but if a woman is methodical about her business she is also orderly about her home. First she insists upon a certain time for everything and everything in its time, just as things are run downtown. Then she makes her hand serve her feet and hands. I tell you what, my friends, there are many so called "home women" who could take lessons in good management from the business woman's little flat. MAUD ROBINSON.

## MASONIC

Freemasons should remember that no part of the greatest and most important tragedy of all the ages is a subject for comedy or burlesque. On no account should they forget its location, its personages or its character and solemnity, and nothing should induce them to act any part of it as a farce.—Masonic Chronicle.

There is talk of forming a commandery of Knights Templars in the City of Mexico.

The grand secretary of Nevada recently reported 1,030 Master Masons in the twenty-two lodges in the jurisdiction, a gain of forty-five for the year.

In St. Augustine, Fla., the Masons have joined with the Knights of Pythias in the erection of an \$8,000 lodge building.

Grand Master Meyerhardt is justly proud of the fact that the grand lodge of Georgia has completed and furnished its Masonic home without incurring a cent of debt.

The Mason who is not willing to share in the work and worry of the fraternity, who is unwilling to help carry its burdens, has no right to enjoy its privileges.—Masonic Chronicle.

The Royal and Select Masters of New York have a present membership of 5,115.

Four immense stone columns will stand at the entrance to the Masonic temple in Birmingham, Ala., now being erected. They weigh 22,000 pounds each.

A medal designating him as the oldest Mason in the state was recently presented to C. P. Hackney of Ashland, Neb. He is ninety-one years of age and has been a Mason since 1841.

Jopka lodge of Brooklyn has a unique fellowcraft team, the members of which belong to the United States army and are stationed at Fort Hamilton.

## DRINKING FOUNTAINS DEvised FOR PUBLIC SCHOOLS

The problem of sanitary and sufficiently cheap drinking fountains to be used in school yards and in public places seems finally to have met a satisfactory solution. The Board of Health has for several years past wrestled with this problem. Several parties have on various occasions approached it with plans for the erection of drinking fountains for man and beast but they have all been found unsatisfactory, either because the fountain proposed did not come up to the required sanitary standard, or, where they were satisfactory from a sanitary point of view, because they were too expensive to allow the government under its present system of rigid economy to procure them.

The Board of Health has for some time past been looking about for a scheme whereby the present system for providing water to the children in the public schools could be done away with. The Board of Education also took the matter up, and the two departments cooperated for the same purpose, namely: to get a perfectly sanitary drinking fountain of a price which was not prohibitive. Heretofore the children had to get their water from taps in the school yards, using drinking cups. Even when these cups were in good repair and kept clean, they were the cause of some danger of infection as they were used by all the children promiscuously. The cups, however, very soon became chipped and cracked, the cracks becoming most perfect breeding places for microbes of various kinds.

The conclusion was soon reached that the only satisfactory drinking fountain was the one which dispensed with the use of cups altogether by squirting forth a small jet of water, where the drinker can quench his thirst by applying his mouth directly to the water. Such fountains are made on the mainland, but they cost about \$20 apiece and the cost of connecting them with water mains and sewers adds about \$30 to the cost, making the total outlay for each about \$50. This price put these fountains entirely out of the question.

In the meantime Plumbing Inspector Keen exercised his ingenuity and devised a drinking fountain which could be made here at a moderate cost, and which answered all the requirements. The Health and Education authorities combined to try the experiment, with the result that it was found to be most satisfactory. A fountain of this kind has been erected in the Normal school yard and is now in use. It consists of a neat white painted trough about ten feet long, in the bottom of which runs a pipe from which four small pipes stand up about four or five inches. From these the water squirts up in a small jet from which a person can easily and conveniently drink by bending over it and letting the water squirt into his mouth. At the end of the trough is an outlet through which the waste water runs into the sewer.

The water can be turned off, so that it will only be used when the pupils are at liberty. It is intended to place a cement basin near the trough where the children can wash their feet. This will be connected with the building by a cement walk so that the children will be able to enter it perfectly clean. The cost of this arrangement is only about \$15 to \$20. It is the intention to place the fountains in all the city schools and also in various public places about Honolulu.

Many of the large ocean greyhounds carry cats as mascots, these pets being well known to globe trotters.

## What It Is What It Does

A BULLETIN WANT AD. is a persistent, insistent and consistent, silent, persuasive buyer and seller of commercial and family requirements. It furnishes you with help and obtains you employment. It secures you a loan and makes one for you. It finds lost articles and lost friends. Buys, sells, exchanges and rents property and transfers a business. Provides music and entertainment, education and means of sustenance. Procures you a boarding or stopping place, an office or a store; engages a physician, an attorney or a nurse; will bring you a husband or a wife, and a home to live in. In fact it supplies you with 90 PER CENT. of your "WANTS" more cheaply and quickly than any other means on earth.

**Women Who Know**

Wine of Cardui has been so helpful to me that I feel it my duty to advise sick and suffering women to try this wonderful remedy.

MISS MARTHA HUBER,  
505 East 88th St., New York City.

Wine of Cardui is simply wonderful and I wish that all suffering women knew of its good qualities.

MRS. WILHELMINA SNOW,  
Treas. Economic League, Portland, Me.

Every woman suffering with female trouble should try Wine of Cardui, and I fully believe they will experience the same benefits and cure which I have.

MRS. L. A. AUSTIN,  
605 N. 6th St., Kansas City, Mo.

My advice to suffering women is to take Wine of Cardui and they will never be disappointed in the results.

MISS LOUISE FINE,  
125 Hennessy St., New Orleans, La.

**WINE of CARDUI**

These women say Wine of Cardui will cure menstrual disorders, bearing down pains, ovarian pains, leucorrhoea, nervousness and hysteria—that this pure wine will rob childbirth of its worst agonies, and that the change of life need have no terrors for a woman who takes this great female tonic. Will you take their advice?

Secure a Bottle of Wine of Cardui today.

**"SAVE-THE-HORSE"**  
SPAVIN CURE

Registered Trade Mark

CAN YOUR HORSE PASS THE JUDGE OR VETERINARIAN?

Remember there are no blue ribbons and few bidders for cripples. Put your horse in condition at once, if you want him ready for the show ring or sales stable.

No blemished or unsound but otherwise valuable horse need be sacrificed. No matter if all other treatments have failed, the marvelous power and properties of "Save-the-Horse" are so effective it is perfectly safe for us to give a guarantee which is a contract absolutely binding to protect you.

WERE THESE TWO CASES WORTH THE COST OF TREATMENT?

Brooklyn, N. Y. Nyack, N. Y.

One of my horses went lame from side or shell bones on both feet, which extended entirely around the quarter, and was laid up for about three months. I used two bottles of "Save-the-Horse," and the horse is perfectly sound. I have driven her over paved roads, and one day gave her a sixty-mile drive and she never showed the least particle of lameness. The growths have nearly all disappeared. I have owned horses for years, used them to build railroads and in all kinds of contract work, and have used remedies, blisters, firing and electricity, but never saw anything take hold and produce such results as "Save-the-Horse" in this case.

D. C. BENNETT, Builder,  
416 79th St.

In August I had a mare with an ankle cocked from a bad wrench in a race. It was so bad I had concluded to shoot her, but was persuaded to breed her and turn her out. I bred her, but instead of turning her out used "Save-the-Horse." In three weeks I was more than surprised to see the swelling disappear, and the remedy produced a complete cure. She is as good as ever. I have raced her since and drive her any distance without any sign of lameness. I cannot say too much for your remedy.

GEO. F. BEHRINGER, JR.

POSITIVELY AND PERMANENTLY CURES Bone and Bog Spavin, Ringbone (except Low Ringbone), Curb, Thoroughpin, Splint, Capped Hock, Shoe Boli, Windpuff, Weak and Sprained Tendons and all Lameness without scar, blemish, loss of hair. Horse may be worked as usual.

\$5.00 per bottle. Written guarantee—as binding to protect you as the best legal talent could make it. Send for a copy and booklet. ALL DRUGGISTS AND DEALERS OR EXPRESS PAID.

Trade supplied by Hollister Drug Co., Hobron Drug Co., Honolulu, and TROY CHEMICAL CO., BINGHAMTON, N. Y., formerly Troy, N. Y.

**The Bulletin, 75cts per month**



## APPROPRIATE GIFTS AT APPROPRIATE PRICES

Nothing is so appropriate for Christmas Gifts as Jewelry. Knowing this, our store has made it, its mission while buying for the Holidays to secure an immense assortment of scores of beautiful things, that exquisite taste says are exactly right for gift giving. And the prices will not leave a vacuum in your purse.

**J. A. R. VIERRA & CO.**  
113 HOTEL near FORT STREET

## SPARKLETS

Small Steel Receivers or Capsules containing CHEMICALLY PURE CARBONIC ACID GAS. This Gas is the cause of all Aeration. It makes all Liquids Sparkling. FOR THE INSTANTANEOUS AERATION OF ALL LIQUIDS: Water, Milk, Tea, Wine, Spirits Invalid Drinks, etc., etc.

**RESTORE LIFE TO BOILED WATER**  
FOR SALE BY

**W. C. Peacock & Co.,**  
LIMITED

## Christmas Reduction Sale

On Koa and Ebony Furniture

Beginning DECEMBER 1 and continuing until DECEMBER 25, we will dispose of our large stock at almost half the former price. The Koa is all made in mission style and will add to the beauty of any home's furnishing. The Ebony is substantially built, artistically decorated and highly polished. The stock consists of desks, bureaux, chairs, tabourettes and settees. Remember the furniture is to be sold at almost

**HALF FORMER PRICES**  
Goods delivered to any part of city.

**FONG INN CO.**  
1152 NUUANU STREET.

## QUALITY

With the usual quantity is the quintessence of every bottle of soft drink manufactured. All the latest drinks for sale. Orders promptly delivered

**HAWAIIAN SODA WORKS**  
Factory, 1425 Emma St Telephone Blue 1871

Imported From Orient

## Christmas Goods

Especially for the Holiday Trade

An immense assortment of the following Japanese and Chinese goods: Chinese Crockeryware, Mattings, Camphorwood Trunks, Rattan Chairs and Chinese and Japanese Ivory and Silver Ware, Canes, Dress Silks, Sandalwood Boxes, Embroidered Table Covers and Dollies, Curtains, Pillow Shams, Fans, Silk Shawls, Handkerchiefs, Shirtwaists and Grass Linen Goods in all colors.

Our prices only require a minimum profit. Mail orders promptly filled.

**WING WO TAI & CO.**

941 NUUANU STREET. Tel. Main 266. P. O. Box 548

## THE MENEHUNES

BY EMILY FOSTER DAY

PRICE 75c.

So great has been the demand for this delightful little story of ancient Hawaiian folk lore that we have just procured a large new stock. BOUND IN TAPA—NO TWO BINDINGS ALIKE.

**HAWAIIAN NEWS Co., Ltd.**  
ALEXANDER YOUNG BLDG.

**J. LANDO**

TRUNKS CLOTHING PAJAMAS  
HATS SHIRTS AND  
AND UNDERWEAR NIGHT SHIRTS  
AND SUIT CASES

**Aloha Company**

BUILDING AND PAINTING CONTRACTORS. House furniture of all kinds repaired and varnished. Yard and lawn work a specialty. Tools furnished. Cooks, Yardboys and Day Laborers supplied on short notice. Office, GREEN HOUSE, S. King nr. Waikiki road. Tel. White 2401.



**BUFFET**  
Golden Quartered Oak  
Polished

WE HAVE THEM FROM  
\$25 UP  
A FINE ASSORTMENT.

**Coyne Furniture Co.,**  
LIMITED.  
HOTEL AND UNION STS.

Going to Housekeeping?

**A  
Gas  
Range**

AND A

**Water Heater**

ought to go with you

Sold by dealers and

**Honolulu Gas Co.**

Limited.

## No Need To Burden Friends

Any person holding a position of trust where a bond is required can avoid asking friends to be his surety by applying to the Fidelity and Deposit Co.

For further information consult

**Insurance Department of**

**Bishop & Co.**  
BETHEL STREET.

Beginning Nov. 15th, 1935, owing to a change in the price of certain sizes of crushed rock, prices will be as follows: No. 1, \$1.55 per cu. yd.; No. 2, \$1.80 per cu. yd.; No. 3, \$2.05 per cu. yd.; No. 4, \$1.80 per cu. yd.

We wish to call attention to the fact that No. 4 has been reduced to practically the price of white sand, making it available for all kinds of concrete work, for which it is far superior to any other sand. **LORD & BELSER.**

**W. G. LET,**  
SANITARY PLUMBING AND TIN SMITH WORK.  
WAIKIKI SIDE SMITH ST.  
Bet. HOTEL and PAUHAU  
Good Workmanship. Work Completed When Promised.

**MRS. ANNIE KEARNS**  
MANGO CHUTNEY FACTORY  
Orders for Xmas boxes of Island preserves should be sent in early, as Mrs. Kearns is making special Jams and Jellies for the Holiday Trade, 134 Hotel St., Telephone Blue 1411.

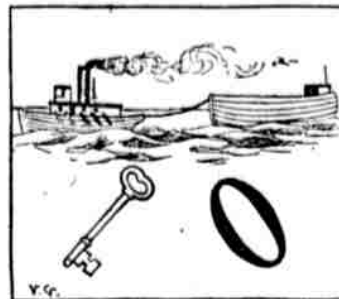
**COMING**  
NEW FURNISHING GOODS FOR  
HOLIDAY TRADE.  
PRICES EXCEEDINGLY LOW.

**YEE CHAN**  
Nuuanu near King St. 3229-11

## THE PUZZLER

**No. 314.—Rhymed Adjectives.**  
1. What adjective rhymes with a forest?  
2. What adjective rhymes with clothed?  
3. What adjective rhymes with a row?  
4. What adjective rhymes with dignity?  
5. What adjective rhymes with a trick?

**No. 315.—Geographical Puzzle.**



A large foreign city is represented by the picture.

**No. 316.—Diagonals.**

• • • • •  
• • • • •  
• • • • •  
• • • • •  
• • • • •  
• • • • •  
• • • • •

1. Instructor.  
2. A common fruit (plural number).  
3. To stutter.  
4. Contents of books.  
5. Suffering for sin.  
6. One who advises.  
7. Lecturer.  
Diagonals.—From upper left hand corner, one who teaches animals; from upper right hand corner, brings to memory.

**No. 317.—Odd Divisions.**  
Divide a bird with plumage gay.  
See equal value and decay.  
Division cut in manner deft,  
Apology and awe are left.  
Divide a relative so dear  
And view sublime and mother here.

**No. 318.—Concealed Words.**  
One word of four letters is concealed in each quotation. When rightly guessed and written one below another, the initial letters will spell the surname of an English poet.

1. "I would the gods had made thee poetical."  
2. "If you have tears, prepare to shed them now."  
3. "Again to the battle, Achians! Our hearts bid the tyrants defiance."  
4. "There is no terror, Cassius, in your threats."  
5. "So full of artless jealousy is guilt, it spills itself in fearing to be split."  
6. "And moody madness laughing wild Amid severest woe."  
7. "Who sees with equal eye, as God of all, A hero perish or a sparrow fall."

**No. 319.—Astronomical Acrostic.**  
My initials and final each name a planet.

1. Metrical arrangement of language.  
2. Uncommon.  
3. Used in making gunpowder.  
4. To tip over.  
5. A cardinal point.

**No. 320.—Charade.**  
Hark, I hear a loud, sharp ome.  
It makes me two, and then I run.  
Why should I fear? My whole is so grand  
I now can master with my hand.

**No. 321.—P.**  
The following letters spell four exceedingly common surnames of people.

b b e h i j m n n n n o o o r r s s t w

**A Great Manager.**  
Tapecon—How much did he make out of that stock company he formed? Tickerly—All that was put into it.

**INCREASE THE NAVY.**

Washington, Nov. 10.—There is practical confirmation today of the humor of last week that the general board of the navy intends to ask Congress through Secretary Bonaparte for three new first class battleships. As a result of this intention of the naval experts, Representative George E. Foss of Chicago will have unpleasant work thrust upon him at the coming session.

Foss is chairman of the House Committee on Naval Affairs, and he will need all his diplomacy to frame an appropriation bill that will satisfy an economically minded Congress and an extravagantly minded department. The result probably will be a compromise such as was effected at the last session.

There are statements to the effect that the department desires not only the authority to build three battleships, but to add ten or a dozen boats of other classes to the navy. There is, however, no definite knowledge to be had on the subject, save in regard to the three large vessels, which it is known Congress will be asked to furnish the money to construct.

Fine Job Printing at The Bulletin

## Books, Bookish People and Things

**LAW AND MEDICINE.**

Dr. Kenneth W. Millican in the "St. Louis Medical Review" (Oct. 14), has a sensible word to say about the matter touched upon by the Los Angeles judge who remarked: "Any one can get a doctor's certificate."

"According to the Southern California Practitioner for July, a judge of the Los Angeles Superior Court, on being told that the plaintiff's chief witness was ill and that he could 'get a doctor's certificate to that effect,' replied: 'Yes, I suppose you can. It seems that anybody who wants a doctor's certificate can get one. I do not mean to say anything against the physicians, because in their minds everyone has something the matter with them. It is their business to think people are sick.'"

"The ideal office of the lawyer is not to wrest the law in favor of either party, but to see that it is so interpreted that no injustice is done to the litigant, whether prosecutor or defendant, that no material facts tending to establish guilt or innocence, as justice demands, are omitted, and, contrarily, that nothing passes for fact in evidence which cannot be substantiated. The counsel for the prosecution and the defense respectively are not ethically opponents, but coadjutors, each charged on the principle of division of labor, with working out one side of a problem, the right aim of each being, not the conviction or acquittal of that insignificant quantity in the case, the prisoner at the bar, not the winner of a one-sided triumph, but the performance of as nearly perfect justice as human imperfection can attain."

"Yet, if such were the actual practice, lawyers would not glory in having 'got off' some prisoners, of whose guilt there could never be the shadow of a doubt; and worse, of convicting one about whose guilt, to put it mildly, there is every reasonable doubt. As a matter of fact, the lawyer has no compunction in defending a man he knows to be guilty—not with the view of merely protecting him against injustice or undue severity, but for the avowed purpose of cheating justice by 'getting him off' if possible; while public prosecutors (to say nothing of plaintiff's counsel in civil cases) who at least, ought to be judicial in their advocacy are generally notorious for endeavoring to fix the crime upon some one, and straining every nerve to secure a conviction, rather than for seeking impartially to make clear all the evidence against the prisoner, setting down naught in malice and extenuating naught."

"And while it is frankly admitted that on promotion to the bench, the lawyer very generally does endeavor, and usually with praiseworthy results, to divest himself of the sophistry of the advocate, and to assume the impartiality of the just judge, it is none the less an act of temerity in him, knowing the glass house in which he so recently lived, and to which, in this country at least, he is likely so soon to return, to cast stones at the members of another profession of at least equally high idea, who, even if many, perhaps most, of them do not live up to it, do not deny their ideal, attempting to make the worse appear the better way."

To this the Bulletin Bookman would add that most doctors have a conscience, and any human, conscientious physician knows better than anybody else how hard a matter it is to say to a man who says he feels sick, "You are well."

**LEARN TO "MIX."**

Chicago, Oct. 25.—University of Chicago students were advised to be "mixers" today by Dean Frank J. Miller, who addressed the students of the lower senior college. He said that if a young man failed in the quality of making acquaintances and impressing himself upon men his success in life would be impaired. In an address on "A Few Mixers" Dean Miller said:

"Learn to be 'mixers,' every one of you. You may be students of marked ability, but that fact will not be known if you do not learn to express it through social graces. Books are good friends, but a man must have others—human friends. It is not good for a man to be too much alone."

**A RECORD-BREAKER.**

The London cabman, smart as he is, occasionally finds his equal.

The other day a sporting gentleman was driven to a certain address, and on arriving at his destination he inquired: "What's your fare, driver?" "Well," replied the cabman, "the meanest gentleman I ever drove on this journey gave me one shilling and sixpence."

"Is that so?" exclaimed the gent. "Then here's a shilling for you; I like breaking records."

**For KIDNEY TROUBLES and CATARRH of the BLADDER.**  
Cures all Discharges in 48 Hours  
**SANTAL MIDY**

## IN THE BED ROOM

Electricity is an inestimable boon. The push button may be placed near the head of the bed. In case of suspected, or real, intrusion—in case of sudden illness—the room may be brilliantly illuminated without hesitation or the delay which may mean discomfort or something worse. Flexible wires easily permit the employment of Electric Light wherever illumination is wanted. Reading need not be confined to the library. For those who will read in bed—a joyful if not a commendable practice—the light may be conveniently placed, and no getting up is necessary to disturb the composure that must precede sleep.

**Hawaiian Electric Co., Ltd.**  
Office King St., near Alakea Phone Main 390

## Our Leader KOLA MINT

There are Imitations, But  
Ours is the only GENUINE  
THE ORIGINAL

We Have all Other Flavors Also

**Consolidated Soda Water Works, Ltd.**  
TELEPHONE MAIN 71

## The Majestic Hotel

Rooms are Electric lighted; single or double; tastily furnished; well ventilated; rented by day, week or month.

**THE DINING ROOM**

Fare and service is unequalled by any other similar price hotel in Islands.

Chicken Dinners Two Times a Week.

Board by month, \$22; Meal Tickets for 21 Meals, \$5.00. Single meals, excepting dinner, 25 cents. Dinner, 35 cents.

**SACHS BLOCK**

CORNER FORT AND BERETATNIA STREETS.

## Come and look at our new CHRISTMAS GOODS

Now on Display  
JAPANESE CURIOS, SILKS,  
AND TOYS

**SAYEGUSA**

1120 NUUANU STREET.  
PHONE WHITE 716.

## THERE IS ART IN BUILDING HOUSES

This Art is only acquired by years of study and practical experience; and that I possess this art can be positively proven to you by allowing me to submit the plans for your new building.

**W. MATLOCK CAMPBELL**

Telephone White 951

## PACIFIC TRANSFER CO.

WILL CALL FOR YOUR BAGGAGE

We pack, haul and ship your goods and save you money.

Dealers in STOVE WOOD, COAL and KINDLINGS.

Storage in Brick Warehouse, 126 King St. Phone Main 53

## NOW WE'RE OFF?

We are prepared to supply the People of Honolulu with Freshest of ISLAND MEATS. Also, Garden Produce of all kinds; Butter, Eggs, Chickens, Turkeys, Sucking Pigs, Bacon, Ham; in fact, everything a FIRST CLASS MARKET is called upon to furnish.

**The ISLAND MEAT CO.**  
JAS. E. WESTBROOKE, Manager.  
TELEPHONE MAIN 76. FORT ST., OPP. LOVE BLDG.

**Y. SUGA SHOTEN**  
Wholesale & Retail Liquor Dealer,

Big Stock of Japanese and America Liquors. 'Anzai Saloon in connection. IWILEI AND KING STREETS.

POSTOFFICE BOX 886 TELEPHONE MAIN 82



