

2ND EDITION

3:30 P. M.

MANY BOERS KILLED

KITCHENER GAINS ANOTHER BIG VICTORY.

General Botha Was Captured by the British Who Allowed Him to Escape. Many Prisoners Taken.

LONDON, February 28.—Following the precedent of Lord Roberts, who announced General Cronje's surrender at Paardeburg in the anniversary of the Battle of Marston (February 27, 1814) Lord Kitchener apparently selected the same anniversary to achieve a big success by a combined movement lasting two days against the Boer forces within the Hartbeesfontein and Van Boven line of blockhouses. The Boer losses aggregate 900 men killed or captured, and 2000 horses and 25,000 head of cattle fell into the hands of the British troops.

CHICAGO, February 28.—A cable to the Record-Herald from London says War Secretary Hordley announced in the Commons today that General de Wet's son had been captured, but he failed to impart to the legislators the more surprising news that the famous General, Louis Botha, had also been made a prisoner and had got away again. That is a story held in reserve, and will result in court-martial.

The affair happened after the capture of Botha's laager near Knapdorp. When Kitchener's troops made a night attack at Knapdorp they captured several prisoners. Among the men taken was Botha, but the British did not recognize him. After the pursuit of the fugitives had ended the captured men were divided into groups, and Botha was included in the number that were intrusted to the care of the rear guard.

Another force of Boers, hearing of the disaster to the main body, and that their General had been captured, moved the British command. In the confusion of the expected attack the body of British troops that held Botha as their prisoner permitted a few of the burghers to escape, and among the number was the redoubtable Botha.

EXCLUSION BILL

WASHINGTON, March 4.—The Senate Committee on Immigration held a meeting today and reported the Kahn-Mitchell exclusion bill. The first seven sections were discussed and approved, and the committee adjourned until Thursday evening. Chairman Penrose said again today that the bill would probably be reported without material change, except the omission of the section relating to Chinese sailors on American vessels. The House committee appears to be waiting on the Senate committee, and while devoting some time to considering the bill does not give any sign of reporting it.

PERU FROM SAN FRANCISCO.

The Peru arrived from San Francisco at 3 p. m. today. She was delayed in leaving San Francisco several hours. The transport Meade developed a case of small pox the day after leaving the Francisco so she put back to that port and her Honolulu mail was transferred to the Peru and brought here. The Peru sailed March 5. Among the passengers returning on the Peru are Assistant Superintendent of Public Works Campbell and Mrs. Campbell and their son.

FAMOUS TONGAN DEAD.

SUVA, Fiji, February 28.—Word has been received of the death in Tonga of Ana Mate, the widow of the great Vaianu chief, Mate-Ki-Tonga, the grandson of the celebrated Pinau. Ana Mate was 70 years of age, and had been blind for some years at the time of her death, which was not altogether unexpected.

The funeral of Ana Mate was marveled over when news reached Nukunono that Lutu, eldest son of the late high chief Ata, had died at 8 a. m. on the 11th instant at Hihifo. Had this young chief lived but another month, until March, he would have attained his majority, and have succeeded to his father's possessions, and have thus become one of the most powerful and highest chiefs in Tonga.

SOMETHING NEW.

We are always looking for new things, but sometimes overlook the fact that new wall paper would be a great improvement to the house. Beal's.

WHITE DRESSES.

This week L. B. Kerr & Co. have a grand display of white muslin English lawns, India linens, Swiss muslins, Nainsooks, etc., at prices only to be obtained at their store.



PERSONAL AND TRUST FUNDS

Receive Our Careful Attention

HAWAIIAN TRUST CO., LTD

923 Fort Street



FRESH DOG CAKES, MEDICINES AND LAST STEAMER.

PEARSON & POTTER CO., LTD

AGENTS

BLOOMFIELD IS STILL MISSING

OTHER DISAPPEARANCES ARE CLEARED UP THIS MORNING IN PERSON.

RECOGNIZES DESCRIPTION AND CONTRADICTS IT.

Skein Is Being Gradually Disentangled. Bloomfield Said to be at Waimea with Charles David.

One by one the tangled threads of the skein of mystery surrounding the discovery of the drowned and probably murdered man in the harbor, are being straightened, and the various men who have been cited as missing have been either reported by their friends or have proved their own alibi against death by appearing alive and well on the scene. The clues have narrowed down until there are now only two disappearances to be accounted for, one of these being Arthur Bloomfield, a deserter from the freddie, whose description tallies in many ways with that of the dead man.

Taking the various clues as they came up, the laundry mark theory has been brought to the following conclusions. The embroidered initial on the handkerchief found on the dead man was "Q." The handkerchief did not tally in quality or likelihood of legitimate possession with the clothes worn by the deceased, who may have stolen it or possibly had it given him by some sweetheart in this or another port. There were two laundry marks on the dead man's linen, 2008 and 20082. The marks on Chatterton's linen were H2008 no 3 being attached.

Chatterton, who is a member of the crew on the Warren, is somewhat aristocratic in his tastes, and is evidenced by the number of "boiled" shirts and handkerchiefs that he sent to the laundry, has no missing acquaintances nor is he cognizant of any of his linen being missing. The laundry marks do not precisely tally and one or more may have been old marks from another laundry. The coincidence that Chatterton should be on board the Warren which lay in the center of the tragedy is a curious one.

Garvin of the collier Alexander reported as being mysteriously missing, to the alarm of his friends, arrived in perfect health at the police station this morning to report that he was emphatically not dead. He reported at the suggestion of shipping masters Turk and Lewis. He has no star tattooed on his forehead nor does he answer the description of the dead man.

Falcon, another deserter from the freddie whose description at second hand seemed to tally somewhat with the dead man also reported. When Falcon heard of the discovery of the body and its identification he started to Tom Morrissey of the Opera Annex saloon that he had a mate who was missing and whose description would tally with that of the corpse. This morning he knocked off work on the collier where he works yesterday and after making inquiries from Turk and Lewis about his friend Bloomfield, came to the police station.

Falcon was reticent at first about Bloomfield's description but under examination developed an astonishing memory about the tattoo marks on "scoutfield." The discoverer was a man about five feet high, brown hair partially bald very matted with blood from the wounds he had received that had ruptured blood vessels and caused a hemorrhage of the brain, was dressed in a check suit with black negligee shirt, heavy grey underwear, lace boots, seventy cents, a plug of tobacco and the handkerchief marked 2008 and 20082 in his pockets, with a three bladed knife, pipe and box of matches. Ring with blue stone on finger. Sore on right forefinger nearly healed and wrapped with rag, body well developed and muscular.

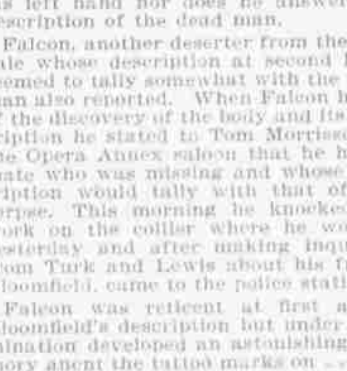
Falcon told Morrissey that the description appeared to tally including the tattooing presumably, which would be one of the most prominent features by which one sailor would recognize another, the custom being indeed adopted by the craft generally for purposes of identification after drowning when other features are indistinguishable.

At the police station however, Falcon, one at a time, recollected tattoo marks utterly at variance with those on the murdered man which were as follows, right arm tattooed with six flags and a man's face, star on left hand and a bracelet around left wrist.

Bloomfield, according to Falcon has a wristlet around his right wrist with the word "Love" underneath and a face on his right arm. The face afterwards turned into the figure of a pugilist and the wristlet into one on both wrists.

Then came a butterfly on the right shoulder and a sheath knife on the right forearm. These Falcon said he had been personally, a statement which is doubted by water front folk as it is seldom one sailor sees another without his shirt and underwear on a voyage or gets a chance to examine the tattooing so minutely. A sailor works in his clothes and sleeps in them. Falcon had not seen Bloomfield in swimming, neither had Bloomfield displayed his tattoo

(Continued on page five.)




PERSONAL AND TRUST FUNDS

Receive Our Careful Attention

HAWAIIAN TRUST CO., LTD

923 Fort Street



FRESH DOG CAKES, MEDICINES AND LAST STEAMER.

PEARSON & POTTER CO., LTD

AGENTS

CARTOON CAUSES CITATION

BITTING ALLEGES CONTEMPT OF COURT IN A PICTURE

WALTER G. SMITH, EDITOR AND OTHER EMPLOYEES AND MANAGERS OF THE PACIFIC COMMERCIAL ADVERTISER HAILED INTO COURT—HUMPHREYS AND DAVIS ROAST ATTORNEY GENERAL.

In Judge Gear's court this morning Attorney C. C. Biting called attention to the cartoon in this morning's Advertiser and asked for a continuance of the trial of Crump McCarthy, pending proceedings to bring those responsible for the publication into court, to answer for contempt. Biting declared that the picture was a malicious effort to bring the court into contempt and influence the trial by the jury. He presented a written motion for a continuance based on the following grounds:

"That this case is set for trial before a jury, which has been duly impaneled and sworn to try said cause, upon this 12th day of March, A. D. 1902, and that this cause is now pending and in progress of trial in this court."

"That including the allegation in the first paragraph hereof contained and notwithstanding the prohibition of the law, on this 12th day of March, A. D. 1902, and while this cause is pending and in progress of trial in this court, a certain newspaper published in Honolulu, Island of Oahu, Territory of Hawaii and within this jurisdiction, called and headed as 'The Pacific Commercial Advertiser' published a ridiculous, absurd, libelous and unlawful cartoon, meant and intended to be suggestive and contemptuous of this Honorable Judge before whom this trial is pending, and tending and intending to prejudice the public respecting the trial of said cause, and particularly against the Honorable Judge now presiding over the trial of this cause, and to obstruct and pervert the administration of justice; and

"That said publication is a knowing and malicious invention against the court and was intended and is intended to bring said court into ridicule, contempt, discredit and odium."

This gave Judge Gear an opportunity to express himself regarding newspaper articles and pictures and he did so, including in his remarks quotations from the Penal Code which provide a maximum punishment of two months for the sort of contempt alleged in this case.

"Personally I care nothing about the articles and pictures," said Gear. "They are a source of amusement to me. I took this oath to administer justice to the best of my ability and knowledge of law and it is a matter of indifference to me how many untrue and malicious statements are made. In the present instance McCarthy was released because there is no such crime as mayhem in the Hawaiian statutes. If he had been sentenced he could have been released on habeas corpus. There is no question about that and if there is anyone in Oahu jail serving for mayhem now, he may be released on habeas corpus. The decision was not mine but that of Judge Robinson sitting with me."

Judge Gear also stated that the newspaper had misrepresented him by saying that he had released the Williams case, and that the latter in fact had been acquitted by a jury. "The court administers law to the best of its ability and knowledge," continued the Judge, "and if there are errors they are errors of judgment, to which all courts are liable."

"I have noticed time after time that local papers, regardless of the penal laws or of decency and right, publish comments upon and wrongful reports of cases proceeding in court."

HENRY IN MILWAUKEE CHAMBER OF COMMERCE

MILWAUKEE (Wis.), March 4.—Milwaukee played the host to Prince Henry Prussia for six hours this afternoon and gave him a reception that was highly enthusiastic and an entertainment that was unique. His special train came at 4 o'clock, and at 4:15 was away again on the long run to Niagara and New England. The intervening time was given over to the reception and entertainment of the royal visitor. It began with a drive through the business and residential districts in review before a crowd that numbered 20,000. Then there was a public reception, at which Governor Robert La Follette and Mayor David Ross voiced their welcome and the United Singing Societies raised their voices in mighty chorus. There was also a splendid illumination and a thrilling night run of the Milwaukee Fire Department. Later there was a banquet at which the Prince met the leading citizens of the city and state.

HAVING A RUN ON CHAMBERLAIN'S COUGH REMEDY.

Between the hours of eleven o'clock a. m. and closing time at night on Jan. 25th, 1901, A. F. Clark, druggist, Glad Springs, Va., U. S. A. sold twelve bottles of Chamberlain's Cough Remedy. He says, "I never handled a medicine that sold better or gave better satisfaction to my customers." This Remedy has been in general use in Virginia for many years, and the people there are well acquainted with its excellent qualities. Many of them have testified to the remarkable cures which it has effected. When you need a good, reliable medicine for a cough or cold, or attack of the grip, use Chamberlain's Cough Remedy and you are certain to be more than pleased with the results which it affords. For sale by all dealers, Benson, Smith & Co., general agents, Hawaiian Islands.

THE SEARCHLIGHT.

Look out for the searchlight on the Heights.

A GOOD APPETIZER.

A ride up Pacific Heights is a good appetizer.

REBELLION IN CHINA IT MAY BE MURDER

REPORT TO OVERTHROW MAN-CHU DYNASTY.

French Said to be Secretly Aiding the Rebels—The Program of the Insurgent Who They Are.

HONG KONG, March 4.—The rebellion in Kwang Si province is spreading rapidly. Signs of unrest are already apparent at Kewin and Nanking, the newly opened treaty ports.

The Canton Viceroy has dispatched troops to the scene of disturbance. The rebels are believed to be former soldiers of Marshal Su, who were disbanded on his promotion. Their propaganda includes the overthrow of the Manchu dynasty, the founding of a Chinese dynasty, and the helping of oppressed and needy Chinese. The French are said to be secretly supporting the rebels.

WRESTLING FOR CUBA

REPUBLICAN CAUCUS IN GREAT DIFFICULTIES.

Strong Opposition to Direct Tariff Concessions—Fears for the Party in Best Sugar States.

WASHINGTON, March 3.—The Republican members of the House who met in conference again tonight to consider the Cuban relief question, after three hours of fruitless discussion adjourned until Thursday without action. Tawney and Morris of Minnesota and Fordney of Michigan, who oppose a direct tariff concession and repudiate the plan of giving a rebate direct to the Cuban sugar planters, held the floor throughout the evening. Much feeling was manifested.

Political disaster to the Republican party in the best sugar states was predicted if the tariff on sugar was lowered for the benefit of the Cubans when another solution was open.

Speaker Henderson was present, but took no part in the proceedings.

RIOTS IN NORFOLK VA.

POLICE UNABLE TO COPE WITH RIOTERS.

Military Are Called Out and Street Cars Are Run Under Military Protection—Sympathizers Aid Strikers.

NORFOLK (Va.), March 4.—A mob of 500 strike sympathizers today held the streets of Norfolk on which the main line of the Norfolk Railway and Light Company's cars run, and the police were unable to cope with it from noon until after dark, when the cars which were guarded by detachments of military and had run with difficulty all day, were housed in the barns. Cars were repeatedly derailed, and wagonloads of stones were piled on the tracks, and free fights between the military guards and the crowd occurred at frequent intervals.

TERRIBLE FLOODS

PATERSON (N. J.), March 2.—This city, recently swept by fire is overwhelmed by flood. Three weeks ago, the greater part of its business section was burned out, and today the quarter occupied by the business of the poorer classes is inundated. Hundreds of families have been made homeless by the overflow of the Passaic River, and the country for miles around the city is under water. So far but one death has been reported.

THE WEATHER.

Weather Bureau, Punahou 1 p. m.

Wind light southeast to east; weather clear, but shows some signs of change.

Morning minimum temperature, 63; midday maximum temperature, 80; barometer, 30.4 m. 20.6 rising corrected for gravity; rainfall, 34 hours ending 2 a. m.; dew point, 64 a. m. 64; humidity, 74 a. m. 72 per cent.

CURTIS J. LYONS, Observer.

ALL MODERN FORMS.

The Oriental Life Insurance Company sells all modern forms of policies at the very lowest rates.

ICE HOUSE DELICACIES.

Camarinas California Fruit Market is the place for ice house delicacies. Everything the California market affords at this season of the year can be found at Camarinas.

Notes Heads, Bill Heads, Statements and Fine Commercial Printing at the Star Office.

A Good Pair of RUBBERS

Is what you need now. Wet weather generally means wet feet. Wet feet means a cold and a cold means—well we won't go any farther.

FOR \$1.00

Invested in a pair of our storm rubbers, you may save many more dollars in Doctor's bills, etc.

We have a full stock of all sizes and have something new to show you.

Our extra heavy and heavy rolled edge around the sole to protect the seam.

MANUFACTURERS' SHOE COMPANY, LIMITED

167 FORT ST.

ROYAL Baking Powder

Made from pure cream of tartar.

Safeguards the food against alum.

Alum baking powders are the greatest menaces to health of the present day.

ROYAL BAKING POWDER CO., NEW YORK.

SALE OF LINEN GOODS.

Kerr's sale of linen goods is well worth the attention of Householders. Linen Sheets, Table Cloth, Table Napkins, Linen, Towels, etc., at prices that can't be duplicated.

A GOOD APPETIZER.

A ride up Pacific Heights is a good appetizer.



## Great Bargains in New and Second Hand Furniture

**New Republic Building, Honolulu H**

Ads under "Situations Wanted," inserted free of charge in the Star.

Domestic Sewing Machine, Etc.

Note Heads, Bill Heads, Letter Heads and all kinds of Job and Commerce printing neatly and promptly executed at the Star Office.



**DR. J. M. WHITNEY,**

DENTIST.

Boston Building, Fort Street, Over H. May &amp; Co.

Hours: 9-5. Tel. Main 277.

**DR. A. E. NICHOLS,**

DENTIST.

Office Hours: 9 to 4.

1123 Alakea Street, next Masonic Temple, Honolulu.

**DR. A. C. WALL, DR. D. E. WALL,**

DENTISTS.

LOVE BUILDING, FORT STREET, Telephone 434.

OFFICE HOURS, 8 a. m. to 4 p. m.

**DR. A. J. DERBY,**

DENTIST.

ott-Smith Building, Cor. For. and Hotel Sts. Honolulu, H. I.

Office Hours: 9 a. m. to 4 p. m.

**Insure Against Accidents.**

The Travelers' Insurance Company of Hartford is the largest Accident Insurance Company in the world.

**A. C. LOVEKIN,**

General Agent.

403 Judd Building.

**J. H. FISHER & CO.,**

Members of Honolulu Stock Exchange

**Stock and Bond Brokers**

STANGENWALD BUILDING.

Advance Made on Approved Security.

**C. BREWER & CO., LIMITED**

QUEEN STREET, HONOLULU, H. I.

**AGENTS FOR**

Hawaiian Agricultural Company, Ono-Sugar Company, Honoumou Sugar Company, Wailuku Sugar Company, Waiea Sugar Company, Mahee Sugar Company, Haleakala Ranch Company, Kapala Ranch.

Planters' Line and Shipping Co. Charles Brewer &amp; Co's Line of Boston Packet. Agents Boston Board of Underwriters. Agents Philadelphia Board of Underwriters.

**LIST OF OFFICERS.**

Charles M. Cooke, President. Gen. H. Robertson, Vice-President. E. Faxon Bishop, Treas. &amp; Sec. W. F. Allen, Auditor. P. C. Jones, Director. H. Waterhouse, Director. G. R. Carter, Director. All of the above named constituting the Board of Directors.

**L. KONG FEE, Merchant Tailor,**

Fort St., opposite Club Stables. Fashionable Suits at Reasonable Rates a Specialty. A full line of Cassimeres and Tailoring Goods always in Stock. Dyeing, Cleaning and Repairing at Short Notice. Satisfaction guaranteed.

**HONOLULU SALOON,**

A. LUDLOFF, Proprietor.

Corner Liliha and School Street.

Has opened a resort where refreshments of all kinds are served.

PRIMO BEER ON TAP.

Telephone Blue 935.

**WING SING CO.**

46 Hotel Street, next door to Iwakami

IMPORTERS IN GROCERIES, CALIFORNIA FRUITS BUTTER.

Note Heads, Bill Heads, Statements and Fine Commercial Printing at the Star Office.

**\$3.50**

FOR AN

**IRON BEDSTEDS**

SACRIFICE PRICES FOR A SHORT TIME. GOODS ALL PLAINLY MARKED AND DISPLAYED IN OUR WINDOWS.

**COYNE FURNITURE CO.,**

PROGRESS BLOCK FORT STREET.

Note Heads, Bill Heads, Letter Heads and all kinds of Job and Commercial Printing neatly and promptly executed at the Star Office.

**Sciatic Pains**

are a protest from weak and debilitated nerves against the over-work, the strain and lack of proper nourishment. Nerves that are so run-down and exhausted that they can no longer supply the system with motive power will be wonderfully benefited, strengthened and invigorated by the use of

**Dr. Miles' Nervine.**

"I suffered for years from sciatica and stomach trouble. Nearly everything I ate would sour in my stomach and I was frequently laid up with these terrible pains in my back and legs. I began taking Dr. Miles' Nervine and Nerve Liver Pills and was soon a well man." Geo. W. Lewis, Grant's Pass, Ore.

Dr. Miles' Nervine is sold at all druggists on a positive guarantee. Write for free advice and booklet to Dr. Miles Medical Co., Elkhart, Ind.

**CORPORATION NOTICES.****NOTICE.**

The power of attorney heretofore given by me to W. G. Ashley is hereby revoked.

THOMAS CHRISTLEY, Honolulu, Hotel and Nuanu streets, March 7, 1902.

**ELECTION OF OFFICERS.**

At the annual meeting of the Okaloa Company, held this 27th day of February, 1902, at the office of its agents, Wm. G. Irwin &amp; Co., the following officers were elected to serve for the ensuing year:

Wm. G. Irwin, President. Wm. G. Irwin, Vice-President. Richard Ivers, Secretary. H. M. Whitney, Jr., Treasurer. George J. Ross, Auditor. Directors: Wm. G. Irwin, W. M. Giffard, Richard Ivers, H. M. Whitney, Jr., and W. L. Cooper.

RICHARD IVERS, Secretary Okaloa Company, Honolulu, February 27, 1902.

**ANNUAL MEETING.**

The regular annual meeting of the stockholders of the Inter-Island Steam Navigation Co., Ltd., will be held at the office of the Company, Queen Street on Tuesday, March 15, 1902, at 10 o'clock a. m.

The stock books of the company will be closed to transfers from the 15th to the 18th inst. inclusive.

C. H. CLAPP, Secretary. Honolulu, March 4, 1902.

**ELECTION OF OFFICERS.**

At the annual meeting of stockholders of the Pala Plantation held on Monday, February 24th, 1902, the following Directors were elected to serve for the ensuing year:

H. P. Baldwin, S. M. Damon, J. B. Atherton, J. P. Cooke, T. W. Hobron, and at a meeting of the Board of Directors, held on Wednesday, March 5th, 1902, the following officers were elected to serve for the ensuing year:

H. P. Baldwin, President. S. M. Damon, Vice-President. J. B. Atherton, Secretary. J. P. Cooke, Treasurer. W. G. Taylor, Auditor.

J. B. ATHERTON, Secretary Pala Plantation, Honolulu, March 5th, 1902.

**ELECTION OF OFFICERS.**

HAUKU SUGAR COMPANY.

At the annual meeting of stockholders of the Hauku Sugar Company held on Monday, February 24th, 1902, the following Directors were elected to serve for the ensuing year:

H. P. Baldwin, S. M. Damon, J. B. Atherton, J. P. Cooke, C. H. Dickey, and at a meeting of the Board of Directors, held on Wednesday, March 5th, 1902, the following officers were elected to serve for the ensuing year:

H. P. Baldwin, President. S. M. Damon, Vice-President. J. B. Atherton, Secretary. J. P. Cooke, Treasurer. W. G. Taylor, Auditor.

J. B. ATHERTON, Secretary Hauku Sugar Company, Honolulu, March 5th, 1902.

**ADJOURNED ANNUAL MEETING.**

OLAA SUGAR COMPANY, LTD.

The adjourned annual meeting of the stockholders of the Olao Sugar Company, Limited, will be held in Assembly Hall, over the offices of Castle &amp; Cooke, Ltd., corner of King and Bethel streets, Honolulu, on Friday, March 14, 1902, at 2 p. m.

ELMER E. PAXTON, Treasurer Olao Sugar Co., Ltd. Honolulu, March 6, 1902.

**Olaa Assessments.**

The 20th assessment of One Dollar is now bearing interest at the rate of 1 per cent per month.

Notice is herewith given the stockholders, that no further assessments will be called prior to June 1st, 1902.

Interest will be charged on assessments unpaid ten (10) days after the same are due, at the rate of one per cent per month from the date on which such assessments are due.

The above assessments will be payable at the office of the B. F. Dillingham Company Limited, Stangenwald Building.

ELMER E. PAXTON, Treasurer Olao Sugar Company, Limited. Honolulu, T. H. July 20, 1901.

Fine Book and Commercial Printing, Star Office.

**THE BISHOP ESTATE**

HAS MURPHY AND OAHU RAILWAY BONDS.

About \$200,000 invested in The Two-Pass positions—Bishop's Wharf Building at Marine Railway.

The annual accounts of the trustees under the will of Berenice Pauahi Bishop were filed yesterday afternoon, in accordance with the order made by Judge Humphreys in the morning. They show receipts of \$275,528.13 and disbursements of \$246,394.78, leaving a balance to the good of \$29,133.35.

The estate has large investments in the bonds which Judge Humphreys is required to control as investments for an estate, declaring the form of the mortgage improper. There are \$41,800 in Murphy bonds and \$6,000 in Oahu Railway and Land Company bonds. In the inventory, outstanding notes aggregating \$40,000. The report of the trustee is a very lengthy one, reviewing what has been done during the year and giving lists of properties acquired. In accordance with the recommendation of the master who reported on the accounts the last time, according to the details, making a very bulky document of the financial statement of the affairs of the estate. The reports of the Kamehameha school are also filed as part of the estate's report and the trustees outline what they propose to do with various pieces of property. Among the matters of this sort is a new wharf in Honolulu harbor, of which the report says:

"At the present time the Trustees have under contemplation the construction of a wharf on property owned by them at Kakaia, adjoining the marine railway, and for this purpose have arranged to secure from the Territorial Government by exchange the surrender of the needed portion of the Marine Railway land, completing the area contemplated in the survey of the proposed wharf at Kakaia, and have also made satisfactory arrangements with Messrs. Sorenson and Lyle, subcontractors for their release of said portion."

"A preliminary survey has just been completed by J. S. Emerson, and test borings by J. S. Emerson. It is likely that work in this connection will be pushed towards completion during the coming year. The trustees feel that the carrying out of the project will be really to the advantage of the estate; and the work of dredging and the material which will be required to fill in a considerable area of low land belonging to the estate in the vicinity."

BUCKEYES IN SESSION. Officers of the local Buckeye Club met last evening in social session at the residence of C. H. Atherton on King street. Officers were elected for the ensuing year. W. C. Woodson being chosen as president. A committee was appointed for the canvassing of members for the balance of the year. The club is planning to hold a social party on Tuesday in May, when the club will celebrate the birthday anniversary of one of the most celebrated of Ohio's sons, General U. S. Grant. Songs by the Buckeye quartet were interspersed with solos by Madame Bishop, who included "Burrah for Ohio" in her selections and enthused her audience by her timely selection and spirited rendition.

DISLIKE THE CHINESE.

Taft Describes Filipino Aversion to Orientals.

The Filipinos dislike the Chinese. This dislike is based more on account of the competition of the Chinese as shopkeepers than on account of their competition as laborers. Governor Taft states that nearly every Chinaman in the Philippines came there as a laborer. "But," he continued, "after he has worked six or eight months for from ten to fifteen Mexican dollars a month, all of which he saves, he opens a shop. After sitting cross-legged in this shop for a year he enlarges his business." In Governor Taft's experience he had never seen any other class of persons who could seem to do no business and yet make money to the extent the Chinese merchants could.

There are very few Chinese women in the Philippines; the Chinamen in the majority of instances marry native women of the islands. In this way, the governor said, while there is hatred between natives and Chinamen on many points there is a constant amalgamation of the races by marriage.

No animosity, however, is felt toward the children of such marriages. They are not looked upon as Chinese, but natives, and in reply to a question, Governor Taft said he saw no objection to their admission into the United States if it was to be the policy to admit Filipinos.

**HARVARD'S LIBRARY.**

By the curious mistake in former years of not allowing for the number of duplicates rejected, sold or exchanged, volumes upon at books transferred to other departments, the total number of books in the Harvard library has been reported each year far in excess of fact, so that an error of about 24,000 volumes has accumulated. A recent made last fall shows the correct total of volumes in all the university libraries is 575,885.

**YALE DEBATE.**

Yale debaters are planning for a new system of preparing the candidates for the university team in the contest with Harvard, the remaining intercollegiate event of the season. They have arranged for a series of interdepartmental debates for the university championship. The law, divinity, academic and scientific departments will debate, debating teams from unions in these departments by competitive preliminary debates.

**EDUCATED INDIANS.**

A young chief of the Yuki tribe of Indians is on his way from Mendocino county, Cal., to the university of California in order to help the ethnologists to record the manners, customs and beliefs of his people. He is a full-blooded Yuki, but speaks and writes English. At one time the Yukis were the fiercest Indians in California. The language of the tribe will be recorded and preserved in the university by means of the phonograph.

**SUSPECTED.**

A Rockford, Ill. young man was nearly mobbed by students of Iowa university a week ago, who suspected him of being a spy on their debate, in the interests of the university of Minnesota. He took voluminous shorthand notes of the debate, but had to burn them before he was allowed to leave town.

**A GOOD THING.**

There's one good thing when they feel dry. That business men cannot pass by. For far and wide it's same you hear. They stop to drink of "Rainier" beer. On draught or in bottle at Criterion.

**FOURTH ANNUAL STATEMENT.**

THE

**BANK OF HAWAII**

LIMITED.

At the Close of Business, December 31, 1901.

The Capital of the Bank of Hawaii, Limited, is \$500,000.00 divided into six thousand shares of \$100 each, fully paid up.

ASSETS.	
Loans	\$51,572.13
Call Loans and Overdrafts	294,295.09
Bonds and Stocks	228,472.65
Leases and Office Fixtures	10,915.51
Other Assets	5,802.52
Due from Other Banks	\$121,150.57
Cash	279,873.71
	\$1,583,002.15
LIABILITIES.	
Capital	\$500,000.00
Reserve	\$0,000.00
Undivided Profits	182,264.57
Deposits	896,775.60
Due to Other Banks	172,567.81
Dividends Unpaid	294.00
	\$1,583,002.15

J. C. H. Cooke, Cashier, do solemnly swear that the above statement is true to the best of my knowledge and belief.

C. H. COOKE, Cashier.

Examined and found correct: CHAS. H. ATHERTON, E. D. TENNEY, Directors.

G. R. CARTER, Auditor.

Subscribed and sworn to before me this 7th day of January, A. D. 1902.

E. B. CLARK, Notary Public, First Judicial Circuit.

CLAUS SPRECKELS, WM. G. IRWIN.

**BANKERS.**

HONOLULU, - - - H. I.

San Francisco Agents—The Nevada National Bank of San Francisco.

DRAW EXCHANGE ON

SAN FRANCISCO—The Nevada National Bank of San Francisco.

LONDON—The Union Bank of London, Ltd.

NEW YORK—American Exchange National Bank.

CHICAGO—Merchants' National Bank.

PARIS—Credit Lyonnais.

BERLIN—Dresdner Bank.

HONGKONG AND YOKOHAMA—The Hongkong and Shanghai Banking Corporation.

NEW ZEALAND AND AUSTRALIA—Bank of New Zealand.

VICTORIA AND VANCOUVER—Bank of British North America.

TRANSACT A GENERAL BANKING AND EXCHANGE BUSINESS.

Deposits Received. Loans Made on Approved Security. Commercial and Travelers' Credits Issued. Bills of Exchange Bought and Sold.

COLLECTIONS PROMPTLY ACCOUNTED FOR.

ESTABLISHED IN 1858.

**BISHOP & CO.****BANKERS****BANKING DEPARTMENT.**

Transact business in all departments of Banking. Collections carefully attended to. Exchange bought and sold.

Commercial and Travelers' Letters of Credit issued on the Bank of California and N. M. Rothschild &amp; Sons, London.

Correspondents: The Bank of California, Commercial Banking Co. of Sydney, Ltd., London.

Drafts and cable transfers on China and Japan through the Hongkong &amp; Shanghai Banking Corporation and Chartered Bank of India, Australia and China.

Interest allowed on term deposits at the following rates per annum, viz:—Seven days' notice, at 2 per cent. Three months, at 3 per cent. Six months, at 3½ per cent. Twelve months, at 4 per cent.

**TRUST DEPARTMENT.**

Act as Trustees under mortgages. Manage estates (real and personal). Collect rents and dividends. Valuable Papers, Wills, Bonds, Etc., received for safe-keeping.

**ACCOUNTANT DEPARTMENT.**

Auditors for Corporations and Private Firms. Books examined and reported on. Statements of Affairs prepared. Trustees on Bankrupt or Insolvent Estates. Office, 224 Bethel Street.

**SAVINGS DEPARTMENT.**

Deposits received and interest allowed at 4½ per cent per annum, in accordance with Rules and Regulations, copies of which may be obtained on application.

**INSURANCE DEPARTMENT.**

Agents for FIRE, MARINE, LIFE, ACCIDENT AND EMPLOYERS' LIABILITY INSURANCE COMPANIES. Insurance Office, 224 Bethel Street.

**Metropolitan Meat Co. LIMITED**

Just received ex-Elihu Thompson from Seattle a shipment of Choice beef, Veal, Mutton, Lamb, and Pork, also Poultry, Salmon and Halibut.

**FOR SALE AT**

Metropolitan Market Co., King Street, Telephone 45.

The Booth, Fishmarket, Telephone 379. Central Market, Nuuanu Street, Telephone 140.

**Silks! Silks!**

JUST RECEIVED DIRECT FROM JAPAN A LARGE LINE OF SILK GOODS IN ALL COLORS, WHICH WILL BE SOLD IN QUANTITIES TO SUIT PURCHASERS.

**Ladies' Hats**

WE HAVE ON DISPLAY IN OUR WINDOW THE LATEST SPRING STYLES OF LADIES' HATS AT PRICES THAT WILL MAKE THEM ALL THE MORE POPULAR.

**IWAKAMI & CO.**

Nos. 16-18 Robinson Block, Hotel St.

P. O. Box 868, Tel. White 421

**People who Use Electrical POWER**

Are of course the best judges and all pronounce it the most satisfactory power they have ever used. Electricity is economical, reliable, so convenient that the motor can be moved to where the work is done, so clearly that it can be used even where the fixtures are elegant, and it has no odor. Used for all kinds of machinery, from running the coffee mill at the Kona Coffee Store to hoisting heavy masonry on the Young Building and operating numerous elevators. CALL AND SEE US OR WRITE FOR INFORMATION.

**Hawaiian Electric Co., Ltd**

KING STREET NEAR ALAKEA

**JUST RECEIVED**

PER GERMAN SHIP MARIE HACKFELD

**"Germania and "Glover Leaf" Cement**

ALSO

**Iron Material for Railroad Cars for 30in. Track**

FOR SALE IN QUANTITIES. TO SUIT AT LOWEST MARKET PRICES BY

**H. Hackfeld & Co., Ltd.,****T. MURATA,**

Main Store, No. 1044, Nuuanu Street

1st Branch, corner King and Beretania Sts. 2nd Branch, No. 1032, Nuuanu St.

**STRAW HAT MANUFACTURERS AND NATIVE HATS**

Any Styles Made to Order

Telephone Blue 3311 Telephone Blue 2781 P. O. Box 884.

Honolulu, Territory of Hawaii.

**YUEN LEE,**

CONTRACTOR, BUILDER, PAINTER AND PAPER HANGER

Kukui near Nuuanu Street, Honolulu.

Note Heads, Bill Heads, Statements and Fine Commercial Printing at the Star Office.

**AHI**

1153 Nuuanu Street Near Pauahi.

Chairs, Tables, Bedroom Sets, Mattresses, Pillows and Furniture made to order at very low prices.

P. O. BOX 952.

Note Heads, Bill Heads, Statements and Fine Commercial Printing at the Star Office.



## THE HAWAIIAN STAR

DAILY AND SEMI-WEEKLY

Published every afternoon (except Sunday) by the Hawaiian Star Newspaper Association, Ltd.

FRANK L. HOOVER, Manager.  
WEDNESDAY, MARCH 12, 1932

## COFFEE OUTLOOK

Coffee steadily takes rank, says a financial commercial paper, as one of the most important articles of food used in the United States. In the calendar year 1931 the imports of this product aggregated 1,972,000,192 pounds, the heaviest amount ever received. No other country shows anything like this aggregate of imports, and it is claimed, in fact, that the consumption of the United States exceeds that of all Europe combined.

Until the recent additions to the national territory the United States had no coffee-producing territory. In Hawaii, Porto Rico and the Philippines, however, the United States possesses some coffee-growing territory, but none of these islands rank as leading coffee producers, and 80 to 90 per cent of the supply comes from South America.

In 1901 the proportion imported was 86.4 per cent. Brazil is the most important coffee-producing country, not only of South America, but of the entire world. For a long series of years it produced steadily an average of about one-half the world's requirements, but in 1928 an impetus was given to the Brazilian industry that has culminated in the present commercial coffee year in a production of probably three-fourths of the entire crop of the world.

Brazil's position with reference to the world's coffee crop has grown to be strikingly similar to that of the United States relative to the world's corn crop. Each country, respectively, occupies a controlling position with reference to these products. And as the bulk of the corn crop of the United States is the production of a limited number of states so a few states in the southern part of the trans-Andean republic constitute the coffee belt of Brazil. The state of Santos is by all odds the heaviest producer, and from its seaport, Santos, there is shipped annually over one-third of all the coffee that enters into the commerce of the world. Next in importance to Santos as a coffee producer is the state of Ilheus, and Santos is a seaboard coffee market, and on account of the brand of coffee that bears its name it is even more widely known in a popular sense than Santos itself.

The total world's crop of the fiscal year ending June 30, 1931, is given by the Crop Reporter of the Department of Agriculture at 12,275,000 bags, of which Brazil produced 10,927,000 bags. Estimates of the present Brazilian crop range from 12,000,000 to 13,000,000 bags.

This enormous over-production is what is telling upon the coffee planter all over the world. The Hawaiian planter suffers from it and is likely to suffer from it for some time to come. His solution of the difficulty is to put a duty upon foreign grown coffee. The objection that will be urged against this is that Hawaiian coffee is an expensive coffee, it stands among the high grades. It is in point of fact a rich man's not a poor man's coffee. Now coffee is used in the United States by the poor man. He cannot afford to buy expensive grades and Brazilian coffee is what he has become accustomed to, and what he calls for. The plea for putting on a duty upon Brazilian coffee will therefore meet with considerable opposition from various sources. Not that the plea is in itself an unjust one, for coffee grown in the United States has as good a right to protection in any other industry, but because Brazilian coffee is an absolute necessity to the American working man.

The Brazilian coffee growers and factors are becoming alarmed about their overproduction, as the European beet sugar growers. The panacea of the beet sugar men is to restrict the area, but though every one is suggesting this restriction no one commends upon it. The Brazilian planters have suggested the burning up of one fifth of the crop. We may be perfectly certain that this will not be done, but is only idle talk. Coffee is an article of commerce which does not deteriorate with age. It improves. Meanwhile the coffee market presents some extraordinary features and is not likely to improve for a year or two.

## A MINOR INDUSTRY.

The virtues of the papaya are being just now explicated in the United States, but it is the East Indian papaya which is considered and talked about. There is no necessity to go so far a field as India, for the papaya is an introduced tree in India, being a native of the shores of the gulf of Mexico. It was taken to India by the Portuguese shortly after the discovery of America by Columbus.

The papaya flourishes with us but we make very little use of it. At a few tables it is one of the regular fruits served, but its use is by no means universal. It is regarded as an excellent food for pigs, but its chemical and medicinal qualities are practically ignored, and yet there is not a more valuable plant in the whole vegetable pharmacopeia. The active principle in its juice has been separated and under the name of "papain" is as valuable and according to some medical authorities more valuable than papain. In administering it as a drug it has the advantage of requiring neither the aid of an acid nor an alkali to convert the contents of the stomach into peptone. Again in India the milky juice is used as a vermifuge, and the Hindu vil-

lages claim that a single dose is sufficient for a cure. The Hawaiians have, as far as the writer knows, never made use of this as a vermifuge, and yet the necessity for vermicifuges is very great among them. Another use the juice can be put to is as a cosmetic to destroy freckles on the skin. Seeing the number of washes that are sold for this purpose—and how easily many of them turn out, the use of the simple juice of the papaya ought to become prevalent throughout the islands, indeed some enterprising chemist might put up the article in attractive form and it would become indispensable to "my lady's" dressing table.

In the Papaya we certainly have the makings of a minor industry. It grows without any care, and it yields abundantly. How soon the medicinal market would be glutted by the manufacture of "papain," the writer cannot say, but of vermicifuges and face washes there is no fear of glut. Once established a name and a brand, and the market is always open. Moreover for dyspepsia the fruit is admirable, without any preparation at all. The wonder is that with this fruit at our very doors we make such very little use of it either for domestic purposes or for manufacture.

The United States mail is something that cannot be fooled with. A local publication has just discovered the fact. As it was practically a first offense the Postal authorities did not prosecute.

The Second Circuit Judge has decided that sleeping in court is no crime. We may now expect Judge and Jury to retire into somnolence while the cases are being tried and waking up to render the verdict and give sentence.

It is very likely that the Grand Jury report this time will make something of a sensation, as the jurors have been investigating independently and quietly. This is the only way to find out properly. Chicago grand jurors nearly all investigate independently.

The Kona middle seems worse than ever, and all brought about by the determination of a Circuit Judge to have his own way, and his self-conscious fear that he was being dictated to. No one dictated to him or wanted to dictate to him, and a careful look through the papers shows there was no dictation from them. Why should there be? The affairs of the Kona Sugar Company only became a matter of public concern through the action of the court. It is a very sad thing for the shareholders, and just as sad a thing for the laborers and contractors, and this all might have been saved if there had been a little less self-consciousness upon the bench.

The illicit distillers are now solidly against it. The Federal authorities are going to take a hand in the suppression of this nefarious industry, and as the Federal laws are very much more severe than the laws of the Territory, the illicit distillers are not going to have a remarkably good time. Then again neither time nor expense are spared by the Federal authorities in hunting down the moonshiner. He is bound to be spotted at last, and once the law has got its grip on him, it never lets go till the full penalty is exacted. You may fool with territorial laws, you may fool with state laws even, but you cannot fool with Federal law; that is inexorable.

The growth of the artificial ice industry is something enormous. At the time the census was taken there were 800 artificial ice-making establishments in the United States, with an invested capital of \$38,000,000, and employing 7,000 wage earners to whom \$3,422,150 were paid in wages. There are now according to "Cold Storage," the organ of the ice industry nearly 1,000 ice factories in operation in the United States and more than \$51,000,000 has been invested in the business. Though ice was regarded as a luxury a few years ago, it is now a necessity. Without ice meats, eggs, fruits and vegetables would not have the extended markets they now have. The rise of the artificial ice industry is phenomenal.

The value of lands at the Peninsula is being gradually settled. The present jury on the condemnation case gave Honolulu plantation \$192,523. The last jury gave \$105,000 which Judge Estee thought excessive and set aside. We have now had twenty-four men upon this proposition and the difference between the first twelve and the second twelve seems hardly worth holding the second trial. There can be little doubt that either the navy department was very much misinformed or that the officials who were sent to look at the lands, had absolutely no knowledge of land values out here, or the productivity of our land when water is regularly used for irrigation. This verdict ought to settle the case.

The production of alcohol in Germany in 1931 amounted to 197,250,000 gallons, against 96,200,000 gallons in 1930. The increase was caused in a great measure by the excessively large potato crop. At the close of the year there was a surplus of 14,250,000 gallons, against 5,500,000 gallons in the previous year, and prices consequently experienced a drop. As last year's potato crop was again exceptionally large, a further increase in the production is to be expected. The time may come when we shall turn our Kula potatoes into alcohol. Thank goodness the time now appears to be far off. We have any quantity of wasting material which could be turned into alcohol, as the fruit of the prickly pear, the root of the ti, the rotting mango fruit and other things. But it will be an ill day for Hawaii when it comes to be used.

# WHY NOT TRY White Clover Soap

A HIGHLY SCENTED, GUARANTEED HARMLESS

## Toilet : Soap

MANUFACTURED EXPRESSLY FOR US AND HIGHLY RECOMMENDED.

AT 25 Cents

PER BOX OF 5 CAKES.

Give It Trial

HOLLISTER DRUG CO.

FORT STREET

## Classified Ads in Star.

One insertion, per line 15 cents.  
Two insertions, per line 25 cents.  
One week, per line 50 cents.  
Two weeks, per line 40 cents.  
One month, per line 60 cents.  
Ads under "Situations Wanted," inserted free until further notice.

### For Sale

One 1-horse power motor, Star office.

Building lots in College Hills. Favorable terms to home-seekers. Apply to P. C. Jones or Jonathan Shaw, Judd Building.

Building lot corner King and McCully streets, Pawaa tract. Rapid Transit line will pass the door. Apply at Star office.

A magnificent building site on the Punchbowl slope, near Thurston avenue. Particulars at Star office.

A choice house corner of Wilber avenue and Kewalo street at a bargain. Easy terms. Come and take a ride on the trolley and see for yourself.—L. C. Ables, Real Estate Agent.

Building lot corner King and Kamehameha road. Palama terminus of P. C. Transit road. Apply at Star office.

### To Lease

Store on Fort Street also warehouse on Queen street.—L. C. Ables, Real Estate Agent.

### Furnished Rooms To Let

Furnished rooms in the central part of the city. "Arlington," Hotel street.

A nicely furnished room. Apply at 248 Beretania street.

### Room and Board

Hele's Court, also residence J. Steiner, Adams lane, is open as a first class rooming house. Airy and mosquito proof. Board if desired. Mrs. J. Dugan.

### Wanted

A second hand roller top desk in good condition is wanted. X 249 this office.

"Business Partner." I have a client who would be prepared to put in a few thousand dollars into a legitimate business provided money could be made, references given and required. L. C. Ables.

### Situations Wanted

Stock clerk, now employed in San Francisco who lease house, desires a position in Honolulu. Can furnish satisfactory references. Address "Stock Clerk," Box 1, Star Office. (Letters will be forwarded to advertiser.)

Advertise your Wants in the Star.

## ANOTHER CARLOAD

OF THE

Celebrated  
Gurney  
Refrigerators and  
Ice Boxes

Just received per S. S. "Eu-reka," direct from the factory at Fond du Lac, Wisconsin.

Refrigerators at \$19.50 and upwards.  
Ice Boxes at \$8.50 and upwards.

These goods are so well and favorably known that further comment is unnecessary.

We are selling them on the installment plan, with very easy terms.

Call and see the large assortment.

We are showing thirty-three different styles.

W. W. DIMOND & CO.,  
LIMITED

Nos. 53, 55 and 57, King Street  
HONOLULU.

### Lost

From the Oahu College a large bay horse, branded W. R. left hip, left hind foot white. Small white spot on forehead. Liberal reward will be paid for returning the horse to the Oahu College.

### Auction Sale of Delinquent Sugar Stock.

On SATURDAY, MARCH 15, 1932 at 12 o'clock noon, at my salesroom, 65 Queen street, Honolulu, I will sell at Public Auction by order of the Treasurer, Mr. Elmer E. Paxton, the following certificates of stock in the Oahu Sugar Co., Ltd., unless the 20th assessment due December 21, 1931 and delinquent February 21, 1932 with interest and advertising expenses is paid on or before the day and hour of sale at the offices of The B. F. Dillingham Co., Ltd., Stangenwald Building, Honolulu:

Cert. No.	Name.	Shares.
297	W. L. Wilcox	50
1471-1485-562	L. Chong	50-133 17
582	Chas. P. Eckart	17
1129	Emmett May	25
1442	Mrs. Emma L. Crabbe	25
1532	Lindsay May	25
1619	M. V. Holmes	10
1871	Miss C. E. O'Neil	10
1952	Willie Wright	1
1953	J. E. Westbrook	4
1956	W. W. Wright	3
1997	Mrs. S. L. Williams	20
1998	J. L. Wheeler Jr.	2

ELMER E. PAXTON,  
Treasurer.

Honolulu, March 3, 1932.

JAS. F. MORGAN,

## SHIPPING INTELLIGENCE

(Continued from Page 2.)

### DEPARTING.

Wednesday, March 12.  
Am. bklin. S. G. Wilder, Jackson, for San Francisco, in afternoon.  
Thursday, March 13.  
Am. bark Mohican, Kelley, for San Francisco, probably sail in morning.

### PASSENGERS.

Per S. S. Aorangi, March 12, from the Colonies—Miss Stokes, T. Tieman and R. Campbell.

### MAKES A SPECIAL TRIP

The Nihau will make a special trip this afternoon to Kahului where she will load some machinery for Kilauea.

### PERU SIGHTED FROM COAST.

The S. S. Peru was sighted from San Francisco at 12:15 p. m. today off Waimanalo! She will dock about 3 p. m.

### CAPTAIN JAMES WILL FISH.

Captain J. F. James the well known Marine editor and character has purchased an interest in a fast sloop and will shortly engage in fishing for the market. If Captain James uses as much energy in fishing as he does in exposing the follies of the public in his newspaper, he will soon have all the Japanese fishermen working for him and be the admiral of the fleet of sampans.

Ads under "Situations Wanted," inserted free of charge in the Star.

# The LACE HOUSE

We are showing  
Some of our

## SPECIALTIES

Infants' and Children's  
Dresses

Some of the prettiest we ever had and  
CHEAP too! also Children's and Misses  
underwear at Reduced Prices. Cheaper  
to buy these than to make them.

Shirt Waists Made to Order

M. BRASCH & CO.

PHONE 157

# Arrival of "Coronado"

A FRESH SUPPLY OF  
DIAMOND HEAD BRAND OF

## GASOLINE

DESTILLATE IN DRUMS.

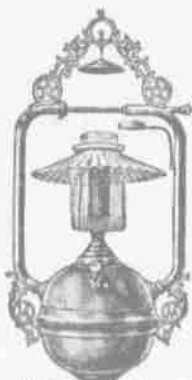
For Two Weeks,  
Special Sale of  
garden hose

OUR HOSE IS OF THE BEST QUALITY AND GUARANTEED TO GIVE SATISFACTION.

## PACIFIC HARDWARE COMPANY, LIMITED,

FORT, MERCHANT AND  
BETHEL STREETS.

## MORE LIGHT, LESS EXPENSE.



Can be obtained by using our old reliable M. & M. Arc Portable Lamps for Stores, Street Lighting, Churches, Halls, and in fact, any place where you want light of 500 Candle-power.

One M. & M. Arc Lamp gives more light than one electric Arc Light at cost of only one-half cent per hour.

This lamp is sold on trial subject to perfect satisfaction; is fully guaranteed for one year; over 30,000 in actual commercial use in the U. S. today. If you want MORE LIGHT, do a little figuring. Note how many hours your burn your Gas, or Electric Lights, then figure cost of our Gasoline Arc Lamps, which are ABSOLUTELY non-explosive. They meet in every way the requirements of the National Board of Fire Underwriters. You will be astonished at the CUT IN YOUR LIGHT BILLS, and you will be MORE astonished at the INCREASE of your light.

Don't turn us down because you have had some other lamp that did not work satisfactorily, but GIVE US A TRIAL; if not perfectly satisfactory it COSTS YOU NOTHING TO FIND IT OUT. Write for particulars. Agents wanted for all unoccupied territory.

Acorn Brass Works,

CHICAGO, ILL.

Dept. 3.

## Chicago

In Less Than

3 Days

From San Francisco at 10 a. m.

CHICAGO, UNION PACIFIC  
& NORTHWESTERN LINE

Double Drawing-Room Sleep-Cars, Buffet, Smoking and Library Cars, with barber. Dining Cars—meals a la carte. Daily Tourist Car Service at 6 p. m. and Personally Conducted Excursions every Wednesday and Friday at 8 a. m. from San Francisco. The best of everything.

R. R. Ritchie,  
Gen. Agent Pacific Coast  
San Francisco.

617 Market Street.  
Palace Hotel.

OR S. P. COMPANY'S AGENT.

NAKANISHI CO.,  
Contractors and Builders  
Painting and Paper Hanging

Opp. Oahu Lumber and Building Co.

King street, No. 450

Telephone, Blue 3531.

Advertise your Wants in the Star.

## NEW POPULAR BOOKS

The very latest and most popular Books of this season. We recommend them knowing that they will please.

AUDREY  
By Mary Johnson, author "To Have and to Hold."  
AT LARGE  
By E. W. Hornung.  
THE SECRET ORCHARD  
By A. & E. Castle.  
THE RULING PASSION  
By H. Van Dyke.  
LIFE ON THE STAGE  
By Clara Morris.  
CARIACAN  
By Robert W. Chambers.  
THE PORTION OF LABOR  
By Mary E. Wilkins.  
MARLETTA A MAID OF VENICE.  
By F. Marion Crawford.  
THE CAVALIER  
By Geo. W. Cable.  
SIR RICHARD CALMADY  
By Lucas Malet.  
MANY OTHERS.

## HAWAIIAN NEWS CO.

LIMITED.  
MERCHANT ST.

## Fine Down and Odorless Feathers

IT IS DIFFICULT IN HONOLULU TO GET ODOORLESS FEATHERS FOR USE IN PILLOWS BUT WE HAVE ACCOMPLISHED THIS AND HAVE THEM NOW ON SALE. WE CAN FILL THE PILLOWS OR CUSHIONS FOR YOU IF YOU WISH OR SELL THE FEATHERS IN BULK.

## Hopp & Company

Leading Furniture  
Dealers...  
KING & BETHEL STREETS  
Phone 111 Main.

Note Heads, Bill Heads, Letter Heads and all kinds of Job and Commercial Printing neatly and promptly executed at the Star Office.















## The Blue Book

This book is now out and while it may fill the wants of some of the people, it does not fill the wants of all the people. For instance in Real Estate and Real Estate Agents you must still see

L. C. ABLES,  
Real Estate Agent

TELEPHONE  
MAIN 130

P. O. BOX  
243

## Metropolitan Meat Co

41 KING STREET.

Wholesale & Retail Butchers

AND NAVY CONTRACTORS.

G. J. WALLER, : : : Manager.

ON HAND

THE

FOLLOWING PLANTATION SHARES.

HAWAIIAN AGRICULTURAL CO.  
EWA, DAHU, WAIALUA, KAHUKU,  
PIONEER MILL, HAIKU, PAIA, KO-  
LOA, MEYERIE, HAWAIIAN SU-  
GAR, KEKAHA.

## Harry Armitage,

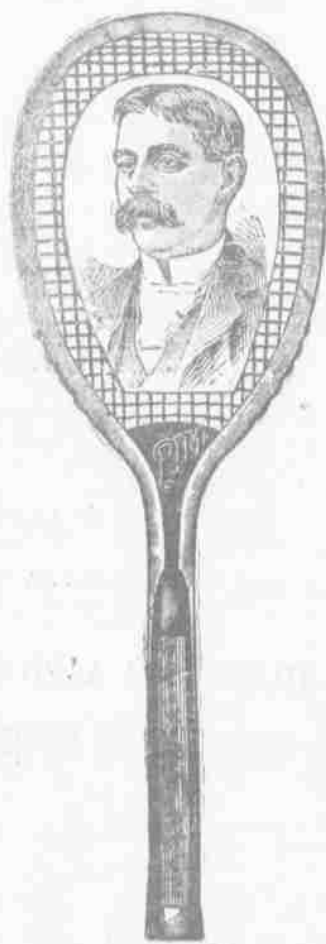
Stock and  
Bond Broker

Member Honolulu Stock and Bond Exchange

Office, Campbell Block,  
Merchant Street,  
Honolulu, T. H.

Telephone Main, 101  
P. O. Box 683

FRESH NEW  
1902  
Tennis  
Goods



MAKE YOUR SELECTION NOW

JUST UNPACKED,  
1902 JIM  
CAMPBELL AND  
OTHER RACKETS  
AND RUNDRIES.

Tether Ball outfits, Hercules  
Clubs and a nice line of new  
Athletic Goods, just being open-  
ed.

PEARSON & POTTER CO.,  
LIMITED

CORNER UNION  
AND HOTEL  
STREETS

## NEW ADVERTISEMENTS.

Metropolitan Meat Company ..... Page 5  
Card of Thanks ..... Page 5  
Waller & Company ..... Page 5  
Hawaii News Company ..... Page 4  
Coyne Furniture Company ..... Page 5  
Kahuku Election Notice ..... Page 5

## NEWS IN A NUTSHELL

Paragraphs That Give Condensed  
News of the Day.

A roll top book is advertised for  
Kahuku's list of officers appears in  
this issue.

The work of painting the Drill Shed  
is in progress.  
Wall paper at 5 cents per roll at  
Waller & Co.

The Chamber of Commerce met at 2  
o'clock this afternoon.

Five down and adobe feathers for  
sale at J. Hopp & Co. See ad.

If you want the very latest books  
call at The Hawaiian News Co.

Great sacrifice sale now on at Coyne  
Furniture Co. in iron beds.

A reward will be paid for the return  
of a lost horse. See classified ad.

The annual meeting of the McElyde  
Sugar Co. will be held on March 27.

Mrs. Russell, wife of Senator Nicholas  
Russell of Ohio is a guest of Mr. and  
Mrs. Fred Whitney.

The game of Ping-Pong has been in-  
troduced into Honolulu and is played  
considerably by the guests of the Wa-  
hiki Annex.

The baseball league for 1902 has been  
organized with C. F. Chillingworth,  
president and Lorrin Andrews, sec-  
retary and treasurer.

Engineer Gere of the Public Works  
Department left for Hawaii yesterday  
to investigate damage done by the late  
storm to public works.

The Laupahoehoe Racing Association  
has been incorporated with a capital  
of \$7,500. A racing track will be con-  
ducted near Laupahoehoe.

The Central Union gospel tent ser-  
vices in the tent on Fort Street near  
Hotel will be resumed tomorrow eve-  
ning. Rev. W. M. Kincaid will be in  
charge. The Dillingham Quartette will  
sing.

The vessel of the Canadian-Australian  
line will maintain a  
service to the Fiji Islands. The Aorangi,  
Captain Phillips, which arrived to-  
day from the Colonies inaugurated  
that service by touching at Suva.

The vessel left Sydney, February 24,  
Frisland, February 25 and Suva, March  
2. She experienced fine weather  
throughout the trip. Three passengers  
came for Honolulu.

Among the through passengers is  
Major General A. A. French a brother  
of Lieutenant General French the fam-  
ous cavalry leader of the British forces  
in Africa. Dr. Melville the former  
governor of the Province of British  
Columbia is also a through passenger.

Owing to there having been several  
cases of plague in Sydney, the Aorangi  
was anchored in the stream and did  
not come to the wharf. She will sail  
for Victoria and Vancouver at 4 p. m.  
today. A number of passengers will  
sail on her from Honolulu.

Among the through passengers is  
Major General A. A. French a brother  
of Lieutenant General French the fam-  
ous cavalry leader of the British forces  
in Africa. Dr. Melville the former  
governor of the Province of British  
Columbia is also a through passenger.

Owing to there having been several  
cases of plague in Sydney, the Aorangi  
was anchored in the stream and did  
not come to the wharf. She will sail  
for Victoria and Vancouver at 4 p. m.  
today. A number of passengers will  
sail on her from Honolulu.

Among the through passengers is  
Major General A. A. French a brother  
of Lieutenant General French the fam-  
ous cavalry leader of the British forces  
in Africa. Dr. Melville the former  
governor of the Province of British  
Columbia is also a through passenger.

Owing to there having been several  
cases of plague in Sydney, the Aorangi  
was anchored in the stream and did  
not come to the wharf. She will sail  
for Victoria and Vancouver at 4 p. m.  
today. A number of passengers will  
sail on her from Honolulu.

Among the through passengers is  
Major General A. A. French a brother  
of Lieutenant General French the fam-  
ous cavalry leader of the British forces  
in Africa. Dr. Melville the former  
governor of the Province of British  
Columbia is also a through passenger.

Owing to there having been several  
cases of plague in Sydney, the Aorangi  
was anchored in the stream and did  
not come to the wharf. She will sail  
for Victoria and Vancouver at 4 p. m.  
today. A number of passengers will  
sail on her from Honolulu.

Among the through passengers is  
Major General A. A. French a brother  
of Lieutenant General French the fam-  
ous cavalry leader of the British forces  
in Africa. Dr. Melville the former  
governor of the Province of British  
Columbia is also a through passenger.

Owing to there having been several  
cases of plague in Sydney, the Aorangi  
was anchored in the stream and did  
not come to the wharf. She will sail  
for Victoria and Vancouver at 4 p. m.  
today. A number of passengers will  
sail on her from Honolulu.

Among the through passengers is  
Major General A. A. French a brother  
of Lieutenant General French the fam-  
ous cavalry leader of the British forces  
in Africa. Dr. Melville the former  
governor of the Province of British  
Columbia is also a through passenger.

Owing to there having been several  
cases of plague in Sydney, the Aorangi  
was anchored in the stream and did  
not come to the wharf. She will sail  
for Victoria and Vancouver at 4 p. m.  
today. A number of passengers will  
sail on her from Honolulu.

Among the through passengers is  
Major General A. A. French a brother  
of Lieutenant General French the fam-  
ous cavalry leader of the British forces  
in Africa. Dr. Melville the former  
governor of the Province of British  
Columbia is also a through passenger.

Owing to there having been several  
cases of plague in Sydney, the Aorangi  
was anchored in the stream and did  
not come to the wharf. She will sail  
for Victoria and Vancouver at 4 p. m.  
today. A number of passengers will  
sail on her from Honolulu.

Among the through passengers is  
Major General A. A. French a brother  
of Lieutenant General French the fam-  
ous cavalry leader of the British forces  
in Africa. Dr. Melville the former  
governor of the Province of British  
Columbia is also a through passenger.

Owing to there having been several  
cases of plague in Sydney, the Aorangi  
was anchored in the stream and did  
not come to the wharf. She will sail  
for Victoria and Vancouver at 4 p. m.  
today. A number of passengers will  
sail on her from Honolulu.

Among the through passengers is  
Major General A. A. French a brother  
of Lieutenant General French the fam-  
ous cavalry leader of the British forces  
in Africa. Dr. Melville the former  
governor of the Province of British  
Columbia is also a through passenger.

Owing to there having been several  
cases of plague in Sydney, the Aorangi  
was anchored in the stream and did  
not come to the wharf. She will sail  
for Victoria and Vancouver at 4 p. m.  
today. A number of passengers will  
sail on her from Honolulu.

Among the through passengers is  
Major General A. A. French a brother  
of Lieutenant General French the fam-  
ous cavalry leader of the British forces  
in Africa. Dr. Melville the former  
governor of the Province of British  
Columbia is also a through passenger.

Owing to there having been several  
cases of plague in Sydney, the Aorangi  
was anchored in the stream and did  
not come to the wharf. She will sail  
for Victoria and Vancouver at 4 p. m.  
today. A number of passengers will  
sail on her from Honolulu.

Among the through passengers is  
Major General A. A. French a brother  
of Lieutenant General French the fam-  
ous cavalry leader of the British forces  
in Africa. Dr. Melville the former  
governor of the Province of British  
Columbia is also a through passenger.

Owing to there having been several  
cases of plague in Sydney, the Aorangi  
was anchored in the stream and did  
not come to the wharf. She will sail  
for Victoria and Vancouver at 4 p. m.  
today. A number of passengers will  
sail on her from Honolulu.

Among the through passengers is  
Major General A. A. French a brother  
of Lieutenant General French the fam-  
ous cavalry leader of the British forces  
in Africa. Dr. Melville the former  
governor of the Province of British  
Columbia is also a through passenger.

Owing to there having been several  
cases of plague in Sydney, the Aorangi  
was anchored in the stream and did  
not come to the wharf. She will sail  
for Victoria and Vancouver at 4 p. m.  
today. A number of passengers will  
sail on her from Honolulu.

Among the through passengers is  
Major General A. A. French a brother  
of Lieutenant General French the fam-  
ous cavalry leader of the British forces  
in Africa. Dr. Melville the former  
governor of the Province of British  
Columbia is also a through passenger.

Owing to there having been several  
cases of plague in Sydney, the Aorangi  
was anchored in the stream and did  
not come to the wharf. She will sail  
for Victoria and Vancouver at 4 p. m.  
today. A number of passengers will  
sail on her from Honolulu.

Among the through passengers is  
Major General A. A. French a brother  
of Lieutenant General French the fam-  
ous cavalry leader of the British forces  
in Africa. Dr. Melville the former  
governor of the Province of British  
Columbia is also a through passenger.

Owing to there having been several  
cases of plague in Sydney, the Aorangi  
was anchored in the stream and did  
not come to the wharf. She will sail  
for Victoria and Vancouver at 4 p. m.  
today. A number of passengers will  
sail on her from Honolulu.

Among the through passengers is  
Major General A. A. French a brother  
of Lieutenant General French the fam-  
ous cavalry leader of the British forces  
in Africa. Dr. Melville the former  
governor of the Province of British  
Columbia is also a through passenger.

Owing to there having been several  
cases of plague in Sydney, the Aorangi  
was anchored in the stream and did  
not come to the wharf. She will sail  
for Victoria and Vancouver at 4 p. m.  
today. A number of passengers will  
sail on her from Honolulu.

Among the through passengers is  
Major General A. A. French a brother  
of Lieutenant General French the fam-  
ous cavalry leader of the British forces  
in Africa. Dr. Melville the former  
governor of the Province of British  
Columbia is also a through passenger.

Owing to there having been several  
cases of plague in Sydney, the Aorangi  
was anchored in the stream and did  
not come to the wharf. She will sail  
for Victoria and Vancouver at 4 p. m.  
today. A number of passengers will  
sail on her from Honolulu.

Among the through passengers is  
Major General A. A. French a brother  
of Lieutenant General French the fam-  
ous cavalry leader of the British forces  
in Africa. Dr. Melville the former  
governor of the Province of British  
Columbia is also a through passenger.

Owing to there having been several  
cases of plague in Sydney, the Aorangi  
was anchored in the stream and did  
not come to the wharf. She will sail  
for Victoria and Vancouver at 4 p. m.  
today. A number of passengers will  
sail on her from Honolulu.

Among the through passengers is  
Major General A. A. French a brother  
of Lieutenant General French the fam-  
ous cavalry leader of the British forces  
in Africa. Dr. Melville the former  
governor of the Province of British  
Columbia is also a through passenger.

Owing to there having been several  
cases of plague in Sydney, the Aorangi  
was anchored in the stream and did  
not come to the wharf. She will sail  
for Victoria and Vancouver at 4 p. m.  
today. A number of passengers will  
sail on her from Honolulu.

Among the through passengers is  
Major General A. A. French a brother  
of Lieutenant General French the fam-  
ous cavalry leader of the British forces  
in Africa. Dr. Melville the former  
governor of the Province of British  
Columbia is also a through passenger.

Owing to there having been several  
cases of plague in Sydney, the Aorangi  
was anchored in the stream and did  
not come to the wharf. She will sail  
for Victoria and Vancouver at 4 p. m.  
today. A number of passengers will  
sail on her from Honolulu.

Among the through passengers is  
Major General A. A. French a brother  
of Lieutenant General French the fam-  
ous cavalry leader of the British forces  
in Africa. Dr. Melville the former  
governor of the Province of British  
Columbia is also a through passenger.

Owing to there having been several  
cases of plague in Sydney, the Aorangi  
was anchored in the stream and did  
not come to the wharf. She will sail  
for Victoria and Vancouver at 4 p. m.  
today. A number of passengers will  
sail on her from Honolulu.

Among the through passengers is  
Major General A. A. French a brother  
of Lieutenant General French the fam-  
ous cavalry leader of the British forces  
in Africa. Dr. Melville the former  
governor of the Province of British  
Columbia is also a through passenger.

Owing to there having been several  
cases of plague in Sydney, the Aorangi  
was anchored in the stream and did  
not come to the wharf. She will sail  
for Victoria and Vancouver at 4 p. m.  
today. A number of passengers will  
sail on her from Honolulu.

Among the through passengers is  
Major General A. A. French a brother  
of Lieutenant General French the fam-  
ous cavalry leader of the British forces  
in Africa. Dr. Melville the former  
governor of the Province of British  
Columbia is also a through passenger.

Owing to there having been several  
cases of plague in Sydney, the Aorangi  
was anchored in the stream and did  
not come to the wharf. She will sail  
for Victoria and Vancouver at 4 p. m.  
today. A number of passengers will  
sail on her from Honolulu.

Among the through passengers is  
Major General A. A. French a brother  
of Lieutenant General French the fam-  
ous cavalry leader of the British forces  
in Africa. Dr. Melville the former  
governor of the Province of British  
Columbia is also a through passenger.

Owing to there having been several  
cases of plague in Sydney, the Aorangi  
was anchored in the stream and did  
not come to the wharf. She will sail  
for Victoria and Vancouver at 4 p. m.  
today. A number of passengers will  
sail on her from Honolulu.

Among the through passengers is  
Major General A. A. French a brother  
of Lieutenant General French the fam-  
ous cavalry leader of the British forces  
in Africa. Dr. Melville the former  
governor of the Province of British  
Columbia is also a through passenger.

Owing to there having been several  
cases of plague in Sydney, the Aorangi  
was anchored in the stream and did  
not come to the wharf. She will sail  
for Victoria and Vancouver at 4 p. m.  
today. A number of passengers will  
sail on her from Honolulu.

Among the through passengers is  
Major General A. A. French a brother  
of Lieutenant General French the fam-  
ous cavalry leader of the British forces  
in Africa. Dr. Melville the former  
governor of the Province of British  
Columbia is also a through passenger.

Owing to there having been several  
cases of plague in Sydney, the Aorangi  
was anchored in the stream and did  
not come to the wharf. She will sail  
for Victoria and Vancouver at 4 p. m.  
today. A number of passengers will  
sail on her from Honolulu.

Among the through passengers is  
Major General A. A. French a brother  
of Lieutenant General French the fam-  
ous cavalry leader of the British forces  
in Africa. Dr. Melville the former  
governor of the Province of British  
Columbia is also a through passenger.

Owing to there having been several  
cases of plague in Sydney, the Aorangi  
was anchored in the stream and did  
not come to the wharf. She will sail  
for Victoria and Vancouver at 4 p. m.  
today. A number of passengers will  
sail on her from Honolulu.

Among the through passengers is  
Major General A. A. French a brother  
of Lieutenant General French the fam-  
ous cavalry leader of the British forces  
in Africa. Dr. Melville the former  
governor of the Province of British  
Columbia is also a through passenger.

Owing to there having been several  
cases of plague in Sydney, the Aorangi  
was anchored in the stream and did  
not come to the wharf. She will sail  
for Victoria and Vancouver at 4 p. m.  
today. A number of passengers will  
sail on her from Honolulu.

Among the through passengers is  
Major General A. A. French a brother  
of Lieutenant General French the fam-  
ous cavalry leader of the British forces  
in Africa. Dr. Melville the former  
governor of the Province of British  
Columbia is also a through passenger.

Owing to there having been several  
cases of plague in Sydney, the Aorangi  
was anchored in the stream and did  
not come to the wharf. She will sail  
for Victoria and Vancouver at 4 p. m.  
today. A number of passengers will  
sail on her from Honolulu.

Among the through passengers is  
Major General A. A. French a brother  
of Lieutenant General French the fam-  
ous cavalry leader of the British forces  
in Africa. Dr. Melville the former  
governor of the Province of British  
Columbia is also a through passenger.

Owing to there having been several  
cases of plague in Sydney, the Aorangi  
was anchored in the stream and did  
not come to the wharf. She will sail  
for Victoria and Vancouver at 4 p. m.  
today. A number of passengers will  
sail on her from Honolulu.

Among the through passengers is  
Major General A. A. French a brother  
of Lieutenant General French the fam-  
ous cavalry leader of the British forces  
in Africa. Dr. Melville the former  
governor of the Province of British  
Columbia is also a through passenger.

Owing to there having been several  
cases of plague in Sydney, the Aorangi  
was anchored in the stream and did  
not come to the wharf. She will sail  
for Victoria and Vancouver at 4 p. m.  
today. A number of passengers will  
sail on her from Honolulu.

Among the through passengers is  
Major General A. A. French a brother  
of Lieutenant General French the fam-  
ous cavalry leader of the British forces  
in Africa. Dr. Melville the former  
governor of the Province of British  
Columbia is also a through passenger.

Owing to there having been several  
cases of plague in Sydney, the Aorangi  
was anchored in the stream and did  
not come to the wharf. She will sail  
for Victoria and Vancouver at 4 p. m.  
today. A number of passengers will  
sail on her from Honolulu.

Among the through passengers is  
Major General A. A. French a brother  
of Lieutenant General French the fam-  
ous cavalry leader of the British forces  
in Africa. Dr. Melville the former  
governor of the Province of British  
Columbia is also a through passenger.

Owing to there having been several  
cases of plague in Sydney, the Aorangi  
was anchored in the stream and did  
not come to the wharf. She will sail  
for Victoria and Vancouver at 4 p. m.  
today. A number of passengers will  
sail on her from Honolulu.

Among the through passengers is  
Major General A. A. French a brother  
of Lieutenant General French the fam-  
ous cavalry leader of the British forces  
in Africa. Dr. Melville the former  
governor of the Province of British  
Columbia is also a through passenger.

Owing to there having been several  
cases of plague in Sydney, the Aorangi  
was anchored in the stream and did  
not come to the wharf. She will sail  
for Victoria and Vancouver at 4 p. m.  
today. A number of passengers will  
sail on her from Honolulu.

Among the through passengers is  
Major General A. A. French a brother  
of Lieutenant General French the fam-  
ous cavalry leader of the British forces  
in Africa. Dr. Melville the former  
governor of the Province of British  
Columbia is also a through passenger.

JAS. F. MORGAN,  
Auctioneer and Broker  
65 Queen Street  
P. O. Box 594 Telephone 72

★  
THE HAWAIIAN  
SOUVENIR  
PLAYING CARDS

HAVE ARRIVED—THEY ARE  
BEAUTIFUL, APPROPRIATE AS  
PRIZES FOR CARD GAMES, SUIT-  
ABLE AS GIFTS TO FRIENDS AND  
RELATIVES IN DISTANT PARTS.

Each pack contains fifty-three half-  
tone engravings of the choicest views  
of Honolulu, Hilo and the principal  
points of interest in the islands. Back  
designs of Kanehahua Statue in col-  
ors. Edges in Gold. Double enamel  
surface, of the very best finish. Large  
indexes make them suitable for all  
card games. Telescope cases stamped  
in Gold. These cards are manufac-  
tured by the United States Playing Card  
Co. who have spared no pains in mak-  
ing them the finest scenic pack of  
cards ever published.

RETAIL PRICE \$1.00 PER PACK.

Published and for sale by  
WALL, NICHOLS CO., LTD.  
Honolulu and Hilo, H. I.

## Taroena

Is a prepared food made entirely from  
taro by a unique process which pre-  
serves all the valuable nourishing  
qualities of the root. It is highly con-  
centrated, thoroughly cooked and ready  
for immediate use. Unlike artificial  
food compounds, Taroena will keep in  
any climate for years after being open-  
ed. It is prepared under the most hy-  
gienic conditions and is completely  
sterilized. Taroena is essentially a  
pure, wholesome, natural food and is  
supplying a long felt want.

## Taroena

Is rich in the phosphates. It is a won-  
derful nerve tonic and nerve fibre  
builder. It is the best of brain foods.  
Business men who have overworked,  
and suffer from loss of sleep and ap-  
petite, nervousness, headache and a  
general prostration of the nervous sys-  
tem, will promptly improve on a diet  
of Taroena. Physicians who have pre-  
scribed Taroena in cases of this de-  
scription, have been both delighted and  
astonished with the rapid recovery of  
their patients.

## Taroena

Is absolutely unlike all other invalid  
foods. In this important essential; it  
contains, placed there by nature, a di-  
gestive ferment peculiar to itself. In  
no other way, than by the presence of  
a natural ferment, can be wonderful  
digestibility of Taroena be explained.

## AUCTION SALE OF WOODEN BUILDINGS

ON FRIDAY, MAR 14,  
AT 12 O'CLOCK NOON.

At the premises 1050 Richards Street,  
half way between King and Hotel  
streets, I will sell at Public Auction the  
wooden buildings and outbuildings.  
Terms cash U. S. Gold Coin. 15 days  
removal.

JAS. F. MORGAN,  
AUCTIONEER

Hobron Drug Co.  
FORT  
& KING.

Sole Agents

## MAEBUCHI DYER

Clothes dyed in all  
colors desired. Also  
Cleaned and Repaired.

## Men's Suit a Specialty

Only experienced  
Help employed

GIVE US A CALL

208 Queen Street, near Richard.

## Corset Critics Silenced

## Straight Fronts vs. Tight Lacing

THE OLD ARGUMENTS AGAINST  
CORSETS ARE NOW OBSOLETE.

THEY'VE SERVED THEIR DAY  
AND GENERATION, AND TO THEIR  
CREDIT LET IT BE ADDED, HAVE  
DONE GOOD SERVICE BUT THE  
NEW "STRAIGHT FRONT" ROBS  
THEM OF ALL FORCE.

THIS STYLE FOLLOWS THE NA-  
TURAL LINES OF THE FORM—IN A  
WORD, HYGIENIC.

ITS MERITS ARE OBVIOUS.

IN CONTOUR NOTHING COULD BE  
MORE GRACEFUL, WHILE IT SUP-  
PORTS THE ABDOMEN AND  
STRENGTHENS THE BACK.

ALL STRAIN IS THROWN UPON  
THE HIPS AND BACK MUSCLES.

BEST OF ALL, IT RETIRES TIGHT  
LACING A BARBARITY ON A PAR  
WITH CHINESE FOOT TORTURE.

WE CARRY ALL THE BEST  
MAKES AND MODELS OF  
STRAIGHT FRONT CORSETS.

FOR SOME ARE BETTER SUITED  
TO YOUR FORM THAN OTHERS.

IF YOU GO BY WHAT WE TELL  
YOU, YOU'LL GET THE KIND THAT  
IS BEST SUITED TO YOUR FORM.

## Whitney & Marsh, Ltd

## Just Received

A Large Line of Japanese  
Silks, Curios and American  
Dry Goods

## SAYEGUSA,

1120 Nuuanu Street -- Telephone White 3271

Lin Sing Kee,  
T