

From San Francisco:  
Korea ..... March 15  
For San Francisco:  
China ..... March 6  
From Vancouver:  
Makura ..... April 2  
For Vancouver:  
Aorangi ..... March 31

# EVENING BULLETIN

3:30 EDITION

The Best Business Directory for the Honolulu housewife is the Bulletin

DON'T WHINE about your Lack of Opportunity. There are opportunities for every one who is able to convince the world by his industry that he is worthy of success.—Advertisement in the Bulletin.

VOL. XI. NO. 4254.

10 PAGES.—HONOLULU, TERRITORY OF HAWAII, TUESDAY, MARCH 9, 1909.—10 PAGES.

PRICE 5 CENTS.

## NEW TELEPHONE SCHEME HAS BEEN FLOATED FERN'S MEN PAID FOR DOING NOTHING

### REAPER CLAIMS ACCIDENT VICTIM

Thos. Lindsay Succumbs  
To Injuries At  
Hospital

At 11:15 o'clock this morning, Thomas Lindsay, the veteran Fort street jeweler, died at the Queen's Hospital, the victim of a runaway accident which occurred yesterday afternoon.

Mr. Lindsay was run down by a frantic, brideless steed on Fort street, near his place of business, and was removed to the Queen's hospital in an unconscious condition. From the first it was seen that his injuries were of a desperate nature, and he never rallied from the shock.

Owing to the advanced age of the victim and a constitution enfeebled by illness, the attending surgeons expressed grave doubts concerning the probable outcome of the wounds when Lindsay was taken to the hospital, but his sudden death came as a shock to the entire community.

Mr. Lindsay was 69 years old and had been a resident of Hawaii for thirty years. His jewelry store on Fort street was well known to all old timers, and he numbered his friends by the hundreds. He was a member of the Court of Lunalia and of the Scottish Thistle Club. He leaves one daughter, Mrs. Thomas Smith.

The remains of the accident victim were taken to the morgue today, pending the inquest. Funeral services will be held tomorrow afternoon at 3 o'clock at Williams' undertaking establishment.

### VICTIMS' WAIL IN CRATER'S DEPTHS

Aloha Temple Makes Its  
Plans For Weird  
Irritation

That the next ceremonial session of Aloha Temple will be held at the Volcano of Kilauea, and that Islam Temple of San Francisco will take part in the gruesome festivities, seems assured.

The illustrious Potentate of Aloha Temple, Mystic Shrine, last Saturday received the following cable from James McCandless, who is now in San Francisco:

"Hoekus:—If you want Islam will you vote invitation Saturday."

In a letter McCandless states that

(Continued on Page 4)

### FERN MEN MUST ALSO HAVE PAY

"Enabling Act" Passes In  
Somewhat Amended  
Form

BAKER WANTS TAX  
ON STOCK TRANSFERS

Senate Holds Brief Routine Session  
and Then Adjourns, That Hawaiian Members May See  
Mauna Kea Sail

SENATE.

Amended so as to provide for the payment of the appointees of the Mayor as well as those of the Board of Supervisors, House Bill No. 98, "The Enabling Act," passed its second reading in the Senate this afternoon.

The amendment in the bill was made at the instance of Senator McCarthy, who, when the matter came up for consideration this morning, moved that the minority report of the Judiciary Committee, written by Senator Maekau, be incorporated in the bill.

"This is not a question for politics," said Senator McCarthy. "If the men employed by the Board are to be paid, those employed by the Mayor should not be forgotten. The precedent was set in the Hilo matter, and I see no reason for making a change."

The amendment to the Act as it came from the House, provides that all men in the employ of the City and County, prior to March 15, 1909, whether appointed by the Board or by the Mayor, shall receive pay. It also provides that the Mayor shall approve all demands submitted for payment.

The amendment would probably have been adopted at this morning's session, but for the fact that Senator Chillingworth wanted a copy of the minority report before voting.

There was practically no discussion this afternoon. Coelho made the motion to amend the bill along the lines laid down in the minority report, and the motion passed without opposition.

**Tax on Stock Transfers**  
Senator Baker came forward with a new revenue proposition. This time he gave notice of his intention to introduce a bill providing for a fixed tax of 2 cents per share on all stock transferred. Evidently there will be no difference between the tax levied

(Continued on Page 4)

The Rev. Chas. Dole's lecture on the ethical teaching on Browning's poetry at Kilauea Art League will be postponed to Monday evening.

Mrs. Wallace Stratton attempts suicide while mentally unbalanced.

## Telephone Is Floated

LOCAL CAPITALISTS PROVIDE \$450,000

"Work will begin on the installation of the new automatic telephone system in a very short time. I return to San Francisco today with the telephone proposition floated except for minor details. I found it impossible to deal with some of the San Francisco financiers with whom I was associated on account of conditions made by them."

This was the statement made by C. J. Hutchins this morning previous to his sailing on the Siberia.

It means that the telephone deal has been completed and within a very few weeks operations will start on the installation in Honolulu of the automatic system with wires underground.

The whole proposition has been financed with local capital through the Hawaiian Telegraph and Telephone Company which is the new name of the wireless telegraph company.

The program for financing the telephone end of the deal provides for taking up \$250,000 in stock and \$200,000 in bonds. The bonds will be underwritten by a local syndicate and are practically subscribed today. The stock is also nearly all taken up, some seventy-five thousand dollars worth of it being reserved for the general public if the people want it.

The distinctive feature of this new company is that all the wires of the system will be put underground in the city centers where the induction is the most serious. The automatic has been tested in many cities and proved a complete success.

The plans have in view a system entirely independent of the present telephone system and there is no proposition of combination yet on foot so far as known.

## Impudent Porch Climber

Burglars visited the home of T. A. Birmingham last evening during the temporary absence of the family. It appears that shortly after 9 o'clock Mr. Birmingham strolled over to a friend's house to witness a signature to a document. He was away about an hour and on his return home noticed a ladder resting against the side of the house, exactly under his study window. The ladder had been carried quite a considerable distance, and the burglar had evidently had a look into the room, but seeing the light had returned to terra firma.

The front door was next tried and opened with a skeleton key. The housebreaker carefully locking the door after him before getting to work. All the rooms were ransacked and a considerable sum of money and two diamond pins were taken. The robbery was a very impudent one as it was a bright moonlight night and neighbors were in the vicinity.

Mr. Birmingham thinks that his movements must have been very close.

(Continued on Page 4)

## C. M. COOKE RETURNS CONVALESCENT FROM KAUAI

C. M. Cooke arrived in the Ki-hau this morning from Kauai and is now at his home on Horetania street in a condition that promises a satisfactory return to health. Mr. Cooke, accompanied by his son Clarence and Dr. Putnam, made the trip without becoming exhausted and was very fortunate in the perfect weather that prevailed. Intimate friends who called on him at his home this morning were very optimistic in their predictions that perfect rest will speedily bring Mr. Cooke back to his former health and enable him to resume business.

## ALEXANDER YOUNG CAFE OPEN AFTER THEATER

The Alexander Young Cafe will be open every evening till further notice after the Lilliputian and other shows are over. Refreshments and after-theatre suppers will be served in good style.

BANANAS!  
PINEAPPLES!!  
PAPAYAS!!!

Island Fruit Co.,  
72 S. KING. PHONE 15.

## FINE MEALS

POPULAR PRICES

Alexander Young  
Cafe

## Spring Mattresses

NEW SHIPMENT OF HIGH GRADE, IMPORTED  
SPRING MATTRESSES, FOR WOOD OR IRON BEDS,  
JUST RECEIVED.

J. Hopp & Co.,  
185 KING ST.

## OLD GRAB BILL IS REVIVED IN HOUSE

Kinney Would Boost the  
Salary List Of  
Honolulu

THINKS SUPERVISORS  
ARE WORTH \$75 A MONTH

Appropriations for Kapiolani Girls' Home and Salvation Army Are Recommended in the Lower Body

HOUSE.

The old "grab bill" over which the House fought for weeks last session and which was finally pruned of its most vicious features, has again risen to the surface this session, and more trouble was in sight. It was introduced this morning by Representative Ruel Kinney, in the shape of a bill to boost the salaries of nearly all the officers of the City and County of Honolulu, notwithstanding the fact that economy has been preached in the Legislature ever since the session commenced.

Kinney is content to leave the salary of Mayor Fern at its present figure of \$3000 per annum, but his bill provides that the Supervisors shall draw down \$75 a month instead of their present \$50. The Sheriff is given a lift of \$25 a month. The City and County Clerk is to get \$2100 a year instead of \$1800; the same with the Auditor. The salary of the City and County Attorney is shoved up to \$3000; that of the Treasurer to \$2100. Down the line of deputy sheriffs there are corresponding increases in salary. There is trouble in sight over this bill.

**Let Everybody Talk.**  
The three bills introduced by Rice, numbers 88, 89 and 90, all relating to the turning over of the district courts, jails and hospitals to the counties, the Health and Police Committee, to which they had been referred, thought of such special import to the House that they should be generally discussed in Committee of the Whole, and the committee so recommended. The report was adopted, and the bills placed on the calendar for the afternoon session.

**\$20,000 for Girls' Home.**  
The Health and Police Committee last week made a personal inspection of the Kapiolani Girls Home at Kalihi, and found the buildings in such a dilapidated condition that it recommended that not less than \$20,000 be appropriated for the erection of new buildings. "The Sisters," said the report, "are doing a good deal of charitable work and even more than should be expected of them. We think the Government should provide anyway weather-proof buildings, and so recommend." Money for Salvation Army.

(Continued on Page 4)

SUGAR

SAN FRANCISCO, Calif., March 9.  
SUGAR: 88 analysis Beets, 10s. 33-4d. Parity, 4.18 cents. Previous quotation, 10s. 3d.

## The Most Popular Boys

are the ones who work for us, and who are always prompt in the delivery of parcels and messages. Try them. Call 361.

TERRITORIAL MESSENGER  
SERVICE. PHONE 361.

## RUSSIA TO CLOSE VLADIVOSTOK

WASHINGTON, D. C., March 9.—It is announced today that the Russian Government will make Vladivostok a closed port.

## Roosevelts In Italy

OYSTER BAY, Long Island, March 9.—The members of ex-President Roosevelt's family will sojourn in Italy during Mr. Roosevelt's African trip.

## Confer For Peace

MEXICO CITY, Mexico, March 9.—President Zelaya will call a conference of neighboring States to insure peace in Central America.

## Johnson Is Willing

VICTORIA, B. C., March 9.—Jack Johnson, the prizefighter, arrived here today. He says he is willing to fight Jeffries.

## Tornado Kills Thirty

BRINKLEY, Ark., March 9.—Thirty people were killed today and a million dollars' damage done to property by a tornado that swept this section.

EARTHQUAKES NEAR LISBON

LISBON, Portugal, March 9.—Earthquake shocks were experienced today in Minho Province.

GEORGE OLIVER FOR SENATOR

HARRISBURG, Pa., March 9.—George Oliver, newspaper publisher and capitalist, was today nominated by the Republicans of the Legislature to succeed United States Senator Knox.

## KAWAILANI PILES UP ON THE ROCKS

One Man Loses Life When  
Little Sloop Goes  
Ashore

The little schooner, Kawailani, which plys around the coast of Oahu, carrying rice, poi, etc., is wrecked on the rocks off Mokuauia near Kaneohe. One of the crew, a Korean, was drowned. It appears that the little craft was beating her way up the coast when the wreck occurred. There was a dead calm and a heavy undertow was running. The crew took to a small boat and when close to shore were

picked up by a wave and dashed on the rocks, all the men being thrown into the water. Two natives and one Korean reached the shore safely, but the fourth man, a Korean, disappeared. Being unable to swim it is thought that he was dragged out to sea by the undertow.

Deputy Sheriff Frank Pahlia detailed Officer U. Jones to the scene of the wreck, and the latter has kept in touch with Alex. Dowsett, agent for Captain Sam, who owns the schooner. The small boat has been recovered, but the sailor's body has not been seen. The Kawailani is hard and fast on the rocks, but the owners hope to pull her off at high tide.

The Kawailani is a boat of twenty-five tons, and a capacity of fifty tons. She had no cargo on board and is consequently not drawing much water. It is probable that she will be got off the rocks some time today or tomorrow.

BULLETIN ADS PAY

## Paragon Pants

Wear and Hold their Shape  
Because

They are correctly tailored of finest pre-shrunk materials in the latest styles. They look right and feel right; it's a comfort to wear them. Sold by

The Kash Co., Ltd.  
CORNER OF FORT AND HOTEL STS.

## YOUR WILL!

Is it properly drawn up? Is every little detail, every minor point, clearly covered?

Let us confer with you about your will. We make no charge for a consultation.



Hawaiian  
Trust Co.  
Ltd.,  
923 FORT STREET



## Bad Walking Ahead

Get in line to keep your feet dry with a pair of our

Box Calf "Diamond"  
Blucher Bals  
at \$3

They are the kind that have the wear in them. Island orders filled in the same day received.

Manufacturers' Shoe Co., Ltd.



## MASONIC TEMPLE

## WEEKLY CALENDAR

MONDAY

Pacific—Stated.

TUESDAY

WEDNESDAY

THURSDAY

Honolulu Commandery—Reg-  
ular, 8 p. m.

FRIDAY

Oceanic—Second Degree.

SATURDAY

Laf. Aikha Chapter No. 3—Reg-  
ular.All visiting members of the  
Order are cordially invited to  
attend meetings of local lodges

## HARMONY LODGE, No. 3, I. O. O. F.

Meets every Monday evening at  
7:30 in I. O. O. F. Hall, Fort Street.  
E. R. HENDRY, Secretary.  
P. D. WICK, N. G.All visiting brothers very cordially  
invited.

## OAHU LODGE, No. 1, K. of P.

Meets every first and third Fri-  
day evening at 7:30 in K. of P. Hall,  
corner Fort and Beretania. Visiting  
brothers cordially invited to attend.  
P. R. NUGENT, C. C.  
R. GOSLING, K. R. S.

## HONOLULU LODGE 616, B. P. O. E.

Honolulu Lodge No. 616, B. P. O.  
E. will meet in their hall on King  
near Fort Street every Friday even-  
ing.

By order of the E. R.:

HENRY C. EASTON,  
Secretary.

WM. H. MCINERNEY, E. R.

## Wm. McKINLEY LODGE No. 8, K. of P.

Meets every 2nd and 4th Saturday  
evening at 7:30 o'clock in K. of P. Hall,  
corner Fort and Beretania. Visiting  
brothers cordially invited to at-  
tend.

P. M. MCGREW, C. C.

E. A. JACOBSEN, K. R. S.

## HONOLULU AERIE 143, F. O. E.

Meets on the 2nd and 4th WED-  
NESDAY evenings of each month at  
7:30 o'clock in K. of P. Hall, corner  
Beretania and Fort streets.  
Visiting Eagles are invited to at-  
tend.

W. L. FRAZEE, W. Pres.

H. T. MOORE, Secy.

## HAWAIIAN TRIBE No. 1, I. O. R. M.

Meets every first and third Thurs-  
days of each month at Knights of  
Pythias Hall. Visiting brothers cor-  
dially invited to attend.

GEO. SANDERSON, Sachem.

E. V. TODD, C. of R.

## Perfumes

The best assortment ever  
shown in the city. STYLES  
and PRICES TO SUIT EVERY  
BODY.Leave your order for a box  
of Lohiward's Candy, Fresh  
only atCHAMBER'S DRUG  
CO., Ltd.Corner King and Fort Streets.  
PHONE 131.

## PAPER

All kinds in rolls and sheets.  
AMERICAN-HAWAIIAN PAPER &  
SUPPLY CO., LTD.  
Fort and Queen Sts., Honolulu.  
Tel. 410. George G. Guila, Gen. Mgr.

## RYCROFT'S SODA

Purest Flavor — Highest Quality  
Guaranteed Absolutely Pure.  
PHONE 270.

## Wong Wong,

CONTRACTOR and BUILDER.  
PLUMBING and PAINTING.  
Office: Honolulu Painting Co., 221  
King St.; P. O. Box 914.Blank books of all sorts, ledgers,  
etc. manufactured by the Bulletin  
Publishing Company.LOOK TO THE  
HEALTH OF  
YOUR

## Plants

We sell you a  
plant food that  
adds life and vig-  
or to Ferns, Vio-  
lets, Carnations,  
and Grass. This is  
not an experiment  
but a tried and  
proven article.Benson,  
Smith &  
Co., Ltd.

Hotel &amp; Fort Sts.

## Ice Cream

AND

## Pastry

THE BEST EXTANT.

## Palm Cafe,

HOTEL NEAR UNION.

## Reliability

is written on every piece of  
"1835" Silverware we sell.  
We Carry It In

## Three Beautiful Patterns

Our guarantee goes with  
each.

## J. A. R. Vieira &amp; Co.

113 HOTEL STREET

Gold Dollars  
At a Discountare just as easy to get as a good job  
of painting at a cheap price. When  
I do work I do it right—not cheap.

## Tom Sharp

—THE PAINTER—

Elite Building. Phone 397.

SHARP SIGNS attract attention

## Fall Millinery

BEAUTIFUL STYLES  
NOW ON EXHIBITION.

## MISS POWER'S

BOSTON BLDG., FORT ST.

## CUT FLOWERS

FOR YOUR VALENTINE

## Mrs. E. M. TAYLOR

THE FLORIST, HOTEL YOUNG BLD  
Telephone 339.

## WAIKIKI INN

"The Finest Bathing on the Beach."  
Meals At All Hours.

## WINES, LIQUORS, AND CIGARS.

W. C. BERGIN, Proprietor.

For Distilled Water and Assorted  
Soda Water, delivered to office and  
residence, RING UP 557.

## Arctic Soda Water Works

1263 Miller St. M. E. DE SA.

185 editorial rooms—256 busi-  
ness offices. These are the telephone  
numbers of the Bulletin office.

## LOCAL AND GENERAL

Bulletin Want Ads. will do all  
that publicity can do toward finding  
work for workers.

## Hello—Get Sullivan's back, 290.

A clean city means a healthy city.  
Meet your friends at Royal Annex.  
Bishop Smith left for the mainland  
by the Siberia today.The Alameda and the Nippon Maru  
arrived in San Francisco today.Surgeon J. Stepp, U. S. N., is a  
through passenger on the Siberia.Geo. A. Bachelder and wife de-  
parted in the Siberia this morning.Hon. Geo. R. Carter will speak at  
the Commercial Club tomorrow noon.Walter Dillingham went to San  
Francisco in the Siberia on business  
today.Paymaster E. R. Wilson, U. S. N.,  
arrived on the P. M. S. Siberia yester-  
day.If you are looking for any of your  
friends go to the "Two Jacks" and  
you'll find them.Take your carriage or automobile  
to Hawaiian Carriage Manfg. Co. for  
up-to-date repairs.Major Beecher H. Ray and Mrs.  
Ray arrived here on the Siberia from  
the Orient yesterday.W. L. Bilger and family left for  
their home in Seattle this morning  
on the Pacific Mail liner Siberia.Look Gum, a Chinese, charged with  
language unit for publication, was  
reprimanded and discharged by Judge  
Andrade.Papa, who used some shocking lan-  
guage yesterday, was sent over the  
water for ten days, by Judge Andrade  
this morning.Have you cleaned your sidewalk  
this morning? If not, why not?  
Jack McVeigh, superintendent of the  
leper settlement, is booked to  
depart for Molokai this afternoon on  
the Mikahala.Tahitashi was fined six dollars and  
three plunks costs for assault and bat-  
tery. Judge Andrade handed him his  
sentence this morning.Three gamblers, Fraser, Kahalana  
and Kam, were fined \$7 this morning  
at the Police Court. A number of  
cases were remanded till tomorrow and  
the next day.C. J. Hutchins was among the out-  
going passengers in the Siberia. He  
went to San Francisco and will prob-  
ably extend his trip to New York, be-  
fore returning to Honolulu.There is talk of an Irishman's din-  
ner being held on St. Patrick's day.  
It is to be hoped that the rumor is  
true, as there are quite a number of  
native of the Emerald Isle in Hono-  
lulu, who can be relied upon to make  
the Thistle club feast look like a Sun-  
day school picnic in comparison with  
the Shamrock layout.No reduction on  
PACIFIC MAILAccording to Mr. Bayer, of the Pa-  
cific Mail Steamship Company, the  
statement made in the morning paper  
that his company was cutting the  
freight rate from \$3.50 to \$2.50 per ton  
is incorrect. Mr. Bayer does not know  
how the mistake arose.Mr. Morse, of the American-Hawai-  
ian company, on the other hand, stated  
this morning that his company was  
reducing the rate one dollar per ton.  
This reduction applies to the cargo  
carried by the Pleiades, which leaves  
San Francisco on the 13th inst.Both the Matson Company and the  
Oceanic line are awaiting instructions  
from the mainland. Cables have been  
sent with reference to the cut in the  
freight rates, and until answers are  
received no steps will be taken in con-  
nection with the matter. Much specu-  
lation is being indulged in as to the  
effect of the cheaper rates on imports  
to this city.THE KINAU, which went over to  
Kauai yesterday morning to bring  
back C. M. Cooke and family, returned  
this morning, docking at her wharf  
at 4:15 o'clock. She will leave again  
this afternoon for her regular run to  
Kauai, returning on Saturday.Rev. W. P. McCluskey threatens to  
stir up scandal on return to Alameda.  
Canadian encroachment threatens  
to cripple halibut trade of Tacoma  
and Seattle.Steel trust announces plan to cut  
prices and form open market in  
trade.Reunion planned of class of 1871  
of San Francisco Lincoln school with  
master and former superintendent.

## A Most Excellent Assortment of

## SUITINGS

## W. W. Ahana Co.,

LIMITED

62 S. KING ST. PHONE 523.

THE BEST "FITTERS" IN TOWN.

## NEW REVENUE PLAN

WASHINGTON, D. C., March 8.—The new tariff bill will probably  
revive the war revenue stamp tax of 1898.  
The duty on lumber will be reduced about one-half.  
Hides will be put on the free list, and other substantial reductions  
will be made.Secretary of the Treasury Franklin MacVeagh, in an interview, says  
that the stamp tax will be necessary because of the serious deficit in  
the revenue receipts of the country from customs duties and other  
sources.LARGE RUSSIAN APPROPRIATIONS FOR  
MUSCOVITE ARMY AND NAVY PLANSST. PETERSBURG, Russia, March 8.—The Duma, in executive ses-  
sion, has voted extraordinary credits: To the Navy, \$3,742,500; to the  
Army and for stocks and munitions, \$19,929,500.

## SPERRY RETIRES; SCHROEDER IN

WASHINGTON, D. C., March 8.—Admiral Sperry today hauled down  
his flag as commander of the Atlantic Fleet, and was succeeded by Ad-  
miral Schroeder.

## AIRSHIP MAN KILLED

SAN PEDRO, Calif., March 8.—Lester Elkins, an aeronaut, who made  
an ascension here, was carried out to sea and drowned.PRESERVING FRUIT; HOUSE WRANGLES  
POULTRY PROFITS AND DOES NOTHINGTwo Good Lectures In Holstein Relaxes Hard  
College of Hawaii And Democrats  
Course Give Show

## HOUSE.

Sixteenth Day—Afternoon Session.

For the first time this session the  
House of Representatives made an  
unhappy show of itself—all because  
Speaker Holstein for an hour and a  
half relaxed his hand and allowed one  
of the Democrats to show his compe-  
tence as a presiding officer. The House  
went into Committee of the Whole to  
consider the current expense appropria-  
tion bill. All afternoon the members  
wrangled and scuffled, clattering up  
the air with words, piled motion on  
top of motion, rose to points of order  
and more points of disorder, called for  
rulings which it was utterly beyond  
the power of the paralyzed chairman  
to make, and generally had a good  
time of the sort that used to be an  
almost daily occurrence in the good  
old days of the early legislatures.And when the committee finally rose  
to "report progress," and Speaker  
Holstein by his mere presence in the  
chair brought order out of chaos, the  
House had done absolutely nothing.  
Matters stood exactly as they did.The attendance at the College of  
Hawaii last evening was nearly dou-  
ble that of previous evenings and  
goes to show that people are inter-  
ested in live subjects which pertain  
to the comforts and enjoyment of  
life.Miss Hunt spoke first on the "Pres-  
ervation of Fruits" and was followed  
by Prof. Porter on "Poultry and  
Profits."Miss Hunt called attention first to  
the end of purpose of preserving  
fruits. Good points were given for  
the prevention of decay, the retention  
of flavors and the preservation of  
form in fruits.Fruit decomposition is due to mi-  
cro-organisms; these may be either  
bacteria, yeasts or molds. After dis-  
cussing the character and habitat of  
the three agents which destroy fruit,  
a few slides were put upon the  
screen to illustrate the points men-  
tioned.There are several methods by  
which fruit may be preserved; dry-  
ing is as ancient as refrigeration is  
recent. Evaporation and canning  
are other successful methods. As for  
canning, the practice began in about  
1810 but at that time was not so suc-  
cessful as today.Many fruits can be preserved by  
the use of sirups and sugar solutions  
of different densities. Several formu-  
lae were given for the making of  
solutions to preserve the various  
kinds of fruits.Prof. B. E. Porter spoke on "Poultry  
and Profits" with interest to all. He  
called attention to the fact that of all  
the various branches of animal indus-  
try there is probably none that brings  
such quick returns as poultry keeping.He pointed out the suitability of the  
vocation to people of either sex and  
station in life. Some very practical  
points were discussed, among which  
were the qualification of a successful  
poultryman, the quality of fowls, the  
expense of equipment and the quality  
and kind of market packages which  
will please the eye of the consumer,  
some points if rightly considered will  
ultimately lead to satisfaction, pleas-  
ure and profits.The lantern slides were from pho-  
tographs of poultry yards in success-  
ful operation and showed in an impres-  
sive manner the possibilities of pos-  
sible culture. The slides covered such  
subjects as location and site, selection  
of stock, management of flocks, breed-  
ing and improvement, methods of mar-  
keting and disposal of by-products.At the close of the lecture a success-  
ful poultryman reported that for the  
last year he had made a profit of \$400  
out of his fowls and that at the present  
time he was gathering about 15 dozen  
eggs per day.Next Wednesday evening a lecture  
upon the "Botany of Economic Plants"  
will be given by Prof. W. T. Pope who  
will be followed by President J. W.  
Gilmore on the subject of "Plant Im-  
provement."SAILING AT NOON today, the  
Mauna Kea and the Mauna Loa de-  
parted for Lahaina and Hawaii. The  
former goes to Hilo and the latter to  
the Kona-Kauai side of Hawaii.AFTER LOADING SUGAR the  
Arizona, from Kahului, passed this  
port last night on her way to Elele,  
Kauai.THE IWALANI sailed this morning  
at 9 o'clock for Honolulu and other  
Hawaiian ports on Hawaii.THE HELENE will leave this af-  
ternoon for Kohala and other ports  
in the immediate neighborhood.

## IN FOREIGN PORTS

Tuesday, March 9.

SEATTLE—Arrived March 8:

S. S. Hygien, from San Francisco.

SAN FRANCISCO—Arrived, March 8:

S. S. Nippon Maru, hence March 2.

VICTORIA—Arrived March 9:

S. S. Makura, hence March 2.

SAN FRANCISCO—Arrived March 9:

S. S. Alameda, hence March 3.

Monday, March 8, 1939

SAN FRANCISCO—Arrived Mar. 7:

S. S. Virginian, from Salina Cruz.

Bith. Cornadu, hence Feb. 17.

Bith. Imgard, hence Feb. 17.

SAN FRANCISCO—Arrived March 8:

S. S. Lurline, hence Feb. 17.

HILO—Arrived Feb. 27:

S. S. Enterprise, from San Fran-  
cisco.

## ARRIVED

Tuesday, March 9.

Stmr. Kinan, Gregory, from Nawili-  
wili, 4:02 a. m.

## DEPARTED

Monday, March 8.

M. S. L. H. T. Kukui, Johnson, for  
Kauai, 10:20 p. m.

Tuesday, March 9.

Stmr. Iwawani, Mitchell, for Hono-  
kua, 9 a. m.Stmr. Mauna Kea, Freeman, for Ha-  
waii, 12 m.Stmr. Mauna Loa, Shineron, for Ha-  
waii, 12 m.P. M. S. S. Siberia, for San Fran-  
cisco, 10 a. m.

## SAILING TODAY

Stmr. Likilike, Naopala, for Hawaii,  
5 p. m.

## PASSENGERS ARRIVED

Per stmr. Kinan, from Nawiliwili.

Mrs. J. A. Cooke, Mrs. C. M. Cooke,  
Miss Alice Cooke, C. M. Cooke, Jr., C.  
H. Cooke, Dr. Putnam, Miss Squires,  
Miss Firkhous.

## PASSENGERS DEPARTED

Per S. S. Siberia, for San Francisco,

March 9: Miss Selon Gordon, Mrs. J.

W. Smith, J. W. Smith, Chesbro Smith,  
Adele Smith, Mrs. Krentzinger, Dr. A.

G. Hodgins, Miss Beale Lord, T. M.

McCord and wife, Mrs. Potter and par-  
ty, Mrs. W. R. Lewis, G. A. Bachelder

and wife, K. Bachelder, Mrs. Daniel

Reardon, E. R. Shaw, S. L. Delgas and  
wife, O. P. Piper, Mrs. M. R. Watts,Mrs. E. C. McEwen, Miss Lucia Mc-  
Ewen, Mrs. W. Long Idreham, Rev.

C. W. Smith, Miss E. M. Smith, Mrs.

Headley, Miss Harris, W. L. Bilger and  
wife, Miss Ruby E. Bilger, Geo. E.Lilly and wife, H. M. Rice and wife,  
Daniel Smiley, Dr. H. C. Allen andwife, Miss Florence Allen, R. L. Lipitt  
and wife, Leopold Shnerman, Mrs. B.

Fischer, Miss Jette Schenman, W.

C. Ramsey and wife, L. A. Norcia and  
wife, H. H. Tompkins and wife, Miss

Ramsey, Frank N. Boyer and wife.

Per stmr. Mauna Kea, for Maui and

12, Mar. 9, 12 m.—C. R. Willard, G. P.

Mac, J. A. McCashell and wife, J. P.

Eppendow, W. S. Spaulding, -C. L.

Green and wife, Miss Canton, Miss H.

Smith, Thos. Hall, W. G. Timley and  
wife, W. A. Holman and wife, Mrs. A.

N. Locke, Mrs. W. H. C. Campbell, Mr.

Aldridge, Miss Snow, Alice Nakea, D.

K. Enebel and wife, President Smith,  
Misses Smith (4), C. W. Nibley, E. W.

Smith, Misses Nibley (2).

Per stmr. Mauna Loa, for Maui and

Hawaii, Mar. 9, 12 m.—Mrs. Akona,

Mrs. J. A. Magoon, Mrs. Wm. Kama-  
ma, Joe Gasper.

## PASSENGERS BOOKED

Per stmr. Kinan, for Kauai, Mar. 9,

5 p. m.—Alvin Wilcox, S. Mahelona, S.

E. Martin, Mrs. Anderson, Miami  
and wife.Per stmr. Mikahala, for Molokai,  
Mar. 9, 5 p. m.—Mrs. C. C. Conrad, Dr.J. M. Howell, J. D. McVeigh, P. W.  
Pease.

## HONOLULU WEATHER

March 9, 1939.

Temperatures—6 a. m., 68; 8 a.

m., 72; 10 a. m., 74; noon, 75; morn-  
ing minimum, 68.

Barometer, 8 a. m., 29.89; absolute

humidity, 8 a. m., 6.294 grains per

cubic foot; relative humidity, 8 a. m.,  
74 per cent.; dew point, 8 a. m., 62.

Wind—6 a. m., velocity 9, direction

SW; 8 a. m., velocity 12, direction

SW; 10 a. m., velocity 20, direction

SW; noon, velocity 20, direction S.

Rainfall during 24 hours ended  
8 a. m., .00 inch.Total wind movement during 24  
hours ended at noon, 190 miles.WM. B. STOCKMAN,  
Section Director, Weather Bureau.Nebraska man convicted on charge  
of murdering woman reprieved one



## New Laces For Spring Dresses

Many different patterns of new Spring LACES have just arrived. A splendid assortment of White, Cream, Ecru, and Black. The colored laces and laces with gold are favorites for Spring. BABY IRISH and VENISE BANDS, in White, Cream, and Ecru, MALTESE and CLUNY LACES, COLORED VALENCIENNES LACES with insertions to match, GOLD VALENCIENNES LACES, with insertions to match, NEW FILLET BAND TRIMMING, THE NEW DROP AND BUTTON EFFECT LACES, GOLD ALL-OVER YOKINGS, NEW FLOUNCE EMBROIDERIES, in demi and full length.—ALL NEW PATTERNS.

### Spring Models —IN— Princess Gowns

Clever Spring Suits arriving with every steamer, the latest-style thoughts of the most famous designers. The advance models are one and two of a kind. They are made of fine sheer materials in white, delicate pink, and blues, handsomely trimmed with lace and fine embroidery, and Very Moderately Priced.

PRINCESS GOWNS from \$7.50 upwards. See our window display.

### New Dressing Sacques

in a variety of styles.

WHITE LAWN  
DRESSING SACQUES.

scalloped border, in light blue and pink, at 50¢ each.

Also with Dresden trimmed border, at 75¢ each.

A SAMPLE LINE OF SACQUES, in all styles, lace and embroidery trimmed, from 75¢ up.

## Sachs Dry Goods Co., Ltd.

Corner Fort and Beretania Streets, opposite Fire Station.

### NOTICE OF REDEMPTION OF BONDS OF HAWAIIAN SUGAR COMPANY.

We, the undersigned, W. G. IRWIN and E. I. SPALDING, Trustees under Deed of Trust dated January 24, 1902, made by HAWAIIAN SUGAR COMPANY to the undersigned as Trustees, hereby give notice to the bondholders of the Hawaiian Sugar Company of the election of said Company to redeem and pay, and of the redemption and payment of the following numbered bonds of said Company on the FIRST DAY OF APRIL, 1909, at the office of the MERCANTILE TRUST COMPANY OF SAN FRANCISCO in the City and County of San Francisco, State of California, to-wit:

Bonds numbered:							
1	60	125	184	246	306	382	452
2	61	128	185	247	307	383	453
3	62	129	186	248	308	384	454
4	63	130	187	249	309	385	455
5	64	131	188	250	310	386	456
6	65	132	189	251	311	387	457
7	66	133	190	252	312	388	458
8	67	134	191	253	313	389	459
9	68	135	192	254	314	390	460
10	69	136	193	255	315	391	461
11	70	137	194	256	316	392	462
12	71	138	195	257	317	393	463
13	72	139	196	258	318	394	464
14	73	140	197	259	319	395	465
15	74	141	198	260	320	396	466
16	75	142	199	261	321	397	467
17	76	143	200	262	322	398	468
18	77	144	201	263	323	399	469
19	78	145	202	264	324	400	470
20	79	146	203	265	325	401	471
21	80	147	204	266	326	402	472
22	81	148	205	267	327	403	473
23	82	149	206	268	328	404	474
24	83	150	207	269	329	405	475
25	84	151	208	270	330	406	476
26	85	152	209	271	331	407	477
27	86	153	210	272	332	408	478
28	87	154	211	273	333	409	479
29	88	155	212	274	334	410	480
30	89	156	213	275	335	411	481
31	90	157	214	276	336	412	482
32	91	158	215	277	337	413	483
33	92	159	216	278	338	414	484
34	93	160	217	279	339	415	485
35	94	161	218	280	340	416	486
36	95	162	219	281	341	417	487
37	96	163	220	282	342	418	488
38	97	164	221	283	343	419	489
39	98	165	222	284	344	420	490
40	99	166	223	285	345	421	491
41	100	167	224	286	346	422	492
42	101	168	225	287	347	423	493
43	102	169	226	288	348	424	494
44	103	170	227	289	349	425	495
45	104	171	228	290	350	426	496
46	105	172	229	291	351	427	497
47	106	173	230	292	352	428	498
48	107	174	231	293	353	429	499
49	108	175	232	294	354	430	500
50	109	176	233	295	355	431	501
51	110	177	234	296	356	432	502
52	111	178	235	297	357	433	503
53	112	179	236	298	358	434	504
54	113	180	237	299	359	435	505
55	114	181	238	300	360	436	506
56	115	182	239	301	361	437	507
57	116	183	240	302	362	438	508
58	117	184	241	303	363	439	509
59	118	185	242	304	364	440	510

The holders of above numbered bonds are hereby notified to present for payment of principal and interest to April 1st, 1909, and surrender said bonds at the place and on the date last above mentioned, and that after April 1st, 1909, all interest on said bonds numbered as aforesaid shall cease.

Honolulu, T. H., February 4, 1909.

W. G. IRWIN,  
E. I. SPALDING,  
Trustees under said Hawaiian Sugar  
Company Trust Deed.

## LOOK

at the automobiles, buggies and carriages we have recently overhauled and painted

THEN SEE US.

W. W. Wright Co.,

King Street near South  
Tel. 252

## BENNY & CO., LTD.,

DEALERS IN

Bottles

And Buyers Of

Raw Material

415 Queen St.

Phone 443.

Let us make you a Sepia Bromide Enlargement from one of your small negatives.

## What Army and Navy Folk Are Doing

A delightful hop was given last night by the officers of the Fifth Cavalry at the Officers' Club at Lihoua cantonment.

Just as soon as the necessary rails arrive, the railroad extension from Wahiawa to the cavalry post at Lihoua will be completed. The roadway has been graded and everything is in readiness for the rails, but there work has been forced to stop.

The troops at Lihoua have experienced considerable inconvenience owing to the absence of railway facilities. The roads leading to the cantonment are not of the best, and during wet weather supplies are taken in with difficulty.

Holland will not participate in the Dreadnought building contest, but has drawn up a modest naval program, which provides for the laying down of four armored vessels of 5000 tons and sixteen knots, twenty-six torpedo-boats of 150 tons and twenty-five knots, fourteen small cruisers, three river gunboats, two mining vessels, and five submarines. These vessels are intended exclusively for the defense of the Dutch coast. The expenditure in 1909 will be \$1,700,000. The coast defense armor-clad De Zeven Provinciën will be completed, and two vessels of the Kortenaar class will be constructed, while a submarine of a larger class than the Luctor and Emergo will be built. Two large destroyers, having a minimum speed of thirty-one knots, are to be laid down for service in the Dutch East Indies.

A delegation of workmen employed at League Island called on Secretary Newberry at the Navy Department, Washington, Feb. 10, and had an extended interview with him in regard to the effect on the employees of the various navy yards of the proposed consolidation and reorganization of all work at the yards. Mr. Newberry explained to them, somewhat in detail, the extent of the reforms under way and showed them how necessary it was that the constantly increasing cost of maintaining the Navy and its vast work should be, if possible, economized and kept within reasonable bounds. He told them that it was impossible to say just how far the changes would make necessary the reduction of yard forces, but that such a reduction would come as obviously to be expected, as it was one of the avowed objects of the reform.

## MODEL LICENSE LEAGUE'S VIEWSON INTEMPERANCE

The annual convention of the National Model License League at Louisville, Ky., adopted the following resolution as the sense of the liquor men on the regulation of the traffic:

First, that as representatives of brewing, wine-making, and distilling trades, and of wholesale liquor dealers, saloonkeepers, innkeepers, and members of collateral trades, we protest against all intemperance in the use of alcoholic beverages and against all lawlessness of every sort whatsoever in the sale of such beverages.

Second, that intemperance is a curse, and every man who becomes intoxicated should be arrested and prosecuted.

Third, that "treating" which is responsible for so large a per cent. of involuntary intemperance, should be opposed by public sentiment and by every member of our trade.

Fourth, that the licenses of all retail liquor dealers who violate laws should be cancelled.

Fifth, that prohibition is un-American, that it is opposed to the idea of individual sovereignty and to the spirit of our institutions, and, furthermore, it must continue to be merely a costly absurdity as long as it prohibits only the manufacture and sale of alcoholic beverages.

Sixth, that when prohibition, whether for State or County, is submitted to the people it should prohibit, not only the sale, but the purchase, possession, and use of wine, beer, and whiskey.

Seventh, that the county should not be the unit in local option contests, as it does not represent the American principle of local self-government.

Eighth, that where prohibition is adopted by a Legislature or a people, the manufacturers and dealers in wine, beer, and whiskey should be compensated for investments made prior to its passage in obedience to demand and under the sanction of existing laws.

Ninth, that the National Model License League reiterates its conviction that the sale of alcoholic beverages can be properly regulated by providing that licenses shall renew themselves each year until cancelled by a vote of the people or by conviction of violation of the law; that no more licenses shall be issued until the proportion is not more than one for each 500 of population; that license fees shall not be unreasonable or in the nature of a penalty; that conviction for violation of law, second offense, shall cancel the license and prohibit the holder from engaging in the business again.

A supplemental resolution was adopted, declaring the league's idea to be ultimate salvation of all trades and all allied industries to enter the movement at once.

## HORRIBLE ACCIDENT; DEATH HAPPY RELEASE

John Joaquin de Reis met with a horrible death yesterday, by falling into a boiling vat of soft soap. Reis was employed at the Honolulu Soap Works and was attending to his usual duties when the accident happened. It appears that late in the afternoon Reis was working in his accustomed place above the vat in which the soft soap is boiled. Thinking that he heard Manager Johnson calling him he turned to answer, and at once slipped and fell into the boiling mixture.

Reis' agonized cries were heard by Mrs. Johnson, who at once summoned her husband. Johnson and some other employees rushed to the rescue and threw a rope to Reis. The unfortunate man grabbed the line, and the other men hauled him out, although the flesh from Reis' hands came off in lumps.

Strange to say, although the cooked flesh came off in slices, and his head was covered with soap, Reis' eyes were not hurt. The dying man was conscious to the last, and spoke highly of his employer. At 10:20 o'clock Reis was released from his suffering by merciful death. An inquest will be held this evening at the police station.

## MAN KICKED BY HORSE AT STOCKYARD STABLE

Ah On, an employee of Lewis' Stock yards Stables, was badly kicked by a horse at noon today. It appears that the Chinaman, who was alone in the stables, went into one of the stalls to attend to the horse's grooming. The animal lashed out at him twice, the first kick catching him on the side of the head, and the second landing on his back.

Ed. Scott, the blacksmith, who has his place of business adjoining the stables, was attracted by the moans of the injured man. Scott at once went into the stall and removed the man to a place of safety. The police patrol wagon was called and the injured man was conveyed to the Queen's hospital. Ah On, although badly hurt, will not die. The scalp wound bled a lot and the other injuries may not have a serious ending.

## REAL ESTATE TRANSACTIONS.

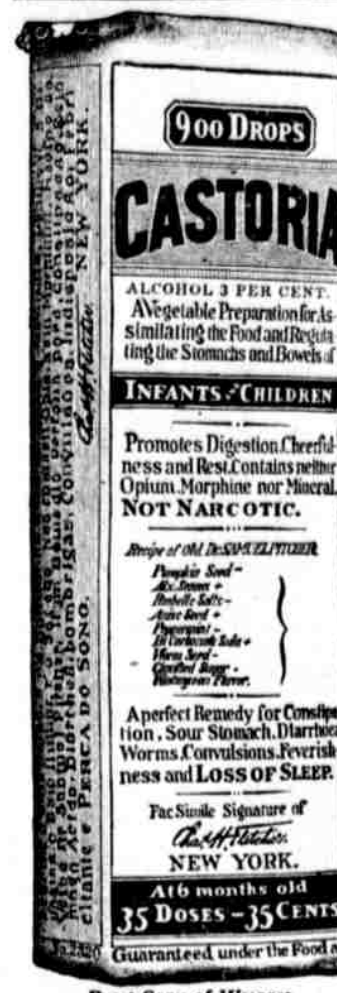
Entered for Record March 8, 1909.  
From 10:30 a. m. to 4 p. m.  
Wm B Harrub to von Hamm-Young Co Ltd ..... CM  
Hon Library & R R Assn to S H Oni ..... Rel  
Moses Naopala to Moses Naopala Jr ..... D  
Moses Naopala to Emele K Naopala ..... D

George P. Thellen, stock broker and real estate man, sailed today for the mainland in the Siberia.

The Korea called at 4 o'clock today from San Francisco for this port.

## GURREY'S

## NEW ORGANDIES BLOM'S



**CASTORIA**  
For Infants and Children.  
The Kind You Have Always Bought  
Bears the Signature of  
*Chas. H. Fletcher*  
In Use For Over Thirty Years  
**CASTORIA**

## Consider The Cost

If you are starting in house-keeping consider the cost of a wood stove and the fuel it consumes during its life.

## Burn Gas

and the joys of house-keeping will be kept down.

Honolulu  
Gas Co., Ltd.  
Bishop St.

## FIRST QUALITY

REISTLE'S PLATES ARE RIGHT  
REISTLE'S RATES ARE RIGHT  
**FRANK REISTLE**  
ENGRAVER AND ELECTROTYPY  
PHONE 114 1420-24 LAMARCA, DENVER COLO.

## OUR CUTS PRINT

## FAIR PRICE

## BOOKS

ALAKEA AND MERCHANT  
STREETS

Brown & Lyon Co.

## The Regal THAT PROVES THE SHOE

## WHEN

You Want Electric Wiring Done or Private Telephone Installed or Dry Batteries, call the

UNION ELECTRIC CO.  
Harrison Block. Phone 315.

THE  
**Chas. R. Frazier  
Company**  
FOUR ADVERTISERS  
Phone 371. 122 King St.

## P. H. BURNETTE,

Attorney-at-Law for the District  
Courts; Notary Public; Draws  
Mortgages, Deeds, Bills of Sale,  
Leases, Wills, etc.; Agent to Grant  
Marriage Licenses.  
79 MERCANT ST.  
HONOLULU. PHONE 310.

## FOR SALE.

Solar Heaters, 30 to 100 gallon capacity. Galv. Tanks, 5 gallon to 500 gallon capacity. French Ranges, sizes 4 ft. to 10 ft., for brick setting. Range closets and seats suitable for use in schools or plantations. Sheet Metal Work and Plumbing. Estimates, Jobbing promptly executed.  
EMMELUTH & CO., LTD.  
TEL. 211. 145 KING ST.

## Royal Hawaiian Garage

GEO. S. WELLS, Mgr.  
HOTEL ST. PHONE 191.  
Prices Reasonable.

"For Rent" cards on sale at the Bulletin office.

## Dingy Walls

are made fresh, clean, and beautiful in a day by our fine

## Wall Paper

Our stock was never better or more complete than now. In our large assortment of new shades and patterns, you will find just the one that will suit you.

## Lewers & Cooke, LIMITED

177 S. KING ST. PHONE 775.

185 editorial rooms—256 business office. These are the telephone numbers of the Bulletin office.

Bulletin Business Office Phone 256. Bulletin Editorial Room Phone 185.

## Andrew Usher's Scotch Whiskey O.V.G. Special Reserve

W. C. Peacock & Co., Ltd.,  
Agents.

## Rainier Beer

FOR SALE AT ALL BARS  
TELEPHONE 1331

## The J. CARLO LOAN OFFICE

Fort Street near Hotel



# EVENING BULLETIN

DAILY and WEEKLY Published by BULLETIN PUBLISHING CO., LTD.  
At 120 King Street, Honolulu, Territory of Hawaii.

Daily every day except Sunday. Weekly issued on Tuesday of each week.

MEMBER OF THE ASSOCIATED PRESS.

Wallace R. Farrington, Editor

SUBSCRIPTION RATES PAYABLE IN ADVANCE.

EVENING BULLETIN	WEEKLY BULLETIN
Per Month, anywhere in U.S. .... \$ .75	Per Six Months, ..... \$ 4.50
Per Quarter, anywhere in U.S. .... 2.00	Per Year, anywhere in U.S. .... 8.00
Per Year, anywhere in U.S. .... 8.00	Per Year, anywhere in Canada, .... 1.50
Per Year, postpaid, foreign, ..... 12.00	Per Year, postpaid, foreign, ..... 2.00

CIRCULATION LARGEST OF ANY NEWSPAPER PUBLISHED  
in the Territory of Hawaii.

Tel. { Editorial Rooms, - 185  
Business Office, - 256

Entered at the Postoffice at Honolulu  
as second class matter, 4

TUESDAY MARCH 9, 1909

## MR. CARTER'S ARGUMENT.

If George Robert Carter had been in the Governor's chair at the meeting with the Legislative Committee last evening, the editor of the Bulletin, for instance, had made the talk in opposition that was put up by Mr. Carter, the utterances from the Governor's chair would have been something like this:

"My dear sir, we are facing a condition—not a theory. You criticize this project on which a large number of our citizens are united and you offer nothing practical in the place of it. Your talk is along the lines of destructive criticism, when we in the government representing the people for the time being need constructive criticism. You say we ought to do certain things. That is very easy. You talk to tell us how this may be done in a practical manner. We appreciate your kindness in giving your opinion, but you are not helping matters."

Then Mr. Carter, as representing the high office of Chief Executive, would have been satisfied that he had his opponent floored.

Now the query is: Does it make a difference whether you are out of the "government" or in it?

## LIQUOR DEALERS' REQUESTS.

The strongest point in the presentation made by the Liquor Dealers' Association before the Ways and Means Committee of the Senate is the request for an appeal to courts of justice from arbitrary authority of the Board of Liquor Commissioners exercised in an arbitrary manner.

The right to be heard has become so fixed in the minds of the people in their efforts to secure common justice that they naturally sympathize with those striving to gain fair-play if made the victims of unjust despotism.

The radical opponents of the liquor traffic state that the present law will be nullified if the right of appeal from arbitrary authority is allowed.

The average citizen responds that any law should be nullified that does not grant a man a fair trial when he is threatened with the destruction of a business that has been legalized, and thereby recognized as legitimate, and which he has built up after years of effort.

The weakness of the present law when it is gone into by men not prompted by bitter prejudices is that it places dealers in a legalized trade under all the restraints of criminals but does not grant them the privilege every free country gives the lowest criminal.

When the radicals say that common justice is so weak that the people cannot be protected against evildoers in liquor traffic without placing power over business life and death in the hands of a few men, the source of the difficulty is as much in the system of justice as in the traffic to be regulated.

Men who call for the right of appeal from arbitrary acts of public officers have always had a strong case since humanity began to raise its voice in protest against the wrongs committed by despots. It is often said that a beneficent despotism is the most perfect form of government. This sentiment prevails more generally among a certain element in Hawaii than in any other place in the United States. But the limitations of the despots are those of average humanity. The people have found it safer for all concerned to rest their cause with the courts of justice rather than men acting in secret.

The liquor men go further in suggesting changes for the present law than it would be advisable for the Legislature to follow. Their statement, however, is notable for its freedom from a reciprocal note of bitterness that has characterized the comment of the so-called temperance radicals.

There are incidents of the secret history of the secret workings of the local Liquor Commission that have come to the knowledge of this paper fully justifying the contention that modern despots can do outrageous things. These facts go to justify the demand that men engaged in a business recognized under our law as legitimate, shall have the right to ap-

peal to a court against the destruction of their business at the discretion of a Board acting in secret.

Honolulu has never witnessed stronger financial backing than is offered the program for immigration and conservation of resources. It is the utmost folly to endeavor to check the sugar plantation interests from now joining in and helping forward a movement for the better Americanization of Hawaii. Now that the large interests are in a mood for assisting new measures to gain desirable immigrants, make the most of it. They have been damned for not doing it. Are they to be damned for becoming converts to the cause?

## FERN'S APPOINTMENTS

(Continued from Page 1)  
on 1000 shares of stock selling at \$100 per share and the same amount selling at 1 cent per share, should his bill become a law.

Lyman Claim Favored  
Senate Resolution No. 27, appropriating \$536.96 to reimburse Levi C. Lyman for land taken at Ponahual, Hawaii, was favorably reported by the Ways and Means Committee.

In his report Senator Fairchild said that, after careful investigation, his committee had come to the conclusion that the claim was a just one, and had prepared a bill to cover the matter. A slight change was made in the amount mentioned in the bill, a reduction of interest having been agreed to by the petitioner. The bill was introduced and passed to the Printing Committee.

House Bill No. 70, making Hawaiian birth certificates prima facie evidence of the facts therein contained, was favorably reported by the Judiciary Committee. The adoption of the report passed the bill on second reading.

The Judiciary Committee reported favorably on House Bill No. 62, relative to the right of sepulchre. The report was laid on the table to be considered with the bill.

Senate Resolution No. 33, asking the Territorial Treasurer for information regarding licenses to sell beer, was reported by the Judiciary Committee in a manner which answered all of the questions asked in the resolution. The report stated that the Treasurer had no knowledge of any violations of the law. Senator Coolidge, the father of the resolution, moved that the report of the committee be adopted, and the incident was thus closed.

Uniform Acknowledgments  
Senator Chillingworth introduced a bill providing for a law, uniform with those of other States and Territories, relative to the acknowledgment of written instruments. The bill went to the Printing Committee.

Senator Makekau introduced a bill defining the boundaries of the First and Second Representative Districts of Hawaii. The bill was referred to the Printing Committee.

House Bill No. 69, relating to the bonds of public officers, passed third reading unanimously.

House Bill No. 47, relative to taxation, was referred to the Judiciary Committee.

House Bill No. 70, relative to certificates of Hawaiian birth, which was favorably reported by the Judiciary Committee, passed its second reading.

Sensor Makekau then stated that the Hawaiian members were very anxious to go down to the docks and see the Mauna Kea sail, so moved that a recess be taken until 2 o'clock this afternoon. The motion passed.

## IMPUDENT PORCH CLIMBER

(Continued From Page 1)  
ly watched, and the moment he left his house the burglar, or burglars, must have started operations.

The police department was informed of the matter and active steps are being taken to rid the suburbs of the gang of thieves who are doing such baroque work.

New record made in criminal cases in Modesto and Los Angeles, burglars being caught and sentenced the same day.

## For Sale Manoa Valley

You can save money by buying a home. It's cheaper than renting. \$3500. will buy a new 6 room house with best modern improvements on car line.

Trent Trust Co.,  
LIMITED

## HOW CAN YOU DO IT?

Here are some figures from the best source possible that ought to set you to thinking if you have kidney disease.

Dr. Loonala of Bellevue Hospital states from clinical observations and a large number of autopsies at Bellevue that nine-tenths of men and women over 40 have Bright's Disease in some form.

See Doctor Medical Times, December, 1903, p. 204.

And the census shows that over nine-tenths of all the deaths from kidney disease the last census year were really due to Bright's Disease, viz., 55,000 out of 62,000.—See U. S. Census for 1900.

Although Dr. Loonala is an authority and it is presumptuous, yet we cannot believe with him that nine-tenths of all people over 40 have Bright's Disease. We think he would have been nearer the facts if he had said that nine-tenths of all people having kidney trouble have Bright's Disease, for the census figures cannot be denied and show conclusively that nine-tenths of all the dead from kidney troubles had Bright's Disease.

How on earth, then, can people with kidney trouble afford to take anything but Fulton's Renal Compound, the only known specific for Bright's Disease. It is superseding kidney medicines. We are the agents. Honolulu Drug Co., Fort St.

## OLD GRAB BILL IS REVIVED

(Continued from Page 1)  
The same committee recommended the adoption of Huddy's resolution, No. 42, to appropriate \$6000 for the maintenance of the Salvation Army Home. The report said:

"Your Committee feels that this institution being somewhat of a public nature, should receive some amount of Government aid. These people are doing an immense amount of good to all nationalities alike." The resolution was laid on the table to be considered with the appropriation bill.

The Committee reported favorably on House Bill 48 relating to the manufacture of oil.



## For Rent

Completely furnished house on Wil-  
der Ave. for four months ..... Price \$75.00  
Furnished Cottage, King St., Pa-  
wana ..... Price \$45.00  
Furnished House at Peninsula.  
..... Price \$75.00

## For Sale

Kalihi, near car line. New house.  
lot 100 x 100 ..... Price \$1900.  
Building lots, Kaimuki, \$200. and up.  
Building lots, Manoa Valley, \$1000  
and up.  
Beach property at Kaalawai.

## Waterhouse Trust

COR. FORT AND MERCHANT STS.  
1000  
MILES OF SEA BRIDGED BY ONE  
Wireless



## Water Works Money.

A resolution for the appropriation of \$342,093 from the Loan Fund, for improving the Honolulu water works, was introduced by Kalelopa. This, an administration measure, covers all the work proposed to be done, including the installation of new pipe lines, an electric power station at Nuuanu, a high lift pump at the Beretania street pumping station, the construction of the proposed reservoir at Punchbowl and Makiki, concrete cover for Makiki reservoir, new discharge main for Kaimuki reservoir, repairs to old pipe lines, boring three additional wells, and labor and material in connection with the above projects. This resolution covers a number of separate resolutions which have at various times been introduced.

The following resolutions for the appropriation of money were introduced:

Hiblo, \$500 for expenses of Lahaina water works;  
Kawewehi, \$1000 for water pipes for Waiolima, Kau;  
Shingle, \$10,000 for completion of Palolo belt road;  
Sheldon, \$5000 for water pipes at Kekaha, Kauai.

Kawewehi introduced a bill amending the pound law relating to animals trespassing upon government land or roads.

Third Readings.  
Senate Bill 33, providing that litigants before the Supreme Court are entitled to a hearing before the full number of Justices was passed on third reading.

House Bill 92, introduced by Castro, making procuring a crime punishable by a fine of from \$100 to \$500 and imprisonment at hard labor for from two to five years, passed third reading by unanimous vote.

House Bill 87, fixing the age of consent at 12 years, was passed on third reading, with no opposition except the dissenting vote of Furtado.

Committee Reports.  
On recommendation of the Miscellaneous Committee House Bill 4, amending the County Act, was tabled, it being identical with a resolution previously introduced by Moanali.

Senate Bill 17, the citizen labor bill was reported back from the Miscellaneous Committee with amendments.

Failed to Concur.  
Consideration of the Senate amendments to Sheldon's House Bill 29, providing for the assignment of counsel to poor prisoners, caused a discussion. The Senate amended the bill, providing that counsel shall be assigned only in "cases of special hardship." Sheldon and Douthitt failed to see what was meant by this clause. The only place Rice could see where there would be a special hardship was if the bill became a law. This would entail a special hardship on the Territory. A motion was made and carried that a special committee be appointed to confer with the Senate over the amendment. Sheldon, Douthitt and Furtado were named.

Second Reading.  
H. B. 104, Kaniho, giving the counties 60 per cent of the taxes and license fees—Finance Committee.  
H. B. 110, Concy, payment of sewer rates—Public Lands Committee.  
H. B. 111, Concy, payment of water rates—Public Lands Committee.  
H. B. 113, Furtado, Supervisors to be liquor license commissioners—Finance Committee.

## "NOTHING DOING" AT CITY HALL

The meeting of the Board of Supervisors tonight will be watched with a great deal of speculation and interest. Mayor Fern would make no statement when seen this morning. Supervisor Kane said he had nothing new to add to the statement which already appeared in the Bulletin, and contented himself by saying that "justice must be done."

Supervisors Ahia, Quinn, and Aylett could not be located this forenoon and hence their views as to the appointment of John Wilson as road supervisor for Honolulu, could not be learned.

The office of His Honor was full of callers this morning, many of whom were waiting for a "chance."

Prosecutor Cook threatens to impeach woman witness in the trial at Redwood City of District Attorney Bullock for malfeasance in office.

Valuable pearl, oyster shells, prehistoric animals and reptiles found fossilized in Nevada oil fields.

NEW  
Two-Piece Costumes  
OF  
Linen and Pique  
JUST IN BY EXPRESS  
Latest Eastern Models  
\$18.50 to \$30

EHLERS

## STARVING COMRADE IS SELF SUPPORTING

Grand Army Men Resent  
Slur On Their  
Good Name

Editor Evening Bulletin:  
I notice an article in this morning's Advertiser headed "Grand Army Man Starving to Death" by the name of I. Charman, living on Richard lane near Gulick avenue. This is sad news and a slur on the Grand Army if true. This comrade belongs to Geo. W. De Long Post, and in good standing. His name on our rolls is Fred, Sherman. Our comrades visit him often. He has an income from the old country of \$500 per annum. He does not even draw a pension for the reason he says that he has enough to keep him.

He has not been feeling well for a few months, but told us that he needed no help. He chooses to live alone, and I suppose does not have the best of cooking, that a man in his condition and age should have. I saw him on the street-car not more than four days ago. I suppose in his feeble condition he fell or lay down, and could not get up again. We do not propose to let Grand Army comrades who defended Old Glory on the bloody field of battle starve in Honolulu.

Respectfully,  
JOHN W. FRANCIS,  
Post Commander.

March 9, '09.

## VICTIMS' WAIL

(Continued from Page 1)  
200 Nobles of Islam Temple, together with their wives, can be counted upon to be present at the ceremonies. The following letter from W. H. C. Campbell of Hilo shows how the plan is received on the big island:

"I am in receipt of your favor of the 19th, contents of which has my careful attention. In reply would say that all the Masons of this island would be pleased to welcome the Nobles of Islam and Aloha Temples to Hilo and will do anything and everything they can to make their visit a pleasant one. In regard to a place for the ceremonial, I am pleased to say that by that time we will have our new Masonic Temple completed, in which there will be ample room. The Lodge-room being 54 x 31 feet; banquet hall 75 x 31 with a stage 17 feet deep, and several entry rooms well arranged for the work.

"In case this project goes through, you will have eight or ten Hilo candidates to have some fun with.

"Another matter which might be considered in this connection is the dedication of our new Temple; there will probably be some members of the Grand Lodge among the Nobles of Islam Temple, and if a Grand Lodge meeting could be held here to dedicate the Temple, the members of Kilauea Lodge would be pleased indeed.

"Hoping to hear in the near future that the project will be carried out, I am, yours in the faith,

"W. H. C. CAMPBELL."

Illustrious Potentate Boekus this afternoon named the following committee to take charge of the festivities: C. G. Boekus, M. E. Grossman, M. Phillips, J. S. McCandless, G. P. Wilder, W. H. C. Campbell.

The plan is to take the neophytes to Hilo by special steamer, and put them through the hair-raising part of the ceremonial in the crater of Kilauea. The Potentate of Islam Temple, San Francisco, has fallen in with the plan and is anxious to have some of his cohorts participate in the feast of tears.



## One Cent A Day

IS ALL IT COSTS TO RUN  
ONE OF OUR

## Watchman's Clocks

If your watchman sleeps at night, you'll know it, if he carries one of our clocks.

H. F. Wichman & Co.  
LIMITED  
LEADING JEWELERS

## Trunks, Valises, Suit Cases

We have a large stock of them in a variety of styles, made especially to give good service. They are handsome and genteel.

T. H. Davies & Co., Ltd.  
Hardware Department

## Home-Made BY Wholesale

That's the secret of the high quality of

## HEINZ GOODS

Made from an old German receipt, they are purer, better, and less expensive than any fruits, pickles, sweetmeats, or delicacies that can be made at home.

Your Grocer Has Them

## New Brownie No. 3 Camera

Size of Picture, 3 1-4 x 4 1-4

This new camera takes a picture in every way as good as those taken by \$8.00 cameras. It is simple in construction, and built primarily to TAKE PICTURES. That's why it is cheaper. Call and see it.

Films, Velox, Photographic Supplies

Honolulu Photo Supply Co.,

"Everything Photographic" Fort St. just below Hotel.

## SIBERIA SAILS

The liner Siberia, carrying many passengers, principally tourists and a few kamainas, sailed for San Francisco this morning shortly after 10 o'clock. Among the kamainas, who left in her were Walter F. Dillingham, Judge Perry, and others.

The Bulletin Publishing Co., Ltd., is agent for the best engraving and lithographing company on the Pacific Coast, and is prepared to give estimates on high-grade printing of every kind. Also prices and samples of the Very Latest in Engraved Cards, Announcements, and Invitations, in the best of form for smart functions.

Radia thor acts like radium, makes photograph through stove lid possible and cures disease, being inexpensive. Mrs. Lizzie G. Cochrane charged with attempted murder for shooting her husband's affiant.

Miss Frances Tait quits cafe job to join theatrical company. Judge upholds power of press in Kentucky case.

## Ready Cash

A savings account in this bank is a safe investment. It pays you 4 1-2% interest, compounded semi-annually, and it is ready cash any time you want it.

Unlike other investments, it is always worth dollar for dollar, and you stand no chance of losing.

But the main point is this: Ready Cash is the answer to the knock of Opportunity. Many hear of chances for high paying investments—and all they can do is to tell their friends of them.

Save your money; get one of our handy savings banks free. We pay 4 1-2% on savings deposits.

Bank of Hawaii, Ltd.,

Judd Building, Fort and Merchant Sts.  
Capital and Surplus  
\$1,000,000.

Unique  
Chinese Goods

Wing Wo Tai & Co.  
941 NUUANU ST.

WING CHONG CO

KING ST. NEAR BETHEL  
Dealers in Furniture Mattresses, Etc., Etc. All kinds of KOA and MISSION FURNITURE Made To Order.

"For Rent" cards on sale at the Bulletin office.







# Immigration and Conservation Find Strongest Financial Supporters

## Large Assembly of Business Leaders Before Legislative Committee

Honolulu saw something last night that is probably new in the history of the world, certainly unique in the history of Hawaii—a lot of men clamoring to be taxed—and experiencing difficulty in being allowed by those upon whom the burden of taxation will not fall to impose a heavy tax upon themselves.

Members of the Sugar Planters' Association, financiers, and prominent business men and lawyers, and other men appeared before the Ways and Means Committee of the Senate and the Finance Committee of the House, sitting jointly, and urged that the Legislature pass the law imposing a special 2-per-cent. income tax upon all incomes in excess of \$4000. Only four men opposed the measure—Geo. R. Carter, L. L. McCandless, Charlie Achi, and A. V. Gear. The others were unanimous in their contention that this tax is absolutely necessary to save the principal industry of Hawaii from ruin.

E. D. Tenney, speaking as a member of the Planters' Association, made the frank statement that it is necessary for the maintenance of the one great industry of this country, and for the development of any other industry, that laborers be provided through immigration.

Representative Shingle, presiding, opened the meeting with the statement that it had been called for the purpose of affording the public an opportunity to express its views freely regarding immigration and the conservation of natural resources, and to discuss particularly the bill imposing an income tax of 2 per cent. upon all incomes over \$4000.

It is estimated, he said, that the revenue from this tax will be \$612,000. Of this it is proposed to apply three-fourths to immigration and one-fourth to conservation of our natural resources. To show what is wanted, he read that portion of the Governor's biennial message relating to immigration and conservation of natural resources. The committee, Shingle said, had asked Governor Frear to be present and to go more fully into details regarding the matters to be discussed.

### Governor Frear

Governor Frear, taking the floor, said that if our present prosperity is to be maintained, it must be by securing an ample supply of labor and developing our natural resources. If the sugar plantations should languish it would mean hard times all around.

What are our prospects for labor? Chinese immigration was cut off by annexation. Japanese immigration is practically shut off. Some time ago a large number of Portuguese and Spaniards were brought in at a cost of \$300,000, the money being raised by the planters. But that is stopped now. If immigration of that kind is to be secured now, it must be either by Act of Congress or by Act of the Legislature. As it is impossible for the planters themselves to obtain immigrants from Portugal and the Azores, they must be brought from the mainland.

Two years ago an Immigration Commission was appointed by Act of Congress. It has been hoped to get them down here, but so far they have been unable to come. And we can get no aid from Congress until they do come.

"Now, we can't get immigrants from the Philippines nor from Porto Rico. We have been trying to get them from the mainland, but we can't get them in adequate numbers. The only way to get them is from Europe and Azores. We propose to raise the money by an income tax with an exemption of \$4000.

Two hundred and twenty-five thousand dollars is only three-fourths of what it cost to bring in a comparatively small number of laborers two years ago, and this tax is to run only two years. So it will be seen that this amount is not any too much.

We must also develop diversified industries for the land that is not suitable for sugar. This will develop the Territory. Just how the remaining \$75,000 a year is to be spent has not been decided. One way might be by aid to the Federal Experiment Station. We all know the good that has been done by the Planters' Experiment Station. We know what the experiment stations

in the States have done. They have practically made farming a new thing.

The work of our Federal Experiment Station is solely for the benefit of the Territory.

There is much to be done with live stock industries, in breeding new kinds and experimenting regarding foddies. There is a great deal to be done by the Station in preventing the diseases of pineapples and in improving the quality of taro and its output.

Then, again, there should be a thorough agricultural survey of the Territory.

Now, all these lines will take only \$10,000 a year.

From \$5000 to \$7500 should be devoted to a hydrographic survey. In these islands water is all-important, and it is necessary to know how much we can get and where we can get it. We know what the planters have done at an expenditure of \$15,000,000. We need to know more for the purpose of developing the arid lands. On the unirrigated lands we have two or three times as much area as we can cut up into homesteads at the present time.

Two or three thousand dollars could be expended in developing the marketing facilities of the Territory, in bringing the grower and consumer together. Some money might be expended in aiding the entomological work of the Bureau of Agriculture and Forestry.

This question of immigration is all-important. The other questions are equally important though perhaps not so immediately pressing.

### What the Planters Think

E. D. Tenney was called upon, Chairman Shingle stating that the Labor Committee of the Planters' Association, consisting of Messrs. Tenney, Cooke, and Hackford, had been asked to be present. Mr. Tenney read his address, as follows:

The question before this Legislature of providing funds to promote immigration to this country, is one which vitally affects the Government, and, directly or indirectly, affects every business man and laborer residing within this Territory.

It is not a new problem which is now presented, for it has been before this country ever since our agricultural enterprises developed to such an extent that the native supply of labor became insufficient to carry on those enterprises.

From 1852, the date of the first immigration of laborers to Hawaii, there has been no cessation of the efforts of the Government, and the agricultural enterprises of this country, to procure settlers and laborers, and only at rare intervals have we been free from anxiety and worry on this account. Hawaii is a country that invites no immigration other than Asiatic. We are isolated, transportation from Europe, the only other source from which laborers may be drawn, is expensive, and the extent of the country is not great enough to attract attention or create any extensive European immigration.

Without artificial stimulus and financial assistance the influx of any people other than from Asia practically would be nothing.

The problem we are now facing is, therefore, only the same question presented in another form and under different circumstances.

This country is dependent upon its agricultural enterprises, and whatever may be the outlook for the future development of diversified industries, it is no exaggeration to say that at the present time, and certainly for many years to come, the Territory of Hawaii is, and will be, wholly dependent on a single industry, not only for its economic prosperity, but even for the actual living of nearly all of its population.

The custom house statistics of imports and exports show this fact conclusively; for the fiscal year of 1938 the total value of exports from Hawaii was \$41,640,505, of which sugar was valued at \$39,816,082.

With very few exceptions every business enterprise in the country and every person employed by such enterprises, is dependent upon the sugar industry, and if that languishes through any cause, whether it be legislative action or an insufficient supply of labor to carry on the operations of the sugar plantations, the result is felt by every one who endeavors to make a living within this Territory. It will be felt very greatly by the Government through an immediate and substantial decrease in revenues, for the revenues of the Territory are largely derived from the sugar industry.

It is necessary for the maintenance of the one great industry of this country, and for the development of any other industry, that laborers be provided through immigration.

The only immigration to Hawaii since the annexation of these islands to the United States, with the exception of some Portuguese and Spanish brought in by the Territorial Board of Immigration, has been of Japanese. For many years the laboring force of the plantations has been, to a very great extent, made up of Asiatics.

As we all know, the majority of the Asiatics who have come here have not intended to make this their permanent home, and the consequence has been that, although there has been a large immigration of such people, there are comparatively few of them who could be classed as a resident population. The average Japanese who has come to Hawaii has seldom worked on the plantations longer than five years, after which time he usually returns to his home country with his accumulated earnings, or, if he returns, enters into other lines of employment.

### Lines Closer Drawn

About two years ago through Congressional action and executive regulation, in conjunction with the Japanese Government, the immigration of Japanese was curtailed, and the lines have been drawn closer all the time, until now the Japanese Government has adopted a policy of almost complete exclusion of its people from the United States.

At the present time there is a sufficient supply of labor for the needs of the plantations, but the Asiatic laboring class, being more or less transient, their number is steadily decreasing by departures for Japan, and it is easy to see that a long continuance of such conditions must bring trouble to the plantations, and financial distress for the Territory and its inhabitants.

### Steady Pressure

From the time that the Federal Government became actively interested in our industrial problems, there has been a great and persistent pressure from that source upon the Territorial Government and upon the sugar plantations to increase by European immigration the non-Asiatic population of the Territory. Every Government official who has been here and investigated our conditions, has repeatedly urged this upon us. They have openly stated that Asiatic immigration would be cut off and that our only source of labor supply would be from the mainland of Europe.

The past efforts of the Board of Immigration have been conducted with the distinct approval and sanction of the Federal Administration, which, from the President down to its labor and immigration officials, has manifested the greatest interest and extended hearty cooperation in this work.

### Established Fact

You may accept it as an established fact that Asiatic immigration to Hawaii is a thing of the past and that any effort to seek such immigration will find no support, but a great deal of opposition, on the part of the Federal Government. The Administration at Washington is absolutely determined that the population of this Territory shall be built up of other than Asiatics, and every step will be taken to accomplish this end. The Federal Government desires that we work out our own salvation along the lines indicated, but if we do not reach the desired result voluntarily, measures will be taken to accomplish this for us, even though measures lead to a curtailment or, perhaps, sacrifice of our principal industry.

### Immigration Board

In 1905, the Legislature of Hawaii created a Board of Immigration, and in 1906 and 1907 the Board introduced about 2400 Portuguese from the Azores and Madeira Islands and about 2200 Spaniards from Malaga, at a cost of approximately \$300,000.

This sum was contributed entirely by plantation corporations, free of conditions except that it should be used for the purpose of European immigration. Naturally, a great majority of these people sought work on the plantations, and we have every reason to believe that this money was well expended and a great benefit has been derived from this immigration.

Immigration of this character, however, was cut off by the amendments to the Federal Immigration law of 1907, which amendments prohibit contributions to the Board of Immigration by corporations. A bill was introduced in Congress to amend the immigration laws so as to permit the resumption of immigration to Hawaii upon the same lines as conducted by the Board of Immigration, but, although every effort was made to secure its passage, this measure was overwhelmingly defeated.

The only method by which European immigration can be conducted

is by the Board of Immigration of the Territory, with funds raised by legislative enactment, and regularly appropriated for that purpose.

It seems to be an established conclusion that, at the present rate of taxation, the income of the Territory will be insufficient to provide any funds for the purpose of immigration.

The amount that should be expended annually for the furtherance of immigration should not be less than \$250,000 to \$300,000. With this amount the Board of Immigration should be able to obtain three shipments of European immigrants per annum, basing my conclusion on what the Board has heretofore accomplished.

The question which presents itself is by what method shall this fund be raised. The burden of taxation should be placed on those who are best able to bear it, and upon those who will naturally derive the most immediate benefit from the immigration. In no way can you reach this result better than by increasing the income tax along the lines proposed by the Governor.

The additional amount obtained by an increase of the income tax of 2 per cent. on incomes above four thousand dollars will be secured principally from the plantation companies, and I consider that the burden of the increase will be more equitably distributed, and be borne by those who are more able to bear it in this manner than by any other method that has been proposed and has come to my attention.

Furthermore, so far as I am informed, the plantation interests stand ready to support this measure and have no opposition to offer to the proposed increase of income taxation, provided that the revenue derived therefrom is used for the purpose under consideration. The plantations realize the necessity of immigration and also that they will derive direct benefit from the bringing in of a number of European immigrants, and, realizing this, they are willing to stand the greater proportion of the expense thereof.

They do not favor an increase of the property tax as has been suggested.

### Why \$4000?

Shingle for the committee asked the Governor why he placed the figure of \$4000 as the amount of exemption.

Governor Frear replied that this placed the burden upon those best able to bear it, and as the sugar plantations would benefit most immediately, it seemed best right that they should pay the tax. If the exemption is put too high, there is danger that the tax would be held unconstitutional. Four thousand dollars is the exemption in the Federal income tax, which was held unconstitutional for other reasons. This would be equivalent to a \$24,000 property exemption.

Shingle wanted to know if the Governor thought a \$24,000 property exemption would stand. Frear replied that he did not think it would. He wouldn't want to take the risk.

### Carter Opposed to Tax

George R. Carter complimented the committee on their open hearings, which he said harked back to the old New England town-meeting idea.

Mr. Carter said he wanted to be on record. He did not agree with the plan proposed.

First, living is too high here. If we want the citizen middle class, we are not encouraging that class when we put a tax of 4 per cent. on an income over \$4000.

Massachusetts has an income tax and it is surprising to learn the number of citizens of Massachusetts who live in Connecticut and Rhode Island.

"I fall to see how the next Legislature can fall to continue the tax. 'What little I have in the world is in sugar. We can't afford many losses. We are running on a high tension."

"I contend that the possibilities of securing immigration are not exhausted, securing immigration by individual effort."

Mr. Carter cited an instance of one man who wanted to bring 1000 Koreans from Yuchan, and of a Macedonian he met in New York who said there were thousands of his countrymen ready to come if they were given the opportunity.

"It seems to me that not sufficient effort has been made along those lines. I am not willing to admit that not any of the better class of Porto Ricans can be obtained."

As to conservation, no sensible man can object to it. But it requires a plan of procedure, and the most important thing is a hydrographic survey, and the Legislature cannot

do better than to appropriate \$5000 for such a survey.

"The mistakes of the past will be repeated unless we have a survey to show where water can be used to the best advantage."

"As to our forests, we have reserved some of them and we ought to reserve more."

"But it seems to me that whenever we get into difficulty here we put our hands in our pockets and pay for it. It is an admirable quality and can be overdone."

"But we can appeal to Congress and get assistance, and it would seem to me the better plan to exhaust every other possibility before we put on this tax. We should consider the matter very carefully before we undertake it."

Senator Fairchild stated that to a man the Ways and Means Committee was of the opinion that the Governor's budget should be kept within the available income. But for the special work under consideration it is absolutely necessary to raise more money somehow. He wanted to know from Mr. Carter how he thought this money ought to be raised. He denied that the committee had lain down on its job, but they were in a quandary.

Carter considered this a hypothetical question, and he was not prepared to answer hypothetical questions.

"These two things you want," he said, "are additional functions of government; and it is just human nature when people want anything done to go to the Legislature to get it done. This is an additional function of government."

"Now, this question of labor—there is no other community in the United States that carries it. I do not offer any method of raising revenue, for I am unalterably opposed to raising any additional revenue."

Furtado asked Carter if he was opposed to any further immigration.

"No, I am not; but I think that should be done by private enterprise."

### Expensive Government

John Emmelhut said he considered our system of government entirely too expensive. The difference between the cost of our government and that of communities on the mainland would be sufficient to do all that the planters want done. He made a comparison between New Mexico and Hawaii as regards cost of government, very much to the credit of the former. Although the chief industry of the Territory ought to be assisted, Mr. Emmelhut could not see that it is best to do it by means of the proposed income tax on incomes over \$4000. He suggested a light, graduated income tax.

### More Localization

Senator Fairchild said that the difficult question was to effect the necessary economy by turning over more functions of government to the Counties. The Ways and Means Committee is ready, he said, if the community will stand by it, to submit a plan whereby \$200,000 a year can be saved to the Government.

### Would Help Hawaiians

W. A. Kinney said it was evident that the planters and business interests have made up their minds to favor and submit to this tax. So anything further from them would be superfluous. But he thought the Hawaiian people ought to be heard from. And there are other small business interests who look upon this bill merely as a plan to get the planters out of a hole. He suggested that the planters make it their business to see to it that these interests understand the situation—make it a community matter so that all might see the necessity of this immigration.

### Would Hit the Poor

L. L. McCandless couldn't see how it is that the poor people are not going to pay their share of the tax. There are many relatively poor persons who own stock in the sugar plantations. It is these poor people

who have put their money into sugar who are going to have to pay this tax. But Ewa and Oahu plantations need their money to conserve the water necessary for their existence instead of spending it to develop plantations on the other islands.

Willing To Help  
C. G. Hallentyne, while professing lack of sufficient knowledge of the subject to speak on it, said that he knew, as everybody does, that everybody in the Territory is absolutely dependent upon the sugar industry, and all ought to be willing to bear the tax for the welfare of that industry. For that reason he favored the proposed tax.

Carter suggested that \$200,000 a year might be saved if property owners were required to pay for street improvements on streets adjoining their property.

Get Out of Civic Feds  
Fairchild replied that that subject had been considered by the committee, and their idea is that the Counties ought to be given more power and authority. If you want fine school houses and sidewalks, you ought to pay for them yourselves. Do as we do in Kauai. I have letters from my constituents saying, 'For God's sake, don't do this thing.' I replied, 'Why don't you stop joining Civic Federations and pay more attention to public business—get into the party and do your work at the polls?'

Castro asked Mr. Carter if he believed that the planters could at their own expense get the necessary number of laborers from New York or any other part of the United States. Carter replied that he did not believe the planters had tried hard enough. It was true that their agent in New York had not succeeded in getting a single man in the last six months—"and if you want my opinion, I don't think he'll get a man in the next six months." Mr. Carter again reiterated his belief that, though immigration is all right, it ought to be induced by private enterprise.

"Do you want to take the job, Geo. R. Carter, for \$10,000 a year, to bring immigrants from the United States?" asked E. D. Tenney. "I could do better than your present man—at least 100 per cent, better," said Carter.

The meeting adjourned at 10:55.

Architects of world may be invited to submit plans for new San Francisco city hall.

BULLETIN ADS PAY

## Whitney & Marsh

## New Season Gingham

PLAIN, FANCY, and BORDERED,

10c

A fine assortment of CASH'S WASH BRAIDS to trim them with.

## New Shirt Waists

Long sleeves, some with the new colored EMBROIDERY and LINGERIE EFFECTS.

port of all classes, not only in bringing immigrants here but in providing for them after they get here.

Kinney said he regarded the proposed special income tax as more equitable than the direct property tax.

### A Subtle Scheme

Charlie Achi said he didn't have much income to pay a tax on but wanted to express his opinion as a citizen.

"If this law passes now, we are establishing a bad precedent. The time will come when many things that are paid by the Government now, the Legislature will say, 'Let the planters pay.'"

"The plantations now want to import labor. I admit it is for the best interest of the country. But this kind of a law is wrong. I don't want Castle, Cooke, Schaefer, and a few others to be the only millionaires in this country. We want millionaires to come here as well as laborers. But they will not come if you put on this tax. The whole country in the hands of twelve men is wrong. The meaning of this law is a punishment on an honest man and a premium on a man who makes a false return. You can't make a law commanding a man to keep books."

"This kind of a law will be a bad precedent. We ought to pass this law of Mr. Cohen's—get all the money you want. I believe if you pass this law you are trying to keep away other millionaires from Hawaii."

### Reforestation

At the request of the chairman C. A. Brown told about the work of reforestation he has been doing at Waipio. A great showing is being made, he said, and he believes it is going to be a big industry in time.

### At Our Doors

Richard Ivers considered it necessary to take some steps to replenish the rapidly diminishing number of laborers, and also to do something to conserve the forests upon which the rainfall is largely dependent.

"The labor and forest questions are not remote; they are at our doors. And with the best intentions in the world the Legislature cannot now economize enough to save the necessary money. The planters are willing to shoulder the burden for their very existence. 'I favor this tax,' he said, 'because we need the money and need it badly.'"

### Would Hit the Poor

L. L. McCandless couldn't see how it is that the poor people are not going to pay their share of the tax. There are many relatively poor persons who own stock in the sugar plantations. It is these poor people

Showing Tomorrow, for the First Time

## European Suitings

One Suit Each of a Kind

Specialty imported for our Merchant Tailoring Dept. HIGH-CLASS CLOTHES TO ORDER.

Mr. SWAHN, Late CUTTER FOR S. ROTH, IN CHARGE.

L. B. Kerr & Co., Ltd.,

ALAKEA STREET



GOOD AS THE BEST AND BETTER THAN THE REST:

## Pennsylvania Lawn Mowers

A new lot of these well-known mowers just at hand, and they are in time for you to attend to the grass that will be growing so fast on your lawns after the fine rains we have had.

We have the rest of the tools that go with Mowers, such as Hedge Shears, Hand Clippers, Tree Pruners, and All Sorts of Garden Tools. By the way, have you tried a little of our FORCEGROWTH on your lawns and in your gardens?

**E. O. Hall & Son, Ltd.**

**Veterinary Surgeon Pottie has taken an office at the corner of Hotel and Union streets, where he can be consulted on all matters relating to stock and where the well-known Pottie remedies can be obtained. Tel. 361.**

### AMUSEMENTS

Return of the "Little Big Favorites"—The

## Lilliputians

Opera House week commencing March 8th: "The Belle of New York," Monday, Tuesday & Wednesday; "Florodora," Thursday, Friday, and Saturday nights and Saturday matinee. Popular prices, 25c, 50c, and 75c; Matinees: Children, 25c; adults, 50c. Seats at Bergstrom's.

Call and See the New 30-H.P.

## Chalmers-Detroit Roadster

THE 7-PASSENGER, 40-H.P.

## Kissel Car

and 40-H. P. CHALMERS. DETROIT TOURING CAR.

at the  
**ASSOCIATED GARAGE, Ltd.**  
Merchant St. Phone 388.

## Livery and Boarding

FINE DRIVING AND SADDLE HORSES FOR HIRE OR SALE.

## CLUB STABLES Fort St.

## PRIMO BEER

## Pau Ka Hana

THE ENEMY TO DIRT. At Your Grocer's.

TYPEWRITERS AND OFFICE SUPPLIES. Everything that the Name Implies.

**Office Supply Co., Ltd.**  
931 FORT ST.

### AMUSEMENTS.

## ART THEATER

Wonderful Motion Pictures bringing to view scenes from many lands and embracing Comedy and Pathos. Two changes each week.

## Monday and Thursday

The Busy Fiancee; The Unsuccessful Flirt; The Female Bluebeard; A Romance in a Gipsy Camp; A Light-house Keeper; Checker Fiend; The Candidate; Enterprising Florist; Stockholm.

## Gem Theater

HOTEL STREET

## Motion Pictures

Changes Mondays, Wednesdays and Fridays

ADMISSION ..... 10c. and 20c. Children 5c.

## Park Theater

FORT ST. opp CONVENT.

LATEST MOTION PICTURES

UP-TO-DATE ILLUSTRATED SONGS

Admission ..... 10c and 15c Children 5c

## OWL

5-CENT CIGAR

**M. A. Gunst & Co.**  
FORT AND KING STREETS.

EXCELLENT LAUNDRY WORK

done by the  
**FRENCH LAUNDRY**  
with their new FRENCH  
dry-cleaning process.  
257 Beretania St. Phone 1491.

### Baseball Boxing Boating

## SPORTS

### Racing Bowling Rowing

### Records Will Soon Be In Danger

Owing to the track being in bad order the motorcyclists did not try for records at Kapiolani Park last Sunday. Quite a number of people took the trip out to the beautiful park in the hope of seeing some speedy work, but there was nothing doing in the cycle line.

Next Sunday being Marathon day most of the motorcyclists will take a run out to Haleiwa, and there will be at least one race out and back. Herrick feels confident that when the Kapiolani course is fixed up some very good, fast rides will be made by the local men. He himself will go after all the records from one mile upward, and hopes to place some new figures on the list that will take some going to beat.

Berger is fixing up a machine that he reckons will make all the others look like go-carts as compared to his. He, too, is confident of being able to make some of the present records look mighty cheap. If given fair weather and a decent track, Honolulu people will be treated to some fine motorcycling in the near future.

### Haleiwa Race Tickets On Sale

The tickets for the Haleiwa special are going off well, and anyone who is thinking of taking that train had better get a move on quickly and drop in and see Mr. Vierra at Wall, Nichols Co. The price of a ticket is only \$1.50—just think of it, six bits each way, and then a fine crowd of fellows who will accompany you.

The race will be a great event and a large crowd of sports will visit Haleiwa to see the finish of the contest. A circular has been sent out to most of the business houses in town inviting them to donate a prize. No doubt there will be a generous response to this appeal, and the fortunate winners of the places in the race will be well rewarded for their efforts over the 24 miles of country roads.

Automobile owners who would like to kokua are requested to communicate with one of the daily papers, Munger Goodale or Waiata has promised to look after his section of the road, and will help all he can in the matter. The race starts at 7:30 a. m. Sunday, and a big crowd will surely be on hand to cheer their respective favorites on to victory.

Frank Mokeat of Mayfield, Mich., returning home late last night discovered a burglar in a local store.

Frederick Palmer says President Diaz, in love for power, does not provide for needs beyond his lifetime.

The fights put up by Ironman McCollough, Sharkey, "Kid" Terry and Corporal Bird, pleased the promoters so much on Saturday night that the same two couples of boxers have been engaged to again provide the main attractions on the night of the Sullivan-Peterson fight.

Joe Cohen knows a good scrap when he sees it, and the fights put up by these men were the best seen in Honolulu for a long time. Both were four-round affairs and both ended in draws. On Saturday next the go between McCollough and Sharkey will be for eight rounds, and should provide enough excitement to stir even a man with liver trouble up, and make him cheerful. Sharkey is clever enough and has a wallop in either hand, but Iron Mac can stand any amount of punishment and is as hard as nails. His condition is superb and there is no doubt that he can stay the eight rounds—barring a knock-out—with ease.

The other pair, "Kid" Terry and Bird, should repeat their performance of Saturday last, when they also drew even. Bird is a clever boxer and knows a good deal about the game; still the "Kid" is improving a lot and has the advantage of Jack McFadden's advice.

It is a pity that the go between Silva and Nelson has been called off, for it would have been a great fight. It appears that the Punchbowl demon thought his services in the ring were worth much more than Joe Cohen had agreed to give him. Silva wanted a raise but there was nothing doing. Nelson is anxious for a fight with anyone about his own weight. At present the Dane is carrying around a black eye which Mr. Peterson handed him last week during a friendly spar at the Orpheum.

Dick Sullivan is hard at work out at Fort Shafter and has plenty of sparring partners to keep him going. Hercules has once more torn himself away from the doughbin and is thinking of fight once more. But now he wears armor over his boiler, and can take Sullivan's hardest punches in that region with a smile. Old Herby is a truer sure and takes a great interest in all kinds of sport.

Benley, the lad whom Nelson defeated, is feeling well again and is a good man in his own class. It was a mistake to put him up against such a much larger man as Nelson is. Benley should do well against someone about his own weight.

George Peterson is getting very fit

STODDARD DAYTON

7-Seated

By Hour or Trip.

G. C. Beckley, Jr.

PHONE 199.



## NO USE!

**THIS man has no use for his shoes. He is tied up to a stiff proposition that is occupying all his attention.**

**But for the one with both feet on the ground we have some good advice.**

**DON'T THROW AWAY A PAIR OF SHOES BECAUSE THE SOLES ARE WORN THROUGH, OR THE SEAMS RIPPED IN THE UPPERS.**

Bring them to us; our expert machine man will mend them in a jiffy so they will look and wear like new shoes.

Men's soles and heels, \$1.25; Women's soles and heels, \$1.00; Women's Fine Hand-Turned soles and heels, \$1.50; Men's rubber heels, 65c; Women's rubber heels, 50c.

## REGAL SHOE STORE,

McCANDLESS BUILDING, KING AND BETHEL STREETS.

## Great Reduction Sale

—OF—

## Shirts and Underwear

FOR ONE WEEK

BEGINNING SATURDAY, MARCH 6th  
25 TO 50% REDUCTION ON ALL SHIRTS AND UNDERWEAR.

TO MAKE ROOM FOR NEW GOODS.

A large line of NEGLIGEE SHIRTS, UNDERSHIRTS, and DRAWERS, at 35c EACH; goods worth 50 cents to 75 cents. These goods are all new and clean.

## Yee Chan & Co.,

CORNER KING AND BETHEL STREETS.

## COYEE HOP & Co.

SHIPPERS &amp; FAMILY BUTCHERS

## LAST WEEK OF OUR Big Mark - Down Sale

LADIES' CORSET COVERS, \$1.25..... Now 75c a Pair  
LADIES' CORSET COVERS, \$1.00..... Now 60c a pair  
LADIES' CORSET COVERS, 75c..... Now 40c a pair  
LADIES' CORSET COVERS, 40c..... Now 25c a pair  
LADIES' CORSET COVERS, 25c..... Now 15c a pair  
LADIES' VESTS, 10c..... Now 5c  
WHITE COTTON, 10c a yd..... 13 yards for \$1.00  
NEW FLANNELLETTE,..... 10 yards for 90c  
DRESS BATISTE, 10c a yd..... Now 5c a yard  
LACE CURTAINS, 75c a pr..... Now 40c a pair  
LACE CURTAINS, \$1 a pair..... Now 60c a pair  
A Large Assortment of LACE, RIBBONS, ETC., marked down.

## L. AHoy,

NUU ANU STREET.

## Another Boxer Tennis Club Leaves For Coast

Frankie Smith will probably leave on the Siberia today for the coast. Smith has made many friends in Honolulu and is a decent boy. When one compares present day boxers with old timers at the mitt game, a great difference is at once noticed. The cauliflower ear, the flat nose and brutal general expression are, now-a-days, not present. In the old days a fighter was almost an outcast, and in most cases he deserved the title. Things have much improved of late years, and it is men like Charlie Reilly and Frankie Smith who tend to elevate the game. It is a pity that Smith is following Reilly to the mainland, as probably some kind of a scrap would have been fixed up for him in the near future. Still we will see both the lightweights back within six months, perhaps before three moons have passed.

## Local Golfer Plays Game In Canada

C. E. Edmunds, the local golf player, had a few games whilst in Vancouver. Captain Combe of the Restorer does quite a lot in the golf line, and took Edmunds up to the links. The Vancouver players are very good, according to Edmunds, and the local man had hard work to hold his own. The clubhouse boys are always talking of Honolulu and Waikiki, and most of them wish they were back in Paradise once more. The boys spend most of their time fishing, and have some great sport with the finny ones. They all attended the football match between the Wallabies and the Vancouver players, and were enthusiastic backslappers for the marauders. The game was a very open one, and the skill of the Australians was wonderful from all accounts. The game was not so one-sided as the scores would lead one to expect, and the Canucks played up well. Edmunds is glad to be back where the trade winds blow, and the "liquid sunshine" is now and again in evidence.

The annual meeting of the Beretania Tennis Club will be held on March 17, St. Patrick's Day. The Club is in a flourishing condition, quite a lot of new members having joined during the past year. Some new business will come up at the meeting, and proceedings in connection with a tournament started.

There will probably be a men's double handicap played off, and there is some talk of mixed doubles being also played. Many of the players are getting into form and some good tennis will be seen. The courts are in fine condition and the coming season should be a very active one. Some of the younger players are coming along in fine style and there are at least two embryo Roths in active training.

Bulletin Business Office Phone 256.  
Bulletin Editor's Room Phone 185.

### AMUSEMENTS

## SULLIVAN

DICK, OF HONOLULU

VERSUS

## PETERSON

GEORGE, OF SAN FRANCISCO  
15 ROUNDS BOXING CONTEST  
For the Middleweight Championship of the Hawaiian Islands  
—at the—

## Orpheum Theater

SATURDAY EVENING, MAR. 13, '39

PRELIMINARIES

YOUNG SHARKEY of Honolulu vs.

SOLDIER McCOLLUGH of Fort

Shafter—EIGHT ROUNDS.

KID TERRY, U. S. S. Iroquois, vs.

CORP. BIRD, of Fort Shafter—

FOUR ROUNDS.

TICKETS on sale at Fitzpatrick's

Cigar Store, Fort and Hotel Streets.

Prices—Stage Seats, \$2.50; Reserved

Seats, \$2, \$1.50, \$1; General Admis-

sion, 50c.







# BUSINESS DIRECTORY

## MUSIC

Piano taught in six months by experienced teacher, 31 month 8 lessons. Special attention to adult beginners. Address "Teacher," Bulletin office, 4237-1m

## REPAIRING.

Woven Wire Mattresses repaired at the Factory Honolulu Wire Bed Co., 1250 Alapai St. Telephone 535. 3945-1f

## PLUMBING.

Yee Sing Kee—Plumber and Tinsmith, Smith St., bet. Hotel and Pauahi.

## EMPLOYMENT AGENCY

Japanese male and female help supplied promptly for any work. 1128 Union St., Phone 579. 4239-1m

## OSTEOPATHY.

Dr. Schumann. Hours 8-9 a. m.; 4-6 p. m. 224 Emma Square.

Blank books of all sorts, ledgers, etc., manufactured by the Bulletin Publishing Company.

The Weekly Edition of the Evening Bulletin gives a complete summary of the news of the day.

# BUY A LOT

—IN—

# Puupueo Tract

(Adjoining College Hills)

No advance in price. No clearing to be done—all ready for building.

PRICES RANGE FROM

\$800 to \$1500 per Lot

ACCORDING TO AREA AND LOCATION

Bishop Trust Co. Ltd.  
NO. 994 BETHEL STREET

**Mrs. Winslow's Soothing Syrup**  
has been used for over SIXTY YEARS by MILLIONS of Mothers for their CHILDREN while TEething, with perfect success. IT SOOTHES the CHILD, SOFTENS the GUMS, ALWAYS all PAIN, CURES WIND COLIC, and is the best remedy for DIARRHEA. Sold by Druggists in every part of the world. Be sure and ask for Mrs. Winslow's Soothing Syrup and take or kind. 25 Cents a Bottle.

and Well-tried Remedy

# The Encore Saloon

Try a drink at the new place and have "MATT" HEFFERN serve you. COR. HOTEL and NUUANU.

## ICE

manufactured from pure distilled water. Delivered to any part of city by courteous drivers.

OAHU ICE AND ELECTRIC CO.,  
Kewalo. Telephone 628.

**Ice**  
Delivered to residences and offices at 25c per hundred in 10-lb. lots or more.  
W. O. BARNHART,  
133 Merchant St.  
Tel. 146.

**BUILDING MATERIAL**  
OF ALL KINDS.  
DEALERS IN LUMBER.

ALLEN & ROBINSON,  
Queen Street :: :: Honolulu

**M. Phillips & Co.**  
Wholesale Importers and Jobbers  
EUROPEAN AND  
AMERICAN DRY GOODS  
FORT and QUEEN STS.

**S. SAIKI,**  
Bamboo Furniture Made to Order.  
Picture Framing a Specialty.  
563 S. BERETANIA ST.  
TELEPHONE 497.

**HONOLULU IRON WORKS**  
Improved and Modern SUGAR MACHINERY of every capacity and description made to order. Boiler work and RIVETED PIPES for irrigation purposes a specialty. Particular attention paid to JOB WORK, and repairs executed at shortest notice.

**HAWAIIAN FERTILIZER CO., LTD**  
Dealers in FERTILIZERS suitable for all crops, climatic and soil conditions.  
OFFICE—Brewer Building, Honolulu; Tel. 272.  
FACTORY at Iwilei; Tel. 430.

**Steinway**  
AND OTHER PIANOS.  
THAYER PIANO CO.  
156 HOTEL STREET.  
Phone 718.  
TUNING GUARANTEED.

# Beautiful New Shapes

# The Very Latest

**Dinner's Hat Shop**  
HONOLULU, T. H.

## Tally Cards

FOR ALL CARD GAMES.

## Dinner Cards

HANDSOMELY GOTTEN UP.

## Papeteries

OF ALL KINDS.

FANCY SEALING WAX.

## Oat & Mossman,

76 Merchant St., near P. O.  
TELEPHONE 403.

# Oahu Railway Time Table.

**OUTWARD.**  
For Wailana, Wailuku, Kahuku and Way Stations—9:15 a. m., \*2:20 p. m.  
For Pearl City, Ewa Mill and Way Stations—17:30 a. m., \*9:15 a. m., \*11:05 a. m., \*2:15 p. m., \*3:20 p. m., \*5:15 p. m., 19:30 p. m., \*11:00 p. m.  
For Wahiawa—9:15 a. m. and \*5:15 p. m.  
**INWARD.**  
Arrive Honolulu from Kahuku, Wailuku and Wailana—8:36 a. m., \*5:31 p. m.  
Arrive in Honolulu from Ewa Mill and Pearl City—17:46 a. m., \*8:36 a. m., \*10:28 a. m., \*1:40 p. m., \*4:31 p. m., \*5:31 p. m., \*7:30 p. m.  
Arrive Honolulu from Wahiawa—8:36 a. m. and \*5:31 p. m.

\* Daily.  
† Ex. Sunday.  
‡ Sunday Only.  
The Haleiwa Limited, a two-hour train (only first-class tickets honored), leaves Honolulu every Sunday at 8:22 a. m., returning, arrives in Honolulu at 10:10 p. m. The Limited stops only at Pearl City and Wailana. G. P. DENISON. F. C. SMITH.

# Autos Repaired

Your machine will be ready for you when we say it will be. We don't experiment on autos; we repair them.

**Von Hamm-Young Co., Ltd.**

ALEXANDER, YOUNG BUILDING.

Mr. and Mrs. HASHIMOTO  
MASSEURS,  
RHEUMATISM,  
BRUISES,  
SPRAINS,  
TIRED FEELING, and other ailments quickly RELIEVED.  
444 KING ST., PALAMA  
Telephone 637

## KANEHBE BEEF

Always on Hand: Young Pigs, Poultry, Eggs, Fresh Butter and Cheese.

**Sam Wo Meat Co.,**  
King Street Market. Tel. 288  
YOUNG TIM, Manager.

# Friendly Race For Ballots Closes Monday; All Votes Must Be Deposited Before 8 p.m.

# EVERYBODY INVITED TO WITNESS FINAL COUNT

# No More Ballots Published in Bulletin After Today; Only Subscriptions Count

Wednesday evening at 6 o'clock the Contest Manager will drop the flag on the triple-vote offer and from that time until the final count of the ballots commences votes will only count one-third their present value.

Those depending on the mails to bring their subscriptions to the Bulletin office will be allowed the triple vote for the same, providing the letters with subscriptions enclosed show postmark of March 10th. Also bear in mind that all ballots which have been issued on subscriptions since the beginning of the contest and have been held in reserve, either by the contestants or their friends, MUST be deposited in the ballot box before 8 o'clock p. m. Monday, the 15th of March. The little coupon, which has played such a prominent part throughout the contest will be conspicuous by its absence after tomorrow, and any of these ballots appearing in the ballot box after tomorrow will not be counted, but thrown out, as the expiration date of all these ballots occurs March 10th, and they will not be published after that date. This ballot will not appear in this issue of the Weekly Bulletin, but will be published in tomorrow's daily for the last time, and it MUST be deposited before 6 o'clock tomorrow evening.

## Committee Will Be Chosen

The Bulletin will announce the names of the Committee Saturday which will count the ballots on Monday evening for the last time, and their decision will be final. The Committee will be chosen from prominent business men of this city and, if possible, will be men who have taken no active part in the contest; however, each contestant will have the right to select some friend or relative to represent them at the final count. The count will begin as soon as all in the Bulletin office at 8 o'clock p. m. Monday, the 15th, are waited upon. An alarm clock will sound the final close of the contest, but if any one should be in the Bulletin office at that time and have not been waited upon, their wants will be satisfied before the ballot-box is opened, but after it is once opened no subscriptions will be received nor votes accepted, as that will be the final close and a square deal for all.

It is well to deposit all your votes early in the day, as the key to the ballot-box will be turned over to the judges Monday morning, and no one will have access to the ballots deposited, save the judges themselves, and they will be on hand at 8 o'clock SHARP and open the box for the final count.

Everybody interested in the final count of the ballots on Monday evening are invited to come to the Bulletin office and witness the count, which will take place as soon as those in the office are waited upon after the alarm clock sounds the final close. Only the reserve ballots will be counted or those deposited in the ballot-box on Monday. All the ballots that have been issued and clipped from the Bulletin, since the beginning of the contest, have been filed away, and if the count should be close and a recount necessary, they will be turned over to the judges and they can recount same, but only the reserve vote and those issued on Monday will be counted first and if anyone is not satisfied with that count the entire ballot will be gone over.

The triple vote which expires tomorrow will practically decide the winners of the contest, but there will be a number who will wait until the last minute to help their favorite contestant. This is a bad idea, as votes count just three times the number that they will count on the last five days of the contest, and those who desire to see their favorite contestant roll up a big score should do their best before tomorrow evening, as after that time votes only count one-third their present value.

Hawaii, Maui, and Kauai.

All contestants and their friends living in Hawaii, Maui, and Kauai districts and depending on the mails to bring their subscriptions to the Bulletin office, MUST be sure and have all their votes and sub-

## Standing of Contestants

SUBSCRIBERS SENDING THEIR SUBSCRIPTIONS TO THE BULLETIN OFFICE MUST ALWAYS MENTION THE CONTESTANT'S NAME. NO VOTES WILL BE ISSUED UNLESS THE CONTESTANT'S NAME APPEARS ON SAME.

DISTRICT NO. 1.	
INCLUDES THE CITY AND COUNTY OF HONOLULU.	
Miss Sophie de la Nux, Wichman Co. Honolulu	240,559
Miss Ida McKeague Aiea	238,452
Miss Martha Voss, emp. Sachs Co., Honolulu	219,082
Miss Lela Dinklage Honolulu	215,742
Miss Lizzie Ten Sue Kau Honolulu	211,945
Miss Florence Winter Honolulu	210,381
Miss Nellie McLain Honolulu	177,313
Miss Millie Duchalsky Honolulu	125,883
Miss Margaret Lum Honolulu	98,461
Miss Madeline Dutra Honolulu	80,789
Miss A. Todd Bodanet Honolulu	77,709
Miss Mary Dias Honolulu	77,361
Miss Amy Fook Tai Honolulu	71,462
Miss Amy Awa Honolulu	66,161
Miss Alice Green Honolulu	61,518
Miss Lizzie Ferreira-Whitney & Marsh Honolulu	52,168
Miss Shizuko Ikeda Honolulu	35,618

DISTRICT NO. 2.	
INCLUDES THE COUNTY OF HAWAII.	
Miss Annie Hattie Kohala	136,667
Miss Elizabeth K. Victor Hilo	131,354
Miss Trixie Marcos Kailua	137,829
Miss Meroy K. Akan Hilo	127,060
Miss Victoria Horner Hilo	105,109
Miss Louise de Harne Kohala, Hawaii	75,861
Miss Julia K. Kawewehi Kauhau	58,391
Miss Hattie Saffery Honolulu	36,131
Miss Violet N. Brown Hilo	34,283

DISTRICT NO. 3.	
INCLUDES THE COUNTY OF MAUI.	
Miss Jennie Hansen Wailuku	135,458
Miss Florence Ho Lahaina	131,782
Miss Mary Gohier Lahaina	134,398
Miss Mabel Wainohole Lahaina	123,877
Miss Eva Scholts Wailuku	111,474
Miss Hattie Kalimo Makawao	72,841
Miss L. K. Hart Wailuku	59,160
Miss Esther M. Hanuna Hana	38,360

DISTRICT NO. 4.	
INCLUDES THE COUNTY OF KAUAI.	
Miss Florence Deverill Hanalei, Kauai	126,626
Miss Miriam Munden Kaneohe, Kauai	114,459
Miss Mable Hastie Elele	107,161
Miss Connie Fasoeth Waimea, Kauai	93,695
Miss Angeline F. Silva Waimea, Kauai	75,018
Miss Ethel E. Edwards Kilauea, Kauai	57,068

Contestants may take the trip any time they choose. Contestants are not limited to the district in which they are entered, but are allowed to secure votes from any other District, County or State.

CONTEST CLOSING MONDAY, MARCH 15TH, 8 O'CLOCK P. M. SHARP.

# The Evening Bulletin Popular Voting Contest

Fill in the name of the young woman you wish to vote for and the district in which she lives. Bring or mail to Manager Contest Department, care of Evening Bulletin, Honolulu, T. H.

THIS COUPON COUNTS AS ONE VOTE FOR

Miss .....

District No. ....

\*This coupon is not good after Wednesday, March 10th)

scriptions in the ballot-box before 8 o'clock p. m. Monday, the 15th, as that is the time set for the final count of the votes, and any votes coming in after that date will not be counted and allowed. Those sending in votes or subscriptions should REGISTER same, before mailing, as there will be less chance for them to be lost in the mails, and if any should be lost and show up after the final count is made, they will not be counted or allowed, as the count on Monday evening will be final. The above rule will also apply to District No. 1.

## SPECIAL NOTICE

SUBSCRIBERS SENDING IN SUBSCRIPTIONS TO THE BULLETIN MUST ALWAYS MENTION THE NAME OF THE CONTESTANT THEY WISH TO VOTE FOR. AS ALL BALLOTS ARE FILLED OUT IN FULL BEFORE LEAVING OFFICE, YOU CAN HOLD BACK THE BALLOTS AS LONG AS YOU WISH. Do It Now.

Contest Closes March 15th, 8 P. M.

Monday, March the 15th is the time set for the close of the contest and all votes and subscriptions MUST be in the Bulletin office on that date. The closing hour will be at 8 o'clock p. m. on March 15th, and those depending on the mails to bring their subscriptions to the Bulletin office MUST have all votes and subscriptions in the ballot box before 8 o'clock p. m. on that date. The judges for the final count of the ballots will be chosen from prominent business men of Honolulu; their names will be announced in due season. Each contestant will have the right to select a friend or relative to represent her and look after her interests during the final count of the ballots. An alarm clock will be

used to signal the closing hour, which will be at 8 o'clock p. m. sharp, March 15th. When the alarm sounds the judges will take charge of the ballot box, and when all in the office at that hour are waited upon, the box will be opened and the final count will commence. There will be no bidding for ballots, as there will positively be no money or subscriptions accepted after the ballot box is opened. No one will know how many votes each candidate has deposited, therefore, no one will know how many votes are required to win.

THE FIVE TRIPS WILL BE APPORTIONED AS FOLLOWS:

District No. 1 includes the City and County of Honolulu.

District No. 2 includes the County of Hawaii.

District No. 3 includes the County of Maui.

District No. 4 includes the County of Kauai.

The fifth trip will be for the chaparran who will be chosen by the young woman securing the highest individual vote, irrespective of district limitation.

Four Separate Contests.

The Evening Bulletin is conducting four separate and distinct contests at the same time.

The young woman who receives the highest number of votes in District No. 1 will be given first-class transportation both ways, and hotel accommodations while in Seattle and San Francisco.

The young woman in District No. 2 will receive the same trip to Seattle and San Francisco, with the same accommodations as the one in District No. 1.

The young woman in District No. 3 receiving the highest number of votes will receive the same trip as the young women in Districts Nos. 1 and 2.

The young woman in District No. 4 receiving the highest vote will receive

# WANTS

ONE CENT A WORD

## WANTED

Advertisements Under this Heading One Cent Per Word Each Day. No Advertisements Inserted for Less Than Ten Cents.

By a wholesale house, a young man of about 25 to help out in shipping; must understand stenography. Address "X," this office. 4259-1f

Situation by Japanese man, experienced cook, and wife to do housework, waiting, and sewing. Address S. F.—P. O. Box 823. 4248-1w

Phonograph owners will learn of something to their advantage by addressing "Phonograph," care Bulletin. 4248-1w

Everybody to make money by planting coconuts. Inquire for plants, Box 102 Lihue, Kauai. 4190-1f

Position by German girl to do housework. Address "A," this office. 4253-1f

Clean wiping rags at the Bulletin office.

## SECOND-HAND CLOTHING

Ladies' & gents' clothing bought; will call; spot cash. 1040 Nuuanu St.

# HOTEL STEWART

SAN FRANCISCO

BEAUTIFUL VIEW OF THE CITY

JUST OPPOSITE HOTEL ST. FRANCIS

EUROPEAN PLAN \$1.50 A DAY UP

AMERICAN PLAN \$3.00 A DAY UP

A new down town hotel. Steel and brick structure. Furnished at a cost of \$150,000. Every comfort and convenience. On our lines transferring to all parts of city. Omnibus meets all trains and steamers.

## HOTEL STEWART

Now recognized as Hawaiian Island Headquarters.

Cable Address "STRAWETS," A B C Guide.



Ukuleles, Hawaiian Music, Postals, 100 Different Views of the Islands, Souvenir Playing Cards.

"PICTURESQUE HAWAII" A Beautiful Souvenir Book of the Islands.

WALL, NICHOLS CO., LTD.  
CORNER FORT and MERCHANT STS.

# Ford

TOURING CAR, \$1185.

SCHUMAN CARRIAGE CO., LTD.  
MERCHANT ST. NEAR ALAKA.

the same trip and accommodations as the three above mentioned districts.

VOTES ON SUBSCRIPTIONS ALLOWED AS FOLLOWS

One month's subscription to the Evening Bulletin—Old subscription, 150 votes; new subscription, 195 votes.

One year's subscription to the Weekly Bulletin—Old subscription, 300 votes; new subscription, 375 votes.

Five years' subscription to the Weekly Bulletin—Old subscription, 3750 votes; new subscription, 6000 votes.

Three months' subscription to the Evening Bulletin—Old subscription, 600 votes; new subscription, 750 votes.

Six months' subscription to the Evening Bulletin—Old subscription, 1500 votes; new subscription, 2100 votes.

One year's subscription to the Evening Bulletin—Old subscription, 3000 votes; new subscription, 4500 votes.

Five years' subscription to the Evening Bulletin—Old subscription, 30,000 votes; new subscription, 48,000 votes.

THE PRICE OF THE DAILY AND WEEKLY BULLETIN IS AS FOLLOWS.

When Paid in Advance.

One month's subscription to the Evening Bulletin, 75 cents.

Three months' subscription to the Evening Bulletin, \$2.00.

Six months' subscription to the Evening Bulletin, \$4.00.

Twelve months' subscription to the Evening Bulletin, \$8.00.

Five years' subscription to the Evening Bulletin, \$40.00.

One year's subscription to the Weekly Bulletin, \$1.00.

Five years' subscription to the Weekly Bulletin, \$5.00.

## FOR SALE

Advertisements Under this Heading One Cent Per Word Each Day. No Advertisements Inserted for Less Than Ten Cents.

Laualala Mats 3-4 in. wide braids, \$1.50 a foot; 1 1/4 in. wide braids, \$1 a foot. Inquire of Senator John T. Brown, Senate Chamber. 4245-2w

A good riding horse. Address "R. H.," Bulletin office. 4228-1f

## TO LET

Furnished room with private family on Emma St.; lady or gentleman; bath adjoining. Address "Reasonable," Bulletin. 4249-1w

New and thoroughly furnished house in Manoa is for rent for one or two years. Address "H.," Bulletin office. 4205-1f

Modern cottage, 8 rooms, 3 bedrooms, gas, sewerage, etc.; \$20 per month. 1317 Beretania St. 4244-1w

Newly furnished front room, only \$2 a week. Apply 1280 Fort St. 4245-1m

Two furnished rooms. Apply Mrs. D. McConnell, 1223 Emma St.

Housekeeping rooms. Apply 708 Quarry St., cor. Alapai.

Two furnished rooms. 1071A Campbell Lane. 4241-1f

REAL ESTATE EXCHANGE, LTD.

## FOR SALE

## LOTS.

We have over 100 lots for sale in all parts of the city, improved and unimproved, business sites, residence sites and farming sites, for prices ranging from \$50 to \$30,000; some for cash sale, some for installment sales and some for exchange.

## HOUSES.

We have over 60 homes for sale, located in every residence section of the city, and suburbs; all comfortable, some elegant, on various terms; some for spot cash, some on installment payments, some for exchange, and some for part cash and part mortgage on easy terms.



# How's YOUR Garden?---

and tired of holding up their heads?

Clean,  
Odorless,  
Simple, Effective

## FORCEGROWTH

Put up in 25,  
50 or 100 Lb.  
Packages

Will re-charge any and all plant life with new vitality and give it a rich, dark, healthy green

Prepared by

**HAWAIIAN FERTILIZER CO.**

Office Brewer Bld. Phone 272. Factory at Iwilei

Sales Agents

**E. O. HALL & SONS, LTD.**

Fort and King Streets, Honolulu

### OLAA CHANGES DEFICIT TO PROFIT

Steady Improvement Is  
Shown In Condition  
of This Property

Olaa stockholders held their tenth annual meeting yesterday afternoon, and listened to a report which showed that the management of the plantation has turned the deficit for 1937 of \$322,477 into a profit for 1938 of \$41,109.72. This represents an improvement in the financial condition of the property of over three hundred thousand dollars.

The report of the manager for the year follows:

Crop 1938.—The total area harvested was 4,208.9 acres, which yielded 17,485.73 tons of sugar, or an average of 3.56 tons sugar per acre.

The cane was of exceptionally good quality and with the favorable weather

it kept on growing more than is usual late in the season. My estimate for the year's production was exceeded by 1,885.73 tons sugar.

CROP 1939.—The area to be harvested of plant and ratoons is 6,652 acres. We began grinding on the 7th of December, and so far the cane has not come up to the standard, the sucrose content being low owing to the cold and continuously wet weather all through the summer months. So far it has taken 8 per cent more cane to make a ton of sugar than it did a year ago. I estimate the total yield of this crop at about 20,000 tons of sugar.

CROP 1940.—The total area of plant and ratoons to be harvested is 5912.77 acres, with a possible addition of 223 acre. The planting was finished in good season and the stand of cane is thicker on the ground and further advanced than the planting of former years. The ratoons are much thicker on the ground than was the plant cane and much further advanced than anything we have had in the past five years. The rose bamboo ratoons on the new land at Mt. View give every indication of yielding as good a crop as the plant cane did; viz, 52 tons of cane per acre.

CROP 1941. We will plant about 1208 acres which will include about

200 acres of new land at Pahoehoe. With this and about 5015 acres of ratoons, we will have a total of 6723 acres of this crop.

MILL.—Only the general repairs have been done during the year. Since the mill started on December 7th, everything is working more satisfactorily than in past year. The machinery is working smoothly, with an abundance of trash for fuel and plenty to spare for bedding in stables. No additions or improvements to any extent are contemplated during the year 1939.

Expenses.—For the past twelve months the cultivating expenses have been less per acre than the year 1937, and I expect to show a still greater reduction in cultivating expenses for the year 1939.

IMPROVEMENTS.—The railroad into Kipuka No. 4 has been finished, except the laying of one-half mile of rails. A sugar warehouse capable of storing 2000 tons sugar has been erected at the mill; the foundation and framework are all up, and we are waiting for the corrugated iron for the roof and sides. No improvements of any magnitude are contemplated for the coming year.

PLANTATION IN GENERAL.—The general appearance of the plantation is greatly improved to what it was a year ago. Demerara cane No. 1135 has made a far superior showing at Mountain View than any other variety of cane we have planted there. The Striped Tip comes next, and of these two canes we hope to plant about 125 acres during the coming season.

### LOOK OUT FOR FIRE

Rats cause many a fire by gnawing matches. If you have rats or mice in house, barn or store, get rid of them with

### Stearns' Electric Rat and Roach Paste

the only guaranteed exterminator. Also sure death to cockroaches and other vermin. Drives rats and mice out of the house to die. Money back if it fails.

2 oz. box 50c; 16 oz. box \$1.00. Sold everywhere or sent express prepaid on receipt of price.

Stearns' Electric Paste Co., Chicago, Ill.

BULLETIN ADS PAY 4c

### FRAUDS IN TESTIMONIALS BY MEDICAL FIRMS

But Some are Genuine—A Significant Case of Eczema.

How do medical firms secure the testimonials which you frequently see in print? This is a question which no doubt every reader of the Bulletin has occasionally asked himself.

Well, testimonials are obtained in various ways. Some are undoubtedly not sincere; they are written by friends of advertisers or by employees. It is alleged that in some cases testimonials are even paid for—a species of bribery which can not be condemned too highly.

But contrary to general opinion, it is a fact that at least a large number of testimonials are genuine and sincere. They are usually given by people who feel so grateful for a cure that they allow their names to be used. We ourselves know of more than one case where a man or woman naturally averse to publicity was so overjoyed at finding the right kind of medicine that the cured patient consented to the use of his name in print.

A typical case of this kind—of special interest to eczema sufferers—is that of Robert Sussman, of Toledo,

Ohio. Mr. Sussman is a well known furrier in Toledo, and for years he suffered with a severe case of eczema.

He described his case as almost unendurable. About five years ago he was induced to try the oil of wintergreen compound known as D. D. D. Prescription for eczema sufferers. He has gone out of his way to find sufferers and to tell them of this remedy. He has done this without pay, of course, and without even having been requested to do so by the D. D. D. Company. It was simply the fact that his health, his very life, had been restored that made him so enthusiastic. We have recently had another letter from Mr. Sussman in which he offers to write to any eczema sufferer and to describe his case. If any reader of this paper should write Mr. Sussman, we request that self-addressed stamped envelope be enclosed.

Speaking of his own case, Mr. Sussman says:

"Six years of intense suffering from a severe case of eczema, to be given up as incurable by sixteen doctors, several of whom were specialists of skin diseases, and then to have tried every known medicine for my ailment without effect, and finally to procure absolute relief and a permanent cure from a new remedy, is an experience that justifies my action in making it known to the public; and I feel that it is my duty to give it as much publicity as possible, so that other sufferers may

be relieved. My sympathy goes out to those who have to go through what I did."

D. D. D. Prescription, also D. D. D. Soap, may be had in Honolulu at the Honolulu Drug Co., Fort street.

Substitute for present orphan asylum system offered at federated club-women's convention.

### McTigue Favorite

The Best Whiskey on the Market.  
THOS. F. MCTIGUE & CO., AGENTS,  
101-105 KING ST.  
PHONE 140. P. O. BOX 755.

### Horse, Harness and Saddle

For Sale, Guaranteed.  
A. R. Rowat, D.V.S.  
777 KING ST.

### Woman's Exchange

FOR  
TAPAS, BASKETS, MATS,  
Hotel near Fort.

Mayflower

## The President

Mayflower

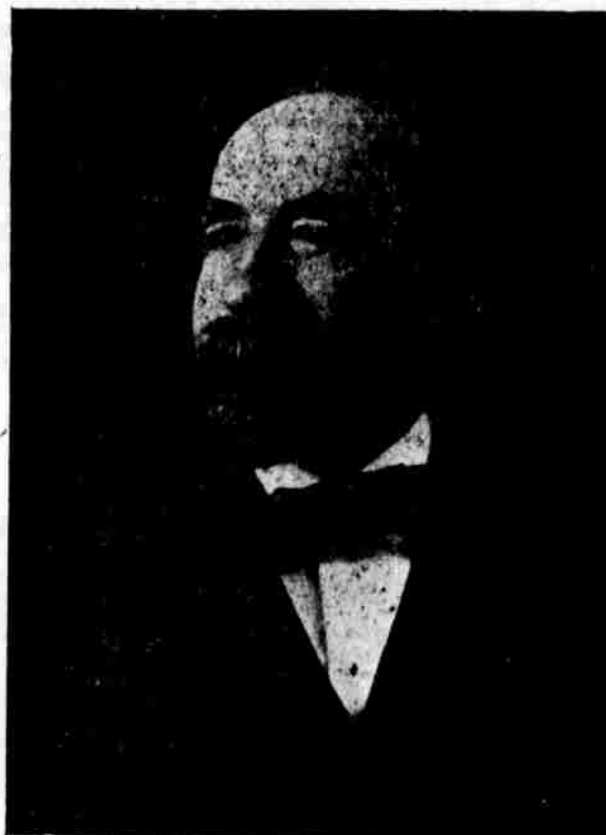
of the "MAYFLOWER" QUARTZ & CHANNEL MINING CO. is Mr. William George Motley, whose photograph is presented herewith and a full sketch of whose personal career and professional record may be read in the February issue of THE SUCCESSFUL AMERICAN MAGAZINE. Mr. Motley is the senior member of the firm of W. G. Motley & Co., the well-known mining engineers, at 32 Broadway, New York City. He has had over thirty years' experience in mining operations in various parts of the world, and his career proves a notable ILLUSTRATION OF THE TRUTH OF THE OLD SAYING that "nothing succeeds like success." In 1887, when on a visit to Europe, where reports of his mining successes had already preceded him, he was made a Fellow of the Royal Geographical Society of England and of the Royal Colonial Institute. English financiers engaged him to conduct mining examinations for them in Central Canada, and upon his recommendation the celebrated Regina Mine was purchased.

The triumph he scored in this great mine was commented upon lavishly, at the time, in the Canadian Government Mining Reports.

Mr. Motley holds the Royal Canadian Humane Society's medal for chivalric services in rescuing, at the imminent risk of his own life, eight miners from a burning mine, near the Regina. All of the eight men were taken out unconscious, a ninth dying in Mr. Motley's arms.

In a recent interview, referring to the progress of his latest enterprises, he said in part: "I am not exactly a promoter, as the term has come to be understood. The present-day promoter is altogether too prone to stick to a proposition only in fair weather, abandoning it and allowing the stockholders to shift for themselves as soon as the first trifling obstacle makes its appearance. That may go for promotion, but it doesn't meet my idea of good business policy. When I take up an enterprise, no matter what it is, I expect to have to confront occasional difficulties, and I believe in sticking to the job until I have overcome the very last one of them."

"Good mining propositions are to be had in all parts of the country, but the promoter who sits in his City office year in and year out isn't



likely to find many of them. The propositions that are brought to you are seldom worth considering. If you want a first-class enterprise to promote and develop, you generally have to go after it. No, I wouldn't want you to put me down as a promoter. I'm a practical mining man, and most of my life I have been employed by capitalists, simply as the means of increasing their wealth, through the operation of properties purchased under my recommendations. Of late I have concluded to look after the operation—end of the business myself, as well as the professional end, and I am perfectly satisfied with my success so far. I am building up an enormous list of correspondents, and just as soon as they learn to understand this new method of mining promotion, I think we will be able to demonstrate through practical results obtained, that my idea is the right idea. It's the system that will bring real dividend checks even though it doesn't make as much noise as some of the others."

Mr. Motley was asked for an expression of his opinion concerning the Mayflower mine, in the Nevada City district, in California, and he said:

"The Mayflower has already a record to its credit that has not been equalled by a good many of the leading gold-producing mines in the West that have been paying dividends for years. When you open a great gold mine it is usually necessary to expend a modest fortune in getting ready for your future production, but the Mayflower has paid its own way from the beginning, and in addition to that, has equipped itself, as you might say, with one of the finest milline plants on the Coast. As an investment proposition it is easily superior to any of the big gold properties that have been brought to the public's attention within the past twelve or fifteen years. It will shortly be realized, I am sure, that the Mayflower is to California what Comstock was to Nevada years ago, and what the Homestake is today to South Dakota. The dividends paid by the Mayflower mine, naturally, will go to those who recognize this fact in time to secure the stock while it offers a basis for a splendid investment; and to this end I can assure you, seriously, that there is no time like the present."

25 Cents

**M. IVAN DOW,**

GEO. M. SHAW, Agent, Hilo, Hawaii

Fiscal Agent, Mayflower Mine  
Office, Suite 51 & 25 Alexander Young Bldg.

PHONE 499

Call, Write or Phone for Prospectus

Buy It Now