

# The Pacific Commercial Advertiser

U. S. WEATHER BUREAU, January 27.—Last 24 hours' rainfall, .00.  
Temperature, Max. 77; Min. 63. Weather, fair.



ESTABLISHED JULY 2, 1854.

SUGAR.—96 Degree Test Centrifugals, 3.77c; Per Ton, \$75.40.  
SS Analysis Beets, 9s. 9½d.; Per Ton, \$81.20.

VOL. XLVII, NO. 7947.

HONOLULU, HAWAII TERRITORY, TUESDAY, JANUARY 28, 1908.

PRICE FIVE CENTS.

## ACCOMMODATIONS ON MORE STEAMSHIPS FOR ISLAND FARM PRODUCE

Pacific Mail Inviting Local Freight and Particularly Fresh Fruit Shipments---  
Hilonian Well Equipped.

Now that small farming is looming up, the steamship companies have all decided that they want some of the business. The latest corporation to stretch out for this trade is the Pacific Mail Steamship Company, which has just issued a circular letter to the firms of this city, stating that they are prepared to handle freight from San Francisco to this city and also take island produce back. Up to the last few months they have never brought freight here from the Coast, and they have never taken anything but very small shipments from here to the mainland.

The letter mentioned is as follows:

To Shippers:

Gentlemen: We take pleasure in informing you that the Pacific Mail Steamship Company is now prepared to regularly carry freight between San Francisco and this port, and we respectfully ask you to patronize and support the line which, for many years, has afforded this community a splendid passenger service, by giving its steamers a share of your freight business.

Returning from the Orient, en route to San Francisco, the steamers of the Company discharge a considerable amount of freight here, and thus are in a position to also carry freight from Honolulu to the Coast.

For your guidance we beg to enclose herewith a sailing schedule of the steamers during the present year, and assuring you that the Company will give you the very best service in carrying your freight.

We remain, gentlemen,  
Yours very truly,  
H. HACKFELD & CO., LTD.,  
Agents.

In speaking of the matter yesterday afternoon, H. P. F. Schultz, who has charge of the steamship department in the absence of F. W. Klebahn, said:

"Yes, the Pacific Mail is going to look for the local freight trade. As is mentioned in the letter which I have just shown you, we are ready to carry freight on all our steamers, both from San Francisco to this port and also back to the mainland. Our ves-

sels arriving here from the Orient always bring in a large amount of freight, and for this reason will have plenty of room in which they may take island produce to the mainland. We are ready to look after all kinds of freight and to handle it in the best of shape. We have boats coming through all the time and will add to the freight service between this city and the mainland greatly.

"Such freight as bananas and pineapples will be just what we want, and we will have the room and accommodations in which to carry them. For many years the Pacific Mail has been giving this city a passenger service which has been easily the best between here and the Coast, and we hope that the people of Honolulu will give us freight on these same vessels."

HILONIAN ALSO FITTED UP.

Credit for perhaps the most important thing which has been done for a long time to assist the shipping of fresh fruit from this city, is due the Hilonian, of the Matson Navigation Company. On her last trip to the Coast a blower was installed between decks, where the fresh fruit will be carried. This will keep the air in constant circulation and will provide the ventilation which the Federal experts have decided is most needed to keep the fruit in good form.

While the Hilonian has been in port, a number of local men, who are interested in the shipping of fresh pineapples and bananas, visited the vessel, and have been shown the new apparatus. They have all expressed themselves as greatly pleased with it and promise big shipments of this fruit in the future. With the new apparatus the fruit will keep just as well as if on deck and there is no chance that it may be ruined by being struck by salt water. This step should increase the shipments of fresh fruit from here, including such fruits as alligator pears and mangoes.

of the Masonic Temple. Both he and Mr. Lyons are high masons and belong to the same lodge.

### THE FISHMARKET PROPOSITION

Honolulu, November 14, 1907.  
Hon. S. B. Dole, Chairman, McKinley Memorial Association, Honolulu.

Dear Sir: This is to inform you that, at the regular monthly meeting of the board of trustees of the Honolulu Chamber of Commerce, held yesterday, a resolution was passed approving of the plans outlined by the Kiloahana Art League for the utilization and improvement of the old fish-market.

Trusting that this matter may be given careful consideration by your committee, I remain, respectfully yours,  
(Signed) H. P. WOOD,  
Secretary.

## COAST CHINESE TONGS SIGN PEACE TREATY

(Associated Press Cablegrams.)

SAN FRANCISCO, January 28.—The leaders of the four Chinese tong, who have been carrying on a bloody war in this city and in Oakland for the past two months, signed a peace treaty yesterday.

The tong war in San Francisco's and Oakland's Chinatowns has been the means of the murder of over a dozen Chinese leaders, in few cases the murderers being apprehended. The six companies have been attempting to bring the leaders together for the past two weeks to secure a settlement of the trouble. The tongs involved in the murders are the Ling Ying, See Yip, Ping Kong and Hop Sing.

### EUROPEAN EXPERTS HELP THAW.

NEW YORK, January 27.—European alienists called to testify in the Thaw murder trial have given testimony to the effect that he was insane when he killed Stanford White.

## ADMIRAL ITO DISMISSED FROM THE JAPANESE NAVY



ADMIRAL BARON ITO.

VICTORIA, B. C., January 10.—Advices by the Aki Maru state that Admiral Baron Ito of the supreme naval council, who commanded the Japanese navy in the war with China, has been dismissed from the service because of a domestic scandal.

## QUEEN'S LAST STATE PAPER

Original Draft of Interesting Document for Historical Society.

About forty members out of the total membership of one hundred and twelve attended the annual meeting of the Hawaiian Historical Association held last night at the University Club, at which a number of papers of decided interest were read and the announcement made of the preparation of some papers of recent historic interest. Among these papers are the original and final drafts of the Constitution of 1894, which were promised by Judge Dole, and others are the original drafts of the abdication address drawn up by Chief Justice Hartwell at the request of a committee headed by Paul Neumann. There are three or four different drafts, the amendments from the original being incorporated at the request of the Queen, to whom they were submitted by Mr. Neumann.

In presenting these papers to the society, Judge Hartwell stated the circumstances under which Mr. Neumann was enabled to discuss the wording of the address with the Queen, who was at that time under arrest. He, the speaker, had called upon President Dole to secure the permission, assuring the President only that in his, Judge Hartwell's, opinion it would be perfectly safe to allow the interview. "Other reports of the occurrence have been circulated, but these are the facts," added the Chief Justice.

### NEW OFFICERS ELECTED.

Following the reading of the minutes and the report of the librarian, the list of officers for the coming year, as recommended by the executive committee, was read. The recommendations were:

George R. Carter, president; Professor W. D. Alexander, first vice president; Dr. N. B. Emerson, second vice president; A. Lewis, Jr., third vice president; Rev. W. D. Westervelt, corresponding secretary; A. F. Judd, recording secretary; W. W. Hall, treasurer, and Miss E. I. Allen, librarian.

These recommendations were unanimously adopted and the officers named elected by the ballot of the recording secretary, Governor Frear. Professor Alexander, the retiring president, then surrendered his seat to his successor.  
(Continued on Page Three.)

## THE OLD GUARD DINES BUT NEVER-

A Unique Gathering at the Commercial Club Last Evening.

A very unique but thoroughly enjoyable affair was the dinner of the "Old Guard" at the Commercial Club last evening. The "Old Guard" includes all those who were members of the Young Men's Christian Association ten years ago or more and have retained their interest in it. The roll of the Old Guard is an interesting one. Here it is: S. B. Dole, F. C. Atherton, C. H. Atherton, Ed. Benner, Isalah Bray, G. P. Castle, W. R. Castle, A. F. Cooke, F. W. Damon, T. C. Davies, C. J. Day, L. A. Dickey, B. F. Dillingham, S. N. Emerson, W. J. Forbes, W. W. Hall, Allan Herbert, W. L. Howard, Sam Johnson, W. A. Love, F. J. Lowrey, James Nott, Jr., J. M. Oat, E. H. Paris, Theo. Richards, P. O. Schmidt, W. O. Smith, J. H. Soper, C. H. Tracy, W. C. Weedon, E. O. White, W. L. Whitney, J. M. Whitney, William Henry, R. G. Moore, A. V. Soares, E. O. Hall, B. F. Beardmore, W. W. Chamberlain, E. O. Farm, O. H. Walker, J. L. McLean, Ed. Towse, M. K. Nakulua, Edgar Wood, O. C. Swain, W. L. Josselyn, Paul Super, E. H. Hand, C. A. Brown, George F. Davies.

Most of them were, present, and there was much enthusiasm manifested, and a warming up as old recollections were exchanged before and during the dinner. And as toasts were responded to and reminiscences were recounted, intensely interesting glimpses of old Honolulu were revealed.

The Old Guard is to continue. It will have reunions of the same kind as that of last night, at intervals, and its members are pledged to "stand by."

At the dinner last evening the members were seated at two long tables parallel to each other, with a third transversely, joining the two at one end, at which sat the toastmaster and those responding to toasts. The tables were very prettily decorated with asters and carnations, and the following delightful menu was served:

### SOUP

Consomme en Tasse

(Continued on Page Four.)

## RECEIVER FOR INTER-URBAN ELECTRIC.

(Associated Press Cablegram.)

CHICAGO, January 28.—Receivers have been appointed for the Chicago and Milwaukee Electric railroad and the Frost private bank, which is connected with the railroad.

## FRANCE DESIRES NO MEDDLERS IN HER MOROCCO DEALINGS

Minister Declares Internationalization Is Not Wanted---Lisbon Agitated Over Conspirator's Arrest.

(Associated Press Cablegrams.)

PARIS, January 28.—In a debate in the Chamber of Deputies yesterday, M. Pichon, the Minister of Foreign Affairs, stated that France would never permit the internationalization of Morocco.

Recent events in Morocco, particularly the declaring of a holy war by Mulai Hafid, the usurping Sultan of Fez, has brought the question of the policing of that country once more before Europe. At the Algier conference, during which France and Germany approached an open rupture, it was decided that France and Spain had paramount interests and the right alone to land troops for the preservation of order. The announcement that France intends to insist on this agreement will mean the sending of a stronger French force to Morocco and the practical occupation of that country.

## ARREST OF CONSPIRATOR STIRS PORTUGAL'S CAPITAL

LISBON, January 28.—Antonio Almeida, a leader of the Republican party, was arrested yesterday charged with being at the head of the conspiracy recently discovered to overthrow the government and establish a Republic. His arrest has created a sensation here.

## DESIRE TO SEND UNFORTUNATES HERE.

SAN FRANCISCO, January 28.—The San Francisco supervisors have decided to send an agent to Honolulu to negotiate with the Territorial authorities for the care of the fourteen lepers in the isolation house here, the lepers to be sent, if arrangements can be made, to the settlement at Molokai.

The question of sending lepers from the mainland to Hawaii has come up time and time again, states as far away as Massachusetts having made proposals in the matter. The Territorial authorities have so far resolutely opposed making Hawaii a dumping ground for the unfortunates of the mainland, President Pinkham, of the Board of Health, stating in an interview a short time ago that this policy of exclusion is unalterable, however much for sentimental reasons the authorities might desire to do otherwise.

## SENATE DISCUSSES PENALTY FOR PHILIPPINE SLAVERS

WASHINGTON, January 28.—The Senate debated yesterday on the proposed additions to the penal code imposing penalties on persons convicted of engaging in the slave trade in the Philippine Islands. No action was determined upon.

## THIRTY THOUSAND HANDS GO BACK TO WORK

POTTSVILLE, Pennsylvania, January 28.—The mills and the collieries here, which employ thirty thousand hands and which were forced to close down during the recent financial stringency, have resumed operation.

## HONDURAS HAS REVOLUTION ON HAND.

WASHINGTON, January 28.—A despatch was received here yesterday announcing the beginning of an uprising against the government in Honduras.

## THAW DEFENSE CLOSES ITS CASE.

NEW YORK, January 28.—The defense in the Thaw trial closed its case yesterday and the case will go to the jury on Thursday.

### TWO BIG FIRES.

PORTLAND, Maine, January 27.—A fire in the wholesale district here has caused a loss of a million.

CHICAGO, January 27.—One fireman was killed and several others injured in a half million-dollar fire in the Florence Hotel here today.

### RAILROADS CAN CHOOSE LABOR.

WASHINGTON, January 27.—The United States Supreme Court in a decision rendered today declares as unconstitutional the Act of Congress prohibiting railroads from discriminating against labor unions.

WASHINGTON, January 27.—The South Dakota has been placed in commission.

NEW YORK, January 27.—Miss Gladys Vanderbilt and the Count Szechenyi were married today.



## PRODUCTS OF Love's Bakery

Machine-manufactured Goods; Baked

Daily

Saloon Pilot  
Pilot and  
Soda Crackers

are for sale by the following firms:

HENRY MAY & CO.,  
J. M. LEVY & CO.,  
T. H. DAVIES & CO.,  
H. HACKFELD & CO.,  
C. J. DAY & CO.,  
GONSALVES & CO.

Schuman Carriage Co., Ltd.

Carriage Material

FARMING TOOLS  
AND IMPLEMENTS

## Associated Garage

Agents for TOURIST and WINTON  
CARS.

## Autos Repaired

Best Gasoline 25c. per Gallon.

## Gunther's Candies

Marshmallows, Coated Nuts, Assorted  
Chocolates, at

## The Palm Cafe

There is no drink so good as

Lime Juice and Soda

from the

Consolidated Soda Works Co.

Telephone 71

## A Good Sign

COSTS YOU NOTHING  
IT PAYS FOR ITSELF

**TOM SHARP**

MAKES GOOD SIGNS

## Hats

FOR LADIES AND GENTLEMEN  
LATEST BLOCKS and

STYLISH TRIMMING

**UYEDA**

1028 Nuuanu Avenue

**T. KUNIKIYO**

FLORIST.

Fort St., next Kash Store.

Fresh flowers daily. Violets, Carnations,  
Asters, Roses and an assortment  
of decorative plants. Orders for table  
flowers promptly filled. 7903

## MISSION FURNITURE

CONTRACTORS, BUILDERS AND  
PAINTERS

**Sun Lee Tai Co.**

26 KING ST., NEAR NUUANU.

Mr. and Mrs. Hashimoto  
**MASSEURS**

RHEUMATISM,  
BRUISES,  
SPRAINS,  
TIRED

FEELING,  
and other ailments

QUICKLY  
RELIEVED.

44 KING STREET Telephone 56

## PRECIOUS STONES

set in rings and brooches. Gold and  
silver jewelry made to order at reasonable  
prices. Your trade solicited.

**SUN WO**

CHIN JEU KWONG, Manager  
1308 Maunakea St. P. O. Box 943.

**For Kimonos**

SEE

**K. Fukuroda**

ALL COLORS AND PRICES

THOROUGHbred REGISTERED

**Jersey Bulls**

The pure bred Jersey bulls, Ojitway  
of Y.B.C.J.C. Co. No. 60247 and Guenon  
Lad, 2nd A. J. C. C. No. 62304, at service  
at THE POND DAIRY. Fee \$10.

## WILLIAM'S FORTY- NINTH BIRTHDAY

Reception at the German Con-  
sulate in Honor of  
the Day.

Yesterday was the forty-ninth anniversary of the birth of William II., Emperor of Germany. His Imperial Majesty's Consul, William Pfoth-hauer, received in honor of the day at the German Consulate, from 11:30 to 1 o'clock. The number of callers was very large. Among the callers were all the other members of the consular corps who are in the city, the Governor and other Territorial officers, and most of the Federal officers, the local army and navy officers, and a very large representation from the business and professional callings of the city.

Consul Pfothhauer received the callers most cordially, responding to the many congratulations and expressions of good will received.

Most of the members of the consular corps called early. Governor Frear, accompanied by Secretary Mott-Smith, arrived about half past twelve. Other Territorial officers had arrived earlier. The consulate was simply decorated with flowers, carnations and roses. Delightful refreshments in abundance were served. The Emperor's health was drank in abundant glasses of champagne.

Consul Pfothhauer was assisted in receiving by Mr. R. I. Isenberg and Mr. Paul R. Isenberg. The Hawaiian band was in attendance and played a program of patriotic German selections, besides the national airs of many of the leading countries of the world.

Among those who called were Italian Consul F. A. Schaefer, British Consul Forster, British Vice Consul T. Clive Davies, Chinese Consul Chang Tso Fan, Japanese Consul General Saito, Portuguese Consul Canavarro, Admiral Very, Major Dunning and staff, Lieutenant Commander Carter, Governor Frear, Secretary Mott-Smith, Chief Justice Hartwell, Associate Justice Wilder, Associate Justice Ballou, Judge S. B. Dole, Attorney General C. R. Hemenway, General John McClellan, General J. H. Soper, Colonel J. W. Jones, Colonel Sam Johnson, S. M. Damon, C. M. Cooke, P. C. Jones, James F. Morgan, J. A. McCandless, George F. Davies, R. D. Mead, George A. Davis, George R. Carter, Dr. and Mrs. W. F. Straub, Judge Kingsbury, F. Freudenberger, H. Focke, R. F. Lange, W. Lanz, A. A. Deas, J. D. Gaines, A. S. Cleghorn, W. H. Parke, M. Phillips, Charles Hustace, Robert Lewers, R. R. Reidford, Robert Catton, Dr. Hoffmann, Marston Campbell, H. E. Cooper, A. J. Campbell, B. L. Marx, C. F. Peterson, Judge P. L. Weaver, E. R. Stackable, Paul Schmidt, R. A. Jordan, R. C. Brown, W. W. Hall, J. G. Smith, Dr. C. B. Cooper, E. F. Paxton, J. Low, G. P. Wilder, F. L. Waldron, E. H. Paris, W. F. Drake, Captain Reilly, M. P. Robinson, J. F. Humberg, Mr. Ishikawa, Judge Lindsay, C. von Hamm, J. Bayer, C. Bayer, C. S. Weight, Alexander Young, Dr. Ramus, Dr. Curry, E. M. Cheatham, C. A. Brown, G. Hedemann, F. W. Macfarlane, S. G. Wilder, J. M. Dowsett, John Waterhouse, R. H. Trent, C. L. Rhodes, Cecil Brown, D. L. Withington, James A. Wilder, W. H. Babbitt, Postmaster J. G. Pratt, W. H. Baird, B. F. Dillingham, Dr. Humphris, W. R. Castle, W. F. Dillingham, W. A. Love, J. G. Spencer, A. P. Taylor, C. F. Wilder, A. N. Almy, John C. Lane, G. F. Straut, George Cooke, W. Williamson, Colonel C. P. Iaukea, Emil Waterman, George Angus, Count Reinecke, W. E. Wall, R. W. Breckons, E. R. Hendry, E. D. Tenney, J. A. Kennedy.

## CHINESE SLIPPED OUT ON NIPPON MARU

There has been a great deal of talk for the last few days among the Chinese of this city over the sudden departure by the Nippon Maru of a noted character of their race. The man in question is said to have been a gambler and vagrant for the last fifteen years and to have earned his living chiefly through being the procurer of certificates of Hawaiian birth and return papers for men of his race by obtaining witnesses willing to perjure themselves.

It is common talk in Chinatown that this individual was in league with a former interpreter in the Immigration service but that, with a change in this position, he had lost a great deal of his influence. It is thought that he may have left town in order to escape prosecution for the part which he had taken in the obtaining of fraudulent certificates of Hawaiian birth. He also left many debts in the city which he failed to settle before going to the Orient.

## AN EDUCATOR OF HIGH CLASS

Man From Cornell to Succeed  
Prof. Pope at Normal  
School.

Seemingly a first-class man has been engaged to teach in the Normal school in place of Professor Pope, who resigned to take the acting deanship of the College of Agriculture and Mechanical Arts. His name is Vaughan McCaughy and at present he is an advanced undergraduate of the Agricultural College of Cornell.

Superintendent of Education W. H. Babbitt was some weeks ago advised by cable that a good man for the Normal vacancy had been secured, but until last mail had arrived he was not apprised of his name.

John W. Gilmore, professor of agronomy in Pennsylvania State College, has written to Prof. Edgar Wood, principal of the Normal school, relative to his selection of Mr. McCaughy. He says in part:

"I have now succeeded in getting for you a man whom I believe to be very well adapted to your needs. This man is Mr. Vaughan McCaughy (pronounced McCoy). He would normally graduate from the Cornell College of Agriculture in June next, but he is so well along with his work that he has determined to leave at the close of this term and go to you at once, graduating in absentia.

"Mr. McCaughy is rather young but he is a splendid worker and I believe embodies that excellent characteristic for you, adaptability. He is handy with his pencil and his crayon and he has always kept his work in close touch with practical agriculture. I have known him for the past three years as a student and have seen him before classes of students and general audiences and he makes a good impression. He is kind and polite and is also a good writer."

## BID FAREWELL TO FAITHFUL WORKER

The members of the local branch of the Salvation Army and their friends in this city gave a farewell reception last night to Adjutant Anderson, who has been in charge of the rescue work here for the past four years. There were between sixty and seventy-five people present and a program was carried out which was unusually interesting.

Adjutant Anderson was the recipient of many compliments from the local people, who told of the fine work which she had done while here and expressed their wishes that she might continue in the same spirit and strength in her new work, which will be in San Francisco. A. F. Cooke was the chairman of the evening, and opened the program with a few remarks. One of the features of the evening was the singing of Miss McAbee, who arrived from Seattle with Staff Captain Bradley last week to take up the position which has been vacated by Adjutant Anderson.

Refreshments were served and all enjoyed a pleasant time. The following program occupied the larger part of the evening:

Remarks, A. F. Cooke; prayer, Staff Captain Bradley; song, Miss McAbee;

## WALLACH CRAWLS OUT OF MAKING EXPERIMENT

J. Lor Wallach has flinched from the test of his boasted healing powers.

He has not signed the agreement with the Board of Health within the time allowed, which was six full days ending at four o'clock yesterday afternoon.

Wallach had been offered practically his own terms, the only ones rejected having been of childish nature, for trying his healing powers, at Kalia receiving station, upon twelve lepers from Molokai in whose selection he was to join.

President L. E. Pinkham of the Board of Health, who is confined to his room with illness, was yesterday afternoon handed a letter by Chas. K. Nottley, the Home Rule member of the political Committee of Ten, which announced that Wallach had refused to sign the agreement.

By the terms of the unanimous resolution of the Board of Health last Tuesday, Wallach having refused to sign the agreement the board is quit of all negotiations whatsoever with him from henceforth.

At a meeting of the Committee of Ten at noon yesterday a letter from Mr. Pinkham was read, under Saturday's date, in which he said:

"I received a call from Chas. K.



**STEIN-BLOCH SMART CLOTHES**

**M. McINERNY, LTD.**

AGENTS COR. FORT AND MERCHANT STREETS.

## Our Stein-Bloch Smart Clothes

Mastery in make  
Confers fit and style

Wool tested woolens  
Confer wear

**Will You Try?**

speech, Adjutant Long; address, Rev. D. W. Crane; song, Captain Baker; address, Miss Yarrow; farewell address, Adjutant Anderson; address, Staff Captain Bradley; closing remarks, A. F. Cooke; chorus, "God Be With You Till We Meet Again"; prayer; chorus, "Aloha Oe."

## WILL SELL OUR FRUIT IN SAN FRANCISCO

W. E. Shaw, well-known in diversified industry circles and as an all-around business man, leaves in the Hawaiian today for San Francisco.

In that city he will start a general commission business. He will handle Hawaiian fruits exclusively as a distributing and sales agent besides doing a merchandise commission business. Mr. Shaw expects to do a large trade in consignments of fresh bananas, pineapples and avocado pears. He carries away contracts with certain local shippers of fruit for regular supplies.

Being well posted in local conditions and seasons, besides having traveled extensively in the West Indies and the mainland fruit regions, Mr. Shaw will be in a position to do well by Hawaiian fruit raisers.

## CHAMBER OF COMMERCE PRESIDENT AT WAHIAWA

"I was delighted with the appearance of the country around Wahiawa when I was there on Sunday," said President James F. Morgan of the Chamber of Commerce. "The sight of that country and the rich appearance of the soil there was a revelation to me. As long as I have lived here I had never been to Wahiawa before. I was there to look over some land."

When asked if he intended to invest in pineapple lands, Mr. Morgan explained that it was to interest others that he had made his initial trip to the upland agricultural center.

Have you secured your copy of Picturesque Honolulu? It is the most beautiful souvenir of Honolulu ever issued. Fifteen cents a copy ready for mailing.

## A Drive in White Goods

We are offering special bargains in Swisses, Corduroys, and all varieties of

**DRESS GOODS, HOSIERY and SHOES**

for grown-ups and little folks.

**L. B. KERR & CO., LTD.**

ALAKEA STREET near HOTEL



**DON'T CRY**

OVER SPILT MILK.  
If your wall paper doesn't harmonize with your other home appointments, have us tell you how to make it right.

**STANLEY STEPHENSON,**  
Painter and Decorator.  
Phone 426. 137 King Street.

**LADIES' UNDERSKIRTS**

50c to \$2.00

**L. AHOY,**

Nuuanu below Hotel Street.

**JUST ONE LOOK**

At our window display, and you will be surprised to see what handsome designs we are offering to Women. Artistic Patterns, Lasts and Leathers, all new. And that Fitting Quality is coupled with Honest Wearing Value in every pair. Ask to see No. 244.

Price \$3.50 to \$5.00.

**MANUFACTURERS' SHOE COMPANY, LTD.**

1051 FORT STREET P. O. BOX 469 PHONE 232

**H. CULMAN,**

1064 Fort St.

sells Hawaiian curios of historic value, and makes Jewelry, Hawaiian, and other suggestions, to order.



## Before Ordering a Hat

See those at

**Mrs. Dunn's**  
Millinery Shop

Harrison Block.

## Have'em Fixed

There is no use wearing shoes with holes in them when the expense of repairing is so slight.  
We will repair men's shoes for \$1.25, using the highest grade of leather. Women's shoes half soled and heeled, \$1.00.

**Vickers' Shoe Repair Shop,**  
1119 Union Street. P. O. Box 567

## SUPPLIES OFFICE SPECIALTIES

CASH REGISTER,  
TYPEWRITER,  
ADDING MACHINE,  
MIMEOGRAPH and  
GLOBE-WERNICKE

**SUPPLIES**  
CARD SYSTEMS  
Hawaiian Office Specialty  
Company, Ltd.  
921 Fort Street

## A FEW DAYS MORE

## Oriental Rugs

J. HOPP & CO., of the Lewers & Cooke Building, wish to announce that the fine collection of Oriental Rugs, which they have had for exhibition and sale for a couple of weeks, will be shipped back to the States within a few days. There are some choice pieces still unsold.

## J. HOPP & CO.

## ROYAL HOUSE

Fourth and Howard Sts.

SAN FRANCISCO, CAL.

F. L. TURPIN, Prop.

EUROPEAN PLAN. 200-room reinforced concrete building, containing all modern conveniences. Reading Room, Ladies' Parlor, etc. Rates same as before the fire—\$20, \$25, \$30 and \$35 per day. Special weekly rates. Two blocks from Fourth and Market. From dock take street car and transfer to Fourth street.

CAFE IN CONNECTION.

## Best Typewriter Papers

A new supply of the above in CAP and LETTER sizes, various weights, ALSO

CARBON PAPER,  
TYPEWRITER RIBBONS,  
DOCUMENT COVERS  
and other Office Supplies, just received, at.....

## Thrum's Book Store

## EL PALENCIA CIGAR

A mild Havana cigar that never fails to please.  
Sold by

**Hayselden Tobacco Co., Ltd.**  
Alexander Young Bldg.

## HEALTH

In Soda Water and Ginger Ale  
**Fountain Soda Works**

SATISFACTION IN EVERY DROP

## Coca-Cola

**Hawaiian Soda Works**  
Phone 515

## The Advertisement

that brings customers to your store is the kind we prepare.

**HAWAII PUBLICITY CO.**  
Telephone 173.



## KENNEL CLUB MEETS TONIGHT

**Dog Fanciers Will Elect New  
Officers and Talk of the  
Coming Show.**

The annual meeting of the Hawaiian Kennel Club will take place tonight at 7:30 in the Alexander Young hotel. The most important business will be the election of officers for the ensuing year. Another matter that will come up for discussion will be the annual Dog Show. The latter will probably be held when the fleet is here, but, as it is possible that the naval vessels may not arrive till late in the summer, an earlier date may be selected.

The dog fanciers of the city are feeling very much pleased over the number of finely bred animals which have been imported during the past season. The latest of these came by the Nuanuu, a fine thoroughbred pointer pup, for Ed. Paris. He is said to be the finest specimen on the islands.

In the line of pointers a strange occurrence, which has never been duplicated so far as is known, took place a few days ago. C. T. Wilder, of this city, owns a fine pointer named Gretchen, which he bred to E. A. McInerney's thoroughbred Veto. The result was a litter of nine magnificent puppies, every one of whom are dogs. There is not a single female in the litter. The mother is taking care of her big family and they are all as strong and healthy as anyone could ask.

## TO BUY FAST POLO PONIES

Already the polo players of this city are getting ready for the summer season. A great deal of sport is expected, and the local men have determined to retrieve their lost honors, if possible. Though Maui won last year, it was acknowledged that its victory was due in great part to the fact that it had the better of the ponies. To make up for this the local men are trying to pick up faster and better mounts to use this year.

One of the finest ponies ever seen here came down from Kauai on the Hall last Sunday. It is a mare named Princess, and was bred by Charlie Rice of Kauai. She is broken to polo and is said not only to have speed, but to be a crackjack at the game. Rice has several other ponies which the local men are watching with longing eyes and which some of them may buy before long.

## MACFARLANE TO OWN FAST LAUNCH

A new and fast launch is shortly to grace local waters. Walter Macfarlane has ordered C. D. Walker to build a gasoline launch 25 feet long and to be fitted with a fifteen-horse-power Buffalo marine engine. The launch will be fitted like an auto-boat and will be used on pleasure trips between here and Pearl Harbor.

Construction of the launch will commence just as soon as Walker has finished building six heavy pontoons for the Hawaiian Dredging Co., which are well under way. They will be used to carry the pipe line between the dredger and the reef.

Walker is figuring on a new second-class yacht for a local sportsman which is wanted in time for the opening of the yachting season. He has a rush of work just now and a queer job that he is doing is putting a round stern on a double-ended gasoline launch belonging to the Hawaiian Dredging Co. The launch is being lengthened three feet, and an eight-horse-power, two-cylinder Standard engine will be put in her. Thirty-five men are working at the boatyard every day.

## CROUP IS IMMINENT.

No matter how well your children may appear to be you are never safe without a bottle of Chamberlain's Cough Remedy in the house. It never fails to relieve and is perfectly safe to give the little ones. For sale by all dealers. Benson, Smith & Co., Ltd., Agents for Hawaii.

## ATHLETIC CLUB BOYCOTTS PAPER

**Chinese Athletes Declare War  
on Man Sang Yat Bo's  
Issues.**

There is a misunderstanding between the Chinese Athletic Club and that breezy and instructive vernacular journal the Man Sang Yat Bo, which may or may not result in hatchets.

It appears that the trouble grew out of little matter of printing which didn't go to the office of the Celestial sheet with the four-jointed name and for the past week or so the athletic organization has been the recipient of several journalistic bouquets which have the effect of making the progressive young men of the C. A. C. hot under the place where their cues used to be.

One of the grievances of the athletic club, as related to a newspaper man by a member yesterday, is that the Man Sang Yat Bo published an item to the effect that the club were charging an entrance fee of 25c. for the events to be contested at the field-day on Feb. 1. A correction was sent to the office stating that as heretofore there would be no entrance fee to take part in the games and it came out the next morning that the Chinese Athletic Club would charge no admittance to their masquerade ball which takes place on Chinese New Year's Eve and tickets for which are on sale for half a dollar.

Not wishing to make trouble the C. A. C. agreed to let the matter rest where it was but in a day or so Chinatown was plastered with red posters which, being translated, read something like this:

"Enlightened brothers: Stop and wonder at the startling intelligence here-below set forth. Ponder it well and then go home and tell your honorable parents, your heaven-born wives and soon-to-be illustrious children. The young upstarts who call themselves the Chinese Athletic Club and who nightly run round a road like a dog in a cage in the hope of winning a piece of tin, can neither read nor write the language of their own country which is a great shame upon them and an insult to our country and to us all. When you meet one of these running pigs show your contempt for him in what way you think best."

Yesterday a report circulated throughout the city, inspired so the C. A. C. firmly believe, by the paper in question, that the club was dead. This was the last straw and the C. A. C. yesterday afternoon decided to boycott the Man Sang Yat Bo and the members are using their influence to spread the boycott as extensively as lies in their power.

## ALOHAS WILL GIVE CONCERT

On Friday next, January 31, the grand concert and dance given by the members of the Chinese Aloha Club in celebration of the Chinese konohi, will take place at the K. of P. hall on the corner of Beretania avenue and Fort street. This will be on the eve of the Chinese New Year.

The committee in charge of this affair is working hard on the preparations and everything will be in shape when the time comes. The program for the concert is to be announced in a few days, and will include selections by the Royal Kawaihau Glee Club, the Catholic Mission orchestra and the Kailima Jr. Glee Club. John Noble, the natural-born whistler, will be there with one of his whistling solos and several local singers are also to be heard. Another number on the program is an address to be delivered by A. L. C. Atkinson, the former Secretary of Hawaii.

After the concert, the floor will be cleared and everybody will be welcome to the konohi dance, that promises to be unique, as several persons have already secured Chinese costumes for the occasion.

The following committees are in charge:

General Committee—Ho Tong, chairman; Albert Akana, W. Tin Chong, Wm. Lee Kwai and L. Mon Tai.

Refreshment Committee—Lee Yen, chairman; Joe Sing and Espinda.

The decoration of the hall will be in charge of the following young ladies, who have promised to have it decorated suitably for the occasion: Miss Mary Marino, Miss Helene Bruns and Miss Annie Lee Kwai.

## CHAMPION MAY COME HITHER

**Japanese Wrestler May Give  
Exhibition of Skill in  
Honolulu.**

It seems likely that Hitachiyama, the champion wrestler of Japan, will make a stop in this city on his way back from his tour of the United States, and give an exhibition. The matter has been taken up by a number of prominent Japanese in this city, and they have asked Joss Woods to handle the arrangements of the entertainment, should it be brought about.

Hitachiyama is without question the champion of Japan, there being only one wrestler in that country who can even stand before him. The latter's name is Umegatamy. The local men would be as small children against his superior strength and skill. He has been in the United States for several months, and has given many exhibitions, one being at the White House, where he was invited by President Roosevelt.

The champion is said to be of remarkable physical build, being over 300 pounds in weight and of enormous strength. He has with him six other wrestlers, who assist in the giving of exhibitions and who would probably all prove better than the local champion named Yakamimata. A guarantee of \$1000 is asked for the coming of the champion, and the local Japanese expect to raise that amount, relying on the fact that Hitachiyama is so popular and famous among his countrymen that he would draw a tremendous crowd of Japanese from all over the Territory.

The news of the possibility of his coming was brought by a Japanese newspaper man, who passed through on the Hongkong Maru a few days ago and who is well acquainted with the wrestler. A letter has been sent to Hitachiyama in regard to giving an exhibition here, and an answer is anxiously awaited.

According to the Japanese custom, the wrestlers always take their name from something that is very strong, such as the sea, a big river, a mountain or something else of that sort. The last two syllables of Hitachiyama's name mean mountain, and the first part is the name of the part of Japan where he lives, and where there is a high mountain named Hitachiyama.

## GERMAN ROWERS MAY CROSS POND

It is more than probable that America will be visited next summer by the best oarsmen and scullers of the German empire, as the experience of Waldimir Sand here last summer has stirred the oarsmen of the Rhine up to a lively pitch.

In a letter from Prof. A. C. Musehold, a member of the Hellas Rowing Club of Berlin, and who last season sojourned in Washington and was a member of the Potomac Boat Club, addressed to a member of that organization, he says that the Hellas and other rowing clubs of the empire of all sections are looking forward to a visit to the United States, and Washington in particular. He writes:

"On the return of Waldimir Sand to his home he delivered talks to the members of the several clubs and detailed minutely the way the regattas were conducted in America and the genial hospitality extended to him by all classes of citizens. He spoke of the extreme fairness of the gentlemen conducting the National Regatta, of the splendid boat houses on the Schuykill river and the beauty and magnificence of the Potomac river course at the capital of the nation and the courtesies extended to him at the home of the President and the executive departments of the government, together with the social entertainments in his behalf because he represented Germany."

This sort of talk, says Prof. Musehold, has increased the desire of all German oarsmen to visit America, and

he says he is sure the winners of the great German National Regatta will be sent to America to get in at the National Regatta of America, as well as the Middle States, which, says Prof. Musehold, all the Berlin rowing clubs are desirous of seeing held at Washington.

Last summer at the National Regatta Mr. Sand announced that his visit was a hurry-up affair; that with proper inducements made to the oarsmen of the old country, outside of England, the very best would be glad to come to this country, and he intended on his return to Germany to work up an interest in getting several crews to visit our shores next summer. Judging from the quotations from Prof. Musehold's letter it looks as if Mr. Sand, was carrying out his intentions, and the prospects are good that Germany will have plenty of representatives in the American regattas in 1908—crews, too, that will make the best in America look to their laurels.

The closing of the gates at Henley this year not only against crews from the United States, but also the champion Belgians, who for two years have won the Grand Challenge plate, has started a movement among the oarsmen of America to get their great crew here next summer. They certainly would be a drawing card, and it is up to the National association to start the wheels going in order to get the Belgians over here as an offset to the action of the stewards of the English Henley for their narrowness in keeping out two-time winners.

## SHOOTING GALLERY PLANS ARE APPROVED

Plans for the new shooting gallery of the National Guard of Hawaii, Governor Frear announced yesterday, have been approved by the Federal authorities. Instructions have only to be awaited from the War Department to have the construction proceed. The gallery is to be erected on the parade ground at the drill shed, on the site now occupied as quartermaster's warehouse facing on Miller street. It will cost \$3200, to come out of the United States treasury.

## QUEEN'S LAST STATE PAPER

(Continued from Page One.)  
Mr. Carter, who thanked the members for the honor shown him, at the same time paying a tribute to the unceasing work of his predecessor for the society.

HONOLULU HARBOR IMPROVEMENT.

The first paper read was one by Professor Alexander on "The Improvements of the Honolulu Harbor," which reviewed the history of the harbor from the time of its discovery in 1794, by the captain of the schooner Jackal, up until the present. The many interesting events which have taken place along the Honolulu waterfront were dealt with, including the litigation necessary to establish the government's claim to the harbor frontage.

## AN EARLY MISSIONARY STORY.

A vicious attack upon the "Conscientious Missionaries," published in London in 1832, entitled "A Letter to a Noble Lord on the Importance of Settling the Sandwich Islands and Bonin Islands," by T. Horton James, Esquire, was read by Lyle Digkey as a fair sample of the reports sent out concerning the early missionaries of Hawaii. The letter was a plea for the establishment of a British colony in the islands, either by the British government or by a company chartered by the government. As an argument it was declared that the missionaries were living on the fat of the land and the contributions sent them by their dupes in New England; that they were oppressing the natives by making them go to school, pay a dollar to be married and being threatened with hell fire if insubordinate to either the chiefs or the clergy.

The reading of this letter afforded the hearers last night considerably more amusement than it could have afforded the noble lord to whom it was addressed.

## JOURNAL OF G. D. GILMAN.

Some extracts from a journal kept by G. D. Gilman in 1842 to 1845 were read, dealing with a vacation trip taken by the writer in Kauai and incorporating with a description of the palis of that island two interesting legends of Madame Pele and her visits there. It was promised that further extracts from the journal would be read at future meetings.

## BROTHER DUTTON THANKED.

A vote of thanks to Brother Dutton, for some manuscripts sent by him to the society, and a motion electing him a corresponding member of the society were passed, as well as a vote of thanks to Mrs. Allen, who has promised to send the society a number of newspapers of early dates.

Following the meeting refreshments were served.

## Stop thinking about it

Order your

## Gas Stove TODAY

Honolulu Gas Co., Ltd.

## Century and Premo Cameras Eastman Kodaks

THE STANDARDS OF

CAMERA and KODAK EXCELLENCE.

Call and see them and the work they do.

## Honolulu Photo Supply Co.

"Everything Photographic." Fort Street.

## GOOD BEER

We have no secret process, but unvarying attention to simple rules enables us to serve the best glass of beer in town.

## HOFFMAN SALOON

(Billy Howell's Place.)

## Centennial's Best Flour

—Is—

HONOLULU'S FAVORITE  
HENRY MAY & CO., LTD.

Wholesale \$2—PHONES—22 Retail

## Our Stock of

## CUT GLASS

Which arrived too late  
for our holiday trade  
has just been opened  
and marked.

Come and inspect our  
handsome designs before  
buying elsewhere

## J. A. R. Vieira & Co. Manufacturing Jewelers

115 Hotel St.

## Union Electric Co.

69 BERETANIA STREET

Telephone 215

House Wiring - Bells - Dry Cells

Special attention to installing private telephones and general repair work.

## Annual January Sale

## A. BLOM,

IMPORTED EMBROIDERIES



# Pacific Commercial Advertiser

A MORNING PAPER.

WALTER G. SMITH EDITOR

TUESDAY : : : : : JANUARY 28

## EMPEROR WILLIAM'S BIRTHDAY.

Wherever there are German colonies or colonies of Germans, the patriotic praises of Emperor William were heard yesterday. His health was toasted and his achievements sung. He himself has contributed largely to the diffusion of Germanic blood throughout the world, for he has been a great advocate of colonization. During his reign colonization has risen to a major place in German statecraft.

No single estimate of Emperor William has yet become recognized as the accepted one. But no estimate of him which does not recognize in him a man of very high capacity in very many directions, is accepted at all. Years of steady achievement accompanied by an ever increasing popularity among his own subjects have wholly dispelled the ideas that found expression at times in the earlier part of his reign, sometimes that he was a charlatan and sometimes that he was a madman.

Forceful to the spectacular, versatile almost to the trivial he may be. But he is spectacular by reason of his forcefulness, and if he takes up matters seemingly trivial, it is because they are included in the grasp of a great mind, and not because his mind is limited by them.

His is a great personality. In qualities of action he is equalled probably by no ruler on earth; in qualities of pervasive influence he is excelled only by his royal uncle, King Edward.

Though we may not all have celebrated his birthday as Germans, we may all take a pride in him as a man of action.

## MARTYR'S CROWNS AT A DISCOUNT.

A recent New York dispatch says: "Determined to devote his life to the care of the lepers in the colony of Molokai, Vincent Mossin arrived in New York from Antwerp this morning. He is 22 years old \* \* \* an athletic, ruddy-faced, jolly young man. He says he expects sooner or later to succumb to the disease, but trusts he will be spared long enough to do some good."

It is quite probable that he said this, and that such was his thought as to his future. But when he arrives here, which will not be for some time according to present plans, he will find little sympathy among his superiors with any such morbidly sentimental forebodings. The Catholic church, which has had upwards of thirty years' experience in the Molokai Settlement, does not now send men or women to the settlement expecting them to succumb to the disease. It expects them to lead not only pure moral lives, but clean, wholesome physical ones, which it has been found are a comparatively certain guarantee of immunity. Brother Joseph Dutton's quarter of a century in the settlement, the many years that the sisters have lived there in charge of the Bishop Home for girls, the fourteen years that Father Wendelin spent there, and his grief because he was called away to other fields of labor, all tend to discredit the idea that real service at the Leper Settlement is the inevitable road to the inevitable martyrdom from the dread disease.

Much has been learned about leprosy since Father Damien volunteered for the work of the settlement. We do not yet know just how leprosy is communicated. But we do know that it is not readily communicable, and that barring those accidents arising from the obscurity of the method of communication, clean, careful, and wholesome living are almost complete security against the contagion.

The experience of the Board of Health with its employees and agents is in point to the same effect. Its superintendents and its physicians, to say nothing of other employees, have spent many years of usefulness at the settlement, free from any taint of the disease. Father Damien was undoubtedly a martyr to his faith and his devotion. To him the martyr's crown descended of right. His halo sheds luster on the Catholic church. But the Catholic church looks very much askance at any more martyrdoms of the same sort. Of another of its ministers at the settlement who became a victim of the disease, the church had no peans of praise, nor no martyr's crowns. Isolated from his brethren and from work among the lepers, he accepts at the hands of the order to which he has made his vows, the penumbra of forgetfulness while he lives. The Catholic church expects those it sends to the settlement to go there to live, not to die.

It is one of the hopeful things in regard to the disease, and for its victims and for the settlement, that a more correct view of the disease and of the conditions at the settlement is beginning to prevail.

## MONUMENTS AND INSTITUTIONS.

Although it was decided some time ago by the overwhelming concurrence of opinion that the Alice Mackintosh Memorial should take the form of a memorial tower for St. Andrew's Cathedral, the mere discussion of an incident of the progress of the memorial is sufficient to call out a suggestion that the memorial take some other form. In these days that is always the case. The suggestion in this instance is that the memorial should take the form of an endowment for the care of somebody at the Queen's Hospital or the Leahi home. That is the type of benefaction which is usually proposed when a memorial is suggested. The form of the argument always is, that it is wiser to do something that will benefit somebody than to put up a carved stone or build a structure. So far as the argument has any force it is because of the assumption that a statutory or an architectural monument has no utility—does no one any good; and the further assumption of some minds that an eleemosynary memorial—the endowment of some institution for the instruction, relief, or benefit of some particular class of people—will recall the memory of the founder more constantly, and be more permanent than a statutory or architectural monument.

Neither assumption is true. Not only are statutory and architectural monuments of the highest utility, but no monument is so constant a reminder of the person honored, nor, in a world of mutations, so permanent.

The essentials of a statutory or architectural monument are Beauty and Truth—the most constant and permanent things on earth—united in art. A statutory or architectural monument which is really a work of art—and none other should be erected—is a blessing and a benefit to the whole community. Its influence is silent, pervasive, constant. The children playing about the foot of a monument that has real artistic worth, unconsciously imbibe its artistic and other lessons. The soul of a community blessed with statutory or architectural monuments, is uplifted and made better. What did Greece or Rome give to the world that was of half the value—half the real utility—of their public works of art?

To do good is indeed worthy. By some it has been exalted into a religion. But the essence of doing good is personal service. That Mrs. Mackintosh gave. To pretend to continue the spirit of her good works by setting mere money into the service of any class of the community, however much money may be thus contributed or how perpetual the service may be, is mere mockery. The spirit and personality are not there, and the recipients of the benefits are neither reminded of, nor grateful to, the individual whose bounty they receive in mortmain.

Nor have such memorials the quality of perpetuity. The conditions of human life are constantly changing, and the records of the world are full of eleemosynary foundations that have long outlived their usefulness. But art embodied in stone, survives the wreck of empires and of institutions, immutable, because presenting truth. Ever beneficent because presenting beauty. The monuments of every nation have long survived its eleemosynary institutions.

The pyramids, the monumental and architectural remains of Greece and Rome, the Taj Mahal, the churches and monuments of Europe, these are both the enduring things as well as the beneficent things.

If institutions could take the place of monuments, the statue of John Harvard, at the great institution which bears his name, would be an absurdity.

The consensus of thought and opinion which decided on an architectural monument for Mrs. Mackintosh was a well-guided one, and sought a form of expression both the most fitting and the most enduring. It is to be hoped that no burst of sentimentality will change the determination so wisely reached.

Fifteen years ago, Irving B. Dudley, the United States Ambassador to Brazil, whose name figures in the news of fleet festivities, was the police magistrate of San Diego. It happened that he had once been tutor in Mark Hanna's family, so entrance to large politics, when McKinley came to the front, was easy. Mr. Dudley was first sent out as Minister to Peru and his service there was so good that promotion followed. His next diplomatic post may be in Europe.

## THE OLD GUARD DINES BUT NEVER—

(Continued from Page One.)

RELISHES  
Anchovy on Toast Salted Almonds  
Olives  
FISH  
Fried Filet of Sole, Tartare Sauce  
Sliced Cucumber

Pommes Saratoga  
ENTREE  
Salmi of Island Duck aux Olives  
PUNCH  
Pineapple Sherbet  
ROAST  
Prime Ribs of Beef au Jus  
VEGETABLES  
New Lima Beans

Potatoes au Gratin  
SALAD  
Tomato, with French Dressing  
DESSERT  
Fresh Strawberry Ice Cream  
Assorted Fruits Mixed Nuts  
Assorted Cakes  
Cluster Raisins Sierra Cheese  
Cafe Noir

Mr. T. Clive Davies proved an exceedingly capable toastmaster, and the toast line was as follows, preceded by a toast to the President of the United States, proposed by the toastmaster and drank on the authority of the Vice President of the United States, as the toastmaster explained—in water.

"Whence".....W. C. Weedon  
"Here".....Paul Super  
"Whither".....W. L. Whitney  
"Our Missionary Enterprise".....  
.....F. W. Damon  
"Old Honolulu Days".....W. R. Castle  
"Why We Stay with the Association".....B. F. Dillingham  
"What We Gave".....F. J. Lowrey  
"What We Got".....Ed. Towse  
"The Old Guard".....W. L. Howard

W. C. Weedon in responding to the toast "Whence" spoke of the original Y. M. C. A. started by George Williams in 1844 of which he became a member in 1861. The Honolulu Y. M. C. A. was organized April 30, 1869, and of the first eleven members ten are still living. Of the thirty-one men who constituted the organization up to the middle of 1871, twenty are still living, and possibly twenty-one. These thirty-one, in the order in which their name are signed to the membership roll, were as follows:

S. N. Emerson, Curtis J. Lyons, P. C. Jones Jr., A. Francis Judd, Sanford B. Dole, H. McIntyre, William Clark, W. W. Hall, S. W. Pogue, T. R. Walker, Walter C. Weedon, H. A. P. Carter, S. M. Damon, C. A. Castle, Jas. Tucker, Samuel Nott, Joseph P. Cooke, J. B. Atherton, W. R. Castle, A. F. Cooke, J. Bartlett, B. F. Dillingham, Robert Bayard Snowdon, Robert W. Andrews, John M. Oat, E. C. Damon, D. P. Peterson, S. C. Damon, Charles G. McCully, and W. O. Smith.

Secretary Paul Super told something of the work the association is doing in helping individual men to better lives. W. L. Whitney dwelt on the work that is opening before the association and of the need of a new building to carry it on in.

F. W. Damon opening with a delightful panegyric of the term "Missionary" which he declared would "become the proudest gem in the nomenclature of our island life," gave in a most interesting way how the Y. M. C. A. had really inaugurated Christian work among the Chinese who began to come in large numbers about the time the organization was formed.

W. R. Castle in telling of old Honolulu days said that while the external Honolulu had changed greatly, there yet remained much of the old noble simplicity of living that was worth emulating.

B. F. Dillingham pleasantly introduced his address by saying that he was born in the year that the Y. M. C. A. was founded, and was married the year the Honolulu organization was formed.

In introducing Mr. F. J. Lowrey to respond to the toast "What We Gave," Toastmaster Davies very gracefully recalled that Mrs. Lowrey had given one afternoon a week for a long time to the juniors of the Y. M. C. A.

Mr. Lowrey told of the time and thought and effort that was given by the members in the days before a paid secretary was employed. After enumerating some of the lines of work carried on and the methods adopted in carrying them on he said that what was given was comprehended at least as to very many of the Old Guard by the conclusion that they gave themselves.

Ed. Towse spoke of how the Y. M. C. A. was developing along many and varied lines. W. L. Howard brought the speech-making to a close in a speech full of classical allusion, on the "Old Guard."

FROM A NOVA SCOTIA PUBLISHER

Mr. H. G. Harris, publisher of the Advertiser, Kentville, N. S., makes the following statement: "I have used Chamberlain's Cough Remedy for myself and family and find it to be one of the best medicines for coughs and colds that I ever tried." For sale by all dealers. Benson, Smith & Co., Ltd., Agents for Hawaii.

## DO I NEED A SHAVE?

That's the wall of the man who uses the old-style razor. He must either go to the barber-shop and wait his turn, or torture himself with a razor that pulls and drags in spite of all his stropping, and cuts him in spite of all his care. The GILLETTE SAFETY RAZOR would make shaving a pleasure to him. No honing, stropping or cutting. Always ready, too.

GILLETTE BLADES.

HOLLISTER DRUG CO.

LTD.

AGENTS

FORT STREET



An Elegant New Line

— Or —

Prize Cups

— And —

Trophies

NOW ON DISPLAY IN OUR SHOW WINDOWS

Our stock of Prize Cups is very complete. We have them at all prices.

FROM \$2.50 UPWARDS

\*\*\*

H. F. Wichman & Co.

LIMITED

Leading Jewelers

## Candies

TURKISH NOUGATS

HUYLER'S CANDIES

GLACE FRUITS

Are like everything else—best

when you get them at the

Alexander Young Cafe

Popular Price Restaurant

READ THE ADVERTISER  
WORLD'S NEWS DAILY

Annual  
Linen  
Sale

BEGINS

Monday, February 3rd,  
AT 8 O'CLOCK

This event is looked forward to each year by the knowing ones, for it is the one time in the whole year when we retail

TABLE LINEN

At Wholesale Prices

The offering this year includes  
TABLE CLOTH, by the yard;  
NAPKINS,  
TOWELS,  
TABLE SETS and  
CENTER PIECES.

EHLERS

WHOSE SALES ARE SALES

## No Danger

YOU could not get a shock from an

## Electric Cooking Device

if you tried.

But you can get lots of COMFORT out of one.

Call and see how they work at the

Hawaiian Electric Company, Ltd.

King Street near Alakea.

Phone 390

## You Know

the objections to the old-fashioned carpet, with its dust and dirt and fading; you know the inconvenience of the matting, and how it rips and shreds away; and the wooden floor in the kitchen and its splinters have been the bane of existence to housewives for years.

Well, none of these objections holds good for

## LINOLEUM

It is the ideal covering for house and office floors, because it is easily cleaned and swept, is non-absorbent, never holds dirt or dust, and looks well all the time.

Lewers & Cooke, Ltd.

AGENTS.

177 South King Street.

Phone Exchange 20

Fit for a King, but we serve it to everybody.

## Best Meats

Beef, Veal, Mutton, Poultry, Game,

Butter and Eggs, and Fish.

Metropolitan Meat Company, Ltd.

Telephone 45.

"If all the world were apple-pie,  
And all the sea were ink;  
And all the trees were bread and cheese"—  
We'd STILL have

## PRIMO BEER

to drink!

## PLANT PINEAPPLES!

You can make \$250 per acre from one season's crop!

## BELLAIR

in Kalihi Valley is an ideal place for growing of Pineapples. The right soil, the right climate. Pineapples grow there now. Let me take you out to show them to you. Three miles from the business center of Honolulu, 1-2 miles from the Pineapple Cannery. Will sell the land at from

\$250 to \$400 Per Acre

ON EASY TERMS.

Chas. S. Desky

CAMPBELL BLOCK, FORT STREET.







## Champagne Without Alcohol

We are agents here for

## Duffy's Apple Juice

Non-Alcoholic - Carbonated

Made and guaranteed by the  
American Fruit Product Co.

Pints .....25 Cents; \$2.50 Doz.  
Quarts .....50 Cents; \$5.00 Doz.

**Benson, Smith & Co., Ltd.**

Hotel and Fort Streets

## Fire Insurance.

**THE B. F. DILLINGHAM CO., LTD.**

General Agents for Hawaii.  
Atlas Assurance Company of London.  
New York Underwriters' Agency.  
Providence Washington Insurance Company.

**Wm. G. Irwin & Co., Ltd.**

AGENTS FOR THE

Royal Insurance Co., of Liverpool, England.  
Scottish Union & National Insurance Co., of Edinburgh, Scotland.  
Wilhelms of Magdeburg General Insurance Co.  
Commercial Assurance Co., Ltd., of London.

**WM. G. IRWIN & CO., LTD.**

**SUGAR FACTORS AND COMMISSION AGENTS**

Wm. G. Irwin—President and Manager  
John D. Spreckels—First Vice-President  
W. M. Giffard—Second Vice-President  
H. M. Whitney—Treasurer  
Richard Ivers—Secretary  
W. F. Wilson—Auditor

AGENTS FOR

Oceanic Steamship Co., San Francisco, Cal.  
Western Sugar Refining Co., San Francisco, Cal.  
Baldwin Locomotive Works, Philadelphia, Pa.  
Newall Universal Mill Co., Manufacturers of National Cane Shredder New York, N. Y.  
Pacific Oil Transportation Co., San Francisco, Cal.

ALL KINDS OF

## Rubber Goods

**GOODYEAR RUBBER CO.**

R. H. PEASE, President.  
573-575-577 Market Street,  
San Francisco, Cal., U. S. A.

Cut Flowers,  
Chrysanthemums  
and ASTERS, all shades.

**Len Choy**

Beretania and Smith Sts.

I sell settings of eggs from

## Prize Winners

White Orpingtons, S. G. English  
Dorkings, Black Minorca, Buff Wyandotte, White and Brown Leghorns.

**W. C. Weedon**

P. O. Box 658, City

## Pau-Ka-Hana

Made in Honolulu

**THE SOAP THAT  
DOES THE WORK**

**Honolulu Soap Works**

F. L. WALDRON, Distributor

## PICTURES that PLEASE

**R. W. PERKINS, Photographer**

Studio on Hotel Street, near Fort

READ THE ADVERTISER

WORLD'S NEWS DAILY

## EVERETT GOES UP FIVE YEARS

**He Commits Forgery to Clear  
Himself of Horse  
Stealing.**

Joe Everett, a very black and a very bad man, goes to the penitentiary for five years from yesterday under sentence for horse-stealing. It will be more by good luck than by even his undoubted foxiness if Joe does not have to stand a trial also for forgery, growing out of his desperate efforts to prove innocence of the charge under which the jury found him guilty.

The trial of the rogue began yesterday morning before Judge Lindsay. Under an indictment for larceny in the first degree, the specification was that, on the fourth of December last, Everett stole a bay mare belonging to A. Huggins, of the value of \$175. Assistant County Attorney F. W. Milverton appeared for the prosecution, and A. T. Brock, assigned by the court, for the defendant.

Charles Butzke, Wentworth M. Buchanan, Frank Godfrey, Thomas W. Carroll, O. H. Walker, William F. Story, Frank J. Robello, A. W. Van Valkenburg, John H. Jones, James Stuart Sharp, Clifford Kimball and John W. Macdonald were the jury.

Positive evidence of Joe's unlawful acquisition of the animal was connected and conclusive enough. The defense set up by Joe, on the witness stand, was that he bought the horse for \$100 from Huggins, paying \$85 down and the rest in installments. He showed what purported to be receipts for these payments, but the body and signature of each were identical in penmanship—a fair style of business chirography at that—and at a glance were identifiable as the handwriting of Everett when compared with them in a letter he had written on the subject of baseball.

George Waterhouse, called as an expert in rebuttal, gave his sworn opinion that the receipts were signed by their writer and written by the same hand as was the letter bearing the signature of the defendant. Huggins, on the stand, had by direction copied one of the receipts, signature and all, and Mr. Waterhouse testified, direct and cross, that it would be impossible for the writer of that exhibit to write the body and signature of the original. The signatures of the receipts were misspelled variably as "Hogans" and "Hogins." They could not stand a moment's comparison with the clear though shaky signature of the old hackman, "A. Huggins," appended to the complaint in the warrant.

Just before the case was given to the jury, Juror Macdonald asked to have a look at the receipts. Mr. Brock's objection on the ground that they had only been introduced for the purposes of the expert testimony was sustained, but Mr. Milverton's proffer of the papers as evidence in themselves was accepted by the court, excepting be-

ing noted. Then the papers went the rounds of the jury box.

Mr. Milverton at 3 o'clock addressed the jury briefly, stating at the outset that there could be no reasonable doubt of defendant's guilt. His explanation of possession of the horse had been absolutely proved false by the evidence in rebuttal. Another false statement by Everett, as fully proved, was that he had asked the Honolulu District Court to permit him to introduce the receipts on his examination there. Prosecutor Brown had testified he said nothing about receipts in the court below.

Mr. Brock opened on the question of degrees, arguing that the animal was not worth \$50 and hence its stealing not first degree larceny. He contended that Everett's testimony had not materially been shaken except by Huggins, who was interested in the case and, moreover, was very fond of the old mare. Huggins was represented as being unreliable, further, because five minutes after he wrote the paper in court, when it was shown to him, he could not remember having written it. If defendant was found guilty, Huggins would take the horse away and have the \$100 Everett said he paid to him besides.

After an absence of about half an hour the jury returned a verdict of guilty as charged.

Judge Lindsay roasted the negro to a turn in pronouncing sentence. He said he had no doubt the defendant wrote and signed all of the receipts. His record showed he was not a fit man to be at large. The court had a mind to give him the utmost limit of ten years, but made it five with the advice to Everett to leave the country as soon as he got out of prison.

## JUDGMENT RESERVED IN AUTOMOBILE CASE

The decision of the District Magistrate in the case of Frank J. Dillon, charged with furious and heedless driving, has been reserved until Wednesday on a point of law covering the question as to what constitutes heedless driving of an automobile. Dillon's case has been in the police court for some weeks.

Harry Hynes, a bum, drew the first prize in the distribution of favors by Judge Andrade in yesterday morning's session, getting ninety days on the reef. His was the only jail sentence. Seven gamblers were convicted, six of them paying seven dollars apiece for being caught, and one, who failed to show up, forfeiting his \$6 bail. In this case it was cheaper to stay away than to face trial. There were six drunks on the list, their fines aggregating \$28. Takahashi, who drew a knife on Officer Leal in Iwilei on Sunday, had his trial postponed until today, and Poi Kee, who has confessed to selling booze without a license in order to save another from punishment, will also come up again today.

You needn't confine your use of a classified ad. to your needs in the servant line; use it for your selling needs, also, and note results.

## BIBLE READING MOVEMENT, READING FOR JANUARY 27

MATTHEW 19.

16 And behold, one came to him and said, Teacher, what good thing shall I do, that I may have eternal life? 17 And he said unto him, Why askest thou me concerning that which is good? One there is who is good; but if thou wouldest enter into life, keep the commandments. 18 He said unto him, Which? And Jesus said, Thou shalt not kill, Thou shalt not commit adultery, Thou shalt not steal, Thou shalt not bear false witness, 19 Honor thy father and thy mother; and, Thou shalt love thy neighbor as thyself. 20 The young man saith unto him, All these things have I observed; what lack I yet? 21 Jesus said unto him, If thou wouldest be perfect, go, sell that which thou hast, and give to the poor, and thou shalt have treasure in heaven; and come, follow me. 22 But when the young man heard the saying, he went away sorrowful; for he was one that had great possessions.

23 And Jesus said unto his disciples, Verily I say unto you, It is hard for a rich man to enter into the kingdom of heaven. 24 And again I say unto you, It is easier for a camel to go through a needle's eye, than for a rich man to enter into the kingdom of God. 25 And when the disciples heard it, they were astonished exceedingly, saying, Who then can be saved? 26 And Jesus looking upon them said to them, With men this is impossible; but with God all things are possible. 27 Then answered Peter and said unto him, Lo, we have left all, and followed thee; what then shall we have? 28 And Jesus said unto them, Verily I say unto you, that ye who have followed me, in the regeneration when the Son of man shall sit on the throne of his glory, ye also shall sit upon twelve thrones, judg-

ing the twelve tribes of Israel. 29 And every one that hath left houses, or brethren, or sisters, or father, or mother, or children, or lands, for my name's sake, shall receive a hundred-fold, and shall inherit eternal life. 30 But many shall be last that are first; and first that are last.

MATTHEW 20.

1 For the kingdom of heaven is like unto a man that was a householder, who went out early in the morning to hire laborers for his vineyard. 2 And when he had agreed with the laborers for a shilling a day, he sent them into his vineyard. 3 And he went out about the third hour, and saw others standing in the marketplace idle; 4 and to them he said, Go ye also into the vineyard, and whatsoever is right I will give you. And they went their way. 5 Again he went out about the sixth and the ninth hour, and did likewise. 6 And about the eleventh hour he went out, and found others standing; and he said unto them, Why stand ye here all the day idle? 7 They say unto him, Because no man hath hired us. He saith unto them, Go ye also into the vineyard. 8 And when even was come, the lord of the vineyard saith unto his steward, Call the laborers, and pay them their hire, beginning from the last unto the first. 9 And when they came that were hired about the eleventh hour, they received every man a shilling. 10 And when the first came, they supposed that they would receive more; and they likewise received every man a shilling. 11 And when they received it, they murmured against the householder, 12 saying, These last have spent but one hour, and thou hast made them equal unto us, who have borne the burden of the day and the scorching heat. 13 But he answered and said to one of them, Friend, I do thee no wrong; didst not thou agree with me for a shilling? 14 Take up thy bag, and go thy way; it is my will to give unto this last, even as unto thee. 15 Is it not lawful for me to do what I will with mine own? or is thine eye evil, because I am good? 16 So the last shall be first, and the first last.

## SECOND MATE'S RIGHTS UPHELD

**Schooner Robert Lewers Must  
Pay \$500 for Captain's  
Wrongdoing.**

Judge Dole yesterday rendered a decision in favor of libellant in the admiralty suit of Paul Peterson against the American schooner Robert E. Lewers. He found that Peterson was entitled to \$50 for his return voyage to the port where he shipped, and to the sum of \$500 damages and costs.

The law of the case is thus given in the syllabus:

"A subordinate officer of a ship if unfit for his position through incompetence or negligence, may be displaced by the master but not disgraced.

"A second mate was disgraced to the position of a common seaman and sent to the fore-castle. Held, this to be an aggravation of damages if there was insufficient ground for displacing him."

G. A. Davis, E. A. C. Long and S. F. Chillingworth were proctors for libellant, and Castle & Withington for libelee. It was a libel for damages, in which the libellant alleged that he, being second mate of the libelee, was wrongfully disgraced and reduced to the standing of a common seaman on the voyage of the libelee from Port Gamble, Wash., to Honolulu. Such damages were claimed as follows: \$750 for the humiliation, shame and disgrace to which he was subjected on board of the vessel; \$60 as one month's wages to which he claimed to be entitled for failure on the part of the libelee to have previously notified him of discharge; and \$50 for passage money for the return of libellant to the place where he shipped on board the vessel.

The court found it was established that the libellant shipped on the libelee on September 14, 1907, for a voyage from San Francisco to Honolulu and such other ports in the Hawaiian Islands as the master might direct, to Puer Sound and back to San Francisco, for a term not exceeding six months, at \$60 a month wages as second mate. On October 6, between six and seven o'clock in the morning, while the libelee was off the Island of Oahu, during the libellant's watch, the master came on deck and, after a few words with him, ordered him to take his things and go forward among the sailors and perform the duties of a common sailor. On the next day, upon reaching port, the libellant left the ship and was later discharged by the shipping commissioner at Honolulu, his wages as second mate being paid up to that date. In connection with such discharge the libellant and the master signed, with other members of the crew discharged at that time, a release which the court quotes.

"This is a receipt and discharge of all claims for wages in respect of the past voyage or the engagement," the decision says. "The engagement covers the agreement set forth in the shipping articles, and although a seaman is not always bound by such a release, yet in this case I see no reason for modifying or refusing to recognize this release according to its terms. The claim, therefore, for any further wages on account of disrating is disallowed.

"It is recognized maritime law that a master has full authority for good reasons, of which the court is the final judge, to disrate any seaman and displace any subordinate officer. It is not very clear from the authorities as to the status of an officer upon being disrated. An A B sailor, upon being disrated, may be placed on any inferior footing and required to do the work at wages belonging to such position. It is not clear that a mate may be compelled to work as a seaman upon being disrated. The general rule is that a seaman who is disrated is entitled to his discharge at the next port."

After a thorough review of the evidence, with some running comment, the court concludes in part as follows: "The manner of the master toward him on the morning of the 6th of October has all the appearance of insolence. A concession appears in the evidence why the master of the ship at the time should have started out to pick a quarrel with this subordinate officer, using his superior authority to snub him and put him at a disadvantage, to refuse to give him any hint as to what he required or what work he should attend to, and then to disrate him to the position of a common seaman. It is not to be presumed that libellant was an ideal mariner, few such are met with; but that he was so deficient that the disrating was justifiable does not appear in this case.

"In the case of Thompson v. Busch, 23 Fed. Cases (No. 13,944) 1924, in which the mate was displaced and returned to the United States on the ship as a passenger, the court goes fully into the evidence in that case showed disloyalty, disrespect, almost conspiracy on the part of the mate against the master, but not disobedience in relation to the navigation of the ship, yet the action of the lower court in sustaining the mate against the action of the master in displacing him, was confirmed, the court adopting the rule laid down in the case of Atkins v. Burrows, in which it was decided that such an officer 'may forfeit his right to command and wages, by fraudulent, unfaithful and illegal practices; by gross and repeated negligence; by incapacity, brought on him by his own fault, to perform his duty, or palpable want of skill in his profession.'

"None of these faults are made out by the testimony in this case. The libellant, with a long record of service as first and second mate, with a license from authority as second mate on steamships, has been grossly humiliated before his crew and has been damaged in his reputation so that, wherever such disrating is known, it will tend to make it difficult for him to obtain such engagements as his license entitles him to. The action of the master, in sending him to the fore-castle and compelling him to do the work of the crew, adds to the damage that he has suffered."

## American Waffle Irons

7 inch 8 inch 9 inch  
\$1. \$1.25 \$1.35



Round Iron Griddles, 8 inch, 40c—9 inch, 50c—10 inch, 60c each  
Deep Skillets, 8 inch, 60c—9 inch, 75c—10 inch, 85c each.

## Deep Ring Waffle Irons



**FOR GAS STOVES**

8 inch, \$1.50 each

**E. O. Hall & Son, Ltd.**

HOUSEHOLD DEPT. SECOND FLOOR.

YOU HAVE NEVER FOUND  
ANYTHING AS GOOD AS

# RAINIER ...BEER

AT ALL BARS BY THE GLASS.  
BY THE CASE AT THE

**Rainier Bottling Works**

Phone 1331.

## Literary Bureau

Advertisements Written

Speeches Prepared

Correspondence Attended to

Manuscripts Revised

Interviews Furnished

Press Work of Every Description

Typewriting Done

Mailing Lists

**All Business Strictly Confidential**

OFFICE : : : COR. UNION AND HOTEL STS

P. O. Box 596

H. M. AYRES : : : : : MANAGER

CALL OR WRITE

## The Hawaiian Forester and Agriculturist

is a monthly magazine devoted to the interests of AGRICULTURE, FORESTRY, ENTOMOLOGY and ANIMAL INDUSTRY in Hawaii.

ONLY \$1 A YEAR.

It contains accounts of the current work, rules and reports of the different departments of the Hawaiian Board of Agriculture and Forestry, which includes AGRICULTURE, FORESTRY, ENTOMOLOGY and ANIMAL INDUSTRY; and also special articles by experts on these several subjects. No one can keep posted on the progress of Hawaii in those connections, without reading the FORESTER AND AGRICULTURIST.

Rates \$1 per year. Foreign \$1.25. Leopold G. Blackman, Editor, P. O. Box 59, Honolulu, T. H.

Advertising and Subscriptions, Hawaiian Gazette Co. Ltd., Publishers, P. O. Box 208, Honolulu, T. H.

## J. LANDO

**Depot For**

**BOSS OF THE ROAD OVERALLS  
PORUSKINT UNDERSHIRTS  
DRESS SUIT CASES**

**NEW LINE OF SHIRTS, TIES, HATS AND CAPS. SEE DISPLAY  
IN OUR WINDOW.**

Odd Fellows Building

The Central High School of Philadelphia has stood at the head of the high schools of the country for three-quarters of a century. It holds the unique position of being the only public high school in the United States invested with the legal power to confer degrees upon its graduates. In the annals of the National Department of Education it is classified with the colleges and universities.

Danger of burial alive will be removed if the test of death proposed by a French surgeon is shown to be infallible. He says that X-ray photographs of bodies, made even a few minutes after death, reveal clearly the outlines of all the internal organs; whereas if life still exists they are not visible in the photographs.



## ONCE

is enough. You may go for years without Life, Accident, or Fire Insurance Policies, and also without occasion for them.

But ONE VISIT from either Death, Accident, or Fire, will make you bitterly regret your short-sightedness in not providing against it.

And all three may come at once. No use putting off—see us NOW.



**Hawaiian Trust**  
COMPANY, LTD.  
Fort Street

**\$2,700**  
will pay for a home in

## MAKIKI DISTRICT

Let us show it to you.

**BISHOP TRUST CO., Ltd.**

924 BEECH STREET

**William O. Smith**

Trust Department

Estates Managed, Revenues Collected, Loans and Investments Made.

Insurance

AGENT FOR ENGLISH-AMERICAN UNDERWRITERS.

Real Estate

FOR RENT—Large House, Beretania street, next to Queen's Hospital.

FOR SALE—Lot With 2 Cottages—Corner Miller and Beretania streets—CHEAP.

Lot in Palolo Tract—Area, 18,000 square feet.

House and Lot—Kewalo.

Lots in Puunui Tract.

Houses and Lots in Palama.

Lots in Nuuanu Valley and Kaimuki.

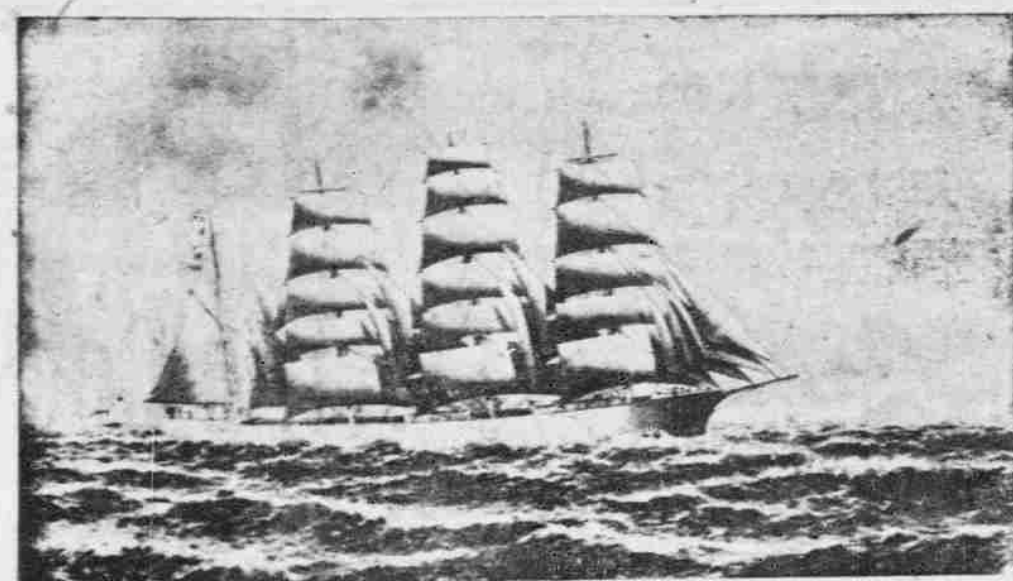
## PICTURESQUE HONOLULU

NOW READY

15 cents

Ready for Mailing

HAWAIIAN GAZETTE CO. Ltd



THE ERSKINE M. PHELPS, WHICH FINISHED SECOND IN THE RACE FROM SAN FRANCISCO.

## MARINE

Up to a 10 hour last night the Pacific Mail steamship Asia, Captain Gaukroger, had not been sighted. She was due yesterday morning from San Francisco, but failed to show up and is expected to be off port this morning. She will bring down three days' mail from San Francisco, but has no passengers for this port, unless they are stopovers. When she sails for the Orient, which will probably be this afternoon, she will take no passengers from Honolulu.

### HILONIAN SAILS TODAY.

The Matson Navigation Company's steamship Hilonian, Captain Johnson, will sail for the Coast this morning at 10 o'clock. The band will be present to give the vessel a sendoff and Hilonian days are now becoming almost as well known as Alameda days, on account of the fact that the Matson vessel almost invariably takes a full list of passengers to the Coast each time she sails. Her agents in this city, Castle & Cooke, bewail the fact that she can accommodate only thirty-five first-class passengers. If they had the room they state that they could more than double the number.

The Hilonian will carry a full load of freight. As usual, sugar will be the largest shipment on board. She will carry 2200 tons, of which 1200 will be refined and the other 1000 raw. A shipment of 4500 bunches of bananas is quite an item and 1000 bags of rice and 200 crates of fresh pineapples will help to fill up her hold.

This will be the last trip on which Chief Officer Russell will be seen on the Hilonian for some little time. He is slated to go back to Newport News.

### LOCAL OFFICE OF THE UNITED STATES WEATHER BUREAU.

Honolulu, Wednesday, Jan. 27, 1908.

Time	Bar.	Thermo.	Wind	Clouds	Direction	Force
5:00	30.10	65	SE	100	SE	10
6:00	30.11	67	SE	100	SE	10
7:00	30.12	68	SE	100	SE	10
8:00	30.13	69	SE	100	SE	10
9:00	30.14	70	SE	100	SE	10
10:00	30.15	71	SE	100	SE	10
11:00	30.16	72	SE	100	SE	10
12:00	30.17	73	SE	100	SE	10
1:00	30.18	74	SE	100	SE	10
2:00	30.19	75	SE	100	SE	10
3:00	30.20	76	SE	100	SE	10
4:00	30.21	77	SE	100	SE	10
5:00	30.22	78	SE	100	SE	10
6:00	30.23	79	SE	100	SE	10
7:00	30.24	80	SE	100	SE	10
8:00	30.25	81	SE	100	SE	10
9:00	30.26	82	SE	100	SE	10
10:00	30.27	83	SE	100	SE	10
11:00	30.28	84	SE	100	SE	10
12:00	30.29	85	SE	100	SE	10
1:00	30.30	86	SE	100	SE	10
2:00	30.31	87	SE	100	SE	10
3:00	30.32	88	SE	100	SE	10
4:00	30.33	89	SE	100	SE	10
5:00	30.34	90	SE	100	SE	10
6:00	30.35	91	SE	100	SE	10
7:00	30.36	92	SE	100	SE	10
8:00	30.37	93	SE	100	SE	10
9:00	30.38	94	SE	100	SE	10
10:00	30.39	95	SE	100	SE	10
11:00	30.40	96	SE	100	SE	10
12:00	30.41	97	SE	100	SE	10
1:00	30.42	98	SE	100	SE	10
2:00	30.43	99	SE	100	SE	10
3:00	30.44	100	SE	100	SE	10

WM. B. STOCKMAN,  
Section Director.

### TIDES, SUN AND MOON.

Time	High Tide	Low Tide	Sun	Moon
Jan. 27	5:10	11:10	10:10	10:10
Jan. 28	5:15	11:15	10:15	10:15
Jan. 29	5:20	11:20	10:20	10:20
Jan. 30	5:25	11:25	10:25	10:25
Jan. 31	5:30	11:30	10:30	10:30
Feb. 1	5:35	11:35	10:35	10:35
Feb. 2	5:40	11:40	10:40	10:40
Feb. 3	5:45	11:45	10:45	10:45
Feb. 4	5:50	11:50	10:50	10:50
Feb. 5	5:55	11:55	10:55	10:55
Feb. 6	6:00	12:00	11:00	11:00
Feb. 7	6:05	12:05	11:05	11:05
Feb. 8	6:10	12:10	11:10	11:10
Feb. 9	6:15	12:15	11:15	11:15
Feb. 10	6:20	12:20	11:20	11:20
Feb. 11	6:25	12:25	11:25	11:25
Feb. 12	6:30	12:30	11:30	11:30
Feb. 13	6:35	12:35	11:35	11:35
Feb. 14	6:40	12:40	11:40	11:40
Feb. 15	6:45	12:45	11:45	11:45
Feb. 16	6:50	12:50	11:50	11:50
Feb. 17	6:55	12:55	11:55	11:55
Feb. 18	7:00	1:00	12:00	12:00
Feb. 19	7:05	1:05	12:05	12:05
Feb. 20	7:10	1:10	12:10	12:10
Feb. 21	7:15	1:15	12:15	12:15
Feb. 22	7:20	1:20	12:20	12:20
Feb. 23	7:25	1:25	12:25	12:25
Feb. 24	7:30	1:30	12:30	12:30
Feb. 25	7:35	1:35	12:35	12:35
Feb. 26	7:40	1:40	12:40	12:40
Feb. 27	7:45	1:45	12:45	12:45
Feb. 28	7:50	1:50	12:50	12:50
Feb. 29	7:55	1:55	12:55	12:55
Mar. 1	8:00	2:00	1:00	1:00

New moon Feb. 1st at 10:07 p. m.  
The tides at Kahului and Hilo occur about one hour earlier than at Honolulu.

Hawaiian standard time is 10 hours 30 minutes slower than Greenwich time, being that of the meridian of 157 degrees thirty minutes. The time while the blows at 1:30 p. m., which is the same as Greenwich 0 hours 0 minutes. Sun and moon are for local time for the whole group.

### METEOROLOGICAL RECORD.

Issued Every Sunday Morning by the Local Office, U. S. Weather Bureau.

Day	Jan.	Feb.	Mar.	Apr.	May	June	July	Aug.	Sept.	Oct.	Nov.	Dec.
High	30.10	30.11	30.12	30.13	30.14	30.15	30.16	30.17	30.18	30.19	30.20	30.21
Low	29.90	29.91	29.92	29.93	29.94	29.95	29.96	29.97	29.98	29.99	30.00	30.01
Thermo.	65	67	68	69	70	71	72	73	74	75	76	77
Wind	SE	SE	SE	SE	SE	SE	SE	SE	SE	SE	SE	SE
Clouds	100	100	100	100	100	100	100	100	100	100	100	100
Direction	SE	SE	SE	SE	SE	SE	SE	SE	SE	SE	SE	SE
Force	10	10	10	10	10	10	10	10	10	10	10	10

\* NE, and W.

Note.—Barometer readings are corrected for temperature, instrumental errors, and local gravity, and reduced to sea level. Average cloudiness stated in scale from 0 to 10. Direction of wind is prevailing cloudiness during 24 hours ending at 8 p. m. Velocity of wind is average velocity in miles per hour. T indicates trace of rain.

WM. B. STOCKMAN,  
Section Director.

## ECLIPSE CREW LANDS ON MAUI

Three Men Died of Exposure on 900 Miles Trip in Open Boat.

The news arrived in this city yesterday afternoon that the American ship Eclipse, Captain Larsen, which sailed from Newcastle for San Francisco with a load of coal on October 16, foundered at sea on January 11, and that the captain and eleven men had arrived at Hana, Maui, after spending sixteen days in open boats on the ocean. Three of their companions died from exhaustion and exposure the day before reaching Hana. The Eclipse was a vessel of 1463 tons and was seen in Newcastle by Captain Fullerton of the Fort George, who arrived here yesterday from San Francisco, where he went after leaving the Australian port. She sprang a leak during a storm and, after a four days' struggle at the pumps, it was decided to abandon her and her crew took to their boats.

While the Eclipse was 103 days out from Newcastle, her long trip had not excited any great amount of comment, as is shown by the fact that up to January 13, when the last San Francisco papers which have reached here were issued, she had not been placed on the overdue list. A passage of ninety days, while considered very long, would not cause great comment at this season of the year, when the winds can never be depended on.

The shipwrecked sailors are being cared for in Hana and will arrive in this city next Thursday morning, coming down on the Claudine. The wreck occurred in latitude 36 north, longitude 155. This means that the shipwrecked crew were about 900 miles away from their landing point, in almost a direct line to the north.

## REALTY TRANSACTIONS

Entered of Record Jan. 27, 1908.

Est of Solomon A Kuaimoku by admr to Mary E Low  
Rufus A Lyman et al to Olaf S. Gar Co Ltd  
Keona to Francis Gay et al  
Kaunale and hsb to Francis Gay et al  
Annie N Pohepohe to M S Grinbaum  
Hawn Evangelical Assn to John Broad Jr  
Mary Hansmann and hsb to Emelia K Cornwell  
Helen L Dalton to Arthur C Alexander  
Louis F Teixeira and wf to Warren Newton et al  
J H Schnack and wf to Walter Thurtell  
Kilikina Kall (w), to Koolau Malle (w), D: 1-7 int in gr 1125, Kemoo, Wai-  
alua, Oahu; \$200. B 300, p 273. Dated  
Mar 17, 1908.  
Koolau Malle, and hsb (C B) to Ke-  
moo Land Co, Ltd. D: int in gr 1125  
and leasehold, Kamananui Wai-  
alua, Oahu; \$1500. B 300, p 280. Dated Nov  
14, 1907.  
William R Castle, Tr, to Kaala Land  
Co, Ltd. D: int in pcs land Waimano,  
Ewa, Oahu; \$1. B 300, p 282. Dated  
May 17, 1907.  
Wai-  
alua Agricultural Co, Ltd, to Kaneohe Rice Mill Co, Ltd. L: lot 5,  
kul, 2225 and lot 2, kul 2242, Paalaa,  
Wai-  
alua, Oahu; 10 yrs at \$25 per yr. B  
233, p 335. Dated Jan. 15, 1908.  
Eva C Styne and hsb (D J) to And-  
rew E Cop, D: kul 9951, ap 5, Kawa-  
loa-kai, Wai-  
alua, Oahu; \$75. B 300,  
p 282. Dated Jan 3, 1908.  
Charles M Cooke, Ltd, by Attns. Notice:  
Notice: appln for Reg Title of  
pors kuls 221 and 97B, cor Merchant  
and Alakea Sts, Honolulu, Oahu. B  
304, p 44. Dated Jan 18, 1908.  
Samuel G Wilder by Regr, Notice of

## GOVERNOR FREAR STRONG FOR MANNING THE LAND

The principal thing which is occupying Governor Frear's time these days is the land matter. It is the biggest single problem which he will probably have to do with during his administration.

"I see that some people seem to think that I wish to limit every man who owns land to what he can cultivate with his own hands," said the Governor to the newspaper men who called on him on their daily round. "I don't know where they get that idea. No hard and fast rules can be made which will apply. The kind of land, the crops raised, the location, and standard of living, must all be taken into account. A man couldn't, for instance, raise sisal without employing extra help at least part of the year, and that is probably true of most other crops. I myself own two farms, one on Punahou street and the other on Tantalus, but I live on them both and I don't think I am violating my own principles because I employ

help to work them. I have been quite successful and have been able to make a very material reduction in my market bill."

The Governor was referring to his home in Punahou, and his summer place on Tantalus, a few acres in extent.

"But the object is to get as many persons living on land they own as is possible. At the present time the tendency is for the owner of land to lease it outright to Orientals or on shares, meanwhile living entirely apart from it and really being a farmer only in name. When I talk of large areas, I might give for example, a man's owning, say, 200 acres of pineapple land. The owner himself would do well if he could handle from ten to twenty, and if he farmed it all he would need to keep twenty or thirty 'hands' busy. In a case like this we should have simply a sugar plantation proposition on a smaller scale."

## NOTICE

At the annual meeting of the Japanese Rice Mill Co., Ltd., the following officers were elected for the ensuing year:

President ..... S. Kojima  
Vice President ..... W. Motoshige  
Secretary ..... Y. Takakura  
Treasurer ..... T. Oda  
Auditor ..... D. Yonekura  
Director ..... T. Murakami  
" ..... T. Sumita  
" ..... M. Kawahara  
" ..... Y. Okumoto  
" ..... T. Kobayashi  
" ..... S. Ozaki  
THE JAPANESE RICE MILL COM-  
PANY, LTD.,  
Y. TAKAKURA,  
Secretary.

## NOTICE

At the annual meeting of the S. K. Kura Co., Ltd., the following officers were elected for the ensuing year:

President ..... W. Motoshige  
Vice President ..... Y. Takakura  
Secretary-Treasurer ..... J. Iwanaga  
Auditor ..... S. K. Ozawa  
Director ..... S. Kimura  
T. IWANAGA,  
Secretary.

Jan. 25 1908. 7947

## IN THE CIRCUIT COURT OF THE FIRST CIRCUIT, TERRITORY OF HAWAII.

### AT CHAMBERS—IN PROBATE.

In the matter of the Estate of G. W. Kahanaupou, deceased.  
Order to show cause on Administrator's application to sell real estate.  
On reading and filing the petition of Mele Keawe, administratrix of the estate of G. W. Kahanaupou, deceased, praying for an order of sale of certain real estate belonging to said G. W. Kahanaupou, deceased, as follows:  
Lots 21 and 22 of the Kapahulu tract, being the premises conveyed to said deceased by R. H. Silva, by deed dated Jan. 15, 1901, and recorded in the office of the Registrar of Conveyances in Honolulu in Liber 216, at Page 230, and setting forth certain legal reasons why such real estate should be sold, to-wit: That claims against the estate of said G. W. Kahanaupou have been filed amounting to the sum of \$485.30, and that there is no personal property in said estate out of which to satisfy said claims.  
It is hereby ordered, That the heirs and next of kin of said deceased and all persons interested in the said estate, appear before this Court on Saturday, the 15th day of February A. D. 1908, at 9 o'clock a. m., at the Court Room of this Court, in Honolulu, then and there to show cause why an order should not be granted for the sale of such estate.  
And it is further ordered, That a notice of this order be published once a week for three successive weeks before the said day of hearing, in the Pacific Commercial Advertiser newspaper published in Honolulu, the last publication to be not less than ten days previous to the time therein appointed for said hearing.  
Dated at Honolulu, January 13, 1908.  
ALEXANDER LINDSAY, JR.,  
Second Judge of the Circuit Court of the First Circuit.  
Attest:  
JOHN MARCELLINO,  
Clerk of the Circuit Court of the First Circuit.  
WADE WARREN THAYER,  
Attorney for Administratrix.  
1908—JAN. 14-21-28, Feb. 4

No. 25. TERRITORY OF HAWAII. COURT OF LAND REGISTRATION. TERRITORY OF HAWAII TO ROSE NEVEN; BLANCH MARTIN; WO HOP; TSUBOI; ARITA; INOUE; THE TRUSTEES OF THE QUEEN'S HOSPITAL BY GEO. W. SMITH, SECRETARY; EMI PUUNOHU; MAUI; KEKAHUNA; LEONG KAU; FATHER H. VALENTIN and HAWAIIAN TRUST CO., LTD., TRUSTEES and EXECUTORS OF THE ESTATE OF JOHN ENA; MARY E. LOW; LEON RENAUT; YIM QUON; TERRITORY OF HAWAII BY C. R. HEMENWAY as Attorney General; COUNTY OF OAHU BY CHARLES HUSTACE, JR., as Chairman of the Board of Supervisors; and to All whom it may concern:

Whereas, a petition has been presented to said Court by NELLIE E. MARKS to register and confirm her title in the following-described land: Beginning at an iron bolt at fence on the North-westerly line of the Iwilei Road, the ordinates of this point of beginning being 359 feet North and 1429.5 feet West of the Government Survey Station Kawa, and running, by true azimuths, as follows:

- (1) 107° 00', 85, feet, to an iron bolt;
- (2) 136° 00', 6, feet, to an iron bolt;
- (3) 62° 15', 70.7, feet, to a spike in the coral;
- (4) 329° 35', 67, feet, to the south corner of fence and North-westerly line of the Iwilei Road at a point distant 15.8 feet North 58° 30' East from an iron bolt on the North-easterly line of a proposed road shown on Government Survey Registered Map No. 2177;
- (5) 241° 39', 127.7, feet, along the North-westerly line of Iwilei Road as fenced to the initial point.

Area 6335 Square Feet, being part of the Ill of Iwilei and part of L. C. A. 11638, Apana 1, R. P. 2427, in Kapalama, Honolulu, Oahu.

You are hereby cited to appear at the Court of Land Registration, to be held at Honolulu, Island of Oahu, on the 20th day of February, A. D. 1908, at one o'clock and thirty minutes in the afternoon, to show cause, if any you have, why the prayer of said petition should not be granted. And unless you appear at said Court at the time and place aforesaid your default will be recorded and the said petition will be taken as confessed, and you will be forever barred from contesting said petition or any decree entered thereon.

Witness, PHILIP L. WEAVER, Esquire, Judge of said Court, this 20th day of January in the year nineteen hundred and eight.

Attest with Seal of said Court.

(SEAL) W. L. HOWARD,  
Registrar.

Jan. 21, 28; Feb. 4, 11.

READ THE ADVERTISER

WORLD'S NEWS DAILY



We can supply  
you with

# Beef OR Fish and Vegetables

The best you can find  
in the city.

**C. Q. Yee Hop & Co.**

Telephone - - 251

## Assessment No. 7

Due December 15, 1907, and delinquent January 15, 1908.

Payable at office of

HONOLULU

MUTUAL BURIAL ASSOCIATION

Kapiolani Bldg. - - Alakea St.

## Wah Ying Chong Co.

King Street, Ewa of Fishmarket

DRY GOODS and FURNISHING

GOODS OF EVERY DESCRIPTION

## Catton, Neill & Company, Ltd.

Engineers and Machinists

QUEEN and RICHARDS STREETS

Boilers re-tubed with charcoal-iron or steel tubes. General ship work.

## Yoshikawa

King Street

WILL BUY

OLD CLOTHES and

BICYCLES

## Y. WO SING & CO.

Groceries and Fruits

1188-1188 Nuuanu St.

Phone Main 235 P. O. Box 883

## Always Swell Millinery

- AT -

## MISS POWER'S

Boston Building, Fort Street

## Old Kona Coffee

WANTED, 1 BAG OR 100 BAGS

State Quality and Price to

## McChesney Coffee Co.

16 MERCHANT STREET,

HONOLULU,

Coffee Roasters to the Trade

## NEW OVAL FRAMES

Just received by the

Pacific Picture Framing

COMPANY.

NUUANU, BELOW HOTEL

## Chickering

PIANOS—the Choice of Musicians

New Shipment Just In

Bergstrom Music Co., Ltd.

Odd Fellows' Building, Fort Street

## NEW SHIPMENT

— Of —

## Chinese Pongee Silk

Heavy and Light

FOR MEN AND WOMEN

## Grass Linen

White and Colored

## Yee Chan & Co.

Corner King and Bethel

READ THE ADVERTISER

WORLD'S NEWS DAILY

## Fraternal Meetings

### POLYNESIA ENCAMPMENT NO. 1, I. O. O. F.

Meets every first and third Friday of the month, at 7:30 p. m., in Odd Fellows' Hall, Fort Street. Visiting brothers cordially invited to attend.

C. A. SIMPSON, C. P.

L. L. LA PIERRE, Scribe.

### EXCELSIOR LODGE NO. 1, I. O. O. F.

Meets every Tuesday evening, at 7:30, in Odd Fellows' Hall, Fort Street. Visiting brothers cordially invited to attend.

J. DUTOT, C. P.

L. L. LA PIERRE, Sec.

### HARMONY LODGE NO. 3, I. O. O. F.

Meets every Monday evening, at 7:30, in Odd Fellows' Hall, Fort Street. Visiting brothers cordially invited to attend.

BEN VICKERS, N. G.

E. R. HENDRY, Sec.

### PACIFIC REBEKAH LODGE NO. 1, I. O. O. F.

Meets every second and fourth Thursday, at 7:30 p. m., in Odd Fellows' Hall, Fort Street. Visiting Rebekahs are cordially invited to attend.

ALICE PRATT, N. G.

JENNY JACOBSON, Sec.

### OLIVE BRANCH REBEKAH LODGE NO. 2, I. O. O. F.

Meets every first and third Thursday, at 7:30 p. m., in Odd Fellows' Hall, Fort Street. Visiting Rebekahs are cordially invited to attend.

JENNIE H. MACAULAY, N. G.

HAZEL CRANE, Sec.

### OCEANIC LODGE NO. 371, F. & A. M.

Meets on the last Monday of each month, at 7:30 p. m., in the Masonic Temple. Visiting brethren and members of Hawaiian and Pacific are cordially invited to attend.

M. M. JOHNSON, W. M.

W. H. GOETZ, Secretary.

### LEAHI CHAPTER NO. 2, O. E. S.

Meets every third Monday of each month, at 7:30 p. m., in the Masonic Temple. Visiting sisters and brothers are cordially invited to attend.

CLARA M. SCHMIDT, W. M.

ADELAIDE M. WEBSTER, Sec.

### LEI ALOHA CHAPTER NO. 3, O. E. S.

Meets at the Masonic Temple every second Saturday of each month, at 7:30 p. m. Visiting sisters and brothers are cordially invited to attend.

MINNIE FRAZEE, W. M.

LOUISE A. TRUE, Sec.

### LADIES' AUXILIARY, A. O. H., DIVISION NO. 1.

Meets every first and third Tuesday, at 8 p. m., in O. B. U. Hall, Fort Street. Visiting sisters are cordially invited to attend.

MRS. M. COWES, Pres.

MAUD O'SULLIVAN, Sec.

### ANCIENT ORDER HIBERNIANS, DIVISION NO. 1.

Meets every first and third Wednesday, at 8 p. m., in C. B. U. Hall, Fort Street. Visiting brothers cordially invited to attend.

F. P. CREEDON, Pres.

J. T. CAREY, Sec.

### MYSTIC LODGE NO. 2, K. of P.

Meets every Tuesday evening at 7:30 o'clock, in K. of P. Hall, corner Fort and Beretania. Visiting brothers cordially invited to attend.

A. S. WEBBER, C. C.

F. WALDRON, K. R. S.

### WILLIAM MCINLEY LODGE NO. 8, K. of P.

Meets every Saturday evening at 7:30 o'clock, in Pythian Hall, corner Beretania and Fort streets. Visiting brothers cordially invited to attend.

W. L. FRAZEE, C. C.

E. A. JACOBSON, K. R. S.

### HONOLULU TEMPLE NO. 1, PYTHIAN SISTERS.

Meets every first and third Monday, at 7:30 p. m., at Knights of Pythias Hall, Fort and Beretania streets. All visitors cordially invited to attend.

RENEE WHITEHEAD, M. E. C.

GRACE O'BRIEN, M. of E. C.

### COURT CAMOES NO. 810, A. O. F.

Meets every second and fourth Tuesday of each month, at 7:30 p. m., in San Antonio Hall, Vineyard street. Visiting brothers cordially invited to attend.

DR. JOHN F. COWES, C. R.

M. C. PACHECO, F. S.

### CAMOES CIRCLE NO. 240, C. O. F.

Meets every second and fourth Thursday of each month, at 7:30 p. m., in San Antonio Hall, Vineyard street. Visiting companions are cordially invited to attend.

MRS. J. P. REGO, C. C.

R. J. BORGES, F. S.

### COURT LUNALILO NO. 6800, A. O. F.

Meets every first and third Wednesday evening of each month, at 7:30 p. m., in Pythian Hall, corner Fort and Beretania streets. Visiting brothers cordially invited to attend.

WILLIAM AHA, C. R.

JAS. K. KAULIA, P. C. F. S.

### HONOLULU AERIE 140, F. O. E.

Meets on second and fourth Wednesday evenings of each month, at 7:30 o'clock, in Pythian Hall, corner Beretania and Fort streets. Visiting Eagles are invited to attend.

W. L. FRAZEE, W. P.

H. T. MOORE, Sec.

HONOLULU HARBOR NO. 54, A. A. of M. & P.

Meets on first and third Sunday evenings of each month, at 7 o'clock, at Odd Fellows' Hall. All sejourning brethren are cordially invited to attend.

By order Worthy President,

A. TULLETT

FRANK C. POOR, Sec.

THEODORE ROOSEVELT CAMP NO. 1, U. S. W. V.

Department Hawaii.

Meets Saturday upon notice to members in Waverley Block, corner Bethel and Hotel, at 7:30 p. m. Visiting comrades cordially invited to attend.

L. E. TWOMEY, Commander.

MARINE ENGINEERS BENEFICIAL ASSOCIATION.

Meets second and fourth Mondays of each month at the new K. of P. Hall, corner Fort and Beretania streets.

E. HUGHES, Pres.

H. G. WOOTTEN, Sec.

CHUNG WAH LODGE NO. 4, K. of P.

Meets every second and last Tuesday at its hall, Vineyard street, at 7:30 p. m. Visiting brothers are cordially invited to attend.

SAMUEL L. WONG, C. C.

WONG KIM CHONG, K. of R. & S.

HAWAIIAN TRIBE NO. 1, I. O. R. M.

Meets every first and third Thursday of each month, in K. of P. Hall, corner Fort and Beretania streets. Visiting brothers cordially invited to attend.

J. W. ACH, Sachem.

A. E. MURPHY, C. of R.

HONOLULU LODGE 616, B. P. O. E.

Honolulu Lodge No. 616, B. P. O. E., will meet in their hall, King street, near Fort, every Friday evening. By order of the E. R.

FRANK E. RICHARDSON, E. R.

HARRY A. WILDER, Sec.

HONOLULU SCOTTISH THISTLE CLUB.

Meets on the first and third Friday, at 7:30 o'clock p. m., in rooms in Oregon Block, entrance on Union street.

J. M. MACKINNON, Chief.

JOHN MACAULAY, Sec.

HAWAII CHAPTER NO. 1, ORDER OF KAMEHAMEHA.

Meets every first and third Thursday evening of each month at 7:30 o'clock in Fraternity Hall, Odd Fellows building, on Fort street.

N. FERNANDEZ, Sec.

Kuaahau.

## SMALL FRUITS OF BIG CLAIM

### Goo Shee \$50,000 Suit Settled Cheaply—Other Court Proceedings.

After dragging through court for almost three years, and after the lapse of nearly four years and six months since the cause of action occurred, also when a jury newly empaneled was on hand for a new trial of it, the Goo Shee \$50,000 damage suit was yesterday dismissed, with costs to plaintiffs, by Judge De Bolt upon announcement of a settlement outside of court.

It is understood that a sum a little under one thousand dollars was accepted by complainants to quit. Goo Shee, widow of Chang Yee Tong, and C. K. Ai, administrator of his estate, brought suit on March 10, 1905, for \$50,000 damages against Mutual Telephone Co., Ltd., and Honolulu Rapid Transit and Land Co., Ltd., on account of the killing of Tong by a live wire near King street bridge on the night of August 19, 1903. The case was tried in June, 1907, a mistrial resulting and a new trial being ordered on the 26th of that month. Continuances were had until the trial was set for yesterday, when the ending came. R. W. Breckons and J. J. Dunne were the original attorneys for plaintiffs, being joined later by W. V. Thayer. A. G. M. Robertson represented the Mutual Telephone Co. and Castle & Withington the Rapid Transit Co.

At the trial last year the jury were out six hours and a half, when, at 11:10 at night, a hopeless disagreement was reported and Judge Lindsay ordered a mistrial entered. It was divulged openly, after the jury were dismissed, that Juror Barry was the one man who had held out against the eleven others and thus prevented a verdict. The jurors were E. S. Barry, F. Waldron, W. G. Walker, Bruce Cartwright, Jr., R. W. Podmore, I. Spalding, M. R. Houghtalling, O. Schilling, John G. Clement, George Cavanaugh, R. W. Atkinson and Charles Phillips. As the case had developed it was a weak one for the claimants, especially as to heavy damages.

Had the case gone to trial yesterday the jurors to wrestle with it would have been Wm. W. Buckle, Wm. E. Kimball, Henry Kaee, Geo. H. Greene, John F. Soper, N. F. Lemon, John E. O'Conner, Frank J. Dutra, Walter C. Gilman, Geo. Lishmau, Wm. Rose and E. O. White.

### WILLIAMS ESTATE.

W. R. Castle, trustee under the will of J. R. Williams, has filed his annual account up to and including December 31, 1907, which balances at \$9190.25. Of the payments \$7100 represents new investments, \$1420 distributions, \$642.05 expenses of the estate, and \$28.20 balance due the trustee on executor's final accounts.

### INDEMNITY SUIT DROPPED.

Attorney General Hemenway has filed a discontinuance of the suit of the Superintendent of Public Works against Edward Vivian Richardson, former clerk of Honolulu Water Works, and his sureties. It was to recover the amount of a defalcation on the clerk's bond, but the Supreme Court held that the bond would not hold under the law as it stood when the bond was given.

### THE DIVORCE MILL.

Judge Lindsay granted a divorce to Asano Takenaka against S. Takenaka for failure to provide any maintenance.

Tsuchi Yanagi was granted a divorce from Kynichi Yanagi for utter and wilful desertion. Kanichiro Matsumoto was granted a divorce from his wife, Matsu Matsumoto, on the ground of desertion.

Kalao Kalani has brought a divorce suit against M. Kalani on the grounds of his desertion of her for ten years and failure to provide support. They were married in 1887 by a Mormon elder at Lalewai. The husband promptly answers, denying everything alleged but the marriage and consenting to an immediate hearing.

Tsune Nakashima is suing Sayichiro Nakashima for divorce on the ground of non-support. She charges him with idleness and having forced her, from her own earnings, to support him. They were married in 1904.

### THE LAND COURT.

L. A. Dickey, examiner, has rendered a favorable report on the petition of F. K. Howard for a registered title to land at Makiki containing 7.28 acres.

Lincoln Loy McCandless has petitioned for a registered title to two parcels of land at Waimano, Ewa, assessed for taxes at a valuation of \$200. One lot contains 1.46 acres and the other 1700 square feet.

### COURT ITEMS.

J. P. Rodriguez, trustee, has brought

suit for \$1655 on a promissory note against William McCandless.

Judgment against Ewa Plantation Co. in its income tax case was filed in the Supreme Court yesterday.

Jury is waived in the damage suit of Joseph O. Carter, trustee, against Frank Andrade.

W. C. Achi for defendant has filed a general denial to the complaint of Tony C. Afong against Hawaii Land Co., Ltd.

T. M. Harrison for defendant has filed a general denial to the complaint of Kahikina against Kalei.

### A LAGGING JUROR.

Guy H. Owens did not answer the roll call when Judge De Bolt's jury lined up yesterday. Bailiff Hopkins brought him in under a bench warrant to show cause why he should not be adjudged guilty of contempt of court. He gave an explanation satisfactory to the court.

### THE BRASH CASE.

Judge De Bolt approved the accounts of Albert F. Judd, guardian of the late Susan Brash, on the report of John Macallino, master. A clerical error of \$12 in the inventory was corrected, the value of the estate being \$4983.95 according to that document. Receipts were \$3660.31 and payments \$3378.56, leaving a balance of \$281.75. The master was doubtful of the value of the Hawaii Land Co. mortgage, assigned to Judd by Magoon, the former guardian. He considered the Walker mortgage good. The fire claim of \$800, for which the court held Magoon responsible, was in an unsatisfactory position.

Judge Lindsay granted the motion of Judge Perry, for eight respondents, to allow the filing of a separate plea of compromise in the Afong case. These respondents contend for the efficacy of the settlement agreed upon some months ago.

### FEDERAL COURT ITEMS.

Judge S. B. Dole yesterday made American citizens of representatives of the three British Isles—James William Athell Redhouse, England; John McPherson Perry, Scotland; and Thomas Joseph Savage, Ireland—and of Pierre Alfred Romane, a subject of Emperor William of Germany.

Daisy Wagner and Albert Toogood were bound over in \$500 each, for violation of a section of the Edmunds Act, by Commissioner Hatch.

Depositions were taken by Commissioner Hatch on the admiralty claim of J. M. Little and others, members of the Spreckels tug fleet, for a share of the salvage money awarded to that vessel in connection with the floating of the steamship Manchuria.

Judge Dole and Deputy Clerk A. E. Murphy will leave for Hilo today to hold a term of the United States District Court there. It is expected that the term business will consist in little more than opening and closing the court, as there is no case on the calendar for trial at Hilo.

## VICKERS REPAIR SHOP IS NOW INCORPORATED

Hawaii Shoe Co., Ltd., has filed letters of association, its incorporators being E. J. Lord, A. G. Hodgins, W. P. Roth, F. E. Thompson and Ben Vickers. Its purposes are to deal in footwear and do a shoe repairing business. The capital is \$15,000 in 750 shares of \$20 a share, with the privilege of extension to \$250,000. The term is fifty years and the officers are the following named:

E. J. Lord, president; A. G. Hodgins, vice president; W. P. Roth, secretary; F. E. Thompson, treasurer; Ben Vickers, auditor.

Ten per cent. of the value of the shares, all subscribed for, has been fully paid up by the conveyance to the company of the plant of Vickers Repair Shop, for the consideration of \$2500, the valuation being: Repairing machinery, \$2222.77; fixtures, \$89.17; stock, leather, etc., \$200. Total, \$2511.94.

## Vapo-Cresolene

(Established 1879)  
An Inhalation for  
Whooping-Cough, Croup,  
Bronchitis, Coughs,  
Diphtheria, Catarrh.

Cresolene is a Boon to Asthmatics.

Does it not seem more effective to breathe in a remedy for diseases of the breathing organs than to take the remedy into the stomach?

Cresolene cures because the air, rendered strongly antiseptic, is carried over the diseased surface with every breath, giving prolonged and constant treatment. It is invaluable to mothers with small children.

Those of a Consumptive Tendency will find immediate relief from Coughs or Inflamed Condition of the Throat.

ALL DRUGGISTS.

Send postal for descriptive booklet.

Vapo-Cresolene Co.,

180 Fulton Street,







## Canadian-Australian Royal Mail Line

Steamers running in connection with the Canadian Pacific Railway Co. sail at Honolulu on or about the following dates:

FOR FLU AND AUSTRALIA.	FOR VANCOUVER.
MIOVERA FEB. 8	AORANGI FEB. 5
AORANGI MAR. 7	MOANA MAR. 4

Through tickets issued to all points in Canada, United States and Europe.

THEO. H. DAVIES & CO., LTD.,  
GENERAL AGENTS.

## Pacific Mail S. S. Co., Occidental & Oriental S. S. Co., and Toyo Kisen Kaisha

Steamers of the above companies will call at Honolulu and leave this port on or about the dates mentioned below:

FOR THE ORIENT.	FOR SAN FRANCISCO.
ASIA JAN. 28	KOREA FEB. 18
MONGOLIA FEB. 5	AMERICA MAR. 1
HONGKONG MAR. 15	SIBERIA FEB. 22
KOREA MAR. 20	CHINA FEB. 29
AMERICA MAR. 20	MANCHURIA MAR. 7
SIBERIA MAR. 16	

For further information apply to  
H. HACKFELD & CO., LTD., Agents.

## Oceanic Steamship Co. Time Table

The fine passenger steamers of this line will arrive and leave this port as hereunder:

FROM SAN FRANCISCO.	FOR SAN FRANCISCO.
ALAMEDA FEB. 14	ALAMEDA JAN. 29
ALAMEDA MAR. 6	ALAMEDA FEB. 11

In connection with the sailing of the above steamers, the agents are prepared to issue, to intending passengers, Coupon Through Tickets by any railroad, from San Francisco to all points in the United States, and from New York by any steamship line to all European ports.

For further particulars apply to  
WM. G. IRWIN & CO., LTD.,  
AGENTS.

## Matson Navigation Co.

The S. S. HILONIAN of this line, carrying passengers and freight, will run in a direct service between this port and San Francisco, sailing and arriving on or about the following dates:

Leave San Francisco.	Arrive Honolulu.	Leave Honolulu.
JAN. 15	JAN. 22	JAN. 28
FEB. 12	FEB. 19	FEB. 25
MAR. 11	MAR. 18	MAR. 24
APR. 8	APR. 15	APR. 21
MAY 6	MAY 13	MAY 19
JUNE 3	JUNE 10	JUNE 16

PASSENGER RATES TO SAN FRANCISCO: First Cabin, \$60.  
Round Trip, First Class, \$110.  
For further particulars apply to

CASTLE & COOKE, LTD.,  
AGENTS.

## AMERICAN-HAWAIIAN STEAMSHIP COMPANY.

FROM NEW YORK TO HONOLULU.  
Weekly Sailings via Tehuantepec.

Freight received at all times at the Company's Wharf, 41st Street, South Brooklyn.

FROM HONOLULU TO SAN FRANCISCO, DIRECT.

S. S. NEBRASKAN...TO SAIL FEB. 8

FROM SAN FRANCISCO TO HONOLULU, DIRECT.

S. S. ALASKAN...TO SAIL FEB. 6

Freight received at Company's wharf, Greenwich Street.

## HUSTACE-PECK COMPANY, LTD.

DRAYMEN

Phone 395 63 QUEEN STREET P. O. Box 112

ESTIMATES GIVEN ON ALL KINDS OF TEAMING

Dealers in

FIREWOOD, STOVE, STEAM AND BLACKSMITH COAL.

CRUSHED ROCK, BLACK AND WHITE SAND, GARDEN SOIL, HAY, GRAIN, CEMENT, ETC.

## Union-Pacific

Transfer Co., Ltd.

FURNITURE AND PIANO MOVING.

BAGGAGE SHIPING  
STORAGE WOOD  
PACKING COAL

Phone  
58

## CITY TRANSFER CO.

JAS. H. LOVE

Phone 152 Lowest Rates on Baggage, Moving, etc.

## GOMES' EXPRESS CO.

Fort Street, opposite Hackfeld & Co.

BAGGAGE CHECKED FREIGHT HANDLED, FURNITURE  
Office Phone - 298 AND PIANO MOVING, STORAGE,  
PACKING, SHIPPING.

## THE PACIFIC Commercial Advertiser

Entered at the Postoffice at Honolulu, T. H., as second-class matter.

SUBSCRIPTION RATES:

One Year \$12.00

Advertising Rates on Application.

Published every morning except Sunday by the

HAWAIIAN GAZETTE CO., LTD.

Van Holt Block, No. 65 South King St.

C. S. CRANE Manager.



## For Sale or Hire

Fine Driving and Saddle Horses.

## Club Stables

Telephone 109



Old Calabashes, Rare

Stamps, Quaint Tapes,

Hats, Mats, Leis, etc.

Best variety at the

BIG ISLAND CURIO

STORE

—STEINER'S—

Elite Bldg., Hotel St.

## Oahu Ice & Electric COMPANY.

Ice delivered at any part of the city.

Island orders promptly filled. Tel. Main

623. P. O. Box 600. Office, Kewalo.

## PILOT FISH SHARES

### SHARK'S CAPTIVITY

The big thirteen-foot shark the Aquarium has been visited by a large number of people since he was hauled over the coral reef and put into the big tank on Saturday last. Thirteen feet of shark is bigger than thirteen feet of almost anything else, and the big fish keeps the tank water in a swirl as he swims ceaselessly about looking for an avenue of escape back to the open sea.

Sharing the captivity of the shark is a pilot fish, some ten inches long, which clings close to the sandpaper hide of the selachian just about the big dorsal fin, making little dashes from its refuge there along the shark's back from time to time, returning always to rest in the lee of the fin as the big fish swings around and around his cramped quarters. Pilot fish accompany sharks about in deep water, nearly every one of the monsters having one or more of these little companions, but it seems extraordinary that the pilot fish at the Aquarium should stick to his big friend throughout all the excitement that prevailed during his capture and ultimate transfer to the tank.

## TOURIST PLAYERS TO STOP AT HONOLULU

NEW YORK, January 14.—One of the most extensive tours ever attempted by a theatrical company is now being planned by a party of American players. It is their intention to start in April on a journey around the globe, in the course of which they will visit nearly every civilized country of the world.

The company will be under the direction of Mark A. Luescher and will be composed of Daizie, the dancer; Miss Josephine Cohan; Harry Lee, the character actor; Frederick Niblo, the humorist, and one other artist who has not yet been selected.

According to the present plans the party will sail from San Francisco in April, stopping at Honolulu, and then visiting Australia, New Zealand, Japan, China, the Philippines, South Africa, Turkey, Italy, France, Germany and England.

### DRUNK FELL OFF A CAR.

A drunken man created some excitement near the corner of King and Liliha streets yesterday afternoon by falling off a moving street car. He was drunk enough to escape any real injury, however, but was taken in charge by the police.

## MARINE REPORT.

(From San Francisco Merchants Exchange.)

Monday, January 27, 1908.

San Francisco—Sailed, Jan. 25, Am. sch. Honolulu, for Honolulu and Hana.

San Francisco—Sailed, Jan. 26, Am. bk. George Curtis, for Honolulu.

San Francisco—Sailed, Jan. 26, Am. bk. Andrew Welch, for Hilo.

Kahului—Arrived, Jan. 25, Am. ship E. M. Phelps, from San Francisco.

Kahului—Arrived, Jan. 27, A-H. S. S. Arizona, from Kaanapali.

## PORT OF HONOLULU.

### ARRIVED.

Monday, January 27.

Sh. Fort George, Fullerton, from San Francisco, 1:10 p. m.

Str. Maui, Bruhn, from Hawaii, 4 p. m.

Str. J. A. Cummins, Searle, from Waimanalo, 7 p. m.

### DEPARTED.

Str. Ke Au Hou, Tullett, for Kauai ports, 5:20 p. m.

Str. Kauai, Sachs, for Hawaii ports, 7:22 p. m.

Str. J. A. Cummins, Searle, for Waimanalo, 7 a. m.

### DUE TODAY.

P. M. S. S. Asia, Gaukroger, from San Francisco, a. m.

Br. S. S. Lord Stanley, Cunningham, from Newcastle, due.

### SAILED TODAY.

P. M. S. S. Asia, Gaukroger, for the Orient, p. m.

### PASSENGERS

Arrived.

Per stmr. W. G. Hall, from Kauai ports, January 26—L. Weinheimer, J. S. Ferry, Mrs. Ludloff and children, Gus Rose, Miss Carter, D. F. McCorkiston, J. P. Fernandez, A. Girard, Fumakaga, Mrs. Dreman, Misses Macfarlane (2), and 23 deck.

Per stmr. Iwalani, from Molokai ports, January 26—J. D. McVeigh, R. Ivers, W. Kaniz, H. Giffard, George Lenord, S. Hayseiden, Mrs. N. Kane, Mrs. J. Kau and infant, S. B. Fugiyama and 6 deck.

Booked to Depart.

Per O. S. S. Alameda, for San Francisco, January 28—Miss L. A. Fleure, H. W. Davis and wife, V. L. Tenney, Mrs. J. Rosenberg and two children, R. Rosenberg, Miss F. Lawrence, G. E. Hart, Mrs. Capt. E. H. Svenson, J. C. Godwin, E. R. Hibberdine, Mrs. A. R. Watson, Mrs. Le Maitre, D. G. F. Brackett and son, Miss Nan Hodnett, N. S. Riley, S. H. Moses, Capt. A. N. Watson, H. J. Heene, wife and daughter, H. Saxi, S. Peiser.

Per M. N. Co.'s S. S. Hilonian, for San Francisco, January 28—Miss Dorothy Rowland, Miss Lawrence, Mrs. Capt. E. H. Svenson, H. Moses, C. H. Smith, F. A. Wickett, C. A. Krumb-



## FOR RENT

Aloha Lane .....\$18.00  
King Street .....15.00  
Victoria Street .....35.00  
Beretania Street .....40.00  
Kinau Street .....30.00  
Punchbowl Street .....30.00  
Matlock Avenue .....25.00  
Kaimuki .....20.00  
Kewalo Street .....22.50  
Liliha Street .....15.00  
Kinau Street .....35.00  
King Street .....25.00

## Furnished

Kaimuki .....\$37.00  
Prospect Street .....50.00

## FOR SALE

A bargain at Kaimuki.....\$1000.00  
Three-quarters of an acre building lot, Manoa Valley.....1600.00

## Henry Waterhouse Trust Co., LIMITED.

Fort and Merchant Streets, Honolulu

## TRENT TRUST CO., Ltd.

### TO LET.

Mrs. Fred Church's residence,  
Kewalo street, inquire at office.

Punchbowl, 2 Bedrooms .....\$ 8.00  
Kalihi, 2 Bedrooms .....\$12.50  
Manoa, 2 Bedrooms .....\$15.00  
School Street, 2 Bedrooms .....\$15.00  
Myers Street, 2 Bedrooms .....\$15.00  
Punchbowl Street, 2 Bedrooms...\$18.00  
Wilder Avenue, 2 Bedrooms.....\$18.00  
Wilder Avenue, 3 Bedrooms.....\$20.00  
Gandall Lane, 3 Bedrooms.....\$22.00  
School Street, 3 Bedrooms.....\$30.00  
King Street, 2 Bedrooms.....\$25.00  
Lunalilo Street, 3 Bedrooms.....\$40.00  
Kewalo Street, 2 Bedrooms.....\$40.00  
Beretania Avenue, 4 Bedrooms...\$50.00

### FURNISHED.

King Street, 2 Bedrooms.....\$30.00  
Young Street, 3 Bedrooms.....\$35.00  
Nuuanu Avenue, 3 Bedrooms.....\$60.00

## TRENT TRUST CO., Ltd.

## SHOOTING NOTICE

All shooting at game upon the lands of the Niu Ranch, Niu, Island of Oahu, is hereby prohibited under penalty of the law.

J. M. DOWSETT, Lessee,  
Honolulu, T. H., January 24, 1908.  
7945

haar, J. Scharpe and family, W. E. Shaw, Miss L. Anderson, Mrs. J. Rosenberg and two children, R. Rosenberg, O. W. Brasch, Dr. Berno Hermann, wife and child; Master Hermann, J. Koolman, O. T. Stone, Miss A. Svenson, Alfred Billups, Mrs. C. F. Peterson and three children, Charles Bon, I. J. Howe, Mary A. Austin, Dr. L. Toiteki, Mrs. Ferreira and child.

### VESSLS IN PORT.

(Army and Navy.)

Iroquois, U. S. S., Carter, Johnson Island, Aug. 30.

(Merchant Vessels.)

S. C. Allen, Am. bk., Willer, Grays Harbor, Jan. 7.

Flourance Ward, Am. scr., Piltz, Midway, Jan. 13.

Coronado, Am. bkt., Potter, San Francisco, Jan. 15.

W. H. Marston, Am. scr., Peabody, San Francisco, Jan. 16.

Hoche, Fr. bk., Le Maitre, Hamburg, Jan. 18.

Robert Lewers, Am. schr., Underwood, Aberdeen, Jan. 19.

Nuuanu, Am. bk., Josselyn, New York, Jan. 22.

Alameda, Am. s.s., Dowdell, San Francisco, Jan. 24.

Hilonian, Am. s.s., Johnson, San Francisco, Jan. 24.

Fort George, Am. s.s., Fullerton, San Francisco, Jan. 27.

### THE MAILS.

Mails are due from the following points as follows:

San Francisco—Per Asia, today.

Orient—Per Korea, Feb. 8.

Colonies—Per Aorangi, Feb. 5.

Victoria—Per Miowera, Feb. 8.

Mails will depart for the following points as follows:

San Francisco—Per Alameda, Jan. 29.

Orient—Per Asia, today.

Victoria—Per Aorangi, Feb. 5.

Colonies—Per Miowera, Feb. 8.

### TRANSPORT SERVICE.

Warren, in Philippines.

Thomas, sailed for Manila, Dec. 14.

Crook, sailed for San Francisco, Jan. 25.

Buford, at San Francisco.

Sheridan, at San Francisco.

Logan, at San Francisco.

Dix, sailed for Manila, Jan. 20.

Sherman, sailed for Manila, Jan. 15.

You needn't confine your use of a classified ad, to your needs in the servant line; use it for your selling needs, also, and note results.

## HONOLULU STOCK EXCHANGE

Honolulu, Wednesday, Jan. 27, 1908.

NAME OF STOCK	Capital	Paid Up	Val.	Bid	Ask
MERCANTILE					
O. Brewer & Co.	\$1,000,000	\$100			
STEAM					
Kwa	5,000,000	30	2 1/2	25	
Haw. Agricultural	1,200,000	100	80	81	
Haw. Com. & Sugar Co.	2,512,753	100	20		
Haw. Sugar Co.	2,000,000	20	20 1/2		
Honolulu	250,000	100	10		
Honolulu	2,000,000	100	9		
Hoku	500,000	100	27 1/2		
Kahuku	500,000	25	27 1/2		
Ribet Plan Co. Ltd.	2,500,000	50	9		
Koloa	500,000	100			
McBryde Sug. Co. Ltd.	500,000	20	8 1/2		
Oahu Sugar Co.	3,800,000	20	23 1/2		
Onomae	1,000,000	20	27 1/2		
Ookala	500,000	20	5		
Olea Sugar Co. Ltd.	3,000,000	20	8		
Olouahu	150,000	100			
Paahau Sug. Plan Co.	5,000,000	50	19 1/2		
Pacific Tel. Co.	1,000,000	100	110		
Pais	750,000	100	130		
Peepee	750,000	100	140		
Pioneer	2,750,000	100	11 1/2		
Waialua Agri. Co.	4,500,000	100	67 1/2		
Waialua	1,500,000	100	93		
Waimea	252,000	100			
Waimea Sugar Mill	125,000	100	60		
MISCELLANEOUS					
Inter-Island S. S. Co.	1,500,000	100	12 1/2		
McBryde Sug. Co. Ltd.	500,000	20	8 1/2		
H. R. T. & L. Co. Ltd.	1,150,000	20	23 1/2		
H. R. T. & L. Co. Com.	150,000	10	48 1/2		
Manila Tel. Co.	500,000	100			
Nahiku Rubber Co.	50,000	100			
O. R. & L. Co.	4,000,000	100	93		
Hilo R. Co.	1,000,000	20			
Honolulu Brewing & Malting Co. Ltd.	400,000	20	22 1/2		
BONDS					
Haw. Ter. & P. Co. (Fire Claims)	\$15,000				