

# Hawaiian Church Chronicle

Devoted to the Interests of Church Work in Hawaii  
The Diocesan Paper

VOL. XVI.

HONOLULU, T. H., FEBRUARY, 1926

No. 43

## Hawaiian Church Chronicle

Successor to the Anglican Church Chronicle.

Entered at the Post Office at Honolulu, Hawaii, as Second-class Matter.

The Rt. Rev. John D. La Mothe - - - Editor-in-Chief  
Herman V. von Holt, 97 Merchant St. - - Business Manager

THE HAWAIIAN CHURCH CHRONICLE is published nine times a year. The subscription price is \$1 per year. Remittances, orders for advertising space, or other business communications should be sent to the Business Manager, 97 Merchant Street, Honolulu, T. H.

Advertising rates made known upon application.

### MISSIONARY DISTRICT OF HONOLULU. DIOCESAN DIRECTORY.

The Rt. Rev. John D. La Mothe, D.D., Bishop.

#### HONOLULU.

##### St. Andrew's Cathedral.

Rt. Rev. John D. LaMothe, D. D., Dean.

Rev. Canon William Ault.

Rev. Canon Y. T. Kong.

Rev. Canon John Usborne.

##### St. Andrew's Cathedral Parish.

Rt. Rev. John D. LaMothe, Rector. Phone 3869.

Rev. Canon William Ault, Vicar. Phone 1908.

##### St. Andrew's Hawaiian Congregation.

Priest-in-Charge, The Rev. Donald R. Ottmann, Sierra Ave., Kaimuki. Phone 7535. Office Phone 4449.

##### St. Peter's Chinese, Emma Street.

Priest-in-Charge, Rev. Y. T. Kong, St. Peter's Parsonage, Emma Street; Phone 4817.

##### Holy Trinity, Japanese, Emma Street.

Priest-in-Charge, Rev. P. T. Fukao, P. O. Box 796; Phone 6521.

##### St. Elizabeth's, Chinese, N. King Street, Palama.

Priest-in-Charge, Rev. James F. Kieb, 1040 Pua Lane; Phone 8745. Rev. Woo Yee Bew, Assistant Priest.

##### St. Luke's Korean.

Priest-in-Charge of St. Elizabeth's.

Mr. P. Y. Cho, Lay Reader, P. O. Box 1436; Phone 8210.

Mr. Noah Cho, Lay Reader, P. O. Box 1436; Phone 8210.

##### St. Mary's Church, Moiliili, 2108 S. King Street; Phone 69772.

Priest-in-Charge of Epiphany, Kaimuki.

##### St. Clement's Church, Wilder Avenue and Makiki Street.

Rector: Rev. W. Maitland Woods, M.A.

##### St. Mark's, Kapahulu, 547 Kapahulu Road; Phone 7527.

Priest-in-Charge of Hawaiian Congregation.

##### Epiphany Church, Kaimuki, 10th Avenue and Harding Avenue.

Priest-in-Charge: Rev. Elmer S. Freeman, 1103 10th Ave., Kaimuki; Resid. Phone 78924; Study, 7537.

#### MAUI.

##### Church of the Good Shepherd, Wailuku.

Priest-in-Charge, Rev. J. Charles Villiers, Wailuku.

##### Holy Innocents, Lahaina.

Priest-in-Charge, Rev. Frank N. Cockcroft, Lahaina.

##### St. John's, Kula.

Priest-in-Charge Good Shepherd.

#### HAWAII.

##### Holy Apostles, Hilo.

Rector, J. Lamb Doty, Hilo.

##### Holy Apostles, Japanese, Hilo.

Priest-in-Charge, Rev. J. Lamb Doty, Hilo.

##### Paaui, Kukaiau, Papaaloa, Ookala.

Priest-in-Charge, Rev. Wm. A. MacClean, Paaui.

##### Christ Church and St. John's Chapel, Kona.

Priest-in-Charge, Rev. D. Douglas Wallace, Kealahou, Kona.

##### St. Augustine's, Kohala;

##### St. Augustine's, Korean, Kohala;

##### St. Paul's, Makapala;

##### St. James, Waimea;

Priest-in-Charge.

Rev. James Walker, Kohala.

#### KAUAI.

##### Episcopal Missions on Kauai.

Rev. J. L. Martin, Waimea.

Rev. Henry A. Willey, Kapaa.

#### SCHOOLS AND INSTITUTIONS.

##### St. Andrew's Priory, Emma Square, Honolulu; Phone 1309.

A Boarding and Day School for Girls.

Faculty: Sister Olivia Mary, Principal; Sister Caroline Mary, Treasurer; Mr. R. R. Bode, Mrs. Nevin, Mrs. Helen Creech, Miss Elizabeth Baker, Miss Edith Shaw, Miss Hannah Bonell, Miss Mildred Lamb, Mrs. Agnes Bonell, Miss Mabel Heckert, Mrs. Taylor, Miss Annie McNicoll.

##### Iolani School, S. Beretania Street, Honolulu; Phone 3980.

A Boarding and Day School for Boys.

Faculty: Rev. Thurston R. Hinckley, Principal; Rev. Jas. F. Kieb, Rev. F. N. Cullen, Miss Roberta Caldwell, Miss Eunice Haddon, Mrs. Elva Oakes, Miss Helen Bailey, Miss Jane Thornton, Miss Mary Wilson, Miss Daphne Miller, Miss Rose Smith, Miss Julia White, Miss Clarine Runyon, Mrs. Kurakawa, Mr. L. W. Clifford, Mrs. Jas. Woolaway, Matron.

##### Trinity School, Beretania Street, Honolulu; Phone 3045.

A Day School for Japanese Boys and Men.

Rev. P. T. Fukao, Superintendent. Faculty: Miss Dorothy Petley, Principal.

##### St. Peter's Chinese School, Emma Street—St. Peter's Parsonage.

Rev. Y. T. Kong, Superintendent; assisted by Mrs. S. W. Chang.

##### St. Elizabeth's School, N. King Street, Honolulu.

Rev. J. F. Kieb, Superintendent; assisted by Miss Helen Tyau, Mrs. Bowl Young.

##### Procter Lodge—for young Chinese lads. Rev. J. F. Kieb, Superintendent.

##### St. Luke's Korean School, N. King Street, Honolulu.

Noah Cho, Superintendent.

##### St. Mary's, Moiliili, 2108 S. King Street; Phone 69772.

Day School—Kindergarten through Third Grade.

Faculty:—Miss Hilda Van Deerlin, Principal; Miss Sam Chung, Miss Margaret Van Deerlin, Miss Grace Jones.

##### St. Mark's, Kapahulu, 547 Kapahulu Road; Phone 7527.

Day School—First, Second and Third Grades.

Mrs. C. C. Black, Superintendent; Miss Edith Ross.

Cluett House—A home for young working women.

Miss Charlotte Teggart, Manager; Phone 2924.

#### HAWAII

##### Paaui Church School, Paaui.

Day School, Grade School and High School.

Rev. Wm. A. MacClean, Principal.

##### Holy Apostles' Japanese School, Hilo.

Rev. J. Lamb Doty, Superintendent.

A night school for young men and women.

**BAPTISMS.****Post Chapel, Schofield.**

By Rt. Rev. John D. LaMothe.

- January 31—Louis W. Haskell, Jr.  
 January 31—William Plummer Cummings.  
 January 31—Mary Virginia Pope.  
 January 31—Aubrey Butler Mickelwait.

**St. Andrew's Hawaiian Congregation**

By the Rev. D. R. Ottmann

- January 10—Samuel Clyton Andrews, Jr.  
**Holy Innocent's, Lahaina.**  
 By the Rev. F. N. Cockroft.  
 January 18—Howard Goo.  
 February 7—Clarice Lehua Iwalani Kinney.  
 February 7—Pricilla Ilima Kinney.

**MARRIAGES.****St. Andrew's Cathedral Parish.**

By Canon Ault.

- January 8—Leland Ripley Kirby and Ella McCann.  
 January 16—Walter Ralph Johnson and Lydia Charlotte Dodd.  
 January 23—Henry Emil Stehli and Sybil Bright Hocking.  
 January 26—Leslie B. Harrison and Doris Craven.  
 February 2—Harry M. Funake and Clara M. Eki.  
 February 3—Max Frederick Landgraf and Hilda Mary Lippertz.

**St. Andrew's Hawaiian Congregation.**

By the Rev. D. R. Ottmann.

- January 4—William F. Schimmelfenning and Maude Cockett.  
 January 27—Llewelyn F. L. Hart and Grace A. Shuff.

**St. Luke's, Korean.**

By the Rev. J. F. Kieb.

- January 9—Joseph Park and K. Chun Sha.  
 January 16—Harry Choy and Hiya Yu.

**BURIALS****St. Andrew's Cathedral Parish.**

By Canon Ault.

- January 8—Myrtle Comstock Friend.  
 January 21—Allen Campbell Robinson.  
 January 26—Mrs. Flora Jean Center.

**St. Andrew's Cathedral, Hawaiian Congregation.**

By the Rev. D. R. Ottmann.

- January 28—John Odienne Cobb-Adams.

**Epiphany Church, Kaimuki.**

By the Rev. Elmer S. Freeman.

- January 5—Phoebe Burnish Geary.

**APPORTIONMENT FOR MISSIONS, 1926.**

Receipts to February 5.

	Apportion- ment	W. A. & Sunday Jr. A. School	Parish	Total Receipts
St. Andrew's Cath. Par....	\$4,500.00	\$.....	\$.....	\$ 191.16
St. Andrew's (Hawaiian)...	500.00	.....	.....	.....
St. Peter's .....	525.00	.....	.....	.....
St. Clement's .....	300.00	.....	39.80	39.80
St. Elizabeth's .....	275.00	.....	50.45	50.45
Epiphany .....	200.00	.....	16.45	16.45
St. Mary's .....	125.00	.....	.....	.....
St. Mark's .....	100.00	.....	.....	.....
St. Luke's .....	150.00	.....	.....	.....
Holy Trinity .....	150.00	.....	.....	.....
Good Shepherd .....	200.00	.....	.....	.....
Holy Innocent's .....	100.00	.....	.....	.....
St. John's, Kula.....	25.00	.....	.....	.....
Holy Apostles, Hilo.....	300.00	.....	.....	.....
St. Augustine's, Kohala....	100.00	.....	.....	.....
St. Augustine's, Korean....	50.00	.....	.....	.....
St. Paul's .....	100.00	.....	.....	.....
St. James', Kamuela.....	50.00	.....	.....	.....
Christ Church, Kona.....	225.00	.....	.....	.....
Paauilo .....	35.00	.....	.....	.....

St. James', Papaaloa.....	35.00	.....	.....	.....
W. Kauai Missions.....	60.00	.....	.....	.....
All Saints, Kapaa.....	100.00	.....	.....	.....

**CONVOCAION EXPENSE FUND, 1926.****Receipts to**

	Assessment.	Received.
*St. Andrew's Cathedral Parish.....	\$350.00	
*St. Andrew's, Hawaiian .....	52.50	
*St. Peter's .....	29.25	
*St. Clement's .....	52.45	
*St. Elizabeth's .....	17.50	
*Epiphany .....	17.50	
*St. Mary's .....	7.00	
*St. Mark's .....	6.00	
*St. Luke's .....	11.75	
*Holy Trinity .....	11.75	
*Good Shepherd .....	29.25	
*Holy Innocents .....	17.50	
*St. John's, Kula .....	7.00	
*Holy Apostles .....	22.25	
*St. Augustine's .....	11.75	
*St. Augustine's, Korean .....	6.00	
*St. Paul's .....	6.00	
*St. James', Waimea .....	6.00	
*Christ Church .....	17.50	
*Paauilo .....	6.00	
*St. James', Papaaloa .....	6.00	
*Kauai Mission .....	6.00	
*All Saints, Kapaa .....	10.00	

**A MESSAGE FROM THE PRESIDING BISHOP**

My Dear Brethren in Christ and His Church:

This year is new to us in many ways. On its threshold I greet you all with a heart full of affection for you and a soul strong with confidence in you.

**The Episcopate**

As I meditate upon the sacred relations that bind us together in the Lord, my thoughts turn first to you, my dear brethren of the Episcopate. In you the life of the Church has continuity of witness.

Under God, you have designated me your chief administrator and executive in the affairs of the Church. "You have chosen me, and ordained me that I should bring forth fruit that will remain."

Impelled of God, and with a trust wholly stayed on Him, I am in fear and trembling assuming the responsibility you have thus laid upon me.

But, in declaring your choice, you had no intent of transferring to me your own obligations, individual or collective. In that sense, you all knew then, and know now, that every man of you "shall bear his own burden" in the Lord.

Your only motive was to make me the binder of all together, so that the work of each will become the concern of every one, and thus enable us to "fulfill the law of Christ," by "bearing one another's burdens."

For this cause are we ONE and only ONE in our allegiance to the Master, in our loyalty to the Church, and in our love for the brethren committed to our diocesan care.

As one with me, you shall all, continually, know of my purposes and plans.

Please God, as one with you, I shall also be kept informed of yours, so that thus bound together we can unitedly strive to feed, not only our own sheep, but to the extent we legitimately may, the "other sheep which are not of this fold," and thus hasten the day when, according to the will of the Good Shepherd, "there shall be one fold and one shepherd."

"Fathers, I write unto you, because ye have known Him that is from the beginning."

#### Priests and Deacons

And then, upon you, my dear brethren of the Ministry, in parochial vocation, do I find myself meditating day and night. Only through you can your bishops accomplish their perfect work. With them you share the responsibility of sponsorship for me by the vote of your order in the House of Deputies, confirming their choice. Consequently and confidently, I look to you for SPONSOR, favor and cooperation.

The relation you sustain to your own bishops, respectively, you also have with me through them collectively, and, while they and I may chart the sea, map out the routes, and designate the destined port, you must conduct the voyagers through calm and sunshine, through storm and tempest, to the haven where they would be. We are but the harbor pilots. You are really the ship captains.

And so, because I say it in affectionate friendship and with loving sympathy, I say with the greater frankness that in your hands supremely, humanly considered, is the welfare of our sacred cause; and that upon your loyalty, love, and consecration in the discharge of the duties and enjoyment of the privileges of your high calling, depends absolutely the full success of our mutual endeavor for the welfare of the world and the glory of God through His Church.

"Brethren, I write no new commandment unto you, but an old commandment which ye had from the beginning."

#### The Whole Body of the Church

And now, my dear brethren of the Laity, men, women, and children, you also are SPONSOR for me by the General Convention action of your order, and are now the focus of all I have written.

To me, in you supremely centers the importance of what I have said and to you I look to clothe it with significance and afford it justification. For "who is Paul and who is Apollos, but ministers by whom ye believed, even as the Lord gave to every man?"

Our worth as your bishops, priests, and deacons, is determined by the measure of your belief. The value of your belief is measured by the nature of your works. Your works are made manifest, and are the expression not only of your faith, but also declare the fact of your worth or worthlessness.

In you the Church lives and moves and has her being. The manner of your life, the method of your movement, and the measure of your contribution of time, talent, toil, and treasure, for the amelioration of human ills, the salvation of eternal souls, and the glory of the Triune God, witness to heaven and earth for the whole Body.

Your testimony declares not only whether YOU are working with perishable material of "wood, hay, stubble," or with imperishable substance of "gold, silver, precious stones"; but also proclaims whether We, your bishops, priests, and deacons, together with you, "have a name to live, but are dead"—our works not being found perfect before God—or whether we are "laborers together with God," and are so building upon the "one foundation," that our work shall abide."

In working the will of Christ, as were the Thessalonians to St. Paul, so "ye are (to us) our glory and joy," and, upon every thought of you, my prayer is that in and through you the Divine Will may so work that "our glory and joy" shall be full.

"I write unto you (men, women, and children), because ye have known the Father and are strong."

And so, my dear brethren, one and all, with the assurance of this our universal Oneness with God for the accomplishment of His will through the medium of His work, "whom shall we fear, or who shall make us afraid?" Our present is well in hand, our future will be what we make it. "All things are ours" for prudent use in pious purposes, and, please God, we shall not only

practise prudence but also prefer and pursue piety in our united endeavor for Divine accomplishment.

In the different orders of our common ministry in the Church of God, we find no division of interest, no diversity of aim, no confusion of authority. We have but one Master, and under Him we all are controlled by one motive. We have one common desire to do with all the force of our will, abilities, and powers, our duty, severally and unitedly, in that particular position of stewardship in which it has pleased God to place us for service in His name.

"Being many, we are one body in Christ, and every one members one of another. Having then gifts differing according to the grace that is given to us, let us wait on our ministering, he that giveth let him do it with simplicity; he that ruleth, with diligence." But, above all, let "love be without dissimulation."

"We are not divided,  
All one Body we,  
One in hope and doctrine,  
One in charity."

JOHN G. MURRAY,  
Presiding Bishop.

New York, January 23, 1926.

Rt. Rev. John D. LaMothe, D.D.,  
Emma Square, Honolulu, T. H.

Dear Bishop:

I want you to know how very greatly the National Council and myself appreciate the action of your Diocese in pledging 100% of the 1926 quota.

You will be glad to know that you are in a goodly company this year, and I feel sure that the example you have set will be very helpful in the influence it will exercise upon the other Dioceses which as yet have not measured up in full.

Kindly extend my hearty congratulations and sincere appreciation to all the people of your Diocese; and, praying the Divine Blessing upon you in all your work, believe me

Affectionately yours,  
JOHN G. MURRAY,  
Presiding Bishop.

#### EPIPHANY CHURCH, KAIMUKI

The most important recent event at Epiphany so far unchronicled (no pun intended) is the annual meeting of the parish. This was held on the evening of January 21st, and was by far the most largely attended and successful meeting in the history of the church. About 135 persons did the honors to a most excellent dinner prepared and served by the Guild. Others came in later, so that not less than 150 people were present for the brief musical program, the "Pageant of Epiphany," and the Bishop's address.

The pageant, written by the parson, was presented with great dignity and reverence by a cast of seven adults and ten children. To judge by the comments heard, it was enjoyed by the audience.

The annual reports of organizations were mimeographed, and a copy furnished to each person present. Routine business resulted in the nomination to the Bishop of the following to serve on the Vestry for 1926. (The Bishop later appointed these nominees.):

Warden, Bert G. Covell, clerk, Frank L. James; treasurer, Alfred Y. Lee; vestrymen, Cuthbert Row, Huron K. Ashford, Robert S. Mowry. Messrs. Covell and Row were elected delegates to Convocation, with Mr. T. H. Gibson and Mr. F. L. James alternates.

Some of the more important items in the annual reports of organizations were as follows:

Increase in Sunday School enrollment and a general improvement in equipment and teaching efficiency. There is now an attendance of about 100, with about 140 on the roll.

A material improvement in the equipment of the Guild Hall. The Guild has purchased and installed during the year folding chairs, a gas stove, dishes, silver, and other necessary items.

An increase in the communicant list of 22, or about 20%. An increase in the number of communions made during the year. A balance in the funds of the Church and of all organizations. Missionary giving from all sources totaled well over \$400, enabling the parish substantially to overpay its missionary apportionment.

Another recent event which promises well for the welfare of Epiphany is the organization of a men's club, to be known as Epiphany Men. Twelve men were enrolled at the initial meeting, and it is expected that by the time the charter membership closes in March that there will be many more. The club is organized, in the words of its constitution, "to promote the welfare of Epiphany Church, and the community which it serves."

The experiment of using religious moving pictures as a feature of the evening service is justifying itself by the attendance of much larger congregations. The very excellent quartette continues, and a brief sermon on simple fundamentals of Christianity is given.

### ST. ELIZABETH'S NEWS

The regular annual meeting of St. Elizabeth's Congregation was held on Sunday, January 10th, after the 11 o'clock service. It was the largest meeting in years and rather much interest was manifested by those present. The treasurer's report showed a balance of \$347.27 in the bank with all the bills and obligations of the entire year paid. The reports from the societies and Guilds showed the same pleasing feature and convinced all present that the Mission Congregation was in the best financial condition. A list of ten names of the male communicants of the Congregation was selected to be sent to the Bishop, from which he makes the appointment of the Mission committee for the ensuing year. The result of the Bishop's appointments is as follows:

Moses Tyau, warden; Nathaniel Chock, treasurer; Kim Loon Ching, secretary; James Lau, Henry Shim, and Ten You Chong, committeemen.

St. Elizabeth's Congregation is planning to purchase a new organ to fill a much needed addition to the effective rendering of the music. Our old organ has been in use since the Church was first furnished and is in a bad state of repair. In fact after spending considerable money we find it almost useless. Our idea is to place a large size vocalion in the organ chamber and face up the arch, which opens into the choir with a paneled wooden screen ornamented with gilded dummy pipes. The cost of this improvement will be met by the societies and congregation.

The Young Girls' society has already pledged \$150.00 and we are quite sure of the help of the entire congregation in this project.

The repairs which are being made to Procter Lodge turns again a page of the past history of St. Elizabeth's work in the crowded Palama district. In 1906, twenty years ago, the late beloved Canon Potwine, a man of vision and inspiration, conceived the idea of a lodging house for young Chinese school boys and business men. In his way he made his vision come true. The late Mr. H. Procter of Cincinnati, a generous benefactor of St. Elizabeth's, gave the land lying mauka of the parsonage, and Bishop Restarick, the enthusiastic pioneer of our Mission in Hawaii, aided the work, by having the old California Hotel, which stood on Emma street where the Davies Memorial Hall now stands, moved to Palama. This building has served for the past twenty years as an abode and shelter for hundreds of deserving young Orientals, while in school or starting on a business career. The ravages of age, the sharp teeth of the borers and the crumble of dry rot, to say nothing of our scorching sun, have done their worst and at last the useful old structure has been placed in the hands of the renovator and restorer, to be brought back again to a fair state of service. The repairs are well under way in the

hands of a reasonable and competent Japanese contractor. The building, with all its outbuildings, is being painted and repaired. The rooms are to be papered and painted, new screens, new doors, curtains, and other articles of furniture to be added. The cost of this renovation will reach \$2,500.00, and we are calling for help. It must be understood that the work of St. Elizabeth's Mission, its schools, lodging house, tenements, etc., is independent of the Chinese Congregation which worships in St. Elizabeth's Church, therefore what may seem to be prosperity on the part of the Congregation does not affect the Mission in general, and the burden of the debt will fall upon the Mission funds. We are sure that among our former friends and among those interested in the efficiency of the work of the Church and her Missions there are those who will aid us in clearing this debt, and placing Procter Lodge on a fair plane to carry on for the next twenty years.

An idea which I put before a great meeting of the Woman's Auxiliary in New Orleans last fell was that different Diocesan branches of the mainland take the cost of repairing one room, and thus aid us in meeting the expense. This cost will be about \$75.00 per room. Any Diocesan branch helping us will have its name placed over the door of its room. The plan appealed to many last fall and many representatives asked for our address. Now is the great chance.

### St. Luke's, Korean Mission Center

One of the finest weddings in the history of St. Luke's was solemnized before the altar of St. Elizabeth's on January 16th, when Harry Choy, a young Korean businessman and an energetic worker in St. Luke's, was married to Miss Hiyu Yu, daughter of Yu Han Enng, a Korean lawyer. Miss Yu was a member of the younger set of St. Luke's.

The regular night school classes in Korean are well attended and the Lay reader, Noah Cho, finds his time well filled, and many from other congregations are attending.

### ALL SAINTS, KAPAA

At the last meeting of the vestry committee of All Saints' Church, Kapaa, it was decided to make a canvass to raise the budget for 1926 and to wipe out as far as possible the indebtedness of the church.

The report of the treasurer showed that the church had a debt of \$11,529.98, of which \$10,000.00 was a loan and \$1,529.98 accounts payable. The budget for 1926 is \$2,260.00, which brings the total that the vestry hopes to raise to \$13,789.98.

The church represents an investment of \$23,085.25, which is divided as follows: church building, including furnishings and organ, \$13,681.70; land and improvements, \$949.34; rectory, \$6,206.97; garage and Delco plant, \$1,619.40; automobile, \$896.52.

Receipts for the year have been very gratifying since no canvass has been made. This includes offerings at services of \$771.45; special donation \$5,000; local donations \$7,904.25; making a total of \$13,681.70. This does not include expenditures made by All Saints' Woman's Guild from their own funds for additional church furnishings, choir vestments, etc.

The vestry expects to complete arrangements for the financial campaign by the first of February. It is felt that the work of the past year has been especially creditable since a church and rectory have been built and over half the indebtedness has been paid off. It is the hope of the vestry that the completion of the drive will find the church entirely out of debt.

Several gifts of church furniture have been made by local communicants and friends from Honolulu and the mainland, among which are the splendid Austin pipeorgan, the bishop's and rector's chairs in koa, the altar and processional crosses, eucharistic lights, altar vases and the hymn board. Below is a list of articles still greatly needed together with approximate prices. Perhaps some

person reading this would like to supply one or more of them: Credence table, \$18.00; glass cruets for communion service, \$10 to \$20; bread box, \$15; brass alms receiving basin, \$25; altar book rest, \$25; litany desk and prayer desk, \$25.00 each; seat for prayer desk, \$8; white, red and purple altar handings, about \$27.50 each. Checks may be sent to the Rev. H. A. Willey, Kapaa, Kauai, T. H.

### HOLY APOSTLES, HILO

The annual meeting of the Parish was held at the Rectory on January 19th. It was the best attended annual meeting in the history of the Parish, about fifty persons being present.

The Rector's report, and the reports of the various organizations indicated a marked improvement in the spiritual, financial and other activities of the Parish during 1925. The affairs of the Parish are in better shape than during any period in the last four years.

During the last quarter of the year a "drive" was made for new pledges for Parish support; and resulted in 39 new pledges, which has added \$122.00 per month to the income of the Parish. The Parish Guild earned \$680.00 during the year, and was very active in other directions.

The following persons were elected to serve the Parish in the various offices for the ensuing year: Senior warden, William H. Bell; junior warden, Thomas E. Cook; vestrymen, Messrs. William J. Stone, A. L. Ruddell, James H. Hutchings, Samuel S. Rolph, James N. K. Keola, James M. Muir, John S. Riekard, Edward R. L. Doty, Desmond Stanley, and Mrs. Fedela Ludloff; clerk of the vestry, James M. Muir, and treasurer, The First Trust Co of Hilo, Ltd. Delegates to the Convocation, Hon. Alexander Lindsay, Jr., J. N. S. Williams, Walter Coombs, Mrs. Lawrence M. Judd and Mrs. James M. Muir.

After the business meeting a social and reception was held, which was enjoyed by all present.

### ST. ANDREW'S CATHEDRAL HAWAIIAN CONGREGATION

The annual congregational meeting of St. Andrew's Cathedral Hawaiian Congregation was held on the evening of January 29th. The annual dinner was served at 6:45 by the ladies of the congregation. About 50 were present at that time, and from then until the close of the business meeting, a lively interest was manifested in the affairs of the congregation.

The business meeting was opened with prayer by the Rev. Donald R. Ottmann, the priest in charge, who presided. Interesting reports were submitted by the various organizations and by the priest. A few high lights from the various reports in the order in which they were read are given herewith:

**Ahahui Iolani (Woman's Guild)**—One of the chief activities of this organization has been the reduction of the debt on the Rectory. They also assisted in the entertainment of the United States Fleet during its recent visit, and have shown an interest in the work at St. Mark's Mission. Their present assets consist of three mortgage loans in the sum of \$910.00, and cash in the sum of \$685.63. The present officers are: President, Mrs. N. Greene; vice-president, Mrs. Trevenan; second vice-president, Mrs. Tai; secretary, Miss Grace Jones; treasurer, Mr. Henry Smith.

**Woman's Auxiliary**—This branch of the National Organization has shown considerable activity during the past year, numerous ways to raise the necessary funds for the carrying on of its work have been adopted. The report of the treasurer shows that the sum of \$945.50 has been expended during the past year. The officers for the present year are as follows: President, Mrs. Alice Chalmers; vice-president, Mrs. Elizabeth Boyd; secretary, Mrs. Donald R. Ottmann; corresponding secretary, Miss Libby Meek;

treasurer, Mrs. J. Vierra; U. T. O. secretary, Mrs. N. Greene.

**St. Mark's Mission**—The Mission has shown not only increased activity during the year but has shown a real spiritual growth. The progress of this work is such that figures fail to convey any idea of the real work. It must be participated in to be understood and appreciated. In addition to the regular kindergarten work there is in active existence the following organizations and societies within the Mission. Sunday School with an enrollment of about 180. Hui Manulani (Young People Society) Boy Scouts; Junior Scouts known as Indians; Girl Scouts and Brownies or Junior Girl Scouts. These organizations are all exceedingly active. The writer wishes sincerely that space were allowed him to express his admiration for the splendid group of young people, and especially for a few of the girls who carry on out at St. Mark's in spite of all difficulties.

**St. Andrew's Hawaiian Sunday School**—Shows an enrollment of 66 for the past year with an income of \$118.53 with expenditures of \$102.25.

**Young People's Service Club**—A verbal report of the plans for a reorganization of this branch of the work was given by the adult advisor, Mrs. Henshaw.

**Treasurer's Report**—This report showed the congregation in a very healthy condition from a financial standpoint.

#### Receipts—

Balance on hand Dec. 31, 1924.....	\$ 961.20
General fund .....	2,466.44
Missions .....	807.62
Rectory income account.....	311.00
Rectory fund .....	677.65
Total .....	\$5,233.91

#### Expenditures—

General fund .....	\$2,301.92
Missions .....	550.00
Rectory income account.....	309.77
Rectory fund .....	517.00
Balance on hand Dec. 31, 1925.....	1,545.22
Total .....	\$5,233.91

The annual report of the priest, Rev. D. R. Ottmann, touched upon all points connected with the spiritual and social life of the Congregation, as well as a statement of his official acts. These alone showed a very active year. During the year 443 calls were made upon members of the congregation who were well, and 867 calls upon the sick, a total of 1310 calls during the year.

The Bishop, who was present, made the closing address, and following the nomination by the members present, appointed the following to serve as the Bishop's committee during the year: Warden, Mr. Henry Hose; clerk, E. W. Henshaw; treasurer, Mr. F. F. Fernandes; committeemen, Mrs. R. P. Hose, Mr. V. K. Boyd and Mr. J. B. Mossman.

### ALEXANDER LIHOLIHO MEN'S CLUB

The Men's Club held a meeting for the reading of annual reports and election of new officers, on Monday evening, February 1st, in the men's room of Davies Memorial Hall. A goodly number were present and a splendid spirit prevailed. The club is taking the proper attitude this year and trying to get the proper prospective—spiritual objective first, all other things a means to a spiritual attainment. The outgoing president, Mr. Edward Hopkins, we are thankful to note, was able to be with us. He gave a most touching address at the close of the meeting. Mr. Hopkins has done some splendid self-sacrificing work and every effort he has expended, all are most thankful for. A rising vote of thanks was accorded him. God bless you Eddie now and ever.

The new officers are: President, Mr. Edgar W. Henshaw; vice-president, Mr. F. H. Smith; secretary, Mr. Charles Lemon; treasurer, Mr. Charles Stone; auditor, Mr. F. F. Fernandes; counselor, Rev. D. R. Ottmann.

Our motto—

Here's to the Alexander Liholiho Men's Club,  
We're glad to have you!  
Help us boost, never stop:  
Good old A. L. M. C.

The Men's Club is helped from time to time by having outside speakers come to us with a message on various topics, both religious and secular. We hope to have an address on Psycho-Analysis, on Law Enforcement and one on Community Problems within the next few months.

#### Those Who Serve

There is probably no branch of Church work which better binds, with never-to-be-forgotten sacred ties, a man to The Church than service at the altar. A loyal crucifer, flag-bearer and lay-reader also finds himself becoming ever more consecrated to the Holy Church which he serves. The priest-in-charge is now forming an Altar-boys Guild, under the general supervision of Mr. C. H. Hose, senior server, directed and counseled by the priest. At present Messrs. C. H. Hose, Ernest Campbell, Edward Kaimana and Lani Pieper compose the Guild members. Mr. E. W. Henshaw is licensed as lay-reader. Messrs. Charles Akau and Adolph Pieper are to serve as ushers, a humble but most helpful position.

#### Our Sick Folk

At this time Mrs. Charles Copp, Sr., is in the Queen's Hospital, suffering from an infected and most painful finger. Our thoughts and prayers are surely with her.

Miss Agnes Hewitt and Mrs. A. N. Jacobson are steadily improving. We are thankful for this.

We also note, with gratitude, that in His mercy, our good friends Edward and Bruce Hopkins are both improved.

A letter has arrived from Mrs. Edith Nelson Knight of Atlanta, Georgia, for whom special prayers were requested, thanking us for our prayer in her behalf, and stating she is gradually improving.

#### HOLY INNOCENT'S, LAHAINA

At a meeting of the Woman's Guild held in the Parish hall on Thursday afternoon, Jan. 7th, the following officers were elected for the ensuing year: Mrs. William K. Kaluakini, president; Mrs. John W. Hose, vice-president; Mrs. David Sharpe, treasurer; and Miss Nellie Richardson, secretary.

A letter from Bishop LaMothe was read in which he thanked the members of the congregation who had contributed towards the amount of \$42.50 which he had received from Lahaina towards the indebtedness of our General Board of Missions.

#### THE ANNUAL MEETING OF ST. ANDREW'S CATHEDRAL PARISH

Tuesday, January 19, 1926

The annual meeting of St. Andrew's Cathedral Parish was held in the Davies Memorial Hall on the evening of January 18, at 6:30 p. m., about 150 people sat down to a delightful supper prepared by the entertainment committee of the Woman's Guild, assisted by members of the Young People's Service League.

At 7:30 the meeting was called to order and opened with prayer by Bishop LaMothe. Mr. Kenneth Day was elected secretary and the minutes of the 1925 meeting were then read and approved. The Bishop suggested that the meeting proceed at once to the election of a vestry. Nominations were made, the ballots taken and while the tellers retired to count them, the meeting listened to the re-

ports of the various organizations. The Parish treasurer's report was read by the treasurer, Mr. L. Tenney Peck, who has given this most faithful service for many years. The following is a digest of the report:

#### Treasurer's Report, 1926

Receipts—	
Balance on hand January 1, 1925.....	\$ 41.28
From pledges .....	9,189.35
From general offerings.....	2,234.96
Special offerings .....	4,963.94
Special contributions .....	564.22
Total .....	\$16,993.75
Expenditures—	
Stipends .....	\$ 7,367.50
Regular expenses .....	3,761.32
Apportionments for missions.....	4,500.00
Assessments .....	612.50
Special offerings .....	265.32
Total .....	\$16,506.64
Cash on hand.....	487.11
Total .....	\$16,993.75

Mr. Wakefield, as chairman, then presented the report of the budget committee, asking for a budget of \$20,000.00 for the year 1926. This is an increase of 25% over last year, due principally to the plan to have some paid singers in the choir and the item for the Parish worker.

The tellers reported the election of the following to serve as the vestry for the year 1926: L. Tenney Peck, senior warden; Robbins B. Anderson, junior warden; Herman V. von Holt, Mrs. F. J. Lowrey, Kenneth Day, Alexander Lindsay, W. L. Emory, James Wakefield, L. M. Judd, W. H. Soper, Guy Buttolph and Dr. J. Morgan.

After the reading of these reports the Bishop made a short address, in which he reviewed briefly the activities of the past year, and pleaded for a greater loyalty on the part of the people for Christ and his Church, and urged a more faithful attendance on the worship of the Church. The thanks of the meeting was extended to all who had helped in arranging for the meeting and after the blessing the meeting adjourned, everyone expressing the opinion that it had been a good meeting and full of life.

#### VICAR'S REPORT

To the Rector and Members of St. Andrew's Cathedral Parish:

It seems to me that it becomes more and more difficult every year for me to make out my annual report; to make a true estimate of the spiritual life of the parish, for whereas with many men it seems that, as they grow older they become less susceptible to individual happenings and so can make a better estimate of the whole, while with me it seems that I am more and more affected with things as they come and hence the difficulty of not becoming too optimistic on the one hand or too pessimistic on the other. Still as one looks over one's diary for the past year one cannot help but be sincerely thankful for many things. It is only too true that there have been things done which perhaps should have been done differently and things not done which should have been done, but on the whole I think we can truly thank God for many blessings and work done and take courage for the future. There is one thing of which I must speak which to me is, to say the least, disconcerting, and that is that there seem to be more and more men and women who are becoming more irregular in

Church attendance. They certainly must think that there is no wrong in it or they would not do it, but it surely is a fact that we owe a duty to God which can only be paid when we are shoulder to shoulder with each other in God's house worshipping Him as a congregation, and it not only is a duty which we owe to God but each other. Why is it, I wonder? Is it because we have lost that wonderful yet simple religious faith and manner of living which we had in the years gone by? If so then we have lost a most wonderful and precious thing. A thing which we should strive very earnestly to get back again, for without it we shall never deepen the religious life of the parish.

There have been 6,872 communions made during the year 1925 as against 5,981 in 1924. This is surely something for which we should all be thankful, as I truly am.

The Woman's Guild has had a splendid year in many ways as you will see from the report.

The Woman's Auxiliary has had a successful year, though a very difficult one. My sympathy has gone out many times to Mrs. Walter Coombs, the late president, but with it went also my admiration for the way she "stood by," and also for the fortitude and courage with which she met the difficulties and brought the work to a successful end in spite of all.

With the splendid help of Deaconess Swinburn the junior organizations are taking on a more businesslike appearance and, I think, that all who know, will admit that the latter part of 1925 showed a great advance on the earlier part of the year and that 1926 will be a banner year.

The organizations for men are certainly a difficulty. The senior and junior chapters of the B. S. A. are defunct once more. We have not lost all the men and boys. They are, most of them, still with us, but the organizations as such do not function. The boys are still interested and are still working but not as members of the B. S. A. This part of the difficulty will work itself out all right.

The Sunday School is, in point of numbers, up to and a little above par. We have a wonderfully faithful corps of teachers, but a difficulty has arisen on account of two teachers resigning, one for the reason of health and the other for another reason. So you see we need two teachers now. Will someone offer? One for boys and one for girls. It is a great work. It is true we are rather exacting for we do try to insist on preparation and regularity.

And this leads me up to something for which I have pleaded for the past fifteen years and that is, **more buildings**, a plant where we can do the work which is expected of us. It seems to me almost impossible sometimes for us to go much longer without some additional rooms. Brethren, this parish house is a beautiful building to look at from the outside, but I think that it would be difficult to find a less useful plant anywhere in a parish of this size and when you take into consideration that not only we use it, but also St. Peter's, Trinity, the Koreans, Iolani, the Priory and the Hawaiian Congregation as well, you must see how very difficult it is sometimes to carry on.

I hope that I have not drawn a too discouraging picture. It is not meant to be for if we believe that we are really in the service of God there should never be any place for discouragement. Thank God for all the wonderful blessings which are ours, but let us strive ever onward and upward.

Before I close I want to say how very thankful I am to the Vestry for having made it possible for Deaconess Swinburn to come here to help with the work. She is doing a fine work and is a wonderful help to me.

My personal acts have been as follows: I have taken 563 services, and assisted at 35 others. I have made 120 addresses. Taken 151 classes or meetings and made 1,617 parochial and sick calls.

Thanking you for the many acts of courtesy and commending you one and all to the love and mercy of God,

I am

Your humble servant in Christ,  
W. AULT.

#### ANNUAL REPORT OF ST. ANDREW'S WOMAN'S GUILD, 1925

It is probable that there are many members of the Parish who do not know just what the real work of St. Andrew's Woman's Guild is, so, we will have a resumé of the work. The Guild family consists of an honorary president, who is the Dean's Vicar, a president, two vice-presidents, a secretary and treasurer. The executive committee consists of the chairman and officers of the several committees. There is the altar committee who take care of the altar linen, a committee to care for the ornaments, particularly the brasses, for the past year Miss Hall assisted by some of the Priory girls has done this. The Church decoration committee, whose duty it is to see that flowers are placed on the altar, to decorate at Christmas and Easter, and also to oversee any other decorations. The Vestment committee has charge of the Church embroideries, the choir committee who sees that vestments are repaired, laundered, and replaced when necessary. Then a very important committee, the ways and means, whose business it is to find the money to carry on all these activities another important committee is the entertainment, whose duty it is to provide refreshments, luncheons and dinners. With the assistance of the vestry they provide the annual supper. Perhaps the most worth while committee is the relief, they visit the sick, the needy, and the stranger, undertake Red Cross work, Child's Welfare, and Social Service work. This committee has been quite active during the past year, in visiting the sick and strangers who have come into the Parish. Incidentally this work has largely increased our membership. The S. S. is not forgotten by us, for there is a committee to cooperate with the Sunday School authorities in matters relating to Christmas cheer.

The largest and most expensive piece of work undertaken by the Guild this year was the repairing and painting of the vicarage at a cost of \$950.00, we hope soon to make a substantial payment on the principal. As the treasurer will tell you we contribute regularly to several charitable organizations. A very interesting thing that the Guild does every fall is to give a reception to the teachers and workers. This year it was given at Niniko, Nuuanu valley, and was very largely attended, although the weather was most unfavorable.

Of course we must not forget our Annual Thanksgiving Fair, which calls for really hard work, and the very best efforts from all of us. During the past year our meetings have been very well attended and much interest and enthusiasm shown. We recall one meeting when there was a small cloudburst, the streets were so flooded that it made driving precarious, the storm lasted nearly all the afternoon, but we had twenty members present at our meeting, including the president, secretary and treasurer, although the latter's husband phoned orders that she was not to leave the house during the storm.

The president is deeply grateful for the cheerful and efficient help given by the different members of the Guild. Surely it ought to be esteemed a pleasure and a privilege to work for our dear Church, for the highest purpose in life is service, service for our fellowman, service for Him who died that we might live. How much we wish that each and every woman connected with our dear Cathedral would feel it her duty and privilege to join at least one of its organizations. Then truly would we have a living working Church.

MRS. F. J. LOWREY.



### THE REV. JAMES WALKER'S LETTER FROM ENGLAND

When we returned from our trip south, it was in order to get ready for our journey to Harrogate, where I was to do Sunday duty for the last four Sundays in August. This left us just a week in Manchester to prepare.

A week to pack up 'far too long,' so on the Tuesday at noon we found ourselves on the road again, this time to crowd a lot of travelling into two and a half days. It was for the pleasure of two friends we took this trip, and on this occasion Donald was left behind. We covered the same ground—on our journey south—most of the time.

Our first stop was Wolverhampton, and then on to Kidderminster—the place where they make the famous carpets—and from there on to Worcester, where we spent the night, staying at the Star Hotel.

I had an amusing experience that evening, we were taken up in the lift to our room, and had to prepare hurriedly for dinner, it being late when we arrived at Worcester. We got ready, came out on to the landing, rang the bell, but no one came to attend to the lift. Finally we got in, pressed one of the five buttons, and trusted to luck, only to find that we landed in a wine cellar, minus of wine. After dinner we got the porter to explain the working of the lift, for there was no object in going into an empty wine cellar again.

The next morning we left Worcester after breakfast, and drove to Stratford-on-Avon, and spent a short time looking at Shakespeare's birthplace, etc. I sent a number of cards from there to friends across the sea. The ladies stayed at the hotel while my friend and I went for a long walk on the banks of the river Severn. Although it was quite late when we returned, it was light, thanks to the daylight saving bill. So many of the cathedrals are built on the banks of a river, and that evening we enjoyed looking across the river at the Worcester Cathedral.

We then drove on to Leamington Spa, and there saw a wonderful show of flowers, both in the park and in the streets, for baskets of flowers were to be seen hanging from the lamp-posts.

There is a hint for Outdoor Circle Clubs, and here is another, for what can be done in one place can nearly always be done in another, and if they are good it is always worth knowing. I saw notices in more than one town, asking motorists not to light their lamps, as the streets were so well-lighted. They find it better to light the streets well, and have fewer in their hospitals through car accidents caused by bright lights on cars.

From Leamington we went to Kenilworth, and then through Warwick back to Stratford-on-Avon again where we had lunch. The afternoon found us driving through the following places: Evesham, Malvern Wells, Malvern Links, Great Malvern, and on to Hereford, where we spent the night. The next day we found ourselves in Shrewsbury in time for lunch, and then we drove into Staffordshire, passing through Leek, and on to Rudyard Lake, where we had a late tea, then into Macclesfield, and then back to Manchester again. Very few people have crowded into two and a half days what we did, and the beauty of it, from a man's point of view, every place we struck was a half closing day. Thanks to a little book I came across, that gave the closing days of all the towns in England. You can judge by this that the month spent in Scotland was not time entirely wasted.

On Saturday morning the three of us left Manchester, "All packed up, and somewhere to go," and that somewhere was Harrogate, where we knew there would be a welcome awaiting us, for we had lived and worked amongst those people for six years.

I think I could get a position as an expert packer, for that car carried not a small load, but then I have lifted those cases in and out so often that I could have done it blindfolded. We reached

there in the afternoon, having stayed in Leeds for lunch. Donald had his joke, calling at a local shop, where he was very friendly, and with whom he had kept in touch, made a purchase, and came out without being recognized.

On Sunday morning I took hold of the work, and spent a very happy four Sundays amongst my old members.

I must leave the account of the various places we visited whilst there, till next month. J. W.

### WOMAN'S GUILD, ST. ANDREW'S CATHEDRAL PARISH

#### Receipts and Disbursements For the Year Ended December 31, 1925

##### Receipts—

January 2, 1925—Balance on hand.....	\$1,460.45
Additional proceeds 1924 delicatessen sale.....	10.55
Proceeds 1925 delicatessen sale.....	2,243.62
Entrance fees and dues.....	261.25
Special donations .....	109.25
For altar flowers.....	\$ 18.00
For parish supper.....	73.65
For parish house expense.....	7.60
For parish house equipment.....	5.00
For general fund.....	5.00
Interest on deposits.....	5.58
Sundry gifts .....	2.40
<b>Total .....</b>	<b>\$4,093.10</b>

##### Disbursements—

Woman's Auxiliary, 20% net proceeds delicatessen sale...\$	440.83
Repairs to vicarage.....	950.00
Donations .....	630.00
St. Andrew's vicarage fund (to Diocese)...	\$ 300.00
Sunday School Christmas tree.....	50.00
King's Daughters Home.....	120.00
Expenses Convocation delegates per Woman's	
Auxiliary .....	150.00
Freight charges Lenten box, per Woman's	
Auxiliary .....	10.00
From relief fund.....	125.00
Annual parish dinner.....	73.65
Vestments for clergy.....	53.67
Expenses 1925 delicatessen sale.....	49.99
Laundering .....	47.25
Parish house equipment.....	37.80
Flowers (altar) .....	29.75
Flowers (personal) .....	8.00
Printing, stationery and postage for secretary.....	33.50
Gas fuel .....	13.00
Teachers' reception .....	6.60
Child welfare dues.....	5.00
Convocation luncheon .....	2.65
Visitors register, cathedral entry.....	1.85
Payment of dues from dues fund.....	1.20
Refund dues, paid in error.....	1.20
Balance on hand December 31, 1925.....	1,582.16
<b>Total .....</b>	<b>\$4,093.10</b>

January 19, 1925.

Respectfully submitted,

ELIZABETH LOCKS PECK,  
Treasurer.



**TREASURER'S REPORT OF ST. ANDREW'S CATHEDRAL  
PARISH BRANCH OF THE WOMAN'S AUXILIARY FOR  
THE YEAR ENDING DECEMBER 31, 1925.**

**Receipts**

Cash on hand (in bank) Dec. 31, 1924.....	\$ 508.73
Pledges for the year.....	87.95
United Thank Offering.....	299.03
Lenten Self Denial Offering.....	16.53
All Saints Day Collection.....	19.77
Personal Pledges .....	260.00
From Guild for Convocation Expenses.....	150.00
Twenty per cent Apportionment of net proceeds of Deli- catessen Sale from Guild of St. Andrew's Cathedral Parish .....	440.83

Total Receipts for the Year.....\$1,782.84

**Disbursements**

Apportionment to Missions.....	\$ 160.00
Convocation Expense Fund.....	50.00
Scholarships .....	60.00
Church Periodical Club.....	30.00
United Thank Offering.....	305.07
Upkeep of St. Mary's Mission.....	100.00
Support of Orphan at St. Mary's.....	35.00
St. Mary's Kitchen Fund.....	100.00
Interest on Cleghorn Lot.....	35.00

For Lenten Sewing.....	103.40
Junior Auxiliary .....	12.02
Auxiliary's Expenses .....	17.85
District Expense Fund.....	30.00
District Auto Fund.....	25.00
District Altar Fund.....	20.77
St. Luke's Piano Fund.....	50.00
St. John's Chinese Church, Kula.....	130.00

Total Expenditures .....\$1,289.11  
Balance in The First National Bank..... 493.73

\$1,782.84

Respectfully submitted,  
FRANCES DAY,  
Treasurer.

**IOLANI SCHOOL**

**Interscholastic Debates**

The Interscholastic debating series is fast approaching. The schools that are participating in these debates are McKinley, St. Louis, Mid-Pacific and Iolani. They begin February 12th and end on the 29th. The resolution is "That the United States Should Recognize the Russian Soviet Government." This league was started in response to an offer of a cup by Governor Wallace R. Farrington.

**Semester Marks**

The reports for the first semester marks are already in the hands of the pupils. There were a number of pupils that failed

**THE BANK OF HAWAII, LTD.**

Capital and Surplus, \$1,293,846.17

**COMMERCIAL AND SAVINGS BANK.**

Exchange drawn and payment made by cable throughout the world. Letters of credit

**SAVINGS DEPARTMENT.**

Accounts will be received and interest allowed at the rate of 4 per cent per annum payable semi-annually.

**The Alexander Young Cafe**

EXPERT COOKING AND SERVICE

REFINEMENT AND MODERATE  
PRICES

**CAKES AND COOKIES**

Church Socials and Sunday School Picnics

DUTCH COOKIES, GINGER SNAPS,  
ASSORTED TEA CAKES, ETC.

Sold in Packages and in Bulk

ASK YOUR GROCER FOR LOVE'S GOODS

Love's Biscuit and Bread Co.

**S. DE FREEST & CO**

Custom House Brokers, Freight and Forwarding Agents.

846 Kaahumanu St., Honolulu, H. T.

Telephones:

Custom House, 1347

P. O. Box

Office, 2412

204

**Shoes, Shoes, Shoes**

**McInerney's Shoe Store**

**Honolulu Iron Works Co.**

*Building Materials*

ARMCO Corrugated Iron

JOHNS-MANVILLE Asbestos Roofing

STANDARD Plumbing Fixtures

P. O. Box 1758

Phone 3122

**YAT LOY CO., LTD.**

Agent for the New McCall Patterns

Importers and Dealers in Dry Goods

Fancy Goods, Notions, Men's

Furnishings, Etc.

12 to 16 King St., near Nuuanu

There's nothing like a Steaming  
Cup of

**Mayflower  
Kona Coffee**

for Breakfast, or when you need  
a gentle, harmless stimulation of  
mind or body. It "Sets you up"  
and keeps you in trim.

Island grown; aged and roasted  
with the greatest of care.

**HENRY MAY & CO.**

Distributors.

Honolulu.

in certain of their subjects and they were obliged to either drop the subject or take the first half year's work over again. Some of the students have criticized this ruling but we believe it to be a just one.

It is the tendency of the small school to accept all those who knock at its doors, whether they are intellectually equipped for the course of study they wish to follow or not. This procedure swells the enrollment and appears to look like success, but in reality it is a crime for such a policy attempts to fit a student for something he is very obviously unfitted and in most cases is uninterested in. Education cannot make a democracy of brains; it can only develop the mentality with which one is endowed and in our high schools we find that many students reach the maximum of their ability. When this point is reached the only thing to be done is for them to learn to do something with their hands with the view of being self-directing and self-supporting.

The great work of our schools is to find out what this type of boy is fitted to do and it is here that industrial training finds its place. One of the great tragedies of life is that so few of us ever really find out what we are best fitted to do.

We at Iolani believe that the standard should be kept up, and as there is no industrial work to offer to only accept those students who might profit by formal education.

#### ST. ANDREW'S WOMAN'S AUXILIARY

We know now, from experience, that the true work of the Woman's Auxiliary cannot be put into written words. From lack of numbers we have fallen short of our ambition for 1925. "We ask for strength that we might achieve; we were made weak

that we might obey. We ask for power that we might have the praise of men; we were given weakness that we might feel the power of God."

We stand with full hearts and willing hands anxious to do the work of our Master. We approach the new year with all the assessments, and pledges, of our annual budget, paid in full.

We have had nine regular meetings with an average attendance of 22 persons. We have accomplished three worth-while things during the year:

First: The surgical dressing work, during Lent, for St. Luke's Hospital in Shanghai. The following list is the finished work of the joint Auxilliaries during that time: 2,920 4x4 gauze compresses, 3,600 4x4 gauze wipes, 1,374 9x9 gauze compresses, 447 muslin bandages, 101 triangular sling bandages, 56 laparotomy pads, 6x6; 50 laparotomy pads, 12x12; 20 gauze rolls, 7 bundles of gauze squares, 9x9.

The meetings were held in the Parish Hall. Light luncheon was served each day during the noon hour. These were most enjoyable, furnishing a means of bringing together the women of the various Auxilliaries. There was an average attendance of 35. The Lenten Self Denial fund was given to the Lenten Sewing work for 1926 by vote.

Second: Was the social work for the men of the great American fleet during their mid-summer visit to Hawaii. The Auxilliary kept "open house" each Friday afternoon at the Seamen's Institute. According to the tally of Mr. Mant and his assistant, we welcomed nearly one thousand men and boys on those afternoons. The gift of an Auxilliary member made possible the serving of delicious refreshments, and of having music, each day. Many times we were asked who made the days of entertainment possible,

DRINK PURE DISTILLED  
WATER AND

CASCADE GINGER ALE

RYCROFT ARCTIC SODA  
COMPANY, LIMITED

VISIT

H. S. Sachs Dry Goods Co.

Up-to-date Dry Goods, Fancy Goods, Millinery,

Infants' Wear, and Ready-to-Wear

116 S. HOTEL ST.

H. F. WICHMAN & CO., LTD.

Jewelers, Gold and Silversmiths.

1042-1050 Fort Street, Honolulu

THE BANK OF BISHOP & CO.,  
LTD.

Established 1858 Incorporated 1919

Capital and Surplus—\$1,783,815.81

General Banking and Exchange Business.  
Travelers' Letters of Credit available in all  
parts of the world. Cable transfers of Money.  
Interest allowed on fixed deposits.  
Savings Bank Department 4% interest.

FOUNTAIN PENS

Sheaffer Lifetime Fountain Pens are the  
finest made and the most efficient—that is  
why they are guaranteed for a lifetime. We  
would be pleased to prove the above to any  
one who will call at our store.

Honolulu Paper Co., Ltd.

Successors to  
Hawaiian News & Thrum's, Ltd.  
Young Hotel Bldg.

and we always proudly told them St. Andrew's Episcopal Church of Honolulu.

We were able to help many of the men with advice, history and data concerning Hawaii, give directions to places, etc., etc. We found them almost to a man clean and fine.

Third: Was the individual work of Auxilliary members for the annual autumn sale of St. Andrew's Guild, the success of which we are all so much interested in? We ask for the cooperation

of every Auxilliary member for 1926. The new president takes office with fine ideas for the progress of the work. Will you ask yourself conscientiously, "What have I, as an Auxilliary member, done for the Spiritual life of our community? And what can I do to help carry on the work of the Kingdom of Christ?"

Respectfully submitted,

GENEVRA E. COOMBS,

Retiring President, St. Andrew's Woman's Auxilliary.

## F. A. Schaefer & Co. LIMITED

Sugar Factors, Commission  
Merchants and Insurance Agents  
Castle & Cooke Building

P. O. Box 2780 - Honolulu, Hawaii

A. WATERHOUSE.....President  
H. T. HAYSELDEN.....Vice-President  
F. T. P. WATERHOUSE.....Treasurer  
F. T. P. WATERHOUSE.....Secretary

## The Waterhouse Co. LIMITED

RUBBER FACTORS

Merchandise Brokers, Insurance  
ALEXANDER YOUNG BUILDING

## GOING EAST? GOING TO EUROPE? AVOID WORRY!

Secure Your Transportation Be-  
fore Leaving Home

## "SCENIC ROUTE"

Western Pacific & Denver & Rio  
Grande Railroads

## International Mercantile Marine Company

White Star Line—Red Star Line—  
White Star Dominion Line—Atlantic  
Transport Line—Panama Pacific Line,  
etc., etc.

Fred L. Waldron, Ltd.  
Agents

QUALITY AND SERVICE OUR  
MOTTO

When You Build Your New  
Home

## CONSULT NOTT'S PLUMBING STORE

72-74 S. Beretania Street  
Telephone 2566

## HENRY H. WILLIAMS Mortician

Member of California Funeral Directors'  
Association, National Funeral Directors'  
Association of the United States and the  
National Selected Morticians.

1374 Nuuanu Ave. - Phone 1408

## Jewels of the Well-Dressed Table—It's

# Glassware

Dear to the heart of every woman are her jewels. She takes pride also in the possession of at least a few jewels of the well-dressed table—it's Glassware. Because of the acceptability of glassware as gifts, she will be interested to know that Dimond & Company displays the most comprehensive collection of the finer glassware in Honolulu. It comprises excellent pieces of pressed, blown and cut glass from such famous makers as: Paden City Glass, Luzerne Cut Glass, Heisey Glass, Fenton Art Glass, Murano Italian Glass.



### The Vintage Pattern

Goblets, set of 6.....\$5.25

Fruit Servers, set of 6.. 5.25

Cocktails, set of 6..... 4.75

**W.W. Dimond & Co. Ltd.**  
"THE HOUSE OF HOUSEWARES"  
53-65 KING STREET, HONOLULU

## Hawaiian Trust Co.

Limited

STOCKS AND BONDS  
REAL ESTATE -- INSURANCE  
SAFE DEPOSIT VAULTS



Authorized by law to act  
as Trustee, Executor, Ad-  
ministrators and Guardian.

Capital, Surplus and  
Undivided Profits Over  
Two Million Dollars

## Wall & Dougherty, Ltd.

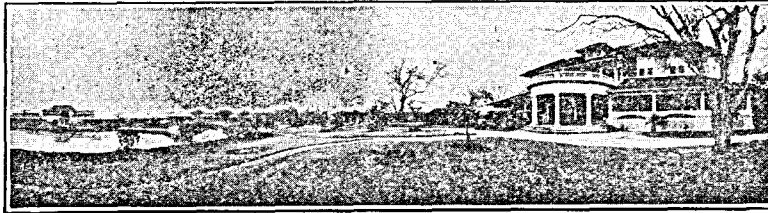
JEWELERS AND SILVERSMITHS

Young Hotel Building

1021 Bishop St. - Honolulu, Hawaii

GOLF  
SWIMMING  
FISHING  
BOATING  
RIDING

Unexcelled  
Cuisine



SPEND YOUR WEEK-END AT HALEIWA HOTEL

### J. M. DOWSETT, LTD.

84 Merchant Street - Honolulu, Hawaii

Agents for

Waianae Company  
Pantheon Company, Ltd.  
Hartford Fire Insurance Company of Hartford,  
Connecticut  
Westchester Fire Insurance Co. of New York

Telephone 4885 - P. O. Box 2600

### M. McINERNY, LTD.

Corner Fort and Merchant Streets

The Old Reliable Men's and Ladies'  
Furnishing Store

## California Feed Co.

LIMITED

DEALERS IN

GRAIN AND MILL FEED

BOTTOM PRICES

Island Orders Promptly Attended To

P. O. Box 120 - Phone 4121

HONOLULU



PACIFIC TRUST  
Company, Limited  
180 Merchant Street

Trusts—Stocks & Bonds  
Real Estate—Insurance

## HOPP'S

OUTFITTERS FOR THE  
HOME BEAUTIFUL

185 King St.

## Silva's Toggery, Ltd.

91 KING STREET, Near Fort

The Home  
of Good Clothes

## Allen & Robinson, LIMITED

LUMBER  
MERCHANTS

Lumber Yard, Robinson's Wharf

## E. O. HALL & SON LIMITED

Hardware of every description,  
Tools for every trade, Stoves,  
Kitchen Ware, Crockery and Glass  
Ware, Spalding's full line of Ath-  
letic and Sporting Supplies, Sher-  
win-Williams World-famed Prepared  
Paints and Finishes, Indian Motor-  
cycles, Columbia Bicycles, Auto  
Supplies, Gasoline Engines, Wind-  
mills, Plows and Farming Tools,  
Cyphers Incubators and Poultry Sup-  
plies. Call at the store with big  
assorted stock.

Corner King and Fort Streets

## Emmeluth & Co., Ltd. PLUMBERS AND SHEET METAL WORKERS

STOVES AND RANGES  
VALJEAN CARBURETORS  
OIL BURNERS

655 Fort St. P. O. Box 573

Tel. 3067

## H. M. Von Holt

General Business, Financial and  
Commission Agent

Agent for—

Niagara Fire Insurance Co.  
St. Paul Fire and Marine  
Insurance Co.

Cable Address, "VONHOLT"

## CASTLE & COOKE, LTD.

SUGAR FACTORS AND SHIPPING AGENTS

Agents for Matson Navigation Company and Isthmian Steamship Lines.

FIRE, LIFE, MARINE AND AUTOMOBILE INSURANCE

AGENTS

A. Reinicke

J. E. Glymour

WHERE QUALITY AND SERVICE COUNT

## French Laundry, Dyeing & Cleaning Works

MASTER DYERS, CLEANERS AND  
LAUNDERERS  
SPECIALISTS IN RUGS

Main Office: 777 King St. Phone 1491  
Branch Office: 1108 Union St. Phone 2919

We invite you to visit our store and examine our stock. You will find our Furniture to be up to date in every respect.

### OUR DRAPERY DEPARTMENT

and our stock of Rugs can supply every demand.

**Coyne Furniture Co.**  
Yuong Building Bishop Street

Phone 2189

P. O. Box 2514

### MERCHANTS' GRILL

FOR LADIES AND GENTLEMEN  
SPECIAL AFTER THEATRE SERVICE  
MEALS AT ALL HOURS

822 Fort Street - Honolulu, Hawaii

### W. BEAKBANE

Engraver

Has moved to the premises formerly occupied  
by the Bailey Auction Rooms  
Alakea Street

### HAWAII & SOUTH SEAS CURIO CO.



LARGEST PACIFIC  
SOUVENIR STORE  
IN THE WORLD

Alexander Hotel Building  
1033 Bishop St.

Phone 1374 P. O. Box 393  
HONOLULU HAWAII

### OUR MUSEUM

Second Floor.

A Museum of Oriental Merchandise, Curios  
and Antiques.

### Dry Goods and Furnishings

Main Floor.

Serving Hawaii Patrons for Forty Years  
And Still At It.

### YEE CHAN & CO.

At King and Bethel Sts.

## Alexander & Baldwin, Ltd.

SUGAR FACTORS

SHIPPING, COMMISSION MERCHANTS, INSURANCE AGENTS

Offices In Honolulu, San Francisco and Seattle.

### The Charm of Music

Fill your home with that feeling  
of goodwill and joy that only  
Music and its charm can give you

LET US HELP YOU

### THAYER PIANO CO., LTD.

HOTEL STREET  
Across from the Young Hotel

The Best Place to Buy Pianos and Organs is  
the

### BERGSTROM MUSIC CO.

Our line includes Estey Organ, Duo Art Re-  
producing, and Pianola.

Pianos—Mason & Hamlin.

Checkering—Whittier, Davenport & Treasy,  
and Clarendon Pianos.

We rent Pianos. We are the sole dis-  
tributors for the Victor Talking Machine Co.  
in Hawaii.

Our instruments are sold absolutely upon  
the One Price Plan—the only honest method  
of merchandising.

Easy terms can be arranged if desired.

### BERGSTROM MUSIC CO., LTD.

Fort & Pauahi Sts.

Honolulu, T. H.

Telephone 2478

P. O. Box 1559

### CITY MILL CO., LTD.

CONTRACTORS

Established 1899

Large importations of Lumber  
constantly received

MOULDING, PLUMBING, SASHES  
AND DOORS

Estimates Given on Building

Lime, Cement, Rice Bran  
and Hardware

For Convenience, Cleanliness and Economy,  
you will like

## COOKING WITH GAS

HONOLULU GAS CO., LTD.

82-84 S. HOTEL ST.

TEL. 3425

Property protection is a recognized necessity. No wise man trusts to luck that the dangers of damage and destruction will never fall upon his possessions. Fire insurance offers you increasing protection against financial loss in the event of property loss. Be sure and secure this protection today. Let us advise you to what extent you should be insured.

We represent leading companies of the world.

## C. BREWER & CO., LTD.

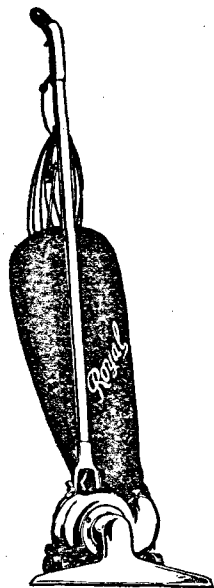
INSURANCE DEPT.

PHONE 2622

FORT STREET

HONOLULU

"See, there is no dust  
here, either!"



## ROYAL Electric Vacuum Cleaner

not only removes the  
surface dirt, grit and  
dust from your rugs  
and carpets, but it  
goes deeper!

It removes, too, the dust and dirt which sift through to the floor.

By means of the powerful suction it **PULLS** all dirt out—the old-fashioned broom merely scatters the surface dirt.

Your dealer will give  
you a demonstration

## The Hawaiian Electric Co., Ltd.

DISTRIBUTORS



## Detor and Company

### JEWELERS AND SILVERSMITHS

FORT AND HOTEL ST.  
Honolulu, T. H.

## Wall, Nichols Co., Ltd.

The Leading Stationery Store

BIBLES, HYMNALS & PRAYER  
BOOKS

Subscriptions taken for any  
Magazine or Periodical Published.

## Since the Days of Kamehameha III---

this store has served the Honolulu public. From the time of crinoline skirts to the modern days of colorful, floating scarfs, and gaily tinted sweaters, the smartest modes for women and children, the loveliest of silks, and all the important accessories of feminine apparel have been obtained here.

## THE LIBERTY HOUSE

Regardless of the price you pay or the car you purchase,

*There Is No Greater Value  
Than Buick*

## The von Hamm-Young Company, Limited

## Oahu Ice & Cold Storage Co.

### Pure Ice and Cold Storage

Telephone 6131 - P. O. Box 20

## The Sharp Publicity Service SIGNS

ON

Wood, Metal, Glass and Cloth  
Electric Signs a Specialty

Phone 3809 - 521 Beretania Ave.

## ADVERTISER PUBLISHING CO., LTD.

217 South King St., Honolulu, T. H.

PRINTERS — BOOKBINDERS  
PHOTO-ENGRAVERS

The most complete printing plant in the  
Territory of Hawaii

## W. W. Ahana Co.

MEN'S TAILORS

Satisfaction guaranteed

Our cutter is a graduate of the John  
J. Mitchell School of Cutting, New  
York City.

62 South King St., between Fort and  
Bethel Streets

HONOLULU, T. H.

## THE FIRST NATIONAL BANK OF HAWAII AT HONOLULU

United States Government Depositary

CAPITAL AND SURPLUS: \$1,000,000.00

L. Tenney Peck, President  
W. H. Campbell, Vice-President and Cashier  
J. H. Ellis, Asst. Cashier

H. M. von Holt, Vice-President  
W. Ballentyne, Asst. Cashier  
J. F. Mowat, Asst. Cashier

Drafts, Telegraphic Transfers, Travelers' Checks and Letters of Credit issued,  
available throughout the world.

ACCOUNTS INVITED

## AMPLICO

Reproducing Pianos  
Brunswick Phonographs  
Victrolas

**LEXINGTON-FOSTER  
ARMSTRONG & CONWAY**

Player Pianos

**Honolulu Music Company**  
1107 FORT STREET

A most delicious drink to  
serve to guests—

**Phez** Pure Juice of the  
Loganberry—

Mix one part of Phez with two  
parts of water and serve. Also  
fine in Punch, Ices, Sherbets and  
many desserts.

Requires no sweetening.

Harmless spicy and sprightly  
like old New England sapt  
cider—

**Applju**

It's a healthful beverage, made  
from the pure juice of carefully  
washed and hand-inspected Wash-  
ington and Oregon apples.

Your grocer has them both

**AMERICAN FACTORS, LTD.**

Wholesale Distributors for Hawaii

## TRAVEL—THE BEST EDUCATOR

### VISIT THE OTHER ISLANDS MAUI KAUAI HAWAII

Summit of Haleakala  
Iao Valley

All **61.70** Expenses

Waimea and Olokele Canyons  
Lawai and Hanalei

All **49.00** Expenses

Hawaii National Park  
Kilauea Volcano

All **50.50** Expenses

LITERATURE AND FULL INFORMATION

TRAVEL DEPT.

**INTER-ISLAND STEAM NAVIGATION CO., LTD.**

PHONE 4941

HONOLULU, HAWAII

For that burning and irritating sensa-  
tion caused by the action of the ele-  
ments on the tender skin use . . .

**Maile Cream**

Eradicates Freckles, Sunburn and Tan,  
and Fair Skins are made fairer by  
using MAILE CREAM.  
Prepared only by

**Benson, Smith & Company, Limited**

Cor. of Fort and Hotel Sts.

Honolulu, Hawaii





SERVICE FIRST

TELEPHONE 4981 (Private Exchange)

## Honolulu Construction & Draying Co., Ltd.

Draymen---Warehousemen---Quarrymen

BISHOP AND HALEKAUWILA

STREETS

P. O. BOX 154

CABLE ADDRESS

"HONCONTRA"

Dealers in  
WAIANAE SAND  
CRUSHED ROCK  
BALLAST  
CEMENT  
COAL

## BISHOP TRUST CO., LTD.

HONOLULU

Trusts

Real Estate

Stocks and Bonds

Insurance

## METROPOLITAN MEAT MARKET

Honolulu's Market De Luxe—Main Office, 50-62 King Street

Wholesale &amp; Retail

Meats  
Poultry  
Sausage  
Butter  
Eggs

Dealers in local, mainland and imported meats and poultry. Army contractors. Purveyors to Oceanic, Pacific Mail, Occidental, Oriental and Canadian Lines. Manufacturers of sausages and head cheese. Maintaining grocery, fruit and vegetable, candy and delicatessen departments.

Grocery Phone 5779

ORDER MAILE BUTTER

Meat Phone 3445

Retail  
Groceries  
Vegetables  
Fruit  
Candy

## Hollister Drug Co.

LIMITED

Druggists and Photo Dealers

Wholesale and Retail

1056 Fort St. - - Honolulu, T. H.

## C. J. DAY & CO.

GROCERS

SERVICE AND QUALITY

Deliveries to All Parts of the City

1060 FORT S.

PHONE 3441

# INSURANCE

LIABILITY, ACCIDENT, FIRE  
AUTOMOBILE, MARINE

Theo. H. Davies & Co., Ltd.

AGENTS

## LEWERS & COOKE, LIMITED

IMPORTERS

Wholesale and Retail Dealers in

LUMBER AND BUILDING MATERIALS

PAINTERS' AND GLAZIERS' SUPPLIES

WALL PAPER, MATTING, TERRA COTTA, ETC.

169-177 South King St.

P. O. Box 2930

Honolulu, Hawaii