

MAILS
From San Francisco
Macon, Jan. 25.
For San Francisco:
Wilhelmina, Jan. 26.
From Vancouver:
Ningara, Jan. 26.
For Vancouver:
Makura, Feb. 4.

Honolulu Star-Bulletin

2:30
Edition

Evening Bulletin, Est. 1882, No. 6379
Hawaiian Star, Vol. XXIII, No. 7420
12 PAGES—HONOLULU, TERRITORY OF HAWAII, MONDAY, JANUARY 24, 1916—12 PAGES.
PRICE FIVE CENTS

PRESIDENT TO CLEAR WAY FOR ARMY AND NAVY APPROPRIATION BILLS

CUTS ESTIMATE OF PLANTATION DAMAGE IN HALF

George H. Robertson, Back From Trip of Inspection to Wailuku, Says \$50,000 Will Cover Havoc Wrought By Storm

ROAR OF WATER GAVE WARNING TO PEOPLE

Three Hundred and Thirty Persons in Need, and 34 Families Homeless, Are Official Figures Given Out By Relief Committee

That a total of \$50,000 will cover the damages sustained by Wailuku plantation is the belief of George H. Robertson, vice-president and manager of C. Brewer & Company, who returned this morning from a short trip to Maui, having gone over the scene of the flood devastation of last week.

"There is not so much damage as we thought there might be," said Mr. Robertson. "Much of the damage is what might be called 'invisible,' of course, and will be seen as time goes on. However, I believe that \$50,000 will cover everything."

"About a dozen laborers' cottages on the Wailuku plantation were wiped out by the water, and six or seven acres of cane down in the stream bed were completely swept away."

Mr. Robertson says that the topography of the river has been changed greatly by the flood, filling in here and digging out there, with new channels cut in many places.

Wailuku, Not Under Water.

He says that Wailuku was not under four feet of water as was printed elsewhere, and that Wailuku people felt this was an unjust description of their little village. The water did its damage down in the stream bed proper.

"I was especially impressed with the condition of the government roads," says Mr. Robertson. "In places their damage was very severe, this condition lasting for mile upon mile. Culverts and bridges were victims of the flood in many places."

Letters received at Alexander & Baldwin's today confirm the estimates of losses printed in the Star-Bulletin last Thursday, and putting the figures somewhere between \$100,000 and \$200,000, for the Hawaiian Commercial plantation.

[Special Star-Bulletin Correspondence]

WAILUKU, Jan. 22.—Conflicting reports and opinions as to the number missing are still prevalent in Wailuku this morning. The coroner's jury did not hold a session before 10:30, expecting that the searching parties working along the stream might find the eight-year-old daughter of Mrs. Soderant. The girl is still missing, and in spite of the most diligent search no trace of her has so far been found.

Twelve bodies have been reviewed by the jury. Members of that jury have expressed the opinion that several bodies are yet to be discovered. Many of those who lost relatives and friends are of the same opinion, and the most careful search in all conceivable places is being kept up. The calm sea of yesterday and today may give up some of the dead at any moment, for the torrent of raging water was sufficiently strong even up to last evening to carry away children, and the stream is still wide in many places. It would not be at all strange if the missing should yet be found to be dead and caught somewhere in the stream or had been washed out to sea.

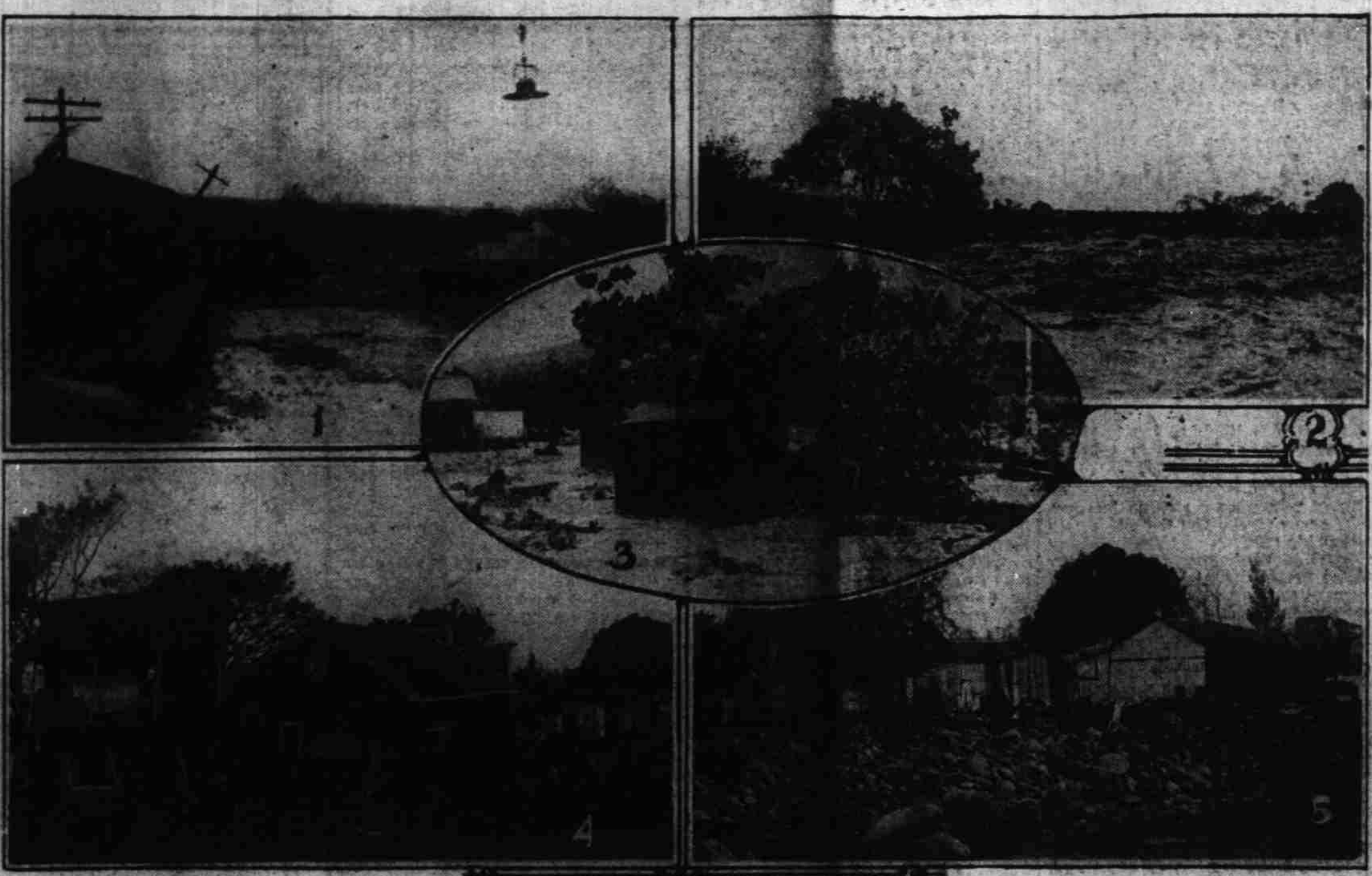
Were Warned by Roar.

It is the unanimous opinion of all the rescue parties and the police department of Maui that had the cloud-burst occurred an hour earlier on Tuesday morning that the toll of the dead would be four or five times what it is today. By half past 4 or 5 when the river began to swell, many of the families were stirring about, and by the terrible roar were sufficiently warned to get out of reach of the flood.

The Spanish homes in Iao Valley were washed away by the river cutting a new channel toward the Wailuku side of the gorge. Trees and stones seemed to more or less obstruct the natural bed, and consequently the violence of the water at this point can easily be understood. Here the loss of life was the worst in a small number of families. The river took a similar turn just above the Wailuku bridge. The pile of stones that had been brought downstream by the rush of the water gathered in a mass filling the usual bed of the river. The water was again diverted toward Wailuku, and came pounding down upon the houses between the bridge and the taro patches.

One new house was taken clear across the highway. Other houses on

Fury and Devastation of Maui Storm Are Shown In Photographs Taken In and Around Town of Wailuku



Only persons familiar with Iao Valley and Wailuku will be able to realize the full extent of the Maui storm damage by these photos, which, however, show how strongly built houses were swept hither and yon and shattered by the waters. Photo No. 1 shows a bridge on the road toward Wailuku, the water having lifted the blacksmith shop and set it half across the highway. No. 2—Raging stream where is usually dry land. No. 3—Iao Valley water surrounding houses and carrying them down stream. No. 4—House which had been washed to their present position. No. 5—Boulders and houses heaped up by the storm.

OLAA PROVING BIG PUZZLE OF LOCAL STOCKS

Comparison of Standing With Onomea; "Big Men" Rumored Trying to "Bear" Market

At \$11.50 per share the stock of the Olua Sugar Company, Ltd., affords one of the puzzles of the market. Recently the stock, in its upward climb, has halted, then receded under heavy profit taking sales, always to resume its climb under the stimulus of eager buying. In comparison with the sale prices of regular dividend paying stocks the present price of Olua is difficult of explanation, from the standpoint of what is known to the general public.

The condition of Olua is this: The capital stock is 250,000 shares, which at \$11.50 per share would represent a valuation of \$2,875,000. In addition the company has outstanding a \$2,500,000 bond issue at 6 per cent, which calls for \$150,000 in interest annually, and has no sinking fund, so far as is known.

The combined stock and bond valuations total \$5,375,000, from which must be subtracted \$530,000, which is what current street rumor gives as the amount of cash on hand from last year's operations.

It is generally known that Olua made a net profit of about \$850,000 (not including depreciation) in 1915, of which \$215,000 must have gone to wipe out the indebtedness which was shown in the last annual statements, leaving about \$635,000 on hand. Of this latter amount it is known that from \$200,000 to \$250,000 will be spent on improvements and enlargements to the mill which have become absolutely necessary.

May Start Sinking Fund.

The use of the balance of the cash from last year's operations—from \$250,000 to \$280,000—for dividends

CHE KIANG HAS LINED UP WITH REBEL WORKERS

Yuan Will Not Assume Imperial Crown Until South China is Pacified, He Says

[Special Cable to Liberty News]

SHANGHAI, China, Jan. 24.—Che Kiang is the latest center of revolutionary action. Today a large number of the citizens of this province declared that they would stand for independence and as a result a movement is on hand to make this province the eastern stronghold of the movement. This province adjoins Kiang Su province, where Shanghai is the principal city.

The revolutionary movement in Che Kiang has grown so strong that Yuan Shih-Kai, through the department of communication, has ordered the Shanghai and Hang Chau railroad not to carry any military men of this province. This is due to the rumor that the military governor has announced that he will go over to the revolutionary party.

It is announced from Peking that the department of foreign affairs has issued a statement that Yuan Shih-Kai will not make an attempt to hold the coronation while there is a revolutionary movement in South China. This statement was given out to the foreign ministers today.

Military governors of Nanking and Chi Kiang are proposing a Chinese-German alliance. Whether or not this statement has been issued to thwart the efforts of the soldiers of Yuan is not known, but it is certain that both governors have a leaning toward the revolutionary party.

Yuan Shih-Kai needs money to pay the troops in the north. He has asked American financiers in Hankow for a loan of \$400,000,000 to carry on his campaign against the revolutionists. The American capitalists have refused the loan.

NEW YORK STOCK MARKET TODAY

	Today.	Yester.
Alaska Gold	23 1/2	24
American Smelter	103	104 1/8
American Sug. Rfg.	114	113 1/2
American Tel. & Tel.	127 1/2	127 1/2
Atchafalpa	106 1/8	106 1/8
Baldwin Loco. ex div.	107 3/4	107 3/4
Baltimore & Ohio	91	94 1/2
Bethlehem Steel	47 1/2	47 1/2
Calif. Petroleum	30 1/2	32
Canadian Pacific	171 1/2	174 3/4
C. M. & St. P. (St. Paul)	98	99 1/2
Col. Fuel & Iron	45	46 1/2
Crucible Steel	65 1/4	66 1/2
Erie Common	38 3/4	39 1/2
General Electric	172 3/4	173 1/4
General Motors	480	485
Great Northern Pfd.	122	123 1/4
Intern'l Harv. N. J.	109 3/4	110 bid
New York Central	108	109 1/2
Pennsylvania	58 1/4	58 1/4
Southern Pacific	101	101 1/2
Studebaker	152	154
Tennessee Copper	58 1/2	59 1/2
Union Pacific	134 1/2	136 1/2
U. S. Steel	83 1/2	84 1/2
U. S. Steel Pfd.	118	117 3/4
Western Union	90	90 bid
Westinghouse Electric	86 1/2	88

GERMANS MINING WEST POSITIONS, SAY CABLEGRAMS

Teutons Advance After Arduous Operations to Blow Up Enemy Trenches

The following cablegrams from official German sources were received yesterday:

"German Headquarters, Jan. 22.—Southeast of Ypres the Germans by mines destroyed 60 meters of the enemy's trenches. The German positions between Moselle, Vosges and several towns behind the front were shelled by the enemy without result. On the east front, artillery duels are in progress before Duenaburg."

SUNDAY.

"German Headquarters, Jan. 23.—Near Neuville, north of Arras, after successful blasting operations the Germans occupied advanced enemy trenches positions 250 meters long, capturing 11 French. In the Argonne the Germans, after short hand-to-hand engagements, occupied a section of the enemy's trench. Military establishments east of Belfort were bombarded."

U. S. INCOME TAX UPHELD IN COURT

WASHINGTON, D. C., Jan. 24.—In an opinion handed down today the United States supreme court upholds the constitutionality of the income tax law.

MANOA WILL BE HOUR AND A HALF LATE IN ARRIVING TOMORROW

That the same rough weather which made the Sonoma three and three-quarters hours late arriving today from San Francisco, is holding back the Matson steamer Manoa, is indicated in a radiogram received this morning by Castle & Cooke, Matson agents, from Capt. Francis M. Edwards, the Manoa's commander, stating that the liner will not arrive until 9 o'clock tomorrow morning.

This is probably the hour of arrival off port. The Manoa is bringing 30 passengers, but has only six bags of mail, as she left on the same day as the Sonoma, which brought in 591 bags this morning. The Manoa has 3303 tons of cargo for Honolulu, 485 for Kahului, 370 for Port Allen and 20 for Kaanapali.

15 KILLED IN BUFFALO PLANT

[Associated Press by Federal Wireles]

BUFFALO, N. Y., Jan. 24.—Fifteen persons were killed and 15 others probably fatally injured in an explosion today at the Kellner Blower Company's plant.

KING OF ITALY MEETS MONTENEGRIN MONARCH

ROME, Italy, Jan. 24.—The king of Italy today met the king of Montenegro, who arrived here this morning, a refugee from his country.

ILLINOIS FLOOD SITUATION NOW GROWING WORSE

River Rises Fast and Lowlands are Flooded, Inhabitants Fleeing

94-MILE GALE SWEEPS NORTH PACIFIC COAST

Great Northern Train-Wreck Still Not All Cleared Away; Bodies in Snow

[Associated Press by Federal Wireles]

PEORIA, Ill., Jan. 24.—The floods in Illinois, so far from subsiding after a week of almost daily increase, are now worse than ever, and have reached the proportions of a great menace.

The Illinois river is rising fast, swollen by recent rains, and the residents of the lowlands are fleeing in panic, many of them being forced to leave behind most of their personal possessions. Hundreds have been rescued from their marooned homes by patrol parties in boats. Many have been suffering from the exposure in their flooded houses. The dikes that protect the low bottom lands are broken in many places.

The inundation of farms, villages and small towns is causing enormous damage to property, and there is a great loss in livestock of various kinds.

One of the most serious of the individual disasters is the breaking early today of the Spoon River levee, protecting thousands of acres below Havana. The towns of Havana, Lewiston, Duncan and Mills are isolated. The water is the highest on record.

SEATTLE, Wash., Jan. 24.—Six hundred men are now employed in clearing the tracks and the vicinity of the spot where a Great Northern passenger train was wrecked by an avalanche last Saturday.

It is expected that it will take a long time to find the missing passengers, owing to the depth of the snow into which they were hurled when the coaches were swept from the tracks.

A fall of 25 degrees in temperature has turned the rain into snow and averted floods in the entire lower Puget Sound country.

RIOTERS JAILED AFTER HOT FIGHT

[Associated Press by Federal Wireles]

ROCKFORD, Ill., Jan. 24.—Twenty-two men were arrested and taken to jail here today, following a battle between police and rioting workmen from the Shengler-Loomis plant. The riot was started by the workmen because some of their numbers were discharged on Saturday. In the melee clubs and pistols were used, but the injuries are not serious on either side.

NEGRO AND WHITE WOMAN ELOPE; HUSBAND THINKS MURDER THREAT REASON

[Associated Press by Federal Wireles]

SALT LAKE CITY, Utah, Jan. 24.—Raymond Dadds, a negro, today surrendered himself to the police to "save trouble," he said. The police declare that Dadds compelled a Mrs. Viola Hood, a white woman of San Diego, to elope with him.

Dadds denies that he used any force to make the white woman accompany him. He said the woman suggested their elopement. She has not been located.

LOS ANGELES, Cal., Jan. 24.—V. L. Hood, husband of the woman who is alleged to have been abducted by a negro, does not believe that his wife elopingly fled. He said that when she went with the negro, she left a note saying that Dadds had threatened to kill the entire family unless she eloped with him. Dadds was formerly Hood's chauffeur, but had been discharged.

MR. WILSON'S PROGRAM IS FIRST ISSUE

Other Legislation Must Make Way for Army and Navy Expansion

GREECE GETTING LOAN FROM ENTENTE POWERS

Action Indicates No Open Break Expected; Aged Austrian Emperor Reported Very Ill

[Associated Press by Federal Wireles]

WASHINGTON, D. C., Jan. 24.—The administration's "preparedness program" will be urged strongly on Congress and other legislation must make way for it.

This result of the president's ideas as based partly on the lesson of the present war in Europe is now plainly developing in Washington. It was announced today that the president has decided to hasten action on the appropriation bills which are before Congress. These bills are to be cleared away and then the army and navy bills will come up.

Considerable debate on these measures is expected and by that time the president will have taken one or more of his proposed speech-making trips on behalf of the defense program.

GREECE TO GET LOAN BY ALLIES

LONDON, Eng., Jan. 24.—A despatch from Athens to Reuter's Telegram Agency says that negotiations for a loan to Greece by the Entente Powers are progressing.

Indications that the Allies and Greece will arrange a loan point to a continuance of present relations and that there is no danger of an open break, though King Constantine complains regarding the Allies' oppression of his country.

EMPEROR JOSEF REPORTED SICK

PARIS, France, Jan. 24.—A despatch from Rome says that there is grave anxiety in Vienna over the illness of the aged Emperor Franz Josef. He is said to be ill with acute chronic bronchitis and to be confined to his bed.

FRENCH FLIERS BOMB MONASTIR

PARIS, France, Jan. 24.—A squadron of 45 French aeroplanes has bombarded Monastir, where the Bulgarian-Teuton forces are quartered. The bombardment did much damage to ammunition depots, to the quarters of the general staff and to the railroad station.

GERMANS SUCCEED IN NIGHT-RAID ON DOVER

BERLIN, Germany, Jan. 24.—The German admiralty announced today that German aeroplanes have bombarded the station, barracks and docks at Dover, England, again. The raids are said to have been made on the night of January 22-23.

BULGARIANS MAY MEET ALBANIANS AT DURAZZO

PARIS, France, Jan. 24.—A clash of Bulgarian soldiers and the Albanians under Essad Pasha is expected at Durazzo, in the vicinity of which both are reported today.

FOR SALE

A 5-passenger car and roadster in good condition. Tel. 3230.

PROBLEM OF ACCOMMODATING TIDE OF TOURISTS ACUTE, SAYS BERNDT

Believes Situation Warrants "Tent City" or More Hotel-Building

Confronted with a situation described by Chairman E. A. Berndt as "acute," the Hawaii Promotion Committee is conducting a detailed canvass of the city to find rooms and board or rooms alone for a tide of tourists which threatens to overflow all available accommodations.

With tourists arriving in larger and larger numbers, Chairman Berndt says that the hotels are all full, that there is an actual shortage in rooms with bath, and that by February the problem will be even more acute.

On a small scale the project of a "tent city" has been received by one real estate man, Dr. E. L. Hutchinson, as feasible, and Berndt reported to day that Hutchinson is preparing to put up, on Wilhelmina rise, 15 or 20 small cottages on the "wooden tent" plan. These cottages he expects to fill with tourists during the rush tourist season, and in the "off season" is confident that the superb view, splendid air and comparative accessibility will make them popular as summer homes for city residents.

"I do not believe that Honolulu realizes how pressing this problem of accommodations has become," said Chairman Berndt this morning, "but it is a fact that owing to lack of rooms and bath for tourists, some people have not come who would have come. It is also a fact that private parties here have received cablegrams or letters asking them to see what can be done to get accommodations for friends anywhere—either in hotels or private homes.

"The Promotion Committee is carrying advertisements in both Honolulu papers asking people who have accommodations of any reasonable sort to let us know, and we will appreciate even the mention of a room which is available.

"There is, besides the wealthy tourist who demands the best and who spends largely during his stay, a large number of travelers with modest purses who are willing to take good, clean rooms in almost any locality.

"Apparently there is a fear that after the war Honolulu will suffer from a failure of the tourist traffic.

PASSENGERS ARRIVED

Per Oceanic str. Sonoma, from San Francisco, today.—For Honolulu: I. L. Berk, J. G. Budd, S. E. Burns, Mrs. Burns, Miss E. J. Colquhoun, T. H. Cosford, Mrs. Cosford, W. K. Low, Mrs. Low, B. F. Magel, J. W. Mengel, Mrs. Mengel, Miss Mengel, Miss Mengel, Syd. Smith, Mrs. Smith, W. D. Wooster, Mrs. Wooster, H. Weston, Mrs. Weston, Mrs. Magel, H. Atkinson, Mrs. G. Cabrie, Ed. Hayes, Mrs. Hayes, Miss B. Levison, Miss E. Quigley, W. G. Robinson, J. Selig, G. Cabrie, J. Enos, T. Kawamura, M. Pierce, L. K. Sen, Through passengers—Mr. Carted, Mrs. Carter, Miss Carter, Frank Coffee, Mrs. Coffee, Mrs. Ashley Cooper, Miss Bert, A. H. Hutton, Miss Ingram, L. J. Jones, Mrs. Jones, Miss Leonore Jones, Master K. Jones, Ben Linn, Mrs. Linn, Miss D. Mansfield, D. F. Magel, E. J. Misch, Addison Parker, A. Robertson, E. C. Schaefer, W. J. Schutt, Mrs. Schutt, C. L. Walter, A. A. Wilson, R. M. Withycombe, Mrs. Gaston, Mrs. M. Cardiff, S. P. Coffey, W. E. Coleman, Mr. Cook, Miss Cook, A. Cooper, Mrs. M. A. Ferguson, W. G. Ferguson, H. M. Hansen, D. L. Hunter, Mrs. F. M. Jackson, Miss Jackson, O. E. Jager, T. Lawton, C. P. Moore, Mrs. Gertrude Oatman, W. D. Pollard, A. L. Robertson, Mrs. Robertson, Miss Molly L. Robertson, L. Robertson, Mrs. L. Robinson, Miss Ula Robinson, W. C. Striland, H. C. Turnham, W. E. Wolgast, Mrs. Wolgast.

otherwise I am certain that the hotels, particularly at the beach, would go more largely into the cottage-building plan. But our information is convincing—the tourist trade is going to keep on growing. The Great Northern has come on the local run to stay—at least for the winter and spring months. Few people realized how fast the travelers are arriving here to spend from two weeks to six months. And 75 per cent of Hawaii's tourists come back. Not always the next year, but always eventually.

That Honolulu is not making any extensive preparations for handling a big tourist traffic is believed due very much to the recent unsettled conditions of transportation. Last year it was feared that the withdrawal of the Pacific Mail liners would cut the tourist trade down to a minimum. The Great Northern service was hastily arranged and whether it is to be permanent is not yet known. Consequently hotel men say that on account of transportation uncertainties and the fear that the war may end and the tide of tourists turn to Europe, no extensive building plans now are justified. Members of the Promotion Committee do not agree with this. They say that Honolulu fails to realize just how fast Honolulu is becoming known as a desirable tourist resort, summer and winter, and how it is taking the people who used to go to the south or to some of the Atlantic islands for their annual outings.

PANAMAN IS BACK TO FINISH HER LOADING

Bringing 6500 tons of sugar from island ports, with 2000 more to load here to complete her cargo, the American-Hawaiian steamer Panaman, Capt. N. J. Kane, arrived from Hilo and Kahului at 8 o'clock this morning, and will sail either tonight or at daylight tomorrow morning for New York, via the Straits of Magellan.

Captain Kane said this morning the steamer will reach New York, unless more bad weather is met, March 20. The kona gale of last week has made the Panaman a week behind her schedule, as she was unable to work at Kaaanapali at all, and her loading at Kahului was also delayed.

The Panaman was at Kaaanapali loading, a week ago yesterday, and had only taken on 117 tons when the kona began to blow. Captain Kane anchored his ship off that port, staying there for two days and then steaming around to Kahului, where the steamer took refuge until the gale abated, after which Captain Kane took his ship to Hilo.

At 10 o'clock Wednesday morning the Matson steamer Wilhelmina will sail for San Francisco. To date 75 cabin and 12 steerage passengers are booked. She will take out 4700 tons of new sugar, 500 tons of molasses, 4500 bunches of bananas and 40,000 cases of canned pineapples.

In the Four Counties Inn, in England, it is possible to eat in Leicester-shire, sleep in Staffordshire, drink in Warwickshire and smoke in Derbyshire without leaving the building.

Old Spanish and French coins valued at \$1,250,000 arrived at the Philadelphia mint to be transformed into current money for the republic of Cuba.

OLAA PROVING BIG PUZZLE OF LOCAL STOCKS

(Continued from page one)

seems scarcely possible, in view of the large and heavy interest bearing bond issue. It has not been announced, however, to what use the surplus will be put, but the general expectation is that it will be put into a sinking fund, or used to purchase bonds for retirement.

Olaa's \$850,000 in profits last year was made on an output of 32,300 tons of sugar. The 1916 crop, it is reported, will probably run around 26,000 tons, with a 36,000 tons output in prospect for 1917.

Onomea's Condition. Contrasted with this is Onomea's position, with no bond issue to pay interest on or to clear up, a stock issue of 75,000 shares which at current prices, \$47, gives a valuation of \$3,525,000, and with \$716,000 cash in the treasury (after paying \$450,000 or 30 per cent in dividends last year) a net valuation of \$2,309,000. If Onomea pays 10 per cent this year, it yields, at present prices, more than 15 per cent on the investment, the par value being \$20, and recent sales being around \$47.

Onomea in 1915 made a net profit of \$320,000 (not including depreciation), on an output of 21,300 tons, though the estimate was only 17,000 tons. This year's estimate is also 17,000 tons, but the cane is likely to run to 19,000 tons or more, and there is a 22,000 ton crop in prospect for 1917.

Street rumor among those interested in sugar stocks has it that certain of the "big men" locally are indulging in much head-shaking and in many doleful prophecies over the future of sugar when the war ends, as well as loud cautions that stocks are now too high.

What basis this may have, coupled with the rumor that the same pessimists have lately unloaded large blocks of stocks in the hope of breaking prices, is not definitely known—but it is said that the large unloading was made with the hope of reducing prices so that they might buy in again at a lower level before Congress takes final action on the sugar tariff.

Pressure of buying orders from small and large investors, however, has caused the market to absorb all offerings with prices climbing up the scale, and now the "big men" are said to view the prospect of not being able to "buy in" again, except at an advance all along the line.

A ministerial decree was issued at Vienna prohibiting the baking of rolls, biscuits, and other fancy breads. The order does not apply to households.

WANTED
Long lease on bungalow with gas stove at beach, moderate rent. "Lease," this office. 6379-tf

LOST.
Between Silva Rise and Liberty theater, gold nugget brooch. Reward. This office. 6379-3t

NOTICE
The annual meeting of the German Benevolent Society will be held at the office of H. Hackfeld & Co., Ltd., on Saturday, January 29, 1916, at 9 o'clock a. m. All members are earnestly requested to attend.
H. A. SCHROEDER, Treasurer.

Manager Penhallow stated that the plantation had at once taken care of all the families of its laborers that had suffered and that all were housed until new buildings could be erected. This task was to be undertaken just as soon as carpenters and lumber could be secured. Frank F. Baldwin, manager of H. C. & S. Co., was chairman of the meeting.

The relief committee opened up headquarters at once at the Alexander House Settlement front rooms, which had been offered for the purpose. A telephone was installed. Daily meetings are being held from 11 to 12 o'clock, and the committee organized with Leslie R. Mathews as chairman, Joaquin Garcia as secretary, and R. A. Wadsworth as treasurer.

Sub-committees were at once put to work as follows: Sheriff Crowell is to ascertain from the Hawaiians what need there is among their people. Mr. Mathews has charge of the Filipinos, Mr. Garcia the Portuguese, Mr. Otsuka the Japanese and Mr. Wadsworth the Chinese and all others.

An important meeting of the committee adjourned a little past 12 o'clock today and it was found 330 persons were in need and 34 families were homeless. A large number of buildings belonging to these families were washed away. The committee is in charge of relief work only, and it is expected that the \$2500 available by vote of the board of supervisors on Wednesday, together with the \$300 that has already in addition become available will with other aid expected be sufficient to meet the greatest need. It is generally understood that all relief work that has already been done and the work that is yet to be done will be handled by this one general committee.

Keeping Card Index. A careful card index is being made of all cases. Many of the persons appearing have had their cases already adjusted, for in many instances those in need lost only a second suit of working clothes, or an equipment not more expensive. Food and clothing have been sent and are being sent to the headquarters and money

MAUI STORM HAS LEFT WIDE WAKE OF DEVASTATION

(Continued from page one)

the mauka side of the road were carried by the water across the road, and in some instances when they came in contact with the houses on the maui side were broken to pieces and the debris floated downstream to the sea. Blacksmith Shop Moved.

The blacksmith shop, which was a good sized structure, was taken half across the road turned endwise by the water, and is now standing in this position, leaving just room enough for vehicles to pass. Houses on the lower side of the highway are now to be found scattered here and there along the river bed to the ocean or, completely broken up, are strewn along the course of the raging stream. The height of the water was a great surprise to all who witnessed the sudden rise of the streams, and the new channels together with the wide cut in the valley where the lao bridge used to span the river at the two mile post are also matters of astonishment.

Yesterday and the day before many automobiles from all parts of central Maui visited the valley, and the exclamations on all sides were, "Isn't it terrible!"

Not a taro patch remains. Many beautiful trees that were ornaments to the lao road are gone, and portions of the valley that were particularly beautiful are now masses of broken down walls or piles of debris.

Big Syphon Washed Out. The plantation syphon used to bring water from the Waihee side of the stream to the Waikapu side is completely washed out. Elsewhere cement and wooden flumes of the Wailuku Sugar Company and the Hawaiian Commercial and Sugar Company are completely ripped out. Many fields are stripped of their cane. All this damage can be easily seen as one passes up and down the familiar roads of Wailuku.

Many thrilling stories of rescues have come to light yesterday and today. In several instances the workmen on the plantation were just starting for the fields when they saw the danger to their families and neighbors and rushed back in time to give warning and help get people to points of safety.

Joe Welch, who chanced to be on the mauka side of the Waihee road when the flood was breaking into the houses and people were swimming about trying to save their families, did some heroic work in rescuing a score of persons.

Had Rope Around Waist. David Kaiwa, John I. and Levi Hoopiwi were with Welch, as was a rope around his waist he made trip after trip into the stream to assist those in need of help. The police did valiant service under the direction of Sheriff Crowell, who seemed to be everywhere at once with his gang. Angus McPhee was also a man of the hour, directing parties where the greatest need was seen. Details of the death of some of the persons whose bodies have been found are heartrending, and the narrow escape of a large number of families shows how close to an even greater calamity Wailuku has been.

The relief committee selected yesterday at a mass meeting of Maui citizens organized immediately. The meeting at which all central Maui was represented was called by Sam Kalamas, chairman of the board of supervisors. Joaquin Garcia was appointed secretary. The meeting was interesting as bringing together all nationalities in the common need of the hour. It also showed what immediate relief had been given by the Wailuku Sugar Company, the Maui Dry Goods, and by the County of Maui, as well as by private citizens.

Laborers Cared For. Manager Penhallow stated that the plantation had at once taken care of all the families of its laborers that had suffered and that all were housed until new buildings could be erected. This task was to be undertaken just as soon as carpenters and lumber could be secured. Frank F. Baldwin, manager of H. C. & S. Co., was chairman of the meeting.

The relief committee opened up headquarters at once at the Alexander House Settlement front rooms, which had been offered for the purpose. A telephone was installed. Daily meetings are being held from 11 to 12 o'clock, and the committee organized with Leslie R. Mathews as chairman, Joaquin Garcia as secretary, and R. A. Wadsworth as treasurer.

Sub-committees were at once put to work as follows: Sheriff Crowell is to ascertain from the Hawaiians what need there is among their people. Mr. Mathews has charge of the Filipinos, Mr. Garcia the Portuguese, Mr. Otsuka the Japanese and Mr. Wadsworth the Chinese and all others.

An important meeting of the committee adjourned a little past 12 o'clock today and it was found 330 persons were in need and 34 families were homeless. A large number of buildings belonging to these families were washed away. The committee is in charge of relief work only, and it is expected that the \$2500 available by vote of the board of supervisors on Wednesday, together with the \$300 that has already in addition become available will with other aid expected be sufficient to meet the greatest need. It is generally understood that all relief work that has already been done and the work that is yet to be done will be handled by this one general committee.

Keeping Card Index. A careful card index is being made of all cases. Many of the persons appearing have had their cases already adjusted, for in many instances those in need lost only a second suit of working clothes, or an equipment not more expensive. Food and clothing have been sent and are being sent to the headquarters and money

subscriptions are still being received by the committee.

Several young children, who are orphans, are being cared for by families in Wailuku. Guardianship papers have in all cases where there was need been taken out, so that every precaution for the permanent relief of destitute children has been attended to.

An interesting fact has developed that comparatively little looting has been done, and where things have been taken or trunks broken into, restoration has been enforced in most cases. The sufferers have been remarkably free from robbery of any kind.

Plantation Damage Heavy. Exact estimate of the damage done to the Maui plantations is impossible at this time. No figures have yet been given out that will adequately cover the situation. Wailuku Sugar Company and the Hawaiian Commercial suffered more than did any of the other companies. Large tracts of the Kihui division are injured, and flumes are down.

The Wailuku Sugar Company lost a large number of houses. The estimate is placed as high as 50 buildings of various kinds. The growing as well as the mature cane suffered severely in large tracts, and the flumes and ditches were in many places absolutely beyond recognition. A large amount of railroad track on all the plantations was destroyed, or the roadbeds washed out. Telephone and electric light service as well as the water systems in all parts of Maui were severely crippled. Fortunately no fires broke out, otherwise large sections of thickly settled portions of Maui might have been destroyed without any opportunity of saving anything.

Reservoirs, as far as is known, were unhurt except for the 14,000,000-gallon reservoir of the Wailuku Sugar Company, between Waikapu and Maalea bay.

Highways Badly Torn Up. Damage to the Maui highways has been great. No one expected that it would be possible to get through by carriage or automobile to Lahaina for at least two weeks. Wailuku Sugar Company furnished the county with between 150 and 200 men and large numbers of men were also supplied by Pioneer Mill Company and other plantations. The result has astonished all Maui for yesterday it was possible by careful driving to get an automobile from the Wailuku side within 20 feet of a machine from the Lahaina side, and today by 6 o'clock County Engineer Cox is confident that light cars can get through, provided they make the attempt before nightfall. The road is absolutely unsafe by dark and will be for some time.

It will, of course, take weeks to get the Pali road in condition such as it was before the storm for in many places the landslides are wide and have cut deeply into the mountain road. The heavy cement bridge at Olowalu is completely gone and a new structure will have to be built there. The river cut a path twice the width of the old channel. Other bad places in the road can be repaired more easily.

Waikapu Bridge Saved. The bridge at Waikapu fortunately was saved. The stream took another course and raced down the road for a distance of 400 yards. A curious sight was to be witnessed at several points on the Lahaina-Wailuku road. In some places sea fish of various kinds were found. Elsewhere the fresh water fish were lying on the road. Piles of stones in long stretches completely covered the highway. Elsewhere the macadam was left six feet in the air while all the supporting banks were washed away. Debris was seen six and 10 feet above the normal beds of the streams, and gulches usually dry as a bone were raging torrents.

Six bad breaks have occurred in the Kula pipe and 10 bridges are down in the Kula region. The scarcity of men in Kula will make a long delay in getting these repairs made.

Only a few breaks in the ditches bringing water from Nahiku to the H. C. & S. Co. and Maui Agricultural Company have been reported and aside from the damage done by falling trees caused by the terrific wind there is nothing serious.

Hana Had High Wind. No lives are reported as lost outside the Wailuku district. At Hana much damage was done by falling trees and by the wind which is reported as having had a velocity of 80 miles an hour. The guest cottage at Manager Chalmers' house was badly injured by the fall of one of the big trees in the yard. The telephone system on that side of Maui is demolished.

Kahului has been practically under water for several days. Large algaroba trees have been lying across the roads in all directions from the seaport town.

A panic occurred in Kahului when it was reported that a tidal wave was threatening the town. Such had occurred years ago, when the lagoon was formed. Manager J. J. Walsh of the Kahului Store had been speaking of it. It was suddenly discovered that

FIRE-PROOF
STORAGE
WE STORE EVERYTHING.
JAMES H. LOVE
CITY TRANSFER COMPANY
PHONE 1281

Love's Bakery
some of the inhabitants had seen Mr. Walsh going toward Wailuku. The rumor then started that he was afraid of another tidal wave and was leaving the town to save his life. Fortunately for the peace of Kahului Mr. Walsh soon returned and the panic was over.

Dainty Oriental Goods at SAYEGUSA'S
Phone 1522 Nunann Street

The JAPANESE BAZAAR
Anything in way of
Oriental Goods
See us first
Japanese Bazaar
Fort St., Opp. Catholic Church

Oriental Goods
ODO SHOTEN
Hotel Street



Here is the one shoe for men that fulfils every requirement

The Banister

Made on correct lasts of finest material, it wears well and is always shapely. In all styles, high shoes or oxfords, tan or black, vic's kid or calf.

\$7.00 the Pair

Manufacturers' Shoe Co.

Your Savings Account increasing from the "inside" by means of compound interest has a greater growth than you realize. Not only that, but there is, as well, the growth of character that accompanies persistent saving and that growth defies computation. Here is what Arthur Brisbane, one of the world's greatest thinkers, has to say:

"You can make today's economy and deprivation pay interest a hundred-fold if you use good judgment and can trust yourself to stick to today's determination as to self-denial and saving."

THINK IT OVER—AND START SAVING TODAY.

Bishop & Company, Savings Department.

Plenty of Knitting Yarns including "Bear" brand

We have received a fresh shipment of these well known "Bear Brand" Yarns—plenty to supply all with any color desired.

Also 4-ply Germantown Yarns in every color and shade. Saxony 3-ply yarns in white, pink, blue, black and scarlet. Shetland Floss in white, pink, blue, scarlet, navy and black. Shetland Zephyr, 2-ply, in white, pink or blue.

Have you seen the February Butterick Fashion Book? Thousands of authoritative new styles. Price 25c, including a coupon good for one Butterick Pattern at 15c.

SACHS'
HOTEL ST. NEAR FORT
"The Store With a Conscience."

Don't Forget!

Coffee contains the drug, caffeine—about 2½ grains to the cup.

Some people use coffee for years and either forget or don't know that caffeine is a cumulative poison, working away in the system, insidiously undermining and destroying health.

Some of the signs are headache, heart flutter, sleeplessness, biliousness, and various stomach, kidney and liver troubles.

Of course, if one prefers his coffee, and is willing to put up with these "comforters," why—keep right on!

But, if one values health and real comfort, and at the same time would enjoy a delicious, wholesome beverage, the thing to do is to quit coffee and use


POSTUM

—the pure food-drink.

Made of wheat with a bit of wholesome molasses, this delightful beverage is wholly free from coffee or caffeine or any other harmful substance, but rich in the health-building goodness of the grain. Good for old and young.

Ten days' trial—a little thing to do—is convincing.

"There's a Reason" for POSTUM



NOTED ANGLERS OF MAINLAND ON CRUISE OF WEEK

F. K. Burnham, Jas. W. Jump,
Gerri Wilder and Gooding
Field Make Party

Fishing with kites and sleds is to be given first try-out in Hawaiian waters this week by a party of four mainland anglers—F. K. Burnham of Martinez, Cal., and James W. Jump of Los Angeles.

This afternoon Messrs. Jump and Burnham, with Gerri P. Wilder and H. Gooding Field, will leave on the steamer Claudine to connect with Senator Harry Baldwin's motor yacht at Lahaina. Then the fishermen will embark on a week's fishing trip that will take them to the outer reaches of Lanai, Kahoolawe and adjacent waters and perhaps across to Mahukona.

They are going out for swordfish and the big blue-fin tuna. They will make their headquarters on the yacht, sleeping there. Part of the time will be spent in the channels between Maui and Hawaii, where the big game fish are known to lurk.

"Kite-fishing" is a new and spectacular form of the ancient sport. It is done in this way: Three hundred feet of rope is attached to a double box kite of the familiar pattern, and sent high into the air. About 250 feet up toward the kite end of the rope is a thin loop of thread and through this is run the fishing tackle. Thus from the fisherman's rod, as he stands in the boat, his line will run far up and behind the boat and then drop into the water at a slight angle. The fish cannot see the line which comes from the sky and the bait or spoon leaps along the surface like a flying-fish. When the fish strikes the thread loop high on the rope breaks and then the angler goes to work as usual to kill his fish.

The "sled-fishing" is done with a small contrivance called a "sled" on the water, which carries the line and bait out to one side of the boat. In both cases the object is to get the fish near the hook without being frightened by the appearance of the line or the boat.

The party going out today is carrying perhaps the most elaborate paraphernalia ever seen in the islands. A famous old veteran of a Japanese fisherman of Lahaina, Okamoto, will accompany the party.

FAMOUS "BIG BUFFALO" LIBEL SUIT ON AGAIN

Tomorrow at 10 o'clock will begin again the trial, on a charge of criminal libel, of Ng Wing Sun, editor of a Chinese paper called the Liberty News, who was brought into court on complaint of Ching Lum. The case has been fought for months and the end still seems far off.

Ching Lum alleged that the Liberty News said he was a "big buffalo," that he "built tortoise nests," and that he was in general a man of bad character. Many witnesses have already been heard, and more are to be summoned, it is said.

The entrance and exit to the University Club grounds are being widened and curbed.

Fort Shafter Notes

[Special Star-Bulletin Correspondence]
FORT SHAFTER, Jan. 24.—Sgt. Van A. Hayes, Company E, 2nd Infantry, has purchased his discharge from the army and will leave for the mainland on the next transport. Sgt. Hayes is a well known non-commissioned officer in the 2nd Infantry, as he has been in the regiment for over 15 years, having served in many of the companies as a non-com. The sergeant was more or less dissatisfied with foreign service, and it is thought by his friends here that he will "take on" in some regiment in the states. His many friends regret exceedingly to see him leave.

Sgt. George P. Bush, Field Company E, Signal Corps, is taking his examination for first lieutenant, Volunteer Signal Corps. Capt. E. H. Hickman and Lieuts. F. F. Black and Robert Love, all of the Signal Corps, are on the examining board. The examination will be completed in a few days and if the sergeant is successful, in the event that volunteers are called out, he will be a first lieutenant in that branch.

A cable was received from Major Herbert O. Williams, 2nd Infantry, that he had given up his quarters and that a letter giving particulars would follow shortly. This evidently means that Major Williams will not return to Hawaii. The major has been on the mainland since November on leave of absence and was expected to return on the March transport. The information that he has given up his quarters in the main garrison comes as a surprise to his friends. The major has about completed his tour of foreign service.

Fort Shafter is delighted to know that the epidemic of measles which was feared has been checked. The several cases which had developed have completely recovered, and on Saturday the quarantine was raised. Since Christmas Sunday school for the little tots has been closed, but on this Sunday it has resumed with a full attendance.

The aerodrome management has announced that the smoker to be given to the enlisted men of the garrison will take place on Tuesday night at 7:30. An extremely interesting evening has been promised the men, as a very fine program has been arranged, and all of the men of the garrison are expected to attend.

The 1st Battalion, 2nd Infantry, has spent a strenuous day today, as they were used by Capt. Paul B. Malone, 2nd Infantry, in his examination for promotion to the grade of major. Field exercises were participated in and will continue on Tuesday.

Capt. Clyde R. Parker, 2nd Infantry, received a cable on Friday informing him of the death of his father. Capt. and Mrs. Parker have cancelled all social engagements for the present.

The U. S. S. Alert, tender for the third submarine division, went into the inter-island drydock today. She will be there at least a week, after which the British Yeoman will go in for repairs to her jammed rudder.

At 5 o'clock this afternoon the inter-island steamers Likelike, for Hanalei, Keala, Kilauea and other ports; and the Claudine for Maui will sail, taking mail and passengers.

Owing to the late arrival of the Sonoma this morning, mail from her did not go out on the morning delivery, but is being distributed by carriers this afternoon. She brought 591 sacks.

LOCAL AND GENERAL

Circuit Judge Stuart's trial jurors have been excused until further notice.

Circuit Judge Ashford's trial jurors will be wanted in court at 9 o'clock tomorrow morning.

Huron K. Ashford, clerk to the first judge of the circuit court, is trying out a new dictaphone machine installed in his office today.

A new gavel, made of koa wood and beautifully polished, has been secured by Judge Charles F. Clemons for use on the bench in federal court.

The regular meeting of the Woman's Guild and Auxiliary of St. Andrew's Cathedral Parish will be held Tuesday at 3 o'clock at the home of Mrs. H. M. von Holt, on Judd street.

For having chefa tickets in possession Gora, Harada, Yama, Obeyasha and Goucha, all Japanese, were arrested Saturday night in a tenement house on Kukui street.

John K. Stewart, charged with assault and battery, entered a plea of not guilty in Circuit Judge Ashford's court today. The case will go to trial at 9 o'clock next Friday morning.

The case of Godo, a Japanese charged with assisting in maintaining a lottery, has been continued in Circuit Judge Ashford's court to be set for trial. No jury will be required for the trial.

Approximately three times as great as the usual weekly total, the building permits issued for the week ending last Saturday represent a total in estimated costs of \$74,700, with fees amounting to approximately \$140.

Charged with assisting in maintaining a lottery, Koga, a Japanese, entered a plea of guilty in Circuit Judge Ashford's court today. The judgment of the police court in the case was sustained and Koga was fined \$150 and costs.

Because he had paid all doctor bills and given \$150 to the complaining witness, according to the prosecution, J. Mishikawa, charged with furious and heedless driving, had his case nolle prossed in Circuit Judge Ashford's court today.

The case of William Alford, an enlisted man who is charged with having liquor for sale without a license, is to be taken from the police court into the circuit court and tried in Circuit Judge Ashford's court at 9 o'clock next Wednesday morning.

Trustees and a president will be elected at the 56th annual meeting of the Queen's Hospital Corporation, which will be held in the rooms of the Chamber of Commerce, Kaula building, at 3 o'clock next Wednesday afternoon.

The case of Ah Sum, charged with being on another's premises after dark without lawful reason, and the case of George Lobo, charged with having chefa tickets in possession, are scheduled to go to trial in Circuit Judge Ashford's court at 9 o'clock tomorrow morning.

Miss Hazel Buckland today assumed her duties as secretary and stenographer to Federal Judge Charles F. Clemons, to succeed Miss Irene Dykes, who has taken a position with the law firm of Frear, Prosser, Anderson & Marx. Miss Dykes will begin a three-weeks' vacation tomorrow.

D. McEwen, a soldier at Schofield Barracks, who was one of those arrested in a recent raid and charged with selling liquor without a license, could not come to court this morning because since he was arrested by the civil authorities he has gotten into trouble at the post and is in the guard house. The case was postponed until tomorrow.

With an estimated cost of \$25,000, the Church of Jesus Christ at Alea leads the list for the week. This building is to be made of concrete, no wood whatever entering into its construction. The Oahu Railway and Land Company placed an estimate of \$18,000 on a portion of the work they have already started, and W. M. Giffard has taken out a permit for a building which will cost \$7450.

At the instance of City Attorney A. M. Brown, the case of L. Ayau, charged with usury, was nolle prossed in Circuit Judge Ashford's court today. The prosecution, in asking that the case be dismissed, stated that it did not believe that the matter was one which should be taken before a jury. According to the prosecution, a man borrowed about \$450 from Ayau and the interest which the latter received for the loan amounted to 40 cents. Ayau was one of five persons arrested by the city attorney's office on charges of usury.

DAILY REMINDERS

To get value sell it by auction. See auction ads.—Adv.

Round the island in auto, \$4.00. Lewis Stables. Phone 2141.—Adv.

Don't just send a "wireless"—send a Mutual Wireless—it's the best way. New spring styles in millinery arriving by every steamer. Mrs. J. Milton, Fort street.—Adv.

If you have a savings account with Bishop & Co. you are prepared for that inevitable "rainy day." Start one today.

Just received, new spring models front and back lace corsets. The Goodwin Corset Shop, 21-22 Pantheon Bldg. Phone 1699.—Adv.

They do not have many special sales but you always get good quality and you always save money by patronizing the Hub, Hotel, Ewa of Fort.

When you are having any kind of trouble with your eyes—or four glasses—consult the best man. In Honolulu, that is Dr. A. N. Sanford in the Boston Building.

LIEUT. KIMBALL DRILLS ALL OF LOCAL SCOUTS

For the first time since the Boy Scouts were organized in Hawaii the entire battalion of 15 troops was called out for drill Saturday at 1:30, and under 1st Lieut. Richard E. Kimball, aide-de-camp to Gen. John P. Wisner, were put through a thorough drill. All scoutmasters were called on to be present.

The attendance at the drill was not as good as was expected by Scout Commissioner James A. Wilder, and some of the troops were tardy in arriving.

Next Saturday Lieut. Kimball will again drill all of the Scout troops in Honolulu in the Palace grounds. Demerits will be given all scout troops or scoutmasters who are late, even as much as a minute. Every member who is not at work is expected to attend.

Radio advices from Hilo to the Inter-island today are that the steamer Wallele will arrive here tomorrow morning from Hilo with cattle, and the Helene will arrive Thursday morning from Honuapo with sugar, and from Napoopoo, Kona, with coffee and cattle.

IN THE CIRCUIT COURT, FIRST Circuit, Territory of Hawaii. In the Matter of the Estate of A. O. Kahikina (East) Kahulualu, of Honolulu, Oahu, deceased intestate.

On reading and filing the petition and accounts of Henry Smith, administrator of the Estate of said above named deceased, wherein petitioner asks to be allowed \$178.30 and charged with \$618.53, and asks that the same be examined and approved, and that a final order be made of distribution of remaining property to the persons thereto entitled and discharging petitioner and sureties from all further responsibility herein.

It is Ordered, that Wednesday, the first day of March A. D. 1916, at 9 o'clock a. m. before the Judge presiding at Chambers of said Court at his Court Room in the Judiciary Building, in Honolulu, County of Honolulu, be and the same hereby is appointed the time and place for hearing said Petition and Accounts, and that all persons interested may then and there appear and show cause, if any they have, why the same should not be granted, and may present evidence as to who are entitled to the said property.

By the Court.
(SEAL) J. A. DOMINIS,
Clerk Circuit Court, First Circuit.
Dated the 24th day of January, 1916.
6379—Jan. 24, 31, Feb. 7, 14.

25TH RECRUITS REFUSE TO OBEY POLICE ORDERS

Negro recruits from the 25th Infantry refused to obey orders of a policeman in Iwilei to stop a game of 7-11 last night, and defied him to arrest them, and on call for assistance from the officer eight detectives hurried to the district and placed the men under arrest. Some of the negroes resisted, and one was knocked down after he had broken away from one detective and resisted arrest by another. Before the men were taken to jail the patrol came with all available policemen in it.

The negroes were taken back to Schofield Barracks by a Lieutenant and 10 soldiers. Those arrested, all from the recruit companies of the 25th, were F. Draper, Chester F. Dent, Charles Hardison, A. Turner, William Tuttle, M. Daniels, G. Frankenberg, W. Rogers, A. Russell, P. Gibson, A. Cowan, William Johnson, L. Kinney. They will be tried by the military authorities.



Your Eyes and Moving Pictures

We have glasses especially adapted to the comfort of the eye while enjoying an evening at motion pictures.

WALL & DOUGHERTY
Optical Department

Special—

Closing out a line
of Women's Grey
Fawn and Tan
Top Laced Boots,
\$4.50, \$5.00,
and \$5.50 now selling at

\$3.50

Your chance, while they last

McInerny Shoe Store

Fort Street

Phone 1529

Federal

Telegraph Company

Quick and accurate Day and Night wireless service to San Francisco and other mainland points.

Night letter service to San Francisco, Oakland, Berkeley and Alameda, \$1.00 for 12 words.

Oceanic steamers Sierra, Sonoma and Ventura are equipped with Federal apparatus.

PROMPT SERVICE DAY AND NIGHT.

828 Fort Street

Phone 4085

An additional appropriation of \$143, by the war was asked by Congress by 660 to care for increased work caused the State Department.

The Opportunity You Have Been Looking For is YOURS if You Purchase a Lot in McINERNY TRACT

What could lead to a more lasting pleasure and benefit,
than the sensible and intelligent step of

Owning Your Own Home

Commanding a marine and landscape view that for picturesque beauty is almost unrivalled, this ideally located property combines to a rare degree the healthful comforts of the country with all the conveniences of the city.

A magnificent new road runs through the McInerny Tract, connecting School Street with Alewa Heights. The property is piped for city water and is wired for electricity and telephones.

42 Homes Already Occupied --- More Building

Plan to see this finest of inside property at once. A phone call to 2161 will bring an auto to your door within a few minutes.

Prices and Terms Extremely Moderate
\$50 cash, \$10 per Month
Charles S. Desky

DIRECTIONS:

Take King St.
car to Hough-
tailing Rd. Walk
up to School St.

83 Merchant Street

NEW LOCATION
PHONE 2161

Campbell Building

"Your Country Needs You"

WILL YOU DO YOUR PART in taking care of the throng of tourists and strangers due to visit Honolulu and the Islands for the Mid-Pacific Carnival?

THE DEMAND FOR ACCOMMODATIONS IS NOW ACUTE.

IT WILL GROW GREATER, according to every prediction from mainland railway, steamship and tourist agents.

HOW ABOUT THAT VACANT BEDROOM?

WILL YOU LIST IT WITH US AT ONCE?

Call, write or phone, giving location, number of rooms available and rates asked.

Hawaii Promotion Committee

Phone 2345

Young Hotel Building

Oil Stove Safety

The Florence is the clean, safe, simple, reliable, economical oil stove—ready to give as much cooking heat as you wish, when you wish it.

You can keep one—or four—burners at an intensely hot flame, or merely simmering. To change the heat you turn a simple, little (patented) lever device. Burners close up under the cooking; no heat wasted.

There are no wicks to trim nor valves to leak. A glass "bull's eye" shows you always how much oil is in the tank. Upper reservoir holds a full gallon.



Burner, High Flame FLORENCE Automatic

FLORENCE
Oil Cook Stoves "Look for the Lever"

FULLY GUARANTEED

Come in and see our full line

W.W. Dimond & Co. Ltd.
"THE HOUSE OF HOUSEWARES"

53-65 KING STREET, HONOLULU

Honolulu Star-Bulletin

RILEY H. ALLEN EDITOR

MONDAY, JANUARY 24, 1916.

ANTI-ORIENTAL LEGISLATION.

Anti-Oriental legislation of the character proposed in Congress is undoubtedly dangerous; on the other hand, the recent history of immigration bills gives hope that Congress will not pass nor the president approve, anything resembling a jingo measure.

Twice previously have presidents vetoed immigration bills on less grounds than will be presented if the house committee insists on reporting out a measure which would bar all Hindus, Mongolians and Malays. The "literacy test" has been the feature of these bills disapproved so strongly by Taft and Wilson that each went the length of registering a veto. Now the present bill contains both the literacy test and the radical anti-Oriental provisions, and it will almost certainly be modified in the houses before the completed legislation reaches the president's desk.

A WAR DRAMA BEHIND THE SCENES.

Clouded under the strict military censorship, one of the most spectacular and dramatic stories of the great European war is now being enacted behind the scenes in Asia.

It is the British attempt to relieve the beleaguered forces at Kut-El-Amara, under Gen. Aylmer.

Little is known of the situation save to the tight-lipped military chiefs who are moving armies like chessmen. Aylmer's force a few weeks ago was striking hard at the Turks in an endeavor to reach Bagdad, but met two successive defeats at the hands of superior numbers and was forced to fall back on Kut-El-Amara, where it is now surrounded.

Then began a relief expedition of the sort for which the British are famous. Today's despatches brought the news that the relief expedition has been defeated in battles with the Ottoman army in Mesopotamia, but that does not mean that the cause is lost. The British are famous for these expeditions.

One need only to remember two such well-known names as Lucknow and Ladysmith to recall brilliant exploits. The relief of Ladysmith, because of the not far distant date, and because in some ways it is much akin to the present situation, is of interest now.

During the South African war of 1899-1901 Ladysmith was besieged by a strong force of Boers. The complete investment was effected in November, 1899, and it was 118 days later when the relief expedition finally fought through and saved the British force. In that 118 days the beleaguered British force of 10,000 had given to military history one of the great examples of stern fortitude under suffering, as courageous as starving Paris thirty years before.

Gen. Buller led the relief expedition which was thrice defeated by the Boers, but at last got its way in. The news that Ladysmith had been saved caused a remarkable demonstration in England.

Perhaps the British will give to history another such story of courage, persistence and sheer power to endure.

WHAT ABOUT THAT ECONOMY PROGRAM?

The territorial grand jury's criticism of the tremendous "overhead expense" of city government remains unshaken by the partial answers of the mayor and the former city engineer.

As to the mayor, his reply merely is a denial of the figures shown in the grand jury report. He didn't go into details, and the public does not and will not expect him to do so. To put it mildly, personal grappling with difficult problems of municipal finance is not the mayor's forte.

The former city engineer, Mr. Whitehouse, who was in charge of the road department when the heavy overhead charges complained of by the grand jury were incurred, goes more into detail in voicing his denial. But his figures would carry more weight if the taxpayers could be sure that Engineer Whitehouse knows what he means and means what he says.

DRAKE TRANSFERRED TO HONOLULU OFFICE OF LORD-YOUNG FIRM

(Special Star-Bulletin Correspondence) Hilo, Jan. 21.—Walter P. Drake, who has been representing the Lord-Young firm of engineers and contractors in Hilo for the past month or so, has been transferred to the Honolulu office of the firm and J. Edwards, an engineer, is now in charge of the Hawaiian swamp reclamation work and the conducting of the approaches

The work of constructing the trestle for the suction dredger and pipe line that is to figure largely in the filling in of the big swamp is going ahead once more and the trestle is now out nearly 200 feet from the shore, on the beach near the Volcano Stables. The trestle will be extended 40 feet more and then the pipe line will be laid on it. The rough seas of the past couple of weeks interfered with the construction of the trestle, but all is going on well now. The contractors figure that they will not be able to begin pumping

He has been accused in open board meeting—and by the chairman of the road committee—of repudiating a very important report which he himself drafted.

It was only last week that this report, inferentially recommending concrete paving, was read to the board, and at the end of the reading Supervisor Shingle arose and said that Whitehouse now declines to stand by the report. No reason was given then for the engineer's action, but the Star-Bulletin has been informed that Whitehouse wrote the report at the insistence of two supervisors who favor concrete, only later to change his mind.

Now it requires no charge of ulterior motives whatever to make such an incident as this discredit Engineer Whitehouse's figures on other things. And it requires nothing but this incident and a knowledge of the former city engineer's failure to take a clean-cut attitude in other cases, to discredit generally his denial of the grand jury's charges.

The present supervisors have been in office a year. They have, thanks to the recent legislation changing the municipal election date, something more than a year yet to serve.

They took office on distinct pledges of economy. Those pledges, if the figures not only of the grand jury but of the city auditor are correct, have not yet made good. Unquestionably by this time the supervisors and the mayor should have at least made a real start toward an economical administration. Yet in answer to every criticism of their money-spending in 1915, they have to offer only that they will economize in 1916, and that they will have a bigger income this year than last.

Mr. Mayor, and Gentlemen of the Board of Supervisors, what reductions are being made in overhead expenses? The Star-Bulletin will be glad to publish your statements.

Governor Pinkham's recent order concerning the National Guard is being interpreted on some of the other islands in the way the Star-Bulletin feared it would be—as a threat to territorial employees that they will lose their jobs unless they join the guard. "A conscription threat," one island contemporary calls the order. On Oahu the opinion is quite freely expressed that no such drastic measure was necessary to build up the guard.

It is reported that Turkey will be the "goat" and admit the sinking of the liner Persia. After the United States has exchanged the proper number of notes with The Sublime Porte, Turkey will yield to "strict accountability." Then it will be Bulgaria's turn. Perhaps by that time Rumania or Persia will be available for the little game of underwater tag.

Japan has found an effective way of arguing with the hard-headed Chinese. Anytime it is necessary to win the debate, Tokio now sends a squadron slipping down Shaighai-way, and Yuan Shih-Kai gracefully acknowledges that he is out-talked.

"Too late" is the British specter in this war," bitterly exclaims an English statesman. But in their measures against neutral commerce the British were plenty early enough.

You notice, do you not, the shout of joy from the territorial departments over the governor's order telling everybody to join the national guard? So do we not.

The Sick Man of Europe is reported to have recovered sufficiently to get down to Gallipoli and look over the remnants of the Allied "invasion."

Of course none of those Mexican bandits will accept responsibility for the other fellow's murders. Each has all of his own he can attend to.

Although about sixty "Greeks" met at dinner Saturday night, there wasn't even a message of condolence for poor King Constantine.

The Governor-Tucker situation has reached that stage described by real war-correspondents as an impasse.

MEN'S LEAGUE OF C. U. WILL MEET TONIGHT

Interesting Reports to Be Presented By Law Enforcement and Vice Committees

What's the matter with the police?

Or
What's the matter with the people? These two questions are put by the law enforcement committee of the Men's League of Central Union church which, after a month of work, will present a report at a meeting of the league in the church this evening.

Considerable progress is noted in the work of the committee during the last month. No definite report will be made this evening for the reason that the holiday season has intervened since the last meeting of the league. During the month, the committee had talks with the head of the police department and found that the department was ready to cooperate in the matter of requests thus far made.

The committee, especially desiring that its members, and the public as a whole, furnish the committee with facts of official delinquencies as they occur.

Campaign of Publicity.

The committee has found these delinquencies to be both numerous and glaring. The best way to secure efficiency in local government, the committee believes, is through a sustained and carefully shaped campaign of organized publicity. Until this campaign is launched, Honolulu will have "shifty and shady and petty peanut politics," in the opinion of W. R. Farrington, chairman of the committee.

The meeting tonight will begin with a reception to be held in the church parlors, at which time the Kamehameha Faculty Quartet will furnish music. This will be followed by a supper served by a committee from the Woman's Society.

During the meeting Rev. John L. Scudder will deliver a sermon on the subject "It Beats the Devil." A report also will be presented by the committee on social evil, of which James A. Rath is chairman. Former Governor Walter F. Frear, president of the league, will preside.

PACKED HOUSE AT SCHOFIELD FOR OPERA COMPANY

(Special Star-Bulletin Correspondence) SCHOFIELD BARRACKS, Jan. 24.—The De Polco Grand Opera Company was well received at Schofield Barracks last night where they played Aida at the 25th Infantry amusement hall.

The house was packed and jammed. Ninety per cent of the officers and ladies of the garrison were present and a large percentage of the high ranking noncommissioned officers and their families. A large part of the audience was from the 25th Infantry though there were soldiers from all parts of the garrison.

The stage settings were wonderfully well arranged considering its very small size. Owing to De Polco's illness the part of Rhadames was taken by Luigi Poggi. Miss Grace Thomson substituted for Mabel Robertson as Una Sacerdotessa.

Amonasro, king of the Ethiopians, made a great hit with the soldiers. There was applause in profusion throughout the opera, and all of the cast received a good share.

NEEDED COAT, SO HE JUST MADE HIS PICK

Jim Morales admitted to the judge in the police court today that he stole a coat from the room of Fukuiado and said he did not want to make a statement, but in an ex-officio way made it plain that he needed a coat and knowing the Japanese had one in his room, took it. He was sent to jail for three months.

PERSONALITIES

MISS ADELE WICKE, who has been visiting on the mainland during the last six months, is expected home in the steamer Matsucia, due in Honolulu on February 1.

S. M. KANAKANUI of the territorial survey office will return from Hilo tomorrow, having completed the survey of several kuleanas in the Waiolama reclamation district.

DWELLINGS FOR RENT

FURNISHED HOUSES
Beach Walk 2 Bedrooms \$65.00
Tantalus Heights 3 " 45.00
Park Avenue 2 "
Pearl City (Peninsula) 3 "

UNFURNISHED HOUSES
919 Prospect St. 3 Bedrooms \$40.00
1231 Lunaillo St. 2 " 35.00
1221 Pensacola St. 4 " 40.00
1475 Thurston Ave. 5 " 40.00
1522 Hastings St. 4 " 75.00
2271 King St. 3 " 25.00

Guardian Trust Co., Ltd.
STANGENWALD BLDG. MERCANT ST.

HAVE HEARING OF DUKES CASE ON WEDNESDAY

Preliminary hearing of the case of Jesse Dukes, colored, a civilian employee in the quartermaster department at Schofield Barracks, who is charged with the murder of G. M. George, who also was a civilian employee and who died at the post from a blow on the back of the head last Wednesday morning, will be held in federal court at 10 o'clock next Wednesday morning by U. S. Commissioner George S. Curry.

Dukes was arrested by U. S. Marshal J. J. Smiddy Saturday on a commissioner's warrant charging him with the murder. As evidence, there was brought, Honolulu the dead man's clothes, a number of papers and documents found on the body, and the five-foot iron poker found in the vicinity of where the crime was committed.

U. S. District Attorney H. W. Vaughan said today that, in determining whether Dukes is guilty of murder, and in the fixing of a penalty in the case the defendant is convicted, the territorial law will apply. Where a person is convicted of first degree murder in the circuit court, the penalty is death. It is understood now that the federal grand jury when that body meets next Wednesday morning.

According to the district attorney's office, Dukes has admitted that the poker which is being held as evidence belonged in his place of work at the post. It is further claimed that Dukes was the last man who saw George alive, which was at about 11:30 o'clock last Tuesday evening, and that he reported having found the body.

LITTLE INTERVIEWS

—D. L. CONKLING: We took up at the treasurer's office on Saturday, registered sewer warrants to the amount of \$15,029.81.

—CIRCUIT JUDGE STUART: With the Kuhio case going on, and with a lot of divorce matters coming up, it looks as if I'm going to be pretty busy for the next few weeks.

—HORACE W. VAUGHAN: Mr. Biting is still acting as my assistant, without pay. Between us, I believe we are doing a pretty fair job of cleaning up the federal court calendar.

—HENRY FREITAS: We intend to go ahead getting all our plans ready on Central Grammar school, so that as soon as the budget passes in July we will be ready to call for bids on the work.

—WALTER E. WALL: Only a few days ago the people were complaining of the amount of mud and rain that they were having to endure, while now the heat and dust make up the burden of their woes.

—HURON K. ASHFORD: To find that your automobile has been taken in bad enough, but to find that a friend has just borrowed it, with your consent, and you have gone through a lot of excitement for nothing, is worse.

—RAYMOND C. BROWN: I got a letter recently from a lady in Tulare county, California, informing the Chamber of Commerce that she has 640 acres of land to trade for land in Hawaii, as she desires to come here to live.

—E. A. BUFFANDEAU: Honolulu people who are not attending the performances of the De Polco Grand Opera Company are surely missing a treat. The quality of the company is such as should bring a packed house every night.

—HARRY MURRAY: We have men fixing up the gate to the outlet pipes in Nuuanu reservoir, No. 4, so that when we send a man into the pipe to investigate he can do so without danger of getting wet. At present the gate does not shut off all the water.

—EDGAR E. BROOKS: The Associated Charities is still accepting old clothes for the city's poor, and with the worthy calls for them that come in to us there is little danger of getting overstocked. People can bring in old garments to us at the capitol bungalow any time.

—A. M. CRISTY: I certainly do not regret the few hours I spent last week in getting our law books moved over from one of the other rooms into the room occupied by Deputy Carden and myself. The convenience of having them arranged here at our elbows has already demonstrated itself to us several times.

SUGGESTS DEAD LINES TO WARN BOLD DRIVERS

Horner Would Have Black Strip Painted on Pavement to Aid Traffic Officers

Hoping to regulate better the traffic on street intersections in the business district, Supervisor Robert Horner, chairman of the police committee, has asked the road committee to establish "dead lines" in black paint or tar as a warning to pedestrians where to stop when the traffic cop gives him the sign.

"I have noticed all over the business district," says Horner, "in fact wherever the traffic policemen are stationed, that people driving along the street insist on crowding up and up though given the signal to stop by the officer, thus shutting off pedestrians from crossing between sidewalks, or at least compelling them to go around in front to get by. This is a violation of the traffic law and I intend to do my part to see that the law is enforced."

"People here fresh from the mainland notice these things," says the chairman of the police committee, "and only the other day I heard one of them remark that if drivers encroached on the traffic law in mainland towns as freely as they do here half of the people would be in jail."

Horner proposes to have the mark placed at the end of a street on a line with the outside of the work so that pedestrians will be given free path when crossing. As it is now, he says, pedestrians have to make

WESCOTT ASKS THAT MERCHANTS FORWARD CITY BILLS SOONER

In order to induce merchants to send in their bills to his office in good time, City Purchasing Agent H. E. Wescott is having printed little red slips which he will send out to the various houses with which he deals. Considerable time is wasted for the auditing and purchasing departments because of the fact that the local merchants do not, in many cases, get their bills in early for payment.

Bills are coming in now that should have come in November or December, with consequent delay to the city officials. Wescott's printed slip will bear a neat little request in red ink, asking that the merchants remember to get their bills in early.

HANDSOME DODGE CARS PRESENTED LOCAL MINISTERS

Two handsome Dodge touring cars are expected to arrive in Honolulu this week, one consigned to Dr. Doernum Scudder, pastor of Central Union church, and the other to Rev. A. A. Ebersole, associate pastor. It was learned today that the cars have been presented to the ministers as Christmas gifts from the members of Central Union congregation. Several other local ministers also received automobiles from their congregations last Christmas.

After creating a disturbance in a Chinese restaurant on Hotel street, George and Manuel Manu refused to listen to Officer Okui when he came at call of the Chinese owner of the place and in a struggle one of them hit him in the jaw. Akui arrested both men in the end and this morning they were fined \$15 and costs each.

flying leaps continually to keep from getting run down by some vehicle.

418 Acres Cane Land

at a trifle over

\$70.00 per Acre

A fine tract on the windward side of Hawaii; major portion in cane.

6 1/2% Interest Guaranteed

by lease at \$1950 per year, net, with 13 years to run.

\$30,000 buys it. Income is NET.

Phone 3477

TRENT TRUST CO. LTD.

Tourists--

We are headquarters for

Souvenir Spoons

Largest and best assortment in town.

VIEIRA JEWELRY CO., Ltd.

113 Hotel Street

FURNISHED

Palolo Road 3 Bedrooms \$40.00
Includes yard boy.

UNFURNISHED

Laniluli Drive (Manoa) 2 Bedrooms \$25.00
Part furnished.
14 Mendonca Tract (Liliha St.) 3 " 20.00
770 Kinau St. 4 " 32.50
1562 Nuuanu Ave. 5 " 50.00
1818 Beretania St. 2 " 25.00
Waiolae Road 15 " 100.00
Bet. 6th and 7th Aves.
Hyde and Oahu, Manoa 2 " 35.00
929 Green St. 2 " 35.00
1317 Makiki St. 2 " 35.00
1225 Wilhelmina Rise 2 " 25.00
14th and Palolo Aves, Kaimuki. 2 " 22.50
1712 King St. 3 " 30.00
2051 Laniluli Drive (Manoa) 2 " 35.00
Hackfeld and Prospect 2 " 27.50
1246 Kinau 2 " 30.00
1140 Kaili St. (in Lane) 2 " 12.50
Kamehameha and Manoa Road 2 " 35.00
1877 Kalakaua Ave. 2 " 20.00

Henry Waterhouse Trust Co.,

Ltd.

Cor. Fort and Merchant Sts., Honolulu

Duplicate (Christmas) Order Sale

caused by Panama Canal slide

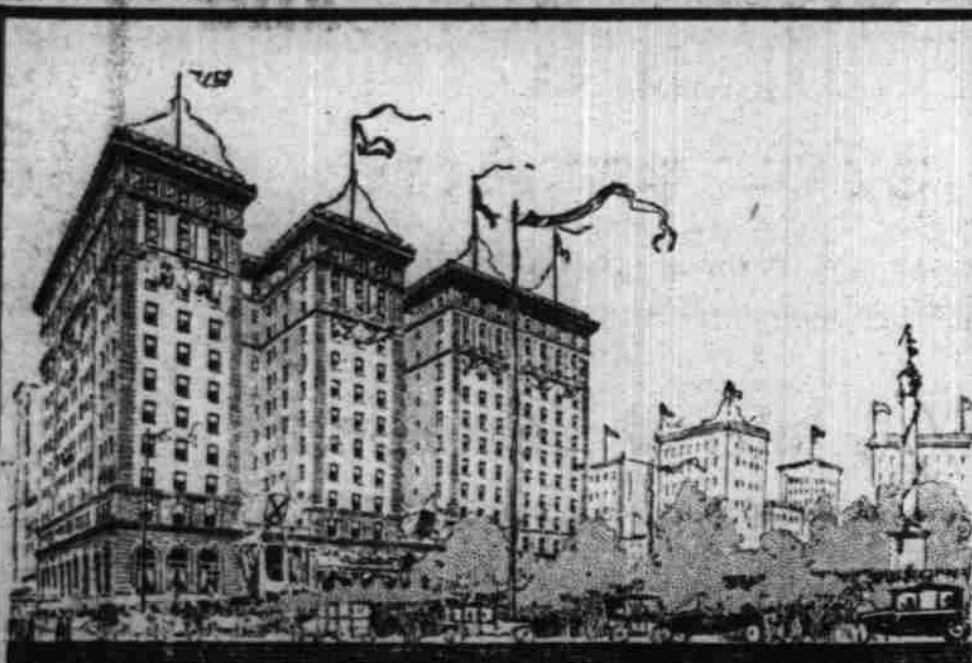
Owing to a great demand for them, we will include in this exceptional sale our full line of the famously well-fitting and finely made

Adler-Rochester Clothes

beginning Monday, Jan. 24, for one week only
until January 29

at a special discount of 20%

THE IDEAL Hotel St.
Ewa Fort



WITH ITS WONDERFUL DECORATIONS by Albert Herter in the cafe, symbolizing the gifts of the Old World to America; the Lounge, inspired by the Chateau Brissac, in which society assemblies daily for afternoon tea; the stately, spacious Rose Room, where dancing is enjoyed every evening; the Italian Room, walled and ceiled with beautifully carved hazel wood and famed for its portal of gleaming twisted pillars surmounted by a golden image; the Colonial Room, in which the fashionable world produces original plays in a completely equipped theatre—with countless original artistic details (such as Arthur Putnam's puma motive) in its many public rooms—with such unique and exclusive service as the Turkish and Roman baths for ladies (11th floor) and for gentlemen (12th floor), supplied with salt water pumped directly from the ocean; the Electric Grill, where table d'hôte meals are served at moderate prices—the Hotel St. Francis is one of the most interesting show places in San Francisco, and a place at which interesting people invariably gather.

THE HOTEL ST. FRANCIS, the largest hotel in Western America (over one thousand rooms), faces an entire side of Union Square, "the center of the city's life and color," where the activity of all famous carnivals like the Portola, Native Sons' fiesta, and New Year celebrations are focused, and where military displays on such occasions as the visits to the St. Francis of President Roosevelt, President Taft, Prince Fushimi of Japan, Prince Tsai Hsun of China, Admiral Evans in command of the battleship fleet, and other dignitaries, have provided historic spectacles.

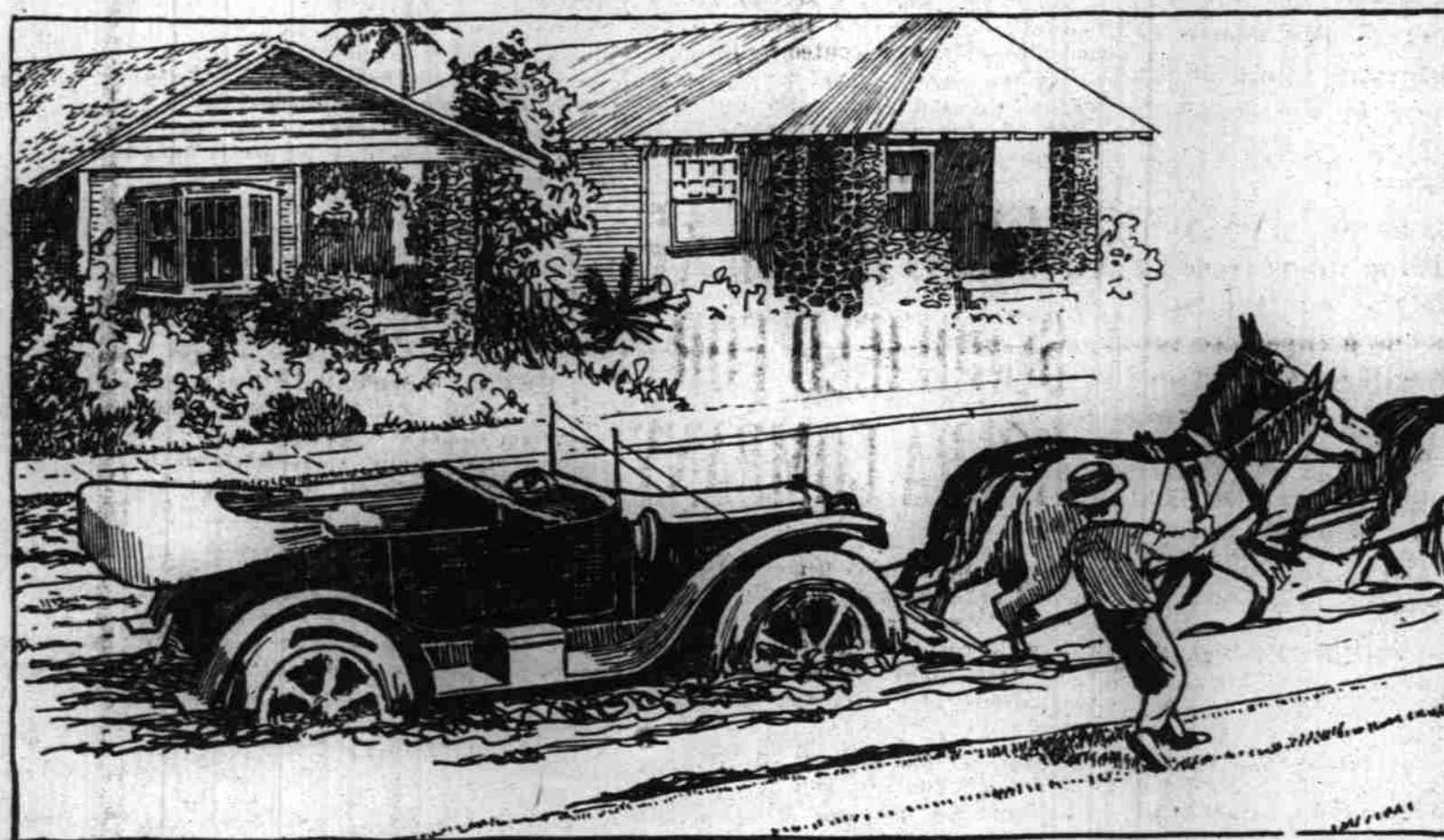
NOTE—While the Hotel St. Francis will never lower its rates beneath the point at which it is possible to provide a service at least equal to that of the best metropolitan hotels in the world, it respectfully invites comparison between its charges and the tariff established by any other hotel of the first rank.

EUROPEAN PLAN

Rooms, from \$2.00; with bath, from \$2.50



Aren't You Tired of This Sort of Thing?



Wednesday at the regular weekly luncheon the Ad Club's "Good Roads Campaign" will be formally launched. Plans for obtaining better roads will be discussed, and among the speakers will be R. E. Bristol and C. A. Day, concrete men from Ogden, Utah, who know the secrets of good concrete roads. Other speakers will be arranged for, and it is hoped that Supervisor "Bill" Larsen will be present to give his views.

NEW HUDSON SUPER-SIX TO BE SEEN SHORTLY IN HONOLULU

Honolulu will be given its first opportunity shortly to inspect the new Hudson Super-Six.

News of the sensation created at the New York show and at San Francisco when the new Hudson was first presented to view, has caused the local automobile fans to eagerly await the display of the car here.

The Schuman Carriage Company, local agents for the Hudson, have received word that several carloads of the Super-Sixes have been shipped and the first carload should arrive next week.

The Hudson people claim that the Super-Six begins a revolution, and there seems every reason to anticipate that the belief is well founded. The heart of the new Hudson Super-Six lies in the motor, in which is comprehended a new invention of Hudson engineers. The motor is patented and the name "Super-Six" is registered, so that the full benefit of the discovery belongs solely to the Hudson company and to the owners of the Hudson cars.

The motor is no larger than last

year's motor, 3 1/2 x 5 inches, but the power has been increased by 80 per cent. The best power heretofore produced by a six-cylinder engine of this capacity is about 45 horsepower. The new Hudson Super-Six effectively uses 76 horsepower, yet the new motor is strictly conventional in every particular. It was not only standard in every particular, but it had a full seven-passenger body and equipment.

With two passengers in the car and with windshield and top in place, the Super-Six made a record of 100 miles in 89 minutes, 21.4 seconds, or an average speed of 74.67 miles per hour. This story of the achievement of the Super-Six seems almost unbelievable, yet it is certified to by a member of the American Automobile Association. The Hudson Super-Six develops the highest power per cubic inch displacement of any automobile motor ever built, and the fuel consumption at 40 miles is about the same as like-sized motors at 20 miles.

WHAT CAUSES COLDS?

This question is asked every day. A cold is really a fever, not always caused by the weather but often due to disordered blood or lack of important food-elements. In changing seasons fat-foods are essential because they distribute heat by enriching the blood and so render the system better able to withstand the varying elements. This is the important reason why Scott's Emulsion should always be taken for colds, and it does more—builds strength to prevent sickness.

Scott's Emulsion contains Nature's rare strength-building fats, so skillfully blended that the blood profits from every drop. It is free from harmful drugs or alcohol. Sold at drug stores—always get the genuine.

NO OTHER BIDDERS CLOSE TO CORREA ON ARMORY LOCKER JOB

J. G. Correa Construction Company was lowest of nine bidders for the work of installing wooden lockers in the armory building, when bids were opened on Saturday at 11 o'clock.

Correa's bid was \$1090, with an offer to do the work in 20 days. Other firms bid as follows: Lee Chee Lumber Company, \$2140, and 35 days; H. K. De Fries, \$1253 and 40 days; Thomas L. Andrews, \$1309 and 28 days; Pacific Engineering Company, \$1845 and 40 days; D. B. Cummins, \$1344 and 34 days; Honolulu Wire Bed Company, \$1493.25, without specified time; Evensen & Cross, \$1490 and 30 days; and Thomas L. Nott \$1922 and 40 days.

SYRUP OF FIGS FOR CROSS, SICK, FEVERISH CHILD

If Little Stomach is Sour, Liver
Torpid or Bowels
Clogged

Mothers can rest easy after giving "California Syrup of Figs," because in a few hours all the clogged-up waste, sour bile and fermenting food gently moves out of the bowels, and you have a well, playful child again. Children simply will not take the time from play to empty their bowels, and they become tightly packed, liver gets sluggish and stomach disordered.

When cross, feverish, restless, see if tongue is coated, then give this delicious "fruit laxative." Children love it, and it can't cause injury. No difference what ails your little one—if full of cold, or a sore throat, diarrhoea, stomach-ache, bad breath, remember, a gentle "inside cleansing" should always be the first treatment given. Full directions for babies, children of all ages and grown-ups are printed on each bottle.

Beware of counterfeit fig syrups. Ask your druggist for a 50-cent bottle of "California Syrup of Figs," then look carefully and see that it is made by the "California Fig Syrup Company." We make no smaller size hand back with contempt any other fig syrup.—Adv.

What is probably the largest leather belt (34 inches wide, double) ever sent to Argentina, according to the Louisiana Planter and Sugar Manufacturer, was sold by a New York firm, which sent a representative to the province of Tucuman and working in conjunction with its local agent, secured some excellent business in that section.

TRY MURINE EYE REMEDY
For Red, Weak, Watery Eyes and
GRANULATED EYELIDS
Murine is a Doctor's Secret—Safest Eye Remedy

What you are waiting
for and it will prove
an acceptable change

FISH

FRESH SALMON
HALIBUT-SMELTS

SMOKED SALMON
New Zealand Butter

METROPOLITAN
MEAT MARKET

Phone 3445

Don't Neglect a Cough TAKE

Logan's Cough Balsam

a safe and effectual remedy for Coughs, Colds, Hoarseness and Bronchial affections.

TWO SIZES
25 CENTS and 50 CENTS

Sold only by

Benson, Smith & Co., Ltd.

The Rexall Store

Fort and Hotel Streets

Phone 1297

Open Evenings Until 11:15

Oriental Goods

Wide Stock of every
description

"The Best at Any Price"

THE CHERRY

Fort Street

Cor. Paushi

Bishop Trust Co., Ltd.

STOCKS AND BONDS

REAL ESTATE SAFE DEPOSIT BOXES

Authorized to act as Executor, Trustee, Administrator or Guardian. Transacts a General Trust Business.

PHONE 2295 REACHES

Hustace-Peck Co., Ltd.

ALL KINDS OF ROCK AND SAND FOR CONCRETE WORK.
FIREWOOD AND COAL.

93 QUEEN STREET

P. O. BOX 212

Honesty First!
which means Purity

RAWLEY'S
PURE
ICE CREAM

7 Flavors this Week
Bricks or Bulk
Delivered any time

PHONE 4225

UNITED STATES
TIRES
ARE GOOD
TIRES

THE von HAMM-YOUNG CO.,
LTD., Honolulu
Agents

Phone 1498
FRANK W. HUSTACE
Automobiles and Motorcycles
Repaired
427 Queen St., near Judiciary
Building.

BEEF SUPREME
from
PARKER RANCH
Metropolitan Meat Market
Phone 3445

FOR ICE COLD DRINKS AND
14 PER CENT ICE CREAM
TRY THE
HAWAIIAN DRUG CO.
Hotel and Bethel Streets

HONOLULU PHOTO
SUPPLY CO.
KODAK HEADQUARTERS
1059 Fort Street

The
Stradivarius
of Planos.
Bergstrom
Music Co.

The largest, most attractive,
and best-stocked florist's
shop in Honolulu is
that of
MRS. E. M. TAYLOR
opp. Young Cafe.

HANAN'S
BEST SHOES
McINERNEY SHOE STORE
Fort above King St.

CHOP SUI
85 North King Street
(Between Maunakea and Smith.)
Call and see our brand new CHOP
SUI House—Everything Neat
and Clean.
Tables may be reserved by phone,
No. 1713

IF YOU WISH TO ADVERTISE IN
NEWSPAPERS
anywhere, at any time, call on or
write
THE DAKA ADVERTISING AGENCY
124 Sansome Street, San Francisco

Economize in everything—
Use White Wings
At Your Grocer's.

Osteopathy
DR. SCHURMANN
Beretania and Union Streets
Phone 1733

RE-TIRE AND
SUPPLY CO.
GUARANTEE
SATISFACTION
Corner Nulani and Pauahi Sts.

FONG INN & CO.
Artiques and Chinese
Merchandise
Nuuanu, above Pauahi

STEINWAY
Bargains in Other Pianos
PLAYER PIANOS
THAYER PIANO CO., LTD.
156 Hotel St. Phone 2313

SHIPPING & WATERFRONT NEWS

SEA SWEEPS AWAY TWO OF LADDERS ON SONOMA

With both the forward companion-ways leaving from the par deck to the shade deck carried away by the huge seas into which she plunged a few nights ago, the Oceanic steamer Sonoma came into port and docked at Pier 10 at 11:15 this morning, nearly four hours later than usual, owing to storms she met between San Francisco and the islands. The steamer is sailing for Pago-Pago and Sydney at 4:30 this afternoon.

Nasty seas and south-southwest to southerly winds made the entire voyage far from pleasant. Capt. J. H. Trask, the Sonoma's commander, said the winds had not been bad, but that there was a nasty sea nearly all the way over. This, together with the way the heavily-laden liner, filled to the hatches with freight, dove into it, was the chief reason why the steamer lost the forward ladders, which were wrenched clean away.

Only comparatively few passengers came to Honolulu. They were 21 first-cabin, eight second and five steerage. A stowaway, Ned Widler, 29, an American, left the boat here. Through passengers are 22 first-class, 23 second and six steerage.

Has Surgical Dressings.
Purser H. J. Holtz said that among the ship's cargo through cargo of 2630 tons are 208 large cases of surgical dressings, consigned to Johnson & Johnson's Sydney agency, and intended for shipment to the war zone. "I heard in San Francisco that 80 carloads of bandages and dressings are being shipped from the East, to be sent around this way because they can't get out from New York quickly enough," he said.

The Sonoma brought 591 bags of mail and 31 tons of refrigerator freight to Honolulu. From this port she is taking no freight and only half a dozen passengers this afternoon. Among the three passengers are Mr. and Mrs. Frank Coffey of Sydney. Mr. Coffey is an American, one of the first Americans to start a publishing and printing business in Australia. His son was recently killed in the Dardanelles, while fighting with the Australian contingent there.

Five cabin and eight deck passengers arrived yesterday from Maui and Molokai in the Mikahala.

PASSENGERS DEPARTED

Per I-L str. Mauna Kea, for Hilo, January 22.—R. J. Baker, Mr. and Mrs. Maquin, Ben Rose, C. E. Hearne, T. Wall, C. B. Blum, Mrs. L. A. Thurston, Mr. and Mrs. N. Kamura, G. Kruck, T. Kita, A. Schner, Mrs. M. B. Lee, Mrs. Ernest Greene, Mr. and Mrs. S. Cutter, Mrs. G. F. Maydwell, J. F. Fenwick, Miss Macleida, Mrs. M. Macleida, Mrs. A. J. Gomes and child, Tanaka, H. Miyazawa, I. S. Kim.

LEGAL NOTICES.

IN THE CIRCUIT COURT OF THE First Judicial Circuit, Territory of Hawaii. At Chambers.—In Probate. In the matter of the estate of Mele K. Noley, deceased.

NOTICE TO CREDITORS.

The undersigned, Henry Waterhouse Trust Company, Limited, administrator of the estate of Mele K. Noley, deceased, hereby gives notice to all persons having claims against the estate of the said Mele K. Noley, deceased, to present such claims, duly authenticated, and with proper vouchers, if any exist, even though such claims be secured by mortgage or real estate, to the undersigned at its place of business, Fort and Merchant Streets, City and County of Honolulu, Territory of Hawaii, within six months from the date of this notice, or such claims will be forever barred. And all persons indebted to said estate are hereby notified to make immediate settlement with the undersigned administrator as aforesaid, at its said place of business.

Dated at Honolulu, this 3d day of January, A. D. 1916.
HENRY WATERHOUSE TRUST COMPANY, LIMITED.
Administrator of the Estate of Mele K. Noley, deceased.
Thompson, Milverton & Cathcart, Rooms 2-12 Campbell block, Honolulu, attorneys for said administrator.
6361-Jan. 3, 10, 17, 24, 31.

IN THE CIRCUIT COURT OF THE First Judicial Circuit, Territory of Hawaii. At Chambers.—In Probate. In the matter of the estate of Augustus E. Murphy, deceased.

NOTICE TO CREDITORS.
The undersigned, having been duly appointed administrator of the estate of Augustus E. Murphy, deceased, hereby gives notice to all creditors of said deceased to present their claims duly authenticated and with proper vouchers, if any exist, even if the claim is secured by mortgage upon real estate, to him at his office, 200 Bank of Hawaii building, Honolulu, Territory of Hawaii, within six months from the date of the first publication of this notice, or within six months from the day they fall due, or the same will be forever barred, and all persons indebted to the said estate are hereby notified to make immediate payment to the undersigned as such executor.

Honolulu, T. H., December 27, 1915.
GEORGE A. DAVIS,
Administrator of the estate of Augustus E. Murphy, deceased.
William T. Rawline, attorney for administrator.
6355-Dec. 27, Jan. 3, 10, 17, 24.

HARBOR NOTES

Due here Saturday morning from San Francisco for Yokohama is the T. K. K. liner Nippon Maru. She will bring mail.

A former night customs inspector, S. R. L. Short, who has been in San Francisco since last fall, has returned to Honolulu.

Due to arrive tomorrow morning from Guam and Manila is the U. S. cruiser Saratoga, coming here for bunkers en route to the Bremerton navy yard.

Purser Pieper of the Inter-Island steamer Claudine, in yesterday from Maui, reported good weather both ways. Inward freight included island products from charcoal and beans to chickens and wine.

Expected here about February 4 from Yokohama is the T. K. K. liner Kiyo Maru, from Yokohama, January 21 with 415 tons of cargo for Honolulu and 379 tons for Hilo. She is a South American liner.

The Union oil steamer Santa Maria is in port today, having arrived yesterday morning with 44,000 barrels of fuel oil. Capt. George Curtis is her master. The steamer brought one stowaway, John Dunn.

Due Wednesday morning from Vancouver is the Canadian-Australasian steamer Niagara, to sail that afternoon for Australia, taking mail and passengers. The steamer will bring mail from the states and Canada.

The Kinai reports Kaula sugar awaiting shipment as follows: Kekaha, 20,500; V. K. 1600; N. 500; Gay & Robinson, 1100; Hawaiian, 18,500; McBryde, 8174; Koloa, 10,525; Lihue, 5900; Makee, 13,000; Kilauea, 1000.

Bringing her regular oil cargo for the Associated's local plant, the oil ship Marion Chilcott arrived from Gaviota this morning and docked at 10:30.

Not before tomorrow morning is the American-Hawaiian steamer Ohioan expected from San Francisco. She was due today with 5000 tons of New York cargo for Honolulu.

Arrival at New York of the New York training school ship Newport, here last summer, is reported. The vessel reached the metropolis the first week in January, from Panama, where she was held several weeks because of the canal tieup.

A luau in honor of the birth of a son was given yesterday at the Tokiwaen tea garden by Mr. and Mrs. T. Mizusaki. Mr. Mizusaki is a foreman for McCabe, Hamilton & Remy. More than 200 guests attended. This is the Mizusaki's first son. They have three daughters.

A thorough search for opium was made yesterday afternoon on the Wilhelmina. The men, led by Deputy Collector Roger J. Taylor, searched the steamer from stem to stern, acting on a tip that there was opium aboard. None was found. The liner arrived yesterday morning from Hilo.

Reports that the government will turn over the Panama canal commission's steamers Ancon and Cristobal to the war department for use as transports comes from the mainland, following the announcement that Congress will be asked for authority to sell the transports Crook and Meade.

Bringing a varied cargo of island products, the Inter-Island steamer Kinai arrived yesterday from Kaula. Purser Charles Akau reported light southerly winds and smooth weather inward. The Kinai brought, among other freight, 5700 bags of sugar and 235 of rice. There were 31 cabin passengers.

A revised schedule for the Persia Maru, which got off the printed one because of delays at Yokohama and Hongkong, has been received by Castle & Cooke, agents. It calls for the steamer to arrive at Honolulu February 29 from Yokohama, sailing March 1 for San Francisco and returning here March 21. The old schedule called for her to reach here February 29 from San Francisco.

Advices received by Fred L. Waldron, Ltd., agents for the Great Northern, are that the liner will not sail from Honolulu on her last scheduled voyage to the coast until April 4, instead of the original date of April 2. The change is to allow Imperial Potentate J. Putnam Stevens of the Mystic Shrine, and his entourage, a chance to see more of Honolulu and take part in the "stunts" arranged for them here.

Inspection of the Inter-Island schooner Omega was made Saturday by Captains J. R. Macaulay, M. A. Madsen and J. J. Winther, the latter master of the schooner William Bowden. The captains found the Omega in excellent condition. The inspection was made for George E. Billings, who has bought the vessel, presumably for Comyn, Mackill & Company, reported from the coast as having purchased her. Coast papers say she brought \$8500, and has a cargo awaiting her there, port not named.

PASSENGERS BOOKED

Per I-L str. Claudine, for Maui, January 24.—W. O. Smith, Wm. Knight, H. B. Weller, F. K. Burham, G. P. Wilder, Mrs. W. S. Chillingworth and two children, Miss I. Wodehouse, Mrs. J. B. Thompson, Tom, Joe, James Jump.

When Your Eyes Need Care
Try Murine Eye Remedy

MACKINAW GETS AWAY AFTER LARGE NUMBER OF VARIED TROUBLES

After a number of delays the American steamer Mackinaw finally sailed yesterday morning for Vladivostok. She left the harbor Saturday afternoon but went to anchorage in the offing, having to make repairs to her boilers and move her cargo, part of which had shifted, before she could make a start.

Half a dozen of the ship's crew were said to be missing when the steamer pulled out Saturday. Several more were said off her and others were signed on. A few of the sailors attempted to get 50 per cent of their wages here, as they intended to quit, but as the vessel was not loading or discharging cargo in this port they could not demand it under the Seamen's Law.

Capt. F. Furman, the steamer's former master, is in command of the Mackinaw now. Capt. Thomas Peabody, who brought her down from Naha, is returning to San Francisco Wednesday on the Wilhelmina.

Bringing a cargo of phosphate rock for the Pacific Guano and Fertilizer Company, the Norse bark Gleneshee arrived from Makatea this morning, after a passage of 35 days.

IN THE DISTRICT COURT OF THE United States in and for the District and Territory of Hawaii.

In the matter of Hatsuji Iwanaga, a bankrupt. In bankruptcy, No. 349. To the Honorable Charles F. Clemons, Judge of the District Court of the United States for the District of Hawaii:

Hatsuji Iwanaga, of Honolulu, City and County of Honolulu, Territory of Hawaii and district aforesaid, respectfully represents that on the 9th day of December, A. D. 1915 last past, he was duly adjudged bankrupt under the acts of Congress relating to bankruptcy; that he has duly surrendered all his property and rights of property, and has fully complied with all the requirements of said acts and of the orders of the court touching his bankruptcy.

Wherefore he prays that he may be decreed by the Court to have a full discharge from all debts provable against his estate under said bankruptcy acts, except such debts as are excepted by law from such discharge.

Dated this 22nd day of January, A. D. 1916.
(Sgd.) Japanese Characters (Hatsuji Iwanaga), Bankrupt.
Witness to signature:
(Sgd.) A. M. TOKIMOTO,
Territory of Hawaii, Jss.
City and County of Honolulu.)

Hatsuji Iwanaga being first duly sworn upon his oath deposes and says that he is the above named bankrupt; that he has heard read over the foregoing petition and knows the contents thereof, and that the same are true to the best of his knowledge, information and belief.

Subscribed and sworn to before me (Sgd.) Japanese Characters, (HATSUJI IWANAGA),
Witness to signature:
(Sgd.) A. M. TOKIMOTO,
this 22nd day of January, A. D. 1916.
(Sgd.) GEO. S. CURRY,
Notary Public, First Judicial Circuit,
Territory of Hawaii.
(Seal)
District of Hawaii).

On this 24th day of January, A. D. 1916, on reading the foregoing petition it is

Ordered by the Court, that a hearing be had upon the same on the 26th day of February, A. D. 1916, before said Court at Honolulu, in said District at 10 o'clock in the forenoon; and that notice thereof be published in the Honolulu Star-Bulletin, a newspaper printed in said district, and that all known creditors and other persons in interest may appear at the said time and place and show cause, if any they have, why the prayer of the said petitioner should not be granted.

And it is further ordered by the Court, that the clerk shall send by mail to all known creditors copies of said petition and this order, addressed to them at their places of residence as stated.

Witness the Honorable Charles F. Clemons, Judge of the said Court, and the seal thereof, at Honolulu, in said District, on the 24th day of January, A. D. 1916.
(Seal)

(Sgd.) F. L. DAVIS,
Clerk of said Court.

A true copy.
Attest: F. L. Davis,
Clerk.

Honolulu Stock Exchange

MERCANTILE	Did.	Asked
Alex. & Baldwin, Ltd.	28 1/2	29
C. Brewer & Co.	20 1/2	21 1/2
SUGAR		
Ewa Plant Co.	28 1/2	29
Haleiwa Sugar Company	20 1/2	21 1/2
Haw. Agr. Co.	43 1/2	44
Haw. Coml. & Sug. Co.	43 1/2	44
Haw. Sug. Co.	40	40
Honokaa Sug. Co.	5	6
Honolulu Sug. Co.	18 1/2	18 1/2
Hutchinson Sug. Plant Co.	18 1/2	18 1/2
Kekaha Sug. Co.	15 1/2	16 1/2
Koloa Sug. Co.	31 1/2	31 1/2
McBryde Sug. Co., Ltd.	9 1/2	9 1/2
Ohia Sug. Co., Ltd.	11 1/2	11 1/2
Onomea Sug. Co.	46 1/2	47 1/2
Panama Sug. Plant Co.	20 1/2	21 1/2
Pacific Sug. Mill	20 1/2	21 1/2
Paia Plantation Co.	35 1/2	36
Pepeekeo Sug. Co.	35 1/2	36
Pioneer Mill Co.	29 1/2	29 1/2
San Carlos Mill Co., Ltd.	8 1/2	8 1/2
Waialua Agr. Co.	29 1/2	29 1/2
Waialua Sug. Co.	16	17 1/2
Waianae Sugar Co.	30	31 1/2
Waimea Sugar Mill Co.	119	119
MISCELLANEOUS		
Haleiwa P. & P. Co. Com.	119	119
Haleiwa P. & P. Co. Pfd.	119	119
Haw. Electric Co.	39 1/2	39 1/2
Haw. Pineapple Co.	39 1/2	39 1/2
Hilo R. R. Co. Frd.	40	45
Hilo R. R. Co. Com.	40	45
Hon. Brew. & M. Co. Ltd	119	119
Hon. Gas Co. Com.	119	119
H. R. T. & L. Co.	210	225
I. J. S. N. Co.	147 1/2	147 1/2
Mutual Tel. Co.	16	17 1/2
O. R. & L. Co.	30	31 1/2
Fahang Rubber Co.	16	17 1/2
Tanjong Olok Rubber Co.	30	31 1/2
BONDS		
Hamakua Ditch Co. 6s.	100	100 1/2
Haw. C. & Sugar Co. 5s.	94 1/2	94 1/2
Haw. Irr. Co. 6s.	94 1/2	94 1/2
Haw. Ter. 5s. Pub. Imp.	94 1/2	94 1/2
Haw. Ter. Pub. Imp. 4s.	94 1/2	94 1/2
Haw. Ter. 4 1/2s.	94 1/2	94 1/2
Haw. Ter. 3 1/2s.	94 1/2	94 1/2
Hilo R. R. Co. 6s Issue 01	94 1/2	94 1/2
H. R. R. Co. R. & E. Con. 6s	94 1/2	94 1/2
Honokaa Sug. Co. 6s.	94 1/2	94 1/2
Hon. Gas Co. Ltd. 5s.	103	103
H. R. T. & L. Co. 6s.	106	106
Kaula Ry. Co. 6s.	106	106
McBryde Sug. Co. 5s.	106	106
Mut. Tel. 5s.	106	106
O. R. & L. Co. 5s.	106	106
Oahu Sugar 6s.	106	106
Ohia Sugar Co. 6s.	106	106
Pacific Guano & F. Co. 6s.	94 1/2	94 1/2
Pacific Sugar Mill Co. 6s.	94 1/2	94 1/2
San Carlos Mill Co. 6s.	94 1/2	94 1/2
Waialua Agr. Co. 5s.	94 1/2	94 1/2

Sales: Between Boards: 120, 60, 100, 20, 201, 40, 100, 100, 100, 100, 250, 50, 10 Oha, 11 1/2; 100, 200 Oha, 11 1/2; 785, 50, 50, 460, 440 McBryde, 94 1/2; 25 I. J. S. N. Co., 210; 70, 150 Waialua, 29 1/2; 15, 200, 75 Oahu Sug. Co., 31; 50, 60 H. C. & S. Co., 44; 50 Ewa, 28 1/2; 50, 50 Koloa, 155.
Session Sales: 200 Hilo Com., 40; 50 O. Sug. Co., 31 1/2; 10 Onomea, 47; 40, 25 Onomea, 47; 50, 50, 15, 20 Oahu Sug. Co., 31 1/2; 15 Waialua 29 1/2; 5 Pioneer, 36; 5 Oha, 11 1/2.

Latest sugar quotation: 96 deg. test, 4.705 cts., or 94.10 per ton.

Sugar 4.705cts

Henry Waterhouse Trust Co., Ltd.
Members Honolulu Stock and Bond Exchange.
Fort and Merchant Streets
Telephone 1208

PASSENGERS ARRIVED

Per I-L str. Kinai, from Kaula, January 23.—Mrs. Von Sergern, Miss Von Sergern, M. Myer, D. Didrick, D. Miyasaki, Miss P. Antone, S. Teshima, T. Harada, Mrs. Harada, Master Harada, Mrs. J. Kalehua, W. H. Friedly, F. Goodwin, Mrs. Papaia, J. Rodriguez, J. P. Aloheka, J. M. Cummings, Miss Lawe, A. S. Heyward, W. H. Ramsey, Mrs. R. Hapo, H. Andermann, Mrs. Yee Po, Miss M. Chang, M. Sokabe, Mrs. Lum Yum, Mr. Kaya, R. H. Worrell.

Per I-L str. Claudine, from Maui, January 23.—P. A. Gorman, Mrs. E. L. Gorman, Miss E. L. Gorman, F. Hagenhart, C. B. Blum, Luis Gil, S. Pupuh, E. Ah Lee, M. Keohokalele, C. A. Franz, A. C. Mowetta, K. Shida, Geo. H. Robertson, Mrs. K. Sasaki.
Per I-L str. Mikahala, from Maui, Molokai and Lanai, January 23.—Miss M. Gay, E. Gay, J. Holmberg, Master H. Brune, Master A. Brune.

In a short time one will be able to go from Alaska to Patagonia in a sleeping car. Already more than 7,000 of the total 12,000 or 13,000 miles of railroad are in operation.

ARE YOU PLEASED?
IF NOT, SEE

US

Castle & Cooke, Ltd.

Agents for

Fire, Life, Marine, Automobile
Tourists, Baggage Insurance

Among the Features of Our Service

is our Savings Department, paying you four per cent (compounded semi-annually); our Checking Department, where your account, be it large or small, will be carefully and gladly taken care of; our Ladies' Room, for the added convenience of our lady patrons.

There are many other facilities which we have to offer and which we should like to talk over with you.

Bank of Hawaii, Ltd.
Cor. Fort and Merchant.

Alexander & Baldwin
Limited.

Sugar Factors
Commission Merchants
and Insurance Agents

Agents for
Hawaita Commercial & Sugar Co.
Haleiwa Sugar Company,
Paia Plantation,
Maui Agricultural Company,
Hawaita Sugar Company,
Kahuku Plantation Company,
McBryde Sugar Co., Ltd.,
Kahului Railroad Company,
Kauai Railway Company,
Kauai Fruit & Land Co., Ltd.,
Honolua Ranch.

FIRE INSURANCE

THE
B. F. Dillingham Co.
LIMITED.

General Agents for Hawaii:
Atlas Assurance Company of London, New York. Underwriters' Agency; Providence Washington Insurance Co.
4th floor Stangenwald Building.

J. F. MORGAN CO., LTD.
STOCK BROKERS
Information Furnished and Loans Made.
Merchant Street — Star Building
Phone 1572

FOR RENT
Electricity, gas, screens in all houses.
Fine 2-bedroom cottage in town; \$22.
2-bedroom cottage; fine location; \$26.
New 5-bedroom house; \$26.

J. H. SCHNACK
842 Kaahumahu St. Telephone 3633

MEAT MARKET & GROCERY
PHONE 3451
C. Q. YEE HOP & CO.

J. P. Burnette
79 Merchant St.
Notary Public

CITY MILL COMPANY, LTD.
Importers of best lumber and building materials. Prices low, and we give your order prompt attention whether large or small. We have built hundreds of houses in this city with perfect satisfaction. If you want to build consult us.

R. W. Perkins
PHOTOGRAPHER
HONOLULU, T. H.

Clothes for Men
ROYAL TOGGERY
152-154 Hotel St., at Bishop

Agents Wanted

HOME INSURANCE CO. OF HAWAII, LTD.
96 KING STREET, CORNER FORT.

HAWAIIAN TRUST CO., LTD.

Carries on a Trust Business in all its branches.

FOR SALE

Theatrical & Amusements

'LA GIOCONDA' WITH VERGERI TO OPEN SECOND WEEK OF GRAND OPERA

Faust, With Wanrell and Kristoffy, Billed for Tomorrow Night; Friday 'La Tosca'

(By HALLETT ABEND)
Despite the seeming indifference of Honolulu to the very good grand opera being presented here, the De Folco Grand Opera Company is going bravely ahead with plans for the second week of the engagement, during which a more richly varied repertoire than that of last week will be offered. "La Gioconda," the bill for tonight, will be an even more ambitious and elaborate performance than was "Aida" last Monday at the opening of the season. Madame Vergeri is to sing the title role, and the cast will include other principals who have won high favor here.

Tomorrow night "Faust" will be presented, with Kristoffy as Marguerite, Wanrell as Mephistopheles, and either de Folco or Poggi as Faust. This will be followed Wednesday by "Cavalleria Rusticana" and "I Pagliacci," on Thursday by a repetition of tonight's opera and cast; Friday, "La Tosca" with Kristoffy; a repetition of "Aida" for next Saturday's matinee; and a second performance of "Faust" Saturday night.

No Poor Performances.
Though the De Folco company has not given one poor performance in Honolulu, the public continues apathetic, as was witnessed by the dwindling audiences last week. Saturday's matinee, when Vivian Kingston repeated "La Traviata," drew only a corporal's guard, and Saturday night when Kristoffy sang a second time in "Aida" there were only 88 people downstairs, and a proportionate handful in the balcony and gallery.

A. L. Benson, Signor de Folco's secretary, has been at several of the schools and colleges in the city, and has aroused great interest by his talks on opera, and the offering of special students' rate tickets in book form for several operas. It is understood that several hundred of these have been disposed of, and that a realization of the educational value of opera may lead to an even larger attendance from schools in Honolulu.

"Aida" went well Saturday evening—so well that the very small audience raised several storms of applause which, by the sound, might have come from a packed house.

Late Arrivals Seated.
Several minor incidents were to be regretted, notably the seating of about eight late arrivals during Kristoffy's first big aria when she had the stage to herself in the first act, and the fact that two members of the organization walked back and forth on the left side aisle during Kristoffy's big aria in act three. Also a small corsage bouquet for the prima donna was not given to her when she responded to encores, but was pitched unceremoniously on to the floor of the stage during a crowded ensemble.

The disturbing use of the aisles during big scenes by members of the

Sings In Faust



Joaquin S. Wanrell, the very capable basso of the De Folco Grand Opera Company, in costume as Mephistopheles in "Faust," in which he appears tomorrow night.

company has been referred to previously in these columns. Surely the management can restrict all coming and going to the periods between acts.

De Folco's continued absence from the stage is a matter of keen regret to those who heard the tenor when he was here with the Lambardi company three years ago, and to those who listened to his fine singing as Rhadames last Monday. It is to be hoped that he will soon be in condition to resume the handling of his roles. Luigi Poggi, meanwhile, has been doing valiant service, and has handled difficult and voice-exhausting roles night after night.

Those Who Sing Tonight.
For "La Gioconda" this evening the following cast has been announced:
La Gioconda, soprano, Emilia Vergeri.
La Cleca, contralto, Bella Fay.
Alvise Badora, bass, Joaquin Wanrell.
Laura, mezzo, Bernice Holmes.
Enzo Grimaldo, tenor, Poggi de Folco.

Barnaba, baritone, Paul Galizzi.
Zuane, bass, Umberto Rovere.
Isopo, tenor, William Giuliani.
A pilot, bass, Mario Marti.

Last evening the company presented "Aida" to a large audience of army people at Schofield Barracks, with Kristoffy in the title role. Other performances may be arranged at Liliuokalani during the company's engagement here, which has still three weeks to run.

Friday Night for Circle.
The night selected as "Outdoor Circle Night" at the grand opera is Friday of this week, and the opera chosen is "La Tosca."

The juvenile members are to act as ushers and that in itself is an attraction. The house has not been bought out by the Circle, so that anyone wishing to go will find room. It is the wish of the Circle that every person in the house wear their favorite hibiscus, as the hibiscus is the Circle flower.

British authorities seized every parcel post package aboard the steamer Goentoor, of the Rotterdam Lloyd Line, bound for New York.

NATIONAL SHOW FINE SURPRISE

Two High Class Vaudeville Acts and Fine Films at Hotel St. Theater Opening

One of the theatrical surprises of the month was the high standard which P. J. Byrne set for the new National theater with his first show last Saturday night. In the crowd that filled the small playhouse to capacity comment was generally expressed that if the proprietor can maintain the high level this first show has fixed he should achieve a success limited only by the seating space of his building.

First, it appeared on opening night that Mr. Byrne is seeking to create an atmosphere of refinement which will appeal to the fastidious as well as ordinary mortals. Two demure part-Hawaiian girls in dainty frocks of black and white, serving as ushers, helped some in the effect. These, by the way, are an innovation here, though feminine ushers are employed very successfully in a few cities on the coast and quite generally in motion picture houses throughout Australia.

Mr. Byrne also has a good orchestra, a new motion picture machine, and has dressed his establishment nicely and in good taste.

Good Vaudeville Acts.
But by far the big feature is the show itself. Herbert Winter, comical English monologist presents a high class act. It, like all the rest of the bill, is clean, and his dry humor kept his auditors chuckling throughout his "turn." The Musical Goolmans wrung some remarkably beautiful strains from weird and unusual instruments, to such success that at this end they were recalled four times, finally stopping from sheer exhaustion.

Of the film features it can be said safely that no better or higher class drama has been shown in Honolulu than "The District Attorney," dramatization of Charles Klein's big play. And J. Rufus Wallingford, the new serial, is brilliant. A third film was shown, but if any criticism of the entire program can be made it is that this should have been eliminated. It not only did not fit with the other high class acts but it made the show longer than performances of the kind should be.

The same program will be shown tonight and tomorrow night.

HAWAIIAN BAND AT LILIUOKALANI SCHOOL

Under the leadership of Prof. Peter Kalani, the director, the Hawaiian Band will give a public concert in the grounds of the Liliuokalani School, Kaimuki, beginning at half-past 7 o'clock tonight. The program for the evening will be as follows:

March—The Universal City C. Arthur Overture—The Call of Bagdad... Boledien Waltz Hesitation—Geraldine... Hoogs Grand Selection—Faust... Gounod PART II.

Four Hawaiian Songs:
(a) Hawaiian Band Glee Club
(b) Lili Wai Aloha, King Kalakaua
(c) Beauty (Lili Ohelo)... P. Kalani
(d) Lili mau Aloha... Kapoho Soloists—Mrs. J. K. Chilton and Mr. Z. Kapue.

Echo Piece—Musicians Astray in the Forest (by request)... P. Herman Hula Step—Cunha's Hula Medley... ART. by P. Kalani Aloha Oe—Hawaii Pono! The Star Spangled Banner.

Fifty dollars has been sent to Maui by the local Japanese Young Women's Buddhist Association for the relief of food sufferers. The Daily Nippon Jiji has received \$50 from K. Matsumoto and \$5 from the Japanese Actors' Association for the same cause.

S. S. Gerwan, the American aviator who fell 150 feet while testing a new aeroplane at Guatemala City on Monday, is improving and is expected to recover.

SORRY FOR HIS PROMISE TO SET HIS WIFE FREE

Jesse L. Lasky sends to the Liberty theater for the first half of the week a number of the old favorites of that studio with a new star, Fannie Ward, in "The Marriage of Kitty," a delightful comedy which becomes almost a satire on modern life in America and continental Europe. Fannie Ward is a new addition to the Paramount firmament.

In the role of Kitty, Miss Ward, a penniless young American girl, marries an English nobleman who promises her a handsome sum and a speedy divorce when the legal formalities of marriage are settled, that he may inherit a large fortune. Neither Kitty nor her English husband, Lord Reginald, had seen each other prior to the ceremony and they separate immediately thereafter.

Subsequently, realizing how attractive Kitty is, her titled husband does not keep his promise to release her, much to the chagrin of an adventurous who had anticipated marriage with the nobleman. Numerous humorous and complicated situations precede and follow the marriage of Kitty.

"Neal of the Navy" is coming strong. The story is appearing in the Saturday Star-Bulletin each week and the serial is shown the first half of the week. Episode number two continues to promise the best serial yet shown here.

Second of Fox Films Proving Drawing Card



Dorothy Donnelly in "The Thief."

Dorothy Donnelly in "The Thief," one of Henri Bernstein's greatest stage offerings, adapted to the film by the Wm. Fox Corporation, proved a worthy successor to "A Fool There Was" at the Bijou theater Saturday and last night. Incidentally, this picture just about makes secure the Fox service as one of the premier screen services now being shown in this city.

In addition to the big feature, "Work," a two-reeler with Charlie Chaplin in the foreground at all times and with another Honolulu favorite appearing in one of the leading roles, Maria Golden, is a big success. It is one of the latest Chaplin releases and, according to information that reached this city several weeks ago Miss Golden was severely injured during the photographing of this picture. It is stated that she suffered three broken ribs and a badly lacerated head—probably when a gas stove exploded and tumbled about the ears of the leading characters.

Another of George Ade's "Fables in



THE THEATER HAVING THE LARGEST CROWDS WITH THE LEAST ADVERTISING. WHY?

PARAMOUNT SPELLS SUPREMACY

Jesse L. Lasky Presents

(Tonight, 7:40 p. m.)



FANNIE WARD

IN HER GREAT COMEDY SUCCESS

"The Marriage of Kitty"

A COMEDY DRAMA OF EUROPEAN COURTSHIP

"NEAL OF THE NAVY"

THE SECOND EXCITING CHAPTER

This wonderful naval romance surpasses anything ever attempted in serial form. The U. S. Government co-operated with the producers, loaning their battleships and crews, to make it the most educational and exciting naval picture of modern times.

PRICES.....10, 20, 30 CENTS BOX SEATS.....50 CENTS

Slang" is ably told in picture form, with a good company participating. These pictures are among the most popular single-reels now being shown. They are well photographed and the Ade "punch" is well sustained.

Appearing with Miss Donnelly in the feature films is Richard Buhler, several years ago a popular idol of this city and for many years the most popular stock actor in Chicago. "The Thief" is a strong play, well handled, and the cameraman has done equally as good work as in the previous Fox feature.

STAR-BULLETIN GIVES YOU TODAY'S NEWS TODAY.

Quality Inn

Hotel Street, near Fort.

Give your children and their little friends a party in this beautiful place. We have made special arrangements to care for them, and can relieve you of all the preparations.

We serve the most wholesome candies and refreshments to be found in Honolulu.

Telephone to make your arrangements.

Foster & Orear's Candies
Rawley's Pure Ice Creams



TONIGHT

Chaplin Film at.....8:00
The Big Feature at.....8:30

William Fox presents Honolulu's old-time favorite—

Richard Buhler
AND
Dorothy Donnelly
the creator of Madame X
IN

"The Thief"

ALSO

Charles
Chaplin

The King of Comedians in

"WORK"

Prices, 10, 20, 30 and 50 Cents.



Phone 3937 for Early Reservations.

Empire

Program beginning 1:30 p. m. until 4 p. m.

Evening (two shows), 6:30 and 8:30
SPECIAL PROGRAM FOR TODAY AND EVENING

"The Cypher Key" (three-reel drama) Lubin

"Home Comforts" (comedy) Vitaphone

"Mrs. Jarr's Auction Bridge" (comedy) Vitaphone

"The Cypher Key" (three-reel drama) Lubin

"Home Comforts" (comedy) Vitaphone

"Mrs. Jarr's Auction Bridge" (comedy) Vitaphone

"The Cypher Key" (three-reel drama) Lubin

"Home Comforts" (comedy) Vitaphone

"Mrs. Jarr's Auction Bridge" (comedy) Vitaphone

"The Cypher Key" (three-reel drama) Lubin

"Home Comforts" (comedy) Vitaphone

"Mrs. Jarr's Auction Bridge" (comedy) Vitaphone

"The Cypher Key" (three-reel drama) Lubin

"Home Comforts" (comedy) Vitaphone

"Mrs. Jarr's Auction Bridge" (comedy) Vitaphone

"The Cypher Key" (three-reel drama) Lubin

"Home Comforts" (comedy) Vitaphone

"Mrs. Jarr's Auction Bridge" (comedy) Vitaphone

"The Cypher Key" (three-reel drama) Lubin

"Home Comforts" (comedy) Vitaphone

"Mrs. Jarr's Auction Bridge" (comedy) Vitaphone

"The Cypher Key" (three-reel drama) Lubin

"Home Comforts" (comedy) Vitaphone

"Mrs. Jarr's Auction Bridge" (comedy) Vitaphone

"The Cypher Key" (three-reel drama) Lubin

"Home Comforts" (comedy) Vitaphone

"Mrs. Jarr's Auction Bridge" (comedy) Vitaphone

"The Cypher Key" (three-reel drama) Lubin

"Home Comforts" (comedy) Vitaphone

"Mrs. Jarr's Auction Bridge" (comedy) Vitaphone

"The Cypher Key" (three-reel drama) Lubin

"Home Comforts" (comedy) Vitaphone

"Mrs. Jarr's Auction Bridge" (comedy) Vitaphone

"The Cypher Key" (three-reel drama) Lubin

"Home Comforts" (comedy) Vitaphone

"Mrs. Jarr's Auction Bridge" (comedy) Vitaphone

"The Cypher Key" (three-reel drama) Lubin

"Home Comforts" (comedy) Vitaphone

"Mrs. Jarr's Auction Bridge" (comedy) Vitaphone

"The Cypher Key" (three-reel drama) Lubin

"Home Comforts" (comedy) Vitaphone

"Mrs. Jarr's Auction Bridge" (comedy) Vitaphone

"The Cypher Key" (three-reel drama) Lubin

"Home Comforts" (comedy) Vitaphone

"Mrs. Jarr's Auction Bridge" (comedy) Vitaphone

"The Cypher Key" (three-reel drama) Lubin

"Home Comforts" (comedy) Vitaphone

"Mrs. Jarr's Auction Bridge" (comedy) Vitaphone

"The Cypher Key" (three-reel drama) Lubin

"Home Comforts" (comedy) Vitaphone

"Mrs. Jarr's Auction Bridge" (comedy) Vitaphone

"The Cypher Key" (three-reel drama) Lubin

"Home Comforts" (comedy) Vitaphone

National Theater

HOTEL STREET NEAR YOUNG HOTEL

TONIGHT

SECOND NIGHT OF THE BIG

VAUDEVILLE AND FEATURE PICTURES

Saturday Night's Audience Would Not Let

The Musical Goolmans
those Clever Musicians, leave the Stage. He kept the audience in a chuckle of laughter all the time. Who? Why

Herbert Winter
OF COURSE.

TOMORROW NIGHT LAST NIGHT OF THESE PICTURES

COMING WEDNESDAY, JANUARY 26,

CHAS. CHAPLIN IN "DOUGH AND DYNAMITE"

Prices, 10, 20 Cents. Reserved, 30 Cents. Phone 2873.

SPECIAL MATINEE WEDNESDAY 2:30

The People Say That

The District Attorney
in Five Acts is the best Feature Picture ever seen in Honolulu.

The Audience stayed till 11 o'clock to see
New Adventures of Wallingford
The New Comedy Serial in Two Parts



Mme. Emilie Vergeri
Who sings in La Gioconda tonight

Hawaiian Opera House

De FOLCO GRAND OPERA CO.

EUGENIO DE FOLCO, IMPRESARIO

TONIGHT

"La Gioconda"

Tuesday.....Cavalleira and Pagliacci
Wednesday.....Faust
Thursday.....La Gioconda
Friday.....La Tosca
Saturday Matinee.....Rigoletto
Saturday Night.....Faust

Company of Seventy-Five Artists; Grand Chorus, Orchestra of Twenty; Corps De Ballet; Special Scenery Gorgeous Effects; Elegant Costumes

EVENINGS—Lower Floor, \$2.50; Balcony (first row), \$2.50; Balcony, next four rows, \$2.00; last row, \$1.50; Upper Balcony, \$1.00. Box Seats, \$2.00.

MATINEES—Lower Floor, \$1.50; Balcony (first row), \$1.50; Balcony, next four rows, \$1.00; last row, 75c; Upper Balcony, 50c; Box Seats, \$1.50.

Seats on sale at Hawaii Promotion Committee rooms, Young Building.

1916 Diaries and Calendar Pads

The Excelsior line comprises diaries for home, personal and business use.

All Prices

Those indispensable desk calendars and other office needs.

Hawaiian News Co. Ltd.
"Buy on Bishop Street"

LORD YOUNG
Engineering Co., Ltd.
Engineers and Contractors
Panttheon Block, Honolulu, T. H.
Telephones 2610 and 5487.

M'CHESNEY COFFEE CO.
COFFEE ROASTERS
Dealers in Old Kona Coffee
Merchant St. Honolulu

WIRE FENCE AND GATES
The very best for every use.

J. C. AXTELL'S
Alaska Street

SPECIAL SALE
Grass Linen and Pongee Waist
Patterns.
YEE CHAN & CO.
Corner King and Bethel Streets

CURIOS, JEWELRY AND NOVELTIES.
HAWAIIAN JEWELRY & NOVELTY CO.
King and Bethel Streets

JAMES NOTT, JR.
Plumber and Sheet Metal
Worker
Phone 2586 74 S. Beretania

Territorial Agents for
STANDARD GAS ENGINES
Honolulu Iron Works Company

D. J. CASHMAN
TENTS AND AWNINGS
Luau Tents & Canopies for Rent
Thirty Years' Experience
Fort St., near Allen, upstairs.
Phone 1467.

Have You Had Your Feet
"Photographed" Yet?
REGAL BOOT SHOP
Fort and Hotel Streets

Repairing Engraving
S. GOLUB
Manufacturing Jeweler and
Diamond Setter
307 Boston Bldg.

Suggestions and designs for
RESETTING AND REMODELING OLD JEWELRY.
Gold and Platinum Settings.
WALL & DOUGHERTY

PAPER
All kinds of Wrapping Papers and
Twines, Printing and Writing Papers
AMERICAN-HAWAIIAN PAPER & SUPPLY CO. LTD.
Fort and Queen Streets, Honolulu
Phone 1416 74 S. Beretania

The HUB
for Clothes

WIRELESS
MUTUAL TELEPHONE CO., LTD.

PACIFIC ENGINEERING COMPANY, LTD.
Consulting, Designing and Constructing Engineers.
Bridges, Buildings, Concrete Structures, Steel Structures, Sanitary Systems, Reports and Estimates on Projects. Phone 1046.

COLLEGE FRATERNITY MEN HOLD SECOND PAN-HELLENIC DINNER

"Greeks" Decide to Form Permanent Organization; Will Help National Fight

Fast-flying college years all the way from 1867 to 1915 were represented among the 60-odd Greek letter fraternity men who gathered at the University Club on Saturday night for the second annual dinner of the Pan-Hellenic Association of Hawaii. More than a dozen fraternities, undergraduate, department or honorary, were represented by one or more members, and the songs and yells which echo in the chapter-houses "back in the states" were repeated with gusto.

Two movements of more than passing importance developed from the meeting. It was decided to form some sort of permanent organization, and A. L. C. Atkinson, who suggested this, was made chairman of a committee to look after the details and to plan next year's dinner and entertainment. The other members of the committee are W. W. Thayer, Stanley C. Kennedy, W. L. Warren and R. W. Bliss.

The second movement is that of drafting a memorial on behalf of Greek letter fraternity men of Hawaii protesting against anti-fraternity legislation now imminent or in prospect in several states, and which may close the doors of several large state universities to the fraternities and sororities. It was pointed out by speakers that already in Mississippi a law passed by the state legislature against fraternities has been tested and held valid in the state courts, and the judgment affirmed by the United States supreme court; and that the United States supreme court holds that state legislatures may bar fraternities from state educational institutions.

The Pan-Hellenic Association of Hawaii proposes to declare itself as a body of men, most of whom have been out of college for years, emphatically in favor of the fraternity influence in college life. This memorial will be sent to each of the suitable officers of each national fraternity for use in various states where anti-fraternity bills are presented or an anti-fraternity movement develops in the institutions.

It was an evening of very informal fun for the assembled Greeks. W. R. Farrington was toastmaster and most of the toasts were brief. W. W. Thayer spoke on the fraternity's influence upon the undergraduate. A pleasant surprise was a talk by Elias Lyman of Vermont, a visitor who declared that Hawaii has charmed him greatly "and that the meeting with fellow-fraternity men was the crowning event of a visit he hopes to repeat. Incidentally, Mr. Lyman was the oldest Greek there in point of years, his "year" being '67. Riley H. Allen spoke on the anti-fraternity legislation and incipient hostile movements. Col. Archibald Campbell, called on suddenly, responded with a brief but vigorous appeal that Greek letter men shall live up to their reputations as leaders by realizing the necessity of and taking part in the work of national preparedness. A. L. C. Atkinson spoke of the fraternity influence on after life, and Bertram G. Rivenburgh said that at the various fraternity conventions at San Francisco last year alumni associations were asked to cooperate more closely with the national officers.

Varied entertainment was furnished by Billy Warren, who told a bushel of funny stories—and got the laughs—and by Dr. R. D. Williams, the new principal of Mills school. Dr. Williams is a remarkably good storyteller. In addition to which he accompanied his sleight-of-hand with an appropriate line of talk on college topics. His tricks carried a freshman through college, figuratively.

Stanley C. Kennedy, formerly yell-master at Stanford, showed that he hasn't forgotten the old art, and led most of the yells. A much-appreciated feature was the singing of the Kamehameha Boys' school male chorus.

The following men, fraternities and colleges being given, were present: W. R. Farrington, Beta Theta Theta Pi, Maine; Wade Warren Thayer, Kappa Alpha, Michigan; Elias Lyman, Sigma Phi, Vermont; Arthur F. Thayer, Sigma Phi, Michigan; R. D. Williams, Alpha Delta Phi, California; John F. Nelson, Beta Theta Theta Pi, Colorado; P. A. MacCaughy, Beta Theta Theta Pi, Kenyon; Riley H. Allen, Beta Theta Theta Pi, Chicago; G. K. Harrison, Sigma Chi, Illinois; G. H. Grace, Sigma Chi, Nebraska; Will R. McAllep, Sigma Chi, U. S. C.; John Howard Ellis, Sigma Chi, Northwestern; B. G. Rivenburgh, Delta Tau Delta, Rensselaer; Carl B. Andrews, Sigma Nu, Rose Poly; Lloyd R. Killam, Sigma Nu, Brown; H. H. Blaggett, Sigma Nu, Chicago; R. E. Woolley, Beta Theta Theta Pi, Utah; P. E. Spaulding, Phi Delta Theta, Stanford; John F. Stone, Phi Delta Theta, Whitman; C. S. Franklin, Phi Delta Theta, Mississippi; William E. Berry, Phi Delta Theta, Whitman; Wilton Stall-smith, Phi Delta Theta, Northwestern; William E. Berney, Phi Delta Theta, Whitman; E. B. Loomis, Phi Delta Theta, Nebraska; H. E. Abend, Kappa Sigma, Stanford; Andrew Farrell, Sigma Chi, Hanover; H. W. Kerns, Sigma Xi, Michigan; R. S. Heath, Tau Beta Phi, Michigan; G. B. Wilkins, Kappa Sigma, Maine; Archibald Campbell, Sigma Chi, Stevens; Fred T. P. Waterhouse, Phi Gamma Delta, Michigan; W. S. Greacen, Phi Gamma Delta, Worcester; R. W. Gaylord, Phi Gamma Delta, Ames; F. A. Edgecomb, Phi Gamma Delta, Brown; R. W. Bliss, Theta Delta Chi, Tufts; F. H. West, Theta Delta Chi, Michigan; M. B. Henshaw, Theta Delta Chi, Stanford; William McCleave, Theta Delta Chi, California; M. B. Carson, Theta Delta Chi, Stanford; W. L. Warren, Delta Upsilon, California; S. C. Kennedy, Phi Kappa Psi, Stanford; W. H. McConnell, Stanford; L. E. Cox, Delta Upsilon, Pennsylvania; N. H. Duval, Kappa Alpha, South, West Virginia; W. H. Soper, Phi Beta Kappa, Stanford; Leon L. Loofbourou, Phi Beta Kappa, Stanford; Guy H. Buttolph, Phi Beta Kappa, Kenyon; H. H. Kirby, Kappa Alpha, Stanford; R. T. Taylor, Kappa Alpha, North Williams; F. F. Black, Alpha Tau Omega, Maine; R. S. Calder, Alpha Tau Omega, Lawrence; Howard L. Grace, Alpha Theta Pi, Georgetown; Leopold Kroll, Sigma Alpha Epsilon, St. Stephens; William W. Merryman, Phi Delta Kappa, Missouri; Edgar Wood, Phi Delta Kappa, Columbia; A. F. Jackson, Phi Kappa Alpha, West Point; L. M. Judd, Phi Kappa Psi; A. L. C. Atkinson, Sigma Phi, Michigan; J. Brooks Brown, Alpha Tau Omega, Emory.

DIABETES

We announce this new FACT IN PHYSICS—influence the renal tract with an agent that opposes Renal and Hepatic degeneration and urinalysis will, in many cases, within twenty days begin to show diminishing sugar in Diabetes in people of 50 and over.

There having been no agent on prescription counters to reduce sugar in Diabetes (except opium, which is not a specific—see Van Noorden on Diabetes) the importance of an antidiabetic is immediately manifest.

That sugar can be reduced and that many of those succumbing to Diabetes can have lives prolonged to other terminations has been established by urinalysis and confirmed by disappearing symptoms in many cases.

The presence of sugar being a PHYSICAL FACT, and its disappearance a FACT IN PHYSICS there is no uncertainty as to the results that have been obtained.

The agent to reduce sugar (Fulton's Diabetic Compound) can be had at Honolulu Drug Co. Ask for pamphlet. Current bulletin of recoveries and rationale mailed on application. John J. Fulton Co., San Francisco, Cal.—adv.

RECOVERIES FROM ATTACK OF PTOMAIN POISONING; FOUND LYING ON PIER

Picked up unconscious on Pier 15 by a policeman at noon Sunday Frank Martinez, a Portuguese, was taken to the emergency hospital and found to be seriously ill with ptomaine poisoning. He has almost recovered today, after being treated by Dr. R. G. Ayer, but the physician said that had he lain much longer on the wharf he would probably have died.

Martinez is a milkman employed by Frank Gouveia, Kapahulu road, near Hobron, and lives at Gouveia's place.

BAGGAGE AND FREIGHT MOVERS

HONOLULU CONSTRUCTION AND DRAYING CO.
Service First Phone 4981

J. J. Belser, Mgr.
General Offices, 65 S. Queen St.

SAYS GOVERNOR'S GUARD ORDER IS 'CONSCRIPTION'

That there is lively opposition to Governor Pinkham's recent order to territorial department heads to give preference to national guardsmen is indicated by the Maui News. Editorially the News says:

"The preparedness craze has certainly about reached the limit when the price of a man's job depends upon whether or not he belongs to the militia. But that is just what the letter of Governor Pinkham, to heads of territorial departments, amounts to. It specifically directs that preference be given to members of the National Guard in filling vacancies, and there is more than a hint to present employees in the sentence—'Employees are urged to at once perform their duty by enlisting.'"

"What are we coming to anyway, that a governor should dare to utter such a manifesto? What shall we call it—conscription? Conscription means—to enroll, by compulsion, for military service. What else is this than compulsion through threat of one's means of making a living?"

"If Governor Pinkham has made any false moves since he took his office, this is certainly the worst; and unless we are mistaken will be one of the strongest weapons against him in the hands of his enemies."

DANCE AT THE MOANA HOTEL THIS EVENING

Tourists, officers of the army and navy and their ladies and local society folk are cordially invited to attend a dance to be given this evening at the Moana hotel, beginning at 8 o'clock. Hawaiian music during dinner.—Adv.

NUUANU VALLEY HAD MUCH RAIN IN YEAR 1914

Figures compiled at the United States hydrographic office by Superintendent George K. Harrison and his assistants show an interesting comparison of rainfall in Nuuanu valley for the last three years.

At the Pali the rain gauge is placed at an elevation of 1200 feet. It recorded during 1913 a fall of 110.1 inches; during 1914, 137.7 inches, and during 1915, 137.5 inches.

At Reservoir No. 4, the gauge known as the Upper Luakaha gauge, which is placed at an elevation of 1125 feet, showed in 1913, 158.18 inches of rainfall; 1914, 198.55, and in 1915, 177.60 inches.

Luakaha lower gauge is placed at 850 feet elevation, and is about one-half mile below Reservoir No. 4. In 1913 the rainfall here was 142.76 inches; in 1914, 172.09 inches, and in 1915, 158.55 inches.

Rainfall at all three locations is thus shown to have been heavier during 1914 than in either the preceding or following years.



You read and look afar with equal facility, but no one observes that you are wearing bifocals because the usual "lines" are absent. Wear the genuine KRYPTOKS awhile and you will never willingly return to old-style bifocal glasses.

A. N. SANFORD
OPTICIAN
Boston Building, over May & Co., Fort Street.

To catch

Your Baby's favorite expression in a photograph requires the utmost skill in handling the pose and the camera.



Portraits Island Views Developing and Printing

Enough gabble about liquid sunshine; give us a sample of rain. We will go to

Haleiwa

for our enjoyment.

Rates, \$3.50 a day, \$21 a week

Tickets via O. R. R.
Wells-Fargo Co.

Auto road, 30
miles, fair condition.

The 1916
Indian Motocycles
are here

E. O. Hall & Son, Ltd.

"The House of Dependable Merchandise" KING STREET, AT FORT

Special Values
for the
Whole Week

Specials for this week:

For all this week we will offer special values in 7-inch blade, all-steel Butcher Knives, set in rosewood handles at, each... **15c**

Manicure and Nail Scissors, made by the Solingen Shear Co. Good quality, any size. Each **40c**

\$1.85 Guernsey Ware 9-in Casserole... **\$1.00**

Oval Casserole of the first grade brown, white lined Guernsey Ware. A special value for the whole week.

Double Your Closet Space with Sliding Bar Hanger Rods, new

Something altogether new that will increase the clothes hanging space and at the same time make removal of garments easier.

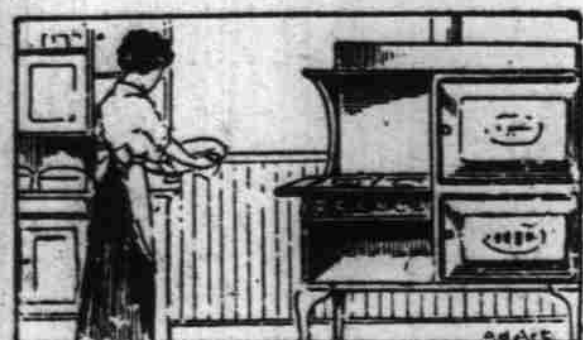
Attaches to under side of shelf; 17-inch bar slides out when garments are wanted; pushes back under shelf again when **50c** not wanted. Stoutly made of steel, nickel-plated

Aluminum Set Brushes

We are showing a new line of brushes, with the bristles set in aluminum, making it impossible for them to fall or pull out. Military Hair Brushes, Shaving Brushes, etc.

Also new things in Shaving Mirrors and Travellers' Mirrors. Popular prices. See the King Street Window.

Wedgewood Gas Ranges withstand the rusty weather



4-burner Wedgewood, with simmerer, oven and broiler. Price... **\$31.50**

Cabinet Model Wedgewood, 4 top burners, simmerer, oven and broiler on side, accessible without stooping... **\$46.00**

Same as above, with white enamel splash boards, broiler door, panel drip pan and broiler; glass oven door....

10% discount for cash.

Made of Ingot Iron, 99.84% pure. The purer the iron the longer it lasts.

Long experience has proven that pure iron will withstand rust longer than any other metal usable in stoves. That is one reason why we so confidently offer the Wedgewood Gas Ranges to our customers.

Cocoa Door Mats protect your floors from the mud

Well made of cocoa fibers in a close set, deep mat.

No. 1, size 14x25 inches **65c**
Each.....

No. 2, size 16x27 inches **85c**
Each.....

No. 3, size 19x32 inches **\$1.25**
Each.....

Flexible Steel Scraper Mats
\$1.25 \$1.75 \$2.00

Columbia Bicycles

1916 Models

The acme of bicycle perfection. Fitted with New Departure Coaster Brake, large Cushion Saddle, and Steel Mud Guard. Price, each

\$45.00
cash