

From S. F.:
Persia, July 27.
For S. F.:
Sierra, July 27.
From Vancouver:
Marama, Aug. 14.
For Vancouver:
Makura, Aug. 13.

Honolulu Star-Bulletin

3:30
Edition

Evening Bulletin, Est. 1882, No. 5297.
Hawaiian Star, Vol. XX., No. 6338.

14 PAGES.—HONOLULU, TERRITORY OF HAWAII, THURSDAY, JULY 25, 1912.—14 PAGES

PRICE FIVE CENTS

HAWAIIAN FIGURES IN SUGAR PROBING

LIGHT TURNED ON BIG PAVING ROW

Two Formal Denials Answer Low's Charge

A declaration from the Rapid Transit company that the company under no conditions will agree to lay a pavement controlled by patent; formal denials of charges that the Rapid Transit company and the Pahoa Lumber company, which furnishes ohia blocks, are interested financially in each other, and an explanation of Supervisor McClellan as to his attitude in voting with the board for a bitulithic paving between the Transit Company's tracks, mark today's developments in the paving controversy which is steadily increasing in bitterness.

Statements and letters given to the Star-Bulletin for publication in an effort to lay the whole matter fairly before the people of Honolulu are published herewith.

Belongs to No One

"I certainly do not belong to any bitulithic hul," said Supervisor McClellan to a Star-Bulletin reporter this morning.

"I went to that meeting prepared to vote for ohia blocks from one side of the King street tracks to the other, if the Rapid Transit company wanted them, but voted for bitulithic on the advice of the engineer, who thought that best for the space between the tracks."

"Another reason was that the ohia blocks would involve a delay of three to six months, and the paving of the Rapid Transit portion of the street has been put off too long already. Personally I should like to see the section between the two tracks paved with wooden blocks, because it would be a noiseless pavement, which is desirable near the market."

"As to the ohia blocks for the spaces between and alongside the rails, I voted for them also for the sake of expediting the work, as the company has a lot of these blocks on hand. Mr. Ballentyne intimated in his letter that either ohia or bitulithic would be agreeable to the company."

"Bitulithic can be laid for \$1.60 a square yard, while ohia blocks would cost the company \$4 or \$5. I supported the motion for bitulithic in this case because I consider it a permanent pavement, having before placed myself on record as being in favor of permanent pavement, and, as already stated, because it was recommended by the engineer."

Reminded that the objection of the Rapid Transit Co. to bitulithic was on the ground that being patented it made the company dependent on the holder of the patent for necessary repairs, Mr. McClellan said the county was in the same position, but the bitulithic contractor guaranteed the pavement for ten years.

"Have the supervisors a right, though, to force the company into that position?" he was asked.

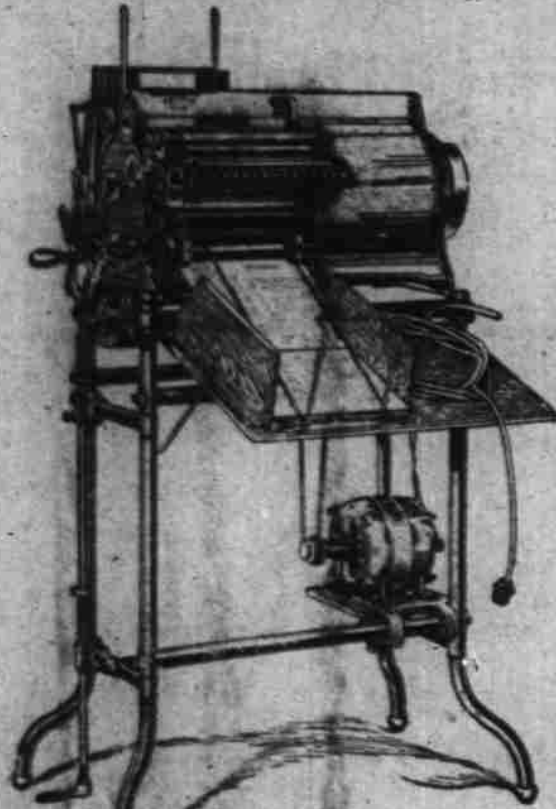
"Well, I suppose that is a question of law," was the reply.

Scents Trouble.
"There is something rotten in that Queen street paving contract," said Manager Ballentyne of the Rapid Transit company to a Star-Bulletin reporter.

"I understand that Mr. Gilman was not required to submit a bid for the bitulithic pavement, or any estimate of his own for the work. The city and county engineer had made a rough es-

(Continued on Page 3)

THE MULTIGRAPH A Machine of Economy



H. E. HENDRICK, LTD.
Corner Merchant and Alakea

LETTERS DECLARE LOW WAS INCORRECT IN HIS ATTACKS

Honolulu, Hawaii, July 25, 1912.
To the Editor of the Honolulu Star-Bulletin, Dear Sir:

According to your issue of yesterday afternoon, as well as this morning's Advertiser, Acting Mayor Low has made the following statements:

First—That the Pahoa Lumber Mill has a monopoly on ohia blocks.

Second—That the Ohia company is interested in the Rapid Transit Company.

Third—That the Rapid Transit Company is interested in the Ohia Company.

All of the foregoing statements are absolutely and unqualifiedly false.

A statement of the exact facts is due to the citizenship of Honolulu as well as in justice to myself.

They are as follows:

First—The Hawaiian Development Company (the owners of the Pahoa Lumber Mill) have no monopoly of the supply of ohia and its steadfast policy and principle is uncompromisingly opposed to any combinations or "understandings" or "gentlemen's agreements" whereby ostensible competitors become practical monopolists. I will state that upon more than one occasion the Hawaiian Development Company has been undersold in straight competition for ohia products, and instead of having any monopoly of ohia blocks in any potential Rapid Transit street work it is directly in competition to secure any such business with the lava-paving block or anything else that may arise suitable to the work of the Rapid Transit Company.

Second—The Hawaiian Development Company neither collectively nor by any individual stockholder (except W. R. Castle, who holds one share of the Hawaiian Development Company, Ltd., stock in order to qualify as a director), has a dollar's interest in the Rapid Transit Company, nor has had any such interest since many years before we ever dreamed of manufacturing ohia blocks or anything else in which the Rapid Transit might have an interest that I might know of.

Third—Neither the Rapid Transit Company collectively nor by any individual stockholder, except as above stated, are interested one dollar in the Hawaiian Development Company, nor in the lumber business thereof.

In all of this controversy we beg to state that we stand for but one thing, the fair and square deal to every citizen of a straightforward, open competition. We have received from the Supervisors so far one such opportunity—that of lower King Street, the contract for which was won by the Bitulithic Company. The next opportunity that might have been given so far as we know, was the Queen street job when the contract, without any opportunity for any other competition, was awarded to the Bitulithic Company with commendable steamroller speed and method.

It is pertinent to remark apropos of the manifest sensitiveness (according to the newspaper reports of the conferences of the Board), of the members of the Board, to implication or innuendo of graft, that there is one way and one way only, so far as I know, to quash any such implication or thought on the part of any citizen and that is to steadfastly maintain a straightforward, open competition without any tricks or jokers in the specifications or conditions, patent or no patent, thereby fulfilling their elementary duty to the public, for whom they are trustees, of securing the best value possible for the expenditure of the people's money.

Yours very truly,
(Signed) J. B. CASTLE,
Manager Hawaiian Development Company, Ltd.

Honolulu, T. H.,
July 25, 1912.

Editor Star-Bulletin, Sir:

In last night's paper appeared a statement by Supervisor Low, that "the Rapid Transit Company insist on the ohia wood blocks, when we all know that the material is the sole product of a corporation in which the heavy-

(Continued on Page 3)

OUT 348 DAYS BARK NUUANU REACHES PORT

Much Tossed About by Gales
and Tempestuous Seas
During Trip

FORCED TO REPAIR AT FALKLAND ISLANDS

Skipper Tells of Voyage and
Trials Since Leaving New
York Last August

Completing his fifty-eighth voyage around Cape Horn, under conditions that would have tried many a stouter heart within a more seasoned navigator, Captain Walter Lyman Joseph, skipper of the American bark Nuuanu, 348 days from New York, stepped ashore at the new Richards street wharf, at ten o'clock this morning, and then there was privileged to greet a circle of relatives and friends, after nearly eighteen months' absence.

"I am certainly glad to get back," was the succinct comment made by the well-liked skipper who now holds the record for the longest passage between the east coast of the United States and the Hawaiian Islands.

"I sailed with a large general cargo from New York on August 6th, stated Captain Joseph this morning to a Star-Bulletin representative.

"Briefly stated, the past year has been one of mingled adventure with plenty of misfortune and bad weather thrown in as a bargain. The Nuuanu skinned along after leaving New York until within forty miles of Cape Horn, when I ran into one of the worst hurricanes that has ever been my misfortune to meet in all the fifty-eight passages around that famous promontory."

Ship Rides Gales.
"Gales and tempestuous seas continued for some days with the result that the bark Nuuanu lost a large section of her port bulwarks, the forecastle was battered and a portion washed away. My sailors lost all their personal effects and belongings in the deluge of angry waters that continually swept over the ship."

"The forward house was destroyed and much of it went over the side. Then we discovered that the ship was making water at a rapid rate and with a number of sails gone, our plight was anything but a pleasing one."

"Under but two sails, the Nuuanu proceeded on her way to Port Stanley, Falkland Islands."

Captain Joseph has an interesting story concerning his long five and one-half months' stay at the most southerly city in the world. The vessel went under repairs, and during the long period of detention, the Nuuanu was given a general overhauling.

(Continued on Page 2)

FISHER CABLES KUHIO HE WILL START AUG. 10

Secretary of Interior Sends
First Definite News of
Visit Here

CONGRESS ADJOURNS, HE TAKES THE TRAIN

Expected to Arrive Here on Pacific Mail Liner China
August 23

Secretary of the Interior Fisher will arrive in Hawaii the latter part of August on his mission to investigate the charges made by Delegate Kuhio and to look into land conditions.

The secretary sent a cablegram to the delegate, which was received here this morning, giving the information that Fisher will leave Washington on the day that Congress adjourns, August 10. He will arrive in San Francisco presumably on August 15, and the next steamer on which he can come to Honolulu is the Pacific Mail steamer China, which arrives here on August 23.

The cable news was immediately sent to Kuhio, who left yesterday to attend the Smart-Parker wedding at Waimea, Hawaii.

This cablegram gives also the first definite news as to the adjournment of Congress.

WOOD DECLARES PEOPLE WILL BE GREAT ASSETS

"Homeseekers and tourists will be as big an asset to the islands as is sugar now," was the emphatic conclusion of an address delivered before the Honolulu Ad Club today at noon in the Young Cafe Rathskeller, by H. P. Wood of the Hawaii Promotion Committee.

After telling in brief detail of the work and accomplishments of the Promotion Committee for the last seven years, he told the Admen of the different ways in which publicity was being secured for the islands.

Requests from publishers who wish to print articles about the islands was one of the sources which gave much results at little cost. Only by the last mail he had received copies of publications from Germany, France and England in which local scenes were depicted. Much information is being given out regarding the islands

(Continued on Page 2)

U. S. MAY USE TRANSPORT TO CARRY FREIGHT

Government Likely to Compete
for Honolulu-Pacific Coast
Business

SPECIAL SHIP NEEDED FOR DEPARTMENT'S USE

Congressional Action Would
Increase City's Traffic
with Northwest

The United States government may go into active competition with the steamship lines in carrying commercial freight from Honolulu to San Francisco. This will be one of the issues of the scheme under consideration to put a direct army transport on the run between here and the Coast.

The excess of demand over supply for accommodations on the army transports to and from Honolulu, which came to a head here the other day with the announcement that only six first-class passengers were available on the Logan, whereas fifty-six had been asked for, gives color to the report that the transport Seward may be put on a swing run between Honolulu and the Coast. This bit of shipping news, published in the Star-Bulletin yesterday, has caused a good

(Continued on Page 3)

MIKADO STILL IN MUCH DANGER SAY CABLEGRAMS

TOKIO, Japan, July 25 (1 p. m.).—Condition of emperor still serious; slightly improved; temperature 37.6, pulse 100, breathing irregular 30.

According to the above dispatch, received this morning at the Japanese consulate from the Japanese ambassador at Washington, the emperor's state of health is very little changed since yesterday. A message received from Washington by the consulate simultaneously with the cablegram quoted above is dated July 24 and reads as follows:

"Temperature 38.2; pulse not regular, about 105; body weak; breathing irregular 37; rest less."

CHAUFFEUR WAS AMATEUR, SO HE WRECKS AN AUTO

Ohashi's first attempt to operate an automobile resulted in a head-on collision between his machine and an automobile driven by H. Culman at King and Punahoa streets yesterday noon and will probably result in the arrest of the amateur chauffeur according to the police, who investigated the case this morning.

Ohashi is an employee of the Aloha Building Company. He decided to go automobile yesterday and for the purpose borrowed the car of Goto, a member of the contracting firm.

Everything went well until he attempted to turn the corner into Punahoa street, when his car collided head-on with the machine of H. Culman. Ohashi was able to stop the car and neither he or Mr. Culman was hurt, but both machines were badly damaged.

The police declare they will prosecute Ohashi for operating an automobile without a chauffeur's license.

SUGAR

SAN FRANCISCO, Cal., July 25.—Beets: 88 analysis, 12s. 7d.; parity, 4.67c. Previous quotation, 12s. 10d.

It was a long passage made by the American schooner Gamble, which is reported to have arrived at Port Gamble today. The vessel sailed from Honolulu on June 29th.

HAWAIIANS WERE TURNED DOWN IN BUSINESS OFFER

Trust Case Evidence to Show Western Company Wouldn't Take Sugar

[Associated Press Cable]
SAN FRANCISCO, July 25.—Further testimony to prove that the American Sugar Refining Company was operating as a monopoly in restraint of trade was brought out here today in a letter from Henry Meyer to Witherapoon, of New Orleans, representative of the Company in New Orleans. The letter was written in 1906, when the California-Hawaii Sugar Refining Company proposed to resume business. Witherapoon was instructed to arrange for railroad rates to New Orleans so that his company could compete in the Missouri fields with the California-Hawaii Company if it should resume business.

The letter said that the New Orleans refinery must run without a profit to meet the condition foreseen.

It was shown that Hawaiian interests sought to arrange with the Western Sugar Refining Company for a third of their business, but that Secretary Hannam of the company and Sprickels had refused to consider it. An effort is being made to show that the Western Company was being run in reality in the interests of the American Sugar Refining Company.

[Special Cable to Star-Bulletin]
SAN FRANCISCO, Cal., July 25.—The Federal Sugar Refining Company is re-entering the local field and refined sugar is now 5.40 cents a pound, an increase of ten points in ten days.

Progressives Choose Beveridge

[Associated Press Cable]
CHICAGO, Ill., July 25.—Former Senator A. J. Beveridge of Indiana was today determined upon for temporary chairman of the Progressive convention. It is stated that the Progressives will have no ticket in Minnesota.

BALTIMORE, Md., July 25.—In conferences preceding a convention of Progressives here, a strong sentiment against a third party has developed in Maryland.

M. D. Whitmans Not Coming

[Special Cable to Star-Bulletin]
SAN FRANCISCO, Cal., July 25.—The Templeton Crocker and Mr. and Mrs. Malcolm D. Whitman, who are now on their honeymoon, have abandoned their plans for a trip to Honolulu.

American Flag Back to Pacific

[Special Cable to Star-Bulletin]
WASHINGTON, D. C., July 25.—Postmaster-General Hitchcock today signed a contract restoring the American flag to the Pacific by establishing the fast mail service to Australia in the Oceanic vessels.

Mine Floods Drown Sixty-Five

[Special Cable to Star-Bulletin]
PITTSBURG, Pa., July 25.—A total of sixty-one lives have been lost in mine floods in Uniontown, Wheeling, Ellenwood and Fairmont.

DR. ELIOT MEETS QUEEN AND TALKS OF WORLD-WIDE PEACE

Famous Educator Guest at Reception Tendered Him by Royalty at Washington Place — Will Make a Trip Over the Island Tomorrow.

Dr. Charles W. Eliot was presented to Queen Liliuokalani at Washington Place this morning, where the former ruler of the Hawaiian Islands held a reception in honor of the distinguished college president. The formal introduction being over, the Queen and her guest strolled out on the lanai and during the entire call of Dr. Eliot carried on an animated conversation concerning matters of general interest.

It was a very informal reception. Dr. Eliot's party, consisting of himself and party, his secretary, Roger Pierce, and James A. Wilder, arrived at Washington Place at 10:15. They were greeted by C. P. Lauka, manager of the Liliuokalani Estate, who escorted them up the stairs and into the house.

Queen Liliuokalani, attended by Mrs. Lauka and Mrs. Holloway, was seated in the reception hall awaiting the arrival of the party.

As Dr. Eliot, accompanied by Mr. Wilder and Mrs. Lauka entered the room, the ladies arose to their feet and Queen Liliuokalani advanced to the center of the room, where the presentation was made by Mr. Lauka. Introduced to Hostess.

The other members of Dr. Eliot's party, together with two attendants of the Queen, stepped forward and joined the group, and mutual introductions were made and acknowledged. Mr. Lauka then excused himself to greet a party of arriving guests

(Continued on page 3)

Shipping

PASSENGERS ALLOTTED PLACE IN LIFEBOATS ON ALL MARU LINERS

"Do you know that the management of the Toyo Kisen Kaisha have gone many of the trans-Pacific lines one better in the adoption of methods insuring the safety of passengers?" remarked a local businessman this morning.

The arrival of the Tenyo Maru from the coast demonstrated that the Japanese line is paying marked attention to the matter of proper equipment of lifeboats.

"When recently taking a voyage on a vessel of this company my attention was called, when entering my cabin for the first time, to a plainly-printed card, which was framed and hung in the cabin in a prominent place. This card gave the number and the location of the particular lifeboat to which the occupants of that cabin were assigned, and, if I recall correctly, stated the officers in charge of that boat."

"Having my attention called thus to the place allotted to me in case of disaster, it was natural to go to that boat to find where and what it was, and I found that other passengers had done the same thing. In like manner also one became acquainted with the officer in whose charge he would be in case of trouble."

"It is furthermore obvious from this arrangement that lifeboats were provided sufficient at least, for all the passengers and some, if not all, of the crew."

Revolution a Solar Plexus to N. Y. K. The disturbed condition of affairs throughout China because of the revolution and the subsequent rise of the new Republic has an appreciable effect upon the business done by more than one large steamship company operating in Asiatic waters.

At a general meeting of the big Nippon Yusen Kaisha, President Kodo, stated that during the last half year the shareholders in maritime transport stock received a heavy blow through the revolution in China, the strike in England and other factors. The fact that the company could show a profit was due to the reason that sea trade generally has recovered its activity. During the last half year, the company opened their Indian line. Though competition on this line is great, the company has determined to win through at any cost. The meeting decided to pay a dividend of 10 percent, per annum for the year. The proposal to present 300,000 yen to the four former directors of the company including Mr. Iwanaga Shochi, in return for the great services they had rendered in the development of the company, was unanimously passed. The division of the sum between them was left to the present directors. Mr. Negishi Rentaro, manager of the London Branch, was nominated a director of the company.

Many Liners Report Positions.

Several trans-Pacific steamers were in touch through wireless with Kahuku station last evening, among them being the following:

M. N. S. S. Honolulu, en route from Honolulu to San Francisco, July 24, 1912, 8 p. m.—One hundred and twenty miles from Honolulu. All well. Strong northwest wind and rough sea.

P. M. S. S. Siberia, en route from San Francisco to Honolulu, July 24, 1912—Thirteen hundred and forty miles from San Francisco.

M. N. S. S. Enterprise, en route from San Francisco to Hilo, July 24, 1912, 3 p. m.—Ten hundred and sixty-eight miles from San Francisco.

P. M. S. S. Persia, en route from San Francisco to Honolulu, July 24, 1912, 3 p. m.—Four hundred and twenty-eight miles from Honolulu. Expected to arrive Friday morning eight o'clock. Will sail for Orient nine o'clock Saturday morning.

The Kahuku station of the wireless company was in touch with the oil steamer Maverick last night. Will arrive at daylight Friday morning.

Interisland Movements.

The island steamer Likiepke, with a shipment of lumber is to sail for Kahuku at five o'clock this afternoon. The vessel will return to Honolulu with cattle and sugar.

The steamer Claudine with general cargo and a large list of passengers is on the berth to depart for Hawaii via Maui ports at five o'clock tomorrow afternoon.

Taking fertilizer and lumber besides consignments of general cargo the steamer Wallele is on the berth to sail for Honokaa and Kukuhaele tomorrow morning, the hour being fixed at ten o'clock.

Striking Seamen Charged With Arson. BRUSSELS, July 14.—A crisis in the seamen's strike was reached at Antwerp today, when seamen set fire to the steamer Zeeland as she lay in her dock. Managers of the seamen's syndicate, who it is believed are in a measure responsible, were placed under arrest immediately.

The Persia, from San Francisco, is bringing the next mail from the coast.

City Transfer

(JAS. H. LOVE)

Office—King Street, opp. Union Grill

Phone 1281

OUT 348 DAYS

(Continued from Page 1)

"Two days after leaving the Falkland Islands for Honolulu, we again met with some nasty weather. A succession of fierce gales caused the loss of more sails, besides other damage being done the ship. I again put back to Port Stanley, and six days following my arrival made the third attempt to clear the port for the Hawaiian Islands."

"We met with heavy weather for the greater part of the voyage from the Falklands to the equator. From the line to Honolulu the voyage has been characterized by almost continuous calm. There has been little wind, and we were twenty-five days in covering the distance from the line to Honolulu."

Skipper Josselyn Much Traveled. Captain Josselyn holds the record for being the most traveled navigator to enter this port.

According to his series of interesting logs, maintained with precision and filed on board his ship, Captain Josselyn has completed fifty-eight trips around the Horn. He has completed twenty-five trips around the Cape of Good Hope. He has been five times around the world.

He has been going to sea for over 53 years and during all that time has been identified with but six vessels.

He claims to have served under five captains, and a strange coincidence was that four of them finally went insane. Captain Josselyn is a great believer in the gospel of industry, and he points out that idleness will drive many a good man crazy. The appearance of the bark Nuuanu, despite the terrible encounter at Port Stanley, is a fine indication that men kept at work are not always happy but far more contented. The vessel shows that much care and attention is daily exercised.

The Nuuanu was in every way shipshape, despite the terrible encounter with the elements down in the south seas.

Nuuanu Developed Two Romances. There are two sailor men on board the Nuuanu, who were more than delighted to receive a large accumulation of mail upon arrival this morning. They are said to have completely lost their hearts to a pair of pretty maidens, residents of Port Stanley.

In the far southern city, where a little colony of eight hundred English, Scotch, and Irish colonists and settlers are making their home, two of the sailor lads met and fell in love with two wealthy daughters of one of the largest sheep growers in the Falklands.

That weddings will follow the return of the men with the bark at New York was freely predicted on board this morning.

Captain Josselyn was an interested participant in the ceremonies attendant on the installation of wireless telegraphy in the Falklands. At the request of the Governor the American skipper was invited to attend the gathering. In speaking of the ceremony this morning the Yankee skipper said that the laying of the corner stone in the foundation of the big wireless tower was done on one of the most disagreeable days with a terrific gale blowing from the north and throwing tremendous seas over the cliffs of the rock bound island shores.

Say Cargo Is Not Damaged. It is stated on board that the cargo brought out from New York in the Nuuanu is not damaged, despite the terrible handling the vessel has met with during the almost year passage from the east coast.

A general survey will follow the discharge of this freight at Richard street wharf.

The cargo is consigned to the agency of T. H. Davies & Company.

Big bundles of mail, including letters, papers and packages were sent to the Nuuanu upon her arrival this morning. There was not a member in the crew of twenty or more men that did not draw one to a score of missives from home and friends.

Captain Josselyn was the recipient of an armload of correspondence that had accumulated at the port during his long absence.

The Pacific Mail liner Persia, en route from San Francisco to Honolulu, was 428 miles off port at 8 o'clock last night. The vessel should arrive here tomorrow morning and in that event will be dispatched for the Orient at 9 o'clock Saturday morning.

The long-overdue bark Nuuanu, now in touch with the islands, will be berthed at the new Richards street wharf, according to the present calculations of the local agents.

Star-Bulletin Ads. are Best Business Getters.

TIDES—SUN AND MOON

Date	High Tide	Low Tide	High Tide	Low Tide	High Tide	Low Tide	High Tide	Low Tide
July 22	12.00	1.00	10.15	4.08	7.30	5.31	6.41	0.17
23	12.48	1.8	11.33	4.58	8.39	5.31	6.41	0.58
24	1.30	1.9	—	—	—	—	—	—
25	2.12	2.0	0.48	6.52	9.45	5.32	6.40	2.27
26	2.46	2.0	1.43	7.08	10.16	5.30	6.39	3.17
27	3.28	2.0	2.30	7.59	10.45	5.33	6.39	4.10
28	3.56	2.0	3.15	8.30	11.14	5.35	6.38	5.12

Full moon July 28th at 5:57 p. m.

WEATHER TODAY

Temperature—6 a. m., 74; 8 a. m., 78; 10 a. m., 79; 12 noon, 79. Minimum last night, 74.
Wind—6 a. m., velocity 9, direction East; 8 a. m., velocity 6, direction Northeast; 10 a. m., velocity 8, direction East; 12 noon, velocity 13, direction East. Movement past 24 hours, 197 miles.
Barometer at 8 a. m., 29.98. Relative humidity, 8 a. m., 56. Absolute humidity, 8 a. m., 5.755. Dew-point at 8 a. m., 61. Rainfall, .01.

VESSELS TO AND FROM THE ISLANDS

(Special Cable to Merchants' Exchange)

Thursday, July 25.
PUGET SOUND—Arrived, July 25, schr. Alice Cooke, hence July 1.
PORT GAMBLE—Arrived, July 25, schr. Gamble, hence June 29.

AEROGRAM.
S. S. PERSIA—Will arrive from San Francisco Friday at 8 a. m. and will probably sail for Yokohama at 9 a. m. Saturday.

DR. ELIOT

(Continued from page one.)

at the residence of General Hartwell. This evening he will deliver an address at the Hawaiian Opera House on "The Carnegie Endowment for International Peace." The address will be free to the public, and it is expected that a crowded house will greet the Harvard president.

Tomorrow the president's party will make a trip over the Paia and around the island, stopping at Haleiwa for luncheon, and in the course of the trip visiting several sugar mills and pineapple plantations. On Saturday morning a trip to the Pearl Harbor drydock will be made, and the party will sail for Hilo in the afternoon for a trip to the volcano. They will return Tuesday morning from Hilo and will sail on the China for the mainland.

For three hours yesterday morning Dr. Eliot inspected the various schools and colleges and spoke very highly of the grounds, equipment and work being done. The schools visited were Oahu College, Mills School, Kawaiahaeo Seminary, College of Hawaii and the Normal School.

PASSENGERS BOOKED

Per str. Mauna Kea, for Hilo, via way ports, July 27.—F. C. Barner, J. L. Stevenson, Rev. A. Drahms, Mrs. J. A. Akana, Helen Apo, Rev. S. L. Desha and daughter, Mrs. Geo. Desha, Mrs. Emily Conrad, Mrs. S. W. Spencer and two infants, Mr. and Mrs. Hindes, Mas. Hindes, Rosalie Vierra, J. A. R. Vierra, Earl Ellworth, Mr. and Mrs. R. E. Smith and daughter Miss White, Mrs. C. D. White, Mrs. A. R. Cunha, Lee Wanger, Miss J. Russell, Miss A. Silva, Miss E. Lemke, Mrs. A. Lemke, Miss A. Lux, Ng On Mr. and Mrs. C. K. Al, Miss O. Kapahua, Admiral Stanford, R. I. Lillie, Miss Hymers, Miss Frey, Mrs. M. Carr, Mrs. A. E. Todd.

Per str. Kilauea, for Kona and Kau ports, July 30.—Mrs. O. A. Moran, Miss Aileen Jarrett, Geo. J. O'Neill, Hattie Ah Yau, Miss Cecilia Chuck Hoy, Chuck Hoy.

Captain Hyde, master of the Matson Navigation tug Intrepid has selected the Ewa side of Alakea wharf as a temporary berth for the vessel pending the construction of the new Matson wharf.

CAPT. DOLLAR TO HELP CHINA ON GREAT LOAN

NEW YORK, July 12.—Captain Robert S. Dollar of San Francisco, head of the Dollar steamship line, left New York today on the California for Glasgow on a mission of far-reaching importance both to the United States and the new republic of China. He is to enter into negotiations for the Chinese Government for a loan with which to finance the republic through the early stages of its existence.

The significance of his trip is that the loan of \$300,000,000 agreed to be made to China, by the six powers—the United States, Great Britain, France, Germany, Russia and Japan—finally has been rejected at Peking, and new arrangements must be made.

Captain Dollar discreetly declined to admit that he was commissioned by the Peking Government to conduct the negotiations, but he acknowledged that he was going to Europe "as a friend of China."

"I am sorry that I cannot talk freely about the subject at present," he said, "but anything I might say now, further than that China will get all the money needed to tide over her present difficulties, might be misconstrued and defeat the object of my visit."

COL. PARKER AS LUAU HOST

SAN FRANCISCO.—Colonel Sam Parker, the picturesque Honolulu, has added another novel chapter in the history of trans-Pacific passenger travel.

On the outer voyage of the liner Mongolia the Colonel gave a "luau," or native feast, aboard the steamer, many of the passengers being his guests at the unique event.

Among those who experienced the novelty of eating "poi" out of gourds with their dairy fingers were Miss Martha Peemoeller of Los Angeles, Miss Elizabeth Reyes of Oakland and Mrs. O. K. Bowden of Hollywood.

The California belles, who were the shining lights in the entertainments held on the Korea, were not in the background on the voyage of the Mongolia. Their dancing and singing added to the gaiety of the festivities marking Colonel Parker's native dinner.

Laughingly the young ladies told how the Colonel's guests tested themselves on deck about the mysterious festive board and how, with many a concealed grimace, they partook of the strange repast.

"It certainly was an unusual experience," said one. "Imagine us squatting on the deck eating with our fingers. Still, we thought it fine, and Colonel Parker proved himself the ideal host."

In addition to dances and concerts the entertainment on the Korea included a Chinese wedding ceremony and a tableau, the program of which follows:

KOREA THEATER.

BOAT DECK, P. M. S. S. KOREA.

"MRS. JARLEY'S WAXWORKS."

HUMANS:

Mrs. Jarley.....Miss M. Porter
George (the showman).....Mr. Cone

FIGURES:

Madame Squallini.....Mrs. Lane
Dude and Belle.....

.....Messrs. Harper and Fellows

The Suffragette.....Miss F. Porter

.....Miss Abbott

.....Dr. von Osterroth

.....Miss Jones

The Late Mr. Jarley.....Dr. Lane

Curtain rises at 9. Carriages may be ordered for 10.

Eggs to be had from steward.

When members of the Harbor Commission are compelled to discontinue their inspection of a portion of the local waterfront because of swirling clouds of dust, it is believed about time that a little oil might well be sprinkled upon the always agitated real estate in the shipping district.

ODDS AND ENDS AT THE PORT

Eight hundred tons coal will be supplied the Pacific Mail liner Persia during the stay of that vessel at this port.

Proceeding to San Francisco, the Pacific Mail liner Siberia was 1340 miles from the coast at 8 o'clock last night.

The American oil-tanker Maverick, bringing oil for the local branch of the Standard Oil Company, is due to reach port tomorrow morning.

The American-Hawaiian freighter Virginian, with general cargo for the islands, is reported to have sailed from San Francisco for Seattle.

Twenty-two days were consumed in the passage of the Mary E. Foster from Honolulu to Puget Sound ports, the vessel arriving there yesterday.

With the belated arrival of the bark Nuuanu from New York by way of the Falkland Islands, the local overdue list has gone into temporary suspension.

Bringing passengers and a large variety of products from the Kona and Kau coasts of Hawaii, the steamer Kilauea is due to arrive at Honolulu tomorrow morning.

Structural iron and steel to be used in the series of pontoons for the new inter-island floating drydock will arrive here by the way of the American-Hawaiian line.

A general cargo and a few cabin passengers will be carried to Kauai ports in the steamer W. G. Hall, scheduled to sail for the Garden Island at 5 o'clock this evening.

BRECKONS HOT AFTER BIGAMISTS

Bigamists—and all those contemplating bigamy—beware!

You may escape easily under the lax territorial laws, but Breckons may get you—and then, look out!

That official doesn't like the Territorial bigamy statutes. He dislikes them so much he is urging that they be repealed or amended by the next legislature. But meantime he is after bigamists under the federal laws, and just as an example, he obtained a nice twelve-month term in prison for one such offender this morning.

William Joseph Hukula, indicted by the federal grand jury for an offense of this character, entered a plea of guilty and this morning drew the sentence, which also includes a fine of \$100 and costs.

Sungaro and Okata, who pleaded guilty to two indictments charging illicit manufacture and possession of illicitly made liquor, were assessed a penalty of \$500 each on one count \$100 each on the other count, imprisonment for eighteen months and the costs of the case.

Henry Uhl, who pleaded guilty to selling liquor without paying the special federal tax, was given six months and a \$500 fine, with costs.

Gordon Roberts, indicted on a charge of engaging in "white slave" traffic, and James F. Fisher, indicted on a charge of aiding in opium smuggling, both pleaded not guilty. Their trials are continued to the October term of federal court.

ONLY POVERTY IN PETTICOAT POKER

Mary Francis Bell So Swears in Answer to Husband's Suit

SAN FRANCISCO, Cal., July 9.—Mary Francis Bell took oath today that there is nothing but poverty in petticoat poker. In her answer to her husband's suit for divorce she affirms that she is destitute. She asks \$300 a month alimony from Chester A. Bell, who, she says, owns a ranch near Los Angeles, has money on deposit here and receives \$10,000 a year from theatrical rights. The fact that Mrs. Bell ran a polite poker game for women in a fashionable street became public when her husband filed his suit. She does not deny it.

The War Department is planning a scenic electric line to run through the Presidio at San Francisco.

NEW CROWN LINE AND HONOLULU

The port of Honolulu may expect more or less regular visits from a line of big cargo carriers operated between Vancouver, B. C., and the Colonies, flying the house flag of the well known Crown Line.

That still another steamship line is to connect northern Pacific ports with Australia and the Antipodes, is the announcement of J. J. Moore & Company, of San Francisco, who state that they intend to inaugurate during the next few months a service of eight large and fully equipped freight and passenger steamers, to be known as the Crown Line. As the company intends to fully develop this trade, Vancouver will, no doubt, be listed as a port of call.

It is stated that these steamers, which are oil burners, will be capable of maintaining a speed of from nine to ten knots an hour throughout the entire voyage. In addition being replete with facilities for the prompt handling of all classes and varieties of cargo, on both inward and outward voyages, only oil fuel will be used, thus providing more cargo space than could be obtainable with coal bunkers.

The fact that the vessels are of large tonnage would indicate that the management has the port of Honolulu in mind as a possible field for new business.

The vessels to be operated by this line will be of from 6,500 to 7,000 tons register, and according to designs, will have a cargo capacity of 6,000 tons of merchandise, although the main idea is the lumber trade, for which they will be eminently suited.

These steamers will go direct from the Pacific Coast to Sydney and Melbourne, these ports being the first on to date, and the first freighter will be dispatched in October next, the others following at regular intervals.

The new steamers for this line are on the stocks, and others are being prepared for the opening of the new service.

Regarding the recent installation of oil as fuel, the steamers were saving about \$350 per trip. He proposes leaving shortly for a trip abroad in connection with the crown line, and hopes to return to Sydney before the first vessel of that line reaches port.

Slash in Tea Rates Continues.

According to advices brought by the steamer Siberia, the Japanese steamship lines and the other companies in the trans-Pacific shipping conference cannot reach an agreement regarding the freight rates on tea, and the rate war will continue. The Japanese lines have cut the rate on

tea from \$6.60 to \$5.50. Foreign shippers in Japan are supporting the conference lines.

RAYMOND TEAL CO. PROMISES BIG SHOW

Some pretentious organizations are promised for early showing at the Liberty Theater, according to statements of the management. A dramatic stock company, the Paul Rainey "African jungle" pictures, three weeks of an "all star" vaudeville bill early in November, which will be headed by one of the leading vaudeville stars; two musical comedy companies, and prospects of even some genuine grand opera.

Raymond Teal's musical comedy company will begin the series of promised good things, and if experienced artists and reputable productions are any criterion as to what may be expected, Teal's engagement will doubtless be worth while, as his is the first musical organization to play this city for some time with a roster that includes any artist of established reputation.

Prominent among the members of Teal's organization is Lillian Sutherland, who will be remembered in this city as a soubrette with the famous Kolb & Dill company that played here some years ago, while Raymond Teal, Fritz Fields, Blille De Long, Charles Le Roy are other principals that will doubtless be known to many local theater goers.

The company will open at the Liberty Monday night, following the popular policy of two performances nightly, with the customary "two-a-night" prices of ten, twenty and thirty cents.

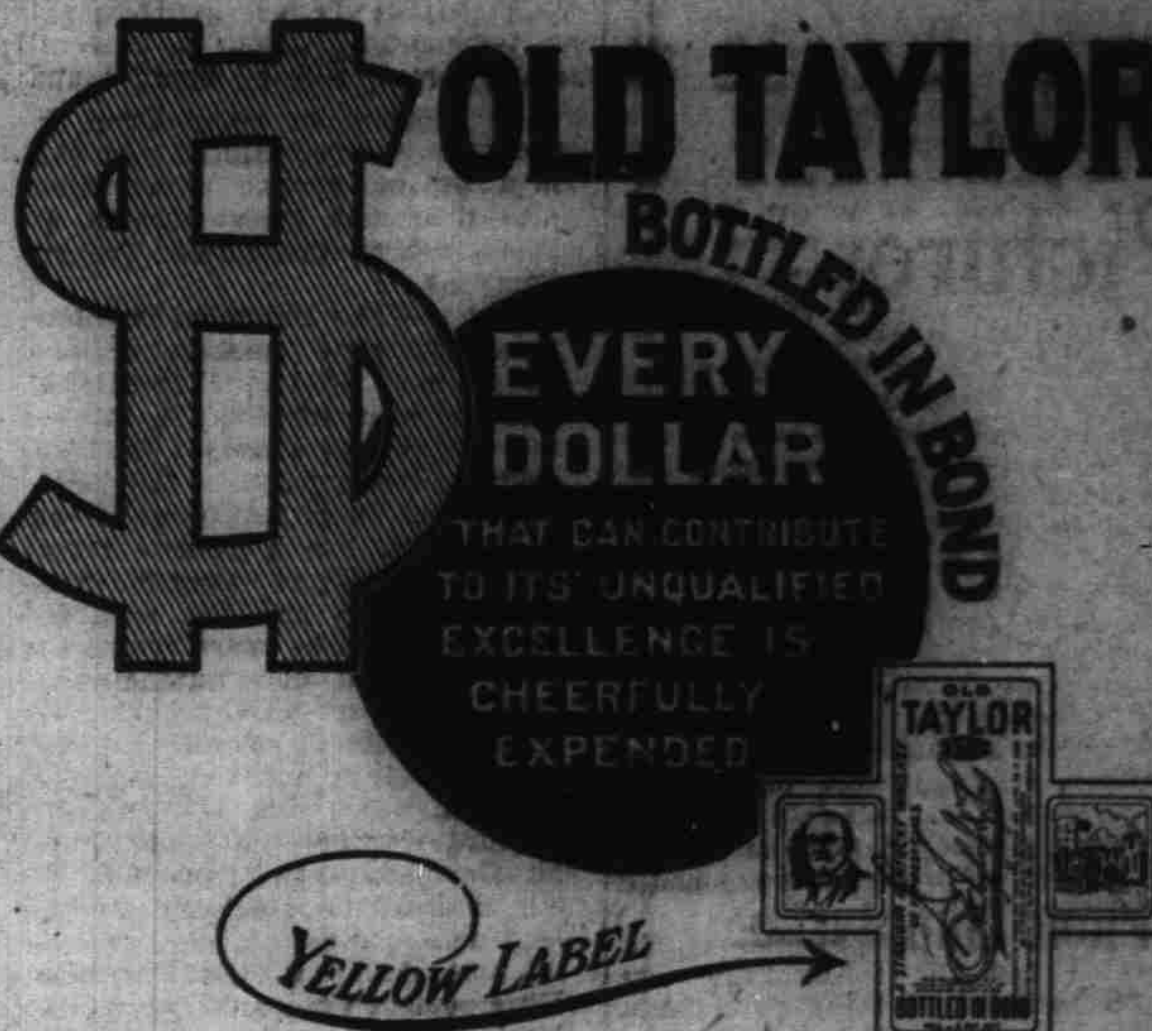
WOOD DECLARES

(Continued from Page 1)

by traveling lecturers who are supplied with slides. Perhaps most notable among these lecturers is Lloyd Childs, who is traveling in the East presenting a vaudeville show, the principal actors being Hawaiians. During this performance a ten minute lecture is given, slides also being used.

Hawaii is being advertised extensively by railroad and excursion promoters according to Mr. Wood, almost all the railroads devoting some space in their folders to get readers to write to the Hawaii Promotion Committee for information concerning the islands. And at least six organizers of excursions are working in Los Angeles alone to encourage travelers to visit Hawaii.

The Matson Navigation steamer Honolulu, en route to San Francisco, which left here yesterday morning, is meeting with rough weather according to a late wireless message received from that vessel.



OLD TAYLOR

EVERY DOLLAR

BOTTLED IN BOND

THAT CAN CONTRIBUTE TO ITS UNQUALIFIED EXCELLENCE IS CHEERFULLY EXPENDED

YELLOW LABEL

Family Trade

Phone 1704 — Phone 1704

W. C. Peacock & Co., Ltd.

Wine and Liquor Merchants,
Merchant Street, near Fort Street

If you didn't read in yesterday's Honolulu Star-Bulletin:

Taft Thanks Gov. Frear For Hawaii,
Conness Bill Goes To President,
Harvard Club Entertains Dr. Eliot,
Nitrate Ship Loses Men At Sea,
Territory's Big Cash Balance,
Harbor Oil Pipe Line Trouble,
Admiral Stanford at Pearl Harbor,
Supervisors Deny Graft Charges,
Heated Debate on Steam Roller Purchase,

You Are
Fourteen Hours
Behind
The Times

A Wedding Present Worth Giving



Kitchen Cabinet, Completely Outfitted

SEE OUR WINDOW FOR A BIG DISPLAY OF KITCHEN FURNITURE

Coyne Furniture Co. Limited



If there's one thing that does not admit of any guessing it's fitting SPECTACLES and EYEGLASSES. Our Spectacle Fitting is done on the basis of knowing how from start to finish. It's a success!

A. N. Sanford,

OPTICIAN
Boston Building - Fort Street
Over May & Co.

Duke's Pictures

To help the "Duke" Fund, we are selling hand-painted Postals of "Duke" in some of his swimming and surf-riding stunts.

10c Each

Entire proceeds to be turned over to the fund.

Honolulu Photo Supply Co.,
"Everything Photographic"

P. H. BURNETTE

Commissioner of Deeds for California and New York; NOTARY PUBLIC; Grants Marriage Licenses. Draws Mortgages, Deeds, Bills of Sale, Leases, Wills, etc. Attorney for the District Courts. 70 MERCHANT ST. HONOLULU, Phone 1246.

THE WONDERFUL SHOE POLISH

SHINOLA

Makes old shoes look new; keeps the leather soft and pliable. 25 Cents for Shinola. 10 Cents for Brush and Dauber. MANUFACTURERS' SHOE CO.

ALL PERSONS holding receipts for money paid to ALBERT HALFF on account of CLOTHING ORDERED, should present them at once for correction. Albert Halff is no longer in our employ.

THE MODEL, 1139 Fort St.

Photo-Engraving of highest grade can be secured from the Star-Bulletin people buy the Star-Bulletin.

Absalom Bars Shingle's Dog From Canine Who's Who

Honolulu's Houn' Dawg Is Not Favorably Impressed with New Arrival

Giving vent to sundry ejaculations of pleasure couched in both high and low German, a liver-colored hunting dog imported from Germany by Bob Shingle, bounded off the bark of H. Hackfeld yesterday. He did not bound far, for he had no cause. His joy was short-lived. How could it be other wise when he found himself facing Absalom, the houn' dawg of Honolulu, posing as Niobe, with tears trickling from his big brown eyes through the furrows on his wrinkled cheeks.

Yes, Absalom was there! The melancholy canine who has more than once demonstrated that he is possessed of almost human intelligence, was the only one to meet the new arrival. Representatives of the Hawaii Promotional committee were not. Absalom only had the welfare of the city at heart. No strange dog can bark with in the confines of Honolulu without Absalom taking cognizance of the noise.

As the Boswell of Absalom, the writer can but state that the intrepid

houn' dawg of Honolulu was not favorably impressed by the visitor. One reason for this is the fact that the new arrival makes little rock of food supplies. He was gambling with a three-link sausage when he stepped to the dock, but instead of devouring the juicy meal dropped it when he sighted Absalom. The latter after greeting him with a soft Southern accent derived from South Carolina, his home—ate the sausage. "Willful waste makes woeful want" is his motto.

It was the garlic that caused the breach between the two dogs. Absalom once worked as a sleuth on a case in which a bag of garlic imported by an immigrant from Spain figured. His delicate sense of smell was offended at the time. Since then he has had no use for the odoriferous vegetable. So when he learned that the German dog had been living on pea soup flavored with garlic during his voyage, Absalom scratched him off the canine "Who's Who."

Shingle's dog bears the name of "Lord" and cost \$150, but that doesn't make an difference with Absalom. He is an unreconstructed Southerner and a Democrat.

is, just before it decays, but not when devoured when only half ripe as is often the case in the United States, which causes many persons to regard bananas as being difficult to digest.

It seems only necessary to make the value of banana food products known in order to create a large market for them. Already they are to a considerable extent popular in Germany and Great Britain, which have been taking the bulk of the exports of much products from Jamaica. When bananas are selling at a low price, as is usually the case in this colony during the fall and winter, it is quite profitable to use them for manufacturing purposes. As the world's demand for these products increases it is to be expected that bananas will be grown extensively in districts remote from shipping ports or railroad facilities to make their exportation practicable.

In Jamaica several factories have already been built in such districts. In banana producing countries far removed from large markets, like the Society and the Samoan Islands and other island groups in the Pacific Ocean, this fruit can be grown at small expense for manufacturing food products. Especially adapted to such an undertaking is Tahiti, the principal island of the Society group, which has steamship communication with San Francisco and New Zealand and Australia, all too distant for exporting the fruit itself to advantage except in vessels built especially for that purpose.

The Hawaiian Islands and the Philippines also seem to offer inviting fields for the profitable manufacture and exportation of banana food products. This consulate has received an inquiry from Honolulu with regard to this method of using bananas.

PAVING ROW

(Continued from Page 1)

time of what bitulthic paving would cost, along with an estimate on wood block paving. Then the supervisors asked Mr. Gilman if he would do the work for the engineer's figure, and he jumped at the offer and was at once awarded the contract.

"This whole matter would be settled were it not for the unfounded charges that are being made," said Secretary A. L. Castle of the Rapid Transit Company this morning. "The supervisors are not expediting matters."

"One thing is certain: under no conditions will the Rapid Transit company agree to use a paving controlled by a patent. The company will never do this, and there is no use in trying to force it to do so."

Gilman on Record.

"I have never at any time approached members of the Board of Supervisors with a view to influencing them in regard to the selection of a paving material for city streets."

This was the direct and forcible statement made by Joseph Gilman, president and manager of the Honolulu Bitulthic Paving and Concrete Company, today.

"The members of the board in selecting bitulthic pavement for the downtown streets have been guided solely on the merits of the material. Bitulthic as a street paving can stand for itself. It requires no undue persuasion upon my part to recommend it to the municipality."

"You can say it straight from me, that I have never at any time approached a single member of the board regarding the choice of bitulthic as a pavement," concluded Mr. Gilman.

LETTERS DECLARE LOW WAS INCORRECT IN HIS ATTACKS

(Continued from Page 1)

lest shareholders in the Rapid Transit are also identified."

If Supervisor Low had cared to learn the facts, he would have found out that only two stockholders in the Rapid Transit Company—one who owns five shares and the other whose holding is merely nominal—each own one share in the Hawaiian Development Company for purposes of qualification; and that no shareholder in the Hawaiian Development Company, except the gentleman who owns five shares in the Rapid Transit Company, is financially

KENTUCKY BOARD OF HEALTH GRAPPLES WITH HOOKWORM

Clay Eaters Acquired Morbid Habit Owing to This Disease

LEXINGTON, Ky., July 7.—It has been announced that the fifteenth international congress on hygiene and demography, which meets in Washington in September, will take up what is just now the newest and most dangerous disease epidemic ever known in Kentucky. This is the hookworm, of which it is estimated there are 10,000 cases in the Kentucky rural districts. This is the most complex problem before the Kentucky state board of health at the present time.

Startling facts have recently been learned by the board, which is investigating the problems connected with pellagra. Investigations have shown the presence of the disease in 20 counties. In 28 per cent of the specimens collected at random by one physician the hookworm has been detected. This, according to the state board of health, indicates as great an infection in Kentucky as has been found in Virginia and other southern states.

It has only recently been realized that the hookworm existed to any very great extent in the state. In the fall of 1910 the surgeon general of the United States army announced that a large proportion of the recruits from Kentucky were infected. This created such interest throughout this state that an appropriation was secured from the legislature and the investigation, which has never ceased since then, has demonstrated that in 20 counties in different parts of the state—in fact, in every county where an investigation has been made—the disease exists.

Children Greatest Sufferers.

Children and young adults are the greatest sufferers, but persons of any age may become infected. Cases have been found in very young children and in very old men in Kentucky. While it is true that it is chiefly among people of poor financial conditions, living in insanitary surroundings, that the disease is found, because the opportunity for infection is so much greater, cases are found among those who are more fortunate financially and the better educated classes.

The state board of health declares that the general disregard for sanitation in the country and small towns, and the outskirts of the larger ones, is responsible for nearly all cases of hookworm disease. It finds, however,

that more than 30 per cent of the students in certain southern colleges are infected, and in some of the common schools 95 per cent. Several schools have shown infection of 10 to 40 per cent.

Hookworm disease is caused by a small, round worm, about one-half inch long and about as thick as an ordinary hairpin. The American species varies in color from a dead white to a dirty gray, sometimes red from ingested blood.

The hookworm patient is a pitiful object. The first symptoms show intense anemia. As the disease takes further hold the sufferer swells in all parts of the body, the skin becomes pasty, the face loses its look of intelligence; in children growth is stunted and the victim looks prematurely aged.

Depraved Appetite Caused. For years in different parts of Kentucky there have been people described as "clay eaters." These people were of loathsome appearance and were pitted even by their neighbors, who did not dream that their peculiar appearance and their appetite for the clay that is found in the mountain sections of the state were caused by a disease. The board of health, however, has found that these people were all victims of the hookworm. It is a peculiarity of the hookworm sufferers that they are inveterate devourers of all sour substances—lemons, pickles, salt, pepper, sour milk, chalk, clay, ashes, tobacco, mortar and plaster, sand, gravel, sticks, decayed wood, paper and cloth being some of the delicacies appealing to the depraved appetite.

Extreme lassitude is a never failing first symptom; then the swelling begins and continues, together with the lassitude, until the victim dies.

Unlike pellagra, the state board of health declares that hook worm can be cured where treatment is given early enough. To this end a statewide campaign has been started and will be pushed until every part of the state has been covered. Where the patient is financially unable to pay for treatment it is expected that the state will settle the bills.

As is the case with pellagra, the hookworm is most prevalent in the more sparsely settled mountain communities. In every case examined it has been found that the home of the victim has been inadequately fitted with sanitary appliances, and the board of health officially states that the real preventive of hookworm lies in cleanliness and proper sanitation.

ROAD FRONTAGE TAX MEASURE

Ed Towse states that the subcommittee on the subject of a road frontage tax law, which it is proposed to have enacted by the next legislature, will be ready to make at least a preliminary report to the Central Improvement committee within two weeks. The subcommittee has been gathering data from different states and is promised two special articles on the subject, which are printed in the current number of the Good Roads magazine.

U. S. MAY USE

(Continued from Page 1)

deal of comment in army circles, the general opinion being that unless something is done to relieve present conditions in the transport service, this move will of necessity be made.

It was learned today that the matter of securing a more equitable adjustment between Manila and Honolulu will be taken up with Washington, and that at the same time the proposition of a separate and distinct run will be investigated. But it costs money, big money, to run transports, and the government could better afford to pay the passage of its employees on liners than to maintain a separate boat, unless the freight business warrants the outlay.

From the Coast to Honolulu Uncle Sam does enough freight business of his own to fill one boat a month, but on the return journey the transport would have to go back in ballast, which would be out of the question from an operative standpoint. Hence the suggestion that for the Honolulu-San Francisco run the quartermaster's department enter into competition with the commercial lines, and carry anybody's goods for the regular tariff.

It is believed that this departure would require a special act of Congress, and of course, a storm of protest could be expected from the shipping interests. But if the government interests demand a special transport to Honolulu, it's quite likely that, protest or no protest, the freight proposition would be put through.

At the present time the transports accept commercial cargo for Guam, but, then, there is no other means of communication between that island and the outside world, with the exception of desultory Japanese schooners.

The cost of operating the army transport on the Pacific is \$625 per day, so it is apparent that from a passenger standpoint alone the venture would not pay the government. Considered from the standpoint of army supplies and forage to Honolulu, and a full general cargo back to the Coast, however, the plan becomes a business proposition which may go through in the near future.

WEAR A BENJAMIN

To that week-end vacation party. If you want to be well dressed at the shore, mountains, or country wear "BENJAMIN" clothes.

Well groomed men and young men wear only "BENJAMIN" Outing Clothes. They are just the right cut, just the proper air. The style is right.

Call today and make your selection.



THE CLARION

Cor. Fort and Hotel Sts.

Bargain in Matting

\$5 PER ROLL OF 40 YARDS

Japanese Bazaar Fort St

Royal Roast Beef

THE BEEF THAT COMES TO US FROM PARKER RANCH, IS THE KIND THAT PRODUCES BROWN AND BONE. IF YOUR DIET HAS NOT BEEN RIGHT AND YOU DO NOT FEEL FIT, ORDER A STEAK FROM US.

Metropolitan Meat Market

HEILBRON & LOUIS TELEPHONE 3445

HIGH CLASS

Upholstery and Drapery Work
J. HOPP & CO., Ltd.

FREIGHT CAR HITS AUTO BUT DOCTORS ESCAPE

Caught by a fast-running freight car that jammed their automobile into a switch target and nearly demolished the machine, Dr. J. S. B. Pratt, president of the board of health, and Dr. George W. McCoy, of the U. S. quarantine service, narrowly escaped serious injury at Kahului last Tuesday morning. The presence of the switch target, which caught the motor car and prevented its overturning, gave them an opportunity to leap and save themselves.

Neither was injured beyond a few scratches, received in their hasty departure from the auto, and they were able to resume the interrupted journey to Hamakua, whither they were bound on the last leg of their tour of sanitary inspection on the island of Maui. In his letter to Secretary K. B. Porter, which came by mail on the steamer Claudine yesterday, Dr. Pratt says the inspection probably will be completed at Hamakua today and that they will return tomorrow morning.

An Excellent Remedy for Diarrhoea.

An ordinary case of diarrhoea can, as a rule, be cured by a single dose of Chamberlain's Colic, Cholera and Diarrhoea Remedy. This remedy has no superior for bowel complaints. For sale at all dealers. Bemon, Smith & Co., Ltd., agents for Hawaii.

Work has started on a handsome residence to be erected by Judge Alfred W. Carter at the corner of Judd and Liliha streets.

ARRANGEMENTS COMPLETED FOR UNION MEETINGS

Final arrangements for the first of the Union Sunday Evening meetings to be held at the Bijou theater during the month of August under the auspices of the Inter-church Federation were completed at a committee meeting held at the Y. M. C. A. this noon.

The Rev. Mr. Frank S. Goodspeed of the First Presbyterian church of Oakland will be the speaker at each of the four union meetings to be held every Sunday evening during the coming month although the pastor of each of the churches will officiate at one service.

Bishop Restarick will conduct the service and introduce the speaker at the first service which will be held one week from Sunday. Arrangements are being made to procure special music for the services.

Sitting as referee in bankruptcy Federal Judge Dole this afternoon heard the case of Elsa Carolyn Andrews, whose voluntary petition was filed some time ago. She estimates her liabilities at \$5032.67, with only \$100 in assets, on which she claims exemption.

The tender of \$774, made by Freitas & Fernandez, was the lowest bid offered for the construction of the proposed new tax office at Kaneohe. The building is to be of frame. The other tenders were \$833 by Otto One and \$985 by Henry Defries.

For news and the truth about it, all people buy the Star-Bulletin.

Honolulu Star-Bulletin

In which is combined the HAWAIIAN STAR, established 1893, and the EVENING BULLETIN, established 1882.

MEMBER ASSOCIATED PRESS.

RILEY H. ALLEN, Editor

WALLACE R. FARRINGTON, Business Manager

MAIN OFFICES 1059 ALAKEA STREET

Telephone 2185 2206

BRANCH OFFICE 1059 ALAKEA STREET

Telephone 2265

SUBSCRIPTION RATES:

DAILY STAR-BULLETIN

Per Month, anywhere in United States \$ 75

Per Quarter, anywhere in United States 2.00

Per Year, anywhere in United States 8.00

Per Year, postpaid, foreign 12.00

SEMI-WEEKLY STAR-BULLETIN

Per Six Months \$ 1.00

Per Year, anywhere in United States 2.00

Per Year, anywhere in Canada 3.00

Per Year, postpaid, foreign 4.00

THURSDAY JULY 25, 1912

I should say sincerity—a great, deep, genuine

sincerity—is the first characteristic of all men

in any way heroic.—Carlyle.

FISHER'S VISIT

Secretary Fisher's visit to Hawaii seems to

have gone beyond the stage of reasonable doubt

to judge by the cablegram to Delegate Kuhio

that arrived today, announcing that the cabinet

member will start from Washington on August

10.

In some quarters, however, there has been a

feeling that Mr. Fisher is not coming at all.

The feeling became more marked after the Ha-

waii Republican delegation returned from Chi-

cago and the report was well confirmed that

Charles D. Hilles, the president's secretary, had

intimated there would be a recess appointment

for the governor immediately upon the adjourn-

ment of Congress.

Wise politicians on both sides can figure why

the secretary should come and why he should

not come, from the standpoint of his visit's ef-

fect on national politics. In view of the latest

information, it now seems wiser to figure that

Secretary Fisher is coming to settle the "con-

troversy" on its merits and without regard to

what this or that political personage in Wash-

ington may gain or lose by it.

PAYING FACTS

Simmered down to the essential points, the

paving controversy seems to revolve on whether

or not the community wishes to force the Rapid

Transit company to accept bituminous for paving

between double tracks. Other issues are brought

up, but the present fight hinges on this.

The engineer and the supervisors take the

position that if lava blocks are laid between the

tracks, just that much of the street will be un-

used by traffic, for the teams will be turned on

the smoother bituminous. To secure a larger sur-

face of this bituminous, the supervisors would

have the transit company lay this form of pay-

ing between its tracks.

The Rapid Transit company declares itself

unchangeably opposed to accepting a paving

controlled by patent. To agree to this, says the

company, would place it at the mercy of a mo-

nopoly.

The essential points in this important mat-

ter should not be forgotten no matter how high

runs the tide of bitterness.

HOME RULE FOR ALASKA

Home rule for Alaska, even in an incomplete

form as provided in the bill that passed the

senate yesterday, is a great step forward for the

big Northern territory.

Alaska has suffered immeasurably through

the exploitation of outside interests and out-

side influences. Alaska has suffered not only

from exploitation, but from powerful interests

which held back domestic development. The

Controller Bay scandal, while proved to be

mostly wind and vivid political imagination,

could be duplicated in three or four places else-

where in the North. Unable to enact local leg-

islation, the territory has seen its growth ar-

rested and its industrial blossoming blighted

by both private and public influences. Under

Secretary of the Interior Richard A. Ballinger

comparatively nothing was done to allow the

Alaskans to develop their rich timber and coal

resources, and the cry of the northerners for

years has been that they may work out their

own salvation.

The one-house legislature proposed under the

bill that has now passed both branches of Con-

gress will not, it is true, give authority over the

disposal of the territory's natural resources, and

its railroad development will still be under

Washington control, but for the first time the

people of Alaska will be able to find adequate expression for their hopes and aims and ideals. The one-house legislature is the opening wedge. How the people of the great principality saved to the United States by the far-seeing Seward will use their trust is a thing that Americans will watch with sympathy and interest.

THE POWERS ON GUARD

Two European powers are now challenging Great Britain's claim that "Britannia rules the waves" and the naval experts of the two challenging nations are busy disproving England's claim to supremacy. This, taken in conjunction with a marked movement in the lawmaking bodies of both nations, France and Germany, to enlarge their navies, has led to a triangle in international politics that is absorbing much attention.

In Germany the Naval league, we are informed by the German press, is growing formidable in numbers and in power and is beginning to assert its right to dictate the naval policy of the Vaterland. It hopes ultimately, according to report, to have much to say in the naming of the minister of marine, and already it is clamoring for a larger and larger battleship appropriation.

The strength of the league has rendered it so confident that one of its leaders, Admiral von Koester, at a recent banquet declared that Germany's fleet should dominate the North Sea so emphatically that all the world would recognize it.

Meanwhile France is beginning to oust Great Britain as the naval power of the Mediterranean, if the French newspapers are to be believed. One of the government organs, the Paris Matin, announced recently that France intends to assert superiority from Gibraltar to Assouan, and it is evident that the tri-color is intended to wave over every spot along the Mediterranean where there is the least excuse for it.

France's policy is to put in the Mediterranean a naval force stronger than the combined forces of the next two strongest powers. Such a program may well be looked upon by Great Britain with some misgiving.

In view of this European policy of doubling and tripling naval strength, the struggle that Congress is going through now in an effort to reach an agreement on one or two battleships a year may well seem futile. Talk of disarmament in the face of such portentous preparations is puerile.

The local Progressives' declaration of faith deprecates a campaign of personalities. Right on schedule time. This is just the time of year when all the parties deprecate campaigns of personalities, but usually two months later there is a shortage in the supply of good old Anglo-Saxon terms such as "fool," "knave," "thief" and "liar."

The sundry civil bill passed the senate yesterday without carrying the provision for disposing of the Oahu military reservation water rights and this important matter is left unsettled until the next session of Congress. Hawaii has been lucky to get any legislation at all in "election year."

Says the Lawrence (Mass.) American: The Hawaiians voted first one way and then the other in the Chicago convention and went both ways without a break in their ranks. It looked more like business with the islanders than sentiment.

The Order of Moose began its annual convention at Des Moines yesterday. This is not the organization which has T. R. as its Supreme Ruler, Imperial and Ineffable Poo-Bah and Grand Exalted Hump-te-Dump.

The first step toward efficient government is to get every stockholder in the municipality to take a personal interest in the election of officers and directors of his company.

Attorneys for the Darrow defense claim now that the illness of one of the jurors was feigned. As a matter of fact, the entire country is sick of the case.

Dago Red may not be so quick in its effects as Paris Green, but it's as deadly in the long run, and police experience in Honolulu lately proves it.

Where, oh, where is Richmond Pearson Hobson in this hour of danger when the House refuses to build more battleships?

Is the steam-roller going to be an issue in Honolulu politics, too?

These be warm days for all this rumpus over paving.

PERSONALITIES

E. A. CAMPBELL, assistant book-keeper for the Onomea Sugar Company, arrived this morning by the Claudine. Mr. Campbell came down on a combined business and pleasure trip and will return by the Mauna Kea on Saturday.

LYNCH EXPLAINS HIS PROPOSITION ON STEAM-ROLLER

James P. Lynch, manager of the Lynch Company, Inc., was asked this afternoon for a statement of how that company came to be awarded the contract for a steam roller, which was cancelled by a majority vote of the Board of Supervisors, the other night, on second reading of the resolution appropriating the money. He made the following response:

"The first intimation I had that there was to be a possibility of the purchase of a steam roller for the county was made on July 22 by Mr. Caldwell, the road overseer. I have been in correspondence with the Buffalo Pitts Company about four months, this machine having been recommended to me by Mr. Patrick and Mr. Bishop, the belt road engineers on the island of Hawaii; as, to their idea, the best piece of road machinery on the market, the same being used exclusively on the New York highways and generally throughout the East in up-to-date work."

"I communicated with the Buffalo Pitts people by cable and received an answer that they could make immediate delivery upon receipt of order for a 10-ton tandem steam roller from Portland, Oregon. This placed the Lynch Company in a position to make a fifteen-day delivery."

"Being asked if anyone connected with the city and county government had any business connection with the Lynch Company, Mr. Lynch replied: 'Absolutely no connection whatever.'"

He added that the statement of Supervisor McClellan that there was something wrong about the transaction did him irreparable injury, and if McClellan should make any definite statement tending to discredit the Lynch Company in the matter he would hold him responsible.

SMART-PARKER WEDDING TONIGHT

One of the most notable weddings of the year in Hawaii will be that of Miss Thelma Parker, of Waimea, Hawaii and Henry Galliard Smart, formerly of Boynton, Virginia, which will be celebrated at 7:30 o'clock tonight at Parker Ranch, Hawaii.

The marriage will be notable not only from the number of guests and their prominence, but for the picturesque features which enhance the romance of the marriage of a son of old Virginia to a daughter of Hawaii and one of Hawaii's most conspicuous heiresses. The bride is to be attended by Miss Harriet Bradford as maid of honor, and Miss Aileen Maguire of Hilo and Miss Charlotte Dowsett of Honolulu will be bridesmaids.

The bridegroom will be attended by Robt. McCarrison as best man, and the ushers will be Guy Macfarlane, Edmund Hedemann, Charles Stillman and Ernest Parker. The bride will be given away by her mother, Mrs. Fred Knight.

Following the wedding ceremony there will be feasting and dancing in which hundreds will join, the cowboys of the Parker Ranch appearing to do honor to the young bride, the owner of the great estate.

At 5 o'clock Friday morning the young couple will leave the ranch house and motor away to the Volcano House, where the honeymoon will be spent. On their return to Honolulu they will occupy the home of Mr. and Mrs. W. A. Kinney in College Hills. The Honolulu people attending the wedding will return on the Mauna Kea Saturday.

REAL ESTATE TRANSACTIONS.

Entered for Record July 24, 1912.
From 10:30 a. m. to 4:30 p. m.
C. Brewer & Co Ltd to Alonzo Jackson and wf Exchange
E. A. C. Long to John M. Kelly
S. Mahelona to Sam Hop Lee Co., Ltd.
Schuman Carriage Co Ltd to Fred G. Hummel and wf
Sophie R. Gaspar et al to T. Ting Lam
G. Akuna to Tang Hee
J. Andre Rodriguez and wf to Jose Fernandez
J. Andre Rodriguez and wf to Masonry Work Co
H. F. Damon to Oliver G. Lansing
L. P. Home to Bishop & Co
Bishop & Co to Jennie E. Ashford, Rel. Jennie E. Ashford and hsb to Bishop & Co
Kaimuki Land Co Ltd to Arthur Turner
E. Coit Hobron to Geo. J. Campbell
Sai Lang Aki and hsb to Selmaus Takahashi
Bank of Hawaii Ltd to Marion W. Hendry
Marion W. Hendry to Bank of Hawaii Ltd
Court of Land Registration.
Robert Bemrose and wf to Emanuel S. Cunha
Entered for Record July 25, 1912.
From 8:30 a. m. to 10:30 a. m.

LETTERS ON TIMELY TOPICS

Honolulu, T. H., July 24.
Editor Star-Bulletin, Sir:
In reference to the matter referred to in your columns some time ago of the Inter-Island having the Mauna Kea stop at Lahaina on its special week-end trip, I may say that the Maui Chamber of Commerce has taken the matter up and named a committee to see if the change can not be effected. Lahaina will be very glad to have the steamer touch on the up-trip Saturdays and the down-trip afterwards, and it looks as if this facility will be afforded the people.
Thanking the Star-Bulletin for its interest in the matter, I remain, yours truly,
MAUI RESIDENT.

DOG'S DEATH CUTS SHORT WESTERN TRIP

SAN FRANCISCO, Cal., July 14. — Miss Grace Campbell of Chicago, who came to San Francisco as an Illinois delegate to the eleventh biennial of the General Federation of Women's Clubs, has had her intended stay of a month in California cut short by a "great sorrow." She hurriedly boarded the overland limited yesterday for the city by the lake.

When Miss Campbell left Chicago she placed her residence in charge of her housekeeper and several servants, with instructions to pay undivided attention to her two Boston bull terriers. Yesterday she received word that one of her pets had been injured and chloroformed by a veterinary surgeon.

When Miss Campbell received this information she wired instructions that no disposition was to be made of the animal's remains until her arrival home.

AUTOS COLLIDE DESPITE DRIVERS

Two automobiles were smashed and the owners narrowly escaped from injury at midnight last night when James Lynch and James Baker, each travelling in opposite directions, thought that the other was going to turn into Victoria street. Each steered in the middle of the road to give the other room to turn, with the result that the machines collided and their owners were thrown into the road by the impact.

According to the story Baker told the police, he was driving toward town on the right hand side of King street about five feet from the walk. As he approached Victoria Street he saw Lynch, and thinking that Lynch, from the way he was steering, was going to turn into Victoria street, steered into the middle of the road to give Lynch room to turn.

Lynch also thought that Baker was going to turn and he likewise turned into the middle of the road to give Baker plenty of room. As a result, both collided.

Neither was hurt by his fall, but both machines were badly wrecked.

REV. MR. SIMPSON DIES SUDDENLY

Rev. Charles Simpson, the father of Mrs. Frank C. Atherton, died today at the Queen's Hospital where he went yesterday for treatment. He passed away quietly at 12:15 P. M. Funeral services will probably be held sometime tomorrow. Notice in regard to the same will be given in the morning paper.

Mr. Simpson was a native of New York state, and came to the islands from Oberlin, Ohio, in 1906, on a visit. For the last two years he has made his home with Mr. and Mrs. Frank C. Atherton. A widow, Mrs. Atherton and a son residing in the states are the immediate relatives who survive him.

LOCAL AND GENERAL

The American schooner Alice Cooke, from Honolulu, leaving here July 1st, is reported to have arrived at Port Townsend this morning.

The members of the local Buckeye Club will meet tomorrow night at the residence of W. A. Bowen, 1701 Kewalo street, at 7:45. Mr. and Mrs. F. C. Jewett of Oberlin College will be present.

SOLDIER KILLS WHOLE FAMILY

WALLA WALLA, Wash., July 5. — Sergeant J. Proctor, of the Coast Artillery Corps, Port Worden, Wash., late yesterday afternoon shot and killed his divorced wife, Ada Proctor, aged 28; his daughter, Nellie, aged 11, and his son, Everett, aged 9, and then committed suicide in the rooming-house in this city conducted by the woman. He came here two weeks ago on a furlough and since that time boarded in the house where his divorced wife lived.

The couple was divorced last Christmas, the woman charging cruel treatment, and since that time she has feared violence, though he has never been known to make threats. Some time ago when she lived at the Odd Fellows' Home here, Mrs. Proctor refused to see her former husband, and when he asked that she come to the window so he could see her, she refused, fearing that he would kill her. There were not witnesses to today's tragedy, friends of the woman calling at her house finding the dead bodies of the four.

LITTLE INTERVIEWS

W. H. HOOBS—I'm getting to be a tennis enthusiast with two boys playing in the tournaments here.

ROBERT MCGEEER—Raymond not only has the audiences mystified, but also the theatrical people too.

SUPERVISOR McCLELLAN—All I want is action in getting down some paving.

T. A. PETRIE—I suppose the term of a member of the Oahu loan fund commission doesn't expire until the commission spends all the money appropriated.

M. C. PACHECO—The gentlemen who have shown such a sudden interest in local good government should not lose sight of the fact that there are just as patriotic democratic Americans in our community as republicans.

BUILDING PERMITS

Since last report the following building permits have been issued:

K. Akahashi, stores, Moiliili; K. Matsuo architect and builder; \$600.

Ching Lum, two dwellings at 3470

each, Alapai lane; Ching Lum architect, Ah Choy builder; \$340.

C. S. Cunha, dwelling, Nuuanu

street; Freitas & Fernandez builders; \$750.

Pang Lum, dwelling, Beretania

street; Sun Lee Tai & Co. builders; \$350.

When a man is dining at home and asks his better half why she fried the

tee cream it is a sign that he is in a

bad humor.



THE name 'Wichman' is rightly accepted as a guarantee of the highest quality when pertaining to jewelry.

We have striven to establish such a reputation, and we now pride ourselves on the fact that our friends have coined the phrase "If it's from Wichman's you know it's Good."

WICHMAN'S
Leading Jewelers

FOR RENT FURNISHED

Tantalus	40.00
Kalakaua Avenue	32.50
Pacific Heights	100.00
Beretania Street	75.00
Colleges Hills	75.00
Wahiawa	25.00
Corner Hackfeld and Lunalilo Streets	125.00
Kaimuki	\$16.50, \$25.00, \$40.00
Thurston Avenue	60.00
Nuuanu Street	80.00
Alewa Heights	35.00

UNFURNISHED

Kaimuki	\$20.00, \$22.50, \$27.50
Wilder Avenue	50.00
Matlock Avenue	27.00
Kalihi	\$18.00, \$25.00, \$35.00
King Street	\$120.00, \$122.50, \$40.00
Pawaa Lane	18.00
Magazine Street	20.00
Young Street	\$30.00, \$30.00, \$30.00

Trent Trust Co., Limited

Waterman's Fountain Pen

Self-Filler or otherwise,

\$2.50, \$3.00, \$3.50, \$4.00, \$4.50, \$5.00

Vieira Jewelry Co., Ltd.,

POPULAR JEWELERS

HOTEL STREET

FROM DICKENS

THE Pickwick Club had finally dissolved and Mr. Pickwick had made a choice of a home. Everything was so beautiful! The lawn in front, the garden behind, the miniature conservatory, the dining-room, the drawing-room, the bed-rooms, the smoking-room, and, above all, the study, with its pictures and easy-chairs, and odd cabinets and queer tables, and books out of number, with a large, cheerful window, opening upon a pleasant lawn, and commanding a pretty landscape, just dotted here and there with little houses, almost hidden by the trees; and then the curtains, and the carpets, and the chairs, and the sofas! Everything was so beautiful, so compact, so neat, and in such exquisite taste, said everybody, that there really was no deciding what to admire most. We have just such a home in Manoa Valley all ready for you—or we can build you a home after your own plans in Beautiful Kaimuki.

Henry Waterhouse Trust Co., Limited,
CORNER FORT AND MERCHANT STREETS

BE JUST

to yourself and to those who are dependent on you. Do not spend all you earn. Save some part for the rainy day that is sure to come. This you can do without much effort if you will open a Savings Account. One dollar will open an account, and with regular deposits you will soon have a good sum to your credit.

Bank of Hawaii, Ltd.
Capital-Surplus, \$1,200,000

INSURANCE

Fire Life Accident Marine Plate Glass Surety Liability



Hawaiian Trust Co., Ltd.
223 Fort Street

FIRE!

If Honolulu were again swept by a conflagration, could you collect your insurance?

C. Brewer & Co., Ltd.
(ESTABLISHED 1826)

represent the largest and strongest fire insurance companies in the world.

Lowest Rates Liberal Settlements

FIRE INSURANCE

The B. F. Dillingham Co.

LIMITED

General Agent for Hawaii:

Athas Assurance Company of London.
New York Underwriters Agency.
Providence Washington Insurance Co.
4th FLOOR, STANGENWALD BLDG.

More Than a Million Dollars

Report of the Insurance Commission, shows that more than a million dollars net is sent out annually from this territory.

Home Insurance Co.

Why not patronize and keep some of this money here?
O'Neill Building Cor. Fort and King
Telephone 3529.

FOR SALE

\$ 850—Lot 55x52.5 off Beretania St., nr. Punchbowl.
\$2750—1.69 acres on old Palolo Rd. with 2-bedroom house. Many fruit trees.
\$1500—10-acre farm, Kalihi, 1 1/2 miles from King St.
\$ 400—Lot 50x100 at Puunui, near car line.
\$2250—Lot 177x67, with house, on Liholiho St., near Makiki Fire Station.
Lots on Fort St. above bridge at 18c to 20c per sq. ft.

P. E. R. STRAUCH,
Wajay Building 74 S. King Street

Jas. W. Pratt

REAL ESTATE, INSURANCE, LOANS NEGOTIATED
Stangenwald Building

Williamson & Buttolph

Stock and Bond Brokers

Phone 1182 P. O. Box 528
88 MERCHANT STREET

Honolulu Stock Exchange

Thursday, July 25, 1912.

NAME OF STOCK	Bid.	Asked.
MERCANTILE.		
C. Brewer & Co.		
SUGAR.		
Ewa Plantation Co.	31 3/4	32 1/4
Hawaiian Agric. Co.	18 1/2	19
Haw. Com. & Sug. Co.	44	44 1/2
Hawaiian Sugar Co.	44	44 1/2
Honouliuli Sugar Co.	10 1/2	11
Honouliuli Sugar Co.	10 1/2	11
Haiku Sugar Co.	20 1/2	21
Hutchinson Sugar Plant.	20 1/2	21
Kahuku Plantation Co.	18	19
Kekaha Sugar Co.	22 1/2	23
Koloa Sugar Co.	7 1/4	7 1/2
McBryde Sugar Co.	2 1/4	2 1/2
Oahu Sugar Co.	26 1/4	27
Onomea Sugar Co.	5 1/2	5 3/4
Chia Sugar Co. Ltd.	7 1/4	7 1/2
Olowalu Co.	20	21
Panauha Sugar Plant. Co.	20	21
Pacific Sugar Mill	150	151
Paia Plantation Co.	230	231
Pepee Sugar Co.	34 1/2	35
Pioneer Mill Co.	122	123
Waialua Agric. Co.	145	146
Waikuku Sugar Co.	21 1/4	21 1/2
Waimanalo Sugar Co.	41 1/4	41 1/2
Waimanalo Sugar Mill Co.	21 1/4	21 1/2

MISCELLANEOUS.
Inter-Island Steam N. Co. 197 1/2
Hawaiian Electric Co. 225
Hon. R. T. & L. Co. Pref. 145
Hon. R. T. & L. Co. Com. 145
Mutual Telephone Co. 21 1/4
Oahu R. T. & L. Co. 145
Hilo R. R. Co. Pfd. 145
Hilo R. R. Co. Com. 145
Hon. B. & M. Co. 145
Haw. Irrig. Co. 68
Hawaiian Pineapple Co. 41 1/4
Tanjong, Olok R. C., pd. up 38
Pahang Rub. Co. 21 1/4
Hon. D. & M. Co. Ass. 21 1/4

BONDS.
Haw. Ter. 4 1/2 (Fire Cl.) 100
Haw. Ter. 4 1/2 100
Haw. Ter. 4 1/2 Pub. Imps 100
Haw. Ter. 4 1/2 100
Haw. Ter. 4 1/2 100
Cal. Beet Sug. & Ref. Co. 6 100
Hon. Gas. Co. Ltd. 50 100
Haw. Com. & Sug. Co. 5 100
Hilo R. R. Co. 1901 100
Hilo R. R. Co. 6 1/2 94 1/2
Honouliuli Sugar Co. 6 1/2 101
Hon. R. T. & L. Co. 1/2 102
Kauai Ry. Co. 6 1/2 100
Kohala Ditch Co. 6 1/2 100
McBryde Sugar Co. 6 1/2 100
Mutual Tel. Co. 6 1/2 100
Oahu R. T. & L. Co. 5 100
Oahu Sugar Co. 5 100
Oahu Sugar Co. 5 100
Pac. Sug. Mill Co. 6 1/2 100
Pioneer Mill Co. 6 1/2 100
Waialua Agric. Co. 5 1/2 102 1/2
Natamas Con. 6 1/2 103 1/2

SALES.
Between Boards—300 Oahu 26 1/2,
250 Oahu 26 1/2, 50 Ewa 31 1/2, 15 Ewa
31 1/2, 5 Ewa 31 1/2.
Season Sales—10 Onomea, 55 1/4, 17
Olan 7 1/2.

Latest sugar quotation: 4.05 cents,
or \$91 per ton.

Sugar 4.05cts
Beets 12s 10d

HENRY WATERHOUSE TRUST CO.

Members Honolulu Stock and Bond Exchange.

FORT AND MERCHANT STREETS
Telephone 1208.

HARRY ARMITAGE, Special Partner
H. C. CARTER, General Partner
S. A. WALKER, General Partner

Harry Armitage & Co.,

LIMITED

STOCK AND BOND BROKERS

P. O. Box 563 Phone 2101

HONOLULU, HAWAII

Member Honolulu Stock and Bond Exchange

Cable and Wireless Address

"ARMITAGE"

ESTATE OF

Jas. F. Morgan Co., Ltd.

STOCK BROKER

Information Furnished and Loans Made

857 KAAHUMANU STREET

Phone 1572

Giffard & Roth

STOCK AND BOND BROKERS

Members Honolulu Stock and Bond Exchange

Stangenwald Bldg., 102 Merchant St.

Needed on a Journey.

Never leave home on a journey without a bottle of Chamberlain's Colic, Cholera and Diarrhoea Remedy. It is almost certain to be needed and cannot be obtained when on board the cars or steamships. For sale at all dealers. Benson, Smith & Co., Ltd., agents for Hawaii.

PROHIBITIONISTS NAME STANDARD BEARERS

ATLANTIC CITY, N. J., July 12.—

The National Prohibition Convention concluded its labors here tonight with the nomination of the party standard bearers of four years ago—Eugene W. Chafin of Arizona for president, and Aaron S. Watkins of Ohio for vice-president. In each case the nomination was made by acclamation after a single ballot had indicated the preference of the delegates.

Four candidates for president were placed in nomination against Chafin. They were F. W. Emerson of California, Finley C. Hendrickson of Maryland, Aaron S. Watkins of Ohio, and Andrew J. Houston of Texas. Each in turn withdrew his name after the first ballot.

The leading candidates against Watkins for vice-president were Emerson of California and George E. Stockwell of New York. Chafin, addressing the convention, promised not to stand for a third nomination.

"Because of a rush to adjourn, the plan to change the name of the party was not taken up for general discussion," A. J. Orem of Massachusetts in a brief speech promised to pledge more money to the campaign fund should the name be changed.

"I believe we could make the campaign doubly effective if we should adopt a new name," said Orem. "We would be greatly aided in carrying our banner to success if we should adopt the name 'progressive.'"

There were shouts of protest to this, as well as to the name "Conservative party," suggested by Rev. S. H. Hart of California.

ANAK RIVALS THE KLONDIKE

TACOMA, Wash., July 15.—The new placer district of Anak, Alaska, is the Mecca toward which hundreds of Alaskans from the Iditarod, Fairbanks, Ruby and Nome districts are hurrying. Cables from Iditarod say that Marvel and other creek tributaries of Anak river are "marvelously rich in gold. Anak has become famous as the only Alaska placer district that has not had a single knocker since the good prospects were first discovered."

J. M. Pickel, who brought news of Marvel creek's richness to Iditarod, is a brother of H. E. Pickel, vice president of the Canadian Manufacturing Company here. Pickel has been prospecting in Alaska eight years, is reliable and will likely be one of the first new Alaska millionaires which Anak will create. In a letter written two months ago Pickel foreshadowed the golden news now received by cable. He writes:

"Conditions are encouraging. Discovery creek, a hundred miles from the mouth of the Anak, is the scene of much prospecting. Every hole put to bedrock pans well. I have located claims on two promising creeks, which I have named Pioneer and Pearl rivers."

"These are eleven miles below Discovery diggings and are shallow. There is an abundance of water. Claims may be hydraulicked with inexpensive outfits. Marvel creek is conservatively estimated to have forty miles of pay dirt."

"Old-timers say this district excels all others in extent and surface values. This portion of Kuskokwim valley has never been prospected hitherto and travel is laborious, especially with bulging packs."

MONA LISA

CARTOONS HERE

Following the excitement of last year over the theft of the Mona Lisa painting from the Louvre, Paris is now extracting a whole lot of fun from the episode—aided thereby by a clever cartoonist.

William C. McGonagle, secretary of Benson, Smith & Co., Ltd., has received a set of cards, done in imitation sepia, satirizing the furore over the stolen work of art. One of them is a fair copy in miniature of the painting. The next is a cartoon of the subject, showing a grimace instead of the holy calm that made the original impressive. In number three of the series the mien of madame is made still more ludicrous, and she is shown with thumb to nose and fingers extended in audacious salute. Underneath is an inscription in French, saying, "This is what Mona Lisa presents to her admirers."

When it is remembered that, day after day, crowds stood in front of the blank space on the wall, from which the picture was abstracted, the pungency of the cartoonist's satire may be realized.

BAND CONCERT.

The Hawaiian band will give a moonlight concert this evening at Honolulu Seaside Hotel at seven-thirty. The program will be:

March—The Champion Swimmer... Berger
Overture—Autumn Queen... Bigge
Ballad—Morning... Beethoven
Selection—Attila... Verdi
Vocal—Hawaiian songs, ar. by Berger
Selection—The Prince of Pilsen...
Waltz—After You... Waldteufel
Polka—Now and Then... Coote
The Star Spangled Banner.

Wigg—You seldom hear of a woman who thinks before she speaks.
Wagg—No, she would have to be a lightning calculator to do that.

LOCAL AND GENERAL

For a hack ring up 2307.
Ukuleles, Calabashes, etc., at factory 1719 Liliha above School. Phone 2384.
Elegantly furnished rooms with hot and cold baths at Hotel Arlington.
The Underwood Typewriter Visible—none better. Wall, Nichols & Co., Ltd. Agents.
Gas Lighters—better and safer than matches. J. W. McChesney, 16 Merchant street.
Wanted—Two more passengers for around-the-island at \$6. Lewis Stables and Garage. Tel. 2141.
If you want a good job done on an auto or carriage take it to Hawaiian Carriage Mfg. Co., 437 Queen St.
Individual driving cups with holders are installed beside the water cooler at the Bureau of Conveyances.
Pineapple soda and Hife's Root Beer—excellent summer drinks—are bottled by the Consolidated Soda Works, Phone 2171.
Bring 10 Green Stamps and one dollar and get a complete Boy Scout suit for vacation. Green Stamp Store, Beretania and Fort streets.
New telephone poles, of larger and longer dimensions, have been delivered up Palolo valley road, the present poles being too light to carry the mass of wires.
Your house may be made hideous or attractive by the wall paper you chose. Be sure to see our handsome stock before deciding. Lewers & Cooke, Ltd.

The Harbor Commission was notified yesterday that Contractor Mahi-koa had completed the Hanalei wharf and it was ready for the use of Inter-Island company's vessels. The final payments were authorized to complete the contract award.

The following furnished work for the police department yesterday: John Sikas, assault and battery; Charles Mu, investigation; Faruno, violating the auto ordinance; Kalam, J. Kellini, Kalkawaha, M. Welson, Pak Pong Yip, gambling; Andre Gligorevsky, investigation; and an unknown inebriate.

Chief Boatwain Metters, of the Honolulu naval station, is receiving the congratulations of his friends on being the proud father of a 9-pound son, born yesterday. No one can spring any race suicide talk around the naval station, the addition to the Metters family belongs. "Third increase in the families of officers with the past two months."

Sixteen to twenty months will be required to complete the construction of the Port street bulkhead wharf, and when it is finished the Matson Navigation Company is expected to take a large portion of the berthage space. This statement was made by Chairman Campbell at the meeting of the board of harbor commissioners yesterday afternoon. It was said that within the next two years the growth of the Matson company's business is expected to prove so great that it will require the largest wharf area in the local harbor.

Jones—At the seashore one evening last week, Von Boggs, the matinee idol, came near drowning.
Irown—He can't swim. How did he happen to go beyond his depth?
Jones—Trying to keep in the glare of the searchlight of a passing steamer.

WANTS
FOR SALE.
Horse, buggy and harness. Cheap.
"X," Star-Bulletin. K-5297-1w

AMUSEMENTS

Independent Theater

HOTEL STREET

Under New Management

NEW MOVING PICTURES

"A Modern Rip Van Winkle"

"A Spanish Wooing"

"The Convert of San Clemente"

PRICES, 10 and 15 Cents

LEGAL NOTICES.

IN THE CIRCUIT COURT, FIRST Circuit, of the Territory of Hawaii.

At Chambers, Jennie Lopez vs. Alexander Antonio Lopez. Notice of Pendency of Libel. Upon reading and filing libellant's motion and affidavit showing that the address or residence of said libellee is not known and that libellant has been unable to ascertain the same after reasonable inquiry or search for more than six months after the filing of the libellant's libel: It is hereby Ordered, that notice be given to the libellee to appear before the Hon. Wm. L. Whitney, Second Judge, at his chambers in the court room of this Court in the old Y. M. C. A. Building in Honolulu on Saturday, October 5, 1912, at 9 o'clock a. m. of said day, and show cause why the prayer of libellant for a decree of divorce may not be granted. Honolulu, 1. H. July 25, 1912. By the Court: J. A. DOMINIS, Clerk.

5297—July 25; Aug. 1, 8, 15, 22, 29

Hen Wise

—And—

Katie Milton

NEW MOVING PICTURES

"A Modern Rip Van Winkle"

"A Spanish Wooing"

"The Convert of San Clemente"

PRICES, 10 and 15 Cents

LEGAL NOTICES.

IN THE CIRCUIT COURT, FIRST Circuit, of the Territory of Hawaii.

At Chambers, Jennie Lopez vs. Alexander Antonio Lopez. Notice of Pendency of Libel. Upon reading and filing libellant's motion and affidavit showing that the address or residence of said libellee is not known and that libellant has been unable to ascertain the same after reasonable inquiry or search for more than six months after the filing of the libellant's libel: It is hereby Ordered, that notice be given to the libellee to appear before the Hon. Wm. L. Whitney, Second Judge, at his chambers in the court room of this Court in the old Y. M. C. A. Building in Honolulu on Saturday, October 5, 1912, at 9 o'clock a. m. of said day, and show cause why the prayer of libellant for a decree of divorce may not be granted. Honolulu, 1. H. July 25, 1912. By the Court: J. A. DOMINIS, Clerk.

5297—July 25; Aug. 1, 8, 15, 22, 29

WANTS

FOR SALE.
Horse, buggy and harness. Cheap.
"X," Star-Bulletin. K-5297-1w

AMUSEMENTS

Independent Theater

HOTEL STREET

Under New Management

NEW MOVING PICTURES

"A Modern Rip Van Winkle"

"A Spanish Wooing"

"The Convert of San Clemente"

PRICES, 10 and 15 Cents

LEGAL NOTICES.

IN THE CIRCUIT COURT, FIRST Circuit, of the Territory of Hawaii.

At Chambers, Jennie Lopez vs. Alexander Antonio Lopez. Notice of Pendency of Libel. Upon reading and filing libellant's motion and affidavit showing that the address or residence of said libellee is not known and that libellant has been unable to ascertain the same after reasonable inquiry or search for more than six months after the filing of the libellant's libel: It is hereby Ordered, that notice be given to the libellee to appear before the Hon. Wm. L. Whitney, Second Judge, at his chambers in the court room of this Court in the old Y. M. C. A. Building in Honolulu on Saturday, October 5, 1912, at 9 o'clock a. m. of said day, and show cause why the prayer of libellant for a decree of divorce may not be granted. Honolulu, 1. H. July 25, 1912. By the Court: J. A. DOMINIS, Clerk.

5297—July 25; Aug. 1, 8, 15, 22, 29

PENHURST
Penhurst meets in front and stays that way. It is non-shrinkable, has the strongest of buttonholes and ample tie space.
ARROW COLLARS
15c, 2 for 25c. Cluett, Peabody & Co., Makers

ONCE MORE ELIXIR OF LIFE IS FOUND

PHILADELPHIA, July 12.—An "elixir of life" which in a thousand tests has been found to cure not only acute and chronic diseases, including neurasthenia, melancholia, locomotor ataxia, typhoid fever, scarlet fever, tuberculosis, pneumonia, influenza, epilepsy and rheumatism, but also to "cure" old age and to be a potent factor in building up the character of the patient, has been discovered by Dr. Frank R. Starkey of this city.

The formula of Dr. Starkey has met the approval of leading men of this city, and the New York Medical Journal has said of it editorially: "Its far-reaching meaning can hardly be overestimated."

Dr. Starkey makes no secret of the composition of the polyglandular extract that he has employed with such remarkable results. In 1908 he enlisted the assistance of fifty volunteer subjects. Fifteen minims of the new, devised polyglandular extract was administered daily to each subject by intra-muscular injection.

This was continued for two weeks," Dr. Starkey says. "The results were increased appetite and muscular and mental efficiency. They were able to stand more mental and physical exertion. They increased in weight, on an average, eight pounds during the two weeks, and declared they felt unusually well and strong. The blood pressure in all cases was increased."

"But would this prove true in disease?" was the next question to demand consideration.

"That question has been settled beyond all possibility of doubt in the four years that have elapsed from the time of the first experiments. It has been answered by a long list of persons who are now completely well, but who would at one time have been given up as hopeless cases."

Dr. Starkey is 30 years old, but appears younger. Two years ago he looked nearly 50 after many years of constant, unremitting research. The change was brought about by the injection of his own formula into himself.

RUSSIANS LEAVE WHEN FINN SINGS

STOCKHOLM, July 15.—The singing of the Finn choir at the choral festival last evening led to a sensational incident. The Grand Duke and Grand Duchess Cyrol of Russia, who were seated in the royal box, rose and left in protest when the Finns began singing a revolutionary hymn, which exhorted Finland to rise in her might and throw off the yoke of the conqueror.

The song began: "Think not that Finland's might is dead, Still can a foe's warm blood our land yet color red." The song went on to bid the Finns: "Boldly, boldly, onward go. And tread the glorious path our days of freedom show."

The verses ended: "Our glorious shattered standard raise, Some fragments left where Finland's ancient colors blaze." Several Russian officers left with the Grand Duke and Grand Duchess.

It takes a silly woman to trust a man who couldn't get credit for a 3-cent head of cabbage at the corner grocery.

Silva's Toggery,

Limited

"THE STORE FOR GOOD CLOTHES"

Elke's Building King Street

Sachs for Dry Goods

New Dry Goods Store

IN SACHS BLOCK

72 Beretania Street

BAKER & HOKE, Props.

Look! Look! Look!

Something New In Clearance Sales

As we have just received a large shipment of Granite and Marble from the East, we are obliged to sacrifice some of our stock to make room for the goods which arrived on the Alaskan. All stock which we now have in the yards are reduced so as to meet the requirements.

If you are in need of anything in our line, it will pay you to come and have a look at our stock, as it is the most complete line of its kind in Honolulu.

We are also in position to do all kinds of coping around your lot at the cemetery at a reasonable price.

Honolulu Monument Works, Ltd.
KING AND PUNCHBOWL STREETS

Special Sale

Jardinieres

At Half Usual Prices

This Week
Only

In Pink, Green and Mixed Colors

E. O. Hall & Sons,

Household Dept. Cor. King and Fort Sts.

CRISP CRACKERS

Love's Bakery

VISCOL



In 1/2 Pint and 1 1/2 Pint Cans—Just Enough to Waterproof Your Shoes



The greatest leather preservative, softener and water-proofer known. For softening and preserving shoes, it has no equal, and by applying to old or stiff leather, will restore flexibility. Invaluable in rainy or wet places.

McInerny Shoe Store

LAUNDRY MESSENGER BOY
PARCEL DELIVERY

PHONE 1861

We know everybody and understand the business.

It is right side up with care.

Union-Pacific Transfer Co.

Limited

handled by the

This ad is kapakahi but when your furniture is

DARES MANY DANGERS TO
TO INVESTIGATE AMAZONStudent of Eastern College to
Make Three-Year Trip up
Mysterious River

PHILADELPHIA, Pa., June 28.—Sitting upon a stone bench, in the shade of the University Museum, a young man, 23 years old, smooth shaven, wearing glasses and looking every inch a student, puffed away on his pipe and made notes as he read from a volume on ethnology. It was Algot Lange, who, despite his peaceful, beautiful surroundings, will soon start for wilds of which no white man knows, to face dangers that in some cases are known, in others only surmised. For he is determined to explore the whole valley of the Amazon river, including its tributaries.

Lange will start on this expedition about the first of August, and when he turns the prow of his steamboat up the Amazon will not return to civilization again for three years. In that time he hopes to make known to the world all the Amazon country and its inhabitants, its natural history and customs. It is one of the few important parts of the world that remains for civilized man to map out.

The young explorer was there before, though he did not finish his investigations. He went there to invest money in a plantation and was glad to get back with his life. But he killed a 65-foot boa constrictor and shipped the skin to this country. He wrote a book about his experiences, which has but recently been published, "In the Amazon Jungle." It attracted the officials of the university, and arrangements were made with him to head this expedition, under the university's auspices.

Tells of Himself. He talked with enthusiasm today about his coming trip. Asked his nationality, he replied:

"I am an American. Some persons call me a Dane, because my parents were Danes. But I was born at sea, on the way from Newcastle, Eng., to St. Petersburg, Rus. The steamer carried an Irish cargo, had a French captain, a Portuguese crew and a Chinese cook. I want to carry the Stars and Stripes through this vast Amazon valley as Peary carried it to the North Pole."

"Few people have any idea of the vastness of this country which we will explore. The river is about 4000 miles long, and has a tributary 3000 miles long. At Manaus, 1000 miles from the sea, it is 14 miles wide. The Negro River, 500 miles from Manaus, where it empties into the Amazon, and 1500 miles from the ocean, is 25 miles across. At Iquitos, Peru, 2500 miles from its mouth, the Amazon is two and one-half miles wide and 250 feet deep. The area of this valley is half as extensive as the whole of the United States."

Study of the Tribes. "Our principal aim will be to study the savage tribes in the unexplored regions. Some of these are cannibals, and have a habit of making a stew of their enemies killed in battle. But I do not fear them."

Lange has a good reason for not fearing them. A few years ago, while exploring alone this remote region, the cannibals found him, hundreds of miles from the nearest white settlement, sleek and delirious, crawling on his hands and knees through the jungle. They had never seen a white man before, and they took him in and nursed him to health so he could travel back to civilization.

But there are dangers other than cannibals. The jungles and marshes are infested with wild beasts and gigantic boa constrictors. Millions of monkeys chatter among the trees, though they do no harm. But there are fevers and strange diseases to fight, and the work must be done under the blighting, scorching rays of an equatorial sun. Then there are other tribes living far back in the jungle of which he has only heard. It is his purpose to study them all, and to do so, that man might know of these aboriginal members of his family, he will boldly face every danger, and for three years live with his equally daring companions in the swamp. The party will start about the latter part of July or the first of August.

Navy Men Go Along. Lange will be accompanied by a commander of the United States Navy, an engineer, two general assistants and two photographers, who will operate not only ordinary cameras, but moving picture apparatus as well. One of these

PILES CURED IN 6 TO 14 DAYS.
PAZO OINTMENT is guaranteed to cure any case of Itching, Blind, Bleeding or Protruding Piles in 6 to 14 days or money refunded.—Made by PARIS MEDICINE CO., Saint Louis, U. S. of A.

Use a PREST-O-LITE TANK on your Automobile and save Generator Troubles.
Acetylene Light and Agency Co., Ltd.

Chemical Engines and Watchman's Clocks

For Sale by
J. A. GILMAN
Fort Street.

PAPER

All kinds Wrapping Papers and Twines, Printing and Writing Papers.
AMERICAN-HAWAIIAN PAPER & SUPPLY CO., LTD.
Fort and Queen Streets—Honolulu
Phone 1416 Geo. G. Guild, Gen. Mgr.

will be a stenographer. The party will carry ample stores of all kinds.

Negotiations are now under way for a steamboat, really a yacht, about 125 or 150 feet in length, and the entire trip, except when shallow water or cascades are found, will be made in this vessel. It will be fitted up with a refrigerating plant and every appliance which will be needed for the comfort and convenience of the party in their life south of the equator.

It is intended that this shall be the most extensive and comprehensive exploring expedition that has ever been made into a South American country. There have been numerous expeditions up the Amazon and some of its tributaries, but Mr. Lange wants to make a finished job of it.

"Africa is known to man," he said; "Polynesia is familiar to us all. India and Hindustan are full of golf links and country clubs. The North and South Poles have been discovered. The only great stretch of land in the world of which we know nothing is this vast Amazon Valley, and I am going to find out what it is like."

BIGGEST AERIAL
DEATH TOLL

Four French Officers Perished in Explosion of Dirigible Balloon

No single aerial catastrophe has ever taken such toll of human life as the tragic accident to Vaniman's airship at Atlantic City recently. The nearest approach to a similar occurrence was when the French military dirigible Republique, while traveling from Paris to Antipex, on September 25, 1909, at a height of 600 feet, exploded and fell to the ground, killing the four French officers in the gondola.

Count Zeppelin, the veteran pioneer of the dirigible balloon, who made his first dirigible ascent in 1901 at Lake Constance, has throughout his career as an airman suffered heavy material losses, but in all his disasters to his mammoth air cruisers, not a life has been lost. His first serious wreck occurred on August 5, 1908, at Echterdingen, when, after a memorable flight, the Zeppelin was struck by a gust of wind while anchored, exploded, and was totally destroyed. In May, 1909, the Zeppelin II struck a tree at Goepfingen and was badly damaged, but after repairs was able to continue her voyage. The same airship was, however, on April 25, 1910, destroyed in a squall.

The Zeppelin airship Deutschland I was totally wrecked on her maiden voyage on June 28, 1910, in the Teutoburg Forest, with twenty passengers on board, but none was hurt. The Zeppelin VI was destroyed while entering her shed at Baden-Baden on Sept. 14, 1910, without fatality. The Deutschland II was wrecked on May 16, 1911, but no one was injured.

The latest accident to a Zeppelin balloon occurred on June 28, when the Schwaben I was totally consumed by fire and explosion at Dusseldorf. A number of soldiers holding the ropes were injured.

The British military aviators have also been unfortunate, their first dirigible, the Nulli Secundus, being wrecked in a gale near London, without fatality, on October 10, 1907. Santos-Dumont, who was the first really to steer a balloon, had a marvellous escape from death in Paris on August 8, 1901, when his dirigible was destroyed. Again on October 19, at Monaco, his dirigible burst, and he fell into the sea, but was rescued.

Severo, a Frenchman, and his companion, while making a trial trip in a new dirigible at Paris on May 12, 1902, were killed by an explosion a quarter of a mile in the air.

Baron Bradeky and his assistant were killed by their dirigible breaking up in the air at Pierrefitte, France, on October 13, 1902.

SUN PECULIARLY AFFECTS
YOUNG OFFICER IN NAVY

SAN MATEO, Cal., July 13.—The case of Horace Walling, Jr., a young naval officer from this city, who was overcome by heat while in port at Hayti, is one of the most peculiar with which medical science has had to deal. After graduating from Annapolis, Walling's rise in the service was rapid and he was assigned to important duty on the Nashville.

Immediately after his arrival in the tropics he was stricken and he completely lost his memory and sense of motion. He had to be taught to talk and walk just as a baby. He proved an apt pupil, and, after four months of instruction he had regained enough knowledge to pass a high school examination. Other than the effect on his mind, the stroke did not affect Walling, as he still retained his normal physical condition. He progressed as rapidly in athletics as in learning, and he is now able to duplicate the athletic feats of his days at the Naval Academy. His mother, Mrs. H. H. Walling, a well-known San Mateo clubwoman, has gone East to attend him.

THEIR NAMES.

During the Spanish-American war the Navy Department, by way of a graceful compliment to the great universities, renamed two converted cruisers Harvard and Yale. Not long after Commodore Dewey was asked what new names should be conferred upon two little Spanish gunboats that had been captured in Philippine waters.

"Oh," said the commodore, "we'll just call one The Massachusetts Institute of Technology and the other The Pennsylvania College for Physicians and Surgeons."

ROYAL

BAKING
POWDER

Absolutely Pure
The only baking powder
made from Royal Grape
Dream of Tartar
No Alum, No Lime Phosphate

B. & P.

**Loose Leaf
Ledger and Account
Books**

Each grade of binder and holder is of the highest quality consistent with the price. All of the best workmanship.

Stock and Special Sheets
Loose-Leaf Price and Memo.
Books

Hawaiian News Co.
Limited

Alexander Young Building

**Hawaiian
Curios
Special Sale**

Weedon's Bazaar
1140 FORT STREET

**Forcegrowth
Will Do It**

A. BLOM,
Importer Fort St

FLANNEL AND PONGEE
SUITS MADE TO YOUR
MEASURE

J. E. ROCHA,
TAILOR
Elite Bldg. Hotel St.

A Dainty Note Paper
Highland Swiss Chiffon

Fifty Cents a Pound
Envelopes to Match

A. B. ARLEIGH & CO., LTD.
Hotel, Near Fort

THE
Crossroads Bookshop,
Limited

Successors to
Brown & Lyon Co., Ltd.
ALEXANDER YOUNG BUILDING
"Everything in Books"

Whitney & Marsh,
Limited

COATS

For Early Fall Wear

A BEAUTIFUL LINE OF COATS,
Practical and Attractive,

In Plain White Serge and White with
Black Stripes. Handsomely Trimmed
with Collars of Contrasting Silk, and
large crystal and fancy buttons.

**Dress
Trimmings**

Silver, &c., Gold Beaded Bands, from
1 to 9 inches wide.

Pearl edges and Bands.

Fringes in Silver, Gold, Pearl and
Jet.

Ball Fringes in Silk and Cotton, all
colors.

White
Piques

with
Fancy

Stripes

of

Green,

Black

Lavender.

and

Navy

60c

per Yard

Crepe Shirts

Are the choice of the exclusive men for summer wear. Big stock of varied
patterns from

\$1.50 up.

The Oriental Crepe Goods Co.

61 KING STREET—NEXT TO ADVERTISER OFFICE

THE ONLY COMPLETE CAR

Electrically Self Started and Lighted INTER STATE

MODEL 40—5 Passenger, Fore Door Touring Car.
MODEL 41—4 Passenger Demi Tonneau.
MODEL 42—Roadster type—all with the splendid new
en bloc motor, 4 1/2 in. bore, 5 1/2 in. stroke; 40 H.P. **\$2700**
MODEL 50—7 Passenger, Fore Door Touring Car.
MODEL 51—4 Passenger, Demi Tonneau.
MODEL 52—Roadster type—all with the new "T" head **\$3700**
5 in. bore, 6 in. stroke motor; 50 H.P.
GEO. W. MOORE
Demonstrator and Selling Agent.

Telephone 1902.

You Can't Be Happy With a Headache

Probably more pleasure is spoiled because of headaches than from any other reason.

When your head aches it not only makes you unhappy but it is very apt to interfere with the pleasure of everyone else around you. One can't be expected to be very cheerful and pleasant when one's head is simply splitting.

And there is no need of suffering. Keep a box of

Stearns' Headache Wafers (Shac)

In the house when you are at home—carry it in your bag when you travel. That insures you against the annoyance of headaches—your own and other people's.

Stearns' Headache Wafers are as pure as they look, and the snow-white wafers certainly indicate purity in the highest degree. One dose cures, and leaves your head "clear as a bell."

It is so much better than any other kind that your own interest demands that you insist on STEARNS'—the genuine.

Muslin Underwear

COMPLETE LINE—BEST QUALITY—PRICES REASONABLE

Canton Dry Goods Co.,

HOTEL STREET, OPPOSITE EMPIRE THEATER

ONLY ONE MORE WEEK
TO SECURE BARGAINS

Balance of stock must be sold by SATURDAY, July 27th, as we have to vacate the present premises by that date.

Now Is Your Time To Secure Bargains

L. B. KERR & CO., Ltd.

Kapiolani Building, Alakea Street

WALL PAPER

makes the interior of your house hideous, passable or attractive, according to the taste you show and the quality and extent of the stock you choose from.

We have the Stock—a big, handsome line created by the foremost designers.

You have the Taste.

Let's get together.

Lewers & Cooke,

Limited

177 SOUTH KING ST.

BEACHWALK

AN OPPORTUNITY

Vienna Bakery

has the best Home-Made Bread, German Pretzels and Coffee Cake. Be sure and ring up 2124.

1129 FORT STREET

GUNTHER'S

Celebrated Chicago

CANDIES

PALM CAFE,

Hotel Street, Near Fort

PINECTAR

WAS AWARDED HIGHEST HONORS
Fair held at Sacramento:
At the recent California State
A GOLD AWARD
A BLUE RIBBON AWARD and
A CASH PRIZE

WHEN TIME IS AN OBJECT

Wireless

IS THE THING

FOR SALE

A small number of cheap lots in a new tract on Gulick street, just opened. Prices ranging from \$150 to \$500. Easy terms.

Also a few lots in Nuuanu Valley.
FOR RENT—A fine, cosy 2-bedroom cottage in town, \$22, and a 4-bedroom house, with all possible conveniences and latest improvements, at Kalihi, \$35.
J. H. SOHNACK, 137 Merchant Street

MILK AND CREAM

Kaimuki Dairy - F. H. Kilby, Prop.
We deliver fresh Milk and Cream twice daily to all parts of the city.
Satisfaction Guaranteed
Phone 3736 P. O. Box 220



Mandarin Coats and
Shantung Hand-Made
Laces

HAWAII & SOUTH SEAS
CURIO CO.

Young Building

Dr. T. MITAMURA

Office: 1412 Nuuanu St., cor. Vineyard
Telephone 1540
Office Hours: 9 to 12 a. m., 7 to 8 p. m. Sundays by appointment.
Residence: 50 N. Vineyard Street,
near office. Telephone 2613; P. O. Box 847

Watch Us Grow

James Guild Company

HOUSE FURNISHING GOODS
Collins Block Telephone 3591

Service Is Always Good at the

UNION BARBER SHOP

Cunha's Alley, Next Union Grill, on King Street

Biorkman's

Gymnasium

139 Merchant Street.

Phone 2747.

SEVEN YEARS OF MISERY

How Mrs. Bethune was Restored to Health by Lydia E. Pinkham's Vegetable Compound.



Stikeston, Mo. — "For seven years I suffered everything. I was in bed for four or five days at a time every month, and so weak I could hardly walk. I had cramps, backache and headache, and was so nervous and weak that I dreaded to see anyone or have anyone move in the room. The doctors gave me medicine to ease me at those times, and said that I ought to have an operation. I would not listen to that, and when a friend of my husband's told him about Lydia E. Pinkham's Vegetable Compound and what it had done for his wife, I was willing to take it. Now I look the picture of health and feel like it, too. I can do all my own housework, work in the garden and entertain company and enjoy them, and can walk as far as any ordinary woman, any day in the week. I wish I could talk to every suffering woman and girl, and tell them what Lydia E. Pinkham's Vegetable Compound has done for me."—Mrs. DEMA BETHUNE, Stikeston, Mo.

Remember, the remedy which did this was Lydia E. Pinkham's Vegetable Compound.

It has helped thousands of women who have been troubled with displacements, inflammation, ulceration, tumors, irregularities, periodic pains, backache, that bearing down feeling, indigestion, and nervous prostration, after all other means have failed. Why don't you try it?

LEVY DENIES INTEREST IN OUTFITTING COMPANY

Francis Levy, proprietor of the Model Clothing Store, takes exception to an article appearing in the morning paper in connection with the case of Albert Half, who was charged by Levy with embezzlement and of which charge Half was cleared yesterday.

"I want to say," said Levy, "that I have no connection whatever with the Francis Levy Outfitting Co. I am in charge of the Model store and I do not owe a penny to any man save in the course of day to day business. I have always paid my bills when they come due and I resent the charges that I have anything to do with the Francis Levy Outfitting Company, now in process of bankruptcy. When I quite the concern some months ago it didn't owe a dollar to anybody. What its troubles have been since is none of my business."

VISIT TO HILO TO BE CONSIDERED

No new business of importance is anticipated to come up at the quarterly meeting of the Merchants' Association this afternoon. Reports of committees, which will be in order, may contain interesting matters for discussion. A report of the association's members of the joint committee on a commercial building, will be due, which may lead to the presentation of new ideas on that subject.

President A. J. Gignoux said this morning that the meeting would take up the invitation of the Board of Trade of Hilo to a commercial conference there in September. He considered it a very good scheme and hoped the Association would show a proper interest in it, and, although it was pretty hard sometimes to get the merchants away from their business, he trusted that a goodly number would be able to visit Hilo on the occasion.

SUGAR OVER FOUR CENTS.

Alexander & Baldwin, Ltd., received the following dispatch from New York yesterday afternoon:

"Kentuckian arrived today, basis 4.05. Holders of raws are asking 4.11; refiners are bidding 4.05. Cottonbeets, 10s. 7d. Favorable weather in Europe, but rains wanted badly in eastern Germany. Senate is likely to pass some sugar legislation, probably Lodge or Smoot bill."

The Kentuckian had 3129 tons of the Missouri's cargo.

The Lodge bill removes the Dutch standard and refiners' differential, but retains the present rate of duty on raw sugar.

The Smoot bill provides for the elimination of the Dutch standard and the refiners' differential and for a small reduction on raw sugar. Starting with a duty of 95 cents per hundred on 75-degree sugar, it increases the rate 3 cents per hundred for each additional degree, which brings the duty out at \$1.58 on 96-degree sugar, a reduction from the present duty on nonconcessionary sugar of 10 1-2 cents per hundred. It reduces the rate on Cuban 96-degree sugar from \$1.348 to \$1.264, or 8.4 cents per hundred.

SMALL FARMING THRIVES.

S. T. Starrett, marketing superintendent, brings back from a tour of Hawaii and Maui favorable reports on small farming. Cabbage grown on Hawaii he considers the best ever shipped to Honolulu. Celery along the Volcano road is of fine quality, and Mr. Starrett showed the growers how to bleach it. Rhubarb is doing well in the same region, and the Bermuda onions on the Kona coast are thriving surprisingly. There is no blight on Irish potatoes on Maui, but the corn in the Kula district is suffering from drought. Mr. Starrett advocates more dry farming.

ARMY AND NAVY

WASHINGTON, D. C., July 16.—Ten thousand navy yard mechanics will pass under the protection of the civil service law, when President Taft signs the executive order now being prepared by the Navy Department officials in conjunction with the civil service commission.

Theoretically these men have been shielded against the vicissitudes of political changes by a system of regulations governing the employment boards in navy yards and stations, but these were subject to change or abolition at the will of the person who might be at the head of the department and lacked the binding force of the law.

The men now in the yards are not to be required to undergo examinations, but newcomers will be subjected to severe practical tests, and must also pass physical examinations. A regulation that any one leaving work and seeking reinstatement must place his name at the bottom of the roll of eligibles is regarded as a probable deterrent to strikes.

The strike at the Norfolk navy yard, which was directed against the use of time cards, was wound up with the strikers applying for reinstatement. They have been out of work sixty days.

The Navy Department has consented, placing their names on the employment rolls as of July 1.

It is stated at the War Department that Col. Frank McIntyre, assistant chief of the bureau of insular affairs of the War Department, will be nominated as head of that bureau, to succeed Brig. Gen. Clarence Edwards, appointed brigadier general of the line.

With nearly \$100,000,000 in the cash drawer of the Treasury, officials expressed the belief that it will not be necessary to issue additional bonds for the construction of the Panama canal for nearly a year.

The purchase and building of the waterway to date has cost the United States \$276,487,000. Of this amount, \$137,886,000 has been paid out of the general fund of the Treasury, and the remainder from bond issues.

Balancing its books for the fiscal year just closed, the Treasury Department

issued a statement that the army cost \$150,182,000, against \$160,136,000 the previous year; the navy \$135,556,000, against \$119,933,000, and pensions \$153,597,000 against \$157,981,000.

The postal deficiency for the year, according to unrevised figures, was \$1,568,000, while \$22,616,000 was paid out in interest on the public debt.

While Secretary Meyer is still confined to his bed at Hamilton, Mass., he has so far recovered from typhoid fever that it is expected he can be removed soon to his flagship Dolphin at Beverly, twelve miles distant, for a short run to sea.

Lieut. Chandler K. Jones, recently attached to the naval station at Puget Sound, has been dropped from the navy as a result of recent court-martial proceedings. Lieut. Jones is from Ohio, and entered the navy in April, 1900.

Officers as well as enlisted men in the navy are expected to qualify as swimmers, and their inability to do so will count against their efficiency records. Hereafter in reporting on the inspection of warships, the inspecting officers will be required to report what percentage of the officers and of the crew "can swim five minutes without exhaustion," and also what percentage "can swim completely around the ship."

Swimming is made part of the regular instruction of midshipmen and of enlisted men. At Annapolis recently the diplomas of several graduates were held up until they were able to meet the swimming requirements.

Since the Army Aviation School was established in June last year the officers attached to it have had 259 hours and 15 minutes of actual flying. This includes all flights up to June 30 of this year. During the period the number of individual flights totaled 1500.

From January 1 to June 30, 781 flights were made, consuming 130 hours and 12 minutes. These figures include actual service flights, and disregard flights made by aeroplanes before final acceptance by the government, as well as practice "hops" across the field of student officers.

REPUBLICANS WILL TURN UP WILSON'S RECORD TO BEAT HIM

Nomination of Jerseyite Gives the Taft Leaders Very Grave Concern

BY C. S. ALBERT.

[Special Star-Bulletin Correspondence]

WASHINGTON, D. C., July 15.—The eventual selection by the Baltimore convention of Governor Woodrow Wilson as the Democratic Presidential candidate immediately gave Mr. Taft and all the Republican leaders grave concern. It was admittedly the strongest combination that could have been made, and elevated to prove the most menacing to Republican success. It at once became apparent that a hard fight is ahead and the possibility of defeat is greater than was anticipated.

After several conferences between the President, Senator Crane and other party warhorses it was decided to begin the work of looking up the record of Governor Wilson. It was ascertained that he has written many foolish letters on all sorts of political topics and some of these will prove damaging when spread broadcast during the campaign. A search with a fine-toothed comb is now in progress to unearth every scrap penned by Governor Wilson which recorded opinions on which he might now desire to hedge or remain silent.

Labor Unions Against Wilson.

The chief objection to the selection of Wilson comes from the labor organizations. They regard the Governor as unfriendly to them and sought by all possible means to prevent his nomination. They were unable to stem the tide. The labor leaders have not yet announced formal antagonism to his election but will go deeply into his record and seek to obtain assurances from him that he will not oppose such legislation as is demanded by the workmen.

For the same reason Governor Thomas R. Marshall is likely to prove a millstone on the Democratic ticket. He is obnoxious to the labor leaders in a much greater degree than Wilson. The attitude assumed by Governor Marshall in the McNamara dynamiting case did not suit the labor people and he has since that time been the subject of severe criticism. This feeling of antipathy toward Marshall is expected to grow until he may prove the handicap that Whitelaw Reid did to Benjamin Harrison when he was renominated for a second term by the Minneapolis convention and defeated at the polls.

It is considered certain that the friends of Speaker Clark will never attempt to punish Wilson because he was nominated through the exertions of William J. Bryan. They denounce the Nebraska as a traitor and apply all kinds of choice and assorted epithets to him, but declare they will support the ticket.

The Bryan Domination.

The one striking fact stands out that Bryan did so dominate and control the Baltimore convention as to prevent the naming of Clark and made that of Wilson certain. Whatever his motives he came out of the convention with more marks to his credit than any other participant. He added materially to his prestige and plainly

demonstrated that he still exercises full sway over the Democratic party despite all assertions to the contrary. Although a break between Wilson and Bryan is predicted long before the November elections roll around at this time the New Jersey man has the full and powerful assistance of Bryan and it is promised him to the end. Under such circumstances the strength of Wilson is self-evident.

The movement engineered by Col. Roosevelt to organize a third party and have himself chosen to head a National ticket received a set back when Wilson was named at Baltimore. It was rumored in advance that in the event of his nomination Col. Roosevelt would abandon his third party program. This was denied by the Colonel on the very night of Governor Wilson's selection and a conference of progressive leaders was immediately called to meet at Sagamore Hill. This gathering was for the purpose of issuing a call for a third party convention early in August. A list of reasons and declaration of principles was also to be set forth.

Senator Dixon, Gifford Pinchot and others who stood by the Colonel, during his fruitless and impotent contest attended.

Oyster Bay Overcast.

This gathering at Oyster Bay was overcast by the gloomy fact that a large number of those who fought for Roosevelt at Chicago had already announced allegiance to either Taft or Wilson. Among these was Governor Osborn of Michigan, who said he would support Wilson. In the same connection, Dr. Harvey W. Wiley, former Chief Chemist of the Agricultural Department, became a Wilson convert and offered to take the stamp for him whenever his services were required.

So many of the Progressives thus aligned themselves with one party or the other as to indicate that the Roosevelt movement will not prove such a stupendous or successful affair as was predicted earlier. It seems destined to fall of its own weight, as do all such movements.

Third Party Not Popular.

Even the Progressive Republican Senators do not seem inclined to go far in assisting Col. Roosevelt. They held a meeting and seriously discussed the entire situation. The net result was that a majority of them insisted on remaining strictly within the regular Republican organization and refusing to take any action which might hereafter classify them as bolters. Senator La Follette did not attend the conference. Senators Bristow and Clapp were the only ones present who suggested that a third party might be a good thing and intimate that possibly they might cast in their lot with such a propaganda.

Senators Works of California, has openly and repeatedly declared that while he will positively refuse to support Taft he will not enter a third party. He is willing the Republicans should suffer temporary defeat provided it has the eventual effect of purifying that organization and ridding it of bosses and privileged interests.

Photo-Engraving of highest grade can be secured from the Star-Bulletin Photo-Engraving Plant.

For "Your Babe"

Why, there is nothing too good, is there? Here's a hint. Read.

Luxury Collapsible Go Cart

Large, wide nickel-trimmed carriage; 14 inches between arm rests, large four-bow English-shaped hood, steel tubing frame, 10-inch quick detachable wheels with 1/2-inch rubber tires, luxury back, with the seat rests on luxury springs, upholstered in imitation leather, seat and back heavily padded. Price, \$18.00.



Luxury Carriage

Of good proportions; has deep and roomy seat, resting on sensitive, coil springs; adjustable foot rest, new un-locking lever, foot brake, detachable 16-spoke wheels, bright tin-plated finish. 10 inches in diameter, with 1/2-inch rubber tires, 3-bow hood, upholstered in imitation leather. This is the strongest and lightest all-tubular carriage on the market. Price, \$14.00.



Steel Frame Folding Go Cart

With adjustable back and buggy top cover, large steel wheels with rubber tires, strong, light, and smooth running. Price, \$4.75.



Collapsible Go Cart

Very roomy; finished either in dark green or brown, large rubber-tired wheels, and folding hood; good steel tubing frame, and upholstered in imitation leather. Price, \$7.50.

Our stock of Go Carts and Carriages is the largest in the city and prices are the lowest

J. Hopp & Co. LIMITED

Where Do You Buy Your Toilet Goods?

Do you drop in at the most convenient store and take any FACE POWDER or CREAM that may be handed out to you, or that you happen to know by name?

Many face powders contain bleaching chemicals that are dangerous to use — others are made in three or four shades, each shade intended for a certain type of complexion. Some rouges show for a block, while a touch of the right kind cannot be detected.

BUY your Toilet things where you can learn what is in the box.

Ask any of our salesmen what best suits your individual case.

Benson, Smith & Co., Ltd. Fort and Hotel Streets

SHINOLA

SHOE POLISH

The box that opens easier and shines quicker. 10 cents. MANUFACTURERS' SHOE CO.

James L. Holt

After some fine lots near the canal at Palao, at a bargain, also the lovely sea-beach home of the late Admiral Beckley at Aqua Marine.

BUNGALOWS

AND REAL ESTATE
OLIVER G. LANSING
80 Merchant Street

BARGAINS! BARGAINS!

We deal in listed and unlisted securities of all kinds. Hidalgo, La Zaca, ulpa rubber, Purissima Hills Oil stock; Mascot Copper.

W. E. LOGAN & CO.
Room 17 Bacon Block, Oakland, Cal.

Your attention is called to the fact that we have just received, by last boat from the Coast, a large shipment of the best PANAMA HATS. Special inspection invited to see our display at our new store, No. 20 Bereania street, near Nuuanu avenue.

THE LEADING HAT CLEANERS
FELIX TURRO, Specialist.

Keep Cool!

It takes more than the suggestion to keep cool these days. It really can be done only with an

Electric Fan

Just attach it to the chandelier in place of a lamp. It uses less current than a 15-candlepower lamp.

We have them complete from

\$10.00 up

The Hawaiian Electric Co., Ltd.

Typewriter Multigraph Printing
General Imitation Typewriter Work

GEO. S. IKEDA

78 Merchant St. Telephone 2500

MAKE ARRANGEMENTS NOW TO HAVE THE

French Laundry,

CALL FOR YOUR LAUNDRY

777 KING STREET J. ABADIE, Prop. TELEPHONE 1491

News and Comment
Written by Experts

STAR-BULLETIN SPORTS

Edited By
L. REDINGTON

MAUI DOWNS THE CAVALRY BY ONE-SIDED SCORE BUT GAME HAS BRILLIANT RED EEMING FEATURES

Hard Riding, Hard Hitting and
Better Mounts Win for Val-
ley Islanders — How the
Game Went Period by Period

BY LAURENCE REDINGTON.

Maui's supposed "shade" over the Cavalry proved to be a very definite bit of color yesterday, when the Valley Islanders mowed down the polo players of the Fifth Horse by the lopsided score of 10-3. It was a closer game than the score indicates, but at no time after the third period was Maui in danger of losing, and in the final periods the hard-hitting visitors rolled up goal after goal, and gave the impression of still having something in reserve.

The game was not nearly so good as one from the spectators' standpoint as the initial match of the tournament between Maui and Oahu last Saturday, not only because of the one-sided score, but also because the class of polo put up by both teams was far below the original sample. There was a noticeable lack of team play



CAPTAIN FORSYTH

on both sides up to half time, when Maui braced somewhat, and started a little combination work that at once showed results on the score board. At that, the game had its exciting moments, and there were a couple of mild spills to give the crowd some genuine thrills.

Cavalry Played Hard. Whatever else may be said of the game, it must be written that the Cavalry played hard from start to finish. There was no shirking and no loafing, and the men got the last ounce of effort out of themselves and their mounts. The luck broke distinctly against the soldiers, for although they were marked for defeat in any instance, the score would have been much closer under ordinary circumstances.



LIEUTENANT SHERIDAN

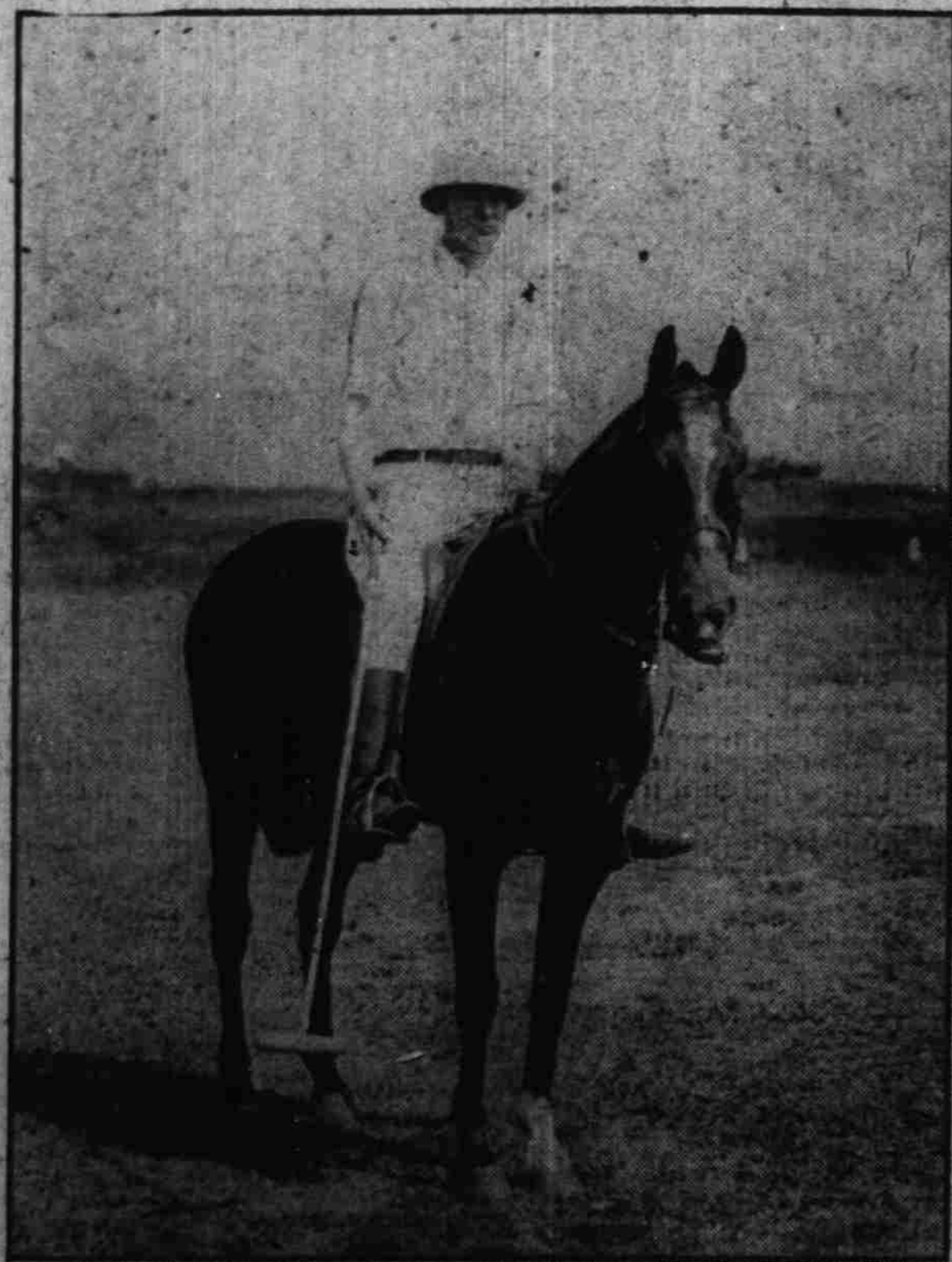
stances. Three times at the matika goal the Cavalry had an open chance to score, and three times the ball missed the posts by a foot or so. Again, in several instances, a flying ball speeding for the posts, was blocked by a Maui pony, and a score saved. Lieutenant Hanson was the bright particular star of the Cavalry aggregation. His play improved as the game progressed, and in the closing periods of the match he was hitting the ball from every possible, and many seem-

COLOS CAUSE HEADACHE

LAXATIVE BROMO-QUININE, removes the cause. Used the world over to cure a cold in one day. E. W. GROVE'S signature on each box. Made by PARIS MEDICINE CO. St. Louis 4, Mo.

There Is Only One Model Sanitary Barber Shop

Three First-Class Artists at your service.
BETHEL AND KING.
E. G. Sylvester and E. Schroll, Props.



ARTHUR COLLINS
Maui's Crack No. 1, Mounted on Little Arthur, His Best Pony

ingly impossible angles. He had a good deal of trouble with his gear and mounts, breaking no less than two bits, and having to come to the sidelines for repairs several times. Captain Forsyth, captain and No. 3 of the losing team, was below his best form. He didn't seem able to get going, and missed many shots that ordinarily he would execute brilliantly. Maui Well Balanced.

Rice and Collins did the sensational work for Maui, but the team is well balanced, and every man did his part toward rolling up the score. Throughout the game the four players kept in touch with each other, and managed some clever passing that netted results. The men didn't always hold their positions, but each knew where the other happened to be, and hit him in a way that completely puzzled the Cavalry players.

A good instance of this came in the seventh period, when the Cavalry started a run up the Waikiki sideboards. Forsyth and Hanson were on the ball, with Sheridan clearing the way for them, and it looked like a determined effort to get within striking distance of the mauka goal. Frank Baldwin, on Boy Blue came up from behind and collared the ball as it came off Hanson's stick. Without looking around he called out "take it Harold," and hit a beautiful quartering backhand to Rice, who was outside the center of play, faced toward the Cavalry goal. Harold took it. He caught the willow as it came out of the bunch of sticks and hoofs, and with just two shots sent it through the pillars. It was this sort of team work that won the game for Maui.

Wind a Factor. The wind was much stronger than during last Saturday's game, and the difference between the uphill and downhill goals was even more strongly marked. The Cavalry lost the toss, and therefore started out on the defensive, which was something of a moral as well as a physical handicap. Hanson was the first man to touch the ball on the throw-in, and he and Sheridan worked it half way up the field between them before Maui collared it and sent it flying toward the Mauka posts. By the way the ball sailed and bounded it was apparent that the wind was a strong factor to be reckoned with, and that while great length could be secured hitting with it, it made accurate goal shooting at the lower end of the field extremely difficult, owing to the speed with which the ball moved and the difficulty of riding fast enough to keep up with it, and hit at the same time. It was really easier to hit goals from directly in front of the mauka goal than to score them through the mauka pillars, but the difficulty was in making the ball travel up the hill and against the wind. The Cavalry had several chances to hit easy goals at the upper end of the field during the game, but missed through over anxiety, or the turn of the luck.

Rice Comes Cropper. Harold Rice got a fall that looked nasty before the game was two minutes old. Making a quick turn in front of the Cavalry goal, his pony Kolara lost her footing and came down, rolling half over the rider, while a Cavalry pony blundered into the mess. It was an excellent opportunity for a bad smash, but Rice bounded up as though made of rubber, and was in the game in a jiffy. His pony was more shaken than he was, and before the period closed he had to change mounts. Frank Baldwin was the first man to

score, sending the ball cleanly between the posts, and giving the Maui supporters something to cheer about. The second goal also went to Maui, Collins putting it through the mauka end in impressive style. This uphill score put heart into the Maui men and correspondingly depressed the Cavalry players, for they found themselves knocking against the slope and the wind, fighting for every yard gained, without getting a goal opposite the team's name on the score board.

Frank Baldwin, in trying to turn a ball toward the sideboards, sent it over his own line instead, making the Maui score one-quarter of a goal less. This was the only penalty of the game, there being no foul called by Referee Naylor, and no other safeties made. Sameness to Play.

There was a good deal of sameness to the play of the first half of the game. The Maui men seemed to have taken to heart the famous epigram of Ed Delehanty, who, when asked to write an article on how to bat at baseball, returned to the publisher a sheet of paper on which was written "Hit 'em where they ain't." That's just what Maui was doing yesterday, and the result was that at half time the score stood, Maui 3-0, Cavalry 2.

(Continued on Page 13)

LATE NEWS OF THE SPORTING WORLD GIVEN IN TABLOID FORM

There are two players in the National League who are hitting above .400. Crandall of New York has a record of .417 and Zimmerman of Chicago an average of .416. Zimmerman has played in about four times as many games this season as has Crandall, hence his record may be considered as the most remarkable.

An "all-American interscholastic olympiad," with teams of athletes representing each of the several States, is under contemplation at Purdue University.

Major league scouts have their eyes on Pitcher Ed Marks of Bloomington, in the Three-Eye League. Sickness kept him out of the game during much of May and June, but he is now again in form. Marks has lost only one game this season, and that through no fault of his own.

Tris Speaker of Boston is ahead of Ty Cobb of Detroit in batting average for this season. The former has a record of .388, the latter .371. Joe Jackson of Cleveland heads the list with an average of about .400.

Peoria has the distinction of graduating the first Three Eye League player of the season, selling Outfielder Robert Veach to Indianapolis for a price said to be \$2500. Veach was signed by Peoria three years ago as a pitcher, but was so strong with the stick that he was removed to the outfield in order that he might be in every game. His batting average this season has been .345.

Al Palmer refuses to meet Luther McCarthy at the present time, on the ground that the fight would not be financially worth while. There may be

BRITAIN PLAYS AMERICA.

LONDON, July 13. — In the continuation of the preliminary games for the Dwight F. Davis lawn tennis trophy at Folkestone today, H. P. Dixon, the British player, beat Andre H. Gobert of France in the singles three sets to one. The score was 4-6, 6-4, 6-2 and 6-3. Dixon's victory gives Great Britain three out of five events and entitled the British players to meet the American team.

PROMISING BOXER CALLED BY DEATH

Mystery surrounds the recent death in San Francisco of Frank McConnell, the well known boxer, who had many friends among the sporting fraternity of Honolulu.

The San Francisco Chronicle of recent date says:

Frank McConnell, at one time one of the most promising lightweight boxers ever developed in this community, passed away Wednesday night at the City and County Hospital, his death resulting from a peculiar combination of circumstances that caused the police to investigate the matter. Detectives were detailed on the case, and notwithstanding the fact that the doctors in charge at the hospital declared that McConnell had died from the effects of peritonitis and not to the alleged injuries he received a month ago from his stepfather, John Connolly, in their home at 1340 Natoma street, an autopsy was ordered.

Promising Fighter.

Yesterday afternoon at the Coroner's office an autopsy was held on McConnell's body by the city physicians, and it was found that he had succumbed to the disease and not to any injuries that he might have received prior to his admittance to the hospital. On the police records there is still an assault and battery charge against the stepfather, and this will not now be changed as a result of the inquiry yesterday.

Not so many years ago McConnell was believed to be one of the most promising lightweights ever seen in the boxing business, but he received severe injuries early in his boxing career and never did develop. It was in a battle in 1903 at the old Woodward's Pavilion that he was matched with "Spider" Welsh, and in that encounter he was so seriously injured that he was laid up for a long time from partial paralysis. He never fully recovered and was a cripple for all time.

So well did the sporting fraternity of this city think of McConnell as a boxer that after his sickness many benefits were arranged for him and several large purses subscribed for to help him. He never got any better, and in a quarrel at his home a month ago he was severely injured by his stepfather, John Connolly. Connolly was allowed out on bail and the case has never come to trial.

MICHIGAN SPEED MARVEL WHO BEAT WORLD'S BEST SPRINTERS



RALPH CRAIG

Ralph C. Craig of the University of Michigan was the sensation of the Olympic games in the sprints. He won both the 100 and 200-meter events and set a clip that none of the other short-distance runners could touch. Craig gives promise of doing even better things, and has a brilliant athletic future.

STEPHENSON WINS DECIDING SET FROM GUARD

TODAY'S MATCHES.

4:30—Littlejohn vs. Gassie; Judd vs. Lowrey.
5—C. J. Hoogs vs. Stephenson; Richards vs. Axelrod.

Jack Guard lost the deciding set of his match with George Stephenson, the Harvard crack, played off yesterday afternoon after the polo match. The match was called on account of darkness Tuesday, with the score set all, 4-1, but by mutual agreement a full set was played to determine the winner. The score yesterday was 5-3.

Stephenson played much the same game that he put up against the Begeretania man in their hot engagement Tuesday, but he was considerably steadier, and this told in the end. It was hard luck for Guard to lose the match after being point-match in the second set, when the score was 5-4 and vantage-in on his serve, but it's all in the game, and he took his defeat with a smile.

The Hoogs-Stephenson match looks like the feature of this afternoon's play. The Y. M. C. A. rooters will be out in force to cheer on their champion, and there is considerable interest shown over the result. Today's matches will be played at Beretania.

BALL THAT CUTS PLATE HARDEST FOR SLUGGER

Ball right over the heart of the plate seems the hardest for the great sluggers to slam. Leaders like Ty Cobb, Tris Speaker, Hans Wagner, Hefie Zimmerman, Jack Collins, George Stovall, Joe Jackson, Chief Meyers and the rest of them will let a perfect strike float past without making a motion at it. Then they'll lambaste one that's far on the outside or inside.

Bill Lange and Joe Benz, the star Sox twirlers, were discussing this point on the bench a couple of days ago. Both men have had remarkable success pitching to the best batters in the American league and arbitrate it

Pitcher Russell Northrup to St. Joseph is announced by Manager Isbell of Des Moines.

DES MOINES, July 13.—The sale of

M'LOUGHLIN IS CHAMPIONSHIP MATERIAL

Win Over Larned Yesterday
Leads to Belief He Will
Win National Title

Maurice McLoughlin's win over William A. Larned in the Longwood tournament yesterday in tennis fans to the belief that the California crack will win the national title this year. Season after season Larned's supremacy has been undisputed, but it was not to be expected that he could play winning tennis indefinitely, and his tennis reputation will not suffer by ultimate defeat at the hands of a younger man, and one that he himself has coached.

William A. Larned has the wonderful record of having won the Longwood cup no less than twelve times since 1891. From 1903 until 1910 he won it eight straight times.

Great things are expected this year of McLoughlin and his team mate, Tom Bundy of Los Angeles. Doubles at Lake Forest.

The most important of the tournaments in which McLoughlin and Bundy will participate outside of the singles National championship event at Newport will be the doubles preliminaries to be contested at Lake Forest, Illinois, on the courts of the Quivertis Club August 1.

Sectional championships in the East are being decided now and McLoughlin and Bundy will be pitted against the winners in the different sections. The winning team in the preliminaries will meet R. D. Little and G. F. Touchard in the challenge match for the title in August.

This will be the fourth time the Pacific Coast has been represented in the preliminaries. In 1909 Maurice McLoughlin and George Jones qualified for the challenge match, but were defeated by Hackett and Alexander. The champions Thomas Bundy and Trow Hendrick, both of Los Angeles won the preliminaries in 1910, but they, too, went down to defeat before Hackett and Alexander. Last year McLoughlin and Bundy were defeated in the preliminaries.

McLoughlin was the runner-up in the all-comers' tournament the first year he went East in 1909, but was defeated in the final round by W. J. Clothier of Boston. Since that time McLoughlin and Bundy have both figured prominently in the tournament, but they have been unable to land the title.

Conditions More Favorable.

The conditions are more favorable for them this year. The champion will be compelled to play through the tournament. Then, too, the former stars have for the most part been supplanted by the younger players and McLoughlin and Bundy have been coming to the front as rapidly as any of them. Both of the coast players are inclined to think that this will be their last trip East and it is safe to say that they will play as high class tennis as ever before.

McLoughlin has gained a world of experience since his two trips to Australia. His strokes have probably not improved to any great extent, but he is a considerably better player than he was three years ago when he first went East. He no doubt feels that he is as clever as any man now playing the game, with the possible exception of Larned, and this confidence will help him materially in his matches.

He still fears Larned, however, despite the poor showing the champion made in Australia in the Davis cup matches. Probably his win yesterday

(Continued on Page 13)

BARTLETT

Natural Mineral Water

FOR TABLE AND MEDICINAL
PURPOSES IT HAS NO EQUAL

Deliveries Made to Any Part
of City

Lovejoy & Co.,

902 NUUANU STREET

PHONE 2708

WANTS

ONE CENT A WORD

WANTED

More soda water drinkers. Better to suffer from stomach ache than D.T. Nothing but good effects from drinking our Root Beer or Pineapple. Hon. Soda Water Co., 34A N. Beretania. C. E. Frasher, mgr. 4941-tf

Young Japanese who speaks English and writes well wants position in any place. His chauffeur's certificate. Address "K", P. O. Box 710. 5295-1m

Partner with \$800 for manufacturing business. Large profits. For details address "E. A. E.", Star-Bulletin. 5290-1m

Girl for housework; able to cook. White girl preferred. No. 10 Tregloan Place, Beretania St. 5296-2t

SITUATION WANTED

Civil engineer, 10 years' experience. Plantation preferred. "W. H. S.", Hon. Star-Bulletin. 5288-1m

Position by Japanese as chauffeur. Two years' experience. Telephone 3839. Ask for Inoue. 5245-2m

Experienced stenographer. References. "A.", Star-Bulletin. 5296-1w

Position by young Japanese as chauffeur. "J.", P. O. Box 639. 5292-1m

A

AUTO SERVICE.

Trips around the island Wednesday and Friday; rates, \$4.50 each. Those desiring to make trip are requested to come and book. City Auto-Stand, opp. Catholic Mission, Fort St. Phone 3664 or 1179. 5279-tf

SELF-STARTERS.

Every-Ready Co.; M. C. King, manager. Agents for Every-Ready self-starter. Auto repairing. Milliani and Queen Sts. Phone 3636. 5258-tf

Royal Hawaiian Garage. Most up-to-date in town. Experienced chauffeurs. Telephone 1340. 5277

For hire, seven-seater Packard. Phone 2411. Young Hotel Stand; Charles Reynolds. 4540-1m

For rent, seven-passenger Packard. Phone 3848. Oahu Auto Stand. Jim Pierce. 5200-1m

Two more passengers for round-the-island tour. Auto Livery; Phone 1326. 5277

New six-cylinder Packard for rent. E. M. Wood, Young Auto Stand; Phone 2511. 5277

Honolulu Auto Stand. Phone 2999. Best rent cars. Reasonable rates. 5277

AUTO PAINTING.

Auto Painting Co., Liliha St., Mr. King. References, von Hamm-Young. Can paint and varnish autos, so they look as good as new. Workmen of many years experience. Let us figure. 5260-3m

ART NEEDLEWORK.

Madeira, French and all kinds of needlework done to order. Artistic designs for stamping lingerie, household linens, etc. Needlework materials. Harrison Bldg., Beretania, opp. Fire Station. 5242-3m

ARCHITECTURAL.

Chang Chan, architect. House plans, low rates; estimates furnished. Office, River Mill Co., 163 Pauahi St.; Tel. 1076. 5280-tf

ATTENTION!

A little down and a little each payday will keep you well dressed. The Model, Fort St., next to the Convent. 5277

B

BICYCLES.

Dowson Brothers, sole agents for Regal, Peerless and Bulldog gasoline engines. Dealers in Royal Navy English bicycles and American bicycles and supplies. Bicycle repairing a specialty. Phone 3258. Smith, Jr. Hotel St. 5287-tf

H. YOSHINAGA, 1218 EMMA ST. We sell any make of bicycle. Repair shop up to date. Tires and bicycle supplies. 5244-6m

M. Hamamoto, 475 Queen; Tel. 2431. Bicycles and bicycle supplies. 5262-3m

BUY AND SELL.

Diamonds, watches and jewelry bought, sold and exchanged. J. Carlo, Fort St. 5252-3m

Thayer Piano Co. Ltd.
STEINWAY
AND OTHER PIANOS
166 Hotel Street Phone 2314
TUNING GUARANTEED

For news and the truth about it, all people buy the Star-Bulletin.

FOR SALE

E. M. F. 1911 touring car; excellent condition, fully equipped; Presto tank, shock absorbers, seat covers, chairs, etc. Going to Coast, must sell at once. Make offer. "Coast," this office. 5296-3t

White Plymouth Rock hens and roosters. Pure bred. C. E. Frasher, Honolulu Soda Works, cor. Beretania and Nuuanu. 5287-2w

\$230—Fine driving horse, bay, 5 years old; height, 15.2; guaranteed sound. Address: Lieut. Crockett, Schofield Barracks. 5293-1w

New gasoline launch; 29 feet long, 7-foot beam, Standard marine engine. \$700. Inquire M. P. Pires, Lovejoy & Co. 5285-tf

New cottage, two bedrooms and bath, Palolo Valley; four minutes from carline. Address C. E. W., P. O. Box 29. 5283-tf

One share Hidalgo rubber and coffee of 1905, bearing dividend this year. Address "Rubber," Bulletin office. 5271-tf

1000 sheets corrugated #24 gauge and ridge. First-class shape. Hon. Scrap Iron Co., Halekaula St. 5292-1m

Bargains in real estate, on sea-shore, plains and hills. "Pratt," 301 Stangenwald Bldg.; Telephone 1602. 5277

Bargains—1910 Beretania. Potted palms, bedroom and parlor sets, fireless cooker, etc., etc. 5292-1w

Thoroughbred Pomeranian Spitz puppies. No. 4 Queen St., bet. Alakea and Fort. 5290-1m

Valuable postage stamps of many nations, sold singly or collection. P. O. Box 293. 5292-1m

Cocconut plants for sale; Samoan variety. Apply A. D. Hills, Liliha, Kauai. 5277

Uchiumi, 518 N. King; Tel. 3921. Dealers "Star" Kerose; 5 gals. 75c. 5250-3m

Rubber-tired phaeton, cost \$450, for \$150. Wright-Hustice, Tel. 1438. 5287-1m

Inter-island and Oahu Railroad shipping books, at Bulletin office. 5277

Inter-island and Oahu Railroad shipping books at Star-Bulletin office. 5277

Easter lily bulbs. Apply Miss J. Renwick, Mountain View. 5293-1m

The Transo envelope—a time-saving invention. No addressing necessary in sending out bills or receipts. Honolulu Star-Bulletin Co., Ltd., sole agents for patentee. 5277

AUTOS FOR SALE

Overland, 5-passenger. Good condition. Auto Painting Co., Liliha, nr. King. 5294-1m

1911 Ford 5-seater; \$500; terms; speedometer, Presto tank. J. W. Kerahner. 5185-tf

B

BAKERIES.

Love's Bakery, manufacturers and distributors of finest quality bread, crackers, pies and cakes. 5293-3m

Home-made bread "just like mother used to make." Boston baked beans and brown bread Saturdays. Fresh pastry daily. Home Bakery, 212 Beretania. 5227-3m

New Sunrise, 1208 Nuuanu. Pies, cakes, ice cream delivered to any part of city. P. O. Box 901. 5247-3m

BAMBOO FURNITURE.

The ideal furniture for the tropics. We submit designs or make from your plans. Picture framing done. S. Sakai, 563 Beretania; Phone 2497. 5245-6m

R. Ohtani, 1286 Fort; Tel. 3745. Screens, stands, etc. 5247-3m

BOARDING STABLES.

Splendid care taken of horses in our charge. See us before making arrangements to board horses. City Stables, 521 Beretania; Phone 1921. 5245-6m

BOOKS.

Books bought, sold and exchanged. Second-hand school books a specialty. Star Book Exchange, 1230 Fort St. 5285-1m

BUTTERMILK.

Buttermilk; pure, fresh churned. Delicious, nutritious. 232 S. Beretania. 5267-3m

C

CLEANERS.

Old hats with new band and ribbon when cleaned will be new. Jos. Roman, Beretania St., next fire station. 5252-3m

CANDIES.

Sweets Faultless Candies. Twice a month fresh from Coast. Hollister Drug Co., Fort St. 5277

WANTS

TO LET

Alewa Heights—To rent, for three months, nicely-furnished bungalow; two bedrooms; gas and electric light. Apply M. C. Webster, Alewa Heights. 5288-1m

Furnished or unfurnished (or for sale) new house, three bedrooms; all conveniences. 1249 Matlock Ave.; Phone 2560. 5287-tf

Fully furnished house. Nice locality, beautiful view, gas range. S. H. Dowsett, 842 Kaahumanu. 5293-3m

Furnished house, College Hills; reasonable to responsible party. Apply J. D. Marques; Tel. 2655. 5293-tf

Unfurnished 8-room house, 8-foot lanai; gas connection. S. H. Dowsett, 842 Kaahumanu. 5293-3m

New cottages, Fort Street Extension. Rents, \$15 and \$18. Apply Tim Kee, King and Alakea Sts. 5270-1m

New bungalow, College Hills; ready for occupancy August 1. Tel. 3195. 5292-2w

The property known as the Wilder building, corner of Fort and Queen streets. Dimensions 41x55. The building will be remodeled to suit tenant. Apply to C. Brewer & Co., Ltd. 5277

FURNISHED ROOMS

84 North Vineyard. Large airy, mosquito-proof rooms for gentlemen. Hot and cold baths. Beautiful grounds. 5290-1m

Nicely-furnished rooms, all modern conveniences, \$2.50 up. Queen Hotel, Nuuanu Ave. 5277

1140 Alakea, opp. Hawaiian Hotel. Running water; mosquito-proof; telephone. 5287-1m

Two rooms suitable for housekeeping. 73 S. Beretania St.; Phone 1325. 5277

The Metropole, Alakea St. Housekeeping suites and single rooms. Phone 5282-3m

The Santa Rosa, 531 Hotel, nr. Punchbowl. Large, airy upstairs rooms. 5287-1m

276 S. Beretania, opp. Hawaiian Hotel. Furnished housekeeping rooms. 5287-1m

Det. Monico—Centrally located; moderate prices. 130 Beretania St. 5281-tf

Cool, mosquito-proof; \$10 month and up. Helen's Court, Adams Lane. 5270-1m

Alakea House, next Bulletin. Rooms \$2 week. Baths and telephone. 5293-3m

The Elite, opp. Young Cafe. Large, airy rooms; \$15 up. Baths. 5266-5m

The Villa, 1269 Fort; Phone 2505. All lanai rooms, \$18 month. 5266-3m

1521 Fort. Nice cool, airy room. Hot and cold bath. Telephone. 5292-1m

Popular Hobbs, 1249 Fort. Cool rooms, tub and shower baths. 5282-3m

89 N. Beretania. Nice, clean rooms, \$1.50 per week. 5287-1m

FURNISHED COTTAGES

Small furnished mosquito-proof cottage for housekeeping. Phone, bath, English, nr. Vineyard. 5285-1m

871 Young, nr. Kapiolani. Mosquito-proof cottage, furnished for housekeeping. 5286-1m

C

CLOTHES CLEANING.

City Clothes Cleaning Co.—Young man, when applying for position, remember first appearance is everything. We call for and deliver. Phone 2067. 5242-6m

THE OHIO.

We have the latest sanitary devices for cleaning clothes. Call 1496 and we will send for and deliver clothes. 5228-3m

Try "The Star." Clothes cleaned, pressed and mended. We send for and deliver clothes within 24 hours. Phone 1182. 5227-3m

S. H. Hradas. Clothes cleaned, dyed and pressed; short notice. All cut flowers for sale. Phone 3029; Fort and Pauahi Sts. 5277

"The Pacific," 1256 Nuuanu; Phone 3063. Make suits good as new. Call for and deliver. Mending, dyeing. 5262-3m

U. Togawa, Nuuanu and Beretania; Tel. 3028. We call for and deliver. Try us. Satisfaction guaranteed. 5252-3m

Matsuoka, 48 N. Kukui; Tel. 3146. Sanitary methods. Dyeing done. Clothes sent for and delivered. 5266-3m

Asahi, 564 N. King; Tel. 2227. Clothes called for and delivered. Mending. 5263-3m

Sunrise Dyeing House, 1246 Fort; Tel. 1027. We also clean hats. 5264-3m

CROCKERY.

Sang, Yuen Kee & Co. Tinware, crockery, fancy china ware. Tin and plumbing shop. Special repair work. 1014 Nuuanu St. 5277

WANTS

ROOM AND BOARD

A family hotel in the best residence section of Honolulu. Rooms and board reasonable. Phone 1322. 1049-50 Beretania Ave. Shady Nook. 5277

Furnished rooms and board in private house, walking distance from post-office. Address "B. H.", Bulletin office. 5038-tf

Large, airy, mosquito-proof room, with board, suitable for married couple or two gentlemen. 1345 Emma. 5287-1m

The Hau Tree, 2199 Kalia Rd. Wai-kiki. Only first-class private hotel on beach. 5293-3m

Furnished rooms, with board, at Hus-tace cottage, Wai-kiki. Gentlemen only. 5055-tf

The Argonaut. Room with or without board. Terms reasonable. Phone 1308; 627 Beretania Ave. 5277

Room and board in private family for lady and gentleman. Apply 1942 King St. 5288-tf

The Bougainvillea, Rooms and board, select. Mrs. Rodanet, Beretania St. 5277

The Nuuanu, 1634 Nuuanu; Phone 1428. Cottages, rooms, table board. 5263-3m

The Roselawn, 1366 King. Beautiful grounds, running water every room. 5263-3m

254 King, cor. Richards. Hot and cold running water, every room. Phone 5295-3m

Cassidy's, Wai-kiki; Tel. 2879. Cottages, rooms, good bathing. 5265-4m

THE DONNA.

Apartment hotel. Rates \$40 and up. Beretania St. 5277

The Alcove, 1445 Emma. Home comforts, piano, reading room. Fine grounds. 5250-3m

C

CONTRACTOR AND BUILDER.

George Yamada, general contractor. Estimates furnished. 208 McCandless Bldg.; Phone 2157. 5277

City Contracting & Building Co., 24 N. Hotel, nr. Nuuanu. Materials supplied. Plans and specifications submitted free of charge. 5291-2m

K. Horuchi, Liliha, nr. King; Tel. 3801. Bids on contracts for building, painting and paper-hanging. Work guaranteed. 18 years' experience. 5250-3m

Buildings, paper-hanging, painting, repairs; materials supplied. Full list of materials in stock. Wing Tai & Co., 1216 Nuuanu. 5269-3m

Sanko Co., 1346 Nuuanu; Tel. 3151. Contracts for building, paper-hanging and cement work. Clean vacant lots. 5261-3m

Before letting contract for house, see Asahi & Co. Best workmanship and materials. Phone 1826. 208 Beretania. 5227-3m

Building, stone and cement work, painting, paper-hanging. Plans drawn. K. Onomoto, Beretania and Maunakea. 5270-3m

J. Kunishige, Kukui lane; Tel. 3377. Carpenter of highest class; 20 years' experience in America and Japan. 5252-3m

H. Nakanishi, King and Kapiolani; Phone 3256. General contractor and builder; painting, paper-hanging. 5265-3m

Y. Kobayashi, carpenter, contractor, paperhanger and painter. 2034 S. King St.; Phone 3365. 5286-tf

Y. Miyao, contractor and builder, 527 Beretania St. Work guaranteed. Phone 3516. 5245-6m

Sun Lee Tai Co., 26 N. King; Tel. 1753. Building contractors and painters. 5295-3m

T. Kokoshin, 711 S. King; Tel. 3091. Buildings. No charge drawing plans. 5262-3m

K. Segawa, 672 S. King; Phone 3236. Building contractor and house mover. 5245-1y

K. Hara, 524 N. King; Tel. 3921. Buildings, stone and cement work, etc. 5263-3m

K. Tihara, 1239 Nuuanu; Phone 3057. General contractor, builder, jobber. 5262-3m

CIGARS AND TOBACCO.

Kam Sing. Cigars, tobacco, candies, soft drinks and novelties. Next to Empire Theater. 5277

THE INVATERS.

The best blend of the finest Havana tobacco. Mild and sweet. Fitzpatrick Bros., agents. 5277

Y. Lee, King and Alakea. Manila cigars, Victoria, Conchas, Londres. 5291-3m

CONFECTIONERY.

German Confectionery, 1183 Alakea St.; Phone 2793. German coffee cake, baumkuchen, honigkuchen, marzipan, delicious ice creams and sherbets, wedding cake, fancy pastry, fruit cakes, plum pudding, small pastry. 5288-1m

KNOTS
BY MISS MILBA WADDELL.

I called to see
Olivia Kane
I thought I made
it very plain
After I thought an awful lot,
So I proposed the marriage knot.

It seems she didn't quite agree.
For this is what
she said to me—
"Another guess,
kind sir, you've got
in thinking of the
marriage—not."

WANTS

LOST

Black Chinese chow dog, with black tongue. Notify A. R. Rowat, D. V. S., Phone 2429, and receive reward. 5294-6t

Passbook No. 9793. Return to the Bank of Hawaii, Ltd. 5295-3t

C

CAFE.

CENTRAL CAFE.
The place where you get genuine home cooking. Best meals in town. To come here once is to come again. 5228-3m

Kentucky Cafe, Alakea, nr. Queen.—Best meals in city for the price. Open until midnight. Polite waiters. Luncheon prepared. 5243-3m

"Boston," next Blou Theater. Open all night. Catering especially to after-theater parties. 5266-3m

CABINET MAKER.

W. Matsushita, 1264 Nuuanu—Bookcases, desks, meat-safes; \$3.50 to \$17. 5251-3m

John Rodriguez, Miller, nr. Punchbowl. Stringed instruments repaired. 5266-3m

D

DRAWING.

City Transfer Co.; Jas. H. Love. All lines of drawing. Auto trucks. 5293-3m

DRESSMAKER.

Dressmaking; cut by French system. Shampooing and manicuring done at Room 105 Majestic Hotel, cor. Beretania and Fort. 5282-1m

Mrs. Cannon, dressmaker. Evening gowns a specialty. 9 Beretania St.; Phone 3284. 5277

Miss Nellie Johnson, dressmaker. Dressmaking of every description. Union St. 5277

Kawaguchi, 508 N. King; Tel. 2073. Men's shirts, ladies' and children's dresses. 5262-3m

DEVELOPING AND PRINTING.
City Photo Co., formerly K. W. Henry. Film developing and printing at special rates. 67 Hotel St. 5277

DRY AND FANCY GOODS.
Yat Loy Co.

Oceanic Steamship Co.

FOR SAN FRANCISCO		FOR SYDNEY, N. S. W.	
S. S. Sierra	July 27	S. S. Ventura	Aug. 5
S. S. Sonoma	Aug. 9	S. S. Sonoma	Sept. 2
S. S. Sierra	Aug. 24	S. S. Ventura	Sept. 30
S. S. Ventura	Sept. 6		

C. Brewer & Co., Ltd., - General Agents

Pacific Mail Steamship Co.

Steamers of the above company will call at Honolulu and leave this port on or about the dates mentioned below:

FOR THE ORIENT		FOR SAN FRANCISCO	
S. S. Persia	July 27	S. S. Siberia	July 23
S. S. Korea	Aug. 1	S. S. China	July 30
S. S. Siberia	Aug. 16	S. S. Manchuria	Aug. 7

For general information apply to

H. Hackfeld & Co., Ltd. - Agents

TOYO KISEN KAISHA

Steamers of the above company will call at and leave Honolulu on or about the dates mentioned below:

FOR THE ORIENT		FOR SAN FRANCISCO	
S. S. Tenyo Maru	July 18	S. S. Shinyo Maru	July 16
S. S. Shinyo Maru	Aug. 9	S. S. Chiyo Maru	Aug. 13
S. S. Chiyo Maru	Sept. 6	S. S. Nippon Maru	Sept. 3
S. S. Nippon Maru	Sept. 27	Tenyo Maru	Sept. 10

* Calls at Manila, omitting call at Shanghai.

CASTLE & COOKE, LIMITED, Agents, Honolulu.

Matson Navigation Company

Direct Service Between San Francisco and Honolulu.

FROM SAN FRANCISCO		FOR SAN FRANCISCO	
S. S. Lurline	July 31	S. S. Honolulu	July 24
S. S. Wilhelmina	Aug. 6	S. S. Lurline	Aug. 6
S. S. Honolulu	Aug. 14	S. S. Wilhelmina	Aug. 14

S. S. HYADES sails from Seattle for Honolulu direct on or about AUGUST 3, 1912.

For further particulars, apply to

CASTLE & COOKE, LTD., General Agents, Honolulu.

Canadian-Australian Royal Mail STEAMSHIP COMPANY.

FOR FIJI AND AUSTRALIA		FOR VANCOUVER	
S. S. Marama	Aug. 14	S. S. Makura	Aug. 13
S. S. Makura	Sept. 11	S. S. Zealandia	Sept. 10

THEO. H. DAVIES & CO., LTD., GENERAL AGENTS.

AMERICAN-HAWAIIAN STEAMSHIP COMPANY.

FROM NEW YORK TO HONOLULU

Via Tehuantepec, every sixth day. Freight received at all times at the Company's wharf, 41st Street, South Brooklyn.

FROM SEATTLE OR TACOMA TO HONOLULU DIRECT

S. S. VIRGINIAN, to sail about JULY 30
S. S. MISSOURIAN, to sail about AUGUST 10
S. S. MEXICAN, to sail about AUGUST 21

For further information apply to H. HACKFELD & CO., LTD., agents, Honolulu. C. P. MORSE, General Freight Agent.

Service--Dispatch

WESTERN PACIFIC RAILWAY

THE FEATHER RIVER ROUTE

For particulars see
Fred. L. Waldron, Ltd.
836 Fort Street

Pau Ka Hana

MOVES THE EARTH

Swedish Gymnastics

139 Merchant Street
Phone 2747

Bishop & Co.

Established in 1868.

BANKERS
Commercial and Travelers' Letters of Credit issued on the Bank of California and The London Joint Stock Bank Ltd., London.

Correspondents for the American Express Company and Thos. Cook & Son.

Interest allowed on Term and Savings Bank Deposits.

BANK of HONOLULU LIMITED

Issue K. N. & K. Letters of Credit and Travelers' Checks available throughout the world.

Cable Transfers at Lowest Rates

Castle & Cooke

Limited
HONOLULU, T. H.

SUGAR FACTORS, SHIPPING AND COMMISSION MERCHANTS
—Agents for—
FIRE, LIFE, MARINE, TOURISTS' BAGGAGE AND AUTOMOBILE INSURANCE

Representing
Ewa Plantation Company
Waiwala Agricultural Co., Ltd.
Kohala Sugar Co.
Apokaa Sugar Co., Ltd.
Matson Navigation Co.
Toyo Kisen Kaisha

The Yokohama Specie Bank, Limited

HEAD OFFICE, YOKOHAMA
Capital Subscribed, Yen 48,000,000.
Capital Paid Up, Yen 30,000,000.
Reserved Fund, Yen 17,500,000.

General banking business transacted. Savings accounts for \$1 and upwards.
Fire and burglar-proof vaults, with Safe Deposit Boxes for rent at \$2 per year and upwards.
Trunks and cases to be kept on custody at moderate rates.
Particulars to be applied for.

YU AKAI, Manager.
Honolulu Office, Bethel and Merchant Streets. Telephone 2421 and 1594. P. O. Box 168.

EMMELUTH & CO., LTD.

PLUMBERS and SHEET METAL WORKERS
STOVES and RANGES
Corner King and Bishop Streets
Phone No. 3067

J-M

Corrugated Asbestos ROOFING
Indestructible. Keeps out the heat. Applied same as corrugated iron.

Honolulu Iron Works Co.

A. P. McDONALD,
Contractor and Builder

Estimates given on all kinds of building.

Concrete Work a Specialty
PAUHI STREET, NEAR NUUANU Queen Street

Honolulu

GET AT THAT DUST WALK

Your neighborhood will be improved by the construction of a Cement Sidewalk. We have the materials—Crushed Rock and Sand.

Honolulu Construction & Draying Co., Ltd.

Robinson Building. :: :: Queen Street.

FIRE LIFE MARINE AUTOMOBILE

Tourist Baggage and Accident Insurance

Castle & Cooke, Ltd.
Agents Honolulu

Alexander & Baldwin

LIMITED
Sugar Factors, Commission Merchants, and Insurance Agents

Agents for

Hawaiian Commercial & Sugar Co.
Haku Sugar Company.
Pala Plantation.
Maui Agricultural Company.
Hawaiian Sugar Company.
Kahuku Plantation Company.
McBryde Sugar Company.
Kahului Railroad Company.
Kauai Railway Company.
Honolulu Ranch.
Haku Fruit and Packing Company.
Kauai Fruit and Land Company.

C. Brewer & Co., Limited

ESTABLISHED 1826
Sugar Factors, Shipping & Commission Merchants, Fire and Marine Insurance

AGENTS FOR

Hawaiian Agricultural Company
Onomea Sugar Company
Pepeeke Sugar Company
Honolulu Sugar Company
Wailuku Sugar Company
Olowalu Company
Kilauea Sugar Plantation Company
Paauhau Sugar Plantation Company
Hakalau Plantation Company
Hutchinson Sugar Plantation Co.
Waimanalo Sugar Company
Honolulu Plantation Company

Oceanic Steamship Company
Baldwin Locomotive Works

PACIFIC ENGINEERING COMPANY, LTD.

Consulting, Designing and Constructing Engineers.
Bridges, Buildings, Concrete Structures, Steel Structures, Sanitary Systems, Reports and Estimates on Projects. Phone 1045.

BUILDING MATERIAL

Of All Kinds

DEALERS IN LUMBER
ALLEN & ROBINSON

150 Hotel St., Oregon Bldg. Tel. 3445

WANTS

B

REAL ESTATE.

Bargains in real estate on seashore, plains and hills. Telephone 1602. "Pratt" 101 Stangenwald Bldg. 5277

S

SHIPPING.

City Transfer Co.; Jas. H. Love. Goods packed and shipped to all parts of the world. 5293-3m

SHIRT MAKER.

H. Akagi, 1718 Nuuanu. Forty years' experience in America and Japan. Satisfaction guaranteed. P. O. Box 750. 5247-3m

I. Kunishige, Kuku Lane; Phone 3377.

Shirts to order. Materials supplied. 5252-3m

K. Fujihara, Kuku Lane. Shirts, pajamas, neckties made to order.

5247-3m

ERI SHIYA, 142 N. BERETANIA.

Shirts made to order. We are up to date in latest styles. Finest line of materials in city. 5229-3m

STORAGE.

City Transfer Co.; Jas. H. Love. Fire-proof warehouse (Hopper Bldg.). Insurance lowest rate. 5293-3m

SHOE REPAIRING.

Shoe repairing. Non-slip heels, catspaw 50c. O'Sullivan 50c. New shoes for sale. 1124 Fort, near Hotel St. 5273-1m

Louis Petrillo, 1287 Emma. Expert.

Latest machinery. Repairs "while you wait." 5291-3m

Antone Canete, cor. Alakea and King.

Work guaranteed. k-5296-3m

SEWING MACHINES.

R. TANAKA, 1266 FORT STREET. Sewing machines bought or exchanged. Ring 3299 and we will send man to look at old machine. 5242-5m

SHIRT MAKER.

O. Yamamoto, 1248 Fort. Experienced shirt and pajama maker. I carry all grades material. Prices reasonable. 5290-3m

SIGN PAINTERS.

HENRY M. GODOY.
527 S. Beretania. Phone 3516. 5245-6m

T

TRANSFER.

City Transfer Co. (Jas. H. Love). Baggage, furniture and piano movers. 5291-3m

Island Transfer Co., 229 Merchant. Day

phone 3289, night 7891. Splendid equipment for handling all kinds of express and draying. All employees have had long experience. 5269-3m

TIRES REPAIRED.

Honolulu Vulcanizing Works, on Alakea St., is now prepared to make repairs to any size tire for any vehicle. Prices reasonable and quick delivery. 5277

TAILORS.

M. Matsuda, 1282 Nuuanu; Tel. 2249. Suits made to order, \$4 to \$60. 5251-3m

U

UKULELES.

The celebrated strictly hand-made ukulele, invented by M. Nunes 33 years ago. Salesroom, Kapolani Bldg. No trouble to show instruments. 5244-3m

UMBRELLAS.

K. Mizuta, 1284 Fort; Tel. 2745. Repairing done. 5242-3m

W

WAGON REPAIRS.

306 NORTH BERETANIA. Bring your old wagons to us. We will make as good as new for very little cost. Lee Kau Co., expert repairers. 5229-6m

WATCHMAKER.

Roy Mathews, Palm Bldg. Annex. Just prices. Close regulation. Mail orders. k-5296-3m

REAL ESTATE INVESTMENTS

78 Merchants St. Phone 3493

J. HOLMBERG

ARCHITECT.
Estimates furnished on Buildings
Rates Reasonable.

150 Hotel St., Oregon Bldg. Tel. 3445

Everything in the printing line at Star-Bulletin, Alakea street; branch, Merchant street.

CLOTHING FOR MEN

ON CREDIT THE MODEL

FORT ST. NEXT TO CONVENT

PASSENGERS BOOKED

Per str. Claudine, for Hilo, via way ports, July 26.—Mrs. H. S. Ewing and daughter, Miss Mary Rodriguez, Miss A. Alexander, Mrs. E. J. Little, Mrs. H. E. Minvielle, Mrs. A. Minvielle, H. C. Brown, A. J. Hilbert, Rev. C. How, Dr. A. Bowen, Mrs. C. W. North, Mr. and Mrs. Moses Kahlapo.

Per O. S. S. Sierra, for San Francisco, July 27.—Dr. R. W. Anderson and family, J. S. Anderson, Mrs. Edith S. Bush, John Buckley, Rev. G. E. Burlingame, Mrs. L. R. Brodeck, Mr. Bozzi, T. Chalmers, R. Chalmers, Miss B. Chalmers, Miss M. B. Casidy, Mrs. B. Cochrane, Miss Helen Cochrane, F. M. Cauberry, Mrs. Cauberry, Mrs. J. Decker, Miss A. Dingley, Miss S. De La Nux, Mrs. Decoto, Miss Helen Deming, Mrs. G. R. Dunmore, Miss Dodson, A. W. Emerson, Mrs. W. K. Freeman, Miss O. K. Franca, Mrs. G. A. Grove, Miss E. W. Grippinger, Mrs. F. Goldman, Miss G. Hart, C. J. Hutchins, Mrs. Hutchins, Mrs. Doris M. Hutchins, D. F. Heasland, R. W. Hendry, Mrs. M. W. Hendry, Miss A. W. Hendry, Miss E. C. Juth, Miss L. Klaber, Mrs. E. Klaber, Mrs. W. J. Klaber, Mrs. Mabel Klaber, Mrs. Lewis, H. J. Lyman, Mrs. Lyman, H. F. Lewis, Mrs. Lewis, Donald Lewis, Mrs. R. E. Langton, Mrs. E. W. Morton, Mrs. A. Morton, Miss E. Morton, Mrs. T. Molinelli, E. C. May, Mrs. May and daughter, J. S. Morrow, E. A. Mulford, Miss A. Metzger, Mrs. Metzger, L. Mathews, Mrs. Mathews, Miss C. Nelson, Miss L. A. Nelson, J. Oliva, Miss Oliva, Miss Alice Porter, Master Wyman Reynolds, Mrs. C. Ryan, G. W. Ross, F. M. Sammis, Mrs. Sammis, Mr. Scheele, Walter C. Smith, Miss E. M. Schmidt, Mrs. Shoemaker, Mrs. E. M. Swift, Mr. Scharlin, Daniel Tweedie, George B. Thayer, M. Tauli, Miss G. M. Voell, G. B. Wyman, Mrs. Wyman and son, Miss A. Wilcock, Mr. Wilcock, Mrs. Wilcock and two children, Miss E. Wren, Lew Wheeler.

Per str. Kilauea, for Kona and Kau ports, July 30.—Mrs. O. A. Moran, Miss Aileen Jarrett, Geo. J. O'Neill.

Per str. Kilauea, for Kona and Kau ports, July 30.—Mrs. O. A. Moran, Miss Aileen Jarrett, Geo. J. O'Neill.

Logan, sailed from Honolulu for Manila, July 13.

Sherman, from Honolulu for San Francisco, arrived July 11.

Sheridan from Honolulu for San Francisco, arrived April 7.

Crook, at San Francisco.

Warren, stationed at the Philippines.

Thomas, sailed from Manila for Honolulu and San Francisco, July 15.

Supply, sailed from Honolulu for Seattle, June 15.

TRANSPORT SERVICE

Logan, sailed from Honolulu for Manila, July 13.

Sherman, from Honolulu for San Francisco, arrived July 11.

Sheridan from Honolulu for San Francisco, arrived April 7.

Crook, at San Francisco.

Warren, stationed at the Philippines.

Thomas, sailed from Manila for Honolulu and San Francisco, July 15.

Supply, sailed from Honolulu for Seattle, June 15.

ROYALISTS COUNTED ON DESERTIONS AMONG SOLDIERS AND SAILORS

Disappointed at Failure of Attack on the Portuguese Republic

LISBON, Portugal, July 11. — The Portuguese parliament closed its sessions today amid cries from the members of "Long live the Fatherland!" and "Long live the republic!"

The rebels at Cabeceira de Basto, led by the parish priest and armed with guns, pitchforks and scythes, have taken refuge in the mountains.

Their plan is to join the survivors of the band commanded by Captain Couciere, who are hidden in the mountains.

No further royalist incursions into Portuguese territory were reported today, and it is believed the backbone of the movement has been broken.

The invaders have lost men, arms and ammunition in abundance, and the loyalty of the republican army and navy is believed to have crushed the hopes of the royalists, who counted in desertions among the soldiers and sailors.

The report that Braga, thirty-five miles east of Oporto, was burned by the royalists yesterday has not been confirmed.

FOR AGED PEOPLE

Old Folks Should Be Careful in Their Selection of Regulative Medicine

We have a safe, dependable, and altogether ideal remedy that is particularly adapted to the requirements of aged people and persons of weak constitutions who suffer from constipation or other bowel disorders. We are so certain that it will relieve these complaints and give absolute satisfaction in every particular that we offer it with our personal guarantee that it shall cost the user nothing if it fails to substantiate our claims. This remedy is called **REXALL ORDELS**.

Rexall Ordeles are eaten just like candy, are particularly prompt and agreeable in action, may be taken at any time, day or night; do not cause diarrhoea, nausea, griping, excessive looseness, or other undesirable effects. They have a very mild but positive action upon the organs with which they come in contact, apparently acting as a regulative tonic upon the relaxed muscular coat of the bowel, thus overcoming weakness, and aiding to restore the bowels to more vigorous and healthy activity. Three sizes, 10c., 25c. and 50c. Sold only at our store—The Rexall Store, Benson, Smith & Co., Ltd. Fort and Hotel Sts. San Francisco—Sierra, July 27.

Yokohama—China, July 30. Mails will depart for the following points as follows:

Yokohama—Perla, July 27. Vancouver—Makura, Aug. 13. Colonies—Makura, Aug. 13. Yokohama—China, July 30.

Mails are due from the following points as follows:

San Francisco—Perla, July 27. Victoria—Makura, Aug. 14. Colonies—Makura, Aug. 13. Yokohama—China, July 30.

MOVEMENTS OF MAIL STEAMERS

VESSELS TO ARRIVE

Thursday, July 25.
European ports—Poltician, Br. stmr.
Friday, July 26.
Kona and Kau ports—Kilauea, stmr.

San Francisco—Perla, P. M. S. S.
Saturday, July 27.
Hilo via way ports—Mauna Kea, stmr.

Sunday, July 28.
Salina Cruz via San Francisco and Sound ports—Arizona, A. H. S. S.
Kauai ports—Kilauea, stmr.

Monday, July 29.
Hongkong via Japan ports—China, P. M. S. S.

Tuesday, July 30.
Hilo direct—Mauna Kea, stmr.

Wednesday, July 31.
Maui and Hawaii ports—Claudine, stmr.

San Francisco—Lurline, M. N. S. S.
Kauai ports—W. G. Hall, stmr.

Monday, August 1.
Manila via Nagasaki—Thomas, U. S. A. T.

San Francisco—Korea, P. M. S. S.
Saturday, August 3.
Hilo via way ports—Mauna Kea, stmr.

Sunday, August 4.
Maui, Molokai and Lan

LEGAL NOTICES.

IN THE CIRCUIT COURT OF THE FIRST JUDICIAL CIRCUIT, TERRITORY OF HAWAII, HOLDING TERMS IN THE CITY AND COUNTY OF HONOLULU.

TERRITORY OF HAWAII, by Marston Campbell, Superintendent of Public Works, Plaintiff and Petitioner, vs. GOO WAN HOY ET AL., Defendants and Respondents.—Eminent Domain.

TERM SUMMONS.

THE TERRITORY OF HAWAII: To the HIGH SHERIFF of the TERRITORY OF HAWAII, or his Deputy; the SHERIFF of the CITY AND COUNTY OF HONOLULU, or his Deputy.

YOU ARE COMMANDED to summon GOO WAN HOY; ENOCH JOHNSON; KAMAKA STILLMAN; ROSE McINERNEY, wife of E. A. McInerney; E. A. McINERNEY; CARL ONTAL; GEORGE D. ROBINSON; GEORGE T. ROBINSON; J. A. MAGGON; LI LIKALANI; THOMAS LALAKA; ROSE K. AIAU; LUM CHAN; CHIN-KWAI KHI; WONG LEONG; HARRY DOE JOE; JAPANESE BENEVOLENT SOCIETY, a corporation; W. O. SMITH, S. M. DAMON, E. FAXON BISHOP, ALBERT F. JUDD and ALFRED W. CARTER, Trustees under the Will and of the Estate of Bernice Pauahi Bishop, deceased; JOHN DOE, MARY ROE, JANE BLUE and JOHN BLACK, unknown owners and claimants, defendants and respondents, in case they shall file written answer within twenty days after service hereof, to be and appear before the said Circuit Court at the term thereof, pending immediately after the expiration of twenty days after service hereof; provided, however, if no term be pending at such time, then to be and appear before the said Circuit Court at the next succeeding term thereof, to wit, the January, 1913. Term thereof, to be held at the City and County of Honolulu on Monday, the 13th day of January next, at 10 o'clock a. m. to show cause why the claim of the Territory of Hawaii, plaintiff, should not be awarded to the defendant, and have you then there this writ, with full return of your proceedings thereon.

WITNESS the Honorable Presiding Judge of the Circuit Court of the First Circuit, at Honolulu aforesaid, this 16th day of February, 1912.

(Seal) (Sgd.) J. A. DOMINIS, Clerk.

Territory of Hawaii,)
City and County of) ss.

J. A. DOMINIS, Clerk of the Circuit Court of the First Judicial Circuit, Territory of Hawaii, do hereby certify that the foregoing is a full, true and correct copy of the original summons in the case of Territory of Hawaii, by Marston Campbell, Superintendent of Public Works, vs. Goo Wan Hoy et al., in the same papers of record and on file in the office of the Clerk of said Court.

I further certify that the petition prays the condemnation for use as a public highway of the following-described land, situate in the City and County of Honolulu, Territory of Hawaii, to wit:

Beginning at a point in the southwest property line of Kuakini Street, which point is azimuth 318° 46' 67.20 feet from the line between the Government Street Survey Monument on Liliha Street at the northeast corner of School Street and the monument above Kuakini Street, opposite E. A. Maggon Lane, which survey line is seven-hundred feet (700) feet from the new southeast property line of Liliha Street, thence running by true azimuth and distances as follows:

1. 47° 10' 54.2 feet in a straight line to a point, thence, in a curved line to the left, having a radius of 520.0 feet;
2. 42° 39' 144.65 feet direct bearing and distance; thence
3. 38° 09' 120.02 feet in a straight line to a point; thence in a curved line to the right, having a radius of 875.0 feet;
4. 44° 29' 139.04 feet direct bearing and distance; thence
5. 50° 49' 131.47 feet to a point in the northeast property line of School Street, which point is azimuth 322° 29' 768.5 feet from the government street survey line on Liliha Street; thence
6. 322° 45' 50.0 feet along the School Street, and across Frog Lane to a point; thence
7. 230° 49' 123.0 feet in a straight line to a point; thence in a curved line to the left, having a radius of 925.0 feet;
8. 224° 29' 204.07 feet direct bearing and distance; thence
9. 218° 09' 120.02 feet in a straight line to a point; thence in a curved line to the right, having a radius of 870.0 feet;
10. 222° 39' 136.77 feet direct bearing and distance; thence
11. 227° 10' 54.2 feet in a straight line to a point in the southwest property line of Kuakini Street; thence
12. 138° 45' 50.0 feet along the southwest property line of Kuakini Street, to the point of beginning. Containing an area of 56,757.6 square feet.

All persons having an interest in the land sought to be condemned are hereby warned that unless they appear at said Court on or before August 5, 1912, they will be forever barred from contesting said petition or any judgment entered thereon.

IN WITNESS WHEREOF, I have hereunto set my hand and affixed the seal of said Circuit Court, this 11th day of April, 1912.

(Seal) J. A. DOMINIS, Clerk of the Circuit Court of the First Circuit.

Alexander Lindsay, Jr., Attorney General, and E. W. Sutton, Deputy Attorney General, attorneys for petitioner.

5279—July 3 to 21

BY AUTHORITY.

NOTICE OF SALE OF PUBLIC LANDS.

The following lands situated on School street, Honolulu, and at Olua, Puna, Hawaii, will be offered for sale at public auction at the following up-set prices, at 12 o'clock noon, Saturday, August 10, 1912, at the front door to the Capitol Building, Honolulu:

- (1) Remnant at School street, containing an area of 1,550 square feet, more or less. Upset price, \$125.
- (2) Remnant on makai line of School street, containing an area of 11,000 square feet. Upset price, \$550.
- (3) Lots 4B and 7B, Block "A," Olua, Puna, Hawaii, containing an area of 4.84 acres. Upset price, \$145.20. The same being sold as a railroad right-of-way and not for residence purposes.

Terms of sale: Cash.
Purchaser to pay cost of patent and stamp.

For maps and further particulars, apply at the office of the Commissioner of Public Lands, Capitol Building, Honolulu.

JOSHUA D. TUCKER,
Commissioner of Public Lands.

Dated at Honolulu, June 6, 1912.
5257—June 6, 13, 20, 27; July 5, 11, 18, 25; Aug 1, 9

RESOLUTION NO. 691.

BE IT RESOLVED by the Board of Supervisors of the City and County of Honolulu, Territory of Hawaii, that the sum of THREE THOUSAND SEVEN HUNDRED AND FIFTY DOLLARS (\$3,750.00) be and is hereby appropriated out of the General Fund of the Treasury of the City and County of Honolulu for the Maintenance of Roads, Honolulu District (Purchase of Steam Roller).

Introduced by S. G. DWIGHT, Supervisor.

Date of Introduction: July 22, 1912.

At a regular adjourned meeting of the Board of Supervisors of the City and County of Honolulu held on Monday, July 22, 1912, the foregoing Resolution was passed on First Reading on the following vote of the said Board, and ordered to print:

Ayes—Amama, Arnold, Dwight, Kruger, Low, McClellan, Murray. Total, 7.

Noes—None.

E. BUFFANDEAU,
Deputy City and County Clerk.

5296-3t

SEALED TENDERS.

Sealed Tenders will be received by the Loan Fund Commission of the City and County of Honolulu, at its office, Room 61, Alexander Young Building, up to 12 o'clock noon, Saturday, July 27, 1912, for furnishing schoolroom equipment.

Specifications are on file in the office of the Loan Fund Commission, Room 61, Alexander Young Building. Each tender shall be accompanied by a certified check or certificate of deposit payable to Andrew Adams, Chairman, on a bank doing business within the Territory of Hawaii, for a sum equivalent to five per cent. (5%) of the amount of the bid.

The Commission reserves the right to reject any or all bids.

ANDREW ADAMS,
Chairman, Loan Fund Commission,
City and County of Honolulu,
Honolulu, July 16, 1912. 5289-10t

SEALED TENDERS.

Sealed Tenders will be received by the Superintendent of Public Works up to 12 noon of Saturday, July 27, 1912, for the construction of a Reinforced Concrete Septic Tank and Five-Inch Cost Iron Sewer for the Girls' Industrial School, Moiliili, Honolulu. Plans, revised specifications and blank forms of tender are on file in the office of the Superintendent of Public Works, Capitol Building.

The Superintendent of Public Works reserves the right to reject any or all tenders.

MARSTON CAMPBELL,
Superintendent of Public Works,
Honolulu, July 16, 1912. 5289-10t

SEALED TENDERS.

SEALED TENDERS will be received at the Office of the City and County Clerk, Room 8, McIntyre Building, until 7:30 p. m. on the 29th day of July, 1912, for furnishing all labor and material necessary to re-timber and re-floor a part of the Queen street bridge over the Nuuanu Stream. Area to be covered, about 10,710 square feet.

Plans, specifications and blank forms of proposal may be had upon application and a deposit of Five (\$5.00) Dollars at the City and County Clerk's Office.

The Board of Supervisors reserves the right to reject any or all bids and to waive all defects.

D. KALAUAKALANI JR.,
City and County Clerk.

SEALED TENDERS.

Sealed Tenders will be received by the Board of Harbor Commissioners up until 2 p. m. of Wednesday, August 7, 1912, for the construction of a sidewalk in front of the Alakea street slip and Richards street wharf, Honolulu.

Specifications and blank forms of tender are on file in the office of the Department of Public Works, Capitol Building.

The Board of Harbor Commissioners reserves the right to reject any or all tenders.

MARSTON CAMPBELL,
Chairman, Board of Harbor Commissioners,
Honolulu, July 22, 1912. 5294-10t

WHEN YOU WANT

Wire Woven Fence

The Man to See Is

J. C. AXTELL - ALAKEA STREET

LEGAL NOTICES.

HAWAII, A. D. 1912 TERM.

IN THE CIRCUIT COURT OF THE FIRST CIRCUIT, TERRITORY OF THE TERRITORY OF HAWAII, by Marston Campbell, Superintendent of Public Works, Plaintiff and Petitioner, vs. PALOLO LAND AND IMPROVEMENT COMPANY, LIMITED, a corporation; JOHN DOE MARY DOE, and RICHARD ROE, unknown owners and claimants, Defendants and Respondents.

THE TERRITORY OF HAWAII: TO THE HIGH SHERIFF of the Territory of Hawaii, or his Deputy; the Sheriff of the City and County of Honolulu, or his Deputy:

YOU ARE COMMANDED to summon Palolo Land and Improvement Company, Limited, a corporation; John Doe, Mary Doe, and Richard Roe, unknown owners and claimants, defendants, in case they shall file written answer within twenty days after service hereof to be and appear before the said Circuit Court at the term thereof, pending immediately after the expiration of twenty days after service hereof; provided, however, if no term be pending at such time, then to be and appear before the said Circuit Court at the next succeeding term thereof, to wit, the A. D. 1913 Term thereof, to be held at Honolulu, City and County of Honolulu, on Monday, the 8th day of January next, at 10 o'clock a. m., to show cause why the claim of the Territory of Hawaii, petitioner, should not be awarded to the defendant, and have you then there this writ, with full return of your proceedings thereon.

That certain crater situate at the head of Palolo Valley, City and County of Honolulu, Territory of Hawaii, containing an area of one hundred acres, more or less, together with those certain forest lands surrounding said crater of an area of two hundred and eighty-seven acres, more or less, more particularly described as follows, to wit:

Commencing at a point on ridge, between Palolo and Maunaloa Valleys and running:

1. N. 41° 2' E. true 336.0 feet up center of ridge between Palolo and Maunaloa Valleys to junction with the Koolau Range of Mountains;
2. N. 55° 2' E. true 412.0 feet along center of Koolau Range along Kalia;
3. S. 79° 55' E. true 381.0 feet along center of ridge along Kalia;
4. S. 62° 3' E. true 235.0 feet along center of ridge along Kalia to peak called Palikea;
5. N. 31° 42' W. true 474.0 feet down center of ridge along Waiomao and Kekio to point in center of ridge;
6. N. 28° 20' W. true 410.0 feet across valley to initial point;

Containing an area of 387.0 acres, more or less; and being a portion of Kekio, L. C. A. 5931, Ap. 4; to Pehu, and L. C. A. 5559B of Kaka, a lease of Kapaehulu, to W. C. Lunallilo, in the left hand or Northwest valley of Palolo Valley at its head.

Also all the water rights and water ways owned by said Palolo Land and Improvement Company in said Palolo Valley whether in and appurtenant to and connected with the lands hereinabove described or not; that said water rights and water ways are, so far as your petitioner has been able, after careful investigation, to determine, the water rights and water ways belonging to the following named lands and to which the same are entitled, to wit:

1. R. P. 5667, L. C. A. 5931 to Pehu for Kapaehulu, being Apana 1 of the Ahupuaa of Kekio, comprising 281 acres excepting the following named lands therein: R. P. 2548, L. C. A. 1781, Aps. 1, 2 and 3 to Maunaloa, area .801 acres; L. C. A. 1882, Ap. 1, to Paalea, area 2.100 acres; L. C. A. 1666 to Upolu, area 2.760 acres; L. C. A. 1770 to Mano, area 3.741 acres—total area excepted, 8.902 acres; leaving a net area in Apana 1 of Kekio of 272.098 acres more or less.

2. R. P. 5667, L. C. A. 5931 to Pehu for Kapaehulu, being Apana 4 of the Ahupuaa of Kekio, containing an area of 578.500 acres more or less.

3. L. C. A. 5559B, Apana 32 to W. C. Lunallilo, being the land of "Kaka," a lease of the ill Apana of Kapaehulu, area 110.5 acres more or less.

4. L. C. A. 5559B to Lunallilo, known as Section 3 of said L. C. A., area 3.4 acres more or less; also known as Apana 3 of Kapaehulu, or as L. C. A. 5559B, Ap. 32, Section 3.

5. L. C. A. 1646, R. P. 1266, Aps. 1 and 2 to Lolo, area 1.476 acres more or less, at Palolo.

6. L. C. A. 1882, R. P. 1268, Apana 2 to Paalea, area 1.47 acres more or less—land at Kekio, Palolo.

7. L. C. A. 8285, R. P. 1270, Aps. 1 and 2 to Keawe, area 1.81 acres—land at Kekio, Palolo.

8. L. C. A. 1896, R. P. 1271, to Maunaloa, area 2.20 acres more or less, at Kapaehulu.

9. L. C. A. 1891, R. P. 2375, Aps. 1 and 2 to Lolo, area 1.116 acres more or less—land at Kekio, Palolo.

10. L. C. A. 1761, R. P. 2430 to Kapaehulu, Aps. 1, 2, 3, 4 and 5, at Kekio, Palolo, area .561 acres more or less.

11. L. C. A. 1842, R. P. 2540 to Paalea, land of Pukaehala, ill of Kekio, area 2.207 acres more or less.

12. L. C. A. 1303, R. P. 2543 to Kapaehulu, at Kapaehulu, Palolo, area .9 acres more or less, known as Moo Kalia Pupaupau.

13. L. C. A. 1778, R. P. 2544 to "Kalelo," area 45 acres more or less in the ill of Kekio, Palolo.

14. L. C. A. 1885, R. P. 2546 to Napaewa, known as the Moo Aina Kaloahii (or Koloahii) ill of Kapaehulu, area 2.108 acres more or less.

15. L. C. A. 1647, R. P. 2549 to Kekul for Kapaehulu, area .596 acres more or less—Moo Aina in Kekio, Palolo.

16. L. C. A. 1308, R. P. 3032 to Kapaehulu, area 2.227 acres more or less; being the Moo Aina of Pukaehala at Kapaehulu, Palolo.

17. L. C. A. 1865, R. P. 3479 to Kapaehulu, Aps. 1 and 2 in Kapaehulu, Palolo, area 1.239 acres more or less.

18. L. C. A. 1633, R. P. 4940 to Kapaehulu, Aps. 1 and 2, area .910 acre more or less in Palolo.

19. L. C. A. 2524B, R. P. 5643, Ap. 1 to heirs of Peter Anderson, land known as Keouluola in Palolo; area .9 acres more or less.

20. L. C. A. 1897, R. P. 5708 to Ohule, Aps. 1 and 2 at Palolo; area .392 acre more or less.

21. All that piece or parcel of land situate between Aps. 1 and 2 of R. P. 4940, L. C. A. 1633 to Kaka, and described as follows: Commencing at the north corner of Ap. 1 of said patent and running along Kuunua along Apana 2 to the south corner of same; thence along Waiomao to the east corner of said Ap. 1; thence along said Ap. 1 to place of commencement, comprising two kalo patches, the above mentioned and described premises being the same that were conveyed to Bruce Cartwright by S. Kauai by deed dated March 23, 1896, and recorded in the office of the Registrar of Conveyances, Book 158, pages 182-184.

22. A parcel in Kapaehulu and Waiomao, consisting of Lot 39 of the survey of the Kapaehulu Lots, as shown on Registered Map No. 1692, on file with the Government Survey Office; being part of the ill of Kapaehulu, L. C. A. 8559B, Apana 3, to W. C. Lunallilo, and part of the land of Waiomao, L. C. A. 10613, R. P. 3578 to A. Paki; area .459.5 acres more or less.

23. L. C. A. 2553, R. P. 3740 to Kapaehulu, Apanas 1 and 2; area 1.48 acres more or less.

24. L. C. A. 1845, R. P. 2556 to Lilo at Pukele, Palolo; area .266 acre more or less.

25. L. C. A. 3415B, R. P. 2552 to Kapaehulu, at Palolo; area 2.4 acres more or less.

26. L. C. A. 8559B to W. C. Lunallilo, Apana 2, Section 1; a portion of Kapaehulu; area .26.93 acres more or less; being the same land conveyed by the trustees under the Will of W. C. Lunallilo to Kapaehulu, and Nalwi, her husband, recorded in the Register of Conveyances, Book 70, page 403.

- Also such rights as the said Company may have in and to any water ways in Palolo Valley, including the following: Mahoe Auwai; Kahanu Auwai; Pukele Stream; Humu Auwai; Waiupe Ditch; Waiomao Stream; Launui Auwai; Kaula Auwai; Pili Auwai; Kaneohoku Auwai; Auwai from Dam No. 4; Kapaehulu Auwai; Kokele Auwai; Hapua Auwai; Keounala Auwai; Kapaehulu Auwai.

- And have you then there this writ with full return of your proceedings thereon.

WITNESS the Honorable Presiding Judge of the Circuit Court of the First Circuit at Honolulu aforesaid, this 17th day of May, A. D. 1912.

(Sgd.) J. A. DOMINIS, Clerk.

LEGAL NOTICE.

IN THE CIRCUIT COURT OF THE FIRST CIRCUIT, TERRITORY OF HAWAII.

JOAO BORGES, Plaintiff, vs. JACINTHA DE JESUS BORGES, JACINTHA BOTELHO BORGES, MARIA AMARAL, JOSE BORGES, LUZIA BORGES, MANOEL BORGES, MANOEL AMARAL and JOHN AMARAL, by F. SCHNACK, their guardian ad litem; MARIA MEDEIROS, MARIE REIS, FRED REIS, JOHN REIS, LOUIZ REIS, GEORGE REIS, and ADELINE REIS, by MARIE REIS, their guardian ad litem, Defendants.

The Territory of Hawaii: To the High Sheriff of the Territory of Hawaii, or his Deputy; the Sheriff of the City and County of Honolulu, or his Deputy:

You are commanded to summon Jacinth de Jesus Borges, Jacinth Botelho Borges, Maria Amaral, Jose Borges, Luzia Borges, Manoel Borges, Manoel Amaral and John Amaral, by F. Schnack, their guardian ad litem; Maria Medeiros, Marie Reis, Fred Reis, John Reis, Louis Reis, George Reis, and Adeline Reis, by Marie Reis, their guardian ad litem, defendants, in case they shall file written answer within twenty days after service hereof, to be and appear before the said Circuit Court of the First Circuit at the term thereof, pending immediately after the expiration of twenty days after service hereof; provided, however, if no term be pending at such time, then to be and appear before the said Circuit Court at the next succeeding term thereof, to wit, the A. D. 1913 Term thereof, to be held at Honolulu, City and County of Honolulu, on Monday, the 8th day of January next, at 10 o'clock a. m., to show cause why the claim of the Territory of Hawaii, petitioner, should not be awarded to the defendant, and have you then there this writ, with full return of your proceedings thereon.

Witness the Honorable W. J. Robinson, Third Judge of the Circuit Court of the First Circuit, at Honolulu aforesaid, this 4th day of April, 1911.

(Sgd.) HENRY SMITH, Clerk.

I hereby certify that the foregoing is a full, true and correct copy of the original Summons which is now on file in the office of the Clerk of the Circuit Court of the Territory of Hawaii in a cause entitled Joao Borges vs. Jacinth de Jesus Borges et al.

Dated, Honolulu, July 18, 1912.

J. A. DOMINIS,
Clerk, Circuit Court, First Circuit.

5291-3m-Thur

IF YOU WISH TO ADVERTISE IN NEWSPAPERS

Anywhere at Anytime, Call On or Write

E. C. DRAKE'S ADVERTISING AGENCY

124 Sansome Street San Francisco

Occasionally a man marries a girl in order to get her of his mind.

The crowning glory of the modern woman is possibly a few strands of her own and a lot of bargain counter hair.

Some men put everything off till tomorrow—with the possible exception of bill collectors, and they put them off indefinitely.

An egotist invariably makes a great hit with himself.

Cable News
IDLE REFINERY
GETS BIG MONEY

SAN FRANCISCO, July 24.—That the owners of the California Hawaiian sugar refinery made a handsome annual profit on their investment by not operating their plant between 1903 and 1905 was testified to by Secretary Hannam of the Western Sugar Refining Company today, before the federal special examiner, W. B. Brice, conducting an investigation into Sugar Trust affairs for the government.

Mr. Hannam stated that for three years, 1903, 1904 and 1905, he had paid two hundred thousand dollars a year to the California-Hawaiian, the consideration being that that corporation should allow its plant to lie idle.

These amounts were charged up on the books of the Western Refining Company as "salary" and were secretly transferred to the beneficiaries. As a consequence of the shut-down of the competing refinery, the Western was enabled to market its sugar at an advance of fifty points, that price coming immediately after the California-Hawaiian went out of business.

FLOOD DESTROYS THE HOMES OF HUNDREDS

UNIONTOWN, Pennsylvania, July 24.—The flood situation throughout this district is very bad. The rivers throughout the surrounding country have all overflowed and hundreds of families are homeless. The galleries of the Superba coal mine were filled today and forty miners are believed to have been drowned like rats in a trap, without a fighting chance for their lives. Other flood fatalities reported up to tonight number thirteen.

EARTHQUAKE RUINS CITY.

PIURA, Peru, July 24.—A severe earthquake visited this region today and the entire city is in ruins. The loss of life is heavy.

Piura is the capital city of the Province of Piura, the most northerly section of Peru. The city has a population of about ten thousand people.

MEXICAN REBELS TO GIVE UP JUAREZ

JUAREZ, Mexico, July 24.—The rebels, who have retained possession of this city, plan to evacuate the garrison to join the other guerrilla bands in the field. With the evacuation of this place, the rebels will have left no town of any importance.

MIKADO SINKING VERY RAPIDLY.

TOKIO, July 24.—After rallying temporarily, the Emperor had a serious relapse and hope of his recovery has been practically given up. The action of his heart was weakening rapidly at a late hour tonight, and stimulants failed to get any satisfactory responses.

DEMOCRATS OPPOSE BATTLESHIP PROGRAM

WASHINGTON, July 24.—A majority of Democrats, in caucus tonight, resolved to oppose the battleship program of the Senate, basing their opposition to an increased navy upon the ground of necessary economy.

SCHMITZ AND DREW WRITING AN OPERA

SAN FRANCISCO, July 24.—Ex-Mayor Schmitz and Attorney Frank Drew are collaborating in the writing of an opera, which deals with pioneer life in California.

EDUCATION AND WAGES

There are many higher standards of university success than the income earned by graduates immediately after leaving classic halls or ten and twenty years after, says an exchange editorially. Albeit, in this present statistical and inquisitorial age, it is quite the proper thing to make inquiry as to how much alumni on the average have to spend, the hope being that from the answers it may be deduced that of men who have been cut in the world a liberal education is profitable unto those who pursued it in their youth.

When Yale's class of 1906 a year ago made investigation

Ask to See It Done

1000 gallons of
water
10 minutes pumping
60 feet high
6 cents

Paris Gasoline Motor Turbine

The Machine is in Honolulu.
GEO. H. PARIS

FOR RENT FURNISHED

House on Green St.,
Two Bedrooms,
\$45 per month
House on Kewalo St.,
Three Bedrooms,
\$75 per month.

Bishop Trust Co., Ltd.

924 BETHEL STREET

W. C. ACHI,

ATTORNEY AT LAW
Kapiolani Building Honolulu, T. H.
P. O. Box 606

E. G. Duisenberg

STOCKS
BONDS
INSURANCE
REAL ESTATE
LOANS NEGOTIATED
76 Merchant St. Phone 3013

The Suititorium

Only establishment on the island
equipped to do Dry Cleaning.
PHONE 3350

For GENERAL OFFICE STATION-
ERY and FILING SYSTEMS, call or
write to us and we will fill your wants.

Office Supply Co., Ltd.,

831 FORT STREET



IF IT'S PAINT

And you want a good job, see me—
Tom Sharp

SHARP SIGNS ARE SEEN
EVERYWHERE
Phone 1697 847 Kaahumanu

Wright-Hustace LIMITED.

Phone 1148.
Cot. King and South Sts.
Successors to
W. W. WRIGHT & CO., LTD.
also

Kellogg & Dempsey
Auto, Motor and Carriage Repairing
Painting, Trimming,
Horse-shoeing.

C. Q. Yee Hop & Co.
MEAT MARKET AND IMPORTERS
Telephone No. 3451

Clothing and Shoes

Yee Chan & Co.
Bethel and King Streets.

BUY YOUR DRY GOODS FROM

Kwong Sing Loy & Co.

King Street, Three Doors from Bethel

FINE LINE OF DRY GOODS

Wah Ying Chong Co.

KING STREET EWA FISHMARKET

IMPORTERS OF ORIENTAL GOODS

Wing Wo Tai & Co.

941 Nuuanu, near King Street.
Phone 1020.

Exclusive Patterns In Handsome Greys

W. W. AHANA,
62 SOUTH KING STREET

SANG CHAN

McCANDLESS BLDG.
P. O. Box 961. Telephone 3129.

FINEST FIT
And Cloth of All Quality Can Be
Purchased from

WONG WONG CO.

Builders and Contractors
Office, Maunakea St.

L. CHONG & CO.,

FURNITURE
Mattress Upholstering and Furniture
Repairing

22 BERETANIA NEAR NUUANU

YOU'LL FIND WHAT YOU WANT
AT THE

City Hardware Co.,

NUUANU AND KING STREETS

WING CHONG CO.

KING ST. NEAR BETHEL

Dealers in Furniture, Mattresses,
etc., etc. All kinds of KOA and MIS-
SION FURNITURE made to order.

BO WO

Men of the Fleet and Tourists
The best place in Honolulu to buy
Jade and Chinese Jewelry of all kinds.

HOTEL AND SMITH STREETS

Y. YOSHIKAWA,

The BICYCLE DEALER and RE-
PAIRER, has moved to

180 KING STREET

New location—Red front, near
Young Building. Telephone 2518.

Telephone 3197 P. O. Box 708

S. KOMEYA

Vulcanizing Works
182 Merchant Street Near Alakea
HONOLULU, T. H.

Y. TAKAKUWA

COMMISSION MERCHANT

Japanese Provisions and
General Merchandise
NUUANU ST. NEAR KING STREET

CUT FLOWERS

Also—
CLOTHES CLEANED AND PRESSED
S. HARODA
Fort and Pauahi Sts. Phone 3028

IS YOUR STOMACH IN BAD CONDITION?

Then by all means get a bottle of

Hostetter's Stomach Bitter's

this very day. It makes weak
stomachs strong, keeps the liver
and bowels active. It also pre-
vents Malaria, Fever and Ague.

For sale by Belton, Smith & Co.,
Ltd., Chambers Drug Co., Ltd., Hilo
Drug Co. and at all wholesale liquor

M'LOUGHLIN

(Continued from Page 9)

has given him greater confidence. Mc-
Loughlin still holds Larned up as the
greatest player in the world, and for
that very reason it is to be hoped that
Larned will be disposed of in the New-
port tournament before McLaughlin
gets into a bracket with the champion.
It may be that the local youngster is as
good a player as the veteran, but he
has so much respect for Larned's
ability, that he would probably be beat-
en before he stepped upon the courts.

MAUI DOWNS

(Continued from Page 9)

The first army score came in the
third, when Doak, who played hard,
fast polo throughout the game, shot
a pretty goal off Hanson's centering
shot. Both sides scored in the fourth,
Collins and Hanson turning the trick.
The fifth period found the Cavalry
still hopeful and ready to get in some
hard licks after the long rest. But it
was at this time that Maui really
woke up to play the game, and what-
ever good resolutions the Leliehua
players made during the intermission
vanished into thin air when the Val-
ley Islanders commenced to slam the
ball in earnest.

Frank Baldwin, who hadn't been
playing his best game in the first half
seemed to get back the full use of a
damaged wrist, and commenced to
crack the willow to good effect, while
David Fleming gave an exhibition of
some of the cleverest stick work ever
seen on the local field.

The first part of the fifth period
was wildly exciting, the Cavalry,
knocking up, pressing the Maui goal
repeatedly. Maui then turned the
tables, but twice Cavalry players nip-
ped the ball out from directly in front
of the posts and carried it up the
field out of danger. These brilliant
saves gave the Army supporters some-
thing really worth while to cheer over.

Maui was not to be long denied,
however, and finally Collins shot the
maimai goal just before the bell rang.

The score was made after a couple of
misses by his teammates, and was a
brilliant bit of individual stick work.

Harold Rice scored the only goal of
the sixth period through the mauka
sticks, just after the Cavalry had
saved one threatened by Frank Bald-
win. Nearly all the play after this
was in the lower field, but the Cavalry
players were making a desperate de-
fense, and time and again turned off
shots that looked like certain scores.

Captain Forsyth at this stage of the
game did some fine work in meeting
swift balls with forehead shots out of
danger zone.

Fleming's Fine Work.
The seventh saw David Fleming do-
ing some spectacular stick work. He
hit near side or off side, backhand or
forehand with equal facility, and at
one time took the ball two-thirds the
length of the field uphill, in the midst
of a tangle of ponies and sticks. He
seemed to snare the ball out of the
worst mix-ups with ease, and his
work, together with the Baldwin-Rice
goal before referred to, was the fea-
ture of the period.

Rice and Baldwin together made
another fine goal uphill, just after
they had scored at the lower end.

Baldwin on Blue Boy made a strong
run, hitting the ball far and true, and
when he was ridden off Rice was
there to give it the final crack.

Collins' pony went down in this pe-
riod, but there was no damage done.

The eighth and final period opened
with a goal by Frank Baldwin's pony
Blackbird, and immediately after-
wards Sheridan scored for the Cav-
alry. The army men then made a dis-
tinct brace, Forsyth taking the ball
up the field and giving Sheridan a
chance to score, which, however, he
missed. Maui then ran the ball down
the field, Baldwin scoring, and just
before the bell rang Rice put the final
goal through the upper sticks, with a
clever shot under his pony's neck.

No Rough Work.
The game was cleanly played
throughout, and there was no rough
or dangerous riding.

A big weekday crowd turned out
for the sport, about 175 motor cars
being arranged in triple tiers on the
Iwa side of the field. Of course, Lei-
lehua was out in force, and had there
been a chance to cheer for the Cav-

HONESTY

By GEORGE FITCH

Honesty is so hard to define that
most people do not tackle the job
except for the benefit of their neigh-
bors.

The dictionary, which is one of the
most successful side-steppers, says
"honesty is freedom from fraud or



gels." It forgets to mention that
honesty usually means freedom from
money also.

The proverb says honesty is the
best policy. It is amazing to see how
many people have a horror of playing
policy.

The old Spartans admired honesty
greatly. Stealing was honest in their
eyes, but getting caught with the
goods was a great crime. The recent
bribery investigations have revealed
the fact that the United States Senate
is full of Spartans.

Some men are so honest that they
will not steal a man's money so long

as they can get it by selling him stock
in a defunct gold mine. Other men
would shudder with horror at the
thought of selling decayed, mining
stock when the same results can be
obtained in a perfectly legal manner
by borrowing the money and going
into bankruptcy with no visible as-
sets.

Many men are so honest that they
will not steal a pin. But they would
hold the coat of a personal friend
while he stole a battleship. Still oth-
ers decline to steal anything at all,
preferring to leave the job to litigation,
which usually gives excellent
satisfaction.

There are also men with whom you
could trust your watch with perfect
safety, but who would take a stock
company away from you with a merry
laugh.

Some men are honest in small
things, because there is no profit in
piker pilfering. Others are honest in
large things, because there is less risk
in small packages.

Thus it is to be seen plainly that
the standards of honesty vary as
widely as plurality guesses by lead-
ers of opposite parties. Standards
vary in Legislatures also. In some
the members are so honest that they
will only sell their votes for political
support. In others the members will
not accept money and would indig-
nantly return the bundles they find in
their pockets if they had time and
could remember to do it. In still oth-
ers, when a member doesn't pawn his
desk and chair, he runs for reelection
on his good record.

It will not do for us to judge the
honesty of others by our own—for oth-
ers are judging our honesty by theirs
and are looking at us with horror as
they do so.

The object is to suggest legislation
so thoroughly non-partisan as to se-
cure Congressional consideration on
broad lines to better Army conditions,
modernize military methods and re-
concile extreme claims.

Concerning that Congress is not like-
ly to consider at this session a com-
plete reorganization scheme, officials
today expressed the hope that the con-
flicting elements which caused a veto
of the regular Army appropriation bill
would consent to postpone a renewal
of the controversies, meantime allow-
ing the bill of last year to remain in
force throughout the present fiscal
year.

The Seattle Post-Intelligencer says:
"The first step toward carrying out
the Berlin radio-telegraphed agree-
ment on the Pacific Ocean was taken
yesterday by R. H. Armstrong, general
manager of the United Wireless Tele-
graph Company, when he ordered new
lists of call letters compiled in ac-
cordance with the ruling of the several
governments placed in the hands of
every operator in the employ of his
company."

In the past the wireless companies
have assigned call letters to the ves-
sels they equip with the result that
there have been many duplications and
at times great confusion. The United
States bureau of navigation has taken
a prominent part in working out the
agreement with other countries, and
more than 80 per cent. of the Ameri-
can shipowners have agreed to adopt
the plan.

Each Vessel to Have its Call.
The bureau of navigation has com-
pleted arrangements with the Berne
bureau for the assignment of call let-
ters to American wireless ship and
shore stations. American vessels and
shore stations will thus become part
of a world-wide system of radio com-
munication, each vessel and shore sta-
tion having its own call letter or let-
ters which can be recognized by the
wireless ship and shore station of all
nations.

The change to the new system will
involve temporary inconvenience to
operators, but this will be offset by
the advantage of having a wireless call
system intelligible to all the world.

The international bureau has as-
signed series of call letters beginning
with K and W to American merchant
vessels and yachts, and with N to the
United States navy. The W group of
letters has been assigned to vessels
plying the Pacific, and the K group to
vessels plying the Atlantic.

How Calls Are Arranged.
"It has been the aim to arrange, as
far as practicable, the two remaining
letters of the call, so that the same
second letter or letters shall be as-
signed to vessels of the same line. The
third letter or letters will be the ves-
sels' distinctive call.

For instance, a steamship line op-
erated on the Pacific has five vessels
equipped with wireless. The first
wireless call letter will be W, indicat-
ing an American vessel on the Pacif-
ic; the second would be Q S, or any
other letter or letters adopted to
distinguish the steamship line; and
the third letter or letters would be X
T S, or any other letter or group of
letters adopted to represent the name
of the vessel.

Mr. Armstrong explained that the
bureau of navigation has completed
arrangements with the Berne bureau
for the assignment of call letters to all
American wireless ship and shore sta-
tions, so that there will be no dupli-
cations. When the readjustments are
made, after all call letters have been
submitted, bulletins will be issued for
the information of all nations enter-
ing the agreement. The hundreds of
calls will be made of single letters and
groups in order to prevent dupli-
cations.

PLAN TO REORGANIZE
MILITARY SYSTEM

WASHINGTON, July 8.—A series of
conferences of experienced officers of
the Army, chiefs of bureaus, Senators
and Representatives, including possi-
bly the heads of the two Military Com-
mittees of Congress, will begin at the
War Department tomorrow with a
view to getting together upon a gen-
eral measure of reorganization for the
whole military establishment.

CASTORIA

for Infants and Children.

Physicians Prescribe Castoria.

CASTORIA has met with pronounced favor on the part of physicians,
pharmaceutical societies and medical authorities. It is used by physicians
with results most gratifying. The extended use of Castoria is unquestionably the
result of three facts: 1st, The indisputable evidence that it is harmless; 2nd,
That it not only allays stomach pains and quiets the nerves, but assimilates the
food; 3rd, It is an agreeable and perfect substitute for castor oil. It is absolutely
safe. It does not contain any opium, morphine, or other narcotic and does not
stupefy. It is unlike Soothing Syrup, Balaam's Drops, Godfrey's Cordial, etc.
This is a good deal for a medical journal to say. Our duty, however, is to expose
danger and record the means of advancing health. The day for poisoning in-
nocent children through greed or ignorance ought to end. To our knowledge, Cas-
toria is a remedy which produces composure and health, by regulating the
system—not by stupefying it—and our readers are entitled to the information.
Hall's Journal of Health.

The signature of *Dr. H. H. Hatcher* guarantees genuine Castoria.

"Your Castoria stands first in its class. In my
thirty years of practice I can say I never have found
anything that so filled the place."
WILLIAM BELMONT, M. D.,
Cleveland, Ohio.

"I have used your Castoria in the case of my own
baby and find it pleasant to take, and have obtained
excellent results from its use."
B. A. BUCHANAN, M. D.,
Philadelphia, Pa.

"I take pleasure in recommending your Castoria,
having recommended its use in many instances, and
consider it the best laxative that could be used,
especially for children."
NATHANIEL E. KING, M. D., St. Louis, Mo.

"I find your Castoria to be a standard family
remedy. It is the best thing for infants and chil-
dren I have ever known and I recommend it."
R. B. ZIMMERMAN, M. D., New York City.

"Having during the past six years prescribed your
Castoria for infantile stomach disorders, I heartily
commend its use. The formula contains
nothing deleterious to the most delicate of children."
J. B. ZIMMERMAN, M. D., New York City.

Children Cry for Fletcher's Castoria

In Use For Over 30 Years.

Phone 2295 Reaches

Hustace-Peck Co., Ltd.

ALL KINDS OF ROCK AND SAND FOR CONCRETE WORK.
FIREWOOD AND COAL.
63 QUEEN STREET. P. O. BOX 518

Honolulu Star-Bulletin Publishes All The News All The Time

The daily reader of the
Honolulu Star-Bulletin
can keep in close touch
with world affairs and
matters of purely local
interest.

The Honolulu Star-
Bulletin offers every
reader full newspaper
value --- good news,
latest news, interesting
features, and honest
advertising.

It is the paper that you
can rely on and the paper
you can always take into
the home where there are
children.

A Hot Weather Warning

In feeding babies and children it is impossible to overestimate the importance of pure milk. This is particularly so during protracted hot weather such as we are now having.

The milk we supply is from certified cows, fed on rich alfalfa, and every dairy is kept in perfect sanitary condition. Every precaution is exercised to prevent contamination from the milking and delivery.

Every bottle is automatically sealed. Every ounce of milk is electrically treated.

THE MILK WE DELIVER IS ABSOLUTELY PURE AND RICH IN FOOD VALUE.

Honolulu Dairymen's Association

Phone 1542

PASTURE

ALFALFA FEED
Best of Care Given

CLUB STABLES

TELEPHONE 1109

Imported Horses

For Sale
518 S. King St.

KOA FURNITURE

OAHU FURNITURE CO.

King Street, opposite Young Hotel
P. O. Box 840 Phone 3992

Everything in Furniture

Honolulu Wire Bed Co.,

CORNER ALAKEA AND KING STS.

Graduates Attention

Anything in basket and bouquet work with class ribbons at reasonable prices.

Mrs. E. M. Taylor, Florist
Hotel St. opposite Alex. Young Cafe.

BUY YOUR

SHOES

JACOBSON BROS.
Pantheon Block Hotel Street

REGAL SHOES

are made on the latest London, Paris and New York Custom Lasts.
QUARTER SIZES

REGAL SHOE STORE
King and Bethel Streets

DRINK

May's Old Kona Coffee

BEST IN THE MARKET
HENRY MAY & CO.
Phone 1271

DUNCAN'S GYMNASIUM

G. M. DUNCAN
258 Beretania St., opp. Roay Hawaiian
PHONE 3524

NO PRESERVATIVES IN

PIONEER MILK

THE BEST MILK FOR ALL PURPOSES
Your Grocer Sells It

Townsend Undertaking Co.,

Limited
Night and Day Phone, 1325
71 BERETANIA

Real Estate Transactions

Recorded June 15, 1912.

First Bank of Hilo Ltd. to Malaka M. Pacheco and hsb. Rel: 30 h p E M F 5-passenger automobile, serial No 4015; \$200. B 361, p 395. June 12, 1912.

Antone M Lopez and wf to Manuel K Cook, tr. D: por R P 491, kul 8265, Kapalama, Honolulu, Oahu; \$750. B 368, p 142. June 14, 1912.

Charles M Cooke Ltd to Territory of Hawaii, D: R P for pipe line through gr 52, Nuuanu Valley, Honolulu, Oahu; \$1, etc. B 368, p 144. June 14, 1912.

James Cameron and wf to Joseph Fernandez, C M; household furniture, etc. Beretania St. Honolulu, Oahu; \$182.50. B 369, p 143. June 13, 1912.

W E Bellina et al to Friederick J McGuire, A L; L P 5189, Waimanalo, Pukele tract, Honolulu, Oahu; \$1. B 363, p 389. May 23, 1912.

Salvador Gonsalves and wf to Bank of Hawaii Ltd. M: lots 20 and 21, bldgs, etc. New Judd tract, Honolulu, Oahu; \$200. B 369, p 145. June 15, 1912.

Jas L Akana to Wong Yow, L; pc land, Nuuanu Valley, Honolulu, Oahu; 15 yrs at \$55 per an. B 363, p 390. May 3, 1912.

Chang Hing Kee to G Yamamoto et al, B S; furniture, fixtures, goods, wares, mdse, etc. In store, 148 Beretania St. Honolulu, Oahu; \$1300. B 376, p 1. June 6, 1912.

First Bank of Hilo Ltd to Henry M Medeiros, Rel: gr 5283, Kaahulu, N Kohala, Hawaii; \$500. B 361, p 395. June 13, 1912.

Nakata Yoshitaro et al to S Hata, C M; cane crops on 20a land, lots 3, 4, 5, 6 and 7, Kukui 2, S Hilo, Hawaii; \$1250. B 371, p 2. June 8, 1912.

Refina Gomez to Francisco G Sabola, D: por gr 5616, Kaapahu, Hamakua, Hawaii; \$327. B 368, p 141. June 6, 1912.

Paahoa to First Bank of Hilo Ltd, M: la of gr 4205, Kaunamano, Hamakua, Hawaii; \$100. B 372, p 47. June 8, 1912.

John Fernandez to K Morizumi, L; por R P 1073, Honokaa, Hamakua, Hawaii; 15 yrs, at \$180 per an. B 363, p 388. June 8, 1912.

Honolulu Sugar Co to Manuel S Teixeira, D: int in 3-4a of gr 1155, Namoku, Hamakua, Hawaii; \$50. B 368, p 146. May 27, 1912.

F A Schaefer and wf to Manuel S Teixeira, D: int in 3-4a of gr 1155, Namoku, Hamakua, Hawaii; \$50. B 368, p 147. June 7, 1912.

G W Ahoy and wf to W F Roy, D: R P 3685, kul 10369, Kawanui, N Kona, Hawaii; \$225. B 368, p 148. Jan 31, 1910.

Hullama to John Saffery, P A; special powers. B 376, p 1. Jan 23, 1912.

Hullama to John Saffery, P A; special powers. B 376, p 1. Jan 23, 1912.

Hullama to John Saffery, P A; special powers. B 376, p 1. Jan 23, 1912.

Hullama to John Saffery, P A; special powers. B 376, p 1. Jan 23, 1912.

Hullama to John Saffery, P A; special powers. B 376, p 1. Jan 23, 1912.

Hullama to John Saffery, P A; special powers. B 376, p 1. Jan 23, 1912.

Hullama to John Saffery, P A; special powers. B 376, p 1. Jan 23, 1912.

Hullama to John Saffery, P A; special powers. B 376, p 1. Jan 23, 1912.

Hullama to John Saffery, P A; special powers. B 376, p 1. Jan 23, 1912.

Hullama to John Saffery, P A; special powers. B 376, p 1. Jan 23, 1912.

Hullama to John Saffery, P A; special powers. B 376, p 1. Jan 23, 1912.

Hullama to John Saffery, P A; special powers. B 376, p 1. Jan 23, 1912.

Hullama to John Saffery, P A; special powers. B 376, p 1. Jan 23, 1912.

Hullama to John Saffery, P A; special powers. B 376, p 1. Jan 23, 1912.

Hullama to John Saffery, P A; special powers. B 376, p 1. Jan 23, 1912.

Hullama to John Saffery, P A; special powers. B 376, p 1. Jan 23, 1912.

Hullama to John Saffery, P A; special powers. B 376, p 1. Jan 23, 1912.

Hullama to John Saffery, P A; special powers. B 376, p 1. Jan 23, 1912.

Hullama to John Saffery, P A; special powers. B 376, p 1. Jan 23, 1912.

Hullama to John Saffery, P A; special powers. B 376, p 1. Jan 23, 1912.

Hullama to John Saffery, P A; special powers. B 376, p 1. Jan 23, 1912.

Hullama to John Saffery, P A; special powers. B 376, p 1. Jan 23, 1912.

Hullama to John Saffery, P A; special powers. B 376, p 1. Jan 23, 1912.

Hullama to John Saffery, P A; special powers. B 376, p 1. Jan 23, 1912.

Hullama to John Saffery, P A; special powers. B 376, p 1. Jan 23, 1912.

Hullama to John Saffery, P A; special powers. B 376, p 1. Jan 23, 1912.

John K Maa to John M Franca, M: pc land, S Hilo, Hawaii; \$500. B 361, p 396. June 14, 1912.

Y C Ah Sam to Woo Yee Bow, M: 4 40-100a land, Makapala, N Kohala, Hawaii; \$500. B 361, p 399. Mar 31, 1911.

K Tamia to Bishop & Co. C M; leasehold, contract, cane crops, etc. Olua, Puna, Hawaii; \$400. B 361, p 401. May 24, 1912.

Thomas Tolentino to William Pullar, D: gr 5239, Honoum, Hilo, Hawaii; \$1, 447.50. B 370, p 136. June 13, 1912.

Hilo Boarding School by trs to W Geo Kahenui and wf, Rel: addl secy on 2 21-100a of R P 4265, kul 110505, Waiakoa, Hilo, Hawaii. B 361, p 405. June 5, 1912.

Geo Groves and wf to W F Pogue, D: R P 330, Makawao, Maui; \$2000. B 362, p 379. May 27, 1912.

Wm F Pogue and wf to George Groves, M: R P 330, Makawao, Maui; \$1500. B 361, p 397. June 1, 1912.

Domingos de Souza and wf to Antonio S Carvalho, D: pc land, Puna, Makawao, Maui; \$350. B 362, p 380. June 15, 1912.

Joseph W Houliu et al to Elikapeka Kallihwa, M: 21a of R P (gr) 382, kul 18 land, and por R P 2802 and livestock, Kowali, etc. Hana, Maui; \$275. B 374, p 2. Mar 23, 1912.

Emma A Defries and hsb (H H K) to C Bolte, tr. D: grs 1915, 3957B, 3395 and 2-11 int in gr 1396, water rts, etc. Makawao, etc. Hamakua, etc. Maui; \$600. B 370, p 134. June 15, 1912.

Territory of Hawaii by Comr of Pub Lands to American Sugar Co Ltd, License: right to construct and place pipe line across lands of Kalamaula, etc. Molokai; 30 yrs, pd \$1. B 376, p 2. June 14, 1912.

Recorded June 18, 1912.

First Bank of Hilo Ltd to Excelsior Soda Works Ltd, Rel: bldgs, livestock, mchury, wagons, bottles, etc. subdiv 2 of kul 11174, Volcano Rd. Hilo, Hawaii; \$2500. B 371, p 3. June 17, 1912.

A W Perelstous to F B McStocker, P A; general powers. B 376, p 6. Dec 19, 1910.

A W Perelstous by atty to Lorrin Andrews, Assnmt Agrmt: int in lots 3 and 4, blk 77, Ocean View tract, Honolulu, Oahu. B 376, p 7. June 17, 1912.

Ilahe Mikaleme et al by jdg to George J Wood and as gdn, Judgment: in re ownership of R Ps 789-793 and 2872, Alea, Ewa, Oahu. B 376, p 8. June 17, 1912.

Bank of Hawaii Ltd to Allen M Nowell, Rel: lot 1, blk 6, bldgs, etc. College Hills tract, Honolulu, Oahu; \$4500. B 359, p 204. Mar 30, 1912.

Henry Waterhouse Trust Co Ltd to Y M Wee, D: lots 10 and 12, blk 52, Kaimuki Tract, Honolulu, Oahu; \$400. B 375, p 10. May 15, 1912.

William M Vincent to George A Davis, tr. M: 1-2 int in personal property of Vincent, Bowen & Co; 1-2 int in grs 3008, 3003 and 3005, bldgs, etc. Kaunamalo, Molokai; 1-2 int in grs 3128 and 3129, bldgs, etc. Kaimuki, Molokai; \$3000. B 359, p 200. June 18, 1912.

Ellis L Jones and wf to Walter Dunsenber, D: lots 45 and 46, blk A, Kaimukiki Park, Addn, Honolulu, Oahu; \$150. B 375, p 11. June 4, 1912.

James Kalkenik and hsb to Mary A Kalekai, L; R P 1511, kul 3142, bldgs, etc. Iwilei, Honolulu, Oahu; 20 yrs-6 yrs pd \$500, rem at \$14 per mo. B 363, p 399. Aug 12, 1911.

Mary H Smith and hsb (W O) to Catton, Neill & Co Ltd, D: 7548 sq ft of kul 115, cor Queen and Alakea Sts, Honolulu, Oahu; \$15,000. B 370, p 140. May 21, 1912.

Pang Chong by atty et al to Trs of Pang Chong School, Tr Sale: 7-9 int in leasehold, bldgs, etc. Beretania St. Honolulu, Oahu; \$1. B 376, p 16. Apr 8, 1912.

M Nosaka and wf to M Harada, M: lot 6 of part 11, sec 11, R P 3588, kul 2937, Kapalama, Honolulu, Oahu; \$500. B 359, p 204. June 13, 1912.

T Clive Davies and wf to George F Davies, D: 1-2 int in lot 3 of kul 8023 and 1281, ap 1, R P 2829, ap 1, R P 2824, and bldgs, Waikeiki, Honolulu, Oahu; \$8210.35. B 375, p 14. June 18, 1912.

Nellie J Rickard to Nora Rickard, D: lot 14, Ahualoa Homesteads, Hamakua, Hawaii; \$1500. B 375, p 7. Dec 8, 1909.

Harry Irwin and wf to Albert Ruddle, D: 23-100a land, R W, rents, etc. Wailuku St, Hilo, Hawaii; \$1000. B 375, p 8. Dec 30, 1911.

Marilana J Moreira and hsb (G V) to Adelaide V Moreira, D: 16a land, bldgs, rents, etc. Ohia, N Kona, Hawaii; \$600. B 375, p 12. 1912.

Wm Pullar to Honomu Sugar Co, Can L: 20a of lot 20, Oliver Settlement, Assn, Honomu Homesteads, S Hilo, Hawaii. B 373, p 18. June 17, 1912.

Howard D Bowen to Vincent, Bowen & Co, Decdn Trust: to hold in trust for Vincent, Bowen & Co grs 3128 and 3008 and por gr 3730, bldgs, etc. Kaimuki, etc. Molokai; \$1. B 376, p 15. June 18, 1912.

Recorded June 19, 1912.

Rosa McPheridge and hsb (E) to Alba M Hurt, D: lot 7, blk 15, Kaimukiki tract, Honolulu, Oahu; \$800. B 368, p 150. June 14, 1912.

Maria G Kahoiwai and hsb (J K) to Sao Martinho Bent Socy of Hawaii, M: 1-2 of lots 6 and 7, blk A, Lunalihi, Honolulu, Oahu; \$150. B 359, p 206. June 13, 1912.

C D Samson to Sam Kahunaale, Rel: pors gr 2186, Alpaako, Honolulu, Oahu; \$200. B 359, p 207. June 19, 1912.

Sam Kahunaale and wf to Sylvano de Nobrega, D: pors gr 2186, Alpaako, Honolulu, Oahu; \$25. B 358, p 152. June 14, 1912.

Palolo Land & Imprvmt Co Ltd to Mrs Mary Schultz et al, D: 7500 sq ft of lot 7, blk 163, Palolo Valley, Honolulu, Oahu; \$200. B 368, p 154. June 19, 1912.

New China Village by Owners to Plan, Plan: 47,098 sq ft of kul 7712, Kukui St, Honolulu, Oahu. File No 72. June 8, 1912.

Hamauku Tract by Owner to Plan, Plan: 5 28-100a of R P 5735, kul 706, King St and Archer Rd, Honolulu, Oahu. File No 73. June 17, 1912.

Recorded June 21, 1912.

Ehu Nahinu (K) to K Shinohara (K), L: 1-4a land, Heela, Koolapoko, Oahu; 10 yrs at \$44 per yr. B 373, p 18. Mar 4, 1912.

Tsuruta to von Hamn-Young Co Ltd, C M: 1912 model 29 Buick touring car No 6129, Tr of Hawaii; \$675. B 374, p 6. June 17, 1912.

Augusta H Graham and hsb (W M) to Thomas McGiffin, D: lots 10, 11 and 12, blk 28, Pearl City, Ewa, Oahu; \$630. B 370, p 146. June 18, 1912.

Thomas McGiffin and wf to Sandwich Islands Honey Co Ltd, D: lots 10, 11 and 12, blk 28, Pearl City, Ewa, Oahu; \$630. B 370, p 147. June 19, 1912.

Kalawainui Kauwa (w) to H Tung Kwal (K), D: lot 7, blk 2, Kapahulu, Honolulu, Oahu; \$85. B 368, p 156. June 6, 1912.

Almeida-Mattos Plumbing Co to Bank of Hawaii Ltd, C M: int in leaseholds, contract, goods, mchury, furniture, fixtures, etc. King St, etc. Honolulu, Oahu; \$2000. B 369, p 149. June 19, 1912.

E S Cunha and wf to Harry Armitage, D: por gr 202, rents, etc. Manoa Valley, Honolulu, Oahu; \$6000. B 368, p 157. June 19, 1912.

A Gumphar and wf to Joao Botelho, D: lots 3 and 4 and pors lot 6 of lot 1, subdiv ap 7, kul 803, Gulick St, Honolulu, Oahu; \$1300. B 368, p 161. June 19, 1912.

Take Kawahara and hsb to Jos P Mendonca, M: pors lots 2 and 3, E Kailhi Valley, Honolulu, Oahu; \$1 and note of \$1400. B 374, p 5. June 19, 1912.

Rose K Kekaula by County Sheriff to Paul E R Sgauch, tr. Sher D: int in lots 42 and 43, Waiakae Heights tract, Honolulu, Oahu; \$165. B 370, p 144. June 19, 1912.

Wm Pullar and wf to Charles M Cooke Ltd, D: grs 5137 and 5239, Honoum, Hilo, Hawaii; \$3347. B 368, p 160. June 18, 1912.

Antone Borba et al to Harold W Rice, D: 2-210a of R P 6301, kul 6148, Kahakuloa, Maui; \$200. B 362, p 384. June 15, 1912.

Recorded June 21, 1912.

Polly Bird to W H Harbottle, A M: mtg D: 1-2 int in lots 5 and 6, blk 3, Pearl City tract, Ewa, Oahu; \$1. B 367, p 229. Mar 25, 1905.

W H Harbottle to David L Peterson, Rel: lots 5 and 7, blk 3, Pearl City tract, Ewa, Oahu; \$400. B 367, p 229. Mar 25, 1905.

David L Peterson and wf to Kalamia, D: lots 5 and 7, blk 3, Pearl City tract, Ewa, Oahu; \$1 and mtg \$400. B 370, p 149. Dec 30, 1909.

Kalamia and wf to Sandwich Islands Honey Co Ltd, D: lots 5 and 7, blk 3, Pearl City tract, Ewa, Oahu; \$500. B 370, p 150. June 18, 1912.

C M Hayashi to August Decker Ltd, C M: wagons and livestock; \$500. B 367, p 230. June 21, 1912.

Edwin B Hamaku to Joseph A Hamaku, Covenants: in re disposition of int in pc land, Honolulu, Oahu. B 376, p 18. June 19, 1912.

Joseph A Hamaku to Edwin B Hamaku, M: int in gr 49 and por R Ps 5735 and 5736, King St, Honolulu, Oahu; \$800. B 367, p 232. June 19, 1912.

A M Stangenwald to Wade W Thayer, Rel: 1-2 int in blk 64, bldgs, rents, etc. Waiakae, Honolulu, Oahu; \$1000. B 359, p 207. June 21, 1912.

Rudolph Wndrath and wf to Mutual Bldg & Loan Socy of Hawaii Ltd, M: lots 5 and 6, blk B, bldgs, etc. Kaimukiki Park tract, Honolulu, Oahu; \$2000. B 359, p 208. June 18, 1912.

Henry Waterhouse by affd, Affd: in re ownership of grs 43 and 109, Manoa, Honolulu, Oahu. B 376, p 20. June 14, 1912.

J Alfred Magoon and wf to P F Ryan, D: 899 sq ft of R P 1953, kul 97B, Alakea St, Honolulu, Oahu; \$3, etc. B 370, p 151. June 11, 1912.

Charles M Cooke Ltd to Honomu Sugar Co, L: grs 5137 and 5239, Honoum, S Hilo, Hawaii; 20 yrs at \$234. B 373, p 20. June 18, 1912.

Makallau Ranch Co to Harold W Rice, B S; leaseholds, bldgs, livestock, brand, etc. of Makallau Ranch, Kahakuloa, Kanaapali, Maui; \$8600. B 366, p 452. June 15, 1912.

Antone Borba to Harold W Rice, A L; lot 2 (777a land), Kahakuloa, Kanaapali, Maui; \$100. B 363, p 401. June 15, 1912.

Antone Borba Jr to Harold W Rice, A L; lot 1 (1115a land), Kahakuloa, Kanaapali, Maui; \$100. B 363, p 402. June 15, 1912.

Polly Kalua and hsb (J W) to Lahaina Agret Co Ltd, D: 10,244 sq ft of R P 6326, kul 6904, Puako, Lahaina, Maui; \$1000. B 368, p 151. May 4, 1912.

Clara M R Mossman and hsb (W F) to Randolph & Good