

MAILS  
From San Francisco?  
Tenyo Maru, May 28.  
For San Francisco:  
Shinyo Maru, June 1.  
From Vancouver?  
Niagara, June 16.  
For Vancouver:  
Niagara, May 28.

# Honolulu Star-Bulletin

3:30  
Edition

Evening Bulletin, Est. 1882, No. 6173  
Hawaiian Star, Vol. XXII, No. 7214

14 PAGES—HONOLULU, TERRITORY OF HAWAII, TUESDAY, MAY 25, 1915.—14 PAGES

PRICE FIVE CENTS

## GERMANY WOULD REMAIN FRIENDLY

### "TRAITOR" IS TAUNT HURLED AT BARON KATO

Opposition to Japan's Yielding to China After Making Drastic Demands, Voiced in the House—Sensational Scene Results—New Treaties are Signed—Japan Asks Damages For Hankow Injuries

[Associated Press by Federal Wireless]  
TOKIO, Japan, May 25.—While Baron Kato, foreign minister, was explaining the Chinese situation in the house today, a member of the opposition rose in his seat and called Kato a traitor to Japan, precipitating a sensational scene. S. Shimada, speaker of the house, ordered the member to apologize. He did so. Then the opposition accused Shimada of exceeding his powers. The matter was referred to a committee.  
TOKIO, Japan, May 25.—Reports of anti-Japanese agitation, fast spreading through the south of China, are causing much uneasiness in Japanese official circles.  
PEKING, China, May 25.—Two treaties relating to Shantung, Manchuria and other points in dispute between China and Japan have been signed, also thirteen notes dealing with various matters up for settlement.  
Japan has filed a heavy claim for injuries for damage done to Japanese shops and other establishments by Chinese mobs in Hankow.

WASHINGTON, D. C., May 25.—A despatch from Tokio says that two treaties concerning Shantung, Manchuria and Mongolia have been signed and exchanged with a note with reference to other questions which have figured as part of the Japan-China controversy.  
JAPAN HAS RATIFIED NEW CHINESE TREATY  
(Special to Hawaii Shinyo.)  
TOKIO, Japan, May 24.—The new Japanese-Chinese treaty resulting from the acceptance of Japan's modified demands by China, was ratified in Tokio today. The treaty was signed by Emperor Yoshihito and President Yuan Shih-kai, and then by China's minister to Tokio and Baron Kato, Japan's foreign minister.

F-4 LIKELY TO BE IN THE HARBOR TOMORROW NOON  
Sunken Submarine Brought to Within 54 Feet of Surface During Today's Work  
The F-4 will not be towed into the harbor this afternoon as originally planned. With the boat resting in 54 feet of water, it was decided to shift the lines so that the submarine would be towed through the channel bow on. This is a precaution against the unexpected, so that in the unlikely event of anything giving way, the entire channel will not be blocked. To swing the suspended boat around requires the shifting of one line and the shortening of others, and this will take all afternoon.  
By tomorrow noon the sunken submarine F-4 should be inside Honolulu harbor. There is small chance that anything will now interfere with the successful carrying out of plans made this morning for the last stage of the journey through the channel.  
With the ill-fated undersize vessel again inside the harbor, one of the (Continued on page two)

IRON FENCE  
Structural and Ornamental Iron  
H. E. HENDRICK, LTD.  
Merchant and Alaska Sts.

### TRIUMPHS AS TREATY WITH CHINA IS SIGNED



Minister M. Hiki, Japan's representative at Peking, whose diplomacy has helped to consummate the new treaty between China and Japan.

### DIVIDEND RUMOR SENDS M'BRYDE PRICE SKYWARD

Rumors that the McBryde Sugar Company, Limited, is getting squared around to a profit-making basis, and that a dividend is not unlikely, have received enough credence on the street today to send the stock mounting.  
Yesterday McBryde changed hands at 6. This morning it was held at 6.34 with strong bidding at 6.12, and reported between boards sales totaling 435 shares at 6.14. This afternoon the stock was being dealt in at 6.34, and was in good demand at that figure, though one month ago it was changing hands at 5.34.  
The company, which has plantations on Kauai, last year made a new high record of production with 15,845 tons of sugar. The stock has a par value of \$16 per share.

### BISHOP NAMES NEW OFFICERS FOR AUXILIARY

Bishop Henry Bond Rensick this afternoon appointed the following officers of the Woman's Auxiliary to serve during the coming fiscal year:  
Mrs. H. M. von Holt, president; Mrs. L. P. Folsom, vice-president; Mrs. William Wall, secretary; Mrs. B. L. Marx, treasurer; Mrs. Arthur G. Smith, secretary of the united offering; Mrs. Martin, secretary of the church periodical club; Mrs. R. B. McGrew, secretary of the babies' class; Mrs. John E. Baird, secretary of the junior auxiliary.

### FAVOR FUND FOR AGED EPISCOPAL MINISTERS

Following a unanimous vote supporting the mainland-wide movement to provide for superannuated ministers and the families of deceased ministers, the 13th annual convention of the mission district of Honolulu came to a close in Davies Memorial hall last night. The scheme is to raise a fund of \$5,000,000 which would be invested, and the income expended in carrying out the plan. In the opinion of those present, the convocation was the biggest and most successful of its kind ever held in Honolulu.

### BASEBALL RESULTS

NATIONAL LEAGUE.  
At New York—St. Louis 11, New York 5.  
At Brooklyn—Brooklyn 5, Pittsburgh 1.  
At Philadelphia—Philadelphia 3, Chicago 0.  
At Boston—Boston 3, Cincinnati 1.  
AMERICAN LEAGUE.  
At Cleveland—Philadelphia 6, Cleveland 5.  
At Detroit—Washington 8, Detroit 4.  
Other games—Rain.  
Mr. Colville Barclay, counselor of the British embassy, and Mrs. Barclay and their family will spend the summer at Manchester, where they have leased a house at Smith's Point.  
The trial jurors in Judge Ashford's court, with the exception of those on the present panel, have been excused until 9 o'clock tomorrow morning.

### HAWAIIAN FOREIGN SERVICE THREE-YEAR TOUR HERE

Recently there was some anxiety amongst the troops in the Hawaiian department caused by a rumor that service here was no longer to be counted as foreign. The department commander has just received advance information that a new order will come out soon regarding foreign service, when it is expected that the tour of duty in Hawaii will be fixed the same as that at Panama—three years—to correspond with the law requiring only two years' service in the Philippines. The roster for foreign service is intended hereafter to be run in such a manner that an officer at the top will take whatever vacancy exists in his arm and grade, whether it be in the Philippines, Panama or Hawaii. It is intended that if an officer is due for foreign service, is detailed and prefers service in a department other than the one to which detailed, he can bring about a change only by mutual transfer with another officer in that department.

### PROMOTION FOR MANY OF JAPAN'S NOTED GENERALS

(Special to Nippon Jiji.)  
TOKIO, May 25.—Because of the retirement of Gen. S. Nakamura from command of the Tokio garrison, the highest military post in the Japanese army, a general promotion was made among the commanding officers today. Lieut.-gen. M. Kamio, hero of the capture of Tsingtau from the Germans, was appointed governor of the Tokio garrison and the capital guard. Lieut.-gen. K. Otsu, commander of the 5th division of the Japanese army at the mobilization point, Hiroshima, was given the command of Tsingtau. Lieut.-gen. D. Ohara, commander of Fort Utsa, which guards the entrance to Osaka and Kobe, was transferred to command the 5th division.

### ATTORNEYS MUST RENEW LICENSES BEFORE JUNE 30

The following order entitled "In the matter of attorneys omitted by the circuit court of the first judicial circuit, to practise in the district courts," was issued in circuit court today, signed by Circuit Judges C. W. Ashford and W. L. Whitney:  
"It is ordered that all persons heretofore licensed by said circuit court to practise as attorneys in and before the district courts of this territory, and the original term, to wit, two years, whose respective licenses to so practise have expired, shall file their several applications for renewal of their licenses, and submit to such examinations as may be prescribed in their cases respectively, on or before the 30th day of June, 1915, and that all licenses so held, and the original terms whereof shall have then expired, shall then lapse and be no further recognized, unless the same shall have been renewed.  
"And it is further ordered that any and all persons holding such licenses, the respective terms whereof shall expire after the taking effect of this order, shall, within one month before the expiration thereof, respectively apply for such renewal and examination, and in default of the issuance of new licenses to them respectively, their licenses shall lapse and be of no further authority."

### RESEARCH CLUB HEADS CHARTER CONVENTION PLAN

A businesslike meeting of the Municipal Research club was held last night in the Chamber of Commerce rooms, discussion being given to plans for the coming charter convention. The club fostered the charter convention law in the last legislature and was principally instrumental in getting the law passed. Now the club will endeavor to secure good candidates for delegates to the convention and suggest also desirable features for the new charter.  
G. Fred Bush, one of the club's active and conscientious members, was elected president last night. Prof. J. M. Young, first vice-president, and J. W. Caldwell, secretary.

### MONSARRAT IS AGAIN NAMED AS DISTRICT JUDGE

Bar Association's Previous Indorsement Evidently Carries Weight

POLITICS AVOIDED BY GOVERNOR IN CHOICE  
Reappointment Comes as Surprise After Having Been Withheld Several Weeks

After a delay of two weeks, a delay so long, in fact, that it was rumored some new man would be chosen for the place, Governor Pinkham has announced the reappointment of James Melville Monsarrat as district judge for Honolulu. The reappointment is for a two-year term.  
Several reasons led to the supposition that some new man would be chosen, for Judge Monsarrat's office. His term expired some time ago, and Governor Pinkham has been extremely reticent as to when or with whom he would fill the place.  
There has been considerable criticism of an alleged excessive leniency on the part of the judge, but this criticism was apparently held unfounded, for a strongly worded petition of indorsement of Judge Monsarrat passed some time ago by the Bar Association, is said to have carried weight. The signatures carried gave the petition practically the weight of a unanimous appeal for his retention in office. It was reported today that a conference was held in the governor's office yesterday and today the notice of reappointment was made public.  
Governor Pinkham is evidently not allowing political affiliations to interfere with his choice of men for judgeship.

### 'RED' FLEET IS VICTORIOUS IN 'ATTACK' ON U. S.

Admiral Beatty Outmaneuvers Admiral Fletcher and Establishes Theoretical Base

[Associated Press by Fed. Wireless.]  
WASHINGTON, D. C., May 25.—A victory for Admiral Beatty, in the "Red" fleet invading the Atlantic shores, closed the big naval war game played by the Atlantic fleet for several days past, according to the reports received at the navy department from the umpires.  
The attacking fleet under Beatty is held to have outmaneuvered Admiral Fletcher, in charge of the "Blue" defenders, the invaders winning a position where they could establish a base on Chesapeake bay.

### CHAGAS BADLY HURT

[Associated Press by Fed. Wireless.]  
LISBON, Portugal, May 25.—Prime Minister Joao Chagas, who was shot a few days ago by Senator Freitas, has resigned his post on the advice of his physicians.

### STEAMER BREAKS UP

[Associated Press by Fed. Wireless.]  
MARSHFIELD, Ore., May 25.—The steamer Claremont, ashore near here, is breaking up.

### COMMANDER RABY GOES TO MAINLAND IN MANOA

Commander J. J. Raby, who came here as executive officer of the Maryland, was today relieved by Lieut. Cmdr. David F. Boy, who arrived on the Matsushima this morning. Cmdr. Raby is ordered to duty at the naval academy and will leave for San Francisco this afternoon in the Manoa. Another departure by the Manoa will be Chief Gunner G. D. Stillson, the diving expert, who was rushed from the east coast with the quartet of navy divers at the time of the F-4 accident. Dr. French and Divers Drelishak, Crilly and Nielsen will remain here until the F-4 is finally raised.

### WEATHER TODAY

Temperature—6 a. m., 72; 8 a. m., 78; 10 a. m., 79; 12 noon, 78. Minimum last night, 72. Barometer at 8 a. m., 30.06. Relative humidity, 8 a. m., 69. Absolute humidity, 8 a. m., 7.091.  
Wind—6 a. m., N-4; 8 a. m., W-6; 10 a. m., SW-12; 12 noon, SW-13 miles. Movement, past 24 hours, 150. Dew-point at 8 a. m., 67. Total rainfall during past 24 hours, 0.

### LEADS TEUTON ALLIES AGAINST RUSSIAN ARMY



Gen. von Mackensen, head of the Teuton Allies in the fighting around Przemyel. His armies have captured many prisoners in the last few days.

### URGES AMERICAN COUNTRIES WALL OUT AGGRESSORS

Colombian Delegate to Conference Would Guard Against European Covetousness

[Associated Press by Fed. Wireless.]  
WASHINGTON, D. C., May 25.—"America for the Americans" with a wall of inviolability so high and strong that no European nation will dare to violate it, is the slogan sounded today by Santiago Triana, delegate from Colombia, at the meeting of the Pan-American conference.

### BECKER'S GUILT AGAIN CONFIRMED IN STATE COURT

[Associated Press by Federal Wireless]  
ALBANY, N. Y., May 25.—The second conviction of Police Lieutenant Charles Becker of New York, held guilty of criminal complicity in the murder of Gambler Rosenthal by gangsters two years ago, was upheld by the state supreme court today. Unless Governor Whitman extends executive clemency or the United States supreme court reverses the state tribunal, Becker has no hope of escaping the electric chair.

### MANY MOURN AT FROHMAN BURIAL

[Associated Press by Federal Wireless]  
NEW YORK, N. Y., May 25.—The funeral of Charles Frohman, the noted theatrical man lost in the Lusitania, was held here today. It was attended by scores of prominent actors, actresses and theatrical magnates.

### REQUESTS WEEK'S DELAY IN ANSWERING PEREMPTORY NOTE; GERMANS DRIVE AT PRZEMYSL

GEN. VON MACKENSEN'S SLASHING OFFENSIVE RESULTS IN THE TAKING OF MANY THOUSAND MORE PRISONERS—WASHINGTON PROCLAIMS U. S. NEUTRAL IN ITALO-TEUTON WAR—HOLLAND ADDS HER PROTEST ON LUSITANIA SINKING—CONFIRMATION OF BERLIN REPORT THAT RUSSIAN STEAMER WAS SUNK BY SUBMARINE

[Associated Press Service by Federal Wireless]  
LONDON, England, May 25.—It is learned here that Germany has requested that she be allowed a further delay of a week to reply to the American note. It is said that the note will be friendly and that everything possible will be done to avert trouble.

NEW YORK, N. Y., May 25.—The German statements to the United States on matters taken up by diplomatic notes are being transmitted from Berlin to Washington through London. Static conditions are hampering wireless communication.

WASHINGTON, D. C., May 25.—It is presumed that the delay in the German reply to the American note on the Lusitania sinking and other incidents is due to Italy's entrance into the war. There is a German rumor that the delay is to satisfy public opinion.

### Italians Penetrate Austria at Several Points; Occupy Towns

[Associated Press Service by Federal Wireless]  
ROME, Italy, May 25.—Striking at Trieste, territory demanded by Italy as part of the price for remaining out of the war, the Italian army in the northeast has penetrated Austria and occupied several towns a few miles from the border or on the border.  
Among the towns occupied are Caporetto, Cormons, Cervignano and Terzo and the heights between Idris and Isonzo. Reports have reached Rome that a destroyer has raided the coast town of Buso, shelling the port, wrecking the landings and railroad station and destroying the barracks.  
The first casualties officially reported are two Austrians killed.  
A steamer has reported that she sighted an Austrian warship. It is believed this warship is the one that appeared off Barletta, on the lower Adriatic, and was driven off after an exchange of a few shots.

LONDON, England, May 25.—A despatch from Berlin says that the Italian ambassador, Sr. Bollati, has left the German capital and that the German chancellor, von Bethmann-Hollweg, refused to extend to him the customary farewell.

CHIASSO, May 25.—Ambassador von Buelow of Germany and Ambassador Macchio of Austria have arrived here on their way to their respective capitals, having been recalled by their governments.

### Gen. von Mackensen Driving Back Russian Forces, Striking Hard

BERLIN, Germany, May 25.—Gen. von Mackensen, who is in command of the Austro-German armies operating in the vicinity of Przemyel and striking north at the Russians, has renewed his offensive campaign north of Przemyel and has just captured 21,000 more Russian soldiers.

BERLIN, Germany, May 25.—Gen. von Mackensen and his army have occupied Drohobow, Oatrow and four other fortified villages.

### Holland Protests to Germany on Loss of Dutch With Lusitania

THE HAGUE, Netherlands, May 25.—The Netherlands has protested to Germany on the basis that several of the country's subjects were lost when the Lusitania sank. The Holland protest is being drawn along the lines of that sent to Berlin by the United States.

### U. S. Proclaims Absolute Neutrality

WASHINGTON, D. C., May 25.—A neutrality proclamation, declaring the United States impartial in the Italo-Teuton war, was officially published today.

### Russian Warship Sunk by Submarine

CONSTANTINOPLE, Turkey, May 25.—It is announced here that a submarine has sunk a Russian warship in the Sea. It is believed this announcement refers to the ship told of in the Berlin announcement yesterday.

[Additional Telegraph Despatches on Page 7]



# QUINN'S DEATH IS MOURNED BY CITY OFFICIALS

Municipality Pays Deep Respect to Memory of Its Late Supervisor

## MAYOR TO FILL VACANCY WITH BOARD'S APPROVAL

Lane Indicates Choice Is to Be Made Soon of "Popular Republican"

The entire city government today paid its respects to the memory of James Carroll Quinn, for 30 years a well-known figure in public affairs of the Hawaiian Islands. He passed away at the Kewalo sanitarium last night following a lingering period of illness. Death was not unexpected and relatives and life-long friends were at his bedside as the end came to the city supervisor.

At noon today all city and county offices closed in respect for the deceased. The flag on the city hall, at the direction of Mayor Lane, was lowered to half mast. The city hall will remain closed to public business throughout the day. A meeting of the board of supervisors, following a session of the supervisors as a committee of the whole, was slated for tonight at 8 o'clock. Owing to the death of Supervisor Quinn, the board will meet at the scheduled hour and a resolution will be introduced to extend the sympathies of the city government to the relatives and immediate family of Mr. Quinn. After which the meeting will adjourn until tomorrow night.

Funeral services are being held this afternoon at Williams' undertaking parlors, Fort street, commencing at 3 o'clock. Interment will be in the Nuuanu cemetery. Mayor Lane paid tribute to the life and good works of Mr. Quinn today.

"I have met many men of many nationalities, many creeds, many politics," he said, "but James C. Quinn towered above them all. He was my platform mate in many a political campaign where he always was known as a clean campaigner. Outside of politics he also was a firm friend of mine and the city of Honolulu loses a public servant whose loss will be felt deeply."

Mr. Quinn was born in Clayton county, Ga., 57 years ago, and was one of 14 children. At the age of 14 years he journeyed to Arizona and drove a stage coach and since coming to Honolulu in 1886 he has recalled many adventures with "bad men and Indians" on the Arizona plains. Following annexation, Mr. Quinn took up the colors of the Democratic party. He was one of the 14 men who organized that party. Later he resigned and became one of the leaders in the Home Rule party, but when that organization was nearly disbanded, Mr. Quinn did not return to Democratic ranks, but instead became a staunch Republican.

On the G. O. P. ticket he was elected to the board of supervisors in 1908, he was defeated for re-election two years later, but at the last city election he again became a candidate and was elected. He served as chairman of the roads committee during both terms.

The vacancy on the board of supervisors made by the death of Mr. Quinn, under the city charter, is to be filled by appointment of Mayor Lane, subject to the approval of the board.

Mayor Lane said today that he was unable to make public his choice as he had not consulted with the proposed candidate for the vacancy and did not wish to make the announcement prematurely.

"The man whom I intend to appoint as Mr. Quinn's successor is a Republican, a man who stands out for clean principles and who is popular with the people. As soon as he accepts, which I believe he will do, I will make public my choice," said the mayor.

John L. Fleming, Republican, who ran high in the primaries, and W. C.

# MONSARRAT IS AGAIN NAMED AS DISTRICT JUDGE

(Continued from page one)



James Melville Monsarrat, Reappointed District Judge Today.

diclary place, for Judge Monsarrat is a Republican. Formerly the power of appointing a district judge rested with the chief justice, but the reappointment of Chief Justice Robertson has seemed unlikely under a Democratic administration, and the last legislature, a Republican body, transferred the appointive power to the governor.

In addition to the reappointment of James Melville Monsarrat as district judge, the following were appointed for four year terms: Richard A. Cooke, license commissioner for Honolulu; William Fred Kane, T. B. Lyons and D. H. Case as Maui license commissioners; and for two year terms William Hentings and George Freeland were appointed prison inspectors for the second circuit court, comprising Maui, Molokai and Lanai.

Ten members of the crew of the Cuardador Carpathia claiming to represent 110 other members of the crew, called at the Cunard line offices and demanded their pay, refusing to sail on the ship, fearing she would be torpedoed.

Achi, Carlos Long, E. A. C. Long and J. A. Maguire, also well-known Republicans, are among those mentioned as a possible successor.

The Primary Vote.

Clark	783
Long	762
McGuire	644
Archer	628
Achi	576
Makalela	347
Mahuka	346
Grand Total	7440
John L. Fleming	1840
Frank K. Archer	1820
J. B. Enos	1613
A. K. Vierra	1535
W. C. Achi	1519
Carlos A. Long	1469
Joseph A. McGuire	1216
A. F. Clark	1164
W. M. Mahuka	803
Geo. Makalela	676

\*24 only below lowest Republican nominated.

# ACCIDENT CAUSE OF DEATH, JURY SAYS IN VERDICT

Testimony Shows Japanese Hit By Auto Was on Wrong Side of Street

Death due to accident, conclusively shown in a short but thorough hearing, was the verdict rendered by a coroner's jury which this morning inquired into the death of Taruchi Mitamura, the Japanese killed last Saturday in collision with an auto driven by Mrs. Theodore Richards.

The verdict also showed that the Japanese, on a bicycle, was on the wrong side of the street. The verdict, rendered at the end of a half-hour hearing today, says that the man came to his death from "fracture of spinal column caused by being accidentally struck by an automobile while the said Taruchi was traveling on the wrong side of the street."

The coroner's jury was composed of John G. Lewis, A. V. Gear, J. Campbell, Levi Perkins, H. Brown and C. A. Stewart.

Mrs. Richards was the only eyewitness to the accident and the hearing was brief. Her testimony as well as the circumstantial evidence submitted by Motorcycle Officer Perry and Deputy Sheriff and Coroner Achi proved beyond question that the Japanese unexpectedly and for some unknown reason, perhaps being confused, swerved his bicycle directly into the path of the auto. It was shown conclusively also that the auto was going slowly and that Mrs. Richards stopped it within about 15 feet.

The first witness, K. Oki, a relative of Mitamura, told of identifying the body and gave some facts about the man and his family. He left a wife and a daughter, the latter in Japan.

Mrs. Richards was then called. Her account of the accident was given clearly and briefly. She told of driving in the Buick runabout down Luanihilo street. As she approached Pitko she saw the Japanese coming down Pitko and sounded her horn.

"I saw him and he saw me," she testified, and told of how he suddenly swerved in front of her car, after first turning as if to go down Luanihilo, which he could have done with entire safety. She applied the brakes and stopped the car. The man was under the car. A number of people came and the man was removed. Mrs. Richards then asked one of the ladies to telephone to the police and for an ambulance and remained until the police came, giving her statement to them.

Mrs. Richards said she did not look at her speedometer just before the accident but thought she was going between 15 and 20 miles an hour. However, Officer Perry and Deputy Achi both stated later that she must have been going considerably slower than this for the car was stopped almost instantly and without skidding the wheels. Deputy Achi made a statement to the jury testifying as to this and also to the fact that Mrs. Richards had remained at the spot and given a full statement to the police.

The jury required but a moment's consultation and then unanimously declared the death due to accident. Juror Gear asked Deputy Achi if nothing could be done to stop the practice of Oriental bicyclists traveling on the wrong side of the street. "There is a great deal of this," he commented.

**LITTLE INTERVIEWS**

**JAMES C. ARCTA:** Identified as I am with the Oahu League, I am a harder worked man than President Ben Johnson.

**FRANK KANUHA:** It's one thing to be a spectator at the presentation of a religious drama at a local theater on Sunday night and quite another to be classed with the seum of the city because of having been there.

**CAPT. F. STERLING:** As a word of constructive criticism, I would like to call attention to some of the so-called public drinking fountains placed about the city. One at the corner opposite the Y. M. C. A. is a sanitary disgrace. It can hardly be considered an incentive to total abstinence or temperance.

**EDWARD MARSH:** After witnessing the many dangers to which a traffic police officer is exposed in the downtown section of the city, I am inclined to the belief the now famous though discarded diving bell constructed by the local navy to assist in raising the sunken submarine should be given to the city to be placed at Fort and King streets to protect the officer from clouds of dust and the constant menace of the heavy traffic.

**W. R. FARRINGTON:** It seems to me that the attention of some of our fellow citizens could be well centered on this sentence of President Wilson's recent speech in Philadelphia: "A man who thinks of himself as belonging to a particular national group in America has not yet become an American; and the man who goes among you to trade upon your nationality is no worthy son to live under the Stars and Stripes."

**STAR-BULLETIN GIVES YOU TODAY'S NEWS TODAY**

**WANT ADS**  
FOR RENT.  
One of Hummel's furnished cottages at Waikiki beach. Inquire Tel. 4382 or 2897. 6173-31

# F-4 LIKELY TO BE IN THE HARBOR TOMORROW NOON

(Continued from page one)

most remarkable salvage operations on record will be practically completed, and a new mark set for the raising of wrecks from the ocean floor.

Work on the F-4 started at 5 o'clock this morning, with the boat lying in 83 feet of water. At 8 o'clock, when lifting and towing operations came to a halt, the submarine was in just 54 feet of water, according to careful soundings. The drums on the lifting scows were half full of wire, and it was determined to cut the lines and clear them in preparation for one final lift and tow through the channel.

Had work continued the drums would have been raised sufficiently to enter the channel. As it is now, all the necessary wire can be taken on.

When towing stopped this morning everything was ready for further examination and work by divers, it having been decided to put a shackle on the lifting pads near the bow of the submarine. Chief Gunner, Stillson, who has been in charge of diving operations, but who has done no diving here himself, elected to go down this morning. Jack Agaz, also made a dive and brought up some valuable information.

Some extended diving was done yesterday by Nielsen and Dreilshak. The former walked along the sea bottom from a depth of 87 feet to 60 feet covering 2000 feet from the submarine well into the channel. In the afternoon Dreilshak did considerable underwater exploring around the quarantine wharf.

Preparations are being made to remove the bodies of the crew from the F-4 as soon as the vessel has been placed in the drydock. The morbidly curious will be kept far away from the scene as soon as this sad task commences. In fact, the public will be kept off the docks, pontoons and crane. Only navy men will be permitted in the vicinity of the submarine.

One of the first things to be done when the submarine is out of the channel and before she can be taken into drydock, is to right her on an even keel. Probably one pontoon and the floating crane will be used for this work.

# NEW PRINCIPALS FOR KAMEHAMEHA

In search of a principal for the Kamehameha Girls' School and one for the Kamehameha manual department, E. C. Webster, president of the schools, is in the East and expects to return to Honolulu in time for commencement next month.

The principal for the girls' school will fill the position left vacant by the death some months ago of Miss Ida M. Pope. In securing a principal for the manual department it is the idea of the school authorities to secure a competent person who can weld the educational and industrial departments of the school under one head.

For these positions Mr. Webster will endeavor to secure persons of not too mature years; as well as persons who will be peculiarly well qualified to handle the work.

Members of the class of 1915 of the manual school have invitations out for a reunion to be held in Bishop hall Saturday evening, May 29, at 7:30 o'clock. There will be dancing.

**If You**  
are troubled with heartburn, gases and a distressed feeling after eating take a  
**Rexall Dyspepsia Tablet**  
before and after each meal and you will obtain prompt relief. Sold only by us, 25c  
Benton, Smith & Co., Ltd.

# JAPANESE Silk Goods and Curios

# SAYEGUSA

1118 Nuuanu St. Above Hotel St.

# THE CONGRESSIONAL PARTY

Approved

# Haleiwa

to the smallest detail.

Tickets via Oahu Railway at Wells-Fargo office.

# Baggage Specialists

CITY TRANSFER CO.,  
Jas. H. Love

# Dutch Cookies

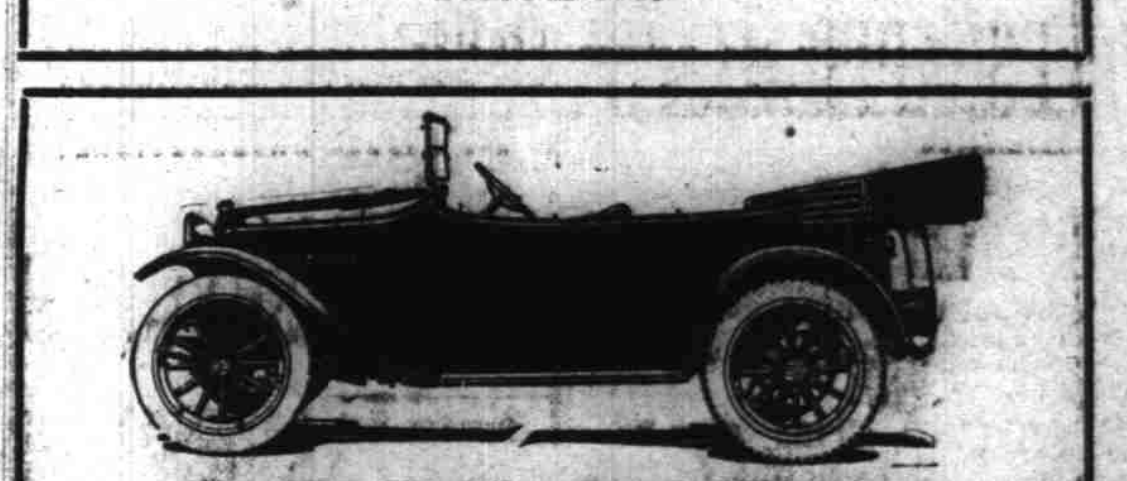
Finest Sweet Cookies in the land, always fresh.  
Sold at all Stores.  
Love's Biscuit and Bread Co.

# We are Offering DELICIOUS Beef, Pork and Mutton

SUPERIOR IN EVERY WAY TO ANY WE HAVE RECENTLY SERVED OUR CUSTOMERS

# Metropolitan Meat Market

PHONE 3445



**An 8-Cylinder Car at an Astonishing Price**

The Detroit Eight-cylinder, Five Passenger Touring Car, is modeled according to the latest European lines, and combines great power, exceptional comfort and remarkable economy.

"V" type motor, electric lighting and starting. Ball-bearing transmission, selective, three speed and reverse type. Multiple disc clutch. Full-floating rear axle. Center control. Right or left side steering as desired. Wheelbase, 112 inches; tread, 56 inches. Kimball green body (five passenger); black chassis and hood. Crowded fenders.

We also manufacture the DETROITER "Four" with same specifications as "Eight," except motor.

Full description and proposition to dealers sent upon request.

An experienced export manager will give all your requests careful personal attention.

Write or cable.

**BRIGGS-DETROITER COMPANY,**  
66 Holbrook Avenue,  
DETROIT, MICHIGAN, U. S. A.  
Cable Address: Detroit, Detroitmich.  
Codes used: Western Union, A. B. C. 5th Edition.

# The Wood Core Does It

This wall board with kiln dried wood slats for the center core has lath and plaster and all other wall boards "backed off the board"

- for strength
- for durability
- for resistance to cold, heat, moisture, air
- for adaptability to decoration by any method.
- for real economy.

# Compo-Board

- is the only wall board made with a wood core (this is a patented feature);
- is the only ball board that is stiff enough to be safely papered;
- is the only wall board that can be satisfactorily decorated without the use of panels; (You can use panels if you wish.)
- has stood the test of time and rough usage for fifteen years.

Are you going to build a home?  
Are you going to remodel your old one?  
Are you going to fix up your summer cottage?

Do you want to put that barren attic or basement into service as extra bedrooms, children's playrooms, workshop, study or billiard room?

Then you need Compo-Board.

Come in or call us up. Let's talk it over.

Compo-Board comes as follows: 4x8 feet, 4x10 feet, 4x12 feet.

# Lewers & Cooke, Ltd.,

Lumber and Building Materials—177 So. King St.

# ROYAL Baking Powder

## Absolutely Pure

The only Baking Powder made from Royal Grape Cream of Tartar

Read the Label

Alum Baking Powder will not make healthful food

Royal Baking Powder Cook Book sent free on request. Address: box 589, Honolulu, Hawaii.



## SLIGHT HURTS TO SEVERAL AS ENGINES TOUCH

Accident on Oahu Railroad is  
Held to Have Been  
Needless

A slight and needless accident on the Oahu railway line, Wahiawa branch, last Saturday afternoon caused minor injuries to several passengers and brought the declaration today from General Passenger Agent Smith that carelessness of several members of the crew of a freight train is responsible.

The accident occurred about the middle of the afternoon. A passenger train ran into an open switch which should have abutted the train in another direction, and the engines of the moving passenger and a stationary freight train came together. The passenger train was almost stopped, said Mr. Smith this morning.

When the air was clapped on, several passengers were thrown forward in their seats. The names of Wells Peterson and George E. McCriston were given today as two passengers who were slightly hurt, neither sufficiently to be disabled at all, and a Korean and two colored women of Schofield Barracks are also said to have been slightly cut or bruised.

The crew of the freight train is held to blame for not having been more alert and seen that the oncoming passenger train was taken care of.

## KOREAN Y. M. C. A. HAS BEEN HAUNT OF ESCAPED MAN

Yee Yo Keuk, who escaped from the police receiving station more than a week ago, was seen on the premises of the Korean Y. M. C. A. last night, according to a report brought to detective headquarters. Police Officer Townsend hastened to the building near Queen's hospital and searched the neighborhood without success.

The secretary of the Korean association today reported the loss of six watches and several gold rings. The police are inclined to lay the theft of the valuables to the wily Keuk.

From personal effects found under the Korean Y. M. C. A. building the officers say Yee Yo Keuk has been making the place his rendezvous at night.

A meeting of the harbor board will be held at 1:30 o'clock tomorrow afternoon in the basement of the Capitol.

## PICTURE BRIDE DIES OF WOUNDS MADE BY SPOUSE

Pretty Little Korean Woman  
Slashed to Death on Down-  
town Street By Husband

Driven to desperation by jealousy after months of matrimonial trouble, Pak Chi Ser, a Korean, brought a stormy picture-bride romance to a close last night by shooting and slaying his wife when he met her on Liliha street at 9:30 o'clock. The refusal of the wife to live with Pak is said to have turned his mind. Inquest by the coroner's jury will be held in the sheriff's office tomorrow afternoon at 2 o'clock.

The case was first brought to the attention of the police two months ago when Kim Pak Chi Ser, the murdered wife, came to the police station with the story that she could not live with her husband any longer. He beat her four or five times every week, she said. McDuffie's men made inquiries of the neighbors, and her story was substantiated.

Kim was then taken to the Associated Charities, and cared for at the Susanah Wesley Home with the hope of getting her a position in some family. However she came back to the police after a month or so for help. Luliha Apana, a member of the police force, offered to take her as a maid in his home. Meanwhile Pak Chi Ser frequented the police station trying to get in touch with his picture bride. The officers told him there was no law compelling Kim to go back and live with him.

Nothing further developed until last night when Pak jumped out of the shadow of a building on Liliha street where he knew Kim and the Apana family would pass on their return from a picture show.

He first fired a shot from a pistol which scared Mrs. Apana and her children. With little Kim entirely at his mercy Pak then used a knife, slashing her neck and arms. The knife wounds caused almost instant death. She was hurried to Queen's hospital but was already dead when the ambulance arrived.

Pak was caught by the crowd which had gathered. He is now held in the police station, pending the inquest tomorrow afternoon.

Company H of the national guard will hold its regular drill this evening and a full attendance is required in preparation for the parade next Monday. The company hopes to parade with nine full squads and no leaves or absence will be granted for tonight's assembly.

Prof. and Mrs. William Howard Taft entertained at dinner recently at their home in New Haven, in compliment to their house-guest, Mrs. Nathaniel Francis of Boston, daughter of the late Chief Justice Fuller.

## LOCAL AND GENERAL

There will be work in the second degree at a meeting of Honolulu Lodge No. 409 tonight.

Bishop Museum will be open on Saturday, May 29, and closed on Memorial Day, May 31.

The territorial grand jury will meet in the judiciary building at 2 o'clock tomorrow afternoon.

Mr. and Mrs. Antonio Lopez will give a luau at Puuloa next Sunday in celebration of the birthday of their daughter.

A discontinuance has been entered in circuit court in the case of the Hawaiian Electric Light Company against L. L. Cockett, an action for debt.

"The Telephone Exchange and Its Cables" will be the subject of Dr. W. C. Hobby's lecture in the Y. M. C. A. tonight in the "How to Keep Well" series.

The trial jurors in Judge Ashford's division of circuit court have been excused until Thursday morning at 9 o'clock.

The divorce suit of Halbina Grant against Mason Grant is on trial before Circuit Judge Whitney this afternoon.

The case of the McBryde Sugar Co. against Manuel Andrade was argued and submitted in the supreme court yesterday.

Circuit Judge Whitney today appointed H. T. Kwal administrator of the estate of Kam Sing, deceased, under bond of \$1000.

Novel ideas of "a trip around Honolulu" were well worked out at the party given last evening at the Y. W. C. A. Homestead on King street, and scores of guests enjoyed the proffered hospitality of the organization.

A verdict in favor of the plaintiff was returned by a jury in Judge Stuart's court this afternoon in the case of Apana against Goo Wan Hoy. The plaintiff sought to recover \$300.

The supreme court next Friday morning will hear the case of the territory against Hoo Koon, charged with having opium in his possession, on reserved question from the circuit court of the first circuit.

That federal authorities at San Francisco were disposed to lay most of the responsibility for the unsuccessful attempt to smuggle \$28,000 worth of precious stones from the Oceanic liner Ventura, at the door of Purser F. V. F. Baker, was the report circulated at the time the Matson liner Matsonia left the coast for Honolulu.

A joinder in demurrer was filed in circuit court today by the petitioner in the case of Capt. A. F. Cassels against C. T. Wilder, tax assessor and collector for the first taxation division, and action for a bill for injunction. The petitioner says that the respondent's demurrer is "good in substance."

A jury in Circuit Judge Ashford's court today found Ngin Chong, a Chinese, guilty of an attempt to criminally assault an 8-year-old Japanese girl. Judge Ashford sentenced the defendant to serve not less than four years, or more than five years, in Oahu Prison at hard labor and pay the costs of the case.

Raymond C. Brown, secretary of the Chamber of Commerce, has received an appreciative letter from the Board of Trade of Easton, Pa., with thanks for the May number of "Honolulu," a request for all back numbers, and a plea that the Easton organization be put upon the permanent mailing list. The Great Falls, Mont., Chamber of Commerce, and the chamber at Minot, N. D., have also written appreciatively about the publication.

A written opinion was handed down from the supreme court today on reserved question in the application of C. D. Pringle, former clerk in Circuit Judge Stuart's court, for a writ of mandamus against James Bicknell, auditor of the city and county. The opinion answers the reserved question in the negative. The case was decided March 29. The present proceeding for mandamus will be heard next Tuesday morning at 10 o'clock.

## HILO DRUGGIST HOME FROM TRIP

Chock Chong, one of the partners of the Hawaii Drug Co. of Hilo, was a returning passenger on the Matsonia this morning, after an extended trip to the mainland, where he visited the principal cities of the United States as well as making side trips into Canada and Mexico.

While away Mrs. Chock Chong combined pleasure with business. Mr. Morehead, his partner in business, recently invented a remedy for sea-sickness for which much success is claimed. Mr. Chong introduced and sold this remedy to the leading wholesalers throughout the country, assuring some more valuable publicity for Hawaii, through a channel heretofore unapproached. He did considerable boosting while in the various cities and was accorded more than ordinary space in several dailies on the mainland. He says that all through the United States he met and talked with people who were either on their way or were expecting to visit Hawaii.

With Mr. Chong Mr. W. H. Martin, a chemist of New York, comes to enter the employ of the Hawaii Drug Company. Mr. Chong had a very enjoyable trip, but is glad to get back to Hawaii.

## THOSE BLANK PAGES

The pulling power of white space is well exemplified by the hundreds of queries that have come to the Star-Bulletin on account of the blank pages appearing on the reverse side of the Hawaiian translation of the laws passed by the last legislature, published in this paper.

Experts on advertising claim that a large amount of white space is the most effective means of attracting attention to advertising.

The cause for the blanks is, that the Speakers of the House of Representatives at the time of the award of contract for publishing these laws, called for the Hawaiian laws to be published with the reverse side free of printing. The Hawaiian translation is not published in book form and it was thought that freedom from printer's ink on the reverse side would result in the type of the laws being clearer when pasted in books for reference.

Meanwhile people who study advertising are reminded that a small amount of reading matter in a blank space can be made quite as effective for attracting attention as a large amount of type in a small space.

## COURT DENIES A MOTION FOR VENUE CHANGE

Special Venire of 25 Names  
Is Ordered in Re-trial of  
the Scully Case

A motion for a change of venue by the defense in the John T. Scully case today was denied by Federal Judge Charles F. Clemons. The motion was made by the defense on the ground that "Scully could not get a fair and impartial trial by a jury drawn from Honolulu and vicinity."

The greater part of today's session of the retrial was taken up with examination of jurors. Shortly before 12 o'clock Judge Clemons excused C. D. Wright and R. L. Auerbach. Mr. Wright said he had formed an opinion as to the guilt or innocence of the defendant. Mr. Auerbach was excused at the request of the prosecution, as about 14 months ago he had been employed to write up the books of the Waikiki Inn.

Upon the excuse of Wright and Auerbach the panel was exhausted and Judge Clemons ordered a special venire of 25 persons to be drawn from bystanders, returnable at 8:30 o'clock tomorrow morning.

Regarding the defense's motion for a change of venue, U. S. District Attorney Jeff McCann said that he did not wish to argue it. It finally was submitted to the court without argument.

Questioned by the defense regarding the publication in the Star-Bulletin on Friday of a list of jurors who voted for and against conviction in the last Scully trial, several of the jurors called for the retrial said that they would not be intimidated by the publication of their names and the way they voted. One of them, in answer to a question, said that if the prosecution failed to establish the guilt of the defendant, he certainly would vote for Scully.

In court yesterday afternoon Mr. McCann gave out the information that it was he who had furnished the Star-Bulletin with a list of the jurors and how they voted.

Dr. A. L. Andrews of the College of Hawaii will lecture next Tuesday night on the subject, "The Overseer."

The Hawaiian band plays at the departure of the steamer Manoa for San Francisco at 4 o'clock this afternoon. There will be no public concert to night.

Manuel Kamma, employed in cleaning windows at the Harrison block, Fort and Beretania streets, yesterday fell to the pavement. He was treated at the hospital for a broken leg.

New officers for the Volcano Research Association for the year 1915-16 were elected yesterday, as follows: President, Lorrin A. Thurston; first vice-president, L. Tenney Peck; second vice-president, C. Montague Cooke, Jr.; treasurer, Robert W. Shingle; secretary, Prof. Howard M. Ballou.

Our entire American Nation pauses on

## Decoration Day

to give thought to our departed ones.

Dressing of the cemeteries and the resting places of our loved ones is part of the ceremony.

Requisites for the occasion we carry in great assortment.

NOTE THESE SPECIALS:

Green Tin Vases	40c each
Lily ptd. Vases	\$1.00 each
Garden Towels	15c each
Moss for Set Pieces	20c lb.
6 1/2-inch dec. Jardinier	35c each

**W. W. Dimond & Co., Ltd.,**  
The House of Housewares  
53-65 King St.

### THE STORE FOR GOOD HOUSEKEEPERS

# Wednesday Specials

S. & W. Loganberries, 2 1/2 lbs. Regular Price 25c tin.....	SPECIAL 20c
Ginger Wafers, A. B. C. (round tins) Regular Price 25c.....	SPECIAL 20c
S. & W. Egg Plums, Regular Price 30c tin.....	SPECIAL 25c
Log Cabin Syrup (qt. tins), Regular Price 50c.....	SPECIAL 40c

**HENRY MAY & CO., LTD. Turn the little disc to 1-2-7-1**

## Personal Mentions

H. A. BALDWIN joined the steamer Mauna Kea at Lahaina.

D. P. R. ISENBERG was numbered with the passengers returning from the island of Hawaii in the steamer Mauna Kea today.

E. M. EHRHORN, territorial entomologist, is back from an official tour of Hawaii. He was a passenger in the steamer Mauna Kea.

JEROME J. SMIDDY, U. S. marshal, left for Hawaii in the Mauna Loa at noon today on a business trip involving civil work. He expects to return to Honolulu at the end of the week.

MRS. R. A. WADSWORTH of Kahu-lui, Maui, who has been visiting her sister, Mrs. G. F. Affonso, Seventh and Kaimuki avenues, for the last two weeks, will return to her home tomorrow.

DR. S. R. BROWN of Honokaa, physician at Honokaa and Pacific plantations, has obtained leave of absence and will shortly depart for England, with the intention of offering his professional services to the British troops at the front.

A. S. WILCOX was reappointed a member of the Kaula Board of prison inspectors and George N. Wilcox, W. D. McBryde and W. H. Rice were re-appointed members of the Kaula license commission by Governor Pinkham late yesterday.

CHARLES H. REWCASTLE, formerly of Honolulu, was married on Sunday, May 16, to Miss Mary Ellen Rittenhouse of Oakland. She graduated recently from the University of California. Mr. Rewcastle is connected with the Berkeley postoffice.

J. A. BUCK, prominently identified with island plantation interests, returned from the Coast in the Matson liner Matsonia today. Mrs. J. A. Buck, Jr., and Miss Viola Buck were members of the party.

WILLIAM P. ROYH, formerly of Honolulu, now with the Matson Navigation Company at San Francisco, and Mrs. Royh, who before her marriage was Miss Lurline Matson, are visitors to the city in the steamer Matsonia.

J. P. COOKE, president and manager of Alexander & Baldwin, Ltd., returned from a trip to the mainland today in the Matsonia. Mr. Cooke went as far as the New England states during his absence, and is glad to be back in Hawaii.

RAYMER SHARP, Mrs. Sharp and their daughters, Misses Alice and Margaret Sharp, will sail for the mainland in the Matsonia next Wednesday. Mr. Sharp will visit extensively in California and will attend the annual meeting of the Associated Harvard Clubs at San Francisco August 22. It is his intention to attempt to bring a delegation of Harvard alumni to Honolulu on their annual junket.

CHARLES P. MCLELLAND, member of the court of general appraisers, who has completed his labors in this city, will leave for the mainland in the Matson steamer Manoa today. He will be accompanied by his secretary, H. P. Kelly. They will visit Seattle, Los Angeles, Saint Paul and Chicago before returning to New York about July 1.

The great demand for automobiles in Honolulu keeps the stock of the local dealers always short. As fast as the cars come in they are snapped up by residents who need cars for pleasure or for business. The Matsonia brought eight Fords, two Studebakers, three Cadillacs and one Packard today and all were sold in advance of being landed.

## DID YOU SEE THIS SPACE YESTERDAY?

Dear Edna:

I received your letter yesterday. I am glad to hear that you have the material for your Graduation dress and that you like it, but why didn't mother get the goods for my dress at the same time, I am sure she could have found something at Ehlers' that would have been appropriate for when I passed there the other day they were showing ever so many pretty white dress materials in their windows. I wanted to go in and see their complete line (they always have so many nice things) but I did not have time.

The next time I am in town I am going to spend a whole day there.

Your sister,  
ETHEL.

## "Scuffers" for Children Boys and Girls

Meant as a romping and play shoe; cannot crowd or cramp the foot. Guaranteed to give absolute comfort and outwear any other play shoe made. Black or tan.

Child's sizes, low cuts, 8 1/2 to 11...\$1.65  
Child's sizes, low cuts, 11 1/2 to 2...2.00  
Child's sizes, high cuts, 9 to 2...2.50

## McInerny Shoe Store

Fort near King St.

## AMERICAN DETROIT MARINE MOTORS

SERVICE RELIABILITY ECONOMY  
FINEST WORKMANSHIP, MATERIAL AND DESIGN

Will run on Gasoline, Kerosene or Distillate. All sizes from 2 to 30 h.p. For work or pleasure boats. Guaranteed for life. Send for our free catalogue in colors, giving low prices.

Representatives wanted in the Hawaiian Islands. Best terms and big Discounts to the Territories.

**American Engine Co.**  
Cable AMECO. 507 Boston Street Detroit, Michigan, U. S. A.

## This Week's Special at the Regal Shoe Store

### Military Lace Boot



### The Very Latest

Patent Vamp, Fawn Cloth Top, "Spool" Heel of Leather, laces clear to top; "Most mileage per dollar of cost." Regularly, \$6.50.

Special at \$3.95

We Carry the Largest  
Stock of Oriental Goods in Town

**Japanese Bazaar**  
Fort Street Opposite Catholic Church



# Honolulu Star-Bulletin

RILEY H. ALLEN

EDITOR

TUESDAY.....MAY 25, 1915.

## WANTED—A CHARTER.

What about the charter convention?

Six weeks from now—on July 6 to be exact—sixty-four delegates are to be chosen to attend a convention called for the purpose of drafting a new city charter.

The convention begins its work on the first Tuesday in September, 1915, and must conclude in not less than sixty days. The form of charter it adopts is to be submitted to the legislature of 1917. There is no question that if the convention is representative and its work is worth while, the charter will be approved by the legislature.

The situation calls for some wideawake men and some wideawake work.

A new charter is needed—there is no dispute on that point. A modern charter, an up-to-date charter. One that is brief, clear, cohesive, comprehensive. One that promotes efficiency instead of inefficiency.

How to get it?

Elect men to this charter convention who are public-spirited, brainy, energetic; men who are alive to the new issues in municipal life; who have the courage of their convictions, who are neither hidebound partisans nor crafty opportunists.

Act 91 of the session laws of 1915 passed with comparatively little attention paid to it in the rush of the session and with world-news of overwhelming importance dwarfing the usual interest in new laws. This is the act that provides for the charter convention.

Nine-tenths of the voters of Honolulu don't seem to know anything about the law or even that there is to be such a convention. For the next few weeks the Star-Bulletin proposes to give frequent publicity to the plans for the convention and to discussions of charter changes. It is a matter of vital importance to Honolulu. Every voter ought to get out and hustle and help make this convention a splendid success. Every voter ought to help send to this convention the best men available.

It ought to be a non-partisan convention. It ought to forget party politics and work for the general good. Whether it does so or not depends on the quality of men elected as delegates.

Voters of Honolulu, it's up to you. If you're not interested, if you're going to let the other fellow do it, the convention will either be a listless, spineless affair which will drift along and get through a commonplace piece of work in a half-hearted way; or it will be a convention ruled by a few professional politicians who will see that the new charter is built to suit their purposes—said purposes being to furnish opportunities for political machines, jobs for the henchmen and chances to exploit the public treasury.

For years Honolulu has complained of a patchwork, antiquated charter. Now's the chance to get a new one.

Don't let the hot weather or previous en-

## PLEADS FOR CONTINUANCE OF WORK OF WOMAN'S AUXILIARY

Mrs. L. F. Folsom Says It is as Necessary as Relief For Suffering in War Zones

"At this time of terrible conflict in Europe appeals are pouring in to help the needy and afflicted in this bloody strife and unholy war; and it is our duty to do all in our power to help in such a time of dire necessity."

Mrs. L. F. Folsom, president pro tem, thus addressed the annual meeting of the Woman's Auxiliary of the 13th annual Episcopal convocation today. Continuing, she said:

"But in doing this, let us not forget for one moment obligations and duties already resting upon us. Any falling off of the Woman's Auxiliary in our own work, and indeed in all missionary work, would mean a serious calamity for now, more than ever before, we are forced to stand before all nations as the embodiment of integrity, and to prove to the world what a Christian life should be."

"Let us deny pleasures and luxuries if necessary, but let us remember that we are pledged for our mission work, and that must go on."

The session today was attended by a representative gathering of women from all parts of the territory. Those present included delegates from 25 branches. The meeting was an enthusiastic one and every report, from that of the president pro tem to the smallest guild, showed that during the past year satisfactory work has been accomplished throughout the mission district, that new lines of work have been added and that the working field has been materially broadened.

Following is the remainder of Mrs. Folsom's report:

"We shall miss the gracious pres-

ence and charming personality of our much loved president today, and I am sure our hearts will long for her, but it has fallen to me by the appointment of our bishop to address the members of the Woman's Auxiliary of the missionary district of Honolulu to the board of missions, and I ask you to bear patiently with me and with your other officers to lay before you the report of some part of the work accomplished through your prayers and gifts. There is one other we shall miss today, and that is Mrs. Caroline Clark upon whom the hand of sickness has been heavily laid and whose genial presence has always been an inspiration to all who came in contact with her. I am sure I voice the sentiment of all present who know her, that we send her today our most cordial aloha.

"Our apportionment should be and is considered our first privilege, and though larger than usual, has been cheerfully and willingly paid.

"The pledges for the year have been promptly paid and it is the first time all pledges have been met in full since the long incumbency of the treasurer.

"As the number of the united offering boxes grows it seems quite impossible to keep track of them, and it has been found necessary to appoint a treasurer, and when I tell you that such a treasurer has been appointed in the person of Mrs. Arthur G. Smith you will agree with me that just the right one has it in hand.

"Our contingent fund is much too small, as there is only \$7. on hand to meet any emergency that may arise and we should make an effort to increase it with even ever so small an offering for every parish and mission paid regularly.

"Our clergy relief fund is another

gagements or business or just general laziness be your excuse for not taking an interest now.

## THE PUBLIC INTEREST.

The discrimination against soldiers and sailors at the mayor's luau constitutes an incident as distasteful to Honolulu as to the army and the navy—and an incident to be ended as soon as possible. The only good reason for the supervisors to investigate it is so that the public will know where the blame lies, as the public has a right to know. The mayor blames the police and the police blame the mayor. While the mayor's letter to Captain Kittelle did not in so many words put the onus upon the police department, inferentially he indicated that the police had gone beyond their instructions. He acknowledged no personal responsibility for the incident. Inasmuch as the sheriff has said he would furnish affidavits to prove the mayor's orders specifically were to exclude the soldiers, Honolulu is naturally interested in knowing what story to believe and what official to credit in the future.

## MOSQUITO PEST SUPPRESSED BY COLONY OF BATS.

The extermination of mosquitoes by means of bats has proved so successful in the vicinity of San Antonio, Texas, that the city has adopted an ordinance forbidding the killing of these little flying animals, and bat colonies are being established in other mosquito-infested sections of the South. The June Popular Mechanics Magazine says:

"The country around Mitchell Lake, ten miles from San Antonio, where the first of these bat roosts stands, was formerly so thickly infested with mosquitoes that it was almost impossible to remain out of doors at night, and since most of the insects were of the malaria-carrying variety, the section became notorious for the prevalence of 'chills and fever.' Now it is one of the healthiest spots in Texas, and all due to the efforts of the bats."

There are still many glorious possibilities for the Colonel to realize upon out of this Syracuse thing. He might sue Barnes for persecution, or Judge Andrews for unfair rulings or the shade of Senator Platt for various revelations.

Judge Monsarrat's fines of \$250 each planked upon two of the gambling gentry ought to discourage their particular brand of banking.

The fierce light that beats around a mayor-ally ought to reveal the handwriting on the wall.

In the theater of war most of the audience seem bent on becoming actors.

The weather threatens to become a burning issue.

that is too small and fortunately blessed are we that there is only one clergyman in the district that it could be used for. Let us bear this in mind in our prayers, for if your prayers are given, the money always follows. St. Clement's and St. Peter's parishes do subscribe, but no others, and this ought not to be.

"Epiphany—To this young child of our missions has been sent through the chain and Lenten self-denial of offerings for the Woman's Auxiliary, \$1194, and more is still needed and we must not think our obligation has ceased by this year's joint effort of the district. We will have to stand by even more loyalty than in the past, or until it is quite able to stand alone.

"Automobiles for the Rev. Mr. Merrill and Rev. D. D. Wallace were secured for, and \$46 was given for Mr. Merrill's, and the bishop has all the money in sight for the balance. Thirty-one dollars has been paid in for Mr. Wallace's.

"Nor have we forgotten the foreign field, for a box for the Alice Mackintosh memorial bed in the hospital of Anking, China, is ready to go, and an offering of \$21 has been sent to Japan to a most interesting case of healed leprosy, and who is now working for that unfortunate people under Bishop McKim.

"A new department has been established which is to be known as the altar department, and to which each branch is expected to contribute \$1 each and every year. With new missions constantly growing in our midst you can readily see what a help this will be to the one in charge to know there is a department of this kind. This department will be in charge of Mrs. Restarick, and this fund is to be used for altars for new missions and altar furnishings.

"In accordance with a resolution passed in 1913 we find that 'All branches shall pay \$1 for the Woman's Auxiliary, and all Juniors 50 cents in order to be entitled to seat their delegates.' It is most earnestly hoped that each and every branch has come prepared for their respective home centers to pledge liberally according to

## GUILDS HAVE BEEN DOING FINE WORK IN ALL ISLANDS THIS YEAR

Summary of Activities Presented at Annual Meeting By Mrs. H. B. Restarick

The following report, summarizing the work of the guilds throughout the islands during the last year, was presented by Mrs. Henry Bond Restarick, wife of the bishop of Honolulu, at the annual meeting of the Woman's Auxiliary of the 13th annual Episcopal convocation today:

"It is my great pleasure to summarize the work of the guilds throughout the islands the past year. The total in dollars and cents is \$4587.51. While this is an excellent showing, yet in spite of an increase from 13 to 16 guilds reporting, we find a shortage over last year's total of \$659.93. Only four guilds show an increase, namely, Epiphany, Kaimuki; Christ church, Kona; Holy Innocents, Lahaina, and St. Peter's, Honolulu.

"But this does not take into account the Red Cross or Christmas ship or Belgian relief in which at least eight guilds have had a share.

"Now as to the reason of the decrease in this year's total. While it is our duty and sacred privilege to aid to the utmost of our ability the great work for suffering humanity which the war entails, yet, as has been predicted, contributors to church extension and support, as well as philanthropic work around us, have fallen off in consequence. I know it has been for this reason that St. Andrew's cathedral guild, with its 109 members, does not head the list this year. St. Andrew's hands over the banner this year to St. Clements, and with as good a grace as she can command, accepts second place on the honor roll.

"I must speak of the relief committee which has broadened out into new fields in addition to its usual work at home. Besides its annual pledge to the King's Daughters' home, it has been the means of sending large and generous boxes of clothing to the war sufferers and a splendid sum to the Christmas ship and the starving Belgians. Mrs. Arthur G. Smith headed the church's department of the Red Cross work and Mrs. Walter L. Emory the Christmas ship enterprise. This guild has also taken an active part in the child welfare movement and thereby broadened the scope of the church's influence and power in this community.

"The aim of every member, I am sure, is to promote a family feeling and interest and to welcome the stranger within our gates. Those who feel neglected should turn the glass on themselves and see how they are fulfilling their social obligations toward the newcomers, welcoming strangers in their turn and offering their services to the vicar or identifying themselves with one of the many organizations of the parish.

"St. Clement's, the banner guild with its membership of 46, sends us a splendid report of large contributions to the support of parish objects, to the Woman's Auxiliary, to the King's Daughters' home, to the children's hospital and to Red Cross work, and it was ably represented at the child's welfare meetings. It reports an an-

the best of their ability.

"In due time, each branch will be notified of their share of the apportionment which I am sure they will accept cheerfully for the future as has been done in the past. It is a well-known and established fact that the parish who gives little or nothing for missions is a dead parish and we want no dead wood in the Honolulu district.

"To us, all this represents a great deal as the majority of our branches of the Woman's Auxiliary are small and struggling and there are many discouragements to meet and rise above both in the small mission and larger parish, and that we do rise to our difficulties is proven by the reports you will hear today. But is this so great a triumph, after all, when we consider what the board of missions sends to this missionary district of Honolulu, and the help we receive from others, and it is only just and right that we should share in the mission work as carried on by the board. Where would the church in the Hawaiian Islands be today if it were not for the help it has received from the mission fund? The board has made an appropriation of \$1,400,000 for the work at home and abroad and surely although our part is not so very large, we will be glad to have our part in it.

"We send to the board as our apportionment \$2083, but we receive many times the amount we give. And we should all remember that the small Mayor Lane, Dr. Doremus Scudder and gift made systematically is the one Dr. J. W. Wadman. There are at us try by our voice and example to hasten the day when our gifts shall be the joy of every churchman and if it founder, Col. Ephraim Williams, who comes with a real sacrifice, one that was born 200 years ago.

nual corporate communion, at which the alms collected go into the guild treasury."

The following interesting excerpts summarize the remainder of Mrs. Restarick's report:

"The guild of the Good Shepherd, Wailuku, comes third in its annual receipts. These are raised in the usual way by dues, donations, Lenten self-denials and entertainments, but with most unusual results for a guild of its size. Its charities have reached out to the Belgian sufferers as well as to the needy poor in its own parish.

"Epiphany guild comes fourth, its efforts in the main having been extended in raising funds for the beautiful new stone church and its furnishings. But it has not forgotten the needs of those poorer than Epiphany and it has given a nice little sum to the Woman's Auxiliary and in the spirit of co-operation it has come into union with the convocation as an auxiliary branch.

"St. James, Hilo, has had an eventful year in the loss of the Rev. Fen-ton-Smith and the coming of Mr. Bodell and his helpful wife. This guild has borne much of the burden of the support of the mission as well as helping to reduce the debt on the parsonage, which has been entirely wiped out through the generous gifts of Mrs. S. W. Wilcox of Lihua, Kauai. I am glad to say this guild has also contributed to auxiliary work and pledges and has sent a gift to the debt on the Lahaina parsonage.

"Holy Trinity, Japanese guild, has 11 members with an average attendance of four at the 22 meetings. Christ church, Kona, has met 21 times with 13 members on the roll. St. Elizabeth's guild of 12 members (Chinese) has devoted its earnings to the upkeep of the church and choir and supplied parish needs and given more to the auxiliary than it has spent itself. St. Peter's guild has kept up its good record in assisting the priest in charge in charities and providing furnishings for the altar of the new church and doing as much for the missions as for its own parish.

"St. Andrew's Hawaiian guild of 80 members has supplied many needs of its own congregation besides assisting very materially the auxiliary and Red Cross work."

Mrs. Restarick also called attention to the splendid work of the St. Cross guild of girls at Lahaina, Maui.

She concluded her report as follows: "There are still six missions in this missionary district without guild or auxiliary organization. To these I want to say that this banding together of the women is a heaven which works magic in promoting religious interest and enthusiasm and eventually strength and growth of the mission results. Even if there are but the two or three earnest women to gather together in His name the promised blessing comes. I might cite as an example Epiphany, Kaimuki. Their president will tell you how one woman gathered the people together for worship at her home. Then the children were gathered into a Sunday school. Then the guild was organized which has ever since been a power there in building up this splendid mission."

we really feel, so much greater is the blessing to us."

"Our Blessed Lord made the one great sacrifice of His life. We are only called upon to give of the little hoard we possess and that, not grudgingly nor of necessity, for God loves a cheerful giver, and that our auxiliaries have been 'cheerful givers' has been proved by the loyal response met from all its branches.

"May we go forward in the days to come pressing toward a higher mark with greater zeal and faith, may our prayers be more intense and our devotion stronger than ever."

The report of Mrs. B. L. Marx, treasurer of the auxiliary, showed that the finances of the organization are in splendid condition.

The session is being continued this afternoon. Luncheon was served in the priory at 1 o'clock, following which the business meeting was resumed. This afternoon's program includes reports of the junior auxiliaries, and Lahaina work among women and girls, and progress at Kapahulu. There also will be a number of five-minute talks regarding the work of the missions during the last year. The bishop will appoint officers this afternoon.

The cornerstone for the new Salvation Army home in Manoa was laid yesterday afternoon. Lieut.-col. Cox and Brig. Sullivan represented the Salvation Army. Among the notables present at the ceremony were Congressman J. A. Frear of Wisconsin, Mayor Lane, Dr. Doremus Scudder and gift made systematically is the one Dr. J. W. Wadman. There are at us try by our voice and example to hasten the day when our gifts shall be the joy of every churchman and if it founder, Col. Ephraim Williams, who comes with a real sacrifice, one that was born 200 years ago.

## DWELLINGS FOR RENT.

FURNISHED.		
2222 Kalia road, Waikiki	2 bedrooms	\$50.00
1811A Kalia road, Waikiki	6 "	40.00
Park ave., Kaimuki	1 "	25.00
Diamond Head road, Waikiki	3 "	75.00
College Hills	3 "	60.00
Center ave., Kaimuki	2 "	25.00
Tantalus	3 "	45.00
UNFURNISHED.		
1148 Lunalilo St.	3 bedrooms	\$32.50
1028 Green St.	4 "	40.00
1475 Thurston Ave.	4 "	40.00
1005 14th Ave., Kaimuki	3 "	30.00
Center Ave., Kaimuki	2 "	15.00
Kunawai Lane	3 "	20.00

Guardian Trust Company, Ltd.,  
Stangenwald Bldg., Merchant St.

## EIGHT YEAR OLD DELAPORTE BOY UNVEILED PLOT

Heard Caroline Island Natives Planning Massacre of Whites on Nauru Island

How their child saved the lives of the white men, women and children of Nauru, in the Marshall Islands, after a wholesale murder of the whites had been planned by natives, was told to the San Francisco Examiner by the proud parents of 8-year-old Philip Delaporte, the hero of the story. With his father, the Rev. Philip Delaporte, who is in charge of a station of the American Board of Foreign Missions of Boston, and his mother, little Philip arrived at San Francisco from Honolulu, having left this city on May 3 in the Sierra.

"A month after the declaration of war, the British cruiser Melbourne appeared off Nauru, which was then a German possession," the Rev. Delaporte related. "They landed mines and having rendered our wireless useless, set sail again. Among the laborers from the Caroline Islands, employed by our phosphate mining industry, the strife among the whites and the fact the provisions had become low, seemed to have created a rebellious and murderous spirit, but of this our handful of white people were ignorant.

Heard Talk of Natives.

"Then one morning, our little boy came running into the house and said: 'Mother, I heard the Caroline talking among themselves, and they are going to kill the whites. They have big sharp knives and after they have killed us they will kill the Nauru na-



**JADE JEWELRY**

Made by expert and artistic goldsmiths in to many kinds of Jewelry for Men and Women—not as expensive as you may have thought.

**Wichman & Co.**  
Leading Jewelers

tives, too."

"As the child had grown up among the people of the island, and understands the language thoroughly, we knew he had stumbled on a dangerous secret, and that every minute was bringing the wholesale murder nearer."

"Leaving the house, I saw the police inspector pass and told him all. Together we went to the governor, who pooh-poohed the thing. The inspector thereupon acted like a man, and gathering a force, penetrated into the quarters of the Caroline. Here we found the finest collection of ugly-looking bushknives, poisoned spears and arrows and other forbidden weapons to be found in the archipelago. The whole plot came out and the ringleaders were thrown into jail."

William Trexler, Jr., receiving teller of the Industrial Trust, Title & Savings Co. of Philadelphia, shot and seriously wounded himself.

When extremes meet they get clumsy.

Duty and inclination seldom shoot the same chute.

## Fine New Bungalow

For Sale - \$4,000

Property is within a short distance of Punahou; is new; consists of 6 rooms, is modern and is on a well-kept street; sidewalk and curbing are down. City water, gas and electric lights are installed. Easy terms will be allowed, if desired: \$500 cash and then easy monthly installments.

Trent Trust Co.

## We are pleased to announce that

MR. JAMES B. BLACKSHEAR,

who was formerly employed by us, will return to take full charge of our Watch Repairing Department.

**Vieira Jewelry Co., Ltd.,**  
Popular Jewelers. 113 Hotel St.

## Henry Waterhouse Trust Co., Limited.

### FURNISHED

2568 Rooke St., Puunui	4 bedrooms	\$15.00
2562 Jones St., Manoa	4 "	60.00
1147 Young St.	2 "	32.50
1252 Kinau St.	3 "	35.00
Waikiki	3 "	40.00
Kinau and Makiki Sts.	3 "	40.00

### UNFURNISHED

1028 Pitikei St.	3 bedrooms	\$30.00
Royal Grove, Waikiki	2 "	30.00
1270 Matlock Ave.	3 "	32.00
2205 McKinley St., Manoa	3 "	45.00
1579 Pitikei St.	3 "	37.50
2116 Lanahuli drive, Manoa	3 "	45.00
1454 Thurston Ave.	2 "	25.00
1313 Makiki St.	3 "	20.00
1205 Wilhelmnia rise, Kaimuki	3 "	25.00
1328 Kinau St.	3 "	35.00
770 Kinau St.	4 "	32.50
1148 Lunalilo St.	4 "	32.50
1877 Kalakaua Ave.	3 "	25.00
1126 King St.	3 "	25.00
3015 Oaku Ave., Manoa	2 "	20.00
1317 Makiki St.	3 "	30.00
2144 Lanahuli drive, Manoa	2 "	40.00
702 Wyllie St. and Puunui Ave.	4 "	50.00
1251 Lunalilo St.	3 "	45.00
2130 Kamehameha Ave., Manoa	3 "	40.00
Lower Manoa road and Hillside	2 "	37.50
Mendocina Tract, Lihua St.	3 "	20.00
Kewalo St.	3 "	40.00
Adams Lane	3 "	35.00
Mokaua and Colburn Sts.	3 "	15.00









**Special Program This Week**

7:45—DETECTIVE DAN CUPID.  
A Breezy Marine Comedy.  
8:15—THREE PRINCESS MIDGETS.  
Character Song and Dance Artists.  
a—Milliners.  
b—Naval Officers.  
c—Tango.  
d—Highland Fling.  
e—Cakewalk.  
8:45—SPRINGTIME.



A Delightful Photo-Play in Five Parts of New Orleans in the Days of Old, produced in That City by Superb Cast.

**TODAY—POPULAR BARGAIN MATINEE**  
Prices, 10c and 15c—Children Under Twelve, 5c  
PICTURES ONLY  
Tomorrow—Regular Matinee.  
Complete Program, including Princess Midgets.  
Prices: Adults 20c, Children 10c.

## Keep Your Clothes MOTH PROOF

You can be sure when you open your Trunk or Dresser-Drawer that your clothes are not moth-eaten if you scatter throughout their folds before you put them away.

### Red Cedar Compound

Ravaging moths cannot come within inhaling distance of Red Cedar Compound. In convenient and generous packages, 20 Cents Each, 3 for 50 Cents.

Sold only by

**Benson, Smith & Co., Ltd.,**

The Rexall Store  
Fort and Hotel Sts. Phone 1297  
Open Until 11:15 P. M.

## Howard Park Lots

Ten choice lots in Makiki, adjoining the home of F. K. Howard. Keeaumoku Street will be extended through the property.

**Bishop Trust Co., Ltd.**

We attend to Checking and Sealing of  
**BAGGAGE**

on all outgoing steamers without inconvenience to passengers.

We also make a specialty of Furniture Moving.

**Union-Pacific Transfer Company, Ltd.,**

U. S. Mail Carriers.

King St. next to Young Hotel

Phone 1875

**COUPON**

**STAR-BULLETIN**

**WAR MAP OF EUROPE**

Send three of these coupons and Fifteen Cents to the Star-Bulletin and receive the new and up-to-date map of Europe.

## MRS. J. B. HAGGIN, WEALTHY WIDOW, IS COMING SOON

Mrs. J. B. Haggin, the pretty and youthful widow of James B. Haggin, the "forty-niner" millionaire, will come to Hawaii and make an extended stay at Honolulu this summer.

Mrs. Haggin, who is known on the mainland as one of the "Newport society crowd," will make Honolulu one of her recreation stops on a six months' business tour. She is starting out to personally investigate the many properties left her by her late husband.

Her first stop will be at the \$3,000,000 Kentucky blue grass farm where the famous Haggin racing horses are bred. After a stay in San Francisco she will come to Honolulu and then make a voyage down the Pacific coast, inspecting her Central and South American holdings.

## GOOD PROGRAM FOR AD CLUB'S WEEKLY LUNCH

Another "live-wire" program is scheduled for the Ad Club tomorrow. Secretary Strange announces it as follows:

"Usual time and place.  
"Director J. P. Ault, in charge of Carnegie scientific expedition and party of scientists from yacht Carnegie now in the harbor, will address the club.  
"Dr. H. A. Garrison of U. S. S. Maryland will entertain the club with one of his famous stories."

## VIOLIN RECITAL WILL BE GIVEN IN BISHOP HALL

A violin recital given by the pupils of Mr. Carl Miltner will be held Friday afternoon at 2:45 o'clock in Charles R. Bishop hall.

The program will open with an attractive ensemble selection and will have on it numbers by beginners and by advanced pupils who are beginning to show fair mastery of the violin. The public is invited.

## DANCE AT MOANA HOTEL THIS EVENING

Tourists, officers of the army and navy and their ladies and local society folk are invited to a dance to be given at the Moana hotel this evening, beginning at 9 o'clock. Hawaiian music during dinner.—Adv.

### WOMAN'S SUFFRAGE

may eventually give to women rights to which they are entitled, but good health, which is the birthright of every American woman, must be hers before she can fully enjoy the privileges which woman's suffrage will bring. Women who suffer from those dreadful pains, backaches, headaches, irritability, nervousness and depression, symptoms of organic trouble, should rely on Lydia E. Pinkham's Vegetable Compound, which is made from roots and herbs, to restore them to a normal healthy condition as it has thousands of other American women.—Adv.

Several thousand dollars in registered warrants issued because of lack of funds in the city treasury during the last three months will be redeemed by City Treasurer Conkling as soon as presented, the 1915 first-half tax money having come in in large sums.

**Delicate Children** usually only need a food tonic to make them strong and healthy.

**Rexall Olive Oil Emulsion** containing Hypophosphite is not only the best food tonic but is pleasant to take. Sold only by us.  
Benson, Smith & Co., Ltd.

**EMPIRE THEATRE**

The House of Silent Drama  
Continuous Matinee, 10:30 a. m.  
Two Shows (Evening), 6:30 and 8:45

**TODAY'S PROGRAM**  
THE HEART REBELLIOUS—Lubin  
The Man From the Past—Biograph  
What Became of Jane—Selig  
Comedy-Drama—Edison  
Something to a Door—Edison  
Get Out and Get Under—Pathe  
Comedy—Pathe

## SOCIAL ARBITER SHOWS THE WAY TO TERRITORY

The Advertiser, the Governor, the Congressional Party and General Etiquette

Very few knew it at the time, or know it yet, for that matter, but the very first day the congressional party landed in Honolulu there came near to being an incident that would have ditched the whole scheme of entertainment and would have changed what turned out to be a great success into a dismal failure. It hinged on a matter of senatorial courtesy, than which there is no more solemn thing extant.

The senators in the party, after they had secured their rooms at the Moana, sorted their baggage out of the heap and had their showers, sat down in solemn state to receive the call of Governor Pinkham. That it was the governor's first move, they all agreed. Their's was the vote that had confirmed the nomination of the chief executive, and ergo, that demonstrated that by all the rules of precedence it was up to the governor to call on them before they took their high hats in hand to call upon him at the evening reception.

The shades of evening drew on and the senators wrapped themselves a little tighter in their togas and waited. But the Governor, who was hustling to get ready for the public reception in the throne room, failed to have any premonitions of the storm that was gathering around his gubernatorial head. He rustled and the senators sat, and there was no kindly hand of providence to give either one a picture of the other.—The Advertiser, May 23.

The facts in the case indicate that the territory is extremely fortunate in having the Advertiser as its social arbiter. The Star-Bulletin learns—That the governor and his military aide modestly met the S. S. Sierra and later proceeded to the Moana hotel, where he casually met several members of congress in the intervals of their trying to get settled.

That the itinerary of the first three days disposed of the idea of personal calls. The whole crowded itinerary called forth from the governor the following, sent to every member of congress visiting:

"Executive Chamber, Honolulu, May 19, 1915.  
"My Dear—: I regret as governor, my opportunities are necessarily so limited for personal constructive conversation and information.  
"Such being possible in but few instances, I beg leave to present copies of three brief public papers written and delivered without reference to the congressional visit.

"The list comprises a speech delivered February 12, particularly for the information of Senator-Elect Warren G. Harding of Ohio, which information should be within every legislator's knowledge; a brief message to the recent legislature relative to public lands and the vital support of our isolated population; and a charted analysis of the seven major problems confronting the Territory of Hawaii.

"I trust you can find present time to read or comprehensively glance over the 22 pages embraced in the above.

Without intruding myself, I respectfully hold myself at your command to the extent, time and opportunity mutually convenient.

Very sincerely,  
"L. E. PINKHAM,  
"Governor of Hawaii."

### WITH THE FRENCH WOUNDED

THE WOMAN'S SACRIFICE.

PARIS, France, May 25, 8:30 p. m.—Away from the battlefield one sees war stripped of its glamor. We see the heroic work of nurses who are on duty day and night. There is devotion, self-sacrifice, suffering, patriotism—qualities which only a great war and its terrible consequences can inspire to the highest development. The women everywhere are helping and everywhere one sees self-sacrifice and devotion to country.

The women of the United States do not know how fortunate they are. Here there are plenty of women who suffer in silence, whose strength is out of proportion to their ambition. Their hands are tied by some chronic disease common to womankind; that weak back, accompanied by pain here or there, extreme nervousness, sleeplessness, maybe fainting spells or spasms, are all signs of distress for women. She may be growing from girlhood into womanhood, passing from womanhood to motherhood, and later suffering from that change which leaves so many wrecks of women. At any or all of these periods of a woman's life she should take a tonic and nerve, prescribed for just such cases by a physician of vast experience in the diseases of women. Dr. Pierce's Favorite Prescription has successfully treated more cases the past 50 years than any other known remedy. When you feel dull, head-achy, backache, dizzy, or perhaps hot flashes, there is nothing you can accomplish, nothing you can enjoy. You can find permanent relief in Dr. Pierce's Favorite Prescription. It is sold by medicine dealers, or trial box by mail from Dr. Pierce, Invalid's Hotel, Buffalo, N. Y., on receipt of 50 cents, or one dollar for large box.—Adv.

## CONGRESS PARTY BILLS MUST BE RENDERED SOON

Business firms having claims against the territory for providing of entertainment, accommodation and transportation for the congressional party must file their statements with Secretary Wade Warren Thayer before Thursday if they expect to receive their money soon. Governor Pinkham leaves for the mainland June 2 and as all claims must be approved by him, delinquents must await his return before getting the cash. About \$15,000 in claims have been allowed so far and Mr. Thayer expects about \$15,000 additional to come in before Thursday. Mr. Thayer said he fears the total claims will exceed the \$40,000 appropriation plus the balance in the governor's entertainment fund and all over that amount will be paid out of the contingent fund.

**CARD OF THANKS.**  
Mr. Manuel Correia and family of the late Mrs. Correia desires to thank the many friends and acquaintances of the family for their kind expressions of sympathy and floral contributions.—Adv.

### BIRTHS

HEWETT—In Honolulu, May 24, 1915, to Mr. and Mrs. Alexander Hewett of Waialua, Oahu, a son.

ALVES—In Honolulu, May 24, 1915, to Mr. and Mrs. George Soares Alves of 2011 Edward street, Kaimanani tract, a daughter.

HQ—In Honolulu, May 21, 1915, to Mr. and Mrs. Ho Lim of South Queen street, a son.

BAINS—In Honolulu, May 18, 1915, to Mr. and Mrs. John William Bains of Kailua, a daughter.

### A SKIN OF BEAUTY IS A JOY FOREVER

**Dr. T. FELIX GOURAUD'S Oriental Cream OR MAGICAL BEAUTIFIER**

Removes Tan, Pimples, Freckles, Red Patches, Rash and Skin Diseases, and every blemish on beauty, and delays deterioration. It has stood the test of 50 years, and is so harmless we have it to be sure it is properly made. Accept no imitations of similar name. Dr. T. Felix Gouraud said to a lady of the highest (a patient): "As you ladies will use this, I recommend 'Gouraud's Cream' as the best of all the skin preparations." At Druggists and Department stores.  
Port T. H. H. & Co., Props, 37 Grand Street, N. Y. C.

### PAYING BUSINESS FOR SALE.

Owner obliged to leave Terr. as soon as possible owing to ill health; conservative estimate of profit \$4000 to \$5000 per yr. Everything guaranteed to absolute satisfaction of purchaser. Present owner will thoroughly familiarize buyer with operations of business, etc. This is unquestionably the finest business opportunity for a man with a small amt. of capital ever offered in this city, and is absolutely a bonafide proposition, with no "strings." For further particulars, etc., write for appointment to "H." care Adv. Mgr., Star-Bulletin, or phone 2256 bet. 8 and 9:30 a. m.

## Bijou THEATRE TONIGHT

POSITIVELY LAST TIME TONIGHT

## CABIRIA

SHOW STARTS AT 8 P. M.

Reserved Seats, 25c and 50c; General Admission, 15c.

PHONE 3937.

## Tomorrow Night "The Sign of the Cross"

## Ye Liberty THEATRE Tonight 7:30 P. M.

THE HOUSE OF GREAT FEATURES

CECIL SPOONER

in the

## DANCER

and the

## KING

In Five Acts.

THE THIRD OPISODE OF

## The Exploits of Elaine

"The Vanishing Jewels"

READ THE SERIAL IN THE STAR-BULLETIN EVERY SATURDAY

PATHE WEEKLY—"UP-TO-THE-MINUTE"

Coming Thursday, MARGUERITE CLARK In

## THE CRUCIBLE

WE LEAD—OTHERS FOLLOW.

Why Such Crowds at Ye Liberty? Best Pictures at 10-20-30 Cents, of Course!

SPECIAL PRICE

**15c—Matinees—15c**

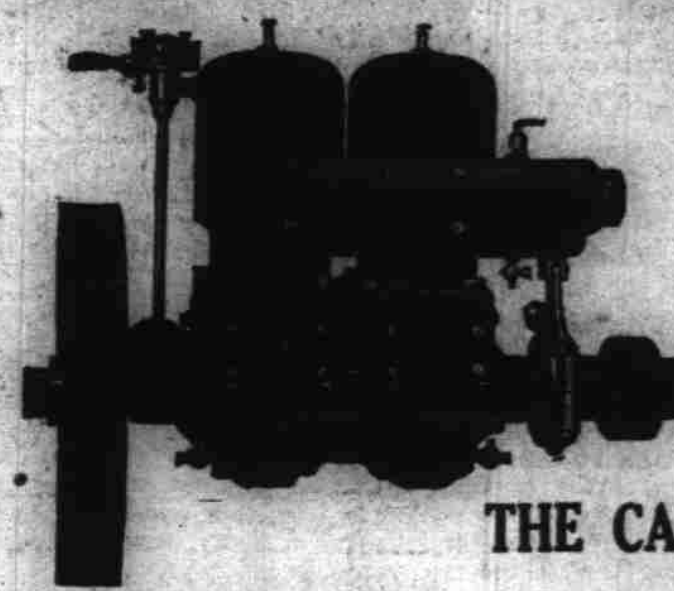
2-5 P. M.

HONOLULU SKATING RINK

EVERY AFTERNOON

Evenings, 7 to 10 p. m. 25c

## WORLD'S LARGEST BUILDERS OF TWO-CYCLE MOTORS



MARINE ENGINES—2 h. p. to 30 h. p. Perfection in design and construction.

STATIONARY ENGINES—For Farm or factory use.

PORTABLE OUTBOARD MOTORS—Make boating a real pleasure.

EVERY ENGINE FULLY GUARANTEED.

**THE CAILLE PERFECTION MOTOR CO.,**

510 Caille Street,  
Detroit, Mich., U. S. A.

Agents wanted—Write today for special offer.

## Meat Fibrine Dog Cakes

will prevent worms from getting in their work, prevent mange, and keep the blood in good condition. If you care for your dog, CARE for him!

**California Feed Co., Ltd.,**

Cor. Alakea and Queen Streets.







## Lord-Young Engineering Co., Limited

### ENGINEERS AND GENERAL CONTRACTORS

For all kinds of construction work, bridges, reservoirs, paving, sewer and water systems, dredging, irrigation and reclamation projects.

Campbell Bldg. Phones 2610 & 4587  
Honolulu, T. H.

## CHICKENS

For Sale

Tel. 1109, or call at

## Club Stables, Ltd.,

52 Kukul St.

## I-C-E

### A SCIENTIFIC ARCH SUPPORT

will put an end to that foot-tired feeling.  
METERNY SHOE STORE

"The Sweet Shop is neutral—every nationality welcome."

## Hawaiian Songs

Singly. Collections.  
BERGSTROM MUSIC CO., Ltd.

## M'CHESNEY COFFEE CO.

COFFEE ROASTERS  
Dealers in Old Kona Coffee  
MERCHANT ST., HONOLULU

## DO IT ELECTRICALLY

## Hawaiian Electric Co.

## WIRE FENCES AND GATES

The very best for every use.

## J. C. AXTELL'S

Alakea Street

## SPECIAL SALE

Grass Linen and Pongee, Waist Patterns  
YEE CHAN & CO.  
Corner King and Bethel Streets

## R. J. BLAKE

Manufacturers' Agent.  
Over Hill's Curio Store, Bishop and King Sts.  
Phone 2443

## CURIOS, JEWELRY AND NOVELTIES

HAWAIIAN JEWELRY NOVELTY CO.  
King and Bethel Streets

## Reliable Transfer Co.

Phone 5319  
Bethel St., bet. King and Hotel Sts.

## Sanitation and Soap!

## Try White Wings.

At Your Grocer's

## D. J. CASHMAN

TENTS AND AV'NINGS  
Luau Tents & Canopies for Rent  
Thirty Years' Experience  
Fort St., near Allen, upstairs.  
Phone 1467

## PAPER

All kinds of Wrapping Papers and Twines, Printing and Writing Papers.  
AMERICAN-HAWAIIAN PAPER & SUPPLY CO., LTD.

Fort and Queen Streets, Honolulu  
Phone 1410. Geo. G. Gull, Gen. Mgr.

STAR-BULLETIN GIVES YOU TODAY'S NEWS TODAY

## Nearest First Class Hotel to Fair Grounds MONROE

SACRAMENTO ST. NEAR VAN NESS AVE.  
In one of San Francisco's fashionable home districts  
5 MINUTES to Fair Grounds  
to Shopping Center  
by taxi cab. Perfect hotel with every appointment for home comforts. 135 comfortable rooms.  
Play lawn for children adjoining.  
European Plan \$1.50 and up.  
American Plan \$3.50 and up.  
Write for descriptive pamphlet. Upon arriving in San Francisco take a California Taxis Co.'s BROWN TAXI and we will pay the fare.

## HOTEL STEWART

SAN FRANCISCO  
SERVICE, COMFORT, UNEXCELLED CUISINE, REASONABLE RATES. CLOSE TO THEATRE, CAFE AND FINE STORES.

## "On the Beach At Waikiki"

YOU WILL FIND THAT

## "Hustace Villa"

Has Accommodations for Ladies and Gentlemen. Phone 2826

## Pleasanton Hotel

LUXURIOUS AND COMFORTABLE  
STRICTLY FIRST CLASS  
100 ROOMS. FIFTY BATHS

## HAUULA HOTEL

"A Home Away from Home"  
An Ideal Vacation Spot.  
White Cooking.  
Phone 772. Hauula, Oahu  
A. ZUMSTEIN, Prop.

## A REAL CHANGE OF CLIMATE

can be had at the new boarding house in

## Wahiawa

nearly 1000 feet elevation, near depot grand scenery, fine bass fishing. For particulars address E. L. Kruss, Wahiawa. Phone 0393.

## CORAL GARDEN HOTEL

See the Wonderful Marine Pictures in KANEHOE BAY.  
Glass-bottomed sail and row-boats for hire—Good Meals Served.  
A. L. MacKAY, Proprietor

## You don't really love Hawaii

until you have dined, danced and slept at the

## SEASIDE HOTEL

J. H. Hertsche, Manager

## VIENNA BAKERY

The Best Home-Made Bread in Town.  
1129 Fort St. Phone 2124

## HAVE YOU HAD YOUR FEET

"FOOTGRAPHED" YET?

## REGAL BOOT SHOP

Fort and Hotel Streets

## HONOLULU MUSIC CO.

Everything Musical  
Fort, next to the Clarion

## The HUB for Clothes

## Suggestions and designs for

RESETTING AND REMODELING OLD JEWELRY

Gold and Platinum Settings

WALL & DOUGHERTY

## H. HACKFELD & CO.

Limited.

Commission Merchants.

HONOLULU

Laundry, 777 King Street

Telephone 1491

FRENCH LAUNDRY

Branch Office, Union and Hotel

Telephone 2919

## Odo Shoten

ORIENTAL GOODS

Hotel St., betw. Nuuanu and Smith Streets

"What little boy in class can mention a memorable date in Roman history?" asked the teacher. "Antony's with Cleopatra!" ventured one of the boys.

## HAWAII'S COMMERCIAL VALUE TO NATION SHOWN IN PLAIN FIGURES

Commerce Has Nearly Doubled During Period of Ten Years—Sugar Shows Steady Increase and Pineapples Have Made a Remarkable Record

By C. S. ALBERT.

[Special Star-Bulletin Correspondence]  
WASHINGTON, D. C., May 14.—The amazing rapidity with which the commerce of Hawaii has developed is made the feature of a special bulletin issued by the Department of Commerce. The figures presented indicate that the growth of transactions with foreign countries approximately has doubled during a period of ten years.

Officials of the government and public men generally regard the statement as indicating an expansion and progress by the people of Hawaii nothing short of marvelous.

The bulletin as given out by the Department of Commerce follows: "Our insular territory of Hawaii, with an area of only 6419 square miles and an estimated population in 1914 of 207,742, has increased its trade with the United States and foreign countries from \$40,000,000 in 1904 to approximately \$76,000,000 in 1914, making its per capita commerce \$369.

"The trade of Hawaii has rapidly increased in the period since the annexation of that territory to the United States in 1898. Shipments thereto from this country, according to official figures published by the bureau of foreign and domestic commerce, Department of Commerce, have grown from \$6,800,000 in 1897, the year preceding annexation, to \$21,800,000 in 1914, and imports from foreign countries from \$900,000 to \$6,000,000. The shipments from Hawaii to the United States during the same period grew from \$16,000,000 to \$48,300,000, while those to foreign countries are negligible, amounting to less than \$60,000 in 1897 and only \$459,000 in 1914.

"Sugar, the leading Hawaiian staple, has steadily increased in value of output and the product for the last ten years amounted to 10 billion pounds, with a value of 364 million dollars. Other important articles of production, according to the 1915 edition of the 'Hawaiian Annual' are pineapples, coffee and rice. So rapidly has the canned pineapple industry grown that the leading share of our domestic consumption of pineapples is supplied by those from Hawaii, having supplanted those from Singapore and other countries. Stated in order of value Hawaii's shipments to the United States in the last calendar year included sugar to the value of \$33,500,000; canned pineapples, \$6,000,000; coffee, \$500,000; hides and skins, \$189,000; molasses and syrup, \$158,000; rice, \$133,000; bananas, \$126,000 and fresh pineapples, \$106,000.

"Shipments to Hawaii from the United States comprise a large variety of articles, chiefly manufactures and foodstuffs. Representative items in last year's trade include iron and steel, \$2,720,000; breadstuffs, \$2,320,000; mineral oils, \$1,969,000; cotton manufactures, \$1,381,000; manufactures of wood, \$1,253,000; automobiles, cars and other carriages, \$1,186,000, and meat and dairy products, \$1,107,000. Other items ranging from \$700,000 downward include tobacco manufactures, spirits, wines and malt liquors, explosives, fertilizers, paper and manufactures thereof, electrical machinery and appliances, vegetables, automobile tires, fruits and nuts, chemicals, boots and shoes, fish, vegetable oils, paints and varnishes, cement and butter.

"The sugar crop of the current year, according to the 'Hawaiian Annual,' will approximate 620,000 tons, a record total; but owing to lower prices its value will be somewhat smaller than that of the preceding year. The coffee crop is also reported as being exceptionally heavy, estimated at 45,000 bags. Shipments during the calendar year 1914 amounted to 3,500,000 pounds. The canning industry was especially affected by low prices at the beginning of the year; nevertheless the shipments of canned pineapples to the United States during 1914 were the largest on record.

"The following table shows the value of Hawaii's commerce with the United States and the principal foreign countries during 1914:

Countries—	Imports	Exports
United States	\$21,800,000	\$48,300,000
Japan	2,500,000	21,000
India	877,000	
Australia	751,000	3,000
Tanzania	485,000	33,000
Germany	421,000	
Hongkong	352,000	23,000
United Kingdom	310,000	111,000
Philippine Is.	127,000	178,000
New Zealand	66,000	2,000
Canada	45,000	41,000

## THEATRICAL OFFERINGS

### DANCER SAVES THRONE FOR KING

Cecil Spooner is popular in Honolulu as an actress. Charles Blaney is popular as a producer. This was proved at Ye Liberty theater last night at the initial offering of "The Dancer and the King," a photo-play that is vastly different to anything previously shown at this, the headquarters of the Paramount and World services.

The story of "The Dancer and the King" is laid in the mythical kingdom of Bavaria. The dancer, Lola, impersonated by Cecil Spooner, is the ward of the secretary to the youthful king and is trained for a dancer. The king attends a performance, sees the dancer and becomes infatuated with her.

As repayment for the kindness of the king the dancer, becoming aware that a revolution threatens the kingdom of Bavaria, disguises herself as a young soldier, and frustrates the plot. So enraged is the leader of the revolutionists that, ignorant of the fact that the youthful soldier is a girl, he issues a challenge to a duel. They meet and Lola kills the traitor.

"The Exploits of Elaine" and "Pathe Weekly" round out the bill for the first half of the week. The offering will be repeated tonight and again tomorrow night. Marguerite Clark, the second Mary Pickford, will appear during the last half of the week at Ye Liberty.

## HEAP BIG CHIEF ARRIVES; HE IS A MOVIE INDIAN

A big buck Indian, glorious in war-paint and feathers and jingling like a dozen Christmas trees with various articles of hardware on his person, attracted much attention today as he arrived on the Matsonia and is part of the "Buffalo Bill Historical Pictures Company," which are to be exhibited at a local theater.

P. S. Crawley, general representative of the company, brings the "show." It has the endorsement of Col. William F. Cody, the original and only "Buffalo Bill," Gen. Nelson A. Miles, Col. Slickles, Gen. M. P. Mans, Gen. Charles King, Gen. Jesse M. Lee, Scout Philip Wells and others. Mr. Crawley presents "Indian Wars Re-fought by United States Army," showing moving-picture reproductions of scenes and combats in the old, stirring days when the Indians and the U. S. soldiers clashed on the frontiers. The pictures are said to have the authorization of the U. S. war department. Crawley announces that free exhibitions are to be given the public school children of Honolulu.

Chief Hallstrom is a Cherokee and comes from Oklahoma. His name in Cherokee is Yu-wah-zonta. "You wouldn't think to look at me that I was once a printer, would you?" he asked a reporter this morning and the reporter truthfully said that he wouldn't.

The chief says he worked at the printing trade for several years. Then the lure of the actor's life took him from the print-shop and for several years he has been smearing grease-paint instead of ink. He has worked for several big movie companies, among them the one which took the "101 Ranch" pictures.

The chief is dressed for the part of a very wild Indian but declares himself peacefully inclined. He went to Carlisle Indian school and talks good.

## LAST NIGHTS OF RUN OF 'CABIRIA'

"Cabiria" continues to prove a big drawing card at the Bijou theater, the powerful drama portraying the making of history in the pagan days some 300 years B. C., holding an interest for all lovers of the silent drama and for many who are not regular "fans."

Gabriele d'Annunzio, author of "Cabiria," is one of the most versatile men of letters in all Italy. He is a dramatist, novelist, poet, journalist and the author of "Cabiria." In this latter offering everyone of his numerous talents is combined. It not only tested his genius as a poet, author and dramatist, but brought to light his almost academic erudition and his attributes as a scholar of departed nations, times, folk-lore, legends and customs. He, in common with very few others, possesses a rare faculty in writing, of making dead nations seem to live again in all their pristine glory of two thousand years ago.

"Cabiria" will be shown at the Bijou again tonight and tomorrow night for the 1st time, probably making way for the series of benefit concerts to be given by and for the Bevan Grand Opera Company.

William Farnum in Wilson Barrett's "The Sign of the Cross," a Danie Frohman Paramount feature production, will be the Sunday offering for next week at the Bijou.

Many a man who takes himself seriously is considered a joke by others.

English. Part of his act is to give Indian songs and dances, during which he looks properly ferocious.

TO CURE A COLD IN ONE DAY  
Take Laxative Bromo Quinine Tablets. All druggists refund the money if it fails to cure. E. W. Grove's signature is on each box.  
WATKINS MEDICINE CO., 233 Centre St., N. Y. C.

## MOVEMENTS OF MAIL STEAMERS

### VESSELS TO ARRIVE

Due Daily.  
Japan ports—Geissen Maru, Japanese str.  
New York via Panama—City of Ranong, Br. str.  
Wednesday, May 26.  
Kauai ports—W. G. Hall, str.  
Thursday, May 27.  
Maui ports—Claudine, str.  
Friday, May 28.  
San Francisco—Tenyo Maru, T. K. K. str.  
Sydney via Auckland, Suva—Nagata, O. S. S.

### VESSELS TO DEPART

Tuesday, May 25.  
San Francisco—Manoa, M. N. str. 4 p. m.  
Maui, Molokai and Lanai ports—Mikabala, str. 5 p. m.  
Maui and Molokai ports—Komokila, str. 5 p. m.  
Kauai ports—Kinau, str. 5 p. m.  
Wednesday, May 26.  
San Francisco—Mongolia, P. M. str. a. m.  
Hilo and way ports—Mauna Kea, str. 10 a. m.  
Thursday, May 27.  
Kauai ports—W. G. Hall, str. 5 p. m.

### MAILS

Mails are due from the following points as follows:  
San Francisco—Tenyo Maru, May 28.  
Yokohama—Mongolia, May 25.  
Australia—Niagara, May 28.  
Vancouver—Niagara, May 16.  
Mails will depart for the following points as follows:  
San Francisco—Manoa, May 25.  
Yokohama—Tenyo Maru, May 28.  
Australia—Sonoma, June 14.  
Vancouver—Niagara, May 28.

### TRANSPORT SERVICE

Logan, from Honolulu for San Francisco, arrived Feb. 14.  
Thomas, from Honolulu to Manila, May 15.  
Sheridan, from Manila to Honolulu via Nagasaki, sailed May 15.  
Sheridan, from Honolulu to San Francisco, arrived May 13.  
Dix, from Honolulu to Seattle, arrived May 13.  
Warren, stationed at the Philippines.

### PASSENGERS BOOKED

Per M. N. S. S. Manoa for San Francisco, May 25.—Miss Isabel Kellegher, H. M. Rogers, Miss E. E. Edings, Miss Mary Slatham, Dr. George S. Aiken, Miss Mary Silva, Miss Rosie Silva, Miss Alice Silva, Eddie Silva, Henry Silva, Miss Gilman, Miss Yarrow, Mr. and Mrs. C. W. Bittling, Mr. Marks, Mr. Goldberg, Mrs. John Mengel and two children, Mr. and Mrs. Wilder, Dr. and Mrs. C. E. Cooper, Jas. T. McCarthy, Miss A. Olson, Mrs. E. Frazier, Mr. and Mrs. Day, W. H. Blacow, Mrs. Blacow, J. R. Freer and wife, Miss E. E. Edings, Mrs. George Larimer, Mr. and Mrs. H. Harris, Miss A. de Peyster, Miss F. de Peyster, Mrs. M. Cullen, Mrs. G. S. Leithead and two children, Miss M. Barret, Mrs. A. L. Shaw, Miss M. Sexton, R. R. Hnd, Thos. Nott, Mrs. Thos. F. Walsh, Miss V. Mott, J. L. Cooke, J. L. Cooke, Theo. Richards, Mrs. Theo. Richards, Mr. and Mrs. H. Keith, Mrs. Kelle, Miss Seeley I. Shaw.

### PASSENGERS ARRIVED

Per str. Mauna Kea from Hilo and way ports, for Honolulu, May 25.—Prof. B. K. Salkar, S. P. Gupta, H. Montague and wife, C. W. Zeigler, W. J. Conroy, Mrs. J. B. Haake and two children, E. R. Bacon, W. O. Church, W. R. Hobby, E. M. Ehrhorn, Z. K. Myers, Mrs. A. Ellis, H. V. Patten, L. A. Fair, Y. Kitakago, K. Mizuno and wife, Miss Mizuno, C. S. Park, wife and two sons, W. O. Standing, wife and child, E. Williams, D. K. Kaupika, wife and two children, S. Spitzger, F. N. Anderson, wife and three children, Mrs. A. K. Evans, F. Anderson, A. Busch, O. H. Swezey, Miss M. Lynda, D. F. R. Isenberg, N. Morisugi, T. Oskid, H. H. Miss Cockett, Mrs. Francis and child, William Prestige, E. Puelin, McCabe, E. W. Hockley, G. Solid, T. L. Lum, Sam. From Lahaina: H. A. Baldwin, S. A. Baldwin, P. Schmidt, Geo. Weight, Jas. Pratt, Dr. G. S. Aiken, G. W. Hayselden.

### Hawaii Sugar Report.

According to Purser Phillips of the steamer Mauna Kea, the following sugar is awaiting shipment on Hawaii to both coasts of the mainland: Olan, 13,300; Waialeale, 5600; Hawaii Mill, 4600; Hilo Sugar Co., 13,400 Pepeekeo, 6100; Honouliuli, 6000; Hakalaka, 1251; Kula, 9894; Hamakua Mill, 12,010; Paauhau, 6400; Honokaa, 12,000; Punaluu, 2473; Honouliuli, 4100 sacks.

When it comes to opening a heart, flattery is superior to dynamite.

Wise men are as slow about giving advice as fools are about taking it.

### BY AUTHORITY.

### HOLIDAY NOTICE.

Monday, May 31, 1915, having been set apart and established by law as a territorial holiday, all territorial offices will be closed on that day.

By order of the Governor:  
WADE WARREN THAYER,  
Secretary of Hawaii.  
Honolulu, T. H., May 24, 1915.  
6172-44

### \$25 REWARD.

A reward of \$25 is hereby offered for information leading to the arrest and conviction of the person or persons who set poison for and killed by poisoning my female collie on Sunday, May 23, 1915.

E. C. PETERS,  
653 Wylie St. Office address: 211 McCandless Bldg.  
6172-47

## OCEANIC STEAMSHIP CO

"THE EXPOSITION LINE"  
FOR SAN FRANCISCO:  
Sierra ..... June 5  
Ventura ..... June 17  
Sierra ..... July 3  
Sonoma ..... July 15  
Sierra ..... July 31  
MAKE YOUR 1915 RESERVATIONS EARLY.  
\$116.00 ROUND TRIP.  
G. BREWER & COMPANY, LTD., General Agents

## Matson Navigation Company

Direct Service Between San Francisco and Honolulu

FROM SAN FRANCISCO.  
S. S. Matsonia ..... May 25  
S. S. Lurline ..... June 1  
S. S. Wilhelmina ..... June 8  
S. S. Manoa ..... June 15  
FOR SAN FRANCISCO:  
S. S. Manoa ..... May 25  
S. S. Matsonia ..... June 2  
S. S. Lurline ..... June 8  
S. S. Wilhelmina ..... June 16

S. S. Hilonian sails from Seattle May 29th.  
CASTLE & COOKE, LIMITED, Agents, Honolulu

## PACIFIC MAIL STEAMSHIP CO.

Sailings from Honolulu on or about the following dates:

FOR THE ORIENT:  
Mongolia via Manila, June 18  
Persia via Manila, out and in, July 3  
Korea via Manila, July 9  
FOR SAN FRANCISCO:  
S. S. Mongolia ..... May 29  
S. S. Persia ..... June 8  
S. S. Korea ..... June 16  
S. S. Siberia ..... June 22

FOR GENERAL INFORMATION APPLY TO

H. Hackfeld & Co., Ltd. Agents

## TOYO KISEN KAISHA

Steamers of the above Company will call at and leave Honolulu on or about the dates mentioned below:

FOR THE ORIENT:  
S. S. Tenyo Maru ..... May 28  
S. S. Nippon Maru ..... June 12  
S. S. Shinyo Maru ..... June 25  
S. S. Chiyo Maru ..... July 23  
FOR SAN FRANCISCO:  
S. S. Shinyo Maru ..... June 1  
S. S. Chiyo Maru ..... June 29  
S. S. Tenyo Maru ..... July 20  
S. S. Nippon Maru ..... Aug. 4

CASTLE & COOKE, LIMITED, Agents, Honolulu

## CANADIAN-AUSTRALIAN ROYAL MAIL LINE

Subject to change without notice.

Per Victoria and Vancouver. Per Suva, Auckland and Sydney  
Niagara ..... May 28  
Makura ..... June 25  
Niagara ..... June 16  
Makura ..... July 14

THEO. H. DAVIES & CO., LTD., GENERAL AGENTS

## AMERICAN-HAWAIIAN S. S. CO

A STEAMER will be despatched from NEW YORK for HONOLULU via Pacific coast ports every TEN DAYS. Approximate time in transit FORTY-THREE DAYS. SEATTLE AND TACOMA to HONOLULU. S. S. KENTUCKIAN to sail about May 23; and sailing every TEN days thereafter.

For particulars as to rates, etc., apply to  
C. P. MOR



## MA KE KAHOHA

KANAWAI 76

HE KANAWAI

E HAAWI ANA I KA PAPA O NA KOMISINA LAIKINI I KA MANA SUPINA A E NINANINAU I NA HOIKE MALALO O KA HOOHOKOLO PANA ME NA PU.

E Hooholoia e ka Ahaolelo o ka Teritore o Hawaii:

PAUKU 1. O ka papa o na komisina laikini o kela me keia Kalana a maloko no hoi o ke Kulanakauhale me Kalana ma keia ke haawia nei me ka mana e supina (hoopuka palapala kii hoike) a e ninaninau i na hoike malalo o ka hoohiki, a e noii i na buke me na palapala o ka poe ma kekahi hana, hoohoke ana a e noiiia ana paha e pili ana i ka ninau i hoopapaia. E loaa no ka mana i ka aha hoohokolo kaapuni kahi o ia papa i ku ai e kauoha e hoohoke mamuli o na lawelawe kupono ana no ka hiki kino a me ka haawi olelo ike ana o na hoike, a me ka hoike ana me ka noii ana hoi i na buke oihana, na palapala me na mea hoomanao pili oihana e ae.

PAUKU 2. Ina kekahi mea i kaheia imua o ia papa ma ke ano hoike malalo o ka supina a ano e ae paha, e hoole i ka pane ana i kekahi ninau a mau ninau paha i pili i ke kumuhana o noonoia ana imua o ka papa a i ninau hoi iaia e ua mau komisina la, a i ole hoole paha i kekahi kauoha o ka aha hoohokolo kaapuni e pili ana i ke kumuhana e ku ana ia wa, e hoike no ua papa la ma ke kakau ana ia mea i kekahi lunakana-wai kaapuni o ka aha kaapuni o kahi o ia papa i ku ai, a e kauohaia no ua hoike la e pane mai no ke aha la e hoopai ole ia ai oia no ka hoowahawaha aha, e like me na hoakaka o ka Mokuna 245 o na Kanawai i Houluuluia o Hawaii, 1915, a e ku no hoi i ka hoopaiia e like me ia i hoakakaia maloko o ka mokuna i oleloia ae nei.

PAUKU 3. O ka hoohiki wahae ana imua o ka papa i oleloia e ku no i ka hoopaiia no ka hoike wahae, a i na wa a pau a ka papa e hoomanao po i ai ua hoohiki wahae kekahi hoike ma kekahi hoohoke ana a ninaninau ana paha i mua o ua papa la, e hoike no ia mea i ka loio o ke kalana a i ole kulanakauhale me kalana paha a nana e hoopii aku i ua hoike la no ka hoike wahae.

PAUKU 4. O na Kanawai a me na mabele o na Kanawai i kulike ole me a i kua hoi i keia Kanawai ma keia ke hoopau loa ia nei.

PAUKU 5. E mana keia Kanawai mai a mahope aku o ka wa ona e aponoia ai.

Aponoia i keia la 13 o Aperila, M. H. 1915.

LUCIUS E. PINKHAM,  
Kiaaina o ka Teritore o Hawaii.

KANAWAI 77

HE KANAWAI

E HOOLOLI AI I KA PAUKU 2026 O NA KANAWAI I HOULULUIA O HAWAII, 1915, E PILI ANA I KE KI MANU A HOLOHOLONA PANA ME NA PU.

E Hooholoia e ka Ahaolelo o ka Teritore o Hawaii:

PAUKU 1. O ka Pauku 2026 o na Kanawai i Houluuluia o Hawaii, 1915, ma keia ke hoooloia nei i heluhelu ai e like me ia mahope iho nei:

"Pauku 2026. Na palapala ae, hoopuka ana. O ka puuku o kela me keia kalana a i ole kulanakauhale me kalana ua amanaia e hoopuka i na palapala ae i ka poe noi e ki manu a holoholona paha me na pu maloko o ke kalana a kulanakauhale a kalana paha, kahi o ia mea e noho puuku ana, e haawi pu ana hoi i na kikiki (tag) e hoike ana i ka makahiki me ka helu o ia mau palapala ae, a o ia mau kikiki e hoopiliia no i ka pu i ka wa e hele ana e ki manu a holoholona paha; aka nae hoi, aole e hoopukaia kekahi palapala ae i kekahi mea i ahewaia no ke kua ana i kekahi o na hoakaka o kekahi kanawai e hoomalu ana i na manu me na holoholona."

PAUKU 2. E mana keia Kanawai mai a mahope aku o ka la ona e aponoia ai.

Aponoia i keia la 13 o Aperila, M. H. 1915.

LUCIUS E. PINKHAM,  
Kiaaina o ka Teritore o Hawaii.

KANAWAI 78

HE KANAWAI

E PILI ANA I KA PAIPAI ANA I NA MEA AI ME NA LAU LA-PAU, E HOOLOLI ANA I NA PAUKU 990, 991, 993 ME 997 O NA KANAWAI I HOULULUIA O HAWAII, 1915, A E PAUKU

ANA I PAUKU HOU E KAPAIA O KA PAUKU 994A.

E Hooholoia e ka Ahaolelo o ka Teritore o Hawaii:

PAUKU 1. O ka Pauku 990 o na Kanawai i Houluuluia o Hawaii, 1915, ma keia ke hoooloia nei ma ke kapaia ana ae i na huaolelo "i ole mea inu a ke kanaka," a hookomo ana iho malaila i na huaolelo "inu, a momona a mea ai ono e ae a ke kanaka a mau holoholona paha" mahope iho o ka huaolelo "ai," i heluhelu ai ka hapa hope o ia pauku e like me ia mahope iho nei:

"O ka huaolelo 'ai' e like me ia i hoopukaia maloko nei e pili no ia i na mea a pau i hanaia no ka ai, inu, mea momona a mea ai ono e ae a ke kanaka a mau holoholona paha, ina paha he mea hana hookahi ia, hoohuihuitia a i ole paipaiia."

PAUKU 2. O ka Pauku 991 o na Kanawai i Houluuluia o Hawaii, 1915, ma keia ke hoooloia nei ma ka paku ana iho mahope iho o ka huaolelo "i hanaia" i keia mau olelo mahope iho nei:

"O kekahi laau paipai a i ole kekahi mea ai paha e manaia no ia hoailona hewaia mamuli o ka manao o keia mokuna i ka wa o ke ope a wahi ana, ina aole i hoailona moakakaia ke ano o ka waiwai maloko, kona koiko, kona ana a i ole kona helu; aka nae, e haawia no he hoooku kupono mai keia ae no na ope lilii, aka e hoomanao poia no ia mamuli o na rula me na hooponopono ana a ka Papa Ola o ka Teritore o hana ai."

PAUKU 3. O ka Pauku 993 o na Kanawai i Houluuluia o Hawaii, 1915, ma keia ke hoooloia nei ma ka paku ana ia i keia manao:

"E hiki no i ka Papa Ola e hookolu i mau hope komisina noii mea ai a i ole i mau luna nana materia."

PAUKU 4. He pauku hou ke pakuiia nei i na Kanawai i Houluuluia o Hawaii, 1915, e kapaia o ka Pauku 994A, e heluhelu ana e like me ia mahope iho nei:

"Pauku 994A. Na hana a na hope komisina noii mea ai a i ole nana materia. Na na hope komisina noii mea ai a i ole luna nana materia e lawelawe i na hana a ke komisina noii mea ai a i ole nana materia a i ole a ka Papa Ola e kauoha ai i kela me keia manawa."

PAUKU 5. O ka Pauku 997 o na Kanawai i Houluuluia o Hawaii, 1915, ma keia ke hoooloia nei i heluhelu ai e like me ia mahope iho nei:

"Pauku 997. Na mana o na komisina a me na hope komisina. O ke komisina noii mea ai a i ole o kona mau hope e loaa no ka mana oia e lawelawe ana i ka lakou oihana e komo maloko o kekahi wahi hana waiu, hale hana, hale aina, hale kuai, keena kuai, keena (humi) hoailu ukana a i ole keena noii materia, (keena like me ko ka poe kauka paipai laau), a i ole wahi e manaia ana malaila kekahi mea ai, mea inu a i ole mau laau lapau paha, kahi i hanaia ai, hoimakaukaia, kuaiia a i ole malaila kahi i haawia ai no ke kuai aku, a e wehe i kekahi barela, tabu (kapu), omole, pahu a i ole ope paha e wahi ana a i ole i manaia paha ke mea ai, laau a i ole mea inu paha ko loko a e nana a i ole kauoha paha e noiiia ka mea o loko o laila. I ka wa o kekahi mea ai e loaa ai ua paipaiia a i ole hoailona pololei ole ia e like me ka manao o keia mokuna, a o ka ona a poe paha e noho mana ana malaila, hoole mai i ka hooko ana i na kauoha a ke komisina noii mea ai a i ole a kona mau hope paha no ka hookaawale ana aku ia mau mea ino, alaila o ia laau a i ole mea ai paha e hopuia no a hoomaluaia. Mamuli o ke noi a ke komisina noii mea ai a i ole a kona hope paha, i kekahi aha hoohokolo o loaa ka nana kupono maluna o ia mau hana, e hoopuka no ia aha hoohokolo o ka kauoha e hopuia a e haawia ae ia laau a mea ai paha iloko o ka malu o ka aha, a malaila e paia ai a hiki i ka hoohokeia ana o ia hana a hooholoia hoi ina paha he waiwai i paipaiia a i hoailona pololei ole ia. Ina ma ia hoohoke ana ke hooholo ka aha hoohokolo o ua laau la a i ole o ia mea ai na paipaiia a i ole ua hoailona pololei ole ia e like me ka manao o keia mokuna, e kauoha no ia aha e hoopoinoia ia waiwai a i ole e kuaiia aku paha, aka, e kuai wale ia no ke ikeia he kupono no i ka ai a aole hoi e poino mai ke ola. Aka hoi, ma ka wa e hookaia ai o na koina o kekahi hihia o keia ano a me ka ukuia ana hoi o ka hoopai mamuli o ia, a me ka hooko a hanaia ana hoi o kekahi bona kupono e hoopaa ana aole ia laau a i ole ia mea ai paha e hoooloia (kuaiia) a i ole ma kekahi ano e ae hoooloia me ke kua i na hoakaka o keia mokuna, e hiki no i ka aha ke kauoha e hoioi hou ia aku ia waiwai i ka ona."

PAUKU 6. E mana keia Kanawai mai a mahope aku o ka la ona e aponoia ai.

Aponoia i keia la 13 o Aperila, M. H. 1915.

LUCIUS E. PINKHAM,  
Kiaaina o ka Teritore o Hawaii.

KANAWAI 79

HE KANAWAI

E HOOLOLI AI I NA PAUKU 450 ME 452 O NA KANAWAI I HOULULUIA O HAWAII, 1915, E PILI ANA I KA HOOPONOPONO PALENA AINA.

E Hooholoia e ka Ahaolelo o ka Teritore o Hawaii:

PAUKU 1. O ka Pauku 450 o na Kanawai i Houluuluia o

Hawaii, 1915, ma keia ke hoooloia nei ma ka paku ana i laila i keia mahope iho nei: "a e waiho no hoi i kekahi kope i hoooloia o ke kii aina i apono a i ole i acia o ia maloko o ke keena oleloia o ke komisina o na aina aupuni."

PAUKU 2. O ka Pauku 452 o na Kanawai i Houluuluia o Hawaii, 1915, ma keia ke hoooloia nei i heluhelu ai e like me ia mahope iho nei:

"Pauku 452. Palapala noi. O na poe ona ahupuaa a pau a me na mabele ahupuaa, na ili ame na mabele ili a mau ahupuaaopopo pili aina e ae maloko nei o ka Teritore o Hawaii no lakou na kuleana i loaa aole mamuli o ka haawi ana a komisina hoona aina, aole no hoi mamuli o na palapala sila i palapala hoolei e ae mai ka moi a i ole mai ke aupuni aku, hoomanao poia hoi ma na palena maloko o ia palapala hoolei kuleana, sila a palapala hoolei paha, e waiho no me ke komisina o na palena aina maloko o ka apana hoohokolo aupuni kahi o ka aina i waiho ai, i palapala noi e hoomanao poia na palena o ia aina a e hoooloia hoi e na komisina la a i ole e kona hope ma ka oihana. E hoike ka palapala noi i ka inoa o ka aina, na inoa o ka aina a mau aina paha e pili mai ana, a me na inoa o ka poe ona o ia ke mopopo, a e komo pu hoi maloko o laila kekahi hoakaka ano nui, ma ke ano kuhikuhi panana, e hoike ana i kona mau palena e like me kona kupono i na laina ku pololei i ke Kahua Ana o ke Aupuni i kukuluia, a e hoopili pu hoi i laila a e lilo hoi ia i mabele no ia mea, i kii aina a kope paha o ia palapala kii-laina oiaio e hoike ana i kona mau mau kupono, kona mau palena me na kii oiaio a mau hoailona kupono e ae ma na laina palena aina, ke kulana degere a me ka loa o kela me keia e hoikeia maloko o na hoakaka o ke ana, a me na mea hoike moakaka e ae mai loko mai o na mea hoomanao i hanaia ma ka wa o ke anaia ana, e hiki ai ke hoomanao poa e hiki ai hoi ke kukulu hou ia i mau kii me ia mau palena i ka wa e malowale ai o na hoike i hana mua ia."

PAUKU 3. E mana keia Kanawai ma kona wa e aponoia ai.

Aponoia i keia la 13 o Aperila, M. H. 1915.

LUCIUS E. PINKHAM,  
Kiaaina o ka Teritore o Hawaii.

KANAWAI 80

HE KANAWAI

E PILI ANA I KA MEA HOIKE I KE KUMU LIKE I HOEA MAI AI O KE KULEANA MA NA HIHIA HOOPII KIPAKU A MA NA HIHIA HOOLA KULEANA AINA.

E Hooholoia e ka Ahaolelo o ka Teritore o Hawaii:

PAUKU 1. Ma kekahi hihia no ke kipaku a i ole hihia paha no ka hooia ana i ke kuleana, ina ka mea hoopii, a i ole o kona agena a loio paha e hana a e waiho i kekahi palapala hoohike maloko o ka aha kahi o ia hihia e ku ana, a e haawi ana hoi i kekahi kope o ia i ka mea i hoopiiia, o ia waiho ana a me la hooko ana (haawi ana i ke kope i oleloia ae la) e hanaia iloko o umikumamalima la ka haahaa loa mamua ae o ka hoohokeia ana o ka hihia, e koi ana hoi ka mea hoopii i kona kuleana ma o ke kumu hookahi mai no me ka mea hoopiiia a e hoakaka ana i ua kumu la, e manaia no ua lawa nana ka hoike ana i ke kuleana mai ia kumu hookahi mai, ke ole ka mea i hoopiiia a i ole kona agena a loio paha iloko o nui la mahope o ka waiho ana me ka hookoia ana o ia palapala hoohiki i oleloia ae nei a i ole ma o a no ka mea hoopii, e hana a e waiho maloko o ia aha hoohokolo kahi o ia hihia e ku ana a e hooko mamua i ka mea hoopii i kekahi palapala hoohiki aole ka mea hoopiiia i koi i kona kuleana i laila ma o ke kumu hookahi i hoikeia i ka mea hoopii ma kana palapala hoohiki, a e hoike mahope ana hoi i ke kumu mai laila mai kana koi ana i kona kuleana.

PAUKU 2. E mana keia Kanawai mai a mahope aku o ka wa e hooholoia ai.

Aponoia i keia la 13 o Aperila, M. H. 1915.

LUCIUS E. PINKHAM,  
Kiaaina o ka Teritore o Hawaii.

KANAWAI 81

HE KANAWAI

E HOOKUMU ANA I KA PAPA O NA KULA A'O HANA, A E HOOMANAO POA ANA I KONA MAU KULEANA ME KANA MAU HANA.

E Hooholoia e ka Ahaolelo o ka Teritore o Hawaii:

PAUKU 1. Ma keia ke hookahua a ke kukuluia nei i Papa no ka hookahua me ka hooponopono ana i na kula a'o hana me na kula hoopololei maloko nei o ka Teritore o Hawaii, a o ia Papa e kapaia o ka Papa o na Kula A'o Hana.

PAUKU 2. I chiku lala o ia Papa, e noho lakou e hookuluia e ke Kiaaina ma ke ano i hookakaka maloko o ka Pauku 80 o ke Kanawai Kumu. O ka Lunakana o ka Aha Hoohokolo o na Kamaiki o ka Apana Hoohokolo Kaapuni Eka kekahi hoi o ka Papa i oleloia mamuli o kona kulana oihana aka nae hoi, i ka wa o ka Lunakana o ka Aha Hoohokolo o na Kamaiki e hoole ai i kona lawelawe ana ma ke ano keia



no ka Papa i oleloia, e hoopihia no kona wahi ana i hoole ai ma ka hookohu ana a ke Kiaina, ma ke ano like no hoi i hoomaopopoia no ka hoopihia ana i na hakahaka e ae.

PAUKU 3. He ekolu wahine ka haahaa e lilo i lala no ka Papa i oleloia.

PAUKU 4. O na hoo o ka Papa i oleloia e paa no i ko lakou kulana oihana no ka manawa o eha makahiki; aka nae, ma ka hookohu mua ia ana o ia Papa, e hookohu no ke Kiaina i ekolu o na lala o na Papa la no elua makahiki wale no, a o na hoo aku e koe ana o na Papa la no eha makahiki; a ma ia hope aku o na hookohu a pau no eha makahiki no ia.

PAUKU 5. E loa no i na Papa la ka mana me ke kuleana kaokoa e hooana a e hooponopono i na kula a'o hana me na kula hoopolelei a pau e ku nei i keia wa maloko nei o ka Teritoro o Hawaii, a i ole e kukuluia aku ana paha ma keia hope aku; a e loa pu no hoi ka mana me ke kuleana hooana a hooponopono i na wahi hoopaa manawa a pau (places of detention) e hooanaia aku ana me kekahi o na mau kula la i oleloia.

PAUKU 6. O na mana a pau i haawia i ka Luna Nui o ka Oihana Hoonauao a me na Komisina Hoonauao e pili ana i na kula a'o hana a me na kula hoopolelei maloko nei o ka Teritoro o Hawaii ma keia ke hoonoe a ke haawia nei i ka Papa e hookumua nei mamuli o keia, a o na hana a pau a ka Luna Nui o ka Oihana Hoonauao i hoomaopopoia ma ke Kanawai a me na Komisina Hoonauao e pili ana i na mau kula la i oleloia, ma keia ke kuaia nei maluna o ka Papa e hookumua nei. O na koena a pau i hoolilo ole ia o na haawina dala i hooliloia mamua ae nei, o ke kuleana hoolilo hoi ia i keia wa ala no i ka Luna Nui o ka Oihana Hoonauao a i ole i na Komisina Hoonauao, ma keia ke hoonoe a ke haawia nei ia mana i ka Papa e hookumua nei, a o ke kuleana hoolilo aku ia ke haawia nei i na Papa la i oleloia.

PAUKU 7. E loa no i ka Papa ke kuleana e hana i mau rula me na hooponopono i kua ole i ke Kanawai e hoomaopopoia i ke ano o ka hoolilo ana i na haawina dala i hookaawaleia no ia mau kula; e hoomaopopo ana no ka hookumua ana i na hana o ka Papa, ma ke koho ana i kona mau luna hooana; a e hoomaopopo ana no ka hooana me ka hooponopono ana o na kula me na wahi hoopaa hoomalu; a e loa like no hoi ka mana e hoolilo i na rula e ae me na hooponopono i kua ole i ke Kanawai e like me ia e manaoia ai he kupono no ka lawelawe ana i na hana i hoomaopopoia mamuli o keia Kanawai.

PAUKU 8. E lawelawe oihana na hoo o ka Papa i oleloia me ka uku ole; aka e loa no i na mau hoo la ka uku no ko lakou mau hoolilo kupono i hanaia mamuli o ka lawelawe ana i ka lakou oihana.

PAUKU 9. E lilo no i hana na ka Papa ka hana ana i hoike makahiki i ke Kiaina, no ka manawa mawaena o ka la mua o Ianuari a me ka la kanakolu-kumamakahiki o Dekemaba o keia me keia makahiki. O ia mau hoike e waihoia ae no ia e ke Kiaina i kela me keia kau o ka Ahaolelo. Maloko o ia mau hoike e komo no na hoike itamu no na dala a pau i hooliloia e ka Papa; o na dala a pau i loa mai i ka Papa; ka poe ia lakou ua mau dala la i ukuia aku ai; a me na hana nolaila ia i hooliloia aku ai iloko o ka manawa i hoikeia maioko o ka hoike. E komo pu no hoi maloko o ia mau hoike kekahi mau mea hooaka e ae e pili ana i ka hana a ka Papa, a me ke kuleana o na kula a me na wahi hoopaa hoomalu malalo o ka mana hooponopono o ka Papa, e hiki ai e loa i ke Kiaina ka hoomaopopo kupono ana e pili ana i na hana a pau a ka Papa.

A e lilo hou no hoi i hana na ka Papa ka waiho ana me ke Kiaina, maloko o na manawa i hoikeia ae nei no ka waiho ana i na hoike, i hoike helu o na waiwai a pau e onia ana e ka Teritoro i hooanaia no na hana o ia mau kula a i ole mau wahi hoopaa hoomalu paha, e like me na hooaka maloko o ka Mokuna 19 o na Kanawai i Houluuluia o Hawaii, 1915.

PAUKU 10. E mana keia Kanawai i Ianuari 1, 1916.

Aponoia i keia la 13 o Aperila, M. H. 1915.

LUCIUS E. PINKHAM,  
Kiaaina o ka Teritoro o Hawaii.

## KANAWAI 82

### HE KANAWAI

E HOOKAAWALE ANA I HAAWINA DALA NO KA UKU ANA I MA KANA NO KA IOLE MANAKU I PEPEHIA.

E Hoololoia e ka Ahaolelo o ka Teritoro o Hawaii:

PAUKU 1. O ka huina o Elua Tausani Elima Haneri Dala (\$500.00), a i ole o ka lawa kupono paha o ia e like me ka hoomaopopoia ana, ma keia ke hookaawaleia nei mai loko ae o na loa mau o ka Teritoro, a e kapaia o ka "Haawina Iole Manaku," a e hooanaia-hoi no ka uku ana i na makana no ka manaku e like me na hooaka maloko o ka Mokuna 39 o na Kanawai i Houluuluia o Hawaii o 1915.

PAUKU 2. E mana keia Kanawai ma ka la ona e aponoia ai.

Aponoia i keia la 15 o Aperila, M. H. 1915.

LUCIUS E. PINKHAM,  
Kiaaina o ka Teritoro o Hawaii.

## KANAWAI 83

### HE KANAWAI

E Hoololi ai i ka Pauku 2197 o na Kanawai i Houluuluia o Hawaii o 1915, e Pili Ana i na Hoolilo o na Aha Hookolokolo Kaapuni, Kookua, na Kamaiki Kaukal.

E Hoololoia e ka Ahaolelo o ka Teritoro o Hawaii:

PAUKU 1. O ka Pauku 2197 o na Kanawai i Houluuluia o Hawaii 1915 ma keia ke hoololiia nei:

- (1) ma ka pakui ana mahope o ka laina 22 o ia i keia mahope iho nei: "No ka malama ana i na Keiki Kaukai (Dependent) .....6,000.00"
- (2) ma ka hoololi ana ae i na huahelu "250.00" ma na laina 27 me 34 o ia i heluhelu ai "600.00," a ma ka hoololi ana ae i ka huahelu "500.00" ma ka laina 41 o ia i heluhelu ai "600.00;" a
- (3) ma ka pakui ana mahope o ka laina 46 o ia i keia mahope iho nei: "Kookua, no na keiki kamaiki kaukai o ka aha hookolokolo kamaiki .....600.00"

PAUKU 2. E mana keia Kanawai ma kona wa e aponoia ai.

Aponoia i keia la 15 o Aperila, M. H. 1915.

LUCIUS E. PINKHAM,  
Kiaaina o ka Teritoro o Hawaii.

## KANAWAI 84

### HE KANAWAI

E HOOKAAWALE ANA I HAAWINA DALA NO KA POMAIIKAI O HENRY E. PETERSEN.

E Hoololoia e ka Ahaolelo o ka Teritoro o Hawaii:

PAUKU 1. O ka Pauku o ka Teritoro o Hawaii ma keia ke hooana a ke kauohaia nei e uku, mamuli o na palapala kikoo i hooana e ka Luna Hooia ma ke apono ana a ke Kiaina o ka Teritoro, i ka huina o ekolu haneri dala a o ka hapa paha o ia wa kupono ai, no ka uku ana i na lilo kupono a pau o ka la me na oki ana no ka lapaau i na maka o Henry E. Petersen; poine ma ka la 30 o Novemaba, 1899, oia oia e lawelawe ana i kana oihana ma ke ano he Kakiana no ka Puali "F." Kana 1, Puali Koa Kiai Lahui o Hawaii, a mahope mai o ia hana ua hiki ole iaia ke lawelawe hana mamuli o ia elia ai hiki ole ke loa na mea e lawa kupono ai o kona oia ana; lawa ae o ia e uku i kela me keia mahina i ka huina o Elima dala ia Henry E. Petersen i oleloia; a e hooana aku i hana ana pela a no ka manawa o elua makahiki mai a mahaku o ka la e aponoia ai o keia Kanawai; o na dala e lawa kupono ai o keia mau uku ana ma keia ke hookaawaleia nei loko ae o na loa mau o ka Teritoro.

PAUKU 2. E mana keia Kanawai ma ka wa tna e aponoia ai.

Aponoia i keia la 15 o Aperila, M. H. 1915.

LUCIUS E. PINKHAM,  
Kiaaina o ka Teritoro o Hawaii.

## KANAWAI 85

### HE KANAWAI

E Hoomaopopo Ana i ka Hoomakaukau Ana, Pa'i Ana a me ke Kuai o ka Buke o na Hoike o ka Aha Kiekie o ka Teritoro o Hawaii, a e Hookaawale Ana i Haaawina Dala ia Hana.

E Hoololoia e ka Ahaolelo o ka Teritoro o Hawaii:

PAUKU 1. Ma keia e hookaawaleia mai loko ae o kekahi haaawina maloko o ka waihoi ka Teritoro o Hawaii i hookaawale ole ia, ka huina o eluausani dala no ka uku ana no ka hoomakaukau a me ke pa'i i kekahi Buke o na Olelo Hoololo o ka Aha Kiekie o ka Teritoro o Hawaii, a o ia huina e hookaawaleia ana e ukuia na a e hooliloia mamuli o na palapala hooia (bila kikoo) i aha e ka Lunakanawai Kiekie o ka Teritoro o Hawaii.

PAUKU 2. O ka hoomakaukau pa'i ana, haawi ana a me ke kuai o ka Buke Olelo Hoololo me ia i hookakaia maloko nei, e hanaia no ia malalo o hooponopono a me ka hookele ana a na Lunakanawai o ka Aha Kiekie o ka Teritoro o Hawaii, ia lakou hoi a ma keia haawia nei no ia lakou ka mana e kauoha e hoomakaukau iaia, haawia a e kuaia aku, a e hoomakaukau hoi i ka helu o na kope o ia e pa'ia ai, a e kauoha hoi no ka haawi ana, ka uku ole, a ma ke ano kuaipo no hoi no kekahi mau Buke Olelo Hoololo e ae o na aha kiekie e ae, o na kope o ia, a e hoomaopopo no hoi no ke kumukuai e hooliloia aku ai o na a e loa pu no hoi ia lakou ke kuleana me ka mana pihia e lawe i na hana a pau e pili ana ia hana.

PAUKU 3. E mana keia Kanawai ma mahope aku o ka la

ona e aponoia ai.

Aponoia i keia la 15 o Aperila, M. H. 1915.

LUCIUS E. PINKHAM,  
Kiaaina o ka Teritoro o Hawaii.

## KANAWAI 86

### HE KANAWAI

E Hoololi ai i ka Pauku 1424 o na Kanawai i Houluuluia o Hawaii, 1915, e Pili Ana i ka Hoololi Ana i na Dala o ka Lehulehu.

E Hoololoia e ka Ahaolelo o ka Teritoro o Hawaii:

PAUKU 1. O ka Pauku 1424 o na Kanawai i Houluuluia o Hawaii, 1915, ma keia ke hoololiia nei i heluhelu ai e like me ia mahope iho nei:

"Pauku 1424. O kekahi luna aupuni a mea paha e hooanaia ana e hooia wahabee a i ole apono paha no ka ukuia o kekahi bila a i ole palapala kikoo, a i ole o kekahi koi aie kue i ka Teritoro a i ole i kekahi Kalana a Kulanakauhale a Kalana paha, a i ole o kekahi mea nana i hookumu a i ole i apono ke kuai ana o kekahi mau lako hana a mau lako e ae paha a i ole no ka lawelaweia ana paha o kekahi hana a i ole hanalima paha no ka pono a i ole no ka pomaikai o ka Teritoro a i ole o kekahi Kalana a Kulanakauhale a Kalana paha, oia aole haawina i hookaawaleia no ia mea, a i ole, a oi aku paha maluna o kekahi mau haawina i hookaawaleia no ia mau hana, me ka manao no nae o ia mau lako hana a mau lako e ae paha i kuaia pela a i ole ia hana a hanalima paha i lawelaweia e ukuia e ia Teritoro a i ole Kalana a Kulanakauhale a Kalana paha, a o kekahi Luna Hooia e kue ana i kekahi o na hooaka o keia Mokuna, e manaoia no ua ku i ka hewa mikamina, a ma ke ahewaia ana no ia mea, e hoopaiia no ma ka hookuia ana i kekahi hoopai aole e oi aku i ka Elima Haneri Dala (\$500.00), a i ole ma ka hoopahao no ka manawa aole e oi aku i ka hookahi makahiki, a i ole ma ia mau hoopai hooku dala me hoopahao huiia."

PAUKU 2. E mana keia Kanawai mai a mahope aku o ka la ona e aponoia ai.

Aponoia i keia la 15 o Aperila, M. H. 1915.

LUCIUS E. PINKHAM,  
Kiaaina o ka Teritoro o Hawaii.

## KANAWAI 87

### HE KANAWAI

E Hoololi ai i ka Pauku 628 o na Kanawai i Houluuluia o Hawaii, 1915, e Pili Ana i ka Luku Ana i na Ia Al.

E Hoololoia e ka Ahaolelo o ka Teritoro o Hawaii:

PAUKU 1. O ka Pauku 628 o na Kanawai i Houluuluia o Hawaii, 1915, ma keia ke hoololiia nei i heluhelu ai e like me ia mahope iho nei:

"Pauku 628. Hookapua, na hookuu ana. Ka maka upena. Aole kekahi mea e lawe, hopu a i ole e pepehi i kekahi ia no ka ai ana e ola ana maloko o na wai o kekahi kai, awa, kaikuono, huwai a i ole muliwai maloko o na palena o ka Teritoro o Hawaii, mamuli o kekahi upena, hinai, a i ole mea okoa ae paha o kela me keia ano nona hoi ka maka upena a owa paha i emi iho malalo o elua iniha ke hukiia a i ole hookahi iniha kua, a i ole mamuli o kekahi pa uwea, upena uwea, a i ole uwea akeakea o kekahi ano, a mea paha i hanaia me ka uwea o kela me keia ano.

Aole kekahi mea maloko nei o keia pauku e manaoia he keakea ana i ka hooanaia o na upena a i ole ano mea okoa e ae paha, koe na pa uwea, na upena uwea, a me na mea keakea uwea e like me ia i hoike mua ia ae nei, ma ka laweia ana, a no ka lawe ana i ka nehū, puhikii, omaka, opelu, hinala, oama, opukai, maiii, maomao, manini, iao, ahohele, opae, hinana, opu-nopili, opu-nakea, kole, ihehe, mamamo, pao, ohua-paleno, ohua-aliko, malolo, akilolo, hahalalu, akule, pitha, alaihi, uu, ahaaha, pualu, alalaua, awcoweo, upapalu, puhī, uiui, maikoiko, aloiloi, alahao, pakii, ia haole me opu umiuni. Aka nae, aole kekahi mea maloko nei e manaoia he akeakea hookapu i ka hopu ana a i ole lawe ana i ka ula a i ole ula papa paha mamuli o na uwea makaupena a i ole ma kekahi ano e ae."

PAUKU 2. E mana keia Kanawai mai a mahope aku o ka la ona e aponoia ai.

Aponoia i keia la 15 o Aperila, M. H. 1915.

LUCIUS E. PINKHAM,  
Kiaaina o ka Teritoro o Hawaii.



# Star-Bulletin WANT Classified

## ONE CENT A WORD

### WANT ADS

#### AUTO.

R. Seki, auto for, Waiakua, 4 p. m., daily. 6131-tf  
Shimamoto, auto service, bet. Haleiwa and Honolulu; stand opp. Depot. Tel. 2172. 6160-tf

#### AUTO STAND.

Auto Service, bet. Haleiwa & Honolulu 7-pas. car; Haleiwa tel. 297; Honolulu tel. 1112; stand King and Ala. 6132-4m

#### AUTO REPAIRING.

United Auto and Machine Repair Shop. Phone 4631, Asylum road. 6091-tf

#### AUTO FENDERS.

Mishima, King and Punchbowl; auto fenders made to order. 6141-6m

#### BUY AND SELL.

Diamonds, watches and jewelry bought sold and exchanged. J. Carlo, Fort. 45

#### BLACKSMITH SHOP.

Kuba, repairs work; Palama. 6076-tf

#### BAMBOO WORKS.

Saiki, Bamboo furniture; 563 Beretania st. 6078-tf

#### BICYCLE STORE.

M. Hamada, baby carriage tires retired. Nuanuu st. Tel. 5043. 6089-tf

#### BAKERY.

Home Bakery, Beretania near Ala. 6094-1m

#### BUILDER.

K. Hara, Builder; 540 King; tel. 3921. 6147-tf

#### CONTRACTOR.

Building, cement work, painting, plumbing, etc. Aloha Bldg. Co., 964 Punalou st. extension. Phone 1576. M. E. Goto, Mgr. 6056-1yr

#### CONTRACTOR AND BUILDER.

Geo. M. Yamada, general contractor. Estimates furnished. No. 208 McCandless Building. Telephone 2157. 5265-tf

#### CONTRACTOR AND BUILDER.

Sanku Co., Nuanuu and Vineyard. Tel. 3151. Contracts buildings, paper hanging, cement work, clean lots. 5522-tf

#### CONTRACTOR AND BUILDER.

Y. Kobayashi, general contractor, 2034 S. King. Phone 3356. Reasonable. 5537-tf

#### COLLECTOR.

S. Kawamoto, due bill collector, Smith st. 6114-tf

#### CUT FLOWERS.

Harada, fresh cut flowers; tel. 3029. 6121-tf

#### CUT FLOWERS.

Kimura, flowers, Fort st. Phone 5147. 6084-6m

### WANT ADS

#### CAFE.

Boston Cafe, coolest place in town. After the show drop in. Open day and night. Bijou theater, Hotel St. 5539-tf

#### COLUMBIA LUNCH ROOMS.

Columbia Lunch Rooms; quick service and cleanliness our motto; open day and night. Hotel, opp. Bethel street. 5518-tf

#### "THE EAGLE" BETHEL.

"The Eagle" Bethel, bet. Hotel and King. A nice place to eat; fine home cooking. Open night and day. 5538-tf

#### NEW ORLEANS CAFE.

New Orleans Cafe. Substantial meals, moderate. Alakea, cor. Merchant St. 5589-tf

#### HOME CAFE.

Home Cafe; Beretania nr. Alakea st. 6079-tf

#### CARD CASES.

Business and visiting cards, engraved or printed, in attractive Russia leather cases, patent detachable cards. Star-Bulletin office. 5540-tf

#### CLOTHES CLEANED.

Harada; clothes cleaned; tel. 3029. 6121-tf

#### CABINET MAKER.

Kana, cabinet maker; 1358 Fort St. 6084-6m

#### CLOTHING.

Pay for your clothing as convenient—open charge account with The Model Clothing, Fort st. 6064-tf

#### CLEANING AND DYEING.

Royal Clothes Cleaning and Dyeing Shop. Call and deliver. Tel. 3149. Okamoto, Beretania nr. Alapai st. 5595-tf

#### CLOTHES CLEANING.

Pawa Clothes Cleaning Shop. Tel. 4892; all clothes and hats cleaned. 6136-6m

#### STEAM CLEANING.

Steam cleaning, Alakea st. nr. Gas Co. 6078-6m

#### THE PIONEER.

The Pioneer, clothes cleaned and repaired. Tel. 3125, Beretania-Emma. 6071-6m

#### "ALOHA," 589 BERETANIA.

"Aloha," 589 Beretania; clothes cleaned. 6104-3m

#### FUJII DYEING & CLEANING CO.

Fujii Dyeing & Cleaning Co., ti. 2319. 6151-1m

#### A. B. C. RENOVATORY.

A. B. C. Renovatory; clothes cleaned. 6104-6m

#### DRUG STORE.

Saito Drug Store, King & Aloha lane. 6076-tf

#### TOTTORI, KING-ALAPAI.

Tottori, King-Alapai, cucumber sponges. 6090-tf

#### DRYGOODS STORE.

J. Fujii, Japanese creases; Hotel St. 6099-tf

#### KIOHJI, JAPAN SILKS.

Kiohji, Japan silks; Beretania street. 6113-tf

#### T. OSHIMA, SILKS.

T. Oshima, silks, King-Maunakea. 6099-3m

#### EMPLOYMENT OFFICE.

Phone 4136 for all kinds of help, or call at 1166 Union st., or write to P. O. Box 1290. Responsibility and promptness our specialty. J. K. Naruse, manager. 6106-tf

#### Y. NAKANISHI, 34 BERETANIA.

Y. Nakanishi, 34 Beretania, nr. Nuanuu, for good cooks, yard boys. Phone 4511; residence phone 4511. 5246-tf

Japanese help of all kinds, male and female. G. Hiraoka, 1210 Emma st., phone 1420. 6054-tf

Filipino Y. M. C. A., Queen & Milliana st., will supply all kinds of help. V. A. Lionson, Mgr., Phone 5029. 6126-tf

Aloha Employment Office, Tel. 4892; Alapai st., opp. Rapid Transit office. All kinds of help furnished. 6101-tf

Japanese cooks, waiters and yard boys furnished. United Construction Co., tel. 5053, cor. Beretania and Nuanuu sts. 6108-tf

For best gardener ring 4136. 6109-tf

Tanabe Co., Paunah, nr. River st., tel. 2857; firewood and charcoal, wholesale and retail. 6140-6m

### WANT ADS

#### FURNITURE.

I. Takano, Enamel furniture; 544 King. 6078-6m

#### FLORIST.

Wakita, cut flowers; Aloha lane. 6106-tf

#### TAKIGUCHI, CUT FLOWERS.

Takiguchi, cut flowers, fruit. Moiliili. 6106-tf

#### GARDENER.

Koya, landscape gardener, wants care of gardens. Address "Gardener," this office. 6091-tf

#### HAWAII PRODUCTS.

Amer. Haw'n Product Co., Prison rd. 6112-tf

#### HAWAIIAN FRUITS.

Fuka Shokat, Haw. fruits; Prison rd. 6136-tf

#### IRON WORK.

Masuda, iron work; Beretania st. 6139-3m

#### JEWELER.

Sun Wo, Gold and Silvermiths; material and work guaranteed. If not satisfactory money will be refunded. 1121 Maunakea nr. Hotel street. 5531-tf

#### JUNK STORE.

Hon. Junk Co., 620-624 N. King st.; phone 4366, Knowles water and oil pumps. 6082-6m

#### LIVERY STABLE.

First-class livery, turnouts at reasonable rates. Territory Livery Stables, 348 King, nr. Punchbowl. Tel. 2536. 551-tf

#### DRUMMERS.

If you want good quarters to display your samples in Hilo, use Oario's store. 5940-tf

#### MOSQUITO PUNKS.

Ishii Drug Co., Nuanuu and Beretania Sts.; best home product mosquito punks. 6105-3m

#### MASON WORK.

T. Matsumoto, stone lanterns. Moiliili. 6100-3m

#### PRINTING.

We do not boast of low prices which usually coincide with poor quality; but we "know how" to put life, hustle and go into printed matter, and that is what talks loudest and longest. Honolulu Star-Bulletin Job Printing Department, Alakea Street. Branch Office, Merchant Street. 5399-tf

#### PLUMBER.

Matsushita, Sanitary plumber, Tel. 3858. 527 Beretania st. Sugimoto, Mgr. 6077-tf

#### PULLARA—PLUMBER AND TINSMITH.

Pullara—Plumber and Tinsmith, 67 Beretania, Phone 4326. 6100-3m

#### PAINTER.

S. Shiraki, 1302 Nuanuu; Tel. 4137. Painting and paperhanging. All work guaranteed. Bids submitted free. 5538-tf

#### M. NISHIGAYA, HOUSE-PAINTER.

M. Nishigaya, house-painter; tel. 2322. 6076-tf

#### O. YAMAGUCHI, 1583 PHILIP.

O. Yamaguchi, 1583 Philip; tel. 5201. 6076-tf

#### POULTRY AND FRUIT.

Hawaii Nonsan Shokat, watermelons, etc. Ala lane. 6099-tf

#### SHIRTMAKER.

B. Yamatoya, shirts, pajamas, kimono to order. Nuanuu, near Paunah. 5533-tf

#### H. AKAGI, SHIRTMAKER.

H. Akagi, shirtmaker; 1218 Nuanuu st. 6088-tf

#### SODA WATER.

The best comes from the Hon. Soda Water Wks. That's the kind you want. Chas. E. Frasher, Mgr. 6106-1yr

#### YAMATOYA

1256 Fort—Shirts, pajamas, kimono. 5782-tf

Circuit Judge Whitely has approved the final accounts of William D. McWayne as executor of the estate of A. S. McWayne, deceased.

## For Rent

FOR RENT.  
Five-room, modern cottage; elegantly furnished. Rent \$35. Apply John Doe, 761 Rabbit lane.

Sample of new "display classified" advertisement, now obtainable in the STAR-BULLETIN at the rate of

9c PER LINE PER DAY  
45c PER LINE PER WEEK  
\$1.05 PER LINE PER MONTH

The above sample is a ten-line ad. Everyone that looks at this page will see it at a glance.

### IT'S GOOD ADVERTISING.

We advocate this form of advertising for those wishing something a little more attractive than the ordinary "liner classified" adv., yet do not want to go into large display advertising, where a contract is necessary.

No contract is necessary for this form of advertising—and you can take as much space as you wish. Try it and be convinced of its merit.

THE "AD MAN."

### WANT ADS

#### SODA WORKS.

Sunrise Soda Works, distilled water. King St. Tel. 1345. 6081-tf

#### SOFT DRINKS.

Our soda will make your business grow. Hon. Soda Water Wks., Chas. E. Frasher, Mgr. 6106-1yr

#### SHOEMAKER.

Ogawa, shoe-maker; Fort nr. Kukui. 6087-tf

#### SHOE STORE.

S. Takahashi, King, opp. Ala Park, dry goods, shoes, etc. 6080-tf

#### SHIP-BUILDER.

Tekahiro Ship Yard, Kakaako; sampans made to order. 6086-6m

#### KATAMOTO, SAMPAN BUILDER.

Katamoto, sampan builder. Kakaako. 6101-tf

#### TAILOR.

O. Okazaki, merchant tailor, Hotel st. 6100-tf

#### FUJII, TAILOR, SCHOOL ST.

Fujii, tailor, School st., Phone 2455. 6141-1m

#### UMBRELLA MAKER.

R. Mizuta, Umbrellas made and repaired. 1284 Fort, nr. Kukui; phone 3746. 5563-tf

#### WATERMELONS.

Best watermelons; prices reasonable; wholesale and retail. Suyetsugu, 693 N. King st. Phone 2275. 6165-2m

#### WHOLESALE HOUSES.

M. Kawahara, Queen st., Ajinomoto (essence of flavor) for cooking purposes; ready to use. 6032-6m

#### OSAKI SHOTEN, MERCHANDISE.

Osaki Shoten, merchandise, King st. 6076-6m

#### KOYAMA SHOTEN, DRY GOODS.

Koyama Shoten, dry goods, toilet g'ds. 6076-tf

#### T. MOTOSHIGE, EXPERT WATCHMAKER.

T. Motoshige, expert watchmaker, 187 Beretania nr. Maunakea st. 6097-tf

#### TENGUDO, WATCHMAKER.

Tengudo, watchmaker, Hotel & Smith. 6076-tf

#### SUGIMURA, JEWELRY.

Sugimura, jewelry, King, nr. Fiver st. 6090-6m

#### WHOLESALE PINEAPPLES.

S. Hiyaama, Fresh pineapples. Tel. 4496. 6077-tf

#### WANT A WAR MAP?

A limited number of war maps of Europe have been secured by the Star-Bulletin and are offered to patrons of this paper at the very reasonable price of 15 cents, the order to be accompanied by three coupons clipped from this paper. The coupon is published in another column. This map takes in all of Europe and enables the reader to follow the activities of all the European warring forces. Remember that the supply is limited.

STAR-BULLETIN GIVES YOU TODAY'S NEWS TODAY

## ONE CENT A WORD

### WANT ADS

#### FOR RENT.

Desirable houses in various parts of the city, furnished and unfurnished, at \$15, \$18, \$20, \$25, \$30, \$35, \$40 and up to \$125 a month. See list in our office. Trent Trust Co., Ltd., Fort St., between King and Merchant. 6058-tf

#### UNFURNISHED HOUSE.

Unfurnished house, 14th and Palolo ayes, Kaimuki; 5 rooms, mosquito-proof, gas and electricity; fruit trees in yard. Phone 1129 in mornings. 6171-6t

#### FURNISHED 2-BEDROOM MOSQUITO-PROOF COTTAGE.

Furnished 2-bedroom mosquito-proof cottage, Punahou st.; \$25 per mo. Apply C. Okimura, 1511 Kakaau ave. 6144-tf

#### TWO-BEDROOM FURNISHED COTTAGE.

Two-bedroom furnished cottage, opp. tennis courts. 871 Young st. 6154-tf

#### NEW, 2-BEDROOM COTTAGE.

New, 2-bedroom cottage, gas and electricity; near town and car line. Phone 3140. 6165-1m

#### \$37.50; 7-ROOM BUNGALOW ON LUNAILLO ST.

\$37.50; 7-room bungalow on Lunaillo st. Address box 172, this office. 6145-tf

#### FURNISHED COTTAGE, 5 ROOMS.

Furnished cottage, 5 rooms, 636 Hotel st., near Alapai st. M. Ohta. 6132-tf

#### FURNISHED COTTAGE AT COTTAGE GROVE.

Furnished cottage at Cottage Grove. Telephone 1087. 6159-tf

#### FURNISHED ROOMS.

MARTIN'S.—The cleanest and most reasonable rooms in the city; hot and cold baths; mosquito proof; walking distance; \$3 to \$10 a month. 627 S. Beretania st. 6156-1m

#### OFFICES FOR RENT.

Offices and warehouse, center of town. Apply to Jas. Steiner, Elite bldg., Hotel street, room 7. 6153-1m

#### FOR SALE.

Contents of 5-room house, 2 bedrooms, lanai, dining room, living room and kitchen; owner leaving for Coast in one week. Apply 2454 Ferdinand ave., phone 4177; price reasonable. 6173-tf

#### THE TRANSO ENVELOPE.

The Transo envelope, time-saving invention. No addressing necessary in sending out bills or receipts. Honolulu Star-Bulletin Co., Ltd., sole agents for patents. 6173-tf

#### CADILLAC, IN FINE CONDITION.

Cadillac, in fine condition; part cash; cheap. 800 South King st. 6164-tf





# The Star-Bulletin's Page of Sport



## TRAVELERS HAVE A FINE RECORD ON PRESENT TRIP

TRAVELING CHINESE.

P	W	L	Pct
50	37	12	.755

Below is given the record of the traveling Chinese for the first two months of their mainland tour. It will be noted that the team has been playing almost every day, and making considerable jumps between games. For a road club the percentage is remarkable.

Only a few days have been lay-offs for the players. March 11 and 12 were spent in San Francisco, March 20 and 27 on the road, April 1 the scheduled game was postponed, and May 7 and 8 were given to sightseeing in Chicago. There has been baseball every other day, and playing on strange diamonds before strange crowds, with railroad travel sandwiched in between. It is a wonder that the local boys have been able to hang up such a record.

Following is a list of the games played:

Date	Mar. Team	Score
10	Stanford, Palo Alto, Cal.	won 10-7
13	Cal. University, Berkeley	lost 6-0
14	Salt Lake Club, San Jose	lost 3-2
15	Stockton B. B. Club, Cal.	lost 4-1
17	Stockton High, Stockton	won 10-1
18	Portland Club, Fresno	lost 20-5
19	Redlands University, Cal.	won 2-1
21	Phoenix B. B. Club, Ariz.	won 2-1
22	Ariz. University, Tucson	won 10-5
23	Ariz. University, Tucson	won 10-5
24	Warren B. B. Club, Ariz.	won 12-4
25	Douglas Club, Arizona	won 7-3
26	Douglas Club, Arizona	won 9-3
28	Texas State League Club, San Antonio, Texas	lost 3-2
29	Texas State League Club, San Antonio, Texas	lost 11-4
30	Rice Inst., Houston, Tex.	won 5-2
31	Rice Inst., Houston, Tex.	won 4-1
Apr.		
2	Texas Un., Austin	won 11-3
3	Texas Un., Austin	lost 9-8
4	Bresham B. B. Club, Tex.	lost 10-4
5	Baylor Inst., Waco, Tex.	won 16-8
6	Baylor Inst., Waco, Tex.	won 4-0
7	Texas Christian College, Ft. Worth, Texas	lost 1-0
8	Austin Coll., Sherman	won 9-4
9	Un. of Okla., Norman	lost 3-0
10	Un. of Okla., Norman	lost 3-0
11	Newton B. B. Club, Kan.	won 19-5
12	Bethany Coll., Lindsborg, Kan.	won 9-4
13	St. Mary's Coll., St. Mary, Kan.	won 6-2
14	Kan. State Agr. Coll., Manhattan, Kansas	won 18-0
15	Kansas Un., Lawrence, Kan.	lost 4-3
16	Kansas Un., Lawrence, Kan.	won 15-1
17	State Normal, Warrensburg, Mo.	won 5-3
18	Booneville B. B. Club, Booneville, Mo.	won 10-5
19	Central College, LaFayette, Mo.	won 26-0
20	Missouri Valley College, Marshall, Mo.	won 10-1
21	Un. of Missouri, Columbia, Mo.	lost 1-1
22	Un. of Missouri, Columbia, Mo.	won 3-0
23	Westminster College, Fulton, Mo.	won 14-1
24	Concordia Seminary, St. Louis, Mo.	won 5-3
25	Seragues Vendevort and Barney, St. Louis, Mo.	won 8-5
27	Iowa State College, Ames, Iowa	won 6-2
28	Un. of South Dakota, Vermillion, S. D.	won 5-2
30	Luther College, Decorah, Ia.	won 7-1
May		
1	Campion College, Prairie Du Chien, Wis.	won 12-3
2	Clinton B. B. Club, Clinton, Iowa	lost 1-0
3	William and Vlasto College, Oledo, Illinois	won 10-6
4	St. Victor's College, Kankakee, Illinois	won 3-1
5	Un. of Chicago, Chicago, Ill.	lost 1-0
6	Notre Dame College, South Bend, Indiana	lost 3-2
9	Kokomo Red Sox, Kokomo, Ind.	won 4-1
10	De Pauw Un., Greencastle, Ind.	won 3-1
11	Un. of Indiana, Bloomington, Ind.	won 6-5

It is when people are charged with their faults they are credited with their good intentions, there would be more satisfactory neighbors in the world.

**LA SALLE**  
A LIGHTWEIGHT DEEP POINTED  
**ARROW COLLAR**  
Makers of Arrow Shirts

## CARDINAL BALL PLAYERS ARE KEEN FOR BUSINESS

Thirteen Men and Graduate Manager Wilcox Will Uphold Prowess of Stanford

None of that hoodoo stuff can scare doughty Stanfordites. This morning 13 ball players who sport the cardinal arrived with a clean bill of health and no accidents on the trip over that they could charge up against their mystic number. Manager R. W. Wilcox made the fourteenth member of the party, and perhaps that took the curse off the playing members.

The team was met of quarantine by "Kelly" Henshaw and W. M. Argabrite of the Punahou, both former Stanford ball players, and several other college men. There was a lot of handshaking and the renewing of old acquaintances, for most of the visiting players were here two years ago, where they made many friends.

"We are sure glad to be here again," said Manager Wilcox this morning. "Why, we've been hoping for this trip ever since we left here almost two years ago. No one who was here before would have missed a repetition. As to baseball, I believe that we will give Honolulu fans the best in the business. Stanford has a well balanced team this year and one that has lots of pep and will fight all the way. The week's rest aboard ship has made all the men keen to get on their uniforms and get the kinks out of their legs. They also want to get into the surf at Waikiki. That's something that we all remember with a lot of pleasure."

The Stanford men are quartered at Huxtable Villa.

Under the chaperonage of Graduate



Tom Workman, Captain and 1st Base.

Manager Wilcox are the following players:

R. C. Maple, A. S. Hayes, Don Day, N. W. Wickersham, R. F. Dowling, A. C. Hoever, R. L. Stevens, B. N. O'Neil, J. A. Landers, W. F. Noonan, T. E. Workman, L. F. Dent and W. J. Stanford.



Dent, Stanford's Crack Catcher, at bat.

## "JERRY" TRAVERS, GOLF CHAMPION, IN ROMANCE OF LINKS

[By Latest Mail]

NEW YORK, N. Y.—A romance of the golf links is found in the announcement of the engagement of Miss Doris Tiffany, daughter of Mrs. Walton Cuyler Tiffany of Newburg, New York, to Jerome Dunstan Travers, golfer of international fame, who has won the amateur championship of the United States four times.

The romance is intimately connected with the ancient and honorable game. Miss Tiffany is a sister of Gilman P. Tiffany, the leading golfer of the Hudson River Association, who plays at Powelton, and one of the closest friends Mr. Travers has. Another brother is Humphrey Tiffany, also a golfer. Miss Tiffany was brought up in the game by her brothers and by Mr. Travers and has learned a lot about it under their expert teaching. They have played many twosomes, threesomes and foursomes over the Powelton course, to which all the Tiffanys belong, and it was quite natural that a romance should spring up between Mr. Travers and Miss Tiffany. Mr. Travers is a son of Mr. and Mrs. Vincent P. Travers of Upper Montclair, N. J., where his home club is located. He first won the amateur golf championship in 1907 at Cleveland, and the following year he retained his title at Garden City, defeating Max H. Blair. At Wheaton, Ill., in 1912 he won the championship for the third time after a sensational final with Charles Evans, Jr. As in 1908 he again successfully defended his title the following year at Garden City, defeating John G. Anderson. Among the players he defeated in this tournament was Francis Outmet, who got his revenge last September, when he took the title away from Mr. Travers at the Ekwanok Country Club of Manchester, Vt.

Mr. Travers also held the metropolitan title in 1906, 1907, 1911, 1912 and 1913, and several times won the New Jersey championship. Mr. Outmet is the only player who is rated equal with Mr. Travers on the United States Golf Association handicap list.

A friend of Nat Goodwin's was staying with the actor at his home in California, in the hope of obtaining relief from chronic dyspepsia. One day he was taking a walk along the beach with his host. "I have derived relief from drinking a glass of salt water from the tide," said the invalid solemnly. "Do you think I might take a second?" Goodwin reflected deeply. "Well," he said with equal seriousness, "I don't think a second would be missed."

## PUNUENE BOWLERS WIN FROM WAILUKU BY NARROW MARGIN

[Special Star-Bulletin Correspondence]

WAILUKU, May 24.—In the contest between the bowlers of the Punuene club and the Alexander House gymnasium, Punuene won for the second time by a total score of 21 pins. High score was taken by Caillingsworth at 200, and high average by L. B. Kaumehelewa. New pins were on the Punuene alley.

The score:  
Wailuku Gymnasium.  
B. Kaumehelewa 134 140 121-395  
Geo. N. Hansen 134 131 140-405  
Wm. N. Weight 142 119 163-424  
W. Chillingworth 166 200 141-507  
L. B. Kaumehelewa 181 164 168-513

Totals.....757 754 733 2244  
Punuene Athletic Club.  
J. B. Thompson 151 173 121-445  
J. H. Nelson 169 169 145-483  
Geo. Murray 119 145 147-411  
A. McLaren 136 144 184-464  
A. G. Paschoal 132 148 182-462

Totals.....707 779 779 2265  
P. A. C. Won 2, Lost 0, Tied 1  
Wailuku Won 0, Lost 2, Tied 1

Victor Murdock says that one night in Fort Scott, after a political meeting, two men who had been in the audience went into a violent discussion about the topic of the speech of the evening. A crowd lingered to hear the disputants out. One was named Flynn and the other Dobbins. They were evidently strangers to each other. Finally Flynn lost his head and said: "You're wrong, I tell you, you're wrong. You're crazy." "I am not," said Dobbins hotly. "I know what I am talking about." "No, you don't," shouted Flynn. "You're crazy, I tell you, you're crazy!" "I am not," cried Dobbins, "and I can prove it." Flynn stopped short in surprise and asked, "How?" Dobbins slowly drew a fat wad of papers from his inside pocket and said, slowly and convincingly, "Well, here are my discharge papers from the asylum."—Kansas City Star.

Man's inhumanity to man has put thousands of lawyers on easy street.

"I Don't Feel Good"  
That is what a lot of people tell us. Usually their bowels only need cleansing.

**Reckitt Orderlies**  
will do the trick and make you feel fine. We know this positively. Take one tonight. Sold only by us.

Benson, Smith & Co., Ltd.

## RAGTIME TOURNAMENT NEARING CLOSE; ENDURANCE NEXT

The Y. M. C. A. ragtime bowling tournament is drawing to a close and the last matches will be rolled next Monday evening. J. C. Chamberlain and Alexander continue to hold the lead with 1289. Chamberlain and Rasmussen are still in second place, their total being 1261.

A. E. Chamberlain and O. P. Soares went into third place last week when they bowled 1239. Gear and Goebig are the other pair inside the prize limits to date.

Capt. Stayton and J. J. Alexander did the best work in yesterday's matches, rolling up a total of 1145. Young and Treptow were second with 1140. Many good bowlers have not yet rolled and there should be some excitement during the remainder of the ragtime tourney.

On Tuesday, June 1, the endurance contest will open. Each bowler can roll ten successive games for total pinfall. The tournament closes June 10, and every man who enters will have three chances to make a high ten-game pinfall.

The man making the best total for ten consecutive games will take the loving cup offered by the Y. M. C. A. to the winner of the endurance contest. The second man will receive a Y. M. C. A. medal. A small entrance fee of 10 cents will be charged for each ten-game match rolled.

The ragtime scores to date are as follows:

J. C. Chamberlain and Alexander	1289
J. C. Chamberlain and Rasmussen	1261
Soares and A. E. Chamberlain	1239
Gear and Goebig	1231
Scott and Mills	1176
J. C. Chamberlain and Tulloch	1168
Mills and Goebig	1168
Lawson and Treptow	1162
Alexander and Goebig	1149
Soares and Alexander	1146
Stayton and Alexander	1145
J. C. Chamberlain and Goebig	1142
Bell and Scott	1140
Young and Treptow	1140
Stayton and Goebig	1120
Treptow and Goebig	1118
J. C. Chamberlain and Canario	1116
Stayton and Scott	1106
Scott and Jackson	1105
Alexander and Scott	1102
Bell and Canario	1101

## EXPOSITION FOOTBALL MEN HAVE RESIGNED

[By Latest Mail]

SAN FRANCISCO, Cal.—Evidently dissatisfied with existing conditions, W. P. Fuller, Jr., chairman of the P. E. E. rugby and American football committee, has handed his resignation to Chairman W. F. Humphrey of the general athletic committee. Fuller states that a lack of action from the exposition upon proposals made by his committee was the cause of his resignation.

At a meeting of the football committee Peter Skov, secretary of the body, handed his resignation to Chairman Fuller. The paper was immediately accepted. It developed, after a canvass of the committee, that nobody was willing to take over the work that had been handled by Skov. Just what action the remaining members of the committee will take is difficult to predict, but it is understood that the men will follow the action of their chairman and secretary. The complete personnel of the committee is as follows: W. P. Fuller, chairman; George Cadwalader, vice-chairman; R. W. Wilcox, J. A. Stroud, Jr., S. Milton Haley, Harry A. McKenzie, W. Travis, Benjamin H. Dibble, William Umack, C. N. Black and Charles Fickert.

As originally planned, the football committee was to handle all American and rugby events finding a place upon the exposition sport program. Very recently the body had issued invitations to a number of the eastern colleges to send teams to the Pacific coast in the fall of the present year to stage exhibition American football on the exposition grounds. The committee had almost definitely decided upon a great match game between the Carlisle Indians and Washington and Jefferson college—two of the foremost teams playing the "old code" game on the Atlantic seaboard.

In addition to the American football program, the committee had planned to stage the Stanford-California rugby game on the exposition grounds. In fact negotiations to this end had been practically completed, until the recent intercollegiate agreement discussion between California's leading colleges. An attraction of this kind was conceded to be an event of major importance and was expected to draw a record crowd to the exposition grounds. As things now stand, the committee's program is quite problematical.

The arithmetic lesson that day had been hard and trying and now, at the closing hour, Tommy stood before the

## DE PAUW ALMOST FOUND NUMBER OF TRAVELERS

By ALFRED YAP.

(Special Star-Bulletin Correspondence)  
CINCINNATI, Ohio, May 12.—It was only after a hard fight that we won the game from the first De Pauw nine. Right off in the first inning they managed to put a run across the plate, while we didn't start ours until the third. But we made two tallies and this put us one run ahead of them. As they couldn't touch Bo's offerings after the first inning, naturally you don't expect them to score any more runs and so they were scoreless for the last eight innings. We added another tally to our score in the seventh inning through a couple of successive errors.

The De Pauw students are very loyal to their team and cheers and yells from them could be heard almost continuously. They also cheered for us whenever we made a good play and their constant teasing of some of our players was very amusing. So throughout the game there was shown the most friendly feeling between the two teams, though the match was a real hot one.

The following is the score:

Chinese:	Hits 1 1 2 0 1 0 1 0 0 7
Runs	0 0 2 0 0 0 1 0 0 3
De Pauw:	Hits 1 0 0 0 0 0 0 0 0 1
Runs	1 0 0 0 0 0 0 0 0 1

Batteries—For Chinese, Bo and Mark. De Pauw University, Sisson and Morrow.

## YESTERDAY'S SCORES IN THE BIG LEAGUES

NATIONAL LEAGUE.  
At Boston—Chicago 9, Boston 1.  
No other National League games; rain.

AMERICAN LEAGUE.  
At Detroit—Detroit 4, Washington 0.  
At Cleveland—Philadelphia 5, Cleveland 4.  
At Chicago—Chicago 5, New York 4.  
At St. Louis—St. Louis 4, Boston 3.

## HOW THEY STAND

NATIONAL LEAGUE.	W.	L.	Pct.
Philadelphia	17	11	.608
Chicago	13	14	.563
Brooklyn	15	14	.517
St. Louis	16	16	.500
Pittsburg	15	15	.500
Boston	14	16	.467
Cincinnati	12	15	.444
New York	10	16	.385

AMERICAN LEAGUE.	W.	L.	Pct.
Chicago	23	12	.657
Detroit	21	12	.636
New York	17	13	.567
Boston	13	14	.481
St. Louis	15	15	.500
Washington	12	15	.444
Cleveland	12	19	.385
Philadelphia	11	21	.344

teacher, waiting to hear the results. "Your last problem is wrong," was the verdict. "You will have to stay after school and do it again." Tommy looked at the clock. "Tell me, please, how much I am out?" he asked. "Your answer is 2 cents short," Tommy's hand dived into the pocket where his most treasured possessions were stored. Swiftly he separated two pennies from a bunch of shoestrings, a penknife and some marbles and pieces of chalk. "I'm in a hurry, please," he said; "if you don't mind, I'll pay the difference."

**OPEN A CHARGE ACCOUNT AT THE MODEL CLOTHIERS FORT ST.**

**BUY IN HAWAII AND BUY IT NOW!**

**A. N. Sanford**  
OPTICIAN  
Boston Bldg., Fort St., over May & Co.

We arrange all kinds of trips—everywhere—in every detail. Also luaus and hulas.  
**PARADISE TOURS CO.**  
Hotel and Union Sta.

Put Your Poultry Problems up to the  
**CALIFORNIA FEED CO.**  
Alakea, corner Queen  
They will tell you the trouble

For the Latest Style Hats for Ladies and Gentlemen Come and See Us.  
**K. UYEDA,**  
1028 Nuuanu Street

**HEYWOOD SHOES**  
\$5.00 and \$6.00  
at the  
**MANUFACTURERS' SHOE STORE**

**DOANE**  
Motor Trucks  
**E. W. ELLIS,** sole agent, 16  
Panthelon Building. Phone 3082

**JAS. NOTT, Jr.**  
Plumber and Sheet Metal Worker  
Sachs Block, Beretania, nr. Fort  
Phone 2566

**SEE COYNE**  
FOR FURNITURE  
Young Building

**Sachs for Dry Goods**

**Osteopathy**  
**DR. SCHURMANN,**  
Beretania and Union Streets  
Phone 1733

**WIRELESS**  
TO THE OTHER ISLANDS

**MUTUAL TELEPHONE CO. LTD**  
**PUGET SOUND FISH**  
JUST ARRIVED.  
Metropolitan Meat Market  
Phone 3445

**PACIFIC ENGINEERING COMPANY, LTD.**  
Consulting, Designing and Constructing Engineers.  
Bridges, Buildings, Concrete Structures, Steel Structures, Sanitary Systems, Reports and Estimates on Projects. Phone 1045.

**HAWAIIAN PICTURES, STATIONERY, PICTURE FRAMING, OFFICE SUPPLIES**  
**YE ARTS AND CRAFTS SHOP**  
1122 Fort Street

Grace was specially charming and attentive to her father on his arrival home from business. No more devoted, obedient daughter than she on this particular evening. "Daddy," she said softly when, dinner over, her parent lounged in his favorite chair, "did Cyril come to your office today?" "He did," said papa, quietly, knocking the ash off his cigar. "What—what did he want, daddy?" "Well, my dear, I've been waiting till I came home to see if you could tell me. As far as I could gather, he wanted to marry me; said that we had always loved each other, and that you could afford to keep him in the style to which he has been accustomed, and much more that I can't remember. So I told him to go home, get calm and type it out and post it to me."—Pittsburg Chronicle.

A man without ambition is like a pan of dough without any yeast to raise it.  
An official decree announced in London prohibits the entry into Great Britain of Belgian bank notes.  
**BISURATED MAGNESIA**  
For sour acid stomachs, gas and fermentation of food. A teaspoonful in a fourth of a glass of hot water usually gives INSTANT RELIEF. Sold by all druggists in either powder or tablet form at 50 cents per bottle.

**Rubber Stamps**  
DATERS,  
AUTOGRAPHERS,  
AND SPECIAL  
STAMPS FOR  
ANY PURPOSE.

**Hawaiian News Co. Limited**  
In the Young Bldg.

**COME AND SEE THE NEW HABERDASHERY AT THE IDEAL CLOTHING COMPANY**

The Honolulu Iron Works Company solicit correspondence and will gladly furnish estimates relative to the modern equipment of Mills and Factories.

**MILLINERY**  
HONOLULU HAT CO.,  
Hotel St., nr. Bethel St.

New Ear Drops  
**CRESCENT JEWELRY CO.**  
Conkling's Self-Filling Fountain Pens  
1130 Fort St., nr. Pauahi

**LAUNDRY**  
Messenger Boy  
Phone 3461

**Silva's Toggery Limited**  
"THE STORE FOR GOOD CLOTHES"  
Elks' Building. King Street

**Canton Dry Goods Company**  
Hotel St., near Bethel St.

**Y. TAKAKUWA & CO., Limited.**  
"NAMCO" CRABS packed in Sanitary Cans, wood lined. Nuuanu St. near King St.

**Collegian Clothes**  
Sold Only At  
**The Clarion**

**Extra Large Chiffoniers**  
BAILEY'S FURNITURE STORE  
Alakea St., near King

**Sprinklers**  
LEWERS & COOKE, LTD.

**King St. Auto Stand**  
LATEST CARS. PHONE 4700  
Sam McMillan Frank Peters  
Antone Rodrigues Frank Baker  
M. F. Costa Tony Cavaco

NOTHING COUNTS LIKE SERVICE—WE GIVE IT.  
**KERSHNER VULCANIZING CO. LTD.**  
1177 Alakea St. Phone 2434  
Fisk and Miller Tires.

**Ukuleles \$5 and \$6**  
Honolulu Picture Framing Co.,  
Bethel, near Hotel.

**Laces and Embroideries**  
HAWAII & SOUTH SEAS CURIC CO.  
Young Building

STAR-BULLETIN GIVES YOU TODAY'S NEWS TODAY