

Original Research Articles

Analysis of morphological differences in five large yellow croaker (*Larimichthys crocea*) populations

Yu-Qing Zhang^{1,2}, Hua-Yang Guo^{1,3}, Bao-Suo Liu^{1,3,4}, Nan Zhang^{1,3,4}, Ke-Cheng Zhu^{1,3,4}, Dian-chang Zhang^{1,3,4a}

¹ Key Laboratory of South China Sea Fishery Resources Exploitation and Utilization, Ministry of Agriculture and Rural Affairs; South China Sea Fisheries Research Institute, Chinese Academy of Fishery Sciences, 510300 Guangzhou, Guangdong Province, PR China, ² College of Fisheries, Dalian Ocean University, Dalian 116023, China, ³ Sanya Tropical Fisheries Research Institute, Sanya 572018, China, ⁴ Guangdong Provincial Engineer Technology Research Center of Marine Biological Seed Industry, Guangzhou, Guangdong Province, PR China

Keywords: *Larimichthys crocea*, Morphological difference, Multivariate analysis<https://doi.org/10.46989/001c.91049>

Israeli Journal of Aquaculture - Bamidgheh

Vol. 76, Issue 1, 2024

To explore the morphological and phenotypic characteristics and differences among different populations of *Larimichthys crocea*, traditional morphological measurements were carried out on three wild populations from Zhoushan, Xiamen and Zhanjiang and two farmed populations from Ningde and Wenzhou. Seven morphological parameters of five *L. crocea* populations were compared and analyzed. The results of one-way ANOVA showed significant differences in trunk and caudal stalk among the five populations. The contribution rates of the first five principal components to the total difference among different populations were 29.984%, 18.462%, 17.234%, 12.167%, and 9.904%, respectively, and the cumulative contribution rates were 87.751%. Trunk can be used to distinguish different geographic populations best. The cluster analysis results showed that the distance between wild populations was the closest, while the distance between farmed populations was far. The step discriminant method established the classification discriminant function of 5 populations. The discriminant accuracy P1 was 78.3%-92.7%, the discriminant accuracy P2 was 76.4%-96.5%, and the comprehensive recognition rate was 99.3%. The discriminant accuracy of this method was high, and it could provide a reference for the differentiation of different populations of *L. crocea*. This study provided basic morphological data for identifying a large yellow croaker population, protecting germplasm resources, and breeding improved varieties.

1. INTRODUCTION

The large yellow croaker (*Larimichthys crocea*) is one of the most important economic marine fish species in China.¹ In the 1960s, large yellow croakers were abundant and one of the country's four most important catches. The 1970s saw a rapid decline in the huge yellow croaker fishery due to stick-knocking fishing and extensive human exploitation. The government started promoting the growth of a significant yellow croaker sector in the 1980s. The distribution of the farmed population has far outstripped that of the wild population due to the expansion of the yellow croaker's culture scale and the increased exchange of fry between different geographic areas, and releasing activities have improved the yellow croaker's resource base, but have also caused the problems of mixed populations and low genetic diversity.^{2,3}

The population structure of the large yellow croaker has been a hot research topic, and there is still ongoing debate regarding its classification. Different studies using various methods and data analysis may result in different conclusions. In the past, the large yellow croaker was initially categorized into the Daiqu stock (DQ, distributed in the East China Sea), Min-Yuedong stock (MYD, distributed in the eastern South China Sea and Taiwan Strait), and Naozhou stock (NZ, distributed in the west South China Sea) based on morphological and ecological characteristics.^{4,5} However, more recent research has thrown new perspectives on the population structure of the large yellow croaker. For instance, some scholars have proposed that the large yellow croaker's entire South China Sea population belongs to a single group based on morphological analysis.⁶

Furthermore, studies using molecular markers such as SSR and mtDNA have not found significant genetic dif-

a Corresponding author: Dr. Dian-Chang Zhang
231 Xingang Road West, Haizhu District, Guangzhou, 510300, PR China.
E-mail address: zhangdch@scsfri.ac.cn
Tel.: +86 02089108316; fax: +86 02089022702

ferences among different geographical populations of the large yellow croaker.^{7,8} Understanding the population structure of the large yellow croaker is still a matter of contention, primarily due to the use of different analytical approaches and the limitations of the various research methods. While some studies suggest a lack of genetic differentiation and support the idea of a single population in the South China Sea, others have observed certain genetic variations at regional scales, supporting the existence of geographical groups.⁹ Environmental influences, migration patterns, and population history may contribute to these genetic differences.¹⁰ In conclusion, the classification of the population structure of the large yellow croaker remains a subject of ongoing debate, and further research is needed to resolve this issue. Understanding the population structure has significant implications for scientific research and conservation efforts, guiding the conservation and sustainable utilization of the large yellow croaker.

Ecological adaptations shaped by natural selection may play an important role in generating new biodiversity, with different habitat environments causing populations to evolve in different patterns.¹¹ Morphological traits are the product of the interaction between genetic and environmental factors and are essential for taxonomy.¹² Classification of aquatic animals based on morphological features is the most basic and primitive method, and its external manifestations are mainly morphological proportions and external features.¹³ The multivariate analysis method has many applications in analyzing and studying morphological differences in fishes.¹⁴ Some researchers proposed using discriminant analysis to examine 22 morphological characteristics of adult male blue crabs from three Southeast Asian countries and categorized them into different populations.¹⁵ Yang et al. explored whether morphological differences between these geographic populations reached the level of subspecies or species by examining differences in 10 external morphological traits in four *Garra orientalis* (*Cyprinidae*) populations.¹⁶ He et al. investigated the variation in male and female morphology among wild populations by discriminant analysis.¹⁷

In this study, the morphological differences of three wild large yellow croaker populations and four farmed large yellow croaker populations in coastal China were comprehensively compared through four multivariate analysis methods, including one-way analysis of variance, cluster analysis, principal component analysis, and discriminant analysis. The genetic diversity among different populations of large yellow croaker in China was studied on the morphological level to provide a theoretical basis and reference for identifying geographical populations, protecting germplasm resources, and breeding improved varieties.

2. MATERIALS AND METHODS

2.1. SAMPLE COLLECTION

300 individuals of *L. crocea* were collected from three wild populations (ZJW, ZSW, and XMW) and two farmed populations (WZF and NDF). The specific sampling times, locations, and body length information are listed in [Table 1](#).

2.2. DATA MEASUREMENT

The measurement methods of morphological data mainly come from the literature. The shape indicators of each morphological measurement include overall high (OL), body length (BL), head length (HL), body high (BH), snout length (SL), eye diameter (ED), caudal peduncle length (CPL), caudal peduncle height (CPH), were measured by vernier caliper, and the data accuracy was 0.1mm. Weight was measured with an electronic balance to an accuracy of 0.1g. Seven standardized character indexes were counted, including OL/BL, BL/BH, BL/HL, BL/CPL, HL/SL, HL/ED, CPL/CPH. A schematic diagram of the morphological measurements is shown in [Figure 1](#).

2.3. STATISTICAL ANALYSIS

Microsoft Excel software was used to process the data to eliminate the influence of fish body size on character parameters during data analysis and improve data accuracy. The data of these seven proportional traits were imported into SPSS 24.0 software for multivariate statistical analysis, including one-way analysis of variance (One-way ANOVA), principal component analysis, cluster analysis, and discriminant analysis.

One-way ANOVA was performed using SPSS 24.0. Multivariate comparison was performed by the Tukey s-b(K) method in one-way ANOVA, and a similar subset was divided, 0.05 was selected as the significance level.¹⁸

In SPSS software, "analysis-dimension reduction-factor" was used to conduct principal component analysis, and extract seven principal components and their eigenvalues, the contribution rate of each principal component, and the cumulative contribution rate according to the order of size. Scatter plots were drawn based on the scores of the first and second principal components to compare the variability and similarity of the five large yellow croaker populations and to determine their morphological differentiation.¹⁹

Using the mean value of each parameter correction, SPSS 19.0 software was used to perform cluster analysis by using the shortest distance system clustering method of Euclidean distance. The species clustering tree was constructed to compare the distance between populations.²⁰

$$P_1 = O/M$$

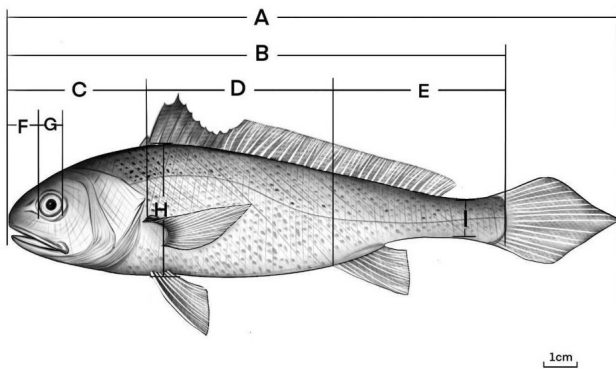
$$P_2 = O/N$$

$$P = \sum_{i=1}^k A_i / \sum_{i=1}^k B_i$$

In formula: P_1 and P_2 are the discriminant accuracy rate (%), P is the comprehensive discriminant rate (%), O is the number of correctly discriminated large yellow croaker (tail), M is the number of measured large yellow croaker (tail), N is the number of large yellow croaker (tail); A_i is the number of large yellow croaker (tail) correctly judged by the i group, B_i is the number of large yellow croaker (tail) actually judged by the i group, and k is the number of groups (number).

Table 1. Information on sample collection for five populations of large yellow croaker.

Population	Sampling location	Sampling time	Number of samples	Size (cm)		Longitude	Latitude
				Range	Average		
ZJW	Zhanjiang City, Guangdong Province	Apr. 2023	60	21.50~27.38	23.93	110°35' E	21°27' N
ZSW	Zhoushan City, Zhejiang Province	Apr. 2023	60	17.90~23.02	20.24	121°30' E	29°32' N
XMW	Xiamen City, Fujian Province	May 2023	60	16.85~28.81	22.28	118°04' E	24°26' N
WZF	Wenzhou City, Zhejiang Province	Jun. 2023	60	14.76~20.28	17.05	119°37' E	27°03' N
NDF	Ningde City, Fujian Province	Jun. 2023	60	16.44~20.65	23.26	119°03' E	26°03' N

**Figure 1. Schematic diagram of morphology measurement of large yellow croaker.**

A: Overall high (OL); B: Body length (BL); C: Head length (HL); D: Troso length (TL); E: Length of caudal peduncle (CPL); F: Snout length (SL); G: Eye diameter (ED); H: Body high (BH); I: Depth of caudal high (CPH)

3. RESULTS

3.1. ONE-WAY ANALYSIS OF VARIANCE

Seven morphological characteristics of five large yellow croaker populations in coastal China were analyzed by one-way ANOVA, and the proportional traits of each population were compared (Table 2). The results of variance analysis showed that there were significant differences in BL/BH and CPL/CPH ratio traits among the five populations. Among them, the three wild populations showed significant differences in OL/BL, BL/BH and CPL/CPH, while the two farmed populations showed significant differences in OL/BL, BL/BH, BL/HL, HL/SL, HL/ED and CPL/CPH, indicating that the morphological differences between these two populations were significant.

3.2. PRINCIPAL COMPONENT ANALYSIS

In SPSS, through principal component analysis of seven proportional traits of large yellow croaker, seven principal components were extracted, and the cumulative contribution rate was 100%. The characteristic values, contribution rates, and cumulative contribution rates of each principal component are listed in Table 3. After sorting by the contribution rate of each principal component, the contribution rates of the first five principal components were 29.984%, 18.462%, 17.234%, 12.167%, and 9.904%, respectively. The contribution rates of principal components 4 and 5 were relatively small, indicating that the two principal components explain the morphological differences between different populations at low rates. The cumulative contribution rate of the first five principal components was 87.751%, which meets the requirement that the cumulative contribution rate is greater than or equal to 85%, indicating that the first five principal components can better explain 87.751% of the morphological differences between different populations. The first principal component is mainly explains the three proportional traits of OL/BL, BL/HL, CPL/CPH; The second principal component mainly explains the two proportional traits of BL/CPL, CPL/CPH; The third principal component mainly explains the three proportional traits of OL/BL, BL/BH, HL/SL. The first three principal components mainly reflected the body size, tail, and head morphological characteristics.

The principal component analysis diagram was drawn with the principal components 1 and 2 of five different geographic populations of large yellow croaker (Fig.2). The results can be intuitively seen from the principal component diagram that there are different degrees of overlap among the five populations. The boundary between populations was not obvious, indicating certain similarities and differences in the morphology of different populations. NDF and WZF overlap partly, and there is almost no overlap with

Table 2. Result of one-way analysis of variance on character parameters of five populations of large yellow croaker.

Character Parameters	Population				
	XMW	ZJW	ZSW	WZF	NDF
OL/BL	1.17±0.022 ^c	1.177±0.011 ^b	1.19±0.021 ^a	1.178±0.016 ^b	1.155±0.018 ^d
BL/BH	3.473±0.141 ^d	3.705±0.177 ^b	3.974±0.258 ^a	3.376±0.136 ^e	3.591±0.176 ^c
BL/HL	3.517±0.218 ^c	3.502±0.124 ^c	3.506±0.186 ^c	3.618±0.209 ^b	3.815±0.311 ^a
BL/CPL	2.932±0.245 ^c	2.695±0.11 ^d	2.959±0.166 ^{bc}	3.001±0.121 ^{ab}	3.039±0.12 ^a
HL/SL	5.683±1.023 ^{bc}	5.87±0.535 ^b	5.37±0.485 ^c	7.06±1.293 ^a	5.933±0.954 ^b
HL/ED	4.631±0.353 ^b	4.476±0.314 ^c	4.398±0.306 ^{cd}	4.335±0.258 ^d	5.11±0.445 ^a
CPL/CPH	4.346±0.511 ^d	4.677±0.303 ^c	4.161±0.347 ^e	4.864±0.348 ^b	5.146±0.44 ^a

Notes: the data were presented by the mean ± SE, and the different letters meant significant difference (P<0.05).

Table 3. Factor loading values and the contribution rate of the principal components of five populations of large yellow croaker.

Character	Load value						
	PC1	PC2	PC3	PC4	PC5	PC6	PC7
OL/BL	-0.400	0.212	-0.418	0.493	0.255	0.559	0.018
BL/BH	-0.338	-0.074	0.526	0.590	-0.245	-0.240	0.371
BL/HL	0.497	-0.112	0.031	0.401	-0.553	0.333	-0.402
BL/CPL	0.047	-0.773	-0.256	-0.098	-0.101	0.251	0.502
HL/SL	0.369	0.159	-0.579	0.358	0.003	-0.554	0.262
HL/ED	0.373	-0.312	0.292	0.315	0.746	-0.010	-0.150
CPL/CPH	0.449	0.466	0.249	-0.107	0.043	0.386	0.598
Eigenvalues	1.449	1.137	1.098	0.923	0.833	0.679	0.630
Contribution (%)	29.984	18.462	17.235	12.167	9.904	6.581	5.668
Cumulative contribution rate (%)	29.984	48.446	65.680	77.848	87.751	94.332	100

other wild populations. Farmed populations and wild populations can be well differentiated.

3.3. CLUSTER ANALYSIS

Cluster analysis can intuitively show the distance of morphological relationship between populations. In this study, seven proportional traits of five large yellow croaker populations were cluster analyzed, and Euclidean distances between populations were obtained (Table 4).

A tree diagram of the clustering relationship was drawn based on Euclidean distance (Fig. 3). As can be seen from Figure 3, the distance between ZJW and XMW is the closest, and they are clustered into one group at first, and then clustered separately with the three populations. Among which the distance between the three wild populations is the closest, while the farmed populations were further apart.

3.4. DISCRIMINANT ANALYSIS

The discriminant analysis of five large yellow croaker populations was carried out based on seven morphological proportional characters, and the step-to-step discriminant method was adopted (Table 5 and Table 6).

The results showed that the seven proportional characters had significant significance for discriminant classification. Therefore, all the seven proportional traits entered the discriminant function, and the discriminant classification function of large yellow croaker population was constructed. According to these functions, the original samples are distinguished and grouped. The discriminant function is expressed as:

$$Y_{XMW}=4246.716X_1+121.907X_2+141.621X_3+396.002X_4-7.499X_5+37.786X_6+145.117X_7-3908.421$$

$$Y_{ZJW}=4268.598X_1+129.829X_2+140.463X_3+384.413X_4-6.986X_5+35.760X_6+143.591X_7-3912.708$$

$$Y_{ZSW}=4327.993X_1+138.588X_2+142.871X_3+392.895X_4-7.482X_5+34.805X_6+142.434X_7-4036.913$$

$$Y_{WZF}=4278.361X_1+119.619X_2+141.393X_3+415.092X_4-5.242X_5+34.344X_6+153.867X_7-4032.883$$

$$Y_{NDF}=4237.545X_1+122.385X_2+147.931X_3+423.013X_4-7.743X_5+42.790X_6+157.901X_7-4086.854$$

Where X_1 = OL/BL, X_2 = BL/BH, X_3 = BL/HL, X_4 = BL/CPL, X_5 = HL/SL, X_6 = HL/ED, X_7 = CPL/CPH.

All the data collected from five large yellow croaker populations were put into the equation to test the discrimination accuracy, and the results showed that the discrimination accuracy P1 was 78.3%-92.7%, the discrimination

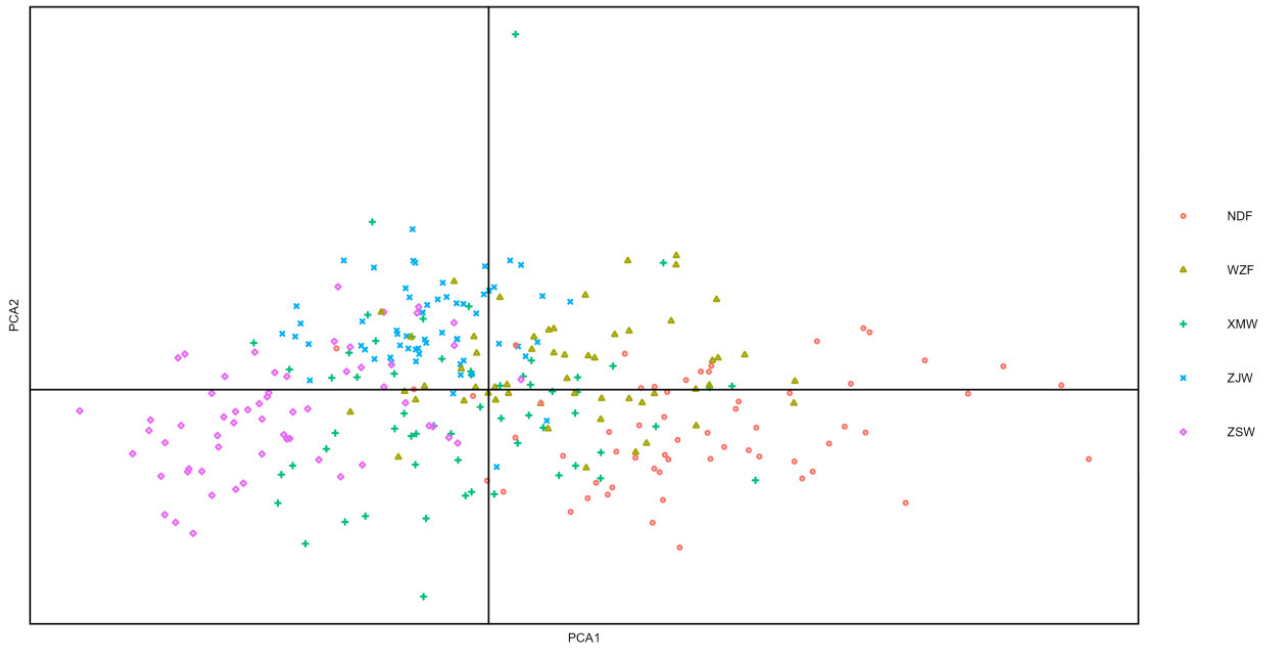


Figure 2. The large yellow croaker populations’ first and second principal component scatter diagram.

Table 4. Euclidean distance between five populations of large yellow croaker.

Population	XMW	ZJW	ZSW	WZF	NDF
XMW		0.528	0.662	1.509	1.023
ZJW	0.528		0.815	1.299	0.925
ZSW	0.662	0.815		1.93	1.43
WZF	1.509	1.299	1.93		1.427
NDF	1.023	0.925	1.43	1.427	

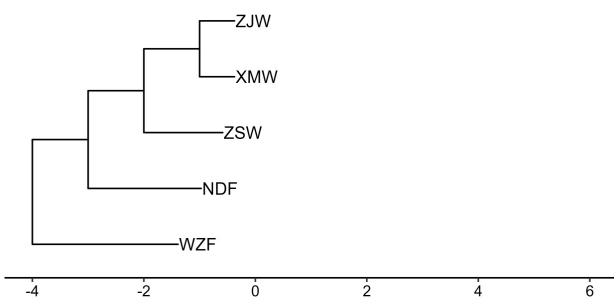


Figure 3. Dendrogram of cluster analysis of five populations of large yellow croaker.

accuracy P2 was 76.4%-96.5%, and the comprehensive discrimination rate was 99.3%. The discriminant accuracy P1 and P2 of five large yellow croaker populations are above 75%. The discrimination accuracy rate of the ZSW population is the highest, indicating that this population has obvious characteristics and is easy to discriminate. After discriminant analysis, the number of tails classified into each population was as follows: XMW had 57 tails, accounting for 19.3% of the total; ZJW had 72 tails, accounting for

24.4% of the total; ZSW had 52 tails, accounting for 17.6% of the total; WZF had 57 tails, accounting for 19.3% of the total; NDF had 57 tails, accounting for 19.3% of the total.

4. DISCUSSION

The partitioning of the large yellow croaker population in offshore China has long been a source of debate.²¹ From north to south, the traditional large yellow croaker geographic populations are the stocks from Daiqu, Min-Yue-dong, and Naozhou.^{4,5,22} Later research revealed that the large yellow croaker living in the Yellow and East China Sea is a member of the same population.^{6,9,23} Our findings do not line up with the conventional division. Before they clustered with ZSW in this study’s cluster analysis, the wild populations XMW and ZJW were more closely connected. In the principal component analysis diagram, the overlap between the XMW and ZJW populations is also wider than between the ZSW populations. According to recent research findings, Chen assessed wild large yellow croaker populations in the Zhoushan, Fuding, and Zhanjiang regions using SNP markers and discovered that the South China Sea population appeared to have more of an infiltration

Table 5. Coefficients and constants of Fisher discriminant functions for five populations of large yellow croaker.

Variate	Character	XMW	ZJW	ZSW	WZF	NDF
x ₁	OL/BL	4246.716	4268.598	4327.993	4278.361	4237.545
x ₂	BL/BH	121.907	129.829	138.588	119.619	122.385
x ₃	BL/HL	141.621	140.463	142.871	141.393	147.931
x ₄	BL/CPL	396.002	384.413	392.895	415.092	423.013
x ₅	HL/SL	-7.499	-6.986	-7.482	-5.242	-7.743
x ₆	HL/ED	37.786	35.760	34.805	34.344	42.790
x ₇	CPL/CPH	145.117	143.591	142.434	153.867	157.901
Constant		-3908.421	-3912.708	-4036.913	-4032.883	-4086.854

Table 6. Results of discriminant analysis of five populations of large yellow croaker.

Population	Discriminant accuracy					Comprehensive discriminant rate (%)	
	XMW	ZJW	ZSW	WZF	NDF	P1(%)	P2(%)
XMW	47	9	0	4	0	78.3	82.5
ZJW	2	55	2	1	0	91.7	76.4
ZSW	3	7	50	0	0	83.3	96.2
WZF	2	0	0	51	2	92.7	89.5
NDF	3	1	0	1	55	91.7	96.5
Total	57	72	52	57	57		
Percentage (%)	19.3	24.4	17.6	19.3	19.3		

into the Ming-Yuedong Stock than the Daiqu Stock. Additionally, they hypothesized that the population border had moved northward from the Pearl River Estuary and that the Naozhou Stock and Min-Yuedong Stock geographic populations may have undergone habitat alterations due to climate change.²⁴

The foundation of the comparative difference analysis method is a one-way analysis of variance, which compares three or more categorical groups to see if there are differences between them.¹⁴ This study showed the three wild populations' OL/BL, BL/BH, and CPH/CPL ratios were significant. The traits of these populations were primarily reflected in their body size and caudal stalk. In contrast, the characteristics of the farmed population were mainly reflected in the morphological characteristics of the head, trunk, and caudal stalk. There were significant differences in trunk and caudal stalk among the five populations. The principal component analysis and one-way variance analysis results are consistent, and the characteristics of the first three principal components are mostly reflected in the trunk and caudal stalk. Additionally, Winans et al. effectively exploited the tail frame structure in various basins as early as 1984 to distinguish between the two ages of western salmon, suggesting that the fishtail may be a rather quick component of variation.²⁵ Studies have also shown that due to the limited food caught in the Marine environment, farmed large yellow croaker is better fed with soybean feed provided by breeders, making the body of marine-caught large yellow croaker more slender than farmed

large yellow croaker, which also causes more phenotypic differences.^{21,26}

It can be seen from the principal component analysis diagram that there are different degrees of differences among the populations, among which XMW and ZJW populations have the highest degree of coincidence, that is, the highest morphological similarity and the least difference. From the scatter-point distribution of a single population, the span of five populations on the horizontal axis is large, indicating that there is likely to be differentiation within the population. The relatively close distribution of the ZJW population indicates that the population form is uniform, and the differences within the population are small. It is speculated that it is related to the geographical environment, which makes the individuals in this region almost unaffected by external populations. Cheng et al. research on *Coilia spp.* found that in terms of morphology, populations of different species that are geographically close together are more similar than populations of the same species that are geographically far apart.²⁷ The XMW population is the most dispersed, indicating that the differences within the population are the largest and the morphological differences are uneven. The XMW population is located at the estuary of the Jiulong River, adjacent to Zhoushan fishing ground in the East China Sea to the north, and adjacent to the South China Sea to the Pearl River Estuary and Dongnan Ao Island in Guangdong. The special geographical environment makes its morphology evolve in a special and independent direction, and the internal differences become greater.^{28,29}

The gradual judgment method establishes the judgment function, the comprehensive judgment rate is 99.3%, and the population of large yellow croakers can be distinguished by morphology. Among them, the Zhoushan population has the highest accuracy. It is speculated that the temperature in the northernmost part is low. To cope with this phenomenon, a large yellow croaker develops in the direction of rapid growth, which significantly differs in body shape.^{30,31} The accuracy of the farmed population is higher than that of the wild population, and the impact of environmental factors on fish growth and development must be addressed. Morphological variation is influenced by environment and heredity, and the living environment may exert different selection pressures on different populations.^{32,33} Franssen et al. The similarity of external morphological characteristics may be due to the insufficient choice pressure of the fish living environment, making the genetic impact more obvious.¹⁰ In this study, the results of the four analysis methods are the same. The distance between the three wild populations is closer. ZJW and XMW cluster with ZSW, NDF, and WZF, respectively. In the main component analysis, the overlap of ZJW and XMW is also high. There is a lower overlap between wild and farmed populations. However, there is no obvious boundary line between the five populations, possibly related to the lower genetic diversity of large yellow croakers.^{34,35} Compared with wild populations in the analysis of the single factor variance, the differences between the farmed populations are more significant, mainly reflected in the morphological characteristics of the head length, long trunk, tail length, and high tail handle. In summary, the reason may be that after generations of breeding, reproductive isolation, and differences in living environment, the morphology of different populations has changed, which needs further molecular analysis to prove.^{28,36} In addition, although the long-term, large-scale artificial release of farmed large yellow croaker enriched the resources of large yellow croaker, it also led to serious gene pollution and population mixing of wild large yellow croaker, resulting in lower genetic diversity among populations.^{26,34}

5. CONCLUSIONS

Morphological analysis is an intuitive and traditional method in comparing and dividing aquatic species. Based on the results of the above research, the four morphological analysis methods confirmed from different angles that there were significant differences between the five populations of large yellow croakers, and differences between

farmed and wild populations were easy to distinguish. The discriminant function obtained in this study can be used as a relatively quick method to identify different large yellow croaker populations and provide convenience for identifying large yellow croaker populations in farming. However, it should be pointed out that the population of wild large yellow croaker collected in this study is single and cannot fully represent a particular population, which has certain limitations. Therefore, to make a more comprehensive and accurate evaluation of the germplasm resources of a large yellow croaker, it is necessary to combine molecular biological means.

DECLARATION OF COMPETING INTEREST

None.

ACKNOWLEDGMENTS

We acknowledge financial support from the Central Public Interest Scientific Institution Basal Research Fund, CAFS (2020XT1002), the Seed Industry Revitalization Project of Special Fund for Rural Revitalization Strategy in Guangdong Province (2022-SPY-00-011, 2022-SJS-00-002), the Central Public-Interest Scientific Institution Basal Research Fund, South China Sea Fisheries Research Institute, CAFS (2022XK01); Thanks providing samples of large yellow croaker aquaculture populations from Miao Liang of Dongtuo Marine Aquaculture Research Institute, Dongtuo District, Wenzhou and Fang Ming of Ningde Aquatic Technology Promotion Station.

AUTHORS' CONTRIBUTION

Formal Analysis: Yu-Qing Zhang (Lead). Investigation: Yu-Qing Zhang (Lead). Software: Yu-Qing Zhang (Lead). Project administration: Hua-Yang Guo (Lead). Writing – review & editing: Hua-Yang Guo (Lead). Methodology: Bao-Suo Liu (Lead). Visualization: Bao-Suo Liu (Lead). Data curation: Nan Zhang (Lead). Validation: Nan Zhang. Conceptualization: Ke-Cheng Zhu (Lead). Supervision: Ke-Cheng Zhu (Lead). Funding acquisition: Dian-chang Zhang (Lead). Resources: Dian-chang Zhang (Lead).

Submitted: September 22, 2023 CST, Accepted: December 07, 2023 CST



REFERENCES

1. Wu C, Zhang D, Kan M, et al. The draft genome of the large yellow croaker reveals well-developed innate immunity. *Nat Commun.* 2014;5(1). [doi:10.1038/ncomms6227](https://doi.org/10.1038/ncomms6227)
2. Hu YM. The historical and present status of large yellow croaker germ plasm in East Sea. *Journal of Shaoxing University.* 2006;(01):4953.
3. Zi-fan L. The current stock of large yellow croaker (*Pseudosciaena crocea*) in the East China sea with respects of its stock decline. *Journal of Dalian Fisheries University.* Published online 2007.
4. Tian M, Xu G, Yu R, et al. Geographic variation and population of morphological characteristics of *Pseudosciaena crocea* (Richardson. *Studia Mar Sinica.* 1962;2:79-97.
5. Xu G, Tian M, Zheng W, et al. The stocks of *Pseudosciaena crocea* (Richardson. In: [C] //Proceedings of the Fourth Plenary Seminar of the Western Pacific Fisheries Research Commission. Science Press; 1963:39-46.
6. Chen J, Xu Z. Analysis of population division and geographical isolation of *Larimichthys crocea* in the East China Sea and Yellow Sea. *J Fish Sci China.* 2012;19:310-320.
7. Lin N, Su Y, Ding S, Wang J. Genetic analysis of large yellow croaker (*Pseudosciaena crocea*) stocks using polymorphic microsatellite DNA. *Fujian J Agric Sci.* 2012;27:661-666.
8. Wang L, Shi X, Su Y, Meng Z, Lin H. Loss of genetic diversity in the cultured stocks of the large yellow croaker, *Larimichthys crocea*, revealed by microsatellites. *Int J Mol Sci.* 2012;13(5):5584-5597. [doi:10.3390/ijms13055584](https://doi.org/10.3390/ijms13055584)
9. Li M, Miao L, Chen J, et al. Division of populations for *Pseudosciaena crocea* based on population ecology concept: discussion. *J Ningbo Univ (nat Sci.* 26:1-5.
10. Franssen NR, Harris J, Clark SR. Shared and unique morphological responses of stream fishes to anthropogenic habitat alteration. *Proceedings of the Royal Society B: Biological Sciences.* Published online 2013:280.
11. Whitney JL, Donahue MJ, Karl SA. Niche divergence along a fine-scale ecological gradient in sympatric color morphs of a coral reef fish. *Ecosphere.* 2018;9(1). [doi:10.1002/ecs2.2015](https://doi.org/10.1002/ecs2.2015)
12. Cadrin SX. Advances in morphometric identification of fishery stocks. *Reviews in Fish Biology and Fisheries.* 2000;10(1):91-112. [doi:10.1023/a:1008939104413](https://doi.org/10.1023/a:1008939104413)
13. Keast AJ, Webb DV. Mouth and Body Form Relative to Feeding Ecology in the Fish Fauna of a Small Lake. *Lake Opinicon, Ontario Wsq: Women's Studies Quarterly.* 1966;23:1845-1874.
14. Meng HJ, Stocker M. An Evaluation of Morphometrics and Meristics for Stock Separation of Pacific Herring (*Clupea harengus pallasii*). *Can J Fish Aquat Sci.* 1984;41(3):414-422. [doi:10.1139/f84-049](https://doi.org/10.1139/f84-049)
15. Overton JL, Macintosh DJ, Thorpe RS. Multivariate analysis of the mud crab *Scylla serrata* (Brachyura: Portunidae) from four locations in Southeast Asia. *Marine Biology.* 1997;128(1):55-62. [doi:10.1007/s002270050068](https://doi.org/10.1007/s002270050068)
16. Yang X, Zhou W, Li X, Li Q. Morphological differentiation of *Garra orientalis* (Cyprinidae) among different geographical populations. *Zoological research.* 2013;34 5:471-474.
17. He Y, Li R, Wang J, Blanchet S, Lek S. Morphological Variation Among Wild Populations of Chinese Rare Minnow (*Gobiocypris rarus*): Deciphering the Role of Evolutionary Processes. *Zoological Science.* 2013;30(6):475-483. [doi:10.2108/zsj.30.475](https://doi.org/10.2108/zsj.30.475)
18. Khan MA, Nazir A. Stock delineation of the long-whiskered catfish, *Sperata aor* (Hamilton 1822), from River Ganga by using morphometrics. *Mar Freshwater Res.* 2019;70(1):107. [doi:10.1071/mf17306](https://doi.org/10.1071/mf17306)
19. Chengjing C, Bin-lun Y, Tian-xiang G. Morphological Variation of Redlip Mullet (*Liza haematocheilus*) in Different Geographical Populations Along China Coast. Published online 2012.
20. Makeche MC, Muleya W, Nhiwatiwa T. Characterization of *Oreochromis niloticus* Strains of Lake Kariba Culture Fisheries using Morphological and Meristic Methods. Published online 2020.
21. Zhou Z, Han K, Wu Y, et al. Genome-Wide Association Study of Growth and Body-Shape-Related Traits in Large Yellow Croaker (*Larimichthys crocea*) Using ddRAD Sequencing. *Mar Biotechnol.* 2019;21(5):655-670. [doi:10.1007/s10126-019-09910-0](https://doi.org/10.1007/s10126-019-09910-0)

22. Zhang Q, Hong W, Yang S, Liu M. Studies on the geographical population division of large yellow croaker. *Mod Fish Inf*. 2011;26:3-8.
23. Wang L, Shi X, Su Y, Meng Z, Lin H. Loss of genetic diversity in the cultured stocks of the large yellow croaker, *Larimichthys crocea*, revealed by microsatellites. *IJMS*. 2012;13(5):5584-5597. doi:10.3390/ijms13055584
24. Chen B, Bai Y, Wang J, et al. Population structure and genome-wide evolutionary signatures reveal putative climate-driven habitat change and local adaptation in the large yellow croaker. *Mar Life Sci Technol*. 2023;5(2):141-154. doi:10.1007/s42995-023-00165-2
25. Winans GA. Multivariate Morphometric Variability in Pacific Salmon: Technical Demonstration. *Can J Fish Aquat Sci*. 1984;41(8):1150-1159. doi:10.1139/f84-136
26. Kon T, Pei L, Ichikawa R, et al. Whole-genome resequencing of large yellow croaker (*Larimichthys crocea*) reveals the population structure and signatures of environmental adaptation. *Sci Rep*. 2021;11(1). doi:10.1038/s41598-021-90645-1
27. Cheng QQ, Lu DR, Ma L. Morphological differences between close populations discernible by multivariate analysis: A case study of genus *Coilia* (Teleostei: Clupeiforms). *Aquat Living Resour*. 2005;18(2):187-192. doi:10.1051/alr:2005020
28. Fenollosa E, Jené L, Munné-Bosch S. Geographic patterns of seed trait variation in an invasive species: how much can close populations differ? *Oecologia*. 2021;196(3):747-761. doi:10.1007/s00442-021-04971-2
29. Chen S, Su Y, Hong W. Aquaculture of the Large Yellow Croaker. *Aquaculture in China*. Published online March 31, 2018:297-308. doi:10.1002/9781119120759.ch3_10
30. Mazur M, Klajbor K, Kielich M, et al. Intra-specific differentiation of *Juniperus phoenicea* in the western Mediterranean region revealed in morphological multivariate analysis. *Dendrobiology*. 2010;63:21-31.
31. Zegeye T, Belay G, Hanotte O. Multivariate characterization of phenotypic traits of five native cattle populations from Tigray, Northern Ethiopia. *Trop Anim Health Prod*. 2021;53(2). doi:10.1007/s11250-021-02652-z
32. Robinson BW, Wilson DS. Genetic variation and phenotypic plasticity in a trophically polymorphic population of pumpkinseed sunfish (*Lepomis gibbosus*). *Evol Ecol*. 1996;10(6):631-652. doi:10.1007/bf01237711
33. Foote CJ, Moore K, Stenberg K, Craig KJ, Wenburg JK, Wood CC. Genetic differentiation in gill raker number and length in sympatric anadromous and nonanadromous morphs of sockeye salmon, *Oncorhynchus nerka*. *Environmental Biology of Fishes*. 1999;54(3):263-274. doi:10.1023/a:1007548807233
34. Wang L, Shi X, Su Y, Meng Z, Lin H. Loss of Genetic Diversity in the Cultured Stocks of the Large Yellow Croaker, *Larimichthys crocea*, Revealed by Microsatellites. *IJMS*. 2012;13(5):5584-5597. doi:10.3390/ijms13055584
35. Zhang K, Zhou Y, Song W, Jiang L, Yan X. Genome-Wide RADseq Reveals Genetic Differentiation of Wild and Cultured Populations of Large Yellow Croaker. *Genes*. 2023;14(7):1508. doi:10.3390/genes14071508
36. Famah Sourassou N, Hanna R, Zannou I, Breeuwer JAJ, de Moraes G, Sabelis MW. Morphological, molecular and cross-breeding analysis of geographic populations of coconut-mite associated predatory mites identified as *Neoseiulus baraki*: evidence for cryptic species? *Exp Appl Acarol*. 2012;57(1):15-36. doi:10.1007/s10493-012-9534-0