

## JAPANESE CONSUL ON TALK OF WAR

VICE CONSUL MATSUBARA SAYS HE IS OUT OF THE SPHERE OF EXCITEMENT BUT THINKS SITUATION EXAGGERATED—NONE OF JAPAN'S STRATEGISTS IN OUR MIDST—BARON KIKUHAWA OPTIMISTIC—NO MILITARY ORGANIZATION HERE.

"I think this talk of war between Japan and the United States is greatly exaggerated," said Japanese Vice Consul K. Matsubara this morning. "You see that the San Francisco public school affair is entirely out of our sphere. Now, if I were a minister at Washington or connected with the consulate at San Francisco I could no doubt tell you some things, but here in Hawaii the situation has not yet immediately affected us. In Hawaii there is no question in regard to Japanese children attending the Territorial public schools, and I think it most fortunate that there is no question. On the mainland, and in Japan and here there is no doubt much talk and some excitement over the San Francisco af-

(Continued on Page Five.)

## BROWN AND IAUKEA ARE STILL KEPT IN SUSPENSE

SUPREME COURT ROOM WAS PACKED THIS MORNING BY CROWD ANXIOUS TO HEAR THE DECISION IN THE ELECTION CONTEST—CHIEF JUSTICE ANNOUNCED AN ADJOURNMENT UNTIL MONDAY IMMEDIATELY AFTER COURT OPENED TODAY.

The sword of Damocles is still suspended. Everyone thought this morning—that is everybody but the three members of the Supreme Court—that the decision that was to tell whether the keen edge of the sword was to fall on the neck of A. M. Brown or the head of C. P. Iaukea to be severed in the sheriffly contest, would be given. But everybody—with the exception of the three members of the Supreme Court—was disappointed.

The court reconvened this morning at 10 o'clock and Chief Justice Frear immediately announced that an adjournment would be taken until 10 o'clock Monday morning. This announcement once more sidetracked an adjustment of the Brown-Iaukea election contest put everybody on the anxious seat once more.

But the announcement of the court had one good effect—everybody came out of the Judiciary building smiling. Absolutely no intimation of what the decision on Monday would be, was given by the court so everybody is still at liberty to speculate as to the nature of the findings of the court.

The cause for the adjournment of court can not be stated. It gives corroboration however to the generally credited rumor that the Supreme Court was reexamining the ballots. During the consideration of the ballots, the court reversed its ruling and granted a greater leniency in passing ballots as the canvass proceeded than it had done at the earlier stage of the proceedings. With the count so close, it is possible that the court may be reconsidering the ballots rejected by itself, with a view to ascertaining whether a more definite result can be obtained than was the case with the open consideration of the ballots. The ballots were submitted as evidence in the contest and the court can, of course, consider them as often as it desires.

There was some surprise expressed over the mode of procedure adopted by the court last Wednesday. When the attorney for Iaukea, closed his case and the arguments were submitted, Kinney had previously filed objections to the rejection of ballots where more names than offices to fill, had been voted for except in the case of the office of sheriff. If a voter had marked a ballot for both Iaukea and Brown then naturally that ballot should be rejected but if four district supervisors instead of three for instance had been voted for, Kinney contended that the vote for sheriff should be counted. Kinney did not limit his argument to this single point but continued to argue the entire case and submit it on its merits. Judge Gear for Brown submitted his case also.

This left the court with a ruling to make on Kinney's objections and an opinion to give on the entire case. Inasmuch as there is no appeal from the decision of the court, it makes no practical difference whether the matters are settled separately or otherwise. It is thought that the court will give its final decision on Monday.

## BRUNNER IN RUNAWAY KAU DROUGHT BROKEN

W. W. Brunner of Kona, according to reports brought today by the S. S. Manna Loa, suffered painful injuries in a runaway last Monday. His fine team got away with him and he was dragged along the ground for a considerable distance, almost losing an ear which was nearly torn from his head. He was much bruised and may have suffered internal injury besides.

In Kau on Tuesday last one and twenty one-hundredths inches of rain fell, coming as a welcome relief after a considerable period of little or no rain. People arriving today in the S. S. Manna Loa report indications of heavy rains in the district and the 1.20 inches is thought to be but a sample of what is coming to Kau during the next few days.

## Is Your Family Protected?

The PRUDENTIAL was the first life insurance company to pay claims immediately upon receipt of satisfactory proof of death. In the thirty years of its history its total payments to policyholders amount to over one hundred and seven million three hundred thousand dollars. Your family has a claim on you. Leave them a policy in The Prudential that they may have a claim on it.



## Xmas Shoe Special

For Men, Women and Children

FOR MEN.  
Men's \$5.00 Hand Made Cordovan at \$3.55.  
Men's \$3.50 Box calf Blucher at \$2.75.  
Men's \$3.00 Vici or Calf at \$1.75.  
FOR WOMEN.  
Dressy Braided Party Slipper, \$2.50 at \$1.55.  
Vici Kid, Large Eyelet Oxfords, \$2.50 at \$1.25.  
A full and complete line of "Just the Right Kind" of Holiday Shoppers. A GIFT ALL APPRECIATE.

L. B. Kerr & Co., Ltd  
ALAKEA STREET.

## EXTRACTS FROM THE REPORT

WHAT THE GOVERNOR HAD TO SAY ABOUT MATTERS OF LOCAL INTEREST.

The following extracts are taken from the Governor's report to the Secretary of the Interior for the year 1906. In regard to Honolulu harbor the Governor says:

"During the year the entrance channel to Honolulu harbor has been made 400 feet wide and 35 feet deep at mean low water, and the harbor proper has a general width of 800 feet and a depth nowhere of less than 35 feet. In connection with the harbor improvement about 345 acres of land belonging to the United States, and under the immediate control of the Navy Department and Department of Commerce and Labor, were reclaimed with the material dredged without cost. The island just seaward of the lighthouse was also reclaimed in the course of the work that has been under way in the harbor much more quiet, and if it can be enlarged in connection with future work it will be a valuable acquisition. Another portion of the material dredged was used in reclaiming Quarantine Island. A portion of the dredged material was placed on other private lands near the harbor and a small portion of the material was tossed into the sea.

In regard to Leprosy the report reads: "A proclamation appears in the last annual report of the Governor setting aside a mile square of land in the leper reservation at Moikakai, a prerequisite

(Continued on Page Five.)

## Governor Preparing Money Policy

++++ The financial policy of the administration has not been determined yet but Governor Carter has the preliminary steps to acquaint himself with the probable requirements of the territory, in order that he will know exactly how to proceed in dealing with the legislature. "I am frequently asked," said the Governor today, "by people if I will recommend an appropriation for a certain measure. At present I am unable to state positively whether I can or not, however meritorious the thing may be. I have therefore requested the heads of departments to prepare me their estimates of the income and expenditure of the territory for the next biennial period. As soon as I ascertain these facts I will be in a position to know how much money the territory will have to appropriate and how much will be actually required for the operative expenses of the Territory. I will then be better able to decide what can be recommended for appropriations by the legislature."

## GRAND JURY HAS RETURNED MANY INDICTMENTS

THIRTEEN WHICH MAY HAVE AN UNLUCKY NUMBER FOR SOME OF THE DEFENDANTS.

The grand jury made a preliminary report to Judge Lindsay this morning. Thirteen indictments, all of them for the secret file, were returned this morning by the jury. It is understood that none of the indictments are of an especially sensational character but, as outlined yesterday by the Star, are for offenses which have already been made public through the newspapers.

Judge Lindsay caused bench warrants to be issued for all of the indicted persons. The warrants are returnable tomorrow morning at 10 o'clock.

The best cup of Hawaiian coffee in the city. New England Bakery and Cafe.

## SARGENT VISITS THE COUNTRY

IMMIGRATION COMMISSIONER TAKEN DOWN THE LINE TO VISIT PLANTATIONS.

United States Commissioner-General of Immigration F. P. Sargent, accompanied by J. A. McCandless, Col. Samuel Parker and E. D. Tenney went down the railroad this morning in a special car. Mr. Sargent is calling on Portuguese immigrants who arrived in the Suverie in order to personally observe how they take to their new conditions and how they were received. The party was met at Waiakula by Manager W. W. Goodale and taken all over the plantation. Commissioner General of Immigration Frank P. Sargent will leave for the Coast on Monday on the Nippon Maru. He has a special permit from the Treasury Department which allows him to do this. He will leave a day earlier than he intended to at first as he expected to sail on the Sonoma.

## BARK OFF KOKO HEAD

The Diamond Head lookout reported a bark off Koko Head at 2:10 o'clock this afternoon. She was not identified. The W. B. Flint is 34 days out of San Francisco, the Carrollton is 68 days out of Newcastle and the Nuuanu is 122 days out of New York.

SQUADRON NOT COMING. Captain Carter of the U. S. S. Iroquois says the southern cruise of the Pacific squadron will not extend to Hawaii.

## To Save Time In Legislature

++++ Acting upon a suggestion made by Senator-elect W. J. Coelha, Governor Carter will have the reports of the various heads of departments of the executive branch of the government, ready for the perusal of the members of the next legislature before that body convenes. Heretofore the custom has been for the reports to be ready in time to be laid upon the desks of the members of the legislature on the opening day of the session. The result was that the members would generally after organization, adjourn for a day or so to enable them to peruse the reports. Inasmuch as it cost about \$600 a day to conduct the legislature this adjournment has seemed a proceeding that might be eliminated. The governor now requests his subordinates to prepare their reports a month earlier than usual, so that the reports can be given to the legislators before they assemble.

Paul Isenberg returned from Ahukini in the S. S. Nihau this morning.

## MANCHURIA LOSES POINT BEFORE DOLE

U. S. JUDGE DECIDES THAT SPECIAL FAVOR TO HARRIMAN CAN NOT BE ALLOWED.

U. S. Judge Dole gave a decision this morning in the admiralty proceedings of the Commercial Pacific Cable Company vs. the S. S. Manchuria. The decision is against the steamship people. It is on exceptions made by libellant to certain claims in the answer of libellee. In effect the answer alleged that the services of the Cable S. S. Restorer in pulling on the S. S. Manchuria while the latter was ashore on Waimanalo reef, were secured as a personal and special favor to E. H.

(Continued on Page Eight.)

Queen Street Rink open every evening and Wednesday and Saturday afternoons.

## HIGH OFFICIALS ARE INDICTED IN SALT LAKE

(Associated Press Cable to The Star).

SALT LAKE CITY, Utah, December 7.—The Union Pacific Railroad Coal Companies, the Oregon Short Line, the Utah Fuel Company and several high officials have been indicted by the Grand Jury for rate discrimination and defrauding the government.

## CHI PSI FRAT HOUSE BURNS

ITHACA, N. Y., December 7.—The Chi Psi Fraternity House burned at Cornell University today. Seven lives were lost.

## EARTHQUAKE ON COAST

SAN LOUIS OBISPO, December 7.—An earthquake was felt at this place this morning.

## POPE'S DOCTOR DEAD

ROME, December 7.—Doctor Lapponi, physician to the Pope, is dead.

TUNNEL CAVER IN KILLS FIVE. BARKERSFIELD, December 7.—There was a cave in in a tunnel belonging to the Edison Electric Power Company of Los Angeles. Five lives were lost.

\$200,000 FIRE IN SAN FRANCISCO. SAN FRANCISCO, December 7.—A big fire in the planing mill district of this city today did \$200,000 worth of damage.

FIVE AMERICANS KILLED. MANILA, P. I., December 7.—Five Americans were killed and nine wounded in the fight which occurred in Leyte between the constabulary and the Puljanans.

## MOTHER PARKER WILL BE 101 ON SUNDAY

AGED MISSIONARY CONTINUES IN GOOD HEALTH BUT IS VERY FEEBLE.

On Sunday next, December 9, Mother Parker will complete the first year in the second century of her life. She is at present in very fair health, all of her faculties being in good condition with the exception of her eyesight which is failing badly. She is not confined to her bed at all but sits up most of the day and receives her friends as of yore. There will be no party on her birthday this year but she will receive friends on Saturday, Sunday and Monday.

Mother Parker was born on December 9, 1805, and came to these islands as the wife of Rev. B. W. Parker as a missionary in 1833. She has spent her life here and in the Marquesas since that time doing missionary work. While Mrs. Parker's health is good she is very feeble and has to be assisted from place to place. She did not appear to be as old as she is when seen this morning at the residence of her son Rev. H. H. Parker.

If you like doughnuts, something very nice, try the New England Bakery.

**A MATTER OF HEALTH**

**ROYAL BAKING POWDER**

**ABSOLUTELY PURE**

**HAS NO SUBSTITUTE**

A Cream of Tartar Powder, free from alum or phosphatic acid

ROYAL BAKING POWDER CO., NEW YORK.

**A REAL BENCH MADE SHOE FOR WOMEN.**

Women who have tender feet should have a pair of these bench made oxfords. They are so soft and easy that you will forget you ever had feet.

A trial means another pair. Price \$5.00.

**Price \$5.00**

**MANUFACTURERS' SHOE CO., LIMITED**

1051 Fort Street. Phone Main 382.







## Keep Your Eye On Your Wife

See how hot she is, cooking meats on a coal stove; then get her a Gas Range.

WE WILL SELL YOU ONE ON EASY PAYMENTS.

**Honolulu Gas Company, Ltd**  
ALEXANDER YOUNG BUILDING

## Union Express Co.,

BRANCH MUSTACE PECK CO., LTD.

63 Queen Street

Having baggage contracts with the following Steamship Co.'s Lines:

Oceanic Steamship Co.  
Occidental & Oriental Steamship Co.  
Pacific Mail Steamship Co.  
Toyoko Kisen Kaisha Steamship Co.

We check your outgoing baggage at your homes, saving you the trouble and annoyance of checking on the wharf.  
Incoming baggage checked on steamers of above companies and delivered with quickness and dispatch at your homes.

Telephone Main 86

### Fraternal Meetings

#### HARMONY LODGE NO 3, I. O. O. F.

Meets every Monday evening, at 7:30, in Odd Fellows' Hall, Fort street. Visiting brothers cordially invited to attend.

C. O. HOTTEL, N. G.  
E. R. HENDRY, Secretary.

#### HONOLULU AERIE 140, F. O. E.

Meets on 2nd and 4th Wednesday evenings of each month at 7:30 o'clock in K. of P. Hall, King street. Visiting Eagles are invited to attend.

SAM'L McKEAGUE, W. P.  
H. T. MOORE, Sec'y.

#### HONOLULU LODGE 616, B. P. O. E.

Honolulu Lodge No. 616, B. P. O. E., will meet in their hall, on Miller and Beretania streets, every Friday evening. By order of the E. R.

HARRY E. MURRAY, E. R.  
HARRY H. SIMPSON, Sec'y.

## THE HAWAIIAN PAWN SHOP

Nuuanu Street, near King

## C. BREWER & CO. LTD.

QUEEN STREET,  
HONOLULU, H. I.

### AGENTS FOR

Hawaiian Agricultural Company, Onomea Sugar Company, Horomou Sugar Company, Aliuku Sugar Company, Ooala Sugar Plantation Company, Haleakala Ranch Company, Kapapala Ranch.

Planters Line Shipping Company, Charles Brewer & Co's Line of Boston Packets.

### LIST OF OFFICERS.

Charles M. Connel.....President  
Geo. H. Robertson.....V-Pres. & gr.  
E. Faxon Hialop.....Treas. & Sec'y.  
F. W. Macfarlane.....Auditor  
P. J. Jones.....Director  
C. H. Soble.....Director  
J. R. Galt.....Director

All of the above named constitute the Board of Directors

## JAPANESE LABOR BUREAU SATO & OZAWA

Japanese young man in store or office.  
Plantation laborers furnished in any number at the shortest notice.  
Families supplied with cooks, house boys and yard-boys.  
Contracts Taken.  
House work, window cleaning and gardening by hour, day or week.  
Prices reasonable.  
Phone White 2576.  
River Street near Hotel.

## S. SAIKI, Bamboo Furniture

AND  
PICTURE FRAMES.  
Neat and Handsome  
Designs made to order.  
803 Beretania Street, near Punchbowl.  
TELEPHONE BLUE 481.

## High Class Dressmaking

MRS. J. A. RODANET.

JOHNSON HOUSE  
Private Cottage.

Punchbowl near K. street.

Fine Job Printing, Star Office.

## Vienna Bakery

GOOD Bread, the only HOME-MADE BREAD in town. All kinds of cakes our specialty.  
Phone Main 179. No. 1123 Fort St.

## M. OHTA, JAPANESE CONTRACTOR AND CARPENTER.

House No. 762 Sheridan St.  
Telephone White 601.

## A Summer Proposition

Well, now, there's the

## ICE QUESTION!

You know you'll need ice, you know it is a necessity in hot weather. You believe you are anxious to get that ice which will give you satisfaction, and you'd like to supply you. Order from

**THE OAHU ICE AND ELECTRIC CO.**  
Telephone 3151 Blue, Postoffice Box 600

## For Rent, Lease or Sale.

Ten to seventeen acres land with house, barn and water, directly on car line; splendid location for dairy farm. Apply P. O. Box 184.

## W. R. PATTERSON & CO.

General Contracting and Jobbing. Housepainting, Paperhanging, Graining, Kalsomining, Brick, Cement and Stone Work. Shop with White, the sign painter, corner Hotel and Union streets. Phone Main 361.

## THE HAWAIIAN REALTY AND MATURITY CO. Ltd.

Real Estate, Mortgages, Loans and Investment Securities. Homes built on installment plan.  
Home Office: McIntyre Building, T. B. KENTWELL, General Manager

## CONSOLIDATED SODA WATER WORKS COMPANY LTD.

Sole manufacturers and agents of genuine Kola Mint. (Don't buy poor imitations.) Phone Main, 71.

## CLOTHES CLEANED AND PRESSED BY THE Honolulu Renovating Co.

T. FUJI, MANAGER.  
All Telephone Messages Promptly Attended To. We Call For and Deliver.  
Telephone Main 373.  
Richard Street near Queen.

## Y. WO SING CO.

GROCERIES, FRUITS,  
VEGETABLES, ETC.  
1136-1138 Nuuanu Street.  
Telephone Main 233. P. O. Box 952.

## T. Shima

Clothes, Pressed and Cleaned.  
Prices Low  
Work Guaranteed  
No. 1250 Fort Street, Honolulu.

## Best Meal in Town CALIFORNIA RESTAURANT

Hotel Street, near Nuuanu.  
T. ODA .....MANAGER  
OPEN ALL NIGHT.  
Telephone, Main 469.

## Bamboo Furniture CARPENTER WORK.

**S. Titania**

188 Beretania Street, Honolulu.

Fine Job Printing, Star Office.

# WHAT THE GOVERNOR REPORTED ABOUT HAWAII

ADVANCE SHEETS OF HIS MESSAGE TO THE DEPARTMENT OF THE INTERIOR RECEIVED IN THE MAIL YESTERDAY—MAKES SOME IMPORTANT RECOMMENDATIONS ABOUT THE LEGISLATION REQUIRED FOR THE TERRITORY.

Governor Carter's annual report to the Secretary of the Department of the Interior was received in the mail yesterday. The report came in the form of loose advance sheets issued from the office of the government printer. The Governor's report occupies 122 pages but his own remarks and suggestions occupy only 18 pages. The remainder is made up with reports and special articles on particular topics as follows: "Agricultural Experiment Work," by Jared G. Smith; "Federal Quarantine Problems," by L. E. Coffer; "Improvement of Harbors," by Lieut. J. R. Slattery; "Shipping at Honolulu," by Norman Watkins; "Post-Offices," by Joseph G. Pratt; "Immigration Business," by Raymond C. Brown; "Internal Revenue," by Roy H. Chamberlain; "United States District Attorney," by R. W. Breckons; "The Federal Court," by Hon. Sanford B. Dole; "Federal Climatological Service," by W. B. Stockman; "Hawaii's Transportation Facilities," by H. P. Wood; "Oahu Railway and Land Company," by Walter P. Dillingham; "Irrigation on Hawaii," by J. T. McCrosson; "Electric Installation in the Territory of Hawaii," A. Gartley; "Agriculture and Forestry," by Daniel Logan; "Descriptions of the Counties," "Department of Public Instruction," by W. H. Babbitt; "Survey Department," by Walter E. Wall; "Public Lands and Their Administration," by James W. Pratt; "International Health Work of Hawaii," by L. E. Pinkham; "Forest Reserves," by Ralph S. Hosmer; "Department of Public Works," by C. S. Holloway; "Finances," by A. J. Campbell; "Attorney General's Department," by E. C. Peters; "High Sheriff's Bureau," by William Henry; "Archives of Hawaii," by R. C. Lydecker; Appendix—Territorial Register and Directory, 1934.

The governor lays particular stress on the educational situation here, as he considers it one of the most important problems of the islands, which are handicapped however he states, in the number of school buildings and in the pay of the teachers. The Governor's view relative to the presence of Japanese children in the schools was made known yesterday in an excerpt from his message. He says that there has been a marked decrease in attendance of American and Hawaiian children. The report states:

"Mr. Babbitt lays stress upon the fact that there have been decreases in the school attendance of children of pure Hawaiian and American blood—more than 58 per cent of the former and more than 40 per cent of the latter—while the attendance of Japanese children has increased more than 58 per cent. Possibly the decreases may be partly accounted for by the necessity of dispensing with truant officers, because of lack of funds. As to American children, no doubt the diminished attendance is considerably due to the departure of many American families upon the ending of a period of great building activity.

Some interesting tables are given relative to the production of sugar during the last 2 years as follows:

	1933.	Price per lb.	Value.
Raw .....	\$11,608,329	4.19	\$33,946,040
Refined .....	21,118,308	5.52	1,166,108
Total .....	\$32,726,637		\$35,112,148

	1934.	Price per lb.	Value.
Raw .....	\$12,560,997	3.35	\$23,840,803
Refined .....	34,941,640	4.86	1,654,624
Total .....	\$47,502,637		\$25,495,427
Decrease .....	\$8,611,900		9,616,721

Being on the basis of the 1930 census, a falling off of \$62.44 per capita in the Territory's increment of wealth from its chief industry.

He also gives a table of sugar shipments for ten years past. Under the above head the governor says: "Commercially, it has been a fairly but not particularly prosperous year for Hawaii. In the matter of sugar, the chief staple, there was a combination of decreased production and diminished prices. Thus, whereas the value of shipments fell short of that of the years before by \$9,616,721, had the average prices (for raw and refined) of 1935 continued the deficiency in valuation would have been less than \$3,500,000. So the low condition of the market is responsible for more than \$6,000,000 of the deficiency. Refined sugar is now only for the second year on Hawaii's list of exports, there being but one plantation on the islands turning out the article from its factory. The product found a ready market on the mainland from the first, and the second year's output shows an increase of more than 6400 tons."

Remarks are made on rice industry, noting a slight improvement therein. Then somewhat extended comments are made on the progress of diversified industries, including appreciative reference to the assistance of the U. S. Experiment Station. The advent of the rubber industry is noted, as well as that of tobacco as a local product, and of sisal the Governor says:

Experts have pronounced the Hawaiian article to be of the very best. The sisal shrub thrives on lands that will produce few other growths of value as well as in good agricultural soil. There are considerable areas in

the islands available for its production, and the only present hindrance to the rise of a large fiber industry here is the slowness of capital to grasp the opportunity.

The report deals with the steamship service and continuing takes up the matter of the population.

Governor Carter's estimate of a population of 209,032 an increase of 55,031 over the census of 1930, made on the basis of school attendance, has already been locally published through his courtesy.

Taking the figures for 1932 and 1934 the Governor shows that the increase of registered voters has been about 20 per cent, as compared with an increase of 36 per cent in school attendance.

There were 12,612 voters registered in 1932 and 15,449 in 1934. The vote cast for Delegate to Congress in 1932 was 11,326 and in 1934 it was 11,990.

Several pages are taken with an interesting section on "Fisheries," especially referring to the ownership by private individuals of exclusive fishing rights in the sea waters adjoining the islands. There is much historical information here. The settled status of the question under Federal decisions on such vested rights is mentioned and the Governor says "three now alone remains the consideration of ways and means of their condemnation and acquisition by the Territory." A full list of the fishery cases is appended.

Under this head, quoting the Organic Act on the subject, the Governor makes remarks in part as follows:

"As yet the people have not found representatives determined to complete their work within the time allowed for the regular session. Thus far no legislation has past appropriation bills during the regular session, and thus each automatically forced an extra session. The cost of the legislature during the past three terms was 1931 \$24,654.94; 1932, \$34,611.24; 1933, \$42,575.06.

The Governor gives full information on permanent settlements fire claims, Chinese fund, Hawaiian coinage, Postal Savings Bank depositors, study of leprosy, finances, taxable property, bonded debt and Territorial bonds.

There is a comparative statement of taxes collected for each fiscal year since annexation. In 1900-01 the amount was \$1,215,325.61. In 1935-36 it was \$2,587,290.33. This is more than doubling in the five years after the first.

Governor Carter concludes his personal report with the following recommendations of needed legislation:

"The passage by Congress of the so-called 'funding bill' is of greater importance than all other things combined. A breakwater at Hilo, for the protection of its commerce, a hydrogeological survey of the life-giving waters of these islands, and many other matters need attention, but it is useless to flood Congress with a lot of minor measures when one of so great importance is before it.

"If American control of Hawaii is to be benignant and intelligent the principle must be admitted that noncontiguous areas, separated by 2000 miles from the mainland, must have different treatment from those political subdivisions which are separated from their neighbors only by an imaginary line. Not only geographically is the difference great, but Hawaii is the point of contact where the Orient and the Occident meet, and our institutions and citizens should be of the highest and best type. And until we can secure a recognition of the principle that different conditions require different treatment, it is useless to expect that the small, far cry from Hawaii will be heard in the clamor at Washington of nearer and larger subdivisions of the Union.

"At present, Hawaii's resources are unnecessarily and unduly taxed, and the problems that our citizens here are struggling with deserve more encouragement and assistance from 'Uncle Sam.'"

### HAWAII COUNTY MAY SUE.

The Board of Supervisors of the County of Hawaii have instructed the County Attorney to bring suit against the Territory if possible to compel the Territory to expend certain sums appropriated for road work in Hawaii and which the administration decided not to spend.

### BORN.

MERRIAM—At Fort Hancock, New Jersey, December 2, 1906, to the wife of Captain H. M. Meriam, a son. Mrs. Meriam is a daughter of Mr. and Mrs. William Lishman of Honolulu. She was not a Miss Widdifield as was stated through an error in The Star of yesterday.

### ONLY ONE STOWAWAY.

"The talk of stowaways aboard the Suveric," said Immigration Commissioner Sargent today "arose from the fact that in the rush aboard at Madela several got on who were not on the manifest. They were manifested after the vessel put to sea. Only one, a boy, weak in mind, was sent away in the Suveric. The others were all admitted."

### NAKED NERVES.

Cover 'em up with Dr. Miles' Nerve, or they will suffer from exposure and friction, and will ache and pain you. Dr. Miles' Nerve will make you fat, strong, hearty, and oblivious to nerve trouble. At druggists. Money back if first bottle fails to benefit.

## Barley=Malt

is the foundation and the principal essential for a really good beer.

## BUDWEISER

"THE KING OF BOTTLED BEERS"

is brewed from the choicest Barley-Malt obtainable, in combination with Select Hops and Special Quality Yeast. In consequence it has the exquisite taste, the mellowness and the delicious flavor which can be found in no other Beer. Budweiser is brewed and bottled only at the Home Plant.

**H. HACKFELD & CO., LTD**

WHOLESALE DISTRIBUTORS.

## ELECTRIC POWER

FOR VARIOUS USES.

Wherever power is needed electricity supercedes steam and all other kinds, owing to its economy, reliability, convenience, adaptability to all kinds of work and the small space its machinery occupies.

## WESTINGHOUSE MOTORS

ARE BEST FOR ALL USES.

They should always be used to get the best service. We have Westinghouse machinery to show those who can come to our office, and to other island residents we will mail catalogues free for the asking.

## Hawaiian Electric Co., Ltd

Office, King near Alakea St.

Phone, Main 390

## Beautiful Gift Books

A handsomely bound book of some famous author makes a Christmas gift that is at once sensible and highly valued by the recipient. We have beautifully illustrated books for the holiday season in greater variety than any other store and the finest selection in the city.

—Also—

CHILDREN'S PICTURE and STORY BOOKS.

## Hawaiian News Company, Ltd.,

Alexander Young Building.

## What Cheer?

The best ever for the Christmas dinner. The S. S. Nebraskan brought us an invoice of real live Turkeys and one of them for your dinner is the cheer you have often read about. If you wish to have the experience that many of your friends will have, you will send in your order for one of these corn-fed fat fellows today.

\*\*\*

## Metropolitan Meat Co., Ltd

What more acceptable Christmas present can you send a friend than a case of

## Primo Beer

We will deliver it Christmas eve or Christmas day, just as you request. Phone your order now to

HONOLULU BREWING & MALTING CO. Main 341.

## The Palm Ice Cream Parlor

### WEDDING CAKES.

When the wedding bells have rung and the dinner is being served, then will appear the handwork of the Palm, for wedding cakes and wedding confectionary are the Palm's specialty.

### BUTTERNUT BREAD.

The Butternut Bread of the Palm is more nutritious than other bread. It reminds one of the bread mother used to make.

116 HOTEL STREET, NEAR FORT.



**The Hawaiian Star,**  
DAILY AND SEMI-WEEKLY.

Published every afternoon (except Sunday) by the Hawaiian Star Newspaper Association, Limited.

**SUBSCRIPTION RATES:**  
Local, per annum.....\$ 8.00  
Foreign, per annum.....12.00  
Payable in advance.

Entered at Post Office at Honolulu, Hawaii, as second class mail matter.

FRANK L. HOOCS.....MANAGER  
FRIDAY.....DECEMBER 7, 1906

**Standard Oil Arraigned**

The petition in the suit instituted by Attorney General Moody for the dissolution of the Standard Oil Company as constituting a combination contrary to law, sums up the entire case against the Standard Oil and is perhaps one of the strongest arraignments of that great organization that has been made. The results of the investigations of the Bureau of Corporations seems to have furnished the material for the allegations of the petition. According to these allegations the Standard Oil began in Ohio as a "trust." It succeeded by secret contracts with the railroads, some of which, it is alleged, have lasted down to 1906, in securing for itself not only special rates, but a share in the profit of the carriage of the oil of its rivals by the railroads. It gained by this policy 90 per cent of the oil trade of the country, and has used this monopoly to advance prices, Attorney General Moody offers to prove, above those in regions where competition still exists. Beginning with contracts which flagrantly gave it advantages over all its competitors, it adjusted its operations to new laws against rebates, evading their purpose, and in 1906 it had secured from the railroads a network of rates covering the entire country in which state rates—that is, special rates within a state—free from the Interstate Commerce Act, and used as part of a continuous trip from State to State, and low rates from obscure places in regard to which its rivals were not likely to be acquainted, have been employed to continue its supremacy. In 1882, when "Standard Oil" was converted from a "trust" to a New Jersey Corporation, its property was valued at \$55,710,698. Between 1882 and 1895, it paid its stockholders \$512,940,884. Since then it has paid between \$350,000,000 and \$500,000,000, and has increased its property to a value exceeding \$200,000,000. These enormous profits, Attorney General Moody announces he will show, have been based on the infraction and evasion of law through the entire period, ending in a consolidation of nearly sixty subordinate companies, contrary to the statutes against trusts.

The iniquity of the Standard Oil Company, according to Attorney General Moody, has not been that its heads made a great deal of money, but that it has constantly, all through its career, violated justice, equity and good morals. While a pretence has always been made by this corporation of observing the law, no possible doubt has existed at any point in its career that its practices were a gross infraction of the moral law and of the principles of the common law, the Attorney General claims. In the State Court at Findley, O., John D. Rockefeller and three other directors, M. G. Vilas, H. P. McIntosh and J. M. Robertson, have been indicted for violating the anti-trust law of the State.

**A Pathetic Figure**

That was a pathetic figure which passed—not from the stage of action, but from the showcase of notabilities—when Rev. Arthur Bell Nicholls died the other day. His sole claim to that intangible thing, the importance or noteworthiness that comes from some extrinsic relation to a famous or noteworthy person, which is a sort of secondary fame, was, that he was the husband of Charlotte Bronte, that wonderful woman of genius who wrote "Jane Eyre." Nothing could more vividly, or yet more mercilessly indicate his position in the world of notables than what appears concerning him in "Who's Who." His name is given and then this, and this only: "M. 1854, Charlotte Bronte, (d. 1855). Educ.: Trinity Coll., Dublin, (B. A.); formerly curate of Haworth, Yorks. Address: Banagher, King's County."

There is nothing of who he was of himself, practically nothing of what he did independently of the woman whose talent and achievement gave him a place, a small place, in dictionaries of biography, and made his death of enough curious but passing interest to be announced to the world. For fifty years he has had sort of mummy fame. He has been made immortal like some of those forms of life which have been embalmed in amber, and remain, not for their own worth, but for the worth of their environment. He was the husband, for one short year of one of earth's gems. That fact is his entire biography. Even the additional statement that he was formerly curate of Haworth has significance only because his married life was during that curacy.

But perhaps, he is not to be pitied. To have been thought worthy to be accepted as husband by such a gifted woman as Charlotte Bronte, to have had such close association with genius, even for only a year, might be, and undoubtedly was, richest compensation for that long period of fifty years of isolation, the isolation that must come to the man or woman who survives as the relic of a genius, and with dignity maintains the reverential life that the world expects. For half a century the Rev. Arthur Bell Nicholls lived, guarding the memory of the great woman with whose life and name his were inseparably linked.

**Secretary Hitchcock**

Secretary Hitchcock has announced his retirement from public life, after years of arduous service. He is to be succeeded by James R. Garfield, now head of the Bureau of Corporations. Secretary Hitchcock, who came to his post after diplomatic experience, has administered the large and difficult Interior Department with exemplary success. Among the Indians, in Western land and timber frauds, in leases of coal and oil fields in Oklahoma, in reorganizing the patent office, and in many lesser issues, he has shown courage, efficiency and a determination to uproot abuses and to prosecute offenders. Mr. Garfield has been zealous in his investigation of corporations. He has shown himself high-minded and well-trained.

**Japanese And Citizenship**

When President Roosevelt's recommendation to admit the Japanese to citizenship comes up in Congress, if it ever does, one matter to be considered is whether the Japanese really want American citizenship at all. When predictions have been made here in the past that in the course of a comparatively few years, the Japanese will be an important, if not a controlling factor in the politics of the Islands because the children born here will be American citizens, the reply has frequently been, that the Japanese children born here are all taught to consider themselves subjects of the Emperor of Japan and not American citizens, and that they will not accept American citizenship. Of course, this is only opinion. But it is an opinion that has been very widely held and expressed in Hawaii by those in a position to know as well as anybody, and at times when

**Sponges**  
AND  
**Chamois**

A large assortment now on exhibition.

**HOLLISTER DRUG CO.**  
ESTABLISHED 1879.

**Pay Rent to Yourself**

**W. Matlock Campbell.**  
ARCHITECT AND CONTRACTOR.

Will build you a home in any part of the city on easy payments.

TELEPHONE WHITE 961.

**STEINWAY**  
AND OTHER PIANOS.  
**THAYER PIANO CO.**  
156 AND 158 HOTEL STREET.  
Opposite Young Hotel.

New Oahu Carriage Manufacturing Co.  
Any kind of Carriage or Carriage Material. Horse Shoeing.  
No. 1179 River Street.

**Whitney & Marsh**  
**Our Opening Display**  
OF  
**Holiday Suggestions**  
Will Be Made On  
**Saturday, December 1st**

**ICE CREAM**  
IN ANY QUANTITY  
50 CENTS PER QUART.

**Main 206**  
DELIVERY FREE  
HARRY STRANGE.  
Corner Alakea and Hotel Streets.

**SHORTHAND!**

Typing and Book Keeping. Monday, Wednesday and Friday evenings 7:15 to 9 p. m. Magoon Building, Merchant and Alakea Streets. Address, M. F. Rawlins, Magoon Building.

there was neither issue nor agitation to warp or bias judgment, or induce wrong impressions to be given out.

In general sentiment in the United States has been that only those races should be admitted to citizenship who are assimilable, the idea being that some degree of homogeneity is necessary in the people of a nation governed by representative government. The Japanese have always held themselves proudly non-assimilable. Strong in their race pride they set their national sentiments strongly against either the absorption of their race in any other, or the absorption into the race of elements that would essentially change it. The Japanese are proud of being Japanese, and neither admit superiority in others, or the wisdom or desirability of impairing the purity of the Japanese blood by the admission of any other strain, however high it might hold itself.

As indicated by the expressions of local Japanese, the President's recommendation appeals to them not because it promises a formal recognition thing that they really want, but because it romances a formal recognition of that equality with the world's greatest nations which their race pride so insistently demands.

Governor Vardaman and Senator Tillman don't seem to be the only men who think the Fifteenth Amendment is obsolete. The discharge of a Negro battalion and the ruling that Negroes cannot re-enlist, which the President has just ordered, out Tillmans Tillman.

Nobody has interviewed Toma Abe yet as to what he thinks of the President's attitude toward Japan and his recommendation of naturalization for Japanese.

Prost! If all the Japanese in Hawaii

Telephone Main 198. P. O. Box 192.

**E. J. Lord**  
Successor to  
**LORD & BELSER.**  
GENERAL CONTRACTOR:

Sewers, Dredging, Grading, Paving, Teaming, Crushed Rock.

Black and White Sand and Soil For Sale.

Office and Yard, South and Kaulahao Streets.

Telephone Main 101  
P. O. Box 683.

**HARRY ARMITAGE**  
Stock and Bond  
Broker....  
Members of Honolulu Stock and Bond Exchange.

Few shares of following stocks for sale: Pioneer Mill Co., Oahu Sugar Co., Ewa Plantation Co., Hawaiian Sugar Co., Waiata Agricultural Co., Etc.

Office, Campbell Block....Merchant St.  
Honolulu, T. H.

should be speedily naturalized, the Americanization of the Territory would be accomplished in a trice!

The Kindergarten Association is now adding to the obligation the community is under to it by giving one of the finest entertainments the town has seen for a long time.

Ecuador has a revolution on her hands. But she won't mind that as long as there is only one.

Hawaii County now proposes to compel the Governor by process of the courts to spend the loan fund money which Link McCandless tried to compel him to spend by force of argument.

John Fitzgerald to Joseph Vierra, Rel; lot 4, gr 4233; gr 4224 and lot 16, gr 4709, Kaumana Homesteads, etc, S. Hilo, Hawaii. \$1200. B 289, p 104. Dated Nov 8, 1906.

Hoffschlaeger Co., Ltd., to J Alfred Magoon, A. M.; mig J Kaulani alias J Kenwe, on 4980 sq ft land, Lanikai 2nd, N. Kona, Hawaii. \$360. B 289, p 106. Dated Sept 22, 1906.

Bathsheba M Allen to James F. Morgan, A. M.; mig J Kaulani on 4983 sq ft land, Lanikai 2nd N. Kona, Hawaii. \$1. B 289, p 106. Dated Nov 28, 1906.

**A SPLENDID SHOWING**

Of new Fall styles of Shoes at reasonable prices. High and Low, in both Black and Tan. Men, women and children will find the best fit, the best wear and the best prices at

**Wah Ying Chong Company**  
P. O. Box 964. No. 1613 King St. Ewa of Fish Market.

Only the Best is What You Want in....  
**BUTTER**  
Always sweet and fresh and the right amount of saltiness.  
**Denman Butter is the BEST**  
JUST SAMPLE IT.  
**LEWIS & CO., Ltd.**  
GROCERS.  
169 King Street. Phone 240.

**Genuine Reduction Sale**  
For One Week from 1st December, Saturday

Japanese Plain Color Silks....Present Price, 35c.; Sale Price, 25c.  
Fancy Silks ..... " " \$1.25; " " 75c  
Fancy Silks ..... " " 1.25; " " \$1.00  
Peau De Sois..... " " 2.00; " " 1.50

**Others**  
AT EQUALLY LOW PRICES.  
**E. W. Jordan & Co.**  
LIMITED.

**6000 BAGS**

How long would it take you to use so much flour? We have just received 6000 bags of.....

**Centennial's Best**

It will be gone in a jiffy—because we have thousands of consumers. It's the best flour sold in the Pacific.

PRICE  
**\$1.25 a Sack**  
PHONE MAIN 22.

**Henry May & Co., Ltd**

**A BARGAIN**

FOR RENT, LEASE OR SALE. Twenty-eight and one-half acres land in Kailua valley; good banana and fruit land; house and spring, irrigation of crops unnecessary. Apply "P." Star office.

**CAMARA & CO.**  
LIQUOR DEALERS.  
Corner Queen and Alakea Streets. PHONE MAIN 492. P. O. BOX 664.

**Fire Insurance!**

Atlas Assurance Company of London.  
New York Underwriters Agency.  
Providence Washington Insurance Company.

**Hawaiian Office Specialty COMPANY**

**GOMES' EXPRESS CO**

Furniture 3 vols with Care to all Parts of the City.  
OFFICE, 14 FORT STREET.  
Near Queen, 19, Hekfeld Building.

Telephones—Residence, White 961; Office, Main 296.



# Spoony People

will not feel lonesome or be laughed at if they visit DIETZ, the Jeweler, for there is where spoon meets spoon.

A New and Splendid Line of SOUVENIR SPOONS—ENAMELED AND PLAIN, IN GOLD AND SILVER—FOR CHRISTMAS.

Remember the Friend of Spoony People and call on

## DIETZ THE JEWELER

FORT STREET, NEAR HOTEL.

# Christmas Goods

Japanese Curios, Silk Kimonos, Silk Shirts and Silk Pajamas. Fancy Embroidered Goods. Straw Hats for both Men and Women at Special Xmas Prices.

## K. Fukuroda

HOTEL STREET NEAR BETHEL.

## SAYEGUSA

CHRISTMAS	FINEST CREPE	KIMONOS
	SILK KIMONOS	
	\$7.25 to \$95.00.	
	Cotton Kimonos in all Colors \$1.50.	
	TOYS,	
	CROCKERY	
	LACQUER WORK	
	CURIOS OF EVERY KIND.	

## ..SHOTEN..

## The Honolulu Candy Co.

Are Giving Special Candy Prices For CHRISTMAS

By the Ton, Barrel, Pail or Box to Sunday Schools and other institutions using Candies in quantities.

We make our goods and can guarantee their absolute Purity and Freshness.

Pop Corns in all styles and colors.

Peanut and Coconut Taffies, etc.

Finest Hand-made Fresh Chocolate Bon Bons, packed in all styles of Fancy Boxes, making very desirable Christmas Presents.

Orders should be placed at an early date to ensure prompt delivery. Orders from the other islands will receive our personal attention.

Hotel Street near Bethel.

## General Advertising and Collecting Agency

SEE US FOR NOVELTY ADVERTISING, FOREIGN AND LOCAL.

74 King Street.

GEO. E. LA MONT.

### MARRIED.

DOLE-DICKEY—At Jamaica Plain, Boston, November 22, 1906, by Rev. Charles Dole, Miss Belle Dickey to Mr. James D. Dole, both of Honolulu.

### RELEASED ON BAIL.

D. L. Akina the Chinese doctor indicted by the Grand Jury for abortion, was released today under \$1,000 bonds furnished by some of his friends.

## JAPANESE CONSUL ON TALK OF WAR

(Continued from page one.)

formation to the Japanese. I presume which we see the message we will learn more in detail of Mr. Roosevelt's attitude in the matter. Naturally, Japanese would welcome naturalization.

"I cannot say anything in regard to whether war between the United States and Japan is likely to occur. Let us hope that no such result will be brought about."

"No, I assure you that there is no military organization among the Japanese in these islands. Further there are no men among the Japanese here capable of assuming the responsibilities and duties of a leader, of a general. We have no military officers among the Japanese here of any consequence. Of course all Japanese are supposed to serve in a military capacity for a certain period at home and there is no doubt but what a few of them came here before the age of service to avoid service. Some of the Japanese who come here as laborers have served their time in the military, but all men of the standing arm are kept at home for duty, they are not permitted to emigrate. There are no doubt some coming here who served in the war between Japan and Russia, but I believe you will find that their number is not large."

"All this talk about Japan being able to capture the Philippines, Guam, Midway, Hawaii and Alaska, is in view of our ignorance of the situation, nothing better than talk. We would know nothing definite here until instructions were received, in any event, for, as I said before, the matter is not within our sphere, it is between Washington, San Francisco and Tokyo and the rest of the world knows but little of what is to be done and will know but little until a decision is reached."

"I had the pleasure of meeting Baron Kikuhara, who is on his way to Japan in the America Maru. I just saw him off at the wharf before the vessel sailed. He is a very well informed gentleman. He has traveled Europe and the United States and is a graduate of Harvard University. He is a member of the Diet, of the upper house. Yes, he spoke of the situation between the United States and Japan, but he said that he could not imagine what could occur in view of the treaty which now exists between the two powers. Such a treaty has never been dissolved."

"Then there is a treaty between Japan and Great Britain you know; I do not recollect what it is just now, for those things are usually very complicated."

Japanese Consul Miki Saito is at present on the island of Hawaii and Vice Consul Matsubara is in charge during his absence.

## EXTRACTS FROM THE REPORT

(Continued from Page One.)

to the establishment there by the Federal Government of a hospital and laboratory for the investigation of this disease in accordance with an act of Congress, approved March 3, 1905. This is a matter of very deep interest to the Territory and it is to be regretted that as yet the work of construction on the ground has not been begun. Congress could have taken no action that would have pleased the people of this Territory more than that by which they provided for the investigation and study of this disease as it inspired many with hope that the day is not far distant when this disease can be cured or at least alleviated."

## SHIPPING INTELLIGENCE

DEPARTING.  
Saturday, December 8.  
Br. S. S. Wilkesden, Raeburn, for Newcastle, a. m.

### AH KWAI UNDER ARREST.

Dai Kwai, alias Ah Kwai, the supposed keeper of an alleged gambling resort on Achi Lane, was arrested today by Assistant Sheriff Vida on a bench warrant, having been indicted by the Grand Jury on the charge of running a gambling place. This is the place made famous by A. P. Taylor's investigations for the Advertiser which investigations were followed by his arrest for assault with a weapon, illegal display of a police badge and trespass, all of which charges fell through.

Mistletoe, I like you yet;  
My sweetheart—don't you never let  
But watch out now! an never let  
The other feller kiss her!  
—Atlanta Constitution.



A. N. SANFORD  
Graduate Optician.

Boston Building Fort Street.  
(Over May & Co.)

## TAKING VERY INTERESTING APPEAL

CENTRAL MILL COMPANY WILL CONTEST A DECISION MADE BY TERRITORIAL TREASURER.

An appeal of special interest to corporations is to be taken to the Supreme Court by Smith and Lewis for the Central Mill Company. The appeal is taken from a decision by Territorial Treasurer Campbell relative to the special tax that is required for corporations on their authorized capital. Under the revised statutes the treasurer shall charge each corporation 25 cents for every \$1,000 of "authorized capital," but such charge is not to be less than \$25. According to the terms of its articles of incorporation, the Mill Company is incorporated for \$75,000 consisting of 3,750 shares of the par value of \$20 each, but is authorized to increase such capitalization to \$5,000,000. The treasurer held that the "authorized capital" means the latter figure and he proceeded to levy the fee of 25 cents on the basis of \$5,000,000 which made a very material difference from the basis of \$375,000.

### WILL PLEAD TOMORROW.

The cases of Dora Lancaster and W. Monroe a black dandy, were called in the U. S. Court this morning. They were indicted for adultery by the Grand Jury. C. F. Chillingworth was assigned as counsel. The arraignment and pleading of the pair was continued until tomorrow morning in order to enable their attorney to inquire in the circumstances of the case.

### PLANS ARE APPROVED.

Captain J. R. Slattery today received notification that the plans for the new front range light have been approved with a few minor changes by the Lighthouse Board in Washington.

### BOARD WILL LEAVE LEGACY.

Jack Lucas state today that the retiring Board of Supervisors would leave to their successors about \$75,000 worth of machinery, \$5,000 worth of materials and about \$10,000 in money. Jack thinks this is doing pretty well.

## THE TOY SHOP

The Bargain Dolls, the Candy Dolls and the Gingerbread men were left out of the printed program last night. But here they are:

Bargain Dolls—Marguerite Wadman, Juliette Atwater, Alice Hoogs, Helen Boyd, Adalide Santos, Agnes Aylett, Ida Mersberg, Abbie Mersberg, Norma Finley, Elizabeth Low.

Candy Dolls—Sherman Badefeld, Beasie Lee, Amy Waterhouse, Lee Waterhouse, Keoloha Waterhouse, Alfred White, Ernest Gray, Madeline Chapin, Roy Graham.

Gingerbread Men—Leroy Bush, Albert Bush, Cyril Tinker, Lorrin Thurston.

The chaprones for the children taking part were: Mrs. Philip Frear, Mrs. C. H. Smith, French Dolls and Bisque Dolls: Mrs. Augar, Mrs. Badefeld, Candy Dolls: Mrs. Clark, Miss Clark, Bargain Dolls: Mrs. Henry Bicknell, Mrs. Burt, American Beauty or Tissue Paper Dolls: Mrs. James Sickenell, Pops and Lady Dolls: Mrs. Graham, Miss Edith Lyle, Dutch Dolls: Mrs. Lawson, Miss Margaret McIntyre, Japanese Dolls: Mrs. Frank Hoogs, Miss Cook, Fairies: Mrs. Pearson, Mrs. L. A. Thurston, Wooden Soldiers: Mrs. J. M. Higgins, Miss Julia McStocker, Tin Soldiers: Miss Daisy Lishman, Miss Maggie Lishman, Marines: Mrs. Fred Angus, Miss Lydia McStocker, Brass Band.

The Ushers were: Mrs. W. F. Frear, chairman; Miss Gwendolyn Blair, Miss Nadine Center, Miss Cora Edmonds, Miss Hazel Hoffman, Miss Alice Hopper, Miss May Kluegel, Miss Louise Lucas, Miss Helen Macfarlane, Miss Lady Macfarlane, Miss Madge McCandless, Miss Constance Restarick, Miss Edith Spaulding, Miss Jane Winne, Miss Mary Lawrence.

In charge of tickets, Mrs. Andrew Fuller, assisted by Mrs. A. T. Brock, Mrs. Montague Cooke, Mrs. George Cooke, Miss Adelle De Lartigue, Mrs. Walter Frear, Mrs. Philip Frear, Mrs. A. Gartley, Mrs. F. Hastings, Mrs. Edwain Hall, Miss K. M. Hopper, Miss Alice Hopper, Miss P. Lawrence, Mrs. A. Lewis, Jr., Mrs. Noonan, Mrs. Riggs, Mrs. Theo. Richards, Miss Irmgard Schaefer, Mrs. C. Smith, Mrs. Arthur Wall, Miss Helen Wilder, Mrs. Arthur Wilder, Miss Bertha Young, Miss Thelma Murphy, Joshua Pratt, Ward Walker, Stanley Kennedy.

Program: Mrs. F. M. Swanzy, assisted by Mrs. J. M. Dowsett and Mr. Frank Armstrong.

### LAND FOR THE PORTUGUESE.

Land Commissioner Pratt will leave this afternoon on the steamer Claudine for Hilo. He goes to place a number of Portuguese in possession of lands at Hakalau Plantation, the leases to the plantation having expired. He will also attend to some land matters at Kahului. Pratt expects to be absent about eight days.

### TO ENCOURAGE BEE INDUSTRY.

Prof. Benton, who is in charge of agriculture under the U. S. Department of Agriculture, is expected to arrive in Honolulu on December 10 or 11. All parties interested in bee culture are requested to meet in Room 5 McIntyre Building on Saturday, December 8, at 9 o'clock, for the purpose of forming a temporary organization to entertain the Professor while here.

### ELECTION CONTEST SERVICE.

Return of services in the election contest brought by W. H. Cornwall against S. E. Kalue has been made. The respondent was served before yesterday at Maui.

## DAILY STOCK REPORT

Between Boards—Sales: 26 Waiulus, \$48.00; 19 Waiulus, \$48.00; 7 Pioneer, \$125.00; 10 Hawaiian Sugar Co. \$100.00; 15 Pacific Sugar Mill \$100.00; 200 Honolulu \$11.00.	
Session Sales: 5 Oahu Sugar \$121.00; 5 Oahu Sugar \$121.00; 10 Oahu Sugar, \$121.00; 10 Oahu Sugar, \$121.00.	
Quotations.	Bid. Asked.
C. Brewer & Co.	\$37.00 \$37.00
Ewa	25.75 26.00
Hawaiian Agri.	130.00 130.00
Hawaiian Com.	81.50 83.00
Hawaiian Sugar	33.50 33.50
Honolulu	11.75 11.75
Kahuku	27.00 27.00
Kihel Plan Co.	8.50 9.00
Kipahulu	58.00 58.00
Koloa	135.00 135.00
McBryde	5.75 6.00
Oahu Sugar Co.	120.00 122.00
Onomea Sugar Co.	28.00 28.00
Ookala	8.00 8.25
Ola Sugar Co.	2.50 2.625
Olovala	100.00 100.00
Panahau Sugar Co.	16.00 16.00
Pacific Sugar Mfg.	100.00 100.00
Papeete	135.00 145.00
Pioneer	135.00 137.50
Waiulus Agri.	67.50 68.00
Wailuku Co.	250.00 250.00
Wailuku Scrip.	200.00 200.00
Waimanalo	100.00 100.00
Waimoa	80.00 80.00
I. I. S. N. Co.	125.00 125.00
Haw. Electric Co.	135.00 135.00
Hon. R. T. Co. pfd.	101.00 101.00
Hon. R. T. Co. com.	59.00 59.00
Mutual Telephone	9.00 9.00
Oahu Railway	91.00 91.00
Hon. B. M. Co.	27.50 28.00
Hon. R. T. Pfd.	101.00 101.00
Haw. Ter. 4 1/2%	100.00 100.00
Haw. Ter. 4 1/4%	100.00 100.00
Haw. Ter. 3 1/2%	100.00 100.00
Haw. Ter. 4%	100.00 100.00
Ha. Govt. 5%	100.00 100.00
Cal. Bots 5%	102.50 102.50
Hawaiian Sugar 6%	101.00 101.00
Hilo. R. R. 6%	65.00 65.00
Kahuku Plan. 6%	100.00 100.00
Pala Plan 6%	102.50 102.50
Pioneer 6%	104.75 104.75
Wailuku Agri. 6%	99.00 99.00
McBryde 6%	99.00 99.00

### GUNBOAT ANNAPOLIS TO SAMOA.

VALEJO, November 28.—Orders were received at the Mars Island Navy Yard late yesterday afternoon to commence work on the gunboat Annapolis at once, so that she may be placed in commission at an early date. It is understood that the Annapolis will be sent to Samoa, to take the place of the Adams, the present station ship there.

### A FINE TREAT.

The concert and dance at Haleiwa appeal to those who love frivolity; Manager Biddgood also provides entertainment for older folk who enjoy something as staid as golf or as active as tennis. Nature has done better, however, in providing location and climate which are appreciated by people of all ages. The hotel at Haleiwa has the patronage of the best people at all times. Rates on application to St. Clair Biddgood, Manager.

Fine Job Printing, Star Office.

## NEW ADVERTISEMENTS

PROPOSALS FOR CONSTRUCTING Fire Engine House. Office of the Constructing Quartermaster, Honolulu, H. T., December 6, 1906. Sealed proposals in triplicate for constructing a fire engine house at the new military post at Kahauliki, Honolulu, H. T., will be received here until 10 a. m. December 20, 1906, and then opened. Blank proposals, plans and specifications furnished on application. Envelopes containing proposals should be indorsed "Proposals for Fire Engine House" and addressed James V. Heidt, Capt. 10th Inf., Constructing Quartermaster, U. S. A.

### NOTICE OF LOST CERTIFICATES.

Notice is hereby given that the following Certificates of Stock of the Kihel Plantation Co., Ltd., have been lost:

No. 2005 for 50 shares in name of Jennie W. Center.  
No. 2006 for 17 shares in name of Charles J. Maurer.  
No. 2007 for 17 shares in name of Josephine L. Maurer.  
No. 2008 for 16 shares in name of Frederick Maurer.

Transfer of the above Certificates on the books of said company has been stopped.

J. P. COOKE.

Treasurer Kihel Plantation Co., Ltd.

Honolulu, T. H., December 7th, 1906.

### BY AUTHORITY

#### NOTICE OF SALE OF CERTAIN PUBLIC LAND KNOWN AS

THE "KUKUILOLO LOT"

KALAEHO, KAUAI.

At 12 o'clock noon, Monday, January 7th, 1907, at front entrance to the Judiciary Building, Honolulu, there will be sold at Public Auction under the provisions of Section 17, Part IV, Land Act, 1895, (Section 276 Revised Laws of Hawaii) the above premises consisting of 17.2 acres of mountain pastoral land.

Upset Price \$891.00, plus cost of Patent and Stamp.

Terms: 10 per cent of total purchase price to be paid at time and place of sale; 10 per cent of same total, one year from date of sale; 20 per cent of same total, two, three, four and five years from date of sale. Interest an unpaid balance at rate of 6 per cent per annum, to be paid annually.



Honolulu, Hawaii.

### FOR RENT.

Lunalilo Street (near Kewalo) \$30.00  
McCully Street 20.00  
Beretania Street 20.00  
Prospect Street 27.50  
King Street 30.00  
Aloha Lane 15.00  
Matlock Avenue 30.00  
Nuuanu Street 50.00  
Waikiki (Port Street) 20.00  
Office suites (Port Street) 10.00

### FOR SALE.

Lots in Manoa Valley, Punapea Tract, \$1,000 and upwards, according to size. Choice building site—College Hills—Two and a quarter acres at a bargain. Half-acre house lot on Punchbowl slopes. Very cheap for cash.

Henry Waterhouse Trust Co., Ltd.  
Real Estate Department.

Cor. Fort & Merchant Sts., Honolulu.

## Classified Advertising

### For Rent

Two large furnished front rooms use of kitchen, terms very reasonable, 1223 Emma street.

### Girls Wanted

Intelligent girls can secure employment at W. W. Diamond & Co., Ltd.

### Wanted

Job compositor. Mercantile Printing Co.

### For Sale

Several hundred pieces of solid gold, jewelry, half price. Goods guaranteed as represented or money refunded. Buy now before store closes. J. Carlo Pawn Co., Fort street, opp. Convent.

Fox Terrier. 16 months old, well bred and good form; excellent ratter and mongeese killer; a keen watch dog. Enquire W. C. Weedon, McIntyre Building.

Splendid seven-room house cheap; Young street, Pawa. R. Star Office.

### Lost

Certificate of Deposit No. 42729 of Bishop & Co. for \$100 in favor of M. Fujii, dated October 11, 1906, has been lost. Finder please return same to Bishop & Co.

Purse containing about \$75 probably on Hotel street car. Shortly after 10 a. m. today. Return to this office and receive reward.

No danger of being garnished; all the money you want at the only and original J. Carlo Pawn Co. No branch. 1154 Fort street, opp. Catholic Mission.

### Lessons

Swimming and rowing lessons in the most refined company. Peter Barron. Healan! Boathouse, Phone Blue 281.

For conditions regarding three planting, fencing, etc., etc., or for plan of lot, or any information required, apply at office of the undersigned, Judiciary Building, Honolulu, H. T.

JAS. W. PRATT.

Commissioner of Public Lands.

Honolulu, December 7th, 1906.

6th—Dec. 7, 8, 15, 22, 29, Jan. 5.

### NOTICE.

My wife, Kahulu, having left my bed and board, I will not be responsible for any debts contracted in my name without my written order.

AH CHONG.

Honolulu, December 6, 1906.

### NOTICE OF LOST CERTIFICATE

Notice is hereby given that Certificate No. 1340 for Twenty Shares of the Capital Stock of the Kihel Plantation Co., Ltd., standing in the name of Minnie Schoenfeld has been lost and transfer of the same on the books of said company has been stopped.

J. P. COOKE.

Treasurer Kihel Plantation Co., Ltd.

Honolulu, T. H., December 6th, 1906.

In the Circuit Court of the First Circuit: Territory of Hawaii, At Chambers. In Probate. In the matter of the Estate of Ioane Kalaikawaha, late of Waiulus, County of Oahu, Deceased.

### NOTICE TO CREDITORS.

All Persons claiming to be Creditors of the above named Estate, are hereby notified to present their claims against said Estate, such claims to be duly authenticated and accompanied with proper vouchers, if any exist, even though such claims or any of them are secured by Mortgage upon Real Estate,—to the undersigned Executor of the Last Will and Testament of said Ioane Kalaikawaha, at the office of C. W. Ashford, Attorney for said Estate, in the Kapolei Building, in the City of Honolulu, within six months from the date of the first publication of this notice; and any and all claims against said Estate which shall not be so presented within said period will be forever barred.

Dated at Honolulu, this 22nd day of November A. D. 1906.

KAAI KAHOWAI.

Executor of the Last Will and Testament of Ioane Kalaikawaha, deceased (6th—Nov. 23, 20, Dec. 7, 14, 21.)



## Do You Decorate?

If you want gold, silver or bronze paints, or any kind of enamel for decorative purposes, call on us.

We have the greatest variety of paints and enamels in the city.

### LEWERS & COOKE

LIMITED

177 SOUTH KING STREET.

### HUSTACE PECK CO., LTD

QUEEN STREET  
DEALERS IN

Firewood, Stove,  
Steam and Blacksmith  
Coal

WHOLESALE AND RETAIL.

Special Attention Given To

DRAYING

1190, WHITE AND BLACK SAND.

### Honolulu Iron Works.

STEAM ENGINES, SUGAR MILLS,  
ROLLERS, COOLERS, IRON, BRASS  
AND LEAD C.S. 48.

Machinery of Every Description Made  
to Order. Particular attention paid to  
Ship's Blacksmithing. Job Work Ex-  
ecuted on Short Notice.

### Dahu Railway and Land Co.'s

TIME TABLE

OUTWARD.

For Wailanae, Wailua, Kahuku and  
Way Stations—9:15 a. m., 3:20 p. m.  
For Pearl City, Ewa Mill and Way  
Stations—17:30 a. m., 9:15 a. m., 11:05  
a. m., 2:15 p. m., 3:20 p. m., 5:15 p. m.,  
5:30 p. m., 11:00 p. m.  
For Wahiawa—9:15 a. m. and 5:15  
p. m.

INWARD.

Arrive Honolulu from Kahuku, Wailua  
and Wailanae—8:35 a. m., 5:31  
p. m.  
Arrive Honolulu from Ewa Mill and  
Pearl City—17:45 a. m., 8:35 a. m.,  
9:55 a. m., 1:40 p. m., 4:31 p. m.,  
5:31 p. m., 7:30 p. m.  
Arrive Honolulu from Wahiawa—  
9:35 a. m. and 5:31 p. m.  
Daily, 1 Ex. Sunday, 1 Sunday Only  
The Haleiwa Limited, a two-hour  
train (only first-class tickets honored),  
leaves Honolulu every Sunday at 8:22  
a. m.; returning, arrives in Honolulu  
at 10:30 p. m. The Limited stops only  
at Pearl City and Wailanae.  
M. P. DENISON, P. C. SMITH,  
Supt. G. P. & T. A.

### CASTLE & COOKE LTD

Commission Merchants  
Sugar Factors.

AGENTS FOR

The Ewa Plantation Company,  
The Wailua Agricultural Co., Ltd.  
The Kohala Sugar Company,  
The Wailua Sugar Mill Company,  
The Fulton Iron Works, St. Louis, Mo.  
The Standard Oil Company,  
The George F. Blake Steam Pumps,  
Weston's Centrifugals,  
The New England Mutual Life Insurance  
Company of Boston,  
The Aetna Fire Insurance Company of  
Hartford, Conn.,  
The Alliance Assurance Company of  
London.

### Hawaiian Carriage Manufacturing Company

QUEEN ST. TEL. MAIN 47.  
P. O. BOX 193.

Manufacturers of all kinds of Car-  
riages and Vehicles, Wagons, Wagon  
Materials of all descriptions supplied;  
Rubber Tires put on at reasonable  
prices; Repairing, Painting and Trim-  
ming; satisfaction guaranteed; esti-  
mates given.

AUTOMOBILE REPAIRING  
& SPECIALTY.  
C. W. ZEIGLER, Manager.

Also Job Printing, Star Office.

**I Can Sell**  
YOUR REAL ESTATE OR BUSINESS  
NO MATTER WHERE LOCATED  
Properties and Business of all kinds  
sold quickly for cash in all parts of  
the United States. Don't wait. Write  
today describing what you have to sell  
and give cash price on same.  
IF YOU WANT TO BUY  
any kind of Business or Real Estate  
anywhere at any price, write me your  
requirements. I can save you time and  
money.

**DAVID P. TAFF,**  
THE LAND MAN.  
415 Kansas Avenue,  
TOPEKA, KANSAS.

## Have You Ever

SAMPLED A DRINK FROM  
THE SODA FOUNTAIN OF  
THE HONOLULU DRUG  
CO.?

PEOPLE WHO HAVE

SAY THEY ARE PERFECT  
IN QUALITY, DELICIOUS  
IN FLAVOR, WITH A TANG  
EXCLUSIVELY THEIR  
OWN.

Skilled Pharmacists

DISPENSE GOODS FROM

The Honolulu Drug Co.

FORT STREET.

## Christmas Leaders

JEWEL BOXES AND CARD CASES  
Exquisitely Carved into Delicate  
framework in both Ivory and Rare  
Woods.

ORIENTAL JEWELRY.  
Chinese Cufflinks, Rings and Arm-  
lets of Amber and Gold.

WONDERFULLY CARVED FANS.  
In both Ivory and Wood.  
All Gifts Fit for a Princess.

**Wing Wo Tai & Co.**  
Nuuanu Street near King.

### W. W. Ahana Co.

If you need a new suit of clothes you  
need not bother your head about style  
and fit. All you need do is to pick  
out the cloth, be measured and an ex-  
pert tailor will turn you out a thorough-  
ly up-to-date suit. Also we do cleaning  
and repairing, neatly and with dispatch.

**W. W. Ahana Co. Ltd**  
Merchant Tailors.

Phone Blue 2741.

No. 62 King Street.

## Horse Clipping.

Luke Rogers is back again from  
Maui, clipping horses at the old stand,  
corner Punchbowl and King streets.

### XMAS HATS

REDUCED PRICES

STRAW

PANAMA

FELT

FOR

Men and Women

E. MORIKUCHI

14 Hotel Street, near Nuuanu.

Clothes Neatly  
CLEANED AND PRESSED

Honolulu Clothes Cleaning Co.

Alakea St., near King. Phone Main 147

SUGAR AWAITING SHIPMENT.  
Purser Friel of the S. S. Mauna Loa  
which arrived from Hawaii and Maui  
this morning reports sugar waiting  
shipment as follows: Kukuhaele, 500;  
Honuapo, 450; Punaluu, 500.

CROUP.

Give Chamberlain's Cough Remedy  
as soon as the child becomes hoarse,  
or even after the croupy cough appears,  
and the attack may be warded off.  
There is no better medicine in the mar-  
ket for children than this remedy. It  
contains nothing injurious and as it is  
pleasant to the taste they readily take  
it. For sale by all dealers, Benson,  
Smith Co., Ltd., agents for Hawaii.

# SPORTS

## HOW YALE WON THE GREAT GAME

IT WAS A VICTORY THROUGH  
FOOTBALL KNOWLEDGE AND  
SUPERIOR PLAY.

NEW HAVEN, November 24.—Yale's  
bright blue banners wave triumphantly  
over the city tonight, proclaiming  
another victory over Harvard, and 6 to  
0, which was the final score, are the  
figures emblazoned on every hand.

The crimson went down to defeat in  
a desperate battle which in football  
strategy and spectacular plays has had  
few equals since the two universities  
have met. To Yale passed the almost  
undisputed title of the college cham-  
pionship of the country, clouded only  
by the drawn, no-score contest with  
Princeton a week ago.

A victory for the crimson would  
have meant first honors beyond ques-  
tion, for she had beaten the Carleis  
Indians, who last week won from Min-  
nesota and who also had defeated the  
University of Pennsylvania, the con-  
queror of the University of Michigan.  
For this reason, if for no other, the  
game on Yale field was of unprece-  
dented importance, and to Yale once  
more has come a victory which will  
live forever in her athletic history.

It was a victory won through foot-  
ball knowledge, superior play, almost  
unerring accuracy in developing the  
possibilities of the new rules and the  
magnificent work of her players. The  
score of a single touchdown and goal  
repeats that of last year in soldier-  
field, and it adds to Yale's string of  
victories only twice broken since 1927.

Harvard proved a worthy foe. Her  
men repeatedly shone conspicuously,  
and the flashes of brilliancy in over-  
plays as time and again her backs  
broke through the line and her stal-  
wart guard, Burr, sent the ball twist-  
ing through the air on long punts,  
seemed to be entitled to a reward. Har-  
vard was a trifle slow in executing her  
plays, which, as last year, seemed to  
hinge on her great strength of defense.

Yale's success lay in playing offen-  
sively at the opening, driving her plays  
hard and taking advantage of every  
opening when her opponents had the  
ball. Interference, forward passes and  
inside kicks were well developed. Not  
once did a Yale man have to run down  
the field without assistance. As the  
game was nearing the close Yale played  
faster and rolled the crimson line into  
a heap time and again. It was only  
Harvard's stubborn contest of every  
inch that kept the score at the single  
figures.

STAR FEATURE OF GAME.

The touchdown followed a sensa-  
tional play. Yale had the ball on Har-  
vard's 25-yard line. Jones called for  
a kicking formation. Veeder dropped  
back to the 24-yard line with his hands  
outspread. A perfect pass from Hock-  
enberger sent the ball into his hands,  
and Veeder, like a flash, started at  
right angles and hurled the ball over  
the heads of the Harvard men, for a  
20-yard pass to where several Yale  
men, as though drawn by a magnet  
had jumped into one little knot.

From their midst leaped Forbes, who  
caught the ball and in an instant,  
placed it down on the four-yard line.  
Up the Yale posts, with cries for a  
touchdown while the crimson side was  
hushed, Boone, who had replaced Knox  
was sent to smash the crimson line.  
His first try gave two yards and the  
next time he was shot over with the  
whole team dragging and pushing him.  
That four yards showed what Yale  
could do when she was hungry for the  
score which was close at hand. The  
kicking of a goal was an easy thing  
for Veeder.

VEEDER PUNTS TO SAFETY.

There were several anxious moments  
for the Yale men, while the Harvards  
never had possession of the inside of  
the twenty-five yard line. Twice Yale  
was lined up with the ball in the  
shadow of her goal posts, and in each  
case Veeder dropped behind the goal  
line to punt. In both instances Har-  
vard, by means of the on-side kick,  
sent the ball Yale at the twenty-yard  
line.

In the early part of the game New-  
hall tried a drop kick. It was blocked  
and Forbes got the ball. Early in  
the game also Yale lost an oppor-  
tunity to score a field goal when Veeder  
tried for one of Harvard's forty-five-  
yard line. It went wide a few feet  
right after this Yale had another op-  
portunity for a try for goal, but lost  
it out of anxiety to make a touch-  
down. Burr had punted to Knox at  
the crimson's forty-five yard line and  
the latter, behind a screen of inter-  
ference, ran the breadth of the field  
for a gain of twenty yards. Three  
line plays which followed resulted in  
the necessary and down and a touch-  
down seemed imminent. On the next  
play Jones took the ball and made a  
forward pass to Alcott who fumbled it  
on the three-yard line. McDonald  
dropped on it and Burr punted out of  
danger.

WOULD HAVE SCORED AGAIN.

With the score 6 to 4, Harvard was  
compelled to change her style of at-  
tack, and Burr was called upon to  
pull the ball out of danger with his toe.  
The first half of the second half re-  
solved itself into a punting duel be-  
tween Burr and Veeder. From then  
on the outcome seemed certain. Yale  
with new players put fresh life into  
their team and in the last five minutes  
of the half there was a march down the  
field. Yale was moving like a batter-  
ing-ram and another touchdown was  
prevented by the referee's whistle end-  
ing the game.

The gridiron was jammed with a

## WOULD HAVE A REGATTA AT WAIKIKI

THE PROMOTION COMMITTEE ARE  
URGED TO ASSIST A REGATTA  
AT THE BEACH.

The Promotion Committee met yes-  
terday afternoon and spent most of  
their time discussing a regatta to be  
held on New Year's Day at Waikiki.  
Secretary Jack Atkinson was the orig-  
inator of the idea and he spent con-  
siderable of his time yesterday talking  
with the Committee.

It was the idea of the Secretary to  
have the sports all Hawaiian and aqua-  
tics such as surf riding, surf canoeing,  
etc. The Committee was heartily in  
favor of the scheme and a committee  
was named to work the matter up.

Charles E. Chade, who is represent-  
ing the magazine "Western Tours,"  
addressed the Committee and told  
them of the January number of the  
magazine which will be devoted to Ha-  
waii. He thought that it would be well  
for the committee to purchase a num-  
ber of copies. The matter was referred  
to Secretary Wood.

A. Gartley was relieved of being  
chairman of the committee to arrange  
for the floral parade. His duties take  
him out of town and he would not  
have time.

The following letter was received by  
Mr. Wood from the veteran author,  
Charles Warren Stoddard:

"Congress Springs, Cal., Oct. 3, 1936.  
"Dear Mr. Wood: In 1934—perhaps  
that was before you were born—I made  
the tour of Hawaii. Was there again  
in 1888-71, when I made Honolulu my  
home for three years.

"I have written and published much  
concerning the Hawaiian Islands. There  
are chapters concerning Hawaii in my  
books, 'South Sea Idylls,' 'The Island of  
Tranquil Delights,' and 'Lazy Letters  
from Low Latitudes' is all about Ha-  
waii. So is 'The Lepers of Molokai,' a  
sketch of my dear friend, Rev. Father  
Damien.

"I have not been in Hawaii since  
1884. Am expecting to make my home  
in old Monterey, California. What  
would be easier or more natural than  
to board the older Rosecrans in Mon-  
terey and slip down to Honolulu.

"But O, the changes since the old  
days! These I almost fear to see.  
Very sincerely yours,  
"CHARLES WARREN STODDARD."

## PREPARING FOR PACIFIC RACE

SYNDICATE OF SOUTH COAST  
YACHT CLUB TO BUILD YACHT  
FOR THE RACE IN 1938.

SAN DIEGO, November 29.—South-  
ern California yachtsmen already are  
beginning to look forward to another  
transpacific race. News comes from  
Honolulu that the Hawaiian yacht club  
is planning for a contest to take place  
in the spring of 1938 and that Com-  
modore W. T. Hobron intends to buy  
or build a yacht in San Francisco with  
which to compete for the trophy.

There will be some fast entries from  
among the Southern California yachts-  
men. The Lurline, owned by Com-  
modore Sinclair of the South Coast club  
which won the race last spring, prob-  
ably will enter the race again. In ad-  
dition to this there will be a syndi-  
cate boat constructed by members of  
the club and the Catalina Yacht club  
also is planning to organize a combina-  
tion to build a yacht.—San Diego Sun.

LUNCHEON TO SARGENT.

Governor Carter gave a luncheon at  
the Young Hotel yesterday to Commis-  
sioner Sargent. The affair was a most  
pleasant one. Those present were F. C.  
Sargent, Governor Carter, R. C. Brown,  
A. L. C. Atkinson, C. M. Cooke,  
E. D. Tenney, F. M. Swaney, R. W. Breckons, W. M. Giffard, W. A. Kin-  
ney, J. H. Craig, J. J. Carden, J. A. Gilman and R. D. Mead.

Y. M. C. A. SOCIAL.

There will be a men's social at the  
Y. M. C. A. Monday night. Music by  
the Diamond Heads; recitation, Mr.  
Bruce Hartman; legerdemain, by Mr.  
R. A. Churton; gymnastic stunts, by  
some of the gymnasts; college songs,  
fun and refreshments.

mass of humanity in which three sides  
were blue and the other crimson.

Following was the lineup:

Yale.	Position	Harvard.
Forbes	.....L.E.	Macdonald
Palge	.....L.T.	Osborne
Bridges	.....L.G.	Burr
Hockenberger	.....C. Parker, Fraser	Erwin
Erwin	.....R.G.	Kersberg
Blegelow	.....R.T.	Perece
Jones, Alcott	.....Morse, R.T.	Starr, Orr
T. Jones, Dines	.....Q.B.	Newhall
Knox, Rooms		
Bomar, Linn	.....L.H.B.	Foster
Veeder	.....R.H.B.	Lincoln
Morse, Woincken	.....B.	Wendell
Score—Yale 6, Harvard 0.		
Touch—Roome.		
Goal from touchdown—Veeder.		
Referee—W. J. Hackett, West Point.		
Umpires—K. Hall, Dartmouth; W. H. Edwards, Princeton.		
Time of halves—30 minutes.		

Fine Job Printing, Star Office.

THE MARKET'S RENOWNED

## SWEET VIOLET

It is the Special  
Favorite Amongst  
TABLE BUTTER

+

Rich in Quality, Rare in Cream.  
It is the Best Family Butter.

+

C. Q. YEE HOP & CO.

Tel. Main 251

## NEW GOODS FOR THE HOLIDAY SEASON

This year we are better prepared than ever to cater to the wants of  
holiday buyers. We have the largest line of Holiday Goods and Novel-  
ties ever imported from the Far East by one firm. All goods per-  
sonally selected by Mr. Isoshima last month.

To display our goods to advantage we have opened a branch store  
at the corner of Fort and Beretania Streets.

COME AND EXAMINE OUR GOODS.

### K. ISOSHIMA

2 STORES

KING STREET NEAR BETHEL  
CORNER FORT AND BERETANIA.

## Foreign News

By Cable

REVOLUTION IN ECUADOR.

QUAYAQUIL, December 7.—A wide-  
spread conspiracy against the govern-  
ment of Ecuador has been discovered.  
Rebels invaded the province of Azuaya  
and were defeated.

A FIFTH WITH PULAJANES.

MANILA, December 7.—A fight has  
occurred in Leyte between the constabulary and the Pulajanes. Four sol-  
diers and thirty Pulajanes were killed  
and many Pulajanes wounded and captured.

BRITISH EDUCATION BILL.

LONDON, December 7.—The educa-  
tional bill has passed third reading in  
the House of Lords.

ENDING THE INCIDENT.

PARIS, December 7.—The Chamber  
of Deputies has ratified the Algerian  
settlement of the Morocco difficulty.

POLES LOSE UNIVERSITY.

WARSAW, December 7.—Poland's  
only university has been ordered re-  
moved to Saratov, in Russia.

BENEFIT CONCERT.

The following is the program of the  
concert to be given in San Antonio  
Hall this evening for the benefit of the  
Church of Jesus Christ of Latter Day  
Saints.

Instrumental—Diamond Head Glee Club  
Quintet.  
Annie Lau, Emily Hatton, D. Hall,  
James Sakuma, Wm. Ewaliko.

Zither Solo.....James Ah Loy  
Vocal Solo.....Miss Ivy Kekuku  
Piano Solo.....Miss Ivy Kekuku  
Quartet.....Diamond Head Athletic Club  
Duet.....Mrs. Nelson, Mrs. Young  
Ocarina Solo.....H. Chilton  
Vocal Solo.....Edwin K. Fernandez  
Mandolin Solo.....W. Chillingworth  
Trio.....Mrs. Lua and Misses Kekuku  
Instrumental—Diamond Head Glee Club  
Quartet.  
Mr. and Mrs. Hanale, Mr. and  
Mrs. Makanani.

Vocal Solo.....John Bright  
The concert will commence at 7:30 p.  
m. and at 9 p. m. there will be dancing.

BURIAL ASSOCIATIONS.

The Mahala Cemetery Association  
has filed its character with Territorial  
Treasurer Campbell. The incorporators  
are W. J. Coelho, Henry Kallehu, G.  
Ehu Haena, John Paikaka, Sam Ka-  
mana, William Aki and Honuakaha,  
all residents of Wailuku, Maui. No  
dividends are to be declared. The Ka  
Home Maha Mau Cemetery Association  
has also filed its articles of incor-  
poration with the treasurer. The in-  
corporators are Henry Birch, S. K.  
Kanakaokai, G. W. P. Khamahana,  
Lucy Lani, A. S. Kaholokai, T. K. Ha-  
le, Solomon Kalole, J. M. Harvest and  
S. Kaholokahiki. All of the incorpora-  
tors are residents of Wailuku, Maui.

NO CAPTAIN FOR MONGOLIA.

SAN FRANCISCO, November 25.—  
The big steamer Mongolia went to her  
former slip at pier 42 yesterday morn-  
ing, after having been in dry dock at  
Hunter's Point for about two weeks,  
undergoing temporary repairs. She is  
scheduled to sail for Honolulu and the  
Orient on December 21st. No com-  
mander has yet been appointed to the  
liner to succeed Captain W. P. S. Por-  
ter, who took leave of the Mongolia  
some weeks ago.—Chronicle.

Fine Job Printing, Star Office.

## HOWARD'S BRUSHES

For the hair are the best made. The  
length of the bristles, the finish of the  
backs and the quality of the material  
go to make them superior to any brush  
on the market. The Prophylactic, ab-  
solutely sanitary, is next and then  
comes the Adams in point of strength.  
We have them all, for the hair, the  
nails and the clothing.

### Benson, Smith & CO., LTD.

Koa Furniture

Made to Order.  
Upholstering and Repairing.  
WING CHONG CO.  
Cor. King and Bethel. P. O. Box 1932.

EUROPEAN RESTAURANT

Meals served at all hours, day and  
night. Best cooking. White servants.

King Street near Nuuanu.

Catton, Neill & Co.,  
LIMITED

Engineers, Machinists, Blacksmiths  
and Boltermakers.  
First class work at reasonable rates.

### W. G. Irwin & Co.

AGENTS FOR THE

Royal Insurance Co., of Liverpool, Eng.  
Alliance Assurance Co., of London, Eng.  
Scottish Union & National Ins. Co., of  
Edinburgh, Scotland.  
Fire Association of Philadelphia.  
Alliance Insurance Corporation Ltd.  
Wilhelms of Magdeburg General Ins.  
Company.

### W. G. Irwin & Co., Ltd

Wm. G. Irwin, President and Manager  
John D. Spreckels, First Vice-President  
W. M. Giffard, Second Vice-President  
H. M. Whitney, Treasurer  
Richard Ivers, Secretary  
W. F. Wilson, Auditor

SUGAR FACTORS, COMMISSION AGENTS

AGENTS FOR



## Claus Spreckels & Co. BANKERS

San Francisco Agents—The Nevada National Bank of San Francisco.  
DRAW EXCHANGE ON  
SAN FRANCISCO—The Nevada National Bank of San Francisco.  
LONDON—London & Smith's Bank, Ltd.  
NEW YORK—American Exchange National Bank.  
CHICAGO—Corn Exchange National Bank.  
PARIS—Credit Lyonnais.  
BERLIN—Dresdener Bank.  
HONGKONG AND YOKOHAMA—The Hongkong and Shanghai Banking Corporation.  
NEW ZEALAND AND AUSTRALIA—Bank of New Zealand and Bank of Australasia.  
VICTORIA AND VANCOUVER—Bank of British North America.

TRANSACT A GENERAL BANKING AND EXCHANGE BUSINESS.

Deposits Received, Loans Made on Approved Security, Commercial and Investors' Credits issued, Bills of Exchange Bought and Sold.

COLLECTIONS PROMPTLY ACCOUNTED FOR.

ESTABLISHED IN 1858.

## BISHOP & CO. BANKERS

Commercial and Travelers' Letters of Credit issued on the Bank of California and N. M. Rothschilds & Sons, London.

Correspondents for the American Express Company, and Thos. Cook & Son.

Interest allowed on term and Savings Bank Deposits.

## THE YOKOHAMA SPECIE BANK Limited.

ESTABLISHED 1880.

Capital Subscribed.....Yen 24,000,000  
Capital Paid Up.....21,000,000  
Reserve Fund.....13,700,000

HEAD OFFICE, YOKOHAMA.

Branches and Agencies:

Honolulu, New York, San Francisco, London, Lyons, Bombay, Hongkong, Dairen, Newchwang, Leiyang, Peking, Hankow, Shanghai, Chefoo, Tientsin, Mukden, Antung Hsien, Kobe, Nagasaki, Tokyo, Osaka.  
The Bank buys and receives for Collection Bills of Exchange, Issue Drafts and Letters of Credit, and transacts a general banking business.

Honolulu Branch 67 King Street

## THE BANK OF HAWAII LIMITED.

Incorporated Under the Laws of the Territory of Hawaii.

CAPITAL, SURPLUS AND PROFITS  
\$1,007,346.65

OFFICERS.

Charles M. Cooke.....President  
P. C. Jones.....First Vice-President  
F. W. Macfarlane.....2nd Vice-President  
C. H. Cooke.....Cashier  
C. H. Cooke, Jr.....Assistant Cashier  
F. B. Damon.....Assistant Cashier  
Zeno K. Myers.....Auditor  
DIRECTORS: Chas. M. Cooke, P. C. Jones, F. W. Macfarlane, E. F. Bishop, E. D. Tenney, J. A. McCandless, C. H. Atherton, C. H. Cooke, F. B. Damon, F. C. Atherton.

COMMERCIAL AND SAVINGS DEPARTMENTS.

Strict attention given to all branches of Banking

JUDD BUILDING, - FORT STREET.

David Ortiz,  
THE HAT CLEANER.

PANAMA, STRAW, FELT AND SILK HATS CLEANED.  
All Hats Called for and Delivered.

King Street, near Young Hotel.

Y. ISHII,  
Corner Beretania and Nuuanu Sts.

JAPANESE DRUGGISTS  
GENERAL MERCHANDISE

All kinds American patent medicines at low prices.

IF YOU WISH TO ADVERTISE  
IN NEWSPAPERS  
ANYWHERE AT ANYTIME  
Call on or Write  
E. C. DAKES ADVERTISING AGENCY  
124 Sansome Street  
SAN FRANCISCO, CALIF.

## The Toy Shop A Pretty Show

The "Toy Shop," as presented last evening at the Hawaiian Opera House by amateurs under the direction of Miss Margaret Martin, was one of the prettiest and most enjoyable shows that Honolulu has ever seen. The play is a delightful working out of the very pretty conceit that the dolls in the toy shop of an old toy-maker, who dearly loves his work and his toys, are really endowed with life, through the agency of the fairies, for the four hours between midnight and 4 o'clock. During that time they feel and express the joys and sorrows, the sentiments and temperaments, of the people large and small, that as dolls they represent.

The conceit is a very pretty one and is very prettily worked out. The stage is constantly filled with color and with action. The lines may not always be as clever as they might be, and the music is sometimes little more than a means of melodiously marking time. But bright interested children in bright costumes is pretty marches and dances, carrying out the conceit of the play, make it a delight from beginning to end.

It was one of the best and dearest and best entertained audiences that has filled the Opera House for a long time, that witnessed the performance last night. Miss Martin directing both the orchestra and the stage, showed both the versatility and grasp that has made her handling and training of the children a wonder to all who have seen what she does.

Miss Lorna Iaukea, as the captain of the tin soldiers, and Miss De l'Artigue as the Paris doll, were very clever. Mr. Noah and his wife and two sons, James Wilder, Willard E. Brown and Richard and George Cooke carried the low comedy part and made it exorcisingly funny. Alphonse, Leon and Gaston, R. McGrew, Allen Renton and Willie Roseman, with the three lady dolls, Araminta, Arabella and Angelina, Thelma Murphy, Helene Spaulding and Fannie Hoogs, received much merited applause. The marines from the ark, in effective costume and pantomime dancing were a real feature of the show. The gingerbread dolls for quaintness, and the candy dolls for fetching cuteness could scarcely be excelled.

The prettily made announcement to the assembled dolls of the arrival of their queen by the Fairy Page, Dorothy Hoogs, introduced the dolls' revels in which intricate marching and counter-marching, and dances as light and pretty and attractive as they could be. The Queen, Ruth Farrington, was borne in on her throne by the "Four Hours."

It is impossible to speak in detail of all the features of the entertainment that deserve commendation, or of all of the individuals who added to the attractiveness of the performance. The play will be given again tonight and on Saturday afternoon.

To Miss Hopper pianist, who has been indefatigable as well as most capable in her work, and to the Symphony Society orchestra which rendered the music of the play, the greatest praise is due.

The cast of characters is as follows: The Toy Maker, Mr. Frederick Hastings; Paris Doll, Miss Adelaide de l'Artigue; Captain Blocklin, Miss Lorna Iaukea; Captain Woodenhead, Mr. Clarence Waterman; Leader of the

Band, Marcus Monsarrat; Japanese Maiden, Miss Agnes Lyle; Johnny, Ivan Graham; Baker, Vernon Tenney; Queen, Ruth Farrington; CHILL, Miss Ray Bell.

Comedians—Noah, James Wilder; Mrs. Noah, Willard E. Brown; Shem, George P. Cooke; Japheth, Richard Cooke; Dr. Pillsbury, Coleman Schwartz; Rag Doll, Watson Ballentine; Fairy Page, Miss Dorothy Hoogs.

Three Pops—Alphonse, Reynold McGrew; Leon, Allen Renton; Gaston, Willie Roseman.

Three Lady Dolls—Araminta, Thelma Murphy; Arabella, Helene Spaulding; Angelina, Fannie Hoogs.

Clock Fairies (four hours)—One o'clock, Miss Kaipo Senna; Two o'clock, Miss Lillian Munday; Three o'clock, Miss Ella Wright; Four o'clock, Miss Mikahala Awana.

Fairies—Isabella, Lucas, Romona Morgan, Violet Lucas, Frances Redhouse, Stella Hoogs, Gladys Halstead, Florence White, Edith Kibbling, Dorothy Hoogs, Beatrice White, Mela Fairchild, Thelma Lindley.

Marines—Alice Hastings, Helen McLean, Mildred Chapin, Ethel Redhouse, Geraldine Traphagen, Psyche Berry, Mildred Brundage, Bernice Halstead, Hester Pratt.

Bisque Dolls—Dorothea Cooke, Marion Ellen Paris, Katherine Pratt, Joe Farrington, Gordon Wakefield, Willie Rowat.

French Dolls—Madeline Ross, Hazel Ridley, Estelle McAllister, Vera Day, Evangeline Rowat, Olive Day, Alice Blart, Martha McChesney, Margaret Thurston, May Kibbling, Ada Robinson, Marion Chapin, Vera Downey, Thelma Rothwell.

Tin Soldiers—Willard Ables, Archie Sinclair, Alapaki Smith, Shirley Bush, James McCandless, Ralph Grey, William Kamehona, Campbell Crozier.

Dutch Dolls—Esther Cummins, Gertrude Traphagen, Ella Peterson, Esther White, Claire Berry, Amelia Grote, Dora Grote, Helene Springston, Helen King, Emma Franca, Mildred Dow, Rosie Herbert, Edean Winter, May Kibbling.

American Beauties—Myrtle Schuman, Ruth McChesney, Tillie Merseburg, Tillie Woolsey, Marjorie Cutting, Henrietta Smith, Josephine Morgan, Lottie Aylett, Mary von Holt, Marjorie Chapin.

Wooden Soldiers—Scott Pratt, Kenneth Ables, Oscar McCandless, Daniel King, Melville Harris, Gavian Bush, Linn Webster, Guy Rothwell, Roy Douglass, Ernest Gonsalves, Alvin Keech, Kenneth Winter.

Band—Wilfred Harrison, Morris Lee, Marston Campbell, Harry Denison, Donald Lewis, Walter Grace, Marcus Monsarrat, Morris Augur, Ward Walker, Worth Staunaker, Stanley, Mott-Smith, Jack Lee, Ernest Mott-Smith.

Japanese Dolls—Mabel Cordes, Charlotte Dowsett, Lillian McChesney, Eva Decker, Helen Dow.

TOY SHOP ANNOUNCEMENTS.

Some unfortunate errors occurred in the Toy Shop programs, which will be corrected today. Those who bought copies the first night and who wish to keep them for souvenirs, can exchange their imperfect lists for perfect ones by calling at E. O. Hall & Son after Monday the 9th. Correct copies will be on sale at the Opera House tonight 10 cents each. Gallery seats are 25 cents. Hoodlums will be promptly removed.

lulu, Oahu. \$3500. B 289, p 104. Dated Nov 27, 1906.

William C Achi and wf to Augustine De Corte, D: lot 10, blk 10, Kailuanu Tract, Honolulu, Oahu. \$150. B 286, p 252. Dated Apr 2, 1902.

Oahu College by trs to Charles F. Peterson, Par Rel: lots 1, 8 and 9, blk 12, College Hills, Honolulu, Oahu. \$3200. B 289, p 104. Dated Apr 30, 1903.

Y. Takakawa to S. Suyehiro, Resgnat T and B S; tr in sale in lber 284, fol 411; mds, furniture, fixtures, aco, etc. \$1. B 284, p 417. Dated Nov 23, 1906.

## REALTY TRANSFERS

Entered for Record December 5, 1906.

From 9 a. m. to 4 p. m.

E Colt Hobron and wf to Elmer Breckenridge.....D

Claus Spreckels & Co by atty to E C Hobron.....Par Rel

E C Hobron and wf to Elmer J Breckenridge.....D

Claus Spreckels & Co by atty to E C Hobron.....Par Rel

E J Breckenridge and wf to Cecil Brown.....M

A G M Robertson to James W Robertson.....F A

Solomon K Oili and wf to John H D'Almeida.....M

Joseph Smith and wf to Western Hawaiian Invt Co Ltd.....M

Olaf Omsted to Hans Isenberg.....C M

Entered for Record December 6, 1906.

from 9 a. m. to 4 p. m.

M A Rego and wf by comr to W D Speckmann.....D

John A Palmer to Olaf Omsted.....AL

J W K Lo and wife to First Abank of Hilo Ltd.....D

John W Kalum and wf to Francisco de Silva.....D

S W Walong and wf to Kalkal Pahlul (W).....D

K Tomishima by mtgee to Y Nakayama.....Fore Affat

Eliza E Cassidy and hsb to Mutual Bldg & Loan Socy.....M

Albert S Wilcox to Kauai Electric Co Ltd.....L

Standard Oil Co by regr to.....Notice

Recorded November 26, 1906.

J Alfred Magoon to Isaac S Kahu, Rel; 15 pcs land and leasehold, Waioli, etc, Halealea, etc, Kauai, Territory of Hawaii. \$250. B 283, p 94. Dated Nov 27, 1906.

Mikahala K Kaeo and hsb (S K) et al to George N. Wilcox, M; et al 1 R P 3846, 3873 and lots 2 and 3 of R P 3737, at 42, Nawiliwili, etc, Puna, Kauai. \$500. B 289, p 95. Dated Nov 24, 1906.

Recorded November 28, 1906.

David Kaalua to Fanny Strauch, D; por R P 1794, kul 1048, Auwaloluu, Honolulu, Oahu. \$500. B 286, p 251. Dated Nov 3, 1906.

Est of S C Allen by trs to Pang Lum Mow, Rel; leaseholds, bldgs, etc, cor Beretania Ave and Nuuanu St, Honolulu.

## Do The Japanese Want American Citizenship?

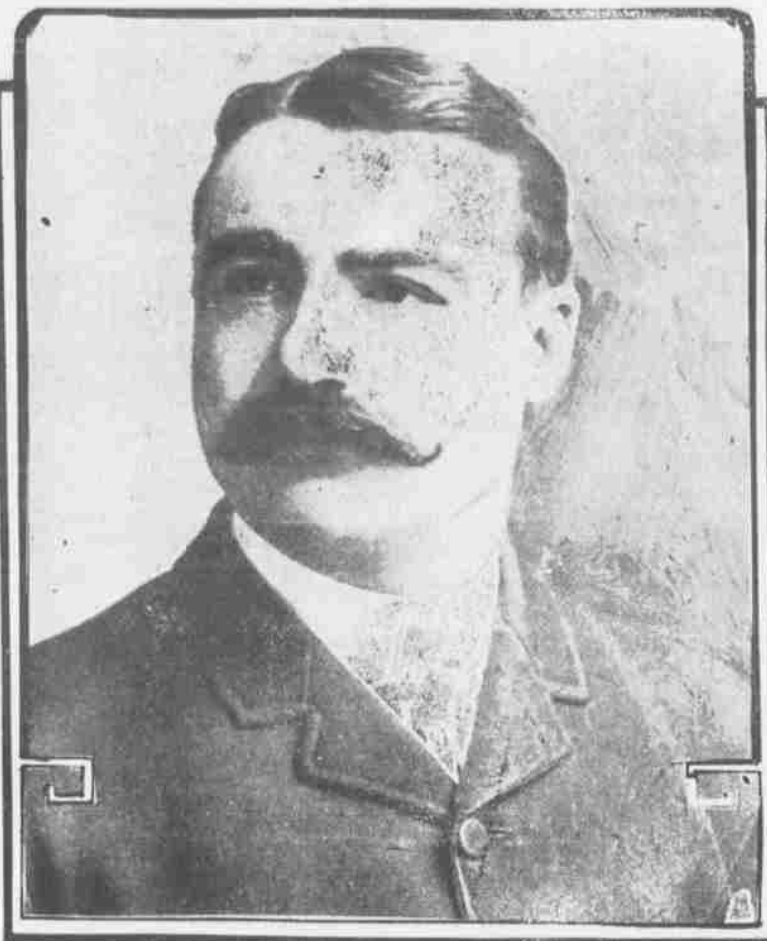
There is one feature connected with the proposal to naturalize Japanese that has not been considered. This is whether the Japanese will avail themselves of this opportunity.

Many prominent local Japanese have expressed the belief that their countrymen would not become American citizens. This sentiment was expressed by Japanese in mental capacities. It is their beloved emperor who keeps them loyal to their country—that is the name of the Emperor with its deep significance holds the Japanese absolutely and always to Japan. When the proposal of President Roosevelt was made known to a number of Japanese yesterday a large part of them expressed approval of the idea. Most of them said that they would like to become American citizens. But when the obligations incurred by becoming an American citizen was explained to them, not a single man was willing to become enrolled under the Stars and Stripes. It was explained to these Japanese that if they became Americans they would have to fight against

their emperor if Japan and the United States ever went to war. To a man they replied that under no circumstances would they do this—they could not they declared fight against their emperor and this sentiment will undoubtedly be found to be the sentiment of the vast majority of the Japanese in these islands at least. But there is another side to the problem. The Japanese are crafty enough to realize the benefits that would accrue to them if they became American citizens and with Oriental guile second thought may cause them to weigh these material benefits against the intangible obligations to their native land in event of war. They might therefore decide to become American citizens but with a mental reservation in the form of allegiance to Japan. Local people who studied the Japanese character and who lived in Japan express the belief that this is the method by which many Japanese would probably solve their side of the problem.

Fine Job Printing, Star Office.

## Billy Madden, Sport, Senate Candidate



BILLY MADDEN

## Iwakami & Co.

MANY JAPANESE CURIOS.

Consisting of Fancy Picture Frames, Delicate Trays and Boxes done in fine Lacquer work and fine Silk Scarfs and Sofa Pillows.

STRAW HATS.

During the Christmas trade, from now until the end of December, all hats will be sold at reduced prices.

NEW GOODS.

A large stock of new goods just received for the Xmas trade.

## Iwakami & Co.

ROBINSON BLOCK, HOTEL STREET.

## A Bewildering Array of Toys

Quality and Prices the BEST

but a catalogue for the asking.

THE STORE WITH IDEAS

The superb line of Toys displayed by us for Christmas is not an accident but is the result of

MONTHS OF THOUGHT

and careful buying on the part of the whole firm.

We offer Toys of every description to the children. For adults we have stationery, fine toilet articles and like goods. Everything in Christmas goods from hobby-horses to my ladies' stationery.

COME AND SEE US FIRST.



Wall, Nichols  
COMPANY



## LATEST THING IN INSURANCE....

23

Kinds of annuities to protect you against the vicissitudes of old age

JUST OUT.

It will pay you as it has paid others to investigate these policies before increasing your insurance. Call or write for particulars.

## Castle & Cooke

GENERAL AGENTS.

A. B. ELNER, Special Agent.

## ALEXANDER & BALDWIN, LTD

J. P. Cooke, Manager.

OFFICERS:

H. P. Baldwin.....President  
J. B. Castle.....First Vice-President  
W. M. Alexander.....Second Vice-President  
L. T. Peck.....Third Vice-President  
J. Waterhouse.....Treasurer  
E. E. Paxton.....Secretary  
W. O. Smith.....Director

Sugar Factors and Commission Merchants

AGENTS FOR

Hawaiian Commercial & Sugar Company,  
Hoku Sugar Company,  
Paia Plantation,  
Maui Agric. Co.,  
Kilauea Plantation Company,  
Hawaiian Sugar Company,  
Kahuku Plantation Company,  
Kahului Railroad Company,  
Haleakala Ranch Company.

JAPANESE HOTELS UNION  
EMPLOYMENT OFFICE

Supplies of all kinds of labor—Cooks, Waiters, General House Servants, Yard Boys, Plantations, Stores, Contractors and Shipping. Address, King Street, near Maunaloa. Telephone Main 255. P. O. Box 567.

BUSINESS MEN'S LUNCH  
A SPECIALTY

Scotty's Royal Annex

Corner Nuuanu and Merchant streets.

Brighten Up



"Brighten Up" your home this Fall with Sherwin-Williams Paints and Varnishes. There's one for every purpose.

For repainting chairs, kitchen furniture, shelves, baseboards and countless useful articles about the house—use S-W. Family Paint. Easy to apply; comes in 26 attractive colors. Put up in convenient sized cans.

For finishing old or new floors to imitate hard woods—use S-W. Floor-lac. Wears well, has a good appearance and does not fade out. Eight shades to choose from.

For refinishing buggies or carriages and objects subject to outside exposure—use S-W. Buggy Paint. Tough and durable and has a high gloss.

For brightening up old stove pipes—use S-W. Stove Pipe Enamel. Prevents rust; does not smoke or blister and stands a high degree of heat.



S-W. PRODUCTS SOLD BY

E. O. Hall & Son, Ltd

COR. FORT AND KING STREETS.



**DID YOU EVER** give a friend?  
No.  
Well, send him a **WOMAN'S EX-CHANGE COCONUT HEAD**. It will be a "Pat" surprise alright.  
**FINE CHRISTMAS GIFTS.**  
Hawaiian Shell and Seed LEIS.

**Woman's Exchange**  
Hotel Street near Fort.



**YOU CAN'T REMOVE DANDRUFF**  
WITH A COMB  
OR HAIR BRUSH.

Pacheco's Dandruff Killer is the only remedy that will effectively destroy the dandruff germ, and promote a luxuriant growth of hair.  
Sold by all Druggists and at Pacheco's Barber Shop, Fort street.  
PHONE MAIN 272.

### An Air of Distinction

The possession of fine teeth, even if you have to buy them, is worth all they may cost. It is easier to keep the natural, but when they are gone, you should have the best appearing and fitting teeth you can get. Consultation free.

F. L. Ferguson, D. D. S., Manager  
**THE EXPERT DENTISTS**  
715 HOTEL ST. HONOLULU



CENTRAL  
ABSOLUTELY  
FIRE-PROOF

**MOANA HOTEL**  
WAIKIKI BEACH

H. HERTSCHE, GENERAL MANAGER

Telephone Main 343.  
Residence, Phone Blue 2291.

**Oceanic Express**  
And Baggage Co.  
WALLACE JACKSON, MANAGER.

**BAGGAGE DELIVERED TO AND FROM ALL STEAMERS AND TRAINS.**

Furniture, Pianos, Etc., Moved to Any Part of the City at Reasonable Rates.

Office and Stand:  
Bethel Street, near Hotel.

**Real Estate Expert**  
And Financial Agent

When you want to buy a Home see **STRAUCH!**

When you want to sell your property see **STRAUCH!**

When you want to invest your money see **STRAUCH!**

When you want to borrow money see **STRAUCH!**

When you want some information of any kind see **STRAUCH!**

You will have satisfaction and make money by seeing **STRAUCH** and seeking his advice.

Waltz Building, 14 King Street.

**IRON BEDS**

BIG SHIPMENT  
JUST RECEIVED.

**J. HOPP & CO.**  
1953-1955 BISHOP STREET.

**THANKSGIVING CLEANLINESS**  
Come Early and Get Your Hat Cleaned

**EXPERT HAT CLEANERS**  
127 Fort Street opposite Club Stables.

### NEW ADVERTISEMENTS.

Notice of Lost Certificate.....Page 5  
Land Sale.....Page 5  
Proposals Wanted.....Page 5  
Metropolitan Meat Co.....Page 5

### NEWS IN A NUTSHELL

Paragraphs That Give Condensed News of the Day.

It will pay you to make your wants known. You can do this cheaply and most effectively by using the Want Ad column of The Star. Want Ads inserted three times for 25 cents.

### THE WEATHER.

Local Office, U. S. Weather Bureau  
Young Building.  
Honolulu, T. H., December 7, 1906.

Temperatures: 6 a.m., 75; 8 a.m., 78; 10 a.m., 75; noon, 77; maximum minimum, 72.  
Barometer, 8 a.m., 30.02; absolute humidity, 8 a.m., 7.917 grains per cubic foot; relative humidity, 8 a.m., 52 per cent; dew point, 8 a.m., 70.

Wind, velocity, 6 a.m., 12, northeast; 8 a.m., 4, south; 10 a.m., 7, southeast; noon, 3, south.  
Rainfall during 24 hours ended 8 a.m., 0.

Total wind movement during 24 hours ended at noon, 135 miles.  
W.M.E. STOCKMAN,  
Section Director.

LONDON BEETS: December 4, 9 shillings, 1 1/2 pence; last previous quotation, December 3, 9 shillings.

SUGAR, New York, November 29—3.84375 cents a pound or \$76.375 a ton; last previous quotation November 29, 3.82 cents a pound.

Elks meeting to-night.  
A Land Office sale notice is published in this issue.

C. Balle returned from Kona in the Mauna Loa this morning.  
Live turkeys at the Metropolitan Meat Market, corned beef and fat.

Miss Ada Rhodes arrived in the S. S. Nihing this morning from Ahukini.  
The Scottish Thistle Club will meet this evening in its rooms in the Oregon block.

Lewis & Co. will receive their Christmas trees on the 21st by the Alameda. Leave orders early.

Don't miss the auction sale at the Pacific Hardware Co. tomorrow at 10 o'clock.

A special choir practice of St. Andrew's Cathedral is called for 5 o'clock today.

The photo exhibit will open today at the Promotion Committee from 7 to 10 p. m.

Raymond C. Brown has been appointed inspector in chief at the Immigration Station.

The second annual meeting of the Hawaiian Entomological Society was held last night.

D. L. Conkling arrived from Kona today to accept a position with the Bulletin Publishing Company.

Proposals for constructing a fire engine house at Kahauiki are advertised for by the Depot Quartermaster.

Hawaiian News Co. in Young Building will be open tomorrow (Saturday) night. There will be good music.

The Catholic Ladies' Aid Society will meet this afternoon following the 3 o'clock services in the Cathedral.

There will be a meeting of the promoters of the Mid-Pacific Institute this afternoon. It is expected that important measures will be adopted.

George Lycurgus has received a letter from his nephew at the Volcano House in which it is stated that the outbreak of the volcano at the first of the week is very similar to the one two years ago.

The Buckeye Club of Hawaii will meet at the residence of Mr. and Mrs. W. C. Weedon, 1717 Bingham street, at 7:30 o'clock December 11.

D. L. Austin, Major and Mrs. W. A. Purdy, A. B. Ingalls, George Robinson, C. Hedemann and H. L. Hudson arrived from Maui in the S. S. Mauna Loa today.

Visit W. W. Dimond & Co. in its holiday attire. You will agree with us that it is a veritable Crystal Palace. Don't fail to be shown the hand-painted china room and art gallery. A rare treat.

Finest hand-made fresh chocolate bonbons packed in fancy boxes makes very desirable Christmas presents. Leave your order now with the Honolulu Candy Co. Special prices for Sunday schools and other institutions using candies in quantities.

**MANCHURIA**  
**LOSES POINT**  
(Continued from Page One).

Herriman the special agent of the libellee, and is pleaded in mitigation on of damages.

In discussing the matter the decision says in part:

"I do not know of any reason why the principle of non-liability for gratuitous services does not apply in admiralty. If this engagement of the Restorer was, as alleged, an agreement or understanding for the gratuitous services of the Restorer, the libellee should have the right to allege and prove it, as a defense in bar of the suit. It is not, however, pleaded in bar but in mitigation of damages. Why, if the theory of a gratuitous service is relied upon at all, should it not be relied upon as a complete defense? It is alleged that the libellant is a corporation of the State of New York and that Mr. Herriman is the representative of the claimant in New York; it is therefore evident that communication be-

tween them and the local agents of the parties was necessarily by telegraph and cable and that at that early period of the disaster exact information as to the extent and character of the assistance necessary under the circumstances was probably unobtainable, and therefore that while an understanding as to the gratuitous assistance on the part of the Restorer might have existed at that time in the minds of the parties, yet, at the subsequent time when the answer was made the detailed circumstances of the work of the Restorer in assisting in the work of extricating the libellee from its dangerous position, being probably available, such information may have influenced the claimant not to take full advantage of such alleged understanding but, considering the extent and danger of the services of the Restorer, was led to present such statement in mitigation only of damages instead of as a bar to the suit.

If it had the right to plead the alleged understanding as a full defense, may it plead it in mitigation? I have been unable to find any precedent on such a question. If such alleged understanding is pleaded in bar of a suit, it raises a definite issue under which the case may as the plea should be sustained or not; allegations of the answer, accordingly as the plea should be sustained or not; but as a plea in mitigation, if the allegation should be fully proved, what guide would it furnish to the court in its attempt to weigh the amount of mitigation which such an understanding might justify? I can find no answer to this question. Having decided not to plead such understanding as a bar to the suit, I do not see that the claimant can plead it for the purpose of mitigation. It has in effect waived whatever advantages it might have been entitled to of using it as a complete defense, and cannot plead it in mitigation of damages.  
The exception is allowed.

## REPORTED LAUKEA GETS THE DECISION

THE SUPREME COURT ALLEGED TO HAVE HAD ITS ELECTION OPINION PREPARED.

According to a report this morning the Supreme Court had its decision in the Brown-Laukea election contest prepared but for some reason, did not deliver the opinion. It was furthermore stated that the opinion was in favor of Laukea. What foundation there was for such rumor is not known.

### MUCH SICKNESS IN SCHOOLS.

There has been an exceptionally large amount of sickness among the schools during the last two months. Measles and sore eyes have been the prevailing maladies. The reports of many of the teachers are therefore delayed. Some of the schools in Maui had to be closed. There were 42 cases of sickness at Kapaa, Kauai. Wailua had 10 cases of sore eyes last month. Wailana had 22 cases of measles and 24 of eye trouble during November. Alea had 26 cases of measles during October. Moanalua had 8 cases of measles and Maunaloa, 17 cases, presumably measles, and 28 eye disease. The Normal school had sickness also.

### MAUNA LOA'S FREIGHT.

Freight brought by the S. S. Mauna Loa from Hawaii and Maui this morning: 9052 bags sugar, 559 bags coffee, 326 bags beans, 28 bags taro, 10 bags peanuts, 5 bags ginger, 4 bags awa, 92 bunches bananas, 52 bundles hides, 12 kegs butter, 38 hogs, 30 head cattle, 4 horses, 2 cows, 1 calf, 2 bundles sheep skins, 27 bags bottles, 259 packages sundries.

## VOLCANO MORE ACTIVE THAN USUAL

MAUNA LOA PASSENGERS SAY KILAUEA IS GETTING A MOVE ON—MAGNIFICENT EXHIBITION.

"Everybody was discussing the activity of the Volcano," said Purser Friele of the S. S. Mauna Loa this morning, shortly after the arrival of that vessel from Hawaii and Maui. "When we touched at Honolulu," continued Mr. Friele, "it was reported that Kilauea was very active and was showing signs of greater activity. 'She was smoking up a great deal.'"

D. L. Conkling, who arrived from Kona in the Mauna Loa, also speaks of the activity of the Volcano. Miss Beckwith, also a Mauna Loa passenger, returned from the Volcano and she was most delighted with the magnificent exhibition now to be seen there.

### TO BUILD A PARSONAGE.

KEALAKEKUA, December 4.—A sum of \$475 was realized by the recent fair arranged by the guilds of the Episcopal Church of North and South Kona in aid of the fund for the building of a new parsonage. The booths were most tastefully arranged and a brisk sale of fancy work, flowers and other articles was driven.

Star want ads pay at once.

Do you wish to own a home? \$375 will buy a splendid place.

**TRENT & CO.**  
938 Fort Street.

### AUCTION SALE

SATURDAY, DEC. 8, 1906

10 O'CLOCK A. M.

Then commences the DELUGE.

Out Glassware

Silverware

Bronzes

Silver gilt, Gunmetal, Pearl and Coloured-case Fancy

**Watches**

Pictures, Easels, Fancy Trays, Busts, Umbrellas, Parasols, Silver Match-safes, Silver Table Goods, Cocktail Shakers, Picture Frames.

EVERYBODY DELIGHTED

YESTERDAY SALE

WHERE?

PACIFIC HARDWARE STORE,  
Corner Fort and Merchant.

SATURDAY MORNING, 10 A. M.

JAS. F. MORGAN,  
AUCTIONEER.

## RUGS

AT AUCTION

MONDAY, DEC. 10, 1906

10 O'CLOCK A. M.

New Consignment of

**Oriental Rugs**

From Neuhran Bros.

At corner of Alakea and King streets.  
Catalogues now ready.

JAS. F. MORGAN,  
AUCTIONEER.

**Old Waikiki!**  
A Great Bargain

HOUSE LOT

With

BEACH BATH LOT

Near residence of J. A. McCandless Esq., adjoins the old Afong premises.

JAS. F. MORGAN,

A safe in your house invites marauders and you endanger your life by reuplusing them. We rent you a box in our safe deposit vault for five dollars a year or rent you space for your silverware and valuables at a small cost. Henry Waterhouse Trust Co., Ltd.

### NEBRASKAN SAILS TOMORROW.

The A.-H. S. Nebraskan sails tomorrow afternoon for Seattle and Tacoma, via Kahului and Hilo. She expects to get away at 5 o'clock and will probably leave Hilo for the Coast next Tuesday.

### CHRISTIAN CHURCH.

Junior C. E. 9 a. m.  
Senior C. E. 6:30 p. m.  
Bible School 9:45 a. m. Preaching, 11 a. m. and 7:30 p. m. Morning: "The Printed Word." Evening: "Opportunity." You are cordially invited to any and all services.

AN OFFERING BEYOND

THE ORDINARY

...Special for Saturday...

FROM 8 A. M. to 9 P. M.

**\$1.50**  
**KIMONOS**  
for 75c.

The long kind in all colors, Oriental and other designs.

SEE BERETANIA STREET WINDOW'S.

**N.S. BIRD & Sons Co.**

The Store That Keeps the Prices Down

Why Do Thousands Use

**HOLLY FLOUR**  
?

Because it is superior to any other brand sold in this market.

ASK YOUR GROCER FOR IT.

**NEXT SALE!**

SATURDAY NOON and 7:30 P. M.

The Sale of JEWELRY, WATCHES, Etc., at the

**Carlo Pawn Brokerage Store**

**Will E. Fisher,**  
AUCTIONEER.

A magnificent assortment of beautiful hand-painted china in exquisite design is now being exhibited in our new French china room.

"KING LIBBY" reigns supreme among the cut glass world. Famous for its rich cuttings and permanent brilliancy.

In Our Art Department we are showing elegant Bronzes, Artistic Vases, and a new and handsome line of Desk materials.

Our Sterling Silverware has arrived and many new shapes and designs in table service and flat ware can be seen in our new Silverware Department.