

What is Best for Maui  
Is Best for the News

# MAUI NEWS.

If you wish Prosperity  
Advertise in the News

VOLUME XII

WAILUKU, MAUI, H. T., SATURDAY, JANUARY 27, 1906

NUMBER 12

## PROFESSIONAL CARDS

### ATTORNEYS

J. M. VIVAS  
ATTORNEY AT LAW  
MARKET STREET  
WAILUKU, : : : MAUI.

DOCTORS WEDDICK AND DINEGAR.  
Usual office  
Hours of Wailuku.  
Office at Puunene  
Hospital until  
further notice.

### NOTARIES PUBLIC.

EDMUND H. HART  
NOTARY PUBLIC, CONVEYANCER AND  
TYPEWRITER  
AGENT TO GRANT MARRIAGE LICENSE  
Office, Circuit Court, 2nd Circuit  
HENRY DICKENSON.  
NOTARY PUBLIC.  
LAHAINA, MAUI.

A prominent citizen and leader  
in politics threw us a bouquet  
the other day while in our store. "What  
a singularly neat store you have,  
everything so up to date, and you  
seem to carry nearly everything,"  
he remarked.

It is all quite true our stock is  
new, fresh and up to date, and we  
do carry almost everything. Just  
try us and you will find we are quite  
correct in our assertion.

## MAUI DRUG STORE

V. A. VETLESEN, Prop.

## The Bank of Hawaii LIMITED.

Incorporated Under the Laws of  
the Republic of Hawaii.

CAPITAL.....\$600,000.00  
SURPLUS.....\$200,000.00  
UNDIVIDED PROFITS \$70,000.00

### OFFICERS.

Chas. M. Cooke.....President  
P. C. Jones.....Vice-President  
F. W. Macfarlane.....2nd Vice-President  
C. H. Cooke.....Cashier  
C. Hustace.....Assistant Cashier

### DIRECTORS.

E. D. Tenney, J. A. McCandless,  
C. H. Atherton, E. F. Bishop.

Transact a General Commercial  
and Savings Business.  
Correspondence Solicited.

## MONEY ORDER FEES.

Orders payable at Honolulu  
for small amounts, current post  
office rates. And for amounts  
exceeding One Hundred Dollars  
20 cents per hundred. Orders  
payable at any MAINLAND POINT,  
current post office rates or 30  
cents per One Hundred Dollars.

### HOURS:

8:30 A. M. to 5 P. M.

### SATURDAYS:

8:30 to 1 P. M. and 7:00 to 8 P. M.

## FIRST NATIONAL BANK OF WAILUKU.

WAILUKU, MAUI, T. H.

## BRAKEWATER AT KAHULUI.

Contract let to Hawaiian Dredging Company  
to build two thousand one hundred  
foot Breakwater.

## KAHULUI RAILROAD'S NEW TRACK.

Cars will be in Wailuku next week—Honolulu Bar  
re-endorses Robinson—\$750,000  
worth of bonds sold.

### BREAKWATER AND DREDGING OF KAHULUI HARBOR AN ASSURED FACT.

On behalf of the Kahului Rail-  
road Co. a contract has been signed  
by Alexander & Baldwin with  
the Hawaiian Dredging Co. where  
by the latter agrees to build a break  
water from a point on the beach  
on the Paia side of the oil tanks  
at Kahului to the American Girl  
Rock, a distance of two thousand  
one hundred feet. It is understood  
that the contract price is one hun-  
dred thousand dollars and will be  
paid for in full by the Kahului  
Railroad Co.

The plans call for a breakwater  
two hundred and fifty feet wide  
on the bottom, one hundred feet  
wide on the top, and eight feet  
above high water.

This will make as safe and quiet  
a harbor as there is in the Hawai-  
ian islands and in all kinds of  
weather passengers may step from  
the wharf at Kahului onto the  
steamer and freight may be landed  
direct and while the facilities are  
better for loading freight than any  
where in the territory except Hon-  
olulu she will soon rival even her,  
the pride of the group.

Maui has a bright future before  
her and much of her past and fu-  
ture prosperity will be due to the  
enterprises of Alexander and Bal-  
win. Kahului is destined to be a  
busy sea port and all of Maui will  
be benefitted thereby.

It will surprise many to know that  
Kahului harbor is to be dredged  
to a depth of thirty two feet which  
will give ample depth for the pre-  
sent for the large sugar freighters  
that regularly take large shipments  
from this busy port.

The contract for the dredging  
has already been let, articles of a-  
greement signed and the Hawaiian  
Dredging Company will begin  
operations soon.

In order to insure labor for the  
local men Superintendent R. W. Fil-  
ler succeeded in getting a stipu-  
lation to the effect that a certain  
number of local men should be  
selected by him to work on the  
dredger and breakwater.

### THE KAHULUI RAILROAD CO. EXTENDS SYSTEM.

The Kahului Railroad Company  
ever ready to meet the requirements  
of freight and passenger traffic  
and even going out of its way to  
accommodate the traveling public  
has recently completed its new  
system to upper Paia and within a  
few days will have its trains run-  
ning into the edge of the business  
portion of Wailuku.

The Company has been at ex-  
pense of over twelve thousand  
dollars in building the extensions  
to Wailuku proper and while this  
will be of great accommodation to  
the public and to shippers the

company will not increase rates at  
all which should be greatly appre-  
ciated by the people here.

The writer has traveled over  
many of the short roads of the  
Pacific coast and on none of them  
has he found better service nor  
rates as low as they are on the  
Kahului Railroad.

The stockholders of Olaa Plan-  
tation are painfully aware that  
there is a vast difference between  
rates on the railroad between Olaa  
and Hilo and those in vogue on  
the road here.

The public are perhaps not a-  
ware that the policy of the super-  
intendent of the Kahului Rail-  
road has been such as to give em-  
ployment to many Hawaiians to  
the exclusion of imported Asiatics  
but that is nevertheless the fact.

The plan has been to give em-  
ployment when there were no ships  
in the harbor to the local men and  
pay them the same wages for pick  
and shovel work they received  
when engaged on the wharf al-  
though this work could have been  
done for much less money by em-  
ploying common laborers who do  
not command the high rates of  
pay that these men do.

Another innovation which will  
be appreciated by all who have  
freight is the extension to the Wai-  
luku Sugar Co.'s new mill of a  
branch road on which will be run  
all of the freight of the Sugar Co.  
and thus keeping separate all of  
the freight of the public and great-  
ly facilitating the dispatch and de-  
livery of small freight for the  
general public.

Nor is this the last of the im-  
provements contemplated by this  
company but further improvements  
will be made that will be of very  
great benefit to the whole of Maui.

During the six and one half  
years of Superintendent R. W. Fil-  
ler's incumbency over three hundred  
thousand Dollars have been expend-  
ed in improvements and all labor  
has been performed by local men  
Maui should foster such enterprises  
as this and give every encourage-  
ment possible.

### HONOLULU BAR UNANIMOUSLY ENDORSES JUDGE ROBINSON.

The Honolulu Bar met at noon  
last Saturday and unanimously  
re-endorsed Judge W. J. Robinson  
for reappointment for Circuit  
Judge.

The largest meeting ever held  
by that organization was had and  
irrespective of politics stood to a  
man for the Judges reappoint-  
ment.

Those present were: D. L. With-  
ington, Judge Perry, J. Alfred  
Magoon, J. O. Lightfoot, Judge  
Whitney, Frank Andrade, George  
A. Davis, C. L. Clemons, E. A.  
Mott-Smith, A. G. Correa, C. L.  
Peterson, County Attorney E. A.  
Douthitt, A. G. M. Robertson,

chairman of the local Republican  
organization national committee-  
man, and president of the Bar  
Association; F. E. Thompson,  
Judge W. A. Whiting, S. H. Der-  
by, H. G. Middle-Ditch, T. M.  
Harrison, Lyle A. Dickey, United  
State District Attorney, R. W.  
Breckons, United States Attorney  
J. J. Dunne, A. Lewis, B. L. Marx,  
Henry Holmes, E. M. Watson,  
W. W. Thayer, Cecil Brown, Judge  
George D. Gear. Never before have  
so many of the leaders of the Bar  
been gathered together for a meet-  
ing and never have they acted with  
such unanimity. It was decided  
to cable at once to President Roose-  
velt and Attorney General Moody,  
giving the result of the meeting.

The object of the meeting was  
stated by President Robertson  
after applications of E. M. Watson,  
and W. A. Greenland for member-  
ship were favorably acted upon.  
D. L. Withington, of Castle &  
Withington, at once offered the  
resolution published here with. In  
offering it, he said:

"It seems to me that the only  
question before us is whether in  
view of the governor having with-  
drawn his endorsement the Bar As-  
sociation desires to stand by its  
unanimous recommendations of  
Judge Robinson. Speaking for  
myself alone and also for other as  
far as I have been able to discover,  
I find the members of the Bar As-  
sociation unanimous in the senti-  
ment that the governor made a  
mistake of judgment surely, in the  
matter. Nothing has occurred to in  
the slightest degree affect the ap-  
pointment. Feeling this way, and  
to bring the matter before us, be-  
cause we ought to have a full and  
fair comprehension of the matter, I  
have some resolutions to offer. It  
is important to the community that  
justice full and fair be adminis-  
tered by courts not only beyond self  
seeking motives and political in-  
fluences, but free alike from the  
legislative and executive depart-  
ments."—The resolution offered  
was as follows.

Whereas, The Honorable George  
R. Carter, Governor, has with-  
drawn his support from the Hon-  
orable W. J. Robinson, Third Judge  
of the Circuit Court of the First  
Circuit, as a candidate for re-ap-  
pointment to said position, and

Whereas, This Association feels  
that said Judge is fully qualified for  
said office and deserves re-appoint-  
ment.

Now, Therefore Be It Resolved,  
That the Hawaiian Bar Association  
heartily favors the re-appointment  
of said Judge and hereby re-affirms  
its recommendation of his re-ap-  
pointment.

And Be It Further Resolved,  
That copies of this Resolution be  
sent to the President of the United  
States and the Attorney General  
at Washington, and that the Presi-  
dent of this Association be instructed  
to at once cable the gist of the  
same to the President and the At-  
torney General. A rising vote was  
called for, by Breckons. When  
Robertson put the question the  
entire meeting rose with a jump,  
excepting Lyle A. Dickey, to vote  
in the affirmative. The noes were  
called upon to rise and still Dickey  
remained seated, so that his at-  
titude remains a dark secret. Per-  
haps, it was suggested, his is the  
name that has been called by  
Carter, and that he therefore de-  
clined to vote on Robinson.

### CAMPBELL SELLS ADVANTAGE- OUSLY NEW BOND ISSUE.

Governor Carter received a cable-  
gram from Treasurer Campbell  
stating that he had sold the \$750,  
000 bond issue at 98½. He did not  
say whether the sale was private  
or competitive. The Governor in  
return cabled his approval.

These bonds will bear interest at  
3.66 per cent, the lowest rate  
obtained so far on Territorial bonds.  
If the rate of sale and the interest  
are considered, the money for  
the bond will cost only 3.66 per  
cent net. An added advantage  
about this issue is that the bonds  
may be issued as the money is  
needed to pay for public works, so  
that the Territory will not have to  
pay interest for money lying unused  
in the treasury.

## THE PRESIDENT REAPPOINTS ROBINSON.

In spite of opposition of Governor Carter the  
president has reappointed  
Judge W. J. Robinson.

## GENERAL JOE WHEELER DEAD

Stephen Decatur Jr. dismissed from navy for Hazing.—  
Over one hundred people drowned on wrecked  
steamer Valencia—Thirty-six saved.

Sugar 3.51 Beets 8.14.

SACRAMENTO, Jan. 26.—The Jury to try ex-Senator French  
for bribery has been completed.

WASHINGTON, Jan. 26.—Stephen De Catur Jr. first class man  
has been dismissed from the naval academy for hazing.

ST. PETERSBURG, Jan. 26.—The Trans Siberian Railway has  
resumed full operations.

VICTORIA, B. C. Jan. 26.—It has been definitely ascertained. That  
thirty six of the crew and passengers of the wrecked Steamer Valencia  
have been saved. A public meeting has been called for a better pro-  
tection for the Coast.

HONOLULU, Jan. 26.—Governor Carter had a better day. Indi-  
cations are that he has a case of grippe. Contrary to the wishes of  
Governor Carter the president has appointed Judge Robinson.

NEW YORK, Jan. 24.—General Joe Wheeler died today.

WASHINGTON, Jan. 22.—France will be given a free hand in  
Venezuela.

PARIS, Jan. 22.—The Government will not take action in Vene-  
zuela before receiving M. Taigny's report.

BERLIN, Jan. 22.—Contrary to expectations, the Socialist meet-  
ings on Sunday were unattended with disorders.

ST. PETERSBURG, Jan. 22.—Yesterday passed in quietness.

PHILADELPHIA, Jan. 22.—A fire caused a panic in a colored  
Baptist church here yesterday. Eighteen persons were killed and  
forty injured.

TOKIO, Jan. 22.—The appointment of Gem, Luke Wright, retir-  
ing Governor of the Philippines, as Ambassador to Japan is well re-  
ceived.

WASHINGTON, Jan. 22.—An unprecedentedly warm wave far  
this season prevails from the Mississippi to the Atlantic.

WASHINGTON, Jan. 22.—Although the present breach in the  
diplomatic relations between France and Venezuela is technically char-  
geable against the personality of M. Taigny, the French Charge at  
Caracas, the real issue, as it is understood here, is the attack by Pre-  
sident Castro upon the properties and franchises of the French Cable  
Company. President Castro has asserted that the cable company had  
lent active assistance to the Matos rebellion. Therefore he began  
proceedings in the Venezuelan courts against the company on that  
score and also complained that the company had violated the terms of  
its concession in not laying certain coast lines of cable, and especially  
in crossing the Island of Santo Domingo with land wires subject to  
frequent interruption in times of rebellion on that island. The courts  
sustained the president's view, and, in fact, practically took possession  
of the company's offices at certain points when the French govern-  
ment intervened. In the absence of the regular Minister, M. Taigny  
presented a written protest to the Venezuelan government. Presi-  
dent Castro regarded this note as insulting to his government and re-  
fused to have anything more to do with Taigny. But the French gov-  
ernment refused to allow the dispute to be made a personal one and  
declared that M. Taigny in his presentment had followed precisely the  
instructions of his Foreign Office.

At this point Mr. Russell, the American Minister at Caracas,  
intervened in the interest of peace, and after many patient exchanges  
it was believed he had finally succeeded. But while he induced Presi-  
dent Castro to withdraw a note refusing to do business with M. Taigny,  
which note the French government regarded as offensive, he could  
not prevail upon President Castro to resume his official relations with  
the French Charge. The climax came on New Year's day, when the  
French government, supposing that a satisfactory settlement had been  
reached, received with the usual honors of the New Year's day recep-  
tion the Venezuelan Minister at Paris, only to learn that President  
Castro had refused to do likewise for M. Taigny at Caracas. This omi-  
sion touched the pride of the French government, which felt it had  
been made the victim of double dealing and deceit, which fact the  
French Ambassador in Washington was not slow to communicate to  
the State Department. Mr. Russell reported his failure to effect a  
settlement, thereby making himself unpopular in Caracas, and then  
came notice from the French government that diplomatic relations  
with Venezuela were completely severed. There is a hint of punitive  
measures on the part of France and the situation is regarded officially  
as very unpleasant, with possibilities of serious consequences.

The State Department has been advised that cable communication  
with Venezuela has been interrupted.



# THE MAUI NEWS

Entered at the Post Office at Wailuku, Maui, Hawaii, as second-class matter.

A Republican Paper Published in the Interest of the People.  
Issued Every Saturday.

Maui Publishing Company, Limited.  
Proprietors and Publishers.

The columns of the News admit communications on pertinent topics. Write only on one side of paper. Sign your name which will be held confidential if desired.

SUBSCRIPTION RATES, IN ADVANCE \$2.50 per Year, \$1.50 Six Months

Hugh M. Coke, Editor and Manager

SATURDAY, JAN. 27, 1906

**Chinese uprising** The war department of Washington is sending more troops to the far east and it is understood that this is being done with the determination to protect Americans in China. The Chinese are reported to be preparing for an uprising against all foreign devils and practically every NEWS PAPER correspondent says such a state will soon occur and it is believed that the storm will far surpass in fury the Boxer troubles.

The Chinese have always considered themselves superior to the Japanese and since Russia's defeat by the little brown men China has been preparing for an attack on the whole white population within her borders.

If such an attack is made the Chinese will soon learn to their sorrow that the Japanese are far their superiors in the art of war and that she will meet a far superior force to that opposed to Japan. Those who are qualified to speak authoritatively on the subject think the trouble will occur either this summer or soon thereafter.

In the recent uprising in Shanghai which was started on account of hatred of the British about sixty-five Chinese were shot down and had the marines not been promptly landed the uprising would have become general.

About the only thing that will be of benefit to China will be a good sound thrashing and she will certainly get it if she carries out her present programme.

**The Superintendents** Superintendent Babbit of the department of public instruction in acquainting himself with local conditions from personal observations is doing a work that all must recognize as of vast benefit to the schools of the territory.

The trips are anything but pleasant ones and few men of his position would take them yet such men as he has proven himself to be are the ones most needed.

The heretofore neglected schools may reasonably expect to get necessary repairs while the favored few may call in vain for what they do not need.

One thing necessary to the proper administration of the territorial affairs is a corps of officials who will acquaint themselves by personal observation with the needs with the territory and then do their work where it will do the most good for all.

**A New Medical Firm.** With this issue of the News we welcome to Wailuku the new medical firm of Doctors Weddick and Dinegar whose advertisement appears in another column.

Dr. Weddick is a well known physician of Wailuku and has a good practice here and is recognized as a physician of ability.

Dr. R. H. Dinegar is not only a successful physician but one of the most skilled surgeons in the territory.

For several years he has been in charge of the Puunene Hospital where hundreds of patients have been under his care and the most difficult surgical operations have been performed by him with very gratifying results.

So successful has his work been that his skill is known throughout the group and recognized every where.

**An explanation** In the last issue of the News we innocently mentioned the fact that Augustine was fond of theatrical performances.

We wish to say that this was not intended by us as a reflection on him or any one else.

We have never heard the slightest intimation that his attitude was open to criticism nor did we intend what was written as such.

We sincerely regret that any thing in the News should be misconstrued and used by any one to annoy one of our friends.

**Carter and the Judgeship.** Governor Carter has made a serious mistake by first recommending the reappointment of Judge W. J. Robinson and then withdrawing the same and has weakened his official position and the confidence he had of the people by so doing.

We are opposed on principle to any one man having all three of the branches of government in his hands but when the governor takes a decided position and then without reason turns about and ignores the wishes of the people he represents he lays himself open to severe criticism.

**The strike** The strike of the plantation laborers at Waipahu seems to have resulted as most strikes do to the detriment of its organizers, more than to the employers. Acts of violence always cost a striking body the support and sympathy they otherwise may have won and they usually suffer greatly and then go back to work under less favorable conditions than they formerly enjoyed.

The business of striking is usually conducted in the interest of the leaders and the laborers foot the bill.

## Surplus of Canada.

Canada is about the only competitor of the United States in exporting cattle, hams, and lard. In none of these articles, however, have there been any important increases during the five years ending with 1904. In 1904 there were exported from Canada 157,000 cattle, 3,900,000 pounds of hams, and 500,000 pounds of lard.

The principal meat exported from Canada is bacon. The quantity exported increased from 77,000,000 pounds in 1898 to 112,000,000 pounds in 1899, and in 1904 amounted to 124,000,000 pounds.

Most of the cattle and meat of Canada is produced in the region lying east of Lake Huron. Of the 5,600,000 cattle in the country in 1901, all but 1,000,000 were in Ontario, Quebec, and the Maritime Provinces. In Ontario alone there were 2,500,000.

## The Kona of Last Week.

The kona storm of last week of which a partial description of its work was given in last week's issue seems to have been the strongest in years and did far more damage than we were able to hear of in time to go to press owing to the fact that the telephone wires were down.

Wahee seems to have suffered most and many houses were blown down and the roofs of the majority of them were damaged if not entirely taken off.

At Waiehu a house occupied by some Chinamen was completely overturned and left standing upside down.

The house was occupied at the time and the fright of the celestials may be better imagined than described.

Many thousands of feet of flume were blown down and the cane badly damaged by being blown down. In some of the upper Waiehu camps whole roofs, timbers and all, were torn off by the wind and carried as far as fifty feet up the hillside leaving the workmen exposed to the torrents of rain.

The next morning Mr. Halverson Superintendent for Mr. Waldeyer on the construction of the new Waiehu ditch sent down to town and bought all the bread for sale for the use of his men and provided other food and shelter for them that the work on the construction of the tunnels might go on uninterruptedly.

In Kula a number of small houses were blown down and considerable damage done.

## Japanese Fishermen In Sampan Are Upset And Saved.

When the wind was blowing its hardest Friday evening two Japanese fishermen in a sampan were seen outside the heads making a desperate endeavor to reach shore. The wind was in such a direction that it was necessary for them to tack. A large crowd along the water front was watching the boat and its occupants. At times it would disappear behind a wave and a second latter seem to be in the air. Several dozen Japanese fishermen were among the witnesses. Finally the sampan was blown over when the men tried to make a turn.

Immediately there was a rush

among the fishermen for the Channel wharf. Ten of the strongest and the best were hurriedly selected and in spite of the rough sea and bad wind hastened to the rescue of their brother workmen. They went out in one of the larger sampans. The two drowning men were clinging to their upset boat and half dead from fright, the cold and from being battered around by the water and against the side of the overturned sampan.

They were hauled aboard by the other fishermen on the big sampan and brought ashore together with their boat. They lost about \$20 worth of fish and all their fishing tackle and other truck they usually keep on the craft. The big sampan with its crew of ten men and the two unfortunates had a hard time making the Channel wharf again, but finally accomplished the task after several hours' work.—Bulletin.

## LAHAINA LINES.

Rev. Rowland Backus Dodge of Wailuku conducted services at the Lahainaluna School last Sunday.

Mrs. T. J. Hayselden of Wailuku is the guest of her brother, Mr. Henry Dickenson.

A number of trees were blown down by the storm. Mr. Aalberg's carriage and fence were injured. Five native fishermen were blown off their course, and landed at Hana. Three Japanese were missing at last accounts. The two scows at Kaanapali were driven by the wind to Napili. A portion of the sea wall was damaged.

The Lahaina Bank will be opposite Mr. Decoto's meat Market, and will be under the direct of Mr. C. D. Lufkin.

The two Mrs. Molonys were visiting in Wailuku last week.

For the present, Miss Lillian Pihl will be the teacher at the Kaanapali school.

The Poto Ricans who were filling in the old canal became discouraged on Monday, and the work is consequently delayed. Last week a temporary track was laid, to facilitate the undertaking.

Canon Ault of Wailuku came to this town on Wednesday afternoon, and brought Archdeacon Jefferis with him. They attended the Salvation Army meeting in the evening; but could not remain until the close, as Canon Ault was obliged to drive back to Wailuku, and the Archdeacon was to take passage on the steamer for Honolulu.

A complimentary copy of the Fish Commission Report, in two large elegant, illustrated volumes, has been received by Captain Geo. H. Dunn. The figured forms of many of the fishes are beautifully colored. This handsome present was sent by Mr. John N. Colt of the U. S. Fishes Commission.

On Tuesday the temporary track beside the canal was removed.

Promptly at 12 o'clock on Tuesday night, a salute was fired, in honor of the Chinese New Year. The enthusiastic celebration continued all day along on Wednesday. The homes and shops of prominent Chinamen were

## THE HENRY WATERHOUSE TRUST CO. Ltd

BUYS AND SELLS—REAL ESTATE, STOCKS & BONDS

WRITES FIRE AND LIFE INSURANCE

NEGOTIATES LOANS AND MORTGAGES

SECURES INVESTMENTS

A List of High Grade Securities mailed on application

CORRESPONDENCE SOLICITED

HONOLULU, HAWAII

P. O. Box 346

## Why

Worry about that

lunch or dinner

when you can get

the very choicest

line of canned goods,

at the

**WAILUKU CASH STORE.**

## H. F. WICHMAN & CO., Ltd. OPTICIANS

For Careful, Scientific and Accurate Optical Work, Consult Us.



We guarantee all our work, and the materials we use in manufacture are the best that can be obtained.

If you are troubled with your eyes write to us immediately and we will give you the benefit of our scientific knowledge and experience.

**H. F. WICHMAN & CO. Ltd.** Manufacturing and Refracting Optician  
1042-1050 Fort St., HONOLULU.  
DR. JOHN GODDARD in charge.

finely decorated, and the serenaders made their rounds as usual.

Archdeacon Jefferis did not arrive on Wednesday, as expected; and notice was given that he would preach in the Waiehu Church on Friday evening.

## Notice To Firemen.

All members of the Wailuku Vol. Fire Company, are requested to meet at the Court House in Wailuku Maui, Tuesday evening at 7 o'clock January 30th 1906, for Drill practice.

JAS. L. COKE,  
Chief N. V. F. Co.



Thumping the keys of a piano is not music, and putting successively various lenses before the eyes is not an examination, even though certain improvements in vision are obtained.

Anybody can test your eyes—you can do it yourself, but the scientific use of lenses involves something more than experimenting.

Few can examine eyes and do it intelligently and satisfactorily—quite a difference between eye-tests and eye examinations. Did that fact ever occur to you?

**A. N. SANFORD,**  
GRADUATE OPTICIAN  
BOSTON BUILDING, HONOLULU  
Over May & Co.

## Wailuku Repair Shop

ARTHUR DOUSE, PROP.

General Repair Work on Bicycles, Automobiles, Sewing Machines, Typewriters, Locks, Guns, Revolvers, etc.

HEADQUARTERS AT Dan Carey's Blacksmith Shop

## NOTICE.

An amendment in the by laws of the MAUI WINE & LIQUOR Co. changing the date of the Annual meeting from the Fourth Wednesday in January to the Third Wednesday of each year will be considered at the meeting of January 24th, 1906.

J. GARCIA,  
Secretary Maui Wine & Liquor Co.

## Time Table--Kahului Railroad Company

STATIONS	A. M.				P. M.				STATIONS	A. M.		P. M.			
	PAS.	PAS.	FREIGHT	FREIGHT	FREIGHT	PAS.	PAS.	PAS.		F & P	F & P	F & P	F & P	F & P	F & P
WAILUKU-PAIA									KAHULUI-PUUNENE						
Kahului Leave	7.00	8.42		1 45		2.00	3.45		Kahului Leave	6.20	1.20				
Wailuku Arrive	7.12	8.54		12.00		2.12	3.57		Puunene Arrive	6.35	1.35				
Wailuku Leave	7.20	9.05			12.25	2.20	4.03		Puunene Leave	6.40	1.40				
Kahului Arrive	7.32	9.17			12.40	2.32	4.15		Kahului Arrive	6.55	1.55				
Kahului Leave	7.35		9.40			2.35			Kahului Leave	8.00	3.05				
Sp'ville Arrive	7.47		9.55			2.47			Puunene Arrive	8.15	3.20				
Sp'ville Leave	7.50		10.10			2.50			Puunene Leave	8.20	3.25				
Paia Arrive	8.02		10.25			3.07			Kahului Arrive	8.35	3.40				
Paia Leave	8.12		10.55			3.12									
Sp'ville Arrive	8.24		11.10			3.24									
Sp'ville Leave	8.27		11.20			3.28									
Kahului Arrive	8.37		11.35			3.38									

## Kahului Railroad Company

AGENTS FOR

ALEXANDER & BALDWIN, Ltd.;—ALEXANDER & BALDWIN, Line of Sailing Vessels Between San Francisco and the Hawaiian Islands;—AMERICAN-HAWAIIAN STEAMSHIP CO.;—WILDER'S STEAMSHIP CO.

Importers and Dealers in

NORWEST and REDWOOD LUMBER in all sizes—rough and surfaced. SASH, DOORS and BLINDS in Cedar and Redwood. CEDAR MOULDINGS and INSIDE FINISHING LUMBER, also a full line of Building Material

CORRUGATED IRON, GALVANIZED IRON, ZINC, GALVANIZED IRON PIPE, COAL TAR, CEMENT, OILS and PAINTS, FENCE WIRE and STAPLES: NAILS PITCH, OAKUM, Etc. Etc.



## A Timely Laugh.

Albert J. Beveridge, United States Senator from Indiana, believes that the direction of his career was completely changed by a careless laugh. A writer in Success quotes him as saying:

"When I was a youth in Illinois I heard that the Congressman from our district intended to hold an examination to determine what young man he should appoint to West Point. I pitched in and studied hard for that examination, and found it easy when I came to take it. Most of the other fellows seemed to be still struggling with it when I had finished, and I was so confident that I had made few mistakes that I was in a pretty cheerful frame of mind. This is why I laughed when one of the strugglers asked a rather foolish question of the professor in charge. The latter evidently felt that the dignity of the occasion had been trifled with, for he scored one per cent against me. When the papers came to be corrected this loss caused me to fall one-fifth of one per cent. below the boy who stood highest on the list. He is a captain in the army now, where I suppose I should be had it not been for that laugh. I believe in the power of cheerfulness. Looking back, I am rather glad that I laughed."

## The Panama Canal.

The American people are pledged to the speediest possible construction of a canal adequate to meet the demands which the commerce of the world will make upon it, and I appeal most earnestly to the Congress to aid in the fulfillment of the pledge. Gratifying progress has been made during the past year and especially during the past four months. The greater part of the necessary preliminary work has been done. Actual work of excavation could be begun only on a limited scale till the Canal Zone was made a healthful place to live in and to work in. The Isthmus had to be sanitized first. This task has been so thoroughly accomplished that yellow fever has been virtually extirpated from the Isthmus and general health conditions vastly improved. The same methods which converted the island of Cuba from a pest hole, which menaced the health of the world, into a healthful place of abode, have been applied on the Isthmus with satisfactory results. There is no reason to doubt that when the plans for water supply, paving, and sewerage of Panama and Colon and the large labor camps have been fully carried out, the Isthmus will be, for the Tropics an unusually healthy place of abode. The work is so far advanced now that the health of all those employed in canal work is as well guarded as it is on similar work in this country and elsewhere.

In addition to sanitating the Isthmus, satisfactory quarters are being provided for employees and an adequate system of supplying them with wholesome food at reasonable prices has been created. Hospitals have been established and equipped that are without superiors of their kind anywhere. The country has thus been made fit to work in, and provision has been made for the welfare and comfort of those who are to do the work. During the past year a large portion of the plant with which the work is to be done has been ordered. It is confidently believed that by the middle of the approaching year a sufficient proportion of this plant will have been installed to enable us to resume the work of excavation on a large scale.

What is needed now and without delay is an appropriation by the Congress to meet the current and accruing expenses of the Commission. The first appropriation of \$10,000,000, out of the \$135,000,000 authorized by the Spooner Act, was made three years ago. It is nearly exhausted. There is barely enough of it remaining to carry the Commission to the end of the year. Unless the Congress shall appropriate before that time all work must cease. To arrest progress for any length of time now, when matters are advancing so satisfactorily, would be deplorable. There will be no money with which to meet pay-roll obligations and none with which to meet bills coming due for materials and supplies; and there will be demoralization of the forces, here and on the Isthmus, now working so harmoniously and effectively, if there is delay in granting an emergency appropriation. Estimates of the amount necessary will be found in the accompanying reports of the Secretary of War and the Commission.

## Superintendent Babbitt on Maui.

Last Saturday Superintendent W. H. Babbitt of the department of



## VICTOR

Talking  
Machines  
For Every Purse

WE SELL AT

San Francisco Prices

Victor Z	\$20.00	Victor III	\$45.00
" I	25.00	" IV	55.00
" II	32.50	" V	65.00

Cash or easy installments.

## RECORDS REDUCED

12 in. Victor Records \$1.

10 in. Victor Records 60c.

7 in. Victor Records 35c.

BERGSTROM MUSIC CO., Ltd.

ODD FELLOWS' BUILDING. HONOLULU.

Education arrived in Wailuku after having made the trip horseback around through Honokohau and Kahakulua and Waihee. Inspector H. M. Wells accompanied Mr. Babbitt and they succeeded in missing the heavy rains.

At Kahakulua they found the troubles somewhat abated. Mr. Babbitt hasn't done much horseback riding for years and didn't enjoy the same. He will however have a chance to acquire some of his lost skill in this art before he returns to Honolulu. On Sunday he drove to Waihee with District Magistrate W. A. McKay, and in the afternoon looked over the building and grounds of Wailuku's new School after acquainting himself with conditions at Wailuku. On Monday he went to Puunene to acquaint himself with conditions there after which he goes up country and expects to ride to Keanae and thence around to Kaupo.

Mr. Babbitt wishes to acquire a personal knowledge of local conditions relative to buildings and grounds and will be in a far better position to carry on the work of his department than he could hope to acquire in years of correspondence.

Few Superintendents have had the necessary grit to go through such hardships.

Mr. Babbitt deserves great credit for his efforts in acquainting himself with local conditions which will be of great benefit to the department and a saving to the territory.

## Federal elections.

"The power of the Government to protect the integrity of the elections of its own officials is inherent and has been recognized and affirmed by repeated declarations of the Supreme Court. There is no enemy of free government more dangerous and none so insidious as the corruption of the electorate. No one defends or excuses corruption, and none would oppose vigorous measures to eradicate it. I recommend the enactment of a law directed against bribery and corruption in Federal elections. The details of such a law may be safely left to the wise discretion of the Congress, but it should go as far as under the Constitution it is possible to go, and include severe penalties against him who gives or receives a bribe intended to influence his act or

opinion as an elector; and provisions for the publication not only of the expenditures for nominations and elections of all candidates, but also of all contributions received and expenditures made by political committees."

I desire to repeat this recommendation. In political campaigns in a country as large and populous as ours it is inevitable that there should be much expense of an entirely legitimate kind. This, of course, means that many contributions, and some of them of large size, must be made, and, as a matter of fact, in any big political contest such contributions are always made to both sides. It is entirely proper both to give and receive them, unless there is an improper motive connected with either gift or reception. If they are extorted by any kind of pressure or promise, express or implied, direct or indirect, in the way of favor or immunity, then the giving or receiving becomes not only improper but criminal. It will undoubtedly be difficult as a matter of practical detail to shape an act which shall guard with reasonable certainty against such misconduct; but if it is possible to secure by law the full and verified publication in detail of all the sums contributed to and expended by the candidates or committees of any political parties the result can not but be wholesome. All contributions by corporations to any political committee or for any political purpose should be forbidden by law; directors should not be permitted to use stockholders' money for such purposes; and, moreover, a prohibition of this kind would be, as far as it went, an effective method of stopping the evils aimed at in corrupt practices act. Not only should both the National and the several State legislatures forbid any officer of a corporation from using the money of the corporation in or about any election, but they should also forbid such use of money in connection with any legislation save by the employment of counsel in public manner for distinctly legal services.

## Labor.

If they are capitalists their selfishness and brutality may take the form of hard indifference to suffer.

ing, greedy disregard of every moral restraint which interferes with the accumulation of wealth, and cold-blooded exploitation of the weak; or, if they are laborers, the form of laziness, of sullen envy of the more fortunate, and of willingness to perform deeds of murderous violence. Such conduct is just as reprehensible in one case as in the other, and all honest and farseeing men should join in warring against it wherever it becomes manifest. Individual capitalist and individual wage-worker, corporation and union, are alike entitled to the protection of the law, and must alike obey the law. Moreover, in addition to more obedience to the law, each man, if he be really a good citizen, must show broad sympathy for his neighbor and genuine desire to look at any question arising between them from the standpoint of that neighbor no less than from his own; and to this end it is essential that capitalist and wage-worker should consult freely one with the other, should each strive to bring closer the day when both shall realize that they are properly partners and not enemies. To approach the question which inevitably arises between them solely from the standpoint which treats each side in the mass as the enemy of the other side in the mass is both wicked and foolish. In the past the most direful among the influences which have brought about the downfall of republics has ever been the growth of the class spirit, the growth of the spirit which tends to make a man subordinate the welfare of the public as a whole to the welfare of the particular class to which he belongs, the substitution of loyalty to a class for loyalty to the nation. This inevitably brings about a tendency to treat each man not on his merits as an individual, but on his position as belonging to a certain class in the community. If such a spirit grows up in this Republic it will ultimately prove fatal to us, as in the past it has proved fatal to every community in which it has become dominant. Unless we continue to keep a quick and lively sense of the great fundamental truth that our concern is with the individual worth of the individual man, this Government can not permanently hold the place which it has achieved among the nations. The vital lines of cleavage among our people do not corre-

## Kodak Films

DEVELOPED AND PRINTED

I am prepared to do first class developing and printing of films. Prices reasonable and satisfaction guaranteed.

Call or send order to  
MAUI HOTEL  
GEO. HOWLEY,  
Wailuku, Maui, H. T.

## A Word With You

Do you know who painted those pretty rigs? You thought they came from the factory? No they were painted in Wailuku by

J. A. HARRIS

Card Signs a Specialty.

## G. AH SEE

Market St., Wailuku.

DRY GOODS FANCY GOODS  
MEN'S AND LADIES'  
FURNISHINGS AND SHOES  
PANAMA HATS & CHRISTMAS  
TOYS

CHINESE and JAPANESE SILKS

NEW GOODS

By Every Coast Steamer.

Give me a call.

Satisfactory Guaranteed.

## BISMARCK STABLES CO. Ltd

WAILUKU, MAUI

LIVERY, BOARD AND SALES STABLES

## The BISMARCK STABLES

proposes to run the LEADING LIVERY

STABLE BUSINESS ON MAUI

DRUMMERS' LIGHT WAGONS

Excursion Rates to Iao and Ha'e  
akala with competent guides  
and drivers

NEW RIGS--NEW TEAMS

NEW MANAGEMENT

80 YEARS' EXPERIENCE

PATENTS

TRADE MARKS DESIGNS COPYRIGHTS &amp;c.

Anyone sending a sketch and description may quickly ascertain our opinion free whether an invention is probably patentable. Communications strictly confidential. HANDBOOK on Patents sent free. Oldest agency for securing patents. Patents taken through MUNN & Co. receive special notice, without charge, in the

Scientific American.

A handsomely illustrated weekly. Largest circulation of any scientific journal. Terms, \$3 a year; four months, \$1. Sold by newsdealers.

MUNN &amp; Co. 361 Broadway, New York

Branch Office, 625 F St., Washington, D. C.

## Bottles.

We will pay \$1.50

per hundred for clean

quart beer bottles.

If you have over

one hundred we will

call for them.

## Maui Wine &amp; Liquor Co.

## PERUVIA GOODNESS

Dealer in

Algaroba

Cord

Wood

Cut to any length desired Prompt Delivery.

that each man, rich or poor, is to be treated simply and solely on his worth as a man, that all his personal and property rights are to be safeguarded, and that he is neither to wrong others nor to suffer wrong from others.

The noblest of all forms of government is self-government; but it is also the most difficult. We who possess this priceless boon, and who desire to hand it on to our children and our children's children, should ever bear in mind the thought so finely expressed by Burke: "Men are qualified for civil liberty in exact proportion to their disposition to put moral chains upon their own appetites; in proportion as they are disposed to listen to the counsels of the wise and good in preference to the flattery of knaves. Society can not exist unless a controlling power upon will and appetite be placed somewhere, and the less of it there be within the more there must be without. It is ordained in the eternal constitution of things that men of intemperate minds can not be free. Their passions forge their fetters."



## GET THE HABIT

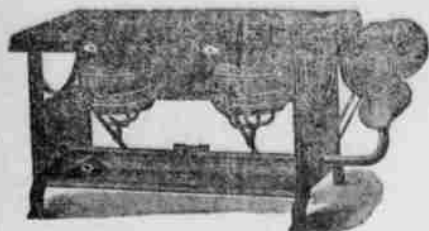
Of trading at the LAHAINA STORE—the dependable store. You might save a few steps by buying elsewhere, but are you sure of the freshness and quality? Our goods in every department are of the best quality for the money. We would not make this statement if we did not mean it.

**The Best of Everything**  
**At Live and Let Live Prices**

**THE : LAHAINA : STORE**

Dry Goods, Groceries, Boots and Shoes, Notions, Plantation Supplies  
**LAHAINA, MAUI.**

## Pacific Hardware Co., Ltd.



**WICKLESS  
BLUE FLAME  
OIL STOVE**

Absolutely safe and reliable, saves time, fuel and temper, once tried, always used.

**1 burner \$5.50 2 burners \$8.50 3 burners \$10.50**

**Securely crated for shipping**

**Fort and Merchant Sts., Honolulu**

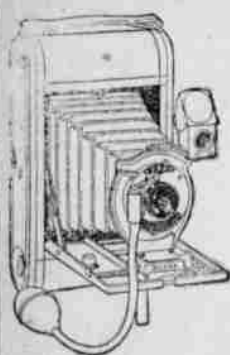


**In the Summer**

nothing goes quite so well with a meal as a glass of nice, cool beer. It refreshes, cheers and stimulates—that is if it's

**Primo  
Lager**

Other beer is just as wet but none is just as good. Try a case if you are unacquainted with its merits.



## Choosing a Kodak

It's easy here where there are so many to choose from. We have every style of the famous Eastman Kodaks, at prices from \$5 upward and instruct purchasers in the operating.

**Kodak Developing Machines**

Films and Photographic Supplies of every description.

**HONOLULU PHOTO SUPPLY CO.,** FORT STREET

## E. O. HALL & SON, Limited,

WHOLESALE AND RETAIL DEALERS IN

**BUILDERS' HARDWARE**

Cutlery, Tools,  
Galvanized Sheet Iron,  
Blacksmith's Coal,  
Leather Shoe Findings

**BICYCLES AND SPORTING GOODS**

### A Valid Defense.

A party of men, among whom was William J. Bryan, were one night waiting for a train in a depot hotel in a small Missouri town. The landlady was the only woman present, says Lippincott's Magazine, which relates the story.

"The talk turning upon the alleged inability of women to see the point of a joke as readily as do the men, Mr. Bryan took the ground that a sense of humor was as much a part of the feminine make-up as it was that of an, but that it merely lacked opportunity for development.

"To illustrate," he said "take the story of the party of excursionists the Aegean Sea. When approaching the Grecian coast the party assembled about the rails to enjoy the scenic scenery. One lady turned quickly to a gentleman at her

right and said:

"What is that white off there on the horizon?"

"That is the snow on the mountain," replied the gentleman addressed.

"Well, that's funny," she replied. "My husband said it was grease."

"All the men in the group laughed noisily at Mr. Bryan's story, but the landlady looked puzzled. Finally she said:

"But, Mr. Bryan how did the grease get on the mountain?"

"Mr. Bryan at once dropped the defense of women as born humorists."

Mrs. Al De Mustard: "You appear to be very fond of your poodle, Mrs. de Bunch."

Mrs. Justin De Bunch: "Yes, indeed. Mrs. Cutler was unkind enough to say that I loved it more than I do my child."

### Public-land Laws.

Once again I call your attention to the condition of the public-land laws. Recent developments have given new urgency to the need for such changes as will fit these laws to actual present conditions. The honest disposal and right use of the remaining public lands is of fundamental importance. The misquoting methods by which the monopolizing of the public lands is being brought about under the present laws are becoming more generally known, but the existing laws do not furnish effective remedies. The recommendations of the Public Lands Commission upon this subject are wise and should be given effect.

The creation of small irrigated farms under the Reclamation Act is a powerful offset to the tendency of certain other laws to foster or permit monopoly of the land. Under that act the construction of great irrigation works has been proceeding rapidly and successfully, the lands reclaimed are eagerly taken up, and the prospect that the policy of national irrigation will accomplish all that was expected of it is bright. The act should be extended to include the State of Texas.

The Reclamation Act derives much of its value from the fact that it tends to secure the greatest possible number of homes on the land, and to create communities of free holders, in part by settlement on public land, in part by forcing the subdivision of large private holdings before they can get water from Government irrigation works. The law requires that no right to the use of water for land in private ownership shall be sold for a tract exceeding 160 acres to any one land owner. This provision has excited active and powerful hostility, but the success of the law itself depends on the wise and firm enforcement of it. We can not afford to substitute tenants for freeholders on the public domain.

The greater part of the remaining public lands can not be irrigated. They are at present and will probably always be of greater value for grazing than for any other purpose. This fact has led to the grazing homestead of 940 acres in Nebraska and to the proposed extension of it to other States. It is argued that a family can not be supported on 160 acres of arid grazing land. This is obviously true; but neither can a family be supported on 640 acres of much of the land to which it is proposed to apply the grazing homestead. To establish universally any such arbitrary limit would be unwise at the present time. It would probably result on the one hand enlarging the holdings of some of the great land owners, and on the other in needless suffering and failure on the part of a very considerable proportion of the bona fide settlers who give faith to the implied assurance of the Government that such an area is sufficient. The best use of the public grazing lands requires the careful examination and classification of these lands in order to give each settler land enough to support his family and more. While this work is being done, and until the lands are settled, the Government should take control of the open range, under reasonable regulations suited to local needs, following the general policy already in successful operation on the forest reserves. It is probable that the present grazing value of the open public range, is scarcely more than half what it once was or what it might easily be again under careful regulation.

The forest policy of the administration appears to enjoy the unbroken support of the people. The great users of timber are themselves forwarding the movement for forest preservation. All organized opposition to the forest reserves in the West has disappeared. Since the consolidation of all Government forest work in the National Forest Service there has been a rapid and notable gain in the usefulness of the forest reserves to the people and in public appreciation of their value. The national parks within or adjacent to forest reserves should be transferred to the charge of the Forest Service also.

The forest policy of the administration appears to enjoy the unbroken support of the people. The great users of timber are themselves forwarding the movement for forest preservation. All organized opposition to the forest reserves in the West has disappeared. Since the consolidation of all Government forest work in the National Forest Service there has been a rapid and notable gain in the usefulness of the forest reserves to the people and in public appreciation of their value. The national parks within or adjacent to forest reserves should be transferred to the charge of the Forest Service also.

### Insurance.

The great insurance companies afford striking examples of corporations whose business has extended so far beyond the jurisdiction of the State which created them as to preclude strict enforcement of su-

pervision and regulation by the parent States. In my last annual Message I recommended "that the Congress carefully consider whether the power of the Bureau of Corporations can constitutionally be extended to cover interstate transactions in insurance."

Recent events have emphasized the importance of an early and exhaustive consideration of this question, to see whether it is not possible to furnish better safeguards than the several States have been able to furnish against corruption of the flagrant kind which has been exposed. It has been only too clearly shown that certain of the men at the head of these large corporations take but small note of the ethical distinction between honesty and dishonesty; they draw the line only this side of what may be called law-honesty necessary in order to avoid falling into the clutches of the law. Of course the only complete remedy for this condition must be found in an aroused public conscience, a higher sense of ethical conduct in the community at large, and especially among business men and in the great profession of law, and in the growth of a spirit which condemns all dishonesty, whether in rich men or in poor men, whether it takes the shape of bribery or of blackmail. But much can be done by legislation which is not only drastic but practical. There is need of a far stricter and uniform regulation of the vast insurance interests of this country. The United States should in this respect follow the policy of other nations by providing adequate national supervision of commercial interests which are clearly national in character. My predecessors have repeatedly recognized that the foreign business of these companies is an important part of our foreign commercial relations. During the Administrations of Presidents Cleveland, Harrison, and McKinley the State Department exercised its influence, through diplomatic channels, to prevent unjust discrimination by foreign countries against American insurance companies. These negotiations illustrated the property of the Congress recognizing the national character of insurance, for in the absence of Federal legislation the State Department could only give expression to the wishes of the authorities of the several States, whose policy was ineffective through want of uniformity.

I repeat my previous recommendation that the Congress should also consider whether the Federal Government has any power or owes any duty with respect to domestic transactions in insurance of the interstate character. That State supervision has proved inadequate is generally conceded. The burden upon insurance companies, and therefore their policy holders, of conflicting regulations of many States, is unquestioned, while but little effective check is imposed upon any able and unscrupulous man who desires to exploit the company in his own interest at the expense of the policy holders and of the public. The inability of a State to regulate effectively insurance corporations created under the laws of other States and transacting the larger part of their business elsewhere is also clear. As a remedy for this evil of conflicting, ineffective, and yet burdensome regulations there has been for many years a widespread demand for Federal supervision. The Congress has already recognized that interstate insurance may be a proper subject for Federal legislation, for in creating the Bureau of Corporations it authorized it to publish and supply useful information concerning interstate corporations, "including corporations engaged in insurance." It is obvious that if the compilation of statistics be the limit of the Federal power, it is wholly ineffective to regulate this form of commercial intercourse between the States, and as the insurance business has outgrown in magnitude the possibility of adequate State supervision, the Congress should carefully consider whether further legislation can be had. What is said above applies with equal force to fraternal and benevolent organizations which contract for life insurance.

### Couldnt take a joke.

One of our local attorneys tells the story of a Jewish merchant who was in the habit of filling his shelves with dummies, securing all insurance possible, after which his store would invariably take fire.

At one of such fires he was stand-

ing on the sidewalk wringing his hands and exclaiming "I was a ruined man I was a ruined man."

A bystander said "Come now Ikey every one knows you set fire to your store."

To this he indignantly replied "May my Got Yesus strike me dead if I did that."

At that instant a loose brick fell from the top of the building, striking the Jew on the head.

After sometime the merchant recovered consciousness and looking up to heaven said, "My Got Yesus cant you take a yoke."

### The reason the child was late.

A few days ago a social gathering was enjoyed by some of Maui's best people.

The following day the writer met a little daughter of one of the prominent citizens who was enjoying himself thoroughly the night before and when the child was asked why she was so late at school she said "Because my papa slept and slept and we couldn't wake him up."

### Thought we had a trolley.

A prominent citizen of up country was in town a few days ago and was seen back of town evidently searching for something and when questioned replied that he heard the noise caused by the trolley of the plantation.

As it is well known there is no trolley here the questioner was a bit surprised but it later developed that the noise referred to was the voices of the thousands of frogs that inhabit the taro patches back of town.

We will say however that their combined voices are enough to excite the wonder of all who have heard them for the first time.

### Toasting a Deaf Miser.

It will amaze millions of John Wana-maker's customers, says Marshall P. Wilder in his new book, "The Sunny Side of the Street" (Funk & Wagnalls Company), to know that the man who is so busy that they can never get a glimpse of him unless they attend his church is an industrious teller of stories and always has the "luck—tho that is not his name for it—to have the right story for any situation. That most of his yarns are spun in Sunday-school does not make them any the less good. I wish teachers had told stories when I wish a boy, and I will bet Bibles to buttons that if teachers were practically instructed in storytelling, all the Sunday-school rooms would have to be enlarged to the hold increase of attendants.

But I was speaking of John Wana-maker. While reproving some of his Sunday school pupils for laughing at a deaf boy's wrong answers to misunderstood questions, he said:

"Boys, it isn't right to laugh at any one's affliction. Besides, you never know when your own words may be turned against you. I once knew a deaf man—let us call him Brown—who was disposed to stinginess and to getting every dollar he could out of everybody and everything. He never married; but he was very fond of society, so one day he felt compelled to give a banquet to the many ladies and gentlemen whose guest he had been.

"They were amazed that his purse-strings had been unloosed so far, and they thought he deserved encouragement, so it was arranged that he should be toasted. One of the most daring young men of the company was selected, for it took a lot of nerve to frame and propose a toast to so unpopular a man as Miser Brown. But the young man rose, and Brown, who had been notified of what was to occur, fixed his face in the customary manner of a man about to be toasted. And this is what was heard by every one except Brown, who never heard anything that was not roared into his ear:

"Here's to you, Miser Brown. You are no better than a tramp, and it is suspected that you got most of your money dishonestly. We trust that you may get your just deserts yet, and land in the penitentiary."

"Visible evidences of applause made Brown smile with gratification. He got upon his feet, raised his glass to his lips and said: 'The same to you, sir.'—Sauce Piquante.

"Where have you been now?" asked Mrs. Jawback, icily. It was a cold day, anyhow.

"I've been watching the cavalry evolutions," explained Mr. Jawback, trying to warm things up a little.

### BY AUTHORITY

IN THE CIRCUIT COURT OF THE SECOND CIRCUIT, TERRITORY OF HAWAII, IN PROBATE. IN THE MATTER OF THE ESTATE OF WILLIAM PATTULLO L. BETT, DECEASED.

Pursuant to proper proceedings in probate heretofore had in that behalf in re Estate of William Pattullo L. Bett, the undersigned, Jessie Brockie Bett on the 8th day of January, A. D. 1906, was duly appointed Administrator, qualified as such, and on the same day had issued to her Letters of Administration re said Estate.

All Creditors of said William Pattullo L. Bett, deceased, and of said Estate, are hereby notified to present their claims, duly authenticated, and with the proper vouchers if any exist, even if the claim is secured by mortgage upon real estate, to the undersigned either at her residence or place of business, in Wailuku, County of Maui, Territory of Hawaii, or to D. H. CASE, in said Wailuku, within SIX MONTHS from the date of this notice; (said date being the date of the first publication of said notice) otherwise such claim, if any, will be forever barred. Dated at Wailuku, Maui, January 13, 1906.

JESSIE BROCKIE BETT, Administrator of the Estate of WILLIAM P. L. BETT, DECEASED.

D. H. CASE, Attorney for Administrator. Jan. 13-20-27 Feb. 3-1906.

### NOTICE.

W. C. PEACOCK & CO. Ltd., offer the following STANDARD BRANDS OF FINE WINES and LIQUORS all of which are fully GUARANTEED. POMMERY & GRENOL Champagne RUINART PILS Champagne SPARKLING HOCK and MOSELES.

MARIE BRIZARD & ROGER'S FINE COGNAC BRANDIES ACME RYE WHISKEY PEACOCK'S OLD Private stock BOURBON WHISKEY.

ANDREW USHER SPECIAL RESERVE SCOTCH WHISKEY the celebrated BLACK & WHITE SCOTCH WHISKEY.

The ONLY "FREEBOOTER" GIN, BOARDS LONDON DRY GIN, "PABST" EXPORT & BLUE ROBBER BEER, A. B. C. BEER (the "KING OF ALL BOTTLED BEERS).

COMMENDADOR PORT & EMERADOR SHERRY, BACCHUS BRAND OF CALIFORNIA WINES, WHITE ROCK WATER and GINGER ALE.

If your local dealer does not carry these goods, write to us direct and we will supply them.

W. C. PEACOCK & CO. Ltd. Jan. 6-13-20-27.

### FOR SALE.

International Encyclopedia (17 vols.) new edition. Pony Preme Camera No. 5. (Plates 4x5).

Black Walnut Bedroom Suite, Singer Sewing Machine, Child's White Enamelled Iron Crib, Glascock Baby Jumper.

MRS. BETT, Puunene, Maui.

### NOTICE.

Notice is hereby given that Christian C. Conradt has been appointed a District Fire Warden under the Board of Agriculture and Forestry, for that section of Molokai extending from the land of Pukoo to the land of Halawa, inclusive.

(Sgd.) C. S. HOLLOWAY, Secretary, Board of Agriculture & Forestry.

### POUND NOTICE.

Mr. KAMANU has this day been appointed Pound Master for the Government Pound at Lahaina, Island and County of Maui, Territory of Hawaii, vice E. H. Cockett resigned.

C. S. HOLLOWAY, Superintendent of Public Works. Dated, Honolulu, T. H., January 17, 1906.

Mrs. Al De Mustard. "Well, that's natural. The dog has a pedigree, hasn't it?"—Cleveland Leader.

"I do love to see the horses caracole about the field.

"Well, I love to see you stay at home and carry coal about the house," said Mrs. J., with grim humor. "Go and attend to the furance at once."—Cleveland Leader.



## MAUI BLUE BOOK

TERRITORIAL OFFICIALS	
Hon. A. N. Kopoikai, Circuit Judge,	Waialua
Edmund H. Hart, Clerk Circuit Court,	Waialua
Judge W. A. McKay Dist. Magistrate,	Waialua
" J. Recard, " " "	Lahaina
" Chas. Copp, " " "	Makawao
" K. K. K., " " "	Honolulu
" J. Kalamia, " " "	Hana
" P. P. P., " " "	Kipahulu
" J. J. J., " " "	Molokai
" K. K. K., " " "	Lana
W. T. Robinson, Tax Assessor,	Waialua
J. N. K. Keola, Deputy Assessor,	Waialua
A. P. Favara, " " "	Pala
G. Dunn, " " "	Lahaina
M. H. Reuter, " " "	Hana
COUNTY OFFICIALS	
Wm. Henning, Supervisor, Chairman,	Lahaina
W. H. Cornwell, " " "	Waialua
T. M. Church, " " "	Makawao
J. H. Hualani, " " "	Hana
T. T. Meyers, " " "	Molokai
D. H. Case, " " "	Lana
L. M. Baldwin, County Attorney,	Waialua
Chas. Wilcox, Auditor,	Waialua
W. F. Kane, Sheriff,	Waialua
Wm. Saffery, Sheriff's Clerk,	Waialua
Edw. Rogers, " " "	Waialua
T. Clark, Deputy Sheriff,	Waialua
C. R. Lindsay, " " "	Lahaina
Edgar Morton, " " "	Makawao
F. Wittrock, " " "	Hana
J. H. Mahoe, " " "	Molokai

## LOCALS

The pipe lines of the H. C. & S. Co's new pumping station will be built by the Honolulu Iron works. The line will be over a mile long.

Work on the excavations for the new pumping station has been begun. The laborers on the H. C. & S. Co's plantation all seem to be contented and work progresses rapidly.

The Puunene Mill turned out nearly one thousand six hundred tons of sugar last week. For three days she averaged over three hundred tons per day.

A contract has been let for a large pumping station of ten million gallons per day capacity on the H. C. & S. Co's plantation. The pumps will be built by the Allis-Chalmers company of Chicago.

The Aloha Glee Club will furnish free music in the rooms above the Aloha Saloon beginning at 7 o'clock to night.

The citizens of Lahaina who desire to take a few shares in the Lahaina National Bank may do so by communicating with Mr. C. D. Lufkin of Waialua at an early date.

What came near being a serious accident was avoided by the presence of mind and prompt act of F. J. Wheeler conductor on the Kahului Railroad.

A car with some twenty odd school children were on a car on their way home from school. The engine was away taking sand further up the track when the car started down the track Mr. Wheeler seeing the car running down the track ran to the switch and turned the car on an up grade switch.

The editor of the News acknowledges the receipt of the following invitation and sincerely regrets his inability to attend.

"You are cordially invited to spend a night with us" Burns January 27th at 7:30 P. M. in Kahuku Club House."

The Waialua Volunteer Fire Company meet next Tuesday Jan. 30th for drilling purposes.

See notice in another column.

The Maui Wine and Liquor Company held its annual meeting Wednesday and elected officers for the ensuing year.

The Kahului store is just as busy as ever. Its many improvements are much appreciated.

The new Oldsmobile of Mr. C. D. Lufkin is one of the prettiest and best automobiles on Maui.

See the new advertisement of Drs. Weddick and Dinegar.

The services at the various churches conducted by archdeacon Jeffries were much appreciated. Mr. Jeffries is a speaker of talent and ability, and all praise him highly.

A fine lot of horses, forty three in number were brought down from Waimea Hawaii last week by Barny Judd and sold on Maui.

Another consignment are to be brought down soon.

An office boy is wanted at the Kahului Railroad Office. See ad.

## Preferment in Cuba.

In the markets of Cuba articles imported from the United States enjoy an advantage over those imported from any other country. Thus American cattle are admitted at 40 per cent lower tariff rates than those imposed on imports from other countries, and other live meat animals and packing house products at a reduction of 20 per cent. This preferential treatment of United States products is guaranteed by the treaty of 1903.

## PERSONAL MENTION.

Honorable H. P. Baldwin and Mrs. Baldwin left for Honolulu by the Claudine of Wednesday.

D. Conway and Mr. McKenzie of Thee. H. Davies & Co. are still on Maui in the interest of their firm.

A. Waal and Mrs. Waal and child were visitors in Waialua Saturday and Sunday.

J. N. Gere who has charge of the construction of McGregors Landing was in town Wednesday and reports the sand along the beach near the landing as having all been washed away.

Miss Violet Makee has been spending the week as guest of Mrs. J. M. Dowsett at Puuomalei.

Mr. C. D. Lufkin made a business trip to Lahaina and return in his new automobile.

Mrs. D. C. Lindsay of Pala took the Mauna Loa to Honolulu Thursday evening expecting to meet Mr. Lindsay upon his arrival from the Coast Monday the 29th.

Mrs. James Kirkland has returned to Waialua, having spent a week or ten days with her daughter Mrs. Wm. Walsh at Puunene.

Mr. L. von Tempsky was a county seat visitor one day this week.

W. G. Scott and wife were in town from Pala on Thursday.

Miss Huntington from Porto Rico and Mrs. Frear are at the Maui Hotel.

## UP COUNTRY NOTES.

Mr. and Mrs. Wm. McGerrow celebrated the birthday of their adopted child last Saturday evening by giving a luau to their friends. A fine spread of Hawaiian dishes had been prepared for the occasion and about 8 o'clock the guests were seated at table. After the luau the rooms were cleared the guests enjoyed themselves dancing for a few hours. Some fine music was furnished by some of the young ladies. About thirty people were present at the luau. Miss Regina Naukana came up from Honolulu Saturday morning to attend the luau.

H. E. Savage arrived by the Kinau Tuesday evening to take the position of assistant chemist at Puunene Mill. Mrs. E. C. Threlfall is out again after an operation in the Puunene Hospital.

F. L. Webster completed his work on the cane loaders Tuesday and left for Honolulu on Wednesday.

The Alaskan was obliged to move out of the harbor on Wednesday night owing to the heavy surf and the Kona wind.

Considerable damage was done to the Kihel wharf by the Kona storm last week. The donkey house and part of the wharf being washed away. More or less damage was done in Kula the full extent of which is not known. The heaviest rains of the season fell in that district.

Mrs. Prescott has been very ill at the Puunene Hospital the past week. We are glad to learn she is improving rapidly.

Mr. Geo. Mayfield will act as steward of the Puunene Club after the 1st of February.

The Chinese employees of the plantation are all celebrating their New years this week which fell on the 24th of Jan.

## Few Supplies from Russia.

The surplus meat of Russia is not sufficient in quantity or quality to have much influence upon the world's markets. What there is of a meat-producing industry in that country is generally in the hands of peasants, who are not able to incur the expense necessary to produce good fat meat animals. This is especially true of cattle. Many of the cattle sold are too old for dairying or farm labor, and often a peasant sells his surplus cattle in the fall rather than feed them during the winter. Difficulties in securing prompt transportation across the western frontier have also hindered the growth of Russia's meat export trade. In 1904 that country exported \$2,000,000 worth of live meat animals, \$2,000,000 worth of packing-house products, and \$5,000,000 worth of poultry and game—chiefly live geese for the German market.

## BY AUTHORITY

IN THE CIRCUIT COURT OF THE SECOND CIRCUIT, TERRITORY OF HAWAII.

At Chambers—In Probate. In the Matter of the Estate of J. PALI SYLVA, late of Waialua, Maui, deceased.

Order of Notice of Hearing Petition for sale of Real Estate.

On reading and filing the Petition of THOS. B. LYONS, Administrator of the Estate of J. PALI SYLVA, deceased, alleging that claims against said Estate of \$1274.10 have been presented to said Administrator, and approved by him, and that there is not enough funds of said Estate in his hands to pay the same, and praying that he may be authorized to sell all of the real property of said deceased which is in said petition more fully described and set forth:

It is ordered that Monday, the 26th day of February, A. D. 1906, at 10 o'clock A. M., be and hereby is appointed for hearing said Petition in the Court Room of this court at Waialua, Maui, at which time and place all persons concerned may appear and show cause, if any they have, why said Petition should not be granted, and that notice of this order be published in the English language for three successive weeks in "Evening Bulletin," a daily newspaper published in Honolulu, and in the "Maui News," a weekly newspaper published in Waialua.

Dated at Waialua, Maui, Jan. 15th 1906.

(Seal) A. N. KEOIKAI, Judge of the Circuit Court of the second Circuit.

(Seal) EDMUND H. HART, Clerk of the Circuit Court of the Second Circuit.

Jan. 20-27-Feb. 3 and 10.

## NOTICE.

Notice is hereby given that at a meeting of the Koolau Rubber Co. Ltd. held at Waialua Maui, T. H. on Jan 13 1906, the following officers were elected to serve for the ensuing year.

James L. Coke President.  
W. A. McKay Vice President.  
R. A. Wadsworth Treasurer.  
Hugh Howell Secretary.  
A. N. Hayseldon Auditor.  
The above with  
C. L. Scrimger } Directors  
W. L. Decoto }  
January 2 1906.

HUGH HOWELL, Secretary.

## NOTICE.

The annual meeting of the Farmers' Institute of Hawaii will be held at Kamehameha Schools on Saturday, February, 3 1906.

The programme will be as follows:

Afternoon Session.  
2:30 p. m.—Business Meeting.  
Report of the Secretary.

Treasurer.  
Election of officers  
Report of Committee on Co-operative Marketing

3:30 p. m.—Spraying Demonstration  
D. L. Van Dine  
J. E. Higgins

4 p. m.—Inspection of the farm and shops of Kamehameha Manual Training School.

Evening Session.

Music Kamehameha Glee Club

Address of Welcome.....

.....President P. L. Horne

Response and President's annual address Mr. Jared G. Smith

Music.....Kamehameha Mandolin Club

The Use of the Agricultural Colleges

.....Prof. U. Thompson

Music.....Kamehameha Glee Club

Sisal and other Commercial Fibers...

.....Mr. Wm. Weinrich, Jr.

All those who are interested are cordially invited to be present at both the afternoon and evening sessions.

(Signed) J. E. HIGGINS, Sect'y-Treas.

## NOTICE.

At the annual meeting of stockholders of the MAUI WINE & LIQUOR CO. LTD. the following officers and directors were elected to serve for the ensuing year:

W. T. Robinson, President.

R. A. Wadsworth, Vice-president.

J. Garcia, Secretary & Treasurer.

Directors—  
W. T. Robinson, H. Streubeck.  
R. A. Wadsworth, F. Sommerfeld.  
J. Garcia, A. K. Stender.

D. F. Nicholson.  
J. GARCIA, Secretary.  
Jan. 27,—Feb. 3rd.

California Ripe Olives in tins.

California Ripe

Olives in Tins.

California Ripe

Olives in Tins.

California Ripe Olives in tins.

California Ripe

Olives in Tins.

California Ripe Olives in tins.

California Ripe

Olives in Tins.

Open Saturday Evenings.

KAHULUI STORE.

The Emporium of the Pacific.



THERE IS ONLY ONE  
**CREMO**  
CIGAR

Be sure that your CREMO CIGAR has the word CREMO perforated in the wrapper of the cigar. The CREMO has no band. It has only its perforated mark and the best flavor and smoking qualities to distinguish it from any other 5c. Cigar.

**H. Hackfeld & Co., Ltd.**  
Wholesale Distributors.

**Maui Wine & Liquor Co.**

OLE AGENTS : :  
**RAINIER BEER**

DIRECT FROM THE BREWERY

ALSO  
**Paul Jones, Cutter**  
AND

**Cream Pure Rye Whiskies**

Special delivery every hour in Wailuku.



This brand denotes quality  
Write us in regards to your  
Leather needs. Send your  
Hides to us and you may feel  
certain of fair treatment.

**Metropolitan Meat Co.**

- LIMITED -

Box 504.

HONOLULU, T. H.

Telephone Main 143.

**S. KIMURA**

Wholesale Dealer in

STANDARD BRANDS OF  
WHISKIES, BRANDY,  
IMPORTED AND DOMESTIC WINES  
LIQUEURS, CORDIALS, GINS, ETC.  
PABST, A. B. C., LEMPS, RAINIER, AND PRIMO  
Bottled Beer  
ISLAND TRADE SOLICITED  
**S. KIMURA,**

Wailuku, Maui.



**CARRIAGE BUILDING**

When you want your carriage repaired to last  
bring it to the right shop.

GENERAL BLACKSMITHING---HORSE SHOEING.

**DAN. T. CAREY**

Main St. near Market,

Wailuku, Maui

**Sampan Men lost at sea.**

The Bulletin of the 22nd has the following:

Two Japanese fish men in a sampan left the Channel wharf last Wednesday for their usual fishing grounds. Nothing has been heard or seen of the men since. Friday morning a larger sampan with a crew of eight men started out in spite of the rough weather to look for the missing sampan, thinking perhaps the occupants were in distress. Now the sampan with the eight men is missing.

The Japanese at the Channel wharf most of the 105 who are staying ashore now on account of the bad sea, are watching the horizon anxiously this afternoon in search of their missing fellow workmen. Up to a late hour this afternoon neither the two who started out Wednesday nor the rescue party had been sighted.

It is feared the two fishermen have been lost at sea. Still, there is a possibility that they might have been washed ashore somewhere, together with their boat. In case they drifted or were blown out to sea, having left here Wednesday, they would be nearly starved to death by this time as they carried only a few days' rations.

Much anxiety is also felt for the big sampan, but it was better prepared for rough weather than the smaller one. The rescue party also took along considerable food and it is likely that the crew is still sailing about looking for the lost pair. If the large sampan does not show up this afternoon or early tomorrow another rescue party will be organized among the brave Japanese fishermen to start on a voyage to look over the rough waters for the first rescue party, which started out to hunt for the missing two.

**Effect of Australian Droughts.**

Owing in a great measure to destructive droughts, the meat surplus of Australia has undergone a marked decline, especially from 1900 to 1904. In 1900 exports of frozen beef and veal were 96,000,000 pounds, frozen mutton and lamb 67,000,000, and tallow 79,000,000 pounds; while in 1904 the exports of these articles were, respectively, 37,000,000, 48,000,000 and 57,000,000 pounds. The value of exports of rabbits and hares, however, increased from \$868,000 in 1900 to \$1,072,000 in 1904. New Zealand, on the other hand, sends more meat abroad than ever before. Its chief meat, frozen mutton, amounted to 228,000,000 pounds in 1904.

**WANTED.**

An office boy.  
Must have rudimentary education write legible hand. Make application on writing to Kahului Railroad Co.

**NOTICE.**

There will be a special meeting of the stockholders of the Hygeia Soda & Ice Works Co. Ltd. held at the residence of Mr. H. P. Baldwin on Tuesday February 6th at 7:30 P. M.

W. A. ENGLE

Secretary.  
Jan. 27 Feb. 3rd.

**Mrs. Carl Waldeyer Returns.**

Mrs. Carl Waldeyer and Children returned to her home Tuesday by the Kinau.

She has been on a visit to friends and relatives in San Francisco during the past four months.

She reports the trip of the Alameda an unusually rough one, the boat experienced strong southerly winds and high seas during the entire trip.

So rough was the trip that some of the officers of the boat were seasick. Mr. Waldeyer has recently leased the house and premises formerly occupied by Dr. Edward Armitage where he and his family will now reside.

**NOTICE.**

At the adjourned annual meeting of stockholders of the MAUI DRY GOODS & GROCERY CO. LTD. the following officers and directors were elected to serve for the year 1906:

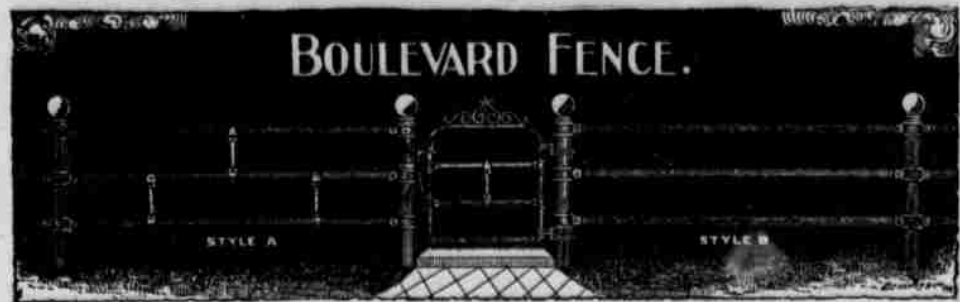
G. B. Schrader, President.  
W. E. Bal, Vice-president.  
F. Medeiros, Secretary.  
J. Garcia, Treasurer.

**Directors--**

G. B. Schrader, W. E. Bal, J. Garcia, T. B. Burrell, Mrs. A. J. Rodrigues, J. S. Medeiros, M. J. Moura, FRANK MEDEIROS, Secretary.

Jan. 27, -Feb. 3rd.

IRON



FENCES

Neat, Reasonable and Durable. Lawn and Cemetery Furniture.

**VAULT FRONTS**

STEEL SAFES that don't absorb moisture and are absolutely Fireproof.

**MONUMENTS**

Of the latest designs in any material known to the trade, including White Bronze and also Real Bronze. Call on or write to

ALAKEA ST., Bet. King and Hotel Sts.

P. O. Box 642

**J. C. AXTELL & CO**

Honolulu

**Vessels for Kahului.**

The Kinross loaded with nitrates is expected to arrive at Kahului soon.

The Kineo a large five masted vessel from New Castle is expected to arrive at Kahului any day now with three thousand tons of coal.

The S. T. Alexander has been chartered for a year to carry lumber from the coast for the Kahului Railroad Company. She is at the Sound now loading lumber.

**STEAMERS TO ARRIVE**

DATE	NAME	FROM
Feb. 2	Nippon Maru	Yokohama
5	America Maru	S. F.
7	Aorangi	Colonies
9	Alameda	S. F.
9	Doric	Yokohama
13	Mongolia	S. F.
16	Manchuria	Yokohama
16	Nevadan	S. F.
20	China	S. F.
20	Ventura	Colonies
21	Sonoma	S. F.
23	Hongkong Maru	Yokohama
27	Nippon Maru	S. F.
Mar. 2	Alameda	S. F.
2	Korea	Yokohama
6	Doric	S. F.
7	Miwera	Colonies
6	Nebraskan	S. F.
13	Coptic	Yokohama
13	Sierra	Colonies
14	Ventura	S. F.
15	Manchuria	S. F.
22	Hongkong Maru	S. F.
23	Alameda	S. F.
23	Siberia	Yokohama
29	Korea	S. F.
30	Nevadan	S. F.
31	America Maru	Yokohama

**STEAMERS TO DEPART**

DATE	NAME	FOR
Feb. 2	Nippon Maru	S. F.
5	America Maru	Yokohama
7	Aorangi	Victoria
9	Doric	S. F.
13	Mongolia	Yokohama
14	Alameda	S. F.
16	Manchuria	S. F.
19	Nevadan	S. F.
20	China	Yokohama
20	Ventura	S. F.
21	Sonoma	Colonies
23	Hongkong Maru	S. F.
27	Nippon Maru	Yokohama
Mar. 2	Korea	S. F.
6	Doric	Yokohama
7	Alameda	S. F.
7	Miwera	Victoria
11	Nebraskan	S. F.
13	Coptic	S. F.
13	Sierra	S. F.
14	Ventura	Colonies
15	Manchuria	Yokohama
22	Hongkong Maru	Yokohama
23	Siberia	S. F.
28	Alameda	S. F.
29	Korea	Yokohama
31	America Maru	S. F.

**Sanitary Restrictions.**

In several countries special restrictions for alleged sanitary purposes are in force, some of which operate to the advantage and some to the disadvantage of United States products. In the United Kingdom, for example, the importation of cattle at the present time is prohibited from our great South American competitor-Argentina-as well as from Uruguay and from Russia and various other European countries, while from the United States such animals are admitted without special restriction.

The sanitary regulations of Germany, however, operate very much to the disadvantage of American products. The prohibition of importing canned meats and sausage, while of general application, strikes the United States most severely, since it formerly furnished the bulk of these products. The importation of cattle and fresh beef from the

**CLASSIFIED ADS.**

For sale, for rent, lost, found, situations or help wanted advertisements will be published under this heading at the following rates: 8 cents a line first issue, five cents a line second issue and three cents a line each succeeding issue. Seven words to constitute a line nine lines a inch-Broken lines to count as full lines.

**SHIPPING NEWS**

Departure-Kahului.

Jan. 24-Str. Claudine Parker, for Honolulu.

Arrivals-Kahului

Jan. 27-Str. Claudine Parker, from Honolulu.

**Services at Island Churches**

**CHURCH OF HOLY INNOCENTS, LAHAIA**

Canon A. B. Weymouth, Rector.  
Holy Communion, 7:30 A. M. every Sunday.  
Sunday School 10:15 A. M. Morning service 11:00 A. M. Evening Prayer, 4:30 P. M. During Advent and Lenten season special week day services.

**WAINIER CHURCH, LAHAIA.**

Rev. S. Kapu, Pastor.  
Sunday school, 9:30 A. M. Morning service 11:00 A. M. Y. P. S. C. E. at 1:00 P. M. Wednesday afternoon, Prayer Meeting at 3:30 P. M. Thursday afternoon, Women's Meeting, 3:30 P. M. Friday afternoon, Choir Rehearsal 3:30 P. M.

**ROMAN CATHOLIC CHURCH, LAHAIA.**

Rev. Father Oliver.  
First Mass, week days 6:00 A. M. Sundays and holidays, 10:00 A. M. Benediction 2:30 p. m.

Meetings at Salvation Army Hall, Market St., 8 P. M. every Saturday. Sunday Juniors at 2 P. M. Salvation meeting at 8 P. M. welcome.

St. Anthony's Church, WAILUKU  
Sunday Service, Communion, 8:00 A. M. Children's Mass, 8:30 A. M. Instruction in English. Second Mass, 10:30 A. M. Sermon in Hawaiian and Portuguese. After Mass, Benediction, 11:45 A. M. Rosary and instruction for natives. week days Mass 8 A. M. Holidays falling during week-Communion at 6 A. M. Mass at 9:00 A. M.

**FOREIGN PROTESTANT CHURCH, MAKAWAO.**

Rev. V. B. Zata, Pastor.  
Sunday School at 10:00 A. M.  
Public Worship at 11:00 A. M.

**THE CHURCH OF THE GOOD SHEPHERD, WAILUKU.**

Rev. Canon Ault, Rector.  
Holy Communion, 1st, 3rd, 4th, 5th Sunday at 7 A. M. 2nd Sunday at 11 A. M. Matins & Sermon at 11 A. M. Children's service, 1st Sunday at 2 P. M. Evensong and Sermon at Puenene, 7:30. Holy Days, Holy Communion at 7 A. M. Daily, Matins at 7:30.

**KAHUMANU CHURCH, WAILUKU**

Rev. J. Nua, Pastor.  
Sunday school, 9:30 A. M. Morning service 11 A. M. Y. P. S. C. E. from 7:00 P. M. to 8:30 P. M. Afternoon service, Wailuku, Sunday School 2:00 P. M. Revival meeting 3:00 P. M. All welcome.

PORTUGUESE PROTESTANT MISSION-PAIA  
M. G. Santos, Evangelist. S. School 10 a. m. Gospel preaching, 11 a. m., Prayer Meeting 7:30 P. M., S. School at Hamakuaoku at 2 P. M. every Sunday.

**UNION CHURCH, WAILUKU.**

Rev. Rowland B. Dodge, Pastor. Preaching Service as usual at 7:30 P. M.

United States is prohibited. Even a more general prohibition is enforced against Russia, covering swine and sheep as cattle; but cattle from Austria Hungary and Switzerland are admitted under restrictions.

France likewise requires the inspection of all meat animals and fresh meat imported, as well as sausages when imported from the United States. A certificate of inspection from the United States Department of Agriculture is required for all salted, pickled, or smoked pork imported from this country. Meats may be imported only at designated custom houses and in certain forms of shipment, in order that rigid inspection may be performed. For this inspection, as in Germany, fees are charged, which naturally tend to increase prices and thus to limit importation. Italy prohibits the importation of American swine, but permits the importation of Pork when accompanied by an official inspection certificate; and Russia prohibits the importation of all forms of pork and pork products, with the exception of lard and hog products for industrial use.

**PIONEER HOTEL.**

("At the Sea's Shore.")

LAHAINA'S LEADING HOSTELRY.

ONE MINUTE WALK FROM BOAT LANDING COOL, AIRY ROOMS,

INVIGORATING SEA AIR and an EXCELLENT TABLE

Makes Living at this Hotel a Joy forever.

SPECIAL RATES BY THE

WEEK OR MONTH You make no mistake when you go up here. SAMPLE ROOM ATTACHED

TELEPHONE FOR USE OF GUESTS  
**GEORGE FREELAND, Manager**

**CENTRAL SALOON**

MARKET STREET WAILUKU

ANTONE BORBA, Prop.

Full line of popular brands of WINES, LIQUORS, CORDIALS, BRANDIES, WHISKIES, GINS, Etc. Etc.

**Celebrated Primo & Sea**

Bottled Beer  
**25c 2 Glasses 25c**

**Pukalani Milk Dairy**

If you want a daily supply of fresh, pure milk, or fresh milk butter, apply

**PUKALANI DAIRY**  
Tel. 166 Makawao

**THE ALOHA SALOON**

Market Street, Wailuku

Nothing but the best of Well Known Standard Brands

OF  
**Wines Whiskeys**  
**Cordials, Liqueurs**  
**RAINIER AND PRIMO**

Bottled Beers  
**25c 2 Glasses 25c**

HEADQUARTERS FOR

Island Sporting People

**T. B. LYONS, Prop.**

**Wailuku Fruit Market**

NG LEONG, Proprietor.

TO ARRIVE  
PER ALL STEAMERS  
Fresh California  
BELL FLOWER APPLES  
PEACHES, PEARS  
PLUMS  
NECTARINES  
ORANGES LEMONS NUTS  
CALIFORNIA VEGETABLES

California Fruit During Season.  
Telephone Orders Promptly Filled.

**Maui Ice Cream Parlor**  
AND BAKERY

ICE CREAM,  
FRESH SODA WATER,  
CANDY, TOBACCO, CIGARS,  
FRESH CAKES TO ORDER,  
Market Street, opp. Lee Hop.  
AH SEE, Proprietor.