

SUGAR:
Raws, 3.36
Beets, 3.52
Mkt. Stronger

The Garden Island.

The
Garden Island
Represents
All Kauai.

ESTABLISHED 1904. VOL. 10. NO. 26.

LIHUE, KAUAI, TERRITORY OF HAWAII, TUESDAY, JULY 7, 1914

SUBSCRIPTION RATES, \$2.50 PER YEAR 5 CENTS PER COPY

CHILDREN GIVEN JOLLY, GOOD TIME

The children of Lihue, Hanalei and the various other suburbs were given a grand time Saturday in Lihue, the occasion being the usual Fourth-of-July treat of Mrs. Isenberg and Hon. G. N. Wilcox. The fun began at 2 o'clock and kept up for two hours or more, during which the vicinity fairly swarmed with children—as well as a considerable sprinkling of older folk.

A large booth had been erected on the main street side of the park, from which ice cream and other refreshments were served. This booth was elaborately decorated with greens, bunting and national flags. One hundred gallons of ice cream had been provided, besides the other things so dear to the hearts of children.

Another leading feature of the afternoon was races of many kinds for both boys and girls, for which prizes were given at the finish line. These prizes consisted of all manner of articles useful to children.

All the kiddies, enjoyed the treat and felt deeply grateful to Mrs. Isenberg and Mr. Wilcox for the pleasure of the day.

Rice Op'ns Office

Senator Charles A. Rice, candidate for nomination as a Republican for Delegate to Congress, has opened an office in the Young building, at Honolulu, from which his campaign will be directed. The office will be in charge of Fred T. P. Waterhouse during the campaign. Mr. Waterhouse is a Republican leader of the Fifth Representation district.

Students Defeat Lihue

Thursday afternoon the All Students played a practice game of baseball with a mixed team, composed of four Lihue league players and five others, on the Lihue grounds. Sheriff Rice umpired. The score was 9 to 2 in favor of the visitors.

Quite a number of local fans witnessed the contest.

THE CORPSE AROSE AND WALKED AWAY

Sheriff Rice received a telephone message Sunday afternoon to the effect that a Porto Rican man, apparently nearly dead, was lying on the roadside opposite the premises of Mr. George N. Wilcox. The sheriff hurried to the scene, fully expecting to discover a case of foul play. He was gratified, upon hurried investigation, to find the man alive and succeed in arousing him.

"What's matter you?" asked the Porto Rican.

"Why, I don't know," replied the sheriff. "What I want to know is, What's the matter with you?"

The Porto Rican said he did not know what had happened, but he must have been asleep. A few minutes later, however, his horse with the bridle and saddle on, was found at the grass a short distance away and it was pretty clearly shown that he was thrown from his horse and stunned. Liquor also probably had something to do with it. The man was lying asleep on the roadside during the heavy shower which fell in the early afternoon, and was not awakened by it.

Trial Juries Tomorrow

The trial juries for the July term of the Circuit Court will be required to appear tomorrow morning. Following is the panel as drawn:

Henry Anderman, Jr., Lihue; Thomas R. Neal, Makaweli; J. B. Featherstone, Waipouli; John Brandt, Kekaha; Sam Kai, Jr.; Joe M. Souza, Elele; Sinclair Robinson, Makaweli; Fred Mendez, Kealia; George Kauhi; E. de La-cey, Lihue; Manuel Ornellas, Hanalei; James W. Rath, Lawai; Dan Hano, Kawaihau; David K. Kane, Kealia; Lawrence Rose; J. Chandler, Koloa; Wm. E. Jenks, Makaweli; C. S. Kuhlman, Lihue; Willie Kalani, Hanalei; Fong Koon Chan; P. A. Romane, Koloa; A. B. Blackstad, Waimea; Chang Kee, Kekaha; E. H. W. Broadbent, Lihue; Martin J. Fassoth, Makaweli; and Herman H. Bush, Koloa.

J. I. Sliva's Elele store handles the famous New Zealand butter.

Adv.

THE ALL STUDENTS CAME AND TOOK AWAY OUR NANNY

Mercilessly Drubbed Our Champion Baseball Team And Then Ran Rings Around The Pick Of Kauai's Players-Rain Bothers The Games-Record Crowds In Attendance

It was surely one, grand slam that the All Students baseball team put over on Kauai last Saturday, and most people have spent a lot of time since trying to figure out how it happened. The walloping the All Kauai's got in the afternoon was bad enough; but Oh, that game with the McBrydes in the forenoon! To have Kauai's champions jumped on, smashed, literally murdered and almost buried, as was done in the forenoon—well, it was a shame.

Just what was the matter with the McBryde team no one [not even the team men] seemed able to make out; but they were certainly far and away off form. Of course the weather was bad—frequent showers sweeping across the field and the ball being hard to handle. But it must be remembered that this handicap fell equally hard upon the visitors, and the natural effect should have been merely a high score for both sides.

It must be admitted that the school boys put up much the best team work. Their drives to bases were immense and effective, while at base stealing they far outclassed their opponents. There was really very little difference in the quality of batting, but owing to the excellent fielding of the visitors, neither of the Kauai teams made much out of their work with the willow.

The crowd was the largest seen on Kauai in many a day, baseball enthusiasts coming from every part of the island. The grand stand was packed to utmost capacity morning and afternoon, the foul lines were crowded and all of the space usually allotted to automobiles was occupied.

The umpires for the morning game were D. Wm. Dean and C. Kuhlman, and the afternoon Richard Oliver and Kuhlman. Scorer N. A. Akana.

STUDENTS VS. M'BRYDES

This game was scheduled to start at 10 a. m., but, as a matter of fact, was under way several minutes prior to that time. The McBrydes were first to bat, and recorded a goose egg. For the visitors, Gay walked and Baldwin fanned. Takuichi singled, scoring Gay, but Takuichi was thrown out at second. Inman walked and Nye singled. Wadsworth was retired, pitcher to first.

In the second, J. Pacheco walked and Spalding singled. On overthrow catcher to second, Pacheco

took third. Gabriel flew out to Nye. T. Pacheco hit for a bag; J. Pacheco was retired at the plate. A. Perriera walked. Aka flew out to Takuichi. The visitors then got busy and Yap singled. Fassoth flew to Takuichi. Quintal was retired at first. Gay singled and Yap scored. Baldwin died at first.

In the third, J. Costa flew out, pitcher to first. Takuichi walked, stole second and third. Aka singled. Takuichi was run down by catcher, and Aka was cut off second. Visitors up, Takuichi and Inman walked. Nye flew out to T. Pacheco. Wadsworth got first on wild throw, pitcher to first, and Takuichi and Inman tallied. Yap walked. Fassoth fanned and Wadsworth was thrown out at third.

Fourth innings, J. Pacheco singled. Spalding flew out to Takuichi. Gabriel singled, but Pacheco was thrown out at second. T. Pacheco struck for two bags, and McBryde's chances looked good; but A. Perriera flew out to Quintal. Of the school boys, Quintal walked and Gay singled. Former thrown out at second. Baldwin hit safe, but Gay also died at second. Takuichi walked and Inman fanned.

At the second half of the fifth inning, Joe Aka was taken from the McBryde box and Irene Akana put in. At the same time, Inman was replaced in the All Students team by Kim Wai. Then McBryde's troubles increased as follows: Joe Aka singled. Joe Costa drove to second, throwing Aka out and being retired himself at first. Takuichi flew out to Quintal.

Visitors to bat, Nye flew out to Takuichi. Wadsworth got first on catcher's passed ball and stole second. Yap singled and Wadsworth ran in. Fassoth hit safe, and on account of a bad fumble at second, Yap scored. Quintal, Gay and Baldwin walked, sending Fassoth home, to be followed a few seconds later by Quintal, on catcher's passed ball. Takuichi drove a scorching grounder, scoring Gay and Baldwin. Inman singled, Nye walked, Wadsworth hit for a bag. Inman scored on catcher's fumble. Yap singled. Fassoth flew to second, throwing out Yap and on double play was retired at first.

This inning gave to the visitors eight of their twenty runs.

In the sixth Aka singled but was thrown out trying to steal second. J. Pacheco fanned and

Continued on page 5

RICE AND HORNER LEAD AT TENNIS

The tennis matches between players of the Kilauea and Lihue clubs began Sunday afternoon, but had to be called off on account of rain after scarcely more than a start had been made. Quite a number of enthusiasts came over from Kilauea to witness the contests, and the turnout of Lihue people was also quite good.

Playing was between Chas. A. Rice and Albert Horner, Jr., of Lihue, and Conrad W. Ahrens and H. F. Hadfield, of Kilauea. Only one set was finished, that resulting 6-0 in favor of Rice and Horner. The second was under way and stood 4-0 in favor of Rice and Horner when the game had to be called on account of rain.

The bad hour of the afternoon came as a serious disappointment. In the forenoon conditions seemed favorable, and, when dried off a bit, the courts were in fine shape. But the showers of the afternoon upset everything.

Grand Jury Reports

The grand jury reported the following indictments in the Circuit Court this morning: Hing Pai, burglary [Silva's store case]; Manuel Salas, two cases assault with weapon, [Homestead]; Manuel Andrade, two cases, assault with deadly weapon and assault and battery, [The Alexander case]; Chu Sing, burglary [Hanalei case]; Tiofio Badayios, maiming; Owen-yo Moreno, assault with weapon; Yim Young Duck, statutory offense. Recommended that Mariano Barola assault case be postponed on account of illness of complainant. The jury condemns the growing practice of assault with pocket knives. A. D. Hills, foreman; W. H. Grote, clerk.

Lumber Schooner Out

The schooner James H. Bruce, which has been discharging lumber at Port Allen, will probably sail today for the Sound.

Mrs. E. P. Osborne, of the Lihue Select School will spend a part of the Summer on Mt. Tantalus.

CHINAMAN ROBBED BY HIGHWAYMEN

Held Up On Road At Night
And Relieved Of Coin
---Suspects

Ah Sing, Chinese cook employed by A. D. Hills, was held up Thursday night by three highwaymen at a point between Halehaka and the ice works and robbed of \$8.80.

The Chinaman had left the premises of Mr. Hills and was returning to his own home, when suddenly confronted by the three men in the road. They presented a revolver and at the same time seized him. The victim of the hold-up made no resistance, that being plainly useless; and as soon as the highwaymen had secured the money they disappeared in the darkness.

The Chinaman believes the highwaymen were Filipinos, although he seems to have no positive knowledge about it, except that they were small men and addressed him in pidgin English. Acting upon this theory, Sheriff Rice detailed a new Filipino officer on the case. Suspicion seems to be against one of two gangs of Filipinos near Lihue, one having four men in it and the other three. These two gangs have been under the eye of the police for sometime in connection with other cases of petty lawry.

This is the first case of highway robbery on Kauai in a great while, on account of which unusual interest is taken in it, although the amount stolen was small.

Fearing that the highwaymen might again attack him, the Chinaman did not tell Mr. Hills about the hold-up until Saturday, and the latter reported the matter to the Sheriff.

Try a "Honolulu Special" at Lihue Store soda fountain. Adv.

On account of the Honolulu steamers sailing on Friday, the overland mails arrived at Lihue on the afternoon of that day in place of on Saturday.

BOARD OF SUPERVISORS HOLD REGULAR MEETING

The regular monthly meeting of the Board of Supervisors of the County of Kauai, was held on Wednesday, July 1st., at 10:00 a. m., at the office of the Board. Present: H. D. Wishard, chairman; W. D. McBryde, J. Von Ekekel, A. Menefoglio.

The minutes of the last meeting were read and approved.

Upon motion of Mr. McBryde, seconded by Mr. Menefoglio, the sum of \$715.00 was appropriated as additional appropriations for the following purposes, to be paid out of moneys available in the County Treasury:

District Courts, etc.:
Koloa \$160.00
Lihue 20.00

Expenses of Election, 180.00

Incidentals, 100.00

License Collections, 35.00

Water Works: Kalahoe, 200.00

County Road Machinery, 200.00

The board, after having carefully examined the several demands presented, approved them to be paid out of the following appropriations:

Salary County Road Supervisor, 225.00

Pay of Police:
Specials, 140.00
Waimea, 240.00
Koloa, 140.00
Lihue, 150.00
Kawaihau, 135.00
Hanalei, 135.00

Coroner's Inquests, 940.00

County Building, 104.00

Janitor Service, 55.15

County Jail, 404.11

County Lot and Building, 40.50

Dispensary, Hanalei, 68.97

Districts Courts, etc:

Waimea, 41.80

Koloa, 163.16

Lihue, 19.00

Hanalei, 5.00

Expenses of Election, 228.96

Expenses of Witnesses, 75.00

Furniture and Office Supplies, 15.00

Hospitals:

Elele, 50.00

Lihue, 125.00

Waimea, 100.00

Incidentals, 275.00

Continued on page 5

THE ALL STUDENTS ARE ENTERTAINED

Although the headquarters of the All Students baseball team have been at the Fairview hotel, they have been entertained while on Kauai at various private homes. Hon. J. H. Coney had a bunch of them at his hospitable home a good deal of the time, and others were entertained by the Broadbents. On Sunday Joe and Hans Fassoth took several down to Makaweli, where they were entertained in various ways.

On Thursday evening, Mr. and Mrs. Wishard had some of the boys at dinner. The decorations were flowers and the Punahou colors. The young people present, with the host and hostess, were: Will Inman, Harold Baldwin, David Wadsworth, Lawrence Gay, Ernest Gay, Malcolm Coney, Frank Broadbent, Miss Blanche Wishard and her guests, Miss India Wayson and Miss Elizabeth Frazier.

DELEGATES SAIL TODAY FOR MAUI

After an item on page 3, this issue, had been printed it was learned that, on account of the likelihood of Circuit Court work being pushed ahead rapidly, the deputy sheriffs referred to will be able to get away for the church convention on Maui, with the other Kauai singers. The entire party will depart by the W. G. Hall this afternoon, and will consist of the following:

S. W. Meheula, leader; Wm. Werner, John Hano, J. H. Kaiwi, Wm. Ellis and wife, Alfred U. Alo-hikea and wife, A. G. Kaulukou and wife, J. Von Ekekel, Mrs. Richard Dias, Mrs. Kaauwai, Mrs. Peter Maline.

Eleven of these persons go as delegates, representing Sunday Schools or churches, and the others make up the singing party.

LATEST OUTSIDE NEWS BY MAIL AND WIRELESS

Tuesday July 7, 1914

Sugar: Raws, 3.36; beets, 3.52.
Honolulu—Sensational charges have been made by Dick Sullivan, Charles J. Lynch and other saloon men against the business methods of the Honolulu Brewery, and the Liquor Commission has the latter still on the grill.

—One hundred and twenty-five school teachers began work in the Territorial Normal School yesterday, that being an exceptionally large attendance.

—It is rumored [and not denied] that Palmer Woods, of Hawaii, will be appointed Land Commissioner in place of J. D. Tucker.

—The total points won by the various teams in the swimming meet at San Francisco were as follows: Illinois Athletic Club 44; Hui Nalu [Honolulu], 19; Los Angeles, 13; Healan [Honolulu], 7; Olympic [San Francisco], 7.

—Sunday's baseball results: P. A. C., 3; St. Louis, 2. Asahi, 6; Hawaii, 5.

Washington—President Wilson and House leaders have agreed upon a measure for practically self government for the Philippines.

Saltillo, Mexico—Carranza and Villa have definitely established a working agreement.

Monday, July 6.

Sugar: Raws, 3.325; beets, 3.524.

THE SWIMMING RACES.

The swimming races at San Francisco Saturday resulted as follows:

100 yards, won by Duke Kahanamoku, in .54 1-5; Rathiel, of Chicago, second.

220 yards, also won by Duke Kahanamoku, McGilvery second.

50 yards for women, won by Dolly Mings. Time .33 1-5.

SUNDAY'S RACES.

50 yards, won by Rathiel in .24 1-5; Duke Kahanamoku second.

Small third. All of the contestants came in in a bunch.

Continued on page 8

RICE CHEERED BY HONOLULU VOTERS

The appearance of Charles A. Rice, Republican candidate for nomination as delegate to Congress, before a meeting of the eighth precinct club in Honolulu on the night of June 29 was the occasion of great enthusiasm. Of the meeting the Advertiser said:

President Lorin Andrews called the meeting to order shortly before eight o'clock and outlined the work before the Eighth Precinct Republican Club for the coming primary campaign and the election campaign to follow. Then he introduced Charles A. Rice, who was given a hearty welcome.

URGED TO MAKE FIGHT

"I am glad to have the opportunity to say a few words to you this evening," said Mr. Rice in starting. "I have been urged to make this fight for the Republican nomination as Delegate to Congress by all classes of citizens, both here and on the other Islands and I am in it to stay. I need your assistance and your votes, and if I am elected I assure you that the citizens of this Territory will have more active representation in Congress than ever. I will represent all of you and will stay on the job."

"Take this question of citizen labor on federal contracts. I am convinced that such an order can be secured, and should be secured; and you all know what that will mean to the citizens of this Territory. It will mean that hundreds of thousands of dollars will remain here and be placed in circulation among our citizens. If I am elected as Delegate to Congress I will work for such a law, and I believe it can be secured. In conclusion, I say again that I need your support and hope you will each make yourself a committee of one to work for my nomination and election."

As Mr. Rice was leaving the hall a short time later, everybody in the room rose spontaneously and gave the Republican candidate three hearty cheers, the glee club struck up, and amid a scene of genuine enthusiasm Mr. Rice spoke his goodby in a few terse words of greeting and farewell.

The Honolulu Star-Bulletin of the same day said:

Senator Charles A. Rice, candidate for the Republican nomination for delegate to Congress, has begun the formation of a strong campaign organization and line of battle. Headquarters have been opened at room 29, Young Hotel building, and F. T. P. Waterhouse is prominent in the preliminary work of getting together the Rice forces.

The Kauai man smiles these days when mention is made of the race for delegate.

"I am daily receiving encouragement from men of all parties," he said this morning. "I am particularly pleased at the large number of Hawaiians who say they will back me to the finish."

Senator Rice spoke at a lively meeting of the eighth precinct, fourth district, Republican club last night in San Antonio hall. Harry Murray, candidate for mayor also spoke. The club is taking up vigorous organization work among the voters of the precinct. J. K. Kamanoulu, candidate for representative; E. P. Fogarty, A. H. R. Vieira, E. L. Schwartzberg, and others were among the speakers. One of the features of Rice's address was his endorsement of the proposal to limit work on federal contracts here to citizen labor.

Next Sunday's Baseball

The baseball games next Sunday will be as follows: K. A. C. vs. Lihue, at Lihue. Koloa vs. McBryde, at Koloa.

Have you tried our whipped cream specials, with crushed fruit? They are delicious. Lihue Store soda fountain.

Advt.

IN THE GOOD OLD SUMMER TIME

You should place your order
for Store and Office Stationery for the busy Autumn and
Winter Months

We make books, mill reports, field reports, warehouse slips, time checks, pay envelopes, letter heads, bill heads and the hundred and one other items of printed material required for the plantation; store books, bill heads, letter heads, envelopes, receipts and everything else required for the office.

Our facilities compare favorably with those of any country shop
WE GUARANTEE QUALITY OF PAPER AND WORKMANSHIP
and our prices will be found as low as or below those of any
city establishment

If you are already a regular customer, go over your stock, see what you will need for the busy season and place your order now. If not a patron of this office, we hope you will give us a trial order.

Results Will Please You

The Garden Island Pub. Co., Ltd.
Lihue, Kauai.

RULING AGAINST THE SUGAR TRUST

NEW ORLEANS, July 2.—Suits against the American Sugar Refiners Company aggregating one hundred and fifty million dollars, must be tried in the United States courts in Louisiana, under a ruling handed down yesterday by Judge Foster.

The suits have been pending for some time having been filed by sugar planters who alleged that the refiners manipulated prices unlawfully and to the damage of the producers.

Attorneys for the corporation in their exceptions filed in the test case now being passed on, contended that the American Sugar Refining Company is incorporated in New Jersey and that therefore the suit should be tried there.

Meeting That Failed

On account of the absence of the president, nothing was done at the meeting of the Lihue Baseball Club Wednesday evening, except for informal talk. The object of the meeting was to devise ways and means for making a better showing in the second baseball series. Several plans have been suggested, and it is hoped by some of the enthusiasts that a scheme for better ball may be worked out. The meeting will be held later.

Theater Kept Open

Almost a continuous program was kept running at Hale Hooni, the local theater, on July Fourth, a show being given in the morning, one in the afternoon and another at evening.

DEWEY HOPES FOR 100 YEARS OF PEACE



The hope that there may be peace and friendship between the United States and Great Britain for another hundred years is expressed by Admiral Dewey in a cablegram sent recently to Lord Burnham. "No one," says the Admiral, "appreciates this international friendship more than I, who have seen it tried."

The son of Mrs. Booge, accompanied by his family, will be expected in Lihue next week from California on a visit to his mother and sister.

Sheriff Rice had a busy time of it last Thursday and Friday cleaning up Lihue park for the Fourth of July events. A gang of prisoners did the heavy work.

DELEGATE KUHIO SULKING IN TENT

The Honolulu Star-Bulletin last Thursday expressed itself as follows in regard to the Delegateship matter:

"As the summer days move along toward the opening of the fall campaign, it is evident that Delegate Kuhio's candidacy for reelection has entirely failed to excite either public interest or sympathy."

"On the other hand, the candidacy of Charles A. Rice has already resulted in the foundation of a strong campaign organization."

"L. L. McCandless has not yet announced himself, but 'Line Kona' always has his adherents staked out over the territory ready to hand so that in a few days he can get his force into action with a minimum of wasted energy."

"The lack of interest in Kuhio has come as a surprise to a good many people who figured that his announcement would at once mean the rallying of Hawaiian voters. This has not been the result. The delegate cannot but realize now that there has been a tremendous change of sentiment in the last four years and particularly in the last two."

"Kuhio seems to be sulking in his tent at Waikiki. At least he has failed to show any interest in his own prospects. And it is certain that his apathy is making him no votes."

"On the island of Hawaii he will probably hold some of the votes of the past. But as the days go by the political tips get stronger and stronger than on Oahu, Maui and Kauai Cupid's cause is a hopeless one."

"He doesn't look like a winner."

ARRIVING AT HONOLULU

July 10--China	San Francisco
13--Sonoma	San Francisco
13--U. S. T. Sheridan	San Francisco
14--Manoa	San Francisco
14--Niagara	Sydney
14--Nippon Maru	Hongkong
15--Makura	Vancouver
17--Ventura	Sydney
17--Manchuria	San Francisco
18--Mongolia	Hongkong
21--Matsonia	San Francisco
24--Tenyo Maru	San Francisco
27--Sierra	San Francisco
28--Lurline	San Francisco
31--Persia	Hongkong
Aug. 1--Nile	San Francisco
4--Wilhelmina	San Francisco
4--Shinyo Maru	Hongkong
4--U. S. T. Logan	San Francisco
8--Nippon Maru	San Francisco
10--Ventura	San Francisco
11--Manoa	Sydney
11--Marama	San Francisco
12--Niagara	Vancouver
13--Seiyo Maru	Valparaiso
14--Sonoma	Sydney
14--Mongolia	San Francisco
14--Korea	Hongkong
15--U. S. T. Sherman	San Francisco
18--Matsonia	San Francisco
21--Shinyo Maru	San Francisco
22--Siberia	Hongkong
24--Sierra	San Francisco
25--Lurline	San Francisco
25--Chiyo Maru	Hongkong
26--Persia	San Francisco

LEAVING HONOLULU

July 10--China	Hongkong
13--Sonoma	Sydney
14--U. S. T. Sheridan	Manila
14--Niagara	Vancouver
14--Nippon Maru	San Francisco
15--Makura	San Francisco
17--Ventura	Sydney
17--Manchuria	San Francisco
18--Mongolia	Hongkong
21--Manoa	San Francisco
24--Tenyo Maru	Hongkong
26--Matsonia	San Francisco
31--Persia	San Francisco
Aug. 1--Nile	Hongkong
4--Sierra	San Francisco
4--Shinyo Maru	San Francisco
4--U. S. T. Logan	San Francisco
8--Nippon Maru	San Francisco
10--Ventura	Hongkong
11--Marama	Sydney
12--Wilhelmina	Vancouver
12--Niagara	San Francisco
14--Sonoma	Sydney
14--Mongolia	San Francisco
14--Korea	Hongkong
15--U. S. T. Sherman	Manila
16--Seiyo Maru	Hongkong
18--Matsonia	San Francisco
21--Shinyo Maru	Hongkong
22--Siberia	San Francisco
24--Sierra	San Francisco
25--Lurline	San Francisco
25--Chiyo Maru	San Francisco
26--Persia	Hongkong

IT IS HERE: Egg malted milk at the Lihue Store soda fountain.

Advt.

THE "PUROLA BRAND"

Household Remedies Household Specialties Toilet Specialties

In this day and age, in our home for our family, we want the Best; and when we say the Best we mean the Highest Quality. The "Purola" Brand of Household Remedies and Toilet specialties, which we have just put in, is another link in the chain that binds us to our customers. Why? Because "Purola" is synonymous with the Highest Type of Purity and Quality and bears the guarantee of an old-established firm of more than thirty years experience. Ask to see our "Purola" Line. No trouble to show goods.

The
Makaweli Store

You must know that

"In 'UNION' there is Strength"

If you are a fuel user you're sure that in

"UNION" Gasoline
"UNION" Distillate
"UNION," Kerosene

there is more strength and less waste during combustion than other brands can claim.

SPECIFY "UNION" FUEL OILS
WHEN YOU CALL AT YOUR DEALER'S

S. OZAKI
WAIMEA

Wholesale Liquor Dealer

Telephone No. 102.

Kerosene the clean, cheap, fuel

Do you realize the convenience and economy of the modern oil stove? The fuel—kerosene—is the cheapest you can get—clean, safe, easy to handle. The stove has been perfected until it is as good as a wood or coal range for any kind of cooking. The

New Perfection OIL COOK STOVE

will cook a quick, light breakfast for you, or it will cook a big dinner with roast and bread and pastry. The New Perfection doesn't overheat the kitchen. It doesn't smoke or taint the food. Think of the comfort of summer cooking in a cool kitchen. No wood or coal to lug; no ashes to dirty up the house. Why not ask your dealer to show you the New Perfection.

Standard Oil
Company
(California)
Honolulu



FOR
BEST RESULTS
USE HONOLULU
STAR OIL

The steamer Missourian, with the first of this year's sugar shipped around Cape Horn, arrived at Delaware Breakwater on June 29. Five other shipments are on the way by the same route, viz: The Arizonan which sailed May 12 from Hilo; the Mexican, sailing May 23, Virginian June 4, Columbian June 15 and Georgian June 28.

WEDDING OF HEAD OF HIGH SCHOOL

William C. Avery, principal of the new Kanae High School, and Miss Margaret Myrick were married in Honolulu on the evening of June 30, the Star-Bulletin of the following day giving the following account of the affair:

Last night at the home of Mr. and Mrs. Walter Smith in Manoa, Rev. Dr. Wilbert P. Ferguson, principal of Mills school, united in wedlock two of the popular teachers of the school, Mr. William Charles Avery and Miss Margaret Muriel Myrick. Both were employed two years ago as teachers under the principalship of Rev. Stephen Myrick, the brother of the bride. Mr. Avery was a graduate of Boston university and proved his work from the beginning. He has just been appointed by the territorial commission to the responsible principalship of the newly organized high school at Lihue, Kauai. He is also honored with an appointment as instructor in mathematics at the summer session of the Normal school and is destined to rise rapidly in his profession. Miss Myrick was a student in Whittier college and the University of Southern California. She has taught in the grammar grades of Mills school and won many friendships both inside and outside the school circle. Her parents live in Idaho and cabled their congratulations. One of her former schoolmates, Miss Starbuck, came from California yesterday and was present at the wedding. The other guests were Mrs. F. W. Damon, Mrs. Ferguson, Miss Bosher, Miss Elizabeth Jones, Miss Julia Peabody, Mr. and Mrs. Willard, of Maui, Mr. Rea, Mr. and Mrs. Walter Smith. "Promise Me" was beautifully rendered by Miss Jones. Miss Peabody played the wedding march.

Land Commissioner J. D. Tucker made a flying inspection visit to Kauai last week. Wednesday was spent at Lihue and Kalaheo, and Thursday at the Waipouli home-steads. Mr. Tucker returned to town Friday night.

"Fan" Has A Kick

THE GARDEN ISLAND has received the following from Koloa: EDITOR GARDEN ISLAND:

Why don't the health inspector or the police force of Koloa, forbid the business men on the main street next to the baseball grounds from using that public place for rubbish, where it contains broken bottles, making it very dangerous to the autoist who travels miles to see the games?

The public in general hopes that either one mentioned will look into this very serious matter for the welfare of the sport.

A Fan.

The registration of voters for the primaries, to be held September 12, will close September 2. Registration for the general election in November will open September 14 and close the third Wednesday in October. So far the registration in Lihue has been very light.

MRS. WILCOX IS LUNCHEON GUEST

Says the Star-Bulletin:

Mrs. J. M. Dowsett was hostess at a delightful luncheon at the Country club last Wednesday afternoon in honor of Mrs. Albert Wilcox, of Kanae, who is spending a few days in Honolulu. Fragrant sweet williams and ferns made attractive decorations for the table. After luncheon, cards were enjoyed for the remainder of the afternoon. Mrs. Helen Noonan, Mrs. Lackland and Miss Margaret Walker receiving handsome parasols for running up the highest scores.

The consolation prizes were delicious lemonade cakes.

Those present were: Mrs. Albert

Court Spoils The Mus

It turns out that the three singers (all deputy sheriffs) in which Kauai depended to win honors at the competition in Wailuku on July 11 will not be able to go on account of their duties in the Circuit Court term; on account of which this island will be unexpectedly and disappointingly thrown out of the competition altogether.

New Zealand butter is always fresh and sweet. Delivered anywhere by J. I. Silva, Eleele. Advt

Wilcox, Mrs. Faxon Bishop, Mrs. Carl Hagens, Mrs. Albert Horner, Mrs. Helen Noonan, Mrs. William Williamson, Mrs. Emil Witterman, Mrs. Zeno K. Myers, Mrs. Frank Richardson, Mrs. Lackland and Miss Margaret Walker.



COMMISSION WHICH NOW HEADS THE U. S. RECLAMATION SERVICE

Instead of being headed by one man, as has been the case previously to this Administration, the U. S. Reclamation Service is now directed by a commission of five men, appointed by Secretary of the Interior Lane. These men will be held responsible for results in the service. This picture shows the entire commission in session. These men direct the average

monthly expenditure of the service of \$1,000,000. Left to right around the table are: Arthur P. Davis, Chief Engineer; W. A. Ryan, Controller; L. D. O'Donnell, Supervisor of Irrigation; Judge Will R. King, Chief Counsel; F. H. Newell, Director and Chairman of the Commission, and Secretary of the Interior Franklin K. Lane.

GOVERNOR TAKES TOO MUCH ON SELF

The Hilo Tribune supports, in the following, the views expressed some weeks ago by THE GARDEN ISLAND on the same subject:

The time is opportune to suggest that a number of the matters which are being called to the attention of Governor Pinkham are as questions of policy matters which, under our theory of government, he has nothing to do with except in an executive capacity. But the executive head of the government of Hawaii has always seemed to have the notion, and this applies to all the governors the Territory has had, that he had a right to supervise, overrule or revise acts of the legislature.

Our present governor has just given an excellent example of this sort of fatherly executive attitude of superiority to the legislature. Acting under a law passed by the legislature, he is about to float a loan for a large sum, but in deciding how the money shall be spent, he ignores the act of the legislature. The legislature passed an act setting aside certain sums for certain purposes. The executive simply decides all over again whether the money shall or shall not be applied to the purposes set forth in the law passed by the legislature. Such a procedure is a far departure from the American theory of separation of the legislative and executive departments of the government.

Governor Pinkham has precedent for his action in these matters. Other governors have done the same thing. Carter was in fact

There Are Others

The following is from the Maui News:

A lot of our friends very charitably commiserate with us when we get out a poor paper, on the theory that "news is scarce." It isn't. There is plenty of material here on Maui all the time for a dandy local paper, and when we don't have that kind, it's our fault. We don't want to hide behind that old lie about scarcity of news. But we are rather up against it to handle this news. It's a fearful thing in this age of the world to set up a paper letter by letter, and then to unset it the same way. But that's the way we do it. In short, our facilities are not equal to our needs. However, we expect to soon remedy this defect in considerable measure, and to publish the kind of a paper that we want to publish, and that you want to receive. In the meantime we are doing the very best we can under the circumstances.

practically forced to do it, for the legislature appropriated more than the available funds, and thus made it necessary for the executive to decide which items in the appropriation bill should be used.

Hilo is presenting to Governor Pinkham some matters with which he has nothing to do, except as an influential citizen. He is an appointed officer. The legislature is elected by the people. A question worth considering is how long the legislatures of Hawaii will remain patient under amendment of their acts by the executive. As long as the Organic Act remains in anything like its present form, the people are going to try to rule, and there is trouble ahead for Mr. Pinkham, or any other executive, who attempts to be both executive and legislature.



CHARMING NEGLIGES

A hint to the bride who wishes to have her negligees original and dainty is given in the two designs above. The beautiful creation on the left was fashioned by rose rope with hemstitched collar of silk. "Val" lace insertion as girdle. The lower portion is gracefully draped and trimmed with knots of chiffon. The long gown was of pink charmeuse with odd revers faced with lace, piped with silk and having the points weighted with tiny silk tassels. The collar falls in a long narrow point to the waist in the back.

THE GARDEN ISLAND

TUESDAY JULY 7, 1914

Issued-Every Tuesday.

Entered at the post office at Lihue, Kauai, as second-class matter.

SUBSCRIPTION RATES \$2.50 PER YEAR, \$1.50 FOR SIX MONTHS IN ADVANCE

ADVERTISING RATES, 75 CENTS AN INCH PER MONTH.

L. D. TIMMONS : : : Editor
K. C. HOPPER : : : Manager

The Liquor Business

The liquor business of Kauai should be put on a strictly cash basis. "Liquor is a luxury; if a man has not the cash to pay for it, he has no right to drink," is an expression coined by one of the leading and most successful liquor merchants of the Hawaiian Islands. As we understand it, credit for liquor is easy to obtain on Kauai, and, inasmuch as it seems to be a human weakness to pay a liquor bill ahead of the bills of the grocer, the butcher and all others, it is an important aim of the liquor merchant to extend his business of giving credit as much as possible. But, as in everything else, the liquor merchant does lose here and there on accounts, and at the end of the year his net earnings are materially lessened thereby.

It is, of course, too late to do anything this year, for the licenses have already been granted upon the old basis, but we think both the liquor men and the liquor commission might well consider seriously for the next period the question of doing away entirely with credit in the liquor business. The regulation should be sweeping, and should include also shipments of liquor from the outside into Kauai on credit to other than licensed dealers. If the law on this point is not explicit, it should be made so.

Liquor merchants say: "There is no use trying to keep a man from getting liquor. If he wants it, he will get it somehow." All right. Then the liquor merchant should be heartily in favor of this plan, for, according to his own reasoning, he will sell just as much, and moreover, will get his cash in advance for his goods. He will do away with a lot of expensive bookkeeping, collecting and bad accounts, thus giving him a larger profit at the end of the year.

Duty Of Hawaiians

No element of Kauai's citizenship should more readily and heartily combine in support of Hon. Chas. A. Rice for Congress than the native Hawaiians. They have for twelve long years thrown their support and their votes to Kuhio, and what have they received in return? What interest has Kuhio ever taken or shown in the Hawaiians of Kauai? He has spent a great deal of time in idleness around his home in Waikiki. If he cared or thought anything of the Hawaiians of Kauai, why has he not come over here and visited them and found out their needs and wishes?

No; only just before election he runs over here, lines the Hawaiians up, and says: "Now, you must be good and vote for me again." Then he scoots back to Honolulu and as soon as the election is over forgets his Hawaiian friends on Kauai entirely. Is this not gospel truth? How long will the Hawaiians of Kauai permit themselves to be made fools of in this way? Will they do it again this year? In the name of common sense and justice to themselves, we hope not.

The primary law gives to the Hawaiians the chance to express themselves in their own party. They will have, in their own Republican party to vote for, on the one hand, their own neighbor and friend, Hon. Chas. A. Rice, whom they know will stay with them

first, last and all the time, and on the other hand they will have a man who has betrayed their trust and thrown them down six times and now wishes them to take their bitter medicine a seventh time!

What will the native Hawaiians of Kauai do about it? There is only one thing to do—work and vote for Hon. Charles A. Rice in the primaries. Give him a solid Hawaiian vote on Kauai, and show to the world that you cannot be fooled all the time and that you intend to place your trust where you know it will be safe.

Sweeping Prohibition

THE STATE of West Virginia, by a majority vote of 92,342 at a regular election, has put into force a prohibition law more stringent than any yet enacted in the country, perhaps. Under it it will be unlawful to manufacture, sell, give away or possess intoxicating liquors anywhere within the State. Neither druggists nor club houses are allowed to carry it. It is also unlawful to advertise liquors in the State, either in newspapers, on bill-boards, by circulars or otherwise; and necessary funds have been appropriated for carrying out the law.

With public sentiment so overwhelmingly on the side of prohibition, this law in West Virginia is certain to be carried out and enforced successfully.

And that brings to mind the very correct conclusion that prohibition prohibits just in proportion to the public sentiment behind it. The old saying that "Prohibition does not prohibit" has been knocked silly so many times of late that it is scarcely worth repeating. At the same time in each case of successful prohibition, the will of the people has been behind it; but without a united popular sentiment, it must be admitted that prohibition does not, and cannot, prohibit.

THE VISIT of the All Students baseball team has brought forcibly to the attention of the players and fans of Kauai the importance of practice. The All Students is not a first team in Honolulu, but when thrown against a team which has not had sufficient practice and is untrained in the fine points of team work, they simply have everything their own way. Before the season is started next year, the local teams should be thoroughly organized and given two or three months diligent practice, under competent leaders. Then [and not until then] can they hope to make a creditable showing against outside teams when the opportunity comes around again. Our teams are good enough for home playing, and everybody enjoys the local games, but we would dearly like to see them able to hold their own against visitors, as well.

THE COMPLAINT made by a correspondent in another column that the baseball park at Koloa is being used for a rubbish dump may or may not be true, but it should be looked into. In fact, the people of Koloa should go a step farther and clean up their park a bit. It bears a ragged, more or less filthy appearance all the time, while with a little attention it could be made quite pleasing to the eye. We would suggest that the public spirited citizens of Koloa put their park in shape during the summer; and that when school opens in September, Principal Bush appoint committees of volunteers from among his boys to work Saturdays and keep it so.

"AS GOES MAINE, so goes the Union." "As goes Waimanalo, so goes Oahu." These are familiar sayings, but have fallen true so many times that it has become a sort of habit to believe in them. Let us, however, add another of equal merit: "As goes Kauai, so goes the Hawaiian Islands"—and apply it to the contest for the Delegateship at Washington. Hawaii could not do better than have it that way.

AT ITS MEETING last Wednesday the Board of Supervisors failed to take up the regulation regarding estrays on the public roads, and the explanation was made that it "was entirely overlooked." Might not the word INTENTIONALLY be used in place of ENTIRELY?

THE ANNOUNCEMENT is made that former Governor Carter will shortly arrive on Kauai for the purpose of working up enthusiasm on the subject of the Progressive Party and organizing Progressive clubs. We believe that Mr. Carter has a mistaken idea about being "called" as the Moses to lead Kauai out of the wilderness. It was probably one of our night owls that he heard. However, he will be hospitably received over here and will be listened to with respect.

WE THINK the school at Kapauka, for the benefit of the home-steaders, should be established on the acre of land which has been made available for that purpose. Of course schools should have ample room for play-grounds, etc.; but in the case in point there will probably be very few children in attendance upon the school for years to come. Under the circumstances, therefore, we favor starting with the acre and taking chances of getting more, should the necessity arise, by condemnation proceedings or otherwise.

FOR A DISTURBED region, they seem to have a lot of "angels" down Mexico way. We are told that General Angel Pena is a candidate for the Presidency of Mexico, and is being opposed by General Felipe Angeles. If there be anything at all in a name, surely the dove of peace might "flock" in there somehow.

THE VISIT of the All Students to Kauai around July Fourth was much appreciated, and it is hoped they enjoyed the outing as much as did Lihue. Good, clean sport is the ambition of Kauai, and it is that type that the All Students put up.

A PORTUGUESE complains to us that he has lost a small, sorrel horse. We don't know anything positive about the matter, but if he will look in the weeds on the sidewalk between the Lihue bank and THE GARDEN ISLAND office we think he will stand a good show of finding the lost animal.

IT IS REPORTED from Mexico that they are using celluloid poker chips in Vera Cruz for small change. We have heard some rumors of poker chips being used elsewhere for the same purpose before.

THE CIVIC FEDERATION has at last come to life, and has passed resolutions favoring the enlargement of Honolulu Harbor. The dredgers may now proceed to get up steam.

THE PLATFORM of the Lahui Party solemnly declares:—"And to reveal that the law is for the poor and not for the rich." It is a pity there is not an open season for monkeys in Hawaii.

ALONG WITH THE SUGAR mill returns beating the estimates comes the prospect of an excellent year for Rice. Agriculturally [and politically] we seem to be improving.

IT IS PROBABLY unfair to assume that the reason the supervisors persistently side-step that stray ordinance is that they are afraid it may not "be enforced."

PLUMBING INSPECTOR Michlstein, of Honolulu, may have been indiscreet in some of his dealing with fishmarket Chinese, but his worst fault, perhaps, is that he is a Republican and holds a job which some Democrat wants.

YOU ARE ALL right, All Students; come back to see us next year.

KAUAI WILL have a strong delegation of vocalists in the church convention at Wailuku after all, and they will be expected to return with the first prize.

WE UNDERSTAND that there is \$22,000 of promoter's stock in the Hilo electric railway project, from which we infer that water also invades the channels of business in the second city.

SENATOR KNUDSEN
HOME TOMORROW

Senator E. A. Knudsen will arrive home in the Kinau tomorrow morning after an absence of about thirteen months, spent, for the most part, in the big cities of Europe. The Senator, with his wife and family, arrived at Honolulu in the Siberia and have been stopping at the Moana hotel.

At Honolulu Senator Knudsen set at rest any idea that he might not stand for re-election to the upper house, giving out definitely that he would be a candidate. He also expressed the opinion that Senator Rice would be elected to Congress.

Speaking of conditions on the mainland, Senator Knudsen said at Honolulu that the indications were of the amalgamation of the Republican and Progressive parties again before the next election.

At any rate, they were tending toward a better understanding, and the likelihood of union was made more probable by the increasing industrial and business unrest throughout the country.

It is expected that Senator Knudsen will formally announce his candidacy and begin his campaign shortly after arriving home.

DR. ARMITAGE IS
DROWNED AT HILO

News reached here last week of the drowning of Dr. Edward Armitage, formerly a resident of Kauai, which occurred at Hilo, presumably on June 29, under singular circumstances. Of the matter a Hilo despatch of June 30 said:

HILO, June 30.—A mystery surrounds the death of Dr. Edward H. Armitage, well known over the islands for his ability as a physician, and linguistic accomplishments, whose body was found under three feet of water on Coconut Island last evening. A coroner's jury investigation will be undertaken sometime today and the result of it may clear up the mystery and determine if Dr. Armitage was a victim of foul play, or took his own life, or met death from accidental causes. The opinion here is divided so far, but the weight of it seems to be in favor of the theory that the physician fell into the water accidentally, stunned himself and drowned before recovering from the shock of the fall.

Dr. Armitage was a physician of high education, a recognized authority on a several medical subjects, and a linguist of great ability. He was a frequent contributor to the London Lancet and other medical journals, and among the medical fraternity here he held a high place of respect. He had a D. P. H. certificate from Cambridge.

Dr. Armitage came to these islands about 20 years ago, at that time planning only to remain here temporarily. He first practiced on Kauai, then in Honolulu for a short time, then on Maui, where he was the government physician of Wailuku. He returned to Honolulu, practiced there again, and about three years ago left for Hilo.

George B. Curtis, who was for years manager of the big house of E. W. Jordan & Company, Honolulu, toured Kauai last week in the interest of an eastern house which he now represents. He returned to the city by the Kinau Friday evening.

Nawiliwili Garage

C. W. SPITZ, Prop.

NAWILIWILI, KAUAI TELEPHONE 104

Automobiles to all Parts of Kauai,
all hours, Day and Night
Careful Chauffeurs

Autos and light machinery repaired.
Plumbing and gas fittings. Agents for Fisk
and Goodrich Tires and Tubes, Chalmers,
Ford, Studebaker, Velie, Federal and
Velie Truck.

Agents for the Inter Island Steam Navigation
Co., Ltd., at Nawiliwili, Kauai

Do over your wooden furniture---fur-
niture that is scratched and worn---with
SAPOLINFLOOR and FURNITURE
STAINS

You can easily do the work yourself

Give the metal bed, bath-tub and
sink a new white coat---using SAPOLIN
ENAMEL. Many shades besides white.

You can easily do the work yourself.

LEWERS & COOKE, LTD.
HONOLULU.

Used by
All the Big
College Nines

The
Official
Ball

If you attend any of the big college games you will find that the ball almost invariably used is the REACH OFFICIAL AMERICAN LEAGUE BALL. College men won't have anything but the BEST—that's why they all use

The Reach Ball

College men know too that the Reach Ball has been adopted by the American League for ten years, and is the Official League Ball. No other ball can be used in any League game. Price everywhere 50c.

The Reach Trade-mark on all Sporting Goods is a guarantee of quality—it means satisfaction, a new article or your money back (except on Balls and Bats under \$1.00).

The REACH OFFICIAL BASE BALL GUTTED, made of the finest quality of leather, with the Reach Trade-mark on the ball.

Series. Schedules, records, etc. 10 cents at dealers or by mail.

Theo. H. Davies & Co., Ltd.
Sole Agents
for the Territory of Hawaii

FISK

C. W. SPITZ
AGENT FOR KAUAI

BY MILES THE BEST TIRE

They average 25 per cent
more than other Tires.

A full stock carried at the
NAWILIWILI GARAGE

Tires

READ THE GARDEN ISLAND

Haven't you yet written for
full particulars of

"Ingeco"

"The General Utility Engine"

[Operates on kerosene, distillate or
gasoline.]

Honolulu Iron Works Co.
HONOLULU

TO THE TRADE

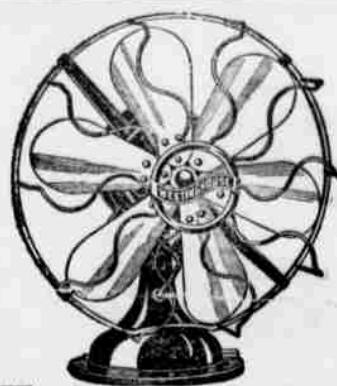
WE ARE DISTRIBUTORS
FOR

"LOOPUYT" GIN "OLYMPIA" BEER
"REWCO" WHISKEY "TIPO" CLARET

A FINE SELECTION OF GROCERIES AND
LIQUORS ALWAYS ON HAND

GONSALVES & CO., LTD.

74 QUEEN ST., HONOLULU



Have a
breeze when
you want one

Today get a Westinghouse Electric
Fan at the
Lihue Store

The Income Tax Law

Has doubtless become a reality to a large number of men and women in the past month than in any time since its enactment. The last day for filing the tax returns **without loss or penalty** has gone by.

There are many people who put off until the last minute--or later--the doing of things which are to their own profit. If you are not yet one of our patrons **your loss** though not imposed by law, is no less **real**.

While our merchandise and service are up-to-date as we can make them, we confess that our business principles are of the old-fashioned variety, which places your satisfaction above the day's profit.

N. S. Sachs Dry Goods Co.
HONOLULU

THE LIHUE STORE

will represent us in the sale of

Rexall Goods

in LIHUE, HANAMAULU and KOLOA

Ask them for a free booklet.

Benson, Smith & Co., Ltd.

Box 426

Fort and Hotel Streets

Honolulu

**THE REXALL
STORE**

SUPERVISORS MEET

Continued from page 1

Attorney,	12.75
Auditor,	64.00
Clerk,	58.85
License Collections,	15.45
Sheriff,	142.35
Supervisors,	39.25
Treasurer,	6.00
County Rd. Supervisor,	143.00
	481.65
Preservation and Importation of Game Birds,	27.20
School Janitor Service and School Supplies,	26.23
Repair and Maintances, etc.,	55.31
	81.54
Support and Maintenance of Prisoners,	341.10
	341.10

Water Works:	
Kalaheo,	479.18
Kawaihau,	9.00
Waimea,	35.00
	523.18

ROAD WORK:

County Road Machinery,	223.32
Waimea:	
Oiling Roads (R. T. S. D.),	193.19
Rd Tax Spec. Dep.,	676.43
	869.62

Koloa:

Oiling Roads (R. T. S. D.),	11.78
Rd Tax Spec. Dep.,	781.84
	793.62

Lihue:

Huleia Bridge,	1,094.25
Rd Tax Spec. Dep.,	682.68
	1,776.93

Kawaihau:

Roads and Bridges,	992.60
Hanalei:	
Macadamizing P. W.,	2,478.01
Roads and Bridges,	779.00
	\$ 11,834.46

Upon the report by the Finance Committee, the financial reports Nos. 152, 152a, 152aa, and 152b for the month of May last were approved.

Financial Reports for the month of June, being the Treasurer's (R 153), Auditor's (R 153a), Auditor's Trial Balance, etc. (R 153aa) and the Joint Report (R 153b) were received and referred to Mr. Gay, of the Finance Committee.

Upon advice of Mr. McBryde, committee, the petition (P 988) for a government school at West Lawai, Koloa, was tabled by unanimous vote.

The report (P 1000) of the poundmaster for Lihue for the three months ending June 30th, was received and approved upon the recommendation of Mr. Menefoglio, standing committee.

The report (P 1001) of the County road supervisor for the month of June was received and ordered placed on file. This report was as follows:

"Roads: In Waimea District the filling in of the trestle approach to Waimea bridge was carried on. Grading on the trail up the pali back of the Waimea courthouse was started.

Koloa district regraded the old road crossing Kalaheo valley about 1-1/2 of a mile makai of Kalaheo schoolhouse; this road will greatly benefit the Homesteaders around the makai slope of Kukuolono. Work of spiking up the oil surface and resurfacing with sand began on the top of the next hill Waimea side of Homestead store on June 30th. It is unfortunate that the splendid surface maintained by means of surface oiling proves dangerous to travel when the road is wet.

In Lihue, the principal work for the month was in the erection of a bridge across Huleia stream in the road to Kipu; the rock was crushed, the west concrete abutment was finished and the east abutment half poured. A new deck was put on and the steel work adjusted at the Kapala bridge. In Kawaihau district new grading on the Kapua homestead road went on and good work is being done.

At Hanalei the balance of the pipe culverts were put in and the roadbed made ready for macadam down as far as the schoolhouse. Very little was done in macadamizing, owing to continuous rainy weather. The first application of rock now extends nearly to the beach road. Stone breaking for the Waikoko section was started and is now going ahead.

Water Works: Development work at the spring and trenching for pipe line was begun at the Kalaheo school water works, and the 2000 feet of pipe required is on hand.

Schools: All requisitions received attention.

A protest (P 1002) from Hanalei against the employment of laborers other than the local laborers except skilled mechanics was received and upon motion of Mr.

McBryde, seconded by Mr. Ekekel, the protest was ordered placed on file; but the Board at the same time, by a vote, declared that it favored the employment, where at all possible, of those resident within the district where work is being done.

Two communications (P 1003) from H. W. Kinney, Superintendent of Public Instruction, recommending, besides other matters, the construction of open air buildings at Elele, Kalaheo and Koloa, for the use of the schools at the named places were received and in connection therewith Mr. Moragne, upon motion of Mr. McBryde, seconded by Mr. Menefoglio, was instructed to construct the buildings asked for.

A communication (P 1004) dated June 15, 1914, from T. Brandt, Commissioner of Public Instruction, recommending the construction of another open air building at Kalaheo for the use of the Kalaheo school was received and placed on file.

A requisition (P 1005) from Mana school for furniture and for repairs to the school buildings was received and upon motion of Mr. McBryde, Mr. Moragne was instructed to purchase the necessary furniture and to give the school building the necessary repairs.

Requisitions respectively received from the schools at Kekaha (P 1006), Waimea (P 1007), Makaweli (P 1008), Elele (P 1009), Kalaheo (P 1010), Koloa (P 1011), Huleia (P 1012), Lihue (P 1013), Hanamaulu (P 1014), Wailua (P 1015) and Anahola (P 1016), some of which asked for repairs to the school buildings and others for school supplies, were received and referred to Mr. Moragne with full power to act in each case.

Another requisition (P 1017) from Miss Mumford for the construction of an extra building and for repairs to the school buildings was received and Mr. Moragne was authorized to construct the extra building and to give the necessary repairs to the present school buildings.

A list [P 1018] of children of school age residing at Kapaa-uka, otherwise known as Kapali, in the Kawaihau district, was received and placed on file. This list was sent to the Board to prove to it that there are children at this place and that a school ought to be built for their accommodation. With this matter the Board, upon motion of Mr. Menefoglio, seconded by Mr. Ekekel, voted to recommend Mr. Kinney, Superintendent of Public Instruction, to accept an available school site of one acre at Kapaa-uka in order that the school needed in that vicinity could be built. To prove that the Board meant business it voted, upon motion of Mr. Menefoglio and seconded by Mr. Ekekel, to appropriate the sum of \$600.00 for a school building, to be built at Kapaa-uka as soon as the site is available.

Reports [P 1019] of school buildings, etc.; for the month of June, from Anahola, Haena, Hanalei, Hanamaulu, Huleia, Kalaheo, Kilauea, Koloa, Lihue, Makaweli, Wailua, and Waimea were received and ordered placed on file.

The chairman stated for the committee to whom was referred the matter of investigating into the water supply of the Hanamaulu school, that there has been under construction 1700 feet of pipe to overcome the difficulty experienced in the past by both the teachers and pupils of that school.

Acting on a complaint verbally made by some of the customers at Koloa, Mr. Moragne was instructed to investigate the county water system and water supply at Koloa and to report at the next meeting.

By vote each of the districts was allowed \$300.00 for road work for the next ensuing month.

At 12:00 P. M. the meeting adjourned.

Our ice cream, at the Lihue Store's soda fountain, is made from fresh cream from the Honolulu Dairymen's Association. Try it. You will like it. Or, better still, take a carton home with you.

Adv.

BASEBALL

Continued from page 1

Spalding flew out to Fassoth. Students again, Quintal and Gay singled and Baldwin walked. In a sort of general scramble, Quintal was thrown out at the plate and Gay ran in unnoticed. Baldwin made a dash for third, but was intercepted. Both sides seemed to be a little rattled. Takeuchi singled, but was caught off first.

In the seventh, Gabriel flew out to Baldwin and T. Pacheco failed at first. A. Perriera struck for one bag, but Akana died at first. Yap, for the students, flew out to Gabriel. Nye and Wadsworth walked and Yap singled. Fassoth flew out to Perriera; Nye stole the plate. Quintal and Gay walked and Wadsworth scored. Baldwin singled and Yap tallied. At this point, Quintal deliberately ran in home. Gay tried the same game but was thrown out.

Eighth inning, J. Costa and Takitani walked, and on a mix-up of throws, Costa scored. Ako walked, but was thrown out at second. On passed ball by catcher, Takitani tallied. J. Pacheco walked. Spalding fouled out and Gabriel died at first. Visitors to bat, Takeuchi singled. Kim Wai failed at first. Nye singled and Takeuchi scored. Wadsworth hit safe, but Yap died at first. Fassoth hit heavy for one bag, scoring both Nye and Wadsworth. Quintal singled, but Gay failed at first.

The ninth was soon over. T. Pacheco died at first. Spalding walked, and Akana and J. Costa found graves at the first sack.

SCORE BY INNINGS

1 2 3 4 5 6 7 8 9 Total	
McBryde	0 0 0 0 0 0 0 0 2
All Students	1 1 2 0 8 1 4 3 x 20

The teams were as follows:

	All Students	McBryde
McBryde	rf	Wadsworth
Takitani	rf	Iman
J. Costa	lf	Kim Wai
Ako	1-b	H. Fassoth
J. Pacheco	2-b	Quintal
Spalding	ss	Takeuchi
Gabriel	c	Baldwin
T. Pacheco	3-b	A. Perriera
A. Perriera	cf	Nye
Akane	p	Gay

THE SECOND GAME

The second game began at 3 o'clock sharp. The weather was then much improved, and the crowd was even larger than in the forenoon. Sanborn was on hand with his picked team, but the old baseball veteran did not himself play. The All Kauais went first to the field and the game proceeded as follows: Gay, of the visitors, flew out to Akana; Baldwin, T. Pacheco to first and Takeuchi fanned. For the home team, Kerr flew out to Takeuchi. Akana singled. J. Pacheco struck to second, retiring Akana but made first himself. Spalding died at first.

Second inning, Inman was retired, J. Pacheco to first. Nye safe on wild throw of T. Pacheco to first. Wadsworth hit safe, but Nye was thrown out. T. Pacheco to second. Yap singled, but Wadsworth was thrown out at second. Home team up, Malina and T. Pacheco fanned. J. Fassoth walked, but Koani died at first.

In the third inning, Hans Fassoth, for the visitors, fanned. Quintal and Gay singled, while Baldwin struck for two bags, scoring Quintal. Takeuchi singled, and during a little balloon throw, Gay scored. Inman fanned. Nye struck to J. Pacheco, throwing Takeuchi out. For the Kauais, Kruse singled. Kerr was hit by pitcher. Akana flew out to pitcher. J. Pacheco drove toward third and landed safe, but threw out Fassoth, running for third. Spalding singled and Kerr scored. Malina singled, scoring J. Pacheco. T. Pacheco fanned.

Fourth inning, Wadsworth flew out Spalding to first. Yap, out to Fassoth. H. Fassoth singled, but was thrown out trying to steal second. Of the Kauais, J. Fassoth fanned, Koani flew out to first and Kruse died at the same spot.

Quintal opened the fifth by a clean home run, away over

among the automobiles out of the field. Gay fanned but was followed by Baldwin with a two-bagger. Takeuchi fanned. Inman struck for three bags, scoring Baldwin. Then Nye landed a home run, at the same time scoring Inman. Wadsworth fanned. Kerr, of the Kauais, failed at first, Akana fanned and J. Pacheco failed at first.

In the sixth, Yap hit safe, stole second and third and on wild throw, catcher to third, scored. H. Fassoth died at first. Quintal flew out to Kruse. Gay singled, but Baldwin flew out to Spalding. Kauais to bat. Spalding was retired, third to first. Malina flew out to Quintal and T. Pacheco fanned.

Seventh inning, Takeuchi singled. Inman died at first, Nye walked. Wadsworth fanned, and Yap walked. Takeuchi was thrown out trying to steal home. Kauais up. J. Fassoth flew out to Gay, Koani fanned and Kruse died at first.

Eighth inning, H. Fassoth flew out to Malina. Quintal singled. Gay fanned and Baldwin expired at first. For the Kauais, Kerr singled. Akana failed at first. J. Pacheco singled and on overthrow to first, Kerr scored. Spalding and Malina followed each other to a grave at first.

In the ninth, Takeuchi fouled out, Inman fanned and Nye died at first. For the homers, Palmer, in place of T. Pacheco, died at first. Joe Fassoth flew out to Yap. Koani walked and Kruse died at first, ending the game.

SCORE BY INNINGS

1 2 3 4 5 6 7 8 9 Total	
All Students	0 0 2 0 4 1 0 0 7
All Kauais	0 0 2 0 0 0 1 0 3

The teams were as follows:

	All Students	All Kauais
Gay	lf	Malina
Baldwin	c	J. Fassoth
Takeuchi	ss	Spalding
Inman	p	Kruse
Nye	cf	Akane
Wadsworth	rf	Kerr
Yap	3-b	T. Pacheco
H. Fassoth	1-b	Koani
Quintal	2nd	J. Pacheco

SUMMARIES OF GAMES

McBRYDES

	AB	R	B	H	SB	P	O	A	E
J. Costa lf	4	1	0	2	1	0	1	0	1
Takitani rf	2	1	0	3	1	0	0	0	0
Ako lf	3	0	1	0	9	0	1	0	1
J. Pacheco 2b	2	0	1	0	4	0	0	0	0
Spalding ss	4	0	1	0	1	1	1	1	1
Gabriel c	4	0	0	0	5	4	2	0	0
T. Pacheco 3b	4	0	1	0	2	0	1	0	0
A. Perriera cf	2	0	1	1	1	0	0	0	0
J. Aka p	2	0	0	0	0	4	1	0	0
I. Akana p	2	0	0	0	0	4	0	0	0
	29	2	5	9	14	15	9		

ALL STUDENTS

	AB	R	B	H	SB	P	O	A	E
E. Gay p	4	3	2	0	0	6	2	0	0
Baldwin c	4	1	1	1	4	3	0	0	0
Takeuchi ss	3	3	2	0	3	2	0	0	0
Inman lf	2	2	1	0	1	0	1	0	1
H. Nye cf	4	2	2	0	0	0	0	0	0
Wadsworth rf	5	3	2	0	0	0	0	0	0
A. Yap 3b	5	2	2	0	1	1	0	0	0
H. Fassoth 1b	6	1	1	0	10	0	0	0	0
Quintal 2b	4	2	1	2	8	3	0	0	0
Kim Wai lf	2	1	0	0	0	0	0	0	0
	39	20	14	3	27	15	3		

2 base hits, Yap 1; sacrifice hits Yap 1, Quintal 1; sacrifice fly H. Fassoth. Struck out by Akana 2; by Akana 1; by Gay 1; bases on balls, off Akana 7; off Akana 9; off Gay 8; wild pitch, Akana 2; Akana 5; Gay 2. Passed balls, Gabriel 7; Baldwin 2; hit by pitcher, Quintal. Double plays, Spalding to Pacheco to Ako; Quintal unassisted to H. Fassoth. Hits off Akana in 4 innings 3; off Akana in 5 innings 11; umpires: D. W. Dean and C. Kuhlman. Scorer, A. A. Akana.

ALL STUDENTS

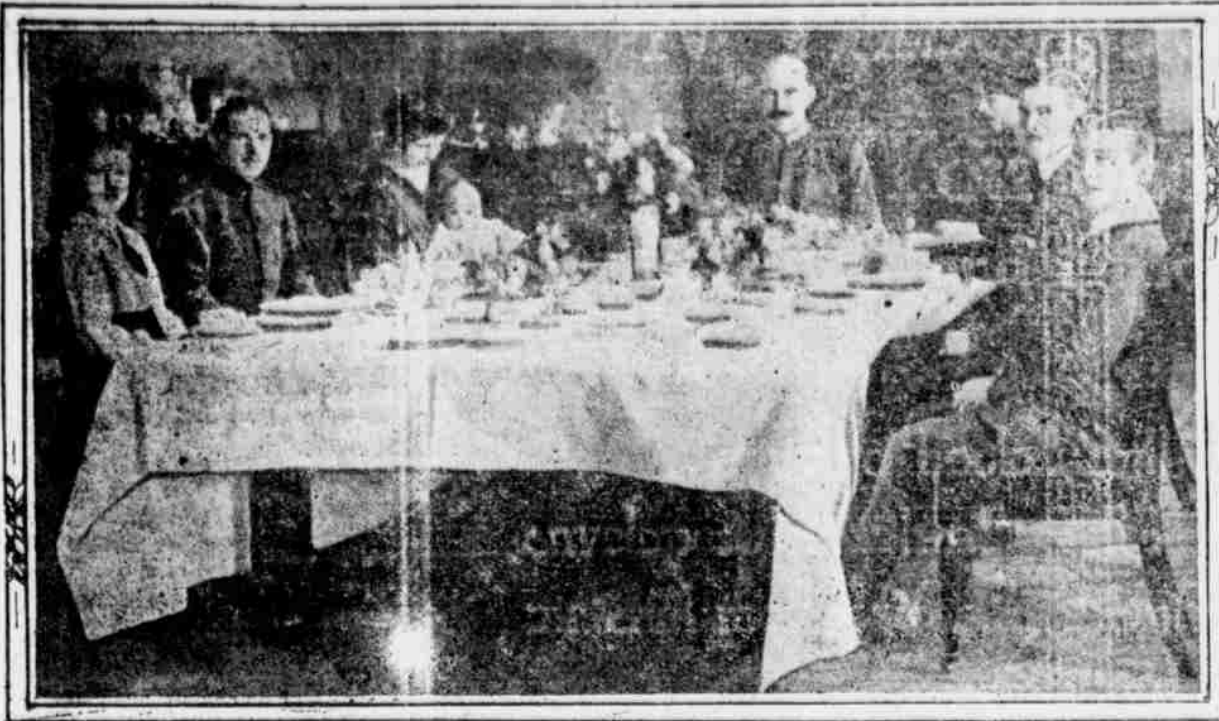
	AB	R	B	H	SB	P	O	A	E
Gay lf	5	1	2	0	1	0	0	0	0
Baldwin c	5	1	1	0	7	1	0	0	0
Takeuchi ss	5	0	1	0	2	1	0	0	0
Inman p	5	1	1	0	2	3	0	0	0
Nye cf	4	1	1	0	0	0	0	0	0
Wadsworth rf	4	0	0	0	0	0	0	0	0
A. Yap 3b	3	1	1	0	2	5	0	0	0
H. Fassoth 1b	4	0	1	0	11	1	0	0	0
Quintal 2b	4	2	3	0	2	3	0	0	0
	39	7	11	0	27	14	0		

ABR BHSBPOAE

Kerr rf	4	2	1	0	0	0	0	0	0
Akane cf	4	0	1	0	1	0	0	0	0
J. Pacheco 2b	4	1	1	0	3	1	1	0	0
Spalding ss	4	0	1	0	1	2	1	0	0
J. Malina lf	4	0	1	0	1	0	1	0	0
T. Pacheco 3b	4	0	0	0	0	2	1	0	0
J. Fassoth c	3	0	0	0	13	1	1	0	0
Koani 1b	3	0	0	0	7	0	0	0	0
Kruse p	4	0	1	0	1	3	1	0	0
	24	3	6	0	27	9	5		

3 base hits Inman 1; Home runs, Quintal 1; Nye 1; sacrifice hits Inman 1; Akana 1; Spalding 1. Struck out by Kruse 10; by Inman 7; bases on balls, off Kruse 2; off Inman 2; wild pitch Kruse 2; passed balls, Fassoth 2; hit by pitcher, Kerr. Umpires K. Oliver and C. Kuhlman. Scorer N. A. Akana.

BREAKFAST OF KING OF HELLENES NOT MARKED BY DISPLAY.



THE KING OF THE HELLENES AND FAMILY AT BREAKFAST FROM THE SPHERE

At the head of the table is King Constantine; on his right hand is his wife, Queen Sophia, nursing her youngest child, and seated on the same side are the Crown Prince and Princess Irene. Seated on the other side we see Prince Paul, at the end nearest the spectator, followed by Prince Alexander, with Princess Helen on his right.

Hawaii To Economize

HILO, June 24.—The supervisors at the July meeting will probably inaugurate another economy session, from there reports now emanating from the city hall, and there will be another general cutting of salaries to bring the expenditures down within hailing distance of the income of the county. Some positions will be eliminated altogether. The board will probably reverse its action at the last meeting, when the members voted to replace the bandsmen back upon the payroll.

Coast Builders Win

Lester H. Stock, a San Francisco man, will be awarded the contract for erecting the Hawaii building at the Panama Exposition grounds, his figure for the work being \$29,500. The only islands bid was put in by the Honolulu Planing Mill, and was \$37,500.

Fresh cream from Honolulu Dairymen's Association for sale at Lihue Store. Advt.

Waimea Stables

LIMITED

Up-to-date Livery, Draying and Boarding Stable and Auto Livery Business.

AUTOMOBILE STAGE-LINE

BETWEEN LIHUE and KEKAHA

Leaving Lihue every Monday, Wednesday and Friday.
Leaving Kekaha every Tuesday, Thursday and Saturday.
ARRIVING AT THEIR DESTINATION IN THREE HOURS
W. WEBER Manager.

Telephone 4 W Waimea P. O. Box 48

BURGLAR GIVEN STIFF SENTENCE

Thomas Salvador, committed from the Waimea district court on two charges of burglary, was arraigned in the Circuit Court, Judge Dickey presiding, last Wednesday and entered a plea of guilty to both counts. The court sentenced him to imprisonment in each case for not less than two nor more than ten years - which means anywhere from four to forty years.

The prisoner received the sentence with a smile, and seemed to view the prospect of work on the road with Honolulu with pleasurable anticipations.

Among Salvador's exploits was stealing the suit case of a well known young lady, formerly of Waimea.

While being transferred from Waimea to the Lihue jail to await trial, Salvador escaped from his guard into the cane field, and gave the police a lot of trouble hunting him up again. It is needless

PROGRESSIVES WILL BACK RICE

Reliable information has arrived that the Progressives of Honolulu are turning from their party wholesale and coming in under the banner of Charles A. Rice, Republican candidate for Congress. It has developed that the Republicans who had joined the Progressive party were in it solely on account of being unable to stomach two more years of Kuhio; and the appearance of Rice in the field has given them the opportunity they have always wanted - a chance to stay with the Republican party on a satisfactory ticket. Of this phase of the situation the Advertiser contains the following comments:

While George R. Carter, leader of the Progressive Party of Hawaii, has been away on the Big Island organizing precinct clubs in the back districts, his Honolulu following has been awakening to the fact that this is no time for fooling and by scores the Honolulu Progressives have been joining the procession marching under the Charles A. Rice banner. A number of those who had pledged their vote to Mr. Carter if he is up in the primaries have announced that they will keep their word, but they will be for Rice in the election. Others who have signed the Progressive rolls are preparing to have their names scratched off.

"I have just written to the secretary of the Progressives canceling my membership," said W. W. Chamberlain yesterday, who is one of the ones to see the folly of chasing rainbows at this critical time in the political life of the Territory. "The Progressives were to begin record in the Kuhio, but arriving with a winner like Mr. Rice in the field, I am back in the party to support him."

This is a sample of the way many are feeling.

less to say that the heavy sentence was pleasing to the police department, and, incidentally, Kaula is rid of a bad egg, perhaps permanently.

Stationery and Paper

We carry all the best grades of paper, stationery, and office supplies.

We will give your mail order the same care and prompt attention that you would receive in person.

Drop us a line.

Hawaiian News Co., Ltd.
Young Bldg. Honolulu

HOTEL LIHUE

(The Fairview)

Twenty-two elegant rooms
In Main Building
Three Airy Cottages

Cuisine unexcelled in country districts

W. H. Rice, Jr.,
Proprietor

JEWELERS

EVERYTHING IN THE
SILVER AND GOLD LINE,
RICH CUT GLASS AND
ART GOODS.

MERCHANDISE OF THE
BEST QUALITY ONLY.

H. F. WICHMAN & CO., LTD.

LEADING JEWELERS
P. O. Box 342 Honolulu

HOTEL WAIMEA

WAIMEA, KAUAI

Breakfast	: : \$.50
Lunch	: : .75
Dinner	: : 1.00
Room	: : 1.00

DICK OLIVER, Manager

THE BANK OF HAWAII, Limited

LIHUE BRANCH

LIHUE, KAUAI, HAWAII

Deposits are received subject to check. Certificates of deposit issued payable on demand. Loans made on approved security.

DRAFTS DRAWN ON

Honolulu Bremen
San Francisco Berlin
New York Hong Kong
London Yokohama

SAVINGS DEPARTMENT

Interest paid on Savings Deposits. 4 per cent on ordinary and 4 per cent on Term Deposits. Ordinary Savings Deposits will be received up to \$2,500 in any one account.

SAFE DEPOSIT BOXES FOR RENT \$2 AND \$3 A YEAR



Souvenirs

We neatly pack and mail Hawaiian Souvenirs.
Hawaii & South Seas Curio Co.
HONOLULU.

Manuel Silva

Homestead

Has added a new six-seater Studebaker to his garage and is in a position to give his patrons even better service than ever before. Careful drivers, comfortable cars, and always ready to start.

DAY OR NIGHT SERVICE
TELEPHONE 84L

UNIVERSAL LUNCH BOX



No man or woman who eats lunch away from home - no child who remains at school during the noon hour - can be without a Universal lunch box. Its vacuum bottle guarantees a steaming hot or icy cold cup of tea, coffee or milk. Its food drawer with its ventilating features assures fresh wholesome food at all times. Positively the most perfect box known. Price \$2.25 each.

W. W. Dimond & Co., Ltd.
53-55 King St. Honolulu

Office Supply Co., Ltd.

HONOLULU, T. H.

Agents for the

REMINGTON TYPEWRITER

and dealers in Office Stationery and Filing Systems.

Carry a complete stock of the Globe-Wernicke Filing Cabinet and Bookcases.

All repairs on typewriters guaranteed satisfactory.

Paper

Paper Bags, Twines,
Stationery

THE LARGEST

PAPER HOUSE

IN THE TERRITORY

MAIL ORDERS PROMPTLY
ATTENDED TO

AMERICAN-HAWAIIAN
PAPER CO., LTD.
Fort and Queen Streets

GEO. G. GUILD, Vice-Pres & Mgr

JAS. F. MORGAN

Co. Ltd.

Stocks, Bonds,

Real Estate and Insurance

NO. 125-131 MERCHANT ST.
P. O. Box No 594 Honolulu

Bishop & Co. BANKERS

Established 1859

HEAD OFFICE - HONOLULU
BRANCHES AT HILO AND
WAIMEA, - KAUAI

Transacts a General Banking and Exchange Business
Commercial and Travelers' Letters of Credit issued available in all principal cities of the world.

Interest allowed at the rate of 4 per cent per annum on Savings Bank deposits.

Interest paid on Time Deposits at the following rates:
3 Months 3 per cent per annum.
6 Months 3 1-2 per cent per annum.
12 Months 4 per cent per annum.

All business entrusted by customers on other islands receives careful and prompt attention.



For Reliability

"There's no holes in it." That's what Lincoln Beachey, the loop the loop aviator, says about Red Crown. That means there's power in every drop - it never fails him. It is those same qualities that make Red Crown a good gasoline for your automobile.

RED CROWN

the Gasoline of Quality

is the old reliable kind, that gets you there and back. It is quick acting - starts easily - and burns up clean. It may cost you a bit more per gallon but it costs you less per mile. Red Crown is not a mixture, but a straight distilled, refinery gasoline - the best we can produce. Make it a practice to ask for Red Crown.

Red Crown signs are furnished to all dealers handling Red Crown Gasoline. Watch for the Sign or ask our nearest agency regarding delivery in bulk.

Standard Oil Company

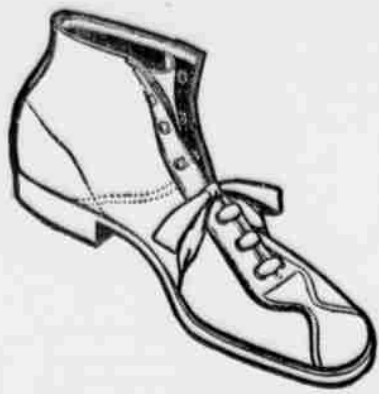
(California)
Honolulu



A STRIKING USE OF BLACK ON A WHITE DANCING GOWN

This black velvet sash, knotted about the hips of this white silk gown is effectively balanced by the sharp note of black in a velvet rose at the corsage. The tunic is puffed up, pannier fashion above the black sash, and below it flows a deep flounce of silver lace. The bodice is of silver lace over white chiffon and the pretty dancing gown is matched by buttoned strap slippers of white satin.

We carry the
**BOY
SCOUT
SHOES**



in two grades.

1st grade, boys' sizes, 2 1-2 to 5, at	\$3.50
2nd " " " 2 1-2 to 5, at	2.75
1st grade, men's sizes, 5 1-2 to 10, at	3.50
2nd " " " 5 1-2 to 10, at	3.00

These are the best school or work shoe made.
Tan or Black.

McInerny Shoe Store Fort Street
HONOLULU

Let Us Do Your

LAUNDRY

Address

Territorial Messenger Service
HONOLULU



Copyright Hans Schaffner & Marx

Silva's Toggery, Ltd.
"The Store for Good Clothes"
HONOLULU



Jack Johnson, the American heavyweight, who, by winning a decision over Moran in Paris about a week ago, remains champion pugilist of the world. In the fight Johnson showed up rather bad, indicating that he had lost a great deal of his former vigor and prowess in the ring.

Just the thing for this hot weather-grape juice soda at Lihue Store soda fountain. Advt.

If you once use New Zealand butter, sold at Silva's Eleele store, you will have it all the time. Advt.

QUARTERLY STATEMENT, GENERAL FUND OF RECEIPTS & DISBURSEMENTS, COUNTY OF KAUAI, FROM MARCH 31ST. 1914 TO JUNE 30TH. 1914.

RECEIPTS:		DISBURSEMENTS:	
Treas. Ter. of Hawaii	\$ 57,579.75	Current Expenses	\$ 3,594.07
License	622.75	Police Dep't	5,430.70
Water Works	893.78	Road Dep't	3,329.07
Fines & Costs	1,461.41	Courts & Jails	4,071.51
Registr. of Autos	28.00	Water Works	2,875.76
Registr. of Brands	5.00	Hospitals	975.00
Homestead Road Koloa	900.00	General Transfer	3,800.00
Treas. Realizations	142.35	Interest, Bonds	3,578.55
Rev. Stamps	200.00	Sink'g Fund	3,199.45
	61,633.04	Janit. Serv. County Building	96.25
		Warr'ts overdrawn March 31st. 1914	950.99
		Net Cash, June 30th 1914	29,711.69
		Rev. Stamps	200.00
			61,833.04

Detailed Statement of Receipts

GENERAL FUND:	
Treasurer Ter. of Hawaii	40,100.84
Permanent Improvement Fund	10,700.91
Interest & Sink'g Fund on Bonds	6,778.00
Licenses, collect since March 31st 1914	57,579.75
Water Works:	622.75
Water Works Waimea	369.90
" " Kalaheo	171.05
" " Omao	24.13
" " Koloa	83.00
" " Kawaihau	245.70
Fines & Costs:	893.78
Waimea Distr. Court & Jail	388.37
Koloa " " "	78.27
Lihue " " "	134.00
Kawaihau " " "	347.80
Hanalei " " "	50.27
Fifth Circuit Court	435.70
County Jail	47.00
Collect. Registr. of Autos	28.00
Registr. of Brands	5.00
Homestead Road Koloa	900.00
Treasury Realizations:	
Bal. Payment on Teacher's Cottage Waimea	100.00
Office Rent by Lord - Young Co.	40.00
Sale of Old Filing Case	2.35
	142
	61,633

Detailed Statement of Disbursements

GENERAL FUND:	
CURRENT EXPENSES:	
Supervisors, Salaries	750.00
Mileage	134.00
Incidentals	27.10
Attorney, Salary	450.00
Incidentals	19.75
Auditor, Salary	450.00
Incidentals	192.95
Clerk, Salary	450.00
Incidentals	119.10
Treasurer, Salary	450.00
Incidentals	5.35
Office Rent	100.00
Expenses of Liquor Licenses	197.50
Incidentals Sundry Licenses	108.00
Expenses of Election	87.50
Discount & Interest	52.82
	3,594.07
POLICE DEPARTMENT:	
Sheriff, Salary	525.00
Incidentals	339.70
	864.70
Dep. Sheriff Waimea	
Salary	375.00
Pay of Police	720.00
	1,095.00
Dep. Sheriff Koloa	
Salary	300.00
Pay of Police	420.00
	720.00
Dep. Sheriff Lihue	
Salary	375.00
Pay of Police	450.00
	825.00
Dep. Sheriff Kawaihau	
Salary	210.00
Pay of Police	405.00
	615.00
Dep. Sheriff Hanalei	
Salary	210.00
Pay of Police	405.00
	615.00
Pay of Police Specials	501.00
Coroner's Inquests	195.00
	5,430.70
ROAD DEPARTMENT:	
Road Supervisor, Salary	675.00
Incidentals	355.00
Roads & Bldgs Koloa, Homestead	1,230.16
Macadamizing Hanalei	1,002.24
County Road Machinery	66.67
	3,329.07
COURTS & JAILS:	
Waimea, Distr. Magistr. Salary	270.00
Court & Jail	120.00
	390.00
Koloa, Distr. Magistr. Salary	210.00
Court & Jail	33.00
	243.00
Lihue, Distr. Magistr. Salary	300.00
Court & Jail	6.45
	306.45
Kawaihau, Dist. Magistr. Salary	165.00
Court & Jail	4.40
	169.40
Hanalei, Distr. Magistr. Salary	150.00
Court & Jail	18.00
	168.00
FIFTH CIRCUIT COURT:	
Clerk Salary	375.00

Expenses	162.10	
Law Books	66.88	603.98
Support & Maint. of Prisoners		737.55
County Jail		1,358.13
Expenses of Witnesses	115.00	4,091.51
WATER WORKS:		
Waimea Water Works	147.95	
Kalaheo " "	2,686.09	
Lawai " "	9.82	
Koloa " "	10.00	
Kawaihau " "	21.90	2,875.76
HOSPITALS:		
Waimea Hospital	300.00	
Eleele " "	150.00	
Koloa " "	150.00	
Lihue " "	375.00	975.00
General Transfer		
Transfer to Rd Tax Spec. Dep. Kawaihau	1,500.00	
Transfer to Rd Tax Spec. Dep. Hanalei	2,300.00	3,800.00
Interest on Bonds	3,578.55	
Sin' Fund on Bonds	3,199.45	6,778.00
s. County Building	96.25	
		\$ 30,970.36

Statement

Receipts, Special Deposit Schools from March 31st. 1914 to June 30th 1914.

Receipts:	Disbursements:	Bal. June 30. 1914
Repair & Maint. 750.00	Drawn since March 253.21	
Buildings & Grounds	Overdrawn March 158.02	338.77
Janitor Service 1 250.00	Drawn since March 69.18	
School Supplies	Overdrawn March 133.90	1,046.92
School Furniture & Fixtures 1,250.00	Drawn since March 7.50	
	Overdrawn March 6.50	1,236.00
New School Bldgs 5,775.00	Overdrawn March 1,021.15	4,753.85
9,025.00		1,649.46
		7,375.54

Statement

Receipts & Disbursements, Special Game Fund from March 31st. 1914 to June 30th. 1914.

Bal. March 31st. 1914	Receipts:	Disbursements:	Bal. June 30th 1914
645.00	10.00	332.16	322.84

Statement

Receipts & Disbursements, Road Tax Special Deposit from March 31st. 1914 to June 30th. 1914.

Districts: Bal. Mar 31 1914	Receipts:	Disbursements:	Bal. June 30 1914
Waimea: Taxes 8,512.90	Overdrawn March 858.10		
	Material 5.00	Drawn since " 2,423.01	5,236.79
Koloa: Taxes 4,137.75	Overdrawn March 688.96		
	Mulehire 13.25	Drawn since " 1,094.79	2,367.25
Lihue: Taxes 6,186.00	Overdrawn March 1,431.64		
	Drawn since " 2,453.25		2,301.11
Kawaihau: Taxes 2,378.50	Overdrawn March 1,618.96		
	Transfer 1,500.00	Drawn since " 2,238.50	21.04
Hanalei: Taxes 1,618.35	Overdrawn March 1,381.78		
	Transfer 2,500.00	Drawn since " 2,507.57	29.00
Nihoa: 4.28 Taxes 75.00			79.28
	4.28	26,726.75	16,696.56
			10,034.47
			Lihue, Kauai, July 1st 1914.

C. MASER,
Auditor, County of Kauai.

DAILY WIRELESS NEWS

Continued from page 1.

WORLD'S RECORD BEATEN.

—The 440 yards race was won by Langer, establishing a new world's record of 5 22 1-5.

HAWAII LOSES IN RELAY

—The big relay race was won by Chicago, the Healanis getting second and Hui Nalus third places, respectively. Olympic (San Francisco) took fourth place. A new American record of .44 3-5 was established by Chicago.

I. W. W. AT IT AGAIN

New York—Evidence of printing inflammatory matter and bomb making has been found in the headquarters of the I. W. W. here.

Hammondsport, Ind.—Glenn Curtis piloted the airship America successfully today, carrying 1500 pounds of cargo, keeping at an altitude of several hundred feet.

MAZATLAN RELIEVED

Mazatlan, Mexico—Food has been landed at this besieged port, the supplies being the occasion of a holiday feast. The Federal governor sent compliments and expressed a wish to exchange compliments with the American admiral.

EXCURSION PARTY DROWNED.

Skagway, Alaska—A party of excursionists in a launch enroute to Juneau drowned Sunday when their boat capsized.

Butte, Mont.—The miner shot by the mayor Friday is dead. The miner had stabbed the mayor, and the latter, when down and almost out, succeeded in shooting his assailant.

GREAT WHARF IS BURNED.

Portland, Oregon—Balfour, Guthrie & Co.'s great wheat wharf was destroyed Saturday by fire. Loss, \$150,000.

PLAGUE IN NEW ORLEANS.

New Orleans—Surgeon General Rupert Blue reports the plague situation in this city as satisfactory. Ministers in all the pulpits of the city yesterday urged war on the plague.

HUERTA ELECTED PRESIDENT.

Mexico City—Returns from various election districts indicate the re-election of President Huerta to continue in office, and also seems to show that the entire legislative assembly was re-elected. Great precautions were taken to preserve order at the polls.

IMMENSE ARMY TO MOVE.

Saltillo, Mexico—The Constitutionalist army, numbering 35,000 men, will move at once toward Mexico City, taking a position first at Queratares. Six aeroplanes for use of this army have been ordered.

CARRANZA AND VILLA MAKE UP

Generals Carranza and Villa reached an amicable understanding last night after their representatives had conferred.

ZAPATA SWITCHES OVER.

Vera Cruz—It is announced here that the Zapata forces will fight with Huerta. Zapata has hitherto been fighting independently.

HONOLULU AND SAN DIEGO.

San Diego—Arrangements have been completed for a yacht race between San Diego and Honolulu to take place next year.

THE MAUI RACES.

Wailuku—The horse races here were a great success, 2:15 class, mile heats. El Oro v. Welcome Boy won the trotting and pacif purse of \$500, from Denervo. Time, 2

THAT GRAF

Honolulu—Supervisor Pac' is to continue tonight, will charge against Plumbing Ir

RACES

Waialua, Oahu—The running race yesterday was won by Young Lady, with Wallaby second. In the maiden race for Hawaiian bred, D. Wallaby took first place and Eben Low second. In the five-eighths Athlon was first and Rainbow second. In the free-for-all-dash, Upua finished first and Harvester second.

Saturday, July 4.

Sugar: Raws, 3.325; beets, 3.523. Sullivan and Lynch, both saloon men, have appeared before the Liquor Commission with charges against the business methods of the Honolulu Brewery. John T. Scully, proprietor of the Waikiki Inn, and Fred. Kiley, until recently his bartender, will be given another chance to air their respective grievances before the Commission.

RAH FOR THE FISH!

—Delegate Kuhio and wife headed a fishing party at Waialua yesterday and landed two tons of fish in 600 hundred foot net.

—A man named Hawley is to enter the dairy business here in opposition to the Honolulu Dairymen's Association. He goes to the Coast by today's steamer to purchase Jersey cows.

HAWAIIAN SWIMMERS MAKE GOOD

San Francisco—The swimming meet, which opened last night, was attended by a very large crowd. The Hawaiian swimmers took six first and six seconds in the semi-finals and one final. The time made all around was regarded as slow.

DUKE KAHANAMOKU BEATEN

Langer, of Los Angeles, defeated Duke Kahanamoku in the 880 contest by eight seconds. His time was eight minutes, 46 seconds. In the fifty yard race, Duke Kahanamoku came in first; Raphael second. Time .24. In the second heat, Small [San Francisco] was first and Lane second. Time .29. Third heat—Cunha, first; Holstein, second. Time .25.

One hundred-yard race: In the first heat Hebner, of Chicago, took first place, with Smith second. Time .59. Second heat, Kruger first; Duke Kahanamoku, second. Time 1.05 2-5. Third heat, Raphael first; Cunha, second. Time .55 1-5.

THE 220 YARD RACE

In the 220-yard race Cunha won first place and Boyd second. Time, 3.04 1-5.

Second heat, McGilvary, first; F. Kruger, second. Time, 2.34 1-5. Third heat, Duke Kahanamoku, first; Elmie Smith, second. Time, 2.33.

Butte, Montana—The mayor of this city was seriously stabbed yesterday by a miner who insisted on the deportation of the editor of a Finnish newspaper who supported the Western Federation of Miners. The Mayor in turn, shot the miner. Both will recover.

Boston—Medical circles here are much agitated on account of a proposal to establish a leprosy station on an island near Boston. City of Mexico—Mohen, Minister of Commerce, has resigned and President Huerta has accepted his resignation.

Washington—A movement on the part of German interests to build a canal across Nicaragua was revealed here today.

Canton, China—Ten thousand persons are reported to have perished from floods from the west river.

JOSEPH CHAMBERLAIN DEAD

London—Joseph Chamberlain, England's foremost reformer and opponent to Irish Home Rule, died yesterday after an illness of paralysis of seven years standing.

Vancouver—It is reported that another steamer load of Hindus are on the way here from Hongkong. The first steamer, loaded with undesirable who were refused landing, is still anchored in the harbor here.

ROOSEVELT WAS NOT "FIRED".

New York—Is is authoritatively announced here that Roosevelt resigned his position as editor of "The Outlook", and was not "fired", as had been at first reported.

Chicago—Secret service men dynamited the safe of Lee Fan and found therein a draft on Hongkong for \$23,000, which is taken as proof of the existence of an opium trust in the United States, for which agents of the government have been searching for several months.

Hot Weather Happiness

To look well and feel comfortable through the hot sticky day, that's your problem. Come in—see how we solve it.

"Keep Kool Palm Beaches"

Will bring you Hot Weather Happiness—Will help you smile at Mr. Sun.

There is a fresh, dapper style about "Keep-Kool" Clothes—that makes purchasers of passersby—

We haven't forgotten either—that value is a vital point—you will like the prices:

\$10.00, \$11.00 and \$12.50

It is figured on a "come again" basis

LIHUE STORE

HONOLULU MUSIC COMPANY, Ltd.



Henry Waterhouse Trust Co., Ltd.

buys and sells
REAL ESTATE and
STOCKS and BONDS
and rents SAFE DEPOSIT BOXES

Fort and Merchant Sts. Honolulu

THEY ARE HERE!

Big and Complete Line of the Celebrated
CROSSETT SHOES
For men just arrived. Call at once and see them. They are beauties.
SILVA'S ELEEELE STORE

Good Shoes For Men and Women

Shoes for every purpose from Dress to Sport

Parcel Post charges cheerfully prepaid.

Manufacturer's Shoe Store

Honolulu

CALIFORNIA FEED CO.

LIMITED.
Dealers in
HAY, GRAIN AND CHICKEN
SUPPLIES.
Sole Agents for
International Stock, Poultry Food
and other specialties. Arabic for
cooling Iron Roofs. Petaluma
Incubators and Brooders.
KING'S SPECIAL CHICK FOOD
P. O. Box 452, Honolulu

L. Y. TIM

Has entered the rent service, and has provided himself with a big

Five-Seater Buick

Special attention paid to commercial travelers. Reasonable rates to all parts of the island.

'Phone 172

Ice cream soda, any flavor, 10 cents. Just the thing for this hot weather. Lihue Store soda fountain. Advt.

Koloa Plantation Store

Wholesale and Retail Groceries
Dry Goods of all Descriptions.
General Plantation Supplies.

If you wish to travel in comfort and safety

Tel. 225 L.

Kapaia Auto Stand

Reasonable Rates and Careful Driver

M. TOGO

Chauffeur

New Zealand butter continues to be popular. Try it. Sold by J. I. Silva, Eleele. Advt.

RICE'S CAMPAIGN IS BIG SUCCESS

His Plans For The Future—Will Tour Kauai In August

Charles A. Rice, candidate for the nomination on the Republican ticket for the delegateship at Washington, will return to Honolulu tonight, after a week spent here during which he placed his business affairs in such shape as to enable him to be absent from the island for considerable periods. His headquarters for the present will be at the offices of his campaign committee in Honolulu, and considerable of his time will be given, in the next few weeks, to Honolulu, Maui and Hawaii.

Mr. Rice does not plan to begin his campaign on Kauai until about the first week in August. At that time he will go all over the island, meeting the voters and addressing them whenever and wherever convenient. On the evening of August 15 he will address the members of the Kauai Chamber of Commerce and guests at the big, annual banquet to be held in Lihue.

Many of Mr. Rice's Kauai friends, of all nationalities and of various parts of the island, are urging him to give his time to Oahu, Maui, and Hawaii, with assurances that Kauai is solid for him anyway. The candidate replies to them, however, that while he feels that much work is to be done on the other islands, he is anxious to meet personally all the voters of his home island as quickly as possible, give them his views and ascertain their own opinions and wishes.

A very satisfactory development of the past few weeks has been what may be termed an awakening on the part of the native Hawaiians of the island of Kauai. The leading Hawaiians in all of the precincts have come to realize how seriously the interests of the Territory have suffered as a result of Kuhio's inactivity at Washington, and how important it is to have an active man at the national capital. The fact that a capable man, other than Kuhio, is in the field is viewed by them with satisfaction; and that he is a son of Kauai-nei makes it all the more pleasing to them, and it is hoped that when the votes are counted every ballot cast by Hawaiians of Kauai may be on the side of Mr. Rice and good government.

The influential Portuguese of Honolulu have come out to a man in support of Mr. Rice. They have not forgotten that Kuhio and his associates did to them on Punch-bowl, as well as what Kuhio did not do for them after they gave him their votes, and are coming out openly in endorsement of Kauai's son. The influential Portuguese of Kauai, aside from their natural and proper desire to support a local man, also recall these facts of recent history and resent them. If Mr. Rice does not get a solid Portuguese vote on Kauai, it will not be the fault of the leading Portuguese of the island, for they are certainly for him.

Tooth Puller Pinched

A Japanese known as Shidara, who has been doing work as a dentist around Hanapepe and Waimanalo, was arrested a short time ago on a charge of practicing dentistry without license. When arraigned in Judge Hofgaard's court he entered a plea of guilty and was fined \$100, which he paid.

Lost

Bag containing auto chains, between Wahiawa and Elele, Sunday, June 14. Finder please return to W. D. McBryde, Homestead. Reward.

Passengers In And Out

The following arrived in the Kinau Wednesday morning from Honolulu: Miss A. Hill, Miss Winslow, Miss I. Wayson, Mrs. Deverill and 3 children, Miss Radewy, Miss L. Girvin, Miss L. Vidinha, Miss L. Martin, Miss Girvin, Mrs. J. K. Brown, Allan Brown, Miss L. Kuhlman, Mrs. Goodwin, M. Coney, Jas. McClellan, Y. Sakuma, W. A. Inman, E. Gay, G. Quintal, H. Nye, Misses Oncha, 2, J. Oncha, Miss S. Choy, Miss L. Young, Miss B. Choy, A. Horner Jr., C. A. Rice, C. W. Spitz, Mrs. Keola, L. Gay, S. Robinson, Miss R. C. Shaw, Miss A. M. Oleson, Miss S. Wichman, Miss E. Akana, Mrs. A. K. Akana, Miss L. Nordmeyer, Miss M. Christian, Miss F. Bryant, Miss H. Bryant, Mrs. A. Souza, Miss Von Arnswaldt, Miss Lizzie Deinert, Mrs. E. B. Mahlum, Mrs. Robinson's maid, Miss E. Kaiwi, Miss C. Kapule, Miss Louisa Akiu, Miss M. Dias, Miss E. Webber, Miss E. Nim, Miss Charman A. Yap, D. Wadsworth, H. Baldwin, Y. Kondo, Hirano, H. M. Roger, Miss Smith, Miss Aholo, K. M. Ahana, Lum Hung, Ho Laio Chack, M. Enos, J. C. Moura, Susie Akau, Mrs. Silva, J. D. Tucker and 59 deck.

The following departed by the W. G. Hall last Tuesday evening for Honolulu: Miss Haynes, Miss Pacheco, Miss L. Cramer, R. Owen, C. H. Alspaugh, Miss M. Reidell, Miss E. Rath, C. Bayer, Miss L. Keating, Miss C. A. Mumford, Miss G. Purcell, Rev. F. A. Saylor.

New Zealand butter in one pound blocks at Silva's Eleele store. Advt.

Mr. and Mrs. J. C. Dort, Lihue, pleasantly entertained a party of friends at dinner Friday evening.

BY AUTHORITY

IN THE CIRCUIT COURT OF THE FIFTH CIRCUIT, TERRITORY OF HAWAII

At Chambers—In Probate
In the Matter of the Estate of Kamaliwahine, deceased.

Order of Notice of Hearing Petition for Administration.

On reading and filing the Petition of the Onomea Sugar Company, of Onomea, Hawaii, T. H., creditor of the deceased, alleging that Kamaliwahine of Koloa, Kauai, T. H., died intestate at Koloa, aforesaid on the 30th day of April, A. D. 1912, leaving property in the Hawaiian Islands necessary to be administered upon, and praying that Letters of Administration issue to some fit and proper person.

It is ordered that Saturday, the 11th day of July A. D. 1914, at 11 o'clock A. M., be and hereby is appointed for hearing said Petition in the Court Room of this Court at Lihue, Kauai, at which time and place all persons concerned may appear and show cause, if any they have, why said Petition should not be granted.

Dated at Lihue, Kauai, June 5, 1914.

(Sgd) LYLE A. DICKRY,
Judge of the Circuit Court of the Fifth Circuit.

(Seal) D. WM. DEAN,
Clerk of the Circuit Court of the Fifth Circuit.

Carl S. Carlsmith and S. E. Han-nestad, Attorney, for Petitioner.

"The Trade-mark of a Fine Shoe"



REGAL SHOES

not only satisfy every requirement as to style, but are superlatively the right shoe for Comfort.

For Men, Women, and Children

REGAL SHOE STORE
Honolulu