

The Garden Island.

ESTABLISHED 1904. VOL. 18. NO. 8.

LIHUE, KAUAI, TERRITORY OF HAWAII, TUESDAY, FEBRUARY 21, 1922

SUBSCRIPTION RATES, \$2.50 PER YEAR 5 CENTS PER COPY

Kauai Gets Fine New Telephone Building Soon

The Kauai Telephonic Co. has all its plans drawn up for a fine, new, reinforced concrete telephone building. The structure is to be two stories high and is to be located on the lot adjacent to the Tip Top building in Lihue.

The plans for the building were prepared by the Associated Engineers of Honolulu. They are modern in every detail and correspond to the best practice followed by the large mainland telephone companies in their smaller exchanges.

The building is to be fireproof throughout. In addition to the two stories, there will be a large basement. The first floor is to be used as the public telephone and business office of the company and is also to house an electric supply and appliance department of the company. The switchboards will be located at the rear of the second story and will be so arranged as to allow for ample growth in the business and increased equipment. In the front part of the second story will be two good, airy office suites that will probably be rented to professional men. The basement will be used for storage purposes.

The cost of this new building is estimated at \$20,000. First class construction is the rule throughout, but all unnecessary have been carefully avoided so to get the best possible building for the money. The company expects to purchase all the material within the next week or ten days. Contracts will be let for the labor and construction only. Erection bids will be called for within a month. Work is to begin as soon as the material arrives and it is hoped that the building will be completed sometime in August.

The Kauai Telephonic Co. has realized for some time that its present office and equipment is inadequate. The cable connecting the switchboard to the outlying lines is so crowded that too many telephones have to be put in on each line. This has, at times, been a serious inconvenience. If the main cable had been put out of commission by storm or accident the whole service of the system would have had to be suspended until the necessary repairs could be made.

Through the co-operation of the Lihue Plantation Co., in selling the telephone people this convenient location, the largest possible number of telephones can now be reached by the shortest lines from what is called in telephone language, "wire center of the island."

The erection of this building is but one step in a definite program mapped out by the telephone company for the improvement of its service. The outside lines have gradually been rebuilt during the last three years. Immediately following the completion of the new exchange building it is planned to make certain changes in the system that will give all Kauai a telephone service equal to the very best any place in the territory.

High School Will Present Operetta

The music class of the Kauai high school will present the operetta, "The Love Pirates of Hawaii," at the Tip Top Theater on Friday, March 3rd, for the benefit of the school library.

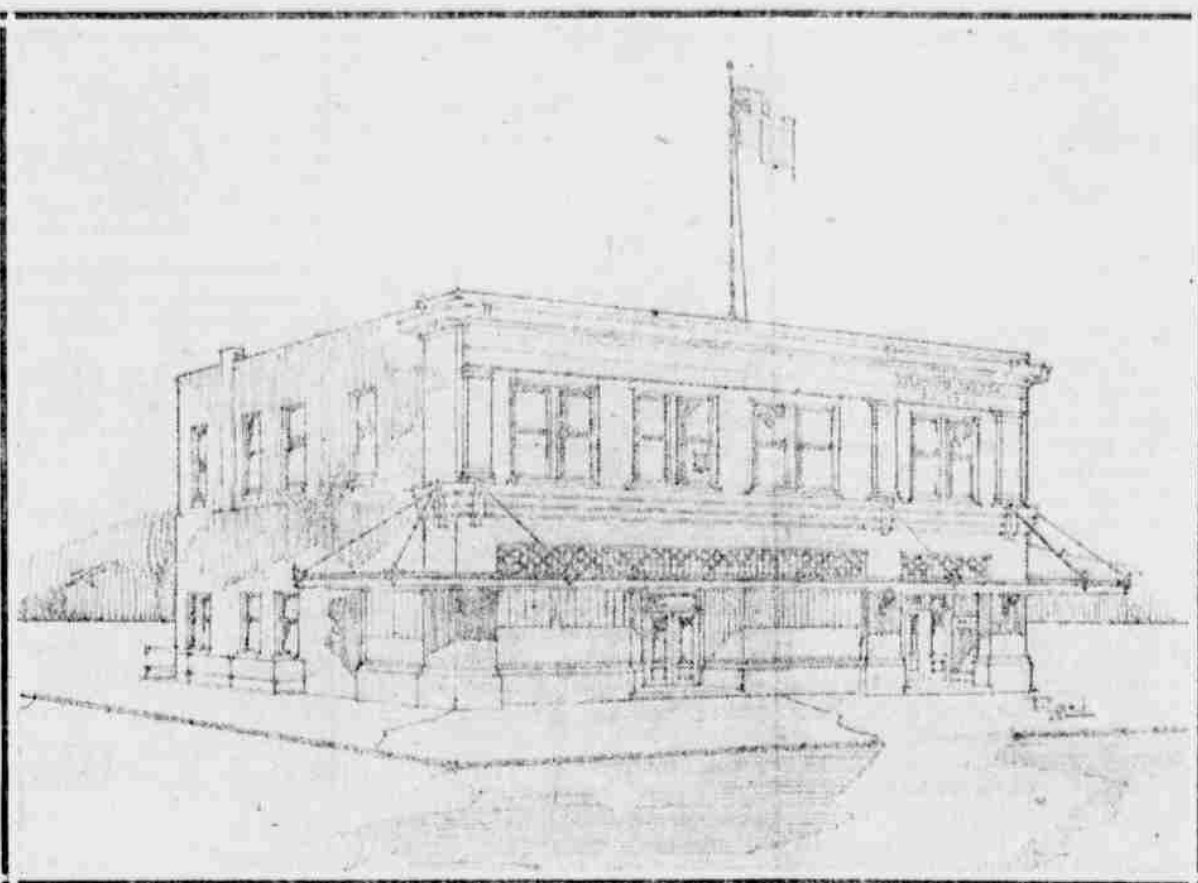
The story of the play has to do with a girl's boarding school in Honolulu, and therein is the inevitable suitor who must be at the side of his beloved. The suitor will be played by Edward Fuller while the girl in question will be played by Catherine Fernandes, who made such a distinct impression in the high school play last year, "Mr. Bob." To be closer to his sweetheart the hero disguises as a pirate and enters the school. In the meantime real pirates capture the school, causing amusing situations. Miss Primer, principal of the school, played by Miss Elaine Mahikoa, causes the pirates a great deal of trouble but she is finally subdued by the pirate chief played by George Kukei. The arrival of the U. S. marines finally straightens things all out and everybody lives happy ever after.

MRS. V. KNUDSEN TO LEAVE FOR HER HOLLYWOOD HOME

Mrs. V. Knudsen, accompanied by her friend, Miss Louise Tice, and Miss Alexandra, young daughter of Mr. and Mrs. Eric Knudsen, will leave for Honolulu next Saturday to take passage on the Wilhelmina for the mainland, where they will go to Mrs. Knudsen's home in Hollywood, California.

Miss Tice, who has been the guest of Mrs. Knudsen for some time, is loud in her praise for the beauty of Kauai.

Proposed New Home of the Kauai Telephonic Company



KAUAI TO HAVE NEW BUSINESS ENTERPRISE

Upon completion of its new central office building, the Kauai Telephonic Co. plans to open up an electrical and jobbing establishment in its new home.

Realizing for some time the need for an electrical store on the island to supply the growing demand for electrical appliances and supplies, the company's management decided to enter the electrical and house wiring field as soon as they had suitable quarters in which to conduct such a business. A start was made last fall when the company commenced to do electrical contracting

and house wiring work with results which thus far have been quite satisfactory.

As soon as it was decided definitely to proceed with the erection of the new building, arrangements were made with the Hawaiian Electric Co., Honolulu's largest electrical supply house, whereby the telephone company will represent this firm for the island of Kauai in many of the lines of electrical household appliances for which they are agents. In addition to this it is planned to carry a complete stock of electric wiring supplies and accessories by means of which to meet any ordinary demand that may arise for such supplies.

Plans for improving the telephone service which the telephone company now has under way will require more funds than are available from the annual earnings of the company, and it was with a view to securing additional funds for this work that the company decided to undertake the electrical business.

The work is and will continue to be handled by the present employees with such additions to the personnel as may be required. Due to the low overhead expenses which will result by thus combining the two enterprises, the company expects to sell direct to its customers throughout the island as cheaply as they can purchase in Honolulu.

KAPAA NOTES

Henry T. Sheldon, manager of the Mahee baseball team and welding expert with the Mahee Sugar Co., met with a painful injury last week. He was performing some welding work with an acetylene torch without wearing glasses and the strong heat was too much of a strain, resulting in the blinding of both of his eyes temporarily. He was immediately taken to the hospital and had his eyes bandaged up for three days, but now has completely recovered and is back on the job again.

Court Wataale, local order of Ancient Foresters, will hold a special meeting at Kapa on Saturday evening, March 4th to give its members on the other side of the island an opportunity to attend, and to start a campaign for increasing the membership of the order. The regular meetings of the lodge are held semi-monthly at Kapa on the first and third Fridays each month. D. Pringle is the present chief ranger and A. H. Hong is sub-chief ranger.

Manuel A. Aguair Jr., homesteader left for Papaikou, Hawaii, last Saturday to join the rank of benedict. He expects to spend his honeymoon in Hawaii, visiting the volcano and other places of interest and return to Kauai in about a month. The bride will be Miss Ignacia, daughter of a prominent Portuguese rancher and landowner of Papaikou, Hawaii.

Mary Mahalich was the hostess at a birthday party given at her Kealia home on Sunday in celebration of her forty-ninth birthday. The guests were Mr. and Mrs. J. F. Bettencourt Jr., mother of Virginia of Correa, Miss V. Brady, Albenah Mahalich, Father Hubert, Ernest Mahalich and Manuel Correa.

Vincent Rapozo, with Manuel Bode while driving past the Kapa school on Friday morning, suddenly lost control of the car on a short turn, resulting in the machine taking a somersault and wrecked considerably. According to eye witnesses of the affair, it was a miracle that

Chamber Commerce Meets Thursday Night

At the last regular meeting of the Kauai Chamber of Commerce it was decided to hold all future regular meetings in the evening. The meetings, it was decided, are to be held in Lihue and Waimea alternately. And preceding the business session the chamber members are to dine together, a Dutch treat.

The next regular meeting is to be held at the Kauai high school in Lihue next Thursday night, February 23. The domestic science department of the high school is to furnish the kaula, so all worries on that score are taken from the shoulders of the members and committees. The dinner is to start at 6:30, Honolulu time.

This is the first meeting held under this new plan and the chamber desires to make it an exceptionally good one. All members are requested to attend. But to be sure that you will have a place reserved for you, you had better answer the secretary's reservation card at once.

CANE CARS PILE UP AT HANAMAULU

An engine and about 45 cane cars got out of control at Hanamaulu yesterday afternoon on the down grade below the Hanamaulu store. All started down grade and the brakes of the engine and the cars were not strong enough to hold them back. The first thirty cars broke loose and the engine was then able to hold the number attached to it.

The cars on the lower part of the grade gained more and more momentum as they putted away from the engine. When they got a little curve in the track they somersaulted into the air, piling up into one big mass of torn up track, twisted rails, broken cars and cane. Fortunately no one was hurt in the smashup. The plantation is able to run its cane to the mill over another track and so little real inconvenience is felt on account of the accident.

None of the occupants were seriously injured or killed. Only Rapozo sustained a fracture of the shoulder blades while Bode escaped with only his nerves a bit worse for the experience. The car was a Dodge touring, No. 1703.

PERSONALS

Mrs. Barbara C. Hays of Lihue left for Honolulu last week on a business trip.

Rev. T. Okamura and Rev. U. Okamura were Honolulu visitors last week.

Mrs. E. H. W. Broadbent of Grove Farm, returned Friday morning from a brief visit to Honolulu.

J. K. Lota, new deputy sheriff of Honolulu district, arrived by the Claudine last Friday morning to assume his new duties.

A. J. Clutterbuck, of the firm of C. B. Hefgaard & Co., Waimea, returned Friday from a week spent in Honolulu.

George N. Wilcox of Grove Farm plantation made a business trip to the city last week. Mr. Wilcox left on the Claudine last Wednesday.

Mr. and Mrs. H. D. Sloggett returned from Honolulu Friday where Mr. Sloggett attended the Republican convention as a delegate from Kauai.

E. F. Wood, manager of the Kauai Telephonic Co., returned from Honolulu Friday morning, where he has been for the past two weeks connected with the construction of the new telephone building.

R. Cushman returned to Honolulu on last Wednesday's Claudine. Mr. Cushman came to Kauai about two weeks ago to make a short visit but was taken sick and confined to the Lihue hospital for some time.

William Searby, plantation expert of the American Factors, made a short business trip to Kauai last week, returning to Honolulu on the last trip of the Claudine. Mr. Searby made a hurried trip to Koloa plantation and spent some time at Lihue.

Rev. Kaesomoku, pastor of the Hanalei church, who has been quite ill since returning from the funeral of Prince Kuhio, departed last Friday for Honolulu, where it is hoped that a complete rest will restore him again to his usual good health.

Jury Splits Verdict in Circuit Court Case

The first case on the calendar of the Circuit Court, which was the Territory vs. Eduardo and Santiago Colobo, charged with assault with a deadly weapon, resulted in a verdict of guilty for the former and a verdict of not guilty for the latter.

The two men were charged with having attacked another Filipino in Wahiawa last year, cutting him several times with a knife. According to the complaining witness' testimony, the one Eduardo cut him while Santiago held him. Santiago offered him an alibi as a defense and the prosecution was unable to prove that he was present at the assault. Attorney A. C. Kalukou defended the accused man.

The next case on the calendar will be the Territory vs. Felix Reyes et al., which will be tried next Thursday. This is the Hanalei robbery case that caused so much excitement in December of last year. There are three indictments against the defendants, all charging robbery in the first degree. Attorney A. K. Kalukou will be the attorney for the defense.

Following this case will be the case of the Territory vs. Louis Rego. This case was postponed from last year. Rego is charged with manslaughter in connection with the death of Joseph Celestro, who died from injuries received when Rego's car was wrecked at the turn in the road in front of the present Hobbs residence. This will come up for trial about March 1. Attorney W. G. Rawlins of Honolulu will defend Rego.

Other cases that will come up this session will be the Territory vs. Charles Wilson and James Charman, charged with burglary, an appeal for mitigation of sentence T. A. Samonte, Alexandre Bracido and Pedro Velasco, charged with assault and battery and sentenced to six months in jail by Judge Hjorth of the district court, and an appeal by Casimiro Aragona who was put under bonds to keep the peace in the Kauai district court for six months when convicted of threatening the life of Attorney Henriques of Kapa. Casimiro is now in jail in connection with the Hanalei robbery case.

Republican Convention Nominates Sen. Baldwin

Senator Harry Baldwin, of Maui, was nominated candidate for delegate to Congress at the election of March 25 by the Republican convention in Honolulu last Tuesday night. Choice came on the second ballot when the count showed 147 votes for Baldwin, 56 for Wise and 48 for Lyman. The first ballot gave Baldwin 127 1/2 votes, which was one and a half votes short of the required majority.

At the conclusion of the count of the second ballot, John Wise moved that the nomination be made unanimous and Norman Lyman immediately seconded the motion.

After the final count, Chairman Harold Rife named Wise and Lyman to escort the successful candidate to the platform, where he thanked the convention for the honor they had conferred on him, and pledged himself, in the event of his election on March 25, to give his best efforts in carrying on the work "of our beloved Prince."

Before making his motion, Wise said: "Ladies and gentlemen, I desire to say a few things. First, this is the best convention the Republicans have ever held in this territory. Secondly, I wish to thank the delegates who came here to give me their support and votes."

Norman Lyman, the other unsuccessful candidate, said: "I wish to thank all who supported and worked for me and to ask them now to turn in and work as hard and as loyally as I shall to elect Senator Baldwin."

Boy Killed By Dynamite Caps

Seiko Asato, a Japanese boy aged nine years, was killed last week in Waimea, and Harry Lyman, a Hawaiian, aged nineteen, was seriously injured, when some dynamite caps that Lyman is said to have been tinkering with, exploded.

According to the story told the police, Lyman had a box of dynamite caps and was opening one of them with the box near by. The Japanese boy was watching him. The one in Lyman's hand exploded, setting off the rest of the box. Lyman received full force of the explosion and was struck all over the face and body by the exploding caps. He was struck in the left eye by one of the caps and will lose the sight of that eye. His face and body appeared as if he had been shot at with a shotgun loaded with buckshot. He will recover.

The Japanese boy received several serious wounds and died of shock two days later.

Dynamite caps are very dangerous playthings and as is generally the case in such accidents, it is the innocent bystander who pays for the folly of some one else.

FILIPINO BOXER HAS FOOT CRUSHED

Boxing fans will be sorry to hear that Maximo dela Cruz, the game Filipino boxer, who met Heine in the main event of the American Legion's bouts on the Fourth of July at Waipouli, met with an accident that means the end of his ring career.

Maximo was working as a brake boy on the Mahee Sugar Co. plantation. While working one afternoon he slipped off the running board of a locomotive and had his foot so badly crushed that it was necessary to amputate it. He is now doing well and will soon be up and about.

Maximo was an all round athlete and was the mainstay of the beach house nine in the Kealia Winter League. He was a game boxer and could always be depended upon to give the fans a run for their money.

CONTROL OF LIHUE GOES TO AMERICAN FACTORS

Word comes from Honolulu this morning that through a deal consummated last Friday and involving \$450,000, American Factors acquired absolute control of Lihue plantation, through the purchase of 3026 shares of Lihue stock from the Hawaiian Trust Co., acting for several clients. This gives American Factors 16,000 out of 39,000 shares.

230 FEET OF THE NEW BREAKWATER ARE NOW COMPLETE

Over 230 feet of the Nawiliwili breakwater have been completed. The sea barrier is now beginning to assume the appearance of a real ocean wall. The work is going a long faster than it ever has. At present between 150 and 200 tons of rock are being added to the breakwater every day.

Spur tracks leading off from the main track around the point are now necessary for the hauling in of the rock. Six or seven 25-ton loads a day are being blasted and carved out of rock hills. This rock is being placed in the breakwater on an old lava flow that forms the foundation for the structure. This natural foundation thus gives strength to the wall and saves many a load of material.

The amount of rock added to the wall is getting larger each month. From a monthly total of only a few hundred tons, the amount of rock has increased until last month over 1,400 tons were quarried out of the hills and placed in the breakwater. The distance of the haul is getting longer each day but the system of obtaining the rock and the methods of handling it have been improved so that the work is gaining momentum all the time.

David T. Fullaway, entomologist, of the Board of Agriculture and Forestry, made his first trip to the Garden Island last week. Mr. Fullaway has been sent to all parts of the globe, looking for parasites, but he says he yet to see a more beautiful land than Kauai.

LIHUE UNION CHURCH

Rev. Royal G. Hall of Koloa, will be the speaker next Sunday morning, taking for his theme, "The Brotherhood of Man." Sunday night at 7:30 the second of the missionary education addresses will be given by Rev. J. M. Lydgate. The subject for his occasion will be "Japan." The community is very cordially invited to attend both of these services.

School Notes

WHAT THEY ARE DOING AT OUR SCHOOLS

In company with F. S. Pugh, supervisor of vocational instruction on Kauai, the editor of the Garden Island had the pleasure of visiting a number of our public schools, last Wednesday.

Our first stop after leaving Lihue was at Huleia school. I had been anticipating this visit to Huleia with a great deal of pleasure because I knew there was a rare treat in store for me.

Mrs. Ahana, who presides over the activities of this school, received us very graciously and conducted us through the institution. We visited the work room and saw numerous examples of fine basketry, hand sawed and painted book racks and other articles that showed a high degree of skill in their making. We were then taken out to the flower garden, which is no doubt one of the finest on the island—especially the geranium bed. These geraniums surpass in color of flower and greenness of leaf anything I have ever seen. When I remarked to this effect to Mrs. Ahana, she laughed and said the reason for that was, she fed the geraniums castor oil. That is, she put a tablespoonful about the roots of each plant every thirty days or so. I knew that castor oil was good for boys and girls sometimes, but that is the first time I had heard that it was good for flowers.

The Treat.

After we had said "How do you do?" to each grade and had seen all there was to show, Mrs. Ahana asked us if we would care to have the children sing for us. As that was the treat I referred to above, you may be sure we earnestly assured her that we would.

For the next ten or fifteen minutes we were privileged to listen to group singing that surpassed in harmony and melody any school singing I had ever heard before. They favored us with two songs composed by Mrs. Ahana—the words being set to popular airs. These songs told us about Huleia and how much they loved their charming little community. And you could tell by the enthusiasm with which they sang that they meant every word of it.

I am going to Huleia again some day and ask them to sing for me.

Koloa School.

Our next stop was at Koloa school where we were received by the principal, Mrs. Sisson, who very kindly consented to show us what her boys and girls were doing in the line of manual training and sewing.

We were first conducted to the sewing room, which is under the very able direction of Mrs. Gluud. Here we found a room full of young girls busily engaged in the business of learning how to make dresses and do fancy needlework. Some were engaged at the tables cutting out garments, some were at the sewing machines while others were making buttonholes, sewing on buttons. Here is a work for the girls that is abundantly worth while, as it is preparing them for the position of efficient housewives for the future.

We were next conducted outside where the manual training instructor, Mr. Lovell, and his boys were engaged in the business of building playground apparatus. Mr. Lovell merely supervises the work of this school. The boys do the actual work and are making a mighty good job of it.

The boys of this school have almost completed the construction of a 20-foot boat into which they intend to install an engine. The work looks like it had been done by professional boat builders.

Koloa school is badly in need of more ground. They have grown so rapidly in the past few years that the additions of the needed school rooms has steadily encroached upon the playground until there is insufficient space for the children to play.

(To be continued next week)

KAPAA SCHOOL

The lumber and other material for the new shop is all here, but the carpenters are still missing. We hope they will come soon.

W. V. Hardy, superintendent of the East Kauai Water Co., lectured to the pupils on Thursday on the subject of island geography and water supply. He told of some very interesting experiences he had in connection with his work for many years while in charge of the water survey of Kauai.

A serious automobile accident took place Friday morning during the morning recess, which proved serious for both the car and the driver. It was truly a miracle that no children

coming from our park to the school grounds were struck by this flying machine. An attempt will be made to have county fathers pass a law restricting the speed of automobiles passing schools, such as they have in all progressive countries.

We are completing a relief map of Kauai, showing the prominent places and political districts. The scale is one inch to a mile.

Jokes from Kapaa School

A wild looking individual rushed into the dentist's office and confronted him with: "You give a fellow gas here? Honest, now, tell me."

"Yes sir," said the dentist.

"Can a fellow feel anything at all when he takes it?"

"No. Well I'll take it."

"All right, sir, which tooth?"

"Tooth be hanged! I want you to take off a porous plaster."

"Ma wants two pounds of butter exactly like what you sent us last week. If it isn't exactly like that she won't take it."

The grocer turned to his customers, and remarked blandly, "Some people don't like particular customers, but I do. It's my delight to give them just what they want. I will attend to you in a moment my boy."

"All right," said the boy, "but be sure and get the same kind. A lot of dad's relatives are visiting our house and ma doesn't want them to come again."

LIHUE SCHOOL

The date for the Lihue grammar school carnival has been set for Friday, March 10th, and the teachers managing the various concessions, as well as the pupils taking part are manifesting much interest.

This is to be a real carnival, the attractions including hula dancing, minstrel show, trip around the world, hypnotist, fortune telling.

There will be a great variety of good eats, hot dogs, ice cream, soda water, etc. The proceeds will be used in equipping our new school playground, so come and bring the dimes.

Ota Masaham, a pupil of Miss Wakefield's grade 1-B, is leaving for a three months' visit to Japan with his father and mother. His father is the proprietor of the Tip Top Cafe.

Mr. and Mrs. Simpson have had as their guest for the past week, their daughter Mrs. Hart, of Honolulu. Mrs. Simpson returned on Saturday with Mrs. Hart to spend a few days in Honolulu.

We are glad to say that Mr. Simpson is feeling much better after an attack of la grippe.

Miss Florence Anthony, of New York, who has been studying at the University of California during the past year, is now visiting her sister, Miss Clara Anthony, our domestic science teacher.

Miss Alma Barker, one of our third grade teachers, is entertaining her father, E. A. Barker, of Washington, D. C.

Both the boys and girls team are practicing hard for the volleyball game with Kapaa next Friday. We had a practice game with Huleia last Friday. Everyone enjoyed the game and there was some good playing shown by both teams.

As Wednesday is a school holiday we will have our exercises for Washington's birthday Tuesday morning. The program includes songs, readings and recitations from the various rooms.

WAIHEA SCHOOL

On Monday, Rev. Okumura and his son visited the school in the interest of Americanization. The advice given the Hawaiian born boys of Japanese ancestry is worthy of quoting, he said: "You young folks who have the wonderful good fortune of being born in Hawaii, under the American flag, who live and learn in this beautiful and free land, should, when the opportunity comes, never delay a moment from enjoying the privilege of citizenship which America so generously extends to you. It, through any influence, you are urged not to take advantage will live to regret it a thousand times afterwards. There is no place in the world where you young Japanese will be accorded such a generous welcome, no where you will live so happily and so free as in these islands."

On Thursday, Mr. Locke presented the "Health Crusade" charts which the government has requested be presented in all public schools.

Rev. Hall of Koloa reviewed the life of Lincoln. Mr. Hall is always a welcome visitor in Waimea school.

The Lincoln Day program was given on Monday. The most unique of the numbers was presented by Miss Ethel Ching, of the fourth grade. Three darkies, under the impression that Lincoln freed them, gave their idea of the emancipation proclamation.

Practice is going regularly for the vaudeville, March 11. The show is for the benefit of the school shop, athletics and the junior high school.

SUNDAY EVENING SERVICES STARTED

Rev. Norman C. Schenck of Honolulu gave the Lihue Union church's Sunday evening missionary program a mighty good send off last Sunday evening. Mr. Schenck spoke on India. He illustrated his lecture with a number of slides showing scenes in all parts of India. Religious fanatics who have dedicated their lives to some heathen god and in recognition of the fact have wired heavy stones into their flesh, little five year old girls who were already betrothed to be married and similar scenes brought out sharply the distinction between old heathen customs and the good being done by Christian missionaries in that dark land.

Next Sunday evening at 7:30 Rev. J. M. Lydgate is to give an illustrated lecture on Japan. Everyone in the community is cordially invited to come and hear Mr. Lydgate speak.

HOWARD W. LAWS GETS HONOLULU ROOFING CONTRACT

Howard W. Laws, well known on Kauai, where he has spent a part of the past few years repairing and constructing roofs, has been awarded the contract by the harbor board to repair and paint the roof on Pier 16 in Honolulu. Laws agreed to put the roof in first class condition and to keep it in good order for three years.

Mr. Laws and his business partner have a secret process for covering roofs that they claim is better than anything else on the market. They have taken many contracts in the last few months, giving the same guarantee as that furnished the harbor board.

WANTS SETTLERS ON MOLOKAI LANDS TO GET EARLY INCOME

That the Hawaiian Homes Commission should prepare the available lands of Molokai in such a way that the initial settlers under the rehabilitation project would derive some income from the soil at the earliest possible date, was the suggestion advanced by Rudolph M. Duncan at a meeting of the commission in the office of Governor Wallace R. Farrington, chairman, last Tuesday, according to the Star-Bulletin.

His suggestion was made during extended discussion with regard to preparations for placing the first settlers on the lower lands of Kalamaula. He expressed the opinion that the commission should arrange for the plowing of at least an acre of land in each tract and plant it to seed, so that crops would be well under way by the time the settler took possession.

Rev. Akaike Akana was of the opinion, however, that this work should be done by the settler himself, under the direction of L. Thornton Lyman, the commission's agricultural expert, in order that he might gain actual experience.

The contract for the furnishing of 7000 feet of 2-inch and 26,000 feet of 1-inch pipe was divided equally between Catton, Neill & Co. and the Honolulu Iron Works, these concerns having submitted identical bids. The bid on the 2-inch pipe was \$1312.50 and on the 1-inch pipe \$2251.60 to be furnished in five days.

The contract for furnishing a tractor was awarded to the Schuman Carriage Co., the only bidder. Its figures being \$1875.

NORMAN WATKINS QUILTS FACTORS TO HEAD NEW FERTILIZER CONCERN

The resignation of Norman Watkins as manager of the merchandise department of American Factors has been accepted in view of the fact that Mr. Watkins will become general manager of the newly merged fertilizer concern, which is to absorb the Hawaiian Fertilizer Co. and the Pacific Guano & Fertilizer Co.

Mr. Watkins' successor has not been definitely settled. Temporarily, Sherwood Lowrey, treasurer of the American Factors, may assume the management of the merchandise department pending selection of a permanent successor to Watkins.

James F. Fenwick, secretary and assistant manager of the Hawaiian Electric Co., is being mentioned for the post.—Honolulu Star-Bulletin.

PASSENGERS DEPARTING BY THE CLAUDINE FEBRUARY SIXTEEN

Geo. N. Wilcox, Mrs. B. C. Hay, Mrs. S. Waialeale, Master Waialeale, Joe Santos, Miss Santos, A. Santos, S. Miyahara, Mrs. Miyao, W. Searby, U. Ishii, Chock Lee Hung, Mrs. Geo. F. Cahill, Miss Cahill, Miss Cahill, Master Cahill, I. Inouye, Mrs. Yokotake, Mr. and Mrs. Goslin, T. Hirose, S. Kurisu, H. Ichinose, J. Choy Ching, Rev. T. Okamura, Rev. U. Okamura, E. M. Pickopp, Mr. and Mrs. MacHose, R. Cushman, D. T. Fullaway, Lee Wah Chong, Mrs. Shiraki, Master Shiraki, T. Yokotake.

Neglected Roofs Rob Your Profits

Properly protected roofs should last indefinitely. Unprotected roofs go to pieces sooner than any other surface.

W. P. Fuller & Co's Barn and Roof Paint

is especially adapted to this climate, and is unequalled for protective and wearing qualities. It is prepared from pure linseed oil and the most durable of pigments.

LEWERS & COOKE, Ltd.

LUMBER and BUILDING MATERIALS

169-177 S. King St. HONOLULU

GOOD MEALS IN HONOLULU

Await you at Child's

New, modern, high class restaurant, centrally located. Cool and comfortable. Intelligent, courteous service. European plan. Operated in connection with the



Blaisdell Hotel

J. F. CHILD, Proprietor.

If you are not now receiving the REXALL MONTHLY MAGAZINE please send your name for mailing list. The Magazine has recently been enlarged, and improved by the addition of stories by prominent writers and pictures of current events.

THIS SERVICE IS ABSOLUTELY FREE.

Benson, Smith & Co., Ltd.

SERVICE EVERY SECOND

The Rexall Store Box 426 Honolulu, T. H.

Dealers in General Merchandise

American Factors Paints
AmFac Red Label Coffee
Yale Locks & Hardware

AMERICAN FACTORS LTD.
WHOLESALE DISTRIBUTORS



Remember the Date

March 3

7:30 P. M.

The Kauai High School

presents

"Love Pirates of Hawaii"

(A Musical Comedy)

at the

TIP TOP THEATRE

Reservations may be made at the Lihue Store

TIP TOP THEATRE



James Kirkwood in
"The Great Impersonation"
A George Melford Production
A Paramount Picture

SATURDAY

James Kirkwood in "The Great Impersonation"

A Paramount Picture

ACCUSED OF BEING HIMSELF

The story of a man who fooled the world by living a perfectly natural life!

In a diplomatic game that leads through, dark, grim ways—watch him through the direct intrigues ever conceived by a spy.

A picture crammed with amazing thrills—like nothing you've seen before.

(From the Novel by E. Phillip Openheim)

SUNDAY

NEIL HART in

"The Black Sheep"

A Stirring Drama of Western Life

TUESDAY, FEB. 28

JESSE L. LASKY Presents

GLORIA SWANSON

—in—

"The Great Moment"

Written for the Star by the author of "Three Weeks"
"THE GREAT MOMENT" IS FIRST SILLS AND SWANSON PICTURE

Gloria Swanson and Milton Sills play together in Miss Swanson's first Paramount starring vehicle "The Great Moment," which was written for her by Mme. Elinor Glynn. Mr. Sills plays the leading male support enacting the role of Bayard Delaval, a young mining engineer.

Although each of these screen players is well known to the public for brilliant past achievements, this is the first picture in which they have been associated. They have been playing at the same studio for several months. Mr. Sills will be remembered for his work in George Melford's "Behold My Wife!" and "The Faith Healer," and Miss Swanson for her leading roles in several of the latest Cecil B. DeMille productions, including "Male and Female," "Why Change Your Wife?" and "Something to Think About."



Milton Sills and Gloria Swanson
in a scene from the Paramount Picture
"THE GREAT MOMENT"

THURSDAY, MARCH 2

"The Ten Dollar Raise"



J.C. Frothingham presents "The Ten Dollar Raise"

From the Saturday Evening Post story by Peter B. Kyne
Directed by Edward Sloman

There are times when a strong arm is more powerful than any other argument. Wilkins—timid and kindly—resorted to this method to good advantage.

TIP TOP-ICS

NO SHOW THURSDAY

There will be no show at the Tip Top this coming Thursday evening.

KIRKWOOD STARS IN
NEW PARAMOUNT PLAY

James Kirkwood, featured player in George Melford's new Paramount production, "The Great Impersonation," which will be shown at the Tip Top theater Saturday night, has one of the most difficult roles ever portrayed on the screen.

The skill required in the portrayal of this role will be understood when one considers the fact that Mr. Kirkwood must enact two racial characters with entirely different characteristics, one a German, the other an Englishman.

The role becomes further involved when, as the story develops, it appears that the German has killed the Englishman and impersonates him in Britain, acting as a spy of the imperial Prussian government.

After many thrilling scenes, a smashing surprise develops which is calculated to make the average motion picture fan gasp. This finale is reported as unequalled in interest and dramatic power by any similar situation ever shown in a motion picture. Mr. Kirkwood's portrayal of this difficult role is highly artistic.

This Paramount picture is an adaptation by Monte M. Katterjohn of E. Phillips Oppenheim's novel. Ann Forrest, Winter Hall, Truly Shattuck, Al Hale, Lawrence Grant, Fontaine La Rue and other noted players are associated with Mr. Kirkwood in the cast.

"THE GREAT MOMENT"

BY ELINOR GYNN

I am learning a great deal in the Laskey studio at Hollywood, where I have written "The Great Moment," in which Gloria Swanson is the star. I think she is the most vivid personality on the screen today. She is an exquisite creature, with perhaps the loveliest eyes I have ever seen. As I watch her playing my character I feel that she has an old soul struggling to remember its former lives. I do not think yet she has had a part that has done her talent justice, and I am sure that I have been able to write such a part for her. She will excel in the future in tragedy, in deep emotion where there can be no possibility of action, as the best two moments she has ever showed, in my opinion, were when she cried on the garden seat in the park in "Something to Think About"—and crouched in the straw in the same day.

I'm sure that "The Great Moment" will be perfect—every detail will be exactly as I would have it. Indeed, I do not know how things could be more auspicious and I anticipate a really beautiful production.

The Romance.

My story has fascinated me in its development as much as any I have ever written. It is the romance of Nadine, the daughter of a British diplomatist and a gypsy woman from the plains of Tartary, whom he meets at a ball in imperial St. Petersburg. From her mother the girl has inherited the fiery nature of her people and submits with difficulty to the restrictions and conventions of her father's staid English home. Eventually she meets the man of her heart, an American mining engineer, and a tempestuous romance, shifting across seas and continents, follows. I am as excited over its presentation on the screen as I was over the publication of my first novel.

KYNE STORY TO BE

FILMED AT TIP TOP

Lovers of Peter B. Kyne's famous stories will welcome J. L. Frothingham's initial Associated Producers' production, "The Ten Dollar Raise," which will be presented at the Tip Top Theater on Thursday, March 2nd.

In selecting "The Ten Dollar Raise," Frothingham has hit upon a story full of adventure, pathos, human interest, humor and satire. It is a story of an elderly bookkeeper who had existed on a small salary for 20 years and lived on the hopes of a \$10 a week raise, which his employer promised annually but always put off until the following Christmas. The raise never materialized, but the bookkeeper became the controlling stockholder in the business and married the girl who had stood by him throughout two decades of hardship.

It is a story of the little circles which combined make a great cosmopolitan city. It is an appealing tale of the everyday life of those who struggle for an existence and make up the great and respectable middle class.

THE BEST PICTURE LOOKS
BETTER IN A

FRAME

You will be wonderfully pleased with the effect that can be produced with a correct frame chosen from our attractive mouldings

W. J. SENDA STUDIO

TIP TOP BUILDING, LIHUE KAUAI

Kodak Films, Finishing and Enlarging

Fong Garage Co.

KAPAA, KAUAI

Now Open for Business

General Automobile Repairing
Automobile Accessories
Welding

We repair old tires and tubes like new.
All kinds of rubber goods repaired.

ALL WORK GUARANTEED
PRICES REASONABLE

You Are Paying 15 Cents to
20 Cents Too Much
for Butter

UNLESS YOU BUY

Maile Butter

You'll enjoy the fresh taste of MAILE BUTTER because it is the finest in the Territory. MAILE is our Brand for New Zealand's choicest dairy product. It sells in Honolulu for 55 cents a pound.

METROPOLITAN MEAT MARKET

HONOLULU

THE GARDEN ISLAND PUBLISHING CO., LTD.

Up-To-Date Printers, Bookbinders and Publishers of
THE GARDEN ISLAND

A Weekly Newspaper Issued Tuesdays.

Entered at the Postoffice at Lihue, Hawaii, as Second-class Matter.

Subscription Rates: Per Year,\$2.50
Six Months, 1.50
Three Months, 1.00

Subscriptions Payable in Advance.

ADVERTISING RATES ON APPLICATION

K. C. HOPPER, Business Manager

Thumbs Down
The Comedian (during pantomime rehearsal)—Wake up, sir—how can you give an opinion when you're asleep?
Producer—Sleep, my boy, is an opinion.—London Opinion.

Mail robbers never bother the bills. Maybe there is such a thing as honor among thieves.—Greenville Piedmont.

Looks as if the dogs of war were going to have their puppies drowned.—Aurora (Ill.) Star.

IN THE CIRCUIT COURT OF THE FIFTH CIRCUIT— TERRITORY OF HAWAII AT CHAMBERS

IN THE MATTER OF THE ESTATE OF JAMES K. APOLO, DECEASED.

NOTICE TO CREDITORS

Having been duly appointed executor of the last will and testament of James K. Apolo, deceased, late of Molokai, County of Kauai, the undersigned, as such executor, hereby gives notice to all creditors of the said deceased to present their claims with proper vouchers, or duly authenticated copies thereof, even if the claim is secured by mortgage upon real estate, to him, the said executor, at his residence at Anahola, District of Kaula, County of Kauai, within six months from the first day of the publication of this notice, the said first day being January 31, 1922. And if such claims be not presented within the said six months, they shall be forever barred.

All persons indebted to said deceased are hereby notified to make payment of their indebtedness to the undersigned.

GEO. K. EWALIKO,

Executor

of the Last Will and Testament of James K. Apolo, Deceased.

(Jan. 31-Feb. 2-14-21)

IN THE CIRCUIT COURT OF THE FIFTH CIRCUIT— TERRITORY OF HAWAII AT CHAMBERS—IN PROBATE

In the Matter of the Estate of DIEDRICH KLUSMAN, Deceased.

ORDER OF NOTICE OF HEARING PETITION FOR ADMINISTRATION

ON READING and Filing the Petition of August Klusman, son of Diedrich Klusman, alleging that said Diedrich Klusman, of Lihue, Kauai, died intestate at Lihue, Kauai, on the 16th day of January A. D., 1921, leaving property in the Hawaiian Islands necessary to be administered upon, and praying that Letters of Administration issue to August Klusman.

IS ORDERED that Saturday, the 11th day of March, A. D., 1922, at 9 o'clock A. M., be and hereby is appointed the time for hearing said Petition in the Court Room of this Court at Lihue, County of Kauai, at which time and place all persons concerned may appear and show cause, if any they have, why said Petition should not be granted; and that notice of this order be published for three successive weeks (4 insertions) in the Garden Island, a newspaper in Lihue, Kauai.

Dated at Lihue, County of Kauai, T. H., February 1, 1922.

(Signed) WILLIAM C. ACHI, JR., Judge

of the Circuit Court of the Fifth Circuit.

Attest: Signed) J. C. CULLEN,

Clerk of the Circuit Court of the Fifth Circuit.

Lyle A. Dickey, Attorney for Petitioner. (Feb. 7-14-21-28.)

TENDER FOR MATERIAL

The Board of Supervisors of the County of Kauai will receive bids up to 10 o'clock of March 1st, 1922 for furnishing all material needed for the construction of the following buildings: Separate bids to be submitted on each:

- (1) A 26 x 47 shop building at Elelee School;
- (2) A 26 x 54 Science building at Elelee School;
- (3) A 24 x 54 bungalow classroom at Kauai High School.

The full list of materials in bid form will be furnished prospective bidders upon application to the undersigned.

The Board of Supervisors reserves the right to reject any or all bids.

(S) R. F. MIDDLETON, County Engineer. (Feb. 7-14-21)

TENDER FOR LABOR

The Board of Supervisors of the County of Kauai will receive bids up to 10 o'clock of March 1st, 1922 for furnishing all labor and tools necessary for the construction and full completion of the following buildings: Separate bids to be submitted on each:

- (1) A 26 x 47 shop building at Elelee School;
- (2) A 26 x 54 Science building at Elelee School;
- (3) A 24 x 54 bungalow classroom at Kauai High School.

Each bid to be accompanied by a certified check for 5 per cent of amount of bid.

Prospective bidders may obtain plans and specifications upon application and deposit to the undersigned.

The Board of Supervisors reserves the right to reject any or all bids.

(S) R. F. MIDDLETON, County Engineer. (Feb. 7-14-21)

The Hele Loas Out Again

Comparatively few people realize what an interesting and charming outing it is to Kukaia, the Isenberg mountain house on the rim of the Kilohana crater back of Lihue.

They Revisit Their Birthplace.

The Heleloa Club was organized there last season and they returned there for their latest hike the other day. Starting from the Lihue mill in cars they rode to the railway at the foot of the German forest where the more ardent and athletic hikers took to their legs, while the less active retained the car—some even to the far end.

They took the new road which runs up through the center of the forest instead of along the north side, as of old.

The Wonders of the German Forest.

The so-called German forest is one of the oldest and most convincing experiments in re-foresting which we have on the islands. With a wisdom and foresight which was prophetic, and far in advance of the times, Lihue plantation in the early days of its struggling existence, some 35 years ago, devoted this tract of some 250 acres to their experiment in forestry. They imported a trained forester from Germany and under his supervision the tract was planted.

Experimentally, first to Pride of India mainly, which however proved not to be a success. Finally koa-trees was adopted for the ridges and ironwood, monkeypod, etc., for the valleys. First and last, the enterprise cost the plantation, it is said \$40,000. It is now a valuable asset worth much more than that.

The trees have grown amazingly, especially in the valleys, and there are many fine specimens over 100 feet high.

It is a veritable tropical forest of rare beauty and charm, the home of singing birds, and whispering shadows and filtered sunshine, with doubtless, the sporting elves and dryads that belong with any such a forest primeval. At any rate it is a most charming and restful place, and we would recommend our readers to go and see it. It only takes 15 or 20 minutes to get there.

The Grassy Upland.

Above the forest zone the party emerged onto the green, grassy slopes of the grazing land, a region of picturesque ridges, centering in toward the Kilohana crater with deep valleys and ravines between. And as they gained elevation with every step, new and ever enlarging vistas opened up with each new elevation.

Sturdy Hiking.

It took the bonafide hikers a trifle over an hour to make Kukaia, which was pretty good going considering that in addition to the distance there was a climb of about 1000 feet.

The Manifold Charms of Kukaia.

The car contingent having preceded them, had opened up the Isenberg house, and were busy preparing tea, lemonade and crackers, a very welcome light refreshment, while the rest wondered about the marvelously beautiful landscape garden, filled with rare and interesting exotic trees and flowering plants from many lands.

Among other things they were delighted with the singing birds flitting about, mostly special importation made by Mrs. Isenberg, among which are the tomtit, the thrush and the lark.

They Want to Come Again.

All were volubly enthusiastic about the beauty of the place, the views, the garden, the home and the air, and with one accord they declared that this was the best outing of all, and cried, "Oh, can't we come here again?"

Look Out Mountain Views Unparalleled.

Although it was growing late, the leader told them they must not leave without going over to "Look Out Mountain," on the north side of the rim of the crater, a few minutes away. So they all tramped out there and were rewarded by the wonderful panorama of all the country below and beyond, extending to Waialeale on one hand and the Kapali mountains, the Huahola range and the sea on the other, a scene of such unequalled beauty as you will go far to find, even in Hawaii.

They "Made" Church in the Evening.

Being reminded that there was church in the evening, and that they would have to hurry to make it, they reluctantly turned away and struck out for home, and made it—most of them.

How did man manage to impress others with his importance before he discovered the art of being disagreeable?—Baltimore Sun.

Pupils of Mrs. Bayless Give Pleasing Concert

One of the most pleasing events of the past week was the recital given by the piano pupils of Mrs. Ralph W. Bayless, of Lihue, Friday evening. The program was an exceptional one and the young musicians displayed much skill and careful preparation for the event which was greatly enjoyed by a large gathering of parents and friends.

The audience showed its approval by hearty applause, and at the close there was a chorus of congratulations and expressions of pleasure, both to the pupils and to Mrs. Bayless.

This being the second recital of Mrs. Bayless' class, the improvement in poise and ease of manner was noticeable, as well as the technique. The following program was rendered:

- | | |
|-----------------------------|-----------------|
| Musical Poems | Hudson |
| (a) Sleep and Dream. | |
| (b) A Wildwood Ramble. | |
| (c) Lullabye by the Sea. | |
| Ruth Hobby. | |
| Poetic Studies | Vernon Spencer |
| (a) The Bird at the Window. | |
| (b) The Swan on the River. | |
| Thelma Olson. | |
| (a) Swiss Idyl | Behr |
| (b) The Night Wind | Dutton |
| Undine Trowbridge. | |
| Fairy Bells | Streabhog |
| Marjorie Waterhouse. | |
| Song of the Reaper | R. Schumann |
| William Achi Jr. | |
| (a) Passepied | Bach |
| (b) Santa Lucia | Arr. by Presser |
| Dora Rice. | |
| Cavalry's Coming | Crammond |
| Glen Hopper. | |
| Dance of the Elves | Grieg |
| Edith Sloggett. | |
| Ballad | Burgmuller |
| Catherine Moragne. | |
| Kleine Romanze | R. Schumann |
| William Waterhouse. | |
| Harp Sounds | C. Mayer |
| Margaret Sloggett. | |
| Gypsy Dance | Lichner |
| Ralph Alexander. | |
| Reverie D'Amour | Glebel |
| Alice Broadbent. | |
| Duet—Rhapsody from Hungari- | |
| an Rhapsody No. 2 | Liszt |
| Margaret Sloggett. | |
| Alice Broadbent. | |

FEDERAL OFFICERS TO ASSIST IN MAKING INCOME TAX RETURNS

Revenue Officers White and Lucas will arrive on Kauai by the Kinanau next Friday morning for the purpose of assisting in making out income tax returns. Following is their itinerary:

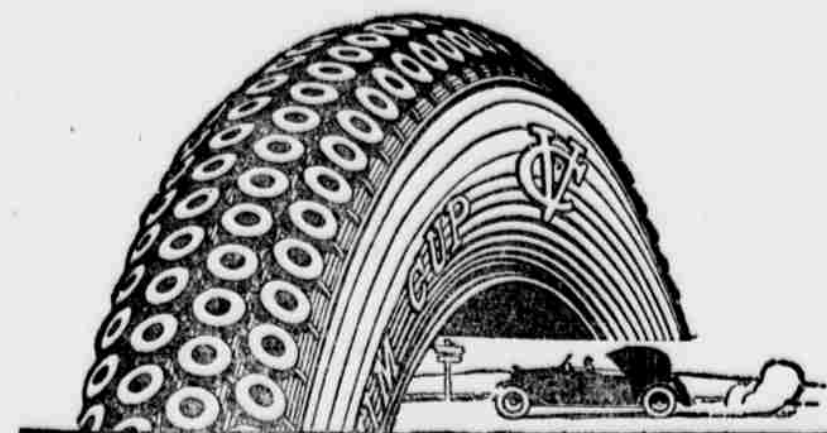
- | | |
|-----------------------------------|------------------------------------|
| February 24— | A. M., Waimea Plantation office. |
| P. M., Kekaha Plantation office. | |
| February 25— | A. M., Makaweli Plantation office |
| P. M., Hanapepe, Holmes' store. | |
| February 26— | Sunday, Waimea Hotel. |
| February 27— | A. M., Eleele, Plantation office. |
| P. M., Wahiawa Plantation office. | |
| Later Kalaheo post office. | |
| February 28— | A. M., Hanalei, Plantation office. |
| P. M., Kilauea Plantation office. | |
| March 1— | A. M., Kealia, bank. |
| P. M., Kapaa, bank. | |
| March 2— | A. M., Kapaa, bank. |
| P. M., Lihue, courthouse. | |
| March 3— | A. M., Lawai, Plantation office. |
| P. M., Koloa Plantation office. | |
| March 4— | A. M., Lihue, courthouse. |
| P. M., Lihue, Grove Farm. | |

DR. LEEBRICK TO SPEAK AT KAPAA

Arrangements are being made for Dr. Karl Leebrick of the University of Hawaii, who is to be on Kauai the early part of March, to speak at a community meeting in Kapaa on the evening of Tuesday, March 7th. His subject will be one of interest to every resident of Kapaa and the island, "The Citizen and His Government."

Dr. Leebrick is known as one of the keenest students of world conditions and a clear thinker on problems relative to governmental and citizenship matters. He has recently returned from a trip to the mainland where he attended and spoke at a number of large gatherings in which present day problems were being considered.

Residents of Kapaa and neighboring communities will do wisely if they reserve the above date and hear Dr. Leebrick.



Pennsylvania
VACUUM CUP
TIRES

WHEN renewal time comes, equip your car with Vacuum Cup Fabric or Cord Tires and forget the dangers of "skiddy" pavements. Forget also the disappointing mileage averages other tires may have given you. Buy Vacuum Cup Tires—you pay only for the quality—the safety costs you nothing.

C. B. HOFGAARD & CO., Ltd., Agents, WAIMEA

"M-m-m Smell that Roast"

What is as delicious and satisfying when you're really hungry as a thick, juicy steak, a savory roast, or a tender breaded veal cutlet?

MEATS THAT MAKE THE MEAL—

are the sort in which we specialize. The choicest cuts, sold to you at honest prices, are the goods upon which our big trade is built.

ICE HOUSE GOODS RECEIVED
BY EVERY COAST STEAMER

LIHUE STORE MEAT MARKET

COUNTY OF KAUAI TAX RATE 1922

Assessed value of real and personal property in Fourth Taxation Division for the year 1921, \$25,502,695, less exemptions \$515,047, net \$24,987,648.

Basis: Net assessed values (gross income less exemptions) \$24,987,648.

Total assessed values in Territory for 1921, \$270,013,966. Kauai's proportion of the whole, 9.25%.

Required for County purposes	\$279,876.48	1.1201%
Refused for Interest and Sinking Fund	32,878.69	.1316%
Required for School purposes	338,367.01	1.3541%
Required for School Cash Basis Fund	18,500.00	.0740%
Required for cost of assessing and collecting taxes	22,292.18	.0892%
Required for Territorial purposes	62,469.12	.2500%
	\$754,383.48	3.0190%

RATE ADOPTED, 3.02%, or \$30.20 per \$1,000.00

COUNTY'S REQUIREMENTS, estimated by Board of Supervisors:

1. Current expenses, 7-10 of 1% on \$24,987,648	\$174,913.54
2. Permanent improvements, 3-10 of 1% on \$24,987,648	74,962.94
3. Samuel Mahelona Memorial Hospital (Act 136, S.L. 1919) \$30,000 a year for two years, 1922 amount	30,000.00
	\$279,876.48

4. PUBLIC DEBTS, INTEREST AND SINKING FUND:

4a. Kauai's proportion of annual payment account principal and interest on Memorial Park bond issue of \$200,000 (Act 190, S.L. 1919) 1-5 principal \$200,000, 1922, equals \$10,000 plus interest \$4,000. Fourth Division pro rata 9-67% of \$44,000	4,254.80
4b. Kauai's proportion of annual payment account principal and interest \$250,000 War Memorial (Act 15, S.L. 1921), 1-5 for the year 1922 equals \$50,000 plus interest of \$12,500. Fourth Division proportion, 9-25% of \$62,500	5,781.25
4c. Interest and Sinking Fund on Territorial bonds allotted for Kauai county purposes:	
Issue Rate Amount Interest Sinking Fund	
1911 4% \$120,000.00 \$4,800.00 \$2,139.61	
1912 4% 27,930.56 1,117.22 498.00	
1914 4% 29,824.41 1,192.97 563.08	
1920 4 1/2%	
Nawiliwili	
Breakwater 204,060.80 9,182.73 3,349.03	
	\$381,815.77 16,292.92 6,549.72
	22,842.64
	32,878.69

5. APPROPRIATIONS FOR SCHOOLS:

5a. Special School Fund for buildings, grounds, repairs and supplies, Kauai (Act 154, S.L. 1921), one-half of two year appropriation of \$237,500, less \$15,669.73, unexpended balance (Act 177, sub. div. 4, S.L. 1919) equals \$221,830.27 X 1/2	110,915.14
5b. General School Fund, Kauai's proportion of \$443,360, for two year period (Act 154, S.L. 1921) or 1/2 for 1922 equals \$221,680 at 9.25%	20,505.40
5c. Teachers' salaries for year 1922, as estimated by Department of Public Instruction (Act 245, S.L. 1921)	\$2,368,494.00
Less Personal School Taxes collected in 1921	\$134,599.85
Deducting 2 1/2% for Teachers' Pension Fund	3,364.99
	\$131,234.86 131,234.86
	\$2,237,259.14
Fourth Division's proportion 9.25%	206,946.47
	338,367.01

5d. School Cash Basis Fund for 1922 (Act 27, S.L. 1921) \$200,000, Fourth Division proportion, 9.25%	18,500.00
--	-----------

6. TERRITORIAL PURPOSES:

Cost of assessing and collecting taxes (Act 177, S.L. 1919, sub. div. 6):	
Ga. Tax Books and Blanks (Act 229, S.L. 1921)	\$15,000.00
Gb. Taxation maps	12,600.00
Gc. Tax appeal expenses	4,000.00
	\$31,600.00
Fourth Division's proportion 9.25% of 1/2 of \$31,600, or \$15,800	1,461.50
Gd. Salaries and expenses Fourth Division (Act 229, S.L. 1921) \$10,500 for two year period, or 1/2 for year 1922	20,250.00

Ge. Special appropriation Tax Books and Blanks (Act 56, S.L. 1921) \$5,000, of which \$4,950.29 was expended. Fourth Division proportion 9.67 per cent of \$4,950.29	478.70
--	--------

Gf. Special appropriation salaries and expenses Fourth Division (Act 56, S.L. 1921) \$1,250, of which \$101.98 was expended	101.98
---	--------

7. For Territorial purposes, Special Tax (Act 3, S.L. 1920) of 1/4 of 1% on net 1921 assessed values of \$24,987,648	62,469.12
Total	\$754,383.48

CARLOS A. LONG,

Assessor, Fourth Taxation Division.

APPROVED:

(Signed) A. LEWIS, Jr.,
Treasurer, Territory of Hawaii.

PUBLIC NOTICE OF SALE OF GOVERNMENT LEASES COVERING PORTIONS OF GOVERNMENT LANDS IN THE DISTRICT OF WAIMEA, COUNTY OF KAUAI.

Public Notice is hereby given that at 10 o'clock a. m., March 13, 1922, at the front door of the Capitol Building, in Honolulu, there will be sold at public auction to the highest bidder, under the provisions of Section 73 of the Hawaiian Organic Act and Section 380, R.L.H. 1915, three general leases covering portions of the government land in the District of Waimea, County of Kauai, containing the following areas and subject to the following terms and conditions, all of which will be incorporated as covenants in the leases to be executed, drafts of which leases containing all such covenants in detail are now on file in the office of the Land Commissioner in Honolulu and may be inspected by any intending bidder or other person:

FIRST LEASE, (designated as the "Main Kekaha Cane Land Lease") containing a total area of 8759.88 acres and classified as follows: Cane lands, 4990.78 acres; Pasture lands, 877.24 acres; Rice lands, 473.82 acres; Other agricultural lands, 345.95 acres; Waste lands, 1947.32 acres; Swamp lands, 47.57 acres; Camp sites, 59.40 acres; Faye's old residence, 4.70 acres; Dantford's residence, 4.10 acres; together with the irrigation system and ditches now in operation on Kekaha plantation, together with all publicly owned water systems and water now in use in connection therewith, together with the right to develop and use additional water on the government lands in said district, and together with the right to use all such government owned lands in such district as may be necessary for use in connection with development, impounding or transportation of such water.

TERMS AND CONDITIONS OF FIRST LEASE

1. Term of Lease—15 years from October 1, 1923.

2. Rental—(a) The lease will be sold for a minimum upset annual rental of \$103,000.00 and bids will be received on this upset minimum rental. The first three months' minimum rental is to be paid in advance upon the delivery of the executed lease and thereafter beginning January 1, 1924, the minimum rental shall be paid semi-annually in advance.

(b) Between January 1, 1924, and February 28, 1924, and thereafter annually during the same period, the lessee is required to render a statement showing the gross proceeds of sugar sold during the previous year and to pay, as additional rental, the difference, if any, between 7 1/2% of such gross proceeds, if the average price per ton of sugar during the previous year shall have been \$120 or less, and the said minimum rental for the previous year.

(c) If the average price shall have been in excess of \$120, the lessee is required to pay, in addition to the above 20% of such excess gross proceeds in excess of \$120 per ton.

(d) The excess rental, provided for by paragraph "b" and "c" above shall not be required as to lands not heretofore under cultivation until after the harvesting of the plant and first ratoon crops.

3. Water Development—If the Lessee shall fail to undertake or complete the additional water development above referred to within two years from the date of written notice from the Lessor, the Lessor may make other arrangements for such water development and may withdraw from the operation of the lease all such uncultivated lands as may be necessary for that purpose and for the use of such water when developed.

4. Certified Check—All prospective bidders are required to deposit with the Commissioner of Public Lands before the sale, as a guarantee of good faith in bidding, a certified check in the sum of \$51,500.00 and no bid will be received from any person who has not so deposited such check. The said amount will be forfeited to the Territory of Hawaii in case the successful bidder fails to execute the lease and furnish the bond hereinafter referred to.

5. Bond—The Lessee will be required to file with the Commissioner of Public Lands before the sale, as a guarantee of good faith in bidding, a certified check in the sum of \$51,500.00 and no bid will be received from any person who has not so deposited such check. The said amount will be forfeited to the Territory of Hawaii in case the successful bidder fails to execute the lease and furnish the bond hereinafter referred to.

6. Withdrawal—Any portion of the lands hereby leased, except those portions which are designated by the Land Commissioner with the approval of the Land Board as being suitable for the cultivation of sugar cane or which are used and occupied as camp or reservoir sites, or as ditch, flume or railroad rights-of-way, may upon not less than three months' written notice, be withdrawn from the operation thereof for homestead, preference rights, or other public purpose, or as being required for agricultural or other purposes in connection with the further development of water as indicated above in the Kekaha Cane Land Lease, in which case the rent reserved shall be reduced in proportion to the value of the part withdrawn.

SECOND LEASE, (designated as the "Kekaha Ranch Land Lease") containing a total area of 24,525 acres and classified as follows: Parcel 1, Waimea upper lands, 22,000 acres; Parcel 2, Mana lower lands, 2,525 acres.

TERMS AND CONDITIONS OF SECOND LEASE

1. Term of Lease—To begin June 1, 1922, and to terminate September 30, 1938.

2. Rental—(a) Upset rental \$3,600 per annum over and above all taxes and other legal impositions; the first semi-annual payment to be made upon delivery of the lease and, beginning December 1, 1922, shall be payable semi-annually in advance thereafter; (b) Should any portion of these lands be put under cultivation in sugar cane, the Lessee shall, after the harvesting of the plant and first ratoon crop, pay a rental, in addition to the annual rental herein provided for of 7 1/2% of the gross proceeds received from the sale of sugar when the average price of sugar for the year shall have been \$120 per ton or less and in addition thereto when the average price of sugar for the year shall have exceeded \$120 per ton, 20% of said gross proceeds in excess of said price of \$120 per ton.

(c) Between January 1 and February 28 of the year and years immediately following the sale of sugar produced from such newly cultivated land as indicated in the foregoing paragraph, the Lessee is required to file with the Commissioner statements showing the gross proceeds derived from such sales and shall immediately thereafter pay to the Lessor such amounts as may be due under the provisions of the preceding paragraph marked "b".

3. Certified Check—All prospective bidders are required to deposit a certified check in the sum of \$1,800.00 for the purpose indicated in paragraph numbered "4" set forth above in connection with the Kekaha Cane Land Lease.

4. Bond—The Lessee will be required to file a bond in the sum of \$10,000.00 as provided by and for the purposes indicated in paragraph numbered "5" set forth above in connection with the Kekaha Cane Land Lease.

5. Withdrawal—Any portion of the lands hereby leased, except those portions which are designated by the Land Commissioner with the approval of the Land Board as being suitable for the cultivation of sugar cane or which are used and occupied as camp or reservoir sites, or as ditch, flume or railroad rights-of-way, may upon not less than three months' written notice, be withdrawn from the operation thereof for homestead, preference rights, or other public purpose, or as being required for agricultural or other purposes in connection with the further development of water as indicated above in the Kekaha Cane Land Lease, in which case the rent reserved shall be reduced in proportion to the value of the part withdrawn.

THIRD LEASE, (designated as "Short Term Lease of Rice and Pastoral Land") containing an area of 1426.42 acres, and classified as follows: Parcel 1, Kekaha Pastoral Lands, 529.36 acres; Parcel 2, Rice lands, 464.17 acres; Other agricultural lands, 345.55 acres; Camp sites, 25.62 acres; Swamp waste, 47.57 acres; Camp 5 road, 1.10 acres; Parcel 3, Mana Rice land, 9.65 acres. All railroad and ditch rights-of-way within these areas are reserved to the Lessor.

TERMS AND CONDITIONS OF THIRD LEASE

1. Term of Lease—To begin on June 1, 1922, and to terminate on September 30, 1923.

2. Rental—Upset rental, \$3,000.00 per annum, payable semi-annually in advance.

3. Withdrawal—Any portion of the leased land, except those which are suitable for the cultivation of sugar cane or which are used and occupied by the Lessee as camp or reservoir sites, or as ditch, flume or railroad rights of way, may, upon three months' written notice, be withdrawn for homesteading, preference rights, or other public purposes.

PROVISIONS AND TERMS APPLICABLE TO ALL OF THE ABOVE LEASES

1. The Lessee will be required (a) to pay all taxes and other assessments that may be legally imposed on said premises; (b) to build and

(or) maintain a stock proof fence around the leased premises when required so to do by the Commissioner or by any Territorial law; (c) to pay the cost of advertising and other charges in connection with the preparation of the lease; (d) to keep the premises and buildings in good sanitary condition; (e) is prohibited from committing waste and from cutting trees without permission.

2. The drafts of these leases marked and designated as (1) Kekaha Cane Land Lease; (2) Kekaha Ranch Land Lease; and (3) Kekaha Rice and Pastoral Lands Lease, together with a map of all of the said lands showing the above classifications, and description of survey showing the lands to be leased and all lands reserved for public and other purposes, and all lands not to be included within said lease, a particular description of the stock proof fence required under this notice of sale, are on file in the Office of the Commissioner of Public Lands, in Honolulu and may be inspected by any prospective bidder or other person.

3. For general information apply at the Office of the Land Commissioner at the Capitol Building in Honolulu.

C. T. BAILEY,
Commissioner of Public Lands,
Dated at Honolulu,
Feb. 11, 1922.

PUBLIC NOTICE OF SALE OF GOVERNMENT LAND

Public Notice is hereby given that at 10 o'clock a. m., March 13, 1922, at the front door of the Capitol Building in Honolulu, T. H., there will be sold at public auction to the highest bidder, under the provisions of Section 73 of the Hawaiian Organic Act and Section 358 of the Revised Laws of Hawaii of 1915, a portion of the Government Land of Kekaha, Waimea, Kauai, for Mill and Camp purposes, including the present Kekaha Mill and Camp Site, comprising 38.37 acres, more or less, together with the mill and all other improvements thereon, appurtenant thereto.

The said land will be sold subject to the following conditions:

1.—The Territory of Hawaii reserves the Government Roads which cross the land to be sold, as shown on plan of same on file in the office of the Commissioner of Public Lands.

2.—The purchaser will be required, at his, or its own cost and expense, to remove to sites to be designated by the Commissioner, all dwelling houses and other buildings now located on the area to be sold and which belong to or are occupied by citizens who claim and are entitled to a preference right to purchase any part of the land comprised within the area to be sold and to put such dwelling houses when so removed in good habitable condition.

3.—The purchaser shall pay the costs of advertising immediately after the sale.

Upset price \$150,000.00.
Terms: Cash at the drop of the hammer.

A map of said land and the Surveyor's description of same are on file and may be seen at the office of the Commissioner of Public Lands, Capitol Building, Honolulu.

For general information apply at the Office of the Commissioner of Public Lands at the Capitol Building in Honolulu.

C. T. BAILEY,
Commissioner of Public Lands,
Dated at Honolulu,
February 11, 1922.

NOTICE OF SALE OF GOVERNMENT LEASE

At 10 o'clock A. M., Friday, February 24, 1922, at the office of the Sub Land Agent, Mr. J. M. Lydgate, Lihue, Kauai, T. H., there will be sold at public auction to the highest bidder, under Section 380 of the Revised Laws of Hawaii of 1915, and the Hawaiian Organic Act, a General Lease to that parcel of Government Land being:

Portion of the Kapaa House Lots, Kapaa, Puna, Kauai, being Lots 8 to 14 inclusive, with the roads there in, containing an area of 8.93 acres, more or less; term of lease 4 years, 9 months from February 26, 1922, co-terminus with General Lease 1298 to Joe R. Aguilar; upset rental, \$127.00 per annum, payable semi-annually in advance.

The County pipeline as shown on the map of the land to be leased, being underground, a right of way for which is reserved in the description of survey of said land, the Territory reserves the right to itself or the proper custodians of said pipeline, to enter said right of way at any time for the purpose of making repairs and inspection, without any responsibility for any damages to any crops that may be planted on said right of way; the Territory will, however, hold the purchaser responsible for any damages to said pipeline caused by him in preparing said land for planting or harvesting.

The purchaser shall immediately after the sale pay the first six months' rental bid, together with the costs of advertising and all other charges in connection with the preparation of said lease.

The sale of the above General Lease is subject to the terms and conditions of Government General Lease issued by the office of the Commissioner of Public Lands.

Map of the parcel of land to be leased, description of same showing reservations and form of Government General Lease, are on file and may be seen at the office of the Sub Land Agent at Lihue, or at the office of the Commissioner of Pub-

lic Lands, Capitol Building, Honolulu, T. H.
For general information apply at the office of the Sub-Land Agent, Mr. J. M. Lydgate, Lihue, Kauai, or at the office of the Commissioner of Public Lands, Capitol Building, Honolulu, T. H.

C. T. BAILEY,
Commissioner of Public Lands,
Dated Honolulu, T. H.,
January 19, 1922.
(Jan 24-31-Feb. 7-14-21.)

IN THE CIRCUIT COURT OF THE FIFTH CIRCUIT—TERRITORY OF HAWAII

At Chambers—In Probate

In the Matter of the Estate of TAM WOODS (also known as TOM WOODS or TOM WOOD), Deceased.
Probate 857

NOTICE OF HEARING PETITION FOR ADMINISTRATION

ON READING and filing the Petition of Frank E. Thompson, of Honolulu, T. H., alleging that said Tam Woods, of Kapaa, Kauai, Territory of Hawaii, died intestate at Kapaa aforesaid on the 20th day of January A. D., 1922, leaving property in the Hawaiian Islands necessary to be administered upon, and praying that Letters of Administration issue to him, the said Frank E. Thompson, as a member of the firm of Thompson, Cathart & Ulrich, creditors of the deceased, there being no heirs.

IT IS ORDERED that Tuesday, the 21st day of March, A.D. 1922, at 9 o'clock, A. M. be and hereby is appointed the time for hearing said Petition in the Court Room of this Court at Lihue, County of Kauai, at which time and place all persons concerned may appear and show cause, if any they have, why said petition should not be granted.

Dated at Lihue, County of Kauai, T. H., February 8th, 1922.

By the Court:
J. C. CULLEN,
Clerk.

Circuit Court, Fifth Circuit.
Thompson, Cathart & Ulrich,
Attorneys for Petitioner.
(Feb. 14-21-28-March-7-1922)

IN THE CIRCUIT COURT OF THE FIFTH JUDICIAL CIRCUIT—TERRITORY OF HAWAII

At Chambers—In Probate

In the Matter of the Estate of JOSEPH FREITAS CALISTRO, late of Hanamaulu, Kauai, Deceased.
Prbate No. 841

ORDER OF NOTICE OF HEARING PETITION FOR ALLOWANCE OF ACCOUNT, DETERMINATION OF TRUST AND DISTRIBUTION OF THE ESTATE.

ON READING AND FILING the Petition and Account of ANTONIO NOBRIGA, JR., ADMINISTRATOR OF THE ESTATE OF JOSEPH FREITAS CALISTRO, DECEASED, late of Hanamaulu, County of Kauai, Territory of Hawaii, wherein petitioner shows receipts amounting to \$1,013.07 and disbursements amounting to \$68.60 and prays that a day be appointed for a hearing of said Petition; that said account be examined and allowed; and that petitioner be ordered to deliver over such property as remains to the person, or persons, thereto entitled; and that petitioner be discharged from all other responsibility concerning said estate and be granted all other proper relief;

IT IS ORDERED, that Friday the 10th day of March, A.D. 1922, at 9:30 o'clock A. M. in the Court Room of this Court, in Lihue, Kauai, be, and the same is, hereby appointed the time and place for hearing said Petition and Account, and that all persons interested then and there appear and show cause, if any they have, why said Petition should not be granted, and present evidence as to who are entitled to said property.

Dated: the 26th day of January, 1922.

BY THE COURT:
(Sgd) J. C. CULLEN,
Clerk.

(Jan. 31-Feb. 7-14-21)

NOTICE TO CREDITORS

The undersigned has been appointed as administrator of the estate of Renichi Nagata, deceased, late of Pakala, in the District of Waimea, County of Kauai, all persons are hereby notified having any claim against said estate to file them within six months after the first publication of this notice to-wit: the 7th day of February, 1922, at his office in Waimea, Kauai, or the same will be forever barred; and all those indebted to said estate to make payment without fail.

WILLIAM O. CROWELL,
Administrator,
Estate of Renichi Nagata, deceased.
Lihue, February 6, 1922.
(Feb. 7-14-21-28.)

SPORTS

BASEBALL

LIHUE JUNIOR LEAGUE

Standing of Clubs

	W	L	Pct.
Kapala	2	0	1000
Braves	1	0	1000
Sunrise	1	1	500
Hanamaulu	0	2	000
Filipino	0	1	000

Kapala held the lead in the Lihue Junior League by winning from the Sunrise by the score of 12 to 9 in the first game of the double header Sunday. The game was good and was featured by the heavy slugging on both sides. The Sunrise put up a game battle but the Kapala team was a little too strong for them.

The score:

	R	H	E
Kapala	12	11	4
Sunrise	9	7	3

The Braves trimmed the Hanamaulu team by the same score, winning after a hard game. Hanamaulu has shown a great deal of improvement and will be in the running from now on. The Braves are out for the championship and should give a good account of themselves.

The score:

	R	H	E
Braves	12	13	2
Hanamaulu	9	9	3

Next Sunday Kapala and the Braves will fight it out for first place and this game should be one of the best of the season. Both teams are strong although both are weak in the box. Heavy hitting will be a feature that can be expected.

The Hanamaulu team meets the Filipino team and Hanamaulu should have an excellent chance to break into the win column. The Filipinos are on probation and any more exhibitions of poor sportmanship on their part will mean that they are through with the league.

The championship game between the Mill and Sunrise for the title in the Keala Winter League was postponed on account of rain and will be played next Sunday at Kapala.

TENNIS

Some mighty fine tennis was served up to the tennis fans last Sunday at McBryde when Lindsay Faye, Alec Lindsay, Wilson Cannon, Dwight Baldwin, Caleb Burns, Dr. Glaisyer, Charlie Brenham and Robert Kay got together for some sport.

Burns and Glaisyer teamed up and played Brenham and Cannon. Several fast sets. D. Baldwin and Faye met Cannon and Glaisyer also.

The feature of the day was a singles match between Caleb Burns and Dwight Baldwin which the former won 8-6. This was indeed an interesting match, due to the fact that two different types of games were used. Baldwin was playing a fast smashing game, while Burns was playing a placing game.

Tennis fans can see more interesting tennis next Sunday at Ko-

BASKETBALL

LIHUE WINS BASKETBALL CHAMPIONSHIP OF ISLAND

Standing of Clubs

Club	W	L	Pct.
Lihue	7	0	1000
Makaweli	5	2	714
Kauai High	4	3	571
Waimea	2	5	286
Hanapepe	0	8	000

Lihue clinched the championship in the Kauai Basketball League last night at Makaweli when they defeated the tailenders, Hanapepe, by the score of 48 to 26. Lihue has one game left to play and that is against Makaweli, but as Makaweli has already lost two games, one to Lihue and the other to Kauai High, even though they beat Lihue, the latter team will still have the better average.

Lihue did not show so well in the game last night as they seemed to have quite a bit of difficulty in finding the basket. Hanapepe played a much improved game and had the Lihue team worried a little.

The score at the end of the first period was 16 to 8 with Lihue on the long end. At the end of the first half Lihue was still out in front with a 24 to 13 score. Both teams in the last half duplicated their score of the first two periods and the final score was 48 to 26.

Betsui and Nakashima were the Hanapepe stars, both playing great basketball. Fernandes and Christian were the stars for Lihue.

The score:

	G	FG	F
Lihue	10	2	0
Fern. f.	5	0	0
Fernandes, f.	5	0	1
Christian, c.	3	0	0
Lane, g.	3	0	0
Morgan, g.	0	0	2
Wedemeyer, g.	0	0	2
Santos, g.	0	0	0

	G	FG	F
Hanapepe—	23	2	6
Nakashima, f.	4	0	1
Betsui, f.	6	4	1
Kaohi, c.	1	0	1
Ohama, g.	0	0	1
Watase, g.	0	0	1
Moura, g.	0	0	0

Referee, Damkroger. Timer, Fernandes.

loa as the clan will gather at the Burns court at Koloa that morning. Caleb Burns has offered a cup for a game to a classification of the players on the island into A and B classes.

A meeting of the Kauai Tennis Association will be held shortly and the principal topic will be in re-singles elimination tournament which will be the permanent possession of the winner. This tournament should be played this spring and the tournament for the perpetual trophy in the fall.

P. M. Kodaira
SANITARY PLUMBER

P. O. Box 47 Lihue, Kauai

KAUAI HIGH SCHOOL DEFEATS MAKAWELI

Playing the best basketball game yet seen in Lihue, Kauai high school stepped out Friday night and defeated Makaweli by the score of 33 to 26. The high school outplayed their heavier opponents in every department of the game. They led Makaweli all the way from the start and although Makaweli came within one point of tying them, the high school was equal to the emergency and spurted into a more substantial lead.

The high school boys started out right off the reel and dropped three baskets before Makaweli could make one. This lead gave the prep-school team confidence and they played for all they were worth. The score at the end of the first quarter was 9 to 6.

Makaweli put on a spurt in the second quarter and almost overtook the school boys but with good playing they managed to hold the lead even though it was a slight one. The score at half time was 14 to 13.

All the high school rooters were praying that their team would not weaken during the last half as they did against Lihue the week before. The school boys started their most ardent rooters by playing Makaweli off their feet in the third quarter and they managed to increase their lead to four points, the score at the end of the third period being 24 to 20.

Everyone realized that it was up to the high school to at least hold their own in the last period if they were to win and many doubted if they could hold the pace. They played the best basketball of the year in the last period and made nine points while Makaweli was making six, the final score being 33 to 26.

It would be hard to pick out any star on the high school team as every player was on his game and played the best basketball of his career.

Damkroger was the Makaweli star making 20 of his team's 26 points.

The score:

	G	FG	G
Kauai High	4	9	1
Camara, f.	6	0	3
Lydgate, f.	1	0	2
Wedemeyer, c.	1	0	0
Sinichi, g.	1	0	0
Chentham, g.	0	0	1

	G	FG	G
Makaweli—	12	9	7
Beam, f.	0	0	1
Aul, f.	3	0	5
Baldwin, f.	0	0	0
Damkroger, c.	8	4	3
Marcellino, g.	0	0	1
Beecroft, g.	0	0	1

Referee, Ferreira. Umpire, Santos. Timer, Longstreth.

HIGH SCHOOL GIRLS BASKETBALL

The four class teams have been chosen and a series of games arranged to play off for the championship. The trophy is a silver cup given last year by the Girls' Basketball Association. These games will be played in the armory according to the following schedule: Seniors-Sophomores vs. Freshmen, February 23.

Senior - Sophomores vs. Freshmen, March 2.
Sophomores vs. Junior Freshmen, March 9.
Junior Freshmen vs. Freshmen, on March 16.

Social Notes

A DELIGHTFUL PARTY

On Tuesday evening, February 14, Mr. and Mrs. R. W. Bayless gave a delightful Valentine party to a group of high school students. The invitations were issued in the form of red hearts with an appropriate invitation verse printed in white. Each guest brought a valentine as the toll of his admission which was received at the door by Master Kenneth who had the U. S. mail pouch. These valentines were later auctioned off with candy hearts serving as coin. There was lots of fun in the bidding as both girls and boys made bids. The spacious living room of the manse was decorated with hearts in every direction.

Soon after arriving there was a heart hunt, as small candy hearts had been hidden in every secret place. Following this game each guest was given a torn red calico heart and asked to mend their broken hearts. Prizes were awarded to the boy and girl who proved the best darners. All the games of the evening were strictly valentine. The one called "Cinderella" provoked much laughter. Toward the close of the evening cut hearts were passed and after being matched for partners the guests were invited to the dining room where again hearts were very much in evidence, not only in the decorating but throughout the refreshments. As the young people left they expressed great appreciation to their host and hostess for this splendid evening of merriment.

MRS. LYDGATE ENTERTAINS

Last Friday afternoon, Mrs. J. M. Lydgate and Mrs. James Corstorphine gave a bridge party at Mrs. Lydgate's home in honor of Miss Dora Lydgate of Hawaii, who is visiting them. About 30 of Miss Lydgate's friends were invited.

Miss Josephine Israel, of Kapaa, gave a Valentine party, February 14 at the wireless cottage, Lihue for fifteen of her little girl friends. Each girl received a heart placard filled with choice candies and a tiny lei. The house was beautifully decorated with hearts of all sizes.

Mrs. E. Allen Creevey of Makaweli entertained a number of her young friends at a very enjoyable party on Valentine day.

Senior - Sophomores vs. Sophomores, March 23.
Sophomores vs. Freshmen, March 30.

To give more girls an opportunity to play on a team a second league has been formed. These three teams, Sparrows, Minah birds and Pheasants, will compete for a banner. The games will be played on the new court at the high school. The following schedule has been arranged:

Sparrows vs. Minah Birds, February 27.
Minah Birds vs. Pheasants, March 7.
Pheasants vs. Sparrows, March 13.



PEACOCK LEI

Beautiful Hand Made Leis
Ichinose Dry Goods Store

Telephone 291L : : : : Koloa

Theo. H. Davies & Co., Ltd.

HONOLULU AND HILO

Sugar Factors and Commission Merchants
IMPORTERS OF GENERAL MERCHANDISE

GENERAL HARDWARE

Builders' Hardware	Crockery	Glassware	Silverware
Sporting Goods	Fishing Tackle	Firearms	Ammunition
Safes	Refrigerators	Spark Plugs	Flashlights
Paints	Varnishes	Brushes	Oils
Harness	Saddlery	Roofing	Trunks
		etc.	etc.

GROCERIES

Fancy and Staple Lines, Feed, etc.

DRY GOODS

Shoes Toilet Supplies Stationery etc. etc.

INSURANCE AGENTS

Writers of Fire, Marine, Compensation, Automobile and Miscellaneous Insurance Policies.

AGENTS FOR

Canadian-Australian Royal Mail Steamship Line.

Upon application information will be cheerfully furnished in regard to any of our lines in which you may be interested.

Waimea Stables, Ltd.

At Waimea and Nawiliwili

The Most Famous Garages on Kauai.

The place to get transportation to

The Barking Sands, Olokele Canyon,
Waimea Canyon, Kokee Camps,
Kukuilono Park, Wailua Falls,
Hanalei, Haena Caves

Our automobiles are comfortable, our drivers are reliable and have been with us for many years, and know every inch of the country.

We rent Ford Cars Without Drivers.

We do draying and hauling by trucks all over the island. We run the stage line between Lihue and Kekaha three round trips per week

WAIMEA BRANCH
Tel. 43-W
A. GOMEZ, Mgr.

NAWILIWILI BRANCH
Tel. 492-L
CLEM GOMES, Mgr.

Authorized by Law
to Act as
Executor and Administrator
Trustee under Will or Deed

WHILE YOU LIVE

your business judgment stands as a careful protector between your dependents and financial troubles.

WHEN YOU DIE

you will want that protection continued.

THIS COMPANY is equipped to manage your affairs conservatively and efficiently, after you are gone.



Bishop Trust Co., Ltd.

924 Bethel Street

Tel. 6177

FIFTEEN YEARS EXPERIENCE IN SETTLING AND MANAGING ESTATES

We Have It

Whatever you may need in the line of Dry Goods, Groceries, and General Merchandise, we have it.

ELEELE STORE
J. I. SILVA

AFTER INVENTORY SALE

Prices Slashed

Dependable Used Cars
First Payment as Low as \$75.00

1917 Buick Touring	\$100.00
1917 Buick Touring	\$550.00
1918 Buick Runabout	\$550.00
1920 Chevrolet Touring	\$400.00
1918 Ford Touring	\$350.00
1920 Ford Touring	\$375.00
1920 Ford Touring (Starter)	\$400.00
1921 Ford Sedan (Starter)	\$550.00
1920 Ford Ton Truck with body and Bosch Magneto	\$850.00

Every Car Overhauled and Guaranteed

Namiliwili Garage, Ltd.



and it will give "punch" and "pep" to your starting system. The space saving "Unit Seal" construction gives extra plate surface—hence greater capacity per unit of weight and volume. This means built-in durability and power. Let us show you your "Exide" Battery and explain its special features.

AGENTS FOR
U. S. ROYAL CORD
TIRES

THE VON HAMM-YOUNG COMPANY, LTD.
Telephone 555 : : : : Kapaa

Y. M. C. A. NOTES

ANOTHER HI-Y CLUB

Interest and enthusiasm is being registered around the high school the past few days by the fellows who have joined the recently organized unit of the Hi-Y movement. At a meeting held Monday noon, Friday evening, 6:30 was chosen for the regular time of meeting and a program was outlined which it is hoped will not only mean helpful and interesting activities for the members of the club, but this same helpful influence may be shared with others. The purpose of the Hi-Y club as stated in its constitution is, "To create, maintain, and extend throughout the school and community high standards of Christian character." The fellows realize this presents the biggest kind of a challenge to each member and the club as a whole but they intend to make good.

We feel unusually fortunate in being able to have William Crawford, assistant manager of the Ahukini railway for our leader. Mr. Crawford was prominent in athletic and student body activities when attending Pomona College, California. During his post graduate work at Columbia he entered the air service and during the war was instructor in that department, being stationed at various flying fields in the United States. He has recently come from Singapore where he had charge of a large government school for boys. Mr. Crawford has been connected with the Hi-Y club work in other places and can bring many suggestions and ideas to the work here.

Our club will be a unit of the Hi-Y work that is being started on Kauai. We have chosen as our name the Lihue Hi-Y Club, and for our officers: Ernest Wedemeyer, president; Richard Rice, vice president; Paul Robinson, secretary and treasurer.

Some of the members are looking forward to attending the older boys' conference to be held in Honolulu on March 30 to April 4. This will be a gathering of the Hi-Y members from the entire territory and will mean four days of pep, perspiration and preparation for bigger things in the future.

The following fellows constitute the present membership of the Lihue Hi-Y Club: William Moragne, Hale Cheatham, Percy Lydgate, Richard Rice, Paul Robinson, Ernest Wedemeyer, Frank Thomas, Fred Santos, Ralph Alexander, Edward Pieler, Matomi Akama, Kenneth Hopper, Orme Cheatham.—Paul Robinson, Secretary.

KALAEHO ORGANIZES 3-C UNIT

After a week's meditation and deliberation, it was the unanimous vote of the fellows present at the meeting last Friday afternoon to start a 3-C Club in the Kalaehe grammar school.

Having received the consent of R. Tashiro, the popular teacher to act as leader of the club, Mr. Loeke, county Y. M. C. A. man, explained the ways and workings of a 3-C program and the meeting proceeded to elect the following officers: Naoki Yokomoto, president; Lewis Ichello, vice president; Benjamin Hamkaun, secretary; Yachi Suga, treasurer.

A program of discussions, stories, games, hikes, feeds and other activities that delight the heart of a boy have been outlined.

This is the seventh organization of this kind to be started among the grammar school boys by the county Y. M. C. A. committee. The purpose in every case is to bring to the growing boy activities of a wholesome and interesting nature of a character building and Americanizing nature.

The charter members of the Kalaehe club are Halardo Santos, Utaka

THE HIGH SCHOOL TEACHERS AT HOME

The teachers occupying the new cottage at the Kauai high school were at home to their friends last Saturday afternoon from 2:00 to 4:00. Quite a number of local folks called to inspect the new building, which is about one of the best school cottages to be erected on the island so far. Refreshments were served throughout the afternoon.

DELEGATES RETURN

Among the delegates to the Republican convention who returned by the Claudine last Friday were L. D. Larsen, A. Q. Marcellino, H. D. Sloggett, W. H. Rice Jr., W. O. Crowell, Henry Ald, Jas. K. Kula, Mammel Costa, Henry Van Giesen, N. K. Hopli and Sam Kaeo.

PERSONALS

Ralph Johnstone, of the firm of Cameron & Johnstone, public accountants, accompanied by Mrs. Johnstone, arrived by the Claudine this morning.

Mrs. R. H. Hagood of Kealia, returned this morning from a brief visit to Honolulu.

U. S. Marshal, Oscar P. Cox, of Honolulu, is visiting Kauai on official business. He arrived this morning.

James W. Pickard, agent at Nawiliwili landing, received news this morning of the death of his mother in England. She was 78 years of age.

MULE TRIES TO BOARD FLIVVER

One of the Lihue plantation mules tried to collide with Bill Crawford and his new flivver last Friday afternoon. Mr. Crawford was just starting up the hill on the Grove Farm side of the mill when the mule decided what it most desired in life was to occupy a place in the seat just beside Bill. Spectators say that the flivver was immediately put through a wonderfully managed shimmy that left the mule entirely dazed and wondering where it would have to go to get aboard. Before it could definitely decide the flivver of Ford had rammed right by. No damages to mule, flivver or Bill.—Mr. Crawford.

MANA 3-C CLUB ON OVERNIGHT HIKE

Under the leadership of Principal Kekauoha, of the Mana school, ten members of the Mana 3-C Club enjoyed an overnight camp at Barking Sands last Saturday.

Fortified by an army tent and plenty of grub the boys had no worries regarding weather or other disquieting influences.

True army regulations were observed for the conduct of the camp. Guards were stationed on one-hour shifts that the dogs that put the bark in Barking Sands might not attack the camp. The chief cook had a pot of boiling coffee which was served with sandwiches at the midnight hour to the watchful waiters guarding the supplies.

The sea being too rough for swimming and fishing skid races and baseball were participated in. Freddie Weber enjoying his customary morning beauty nap was rudely interrupted by a precipitated tennis slipper landing on his smiling apparatus. Mr. Kekauoha thought he had lost one of his shoes, but it was later discovered that one of the boys had taken it for a suit-case and not it outside the tent so that there would be more room.

The mosquitoes displayed their usual friendliness, but the campfire discouraged them after the first greetings.

The following unanimously carried motion signifies whether the boys enjoyed themselves: "That we have an over night camp every time there is a full moon."

Horita, Fusutoma Yoshida, Kikuo Kalezuka, Mamoru Urabe, Kazuo Kawabata, Kishiu Nagata, Masaru Tanaka, Mitsuki Matada, Tadashi Tamakazu, Manuel Gomes, John de Fantes, Fusuzio Nishi, Toichi Hamamuta.

ERNEST GIESECKE, PIANO EXPERT TO VISIT KAUAI

I am arranging to visit Kauai on my regular annual tuning trip early in April with headquarters at Lihue Hotel. Having had 14 years' experience in Hawaii, besides 18 on the mainland, enables me to give your piano or player piano just what care and adjustment it may require.

The piano is the most expensive and most abused article in the average home. It has about 230 highly tempered steel strings ranging in gauge from 13 to 23, when drawn to international pitch, exert a strain on the frame of the piano approximately 18 tons. Other string instruments with a few pounds strain are tuned every time they are played. A piano out of tune and out of adjustment is a handicap to the performer, as well as listener. "Let me straighten out your discords and create harmony in your home."

Very truly yours,
ERNEST GIESECKE,
Piano Expert.
Pianos bought and sold.
(Feb. 21st)

ANNUAL MEETING

The Garden Island Publishing Co., Ltd.

The annual meeting of the shareholders of the Garden Island Publishing Company, Ltd., will be held at the office of the company, Lihue, Kauai, Thursday, February 23, 1922 at 2:30 p. m.

Lihue, Kauai, Feb. 7, 1922.
K. C. HOPPER,
Secretary.

MEETING NOTICE

All members of the Catholic Burial Association are requested to be present at a meeting, to be held at the Koloa hall, Sunday, February 26th, 1922 at 2:30 p. m.

ANTONE VIDINHA
(21) President.

SITUATION WANTED

Assistant sugar boiler or time keeper. Experience in both lines. M. G. Cadle, Lihue. 31.

WANTED

To Rent phonograph until July. Careful treatment guaranteed. Address Garden Island.

LOST

Certificate of deposit No. 890, dated February 4, 1922, for \$574.70, from Knudson Bros., to order of Quong Sam Sing Co. Finder is warned against trying to negotiate same. (31).

FOR SALE OR TRADE

Reo touring car. Will sell for cash or trade for Ford. Engine in good condition. Car will make fine speed wagon. Call at Garden Island office.

FOR SALE

One 2 1/2 h. p. Ingles Gas engine. Apply to Mrs. A. Reichelt, Kapaa Homestead.

FOR SALE

Dining room table, 4 chairs, 2 rockers, all in bamboo. Inquire at Mrs. O. R. Olsen, Lihue.

Dr. T. L. Morgan
OSTEOPATHIC PHYSICIAN

Office on Wm. Hyde Rice Premises

Phone 154-L.

JEWELERS

Everything in the
Silver and Gold Line
Rich Cut Glass
and Art Goods

Merchandise of the
Best Quality Only

H. F. Wichman
& Co. Ltd.

Leading Jewelers

P. O. BOX 342 HONOLULU

Honolulu Paper Co.
Limited

Wholesale Paper Dealers
and Stationers.

821-823 Alakea Street
HONOLULU, HAWAII.

How Much Does a Roof Cost-If It Leaks?

When you put on a good roof you know how much it will cost. But there's no telling what a leaky one will cost.

Water damage need not be feared if you have a Johns-Manville PILOT or REGAL roof. These "rubber" type Johns-Manville products are the most satisfactory roofing material yet devised.

As with other Johns-Manville products the company's interest does not cease when your order is delivered and paid for. After roofing goes into action Johns-Manville service keeps a record of its performance. Ask for further information on this feature.

THE HONOLULU IRON WORKS CO.

Sole Agents in Hawaii for Johns-Manville Products