

Ten Japanese Battalions Repulsed

(Associated Press Cable to The Star).

MUKDEN, Feb. 2.—Ten Japanese battalions have been repulsed in the fighting here by the Russians.

GORKY IS RELEASED

THE GREAT RUSSIAN NOVELIST WHO DECLARED THAT REVOLUTION HAD BEGUN WHEN THE TROOPS FIRED ON GOPON AND THE STRIKERS ON EPIPHANY SUNDAY HAS BEEN SET FREE—WHAT HE HAS SAID AND DONE.

ST. PETERSBURG, Feb. 2.—Maxime Gorky, the novelist, has been released.

Maxime Gorky was born at Nizni Novgorod, March 14, 1868. He has been successively a painter of ikons, a peddler of kvass, a scullery-boy, a gardener, a watchman and a baker's apprentice. Some of his publications are: Chelkash; Song of the Falcon; Song of the Petrel; The Orloff Couple and Malva; Twenty-six and One; Forma Gordyeff; Makar Choudra; Troye; About The Devil; The Reader; The Outcasts, and Three Men.

When the troops fired on the strikers and populace in St. Petersburg January 23, following the firing on the chapel where the Czar and Royal family were celebrating the festival of the Epiphany, and the dead and wounded were estimated at from 2000 to 5000, Gorky gave expression to the following, for which he was arrested. Journalists, authors and others united in an appeal to the Czar to save his life, though Minister of the Interior Mirsky at first refused to receive the deputation which presented the appeal. This appeal seems now to have been successful:

"Today inaugurated revolution in Russia. The Emperor's prestige will be irrevocably shattered by the shedding of innocent blood. He has alienated himself forever from his people. Gopon taught the workmen to believe that an appeal direct to the 'Little Father' would be heeded. They have been undeceived. Gopon is now convinced that peaceful means have failed and that the only remedy is force. The first blood has been shed, but more will follow. It is now the people against the oppressors and the battle will be fought to the bitter end."

CARRYING CONTRABAND.

SAN FRANCISCO, Feb. 2.—The British steamer Brinkburn sailed today for Vladivostok with a cargo of forage.

RUSSIAN PRESS CENSOR REMOVED.

ST. PETERSBURG, Feb. 2.—M. Swereff, the chief Russian press censor, has been removed.

CURATIVE SKIN SOAP.

Refreshing and pleasant to the skin, purifies the pores and removes black heads. Improves the complexion. Hobron Drug Co.

NEW GOODS.

We are showing big bargains in full lines of corset cover embroidery which will pay you to inspect. New shipment of Irish linen at 45c a yard. Pacific Import Co.

ANNUAL MILLINERY SALE.

Remarkable reductions at Sachs' on ladies and children's trimmed and untrimmed hats and children's sailor hats. Sale begins Monday morning January 30.

It frequently happens that one desires to set aside property for the use and benefit of a wife, child, or others, to be held and managed by a trustee, and the income paid to the person or persons designated, who for some reason, is unable to care for the principal.

This company is authorized by law to act as trustee for such.



HAWAIIAN TRUST CO., LTD.
Fort Street, Honolulu

ANOTHER CASE OF RHEUMATISM CURED BY CHAMBERLAIN'S PAIN BALM.

The efficacy of Chamberlain's Pain Balm in the relief of rheumatism is being demonstrated daily. Parker Triplett, of Grigsby, Virginia, U. S. A., says that Chamberlain's Pain Balm gave him permanent relief from rheumatism in the back when everything else failed, and he would not be without it. For sale by all dealers, Benson, Smith & Co., agents for Hawaii.

PACIFIC IMPORT CO. FOR SKIRTS.

They are showing great values in the latest styles of black and colored skirts; prices \$4.00, \$4.50 and \$5.00.

AT THE OLD STAND.

Kalsomining, tinting and glazing a specialty with Enos Bros, Union street.

THINK OF IT.

A leather bound fine edition of Webster Unabridged Dictionary \$7 at Arleigh's book and stationary store.

HUNTER'S SUPPLIES

SHOTGUNS, RIFLES, REVOLVRS

Ammunitions

A FULL LINE AT

PEARSON & POTTER CO.

Limited

481 FORT STREET

Gallant Priest Died In Battle

REV. RYOGEN SATOMI, OF BUDDHIST TEMPLE HERE, FELL BEFORE PORT ARTHUR IN LAST GENERAL ASSAULT RIDDLED WITH BULLETS—OF 250 OF THE FORLORN HOPE ONLY 16 REMAINED ALIVE.

The Japanese colony in Honolulu is both grieved and proud over the news which has just reached here of the death of Reverend Ryogen Satomi, formerly assistant priest at the Japanese Buddhist temple on Fort street. Rev. Satomi fell before Port Arthur in the last general assault after having been wounded twice.

Priest as he was, the young man was essentially the priest militant and during the period of service which he, in common with every other



REV. RYOGEN SATOMI OF HONOLULU KILLED IN THE ASSAULT ON PORT ARTHUR.

Japanese, had to serve, he displayed a marked taste for military service. He came to Honolulu in October, 1903, as assistant to his cousin Rev. Imamura who is the officiating priest of the Buddhists here. He made many friends among the Japanese and also among the English speaking people with whom he came in contact. Being in the first line of the reserves he was called to Japan in April last and went to the front in the ranks of the 36th Sabai regiment of infantry. His regi-

(Continued on page five.)

QUIET RESTORED IN RUSSIA.

(Associated Press Cable to The Star).

ST. PETERSBURG, Feb. 2.—Quiet has been restored in most of the industrial centers of the Empire, except Riga where 53 rioters were killed and 150 wounded in an encounter with the troops.

NEW MINISTER OF JUSTICE APPOINTED.

ST. PETERSBURG, Feb. 2.—Minister of Justice Muraviev has been made Russian Ambassador to Rome. He has been succeeded by M. Manuclin, the former Assistant Minister of Justice.

LONDON BEETS.

SAN FRANCISCO, Feb. 1.—The London price of 88 analysis beets this day is 16 shillings. The last previous quotation was January 31, 15 shillings, 9 pence. The quotation a year ago was 7 shillings, 9 pence.

FUNERAL OF MRS. WALTER G. SMITH

SERVICES CONDUCTED IN SAN DIEGO AT WHICH FLORAL OFFERINGS WERE BEAUTIFUL.

SAN DIEGO, January 21.—The funeral services over the remains of the late Mrs. Walter Gifford Smith, wife of the well-known Honolulu newspaper man, were held this morning at the undertaking establishment of Watson, Davis and Co., and the body was shipped after being embalmed to Sherbourne, N. Y., being accompanied by her son, Ernest N. Smith, who came from Stanford University to perform that duty.

Rev. Charles E. Spaulding of Christ Episcopal Church officiated and a mixed quartet sang several numbers. There were many attendants at the funeral from among the large number who knew and loved Mrs. Smith when she made her home in this city and at Coronado. The floral offerings were both numerous and beautiful.

ARRIVING.

Thursday, February 2.
Smr. Helene, Nelson, from Hamakua ports and Kaula at 6:12 a. m. with 80 head cattle and 4,040 bags sugar.

DEPARTING.

Thursday, February 2.
Smr. Helene, Nelson, for Hamakua ports at 5 p. m.

CALABASHES BY THE SCORE

GOURD TREE IN THE CAPITOL GROUNDS HAS A PHENOMENAL CROP THIS SEASON.

Colonel R. J. Greene who has charge of the Capitol grounds is particularly proud of the remarkable crop of calabashes which the gourd tree mauka of the Bungalow is bearing at present. There are considerably over a hundred gourds on it at present in all stages of development and new blossoms are appearing every week. The curious part of the gourd tree is that its blossoms and subsequent fruit invariably spring from the solid trunk or from the branches and are not in among the leaves as is the case with most fruits. Strangers on the islands are much interested in the tree, so much so that a sign has been put on it marking it strictly tabu. The tree is between the Bungalow and Hotel street near the little wicket gate which was made for the purpose of giving a certain royal personage easy access to the Hawaiian hotel.

STOCKS THIS AFTERNOON.

The following sales on the exchange were reported at the afternoon session today: On board: 50 Honokaa \$22.50; 50 Honokaa \$22.50; 50 Honokaa \$22.50; 50 Honokaa \$22.50; 50 Kahuku \$35.00; 50 Olua \$5.50; 30 Olua \$5.50; 12 Koloa \$150.00.

Fought With Wild Cattle In Harbor

TEN WILD STEERS FROM HAWAII BREAK LOOSE FROM THE CATTLE PEN AND BEGAN TO SWIM DOWN CHANNEL—CAPTAIN HAMLET OF REVENUE CUTTER BEAR TRIED TO CHECK THEM—HAD TO CALL FOR AID FROM THE BOAT BOYS.

Captain Hamlet, the commander of the revenue cutter Bear, has probably had a number of exciting experiences in his career of watching poachers and smugglers, but he probably never experienced quite as novel or as more lively time in his naval career as he did this morning.

The steamer Helene arrived this morning from Hawaii with a quantity of cattle for the Metropolitan Meat Company. The cattle which were pretty wild were discharged at the cattle pen and the steamer then moved around to the Railway wharf. The gate to the pen was not closed entirely and

(Continued on page five)

INSPECTOR'S WORK NEARLY COMPLETE

Will Probably Be Able to Return to Mainland by S. S. Siberia This Month—Eleu May Get Certificate.

The Federal inspectors of hulls and boilers are getting along rapidly with their work in these islands, the greater part of the inspection being completed. It is likely from the way that conditions appear now that the inspectors will finish their work in time to get away for San Francisco by the S. S. Siberia February 14. In such an event they will have worked with very fast speed as they will have been down here a little over a month.

The inspectors have not passed on the boilers of the government tug Eleu but they have inspected her hull. The vessel was found to be in much better condition than had been anticipated. With considerable repairing her hull can be put into good shape so as she can secure a certificate. But considerable expense will be incurred in making such repairs. Whether the boilers will pass inspection is another matter. The inspectors have not examined the boilers of the Eleu. If she can secure a certificate she will probably be offered for sale by the government.

DAVIS NOT AFTER WHITNEY'S SCALP

George A. Davis is not after the scalp of Judge Whitney of the police court, but the attorney declares he is after a square deal. He does not seem



GEORGE A. DAVIS.

to think that he got it from Whitney yesterday.

According to the statements of Davis, Sekano and Uta Nakashima a wo-

man were charged with trying to export \$100 from another Japanese who was employed in the New England Bakery. According to the claims of Sekano the latter gave the bakery an envelope containing \$25 to give to Sekano's father in Japan. In some way the money got astray. Sekano and the woman Uta who was alleged by the bakery to have received the money from him, went after the Jap recently and instead of demanding only the \$25, wanted \$100 for damages and interest during the last two years from

(Continued in Page eight.)

THE KAIMUKI ZOO.

The Kaimuki Zoo will interest you. Monkeys, Belgian Hare, Rabbits, Mongooses, Guinea Pigs, Peacocks, Guinea Fowl, Pheasants, Quail, Madarin Ducks, Ring Doves, Chinese Doves, Japanese Robins, Java Sparrows, Strawberry Birds, Canaries, African Parrot, Australian Parrots, Cockatoo, Fan Tail Pigeons, etc., etc.

Misses' and Children's SHOES

Remarkable Prices for last days of great Clearance Sale.

You Cannot Afford To Miss This Chance

MANUFACTURER'S SHOE CO.,
1051 FORT STREET

THE OLD RELIABLE

ROYAL BAKING POWDER
Absolutely Pure
THERE IS NO SUBSTITUTE

Oceanic Steamship Company.

TIME TABLE

The fine Passenger Steamers of this line will arrive at and leave this port as hereunder:

FROM SAN FRANCISCO.	1905.	FOR SAN FRANCISCO.	1905.
*ALAMEDA.....	FEB. 17	VENTURA.....	FEB. 7
VENTURA.....	MAR. 1	*ALAMEDA.....	FEB. 23
*ALAMEDA.....	MAR. 10	SIERRA.....	FEB. 28
SIERRA.....	MAR. 22	*ALAMEDA.....	MAR. 15
*ALAMEDA.....	MAR. 31	SONOMA.....	MAR. 21
SONOMA.....	APR. 12	*ALAMEDA.....	APR. 5
*ALAMEDA.....	APR. 21	VENTURA.....	APR. 11
VENTURA.....	MAY 3	*ALAMEDA.....	APR. 28
*ALAMEDA.....	MAY 12	SIERRA.....	MAY 5
SIERRA.....	MAY 24	*ALAMEDA.....	MAY 17
SONOMA.....		SONOMA.....	MAY 23

* Local Boat.

In connection with the sailing of the above steamers, the Agents are prepared to issue to intending passengers coupon through tickets by any railroad from San Francisco to all points in the United States, and from New York by steamship line to all European Ports.

For further particulars apply to:

W. G. Irwin & Co.

(LIMITED)

General Agents Oceanic S. S. Company.

Canadian-Australian Royal Mail

STEAMSHIP COMPANY

Steamers of the above line, running in connection with the CANADIAN PACIFIC RAILWAY COMPANY between Vancouver, B. C., and Sydney, N. S. W., and calling at Victoria, B. C., Honolulu and Brisbane, Q.

Due at Honolulu on or about the dates below stated, viz:

FOR AUSTRALIA.	FEB. 11	MOANA.....	FEB. 8
FOR ANCOOVER.	MAR. 11	MOANA.....	MAR. 8
MOANA.....	MAR. 11	MOANA.....	MAR. 8
MOANA.....	APR. 8	MOANA.....	APR. 5
MOANA.....	MAY 6	MOANA.....	MAY 3

CALLING AT SUVA, FIJI, ON BOTH UP AND DOWN VOYAGES.

THEO. H. DAVIES & CO., Ltd., Gen'l Agts.

Pacific Mail Steamship Co.

Occidental & Oriental S. S. Co

Steamers of the above Companies will call at Honolulu and leave this port on or about the dates below mentioned:

FOR CHINA AND JAPAN.	1905.	FOR SAN FRANCISCO.	1905.
MANCHURIA.....	FEB. 4	COPTIC.....	FEB. 3
KOREA.....	FEB. 21	SIBERIA.....	FEB. 14
COPTIC.....	MAR. 4	MONGOLIA.....	FEB. 24
SIBERIA.....	MAR. 15	CHINA.....	MAR. 10
MONGOLIA.....	MAR. 25	MANCHURIA.....	MAR. 21
CHINA.....	APR. 4	DORIC.....	APR. 21
MANCHURIA.....	APR. 15	KOREA.....	APR. 14
DORIC.....	APR. 27	COPTIC.....	APR. 25
KOREA.....	MAY 9	SIBERIA.....	MAY 6
COPTIC.....	MAY 20	MONGOLIA.....	MAY 16
SIBERIA.....	MAY 31	CHINA.....	MAY 27
MONGOLIA.....	JUNE 10	MANCHURIA.....	JUNE 17
CHINA.....	JUNE 20	DORIC.....	JUNE 17
MANCHURIA.....	JULY 1	KOREA.....	JUNE 30

For general information apply to

H. Hackfeld & Co.

AMERICAN HAWAIIAN STEAMSHIP COMPANY.

DIRECT MONTHLY SERVICE BETWEEN NEW YORK AND HONOLULU, VIA PACIFIC COAST.

FROM NEW YORK.

S. S. "AMERICAN".....To sail about January 30th

S. S. "CALIFORNIAN".....To sail about February 25th

FROM SAN FRANCISCO.

S. S. "NEVADAN".....To sail January 26th

S. S. "NEBRASKAN".....To sail February 16th

FROM HONOLULU TO SAN FRANCISCO.

S. S. "NEVADAN".....To sail February 5th

S. S. "NEBRASKAN".....To sail February 26th

FROM SEATTLE AND TACOMA (Via San Francisco.)

S. S. "NEBRASKAN".....To sail February 10th

S. S. "NEVADAN".....To sail March 3rd

H. Hackfeld & Co.,

C. P. MORSE, General Freight Agent.

AGENTS.

A Cup of Good Tea

THAT DELIGHTFUL AMBER COLOR, THE REFRESHING AROMA AND DELICATE FLAVOR OF THE CHOICEST TEAS ARE CERTAIN WHEN YOU USE

Flowery Orange Pekoe

It is specially selected and packed by the growers in Ceylon for our Honolulu trade.

Awarded Gold Medals at Kimberly, South Africa, 1892; Chicago, 1893; San Francisco 1894; Hobart, 1895; Paris, 1901.

Half pound, 35 cents. Pound packages, 65 cents.

Henry May & Co., Ltd.,

Retail Main 22. TELEPHONES. Wholesale Main 92.

SHIPPING INTELLIGENCE

(For additional and later shipping see pages 4, 5, or 6.)

New Moon February 9th at 9:35 a. m.

Date	Jan. a.m.	ft. p.m.	p.m. a.m.	High Tide	Low Tide	High Tide	Low Tide	High Tide	Low Tide	High Tide	Low Tide
Jan. 1	0.29	1.6	12.03	5.39	7.40	6.28	5.49	2.04			
Jan. 2	1.12	1.8	1.07	6.32	8.33	6.28	5.50	3.40			

Feb.

1	1.57	1.9	2.00	7.23	9.15	6.87	5.60	4.23
2	2.38	1.9	2.45	8.09	9.90	6.87	5.51	5.14
3	3.19	1.9	3.25	8.51	10.19	6.87	5.52	6.01
4	4.01	1.8	4.03	9.30	10.42	6.36	5.52	6.85

a.m. p.m.

5	4.15	1.7	4.45	11.04	10.08	6.36	5.53	7.19
6	4.42	1.6	5.25	11.39	10.45	6.35	5.53	8.09

Times of the tide are taken from the U. S. Coast and Geodetic Survey tables. The tides at Honolulu and Hilo occur about one hour earlier than at Honolulu. Hawaiian standard time is 10 hours 30 minutes slower than Greenwich time, being that of the meridian of 157 degrees 30 minutes. The time whistle blows at 1:30 p. m., which is the same as Greenwich, 4 hours, 0 minutes. The Sun and moon are for local time for the whole group.

U. S. DEPARTMENT OF AGRICULTURE.—WEATHER BUREAU.

The following data, covering a period of 30 years, have been compiled from the Weather Bureau and McKibbin records at Honolulu, T. H. They are issued to show the conditions that have prevailed, during the month in question, for the above period of years, but must not be construed as a forecast of the weather conditions for the coming month.

Month of February for 30 years.

TEMPERATURE. (1890-1904, incl.)

Mean or normal temperature, 71°.

The warmest month was that of 1897, with an average of 73°.

The coldest month was that of 1903, with an average of 67°.

The highest temperature was 82°, on Feb. 17, 1890, Feb. 16, 1897 and Feb. 22nd and 23rd, 1900.

The lowest temperature was 52° on Feb. 16, 1902.

PRECIPITATION (rain). (1877-1894, incl.)

Average for the month, 5 inches.

Average number of days with .01 of an inch or more, 12.

The greatest monthly precipitation was 14.00 inches in 1893.

The least monthly precipitation was 0.32 inches in 1875.

CLOUDS & WEATHER (1884-1904 incl.)

Average number of clear days, 6; partly cloudy days, 13; cloudy days, 9.

WIND. (1875-1904, incl.)

The prevailing winds have been from the northeast.

Station, Honolulu, T. H.

Date of issue: January 30th, 1905.

ALEX. McC. ASHLEY,

Section Director, Weather Bureau.

ARRIVING.

Thursday, February 2.

S. S. Manchuria, Saunders, from San Francisco, due in morning.

U. S. A. T. Sheridan, Peabody, from San Francisco at 8 a. m.

S. S. Coptic, Finch, from the Orient due.

U. S. A. T. Dix, from Manila and Nagasaki, due.

Friday, February 3.

Stmr. Mauna Loa, Simerson, from Lahaina, Maui, Kona and Kau ports due early in morning.

DEPARTING.

Wednesday, February 1.

Am. schr. Alice Cooke, Penhallow, for San Francisco at 2:15 p. m.

Schr. Charles Levi Woodbury, Harris, for Hilo at 5:15 p. m.

Thursday, February 2.

Stmr. Kauai, Bruhn, for Anahola at 5 p. m.

Stmr. Iwaland, Piltz, for Honolulu and Kaula at 5 p. m.

Stmr. Mikahala, Gegory, for Kauai ports at 5 p. m.

S. S. Coptic, Finch, for San Francisco may sail in evening.

Friday, February 3.

U. S. A. T. Sheridan, Peabody, for Manila at 11 a. m.

S. S. Manchuria, Saunders, for the Orient, probably sail in afternoon.

PASSENGERS.

Arriving.

Per U. S. A. T. Sheridan, February 2, from San Francisco for Honolulu—C. F. Armistead, Captain 21st Infantry; Lieut. Trotter, Coast Artillery; Mrs. Bailey, sister Lieut. Trotter; Mrs. C. Morgan, sister employe R. M. S.; Mrs. E. E. Mead and infant, family Lieut. R. C. S.; Mrs. O. C. Hamlet, family Lieut. R. C. S.; Mrs. Henry Highton, Edward M. Shaw, Chief clerk Light house Service; Mrs. Mark Well and 3 children, family Customs employe; Dr. Charles Slough and wife, phar. M. H. S.; D. P. Lawrence, wife and child; Mrs. Thomas Dunn, wife Chief Yeoman U. S. N.; Robert A. McCulloch, ex-soldier.

FINE FRUIT EXHIBIT.

Manager Lake of the Alexander Young Hotel had a splendid display of Island grown fruits on exhibition in the dining room of the hotel last evening. The special feature of the display was a quantity of strawberries grown on the Clark farm that in size and lusciousness rivaled strawberries grown anywhere. Besides these there were artistically arranged papayas, figs grapes and other island fruit.

UNIVERSITY CLUB.

The University Club last night elected officers as follows: President, A. S. Hartwell; vice president, A. Galtley; secretary, A. F. Judd; treasurer, J. R. Galt; governors, M. F. Prosser, H. P. Benson, Dr. F. H. Humphris. The entire list above constitutes the Board of Governors. During the absence of J. R. Galt, John Waterhouse was selected as treasurer. The election was held in the new club house, where a smoker was held with about seventy-five members present.

THE "FOREST CITY" ART PORTFOLIOS

Constitute a Complete and Artistic Pictorial and Descriptive History

—OF THE—

GREAT ST. LOUIS WORLD'S FAIR



(Reduced Pen Sketch of Cover. Size of Page, 11x14 inches.)

SO THOROUGHLY does this Great Exposition represent the world's civilization that if all men's other works were, by some unspeakable catastrophe, blotted out, the record here established would afford a necessary standard for the re-establishment of our entire civilization. And, just as the Louisiana Purchase Exposition held within its gates an epitome of the civilization of to-day, so the Forest City Portfolios are a complete record and reflex of the great Exposition. This great World's Fair, one of the most remarkable undertakings in the history of American civilization and progress, will inspire many pens, but no history of the great event can compare with the one written on the grounds by Secretary Stevens and illustrated with 480 magnificent photographic reproductions, which transfer the Exposition to the printed page.

A BEAUTIFUL SOUVENIR AND MEMENTO

This paper has made special arrangements whereby its readers can obtain the full series 30 Portfolios for only \$3.00, or 10c for any part desired. Use the "Forest City" Coupon in this issue.

Thirty Parts Now Ready

How to Secure the Views.

These views, which will constitute a complete reflex and record of the Exposition, are not distributed by us as a matter of profit, but rather to please our readers. Although the regular price is 25 cents, we place the entire series "thin the reach of every reader at only

10c a Part

to cover the cost of HANDLING, WRAPPING, ADDRESSING, MAILING, ETC. Simply fill out the coupon at the right and bring or send to us with 10 cents, and Part 1 will be mailed to you at once. Address,

Fill out this Coupon and bring or send to us, with 10 CENTS, as indicated below.

BE SURE TO STATE WHICH PART YOU WISH

.....1904.

HAWAIIAN STAR,
Honolulu, Hawaii:

Enclosed herewith find TEN CENTS to cover cost of postage and expense of mailing No. of "The Forest City," to which I am entitled as one of your readers.

Name

P. O. Island

HAWAIIAN STAR, Portfolio Department Honolulu, Hawaii

Chas. Spreckels. Wm. G. Irwin.

Claus Spreckels & Co.
BANKERS

HONOULULU, H. I.

San Francisco Agents—The Nevada National Bank of San Francisco.
DRAW EXCHANGE ON
SAN FRANCISCO—The Nevada National Bank of San Francisco.
LONDON—Union of London & Smith's Bank, Ltd.
NEW YORK—American Exchange National Bank.
CHICAGO—Corn Exchange National Bank.
PARIS—Credit Lyonnais.
BERLIN—Dresdner Bank.
HONGKONG AND YOKOHAMA—The Hongkong and Shanghai Banking Corporation.
NEW ZEALAND AND AUSTRALIA—Bank of New Zealand, and Bank of Australasia.
VICTORIA AND VANCOUVER—Bank of British North America.

TRANSACT A GENERAL BANKING AND EXCHANGE BUSINESS.

Deposits Received. Loans made on Approved Security. Commercial and "Travelers" Credits issued. Bills of Exchange Bought and Sold.

COLLECTION PROMPTLY ACCOUNTED FOR.

ESTABLISHED IN 1858.

BISHOP & CO.
BANKERS**BANKING DEPARTMENT.**Transact business in all departments of banking.
Collections can be fully attended to.
Exchange bought and sold.

Commercial and Travelers' Letters of Credit issued on the Bank of California and N. M. Rothschilds & Sons, London.

Correspondents for the American Express Company, and Thos. Cook & Son.

Interest allowed on term and Savings Bank Deposits.

TRUST DEPARTMENT.Act as Trustees, collect Rents and Dividends.
Safety Deposit Vault.**ACCOUNTANT DEPARTMENT, 228**Bethel street.
Auditors and Trustees in Bankruptcy Books examined and reported on.**INSURANCE DEPARTMENT, 224**F. Thel Street.
Agents for Fire, Marine, Life, Accident and Employers Liability Insurance Companies.**THE YOKOHAMA SPECIE BANK**

Limited

ESTABLISHED 1850.

Capital Subscribed.....\$24,000,000
Capital Paid up.....18,000,000
Reserve Fund.....9,520,000**HEAD OFFICE, YOKOHAMA.****Branches:**

Honolulu, New York, San Francisco, London, Lyons, Bombay, Hongkong, Newchwang, Peking, Shanghai, Tientsin, Kobe, Nagasaki, Tokio.

The Bank buys and receives for collection Bills of Exchange, issue Drafts and Letters of Credit, and transacts a general banking business.

Honolulu Branch 67 King Street

S. SAIKI,
Bamboo Furniture**AND****PICTURE FRAMES.**Neat and Handsome
Designs made to order.

665 Beretania Street, near Punchbowl.

Oregon Restaurant

King Street Near Nuuanu.

Serves the best 25 cent meal in town.

SPECIAL SUNDAY DINNER from 4 p. m. to 9 p. m. Experienced cooks, and courteous waiters.

W. A. CHUNG, Proprietor.

McFadden
vs. Modlin

Featherweight Championship of the Hawaiian Islands.

10 Rounds.Sailor Moch vs. Young Scott.
6 Rounds.

Nettigan vs. Harris.

4 Rounds.

Ashcroft vs. Viera.

4 Rounds.

Japanese Exhibition of Jiu Jitsu.

Orpheum Theater,
Saturday, Feb. 4

Seats on sale at Orpheum.

Want ads in the Star bring quick returns. Three lines three times for 25 cents.

A SAN FRANCISCAN
AND A REVOLUTION

REPORT THAT "OLLIE" TOBIN IS IN A CONSPIRACY TO PUT THROUGH A REVOLUTION IN SAN SALVADOR AND MAKE HIMSELF VICE-PRESIDENT OF NEW REPUBLIC—TOBIN'S SPECIAL QUALIFICATION SEEMS TO BE EXPERIENCE AS POLO PLAYER.

Su puesto ocupa en el feral combate,
y nada doma su valor heroico;
el temor de la muerte no le abate:
la ve de frente, con semblante estoico.

This Spanish verse in praise of a famous warrior was not written to honor O. D. Tobin, better known as "Ollie," but the scion of the well-known San Francisco banking house may yet be the object of similar poetry.

Very freely translated, and with more regard for the facts relating to Mr. Tobin, than for the meaning of the foreign author, the quoted stanza may be rendered as follows:

His place on the foremost battle line,
Young Tobin now as a conqueror view!
Unclouded ever his star will shine;
He'll be a ruler when his dreams come true.

According to the news brought from Central America on the steamer City of Panama, Mr. Tobin has joined Senor Escalon of San Salvador in a plan to overthrow the little Central American Government and establish a new republic there. Mr. Escalon is a man of high standing and much influence in Salvador, his cousin being the president now in office.

The project is to make Senor Escalon president, after the overthrow of the present government, and to honor Mr. Tobin with the Vice-Presidency. The present Republic of Salvador, having a population about twice as large as that of the city of San Francisco, is something like the other Southern nations in being given to revolutionary impulses. The revolutions are played with all the fervor of a polo match at Burlingame; the winners holding office until they lose the championship to new challengers. "Ollie" Tobin was always fond of outdoor sport.

Last November Mr. Tobin started for England by way of Panama, and on the way down the coast he had Senor Escalon as a fellow passenger. The plot, it is said, was formed on shipboard, the future President and Vice-President of the little republic agreeing to equally share in the cost of the prospective war. Mr. Tobin's first duty is to buy 500 rifles for equipment of the revolutionary army, and from England he will go to Germany, where the Krupp manufacturing are located.

The beginning of the Escalon-Tobin revolution is scheduled for the early part of June. Before that time Mr. Tobin may return to San Francisco for the purchase of a small steamer to use in naval operations.

People who are not acquainted with Central American affairs think the venture is a visionary one, but Mr. Tobin may yet be at the head of the republic. Quien sabe?—San Francisco Examiner.

CAR ROUTE
AS CHANGED

THE STREETS WHICH WILL NOW BE TRAVERSED BY THE DIFFERENT CARS AND THE TIMING

The following particulars regarding the new routes for the Honolulu street car service will be of use to every resident:

KING STREET LINE.

Cars marked "Kalili and Waikiki" from Kalili via King, McCully streets and Waikiki road to Diamond Head, every ten minutes. Last car leaves Port and King for Kalili, 11:42 p. m. For Waikiki, 11:27 p. m.

HOTEL STREET LINE.

Cars marked "Liliha Street and Punahou" from Liliha street via Liliha, King, Hotel, Alapai and Beretania streets to Punahou Junction. Cars marked additionally "To Miller Street Only" turn back at Capitol. Cars marked "To Punahou Junction" go out Beretania. This gives ten minute service on Liliha street. Last car leaves Port and Hotel streets for Liliha and 11:33 p. m. For Punahou Junction via Beretania, 11:27 p. m.

PUNAHOU LINE.

Cars marked "Fort St. and Punahou" from Port and Allen streets (Oceanic dock) via Fort, Beretania, Alapai, Luanihio, Pansacola, Wilder and Alexander streets to Punahou Junction every ten minutes. Last car leaves Port and Allen streets, 11:30 p. m.

NUUANU VALLEY LINE.

Cars marked "Fort and Nuuanu" from Port and King streets via Fort, Beretania and Nuuanu streets to the Mausoleum, every ten minutes. Last car leaves Port and King streets, 11:25 p. m.

ALAKEA STREET LINE.

Unmarked cars from Iron Works via Ala Moana, Alakea, Emma and Punchbowl streets to Pauoa, every ten minutes.

MANOA VALLEY LINE.

Unmarked cars from Punahou street and Wilder avenue via Manoa Valley, every twenty minutes. Last car connecting with Manoa Valley leaves Port and Allen streets at 11:30 p. m. via "Punahou Line."

WALALAE ROAD LINE.

Unmarked cars from Punahou Junction (King and Alexander streets) via King street and Walalae road to Kaimuki every half hour. Last car connecting with Walalae car leaves Port and King streets via "King St. Line," 11:27 p. m., leaves Port and Hotel streets via "Hotel Street Line" 11:27 p. m.

SHE PROVED HER CASE.

Miss Frances Kellar of the Woman's Municipal League of New York illustrated admirably at a recent dinner party a point which she wished to make.

"Women," a man had said, "are valuer than men."
"Of course," Miss Kellar answered, "I admit that women are vain and men are not. There are a thousand proofs that this is so. Why, the necktie of the handsomest man in the room is even now up the back of his collar."
There were six men present, and each of them put his hand gently behind his neck.—Salt Lake Tribune.

Want ads in the Star bring quick returns. Three lines three times for 25 cents.

JIU JITSU AT
THE ORPHEUM

AN EXHIBITION OF THE MUCH TALKED OF JAPANESE SCIENCE OF SELF DEFENCE.

On Saturday night as a preliminary to the McFadden-Modlin fight at the Orpheum, six Japanese will give exhibitions of wrestling and Jiu Jitsu. The latter is their science of self defence, which many people claim is far superior to anything in the world. It is claimed that one of these little men weighing 115 lbs. could conquer the largest American boxer. This is the first opportunity that has ever been presented to the Honolulu public to see an exhibition of this kind.

McFadden and Modlin together with Joe Cohen met at the Honolulu Athletic Club and decided upon Prof. Woods to referee the contest. Woods was perfectly agreeable to all three parties. He is perfectly responsible to referee and the public is sure to get a "run for their money" with him in the ring.

Young Scott and Sailor Marsh are training hard for their six round semi-final. They are both strong and have the punch.

Seats for the fight were placed on sale at the Orpheum this morning the sale opened up brisk and it looks as though there will be a large crowd.

NAONE IAKA FINED.

Naone Iaka who pleaded guilty to a charge of gross cheat in Judge Robinson's court yesterday came up for sentence this morning and was punished by a fine of \$30 and costs. A second charge against him was not pressed. Iaka's offense consisted of collecting \$2.50 to which he had no right.

NATIONAL GUARD.

There was an election in Company B. N. G. H., last night, held under General Order No. 1 relieving Captain J. B. Gorman from duty for overstaying his furlough. A. D. Wise was elected Captain with opposition, as was also J. W. Cook for first lieutenant. Will Prestige was elected second lieutenant in a spirited contest with two others. Prestige will become an American citizen before Judge Dole on Monday in order to qualify.

JOINS STOCK EXCHANGE.

The Stock Exchange held an executive meeting yesterday afternoon and elected George P. Thielen a member of that body. Thielen having purchased the seat of H. P. Eakin for \$5,000. Thielen will at once enter upon his new profession of stock broker and will resign his position as official stenographer of the United States Court.

MRS. BUFFANDEAU INJURED.

Mrs. E. E. Buffandeau sustained a serious accident at Kahuku ranch yesterday. She was thrown from a buggy and kicked in the face by a horse. She was taken to Kahuku and a physician summoned to attend her. Mrs. Buffandeau was formerly Miss Victoria Ellis a sister of John and Willie Ellis the singers.

HIS FAME LIVES.

A Pennsylvanian man recently sought fame by drinking a quart of raw whiskey at a single draught. All the consolation he got for the feat, however was the joy of having it recorded on his tombstone.

You will prick up
your ears when we
begin to tell you
some of the things
Stein-Bloch Smart
Clothes can do to
your Looks:

This is their label of
Rightness:



M. MCINERNEY, LTD.
MERCHANT AND FORT STS.

Clothes Cleaned and Pressed
BY THE

Honolulu Renovating Co.,

Joseph J. Fern, Manager
Office 1148 North Fort Street,
Opposite Catholic Mission.

All telephone messages promptly attended to.
We Call for and Deliver.

DYEING EXTRA.

Telephone Main 378. Honolulu, T. H.

FOREIGN STEAMER TIMETABLE**STEAMERS TO ARRIVE.**

Date.	Name.	From.
Jan. 4—	Mongolia	San Francisco
6—	Alameda	San Francisco
7—	Doric	Yokohama
11—	Miowera	Colonies
13—	Nebraskan	San Francisco
14—	Aorangi	Victoria, B. C.
17—	China	San Francisco
17—	Sonoma	Colonies
18—	Sierra	San Francisco
27—	Korea	Yokohama
27—	Alameda	San Francisco
Feb. 3—	Nevadan	San Francisco
3—	Coptic	Yokohama
4—	Manchuria	San Francisco
7—	Ventura	Colonies
8—	Sonoma	San Francisco
8—	Moana	Colonies
9—	Doric	San Francisco
11—	Miowera	Victoria, B. C.
14—	Siberia	Yokohama
17—	Alameda	San Francisco
21—	Korea	San Francisco
24—	Nebraskan	San Francisco
24—	Mongolia	Yokohama
25—	Sierra	Colonies
Mar. 1—	Ventura	San Francisco
4—	Coptic	San Francisco
8—	Aorangi	Colonies
10—	Alameda	San Francisco
10—	China	Yokohama
11—	Moana	Victoria, B. C.
15—	Siberia	San Francisco
17—	Nevadan	San Francisco
21—	Sonoma	Colonies
21—	Manchuria	Yokohama
22—	Sierra	San Francisco
25—	Mongolia	San Francisco
31—	Alameda	San Francisco

STEAMERS TO DEPART.

Date.	Name.	For.
Jan. 4—	Mongolia	Yokohama
7—	Doric	San Francisco
11—	Alameda	San Francisco
11—	Miowera	Victoria, B. C.
14—	Aorangi	Colonies
17—	China	Yokohama
17—	Sonoma	San Francisco
18—	Sierra	Colonies
21—	Nebraskan	San Francisco
27—	Korea	San Francisco
Feb. 1—	Alameda	San Francisco
3—	Coptic	San Francisco
4—	Manchuria	Yokohama
7—	Ventura	San Francisco
8—	Sonoma	Colonies
8—	Moana	Victoria, B. C.
9—	Doric	Yokohama
11—	Nevadan	San Francisco
11—	Miowera	Colonies
14—	Siberia	San Francisco
21—	Korea	Yokohama
22—	Alameda	San Francisco
24—	Mongolia	San Francisco
28—	Sierra	San Francisco
Mar. 1—	Ventura	Colonies
4—	Nebraskan	San Francisco
4—	Coptic	Yokohama
8—	Aorangi	Victoria, B. C.
10—	China	San Francisco
11—	Moana	Colonies
15—	Alameda	San Francisco
15—	Siberia	*Yokohama
21—	Sonoma	San Francisco
21—	Manchuria	San Francisco
22—	Sierra	Colonies
25—	Nevadan	San Francisco
25—	Mongolia	Yokohama

*Calling at Manila.

!Date of Departure from Kahului.

U. S. A. Transports will leave for San Francisco and Manila, and will arrive from same ports at irregular intervals.

BEAVER LUNCH ROOM.

Fort Street. Opposite Wilder & Co.
H. J. NOLTE, PROP.

First-Class Lunches served with tea, coffee, soda water, ginger ale or milk.

Smokers Requisites a Specialty.

DIME NOVELS.

A member of the Chicago board of education is making a crusade against the sale of dime novels in that city.

USE

Golden Gate Flour

The Standard of Quality

Sold By All Dealers

Is Your Hour Wired
for Electric Light?
If Not, Why Not?

It is a

SAFE LIGHT

BRIGHT LIGHT

PLEASANT LIGHT

RIGHT LIGHT

CLEAN LIGHT

CHEAP LIGHT

Hawaiian Electric Co., Ltd

Office King St. near Alakea.

Phone Main 390.

The DENSMORE

Have you seen it? If not call at Hawaiian News Co. It is the most nearly perfect typewriter in the world. In every detail that means speed, fine work and least fatigue to the operator, the Densmore No. 5 is pre-eminent. Great improvements made over the old models. Worth double its price to the man who wants the best work and the most work.

Hawaiian News Co., Ltd
YOUNG BUILDING STORE

CHOICE GOODS

Ladies' Silk Kimonos.....\$6.50
Children's Silk Kimonos.....2.75
Silk Short Kimonos.....3.25
Japanese Silks (in all colors) per yard.....40c
Silk Cushion Covers with Coat of Arms, Silk Linen and Cotton Handkerchiefs, Japanese Purses for ladies, Japanese Screens and latest styles of Vases at very low prices.

K. FUKURODA,
25 and 32 Hotel St. Robinson Block.

CHICAGO...
IN LESS 3 DAYS
THAN

and over The Only Double-Track Railway between the Missouri River and Chicago.

Three Fast Trains Daily

VIA

SOUTHERN PACIFIC, UNION PACIFIC AND**CHICAGO & NORTHWESTERN RAILWAYS.**

Overland Limited. Vestibuled. Leaves San Francisco at 10:00 a. m. Daily. The most Luxurious Train in the World. Electric Lighted Through-out. Double Drawing-Room, Sleeping Cars, Composite, Observation, Buffet Smoking and Library Car. Dining Cars, Meals a la Carte. Less than three days to Chicago without change.

Eastern Express. Vestibuled. Leaves San Francisco at 6:00 p. m. Daily Through Pullman Palace and Tourist Sleeping Cars to Chicago. Dining Cars. Free Reclining Chair Cars.

Atlantic Express. Vestibuled. Leaves San Francisco at 9:00 a. m. Daily. Standard and Tourist Sleepers.

PERSONALLY CONDUCTED EXCURSIONS

Wednesdays, Thursdays and Fridays. The best of everything.

Chicago & Northwestern Ry.

R. R. RITCHIE, G. A. P. C.,

or S P Company's Agent 617 Market St. (Palace Hotel) San Francisco.

Fire Insurance!

Atlas Assurance Company of London.
Phoenix Assurance Company of London.
New York Underwriters Agency.
Providence Washington Insurance Company.
Phoenix Insurance Company of Brooklyn.
Fourth Floor, Stangenwald Building.

THE B. F. DILLINGHAM CO., LIMITED
General Agents for Hawaii.

CONSOLIDATED SODA WATER WORKS

COMPANY, LTD.
Esplanade, cor. Allen and Fort Sts.

Manufacturers of Soda Water, Ginger Ale, Sarsaparilla, Root Beer, Cream Soda, Strawberry, Etc., Etc.

BATH

THE

Plumber

165 S. King Street

Telephone Main 61

KONO EMPLOYMENT OFFICE

General house work, Cook, Sailor and day work, etc.

PHONE BLUE 2181.

Corner Emma and Beretania Streets.

The Hawaiian Star.

DAILY AND SEMI-WEEKLY.

Published every afternoon (except Sunday) by the Hawaiian Star Newspaper Association, Limited.

SUBSCRIPTION RATES.

Local, per annum.....\$ 8.00
Foreign, ".....12.00

Payable in advance.

FRANK L. HOOBS.....MANAGER

THURSDAY.....FEBRUARY 2, 1905

Coast Quotations And "Heat"

There seems to have been considerable indignation felt in some local quarters at the cablegram received by Halstead & Company day before yesterday announcing the sale of two blocks of Hawaiian Commercial at descending quotations on the San Francisco Stock Exchange, and describing the market there as weak and depressed. As a counterblast it was announced yesterday that Pollitz had cabled: "There is no truth in cable sent to Halstead & Company concerning this market. Our market firm with an upward tendency. We bid you \$87.50 for 500 or any part Hawaiian Commercial."

Aside from the rather unnecessary warmth shown in this dispatch it bears incontrovertible testimony to the truth of the fact it is denying. The Halstead cable announced the sale of ten shares at \$88.50. In proof that the market is not "weak and depressed," but is "firm with an upward tendency," the Pollitz cable offers to buy 500 shares or any part of it for \$87.50, a dollar less than an actual sale had been made at. This decidedly does not show an "upward tendency." But what it does show will be more clearly seen when taken into consideration with the fact that the last quotation sent by Pollitz on that particular stock, which had been made public, was January 26, four or five days previously, \$93. This shows a drop of \$5.50 between the quotation sent by Pollitz on January 26 and his offer to buy sent on February 1. If this does not bear out the statement of the Halstead cable that the market is weak and depressed, the language means nothing.

But it must be remembered that the Halstead cable gave the successive quotations as \$88.50 and \$86.875, based on actual sales on the exchange at those figures on January 31. But Pollitz' offer by cable on February 1 to buy 500 shares at \$87.50, does not constitute a quotation. If it were made on the stock exchange it would, because there it would be binding on the market is not "weak and depressed," but is "firm with an upward tendency," the Pollitz offer the status of a quotation, it shows that the price of this commodity had gone down \$5.50 in five days. By those who have only a general knowledge of stock exchange matters this would be taken as an indication that the market was "weak and depressed." To the experienced and the specialists, of course, it may mean something else.

The Star has no quarrel with Mr. Pollitz, nor with anyone else who is interested in maintaining the price of Hawaiian Commercial. That plantation is undoubtedly a valuable property, and though manipulators may be able to juggle with the market prices of the stock within certain limits, in the end and in the long run, the stock will find and maintain the equilibrium which the earnings of the plantation entitle it to.

But to show heat when unpleasant truth is published about a matter where truth is vital, is very foolish. What is the use of the cable, if when we think down here that the San Francisco price of Hawaiian Commercial is \$93, and we want it to remain there or go higher, we get angry because the cable tells us the price has gone down? How equally foolish to try and make ourselves believe that the price has not gone down when it has. Instead of being angry with Halstead & Co. because they received and published a later cable than any that had then been published, the community that is interested in the coast quotations ought to be thankful to Halstead & Co. or anybody else who secures and publishes such quotations. The more agencies that secure these quotations, the better it will be for the investing and speculating community.

The "Recall" Election

The city of Los Angeles, Cal., has just tried an experiment in municipal government which is full of interesting possibilities for expansion and wider application. It is popularly known as the "recall election," by which is provided a means of depriving of his office any person who, after election, proves himself unworthy of trust. Los Angeles adopted this in the form of an amendment to the city charter, voted upon in December, 1902. It provides that "the holder of any elective office may be removed at any time by the electors qualified to vote for the successor of such incumbent." Whenever one-fourth of the qualified voters file a petition with the city clerk for the removal of any official that officer is required to certify the fact to the council, which must thereupon issue a call for a special election to take place not less than thirty nor more than forty days thereafter. Unless the accused official specifically requests in writing that his name be not printed, it must be included on the official ballot with those of other candidates.

Not long ago some of the voters of a ward of Los Angeles determined to put the new provision to a test in an attempt to rid the city council of their representative, who had become obnoxious to his constituents. Their petition was honored by a call for a special election and they nominated a local physician of good repute. The other man was re-endorsed by the party machine and a sharp fight ensued, resulting in the defeat of the sitting member by a two-thirds vote.

Railroad Accidents

The Interstate Railroad Commission in its annual report devotes a good deal of space to the subject of railway accidents. In spite of the introduction and increased use of improved safety appliances the number of railroad accidents and of persons fatally or otherwise injured in railway accidents, is increasing, and increasing in proportion to railroad mileage and passengers. The Commission is not able to arrive at any satisfactory conclusion why this should be so. The periodical press of the mainland has indulged in a great deal of discussion of the subject, some of it more bitter than valuable. The railway managers themselves have entered into the discussion to a considerable extent, and they likewise are unable to give a solution to the problem. The most valuable contribution to the subject they have made is to point out two facts. One of these is that no railroad wants accidents either to its employees or to the traveling public, and therefore the railroads themselves are as vitally interested in the subject, financially, as anyone can be. The other is that there seems to be something in human mentality which neither rules, nor care, fear, nor caution will counteract, and which is responsible for many of the most frightful of the railroad casualties. This something is a sort of paralysis that is bred by the combination of the constant strain of responsibility, and the deadening effect of habit. It is pointed out that train men who are sober, capable, careful and have a lively sense of responsibility, often, at the critical time, seem to forget the orders they have received, and go on, often to their own destruction. Cases innumerable have been noted where train men receiving orders to wait at certain stations until certain trains bound the other way have passed, read their orders mechanically, forget them, and go on. The men know the danger of this. They do not court danger. They are as liable to suffer as anyone. But in spite of every incentive, not to carelessness but to self-preservation—the mental machinery seems to stop at the critical moment and a frightful calamity follows. One incident of this kind happened on an Indian railroad. An east-bound train received orders to wait at a certain siding until the two sections of a

Sanipure

Infants' and Invalids' Milk Or Artificial Mother's Milk

Is a food scientifically prepared, by a patented process, from the purest cow's milk, obtained from model dairies, directly under the most careful supervision of veterinarians. It contains all the fats and strengthening properties of a healthy mother's milk.

The difference in casein (cheese) between cow's milk and human milk is removed and a proportionate quantity of pure Milk Sugar added. It is absolutely pure and is manufactured under the most cleanly and sanitary conditions. It is germless and perfectly sterilized and represents the most natural and healthiest food for infants.

Ready for use by the simple addition of the necessary quantity of water.

Ask Your Physician About It

25 Cents Per Tin

HOLLISTER DRUG CO.

Fort Street

west bound passenger train passed. The freight train went on the siding and waited. The first section of the passenger passed, and the "front brakeman," mechanically went forward forgetting that there were two sections or else failing to mentally recognize that only one section had passed, threw the switch to let his own train out on to the main line, and thereby turned the second section of the passenger, when came along at that moment, on to the siding, crushing it into the heavy freight, and killing more than a dozen people. The brakeman himself was killed in the accident.

In some cases, no doubt, this forgetfulness at the critical time is due to fatigue from overwork or irregular hours. Because of this rules have been issued by some railroads not only giving certain regular hours for rest, but requiring that employees shall rest during the resting hours; that they shall not engage in other employment to exhaust their strength and energy, nor waste their resting time in pastimes that will rob them of needed sleep. Yet in spite of this, the fatal brain paralysis sometimes seizes them at the wrong time. It is probable that the same sort of brain stoppage seizes those engaged in other employments. But fatalities do not so frequently follow to draw attention to it.

Still as long as men are human and have their human relationships they will have worries and cares that take their minds from their work. A young man stationed as telegraph operator at a small station up in Pennsylvania received orders to hold a certain passenger train there until a locomotive then coming down the line had passed. He received the order mechanically and then felt to thinking about his two weeks' bride, who was ill at home, and whom he had been nursing so constantly that he was utterly exhausted. The memory of the sufferer drove all recollection of the "hold order" out of his mind, so when the passenger train arrived he forgot to notify the conductor. The train went forward, and then after it had gone beyond recall, the telegrapher remembered. All he could do was to wire the train dispatcher telling of his blunder and await results. They came soon and fatally. The locomotive crashed into the passenger train and two people were killed and a score were injured.

It seems probable that accidents will occur as long as men are human. The testimony all seems to point to the fact too, that in the complicated mechanical

Classified Ads in Star.

For Rent

House Kinau street near Alapai, Apply F. H. Damon, Judd building.

Furnished Rooms To Let

Front room, large closet, outside entrance, mosquito proof, electric light, hot and cold water bath, telephone, and within short block of either King or Beretania St. cars. Rent reasonable. Mrs. Blaisdel, 1174 Young St.

For Sale

A magnificent building site on the Punchbowl slope near Thurston avenue. Particulars at Star office.

Building lot corner King and Kamehameha road. Palama terminus of Rapid Transit road. Apply at Star office.

WE CARRY A FULL LINE OF Manias, Clear Havana and Porto Rico Cigars, also

EL MERITO, King of So. Cigars.

HAWAIIAN TOBACCO CO.
Ewa Corner King and Bethel Street

Don't

put all your eggs in one basket

SUGAR STOCK

are alright—sometimes—

If you wish to hear of something better Apply

PHOENIX SAVINGS, BUILDINGS AND LOAN ASSOCIATION

Judd Building, Honolulu.

Guarantee Capital.....\$ 200,000

Paid in Capital.....1,300,000

HENRY E. POCOCK.....Cashier.

CLOCKS

Grandfather's Clock,
Wall Clocks,
Mantle Clocks,
Alarm Clocks,
Etc., Etc.,

A large and complete stock of all kinds—Varying in price from \$1 to \$250.00.

H. F. Wichman & Co., Ltd.
Fort Street.

surroundings of modern life, where precision and time are mighty factors, these keep up a strain on the mind and nervous system, that brings about this paralysis of continuity, that at times is so fatal.

The McKinley legend seems to be losing its potency. The late President's Uncle Ben who was made assistant postmaster at San Francisco in 1891 has just been relegated to a subordinate position in the money order department.

They get quick action in the California legislature when charges of bribery are made. Investigation begins promptly, and one man has already been arrested.

The death of a Japanese, in the assault on Port Arthur, who formerly lived here, makes us all feel that we are kin to a hero.

In giving Senator Burton a new trial, the Supreme Court did not throw any doubt on the practical equity of the jury's verdict.

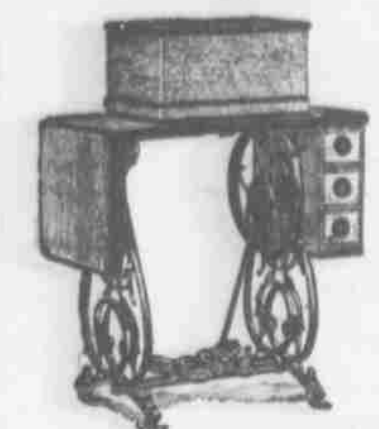
The World's Work has the following scorching estimate of the Czar:

Autocrat among autocrats, and grand beneficiary of a tremendous system of oppression, is the Czar Nicholas II. Fearing for his life, he is like clay in the hands of the Grand Dukes.

Diminutive and insignificant, when he stands at full height he must peer up to see the eyes of a woman. He has an inborn weakness that approaches effeminacy. His voice squeaks in a high falsetto. His education has been grievously neglected, for he has been bred entirely by women. The czar of all Russias is weak and vacillating. Frightened by signs and dreams.

To sum up: Russia stands at a great crisis in an evil plight. Its aristocracy is rotten and tyrannous, its people addled in ignorance, without moral sense, dull and brutish; its priestcraft often degraded, extortionate, and sensual; its land of natural resource wasted and consumed; its imperial line counting human souls and bodies as bullion for its coining; and the Czar a grotesque weakling.

To Those Seeking A Low-Priced MACHINE



Our AUTOMATIC B-MACHINE possesses advantages and automatic features found in none of the other low-priced machines, and although it is without some of the improvements and recent inventions which are only embodied in our "latest" AUTOMATIC, it is by far the best and most desirable low-priced machine that can be obtained.

NEEDLE—shortest in use—straight self-adjusting—cannot be set wrong. ATTACHMENTS—best in use—self-adjusting as far as possible—no screw-driver required. SAFE—the most delicate use it with ease and safety.

ASK YOUR PHYSICIAN

If the easiest and lightest running Sewing Machine is not the one you should select above all others.

A reasonable present at any time of the year.

WILCOX & GIBBS New Automatic Sewing Machine.

A fresh supply just received, including the New B-Machine.

Pacific Hardware Company, Ltd

SOLE AGENTS

Honolulu Iron Works.

STEAM ENGINES, SUGAR MILLS, BOILERS, COOLERS, IRON, BRASS AND LEAD CASTINGS.

Machinery of Every Description Made to order. Particular attention paid to Ship's "lackmishing." Job Work Executed on Short Notice.

HUSTAGE PECK CO., LTD

QUEEN STREET
DEALERS IN
Firewood, Stove,
Steam and Blacksmith
Coal
WHOLESALE AND RETAIL.
Special attention given to
DRAYING
ALSO, WHITE AND BLACK SAND

LORD & BELSER.

GENERAL CONTRACTORS
OFFICE AND YARDS,
SOUTH AND KAWAIAHAWA
TELEPHONE MAIN 198.

TEAMING A SPECIALTY

EUROPEAN BARBER SHOP

228 Fort, between King and Merchant.
First class shop with three barbers. Parisian Spray Shampoo, a specialty. Dandruff, makes hair grow. Barbers will attend customers at their residences.

No Clubs! No Illicit Selling!!

NO PLACE TO BUY A DRINK ON SUNDAY!

Order your Liquor and keep it home. Its much cheaper and you get better grades.

Assorted Cases of the Best Brands of Wines, Beers, Liquors, Liqueurs and Bitters, California Claret, 50 cents a gallon; Zinfandel and Sweet Wines, 75 cents a gallon. Demijohns extra. I DE TURK'S SWEET AND SPARKLING WINES A SPECIALTY.

CAMARA & CO.,

Corner Merchant and Alakea Streets.
Telephone Main 492. P. O. Box 664.

Why Pay \$100?

When you can purchase the "WELLINGTON" No. 2 Typewriter for \$60.00. This machine is EQUAL to any machine in the market and it is SUPERIOR TO ALL in several important features. Permanent Alignment. Minimized keyboard, 28 keys and 84 characters. Simplicity—one-third the parts found in others. Durability, steel parts hardened. Portability, only weighs 15 lbs. Machines sent to any responsible person or house on 10 days trial.

Theo. H. Davies & Co., LIMITED

Hardware Department

Annual Millinery Sale

REMARKABLE REDUCTIONS FOR
ONE WEEK ONLY, BEGINNING

Monday, January 30

This Store will be the scene of stirring activity in our Millinery Department. Prices are reduced so sharply that the entire line will be quickly disposed of.

LADIES' AND CHILDREN'S
SWELL TRIMMED HATS
AND UNTRIMMED HATS
AT IMMENSELY CUT PRICES.

CHILDREN'S SAILOR HATS
At Almost Half Price.

This is an exceptional opportunity to get swell millinery for very little money.

N. S. SACHS' DRY GOODS CO., LTD., Cor. Fort and
Beretania Sts.

FOUGHT WITH WILD CATTLE IN HARBOR

(Continued from page one.)

one of the steers discovered this fact and, making a break, got through and ran onto the wharf. He was followed by a crowd from the herd. The wharf was soon crowded and ten of the cattle, wilder than the rest, jumped into the water and began swimming down the channel toward the lighthouse. They swam about 200 yards and when near the revenue cutter Bear which lies at anchor in the stream, were met by the cutter boat from the revenue vessel. Captain Hamlet was in the cutter.

As soon as Captain Hamlet saw the herd of swimming cattle he realized that they must have escaped from the cattle pen and he immediately steered the boat toward the swimming cattle. He wanted to turn the cattle back and drive them over toward the cattle pen again out of deep water, but the cattle were beyond control. Instead of being frightened by the yells and gestures of the men in the revenue cutter, the cattle swam toward the boat and nearly formed a complete circle about it. Captain Hamlet saw that it would be impossible for him alone to get the cattle back. There was even danger that the cattle would attack the boat and perhaps try to get their front hoofs over the gunwales of the small craft in order to rest. Captain Hamlet steered the craft over toward the boat landing for the purpose of getting help.

The cattle swam after him. Captain Hamlet called to the boat boys to come out and help get the cattle. Six of the boys responded with as many boats. It was seen that some of the cattle were swimming toward the Oceanic and Allen & Robinson wharves and might get underneath the wharves. In such an event it would have been very difficult and dangerous to get them out.

Each boat boy singled out a steer and went in pursuit of him. It was necessary to lasso the cattle so as to hold their heads out of the water as the stock was badly winded and tired out by this time. They had swam fully a quarter of a mile in the harbor since jumping from the cattle pen wharf. It was a dangerous undertaking. The shore boats are lightly constructed craft and there was danger of the wild frightened cattle smashing and capsizing the craft. The boat boys were wary, however, and eventually succeeded in getting lines about the heads of the cattle and bringing the swimming stock alongside the boats. Many of the steers fought desperately against being hauled up alongside of the small boats while others reached the wharves and were trying to get underneath. Several of the steers reached the shallow water near the boat landing and there stood on the bottom and resisted the efforts of the natives to get them out into deeper water so that the boat men could get hold of them.

In the meanwhile a steamer boat from the Helene joined the crowd of rescuers. The boat boys finally succeeded in getting control of a steer each and were rowing toward the cattle pen with their prizes by the time that the steamer craft rounded up the last swimming bullock and started back across the harbor. John Mahuka, one of the boatmen, caught one of the steers, David Miranda got another, Noah Hiram a third, I a fourth, Andrew another and Lima the sixth steer. Despite the long swim and very severe exertions that the stock had undergone the cattle were landed safely in the cattle pen this morning.

The Metropolitan Meat Company will probably make some suitable present to the men who helped recover the stock. There appears to have been no damage done the various boats, although the struggle lasted nearly an hour.

JUDGE GEAR'S RETURN

Judge Gear did not return on the transport Sheridan which arrived from San Francisco this morning and the rumor spread through the Judiciary building this morning that it was his intention to remain on the coast. This suggestion could only be made on the theory that the judge had abandoned any idea of reappointment, but his supporters aver that this is far from his idea.

A. B. Gear stated at noon today that he had not heard from the judge but he scouted the suggestion that there was any present intention of his remaining on the coast. He would not be surprised to see him arrive by the Manchuria tomorrow.

DIED IN BATTLE

(Continued from page one.)

ment joined the beleaguering army at Port Arthur on September 7 last but the young priest's military knowledge had already been marked by his superiors and he was transferred to the 7th regiment of infantry with the rank of sergeant-major.

The 7th were on the left flank of the attacking army and bore the brunt of many a fierce engagement. Sergeant-Major Satomi was wounded on October 19 and again on November 10, but his wounds were not sufficiently severe to quench the fire of patriotism which burned in his breast and he remained on duty.

In the final assault on the Russian forts, Satomi was one of a forlorn hope of 250 men sent to attack a certain position. Of the details of the fighting very little has been learned, but some idea of its ferocity may be gathered from the fact that of the 250 who went gallantly to the sacrifice only sixteen remained alive when the day was over. Sergeant-Major Satomi was found dead, shot through the head and body. He was one of six men mentioned in dispatches to the Emperor for his cool daring before the searching bullet found him. His body was cremated.

Mission Board Wants \$15,000

AN AGREEMENT MADE OVER FIFTY YEARS AGO BY WHICH THE GOVERNMENT PROMISED TO PAY FOR THE LAHAINALUNA PROPERTY IF RELIGIOUS INSTRUCTION WERE NO LONGER GIVEN IN THE SEMINARY.

Attorney General Andrews and W. R. Castle are working on a case for an agreed statement of facts for submission to the Supreme Court in which all kamaainas and particularly those of the missionary cult will be intensely interested. The matter concerns the Lahainaluna Seminary and a claim against the Government for \$15,000 has been made on its account by the American Board of Missions.

From the facts at hand it appears that the Lahainaluna school was established by the American Board of Missions, with headquarters in Boston, in the year 1831. Four years later in 1835 the chiefs granted the property at present occupied, for school purposes and the instruction went ahead and prospered in the good work that it was doing.

In the year 1849 the whole question of land titles throughout the kingdom was taken up by a commission and the claim of the Board of Missions was allowed. Before the award was made, however, an arrangement was made by which the Government took over the seminary on the agreement that it should be kept running for the purpose of inculcating "sound learning and solid science" as the wording of the deed runs. The Government at the same time agreed that it would teach the doctrines of belief which were held by the American Board at the same time insisting on a proviso that if at any time it wished to do so the agreement might be abrogated by the payment of a sum of \$15,000.

So the school ran along until 1894 when the Republic of Hawaii was established. Then came annexation and by the Organic Act the Government of the Territory is expressly forbidden to apply public funds to secular purposes. Under these circumstances the American Board of Missions claims the \$15,000 arranged for in the agreement of 1849.

Should the Supreme Court decide in favor of the Board the sum will have to be paid over to the Board forthwith.

Was Searching For Jones

After many days Mrs. Marcus Parmenter concluded her testimony in the Jones murder case this morning being recalled in re-direct examination by Deputy Attorney General Peters for a couple of minor questions suggested in the cross-examination.

The next called was Arthur McDuffie, formerly on the police force as a detective. McDuffie's evidence was along exactly the same line as given at the former trial of Jones. He was summoned to the Parmenter house directly after the tragedy and he described the condition of affairs as he found them. Mrs. Jones was dead when he arrived and he superintended the sending of the body to the undertaker's. He commenced a search of the premises and the adjacent buildings along the street as soon as he arrived. "For whom were you searching?" asked the Deputy Attorney General. McDuffie then answered that he was searching for Jones.

THE PACIFIC MAIL INJURES OCEANIC

SAN FRANCISCO, Jan. 21.—The annual meeting of the stockholders of the Oceanic Steamship Company was held this morning at the principal office of the corporation, 327 Market street.

Secretary H. W. Thomas in his report said the total credits of the past year's business amounted to \$2,032,961.39, while the total debits reached \$2,215,179.16, leaving a loss for the year of \$182,217.77, and that the overdraft due J. D. Spreckels & Bros. Company amounted to \$1,710,883.13, an increase of \$153,440.41 during the year. John D. Spreckels, the president of the company, in his report said:

"At our last annual meeting we expressed the belief that a very much improved showing would be made for the year 1904. We had expected at that time that our gross revenue would show a decided increase over that of 1903, in view of the travel expected through the influence of the St. Louis Exposition. As a matter of fact, the revenue is slightly less than that of the previous year, having been adversely affected through two causes: first, the advent of the larger vessels now competing with us for the Honolulu traffic, and, secondly, the restrictions on American export trade on account of the workings of the new tariff law of New Zealand and the Australian commonwealth. These two factors operating against us, together with the expected inauguration of new lines to China and the Philippine islands via Honolulu, made possible through generous subsidies as proposed in the new shipping bill now before Congress, present an important problem for the consideration of your incoming board of directors.

Compared with vessels' operations of preceding year, the net receipts over disbursements from steamers operated for the different branches of the service show as follows:

Sydney service (gain)	\$19,142.72
Honolulu service (gain)	\$0,165.16
Tahiti service (decrease)	4,100.77

The slight falling off in the net earnings of the Tahiti service as compared with 1903 is mainly due to the low price ruling in the California market for copra during the greater part of last year, which resulted in the diversion to Europe of a large part of that important item of freight. However, in the latter portion of the year this condition was almost entirely reversed, and the returns of the latest voyages of the Mariposa show a gratifying improvement.

The vessels now in active service have either recently passed or are now undergoing Lloyd's special survey, and the good condition in which they are found precludes the necessity of making any allowance whatever for depreciation; in fact, through the systematic attention which has been given to all departments, and the many improvements made in the interests of better and more economical service, which is made manifest in the reduced cost of operation, we are able to state that the vessels may be classed as practically new.

The old board of directors, consisting of John D. Spreckels, A. B. Spreckels, Claus Spreckels, E. F. Preston, Henry E. Bothin, F. Tillmann, Jr., and W. D. K. Gibson, was selected. They will meet on Tuesday for organization, and it is probable that they will make no change in the officers.

NANCE O'NEIL TO AUSTRALIA.

BOSTON, Mass., Jan. 21.—It is reported in theatrical circles here that Nance O'Neil will leave the country in May and make a trip to Australia, returning to the United States in October. This announcement comes as a surprise, for she had made many preparations for passing the next summer at the O'Neil manor in Tyngsboro.

FOR NEW LIGHTHOUSES.

Delegate Kalaniana'ole has introduced a bill for the establishment of a lighthouse at Makapu'u Point on this island, at a cost not to exceed \$60,000. Also another bill for the establishment of a new lighthouse and range lights in Honolulu harbor at a cost not exceeding \$40,000.

ADMIRAL TERRY IS COMING BACK

MRS. TERRY'S HEALTH IS POOR
SO THEY HAVE ABANDONED
THEIR TRIP ROUND THE WORLD

Admiral Silas W. Terry (the former commandant of the local Naval Station) has decided to abandon his trip around the world. The ill health of Mrs. Terry has caused him to reach this decision.

Admiral and Mrs. Terry and Miss Terry left here in December for the Orient intending to go around the world to New York. They stopped in Japan but Mrs. Terry's health began to fail in that country and it was decided last month that she should not extend the tour that she and her husband had planned. They will therefore, take the S. S. Mongolia this month at Kobe and return to their home in the United States. They will pass through Honolulu the latter part of this month, en route to San Francisco.

HAS LET CONTRACT FOR BUOY SINKERS

AS SOON AS ANCHORS ARE COMPLETED CAPT. NIBLACK WILL ADVERTISE FOR OTHER BIDS.

Captain Niblack has awarded the contract for the construction of a dozen cement sinkers for the mooring of the most important buoys about the islands. As soon as these buoys will have been completed, Captain Niblack will advertise for bids for the laying of the buoys. This work will be by contract and is not to be done by the government.

Captain Niblack the light house inspector for these islands, is anxiously awaiting the news from Washington of the appropriation for the lighthouse and buoy work in these islands. The island system has simply been maintained by the lighthouse board out of the general fund by stinting and saving in the cost of maintenance of mainland places. A special appropriation for the local service will undoubtedly be made by Congress and naturally Captain Niblack is desirous of learning how much of an appropriation for these islands was named in the bill.

MAY ARRIVE TOMORROW.

It is likely that the S. S. Manchuria will arrive tomorrow morning from San Francisco. It had been thought she might strike the heavy weather that has detained other steamers from the mainland but as the transport Sheridan got through on time today the big Manchuria is likely to be reported tomorrow morning. The officers of the Sheridan were informed that the Manchuria would have a full load leaving San Francisco but whether she would be deep or not was not stated. Inasmuch as she has a full load it is possible she may not be able to enter the harbor even though a berth could be secured for her.

CAPTAIN JOHNSON IS ILL.

Captain Johnson of the bark W. E. Flint which is now at Makaweli discharging, was reported yesterday to be suffering from a bad attack of dysentery. He became ill when the vessel was at Eleale and by the time she had gone to Makaweli, was thought to be in a serious condition.

MUST SHOW CAUSE.

A citation has been issued by Judge Robinson for Thomas Dickson to appear and show cause why he should not be punished for contempt. Dickson's wife secured a divorce from him in December with an order for \$10 a week alimony for support of her children. He has neglected to pay this and has also avoided payment of attorney's fees. Dickson is a ship carpenter earning \$5 a day.

TRANSPORTS ARE DUE.

The transport Dix is expected today from Nagasaki with a cargo of coal for the depot quartermaster's department. The transport Logan is expected about Sunday from Manila and Nagasaki en route to San Francisco.

SON OF A FAMOUS MAN.

Herbert Gladstone, son of the famous English statesman and himself a man of note in public life, is about five feet seven inches tall, and with an extremely boyish face might be taken for a man of less powerful physique than he is really is. As a matter of fact, he is a very powerful and a very muscular man, and is able to do great feats in athletics when he likes. He inherits his strength from both his parents. They both lived almost to 90.

A SCHOOL FOR "SANGFROID."

M. Marcel Prevost wants to start a school of "sangfroid" in France. Most people, he says, are too timid. In a sudden emergency they have not the courage of the man who is pointed at you if a revolver is fired if you rush upon it than if you turn your back. Prevost would have this philosophy taught by regular professors of nerve, who would set exercises to the pupils. For example, when you receive a letter for you have been impatiently waiting for, don't open it at once. Smoke a cigarette slowly, or glance through the thrilling pages of Bradshaw. But if Frenchmen are to practice this rule, what will become of the Latin temperament? They will grow as phlegmatic as the English—London Chronicle.

Want ads in the Star bring quick returns. Three lines three times for 25 cents.

ACCOMMODATIONS

In our Safe Deposit Vaults

and Boxes for your valuable

papers, jewelry, etc. Rates

reasonable.

**THE HENRY WATERHOUSE
TRUST CO. LTD.**

Merchant and Fort Sts.,
Honolulu, Hawaii.

DAILY STOCK REPORT

Morning Session Sales: 50 Kihel \$14.50
50 Olua \$9.00; 50 Olua \$9.00; 20 Olua \$8.75.

Quotations.	Bid.	Asked.
C. Brewer & Co.	\$375.00	\$400.00
Ewa	30.875	31.25
Hawailan Com'l.	30.00	30.00
Tasavalan Sugar	35.00	35.00
Honolulu	170.00	190.00
Honolulu	24.00	24.00
Kahuku	35.00	35.00
Kihel	14.00	14.50
Koloa	35.00	35.00
McBryde	8.75	10.00
Oahu Sugar	140.00	147.50
Onomea	40.00	40.00
Okaka	9.50	9.50
Olua	9.00	9.00
Pacific	265.00	265.00
Pepeekeo	175.00	175.00
Waialua Agri.	70.00	80.00
Wilder S. S. Co.	140.00	140.00
Hawaiian Electric	165.00	165.00
Mutual Telephone	10.00	10.00
Oahu R. & L. Co.	70.00	70.00
Hon. R. T. Co.	60.00	60.00
Kahuku 60	100.00	100.00
Oahu R. & L. Co. 60	100.00	100.00
Oahu Sugar 60	101.00	101.00
Pala 60	101.00	101.00
Waialua Agri. 60	100.00	100.00

The general monthly business meeting of the Honolulu Chess Club will be held at 8 o'clock this evening. The list for entry in the new chess tournament is now open.

AN ENJOYABLE OUTING.

The most attractive day's outing is that afforded by the excursion down the railroad line. The HALEIWA LIMITED, a first-class train, leaves Honolulu every Sunday morning at 8:22 o'clock making the run in two hours, the rate for round trip being only \$2.00, from 10:22 a. m. until 8:10 p. m. is spent at the beautiful HOTEL HALEIWA, with fresh and salt water bathing, tennis, golf drives and walks, shooting or fishing and you are back in town at 10:10 o'clock in the evening.

NEW ADVERTISEMENTS.

ELECTION OF OFFICERS.

At the postponed annual meeting of stockholders of the Oahu Market Co., Ltd., held on Saturday the 28th day of January, 1906, the following officers and directors were elected to serve for the ensuing year:

Chu Gem	President.
Li Cheung	View-President.
Lau Tang	Secretary.
Y. Ando	Treasurer and Manager.
Yee Chin	Auditor.

Directors: Li Cheung, Wong Leong, C. Mee Hing, W. H. Crawford, Ching Hong, Kau Kim Yin, and Young Tuck.

LAU TANG,
Secretary.

Honolulu, February 2, 1906.

BY AUTHORITY

FENCING WAIKAKALUA-KIPAPA ROAD.

Proposals will be received at the office of the Supt. of Public Works until 12 o'clock m. of February 8th, 1906, for constructing fence along portions of the Waikakalua-Kipapa Road, District of Ewa, Oahu.

Blank proposals, in which are incorporated the specifications, are on file at the office of the Asst. Supt. of Public Works, copies of which will be furnished intending bidders upon application.

No proposal will be entertained unless submitted on blanks furnished, and enclosed in a sealed envelope addressed to C. S. Holloway, Supt. of Public Works, Honolulu, T. H., endorsed "Proposal for Fencing Waikakalua-Kipapa Road," and delivered previous to 12 o'clock m. on the day specified.

The Superintendent reserves the right to reject any or all bids.

C. S. HOLLOWAY,

Superintendent of Public Works.

February 2, 1906.

A Summer Proposition.

What, you, think?

ICE QUESTION!

You know you'll need ice, you know it is a necessity in hot weather. We believe you are anxious to get that ice which will give you satisfaction, and we'd like to supply you. Order from

THE OAHU ICE & ELECTRIC CO.,

Telephone 1481 Blue. Postoffice Box 498.

W. G. IRWIN & CO., LTD.

Wm. G. Irwin—President and Manager
John D. Speckels—First Vice-President
W. M. Biddell—Second Vice-President
M. M. Whitney Jr.—Treasurer
Richard Ivers—Secretary
M. C. Lovekin—Auditor

SUGAR FACTORS, COMMISSION AGENTS

AGENTS FOR THE
Oceanic Steamship Company of San Francisco, Cal.

AGENTS FOR THE

Scottish Union National Insurance Company of Edinburgh.
The Germania of Magdeburg General Insurance Company.
Alliance Marine and General Assurance Co., Ltd., of London.
Royal Insurance Company of Liverpool.
Alliance Assurance Company of London.
Worcester German Insurance Company

HART & CO., LTD

The Elite Ice Cream Parlors.
Chocolates and Confections.
Ice Cream and Water Ices.
Bakery Lunch.

THE FINEST RESORT IN THE CITY

Union Pacific

Railroad

SUGGESTS

Speed and Comfort

Three trains daily through cars, first and second class to all points. Reduced rates take effect soon. Write early.

S. F. Booth,

General Agent.

No. 1 Montgomery Street,
San Francisco.

Travellers Agree

THAT

The Overland, Limited

IS

Quickest, Finest, Best

A Train that Supplies
All Demands

To St. Louis or Chicago

IN 3 DAYS

from San Francisco.
ELECTRIC LIGHTS
READING LAMPS,
CLUB CARS—
ALL GOOD DINING

Southern Pacific

Information Bureau
613 Market Street,
San Francisco.

OAHU RAILWAY AND LAND CO'S

TIME TABLE

OCTOBER 1904.

OUTWARD.

For Waiwae, Waiwae, Kahuku and
Way Stations—9:15 a. m., 9:30 p. m.
For Pearl City, Ewa Mill and Way
Stations—11:30 a. m., 9:15 a. m.,
11:05 a. m., 9:15 p. m., 9:30 p. m.,
9:45 p. m., 10:30 p. m., 11:15 p. m.

INWARD.

Arrive Honolulu from Kahuku, Waiwae and Waiwae—9:30 a. m., 9:31 p. m.
Arrive Honolulu from Ewa Mill and Pearl City—11:45 a. m., 9:35 a. m., 10:35 a. m., 1:40 p. m., 4:31 p. m., 9:31 p. m., 11:30 p. m.
Daily.
Sunday Excepted.
Sunday only.

M. P. DENNISON, Supt. P. C. SMITH, G. P. A. T. A.

For the Skin

You cannot have a clear and smooth skin unless the blood is pure. Itches, eruptions, rashes, pimples, all show how impure the blood must be. Get all impurities out of your blood before you are seriously ill.



Miss Dorothy Maher, of Pittsford, Victoria, sends her photograph and this letter:
"I had a terrible eruption on my face, which was of a very irritating nature. I used many blood medicines, but without relief. Friends told me to try Ayer's Sarsaparilla, as it was a most famous blood remedy. I did so, and after taking only two bottles I began to see a great change. By the time the third bottle was used the eruption had entirely disappeared, and without leaving a mark on my face. I am perfectly well now, and I owe it all to this great blood-purifying remedy."

AYER'S Sarsaparilla

There are many imitation Sarsaparillas. Be sure you get "Ayer's."
Correct any tendency to constipation with Ayer's Pills. They are sugar-coated, easy to take, mild in action. A family laxative.
Prepared by Dr. J. C. Ayer & Co., Lowell, Mass., U. S. A.

Castle & Cooke, Ltd

Life and Fire

Insurance Agents

AGENTS FOR

New England Mutual Life Insurance Co

OF BOSTON.

Aetna Fire Insurance Co.,

OF HARTFORD, CONN.

C. BREWER & CO., LIMITED

QUEEN STREET,
HONOLULU, H. T.

AGENTS FOR

Hawaiian Agricultural Company, Oahu Sugar Company, Honolulu Sugar Company, Walluku Sugar Company, Oahu Sugar Plantation Company, Haleakala Ranch Company, Kapapala Ranch.

Planters' Line Shipping Company.
Charles Brewer & Co.'s Line of Boston Packets.

LIST OF OFFICERS.

Charles M. Cooke.....President
Geo. H. Robertson, V. Pres. & Mgr.
E. Faxon Bishop.....Treas. & Secy.
W. F. Allen.....Auditor
P. C. Jones.....Director
C. H. Cooke.....Director
G. R. Carter.....Director

All of the above named constituting the Board of Directors.

Blue and White Japanese Cotton Rugs

We have them displayed in our show window. Designs are exceedingly handsome and to see them is to want them.

We have a number of sizes from 3x4 feet to 12x12 feet, some with solid blue centers, others with blue and white centers

LEWERS & COOKE, LTD.,

177 S. KING STREET

FAMILY OF CENTENARIANS.

There is living on the Duke of Manchester's Irish estate, near Tanderagee, an old man named John Ralney, who has just celebrated his 105th birthday. He is still hale and hearty, and consumes two ounces of strong tobacco per week. One of his uncles lived to the age of 113 and another was in his 112th year when he died.—London Chronicle

NEW YORK'S NEW GOVERNOR

LESLIE'S WEEKLY GIVES A VERY FLATTERING ESTIMATE OF MAN ABOUT WHOSE CANDIDACY THERE RAGED SUCH A FIERCE CONTROVERSY, AND WHOSE CAMPAIGN ASSUMED NATIONAL IMPORTANCE.

When Frank W. Higgins was nominated by the Republican for Governor of New York, there was a commotion in Empire state politics. The Democrats and some of the Republicans charged that he was a mere representative of Governor B. B. Odell, and that if elected the de facto Governor of New York would not be Higgins, but those who



GOVERNOR FRANK W. HIGGINS, OF NEW YORK.

had secured his nomination. There was even a feeling during the campaign that these charges might defeat him. However he was triumphantly elected, and the following is what Leslie's Weekly says of him following his inauguration:

No Governor of New York State has ever entered upon the discharge of his executive duties with a freer hand than the Hon. Frank W. Higgins, who was sworn in publicly on the second of January. In his inaugural address he made this declaration: "I shall freely seek the assistance and expert counsel of those who have made a study of any of the multifarious branches of governmental activity. I shall welcome the suggestions of all citizens. Ultimately, however, with God's help, I shall jealously guard my prerogative of personal independence, and, whether for good or for evil, I shall assume responsibility for all my official acts."

During the fall campaign Governor Higgins was assailed by his political opponents and by some in his own party, on the ground that he was not his own man, but merely the representative of the Republican State organization, and particularly of Governor Odell. One of the



Copyright 1904 by Scott & Co.

MRS. FRANK W. HIGGINS

MRS. HIGGINS, WIFE OF THE GOVERNOR OF NEW YORK

first public announcements of Mr. Higgins after his nomination was to the effect that he was nobody's man; that he was the candidate of his party, and that, if elected, he would be the Governor of the State, unpledged, untrammelled, and bound only by the obligations of his duty to the people. We are glad that in his inaugural remarks, like the honest man we believed him to be, Gov. Higgins has once more emphasized the independence of his position. It will be better for him to be an independent Governor for two years, and to retire from office at the expiration of that time with the knowledge that he has kept his pledge, than to secure a renomination and even a re-election by making the executive office subordinate to the claims of any man or any party. In our judgment the best way to win a renomination and a re-

Hens Don't Bite

But they need "Hon's Teeth" just the same to keep them in a good healthy laying condition.

We also carry in stock the following Poultry Supplies which are needed in every poultry yard.

Ground Oyster Shell, Clover Meal, Egyptian Corn, Laying Food, Chick Food, Water Founts, Food and Grit Boxes, Revolving Egg Trays, Beef Scraps, Blood Meal, Myer's Poultry Spice, Pratt's Egg Food, China Nest Eggs, Green Bone Cutters, Lice Powder & Spray Fluid, Pat. Food Pans CYPHERS INCUBATORS & CYPHERS BROODERS.

The most perfect hatchers and brooders ever invented. Special import orders taken for Chickens, Ducks, Pigeons or fancy fowl of any kind.

E. O. HALL & SON, LTD.

OUR OWN LINE

San Francisco to Chicago

(WITHOUT CHANGE).

STANDARD AND TOURIST SLEEPERS DAILY



Trade

Mark

Stopping en route at Los Angeles, also "THE PETRIFIED FOREST" and the "GRAND CANYON OF ARIZONA."

HONOLULU PEOPLE TAKE THE SANTA FE ROUTE DURING THE COLD WINTER MONTHS. AN IDEAL TRIP ALONG THE OILED ROAD-BEDS ON THE CALIFORNIA LIMITED. TWO TRAINS DAILY.

Passenger Agent, W. G. Irwin & Co., Office

BLACK SILK CAPS

K. ISOSHIMA

No. 30 KING STREET, NEAR BETHEL.

election is by deserving it, and the path of danger is not the path of duty.

In his opening message to the Legislature, Governor Higgins makes no sensational announcement. He does not intend to upset things, to create new policies, or destroy existing conditions. In a characteristically business-like tone he commends to the Legislature, first of all, the necessity for prudence, economy, and conservatism. This is commonplace, but it embraces essentially the platform on which Governor Higgins was elected. His suggestion that prudence demands that the expenditures of the State be regulated by its income is the essence of the general demand for economy, and it means that Governor Higgins must remorselessly and fearlessly refuse to countenance every bill which openly or covertly seeks to add unnecessarily to the expenditures of the State. It is reported that some so-called leaders of the party, in and out of the Legislature, are personally interested in grabs and grafts which must, sooner or later, face the light of publicity. The first duty of Governor Higgins is to put the heavy hand of the executive upon every one of these. His position for so many years as the head of the Finance Committee of the Senate qualifies him for the duty and will render the task the easier.

The character of the Governor's appointments thus far, including an eminent business man, the Hon. Nicholas V. V. Franchot, for the important place of superintendent of public works; of ex-Senator Cuthbert W. Pound as legal adviser, Colonel Frank A. Perley as private secretary, and Colonel Selden E. Marvin as military secretary, shows that he is surrounding himself with gentlemen of his own selection, and we are glad to note that they are gentlemen of high character and eminent fitness for the places to which they have been called. We were first to give our cordial support to Governor Higgins, after his nomination at Saratoga, and we see no reason thus far to fear that his administration will prove in any sense a disappointment.—Leslie's Weekly.

FOR TEXAS' GLORY.

The Texarkana (Tex.) Courier published this problem in arithmetic for the glory of the State of Texas: "This will help you to figure out just how large Texas really is. If you have a star mathematician in your family tell him the number of square miles there are in the big state, then tell him the population of the globe, then ask him if all the people in the world were placed in Texas and its soil divided out among them per capita, how large would the man's farm be who had a wife and two children? When he gets through figuring, then whisper in his ear: 'More than half an acre.'"

A DIRTY TRICK.

The members of a girls' society in an Indiana high school recently initiated a number of new members by showing them a dish full of angle worms, then blindfolding them and feeding them hot macaroni. Several of the new members are now suffering with nervous prostration.

WALTHAM WATCHES

STEM WINDING, LEVER.
WALTHAM WATCHES EXPRESS
THE HIGHEST STAGE OF
THE WATCHMAKER'S ART.

TWELVE MILLION WALTHAM
WATCHES NOW IN USE.

ALL GUARANTEED BY
AMERICAN WALTHAM
WATCH COMPANY,
WALTHAM, MASS., U. S. A.



CORPORATION NOTICES.

ELECTION OF OFFICERS.

HAWAIIAN AGRICULTURAL COMPANY.

At the annual meeting of the shareholders of the Hawaiian Agricultural Company, held January 31, 1905, the following officers were elected to serve for the ensuing year, viz:

Chas. M. Cooke.....President
P. C. Jones.....Vice President
Geo. H. Robertson.....Treasurer
E. F. Bishop.....Secretary
T. R. Robinson.....Auditor
W. F. Allen.....
A. F. Judd.....Directors
C. H. Cooke.....

E. F. BISHOP,
Secretary.

Honolulu, T. H., February 1, 1905.

ANNUAL MEETING.

WAIAE COMPANY, LTD.

The annual meeting of the stockholders of Waiaie Co., Ltd., will be held at the office of J. M. Dowsett, Merchant Street, on Tuesday, February 7, 1905, at 2 o'clock p. m.

J. M. DOWSETT,
Secretary Waiaie Co., Ltd.
Dated, Honolulu, January 31, 1905.

ELECTION OF OFFICERS.

HUSTACE-PECK COMPANY LTD.

At the regular annual meeting of the stockholders of Hustace-Peck Company Ltd., held on Monday January 30th, 1905, the following officers and directors were elected for the ensuing year:

James F. Morgan.....President
C. J. Campbell.....Vice-President
James L. McLean.....Secretary
A. F. Clark.....Treasurer
N. E. Geddes.....Auditor
Directors: Jas. F. Morgan, C. J. Campbell, Jas. L. McLean, F. Hustace, W. F. Pfeiffer, Cecil Brown and G. P. Wilder.

JAMES L. McLEAN,
Secretary.

Honolulu, Jan. 31, 1905.

ELECTION OF OFFICERS.

M. S. GRINBAUM & CO., LTD.

At the annual meeting of shareholders of M. S. Grinbaum & Co., Ltd., held this 25th day of January, 1905, the following were the officers duly elected to serve for the ensuing year:

Mr. M. S. Grinbaum.....President
Mr. E. J. Benjamin.....Vice-President
Mr. A. G. Gantenberg.....Treasurer
Mr. H. G. Danford.....Secretary
Mr. H. G. Ramsey.....Auditor

The above named officers constitute the Board of Directors.

H. G. DANFORD,
Secretary M. S. Grinbaum & Co., Ltd.

ANNUAL ELECTION OF OFFICERS AND DIRECTORS

OF THE
HONOLULU RAPID TRANSIT AND LAND COMPANY.

Notice is hereby given that at the annual meeting of stockholders of the Honolulu Rapid Transit and Land Co. held on Thursday, the 26th day of January, 1905, the following officers and directors were duly elected to serve for the ensuing year:

President.....L. T. Peck.
1st Vice President.....L. A. Thurston.
2nd Vice President.....J. B. Christie.
Secretary.....Geo. P. Thiele.
Treasurer.....C. H. Atherton.
Auditor.....F. W. Klebahn.
The above and W. R. Castle to constitute the Board of Directors.

GEO. P. THIELE,
Secretary Honolulu Rapid Transit and Land Company.

ANNUAL MEETING.

C. BREWER & COMPANY, LTD.

The annual meeting of the stockholders of the C. Brewer & Company, Ltd., will be held at the office of the Company in Honolulu on Wednesday February 8, 1905 at 10 o'clock a. m.

E. F. BISHOP,
Secretary.
Dated Honolulu, January 23, 1905.

CHEE HOON KEE,

Hotel Street near Maunakea.

Plumber

LOUI CHEE, MANAGER.

Want ads in the Star bring quick results. Three lines three times for 25 cents.

How Would You Like To Work On Panama Canal?

DETAILS OF THE CANAL SERVICE RULES FOR THE EMPLOYMENT OF MEN ON THE PANAMA CANAL ZONE IN GOVERNMENT WORK—LOOKS LIKE AN EASY PROPOSITION—MAXIMUM AGE FOR EMPLOYEES 40 YEARS.

Here are briefly the regulations governing employment under the Isthmian Canal Commission.

All employees except those confirmed by the Senate and engineers detailed from the army and common laborers are appointed under the Civil Service rules. Until special lists of eligibles are prepared existing lists will be used when clerks and other employees are needed.

The age limits for appointments are between 18 and 40 years, except when expressly stated in the notices of examinations to be held, but persons entitled to be appointed without regard to age retain their rights under the Canal Commission.

When the commission is ready to begin construction work examinations will be held in various places in this country, as well as on the Isthmus of Panama, as occasion requires.

Employees on the Isthmus will be well cared for. Medical attendance and medicines will be furnished free of charge and at Ancon and Colon two hospitals will be maintained for the free treatment of sick employees and their families.

Residences will be provided for American employees on the Isthmus; where they are not provided an allowance in money will be made. A commissary department—a government department store, in effect—will soon be opened on the Isthmus at which salaried employees may buy at the regular government rates.

The commission further will carry employees to the Isthmus from New York, New Orleans or San Francisco, and at the end of their service, if it is satisfactory, will bring them back to the United States.

Employees after eight months of good service will be entitled to six weeks' leave of absence on full pay; and sick leave for thirty days may be granted in meritorious cases.

When they visit the United States on leave employees and their families will get special rates and families of employees will be carried at the same special rates to the Isthmus.

All salaries and wages of employees from the United States will be paid in American gold or its equivalent.

The United States Civil Service Commission will supply information about competitive examinations; and the Isthmian Canal Commission will answer questions about the service, conditions, climate and situation on the Isthmus. Both bodies should be addressed at Washington, D. C.—The Examiner.

MARK TWAIN
IN MISSOURI

RECOLLECTIONS OF THE GREAT
HUMORIST TOLD BY COLONEL
LACY WHO KNEW HIM.

Captain H. Lacy, editor of the West Mountain Tribune, of Westcliff, Col., was here this week for the first time since he ran through here in 1864 as a postal clerk on the pony express, as the Hannibal and St. Joe mail train was then known, because it connected with the real pony express at the town says a Macon, Mo., correspondent of the New York Sun.

Captain Lacy was born in Hannibal in 1838, and was a playmate and later a fellow printer of Samuel L. Clemens.



MARK TWAIN.

though a few years younger. Like most of Mark Twain's early chums, Captain Lacy never saw the slightest indication of coming greatness in his friend.

"The worst trouble about Sam when he was a boy," said Captain Lacy "was his laziness. He was a dreadful shirker."

"When the war came on and everybody was taking sides he joined Maj. Thomas A. Harris' Confederate regiment, and was in a little fight at Florida, Monroe county, with Col. U. S. Grant's command. Harris was liked and Sam came home. He said he believed the Confeds were wrong because the other fellows were the strongest."

"The first thing that called my attention to Sam as a writer while out West was his yarn about Jim Wolf's tombcat, which was published in a San Francisco paper. I recognized the incident, and knew there was nobody out there who could have told it."

"Jim was a printer, and he roomed with Sam, who he thought was the smartest boy that ever lived. One night the girls of the house gave a candy pull, and a lot of sticky molasses candy was laid out on the back porch to cool before pulling. The young folks were raising high jinks downstairs and Jim's tombcat was out on the back fence singing an accompaniment."

"Sam had gone to bed and the cat's howling annoyed him. He told Jim to drive the cat away."

"Jim would have committed suicide if Sam had told him to, and without taking the trouble to dress he climbed out on the trellis, intending to make connections with the fence. But the trellis was fragile and Jim was a good healthy boy. The thing gave way with a crash and poor Jim was precipitated like a chunk out of a meteor on that red hot molasses candy."

"He gave a shriek that brought all

HAS HELD OFFICE

Arthur A. Wilder is a member of the Hawaiian Code Commission which has been preparing the revision of the Hawaiian statutes for submission to the legislature. This work has been completed however and only proof reading is now necessary to complete the work. His first approach to an official position in the Hawaiian Islands was in 1894, when he was stenographer for the Constitutional convention which framed the Constitution of the Republic of Hawaii. In the following year he was the official reporter at the military court when Wilcox and his wife were tried for treason. Wilder was born at Honolulu November 3, 1873.

BAND CONCERT.

The Hawaiian Band under the direction of Captain Heger will give a concert on the Roof Garden of the Alexander Young Hotel this evening, complimentary to Captain Berry, Army Quartermaster on the Transport Sheridan, and Mrs. Berry, who will be guests of the hotel during the stay of the transport in port. The following is the program:

PART I.

March—"The Man Behind the Gun".....Souza
Overture—"Jubilant".....Weber
Chorus—"Tannhauser".....Wagner
Selection—"Rebello".....Donizetti

PART II.

Selection—"A Night in New York".....Brooks
Intermezzo—"A Bit of Blarney".....Help
Waltz—"Remembrance".....Waldteufel
March—"Uncle Sammy".....Holman
"Star Spangled Banner"

the boys and girls out on the porch, and the landlady kindly fetched a lamp Jim was never a very pretty boy, but at that moment everybody thought he was the sweetest thing on earth, for the candy covered him. The accident broke up the party and everybody blamed Sam for it.

"Well, he touched up that yarn in a way that made it even funnier than it was, and then I knew the careless, fun loving lad had struck his gait—that he was really good for something."

"A tramp printer named Snell blew into Hannibal one day and was given work on the paper. He was an uncommunicative sort of fellow, but a good worker and obedient."

"Sam decided to bring him out of his reserve and to do it borrowed a skeleton from a doctor's office and slipped it into the printer's bed. Then we got around to a window about bedtime to see what was going to happen."

"The printer pulled off his shoes, piled his clothes over on the floor and blew out the light. The next thing we supposed would be a yell and a printer shooting out of the window in his night shirt."

"But there wasn't anything of the sort. There was a sleep yawn and—'Get over on your own side, darn you!' 'We heard the ghastly bedmate of Snell fell to the floor, and then everything was quiet except for the snoring of the sleeping printer. The joke had failed and we went up to our rooms in disgust."

"Next day Snell didn't show up, and we began to feel a little hopeful that maybe the trick had worked after all. But we were again disappointed. Snell was in a gimml, boiling drunk, and having the time of his life."

"Killed man dead'n red injun" he yelled 'an' shell corpus fer dollar an' shewty-five! Wow!"

"He had rolled the skeleton up in a sheet and sold it to another doctor."

Star Want Ads pay 25 cents.

CORPORATION MEETINGS

The annual meeting of the stockholders of Waianae Co., Ltd., will be held at the office of J. M. Dowsett, Merchant Street, on Tuesday, February 7, 1905, at 2 o'clock p. m.

The annual meeting of the stockholders of the C. Brewer & Company, Ltd., will be held at the office of the Company in Honolulu on Wednesday February 8, 1905 at 10 o'clock a. m.

NEWS BY CABLE

HOPE FOR WORKERS.

ST. PETERSBURG, February 2.—Favorable results are expected from the audience given yesterday by the czar to a delegation of workmen. Manufacturers are expected to make concessions to labor. The situation is still strained in Poland and strikes are reported in Siberia.

FIGHTING NEAR HUNAN.

HUNAN, February 2.—The result of the battle near here is not known. It is expected that operations will be suspended until the end of February.

TEN WOMEN KILLED.

HORNELLVILLE, February 2.—A train collided here with a sleigh containing a pleasure party. Ten women were killed and three injured.

GO-BETWEEN ARRESTED.

SACRAMENTO, February 2.—Joseph Jordan, the alleged go-between in the senatorial bribery case, has been arrested.

MITCHELL REINDICTED.

PORTLAND, Ore., February 2.—Senator Mitchell has been re-indicted in connection with the land frauds.

TOGO RESUMES COMMAND.

TOKIO, February 2.—Admiral Togo will return to duty on the 6th.

JAPANESE REPULSE ENEMY.

Washington, February 1, 1905. To the Japanese Consul, Honolulu. Marshal Oyama reports that on our right and center the Russians engaged on the 30th in bombardment, while their small detachments attacked us from various directions but they were all repulsed by our outposts. On our left the enemy bombarded, on the 30th, with heavy guns Polyental and Chenchiepao, otherwise called Sandepu, and on the 31st Chenchiepao, Yapatul (two miles east of Chenchiepao) and Litangton. The enemy's offensive movements in small detachments towards Yatzupao and Tatalizu on the 30th, and towards Chenchiepao on the 31st, were repulsed on all sides.

TAKAHIRA.

PETRELS WERE BEATEN. A baseball match between the teams from the Petrel and the Iroquois was played at Kapiolani park yesterday afternoon. The Iroquois outfit won out to the tune of 17 to 5.

TRAVELERS FIND CHAMBERLAIN'S COUGH REMEDY EVERYWHERE.

Mr. C. W. Eckerman, manager of the Smith-Premier Typewriter Co., at Omaha, Nebraska, U. S. A., who is a staunch friend of Chamberlain's Cough Remedy, says: "I have taken particular notice that this remedy seems to be carried by drug stores in all parts of the country, which is quite an item when one is traveling. It gives me pleasure to say that I have used it for years and have always found it highly satisfactory, effecting a cure in a shorter time than any other medicine." For sale by all dealers, Benson, Smith & Co., agents for Hawaii.

Star Want Ads pay 25 cents.

CHAS. M. COOKE
President
C. H. COOKE
Cashier
C. HUSTACE, JR.
Asst. Cashier

Incorporated under the Laws of
the Republic of Hawaii.

F. C. JONES
Vice President
F. W. MACFARLANE
Vice President
F. R. DAMON
Asst. Cashier

THE BANK OF HAWAII, LTD

OF HONOLULU, T. H.

Capital Paid-up\$600,000.00
Surplus and Profits.... 302,617.80

DIRECTORS—Chas. M. Cooke, P. C. Jones, F. W. Macfarlane, E. F. Bishop, E. D. Tenney, J. A. McCandless, C. H. Atherton, C. H. Cooke.

COMMERCIAL AND SAVINGS BANK.

CONDITIONS OF THE BANK OF HAWAII, LIMITED.
At the close of Business, December 31, 1904.

ASSETS.	LIABILITIES.
Loans and Discounts.....\$1,182,325.85	Capital.....\$ 600,000.00
Calls, Loans and Overdrafts 218,544.24	Surplus..... 300,000.00
Stocks and Bonds..... 301,170.80	Undivided Profits..... 102,617.80
Leases and Office Furniture 19,053.62	Deposits..... 1,379,267.57
Other Assets..... 12,292.18	Due other Banks..... 470.25
Due from Banks..... 143,306.41	Dividends Uncalled for..... 1,990.00
Cash..... 307,631.64	
\$2,184,345.62	\$2,184,345.62

I CHAS. HUSTACE, JR., Asst. Cashier, do solemnly swear that the above statement is true to the best of my knowledge and belief.

C. HUSTACE, JR., Asst. Cashier.

Examined and found correct:

CHAS. H. ATHERTON,
J. A. McCANDLESS,
E. F. BISHOP.

Directors.

ZENO K. MYERS, Auditor.

Subscribed and sworn to before me this 5th day of January, A. D. 1905.
EDWARD W. CAMPBELL, Notary Public, First Judicial Circuit.

Curios! Curios!!

The most acceptable presents to send away to friends are Hawaiian curios. We have a large line of cut glass, bone and Hawaiian jewelry.

WOMAN'S EXCHANGE

No other food is subject to keener criticism than table butter, and no butter receives so much praise from all members of the household as

Crystal Springs Butter

New shipment just received. Also Clark Farm butter.

METROPOLITAN MEAT CO.

Limited

Telephone Main 45



A KNOCKER is a fellow who doesn't mind his business.

PACHICO'S 1-1 DANDRUFF 1-1 KILLER prevents the hair from falling out and gives it a healthy appearance—that's its business.

Sold by all druggists and at the Union Barber Shop. Telephone Main 232.

Stormy Weather Is Coming on And many Outdoor Sports Must be Abandoned.
Why not Get a set of Table Tennis?
The game affords Good sport and Plenty of Exercise.
To close out the Stock we are Selling some fine Carving sets at Less than cost.
Step in and see Them.
Pearson & Potter Co., Ltd. 931 Fort Street.

NEW ADVERTISEMENTS

Election of Officers, Page 5
Lewers & Cooke, Page 5
By Authority, Page 5
Jas. F. Morgan, Page 5

NEWS IN A NUTSHELL

Paragraphs That Give Condensed News of the Day.

WEATHER REPORT.

U. S. Weather Bureau, Office, Young Building.

Temperatures: 4 a. m. 65; 8 a. m. 68; 10 a. m. 70; noon 67; morning minimum 67.

Barometer 8 a. m. 30.05; absolute humidity 8 a. m. 5.015 grains per cubic foot; relative humidity 8 a. m. 67 per cent; dew point 5 a. m. 57.

Wind velocity: 6 a. m. 3, northeast; 8 a. m. 2, east; 10 a. m. 10, northeast; noon 10, east.

Rainfall during 24 hours ended 8 a. m. trace inches.
Total wind movement during 24 hours ended at noon 180 miles.

ALEX. McC. ASHLEY,
Section Director U. S. Weather Bureau

Live Shark at the Aquarium.
A BY Authority notice appears in this issue.

Regular Friday sale at Morgan's salesrooms tomorrow.

List of officers for Oahu Market Co. is published in this issue.

Tickets for Miss Marx' concert, can be secured at Wall Nichols Co.

House at Kinohi street near Alapai is for rent. See classified ads.

Delegate Kahanaloa has been dubbed Mr. Kuhio, by President Roosevelt.

SL. Clair Bidgood, manager of the Haelewa, is a visitor in Honolulu today.

Consultation costs nothing at Hawaiian Trust Co. regarding making your will.

The S. S. Nevada and S. S. Manchuria are due tomorrow from San Francisco with later mail.

L. Schwelzer has filed his report as executor of the will of the late Samuel Sachs. The estate amounted to \$738.

Governor Carter and Treasurer A. J. Campbell were busy today in connection with the report for the Legislature.

Lewers & Cooke have a very handsome display of Japanese blue and white cotton rugs in their show window.

McBryde plantation people on the spot are reported to be expecting a crop considerably in excess of the 12-150 tons estimated.

An invitation to the people of Hawaii to attend the Lewis and Clarke Centennial at Portland, Ore., next summer has been received by Governor Carter.

Mr. and Mrs. J. R. King of Chicago and Mrs. King's sister, Mrs. Melville, who are spending some time in the islands, were week-end guests at Haelewa.

Chinese Consul and Mrs. Chang Tso Fan will hold a public reception at the consulate in honor of the Chinese New Year on Saturday afternoon, from 12 to 2 o'clock.

The supervisors of the Free Kindergarten and Children's Aid Association will hold its regular monthly meeting on Friday morning February 3, at 9:30 in the Y. W. C. A. rooms.

A bill has been introduced in the California legislature for the segregation of lepers in that state under the care of the state commission in lunacy and providing for a hospital for their care.

The marriage of Miss Lilian Stack and C. H. Raven, Chief Inspector at the Custom House will take place this evening at the home of the bride's parents and will be private owing to the recent death of Mr. Raven's father.

The Astor House Hotel of Shanghai The New York Evening Post in a late issue has a long article from its Washington correspondent about the introduction of Chinese laborers into Hawaii. The article includes an interview at length with Delegate Kahanaloa.

Dr. McDonald and a trained nurse left this morning for Kahuku to attend Mrs. E. E. Buffandau who was kicked in the face by a horse yesterday at Kahuku ranch. Several doctors were in attendance upon the injured woman last night. She is thought to have sustained some internal injuries.

has sent to Honolulu to inquire if a good Hawaiian quintette club can be secured for a term of six months to give daily and evening concerts at that hostelry. The Ellis brothers have the proposal under consideration.

There will be a dance at the Alexander Young Hotel this evening immediately following the band concert there, complimentary to Quartermaster Captain Berry and Mrs. Berry and the officers and ladies of the Transport Sheridan. Townspeople are invited.

The regular quarterly meeting of the Diocesan branch of the Woman's Auxiliary will be held Friday afternoon at 3 o'clock at St. Clement's parish house. It is hoped that Bishop Restarick will be back in time to give an address. Bishop Root, the new Episcopal Bishop of Hankow and Bishop Graves of Shanghai who are passengers on the Manchuria which will be in port that day, are expected to be present and give addresses.

Live shark at the Aquarium.

FOR SALE!

A Few Sets
OF

THOROUGHbred PEKIN DUCKS

Inquire at

W. W. DIMOND & CO.

Agents for East Niu Ranch

WAITING TO DIGEST
MAINLAND STOCK

LOCAL BUYERS LOADED UP ON STOCKS SO FAST THAT THEY HAVE TO WAIT BEFORE BUYING

The stock market was weak today. Few sales were recorded and practically every stock dropped in price. Olan went down to \$9 and \$8.75. Fifty shares of Kihel were sold at \$14.50. Koa dropped to \$36.875.

The present condition of the market is due to the fact that the local buyers have absorbed a large quantity of mainland stocks within a very short time and a few weeks will probably be required in which to recover. There was practically no demand today for stocks and those hoping to realize, will probably have to wait in the face of a slumping tendency. Business is likely to be dull for some days.

While the sugar of the present crop is being moved rapidly, still not enough of it has reached the mainland for the plantations to realize and the feeling of confidence to reach the stage that it undoubtedly will, a few months later.

DAVIS NOT AFTER
'WHITNEY'S SCALP'

(Continued from page 1.)

the man. The bakery Jap refused to punge and caused their arrest on the charge of conspiracy.

Judge Davis assisted by that legal helixweight—in avoidance of—Sonny Cunha conducted the prosecution while A. M. Brown and J. W. Cathcart appeared for the defendants. Brown and Davis have been associated together in a number of cases but when they separated some thing had to drop and apparently it was Davis. In any event, after the prosecution had presented its case, the defence moved for a dismissal on the grounds that the case had not been made out. The court granted the motion.

The hair of Judge Davis rose with wrath and a fortunate thing it was that Judge Whitney escaped to the judicial chambers and dodged out the side door or he would have been buttoned by the late attorney who felt certain that the court had erred in granting the motion.

"I feel," said Davis today "that the court was in error in granting the motion to dismiss. The prosecution made out its case conclusively and as a matter of fact I am satisfied that the \$35 claimed by Sekano was never in the envelope, but the court dismissed without waiting to hear the evidence by the defence. Had the court heard that evidence and then dismissed, I would not have felt so strongly that an injustice had been done but the court failed to take such action. I will not institute action against the court for incompetency but I intend to secure the record in the case and present the facts before Judge De Bolt so that a new warrant for the arrest of the defendants may be issued, provided, of course, that Judge De Bolt considers the evidence sufficient.

STRANGE INFATUATION.

SAN FRANCISCO, January 25.—Charles Tidcombe, a college athlete and member of the Multnomah Club of Portland Or., shot and killed Mrs. George Mabry Nelson and then killed himself yesterday at 945 Stanyan street where they had been living. Mrs. Nelson was the wife of a traveling salesman and was with him about a year ago in Honolulu when she met Tidcombe. Becoming enamored with the handsome athlete she deserted her husband and followed Tidcombe to this city. He was a fugitive, having embezzled money of his Portland employer, and was without funds. Despondency is supposed to have been the cause of the double tragedy.

THE JONES ESTATE.

Judge Robinson this morning made an order allowing a transfer of securities in the guardianship of Edwin Austin Jones, Helen Jones, Margaret Jones and Catherine Hay Jones. The Hawaiian Trust Company, as guardian is permitted to exchange seventy-two shares of the capital stock of Peter C. Jones Limited, for the following bonds: 2 bonds Honolulu Rapid Transit of par value of \$1000 each; 4 bonds of Pioneer Mill Company of par value of \$1000 each; 4 bonds of the Pala Plantation Co., of par value of \$1000 each.

The stock of Peter C. Jones Limited, is said to be worth \$150 a share so that the value to the wards was \$10,800 paying an income of \$432. The new acquisitions will pay \$660 per annum.

MANY PASSENGERS
REACH HONOLULU

TRANSPORT SHERIDAN ON SPECIAL TRIP FROM SAN FRANCISCO THIS MORNING.

The transport Sheridan, Captain Peabody, arrived this morning from San Francisco with four days later mail from the mainland. The vessel left San Francisco January 25 being sent out on a special trip with a large quantity of supplies for the army at the Philippines. She has 7,000 tons of cargo, the largest that has ever been carried by her from the mainland. Captain Peabody was ill when the vessel left and only after undergoing heroic treatment from his physician, was he able to leave a sick bed and take command of the transport. Captain

James F. Morgan,

AUCTIONEER AND
BROKER.

347-349 Kauhuanu St. Tel. Main 75.
P. O. Box 594.

AUCTION SALE

FRIDAY, FEBRUARY 3, 1905.
10 O'CLOCK A. M.
REGULAR FRIDAY SALE

I will sell at my salesroom, 347 Kauhuanu street,
Bedroom Suits, in Oak
Chairs, in Oak and Maple
Tables,
Dining Table, extension.
Stoves, for wood or coal.
Sideboard, oak.
Rockers,
Large Plate Glass Mirror,
Crockery, Pictures,
SINGER SEWING MACHINE IN
FINE ORDER.
1 New Home Sewing Machine.
Glassware,
2 MALE CANARIES (good warblers)
Refrigerator,
Plants, etc.

—ALSO—
Groceries, Jellies,
Rice (new Al Hawaiian),
Matting, Etc.

JAMES F. MORGAN, Auctioneer.

AUCTION SALE

FRIDAY, FEBRUARY 3, 1905.
10 O'CLOCK A. M.

I will sell at my salesroom, 347 Kauhuanu street,

1 LOT WALL FIXTURES

With Plate Glass Mirrors, suitable for ice cream parlor.
1 Corner Counter, with marble top.

JAMES F. MORGAN, AUCTIONEER.

AUCTION SALE

FRIDAY, FEBRUARY 3, 1905.
AT 10 O'CLOCK A. M.

I will sell at my salesroom, 347 Kauhuanu street,

1 Oak Roller Top Desk,
1 Walnut Roller Top Desk,
1 "Herring" Safe,
Lot Coir Matting,
1 Office Table,
1 Pigeonhole Cupboard,
1 Copying Press,
1 Lamp,
1 Revolving Office Chair.

JAMES F. MORGAN, AUCTIONEER.

S. Kojima.

Importer and Wholesale Dealer in

LIQUORS,
JAPANESE PROVISIONS,
GENERAL MERCHANDISE,
AND PLANTATION
SUPPLIES.

Plantation Orders Specially Cared For.

No. 21 & 25 Hotel St., Honolulu, T. H.

Telephone White 2411.
P. O. Box 206.

Peabody narrowly escaped being attacked with pneumonia.

The vessel encountered very rough weather for the first two days after leaving San Francisco but was able to make up the lost time and get to port on time, a good showing for this season of the year. The vessel has a small crowd of through passengers but brought a good sized number of people to Honolulu.

Among the passengers for Honolulu were Mrs. O. C. Hamlet wife of Captain Hamlet the commander of the revenue cutter Bear.

Mrs. E. C. Mead wife of Lieutenant Mead the executive officer of the Bear was another arriving passenger for this port, with infant.

E. M. Shaw the chief clerk of the lighthouse service returned from the mainland, after a leave of absence.

Mrs. Judge Henry E. Highton returned from an extended visit to the mainland.

Dr. Charles Slough the new pharmacist for the marine hospital station arrived accompanied by his wife.

Lieutenant Trotter of the Coast Artillery from a trip to the mainland.

Mrs. Thomas Dunn wife of the chief yeoman of the local naval station returned from a trip to the mainland.

C. F. Armistead, captain of the 21st Infantry was also a passenger for Honolulu.

The other passengers for this place were Mrs. Baley sister of Lieutenant Trotter, Mrs. Christian Morgan, D. P. Lawrence, wife and child, Robert A. McCulloch and Mrs. Mark Well and three children.

Among the through passengers is Col. Thomas C. Lebo of the 14th Infantry.

NEW SHAFT FOR SONOMA.

SAN FRANCISCO, January 25.—The Oceanic Company's steamer Sonoma which arrived in port yesterday, will be fitted out with a new tall shaft during her stay in port. She will be taken to the Hunters Point drydock tomorrow, and there the Risdon Iron Works will make the necessary repairs.

ONE DAY COLD CURE.

Don't let a cold "run its course" but nip it at the start by taking the famous Anti-Grippe Tablets. They are safe, sure, pleasant and cure a cold in one day. At Hobron's.

Fine Job Printing, Star Office.

Whitney & Marsh

Grand Annual
Clearance Sale

Begins Wed. Feb. 1st

Bargains In All Lines

ALEXANDER & BALDWIN, LTD.

OFFICERS:

H. P. Baldwin.....President
J. P. Cooke.....First Vice-President
W. M. Alexander.....Second Vice-President
L. T. Peck.....Third Vice-President
J. Waterhouse.....Treasurer
G. M. Rolph.....Secretary
W. O. Smith.....Auditor

Sugar Factors and
Commission
Merchants

AGENTS FOR

Hawaiian Commercial & Sugar Company,
Maui Sugar Company,
Paia Plantation,
Maui Agricultural Company,
Kihel Plantation Company,
Hawaiian Sugar Company,
Kahuku Plantation Company,
Kahului Railroad Company,
Haleakala Ranch Company.

M. PHILLIPS & CO.,

Wholesale Importers
And Jobbers of

AMERICAN AND EUROPEAN DRY GOODS

Corner of Fort and Queen Sts.

M. OHTA,
Contractor and Builder
House Painter

Kewalo, Sheridan Street, near King.
Honolulu H. I.
Telephone White 691.

Want ads in the Star bring quick returns. Three lines three times for 25 cents.

W. G. Irwin & Co.

AGENTS FOR

Western Sugar Refining Co., San Francisco, Cal.
Baldwin Locomotive Works, Philadelphia, Pa.
Newell Universal Mill Co., Manufacturers of Cane Shredder, New York, N. Y.
Paraffine Lamps Company, San Francisco, Cal.
Ohlandt & Co., San Francisco, Cal.
Pacific Oil Transportation Co., San Francisco, Cal.

Apollinaris Water,
Hungarian Aperient Water,
Johannis Lithia Water

The woman who values the freshness of her skin, bright eyes, glossy hair and sweet breath, must remember that these rooms, rich diet and late hours, are her most powerful enemies, and that a slight aperient, such as a small wine-glassful of ONE OF THESE FAMOUS WATERS taken every morning before breakfast, is one of the greatest aids to health and therefore beauty.

LEWIS & CO., LTD.

169 King Street.

SOLE AGENT FOR THE
HAWAIIAN ISLANDS

240-3 Telephones—240.

T. HAYASHI,
TAILOR.

Clothes Cleaned, Dyed and Repaired.
337 Beretania Street.
Opposite Queen's Hospital.

Beer that's pure;
Beer mature,
And beer that's sure to please.

PRIMOLAGER

has all the delightful qualities
that make it the popular beverage.
Sold in bottle and keg.

A SPECIAL RUN

—O N—

RUBBER
GARDEN HOSE

For 10 Days Only, Starting January 30, 1905,

NATIVE OR HAWAII HOSE

25 feet for\$2.40
50 feet for4.35

W. W. DIMOND & CO., LTD.

Dealers in Glassware, Crockery, Platedware, Silverware and House
Furnishing Goods.

—SOLE AGENTS FOR—

Celebrated Jewel Stoves, Gurney Cleanable Refrigerators, Etc.

53, 55, 57 King Street. Honolulu, H. T.