

DIAZ TO MAKE VISIT



President Porfirio Diaz of Mexico is certain of a life tenure of the office of President of the republic. His rule has been that of a dictator, but he has shown himself to be an able statesman and under his long term of office, Mexico has been free from the revolutions and other turbulences that characterize all the other Latin-American nations. His sixth four-year term as President expires next November, and there appears to be no opposition to his having a seventh. Diaz contemplates a visit to the United States in the near future. He has been a friend of the United States and is held in high esteem by virtue of his qualities as a ruler, and he will be received with great honors.

WAS LOST AT THE VOLCANO

A YOUNG LADY'S STARTLING EXPERIENCE AT KILAUEA CRATER AS A RESULT OF EXPLORING.

HILO, August 19.—One of Professor Burton's party of ladies from Boston, who have been studying the volcanoes of Hawaii, had an experience during her stay at Kilauea which she will not soon forget. Miss Mary Lincoln, a school teacher of Bedford, Mass., being of a more inquiring turn of mind than the rest, could hardly be persuaded to leave the inner pit of the crater to attend to her meals. She spent the whole of one day from 9 a. m. to 6 p. m. looking into the yawning vent hole of Madame Pele. On Sunday afternoon alone and without any precautions as to lunch or wraps, Miss Lincoln undertook to make the circuit of the crater. When she failed to show up at nightfall, Manager Bigelow sent out a searching party with lanterns. They were gone all night finding with difficulty, on the Kau side of the crater the wayward miss, numb with cold and weak with hunger. Otherwise, she suffered no ill effects from the hardship of her all night experience.

Star Want ads pay at once.

An insurance policy is an asset for the full amount in the event of death, without regard to the cost to you. The Prudential has the strength of Gibraltar.



HILO WILL HAVE HOTEL

BOARD OF TRADE TAKES THE MATTER UP AND STARTS A HOTEL COMPANY.

HILO, August 19.—The Hilo Board of Trade has decided to take up the matter of a hotel in Hilo. At a meeting of the executive council last Tuesday night at the Board of Trade Rooms, the necessity for a public hotel in Hilo was conceded and forthwith that body, which is composed of the substantial business men of the town, determined to organize a hotel company. The Board of Trade will be the promoters of the project, which insures the success

(Continued to Page 5)

COL. ALLEN'S ILLNESS

A report was current in Honolulu this morning that Col. W. F. Allen was dying, and a number of inquiries were made about his condition. The colonel has been confined to his home since last Thursday by illness, but he is improving and his physicians express the utmost confidence. On his way home at noon last Thursday Col. Allen suffered an attack of dizziness and fell. He has been under the care of physicians since. The dizziness is attributed to a liver trouble which is not regarded as dangerous. Though well along in years, Col. Allen possesses a very strong constitution and he is expected to be at his desk again next week.

HUNTER'S SUPPLIES

SHOTGUNS, RIFLES, REVOLVERS

Ammunitions

A FULL LINE AT

PEARSON & POTTER CO., Limited

321 FORT STREET.

Desperate Fighting At Port Arthur

(Associated Press Cable to The Star.)

CHIEFOO, August 20.—Desperate fighting continues at Port Arthur. A grand assault on the fortresses was made today by the Japanese and it is reported that they were repulsed.

RESERVES CALLED OUT.

ST. PETERSBURG, August 20.—The reserves of forty-two districts and the reserve officers of the entire empire will be mobilized for the war with Japan.

CRUISERS SAFE.

ST. PETERSBURG, August 20.—The cruiser Novik has reached Lakhain Island. The Diana is reported at Saigon.

DISASTROUS STORM.

ST. LOUIS, August 20.—The cyclone injured over fifty people. The damage will reach \$150,000.

A LONG SWIM.

DOVER, England, August 20.—Three swimmers are attempting to swim across the channel to France.

NO SETTLEMENT.

CHICAGO, August 20.—No settlement of the strike is in prospect. The strikers declare that the packers must grant their terms.

LEGISLATORS FROM MAUI

REPRESENTATIVE KALAMA IS AFTER A SENATORSHIP THIS TIME AND W. J. COELHO WANTS TO RUN FOR THE HOUSE—OILY BILL. WHITE WILL RUN AGAIN—ONE HOUSE MEMBER WANTS TO RETIRE.

WAILUKU Aug. 19.—With the temporary organization of the Republican district convention, the political pot has started to boil, and already numerous names have been mentioned as probable candidates for Senators and Representatives, in the Republican as well as Home Rule and Democratic circles.

For senators on the Republican ticket the names of S. E. Kalama, A. N. Hayselden and Charles Gay of Lanai have been mentioned. It is almost a certainty that Kalama will run for senator. Hayselden has refused to run. Charles Gay of Lanai is mentioned as a probable candidate, although he has not been communicated with in regard to the matter. For representatives on the Maui Republican ticket, quite a list of names have been mentioned. From the Hana district J. K. Hanuna and C. O. Cooper are spoken of, although Cooper stated at the Republican convention that he will refuse to run for the house. Hana will not run again, as he intends to be appointed judge of the Hana district court on the day after election. George Copp of Makawao is spoken of for representative from the Makawao district, to succeed Kalama who will run for the upper house. From the Wailuku district W. J. Coelho is the only nominee so far, and the chances are in his favor for nomination. Coelho will not run again, as he is desirous of keeping out of politics. Phillip Pali of Lahaina or Rev. S. Kapu, and Joel Nakaleka of Molokai or Solomon Fuller, will be the other candidates of the party, if present indications are any criterion. On the Home Rule ticket, Senator Kalua and Billy White will run for the senate, providing there is no fusion with the Democrats. For the house on the Home Rule ticket, there are dozens of names, Beckley, Kookoo, Wallehua, Makekua, Maxwell, Kahauliello, et al. If the Democrats put up a separate ticket, Attorney J. L. Coke is prominently spoken for the senate, and there is no doubt but that Coke would poll very many votes, as he is extremely popular on this island. It is stated that Attorney Richardson of Lahaina is aspiring for the candidacy on the Democratic ticket for the upper house. For representatives on the Democratic ticket, very few names have been mentioned.

STARBUCK IS NOT AT HILO YET

SHIP HAS NOT REACHED HER DESTINATION ALTHOUGH SHE SAILED EIGHT DAYS AGO.

The ship Talm E. Starbuck has evidently struck calm weather or else got a bad slant of wind that has taken her south of the islands. She left Honolulu August 12 bound for Hilo, to load the remainder of her cargo of sugar. It was thought she would make port within two or three days but Captain Winn evidently hit some sort of weather that has prevented his making the trip in that time. The vessel is now out eight days. She is thought to have struck weather that carried her south of Hawaii, for nothing has been seen of her about any of the islands. The delay of the Starbuck in reaching Hilo will probably cause a delay in loading the ship Fort George as the latter vessel is also to go to Hilo for sugar for San Francisco. The Fort George will probably not get away from Honolulu until the middle of next week. She may have better luck than the Starbuck and reach Hilo ahead of the other boat.

GOLF BALLS—CUT PRICES.

We are now offering the Spalding "Wizard Golf Balls" (best ball made) at the out price of 50 cents. Golf players will appreciate this low price, only at Wall-Nichols.

HARRISON VS. MAGOON AGAIN

OLD HAGEY CURE CASE BOBS UP ONCE MORE IN THE CIRCUIT COURT.

The much tried case of T. M. Harrison against J. A. Magoon and others, a case in which the plaintiff is seeking to recover money he alleges he invested in a liquor cure enterprise, was again in the court this morning before Judge Robinson. There were two motions argued, the first was by the plaintiff to allow and certify to his bill of exceptions to the Supreme Court, where the case is now on appeal, and the other was to disallow the bill of exceptions. The matter was taken under advisement.

BARGAIN SALE OF MEDALLIONS. We are selling medallions at 1-3 off the regular prices. Only a few left. A. B. Arleigh & Co.

NEW RESTAURANT.

For a good meal go to the Oregon Restaurant on King street near Nuuanu. Everything new and clean. W. A. Chung, Proprietor.

EXCELLENT COUGH REMEDY. The old New England Remedy Co. prepare a medicine for coughs and colds that is the best of its kind. Putnam's Cherry Cough Comfort is what you must ask for. At Holman's.

TROUBLE WITH PANAMA

WASHINGTON, August 1.—The trouble between the United States and its wards in the republic of Panama is culminating, and Minister W. P. Buchanan, the first minister to the little republic, is having plenty of work to do.

The United States governs the zone by treaty, and according to the law of floors of the War Department, the treaty is tantamount to sovereign United States rights over the canal zone. People of Panama were so informed ten days ago, but they are not satisfied, it appears, with the way the President reads the Panama treaty.

Some able Panamanians, such as Minister Obaldia, who entered his protest at the State Department today, do not believe the commission has a right to do anything and everything.

The State Department did not meet the issue today, and believing that the question is one between the Panamanians, the commission and the President prudently made no specific answer to Senator Obaldia.

The commission has claimed the right among the important phases of the trouble to establish a new customhouse, with, of course, the Dingley rates in force, outside of the City of Panama, but near it.

The United States, of course, claims jurisdiction over all the islands near the



W. I. BUCHANAN, AMERICAN MINISTER TO PANAMA.

zone coast. The Panamanian business men believe that the bulk of the trade and customs will go near the center of the customs, and the citizens of a big city like Panama will not get the benefit of the trade.

The Panamanians also object to the location of certain ports in the zone.

NATIONAL BANK DEAL

JAMES F. MORGAN MAY BE PRESIDENT OF FIRST NATIONAL IF THE ANGLO-CALIFORNIA BANK INTERESTS TAKE CHARGE—MORGAN AND COLONEL MACFARLANE MAKE TRIPS TO SAN FRANCISCO.

Col. George W. Macfarlane and James F. Morgan have both been in San Francisco this week, and it is said that their business has to do with the reported sale of the First National Bank to the Anglo-California Bank of San Francisco, which was reported in The Star yesterday. None of those who are here and are concerned in the deal are willing to talk about it. Report has it that a high price was paid for the locally held stock which was sold.

August Dreier is one of the large local stockholders. It is said that he was left out of the deal by which the San Francisco concern carried out its long-cherished desire to obtain a majority of the stock. When seen this morning and asked regarding the sale all that Dreier had to say was "I don't know anything about it."

James F. Morgan is reported to be the choice of Lillienthal for president of the bank, and this may have been the occasion of his trip to San Francisco. Morgan is now in San Francisco, but is expected back in the near future. W. G. Cooper, cashier of the bank, will retire as well as President Brown, it is stated, in the event of the change in the control of stock taking place.

Col. Macfarlane is allied with the Anglo-California Bank and it is supposed that he has retained his stock. In the controversy of two years ago Macfarlane voted his stock with the other stock controlled by the San Francisco institution. Colonel Macfarlane is on his way back and will arrive next Wednesday.

Two years ago the desire of Lillienthal and the Seligman of New York to obtain control of the national bank here led them to offer a high price for available stock. The block owned by the James Campbell estate was in the market and Sumner, an agent of the Anglo-California Bank who spent some time in Honolulu, bid high for it. The local stockholders went over the San Francisco bid, however, and the deal was closed over the head of Sumner. It has been reported since that the latter was willing to go higher than the price at which the deal was made, had he known it was necessary.

The great success of Chamberlain's Colic, Cholera and Diarrhoea Remedy in the treatment of bowel complaints has made it standard over the greater part of the civilized world. For sale by all dealers, Benson, Smith & Co., agents for Hawaii.

SAVE YOUR MONEY.

The Twenty-Ninth Series of Stock in the Pioneer Building & Loan Association will be issued in July, 1904, and is now open for subscription. The membership fee is fifty cents per share, and the monthly dues are one dollar per month per share. The stock draws much better interest than a savings bank.

Further information can be obtained from A. V. Gear, Secretary, 122 King Street.

Star Want ads pay at once.

THE OLD RELIABLE

ROYAL



BAKING POWDER

Absolutely Pure

THERE IS NO SUBSTITUTE

SPECIAL BARGAINS AT SACHS.

Scotch gingham and zephyrs that sell regularly for 20c and 25c will be reduced to 10c a yard this week only. Fancy white goods reduced from 20c to 10c and from 15c and 16 2-3c to 12 1-2c. Fancy stripes and checks were 8 yards for \$1 now 11 yards for \$1.

Star Want ads pay at once.

"With shoes the last is first; with me the first shall be the last and when shoes wear out, there is needed new. Whilst men wear out are men dead too."

Our Repair Department is a First-class Institution

and work done by us is WORK DONE RIGHT.

If you have decided to have new soles or heels on your old shoes, bring them to us. We guarantee to do the very best work at a reasonable price.

Manufacturers' Shoe Co., 1051 Fort Street

Oceanic Steamship Company.

TIME TABLE

The fine Passenger Steamers of this line will arrive at and leave this port as hereunder:

FROM SAN FRANCISCO.		FOR SAN FRANCISCO.	
VENTURA.....	AUG. 24	*ALAMEDA.....	AUG. 17
*ALAMEDA.....	SEPT. 2	SIERRA.....	AUG. 23
SIERRA.....	SEPT. 14	*ALAMEDA.....	SEPT. 7
*ALAMEDA.....	SEPT. 23	SONOMA.....	SEPT. 13
SONOMA.....	SEPT. 25	*ALAMEDA.....	SEPT. 25
*ALAMEDA.....	OCT. 14	VENTURA.....	OCT. 4
VENTURA.....	OCT. 26	*ALAMEDA.....	OCT. 19
*ALAMEDA.....	NOV. 4	SIERRA.....	OCT. 23
SIERRA.....	NOV. 16	*ALAMEDA.....	NOV. 9
*ALAMEDA.....	NOV. 25	SONOMA.....	NOV. 15
SONOMA.....	DEC. 7	*ALAMEDA.....	NOV. 30
*ALAMEDA.....	DEC. 16	VENTURA.....	DEC. 6
		*ALAMEDA.....	DEC. 21

* Local Boat.

In connection with the sailing of the above steamers, the Agents are prepared to issue to intending passengers coupon through tickets by any railroad from San Francisco to all points in the United States, and from New York by steamship line to all European Ports.

For further particulars apply to

W. G. Irwin & Co.

General Agents Oceanic S. S. Company.

Canadian-Australian Royal Mail STEAMSHIP COMPANY

Steamers of the above line, running in connection with the CANADIAN PACIFIC RAILWAY COMPANY between Vancouver, B. C., and Sydney, N. S. W., and calling at Victoria, B. C., Honolulu and Brisbane, Q.

Due at Honolulu on or about the dates below stated, viz:

FOR AUSTRALIA.		FOR ANCOOVER.	
MIOWERA.....	AUG. 27	MANUKA.....	AUG. 24
MANUKA.....	SEPT. 24	AORANGI.....	SEPT. 21
AORANGI.....	OCT. 22	MIOWERA.....	OCT. 19
MIOWERA.....	NOV. 19	MOANA.....	NOV. 16
MOANA.....	DEC. 17	AORANGI.....	DEC. 14
AORANGI.....	JAN. 14	MIOWERA.....	JAN. 11
MIOWERA.....	FEB. 11	MOANA.....	FEB. 8
MOANA.....	MAR. 11	AORANGI.....	MAR. 8
AORANGI.....	APR. 8	MIOWERA.....	APR. 5

CALLING AT SUVA, FIJI, ON BOTH UP AND DOWN VOYAGES.

THEO. H. DAVIES & CO., Ltd., Gen'l Agts.

Pacific Mail Steamship Co. Occidental & Oriental S. S. Co

Steamers of the above Companies will call at Honolulu and leave this port on or about the dates below mentioned:

FOR CHINA AND JAPAN.		FOR SAN FRANCISCO.	
DORIC.....	AUG. 25	COPTIC.....	AUG. 23
MANCHURIA.....	SEPT. 6	KOREA.....	SEPT. 3
SIBERIA.....	SEPT. 15	GALIC.....	SEPT. 13
COPTIC.....	SEPT. 27	MONGOLIA.....	SEPT. 24
KOREA.....	OCT. 8	CHINA.....	OCT. 7
GALIC.....	OCT. 15	DORIC.....	OCT. 15
MONGOLIA.....	OCT. 20	MANCHURIA.....	OCT. 15
CHINA.....	NOV. 1	DORIC.....	OCT. 22
MANCHURIA.....	NOV. 9	SIBERIA.....	OCT. 22
DORIC.....	NOV. 16	COPTIC.....	NOV. 5
SIBERIA.....	NOV. 24	KOREA.....	NOV. 19
COPTIC.....	DEC. 3	GALIC.....	NOV. 29
KOREA.....	DEC. 13	MONGOLIA.....	DEC. 29
GALIC.....	DEC. 21	CHINA.....	DEC. 24
		MANCHURIA.....	DEC. 31

For general information apply to

H. Hackfeld & Co.

AMERICAN HAWAIIAN STEAMSHIP COMPANY.

DIRECT MONTHLY SERVICE BETWEEN NEW YORK AND HONOLULU, VIA PACIFIC COAST.

FROM NEW YORK.

S. S. ALASKAN to sail about September 1.

Freight received at Company's wharf 41st Street, South Brooklyn, at all times.

FROM SAN FRANCISCO, VIA PUGET SOUND, TO HONOLULU.

S. S. NEVADAN, to sail August 25, and each month thereafter.

Freight received at Company's wharf, Greenwich Street.

FROM HONOLULU TO SAN FRANCISCO VIA KAHULUI.

S. S. NEVADAN, to sail about September 10.

The above mentioned steamers will be dispatched from Honolulu direct for San Francisco on date stated.

FROM SEATTLE AND TACOMA.

S. S. NEVADAN, to sail from Seattle, August 30.

S. S. NEVADAN, to sail from Tacoma September 1.

H. Hackfeld & Co.,

C. P. MORSE, General Freight Agent.

AGENTS.

We Havabiscuit

to suit every taste and they're all fresh goods that came on the last "Alameda."

Peck, Fream & Co's dainty and exquisitely flavored biscuits and wafers are favorites and the requisite at all afternoon teas, etc.

They came all the way from London hermetically sealed.

Equally fine goods are those made by the National Biscuit Co. and by the American Biscuit Co.

Our assortment at the present time is complete and all goods guaranteed fresh.

In this and bulk.

Henry May & Co., Ltd.,

Retail 22—Telephones—Wholesale 92.

SHIPPING INTELLIGENCE

(For additional and later shipping see pages 4, 5, or 8.)

First Quarter of the Moon Aug. 17th.

Date	High Tide	Low Tide	Small Tide	Large Tide	Sun Rises	Sun Sets	Moon Rises	Moon Sets
Aug. 15	6:35 a.m.	1:25 p.m.	6:35 a.m.	1:25 p.m.	5:38	6:30	10:06	
Aug. 16	7:36 a.m.	1:17 p.m.	1:00	1:50	5:29	6:29	10:52	
Aug. 17	8:47 a.m.	1:09 p.m.	1:46	3:17	5:20	6:28	11:38	
Aug. 18	10:02 a.m.	1:01 p.m.	2:34	5:03	5:39	6:28	12:24	
Aug. 19	11:13 a.m.	1:03 p.m.	3:22	6:39	6:29	6:27	1:10	
Aug. 20	12:12 p.m.	1:05 p.m.	4:10	7:25	6:40	6:26	1:56	
Aug. 21	1:02 p.m.	1:07 p.m.	5:00	8:12	6:50	6:25	2:42	
Aug. 22	1:44 p.m.	1:09 p.m.	5:50	9:00	7:00	6:24	3:28	

Times of the tide are taken from the U. S. Coast and Geodetic Survey tables. The tides at Honolulu and Hilo occur about one hour earlier than at Honolulu. Hawaiian standard time is 10 hours 30 minutes slower than Greenwich time, being that of the meridian of 157 degrees 30 minutes. The time whistle blows at 1:30 p. m., which is the same as Greenwich, 3 hours, 0 minutes. The Sun and moon are for local time for the whole group.

ARRIVING.

Saturday, August 20.
Stmr. Kauai, Bruhn, from Hamakua ports and Lahaina, at 5:28 a. m., with 5,000 bags sugar and 62 pkgs. sundries.
Stmr. Maui, F. Bennett, from Kawaihine and Hamakua ports, at 5:29 a. m., with 8,016 bags sugar and 75 head cattle.
Stmr. Kinau, Freeman, from Hilo and way ports, at 10 a. m., with 62 eds wood, 31 kegs, 2 horses and 171 pkgs. sundries.

Sunday, August 21.
Stmr. W. G. Hall, S. Thompson, from Kauai ports, due early in morning.
Stmr. Helene, Nelson, from Maui ports, due early in morning.
Stmr. Likelike, Naopala, from Lanai, Maui and Molokai ports, due.

Monday, August 22.
S. S. Sierra, Houdlette, from Sydney, Auckland and Pago Pago, due in afternoon.

S. S. Coptic, Armstrong, from the Orient, probably arrive in afternoon.

DEPARTING.

Saturday, August 20.
Stmr. Kailua, for Aki's landing, at 9:30 a. m.

Monday, August 22.
S. S. Coptic, Armstrong, for San Francisco, probably sail in afternoon.
Stmr. Likelike, Naopala, for Maui and Molokai ports, at 5 p. m.
Stmr. Nona, Pederson, for Anahola, Kapau, Kilauea, Hanalei and Kailua, at 5 p. m.

Tuesday, August 23.
S. S. Sierra, Houdlette, for San Francisco, probably sail in forenoon.

PASSENGERS.

Arriving.
Per stmr. Kauai, August 20, from Hamakua ports and Lahaina: J. A. Waldron, Miss Dorothy Waldron and nurse, Mrs. Leebe and 2 children, J. R. Lougher, R. Oberwimmer and 40 deck.
Per stmr. Maui, August 20, from Kawaihine and Hamakua ports: C. T. Day, W. D. Schmidt and F. W. Carter.
Per stmr. Kinau, August 20, from Hilo and way ports: S. M. Damon, Frank Schutte, Henry Albers, Lieut. Col. Cleve, Clarence Smith, Dr. C. T. Rodgers, Mrs. O. A. Stevens and 2 children, Charles Lucas, E. Dege, A. H. Jackson, A. Hanneberg, D. B. Machonachie, W. H. Thompson, R. Mitchell, Mrs. R. Mitchell, Miss Ivy Richardson, Miss Ruth Richardson, Miss L. A. Voy, Miss A. H. Parke, J. W. Vannatta, H. A. Knell, C. M. Hardee, E. Lake, Alexander Raymond, A. Von Arnswaldt, E. H. Cant, John McTaggart, George Richardson, W. S. Ward, J. A. M. Osorio, O. Ludloff, Dr. Y. Nakamura, S. W. A. Kaleihoa, Mrs. Mariam McTaggart and 2 children, Mrs. R. Hawshurst, child and maid, Mrs. Charles Lucas, Miss Hattie Lucas, Miss Mary Lucas, Master C. Lucas, Mrs. Mary Allau, Father Francis, L. A. Andrews, Mrs. W. R. Lewis and child, P. Peck, R. T. Guard, Capt. F. Mosher, George Burningham, Miss Alice Winter, Mrs. A. C. P. Ferdner, George A. Olding, M. C. Olding, H. R. Bryant, J. C. Burgess, H. H. Perry, Palmer Woods, Robert Hall, Rev. E. L. Miner, A. C. Aubrey, Paul Jarrett, James L. Coke, M. S. Deponte, Master Harry Apo, Master Albert Apo, William Green, Ching Chow, Miss Louisa Pihl, Mrs. E. Kapu and child, Miss Lillian Pihl, Ang Apo.
Booked to Depart.
Per S. S. Sierra August 22, for San Francisco—J. Ross and wife, E. N. Smith, B. H. Austin, Misses Cooke (2), George Canavero, Clifford P. Egan, G. Schuman and wife, E. Hedeman, Mrs. James Lynch, Miss A. C. Lynch, E. C. Peters, Mrs. John Herd and child, A. Ferguson, J. D. Kennedy, James Quinn, Miss Richardson, George Richardson, C. S. Hall, C. F. Johnson and wife, Mrs. E. M. Clyde, L. S. Augst, Mrs. Schopdatch and party, Mrs. A. P. Burwell, Mrs. D. Stoney and three children, L. E. Arnold, Mrs. Culbert, Miss Culbert, G. P. Wilcox, G. N. Wilcox, James E. Carroll, Mrs. W. H. Corawell, F. Crawford, A. H. Jackson, J. L. P. Robinson, A. C. Robinson, M. A. Robinson, R. A. McWayne, K. B. G. Wallace, Miss Peabody, Miss York, Miss Parkhurst, E. E. Paxton, Rev. W. D. Westervelt, Miss Buck, S. Mahelona, S. A. Jaeger, H. Castle, Miss Randle, J. M. Henry, Rev. M. Wong Yuk Shing, George S. Garnett, Eugene N. Doyo, R. Mitchell, W. C. Stayton, Miss E. Brasch, T. F. Sanborn wife and 3 children, Mr. and Mrs. Charles Healy.

DIED.

WILSON—In Honolulu, August 19, Sadie Wilson, daughter of Charles Wilson, 1294 Beretania street, a native of Honolulu, aged 5 months.

Final J. J. Printing, Star Office.

Every community has been benefited by the introduction of Chamberlain's Colic, Cholera and Diarrhoea Remedy into this country. There is scarcely a neighborhood but that someone can be found whose life has been saved by its use. It is the best known medicine for all forms of stomach and bowel troubles. It never fails to give immediate relief and can always be depended upon. For sale by all dealers, Honolulu, Smith & Co. agents for Hawaii.

Pleasure Trips at World's Fair

When the Exposition visitor is weary of tramping, he can choose any one of the several diverting trips, where he can sit at ease and travel to interesting points at home and abroad. For instance, he can see Galveston before and after the great flood; he can enter Battle Abbey and witness the great land battle at Gettysburg, the great sea fight at Manila, and Custer's last charge; or, if inclined to adventure, he can go for a voyage "From New York to the North Pole."



Fancy yourself on a staunch vessel steaming out of New York harbor, past the Battery, Governor's Island, the Bartholdi statue, Staten Island; out through the narrows and up to the frozen north, which has tempted so many brave spirits. At last you find yourself among the mighty icebergs which threaten to crush the little craft. It is

Interesting, Instructive, Inspiring

And not alone these pleasure trips, but all other features of the Fair which are most interesting, instructive and inspiring, are pictured and told about in

That The
Superb Series of Photographic Reproductions
Forest City World's Fair Art Portfolios

These beautiful art-views (there are 480 of them) taken by the official photographer of the Exposition, and the vivid descriptive matter written by Secretary Stevens of the Fair, will beguile many an hour and afford much useful knowledge. The views will be highly prized and much enjoyed by old and young alike. The series of 30 parts (you should secure them all) will prove

A Delight to Every Member of the Family

Affording equal enjoyment to those who visit the Fair and to those who do not.

Ten Parts Now Ready

How to Secure the Views.

These views, which will constitute a complete reflex and record of the Exposition, are not distributed by us as a matter of profit, but rather to please our readers. Although the regular price is 25 cents, we place the entire series at the reach of every reader at only

10c a Part

to cover the cost of HANDLING, WRAPPING, ADDRESSING, MAILING, ETC. Simply fill out the coupon at the right and bring or send to us with ten cents, and Part I will be mailed to you at once. Address,

Fill out this Coupon and bring or send to us, with 10 CENTS, as indicated below.

BE SURE TO STATE WHICH PART YOU WISH

.....1904.

HAWAIIAN STAR, Honolulu, Hawaii:

Enclosed herewith find TEN CENTS to cover cost of postage and expense of mailing No. of "The Forest City," to which I am entitled as one of your readers.

Name

P. O. Island

HAWAIIAN STAR, Portfolio Department Honolulu, Hawaii

THE BANK OF HAWAII LIMITED.

Incorporated Under the Laws of the Territory of Hawaii.

PAID-UP CAPITAL.....\$500,000.00
SURPLUS.....200,000.00
UNDIVIDED PROFITS.....85,737.85

OFFICERS AND DIRECTORS.
Charles M. Cooke.....President
P. C. Jones.....Vice-President
F. W. Macfarlane.....2nd Vice-President
H. Cooke.....Cashier
C. Hustace Jr.....Assistant Cashier
E. F. Bishop, E. D. Tenney, J. A. McCandless and C. H. Atherton

COMMERCIAL AND SAVINGS DEPARTMENTS.
Strict attention given to all branches of Banking.

JUDD BUILDING. FORT STREET.

THE FIRST
AMERICAN SAVINGS & TRUST
CO. OF HAWAII, LTD.

Capital, \$250,000.00.

President.....Cecil Brown
Vice-President.....M. P. Robinson
Cashier.....W. G. Cooper
Principal Office: Corner Fort and King streets.

SAVINGS DEPOSITS received and interest allowed for yearly deposits at the rate of 4 1/2 per cent per annum.
Rules and regulations furnished upon application.

Claus Spreckels. Wm. G. Irwin.

Claus Spreckels & Co
BANKERS.

HONOLULU. - - - H. I.

San Francisco Agents—The Nevada National Bank of San Francisco

DRAW EXCHANGE ON

SAN FRANCISCO—The Nevada National Bank of San Francisco.

LONDON—Union of London & Smith's Bank, Ltd.

NEW YORK—American Exchange National Bank.

CHICAGO—Corn Exchange National Bank.

PARIS—Credit Lyonnais.

BERLIN—Dresdner Bank.

HONGKONG AND YOKOHAMA—The Hongkong and Shanghai Banking Corporation.

NEW ZEALAND AND AUSTRALIA—Bank of New Zealand, and Bank of Australia.

VICTORIA AND VANCOUVER—Bank of British North America.

TRANSACT A GENERAL BANKING AND EXCHANGE BUSINESS.

Deposits Received. Loans Made on Approved Security. Commercial and Travellers' Credits Issued. Bills of Exchange Bought and Sold.

COLLECTIONS PROMPTLY ACCOUNTED FOR.

ESTABLISHED IN 1858.

BISHOP & CO.
BANKERS

BANKING DEPARTMENT.

Transact business in all departments of Banking.
Collections carefully attended to.
Exchange bought and sold.

Commercial and Travellers' Letters of Credit issued on The Bank of California and N. M. Rothschild & Sons, London.

Correspondents: The Bank of California, Commercial Banking Co. of Sydney, Ltd., London.

Drafts and cable transfers on China and Japan through the Hongkong & Shanghai Banking Corporation and Chartered Bank of India, Australia and China.

Interest allowed on term deposits at the following rates per annum, viz.:
Seven days' notice, at 2 per cent.
Three months, at 3 per cent.
Six months, at 3 1/2 per cent.
Twelve months, at 4 per cent.

TRUST DEPARTMENT.

Act as Trustees under mortgages. Manage estates (real and personal). Collect rents and dividends.
Valuable Papers, Wills, Bonds, Etc., received for safe-keeping.

ACCOUNTANT DEPARTMENT.

Auditors for Corporations and Private Firms.

Books examined and reported on. Statements of Affairs prepared.

Trustees on Bankrupt or Insolvent Estates.

Office, 924 Bethel Street.

SAVINGS DEPARTMENT.

Deposits received and interest allowed at 4 1/2 per cent per annum, in accordance with Rules and Regulations, copies of which may be obtained on application.

INSURANCE DEPARTMENT.

Agents for FIRE, MARINE, LIFE, ACCIDENT AND EMPLOYERS' LIABILITY INSURANCE COMPANIES.

Insurance Office, 924 Bethel Street.

M. PHILLIPS & CO.,

Wholesale Importers
And Jobbers of

AMERICAN AND EUROPEAN DRY GOODS

Corner of Fort and Queen Sts.

Twenty-five cents pays for a Want ad in the Star. A bargain.



And Don't You Forget

That the evening's meal will not be satisfactory; will not seem complete without a supply of

RAINIER BEER

It puts health and happiness in every one of the family

RAINIER BOTTLING WORKS, AGENTS Phone White 1331 P. O. Box 517

ARMY CANTEN QUESTION AGAIN

The establishment of army posts has been followed by the usual crop of saloons and disreputable people. With the well regulated post exchanges of former days, weak men had a choice of evils and generally chose the lesser, the pure beer of the exchange. So long as the misguided Christian women of America insist on carrying the canteen into politics, young soldiers whose powers of resistance to temptation are below normal or not firmly exercised will continue to fall victims to the plague of service in India and the Orient generally, namely, drunkenness and dissolute company. From the Report of Brigadier-General William H. Carter, General Carter commands the Department of Visayas, Philippine Islands. He is thus outspoken, for he has been and is in a position to judge of the conditions of which he makes report. And his conclusions simply add to the volume of army testimony that favors the post exchange as a means of restricting the evils of intemperance.

Under an act of Congress of February 2, 1901, the sale of or dealing in beer and light wines, which had before that been permitted at post exchanges, was prohibited. When the orders were issued for the enforcement of the law the commanding officers of the various posts and military organizations were directed to report on its effects. The Secretary of War, in his report for 1901, declared that from the statements received from officers the effect of the law appeared to be unfortunate. He did not think, however, that sufficient time had elapsed to give the law a fair trial.

By 1902 a great number of additional reports were received confirming the

impression produced by the earlier reports, and Secretary Root then declared: "I am convinced that the general effect of prohibiting the use of beer and light wines within the limited area of the army post is to lead the enlisted men to go out of the post, to frequent the vile resorts which cluster in the neighborhood, to drink bad whiskey to excess, and to associate intimately with abandoned men and more abandoned women." His conclusion was that the operation of the law tended to increase drunkenness, insubordination, and desertion, and moral and physical degeneration.

The no doubt well meaning but very evidently misguided and certainly ill advised guardians of the morals of the American soldier may well consider the results of the anti-canteen law. General Carter's latest contribution is but an addition to the great mass of testimony that the abolition of the canteen has been demoralizing.

The fact is that the morals of an army cannot be conserved by absurd laws like these. Reasonable restriction such as prevailed at the old post exchanges made it possible to fight the evil on a common sense basis. It lessened the peril of the vile resort and the greater peril of cheap liquor. The law that shut the post exchange to the soldier opened to him a door that leads only to what is bad.

The law that promotes well being is first of all the law that reasonably restricts, that gives a choice of the lesser evil. The blunder of 1901 merely showed the way to the worse evil. An so long as the law of 1901 is effective, we may expect to hear just such reports as come from General Carter.—Chicago Inter-Ocean.

BASEBALL TOMORROW

The teams of the Oahu Railroad and the Board of Health will play a game of baseball tomorrow morning at 9 o'clock on the railroad grounds. The teams will line up as follows:

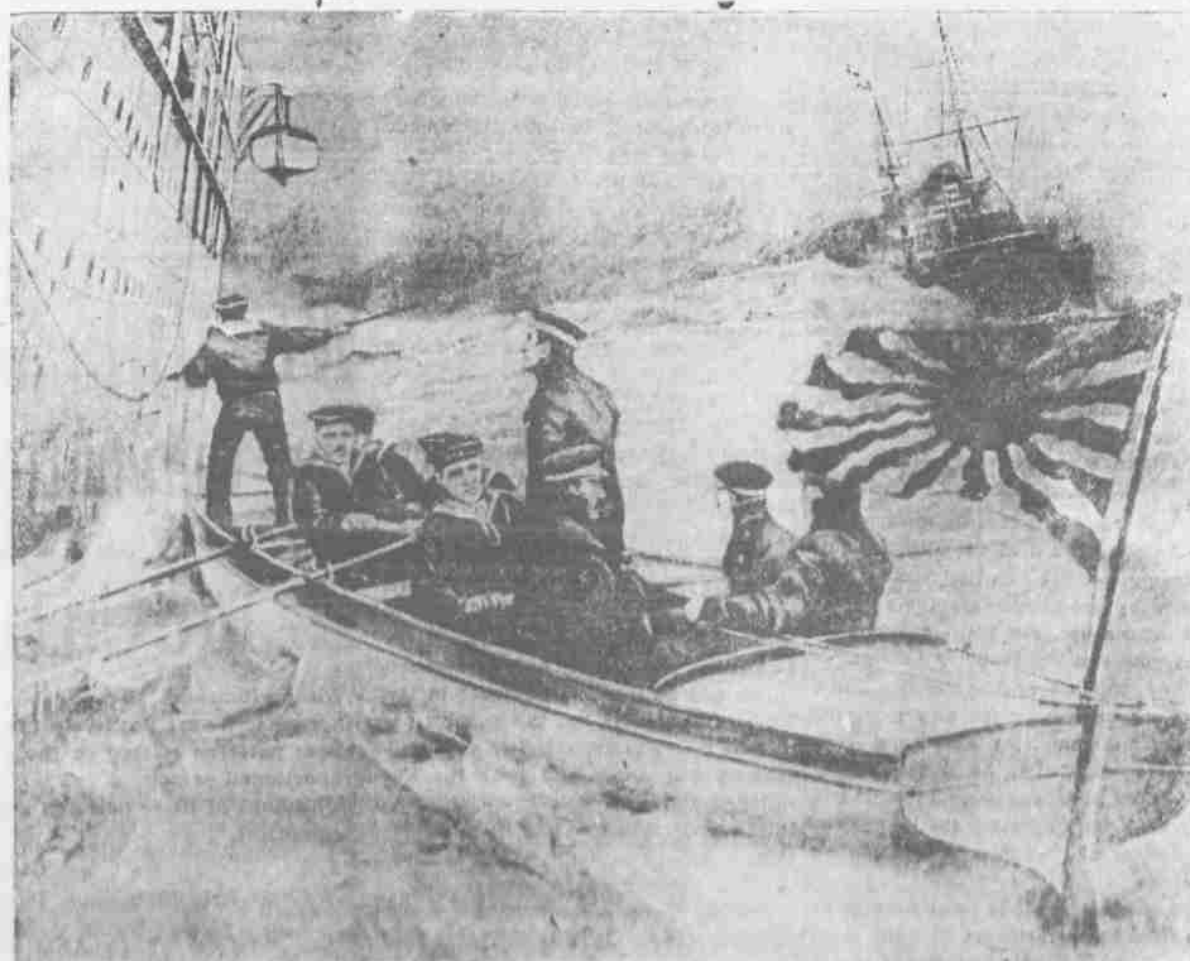
Fumigators—A. C. Stone, c; Lord McKnew, p; W. K. Simerson, 1b; W. K. Bush, 2b; Henry Kaal, 3b; W. C. Mahuka, 4b; Sidney Jackson, 1c; Harry

Hanakaht, cf; L. K. Ka-ne, rf. Sub—Hussey, Pahan, Fox, Durao, Lane, and Vivichaves.

Railroads—Cushingham, c; Milton, p; Auld, 1b; Jones, 2b; Grady 3b; Sheldon ss; Denison, rf; Petrie lf; Hurt, cf. Sub—McShane, Hughes, Olsen Wilson.

Star Want ads pay at once.

THE SEARCH FOR CONTRABAND OF WAR



Merchantmen in the seas of the Far East are in constant danger of being stopped by Russian or Japanese men-of-war, and searched for contraband. Those on whom contraband is found are allowed to proceed. The Russians have adopted a plan of compelling captains whose vessels they stop and search, to sign statements, to the effect that they received courteous treatment.

POLO GAMES...

Maui vs. Kauai

HON. S. E. DAMON'S

MOANALUA POLO GROUNDS

Aug. 21th and 27th, 1904.

Tickets, 50c.

Tickets on sale at E. O. Hall & Son's, Woods & Sheldon, Pearson & Potter.

Sensible Buying

You can never hope to get something for nothing in this world, but we can help you toward clothes satisfaction at sensible prices. STEIN-BLOCH SMART CLOTHES, prepared for immediate service, are the best in quality and appearance that the ready-to-wear world knows. The Stein-Bloch tailors have mastered the technique of style and turn out enviable productions wrought from fine fabrics and put together with tested materials. Only the most notable merchant tailors rival them. Our summer sacks, unlined, are particularly fine examples of this surpassing skill. Mention the mark of rightness the Stein-Bloch label.



M. MCINERNEY, LTD.

MERCHANT AND FORT STS.

Everyone who loses a dog says he wouldn't have taken a hundred dollars for it, though he was never offered a cent.—Atchison Globe.

Those contemplating keeping house should see the new

LEONARD CLEANABLE Refrigerators

Porcelain or Zinc Lined.

H. HACKFELD & CO., LTD

HARDWARE DEPARTMENT.

The Incandescent Light

CONVENIENT
HEALTHFUL
SAFE

Electric light should be used in every residence in Honolulu where the best at a reasonable price is desired.

All the modern residences are equipped for its use but those that are not can be wired at a small expense.

It means: no matches, no dirt, no trouble, no danger. Almost as cheap as kerosene if used judiciously.

Where used for lighting, electricity can also be used for operating electric fans, electric chafing dishes, curling iron heaters, etc.

Our representative will call upon you on request.

Hawaiian Electric Co., Ltd.

OFFICE, KING STREET.

PHONE MAIN 190.

"Hard to Get Good Stationery"

That is a remark we overheard a fashionable lady make a few days ago and she was nearly right too, but she hadn't been in our store.

The same lady found us in the Young Building and now she knows where to get paper that just suits her.

Our stock of Hurd's standard and Crane's linen lawn stationery is strictly high class and up-to-date.

Different styles and colors to suit any fancy.

Hawaiian News Co., Ltd

Bishop Street.

TWO STORES.

Merchant Street.

Savory Meats

TENDER BOILING MEAT, JUICY BROILING BITS—WE HAVE THEM ALL.

For special occasions or for the daily menu, we furnish the meats that fill the need completely.

Telephone orders are carefully filled and promptly delivered. Main 7th.

Island Meat Co., Fort Street

\$72.50

Chicago

AND RETURN

One way via St. Louis with stop over privileges.

SALE DAYS—August 18th, 19th, September 1st, 2nd, 5th, 6th, 7th, 8th, October 3rd, 4th, 5th, 6th.

TWO FAST TRAINS DAILY

Via the Southern Pacific

Union Pacific and

Chicago and

Northwestern Railways

Overland Limited, Vestibuled. Leaves

San Francisco at 10:00 a. m. The most

Luxurious Train in the World. Electric

Light throughout. Buffet smoking

cars with barber and bath. Booklovers

Library, Dining Cars, Standard and

Compartment Sleeping Cars and

Observation Cars. Less than three days to

Chicago without change.

Eastern Express, Vestibuled. Leaves

San Francisco at 6:00 p. m. Through

Standard and Tourist Sleeping Cars to

Chicago. Dining Cars. Free Reclining

Chair Cars.

Personally Conducted Excursions—

Wednesdays, Thursdays and Fridays at

9 a. m.

Send ten cents in stamps for Russia-

Japan War Atlas.

Chicago & Northwestern Ry.

R. R. RITCHIE, G. A. P. C.

617 Market St. (Palace Hotel) San

Francisco, or S. P. Company's Agent.

THE HAWAIIAN REALTY AND MATURITY CO., Ltd.

Real Estate, Mortgages, Loans and Investment Securities. Homes built on the installment plan.

Home Office: McIntyre Building, T. H. L. K. KENTWELL, General Manager.

THE YOKOHAMA SPECIE BANK

Limited.

ESTABLISHED 1880.

Capital Subscribed.....Yen 24,000,000

Capital Paid up.....18,000,000

Reserve Fund.....9,320,000

HEAD OFFICE, YOKOHAMA.

Branches:

Honolulu, N. w York, San Francisco,

London, Lyons, Bombay, Hongkong,

Newchwang, Peking, Shanghai, Tientsin,

Kobe, Nagasaki, Tokio.

The Bank buys and receives for collection

Bills of Exchange, issues Drafts and

Letters of Credit, and transacts a

general banking business.

Honolulu Branch 67 King Street

CONSOLIDATED SODA WATER WORKS

(COMPANY, LTD.)

Esplanade, cor. Allen and Fort Sts.

Manufacturers of Soda Water, Ginger

Ale, Sarsaparilla, Root Beer, Cream

Soda, Strawberry, Etc., Etc.

S. Kojima.

Importer and Dealer in

LIQUORS, JAPANESE PROVISION

GENERAL MERCHANDISE

AND PLANTATION

SUPPLIES

No. 45 Hotel Street.....Honolulu, T. H.

Telephone White 1411.

P. O. Box 904.

Star Want ads pay at once.

Nine parts of the World's Fair Portfolios now ready at Star office. Portfolios now ready at Star office. Nine parts of the World's Fair

The Hawaiian Star, DAILY AND SEMI-WEEKLY.

Published every afternoon (except Sunday) by the Hawaiian Star News-paper Association, Limited.

SUBSCRIPTION RATES.

Local, per annum \$ 8.00
Foreign, " 12.00
Payable in Advance.

Frank L. Hoogs, Manager.
SATURDAY, AUGUST 20, 1904

As a matter of Education, it becomes the duty of everyone who can possibly do so to attend the World's Fair, but if this is not possible, it is easily within the reach of every man, woman and child to secure the superb series of "Forest City" World's Fair Art Portfolios which we are now distributing to our readers. It should be borne in mind that this is the official series, the originals of the views being taken by the official photographer, while the descriptions are all written by Walter B. Stevens, the Secretary of the Louisiana Purchase Exposition. The cost of these portfolios, divided into thirty parts, each part containing 16 views, is merely nominal, it being only necessary to send or bring 10 cents, together with a "Forest City" coupon and any part issued will be delivered or mailed. The regular price of each portfolio is 25 cents, but we have secured a special concession which they highly appreciate, which is evidenced by the fact that the distribution is increasing in popularity each week.

Panama Canal Hurts Europe

The Panama Canal will be open to commerce in about ten years, says a leading German paper, the Frankfurter Zeitung, and it proceeds to show that the canal will be detrimental to Europe as far as commerce with the Far East is concerned, and will give American ports a distinct advantage. The canal places even New York nearer Hongkong via Panama than Hamburg via the Suez. In this lies the "gravity of the situation," says the German. The paper continues: "Of what real advantage the sole control of the waterway in times of war will be to the United States will be seen only after a long time. The consequences for commercial navigation are more evident. If looked at with European eyes they appear small. What will the Panama Canal offer us? To the whole of eastern Asia and to Australia, inclusive of New Zealand, the way via the Suez Canal will remain much the nearer for Europe.

"The exchange of goods with the countries to which the lessening of distance is the greatest, namely, western Mexico and California, is of only moderate importance. The saving of nautical miles between Hamburg and San Francisco and all harbors on the western coast north of Panama is 6,652; south of Panama the saving constantly decreases. Between Hamburg and Valparaiso it amounts to only about 2,400 nautical miles.

"This saving is very much larger for the eastern ports of the United States, namely, 9,531 nautical miles between New York and San Francisco, so that New York on this route gains 2,889 nautical miles more than Hamburg. But this is not all. The main fact is that this saving is so large on the route from New York to eastern Asia and Australia that it changes the present disadvantage of New York into an advantage. From Hamburg to Hongkong, via Suez, the distance is 10,542 nautical miles; from New York to Hongkong, via Suez, it is 11,055 miles. Hamburg therefore has an advantage of about 1,100 nautical miles. The Panama Canal will give nothing to Hamburg, but a saving of 1,820 nautical miles to New York, so that the distance will be only 9,835 nautical miles, 707 less than from Hamburg. In routes to the more northern ports of eastern Asia, as well as to those of eastern Australia, the gain of New York grows very materially. From Hamburg, via Suez, to Melbourne the distance is 12,367 nautical miles; from New York about 12,500. Via Panama, however, the distance from New York is only 10,427, so that it will be about 2,000 nautical miles nearer to the Australian port than Hamburg. To Yokohama the distance from Hamburg is 12,531 nautical miles; from New York, via Suez, it is 13,564—in round numbers 1,000 nautical miles longer than from Hamburg. Through the Panama route New York gains 3,729 nautical miles in the Japan lines; Hamburg nothing. New York has therefore a distance of only 9,835 nautical miles to Yokohama—that is, in round numbers, 3,700 nautical miles less than Hamburg. In shipping to Japan and northern China, and, in a lesser degree, to southern China and Australia, New York will have the advantage, on account of shorter steamer trips, over Hamburg and the English ports. If Europe has been heretofore in a more advantageous position, North America will be the favored party when the Panama Canal is built.

"Distance is, of course, not the only decisive factor; if it were Trieste would be of greater importance in the Far East than Liverpool and London. It is, however, of great weight. The Panama Canal will favor the chances of the eastern ports of North America in an extraordinary degree."

Psychological Mystery

Who can explain the mystery of H. well known novelist has given over Rider Haggard and his dog? The his signature an account of an incident which he describes as a sort of "telepathy," between a human being and a dog. The main facts are corroborated by outside evidence, for the benefit of those who do not think that Rider Haggard's name is enough alone. The case, briefly stated, is as follows: Haggard awakened at midnight in the throes of a nightmare, his wife calling to him because he had disturbed her by making horrible and weird noises. On awakening throughly he stated that he had been having a terrible struggle and had dreamed that his pet dog Bob was in some fearful situation and was trying to tell him about it. He had dreamed that the dog was lying in some brush, near water. He felt that the dog was dying and, he says, "My own personality in some mysterious way seemed to be rising from the body of the dog." This was Haggard's experience, in a few words. The sequel is that subsequent investigations established practically beyond doubt that the dog was run over by a train, knocked from a bridge and fell into some brush, being finally found dead, floating in near-by water, and that the accident to the dog must have occurred at about the time when the novelist had his peculiar dream and nightmare and woke his wife by making "horrible and weird noises."

These are the facts. It is for those who can to explain them. Haggard's explanation is: "The dog Bob, between whom and myself there existed a mutual attachment, either at the moment of his death, if his existence can conceivably have been prolonged till after 1 in the morning, or, as seems more probable, about three hours after that event, did succeed in calling my attention to its actual or recent plight by placing whatever portion of my being is capable of receiving such impulses when enmeshed by sleep, into its own terrible position. That subsequently, as that chain of sleep was being broken by the voice of my wife calling me back to a normal condition of our human existence, with some last despairing effort, while that indefinable part of me was being withdrawn from it (it will be remembered that in the dream I seemed to rise from the dog), it spoke to me, first trying to make use of my own tongue, and, failing therein, by some subtle means of communication whereof I have no knowledge telling me that it was dying, for I saw no blood or wounds which would suggest this to my mind.

"I recognize, further, that, if its dissolution took place at the moment when I dreamt, this communication must have been a form of that telepathy which is now very generally acknowledged to occur between human beings from time to time and under special circumstances, but which I have never heard of as occurring between a human being and one of the lower animals. If, on the other hand, that dissolution happened, as I believe, over three hours previously—what am I to say? Then it would seem that it must have been some non-bodily but surviving part of the life or of the spirit of the dog which, so soon as my deep sleep gave it an opportunity, reproduced those things in my mind, as they had already occurred, I presume, to advise me of the manner of its end or to bid me farewell."

This is an interesting contribution to the literature on whether animals have souls. Haggard's statements and his explanation have naturally caused considerable discussion. Who can offer a better explanation than the remarkable one given by the novelist?

ANHEUSER-BUSCH'S
Malt-Extract
TRADE MARK.

A non-intoxicant, sparkling and highly concentrated liquid

Extract of Malt and Hops

Strengthening, invigorating and sedative.
Recommended by the Medical Profession.

THE WARM WEATHER TONIC

HOLLISTER DRUG CO.
FORT STREET.

Bishop Potter is being roundly denounced for taking part in the opening of a saloon which he was pleased to call a poor man's club. It is hard to see wherein the bishop's saloon differs from thousands of others and it is no wonder that his actions produce a shock in the religious world. Every city that has saloons has some which are run on the bishop's plan of making the liquor business respectable. All the bishop seems to have accomplished is to give a splendid advertisement to a new place, which at last accounts was doing enormous business.

A Merchant Marine Commission of Congress, appointed at the last session to make an extensive tour of the United States, is on the Pacific coast and is being much entertained and talked to. Its mission is to study means of bettering American shipping, in their words to take up the old problem of restoring American shipping. The successful accomplishment of its mission would be of great benefit to Hawaii.

What has happened to the corner in which General Stalkeburg was supposed some days ago to be fastened? Nothing seems to be going on except at Port Arthur, a condition of affairs which lends color to the statement that other operations have been suspended in order to devote all possible energies to taking that fortress. Still it is not likely that any operations would be suspended, which would mean practically abandoned, if there was a chance of cutting off and capturing Stalkeburg's army.

It would be well for the government to come to the aid of the anti-mosquito committee. The matter is one to be studied by prospective members of the next legislature, for there are regulations which might properly be enacted as laws, which would materially assist the work of freeing the city from the pest. The committee has done very valuable work, first in demonstrating the possibility of success, and second in very materially reducing the number of mosquitoes and adding to the public comfort.

A work that depends so absolutely on universal co-operation as does the mosquito campaign, however, can scarcely be kept up to the proper standard without the aid of law. Even the most energetic stirring of public spirit leaves some citizens in a state of indifference, and moreover there are still many who do not believe that mosquitoes can be prevented from breeding, just as there

Classified Ads in Star.

Ads under "Situations Wanted," inserted free until further notice.

Situation Wanted

Japanese couple. Man is good in yard, garden or stable. Woman in care of children, sewing or housework. First class references. Address B. H. S., P. O. Box 556.

Notice Of Removal

Dr. Camp Office No. 1240 Emma Street Hours: 9-12 a. m., 7-8 p. m. Residence Telephone Blue 2071.

For Sale

A magnificent building site on the Punchbowl slope near Thurston avenue. Particulars at Star office.

Building lot corner King and Kamehameha road. Palama terminus of Rapid Transit road. Apply at Star office.

Furnished Rooms To Let

A nicely furnished front room. Mosquito proof and electric light. 494 Bereania near Punchbowl.

INVEST Your Savings

where it will earn
9%
with safety

Guaranteed

for particulars apply
Phoenix Savings, Building
And Loan Association

Judd Building, Honolulu

GUARANTEE CAPITAL
\$200,000.00

PAID UP CAPITAL
\$1,300,000.00

Henry E. Pocock, Cashier

Photo Frames

At 33 1/3 % Discount.

In order to close out our present stock we are sacrificing our entire line of silver and gilt frames at one-third the regular price.

This is below cost, and are genuine bargains while they last.

They're going fast, so come early.

H. F. WICHMAN & CO. LTD.,
FORT STREET.

are people who do not believe that they carry malaria, or yellow fever, or dengue, and people who do not think vaccination prevents small-pox, or that the earth is round. The obstinate skeptics in most cases do not matter, but when it comes to dealing with mosquitoes, a single household, by ignoring the work, can infect a whole district with pests. Whoever does so maintains a nuisance just as much as if he kept an open cesspool, and the law should deal with his case.

The practicability of the plan is generally recognized by the public. If the legislature will take hold and adopt some general rules, without going into too much detail, and give some authority to the men in charge of the work, the latter will be able to do even more for the community than they have done now.

Hamilton Wright, whose modest request of the Merchants' Association is for all the data necessary for him to prepare a series of articles for Eastern papers on Hawaii under American rule, furnishes a fair sample of Eastern ignorance of these islands. Wright is secretary of the California Promotion Committee, an organization which has no interest whatever in the welfare of Hawaii, but the Eastern papers he refers to probably thought that Hawaii was somewhere near the Farallones and that San Francisco was the nearest point to apply for information.

The Paraguay revolutionists are not fighting fairly. How is the other side going to carry on the contest when they make the Minister of War a prisoner?

Probably the most comfortable place for the Senate to meet would be under the shade of the big tree in the Capitol grounds, sacred to the memory of the "third house" of 1861.

Thousands of Feet of

GARDEN HOSE

Anticipating the irrigating season we have imported a large stock of the

VERY BEST

GARDEN HOSE OBTAINABLE.

THE LOW PRICES

WE ARE ABLE TO MAKE ARE SIMPLY PARALYZING.

Lawn Sprinklers in Great Variety

A New Invoice of the Favorite

EDDY REFRIGERATORS

Made to Keep Things Cool and Economize ICE.

Pacific Hardware Company, Ltd Merchant Street

M. S. GRINBAUM & CO. LTD.
LIMITED.

Importers and
Commission
Merchants

SOLE AGENTS FOR

Little Jack

Smoking Tobacco

5¢ and 10¢ packages.

AGENTS FOR

BRITISH AMERICAN ASSURANCE
COMPANY of Toronto, Ontario.

DELEWARE INSURANCE CO. of
Philadelphia.

CASTLE & COOKE, LTD.

Commission Merchants,
Sugar Factors..

AGENTS FOR

The Ewa Plantation Company.
The Waiata Agricultural Co., Ltd
The Kohala Sugar Company.
The Waimoa Sugar Mill Company.
The Fulton Iron Works, St. Louis, Mo.
The Standard Oil Company.
The George F. Blake Steam Pumps.
Weston's Centrifugals.
The New England Mutual Life Insurance Company of Boston.
The Aetna Fire Insurance Company of Hartford, Conn.
The Alliance Assurance Company of London.

W. G. IRWIN & CO.

AGENTS FOR

Western Sugar Refining Co., San Francisco, Cal.
Baldwin Locomotive Works, Philadelphia, Pa.
Newell Universal Mill Co., Manufacturers of National Cane Shredder, New York, N. Y.
Paraffine Paint Company, San Francisco, Cal.
Ohlandt & Co., San Francisco, Cal.
Pacific Oil Transportation Co., San Francisco, Cal.

Fire Insurance!

THE B. F. DILLINGHAM CO., LIMITED,

General Agents for Hawaii
Atlas Assurance Company of London.
Phoenix Assurance Company of London.
New York Underwriters Agency.
Providence Washington Insurance Company.
Phoenix Insurance Company of Brooklyn.

Albert Raas, Manager
Insurance Department office Fourth Floor, Stangenwald Building.

The Pacific Hotel,

1182 UNION STREET
OPPOSITE PACIFIC CLUB.

NEWLY FURNISHED ROOMS

The Best Restaurant
in the City . . .

MRS. HANA, Proprietor.

We Unhesitatingly Make The Emphatic Statement THAT THE McCall Patterns

With perforations showing basting and sewing lines—not found in any other pattern—are positively the finest shape, the best fitting, and the most simple patterns offered to the public, and are cut to fit the average well-proportioned person.

Millions of these patterns are sold during the year with seldom or never a complaint.

OUR MOTTO IS:

Strictly high grade Patterns at the lowest possible price.

10 AND 25c, NONE HIGHER.

SOLE AGENTS,

E. W. Jordan & Co., Ltd
NO. 10 STORE, FORT STREET.

Monday morning, August Twenty-second, begins our

Annual Remnant Sale

What to do with remnants is a problem every large store has to face once a year.

From all parts of the store we have gathered up the short ends of Organdies, Lawns, Batistes, Dimities, Ginghams, Zephyrs, Chambrays, Voiles, Etamines, Flannels, Flannelets, Woolen Dress Goods of all kinds, Silks, Silk Mulls, Sheeting Denims, Silkolines, Crettonnes, Curtain-Swings, Table Linen and in fact all odds and ends which have accumulated in the past year.

Prices scarcely matter. Anything that will sell the goods is the right price. Sometimes it is 10c. for the stuff originally 65c., but never mind that!

Early comers of course get first selection, so just remember that the sale begins at 8 o'clock Monday morning.

N. S. SACHS' DRY GOODS CO., LTD., Cor. Fort and Beretania Sts.

Camara & Co.

LIQUOR DEALERS

Corner Merchant and Alakea Streets.

de Turk Wines,
White Seal Champagne, qts. and pts.,
European Wines and Brandies,
Bulldog Brand Stout and Ale,
A. B. C., Budweiser, Pacific, Rainier and Primo Beers,
In qts. and pts.

Telephone Main 492. P. O. Box 664

Sale of Lease

Land of Kawaihae 2d--Kohala, Hawaii

By direction of the Executive Committee of the Board of Trustees of the Queen's Hospital, I will offer at public auction a leasehold of the Land of Kawaihae 2d, Kohala, Hawaii, on Monday, September 19, 1904, at my salesrooms, in Kaunahu street, Honolulu, at 12 o'clock noon.

This property comprises one of the most desirable grazing tracts of the District and the source of the Keawenui stream, an unfailing water supply, is located on the upper or mauka portion of the property which is considered the best fattening land in the neighborhood.

The property extends from a point near Kawaihae Landing to the mountain known as Kaunahu o Kaleihoohe, a distance of about eight miles, varying in width from one to two miles.

At Kawaihae there is on the property, adjoining the Parker place, a very desirable House lot.

The area of this land is 10,600 Acres, more or less.

The purchaser will be required under the terms of the lease to fence the forest portion of the property in the vicinity of the water heads or source of the Keawenui stream, and otherwise provide for the exclusion of cattle from the forest portion by the erection of a five-wire fence so constructed to keep the cattle out.

Lessee must also keep down the lantana on the property. No live timber to be cut on the forest portion except for fence posts to be used on the ground, and the cutting of algaroba on the lower portion must be confined to thinning out and trimming.

Upset price for 10 year term, \$2500.00 per annum, payable quarterly in advance.

A Map of the property is now posted at my salesroom.

For further particulars apply to the undersigned or A. B. Loebenstein, Surveyor, Hilo.

JAS. F. MORGAN,
AUCTIONEER.

Assignee's Notice.

Notice is hereby given that all persons having claims against Z. Yoshida, of Honolulu, must file the same with the undersigned, at Room 12, Campbell Block, Honolulu, on or before September 15th, 1904, or the same will be forever barred.

K. Oshida,
Assignee Z. Yoshida.
Dated Honolulu, July 15th, 1904.

IN THE CIRCUIT COURT OF THE Second Circuit, Territory of Hawaii. At Chambers.—In Probate.

In the Matter of the Estate of Kamal and Kadelonehu, minors.

Order of Notice of Hearing Petition for Allowance of Final Accounts, Distribution and Discharge.

On Reading and Filing the Petition and Accounts of Helewaile (W), Guardian of the persons and estate of Kamal and Kadelonehu, of Waikapu, Maui, minors, wherein she asks to be allowed \$24.25 and charges herself with \$24.00, and asks that the same may be examined and approved, and that a final order may be made of distribution of the property remaining in her hands to the persons thereto entitled, and discharging her and her surviving from all further responsibility as such guardian as aforesaid.

It is ordered, that Wednesday, the 21st day of September A. D. 1904 at ten o'clock, a. m. before the Judge of said Court at the Court Room of the said Court at Waikapu, Island of Maui, be and the same hereby is appointed as the

time and place for hearing said Petition and Accounts, and that all persons interested may then and there appear and show cause, if any they have, why the same should not be granted, and may present evidence as to who are entitled to the said property. And that notice of this Order in the English language be published in the Hawaiian Star a newspaper printed and published in Honolulu, Oahu, for three successive weeks, the last publication to be not less than two weeks previous to the time therein appointed for said hearing.

Dated at Waikapu, Maui, this 10th day of August, 1904.
By the Court:
(Signed) EDMUND H. HART,
Clerk.
4th—Aug. 13, 20, 27, Sept. 3.

IN THE CIRCUIT COURT OF THE First Circuit, Territory of Hawaii.—At Chambers.—In Probate.

In the Matter of the Estate of Naeole (W) of Waialeale, Ewa, Oahu, deceased.

Order of Notice of Hearing Petition for Administration.

On Reading and Filing the Petition of Kalama (K) of Ewa, Oahu, husband of said Naeole, alleging that Naeole of Ewa, Oahu, died intestate at Ewa, Oahu, on the 23rd day of April, A. D. 1903, leaving property in the Hawaiian Islands necessary to be administered upon, and praying that Letters of Administration issue to Kalama.

It is Ordered that Monday, the 5th day of September, A. D. 1904, at 10 o'clock a. m., be and hereby is appointed for hearing said Petition in the Court Room of this Court at Honolulu, Oahu, at which time and place all persons concerned may appear and show cause, if any they have, why said Petition should not be granted, and that notice of this order be published in the English language, for three successive weeks, in the Hawaiian Star, newspaper in Honolulu.

Dated at Honolulu, July 30, 1904.
W. J. ROBINSON,
Third Judge of the Circuit Court of the First Circuit.

Attest:
GEORGE LUCAS,
Clerk of the Circuit Court of the First Circuit.

C. E. Peterson, Attorney for Petitioner.
July 30, Aug. 6, 13, 20.

BY AUTHORITY

PUBLIC LANDS NOTICE.

On Saturday, September 3rd 1904, at 12 o'clock noon, at the front entrance to the Judiciary Building, Honolulu, will be sold at Public Auction two government lots of grazing land situate at Hanalei, Kauai, as follows:

Lot 1, containing 987.25 acres, a little more or less; upset price \$9,000.

Lot 2, containing 994.75 acres, a little more or less; upset price \$4,000.

Terms: Cash, U. S. Gold Coin.

For plans and further particulars, apply at the Department of Public Lands, Judiciary Building, Honolulu.

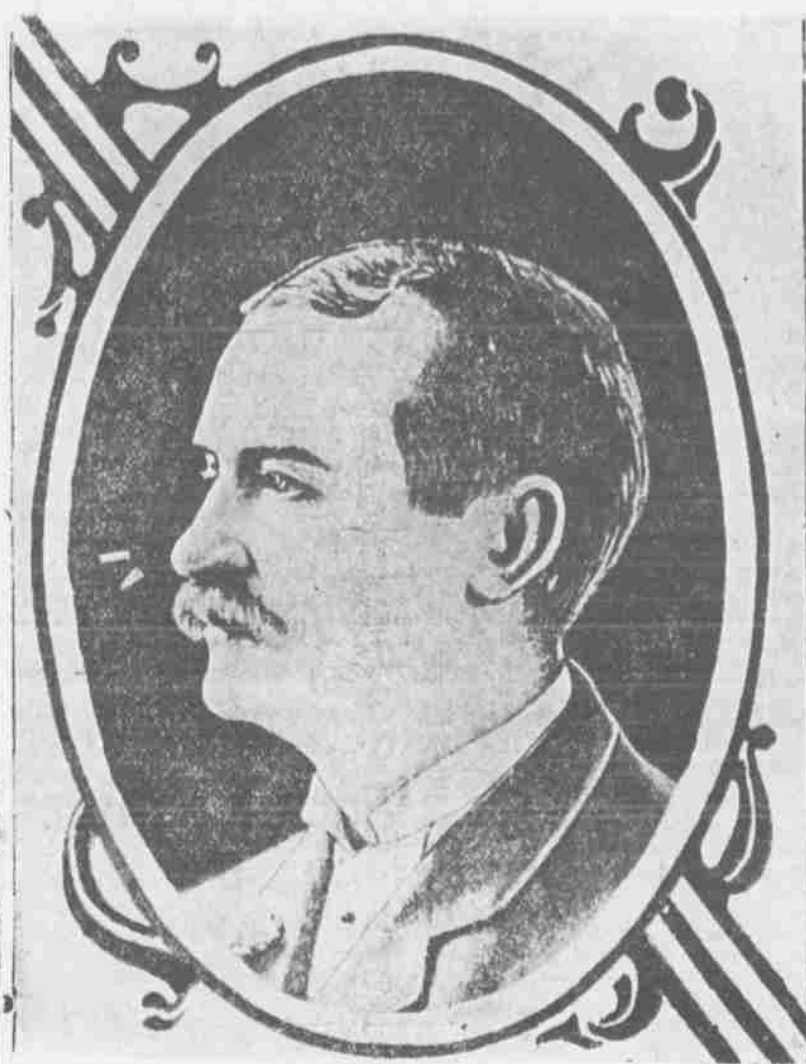
JAS. W. PRATT,
Commissioner of Public Lands.
Honolulu, T. H., August 1, 1904.

HILLO WILL HAVE HOTEL

(Continued from Page 1.)

of the enterprise. The capital stock of the company was fixed at \$25,000 the shares to be distributed among the business men and members of the Board. E. B. Holmes, president of the Board and Secretary H. V. Jones were authorized to see what outside support

IS DEPORTING MINERS



GOVERNOR PEABODY OF COLORADO.

Governor Peabody of Colorado, as the head of the state militia, is responsible for the policy which is being carried out of summarily deporting union miners from the Cripple Creek district. The governor's actions are attracting wide attention, being unprecedented in American history, and political capital is being made out of them. Peabody says deportation is necessary for the restoration of peace, the union miners being in the position of having declared war on the United States.

PORTUGUESE FOR MEXICO

J. J. Souza, a grocer of Kakaako, is in a scheme to induce Portuguese to emigrate to Mexico. He is maintaining secrecy about the details of the emigration and refuses to disclose the destination in Mexico. He does not state the character of business in which they are to engage.

Souza claimed to have 300 Portuguese who have promised to sign an agreement to leave Honolulu and go to the new place where they will be given work. He states that he is anxious to get 500 men to sign the agreement. He thinks he will be able to get this number without much trouble. He intends to leave Honolulu in the course of a month and visit the mysterious haven and investigate the character of the place. If he finds it satisfactory he will advise his people to follow him.

THE DEMOCRATS

THE TERRITORIAL CONVENTION TO BE HELD NEXT MONDAY IN HONOLULU, AT THE ORPHEUM THEATER—A CHANCE THAT DELIBERATIONS OF THE PARTY WILL PROVE VERY LIVELY.

Democratic politics are warming up very rapidly. The caucus of the Fourth District delegates last night scared the Dove of Peace so badly that she flew far away and cannot be coaxed back today. Harmony is the watchword, but it does not enable some of the candidates to pass the line, for there seems likely to be a fight in the convention on Monday.

The selection of A. A. Wilder for permanent chairman will probably meet with general approval, but over the choice of J. L. Coke of Maui for temporary chairman, there seems likely to be some discord. F. J. Testa was favorably endorsed for this position by the members of the Fifth District delegation, but there is the strongest sort of opposition to Testa. Coke appears to have the best of the argument, but it is possible that a compromise candidate may be selected. There will probably be no fight over any of the other officers nor is there likely to be any wrangle over the appointment of various committees.

Iauka will have a walkover apparently for nomination as delegate to Congress.

The platform for the coming campaign is to be adopted and a new central committee will be chosen. There seems likely to be no contest over positions on this committee. Some of the prominent leaders will not be seen on the new committee. Col. C. J. McCarthy who has always been identified with the Democratic party, has declined to serve on this committee.

The Hawaii and Maui delegates arrived today on the steamer Kinau. The Kauai delegates are expected to reach Honolulu by the steamer W. G. Hall tomorrow.

FAXON BISHOP READY TO RUN

A rumor that Faxon Bishop was intending to retire from politics and refuse a nomination for the Senate even if it were offered to him somehow gained currency last evening, but as may have been expected it was in exact reverse of the truth. In political parlance Bishop is "in the hands of his friends" and those friends have every intention of putting his name in nomination. Not only this, but it is extremely probable that he will act as treasurer for the Republican campaign as well.

"Bishop will certainly not refuse a nomination," said Governor Carter this morning, "and it seems pretty certain that he will act as treasurer if he should be asked. A better man for treasurer could not be found as his high standing with the business community would commend him to all classes."

It is believed the transportation companies running out of Hilo, and nearly all of the plantation people in the vicinity of Hilo will subscribe liberally to the stock. It is proposed to secure entirely island capital and distribute the shares so as to make the hotel a cooperative concern. If satisfactory arrangements cannot be made with the companies with a view of leasing the present hotel property, the plan is to build on some suitable location for which three sites have already been offered. The question of details and management have not been considered, but it is understood the right man can be readily secured. Architect Richley has already made drawings of a proposed hotel building, to be located on Reed's Island, which contemplates beautiful grounds and driveway through Riverside Park.

LONG N BENT.

SAN FRANCISCO, August 18.—The London price of 88 analysis bent today is 10 shillings, 6 pence. The last quotation was August 13, 10 shillings, 2 pence.

WILD RUMORS OF A SUICIDE

SENSATIONAL REPORT WHICH PROVED TO BE A JOKE WHEN RUN DOWN.

There was excitement out at Waikiki last evening over the story that E. S. Boyd, formerly Land Commissioner, had committed suicide. The troubles of Boyd have been pretty well aired recently and this gave color to the rumors. He is at present waiting trial on the charge of appropriating government funds and yesterday he was in the police court on a charge of having assaulted his wife, a charge to which he pleaded guilty and got off on suspended sentence.

When he went home yesterday afternoon he announced his intention of ending his earthly troubles, but he had previously made similar announcements and no notice was taken of his threats. Early in the evening, however, one of the children found Boyd in his room groaning, and shortly after assistance had been summoned he, to all appearances, gave up the ghost. The Mauna Hotel was telephoned and among others who went over to the Boyd house was Dr. Murray. An examination showed that the corpse was very much alive. Its heart was beating regularly and its pulse was strong, but still it refused to come to life again. Ordinary methods failing, the medicine man turned to more drastic remedies. He saturated a handkerchief with ammonia and applied it to the corpse's nostrils. Then "Pat Malone forgot that he was dead," Boyd came to life again immediately and explained that it was all a joke he was playing on his wife. This rare gift of humor having been thoroughly explained the sympathetic neighbors withdrew and prayers for the dead were cancelled.

The report of a suicide was generally current in Honolulu this morning.

Boyd was about town as usual today and was strenuous in his denials of the current story. He says that he did not attempt suicide, nor did he feign death in order to fool his wife. His unconsciousness, he avers, was genuine having been brought on through the mental distress occasioned him by his brother-in-law's action in causing his arrest over a little family row which would have been easily settled but for outside interference.

IS KEOKHOKALOLE COMING BACK?

REPORTS REGARDING THE MOVEMENTS OF DELEGATE KUHIO'S FORMER SECRETARY.

Morris Keokhokalole, former secretary to Delegate to Congress Kalaniana'ole, is said to be in Utah, where he has some relatives. One report is that he is on his way home and this is believed to be true, though some of his friends declare that he will never return to Honolulu. Morris has so far repudiated all plans to get him back. He is now said to be about to become a political issue, the Democrats having intention to inject him into the campaign and use his troubles to create opposition to Cupid. The result is likely to be some very spicy disclosures about Morris' Washington career.

Some months ago, when Keokhokalole's plight first became known here, a number of his friends raised \$200 for him, with which to return. The cash was raised without any difficulty and the cable was used to inform Keokhokalole that his passage was secured, first-class all the way. Morris absolutely refused to return, and the scheme was dropped.

Prince Kuhio is said to have paid Morris' passage twice. The first time was when the secretary was discharged from his position, after various troubles. Morris, however, did not make the trip. At a later day Kuhio, it is stated, secured tickets, refusing to hand over any more cash to Morris, but the latter again failed to make the trip. Morris is said to have personated the Prince in some Washington resorts, with the result that there was pliska for the delegate, and this is stated to be what led to the first split between them. The former secretary, it is also stated, wrote to Governor Carter asking for assistance, when Carter was at the Chicago convention.

Kuhio when asked about the matter this morning was inclined to take it good naturedly.

"I would be sorry for Morris' own sake if the matter should be used in the campaign against me as is indicated in the morning paper," he said. "The facts are all at hand and they would only injure Morris in the eyes of Hawaiian people. That is the reason I do not want to discuss the matter at length now, I merely want to say though that not only did he receive every cent of his salary but on two occasions I advanced him sums to help him get home and he spent the money in other ways. Personally I do not think he intends to come home now."

DEMOCRATS TRY FLANKING TACTICS

FOURTH DISTRICT CAUCUS DECIDES POSTPONING DISTRICT CONVENTIONS.

The Democrats of the Fourth District decided last night at their caucus at Waverley Hall to try to outflank the Republican district conventions by making the nominations for the legislature after the Republican party has named its ticket. There was no debate on this issue. The district convention for the island of Oahu are to meet August 24, according to the

This Company undertakes the entire management of estates. It looks after the rents, insurance and repairs. It also judiciously invests all surplus income.

THE HENRY WATERHOUSE TRUST CO. LTD.

Merchant and Fort Sts., Honolulu, Hawaii.

moderate Central committee call, but the Unaffiliated manifested an attack of "Cold Feet" and decided to let their adversaries start the ball rolling. The result was that the caucus decided to meet next Wednesday, effect organization, and then adjourn to some date subsequent to the Republican district conventions.

The session last night was quite animated, for there was considerable debate on various matters of detail. It was decided to support A. A. Wilder for permanent chairman of the Territorial convention which meets at the Orpheum on next Monday and J. L. Coke of Maui for temporary chairman. The meeting last night was presided over by Col. C. J. McCarthy, W. F. Erving being secretary. The selection of temporary and permanent secretaries and other officers was undecided.

After a ballot the following were recommended as the men to be favored as members of the Territorial Central committee: C. P. Iauka, Stephen Uma, W. A. Kinney, J. Menasse S. Nalaha, L. R. Mogeles, E. M. Watson, Fred Turrell, S. K. Kalou, W. F. Erving, H. A. Juen and B. N. Kahalapuna. C. P. Iauka was unanimously endorsed as the caucus candidate for nomination for delegate to Congress. As the hour was late no action was taken regarding the selection of various committees for the coming territorial convention.

IN THE CITY'S CHURCHES

Notices for this column should be sent in not later than 3 o'clock Saturday morning.

Deutsche Lutherische Kirche Beretania Ave. nahe der Punchbowl street. Pastor Willibald Felmy, 976 Beretania Ave. nahe der Keaumoku street. Wohnung Tel. White 2541. Schul- und Kirchen telephon White 2691. Sonntag, 10 Uhr. Sonntagschule; 11 Uhr, Gottesdienst.

German Lutheran Church, Beretania Ave. near Punchbowl street. Pastor Willibald Felmy, 976 Beretania Ave. near Keaumoku street. Residence Tel. White 2541. School and Church telephone White 2691. Sunday, 10 a. m. Sunday School; 11 a. m. Service with sermon from St Mark 3.

At St. Andrew's Cathedral tomorrow evening there will be a special service for the Cadets of St. Andrew. Bishop Restarick will preach. The Cadets number about fifty and under Captain Myton are making great progress.

11 a. m. morning service with sermon by Doremus Scudder, D. D., subject "The Paradox of Jesus."

7:30 p. m. Evening Service with sermon by Doremus Scudder, D. D., subject, "Conventions."

6:30 p. m. the Christian Endeavor Society meet in the chapel, subject, "Obeying when Obedience is Hard."

POLICE COURT CASES

Harold Jeffe was charged in the police court, with assault and battery on Stephen and Liza Peculiar. An attempt was made to sidetrack the police part of the prosecution in this case. It was announced when the case was called that a continuance had been agreed upon by F. L. Weaver for the defence and C. W. Ashford for the prosecution. It was agreed to have the case continued until August 22. Deputy High Sheriff Chillingworth interposed an objection. He said that he had not been consulted in the matter. He was conducting the prosecution of the cases and if there was to be any continuance, he wanted to know about it. Weaver said that he and Ashford had agreed to the continuance and he thought Ashford had spoken to Chillingworth about the matter. The deputy said that nothing of the kind had been done, and he wished the case continued a day later. Ashford declared he would not prosecute in such an event, to which Chillingworth replied that he did not care whether Ashford did or not. The continuance to August 22 was granted.

The case against Ah Sang charged with gross cheat was also pressed in the police court today.

Pugmote the Jap charged with being unlawfully on the premises of another, Jeremy in the second degree, and burglary in the second degree, was before Judge Lindsay. The case was continued until August 22.

TODAY'S BASEBALL.

Today's games at the League baseball grounds will be played as follows:

1:30 p. m.—H. A. vs. Kona.

3:30 p. m.—P. A. vs. Kona.

A Summer Proposition.

Well, now, there's the

ICE QUESTION!

You know you'll need ice, you know it is a necessity in hot weather. We believe you are anxious to get that ice that will give you satisfaction, and we'd like to supply you. Order from

THE ORHU ICE & ELECTRIC CO.,

Telephone 1151 Blue. Postoffice Box 606

W. G. IRWIN & CO., LTD.

Wm. G. Irwin—President and Manager
John D. Speckels—First Vice-President
W. M. Giffard—Second Vice-President
H. M. Whitney Jr.—Treasurer
Richard Ivers—Secretary
A. C. Lovekin—Auditor

SUGAR FACTORS, COMMISSION AGENTS

AGENTS FOR THE
Oceano Steamship Company of San Francisco, Cal.

AGENTS FOR THE
Scotsman National Insurance Company of Edinburgh.

Willelmira of Magdeburg General Insurance Company.

Alliance Marine and General Assurance Co., Ltd., of London.

Royal Insurance Company of Liverpool.

Alliance Assurance Company of London.

Worcester German Insurance Company

HART & CO., LTD

The Elite Ice Cream Parlors.
Chocolates and Confections.
Ice Cream and Water Ices.
Bakery Lunch.

THE FINEST RESORT IN THE CITY

Union Pacific

Railroad

SUGGESTS

Speed and Comfort

Three trains daily through cars, first and second class to all points. Reduced rates take effect soon. Write early.

S. F. Booth,
General Agent.

No. 1 Montgomery Street,
San Francisco.

Travellers Agree

THAT

The Overland,
Limited

IS

Quickest, Finest, Best

A Train that Supplies
All Demands

To St. Louis or Chicago

IN 3 DAYS

from San Francisco.

ELECTRIC LIGHTS

READING LAMPS,

CLUB CARS.

ALL GOOD THINGS

Southern Pacific

Information Bureau

613 Market Street,

San Francisco.

HAWAIIAN RAILWAY AND LAND CO'S

TIME TABLE

MAY 1ST, 1903

OUTWARD.

San Francisco, Wailua, Kahuku and
Waipahoehoe—7:15 a. m., 7:20 p. m.
San Francisco, Ewa Mill and Waipahoehoe—7:30 a. m., 7:35 p. m.
San Francisco, Ewa Mill and Waipahoehoe—7:45 a. m., 7:50 p. m.
San Francisco, Ewa Mill and Waipahoehoe—8:00 a. m., 8:05 p. m.
San Francisco, Ewa Mill and Waipahoehoe—8:15 a. m., 8:20 p. m.
San Francisco, Ewa Mill and Waipahoehoe—8:30 a. m., 8:35 p. m.

INWARD.

San Francisco from Kahuku, Wailua, and Waipahoehoe—7:30 a. m., 7:35 p. m.
San Francisco from Ewa Mill and Waipahoehoe—7:45 a. m., 7:50 p. m.
San Francisco from Ewa Mill and Waipahoehoe—8:00 a. m., 8:05 p. m.
San Francisco from Ewa Mill and Waipahoehoe—8:15 a. m., 8:20 p. m.
San Francisco from Ewa Mill and Waipahoehoe—8:30 a. m., 8:35 p. m.
San Francisco from Ewa Mill and Waipahoehoe—8:45 a. m., 8:50 p. m.

San Francisco from Ewa Mill and Waipahoehoe—8:55 a. m., 9:00 p. m.

San Francisco from Ewa Mill and Waipahoehoe—9:05 a. m., 9:10 p. m.

San Francisco from Ewa Mill and Waipahoehoe—9:15 a. m., 9:20 p. m.

San Francisco from Ewa Mill and Waipahoehoe—9:25 a. m., 9:30 p. m.

San Francisco from Ewa Mill and Waipahoehoe—9:35 a. m., 9:40 p. m.

San Francisco from Ewa Mill and Waipahoehoe—9:45 a. m., 9:50 p. m.

For the Skin

You cannot have a clear and smooth skin unless the blood is pure. Blisters, eruptions, rashes, pimples, all show how impure the blood must be. Get all impurities out of your blood before you are seriously ill.



Miss Dorothy Maher, of Fitzroy, Victoria, sends her photograph and this letter: "I had a terrible eruption on my face, which was of a very irritating nature. I tried many blood medicines, but without relief. Friends told me to try Ayer's Sarsaparilla, as it was a most famous blood remedy. I did so, and after taking only two bottles I began to see a great change. By the time the third bottle was used the eruption had entirely disappeared, and without leaving a mark on my face. I am perfectly well now, and I owe it all to this great blood-purifying remedy."

AYER'S Sarsaparilla

There are many imitation Sarsaparillas.

Be sure you get "Ayer's." Correct any tendency to constipation with Ayer's Pills. They are sugar-coated, easy to take, mild in action. A family laxative.

Prepared by Dr. J. C. Ayer & Co., Lowell, Mass., U. S. A.

Sausage Fresh To-day

Fresh pork sausage in bulk and in casing and smoked sausages as follows:

FRANK FLETCHERS BOLOGNA, GARLIC, PORTUGUESE SAUSAGE, LIVER SAUSAGE, HEAD CHEESE, BLOOD SAUSAGE, TONGUE SAUSAGE, COMPRESSED HAM ETC.

All our sausages are made fresh every day and you can depend on having the best from us.

METROPOLITAN MEAT CO.
Limited

Telephone Main 45

M. Shirokane

General Employment Office, Japanese and Chinese Laborers Etc., Supplied. Contract Work of Every Kind Undertaken. Corner Emma and Beretania Streets. Telephone Blue 2181.

LINOLEUM

Linoleum is not cheap unless it is good.

Good linoleum means thick linoleum. Thin stuff will wear through in a short time, but the real material will last a lifetime.

We carry several grades at prices from 90c. to \$1.50 a square yard according to the pattern—all good.

It wouldn't pay you or us either to carry cheaper grades.

In our excellent new stock are splendid inlaid and print patterns. Plain also.

LEWERS & COOKE, LTD
LIMITED.

177 S. KING STREET.

FOR THE WAR.

A Japanese murderer, condemned to death had a dollar left on the eve of his execution, out of money that had been sent him by his friends. The jailer advised him to spend it on a last luxurious meal. But he sent it to the war fund.

GOOD PLUMBING is our forte, we don't do cheap work. You will find on exhibition in our store, all the latest fancy designs in bath room apparatus. We carry everything that goes to make up that most important part of a dwelling—the bath room—AND WE INSTALL IT RIGHT. Our plumbing is put in to last, we guarantee all work done by us, and can quote you the names of hundreds of satisfied customers.

It costs no more to have your plumbing and sewer connections done by us, and remember WE GUARANTEE THE WORK.

BATH THE PLUMBER, 166 King Street, Telephone 61 Main.

Five Job Printing, Star Office

THE ROW WITH VENEZUELA

MINISTER BOWEN DEMANDS ASPHALT MINES—HOW THEY WERE SEIZED BY CASTRO.

Associated Press, Morning Service.

CARACAS, August 26.—Minister Bowen has requested the government of Venezuela to remove the receiver appointed to control the American asphalt concession and return it to the owners. WASHINGTON, August 1.—Professor J. B. Moore, former Assistant Secretary of State, and John E. Lindsay of New York on the case today to the department, today representing the New York and Bermuda Asphalt Company, whose property has been practically confiscated by President Castro of Venezuela, and made formal protest against such action. Minister Bowen reported that the visitors were able to inform the department that Great Britain had formally protested against Castro's action on the ground that about \$1,000,000 worth of the company's bonds are held by English citizens.

The department has received unofficially a denial of the report that Germany had sent an ultimatum to Venezuela.

The State Department officials, however, express the hope that there will not again be occasion for a "peaceful blockade" of Venezuelan ports. As to the asphalt case, it is thought here that the State Department will be able to show, in a few minutes after the arrival of Minister Bowen's mail report, the duplicity of the action of the Venezuelan Supreme Courts, and as that is the basis of the action of Castro's appointing a receiver, his whole contention will crumble and he will be obliged either to fight, reinstate the company or pay a punitive indemnity.

Mr. Bowen says that A. H. Carper, formerly connected with the New York and Bermuda Asphalt Company, was named receiver of the property by the Venezuelan Supreme Court. Before the company was advised of the suit to throw it into the hands of a custodian, Mr. Carper had started for the asphalt lake of the company on the Venezuelan warship. It is held that the action of the court was directed by the Government, and shows that the court proceedings were only a pretense to screen the illegal action of the government.

BATTLE IMMINENT

Associated Press, Morning Service.

MUKDEN, August 26.—A battle is again imminent as the advance posts of the contending armies are only four miles apart.

JAPAN'S SMALL LOSSES.

Associated Press, Morning Service. TOKIO, August 26.—Two officers and thirty-two men were wounded in the naval engagement of the 14th between Kamimura's ships and the Vladivostok squadron.

REGULARS AND MILITIA FIGHT.

Associated Press, Morning Service. ATHENS, August 26.—In a fight here between regulars and militia, one militiaman was killed and three hurt.

PUT TO THE SWORD.

Associated Press, Morning Service. ALGIERS, August 26.—Eighty-three horsemen sent by the Pretender to Buzeakora, a desert chieftain, to demand the hand of his daughter, have been murdered.

CAPTURE MINISTER OF WAR.

Associated Press, Morning Service. ASUNCION, August 26.—The insurgents have seized a steamer carrying the Paraguayan Minister of war and an escort. Two thousand insurgents are now approaching the city.

FATAL DESERT CLOUDBURST.

Associated Press, Morning Service. EL PASO, August 26.—Seven people have been killed by a cloudburst in Arizona.

REALTY TRANSFERS

Entered for Record Aug. 19, 1904.
Henry Kahauwini and wife to Allen Herert
A. K. Aona by High Sheriff to J. W. Akana
Geo Andrews by atty to Demosthenes Lyourgas
Lyourgas to James E. Fullerton
Fore Affdt Wang How to Wong Ming
W. Aki to Hutchison S Plantin Co
Charles W Booth to Calvin E Camp
Charles W Booth and wife to Calvin E Camp
E Camp
C W Booth and wife to Will E Fisher
D Will E Fisher to Bank of Hawaii Ltd
Recorded Aug. 12, 1904.

Joseph Fernandez and wife by mtgee to Cecil Brown Tr. Fore Affdt lot 18, Pawaa Tract, Honolulu, Oahu. B 259, p 359. Dated Aug. 11, 1904.

Joseph Fernandez and wife by mtgee to H. M. Von Holt; D; lot 10, Pawaa Tract, Honolulu, Oahu; \$500. B 258, p 305. Dated Aug. 11, 1904.

Ahko to Pah On; Rel; 2 leaseholds bldgs, mills, rice crops, melons, livestock, tools, etc, Waima, Kauai; \$10,000 and advs \$20,000. B 256 p 300. Dated Aug. 9, 1904.

Ching Sal Kee (firm) to Pah On et al; Agmt; in the settlement of claims, suits, accounts, etc; \$101.05. B 263, p 118. Dated Aug. 9, 1904.

Kala (w) to C. Kaul (s); D; int in Ap 1, R P 7234 kul 2165, Kunawai, Honolulu, Oahu; \$50. B 255, p 306 Dated Aug. 11, 1904.

Bernice P. Bishop Museum by Trs to Bishop of Zeigmas; D; per R P 7559 kul 4452, Ap 3, Waipio, Hamakua, Hawaii; \$75. B 258, p 307. Dated Aug. 11, 1904.

S. J. Shaw to Wm L Peterson; AM; mtg E Garbner and wife on R P 3634 and 4236, Nahu, etc, Koolau, Maui; \$300. B 260, p 74. Dated Aug. 9, 1904.

Twenty-five cents pays for a Want ad in this Star. A bargain.

CORTELYOU NEEDS MONEY

REPUBLICAN NATIONAL COMMITTEE HAS NOT SUCCEEDED IN RAISING FUNDS YET.

NEW YORK, August 1.—Chairman George B. Cortelyou of the Republican National Committee will find palatial quarters awaiting him when he assumes personal command of the Roosevelt campaign in the East on Wednesday.

Assistant Secretary L. A. Coolidge threw the apartments open for inspection to a few visitors today. They consist of fifteen connecting rooms facing Fourth avenue, all the way from Twenty-third to Twenty-fourth street, in the Metropolitan Life Insurance Building.

It is no secret about the Republican national headquarters that neither Cortelyou nor Bliss have as yet been able to make even a beginning with securing the vast amount that was poured into the committee's coffers for the McKinley campaigns of 1896 and 1900. An organized raid on Wall street is contemplated within a day or two after Cortelyou takes the reins. The Republican managers are hopeful that magnates who have thus far proved close-fisted will open their hearts and their purses.

Chairman Cortelyou has asked Ward, Payne, Scott, Crane, McComas, Penrose and others whom he purposes to name on the Executive Committee to meet him here Thursday. Then the preliminary programme of the campaign will be outlined.

CITRUS FRUITS IN GUAM

This island seems to be unusually well adapted for the cultivation of all kinds of citrus fruits. Lemons and limes occur in abundance but are little used by the natives—hundreds of tons of them go to waste each year. Citrus medica, which yields the "citron" of commerce, grows with little or no care, but sugar is dear and few people take the trouble to preserve the rind. Fragrant bergamots grow spontaneously in the forest. They would yield fine essential oil. Shadocks of several varieties occur both with pink and with yellow or white pulp, some of great size and with thick rind like that of the citron. They are not, however, equal in flavor to the varieties of grape-fruit or pomelos, of our home markets, and are seldom gathered by the natives. There is no reason why pomelos of fine quality should not be introduced into the island. Even mandarin oranges, or "tangerines," have been successfully introduced, but there are only a few trees bearing fruit—W. E. Safford in The Plant World.

AMATEUR THEATRICALS.

A Pleasing Production at the Waterhouse Residence.

"The Adventures of Lady Ursula," a pretty little play, was given last evening at the Waterhouse residence, Wythe street, by a cast entirely of ladies, the proceeds being intended for the boat club which has been organized recently by them.

The stage was placed on the lawn and the audience sat in the open air, the whole effect being charming in the extreme. The cast was as follows:

Lady Ursula Barrington.....Miss Linda Schaefer
Sir George Sylvester.....Sir George Sylvester
Mrs. F. P. T. Waterhouse.....Mrs. F. P. T. Waterhouse
Dorothy Fentor.....Miss Eunice Pratt
Lord Hassenden.....Miss Elsa Schaefer
Mrs. Fentor.....Miss Helen Alexander
Rev. Mr. Blimboe.....Rev. Mr. Blimboe
Miss Marion Waterhouse.....Miss Marion Waterhouse
Jack Castletor.....Miss Alice Jones
Dent.....Miss Elsie Waterhouse
Devereaux.....Miss Josslyn Clifford
Miss Judd Ward.....Miss Judd Ward
Quilton.....Miss Elsie Waterhouse
Mills.....Miss Harriet
Servant to Lord Hassenden.....Miss Margaret Waterhouse

CRICKET THIS AFTERNOON.

A cricket match will be played at the Makiki grounds this afternoon, the teams to be picked from the following: R. Anderson, S. Beardmore, J. H. Catton, R. R. Catton, L. E. Cofer, T. Gill, D. Glass, J. W. Harvey, A. R. Hatfield, H. L. Herbert, T. Harrison, R. A. Jordan, S. Jordan, A. Jordan, J. C. McGill, C. P. Morse, W. L. Stanley, H. E. Pickler, A. Tullett, R. Weedon, J. R. M. MacLean, A. H. Crook, Mytton, Center, Porter, Boyd, R. de B. Layard, Tucker, B. F. Beardmore.

BAND CONCERT.

Tomorrow afternoon the public Sunday concert will be at the Capitol grounds, beginning at 3 o'clock with the following programme:

PART I.

"The Old Hundred".....Ellenore Ballad—"True Love".....Kretschmar Grand Selection—"Faust".....Gounod Vocal—"Astranga".....Abert "Star Spangled Banner."

PART II.

Overture—"Tell".....Rossini Selection—"Coppelia".....Delibes Intermezzo—"The Gondolier".....Powell Finale—"Astranga".....Abert "Star Spangled Banner."

ANIMAL BOUNTIES.

The total returns for the year from April 30, 1903, to April 30, 1904, shows that bounties have been paid in Vermont on 4980 foxes, 21,559 hedgehogs, 91 lynxes, 46 bears, and 69 snakes. One wolf and one panther were killed, on which the bounties have not been paid as yet.

As usually treated a sprain will disable the injured person for three or four weeks, but if Chamberlain's Pain Balm is freely applied a complete cure may be effected in a very few days. Pain Balm also cures rheumatism, cuts, bruises and burns. For sale by all dealers, Henson, Smith & Co., agents for Hawaii.

Want ads in Star cost but 15 cents, 25 in the Star. A bargain.

CUTLERY

Scissors and Shears.

Razors, Gem and Star Safety and Ordinary.

Pocket Knives, I. X. L. Keen Cutter.

Table Cutlery, all Grades.

The place to buy all these goods.

E. O. HALL & SON, LTD.

Another Large Shipment

These safes are now on the floor and ready for inspection.

The Herring Hall Marvin Safe

is so constructed that its contents are absolutely preserved. A scientific study of the effect of fire on safes, combined with 60 years experience in safe construction, warrants the manufacturers to make the claim that their safes are positively perfect.

We carry a large assortment of safes from \$50.00 up. Cash or installments.

Theo. H. Davies & Co., LIMITED

Hardware Department

OUR OWN LINE
San Francisco to Chicago
(WITHOUT CHANGE).

OILED ROAD BED ALL THE WAY
STANDARD AND TOURIST SLEEPERS DAILY



Stopping en route at Los Angeles, also "THE PETRIFIED FORESTS" and the "GRAND CANYON OF ARIZONA."

World's Fair Dates from San Francisco

July 12-14, August 8-9-10-15-19, September 5-6-7-8, October 3-4-5-6.

SPECIAL RATES.

San Francisco to St. Louis and Return.....\$ 67.50
San Francisco to Chicago and Return..... 72.50
San Francisco to New York and Return..... 107.50
San Francisco to Boston and Return..... 108.50

Call on agent of Railroad Lines at Wm. G. Irwin & Co.

"The Only Way"
To the World's Fair at St. Louis

The Handsomest Trains in the World, consisting of Matchless Chair Cars, Standard and Compartment Sleepers, Cafe-Library-Lounging-Smoking-Observation Cars, all wide Vestibuled, are operated over the Chicago & Alton Railway between KANSAS CITY AND ST. LOUIS, KANSAS CITY AND CHICAGO, AND ST. LOUIS AND CHICAGO. This fact, together with the courteous attention shown everybody, makes the Chicago & Alton Railway indeed "THE ONLY WAY." Nice connections are made with all lines entering Kansas City, St. Louis and Chicago.

Kindly request the Agent to ticket you over the Chicago & Alton Railway, or address: A. P. STEWART, General Agent, Chicago & Alton Railway, 80 Crocker Building, San Francisco, Calif.



ABSOLUTE PURITY PRIMO LAGER

Delicious hop flavor—healthful
tonic properties—and pale
golden color all go to make

the ideal family beverage. Sold by all
dealers.

NEW GOODS

We have just received a large invoice of goods which are now on display,
also Panama Hats.

The latest styles in ladies and gents hats on hand and made to order on
short notice.

K. FUKURODA,
28 and 32 Hotel St. Robinson Block.

Bargains in Panama Hats

WE ARE CLEANING UP OUR STOCK OF PANAMA
HATS AND ARE OFFERING THEM AT COST PRICES.

K. ISOSHIMA,

KING STREET, NEXT TO CASTLE & COOKE.

S. SAIKI, Bamboo Furniture

AND
PICTURE FRAMES.

Neat and Handsome
Designs made to order.

563 Beretania Street, near Punchbowl.

S. YOKOMIZO,

Contractor for Stone and Cement work

Crushed Rock

Prices: No. 2, 1 cubic yard, \$1.70;
No. 3, 1 cubic yard \$1.90; No. 4, 1 cubic
yard, \$2.05. Delivered to any part
of the city, white and black sand, founda-
tions, curbing and coral stones, bal-
last for ships and fire wood always on
hand. Emma Lall corner Beretania
and Nuuanu street. Phone Blue 1211.

FOREIGN STEAMER TIME TABLE

ARRIVING.		
Date	Name	From
July 1	Alameda	San Francisco
2	Manuka	Victoria, B. C.
7	Nevadan	San Francisco
8	Mongolia	Yokohama
9	Korea	San Francisco
12	Sonoma	Colonies
13	Sierra	San Francisco
14	China	Yokohama
21	Gaelfie	San Francisco
22	Alameda	San Francisco
27	Mowera	Colonies
31	Aorangi	Victoria, B. C.
Aug. 2	Dorlie	San Francisco
2	Mongolia	San Francisco
2	Ventura	Colonies
3	Sonoma	San Francisco
6	Nevadan	San Francisco
12	Siberia	Yokohama
12	Alameda	San Francisco
13	China	San Francisco
22	Coptic	Yokohama
23	Sierra	Colonies
24	Ventura	San Francisco
25	Moana	Colonies
25	Dorlie	San Francisco
27	Mowera	Victoria, B. C.
Sept. 2	Alameda	San Francisco
3	Korea	Yokohama
6	Nevadan	San Francisco
6	Siberia	San Francisco
13	Gaelfie	Yokohama
13	Sonoma	Colonies
14	Sierra	San Francisco
17	Coptic	San Francisco
17	Aorangi	Colonies
23	Alameda	San Francisco
24	Mongolia	Yokohama
24	Moana	Victoria, B. C.
25	Korea	San Francisco

DEPARTING.		
Date	Name	For
July 2	Manuka	Colonies
6	Alameda	San Francisco
8	Nevadan	San Francisco
8	Mongolia	San Francisco
9	Korea	Yokohama
12	Sonoma	San Francisco
13	Sierra	Colonies
19	China	San Francisco
21	Gaelfie	Yokohama
22	Alameda	San Francisco
27	Mowera	Victoria, B. C.
31	Aorangi	Colonies
Aug. 2	Dorlie	San Francisco
2	Mongolia	Yokohama
2	Ventura	San Francisco
3	Sonoma	Colonies
6	Nevadan	San Francisco
12	Siberia	San Francisco
13	China	Yokohama
17	Alameda	San Francisco
22	Coptic	San Francisco
23	Sierra	Colonies
24	Ventura	Colonies
24	Moana	Victoria, B. C.
25	Dorlie	Yokohama
27	Mowera	Colonies
Sept. 3	Korea	San Francisco
6	Siberia	Yokohama
7	Alameda	San Francisco
7	Nevadan	San Francisco
13	Gaelfie	San Francisco
13	Sonoma	San Francisco
14	Sierra	Colonies
21	Coptic	Yokohama
21	Aorangi	Victoria, B. C.
21	Mongolia	San Francisco
24	Moana	Colonies
24	Korea	Yokohama
25	Alameda	San Francisco

*Calling at Manila.
Via Kahului.

THEY GET QUICK STRENGTH AND HEALTH FROM

Paine's Celery Compound
MEN AND WOMEN HEARTENED—
BRACED—INVIGORATED QUICK-
LY BY THE CELEBRATED
NERVE VITALIZER AND
TONIC.



MISS FLORENCE WORDEN.
Paine's Celery Compound Restored Her
So Quickly that Her Doctor
was Astonished.

Tired, weak-nerved, thin-blooded, un-
happy men and women get quick, sure,
heartly health from this celebrated
Nerve Vitalizer and Tonic. It drives
away lassitude, gives courage and
strength. There is a rich increase in
blood supply, and soon the whole system
thrills with hearty health.

"Paine's Celery Compound has been
worth a thousand dollars to me," writes
Miss Florence Worden, niece of Admiral
Worden. "Strain of professional duties
left me a nervous wreck. I went home
and for weeks was nursed by my mother
as an absolute invalid."

"My digestion was very weak, and I
suffered agonies from neuralgia."
"A girl friend sent me a bottle of
Paine's Celery Compound, with a cheer-
ful, hopeful letter, telling what it had
done for her. I took four bottles, and
by the end of summer I was well—absolutely
well."

"Not since I was a child have I felt
such buoyant HEALTH AND SPIRITS.
Our doctor was astonished."—(Miss)
Florence Worden, 314 West Forty-
seventh street, New York.

HAWAII'S NEEDS FULLY TOLD

MERCHANTS' ASSOCIATION MEETS
AND DISCUSSED THE REPORT
TO THE GOVERNOR.

Yesterday's meeting of the Merchants'
Association was one of the most im-
portant held by that body for a long
time as its principal business was the
consideration of the report of a special
committee on the reply to be made to
the governor as to the matters which
should be pressed on congress as requir-
ing federal appropriations.

The committee's report drew attention
to the dullness in trade both whole-
sale and retail which has been so marked
for the past two years and to the
causes thereof. The loss of Customs
revenues, amounting to \$5,000,000 in
four years, the expense of dredging Ho-
nolulu harbor and the maintenance of
lighthouses were all contributory to the
state of affairs. It was shown by figures
that the Federal government collects
annually from Hawaii \$5.12 per capita
and expends per capita only \$1.62
whereas it expends \$7.97 per capita for
the mainland population. The decrease
in the Portuguese population was noted
with regret. Many of them have been
forced to seek work in other countries
as there is not sufficient money in the
treasury to keep them employed on pub-
lic works. The committee thought
that Congress should be memorialized
with a view to obtaining a fair return
of a portion of the Federal receipts col-
lected here. It was recommended that
Federal grants should be expended on
the following:

First, to carry on dredging work and
enlarging Honolulu harbor so that the
port can dock the largest merchant and
naval vessels; second, a commodious
Federal building to accommodate the
Customs department, postoffice, courts
and administrative bureaus; third, to
establish a naval station at Pearl Har-
bor, opening the locks to practical use
and making it possible for the direct
shipment of 100,000 tons of produce from
there annually; fourth, to erect forti-
fications, and establish an army post,
although the committee suggested that
there was assurance of these items be-
ing favorably considered; fifth, a broad-
water at tide, the only possible harbor
for Hawaii.

It was further recommended that the
governor exert his influence to have the
Navy and War departments give Hon-
olulu merchant an opportunity to furnish
supplies for war vessels and transports.
The suggestion was also made that an
account of the amounts expended by
the territory on light houses and buoys
and on the cleaning of Honolulu harbor
should be made up and forwarded to
Washington for settlement. Since June

15, 1904, the date that the service was
taken over by the federal authorities,
the territory has spent \$43,421.76 for
lighthouses and buoys and \$142,000 for
dredging Honolulu harbor, a total of
over \$175,000.

In discussing the necessity for fur-
ther dredging of the harbor the follow-
ing letter from Lieut. Slattery of the
Engineers was read:

Honolulu, T. H. August 9th, 1904.
Hon. J. Kalaniana'ole,

Honolulu, T. H.
Sir: I have the honor to acknowledge
your letter of the 30th ult., and to in-
form you that there is now on file in
this office a map compiled from recent
surveys, which renders further surveys
for the purpose of preparing a project
for the improvement of Honolulu har-
bor unnecessary. The only additional
data required could be obtained without
cost from contractors who heretofore
have carried on dredging operations in
the harbor. In preparing a project, it
would be necessary to employ my
draftsman for two or three days on the
work. Strictly speaking his pay for that
time should be paid from funds espe-
cially appropriated for that work, but
owing to the very short duration of this
time, and the fact that no additional
expense would be incurred by the office
it would seem unnecessary to obtain a
special appropriation for that purpose.

It is therefore my opinion that a pro-
ject could be prepared without any special
appropriation. It would require
about two weeks time.

Very respectfully,
J. A. SLATTERY,
1st Lt. Corps of Engineers, U. S. A.

Upon this George B. McClellan pre-
sented the following resolution which
passed unanimously:
Whereas the recent experiences of
some of the large steamers calling at
this port have demonstrated the entire
inadequacy of Honolulu Harbor facili-
ties, there not being sufficient depth at
a single Territorial wharf to accommo-
date the largest ships of the Pacific
Mail line, and

Whereas the Territorial Delegate to
Congress has, in response to his enquiry
been advised by the local office of the
United States Engineering Corps that
"There is now on file in this office a
map compiled from recent surveys
which renders further surveys for the
purpose of preparing a project for the
improvement of Honolulu Harbor un-
necessary," and further stating that
such project could be prepared by this
office without any special appropri-
ation.

Therefore, be it resolved, that the Ho-
nolulu Merchants' Association immedi-
ately petition the Secretary of War
that he instruct the United States En-
gineer Office in Honolulu to prepare a
project for the improvement of Hon-
olulu Harbor.

Resolved that a committee of three
be appointed by the President of this
Association to prepare a petition setting
forth the immediate and imperative
needs of such improvements and urging
the importance of having such project
returned to the War Department in
time to be included in the Departmental
Estimates for the River and Harbor
Bill to be presented at the coming ses-
sion of Congress.

Resolved, that the Delegate to Con-
gress be requested to forward said pe-
tition to the Secretary of War, and that
both the delegate and the governor of
the Territory be requested to urge on
the War Department the fact that early
action in this matter is of first impor-
tance to the commerce of this Territory.

A committee consisting of Messrs.
McClellan, Trent and Paris was ap-
pointed to make up the report for the
War Department.

J. Oswald Luttrell's suggestion to me-
morialize the Secretary of the Navy to
have the Pacific and Atlantic fleets sent
here for the maneuvers next winter
was unanimously endorsed.

A letter from the Merchants' Asso-
ciation of San Francisco regarding freight
and passenger rates read as follows:
San Francisco, August 5, 1904.
Merchants' Ass'n Honolulu.

Gentlemen: Your communication of
July 23 regarding discrimination in
steamship passenger rates between this
port and Honolulu has been received
and will be submitted to the Board of
Directors at its next meeting.

Meanwhile we note your communica-
tion to the Oceanic Steamship Company
and would ask you to kindly cable us,
briefly the nature of their reply to your
communication. We presume you will
receive their reply on the same steamer
with this letter or on the following one,
if we can know through you what the
attitude of the steamship company is
to your request, it will greatly assist
the Board of Directors in determining
what assistance if any, this association
can give in the matter.

Yours truly,
MERCHANTS' ASSOCIATION
of San Francisco.

Hamilton Wright of San Francisco
wrote asking for particulars about
everything as he said he had been asked
by eastern papers to write a series of
articles on Hawaii under American
Rule and he admitted that he did not
know anything about the matter.

The resolution to extend the term of
the president of the United States to
six years and to make his ineligible for
a second term was tabled without dis-
cussion.

Star Want ads pay at once.

The Tonic
Par Excellence.

**QUINA-
LAROUCHE**

(A Wine Cordial.)
The best specific remedy for
Malarial and Typhoid
Fever,
Colds, Influenza, &c.

By Authority
SHERIFF'S SALE NOTICE.

Under and by virtue of a certain Alias
Execution issued by Lyle A. Dickey,
District Magistrate of Honolulu, Island
of Oahu, Territory of Hawaii, on the
30th day of June, A. D. 1904, in the
matter of James W. Pratt, Assessor
and Collector of Taxes, First Division,
Plaintiff, vs. Chun Kum Sut, C. Q. Yee
Hop, Chang Chan and Chun Choy, de-
fendant, I have, in said Honolulu, on
this 29th day of July, A. D. 1904, levied
upon, and shall offer and expose for
sale and sell at public auction, to the
highest bidder, at the Police Station,
Kalaheua Hale, in said Honolulu, at
12 o'clock noon of Monday, the 29th day
of August, A. D. 1904, all the right,
title and interest of the said Chun Kum
Sut, C. Q. Yee Hop, Chang Chan and
Chun Choy, doing business as Sun Choy
Sing Co., Defendant, and of said
Chun Kum Sut, C. Q. Yee Hop, Chang
Chan and Chun Choy, in and to the
following described leasehold unless he
sum of Ninety-four and 50-100 (\$94.50)
dollars, that being the amount for
which said Alias Execution issued, to-
gether with interest, costs and my fee
and expenses are previously paid:

WALTHAM WATCHES ARE GUARANTEED AGAINST ANY DEFECT IN MATERIAL OR CON- STRUCTION

of Oahu, Territory of Hawaii, on the
30th day of June, A. D. 1904, in the
matter of James L. Holt, Collector of
Taxes, First Division, Plaintiff, vs. Sol.
Kahalewai, Defendant, I have in said
Honolulu on this 29th day of July, A.
D. 1904, levied upon, and shall offer and
expose for sale and sell at public auc-
tion, to the highest bidder, at the Police
Station, Kalaheua Hale, in said Hon-
olulu, at 12 o'clock noon of Monday, the
29th day of August, A. D. 1904, all the
right, title and interest of the said Sol.
Kahalewai, Defendant, in and to the
following described real property, un-
less the sum of Seventy-three (\$73.00)
dollars, that being the amount for
which said Alias Execution issued, to-
gether with interest, costs and my fee
and expenses, are previously paid.

Apana 2 of L. C. A. 1266 B, R. P. 719
to Loloea, containing 40-100 of an acre,
and situated at Maunakekepa, Waikiki,
Honolulu, Oahu.

A cash payment of one-half of the
amount of the successful bid in United
States Gold Coin will be required at
time of sale, the balance to be paid in
United States Gold Coin upon the de-
livery of the deed.

Deed at expense of purchaser.
Dated at said Honolulu, this 29th day
of July, A. D. 1904.

A. M. BROWN,
High Sheriff, Territory of Hawaii.

SHERIFF'S SALE NOTICE.

Under and by virtue of a certain Alias
Execution issued by Lyle A. Dickey,
District Magistrate of Honolulu, Island
of Oahu, Territory of Hawaii, on the
30th day of June, A. D. 1904, in the
matter of James L. Holt, Assessor and
Collector of Taxes, First Division,
Plaintiff, vs. Becky Kaonohi, Defen-
dant, I have, in said Honolulu, on this
29th day of July, A. D. 1904, levied upon,
and shall offer and expose for sale and
sell at public auction, to the highest
bidder, at the Police Station, Kala-
heua Hale, in said Honolulu, at 12
o'clock noon of Monday, the 29th day
of August, A. D. 1904, all the right, title
and interest of the said Becky Kaonohi,
Defendant, in and to the follow-
ing described real property, unless
the sum of Thirty-four and 60-100 dol-
lars, that being the amount for which
said Alias Execution issued, together
with interest, costs and my fee and ex-
penses are previously paid:

All that certain piece of land situated
at Lele, Honolulu, Oahu, being all of
the premises described as Royal Patent
7623, L. C. A. 10167 to Malackoa.

A cash payment of one-half of the
amount of the successful bid in United
States Gold Coin will be required at
time of sale, the balance to be paid in
United States Gold Coin upon the de-
livery of the deed.

Deed at expense of purchaser.
Dated at said Honolulu, this 29th day
of July, A. D. 1904.

A. M. BROWN,
High Sheriff, Territory of Hawaii.

SHERIFF'S SALE NOTICE.

Under and by virtue of a certain Alias
Execution issued by Lyle A. Dickey,
District Magistrate of Honolulu, Island
of Oahu, Territory of Hawaii, on the
30th day of June, A. D. 1904, in the
matter of James W. Pratt, Assessor
and Collector of Taxes, First Division,
Plaintiff, vs. Chun Kum Sut, C. Q. Yee
Hop, Chang Chan and Chun Choy, de-
fendant, I have, in said Honolulu, on
this 29th day of July, A. D. 1904, levied
upon, and shall offer and expose for sale
and sell at public auction, to the high-
est bidder, at the Police Station, Kala-
heua Hale, in said Honolulu, at 12
o'clock noon of Monday, the 29th day
of August, A. D. 1904, all the right, title
and interest of the said Chun Kum Sut,
C. Q. Yee Hop, Chang Chan and Chun
Choy, doing business as Sun Choy Sing
Co., Defendant, and of said Chun Kum
Sut, C. Q. Yee Hop, Chang Chan and
Chun Choy, in and to the following
described leasehold unless he sum of
Ninety-four and 50-100 (\$94.50) dol-
lars, that being the amount for which
said Alias Execution issued, together
with interest, costs and my fee and ex-
penses are previously paid:

All that certain piece of land situated
at Lele, Honolulu, Oahu, being all of
the premises described as Royal Patent
7623, L. C. A. 10167 to Malackoa.

A cash payment of one-half of the
amount of the successful bid in United
States Gold Coin will be required at
time of sale, the balance to be paid in
United States Gold Coin upon the de-
livery of the deed.

Deed at expense of purchaser.
Dated at said Honolulu, this 29th day
of July, A. D. 1904.

A. M. BROWN,
High Sheriff, Territory of Hawaii.

SHERIFF'S SALE NOTICE.

Under and by virtue of a certain Alias
Execution issued by Lyle A. Dickey,
District Magistrate of Honolulu, Island
of Oahu, Territory of Hawaii, on the
30th day of June, A. D. 1904, in the
matter of James W. Pratt, Assessor
and Collector of Taxes, First Division,
Plaintiff, vs. Chun Kum Sut, C. Q. Yee
Hop, Chang Chan and Chun Choy, de-
fendant, I have, in said Honolulu, on
this 29th day of July, A. D. 1904, levied
upon, and shall offer and expose for sale
and sell at public auction, to the high-
est bidder, at the Police Station, Kala-
heua Hale, in said Honolulu, at 12
o'clock noon of Monday, the 29th day
of August, A. D. 1904, all the right, title
and interest of the said Chun Kum Sut,
C. Q. Yee Hop, Chang Chan and Chun
Choy, doing business as Sun Choy Sing
Co., Defendant, and of said Chun Kum
Sut, C. Q. Yee Hop, Chang Chan and
Chun Choy, in and to the following
described leasehold unless he sum of
Ninety-four and 50-100 (\$94.50) dol-
lars, that being the amount for which
said Alias Execution issued, together
with interest, costs and my fee and ex-
penses are previously paid:

All that piece of land situated at Ka-
panaea, Honolulu, Oahu, containing 11-
900 square feet, being a part of R. P.
177, and conveyed to Thos. Forrest by
deed of S. De Nobrega and wife, as of
record in the Registry Office, in said
Honolulu, in Liber 120, page 318.

The above described premises situated
on the makai Waikiki corner of Be-
retania and McCully Streets, leased by
Thomas Forrest to W. L. Bowers for
two years from May 1st, 1903, at a
monthly rental of \$12.50, as of record
in said Registry Office in Liber 246, page
335.

A cash payment of one-half of the
amount of the successful bid in United
States Gold Coin will be required at
time of sale, the balance to be paid in
United States Gold Coin upon the de-
livery of the deed.

Deed at expense of purchaser.
Dated at said Honolulu, this 29th day
of July, A. D. 1904.

A. M. BROWN,
High Sheriff, Territory of Hawaii.

tania Street, Honolulu, Oahu, contain-
ing 47-100 acre and (2) 194-1000 acres,
being portion of L. C. A. 639.

Term of said lease, 40 years from Oc-
tober 1st, 1899.

Rental, \$90 per month.
A cash payment of one-half of the
amount of the successful bid in United
States Gold Coin will be required at
time of sale, the balance to be paid in
United States Gold Coin upon the de-
livery of the deed.

Bill of Sale at expense of purchaser.
Dated at said Honolulu, this 29th day
of July, A. D. 1904.

A. M. BROWN,
High Sheriff, Territory of Hawaii.

SHERIFF'S SALE NOTICE.

Under and by virtue of a certain Alias
Execution issued by Lyle A. Dickey,
District Magistrate of Honolulu, Island
of Oahu, Territory of Hawaii, on the
30th day of June, A. D. 1904, in the
matter of James W. Pratt, Assessor
and Collector of Taxes, First Division,
Plaintiff, vs. Robert Kamohihi, Defen-
dant, I have, in said Honolulu, on this
29th day of July, A. D. 1904, levied upon,
and shall offer and expose for sale and
sell at public auction, to the high-
est bidder, at the Police Station, Kala-
heua Hale, in said Honolulu, at 12
o'clock noon of Monday, the 29th day
of August, A. D. 1904, all the right, title
and interest of the said Robert Kamohihi,
Defendant, in and to the follow-
ing described real property, unless
the sum of fifty-three and 30-100 dollars
that being the amount for which said
Alias Execution issued, together with
interest, costs and my fee and expenses
are previously paid:

All that certain piece of land situated
at Nini, Honolulu, Oahu, being a por-
tion of Apana 3 or Royal Patent No.
1903, the same conveyed to Kamohihi
by deed of Kapaa and wife, as of re-
cord in the Registry Office, in said Ho-
nolulu, in Liber 95, page 454.

A cash payment of one-half of the
amount of the successful bid in United
States Gold Coin will be required at
time of sale, the balance to be paid in
United States Gold Coin upon the de-
livery of the deed.

Deed at expense of purchaser.
Dated at said Honolulu, this 29th day
of July, A. D. 1904.

A. M. BROWN,
High Sheriff, Territory of Hawaii.

SHERIFF'S SALE NOTICE.

Under and by virtue of a certain Alias
Execution issued by Lyle A. Dickey,
District Magistrate of Honolulu, Island
of Oahu, Territory of Hawaii, on the
30th day of June, A. D. 1904, in the
matter of James L. Holt, Collector
of Taxes, First Division, vs. Thos. For-
rest, I have, in said Honolulu, on this
29th day of July, A. D. 1904, levied upon,
and shall offer and expose for sale and
sell at public auction, to the high-
est bidder, at the Police Station, Kala-
heua Hale, in said Honolulu, at 12
o'clock noon of Monday, the 29th day
of August, A. D. 1904, all the right, title
and interest of the said Thos. Forrest in
and to the following described real
property, unless the sum of Twenty-
three and 10-100 dollars, that being the
amount for which said Alias Execution
issued, together with interest, costs and
my fee and expenses are previously paid:

All that piece of land situated at Ka-
pan

NATIVE HATS

A large and varied assortment of native hats. Just the thing for the hot weather.

WOMAN'S EXCHANGE

Soda, Soda, Soda

The finest in the city. Only fresh fruits and fruit syrups dispensed at our fountain. Our

Ice Cream

AND

Sherbets

are not to be excelled.

CHAMBERS DRUG CO., LIMITED.

Corner King and Fort Streets.
Telephone Main 131.

The Secret of Health

You will find at the bottom of each glass of

Bethesda Water

No table should be set without this health-giving water. It is essential at meal times as it contains all the necessary mineral properties which nature demands.

CARRERA & CO., LIMITED.

120 Hotel St. Tel. Main 219.



TENTS.

We MAKE SELL and RENT THEM

Awnings

We MAKE and SELL THEM

Pearson & Potter

Co., Ltd.
931 - - Fort St.

NEW ADVERTISEMENTS

Whitney & Marsh.....Page 8
Mitz, Shoe Co.....Page 8

NEWS IN A NUTSHELL

Paragraphs That Give Condensed News of the Day.

If greatly troubled with mosquitoes notify the Board of Health. Send to, or immediately notify the Board of Health of all rats found dead from unknown causes.

THE WEATHER.

Weather Bureau, Honolulu, 1 p. m. Wind light northeast; weather clear. Morning minimum temperature 69; midday maximum temperature 84; barometer 30.05 steady (corrected for gravity); rainfall 24 hours ending 9 a. m. 0; absolute moisture 9 a. m. 7.5 grains per cubic foot; humidity 9 a. m. 71 per cent.

R. C. LYDECKER, Territorial Meteorologist.

The steamer Hanalei is still unsold in San Francisco. Whitney & Marsh will hold their sale of Pique skirts Monday morning.

The S. S. Nevada arrived at San Francisco yesterday from Kahului.

The Hackfelds and Wharf Rats cross bats tomorrow morning at 9:30 at Kapalani Park.

The steamer Kinu was sighted 25 miles off Koko Head at 7:30 a. m. today from Hilo and way ports.

The naval vessel Buffalo is expected to arrive here in three weeks from Mare Island, en route to Manila and New York.

Governor Carter and Superintendent of Public Works Holloway visited the new prison yesterday and inspected the building.

Local business houses generally have signed an agreement to close next Wednesday afternoon for a half holiday on the occasion of the Maui-Kauai polo game.

If you need new shoes on your old shoes take them to the Manufacturers' Shoe Co. Their repair department is strictly first-class, and their prices are reasonable.

The best lunch in town is served every day at the Criterion Saloon, commencing at 11 a. m. Tables and chairs are furnished. The bill of fare is changed every day.

The following games of the Midwinter Baseball League are scheduled to be played tomorrow afternoon at Kapalani Park: 1:30 p. m., Aala vs. H. I. W.; 4:30 p. m., Makiki vs. Punahou.

Prof. Burton will deliver a stereoscopic lecture on "A Summer Trip To Greenland" at Bishop Hall, Punahou, on Monday evening, August 22, at 8 o'clock, under the auspices of the Young Men's Research Club.

Sadie Wilson, the infant daughter of Charles Wilson, 124 Beretania street, died last night. The little girl was five months old. The funeral will take place at 4:30 tomorrow afternoon, interment being in Kawaiahae cemetery.

Principal McDonald of Lahaina and Principal Copeland of Wailuku school were in consultation yesterday with A. T. Atkinson, Superintendent of Public Instruction, regarding improvements in those institutions.

N. S. Sachs Dry Goods Co. have their annual remnant sale at 8 o'clock Monday morning, August 22nd. This sale will include short ends gathered up from all parts of the store. The goods will go at anything that will sell them.

The proposed Palolo valley road, for which \$20,000 is appropriated in the Loan Act, will not be built under contract but as part of the regular Honolulu road department's work. A survey of the route has been some time completed.

The Japanese Christian Club had a formal opening last night. The headquarters are on Kukul street. There were about a hundred at the meeting and several addresses were made by Dr. Scudder, Rev. T. Okumura, Dr. Kobayashi and Consul Miki Salto.

Leong Shing Lee, the former Chinese Hawaiian school teacher who is accused of having attempted to assist a Chinaman to land unlawfully appeared before U. S. Commissioner Judd this morning and a prima facie case was made out against him. He was committed to appear before the Federal court at the October term, bail being fixed at \$1,000.

MAIL TO COAST MONDAY.

Two mail steamers are expected to arrive here on Monday en route to San Francisco. The S. S. Coptic from the Orient will probably arrive here on Monday afternoon, and after discharging about 250 tons of freight, sail the same day for San Francisco. The other vessel is the S. S. Sierra. She will arrive the afternoon of Monday from Sydney, Auckland and Pago Pago, but is not expected to sail before the following forenoon for San Francisco. The Coptic is likely to arrive in San Francisco ahead of the other vessel if they leave at the time now thought likely.

SHERIFF ANDREWS ARRIVED. Sheriff Andrews of Hawaii arrived today by the steamer Kinu to confer with High Sheriff Brown regarding matters pertaining to the appropriations for the islands of Hawaii. A general discussion of police matters on the Big Island will be held. Sheriff Andrews brought several prisoners, one a girl committed to the reform school and the other a man for assault and battery.

CHOICE ALGARROBA FIRE WOOD

DELIVERED TO ANY PART OF THE CITY. LEAVE ORDERS WITH W. W. DIMOND & CO.

Agents for East Niu Ranch.

KINAU BRINGS MANY PEOPLE

HILLO MAIL STEAMER PUT IN HER APPEARANCE VERY EARLY THIS MORNING.

The steamer Kinu was alongside the Wilder wharf this morning and the passengers going ashore by 10 o'clock. She was sighted at 7:30 a. m. today from Hilo and way ports. Nothing of special occurrence during the trip, good weather being experienced. The vessel brought a very large crowd of passengers to Honolulu.

Among those who arrived were a number of delegates to the Democratic Territorial convention. Senator Palmer P. Woods decided that he could not remain out of business and came down to represent Kohala in the coming convention. Harry Kneil also came from Hawaii as a delegate. Some of the other Democratic leaders from the big island were among the passengers. J. L. Coke came from the island of Maui to attend the Democratic convention.

S. M. Damon returned from a business trip to Oahu.

Dr. C. T. Rodgers of the Board of Education was a returning passenger from Hilo.

Paul Parrott the ranchman, arrived from Hawaii.

L. A. Andrews, sheriff of Hawaii, arrived on a business trip.

R. T. Guard of the Matson S. S. Company of Hilo arrived on business.

Captain F. Mosher who went to Hilo on a trip, returned.

A. Hansen and D. B. Machonachie were among the Honolulu business people returning from Hawaii.

Col. Cleve of the German army returned from a visit to the volcano.

ASSIGNMENTS OF TEACHERS

The Superintendent and Commissioners of Education met at the office of the department this morning. Superintendent Atkinson and Commissioners Hall, Jordan and Hopkins, were present.

The following recommendations by the committee on teachers were approved:

Miss Agnes Creighton, teacher Wallapa School, in place of Miss Anna Perry, resigned.

Miss Keolu Hookoo, assistant Pearl City School, in place of Miss Bertha Blundt, transferred.

Miss Bertha Blundt, teacher Kalia School, in place of Miss Alice Winter, transferred.

Miss Ching Kau, assistant Honolulu Plantation School.

Dan Kaloi, principal of Kalaupapa School in place of H. E. Wilson, resigned.

Mrs. D. Kaloi, assistant in Kalaupapa school.

R. L. Ogilvie, principal of the Naeopopo School, in place of Miss Florence Rathburn, transferred.

Miss Florence Rathburn, principal of Konaewa School, in place of H. T. Mills.

Miss Margaret Kaamauna, assistant of Waimoe School, Hawaii.

Miss Lily Auld, assistant in the Wailuku school, in place of Mrs. Martin, (nee Zerbe) resigned.

Mr. and Mrs. W. W. Taylor, principal and assistant of Kilauea school vice R. L. Ogilvie, transferred.

Robert Plunkett, principal of Oloino School.

Mrs. Nellie B. King, assistant Hanalei School.

Peter Pascal, teacher Wallapa School, in place of Miss Margaret Telford, resigned.

C. B. Kuhns, Honokowai school.

David Taylor, Honokowai school.

J. Vincente, Kealahou school. Principal.

Miss M. Vincente, assistant, Kealahou school.

It was voted that the Superintendent be authorized to provide for such vacancies as may remain unfilled.

MAIL FOR SAN FRANCISCO.

Mail will arrive here Wednesday morning from San Francisco by the S. S. Ventura. The S. S. Dorie also from San Francisco, will probably arrive the same day.

POLO SADDLES STOLEN.

The Kauai polo team is having a disagreeable experience in Honolulu this

HOT TIMES ON THE POLO FIELD

LINE-UP OF THE PLAYERS IN THE COMING INTER-ISLAND CONTEST AT DAMON'S MOANALUA FIELD—SENATOR ISENBERG'S HALF HOLIDAY SCHEME IS A GO AND A BIG CROWD IS EXPECTED.

The Maui and Kauai polo players who are to contest next Wednesday afternoon on the Moanalua grounds will give some splendid examples of horsemanship. Both teams are in good practice and the game will be a fast one. Arrangements are being made to provide cheap accommodations for a large crowd at the grounds and as the movement to close stores and have a half holiday has become a general one throughout Honolulu, there will probably be large attendance.

The players and their ponies are as follows:
Kauai Team: 1. John Mallina, Bob Wilcox, Sunflower, Charlie, Umi Koa. 2. James Spaulding, Belle Dame, Pono, Potrota, Lady Bess. 3. Charles Rice, captain, Sure Kela, Picaniny, Lydia and Hawaii. 4. A. H. Rice, Strawberry, Daisy, Enoke and Tonny. Substitute, Rufus Spaulding, Daisy.

Maui: 1. H. A. Baldwin, General Bumps, Perhaps, Jubilee, Katrina. 2. W. O. Aiken, Vixen, Proutie, Tom Thumb, Stephanus. 3. George W. Wilbur, Quickstep, Venus, Cocktail and Queen. 4. F. F. Baldwin, captain, Foxey Grandpa, Cupitana, Gypsy, Pompom. Substitute, Joseph Taylor.

Play is to start at 3 p. m. on Wednesday. The polo club has made arrangements to have hacks at the terminus of the electric railroad lines, to carry passengers at reasonable rates. The hacks will be secured by the club. There will also be four or five hundred chairs around the field, provided by the club.

James F. Morgan,

AUCTIONEER AND BROKER.

847-857 Kaahumanu St. Tel. Main 72.
P. O. Box 584.

Executor's Sale OF REAL ESTATE ON MONDAY, AUG 22, 12 O'CLOCK NOON.

At my salesroom, 857 Kaahumanu St., known as part of the

Luther Wilcox Estate

Telephone me for list of properties for sale.

Real estate to be sold is mostly composed of lands that are Income Producers "now" at a fair rate of interest. I shall be glad to give you every information and to show you the property at any hour.

JAS. F. MORGAN, AUCTIONEER.

AUCTION SALE ON SATURDAY, AUGUST 27. Stocks! Stocks!!

At my salesroom, 857 Kaahumanu street, I will sell at 12 o'clock noon, 10 SHARES HALL & SON, LTD.

JAS. F. MORGAN, AUCTIONEER.

AUCTION SALE OF FURNITURE AND HOUSEHOLD EFFECTS ON MONDAY, AUG 22, AT 10 O'CLOCK A. M.

At 1443 Liliha street, I am instructed by Mr. Payne to sell at his residence, as above, the whole of his household furniture, comprising:
Iron and wooden bedsteads, Wardrobes, Bureaus, Tables, Chairs, in Rattan and Oak, Rockers, Linen, Crockery, Glassware, Roller Top Desk, 1 Wheeler & Wilson Sewing Machine, and 1 Harness and Buggy.

JAS. F. MORGAN, AUCTIONEER.

visit. A saddle, bridle and blanket belonging to members of the polo team have been stolen. The things were taken from the Kilauea Park track where the ponies and outfit of the Kauai team are quartered. The saddle and bridle belong to the blue boys while Spalding owns the blanket. The police were notified and are investigating the case. No arrests have been made. The police strongly suspect some one of the theft but the suspected offender has not been taken into custody.

JARRETT LEAVES ULUPALAKUA. Paul Jarrett, who recently assumed the management of Ulupalakua ranch, on Maui, has retired from the management. Jarrett several months ago succeeded Dr. J. H. Raymond as manager of the ranch. The affairs of the concern are in the hands of the Henry Waterhouse Trust Company.

LONDON BEETS. SAN FRANCISCO, August 20.—The London price today of 88 analysis beets is 10 shillings, 6 1/2 cents. The last quotation was August 19, 10 shillings 5 1/2 cents.

CURES MANY AFFECTIONS.

Red Star Plasters have no equal for pains lame back, sprains and colds. Best thing about the Red Star plasters is, they contain real painkilling virtues, Hobron Drug Co.

Want ads in the Star bring quick results. Three lines three times for 25 cents.

WHITNEY & MARSH

WILL HAVE THEIR SALE OF

PIQUE SKIRTS

ON Monday Morning August 22

Embroidered Wash Skirts

\$1.50, \$1.75, \$2.00.

We are also showing some Velone's Brocke suitable for Kimono Gowns.

ALEXANDER & BALDWIN LTD.

OFFICERS.

H. P. BALDWIN.....President
J. B. CASTLE.....First Vice-President
W. M. ALEXANDER.....2d Vice-President
J. P. COOKE.....Treasurer
W. O. SMITH.....Secretary
GEORGE R. CARTER.....Auditor

Sugar Factors and Commission Merchants

AGENTS FOR

Hawaiian Commercial and Trust Company.
Haku Sugar Company.
Pala Plantation Company.
Nahiku Sugar Company.
Kihel Plantation Company.
Hawalei Sugar Company.
Kahului Railroad Company.

—AND— The California and Orient Steamship Company

Castle & Cooke, Ltd

Life and Fire

Insurance Agents

AGENTS FOR

New England Mutual Life Insurance Co OF BOSTON.

Aetna Fire Insurance Co., HARTFORD, CONN.

M. OHTA, Contractor and Builder House Painter

Kewalo, Sheridan Street, near King Honolulu H. I. Telephone Blue 199L.

- Just Received -

A SHIPMENT OF GENUINE PANAMA HATS IN ALL THE LATEST SHAPES. PRICES FROM \$7.50 UP.

Levingston & Co., Young Building

1071 BISHOP STREET.

A-Little-at-a-Time-Payments

The famous up-to-date Jewel Stoves and Ranges, are within the means of all, by our Little at a Time Payments, it enables you to be the possessor of a Jewel.

Come to the store or write for our Jewel literature, which we will cheerfully furnish.

Lotus Jewel

Cook Stove

Uses wood for fuel. The Lotus is one of the new Jewel cook stoves. It is very economical in its use of fuel and heats the oven very quickly. Make of smooth castings. Has a large, well shaped oven, aluminum oven doors. Very simple and easy to operate and clean.

Our Lotus Jewel line is complete in eight different sizes. When writing address as follows:

W. W. Dimond & Co., Ltd

P. O. BOX 48

MAIL ORDER DEPT "D"

HONOLULU T. H.