

TELEPHONE 365
STAR
BUSINESS OFFICE

THE HAWAIIAN STAR.

The Star Prints More Local News Than Any Other Paper In This City

SECOND
EDITION

VOL. XV.

HONOLULU, HAWAII, THURSDAY, MAY 16, 1907.

No. 4724

CONFIDENT SCHMITZ WILL CONFESS

RUEF BEFORE GRAND JURY

(Associated Press Cable to The Star.)

SAN FRANCISCO, Cal., May 16.—Abe Ruef, who yesterday confessed in court to extortion in the French restaurant case, was before the grand jury this afternoon and the indictment of numerous prominent men is expected as the result of Ruef's disclosures.

The prosecution is now confident that Mayor Schmitz will confess his part in the corruption being exposed.

STRIKERS' DEMANDS REFUSED

(Associated Press Cable to The Star.)

SAN FRANCISCO, Cal., May 16.—The Geary street railway company refuses the demands of the Carmen's Union and will not resume service unless the strikers give in.

EUROPEAN WHEAT IS FAILURE

(Associated Press Cable to The Star.)

ODESSA, May 16.—The European wheat crop is largely a failure.

STRIKERS DEFEATED

(Associated Press Cable to The Star.)

BUENOS AYRES, May 16.—The strike here has been ended and the strikers defeated.

NON-UNION CAR-CREWS

(Associated Press Cable to The Star.)

SAN FRANCISCO, Cal., May 16.—Many cars are running in this city today. They are manned by non-union crews. Conditions are practically unchanged.

CONGER IS DYING

PASADENA, May 16.—Ex-Minister Conger is dying.

Do You Believe In Robbers?

You would if you knew what class of men fill our jails today. And it is said that all robbers are not in jail. Nobody is "robber-proof," and there is always a first time. You are taking big chances in not keeping your valuables, etc., in a safe deposit box. We will rent you one for 50c. a month.



Hawaiian Trust Co.,
Limited
Fort Street

\$20,000 FINE FOR REBATING

(Associated Press Cable to The Star.)

NEW YORK, N. Y., May 16.—The Chicago, St. Paul & Milwaukee Railway Company today paid its fine of \$20,000 for rebating.

(Associated Press Cable to The Star.)

EVANSVILLE, Indiana, May 16.—There is a street car strike on here and violence has begun.

VISITORS AT PUUNENE AND HALEAKALA

(Special Wire to The Star.)

WAILUKU, May 16.—The Congressional party, or at least the greater part of it, are visiting Puunene mill this morning. This is the largest sugar mill in the world, and the party was greatly interested in visiting it and Hawaiian Commercial & Sugar Company's plantation, with its thousands of acres and miles of irrigation ditches.

A portion of the party started for the summit of Haleakala early enough in the day to go down in the crater. Others will go during the day and be able to witness the wonderful effect of sunrise and sunset from that eminence more than 10,000 feet above sea level.

The members of the party are being entertained at the homes of residents. Iao Valley and its wonders excited much enthusiasm among the visitors yesterday. Last night the party was entertained with native music.

Fine Job Printing, Star Office.

Walk Over Shoes

IMMENSE NEW STOCK
IN ALL STYLES.

\$4.50 \$4.00 \$5.00

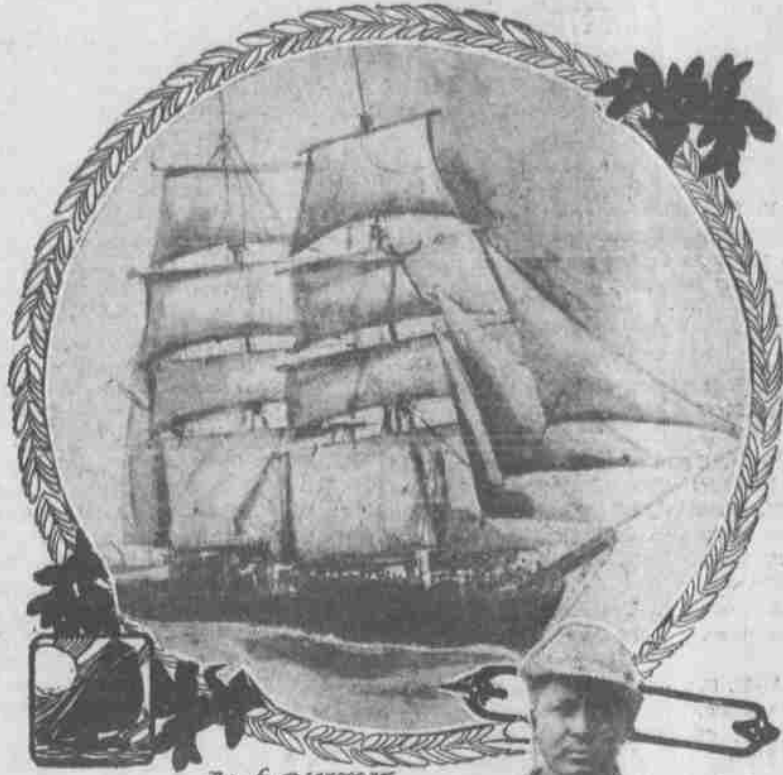
Ladies Sorosis Shoes

BLACK AND TAN,
TINTED CANVAS BALS.

\$3.50 \$4.00 \$5.00

L. B. Kerr & Co., Ltd
ALAKA STREET.

Ancient Whaler Still In Commission



Dark Canton,
Oldest whaler in the world.

The "Canton," aged 72 years and the oldest whaling ship in the world, has just sailed from the port of New Bedford, Mass., on another voyage. She is considered one of the staunchest vessels afloat. She was built in Baltimore in 1835 and during her career has taken 62,500 barrels of oil, value at \$20 a barrel. She is built entirely of oak and is copper fastened throughout. Captain Valentine, who commands her on her present voyage, is a Portuguese, and has been twenty years in the whaling industry.



Captain VALENTINE,
Master of whaler
"CANTON"

MATSON STEAMER GOES ON REEF IN HARBOR

S. S. HILONIAN'S SCREW AND
HELM BECAME UNMAGNABLE.
OFF IN 30 MINUTES.

Seismic disturbances have been held responsible for the going ashore of many vessels in various parts of the world of late, but the S. S. Hilonian will probably have to find some other excuse for piling on the coral at the Waikiki end of the harbor, just as she was about to enter the channel to go out this morning.

The Hilonian left the Oceanic wharf at 10:35 o'clock. She was booked to sail at 10 o'clock, but had to wait 25 minutes for a W. Lindo, a passenger. Yesterday afternoon, as elsewhere reported, she crashed into the Oceanic wharf while docking after coming from the railway sugar wharf. Not satisfied with breaking up the wharf and getting away late, the Hilonian had to pile up on the reef near the Kunalu boat house, trying to get out. She was hard and fast for over thirty minutes, when by her own exertion and the assistance of the Spreckels tug Intrepid she was worked astern and into deep water and went out on her way to San Francisco rejoicing.

Captain Johnson was on the bridge at the time of the accident and most of the passengers had gone to their cabins. (Continued on Page 5.)

Japanese By The China And Alameda Are Refused A Landing

CLAIMED THAT A SYNDICATE IN
HONOLULU IS ENGAGED IN
BUYING UP OLD PASSPORTS.

SAN FRANCISCO, May 16.—Discovery is made by immigration officials that a syndicate at Honolulu is dealing in second-hand United States passports, and that President Roosevelt's recent agreement with the Tokyo government excluding Japanese coolies is being violated with the arrival of nearly every steamer at Pacific coast ports. Two Japanese who have come to San Francisco on the steamer China and three on the steamer Alameda on these purchased passports have been refused landing and will be deported.

In investigating the passports of those Japanese who have come here from Honolulu since the president effected the tide stemming arrangement the immigration officials have uncovered a plot whereby the Japanese government can keep faith with this government and the Japanese coolie effect a landing just the same. In this country are many Japanese who hold passports from Japan to the United States. A Japanese syndicate is believed to have collected, either by buying or borrowing, a large number of these precious tickets of admission to the land of promise. These passports have been sent to Honolulu and there distributed, presumably for a consideration, among the coolies lacking their government's permission to come this far from Japan.

These second hand passports are now coming to light. Under recent private orders from Secretary Strauss the of- (Continued on Page Five.)

Plans Made For Last Days Of Visit

PROGRAM ARRANGED FOR ENTERTAINING CONGRESSIONAL PARTY
ON ITS RETURN FROM HAWAII—VISIT TO PEARL HARBOR THE
IMPORTANT FEATURE—A CLOSING ROUND OF SOCIAL AFFAIRS
WILL MARK CLOSING DAYS.

At the meeting of the executive committee on the entertainment of the Congressional party, which was held this afternoon in the rooms of the Promotion Committee the program covering the last few days of visitors stay in Honolulu after their return from Hawaii on the 25th was arranged as fully as possible at this time. Something may be changed, and a portion of two days was left practically open to be filled in later.

On the afternoon and evening of Saturday the 25th, nothing has been set owing to the fact that the party may be tired; but at this time the lawn fete and luau given by the ladies at the home of Princess Kawannakoa for the benefit of indigent Hawaiian women, will probably attract a number of the visitors. In the evening of this day also will be held an entertainment at the Opera House of much interest to strangers, as it will portray almost all of the distinctively Hawaiian customs.

On Sunday a band concert will be given in the Capitol grounds, and it is planned to take the men of the party in automobiles to the top of Pukali hills in order to afford them a panoramic view of Pearl Harbor.

On Monday Pearl Harbor will be visited. The party will go in the Government tug Iroquois, leaving here at 9 o'clock. At noon the guests will be entertained at luncheon by F. W. Macfarlane at the home of C. W. Macfarlane, in Pearl Harbor, and it is likely that many yachts will also be on hand to afford an opportunity of sailing on the beautiful sheet of water. A return to the city will probably be made about 4 or 5 o'clock by special train.

On Monday night the visitors will be banquetted at the Moana Hotel by the Merchants Association and Chamber of Commerce.

Tuesday and Wednesday have not been fully filled. It is possible that upon the arrival home of Secretary Atkinson and others who had planned a regatta and exhibition of pa-u riders at Waikiki beach will be carried out. There is also the possibility that the trip to Haleiwa and Wahiawa may be made, but it cannot be if the regatta is given.

On Tuesday evening a number of private dinners have been arranged for the men. Among those who will thus entertain will be F. M. Hatch, and Judge Hartwell. Some others may dine some of the guests at this time also.

The ladies of the party will be entertained on this evening also by Mrs. J. M. Dowsett.

On Wednesday evening a formal reception will be given by Delegate Kuhio and Princess Kalaniana'ole, which will be entirely by invitation, and will be an elaborate affair.

Thursday being Memorial Day, and several members of the party having been expected to speak on this occasion, no program has been planned for this time, although it is possible that in the afternoon a meeting of business men will be held at the Capitol grounds to meet the Congressmen. On Thursday, the 31st, the delegation leaves on the transport Sherman for their homes.

On Wednesday evening a formal reception will be given by Delegate Kuhio and Princess Kalaniana'ole, which will be entirely by invitation, and will be an elaborate affair.

Thursday being Memorial Day, and several members of the party having been expected to speak on this occasion, no program has been planned for this time, although it is possible that in the afternoon a meeting of business men will be held at the Capitol grounds to meet the Congressmen. On Thursday, the 31st, the delegation leaves on the transport Sherman for their homes.

On Wednesday evening a formal reception will be given by Delegate Kuhio and Princess Kalaniana'ole, which will be entirely by invitation, and will be an elaborate affair.

Thursday being Memorial Day, and several members of the party having been expected to speak on this occasion, no program has been planned for this time, although it is possible that in the afternoon a meeting of business men will be held at the Capitol grounds to meet the Congressmen. On Thursday, the 31st, the delegation leaves on the transport Sherman for their homes.

On Wednesday evening a formal reception will be given by Delegate Kuhio and Princess Kalaniana'ole, which will be entirely by invitation, and will be an elaborate affair.

Thursday being Memorial Day, and several members of the party having been expected to speak on this occasion, no program has been planned for this time, although it is possible that in the afternoon a meeting of business men will be held at the Capitol grounds to meet the Congressmen. On Thursday, the 31st, the delegation leaves on the transport Sherman for their homes.

On Wednesday evening a formal reception will be given by Delegate Kuhio and Princess Kalaniana'ole, which will be entirely by invitation, and will be an elaborate affair.

Thursday being Memorial Day, and several members of the party having been expected to speak on this occasion, no program has been planned for this time, although it is possible that in the afternoon a meeting of business men will be held at the Capitol grounds to meet the Congressmen. On Thursday, the 31st, the delegation leaves on the transport Sherman for their homes.

On Wednesday evening a formal reception will be given by Delegate Kuhio and Princess Kalaniana'ole, which will be entirely by invitation, and will be an elaborate affair.

Thursday being Memorial Day, and several members of the party having been expected to speak on this occasion, no program has been planned for this time, although it is possible that in the afternoon a meeting of business men will be held at the Capitol grounds to meet the Congressmen. On Thursday, the 31st, the delegation leaves on the transport Sherman for their homes.

On Wednesday evening a formal reception will be given by Delegate Kuhio and Princess Kalaniana'ole, which will be entirely by invitation, and will be an elaborate affair.

Thursday being Memorial Day, and several members of the party having been expected to speak on this occasion, no program has been planned for this time, although it is possible that in the afternoon a meeting of business men will be held at the Capitol grounds to meet the Congressmen. On Thursday, the 31st, the delegation leaves on the transport Sherman for their homes.

ST. LOUIS AMERICANS WANTED BARNEY JOY

IN A LETTER TO PAT GLEASON
THE HONOLULU BOY TELLS OF
HIS EXPERIENCES.

Patrick Gleason, Captain of the St. Louis Alumni team received the following letter from Barney Joy this morning:

San Francisco May 9, 1907.
Dear Friend Pat: I received your letter yesterday and was glad to hear from you.

About my first game, Pat, my catcher lost that game for me, he caught pretty bum for me. I had the Oakland team striking at every thing, the only fault was I walked seven men, and they only got one hit from me. I tell you how I lost. There was a man on third, Van Halteren was at the bat; he knocked the ball to the right fielder and the man started from third home, the right fielder made a nice throw home and the catcher missed it and the runner scored. That's how I lost my first game and in the second game the team did not support me very well, you ought to hear the grand stand hollering that

(Continued on Page Five.)

Is Ho San One Of The Siamese Twins?

THE FEDERAL AUTHORITIES
CLAIM THAT HE IS A CHINESE
—BUT HE SAYS NO.

Rather an odd case was before U. S. Commissioner Hatch this morning. This was the examination of Ho San on a charge of being unlawfully in the United States. The authorities claim that Ho is a Chinese, but he claims he is not. He says he has a right to remain in American territory. The defendant was formerly a sailor on the S. S. Nevada.

Ho San claims that he was born in San Francisco. His mother was a Chinese, but his father was a Siamese. He says he went to work on an American vessel when he was seven years of age and has worked on American vessels until the present time. He is now about 25 years of age. Strange to relate, Ho could not recall the name of any of the American vessels where he had served. The case was taken under advisement.

Delicious pies and cakes. Candy fresh every day. New England Bakery.

An Investigation

is essential when buying your Foot Wear. Some men don't care to go into the details of a shoe when buying. But they should. Our No. 10 Patent Colt Kaiser Oxford for men is absolutely the best in the market. Dressy foot form last, medium narrow swing toe with high arch and Cuban heel. Just the tie for the swell or conservative dresser.

Note:—Strong and Garfield Shoes are well known for their good fitting qualities.

A MATTER OF HEALTH

ROYAL

BAKING POWDER
Absolutely Pure
HAS NO SUBSTITUTE
A Cream of Tartar Powder, free from alum or phosphate
ROYAL BAKING POWDER CO., NEW YORK.

RICE AND SUGAR

K. Yamamoto, the wholesale merchant on Hotel street, receives by every steamer from the Orient large consignments of Japanese rice which comes direct from the fields. Experience have shown that more work is obtainable from Japanese laborers fed on Japan rice than from those fed on any other rice. Ring up Main 229.

THE WORTH OF YOUR MONEY.

Breakfast, lunch and dinner served at Royal Annex Cafe every day in the year. All the market affords served properly at prices to meet your purse. This is one place in Honolulu where you get the worth of your money.

The best cup of Hawaiian Coffee is in the city. New England Bakery and Cafe.

SPRAINS QUICKLY CURED.

Bathe the parts freely with Chamberlain's Pain Balm and give them absolute rest and a quick cure is certain. For sale by all dealers, Benson, Smith & Co., agents for Hawaii.

Fine Job Printing, Star Office.

Oceanic Steamship Company.

SIERRA-ALAMEDA SCHEDULE

Voy.	Steamer.	Lv. S. F.	Ar. Hon.	Lv. Hon.	Ar. S. F.
184	ALAMEDA	SAT. MAY 11	MAY 11	MAY 11	MAY 17
185	SIERRA	THUR. MAY 23	MAY 17	MAY 22	MAY 28
186	ALAMEDA	SAT. JUNE 1	MAY 29	JUNE 2	JUNE 9
187	SIERRA	SAT. JUNE 15	JUNE 7	JUNE 12	JUNE 18
188	ALAMEDA	SAT. JUNE 22	JUNE 14	JUNE 19	JUNE 25
189	SIERRA	SAT. JUNE 29	JUNE 21	JUNE 26	JULY 2
190	ALAMEDA	SAT. JUNE 29	JUNE 21	JUNE 26	JULY 2

In connection with the sailing of the above steamers, the Agents are prepared to issue to intending passengers coupon through tickets by any railroad from San Francisco to all points in the United States, and from New York by steamship line to all European Ports.

FOR FURTHER PARTICULARS APPLY TO

W. G. Irwin & Co.

General Agents Oceanic S. S. Company.

Canadian-Australian Royal Mail STEAMSHIP COMPANY

Steamers of the above line running in connection with the CANADIAN-PACIFIC RAILWAY COMPANY between Vancouver, B. C. and Sydney, N. S. W., and calling at Victoria, B. C., Honolulu and Brisbane, Q.

DUE AT HONOLULU ON OR ABOUT THE DATES BELOW STATED, VIZ

FOR AUSTRALIA.	FOR VANCOUVER.
MANUKA..... JUNE 1	MIOWERA..... JUNE 26
AORANGI..... JUNE 29	MANUKA..... JULY 24

CALLING AT SUVA, FIJI, ON BOTH UP AND DOWN VOYAGES.

THEO. H. DAVIES & CO., Ltd., Gen'l Agts.

American Hawaiian Steamship Company

DIRECT SERVICE BETWEEN NEW YORK AND HAWAIIAN ISLANDS, VIA PACIFIC COAST PORTS.

FROM NEW YORK TO HONOLULU.

Weekly Sailings, Via Tehuantepec.

Freight received at all times at the company's wharf, 41st Street, South Brooklyn.

FROM HONOLULU TO SAN FRANCISCO.

S. S. NEVADAN to sail direct.....May 17

FROM SAN FRANCISCO TO HONOLULU.

S. S. NEVADAN to sail direct.....May 31

FROM SEATTLE & TACOMA FOR HONOLULU.

S. S. MISSOURI to sail direct about.....May 15

H. Hackfield & Co.,

C. P. MORSE, General Freight Agent.

Agents.

MATSON NAVIGATION COMPANY,

Passenger Steamers of this Line will Arrive and Leave this Port on or about the following dates:

FROM SAN FRANCISCO.	FOR SAN FRANCISCO.
S. S. HILONIAN.....MAY 12th	S. S. HILONIAN.....MAY 16th
S. S. HILONIAN.....JUNE 5th	S. S. HILONIAN.....JUNE 12th

RATES TO SAN FRANCISCO.

First Cabin \$60.00; Steerage \$25.00.

For Further Particulars, Apply To

Wm. G. Irwin & Co., Ltd., Agents

Union Express Co.,

BRANCH HUSTACE PECK CO., LTD.

63 Queen Street

Having baggage contracts with the following Steamship Co.'s Lines:

OCEANIC STEAMSHIP CO.
OCCIDENTAL & ORIENTAL STEAMSHIP CO.
PACIFIC MAIL STEAMSHIP CO.
TOYO KISEN KAISHA STEAMSHIP CO.

We check your outgoing baggage at your homes, saving you the trouble and annoyance of checking on the wharf.

Incoming baggage checked on steamers of above companies and delivered with quickness and dispatch at your homes.

Telephone Main 86

Dewar's Scotch WHISKY

Agents:—

F. A. SCHAEFER & CO., HONOLULU.

SHIPPING INTELLIGENCE

(For additional and later shipping see pages 4, 5 or 8.)

TIDES, SUN AND MOON.

First Quarter of the Moon May 20th.

Date	High Tide	Low Tide	Sun Rises	Sun Sets	Moon Rises	Moon Sets
May 16	5:51 a.m.	4:51 p.m.	5:22	6:31	5:51	6:31
May 17	5:26 a.m.	4:17 p.m.	5:22	6:31	5:51	6:31
May 18	5:00 a.m.	4:48 p.m.	5:21	6:32	5:51	6:32
May 19	4:33 a.m.	4:27 p.m.	5:21	6:32	5:51	6:32
May 20	4:02 a.m.	4:02 p.m.	5:21	6:33	5:51	6:33
May 21	3:30 a.m.	3:30 p.m.	5:20	6:33	5:50	6:33
May 22	3:00 a.m.	3:00 p.m.	5:20	6:33	5:50	6:33
May 23	2:30 a.m.	2:30 p.m.	5:20	6:33	5:50	6:33
May 24	2:00 a.m.	2:00 p.m.	5:20	6:33	5:50	6:33
May 25	1:30 a.m.	1:30 p.m.	5:20	6:33	5:50	6:33
May 26	1:00 a.m.	1:00 p.m.	5:20	6:33	5:50	6:33
May 27	1:30 a.m.	1:30 p.m.	5:20	6:33	5:50	6:33
May 28	2:00 a.m.	2:00 p.m.	5:20	6:33	5:50	6:33
May 29	2:30 a.m.	2:30 p.m.	5:20	6:33	5:50	6:33
May 30	3:00 a.m.	3:00 p.m.	5:20	6:33	5:50	6:33
May 31	3:30 a.m.	3:30 p.m.	5:20	6:33	5:50	6:33

Times of the tide are taken from the U. S. Coast and Geodetic Survey tables. The tides at Kahului and Hilo occur about one hour earlier than at Honolulu. Hawaiian standard time is 10 hours 30 minutes slower than Greenwich time, being that of the meridian of 157 degrees 30 minutes. The time whistle blows at 1:30 p. m., which is the same as Greenwich, 6 hours, 6 minutes. The Sun and Moon are for local time for the whole group.

U. S. DEPARTMENT OF AGRICULTURE—WEATHER BUREAU.

The following data, covering a period of 22 years, have been compiled from the Weather Bureau and McKibbin records at Honolulu, T. H. They are issued to show the conditions that have prevailed, during the month in question for the above period of years, but must not be construed as a forecast of the weather conditions for the coming month.

Month May for 22 years.

TEMPERATURE.

Mean or normal temperature, 73 deg. The warmest month was that of 1893, with an average of 76 deg. The coldest month was that of 1905, with an average of 73 deg. The highest temperature was 87 deg. on May 28, 1897. The lowest temperature was 60 deg. on May 6, 1902.

PRECIPITATION.

(Rain 1877-1894, 1905-6.)

Average for the month 2.21 inches.

Average number of days with .01 of an inch or more, 13.

The greatest monthly precipitation was 11.23 inches in 1885.

The least monthly precipitation was 0.13 inches in 1880.

The greatest amount of precipitation recorded in any 24 consecutive hours was 9.63 inches on May 10, 1885.

The greatest amount

RELATIVE HUMIDITY.*

Average 9 a. m. 66.3 per cent; 9 p. m. 74.4 per cent (1893-1904).

Average 8 a. m. 65.5 per cent; 3 p. m. 69.0 per cent (1905-6.)

CLOUDS AND WEATHER.

(1899-1905)

Average number of clear days 10; partly cloudy days 17; cloudy days, 4.

WIND.

The prevailing winds are from the NE (1875-1894, 1905-6.)

The average hourly velocity of the wind is 9.0 miles (1905-6.)

The highest velocity of the wind in 1905-6 was 23 miles from the Northeast on May 13, 1905.

Station, Honolulu, T. H.

Date of issue: April 22, 1907.

* 9 o'clock averages from records of Territorial Meteorologist, 5 o'clock averages from Weather Bureau records.

WM. B. STOCKMAN,

Section Director Weather Bureau.

Shipping in Port

(Army and Navy)

U. S. R. C. Manning, Joyner, from Kamalo where sp. Loch Garve stranded, March 8.

U. S. S. Iroquois, Carter, San Francisco, May 2.

(Merchant Marine.)

Br. cableship Restorer, Combe, Esquimaux, March 31.

Br. S. S. Virginia Crocker, Newcastle, May 8.

Jap. S. S. Chiusha Maru, Surakai, Yokohama, May 10.

P. M. S. S. Siberia, Zeeder, San Francisco, May 16.

Sailing Vessels

Am. sc. Helene, Thompson, San Francisco, April 29.

Am. sp. Manga Reva, Townsend, San Diego, May 7.

Am. sp. Dirigo, Goodwin, San Francisco, May 7.

Am. bk. Amy Turner, Warland, San Francisco, May 10.

The Mails

OUTGOING.

For San Francisco, per S. S. Nevada, May 17.

For Yokohama, per S. S. Siberia, May 18.

For San Francisco, per S. S. Alameda, May 22.

For Yokohama, per S. S. China, May 24.

For San Francisco, per S. S. Doris, May 25.

For Victoria, per S. S. Aorangi, May 25.

For Colonies, per S. S. Manuka, June 1.

INCOMING.

From San Francisco, per S. S. Alameda, May 18.

From San Francisco, per S. S. China, May 24.

From Yokohama, per S. S. Doris, May 25.

From Victoria, per S. S. Manuka, June 1.

From Colonies, per Aorangi, May 25.

U. S. A. TRANSPORTS.

Thomas at San Francisco.

Buford sailed from Honolulu for Manila, May 9.

Logan sailed for Manila, from Honolulu, May 14.

Sheridan due from Manila May 20.

Sheridan at Mare Island repairing.

Dix sailed from Coast direct to Manila, April 5.

Warren leaves San Francisco June 15 for Honolulu.

ARRIVING.

Wednesday, May 15.

S. S. Nihau, Ones, from Kauai ports with 5169 bags of sugar, 6:30 a. m.

A-H. S. S. Nevada, Greene, from Kahului, 7:30 a. m.

Thursday, May 16.

P. M. S. S. Siberia, Zeeder, from San Francisco, at Hackfield wharf at 8:15 a. m., with 4 days mail and 49 passengers for Honolulu.

DEPARTING.

Wednesday, May 15.

U. S. R. C. Manning, Joyner, on trial trip, 10:45 a. m.

Thursday, May 16.

P. M. S. S. Siberia, Zeeder, for the Orient, from Hackfield wharf, 5 p. m.

M. N. S. S. Hilonian, Johnson, for San Francisco, 10 a. m.

S. S. Mikahala, Gregory, for Kauai ports, 5 p. m.

Am. sc. Luka, Mansfield, for Laysan, 5 p. m.

Friday, May 16.

A-H. S. S. Nevada, Greene, for San Francisco, 5 p. m.

S. S. Claudine, Parker, for Hawaii and Maui ports, 5 p. m.

S. S. Mauna Loa, Simerson, for Hawaii and Maui ports, noon.

PASSENGERS.

Arrived.

Per S. S. Nihau, from Kauai ports, May 15—A. B. Pemberton and wife, C. B. Wilson, Father Rodriguez, P. Lamb, Pah On and wife, Yok Hon, Yim Fook, A. K. Kiau, Ah Lin, Kim Fook, J. W. L. Hjorth, C. F. Hays, C. W. Baldwin and 55 deck.

Per S. S. Siberia, from San Francisco, May 14, for Honolulu—F. L. Austin, Mrs. Edmund Baker, Mrs. N. O. Bradley, Mrs. F. E. Burrell, Capt. J. C. Carden, J. S. Clark, Dr. C. B. Cooper, Miss Grace E. Cutting, Rev. Warren F. Day, Mrs. Warren F. Day, Miss Helen Eames, Miss Elizabeth Eames, Mrs. G. A. Giles, Mackenzie Gordon, Mrs. R. P. Hall, W. P. Hopkins, Mrs. A. B. Horner, Howard B. Horner, James F. Morgan, George Myers, H. Phillips, A. M. Lumpkin, Mrs. A. R. Orr, Mrs. H. Robinson, Dr. M. G. Peters, T. R. Robinson, A. T. Robinson, S. Robinson, Mrs. Helen Rowland, Miss Hazel Rowland, H. A. Schwartz, Miss E. Schnoor, Mrs. H. A. Schwartz, Lieut. W. Henry Shea, C. B. Sloan, Mrs. C. B. Sloan, Mrs. S. F. Sloan, Miss Anna K. Smith, Miss L. M. Varney, C. B. Weller, Mrs. C. B. Weller, H. E. Westervelt, Mrs. H. E. Westervelt, Miss Helene Westervelt, Miss Mildred Westervelt, W. Walters, J. K. Taylor.

For Yokohama—Mrs. George R. Allen, F. M. Byl, C. Dudley Campbell, Mrs. Mary H. Gray, Mrs. Mary L. Johnson, Shoji Konishi, Mrs. G. W. Lewis, Miss Winifred Lewis, Miss E. M. Maltby, Miss E. F. Maltby, A. W. Schroeder, Mrs. A. W. Schroeder, B. M. Ward, Mrs. B. M. Ward, R. Wesselhoft.

For Shanghai—D. Lattimore, Mason Wells, Mrs. Mason Wells and 2 children, Miss Inez Barnes.

For Hong Kong—J. E. Bien, Dr. Heber Butts, Andrew W. Cain, Mrs. Andrew W. Cain, J. Carrigan, Miss May Carrigan, Chin Choe, Mrs. Chin Choe and infant, Miss Chia May, Lawrence A. Cooper, Dr. Edwin R. Copeland, Rev. C. E. Eckels, Mrs. C. E. Eckels and 2 children, Max Feist, Dr. John Flint, Miss A. Galt, L. A. Gearhart, C. H. Hamilton, Mrs. C. H. Hamilton, Miss Hamilton, Miss Hamilton, J. P. Heilbron, Alvin Heinrich, Mrs. E. A. Holmes, Mrs. W. Hunsaker, Miss Florence Hunsaker, Verne U. Hutchings, Anthony J. Jordan, W. K. Kennedy, Mrs. J. Lashbrook, Mrs. S. J. Lashbrook, Benjamin Levin, Tomas Mapua, Pedro Mapua, Marcellino Asuano, Eucataquo Asuano, Hugh L. McKenzie, Miss Charlotte E. Neale, Mrs. G. E. Nesom, Mrs. Louis Oy and infant, E. C. Peoples, Dr. Thomas W. Raison, Jesse W. Ratcliffe, Mrs. J. Schaefer, Master Julius Schaefer, Miss M. A. Luttner, Miss Bessie Taylor, J. C. Vickers, Mrs. J. C. Vickers, Lawrence D. Wharton, Miss Virginia Williams, Hugh A. Wilson, Dr. Condie K. Winn, R. Gensendorfer, W. R. Stants, Mrs. W. R. Stants, Dr. L. A. Whitte, W. M. Kelley, Mrs. W. M. Kelley, E. Reeves.

For San Francisco, per S. S. Nevada, May 17.

For Yokohama, per S. S. Siberia, May 18.

For San Francisco, per S. S. Alameda, May 22.

For Yokohama, per S. S. China, May 24.

For San Francisco, per S. S. Doris, May 25.

For Victoria, per S. S. Manuka, June 1.

For Colonies, per Aorangi, May 25.

For San Francisco, per S. S. Alameda, May 18.

For San Francisco, per S. S. China, May 24.

For Yokohama, per S. S. Doris, May 25.

For Victoria, per S. S. Manuka, June 1.

For Colonies, per Aorangi, May 25.

For San Francisco, per S. S. Alameda, May 18.

For San Francisco, per S. S. China, May 24.

For Yokohama, per S. S. Doris, May 25.

For Victoria, per S. S. Manuka, June 1.

For Colonies, per Aorangi, May 25.

For San Francisco, per S. S. Alameda, May 18.

For San Francisco, per S. S. China, May 24.

For Yokohama, per S. S. Doris, May 25.

For Victoria, per S. S. Manuka, June 1.

For Colonies, per Aorangi, May 25.

For San Francisco, per S. S. Alameda, May 18.

For San Francisco, per S. S. China, May 24.

For Yokohama, per S. S. Doris, May 25.

For Victoria, per S. S. Manuka, June 1.

For Colonies, per Aorangi, May 25.

For San Francisco, per S. S. Alameda, May 18.

For San Francisco, per S. S. China, May 24.

For Yokohama, per S. S. Doris, May 25.

For Victoria, per S. S. Manuka, June 1.

For Colonies, per Aorangi, May 25.

For San Francisco, per S. S. Alameda, May 18.

For San Francisco, per S. S. China, May 24.

For Yokohama, per S. S. Doris, May 25.

For Victoria, per S. S. Manuka, June 1.

For Colonies, per Aorangi, May 25.

For San Francisco, per S. S. Alameda, May 18.

For San Francisco, per S. S. China, May 24.

For Yokohama, per S. S. Doris, May 25.

Wall, Nichols Co., Ltd.

GENERAL STATIONERS,
MUSICAL AND
SPORTING GOODS.
61 to 71 King Street, Honolulu.

Lovers of
Violet

Can always find their favorite odor
in many forms at this store. Has any
one a better assortment?

VIOLET PERFUMES,
VIOLET TOILET WATERS,
VIOLET WITCH HAZEL,
VIOLET AMMONIA,
VIOLET TALCUM POWDER,
VIOLET FACE POWDER,
VIOLET SACHET POWDER,
VIOLET BATH POWDER,
VIOLET TOILET SOAP,
VIOLET ALMOND MEAL,
VIOLET MOUTH WASH.

BENSON, SMITH & CO., LTD

W. G. Irwin & Co.

AGENTS FOR THE
Royal Insurance Co. of Liverpool, Eng.
Scottish Union & National Ins. Co. of
Edinburgh, Scotland.
Wilhelmina of Madgeburg General
Insurance Company.
Commercial Union Assurance Co. of
London.

LATEST POSTAL CARDS

Beautiful Pictures taken from the
Original Hand-Painted Model.

PACIFIC PICTURE FRAMING CO.

Nuuanu St. near Hotel.

Y. WO SING CO.

GROCERIES, FRUITS,
VEGETABLES, ETC.
California Butter, 40c. lb.; Cooking
Butter, 30c. lb.; Island Butter, 35c. lb.
1188-1188 Nuuanu Street,
Telephone Main 238, Box 952.

Telephones—Residence, White 861;
Office, Main 298.

GOMES' EXPRESS CO

Furniture Moved With Care to All
Parts of the City
OFFICE: 716 FORT STREET.
Near Queen, opp. Hackfeld Building.

CONSOLIDATED SODA WATER WORKS
COMPANY, LTD.

Sole manufacturers and Agents of
Genuine Kola Mint. (Don't buy poor
imitations.) PHONE MAIN 71.

C. BREWER & CO., LTD.

QUEEN STREET,
HONOLULU, H. I.

AGENTS FOR
Hawaiian Agricultural Company, Ono-
mea Sugar Company, Honouliuli Sugar
Company, Wailuku Sugar Company,
Ookala Sugar Plantation Company,
Pepeekeo Sugar Co., Kapapala Ranch.
Charles M. Cooke.....President
Geo. H. Robertson, V-Pres. & Mgr.
E. Faxon Bishop.....Treas. & Secy.
P. W. Macfarlane.....Auditor
C. F. Jones.....Director
C. H. Cooke.....Director
J. R. Galt.....Director
All of the above named constitute
the Board of Directors.

JAPANESE AND AMERICAN
DRY GOODS.

Straw Hat Manufactured.

K. FUKURODA,

Hotel Street, near Bithol.

Honolulu Iron Works.

STEAM ENGINES, SUGAR MILLS,
BOILERS, COOLERS, IRON, BRASS
AND LEAD CASTINGS.

Machinery of Every Description
Made to Order. Particular Attention
paid to Ship's Blacksmithing. Job
Work Executed on Short Notice.

T. SHIMA

THE DYER.
CLOTHES DYED AND CLEANED.
All Work Guaranteed.
Suits Cleaned and Pressed, 50c.
Tuxedo, \$75c.

No. 1854 Fort Street, near Orpheum
Theater, Honolulu, T. H.

\$4,000

Fine Residence in
Kalihi

New House 6 large rooms, 2 bed-
rooms, parlor diningroom, kitchen,
lanai 10x30 feet. House modern in
every respect.

For Rent

A very comfortable cottage in Col-
lege Hills. Occupancy June 1st. \$25
per month.

BISHOP TRUST CO., LTD

924 BETHEL STREET.

Fire Insurance!

Atlas Assurance Company
of London.
New York Underwriters
Agency.
Providence Washington In-
surance Company.

THE B. F. DILLINGHAM CO., LIMITED

General Agents for Hawaii.
Fourth Floor Stangenwald Building.

LATEST THING
IN INSURANCE....

23

Kinds of annuities to protect you
against the vicissitudes of old age
JUST OUT.

It will pay you as it has paid others
to investigate these policies before in-
creasing your insurance. Call or write
for particulars.

Castle & Cooke

GENERAL AGENTS.

A. B. EBNER, Special Agent.

W. G. Irwin & Co., Ltd

Wm. G. Irwin.....President and Manager
John D. Spreckels.....First Vice-President
W. M. Giffard.....Second Vice-President
H. M. Whitney.....Treasurer
Richard Ivers.....Secretary
W. F. Wilson.....Auditor

SUGAR FACTORS, COMMISSION AGENTS

AGENTS FOR
Oceanic Steamship Co., San Francisco,
Cal.
Western Sugar Refining Co., San Fran-
cisco, Cal.
Baldwin Locomotive Works, Philadel-
phia, Pa.
Newall Universal Mill Co., Manufac-
turers of National Cane Shredder,
New York, N. Y.
Pacific Oil Transportation Co., San
Francisco, Cal.

ALEXANDER & BALDWIN, LTD

J. P. COOKE, MANAGER.

OFFICERS:
H. P. Baldwin.....President
J. B. Castle.....1st Vice-President
W. M. Alexander.....2nd Vice-President
L. T. Peck.....3rd Vice-President
J. Waterhouse.....Treasurer
E. B. Paxton.....Secretary
W. O. Smith.....Director

Sugar Factors and
Commission
Merchants

AGENTS FOR

Hawaiian Commercial & Sugar Com-
pany.
Maui Sugar Company.
Pala Plantation.
Maui Agricultural Company.
Kihel Plantation Company.
Hawaiian Sugar Company.
Kahuku Plantation Company.
Kahului Railroad Company.
Haleakala Ranch Company.

Kaiser's Son To Enter Harvard



Prince Oscar of Germany, fifth son
of the Emperor, is to take a course
at Harvard, entering next Fall. This
is held to be a great compliment to
the United States and to President
Roosevelt, a graduate of that univer-
sity. Prince Oscar, being far from
his father.

ATKINSON REPORTS
PARTY'S ARRIVAL

The following wireless telegram was
received yesterday afternoon by D.
Lloyd Conkling, chief clerk in the
Secretary's office, from Acting Gov-
ernor Atkinson who is with the Con-
gressional party which left here Tues-
day night on their tour of Maui and
Hawaii:

Party all landed safely and dis-
tributed in homes of citizens. All are
in Iao Valley today for luau. A por-
tion of the party goes to Olanda to-
morrow and will ascend the mountain
on Thursday. Another part ascends
tomorrow and sleeps on summit. All
will descend on Friday. All well.
"ATKINSON."

FILED AMENDED COMPLAINT.

An amended complaint has been made
in the suit of the partners in Kwong
Chong Yuen Co. against the partners in

PAY! PAY! PAY!

EDITOR STAR:—It does indeed
make us too tired to hear the sighing
and the groaning because of "taxes to
pay."

The poor editors and scribes, that do
not own a single board in anything
(but a mansion in the sky) are the
very ones that would step up, smil-
ingly, to pay the honest few dollars
and be thankful that they were own-
ers of houses and lands. Truly, this is
a contradictory world and the wrong
that is on the wrong man's head! Is
it not so?

ANNE M. PRESCOTT.

GET IT TODAY.

Chamberlain's Colic, Cholera and
Diarrhoea Remedy cures diarrhoea and
dysentery in all forms and in all
stages. It never fails. For sale by all
dealers, Benson, Smith & Co., agents
for Hawaii.

Lung Do Wai Co. Judgment is pray-
ed for \$3818.30 damages on account of
the destruction of dams, causing the
loss of ducks and fish on the ranch of
plaintiffs at Waikiki.

LIQUOR COMMISSION
DISCUSSES ITS WORK

MADE NO APPOINTMENT OF THE
LICENSE INSPECTOR BUT MAY
DO SO THIS AFTERNOON.

The first business meeting of the
new Liquor License Commission was
held yesterday afternoon. A number
of matters were discussed, but no de-
finite action was taken, the Commis-
sion deciding to defer action along var-
ious lines until a meeting which will
be held this afternoon.

Several applications for the position
of license inspector were brought to
the attention of the Commission, but
no appointment was made.

There was a discussion as to the lim-
its of the district in which saloons
would be permitted in Honolulu. It
was suggested that the district be
bounded by the waterfront, Liliha,
King, Alapai streets.

A notice to saloon-keepers relative
to the general operation of the new
law and the details connected with se-
curing a liquor license is being prepa-
red.

BAND CONCERT

This evening at 7:30 the band will
render the following program at the
Royal Hawaiian Hotel:

PART I.
Overture—"The Smugglers' Bride"....
.....Bohm
Fantasia—"The Ball Queen".....Volstedt
Intermezzo—"Hermosillo".....Schuh
Selection—"L'Ebreco".....Apolloni
PART II.
Vocal—American Songs...ar. by Berger
Selection—"Fiddle-de-dee".....
.....Strömberg
Patrol—"The Siamese".....Linke
Finale—"Remembrance".....W. Alteufel
"Star Spangled Banner."

A London paper says no British jury
would tolerate such speeches as were
made in the Thaw case, but the great
American jury demands the best or-
atorical talent and the finest kind of an
entertainment.

Be Not Deceived

There is only one leanable Refrigerator and therefore GERM PROOF,
and that is the Gurney Refrigerator handled by us.
No other make has ever stood the test and by means of the removable
ice chamber as well as removable shelves, drain pipes, traps, etc., we have
solved the problem.
Assail us where you will you cannot help but admit our claim. All other
makes fail when it comes to keeping the ice chamber pure, sweet, clean and
germ proof, but



THE GURNEY

Listen not to idle talk and arguments put forth in favor of cleanable pro-
vision compartment. All refrigerators have this feature. You cannot deny
that unless ALL COMPARTMENTS can be kept absolutely pure and whole-
some that a refrigerator is germ-proof. Go from the provision chamber to the
receptacle for the ice and it is here where all other makes fail. There's the
weakness that cannot be overcome by them.
The Gurney with its removal Ice Chamber feature has supplied the great
want and therefore

Is the Only Cleanable

Come in and bring forth your arguments and if we fail to convince you
we are ready to take your decision. A full line always on hand. They are
used in almost every household. Do you possess one. If not why not, it
costs no more than other makes

W. W. Dimond & Co., Ltd

Distributors.
53-57 King St., Honolulu.

Have You Ever

had a steak that defied the attack your grinders
would make on it, a steak that would dull the
upper and nether mill stones? Well that's the
kind we don't sell. Ours is the melt in your
mouth sort. Prove it for yourself.

Metropolitan Meat Co., Ltd

Don't You Want a
Typewriter?

Do you fully realize how valuable a typewriter would be to you—
how much time it would save and how much satisfaction it would
give. Drop in our store and we will show you the best typewriter
ever put on the market, one that you can easily learn to operate—

THE SMITH PREMIER.

Hawaiian News Company, Ltd.,

YOUNG BUILDING.



RAINIER TOAST

From Diamond Head to the Fall,
From Tantalus' crest to the sea,
Where kissing waves lovingly dally
With coral at fair Waikiki,
Anon come the echoes of laughter,
The clinking of glasses, and mirth,
And songs that from cellar to rafters,
Bring Paradise here upon earth.

HERE'S TO THE PARADISE OF
THE PACIFIC!

C. A. NELSON, AGENT FOR RAINIER BEER.

'Phone White 1331.

Now is the time to come and see our new lines of Fancy Goods.
Wash Skirts, Children Wash Suits, Misses Dresses, Fancy Ribbons, Ladies
Stockings of all kinds, Fancy Lace and Embroidery Corset Covers.
Also Ladies and Gentlemen's, Misses' and Children's Shoes, etc., etc.
SPECIAL SALE.

YAT LOY CO. : No. 12 and 16 King St.

CHICAGO...
IN LESS
THAN 3 Days

and over The Only Double-Track Railway between the Missouri River and
Chicago.

Three Fast Trains Daily

VIA
SOUTHERN PACIFIC, UNION PACIFIC AND
CHICAGO & NORTHWESTERN RAILWAYS.

OVERLAND LIMITED, VESTIBULED. Leaves San Francisco daily

11:00 a. m.

The most luxurious train in the world. New Pullman drawing room and

stateroom cars built expressly for this famous train. Gentleman's buffet and

Lady's parlor observation car. Book-lovers Library. Dining car—meals a

la carte. Electric lighted throughout.

EASTERN EXPRESS VESTIBULED. Leaves San Francisco at 6:00 p.

m. daily. Through Pullman Palace and Tourist Sleeping Cars to Chicago.

Dining Cars. Free Reclining Chair Cars.

ATLANTIC EXPRESS VESTIBULED. Leaves San Francisco at 9:00

a. m. Daily. Standard and Tourist Sleepers.

PERSONALLY CONDUCTED EXCURSIONS

Wednesday, Thursdays and Fridays. The best of everything.

Tickets to and from all points in Europe.

Chicago & Northwestern Ry

R. R. RITCHIE, G. A. P. & S.

517 Market Street. Central Building, San Francisco.

Shipping
Receipt
Books

SOLD AT

STAR OFFICE

Oahu Railway & Land Comp

Inter-Island & N. Company.

The Hawaiian Star

DAILY AND SEMI-WEEKLY.

Published every afternoon (except Sunday) by the Hawaiian Star Newspaper Association, Limited.

SUBSCRIPTION RATES:

Local, per annum\$8.00
 Foreign, per annum 12.00

Payable in advance.

Entered at Post Office at Honolulu, Hawaii, as second class mail matter.

Subscribers who do not get their papers regularly will confer a favor by notifying the Star Office; Telephone 365.

RANK L. HOOFSMANAGER

THURSDAYMAY 16, 1907

A Worthy Citizen Gone

The death of J. M. Horner removes from the activities of this life a man who for nearly three decades has been a commanding figure in the industrial, and to some extent in the public life of these Islands. Though he was nearly

sixty years of age when he came to the Hawaiian Islands he attacked the problems he met here with the same energy and enthusiasm with which he had those in the California of Fremont's time, more than thirty years earlier.

Perhaps the most striking characteristics of Mr. Horner were his resourcefulness, his aggressiveness in attacking new problems or new conditions, and his independence of mind. It was his resourcefulness that so well equipped him for the role of pioneer which he exemplified in three different parts of the world, in Iowa in his very young manhood, in California a few years later, and in Hawaii when he was at an age when most men shrink from new ventures.

His aggressiveness was the spur to his resourcefulness. He was never faint hearted in anything he undertook. He moved forward, and his resourcefulness found or made the means. With a different cast of temperament, or perhaps only with different environment he might have connected his name with more spectacular achievements than he did, though his achievements are more than commonplace.

His independence of mind made him a leader wherever he lived. His opinions were his own. He did not adopt them simply because they were held by those around him. He held them because he had reasoned them out himself. In the exposition and defense of his views and opinions he was as vigorous and aggressive as in any other sphere of activity. From this it could hardly be expected that he was a frequent contributor to the press, and frequently a public opinion through the printed argument.

It was his happiness to crown a vigorous youth with a lusty age. Up to within the last, almost, of his life, his strength was unimpaired. He leaves a record of achievement and of influence of which his family may well be proud. He was a strong citizen and a useful one.

A Dramatic Incident

The confession of Ruef in open court is one of the most dramatic things that has happened in a long time. Court procedure in America is not well designed for spectacular incidents. But the spectacle of this man, who for months and weeks has been charged, and believed, to have been at the head of a system of bribery and corruption almost without parallel, when finally brought before the twelve who were to pass on his guilt or innocence breaking down, confessing, and abjectly promising reform, needed no stage set setting to make it dramatic.

The mental strain under which Ruef has been for weeks has been enough to break down nerves of steel. With the confessions of his dupes and accomplices rehearsed daily in the hearing of the public, knowing that he was from one end of the country to the other believed guilty, unable to make even a plausible public defense, the most calloused effrontery could not remain unmoved. It was beyond the power of human endurance to remain unmoved. There was nothing left but "suicide or confession, and suicide is confession."

Financial Conditions

A very reassuring but at the same time seemingly a very well founded resume of the financial conditions of the country is given in Henry Clew's financial letter under date of May. He says:

Convalescence is progressing, and in both the money and security markets the undertone shows improvement. In monetary affairs the change for the better is worldwide and is not confined to New York. In consequence we have not only had easier rates for money the last few weeks, but bonds have been more active and in better demand, although transactions were still much less than a year ago. The announcement of a \$20,000,000 5 per cent. Atchison bond issue was somewhat of a surprise and must exert a temporarily depressing effect. Not only was the rate of interest so high as to materially affect conditions in the bond market, but the fact that the road had recently increased its dividend from 5 to 6 per cent brought on the management more or less criticism. Hereafter an increase in the dividend rate by any railroad will be apt to be regarded as a forerunner of a bond issue or a short-term loan. The Atchison, however, is not the only road which has adopted the questionable policy of increasing its dividends and then coming into the market for new capital. At best such a policy is undesirable; for some of the improvements which railroads have undertaken could have been gradually provided for out of large net earnings, and thus kept down capital and obligations which have been enormously expanded during the last few years. Apart from this feature the market shows an improving tone. Confidence is unmistakably gradually returning, and gradually also, but surely, the money markets of the world are righting themselves. Inordinate speculation in Europe and America has been substantially checked; and the excessive demands for new capital, which were chiefly responsible for exhausting our monetary supplies, have abated because of the universal restraint placed upon such demands by bankers at home and abroad. This conservative policy by banking interests has probably saved us from a dangerous reaction, and it should be adhered to unflinchingly until our finances, industries, and commerce have been once more placed upon a sound basis. It is not too much to say we approach the second half of the calendar year in a much safer condition than we did the first half. There is far less distrust now than at the close of 1906. Then the high level of security prices and the scarcity and extreme rates for money induced general apprehension that a financial upheaval of some sort was in prospect. There was also much uneasiness concerning the political outlook and the universal social discontent. In all three of these directions there is a distinct change for the better. The March collapse distinctly cleared the financial atmosphere; while recent efforts towards reform are doing much in lessening the dangers in the political situation. Wall Street has, of course, been more or less disturbed at some of the extremely radical legislative proposals; but time and discussion are proving that many of these apprehensions are unfounded; because the only reform which is likely to be successful is that which runs on the lines of a "square deal," benefiting all interests alike.

U. S. DEPARTMENT OF AGRICULTURE, WEATHER BUREAU.

MONTHLY METEOROLOGICAL SUMMARY.

Station, Honolulu, T. H.; month, April, 1907.

Temperature.					Precip.	Ch'ct'r
Date.	Max.	Min.	Mean.	Station.* of day.		
1.....	76	67	72	.02	Clear	
2.....	78	67	72	.17	Pt Cl'dy	
3.....	78	68	73	.01	Pt Cl'dy	
4.....	78	70	74	0	Clear	
5.....	79	66	72	0	Clear	
6.....	79	66	72	0	Clear	
7.....	75	66	70	.03	Pt Cl'dy	
8.....	72	64	68	0	Clear	
9.....	74	63	68	.03	Pt Cl'dy	
10.....	75	64	70	.01	Pt Cl'dy	
11.....	76	65	70	0	Clear	
12.....	78	66	72	0	Clear	
13.....	80	66	73	0	Clear	
14.....	79	68	74	0	Clear	
15.....	80	69	74	.13	Clear	
16.....	81	69	75	0	Pt Cl'dy	
17.....	77	68	72	.02	Pt Cl'dy	
18.....	74	67	70	.04	Pt Cl'dy	
19.....	75	67	71	0	Clear	
20.....	76	65	70	0	Clear	
21.....	75	64	70	0	Pt Cl'dy	
22.....	77	63	70	0	Clear	
23.....	76	65	70	0	Clear	
24.....	77	67	72	0	Pt Cl'dy	
25.....	78	68	73	.04	Pt Cl'dy	
26.....	81	67	74	0	Pt Cl'dy	
27.....	80	66	73	.13	Pt Cl'dy	
28.....	78	66	72	0	Pt Cl'dy	
29.....	80	70	75	0	Pt Cl'dy	

Mean.....77.2 66.3 71.8 0.64

ATMOSPHERIC PRESSURE.
(Reduced to sea level; inches and hundredths).

Mean, 30.05; highest, 30.15; date, 5th; lowest, 29.98; date, 15th.

TEMPERATURE.

Highest, 81; date, 27th; lowest, 63; date, 23rd.

Greatest daily range, 14; date, 23th.

Least daily range, 7; date, 19th.

Mean for this month in 1890, 74; 1891, 73; 1892, 75; 1893, 75; 1894, 73; 1895, 73; 1896, 74; 1897, 74; 1898, 71; 1899, 73; 1900, 73; 1901, 74; 1902, 72; 1903, 72; 1904, 73; 1905, 72; 1906, 74; 1907, 72.

Mean of this month for 18 years, 73.2

Absolute maximum for this month for 18 years, 86.

Absolute minimum for this month for 18 years, 29.

Average daily excess (+) or deficiency (-) of this month as compared with mean of 18 years, -1.4.

Accumulated excess (+) or deficiency (-) since January 1, +32.

Average daily excess (+) or deficiency (-) since January 1, +0.3.

PRECIPITATION.

Total this month, 0.64.

Greatest precipitation in 24 hours, 1.92; 1877, 1.44; 1879, 2.50; 1880, 1.59; 1881, 2.73; 1882, 1.52; 1883, 0.75; 1884, 2.38; 1885, 5.71; 1886, 0.94; 1887, 2.05; 1888, 3.13; 1889, 2.28; 1890, 7.95; 1891, 1.13; 1892, 1.73; 1893, 2.23; 1894, 2.92; 1905, 1.15; 1906, 0.18; 1907, 0.64.

Average of this month for 21 years, 2.23.

Excess (+) or deficiency (-) of this month as compared with average of 21 years, -1.69.

Accumulated excess (+) or deficiency since January 1, +8.12.

WIND.

Prevailing direction, NE; total movement, 6982 miles; average hourly velocity, 9.7; maximum velocity (for five minutes) 29 miles per hour, from NE.

on 4th; av. rel. humid., 64.4 per cent.

WEATHER.

Number of days, clear, 13; partly cloudy, 17; cloudy, 0; on which .01 inch, or more, of precipitation occurred, 12.

MISSCELLANEOUS PHENOMENA.

(Dates of).

Auroras, none; halos: solar, none; lunar, none; halo, none; sleet, none; fog, none; thunderstorms, none.

Note: ("T") indicates trace of precipitation.

WM. B. STOCKMAN,

Section Director, Weather Bureau.

(Continued on Page Five.)

In one of the pictures of the Congressional party taken on Kauai, recently published, few of the Congressmen can be distinguished. But Admiral Beckley, in the foreground at the left, cannot be mistaken by anyone.

The Imperial Conference, according to the Associated Press dispatches, was in the main a failure. Our Legislature clearly has it best.

If H. E. Cooper doesn't look out Superintendent Holloway will take the record for holding the greatest number of different public offices away from him.

Bouquets and bullets seem to be the characteristic of the street car strike in San Francisco.

If every household and every individual will co-operate, the work of cleaning up the city in which the Board of Health is now engaged will be quickly and effectively done.

Malt - Nutrine

A non-intoxicant, sparkling, highly concentrated liquid

EXTRACT OF MALT AND HOPS

The BEST Preparation of this Nature in the Market.

Manufactured by the Anheuser-Busch Co., St. Louis.

The ideal hot weather TONIC.

Try It!

HOLLISTER
 DRUG CO.
 ESTABLISHED 1879

SWIMMING, BOWLING, TURKISH BATHS AND PHYSICAL CULTURE at

HOTEL BATHS

HOURS 7 A. M. TO 10 P. M.

Tested by Storm

A terrible wind storm visited Mobile last year, actually "raising the roofs" of many buildings. But roofs of buildings covered with

Rex Flintkote Roofing

were not injured in the slightest. This proved the superiority of Rex Flintkote over tar, tin and gravel roofing under the most severe weather conditions. This roofing is also proof against ignition. For this reason it is endorsed by Boards of Fire Underwriters. True it costs more than many other roofings. But the first cost is not the entire expense. A cheap roofing costs as much to lay. And \$5 or \$10 paid out today for Rex Flintkote may mean \$75 or a \$100 saved a few years hence.

Sold in rolls containing 216 sq. feet by

E. O. HALL & SON, LIMITED

Corner Fort and King Streets.

Ice Water In Demand

It surely is this time of year, these warm days. You need more ice. Telephone your order for extra ice today—it'll be delivered tomorrow.

THE HAWAIIAN ELECTRIC CO., LTD.

King Street near Alakea Phone Main 390

NEW GOODS JUST RECEIVED BY

C. R. COLLINS

King Street near Fort.

PHONE MAIN 427.

RIDING SADDLES, HARNESS BITS, SPURS, BLANKETS, WHIPS AND CROPS, DOG COLLARS AND CHAINS, HORSE BRUSHES, CHAMOS, SPONGES, HARNESS AND SADDLE, SOAPS, OILS, DRESSING, GREASE, WASHERS, ETC., ETC.

What will poor Schmitz do now?

It seems to have taken a good while to bring Ruef to a determination to reform.

The suggestion that because of the formalities required under the new law for securing a license some saloons whose licenses expire within the next four weeks might be obliged to close for a while would be of more importance if there were any such saloons. But all saloon licenses expire June 30.

Passports from Japan to the United States ought to be worth much more than their weight in gold these days.

WING SHOTS.

(From The St. Paul Dispatch.)

That man Venner is alleged to be a professional litigant, but he has been in the business so long that he must find it pays.

With the bills just introduced, the

bonded debt of St. Paul will be increased by \$3,000,000 in this session, without counting the \$400,000 for the Minnesota street bridge. That ought to be enough.

The man who says he will be guided by the voice of conscience often means that he is listening to a phonograph record of his desires.

At \$14,000 a year as governor of the canal zone, ex-Senator Blackburn will hardly regret the loss of his senatorial seat.

Under the supreme court decision it will be necessary for the public to put its trust in railway companies and hope that they will not water their stock hereafter. All the state can say is: "Please don't."

It is easy to talk of love for our fellows, but the test comes when we find the particular fellow in need of our love.

The workhouse board may not like the grand jury's report, but it has taken the hint as far as fire protection is concerned.

Big Discount Sale

OF

Rugs, Carpets and Mats

FOR

CASH

FOR ONE WEEK FROM TODAY.

E. W. Jordan & Co. LIMITED.

When the Alameda Comes in

on Saturday We'll Have Fresh

HORSE RADISH ROOT,
 CELERY,
 CAULIFLOWER,
 GREEN PEAS,
 PARSNIPS,
 RUTABAGA TURNIPS,
 APPLES,

RHUBARB,
 ASPARAGUS,
 ARTICHOKE,
 HUBBARD SQUASH,
 GRAPEFRUIT,
 ORANGES,
 LEMONS,

PINEAPPLES.

California Rose Creamery Butter

Henry May & Co., Ltd

Wholesale 92 PHONES 22 Retail

Midsummer

The Season for Sunburn, Mosquitoes and Prickly Heat when the Bath is the first consideration.

HUDNUTS' Marvelous Cold Cream, Extract of Hamamelis, Bay Rum, Talcum Powder, Toilet Water, Pasta Mack for the bath, Pure Olive Oil Soap, French and Italian Castile Soap, Sponges, Bath Brushes, Face Powder, Manicure Articles; Tonsorial Necessities, we have a full supply.

Lewis & Co., Ltd.

THE FOOD SPECIALISTS.

169 King Street.

Telephone Main 240

ASummer Proposition

Well, now, there's the

ICE QUESTION!

You know you'll need ice, you know it is a necessity in hot weather. We believe you are anxious to get that ice which will give you satisfaction, and we'd like to supply you. Order from

THE OAHU ICE AND ELECTRIC CO.

Telephone 3151 Blue. P. O. Box 800.

Telephone Main 101. P. O. Box 682.

HARRY ARMITAGE

Stock and Bond Broker.

Member of Honolulu Stock and Bond Exchange.

Few shares of following stocks for sale: Pioneer Mill Co., Oahu Sugar Co., Ewa Plantation Co., Hawaiian Sugar Co., Wai'alea Agricultural Co., Etc.

Office, Campbell Block—Merchant St. Honolulu, T. H.



SHEU LUN

MERCHANT TAILOR.

Suits Made to Order.

Best Linen Duck and Silk Pongee.

All Suits in the Latest Style.

1006 Nuuanu, near King, P. O. Box 947.

Won Loui & Co.

Plumbers and Tinners

77 Hotel Street near Maunakea.

Oregon Restaurant

HOY WO, Proprietor.

Reopened under new management.

Best 25 Cents Meal in Town.

Open Tuesday, December 11.

Fine Job Printing, Star Office.

THE J. CARLO PAWN CO.

FORT ST. O'P'CONVENT

SPECTACLES AND EYEGLASSES
 OPTICIAN'S
 EYE EXAMINER

Don't Neglect

The Care of Your Eyes

Consult us if your Eyes trouble you. We will prescribe the proper Glasses which will give you instant and permanent relief.

Our Optical Department is complete with factory on the premises.

H. F. Wichman & Co.,

LTD.

LEADING JEWELERS

AND

OPTICIANS.

Silva's Toggery

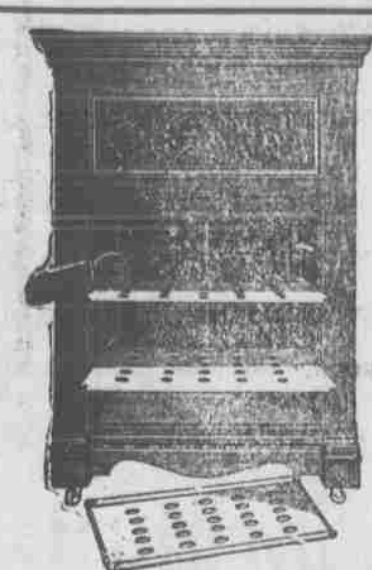
Opens Saturday Morning, May 18

A cordial invitation is extended to you. We hope you will attend this Opening, knowing, as we do, that you will enjoy yourself. Everything is bright and new. Every piece of goods is stamped with quality and fashion. And those marks are so easy to distinguish. Next week, next year, the same as now, our stock will always embody the latest, the best styles. The stock includes:

Hart, Schaffner and Marx Clothing; Boy's Clothing; Straw, Panama and Felt Hats; Shirts; Neckwear; Collars and Cuffs; Dress Suit Cases—in fact everything to be expected of a first-class, up-to-date Toggery.

Visit us frequently. We are right close. And we are confident that your acquaintance with us will be a pleasant one and of long standing.

Elks Building, - King Street near Fort



Your Refrigerator Paid for in 2 Years

THE LEONARD
CLEANABLE
REFRIGERATOR

will pay for itself in that time on the saving of ice and food. Its sanitary construction has made it the most economical refrigerator sold. The Leonard also saves much labor, being so very easy to clean. There is no clumsy ice box to lift out as in some refrigerators. We earnestly invite your inspection of this celebrated refrigerator.

H. Hackfeld & Co., Ltd
HARDWARE DEPARTMENT.

SURE KELA!

There is so much good in the worst of us
And so much bad in the best of us—
That it hardly behooves any of us
To talk about the rest of us.

—JUST TALK ABOUT THE—

HONOLULU DRUG COMPANY.

and you will always be talking—the best ever.

AROMATIC COLD DRINKS AND DELICIOUS HOME-MADE ICE CREAMS

Shur-On Eye-glasses

A. N. Sanford

GRADUATE OPTICIAN

Boston Building—Fort St.

Shur-On Eye-glasses



Alexander Young's cafe

The Meal Department

Opens at 8:30 a. m.,
Closes at 8 p. m.

Japanese not Landed

(Continued from Page One.)

Officials here have been forbidden to interfere with any Japanese immigrant unless the evidence of fraud or disability is beyond question. In doubtful cases the coolies have been allowed to land rather than risk Washington's displeasure by questioning credentials that appeared to be regular. In five cases, however, the fraud has been so palpable that the passports have been seized and the holders held for deportation. One of the Japanese who presented

SCHWAB SAYS UNIONS ARE WRECKING 'FRISCO

DECLARES THAT THE UNION IR ON WORKS HAVE LOST TWO AND A HALF MILLION DOLLARS ON THREE WAR VESSELS BECAUSE OF THE UNIONS—AND THAT HE WILL TAKE NO MORE CONTRACTS FOR THE SAN FRANCISCO WORKS.

SAN FRANCISCO, May 7.—Charles M. Schwab, former president of the United States Steel Corporation and president of the Carnegie Company prior to the organization of the steel corporation, heavily interested in large shipbuilding works in the East, chief owner of the Bethlehem Steel Works and the principal holder in Harlan & Hollingsworth of Wilmington, Del., made a flying trip to San Francisco yesterday.

He had just returned from Tonopah, Goldfield and Bullfrog, where his great mines are, and, in company with Mr. McGregor, acting manager of the Union Iron Works, made a trip about the city. Mr. Schwab left for New York late in the afternoon.

Mr. Schwab, in a personal interview

a day, but this did not exist long before it was nine hours. It is not so much the time as it is greatly because of their inferior and inefficient workmanship that we object, as the same standard has not been maintained.

"The whole thing in a nutshell is this: As long as I control the Union Iron Works, under the present labor conditions existing, nothing would ever make me undertake to build another ship at this price.

"A certain concern wanted a large ship built and asked us to bid on it within the last three months. We would not talk of bidding on it against Eastern bidders, although they stated that they would give us \$50,000 more than the Eastern bidder, besides the cost of bringing the ship here, as they



CHARLES M. SCHWAB.

yesterday, stated: "Our concern will never take a battleship or any other kind of a ship to be built in San Francisco as long as the labor conditions are maintained as at present. We lost \$2,500,000 on the last three battleships contracted for, and have lost more money in our work in San Francisco than we have made at our other works throughout the different parts of this country. We shall not take any work of any magnitude under the labor conditions existing in San Francisco. I have never seen anything like it anywhere.

"We have just completed three battleships for the United States Government and we have lost \$2,500,000 in the construction, and this was chiefly caused by the condition of labor. When we took control of the Union Iron Works Henry T. Scott had already contracted for these three ships, and then the men were working ten hours a day.

"I want to state in the interest of your great city that unless labor conditions change here all manufacturing must perforce stop, as no living man would dare bid on future contracts with your labor organizations constantly raising wages and reducing the hours of labor."

TAX MONEY CAME IN WITH A RUSH

TAX ASSESSOR HOLT WILL NOT HAVE RETURNS COMPLETED BEFORE SATURDAY.

Tax Assessor Holt is well pleased with the way that the tax money came in during the last day preceding the delinquent period. He says that the money was paid much faster than he had anticipated, and a large volume of business was done by his office yesterday, the office having to keep open until 11 o'clock last night.

No completion of figures has been made by him yet, and none will be made before Saturday. The returns from the outside districts will be received by the end of the week.

TOMORROW'S ATTRACTIONS.

You cannot imagine more beautiful weather than this for a visit to Haleiwa, the most beautiful hotel and grounds in the vicinity of Honolulu. There is a bunch of attractions that will keep one busy during the day or the veranda with its lounging chairs may be occupied in preference to the links. St. Clair Bldgood, manager.

that she was clear and the Hilonian and Intrepid exchanged salutes and the liner steamed out.

The Hilonian carries 3,500 tons of sugar and a number of passengers. She

would like it built here under their supervision, but we wouldn't bid on it.

"Now, the Harlan, Hollingsworth works built two steam schooners for this Coast and at a price we could not touch, yet it made money. It has built eighteen ships, and has made money on every ship, that is, it made something. I won't say a large sum of money. These works are at Wilmington, Del., and are under my control.

"Now, the whole thing in a nutshell is this: In my report I was compelled to state that, instead of making money on the completion of these three battleships, our loss had been great.

"I want to state in the interest of your great city that unless labor conditions change here all manufacturing must perforce stop, as no living man would dare bid on future contracts with your labor organizations constantly raising wages and reducing the hours of labor."

BOARD OF HEALTH USING WIRELESS

RESULTS OF MICROSCOPIC EXAMINATIONS OF SPECIMENS ARE IMMEDIATELY SENT TO ISLANDS

The outside islands are now in closer touch with the Board of Health than ever before. President Pinkham has established the custom of keeping in wireless communication with the physicians on the outside islands, where urgent matters pertaining to health are concerned.

Several days ago some slides with specimens of the phlegm taken from a Japanese child supposed to have diphtheria were sent to the Board of Health from Maui for a microscopic examination. An examination by the bacteriologist showed that the bacilli of diphtheria was in the specimens. President Pinkham caused the physicians on Maui to be notified immediately, by wireless, of the fact. This has been the habit now for some time past, as it is the intention of President Pinkham to keep the other physicians on the other islands apprised immediately of the presence of any dangerous disease in their particular localities.

expects to make San Francisco on May 24.

Fine Job Printing, Star Office.

HILONIAN SMASHES INTO WHARF

SHOVES HER NOSE INTO OCEANIC STRUCTURE UNDER INFLUENCE OF FRESH WIND.

When she was moving to the Oceanic wharf from the Railway wharf yesterday afternoon about 5:30 o'clock, the Matson Navigation S. S. Hilonian, Captain Johnson, bumped head-on into the middle of the wharf, shoving her nose a good six feet into the planks splintering some seven or eight timbers and wrenching loose a couple of heavy beams.

The Hilonian had a good load aboard, 3,500 tons of sugar from the Honolulu Plantation, and the wind blowing fresh from Nuuanu valley gave her a momentum greater than was calculated. She did not injure herself by the contact, merely scraping off a little paint forward. She backed immediately and soon maneuvered safely alongside, head to the stream. No one was hurt.

DAILY STOCK REPORT

Session sales: 9 McBryde, \$4.50.

Quotations. Bid. Asked.

Ewa Plan. Co.	25.25	25.50
Haw. Agr. Co.	160.00	
Haw. Com.	82.75	84.00
Haw. Sugar Co.	30.375	30.75
Kahuku Plan. Co.	26.50	
Kihel Plan. Co.	8.25	
McBryde Sugar Co.	25.625	24.75
Onomes Sugar Co.	36.50	
Olowalu Co.	100.00	
Paauhau Sugar Co.	15.50	16.50
Pioneer	130.00	134.00
aWaihua Agr. Co.	78.25	78.75
Walluku Sugar Co.	185.00	
Waimanalo	155.00	
I. I. S. N. Co.	130.00	
Haw. Electric Co.	140.00	150.00
H. R. T. Com.	50.00	55.00
Oahu Railway	94.00	94.50
Honolulu	150.00	
Honokaa Sugar Co.	11.50	
Koloa	100.00	
McBryde	4.50	4.75
Ookala Sugar Co.	9.25	
Oloa Sugar Co.	3.00	3.50
Pala	175.00	
Pepeskee Sugar Co.	150.00	
Waimea	60.00	
Hon. R. T. Co. pfd.	122.50	
Mutual Tel. Co.	8.75	
Nahiku Rubber pd.	90.00	
Honolulu B. & M. Co.	27.00	
Haw. Ter. 4s F. C.	100.00	
Haw. Ter. 4s R. 1905.	100.00	
Haw. Ter. 4 1-2s	100.00	
Haw. Ter. 4 1-2s	100.00	
Haw. Ter. 2 1-2s	100.00	
Haw. Govt. 5s	100.00	
Cal. Ref. Co. 6s	103.00	
Haiku 6s	102.75	
Hon. R. T. 6s	107.75	
Kahuku Plan. 6s	100.00	
Oahu Sugar 6s	100.00	
Pala 6s	102.75	
Pioneer 6s	105.00	
Waialua Agri 6s	99.00	

WANTS FINAL DISCHARGE.

By her attorney Wade Warren Thayer Julia Elizabeth Hughes, executrix of the will of Matilda Hughes, deceased, asks that her final accounts be approved and she be discharged, without the appointment of a master. Four beneficiaries under the will have signed consent to this motion.

A PROMINENT AMERICAN SOLDIER.



JAP LABORERS ON HAWAII ON STRIKE

ABOUT SIX HUNDRED EMPLOYEES ON HONOLULU PLANTATION HAVE TROUBLE WITH JAP LUNAS.

Consul General Miki Saito, of the Japanese consulate, received a wireless telegram yesterday afternoon to the effect that all the Japanese laborers on the Honouliuli Plantation, on Hawaii, had gone out on a strike. The message did not give much information concerning the trouble, but it seems to have been caused by some unpopular acts on the part of the ten or fifteen lunas or overseers, almost all of whom are also Japanese.

As far as is known there has been no serious disturbance as a result of the strike, and Consul Saito hastened to wire the strikers to keep quiet, and not to commit any breach of the peace, but to report the details of the trouble by letter. It is expected that more light will be thrown on the situation when mail communications are received, and Mr. Saito is not inclined to believe the trouble will prove to be very serious.

FOUR DAYS MAIL PER S. S. SIBERIA

BRINGS 49 PASSENGERS AND 64 TONS CARGO FROM SAN FRANCISCO—SAILS AT 5 P. M.

The P. M. S. S. Siberia, Captain Zeeder, arrived this morning from San Francisco, having left the coast on May 10, docking at the Hackfeld wharf at 8:15 o'clock, whence she sails this afternoon at 5 o'clock for the Orient.

On board were 126 cabin, 10 steerage and 119 Asiatic steerage passengers, of which 46 cabin, 2 steerage and one Asiatic landed here. Among Honolulu people returning home were Dr. C. B. Cooper, James F. Morgan and W. Wolfers. There were but two stop-over passengers, W. H. Phillips and Albert M. Lumpkin.

Mackenzie Gordon, the celebrated

tenor was among the arrivals.

The Siberia's cargo consists of 3,000 tons for the Orient and 64 tons for Honolulu. Fair weather was experienced all the way down. The O. S. S. Sierra and the P. M. S. S. Mongolia were sighted. Nothing was seen of Jack London's ketch Shark.

The Siberia is the vessel in which the Shriners went to the coast. It is reported aboard that the pleasure of the trip for the Shriners was marred by the painful accident to Percy Lishman of Honolulu.

Among the passengers is Captain Cantwell who comes to take command of the U. S. Revenue Cutter Manning which is going on a five months' cruise to the Behring Sea.

The Siberia brought four days later

mail.

BY AUTHORITY

Applicants for Liquor Licenses under the provisions of Act 119 of the Session Laws of 1907 are hereby notified to file their applications in conformity with law with the Secretary of the Board of License Commissioners, County of Oahu, as soon as possible.

A. J. CAMPBELL,
Secretary, Board of License Commissioners, County of Oahu.



FOR RENT.

Beretania Street\$40.00
Beretania Street 10.00
King Street 27.50
Nuuanu Street 50.00
Thurston Avenue 40.00
Wilder Avenue 40.00
Gallek Avenue 35.00
Pensacola Street 25.00
Wilder Avenue 15.00
Lunalilo Street 30.00

FURNISHED.

Wilder Avenue\$45.00
King Street 40.00
Liliha Street 40.00

FOR SALE.

Eight lots 2 1/2 acres in Kaimuki Tract, all cleared and fenced. 2,100 Also, lots in Manoa Valley, Punui and Kailua.
Makiki District, two-story house, four bedrooms, servant's quarters and fern house, \$4,200.

Henry Waterhouse Trust Co., Ltd.
Real Estate Department.
Fort and Merchant Sts., Honolulu.

Classified Advertising

WANTED.

Try the William Penn and the Adeline Patti the king and queen of Havana cigars.

A compositor. Apply at Star Office.

For Sale

Eggs for Hatching; from Choice prize-winning Stock. Black Minorcas; S. G. English Dorking; B. Plymouth Rock; Buff Wyandotte; Brown Leghorns; White Leghorns. Homer Pigeons, Single or mated. Address, W. C. Weedon, 310 Stangenwald Building.

If you are looking for a good 50 cigar try the Doctor or The Roughriders at the Myrtle Cigar Store or Fitzpatrick Bros.

At a bargain, house in Pawa, four bedrooms, parlor, dining room, breakfast room, bath, kitchen, pantry, servants' quarters, artesian water.

Splendid seven-room house cheap! Young street, Pawa. R. Star Office.

NOTICE

Honolulu, T. H., May 14, 1907.
A. J. Campbell, Esq., Treasurer Territory of Hawaii.

Dear Sir:—In pursuance of the Provisions of Act 191, Session Laws of 1907, entitled "An Act to Protect the Owners of Bottles and Siphons Used in the Manufacture and Sale of Soda Water, Mineral or Aerated Waters, Porter, Ale, Beer, Cider, Ginger Ale, or other Beverages," which was approved and became law on April 25th, 1907, I herewith hand you the description of the names, marks and devices used by the Sunrise Soda Works to identify its bottles:

No. 1—Device blown into side of bottles as follows: Sunrise Soda Water Works, Honolulu, and on the bottom of said bottle the character of a Japanese name.

No. 2—Device blown into side of bottle as follows: Sunrise Soda Water Works, Honolulu.

No. 3—Device etched on side of siphons as follows: Property of the Sunrise Soda Water Works, and stamped on the head of same siphons the character of the sun.

SUNRISE SODA WATER WORKS,
Per K. NAKASAKO.

SHAREHOLDER'S MEETING.

OAHU COUNTRY CLUB.

A Shareholders' Meeting of the Oahu Country Club will be held in the makai ballroom on the roof garden of the Alexander Young Hotel, in Honolulu, on Monday, May 20th, at 5 o'clock P. M.

Notice is also given that amendments to the By-Laws of the Club will be proposed and acted upon at this meeting.

F. H. ARMSTRONG,
Secretary, Oahu Country Club.
Honolulu, T. H., May 16, 1907.

It's Open!
It's an ARCADE!
It's Fine!
Admission, Free!
Now Come Along!

Election of Officers.

At the adjourned annual meeting of the Hawaiian Star Newspaper Association, held in this city on May 11, 1907, the following officers were elected for the ensuing year:

President and Treasurer.....Frank L. Hoogs
Vice President and Auditor.....Chas. H. Atherton
Secretary.....Emil A. Berndt

EMIL A. BERNDT,
Secretary.
Honolulu, May 12, 1907.



The woman on the right never used Ayer's Hair Vigor. She neglected her hair, and now herself suffers from neglect. On the contrary, the woman on the left has always used Ayer's Hair Vigor, and owes to it much of her youthful appearance and attractiveness.

Ayer's Hair Vigor

produces beautiful hair. Long, rich, heavy hair. Soft and silky hair, free from dandruff.

Prepared by Dr. J. C. Ayer & Co., Lowell, Mass., U. S. A.

Orpheum Theatre

Engagement of the HONOLULU FAVORITES,

The Elleford Co.

WEDNESDAY and THURSDAY Comedy

Henrietta

FRIDAY and SATURDAY

The Red Cross Nurse

Polite Vaudeville Between Acts, headed by the Clever Child Duo,

THE OSBORN CHILDREN

LAVIGNE IN ILLUSTRATED SONGS

Princess of Patches

Reserved Seats on sale at Orpheum Box Office after 10 a. m.

L. Kong Fee, MERCHANT TAILOR.

Hotel St. near Nuuanu. Fashionable Suits at Reasonable Rates a Specialty. Rates very reasonable. Give us a call.

THE CHILDREN DON'T WEAR THEM OUT

Our Japanese and Chinese Mattings are very serviceable, very pretty, very inexpensive. We believe you would like them—the handsome plain, colored and figured styles. We also call your attention to our fine stock of Chinese matting rugs and Japanese blue and white cotton rugs.

LEWERS & COOKE

LIMITED 177 SOUTH KING STREET.

Y. ISHII,

Corner Beretania and Nuuanu Sts.

JAPANESE DRUGGISTS GENERAL MERCHANDISE

All Kinds of American Patent Medicines at Low Prices.

MATTRESSES

J. HOPP & CO. LEWERS & COOKE BUILDING King Street.

LEADING HAT AND CLOTHES CLEANERS

Hats Cleaned and made to look like new by experienced men.

GIVE US A TRIAL. Fort Street, opposite Convent.

Fine Job Printing, Star Office.

SPORTS

SQUIRES AND BURNS TO FIGHT MAY 30

AUSTRALIAN CHAMPION WHO PASSED THROUGH HONOLULU NOT LONG AGO, GETS MATCH.

LOS ANGELES, May 9.—The articles of agreement for the fight between Burns and Squires are as follows:

Tommy Burns and William Squires agree to box forty-five rounds under straight Marquis of Queensberry rules for J. W. Coffroth, at a place to be designated by him, under the following conditions:

First—Burns to receive \$3000; Squires to receive 60 per cent of 60 per cent of the gate receipts if he wins, 40 per cent of 60 per cent of the gate receipts if he loses, and 50 per cent of 60 per cent if the contest results in a draw. In case the contest draws more than \$30,000, then the respective winning, losing and draw percentages to be made on a basis of 65 per cent.

Second—Burns and Squires to deposit with W. W. Naughton \$5000 each on or before May 15, 1907, pursuant to agreement between the parties named.

Third—It is understood that \$2500 each shall be the forfeits in this contest and that one-half of the \$5000 of each contestant shall act as a forfeit to guarantee Burns' and Squires' compliance with the conditions of this agreement. Coffroth at the same time to deposit \$1000 as a forfeit to carry on the contest.

Fourth—Surgical bandages or fingerless kid gloves of ordinary walking-glove character may be put on and worn, the same to be put on in the ring, subject to the approval of referee. Contestants to wear ordinary ring costume. Anything in addition to be subject to the approval of the referee.

Fifth—Burns and Squires hereby select James J. Jeffries as the referee of the contest.

Sixth—Contest to be held May 30, 1907, at 2 p. m. Contestants to be prepared to enter ring at 1:30 p. m. Contestants to submit to physical examination by physician. Coffroth to be allowed, on date of placing of forfeits, to postpone contest to July 4, 1907, if he so desires.

BARNEY REYNOLDS, Representing Bill Squires.

TOMMY BURNS, J. W. COFFROTH.

Witnesses: James J. Jeffries, Willie

ST. LOUIS AMERICANS WANTED BARNEY JOY

(Continued from Page One).

The team was throwing me down, there were hits out in the field which ought to have been got by the fielders. There are some fellows in this team that are jealous of me, one thing Pat I got the crowd with me.

The team went to Los Angeles Monday night and left Jones, Hoag and myself back. I tell you Pat I was sore I told Mr. Long to give me my release he told me not to get sore. He said that I will go to Portland when the team goes. I wanted to go the worst way. I wanted to see the fight and the bunch of Shriners from Honolulu. I met all of them at the Grand Central Hotel. Pat if I got my release I would have gone to St. Louis American. They want me bad, there was an agent here for them saying the moment I get released he will sign me.

The only fault with Frisco is the wind it blows and gets me cold and stiffened up. I'll be doing something with these fellows some day.

I met Johnny Cowes at the grounds and a whole lot of Honolulu boys. The electric cars here are not running on account of the strike. The scabs on the cars shot about ten or more innocent people. People are riding on wagons and every thing they can ride on, from Fillmore to the Ferry is two bits. I walk from Fillmore to the grounds every day. Everything here is striking.

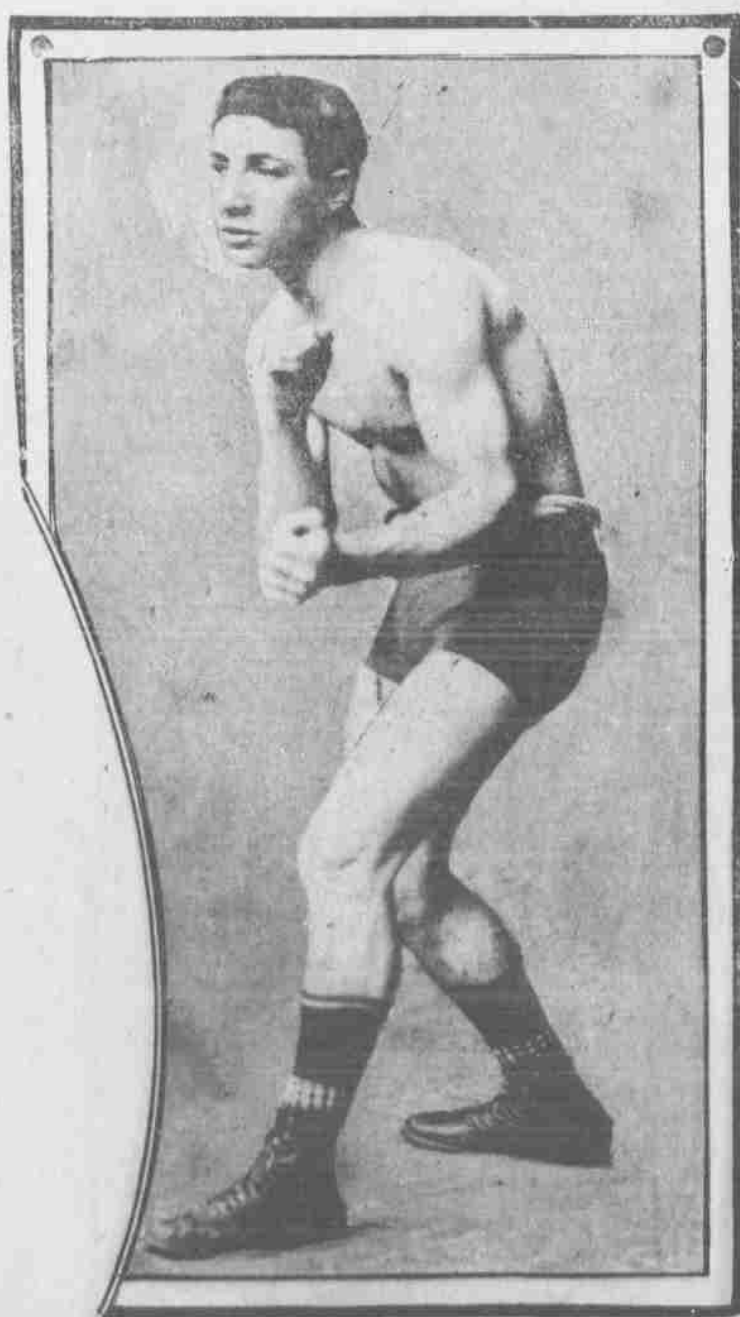
Say Pat, how is the S. L. C. baseball team getting along, are you fellows practicing hard? The way we play here is run and hit game. Pat if there is a man on third and only one out we give the man a sign to run and the man got to bunt the ball. That's what they call a squeeze play.

F. Britt, R. A. Smyth, Harry B. Smith, F. S. Lewis.

Jeffries shy the way is to receive \$1000 for the job. It is a bigger fee than Coffroth wanted to pay, but the contestants have agreed to stand part of the expense.

That the fight between the men will be a contest to a finish, and that they want the decision not on points, but on ability to punch, is evidenced by the fact that each man agreed to make it a forty-five round fight without the slightest hesitation.

ABE ATTELL NOW CARELESS



Abe Attell, the featherweight champion, since his defeat of Harry Baker, has waxed lazy, says the New York World. Abe should take warning from the careers of other champions before him. If he persists in going into the ring with the idea that he is invincible, and that he never needs to train or prepare in any way for a fight, he will soon run into a punch that will rob him of all his laurels.

There is no doubt whatever that Attell is the cleverest man in his class in the world today. But condition has a great deal to do with the winning of a fight, and the man who trains conscientiously always has the better chance. That Attell has been taking

things much too easily was amply proven in his last two fights. When he met Robson in Philadelphia, the shifty Abe had all he could do to keep pace with the Englishman. And some critics think that he did not even succeed in doing that.

Last month Attell fought Tommy O'Toole, a boy who comes nowhere near classing with him. But O'Toole made such a good showing against Attell that opinion was divided at the end as to who had the better of the milling. If Attell had been in his best fighting condition he could have stopped O'Toole in a round.

But the champion made a flying trip from Chicago, rested for a day or two and then went into the ring to fight O'Toole. On the other hand, had trained as he never trained before, and the result was that he was able to swap punches with Abe, and even make the champion fall short in his leads by nearly a foot. It was a surprise to every man who saw the fight when the champion, one of the most accurate men in the ring, swung wild punches that missed and carried him off his feet. Maybe Attell believes that if he easily defeats every man he meets, he will be in Jeffries' class, without a worthy opponent, and will have to retire. But this business of "letting them stay" is hazardous.

LIQUOR DEALERS' LEAGUE.

Manager C. E. King of the Retail Liquor Dealers' Base Ball League, announces that the game for next Sunday at Kapiolani Park will be played at 10 o'clock by the teams of the Encore and Favorite Clubs. The winners of this game will meet the Anchors, and on the following Sunday the Fashions will tackle the winners of this last game.

At the present time the standing of the teams is as follows:

	P.	W.	L.	Pct.
Fashions	2	2	0	1.000
Anchors	2	1	1	.500
Favorites	2	1	1	.500

PUNAHOU DECLARES DESHA SHALL PLAY

ARE WILLING TO STAKE CHAMPIONSHIP ON MATTER OF ELIGIBILITY OF POPULAR PLAYER.

The Punahou have issued an ultimatum through Dr. W. T. Monsarrat, their manager, that Eddie Desha will continue to be played by them even though it should cost them the championship. "The people want to see Desha play," said Monsarrat, "and we are out to please the people."

The Punahou believe that the trustees of the league will stand back of Desha, who is charged with having signed for the season with the Diamond Heads, and afterwards joined the Punahou, contrary to the rules adopted by the league on April 17. Desha claims that he signed with the Diamonds prior to this time, and notified them of his change of mind a few days after he had done so. As the contract is not dated it looks probable that Desha will be backed up by the trustees when they have time to look into the matter.

SAILING RACE IN JUNE.

The talk in yachting circles is beginning to turn very frequently these days to the race around the Island on June 22nd for the Governor's cup. The course is an ideal one and as there will be several new boats entered this year. The race two years ago was won by the Spray.

BORN.

DEERING—At the Kapiolani Maternity Home, May 14 1907, to Mr. and Mrs. Augustus J. Deering, a son.

FIRST SHOOT FOR NEW GUN CLUB CUP

WON BY SPALDING—NEW SERIES OF WEEKLY CONTESTS PROMISE TO BE INTERESTING.

The new challenge cup which was contested for for the first time yesterday by the Hawaiian Gun Club, was carried away by I. Spalding after an exciting match had been shot at the Kakaako traps. The results follow:

D. L. Austin, 19 out of 20.
J. W. Harvey, 19 out of 20.

I. Spalding, 19 out of 21.
The shoot-off resulted as follows:
J. W. Harvey, 8 out of 10.
I. Spalding, 8 out of 11.
D. L. Austin, 5 out of 10.
In the final shoot he score was:
I. Spalding, 10 out of 11.
J. W. Harvey, 9 out of 10.

LATE PAYING TAXES.

The office of the tax assessor was kept open until 11 o'clock last night, receiving the payments from people who desired to escape the 10 per cent penalty. Assessor Holt will prepare a statement within a few days, showing the amount of collections ending with yesterday's business.

Fine Job Printing, Star Office.

Clean Streets and Sidewalks

TO THE PUBLIC:

ONE OF THE BEST ASSETS WHICH ANY CITY CAN HAVE IS CLEAN STREETS AND GOOD SIDEWALKS. THEY MAKE THE CITY MORE BEAUTIFUL; MORE COMFORTABLE AND HEALTHIER TO LIVE IN; MAKE IT LOOK PROSPEROUS AND UP-TO-DATE AND ATTRACTIVE TO TOURISTS AND PROSPECTIVE SETTLERS.

WE ASK ALL NATIONALITIES IN HONOLULU TO JOIN IN A UNITED EFFORT TO IMPROVE OUR STREETS AND SIDEWALKS.

SOME CAN AFFORD TO PUT IN STONE CURBS, AND CEMENT OR ASPHALT WALKS. OTHERS CAN NOT. ALL CAN DO THE FOLLOWING.

- 1.—KEEP THE SIDEWALK IN FRONT OF YOUR HOUSE CLEAR OF WEEDS.
- 2.—PICK UP THE PAPERS AND RUBBISH ON THE STREET AND SIDEWALK IN FRONT OF YOUR HOUSE, EVERY MORNING.
- 3.—PICK UP THE LOOSE STONES ON THE STREET IN FRONT OF YOUR HOUSE.
- 4.—ASK YOUR FAMILY, SERVANTS AND NEIGHBORS TO HELP TO DO THIS.

"MANY HANDS MAKE LIGHT WORK."

OAHU CENTRAL IMPROVEMENT COMMITTEE.

The Greatest Premium Offer Ever Made

By a Newspaper In Honolulu

Parlor Alarm Clock For Readers of THE STAR

Parlor Alarm Clock

CLOCK STANDS ABOUT TWELVE INCHES HIGH.

Guaranteed by Manufacturer to be a perfect timepiece. The clock can be seen at THE STAR office. It is an attractive piece of furniture and when you see it you will want one to replace that cheap nickel affair which is usually called an Alarm Clock. This clock is made of Gun Metal and the movement is guaranteed to keep absolutely correct time.



THIS ILLUSTRATION WILL GIVE THE READER A GOOD IDEA OF THE APPEARANCE OF THE NEW ORNAMENTAL PARLOR ALARM CLOCK, BUT THE ACTUAL SIZE OF THE CLOCK IS MUCH LARGER; IT STANDS ABOUT 12 INCHES HIGH AND IS MASSIVE IN APPEARANCE. IT IS MADE OF EBONIZED BAR BUFF GUN METAL OF VERY ORNAMENTAL DESIGN, AND IS FITTED WITH AN EXTRA LOUD BELL ENTIRELY HIDDEN FROM VIEW.

Every House in Hawaii CAN USE AN Alarm Clock

IT IS A WANT AND A NECESSITY.

Here's a chance to get a New Ornamental Parlor Alarm Clock absolutely free. This is a STAR premium and it beats anything ever put out. Indeed, we've spread ourselves to secure an unusually attractive, durable and Ornamental Parlor Alarm Clock. They sell everywhere for FIVE DOLLARS, but readers of THE STAR can secure one absolutely free.

How to Obtain a New Ornamental Parlor Alarm Clock
Subscribers to THE STAR, both old and new, who will pay \$8.00 in advance for one year's subscription will receive one New Ornamental Parlor Alarm Clock free of charge

CALL AT THE STAR OFFICE AND SEE THE PARLOR ALARM CLOCK

BANK OF HAWAII

LIMITED.

Incorporated Under the Laws of the Territory of Hawaii.

CAPITAL, SURPLUS AND PROFITS
\$1,029,366.90

OFFICERS.

Charles M. Cooke.....President
F. C. Jones.....First Vice-President
F. W. Macfarlane.....Second Vice-President
C. H. Cooke.....Cashier
C. H. Cooke.....Assistant Cashier
F. B. Damon.....Assistant Cashier
Zeno K. Myers.....Auditor

DIRECTORS: Chas. M. Cooke, P. C. Jones, F. W. Macfarlane, E. F. Bishop, E. D. Tenney, J. A. McCandless, C. H. Atherton, C. H. Cooke, F. B. Damon, F. C. Atherton.

COMMERCIAL AND SAVINGS DEPARTMENTS.

Strict attention given to all branches of Banking

JUDD BUILDING, - FORT STREET.

Claus Spreckels. Wm. G. Irwin.

Claus Spreckels & Co.

BANKERS

HONOLULU, H. T.

San Francisco Agents—The Nevada National Bank of San Francisco.

DRAW EXCHANGE ON SAN FRANCISCO—The Nevada National Bank of San Francisco.

LONDON—Union of London & Smith's Bank, Ltd.

NEW YORK—American Exchange National Bank.

CHICAGO—Corn Exchange National Bank.

PARIS—Credit Lyonnais.

BERLIN—Dresdner Bank.

HONGKONG AND YOKOHAMA—The Hongkong and Shanghai Banking Corporation.

NEW ZEALAND AND AUSTRALIA—Bank of New Zealand, and Bank of Australasia.

VICTORIA AND VANCOUVER—Bank of British North America.

TRANSACT A GENERAL BANKING AND EXCHANGE BUSINESS.

Deposits Received, Loans Made on Approved Security, Commercial and Travellers' Credits Issued, Bills of Exchange Bought and Sold.

COLLECTING PROMPTLY ACCOUNTED FOR.

ESTABLISHED IN 1858.

BISHOP & CO.

BANKERS

Commercial and Travellers' Letters of Credit issued on the Bank of California and The London Joint Stock Bank, Limited, London.

Correspondents for the American Express Company, and Thos. Cook & Son.

Interest allowed on term and Savings Bank Deposits.

THE YOKOHAMA SPECIE BANK

Limited.

ESTABLISHED 1856.

Capital Subscribed.....Yen 24,000,000
Capital Paid Up.....21,000,000
Reserve Fund.....13,700,000

HEAD OFFICE, YOKOHAMA.

Branches and Agencies:

Honolulu, New York, San Francisco, London, Lyons, Bombay, Hongkong, Hankow, Shanghai, Peking, Tientsin, Mukden, Antung, Hsien, Kobe, Nagasaki, Tokyo, Osaka.

The Bank buys and receives for Collection Bills of Exchange, issue Drafts and Letters of Credit, and transacts a general banking business.

Honolulu Branch 67 King Street

HAND PAINTED NOVELTIES.

At

O. Y. ITOW
Beretania St. near Emma Honolulu.

First Class Meals Served.

CALIFORNIA RESTAURANT

Hotel Street, near Nuuanu.

OPEN ALL NIGHT.

Short Orders & Specialty, 21 Meals, \$1.50

IF YOU WISH TO ADVERTISE

IN NEWSPAPERS

ANYWHERE AT ANYTIME

Call on or Write

E. C. DAVE'S ADVERTISING AGENCY

224 Sansome Street

SAN FRANCISCO, CALIF.

BOUQUETS AND KISSES FOR STRIKE BREAKERS

A DESCRIPTION OF ONE DAY OF THE STREET CAR STRIKE IN SAN FRANCISCO.

The San Francisco Chronicle of May 10 thus describes the scene of one day of the street car strike in San Francisco:

The United Railroads operated two cars yesterday with much greater success than on the day before, partly due to the better police protection and partly to the fact that the mob was cowed. With the exception of a few blocks on Divisadero street, the whole route resembled a march of triumph. The bouquets thrown far outnumbered the bricks and lousy cheers took the place of the curses that were hurled at the car crews on the preceding day. The well-directed shots fired by the guards on Tuesday and the healthy beating that the rabble received Wednesday at the hands of the police had thoroughly intimidated the mob and its members were pretty "good dogs." A few bricks were thrown and one shot fired, but there were not many acts of violence and little opposition to the operation of the cars.

The most serious bombardment of the day occurred at the start. At Oak and Broderick streets there is a large vacant lot and it is littered with cobblestones. Hoodlums had gathered at this place and concealed the stones beneath their coats. As the cars ran across Broderick street the volley came. One rock crashed through a transom window in the second car and the splintered glass was sprinkled about the floor. Other stones followed, but they either missed their mark or struck harmlessly against the sides of the cars. No one was struck by them. The trip up Oak, across Stanyan and most of the way down Page was made without any act of violence being committed. Women appeared at the doors and windows, as on the previous day, and cheered the men on the cars, accompanying the cheers with various feminine salutes.

As the run down Page street continued the crowd increased in numbers, and a few feeble execrations were mingled with the cheers. At Page and Divisadero the streets were filled with people. It was not like the mob of the preceding day, however. It lacked enthusiasm, and even that sort of courage that is necessary for the commission of an act of violence. The mob represented no particular element, but was composed of the offscourings of humanity that are to be found in every large city. The crowd seemed to be actuated by no particular predilection, but was moved more by the love of excitement. It was a pitiful mob and even its howls were feeble, like those of an animal in the throes of death.

It was this sort of a rabble that followed the cars for several blocks on Divisadero street. The mob was large in number, but its opposition to the running of the cars was weak and easily overcome by the police. It was soon distanced by the cars and the automobiles and it lagged behind, beaten and disgusted.

The run up to Sacramento street and on that thoroughfare to Presidio avenue was made without anything worthy of note. At this point the rails had been smeared with soap by some union sympathizer. The first car got up the hill without much difficulty, but the second was not so fortunate.

The run from this point out to Sixth avenue and California street was without incident. The crowd that had gathered along the line represented the residents of the vicinity and not the hoodlum element, and these cheered loudly as the cars went by. Many were the flowers and compliments hurled at the crews. These sometimes bowed their acknowledgments and again doffed their caps. The nurses appeared at the windows at Hahnemann Hospital and cheered the crews, waving their handkerchiefs until the procession had passed from sight.

At Sixth avenue and California street the cars were switched to the inbound track and the return trip was made from the point instead of continuing to the Chutes as on the day before. The teachers at Peabody Grammar School permitted the children to come out and view the cars, and they cheered and clapped their little hands.

The cars stopped on the return trip at Presidio avenue and Sacramento street to permit the inspection of the inbound track to see whether it had been soaped as the other had been. It was found to be all right.

At this point a very pretty little incident happened which was typical of the conduct of the residents along the whole line of the run. A half-dozen pretty young girls employed in a nearby bakery and candy store came out, their arms filled with roses and carnations furnished for the occasion by a florist in the vicinity who took this

KILOHANA ART LEAGUE'S FESTIVAL

DELIGHTFUL AFTERNOON SPENT AT BEAUTIFUL AINAHU IN CELEBRATION OF ANNIVERSARY

The Spring Festival of the Kilohana Art League held yesterday afternoon in the beautiful grounds of Ainaahu, Governor Cleghorn's home at Waikiki, in celebration of the 12th anniversary of the founding of the league, was an inspiring event in the history of the organization, not only to its members but to the many invited guests who were in attendance. A perfect day and ideal surroundings produced a setting for the festival that could scarcely have been improved upon, and the several addresses read by members of the different departments of art work embraced by the league were masterly in style and handling. During the intermissions in the program of papers read, the band played especially selected music, suggestive of the season.

As the members and guests arrived at Ainaahu they were graciously received by Mrs. W. M. Graham, representing the charter membership of the league, and by Governor Cleghorn; after which they were shown to seats arranged beneath the huge banyan tree by a number of young men acting as ushers. Afterwards they were served with simple but dainty refreshments served by young girls wearing a profusion of beautiful flower leis.

The various addresses made were relative to the inspiration of Spring on art generally, and had especial application to the improvement of the city. A feature of regret to those present was the inability of D. Howard Hitchcock and Mr. H. P. Wood to be present. They however each sent papers to be read. Mrs. Frear, Mrs. Von Holt, and Mrs. W. W. Hall also read papers on various branches of art work.

Foreign News By Cable

SAN FRANCISCO, May 16.—Ruef pleaded guilty on account of sickness and to save his family. He said he would expose those who entered voluntarily into corruption and protect those who were involuntary participants in the prevailing graft. Conditions had forced him to desert his political ideals. He had wished to shake Schmitz two years ago, but had been forced to retain the connection so as to preserve the party machine. Probably Ruef will get a light sentence. It is expected that he will be a witness before the grand jury.

SURRENDER TO CARMEN.

SAN FRANCISCO, May 16.—The Geary street railroad company has conceded the demands of the carmen.

AIDING THE STRIKERS.

CHICAGO, May 16.—The carmen of this city have sent \$40,000 to aid the San Francisco strikers.

PLOT AGAINST CZAR.

ST. PETERSBURG, May 16.—A plot of the terrorists against the life of the Czar has been discovered.

LAWSON JOINS OIL TRUST.

NEW YORK, May 2.—A circumstantial report was circulated in Wall street today that Thomas W. Lawson, who has gone to London to operate in the copper market, is acting as the accredited agent of the United Metals Selling Company, and that while his alliance with the copper trust and "system" which he fought long and sensationally is not yet openly admitted, it will be when his mission in London is completed. It is said in Wall street that on his return to America Lawson will be the acknowledged agent of the Standard Oil Company.

Lawson's announcements in London concerning Amalgamated Copper are like those made by the Standard Oil people here. With the retirement of John W. Gates and the age and comparative inactivity of James R. Keene, the Standard Oil needs some man of vigor and nerve like Lawson to swing the market.

way of expressing his pleasure at seeing a trolley car in operation.

The girls ran up to the cars as they came to a stop, while the rails were being inspected, and showered the flower upon the non-union carmen, whose courage in coming out unarmed into the hostile rabble had excited the admiration of the maid.

One of the girls, rather prettier than the rest, stepped timidly toward the car and then back again. The other girls hastened to bolster her failing courage by remarks of encouragement. Then, blushing violently, she stepped close to the car, raised her arms, pursed her lips and looked longingly up at one of the carmen, natty looking in his new uniform. This gallant, slightly abashed himself, quickly divined the wish of the girl, and, leaning hurriedly from the car, he touched her lips with his, amid the uproarious cheers of the crowd.

Fine Job Printing, Star Office.

PROMINENT MAN DIES AT KUKAIAU

J. M. HORNER PROMINENT IN THE DEVELOPMENT OF THE SUGAR INDUSTRY PASSES AWAY

John M. Horner died at his home in Kukaiau, Hawaii at 11 o'clock Tuesday night. He was 86 years of age at the time of his death. In the death of Mr. Horner there passed away a veteran capitalist and sugar planter of these islands, as well as a writer of much ability. He was a publicist.

There survive him four sons and two daughters. Mrs. Horner died several years ago. Of the sons, Albert Horner is manager of Kukaiau Plantation Co., Ltd., and Kukaiau Stock Ranch; Robert Horner is assistant manager of the ranch; Joseph J. Horner, a capitalist of Kukaiau and William Horner, a business man and postmaster at Kukaiau. One daughter is the wife of Dr. Taylor of Kukaiau and another the wife of Charles R. Blawie, at present in charge of the tobacco department in Hamakua of the U. S. Agricultural Experiment Station. Another daughter died many years ago. J. Louis Horner, stenographer of the First Circuit Court, is a grandson of the deceased.

The elder Horner was born on a New Jersey farm in Monmouth County, June 15, 1851. He remained there until the end of his 21st year and then he left home and worked on a farm at the rate of \$9 a month for nine months each year, teaching district school for three months. He went to Iowa each spring for two years, and returned to New Jersey for the remainder of each year. He married in 1846 and went on a wedding trip to San Francisco by sailing vessel, stopping at the Falkland and Sandwich Islands. He established himself in business and was later joined by his brother. Among other things the Horner, the Company had been considerably enlarged, opened a stage line to San Jose. During the panic from 1853 to 1859 the Horner lost practically all of their wealth.

In 1879 the Horner brothers made a contract with Claus Spreckels to come to the Hawaiian Islands and cultivate sugar for him on shares. His brother

WILL CARTER QUIT OFFICE IMMEDIATELY?

A RATHER SIGNIFICANT STATEMENT ON THIS SCORE IN HIS SO-CALLED "OFFICIAL" ORGAN.

Trans-Pacific Trade issued this morning, says:

Before leaving Hawaii, Governor Carter stated that there would be no action taken toward increasing the Territorial debt, by an additional loan, during the present administration. This may be taken in two ways. It may mean that the Governor is well informed as to the present unfavorable condition of the Eastern money market, a condition that shows no prospect of improvement and which would be a gainst any favorable borrowing on the part of Hawaii. He may be advised that this is likely to last till after the new year. Again it may be that the Governor has decided to relinquish the care of office as soon as possible, and that he will arrange to do so after his arrival in Washington, simply returning to Hawaii to turn the administration over to his successor who naturally, would desire to act in regard to any future financial arrangements. Should the latter surmise be the correct one, then Mr. Carter's successor would be named within three months.

GAVE DEFAULT JUDGEMENT. A motion for judgment by default was granted yesterday by Judge Lindsay in the case of the California Electrical Works against the Guy Owens Electrical Construction Co., for a balance of \$487.22 on a promissory note together with interest and costs from October 18, 1906.

When we look at the price of groceries, Easter bonnets, and other necessities of life, we wonder where the W. C. T. U. ever got the idea that polygamy is likely to spread like wildfire.—Washington Post.

W. Y. Horner settled on Maui and prospered while J. M. Horner continued in the sugar business on the other island. He was for many years one of the strongest minds of the sugar planters association.

Sinclair's Utopian Dream Shattered



MRS. GRACE MCGOWAN COOKE.

Grace McGowan Cooke, novelist and lately a member of the colony founded by Upton Sinclair near Englewood, N. J., is quoted as saying that the dream of the author of "The Jungle" does not seem practical. Since the destruction by fire of Heliopolis Hall, where the colonists lived, a great deal of gossip has filtered out into the common world from that center of philosophy and highbrow thinkers. Mrs. Cooke is reported to have said that the various

theories of socialistic life held by the thinkers were so conflicting that had not the Hall been destroyed as it was there is every reason to believe that the colony would soon have dissolved. It is also asserted on what is believed to be good authority that Mrs. Cooke will shortly publish an article on socialistic living according to the Sinclair theory and in it will point out exactly wherein his ideas can never be carried to an effective result.

STAR Printing Office

For years the Star's printing office has been a busy place. We have gained a reputation for doing good work at fair prices and delivering the job when promised. Few printing offices can make a similar claim. With addition to our plant we are in a better position than ever to handle commercial printing. Our three Linotypes are at your service for book and brief work. If you are not a Star customer, send us a trial order; you will be pleased with the result.

Star Printing Office

McCandless Building.

Telephone 365

Fraternal Meetings

HARMONY LODGE NO. 3, I. O. O. F.

Meets every Monday evening, at 7:30, in Odd Fellows' Hall, Fort street. Visiting brothers cordially invited to attend.

C. A. SIMPSON, N. G.
E. R. HENDRY, Secretary.

HONOLULU LODGE 616, B. P. O. E. will meet in their hall, King street, near Fort, every Friday evening. By order of the E. R.

FRANK E. RICHARDSON, E. R.
HARRY H. SIMPSON, Secy.

J. Hopp & Co.

New Furniture Stores now open in the Lewers & Cooke Building on King Street.

A cordial invitation is extended by the firm to their customers and old friends to inspect the new store.

How to Raise Money

Call at our office, McIntyre Building, and we will show you how to raise money.

THE HAWAIIAN REALTY AND MATURITY CO., Ltd.

CASTLE & COOKE, LTD.

Commission Merchants
Sugar Factors.

AGENTS FOR

The Ewa Plantation Company.
The Waiakua Agricultural Co., Ltd.
The Kohala Sugar Company.
The Waimea Sugar Mill Company.
The Pailon Iron Works, St. Louis, Mo.
American Steam Pump Co.
The George R. Blake Steam Pumps.
Weston's Centrifugals.
The New England Mutual Life Insurance Company of Boston.
The Aetna Fire Insurance Company of Hartford, Conn.
National Fire Insurance Co., of Hartford.

Union Pacific

Railroad

SUGGESTS

Speed and Comfort

Three trains daily, through cars, first and second class to all points. Reduced rates take effect soon. Write now.

S. F. Booth

GENERAL AGENT.

NO. 1 Montgomery Street,

SAN FRANCISCO.

68 HOURS

To Chicago

From San Francisco. The Fastest transcontinental train.

Overland Limited

Electric lighted, Buffet, Library and Drawing room compartment, observation car, with diner. Telegraphic news posted on train.

Southern Pacific

Just Received

A Large New Line of LACES, EMBROIDERED RIBBONS, and GENTS' UNDERWEAR, Etc. Prices Reasonable.

CHAN KEE

23 Hotel Street, near Bethel.

H. AKAGI

SHIRTMAKER.

Shirts made with material furnished. \$1.00, \$1.50, \$2.00, \$2.50. When customer furnishes material 50c and 75c. Ewa side Nuuanu St. near Beretania

James T. Taylor,

M. Am. Soc. C. E.

CONSULTING HYDRAULIC ENGINEER.
Honolulu, T. H.

JAPANESE LABOR BUREAU SATO & OZAWA

River Street near Hotel.
PHONE WHITE 2576.

S. SAIKI,

Bamboo Furniture
AND PICTURE FRAMES.

Neat and Handsome Designs Made To Order.

563 Beretania Street, near Punchbowl.
TELEPHONE BLUE 881.

HUSTAGE PECK CO., LTD

Queen Street.

DEALERS IN

Firewood, Stove,
Steam and Blacksmith
Coal

WHOLESALE AND RETAIL.
Special Attention Given To

DRAYING

ALSO WHITE AND BLACK SAND.

Vienna Bakery

GOOD Bread the only HOME-MADE BREAD in town. All kinds of cakes our specialty. Wagon delivery through city.
Phone Main 172. No. 1120 Fort St.

Clothes Neatly CLEANED AND PRESSED

Honolulu Clothes Cleaning Co.

Alakea St., near King. Phone Main 148

Koa Furniture

UPHOLSTERING AND REPAIRING.

WING CHONG CO.

Cor. King and Bethel. P. O. Box 1020.

M. OHTA,

JAPANESE CONTRACTOR

AND CARPENTER.

House No. 762 Sheridan St

Telephone White 601.

Horse Clipping.

Luke Rogers is back again from Maui, clipping horses at the old stand, corner Punchbowl and King streets.

CLOTHES CLEANED AND PRESSED BY THE

Honolulu Renovating Co.

T. FUJI, MANAGER.

All Telephone Messages Promptly Attended To. We Call For and Deliver. TELEPHONE MAIN 378.
Richard Street near Queen.

Absolutely

THE LATEST PATTERNS

In suitings for Spring and Summer wear. These goods are limited to one suit per pattern.

Good dressers will not have their ideas limited if they buy here. Try us and be satisfied.

W. W. Ahana Co. Ltd

Merchant Tailors.
Phone Blue 2761.
No. 62 King Street.

MIRIKIDAMI

BARBER SHOP.

Open from 6:30 a. m. to 9 p. m.

HOT AND COLD BATHS.

Four modern bath tubs with shower.

Nuuanu Street near Pauahi.

KWONG HING CHONG CO.

Importers and dealers in English, American and Chinese Dry Goods, Chinese Grass Linens, Ladies' Shirt Waist Patterns, Grass Cloth and Grass Linen Table Covers, Pongee and all kinds of Silks, Matting and Camphor Wood Trunks. 1024 Nuuanu street between King and Hotel streets, Ewa side. P. O. Box 971 Honolulu, H. T.

Fine Job Printing, Star Office.

Darn It

What?
Why, your socks.
We make a specialty of it, and at the same time you help a worthy cause.

WOMAN'S EXCHANGE.
Hotel St., near Union.



YOU CAN'T REMOVE DANDRUFF
WITH A COMB
OR HAIR BRUSH.

Pacheco's Dandruff Killer is the only remedy that will effectively destroy the dandruff germ, and promote a luxuriant growth of hair.
Sold by all Druggists and at Pacheco's Barber Shop, Fort Street.
PHONE MAIN 232.

The Henry Waterhouse Trust Co., Ltd.
WILL

Audit and Expert
Books and Accounts

either in Town or Country.
And will attend to book-keeping for Professional and Business men in the City. Phone Exchange 4.



CENTRAL
ABSOLUTELY
FIRE-PROOF

MOANA HOTEL

WAIKIKI BEACH

J. H. HERTSCHE, GENERAL MANAGER

Telephone Main 198. P. O. Box 192.

E. J. Lord

Successor to
LORD & BELSER,
GENERAL CONTRACTOR.

Sewers, Dredging, Grading, Paving,
Teaming, Crushed Rock.

Black and White Sand and Soil
For Sale.

Office and Yard, South and Kawaiahao
Streets.

Fish Akua's
Historical

Hawaiian and South Seas
HAWAII & SOUTH SEAS CURIO CO.

Alexander Young Building.

ENAMELED JEWELRY.
At Half Prices.

J. A. R. VIEIRA & CO.
115 Hotel Street.

Newspaper
Press

FOR SALE!

This press was made by Cottrell and formerly used in the Star Office. It is in first-class condition and will be sold at a reasonable price. This is an opportunity to secure a press at a small cost.

Hawaiian Star

NEW ADVERTISEMENTS.

Jas. F. Morgan, Page 8
Oahu Country Club, Page 5
Sunrise Soda Works, Page 5
Henry May & Co., Page 4
C. R. Collins, Page 4

NEWS IN A NUTSHELL

Paragraphs That Give Condensed News of the Day.

THE WEATHER.
Local Office, U. S. Weather Bureau,
Young Building.
Honolulu, T. H., May 16, 1907.

Temperatures at 6 a. m.: 8 a. m.: 10 a. m.; and morning minimum:
78; 78; 75; 75.
Barometer reading; absolute humidity (grains per cubic foot); relative humidity, and dew point: At 8 a. m.:
70; 30; 6.674; 76; 66.
Wind: Velocity and direction at 6 a. m.; 8 a. m.; 10 a. m.; and noon:
3, NE.; 3, N.; 15, NE.; 14, NE.
Rainfall during 24 hours ending 8 a. m.: .01.

Total wind movement during 24 hours ending at noon: 200 miles.

WM. B. STOCKMAN,
Section Director.

LONDON BEETS: May 15, 10 shillings; last previous quotation May 14, 10 shillings 1-2 pence.

SUGAR: May 15, 3.86 cents a pound or \$77.20 a ton; last previous quotation May 10, 3.90 cents a pound.

Low prices at New England Bakery.
On account of the delay in the arrival of the steamer, the regular Alameda dance will take place on Saturday night at the Royal Hawaiian Hotel. Music at dinner hour.

Morgan's regular Friday sale.

New photos of editor Times; Elite Building, Room 9.

The Oahu Country Club will hold a meeting on May 20 at the Young hotel.

Carriage and Automobile painting and repairs at Schuman Carriage Co. *
*Chan Kee, Hotel street near Bethel, is opening up a large line of new goods.

Try the Banzai brand biscuit sold by K. Yamamoto, wholesale merchant, Hotel street.

MacKenzie Gordon the noted tenor arrived this morning by the S. S. Siberia.

All kinds of fresh fruits and vegetables will come to May & Co., when the Alameda arrives on Saturday.

W. P. Hopkins, a prominent member of the San Francisco Bohemian Club, arrived by the Siberia this morning.

A rumor on the street persists that a petition is in circulation favoring the appointment of L. E. Pinkham for Governor.

John S. Clark, the popular and well known druggist, returned on the Siberia to accept a position with the Holister Drug Co.

The best place in town to buy candy is the Alexander Young Cafe. The candy sold at this cafe is home made, pure and delicious.

There will be a meeting of the Chinese students Alliance of Hawaii at 7:30 p. m. tomorrow at the Fort street Chinese church hall.

Mr. and Mrs. John H. Jones have returned from their honeymoon spent at Haleiwa and have taken up their residence at Dole and Artesian streets, Punahou.

C. Percy Morse, local superintendent of the American-Hawaiian steamship line, is taking a course of marine engineering under A. W. Keech, formerly master mechanic of the Inter-Island Company.

Sinclair and Alymer Robinson, sons of Aubrey Robinson, of Makawili, arrived here on the Siberia today on their way home from attending school on the mainland.

Applicants for Liquor Licenses are notified to fill their applications in conformity with law with the Secretary of the Board of License Commissioners as soon as possible.

The vestry and guild of St. Clement's church have arranged to hold a reception this evening at the parish house Makiki street, to Rev. and Mrs. W. H. Ellis. The congregation and friends of the church are invited to attend.

J. J. Dunne resumed his argument this morning in the Afong case. He will take the remainder of the day to complete his argument. The case is being heard before Judge Robinson on demurrer.

According to advices received here by Consul General Saito by cable from Consul Morikawa, at Vancouver, many Japanese in that part of the country are out of employment, and warning others from going there. The Japanese press here will publish the warning accordingly.

Adjutant Bamberg and the Salvation Army brass band are going to Kauai, on the Mikahala this evening, to dedicate a new building in Waimea. Heretofore the Salvationists have used a borrowed building for their meetings, but now, through the generosity of their friends, they have been able to erect a suitable hall for their meetings.

Captain Finch, formerly master of the O. & O. S. Coptic, and before that of the Celtic and Belgic, has just been appointed commander of the White Star liner Cymric, running between Boston and Liverpool. Captain Harry Smith, who commanded the Doric until that vessel changed owners, is commander of the S. S. Teutonic, New York and Southampton.

President Pinkham Starts To Clean Up Honolulu

FOUR GANGS OF MEN ARE AT WORK DISTRIBUTING DISINFECTANT.

"We have started on a thorough cleaning of the town," said President Pinkham of the Board of Health, this morning. "There are four gangs working now and by the system that we follow, a great deal of work can be done. We provide the various houses with disinfectant and the people on the premises attend to cleaning up the places, under the supervision of the Board of Health force. The cleaning includes everything. The idea is to have the interior of the houses, as well as the yards and out houses, cleaned and put in as sanitary a condition as possible."

"At present, we are at work in the Kewalo district but by degrees, we plan to extend the work to include the rest of the town. After completing the work in the Kewalo section, the force will go to the more thickly populated sections lying in Chinatown and Palama and in that section of the city."

"The Chinese and Japanese at Aiea and Waipahu have shown the greatest desire to co-operate with the Board and are doing and have done, what we require. Recently they sent four times to Honolulu to have some one from the board of health go down there to determine whether certain work had been properly done."

"The failure of the legislature to make some adequate appropriation for an emergency is now bearing fruit. Were it not for the shipper's wharf committee, President Pinkham would have no funds whatever to enable him to carry on the sanitary crusade that is now imperative to the welfare of the islands."

BECKY PANEÉ WANTS MORE MONEY

SO GUARDIAN TRENT WANTS THE COURT TO PERMIT HIM TO LEASE SOME OF HER LANDS.

R. H. Trent, guardian of Becky Paneé, the spendthrift, has petitioned the court for permission to make a 25-year lease with one Pang Lum Mow, to a small lot on Maunakea street near Pa'uahi, belonging to Becky.

Trent says that there has been no income from the property since June 1, 1905, and as the income of the estate is not sufficient to support her, it is desired to obtain more money. The rental of the property will be \$20 a month and the Chinese agrees to erect a building to cost not less than \$3000 on the lot. The guardian asks the approval of the court to the lease.

The trial of the case of J. F. Durao vs. J. D. Marques, et al., has been continued to May 27, at 10 a. m., by mutual agreement.

In the case of C. F. Peterson vs. Kalia Ahiena (w) et al, the trial has been continued until June 10 at 10 a. m.

The trial of the case of C. W. Booth vs. J. H. Schnack was continued until Monday at 10 a. m., by Judge Lindsay this morning.

Judge Lindsay was busy this morning hearing the assumption case of W. K. Brunner vs. L. Andrade for \$173.50. This suit is over the sale of a hack. A motion for a non-suit was denied.

CLOSED A SCHOOL.

Owing to the sudden death of a sister of a pupil of the Kaakopua school on Vineyard street, Superintendent of Public Instruction Babbitt has decided to close that school for three days and have the place fumigated. This course was taken more to allay the fears of the school children and their parents than for any other reason.

PROGRAM BEING ARRANGED.
The executive committee having in charge the arrangement of the entertainment of the Congressional visitors between the time of their return to Honolulu on the 28th inst. from their visit to Maui and Hawaii, and their departure for the Coast on the 31st or 1st, is holding a meeting this afternoon in the offices of the Promotion Committee. It is likely that a program will be arranged definitely, before the meeting adjourns, so that the various sub-committees may begin at once to carry out the details of the plans.

\$2500
will buy a fine home.
Easy terms.

TRENT & CO.

Honolulu Shriners Make A Hit

DR. C. B. COOPER, WHO RETURNED FROM ATTENDING SHRINERS' COUNCIL TELLS OF TRIP.

Dr. C. B. Cooper, who returned this morning on the Siberia from the coast where he went with the Hawaiian delegation of Shriners to attend the meeting of the Imperial Council which was held in Los Angeles, brings back a glowing report of the trip and of the big gathering. His report of the success of the Arab Patrol is also flattering. The Honolulu boys, he said, probably attracted as much or more attention than any of the numerous drill corps present; and in the drilling at Ascott Park, at which a crowd of 25,000 was gathered to see the maneuvers, the Patrol was received with more applause than any of the dozen or more other companies present. The spear drill, he said, was a novelty which called forth universal admiration and favorable comment.

The Arab Patrol had assigned it for the parade and to escort it about during the time of the meeting, the Boston and Montana Band, one of the very finest bands in attendance. It is from Butte, Montana, and is composed of miners exclusively. The Honolulu delegation greatly appreciated this as well as many other favors shown them by the Los Angeles committee.

Dr. Cooper was the only member of the Honolulu delegation of Shriners who came back on the Siberia, the main body staying over for another week, and will return on next Thursday on the China. Percy Lishman, who was seriously hurt by tripping on a rope while en route to the Coast, and striking his head on the deck, Dr. Cooper says has entirely recovered from the effects.

The Doctor stated that the conditions in San Francisco when he left there a week ago were simply indescribable owing to the various strikes in progress. He was unable to telephone for a wagon to haul his baggage to the boat, but had to go out on foot and find one, and the street cars being tied up put such a premium on all kinds of vehicles that it was almost impossible to get any kind of a rig for love or money. He was glad to get safely away from the place.

MANNING'S NEW CAPTAIN ARRIVES

CANTWELL COMES TODAY IN S. S. SIBERIA TO SUCCEED CAPTAIN JOYNES ON REVENUE CUTTER.

Captain J. C. Cantwell, for a long time in command of the U. S. Revenue cutter McCulloch, arrived today in the S. S. Siberia to take command of the U. S. Revenue cutter Manning, succeeding Captain Joynes. Cantwell has been succeeded on the McCulloch by Captain Rogers.

In a few days the Manning leaves Honolulu for a five months cruise in the Behring Sea. She may be joined there by the cutter Thetis, Captain Henderson, late of the cutter Arcata.

SHIPPING INTELLIGENCE

Thursday, May 15.

Am. S. S. Santa Rita, Sonnor, 13 days from Port Harford, with oil, at noon.

S. S. Likilike, Naopala, from Hawaii, with 6500 bags sugar, 10:40 a. m.

S. S. Claudine, Parker, from Maui and Hawaii, 4 a. m.

DEPARTING.
Wednesday, May 15.

FROM KAHULUI—Am. Sp. Bangalor, Blanchard, for Delaware Breakwater.

PASSENGERS.
Arrived.

Per S. S. Claudine, May 16, from Maui—Father Edward, Mrs. J. Lawrence, E. F. Bishop, G. Shimada, K. Yemoto, Mrs. M. Heakekoea, A. W. Seabury, Charles Gay, K. Nakamura 52 deck.

Booked.

Per S. S. Mauna Loa, for Hawaii and Maui ports, May 17—Mr. Clark C. Haswell, G. K. Wo. C. K. Al, Mrs. W. W. Bruner, C. H. Bellina, W. F. Wilson, Mrs. H. Makee and children, R. S. Johnstone, L. Macfarlane, C. A. Doyle and valet, Mrs. C. Ah Kee.

PASSENGERS DEPARTED.

Per S. S. Hilonian, for San Francisco, May 16—Mrs. Blake and 3 children, Mrs. Burke, Arthur Burke, Mrs. J. Bergstrom and child, Arthur Davies, Hon. A. D. Castro, H. C. Plans, A. P. Linder, R. E. Carlisle, W. Roseman.

SANTA RITA HERE.

The big oil steamship Santa Rita, 13 days from Port Harford, with cargo for the Union Oil Co., arrived off port early this morning, entering about noon.

James F. Morgan,

AUCTIONEER AND BROKER.

547-857 aahumanKu St. Tel. Main 72.

AUCTION SALE

Friday, May 17, 1907

10 O'CLOCK A. M.

At my salesroom

Friday Regular Sale

—OF—

Furniture
Buggies
Middlings

—ALSO—

Amoskeag seersuckers,
Kioto prints,
Hamilton fancy prints,
Sateens,
Indigo prints,
Etc., etc.

THESE DRY GOODS ARE NEW.

JAMES F. MORGAN,
AUCTIONEER.

CHURCH CALLS A PASTOR

REV. A. C. MCKEEVER OF FRESNO IS CHOICE TO SUCCEED REV. G. D. EDWARDS.

At a meeting of the congregation of the Christian church held last evening after the regular prayer meeting, it was unanimously decided to extend a call to Rev. A. C. McKeever, of Fresno, California, to become the pastor of the church beginning September 1st next. In case Mr. McKeever accepts the call he will succeed the present pastor, Rev. G. D. Edwards, who resigned some time ago to accept a professorship in the Bible school at Columbia, Missouri, and will terminate his connection with the Honolulu church at the beginning of fall.

Mr. McKeever, who has been called, is personally known to some of the congregation, and it is universally hoped that he will see his way clear to accept the pastorate. At the present time he is pastor of the Christian church of Fresno, a member of the California State Board of Christian Missions, and a trustee of the Berkeley Bible School.

He is a man of about 50 years of age, and was once the pastor of the Christian church at Nevada, Missouri, from which Mr. Edwards came to this charge. As before stated, Mr. McKeever would not be an entire stranger should he come here, as he knows some of the members of the church in Honolulu, besides having some distant relatives living on different islands of the group.

MACHINERY FOR JAPAN.

The S. S. Siberia, sailing hence for the Orient this afternoon, carries from San Francisco big shipments of machinery for Japan, one piece of electrical machinery alone weighing 17 tons.

THE BETTER REASON.

Ex-Secretary Shaw is greatly worried because our trunk lines altogether could not carry an army to the Pacific coast in six months. A more urgent reason for double-tracking them is that they can't carry the crops to market fast enough to keep them from rotting.—New York World.

Friday and Saturday

LAST DAYS OF SALE OF

Real Torchen Laces and Insertions

LAST OPPORTUNITY OF BUYING

Real Hand Made Laces

Far below their value, in fact for less than they can be produced today.

TORCHON EDGINGS AND INSERTIONS

10c quality, Sale Price.....	6c yd.
12 1/2c " " " " " " " "	8c yd.
15c " " " " " " " "	10c yd.
20c " " " " " " " "	15c yd.
25c " " " " " " " "	16 2/3c yd.
35c " " " " " " " "	25c yd.
50c " " " " " " " "	37 1/2c yd.

HIGHER PRICED QUALITIES IN THE SAME PROPORTION.

N. S. Sachs Dry Goods Co.

THE STORE THAT KEEPS THE PRICES DOWN.

C. Q. YEE HOP & CO.

BUTCHERS

Wholesale and Retail

KING STREET

Slaughter House Tel. Blue 3181

Tel. Main 251

PALM CAFE

An Up-to-Date RESTAURANT.

Lunches Served at Short Notices

Meals from 6 a. m. to 11 p. m.

Candies, Wedding Cakes and Catering

Are Our Specialties—We are the only

First-Class Restaurant in Town

European Plan

Simple Fact

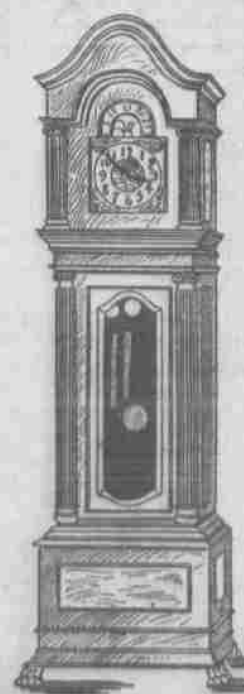
Don't be fooled into buying anything, but a Wachusett Shirt. Insist upon it. Pajamas, light and heavy. Shoes of all description. We also carry a large assortment of Men's Furnishing Goods.

Wah Ying Chong Co.

KING STREET

EWA FISH MARKET

OUR "TICK" DEPARTMENT



Clocks

are a necessity, without them we are entirely lost. With one of ours you are up to date—right to the scratch. Look over the large assortment, each one of which is guaranteed, and agree with us that all are reasonable and beautiful.

Prices Range From \$1.25 to \$125
W. W. Dimond & Co., Ltd.

55-57 King Street, Honolulu, T. H.