

If you want to-day's News to-day you can find it in THE STAR.

THE HAWAIIAN STAR.

The Hawaiian Star is the paper that goes into the best homes of Honolulu.

VOL. VII.

HONOLULU, H. I., WEDNESDAY, DECEMBER 19, 1900.

No. 2735

A TEMPERANCE CRUSADE RECORDS OF STEAMERS COHEN ON THE WARPATH BENNETT LED DUAL LIFE ABANDONED BY ATTORNEY FOUNDERS' DAY PROGRAM

W. C. T. U. AND MINISTERS' UNION.

Dr. Chapman of the California Anti-Saloon League is coming—Littlefield's Bill will be boomed.

Honolulu is on the eve of a temperance crusade. The Woman's Christian Temperance Union, and the Pastoral Union, will each have a hand in it. At the meeting of the Woman's Christian Temperance Union held yesterday afternoon at Central Union church, it was announced that Miss Jessie Ackerman and Miss Ada Murcutt, "Round-The-World Missionaries" of the World's Woman's Christian Temperance Union would arrive here from the Coast by the Coptic and would remain for a week or ten days. Arrangements were at the same time made for holding a series of temperance meetings under the auspices of the Woman's Christian Temperance Union.

These meetings are to be in a sort of preparatory and preparatory to the advent of Dr. Chapman of Oakland of the California Anti-Saloon League who will arrive here early in January and begin a series of meetings and inaugurate a work which it is hoped will amount to a successful crusade against the liquor traffic. Miss Ackerman has been here before and is well known in the Islands. Miss Murcutt, whose home is in Australia, comes here for the first time. Both have reputations as able and efficient lecturers. It is a part of the plans for the crusade which Dr. Chapman is to inaugurate to arouse sentiment in favor of the bill which Congressman Littlefield of Maine has introduced, prohibiting the sale of liquor and opium to aboriginal natives of the Pacific Islands. On this subject the Woman's Christian Temperance Union has not expressed its position, but it is known that some members of the local society do not approve the measure, doubting the principle of discrimination involved in it, and likewise the possibility of enforcing it.

Mrs. Henry Waterhouse was at yesterday's meeting, appointed Superintendent of the Flower Mission, and Mrs. W. D. Westervelt, Superintendent of the Department of Temperance Literature.

NEW MILL COMPANY.

Will Take No More Building Contracts.

The Enterprise mill has been purchased by a private concern which will shortly incorporate and conduct the business under the name of the Pacific Mill Company. Emmett May and W. H. G. Arnesmann appear as the purchasers but they are representing their associates as well.

CHURCH PARSONAGE.

Meeting of Central Union Called to Discuss It.

Central Union church is considering the matter of securing a parsonage. The matter will be brought up for discussion this evening at a church meeting to be called immediately after the regular Wednesday evening prayer meeting.

More or less thought and consideration has been given to the subject by members and friends of the church, though the church itself has never taken any stand on the subject. Several members of the church have interested themselves in the matter. A number of pieces of property are available for such a purpose. Some of them are of property upon which to build, and one at least is a piece of property already suitably built upon.

At the meeting this evening, if the church decides that it is desirable to proceed with securing a parsonage at this time, it is probable a committee will be appointed to take up the matter.

HAWAIIAN TRUST AND INVESTMENT COMPANY, LTD

TRANSACTS A GENERAL TRUST AND SAFE DEPOSIT BUSINESS. TAKES ENTIRE CHARGE OF REAL AND PERSONAL ESTATES. COLLECTS AND REMITS INCOME AT REASONABLE RATES. RENTS SAFES AND STORES VALUABLES IN WELL GUARDED, BURGLAR AND FIRE PROOF VAULTS. ACTS AS TRUSTEE, GUARDIAN, ADMINISTRATOR. TRUST FUNDS AND TRUST INVESTMENTS ARE KEPT SEPARATE AND APART FROM THE ASSETS OF THE COMPANY.

409 Fort Street, Honolulu T. H.

SPEEDY TRIPS TO AND FROM SAN FRANCISCO.

All Records in the Pacific Claimed for The China In Spite of Contrary Showing.

Since the Sierra went on the run between the coast and here, her sailing qualities and speed have been discussed. There has also been much discussion about the records and capabilities of the other vessels of the Pacific Mail, O. & O. and Toyo Kisen Kaisha lines, which have been competing in the matter of records for some time.

Thurs. annual for 1901, just issued, gives to the Nippon Maru the best record between here and San Francisco, on account of her trip last January, when she made the distance in five days and two hours. The China and Coptic have the other good records, the China having a trip of 5 days, 7 hours and one of 5 days and 8 hours for her credit, while the Coptic is down for a trip in 5 days and 20 hours.

In spite of apparent showings the other way, it is claimed for the China that she has the record. Captain Seabury is quoted as expressing confidence that she has made the trip in five days and four hours. The China counts from dock to dock, according to time shown to have expired at the journey's end. The Nippon Maru's count was from pilot to pilot and for actual time expired during the journey. This gives her the advantage of about fifteen minutes a day change in time which the China included in her reckonings and of two or three hours during which the pilots had the vessel.

The China has every record in the Pacific say her admirers, and Captain Seabury is quoted as expressing confidence that she can hold the records. The Maru boats lately have been hurrying in their trips between oriental ports and they are piling up records, but it is claimed for the China that she can beat them when she tries. Lately the China has not been pushed.

The record for the trip from San Francisco to Honolulu is held by the China. The America Maru is a close second and the old Australia has the third best record. In the Pacific the China has all the records so far listed.

New steamers are now coming into the service and some new records are looked for. If a new record is made it will be by the Captain Seabury will try to beat it, and the new vessels are likely to make new records when they try.

AWAITING THE SIERRA.

Many People Expecting the New Liner.

The new steamship Sierra was anxiously waited for all day yesterday and all the previous night, as well as last night and there was much surprise that she did not show up at least this morning. According to her set time for departure she was beginning her 7th day last night, and as she was supposed to be coming along at her best pace, there was a good deal of speculation as to the cause of the delay.

The general opinion was that she had to wait for the British mails. The company's contract for carrying mails to the Colonies provides that they must be certain that the ship will be on schedule, so that the Oceanic steamers for the Colonies always have an interest in making good time.

INDEPENDENTS NOT READY.

The Independents are still selecting the members of the charter committee, and the announcement of the membership will be made the latter part of the week. Various matters are also being considered in connection with the work of framing a charter.

THE WEATHER.

Weather Bureau, Punahou, 1 p. m. Wind light, easterly, westerly airs. Weather fine. Will continue so. Morning minimum temperature, 67; maximum temperature, 79; barometer, 9 a. m., 30.04 rising (corrected for gravity); rainfall, 24 hours ending 9 a. m., 0; dew point, 9 a. m., 67; humidity, 9 a. m., 71 per cent.

CURTIS J. LYONS, Observer.

HAS FEW EQUALS.

For light running, easy adjustments, and good work the Singer Sewing Machine has few equals and no superiors. —B. Bergerson, agent, Bethel Street.

Fine Job Printing, Star Office.

Gas Engines Repaired

Every job guaranteed and our guarantees are lived up to.

PEARSON & POTTER CO., LTD.

312 Fort Street Telephone 565.

THE SAID COFFEE SPOILED BY OFFICIALS.

Packages were Opened and Cups and Saucers Ruthlessly Stolen Therefrom. A Suit is Coming.

J. C. Cohen, broker and business manager of the Orpheum, is more than hot in the collar against the customs bureau. He has a grievance that seems a bit unusual and the matter will likely be aired in the courts. Mr. Cohen was down to see High Sheriff Brown this morning about it, and the next step will probably be a suit.

Nearly two years ago Cohen imported a lot of coffee. There were really 4049 pounds in the shipment although it was billed and entered at much less than that. The custom house people had him summoned on the charge of smuggling. Cohen fought the case, and won. In other words, he proved his innocence in any matter of a larger shipment than his bills called for. But the coffee was seized at the time of the original trouble and has since been held in custody.

After Cohen had won the case Attorney-General Dole wrote an order for the delivery of the coffee to him. It was turned over, but in a miserable plight. Of the attorneys, Mr. Cohen told High Sheriff Brown that: "All of the packages were opened more than a year and a half ago, and the coffee is ruined. In each package of five pounds was a nice cup and saucer, which made the coffee more valuable. These cups and saucers were nearly all taken out, if you please. Thus the drawing card for the coffee was destroyed and the coffee itself by reason of being opened and left open is no longer of any value."

Cohen claims that the coffee cost 85 cents a package which would make the cost of the total shipment \$688.50. It is this amount he wants in good U. S. gold coin from somebody. Mr. Cohen says he is now willing and always has been willing to pay the duty on the larger amount of coffee but will be blanked if he will on coffee that has been spoiled by officials of the defunct Hawaiian Republic. The suit will probably be leveled at the Hawaiian Republic, the successor of the Republic.

MR. AZBILL'S STATEMENT

THINKS HE WAS MISJUDGED BY ATTORNEYS.

At the Same Time He Sticks to Stand That Three Men are Falsely Imprisoned—Appeal to Consul.

The committee of the Protective League to whom Rev. Azbill's story of injustice to Japanese in Kona was referred, held a meeting yesterday afternoon. Rev. Azbill retold his story, but the committee was not sufficiently impressed to take any action.

Rev. Azbill has written the following:

EDITOR THE STAR: I beg to say that the report of the Japanese case on which you and certain legal gentlemen comment, was misleading. If you had taken the report of the Bulletin or of the Advertiser you would have observed that I did not vouch for the story which I said had been told to me. I am a matter of fact man. Those gentlemen did not make allowance for that particular style of reporting. Please give them my love, and tell them that, after further inquiry, without any reflection on the court or the attorneys, I am of opinion, as are the Japanese of Kona and of Honolulu, that three innocent men are in prison working out their sentence as the result of miscarriage of justice in their cases.

Yours, W. K. AZBILL.

After reading the above Rev. Mr. Azbill called at the Star office and said: "The judge and attorneys in this matter seem to construe the statements made before the Protective League as coming from me personally, whereas I was particular to say that it came from others. My information was and is from Japanese sources. Mr. Katsunuma is a very reliable man and he has, after the hardest of work in investigating the matter, given me facts that convince me of the innocence of the three men now in prison. He tells me the matter is like all the evidence was taken in the case. Several witnesses were shut out in the hurry of the hearing. I believe those statements and shall follow the matter up to the end."

"When Mr. Davis says 'Mr. Azbill lies' he had better first consult with Mr. Towt, a reliable sugar planter of Kona, and the reliable Japanese of Kona and Honolulu. He will find that the injustice done three men of the party in question is well known among them."

"It is our intention to interest the Japanese consul in the matter and to get a square deal for the men I have mentioned. There will probably be developments very soon in the matter."

MOWERS ARRIVES.

The steamship Mowera, Captain Hemming arrived at one o'clock today from the Colonies. She left Sydney on the 3rd and had a fair trip here. She will leave for Victoria at ten o'clock tonight.

SCOPE COMMITTEE.

The "plans" committee of the Republican charter commission met at the office of George A. Davis this morning but did no business as two of the members desired to be present in the Supreme Court at the opening. All of the members were in attendance. It was decided to meet again at 10 o'clock tomorrow morning, and in the meantime the members will figure on a course of procedure and "an of a charter. No form of a charter was presented at the meeting so that it is not supposed that any member has one up his sleeve.

ICE HOUSE DELICACIES.

Camariño's California Fruit Market is the place for ice house delicacies. Everything the California market affords at this season of the year can be found at Camariño's.

HE WAS A VERY HEAVY DRINKER.

Tried on One Occasion to Commit Suicide in the Ocean View Villa. Other Testimony.

The coroner and a jury are still at work seeking to unravel the mystery surrounding the death of Miss Schneider and Scout Bennett. A number of threads of evidence have been discovered but they have not been followed to definite conclusions. There seems to have been no particular effort made to trace Bennett's movements on the night preceding Miss Schneider's death, though his personality and clothing were so striking that it would seem as though his movements at any given time could be traced with comparative ease. Many of the most famous criminal cases of late years on the mainland have been worked out to demonstrated conclusions from beginnings that were much less promising or readily worked out, than the circumstances which surround this mystery. In the Durrant case, for instance, the police accounted for almost every movement of Durrant's from some days before the murder until some days afterwards.

During the course of the inquest yesterday Mrs. Paul Neumann mentioned having noticed some white powder on the shawl which was found around the head of Miss Schneider. It was thought that this powder might prove to be morphine so it was given to Dr. Shorey the government chemist, for analysis. He inspected the powder today under a microscope and made chemical tests of it. He discovered that the stuff was not morphine at all, but contained some lime. He accounted for its presence by saying that perhaps the woman brushed against white wash and some of the stuff had stuck to her shawl.

Another fact concerning the habits of Miss Schneider, which shows her to have been of a peculiar disposition, has been learned of her residence at the Waikiki Inn. It was her custom almost every night to put a little shawl about her head and go to Kapiolani park about 10 o'clock and sit on the benches until as late as 2 o'clock in the morning. The day after returning to the Inn she would go in the ocean to bathe. She complained of being unable to sleep. Kaal one of the members of Captain Berger's band remembers having seen her sitting alone in the park at late hours of the night.

Inquiry at all of the drug stores in the city failed to find any trace of Bennett or Miss Schneider having secured morphine. On the contrary the statement was made at every place that none was sold to either of them. And it would have been impossible for them to have secured the drug without a physician's prescription and such authorization had not been presented.

Where and by whom the drug could have been secured is another important feature of the case. It was said at all the stores, that people desiring to use morphine can secure it in quantity by sending to the Coast and receiving it by mail. If Bennett used morphine constantly as Ottmann testified he did, it is likely that the scout must have either gotten it surreptitiously from the coast or else at the government dispensary at Camp McChesney. By mail, if Bennett used the drug was not secured by him at the post. It is of course possible that the woman may have sent for the drug but if Bennett used morphine steadily it is far more likely that the poison was secured by her from him.

The inquest into the death of Miss Clara Schneider was begun yesterday and will be concluded today. A number of witnesses were examined but only one of them was able to throw any additional light upon the habits of Bennett. He was W. J. Ottmann, the proprietor of the Ocean View Villa on the Waikiki road. According to Ottmann, Bennett was not only a heavy drinker but a continual one and he and Ottmann have visited saloon after saloon together.

Bennett was a very quiet man and seldom talked of his private affairs. He told the witness that he had an income of \$100 from the government and \$191 more a month from property in the east. Bennett used to go to the house of the scout on a number of times and on many occasions Ottmann had seen the scout greatly under the influence of liquor. Bennett seldom showed the effects of the liquor to a casual observer however. The police had visited Ottmann's place but the scout had been at one time sent a dozen bottles of wine to the Ocean View and had drunk them there. Bennett did not pay his visits occasionally to the Ocean View, but went there almost every night. So far as the scout's gambling was concerned, Ottmann did not know positively of any such habit, but he was sure that Bennett did bet money on the horse races. Once somebody tried to induce Bennett to play poker at the Ottmann place but the scout had refused. He had told Ottmann of playing in the Hawaiian hotel.

Bennett used to complain of pains in his head, caused by an old wound. He told Ottmann that he was in the habit of using morphine and whiskey to allay his suffering. Just where he secured the morphine Bennett did not say but he stated that the whiskey was supplied at the army post. The pain annoyed Bennett so much that the witness thought it had affected his brain. On several occasions Bennett would order coffee and a sandwich at the resort of Ottmann and after partaking of it go away and return a few minutes later and again ask for coffee. He would be informed that he had already eaten and the scout would reply in a surprised sort of way that he had.

On the night of November 5, Bennett was considerably under the influence of liquor and attempted to deliver an address at Prince David's luncheon. He was jeered by the crowd and this seemed to cut him to the quick, for he was very depressed over the occurrence and talked to Ottmann of wanting to quit living. Bennett declared that he had lived long enough anyhow. Ottmann feared that the man might attempt suicide so he persuaded him to go to the Ocean View. Bennett called for a glass of soda water, which was given him and to the surprise of the crowd he went to bed.

(Continued on page five)

CASE IN SUPREME COURT LET SLIDE.

Lawyers Will Not Answer for Defense On Appeal—Rev. Mr. Azbill Might Look Into This.

Chief Justice Frear and Justice Perry today signed a decision in the case of Malani, et al. vs. Alapai, et al., regarding a deed, reversing the decision of the judge of the Fourth Circuit sustaining the demurrer and dismissing the bill, and remanding the case back for further action. This case is peculiar for the reason that it was absolutely deserted in the Supreme court by the attorneys for defendants. Mr. Maydwell refuses absolutely to have anything to do with it and even neglected to appear in court. Gardner K. Wilder, the other attorney, appeared in court but refused to defend the case. Carl S. Smith, attorney for plaintiff appellant, insisted upon a hearing and the case was allowed. He made a twenty minutes talk and submitted the matter. The decision is short, its whole intent being reversal of the decision of the lower court.

Suit has been brought by the Hawaiian Trust & Investment Co. against Annie Barton, Helen A. Dunning and Gear, Lansing & Co., to have partition made of a piece of land on Hotel street near the Cook house. The plaintiff claims to an undivided one-fourth interest in the property and that Annie Barton and Helen Dunning are owners in fee simple of which Gear, Lansing & Co. are the lessees. Defendants have refused to have the land partitioned. E. D. Tenney and J. R. Galt, president and secretary respectively of the company, have signed the petition.

LOVE HAS COME BACK.

James H. Love, who was the manager for James Waldorf during her engagement here last year and also passed through Honolulu with the Nance O'Neill company during the plague, is a passenger on the Mowera en route to the Coast. He was in Australia with the O'Neill company there the star scored an immense success. He will return here with a vaudeville company this spring.

POLICE COURT CASES

JUDGE WILCOX DEALS OUT SOME JUSTICE.

Two Drunks Who Got in Twine During the Same Jags—Small Boys Under Arrests.

Judge Wilcox had a long list of small cases this morning, drunks coming first. Harry Miller and McPherson both reappeared on the list of drunks under very similar circumstances. Miller forfeited \$6 yesterday and showed up some hours after the forfeit was declared. He was somewhat tipsy as to the time of day and it was not long before he was under arrest again on another charge of being drunk.

This morning he explained that it was a champagne drunk, but the judge said that was no excuse, but only made matters worse, for there was no jag worse than a champagne jag. However, in consideration of the \$6 forfeit, Miller began to put up a talk to get his back. McPherson was arrested yesterday and he put up his back and got out before he had quite sobered up. He was soon in again and was not in condition to appear this morning.

William Mason was charged with heedless driving. He said that he had driven a horse before and his life being a sailor, and that the animal insisted upon going on a sidewalk. He was given a day to find witnesses.

A small boy named S. Kaweweha was up for disobeying the commands of his parents or guardians, but it came very doubtful whether he had any. Judge Kauikou offered to take the youngster for a time and look after him until his folks could be heard from on another island, and John went with Kauikou. Another small boy, who gave his only name as John, was up for truancy and was turned over to his father for treatment.

SAILORS DESERT.

A Boat Was Stolen From The Bark Bossuet.

A boat was stolen last night from the French bark Bossuet and two men deserted in her. They met two others who got away some time ago, at the Nuuanu bridge, where the boat was left and all four men are thought to be together.

The latest place for deserting seamen is in the colony of Portuguese beyond Moanalua, and the police are having great trouble in finding them. Captain Flint is on the trail of the men who left the Bossuet and will probably land them.

A new captain for the Bossuet is expected to arrive on the Sierra, to take the place of the man whose sickness caused the stop here. The Bossuet will then continue her journey to the Sound while her masts and spars have been painted white and her bottom has had a new coat, and she now presents a very handsome appearance.

THE BEST PLASTER.

A piece of flannel dampened with Chamberlain's Pain Balm and bound to the affected parts is superior to any plaster. When troubled with lame back or pains in the side or chest, give it a trial and you are certain to be more than pleased with the prompt relief which it affords. Pain Balm also cures rheumatism. One application gives relief. For sale by all dealers. Benson, Smith & Co., general agents, Hawaiian Islands.

CHRISTMAS MILLINERY.

Special bargains in millinery for Christmas at L. B. Kerr & Co.'s, Queen street.

McBryne's shoes are right in it. They are made by the leading factories of America, and consequently have no equal.

MINERNY SHOE STORE.

KAMEHAMEHA PUPILS HONOR MRS. BISHOP.

Grave of Their Patron Saint Decorated. Amidst Touching Ceremonies—Exercises at the Schools.

This is Founders' Day at Kamehameha schools and it is being observed as extensively as on any such days of the past. It is the great day of the year with the schools established by and with the money of the late Mrs. Bernice Pauahi Bishop. From morning until late at night is given over to diversions and ceremonies appropriate to such an occasion.

Early this morning five car loads of pupils went to the Maunaloa in Nuuanu valley had the usual services and decorated the grave of Mrs. Bishop. The cars went via King, Alakea, Berea, School and Nuuanu streets, returning the same way about 11 o'clock. The girls decorated the grave, the boys of the manual and training departments standing at attention, uncovered, during the proceedings. "Only remembered by the good we have done" was then sung by both schools in chorus. The Kamehameha Girls' School call was then given, the boys standing as before at attention.

This ended the ceremonies at the grave and the cars were once more taken on and the return made to the schools. At 1 o'clock this afternoon the luncheon in the manual department began. All of the pupils, teachers and a number of people from town were there. The luncheon lasted until 2 o'clock. The spread was very elaborate and was duly enjoyed by all present.

One of the principal events of the day will occur at 4:30 this afternoon when Prof. Theodore Richards, formerly principal of the schools will address all of the departments in the Bishop Memorial chapel. The classes will be assembled together there. There will first be the regularayer and song service and then the address. Music will be supplied by the three schools.

HONOLULU STOCK EXCHANGE.

Morning Session—Sales: On the board, 50 Ewa, 28.25; 50 Ewa, 28.25.

Quotations.	Bid.	Asked.
Ewa.	\$28.00	\$28.50
Hawaiian Sugar.	40.50	41.50
Honolulu.	162.50	163.50
Kahuku.	31.50	32.50
Kihel, assessable.	25.00	26.00
Kihel, paid up.	12.50	14.00
Kihel, paid up.	17.50	18.75
Kipahulu.	110.00	111.00
Kona.	100.00	101.00
McBryde, assessable.	9.75	9.875
McBryde, paid up.	14.25	14.50
Oahu.	165.00	166.00
Ookala.	14.75	15.25
Olaa, assessable.	4.25	4.50
Olaa, paid up.	15.00	15.50
Olowalu.	150.00	151.00
Pala.	240.00	241.00
Peepee.	100.00	101.00
Pioneer.	150.00	151.00
Wailua Agricultural.	116.00	118.00
Waimanalo.	145.00	147.00
Waimanalo.	105.00	106.00
Wilder Steamship.	105.00	106.00
Inter-Island.	100.00	101.00
Hawaiian Electric.	105.00	106.00
Mutual Telephone.	15.00	15.50
People's Ice.	70.00	71.00
Hawaiian Govt. 6's.	100.00	101.00
Hilo Railroad Co. 6's.	101.00	102.00
Hono. Rapid Transit 6's.	101.00	102.00
Ewa 6's.	101.00	102.00
Oahu Railway Bonds.	101.50	102.00
Oahu Plantation 6's.	101.00	102.00

LIVE TURKEYS FOR CHRISTMAS.

On the by Telephone No. 131. All orders sent in up to Monday 10 a. m., December 24th, will be delivered wherever desired.

HENRY DAVIS.

ENDOWMENT BOND.

Do you know that an Endowment Bond in the Provident Savings Life Assurance Society combines protection and investment, and at the end of twenty years the principal sum would be paid to you in cash with accumulated profits, and in event of death during the premium paying term, a cash addition to the principal sum assured, representing a return of from thirty to ninety per cent of the total premiums paid would be included in the amount then due and payable to your beneficiary? I. R. Burns, resident manager, New Maroon Building.

EMBROIDERED HANDKERCHIEFS.

A wonderful display of embroidered handkerchiefs 25 cents each at L. B. Kerr & Co., Queen street.

Style, Fit and Wear

Are most happily blended

In our new arrivals of Ladies' Slippers One, Two and Three Straps, slipped from the most recent last's of the Fashion Leading Shoe Manufacturers in the Eastern States.

These Slippers are all selected. Patterned and Guaranteed to be the Styles of the day.

They are just to hand and some of these elegant Slippers are in our display window.

\$1.50 to \$7.50 per Pair

MANUFACTURERS SHOE COMPANY

McBryne's shoes are right in it. They are made by the leading factories of America, and consequently have no equal.

MINERNY SHOE STORE.

Thurston Avenue Property IS VALUABLE.

We offer the Sharp Homestead on Thurston Avenue, adjoining the residence ground of George Davies Esq., and opposite to W. G. Ashley, Esq. Grounds contain 1-3 acre. House in good condition. Attractive growth of trees and shrubbery. PRICE, \$11,000.00

McClellan, Pond & Co.

Telephone Main 69. Judd Building.

Canadian-Australian Royal Mail STEAMSHIP COMPANY

Steamers of the above line, running in connection with the CANADIAN PACIFIC RAILWAY COMPANY between Vancouver, B. C., and Sydney, N. S. W., and calling at Victoria, B. C., Honolulu and Brisbane, Q., are

Due at Honolulu on or about the dates below stated, viz:

From Vancouver and Victoria, B. C., for Brisbane and Sydney:	From Sydney and Brisbane, for Victoria and Vancouver, B. C.:
WARRIMOO DEC. 22	MIOWERA DEC. 19
MIOWERA JAN. 19	WARRIMOO JAN. 16
AORANGI FEB. 16	WARRIMOO FEB. 13
WARRIMOO MARCH 13	MIOWERA MARCH 10
AORANGI APRIL 10	WARRIMOO APRIL 7
MIOWERA MAY 5	WARRIMOO MAY 2
WARRIMOO JUNE 2	MIOWERA JUNE 5

The magnificent new service the "Imperial Limited" is now running daily

BETWEEN VANCOUVER AND MONTREAL

Making the run 100 hours without change. The finest Railway service in the world.

Through tickets issued from Honolulu to Canada, United States and Europe.

For freight and passage and all general information, apply to

THEO. H. DAVIES & CO., Ltd., Gen'l Agts.

Pacific Mail Steamship Co.

Occidental & Oriental S. S. Co. and Toyo Kisen Kaisha.

Steamers of the above Companies will call at Honolulu and leave this port on or about the dates below mentioned:

FOR JAPAN AND CHINA:		FOR SAN FRANCISCO:	
RIO DE JANEIRO DEC. 21	PEKING DEC. 25	GAELIC JAN. 1	GAELIC JAN. 1
AMERICA MARU DEC. 22	HONGKONG MARU JAN. 10	HONGKONG MARU JAN. 10	HONGKONG MARU JAN. 10
AMERICA MARU JAN. 5	CHINA JAN. 15	CHINA JAN. 15	CHINA JAN. 15
AMERICA MARU JAN. 15	CHINA JAN. 22	CHINA JAN. 22	CHINA JAN. 22
AMERICA MARU JAN. 22	CHINA FEB. 5	CHINA FEB. 5	CHINA FEB. 5
AMERICA MARU FEB. 5	CHINA FEB. 12	CHINA FEB. 12	CHINA FEB. 12
AMERICA MARU FEB. 12	CHINA FEB. 19	CHINA FEB. 19	CHINA FEB. 19
AMERICA MARU FEB. 19	CHINA FEB. 26	CHINA FEB. 26	CHINA FEB. 26
AMERICA MARU FEB. 26	CHINA MARCH 5	CHINA MARCH 5	CHINA MARCH 5
AMERICA MARU MARCH 5	CHINA MARCH 12	CHINA MARCH 12	CHINA MARCH 12
AMERICA MARU MARCH 12	CHINA MARCH 19	CHINA MARCH 19	CHINA MARCH 19
AMERICA MARU MARCH 19	CHINA MARCH 26	CHINA MARCH 26	CHINA MARCH 26
AMERICA MARU MARCH 26	CHINA APRIL 2	CHINA APRIL 2	CHINA APRIL 2
AMERICA MARU APRIL 2	CHINA APRIL 9	CHINA APRIL 9	CHINA APRIL 9
AMERICA MARU APRIL 9	CHINA APRIL 16	CHINA APRIL 16	CHINA APRIL 16
AMERICA MARU APRIL 16	CHINA APRIL 23	CHINA APRIL 23	CHINA APRIL 23
AMERICA MARU APRIL 23	CHINA APRIL 30	CHINA APRIL 30	CHINA APRIL 30
AMERICA MARU APRIL 30	CHINA MAY 7	CHINA MAY 7	CHINA MAY 7
AMERICA MARU MAY 7	CHINA MAY 14	CHINA MAY 14	CHINA MAY 14
AMERICA MARU MAY 14	CHINA MAY 21	CHINA MAY 21	CHINA MAY 21
AMERICA MARU MAY 21	CHINA MAY 28	CHINA MAY 28	CHINA MAY 28
AMERICA MARU MAY 28	CHINA JUNE 4	CHINA JUNE 4	CHINA JUNE 4
AMERICA MARU JUNE 4	CHINA JUNE 11	CHINA JUNE 11	CHINA JUNE 11
AMERICA MARU JUNE 11	CHINA JUNE 18	CHINA JUNE 18	CHINA JUNE 18
AMERICA MARU JUNE 18	CHINA JUNE 25	CHINA JUNE 25	CHINA JUNE 25
AMERICA MARU JUNE 25	CHINA JULY 2	CHINA JULY 2	CHINA JULY 2
AMERICA MARU JULY 2	CHINA JULY 9	CHINA JULY 9	CHINA JULY 9
AMERICA MARU JULY 9	CHINA JULY 16	CHINA JULY 16	CHINA JULY 16
AMERICA MARU JULY 16	CHINA JULY 23	CHINA JULY 23	CHINA JULY 23
AMERICA MARU JULY 23	CHINA JULY 30	CHINA JULY 30	CHINA JULY 30
AMERICA MARU JULY 30	CHINA AUGUST 6	CHINA AUGUST 6	CHINA AUGUST 6
AMERICA MARU AUGUST 6	CHINA AUGUST 13	CHINA AUGUST 13	CHINA AUGUST 13
AMERICA MARU AUGUST 13	CHINA AUGUST 20	CHINA AUGUST 20	CHINA AUGUST 20
AMERICA MARU AUGUST 20	CHINA AUGUST 27	CHINA AUGUST 27	CHINA AUGUST 27
AMERICA MARU AUGUST 27	CHINA SEPTEMBER 3	CHINA SEPTEMBER 3	CHINA SEPTEMBER 3
AMERICA MARU SEPTEMBER 3	CHINA SEPTEMBER 10	CHINA SEPTEMBER 10	CHINA SEPTEMBER 10
AMERICA MARU SEPTEMBER 10	CHINA SEPTEMBER 17	CHINA SEPTEMBER 17	CHINA SEPTEMBER 17
AMERICA MARU SEPTEMBER 17	CHINA SEPTEMBER 24	CHINA SEPTEMBER 24	CHINA SEPTEMBER 24
AMERICA MARU SEPTEMBER 24	CHINA OCTOBER 1	CHINA OCTOBER 1	CHINA OCTOBER 1
AMERICA MARU OCTOBER 1	CHINA OCTOBER 8	CHINA OCTOBER 8	CHINA OCTOBER 8
AMERICA MARU OCTOBER 8	CHINA OCTOBER 15	CHINA OCTOBER 15	CHINA OCTOBER 15
AMERICA MARU OCTOBER 15	CHINA OCTOBER 22	CHINA OCTOBER 22	CHINA OCTOBER 22
AMERICA MARU OCTOBER 22	CHINA OCTOBER 29	CHINA OCTOBER 29	CHINA OCTOBER 29
AMERICA MARU OCTOBER 29	CHINA NOVEMBER 5	CHINA NOVEMBER 5	CHINA NOVEMBER 5
AMERICA MARU NOVEMBER 5	CHINA NOVEMBER 12	CHINA NOVEMBER 12	CHINA NOVEMBER 12
AMERICA MARU NOVEMBER 12	CHINA NOVEMBER 19	CHINA NOVEMBER 19	CHINA NOVEMBER 19
AMERICA MARU NOVEMBER 19	CHINA NOVEMBER 26	CHINA NOVEMBER 26	CHINA NOVEMBER 26
AMERICA MARU NOVEMBER 26	CHINA DECEMBER 3	CHINA DECEMBER 3	CHINA DECEMBER 3
AMERICA MARU DECEMBER 3	CHINA DECEMBER 10	CHINA DECEMBER 10	CHINA DECEMBER 10
AMERICA MARU DECEMBER 10	CHINA DECEMBER 17	CHINA DECEMBER 17	CHINA DECEMBER 17
AMERICA MARU DECEMBER 17	CHINA DECEMBER 24	CHINA DECEMBER 24	CHINA DECEMBER 24
AMERICA MARU DECEMBER 24	CHINA DECEMBER 31	CHINA DECEMBER 31	CHINA DECEMBER 31

For general information apply to

H. HACKFELD & CO., Ltd. Agts.

Oceanic Steamship Company.

TIME TABLE

The fine Passenger Steamers of this line will arrive at and leave this port as hereunder:

FROM SAN FRANCISCO:		FOR SAN FRANCISCO:	
ZEALANDIA DEC. 18	ALAMEDA DEC. 17	ZEALANDIA JAN. 1	ALAMEDA JAN. 1
ZEALANDIA JAN. 2	ZEALANDIA JAN. 5	ZEALANDIA JAN. 5	ZEALANDIA JAN. 5
ZEALANDIA JAN. 8	ZEALANDIA JAN. 12	ZEALANDIA JAN. 12	ZEALANDIA JAN. 12
ZEALANDIA JAN. 15	ZEALANDIA JAN. 19	ZEALANDIA JAN. 19	ZEALANDIA JAN. 19
ZEALANDIA JAN. 22	ZEALANDIA JAN. 26	ZEALANDIA JAN. 26	ZEALANDIA JAN. 26
ZEALANDIA JAN. 29	ZEALANDIA FEB. 2	ZEALANDIA FEB. 2	ZEALANDIA FEB. 2
ZEALANDIA FEB. 5	ZEALANDIA FEB. 9	ZEALANDIA FEB. 9	ZEALANDIA FEB. 9
ZEALANDIA FEB. 12	ZEALANDIA FEB. 16	ZEALANDIA FEB. 16	ZEALANDIA FEB. 16
ZEALANDIA FEB. 19	ZEALANDIA FEB. 23	ZEALANDIA FEB. 23	ZEALANDIA FEB. 23
ZEALANDIA FEB. 26	ZEALANDIA FEB. 26	ZEALANDIA FEB. 26	ZEALANDIA FEB. 26
ZEALANDIA MARCH 2	ZEALANDIA MARCH 5	ZEALANDIA MARCH 5	ZEALANDIA MARCH 5
ZEALANDIA MARCH 8	ZEALANDIA MARCH 12	ZEALANDIA MARCH 12	ZEALANDIA MARCH 12
ZEALANDIA MARCH 15	ZEALANDIA MARCH 19	ZEALANDIA MARCH 19	ZEALANDIA MARCH 19
ZEALANDIA MARCH 22	ZEALANDIA MARCH 26	ZEALANDIA MARCH 26	ZEALANDIA MARCH 26
ZEALANDIA MARCH 29	ZEALANDIA MARCH 29	ZEALANDIA MARCH 29	ZEALANDIA MARCH 29
ZEALANDIA APRIL 1	ZEALANDIA APRIL 5	ZEALANDIA APRIL 5	ZEALANDIA APRIL 5
ZEALANDIA APRIL 4	ZEALANDIA APRIL 8	ZEALANDIA APRIL 8	ZEALANDIA APRIL 8
ZEALANDIA APRIL 7	ZEALANDIA APRIL 12	ZEALANDIA APRIL 12	ZEALANDIA APRIL 12
ZEALANDIA APRIL 10	ZEALANDIA APRIL 15	ZEALANDIA APRIL 15	ZEALANDIA APRIL 15
ZEALANDIA APRIL 13	ZEALANDIA APRIL 19	ZEALANDIA APRIL 19	ZEALANDIA APRIL 19
ZEALANDIA APRIL 16	ZEALANDIA APRIL 23	ZEALANDIA APRIL 23	ZEALANDIA APRIL 23
ZEALANDIA APRIL 19	ZEALANDIA APRIL 26	ZEALANDIA APRIL 26	ZEALANDIA APRIL 26
ZEALANDIA APRIL 22	ZEALANDIA APRIL 29	ZEALANDIA APRIL 29	ZEALANDIA APRIL 29
ZEALANDIA APRIL 25	ZEALANDIA MAY 3	ZEALANDIA MAY 3	ZEALANDIA MAY 3
ZEALANDIA APRIL 28	ZEALANDIA MAY 6	ZEALANDIA MAY 6	ZEALANDIA MAY 6
ZEALANDIA APRIL 31	ZEALANDIA MAY 9	ZEALANDIA MAY 9	ZEALANDIA MAY 9
ZEALANDIA MAY 4	ZEALANDIA MAY 12	ZEALANDIA MAY 12	ZEALANDIA MAY 12
ZEALANDIA MAY 7	ZEALANDIA MAY 16	ZEALANDIA MAY 16	ZEALANDIA MAY 16
ZEALANDIA MAY 10	ZEALANDIA MAY 19	ZEALANDIA MAY 19	ZEALANDIA MAY 19
ZEALANDIA MAY 13	ZEALANDIA MAY 23	ZEALANDIA MAY 23	ZEALANDIA MAY 23
ZEALANDIA MAY 16	ZEALANDIA MAY 26	ZEALANDIA MAY 26	ZEALANDIA MAY 26
ZEALANDIA MAY 19	ZEALANDIA MAY 29	ZEALANDIA MAY 29	ZEALANDIA MAY 29
ZEALANDIA MAY 22	ZEALANDIA JUNE 2	ZEALANDIA JUNE 2	ZEALANDIA JUNE 2
ZEALANDIA MAY 25	ZEALANDIA JUNE 5	ZEALANDIA JUNE 5	ZEALANDIA JUNE 5
ZEALANDIA MAY 28	ZEALANDIA JUNE 9	ZEALANDIA JUNE 9	ZEALANDIA JUNE 9
ZEALANDIA MAY 31	ZEALANDIA JUNE 12	ZEALANDIA JUNE 12	ZEALANDIA JUNE 12
ZEALANDIA JUNE 3	ZEALANDIA JUNE 16	ZEALANDIA JUNE 16	ZEALANDIA JUNE 16
ZEALANDIA JUNE 6	ZEALANDIA JUNE 19	ZEALANDIA JUNE 19	ZEALANDIA JUNE 19
ZEALANDIA JUNE 9	ZEALANDIA JUNE 23	ZEALANDIA JUNE 23	ZEALANDIA JUNE 23
ZEALANDIA JUNE 12	ZEALANDIA JUNE 26	ZEALANDIA JUNE 26	ZEALANDIA JUNE 26
ZEALANDIA JUNE 15	ZEALANDIA JUNE 29	ZEALANDIA JUNE 29	ZEALANDIA JUNE 29
ZEALANDIA JUNE 18	ZEALANDIA JULY 3	ZEALANDIA JULY 3	ZEALANDIA JULY 3
ZEALANDIA JUNE 21	ZEALANDIA JULY 6	ZEALANDIA JULY 6	ZEALANDIA JULY 6
ZEALANDIA JUNE 24	ZEALANDIA JULY 9	ZEALANDIA JULY 9	ZEALANDIA JULY 9
ZEALANDIA JUNE 27	ZEALANDIA JULY 12	ZEALANDIA JULY 12	ZEALANDIA JULY 12
ZEALANDIA JUNE 30	ZEALANDIA JULY 16	ZEALANDIA JULY 16	ZEALANDIA JULY 16
ZEALANDIA JULY 3	ZEALANDIA JULY 19	ZEALANDIA JULY 19	ZEALANDIA JULY 19
ZEALANDIA JULY 6	ZEALANDIA JULY 23	ZEALANDIA JULY 23	ZEALANDIA JULY 23
ZEALANDIA JULY 9	ZEALANDIA JULY 26	ZEALANDIA JULY 26	ZEALANDIA JULY 26
ZEALANDIA JULY 12	ZEALANDIA JULY 29	ZEALANDIA JULY 29	ZEALANDIA JULY 29
ZEALANDIA JULY 15	ZEALANDIA AUGUST 2	ZEALANDIA AUGUST 2	ZEALANDIA AUGUST 2
ZEALANDIA JULY 18	ZEALANDIA AUGUST 5	ZEALANDIA AUGUST 5	ZEALANDIA AUGUST 5
ZEALANDIA JULY 21	ZEALANDIA AUGUST 9	ZEALANDIA AUGUST 9	ZEALANDIA AUGUST 9
ZEALANDIA JULY 24	ZEALANDIA AUGUST 12	ZEALANDIA AUGUST 12	ZEALANDIA AUGUST 12
ZEALANDIA JULY 27	ZEALANDIA AUGUST 16	ZEALANDIA AUGUST 16	ZEALANDIA AUGUST 16
ZEALANDIA JULY 30	ZEALANDIA AUGUST 19	ZEALANDIA AUGUST 19	ZEALANDIA AUGUST 19
ZEALANDIA AUGUST 2	ZEALANDIA AUGUST 23	ZEALANDIA AUGUST 23	ZEALANDIA AUGUST 23
ZEALANDIA AUGUST 5	ZEALANDIA AUGUST 26	ZEALANDIA AUGUST 26	ZEALANDIA AUGUST 26
ZEALANDIA AUGUST 8	ZEALANDIA AUGUST 29	ZEALANDIA AUGUST 29	ZEALANDIA AUGUST 29
ZEALANDIA AUGUST 11	ZEALANDIA SEPTEMBER 2	ZEALANDIA SEPTEMBER 2	ZEALANDIA SEPTEMBER 2
ZEALANDIA AUGUST 14	ZEALANDIA SEPTEMBER 5	ZEALANDIA SEPTEMBER 5	ZEALANDIA SEPTEMBER 5
ZEALANDIA AUGUST 17	ZEALANDIA SEPTEMBER 9	ZEALANDIA SEPTEMBER 9	ZEALANDIA SEPTEMBER 9
ZEALANDIA AUGUST 20	ZEALANDIA SEPTEMBER 12	ZEALANDIA SEPTEMBER 12	ZEALANDIA SEPTEMBER 12
ZEALANDIA AUGUST 23	ZEALANDIA SEPTEMBER 16	ZEALANDIA SEPTEMBER 16	ZEALANDIA SEPTEMBER 16
ZEALANDIA AUGUST 26	ZEALANDIA SEPTEMBER 19	ZEALANDIA SEPTEMBER 19	ZEALANDIA SEPTEMBER 19
ZEALANDIA AUGUST 29	ZEALANDIA SEPTEMBER 23	ZEALANDIA SEPTEMBER 23	ZEALANDIA SEPTEMBER 23
ZEALANDIA SEPTEMBER 1	ZEALANDIA SEPTEMBER 26	ZEALANDIA SEPTEMBER 26	ZEALANDIA SEPTEMBER 26
ZEALANDIA SEPTEMBER 4	ZEALANDIA SEPTEMBER 29	ZEALANDIA SEPTEMBER 29	ZEALANDIA SEPTEMBER 29
ZEALANDIA SEPTEMBER 7	ZEALANDIA OCTOBER 2	ZEALANDIA OCTOBER 2	ZEALANDIA OCTOBER 2
ZEALANDIA SEPTEMBER 10	ZEALANDIA OCTOBER 5	ZEALANDIA OCTOBER 5	ZEALANDIA OCTOBER 5
ZEALANDIA SEPTEMBER 13	ZEALANDIA OCTOBER 9	ZEALANDIA OCTOBER 9	ZEALANDIA OCTOBER 9
ZEALANDIA SEPTEMBER 16	ZEALANDIA OCTOBER 12	ZEALANDIA OCTOBER 12	ZEALANDIA OCTOBER 12
ZEALANDIA SEPTEMBER 19	ZEALANDIA OCTOBER 16	ZEALANDIA OCTOBER 16	ZEALANDIA OCTOBER 16
ZEALANDIA SEPTEMBER 22	ZEALANDIA OCTOBER 19	ZEALANDIA OCTOBER 19	ZEALANDIA OCTOBER 19
ZEALANDIA SEPTEMBER 25	ZEALANDIA OCTOBER 23	ZEALANDIA OCTOBER 23	ZEALANDIA OCTOBER 23
ZEALANDIA SEPTEMBER 28	ZEALANDIA OCTOBER 26	ZEALANDIA OCTOBER 26	ZEALANDIA OCTOBER 26
ZEALANDIA OCTOBER 1	ZEALANDIA OCTOBER 29	ZEALANDIA OCTOBER 29	ZEALANDIA OCTOBER 29
ZEALANDIA OCTOBER 4	ZEALANDIA NOVEMBER 2	ZEALANDIA NOVEMBER 2	ZEALANDIA NOVEMBER 2
ZEALANDIA OCTOBER 7	ZEALANDIA NOVEMBER 5	ZEALANDIA NOVEMBER 5	ZEALANDIA NOVEMBER 5
ZEALANDIA OCTOBER 10	ZEALANDIA NOVEMBER 9	ZEALANDIA NOVEMBER 9	ZEALANDIA NOVEMBER 9
ZEALANDIA OCTOBER 13	ZEALANDIA NOVEMBER 12	ZEALANDIA NOVEMBER 12	ZEALANDIA NOVEMBER 12
ZEALANDIA OCTOBER 16	ZEALANDIA NOVEMBER 16	ZEALANDIA NOVEMBER 16	ZEALANDIA NOVEMBER 16
ZEALANDIA OCTOBER 19	ZEALANDIA NOVEMBER 19	ZEALANDIA NOVEMBER 19	ZEALANDIA NOVEMBER 19
ZEALANDIA OCTOBER 22	ZEALANDIA NOVEMBER 23	ZEALANDIA NOVEMBER 23	ZEALANDIA NOVEMBER 23
ZEALANDIA OCTOBER 25	ZEALANDIA NOVEMBER 26	ZEALANDIA NOVEMBER 26	ZEALANDIA NOVEMBER 26
ZEALANDIA OCTOBER 28	ZEALANDIA NOVEMBER 29	ZEALANDIA NOVEMBER 29	ZEALANDIA NOVEMBER 29
ZEALANDIA OCTOBER 31	ZEALANDIA DECEMBER 2	ZEALANDIA DECEMBER 2	ZEALANDIA DECEMBER 2
ZEALANDIA NOVEMBER 3	ZEALANDIA DECEMBER 5	ZEALANDIA DECEMBER 5	ZEALANDIA DECEMBER 5
ZEALANDIA NOVEMBER 6	ZEALANDIA DECEMBER 9	ZEALANDIA DECEMBER 9	ZEALANDIA DECEMBER 9
ZEALANDIA NOVEMBER 9	ZEALANDIA DECEMBER 12	ZEALANDIA DECEMBER 12	ZEALANDIA DECEMBER 12
ZEALANDIA NOVEMBER 12	ZEALANDIA DECEMBER 16	ZEALANDIA DECEMBER 16	ZEALANDIA DECEMBER 16
ZEALANDIA NOVEMBER 15	ZEALANDIA DECEMBER 19	ZEALANDIA DECEMBER 19	ZEALANDIA DECEMBER 19
ZEALANDIA NOVEMBER 18	ZEALANDIA DECEMBER 23	ZEALANDIA DECEMBER 23	ZEALANDIA DECEMBER 23
ZEALANDIA NOVEMBER 21	ZEALANDIA DECEMBER 26	ZEALANDIA DECEMBER 26	ZEALANDIA DECEMBER 26
ZEALANDIA NOVEMBER 24	ZEALANDIA DECEMBER 29	ZEALANDIA DECEMBER 29	ZEALANDIA DECEMBER 29
ZEALANDIA NOVEMBER 27	ZEALANDIA JANUARY 2	ZEALANDIA JANUARY 2	ZEALANDIA JANUARY 2
ZEALANDIA NOVEMBER 30	ZEALANDIA JANUARY 5	ZEALANDIA JANUARY 5	ZEALANDIA JANUARY 5
ZEALANDIA DECEMBER 3	ZEALANDIA JANUARY 9	ZEALANDIA JANUARY 9	ZEALANDIA JANUARY 9
ZEALANDIA DECEMBER 6	ZEALANDIA JANUARY 12	ZEALANDIA JANUARY 12	ZEALANDIA JANUARY 12
ZEALANDIA DECEMBER 9	ZEALANDIA JANUARY 16	ZEALANDIA JANUARY 16	ZEALANDIA JANUARY 16
ZEALANDIA DECEMBER 12	ZEALANDIA JANUARY 19	ZEALANDIA JANUARY 19	ZEALANDIA JANUARY 19
ZEALANDIA DECEMBER 15	ZEALANDIA JANUARY 23	ZEALANDIA JANUARY 23	ZEALANDIA JANUARY 23
ZEALANDIA DECEMBER 18	ZEALANDIA JANUARY 26	ZEALANDIA JANUARY 26	ZEALANDIA JANUARY 26
ZEALANDIA DECEMBER 21	ZEALANDIA JANUARY 29	ZEALANDIA JANUARY 29	ZEALANDIA JANUARY 29
ZEALANDIA DECEMBER 24	ZEALANDIA FEBRUARY 2	ZEALANDIA FEBRUARY 2	ZEALANDIA FEBRUARY 2
ZEALANDIA DECEMBER 27	ZEALANDIA FEBRUARY 5	ZEALANDIA FEBRUARY 5	ZEALANDIA FEBRUARY 5
ZEALANDIA DECEMBER 30	ZEALANDIA FEBRUARY 9	ZEALANDIA FEBRUARY 9	ZEALANDIA FEBRUARY 9
ZEALANDIA JANUARY 2	ZEALANDIA FEBRUARY 12	ZEALANDIA FEBRUARY 12	ZEALANDIA FEBRUARY 12
ZEALANDIA JANUARY 5	ZEALANDIA FEBRUARY 16	ZEALANDIA FEBRUARY 16	ZEALANDIA FEBRUARY 16
ZEALANDIA JANUARY 8	ZEALANDIA FEBRUARY 19	ZEALANDIA FEBRUARY 19	ZEALANDIA FEBRUARY 19
ZEALANDIA JANUARY 11	ZEALANDIA FEBRUARY 23	ZEALANDIA FEBRUARY 23	ZEALANDIA FEBRUARY 23
ZEALANDIA JANUARY 14	ZEALANDIA FEBRUARY 26	ZEALANDIA FEBRUARY 26	ZEALANDIA FEBRUARY 26
ZEALANDIA JANUARY 17	ZEALANDIA FEBRUARY 29	ZEALANDIA FEBRUARY 29	ZEALANDIA FEBRUARY 29
ZEALANDIA JANUARY 20	ZEALANDIA MARCH 2	ZEALANDIA MARCH 2	ZEALANDIA MARCH 2
ZEALANDIA JANUARY 23	ZEALANDIA MARCH 5	ZEALANDIA MARCH 5	ZEALANDIA MARCH 5
ZEALANDIA JANUARY 26	ZEALANDIA MARCH 9	ZEALANDIA MARCH 9	ZEALANDIA MARCH 9
ZEALANDIA JANUARY 29	ZEALANDIA MARCH 12	ZEALANDIA MARCH 12	ZEALANDIA MARCH 12
ZEALANDIA FEBRUARY 1	ZEALANDIA MARCH 16	ZEALANDIA MARCH 16	ZEALANDIA MARCH 16
ZEALANDIA FEBRUARY 4	ZEALANDIA MARCH 19	ZEALANDIA MARCH 19	ZEALANDIA MARCH 19
ZEALANDIA FEBRUARY 7	ZEALANDIA MARCH 23	ZEALANDIA MARCH 23	ZEALANDIA MARCH 23
ZEALANDIA FEBRUARY 10	ZEALANDIA MARCH 26	ZEALANDIA MARCH 26	ZEALANDIA MARCH 26
ZEALANDIA FEBRUARY 13	ZEALANDIA MARCH 29	ZEALANDIA MARCH 29	ZEALANDIA MARCH 29
ZEALANDIA FEBRUARY 16	ZEALANDIA APRIL 2	ZEALANDIA APRIL 2	ZEALANDIA APRIL 2
ZEALANDIA FEBRUARY 19	ZEALANDIA APRIL 5	ZEALANDIA APRIL 5	ZEALANDIA APRIL 5
ZEALANDIA FEBRUARY 22	ZEALANDIA APRIL 9	ZEALANDIA APRIL 9	ZEALANDIA APRIL 9
ZEALANDIA FEBRUARY 25	ZEALANDIA APRIL 12	ZEALANDIA APRIL 12	ZEALANDIA APRIL 12
ZEALANDIA FEBRUARY 28	ZEALANDIA APRIL 16	ZEALANDIA APRIL 16	ZEALANDIA APRIL 16
ZEALANDIA MARCH 1	ZEALANDIA APRIL 19	ZEALANDIA APRIL 19	ZEALANDIA APRIL 19
ZEALANDIA MARCH 4	ZEALANDIA APRIL 23	ZEALANDIA APRIL 23	ZEALANDIA APRIL 23
ZEALANDIA MARCH 7	ZEALANDIA APRIL 26	ZEALANDIA APRIL 26	ZEALANDIA APRIL 26
ZEALANDIA MARCH 10			

Aching Bones,

pain in the back running up the spinal column to the base of the brain, eyes feverish and bloodshot, a stuffy feeling in the head, scalding discharge from the nose, sneezing, sore throat, cough, pain in chest—these are all signs of grip's ravaging effect on the nerves. Grip weakens the heart, congests the lungs, destroys the appetite and lowers the vitality of the whole system. The best and safest remedy for overcoming the depressing and prostrating effects of grip is Dr. Miles' Nervine. It invigorates the appetite, assists digestion, quiets the nerves and brings restful, refreshing sleep. It builds up the nerve tissues, overcomes the aches and pains, steadies the nervous heart and puts new life and energy into broken-down men and women as nothing else can.

"Four years ago I had a very severe attack of La Grippe, which settled in the back of my head and spinal cord. I had distressing pains in my head and back, my bones ached all the time and I became extremely nervous and restless. I could not sleep for days and nights together, my brain became seriously affected and I thought I should lose my mind. For two years my condition grew steadily worse and then I commenced taking Dr. Miles' Nervine. In a few days I was able to sleep naturally and continued to improve from that time on until my health was completely restored." Miss Sue Godwin, Opelika, Ala.

Dr. Miles' Nervine

Is sold at all drug stores on a positive guarantee. Write for free advice and booklet to

Dr. Miles Medical Company.

Elkhart, Ind.

DR. A. E. NICHOLS,

DENTIST.

Office, Alakea Street with Dr. Anderson. Office hours: 9.30 a. m. to 4 p. m.

DR. C. B. HIGH,

DENTIST

Philadelphia Dental College, 1892.

Office: Masonic Temple.

Telephone, Main 218.

DR. I. MORI

136 Beretania St., bet. Emma and Fort Telephone 277; P. O. Box 843

Office hours: 9 to 12 a. m. and 7 to 8 p. m.; Sundays, 9 to 12 a. m.

DR. A. C. WALL, DR. O. E. WALL,

DENTISTS.

LOVE BUILDING, FORT STREET. Telephone 471.

OFFICE HOURS, 8 a. m. to 4 p. m.

DR. W. J. GALBRAITH,

OFFICE AND RESIDENCE:

Corner Beretania and Alakea Streets.

Office Hours: 9 to 10 a. m., 2 to 4 p. m., and 7 to 8 p. m. Sundays: 9 to 10 a. m., 7 to 8 p. m. TELEPHONE 204.

DR. A. J. DERBY,

DENTIST.

Mott-Smith Building, Cor. Fort and Hotel Sts., Honolulu, H. I.

Office Hours: 9 a. m. to 4 p. m.

M. S. GRINBAUM & CO.

Limited.

HONOLULU, H. I.

Commission Merchants and Importers of General Merchandise.

San Francisco Office, 215 Front Street.

T. R. MOSSMAN,

Real Estate Agent, Abstractor and Searcher of Titles, Loans Negotiated, Rents Collected.

Campbell Building, Merchant St.

J. H. FISHER & CO.,

Members of Honolulu Stock Exchange

Stock and Bond Brokers

411 Fort Street. Advance Made on Approved Security.

BEAVER LUNCH ROOM.

Fort Street. Opposite Wilder & Co.

H. J. NOLTE, Prop'r.

First-class Lunches served with tea, coffee, soda water, ginger ale or milk. Smokers' Requisites a Specialty.

Y. YUEN TAI,

No. 740 Fort St. near Kukui.

Dressmaker, Ladies' Underwear, Skirts, Chemises, Etc.

A large line of ready-made Mosquito Nets always on hand.

Telephone Main 82 P. O. Box 886

Y. SUGASHOTEN,

IMPORTER IN

Japanese Provisions

AND

Dry Goods

QUEEN AND ALAKEA STREETS.

WING TAI LUNG,

1048 Nuuanu Street.

DEALER IN

Crockery, Hardware and Glassware. Special lines of Christmas Goods now on exhibition.

STILL AFTER MR. AZBILL

HIS "UNFAIR TRIAL" PIPE DREAM WON'T DOWN.

Sheriff Andrews Hits Out From the Shoulder—Azbill Can't Play in Dole's Backyard Any More.

Following up an article of yesterday in which Judge Edging and the lawyers for the defense took Rev. W. K. Azbill to task for the assertion that the Kona strikers had not been given a fair trial, Sheriff Andrews, of Hawaii, says: "There is one item of truth in the entire statement of Mr. Azbill: There was a political meeting and Attorney George A. Davis went to it, but not until he had completed his business and arranged for an additional thirty days of time on appeal. It is my opinion that Mr. Davis made a tremendous fight for his clients. I thought so then and still think so. The accused men, one and all, were given a full and fair trial. It is my opinion that in his sentences Judge Edging was very lenient. The Japanese on trial intended to kill their man and left him in the belief that he was dead or nearly so. It was one of the meanest cases I have had to handle since my incumbency as sheriff of the island."

Attorney-General Dole has authorized the following statement:

"On the 13th day of May last a Japanese by the name of Okawa Yohachiro was attacked at Kailua, North Kona. Both of his legs, one of his arms and his nose were broken and he was otherwise severely injured. He was left apparently dead and the remarkable thing about the case is that he is still alive. Twelve Japanese were indicted for the crime at the October term of court at North Kohala."

"All had a full and fair trial by jury and one was acquitted and eleven were convicted. Mr. Cathcart, the Deputy Attorney General, who tried the case on behalf of the Territory, gave Mr. George A. Davis, the attorney for defendants, thirty days in which to perfect a bill of exceptions. He subsequently gave Messrs. Robertson and Wilder, who were also of counsel for the defendants, eighteen days more."

"If the allegations of Mr. Azbill had any foundation in fact, certainly Mr. Davis, Mr. Robertson and Wilder would have been prompt to take advantage of it. Sentences without trial and without pleas of guilty belong to the domain of Baron Munchausen."

NOBLITT'S CASE AGAIN

The case of Dr. W. S. Noblitt, charged with practicing medicine without a license, was reviewed by Judge Humphreys yesterday afternoon. The appeal was on law points. After a presentation of the case and argument by Deputy Attorney General Cathcart and C. C. Bittling, respective counsel, the court took the matter under advisement until Friday when a decision will be filed.

During the hearing Bittling made the sensational charge that Noblitt had been the victim of the "medicine trust" and had been turned down by "jealous brother doctors" of the Board of Health. "Medicine trust" is a term that has been frequently heard of late but this is the first time it has been used openly in court trial. The Board of Health that caused a revocation of the license of Dr. Noblitt was as follows: Henry E. Cooper, president; Dr. F. R. Day, Dr. C. B. Wood, Dr. N. B. Emerson, George W. Smith and L. D. Kellogg. The very same unimpeachable Dr. Wood, Dr. Day and Mr. Smith have since that time remained very firm in the belief that Noblitt should be kept from practicing. Dr. Cooper, successor to Dr. Day in the Board, retains the latter's set views on the matter. Dr. Emerson and Mr. Winston, of the Board as it now stands, seem to be willing to accept an "apology" from Dr. Noblitt.

Mr. Bittling contended before the court that no established regulation had been violated by his client and also called into question the authority of the Board to cancel a license for the offense charged. As the latter has been in the courts several times it has gained a notoriety and the result will be of interest.

PERTINENT MATTERS. A good many people who were predicting better prices on the reelection of McKinley are now wishing that their faith had been strong enough to induce them to buy corn.—Chicago Record.

NOTICE.

CHANGE OF SAILING. WILDER'S STEAMSHIP COMPANY.

Owing to Christmas and New Year days fall—on Tuesday, the steamers KINAU, CLAUDINE and LEHUA will sail on Wednesday, December 26th, and Wednesday, January 2d, at their regular hours, instead of on their regular days of sailing. Returning will arrive in Honolulu near as possible on scheduled time.

WILDER'S STEAMSHIP COMPANY.

TO LET.

A cottage of 5 rooms on River street, above Vineyard street. With modern improvements. Apply to J. A. M. Osorio at Luso Publishing Co.'s office, next Bishop's Bank.

BY AUTHORITY

Notice is hereby given that Edmund J. Lord, has this day been appointed Superintendent of Sewers for the City of Honolulu, Island of Oahu, Territory of Hawaii.

J. A. McCANDLESS, Superintendent of Public Works. Department of Public Works, Honolulu, December 17, 1900.

Y. LUM SING & CO.,

621 Fort Street.

Keep constantly on hand FRESH ISLAND BUTTER, FRUITS and VEGETABLES. Ice house goods by every steamer.

Family Groceries

Telephone 623.

TERRITORY OF HAWAII, Treasurer's Office.

Certificate of Increase

OF

CAPITAL STOCK

OF

THE BANK OF HAWAII, LTD.

I, Theo. F. Lansing, Treasurer of the Territory of Hawaii, U. S. A., in accordance with Section 11 Chapter XXIII of the Session Laws of 1894 relating to the increase of capital stock of incorporated Banking Companies do hereby certify that at a special meeting of the stockholders of The Bank of Hawaii, Ltd., held August 30, 1900, it was decided by a unanimous vote of more than two-thirds of the stockholders there represented, to increase the capital stock of said Bank from \$400,000.00 to \$600,000.00 by the issue of two thousand new shares, said increase to be issued October 15, 1900, and upon examination I am satisfied that said increase of \$200,000.00 was duly paid in on October 15, 1900 and that all the requirements of said law have been fully complied with. Given under my hand and the seal of the Treasurer's office this 18th day of October A. D. 1900.

(Seal) THEO. F. LANSING, Treasurer, Territory of Hawaii.

ESTABLISHED, 1858.

BISHOP & Co., Bankers

TRANSACT A GENERAL BANKING AND EXCHANGE BUSINESS.

COMMERCIAL AND TRAVELERS' LETTERS OF CREDIT ISSUED, AVAILABLE IN ALL THE PRINCIPAL CITIES OF THE WORLD.

Interest allowed after July 1st, 1900 on fixed deposits: 7 day notice 2 per cent, (this form will not bear interest unless it remains undisturbed for one month) 3 month 3 per cent; 6 months 3 1/2 per cent; 12 months 4 per cent.

CLAUS SPRECKELS, WM. G. IRWIN.

Claus Spreckels & Co. BANKERS.

HONOLULU, H. I.

San Francisco Agents—The Nevada National Bank of San Francisco.

DRAW EXCHANGE ON

SAN FRANCISCO—The Nevada National Bank of San Francisco.

LONDON—The Union Bank of London, Ltd.

NEW YORK—American Exchange National Bank.

CHICAGO—Merchants' National Bank.

PARIS—Credit Lyonnais.

BERLIN—Dresdner Bank.

HONGKONG AND YOKOHAMA—The Hongkong and Shanghai Banking Corporation.

NEW ZEALAND AND AUSTRALIA—Bank of New Zealand.

VICTORIA AND VANCOUVER—Bank of British North America.

TRANSACT A GENERAL BANKING AND EXCHANGE BUSINESS.

Deposits Received. Loans Made on Approved Security. Commercial and Travelers' Credits Issued. Bills of Exchange Bought and Sold.

COLLECTIONS PROMPTLY ACCOUNTED FOR.

BISHOP & CO. Savings Bank

Until further notice, Savings Deposits will be received and interest allowed on this Bank at four and one-half per cent per annum.

Printed copies of the Rules and Regulations may be obtained on application.

Office at Bank building on Merchant street.

BISHOP & CO.

P. O. Box 885. Tel. 562.

HIROSE SHOTEN,

Aala, cor. Beretania St.

GROCERY AND JAPANESE PROVISION

ISLAND POTATOES,

ALWAYS ON HAND.

A Summer Proposition.

Well, now there's the

ICE QUESTION!

You know you'll need ice; you know it's a necessity in hot weather. We believe you are anxious to get that ice which will give you satisfaction, and we'd like to supply you. Order from

THE OAHU ICE & ELECTRIC CO.,

HOFFMANN AND MARKHAM.

Telephone 3151 Blue, Postoffice Box 606.

LEE TIE,

Emma Street near Beretania.

Merchant Tailor,

Washing and Cleaning Suits, \$1.00
Dyeing Suits, \$2.50
Cleaning Ladies' Skirts, each, \$1.75
Dyeing Ladies' Skirts, each, \$1.50

FINKE & ASBAHR, FLOWERS.

Have removed from Mrs. Williams' Undertaking parlors to corner of Fort street and Kalia lane, opposite Catholic Mission.

The White House,

420 Fort Street.

Toys! Toys! Toys!

Wagons, Drums, Dolls and Hundreds of other Presents

For the Little Folks

For the Older Ones

Gloves, Handkerchiefs, Pocket Books, Perfumes, Belts, Umbrellas, Etc., Etc.

See Window Display

The

White House

Holiday Goods!

Silk Embroidered Piano Covers, Tydies, Table Covers, Center Pieces, Initial Silk Handkerchiefs, Ladies' Jackets, Gent's Smoking Jackets, Dressing Gowns, Etc., Etc., Etc.

Are the Things for Christmas Presents

IWAKAMI

HOTEL STREET

"The Only Way"

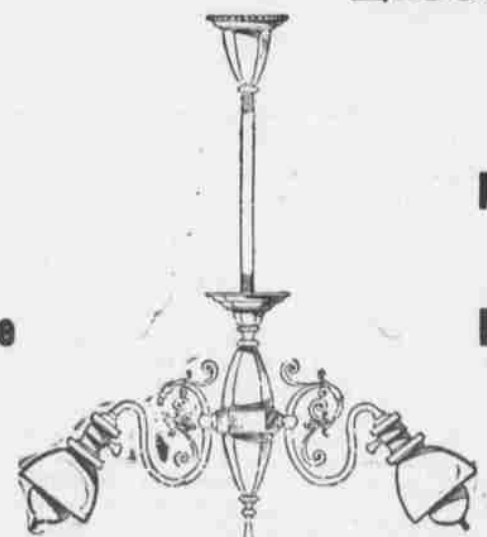
TO LIGHT A HOME, STORE, OFFICE, FACTORY, OR SHOP IS BY Electricity

No Odor

No Smoke

No Dirt

No Trouble



SPECIAL INDUCEMENTS

To those wishing to change from old methods of lighting, such as Candles and Oil to Electric Light.

THE HAWAIIAN ELECTRIC CO., LTD.,

P. O. Box 144. ALAKEA ST. MAKAI OF MERCHANT ST. "Phone" 230.

A Shipment

OF THE ONLY

Genuine Harzer Sauerbrunnen (KOENIGSQUELLE)

Just Received Per J. C. Glade

H. Hackfeld & Co., Ltd., Sole Agents

CASTLE & COOKE, LIMITED

Commission Merchants.

SUGAR - FACTORS.

AGENTS FOR

The Ewa Plantation Company.

The Waiulua Agricultural Co., Ltd.

The Kohala Sugar Company.

The Waimea Sugar Mill Company.

The Koloa Agricultural Company.

The Fulton Iron Works, St. Louis, Mo.

The Standard Oil Company.

The George F. Blake Steam Pumps.

Weston's Centrifugals.

The New England Mutual Life Insurance Company of Boston.

The Aetna Fire Insurance Company of Hartford, Conn.

The Alliance Assurance Company of London.

C. BREWER & CO., LTD.

Queen St., Honolulu, H. I.

AGENTS FOR

Hawaiian Agricultural Company, Onomea Sugar Company, Honoumua Sugar Company, Wailuku Sugar Company, Waiehe Sugar Company, Mahee Sugar Company, Haleakala Ranch Company, Kapapala Ranch.

Planters' Line San Francisco Packets.

Charles Brewer & Co's Line of Boston Packets.

Agents Boston Board of Underwriters.

Agents Philadelphia Board of Underwriters.

LIST OF OFFICERS.

P. C. JONES.....President

GEORGE H. ROBERTSON.....Manager

E. F. BISHOP.....Treasurer and Sec'y

COL. W. F. ALLEN.....Auditor

Directors.

C. M. COOKE, H. WATERHOUSE, GEORGE R. CARTER.

THE HAWAIIAN STAR

DAILY AND SEMI-WEEKLY.

Published every afternoon (except Sunday) by The Hawaiian Star Newspaper Association, Ltd.

FRANK L. HOOGE, Manager

SUBSCRIPTION RATES:
 Per Year (in advance).....\$ 8.00
 Three Months (in advance)..... 2.50
 Per Month (in advance)..... .75
 Foreign (per year, in advance).... 12.00

SEMI-WEEKLY SUBSCRIPTION.
 Local Subscribers, per annum.....\$2.00
 Foreign Subscribers, per annum.... 3.00
 (Strictly in Advance.)

WEDNESDAY, DECEMBER 19, 1900.

CLERICAL MISTAKE.

The Rev. W. K. Azbill made some very serious charges at the meeting of the Protective League Monday afternoon. These charges involved the condemnation of a judge of the Circuit court, and prominent members of the bar. The charges moreover reflected upon the grand jury.

The Star yesterday published interviews with Judge Edings, an appointee of President McKinley who tried the case. Judge Edings showed that the trial lasted for two days, and that the men were defended by George A. Davis a lawyer of eminence at the bar and of the very strictest integrity in his defense work for his clients. Yet the Rev. Azbill has charged these gentlemen with what amounts to a serious crime or what is its equivalent a malfeasance of office.

As we are starting out upon cases of this kind, apparently from the Rev. W. K. Azbill's statement, it may be well for those who make charges such as the reverend gentlemen has put forth, to be sure of their ground before they publicly denounce the wrong doings of others. To make charges is easy. To prove them is quite a different kind of thing. Haman ingenuity and fore sight has understood this for some thousands of years, and has punished those who make false charges variously, according to the state of civilization. In some civilizations they pulled out the false-finders tongues, in others they drove a pin through that organ. Then they took to cutting off ears and putting the gentlemen in pillory where dead cats, rotten fruit and ancient eggs became an incident, and it is said an unpleasant one. Later still we have the money payment for this kind of talk. Courts awarded damages for such attacks, if anyone cares to go before the courts to show the wrong that has been done. As a rule few care to go to the trouble, because the results do not pay for the expense and wrong.

Mr. Azbill's attack upon the Federal Courts of the United States are utterly unjustified. The evidence is clear, but Mr. Azbill's published statement may go far, and the correction may also go as far but it is unlikely that both will go together. The result is that a statement which is on the face of it wrong and which the bulk of laymen and professional men know must be wrong, will be knocked about from one religious, or quasi religious paper to another, giving a wrong impression, degrading one of the most honorable professions in the world, and striving to show that in spite of the fact that we have been annexed to the United States our judges, lawyers and jurors are unfit to occupy the positions they each hold.

It is time to call a halt upon such unfounded charges. To make sweeping charges as has been already said in this article is easy. The present writer remembers very well many years ago the charge being made in this city that there was no chaste woman in it. And that charge was brought by preacher, parson or clergyman, whatever he was pleased to be called. It was a lie, but it was one of those insidious lies which went crawling like a snake from San Francisco to Valparaiso and even farther. No man has any right to make sweeping assertions of this kind. No people have suffered more from such villainous assertions than the residents of these islands, both native and foreign.

As the chastity question has fallen into the back ground, the justice question appears to loom forward. It is presumably hard for untrained minds to sift evidence. The legal mind can do it and put up a good fight when it is sure the person is in the wrong, and will acknowledge it as soon as the fight is over. The newspaper mind equally values evidence, and on account of its legal penalties is doubly careful in weighing everything that comes before it. But the ecclesiastical mind in many cases, by no means all, sees only one side of the argument. It is looking for sin and wrong doing and it finds it, and when it is like the Rev. W. K. Azbill, or the Mahdi, or the Mad Mullah of the Chitral or half a dozen cranks on the mainland, it lets its voice be heard. Some times that voice brings ruin and desolation. It is fortunate if it only brings laughter. The Rev. W. K. Azbill has much to learn.

QUARRELLING WITH OUR BREAD.

It is curious how desirous some people are to kill the goose that lays the golden eggs. The prosperity of this country depends upon the sugar industry, yet there are numbers of people who honestly think and a greater number who dishonestly wish that it would be a good for the Territory to have that industry ruined. The ruin of the sugar industry would mean the ruin of every business in the place. Small farming, if it is to be successful will depend upon the success of sugar, and the consequent increase of the consumer. From the hackman to the hotel-keeper; from the huckster to the large retail store keeper, every one is dependent on the principal industry.

One never hears the people of Pitts-

burg inveighing against the iron industry and desiring to replace it by small stores, or the Californians railing against fruit farms or mines. They do all that they can to foster their industries. Everyone is interested in them and takes pride in their success. But here there is an idea fostered by the unsuccessful that a moneyed class has taken possession of every money making chance and that the industrious poor man can never get ahead. This is absolutely untrue. There is a manager of an important plantation who came to this country as a gardener. Another who commenced his career here as a plough man, another who not so many years ago was a clerk at \$50 per month, and so one might go on enumerating. Hawaii has been a wonderful field for success from small beginnings, and will continue to be so unless the disgruntled and unsuccessful are able to thwart progress. To win fortune has taken time, certainly, but it has not taken as much time as it does elsewhere.

HAS BEEN PUSHED ASIDE.

The attention of the world has been so concentrated first upon the Transvaal, and then upon China, that the problem in the Philippines has almost been lost sight of. But it is a very serious problem, and one of which the solution is even yet unknown. One of the main difficulties lies in locating the disaffected. The man who may be sniping officers and men today will be a peaceful citizen expressing the greatest loyalty to the United States Government tomorrow. Like the Boers, the Filipinos now use no uniform. It only requires a man to conceal his rifle and cartridges to become a friendly, and it only needs to resume them in order to become a guerrilla.

The Filipino guerrilla shoots his men from ambush. Here again he is like the Boer. Lord Roberts found that the Boer farmer would take the oath of allegiance and become a very peaceful citizen, and then when he saw a couple of soldiers quietly coming along the road, would unearth his rifle and pot one or both from behind a bush, or a wall. Against such methods it is hard for the military to contend, and yet they must contend. To leave the Philippines in their present condition is impossible. There must be order. Without the presence of United States troops there would be chaos and the destruction of what civilization now exists. The Philippines would become another Hayti and San Domingo, that disgrace to the West Indian Archipelago. Barbarism gilded with some attributes of civilization is found there, and in the Philippines it would be infinitely worse.

The losses in the Philippines for the six months from January 31, to July 31, 1900, were 24 officers and 971 enlisted men, of whom 4 officers and 204 men were killed outright, and 2 officers and 43 men died of wounds. The rest died from disease. It is plain that disease is a more potent factor in the slaughter of an army than the bullets of an enemy. The total deaths from the enemy was 254. Those who died from disease numbered 741.

The Cuban and Porto Rican problems have been fairly solved, or are on the high road to solution. The Philippines problem will find its solution most probably in a few months. The hopes that Filipino leaders built upon the victory of the Democratic party are completely shattered. The inevitable will have to be recognized. Already the lamp of American education is beginning to burn, and is received with joy. Education is the keynote to the situation in the Philippines.

The Stock Exchange shows a good deal of firmness, and will show more in a couple of weeks when money will be more free. The rise of McBryde has been a surprise to very many.

The death of the Peking Gazette, the oldest daily paper in the world, is a notable fact. If the Manchu dynasty gets on its legs again the old daily will be revived. The Boxers had a pleasing way of suppressing the paper and beheading editors, reporters, foremen and compositors. There has apparently been no rush for vacancies on the staff of late. Even men from the Topeka Capital have not offered their services.

It is satisfactory to know that the monument to Captain Cook at Kealahou bay is in good condition, and that H. B. M. S. "Icarus" had practically nothing to do in order to make the memorial in good shape. But that monument at Kealahou bay is a very cheap and a very unsatisfactory remembrance to a man who certainly was a pioneer in the waters which are only now being furrowed by many keels. Cook's ships were put out of the chance of being captured by belligerents. The agreement was a step towards national courtesy on scientific work which had not been known before.

San Francisco will not have plague at any price. That San Francisco has had cases of plague, and that its population has attempted to conceal cases of plague is an incontrovertible fact. How many cases have been successfully concealed is a matter which will never be found out. But San Francisco will one of these days pay a terrible penalty for her own selfishness. The golden twenty is ever before the San Francisco people. That the golden twenty should not be at hand to throw round would break the San Francisco heart. But when difficulties such as plague comes it is far better to meet them than to play the ostrich act. Honolulu met the plague and killed it. San Francisco has nursed the plague and now menaces Honolulu.

Looking

For Suitable Christmas Gifts is not such a difficult task; but finding them certainly is—

Perhaps we can assist you to make your selection from an elegant stock.

Our line never was more complete than this year; Consisting of

Leather Goods
 Perfumery
 Toilet sets
 Kodaks
 Etc., Etc.

And Other Suitable Articles too numerous to mention.

Call and inspect these goods before making your selection.

HOLLISTER DRUG CO.

Fort Street,
 Honolulu

Season of
1900

Gifts to Suit Everybody. Come and see the

Finest
 Display of
 Goods

Ever shown in Honolulu.

Our store will be open every evening, and beautifully illuminated with many powerful arc lights, and other lamps.

Do not miss this sight. We will welcome your visit, whether you buy or not.

W. W. DIMOND & CO.,
 LIMITED

IMPORTERS OF
 Crockery,
 Glass and
 House
 Furnishing
 Goods

Nos. 53, 55 and 57, King Street

The Lace House

Special Display this
 Week of Articles
 Suitable for **CHRISTMAS**

Hosiery in Silk and Lisle, Neckwear,
 Gloves, Silk Waists, Silk Skirts,
 Umbrellas, Parasols, Hand Painted
 Cushions, Table Centers, Lace Fichus
 and Opera Cloaks.

M. BRASCH & CO.

PHONE 157

Something New Under the Sun

Baker's Egg

A substitute for the whole egg. Contains both white and yolk, and makes delicious omelettes, scrambled eggs, waffles, pancakes, and the very best fancy pies, cakes, puddings, etc.

JUST THE ARTICLE TO USE AS A SUBSTITUTE FOR EGGS.

FOR SALE AT

HENRY MAY & CO., LTD.

Boston Block,
 Fort Street



Will make special
 arrangements during
 the Holidays for
 quick and efficient
 service in delivering
 packages, invitations
 Etc. Etc.
 TEL. MAIN 199

CONSOLIDATED SODA WATER WORKS
 (COMPANY, LTD.)
 Esplanade, cor. Allen and Fort St.
 HOLLISTER & CO., AGENTS.

A WONDERFUL TOY DISPLAY

AT

L. B. KERR & CO., LTD.

Toys of all kinds and description at
 prices one-half their worth

Trolley Cars, Automobiles, Railroad Trains that
 go of their own power, Walking Animals, Sing-
 ing Birds, Savings Banks that save and hold.
 Tools, Dolls, Trumpets, Wagons, Games, Mechan-
 ical Toys, Books.

An immense assortment of Christmas Tree
 necessities.

Really the largest assortment and most up to
 date collection of TOYS ever shown in this City at
 prices ONE-HALF their value.

L. B. KERR & CO., LTD.

QUEEN STREET

If you are looking for good
useful articles for

CHRISTMAS GIFTS

you cannot do better than
look over our

Extensive Assortment

in every department. We
were never better prepared
We have the

Latest Novelties in Millinery

Up-to-date goods in
Ladies' Muslin Underwear
Real Lace Handkerchiefs
Ribbons and Gloves and a
Splendid lot of Ladies' Capes

You Will Find Our Values Particularly Right

N. S. Sachs Dry Goods Co., Ltd
JOBBER AND RETAILERS

NATIVE! NATIVE!! NATIVE!!!

HATS

T. MURATA,

118 NUUANU STREET

**SELECT
Christmas .: Gifts**

PERFUMES

Lundborgs, Rickseckers, Atkinsons,
Pinauds, Lautiers, Roger & Gallets
Toilet Waters, Etc., Etc.

AT AMERICAN PRICES

Benson, Smith & Co.

LIMITED

FORT AND HOTEL STREETS

BAILEY'S : Telephone 398
BIKE :
ITS.... : P. O. Box 441

Children's Bicycles for Christmas gifts. We are making to order the
FINEST LITTLE BICYCLE in the neatest, daintiest style for little people.
Price \$25.00 with the best equipment. Nothing slighted, plain, lustrous,
black Enamels, guaranteed.

We offer for \$25.00 a Bicycle that we will guarantee, cannot be duplicated
in this city. Made in our own workshop. Forged connections. Seamless
Tubing. Double Tube Tires or single. Single piece cranks, FULLY GUAR-
ANTEED. Free wheels, \$30.00.

The Bikie is out a last year's wheel bought at bankrupt sales, but
made especially for Honolulu trade in Honolulu.

**Headquarters for Repairs and
Puncture Proof Tires**

BAILEY'S HONOLULU CYCLERY CO.,

LIMITED.

227, 222, 221 AND 231 KING STREET

**A Window
of Mandolins**
at \$2.50 each
Guitars, . \$4.00

Violin,
with Case, Bow } \$7.50
Rosin, etc.

Now is the Time to Buy
See Our Display

**Bergstrom
Music Co.**

FORT ST. HONOLULU.



**ISLAND
REALTY
CO. LTD.**

OFFICE
204 JUDD
Bldg.
TELEPHONE
MAIN 310

AGENTS
FOR

SALE OF REAL ESTATE

F. J. LOWERY, President.

C. D. CHASE, Vice-Pres. and Manager.

ARTHUR B. WOOD, Treasurer.

J. A. WILMAN, Secretary.

E. P. DOLE, Auditor.

Come Quick Now!

FOR SALE!

20 years leasehold on King street.
Lot 100x100.
New house of 5 rooms and bath.
Must be sold THIS WEEK. -Sacrificed at \$22,000.

ISLAND REALTY CO.

C. D. Chase, Manager,

Office 204 Judd Building, Tele-
phone, Main 310.

DACK SANG,

Kir- St., opposite Kawaiahao Church.

GROCERIES, CIGARS,

TOBACCO, CALIFORNIA

AND ISLAND FRUIT.

NOTICE.

Notice is hereby given that the Pearl
City Cemetery will be open for inter-
ments on and after Monday, November
5th, 1900. A special funeral train leave
the railroad station at 2:15 p. m., daily,
remaining at the cemetery until after
all interments.

The rates for transportation are one
dollar for the corpse, and fifty cents
for the round trip for mourners.

Plots are now on sale at the office of
the company, ranging in price from \$10
up, according to location and size. No
other charges of any nature.

HAWAIIAN CEMETERY ASSO-

CIATION, LTD.

Room 3, Love Building, Fort St.

Fine Book and Commercial Printing at
the Star Office.

CLOSING OUT FOR THE HOLIDAYS

Lines of French-China at Cut Rates,
Fine Cut Glass at a discount of 25 per cent
from marked prices.

Just Opened

Vases in Great Variety,
Bohemian Glass and Metal Bric-a-Brac at
bargain prices.

Bethel Street Household Department,
PACIFIC HARDWARE COMPANY, LTD.,

Call and See Copies of the Old Masters
At the Fort Street Art Department

THE NEW MARKET OPENED

VISITORS BY HUNDREDS CROWD
THE PLACE.

Everyone Amazed at the Immensity of
the Enterprise and the Display of
Good Things.

The Honolulu Market Company opened
its doors on the Bethel street side
of the Waverley block this morning
and all day the place has been thronged
with people. Customers and sight-
seers were amazed at the immensity
of the enterprise and the completeness
of its every department and arrange-
ment. The market occupies all of the
store house from the Porter Furniture
Company up to the Pacific Hardware
Company's branch store, giving it
three times the width of an ordinary
house in the building.

"Though I had just had breakfast it
made me hungry again to go through
the market," said an old resident this
morning. "This was doubtless the ex-
perience of all; for a display of every-
thing edible from beef steak to Bel-
gian hares, quail, fresh oysters and
oranges is apt to force one's appetite
in these days of 'famines' and high
prices.

The market has presented a busy
scene all day. With the crowding of
sight-seers was a heavy sprinkling of
customers, and employees of the mar-
ket, to the number of about thirty,
hurried to and fro in the fulfillment of
orders. The handsome, new wagons of
the company departed and returned at
frequent intervals, each time carrying
away loads of good things for the ta-
bles of the city.

The shop is arranged with three mar-
ble top counters, each in the shape of
a horse shoe. The counter on the ex-
treme makai side is given over entire-
ly to beef and veal. It is in charge of
four experienced butchers, with their
four blocks and tools. To an in experi-
enced eye it would seem that there
was enough beef and veal inside the
counter to supply Honolulu for a week.

In the back lot and at a point near the
wrappers' counter are immense ice
chests with temperatures far below the
freezing point, filled with beef, veal,
mutton, pork, brains, ox tail, fresh
sausage and other things.

The second counter is divided into
two parts, one side making a specialty
of mutton and the other of pork. In
the middle is a lofty shelf arrange-
ment carrying hams, shoulders, bacon
and the like. On the front of the coun-
ter such things as pigs' feet, sausage,
tripe, tongue and other similar arti-
cles.

The third counter is given over to
fish, cheese, eggs, hams and lunch de-
licacies. The cheese display is probably
the finest ever seen in Honolulu, com-
bining every kind known on this side
of the world. Eggs are offered at 40
cents a dozen.

Immediately back of this counter is
a large ice chest which has attracted
special attention. It contains turkeys,
chickens, ducks, quail, wild ducks of
various sorts and other game.

Against the makai side is another
ice chest, glass all around, fully as
large as the others, that is equally
interesting. It contains products of
the sea. In it are fish of many kinds
and sizes, the best of the Pacific coast
species. There are also fine crabs, big
red lobsters and oysters in the shell
and in tins.

On the street side of this ice chest
are slanting tubs containing vegeta-
bles and fruits. The first has vegeta-
bles of all sorts, such as cabbage, caul-
iflower and a dozen other things, and
is set off at the top with basket of fine
grapes. The second and third have fine
oranges and apples in variety. Then
come boxes of onions, potatoes, turnips
and crates of live chickens. Sand-
wiched in between is a row of kits and
kegs of pickled goods, such as beef,
pigs' feet, fish, etc.

Managed by Rosin and other officers of
the company have spent the day there
and have busied themselves showing
people through the premises. They ex-
press as much pleasure at the cordial-
ity of the reception their enterprise
has received as did the visitors of the
immense display and unmistakable ef-
fort to supply Honolulu with every-
thing it requires in the meat line at
the lowest market prices.

BENNETT LED DUAL LIFE
(Continued from Page 1)

prise of Ottmann the scout put a small
white powder in the stuff and started
to drink the mixture. Ottmann struck
the glass before Bennett could swal-
low the contents being dashed over the
floor. Bennett then said that Ottmann
had not done a kind act for it was not
easy for a man to get screwed up to
doing a thing like that. Bennett was
given coffee and taken home by Ott-
mann. The next day Ottmann told
Bennett not to try and take the money
at the place of Ottmann and Bennett re-
plied he guessed he had overstayed
his time on earth anyhow.

"Mammy" Wilder one of the domestics
at Mrs. Paul Neumann's place
where Miss Schneider was employed,
testified that she had seen the dead
girl give Bennett some gold. This was
a month before the woman died and the
man had never returned to see Miss
Schneider at the Neumann place after
getting the money. Miss Comyn tes-
tified to having talked with Miss
Schneider over her money and advised
Miss Schneider to get her principal
back from the last man to whom she
had loaned it. When doubt was thrown
upon her ability to get the money
Miss Schneider appeared very down-
cast and said that there would be no
use in her living if she lost her money.

In order that Mr. Campbell who was
the first man to whom Miss Schneider
loaned money, could be subpoenaed, an
adjournment was taken until this af-
ternoon.

TRAINING MASTER HERE.
George F. Buchter, of Portland, an
all round athlete and trainer, will
shortly open a school in this city. He
has already accepted several pupils
among them being the Deputy High
Sheriff. Besides scientific ability Mr.
Buchter is physically a very strong
man, having the appearance of being
"built for the business." He resides
in Vineyard street and will shortly
make arrangements to accept a num-
ber of young athletes for the purpose of
scientific training.

WILL START AGAIN.
Captain T. B. Murray will shortly re-
open a blacksmith shop on his own
hook not very far from his old stand
near King and Smith streets. He has
severed his connection with the Hono-
lulu Stockyards Company, preferring
to work for himself.

PRINCE VICTOR SAILS.
The bark Prince Victor, Captain
Iverson, left today for the Sound in
ballast.

Fine Job Printing, Star Office.

FORGED LOVE LETTERS.

How Joe Akana Tried to Comfort a
Friend.

The romantic disposition of Joe
Akana landed him in jail yesterday.
He had a Portuguese friend who was
deeply in love with a Portuguese maid-
en and Joe acted as a messenger be-
tween the two. When the maid's heart
grew cold Joe could not bear to see
Romeo's heart torn, so he faked love-
letters and signed Juliet's name to
them. Incidentally he collected small
sums from Romeo to pay back hire
for Juliet.

Akana told Judge Wilcox all about
the case this morning. He was arrest-
ed for embezzlement, being charged
with having appropriated the sum of
\$18, belonging to the Romeo in the case,
to his own use.

The young defendant explained that
Romeo was a car driver until he met
his fate in Nuuanu valley. Then he
got a job driving a bus, in order that
he might have the joy of proudly driv-
ing his vehicle past the cottage where
his lady love dwelt. Joe Akana was
a dear friend of Romeo, and it pained
him to see how Romeo suffered when
Juliet was hard to please. At last he
decided that he would help matters
out, so he began writing love letters,
signing the name of Juliet, to his friend
Romeo. Some of the letters called for
a little cash, which the passionate
lover paid over with a light heart,
thinking that it was helping to win his
Juliet.

The day of reckoning came when the
ardent lover found that the letters
were faked and that the cash had ap-
parently been spent by Joe. Joe was
promptly arrested. This morning he
was given a day's time in which to
bring both Romeo and Juliet into court
to prove that he had not stolen any-
thing, but had simply used his talents
as a letter-writer to ease the aching
heart of his friend.

The police theory in the case is that
Akana forged the young lady's name
with a view to getting money from her
lover. Akana, however, insists that
he was only trying to bring the two
hearts together, and says that he was
understood all the time, from what the
letters said, that the money was to be
for him, in payment for his efforts to
make a match.

ARRESTED AGAIN.
J. F. Mallett, who was fined \$100 for
violating giant powder recklessly in
the foundation of the Young building,
was before Judge Wilcox again this
morning, on another charge of the same
nature. The case was postponed until
tomorrow.

OFFICIAL CALLS.
Commander George F. Knowling,
Surgeon S. H. Birt and Lieutenant C.
H. Pilcher, of the British ship Icarus,
called to see Governor Dole this morn-
ing. They were met by Secretary Co-
oper and the Governor's secretary, A. G.
Hawes, Jr., and left their cards for Mr.
Dole until his return. The call will be
returned by Mr. Cooper and Mr. Hawes
on board the Icarus at 3 o'clock this
afternoon. The visitors this morning
were introduced by British Consul W.
R. Hoare.

THEY REMEMBER.
After a poet gets famous all the girls
fifteen years older than he remember
that they used to go to school with him.

NEW ADVERTISEMENTS

FOR SALE!

**THE RESIDENCE OF
CHARLES W. BOOTH ESQ.
ON
PACIFIC HEIGHTS**

This beautiful home has an elevation
of 350 feet above sea level, and includes
one and one half acres of land on one
of the most prominent points of "The
Pacific Heights," and commands an un-
interrupted view of Diamond Head, The
City of Honolulu, with the Harbor and
entire water front, Ewa, Oahu and Ho-
nolulu Plantations, the lovely Nuuanu
Valley to the Pali, Tantalus mountain
and the Mauna Valley.

There is a fine two-story house, al-
most new, with wide verandas in front
and rear, and is fitted with all the mod-
ern conveniences of a well kept up to
date home.

The arrangement of the house con-
sists of a parlor, dining and breakfast
rooms, 3 bedrooms with ample closets,
kitchen and large pantry, bath with hot
and cold water on first floor and 6 large
conveniently arranged bedrooms on the
second floor.

There is also a large attic in which
could be arranged several more rooms if
desired.

There is no place in Honolulu that
can approach this lovely scene in scenic
effect, and it always commands the
cool winds, and as a health resort, its
superior advantages are at once ap-
parent.

Price very reasonable. Easy terms.
Apply to
L. C. ABLES,
Real Estate and Financial Agent
Fort Street,
Honolulu, Oahu, T. H.

O. Box 345. T. A. 139.

BY AUTHORITY

NOTICE TO FRUIT IMPORTERS.

Several Fruit Maggot Flies having
been discovered by the Government
Entomologist, Prof. A. Koebele, during
his recent visit to the South Sea Islands
and Australian Colonies, and which
pests are doing serious damage to all
the fruits in those Islands and Colonies.
Notice is hereby given by the Commis-
sioner of Agriculture and Forestry that
the importation of fruits from the
South Sea Islands and Australian Colo-
nies is strictly forbidden.

WRAY TAYLOR,
Commissioner of Agriculture and
Forestry.
Honolulu, December 18, 1900.

NOTICE.

Persons failing to get waited on to-
day will please excuse us. The rush
has been greater than we calculated up-
on. We will have more help this after-
noon and by tomorrow will be able to
serve everybody promptly.
HONOLULU MARKET CO., LTD.

OFFICE TO LET.

One office in Brewer Building, Queen
Street. Apply
C. BREWER & CO., LTD.

LEE KEE, 4 NUUANU STREET, Merchant Tailor

Clothing made to order.
Suits Guaranteed to
Fit and in Latest Styles.
Clothes Cleaned and Repaired,
Dyed at Reasonable Rates,
Special Uniform.

Dry Goods, Cigars, Tobacco

Holiday Goods

Fine Pipes,
Amber Mouthpieces,
Tobacco Pouches,
Cigar and Cigarette
Holders

The Finest Stock in Town

BEAVER LUNCH ROOM,
H. J. NOLTE.

FOR SALE!

A large down town Ware-
house.
A centrally located Lodg-
ing House with Cottage.
Business Property in the
heart of City.
Residence Property.

FOR SALE OR RENT.

A 3 acre lot in Nuuanu
Valley with large house and
several cottages.

HENRY WATERHOUSE & CO.

We Don't Sell Earthquakes

But we have the largest assortment
of Hardware, Stoves, Ranges, Cut-
lery, Glassware and China, there is
on the Islands. By recent arrivals
we have added largely to our stock

CHAVILAND CHINA,
SILVERWARE AND
CUTLERY.

So that it is today the best in the
city. Manila and Sisal Rope, all
sizes; celebrated Pansy Stoves and
Golden Anvil Steel Ranges.

The Aermotor

The only Windmill made of steel,
and that will run in a dead calm.
Buffalo Scales, Victor Fireproof
Safes, Gate City Filters, Paints, Oils
and Varnishes.

Builder's Hardware

Carpenters' and Machinists' Tools,
which we sell at prices lower than
ever before.

THE HAWAIIAN HARDWARE CO

FORT STREET,
OPPOSITE SPRECKELS BANK

Chu Yip Co.,

123 Nuuanu, Between King and Hotel
Streets.

CLEARING SALE FOR THREE
WEEKS.
COMMENCING TODAY.

Corsets25c.
Ladies' Hose.....20c. per pair.
Ladies' Hose.....50c. per pair.
Ladies' Underwear.....50c. a piece.
Black Satin.....10 yards for 90 cts.
Crepe, all colors.....10 yards for 75 cts.
Muslins.....25 yards for \$1.00.
Men's Shoes.....\$1.40 per pair

W. G. IRWIN & CO.

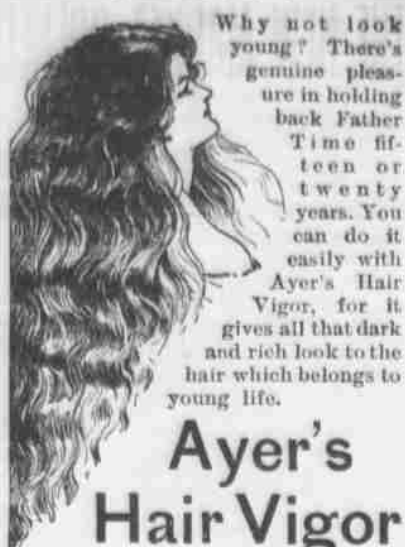
(Limited.)

AGENTS FOR

Western Sugar Refining Company of
San Francisco, Cal.
Gardner Locomotive Works of
Philadelphia, Penn.
General Universal Mill Company
(National Cane Shredder),
New York, U. S. A.
M. Oblandt & Co.'s Chemical Fertilizers
High Grade Fertilizers for Cane and
Coffee.
Allen, Cross & Son's High Grade Fer-
tilizers for Cane and Coffee.
Reed's Steam Pipe Cars.

Also Offer for Sale

Paraffine Paint Co.'s P. & B. Paints and
Papery.
Lard and Linseed Oils, raw and boiled
Camelline (a cold water paint) in white
and colors.
Water Press Cloths, Cement, Lime and
Brick.



Ayer's Hair Vigor

You know the story—how good
Queen Bess, pointing to the beautiful
hair of a peasant girl, said, "There's a
real royal crown. I would trade my
golden one for it." That was long ago.
Now you can have a "real royal crown"
of your own, simply by using Ayer's
Hair Vigor. It makes the hair grow
thick and long and stops it falling out.
When your hair is rich and heavy,
and when the closest inspection fails to
detect a single gray hair, you will cer-
tainly look a great deal younger, and
you will be much better satisfied with
yourself, too. Isn't that so?

Prepared by Dr. J. C. Ayer & Co., Lowell, Mass., U. S. A.

TOYS AND BOOKS

FOR

THE CHILDREN

AT

HAWAIIAN NEWS CO.

(LIMITED.)

MERCHANT STREET

Holiday Goods

Fine
Silks,
Etc.

ASADA & CO..

ROBINSON BLOCK,
HOTEL STREET.

THE CLUB STABLES, LTD.

518 FORT STREET.

Is Re-Opened for Business

Tourists, as well as our home people,
wishing RELIABLE HORSES, EX-
PERIENCED DRIVERS, NEW RIGS,
FAIR PRICES, COURTEOUS TREAT-
MENT, call on

CHAS. BELLINA, Manager.
Stables Telephone 477.
Hackstand Phone 319.

Wm. G. Irwin & Co., Ltd.

FIRE AND MARINE
INSURANCE AGENTS

AGENTS FOR THE

Royal Insurance Company of Liverpool,
Alliance Assurance Company of Lon-
don,
Alliance Marine and General Assurance
Co., Ltd., of London,
Scottish Union National Insurance
Company of Edinburgh,
Wilhelms of Magdeburg General Insur-
ance Company,
Associated Assurance Co., Ltd., of Mu-
nich and Berlin.

Lin Sing Kee, TINSMITH.

Does Sanitary Plumbing

Nuuanu Street, Opposite Emma

ADDITION TO POSTOFFICE

NEW ROOMS BEING OCCUPIED
THIS WEEK.

George W. Carr, superintendent of
mail service, has occupied his new of-
fice on the second floor. The other of-
fices are nearly ready and will shortly
be occupied. Assistant Postmaster L.
T. Kenake has occupied his office on the
lower floor. The racks to be used in
handling island mails and for special
delivery are being placed and by next
week that section of the office will be
in good shape. The old round table
arrangement of the Republic will be
moved out of the main office.

The fine addition to the Honolulu
post office has been called into service.
Mr. Carr, superintendent of railway
mail service, has occupied his new of-
fice on the second floor. The other of-
fices are nearly ready and will shortly
be occupied. Assistant Postmaster L.
T. Kenake has occupied his office on the
lower floor. The racks to be used in
handling island mails and for special
delivery are being placed and by next
week that section of the office will be
in good shape. The old round table
arrangement of the Republic will be
moved out of the main office.

Tenders for supplying the wagons and
the service will be for fourteen months
from the first of next May. At the end
of the fiscal period of 1902, which is
June 30, the contract will again be let
for four years. The United States is
divided into four mail route sections,
the contracts in one of the sections run-
ning out each year. Hawaii is in the
fourth section, which extends from the
Mississippi west. In this section, the
contracts will run out on June 30, 1902,
so that new contracts can only be made
for the unexpired time. Tenders must
be in by December 31, must arrive in
Washington by January 8 and the con-
tract will doubtless be let a short time
after that.

THE FISHMARKET COOKS

For some months a number of Chinese
have been in the habit of cooking
morning meals on the sidewalk on Ala-
hwa street near the fishmarket. They
used small wood stoves, placing them
on the curb in a row, and passers by
could see various dishes being made
fit for eating. This is to be stopped
now for yesterday six of them were ar-
rested as common nuisances, obstruct-
ing the sidewalk, and they have moved
their stoves inside the market.

The sidewalk cooks are fishermen or
salesmen in the market. They open shop
early and have no place in the big
market to cook their food. The plan
has therefore been carried out of de-
legating to half a dozen men the task of
cooking for all, and with six or more
small stoves the cooks used to spend
about an hour fixing up various meats
and vegetables.

The stoves and cooks in a line along
the sidewalk often attracted attention
as a somewhat picturesque sight but
the men who were doing the cooking
took up half the width of the sidewalk,
and they will no longer be allowed to
use the sidewalk for a kitchen.

The six men arrested were arraigned
in the district court yesterday morning.
All wanted their cases postponed and
the trials were set for today. This
morning there will be no line of small
wood stoves on the sidewalk. Pedes-
trians will not note the fragrance of
cooking Chinese food, and the Chinese
in the fishmarket will have to eat cold
meats or go to their homes for refresh-
ments.

The six cooks appeared in court this
morning and said they didn't know and
wouldn't do it again. Officer Hart said
he had warned them and tried to move
them but they wouldn't go, which the
Celestials promptly denied. They were
fined \$2 and costs each.

Judge Wilcox remarked that he had
observed that some Chinese slept on the
stalls in the fishmarket, and he did not
think the stalls were improved thereby,
as places for selling food.

AUCTION SALE

OF

Delinquent Stock

IN THE

Olaa Sugar Co., Ltd.

ON SATURDAY, DEC. 29,
AT 12 O'CLOCK NOON.

At my salesroom, Queen Street, Hon-
olulu, I will sell at Public Auction,
by order of the Treasurer, Mr. Elmer
E. Paxton, the following Certificates of
Stock in the Olaa Sugar Co., Ltd., un-
less the thirteenth (13th) assessment
due September 1st, 1900, delinquent
October 30, 1900, with interest and ad-
vertising expenses is paid on or before
the day of sale.

No. Certificates.	No. Shares.
95 Mrs. J. K. Brown.....	100
207 W. L. Wilcox.....	50
294 Willie Wright.....	50
316 Mrs. J. Monsarratt.....	15
406 U. J. Ordway.....	33
487, 723 N. Watkins.....	8, 5
522 J. E. Westbrook.....	17
542 Mary E. Wynn.....	27
543 Genl. Hottel.....	67
572 Mrs. M. Gilbert.....	8
582 Chas. F. Eckart.....	17
623 A. B. Ingalls.....	17
672 W. W. Wright.....	17
673 J. T. Wright.....	5
1094 A. Macphail.....	5
1124, 1125, 1126 Wm. Kaiser.....	50, 50, 17
1129 E. May.....	83
1273 A. M. Webster.....	25
1494 J. Monsarratt.....	20
1465 N. W. Bernard.....	50
1600 J. H. Waterman.....	50
1607 Miss E. Stansbury.....	50
1676 H. C. Austin.....	23

Residue of Sale of 12th Assessment.
134 Young Chook Hin..... 1
135 Chas. Sun..... 3
577 W. E. Pinkham..... 4
585 F. K. Archer..... 1
592 D. L. Akwal..... 1

ELMER E. PAXTON,
Treasurer.

Honolulu, December 12, 1900.

JAS. F. MORGAN,
AUCTIONEER.

THE ORPHEUM

The Only Regular Evening Attraction In Honolulu

A first-class program arranged to
please all and offend none.

A One Act Comedy

"CHAMPAGNE AND OYSTERS"

BY

Conlon and Ryder and the Stock Com-
pany.

An excellent and Varied
VAUDEVILLE BILL

Prices, 25, 50 and 75 cents

"Fex" Matinee Saturday
25 Cents

PHONE 540

OAHU RESTAURANT

WILL OPEN

Monday, Dec. 17th

IN THE

NEW BLOCK HOTEL STREET

2 Doors Above
New England Bakery

If you want a good dinner come and
see us.

AT IT AGAIN!

Will be pleased to have my customers
call.

TIM KEE,
MERCHANT TAILOR.

42 King Street with Y. A. Sooa
Next to W. W. Diamond & Co

S. HIROKAWA,

Beretanla near Punchbowl Street,
Honolulu, H. I.

Bamboo Furniture

NEAT AND HANDSOME,
MADE TO ORDER.

OHTA,

Contractor and Builder,
.....House Painter

Kewalo, Sheridan Street, near King
Honolulu, H. I.

ADVERTISING SALE!

A FULL SUIT

FOR

\$5.00

This Week Only

THE GLOBE CLOTHING CO

Fort Street,
Opposite Club Stables

NAKANISHI CO.,

Contractors and Builders
Painting and Paper Hanging

All Orders Promptly Attended to.

King Street, Opposite Oahu Lumber Co.

W. G. IRWIN & CO., LTD.,

Wm. G. Irwin, President and Manager
Claus Spreckels, First Vice-President
W. M. Giffard, Second Vice-President
H. M. Whitney, Jr., Sec'y and Treasurer
Geo. J. Ross, Auditor

Sugar Factors,
Commission Agents

AGENTS OF THE
OCEANIC STEAMSHIP COMPANY
OF SAN FRANCISCO, CAL.

CHAS. HUSTACE.

212 KING STREET. TEL. MAIN 119

Between Fort and Alakea Sts.

DEALER IN

GROCERIES and PROVISIONS.

Fresh California Roll Butter and
Island Butter always on hand.

Fresh goods received by every steamer
from San Francisco.

SATISFACTION GUARANTEED.

KWONG FAT CHAN,

Opening, Saturday, May 19th. Dry
and gentle furnishing goods; boots and
shoes. Corner Nuuanu and King
streets.

Cheaper to Move Than Pay Rent

Is the saying, but we don't believe it. We have moved twice
within a year, we had to in order to erect our new building.
We have now moved from the store next to JOHN NOTT'S
to our new building on the

Corner Fort and King Streets

At present we are occupying the upper floor and basement as
the carpenters are not through work on the main floor. We ask our
friends to overlook the inconvenience and confusion that will exist
for a few weeks yet. When once we are settled we will be able to
take care of you and attend to your wants in first class shape.
Our BICYCLE SHOP is now running in the new store and we
have a fine line of wheels.

Columbias,
Ramblers and
Clevelandas

And a lot of good wheels suitable for the little folks for XMAS at
prices that will suit everyone.

Call at the corner of Fort and King Streets, King street
side, UP-STAIRS and see the Kansas Cyclone.

E. O. Hall & Son, Ltd.,

HALL BUILDING,
CORNER KING AND FORT STREETS

Great Bargains FOR THIS WEEK

..... While They Last

LADIES' LACE SCARFS 75c and up.
TEA CLOTHS 50c.
TRAY CLOTHS 50c.
SIDEBOARD COVERS \$1.50
SWISS ANTIMACASSARS 2 for 25c and up.
ART MUSLINS 10c per yard and up.
LADIES' COTTON LILE AND LACE HOSE 10c per pair and up.
LADIES' WHITE KID BELTS 35c.
FIGURED TAPESTRY SQUARES FOR PILLOWS 75c.
LINEN TABLE DAMASK 50c per yard and up.

GOODS SUITABLE FOR CHRISTMAS NOW BEING OPENED AT

The Bargain Store

ALBERT BLOM,

Opposite the Fire Station. Fort and Beretanla Streets.

BEST CIGARS

Manila
Havana
Mexican
American
Porto Ricans

AT THE

HAWAIIAN TOBACCO CO., LTD

Corner Merchant and Nuuanu Streets, Also
Hotel Street Next to the New England Bakery

Grand Clearance SALE!

FOR THIRTY DAYS ONLY,
Commencing Saturday, December 1st

Heavy White 10x4 Blankets.....were \$1.50, now to clear.....\$.85
Heavy Grey 10x4 Blankets..... " 1.50, " " \$.85
Men's 9 oz. Denim Overalls..... " .75, " " 1.10
Men's Fine Felt Hats, all styles..... " 2.00, " " 1.25
Men's Fine Felt Hats, all styles..... " 2.50, " " 1.50
Men's Fine Felt Hats, all styles..... " 2.75, " " 1.75
Men's Fine Felt Hats, all styles..... " 3.00, " " 1.75
Fine Silk Handkerchiefs, white and colored, must be sold on account of
overstocked.

Also a large assortment of Men's and Boys' clothing must be sold to
make room for our heavy importations which are to arrive shortly.

Our Mens' and Boys' Underwear Overshirts and Hats, of which we have
a large line, we the offering at half price.

In our Shoe and Hosiery Departments we offer the same inducements as
above. To convince yourselves come and examine our prices and goods which
speak for themselves.

C. AFAT,

Nos. 1049 and 1059 Nuuanu Street, Corner Hotel

ARRIVED

EX ELIHU THOMSON,

Seattle Rainier ..BEER..

For Sale by All Dealers

KWONG CHAN,
Hotel Street opposite S. Osaka.

DRESS MAKING,
LADIES UNDERWEAR,
CHEMISES, SKIRTS, ETC.,
MADE TO ORDER.

FOR....
A CLEAN SHAVE,
AN ELEGANT BATH
go to the
PANTHON SHAVING
PARLORS
Hotel Street, near Fort.

Pabst Milwaukee Beer Always Pure

"THIRSTY EARTH DRINKS UP THE RAIN,
TREES FROM EARTH DRINK THAT AGAIN,
THE OCEAN DRINKS THE AIR, THE SUN
DRINKS THE SEA, AND HIM THE MOON.
ANY REASON, CANST THOU THINK,
I SHOULD THIRST WHILE ALL THESE DRINK?"

No reason at all for one to go thirsty as there is a large supply of PABST BEER on hand.

W. C. PEACOCK & CO., LTD.,
Sole Agents, Hawaii Territory

Who will do it?

You are going to have your house
Papered, Painted or Decorated.
Who's going to do it?
No one does or can do better work
than we. Investigation proves that
few do as good.
All we ask for it is a fair price—
not high, not low. Either extreme is
dangerous.
Any one who gives us work gets the
best going at the fairest and squarest
price.

STERLING, THE PAINTER
Office: Union Street, opp. Bell Tower.

A GOOD THING
4 U 2 C.
Firewood, Coal, Sand.

Ohia, Algaroba and Pine Firewood,
cut and split, ready for the stove;
Stove, Steam and Blacksmith's Coal,
White and Black Sand at lowest prices,
delivered to any part of the city.

Hustace & Co.
Telephone 414. QUEEN STREET.

Grass Cloths,
Table Covers,
Silk Kimonos
and Crepe
Shirts.

S. OZAKI.

Goods for Ladies and Gentlemen
Call and be Convinced,
Holiday Goods now on the Way

WAVERLEY BLOCK, HOT. L ST.

NO SKIPPING

With us if you are one of our
customers.

Our delivery system is like
clock work which insures you
of your daily order.

Let us serve you?

German Bakery,
PHONE WHITE 3831.

K. TANAKA.
Furniture Dealer,

BAMBOO FURNITURE
NEAT AND HANDSOME
MADE TO ORDER.
Also Repairing Renovating, Etc.
Star Building, Fort Street.

K. MIYAMOTO,
KING STREET NEAR ALAPAI.

Umbrellas, Sun Shades, Etc.
MADE AND REPAIRED.

S. Kojima.

IMPORTER OF
Japanese Provisions.
General Merchandise,
AND PLANTATION SUPPLIES.

No. 9 Hotel Street, Honolulu.
Telephone 574. P. O. Box 906.

WHO SHAVES YOU?

Why pay more when you can get a
first-class shave for 15 cents at the
Club Barber Shop? White barbers.
H. JEFFES, Prop.
No. 48 King Street, corner Bethel.

"REMINGTON"

Double Barrel
Hammerless Ejector

SHOT GUNS

Elegant Finish,
Exact Balance,
Close Shooting,
Simple Construction

AND

Lots of Ammunition

AT THE

PACIFIC CYCLE & MFG CO.
FORT STREET

PAINTS FOR ALL KINDS OF WORK

White Lead and Zinc,
Pacific Rubber Paint,
Graphite Paint,
Galvanum for Galvanized Iron,
Carbonizing coating for Structural Iron,
Colors, Varnishes, etc.

LEWERS & COOKE.
Fort Street.

ROBT. LEWERS. F. J. LOWREY.
C. M. COOKE.

LEWERS & COOKE,
Lumber and Builders' Hardware,
DOORS, SASH, BLINDS,
PAINTS, OILS, GLASS,
WALL PAPER, MATTING.
CORRUGATED IRON,
LIME, CEMENT, ETC.

Refrigerated Poultry
—AND—
Fresh Salmon
CONSTANTLY ON HAND.

Metropolitan Meal Co.
TELEPHONE NO. 45.

NEW BOOK BULLETIN.
THE GOLDEN RULE BAZAAR
216 FORT STREET.

"In Circling Lamps"—by Attsheler.
"Resurrection"—by Count Tolstol.
"The Road to Paris"—by Stephens.
"The Banker and the Bear"—by Webster.
"Unto the Heights of Simplicity"—by Reimers.
"A Man's Undoing"—by Mrs. Lovett Cameron.
"Our Presidents and How We Make Them"—by McClure.
"The Sledge"—by Risley.
"Bob, Son of Battle"—by Ollivant.
"The Black Terror—A Russian Romance"—by Leys.
"Boy"—by Marie Corelli.
"The Waters of Edera"—by Onda.
"Red Blood and Blue"—by Harrison Robertson.
"The Touchstone"—by Edith Wharton.
And scores of others just as good, and something to suit the taste of all classes of readers.

J. M. WEBB.

Wing Chew Lung Co.
212 NUUANU STREET

Importers and Dealers in General Merchandise.

CHINESE AND JAPANESE CURIOS
GRASS CLOTHES IN ALL COLORS.
Teas, Cigars, Rattan Chairs, Baskets,
Trunks, Flower Pots, Vases, Etc., Etc.
Telephone White 431. P. O. BOX 987.

W. H. BARTH
H. W. BARTH

Honolulu Sheet Metal Works

Galvanized Iron Skylights and Ventilators
Metal Roofing, Conductor Pipe
and Gutter Work Jobbing Promptly
attended to.
Richard Street, between Queen and
Merchant, Honolulu.

THRUM'S ANNUAL FOR 1901

WELL KNOWN PUBLICATION IS
ISSUED.

Something of Its Contents—Statistical
Table—Dr. Bishop on the Geology of
Oahu—Other Articles.

Thrum's Annual for 1901 has just
been issued. This volume follows much
the style both in make up and contents
of previous issues. The statistical
matter is of the same kind, current for
the period covered by this number. The
statistics of sugar production are very
full and complete.

In the "Register and Directory" there
are a number of things that are some-
what surprising. The "Council of State"
is given with nothing to make it known
to the uninformed reader that it no
longer exists. At the same time a note
says the directory is corrected to De-
cember 1, 1900. The title "Executive
Council" is also given, when there is
now no such body known to the law;
and even if the term is understood as
identifying those officials who meet in
conference with the governor the list
given is not a correct one. In several
other respects the register will bear
revision.

Following the statistical tables the
matter in this annual begins with an
account of the complete organization
of Hawaii as a territory, and includes
the full text of Governor Dole's in-
augural address.

Probably one of the most interesting
articles in this number will prove to
be Dr. Sereno E. Bishop's article on the
geology of Oahu.

In this the author frankly says "this
article is largely indebted to a publica-
tion on the same topic by C. H. Hitch-
cock, LL.D.; the writer's observations
of fact and his conclusions, however
differ in several points from those of
Dr. Hitchcock." The article concludes
with "a conjectural estimate of the
lengths of time elapsed since the suc-
cessive events of geology in Oahu took
place; such guessing is necessarily
made, and merely tentative." These
estimates vary from 1,000,000 years
since the emergence of Waiānae, to
5,000 years since the formation of Koko
Head.

There are a number of contributions
to the curious history of early Hon-
olulu, including a selection of extracts
from the diary of an early merchant,
and an article on Nuuanu Pali in the
olden time. Prof. Koebele has a valu-
able article on Hawaii's Forests; an
account of the flight made with bu-
bolic plague is given; an account of
some Hawaiian fish stories and super-
stitions is given by D. L. Keliipio,
translated by M. K. Nakulua.

"Farming in Hawaii" is treated by
W. B. Thomas of Waiānae colony.
His "Changing Conditions and
Outlook" by J. T. Stacker. "Introduc-
tion of Foreign Birds into the Hawai-
ian Islands With Notes on Some of the
Introduced Species" by H. W. Hen-
shaw; the "Lowrie Irrigation Canal,"
by Wade W. Thayer; and "The Moana
Hotel; Waikiki's New Attraction," by
L. D. Timmons.

AT THE ORPHEUM.

The regular program was well re-
ceived last evening. The management
announces a special matinee for Sat-
urday afternoon at which little Claire
Fox will preside.

A special sacred Sunday concert has
been arranged for next Sunday even-
ing. The full orchestra under Paul
Egry's direction will play selections
assisted by the soloists of the company
and others.

There will be no charge, the seats are
reserved as usual and can be obtained
at the box office the Hergstrom Music
Company, and the company's press
agent. Seats will not be held after eight
o'clock.

MARRIED.

POND-ELDRIDGE—At the residence
of Prof. George Mead, 5535 Madison
Avenue, Chicago, Monday, November
26, 1900, by Rev. C. N. Pond, Ober-
lin, the father of the bridegroom,
Percy M. Pond and Miss Edith O.
Eldridge, both of Honolulu.

PNEUMONIA PREVENTED.

Among the tens of thousands who
have used Chamberlain's Cough Remedy
for colds and influenza during the
past few years, to our knowledge, not a
single case has resulted in pneumonia.
Thos. Whitfield & Co., 240 Wabash ave-
nue, Chicago, one of the most promi-
nent retail druggists in that city, in
speaking of this says: "We recommend
Chamberlain's Cough Remedy for in-
fluenza in many cases, as it not only
gives prompt and complete recovery,
but also counteracts any tendency of
influenza to result in pneumonia." For
sale by all dealers. Benson, Smith &
Company, agents, Hawaiian Islands.

Fine Job Printing, Star Office.

H. AKAGI,

FORT STREET, STAR BLOCK.

SHIRT MAKER.

Men's Shirts, Pajama Suits, Collars
and Cuffs made to order, Crepe and Silk
Shirts always on hand.

STAR ICE CREAM PARLOR,
FORT STREET,
STAR BLOCK.

ICE CREAM, CANDIES, MILK
SHAKES AND COLD DRINKS.

Antiseptic Solution.

A law is in vogue in Paris
that this shall be used in
all barber shops.

In use at
THE SILENT BARBER SHOP.

Joseph Fernandez,
Proprietor.
Arlington Block, Hotel Street.

OYSTER COCKTAILS UP TO DATE



ELITE ICE CREAM PARLORS

Appreciated

The greatly increasing demand
for the "Hanan & Sons' Shoes,"
shows the popularity of this line.

Every steamer brings us a fresh
new stock.

Our customers are learning to
ask for these goods, and accepting
no other.

You don't know what comfort
and satisfaction means, until you
have tried a pair.

McInerny's Shoe Store,
Sole Agents

We figure that every pair of "Hanan"
Shoes we sell, bring three new customers.

TO THE PUBLIC!

We take great pleasure in announcing
that our New Market in the

Waverley Block, .: Bethel Street
BETWEEN KING AND HOTEL

Will be open for business

Wednesday, Dec. 19th

Hardly a thing that you could wish for,
but what is to be had at our market.

MILLER & LUX'S Prime Beef, Mutton, Pork and Veal. The Standard
Meats of the coast. Nothing better to be had. We are the Sole Agents for the
Hawaiian Islands.

FISH. Salmon, Halibut, Trout, Sturgeon, Sole, Smelt, Shad, Carp, Rock
Cod, Sea Bass, Crawfish, Crabs, etc., etc.

POULTRY AND GAME. Turkeys, Geese, Chickens, Quail, Canvas
Back, Mallard, Teal, Sprig, Brant, Belgian Hare, etc., etc.

SMOKED MEATS. Hams, Bacon, Sausages, fresh every day Tongues,
Shipped Beef, etc. Also Sweet Bread, Brains, Calves Liver, Tripe, Calves Feet
and Heads, etc., etc.

BUTTER, Eggs, Cheese, Pickles, Chow Chow, Saur Kraut, Apples, Pears,
Grapes, Potatoes, Onions, Cabbage. A Full Supply of Fruits and Vegetables.
OYSTERS, Fancy, Large or Small, in shell or cans. In Fact Everything
in the Market to be had we keep.

Honolulu Market Co

LIMITED.

TELEPHONE MAIN 219

J. H. & CO.—J. H. & CO.

The Best at the Lowest
Price at Hopp's



This space is like our
Store, too small to
hold all the nice things
that we have received
for CHRISTMAS.
You are invited to
call and inspect them.

Buy or No Buy

J. HOPP & CO.

THE LEADING
FURNITURE
DEALERS

KING & BETHEL STREETS

J. H. & CO.—J. H. & CO.

Holiday Goods

Holiday Goods

M. CHIYA

Telephone 3311 White.

Corner of Nuuanu and Hotel Streets.

HAS A FULL LINE OF

Japanese Silks,

TOYS AND CURIOS,

Always make suitable presents. We
have also added to our establishment a

**Dyeing and Cleaning
Department**

All kinds of ladies' and gents' cloth-
ing cleaned and pressed at reasonable
rates. Old clothing made to look like
new. Goods will be called for and de-
livered when finished.

Note Heads, Bill Heads, Letter Heads
printing neatly and promptly executed
and all kinds of Job and Commercial
at the Star Office.

A GREAT PHYSICIAN SAYS: "The
per cent of all diseases and sickness is
caused by the pores becoming clogged,
thus shutting up in the blood the poisons
and impurities which Nature in-
tended they should eliminate." Pacheco's
Dandruff Killer "opens the pores
and expels all the poisons in the scalp,
leaving it clean and healthy."

PACHECO'S DANDRUFF KILLER.
Sold by all Druggists and at the
Union Barber Shop, Telephone 696.

P. O. Box 912

Tel. Main 200

H. HAMANO,

IMPORTER OF

Japanese Provisions

AND
General Merchandise

PLANTATION SUPPLIES

King Street, - - - Corner Smith

KATSEY BLOCK

Honolulu Iron Works.

**STEAM ENGINES, SUGAR MILLS,
BOILERS, COOLERS, IRON, BRASS
AND LEAD CASTINGS.**

Machinery of Every Description Made
to Order. Particular attention paid to
Ship's Blacksmithing. Job Work Exe-
cuted on Short Notice.

Oriental Goods

NEW IMPORTATION OF Silk
Goods, in the piece; Silk Handkerchiefs;
Silk Shawls; Decorated Flower Pots;
New Porcelain Cups and Saucers; Tea
and Dinner Sets; Carved Ivory; Rattan
Chairs; Carved Sandalwood Boxes.

These Goods are the Handsomest
In all Honolulu

WING WO CHAN & CO.

210-212 Nuuanu Street.

Note Heads, Bill Heads, Letter Heads
printing neatly and promptly executed
and all kinds of Job and Commercial
at the Star Office.

FOR SALE

House and Lot at Makiki, near car line.
Large and conveniently arranged house of 13 rooms (9 bedrooms). All the modern conveniences, house nearly new. Price \$6,000.

Apply to

L. C. Ables,
Real Estate and Financial Agent.

Tel. 139. Fort St.

FOR A LIGHT WAGON OR DRAY

Ring Up
Main 58

Pacific Transfer Co.,
JAMES H. LOVE.

Stocks....

AND

Bonds

Bought and Sold.

Careful attention
to all business intrusted.

HARRY ARMITAGE

CAMPBELL BLOCK, MERCHANT ST

NEW ADVERTISEMENTS.

BY AUTHORITY.

Notice to Fruit Importers.....Page 5
NOTICE.
Honolulu Market.....Page 5
MISCELLANEOUS.
Honolulu Tobacco Co.....Page 2
The Luce House.....Page 4
Hollister Drug Co.....Page 4
Peacock & Company.....Page 7
Pacific Transfer Co.....Page 8
Hobron Drug Co.....Page 8

NEWS IN A NUTSHELL.

Bits of Paragraphs that Give Condensed Notes of the Day.

When in need of a light wagon or dray call up Main 58.

Judge Luce will tomorrow morning render a decision in the William Carson case.

High grade cigars at the Honolulu Tobacco Company, corner Fort and Hotel streets.

Governor Dole is visiting the Rices on Kauai. His address is Lihue and he will be back Sunday.

Andrew Adams returned by the Claudine last night to Spreckelsville. He had been ill in Honolulu.

Think of the marrow by stocking up a supply of Pease Beer. Always pure. W. C. Peacock & Co., agents.

The Hobron Drug Co. ad. tells of good Christmas things and about photo albums given away with every kodak sold.

The annual meeting of the Ladies Society of Central Union church will be held on Thursday, December 20, at 29 a. m.

The Luce House on Hotel street has a splendid line of infant's goods and children's wash suits. New styles just received.

At the regular meeting of the Royal Arch Chapter, to be held tomorrow evening, officers for the ensuing year will be elected.

J. A. Magoon has sued W. H. Cornwell for \$1,000 for a note for stock in the Honolulu Steam Laundry which remains unpaid.

Fred. Harrison has purchased the lease of the lot at Beretania and Fort streets from Senator Clark of Wyoming and will erect a business block upon it.

Henry Vida threw open the doors of the "California" in the old rooms of the Sugar Planters' Association on Nuuanu street at 2 o'clock this afternoon.

There will be an important meeting of the Kamehameha Alumni Association at the Club House on Fort street Thursday evening at 7:30 p. m. All members are requested to be present.

The Honolulu Market Co., Ltd. asks the public to kindly overlook its failing to wait on everybody promptly. The rush has been too great. More help will be on hand this afternoon and tomorrow.

Two Christmas bombs, of Japanese manufacture, were found under a safe in the hallway of the Kapiolani Estate yesterday afternoon. They were doubtless left there and forgotten by someone in the office.

Mrs. Walter Hoffman has sent \$993 to the Molokai settlement, being \$1 apiece for the patients to spend Christmas. The balance of the \$1,000 realized from the concert will be spent on the patients at Kalihii.

Before making your selection of holiday gifts, it will pay to inspect the stock of the Hollister Drug Company. They do not give goods away, but they claim that the prices of those elegant lines of leather goods, perfumery and toilet sets are just right.

Be sure and attend the sale of palms and ferns at Morgan's saleroom at 10 o'clock tomorrow. The hanging brackets and pots of maiden hair ferns are the most select and beautiful in the city. There will also be sold a large handsome Australian fern and just 20 pots of large rare palms.

Wray Taylor, Commissioner of Agriculture and Forestry, renews notice in this issue that the importation of fruits from the South Sea Islands and Australia is prohibited. This renewed notice is called out by the receipt here by the Alameda of some cherries on ice from Australia.

Morgan calls the attention of Christmas buyers to his sale of oriental rugs and draperies at 10 o'clock tomorrow. Among the gems of the collection are: Royal palace Kirman rug which is involved at \$300. 1 Shahs Hnom rug cost \$700. 1 Mohamed Khau palace rug cost \$520. There are also rugs of every description at prices as low as \$10 each, thus affording a chance for all purses.

CHRISTMAS CONTRIBUTIONS. Any gifts or contributions for distribution among the inmates of the Hospital for Incurables at Christmas will be highly appreciated and may be sent to the care of the Medical Superintendent, Victoria Hospital, Kakaako.

THE BOER PRISONERS. Among the 800 and odd Boer prisoners who sailed for Ceylon by the Dilwara last week were twenty-five Krugers, six Eteyns, nine De Wets, twelve Bothas, two Cronjes, ten Oliviers and eight Prinsloos.—East London (Cape Colony) Dispatch.

Fine Job Printing, Star Office.

HENRY WATERHOUSE & CO.

QUEEN STREET

Stock and Bond Brokers,
Fire Insurance Agents,
Commission Merchants

Careful Attention Given to
Business Trusts

GLOBE-WERNICKE BOOK-CASES
AND
OFFICE FURNITURE

In Stock or Ordered from
Manufacturers.

Hawaiian Curios

Kapa, Calabashes, Leis, Native Hats, Bells, Bells, Nihau Mats, Fans, Shells, Seeds, etc. Home-made Poi constantly on hand. Mending done neatly, and Cut Flowers furnished by

THE WOMAN'S EXCHANGE,
Cor. Hotel and Union Streets, Honolulu.

Telephone 658.

JAS. F. MORGAN

Auctioneer and Broker

65 Street Queen

P. O. Box 594 Telephone 72

ELEGANT NEW FURNITURE
AT AUCTION

ON THURSDAY, DEC. 20,
AT 10 O'CLOCK A. M.

At my saleroom, Queen street, I will sell at Public Auction, a quantity of Elegant New Furniture finely decorated in burned woodwork. The articles comprise:
SIDE BOARD, DINING TABLE, SIDE TABLE, 8 CHAIRS, "LEATHER UPHOLSTERED,"
HALL SETTEE, PIANO STOOL, and a LARGE HALL CLOCK.

These articles will be on view all day Wednesday, December 19, and will well repay your inspection.

JAS. F. MORGAN,
AUCTIONEER.

AUCTION SALE

—OF—

Shares of Stock

IN THE

INTER-ISLAND STEAM NAVIGATION CO.

ON SATURDAY, DEC. 22,
AT 12 O'CLOCK NOON.

At my saleroom Queen street, I will sell at Public Auction by order of the Treasurer, 27 shares of stock in the Inter-Island Steam Navigation Company per value \$100 each being the fractional shares of the new issue.

JAS. F. MORGAN,
AUCTIONEER.

Fine Residence Sites
For Sale!

Four fine lots in the Judd tract at Punahou on the upper side of the government road to Manoa.

These lots overlook the Punahou College property and command an unsurpassed view of the city and harbor.

Lot No. 1, 199 feet on road and about 500 feet deep. 1.81 acres.

Lot 2, 180 feet on road and about 500 feet deep. 1.73-100 acres.

Lot 3, on Manoa road, 180 feet about 500 feet deep. 2.46-100 acres.

Lot 4, on Manoa road, 180 feet about 500 feet deep. 25.2-100 acres.

These lots are now being offered at about one-half of the price that will shortly be commanded by property in this vicinity.

For particulars apply to
JAS. F. MORGAN,
33 QUEEN STREET.

FOR RENT.

Two Warehouses on Kawaiahao Street, Kewalo. 1 Building 50x100. 1 Building 60x40 with Stables. Buildings near to South Street. For particulars, apply to

JAS. F. MORGAN,
65 Queen Street.

For Sale or Lease.

Residence of Mr. H. Gorman at Kaimuki.

Property fronts 200 feet on Road and is 300 feet deep.

Large 2 story dwelling house on the property containing Double Parlor, 4 Bedrooms, Dining Room, Pantry, Kitchen etc. Ten foot veranda around house. Servants quarters, stables etc. Nice Lawn, water throughout.

For Sale.

3 fine lots at Kaimuki, size 75x150 each. 2 are fine corner lots facing Maunaloa Avenue.

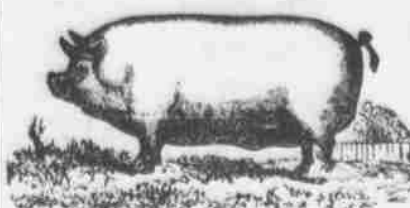
Price from \$750 to \$900 each. Also 3 lots 50x225 adjoining above 3 lots. Price \$700 each.

These are bargains.

JAS. F. MORGAN,
Auctioneer and Broker

65 Queen Street.

P. O. Box 594 Telephone 72

Santa Claus
Emporium

More

Crying Pigs
Just arrived

DOLLS, TOYS,
BOOKS, GAMES

PRESENTS FOR YOUNG AND OLD.

Largest assortment in town to select from.

The Emporium

WALL, NICHOLS CO., LTD.

OPEN EVENINGS FROM
NOW UNTIL CHRISTMAS

christmas things

are many and varied

perfume is one of them

its odors are many and varied

ladies prefer exquisite odors—

the kind we keep.

Single bottles, duets, trios, and quartets one, two, three or four bottles in a case \$1.25 to \$25.

Kodaks are good Christmas things that cost \$1.00 to \$35 each. They all take funny or sober pictures. An Eastman kodak is a good thing to give away to a friend.

Atomizers are good Christmas things they are for spraying perfume on yourself 25 cents to \$5 each.

Hair brushes are good things to give to friends who are not bald.

We find photo albums are good things to give away at Christmas time, to all of our customers who buy kodaks from us. We give away one with every kodak—that's a good Christmas thing.

Hobron Drug Co.

FORT AND KING.

T. HAYASHI,

BERETANIA STREET
Opposite Queen's Hospital.

Merchant Tailor

DYEING, CLEANING AND
REPAIRING ALL
KINDS OF CLOTHES.

Skillful Workmanship The best in Town.

A Trial Will Convince You.

ALEXANDER & BALDWIN, LTD.

OFFICERS.

H. P. BALDWINPresident
J. B. CASTLE.....First Vice President
W. M. ALEXANDER.....2d Vice Pres't
J. P. COOKETreasurer
W. O. SMITH.....Secretary and Auditor

Sugar Factors and
Commission
Merchants

AGENTS FOR

Hawaiian Commercial and Sugar Company,
Olaa Sugar Company,
Haku Sugar Company,
Pala Plantation Company,
Nahiku Sugar Company,
Kihel Plantation Company,
Hawaiian Sugar Company,
Kahului Railroad Company,
—AND—
The California and Oriental Steamship Company

AHI

River Between Kukui and Vineyard Streets.

WHOLESALE AND RETAIL
FURNITURE STORE.
Mating, Mattresses, Pillows, Rattan
Chairs and Coffins.

WHITNEY & MARSH, LTD

Ladies' Neckwear,
Everything New, Dainty and Beautiful

Handkerchiefs,
Thousands of Them from 5 cents to \$5.00 Each.

Sterling Silver Novelties,
From 25 cents Each, Most Acceptable Gifts.

Silk Waists,
Swell Garments from the Most Popular Maker in New York, from \$7.50 to \$15.00

Silk Petticoats,
The Latest Modes, All Colors, \$7.00 to \$18.00.

Men's Neckwear,
The Seventy five cent and One Fifty Kind, Our Price 25 cents and 50 cents.

Umbrellas,
The Windsor is the Best Umbrella Made in America, Great Variety. Steel Rods, Sterling and Pearl Mountings and Fine Plain Sticks.

Belts, Fans, Purses,
Fancy Garters, Shopping Bags, Silk Gloves, Kid Gloves, Combs, Hair Ornaments, Ribbons, Silk Underwear, Golf Capes, Separate Skirts, Hosiery and a Thousand Novelties at Moderate Prices.

WHITNEY & MARSH, LTD

PACIFIC HEIGHTS

Magnificent View,
Refreshing Breezes,
Easy of Access,

An Unsurpassed Residence Site

These lots are on the Pauoa side of Pacific Heights. They face on Pauoa Road, now being widened and macadamized, and adjoin the Pacific Heights Electric Railway.

A Chance for Investors:

Any one with money to invest looking for something that will bring good returns on sums invested, has here a fine opportunity. Houses built on these lots will find ready rental at strong rates by good tenants.

Attractions Offered in this Site to Home-seekers:

LOCATION. They are located on high ground at an elevation of from 200 to 500 feet, affording unsurpassed scenic and marine views.

ELECTRIC RAILWAY AND LIGHTING. The Electric Railway makes access most easy, and power for lights may be had at most reasonable rates.

WATER. Water will be supplied at the rate of \$15 per year for each lot, from out Pacific Heights Water System. This is less than city rates.

SPECIAL INDUCEMENTS TO BUILDERS. To all who will begin the erection of houses within 60 days, we will make special inducements in the matter of transportation of building material over our railway.

LOW PRICES, GOOD TERMS. Prices of lots range from \$400 to \$750 each, according to size and location. One-fourth cash only is asked. Balance in installments at terms to suit purchasers.

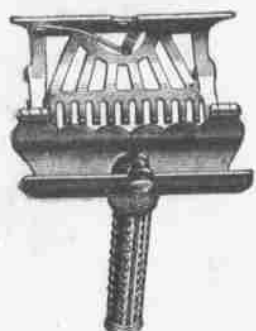
HEALTHFUL AND COOL. The air is always cool and bracing. We can recommend this property as being especially desirable and attractive to persons seeking a choice location for a home at a moderate cost.

For Further Particulars Apply to

BRUCE WARRING & CO.

Progress Block, Fort Street

For Xmas



These Sets make
Elegant Presents

We have an elegant line of "new Gem Safety Razor Sets" ranging in price from \$5.00 to \$15.00 each.

To Live
Correctly,
obtain
Health,
Strength
and
Vitality
We Must
Exercise



THE WHITELY
IN THE HOME
AFFORDS
THE MEANS

Compact,
Inexpensive,
Ever
Ready

PRICES:
\$1, \$2, \$3
\$4, \$5,
\$10

As presents very suitable
and always acceptable.

Always glad to show goods

PEARSON & POTTER CO.,
LIMITED

312 FORT ST.,
TEL. 665.