



Calendar News

HONOLULU ACADEMY OF ARTS

MARCH/APRIL 2006



MASTERPIECES OF BOTANICAL ILLUSTRATION:
THE LOY MCCANDLESS MARKS BOTANICAL LIBRARY

Honolulu Academy of Arts

Board of Trustees
Samuel A. Cooke, Chairman

Charman J. Akina
Burta Atherton
Dawn Aull
Frank Boas
Henry B. Clark, Jr.
Phoebe Cowles
Judy Dawson
Diane Dods
Cecilia Doo
Barney A. Ebsworth
Peggy Eu
Mark Fukunaga
Helen Gary
Alice Guild
Stephanie Hee
Ron Higgins
Claire Johnson
Lynne Johnson
Akemi Kurokawa
Clarence Lee
Warren K.K. Luke
Richard Mamiya
Watters O. Martin, Jr.
Lila Morgan
Margaret Oda
Michael O'Neill
Wesley T. Park
James F. Pierce
Duane Preble
Jean E. Rolles
Yoshiharu Satoh
Betty Sterling
Joanne V. Trotter
Thurston Twigg-Smith
Indru Watumull
Charles R. Wichman
Betty Wo

Honorary Trustees
Ernest Hara
Keiji Kawakami
T. Clifford Melim, Jr.
Joanna Lau Sullivan
Edward D. Sultan, Jr.
Masaru Yokouchi
Thelma Zen

Stephen Little, *Director*

About the cover:
Illustration in Robert John Thornton
(c. 1768–1837)
Temple of Flora, 1812
Loy McCandless Marks Library,
National Tropical Botanical Garden, Kauai

Calendar News vol. 78, no. 2, is published six times
a year as a benefit for museum members by
Honolulu Academy of Arts:
900 South Beretania Street, Honolulu, Hawaii 96814

Editor: Milt Chun
Assistant Editor: Sati Benes

Staff Photographer: Shuzo Uemoto

Design & Production: Steven Ledbetter Design & Associates, Inc.

Printing & Mailing: Edward Enterprises, Inc.

©2006 Honolulu Academy of Arts, All rights reserved.

Photograph by Tessa Farny, © 2001 Honolulu Academy of Arts

Continuing Exhibitions

Life in the Pacific of the 1700s: The Cook/Forster Collection of the Georg August University of Göttingen

LUCE GALLERIES THROUGH MAY 14

This remarkable exhibition presents several hundred objects collected during the second and third Pacific Ocean voyages of Captain James Cook (1728–79). The show is organized by the Academy in cooperation with the Institute of Cultural and Social Anthropology at the Georg August University of Göttingen in Lower Saxony, Germany.

The Shining One: The Tale of Genji in Edo

MICHENER GALLERY THROUGH MARCH 12

This exhibition of the Michener Collection of Japanese woodblock prints will focus on how the famous Japanese novel, *The Tale of Genji* (*Genji Monogatari*) was visually interpreted during the Edo period (1615–1868) and its impact on society during that time.

Kapa Moe

TEXTILE GALLERY THROUGH APRIL 9

View the Academy's splendid and majestic 19th and 20th century Hawaiian *kapa moe* (large sleeping coverings made from the inner bark of the stems of the *wauke*, or *Broussonetia papyrifera* plant) presented in this exhibition.

Persian Visions: Contemporary Photography from Iran

GALLERY 14 THROUGH APRIL 16

The first major survey of contemporary Iranian photography in the United States, *Persian Visions* is an exhibition of more than sixty works by twenty of Iran's most celebrated photographers. It is a gathering of personal perspectives, a view of contemporary Iran filtered through private, individual sensibilities even when addressing public concerns.

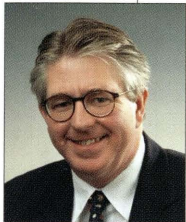
Portraits of Persons, Views of Places, and Historical Representations of Remarkable Incidents: John Webber's Images of Hawaii

HOLT GALLERY THROUGH APRIL 30

On June 24, 1776, the British Admiralty appointed English-born John Webber (1752–1793) official artist under Captain James Cook during his third voyage of exploration and discovery into the Pacific (1776–1780). Webber was to “diligently employ himself in making Drawings or Paintings of such places as [he] may touch at, that may be worthy of notice.”



Honolulu Academy of Arts



Stephen Little

Dear Friends,

I am writing to give you an update on the Academy's recently acquired Richard Lane Collection of twenty thousand (20,000) Japanese, Korean, and Chinese paintings, prints, and books. When I first saw the collection in Lane's home in Japan (2003), I was overwhelmed with the enormity of what this one man, an internationally known scholar of Japanese literature and woodblock prints, had accomplished during his lifetime. I never met Dr. Lane, but we corresponded briefly in the early '90s. He wanted to publish several Ukiyo-e woodblock prints in the Academy's collection, and it was then that he offered to leave his massive research library to the Academy as a bequest. I knew Lane to be a brilliant and elusive scholar. One of his great achievements, in addition to building a great collection of East Asian art, was hiding it from the world so successfully for such a long time. Very few people knew of his passion for collecting paintings as well as books.

The collection, purchased from the court of Kyoto Prefecture in 2003, is now being sorted into some fifty categories by an Academy-organized team. The paintings include Buddhist, Shinto, Muromachi, Momoyama, Edo, Meiji, Taishō, Kanō, Nanga, Ukiyo-e, Maruyama-Shijō, Korean, and Chinese works in every imaginable format: handscrolls, hanging scrolls, album leaves, fan paintings, and folding screens. One recent discovery was a fifteenth- or sixteenth-century hanging scroll of a squirrel on a bamboo stalk, bearing the signature and seal of the Muromachi ink painter Sōami, an official artist and connoisseur for the Ashikaga Shōgunate, who died in 1525 (Fig. 1). Whether or not the scroll proves to be by this artist, it depicts a charming and unusual subject, and is a masterpiece of Japanese ink painting.

Another discovery has been the extraordinary trove of woodblock printed books, from classical Buddhist texts to the Meiji period (1868–1912) illustrated encyclopedias for Japanese housewives. One of the first books I ever examined in the collection, over two years ago, was designed by the great Ukiyo-e printmaker Katsushika Hokusai, who designed the famous print, *Under the Wave Off Kanagawa* (*The Great Wave*), one of the world's most copied images. The book, however, was printed in Hokusai's last year of life, when he was 89, and is an illustrated guide to Western surveying instruments. I was amazed because the Academy already owns Hokusai's last known woodblock print of 1849, which also illustrates and explains the use of Western surveying instruments. Both works seem to have been published at the same time. Such connections and discoveries have been astonishing as we excavate this great artistic treasury. The most recent discovery has been a major trove of Korean paintings, ranging in date from the sixteenth through the nineteenth centuries.

In the 2009 exhibition devoted to the collection we hope to explore the full range of Lane's intellectual interests. The collection is also in many ways a mirror of the art market in Japan over a period of fifty years (Lane was collecting in Japan from roughly 1951 until his death there in 2002).

Stephen Little

Stephen Little
Director

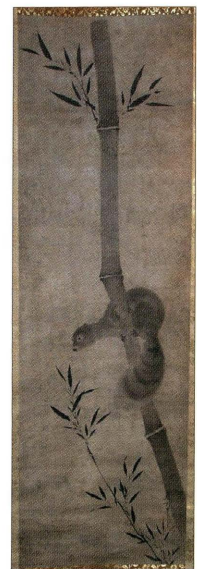


Fig. 1

Photo: ©2006 Honolulu Academy of Arts

Chinese Painting of

SULLIVAN GALLERY MARCH 8 - JULY 16

The Honolulu Academy of Arts is pleased to introduce the first Lee Family Internship Special Exhibition: *Chinese Painting of the Shanghai School*. This exhibition will run as two rotations, the first beginning on March 8 and the second on May 16. Two different themes will be explored, but each will focus on the stylistic developments that came to influence modern Chinese painting.

Shanghai School painters were a loosely-knit group of artists who lived and worked in and around Shanghai. Many were sojourners while others were natives of the growing city. What held the group together was not a specific style or mode of training but the fact that these artists worked as professionals, selling their works openly in this urban market.

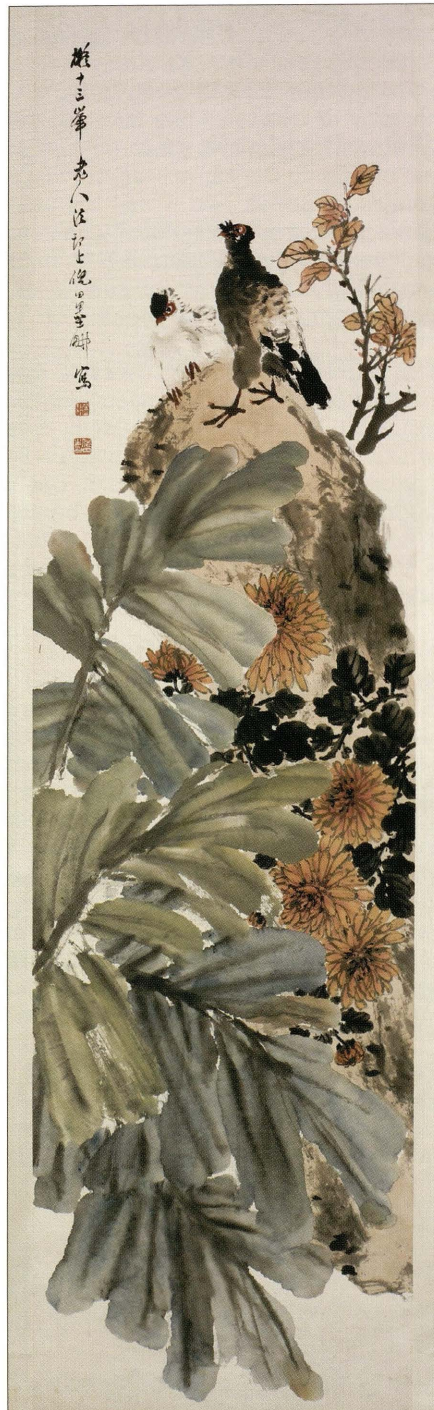
The growth of an art market in Shanghai was made possible by social change during the second half of the nineteenth century. Although the first Opium War (1838–1842) opened Shanghai to foreign trade, the Taiping Rebellion (1851–1864) destroyed some established urban centers and directed the population flow into Shanghai. This combination of forces

ultimately led to an infusion of wealth in the city and a growing merchant class. Because art and

decoration offered a visual display of material wealth, the new merchant class created a demand for fan and scroll paintings. Artists and patrons flocked to Shanghai to participate in the buying and selling of these works. As the role of the artist changed, so did the subject matter and style of painting during this period.

Traditional Chinese painting favored the academic style of the *wenren*, or literati, whereas the Shanghai school was more influenced by popular culture. Many of the people purchasing paintings at this time were not educated in the classical Confucian manner, and therefore works of art needed to be more accessible to all audiences. Shanghai School painters were influenced by the prints and illustrations that were widely available rather than paintings of earlier masters. The influence of popular culture led to the use of bold colors, exaggerated brushwork, and the use of more decorative and auspicious subject matter.

This exhibition will bring together some of the most influential artists who lived and worked in Shanghai during this pivotal time in Chinese history. Although these paintings represent a time period that is often overlooked in Chinese art



the Shanghai School



Photo ©2006 Honolulu Academy of Arts

history, they bridge the gap between the traditional and the modern in Chinese painting. Bringing these works together will showcase the relationship between art and society at the end of the Qing dynasty. The Academy is honored to exhibit these works as part of the Lee Family Internship.

—Rachel Farkas, Asian Art Intern

Rachel Farkas is the David Sen Lin and Chi-Ming Lee Family Intern in Chinese Art at the Honolulu Academy of Arts. She received her MA in Asian Studies in May of 2005 and is currently researching and cataloguing the Academy's collection of Chinese paintings by Shanghai School artists. The Lee Family Internship is offered specifically for the research of Chinese and Buddhist art at the Honolulu Academy of Arts and is intended for those who wish to continue as museum professionals.



Photo ©2006 Honolulu Academy of Arts

far left:

Ni Tian (1855–1919)
Pair of Birds on Rock
 China, Republic period, 20th century
 Hanging scroll; ink and colors on paper
 221.5 x 56.2 cm
 Purchase, 1993
 (7380.1)

left:

Ren Yu (1854–1901)
Bird on Branch (detail)
 China, Qing dynasty, dated 1870
 Hanging scroll;
 ink and colors on paper
 Anonymous loan
 (L36,502)

right:

Ren Bonian (1840–1895)
Landscape
 China, Qing dynasty, dated 1886
 Hanging scroll; ink and colors on paper
 217.0 x 64.3 cm
 Anonymous loan
 (L36,507)

Masterpieces of Botanical

The Loy McCandless Marks Botanical Library

GALLERIES 7 - 8 APRIL 6 - 30

The Loy McCandless Marks Botanical Library, owned by the National Tropical Botanical Garden on Kaua'i, is the finest personal collection in the United States of rare botanical illustrated books. With the consultation of such Hawaii botanists as Joseph Rock and Horace Clay, Mrs. Loy Marks collected over seven thousand titles, with an emphasis on tropical and subtropical botany and horticulture. The library is especially strong in 18th and 19th century botanical literature, particularly floras and florilegia. Early Renaissance herbals are another major component of the collection, with works of authors such as Otto Brunfels and Leonhard Fuchs representing impressive first steps, from medieval superstition to modern botany.

This rare illustrated book exhibition is a key adjunct to both the *Life in the Pacific of the 1700s* exhibition (on view through May 14) and the tri-annual Garden Club of Hawai'i exhibition, entitled *The Silk Road*, on view from April 27-30.

Book collecting is first and foremost an expression of love, as is made explicit in the term bibliophile. For those collectors with the vision and enthusiasm of Mrs. Marks, books are the focus of a deeply felt emotion, an expression of an impor-

tant part of their personalities, an enlargement and an intensification of their lives. Perhaps more importantly, books collected and loved by one dedicated person can enrich the lives of many others.

How is Mrs. Marks's passion for books, as expressed in her library, being preserved and treasured? The National Tropical Botanical Garden curates the Marks Collection to support research and education for another of her passions - plants.

The association of libraries and gardens is an ancient one: Cicero wrote to his friend Terentius Varro, "Si hortum in bibliotheca habes, nihil deerit" ("If you have a garden in the library, nothing will be lacking"). Mrs. Marks appreciated this association and expressed the wish that her collection have an adjoining landscaped garden. The National Tropical Botanical Garden is the perfect home for these magnificent books.

Mrs. Marks was the source of inspiration and motivation to establish a national tropical botanical garden in Hawai'i. While serving as president of the Garden Club of Honolulu, she consulted Joseph Rock on establishing a garden in Hawaii. According to Mrs. Marks, Rock urged the establishment of a tropical garden on an international level.

In 1961, Mrs. Marks began a campaign in Washington, D.C., for legislation establishing a



Illustration:

garden in Hawai'i. Goodale Moir and Mrs. Marks, executive officers of the Hawaiian Botanical Gardens Foundation, and Micheal Shea, a young Washington lawyer, drafted charter language and recruited fifty organizations as sponsors of the charter. When the charter was successfully

obtained in August 1964, she hosted a triumphant dinner party in Washington to celebrate.

The collection policy for the NTBG library focuses on current research in tropical botany and horticulture. The strong historical component of the Marks Library complements and strengthens the library at NTBG and the synergistic effect of a combined collection will benefit the entire plant science community. The auspicious union of the Marks Library with the NTBG collections has created the premiere research and education resource for the study of plants in the State of Hawai'i and the South Pacific region.

—Rick Hanna, Librarian, National Tropical Botanical Garden, Kaua'i



Photo ©2006 Honolulu Academy of Arts

far left:
Illustration in Carl Ludwig Blume
(1828–1858),
Rumphia, Sive Commentationes Botanicae,
1835
Loy McCandless Marks Library, National
Tropical Botanical Garden, Kauai

top left:
Victoria Water Lily, illustration by William
Sharp (1749–1854) in
John Fisk Allen (1807–1876),
Victoria regia, 1854
Loy McCandless Marks Library, National
Tropical Botanical Garden, Kauai

bottom left:
Varieties of Palm Trees, illustration in Karl
Martius (1794–1868),
Historia Naturalis Palmarum, 1833
Loy McCandless Marks Library, National
Tropical Botanical Garden, Kauai

right:
Priscilla Susan Bury (fl. 1831–1837),
Lily, illustration in
A Selection of Hexandrian Plants, 1831
Loy McCandless Marks Library, National
Tropical Botanical Garden, Kauai



Photo ©2006 Honolulu Academy of Arts



Photo ©2006 Honolulu Academy of Arts

Island Shadows: Recent Work in Clay and Bronze by David Kuraoka

HOLT GALLERY MARCH 30 – JUNE 18

Celebrated for his ceramics and cast-bronze sculpture alike, David Kuraoka presents a selection of work that is exquisite in shape, color, and surface. Born in Lihue in 1946, on the faculty at San Francisco State University, and involved with clay for almost four decades, Kuraoka produces ceramic forms on the wheel that are either perfect in shape and glazed with transparent celadon or are altered and manipulated by hand before pit-firing with sawdust, rock salt, and copper carbonate. He makes large-scale

also uses the lost-wax method for casting a selection of his sculptural ceramic forms and, with blow torch and chemicals heated on the bronze surface, mimics the expressive colorism of his pitfiring, only now deeper, richer, more translucent in effect.

Kuraoka recognizes the potential for decorative patterning that is integral to wall murals created out of multiple rows of equally sized tiles. He creates his murals either by pitfiring the tiles with chemicals and copper wire placed in physical contact with their surfaces, or by glazing them in simplified, abstract patterns. The techniques lead

to effects that are indebted to the earthy tonalism and unpredictability of pitfiring or the more controlled glossy colorism possible with the kiln.

Raised on the island of Kauai, Kuraoka confesses to having been rather naïve with no conception of art and being an artist when he moved to the Bay Area in 1964 to attend San Jose City College. He transferred to San Jose State College to continue his education, earning first a BA in art and then an MA in 1971, with ceramics as his



architectural statements out of wall murals created with pit-fired or glazed tiles as well as, more recently, ceramic forms cast in bronze and patinated with heated chemicals.

Irregular yet organic and sculptural in shape with a lustrous burnished surface and a luminous array of pitfire reds, blacks, and browns, Kuraoka's lowfired works not only beg the touch, they are often said to suggest the volcanic origin of the Hawaiian Islands. In contrast, the absolute purity of shape and pristine delicacy of his pale sea-green celadon glaze belie the functional origin of his porcelain vessel forms. Working in a foundry close to his San Francisco home, Kuraoka

graduate focus. Kuraoka started teaching that same year at San Francisco State University, where he remains the head of the ceramics program. In addition to teaching, Kuraoka maintains studios on Kauai and in San Francisco, where he produces his own work, with an exhibition record that includes shows in Hawaii, California, and elsewhere on the U.S. mainland. His work is included in many private and corporate collections as well as the Honolulu Academy of Arts, The Contemporary Museum in Honolulu, the Hawaii State Foundation on Culture and the Arts, and the Rotterdam Modern Museum of Art in The Netherlands.

—Jennifer Saville, Curator of Western Art

Susan Sayre Batton Joins the Academy Staff as Deputy Director



Susan Sayre Batton

The Academy is delighted to announce that Susan Sayre Batton has joined the staff as our new Deputy Director.

Despite her recent appointment, Batton is not a newcomer to the Academy, having worked since 1992 as

the Director of Conservation for the world-renowned James A. Michener Collection of Japanese Ukiyo-e woodblock prints. She has extensive experience as an administrator, grant writer, art educator, conservator, and fundraiser. For the last ten years she maintained a private practice providing exhibition coordination, conservation services, and management consulting to museums, arts organizations, galleries, and collectors, facilitating many professional relationships in the art world.

During this time, she was the conservator and project manager for the Academy's Robert F. Lange Foundation-funded project to organize, conserve, and develop exhibition standards for the Michener Collection. This project has raised the profile of the Academy locally, nationally, and internationally, and is a model for many Mainland museums.

Concurrent with her long affiliation with the Academy, Sayre has been actively involved with other museums, including the Norton Simon Museum in Pasadena, California, where she was the paper conservator for the Asian and Western collections, as well as a researcher and writer, contributing technical entries for the forthcoming 19th century-European Art Catalogue. Sayre also worked closely with Academy Director Stephen Little at the Art Institute of Chicago, as a consulting conservator in the Asian Art department. Prior to that, she was the Acting Head of Conservation at the Asian Art Museum of San Francisco.

Prior to establishing her private practice, Sayre was the Associate Director of the Los Angeles Center for Photographic Studies, a non-profit art center devoted to the exhibition and publication of contemporary photo-based art. In this administrative role, she directed the publications program, exhibitions, fundraising, film and video

programming. Sayre directed the organization's move and new gallery construction on Hollywood Boulevard, and chaired the patron print program, called *Contemporary Collections*, whereby donors received a photograph from a unique edition in exchange for a high level membership.

From 1990 to 1992, Sayre was awarded Institute of Museums Services and National Endowment for the Arts Fellowships at the Los Angeles County Museum of Art, where she researched and surveyed the Tibetan *thangka* collection, and worked with the Department of Prints and Drawings. While at LACMA, Sayre also worked on landmark exhibitions such as *Degenerate Art* and *Parallel Visions*.

Prior to working in the museum world, Sayre was the Head of Conservation Treatments at the Princeton University Library, with collection responsibility for five million books. Concurrently, she was also a teaching assistant for five years in the Visual Art Program at Princeton in ceramics, and led book arts seminars in the photography department.

Educated at Denison University in Granville, Ohio, she studied art history, including a year abroad at Oxford University, and completed a BFA degree in studio art. After graduation, Sayre went to Princeton for postgraduate study, and received a Mellon Fellowship to study book and paper conservation in the Princeton University Library.

Sayre's professional accomplishments were acknowledged by election in 2001 to membership in ArtTable, the national organization of professional women in the arts. She regularly serves on grant panels and advisory boards, including the national Institute for Museum and Library Services (IMLS), the Hollywood Art and Design Advisory Board, and on the UH Manoa Library Development Advisory Board.

left:

David Kuraoka
United States/Hawaii, born 1946
Hanapaa 1-7 (detail), 2003
Low-fired stoneware; wheel-thrown,
altered, pit-fired
Ea. approx. 14.5 x 4.5 in.
(36.8 x 11.4 cm)

Bjørn Melhus: EASTERN_WESTERN_PARK



Photo: 2006 © Honolulu Academy of Arts

Guests gather in the Mylar teepee - part of the video installation built conceptually on two sets of stereotypes prevalent in the Western world featuring images of native Americans and cowboys of the Old West as presented through the best-selling popular novels of the German author Karl May (1842–1912).

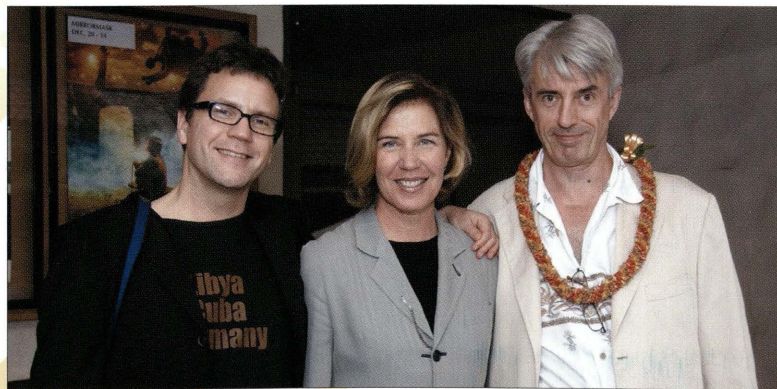


Photo: 2006 © Honolulu Academy of Arts

Second in the new series of Contemporary Masters @ Honolulu Academy of Arts are works by video artist Bjørn Melhus (left) with the Academy's Deputy Director Susan Sayre Batton and Peter Ruthenberg, Special Assistant to the Director.

MARCH at The Doris Duke Theatre



Kinau St. entrance will be CLOSED from Feb. 23 - May 14, 2006. Use Beretania Street entrance for admission to Doris Duke Theatre.

Got Film? Join the Doris Duke Theatre email newsletter. To subscribe, send an email to film@honoluluacademy.org

WEDNESDAY

1

Lecture
HOT Tosca
10:00 a.m.
Films
**New Oceania/
Velvet Dreams**
1:00 p.m.
7:30 p.m.

THURSDAY

2

Films
**The Land Has
Eyes/Tama Tu/
Haka- Rongo**
1:00 p.m.
7:30 p.m.

FRIDAY

3

Films
**Big Waves &
Tall Tales/
Polynesian
Power**
1:00 p.m., 4:00 p.m.
and 7:30 p.m.

SATURDAY

4

Lecture
LIP: The Spirit World
11:00 a.m.
HOT Tosca
4:00 p.m.
Films
Bubble/Caress
1:00 p.m. 7:30 p.m.

SUNDAY

5

Film
Bubble
1:00 p.m.
4:00 p.m.
7:30 p.m.

MONDAY

6

Film
Bubble
7:30 p.m.

TUESDAY

7

Film
Bubble
1:00 p.m.
7:30 p.m.

WEDNESDAY

8

Film
Bubble
1:00 p.m.
7:30 p.m.

THURSDAY

9

Film
Bubble
1:00 p.m.
Lecture
Roman Art
7:30 p.m.

FRIDAY

10

Film
**Tristam
Shandy**
1:00 p.m.
4:00 p.m.
7:30 p.m.

SATURDAY

11

Lecture
**LIP: The Sky
World** 11:00 a.m.
Film
Tristam Shandy
1:00 p.m.
4:00 p.m.
7:30 p.m.

SUNDAY

12

Film
Tristam Shandy
1:00 p.m.
4:00 p.m.
7:30 p.m.

MONDAY

13

Film
Tristam Shandy
7:30 p.m.

TUESDAY

14

Film
Tristam Shandy
1:00 p.m.
7:30 p.m.

WEDNESDAY

15

Film
Tristam Shandy
1:00 p.m.
7:30 p.m.

THURSDAY

16

Film
Tristam Shandy
1:00 p.m.
7:30 p.m.

FRIDAY

17

Film
Why We Fight
1:00 p.m.
4:00 p.m.
7:30 p.m.

SATURDAY

18

Lecture
**LIP:
Recovering
the Sky** 11:00 a.m.
Film
Why We Fight
1:00 p.m., 4:00 p.m.
and 7:30 p.m.

SUNDAY

19

Lecture
**Dr. Dennis
Geronimus**
2:00 p.m.
Film
Why We Fight
4:00 p.m.
7:30 p.m.

MONDAY

20

Performance
**Chamber
Music Hawaii:
The Honolulu
Brass**
7:30 p.m.

TUESDAY

21

Performance
**New Music for
Contrabass**
7:30 p.m.

WEDNESDAY

22

Performance
**Francois
Rabbath**
7:30 p.m.

THURSDAY

23

Film
Why We Fight
1:00 p.m.
Lecture
**Hawaii
Craftsmen**
5:30 p.m.

FRIDAY

24

Performance
Jazz from Japan
7:30 p.m.

SATURDAY

25

Lecture
**LIP: The
Underworld**
11:00 a.m.
Film
Why We Fight
1:00 p.m., 4:00 p.m.
and 7:30 p.m.

SUNDAY

26

Lecture
**Christine
Kondoleon**
2:00 p.m.
Film
Why We Fight
4:00 p.m. 7:30 p.m.

MONDAY

27

Film
Why We Fight
7:30 p.m.

TUESDAY

28

Film
Why We Fight
1:00 p.m.
7:30 p.m.

WEDNESDAY

29

Film
Why We Fight
1:00 p.m.
7:30 p.m.

THURSDAY

30

Film
Fateless
1:00 p.m.
7:30 p.m.
Lecture
David Kuraoka
5:00 p.m.

FRIDAY

31

Film
Fateless
1:00 p.m.
4:00 p.m.
7:30 p.m.



APRIL at The Doris Duke Theatre

Please be advised that the Kinau St. entrance to the Doris Duke Theatre will be CLOSED during the daytime for the duration of the Life in the Pacific of the 1700s exhibition (Feb. 23 - May 14, 2006). Please use the museum entrance on Beretania St. for admission into the Doris Duke Theatre. The Kinau St. entrance to the Doris Duke Theatre will be OPEN during the evening.

Got Film? Join the Doris Duke Theatre email newsletter. To subscribe, send an email to film@honoluluacademy.org

SATURDAY

1

Lecture

LIP: The Ocean Land
11:00 a.m.

Film

Fateless
1:00 p.m.

4:00 p.m., 7:30 p.m.

SUNDAY

2

Film
Fateless
1:00 p.m.
4:00 p.m.
7:30 p.m.

MONDAY

3

Film
Fateless
7:30 p.m.

TUESDAY

4

Film
Fateless
1:00 p.m.
7:30 p.m.

WEDNESDAY

5

Film
Fateless
1:00 p.m.
7:30 p.m.

THURSDAY

6

Films
Occupation: Dreamland
1:00 p.m.
Clans of Intrigue
7:30 p.m.

FRIDAY

7

Films
Occupation: Dreamland
1:00 p.m.
4:00 p.m.
Dirty Ho
7:30 p.m.

SATURDAY

8

Films
Occupation: Dreamland
1:00 p.m.
The Boxer from Shantung
4:00 p.m.
7:30 p.m.

SUNDAY

9

Lecture
Mexican Murals
2:00 p.m.
Film
King Boxer
4:00 p.m.
7:30 p.m.

MONDAY

10

Performance
Chamber Music Hawaii: Spring Wind Quartet
7:30 p.m.

TUESDAY

11

Films
Occupation: Dreamland
1:00 p.m.
Young Auntie
7:30 p.m.

WEDNESDAY

12

Films
Occupation: Dreamland
1:00 p.m.
Jade Tiger
7:30 p.m.

THURSDAY

13

Films
The Minutemen
1:00 p.m.
Magic Blade
7:30 p.m.

FRIDAY

14

Films
The Minutemen
1:00 p.m.
4:00 p.m.
One-Armed Swordsman
7:30 p.m.

SATURDAY

15

Films
The Minutemen
1:00 p.m.
Five Venoms
4:00 p.m.
7:30 p.m.

SUNDAY

16

Films
The Minutemen
1:00 p.m.
4:00 p.m.
Legendary Weapons
7:30 p.m.

MONDAY

17

Film
Manderlay
7:30 p.m.

TUESDAY

18

Film
Manderlay
1:00 p.m.
7:30 p.m.

WEDNESDAY

19

Film
Manderlay
1:00 p.m.
7:30 p.m.

THURSDAY

20

Film
Manderlay
1:00 p.m.
7:30 p.m.

FRIDAY

21

Film
Manderlay
1:00 p.m.
4:00 p.m.
7:30 p.m.

SATURDAY

22

Film
Sophie Scholl
1:00 p.m.
Performance
Bertoncini/Yasui
7:30 p.m.

SUNDAY

23/30

Film
Sophie Scholl
1:00 p.m.; 4:00 p.m. and 7:30 p.m.
Film
Boys of Baraka
1:00 p.m.; 4:00 p.m. and 7:30 p.m.

MONDAY

24

Film
Sophie Scholl
7:30 p.m.

TUESDAY

25

Film
Sophie Scholl
1:00 p.m.
7:30 p.m.

WEDNESDAY

26

Film
Sophie Scholl
1:00 p.m.
7:30 p.m.

THURSDAY

27

Film
Sophie Scholl
1:00 p.m.
7:30 p.m.

FRIDAY

28

Film
Boys of Baraka
1:00 p.m.
4:00 p.m.
7:30 p.m.

SATURDAY

29

Lecture
LIP: Tatoo
11:00 a.m.
Film
Boys of Baraka
1:00 p.m., 4:00 p.m.
HPU Shorts
7:30 p.m.

APRIL at The Doris Duke Theatre



FILMS

Fateless

Dir: Lajos Koltai, Hungary, 2005, 140m, NR
German, Hungarian w/E.S.

Based on Nobel Prize-winner Imre Kertész's stunning novel about a Hungarian Jewish boy's experiences during and after the Nazi occupation of Hungary.

April 1, 2, 4 and 5 at 1:00 p.m.

April 1, 2, 3, 4 and 5 at 7:30 p.m.

April 1 and 2 at 4:00 p.m.

Occupation: Dreamland

Dirs: Ian Olds, Garrett Scott, USA, 2005, 78m, R

A riveting depiction of eight members of the US Army's 82nd Airborne deployed in the besieged Iraqi city of Falluja during the winter of 2004. Warning: Coarse language and mature themes.

April 6, 7, 8, 11 and 12 at 1:00 p.m.

April 7 at 4:00 p.m.

Heroic Grace: The Chinese Martial Arts Film, Part II

The Doris Duke Theatre is proud to present ten films from the legendary Shaw Brothers Studio. This film program has been selected and organized by the UCLA Film and Television Archive. Many of these films have been out of circulation and unseen on the big screen for over two decades. This is a rare opportunity to enjoy some of the best and most popular martial arts films ever made. All film synopses excerpted from the UCLA Film & Television Archive's Heroic Grace II notes by Cheng-Sim Lim and Jesse Zigelstein. (c) Licensed by Celestial Pictures Ltd. All rights reserved.

Clans of Intrigue (Chu Liuxiang)

Dir: Chu Yuan, Hong Kong, 1977, 99m, NR
Mandarin w/E.S.



A gripping wuxia "whodunnit" set in the timeless realm of martial chivalry. Someone is framed for the murder of three clan chiefs and the mystery is solved in a gender-bending

twist.

April 6 at 7:30 p.m.

Dirty Ho (Lan Tou Hou)

Dir: Lau Kar-leung, Hong Kong, 1979, 100m, NR
Cantonese w/E.S.



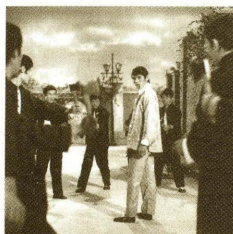
Fighting without seeming to fight—that's the ingenious premise at the heart of this dazzler by martial arts grand-master Lau Kar-leung. The director's

mainstay and legendary martial artist Gordon Liu plays a prodigal prince (and hyper-cultivated epicurean) targeted for assassination by his elder brother.

April 7 at 7:30 p.m.

The Boxer From Shantung (Ma Yongzhen)

Dir: Zhang Che, Bao Xueli, Hong Kong, 1972, 126m, NR, Mandarin w/E.S.



This brutal fight film adapts the proverbial rise-and-fall gangster formula to the mean streets of '30s Shanghai.

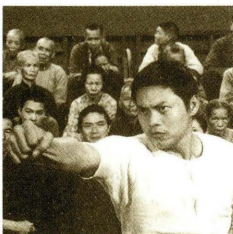
Among the film's highlights that have inspired a host of

imitators: an iconic match between Chen and a Russian wrestler, and ruthless hatchet-wielding thugs, most recently revived as the "axe gang" in Stephen Chow's comic tribute to the martial arts cinema, Kung Fu Hustle.

April 8 at 4:00 p.m. and 7:30 p.m.

King Boxer (Tianxia Diyi Quan)

Dir: Chung Chang-wa, Hong Kong, 1972, 97m, NR, Mandarin w/E.S.



Korean director Chung Chang-wa was hired by studio mogul Run Run Shaw in the late '60s to help meet Asian audiences' growing taste for tough action films. Actor

Luo Lie brings characteristic intensity to his role as an "Iron Fist" adept whose fingers are viciously shattered by a rival gang.

April 9 at 4:00 p.m. and 7:30 p.m.

My Young Auntie (Zhangbei)

Dir: Lau Kar-leung, Hong Kong, 1980, 114m, NR
Mandarin w/E.S.



A young widow delivers a fought-over deed of inheritance to the rightful heirs, her crotchety nephew and his westernized son. Freely mixing martial arts moves with allusions to

popular Hollywood genres, *My Young Auntie* is an unalloyed triumph of kung fu comedy.

April 11 at 7:30 p.m.

The Jade Tiger (Bai Yu Laohu)

Dir: Chu Yuan, Hong Kong, 1977, 101m, NR
Mandarin w/E.S.

Di Long heads an all-star cast as a Zhou warrior

is catapulted into the middle of a no-holds-barred war between his clan and another one. Chu's characteristic visual splendor contributes to the air of delirium, but a self-conscious pathos about the futility of martial rivalry lends the film thematic ballast and anticipates the reflexive tone adopted in the melancholy wuxia by the Hong Kong New Wave of the '80s.

April 12 at 7:30 p.m.

The Magic Blade (Tianya Mingyue Dao)

Dir: Chu Yuan, Hong Kong, 1976, 101m, NR
Mandarin w/E.S.

Shaw action stars Di Long and Luo Lie are chivalric rivals who join forces to track down a legendary weapon - the terrifying Peacock Dart! - and defeat an evil sorcerer bent on domination of the jiang hu. Along the way, a wild menagerie of armed henchmen, conniving nobles and beauties, and a militant grandma crosses swords with the twosome.

April 13 at 7:30 p.m.

The New One-Armed Swordsman (Xin Dubi Daowang)

Dir: Zhang Che, Hong Kong, 1971, 94m, NR
Mandarin w/E.S.

David Jiang portrays an arrogant warrior humbled by a nefarious opponent and forced to hack off his own arm. Years of waiting tables fortify his single-handed dexterity, but what finally launches him back on the path of bloody retribution is the untimely death of his comrade Di Long.

April 14 at 7:30 p.m.

The Five Venoms (Wu Du)

Dir: Zhang Che, Hong Kong, 1978, 97m, NR
Mandarin w/E.S.

A longtime favorite of martial arts movie fans! The dying master of the Venoms House tasks his one remaining disciple to bring to justice the young man's five predecessors, now dispersed and fallen into ignominious criminality. A suspenseful mystery unfolds, punctuated by some of the most well-articulated and imaginative fight sequences of the martial arts cinema.

April 15 at 4:00 p.m. and 7:30 p.m.

Legendary Weapons of China (Shiba Ban Wuyi)

Dir: Lau Kar-leung, 1982, 101m, NR
Cantonese w/E.S.

Director Lau Kar-leung's exhilarating exposition on Chinese martial arts has been hailed as the ultimate film on the subject, and it's easy to see why. It argues for realistic kung fu over fakery and spectacle. A compendium of 18 classic weaponry and combat styles, including "weaponless" fist-fighting, the film also reiterates a favorite theme of the martial arts cinema - the training of a disciple by a master.

April 16 at 7:30 p.m.

APRIL at The Doris Duke Theatre



We Jam Econo - The Story of the Minutemen

Dir: Tim Irwin, USA, 2005, 90m, NR

A popular, but underground documentary about the groundbreaking '80s punk rock band, The Minutemen. They released five LPs in four years, toured with bands from Black Flag to REM and were featured on MTV. All music fans will appreciate the energy and insight of this seminal band.

April 13, 14, 15 and 16 at 1:00 p.m.

April 14 and 16 at 4:00 p.m.

Manderlay

Dir: Lars Von Trier, Denmark, 2005, 139m, NR
Manderlay continues the intrigue of Lars Von Trier's innovative film, *Dogville*, by telling the strange, disturbing story of the Manderlay plantation. In 1933, fate brings Grace and her father to a plantation where they find a group of people living with white masters and black slaves...as if slavery had not been abolished seventy years earlier. Film critic Roger Ebert describes *Manderlay* as "genuinely powerful...the film uses language and description few American films dare to use."

Preceded by

A Team Like No Other

Dir: King Kekaulike High School, Hawai'i, 2005, 2m, NR

HSFF 05 Award Winner. A look at our courageous health care workers.

April 17, 18, 19, 20 and 21 at 7:30 p.m.

April 18, 19, 20 and 21 at 1:00 p.m.

April 21 at 4:00 p.m.

Sophie Scholl: The Final Days

Dir: Marc Rothemund, Germany, 2005, 117m, NR, German w/E.S.

The true story of Germany's most famous anti-Nazi heroine is brought to life in this the multi-award winning dramatic film. In 1943, as Hitler continues to wage war across Europe, a group of college students mount an underground resistance movement in Munich. Its sole female member, Sophie Scholl, is captured. Her cross-examination by the Gestapo quickly escalates into a searing test of wills as Scholl delivers a passionate call to freedom and personal responsibility that is both haunting and timeless.

April 22 and 23 at 1:00 p.m., 4:00 p.m. and 7:30 p.m.

April 24, 25, 26 and 27 at 7:30 p.m.

April 25, 26 and 27 at 1:00 p.m.

The Boys of Baraka

Dir: Heidi Ewing, Rachel Grady, USA, 2005, 84m, NR

This is an incredible documentary about an experimental education program that takes 12-year-old boys from the most violent ghettos of Baltimore to an experimental boarding school in rural Kenya. Similar to award winning documentaries, *Born Into Brothels* and *Lost Boys of Sudan*, this film tells a powerful and emotional story about the courage of children and the hope of opportunity.

April 28, 29 and 30 at 1:00 p.m.

April 28, 29 and 30 at 4:00 p.m.

April 28 and 30 at 7:30 p.m.

Shorts on the Rocks

Presented by the Hawaii Pacific University Film Club

The inaugural student short film festival will be a chance for selected student filmmakers to showcase their works. Industry professionals will announce awards and prizes. Join in the celebration of these talented filmmakers.

April 29 at 7:30 p.m.

\$3 Students/Members

\$5 General Admission

LECTURES

Life in the Pacific

Emil Wolfgramm, Teller of Tongan and Polynesian Epics, is a native of Tonga. Educated in Aoteroa (New Zealand), he has lived in Hawai'i since the 1960s. Wolfgramm is a renowned recounter of Tongan and Polynesian epic tales and mythologies. His four-part program at the Academy explores ancient Tongan tales regarding the genesis of the cosmos.

"The Cosmogony from Tonga, Part 4: The Ocean Land"

Saturday, April 1, 11:00 a.m.

"José Clemente Orozco: The Man and the Muralist"

Lecture by Clemente Orozco V

In this lecture cosponsored with the Academy by the Jean Charlot Foundation, Clemente Orozco V, the son of celebrated Mexican painter José Clemente Orozco, will speak about his father and his father's art. Along with Diego Rivera and David Alfaro Siqueiros, José Clemente Orozco was one of the trio of politically and socially

committed muralists known for its leadership of modern Mexican art. Recognized for its intense humanitarianism, Orozco's work is well known for its passionate commentary on the suffering and misery of humankind.

Sunday, April 9 at 2:00 p.m., Free

"A Tattoo Tour of Polynesia" Tricia Allen

This lecture by renowned Polynesian specialist and tattoo artist Tricia Allen will provide an overview of the tattoo among traditional Polynesian cultures, including how the tattoo functioned within each specific island group. It will also include a brief overview of the revival of tattooing in Polynesia today.

Saturday, April 29, 11:00 a.m.

PERFORMANCES

Chamber Music Hawaii Spring Wind Quintet: Something Old, Something New

From the Classical period to today, this program will feature something for everyone. The jazz-inspired rhythms of the John Harbison Quintet contrast with the Brahms-inspired Rondo Humoresque of Alexander von Zemlinsky, and the romantic sonorities of Carl Reinecke's Sextet in B-flat Major. The program also celebrates the 250th anniversary of Mozart's birth with a specially-commissioned arrangement of one of his works by our own talented Marsha Schweitzer. Don't miss this thrilling world premiere!

Monday, April 10 at 7:30 p.m.

\$20/Students Free

Guitar Virtuoso Gene Bertoncini

What a monstrously talented musician this man is. Those who have witnessed his previous visits to our stage can attest that no one is smoother or finer than Gene Bertoncini. Equally fluid in jazz, bossa nova, and popular tunes from many eras, and joined as always by bass artist Byron Yasui, this will be a concert for you to remember.

Saturday, April 22 at 7:30 p.m.

\$20/\$18

THE DORIS DUKE THEATRE TICKETS: The Box Office is located at the museum's main entrance on Beretania Street. Hours: Monday 10 a.m.-3 p.m., Tuesday-Saturday 10 a.m.-4 p.m., Sunday 1-4 p.m.

FILMS: Tickets are \$7 general, \$6 for seniors, students & military, \$5 for members and may be purchased on the day of screening at the Academy Box Office at the museum's main entrance on Beretania Street or at The Doris Duke Theatre at the Academy door, on Kinau Street, one half-hour before each screening.

CONCERTS & LECTURES: Tickets are available in advance by mail or in person unless indicated otherwise. Enclose a self-addressed stamped envelope, a note indicating the events for which you wish to purchase tickets, and a check payable to: Honolulu Academy of Arts, 900 South Beretania St., Honolulu, Hawaii 96814-1495

PARKING: For weekday matinee screenings theater patrons may use the Academy Art Center parking lot for a \$3 fee for every four hours with validation at the theater; for evening screenings parking is FREE at the Academy's

1035 Kinau Street lot; handicapped parking is available in the small Luce Pavilion lot adjacent to Victoria Street; patrons using handicapped stalls should proceed around the corner to the Theater's main entrance on Kinau Street.



The Doris Duke Theatre is equipped with the **Easy Listener Hearing Assistance System** for our patrons who have trouble hearing due to hearing loss, seat location, acoustics or audience noise. Receivers are at no extra charge. Please pick up a receiver at the ticket counter.



MARCH at The Doris Duke Theatre

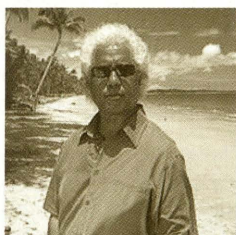
FILMS

Life in the Pacific Film Series March 1 - 3, 2006

The Doris Duke Theatre is proud to present a collection of contemporary and engaging films that celebrate life in the Pacific.

New Oceania

Dir: Shirley Horrocks, Aotearoa/Samoa, 70m, NR, Samoan w/E.S.



Albert Wendt is one of the South Pacific's leading novelists, poets, and dramatists. He has also been a tireless teacher of creative writing, an anthologist and a champion of indigenous work across the Pacific. This film presents a history of cultural renewal in the Pacific and celebrates the explosion of creative activity by Pacific artists in New Zealand.

on of indigenous work across the Pacific. This film presents a history of cultural renewal in the Pacific and celebrates the explosion of creative activity by Pacific artists in New Zealand.

Preceded by

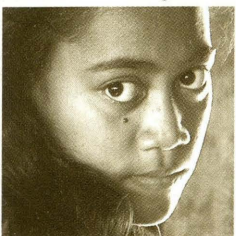
Velvet Dreams

Dir: Sima Urale, Aotearoa, 2000, 45m, NR
Renowned Pacific Islander filmmaker Sima Urale presents a clever docudrama tracing the story behind the stereotypical "dusky maidens" - portraits of sexualized Polynesian women in velvet paintings.

March 1 at 1:00 p.m. and 7:30 p.m.

The Land Has Eyes (Pear Ta Ma 'on Maf)

Dir: Vilsoni Hereniko, USA/Fiji, 2005, 87m, NR
Rotuman and English w/E.S.



Viki, is a young Pacific Islander who redeems her family's name by exposing the secrets of her island's most powerful and important people. This film was made

by UH Professor Vilsoni Hereniko and is Fiji's official submission to the Academy Awards.

Preceded by

Tama Tū

(Sons of Tū: The God of War)

Dir: Taika Waititi, Aotearoa, 2005, 18m, NR
6 Maori Battalion soldiers wait for night to fall in the ruins of an Italian home.

And

Haka-Rongo (To Listen)

Dir: Sergio M. Rapu, Rapanui/Chile/Hawai'i, 2005, 2m, NR

A beautiful film about the past, the future, and

the identity of a Rapanui man. Co-presented by Pacific Islanders in Communication.

Mar. 2 at 1:00 p.m. and 7:30 p.m.

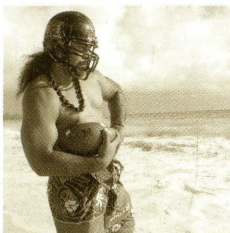
Big Waves & Tall Tales

Dir: Grant Washburn, USA, 2006, 75m, NR
Hawai'i premiere! Spectacular short stories from surfing's wild frontier! Brought to you by big wave surfing legend Grant Washburn, this documentary features stunning film footage, gargantuan waves and dramatic accounts that will take you on a "surfari" that you will never forget. Featuring Jeff Clark, Peter Mel, Jay Moriarity and others.

Preceded by

Polynesian Power

Dir: Jeremy Spear/Robert Pennington, USA, 2005, 47m, NR



Polynesian pride and cultural identity are challenged when young men from Samoa and Hawai'i journey stateside to realize their boyhood dreams of playing

professional football in the National Football League (NFL).

And

Matto Saina-Ta As Hurao

Dir: Alex Munoz, Guam, 2005, 1m, NR
The powerful and haunting return of Hurao, one of the first chiefs to unify the Chamorro against the Spanish. Co-presented by Pacific Islanders in Communication.

Mar. 3 at 1:00 p.m., 4:00 p.m. and 7:30 p.m.

Bubble

Dir: Steven Soderbergh, USA, 2006, 90m, R
Academy Award winner Steven Soderbergh returns to his small-scale independent roots in *Bubble*. The result is a genre-bending exercise that is a truly original cinematic experience. The friendship of two long time employees is threatened by the arrival of a new and younger worker named Rose. One morning, Rose is found dead. An investigation begins, that will call into question our established assumptions about these characters and their small town. Soderbergh brings this tragic story to life with startling realism.

Preceded by

Caress (after Roland Barthes)

Artist: Rudy Lemcke, USA, 2001, 4m
An artistic work based on philosopher Roland Barthes. Co-presented by the UHM Art Department.

March 4, 5, 7, 8 and 9 at 1:00 p.m.

March 4, 5, 6, 7 and 8 at 7:30 p.m.

March 5 at 4:00 p.m.

Tristram Shandy: A Cock and Bull Story

Dir: Michael Winterbottom, UK, 2005, 91m, R
Tristram Shandy: A Cock and Bull Story is a hilarious and inventive adaptation of the classic 18th Century comic novel "The Life and Opinions of Tristram Shandy, Gentleman" by Laurence Sterne.

March 10, 11* and 12 at 1:00 p.m., 4:00 p.m. and 7:30 p.m.

March 13, 14, 15 and 16 at 7:30 p.m.

March 14, 15 and 16 at 1:00 p.m.

*Cinema Supper Event Returns!

From 5:30 p.m. on March 11, the Pavilion Café will be open with a special menu that features the delicious cuisine of Chef Mike Nevin. By reservations only, after March 1, please call 532-8734 to make a reservation. Film admission is separate. Enter the Pavilion Café through the Doris Duke Theatre entrance on Kinau St. Savor this rare opportunity to enjoy dinner and a film at the Academy.

Why We Fight

Dir: Eugene Jarecki, USA, 2006, 98m, PG-13
Winner of the Grand Jury Prize at the 2005 Sundance Film Festival! *Why We Fight* launches a bipartisan inquiry into the workings of the military industrial complex and the rise of the American Empire. This powerful documentary asks how a nation of, by, and for the people has become the savings-and-loan of a system whose survival depends on a state of constant war.

March 17, 18, 23, 25, 28 and 29 at 1:00 p.m.

March 17, 18, 19, 25 and 26 at 4:00 p.m.

March 17, 18, 19, 25, 26, 27, 28 and 29 at 7:30 p.m.

Fateless

Dir: Lajos Koltai, Hungary, 2005, 140m, NR
German, Hungarian w/E.S.

Based on Nobel Prize-winner Imre Kertész's stunning novel about a Hungarian Jewish boy's experiences during and after the Nazi occupation of Hungary, *Fateless* is one of the most powerful cinematic treatments of the Holocaust.

March 30 and 31 at 1:00 p.m. and 7:30 p.m.

March 31 at 4:00 p.m.

LECTURES

Hawaii Opera Theatre Preview Lecture

Tosca by Giacomo Puccini

Tosca, a sensual beauty, is caught between the political captive she loves and the villainous police chief who bargains for her body. The equivalent of a modern-day thriller, fraught with intrigue and emotion, *Tosca* is an intense experience of obsessive love, power and dangerous beauty. The Wednesday morning lecture includes

MARCH at The Doris Duke Theatre



opera cast members on stage to answer your questions. On Saturday afternoon the lecture repeats without the cast.

Wednesday, March 1 at 10:00 a.m.,

\$3/Members Free

Saturday, March 4 at 4:00 p.m.

\$3/Members Free

Life in the Pacific

Emil Wolfgramm, Teller of Tongan and Polynesian Epics, is a native of Tonga. Educated in Aoteroa (New Zealand), he has lived in Hawai'i since the 1960s. A renowned recounter of Tongan and Polynesian epic tales and mythologies, this four-part program at the Academy explores ancient Tongan tales regarding the genesis of the cosmos.

"The Cosmogony from Tonga, Part 1: The Spirit World"

Saturday, March 4, 11:00 a.m.

"The Cosmogony from Tonga, Part 2: The Sky World"

Saturday, March 11, 11:00 a.m.

"The Cosmogony from Tonga, Part 3: The Underworld"

Saturday, March 25, 11:00 a.m.

"Recovering the Sky: Astronomy in Ancient Hawai'i"

Paul Coleman, *Institute for Astronomy, University of Hawai'i Manoa*

Paul Coleman is a native Hawaiian and professional astrophysicist who specializes in cosmology. This lecture explores the realm of heavenly bodies and astronomy in ancient Hawaiian culture.

Saturday, March 18, 11:00 a.m.

Archaeological Institute of America Portraits of Barbarians in Roman Art

Dr. Eliabeth Bartman

If the essence of the Roman portrait was the depiction of an individual, then the portrait of the barbarian—by definition a category of non-person—would seem to be a contradiction. This lecture will explore a corpus of high-quality portraits of Roman date, style, and conception that depict subjects whose physiognomy and costume define them as non-Roman. Co-Sponsored by Archaeological Institute of America, Honolulu Academy of Arts and the University of Hawaii.

Thursday, March 9 at 7:30 p.m. Free

Performing the Divine: A New Look at Saint John the Evangelist

Dr. Dennis Geronimus, *Assistant Professor, New York University*

Italian Renaissance painter Piero di Cosimo was esteemed in his day as a master of uncommon imagination. His versatility as a painter attracted the attention of his many patrons. The Academy's painting by Piero, *Saint John the Evangelist*, is on view in the recently reinstalled gallery of Italian Renaissance painting. Like many of Piero's works, it has not been without controversy. Relying on formal and technical analysis, Prof. Dennis Geronimus, a leading expert on the artist, will argue for Piero's authorship of the work.

Sunday, March 19 at 2:00 p.m.

Reception to follow.

Hawaii Craftsmen

Aba Hana Lima: *"A Gathering of the Crafts"*

Meet four visiting artists, here to participate in a series of slide lectures, workshops and dialogue. Featuring: Woodworking artist David Marks, ceramicist Arthur Gonzales, metal sculptor Janet Berg, and hot glass artist Hank Murta Adams.

Thursday, March 23 Reception at 5:30 p.m. Lecture at 6:30 p.m. Free

The Roman Mozaic Animals Hunting

Christine Kondoleon

Co-sponsored by the Archaeological Institute of America, *Hawaii Society*

Christine Kondoleon, Senior Curator of Greek and Roman Art, Museum of Fine Arts, Boston, will discuss the Academy's floor mosaic depicting animals hunting which dates to the late fifth to early sixth centuries. She will present it as part of the larger history of the excavations of the great Roman and early Byzantine city of Antioch (today, Antakya) in southern Turkey. The hunt theme is found throughout the Near East.

Sunday, March 26 at 2:00 p.m. Free

Reception to follow.

Island Shadows: Recent Works in Clay and Bronze

David Kuraoka

Lihue-born David Kuraoka, a professor of art at San Francisco State University, will discuss his recent work, highlights of which will be on view through June 18, 2006, in the John Dominis and Patches Damon Holt Gallery and the Mediterranean Courtyard.

Thursday, March 30 at 5:00 p.m. Free

PERFORMANCES

Spring Music Festival!

Chamber Music Hawaii The Honolulu Brass Quintet: Jazz Americaine

By popular demand: an evening of brass jazz. Sammy Nestico and Horace Silver arrangements offer a re-interpretation of big band and jazz combo sounds for brass quintet.

Monday, March 20 at 7:30 p.m.

\$20/Students Free

Hawaii Contrabass Festival New Music for Contrabass

In the classical world, the biggest fiddle is called a contrabass. Every two years some of the world's greatest contrabass performers and composers gather in Hawaii. This time we welcome the Ebb and Flow Arts Ensemble from Maui, and feature a rare performance by bassist-composer Frank Proto.

Tuesday, March 21 at 7:30 p.m.

\$22 general/\$15 students

Hawaii Contrabass Festival Francois Rabbath

Legendary French bassist Francois Rabbath returns to our stage for an electrifying solo set and also performs with pianist Robert Pollock.

Wednesday, March 22 at 7:30 p.m.

\$22 general/\$15 students

Hawaii Contrabass Festival Jazz & Free Improvisation From Japan

Japanese Bass giants Nobuyoshi Ino and Tetsu Saitoh expand the boundaries and prove that bass is the universal language.

Friday, March 24 at 7:30 p.m.

\$22 general/\$15 students

THE DORIS DUKE THEATRE TICKETS: The Box Office is located at the museum's main entrance on Beretania Street. Hours: Monday 10 a.m.-3 p.m., Tuesday-Saturday 10 a.m.-4 p.m., Sunday 1-4 p.m.

FILMS: Tickets are \$7 general, \$6 for seniors, students & military, \$5 for members and may be purchased on the day of screening at the Academy Box Office at the museum's main entrance on Beretania Street or at The Doris Duke Theatre at the Academy door, on Kinau Street, one half-hour before each screening.

CONCERTS & LECTURES: Tickets are available in advance by mail or in person unless indicated otherwise. Enclose a self-addressed stamped envelope, a note indicating the events for which you wish to purchase tickets, and a check payable to: *Honolulu Academy of Arts, 900 South Beretania St., Honolulu, Hawaii 96814-1495*

PARKING: For weekday matinee screenings theater patrons may use the Academy Art Center parking lot for a \$3 fee for every four hours with validation at the theater; for evening screenings parking is FREE at the Academy's

1035 Kinau Street lot; handicapped parking is available in the small Luce Pavilion lot adjacent to Victoria Street; patrons using handicapped stalls should proceed around the corner to the Theater's main entrance on Kinau Street.



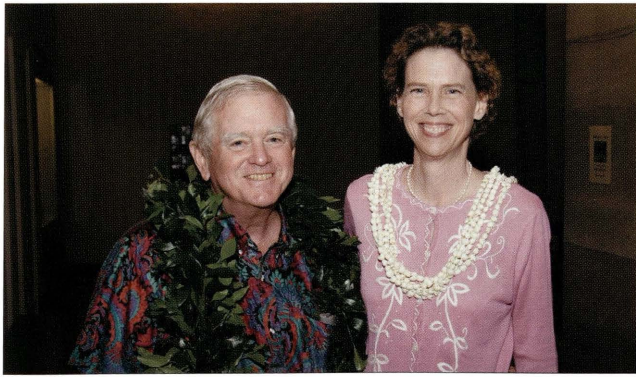
The Doris Duke Theatre is equipped with the **Easy Listener Hearing Assistance System** for our patrons who have trouble hearing due to hearing loss, seat location, acoustics or audience noise. Receivers are at no extra charge. Please pick up a receiver at the ticket counter.

Through My Father's Eyes: The Filipino American Photographs of Ricardo Ocreto Alvarado (1914–1976)



Academy Director Stephen Little with Janet Alvarado (daughter of Ricardo Alvarado), Academy Art Center Curator Carol Khewhok, and from the Smithsonian Institution, Franklin Oda, Director, Asian Pacific American Program and Curator, Division of Cultural History.

Western Galleries



The Academy's Curator of Western Art Jennifer Saville and Chairman Samuel A. Cooke couldn't be happier over the new state-of-the-art galleries.



Generous donations from Academy Trustees Peggy Eu, Joanna Sullivan, and Betty Wo helped to bring the Western Art Galleries into the 21st century.



Kumu John Lake and Director Stephen Little during the blessing of the new Western Art Galleries.



Tom Klobe, Director, University of Hawaii Art Gallery and designer of galleries 1 - 6 with Mrs. Samuel A. Cooke, and Fray Heath, President, Heath Construction Services, Inc. and project manager for the renovation and reinstallation.

UP: Contemporary Works by a Group of SEVEN Oahu Artists

ACADEMY ART CENTER MARCH 21 – APRIL 9



Narcissus Series (detail) by Karen Lee.

SEVEN, a group of artists including Nadine Ferraro, Kloe Kang, Karen Lee, Birgitta Leitner, Katherine Love, Mary Mitsuda, and Yida Wang, will present their next exhibition, *UP*, at the Academy Art Center March 21 through April 9, 2006. As it was with their two previous exhibitions, the artist's interpretation of the theme is open (or "up") to individual interpretation. In this exhibition, however, each artist aspires to reveal in various ways their personal working process, providing a window into the artist's world.

The group, many of whom met while attending the University of Hawaii at Manoa, formed in response to their growing desire to see more exhibitions in Hawaii dedicated to painting and drawing. Although they work in varied styles and with different materials, the common thread is art that tends to be psychologically provocative, mentally engaging, emotionally evocative, and visually compelling.

From their first meeting in 2003, the group felt that this exhibition must include education in its concept. Along with the goal of presenting two-dimensional works in painting, drawing and collage, *SEVEN* will share with viewers their way of working, thereby revealing some of the emotional

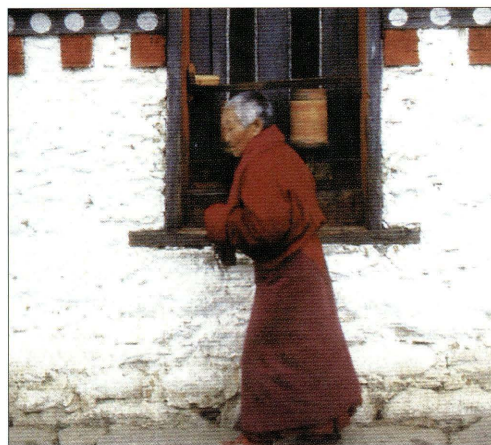
and intellectual impetus behind their expression in art (and of art making's challenges, too.)

Each of the artists is creating new works specifically for this exhibition, including one or two large pieces as well as some forms of visual evidence of the individual working process. (i.e., smaller paintings, sketches, working drawings, photo or video records, collages, or maquettes.)

Academy members are invited to an opening reception for the exhibition Wednesday, March 22 from 5:30–7:30 p.m. The exhibition will be on view from March 21 through April 9, 2006.

Bhutan: Mountains, Myths and Mysteries: Photographs by Celiamarie Moore

ACADEMY ART CENTER MARCH 22 – APRIL 9



In the autumn of 2003, self taught photographer and avid world travel Celiamarie Moore realized a lifelong dream and spent several weeks in the Himalayan Kingdom of Bhutan. Armed with an old fashioned camera and film, she set out to record the amazing people and magical places in this tiny jewel of a country. The results of Moore's trip and experiences are on view in the Art Center Second Floor Gallery from March 22 through April 9. Moore has lived and worked in Honolulu for over twenty years. As a Certified Registered Nurse Anesthesiologist she has coordinated and led medical missions to Vietnam, Cambodia, Laos and Nepal. She is the owner of Global Warmings Photography and has had several one woman exhibitions in Honolulu.

Academy members are invited to attend an opening reception for the exhibition on Wednesday, March 22 from 5:30–7:30 p.m.

Don't Miss the Young People's Spring 2006 Exhibition

ACADEMY ART CENTER APRIL 15 - 26

Here's a chance to see Spring through the eyes of young people in the Academy Art Center's *Young People's Spring 2006 Exhibition* on view in the gallery from April 15-26.

This exhibition of art in a variety of media by young people grades K-12 enrolled in the Academy Art Center's Spring 2006 classes will be alive with color, creativity, and fun.

Members are invited to attend an opening reception in the Art Center Gallery. Saturday, April 15 from 2:00-4:00 p.m. Free.

Three Special Workshops Offered in March

ACADEMY ART CENTER



Timothy Ojile

The Art Center offers the following special workshops in March. Call 532-8741 for more information and registration materials.

Intuitive Painting: Escape From Heaven: A Mixed Medium Painting and Drawing Workshop With Timothy Ojile

Sunday, March 23, 9 a.m. - 4 p.m., \$100

This is the first of three workshops planned for 2006. These one and two-day workshops are connected by theme and can be taken as a progressive series of seminars or attended singly. Participants will experience a new series of exercises designed to enhance confidence in painting and drawing intuitively with emphasis on individual growth. Beginners as well as students who have taken Ojile's Intuitive Painting classes and workshops at the Art Center are welcome to attend.



Emily Elman

Color and Landscape Painting Workshop with Emily Elman

4 sessions: March 28-31

10:00 a.m. - 4:00 p.m. daily, \$200

Students will receive information, practice and inspiration for painting landscapes, with a focus on color. The workshop will be conducted indoors using reproductions of specific paintings by American Luminists, Turner's watercolor sketches, Corot's Italian sketches, Constable's cloud studies and Matisse's Fauve landscapes. The use of memory and imagination will be encouraged for the sake of personal interpretation: the creation of individual outside worlds. Watercolors, acrylics, oils, or gouache may be used. Emily Elman has been an Instructor of Color and Painting at JCC Manhattan, The Creative Center, and Parsons School of Design, NY. She received a BFA from Syracuse University and an MFA from Hunter College. She has exhibited widely and been the recipient of many prestigious awards and grants. She lives and works in Long Island City, NY.

Pinhole Camera Workshop With Yoshi Higa

March 29, 30 and 31

9:00 a.m. - noon daily

Open to adults and young people grades 7-12; \$150

New York based artist Yoshi Higa presents a three session pinhole camera workshop for adults and young people grades 7-12. Participants will learn how to build the camera out of simple materials and to capture stunning imagery with these simple tools. They will learn how to find and work with the unexpected, unlike the experience of working with digital cameras which eliminate all guesswork. Yoshi Higa was born in Nagao City, Japan. He received a BFA from Yama University, Japan and an MFA from

Columbia University, New York. He is professor emeritus, Long Island University and Mainichi Shimbun has recently published a book of his pinhole photographs entitled *Pinhole Within A Dark Box*. He has exhibited his work internationally and his works are included in many private and public collections including Museum of Modern Art, New York, Los Angeles County Museum, Los Angeles, The Philadelphia Museum of Art and the Tokyo Museum of Modern Art.

Enrollment Opens on April 5th for Art Center Summer School 2006



The Academy Art Center's Summer School 2006 enrollment opens April 5th. This year's Summer School runs from June 13 through July 20 and offers a selection of four classes: Exploring Two and Three Dimensional Art for Grades K-4; Drawing and Painting for Grades 5-12; Ceramics for Grades 4-6; Cartooning for Grades 4-7; and Mixed Media Sculpture for Grades 7-12. Class times vary. Tuition for the 24 class session is \$190 (\$180 for children of Academy members).

Parent-Child Classes for preschool children ages 3-5 accompanied by a parent or grandparent are offered in five Monday sessions running from June 19-July 17. Tuition is \$100 (\$90 for children of Academy members.) For a parent with two children, tuition is \$120 (\$110 for Academy members).

Please call the Academy Art Center at 532-8741 for further information.

Kama'aina Christmas Sets New Record

Co-chairs Trish O'Neill and Lori Thomas have announced that a record \$650,000 was raised for the Honolulu Academy of Arts at the 20th annual Kama'aina Christmas. This is the third year that the event has raised more than a half million dollars for the Academy. Kama'aina Christmas is the Academy's signature event and is generously supported by Angel sponsor, Cartier.

Five hundred and fifty guests attended the gala on December 10 which had an "essence of India" feel to the decorations and setting.

Proceeds increased in almost every category including table sales, silent auction, and the Kama'aina Christmas luncheon and "Wonderland Shoppe." Table sales alone grossed more than a half million dollars.

Thomas said the silent auction increase was significant in the over-all record. A new feature was an Indian Bazaar, in keeping with the evening's theme, featuring jewelry purchased in India by Academy Trustee Indru Watumull and her sister.

This year Cartier donated a \$10,000 gift certificate which was the prize in a special lucky number drawing.

"It was a beautiful event and it was a very successful event," said Thomas. "The guests were well entertained and well served."

Thomas and O'Neill thanked the volunteers and staff for their "labor of love" in creating this holiday tradition and all those who supported the event through their generous donations.

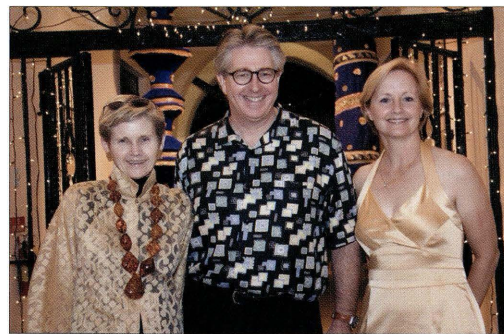
"Lori and I are thrilled that the evening went so well, said O'Neill. "We are enormously grateful to all those who worked so hard to make it such a success."

"We would like to add a special thanks to Bertie

Lee and her group of volunteers who made the Academy look so beautiful that night, as well as Greg Mills who did such a great job with the auction display."

The Academy would like to acknowledge the following businesses and individuals whose donations were received after November 11, 2005:

A'a Party Supplies, Lenny Fabro
Anonymous
Dr. Timothy Y.C. Choy
Coastal Wines and Spirits of Hawaii
Mr. and Mrs. Karl Essig
Edward and Peggy Eu Foundation
Fiji Water Company, Pamela Maeda
King Food Service, Will Hughes
James Napier
Neiman Marcus, Al Tomonari
Pepsi Bottling Group of Hawaii
The Schuler Family Foundation
Peter and Susan Shaindlin
Mr. and Mrs. Larry Stupski
Indru and Gulab Watumull



Trish O'Neill, Stephen Little and Lori Thomas.



Director of Cartier, Kellyn Okabe, David Okabe and Alice Hennrich.



(seated) Ethan Abbott, Allison Holt Gendreau, Richard Chamberlain
(standing) Stephen and Nadine Little, Waters Martin.

Life in the Pacific: The 21st Century An Educational Project - Connecting Communities

EDUCATION

- February 23 -April 23, 2006
Central Courtyard
- February 23 - April 23, 2006
Honolulu Hale Lane Gallery
- March 15 - March 28, 2006
Outrigger Hotel

This special exhibition is a result of an educational project that taught a select group of students the art of photography, introduced them to museum work, and created a deeper appreciation for Pacific Island art and culture. The unique museum opportunity was offered to students interested in Polynesian art and culture. The participating students range in age from elementary school to adult and represent many diverse community groups.

The student project complements *Life in the Pacific in the 1700s*, a blockbuster exhibition of the Cook/Forster Collection from Göttingen, Germany. The Cook/Forster Collection includes indigenous works of art from Hawai'i, Tahiti and the Society Islands, New Zealand, Marquesas, Tonga, New Hebrides (Vanuatu), New Caledonia and the Northwest coast of America. The students, some of their parents and community leaders, scholars, and experts on Pacific Island art and culture met to discuss the significance of the works of art that will be on view. Some of the scholars participating were: Leonard Barrow, Hana Johnson, Ruby Kawena Johnson, Carolyn Yacoe, Jerome Feldman, Deborah Waite and Academy Director Stephen Little.

The students have been meeting on Saturdays in the Education Lecture Hall to learn more about traditional Pacific Island arts and digital photography. Many of the students participated in a tattoo design project, creating a design that symbolized their life in and their connections to Pacific culture. They attended workshops with various artists to discuss subjects such as: *kapa* making with Moana Eisle, wood carving with La'akea Suganuma and *laubala* weaving with Duncan Seto. The students studied digital photography with a number of

photographers: Shuzo Uemoto, Christiaan Phelger, Lexie MacKenzie, Arne Johnson, Geralyn Camarillo and Annie Rogers. Digital cameras were provided by the Education Department.

Over the last five months, the students took thousands of photographs, which were critiqued at each meeting. The goal was to document 21st century life in the Pacific, making links to the 1700s. They looked around their communities for connections to the traditions of the past. They took photographs that fit into the themes seen in the *Life in the Pacific in the 1700s* exhibition: music and dance, canoes, power and prestige, wood carvings, ritual, everyday life, clothing, textiles, body decoration, weapons and tools.

In the final sessions, the group sorted, discussed, and critiqued their photographs to select the images for their exhibition. They applied what they learned about "what makes a good photograph" to make their decisions. As a group, they wrote the labels and wall text. The exhibition represents the photographs and a group voice about life in the Pacific today.

The photographs and tattoo drawing projects will be on display in the Central Courtyard from February 23 to April 23. Due to great community interest, the documentary photography project *Life in the Pacific: The 21st Century* will also show in two venues outside the Honolulu Academy of Arts: Honolulu Hale Lane Gallery and in the gallery at the Outrigger Hotel in Waikiki.

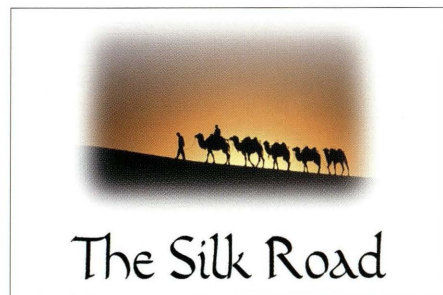


La'akea Suganuma talks to the *Life in the Pacific: The 21st Century* students about his traditional Hawaiian weapons.

The Garden Club of Honolulu

APRIL 28, 29, AND 30

The Garden Club of Honolulu presents *The Silk Road*, the major flower show at the Honolulu Academy of Arts. The event will include entries in horticulture, flower arranging, photography and 'jewelry,' as well as educational exhibits. Hours of display are Friday and Saturday (April 28 and 29), 10:00 am to 4:30 p.m., and Sunday (April 30), 1:00 to 5:00 p.m. Call 808-532-8700 (the Academy) for more information. The Honolulu Academy of Arts is located at 900 S. Beretania Street. Admission is free.



Traveling Exhibition

JANUARY 28 - MAY 7

In Celebration of Light: Photographs from the Collection of Cheryle R. and James F. Pierce.

The Monterey Museum of Art.



Jim and Cheryle Pierce at The Monterey Museum of Art for the opening of *In Celebration of Light*, an exhibition organized and exhibited by the Honolulu Academy of Arts in 2003—also shown at the New Orleans Museum of Art in 2004.

Education/Announcements

Afternoon Tour and Tea

IN THE GALLERIES TUES & SUN 2:30 - 4:00 P.M.

The Afternoon Tour and Tea is for those who want to explore our galleries, learn about art and culture, and socialize over a glass of tea. Our Academy Docents will lead discussions in the galleries that will inspire you to consider art in many new ways, and offer great insight to many cultures and time periods. The unique themes will provide new approaches to art; the tour titles will intrigue the art novice. Warning: Art may become habit forming. You may never look at the galleries the same way again!

Call 532-8700 to reserve a place. The tour is free. Donations for refreshments are voluntary. Space is limited.

Tuesday March 7

Life in the Pacific in the 1700s Hannelore Herbig

Sunday March 12

Life in the Pacific in the 1700s Hannelore Herbig

Tuesday March 14

Marvelous Materials: how do they make them?

..... Myra Kent

Sunday March 19

BOH SUNDAY NO TOUR

Tuesday March 21

The Spell of Shell Carol Bonham

Sunday March 26

The Spell of Shell Carol Bonham

Tuesday March 28

The Art of 18th and 19th Century Hawaii

..... Mary Flynn

Sunday April 2

The Art of 18th and 19th Century Hawaii

..... Mary Flynn

Tuesday April 4

Pathology in Art Charles Hardy

Sunday April 9

BOH SUNDAY NO TOUR

Tuesday April 11

What? You call this stuff art? Sheila James

Sunday April 16

What? You call this stuff art? Sheila James

Tuesday April 18

Wearable Art Marge Chase

Sunday April 23

Wearable Art Marge Chase

Tuesday April 25

Light and Form in Painting Bill Gemmer

Sunday April 30

Light and Form in Painting Bill Gemmer

Bank of Hawaii Sunday

MARCH 19 & APRIL 9

It's free! It's fun! It's Bank of Hawaii Sunday! The Honolulu Academy of Arts' Free Sunday program sponsored by Bank of Hawaii continues monthly throughout 2006.

To coincide with the highly anticipated *Life in the Pacific of the 1700s* exhibition, *Life in the Pacific Festivals* will be held on March 19 and April 9 from 11 a.m. until 5 p.m. Enjoy a variety of cultural activities from the Pacific Islands, including arts and crafts, demonstrations, music and dance, storytelling and children's art projects.

The Academy opens two hours earlier on *Bank of Hawaii Free Sundays* with special operating hours from 11 a.m. until 5 p.m. The Pavilion Café will serve lunch from 11:30 a.m. until 2 p.m.

Free Sundays feature a variety of entertainment and activities suitable for families and people of all ages. The focus is on providing new and interesting ways to explore the Academy's galleries through treasure hunts, activities and entertainment. Themes change monthly and tie in with the Academy's permanent collections and special exhibitions.



Nathan Lyum enjoys the Annual Keiki Christmas at BOH Sundays on December 18, 2005. The Academy gratefully acknowledges Bank of Hawaii's third year sponsoring BOH Sundays.

New Members' Tour

MARCH 12 & APRIL 9

Call the Education Department at 532-8726 to reserve your space for a New Members' Tour at 1 p.m. on Sunday, March 12 or Sunday, April 2.

Starlight Ball 2006

The third annual Starlight Ball rang in the New Year and heralded the upcoming Chinese Zodiac, Year of the Dog, at its *RED* gala event on January 14, 2006. An all-star team of volunteers, who comprised the Starlight Ball Committee, sold out the affair and raised \$40,000—one hundred percent of which goes to support the Academy Art Center and its Art to Go program. Prada generously sponsored the event.

Guests were greeted by Academy Director Stephen Little, his wife Nadine, and Starlight Ball Chair Natalie Aczon—while the sounds of traditional Chinese *erhu* and *guzheng*, created the atmosphere of a Chinese tea-house in the museum. Three-hundred-fifty attendees, many outfitted in all red and Chinese attire, strolled among the courtyards

sampling champagne, top-shelf Grey Goose martinis, and a wide selection of treats provided by noted local establishments: Chocolate Fountain Hawaii, Big Aloha Brewery, Hawaiian Host, Fine Wine Imports, Legend Seafood Restaurant, Mei-Sum Dim Sum, Sweet Basil, The Green Door, Times Supermarkets, Tokkuri-Tei, Starbucks Coffee Hawaii, Y. Hata & Co. and town. The silent auction was filled as ever, with hard-to-find gems, ranging from a Kelly Sueda diptych to a visit for two to the set of *LOST*, and a signature Prada Saffiano leather bag.

The University of Hawaii Chinese Music Ensemble graced the café area with their talent, while DJ James Coles and His United DJs energized the central court and dance floor under a moonlit and star-filled sky. William T. Maliglig Designs bathed the museum in the hue of the evening, using

wide swaths of red fabric, gigantic red and white lanterns, and hundreds of red South American roses in his palette. The night was punctuated by the lion dancers of the Chinese Martial Arts Academy—eyes lit, mouth agape, bobbing and weaving its way through the courtyards, the lion took the *lycee* offered by guests in small red envelopes, and helped to bless the event with its infectious energy and spirit.

The Honolulu Academy of Arts, ARTafterDARK program, and 2006 Starlight Ball Committee wish to give a warm and red-tinged *do jeh*, or thank you, to all who helped to make this year's fête such a resounding success. A special *do jeh* goes to those who showed their support for this event by purchasing a Premium Table, an item from the Silent Auction, or a wish from the Lam Tsuen Wish Tree.

OUR STAR

Prada

PREMIUM TABLES

Benefactor

Carlene and Ian Damon
Cynthia and Donald Fritts
The MacNaughton Group
Prada

Patron

Anonymous
Caron B Realty
Charles E. Degala
Darin Mijo
Denise Nakano
HONBLUE
Michael and Lacey Pfeffer
Prada

Sponsor

BAE Systems Spectral Solutions LLC
Carolynn Bell
Tim and Melanie Bostock

Lower Manoa Gun Club
Societe de Lagaso Goldberg
Engle/Simon

FOOD AND DRINK

Better Brands
Big Aloha Brewery
Chocolate Fountain Hawaii
Fine Wine Imports
Legend Seafood Restaurant
Little Village
Mei Sum Dim Sum
Starbucks Coffee Hawaii
Sweet Basil
The Green Door
Times Supermarkets
Tokkuri Tei
town
Y. Hata & Co.

SUPPORTERS

a'a Party Supplies, Inc.
Academy Art Center

Anonymous
Bay West Equities LLC
Better Brands
Big Aloha Brewery
Carats & Karats Fine Jewelry
Charles E. Degala
Chef Mavro
Chef Noreen Lam
Christian Dior
Clarence Lee Designs
Coffee Partners Hawaii
Consolidated Theatres
Diamond Head Theatre
Doris Duke Foundation of

Islamic Art
Doris Duke Theatre
E & O Trading Co.
Fine Wine Imports
Flavors of Hawaii
fresh
Fujioka's Wine Times
Garage Girls
Grass Skirt Productions

Great Harvest Bread Co.
Hawaii Opera Theatre
Hawaiian Airlines
Hawaiian Host
Hilton Waikoloa Village
Honolulu Academy of Arts
Honolulu Symphony
Indich Collection
Indigo Restaurant
INTO, Inc.
Island Glassworks - Geoff Lee
Jamba Juice Hawaii
James Coles and His United DJs
Jason and Darlene Reynon
John Dominis Restaurant
Jon and Neige Whittington
Jonathan McManus
Joy's European Facials
K & D Signs and Graphics
Kahala Mandarin Oriental,
Hawaii
Kahi and Diana Ching
Kanimaula

Kaui Philpotts
Kay Yamaguchi
Kelly Sueda
Kumu Kahua Theatre
Leather Soul
Legends Seafood Restaurant
Leonard Chow
Local Motion Inc.
Maui Divers of Hawaii
McCully Bicycle & Sporting
Goods
Michel's at the Colony Surf
Neiman Marcus
Owen Ho
Paul Brown Salon & Day Spa
Phuket Thai Restaurant
Pier 1 Imports
Prada
Quality Graphics & Printing Inc.
Richard S. H. Wong
Riches Kahala
Roy's Hawaii Kai
Roy's Kahana Bar & Grill

Sam Choy's Diamond Head
Restaurant
Seawind Tours and Travel
Sidney Yee
Sourcing Asia LLC
Starbucks Coffee Hawaii
Starn, O'Toole, Marcus and
Fisher
Stephen and Nadine Little
The Catering Connection
The Cheesecake Lady
Times Supermarket
Tommy Bahama
town
Turtle Bay Resort
Visual Design Group
William T. Maliglig Designs
Worldwide Furnishings
Y. Hata & Co., Ltd.



Nadine Little, Director Stephen Little, Starlight Ball chair Natalie Aczon, and Waileia Roster.



Nadine Little, Director Stephen Little, Cori Mackie and Sebastian Suhl from Prada, and the Academy's Director of Development, Karen Sumner.

Members & Donors

The Academy extends a warm welcome and mabalo to the 198 households who joined and the 1,006 members that renewed or rejoined between November 1 and December 31, 2005. Membership dues help fund Academy exhibitions and programs, and we are grateful to all of our generous Academy members. Due to limited space, \$125 Subscriber, \$300 Contributor and \$600 Sponsor level members who have recently joined or those who have upgraded to these levels will be listed in Calendar News.

New or Upgrade Members

Mr. Dean Baxley
Neil Bellinger
Mr. Red Cavaney
Ms. Sara Clarke
Ms. Kathleen Cole
Lynn A. Davis &
Giuseppe Leone
Mr. Scott B. Dennis
Sim B. & Maryann Fulcher
Ms. Margaret Gaspar
Miss Lydia H. Glassmyer
Ms. Gwen Haugen
Mr. Eric N. Hill
Mr. Kevin Imai &
Ms. Cherise Imai
Mr. Duff Janus
Mr. & Mrs. Michael Klimenko
Mr. & Mrs. Michael Kop
Mr. & Mrs. Charles May
Mr. & Mrs. James McDiarmid
Mr. & Mrs. Hideki Nakamura
Ms. Denise Nakano
Miss Lenore M. Prehler
Ms. Laura Santi
Penny & Dixon Smith
Mr. Wayne Watkins
Mr. Eldon L. Wegner
Mr. & Mrs. Les Wicks
Ms. Lynne Wilkoff
Ms. Patience Wine
Mr. Christopher Wittmann

Academy Business Council

We gratefully acknowledge the following corporate members for annual support given between November 1 and December 31, 2005.
Central Pacific Bank
Commercial Data Systems, Inc.
First Hawaiian Bank
Hawaiian Telcom
Jamin Sales, Inc.
Min Plastics & Supply, Inc.
Pacific Gallery & Frames
Pacific Guardian Center

Society of Academy Fellows

A special thank you to the following individuals for their generous membership support given between November 1 and December 31, 2005.
Linn & Steven Alber
Gov. & Mrs. George Ariyoshi
Robert R. &
Jacqueline J. H. Bean
Robert L. Becker III
Mr. & Mrs. Roger S. Bellinger
Fred & Diane Blum
Ms. Kay Caldwell
Emily O. Castle
Earl M. &
Margery C. Chapman
Ms. Georgi Chlebicki
Mrs. Shirley M. Connors
Mrs. Thomas M. Culbertson
Sue & Gordon Damon
Georgianna Lagoria &
David de la Torre
Mrs. Herbert Dimmitt
Sunny & Frederick Dupree, Jr.
Ms. Pamela Ebsworth
Dr. & Mrs. Gordon E. Edgar
Ms. Suzanne B. Engel
Karl & Megumi Essig
Donald & Laura Goo
Mrs. Marshall M. Goodsill
Debbie Harris & Jeff Emerson
Mr. & Mrs. David A. Heenan
Mr. & Mrs. Jim Higgins

Mr. & Mrs. Robert A. Hite
Will & Celeste Hughes
Juli M. K. Walters &
Riley Jaschke
Mr. John B. &
Ms. Kathy Merrill Kelley
Dr. Robert & Adelaide Kistner
Mr. & Mrs. David B. Lee
Galen C.K. Leong
Elliot H. Loden
Mr. Roy P. Mesker
Mrs. Frank E. Midkiff
Molly Nurse
Mrs. Susan O'Connor
Carla & Ellsworth Peterson
Fran Putnam, PA-C
Lila Watumull Sahney
Dr. Nancy Scanlon
Dr. & Mrs. George Schnack
Mrs. Lloyd Sexton
Carolyn Sherwood
Joseph B. Silver
Mr. & Mrs. Dale Sommerfeld
John & Sandra Stephenson
George & Roberta Sullivan
Paul M. Sullivan
Mrs. Roy T. Tanoue
Trudie & David Taylor
Dr. Lawrence K.W. Tseu
Mary & Fred Weyand
Dr. & Mrs. Philip Wright
Mr. & Mrs. A. James Wriston, Jr.
Mr. & Mrs. Douglas Q. Yee
Lyn Zukerkorn

The Academy thanks the following individuals and corporations for their contributions made between November 1 and December 31, 2005.

SPECIAL PROJECTS AND EXHIBITIONS

A special thank you to the following donors to the Renovation of the Western Galleries for their generous support given between November 1 and December 31, 2005:
Charman J. Akina, M.D.
Mr. & Mrs. William E. Aull
Marguerite Carroll
Ms. Ann Chung
Mr. & Mrs. Samuel A. Cooke
Cooke Foundation Limited
Judith M. Dawson
Mr. & Mrs. Walter A. Dods, Jr.
Mr. David Dolan
Cecilia Ching Doo & Gene Doo
Mr. Barney A. Ebsworth
Mr. & Mrs. Edward Eu
Ms. Ellen M. Flaherty
Mr. James W. Foster
Dr. & Mrs. Lawrence Fujioka
Mr. Mark H. Fukunaga &
Mrs. Margery S. Bronster
Helen G. Gary
Dr. Margaret Y. Oda
Ron & Sanne Higgins
Ms. Lynne Johnson &
Mr. Randy Moore
Mr. & Mrs. Clarence Lee
Mr. & Mrs. Warren K.K. Luke
Mr. & Mrs.
Watters O. Martin, Jr.
Mrs. Shirley M. Miyamoto
Mrs. Francis R. Montgomery
Mr. & Mrs. James F. Morgan
Mrs. Billie C. Nelson
Mr. & Mrs. Wesley T. Park
Dr. & Mrs. James F. Pierce

Mrs. Jean E. Rolles
Mr. & Mrs. Yoshiharu Satoh
Mrs. Joanne H. Shigekane
Mrs. Joanna Sullivan
Mr. & Mrs.
Edward D. Sultan, Jr.
Mr. Masami Teraoka &
Ms. Lynda Hess
Mrs. Joanne V. Trotter
Sharon & Thurston
Twigg-Smith
Victoria S. & Bradley L. Geist
Foundation
Mr. & Mrs. Gulab Watumull
Ms. Lucinda J. Weaver
Mr. & Mrs.
Charles R. Wichman
Mr. & Mrs. Robert Ching Wo
Mr. & Mrs. Clifford E. Young

In support of the Academy

Art Center
Mrs. Nelly Baers
Mr. & Mrs. Charles Dudoit
Mr. Carl E. Fieber
Hawaii Craftsman
Hawaii Quilt Guild
Ms. Nancy Lea Jackson
Kindred Spirits Portrait Group
Korean Artist Association of Hawaii
National League of American
Pen Women
North American Taiwanese
Women's Society
Pastel Artists of Hawaii

In support of Acquisition

John V. Levas

In support of acquisition of artwork from Artists of Hawaii 2005, in honor of Dr. Timothy Y.C. Choy

Miss Marion M. Akamine
Mary Ann E. Akao
Dr. Cedric K. Akau &
Ms. Sabrina R. Toma
Ms. Carol A. Aki
Ms. Janis Akuna
Mrs. Maridell B. Alexander
Mr. & Mrs. Paul D. Alston
Mr. Frederick Y. Arashiro
William E. & Gail W. Atwater
Ms. Caroline M. Au
Dr. Argy D. Bacon, in
memory of Marjorie E. Bacon, M.D.

In support of Art of the Philippines: The George and Nancy Ellis Gallery

Mr. & Mrs. John Brassell
Christopher Puttock &
Terrell Erickson
Ms. Annette Sekine
Mr. & Mrs. William D. Toops
Mr. Robert W. Zimmermann

In support of the Art To Go Education Program

After School Art
Ellen M. Koenig Fund
Sidney Stern Memorial Trust

In support of the Conservation Fund

Mr. & Mrs.
Keith Gendreau
Mr. & Mrs.
Michael D. Horikawa

In support of the Educational Ambassador Program

Mr. Terrence Young

In support of the Frances Zane Chock Acquisition Fund

Patricia Chock Chainon

In support of the exhibition: Hawaiian Idyll: The Prints of John Kelly

Mr. John C. Russell

In support of the exhibition: Order from Disorder: The Ancient Art of Chinese Calligraphy and Abstract Expressionism by John Way Eileen M. Soong

In support of the Registrar Department

Mr. James H. Soong

In support of the 75th Renaissance Campaign

Mr. & Mrs. James W. Growney

In support of the Society of Asian Arts of Hawaii Endowment Fund

Mr. & Mrs. Roger S. Bellinger
Dr. Timothy Y.C. Choy
Mrs. Sanna S. Deutsch
Ms. Ryuko Sakoda
Garrett & Bronwen Solyom

In support of the Society of Asian Arts of Hawaii Scholarship Fund

Mrs. Albert H. Ogawa
Ms. Ryuko Sakoda

Annual Fund

Mr. Neil Abercrombie
Ms. Wanda A. Adams
Steve & Linda Ahlers
City Mill Company, Ltd./
Chung Kun Ai Foundation
Mrs. Mary Louise J. Akaka, in
memory of Reverend Abraham Akaka

Miss Marion M. Akamine
Mary Ann E. Akao
Dr. Cedric K. Akau &
Ms. Sabrina R. Toma
Ms. Carol A. Aki
Ms. Janis Akuna
Mrs. Maridell B. Alexander
Mr. & Mrs. Paul D. Alston
Mr. Frederick Y. Arashiro
William E. & Gail W. Atwater
Ms. Caroline M. Au
Dr. Argy D. Bacon, in
memory of Marjorie E. Bacon, M.D.

Mr. & Mrs. Michael E. Baker
Mrs. Robert Ballard
Ms. Helen Baroni &
Mr. Rodman Low
Mrs. Pat Barron
Dr. & Mrs. Bob Bart
Clint & Mimi Basler
Mr. Peter C. Beamer III
Robert L. Becker III
Mr. & Mrs. Robert Bellas
Mr. & Mrs. Roger S. Bellinger
Stan H. Bergstrom &
Suzanne L. Varady
Mary Rinato Berman
Mr. & Mrs. Howard A. Bern
Mrs. Albert Bernatowicz
Carolyn Berry
Miss Barbara F. Borhwick
Ms. Ann M. Bouslog &
Mr. Jeff Crabtree
Mrs. Mary B. Bowers
Mrs. Margaret Y. Harada
Mrs. Jane Boynton
Miss Kathy Brand
Col. & Mrs. Leslie R. Bratton

Ms. Tahmi Brodhead
Dr. & Mrs. Raymond W. Brust
Dr. Elizabeth Buck
Mrs. Filomena Buck
Ms. Madeline K. Cahoon
Ms. Frances L. Carpel, in
memory of Roila T. Earl
Dr. Ann B. Catts
Ms. Elaine M. Chang
Mrs. Jean Chesley
Larry & Beatrice Ching
Foundation
Dr. & Mrs. Yi-Chuan Chong
Mrs. Herbert Y. C. Chock, in
honor of Jennie F. Chock
Mr. & Mrs. Reynold Choy
Mr. Arnold Chun
Pauahi W. Clark
Putman D. Clark
Mr. James Connors
Mr. & Mrs.
Conrad G. Conrad III
Mr. & Mrs. Ian McLean Cooke
Mr. & Mrs. Samuel A. Cooke
Mr. & Mrs. Ron Cooper
Richard & Myrna Cundy
Mr. & Mrs. C. F. Damon, Jr.
Ms. Janet O. Dana
Dr. & Mrs.

Douglas M. Davenport
Caroline Bond Davis
Lynn A. Davis &
Giuseppe Leone
Mr. John De Francis
Mr. Scott B. Dennis
Dr. Eliot Deutsch
Ms. Vi Dolman
Mrs. Sally Duffield
Mrs. Marion A. Durant
Page R. & Charles B. Dwight III, in
memory of Sally Aull
Mr. Robert Easton
Ms. Sally H. Edwards
Carol A. Egan &
Charles Holmes
Mr. & Mrs. George R. Ellis
Mrs. Mona M. Elmore, in
memory of Albert Chikasuye
Mr. Samir A. El-Swaify &
Mrs. Charlene El-Swaify
Mrs. Chisato N. Emmos
Ms. Aileen Esmeralda
Conard Eyre, in memory of
Cynthia Eyre
Mr. & Mrs.
Ralph A. Ferguson, Jr.
Mrs. Heather F. Fleck, in
honor of Mrs. Kay Wery
Mr. Jeff Fleener &
Ms. Pearl Ling
Mrs. Leo Fortess
Ms. Leilani Fox, in memory
of Leimomi Gabeton
Mrs. Alyce L. Fujihara
Mr. Kenneth K. Fujii
Ms. Agnes H. Fujimoto
Dr. Lynn Fujimoto
Dr. & Mrs. Roger S. Fujioka
Ms. Eloise Fukui
Mr. & Mrs. Fred S. Gartley
Mr. & Mrs. A. J. John Gaudet
Martha & Wayne German
Mr. & Mrs. Herbert C. Gima
Mr. Roger K. Godfrey
Mrs. Marjorie M. Guy
Mr. & Mrs. Warren Haight
Aaron & Eriko Hara
Mrs. Margaret Y. Harada
Beverly M. Hayashi
Mr. & Mrs. Francis R. Heath IV
Mrs. Anne H. Heinicke

Mark & Joan Helbling
 Mr. Harold E. Henderson
 Mr. Derral Herbst
 Betty U. Higa, *in memory of Tom T. Higa*
 Mrs. Helen Higa
 Ms. Kaoru K. Higa
 Stanley & Charla Higa
 Mrs. Alma Ho
 Snowden Hodges &
 Paula Hodges, *in memory of Mary Grant Price*
 Mrs. Robert George Hogan
 Mrs. Radha Watumull Homay
 Irngard & David Hormann
 Mr. & Mrs. Robert H. Hughes
 Ms. Patricia S. Hunter
 Mrs. Marie M. Ichida
 Joanne M. & Thomas K. Imada
 Ms. Jean R. Imamoto
 Senator Daniel K. Inouye
 Mr. Robert Iwamoto
 Ms. Shirley Iwane
 Ms. Ann C. Iwasa
 Ms. Ethel C. Iwasaki
 Ms. Nancy Lea Jackson
 Mr. & Mrs. Martin Jaskot
 Mr. James F. Jensen, *in memory of Sally Aull*
 Mrs. Robert Jim
 Ms. J. Goya Johnson &
 Mr. Ian Capps
 Ms. Anna Kaarina Jolkkonen
 Ms. Sandra M. Kaneshiro
 Solomon & Margaret Kaulukukui
 Lorna & Masayuki Kawahara
 Mrs. Jean K. Kawamura
 Mrs. Keiko Pang Keel
 Ms. Kathleen Kelley-Markham
 Dr. & Mrs. Stephen B. Kemble
 Ms. Amy Y. Kimura
 Mr. & Mrs. Roy King, *in memory of Cornelia S. King*
 Mrs. Lillian Kitagawa
 Mrs. Sandra Klein
 Mrs. Minoru Kobashigawa
 Ms. Dana Kokubun
 Ms. Ellen Kondo
 Alice Kono
 Mr. & Mrs. Richard H. Kosaki
 Mrs. Jane S. Kramer
 Dr. & Mrs. Keith Kuroiwa
 Miss Harriet Y. Kusunoki
 Ms. Sybil S. Kyi, *in honor of Hazel Hee*
 Abigail S. Laros
 Ms. Diane S. Lau & Mr. Aisea Ratokalau
 Miss Juliana Lau
 Mr. & Mrs. Joel S. Lawson, Jr.
 Mrs. Gwendolyn Lee
 Mr. & Mrs. Kenneth Len
 Mr. & Mrs. Jeremy Lepard
 Col. Edward A. & Jeanette L. Lesko
 Steve & Cathy Levinson
 Barbara Lindblad
 Jensen & Nyna Lipton
 William & Sally Little
 Mrs. Amy E. Littlejohn
 Elliot H. Loden
 Mr. & Mrs. Cheong Lum
 Mrs. Pauline B.L. Lum
 Dr. & Mrs. James F. Lyons
 Mrs. Joy E. Major
 Mrs. Alison K. Manaut
 Downey R. Manoukian
 Mr. & Mrs. Robert Marchant
 Marquesa Kapiolani Marignoli
 Mr. & Mrs. David D. Marquardt
 Ms. Edna E. Marr
 Ms. Ann Marsteller
 Mr. & Mrs. Jon W. Martin
 Mary Martin & Pat Goldstein
 Ms. Lesli Y. Marumoto
 Mr. & Mrs. George Mason
 Florence M. Matsuda
 Ms. Mary Matsuda
 Violet S. Mau
 Mr. John W. McDermott
 Dr. Bruce McEwan
 Dr. & Mrs. Robert H. McKay
 Mrs. Marsue McShane
 Mr. & Mrs. Stanley R. Medsker
 Mrs. Frank E. Midkiff
 Mr. & Mrs. David E. Milotta

Mrs. Gladys C. Minchin
 Mrs. Clifford K. Mirikitani
 Ms. Carolyn Mohn
 Mrs. Mary Louise Monroe &
 Mr. Donald Monroe
 Mr. & Mrs. Willson C. Moore, Jr.
 Mrs. Margo A. Morgan
 Thomas Kevin McCarthy
 Mrs. Gloria Munson,
in memory of Leon J. Munson
 Ms. Karen M. Muraoka
 Mr. & Mrs. Richard S. Nagamine
 Hideki & Irene Nakamura
 Mrs. Edward H. Nakamura
 Col. & Mrs. Albert S. Nakano, (Ret)
 Joan Namkoong
 Mrs. Betty Chapson Neogy,
in honor of Steve Little
 Mr. Kenneth Y. Nishihara
 Mr. C.T. Nishimoto
 Daikichi & Joyce Nishita
 Mr. Hideo Noguchi
 Paula & Mark Nokes
 Mrs. Mildred C. Losier
 Hans Odsen & Gerald Losier
 Mr. & Mrs. Edwin T. Ogasawara
 Mr. Wallace T. Ohta
 Jeffrey & Frances Okazaki
 Joseph O'Mealy
 Ms. Ethel U. O'Neil
 Dr. & Mrs. Henry T. Oyama
 Pacific Gallery & Frames
 Mr. & Mrs. James J. Pappas
 Mrs. Elizabeth McD. Parsons
 Mr. Neil A. Pateman
 Dr. & Mrs. Donald A. Person
 Mrs. Max L. Pilliard
 Mr. Kenneth Plonsky
 Mrs. Elizabeth Porteus
 Ms. Ann Powers
 C. Dudley Pratt, Jr.
 Joan C. Pratt
 Mrs. Lucille M. Pratt
 Miss Lenore M. Prehler
 Yoko Radke
 Mrs. Robert Redfield
 Mr. & Mrs. Arthur B. Reinwald
 Mary S. Rice Estate
 Mrs. Cynthia E. Rich
 Ms. Frances V. Robbins
 Kenneth S. & Shaunagh G. Robbins,
in memory of Sally Aall
 Robert J. Clancey, Ltd.
 Mrs. Barbara Robinson
 Rons Construction Corporation
 Mr. D. Haigh Roop
 Harry W. Russell
 Mrs. Hee Sun Sagatis
 Mrs. Eliisa Salmi-Saslaw
 Miss E. Harriette Salyers
 Kiyoshi & Hanayo Sasaki
 Mrs. & Mrs. Thorndike Saville, Jr.
 John & Laurie Sawyer
 Ms. Maureen A. Schaeffer & Mr. Alan Price
 Mrs. Ingrid Scheerer
 Dr. & Mrs. George Schnack
 Dr. Jane E. Schoonmaker
 Mr. & Mrs. Arthur Schwartz
 Ms. Annette Sekine
 Mr. Stanley T. Seo
 Joan & Jerry Shapiro
 Janet K. Shiga,
in memory of Mr. & Mrs. Robert Shiga
 Mr. J. Brenton Shore
 Dr. Yoshihiko Sinoto
 Mr. & Mrs. Kenneth R. Smith
 Ms. M.K. Smith
 Robert H. Smith
 Ms. Elizabeth Lee Stack
 Ms. Agnes Stamirowski
 Mrs. Herta Stevens
 Mrs. Gayle Sugita
 Mr. & Mrs. Frederick H. Takara
 Mr. Victor N. Takara
 Gerald H. Takei
 Mrs. June Y. Takenaga
 Nancy E. Taono
 Mr. & Mrs. Robert Tellander
 Karla & Walter Tennant
 Mr. Peter K. Teruya
 Thomas & Elizabeth Brodhead Foundation
 Elaine Thomas

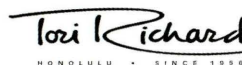
Miss Barbara Thompson
 Mrs. Mitsue Thompson
 Mrs. Barbara B. Tilley
 Gregory Y. Tom & Linda Okita Tom
 Mr. & Mrs. David Twigg-Smith
 Mrs. Stella M. Uno
 Lawrence Van Hoey & Kim Stowell
 Mrs. Jessie Y. Varble

Mr. Victor Weisberger
 Michael Weitzenhoff
 Dr. Rodney T. West
 Mrs. Nancy D. White
 Mr. & Mrs. Perry J. White
 Cindi White-Yanaga
 Janice & Wyman Williams
 Ms. Marian L. Williams

Mr. & Mrs. Albert Yoshiyama
 Calvin & Leslie Young
 Miss Laurie M. Zane
 Mr. & Mrs. Charles A. Zapf
 Rev. Lawrence W. Zdvoracek
 Mrs. Melinda A. Zisko
 Anonymous Donor of Schwab Fund
 for Charitable Giving, *in memory of Sibyl Paris*
 Anonymous Donor,
in memory of Ken & Dorothy Sumida

We salute leading Members of the Academy Business Council

Corporate Leader



Corporate Director's Circle

First Hawaiian Bank
 Honolulu Weekly
 Sotheby's

Corporate Patron

ABC Stores
 Alert Holdings Group
 Christie's
 Merrill Lynch

Corporate Benefactor

Brodhead, Warren, Ltd.
 Commercial Data Systems
 Edward Enterprises, Inc.
 Hawaiian Electric Industries, Inc.
 Hawaiian Telcom

Ms. Ann M. Vergara,
in memory of P.A. Martineau
 Mr. William W. Victor
 Mrs. Betty Vitousek
 Ms. Barbara K. Vlachos
 Ms. Dorothy S. Voigt
 Dr. & Mrs. Jerry A. Walker
 Ronald & Charlotte C. Walker
 Ms. Joyce Warner
 Maryann P. Warner,
in memory of Willis L. Warner
 Mr. Lloyd T. Watarai
 Mr. & Mrs. Joseph K. Wee
 Mrs. Robert C. Weible

Dr. Elsa Wixom
 Mrs. William Wo
 Drs. William & Margaret Lai Won
 Dr. & Mrs. Livingston M. Wong,
in memory of Caroline R. Wright
 Tracy Timothy Woo
 Ms. Joan H. Worthen
 Ms. Suemi N. Yamada
 Mr. Edmund K. U. Yee &
 Ms. Janet H. Murphy
 Winifred W. & Lester Yee
 Mr. & Mrs. Masaru Yokouchi
 Mr. & Mrs. Yoko Yonamine
 Mr. & Mrs. George S. Yoshishige

ADDITIONAL SUPPORT

Endowments

Mary S. Rice Estate
 Mr. & Mrs. Charles R. Wichman
 Joanna Sullivan
 Mr. & Mrs. Barton Wetzel
 Mr. & Mrs. Ronald Wo

Grants

The Blakemore Foundation
 E. Rhodes & Leona B. Carpenter
 Foundation
 John R. Halligan Charitable Fund

Matching Gifts

Alexander & Baldwin Foundation
 CNA Foundation

The Prudential Foundation

Unrestricted Gifts

Mrs. Alexander Atherton
 Mr. & Mrs. Samuel A. Cooke
 Judith M. Dawson
 Helen G. Gary
 Dr. Margaret Y. Oda
 Akemi & Misako Kurokawa
 Mr. & Mrs. Wesley T. Park
 Dr. & Mrs. James F. Pierce
 Duane & Sarah Preble
 Mrs. Joanne V. Trotter

OHANA TRIBUTE FUND

In Honor of Steve & Patsi McClaran
 Ms. Carolyn DuPont
 Ms. Brenda Lowrey
 Mr. & Mrs. Frederick Y. Smith

In memory of Mrs. Frances Damon Holt
 Mr. H. Dwight Damon

In memory of Mrs. Edith S. Cooke
 Mr. & Mrs. Edward Eu

In memory of Horace & Marjory Thue
 Joan K. Ross & Larry Wenberg

In memory of Heaton L. Wrenn, Jr.
 Mr. C. M. Cooke IV

ARTafterDARK
at the HONOLULU ACADEMY OF ARTS
PRESENTS

GODS & GODDESSES

FRIDAY • MARCH 31 2006 • 6:00–9:00PM

SPONSORED BY
HONBLUE



A Registered National Historic Place
Accredited by the
American Association of Museums

Samuel A. Cooke
Chairman, Board of Trustees

Stephen Little, Director

Gallery and Shop Hours:

Tuesday–Saturday: 10:00 a.m.–4:30 p.m.,
Sunday: 1:00 p.m.–5:00 p.m.
11:00 a.m.–5:00 p.m. Bank of Hawaii Sundays
(admission free)
Closed Mondays, New Year's Day, Fourth of July,
Thanksgiving, and Christmas.

Telephone:

532-8700 Administrative
532-8701 Recorded Information
532-8768 Recorded Theater Programs
532-8724 Membership Services
532-8734 The Pavilion Café
532-8703 The Academy Shop

Admission:

General \$7
Seniors (62+)/Students (12+)/Military \$4
Age 12 and under FREE
Academy members FREE
Bank of Hawaii Sundays FREE
First Wednesday of every month FREE
The Academy Shop, The Pavilion Café,
and The Robert Allerton Library are always FREE

The Pavilion Café:

Open Tuesday–Saturday 11:30 a.m.–2:00 p.m.
Reservations 532-8734

Robert Allerton Library:

Open Tuesday–Friday 10:00 a.m.–4:00 p.m.
Saturday 12:30 p.m.–4:00 p.m.

Tours:

Guided tours of the collection are offered Tuesday
through Saturday at 10:15 a.m., 11:30 a.m., 1:30 p.m.,
and Sunday at 1:15 p.m. Japanese language tours are
offered Wednesday, Friday, and Saturday at 1:00 p.m.
Special and group tours are available, and tours for
hearing impaired can be arranged. Call 532-8726

Access for patrons in wheelchairs and courtesy parking
for disabled persons is available.

Academy Parking:

Art Center Lot: Monday–Saturday 7:00 a.m.–11:00 p.m.
Sunday 10:00 a.m.–6:00 p.m.
\$3 with validation for every 4 hours.
1035 Kinau Street Lot:
(Diamond Head of Admiral Thomas)
Closed during regular museum hours except for
museum staff and volunteers. Open during evening
and weekend hours until 11:00 p.m.

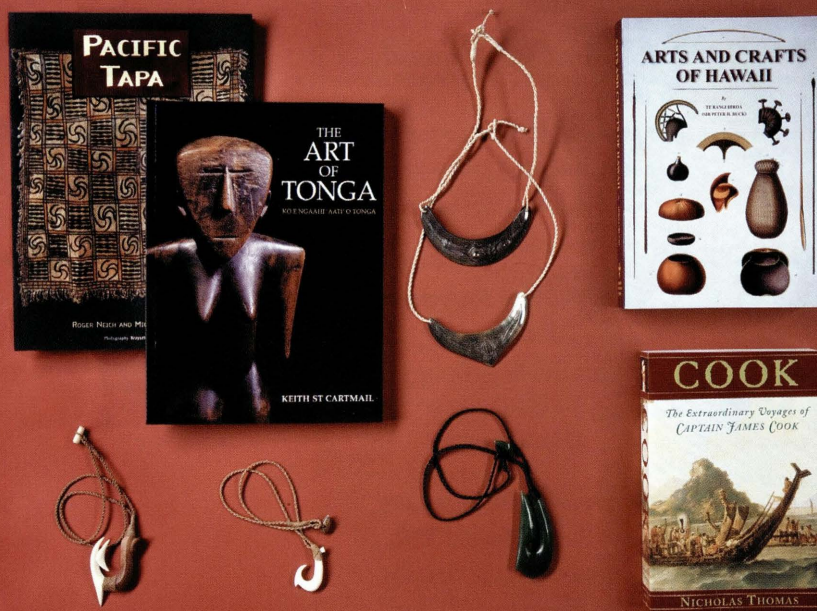
Parking Fees:

\$3 for every 4 hours with validation, or
\$4 flat rate (evening) without validation
or for parking beyond the validation period.
Parking during member openings is free.

The Art Center and Kinau Street lots are
controlled by Diamond Parking, Inc.

www.honoluluacademy.org

Discover Arts of the Pacific Islands at the Academy Shop



Gift certificates available in any amount.

Admission to the shop is always free to members and
the public. Academy members receive 10% discount.



Honolulu Academy of Arts
900 South Beretania Street
Honolulu, Hawaii 96814-1495

Dated Material

NON-PROFIT
ORGANIZATION
U.S. POSTAGE
PAID
HONOLULU, HAWAII
PERMIT NO. 119