



Hawaii's Popular Sea Captains!

# EVENING BULLETIN

Register Your Votes for Your Favorite!

ONE VOTE FOR  
Capt.  
THE MOST POPULAR CAP  
TAIN OF THE ISLAND  
FLEET.

VOL. VIII. No. 1428.

HONOLULU, H. I., MONDAY, JANUARY 15, 1900.

PRICE 5 CENTS.

## 'TIS WINTER OF DISCONTENT

London Dubious Over Returns From the War.

Probable Head of the War Forces—Roberts Loses Chances by Going to the Front—Sharp Debates Anticipated.

London, Jan. 6.—The winter of discontent to which Great Britain has been settled down has been somewhat modified by the isolated successes which marked the past week, though the seizure of foreign ships and unfounded rumors regarding Delagoa Bay threatened to bring out a crop of rumors of European interference.

The doings of General French and Colonel Pilcher have been made the most of by the correspondents and are rather magnified editorially by the British press. But anything is acceptable in these days.

The appointment of the Duke of Connaught to command the British forces in Ireland has led to a lot of speculation as to whether he will succeed Lord Wolseley, whose term expires in November as commander-in-chief. Lord Roberts is his logical successor, but until he was chosen to command in South Africa the general impression was that he would be too old to be selected for the office when it became vacant. General Buller was a hot favorite but his defeat near Colenso seems to have irrevocably ruined his chances. It is more than probable that Roberts, if successful in South Africa, will fill the office of commander-in-chief for a short period and that he will then be succeeded by the Duke of Connaught, whose popularity and military knowledge are strong enough to overcome the prejudice against a member of the royal family holding that office.

The abuse of the War Office and Lord Lansdowne, the Secretary of State for War and Lord Wolseley continues unabated in the press and among the public. By the time Parliament reassembles it promises to have gathered such force that it is more than likely that some stormy scenes will mark the debates, while many people declare that unless Lord Lansdowne resigns or exculpates himself the Conservative party will be seriously menaced. So far, the criticisms emanate chiefly from the patriotic British whose pride is hurt at the reverses and from those whose heartstrings have been touched by death. But, when the solid British taxpayer begins to be drained to support the war then, truly, the criticism of the military officials will begin to reach its true volume.

The Times, which, with the rest of the British press, has been under the impression that America was unanimously supporting Great Britain, today prints a letter from Toronto saying the anti-English press in the United States is enjoying itself over the reverses the empire is at present enduring, and adds:

"It screams with delight and it speaks sneeringly and tauntingly of Great Britain's decadence and the uselessness of her colonial sons."

The action of the English insurance companies in charging an extra 5 per cent for war risks, already referred to in these dispatches, has created no little unfavorable comment and uncompromising comparison of their action with that of the American concerns. Today's Times says: "In answer to the protests the companies say sentiment cannot enter into business transactions. The best answer to the English companies is that the American officers are making no such demand, and if the Americans see their way to dispense with an extra premium it might be thought that the enormous wealthy English officers could easily do the same. Their refusal is short-sighted from a business point of view as it is unpatriotic. Unfortunately, it is in keeping with the general trend of English insurance management."

Much interest is exhibited in the new Duke of Westminster, who has decided to remain at the Cape during the war. It appears that he has a keen taste for racing horses and his father's splendid stable is not likely to be broken up. "Ben d'Or," as the young duke is nicknamed, after the famous horse, though not yet twenty-one, is said to have selected a wife, which disappoints society, for he is the most eligible party in the matrimonial market.

The decision of Mr. Edward Corrigan to bring over a great string of American horses is hailed with interest and pleasure. One sporting authority writes that Mr. Corrigan never does things by halves, adding that, "It is safe betting that such a collection of racers as he will send has seldom, if ever, been gathered together by an American owner."

Some confusion has been caused by the various reports of the relief of Lieutenant Commander Colwell, the United States naval attaché and the name of his successor. The press statements announcing Commander R. Clover's appointment considerably antedated an issue of orders from Washington and in some unexplained way the Admiralty went astray and Commander Clover's name was substituted for Lieutenant Commander Colwell's on the list of attaches. The mail began arriving addressed to Commander Clover and it took no little trouble and explanation to extricate the present incumbent from the inconveniences. It is understood that Commander Clover will arrive here several months before he assumes his duties.

From Melbourne comes the news that Lord Brassey on the eve of retiring from office as Governor of Victoria, mounted an Episcopal pulpit and preached a sermon to the congregation. Lord Brassey is coming home on the famous old yacht Sunbeam.

Both the theatrical and book worlds are in a bad way on account of war. Not more than three theaters in London are making money and the publishers are alarmed at the absolute stagnation of their business.

"King John" with "A Midsummer Night's Dream" which will be treated as a fairy play and beautifully staged. A feature of the production which is awaited with the greatest curiosity and interest in the appearance of Louise Freear as Puck. Miss Freear is the dardish and plain but very clever actress whose greatest success was as "Slav" in "The Gay Parisienne," and who is the creator of the song "Mary Jane's Top Note." She recently appeared in "The Man in the Moon," at the New York, New York city.

Charles Frohman has engaged Charles Hawtrey for a tour of America in 1900. Hawtrey is considered the cleverest comedian in London, where he has long occupied a unique position. Edna May sails for home on the St. Paul today.

De Wolf Hopper has engaged twenty of "The Belle of New York" chorus to remain in London in "The Mistral Miss."

Kyrie Bellew is seriously ill and has been ordered abroad.

### ON LOUISIAN PLANTERS.

Frank Davies, secretary for W. W. Bierce, the representative of the Illinois Steel Co., of Chicago, and a Louisiana planter, is registered at the Hawaiian Hotel, he having set sail with the latter from San Francisco. It was Mr. Bierce's intention to remain here but, hearing of the plague, he decided to go on to the Orient as quarantine regulations here might interfere with his getting away at the time he might wish.

Seen by a Bulletin reporter while ashore Saturday Mr. Bierce said: "I came here with the intention of buying a lot of sugar stocks. I make no bones about saying that, in a short time, there will be a general exodus of Louisiana planters from the South for I believe the Hawaiian sugar industry will freeze us out. Many of these men will buy largely into the plantations of this country."

## MEETING THIS AFTERNOON

Board of Health Calls for Conference of Business Men.

Status of the Quarantine—Wild Rumors With No Foundation of Truth—Mrs. Boardman Is Better—No New Cases Up to Noon.

2 p. m.—The situation is critical and the Board of Health, realizing this, will hold a semi-public meeting at 3 o'clock at which it is hoped the business men of the city will be present. It is proposed by many that there be a complete cessation of business in the community and this will be considered at the meeting. If such a thing is done everyone will put his shoulder to the wheel and the Board of Health will have no reason to say, "We haven't a sufficient force of responsible men to carry on the work."

That the men in charge of the situation are fully awake to the situation is without doubt. Dr. Wood said this morning in response to a question put by a Bulletin reporter: "Yes, there is no doubt that there should be a cessation of business in town, but the Board of Health cannot take such action. The merchants will have to do that and I hope that the business interests of the city will be well represented at the meeting of the Board of Health this afternoon."

### The Situation.

Outside of the case of the Arlington Japanese girl today there have been no others although the doctors have been sent out on several cases of sickness. The Spaniard found at the detention camp the other day is classed only as suspicious, no direct signs of the plague having made their appearance. The brother of Kaala, the native girl from Kewalo, was moved to the pest house yesterday. His is an unmistakable case of the plague.

### Mrs. George Boardman.

The premises of George Boardman at Makiki is being very closely watched. Mrs. Boardman having been taken down with a disease that the Board of Health physicians characterize as suspicious. The lady is very much better today and, unless there is a change for the worse and there is absolutely no doubt about the case, she will be allowed to remain in her home. Various reports of blood poisoning were about on the streets today.

### King Street Fire.

The fire in the electric block bounded by Richards, King, Alakea and Merchant streets was started this morning in the Meek cottage at the corner of Alakea and Merchant streets. This and the grocery store next on Merchant street were soon annihilated and after the noon hour the buildings on King street were attended to. The department is still busy with these as the men are still busy with these this afternoon.

### Case in the Night.

The case of a Chinese woman at the corner of King and River streets was reported last night. It is learned today that this is a sure case of the plague, but the patient cannot be moved on account of extreme weakness.

### Arlington Case.

A case of the plague was reported at the Arlington Hotel, King street, this morning. Physicians of the Board of Health were called and a strict quarantine was maintained immediately. The victim, a Japanese woman, an employee of the place, was removed to the pest house. Seen in regard to the case this morning, Dr. Wood said: "It is my own personal opinion that there need be no destruction of property in this case as the woman was taken sick in a brick building with cement floors that is completely isolated from the hotel proper. Mr. Geo. Smith agrees with me in this. The house could be disinfected and a guard placed over it. If the people of the Arlington would agree to remain in the hotel and be examined twice daily by a physician of the Board of Health, I see no reason why the quarantine should not be lifted."

### Death From Plague.

The following deaths from the plague were posted Saturday and Sunday after the case of Lum Wing Sing, the Chinese from Kaumakapili, who dropped dead in the street as reported in Saturday's Bulletin:

Saturday—Makaena, male Hawaiian, aged 38, died at Moanalua in the vicinity of S. M. Damon's place near the Protestant church; Kaala, female Hawaiian, aged 13, died in a cottage on the Peck premises, Kewalo.  
Sunday—Kaanohi, male Hawaiian, aged 18, died at the pest house. Deceased was the second man from the odorless excavator affected with the plague; Kanehoa, male Hawaiian, aged 20, died at the pest house. Deceased was a member of the National Guard. All the bodies of the above were cremated after post mortem examination.

### Sunday's Fires.

The fire department turned out early Sunday morning and got to work on the Ahlo premises. An old shack next the fence dividing off the Mills Institute was first set on fire and the work of the firemen was so well done that, although the shack was only about ten feet away from the fence, not a picket was even scorched.

This done the Ahlo premises on Chaplain lane and then the three stores on Nuuanu street next the Ahlo place, were burned. When the firemen had completed this work, the stores on the Nuuanu side of Fowler's yard and above the brick buildings that reach to Hotel street, were destroyed. The Moanalua house was burned early in the morning.

### Report of Plundering.

A report to the effect that plundering of goods in the basement of Kaumakapili church has been going on for a couple of days is current. Certain irresponsible people employed as guards and carriers are blamed. With the rush of work going on at the fumigating headquarters it is hard to keep an eye on everybody. The information comes from a reliable source, the informant saying that something to correct the evil should be done at once.

### People Fumigated.

The men at the fumigating headquarters took care of 241 people yesterday forenoon. This is the largest number at one time so far. Most of those who were bathed and sent to the detention camp at Waikamilo were Japanese. Next came Chinese. A few natives were also attended to. The women were removed in drags and hacks while the men marched along behind in charge of guards.

### Discuss the Plague.

At a meeting of the San Francisco board of health held January 5 the bubonic plague was discussed, and it being uncertain whether the disease existing at Honolulu was the real plague, action in regard to protective measures was deferred. In case the identity of the disease is established there will be a strict quarantine inspection and measures will be adopted similar to those enforced in the case of the Nippon Maru.

### Dangerous Materials.

At the kerosene warehouse detention camp on the ground floor of the large building is a lot of kerosene, gasoline, turpentine, carbide and distillate that is a menace to the place. A. L. C. Atkinson, who has charge of the camp in place of Mr. Galt, has asked the Board that this be removed at once. A small fire this morning caused by matches, was put out with but little difficulty.

### Most Unsanitary Premises.

A well known Chinese resident told a Bulletin reporter this morning that a new Chinese theater premises were the vilest in town. He said that Chinese people of the neighborhood threw all sorts of refuse and rubbish into the lot and the adjacent fish pond. The place ought to be purified out of existence by fire, so thinks the man giving the information.

### Rioters Sent to Waikamilo.

The three Japanese inspectors arrested on the charge of riot in connection with the attempted assault on Dr. Mitamura, were admitted to bail the other day. On Sunday they were caught in Block 9 and taken to the fumigating headquarters to be bathed, furnished with new clothes and sent out to the Waikamilo detention camp.

### Mounted Reserve.

The Mounted Reserve now has seventy-five men under arms who can, in the case of necessity, be called on immediately. The original twenty-five are at Pukaki on the country road, while a squad of ten at Makapuu pass and another six at the Pull are doing duty.

### The Reason Why.

A Japanese with a very sore leg was taken to the fumigating headquarters, Kaumakapili, yesterday. It was found that he had been treated by a veterinary surgeon and, upon being asked his reason for this, stated that he had been kicked by a horse and that therefore he thought a veterinary surgeon was the best one to get.

### Dead Man's Horse.

A fine bay mare, the property of the Chinaman that dropped dead in the vicinity of Kaumakapili church Saturday, was found on the premises of the dead man yesterday. The poor animal had had nothing to eat for a whole day and a half. Harry Juen took her to the fumigating headquarters.

### An Ill-timed Joke.

A report gained currency this morning that there was a "case" at the Hotel Annex, Waikiki. This was probably started as a so-called joke, but as it progressed about, the town came to be taken seriously. There is no sickness at the Hotel Annex nor has there been.

### South Sea Islander.

It was reported last evening that a South Sea Island child in the Queen street premises was stricken with the plague. The child died and upon a post mortem examination of the body being held it was found that death resulted from tuberculosis.

## HILO RAILROAD TERMINALS

Requests for Permission to Traverse a Wharf and Occupy a Stream

The Executive Council Having No Authority Itself Makes Recommendations to the Federal Government—Judge Hartwell.

This morning's session of the Executive Council was occupied with matters of the Hilo Railroad Company. The company wanted a written approval of their terminal location in Hilo over the Government wharf in Hilo bay and the approaches thereto, with regard to which the Government had previously given it a verbal approval.

The company also has a piece of land from Mr. Furneaux which reaches the Waioa river, and it asks to have a terminal approved there. Its title projects a little into the stream.

While the Government does not consider it has the authority to approve these things, it will recommend to the United States Government the approval of the first request. Also that of the second, with the exceptions that the right should not project into the river and that no public rights of way be obstructed.

### Sheriff Andrews of Hawaii.

Toward the end of the meeting of the Board of Health Saturday the captain of the Kinuau put in an appearance and stated that he had just come from Hilo. Sheriff Andrews had refused to allow passengers or freight to land, had absolutely refused any communication with the town and had ordered the Kinuau back to Honolulu. When the captain had finished the Board voted that the commission of Sheriff Andrews as an agent of the Board of Health be cancelled and the following communication was sent to Mr. Andrews by Minister Cooper:

"Sir:—I beg to inform you that at a special meeting of the Board of Health held this day, your commission as Agent of the Board of Health for the island of Hawaii, was cancelled."

### President Board of Health.

The Kinuau sailed again for Hilo at about 12 midnight taking Minister Cooper along. It is possible that Mr. Andrews may lose his position as sheriff as well as agent of the Board of Health on account of the regulations he saw fit to institute recently. The Board of Health is not at all pleased with his attitude.

### Worms Was Not Afraid.

Mr. Worms, a Frenchman and a prominent banker of New York, booked for the Orient in San Francisco and arrived here in the Gaelic Saturday. After a trip about the place he said to a friend: "I stay here. Afraid of ze plague? No."

### Gaelic Passengers Ashore.

Evidently Captain Finch of the Gaelic was not very much frightened over the plague in Honolulu for he allowed all the through passengers who so wished, to come ashore and see the place. All but one or two took advantage of the opportunity.

### Dogs Dead.

The garbage wagon was called to Kukui street yesterday forenoon to collect a number of dogs that had died along that thoroughfare.

### Plea From Fort Street.

Residents of the Fort street Villa are making serious complaint of unsanitary conditions existing in the lot just mauka of the house. They state that the Board of Health has been notified, but under pressure of the work on hand has been unable to give the matter attention. Boarders at the Villa are anxious that the Board condemn the place mentioned and require the owner to remove the nuisance.

An executive session of the Board of Health was held Sunday morning.

Twenty-five stamp fotos 50 cents by J. W. Sandison, stamp artist, at J. J. Williams' Photo Parlors.

The Nuuanu arrived off port yesterday morning but did not come into the harbor until this morning.

The schooner Mary Dodge that arrived today has a hundred tons of general merchandise for Hana, Maui.

The new government dispensary will be at the corner of Miller street and Palace walk, next to Captain Berger's premises.

The body of a Chinaman reported to have been buried under one of the Maunakea street houses last week cannot be found. The police believe the story to be a canard.

The Doyo Maru that arrived from Yokohama this morning brought the following Japanese immigrants: 289 free males, 105 females and 8 children; 218 contract males, 87 females and 12 children. There were six in the cabin.

## THE TRAM WAR DELAYED

Manager Pain And Attorney on Hand to Answer.

Important Business Delays Government—Judge Wilcox Decides to Postpone—Meanwhile No Work.

The case of W. H. Pain, manager of the Hawaiian Tramways Co., appeared in the Police Court before Judge Wilcox this forenoon on the charge of common nuisance. With him was his attorney, Paul Neumann. The prosecution was represented by Deputy Attorney General Dole and Marshal Brown.

The first step in the proceedings was the despatch of an officer to the Executive building, with subpoenas for President Dole, Minister Young and Chief Clerk Hassinger of the Interior Department.

The court took a short recess, during which Mr. Hassinger arrived and conveyed the information of an important Cabinet meeting and the necessity of the presence there of President Dole and Minister Young.

On being asked if he were willing to continue the case until the 23d inst., Mr. Neumann stated that he was agreeable to a continuance, but that he wanted a settlement of affairs as soon as possible.

"I saw Minister Young," continued Mr. Neumann, "and explained to him that we intended to connect our tracks at the loop in front of the Gulick premises and that then our work would cease. (Marshal Brown smiles, but we understand what we are doing.)"

"We are willing to do that now and fill in the depressions that we have made and if Marshal Brown will agree we will go on with the work, stopping when the road is put in good condition to await the decision of the courts. However, we do not wish to be arrested while we are doing this."

Marshal Brown—"As long as you fill up the ditches we won't arrest you, but if you tear up any more ground we will take action."

Mr. Neumann—"Well, we are willing to go on with the work if you leave us alone."

Judge Wilcox—"If you have told Minister Young your intention you will have to settle matters with him. I don't care about having you to come back later on with the assertion that the court granted you permission to go on with your work. The court says nothing. I see I will have to cut the knot. Case continued until January 23."

Mr. Neumann—"I am sure that Marshal Brown and I can come to terms much sooner than the Tramways and the Rapid Transit companies."

### "The Naked Truth."

"The Naked Truth" is a new monthly publication issued by C. L. Clement the well known advertising man of Honolulu. The paper is devoted to "advertising for the progressive advertisers of Hawaii" and its subscription price is gratis. The first issue contains many valuable hints for advertisers which will be highly acceptable to local business men. As a pioneer in advertising specialties, Mr. Clement has made a success that guarantees a favorable reception for his pioneer publication.

### Sugar on Kauai.

The W. G. Hall that arrived Sunday brought the following report of sugar on Kauai: K. S. M., 7,000; V. K., 3,000; Diamond W., 2,000; Mak., 12,000; G. & R., 1,100; K. P., 4,000; H. M., 16,000; L. P., 11,000; M. S. Co., 3,00 and K. S. Co., 3,000. This makes a total of 56,100 bags.

The store of E. W. Jordan on Fort street is under temporary quarantine. DON'T PASS OUR OPERA GLASSES for the World. They're made by Le Maire. "Nuff said." H. F. WICHMAN

## VOTING FOR THE CAPTAINS

The contest for the most popular Captain of the Inter-island vessels has been going along merrily for the last ten days. The friends of Capt. Cameron have been the most active and as a consequence he stands at the head of the list today with a good lead. Capt. Cameron looks at the pair of binoculars in Wichman's windows now with a proprietary air as he passes by. The list of votes to date is as follows:

Capt. Cameron.....	172	Capt. Nicholsen.....	9
"Tullet.....	47	"Welebarth.....	9
"Simerson.....	15	"Pederson.....	7
"Freeman.....	18	"Thompson.....	6

All new subscribers to the BULLETIN are entitled to vote as follows according to the length of their subscription:

1 Month.....	40 votes
3 Months.....	150 votes
6 Months.....	350 votes
1 Year.....	750 votes

A coupon will also be found in the upper right hand corner of the first page in each issue of the paper.

Just received the very thing to gladden the hearts of the ladies.

The most acceptable Xmas gift your wives, sisters or daughters is a pair of our BEADED STRAP SLIPPERS



These are included in the 7000 pairs shoes just opened ex S. S. Australia and hold premier place for beauty.

The Manufacturers' Shoe Co



**HENRY R. WORTHINGTON,**

(INCORPORATED).

**Engineers and Builders of High Duty Pumping Engines for Water Works and Irrigation.**

THE SPECIAL ATTENTION OF PLANTATION MANAGERS AND AGENTS is called to the fact that we carry in stock at our Queen street warehouse a large assortment of pumps for all kinds of sugar house service, including vacuum pumps, air pumps, condensers, feed pumps, juice pumps, molasses pumps, etc., together with a complete stock of spare parts and valves for all sizes. Careful attention given all orders, and prompt shipment guaranteed.

Estimates furnished for complete irrigation pumping plants of any capacity or power.

**Office: Cor. Fort & Queen Sts., Honolulu, H. I.**  
Warehouse: Cor. Queen & Cook Sts. Telephone 596.

**Praternal Directory.****HARMONY LODGE No. 3,**  
I. O. O. F.

Meets every Monday evening at 7:30, in Harmony Hall, King street.  
J. D. McVEIGH, N. G.  
E. R. HENDRY, Secretary.

All visiting brothers very cordially invited.

**MYSTIC LODGE No. 2, K. of P.**

Meets every Wednesday evening at 8:00 o'clock, Castle Hall, Fort street.

Visiting brothers cordially invited to attend.

A. E. MURPHY, K. R. S.

**HONOLULU CHAPTER No. 1,**  
R. A. M.

Meets every third Thursday evening in Masonic Temple. All visiting companions cordially invited.

A. F. GILFILLAN, H. P.  
J. D. TUCKER, Secretary.

**HONOLULU COMMANDERY**  
No. 1, K. T.

Meets in Masonic Temple on the second Thursday evening of each month.

Visiting Sir Knights courteously invited.

HENRY E. COOPER, E. C.  
J. D. TUCKER, Recorder.

**OAHU LODGE No. 1, K. of P.**

Meets every Thursday evening at their Castle Hall, 420 1/2 Fort street, at 8:00. Members of Mystic Lodge No. 2, and visiting brothers, cordially invited.

A. N. SINCLAIR, C. C.  
M. ROSENBLUDT, K. of R. and S.

**NUUANU CHAPTER ROSE**  
COIX.

No. 1, A. & A. S. R.

Meets the first Thursday in each month, at Masonic Temple. Sojourning and visiting brothers cordially invited to attend all meetings.

W. M. FRANK B. AUERBACH.  
ALLAN B. SCRIMGEOUR, Secretary.

**LODGE LE PROGRES DE**  
LOCEANIE.

No. 124, A. & A. S. Rite.

Stated meetings on the last Monday of each month, in its hall, Masonic Temple.

C. M. WHITE, W. M.  
E. B. FRIEL, Secretary.

**GEO. W. DeLONG POST No.**  
45, G. A. R.

Department of California and Nevada, meets at Harmony Hall, King street, first Thursday evening of every month. Sojourning comrades are cordially invited to attend.

L. L. LAPIERRE, P. C.  
JAS. T. COPELAND, Adj.

**HAWAIIAN LODGE No. 21,**  
F. AND A. M.

Stated meetings, first Monday each month. Special meetings, when called (will be noted in this space).

Members Lodge Le Progres, Pacific Lodge, and all sojourning brethren cordially invited.

ED. I. SPALDING, W. M.  
C. R. G. WALLACE, Secretary.

**HONOLULU SCOTTISH**  
THISTLE CLUB.

Love Block, Fort street. Reading room opened day and evening for reading and social intercourse. Regular meetings Friday, 7:30 p. m. Visiting Scotsmen especially welcome at all times.

GEO. L. DALL, Chief.  
ALEX. B. KENNEDY, Secretary.

**ENSIGN WORTH BAGLEY**  
GARRISON.

No. 171.

Regular Army and Navy Union of the United States of America, meets at Harmony Hall, King street, every second and fourth Friday in each month at 7:30 p. m. Visiting comrades are cordially invited.

All honorably discharged soldiers or sailors, either regulars or volunteers, are eligible for membership.

E. J. WILSON, Commander.

**J. E. SHEAHAN, Adjutant.****THE WAVERLY CLUB.**

Waverly Block, Bethel street. Standard magazines and periodicals; library; billiard, pool and card tables for free use of members. Arrangements for transient visitors. Entrance fee \$1.25, monthly dues \$1. Open from 8 a. m. to 11 p. m.

A. V. GEAR, President.  
JAMES T. COPELAND, Recording Sec.  
ALLEN B. SCRIMGEOUR, Fin. Sec'y.

**SUGAR MILLS FOR SALE.**

One 24x48 in. 3-Roller Sugar Mill, with Engine and Gearing complete.

One 24x48 in. 2-Roller Sugar Mill, with Engine and Gearing complete.

These Mills are in first-class condition and will be sold separately, or as a 5-Roller Plant with cane and trash carriers complete.

Apply to  
WM. G. IRWIN & CO., LTD.

**LOCAL AND GENERAL.**

American Messenger Service, Masonic Temple. Tel. 444.

For rough sailor hats, ribbons, etc., try Mrs. Hanna, Fort street.

Two thousand dollars to lend on real estate security. See New Today.

There will be an important meeting of the Y. M. C. A. board this evening.

The latest fad, stamp photos, 25 for 50 cents at J. J. Williams' Photo Parlors.

WEDDING STATIONERY, Engraved Cards, Embossing.

H. F. WICHMAN.

Honolulu Messenger Service delivers messages and packages. Telephone 378.

When the Kaula steamers left the Garden Isle the Kauhau was loading at Anahou.

Nicely furnished rooms at the Popular House, 154 Fort street, from \$1.00 per week up.

A \$2.50 gold piece was picked up in Chinatown in the vicinity of the burned houses by a soldier.

Great reduction in price of tires, Milwaukee Patent Puncture Proof, price \$12.00 per pair, at Bailey's.

Chief Hunt was around on crutches Sunday forenoon attending to the work in connection with the Nuuanu street fires.

The Rialson Iron Works have removed their offices to the Progress block, Fort and Beretania streets. See New Today.

Waikiki Inn, having "caught on" to an extra fine green turtle, Ah Chuck will serve him up in his own peculiar way, Saturday night.

All persons other than those authorized found in or around the Kalia detention station will be arrested and detained in quarantine. See New Today.

The following vessels were on the boards to sail for Honolulu when the Gaelic sailed from San Francisco: Bktn. W. H. Dimond, Jan. 7; sp. Cyrus Wakefield, Jan. 13; schr. Dora Blumh, Jan. 6. The bktn. S. N. Castle and sp. George Curtis were to begin loading soon.

The bktn. W. H. Dimond arrived yesterday, 22 days from Honolulu, with a cargo of sugar. The vessel met with pleasant weather until 300 miles off this port. When a heavy north wind came up and continued for five days, the Dimond being ten days making the 300 miles. S. F. Dec. 31.

The Le Munyon Photo Supply Co. calendar for 1900 arrived on the Gaelic and is on sale at their store at No. 426 Fort street. Mr. Le Munyon has spared no pains to make it the finest and most elite calendar ever published in the world. It will be strictly three color process work and very elaborate, being done from Mr. Le Munyon's own negatives.

**Collier Scindia Delayed.**

Vallejo, Jan. 4.—The big collier Scindia, which went into commission a short time ago, has orders to sail on the 5th inst., but owing to work that must be done she will be detained at the Navy Yard until the 1st of February. The Scindia will go to Guam and Manila and carry many officers and men who have been ordered to those stations. Among her passengers will be a battalion of marines for Guam and 100 apprentices for the Eastern station.

**Hotel Arrivals.**

Hawaiian—C. D. Vincent, E. W. Alston, M. M. O'Shaughnessy, J. S. Molony, San Francisco; Frank Davies, Wm. W. Bierce, New Orleans, La.; T. C. Hartmann, Chester W. Thompson and wife, C. M. Youmans and wife, C. B. Booth and wife, Los Angeles, Cal.; Paul Worms, Geo. C. Scott, W. P. Cray, New York; F. M. Whitney, Santa Barbara, Cal.; A. C. Russell, Stockton, Cal.

The Evening Bulletin, 75 cents per month.

**CHAS. D. WALKER,**

Designer and Builder of High-Grade Yachts, Boats and Launches.  
Works, 695 KING ST.  
P. O. Box 513. Telephone 760.

**Henry Waterhouse & Co.****AGENTS FOR**

German American Ins. Co.,  
Of New York, and

Union Assurance Co.,  
Of London.

**MEMBERS HONOLULU STOCK**  
EXCHANGE.

—Wernicke Book Cases, —  
—AND—  
The Globe Company's Desks,  
Filing Cases and office  
novelties,  
Secured at lowest prices.

OFFICE FURNITURE  
JUST ARRIVED.

Telephone, 313.  
Queen street.

**PARQUETRY,**  
.....THE.....**Sanitary Flooring,**

Harbors no germs. It is the only floor suitable for residences, and its cleanliness and moderate cost recommend it to all householders.

Plans and estimates cheerfully furnished upon application to

**Lewers & Cooke,**

—Sole Agents for—

Johnson's Celebrated Parquetry,  
Johnson's Floor Wax,  
Johnson's Floor Brushes,  
Johnson's Restorer,  
Johnson's Solvent.

**Wall**  
**Paper**

—Latest styles. A large  
invoice just received.

**Wilder & Co., Ltd.**

1231

**BASEBALL**  
**TRACT** ++ ++ ++ ++ ++

**Bounded by Keeaumoku, Klnau, Pilioli and Lunallo streets; only one block from the Beretania street car line**

This tract is situated in one of the finest residence portions of Honolulu, and in a direct line with the cooling breezes of Makiki.

Lots 50 x 90 feet will be sold for the reasonable price of \$1,250. Terms, \$250 cash, balance on installments, payments to suit purchaser.

This land has a very gentle slope, and purchasers can immediately commence building operations. Early purchasers can secure choice locations.

For further particulars apply to

**GEAR, LANSING & CO.,**

**Judd Building.**

**HONOLULU COFFEE MILLS****Headquarters**

— FOR —

**PURE HAWAIIAN COFFEES,**

Green or Roasted

Large stock of Coffees from the Kona, Hamakua, Olan Districts always on hand. Old Coffees a speciality.

**H. HACKFELD & CO., LTD.**

Proprietors

**HENRY MAY & CO., Ltd.****Wholesale**  
**and Retail**  
**Grocers. . . .**

2 — Big Stores — 2

**The Waterhouse Store, | The McIntyre Store,**  
Bethel street. Telephone 24. | Cor. King and Fort streets. Telephone 22.

**Just Received:**

Cape Cod Cranberries,  
Atmore's Mince Meat,  
Condensed Mince Meat,  
Apples, Turnips, Hams,  
New Crop Nuts and Raisins,  
Cream Chocolate Tablets, Jams,  
Jellies, Shrimps, Table Fruits, Olives,  
Oregon Burbank Potatoes, Crackers and Cakes, &c., &c.

**Chas. Hustace,**

Telephone 119.

212 King street, next to the Arlington.

Established 1860.

Assets \$25,211,910.15.

**INSURE YOUR LIFE**

— IN —

**The : Germania : Life**

Insurance Company of New York.

The GOLD BOND ENDOWMENT POLICY is BETTER than  
U. S. Government Bonds.

Merchant Street Side  
Judd Building

EMMETT MAY, Manager

**Great STOCK-TAKING Sale!****Of Dry Goods and Millinery,****Will Commence on Saturday Morning Next.****PRICES CUT IN HALF. BARGAINS IN ALL DEPARTMENTS.****N. S. SACHS DRY GOODS COMPANY, LTD.,****PEOPLE'S PROVIDERS.**



**HOLIDAY GIFTS!****Benson, Smith & Co., Ltd****OFFER:****ATOMIZERS,**New Styles in Iridescent and Colored Glass,  
**EBONITE TOILET SETS AND CASES,**  
**PERFUMES,**

In Baskets, Bottles, and Bulk.

New Odors, New Styles.

**PUFF BOXES,****TOILET REQUISITES,****MAILE COLOGNE.****FORT AND HOTEL STS.****FOR SALE CHEAP!****On Easy Terms.****BUILDING LOTS AT PAWAA.**

This desirable property, bounded by Beretania, Punahou and King streets, on the town side of the McCully Homestead, is now offered for sale. The extension of Young street passes through the land. An artesian well on the premises supplies the purest water. The breezes from Manoa valley render the locality extremely healthful. The property is on the line of cars, and the Rapid Transit cars will run through or by it.

There is no better or more refined neighborhood in Honolulu.

For terms, etc., apply to

**F. WUNDENBERG,**At J. A. Magoon's office, next to P. O.  
Or to J. LIGHTFOOT, on the adjoining premises.

# Sparklets are Coming!

**HAWAIIAN SONGS****40 Selected ones for \$3.00**

—FOR SALE AT THE—

**HAWAIIAN BAZAAR, MASONIC TEMPLE.**

Corner Hotel and Alakea Streets.

**Just Landed,****EX MOHIOAN,**A Splendid Consignment of Surreys, Phaetons,  
Buggies, Road Carts, and Harness.  
Specially Selected for Local Requirements.**Honolulu Carriage Manufactory****W. W. WRIGHT, Prop'r.**

\*.....FORT STREET, ABOVE HOTEL.

**Horses, Cattle, Sheep and Dogs  
ALL HAVE THEIR ILLS.****REMEDIES MADE BY JOHN POTTIE & SONS,**

Veterinary Surgeons of World-wide Fame, will

**CURE THOSE ILLS.****Money is saved by investing in Pottie's Remedies.**Black Oils for Sprains, Gall Salve for Sore Necks, White Oils for Swollen Glands,  
Green Lotion, great healing agent, Soothing Oils for Skin Eruptions,  
Black Ointment for Horses' Feet, Electric Oils, a mild blister,  
Pottie Eye Salve for Sore Eyes.

Vermil Soap for Dogs, Sheep, Cattle, Horses, Shrubs and Trees.

\*This is only a partial list; if you don't see what you want ask

**C. W. MACFARLANE,**

Agent for the Hawaiian Islands.

**CARRIAGE, WAGON AND TRUCK****Repairing, Painting, Trimming and Manufacturing****Fine Horseshoeing a Specialty.****Agency Rubber Tire Wheel Company.****HAWAIIAN CARRIAGE MANUFACTURING CO.**

Queen Street near Fort.

**Scrofula****Swollen Glands, Scrofula Sores, Hip Disease, Boils, Pimples, Eruptions Tell the Story—Dreadful Consequences of Impure Blood.**

Certainly scrofula, if anything, may be called the advertisement of foul blood. It is the scourge of the world—offensive, painful, debilitating, stubborn. Outward applications do not cure. Emollients may palliate, they cannot abolish the evil. There is one sure way out, and that is to eliminate the taint from the blood. For this purpose Hood's Sarsaparilla is absolutely without an equal.

"I have taken Hood's Sarsaparilla for scrofulous humor and impure blood and am now almost entirely cured of the eruptions with which I have been afflicted for the past year. My face, chest and back were badly broken out." **FRED B. ORDWAY, Woodstock, Vt.**

**Hood's Sarsaparilla**

Is the best—In fact the One True Blood Purifier.

**Hood's Pills** are the best after-dinner pills, aid digestion.**Hood's Pills**

Hotels and Restaurants.

**CIVIL SERVICE RULES**

IN OUR RESTAURANT.

It has to. Our waiters are trained to be civil, quick and attentive to our guests. Our chef is unrivaled in preparation of dainty and appetizing dishes. Everything is scrupulously clean, everything as comfortable as we can make it. And the prices are always in reason.

**Home Bakery Cafe.**  
**The Best Meal Cafe.****WE OFFER YOU THE****Best 5c. Cigar**

To be had for the money.

**CLOSING OUT ALL OUR DOMESTIC CIGARS.****Beaver Lunch Rooms.****H. J. NOLTE.****Beer and Wine Dealers.****LOVEJOY & CO.****IMPORTERS, AND WHOLESALE****Wine and Liquor Dealers.**

Agents for the Bottled Rainier Beer of Seattle.

No. 19 NUUANU STREET

Foster Block, HONOLULU, HAWAIIAN ISLANDS.

P. O. Box 137. Mutual Telephone 308.

**GONSALVES & CO., Ltd****WHOLESALE GROCERS AND****WINE MERCHANTS.**

225 Queen street, Honolulu, H. I.

**METROPOLITAN MEAT CO.**

108 KING STREET.

**G. J. WALLER, : : MANAGER****Wholesale and Retail****BUTCHERS**

—AND—

**Navy Contractors.****BEST OF MEATS.**

Families desiring tender roasts,

juicy steaks and chops should

call on the

**Central Meat Market**

We make a specialty of family trade

and sell the best at reasonable

figures.

214 Nuuanu St. Telephone 104.

**DIAMOND**

And other Rings, Watches, Brace-

lets, Pins, and an extensive variety

of Jewelry.

**H. G. BLART,****Manufacturing Jeweller,**

404 1/2 FORT STREET.

**Consolidated Soda Water Co., Ltd****Esplanade,**

Corner Allen &amp; Fort Sts., Honolulu

**HOLLISTER & CO.,**

Agents.

**LAST HONORS TO LAWTON**

Manila, Dec. 30.—The funeral of General Henry W. Lawton, who was killed at San Mateo, December 18th, was held today with impressive ceremonies. The remains were conveyed from the Paco Cemetery down to the Luneta, to Pasig and thence to the transport Thomas, which sailed this afternoon.

As the body was removed from the vault, Chaplain Marry read the prayers. The personal staff of the late General was augmented by Color Sergeant Simon, Trumpeter Haberkam and Privates Oakum and Mohrusen. The latter, who was closely connected with General Lawton's late campaigns, bore the casket from the vault to a six-horse caisson awaiting at the gate. The funeral procession was composed of the band of the Twentieth Regiment General Hall and his staff, two troops of the Fourth Cavalry, who were with General Lawton at the time of his death, a battery of artillery, a number of clergymen, the caisson covered with flowers, the personal staff, the troop on foot, Generals Wheeler, Bates, Forsythe, Kobbe and Schwan, and Admiral Watson, in three carriages, a naval battalion, Major General Otis and staff, the foreign Consul in full dress, and the members of the Philippine Supreme Court.

Native delegations from the towns where General Lawton established civil governments held wreaths. Women from the same towns waited upon Mrs. Lawton yesterday, and presented her with their condolences and flowers.

Crowds of natives and Americans witnessed the procession, the band played dirges and the crowds remained uncovered.

At Pasig the casket was transferred to a tug, "taps" was sounded, and prayers were offered by Chaplain Pierce.

Four enlisted pall-bearers will accompany the remains to the United States.

**A Clear Case.**

The Judge—Herr Doctor, how do you

bleed by der indictment?

The Accused—Mit vat vas it I vas

charget?

The Judge—Do you not know? So?

You are charged mit leze majesty.

The Accused—Impossible. I am al-

ways a loyal subject. Ven vas it I vas

guilty of dot offense?

The Judge—In your pulpit last Son-

tag. How do you bleed?

The Accused—Vy, I ton't—

The Judge—You vill stand reprim-

mandet by der court und pay a fine of

500 thalers.

The Accused—Himmell! Vat vas it I

said?

The Judge—In your sermon last Son-

tag you spoke in slighting terms of

Adam and Eve in connection mit vat

you vas blessed to recklessly call der

original sin. You see, vee haf all der

notes right here.

The Accused—But I ton't onder-

stand how dot vas construed into leze

majesty.

The Judge—You ton't, eh? Haf you

forgotten dot Adam and Eve vas der

emperor's first parents?—Cleveland

Plain Dealer.

**Primitive Man.**

Man's closest relative in the family of nature is the ape. This is a familiar fact. But it is not so generally known that man approaches in bodily conformation more and more nearly to his inferior relative the lower and lower his state of cultivation. Where and when was the line drawn? Quite recently some skulls and skeletons of races contemporary in France with the reindeer have been discovered, and they have afforded material for the above conclusion. The characteristics of the animal, the low forehead and the projecting mouth disappear in man's conflict with circumstances. Mental labor of course develops the brain, and the forehead becomes upright and the projecting countenance recedes under the skull. It is also the belief among scientists that the primeval Europeans were cannibals and inferior, in spite of their white skins, to the lowest type of existing savagery—the Australian bushman. All this chain of deductions and much more were recently made at a paleontological congress in Copenhagen.—New York Times.

**Height and Genius.**

Here are a few statistics bearing on the question of height in its relation to genius: Tall men—Burke, 5 feet 10 inches; Burns, 5 feet 10 inches; Sir R. Burton, over 6 feet; Sir Walter Raleigh, 6 feet; Peter the Great, 6 feet 8 1/2 inches; Thackeray, 6 feet 4 inches; Lincoln, 6 feet 1 inch; George Washington, 6 feet 3 inches. Medium stature—Lord Beaconsfield, 5 feet 9 inches; Byron, 5 feet 8 1/2 inches; Voltaire, 5 feet 7 inches; Wellington, 5 feet 7 inches. Short men—Balzac, 5 feet 4 inches; Beethoven, 5 feet 4 inches; Keats, 5 feet; Napoleon, 5 feet 1 1/2 inches; Nelson, 5 feet 4 inches; De Quincey, 5 feet 3 inches.—Medical Record.

**SEATTLE BEER.**

The ever popular Rainier beer is becoming a household word and "will you have a glass of Seattle," is more often heard than anything else. The Criterion Saloon has the beer on tap or in bottles.

All kinds of carriage painting by up-to-date painters at the Stockyards shop.

Boarders and livery rigs delivered and called for at all hours. King Street Stables.

DIAMONDS bought before the Boer war to be sold at low figures. GEO. HAFNER, Manufacturing Jeweler.

**Real Estate and Insurance.****CASTLE & COOK****IMPORTERS****LIFE and FIRE  
INSURANCE AGENTS.****AGENTS FOR..****NEW ENGLAND MUTUAL LIFE IN-****SURANCE CO. OF BOSTON.****ETNA FIRE INSURANCE COMPANY****OF HARTFORD.****HENRY ST. GOAR,****EDWARD POLLITZ.****Members Stock and Bond Exchange.****EDWARD POLLITZ & Co****COMMISSION BROKERS****AND DEALERS IN****INVESTMENT SECURITIES.....**

Particular attention given to purchase and sale of

Hawaiian Sugar Stock.

Loans Negotiated. Eastern and Foreign Stocks

and Bonds.

403 California St.,

San Francisco, Cal. 1172

**W. C. ACHI & CO.,****Brokers & Dealers**

— IN —

**REAL ESTATE**

We will Buy or Sell Real Estate in

all parts of the group.

We will Sell Properties on Reason-

able Commissions.

**OFFICE, 10 WEST KING STREET****DAVID DAYTON,****Real Estate Broker.**

223 MERCHANT ST.

**FOR SALE.**

Twelve Chinese Granite Hitching

Posts, \$5 each.

Property in town.

**HOUSES TO LET.****Real Estate Transactions**

Subscribers are furnished with from five

to six lists per week, giving an accurate

record of all deeds, mortgages, leases, re-

leases, powers of attorney, etc., etc., which

are placed on record.

Subscription Price, \$2.00 per Month,

**A. V. GEAR,**

Judd Building, Honolulu.

**F. W. THURM,****Surveyor.**

ROOM NO. 10, SPRECKELS BLOCK.

Plantation Work a Specialty.

1233

**CHAS. J. FALK,****STOCK AND BOND BROKER**

Member Honolulu Stock Exchange.

Room 301, Judd Building.

1920

**JAS. F. MORGAN,****OPTIONEER AND STOCK BROKER**

No. 45 Queen Street.

**Expert Appraisement of Real****Estate and Furniture.****WILLIAM SAVIDGE,****Stock and Bond Broker**

Member of Hawaiian Stock Exchange.

McNerny Block, Fort Street.

**P. E. R. STRAUCH,****Real Estate Broker**

Financial Agent and Collector.

Lincoln Block, 639 King street.

Telephone 641.

**A. J. CAMPBELL,****Stock and Bond Broker.**

Member of the Honolulu Stock Exchange.

Office Queen street, opposite Union

Feed Company.

Telephone 506. P. O. Box 373.

**JAS. F. MORGAN,****Real Estate and Stock Broker**

Member of Honolulu Stock Exchange.

Telephone 72. Queen street. P. O. Box 596.

**BRUCE CARTWRIGHT,****General Manager of****The Equitable Life Assurance Society**

Of the United States for the Hawaiian

Islands.

Office: Merchant street, Honolulu.

**Agents, Brokers and Jobbers.****W. G. Irwin & Co****Limited****AGENTS FOR—**

Western Sugar Refinery Co., of

San Francisco.

Baldwin Locomotive Works

Philadelphia, Penn., U. S. A.

Newell Universal Mill Co. (National

Cane Shredder), New York, U. S. A.

N. Ohlandt &amp; Co's Chemical Fertilizers

etc.

Alex. Cross &amp; Sons, high grade

utilizers for Cane and Coffee.

Reed's Steam Pipe Covering.

**ALSO OFFER FOR SALE**

Paraffine Paint Co's F. &amp; B. Paints

and Papers; Lucol and Lincol

Oils, raw and boiled.

Indurine (a cold water paint), in

white and colors.

Filter Press Cloths, Cement, Lime

and Bricks.

**CASTLE & COOK,****LIMITED,****HONOLULU.****Commission Merchants,****SUGAR FACTORS.****AGENTS FOR**

The Ewa Plantation Co.

The Waiwala Agricultural Co., Ltd.;

The Kohala Sugar Co.

The Waianae Sugar Mill Co.

The Koloa Agricultural Co.

The Fulton Iron Works, St. Louis, Mo.

The Standard Oil Co.

The Geo. F. Blake Steam Pumps.

Weston's Centrifugals.

The New England Life Insurance Co. of Bos.

The Atlas Fire Ins. Co. of Hartford, Conn.

The Alliance Assurance Co. of London.

**Alexander & Baldwin****SUGAR**



## EVENING BULLETIN.

Published Every Day, except Sunday,  
at 210 King street, Honolulu, H. I.,  
by the

BULLETIN PUBLISHING COMPANY  
W. R. FARRINGTON ..... Editor  
DANIEL LOGAN ..... City Editor

## SUBSCRIPTION RATES:

Per month, anywhere in H. I. \$ .75  
Per year, in H. I. 8.00  
Per year, postpaid, U. S., Canada  
or Mexico 10.00  
Per year, postpaid, other foreign  
countries 13.00  
Payable invariably in advance.

Telephone ..... 255  
Post Office Box ..... 718

MONDAY, JANUARY 15, 1900.

Hilo has given a demonstration of the old adage "small pot soon hot," and it is not unlikely that Minister Cooper will meet a very warm reception when he arrives off the city of the big island. It is likely, however, that the heated atmosphere will cool quite as promptly, particularly when the good people of the town learn of the the conservative manner in which San Francisco has handled Honolulu shipping and passengers. Sheriff Andrews has unfortunately swung into line with the alarmists, an action that can hardly be overlooked in an official. It is an open question whether Andrews when brought to his senses will not make a more competent official than a new man placed in charge.

## CALL TO BUSINESS MEN.

The call of the Board of Health for a general meeting of citizens this afternoon should be heeded by every person of the city ready to lend effort to such measures as may be necessary to deal with the present situation. Now as never before, is calm judgment coupled with vigorous action necessary. Appearance of the plague in the midst of white families creates fear that borders close upon a stampede. Fears should be allayed so far as possible, but there should be no discounting the serious character of the conditions that now confront us.

Honolulu is ready to shut up shop and turn out all hands to fight the plague. During cholera times two days were devoted to a general house cleaning throughout the city and the people are ready to do it again. Unless this is done the officials see possibilities not pleasant to contemplate. It will be better to suspend general business for a week than allow the plague to get beyond control. The house to house inspection of every section of the city seems an absolute necessity.

The business men should turn out in force this afternoon prepared to do what a careful, cool, thoughtful consideration demands.

## THE JAPANESE THUGS.

"Opportunity is now offered for Honolulu to come to the assistance of the respectable Japanese and rid the town of the low lived thugs and pimps of Pauahi street whose means of support is the earnings of dissolute women. No system of blackmail was ever more complete than that which these men have established within the Japanese community. Their operations include visiting the stores of Japanese merchants and securing money by threats. Instances are not wanting where wives have been taken from their husbands to enter the employ of these miserable wretches. Refusal to comply with the demands of these thugs is met with threats upon life.

The situation is such that the Japanese merchants fear to take the initiative, though they are ready to give information when assured of positive and vigorous action by local authorities. The hands of the Japanese Consul are practically tied. As a representative of a foreign nation he cannot lead the movement, nor would he be considered justified in making complaint to the local authorities. It is assured, however, that the Japanese authorities will not raise objections to deporting these men who are a disgrace to their nationality and a source of danger to every respectable Japanese in the country.

It is within the power of the local authorities to put an end to this infamous business. If the community has any respect for pure womanhood, it will act now while the thugs are corralled in the detention camps.

## MR. RAY'S REPORT.

Through the courtesy of Senator Culom the Bulletin has received a copy of Daniel A. Ray's report on the condition of labor in the Islands. The report is not a long one and is devoid of comment, except as regards Hawaii as a field for white labor. It gives, however, a detail of the laborers on all the plantations, the sugar production of each plantation for three years, as well as the forms of contract used in dealing with all classes of laborers. Letters from Manager Walters of Lihue, W. J. Lowrie, H. P. Baldwin, W. A. Kinney are given as well as Prof. Maxwell's article on the labor conditions. Not the least interesting feature is Inspector Peterson's reports on the Galapagos troubles at Oahu plantation. It will be remembered that the local authorities would not allow the publication of these reports, having repeatedly refused them to the Bulletin. After reading the reports as secured by Mr. Ray, it is still a mystery why the local authorities exercised such a strict censorship.

Mr. Ray speaks in no uncertain tone as to the feasibility of employing white American labor on Hawaii's sugar estates. He pictures the conditions as much more favorable for white men, than climatic and industrial conditions in many sections of the United States notably Southern California. In dealing with the question of nationality of laborers Mr. Ray makes no comparisons, but he gives full details from which such comparisons as may be desired can be drawn.

## HEALTH BOARD MEETING

At a meeting of the Board of Health Saturday George Carter again urged complete cessation in the matter of shipping freight to the other islands. Laid over for future consideration.

At a meeting of the Board of Health Saturday afternoon the major part of the time was taken up with the consideration of the report of the Sanitary Committee. Important changes were made and several new sections added. There were present the following: President Wood, Minister Cooper, P. M. Hatch, Dr. Emerson, Dr. Day, Geo. W. Smith, President Dole, A. G. M. Robertson, George Carter and others.

It was voted that the Minister of the Interior be requested to erect on the grounds of the Government building in the vicinity of the Board of Health office, a building to be used as a dispensary, the old one on King street having been condemned.

President Wood having reported on the Wing Wo Tai building on Nuuanu street it was voted that the transaction of business be allowed in that place.

It was further voted that the Minister of the Interior be authorized to proceed with the work on the military fumigating place.

## DR. GALBRAITH MARRIED.

[Omaha World-Herald.]

St. Charles, Mo., Dec. 22.—A couple came up from St. Louis this morning and were married at the Methodist parsonage here by the Rev. J. W. Ramsey. They gave their names as William James Galbraith and Luella N. Millard, both of Omaha. They returned to St. Louis at noon.

In the Omaha directory the only William James Galbraith is Dr. W. J. Galbraith, former chief surgeon of the Union Pacific. The nearest approach to the name of Luella N. Millard is Luella N. Millard, formerly in the office of Galbraith & Lord during the days of their partnership.

Dr. John P. Lord, formerly a partner with Dr. Galbraith, when seen at his residence, where he is confined by a painful case of blood poisoning, the result of a recent surgical operation, was very much surprised to learn of the report of Dr. Galbraith's marriage, and said it was very hard to believe, as he had seen the latter when he returned from New York Wednesday last and the doctor had told him he was going immediately to Denver, giving no intimation that he had any other object in view.

He said that Miss Willard had been employed by the partnership and upon its dissolution last June the young lady had been retained in his employ. She had sought and obtained a vacation a short time ago, but was back promptly at her place this week and had given no word of her approaching nuptials.

Miss Willard is a refined and attractive young lady, 23 years of age, the daughter of the late Charles H. Willard, who, while living, occupied the position of bailiff in Judge Dickinson's court.

## Storm Water Drainage.

"I consider drainage for carrying away storm water as almost, if not altogether, equal in importance to sewerage."

This is the expressed opinion of a high official, who hoped the Bulletin would advocate early action toward getting such drainage. The saving of streets from damage by freshets is one great object in view. Another is to have the work done before extensive street improvement is begun under the coming era of municipal government. It would be a poor policy to make good streets only to have them torn up soon afterward for the purpose of putting in a drainage system.

On To Manila devotes an interesting chapter to the reception of American troops in Honolulu.

## ART GOODS - -

Just opened, direct shipments from the manufacturers.  
An invoice of

French White China for Decorating.

The finest assortment ever exhibited in Honolulu, direct from France.

Direct from the Fry Art Co.,

Fry's Vitrifiable Colors in Powder.  
Lustre Paint.

Thirty thousand feet of

Picture Mouldings in the Latest Patterns.

Our selection of Pictures are the Latest from Art Centres.

Howard Hitchcock's Oils, Water Colors, of Island Scenery and Fruits.

China Firing a specialty, at reduced rates.

The Latest in Lamp Goods.

## The Pacific Hardware Co.,

LIMITED

Art Rooms, - - Fort Street.

## QUEEN'S NEW YEAR HONORS.

London, Jan. 1.—The Queen's list of New Year honors, published last evening, shows fewer names than usual.

Sir John Lubbock and Sir Henry Stafford Northcote, Governor of Bombay, are created peers.

Baron Cromer, British diplomatic agent in Egypt, Lord Montague Rowton and William Wither Bramston Beach, Conservative member for the Andover division of Hants, the Commander who has seen the longest service, are appointed members of the Privy Council.

Charles Norton Elliot, the British member of the Samoan High Commission, is appointed Knight Commander of St. Michael and St. George.

Naval Captains Stuart and Sturdee are designated Companions of St. Michael and St. George for their services in Samoa.

George Buchanan and H. Cunningham are made Companions of the Bath in recognition of their services in connection with the Venezuelan boundary arbitration commission.

Captain William de Wiveleslie Abney, principal assistant secretary of the science and art department, is designated a Knight Commander of the Bath.

Among the new knights is Dr. Thomas Lauder Brunton, physician to St. Bartholomew's Hospital.

Lieutenant Governor Dailey of Nova Scotia is also appointed Knight Commander of St. Michael and St. George.

## The Pope's Successor.

Rome, Dec. 31.—It is asserted that the Pope, after the recent ceremony of opening the holy door at St. Peter's Cathedral, addressed his intimate entourage and said:

"I thank Divine Providence for granting me the grace of being able to celebrate this great function, and I wish for my successor grandeur and a long reign, to the greater glory of God. My successor will be young, as compared with my own age, and will have time to see many glories of the papacy and the church."

Later, Leo, recently designated Cardinal Ciriaco Maria Gotti, prefect of the congregation of indulgences and sacred relics, as his successor. Cardinal Gotti, the famous Genoese monk, is a man of great piety and modesty. He is now about 64 years of age, and has always lived the life of an ascetic, and, despite the dignity of a prince of the church, he always sleeps in a cell and on a hard mattress.

## Only a Few

Ladies'

"White"

and

"Remington"

Bicycles

Will be sold at  
\$40! cash,

To clear out the line.

Call early and inspect

Pacific Cycle & Mfg Co.

R. A. DEXTER, Manager.

EHLER'S BLOCK, - - FORT ST.

A Beautiful  
Calendar  
for  
1900!

THAT IS WHAT EVERYBODY SAYS  
.....OF THE.....

Hawaiian Scenic Calendar!

PUBLISHED AND FOR SALE  
ONLY BY THE

Golden Rule Bazaar

Thirteen Beautiful Views!

Four Pieces Hawaiian Music!

Rainfall and Temperature Tables!

Make this year's Calendar particularly valuable. Price, ready for mailing, 50 cents. Send the address, enclosing 50 cents, and we will do the rest.

Books and Stationery!

318 FORT STREET.

We Are Still

In the Swim!

That's an old saying, yet true, and when we say we are in the swim, why we mean every word of it.

We have the swellest TIES for the Holidays that you want to lay your eyes on, in all of the Latest Styles and Shapes. We have just replenished our stock of GOLF SHIRTS, and are strictly speaking right up-to-date in as complete a line of men's and boys' FURNISHINGS as can be shown in the largest city of the Mainland.

At our Hotel Street Store, Nos. 9 and 1, Waverley Block, we are going to give you a chance to win a fine BICYCLE. For every purchase of 50c the customer is entitled to one ticket. The party who holds the greatest number of tickets on Christmas morning at 10 o'clock gets the wheel.

"The Kash,"

TELEPHONES 679 and 96.

Two Stores.

Two Large Stocks  
Of the Best Furnishings.

Accurate history and interesting stories of the campaign are told in On To Manila.

## Grand Sale

.....AT THE.....

## TEMPLE OF FASHION

Commencing Next Monday, December 4th, 1899.

—Our entire stock of Dry Goods will be offered to our customers at very low figures.

—Laces, Ribbons, Fine Lawns, Indian Linen, Fine Cashmeres, Ladies' Capes suitable for the holidays.

HAWAIIAN DRY GOODS ASSOCIATION.

M. PALAU, Manager.

## JUST RECEIVED

Pickled Pig's Feet

Pickled Lamb's Tongues,

Pickled Tripe,

Salt Salmon, Salt Beef, &c.,

Holland Herrings,—

.... A full line of CEREALS for Breakfast

## Salter's Grocery

Telephone 680. Orpheum Block.

## We Invite Inspection.

PACIFIC  
HEIGHTS.

Residence Lots on Pacific Heights

ARE NOW OFFERED FOR SALE.

No residence property having similar advantages and attractions, as for healthfulness of location, having an elevation of from 170 to 800 feet, and affording the grandest marine and scenic views; as also its proximity to the business part of the city, being less than a mile from the Progress Block,—has ever before been presented to the people of Honolulu.

One of the main features of the property, and procured at great expense, is the abundant supply of pure spring water, pronounced by Dr. C. B. Wood as being the purest and best drinking water obtainable in the Island, which is now being conducted into storage reservoirs upon the property by an independent pipe line, and will be supplied to residents at Government rates.

OUR GUARANTEE: We guarantee to all purchasers of lots on Pacific Heights, that we will, within six months, provide rapid transportation to the highest lots on the property, connecting the same with the Honolulu Rapid Transit Co.'s line on Pauoa Road, at the beginning of Kaiulani Drive.

TERMS: 1/3 cash, 1/3 in one year, 1/3 in two years; interest 6 per cent. per annum on deferred payments.

Our carriage will convey parties desiring to inspect the property to and from the same.

For maps and full particulars call at our office, Rooms 7 and 8 Progress Block.

BRUCE WARING & CO.

## Special Announcement!

Call, before purchasing elsewhere, and see my assortment of.....

## WATCHES!

Being the largest in the city.

New Waltham Watches

Of all kinds.

Seth Thomas Clocks

In great variety.

FRANK J. KRUGER,

Corner Fort and Merchant Sts.

1408

## GET IT!

SOMETHING NEW!!

Hawaiian  
Souvenir  
China

(Nine Different Views.)

Children's Books and  
Toys at Reduced  
Rates.

Hawaiian News Co.,

Limited.

Merchant Street.



## A Thing of Beauty Is A Joy Forever

Just arrived per S. S. Australia a grand display of assorted silver-ware viz.:

Cruet Stands,  
Fancy Berry Dishes,  
Cake Baskets,  
Fruit Stands,  
Pudding Dishes,  
Celery and Pickle Stands  
Ice Tubs, Ice Water Pitchers  
(with or without Filters),  
Fancy Card Receivers,  
Spoon Holders,  
Toilet Stands,  
Fancy Vases,  
Individual Salts, Peppers and  
Mustard and Napkin Rings.

A great variety of Rodger's  
celebrated silver plated ware  
viz.:

Table,  
Desert and Tea Spoons,  
Medium and  
Desert Forks.

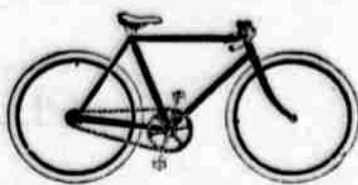
Just the thing for Christ-  
mas and New Year presents.  
Please call and examine for  
yourself. Lowest market price  
less 10 per cent for cash.

The Hawaiian Hardware Co.

Fort street. opposite Spreckels' Bank.

No shop-worn goods on the coun-  
ters of merchants who advertise in  
The Bulletin.

## THE TRIBUNE.



## THE CALCIUM KING.



Repairing a Specialty.

Bicycle Sundries.

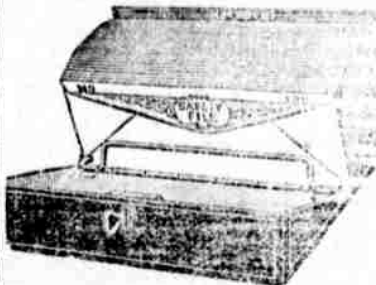
Renting.

WHITMAN & CO.,

Sole Agents for the Hawaiian Islands.

## Office Supplies FOR 1900.

Sole Agents for SHANNON FILING  
CABINETS AND DOCUMENT FILES.  
See the RAPID ROLLER COPIER—  
best in the world.



Safety Document File Boxes like cut.  
Many other good things, call and see  
them.

WALL, NICHOLS CO.,  
LIMITED.

## LOCAL AND GENERAL.

Pretty little fotos 25 for 50 cents, at  
J. J. Williams' Photo Parlors.

Paul Egly of the Boston Lyric Co. is  
now a Board of Health guard.

An experienced bookkeeper and office  
man is wanted. See Want column.

Livery and boarding stables have  
been established by the Club Stables at  
Long Branch, Waikiki.

Harmony Lodge, No. 3, I. O. O. F.,  
will meet this evening at 7:30 o'clock  
in Harmony Hall, King street.

The last day's run of the Gaelic to  
Honolulu was 334 miles. The biggest  
run previous to that was 321 miles.

A member of the Board of Health  
said Sunday: "There will be no Sun-  
days in Honolulu until the plague is  
over."

There was not a quorum for the ad-  
journing monthly meeting of the Ha-  
waiian Medical Association on Satur-  
day night.

An old Chinaman fell down on Mau-  
nakea street Sunday afternoon and  
hurt his leg. He was removed later to  
the Chinese hospital.

Sounds of military bands, songsters,  
etc., on the water at night have proved  
to be some Bergstrom Music Co. gram-  
ophones used by quarantined steamer  
men.

Sunday morning early a corps of car-  
penters was set at work building the  
military fumigating house on the drill  
shed grounds. Great progress has al-  
ready been made.

The dry goods store of Whitney &  
Marsh closed temporarily today and it  
will remain so for awhile. They are  
not quarantined, but have closed vol-  
untarily for the present.

The Le Munyon Photo Supply Co.  
will receive on the Australia the larg-  
est line of moulding that ever came to  
Honolulu, also the latest machinery to  
make up same into frames.

Prince David Kawanakoa will return  
to Honolulu in the Hongkong Maru.  
He and Samuel Parker were expecting  
to return in the Gaelic, but the latter  
found it necessary to go to Washing-  
ton.

Rev. A. Mackintosh was taken with  
a chill on Saturday evening, and in  
consequence was unable to conduct the  
services of the Second Anglican congre-  
gation. Bishop Willis officiated in his  
stead.

A special meeting of the Hawaiian  
Medical Association will be held in the  
office of Dr. Cooper, Alakea street, at  
8:30 o'clock this evening. Every mem-  
ber is urged to be present. See New  
Today.

Here is a list of the men who were ar-  
rested the other day on the charge of  
common nuisance in connection with  
work for the Tramways Co.: W. H.  
Pain, A. Gaudesbagen, Ah Pin, Ah Hui  
and Ah Gim.

By request, the Hawaiian band, un-  
der the leadership of Capt. Berger, will  
give its last moonlight concert for this  
month at Thomas Square Tuesday  
evening at the usual hour. A very  
good program is anticipated.

Henry Brower, who lives on the  
Emmeluth premises reported at the  
police station today that about mid-  
night Sunday he was attacked by a  
gang of hoodlums who ordered him  
from his verandah. They fled when he  
cried out for assistance.

Among the passengers in the Gaelic  
was Mr. O'Shaughnessy, the expert en-  
gineer of the American Sugar Co., of  
Molokai. A special pass was granted  
him to go to Molokai Saturday but as  
he did not get away he will now have  
to undergo a ten days' quarantine.

"The Hawaiian Scenic Calendar" for  
1900, published only by the Golden  
Rule Bazaar, 316 Fort street, is a beau-  
tiful work of art. It eclipses all pre-  
vious efforts in this line, and nothing  
would be more appropriate at this time  
than to mail one of these to the "folks  
at home." Price 50 cents.



Style, : Comfort : and : Neatness.

AN ELEGANT SOFT VICI KID BALMORAL  
FOR \$4.00—ONE OF THE NEW POPULAR  
PRICED SHOES : : : : :

Per the last Australia, we received a grand line of new styles in  
Men's, Women's and Children's.

Just in season for the Holiday trade.

The Children's White Canvas Slippers, Men's House Slippers, and  
Ladies' Evening Slippers, are especially nice, and are selling readily.

Our stock is complete.

We are in position to fit you.

McINERNEY SHOE STORE.

# HANDKERCHIEFS,

## Hosiery

## Ribbons

# Ladies' and Men's FURNISHINGS

# WHITNEY & MARSH, LTD

## NOVELTIES!

House Furnishing Goods!

CORK MATS prevent colds and cold feet and absorb the moisture; just what is  
wanted for the bathroom floor. It is a pleasure to stand on one of these mats after  
your bath.

OCEAN CHURNS make butter in half the time or any other kind and are easily  
cleaned. Simple and effective.

FLY-CATCHING PLATES.—They hold six sheets of sticky fly paper. As soon  
as one is filled it can be pulled off without soiling the figures; is self-protecting and  
will not soil carpets or furniture, and is non-poisonous. Protection from first to last.  
The cleanest and surest Sticky Fly Catcher on the market.

Housefurnishing Goods Department is on the second floor. Take the safety  
elevator.

## W. W. Dimond & Co., Ltd.

Importers of Crockery and Glass and House Furnishing Goods.

Sole Agents Jewel Stoves, Gurney Cleanable Refrigerators.  
Store open from 7 a. m. to 5:30 p. m.

## IN THE HIGHER COURTS.

C. E. Egan by his attorneys, Hitch-  
cock & Smith and Guy F. Maydwell,  
demurs to the bill in equity of E. A.  
Nicholas on the ground that the plain-  
tiff has a remedy at law.

To the suit in ejectment of C. K. C.  
Rooke vs. Mary M. Seabury and Bishop  
Gulstan F. Roper, trustees, defendants  
by their attorney, Cecil Brown, answer  
denying the allegations.

The same defendants make a similar  
answer to the suit of S. M. Damon et  
al., trustees of the Bishop Estate.

Judge Stanley has appointed Mark P.  
Robinson as administrator of the es-  
tate of the late Dr. A. W. McWayne  
under a bond of \$50,000. Cecil Brown  
appeared for petitioner, no one to con-  
test.

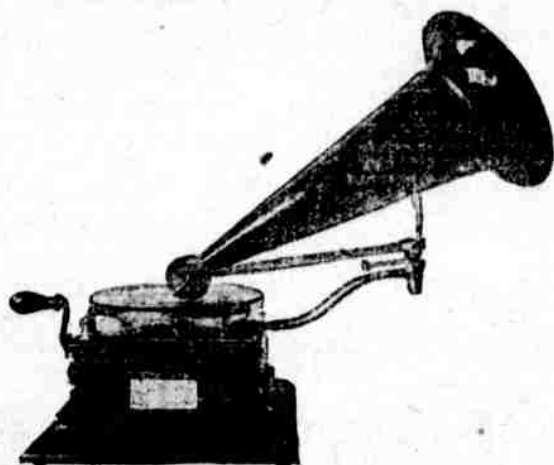
A. F. Gillilan, temporary adminis-  
trator of the estate of John Phillips,  
deceased, has filed a first and final re-  
port. His receipts have been \$3,555.64  
and expenditures \$3,502.52, leaving a  
balance of \$53.12. Assets of the estate  
are given at \$22,190.37, and liabilities  
\$15,826.77.

George J. Campbell, receiver for  
Rose Ranch in the case of the Bishop  
Estate vs. the J. I. Dowsett Estate, has  
filed his account with a petition for  
discharge. Receipts have been \$1,526-  
99, and payments \$744.62, leaving a bal-  
ance of \$782.37. The trustees of the  
Bishop Estate by their attorney, F. M.  
Hatch, have filed a discontinuance of  
the case in question, which was a bill  
to foreclose a mortgage and for a re-  
ceiver.

The Evening Bulletin, 75 cents per  
month.

## Gram-o-phones!

NEW  
RECORDS



NEW  
RECORDS

Talks Talk

Sings Sing

Laughs Laugh

SOLD ON EASY PAYMENTS

COME AND HEAR THEM

## THE BERGSTROM MUSIC CO.'S,

Progress Block, Fort St.

GRAND

## Clearance Sale To Make Room for New Stock.

Bargains to be had in Elegant Silk  
Waists and Skirts, Underwear,  
Millinery, Feathers, Ribbons, &c.

ALL GOODS WILL BE SOLD AT GREATLY REDUCED PRICES.

## MISS M. E. KILLEAN.

Hairdressing and Manicuring Parlors.

Arlington Block, 205-207 Hotel St.

I am daily opening up goods  
purchased by myself which are  
well worth your inspection.

The assortment comprises  
the choicest

## Dress Goods, Laces,

And everything in our line that was ever shown

## E. W. JORDAN, - - - No. 10 F



## Attorneys.

**ATKINSON & JUDD,**  
A. L. C. Atkinson and Albert P. Judd, Jr.  
Attorneys and  
Counselors at Law.  
Office over Bishop & Co.'s Bank, cor.  
Kahumahu and Merchant streets.

**T. McCANTS STEWART,**  
Attorney and  
Counselor at Law.  
Progress Block, opposite Catholic Church  
Fort street, Honolulu, H. I.  
Telephone 1122

**R. D. SILLIMAN,**  
LAWYER.  
308 Judd Building, Telephone 213

**FREDERICK W. HANKEY,**  
Attorney-at-Law.  
18 Merchant street, opp. Bishop's Bank  
Honolulu, H. I.  
Telephone 299.

**CHARLES F. PETERSON**  
Attorney at Law and  
Notary Public.  
Kahumahu Street.

**W. C. ACHI, ESQ. JOHNSON,**  
Attorneys and Counselors  
at Law.  
Office No. 20 West King street.  
Telephone 884.

**F. M. BROOKS,**  
Attorney at Law  
Spreckels Building, Fort Street,  
Honolulu.

**B. A. MOTT-SMITH,**  
ATTORNEY,  
HAS MOVED to the Judd  
Block, Fort St.

**DR. WALTER HOFFMANN,**  
METATANIA STREETS, (opposite the  
Hawaiian Hotel).

Office Hours: 8 to 10 a. m.; 1 to 3  
p. m.; 7 to 8 p. m. Sundays: 8 to 11  
a. m. Telephone 510. P. O. Box 501.

**DR. A. GORDON HODGINS,**

PLACE AND RESIDENCE, GEDGE  
COTTAGE, corner Hotel and Richards  
streets. Office Hours: 9 to 11; 2 to  
4, 7 to 8. Telephone 983. 1245

**DR. SINCLAIR**  
WILL RESUME PRACTICE  
on Jan. 15th, on School street, between  
Emma and Fort.  
Hours: 9 to 10 a. m., 2 to 4 p. m., 7 to 8 p. m.;  
Sundays 9 to 10 a. m. 1416

**DR. I. MORI,**  
136 Beretania street, between Emma  
and Fort streets.  
Telephone 277. P. O. Box 843.  
Office Hours: 9 to 12 a. m. and 7 to 8  
p. m.; Sundays, 9 to 12 a. m. 1229

**A. C. WALL, D. D. S.,**  
**O. E. WALL, D. D. S.,**  
DENTISTS.  
New Love's Building, Fort Street.  
TELEPHONE 454.

**A. R. ROWAT,**  
(D. V. S.)  
Office at the Club Stables  
1402-1M

## Bouquets!

FINKE & CO.,  
Florists.

Supply every variety of Cut Flowers and  
Grown-up Plants. Sprays, Bouquets and  
Funeral and Wedding Floral Designs sup-  
plied on short notice.

Office, corner Fort street and Chaplain  
Lane, opposite the Catholic Mission.  
1317

A GOOD THING  
4-U-2-C

Ohio, Algeroba and Pine Firewood  
Out and Split (ready for the stove).  
Also,  
STOVE, STEAM & BLACKSMITH CO.

WHITE AND BLACK SAND  
Lowest Prices, delivered to any part  
of the City.  
TELEPHONE 434

**HUSTACE & CO.**  
21 Queen Street.

Kaiulani  
Tract

Situated on the east side of  
Kalih Valley. The view to  
Pearl Harbor is the best in  
the city of Honolulu. The  
soil is very deep; no stones  
or rocks on the place.

Water will be laid before  
purchasers are ready to build.  
A space will be set apart,  
in memory of the Princess  
Kaiulani, for a park.

The lots will be sold at the  
lowest prices in the market,  
with which other real estate  
agents will not afford to com-  
pete.

Applications for lots will  
be received at our office, and  
will be given preference of  
choosing lots in the order they  
are received.

For further particulars ap-  
ply to

## W. C. ACHI &amp; CO.

Real Estate  
Brokers

10 WEST KING ST.

October 4th, 1899. 1343

Schuman's  
Carriage  
Repository,

FORT STREET

Keeps constantly on hand  
Studebaker's Farm and Express  
Wagons, Dump Carts, Drays,  
&c. Also, a full line of Car-  
riages and Harness.

SAVOY  
MME. AUGER  
MILLINER FROM PARIS.  
143 POST ST.  
SAN FRANCISCO CALIF.  
HATSDAIRYMEN'S ASSOCIATION  
532 Fort Street.PURE MILK  
PURE CREAM

Best on the Islands

Delivered twice daily to any part of  
City. 1385

FOR SALE,

Fresh Milk  
at 12 cents  
a Quart!

Delivered in any quantities to suit.  
Leave your orders at STAR DAIRY,  
or TELEPHONE 108.  
1247

Telephones 1086 & 895. P. O. Box 79.

HAWAIIAN  
Mercantile Agency

O. H. BERREY, Manager,  
Judd Building.  
Difficult Collections a Specialty.

## AMERICANS GAIN IN SHANGHAI.

Washington, Dec. 31. — The an-  
nouncement that the extension of the  
foreign concessions at Shanghai,  
China, has been finally approved brings  
to a close a diplomatic controversy be-  
tween Great Britain and the United  
States and France which at times be-  
came rather acute. France taking the  
position at one stage of the negotia-  
tions that the cooperation with the  
British in opposing the French plan of  
extension was an unfriendly act to-  
wards France. This and the other dif-  
ferences have been happily adjusted,  
according to announcements from Chi-  
na, which are borne out by informa-  
tion of officials here.

The controversy assumed an inter-  
national scope when the three col-  
onies at Shanghai—British, French and  
American—sought to extend their lim-  
its. The concessions are just outside  
the old native city, and lie along the  
river Chang Poo, near the point where  
it joins the Yang-tse Kiang. They are  
chiefly important because Shanghai is  
the foremost port of entry for foreign  
trade in the Chinese empire. The  
French settlement is nearest the city,  
and fronts on the river. Next comes  
the British settlement, and then the  
American. The French desire was to  
extend the settlement so as to take in  
a large area of the old city, including  
five American missionary institutions.  
The British Government opposed this  
extension quite vigorously. The British  
plan of extension was for an "inter-  
national settlement," running from  
the rear of the British concession up to  
the native city. France in turn pro-  
tested against it on the ground that she  
would be entirely surrounded without  
exit, except by the river, the native city  
of over British territory.

The United States approved the plan  
of an international settlement, as the  
American interests were substantially  
similar to those of the British, but the  
American attitude did not include an  
endorsement of all the contentions  
made by the British. It was to this  
course of the American Government  
that France took exception, on the  
ground that it was an unfriendly act  
to France. The negotiations, while  
assuming no outward show of warmth,  
were carried on with some briskness.  
Embassador Cambon of France pre-  
sented the French side up to a few  
months ago.

The adjustment finally reached is  
satisfactory to all parties concerned.  
The French concession is extended  
without including the American mis-  
sions. The British and American set-  
tlements are extended, and to some  
extent merged in the international set-  
tlement, but the British-American ex-  
tension does not so envelop the French  
colony as to place it in a pocket.

The values of the several con-  
cessions is considerable, as the popu-  
lation of Shanghai is about 600,000,  
of which the greater part is in the foreign  
settlement. Here the foreigners have  
the right to carry on and control prop-  
erty, and also have their own courts,  
police and an organized military es-  
tablishment.

## Government for Porto Rico.

Washington, Dec. 31.—One of the  
first bills to be presented to the Senate  
upon the reassembling of that body af-  
ter the recess will be Senator Foraker's  
bill providing a form of government  
for Porto Rico. Senator Foraker has  
been working upon this measure dur-  
ing recess and has his plan fairly well  
outlined. In this connection the com-  
ing of General Davis, Governor Gen-  
eral of the island, to Washington is in-  
teresting, or it denotes the anxiety of  
the Administration to give to Porto  
Rico a form of government speedily.

Residents of the island have been in  
a somewhat restless state and business  
of necessity has been disturbed. Gen-  
eral Davis will consult with the com-  
mittees and will assist them in the  
work of modeling a bill to meet local  
conditions. In general, the measure  
will provide for the appointment of a  
civil governor and judiciary by the  
President and the election of a legisla-  
tive council by the people. As nearly  
as possible all local offices will be filled  
with natives.

## THE LAST CAR.

The last cars of the King street line  
going to Walkiki and Palama pass the  
Anchor Saloon. The cleverest mixolo-  
gists in the city are there a ways to  
put you up anything you may desire.  
Drop in and take a drop before you  
take the car. The celebrated Seatt-  
beer is to be had here on draught. A  
full line of liquors, including the fa-  
mous Jesse Moore Whiskey, etc., al-  
ways on hand. Received per Warri-  
moo, Rainier Beck Beer on draught.  
The Anchor Saloon is here to please its  
patrons.

If you are fond of pictures,  
drop in and look over the fresh  
lot of Copley Prints, Carbons,  
and London Prints, covering  
over fifty subjects of the very  
latest publications.

KING BROS.,  
110 Hotel street.

Horses properly cued to correct  
faults of gait at the Steekyards shop.  
There is only one Jesse Moore Whis-  
key in the world and that is cold and  
pure. Lovejoy & Co. are distributors for  
the Hawaiian Islands.

Mechanics' Home, corner Hotel and  
Nuuanu streets, lodging by day, week  
or month. Terms: 25 and 50 cents  
per night. \$1 and \$1.25 per week.

The use of the Singer in millions of  
homes shows the unprecedented suc-  
cess of these ideal sewing machines.  
It is convincing proof that the Singer  
excels in all kinds of family sewing  
and art needle work. All our sewing  
machines are of the best construction,  
beautifully decorated, and are mounted  
on selected woods in finely finished  
cabinets of artistic designs. B. Ber-  
gerson, agent, 164 Bethel street.

## BY AUTHORITY.

OFFICE OF THE BOARD OF  
HEALTH.

Honolulu, H. I., Jan. 11, 1900.

Public attention is called to the  
terms of the following laws relating to  
the sanitary conditions of dwellings-  
houses and tenements, viz:

"Section 1. Every house or tenement  
used or occupied as a dwelling  
for lodgers or contract laborers shall  
be kept by its owner in good repair,  
with the roof water tight, and shall  
have the capacity of not less than  
three hundred cubic feet of space for  
each adult, or nine hundred cubic feet  
for one man and woman and two chil-  
dren.

"Section 2. The yards and grounds  
about all dwellings shall be well  
drained and kept free from rubbish of  
every description, with a closet, or  
privy, also to be kept in repair by the  
lodging house keeper or employer of  
laborers, for every six adults.

"Section 3. Every owner or keeper  
and every other person having the care  
or management of a lodging house or  
of a dwelling for contract laborers,  
shall at all times, when required by  
the Board of Health or its Agents, give  
free access to such house or any part  
thereof.

"Section 4. Every lodging house  
keeper or employer of laborers who  
shall fail to comply with the provi-  
sions of this act shall pay a fine not  
exceeding fifty dollars.

"Section 5. Every person who shall  
keep his dwelling in so filthy a state as  
to be a nuisance or injurious to health,  
or who shall refuse or neglect to re-  
move any nuisance or substance he  
may have caused or placed in the vic-  
inity of the dwelling he occupies or  
any nuisance in any stream or thor-  
oughfare, shall on conviction pay a  
fine not exceeding three dollars, or be  
imprisoned at hard labor for any term  
not exceeding thirty days."

C. B. WOOD,  
President Board of Health.  
1426-3t

## QUARANTINE NOTICE.

Office of the Board of Health, Hon-  
olulu, H. I., January 11, 1900.

For the more efficient enforcement  
of quarantine against that portion of  
the City of Honolulu bounded by and  
including both sides of Nuuanu street,  
Queen, River and Kukui streets, it is  
hereby ordered that that portion of  
Queen and River streets extending  
from Nuuanu street to King street  
bridge be closed against all traffic be-  
tween the hours of 6 o'clock p. m. and  
6 o'clock a. m. C. B. WOOD,  
President Board of Health.  
1426-3t

## NOTICE TO CORPORATIONS.

In conformity with Section 2024 of  
the Civil Code, all Corporations are  
hereby notified to make a full and ac-  
curate exhibit of the state of their af-  
fairs for the year ending December 31,  
1899, such exhibit to be filed in the In-  
terior Department on or before the  
31st day of January, 1900.

Blanks for this purpose will be fur-  
nished upon application to the Interior  
Office.  
Upon failure of any corporation to  
present the exhibit within the time re-  
quired, the Minister of the Interior  
will, either himself or by one or more  
commissioners appointed by him, call  
for the production of the books and  
papers of the corporation and examine  
its officers touching the affairs, under  
oath.

ALEX. YOUNG,  
Minister of the Interior.  
Interior Office, November 11, 1899.  
1376-td.

## IRRIGATION NOTICE.

Holders of water privileges, or those  
paying water rates, are hereby notified  
that the hours for irrigation purposes  
are from 6 to 8 o'clock a. m. and from  
4 to 6 o'clock p. m.

ANDREW BROWN,  
Superintendent Water Works.  
Approved by A. YOUNG,  
Minister of Interior.  
Honolulu, June 14, 1899.  
1244-ff

## WANTED.

A half dozen healthy rabbits at the la-  
boratory of the Board of Health in the  
government building.  
DR. HOFFMANN,  
Government Bacteriologist.  
1423-ff

## Olao Assessments.

Third Assessment of 50 cents per  
share was DELINQUENT Dec. 31, 1899,  
delinquent shares will be sold at 12 noon,  
January 27, 1900, if said assessment is not  
settled for, with interest, before that date.

Fourth Assessment of 50 cents per  
share is now subject to penalty and will  
be delinquent January 31, 1900.

Fifth Assessment of 50 cents per  
share is now DUE AND PAYABLE.

All assessments are payable at the  
office of Alexander & Baldwin, Judd  
Building.  
J. P. COOKE,  
Treasurer Olao Sugar Co.  
Honolulu, Jan. 2, 1900. 1423-1W

## Bankers.

## THE BANK OF HAWAII, Ltd.

JUDD BUILDING.

(INCORPORATED UNDER THE LAWS  
OF THE HAWAIIAN REPUBLIC.)

Capital.....\$400,000

OFFICERS AND DIRECTORS:  
CHAS. M. COOKE, President.  
P. C. JONES, Vice-President  
C. H. COOKE, Cashier.  
F. C. ATHERTON, Assistant Cashier.  
Henry Waterhouse,  
Tom May,  
F. W. Macfarlane,  
E. D. Tenney,  
J. A. McCandless.

Solicits the Accounts of Firms, Cor-  
porations, Trusts, Individuals, and will  
carefully and promptly attend to all  
business connected with banking en-  
trusted to it. Sell and purchase Foreign  
Exchange, issue Letters of Credit.

**SAVINGS DEPARTMENT**  
Ordinary and Term Deposits received,  
and interest allowed in accordance with  
rules and conditions printed in Pass-  
books, copies of which may be had upon  
application.

The First American Bank  
OF HAWAII, LTD.

Incorporated Under the Laws of the  
Republic of Hawaii.

Authorized Capital, \$1,000,000  
Subscribed Capital, 750,000  
Paid Up Capital, 500,000

OFFICERS AND DIRECTORS.  
Cecil Brown.....President  
M. P. Robinson.....Vice-President  
W. G. Cooper.....Cashier  
E. M. Boyd.....Secretary  
Directors—Cecil Brown, Mark P.  
Robinson, Bruce Cartwright, W. G.  
Cooper and H. M. Von Holt.

**DRAW EXCHANGE ON:**  
San Francisco—The Anglo-California  
Bank, Limited.  
Chicago—The Merchants Loan and  
Trust Company.  
New York—J. & W. Seligman & Com-  
pany.

London—The Anglo-California  
Bank, Limited.  
Paris—Societe Generale.  
Hamburg—M. M. Warburg & Com-  
pany.

Hongkong and Yokohama—The  
Chartered Bank of India, Australia  
and China.  
Australia—The Union Bank of Aus-  
tralia, Limited.  
Canada—Bank of Montreal.  
Berlin—Gerbruder Meyer.

Exchange bought and sold Letters  
Credit issued on all parts of the  
world.

O. G. TRAPHAGEN,  
ARCHITECT

223 Merchant St., Honolulu,  
Between Fort and Alakes,

TELEPHONE : : : 734  
G. A. HOWARD, JR. ROBT. F. TRAIN.

HOWARD & TRAIN,  
Architects.

Suite 7, Model Block, HONOLULU, OAHU, H. I.  
P. O. Box 703. Telephone 949

H. L. KERR & CO.,  
Architects and Builders

(Rooms 11-12,  
PROGRESS BLOCK.

Telephone 131.

Coney Estate  
LANDS.

A FEW VERY DESIRABLE BUILD-  
ING LOTS on Nuuanu Avenue, at Ni-  
lopa, Nuuanu Valley, for sale. Apply to

J. M. MONSARRAT,  
Cartwright Block, Merchant street.  
1258

The Mercantile Printing Co.  
(Limited).FINE  
JOB  
PRINTING.

119 King St.  
CHURCH and SOCIETY WORK.

HONOLULU  
EYE AND EAR INFIRMARY

Supported by Voluntary Contributions.  
FREE TREATMENT to the Poor of  
all nationalities.

For information as to cards of ad-  
mission and to the service, etc., etc.,  
apply at the

Infirmary.  
Third Floor, Progress Block.

Subscriptions may be left with J. F.  
Hackfeld, L. C. Ables or Dr. Sloggett.  
1396-6m

## Bankers.

## Haus Spreckels &amp; Co.

## BANKERS.

HONOLULU

San Francisco Agents—THE NEVADA  
NATIONAL BANK OF SAN FRANCISCO.  
SAN FRANCISCO—The Nevada National  
Bank of San Francisco  
LONDON—The Union Bank of London  
Ltd.,  
New York—American Exchange Na-  
tional Bank.

CHICAGO—Merchants National Bank.  
PARIS—Credit Lyonnais.  
BERLIN—Dresdner Bank.  
HONGKONG AND YOKOHAMA—Hongkong &  
Shanghai Banking Corporation.

NEW ZEALAND AND AUSTRALIA—Bank  
of New Zealand.  
VICTORIA AND VANCOUVER—Bank  
of British North America.

Transact a General Banking and Exchange Business:  
Deposits Received, Loans made on Ap-  
proved Security. Commercial and Travelers  
Credits Issued. Bills of Exchange bought  
and sold.  
COLLECTIONS PROMPTLY ACCOUNTED FOR

## BISHOP &amp; CO.

## Savings Bank

..... Savings Deposits will be  
received and interest allowed by this  
Bank at four and one-half per cent.  
per annum. The terms, rules and  
regulations of the Hawaiian Postal Sav-  
ings Bank have been adopted as far as  
it is practicable to apply them, and the  
Cash Reserve of \$50,000 as required un-  
der the Postal Act will be maintained.  
Printed copies of the Rules and Reg-  
ulations may be obtained on application  
BISHOP & CO.

—Established 1858—

BISHOP & Co.  
BANKERS.

Transact a General Banking  
and Exchange Business.  
Commercial and Travelers  
Letters of Credit issued, avail-  
able in all the principal cities  
of the world.

Interest allowed after July  
1, 1898, on fixed deposits 3  
months 3 per cent., 6 months  
3½ per cent., 12 months 4  
per cent.

Pioneer Building and  
Loan Association.

Assets, Dec. 31, 1898, \$116,803.38

Money loaned on approved security.  
A Savings Bank for monthly deposits.  
Houses built on the monthly instal-  
ment plan.

Eighteenth Series of Stock is now  
opened.  
OFFICERS: T. F. Lansing, President;  
S. B. Rose, Vice-President; C. B. Gray,  
Treasurer; A. V. Gear, Secretary.  
DIRECTORS: T. F. Lansing, S. B. Rose,  
A. V. Gear, A. W. Keech, J. G. Roth-  
well, Henry Smith, J. J. McLean, J. D.  
Holt, C. B. Gray.

For further particulars apply to  
A. V. GEAR, Secretary.  
Chamber of Commerce rooms.  
Office Hours: 12:30—1:30 p. m.

The Yokohama Specie Bank  
LIMITED.

Subscribed Capital.....24,000,000 yen  
Paid-up Capital.....12,000,000 yen  
Reserve Fund.....7,500,000 yen.

The Bank buys and receives for col-  
lection Bills of Exchange, Issues Drafts  
and Letters of Credit, and transacts  
a general banking business.

INTEREST ALLOWED—  
On Fixed Deposit for 12 months, 4 per cent p. a.  
On Fixed Deposit for 6 months, 3½  
On Fixed Deposit for 3 months, 3  
INTEREST ALLOWED—  
By the Head Office, at Yokohama, on Current De-  
posits, 1 to 10 yen per day.  
On Fixed Deposit for 12 months, 5½ per cent p. a.

New Republic Building, 111 King St., Honolulu

The...  
Hawaiian Electric  
Company,

Cor. Alakes & Halekulu Sts.

Has a large assortment of

Chandeliers and Elec-  
trical Goods

Constantly on hand.

Estimates given for house wir-  
ing and Electrical plants.

Marine Wiring a specialty.

**THEO. HOFFMANN,**  
Manager



# Oceanic Steamship Company.

## TIME TABLE.

The Fine Passenger Steamers of This Line Will Arrive at and Leave This Port as Hereunder.

From San Francisco:	For San Francisco:
AUSTRALIA.....JANUARY 17	AUSTRALIA.....JANUARY 23
MOANA.....JANUARY 21	ALAMEDA.....FEBRUARY 2
AUSTRALIA.....FEBRUARY 14	AUSTRALIA.....FEBRUARY 20
ALAMEDA.....FEBRUARY 18	MARIPOSA.....MARCH 3

In connection with the sailing of the above steamers, the Agents are prepared to issue, to intending passengers, coupon through tickets by any railroad from San Francisco, to all points in the United States, and from New York by any steamship line to all European ports.

For further particulars apply to  
**Wm. G. Irwin & Co., Limited**  
General Agents Oceanic S. S. Co.

## Pacific Mail Steamship Co.

### Occidental and Oriental Steamship Co. Toyo Kisen Kaisha

Steamers of the above companies will call at Honolulu and leave this port on or about the dates below mentioned:

For Japan and China:	For San Francisco:
Hongkong Maru.....January 31	Nippon Maru.....January 31
China.....January 31	Ozama (cargo).....January 31

For general information apply to  
**H. Hackfeld & Co., Ltd., Agents.**

## Canadian-Australian Royal Mail Steamship Company.

Steamers of the above line, running in connection with the CANADIAN PACIFIC RAILWAY CO. between Vancouver, B. C., and Sydney, N. S. W., and calling at Victoria, B. C., Honolulu and Brisbane are due at HONOLULU on or about the dates below stated, viz:

FROM VANCOUVER AND VICTORIA, B. C.	FROM SYDNEY AND BRISBANE.
For Brisbane and Sydney:	For Victoria and Vancouver (B. C.):
Mowara.....February 17	Mowara.....January 17
Warrimoo.....March 17	Warrimoo.....February 21
Aurora.....April 14	Warrimoo.....March 14
	Warrimoo.....April 11
	Warrimoo.....May 9

Through tickets issued from Honolulu to Canada, United States and Europe. For Freight and Passage and all general information, apply to

**Theo. H. Davies & Co., Ltd., Gen'l Agents.**

## Wilder Steamship Co., Ltd.

### TIME TABLE.

#### S. S. Kinau.

FREEMAN, Master.  
MOLOKAI, MAUI, HAWAII.

### Change in Sailing of Stmr. "Kinau."

On and after Tuesday, Nov. 6, the steamer KINAU will sail from Honolulu on Tuesdays at 12 noon, for Kaunakakai, Lahaina, Manalea Bay, Kihel, Makana, Kawaihae, Mahukona, Laupahoehoe and Hilo.

Returning, will sail from Hilo on Fridays at 2 p. m. for above named ports, arriving in Honolulu on Saturdays.

Passengers and freight will be taken for Makana, Mahukona, Kawaihae, Hilo, Kaunakakai, Honoumou, Papaikou, and Pepeekeo.

Passengers and PACKAGES ONLY will be taken for Kaunakakai, Lahaina, Manalea Bay, Kihel and Laupahoehoe.

**S. S. Claudine.**  
CAMERON, Master.  
MAUI.

Will leave Honolulu every Tuesday at 5 P. M., touching at Lahaina, Kaunakakai, Maui, Hana, Hamoa and Kihel, returning, touching at above named ports, arriving in Honolulu Sunday mornings.

Will call at Nuu, Kaupo, once each month.

**S. S. Lehua.**  
BENNETT, Master.  
MOLOKAI, MAUI, LANAI.

Sails every Monday for Kaunakakai, Kamao, Maunaloa, Kalaupapa, Lahaina, Honolulu, Olowalu. Returning arrives at Honolulu Saturday mornings.

This company reserves the right to make changes in the time of departure and arrival of its steamers WITHOUT NOTICE, and it will not be responsible for any consequences arising therefrom.

Consignees must be at the landing to receive their freight. This company will not hold itself responsible for freight after it has been landed.

Live stock received only at owner's risk.

This company will not be responsible for money or valuables of passengers unless placed in the care of the purser.

Passengers are requested to purchase tickets before embarking. Those failing to do so will be subject to an additional charge of twenty-five per cent.

The company will not be liable for loss of, nor injury to, nor delay in, the delivery of baggage or personal effects of the passenger beyond the amount of \$100.00, unless the value of the same be declared, at or before the time of the ticket, and freight paid thereon.

## Lines of Travel.

All employees of the company are forbidden to receive freight without delivering a shipment receipt therefor in the form prescribed by the Company, and which may be seen by shippers upon application to the pursers of the Company's steamers.

Shippers are notified that if freight is shipped without such receipt it will be solely at the risk of the shipper.

C. L. WIGHT, President.  
S. B. ROSE, Secretary.  
CAPT. T. K. CLARKE, Port Supt.

## O. R. & L. Co.

### TIME TABLE.

From and After January 1, 1899.

STATIONS.	Daily	Daily	Daily	Daily	Daily
(Outward)	ex. Sun.	ex. Sun.	ex. Sun.	ex. Sun.	ex. Sun.
Honolulu	7:10	9:15	11:20	3:15	5:10
Maui	8:05	10:10	12:15	4:10	6:05
Maui	8:35	10:40	12:45	4:40	6:35
Maui	9:10	11:15	1:20	5:15	7:10
Maui	9:40	11:45	1:50	5:45	7:40
Maui	10:10	12:15	2:20	6:15	8:10
Maui	10:40	12:45	2:50	6:45	8:40
Maui	11:15	1:20	3:20	7:20	9:15
Maui	11:45	1:50	3:50	7:50	9:45
Maui	12:15	2:20	4:20	8:20	10:15
Maui	12:45	2:50	4:50	8:50	10:45
Maui	1:20	3:20	5:20	9:20	11:15
Maui	1:50	3:50	5:50	9:50	11:45
Maui	2:20	4:20	6:20	10:20	12:15
Maui	2:50	4:50	6:50	10:50	12:45
Maui	3:20	5:20	7:20	11:20	1:15
Maui	3:50	5:50	7:50	11:50	1:45
Maui	4:20	6:20	8:20	12:20	2:15
Maui	4:50	6:50	8:50	12:50	2:45
Maui	5:20	7:20	9:20	1:20	3:15
Maui	5:50	7:50	9:50	1:50	3:45
Maui	6:20	8:20	10:20	2:20	4:15
Maui	6:50	8:50	10:50	2:50	4:45
Maui	7:20	9:20	11:20	3:20	5:15
Maui	7:50	9:50	11:50	3:50	5:45
Maui	8:20	10:20	12:20	4:20	6:15
Maui	8:50	10:50	12:50	4:50	6:45
Maui	9:20	11:20	1:20	5:20	7:15
Maui	9:50	11:50	1:50	5:50	7:45
Maui	10:20	12:20	2:20	6:20	8:15
Maui	10:50	12:50	2:50	6:50	8:45
Maui	11:20	1:20	3:20	7:20	9:15
Maui	11:50	1:50	3:50	7:50	9:45
Maui	12:20	2:20	4:20	8:20	10:15
Maui	12:50	2:50	4:50	8:50	10:45
Maui	1:20	3:20	5:20	9:20	11:15
Maui	1:50	3:50	5:50	9:50	11:45
Maui	2:20	4:20	6:20	10:20	12:15
Maui	2:50	4:50	6:50	10:50	12:45
Maui	3:20	5:20	7:20	11:20	1:15
Maui	3:50	5:50	7:50	11:50	1:45
Maui	4:20	6:20	8:20	12:20	2:15
Maui	4:50	6:50	8:50	12:50	2:45
Maui	5:20	7:20	9:20	1:20	3:15
Maui	5:50	7:50	9:50	1:50	3:45
Maui	6:20	8:20	10:20	2:20	4:15
Maui	6:50	8:50	10:50	2:50	4:45
Maui	7:20	9:20	11:20	3:20	5:15
Maui	7:50	9:50	11:50	3:50	5:45
Maui	8:20	10:20	12:20	4:20	6:15
Maui	8:50	10:50	12:50	4:50	6:45
Maui	9:20	11:20	1:20	5:20	7:15
Maui	9:50	11:50	1:50	5:50	7:45
Maui	10:20	12:20	2:20	6:20	8:15
Maui	10:50	12:50	2:50	6:50	8:45
Maui	11:20	1:20	3:20	7:20	9:15
Maui	11:50	1:50	3:50	7:50	9:45
Maui	12:20	2:20	4:20	8:20	10:15
Maui	12:50	2:50	4:50	8:50	10:45
Maui	1:20	3:20	5:20	9:20	11:15
Maui	1:50	3:50	5:50	9:50	11:45
Maui	2:20	4:20	6:20	10:20	12:15
Maui	2:50	4:50	6:50	10:50	12:45
Maui	3:20	5:20	7:20	11:20	1:15
Maui	3:50	5:50	7:50	11:50	1:45
Maui	4:20	6:20	8:20	12:20	2:15
Maui	4:50	6:50	8:50	12:50	2:45
Maui	5:20	7:20	9:20	1:20	3:15
Maui	5:50	7:50	9:50	1:50	3:45
Maui	6:20	8:20	10:20	2:20	4:15
Maui	6:50	8:50	10:50	2:50	4:45
Maui	7:20	9:20	11:20	3:20	5:15
Maui	7:50	9:50	11:50	3:50	5:45
Maui	8:20	10:20	12:20	4:20	6:15
Maui	8:50	10:50	12:50	4:50	6:45
Maui	9:20	11:20	1:20	5:20	7:15
Maui	9:50	11:50	1:50	5:50	7:45
Maui	10:20	12:20	2:20	6:20	8:15
Maui	10:50	12:50	2:50	6:50	8:45
Maui	11:20	1:20	3:20	7:20	9:15
Maui	11:50	1:50	3:50	7:50	9:45
Maui	12:20	2:20	4:20	8:20	10:15
Maui	12:50	2:50	4:50	8:50	10:45
Maui	1:20	3:20	5:20	9:20	11:15
Maui	1:50	3:50	5:50	9:50	11:45
Maui	2:20	4:20	6:20	10:20	12:15
Maui	2:50	4:50	6:50	10:50	12:45
Maui	3:20	5:20	7:20	11:20	1:15
Maui	3:50	5:50	7:50	11:50	1:45
Maui	4:20	6:20	8:20	12:20	2:15
Maui	4:50	6:50	8:50	12:50	2:45
Maui	5:20	7:20	9:20	1:20	3:15
Maui	5:50	7:50	9:50	1:50	3:45
Maui	6:20	8:20	10:20	2:20	4:15
Maui	6:50	8:50	10:50	2:50	4:45
Maui	7:20	9:20	11:20	3:20	5:15
Maui	7:50	9:50	11:50	3:50	5:45
Maui	8:20	10:20	12:20	4:20	6:15
Maui	8:50	10:50	12:50	4:50	6:45
Maui	9:20	11:20	1:20	5:20	7:15
Maui	9:50	11:50	1:50	5:50	7:45
Maui	10:20	12:20	2:20	6:20	8:15
Maui	10:50	12:50	2:50	6:50	8:45
Maui	11:20	1:20	3:20	7:20	9:15
Maui	11:50	1:50	3:50	7:50	9:45
Maui	12:20	2:20	4:20	8:20	10:15
Maui	12:50	2:50	4:50	8:50	10:45
Maui	1:20	3:20	5:20	9:20	11:15
Maui	1:50	3:50	5:50	9:50	11:45
Maui	2:20	4:20	6:20	10:20	12:15
Maui	2:50	4:50	6:50	10:50	12:45
Maui	3:20	5:20	7:20	11:20	1:15
Maui	3:50	5:50	7:50	11:50	1:45
Maui	4:20	6:20	8:20	12:20	2:15
Maui	4:50	6:50	8:50	12:50	2:45
Maui	5:20	7:20	9:20	1:20	3:15
Maui	5:50	7:50	9:50	1:50	3:45
Maui	6:20	8:20	10:20	2:20	4:15
Maui	6:50	8:50	10:50	2:50	4:45
Maui	7:20	9:20	11:20	3:20	5:15
Maui	7:50	9:50	11:50	3:50	5:45
Maui	8:20	10:20	12:20	4:20	6:15
Maui	8:50	10:50	12:50	4:50	6:45
Maui	9:20	11:20	1:20	5:20	7:15
Maui	9:50	11:50	1:50	5:50	7:45
Maui	10:20	12:20	2:20	6:20	8:15
Maui	10:50	12:50	2:50	6:50	8:45
Maui	11:20	1:20	3:20	7:20	9:15
Maui	11:50	1:50	3:50	7:50	9:45
Maui	12:20	2:20	4:20	8:20	10:15
Maui	12:50	2:50	4:50	8:50	10:45
Maui	1:20	3:20	5:20	9:20	11:15
Maui	1:50	3:50	5:50	9:50	11:45
Maui	2:20	4:20	6:20	10:20	12:15
Maui	2:50	4:50	6:50	10:50	12:45
Maui	3:20	5:20	7:20	11:20	1:15
Maui	3:50	5:50	7:50	11:50	1:45
Maui	4:20	6:20	8:20	12:20	2:15
Maui	4:50	6:50	8:50	12:50	2:45
Maui	5:20	7:20	9:20	1:20	3:15
Maui	5:50	7:50	9:50	1:50	3:45
Maui	6:20	8:20	10:20	2:20	4:15
Maui	6:50	8:50	10:50	2:50	4:45
Maui	7:20	9:20	11:20	3:20	5:15
Maui	7:50	9:50	11:50	3:50	5:45
Maui	8:20	10:20	12:20	4:20	6:15
Maui	8:50	10:50	12:50	4:50	6:45
Maui	9:20	11:20	1:20	5:20	7:15
Maui	9:50	11:50	1:50	5:50	7:45
Maui	10:20	12:20	2:20	6:20	8:15
Maui	10:50	12:50	2:50	6:50	8:45
Maui	11:20	1:20	3:20	7:20	9:15
Maui	11:50	1:50	3:50	7:50	9:45
Maui	12:20	2:20	4:20	8:20	10:15
Maui	12:50	2:50	4:50	8:50	10:45
Maui	1:20	3:20	5:20	9:20	11:15
Maui	1:50	3:50	5:50	9:50	11:45
Maui	2:20	4:20	6:20	10:20	12:15
Maui	2:50	4:50	6:50	10:50	12:45
Maui	3:20	5:20	7:20	11:20	1:15
Maui	3:50	5:50	7:50	11:50	1:45
Maui	4:20	6:20	8:20	12:20	2:15
Maui	4:50	6:50	8:50	12:50	2:45
Maui	5:20	7:20	9:20	1:20	3:15
Maui	5:50	7:50	9:50	1:50	3:45
Maui	6:20	8:20	10:20	2:20	4:15
Maui	6:50	8:50	10:50	2:50	4:45
Maui	7:20	9:20	11:20	3:20	5



**RISDON IRON WORKS,**  
San Francisco, California.  
**ENGINEERS AND BUILDERS.**  
**High Duty Pumping Machinery,**  
Heine Boilers, Plain Tubular Boilers, Corliss Engines, Cane Cars,  
Vacuum Pans, and all machinery for the complete equipment of Sugar Mills.  
**Office: Progress Block,**  
**FORT AND BERETANIA STREETS. HONOLULU, H. I.**

**Honolulu Drug Co.,**  
**HEADQUARTERS FOR DISINFECTANTS:**  
**ELECTROZONE,**  
**CHLOROZONE,**  
**PURIFINE,**  
**CHLORIDE OF LIME,**  
**&C., &C.**

**Honolulu Drug Co.,**  
**Von Holt Block, King st.**

**DURING QUARANTINE**  
**The Harness Factory**  
**And Office of :**  
**C. R. COLLINS**  
.....IS SITUATED IN THE.....  
**Lincoln block, King street,**  
**NEAR ALAKEA.**

Any orders entrusted to me will receive prompt attention. Orders already booked will be delivered from there.

**C. R. COLLINS,**  
**Largest Manufacturer of Harness**  
**and Horse Goods in the Islands.**

Telephone No. 502. P. O. Box No. 507. 1414-111

### Lubricating Oils

Will be used very freely for the next 6 or 8 months so we wish again to call the attention of all mill men and users of machinery to our TROPIC LUBRICATING OILS. For years this brand has been used on these islands and each season the demand has increased so that this year we have had to build a special oil warehouse at Kalaheke to hold the hundreds of barrels of oils we have to carry in stock. Tropic Cylinder, Engine, Machine, Dynamo and Carbox Oils are the ones you want if you want everything to run smoothly.

### Benton Boiler Compound

This compound is entirely vegetable, contains no oil or acid, it being a natural preservative for iron or steel. It rots the scale in the boiler and gradually cleans same. After the boiler becomes clean, the Compound, if used according to directions, will keep the scale forming properties of the water in the form of solution or pendent, and the boiler can be kept clean, and the scale forming properties of said water can be blown out in the form of mud. It is a great saver of fuel as it will clean and keep clean any boiler. Let us send you a barrel on trial, no pay if not satisfactory. Packings, Waste, Compound, Engineers' tools and supplies of all kinds.

**E. O. HALL & SON, Ltd,**  
**Cor. Fort and King Sts.**

## On to Manila!

A COMPLETE HISTORY OF  
THE CAMPAIGN OF THE VOL-  
UNTEER TROOPS IN THE  
PHILIPPINES, WITH AN AC-  
COUNT OF THEIR FIRST RE-  
CEPTION IN HONOLULU.

Superbly Illustrated.

A Limited Number on Sale at 25  
cents each by

WALL, NICHOLS CO.,  
THRUM'S BOOK STORE,  
HAWAIIAN NEWS CO.,  
GOLDEN RULE BAZAAR,  
E. W. JORDAN.

### Notice.

### --LOVE'S BAKERY--

Having purchased the bakery of L. Andradé, we are now prepared to furnish all of our former customers and all new ones with bread. The new bakery will be in charge of Mr. F. Johnson our chief baker. Send orders to office of Jas. F. Morgan, 33 Queen street. Telephone 72.

**LOVE'S BAKERY,**  
Per Jas. F. Morgan.  
1425-61

**When You Want a Rig**  
.....RING UP THE.....  
**C-L-U-B**

Livery, Boarding and  
Sales Stables, : : :  
.....518 FORT STREET.

Stable Phone, 477.  
Hack Stand Phone, 319 and 777.  
**C. B. BELLINA.**

A birdseye view of the region  
about Manila. It is given in On To  
Manila.

## WANTS.

Ad in this column will be inserted at 10 cents a line per week; for longer periods, by special arrangement, to suit the advertiser. This is the lowest advertising ever offered the people of Honolulu.

### WANTED.

WANTED—A competent experienced bookkeeper and office man, by an established firm. Apply to L. C. this office, at 1199 Broadway, Honolulu, for a permanent position for a suitable man. 1426-11

WANTED—Men to know that they can get shaved by a white barber for 15 cents at H. JEFFS, 1195 Fort street, opp. Club Stables. 1426-11

WRITING AND ACCOUNTING DONE accurately by a competent man. References. Address: Express Co., or General Delivery, P. O. 1426-11

COMPETENT GERMAN GIRL WANTED for general housework and care of children. References required. Apply G. M., Bulletin office 1426-11

### FOR SALE.

FOR SALE—Sole and Sand for sale. Apply Stangenwald Block, Merchant street. 1426-11

FOR SALE—A very desirable PIECE OF IMPROVED PROPERTY, containing about 20,000 square feet on Makiki Plains. Principals only. Address "No. 35," this office. 1426-11

FOR SALE—A 355 Anthony Camera, reversible back, with wide angle Morrison lens. Inquire at this office. 1426-11

FOR SALE—LAND IN ALL PARTS OF THE CITY. By J. M. VAS. 1426-11

FOR SALE—A new COTTAGE of eight rooms and bath, grounds nicely laid out; stable and out-houses. One lot 95 x 135; water laid on; ornamental trees, etc. One corner lot 75 x 125. All on College street. For further particulars apply to W. M. CUNNINGHAM, at the Favorite Saloon. 1426-11

### LOST.

LOST—Yo ne female Fox Terrier, black and brown head, black spots on body; tail clipped. Return to H. F. Beretania's shop, King street, or residence at Waikiki. 1426-11

LOST—Small Sorrel Mare. Suitable reward if returned to H. F. Beretania's shop, King street, or residence at Waikiki. 1426-11

### TO LET.

TO LET—Mr. Darnford's cottage on Kinohiki street between Mrs. E. R. Hentley and Mrs. S. Roth's residence. Cottage contains parlor, dining room, four bedrooms, two bath rooms and all modern conveniences, also kitchen range. 1426-11

TO LET—A New Cottage at Punahoa, nearly completed, ready to occupy January 1st, 1900. Several Cottages on Kings not far from town on car line. A Residence at Waikiki on the beach, immediate possession given. Apply to WILLIAM SAVAGE, 1426-11

THE ALOHA ROOMING HOUSE, Fort St. Best rooms and attendance in city. 1426-11

## BY AUTHORITY.

Office of the Board of Health, Honolulu, January 14, 1899.

ALL PERSONS FOUND IN or about the grounds of the Kalihl Detention Station, except workmen or those having special permission, will be arrested and detained in quarantine.

By order of C. B. WOOD,  
1424 President Board of Health

## THE ORPHEUM

FAMILY THEATRE.

SEASON OF GRAND AND COMIC OPERA

Boston Lyric Opera Co

WEEK OF DEC. 15TH.

Monday and Tuesday.....

Boccaccio.

Wednesday and Thursday.....

Chimes of Normandy.

Friday and Saturday Matinee.....

Bohemian Girl.

Saturday.....

Princess of Trebizond.

—AND—

Farewell Performance:

Monday, Jan. 22nd.....

Girofle-Girofla.

Popular Prices, 50c., 75c., and \$1.

Smoking strictly prohibited during the present opera season. Telephone No. 540. Box Office open at 10 a. m.

### Copartnership Notice.

Mr. H. Renjes retires as partner of our firm by mutual consent, and Messrs. H. Focke and W. Lanz are admitted as partners in our firm, from and after January 1, 1900. F. A. SCHAEFER & CO.  
Honolulu, Jan. 10, 1900. 1427-31

### Notice.

Joseph Goo Kim and Chang Chau have this day been appointed reporters and collectors for the Hawaiian Chinese News Company. Bill signed by either of the above parties will be sufficient receipt. W. H. Crawford having left the Company's employ is no longer authorized to collect on its behalf. 1423-11

### Notice of Assessment.

Notice is hereby given that the seventh assessment of ten (10) per cent on the capital stock of the HONOLULU RAPID TRANSIT AND LAND CO. will be due and payable to J. H. Fisher, treasurer, 411 Fort (upstairs), Honolulu, on the 1st day of January. The shares upon which assessment may remain unpaid after thirty days from said date, will be declared delinquent. J. A. GILMAN,  
Secretary H. R. T. & L. Co.  
Honolulu, Jan. 3, 1900. 1419

## SHIPPING INTELLIGENCE

For additional Shipping News see seventh page

Weather Bureau, Honolulu, Jan. 15.  
Temperature — Morning minimum, 66; Midday maximum, 79.  
Barometer at 9 a. m. 29.97. Falling.  
Rainfall .0.  
Dew Point 59 F.  
Humidity at 9 a. m. 58 per cent.  
Diamond Head Signal Station, Jan. 15.—Weather clear; wind fresh W.

### ARRIVALS.

Saturday, Jan. 13.  
Stm. Kinau, Freeman, from Maui and Hawaii ports.  
C-A S. S. Aorangi, Hepworth, from Vancouver and Victoria, Jan 6, with passengers and mdae to T. H. Davies & Co.

Sunday, Jan. 14.

Stmr. Iwalani, Gregory, from Koloa, with 5,400 bags sugar to H. Hackfeld & Co., and 7 pea castings.  
Stmr. Kauai, Bruhn, from Hanamaulu, with 6,770 bags sugar to H. Hackfeld & Co.  
Stmr. W. G. Hall, Thompson, from Kauai ports, with 6,275 bags sugar to H. Hackfeld & Co. and 30 hd of cattle.  
Stmr. Lehua, Dudoit, from Maui ports.

Monday, Jan. 15.

Am. schr. Mary Dodge, Olson, from San Francisco Dec. 21, with 550 tons grain mdae to M. S. Grinbaum & Co.  
Jap. S. S. Dojo Maru, Asara, from Yokohama Dec. 30, with 995 tons coal to T. H. Davies & Co.  
Am. schr. Allice M. Kimball, Anderson, from San Francisco Dec. 23, with gen'l mdae to Wilder & Co.  
Haw. bk. Nuuanu, Joasslyn, from New York Aug. 21, with 1,800 tons gen'l mdae to C. Brewer & Co.  
Am. bk. Alexander McNeill, Jorgensen, from Newcastle Oct. 20, with 1,538 tons coal to order.

### DEPARTURES.

Sunday, Jan. 14.

S. S. Nanyo Maru, for Japan.  
U. S. T. S. Westminister, for Manila.  
C-A S. S. Aorangi, for the Colonies.  
S. S. Lady Joyce, for San Francisco.

### PASSENGERS ARRIVED.

From Kauai, per stmr. Iwalani, Jan. 11.—P. Higgins and 6 deck passengers.  
From Kauai, per stmr. W. G. Hall, Jan. 14.—J. R. Hall and B. L. Strout.  
From Vancouver and Victoria, per C-A S. S. Aorangi, Jan. 13.—Hector Mackenzie, Anna Mackenzie, Rose Wiegand, Annie Muir, Henry Campbell, Ah Sai, Ng Ong and 19 first, 25 second-class and 50 steerage through passengers.

### The Boston Lyric.

Saturday night "Olivette" drew a packed house. Miss Stanton and Miss Andrews received an immense floral ovation, completely breaking all previous records in that line. On several occasions the performance was brought to a positive standstill to allow the ladies in question time to pick up the multitude of bouquets thrown on the stage, a member of Hackfeld & Co.'s clerical staff being specially responsible for the unprecedented shower of nosegays.

The general understanding that it would be the Lyric's final performance was set aside by Manager J. C. Cohen, who came before the curtain and announced that the Board of Health had that afternoon sanctioned the company's continued appearing provided each member reported daily for examination to Dr. Carmichael, the Board's examining physician. A new and unexpected development, however, has taken place. This morning the Arlington Hotel was placed under quarantine, Mr. J. C. Cohen, his wife, Ethel Dixon and Miss Maude Leekley being among the beleaguered guests. Col. Thompson and his wife luckily happened to spend last night at Waikiki, thus escaping an enforced retirement. Unless the authorities interfere, the Orpheum will remain open during this week. Tonight Boccaccio will be the opera presented with the full cast as previously given at the Opera House.

The Orpheum variety talent, including Managers Adams and Curtis, returned from Hilo on Saturday afternoon after a successful stay in that city.

### "IF THE CAP FITS WEAR IT."

If you are suffering from the consequences of impure blood,—have boils, pimples or scrofula sores; if your food does not digest or you suffer from catarrh or rheumatism, you are the one who should take Hood's Sarsaparilla. It will fit your case exactly, make your blood pure and cure scrofula, catarrh, rheumatism, dyspepsia, catarrh, and give you perfect health. Hood's Pills cure all liver ills. Non-irritating.

Housekeepers, we can fill your rooms; losers of property, we can find it; owners of articles desiring to exchange them, we can do it.

## NEW TO-DAY

To Loan, \$2,000,  
ON REAL ESTATE SECURITY.

Apply to J. M. MONSARRAT,  
1428 Attorney-at-Law.

Hawaiian Medical Association.

A special meeting of the Hawaiian Medical Association will be held in Dr. Cooper's office, Alakea street, at 8:30 o'clock THIS EVENING for the consideration of unfinished business. 1428-11

## Jas. F. Morgan

AUCTIONEER AND  
BROKER

33 Queen Street

## Guardian's Sale of Real Estate.

By direction of Belle F. Jones, Guardian of Edwin Austin Jones, Helen Jones, Margaret Jones and Catherine Hay Jones, minors, and acting under and by virtue of an order issued out of the Circuit Court of the First Circuit, dated the 2nd day of January, 1900, I am directed to sell at public auction, at my salesroom in the city of Honolulu, Island of Oahu, on Saturday, the 27th day of January, 1900, at 12 o'clock noon of that day, all the right, title and interest of said minors, being an undivided half of, in and to all those certain pieces or parcels of land situate at Waikane, District of Koolapoko, Island of Oahu, and more particularly described as follows:

1. All that land described in R. P. 186, L. C. A. 5721 and 805 to Kalkaina, more particularly described as follows:

Apana 1. 6 lot kato me ke Kakuahale Mamane. E hoomaka ma ke kahi Hema mae o kela ma ke kahi o ka pa hau, ke kahi akau mae o ka Kakuahale pili ana i ko Ku hua, a e holo ana He, 60 1/2 Kom. 2.51 Kaul, ma ka pa hau, ma ko Makalukae, a hiki i ka lili kae pili i ke kahi Ak. mae o ka lot o Kaheana; Alaila He. 75 1/2 Kom. 2.38 Kaul, iho ana ma ka pili a pili ana ma ka auwai ma ko Kaheana; He. 55 1/2 Kom. 1.22 Kaul, ma ko Kaheana a hiki i ke kahi Hema mauka o kela; Alaila Ak. 15 1/2 Kom. 2.50 Kaul, ma ko Kaheana ame ko Ku a hiki i ke kumu pili; Alaila Hiki. 1.47 Kaul, ma ke kumu pili, a hiki i ko Kaheana maua ulu; Alaila Ak. 66 Hiki. 2.25 Kaul, ma ko Kaheana, a pili ana a hiki i ka lili kae pili, Alaila Ak. 59 1/2 Hiki. 1.90 Kaul, ma kula a hiki i ka pihua, ke kahi akau mae o kela, a ke kahi Akau mauka o ko Ku hua. Alaila He. 31 1/2 Hiki. 2.04 Kaul, ma ko Ku Kahuahale a hiki i kahi i hoomakai. Maloko o la Apana 1 13-100 Eka.

Apana 2. 6 lot. Mamane. E hoomaka ma ke kahi Hema mae o kela kahi e waiho ana He. 61 Kom. 73 Pauku mai ke kahi Hema mauka o ka Apana 1 mai, pili ana hoi me na loi elua o Kaheana ame kahi loi nahelehele. A e holo ana He. 40 1/2 Kom. ma ka auwai ma ko Kaheana; Alaila He. 25 1/2 Hiki. 85 pauku ma ko Kaheana; Alaila ma kahi waiho wale He. 14 Kom 96 pauku, a He. 62 45 Kom. 93 pauku, a Ak. 37 Kom. 1 Kaul, a moku ka auwai. Alaila Ak. 40 1/2 Hiki. Iho ana ma ka auwai; Alaila Ak. 7 40 Kom. 1.44 Kaul, a hiki i ke kahi Hema mauka o ka loi poalima. Alaila ma ka loi poalima Ak. 10 1/2 Kom. 88 pauku; a He. 75 1/2 Kom. 2.50 Kaul, Alaila Ak. 18 1/2 Kom. 1.50 Kaul, a hiki i ke kumu pili. Alaila ma ke kumu pili a ma ka auwai. Ak. 60 Hiki. 1.05 Kaul, a Ak. 76 1/2 Hiki. 1.73 Kaul, a hiki i ke kahi Akau mauka o ko Ku loi; Alaila ma ko Ku He. 11 1/2 Hiki. 1.41 Kaul, Ak. 82 Hiki. 1.66 Kaul, a He. 28 1/2 Hiki. 40 Pauku a hiki i ko Kaheana loi. Alaila He. 32 Hiki. 71 Pauku ma ko Kaheana a hiki i kahi i hoomakai.

Upset price for all the above property will be \$12,000.00. Deeds at the expense of purchaser. Dated Honolulu, January 3rd, 1900. For further particulars apply to Cecil Brown, Esq., or J. F. MORGAN, Auctioneer.

1419

1419

1419

1419

1419

1419

1419

1419

1419

1419

1419

1419

1419

1419

1419

1419

1419

1419

1419

1419

1419

1419

1419

1419

1419

1419

1419

1419

1419

1419

1419

1419

1419

1419

1419

1419

1419

1419

1419

1419

1419

1419

1419

1419

1419

1419

1419

1419

1419

1419

1419

1419

## MALOKO IA APANA I EKA.

Apana 3. 1 lot. Kahaia. E hoomaka ma ke kahi Akau mae o kela pili ana i na loi o Kuluhi ame ko Kauli; a e holo ana He. 47 1/2 Hiki. 1 Kaul, ma ko Kuluhi, a hiki i ke kahi Hema mae o kela; Alaila He. 45 Kom. 1.48 Kaul, ma ke akaukai; Alaila Ak. 43 15 Kom. 1.18 Kaul, ma ko Kapule; Alaila Ak. 50 1/2 Hiki. 1.40 Kaul, ma ko Kauli a hiki i kahi i hoomakai.

Maloko o la Apana 15-100 Eka.  
2nd. All that portion of the land described in R. P. 158, L. C. A. 5919 to Palauhulu, as is described in deed of Palauhulu to Nakea, dated May, 1857, and of record in Liber 27 on page 410.  
3rd. All that land, being a portion of the makai half of R. P. 158, L. C. A. 5919, to Palauhulu, more particularly described as follows:

Beginning at the northwest corner of the land of M. Phillips & Co., adjoining the Protestant church yard, and running south 33 East 5.25 chains along the line dividing the mauka from the makai half of R. P. 158; thence south 69 West 1.95-100 chains along the land of Pulka to the Government road; thence north 33 1/2 West 5.30 chains along the Government road to the Protestant church yard; thence north 64 1/2 East 1.95 chains along the said church yard to the point of commencement. Containing an area of 1 027-1000 acres.

4th. Five undivided shares or interest in the land known as the Ahupuaa of Waikane, and held and owned by a number of people as tenants in common, and called the Hui of Waikane.

5th. All that land at Kumunui, Waikane aforesaid, and more particularly described in R. P. 152, L. C. A. 6051, together with dwelling houses, cook house, servants' dwellings, stable and bath house situate thereon.

6th. That certain spring of water known as Ulawini, situate in the Ahupuaa of Waikane, conveyed by the officers of said Hui of Waikane to P. C. Jones, together with the pipes leading the water from said spring to the last above mentioned premises.

7th. Lease from the officers of said Hui of Waikane of about ten acres of land known as the Peterson lot; rent paid in full to October 1st, 1907.

8th. Note for \$120 secured by mortgage dated May 17, 1890, at 12 per cent per annum, made by Pini to Peterson, Larsen and Hopkins, of his interest in the Hui of Waikane.

The property above described has for the most part been used as a country residence, and has on a portion thereof two dwelling houses, outhouses, stables, etc., all in good order and condition. A portion of the land's three pieces are leased, and bring in a rental of \$155 a year.

P. C. Jones, Esq., who is the owner of the other undivided half of said property, has consented to a sale of his half at the same time and place, and will join in the deed for his half interest with the Guardian, so that the party buying can secure the whole property. The five shares in the Hui of Waikane represent