

Honolulu Weekly

December 14-20, 2011 • Volume 21 Number 50 • www.HonoluluWeekly.com

GIFT
GUIDE
PAGE 12

Rock of Ages



SHORELINE SHRINES

TSUNAMI TRASH 4 DJ OAKENFOLD 9 KAKA'AKO GUIDE 23

THE SURF-N-SEA ANNIVERSARY BLOW-OUT SALE! EVERY ITEM ON SALE!



Surfboards, Bodyboards, Stand-Up Paddleboards, Dive Gear, Clothing, Sunglasses, Leashes, Wetsuits, Watches, Shorts, Trunks, Footwear, Skateboards, T-Shirts, Jewelry, Fins, Racks, Boardbags, Snorkels, Masks, Spears, Hats, Backpacks, and ...
MUCH MUCH MORE!! EVERY ITEM IN THE STORE IS SALE PRICED!

Hawaii's Ocean Sports Headquarters!

DAILY SURFING AND STAND-UP PADDLING LESSONS, INTRO DIVES (NO EXPERIENCE NECESSARY)
SCUBA & SNORKEL GEAR, SHARK TOURS, 3 DAY PADI CERTIFICATION
HAWAII'S LARGEST SELECTION OF NEW & USED SURFBOARDS, WORLDWIDE SHIPPING AVAILABLE
RENTAL SURFBOARDS & BODYBOARDS, SURFBOARD PACKAGING & 24 HR. DING REPAIR

637 - DIVE
(3183)



62-595 KAM HWY HALENNA, HI 96712 • WWW.SURFNSEA.COM

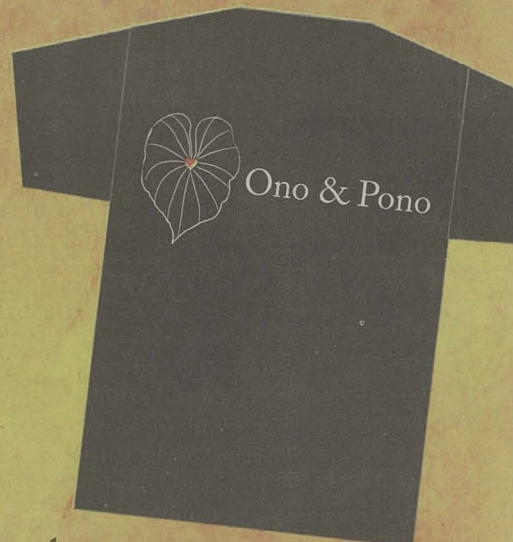
THIS IS HOW YOU GET THERE. FIND THE OCEAN AT SURF N SEA!



637 - SURF
(7873)



Slow Food Oahu T-shirts for sale.



Look for them at
Pegge Hopper Gallery,
Downtown and Town restaurants.

Great garb for
local foodies!

\$20 per shirt, available in small,
medium, large and x-large.



Slow Food Oahu
slowfoodoahu.org

Advertise In Spring Arts



Issue Specials

1/2 page ads - \$1050
9.22" w x 7.33" h

full page ads - \$1750
9.25" w x 15" h

Rates are net. Add GET.

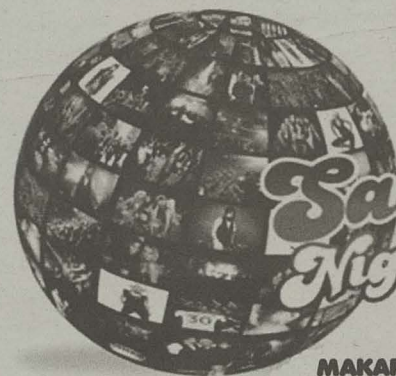
Deadline for space
January 9TH

Deadline for materials
January 11TH

Please call 528-1475 x10
Colleen Knudsen x14
Laurie Carlson x17

January 18th

Honolulu
Weekly



PRESENT

**Saturday
Night Sessions**
SNS013 "Far Too Long"
(Paul Oakenfold Remix)
Release Party

MAKAPU'U MEADOWS at SEA LIFE PARK

SATURDAY DECEMBER 17 2011

PAUL OAKENFOLD

WE ARE PLANET PERFECTO VOLUME 01



www.saturdaynightsessions.com



PRIVATE CURRENCY
NETWORK

Working Together to Create Success with Referrals
Pay Attention or Pay Cash
PROUD MEMBER 808-831-8839 CO-OP AD

More vs Akaka Bill

Support unity, equality and aloha for all.

The only credible poll on the Akaka bill was done by Zogby in November 2009. It showed that the majority of Hawai'i's people oppose the Akaka bill, and an even larger majority demand a referendum on the ballot, comparable to ratification of a state Constitutional amendment. Yet every Democrat running for the House or Senate, and also ex-Gov. Lingle (the likely Republican nominee for Senate), supports the Akaka bill. All of them insist on ramming it down our throats as an unfunded federal mandate, whether we like it or not, without putting it on the ballot.

Joan Conrow's Dec. 7 article ["Hawaiian Roll Call"] describes only two viewpoints about the federal Akaka bill and state Act 195. Neither view represents what most of Hawai'i's people, and probably

most ethnic Hawaiians, want. Both views ignore what's best for Hawai'i and focus only on how ethnic Hawaiians can get the most goodies.

Viewpoint number one: Ethnic nationalism. Rip the 50th star off the flag. Re-establish Hawai'i as an independent nation. But unlike the historical Kingdom where all citizens had equal voting and property rights regardless of race, the re-instated nation would give superior rights to ethnic Hawaiians on account of the "rights of indigenous people" under modern "international law." Hawaiians are children of the gods and brothers to the land in a way nobody else ever can be. First class citizenship for people who have a drop of the magic blood; back of the bus for everyone else.

Viewpoint number two: Racial separatism. Use Act 195 or the Akaka bill to create a race-based phony Indian tribe and transfer huge amounts of money, land and jurisdictional authority to it. This would get gobs of goodies quickly, but would undermine hope for the first because ethnic Hawaiians who sign up for the tribe are thereby acknowledging that the federal and state governments have sovereignty.

Conrow clearly favors viewpoint number one. But she lacks the magic blood, so she exercises political correctness by not explicitly saying so.

Conrow totally ignores the option most of Hawai'i's people favor, and probably most ethnic Hawaiians as well. Viewpoint number three: Unity, equality and aloha for all. Hawai'i remains united with the US, and our people and lands remain unified under the undivided sovereignty of the state of Hawai'i. Everyone is equal in the eyes of God regardless of race and gets treated equally under the law. To quote that famous street philosopher Rodney King: "Can't we all just get along?"

Please read the book "Hawaiian Apartheid: Racial Separatism and Ethnic Nationalism in the Aloha State." Twenty-seven copies are available in the public library system, and portions are available for free on the internet.

Ken Conklin via
HonoluluWeekly.com

Get over it

[Dec. 7: "Not Funny"] I can't believe that out of this review that's what you chose to focus on. Get a sense of humor!

"AKUMA357" via
HonoluluWeekly.com

Treacherous trolleys

After reading [Nov. 30: "Hawai'i Survival Guide"], I have the following to add to the section on Waikiki Trolleys.

The vehicles are based on San Francisco cable cars, which were designed in the 1890s. They ran at 9 mph, slightly faster than walking, and even then there could be trouble for standing passengers who did not hold on to a pole as



COPYRIGHT JOHN S. PRITCHETT

the car rounded a curve. There is more than one cartoon showing an unwary passenger being ejected by centrifugal force as the car made a turn. So at every turn cable car conductors would traditionally call, "Koutfordacurve!" (Look out for the curve) as a warning.

The Waikiki Trolley can probably run up to 20 mph in city traffic, so standees beware. You're safer sitting down and waiting until the vehicle comes to a stop before getting up to leave.

Dexter Wong
Honolulu

Off-island plea

[June 15: "Eminent Domain or Imminent Domain?"] Please do not develop at all. Hawai'i is developed enough. People come to Hawai'i for its beautiful land and pristine beaches. I have lived there before, and I have seen the impact it makes on the environment and the community. There has to be a certain point where development stops. O'ahu has enough developments as it is. Local people, who were born and raised on the island, can't afford to buy a home, because of outside money driving up home prices. This project [Turtle Bay and highway expansion] will only add to an already out of control problem, and it is unacceptable. This project will not only hurt environmentally, but will also hurt locals as well. This expansion will bring more crowds to an already crowded North Shore. Stop being greedy, and think about O'ahu. If tourists want to see big buildings and resorts, go to Waikiki. I am not a born local, but I spent a part of my youth in Hawai'i and continue to visit friends regu-

larly. Hawai'i is in my heart and is absolutely, without a doubt the most beautiful place on God's earth. Leave it the way it is, KEEP THE COUNTRY COUNTRY!

John Ritter
Kailua

HECO unfair

I am sure we all have several complaints about our giant monopoly Hawaiian Electric (HECO). Here are a few of mine.

First let me start by saying that I think it is great that HECO has adopted a greener attitude towards our planet. But what took so long? The Hippies have been trying to get us to do this since the sixties. HECO should have started budgeting for these changes long ago—within the company, not by having the consumer pay for their lack of foresight by increasing the rates. Since taking a greener stance, HECO has been asking us to conserve, conserve, conserve. But it seems the more we do this, the more we pay. So the more we conserve, the less income for HECO? Instead of making their organization more efficient and cutting costs they are making the consumer pay the difference.

We try to do our share in making our Mother Earth healthier: use shopping bags and cut back on plastic ones, recycle as much paper and plastic as possible, line dry our washing, etc. On Green Day we even sold our gas guzzling car and now enjoy riding bikes around our beautiful (but bicycle-unfriendly) city. On the other side, we know people with two SUVs and a truck in their driveway and who use every house light, who are always running their

clothes driers, and never teach their kids about recycling. So yes, they can live their lives the way they want (it's a free country), but why should those who are trying to conserve be paying about the same electric rates (one cent difference) as the abusers. We use much less electricity now but have a larger bill for the same period as last year. Where is the incentive, HECO? I mean an incentive that will seriously impact our bills. HECO will not lose out by charging conservers a much lower rate if they offset that by penalizing the wasteful—in a meaningful way.

And HECO can help even more by stopping the import of the thousands of (former) trees they use to carry their power lines. Other countries I have seen use concrete instead of wooden poles, or better still, none at all. Undergrounding lines (and not just in new neighborhoods) should be a significant part of HECO's yearly budget. A little more civic pride please. And wind farms on Moloka'i? Like power poles...what an eyesore.

Kevin W. Smith
Honolulu

We love to get letters and print as many as space allows. Letters are often edited for length and clarity. Letters should be signed with the writer's full name and their town or city and state, as well as phone number for confirmation only.

WRITE TO:
Letters to the Editor,
Honolulu Weekly, 1111 Fort Street Mall, Honolulu, HI, 96813. Fax to 528-3144 or e-mail to editorial@honoluluweekly.com.

Honolulu Weekly

Vol. 21, No. 50
December 14-20, 2011

Our Mission:

To create a high-quality, profitable weekly O'ahu newspaper that provides its readers with independent, entertaining, provocative coverage examining local issues, arts and events in a visually striking format.

Publisher Laurie V. Carlson

Editor Mindy Pennybacker

Managing Editor Shantel Grace

Calendar Editor Matthew DeKneef

Film Critic Bob Green

Copy Editor Ashley L. Angello

Contributing Writers Nina Buck, Anna Harmon, Tiffany Hervey, Matthew Kain, Maria Kanai, Curt Sanburn, Kalani Wilhelm, Christa Wittmier

Features Writer Niko Rivas

Editorial Interns

Tracey Nakama, Michael Nakasone

Director of New Media & Production Joe Edmon

Production Assistant Hideyo Kusano

Cartoonists & Illustrators

John Pritchett, Slug Signorino, Tom Tomorrow

Cover Illustration by Michael Ledger

Sales & Marketing Manager

Laurie V. Carlson

Senior Account Executive

Colleen Knudsen

Distribution Manager Kate Paine

Bookkeepers Pamela Farris, Bob Brooks

ISSN #1057-414X

Entire contents © 2011 by Honolulu Weekly Inc. All rights reserved.

Manuscripts should be accompanied by a self-addressed stamped envelope: Honolulu Weekly assumes no responsibility for unsolicited material. First copy of Honolulu Weekly is free at the newsstand, limited to one copy per reader. Subsequent copies are \$1 each and may be purchased at our office. No person may, without permission of Honolulu Weekly, take more than one copy of each Honolulu Weekly issue. It is unlawful to remove copies in bulk; violators will be prosecuted to the full extent of the law.

A.A.N.
A Member of the
Association of
Alternative
Newsweeklies

www.honoluluweekly.com

Phone: (808) 528-1475

Fax: (808) 528-3144

Classifieds: (808) 528-1475 x 48

1111 Fort St. Mall, Honolulu, HI 96813

editorial@honoluluweekly.com

sales@honoluluweekly.com

classifieds@honoluluweekly.com

Printed on recycled newsprint with soy-based inks

INDEPENDENT, LOCALLY OWNED

honolulu diary



S.O.S. FOREVER

Hosted by Surfrider Foundation, the John Kelly Environmental Achievement Award ceremony was recently held in honor of the legendary waterman and environmental leader who started Save Our Surf (SOS) and fought to protect Hawai'i's coastlines from overdevelopment. Kelly and SOS helped to save 140 surf sites around the state, while also stopping many destructive developments.

On Dec. 9, the 9th annual awards were presented at Waimea Valley Pavilion, where bodysurfing legend Mark Cunningham served as emcee and singer-songwriter Jack Johnson made a surprise move from the crowd to the stage and sang a few songs with the night's live entertainment, The Intire Project.

"We don't have a mall at Shark's Cove right now and you can thank Cora [Sanchez] for that," Peter Cole said as he introduced the Lifetime Achievement Award winner. Sanchez has a 20-year history on the North Shore, where she helped create the Pūpūkea-Waimea Marine Life Conservation District (MLCD) and, with the North Shore Community Land Trust and the Trust for Public Land, defeated development in the Pūpūkea-Paumalū region.

Kyle Thiermann received the Professional Surfer Award for creating a five-part video series, *Surfing for Change*, which inspired viewers to move over \$340 million dollars of lending power out of the multi-national, coal-invested Bank of America

and into local banks around the country.

Kona Brewing Company received the Environmentally Friendly Hawai'i-Based Company Award (won by the *Weekly* last year!). The company helps organize the Kona Brewers Festival, which raises money for educational, environmental and cultural organizations. Along with installing solar and using recycled building materials at their facilities, Kona Brewing Co. continues to support local efforts to protect beaches and coastlines across Hawai'i.

"We are for jobs and the environment," said Mattson Davis, Kona Brewing's president, as he accepted the award. "The best kind of business thinks long term, so we want to do more for our community and support them, because they support us." The night's award winners are living proof that activism works. They have proof in numbers—cash flowing locally and sustainably rather than globally and harmfully. They have proof in open spaces and marine conservation—where development was supposed to have taken root. John Kelly's legacy and those this event celebrates show that to save something is to live a life of purpose and fulfillment.

—Tiffany Hervey

LOTSA FLOTSAM

Picture your house and everything in it. Now picture it floating in the ocean. At last Saturday's tsunami debris conference on Kaua'i, University of Hawai'i researcher Dr. Nikolai Maxi-



Stuart Coleman and winners from the John Kelly Environmental Awards.

menko used that visualization exercise to give people a sense of what was washed out to sea by the monster waves that devastated Japan last March.

Some of that flotsam is expected to start washing up on the reefs and beaches of the Hawaiian archipelago, perhaps hitting Midway as early as next month, although, Maximenko said, it's tricky to precisely predict.

There was more certainty in Dr. Henrietta Dulaiova's assessment of whether the debris picked up any harmful radioactivity from the meltdown of the Fukushima nuclear power plant. "It is extremely unlikely," the UH geophysicist said, noting that the radioactive plume initially released blew inland. And the debris pile was about 8 miles offshore last April when more than 10,000 tons of tainted water was released into the sea, where it was effectively diluted, Dulaiova added. Since then, contaminated water has been stored at the plant.

The conference, organized by Dr. Carl Berg of the Surfrider Foundation's Kauai Chapter in hopes of developing a plan for dealing with the flotsam before it shows up, drew about 125 concerned citizens, fishers and ocean users. The Northwestern Hawaiian Islands, Kaua'i, Ni'ihau and possibly O'ahu, are most likely to be affected. Al-

though no one knows exactly how much of the tsunami debris is still floating or how much will hit land.

Surfrider is trying to recruit more volunteers and enlist the help of local government. "We can't put our head in the sand," Berg said, noting that cleanup plans need to be worked out ahead of time, "and that's now."

To that end, Carey Morishige of the National Ocean and Atmospheric Administration (NOAA)'s marine debris program met with Kaua'i County officials on Friday, prior to the conference. The state Department of Health also sent a representative to the event, and is continuing to monitor the situation and develop a response plan.

Surfrider and NOAA are concerned that the debris, which could include 70- and 100-foot fishing boats loaded with gas and oil, may harm reefs, wildlife and ocean users. Morishige said NOAA has stationed observers at Midway and Laysan to watch for the debris.

The stuff that initially washed out to sea has been greatly dispersed, Berg said. So unless the debris has wording linking it to Fukushima, like the small fishing boat found off Midway last September, or emits faint radioactivity, it will be hard to know if it was generated by the tsuna-

QUOTE

"All of the judges in the United States District Court for the District of Hawai'i have recused themselves from this [Honolulu Rail project] case."

—US District Court Chief Judge Susan Oki Mollway

FACTOID

720

Number of concrete columns to support the proposed rail project

outdoorcircle.org

mi. But regardless of its origins, he said, if it poses a threat, it will need to be cleaned up.

—Joan Conrow

NAKED NO MORE

Amidst a whirlwind of negative feedback, mostly stirred up by Girl Fest Hawaii, Rakuen Sushi Lounge in Chinatown has decided to amend its "Naked Sushi" event, removing the "naked" and replacing it with a less controversial soirée they have dubbed "The Art of Sushi Happy Hour."

The burlesque group, Cherry Blossom Cabaret will still perform at the event, which is to include sushi making and body painting by Daniel Morris.

Both parties—Rakuen and Cherry Blossom—declined to comment on the change, the latter's spokesperson simply stating, "everything you need to know can be found in the press release."

—Ashley L. Angello

HAPPY 50TH ANNIVERSARY!



ELS[®] Language Centers

INTERNATIONAL PATHWAYS

Open House:

**Friday December 16, 2011
12:15pm-3:00pm**

**ELS Language Centers Honolulu
1188 Fort Street Mall, MP 133
Honolulu, HI 96813
808-543-8075**

www.els.edu/honolulu

Hairstyles that won't hurt your budget

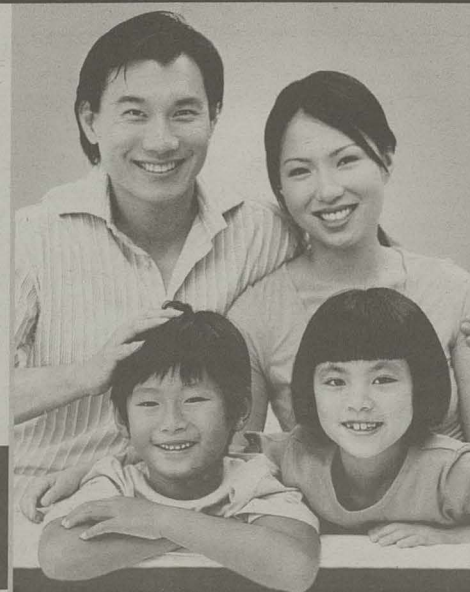
8:30am—4:00pm - no appt. necessary

**All Haircuts \$7.50
Color \$19.95 & up**

**Highlights \$25 & up
Formal Hairstyle \$15.50**

LGW Hawaii Institute of Hair Design
Training the Next Generation of Hair Stylists

For more information about our school, graduation rates, median debt of students who complete our program and other important information visit our website at hihdhawaii.net



**1128 Nuuanu Ave.
533-6596**

Q&A

Tom Berg

"I've taken heed to the criticism, and I've sharpened and honed in on my delivery skills to be more effective to serve."

COURTESY OF THE OFFICE OF TOM BERG

The Conformist



'Ewa makai school town hall meeting.

Matthew Kain

The Weekly interviewed District 1 city councilman Tom Berg back in July [see "Rail Done Right," July 6], well before the police were called to a Waipahu Neighborhood Board meeting when he refused to stand down, and an allegedly drunken argument took place with APEC security details. At the time, it was hard not to agree with a lot of what he had to say about the rail project's misgivings. Six months later, buffoonery aside, his views still make sense.

But will anyone listen to him now? Berg met with the Weekly to discuss his regrets and his new approach.

Tell us what happened during APEC on Nov. 12 at the Hale Koa—why were you so angry? Did you really expect to be let back into a presidential event without any credentials at all?

I was given an invitation by email, and went to the Kahala Hotel and checked in. And [I] was scrutinized there to make sure I was who I was. I got on a shuttle bus and got dropped off inside a secure area. I walked in the event without a badge, without anyone checking my name...The same people who saw me walk in, saw me walk out.

To walk right by them, and merely say "I forgot my phone," and try to go back, and [for them to] accuse me of being a party crasher—that's not how you handle this type of event in my opinion.

So there's a misunderstanding here; being a Monday night quarterback, I'm saying we both could have handled this better. So, I'm contrite. I will take responsibility, and I apologize to them for my behavior, absolutely.

You've been called confrontational, abrasive and rude. What gives? Do you think you push things a little more than necessary at times?

The answer is yes. To me, government doesn't move fast enough. To me, everyone [should have] an opportunity to exhaust their opinions. I always think there's a win-win in every situation, that's my philosophy—that it doesn't have to be one or the other, it really doesn't.

My boisterous, belligerent, argumentative, confrontational behavior has really stemmed

[from] being stymied on this rail... but trying to get the media to pay attention to me, I've had to be boisterous to get somebody to listen to me. I was the first guy to object to Ansaldo with a resolution, back in March I believe. Four months later some other city councilmen say, "Wow, yeah, maybe Berg is right," ...well I had to make a lot of noise to get to that point. I had to go testify before HART [Honolulu Authority for Rapid Transportation], make an ass of myself. I'm not proud of my behavior.

As the public feeling towards rail seems to ebb and become more cautious, where do you see the project heading?

There is due diligence that should be done, and done immediately. People have gotten educated. The last thing the city wants to do is let the voter vote again. The city knows that rail will not succeed if put on the ballot. They don't even want to have it discussed.

I believe my constituents, by majority, don't want this rail. Maybe they did five years ago. But today, after being educated—after seeing what has happened with Ansaldo, after seeing what has happened with HART—to see that the game has been fixed, I think a lot have remorse. I think a lot have misgivings and maybe feel duped.

Do you think the current federal trial has a chance of stopping or holding up the rail?

I don't like this lawsuit, and I don't like attorneys—that the taxpayer is paying for—feeding off the public trough. That's

why I came up with a resolution saying just do the supplemental EIS [Environmental Impact Study] anyways. If we expended the funds to do a supplemental EIS, it would take six months to do. Let's assume Cayetano and the gang are successful and get relief. The relief they're seeking, merely is, do a supplemental EIS. So why spend all this taxpayer money and take a risk? Why not just do it?

With all the assumptions that people are probably making about you right now, what would you like people to know about you and what you are trying to accomplish in city council?

What I'd like them to know is I've taken heed to the criticism, and I've sharpened and honed in on my delivery skills to be more effective to serve.

My new Tom Berg—the conforming Tom Berg—is not going back to the APEC video. He's not going back to his behavior in committees, because he's not getting his measures heard. This Tom Berg is here to serve, and has acted on behalf of all sides of his constituents. I have people who want this rail, and I have people who don't want this rail. So I've been the conduit for both sides to get a hearing so that everybody feels comfortable. I'm fighting for a consensus. I think this civil war that is happening in our town is most unfortunate, and I think I have solutions to make us all back up this rail.

For more information on the current, ongoing federal trial, see Nov. 23 Diary "On Trial."

You're invited to a Christmas Presentation For The Whole Family!



PERFORMANCE DATES & TIMES

Dec. 21-23, Wed. - Fri. at 7pm

Doors Open at 6:30pm

Dec. 24 -25, Sat. - Sun. at 6pm

Doors Open at 5:30pm

Childcare is provided from Birth - 12 Years Old!

A special Christmas Celebration just for the kids with games, prizes and fun activities!

Now available. . .

Reserved Seating

(General seating is free)

Word of Life
CHRISTIAN CENTER

Tickets are just \$20 per person
Limited seating available.
Please call to purchase tickets.

www.wordoflifehawaii.com

582-4044 • 544 Queen Street • Downtown Honolulu

1st-3rd Generation Japanese?

Generations of people have helped test investigational medications by participating in clinical research studies. You could help too.

To enroll for research study 8243-302 you must be:

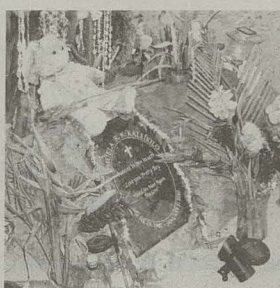
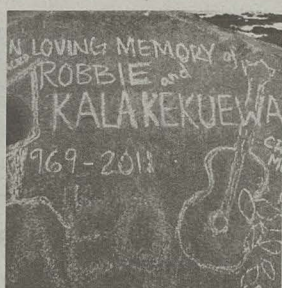
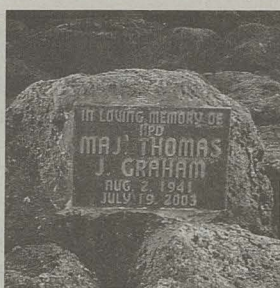
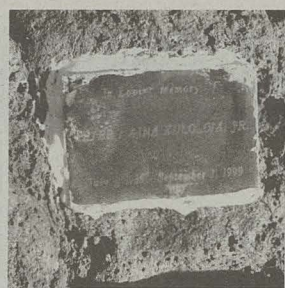
- 1st to 3rd generation Japanese adult
- Healthy, age 24-60
- Light smoker or non-smoker
- Up to \$3,100 for time and participation
- Willing to stay at Covance for a 2-night/3-day stay and 8 outpatient visits



Think you can help? Great! Then call 877-708-6681 (877-708-7092 for Japanese), text ALOHA to 77982, or visit TestWithTheBest.com today.

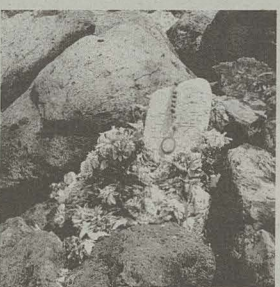
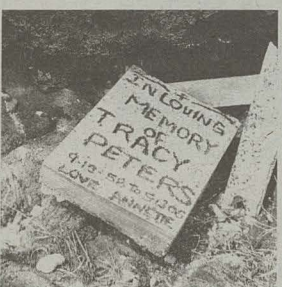
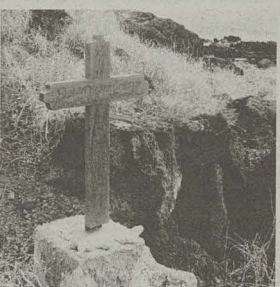
COVANCE

One Waterfront Plaza, 500 Ala Moana Blvd., Ste. 400, Honolulu, HI 96813



Is there space for all our public displays of grief?

BEACH MEMORIALS



Memorials—for the beach or the graveyard?

CURT SANBURN

A few yards west of the bam-boochoa rock lie two small metal plaques discreetly cemented onto dry beach rock even closer to the tide-pools and the sea. A corroded copper sheet with engraved lettering reads, "In Loving Memory of Peter Kaina Kuloloia Jr July 7, 1935–September 1, 1999." A few yards away, a smaller plaque in thick cast bronze reads in raised lettering, "In loving memory of HPD Maj. Thomas J. Graham Aug. 2, 1941–July 19, 2003."

Around the bend, past Makapu'u, at Kaupō Beach Park, sits a much more elaborate memorial put up by family and friends of the late Kamuela R.K. Kaleikilo, a 22-year-old Waimānalo man who was shot to death during a quarrel on New Year's Day two years ago.

Kaleikilo's memorial is set in a small naupaka island in the sand between the lawn/parking area and the rocky shore. A polished black granite stone engraved with white-painted lettering gives Kaleikilo's vital statistics along with "Love You Pretty Boy." Arranged around it, as if on a shrine, are pōhaku wrapped with lei, teddy bears, an upright canoe paddle, stylized ki'i, beer and liquor bottles, as well as glass vases regularly replenished with fresh armfuls of ginger, bird of paradise, heliconia and anthurium. The assemblage, big as a small room, can be lit at night by small, solar-powered lamps staked into the sand, with a miniature spotlight aimed up toward the central plaque.

On the west side of O'ahu, a low hump of smooth beach rock interrupts Makua's long crescent of sand. Its surface bristles with things: upright crosses, low concrete plinths, plaques surrounded by beer bottles. Among those memorialized here are "Frank M. Raymond—Legend and Fisherman of Makua—Loving Dad, Grandfather, Friend—Dec. 7, 1916–June 15, 2008"; "Beloved Husband, Dad, Papa—Domingo Albert Alonzo—1941 to 2010"; "Mama Dog and Dutches—1992–2007—Forever in Our Hearts"; "James Keo [something] Rosa" (scratched into a rusting iron cross, the middle name is no longer legible); and, lastly, "Our Son," burnished into another corroded iron cross.

Down the coast at Wai'anae Small Boat Harbor, a stretch of beach rock adjacent to the jetty is encrusted with nearly

"In Loving Memory of Robbie and Kalakekuewa, 1969–2011," says the smooth-faced boulder in big, grey-paint letters for all to see. On the margin, scrawled above a petroglyph-style sketch of a paddler, is the name of a canoe club, Healani. "Cherish memories" is written by the drawing of a maile-draped 'ukulele. All in all, it's a sweet and touching memorial that will last until it weathers away or gets wiped clean by a sandblaster. The upright stone is close to water's edge, right next to the landmark Alan Davis Ranch wall separating the city's Wāwāmalu Beach Park from the state's Ka Iwi Scenic Shoreline Park in southeast O'ahu.

30 years worth of memorials. There may be 100 of them, an expanse of corroding crosses, cracked plinths, polished stone markers, mosaics set in concrete and a few body-length slab constructions that look just like graves or tombs complete with headstones. Among the oldest is a polished and engraved rectangular stone set into a concrete frame. It memorializes "Beloved Father Alfred" and "Beloved Mother Juliette" Castro, who died in 1983 and 1987, respectively, according to the barely legible, weathered lettering in the stone. Below the vitals is inscribed, "We remember you with love."

Why build them?

In a phone conversation, Anthony Kuloloia of Waimānalo remembers that it cost him about \$40 at the Trophy Shop to get his dad's copper plaque engraved. The reason he and his family decided to install it near the Alan Davis wall at

Wāwāmalu was "to have someplace to go to, a place to remember," he says.

"My dad was always down there fishing. He called it Pipe Littles. Every weekend we'd go down there, and he'd throw net."

The idea for his dad's plaque came from a *National Geographic* TV special about the sinking of the *Titanic*, Kuloloia says. "They actually have a plaque on the ocean floor for all the guys that died on the *Titanic*, so I was like, 'Oh, maybe we can just make a small little plaque and put it up there.'" He cemented it to the rock with a two-tube adhesive called Water Putty.

About two years ago, a small flurry of articles appeared in the newspapers about beach memorials, bureaucrats and the Hawai'i Kai Neighborhood Board. At roughly the same time, Kuloloia says, his mother got a call from the state Department of Land and Natural

Resources (DLNR) asking the family to remove the plaque. "So I told them, 'Eh, if you want to remove it, go take it off.' And they said, no, they didn't want to remove it, they wanted us to remove it."

And that was the end of that. The family didn't hear from DLNR again.

Kuloloia, who works for the US Air Force at Hickam, says he lived in Wai'anae for a few years recently and was surprised to discover there were a bunch of beach memorials over there, too.

I ask him what he would do if he was a public official and these memorials were popping up everywhere. After a long pause and nervous laughter, "Probably nothing," he says. Then he continues thoughtfully, "I don't know. I thought it was all right until I saw these articles in the paper and the people complaining who say they go to the beach all the time... I didn't know it was going to cause this much hassle."

Both Kuloloia's parents are from Maui where, he says, he recently buried his grandmother in the family's own little backyard graveyard. "You know what, I always thought my dad wanted to get buried in a cemetery," he says. "But when he actually passed away, he donated everything that he had—I didn't know he was an organ donor—and so my mom said, 'Yeah, we're going to cremate him and spread him in the ocean,' so I said, 'Okay.'"

Bureaucrats respond

"I cannot believe people do this! People have gall to do this!" sputtered state Sen. Pohai Ryan (D, Hawai'i Kai–Kailua) as she sifted through pictures of beach memorials dotting O'ahu's shores.

Ryan was at a Sept. 16 meeting at the Capitol to discuss the memorials and other Ka Iwi coast issues with area stakeholders. Attendees included representatives of DLNR, the Hawai'i Kai Neighborhood Board, the Ka Iwi Coalition (including this reporter), and a staffer from city Councilmember Stanley Chang's office. Also attending was state Rep. Gene Ward (R, Hawai'i Kai–Kalamā Valley).

Curt Cottrell, DLNR's assistant administrator for state parks, gave a brief summary of past attempts to contact the families and to get the east side memorials removed, but the cost and the time required were prohibitive and better allo-

cated elsewhere, he said. The conversation devolved into confusion about locations and numbers of memorials, then drifted to permanent vs. non-permanent structures, authorized vs. unauthorized memorials, and then to the capacity issue: How many memorials can we tolerate?

Cottrell held up a 2007 book, *Guardian of the Sea: Jizo in Hawaii* by respected local beach expert John R.K. Clark, who studied the shoreline obelisks and Jizo statues erected by Japanese fishing clubs and Buddhist groups in the first half of the 20th century. The jizo function doubly as danger signs to the living and as memorials to those who lost their lives fishing on the treacherous rocks.

What's the difference? Cottrell seemed to suggest. I understood his conceptual argument—and his discomfort with the notion of DLNR enforcement officers going in with pickaxes to bust up the tender memorials while family members wipe away tears for the TV news cameras.

Videographer Ann Marie Kirk, a volunteer with the Ka Iwi Coalition, asked, "What's the difference between these memorials and graffiti?"

City action

Gary Cabato, director of the city's parks & recreation department, makes no bones about his position on beach memorials on public land. "Private permanent structures are prohibited under the law on public property," he says, "so you cannot erect memorials like I've seen on the Ka Iwi coast."

Kaupō Beach Park, home to the illuminated Kamuela

Kaleikilo memorial, lies under the department's management. In a recent phone interview, Cabato, a 17-year veteran of the department, said he goes out daily to inspect his parks, and that he surveyed several beach memorials just days before our conversation. He excitedly described the memorials he saw at Kaupō Beach Park.

"The one that scared me was some kind of altar built out of rocks," he said. "It's not a natural formation. For me to be able to see it from the roadway... It's unauthorized, so I made a note to have it removed."

"Of course, before we do anything, we'll try to contact the family," he avers. "We want to give them time so they can grieve and whatever's appropriate for them, but then we'll explain our point and explain why it's not allowed."

He pauses. "You know, no one wants to [remove the memorials], but what is the correct thing to do for future generations?"

As an alternative, Cabato points out that whoever wants to put up a memorial for a loved one can work with his department's district offices to arrange for a memorial bench at a mutually agreed-upon location. There are four such benches lined up at Sandy Beach, each approved by the City Council in a process that takes months. The cost, Cabato says, is about \$500 for the purchase and installation of a bench, including the memorial plaque. He estimates that maybe three bench projects have cleared the bureaucracy this year.

Two weeks after our phone interview, Cabato reported that park workers recently removed

several temporary memorials (mostly piles of pōhaku and flowers) that have sprung up at Ka Iwi's string of beach parks. And he says the department is preparing a letter to Kaleikilo's family asking them to remove his substantial (and lighted) assemblage, and if it's not gone by a certain date, Cabato says, the department will remove it.

Kaleikilo's family is aware of the city's impending actions, but his mother, Louise "Wiji" Kahawai, is unwilling to talk about her son's memorial, which she has tended regularly since putting it up almost two years ago.

Her boyfriend, Victor Kukahiwa, 51, says, "There should be places where poor folks can put plaques. There's gonna be more and more people who can't afford burials and cemeteries." (According to news reports, costs for a funeral and cemetery burial in Hawai'i average between \$10,000 and \$15,000.)

Kukahiwa describes his idea of "little, passive parks next to the ocean with benches, [and] maybe a little grassy area. 'When my wife died of cancer,' he says, 'I did the regular thing, put her in a cemetery, and I went over there all the time for the first three months. Then it just fades away and you stop going to the cemetery.'"

"But people go to the parks. It's where all the family goes. You can swim, have barbeque, just come and hang out... The beach is better than a graveyard."

Kukahiwa says there's a big memorial at Kaiona Beach Park in Waimānalo with over 20 old-timers' names inscribed on it. "Who's gonna remove that?" he asks. "If you guys start making laws about this stuff, then where can Hawaiian people put their loved ones? What can we use to remember them?"

One answer: The Internet. In Kamuela Kaleikilo's case, it's already been done. Twice. His family and girlfriend set up a memorial website complete with

a Boyz II Men soundtrack on Legacy.com a month after his death. Another website, Tributes.com, has page dedicated to Kaleikilo automatically generated by the US Government's Social Security Death Index.

State inaction

State Sen. Ryan is thinking along the same lines as Kukahiwa and talks about "serenity parks," with low memorial walls with space available to the public to engrave loved ones' names.

I ask the lawmaker if she remains as absolutist, as she sounded at the November meeting about private beach memorials on public land. "I am," she says, "but I also have to be sensitive to the fact that ordering the removal of existing memorials might not be possible, for several reasons: One, the emotional, highly charged nature of the act. Two, the visual impact might be more devastating than what's there already. And it would be hard to put DLNR staff in that position."

Previous to his appointment by Gov. Abercrombie to head DLNR, William Aila served 24 years as harbor master at the Wai'anae Small Boat Harbor. He says the graveyard facsimile at the boat harbor grew "organically" over 30 years, and that it was not within his kuleana but managed separately as unencumbered state land by DLNR's land division.

Aila surmises that a "vast majority" of the island's beach memorials are within DLNR's jurisdiction, "simply because we control the majority of public lands on O'ahu."

I ask him about DLNR's apparently lax enforcement of existing laws regarding unauthorized permanent structures on public land, but, understand-

ably, he pleads poverty: DLNR's miniscule budget regularly ranks among the smallest-per-capita for state environmental agencies in the nation. "I have to choose, in terms of priorities," Aila says, "whether I assign someone to go out there and remove memorials or to investigate health and safety issues, clearing streams and what not—or I can send them out to work on leases to increase revenues. Memorials are low on the priorities list."

Private coping

My sister Kai accompanied me when I toured the memorials on the west side. We were both on O'ahu to help care for our ailing, 91-year-old father, a widower of two years who had had a bad stroke. The weekday car trip out to Wai'anae was a nice break, and the shore was quiet. Together we walked through the fields of memorials at Mākua, at the boat harbor and all around the rocks of Kāne'ilio point at the south end of Pōka'i Bay.

Kai talked about the memorials later on the phone. She said she was moved by them and upset that they might become an issue.

"Here are these people trying to remember someone they love," she said, "and someone's going to legislate a new law and tell them they can't?"

Always a bleeding heart.

"Of course it's better to remember loved ones close to the sea, rather than in a box in a cemetery that costs \$5,000!" Kai said sharply. Then she added, almost in a whisper: "There's something powerful about those memorials. When I was standing on those rocks and there they were, it was like you're with the spirit of those people, their stories." ■

MEMORIAL MANIA: The Book!

Last year Erika Doss, professor of American Studies at Notre Dame, published a pop-cultural tome: *Memorial Mania: Public Feeling in America*. "Much of today's memorial making is excessive, frenzied, and extreme," she writes, asking, "What is driving this contemporary American frenzy to memorialize, and who is being remembered?"

In a chapter on grief and temporary memorials she discusses America's long history of roadside memorials and cites the case of Colorado resident Rodney Lyle Scott, who, in April 2000, dismantled a roadside memorial made from a cross and plastic flowers, which he had driven by every day for years. When the family reported it missing, Scott was charged with "desecration of a venerated object."

Scott told Doss, "I didn't appreciate somebody else throwing their hurt and sorrow out for public view, as if it was more important than someone else's hurt or loss."

The case against Scott was dismissed, and Colorado eventually outlawed privately erected roadside memorials altogether, instituting instead a uniform Roadside Memorial Signing program. But of course, not everyone was happy with this, either. "This is the bureaucratization of love. I don't like it one bit," said a conservative Virginia assemblyman when that state enacted a roadside memorial policy similar to Colorado's in 2004. He vowed to defy the new law and put up a roadside cross anyway for his son, who had been killed in a car accident.

Doss spends several pages talking about "mourning management," suggesting that spontaneous commemorations of tragic or traumatic death (mountains of flowers at the gates to Kensington Palace after the death of Princess Diana, mountains of ephemera at Columbine High School, the AIDS Memorial Quilt, etc.) often morph into permanent memorials, "places of communion between the living and the dead, inviting broad public participation." She quotes folklorist Jack Santino: "Such memorials display death in the heart of social life. These are not graves awaiting occasional visitors and sanctioned decorations. Instead of a family visiting a grave, the 'grave' comes to the family—that is, to the public. All of us."

—C.S.

Treasure Hunt

Antiques, Consignment
& Collectables

Mellow Antiques

HAPPY HOLIDAYS!



Gifts for a
Happy Holiday
Ming's Et
Estate Jewelry
Engagement Rings
La Vie Parisienne

Davies Pacific Center 841
Bishop St, Suite 156
533-6333
www.mellowantiques.com

Shop local
Lovely, natural
handmade
soaps, candles,
bath and body
products



66-218 Kam. Hwy.
Haleiwa • 637-9088

BookEnds

Where
browsing
is welcome
& treasures
abound

261-1996

Kailua Shopping Ctr
600 Kailua Rd

hot picks

Concerts

Sedaka Hanukkah

Christmas music this time of year isn't exactly new or novel—Crosby crooners, the Bublé Christmas album, “Mistletoe” by baby-faced Bieber—it's everywhere.

Well, for those of us with old-fashioned dads who played Neil Sedaka in the car all year long even though we wanted to listen to traditional songs on Christmas Eve, Sedaka's 1961 hits “Little Devil” and “Happy Birthday Sweet Sixteen” can be seen as unconventional Christmas songs simply by context (Neil's half-Jewish; he even has a few records in Hebrew). As odd as that may have been at the time, it's coming together now: Sedaka is coming to Honolulu for a special holiday concert—just 48 hours before those “eight crazy nights.” Coinkydink?

If you haven't had the chance to get a present for your dad or your grandparents, a ticket might just make their December the most wonderful time of 2011.

And after Sedaka performs, you can go “Oh! Carol”—ing through your neighborhood if so inclined, and sing “The First Ne-il.” —Maria Kanai

Hawaii Theatre, 1130 Bethel St., Sat., 12/17, 7:30PM, \$39.50–\$49.50, hawaiiitheatre.com

Tiki-Licious

If all of this Christmas hyper-activity is causing you to SAD-out (Seasonal Affective Disorder) this winter, there's still a place where you can go to escape it all. It's a place where the *Glee* remake of George Michael's “Last Christmas” does not yet exist. It's a place where you won't get clotheslined because of someone else's frantic material lust in Macy's. We're talking about a place where you can experience a different kind of intrinsic, sensual lust: Pagan lust.

Don Tiki's Holiday Pagan Show will feature nine acclaimed performers from the wandering creative cluster of musicians, dancers and vocalists. Some of the performers include Delmar DeWilde (vocals), Abe Lagrimas (percussion, guitar), Sherry Shaoling (actress, songstress), Ryoko Oka (keyboards, Vietnamese bamboo xylophone) and Violetta Beretta (exotic dancer). The Pagan Kingdom that is Don Tiki has even won the affection of Anthony Bourdain. “Don Tiki knows the world, the subculture of tiki... it really doesn't get much better than this,” he enthused after



STEVE HANSON

Stage

Energizer Ballet

The lights are strung around the tree, twinkling in time to Pandora's “Mele Kalikimaka” station. Keiki watch *A Charlie Brown Christmas* on a flat screen TV while parents debate which gadget to get one another: Kindle or iPad? Just in time to soothe short-circuiting holiday nerves, escape to simpler holiday via a time-honored performance only 20 years younger than the light bulb: *Nutcracker* as performed by Ballet Hawaii.

These Christmas Eve imaginings of a girl fascinated with a wooden nutcracker never get old, despite the 1800s setting, thanks to scenes such as “Dance of the Sugar Plum Fairy” and “The Nutcracker and the Mouse King.” And if the lack of Blu-ray is still making you cringe, think again—Chi Cao, dashing dance star of film *Mao's Last Dancer* (big deal alert), will be taking

the main stage, brushing extravagantly costumed shoulders with Ballet Hawaii's own dancers and stars from New York City Ballet, Carolina Ballet and Broadway. And never mind your Bose sound system, the Hawaii Youth Opera Chorus has live accompaniment covered.

When you can follow along live with a stunning holiday tale including a magician, toys and mice that come to life, an evil king, fairies and a dramatic rescue, tip toeing through your Facebook newsfeed sounds a little dull anyway.

—Anna Harmon

Blaisdell Concert Hall, 777 Ward Ave., Fri. 12/16, 8PM, Sat. 12/17, 7:30PM & Sun. 12/18, 2PM, \$35–\$75, opening night gala with post-show reception \$150, ticketmaster.com, 521-8600

his visit for the Travel Channel series *No Reservations*.

Watch Don's tribe give an offering to the celestial tiki spirits in the form of spellbinding exotica music. Expect to hear seductive tunes from their latest album, *South of the Boudoir*, which was inspired by early pioneers of exotica music, including Les Baxter and Martin Denny.

—Niko Rivas

Doris Duke Theatre, 900 S. Beretania St., Sun., 12/17, 7:30PM, \$40–\$45, honoluluacademy.org, 532-8700

Whatevas

Live Socialite!

Each issue, our very own “Socialite” Super CW (whose Clark Kent-ian name is Christa Wittmier) diarizes in this paper and on her blog what's happenin' in local nightlife. She's become such a fabric of the Honolulu scene (how she doesn't have her own Wikipedia page is a hashtag mystery...), you can almost hear her voiceover-ing your evenings

standing in line for Bar 35. Hey, she's like a little alternative Carrie Bradshaw—except way less self-involved, waaaay more likeable and wears shoes I'd waaaaay want to steal (Nike Classic SBs). Y'know, someone you'd *actually* want to brunch with.

If reading “Socialite” wasn't enough, this Friday, you can live the girl's column. Read between the lines of everything we love about going out here—the music, art, drinks, people—at **supercw.com presents The Best EVER!!!** Going down in up-and-coming Kaka'ako, this fundraiser for international art gallery-exchange Pow Wow Hawai'i 2012 will bring together sick live painting, nine emerging and veteran DJs, a Matt Bruening fashion show, live visuals by Joseph Paahana and a special performance by MONARX. Also, projected on the venue walls will be every photo CW's ever taken

for her diaries (2004–2011). That'll give you a serious case of nostalg-ugh!

When it's all over, be sure to read her next column because we bet you 500 (um, free) *Weeklys* it'll be the best evarz!!! Oh, and though she doesn't want you to focus on it, it's also the girl's early birthday party, so... Happy early b-day, CW. Live your life, bb! xoxo, Honolulu Weekly.

—Matthew Dekneef

Kaka'ako, 683 Auahi St., Fri., 12/16, 6PM–midnight, \$5–\$15, supercw.com, welovecampfires.com



B-day CWish.

JOHN HOOK

Literary

Word Play

Janine Oshiro, author of the poetry collection *Pier*, performs at an upcoming M.I.A. event at Fresh Cafe this Monday. Oshiro, who is also a poetry judge for the *Weekly's* inaugural Fiction & Poetry Contest, caught up with us before her big soirée.

How's living, working and writing in Hawai'i?

I lived away for 15 years, and I have been back since the fall of 2007. I still feel as if I am getting to know Hawai'i as a grown up.

Tell us about *Pier*. Any critical feedback?

Susan Schultz wrote about my book in an interesting piece about local literature on her Tinfoil blog, and there is a review in *The Great American Pinup*. It's amazing to me that the book is now part of a larger, more public conversation.

Someone said to me recently students have lost the ability to “play.” Agree?

This is an interesting question. I think “play” is absolutely fundamental to writing and learning... It doesn't mean slacking off and doing nothing. “Play” is not efficient or based on outcomes. It requires being invested, engaged with a process that may not have a tidy ending. It can't be the fault of students entirely if they've lost that ability. I see so many ways students have learned to be obedient, unquestioning and helpless.

How do you feel about M.I.A., or about poetry readings in general?

M.I.A.'s a really amazing event, I'm really excited Jaimie Gusman curates it. I love being able to get a different sense of the poem as it is spoken by the writer. I often find myself wishing for more silence at readings. I want to digest a poem.

—Shantel Grace

Fresh Cafe, 831 Queen St., Mon., 12/19, 7:30PM, miahonolulu.wordpress.com

Q&A

Paul Oakenfold

"The crowds want more interaction, they want to be recognized, acknowledged and led, but they also want to be directly involved now."

Stellar Sounds from Planet Oakenfold

Kalani Wilhelm

DJ Paul Oakenfold deserves his own star sign. Right there in between something fierce like Leo and Scorpio—his sonic gravity is just that powerful. The Weekly spoke to the British record producer about his career highlights, DJ competition and the current state of electro.

With a career that's amassed a virtually endless list of credentials, Paul Oakenfold's contributions to dance music are well revered. When Madonna and U2 handpicked him to headline some of their highest grossing tours ever his status was forever imprinted within the electro-dance music galaxy.

"Oakey," who famously said, "dance music will sooner or later conquer America," highlights Saturday Night Sessions with his trance/techno Godlike aura this weekend at Sea Life Park, supported by his current album *We Are Planet Perfect*, Vol. 1.

Will you be DJ-ing for Madonna at the Super Bowl?
No, I won't be there, that will be her stage.

If you were coming up as a DJ-producer today, do you think it would be easier for you to gain success because of the technology that exists? Or would it be more difficult simply because the competition and numbers?
Regardless of any technological advantages, it's always going to be about talent, passion and dedication. You have those three and you come up with a sound and style that is unique enough, you'll make it.

Will this be your first trip to Hawai'i ever?
No, I was there back in 2003, I think. I remember it being a very different gig. I got to hang out with a really cool bunch of people. I'm pretty excited to come back.

How important is it for DJs, producers and just fans of electronic music to knowledgeable about the history of the sound?
A lot of newer DJs are not so interested to know about the history, but I think it has an importance, to know who was doing what, when and where. It's an art form and like other forms of art often

those that excel are the ones who have an appreciation of the origins and history.

What is your viewpoint of electro's presence in American pop music today? Do you believe it's just a trend or will the popularity sustain?

It's very popular right now and I think it will change and evolve as new sounds are introduced. All music evolves. All music genres have stages of being popular and then unpopular. It's an ongoing cycle and right now in the US, dance is certainly enjoying a period of popularity, which is great.

How have the interests and needs of a crowd changed, if at all?
The crowds want more interaction, they want to be recognized, acknowledged and led, but they also want to be directly involved now.

Has the growth of Ibiza [Spanish isle in the Mediterranean] become too commercial in your eyes?
Yes, it's commercial in the sense of it being a major tourist destination, but musically I would say there is plenty of room for the most underground nights to be just as successful as the commercial ones running alongside them. Some of the biggest nights on the island...are underground techno parties.

What is the biggest event you have ever played?
An event at Wembley Stadium circa 1998 and the Hand Over Party in Hong Kong 1997. Both were 90,000 plus.

Do you think there should be an international DJ Hall of Fame? If you were on the voting committee, what would be some good criteria?
I don't necessarily think there should be, but with everything else in recognition, there probably will be.



Spin you into outer orbit.

What have been your highlights of 2011 and what do you have in store for 2012?

My highlight thus far for 2011 was playing in Ushuaia, Argentina, it was just so very special and something that will stick with me. Ushuaia is right on the southern most tip of South America on the Tierra del Fuego peninsula and we took a thousand people and a killer stage and sound system down there to put on the most southerly party in the world. It was really special.

In a career filled with many highlights, what would you call your most notable achievements?
Working with U2, Madonna, Hunter S. Thompson and also getting recognized by the Queen for my services to British industry. All these were pretty special.

What have been the keys to, one, staying driven and two, remaining personally creative?
One, the challenge. Two, passion.

Final thoughts for your fans in Hawai'i?
I'm looking forward to hearing those wonderful words "Aloha Paul" and replying "Aloha" back to you.

Makapu'u Meadows (Sea Life Park), 41-202 Kalaniana'ole Hwy. #7, Sat., 12/17, 5PM-1AM, \$30-\$75, saturdaynightsessions.com ■

5 Essential Tracks

1. Starry Eyed Surprise (2002)
2. LTJ Bukem - Music (1997)
3. Ready Steady Go (2002)
4. Voyager III: Prana (2001)
5. Southern Sun (2002)



KAILUA
600 Kailua Rd.
263.1182

KAIMUKI
1152 Koko Head Ave.
734.1182

KAPOLEI
590 Farrington Hwy.
674.1192
ibeads.com



Really made
in Hawai'i

Native Books
Nā Mea Hawai'i
www.nativebookshawaii.com

155 C Hamakua Dr., Kailua, 262-6068 www.naish.com

"Tis The Season"
for HOT's \$99 Holiday Special

The holidays are here and HOT's making it a special holiday season with a HOT \$99 Holiday Special which includes two \$58 opera tickets and added incentives from our partner sponsors, Honolulu Club, Jamba Juice, and P.F. Chang's Hawaii. That's a \$250 value for just \$99. Get it while its HOT. \$99 Holiday Special available while sponsor incentives last. To order, contact the HOT Box Office at 808-596-7858.

HOT
HAWAII OPERA THEATRE

Sociallite

with Christa Wittmier
supercw.com



Getting shacked at Surfer Pole Awards

SURF CITY CELEBRATIONS AND POW WOW WOW!

I remember when I used to live in Newquay we'd get so excited for the Association of Surfing Professionals to come to our little town. Cornwall, about 250 miles west of London, wasn't the most eventful place to live, although we did appreciate the cider, the Manic Street Preachers, scones with clotted cream. The highlight of each year was the three-day surf meet at our local Fistril Beach each August, when Brits that couldn't afford a proper holiday abroad would pack up their cars and head to Newquay with "Run to the SUN!" or "RTTS" painted on the windows of their cars. It became a custom for locals to pack large super-soaker water guns and spray down the cars as they arrived. A sort of welcome, if you will. The town is very small with only one stop light and many roundabouts so it wasn't unheard of to pile in the car and take several trips from one side to the other over soaking as many cars as possible during that long weekend. It was the best three days of the year.

13 years later I'm still reminded of this massive event every winter when the **Vans Triple Crown of Surfing** kicks off here in Hawai'i. I want to paint "RTTNS" on my windows as I load up the backseat with coolers and blankets for the long drive from Makiki to the North Shore. I daydream of being attacked by water guns along Kamehameha Highway as I'm slowing down by Lani's. The events surrounding the Triple Crown have grown each year, just as the Run to the Sun has in the U.K. There is nothing wrong with creating more excitement to surround the excitement, I always say.

Breakout events this year, aside from young local **John John Florence** winning the Triple Crown, was premiere of *Come Hell or High Water*. **Keith Malloy's** directorial debut shot on 16mm film is a beautiful doc about bodysurfing, showing the solitary act of riding waves with just your own body (and sometimes a slipper or McDonald's tray) is as close to nature as one can get. Having received Best Film at London Surf Film Festival, it was a special event to have it screened in Hawai'i where Malloy got most of his inspiration to make the film. The **Surfer Poll Awards** also gave the film an award for Best Cinematography, which is no surprise when you consider his team consisted of camera geniuses **Scott Soens** and **Dave Homcy**. The Ward Theaters screening was a star-studded event, big names like Scott Caan taking a backseat to the sheer beauty of the film. Malloy has said bodysurfing is the purest form of riding waves.

This weekend is my own celebration as the end of the year brings another birthday and an art bash. In newly developing **Kaka'ako** there's a warehouse behind Hank's Haute Dog's that'll serve as the largest blank canvas yet for local artists who'll create a massive mural to help raise the last bit of money needed for **Pow Wow Hawaii 2012**. With over 40 visiting artists and media from all over the world, the excitement for February is already building and is sure to peak at the fundraiser party this Fri. at 683 Auahi St. from 6 p.m.-midnite. You are all invited.

Check it out

woodshed.com/
welovecampfires.com

REGGAE WEEKEND

12/17 **Mike Love Duo**, no cover.

12/18
Half Pint
with
Guidance
10pm. 21+
\$10 cover.



Red Stripe
on special
all night



irishpubshawaii.com

THE SCENE

Gigs

14/Wednesday

COMEDY

Bo Irvine and Friends, *Comedy Polynesia at the Sheraton Princess Ka'iulani* (8PM) 531-HAHA
Michael Staats, **Arthur Wayne**, **Kenny Johnson**, *Sharkey's Comedy Club at the Sheraton Princess Ka'iulani* (9:30PM) 531-HAHA

COUNTRY/FOLK

Gordon Freitas & Local Folk, *The Ground Floor* (6PM) 538-6012

HAWAIIAN

Brothers Cazimero, *Chai's Bistro* (7PM) 585-0011
Imua Garza, *Diamond Head Cove Bar* (8PM) 732-8744
Typical Hawaiians, *Tapa Bar* (8PM) 947-7875
Cyril Pahinui, *Kani Ka Pila Grille* (6PM) 924-4990
Royal Hawaiian Band, *Tolani Palace* (12PM) 523-4674
Kawika Trask & Friends, *Royal Hawaiian Center Royal Grove* (6PM) 922-2299

JAZZ/BLUES

TM3 & branapeles Presents Screwed Up Wednesdays!, *Jazz Minds Art & Cafe* (9PM) 945-0800
Johnny Williams Trio, *Hank's Cafe* (8PM) 526-1410

ROCK/POP

Chris Murphy, *Cabanas Pool Bar (Ohana West)* (9PM) 922-3143
Tahiti Rey & Jason Alan, *Apartment3* (8PM) 955-9300
Stuck In The '80s, *Dragon Upstairs* (6:30PM) 526-1411

WORLD/REGGAE

Half Pint & Guidance, *Tropics* (9PM) 597-8429

15/Thursday

HAWAIIAN

Beach 5's, *Tiki's Grill & Bar* (9PM) 923-8454
Sista Robi Kahakalau & Friends, *Chai's Bistro* (7PM) 585-0011
Kawika Kahiaho, **Del Beazley**, **Mike Ka'awa**, *Kani Ka Pila Grille* (6PM) 924-4990
Little Albert Maglimat, *Tapa Bar* (8PM) 947-7875
Pakele Live! with **Tony Solis**, *Willows* (6PM) 952-9200
Mana'o Trio, *The Shack Waikiki* (8PM) 921-2255
Ka Momi, *Aku Bone Lounge* (9:30PM) 589-2020
Keawe'Ohana and Friends, *Moana Terrace* (6:30PM) 922-6611
Palena'ole, *Royal Hawaiian Center Royal Grove* (6PM) 922-2299
Tahiti Rey, *Elegant Dive, Hyatt Regency Waikiki* (6PM) 923-1234
Royal Hawaiian Band, *Royal Hawaiian Center Royal Grove* (1PM) 922-2299
Welo, *Tilikai Hotel* (7PM) 949-3811
"Auntie Pudgie" Young and Puamelia, *Kuhio Beach Hula Stage* (6PM) 843-8002

JAZZ/BLUES

Steve Lucas, *Dots* (7PM) 622-4115
Rick Smith, *Soul Cuisine* (7PM) 735-7685
The Smooth Operators, *Jazz Minds Art & Cafe* (9PM) 945-0800
Sunset Street, *Thai Sweet Basil* (6PM) 988-8811
Satomi Varimizo Trio and Frank Tabata, *Dragon Upstairs* (6PM) 526-1411

ROCK/POP

Tito Berinobis, *Chart House* (6:30PM) 941-6660
Mango Jam, *Chuck's Cellar* (6PM) 923-4488
On-Q, *Warrior Lounge, Hale Koa* (8PM) 955-0555
Jim Smart, *Cha Cha Cha Salsaria* (6:30PM) 395-7797
Al Waterson & Friends, *Don Ho's Island Grill* (6PM) 528-0807

WORLD/REGGAE

UnNatural, *Tiki's Grill & Bar* (6PM) 923-8454

16/Friday

COUNTRY/FOLK

Kelli Heath, *Peace Cafe* (7PM) 951-7555

HAWAIIAN

Harold Kama Jr., *Barefoot Bar, Hale Koa Hotel* (8PM) 955-9428
Kailua Bay Buddies, *Jimmy Buffett's at the Beachcomber* (9:30PM) 791-1200
Kaukahi, *Kani Ka Pila Grille* (6PM) 924-4990
Ko'olau Serenaders, *Honey's at Ko'olau* (6PM) 236-4653
Ku'uipo Kumukahi & The Hawaiian Music Hall of Fame Serenaders, *Royal Hawaiian Center Royal Grove* (6PM) 922-2299
Mark Yim's Piliikia, *Chart House* (6PM) 941-6660
Maunaula, *Duke's Canoe Club* (4PM) 922-2268
Glenn Mayeda, *Mai Tai Bar, Royal Hawaiian* (6PM) 923-7311
Olomana, *Tapa Bar* (8PM) 947-7875
Kawika Ortiz, *Terry's Place* (7PM) 533-2322
Cecilio Rodriguez, *Tropics Bar, Hilton Hawaiian Village* (8PM) 949-4321
Royal Hawaiian Band, *Tolani Palace* (12PM) 523-4674
Kawika Trask, *Tilikai Hotel* (6PM) 949-3811
Cherie Yuen & Friends, *Uncle's Fish Market & Grill* (6PM) 275-0063

JAZZ/BLUES

Air, **Chris Yeh Quartet**, *Dragon Upstairs* (7PM) 526-1411
Stewart Cunningham Trio, *Hank's Cafe* (9PM) 526-1410
Gyn & The Blue Light Funk Band!, *Jazz Minds Art & Cafe* (9PM) 945-0800
The Hot Club of Hulaville, *Cafe Che Pasta* (6PM) 524-0004
Black Sand Jazz Trio, *Chuck's Cellar* (6PM) 923-4488
Mihana Souza, *Don Ho's Island Grill* (5PM) 528-0807
Zach Shimizu, *Chibo Okonomiyaki* (10PM) 922-9722
Tennyson Stephens, *Rocky Holmes, Lewers Lounge* (8:30PM) 923-2311
Yoza, *RumFire* (5PM) 921-4600

ROCK/POP

Gyn & Melodie Soul feat. The Blue Light Funk Band, *Jazz Minds Art & Cafe* (9:30PM) 945-0800
MaNel, *Pueo Restaurant at Coral Creek Golf Course* (7PM) 479-0576
Chris Murphy, *Jimmy Buffett's at the Beachcomber* (6PM) 791-1200
Kimo Opiana, *The Shack Waikiki* (7PM) 921-2255
Brian Robertshaw, *Roy's* (6:30PM) 396-7697
Taimane, *Elegant Dive, Hyatt Regency Waikiki* (6PM) 923-1234
Taimane, *Hilton Hawaiian Village* (7:45PM) 949-4321
Arsenio the Band, *Beeman Center, Pearl Harbor* (9PM) 471-2581
Vinyl Wine, *Lulu's Waikiki* (10PM) 926-5222

VARIOUS

Hot Club of Hulaville, *Cafe Che Pasta* (6PM) 524-0004

WORLD/REGGAE

Kunoo, *Tiki's Grill & Bar* (5PM) 923-8454

17/Saturday

COMEDY

Bo Irvine and Friends, *Comedy Polynesia at the Sheraton Princess Ka'iulani* (8PM) 531-HAHA

HAWAIIAN

2 Point 0, *Chart House* (8PM) 941-6660
Danny Couch, *Chai's Bistro* (7PM) 585-0011
Manoa DNA, *Kani Ka Pila Grille* (6PM) 924-4990
Eric Lee, *Peter Milo, Uncle's Fish Market & Grill* (6PM) 275-0063
Kailua Bay Buddies, *Jimmy Buffett's at the Beachcomber* (9:30PM) 791-1200
Kapala, *Royal Hawaiian Center Royal Grove* (7:30PM) 922-2299
Lawrence Kidder, *Beach Bar, Moana Surfrider* (8PM) 921-4600
Ellsworth Simeona, *RumFire* (5PM) 921-4600
Alika Souza, *Don Ho's Island Grill* (5PM) 528-0807
Waipuna, *Kani Ka Pila Grille* (6PM) 924-4990

JAZZ/BLUES

Jimmy Funai, *Roy's* (6:30PM) 396-7697
Gina & Friends, *Brasserie Du Vin* (9PM) 545-1115
Stewart & Matt Jazz and Blues Duo, *Hank's Cafe* (8PM) 526-1410

Black Sand Jazz Trio featuring **Betty Loo Taylor**, *Chuck's Cellar* (6PM) 923-4488
The Bobby Nishida Band, *Jazz Minds Art & Cafe* (9PM) 945-0800
The Stewart and Matt Jazz and Blues Duo, *Dragon Upstairs* (8PM) 526-1411

ROCK/POP

Analog, *Coconut Willy's* (9PM) 921-9000
Piranha Brothers, *Tropics Bar, Hilton Hawaiian Village* (3PM) 949-4321
Mark Caldeira, *Moana Terrace* (6:30PM) 922-6611
Jasmin Ilica, *The Shack Waikiki* (8:30PM) 921-2255
Juke Joint, *Tropics Bar, Hilton Hawaiian Village* (6:30PM) 949-4321
Melveen Leed, *International Marketplace* (11AM) 971-2080
Chris Murphy, *Jimmy Buffett's at the Beachcomber* (6PM) 791-1200
Taimane, *Hyatt Regency* (5PM) 923-1234

WORLD/REGGAE

Guidance, *The Shack Waikiki* (6PM) 921-2255
Kunoo, *Tiki's Grill & Bar* (7:30PM) 923-8454

18/Sunday

HAWAIIAN

Beach 5, *Tropics Bar, Hilton Hawaiian Village* (5:30PM) 949-4321
David Asing, *Tropics Bar, Hilton Hawaiian Village* (3PM) 949-4321
Brother Noland, *Kani Ka Pila Grille* (6PM) 924-4990
Kona Chang, *RumFire* (5PM) 921-4600
Waipuna Duo, *Mai Tai Bar, Royal Hawaiian* (6PM) 923-7311
George Kuo, **Martin Pahinui**, **Aaron Mahi**, *Moana Terrace* (6:30PM) 922-6611
Hi'ikua, *Kani Ka Pila Grille* (6PM) 924-4990
Ledward Ka'apana, *Kona Brewing Co.* (6:30PM) 394-5662
Mike Kawa'a, **Ocean Kaowili**, **Analu Aina**, **Paul Kim**, *Honey's at Ko'olau* (3:30PM) 236-4653
Royal Hawaiian Band, *Kapi'olani Park Bandstand* (2PM) 523-4674
Sean Na'auao, *Tapa Bar* (8PM) 947-7875
Ellsworth Simeona, *Tiki's Grill & Bar* (9PM) 923-8454

JAZZ/BLUES

Dr. J's Blues Review, *Anna's* (5PM) 946-5190
Noly Pa'a, *Lewers Lounge* (8:30PM) 923-2311
Kelly Villaverde, *Kahala Hotel & Resort* (7:30PM)

ROCK/POP

Cecilio & Kompany, *Terry's Place* (7PM) 533-2322
Dean & Dean, *Chart House* (6PM) 941-6660
Henry Kapono, *Duke's Canoe Club* (4PM) 922-2268
Melveen Leed, *Chai's Bistro* (6PM) 585-0011
Chris Murphy, *Arnold's Beach Bar* (5PM) 924-6887
Jim Smart, *Cha Cha Cha Salsaria* (6:30PM) 395-7797
Johnny Valentine, *Beach Bar, Moana Surfrider* (8PM) 921-4600
Robert Young, *Uncle's Fish Market & Grill* (5PM) 275-0063

19/Monday

HAWAIIAN

Na Kama, *Hula Grill* (7PM) 923-HULA
Little Albert Maglimat, *Beach Bar, Moana Surfrider* (8PM) 921-4600
Jerry Santos and Friends, *Chai's Bistro* (7PM) 585-0011
Sean Na'auao, *Kani Ka Pila Grille* (6PM) 924-4990

JAZZ/BLUES

Pau Hana Blues Band, *OnStage Drinks & Grinds* (6:30PM) 306-7799
Absolute Joy, *The Ground Floor* (6PM) 538-6012
Project Monday, *Jazz Minds Art & Cafe* (9PM) 945-0800
JG Syndrome, *Dragon Upstairs* (7PM) 526-1411
Tennyson Stephens, *Rocky Holmes, Lewers Lounge* (8:30PM) 923-2311

ROCK/POP

FVP Music All-Star Acoustic Showcase, *Terry's Place* (8PM) 533-2322
Taimane, *Royal Hawaiian Hotel* (7:45PM) 923-7311

THE SCENE

20/Tuesday

COMEDY

Bo Irvine & Friends, Hale Koa (8PM)

HAWAIIAN

Ainsley Halemunu and Ka Liko O Kapalai, Kūhiō Beach Hula Stage (6PM) 843-8002
Ke O'ahu, Royal Hawaiian Center Royal Grove (6PM) 922-2299
Weldon Kekauoha, Kani Ka Pila Grille (6PM) 924-4990

JAZZ/BLUES

A JazzStory Christmas featuring Malia Mathis, Jazz Minds Art & Cafe (9PM) 945-0800
Jazz M.O.G.I., Indigo (6:30PM) 521-2900

ROCK/POP

Chris Murphy, Arnold's Beach Bar (5PM) 924-6887
Songwriters Acoustic Showcase, OnStage Drinks & Grinds (9PM) 306-7799
Vinyl Wine, Sandbox Waikiki (10PM) 923-8848

VARIOUS

The Latin/Hip Hop R&B Night, Zanzabar (8PM) 924-3939

21/Wednesday

COMEDY

Bo Irvine and Friends, Comedy Polynesia at the Sheraton Princess Ka'iulani (8PM) 531-HAHA
Michael Staats, Arthur Wayne, Kenny Johnson, Sharkey's Comedy Club at the Sheraton Princess Ka'iulani (9:30PM) 531-HAHA

COUNTRY/FOLK

Gordon Freitas & Local Folk, The Ground Floor (6PM) 538-6012

HAWAIIAN

Brothers Cazimero, Chai's Bistro (7PM) 585-0011
Imua Garza, Diamond Head Cove Bar (8PM) 732-8744
Typical Hawaiians, Tapa Bar (8PM) 947-7875
Cyril Pahinui, Kani Ka Pila Grille (6PM) 924-4990
Royal Hawaiian Band, 'Iolani Palace (12PM) 523-4674
Kawika Trask & Friends, Royal Hawaiian Center Royal Grove (6PM) 922-2299

JAZZ/BLUES

TM3 & branapeles Presents Screwed Up Wednesdays!, Jazz Minds Art & Cafe (9PM) 945-0800

Johnny Williams Trio, Hank's Cafe (8PM) 526-1410

ROCK/POP

Chris Murphy, Cabanas Pool Bar (Ohana West) (9PM) 922-3143
Tahiti Rey & Jason Alan, Apartment3 (8PM) 955-9300
Stuck In The '80s, Dragon Upstairs (6:30PM) 526-1411

WORLD/REGGAE

Ooklah the Moc, Tropics (9PM) 597-8429

Concerts & Clubs

A Mini Christmas Concert featuring Fernando Pacheco KPOI radio DJ, PIMBOT band member and Weekly contributor Pacheco performs the trombone to all of your favorite holiday songs accompanied by piano. Boost your spirits! Station Bar & Lounge, 1726 Kapiolani Blvd.: Wed., 12/14, (7PM) Free. 384-9963

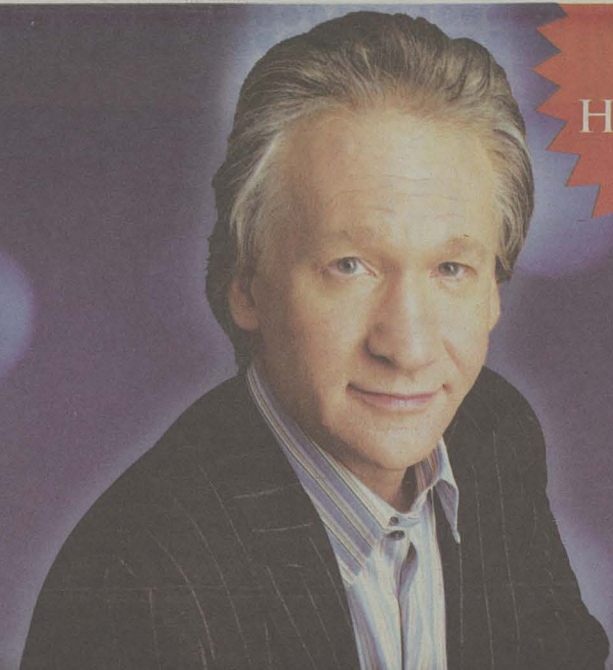
Beats Antique Beats Antique returns to Oahu for their 4th show on the Island. Beats Antique merges modern technology, live instrumentation and seductive performance, built of brass bands and glitch, string quartets and dubstep. Showbox, 985 Dillingham Blvd.: Sat., 12/17, (9PM-2AM) \$20 pre-sale, \$25 at the door, \$30 RSVP. 358-2571

Contra Dance Music by Whiskey Starship—playing Irish jigs and reels. All dances taught with no partner or experience required. Beginners welcome. Kapi'olani Community College Chapel, 4303 Diamond Head Rd.: Sat., 12/17, (7:30-10PM) Free. sls.hawaii.edu/contra

Don Tiki Lights Up the Holidays (See Hot Picks) Doris Duke Theatre, 900 S. Beretania St.: Sat., 12/17, (7:30PM) \$40-\$45. 532-8768

Hawaii State Ballet presents The Nutcracker Directed by John Landovsky, the annual production of this Christmas classic about a young girl's journey through a holiday dream world. Mamiya Theatre, St. Louis High School, 3142 Wai'ala Ave.: Sat., 12/10-Sun., 12/18, (Fridays 7PM, Saturdays 3:30 and 7PM, Sundays 1 and 4:30PM) \$18-\$32. hawaii.stateballet.com, 947-2755

Continued on Page 15



GREAT HOLIDAY GIFT

BILL MAHER

LIVE IN HONOLULU

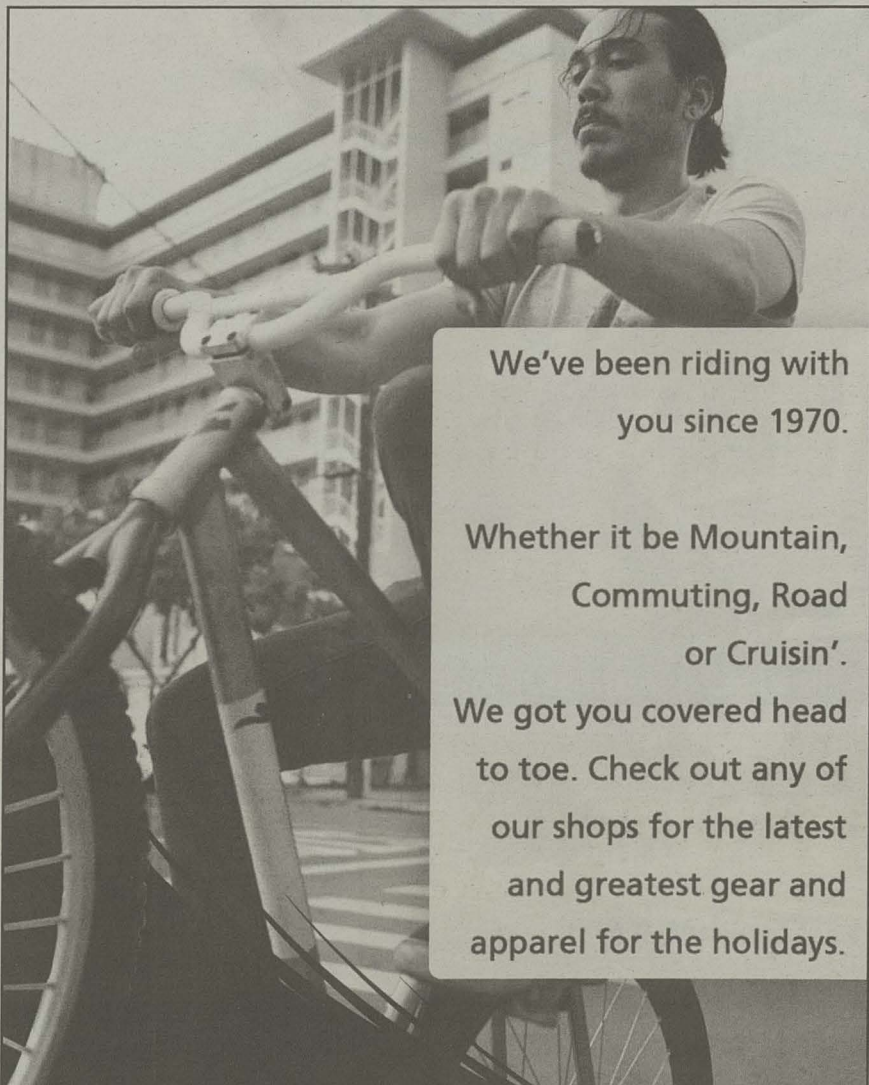
NEW YEAR'S EVE

WAIKIKI SHELL

DECEMBER 31, 2011 · 7:30 PM

BLAISDELL CENTER BOX OFFICE
TICKETMASTER OUTLETS
CHARGE-BY-PHONE 1-800-745-3000
TICKETMASTER.COM

Hotel Wailea MAUI THE MODERN HONOLULU Honolulu Weekly



We've been riding with you since 1970.

Whether it be Mountain, Commuting, Road or Cruisin'.

We got you covered head to toe. Check out any of our shops for the latest and greatest gear and apparel for the holidays.

Not Just Any Bike Shop.... The Bike Shop

THE BIKE SHOP HAWAII

Honolulu 808.596.0588 1149 S. King St.	Aiea 808.487.3615 98-019 Kam Hwy	Kailua 808.261.1553 270 Kuulei Road
---	---	--

www.BikeShopHawaii.com / info@BikeShopHawaii.com



STARRING CHI CAO
STAR OF THE MOVIE 'MAO'S LAST DANCER'

A HOLIDAY TRADITION - BALLET HAWAII PRESENTS

THE NUTCRACKER

FEATURING SYMPHONY ORCHESTRA

SEASON SPONSORS: STARWOOD HOTELS AND RESORTS WAIKIKI AND THE HONOLULU STAR ADVERTISER
PRODUCTION SPONSORS: FIRST INSURANCE CO. OF HAWAII, PENSION SERVICES CORP., HAWAII STATE FOUNDATION ON CULTURE AND THE ARTS, WALL-TO-WALL STUDIOS AND THE HONOLULU MAYOR'S OFFICE OF CULTURE AND ARTS

DEC. 16-18, 2011

BLAISDELL CONCERT HALL

RESERVATIONS: 800-745-3000, AT THE BLAISDELL BOX OFFICE OR ONLINE AT TICKETMASTER.COM
OPENING NIGHT CELEBRATION, FRIDAY DEC. 16, 6:30PM
PREMIUM PACKAGE: \$150 INCLUDES VIP TICKET, GOURMET DINING FROM HAWAII'S FINEST RESTAURANTS, PARKING, AND A POST-PERFORMANCE BACKSTAGE RECEPTION
CALL FOR RESERVATIONS & MORE DETAILS 521-8600

CHARITABLE GIFT GUIDE

Philanthropic gifts are those that truly keep on giving. They can't break, go out of style or be exchanged for a different size. Whether donating your energy to a pono project you believe in, putting in time as a volunteer or mentor with an organization you're passionate about, purchasing products from companies that contribute proceeds to a worthy cause or giving family and friends a membership gift to an organization that strives for a better Hawai'i, there are infinite ways to spread holiday cheer that will continue to bring joy and growth throughout the next year.

—Tiffany Hervey

WALK THE WALK Honolulu Aids Walk

Volunteer with the Life Foundation, a local organization that provides services to those living with HIV/AIDS, (as well as free HIV testing and education), during the 21st annual Honolulu AIDS Walk at the Kapi'olani Park Bandstand on Sunday, April 15, 2012. Performances, food, prizes and family fun follow the 5K. Help the Life Foundation put on the event, and ask friends and family to sponsor participants to help raise funds to fight AIDS in Hawai'i.

honoluluaidswalk.org



DONATE TO EDUCATE Schools in Need

Help Hawai'i public schools by donating much-needed items. By going to their website, you can search "All Donation Needs" and see what every school in the state is in need of. For example, Ka'u High currently needs to retire its 50-year-old wrestling mat and is in search of a new one. Kalei'opu'u Elementary needs basic school supplies. Barbers Point Elementary and Jefferson Elementary both need more books for their libraries.

helphawaiischools.com

BE A MENTOR

Big Brothers Big Sisters

Shape a child's future this new year by spending quality time with a young boy or girl, empowering a child to achieve as a mentor at Big Brothers Big Sisters Honolulu, which has been serving the children of Hawai'i since 1963 as part of the nation's largest donor- and volunteer-supported mentoring network. Big Brothers Big Sisters of Honolulu makes meaningful, monitored matches between qualified volunteers ("Bigs") and children ("Littles") ages 6-18.

bigshonolulu.org



REVOLUTIONIZE Revolution Books

If you're an activist, an avid reader or just care what's going on in the world, give the gift of time to Revolution Books, Honolulu's most critically-thinking independent bookstore. Volunteers will design store displays, produce events, shelf and organize books, review books, produce art exhibitions, work with customers, design leaflets and posters, facilitate course book ordering, develop a greater presence on the web, take Revolution Books tables to events and, most importantly, help facilitate donations of used books.

revolutionbookshonolulu.org

EXPLORE. ENJOY. PROTECT.

Sierra Club

Sierra Club Hawaii is currently fighting urban sprawl and working to protect local farms. Giving a membership to the Sierra Club ensures a hands-on experience protecting natural resources. It also includes a one-year subscription to *Sierra* magazine, members-only outdoor adventures, involvement in your local chapter's initiatives and discounts on Sierra Club calendars, books and other merchandise.

sierraclubhawaii.com



GET MUDDY Kako'o 'O'iwi

Restore lo'i 'ai (taro patch) in He'eia, Kane'ohe with Kako'o 'O'iwi on Community Workdays, every second Saturday of the month. Lunch is provided by Kako'o 'O'iwi and duties include (but are not limited to) planting and harvesting taro, digging new taro patches, weeding, weed wacking, invasive species removal and other various farm duties.

kakooiwi.org

ARTLINES

The best selection of Jewelry & Gifts from around the world

*** Now open ***
for the Holiday Season:

Ala Moana Shopping Center
Street Level, by Center Stage, next to Crazy Shirts
941-1445 • Mall Hours

Windward Mall
Ground Floor, next to Food Court
235-1445 • Mall Hours

ORIGINAL GIFTS FOR YOUR LOVED ONES!!!

Bikinis, Clothes & Accessories
**BRAZILIAN
SHOW ROOM**
THE BRAZILIAN'S FAVORITE BRAZILIAN BIKINIS



3588 Wai'alae Ave • 735.7537 • www.brazilianshowroomhawaii.com
Kaimuki between 11th & 12th Ave. (Across from Big City Diner)

Bamboo Flooring Hawaii

Bamboo Composite Decking
Strong, Durable, Maintenance Free
\$3 a linear foot – in two colors

Bring in this ad and receive
\$250 dollars off your purchase
of at least 500 sq ft of decking
Offer expires 12/31/11

808-550-8080 • www.dockshawaii.com



CLEAN A BEACH Local Foundations

Take your family and friends to participate in a beach cleanup. There is a cleanup almost every weekend if you explore opportunities with the Surfrider Foundation, Sustainable Coastlines Hawaii, Adopt-A-Beach Hawaii and Beach Environmental Awareness Campaign Hawai'i (B.E.A.C.H.). Surfrider's offering a Holiday Gift Member Package that includes a one-year membership, a bar of Matunas natural wax, a bamboo wax comb and six issues of *Making Waves*.

surfrider.org/oahu

GEAR THAT GIVES BACK Hurley

Purchase surf gear from Hurley International's "H2O" line, launching in January, which will give back to clean water programs around the world. When the water-borne company Hurley saw that one in six people in the world do not have access to clean water, they decided to take action. Hurley's H2O line will support two clean water initiatives: Jon Rose and Waves For Water, which are saving lives one filter at a time on the frontlines of countries like Haiti, Brazil and India; and The Ecology Center, a non-profit organization that educates the next generation of water activists.

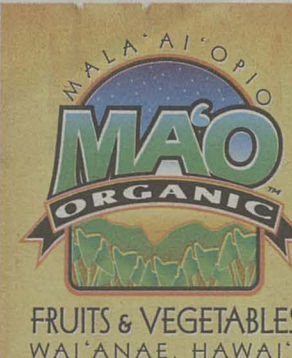
hurley.com/h2o

TALK FISHY

Waikiki Aquarium

Inspire and promote understanding, appreciation and conservation of Pacific marine life as a volunteer for the Waikiki Aquarium. Volunteer positions for all ages include Edge of the Reef Interpreters, Natural Selection Gift Shop staff, School Support Program Docents, Aquarium Interpreters and the Water Program Helpers, which enlists intermediate and high school homeschoolers as volunteers to work with scientists in the field with hands-on activities and experiments. Interpreter training sign-up will be Jan. 19 through Feb. 11, 2012. If you love ocean creatures, this is a great way to share your knowledge and to learn more!

waiaquarium.org



Subscribe to
**MA'O Organic Farms
CSA**
Community Supported Agriculture
Program

A weekly box of
fresh organic produce grown
by our Youth interns
on our farm on Wai'anae

8-12 items per box
for your 'ohana or to share

\$92 per week

2 delivery locations:
Honolulu and West Side

www.shop.maoorganicfarms.org

HUNDREDS OF COOL PRIZES WILL BE GIVEN AWAY...
Surfboards, Dive Gear, Bodyboards, Tees, Watches, Sunglasses,
Hats, Beachwear, Surf and Dive Accessories and More!



The 23rd Annual
Twelve Days of Christmas
Giveaway!!

WIN!

HERE'S HOW TO WIN...

Pick up a free sticker at Surf n Sea. Stick it on your car, bike, skateboard, etc. From Dec. 13th thru Dec. 24th we'll be cruisin' the island, and if our elf spots your sticker, YOU WIN! It's that easy! Stop by for more details!
This is how you get there... find the ocean at Surf n Sea!
62-595 Kamehameha Hwy (Next to Old Haleiwa Bridge) Haleiwa -
(808) 637-SURF www.surfnsea.com

Find Unique, Handmade Gifts at
CHAI studio
Happy Holidays!
536-4543 | 675 Auahi St., Honolulu
www.chai-studio.com

Eggs'n Things
Now Open!
Eggs'n Things
Waikiki Beach Eggspress
2464 Kalakaua Ave
The same Quality Food and Spirit
of Aloha in an Eggspress Style.
Visit us at www.eggsthings.com.

the
complete kitchen
20% off
Any one in-store item
This original ad required
One item per ad. All sales final.
Expires December 31, 2011
www.completekitchen.com
Kahala Mall • 737-5827 • 735-8288

GIVING GREEN

There are many amazing local non-profits. Here are just a few inspirational organizations that could use your physical or financial gifts.



Instead of buying videogames for your keiki this year, take advantage of Hawaii's year-round sunlight and let them do some exploring outside. Visit the serene Hawaiian fishpond located in He'eia Kō'olau-poko. **PaePae o He'eia**, a foundation established by a group of young Hawaiians, has partnered with Kamehameha Schools to keep the fishpond healthy for the community. Pae Pae o He'eia is always looking for volunteers of all skill levels.

paepaeoheieia.org

Hoa 'Aina o Makaha, also known as "Makaha Farms," is an educational program in which 600 students at Makaha Elementary learn how to farm and how to take care of the land. One grade per day follows a planned curriculum aligned with Department of Education standards. This empowering program gives students more than just a school garden—it gives them a school in the garden.

hoainaomakaha.org

Ka'ala Farms in Wai'anae has a diverse array of programs, which flow from their core fourth grade education program at The Cultural Learning Center at Ka'ala. Their mission is to reclaim and preserve the living culture of the Po'e Kahiko (people of old) in order to strengthen the kinship relationships between the land and all forms of life necessary to sustain the balance of life on these vulnerable islands.

kaalafarm.org



Mālama

Maunalua is a community-based group that has emerged to create a marine education and resource stewardship program for the Maunalua region of southeast O'ahu. Volunteers are trained in and dedicate hours to monitoring benthic cover, water quality, juvenile fish populations, invasive alien algae removals and community outreach.

malamamaunalua.org

The Windward Ahupua'a

Alliance (WAA) created the Kō'olau Greenbelt & Heritage Trails System in order to restore, protect and provide public access to the mauka lands on the Windward side of O'ahu. WAA's mission has expanded over the years and currently needs volunteer support of all skill levels.

waa-hawaii.org



The Kokua Foundation strives to provide students with experiences that will enhance their appreciation for their environment so they will be lifelong stewards of the earth. Give the gift of a Kokua membership and receive a receipt/mahalo letter for your tax-deductible donation, a Kokua Hawai'i Foundation "Reduce, Reuse, Recycle" sticker, a Kokua Hawai'i Foundation tote bag, a one-year subscription to "The Bulletin Board" (the KHF e-Newsletter) and advance notice and presale ticket information on Kokua events.

kokuahawaiifoundation.org



Power, Unity, Revolution and Energy fuels the heart of DJ EP. It doesn't have to be the holiday season to get him to give back simply since innovative, top tier electronic dance music is the gift that keeps on giving.

Displaying efforts of excellence on the DJ and promoting fronts has helped enhance the 808's dance music presence through his involvement in the Pure Coalition collective.

"For us it was just a simple goal: revolutionize the dance scene in Hawai'i. Having an awesome team helps a lot," says the 25 year veteran. "Believe it or not it's always been about the music and our love for the music."

The UK hard house, hard style diehard refers to his genre of choice as the true sound of the underground.

"While my genre is not for everyone, it's nice to see them trying to keep up with the shuffle after shuffling to electro house."

Since Pure Coalition formed in 2007, EP has been a viable asset for his music know how and tech-savvy nature. Putting the saying "teamwork makes the dream work" into action in all ways imaginable for parties and events that are nothing short of remarkable.

—Kalani Wilhelm

Fridays, Space at Cafe Sarang, Ilaniwai St. (across from Baby Emporium), 18+, 10pm–4am

Pure Coalition NYE 2012, 805 Ala Moana Blvd., Sat., 12/31, 8pm, 18+, honoluluoffice.com

DJ NIGHTS GUIDE



brought to you by
SCION HAWAII

WEDNESDAY, DECEMBER 14

ACID WASH 2.0 @ Nextdoor
COWBOYS & INDIANS @ Apartment3
DJ ANARCHY @ Bar 35
DJ gRAD @ Boardriders
DJs QUIKSILVA, LOSTBOY, AUDISSEY @ Indigo
GET RIGHT @ Manifest (10PM)
H.U.M.P. (hip-hop) (mainstream) (pop) @ Hula's Bar & Lei Stand
MARTINI NIGHTS @ bambuTwo
SALSA NIGHT @ 4Play
UNDER \$9 AT 9PM @ Giovanni Pastrami
W.T.F. @ V-Lounge & Bar 7
WILD WEDNESDAYS @ Zanzabar

THURSDAY, DECEMBER 15

BROADCAST @ Nextdoor
THE CORNER @ Visions
FLIRT @ Paparazzi
JET BOY; JET GIRL @ Mercury Bar
LATIN HEAT THURSDAYS @ Blue Ocean Night Club
SALSA AFTER HOURS @ Indigo
THE SPEAKEASY @ Hush
SPIN @ Hula's Bar & Lei Stand
TAP THAT THURSDAYS @ Soho
TGIT @ Lotus
THIRSTY THURSDAYS @ Zanzabar

FRIDAY, DECEMBER 16

DJ 45 REVOLVER & DJ QUIKSILVER @ Indigo
DJ/VJ RACER-X @ Hula's (5PM)
DJ/VJ KSM @ Hula's (9PM)
FADED FRIDAYS @ THAI SWEET BASIL
FRENCH TOAST FRIDAYS @ The Villa
FUNKY FRESH FRIDAYS @ Paparazzi
HANDLEBAR @ Soho
LIVE @ 4PLAY FRIDAYS @ 4Play Nightclub
POSH @ Oceans808
PRE @ Nobu
PUSSYCAT LOUNGE @ Apartment 3
ROCK SOLID FRIDAYS @ Showbox
SALSA @ Sand Island Sports Club
THE SESSION @ Lulu's Waikiki
SINSUAL FRIDAYS @ Zanzabar
TOAST @ Bonsai
VJ's Back Yard BBQ @ Fresh Cafe

SATURDAY, DECEMBER 17

THE BOILING POINT @ RumFire
CLUB CARIB/REGGAE NIGHTS @ Tiki's
ENERGY @ The Warehouse
EUROTRASH @ Lotus
FLIRT @ Soho
FLASHBACK SATURDAY @ T-Spot
FLASHBACK SATURDAYS @ The House of Fortune
GOOD LIFE SATURDAYS @ Letto
HUGS AND KISSES @ Bonsai
KA-BOOM SATURDAYS @ Ka
NOIR @ Brasserie Du Vin
PAPERDOLL REVUE @ Fusion Waikiki
POPPIN @ The ClubHouse
PRESTIGE @ Paparazzi
SATURDAY NIGHT LIVE @ Lulu's Waikiki
SIZZLING SALSA SUMMER NIGHTS @ Indigo
SUGARHILL SATURDAYS @ Ige's
SUPPER CLUB @ Apartment3
SUPER HANDSOME SATURDAYS @ Manifest
THE SURF SHACK @ The Shack Waikiki

SUNDAY, DECEMBER 18

BEACH PARTY BLAST @ Hula's Bar & Lei Stand (5PM)
DOUBLEDUBBLE SUNDAYS @ Hula's w/ DJ RACER-X (9PM)
INDUSTRY NIGHT @ Nobu
SIZZLIN SUNDAYS @ Zanzabar, 18+
SPIRAL GIRL HAWAII @ The Clubhouse
THE VITAL LOUNGE @ V Lounge

MONDAY, DECEMBER 19

BROKE ASS MONDAYZ @ Red Lion Waikiki
5-0 MONDAYS @ Apartment 3
MAD HOUSE MONDAYS @ Aiea Bowl
MOTOWN MONDAYS @ Next Door
SWITCH MONDAYS @ V-Lounge
UNDERGROUND PLAYGROUND @ Mercury Bar
WII PLAY MONDAY @ Bar 35

TUESDAY, DECEMBER 20

DIAMOND @ V Lounge
EYE CANDY @ Hula's Bar & Lei Stand
HAPPY HOUR @ Apartment3, 21+
HUSH HUSH TUESDAYS @ Hush, 21+
KALEIDOSCOPE @ thirtyninehotel (9PM)

GET YOUR EVENT LISTED! SPINZONE@HONOLULUWEEKLY.COM, TWO WEEKS IN ADVANCE.

SCORE

2.9%* APR OR \$100 GIFT CARD**

with purchase of a new or demo
2012 Scion!

Only at your Scion Hawaii dealers.

OAHU | ServcoScion.com | 564-2400

BIG ISLAND | BigIslandScion.com | 935-2920

MAUI | MauiScion.com | 877-2781



what moves you
scionhawaii.com

* Not combinable with any other offers. Some restrictions apply. Not all customers will qualify. See a Scion Hawaii dealer for details. On approved credit, 2.9% APR on 60-month terms on a new or demo 2012 MY Scion iC (maximum to finance: \$25,000), xB (maximum to finance: \$22,000), or xD (maximum to finance: \$19,000) in stock, purchased and delivered between 11/1/11 - 12/31/11, or while supplies last. Excludes IQ and Release Series vehicles. Program dates and details subject to change without notice. See gpr.com for gift card terms and conditions.

THE SCENE

From Page 11

MénageA3: Las Vegas Strip What happens at Apartment3, stays at Apartment3 in this sweet ass theme party from Cherry Blossom Cabaret. Take a peep(show) into this ultra-cool venue where sophistication meets burlesque all night long—Vegas style, baby! *Apartment3*, Century Center, 3rd Fl., 1750 Kalākaua Ave.: Sat., 12/17, (9PM–2AM) \$10. 955-9300

Open Mic in Paradise Musicians, poets, comedians—whoever has a way with song, words or thoughts to share. A chance to express virtually anything in the open air of the restaurant. Yummy for all your senses. *Da Spot Health Foods*, 2469 S. King St.: Tue., 12/20, (7–9:30PM) Free. 941-1313

On Sale

Andrew Bird It's the return of the indie-rock multi-instrumentalist. *Hawaii Theatre*, 1130 Bethel St.: 1/12/12, (8PM) \$25–\$50. hawaii-theatre.com, 528-0506

Holiday Celebration Gift Sale Sierra Dew is hosting her widely celebrated annual holiday gift sale for those looking for some unique, handmade, local products. Invite a few friends, bring snacks or libation to share for this festive shoppers' event. *UMU office at Manoa Marketplace*, 2752 Woodlawn Dri. (2nd floor next to Red Ginger): Sat., 12/17, (11AM–4PM) seriadew.com

Neil Diamond A living legend, this Diamond sparkles on stage with songs like "Love on the Rocks" and "Sweet Caroline." *Blaisdell Arena*, 777 Ward Ave.: Thu., 2/16/12 and Sat., 2/18/12, (8PM) \$49–\$159. ticketmaster.com, 745-3000

Stage

Ballet Hawaii's "The Nutcracker" (See Hot Picks) *Blaisdell Concert Hall*, 777 Ward Ave.: Fri., 12/16–Sun., 12/18, (Times vary.) \$35–\$75. ticketmaster.com, ballethawaii.org, (800) 745-3000

All Scrooged Up A classic Christmas story will be told with a local twist (courtesy of Hawaii's own Da Bradahs). Enjoy a touching story of a man's journey to recapture a love once lost. *Word of Life Christian Center*, 550 Queen Street.: Wed., 12/21–Fri., 12/23, 7PM, Sat., 12/24–Sun., 12/25, 6PM Free. wordoflifehawaii.com, 447-5529

Cirque Wings High-octane aerial acrobatics will shoot your senses through the stratosphere. Kama'aina receive an additional 10% discount. *cirquewings.com*. *Waikiki Shell Amphitheater*, Kapi'olani Park: Sat., 12/17 (7:30PM) \$10–\$20. 545-4000

Curious Fish Legendary Butoh master Katsura-Kan in a Butoh Master experimental workshop and performance series that melds the surreal with the flesh. *The ARTS at Marks Garage*, 1159 Nu'uanu Ave.: Fri., 12/16 and Sat., 12/17, (7:30PM) \$15. artsatmarks.com, 521-2903

Deck the Balls 2 Annual Standup Comedy Show and CD Release party. Performers: Aaron Pughes, Fernando Pacheco, Jose Dynamite, Jonny Sparkles, Jose Ver, Anthony Silano, Cheyne Gallarde, Duke Guerrero and Marcus Busekrus. *Hawaiian Brian's*, 1680 Kapi'olani Blvd.: Tues., 12/20, (7:15PM) \$8–\$10. 728-7146

Peter & the Wolf and Rites The only public school in the state with a formal dance program (ballet and modern dance) in the regular school day for a grade performs. *Aiea High School*,

H1 dance studio, 98-1276 Ulune St.: Sat., 12/10 (3PM) and Thu., 12/15 (6:30PM) \$5–\$8. 483-7300

The Gift Alive Ballet Center celebrates their second year with a performance featuring students of all levels and interest. *Palikū Theatre*, Windward Community College: Sun., 12/18, (4PM; 7PM) \$15–\$20. 235-7433

Museums

Bishop Museum 1525 Bernice St. Open Wed.–Mon. (closed Tuesdays) 9AM–5PM. \$17.95 adults; \$14.95 ages 4–12; under 4 free. bishopmuseum.org, 847-3511

Manu'unu' Ka Welo'ani: The Chiefly Cultures of Polynesia This exhibit provides an insightful expose on the ancestral connections between the Chinese and Polynesian cultures through a unique assemblage of Oceanic artifacts.

Tradition and Transition: Stories of Hawai'i Immigrants Semi-permanent installation focuses on the strength of the human spirit and power of change through the inspiring stories of immigrant hardships.

Facing Mars This exhibit focuses on the challenges of sending human explorers to Mars with 28 interactive stations featuring stunning imagery and fascinating artifacts such as a rare Mars meteorite from West Africa.

The Astronomy of Galileo A live interactive planetarium show. 3:30PM.

Hawaiian Hall The buzzed-about restoration is now a museum staple. See a reinvigorated hall that shows a Native Hawaiian worldview layered in meaning and authentic in voice. Now on display: The Pa'u of Nāhi'ena'ena, a sacred cape measured at 20 x 2.5 feet, created with

an estimated one million feathers of the 'o'o bird.

Rare Botanical Flowers: Picture Gallery Newly revealed water colors, oil paintings and works on paper are on constant rotation.

Planetarium Shows "The Sky Tonight," daily 11:30AM; "Explorers of Mauna Kea," daily, 1:30PM; "Explorers of Polynesia," daily, 12:45PM, 3:30PM.

Science on a Sphere The museum's permanent exhibit presents wall graphics, interactive stations and the suspended 40-pound sphere, which offer insights into our ever-changing climate.

The Sky Tonight An hour-long, live tour of the current night sky in the Watumull Planetarium at Bishop Museum. Presented by the Hawaiian Astronomical Society, the audience gets an overview of the planets, stars and special astronomy happenings for the month to come. Following the sky talk, the group is invited to Bishop Museum's observatory to peek through 12.5 inch telescope. First and third Fridays, 8PM. \$4–\$6. Members free.

Children's Discovery Center Kids can present a puppet show, dress up like a doctor, play virtual volleyball, explore the inside of a mouth, visit different cultures, test their wheelchair skills, put on a play, make crafts and much more at this interactive museum. 110 'Ohe St.: Tue.–Fri., 9AM–1PM; Sat. & Sun., 10AM–3PM. \$8 adults, \$6.75 kids 2–17. 524-5437

Chinatown Museum Learn Chinatown history and Hawaiian history; tour Chinatown and downtown. 1120 Maunakea St., 2nd floor: Open Mon.–Sat., 10AM–2PM. \$2 adults; \$1 youths. 595-3358

The Contemporary Museum 2411 Makiki Heights Dr. Open Tue.–Sat.,

10AM–4:30PM; Sun., 1–5PM. Monday closed. \$10 adults; \$5 children (ages 4–17); children 3 and under/members free. Free first Wednesday of the month. tcmhi.org, 526-1322

Red Moon Rising Mural on the tennis court by Eukarest.

Battle of the Birds and the Bees Mural on the tennis court by Ckaweeks.

The Silent Echo Chamber Former SNL alum Harry Shearer captures the quiet moments of media personalities before they "go live" on TV in this multi-screen video installation. Runs through 1/29/2012.

Through the Fire, From Dirt to Dazzle: Ceramic Works from the Drawliner/Higa Gifts Donated works on view by major mid-century American Studio Pottery members such as Beatrice Wood, Rose Cabat, Robert Turner and others. Runs through 1/29/12.

Jennifer Steinkamp: Mike Kelley Series of computer video projections of trees dedicated to past teachers. Runs through 1/29/12.

Escape from the Vault: A Few Great Paintings and Sculptures Includes a gigantic metal assemblage-relief by Frank Stella to minimalist masterpieces like a Cor-Ten steel and Plexi "stack" by Donald Judd. Runs through 1/29/12.

The Contemporary Cafe 2411 Makiki Heights Dr. Tue.–Sat., 11:30AM–2:30PM; Sun., Noon–2:30PM. 526-1322

Gruntled Funk A mural by local artist Ryan Higa on the Café lanai.

O2 Art 4: A mural of Aaron "Angry Woebots" Martin's signature angry pandas resides on one of the walls outside of the Contemporary Cafe.

The Contemporary Museum at First Hawaiian Center 999 Bishop St. Open Mon.–Thu., 8:30AM–4PM: **Continued on Page 16**

KAISER PERMANENTE

PRESIDENTS' DAY, FEB. 20, 2012

GREAT ALOHA RUN

IN TRAINING WORKSHOP

WHAT: 9 week varied-group progressive training

WHEN: Sundays 6:45 am, 12/18/11 - 2/12/12 (Saturdays on Christmas and New Years weekends)

WHERE: Kapi'olani Park Bandstand

COST: FREE to 2012 Kaiser Permanente Great Aloha Run entrants (value: \$185.00 per person)

For more information, go to: www.GreatAlohaRun.com/events/workshop or call 679-2830



NICOLE LAMB
NASM Certified
Personal Trainer

LUCKY 7 MEMBERS CAN WIN ONE OF THESE TWO FABULOUS PRIZE PACKAGES...



THE LUCKY 7 VACATIONS HAWAII LAS VEGAS PACKAGE

An all inclusive five night stay at the fabulous California Hotel and Casino in Downtown Las Vegas!

THE ISLANDS BEST FAMILY PACKAGE

Value: over \$1,100.00!



A Day of Golf for Four
Teppanyaki Meal for Four
Fashion Merchandise Gift Certificates
A Loaded Pastry Gift Card
Family Fun Gift Certificates



...MORE THAN JUST A RUN!



TITLE SPONSOR

KAISER PERMANENTE **thrive**



BENEFACTOR

Harry & Jeanette Weinberg Foundation, Inc.

KAMA'AINA SPONSORS

Commercial Plumbing, Inc.

Eddie Onouye, Inc.

The Queen's Medical Center

Roberts Hawaii

THIS MODERN WORLD

by TOM TOMORROW

THE SCENE

Literary

Call To Artists

James M. Vaughan Award for Poetry Entries HPU's annual poetry award. Supported by the Hawai'i Literary Arts Council and State Foundation on Culture and the Arts, the awardee will be printed in HPU's annual literary magazine *Hawai'i Pacific Review* and receive a \$250 cash award. Deadline extended. For submission details visit hpu.edu/HPUNews/2011/09/Vaughn_Award.html

"Don't Look Back" Book Launch Editor Christie Thomas has collected 17 tales of old Hawai'i in *Don't Look Back: Hawaiian Myths Made New* which includes writing by Maxine Hong Kingston, W.S. Merwin, Victoria Kneubuhl, the late Ian MacMillan and more. *Mission Houses Museum*, 553 S. King St.: Wed., 12/14, (6-7:30PM) Free. RSVP requested at dawn@bookshawaii.net, 534-7170
Waialua Book Sale Score some cheap books, indulge in some ono treats at a neighbor bakesale, and support Waialua Public Library—all at the same time! *Waialua Public Library*, 67-068 Kealahou St.: Sat., 12/17, (9AM-2PM) 637-8286

Learning

Contra Dance Put on your dancing shoes and listen to some live music from Whiskey Starship, who will be playing Irish jigs and reels. Beginners are welcome and no experience is necessary. *Kapi'olani Community College Chapel*, 4303 Diamond Head Rd.: Sat., 12/17, (7:30-10PM) Free. 392-8774, sls.hawaii.edu/contra/
International Folk Dancing For those interested in trying their hand at international folk dancing, it's never too late. And don't worry if you're not advanced—beginners are welcome and no partner is needed. *Mō'ili'ili Community Center*, 2535 S. King St.: Sundays, (7-9PM) \$4 donation. ifd-hawaii@gmail.com, 941-6453

Memory Enhancement Join Dr. Robert Winningham as he presents his award-winning research in psychology that focuses on cognitive rehabilitation and memory enhancement for older adults. *Kahala Nui*, 4389 Malia St. (Diamond Head Room): Wed., 12/14, (7PM) Free. 218-7200

Spring Wind Quintet Meet in front of the Christmas tree to hear the Spring Wind Quintet perform a variety of joyous Christmas music. Stick around to hear about how the instruments produce each sound, and learn how the group performs together. *Kapolei Public Library*, 1020 Manawai St.: Sat., 12/17, (1PM) Free. 693-7050

'Ohana

A Christmas Story(time) Bring the young ones (ages 2-5 welcome) to a special, holiday-themed storytime. The storytime will be filled with fun activities including songs, rhymes and simple crafts. *Hawaii Kai Public Library*, 249 Lunalilo Home Rd.: Thu., 12/15, (10:30AM) Free. 397-5833
Bank of Hawaii Family Sunday: Gifted Get in the seasonal spirit with music from Mele Mai Paki Handbell Choir and let the keiki meet Mr. and Mrs. Claus. This year the annual holiday-themed Family Sunday focuses on giving back; visitors are invited to bring in goods for the canned food drive. *Honolulu Academy of Arts*, 900 S. Beretania St.: Sun., 12/18, (11AM-5PM) Free. 532-8700

Ohana Magic: Live Christmas Show! David "The Great Davidio" Brown, Aaron Vermeer and Craig the Illusionist will offer magical and merry entertainment for the whole fam-

FUN FACTS ABOUT NEWT GINGRICH

NOTE: QUOTATION MARKS DENOTE GENUINE QUOTES

VISITED FIRST WIFE IN HOSPITAL TO DISCUSS DIVORCE.*CURRENTLY TRYING TO OBFUSCATE STORY BY DISPUTING DETAILS.

I MOST CERTAINLY DID NOT HAVE A YELLOW LEGAL PAD!



*SHE LATER HAD TO SUE HIM FOR UNPAID CHILD SUPPORT.

IN A 1992 NOTE TO HIMSELF, WROTE: "GIN-GRICH--PRIMARY MISSION, ADVOCATE OF CIVILIZATION, DEFINER OF CIVILIZATION, TEACHER OF THE RULES OF CIVILIZATION, AROUSER OF THOSE WHO FAN CIVILIZATION...LEADER (POSSIBLY) OF THE CIVILIZING FORCES."

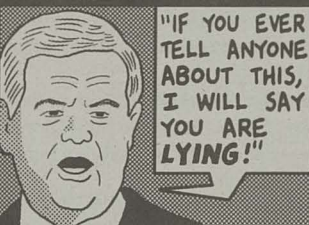
HAS ALSO REFERRED TO HIMSELF AS A "TRANSFORMATIONAL FIGURE."

IN '95, INDIGNATION OVER A SEAT ASSIGNMENT ON AIR FORCE ONE LED TO BUDGET IMPASSE WHICH SHUT DOWN GOVERNMENT.

A DEFINER OF CIVILIZATION DOES NOT SIT AT THE BACK OF THE PLANE!



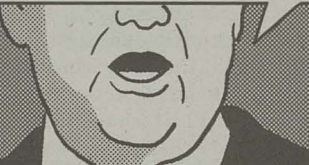
ACCORDING TO A FORMER MISTRESS, PREFERRED ORAL SEX BECAUSE HE COULD THEN DENY HAVING SLEPT WITH HER. ALSO TOLD HER:



"IF YOU EVER TELL ANYONE ABOUT THIS, I WILL SAY YOU ARE LYING!"

LED PERSECUTION OF BILL CLINTON FOR EXTRAMARITAL AFFAIR WHILE HAVING AN EXTRAMARITAL AFFAIR.

"IT DOESN'T MATTER WHAT I DO--PEOPLE NEED TO HEAR WHAT I HAVE TO SAY!"



HAS SUBSEQUENTLY BLAMED HIS NUMEROUS AFFAIRS ON THE INTENSITY OF HIS LOVE FOR AMERICA.

"THERE'S NO QUESTION AT TIMES OF MY LIFE, PARTIALLY DRIVEN BY HOW PASSIONATELY I FELT ABOUT THIS COUNTRY... THINGS HAPPENED IN MY LIFE THAT WERE NOT APPROPRIATE."



WAS FIRST SPEAKER IN 208 YEARS TO BE DISCIPLINED BY HOUSE FOR ETHICAL WRONGDOING, PAID UNPRECEDENTED \$300,000 PENALTY.

SEE? I AM A TRANSFORMATIONAL FIGURE!



BLAMED THE MURDER OF TWO CHILDREN BY THEIR MOTHER ON DEMOCRATS.

"(IT) VIVIDLY REMINDS EVERY AMERICAN HOW SICK THE SOCIETY IS GETTING...THE ONLY WAY YOU GET CHANGE IS TO VOTE REPUBLICAN!"



CLAIMS TO BE BAFLED BY OUR CENTRIST, TECHNOCRATIC PRESIDENT.

"WHAT IF HE IS SO OUTSIDE OF OUR COMPREHENSION, THAT ONLY IF YOU UNDERSTAND KENYAN, ANTI-COLONIAL BEHAVIOR, CAN YOU BEGIN TO PIECE TOGETHER (HIS ACTIONS)?"



IN 1996 MEMO PURPORTING TO RESPOND TO THE "PLAINTIVE PLEAS" OF CANDIDATES WHO WISHED THEY COULD "SPEAK LIKE NEWT," COMPILED LIST OF TERMS FOR G.O.P. TO USE IN DESCRIBING DEMOCRATS, INCLUDING: ANTI-FLAG, ANTI-CHILD, ANTI-FAMILY, BIZARRE, PATHETIC, SICK AND OF COURSE, TRAITORS.

ACCORDING TO A RECENT POLL, IOWA VOTERS CONSIDER HIM "MOST APT TO BRING REPUBLICANS AND DEMOCRATS TOGETHER."

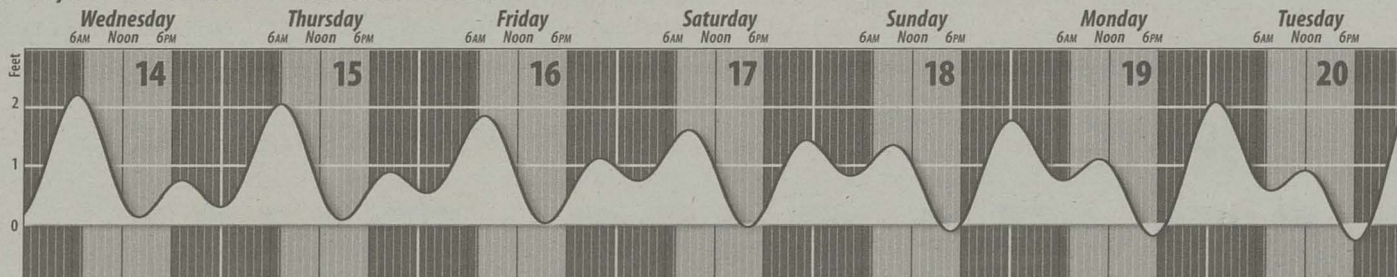
WHAT? WHY IS EVERYONE LAUGHING?



BONUS FUN FACT: IN HIGH SCHOOL NEWT COULD NOT FIND A FOOTBALL HELMET THAT FIT BECAUSE HIS HEAD WAS TOO BIG.

Sun, Moon & Tides — Honolulu Harbor

Daytime Nighttime



Moon Phases: LAST QUARTER-Dec 17 NEW MOON-Dec 24

From Page 15

Fri., 8:30AM-6PM. Validated parking available; enter on Merchant St. 526-1322

Abstracted Landscapes Multi-layered, multipanel pieces from Brad Huck and woodblock prints from Jeera Rattanangkoon. Runs through Mon., 1/2/12.

Udo Nöger: Me Water Internationally German artist builds subtle works of mixed media. Runs through Mon., 1/2/12.

Doris Duke's Shangri La Guided tours of the 5-acre waterfront estate of the late heiress and philanthropist. All tours depart from the *Honolulu Academy of Arts*, 900 S. Beretania St. Wed-Sat, 8:30AM, 11AM & 1:30PM. \$25, \$20 to Hawai'i residents (13 & older) with proof of residency. honoluluacademy.org, (866) DUKE-TIX
Hawai'i State Art Museum No. 1 Capitol District Building, 250 S. Hotel St., 2nd Fl. Open Tue.-Sat., 10AM-4PM. Free. 586-0900

He Alo A He Alo: Face to Face, Visions & Portraits of Hawai'i From the Art in Public Places collection. Ongoing.

Hōkūlani Imaginarium Windward Community College's state-of-the-art planetarium and multi-media facility presents shows for all ages. *Windward Community College*, 45-720 Kea'ahala Rd., Kane'ohe: 235-7321

Honolulu Academy of Arts 900 S. Beretania St. Open Tue.-Sat., 10AM-4:30PM; Sun., 1-5PM. Monday closed. \$10 adults; \$5 children (ages 4-17); children 3 and under/members free. Free first Wednesday

of the month. honoluluacademy.org, 532-8700

Paul Emmert: Artist-Traveler The late Swiss-born painter and draftsman's drawings of the geophysical beauty of O'ahu, Maui and Hawai'i Island. Runs through 1/15/12.

Gaye Chan: Frass Worm-eaten pages from a book of woodblock prints inspire the latest project from this photographer/conceptual artist. An inspection on globalization and free trade agreements. Runs through 2/20/12.

Masterpieces of Landscape Painting from the Forbidden City Landmark exhibition of 56 paintings from the Palace Museum, the largest collection of Chinese paintings in the world. Runs through 1/8/2012.

Paul Gauguin: Noa Noa Not just a painter, but a skilled printmaker and draftsman, an exhibit of woodcut illustrations from his Tahitian journal. Based on a series of paintings and sketches chronicling his encounters through the South Seas. Runs through Sun., 4/22/2012.

In Memoriam: Maqbool Fida Husain India's most famous painter, who recently died last June at age 95. Runs through Sun., 4/22/2012.

Ulana Me Ka Lokomaika'i: To Weave from the Goodness Within This exhibition recognizes the influence of Gladys Kukana Grace, an accomplished lauhala weaver, with pāpale, or hats, skillfully woven by her and her students. Runs through 1/29/12.

Academy Art Center at Linekona 1111 Victoria St. Open Tue.-Sat., 10AM-4:30PM; Sun., 1-5PM. Free

admission. honoluluacademy.org, 532-8700

Kapi'olani Palace The palace is the only official residence of royalty in the United States. Guided tours: Mon.-Sat., 9-11:15AM; tours in Japanese available Mon-Sat, 11:30AM, \$20 adults, \$15 kama'aina, \$5 children ages 5-12 (under 5 years not admitted). Audio tours available 11:45AM-3:30PM, \$13 adults; \$5 children ages 5-12. Galleries open: Mon.-Sat., 9AM-5PM. \$6 adults; \$3 kids ages 5-12, under 5 free.

Mission Houses Museum Step into 19th century Hawai'i when you visit the original homes of the first missionaries to the Islands. 533 S. King St. Open Tue.-Sat., 10AM-4PM; closed Sun. & Mon. Tours available at 11AM, 1PM & 2:45PM. \$6-\$10; 50 percent kama'aina discount on last Saturday of each month. missionhouses.org, 447-3910

Galleries

Opening

Bernice Pauahi's Birthday Celebration Help the Bishop Museum honor Princess Pauahi's birthday with mele and storytelling in front of the Hawaiian Hall complex. Opens Wed 12/14, runs through 12/18. *Bishop Museum*, 1525 Bernice St.: \$14.95-\$17.95. 847-3511

Hawaiian Legends Series Exhibition features the artistic collaboration between Dan Merkel and Harald M. Lehnardt. It will be the first dis-

play of the artists' new Hawaiian Legends Series. Opens Wed 12/14, runs through 2/29. *Kahala Hotel and Resort*, 5000 Kahala Ave.: kahalaresort.com, 739-8888

Continuing

Day Dreaming Color photography infused on aluminum by Chad Heroemus. Through 1/31. *Morning Brew Coffee House*, 572 Kailua Rd.: 262-7770

Perpetual Reflections: Identity in Contemporary Art Group art exhibition on critical issues surrounding identity in art today. Through 12/26. *Gallery of Hawaii Artists*, 1888 Kalakaua Ave., Ste C312: info@galleryofhawaiiartists.com, 447-8908, galleryofhawaiiartists.com

La Mirada Phoenix-based multimedia artist Dan Diaz exhibits four site-specific murals influenced by his Mexican and Japanese heritage. Through 1/21. *thirtyninehotel*, 39 N. Hotel St.: 599-2552

Loose Threads and Friends Jewelry works by Mary Kamiya and Carola Wilson, fused glass by Sydney Lynch, traveling journals by Sara Oka and others. Artists Reception on Fri., 11/18. Through 12/24. *Louis Pohl Gallery*, 1111 Nu'uuanu Ave.: 521-1812

Toy Show Rediscover the joy of toys with quirky works by Jason Teraoka, Tracy Gunn, Nicole Higa, Mark Chai, Deb Aoki and others. Through 1/7. *fishcake*, 307C Kamani St.: 593-1231

The Straight Dope

By Cecil Adams

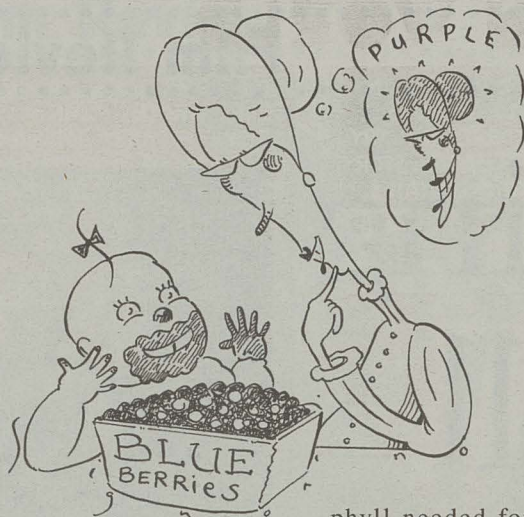


illustration: slug signorino

Why is there no (or at least, so little) naturally occurring blue food? Nature seems to have provided us with edible substances of every other hue, but the only blue food to be found in the supermarket is invariably, artificially colored. Even blueberries aren't really blue. How come?

—Matt McElligott

If we're going to study the ancient texts, Matt, we need to have those texts in front of us. The question you cite was placed before the house by the late philosopher George Carlin while hosting the inaugural episode of *Saturday Night Live* in 1975:

"Why is there no blue food? I can't find blue food—I can't find the flavor of blue! I mean, green is lime; yellow is lemon; orange is orange; red is cherry; what's blue? There's no blue! 'Oh,' they say, 'blueberries!' Uh-uh; blue on the vine, purple on the plate. There's no blue food! Where is the blue food? We want the blue food! Probably bestows immortality! They're keeping it from us!"

Pretty funny, at least as delivered by Carlin. However, the bit works only because he cavalierly dismisses several nominally blue foods, including not just blueberries but, in other performances, bleu cheese and bluefish. Cheese and fish

I'll let slide. The notion that blueberries aren't blue, on the other hand, sticks in my craw.

I love blueberries. In one of my few concessions to domesticity, I periodically make blueberry jam. It is, I acknowledge, purple, because the inside of the blueberry is purple. However, the skin of the blueberry is blue, which is the fact of importance. Brightly colored fruits and vegetables generally look that way to attract animals, who carry them off to eat and scatter the seeds. Who cares if blueberries are purple on the plate? When the propagation of the species is on the line, blueberries are blue.

You say: fine, but the fact remains that we have few blue foods, in contrast to numerous foods of other common colors. Why?

Simple. Because leaves are green. Work with me on this.

Broadly speaking, two classes of chemicals produce bright colors in edible plants. Yellow, orange and red are generated by chemicals known as carotenoids, most famously evident in carrots. Red, purple and blue are produced by compounds called anthocyanins, found in everything from grapes to eggplant.

The common element in these two sets of colors is red. Why red? No doubt because it contrasts so strikingly with green, the default plant color due to the chloro-

phyll needed for photosynthesis. (Why chlorophyll is green is a question for another day.) In opponent-process color perception, thought to be at work in many primates and presumably in birds, red and green are visual antagonists, incapable of blending—there's no such color as reddish green. If you're a plant and you want to produce a fruit or flower sure to stand out against green foliage, red's your best bet.

Naturally, depending on circumstances, you, Joe Plant, may want to dial the red up or down. In the tropics you may find yellow or orange fruit is the best way to increase your bird traffic. If you're pushing berries in more temperate climates you may have better luck with darker colors, which you can get by amping up on the blue in your anthocyanin paint box. But generally some red remains, and red and blue make purple, a common color for fruit.

Now, under some conditions it may be useful for a plant to suppress red to such a degree that its edible bits aren't just purple or bluish but indisputably blue. Or the local environment may simply favor blueness—high acidity accentuates the red in anthocyanins, while low acidity brings out the blue.

Circumstances evidently don't align often, but when they do the result can be startling. Blueberries not blue enough for you? Search online for images of blue quandong or *Decaisnea fargesii*, both of which bear fruit that's blue to the point of being unnerving—the fruit of *D. fargesii*, in fact, is popularly known as dead man's fingers. For better or worse, the dominance of red in the edible food palette means such sights are rare.

It might have been otherwise. Scientists have speculated that, prior to the emergence of chlorophyll as the primary medium for photosynthesis, primitive organisms used a pigment called retinal. Retinal is purple, meaning Earth would have been not a green planet but a purple one. Were that the case now, the dominant color in edible plants arguably would be the visual opposite of purple. Purple is a mix of red and blue, and the opponent color to blue is yellow, so the opposite of purple would be a mix of green and yellow. In other words, the most prevalent food color on a purple world might well be chartreuse.

Far-fetched? Hush now—our hypothesis lets us offer hope to George Carlin disciples. All that's needed is a planet where the foliage is yellow. Assuming the local fruit-eaters perceive color the same way Earth's do, the dominant food color would be blue.

Send questions to Cecil via straightdope.com or write him c/o Chicago Reader, 11 E. Illinois, Chicago 60611. Subscribe to the Straight Dope podcast at the iTunes Store.

THE SCENE

ily. Witness hilarious, interactive routines and score some impressive (and free) animal balloons. *Ko'olau Shopping Center*, 47-388 Hui Iwa St. Kaneohe: Fri., 12/16, (7PM) \$12 adults, \$8 children. koolaumagictheatre.com, 239-6711

Winter Program A week's worth of exciting activities—such as crabbing and bamboo pole-fishing—for your keiki to enrich their cultural and historical knowledge. Wed., 12/21–Fri., 1/6, (8:45–4PM) \$50. 923-2311, see halekulani.com

Botanical

Garden Mulch Take as much as you can carry when it comes to free mulch—reusable material used to enrich or insulate the soil. Sat., 12/17. Free. opala.org, 768-3200

Outside

Mānoa Cliff Restoration Meet at the trailhead on Round Top Drive to help nurture native plants and remove invasives on around the popular trail site. E-mail manoacliffnatives@gmail.com for details. Sun., 12/18, (9AM)

Green

Bike Path Clean-Up Island Triathlon & Bike is picking up trash, removing weeds on the path by the Ala Wai Golf Course. Free shirt for helpers while supplies last! Sat., 12/17, (3PM) ITBHawaii.com, 732-7227

E-Waste Recycling Event Dispose your e-waste to make room for Santa's digital deliveries this holiday. *Windward Mall*, HI 5, off Alaloa, back parking lot. Sat., 12/17, (8am–3pm) Free.

Volunteer

Nā Pōhaku 'O Hauwahine Help restore the ethno-botanical and cultural features of this important historical state park. Visit ahahui.wordpress.com. Meet at the *Kapa'a Quarry Road*. Sat., 12/17, (8:30AM–12:30PM) 593-0112

Neighbors

Amy Hānaiali'i Christmas Concerts Two concerts on the Big Island featuring Amy's full band with special guest Sonny Lim at both concerts. Fri., 12/16 and Fri., 12/17, (Fri. 8PM, Sat. 7PM) \$20–\$30. kahilutheatre.org, hilopalace.com

Holiday!

2011 Christmas Concerts Let the Hawaii Vocal Arts Ensemble enrich your holiday season with their warm and expressive voices as they sing traditional, familiar and contemporary songs. *Mystical Rose Oratory*, Chaminade University: Fri., 12/16 at 7:30PM, Sun., 12/18 at 4PM \$5 students K–University, \$15 seniors and military, \$20 adults.

Christmas in Polynesia Festive canoe rides offering a local take on the traditional Holiday narrative with Christmas lights, musical performances and more. *Polynesian Cultural Center*, 55-370 Kamehameha Hwy, Lā'ie: Every Mon., Wed., Fri., Sat. from 12/12 through 12/23, (6–8PM) \$8–\$10. 293-3333

Mermaid's Christmas Water Show Head over to Waikiki to enjoy some colorful and sparkly routines put together by Hawaii's lovable *Mermaids*. Synchronized swimming will be set to

modern, classical and Hawaiian music. *Princess Ka'iulani Hotel*, 120 Ka'iulani Ave.: Fri., 12/16, (5:30PM) Free. mermaidshawaii.com

Musical Christmas Show Join in on the musical Christmas show fun, featuring salsa dancers, hula, models, pageants, the Arsenio band and Santa's Magical Christmas Show. *Aloha Tower Marketplace*, 1 Aloha Tower Dr.: Sun., 12/18, (5PM–7PM) Free. alohatower.com, 528-5700

Oahu Civic Orchestra's Winter Concert A 70-piece orchestra playing music of the season, including: A Christmas Festival, Messiah Majesty, Greensleeves, Selections from Lieutenant Kije Suite, Nutcracker Suite and more. Conducted by Roy Yanagida and Grant Okamura. *Honolulu Academy of Arts*, 900 S. Beretania St.: Sun., 12/18, (1PM) Free. 342-0610

Ring for the Holidays Join the rule-breaking Honolulu Handbell Ensemble as they rebel against the "library voices" rule and perform a Christmas concert, "We Ring for the Holidays!" Suitable for ages five and older. *Hawaii State Library*, First Floor Reading Room, 478 S. King St.: Sat., 12/17, (12PM) Free. 586-3520

SJV Travel Club Craft Fair The SJV Travel Club is hosting a Craft Fair to help raise money for a 2012 trip to England and France. Locally made crafts and food will be available for purchase. *St. John Vianney School*, 920 Keolu Dr., Kailua: Sat., 12/17, (9AM–3PM) Free. 222-1694, dsousa@sjvkailua.org

St. Andrew Annual Carol Concert Sing your favorite carols and hear some new ones as the Director of Music, John Renke, selects songs that recognize the spiritual meaning of "ha" or sacred breath. *The Cathedral of Saint Andrew*, 229 Queen Emma Square: Sun., 12/18, (5:30PM) Free. saintandrewscathedral.net, 524-2822

Whatevas

Adore Life Soiree Benefit A benefit that will honor the memory of Sheila Ann Rausch. Live entertainment includes Kuana Torres Kafele, Keali'i Ho, Randy Allen and Twilight Audio. There will also be heavy pupus, a silent auction and prize drawings. All proceeds will benefit the Muscular Dystrophy Association Hawaii Chapter. *Mid-Pacific Country Club*, 266 Ka'elepulu Dr.: Sat., 12/17, (6–10PM) \$60. 721-2688

SuperCw.com presents "The Best Ever!!!" (See Hot Picks) *Kaka'ako*, 683 Auahi St.: Fri., 12/16, (6PM–Midnight) \$5–\$15. welovecampfires.com

Distinguished Kama'aina The Ko'olaupoko Hawaiian Civic Club will honor Haunani Apoliona, trustee for the Office of Hawaiian Affairs (OHA), as its Distinguished Kama'aina for 2011, and will launch book profiling Windward notables. A Hawaiian dinner and silent auction will be held to benefit the club's scholarship fund. *Kokokahi YWCA*, 45-035 Kāne'ohe Bay Dr.: Sat., 12/17, (4:30–8:30PM) \$10. 247-2124, koolaupoko.hcc.com

First Annual Christmas House Pick out some crafts and culinary creations for Christmas gifts and seasonal delights. Handicrafts, textiles and artwork from Thailand, Myanmar, and Vietnam share space with Hawaiian cheesecake, fresh scones, and jewelry from Manoa. *Pacific Gateway Center*, *Lemongrass Cafe*, 83 N. King St.: Wed., 12/14–Fri., 12/23, (Mon.–Fri., 8:30AM–4PM; Sat., 9AM–2PM) pacificgatewaycenter.org, 851-7010

Kaka'ako Makai Community Cultural Marketplace Local performers, history, culture, crafters, artisans, farmers, fish and food come together in a com-

munity village for the family. *Kaka'ako Waterfront Park*, 677 Ala Moana Blvd. #1001: Fri., 12/16 (4:30–8PM); Sat., 12/17 (9AM–2PM) Free.

Pacific Gateway Center's First Annual Christmas House Crafts, textiles and artwork share space with coffee from Hilo, cranberry cookies from Honolulu and rice pillows and necklaces from Kaimuki. *Lemongrass Cafe*, 83 N. King St.: Through Sat., 12/24, (11AM) \$5–\$25. pacificgatewaycenter.org, 851-7010

The Swing Circuit Meet new people and have some tactile conversations on the dance floor. Music will be in all different styles, including swing, and music will be by Bert Burgess. *Waikiki Elk's Club*, 2933 Kalakaua Ave.: Sun., 12/18, (6:30PM) \$35–\$40. swingdanceclubhawaii.com, 255-6095

Submissions

"The Scene" provides groups and individuals with free listings of community events, activities and entertainment. Submissions must include the following:

- Date and time;
- Location (include a street address);
- Cost or admission price;
- Contact phone number;
- Description of the event. (who, what, where, why...etc.)

Deadline for submissions is two weeks before the listing should appear. Listings appear the Wednesday before the event. "The Scene" is also posted each week on our Web site, at honoluluweekly.com.

Send all submissions through honoluluweekly.com/calendarsubmit. Submissions are not accepted over the phone. Please do not send original art.

Film Review

Dropping the Ball

RYAN SENAGA

The makers of the ensemble cast romantic comedy *Valentine's Day*, which revolves around Feb. 14, now bring us *New Year's Eve*, an ensemble cast romantic comedy, which revolves around Dec. 31/Jan. 1.

What did we do to deserve this?

Okay, that was a cheap shot, but here's a backhanded compliment: *New Year's Eve* isn't anywhere near as excruciatingly saccharine and atrociously painful as *Valentine's Day*. Granted, the filmmakers had nowhere to go but up.

Once again, the format is semi-inter-locking stories with an *Us Weekly* cast. Hilary Swank is in charge of the Times Square ball and, of course, something goes very wrong with the wiring before it descends. Seth Meyers and

Shockingly, New Year's Eve, won't give you a hangover

Jessica Biel are an expecting couple racing another couple while in the hospital to see who can squeeze out a New Year's baby by midnight. Sarah Jessica Parker is an uptight mother who won't let her daughter, Abigail Breslin, meet up with her friends in the city. Ashton Kutcher gets stuck on an elevator with *Glee*'s Lea Michele. Josh Duhamel must catch a ride into NYC to deliver an important speech. Katherine Heigl is a chef catering an event that happens to headline her ex, Jon Bon Jovi. Robert DeNiro is a dying patient whose last wish is to see the ball drop and Halle Berry is his compassionate nurse. Zac Efron is a bike mes-

senger who helps fulfill frumpy Michelle Pfeiffer's resolution list.

And just hanging out on the sidelines are Common, Ludacris, Sofia Vergara, Carla Gugino, Alyssa Milano, Penny Marshall, Cherry Jones, Ryan Seacrest, NY Mayor Michael Bloomberg, Joey McIntyre (yes, a New Kid on the Block) and a host of other stars.

Did I miss anybody?

Truth is, *New Year's Eve* ain't that bad and it manages to provide moments of trivial pop culture pursuit. Pfeiffer has aged from her Catwoman days, while, miraculously, Bon Jovi hasn't. John Hiatt's

beautiful "Have a Little Faith in Me" gets the montage treatment with Pfeiffer and Bon Jovi. There's a cameo from Matthew Broderick playing a character named "Buellerton." The Goo Goo Dolls' "Better Days" gets crowned as the new contemporary year-end anthem. And it's just plain astounding how Efron's hair is a flawless faux hawk even after wearing a bike helmet.

Suffice to say, everyone comes out of this chick-flick massage with a happy ending. If you're in the mood for something like this, there's no stopping you from seeing *New Year's Eve* and even if you

aren't in the mood, it just might make you feel good if you happen to be feeling particularly vulnerable this season. Think of it as one last piece of crap that you can't resist before you make a cinematic resolution: I will never give in to big studio marketing ever again—and if I must, I'll just rent *Love, Actually* instead. (Besides, you need to make 2012 count. According to Roland Emmerich, we're all dead.)

Still, for those that do find this genre completely unappealing, wait for something like *Shame* to finally open here. That should sufficiently dampen the holidays. ■



Do you think they've even heard of each other prior to this?

O'ahu Films

A selection of films currently playing in island theaters. Unattributed film synopses indicate movies not yet reviewed by HW staff. * Indicates films of particular interest.

Opening

* **Young Adult** The *Juno* writing and directing dream team bring us a new coming-of-age story starring Charlize Theron, a newly divorced author who returns to Minnesota to relive her adolescent glory day—which turns out to be not such a glorious idea.

Alvin & the Chipmunks: Chip-Wrecked What would the holiday season be without Alvin and his helium-voiced accomplices? This year they end up shipwrecked overseas, but discover their new home might not be so bad.

* **Sherlock Holmes: A Game of Shadows** Robert Downey Jr. and Jude Law reprise their roles as Sherlock Holmes and Dr. Watson in Guy Ritchie's newest gripping adventure. Holmes must outwit his fiercest rival yet, Professor Moriarty.

Mission: Impossible—Ghost Protocol in Titan XC Tom Cruise is back as Ethan Hunt, the globe-trotting spy in M:I's fourth feature, directed by Brad Bird and produced by Tom Cruise and JJ Abrams.

Continuing

Arthur Christmas The makers from *Flushed Away* reassure us (in 3-D) that even Santa's got comically dysfunctional family issues.

My Week with Marilyn (See review, opposite page)

* **The Descendants** A very funny film that embraces the big themes—love, death—without getting all sentimental on us...Payne delivers his best film yet, Clooney in his finest role.—Mindy Pennybacker

The Muppets When three noble muppet fans learn that Tex Richman (Chris Cooper) wants to dig for oil under the sacred muppet theater, they find out what those loveable muppets are up to, band together, and save the theater.

Happy Feet Two Those lovable penguins are back with Brad Pitt, Elijah Wood, Pink, Robin Williams, and a slew of other celebs lending their star-studded voices.

Melancholia The film is insightful about the nature of depression, is beautifully photographed and well acted. Does this story end with a bang or a whimper? Well, one or the other.—Bob Green

The Sitter David Gordon Green (director of *Pineapple Express*) presents us with a comedy starring Jonah Hill, as said sitter. Things get progressively rowdy (and rated R) as Hill is coaxed into babysitting the kids next door.

New Year's Eve (See review, this page)

Hugo A tale adapted from Brian Selznick's vivid, 526 pg. children's cult classic, *The Invention of Hugo Cabret*. The vivid imagery in this orphan tale set in Paris was just screaming to be directed by Scorsese, in 3-D no less—it's a Christmas miracle!

Puss in Boots The doe-eyed smooth-talker has finally landed his own role on the big screen. This film kitty chronicles the events leading up to a big sword fight with Shrek and company.

Tower Heist Ben Stiller and Eddie

Murphy have been swindled by a Wall Street business man's Ponzi Scheme. In an attempt to gain back their retirement fund (and dignity), they plan the ultimate heist to get back what's theirs.

The Twilight Saga: Breaking Dawn—Part 1 Thing get pretty heated for expecting parents Edward and Bella (they grow up so fast) when their unborn baby creates turmoil for the Wolf Pack.

A Very Harold & Kumar 3-D Christmas John Cho and Kal Penn are back from Guantanamo Bay to take us on another ill-advised journey, which involves setting Harold's father-in-law's prized Christmas tree ablaze.

Jack and Jill Adam Sandler takes on the role of boy-and-girl twins in this Thanksgiving comedy.

Doris Duke Theatre

Honolulu Academy of Arts, 900 S. Beretania St., honoluluacademy.org, 532-8768

* **The River** (1959) Director Jean Renoir captures the lively atmosphere of India in his first color feature film, which follows three adolescent outsiders who are all pining for the same American man, Captain John. The large river the girls grow up next to signifies the transitory nature of adolescence.

Thu. 12/13 & Wed., 12/14, 1 & 7:30pm

* **Le Notti Bianche** (1957) Director Lucino Visconti's film (translated to "White Nights") is a compelling and stunning screen adaptation of Dostoevsky's short story. The film, set in a fairy-tale atmosphere remi-

WORK
 PLAY
 RELAX
 MANIFEST

WORK • PLAY • RELAX

MANIFESTHAWAII.COM
 32 N. HOTEL ST.
 ACROSS FROM BAR 35

KELLI BULLOCK PHOTOGRAPHY
 Kelli with an eye.....for mana

HAWAII HARLEQUINS
 2012 RUGBY CALENDAR
 Photography by Kelli Bullock

Order your calendar today at www.rugbyhawaii.com
 For a personal Portrait Session, please visit
www.kellibullockphotography.com

Sad Showgirl

MATTHEW DEKNEEF

Based on a duo of memoirs by Colin Clark, *My Week with Marilyn* is a breezy 99-minute look behind the behind-the-scenes making of 1957 picture *The Prince and the Showgirl*, in which a young Clark lands a tiny assistant job on the highly anticipated Sir Laurence Olivier comedy and an unexpected glimpse into a Hollywood icon's psyche.

But before seeing, don't for-

Michelle Williams glows in *My Week with Marilyn*

get that just three seconds ago at the box office you asked for a ticket to *My Week with Marilyn*, not *My Entire Life Spent From Beginning to End Forever and Ever Until Eternity with Marilyn*. This film is more a look into a specific time and place in the actress's life and career than it is an overarching Norma Jeane rise-to-fame storyline oft associated with a conventional

biopic, and considerably wiser for it. To reference one of my favorite Marilyn Monroe quotes (because everyone has a favorite, right?): "I used to think as I looked out on the Hollywood night, there must be thousands of girls sitting alone like me, dreaming of becoming a movie star. But I'm not going to worry about them. I'm dreaming the hardest." All that blind drive, self-belief and raw ambition—this is not a film about *that* Marilyn.

Instead, we're pulled under the silky bedridden covers of her paranoia, insecurities and personal pressures brought on by fame following her marriage to third (and final) husband, playwright Arthur Miller, her progression into the Stanislavski-based Actors Studio and a move towards a more disciplined direction in her career. This is five years before her death. The actress is 31 years old.

Enter Michelle Williams, also age 31 and a blonde beauty in her own right. In all areas where *Marilyn* lacks luster—script, direction, supporting actors—Williams makes up for it in a full and balanced performance of Monroe's outward charm and inner demons. Like



Girl can pout.

The Prince and the Showgirl itself, she's entirely the glue that holds every frame together. Without her, *Marilyn*'s a fairly two-dimensional film made up widely of caricatures—Kenneth Branagh's Olivier, Dougray Scott's Arthur Miller and Judi Dench's Dame Sybil Thorndike. The only semi-compelling supporting character is Zoë Wanmaker as Marilyn's acting coach

and confidante Paula Strasberg. While also admittedly a lampoon, it at least lifts a curtain on the pair's symbiotic remora-like relationship and casts a cultish shadow on the much-celebrated Method as if it were the original Church of Scientology. As for Eddie Redmayne in the role of Colin Clark, he's merely present, never a presence. These vanilla performances neutralize

everything Williams brings to elevate it, allowing her to glow, but never sparkle. The overall effect: *Marilyn* is all just very Meh-rilyn Monroe.

To use an optimistic, partially empty descriptor from the '50s, *Marilyn* is a "swell" enough picture, but ultimately a bit forgettable. Monroe was anything but.

O'ahu Films

niscent of Venice, is anchored in a problematic love triangle.

Thu., 12/15, Wed., 12/16 & Tues., 12/20, 1 & 7:30pm

Women in Love (1969) Alan Bates, Oliver Reed, Jennie Linden and Glenda Jackson star in Ken Russell's faithful adaptation of D.H. Lawrence's novel, "Women in Love," a captivating story that explores the nature of love, romance and morality.

Wed., 12/21 & Thu., 12/22, 1 & 7:30pm

Movie Museum

3566 Harding Ave. #4, \$4 members, \$5 general, 735-8771

One Last Chance (2004) A comedy that traces the lives of three small-town friends who wish to break free from their dull suburban existence. As they watch all of their friends move away and climb the social ladder, they become desperate for a more exciting lifestyle. When they find a golden nugget one day, everything changes.

Thu., 12/15, 12:30, 2:15, 4, 5:45pm

A Swedish Midsummer Sex Comedy (2000) Ian McCrudden directs a comedy starring Olle Sarri, Daniel Gustavsson, Lisa Werlinder and Alexander Karim. Everyone anticipates a fun, romantic night at Emil's Midsummer party, but awkward personal matters (such as Anders' low sperm count) sends the night into a comical downward spiral.

Fri., 12/16, 12:30, 2, 3:30, 5, 6:30 & 8pm

Mon., 12/19, 2, 3:30, 5 & 6:30pm

Love Actually (2003) Hugh Grant, Billy Bob Thornton, Liam Neeson and Keira Knightley

star in a heartwarming Christmas comedy directed by Richard Curtis.

Sat., 12/17, 12:30, 3, 5:30 & 8pm

Rise of the Planet of the Apes (2011) James Franco plays a young scientist who, in an attempt to cure Alzheimer's disease, finds a drug that dramatically increases the intelligence for chimpanzees. When he adopts a baby chimp and raises it like a child, the chimp begins to ponder his captivity with his new and improved genetic wisdom.

Sun., 12/18, 12:15, 8:15pm

The Best Man's Wedding (2000)

A four-time international award-winning comedy directed by Josef Fares. A man named Roro would like to marry his dream-girl Lisa, but his traditional Lebanese family wants him to marry a different girl to save her from getting sent back to Lebanon. His best friend's erectile complications also become increasingly problematic.

Mon., 12/19, 12:15 & 8:15pm

Movie Cafe

The Venue, 1146 Bethel St., \$10, half price for HPU students, 528-1144

This is Bossa Nova: The History and the Stories (2005) Filmmaker

Paulo Thiago follows the esteemed Brazilian singer and composer of bossa nova, Carlos Lyra, who tells vivid stories about the people who have brought Brazilian music to an international level in the early sixties. The importance of jazz guitarist Roberto Menescal is also highlighted.

Mon., 12/19, 7pm

THE GIRL WITH THE DRAGON TATTOO

12.21

COLUMBIA PICTURES AND METRO-GOLDWYN-MAYER PICTURES PRESENT A SCOTT RUDIN/YELLOW BIRD PRODUCTION A DAVID FINCHER FILM DANIEL CRAIG ROONEY MARRA "THE GIRL WITH THE DRAGON TATTOO" CHRISTOPHER PLUMMER STELLAN SKARSGÅRD STEVEN DERKOFF ROBIN WRIGHT YORICK VAN WAGENINGEN JOEY RICHARDSON MUSIC BY TRENT REZNOIR & ATTICUS ROSS PRODUCED BY STEVEN ZAILLIAN MIKAEL WALLIN ANNU FAUDROYE FERNANDEZ WRITTEN BY STEVEN ZAILLIAN PRODUCED BY SCOTT RUDIN OLE SANDBERG SOREN STERNMOSE CÉCILE CHAFFIN BASED ON THE BOOK BY STEIG LARSSON DIRECTED BY DAVID FINCHER #DRAGONTATTOO

RESTRICTED
UNDER 17 REQUIRES ACCOMPANYING PARENT OR ADULT GUARDIAN
BRUTAL VIOLENT CONTENT INCLUDING RAPE AND TORTURE, STRONG SEXUALITY, GRAPHIC NUDITY, AND LANGUAGE

STARTS WEDNESDAY, DECEMBER 21 CHECK LOCAL LISTINGS FOR THEATERS AND SHOWTIMES

SONY
make.believe

H O N O L U L U

Weekly

STAY CONNECTED

Every week, the best in local Entertainment, Food and Green living, delivered by email.

Sign up now.

honoluluweekly.com/email-signup

ACCESS HNL

Professional Display Graphics

Full Color Outdoor Grade
BANNER \$24
2' x 4'

Print Ready File, Add \$2 per Grommet, Restrictions Apply
Prices subject to change without prior notice

Full Color 18" x 24"
POSTER \$5
24" x 36" \$9

Oce Color Wave Printer on 24# Paper
Minimum 10 posters, limited time offer

Wholesale Pricing
LAMINATION
We'll beat or match any local competitor's price

HON graphics

www.hongraphics.com
ph: 596-2679 info@hongraphics.com
417 Cooke St. Across from Fisher Hawaii

Happy Holidays from Kokua Market

Kokua market has all your holiday needs

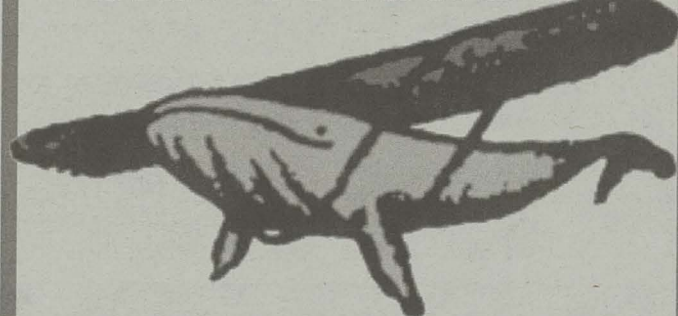
Vegetarian or Not

- Free Range Turkeys + Local Beef Roasts
- ToFurky stuffed roasts and vegetarian Feast
- Frozen Pies, shells, vegetables and much more
- Organic and Local Fresh Produce to choose from

Kokua Market will close at 6:00pm Christmas Eve (Sat) and re-open Monday at 8:00 am. Closed Christmas Day

kokua market 8:30am - 8:30pm Daily
NATURAL FOODS GROCERY COOPERATIVE 2643 South King St 941-1922

SHIP TO HAWAII



YES, you can ship it to Hawai'i!

- Special 1 month \$7 membership for air freight service only
- Great for Christmas shopping
- No package too big or too small

WWW.SHIPTOHAWAII.COM • 866-226-6454

Do you eat?

Honolulu Weekly is looking for writers who are borderline-obsessed with food and drink, curious and interested in all aspects of food, whether in the farm or kitchen, on white tablecloth or on the street. If you know the difference between restaurant criticism and food writing—and can talk about your favorite examples of both—we want to hear from you. Please send your resume and clips to:

shantelgrace@honoluluweekly.com

Honolulu
Weekly

Food & Drink

NINA BUCK

news you can eat

Cage-free eggs-clusive: Locally raised cage-free eggs from Maili Moa Farm now available at Whole Foods Kahala for \$6.99 per dozen.

4211 Wai'ala'e Ave., open 7AM–10PM every day, wholefoodsmarket.com, 738-0820

Redesign: Café-meets-restaurant Town in Kaimuki has gotten a shade earthier, replacing its stark white walls with subtle touches of deep gray and reused hardwoods.

Town, 3435 Wai'ala'e Ave., open Mon.–Sat., 7AM–2:30PM and 5:30–9:30/10PM, townkaimuki.com, 735-5900

Expanding: The Fat Greek will bring its Mediterranean menu to a new location at the Enchanted Lake Shopping Center in Kailua next month.

thefatgreek.net

Got food news? Send 'em in to foodnews@honoluluweekly.com

The Weekly Appetite

Annual Holiday Champagne Tasting

Each holiday season, Du Vin presents this evening filled with good cheer, an outstanding menu and bubbly sparkling wines: Charles Heidsieck Brut Reserve, Taittinger Cuvée Prestige, Lorient Brut Tradition, Schramsberg Rose and Piper Heidsieck Demi-Sec "Sublime." **Brasserie Du Vin, 1115 Bethel St.** Thu., 12/15, (6:30PM) \$95. 545-1115

Fa La La Lunch

During this busy holiday season, Nobu will be offering special lunch treats for a limited amount of time. Treat yourself to some delectable dishes such as yellowtail sashimi with jalapeño or black cod sakivo miso.

Nobu, 2233 Hemulua Rd. Mon., 12/19–Fri., 1/13, (11AM–2PM) noburestaurants.com, 237-6999

Sip This Cityscape

Celebrate a Waikiki winter with a sunset view at this wine mixer, and toast to the Waikiki Parc Chic Wines label.

Waikiki Parc Hotel, 2233 Helumoa Rd. Fri., 12/16, (5:30–6:30PM) 931-6643

December Tastings

Maui Brewing Company has joined forces with the Liquor Collection to produce a fine evening of delicious, local beer tasting. All folks must be 21+ with a valid ID. **Liquor Collection, Ward Warehouse, 1050 Ala Moana Blvd. #1200** Wed., 12/14, (5:30–8:30PM) 524-8808

Wine Down Wednesday

A hip way to enjoy wine and learn about four different varieties from local experts with optional food pairings.

Town, 3435 Wai'ala'e Ave. Wed., 12/14 and 12/21, (6PM) \$24–25. 735-5900

Art of Sushi Happy Hour

Dive into this tantalizing happy hour of eating sushi and bodypainting, courtesy of the girls at Cherry Blossom Cabaret. TyKu drink specials all night long.

Rakuen Lounge, 1153 Bethel St. Fri., 12/16, (6:30–9:30PM) \$10. rakuenlounge.com, 524-0920

Oodles of Korean Noodles

Experiment with various types of Korean noodle-making. The class will go over favorites such as sweet bibim kooksoo, chol myun (chewy noodles), Korean-Chinese cha jian myun (black bean noodle), as well as sauces, toppings and broths to accompany each dish.

Palama Market Dillingham, 1210 Dillingham Blvd. (Behind Zippy's) Sat., 12/17, (2:30–5:30PM) \$80. walter@walmartshawaii.com, 391-1550

Wine Night

The folks at Vino understand that Christmas shopping is hard. That's why they are inviting you to take a break and try some terrific bottles of wine, sold at special, irresistible prices ranging from \$25–\$100.

Vino, Restaurant Row, 500 Ala Moana Blvd. Suite 6 D-1 Sat., 12/17 524-8466

Sushi Roll Secrets

Learn the tricks of the trade for making maki (rolls) with helpful hints that are rarely discussed in cookbooks. Participants should bring a non-serrated knife, a small cutting board and a cooler with ice for this hands-on class.

Palama Market Dillingham, 1210 Dillingham Blvd. (Behind Zippy's) Fri., 12/16, (4:30PM–7:30PM) \$80. walmartshawaii.com, 391-1550

Dive-In Movie Theatre

Drink up holiday-inspired cocktails poolside while watching a holiday movie under the Hawaiian stars and the glow of Waikiki's metro skyline. Chic chaise lounges as your theater seating with delectable goodies for purchase.

Waikiki Parc Hotel, 2233 Helumoa Rd. Wed., 12/14, (7:30–9:30PM) 931-6643

Vegan Holiday Treats

Chef, animal advocate and former Mrs. Hawaii, Ori Ann Li, will give a presentation on exotic vegan dishes with multiethnic flavors and will teach you how to integrate decadent holiday treats into a cooked and raw vegan cuisine.

McCoy Pavilion, Ala Moana Beach Park, 1201 Ala Moana Blvd. Sat., 12/17, (7PM) Free. vsh.org

Happy Kahala Hotel Hours

Featuring innovative creative cocktail creations and pūpū, all \$8 or less. New signature drinks include the Pineapple Basil Crush, Cucumber Ginger Smash, Mango Plantation and more—complex flavors mixed with authentic liquors.

Kahala Hotel and Resort, 5000 Kāhala Ave. Fri., 12/16 and Sat., 12/17, (3–7PM) kahalaresort.com, 739-8888

Vintage Steak Special

In two different blind tastings, the Vintage New York was the steak that won the hearts (and the taste buds) of Vino. Come see how delicious this vintage cut is, served for only \$12.

Vino, Restaurant Row, 500 Ala Moana Blvd. Suite 6 D-1 Thu., 12/15 524-8466

Eat the Street Winterfest

Enjoy a taste of the holidays at Eat the Street's 2011 Winterfest Food Truck Festival Friday, with Honolulu's first-ever outdoor ice-skating rink!

Kaka'ako, 805 Ala Moana Blvd. Fri., 12/16, (4–9PM) streetgrindz.com, 780-9288

Taste of Chinatown Tour

Become a savvy Asian food connoisseur as Walter teaches you what to eat and where to go with his eclectic insight on tropical fruits, history and food science in Honolulu's Chinatown.

Meet at intersection of King and Smith St., Cornerside of Hawaii National Bank, 45 N. King St. Sat., 12/17, (8:30AM–12:30PM) \$80. walter@walmartshawaii.com, 391-1550

Local Boy, Local Cheesecakes

Cheesecake has been around since ancient Greece. When the Romans came along, they adapted the recipe, carrying it into greater Europe. Europeans created their own versions—Italians use ricotta; Germans use cottage cheese—which then traveled with them to the New World. The recipe most familiar to Americans was born in the early 20th century with the invention of cream cheese by New York dairy farmers. In today's era, what about Hawai'i?

"Other people are making cheesecake," says David Bearden, the friendly founder of Hawaiian Cheesecakes, but his are unique. Bearden makes New York style cheesecake with local toppings like rich Kona coffee and Kula strawberry. He started baking cheesecake at age 16, when he prepared the decadent dessert for a family Christmas party. The following year, he had orders for over 100 cheesecakes. Bearden left Hawai'i for school and work, but came home in 2008 and happily resumed baking cheesecakes.

Hawaiian Cheesecakes use 75 percent local ingredients. The butter, eggs, sugar and vanilla are all locally sourced. Strawberries come from Waimea and liliko'i come from farmers' markets, gardens and wild groves on O'ahu, Kaua'i and the Big Island. Only the cream cheese is imported because, according to Bearden, it isn't produced here. Yet.

Samples of the luscious local desserts (\$5 slice/\$35 cake) can be found at the Honolulu and Ala Moana famers' markets. Creamy, not too sweet. Gluten-free and glorious for the holidays!

—Nina Buck

hawaiiancheesecakes.com



Slice it up.

Food & Drink

MINDY PENNYBACKER

Local People Food



Chef Toshi Ishizawa, servers Angie Berger and Bobbi Vinci, with happy customers.

There's more to Irifune than the garlic ahi, and more to SOUL than chicken

MINDY PENNYBACKER

The dim little foyer is silent and unpopulated, but the sign says "Open." Following the arrow, we slide open a wooden door and here are the people, in a room splashed with sun through the big front window. Walls encrusted with tchotchkes, from red devil masks to a big black fish to jolly tip-jar Buddhas, lend a flea market, Mad Hatter air, but the dining space, though not large, feels spacious, airy and uncluttered. Smells of ginger and garlic, steam and hot oil, waft from the kitchen at the back. A long-haired waitress greets us a gentle wave of her arm and a mellow smile. "Sit anywhere you like." How many times has that ever happened in your life? It's not crowded, so we take the table we want, the one by the window that could easily sit eight. On our second visit, at a later hour, the room is quite full, but we are again offered our pick of the two small free tables. Nice.

Both times, we arrive starving. We are happy to follow the directions on the menu: "Shut up and eat!" Others, however, are loudly and animatedly talking throughout their meals. An appetizer of cold tofu with onion, fresh ginger, nori and bonito quickly takes the edge off. The gyoza filled with tofu and cream cheese are perfectly hot, sticky and satisfying. But it's with the main dishes that Irifune comes into its own: The food has a freshness and sense of play, but the tastes of every ingredient are strictly distinct and balanced on the plate.

My first time at Irifune I resisted ordering the much-acclaimed garlic ahi; having been raised Korean, I know from garlic and doubted their version could improve on my mom's. Instead, after the rather Spartan cold tofu, I joined my companion in ordering the shrimp tempura special (\$12), even though I almost never eat deep-fried food (I have sampled friends' portions at Japanese restaurants over the

years.) I was rewarded by the lightest, crispiest, freshest tempura I've ever enjoyed, with not a trace of ammonia in the shrimp and a nice selection of battered orange and green vegetables, including broccoli.

One advantage of Irifune lunchtime is the bento box with hot garlic ahi, ahi sashimi, steamed vegetable chunks and some shrimp and vegetable tempura, which I tried on the second visit (\$11.95). The sashimi was fresh; the cooked ahi, a little more fishy than I like. The succulent garlic crab, however, more than made up for it. Lunches and dinners include a small salad and what two people have told me is "the best miso soup I've ever had," (\$2).

Do save room for dessert, either the fried banana with house haupia ice cream (\$4.95) or the ice cream "crepe," really a puff-fried profiterole (\$4.50). Both come drizzled with chocolate sauce. If you like, ask your server to combine the two in one big bowl.

Irifune opened in 1974, and local pals have consistently recommended its food, so why did it take me so long to visit? Chalk it up to Kapahulu traffic and parking problems, but it's worth paying the modest fee in the pay lot across the street.

After two incognito visits, we asked to speak with the chef, Toshi Ishizawa, who explained the evolution of his cuisine. "I was cooking for a hotel in Japan, then I worked in Honolulu, then I went to San Francisco, came back here and was at Halekulani before I started Irifune

in 1974. I used to do European style cooking, so the food coming all mixed up. It's not Japanese. This is a local people food," Ishizawa said.

True Grits—Pacific Soul

Get up and grind! You want to start your holiday activities, not too early of course, with a hearty breakfast, that's got that something extra special and festive about it, and Soul is just the place. Chef Sean Priester grew up in Germany but went to college in North Carolina, where he also has family and learned true southern cooking. Inclined towards health and fitness (just look at him!) He also learned how to lighten it up, so that his fried chicken and waffles (~\$12, a dish said to have originated with Sylvie's in Harlem) are a true celebration of golden crispness and crunch that will not weigh you down.

"Better than Roscoe's House of Chicken and Waffles in Long Beach," one of my companions declared. A side of cheesy grits almost belie the name; far from the shuddering glutinous mess of yesteryear ladled up by Dixie-singing in-laws in their cups, Priester's grits are fluffy as a runny soufflé, and his coleslaw is fresh and tangy instead of its mayo-messy counterpart found in other restaurants.

Not surprising from the accomplished, creative chef who brought new life, fun and flavor to the restaurant at the Richards St. YWCA and jolted the Top of Waikiki out of senescence and back into vogue before leading the Honolulu lunch wagon revival with his Soul Patrol truck, which fed the homeless in Wai'anae and the hungry in downtown Honolulu.

Now, having come to rest in early 2011 in this bright, warm little bungalow in the Kaimuki restaurant square at St. Louis Drive and Wai'alae, the chef, a new father and a welcoming host, is usually on hand to hang around and chat, showing a genuine interest in his patrons, local and visitor, and making recommendations as requested. Today he advises the jambalaya (\$20) rather than the gumbo (\$18) for brunch, and the spicy seafood, chicken and sausage dish (\$14) is just the ticket with a side of local organic collard greens, followed by sweet potato pie (\$5). Also recommended for brunch, besides the butter-milk fried chicken and waffles that my two companions scarf down, are buttermilk biscuits (~\$5), cornbread (\$6), pecan pie (\$5) and banana pudding with chocolate-infused whipped cream (\$6). Seriously. It's the holidays, right? You can always come back later for the ribs.

Honolulu Weekly restaurant reviewers dine anonymously, editorial integrity being our first priority. Reviewers may visit the establishment more than once, and any interviews with restaurant staff are conducted after the visits. We do not run photos of the reviewers, and the Weekly pays the tab. The reviews are not influenced by the purchase of advertising or other incentives.

IRIFUNE RESTAURANT

563 Kapahulu Ave.
737-1141

Open Tue.-Sat. 11:30AM—1:30PM;
Sun. 5:30PM—9:30PM

BYOB

PACIFIC SOUL

3040 Wai'alae Ave., across from
City Mill, pacificsoulhawaii.com,
735-7685

Open Tue.-Thu. 11AM-9PM, Fri. &
Sat. 11AM-10PM, Sun. 10:30AM-8PM

BYOB

bambutwo
CAFE + MARTINI LOUNGE

pau hana

\$3.50 Martinis — All Day, Every Day

1144 Bethel Street | bambutwo.com

Buy \$25
gift certificate, get
\$5 gift certificate
bonus



OPEN
MON-TH 6:30AM-6:30PM
FRI 6:30AM-4PM
SAT 7AM-1PM
1088 BISHOP ST. #101 521-6699
WWW.BEACHBUMCAFE.COM



Christmas is a
time for SOUL,
so join us for a
special edition
of our
Sunday Brunch
on 12/25.

Call 735-7685 now
for reservations.

3040 Wai'alae Avenue • 735-7685
Tues-Thurs: 11am-9pm
Fri: 11am-10pm Sun: 10:30am-8pm

hirashi
EURASIAN TAPAS

FOUR COURSE
CHRISTMAS
MENU AVAILABLE

SATURDAY, 12/24
& SUNDAY, 12/25

IN ADDITION TO OUR
REGULAR MENU.

First Course

Sauteed Japanese Kinki
Big Island smoked pork,
Ho Farm's long beans
Red ginger, chive oil & beurre
blanc on capellini pasta

Second Course

Lump Crab Cake
Haula tomato concasse,
Kahuku corn & avocado puree

Main Course (choice of one)

Marinated Kona
Kampachi - \$52
Pasta, Shintaku haricot verts,
brussel sprouts & caper soy
butter sauce

Sous Vide of Kulana Beef
Tenderloin - \$54

Kula baby romaine lettuce,
shiso & chorizo bean stew,
red potato

Sweet Course

Duo of Desserts
Macha Cake-azuki bean puree
& strawberry anglaise
Li Hing "Pina Colada"-li hing
cloud & coconut pineapple
granita

Restaurant Row
500 Ala Moana Blvd.

533.4476

www.dkrestaurants.com

Monsoon India
Authentic Indian Cuisine

Sunday Lunch Buffet

All-You-Can-Eat

Featuring:

- Indian House Salad
- Chana Masala
- Aloo Mutter
- Cabbage Curry
- Daal Curry (Yellow Lentil Curry)
- Rajwain Curry (Kidney Bean Curry)
- Potato / Cauliflower Pakora
- Lamb Vindaloo
- Chicken Tikka Masala
- Tandoori Chicken
- Choice of Desserts: Gajar Halwa, Rice Pudding, and Kesari
- Endless Naan

\$34.95

(plus tax & gratuity)

Ala Carte Menu Also Available

Validated Parking • B.Y.O.B.

Reservations: 941-5111

Monday - Saturday 4:30 p.m. - 10:00 p.m.
and Sunday from Noon - 9 p.m.

1778 Ala Moana Blvd., Discovery Bay Center
(next to Buffalo Wild Wings)

FREE WILL ASTROLOGY

by Rob Breznsky

ARIES

(March 21-April 19):

Jim Moran (1908-1999) called himself a publicist, but I regard him as a pioneer performance artist. At various times in his colorful career, he led a bull through a china shop in New York City, changed horses in midstream in Nevada's Truckee River and looked for a needle in a haystack until he found it. You might want to draw inspiration from his work in the coming weeks, Aries. You will not only have a knack for mutating clichés and scrambling conventional wisdom. In doing so, you could also pull off feats that might seem improbable.

TAURUS

(April 20-May 20):

One possible way to tap into the current cosmic opportunities would be to seek out *storegasms*—the ecstatic feelings released while exercising one's buyological urges in consumer temples crammed with an obscene abundance of colorful material goods. But I advise you against doing that. It wouldn't be a very creative solution to the epic yearnings that are welling up in your down-below-and-deep-inside parts. Instead, I offer a potentially far more satisfying recommendation: Routinely maneuver yourself into positions where your primal self will be filled up with sublime wonder, mysterious beauty and smart love.

GEMINI

(May 21-June 20):

I'm not an either-or type of person. I don't think that there are just two sides of every story and that you have to align yourself with one or the other. That's one reason why, as an American voter, I reject the idea that I must either sympathize with the goals of the Democratic Party or the Republican Party. It's also why I'm bored by the trumped-up squabble between the atheists and the fundamentalist Christians, and the predictable arguments between dogmatic cynics and fanatical optimists. I urge you to try my approach in the coming weeks, Gemini. Find a third way between any two sides that tend to divide the world into Us against Them.

CANCER

(June 21-July 22):

No one actually looks like the retouched images of the seemingly perfect people in sexy ads. It's impossible to be that flawless, with no wrinkles, blemishes and scars. Acknowledging this fact, the iconic supermodel Cindy Crawford once said, "I wish I looked like Cindy Crawford." Our unconscious inclination to compare ourselves to such unrealistic ideals is the source of a lot of mischief in our lives. Your assignment in the coming week, Cancerian, is to divest yourself, as much as possible, of all standards of perfection that alienate you from yourself or cause you to feel shame about who you really are.

LEO

(July 23-Aug. 22):

Barney Oldfield (1878-1946) was a pioneer car racer who was the first ever to run a 100-mile-per-hour lap at the Indianapolis 500. He was a much better driver while setting speed records and beating other cars on racetracks than he was at moseying through regular street traffic. Why? He said he couldn't think clearly if he was traveling at less than 100 miles per hour. I suspect you may temporarily have a similar quirk, Leo—not in the way you drive but rather in the way you live and work and play. To achieve maximum lucidity, you may have to be moving pretty fast.

VIRGO

(Aug. 23-Sept. 22):

Back in August 2010, there was an 11-day traffic snarl on a Chinese highway. At one point the stuck vehicles stretched for 60 miles and inched along at the rate of a mile per day. In that light, your current jam isn't so bad. It may be true that your progress has been glacial lately, but at least you've had a bed to sleep in and a bathroom to use, which is more than can be said for the stranded Chinese motorists and truck drivers. Plus I'm predicting that your own personal jam is going to

disperse sometime in the next few days. Be prepped and ready to rumble on.

LIBRA

(Sept. 23-Oct. 22):

Here's a joke from Woody Allen's movie *Annie Hall*: "Two elderly women are in a Catskills Mountain resort and one of them says: 'Boy, the food at this place is really terrible.' The other one says, 'Yeah, I know—and such small portions.'" Is it possible you're acting like the second woman, Libra? Are you being influenced to find fault with something that you actually kind of like? Are you ignoring your own preferences simply because you think it might help you to be close to those whose preferences are different? I urge you not to do that in the coming week. According to my analysis of the astrological omens, it's very important that you know how you feel and stay true to your feelings.

SCORPIO

(Oct. 23-Nov. 21):

The Los Angeles school district dramatically downgraded the role that homework plays in the life of its students. Beginning this fall, the assignments kids do after school account for only 10 percent of their final grade. As far as you're concerned, Scorpio, that's not a good trend to follow. In fact, I think you should go in the opposite direction. During the enhanced learning phase you're now entering, your homework will be more important than ever. In order to take full advantage of the rich educational opportunities that will be flowing your way, you should do lots of research, think hard about what it all means and in general be very well-prepared. The period between late 2011 and early 2012 is homework time for you.

SAGITTARIUS

(Nov. 22-Dec. 21):

The Amazon is the second longest river in the world, and has such a voluminous flow that it comprises 20 percent of all river water in the world. And yet there is not a single bridge that crosses it. I love that fact. It comforts and inspires me to know that humans have not conquered this natural wonder. Which leads me to my advice for you this week, Sagittarius. Please consider keeping the wild part of you wild. It's certainly not at all crucial for you to civilize it.

CAPRICORN

(Dec. 22-Jan. 19):

Emotion is the resource we treasure when we're young, says poet Naomi Shihab Nye, but eventually what we thrive on even more is energy. "Energy is everything," she says, "not emotion." And where does energy come from? Often, from juxtaposition, says Nye. "Rubbing happy and sad together creates energy; rubbing one image against another." That's what she loves about being a poet. Her specialty is to conjure magic through juxtaposition. "Our brains are desperate for that kind of energy," she concludes. I mention this, Capricorn, because the coming weeks will be prime time for you to drum up the vigor and vitality that come from mixing and melding and merging, particularly in unexpected or uncommon ways.

AQUARIUS

(Jan. 20-Feb. 18):

Studies show that if you're sharing a meal with one other person, you're likely to eat up to 35 percent more food than if you're dining alone. If you sit down at the table with four companions, you'll probably devour 75 percent extra, and if you're with a party of eight, your consumption may double. As I contemplate your horoscope, these facts give me pause. While I do suspect you will benefit from socializing more intensely and prolifically, I also think it'll be important to raise your commitment to your own physical health. Can you figure out a way to do both, please?

PISCES

(Feb. 19-March 20):

"Were it not for the leaping and twinkling of the soul," said psychologist Carl Jung, "human beings would rot away in their greatest passion, idleness." To that edgy observation I would add this corollary: One of the greatest and most secret forms of idleness comes from being endlessly busy at unimportant tasks. If you are way too wrapped up in doing a thousand little things that have nothing to do with your life's primary mission, you are, in my opinion, profoundly idle. All the above is prelude for the climactic advice of this week's horoscope, which goes as follows: Give everything you have to stimulate the leaping and twinkling of your soul.

Go to RealAstrology.com to check out Rob Breznsky's EXPANDED WEEKLY AUDIO HOROSCOPES and DAILY TEXT MESSAGE HOROSCOPES. The audio horoscopes are also available by phone at 1-877-873-4888 or 1-900-950-7700.

Classified



COPACABANA Residential Cleaning

CLEANING HAS NEVER BEEN THIS EASY
One phone call, two hours later,
your house will be spotless!

(808) 286-3761 / www.wemakemshine.com

Legal

RONALD W. BEALS, Chief Counsel
DAVID GOSSAGE, Deputy Chief Counsel
LUCILLE Y. BACA, Assistant Chief Counsel
HELEN CRAMER, State Bar No. 238421
595 Market Street, Suite 1700, San Francisco, CA 94105

Telephone: (415) 904-5700, Facsimile: (415) 904-2333
Attorneys for Plaintiff THE PEOPLE OF THE STATE OF CALIFORNIA,
acting by and through the Department of Transportation

SUPERIOR COURT OF THE STATE OF CALIFORNIA
FOR THE COUNTY OF SAN BENITO

THE PEOPLE OF THE STATE OF
CALIFORNIA,
acting by and through
the Department of
Transportation, Plaintiff,
v. JEFFREY MERRITT WILSON,

et al., Defendants.

Case No. CU-11-00119
Parcels 11287-1, 11287-2
SUMMONS

Action Filed: September 15, 2011
Trial Date: Not Set

NOTICE TO DEFENDANTS:

a. Jeffrey Merritt Wilson.
b. Teresa Jean Moore.

YOU ARE HEREBY SUED BY PLAINTIFF:

THE PEOPLE OF THE STATE OF CALIFORNIA, acting by and through the Department of Transportation.

You have 30 CALENDAR DAYS after this summons and legal papers are served on you to file a written response at this court and have a copy served on the plaintiff. A letter or phone call will not protect you. Your written response must be in proper legal form if you want the court to hear your case. There may be a court form that you can use for your response. You can find these court forms and more information at the California Courts Online Self-Help Center (www.courtinfo.ca.gov/selfhelp), your county law library, or the courthouse nearest you. If you cannot pay the filing fee, ask the court clerk for a fee waiver form. If you do not file your response on time, you may lose the case by default, and your wages, money, and property may be taken without further warning from the court.

There are other legal requirements. You may want to call an attorney right away. If you do not know an attorney, you may want to call an attorney referral service. If you cannot afford an attorney, you may be eligible for free legal services from a nonprofit legal services program. You can locate these nonprofit groups at the California Legal Service website (www.lawhelpcalifornia.org), the California Courts Online Self-Help Center (www.courtinfo.ca.gov/selfhelp), or by contacting your local court or county bar association.

The name and address of the court is: Superior Court of California, County of San Benito, 440 Fifth Street, Hollister, California 95023.

Plaintiff THE PEOPLE OF THE STATE OF CALIFORNIA, acting by and through the Department of Transportation, has brought this proceeding to acquire real property, or interests in real property, for a public use, namely, for state highway purposes.

The real property, or interests in real property, are situated in the County of San Benito, State of California, and are described as follows:

That portion of Parcel 4 according to the map filed July 2, 1987 in Book 7 of Parcel Maps at Page 28 in the Recorder's Office of San Benito County, lying southerly and southeasterly of the following described lines:

PARCEL 11287-1: FEE

BEGINNING at the 3/4" iron pipe tagged "RCE 16358" found at the most southerly corner of Parcel 3 shown on the map filed August 22, 1980 in Book 5 of Parcel Maps at Page 57, records of said County, said pipe bears S 31°41'09" W, 352.41 feet from the 3/4" iron pipe tagged "RCE 16358" found at the southeasterly corner of said Parcel 3;

THENCE (1), S 64°44'44" W, 137.11 feet;

THENCE (2), S 79°59'22" W, 212.77 feet;

THENCE (3), N 63°11'19" W, 386.72 feet to the beginning of a curve concave to the south having a radius of 200.00 feet;

THENCE (4), northwesterly, along said curve a distance of 190.51 feet through a central angle of 54°34'39";

THENCE (5), S 62°14'02" W, 239.96 feet to the point that bears S 63°59'19" E, 714.82 feet from the 3/4" pipe tagged "RCE 16358" found at northwesterly corner of parcel 3 shown on the map filed July 30, 1982 in Book 6 of Parcel Maps at Page 17, records of said County;

THENCE (6), S 48°14'50" W, 465.38 feet to the point that bears S 25°20'30" E, 689.76 feet from last said 3/4" pipe.

Lands abutting said freeway shall have no right or easement of access thereto; provided, however, that part of the remaining lands shall abut upon and have access, as hereinafter provided, to an adjoining frontage road which will be connected to the main thoroughfare of the freeway only at such points as may be established by public authority.

The said right of access to said frontage road is hereby expressly limited to course 1 and the easterly 49.39 feet of course 2 described above.

TOGETHER WITH all of the existing improvements which are located partially within and partially outside the boundaries of the above described Parcel 11287-1.

ALSO TOGETHER WITH a temporary easement, to expire on December 31, 2018 over and across said Parcel 4 shown on said Book 7 of Parcel Maps at Page 28 for the purpose of removing existing improvements.

TOGETHER WITH a temporary easement for construction purposes upon, over, and across that portion of Parcel 4 according to the map filed July 2, 1987 in Book 7 of Parcel Maps at Page 28 in the Recorder's Office of San Benito County, described as follows:

PARCEL 11287-2: TEMPORARY CONSTRUCTION EASEMENT

A strip of land 10.00 feet wide, the generally northerly line of which is parallel with and 10.00 feet northwesterly of the above described courses 1 and 2.

Said temporary easement shall terminate on completion of construction, but in any event, shall terminate no later than December 31, 2018.

Bearings and distances used herein are based on the California Coordinate System of 1983, Zone 4. Multiply distances by 1.00005666 to obtain ground level distances.

END OF DESCRIPTION

YOU ARE HEREBY NOTIFIED that unless you file with the Clerk a written responsive pleading to the Complaint in Eminent Domain as required above, plaintiff will apply to the court for the relief demanded in the Complaint.

Marketplace

FOR SALE

OLD HAWAIIAN COINS,
TOKENS, STAMPS
& DOCUMENTS
M-F 9-5 SAT 10-4

531-6251

Hawaiian Islands Stamp & Coin
1111 Bishop St., Downtown



INSTANT CASH!
For Anything of Value

Husbands, Wives, Kids and Pets Excluded

Open 7 Days a Week **Mon-Sat 8-6pm Sun 8-2pm**
Family Pawn Shop & Payday Loans In Waipahu
676-8800 94-220-C Leokane Waipahu
(Behind HC Drive-In)

Miscellaneous

FRIDAY NIGHT HOLIDAY

SALE!!!!

THH's deeply discounted
on Dec. 16th only.
Call 1-800-291-1359
xx..Bz..Sl..Tk..xx

**Help people
de-stress,
for less.
CALL 528-
1475 X48**

Service Directory

Adoption

PREGNANT? CONSIDERING ADOPTION? Talk with caring agency specializing in matching Birthmothers with Families nationwide. LIVING EXPENSES PAID. Call 24/7 Abby's One True Gift Adoptions 866-413-6293 (Void in IL-Illinois) (AAN CAN)

Cleaning

CLEAN WINDOWS
SINCE 1977
Ron Albert,
Owner
599-8779

Real Estate

Rentals Wanted

WANTED TO RENT
**House in Honolulu for
mature, well-established
couple.**
Contact us
Michicat01@gmail.com

Rooms For Rent

FURNISHED ROOM
for Rent. Pahoa Valley
\$650/month
Reduced rent for work
C: 429-0800 H:521-3283

Career Source

Work from Home

Paid In Advance! Make \$1000 a Week mailing brochures from home! Guaranteed Income! FREE Supplies! No experience required. Start Immediately! www.home-mailerprogram.net (AAN CAN)

Nude Models Wanted

**PHOTOGRAPHY
MODELS WANTED!**
\$100/hr. Requires tasteful nudity - NO PORN! Females 18-25. Please call 623-4574.

Adult

Adult Personals

AshleyMadison.com 100% FREE for Women! Every 30 seconds another woman joins AshleyMadison.com looking to have a Discreet Affair. Try it FREE today. Featured in: TIME, New York Times & USA Today. (AAN CAN)

Have a Guaranteed Affair at AshleyMadison.com Stop having Sex with Escorts who've been with 1000s of other Men. Meet real women who are trapped in sexless Marriages and need to find sex on the side. Featured on: Ellen, Tyra & The View. (AAN CAN)

Companion- ship Services

The #1 Source for Mutually Beneficial Arrangements. Tons of BROKE college girls and SINGLE MOMS looking for Mutually Beneficial Arrangements. Find Her Today at ArrangementFinders.com. Featured in: USA Today and MAXIM

The #1 Source for Mutually Beneficial Arrangements. Tons of BROKE college girls and SINGLE MOMS looking for Mutually Beneficial Arrangements. Find Her Today at ArrangementFinders.com. Featured in: USA Today and MAXIM

ISLAND WISE



PHOTO BY V.

Artisan Oasis

Chai Studio is a charming pop of color to Kaka'ako's otherwise steely color wheel of a city. Handcrafted flair is on full display in this one-shop bazaar—turquoise silk tunics crafted in India (\$105), hand-embroidered bags from the Hmong Hill tribes of Thailand (\$88), Big Island-made Dirty Soaps (\$3–\$8)—all laid out before you like a local magic carpet of discoveries. If you know someone whose apartment is just screaming for some Kantha vintage cotton sari throw pillows (\$30–\$84), Chai's marks the spot. No passport needed. 675 Auahi St., chai-studio.com, follow @chaistudiohnl



PHOTO BY V.

Seeds of Imagination

What's already a popular venture in other metro cities, coworking spaces are slowly sprouting up in Honolulu, and not surprisingly within Kaka'ako too, which has a high commuter spirit. Similar to the coffice, except more formal and structured, **The Green House** offers monthly memberships (\$150–\$300) for the budding Zuckerberg in your social network that include part- and full-time perks: internet access, member-only workshops, desk and lab space and a thriving creative community. 685 Auahi St., higreenhouse.com, follow @higreenhouse

HOLIDAY GUIDE TO KAKA'AKO

It's a 600-acre commercial and retail area that spans Pi'ikoi, Ala Moana, Punchbowl and more. In this guide, we focus our sights on Kaka'ako's industrial warehouse district, an emerging center for innovative businesses, creative commerce and the idiosyncratic piece of art. Just another neigh-bore-hood? Hardly. Kaka'ako: It's not going to happen. It already is. —Matthew Dekneef

Kaka'ako Map

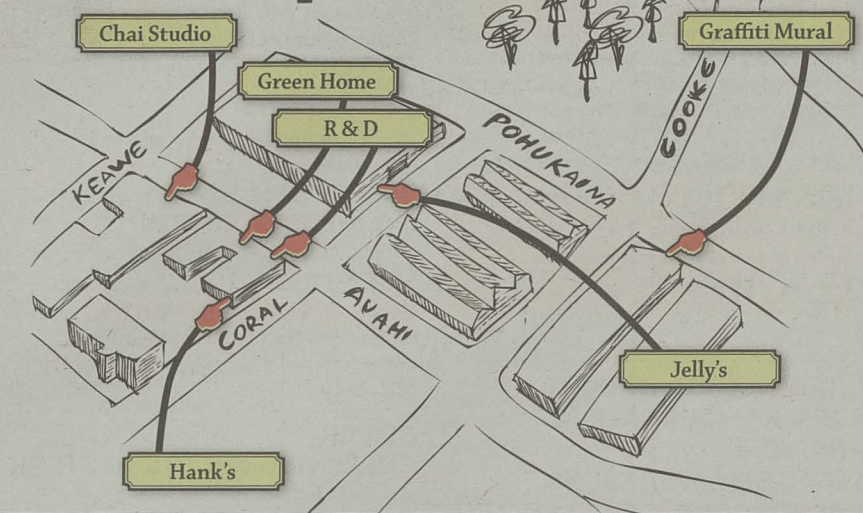


ILLUSTRATION BY DANA PARESA

Mint Condition

For music lovers, **Jelly's** offers what can be a hit-or-miss record collection, but that's part of the vinyl finger-flicking fun. Locally-owned and operated, it's one of the few independent book and music shops left on the island where you can come across those 12" singles (~\$2.75) crucial to spicing up your holiday party's playlist—y'know, Whitney Houston, Al Green, Tower of Power, essentials! 670 Auahi St., jellyshawaii.com, follow @JellysHawaii



MATTHEW DEKNEEF

Book Appétit

T rue to its uniform design—a matrix of square bookshelves and shape-shifting desks and chairs—**R&D** is a physical Rubik's cube of utility. This no-frills coffee joint is all negative space designed for positive productivity. Stop in for a cup of Stumptown, collaborate courtesy of their comp Wi-Fi and listen to what can only be referred to as the Holy Riot Grrrrrail of Coffee Shop Radio: Morrissey, Bowie, Eno, etc. This holiday, use R&D to gift gorgeous art and design-related titles (~\$39.99) from their carefully selected library that runs the Dewey Decimals of Richard Prince and Carine Roitfeld to momofuku and Alice Waters. 691 Auahi St., interislandterminal.org, follow @RnDHI



MATTHEW DEKNEEF

Design galore.

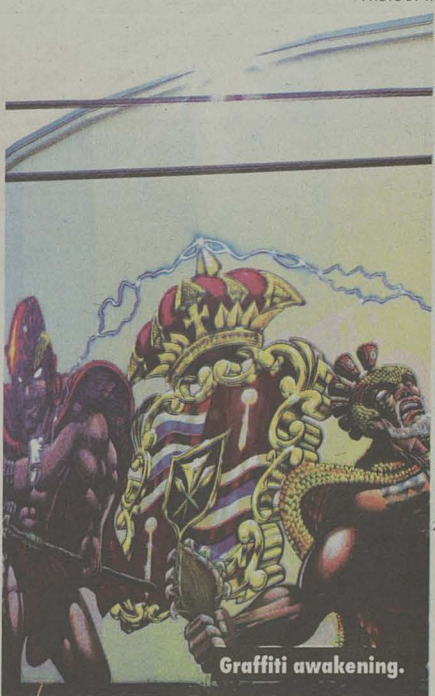


COURTESY HANK'S

Doggie Style

Lobster sausage. Alligator andouille. Duck and foie gras in a bun. The daily specials (~\$8.50) at **Hank's Haute Dogs** read like a creative think tank of wieners proving not all all-American fast food menus need a snooze button attached. Take a shopping timeout and wake up your afternoon with their reindeer sausage dogs (that's right, Rudolph had a very shiny nose...) or take a stab at their other hot dogs in HD. 324 Coral St., hankshautedogs.com, follow @hankshautedogs

PHOTO BY V.



Graffiti awakening.

Mural Integrity

An **Estria** and **Prime** location. Across the vacant Pipeline Cafe, this co-signed graffiti mural by two local artists of 808 Urban sprays a piece of life back into an otherwise despondent corner in Kaka'ako. The energetic display acts on behalf of Kamehameha School's vision to raise art awareness, education and culture in the area. Cross streets Pohukaina and Cooke

Tired of being curled up in that fetal position?

Time to get up, take action and expand your business.

Call us at the *Weekly*.

We have experienced pros who will work with you & your business.

Call 528-1475: Colleen Knudsen x14 or Laurie Carlson x17

FIND IT HERE Back Page

We'll sell the shirt off your back, or anything else. Call 808-528-1475

ENCHANTED HOLIDAYS!

Enchanted Pleasure

www.ePleasureHawaii.com
Low Prices • Free Shipping

Shop online or use our **FREE Personal Shopper Service** by appointment to find the perfect gift

Use Promo Code: **#ISTORE**
Get **10% off first online order** - combinable
Call 808-295-4641 for an appointment

Volunteers are needed to help prepare taxes for Hawaii's low-income families

VOLUNTEER!

Anyone willing to do a little training can become a certified volunteer tax return preparer. Classroom and online training available. Other volunteer opportunities, such as site coordinators, translators, and appointment schedulers are also available.

808.548.1012 | info@hawaiiataxhelp.org
SIGN-UP ONLINE: <http://hawaiiataxhelp.org/volunteer>

Family and Individual Self-Sufficiency Program
HACBED Hawaii's Alliance for Community-Based Economic Development

WATCH REPAIR & OVERHAUL
(all Brand Name Watches), Battery Replacement & Reseal, (We warranty our major service repairs),
JEWELRY REPAIR & CUSTOM DESIGNS
Free Estimates • **EVELYN'S COLLECTION**
Fine Jewelry & Watches (since 1978)
Pacific Guardian Center
733 Bishop St. #190 538-7400

SHIPTOHAWAII
Tired of paying too much for Hawaii shipping?
check out shiptohawaii.com

LIQUOR COLLECTION
Honolulu's biggest little liquor store
Ward Warehouse

CHAI STUDIO FOR GREAT
Christmas gifts--local and exotic
in the heart of Kakaako
536-4543

OLIVER
GREEK AND MIDDLE EASTERN
specialty foods
best prices--best selection
Next to the Olive Tree Kahala

Tincan Mailman
VINTAGE HAWAIIANA



1026 Nu'uuanu Ave. • 524-3009
tincanmailman.net

DOWNTOWN COFFEE
900 Fort Street Mall
latte = Hawaiian espresso + local milk + ♥

NEED STRESS REDUCTION?
Try Body + Mind Spa
2 locations--downtown, Alea
call 524-8588

GRANTWRITER SOUGHT
FOR HW JOURNALISM
PROJECTS.
PLEASE EMAIL RESUME/
BACKGROUND/COVER LETTER
lvc@honoluluweekly.com



Peace on earth

The Pegge Hopper Gallery
1164 Nuuanu Avenue • 524-1160 • Tue-Fri 11-4 Sat 11-3

SoulTrex
Hawaii's Outdoor Adventure Store

Now in Hawaii AND ONLY at SoulTrex...

Now you can buy the LifeStraw Personal Water Filter in Hawaii. Come see why **eartheasy** chose SoulTrex to distribute this award winning product. Regular retail \$19.95.



And the Piggyback Rider Child Carrier for kids over 2 1/2 years old up to 60lbs. Regular retail \$79.99.



Your source for innovative outdoor products for your family

WINDWARD MALL (Kaneohe), Theater Wing, 2nd Floor 808 247 8735 www.soultrexinc.com
Extended holiday hours 9am to 10pm

COLUMBIA PICTURES

Metro Goldwyn Mayer
TRADE MARK

Honolulu Weekly

Invite you and a guest to see

THE GIRL WITH THE DRAGON TATTOO

Screening will be held on
Monday, Dec 19 at 7pm
Ward 16 • 1044 Auahi Street

FROM THE INTERNATIONAL BEST-SELLING TRILOGY



DANIEL CRAIG ROONEY MARRA
THE GIRL WITH THE DRAGON TATTOO

12.21

For your chance to receive a complimentary advance screening ticket good for two, visit honoluluweekly.com and enter to win.

Limit one pass per person/per household, while supplies last. No purchase necessary. Employees and their agencies are not eligible. No phone calls and no walk-ins, please. Envelopes will not be mailed back if not used. Seats are limited and available on a first-come, first-served basis. Pass does not guarantee seating. No cell phones will be allowed in the theater.

OPENS IN THEATERS
DEC 21

AS ANYBODY WHO STILL BELIEVES IN SANTA CLAUS KNOWS,
THE BEST GIFTS COME BY AIR.



go!Mokulele is helping families connect. You can too. Donate to either Kapi'olani Medical Center for Women & Children or the Lokahi Giving Project, and get a 10% discount on any go!Mokulele flight during the holidays. Plus we'll provide free a round-trip for a local ohana so they can visit loved ones on a neighbor island.
iflygo.com

go!Mokulele
Hawaii's Low Fare Airline

KAPI'OLANI HEALTH FOUNDATION
LOKAHI

For terms & conditions please visit us at www.iflygo.com