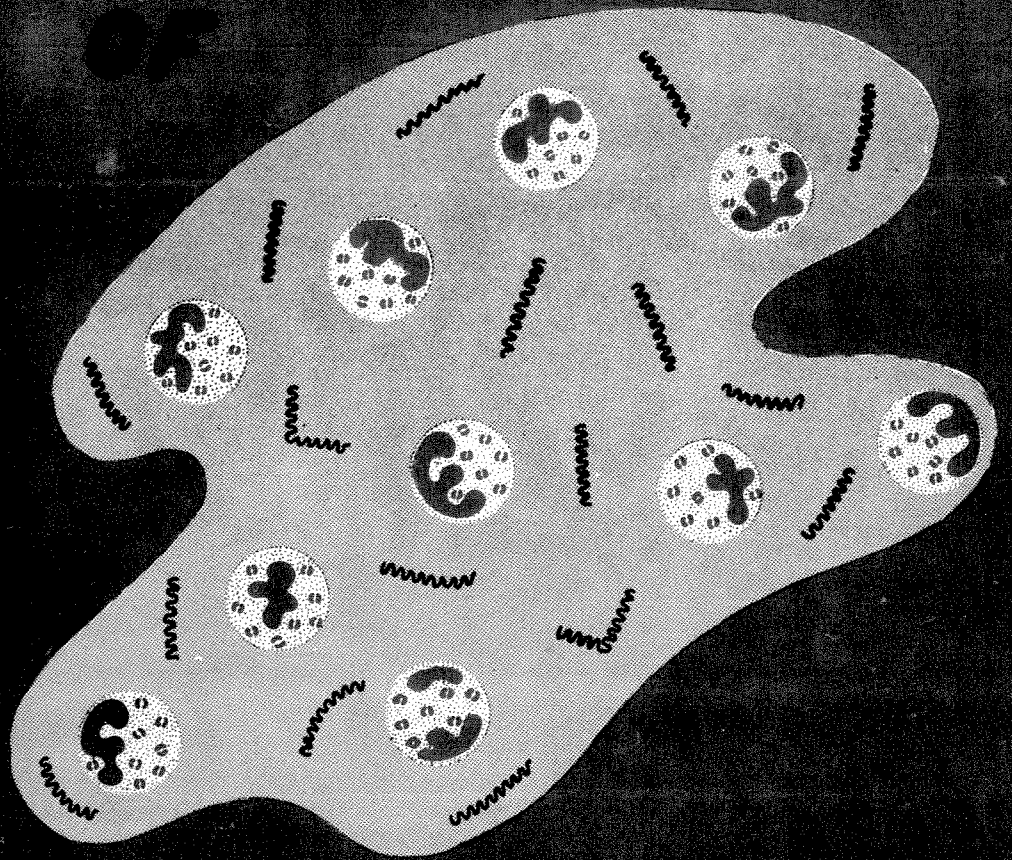


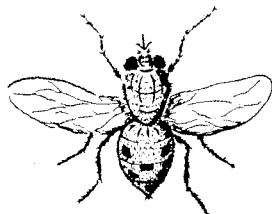
# THE STORY OF



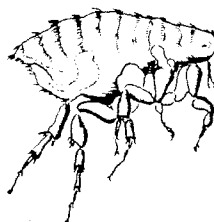
END

## DO YOU KNOW HOW DISEASES ARE SPREAD?

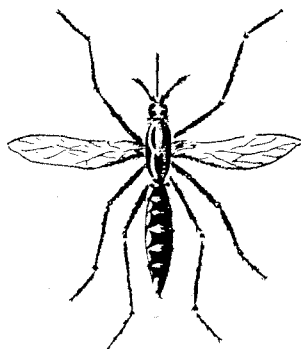
DISEASES ARE SPREAD IN MANY WAYS.



SOMETIMES WE GET DISEASES FROM  
FLIES, FLEAS AND MOSQUITOES.

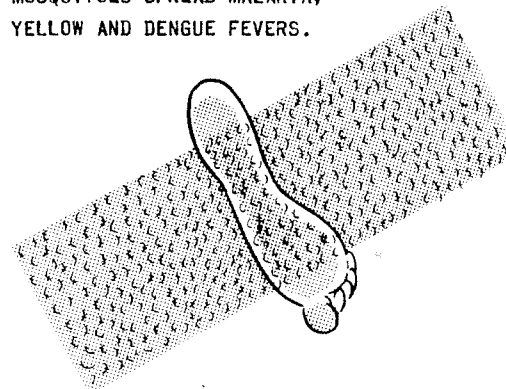


RATS AND FLEAS SPREAD BUBONIC  
PLAGUE AND TYPHUS FEVER.



MOSQUITOES SPREAD MALARIA,  
YELLOW AND DENGUE FEVERS.

SOME DISEASES ARE CAUSED BY TINY  
WORMS THAT ENTER THE BODY SUCH  
AS TAPEWORMS, OR HOOKWORMS.

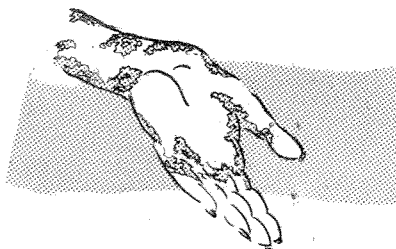


DO YOU KNOW HOW DISEASES ARE SPREAD?

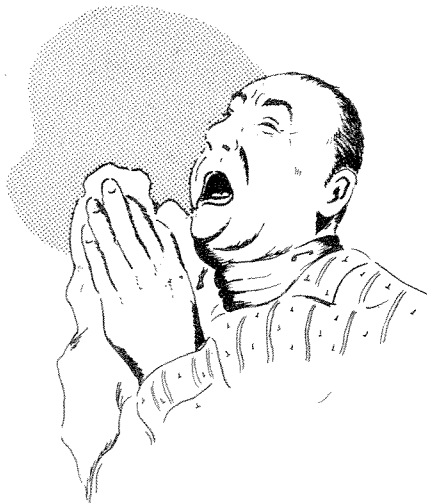


FOOD OR WATER CAN ALSO SPREAD SOME DISEASES AS DYSENTERY AND TYPHOID FEVER.

WE ALSO GET SOME DISEASES BY TOUCHING A PERSON WITH THE "ITCH", RINGWORM, OR IMPETIGO.

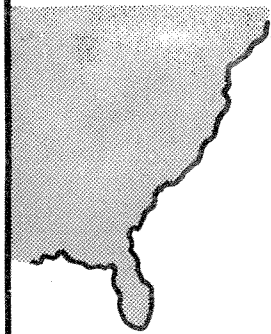


AND THEN, THERE ARE GERMS THAT PASS FROM ONE PERSON TO ANOTHER BY COUGHING OR SNEEZING, CAUSING COLDS, DIPHTHERIA, PNEUMONIA AND TB.

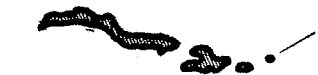


STILL OTHER DISEASES ARE PASSED ON BY VERY CLOSE CONTACT AS SEXUAL INTERCOURSE OR KISSING. THESE ARE THE VENEREAL DISEASES, OR AS WE WILL CALL THEM HERE VD. THERE ARE FIVE OF THESE DISEASES BUT THE MOST COMMON ONES IN HAWAII ARE SYPHILIS AND GONORRHEA.

SCIENCE HAS



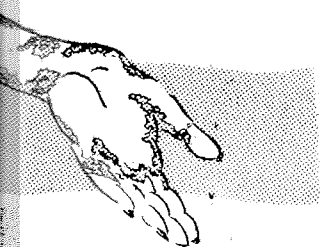
...  
HAVE E  
WHEN



THEN IN 1905, SCHAUD  
CAUSE OF THE DISEASE  
VERY TINY, CORKSCREW

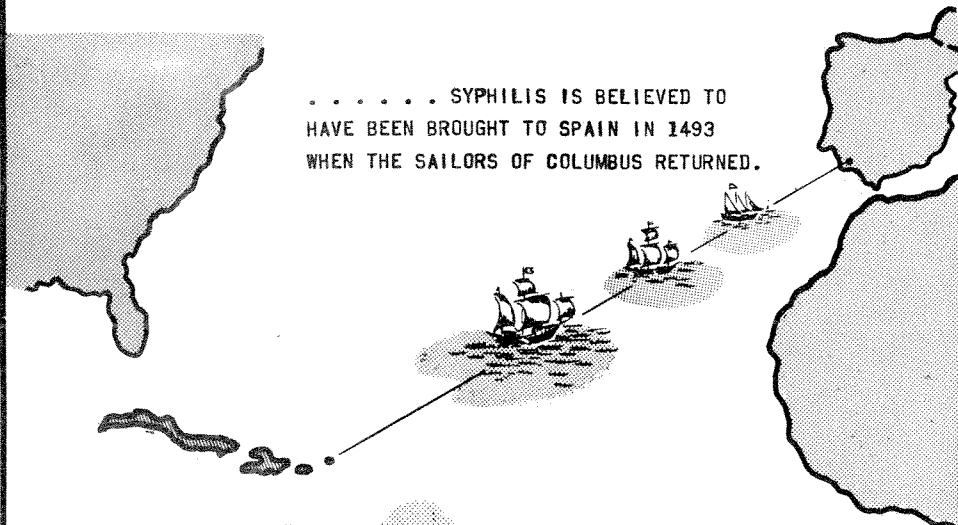
ARE SPREAD?

R WATER CAN ALSO SPREAD SOME  
ES AS DYSENTERY AND TYPHOID  
FEVER.

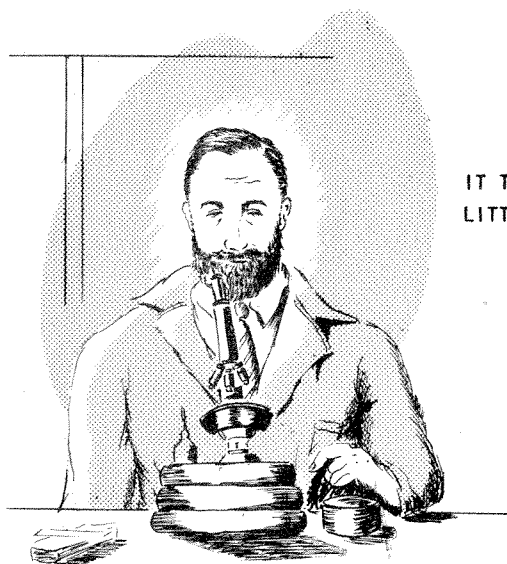


## SCIENCE HAS CONQUERED SYPHILIS

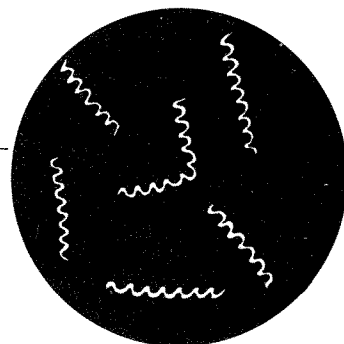
..... SYPHILIS IS BELIEVED TO  
HAVE BEEN BROUGHT TO SPAIN IN 1493  
WHEN THE SAILORS OF COLUMBUS RETURNED.



IT THEN QUICKLY SPREAD OVER EUROPE.  
LITTLE WAS KNOWN ABOUT THE DISEASE  
FOR SEVERAL HUNDRED YEARS.



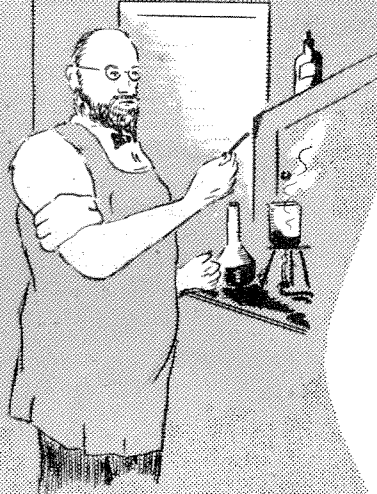
THEN IN 1905, SCHAUDINN FOUND THE  
CAUSE OF THE DISEASE. IT IS A  
VERY TINY, CORKSCREW SHAPED GERM.





# SCIENCE HAS CONQUERED SYPHILIS

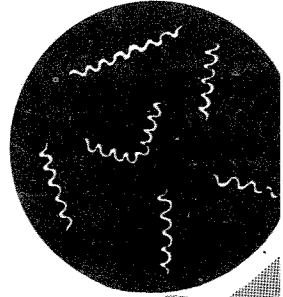
TWO YEARS LATER, IN 1907,  
WASSERMANN DEVELOPED A BLOOD  
TEST WHICH SHOWS WHETHER OR  
NOT SYPHILIS IS PRESENT IN  
THE BODY.



IN 1910, AFTER 605  
UNSUCCESSFUL EXPERIMENTS,  
EHRICH FOUND A CURE FOR  
SYPHILIS. IT HAS SINCE BEEN  
POPULARLY CALLED DR. EHRICH'S  
"MAGIC BULLET."

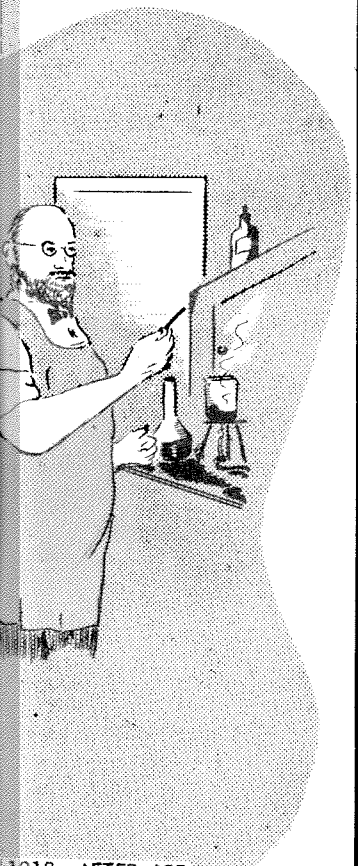
# BUT WE, 1 NOT YET CO

WE KNOW THE CAUSE --



WE KNOW THE WAY TO  
FIND OUT IF PEOPLE  
HAVE THE DISEASE --

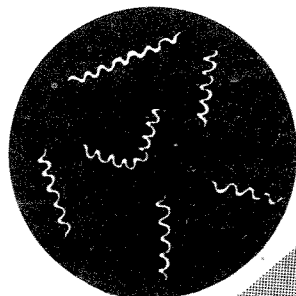
PHILIS



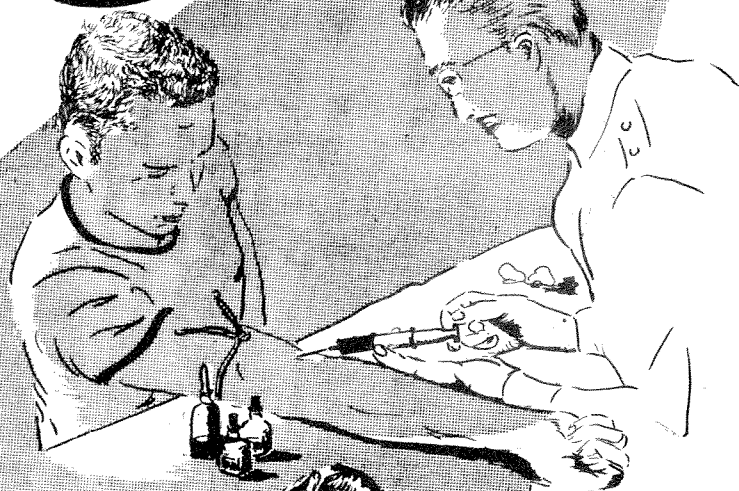
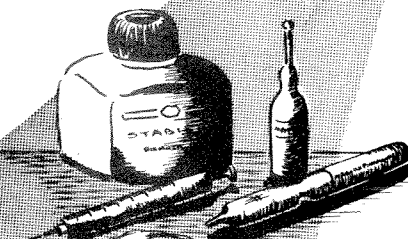
1910, AFTER 605  
SUCCESSFUL EXPERIMENTS,  
ERLICH FOUND A CURE FOR  
PHILIS. IT HAS SINCE BEEN  
ULARLY CALLED DR. EHRLICH'S  
AGIC BULLET."

# BUT WE, THE PEOPLE, HAVE NOT YET CONQUERED SYPHILIS

WE KNOW THE CAUSE --



WE HAVE A CURE --



WE KNOW THE WAY TO  
FIND OUT IF PEOPLE  
HAVE THE DISEASE --



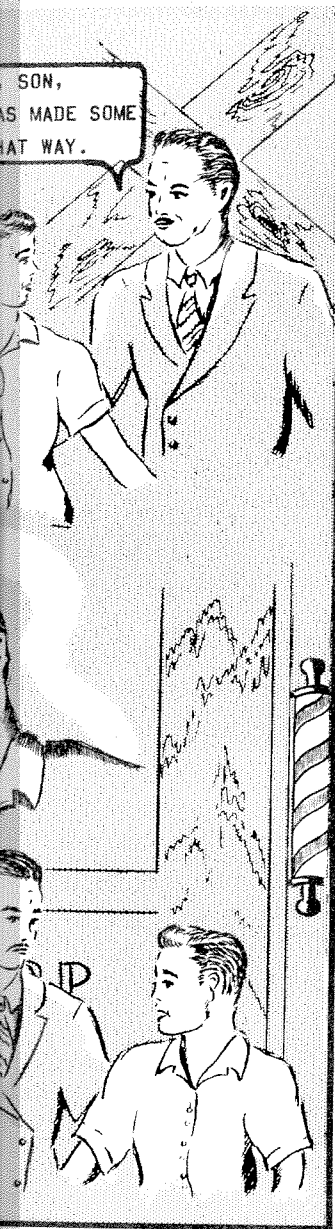
... AND YET, THE DISEASE  
HAS NOT BEEN WIPED OUT. WHY?  
BECAUSE PEOPLE DON'T KNOW THE  
FACTS ABOUT THE DISEASE.

# JIMMIE FINDS OUT HOW SERIOUS VD IS



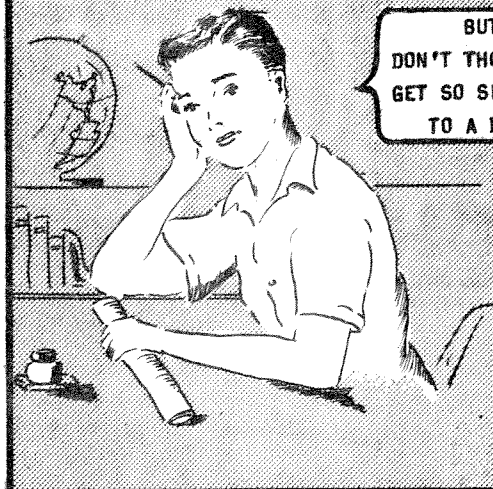
# HOW SERIOUS

SON,  
AS MADE SOME  
WHAT WAY.



## JIMMIE FINDS OUT HOW SERIOUS VD IS

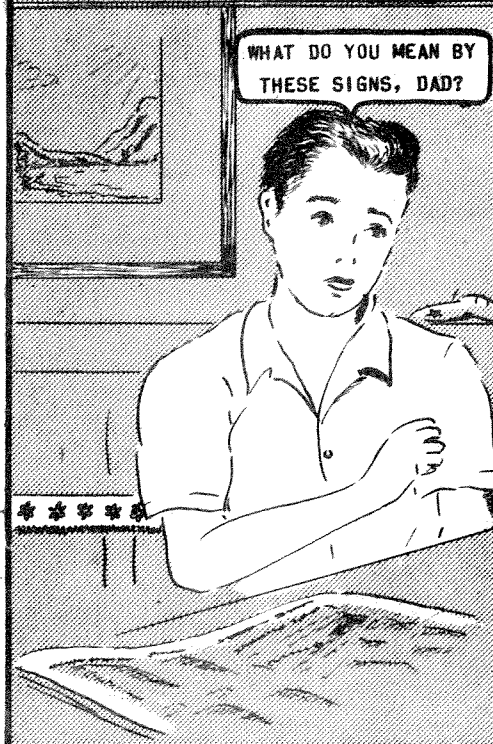
BUT, DAD,  
DON'T THOSE PEOPLE  
GET SO SICK THEY GO  
TO A DOCTOR?



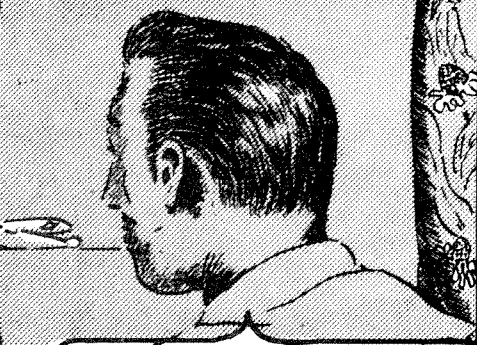
WITH SYPHILIS, THE PERSON  
MAY NOT REALIZE ANYTHING  
IS WRONG AS THERE MAY NOT  
BE ANY OUTWARD SIGNS, OR,  
IF THERE ARE, THEY MAY NOT  
BE NOTICED.



WHAT DO YOU MEAN BY  
THESE SIGNS, DAD?



OH, THERE ARE SEVERAL SIGNS.  
TWO OF THE MOST COMMON ONES  
ARE A SORE ON THE MOUTH OR  
SEX ORGANS THAT HASN'T HEALED  
IN A FEW WEEKS, OR A RASH  
ON THE BODY. OTHERS ARE PATCHY  
LOSS OF HAIR, FEVER AND PAINS  
IN THE BONES. BUT DON'T GET  
THE IDEA THAT A COLD SORE OR  
PIMPLES MEAN ONE HAS THE DISEASE.





JIMMIE FINDS OUT HOW SERIOUS VD IS

DOES EVERYONE WHO IS CRIPPLED  
LIKE THAT MAN HAVE SYPHILIS?

NO, JIMMIE, YOU MUSN'T  
THINK THAT. ONLY A DOCTOR  
CAN TELL WHO HAS SYPHILIS.  
WE DOCTORS USE MANY WAYS  
TO DECIDE WHETHER A PATIENT  
HAS SYPHILIS AS A PHYSICAL  
EXAMINATION AND BLOOD TEST.

DOES SYPHILIS DO OTHER THINGS TO  
A PERSON BESIDES CRIPPLING HIM?

YES. SYPHILIS IS A VERY SERIOUS  
DISEASE. IT MAY CAUSE INSANITY,  
BLINDNESS AND HEART DISEASE.  
MANY PEOPLE DIE FROM THE DISEASE  
BECAUSE THEY HAVE LET IT GO TOO  
LONG WITHOUT TREATMENT OR THEY  
HAVEN'T HAD ENOUGH TREATMENT.

JIMMIE FINDS

SYPHILIS AND GONORRHEA, USUALLY  
COME FROM SEX CONTACT, WITH  
A PERSON WHO HAS THE DISEASE.  
KISSING A PERSON WHO HAS THE  
SORES OF SYPHILIS ON THE LIPS  
MAY ALSO SPREAD THE DISEASE.

NO, IT'S AN ENTIRELY DIFFERENT  
DISEASE ALTHOUGH BOTH ARE  
USUALLY IN THE SAME WAY--TRANSMITTED  
BY SEX CONTACT. GONORRHEA HAS  
DIFFERENT SIGNS FROM SYPHILIS.

OUS VD IS

NO, JIMMIE, YOU MUSN'T  
THINK THAT. ONLY A DOCTOR  
CAN TELL WHO HAS SYPHILIS.  
WE DOCTORS USE MANY WAYS  
TO DECIDE WHETHER A PATIENT  
HAS SYPHILIS AS A PHYSICAL  
EXAMINATION AND BLOOD TEST.

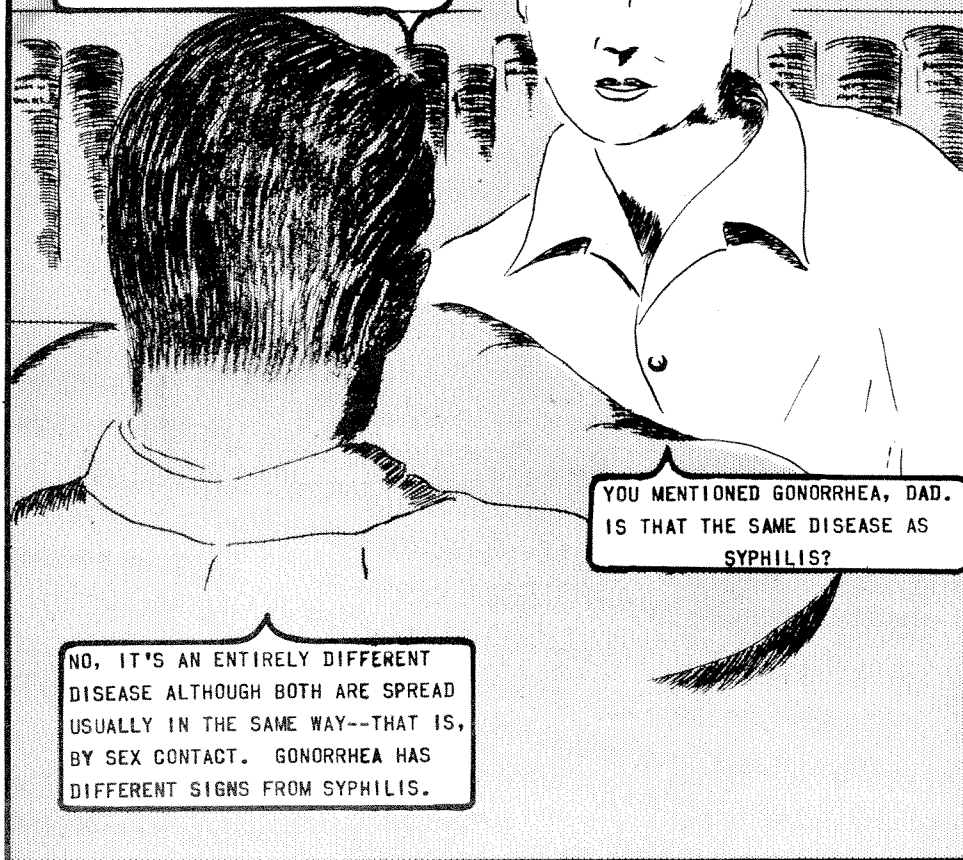


SYPHILIS IS A VERY SERIOUS  
DISEASE. IT MAY CAUSE INSANITY,  
DUMBNESS AND HEART DISEASE.  
PEOPLE DIE FROM THE DISEASE  
BECAUSE THEY HAVE LET IT GO TOO  
LONG WITHOUT TREATMENT OR THEY  
HAVEN'T HAD ENOUGH TREATMENT.

JIMMIE FINDS OUT HOW SERIOUS VD IS

HOW DO PEOPLE GET THIS DISEASE?

SYPHILIS AND GONORRHEA, USUALLY  
COME FROM SEX CONTACT, WITH A  
PERSON WHO HAS THE DISEASE.  
KISSING A PERSON WHO HAS THE  
SORES OF SYPHILIS ON THE LIPS  
MAY ALSO SPREAD THE DISEASE.



YOU MENTIONED GONORRHEA, DAD.  
IS THAT THE SAME DISEASE AS  
SYPHILIS?

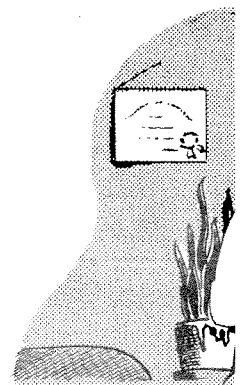
NO, IT'S AN ENTIRELY DIFFERENT  
DISEASE ALTHOUGH BOTH ARE SPREAD  
USUALLY IN THE SAME WAY--THAT IS,  
BY SEX CONTACT. GONORRHEA HAS  
DIFFERENT SIGNS FROM SYPHILIS.





-10-

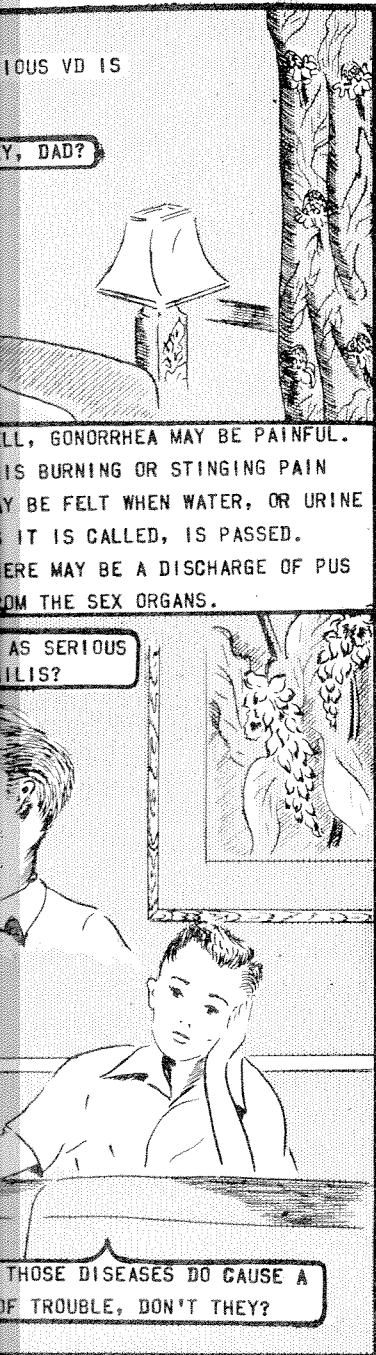
HOW CAN CO  
BE



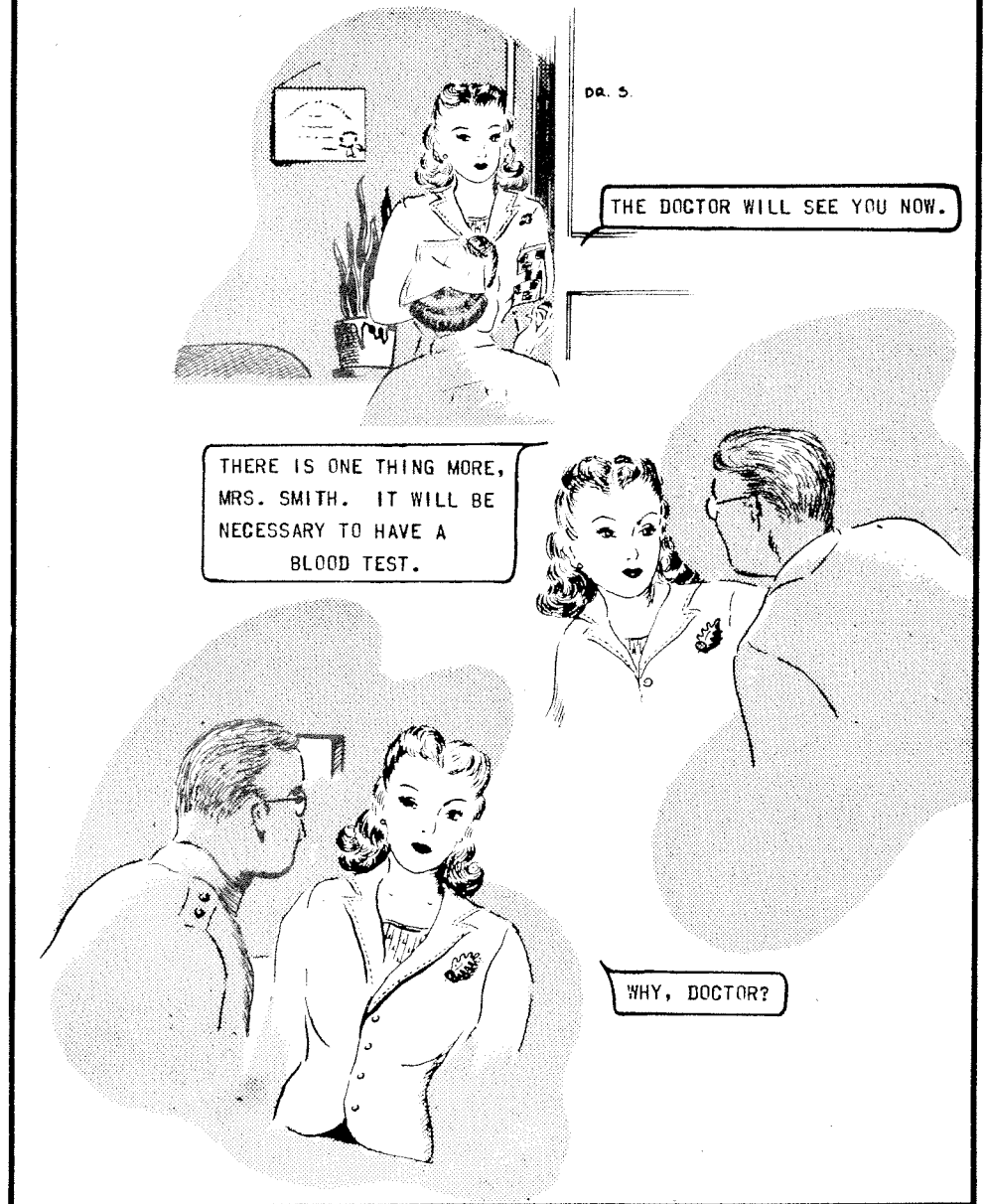
THERE IS ONE TH  
MRS. SMITH. IT  
NECESSARY TO HA  
BLOOD TES



DO NOT REMOVE THIS BAND

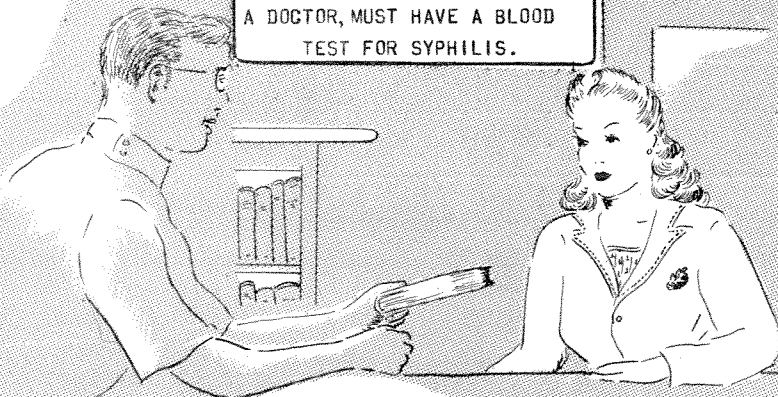


## HOW CAN CONGENITAL SYPHILIS BE PREVENTED?



HOW CAN CONGENITAL SYPHILIS BE PREVENTED?

YOU SEE, ACCORDING TO A LAW WHICH WAS PASSED IN HAWAII IN 1943, EVERY EXPECTANT MOTHER, WHEN SHE FIRST VISITS A DOCTOR, MUST HAVE A BLOOD TEST FOR SYPHILIS.



WHY IS THAT SO IMPORTANT, DOCTOR?



WELL, IF A WOMAN HAS SYPHILIS, HER BABY MAY BE BORN DEAD OR, IF ALIVE, MAY HAVE THE DISEASE.

-12-

HOW CAN CO

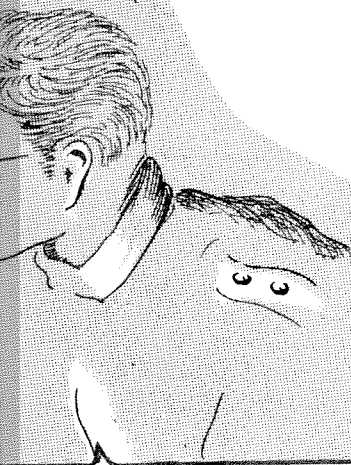
A FEW DAYS LATER

MORE THAN ANYTHING ELSE, I WANT TO MAKE SURE MY BABY IS BORN FREE OF THE DISEASE. WHAT CAN I DO?

IF YOU WILL TAKE REGULAR TREATMENT UNTIL THE BABY IS BORN, YOU WILL HAVE A GOOD CHANCE OF HAVING A BABY FREE OF SYPHILIS. IT'S LATE FOR YOU THAT YOU CAME IN SO EARLY FOR AN EXAMINATION. IF TREATMENT IS STARTED BEFORE THE LAST FIVE MONTHS OF PREGNANCY, THE CHANCES ARE NINE OUT OF TEN FOR A BABY FREE FROM SYPHILIS.

...S BE PREVENTED?

...S TO A LAW  
...N HAWAII  
...ECTANT  
...FIRST VISITS  
...A BLOOD  
...ILIS.



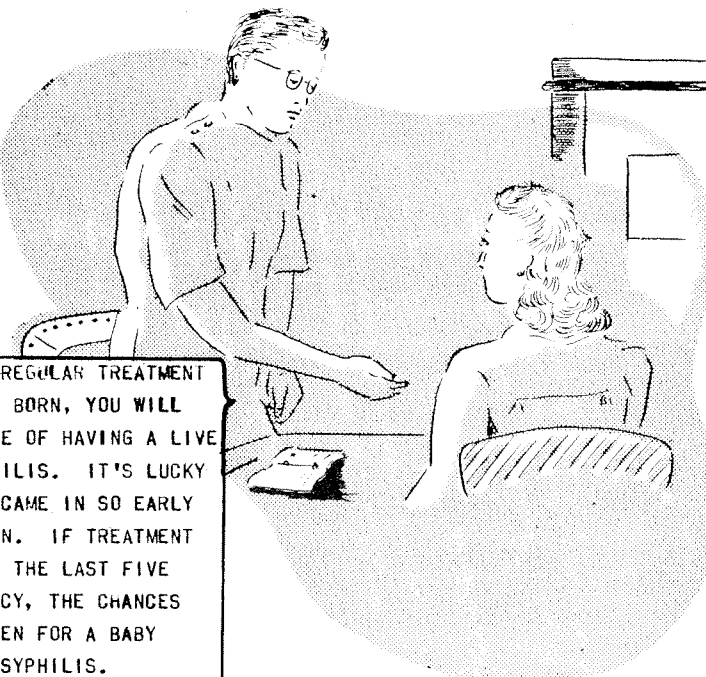
WELL, IF A WOMAN HAS SYPHILIS,  
HER BABY MAY BE BORN DEAD OR,  
IF ALIVE, MAY HAVE THE DISEASE.

HOW CAN CONGENITAL SYPHILIS BE PREVENTED?

A FEW DAYS LATER

THE REPORT OF YOUR BLOOD TESTS  
INDICATES THAT YOU HAVE SYPHILIS.

MORE THAN ANYTHING ELSE,  
I WANT TO MAKE SURE MY  
BABY IS BORN FREE OF THE  
DISEASE. WHAT CAN I DO?



IF YOU WILL TAKE REGULAR TREATMENT  
UNTIL THE BABY IS BORN, YOU WILL  
HAVE A GOOD CHANCE OF HAVING A LIVE  
BABY FREE OF SYPHILIS. IT'S LUCKY  
FOR YOU THAT YOU CAME IN SO EARLY  
FOR AN EXAMINATION. IF TREATMENT  
IS STARTED BEFORE THE LAST FIVE  
MONTHS OF PREGNANCY, THE CHANCES  
ARE NINE OUT OF TEN FOR A BABY  
FREE FROM SYPHILIS.

# HOW CAN CONGENITAL SYPHILIS BE PREVENTED?

WELL, SO TODAY IS THE DAY FOR YOUR WEEKLY TREATMENT. I MUST SAY YOU'VE BEEN VERY GOOD ABOUT NOT MISSING A WEEK.

LATER

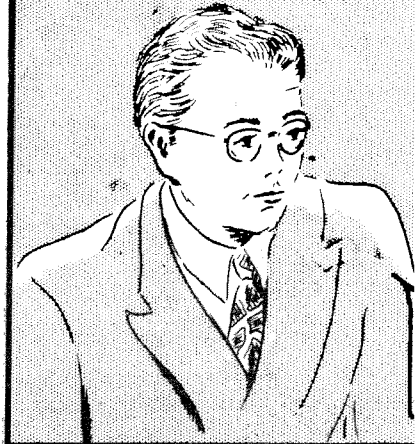
IT ISN'T SO BAD WHEN YOU KNOW IT WILL MEAN SO MUCH TO THE BABY.

YOUR BABY HAS BEEN CHECKED CAREFULLY AND SHOWS NO SIGNS OF SYPHILIS. I WISH MORE PEOPLE WOULD LEARN THAT CONGENITAL SYPHILIS IS PREVENTABLE. IF EVERY PREGNANT WOMAN DID AS YOU DID, WE COULD COMPLETELY WIPE OUT CONGENITAL SYPHILIS.

# HOW IS A BL

JOHNNIE A

DOCTOR, I HAVE TO MAKE A REPORT TO MY SCIENCE CLASS ON THE BLOOD TEST FOR SYPHILIS. WILL YOU SHOW ME HOW IT'S DONE? I HAVE A NOTE FROM MY MOTHER ALLOWING ME TO HAVE THE TEST.





PREVENTED?

LATER

WHEN YOU KNOW IT  
UGH TO THE BABY.

HAS BEEN CHECKED CAREFULLY  
NO SIGNS OF SYPHILIS. I  
PEOPLE WOULD LEARN THAT  
L SYPHILIS IS PREVENTABLE.  
PREGNANT WOMAN DID AS YOU  
OULD COMPLETELY WIPE OUT  
ONGENITAL SYPHILIS.

## HOW IS A BLOOD TEST DONE?

JOHNNIE ASKS A DOCTOR

DOCTOR, I HAVE TO MAKE A REPORT  
TO MY SCIENCE CLASS ON THE BLOOD  
TEST FOR SYPHILIS. WILL YOU  
SHOW ME HOW IT'S DONE? I HAVE  
A NOTE FROM MY MOTHER ALLOWING  
ME TO HAVE THE TEST.

I'D BE GLAD TO, JOHNNIE.  
EVERYONE SHOULD LEARN  
ABOUT IT AS IT IS VERY  
IMPORTANT.

FIRST, JOHNNIE, I'LL TAKE A  
RUBBER TOURNIQUET AND PLACE  
IT AROUND YOUR UPPER ARM TO  
MAKE THE VEINS STAND OUT.  
THEN, I WANT YOU TO MAKE A  
TIGHT FIST.



HOW IS A BLOOD TEST DONE?

WILL IT HURT, DOCTOR?

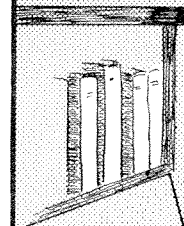
NO, JOHNNIE, YOU WILL  
HARDLY NOTICE IT. YOU  
CAN TURN YOUR HEAD A'YAY,  
IF YOU LIKE, SO YOU WON'T  
SEE IT.

NO, DOCTOR, I WANT TO WATCH IT.

ALL RIGHT THEN. WITH THIS LITTLE  
NEEDLE, I'LL TAKE ABOUT A TEASPOONFUL  
OF BLOOD FROM A VEIN BELOW THE BEND  
OF YOUR ELBOW AND THEN I'LL PUT IT  
INTO A TUBE.

- 16 -

HOW I



NOT ENTIREL  
USES SEVERA  
TEST TO MAK  
PHYSICAL EX  
WE CAN'T BE

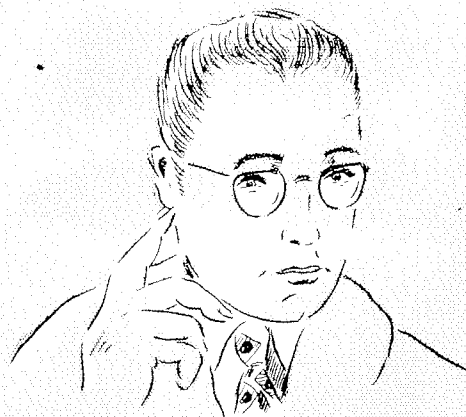
NE?

NO, JOHNNIE, YOU WILL  
HARDLY NOTICE IT. YOU  
CAN TURN YOUR HEAD AWAY,  
IF YOU LIKE, SO YOU WON'T  
SEE IT.



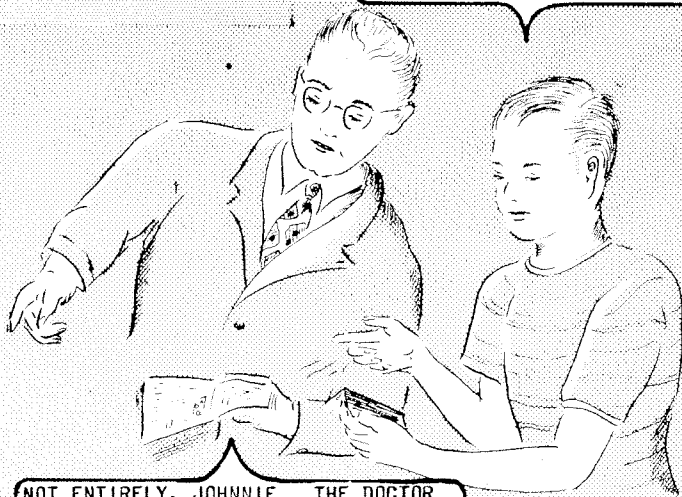
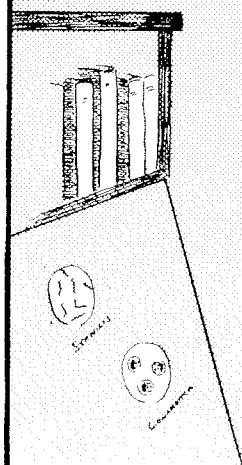
HT THEN. WITH THIS LITTLE  
I'LL TAKE ABOUT A TEASPOONFUL  
FROM A VEIN BELOW THE BEND  
ELBOW AND THEN I'LL PUT IT  
TUBE.

# HOW IS A BLOOD TEST DONE?



THIS BLOOD WILL BE SENT TO A  
LABORATORY WHERE SPECIAL TESTS  
WILL BE MADE ON IT. IF THE  
TEST IS POSITIVE, IT INDICATES  
THE PRESENCE OF THE DISEASE.  
LATER, THIS REPORT OF THE BLOOD  
TEST IS SENT TO THE DOCTOR.

WELL, DOCTOR, A BLOOD TEST  
IS IMPORTANT. IT'S A SURE  
WAY OF TELLING US WHETHER  
WE HAVE SYPHILIS, ISN'T IT?



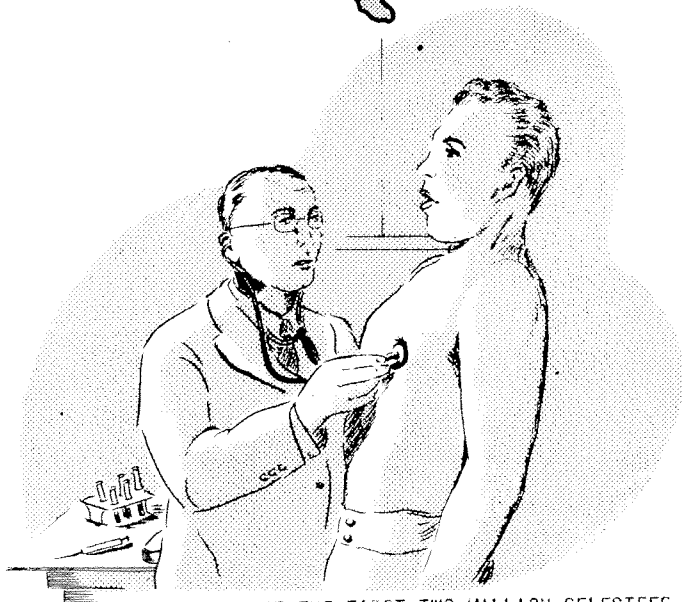
NOT ENTIRELY, JOHNNIE. THE DOCTOR  
USES SEVERAL WAYS BESIDES THE BLOOD  
TEST TO MAKE SURE. FOR EXAMPLE, A  
PHYSICAL EXAMINATION IS IMPORTANT.  
WE CAN'T BE SURE FROM ONE BLOOD TEST  
ALONE.

# HOW COMMON A DISEASE IS SYPHILIS?

IN THE U. S.?

IT WAS ESTIMATED THAT 3,200,000 PERSONS HAD THE DISEASE IN 1941 IN THE UNITED STATES.

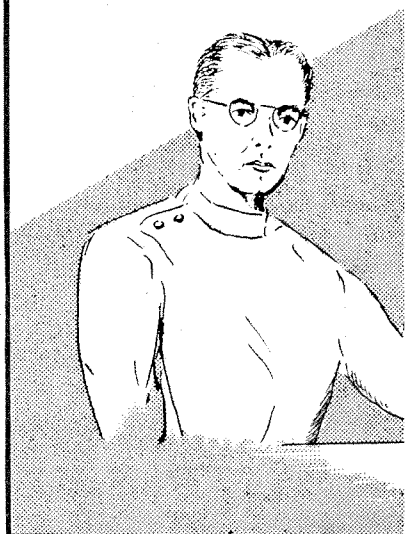
THE ESTIMATE OF NEW CASES OF SYPHILIS OCCURRING YEARLY IN THE U.S. IS 500,000.



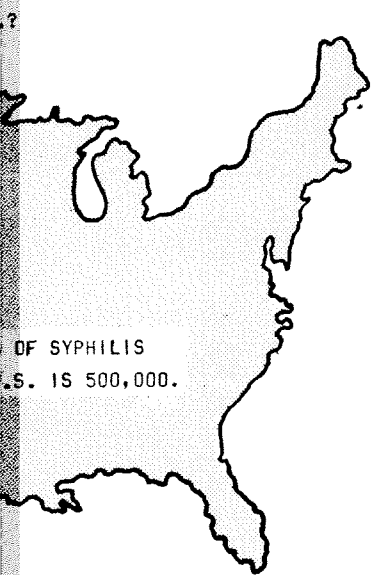
OUT OF THE FIRST TWO MILLION SELECTEES WHO WERE BLOOD TESTED, ABOUT 90,000 WERE FOUND TO HAVE SYPHILIS.

HOW COMMON

FOR THE SEVEN YEARS FROM 1934 TO 1940 THERE WERE 6,054 CASES REPORTED



# ASE IS SYPHILIS?



OF SYPHILIS  
U.S. IS 500,000.

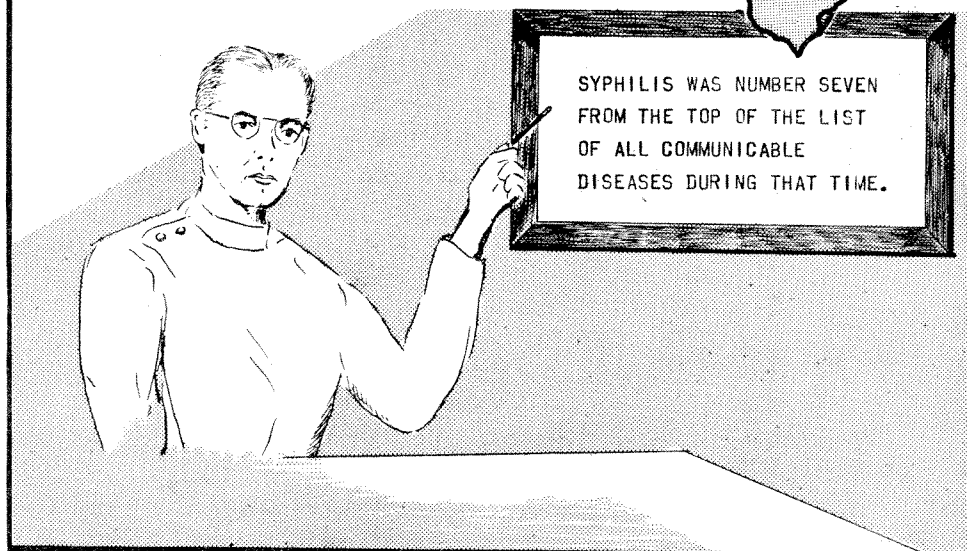


MILLION SELECTEES WHO WERE BLOOD  
TO WERE FOUND TO HAVE SYPHILIS.

## HOW COMMON A DISEASE IS SYPHILIS?

IN HAWAII?

FOR THE SEVEN YEARS FROM 1937-1943  
THERE WERE 6,054 CASES REPORTED.



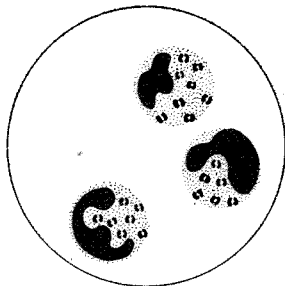
SYPHILIS WAS NUMBER SEVEN  
FROM THE TOP OF THE LIST  
OF ALL COMMUNICABLE  
DISEASES DURING THAT TIME.

# HISTORY OF GONORRHEA

THE ORIGIN IS NOT DEFINITELY KNOWN  
BUT IT IS EVIDENTLY AN OLD DISEASE.



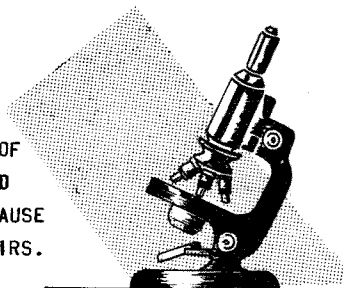
GONORRHEA WAS NAMED BY GALEN,  
A GREEK PHYSICIAN, IN 200 A. D.



NOT UNTIL ALMOST 50 YEARS LATER WAS THE CAUSE OF  
THE DISEASE DISCOVERED. IN 1879, NEISSER FOUND  
THE VERY TINY COFFEE-BEAN SHAPED GERMS WHICH CAUSE  
GONORRHEA. THESE GERMS ARE ALWAYS FOUND IN PAIRS.



IN 1831, RICORD PROVED SYPHILIS AND  
GONORRHEA WERE TWO SEPARATE DISEASES.



IN 1884, THE USUAL LABORATORY  
MEANS OF TELLING WHETHER THE  
DISEASE IS PRESENT WAS DEVELOPED.



THE SULFA DRUGS (1937) AND  
PENICILLIN (1943) ARE THE  
BEST DRUGS FOR THE TREATMENT  
OF GONORRHEA.

# HOW WIDESPREAD GO



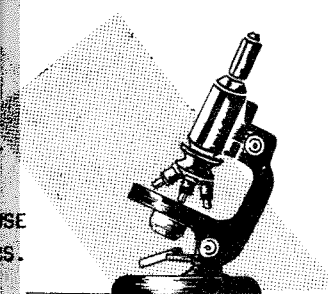
IT WAS THE FIFTH MOST COMMON COM  
DISEASE DURING THAT TIME IN I

# GONORRHEA

IT IS NOT DEFINITELY KNOWN  
EVIDENTLY AN OLD DISEASE.



RICORD PROVED SYPHILIS AND  
WERE TWO SEPARATE DISEASES.



THE USUAL LABORATORY  
TELLING WHETHER THE  
PRESENT WAS DEVELOPED.

THE SULFA DRUGS (1937) AND  
PENICILLIN (1943) ARE THE  
BEST DRUGS FOR THE TREATMENT  
OF GONORRHEA.

## HOW WIDESPREAD A DISEASE IS GONORRHEA?

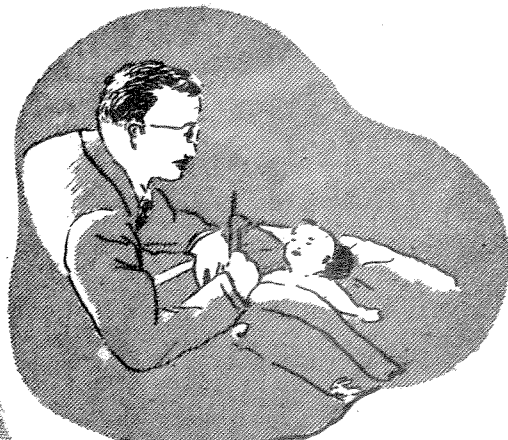
GONORRHEA IS ESTIMATED TO BE  
TWO TO THREE TIMES MORE COMMON  
THAN SYPHILIS IN THE U. S.



IT WAS THE FIFTH MOST COMMON COMMUNICABLE  
DISEASE DURING THAT TIME IN HAWAII.

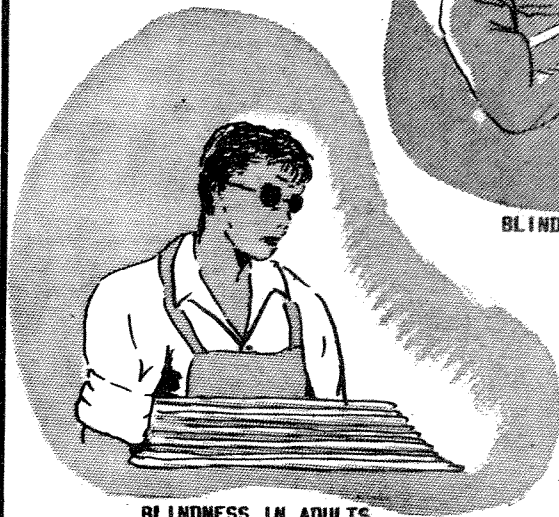


# WHAT ARE SOME OF THE EFFECTS OF GONORRHEA?



BLINDNESS IN BABIES.

OTHER EFFECTS.



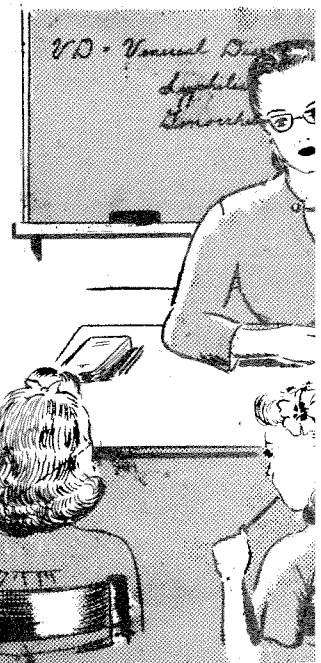
BLINDNESS IN ADULTS.

STERILITY (INABILITY TO BECOME A FATHER OR A MOTHER).



CRIPPLING.

## MARY FINI COMMUN



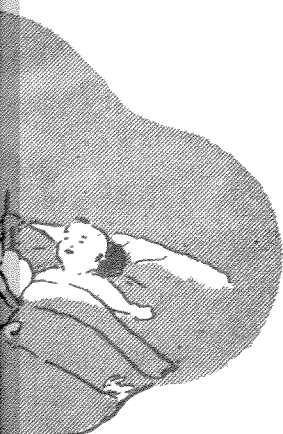
VD - Venereal Disease  
Lymphatic  
Gonorrhea

MISS  
WOULD  
THE P  
CONTR



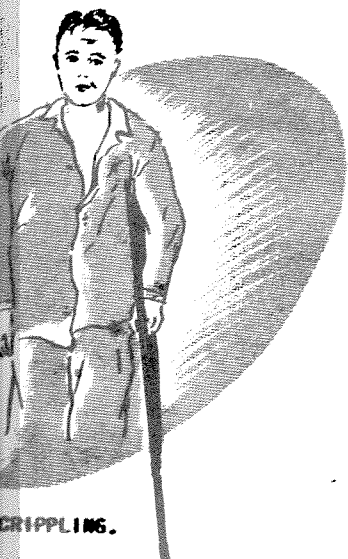
I'LL BE GLAD TO. I'M GOING TO THE CLINIC NOW, SO COME ALONG.

# THE EFFECTS A?



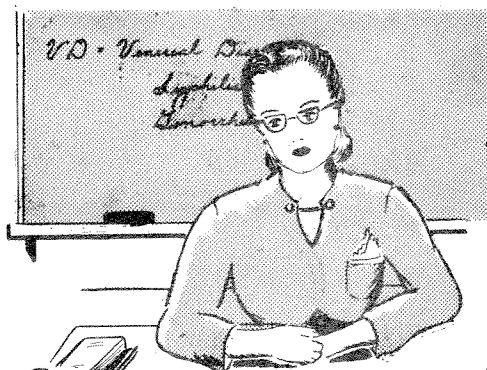
S IN BABIES.

OTHER EFFECTS.

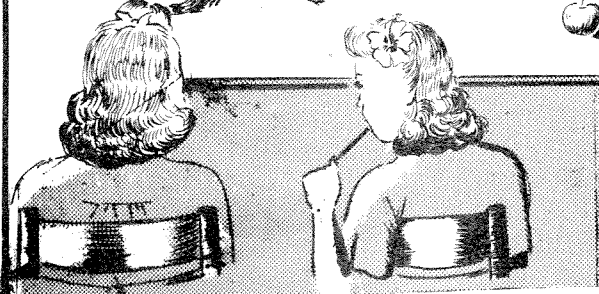


CRIPPLING.

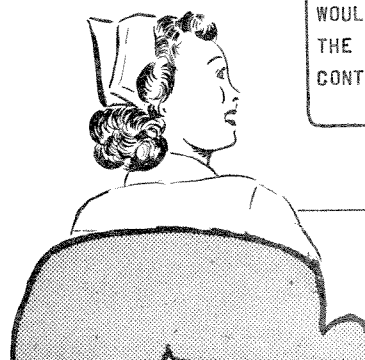
## MARY FINDS OUT HOW A COMMUNITY FIGHTS VD



MARY, I WANT YOU TO MAKE A REPORT TO THE CLASS ON WHAT OUR COMMUNITY IS DOING ABOUT VD. THE CLASS IS ABOUT READY TO FINISH ITS WORK, SO BE READY TO REPORT ON FRIDAY.



MARY VISITS  
A PUBLIC HEALTH NURSE.



MISS BROWN, I WONDER IF YOU WOULD GIVE ME SOME HELP ON THE PROBLEM OF THE COMMUNITY CONTROL OF SYPHILIS AND GONORRHEA.



I'LL BE GLAD TO. I'M GOING TO THE CLINIC NOW, SO COME ALONG.

IN THIS CLINIC, WE GIVE TREATMENTS TO THOSE WHO CANNOT PAY. THOSE WHO CAN PAY, GO TO THEIR OWN DOCTOR. TO CONTROL A DISEASE, IT IS NECESSARY TO FIND THE CASES AND PUT THEM UNDER TREATMENT.



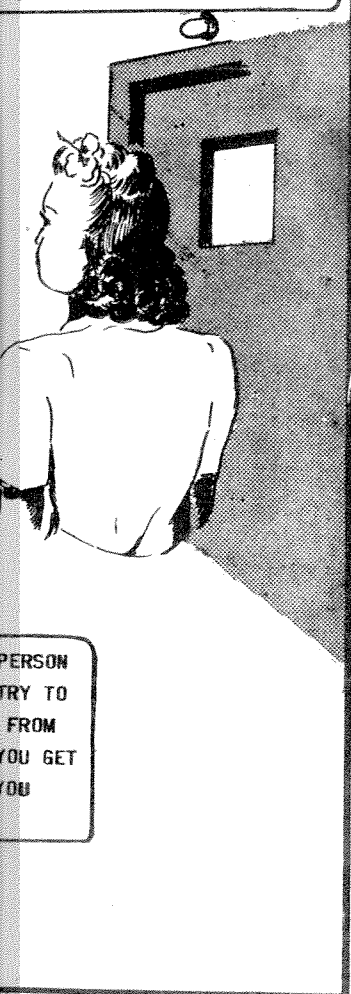
THEN, WE FIND OUT WHERE THE PERSON GOT THE DISEASE. WE ALWAYS TRY TO GET ANSWERS TO TWO QUESTIONS FROM THE PATIENT: FROM WHOM DID YOU GET THE DISEASE? TO WHOM MIGHT YOU HAVE GIVEN IT?

WE CHECK UP ON ALL PERSONS CONC WE MAKE SURE THE PATIENTS ARE T TREATMENTS REGULARLY. I'D SUGG YOU GO TO THE LIBRARY TO FIND O WHAT LAWS THERE ARE ON THIS SUB FOR ANOTHER WAY TO CONTROL VENE DISEASES IS BY LAW.



HERE IS THE PRENATAL ACT WHICH PASSED IN 1943 BY THE TERRITORY LEGISLATURE. THIRTY STATES HA SIMILAR LAWS. BESIDES THE PREI LAWS, THIRTY STATES HAVE PREMAI LAWS. TO PREVENT THE BLINDNESS BABIES CAUSED BY GONORRHEA, DRU ARE PLACED IN THE BABY'S EYES / BIRTH. HAWAII, AS WELL AS MOST STATES, REQUIRES THIS SAFEGUARI LAW.

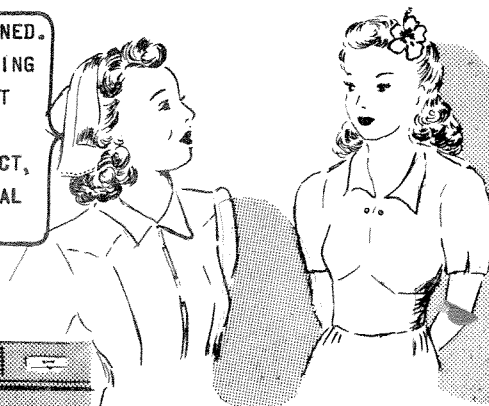
NIC, WE GIVE TREATMENTS  
O CANNOT PAY. THOSE WHO  
TO THEIR OWN DOCTOR.  
A DISEASE, IT IS NECESSARY  
CASES AND PUT THEM UNDER  
TREATMENT.



PERSON  
TRY TO  
FROM  
YOU GET  
YOU

MARY FINDS OUT HOW A COMMUNITY FIGHTS VD

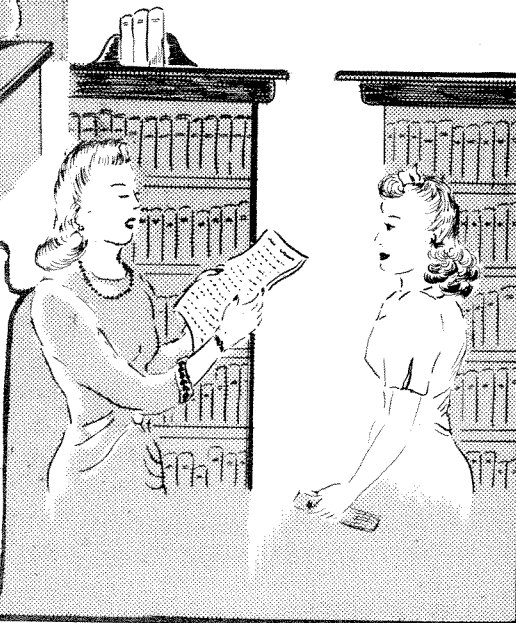
WE CHECK UP ON ALL PERSONS CONCERNED.  
WE MAKE SURE THE PATIENTS ARE TAKING  
TREATMENTS REGULARLY. I'D SUGGEST  
YOU GO TO THE LIBRARY TO FIND OUT  
WHAT LAWS THERE ARE ON THIS SUBJECT,  
FOR ANOTHER WAY TO CONTROL VENEREAL  
DISEASES IS BY LAW.



LET'S SEE . . .  
WE CAN LOOK UNDER THE HEADINGS  
"PRENATAL" AND "PREMARITAL" TO  
SEE WHETHER THERE ARE ANY LAWS  
LISTED ON THESE TOPICS.



HERE IS THE PRENATAL ACT WHICH WAS  
PASSED IN 1943 BY THE TERRITORIAL  
LEGISLATURE. THIRTY STATES HAVE  
SIMILAR LAWS. BESIDES THE PRENATAL  
LAWS, THIRTY STATES HAVE PREMARITAL  
LAWS. TO PREVENT THE BLINDNESS IN  
BABIES CAUSED BY GONORRHEA, DROPS  
ARE PLACED IN THE BABY'S EYES AT  
BIRTH. HAWAII, AS WELL AS MOST  
STATES, REQUIRES THIS SAFEGUARD BY  
LAW.



MARY FINDS OUT HOW A COMMUNITY FIGHTS VD

I GUESS I'D BETTER LOOK UP "PRENATAL" AND "PREMARITAL" IN THE DICTIONARY. SOMEONE WILL BE SURE TO ASK ME WHAT THEY MEAN.



LET'S SEE . . .  
OH, HERE IT IS . . .  
"PREMARITAL" MEANS BEFORE MARRIAGE AND "PRENATAL" MEANS BEFORE BIRTH.

IN CLASS ON FRIDAY

. . . AND SO, THAT IS WHAT OUR COMMUNITY IS DOING TO FIGHT THESE DISEASES.



YOUR REPORT IS WELL DONE, MARY, EXCEPT THAT YOU FORGET THAT WE, TOO, ARE FIGHTING VD RIGHT HERE IN THIS CLASS BY LEARNING ABOUT THESE DISEASES.



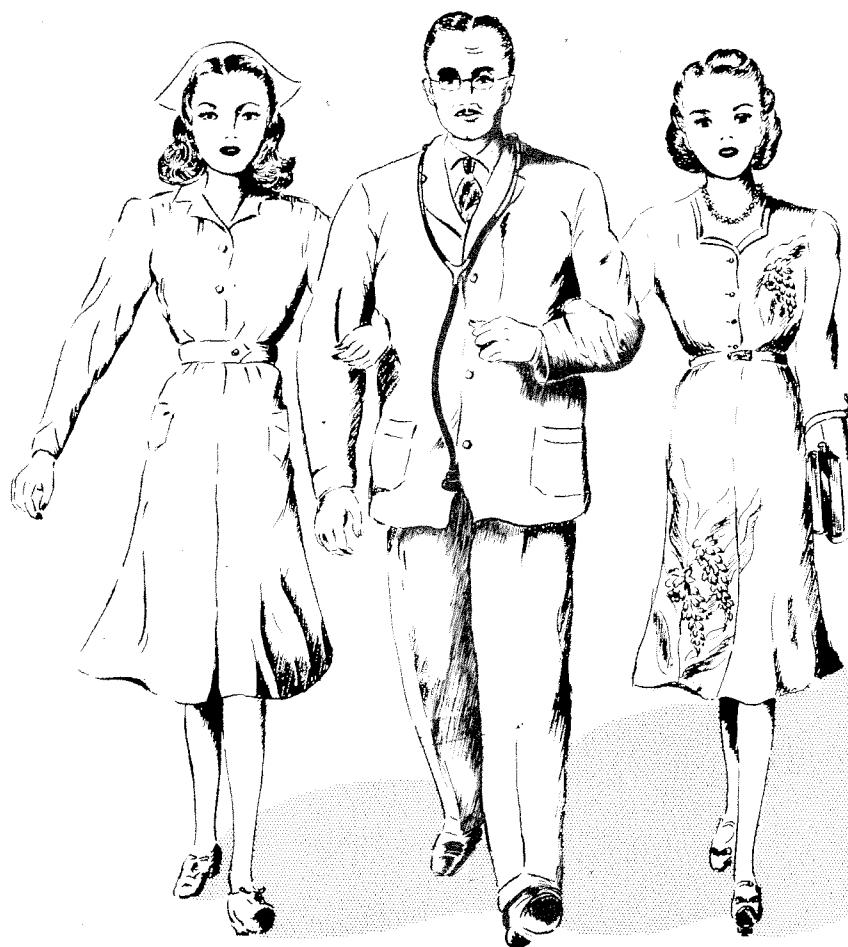
TOGETHER WE  
AS CITIZENS  
HELP IN EVER  
THES

S VD



SEE . . .  
WHERE IT IS . . .  
"PARTISAN" MEANS BEFORE  
AGE AND "PRENATAL"  
BEFORE BIRTH.

CLASS ON FRIDAY



TOGETHER WE MUST FIGHT THESE DISEASES.  
AS CITIZENS OF A COMMUNITY, WE ALL MUST  
HELP IN EVERY WAY POSSIBLE TO WIPE OUT  
THESE SERIOUS DISEASES.





Prepared by JUNE JOHNSON, School Health Education Administrator of the Board of Health, in collaboration with SAMUEL D. ALLISON, M. D., Venereal Disease Control Officer of the Board of Health; W. TATE ROBINSON, Director of Health Education, Department of Public Instruction; ELMER J. ANDERSON, Acting Director, Public Health Education of the Board of Health.....Illustrated by Lawrence M. Shimazu

Published by: Venereal Disease Division, Board of Health, Territory of Hawaii, Charles L. Wilbar, Jr., M. D., President ...Distributed by: Division of Health Education, Department of Public Instruction, P. O. Box 2360, Honolulu 4, T. H.

September, 1944