

SUGAR:
Raws, 2.92
Beets, 9s, 1 1-2
[Mkt. Firm]

The Garden Island.

The
Garden Island
Represents
All Kauai.

ESTABLISHED 1904. VOL. 10. NO. 13.

LIHUE, KAUAI, TERRITORY OF HAWAII. TUESDAY, APRIL 7 1914

SUBSCRIPTION RATES, \$2.50 PER YEAR 5 CENTS PER COPY

WAIMEA TO HAVE EASTER PROGRAM

There will be an unusually elaborate observance of Easter Sunday by Catholics in Waimea, the affair including church services and a "celebration" on the grounds.

High Mass will be sung by Rev. Father Celestin, at 10 a. m., Honolulu time, and in the afternoon the Father will give the benediction with the blessed sacrament.

The singing of the choir will be accompanied by a special string orchestra under the direction of P. E. Perriera. Kalaheo brass band, under direction of J. C. Jerves, will be in attendance and will give a concert on the grounds. Ice cream and refreshments will be sold, the net proceeds of which will go to the church funds.

One of the features of the day will be singing together of the choir bodies of Waimea and Koloa.

A general invitation to the public to attend is extended by the committees. The committees are as follows: Finance—M. Frietas, M. J. Periera and J. Abreu. Music—Mrs. H. Schimmelfennig, Miss H. Schimmelfennig, Miss A. Periera and Messrs. Hamaku, Pereira, Aukai, J. Periera and J. C. Jerves—P. E. Periera director. Decorations—Mrs. Schimmelfennig, Mrs. Ah Tim, Mrs. Ing Fook, Mrs. Hunt, Jr., Mrs. Aka, Mrs. Onaha and Mrs. Otto Lihau. Luncheon—Mrs. M. J. Periera, Mrs. J. M. Silva, Mrs. P. E. Periera and Mrs. J. I. Silva. Refreshments—Miss Virginia Silva, Mrs. T. Freitas, Misses R. Gomes, M. Gomes, L. Periera, F. Periera and A. Periera.

THE KAWAIHAUS ELECT OFFICERS

The Kawaihau Athletic Club, at a meeting held in the Kapaa court house, elected the following officers for the ensuing year: J. Mahiai Kaneakua, president; Joe Rodrigues, vice president; J. Von Ekekel, secretary; C. B. Gray, treasurer. Manager baseball team: H. T. Sheldon; A. C. Wilcox, captain. Committee on ways and means: C. B. Gray, A. C. Wilcox and S. W. Mchuela.

The latter committee will look after the important matter of raising funds for the expenses of the team. It plans to give a dance in the near future for the purpose of raising money, notice of which will be given in THE GARDEN ISLAND.

The Kawaihau Club is in fine shape, in every way, and a very strong team will be put into the league this year, although it will be composed of several new "first team" players.

ALL READY FOR MEN'S DOUBLES

Men's doubles' in the Lihue tennis tournament, are supposed to be now on, but as a matter of fact, no games have been played on account of the bad weather.

The entries are: P. L. Rice and S. E. Haunestad; W. H. Grote and Harrison Rice; K. C. Hopper and A. R. Robertson; C. S. Dole and H. Vincent.

Each team will play each other team, and the one scoring the most points will be the winner. After this series the players will be classified and will play for class positions.

BRUTAL ASSAULT ON MR. ALEXANDER

F. A. Alexander, manager of McBryde Sugar Company, was the victim of a brutal assault at the hands of a homesteader named Manuel Andrade, at Kalaheo, last Wednesday, and is still suffering from badly bruised arms.

It appears that Mr. Alexander had gone over to inspect a ditch which belonged to the plantation but ran through the premises of the homesteader. While talking over the matter, Andrade suddenly turned upon Mr. Alexander with a piece of wood which he used as a club. The blows were aimed at the manager's head but fell upon his arms, which Mr. Alexander had raised to save himself from more serious injuries.

Bystanders rushed in and rescued the manager from his peril.

Andrade gave himself up to the police and was later released on bail.

At Koloa on Monday he was charged with assault with a dangerous weapon and was committed for trial by jury in the Circuit Court. Bail was fixed at \$300 cash, which he furnished.

The whole community around McBryde and Koloa was stirred over the outrage, the other Portuguese homesteaders themselves being foremost in condemning the assault and the assailant. Mr. Alexander, who is notoriously even tempered and mild mannered, made no attempt to strike back at his assailant, but merely threw up his arms to shield his head from the blows—all of which deeply impressed everyone knowing of the affair.

Relations between the homesteaders around Kalaheo and McBryde plantation have always been the most cordial, which makes this incident all the more unfortunate and deplorable.

MANAGEMENT OF MCBRYDE IS O. K.

At the annual meeting of the stockholders of the McBryde Sugar Company, held in Honolulu last week, a vote of confidence in Alexander & Baldwin was passed by 115,433 shares of stock. E. I. Spalding, of the Bank of Honolulu, introduced the resolution which called out the endorsement.

President J. P. Cooke submitted a supplementary report in which he showed that the actual cost of production of sugar at McBryde was \$43.08 per ton, after omitting McBryde's heavy water expenses and extraordinary interest obligations. It was stated that the 1914 crop would likely go above the estimate of 15,120 tons, and might reach 16,000 tons.

D. P. R. Isenberg, who had made a careful inspection of the estate, reported that the cane was looking fine, and that the physical condition of the plantation was excellent.

No changes were made in the directorate.

After hearing these reports, expressions of confidence in the conduct of the plantation by Manager Alexander were generally expressed. His showing of a sugar cost of only \$43.08 against Makaweli's cost of \$42.04 was regarded as remarkably good.

Judge L. A. Dickey, who is filling Judge Cooper's place at Honolulu, came up on the Hall Friday morning and returned again to Honolulu by the Kinau.

BUSINESS MEETING OF BOARD OF SUPERVISORS

The regular monthly meeting of the Board of Supervisors was held at the office of the Board in Lihue on Wednesday, April 1st, beginning at 10:00 a. m. Present: Mr. H. D. Wishard, chairman; Mr. Francis Gay, Mr. W. D. McBryde, Mr. J. Von Ekekel, Mr. A. Menefoglio.

The minutes of the last meeting were read and approved.

The Board examined the several bills presented to it and approved them to be paid out of the following appropriations and as follows: Salary County Road Supervisor \$ 225.00

Pay of Police:
Specials 165.00
Waimea 240.00
Koloa 140.00
Lihue 150.00
Kawaihau 135.00
Hanalei 135.00

Coroners Inquest 965.00

County Jail 30.00

District Courts etc: 514.55

Waimea 40.00
Koloa 10.00
Lihue 1.95
Hanalei 5.00

Expenses of Witnesses: 56.95

Hospitals: 50.00

Eleele 50.00

Koloa 125.00

Lihue 100.00

Waimea 325.00

Incidentals: 7.25

Auditor 62.55

Clerk 42.55

Sheriff 92.45

Total 7,355.33

Continued on page 6

PUBLIC MEETING CALLED ON HIGH SCHOOL MATTERS

A public, mass meeting has been called for next Thursday evening, in Lihue, for the purpose of discussing and acting upon the question of a high school. It is true that the Chamber of Commerce has acted upon the matter of the site, and that site is available, in so far as the government is concerned; but it is desired that the opinion of the public on this and other phases of the subject be forthcoming at this time.

Commissioner Brandt, of the Department of Education, has issued the following call for the meeting:

PUBLIC MEETING TO DISCUSS HIGH SCHOOL.

Before attending the coming meeting of the Commissioners of Public Instruction I wish to call a public meeting of the citizens of Kauai for the purpose of getting a free and full expression as to the advisability of starting a high school and ascertaining the will of the people in the matter.

There are many reasons for and against, and all are asked to consider the question before and be prepared to express their views.

Among the problems to be considered are the following:

Is the old Court House lot a suitable location? Can the County afford the necessary expense for

buildings and equipment in addition to the appropriation of \$3,000.00 made by the Legislature?

Can we get the needed pupils for a high school? Shall the grammar grades be taught and, if so, how far down? How can pupils at a distance attend the school? Is there any place where they can live? Shall the County build dormitories and those using them pay rent? Is it feasible to have daily truck service to transport children from a distance? If children from a distance can not make use of the school, are outside people willing to help maintain a high school for the local use of Lihue? Are the conditions in the future likely to be more opportune for starting a high school than now? All the other islands have high schools and Kauai helps, by the way of taxation, to support them; should Kauai ask its rights and have a high school? These and many more questions will arise for consideration.

The meeting will be held in the Sunday school room of the Lihue Union Church on Thursday, April the 9th, at 7:30 p. m. sharp, at Lihue.

T. BRANDT,
Commissioner of Public Instruction.

MR. FARRINGTON TO KAUAI PEOPLE

W. R. Farrington, president of the Honolulu Ad Club, writes to the editor of THE GARDEN ISLAND as follows:

Honolulu, Hawaii,
April 3rd., 1914.

Mr. L. D. Timmons,
EDITOR, GARDEN ISLAND,
Lihue, Kauai.

Dear Mr. Timmons:

It is impossible for me to write a personal letter to the many Kauai people who joined in making the trip of the Honolulu Ad Club to your Island, such a complete success; consequently I am asking you to give publicity through the columns of your live newspaper to my appreciation of the splendid Kauai spirit which made the success of our expedition. I have not heard a single word of criticism or regret from any member of our body. All the comments have been enthusiastic in their praise for the Island beauties and the cordiality of the Kauai people. We are even glad that it rained, so that we now know Kauai in all kinds of weather.

You have probably noticed our scheme for putting the Nawiliwili Breakwater project before each member of the U. S. Senate and the House of Representatives. We do not say that this will turn the trick, but as you know advertising is the Ad Club's business we feel certain that it will help some.

With kindest regards to yourself and all the other good people of Kauai, I remain,

Yours sincerely,
W. R. FARRINGTON

President, Honolulu Ad Club.

Lihue Baseball

Excellent material has come forward for the Lihue baseball team, included in which are as many as four pitchers. Final selection of team men will not be made, however, until all of the prospective players have been given a thorough try-out. It was planned to have a try-out game on Sunday, but the inclement weather prevented. It all goes well this "examination" practice will take place next Sunday.

The Happier View

The Garden Island in its reference to the visit of the Ad Club devotes considerable space to the rain. Taking its cue from the enthusiastic reports of returned members of the Ad Club, Honolulu has been acquainted only with the glorious sunshine of the trip. —Honolulu Star-Bulletin.

Monument To Mr. Gandall

The Honolulu papers report that a novel design for a memorial to the dead is shown in the monument works of J. C. Axtell, 1048 Alakea street. It shows a settee in white marble artistically sculptured to represent a rustic bench. The piece was executed on an order from the widow of the late Senator John Gandall of Kauai and in a few weeks will be shipped to that island to be placed over the grave. It bears a sentiment which will be instantly recognized by the friends of the late senator as appropriate.

It is reported from Honolulu that Governor Pinkham has approved the railroad right-of-way asked for by the Makae Sugar Co., over the lands of Kapaa and Waipouli.

The Lihue store has received a large lot of Baker's pictures of the Ad Club's tour which have been placed on exhibition and sale.

A couple of cases of typhoid fever have appeared in Hanapepe valley and another suspicious case exists in a settlement not far from Lihue. The infection in both instances has been traced to a Honolulu source.

AUTO COLLISION NEAR PORT ALLEN

One of the worst auto collisions on Kauai in a great while occurred on the road leading up from Port Allen last Saturday morning, when the machines of R. L. Hughes, assistant superintendent of the Kauai Railway Company, and Dr. Waterhouse, of Koloa, came together, while both were running at a pretty fast clip.

Both machines were considerably wrecked, the Doctor's auto, however, probably being the worst damaged of the two.

Dr. Waterhouse's little girl, who was with him in the machine, was hurled out toward the cane-field, but almost miraculously escaped injury.

At the time of the accident Dr. Waterhouse was proceeding down the road toward the landing. Mr. Hughes was bringing his car cut through the short-cut from toward the office. On account of the tall cane, neither car could be seen from the other until both were on the same road. The collision occurred immediately after the Hughes car emerged from the short-cut.

Mr. Hughes claims that he was moving to his side of the road, from the short-cut, when struck; and that is probably correct, but at that moment Dr. Waterhouse also drew his car to that side to escape exactly what he ran into.

THE GARDEN ISLAND

TUESDAY APRIL 7, 1914

Issued-Every Tuesday.

Entered at the post office at Lihue, Kauai, as second-class matter.

SUBSCRIPTION RATES \$2.50 PER YEAR, \$1.50 FOR SIX MONTHS IN ADVANCE

ADVERTISING RATES, 75 CENTS AN INCH PER MONTH.

L. D. TIMMONS : : : Editor
K. C. HOPPER : : : Manager

Mr. Kinney's Platform

The letter of Henry W. Kinney, the coming new superintendent of public instruction, to the Governor, outlining his ideas in regard to needed improvements in the public school system of Hawaii, which has been published in the Honolulu papers, is summarized as follows:

Standard school buildings, meeting needs at smallest expense possible. Will effect great saving.

Concentration on essential studies and elimination of fads. Results: greater efficiency, less time, less money.

Classification of schools to correspond with conditions. No pupils retarded. None rushed.

Examinations will furnish means for determining value of work done by both pupils and teachers. Will reduce need for large number of supervisors. Another saving.

Meet vocational training demand, not by instruction along superficial show lines, but by concentrating attention on central institutions instead of trying to extend system to schools in general by carpenter work and the like. Make use of what we have, improving it to meet demands as far as these are based on sound sense, and avoid wasting of large special funds. Make training schools more self-supporting.

Reduce expense of supplies. Substantial saving.

The ideas expressed are most certainly reasonable. In all probability, however, the new superintendent will meet with difficulty in carrying them out. There is so much fogeyism still left in the Islands that innovations, however meritorious, are viewed askance; and a peculiar complexity of conditions seems to face new ideas of almost every kind.

The proposition of standardizing public school buildings is not new, but, on the other hand, is the rule east of the Rocky Mountains. Two minutes thought will bring conclusively to mind several points at which savings of money would be possible under this plan.

The elimination of fads from the public schools is good, depending, of course, upon just what the new superintendent may consider to be fads. Many things might easily be classed as "fads," which, however, have an important bearing, on or lead directly up to, "concentration on essential studies." But it must be admitted that a great deal of time is wasted in the public schools on the veriest bosh; and if the new superintendent thinks he can eliminate this without detracting from the enthusiasm of Young America in the merry-go-round of rudimentary education, well and good.

Classification of schools so that no pupils shall be over-rushed and none retarded will be a stupendous task in the Islands. If the superintendent is only partially successful in this matter, he will prove the Moses of our fondest dreams.

The point in regard to vocational training seems reasonable, although we would like to see the plans yet in their infancy given a fair trial before being relegated to the scrap heap.

The suggestion that expenses of supplies be reduced is a good one. This item of supplies is a considerable one, and there is no longer a valid reason why it should come out of the money of the tax-payers. In the run of a year the expense per pupil is not large, and it is not asking much that it be borne by parents. At the same time, the aggregate, as it has loomed up in the past, has been a severe strain upon the Department of Education.

Mr. Kinney's "platform" is quite satisfactory. We only hope that he may be able to stay with it and bring about the numerous reforms indicated therein.

How It Is Working

Some weeks ago mention was made in this paper of a tour of Kauai by a representative of a cheap-labor, cheap-material print shop on the Coast, and it was then stated that, in order to save a few cents on printing bills, several merchants and several others of this island had bitten at the bait offered. We have been quietly awaiting results; and when enough have shown up we will have some quite interesting reading for the public of Kauai.

One of the first houses to hear from the Coast printery happened to be a concern whose manager is loyal to Kauai and lives up to his motto of "Patronize home industry." This manager told the Coast solicitor, when here, that he did not need anything, but finally consented to examine the quotations left with him by the latter. No order for printing was given, nor was it even favorably discussed.

By a late mail the local man received notice from the Coast printshop that his ORDER had arrived there. This was in itself startling; but imagine the merchant's amazement when he found that the alleged order was for TWELVE TIMES AS MANY BOOKS of a certain kind as he usually gets, and that particular lot was to be followed by another classed as a "repeat" order, same size, a short time later!

It is needless to say that the local man repudiated both "orders" by return mail.

We are mentioning this case now merely to start the subject again where we left off a few weeks ago. It is not a very interesting story. But just wait. We have much up our sleeve.

And the sleeve is bulging a little more with the arrival of each Coast mail.

Watch this subject as it is unwound. Some surprises are in store, and some names will be given that may be equally surprising.

THE GARDEN ISLAND believes in the slogan "patronize home industry." We live up to that principle. We want the people of the Hawaiian Islands to patronize their own merchants, and not send abroad for their merchandise. We want the merchants of Kauai to do the fair thing by those who believe in and are fighting for this principle.

THE GARDEN ISLAND is battling for Kauai—for the progress and prosperity of her business interests and business men. We are in position to handle any printing as advantageously and as satisfactorily as can any other legitimate concern operating in a legitimate and square manner. Then, why should we not be given the patronage in printing of All Kauai merchants and business men?

Kauai's Wharf Needs

The conclusion of Governor Pinkham and Superintendent Caldwell to expend \$26,000 on improvements to the wharf at Waimea will be hailed with general satisfaction on this island. The work is no longer in the "desirable" class—it is a pressing necessity; and it should be undertaken with the least possible delay. The difficulty of landing passengers at Waimea is a shame; and the business community (Kauai and Honolulu as well) is put to great inconvenience and loss on account of the hardship and expense of landing heavy freight there.

It is gratifying to know that the Governor and the superintendent of public works (the latter of the commission which will have the work in charge) recognized the need of this improvement so quickly upon landing at Waimea; and it is to be sincerely hoped that their present determination to put the work through may not be delayed by other considerations.

We fail to agree, however that repairs to the Nawiliwili wharf should await the decision of Congress in regard to the breakwater project. Indications now are that the latter will be hung up indefinitely. In the meanwhile, the Nawiliwili wharf is in bad condition and is getting worse constantly. It requires new piling and new flooring. If it does not get these, the day is not far distant when a lot of machinery and perhaps several people will be dumped into the bay; and the wharf be put out of commission. Even if the breakwater item does go into the appropriation bill at the next session of Congress (there is now hardly any hope of it at this session) it will be two or three years before the wharf itself will be taken in hand; and in the meanwhile the harbor commission will have been called upon to spend a much larger sum than is now asked for to renew a collapsed wharf. Economy is on the side of immediate repairs. Let the Waimea and the Nawiliwili projects be carried out together.

LISTS OF PERSONS who contributed, in one way or another, to the success of the entertainments given the Ad Club at Lawai Beach House and the Lihue Social Hall have been received at this office. In our judgment publication of the same is not well advised, for the first reason that a majority of people are modest enough to prefer that their names be not publicly used; and for the second reason that there is almost the liability of leaving out somebody who might feel that they had been slighted. The committees and the Kauai public appreciate all individual effort, which, after all, made it possible to round out successful entertainments at both of the places indicated.

THE ASSAULT upon Mr. F. A. Alexander by a homesteader was a most unfortunate occurrence, particularly at a time like this when the utmost good feeling between sugar plantation men and homesteaders should be encouraged. It is a satisfaction to learn that fellow homesteaders of the assailant are first and loudest in condemning the act. This community wants to see the plantations and homesteaders work harmoniously together, and will not view with favor any movement or act that may tend to provoke other than the most friendly relations between them.

THE ANNOUNCEMENT of the retirement of Superintendent Gibson from the Department of Education was a surprise to most people on Kauai, although, it appears, he had had that course in contemplation for sometime. Henry W. Kinney, editor of the Hilo Tribune, who will succeed Mr. Gibson, is favorably known, is unusually well qualified and will doubtless give general satisfaction. His worst fault, so far as we know, is that he is a newspaper man; but he is still young, and may avail himself of this fine chance to reform. Look at Woodrow Wilson. He was actually a school teacher—and reformed!

WE WOULD SUGGEST to the baseball clubs of Kauai, that they set their financial houses in order before beginning this year's series of games. Decide how much money will be needed, add fifty per cent for extraordinary expenses and then get the cash in the respective treasuries. The teams will thereupon be ready to play ball, with every assurance of a successful season. It is easier to raise money before a season of baseball begins than after it is finished. That is the experience the country over.

BY A SLIP of the pen, Koloa was included in the list of landings, given last week, that should be overhauled by the Government. The Koloa landing is under private control at present; but that does not render improvements there any the less necessary.

J. L. Silva's Melele store handles the famous New Zealand butter. Adv.

Getting Acquainted

Getting acquainted is the best promoter of community cooperation that we can have.

The great value of the Honolulu Ad Club excursions is the opportunity they offer for the people of the Territory to get acquainted in their capacity as members of the Community as a Whole. The atmosphere of good-will is contagious, and the memory of courtesy, cordiality and fellowship on one occasion makes it easy to understand how foolish people are when indulging in factionalisms that worry and retard.

Honolulu Ad Club men have formed the habit of being happy in all kinds of weather. They do not turn back.

The same inspirational determination adapted to personal and public affairs is certain to bring the desired and a happy result.

One of the incidents of the Ad Club "getting acquainted" with Kauai is a unanimous support that will be gained for the proposed breakwater at Nawiliwili. This will be advocated not only seriously and in the orderly manner of good business organization, it will also be backed with enthusiasm, and that after all is what carries through a very large percentage of the projects worth while.

We believe it a piece of good fortune that the Ad Club excursionists were given a taste of weather and sea conditions out of the ordinary. They know some of the real problems of Kauai which are also matters which must interest every citizen of the Territory.

"Getting acquainted" is merely one of the very effective forms of publicity which help business.—Star-Bulletin.

Arizonan Takes Sugar

The freighter Arizonan arrived at Port Allen Saturday morning, bringing 250 tons of coast cargo. She sailed at noon Sunday for Kahului, taking 1,321 tons of sugar. Mrs. W. Alexander and Mr. Bailey sailed in her for Kahului and Mrs. Bailey for San Francisco.

Special Services

This being Passion Week, there will be suitable Vesper Services in the church at 3:30 p. m. Tuesday, Wednesday, and Thursday afternoons and at 11 a. m. on Friday. Special Easter Service on Sunday. The services will be brief, devotional and helpful.

All are cordially welcome.
J. M. Lydgate.

C. B. Ripley, architect of the new county building, came up on the W. G. Hall Friday for inspection purposes, returning by the Kinua Saturday night to Honolulu.



DISTINCTIVE clothes—clothes with character—that's the kind sold by us. To the discriminating dresser, the correctness of design and the quality of workmanship will appeal, as no other clothing can. It's a truthful saying that "Royal Tailored" clothes are "Just a little ahead of the parade."

LET US TAKE YOUR MEASURE
Lihue Store

Used by All the Big College Nines

The Official Ball

If you attend any of the big college games you will find that the ball almost invariably used is the REACH OFFICIAL AMERICAN LEAGUE BALL. College men won't have anything but the BEST—that's why they all use

The Reach Ball

College men know too that the Reach Ball has been adopted by the American League for ten years, and is the Official League Ball. No other ball can be used in any League game. Price everywhere \$1.25.

The Reach Trade-mark on all Sporting Goods is a guarantee of quality—it means satisfaction, a new article or your money back (except on Balls and Bats under \$1.00).

The REACH OFFICIAL BASE BALL, OUTSIDE and INSIDE of the American League. History and photos of the Series. Schedule, records, &c. 10 cents at dealers' or by mail.

Theo. H. Davies & Co., Ltd.
Sole Agents
for the Territory of Hawaii

FISK

C. W. SPITZ
AGENT FOR KAUAI

BY MILES THE BEST TIRE

They average 25 per cent more than other Tires.

A full stock carried at the
NAWILIWILI GARAGE

Tires

Let Us Do Your
LAUNDRY

Address
Territorial Messenger Service
HONOLULU

PLATING

NICKLE, COPPER, GOLD, ZINC, BRONZE AND SILVER PLATING

Reasonable Prices

Honolulu Electric Co.
King and Bishops Sts.

THE BANK OF HAWAII, Limited
LIHUE BRANCH
LIHUE, KAUAI, HAWAII

Deposits are received subject to check. Certificates of deposit issued payable on demand. Loans made on approved security.

DRAFTS DRAWN ON
Honolulu Bremen
San Francisco Berlin
New York Hong Kong
London Yokohama

SAVINGS DEPARTMENT
Interest paid on Savings Deposits. 4 per cent on ordinary and 4 per cent on Term Deposits. Ordinary Savings Deposits will be received up to \$2,500 in any one account.

SAFE DEPOSIT BOXES FOR RENT \$2 AND \$3 A YEAR

The MAJESTIC
Cor. Fort & Ber. Sts., Honolulu

Rooms by the day, week or month—single or in suite.

REASONABLE RATES
OPEN DAY AND NIGHT

Kauai trade solicited
MRS. C. A. BLAISDELL, Proprietor

JEWELERS

EVERYTHING IN THE SILVER AND GOLD LINE, RICH CUT GLASS AND ART GOODS.

MERCHANDISE OF THE BEST QUALITY ONLY.

H. F. WICHMAN & CO., Ltd.
LEADING JEWELERS
P. O. Box 342 Honolulu

Souvenirs

We neatly pack and mail Hawaiian Souvenirs.

Hawaii & South Seas Curio Co.
HONOLULU

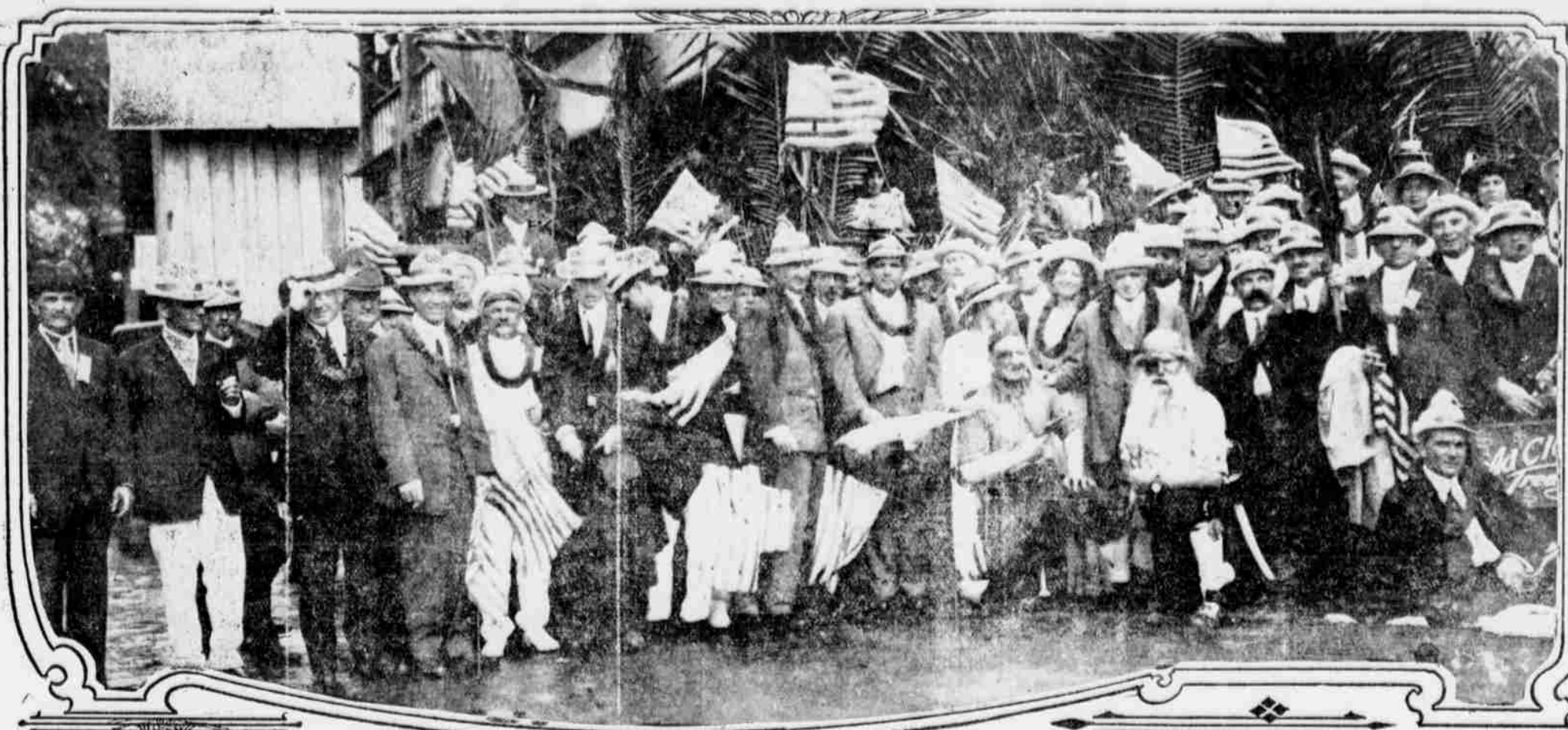
Stationery and Paper

We carry all the best grades of paper, stationery, and office supplies.

We will give your mail order the same care and prompt attention that you would receive in person.

Drop us a line.

Hawaiian News Co., Ltd.
Young Bldg. Honolulu



Members of the Honolulu Athletic Club and a few Kanai Boosters Outside of the Hotel at Waimea.

AD CLUB BOOSTS FOR BREAKWATER

The Honolulu Ad Club is going right after the Nawiliwili breakwater. At a largely attended meeting held last Tuesday in Honolulu, the subject was taken up and the Club went on record as endorsing the breakwater. A committee composed of Chas. R. Frazier, Superintendent Caldwell and Judge P. L. Weaver was appointed to compile a folder, setting forth the importance of the breakwater and to get the same before every member of Congress.

The secretary reported that thirty-one persons of Kauai had joined the club during the recent tour, bringing the total of membership up to 558.

The pictures taken by Mr. R. J. Baker on Kauai, during the excursion, were exhibited in the Y. M. C. A. last Thursday evening.

FOR SALE One horse, broken to saddle and buggy. Well trained; no tricks. Seven years old; sound.
Apply Wireless office, or Phone 102.

GRAND RALLY HELD
BY Y. P. S. G. E.

A grand rally was held by the Christian Endeavorers in the Sunday School hall at Kapaa Sunday morning, beginning at eleven o'clock. Rev. I. K. Kaaui presided. Speechmaking, reports and singing were the features.

Owing to the inclement weather, the attendance from the Hanalei and Lihue sides was small, but the turnout from the immediate neighborhood was unexpectedly large. The rally was a great success in all general particulars.

Death Of Mrs. Souza

Mrs. J. M. Souza, of Eleele, died Saturday after a short illness. The funeral took place Sunday afternoon, interment being in Kalaheo cemetery. Deceased leaves a husband, who holds a responsible position with McBryde store, and four children.

As The Funny Man Saw It



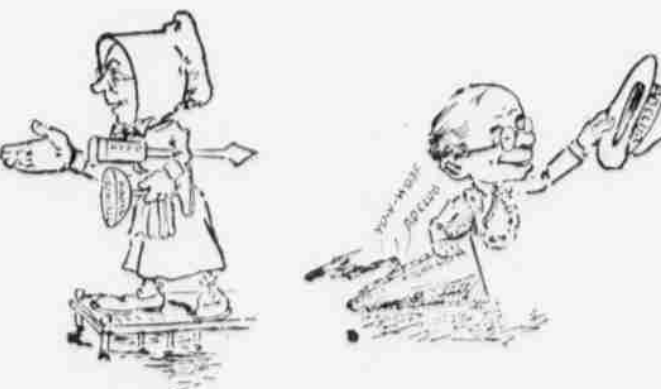
Artist Coonley, superintendent of the Advertiser's Art Department, who was a member of the Ad Club's party at the time of the recent tour, presented some amusing pictures in his paper upon returning to Honolulu. One of the number most likely to excite the risibles of Kauai people present at the spread in Lawai showed Walter McBryde on a hunt for more chickens for the festal board at his beach house.



The smaller cartoon is supposed to show Honolulu Supervisor Lester Petrie making a careful investigation of Kauai's good roads. Mr. Petrie is head of the roads committee on Oahu, and upon him devolves the duty of working out Honolulu's street problems. He is one of the youngest, but at the same time one of the most active and valuable of Honolulu's law-makers. Petrie and Wolter, of the Honolulu board, have led in the movement over there for good roads, and, it appears, they have come in for the brunt of the kicks.



On the left side is shown Governor Pinkham after meeting a part of his friends of Kauai. On the other is President James A. Kennedy, of the Inter-Island S. S. Co., who "personally conducted" the Ad Club and ladies.



Judge L. A. Dickey, the kindly hospital nurse, who looked after the afflicted at the Waimea landing. The other shows the Mauna Loa and a figure which we will the artist himself, illustrating the Ad Club spirit.

SHORT-CUT ROAD OPENED TO AUTOS

The road department has done some very fine work on what is known as the "short cut" above Koloa. It has been finely levelled and rounded over, so that automobiles may use it without loss of time. The road saves the "ups and downs" of the present main thoroughfare and also cuts off two and one tenths miles in the distance from Lihue to Waiuea.

On Club Dance

Cards have been issued announcing a dance of the On Club in the Lihue Hall Saturday evening, April 18, beginning at 8 o'clock. Each member is privileged to invite two friends. The members of the "Ilima Club", of Makaweli, have been invited.

New Zealand butter is pure and fresh by every steamer. Order it from Silva's Elecle store. Advt.

Koloa's Battery

Kolou is going into the coming baseball series with great expectations. One of the crack catchers of the famous All-Chinese baseball aggregation will appear behind the bat for the Koloas, and arrangements have about been completed for a pitcher from the same source. With this powerful battery, the Koloas will certainly have a hopeful prospect.

Passengers In And Out

The following sailed by the W. G. Hall last Tuesday for Honolulu: Gov. L. E. Pinkham, Judge L. A. Diekey, L. M. Judd, J. D. T. Akers, A. Horner, W. N. Hardy, Rev. F. A. Saylor, A. Lambert, Mrs. E. A. Chong, Sam Yin, May Basker, G. F. Alfonso, M. Iona, Helen Aki, F. C. Bertelmann, Mrs. Bertelmann, C. Apana, 18 deck.

The following arrived from Honolulu in the Kinau last Wednesday:

Geo. Rodiek, J. F. Hackfeld,
F. A. Sing, Mr. and Mrs. E. I.
Bishop, Mrs. Chas. A. Rice, Mrs.
Geo. Isenberg and infant, Mr. and
Mrs. A. Gartley, Mrs. E. M. Cheat-
ham, Master O. Cheatham, Master
H. Cheatham, Mrs. R. D. Israel,
Miss Israel.

Fr. Delivery to Kauai

Silver Plated

Individual

Pepp

Shakers


50c the pair

Exceptional value, and by far the best and most useful shaker we have ever offered for the prices.

We pay the transportation charges to Kauai, every pair bought just to show you that we are anxious to please, and appreciate your business.

We are specialists in
Dinnerware, Glassware, Silverware
and Nickelware.

W. W. Elmer & Co., Ltd.
"The House of House Wares"
33-35 King St. Honolulu



In Honolulu

Ye Mammoth Regal Boote now hangs at the mauka-Ewa corner of where Fort and Hotel streets meet (Pantheon Building). Remember the new location when you write, or when you come to the Capital.

We moved to larger quarters, in a splendid building, because of increasing trade due to the real worth of the shoes we sell.

People are realizing more than ever before that Regal Shoes are Good Shoes until they are completely worn out by long wear.

Yet they cost no more than poorer shoes, and everybody in the Territory pays the same price for a pair.

We pay all Parcel Post charges.

J. J. J.

Regal Boot Shop

HOMOLULU

Pantheon Building.

Office Supply Co., Ltd.
HONOLULU, T. H.
Agents for the
REMINGTON
TYPEWRITER
and dealers in Office Stationery
and Filing Systems.
Carry a complete stock of the
Globe-Wernicke Filing Cabinet
and Bookcases.
All repairs on typewriters guaran-
teed satisfactory.

Paper

Paper Bags, Twines,
Stationery

THE LATEST

PAPER HOUSE

IN THE TERRITORY

MAIL ORDERS PROMPTLY
ATTENDED TO

AMERICAN-HAWAIIAN
PAPER CO., LTD.
Fort and Queen Streets

17


GEO. C. GUILD, Vice Pres & Mgr

JAS. F. MORGAN
Co. Ltd.
Stocks, Bonds,
Real Estate and Insurance
NO. 125-131 Main Street
P. O. Box No 59
Hotel. It
and is ad-
current pro-
and house.

Haven't you yet written for
full particulars of
“Ingeco”

“The General Utility Engine”
[Operates on kerosene, distillate or
gasoline.]

Honolulu Iron Works Co.
HONOLULU



They Hold Their Shape

One of the greatest difficulties with many shoes is their tendency to stretch and lose shape after being worn a short time.

We have solved this trouble for women who call on us for

E. P. REED & CO., SHOES

Here are shoes that always look well, wear well and hold their shape under the most severe strain.

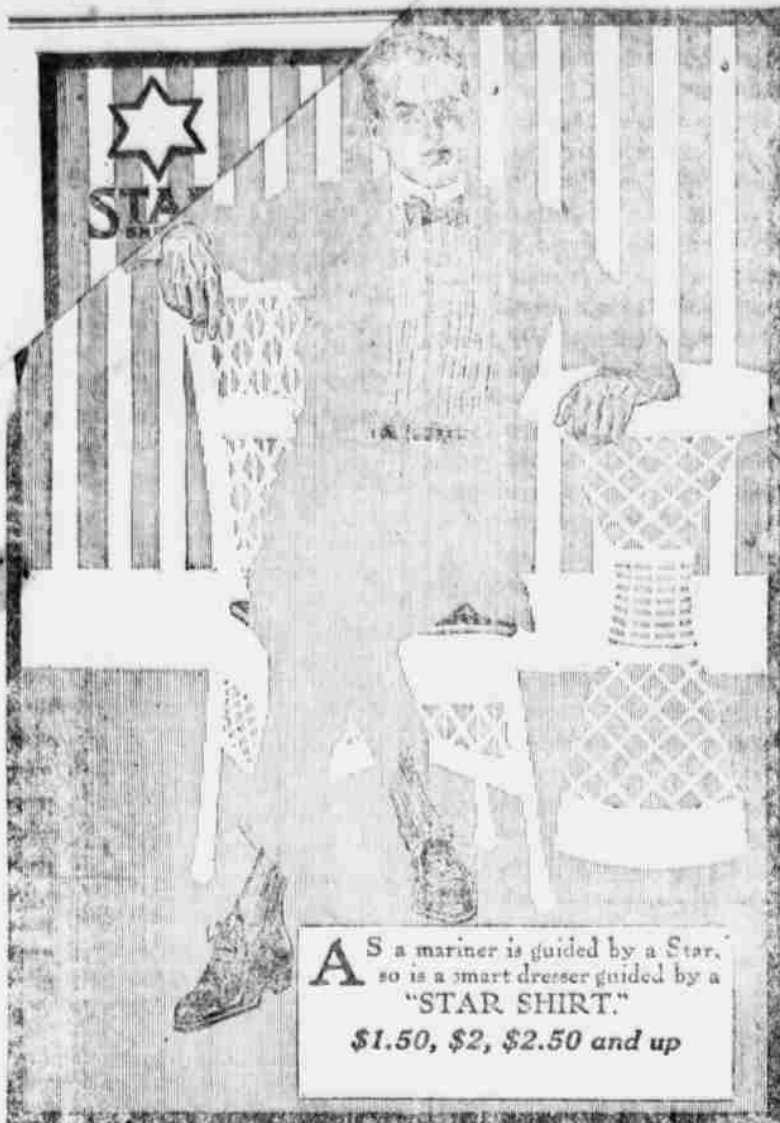
These qualities, together with their correct style and comfortable fit have brought these shoes into high favor with women who make wise selection of their footwear.

Free delivery to any postoffice on Kauai.

Manufacturer's Shoe Co., Ltd.

1051 Fort St.,

Honolulu, T. H.



STAR SHIRT

A S a mariner is guided by a Star,
so is a smart dresser guided by a
"STAR SHIRT."

\$1.50, \$2, \$2.50 and up

Silva's Toggery, Ltd.

"The Store for Good Clothes"
HONOLULU

We carry the
**BOY
SCOUT
SHOES**



in two grades.

1st grade, boys' sizes, 2 1-2 to 5, at	\$3.50
2nd " " " 2 1-2 to 5, at	2.75
1st grade, men's sizes, 5 1-2 to 10, at	3.50
2nd " " " 5 1-2 to 10, at	3.00

These are the best school or work shoe made.
Tan or Black.

McInerny Shoe Store Fort Street
HONOLULU

SILVA'S ELEELE STORE

Kauai's First REAL Emporium
J. I. SILVA, Proprietor

Most complete stock of Drygoods and General Merchandise on
the Island. Free delivery. No trouble to show goods.
For Fancy Wines Ring up 73.

Main Store ELEELE, KAUAI

What They Said

Following are some of the comments of Ad Clubbers upon their return to Honolulu, as reported in the Star-Bulletin:

JAMES A. WILDER: That Zulu song made a big hit on Kauai, but it didn't have anything on the flute music furnished by Charlie Frazier and myself.

EMIL A. BERNDT: The old form of hospitality which you see on Kauai has died out in many parts of Hawaii. I was born on Kauai, and it was my first visit there in many years.

GOV. L. E. PINKHAM: A country which boasts of an organization like the Ad Club need never fear a financial or any other depression. I notice that Kauai has made many remarkable advances.

J. D. LEVENSON: I cheered so much that I lost my voice. I didn't have so much fun after that, for how can an Ad Club member have a good time when he cannot give vent to his feelings by lusty shouts?

JAMES FRIELE: That Ad Club bunch are certainly live wires. I missed some of the stunts ashore while the Mauna Loa lay off the several ports of call, but there was not a dull moment on board ship.

GEORGE R. CARTER: I told the Kauai people that I was president of the Chamber of Commerce, and to register their complaints with me. However, I don't believe the Kauaians have anything to complain about.

PRESIDENT FARRINGTON: (Ad Club): Our Kauai trip was a splendid affair from start to finish. I am not at all disappointed that we met with unexpected weather conditions which forced changing some of our plans. People who can show themselves ready for all that comes whether on the program or not, and all the while be happy and contented, must be all right on general principles. The same spirit brought into practical business problems as well as excursions makes business good. That's one of the things the Ad Club is driving at. Kauai people treated us cordially, magnificently, which is another way of saying that they were just natural. We were more than satisfied. Just to show that the trip is not all fun and that we have serious matters on our minds during our travels, I shall propose a plan to the Ad Club tomorrow which will be purely advertising and which, in my estimation, will bring the Nawiliwili breakwater proposition before the members of Congress in a unique and effective way. The Ad Club, you know, is a territorial institution and we now have a Kauai project on the list of matters to receive enthusiastic attention, as well as united support.

TO SPEND \$26,000 ON WAI MEA WHARF

While over here Superintendent Caldwell looked over Waimea and Nawiliwili wharves, and decided that the expenditure of \$26,000 on the former was necessary; but (strange as the reckoning may appear on Kauai) concluded that, on account of the breakwater talk for Nawiliwili, improvements to the wharf there could wait awhile. The Star-Bulletin thus sums up the work of Superintendent Caldwell over here and his conclusions:

That the expenditure by the territory of \$26,000 for the construction of a new wharf at Waimea, Kauai, will be an outcome of the recent inspection by Governor Pinkham and J. W. Caldwell, chairman of the Board of Harbor Commissioners, of piers and wharves on the Garden Island, was the gist of a statement made this morning by Mr. Caldwell. Mr. Caldwell and the governor visited Kauai with the Ad Club and, while there, took the opportunity of combining business with pleasure.

According to Mr. Caldwell, the Waimea wharf, concerning which complaints frequently have been made, was found to be in bad condition.

"There now is \$26,000 in the Loan Fund and I expect that a amount will be expended for rebuilding the wharf," said the chairman. "But in the meantime, some repairs will have to be made on the wharf. I met James Morse, foreman of the harbor board, at Waimea, and we talked the matter over, he declaring that 30 piles will be necessary to make the wharf safe for the next twelve months. At the present time, no weighty articles, such as a steam plow, may be taken on the pier without danger."

Mr. Caldwell went on to say that the plans for a new wharf at Waimea would call for an outer end 50 by 50 feet, and an approach 20 by 50 feet, the cost of which is figured at about \$20,000.

"Governor Pinkham said that he would get the money as soon as the loan fund is straightened out," Mr. Caldwell said. "The governor realizes that the work must be done at once."

Speaking of matters concerning his trip which are connected with the department of public works, Mr. Caldwell stated that he went over the matter of the loan fund work with J. H. Moragne, county engineer for Kauai. Two contracts are now being carried out on Kauai, one of \$900 for a homestead road at Homestead, and another for a homestead road at Kapaa, calling for \$7700. The latter contract, for which \$10,000 was appropriated by the last legislature, is about 65 per cent completed. Mr. Caldwell said that, generally speaking, the wharves on Kauai are in fair condition and pointed out that, if the territory intends spending any more money on big wharf projects, it should wait until the federal government takes action on the Kauai breakwater proposition. He avers that a breakwater would make Nawiliwili one of the finest harbors in the territory.

Card Of Thanks

The Executive Committee having general charge of the reception of the Ad Club in the recent excursion tender this expression of their appreciation and thanks to all those generous friends who in any and some in many ways, contributed to the success of the occasion. It is a pleasure to serve and work with such public spirited and generous people.

J. M. LYDGATE,
Chairman of Executive Com.

If you once use New Zealand butter, sold at Silva's Eleele store, you will have it all the time. Advt.

Nawiliwili Garage

C. W. SPITZ, Prop.

NAWILIWILI, KAUAI TELEPHONE 104

Automobiles to all Parts of Kauai,
all hours, Day and Night
Careful Chauffeurs

Autos and light machinery repaired.
Plumbing and gas fittings. Agents for Fisk and Goodrich Tires and Tubes, Chalmers, Ford, Studebaker, Velie, Federal and Velie Truck.

Agents for the Inter Island Steam Navigation
Co., Ltd., at Nawiliwili, Kauai

S. OZAKI

WAI MEA

Wholesale Liquor Dealer

Telephone No. 102.

HONOLULU MUSIC COMPANY, Ltd.



88 KING STREET HONOLULU, T.H.

This year use

Pioneer Shingle Stain

and next year your roof
or siding won't need
"doing over."

At your Dealer's or from

LEWERS & COOKE, LTD.
HONOLULU.

Henry Waterhouse Trust Co., Ltd.

buys and sells

REAL ESTATE and
STOCKS and BONDS
and rents SAFE DEPOSIT BOXES

Fort and Merchant Sts.

Honolulu

For all the family---often

"Surely I recommend Primo to My Patients!"

Not every beer can safely be given
to sick people, but the tonic qualities of PRIMO PALE, together

with its purity and general all-around worth, causes me to
recommend it highly to many of my patients.



The Beer That's Brewed
To Suit The Climate

To improve the flavor of gravies, soups
and stews, and to make more appetizing
roast beef, roast pork, liver, steak
and hamburger steak, use plenty of

Blue Label Ketchup

After you have once
tried this, you'll not
be satisfied to be without
a stpply of this
dandy ketchup.

Need Gasoline?

Stop at McBryde Store and fill up.
Tank right by the roadside. No
trouble at all, Week-Day, Night or
Sunday.

Cheapest Gasoline on Kauai.

McBryde Store - - Eleele

TO THE TRADE

WE ARE DISTRIBUTORS
FOR

"LOOPUYT" GIN "OLYMPIA" BEER
"REWCO" WHISKEY "TIPO" CLARET

A FINE SELECTION OF GROCERIES AND
LIQUORS ALWAYS ON HAND

GONSALVES & CO., LTD.

74 QUEEN ST., HONOLULU

If you have Electric Current, yet
do not use Westinghouse Electric
Cooking Utensils and Westing-
house Mazda Lamps, you don't
find much joy in Work and Life,
do you?

Lihue Store

Waimea Stables

LIMITED

Up-to-date Livery, Draying and Boarding Stable and Auto-
Livery Business.

AUTOMOBILE STAGE-LINE

BETWEEN LIHUE and KEKAHA

Leaving Lihue every Monday, Wednesday and Friday.
Leaving Kekaha every Tuesday, Thursday and Saturday.

ARRIVING AT THEIR DESTINATION IN THREE HOURS

W. WEBER Manager.

Telephone 4 W Waimea P. O. Box 48

While on the subject of
Home-Buying, why not

MAUI WINE

From the Kaupakalua Winery

Its a Delicious, Bright and Pure Table Wine. Try it.

Orders from Kauai Dealers Will Be Given Special Attention.

Lovejoy & Co., Ltd.

Wine and Liquor Merchants

902-909 Nuuanu Street

Honolulu

THE LIHUE STORE

will represent us in the sale of

Rexall Goods

in LIHUE, HANAMAULU and KOLOA
Ask them for a free booklet.

Benson, Smith & Co., Ltd.

Box 426

Fort and Hotel Streets

Honolulu

**THE REXALL
STORE**

QUARTERLY STATEMENT, GENERAL FUND OF RECEIPTS & DISBURSEMENTS, COUNTY OF KAUAI FROM JAN. 17TH. 1914 TO MARCH 31ST. 1914

RECEIPTS:

Treas. Terr. of Hawaii	\$ 285.30	
Licenses	202.75	
Water Works	800.70	
Fines & Costs	456.20	
Registr. of Autos	5.00	
" Brands	5.00	
Treas. Realizations	10.92	1,765.87
Net Bal. Treas Jan. 17th. 1914		10,804.24
Warrants outsdg March 31st. 1914		3,131.30
Rev. Stamps		200.00
		15,901.41

DISBURSEMENTS:

Current Expenses	\$ 3,117.91	
Police Department	4,280.40	
Road Department	720.70	
Courts & Jails	3,960.10	
Water Works	358.40	
Hospitals	1,083.59	13,521.10
Cash Bal. March 31st 1914		2,180.31
Rev. Stamps		200.00
		15,901.41

Detailed Statement of Receipts**GENERAL FUND:**

Treasurer, Terr. of Hawaii	285.30	
Licenses, collect since Jan. 1914	202.75	
Water Works:		
Water Works Waimea	383.70	
Water Works Kalaheo	104.90	
Water Works Omao	99.70	
Water Works Kawaihau	212.40	800.70
Fines & Costs:		
Waimea Dist. Court & Jail	130.30	
Koloa " " "	10.90	
Lihue " " "	78.00	
Kawaihau " " "	78.40	
Hanalei " " "	93.30	
Fifth Circuit Court	54.30	
County Jail	11.00	456.20
Collections:		
Registr. of Autos	5.00	
Registr. of Brands	5.00	
Treasury Realizations		
Waiahi Electric Co. Ltd. & Waimea Electric Co.		
Franchise Dues	10.92	
	1,765.87	

Detailed Statement of Disbursements**GENERAL FUND:**

CURRENT EXPENSES:		
Supervisors, Salaries	750.00	
Mileage	76.50	
Incidentals	.50	827.00
Attorney, Salary	450.00	
Incidentals	38.00	488.00
Auditor, Salary	450.00	
Incidentals	180.03	630.03
Clerk, Salary	450.00	
Incidentals	102.08	552.08
Treasurer, Salary	450.00	
Incidentals	12.70	462.70
Office Rent		60.00
Expenses of Liquor Licenses		74.00
Stationery		24.10
		3,117.91
POLICE DEPARTMENT:		
Sheriff, Salary	525.00	
Incidentals	208.90	733.90
Dep. Sheriff Waimea		
Salary	375.00	
Pay of Police	480.00	855.00
Dep. Sheriff Koloa		
Salary	300.00	
Pay of Police	280.00	580.00
Dep. Sheriff Lihue		
Salary	375.00	
Pay of Police	300.00	675.00
Dep. Sheriff Kawaihau		
Salary	210.00	
Pay of Police	270.00	480.00
Dep. Sheriff Hanalei		
Salary	210.00	
Pay of Police	270.00	480.00
Pay of Police Specials		367.00
Coroner's Inquest		109.50
		4,280.40
ROAD DEPARTMENT:		
Road Supervisor, Salary	450.00	
Incidentals	214.50	664.50
County Road Machinery		56.20
		720.70
COURTS & JAILS:		
Waimea, Dist. Magistr. Salary	270.00	
Court & Jail	92.65	362.65
Koloa, Dist. Magistr. salary	210.00	
Court & Jail	34.40	244.40
Lihue, Dist. Magistr. Salary		300.00
Kawaihau, Dist. Magistr. Salary		165.00
Hanalei, Dist. Magistr. Salary	150.00	
Court & Jail	10.00	160.00
Fifth Circuit Court:		
Clerk Salary	375.00	
Expenses	771.95	
Law Books	22.39	1,169.34
Support & Maint. of Prisoners		517.30
County Jail		955.21
Expenses of Witnesses		86.20
		3,960.10
WATER WORKS:		
Waimea Water Works	106.05	
Kalaheo " "	223.55	
Omao " "	10.55	
Koloa " "	15.00	
Kawaihau " "	3.25	358.40
		358.40
HOSPITALS:		
Waimea Hospital	200.00	
Elele Hospital	100.00	
Koloa Hospital	100.00	
Lihue Hospital	250.00	
Hanalei Dispensary	433.59	1,083.59
		13,521.10

Statement**Receipts & Disbursements, Special Deposits Schools from Jan. 17th. 1914 to March 31st. 1914.**

	Bal. Jan. 1914	Receipts	Disbursements	Bal. March 31st. 1914	Overdrawn
Repair & Maint. of					
Build'gs & Grounds	13.99		172.01	158.02	
Janitor Services &					
School Supplies			133.90	133.90	
School Furniture					
& Fixtures			6.50	6.50	
New School Buildings			1,021.15	1,021.15	
	13.99		1,333.57	1,319.57	

Receipts & Disbursements, Special Game Fund from Jan. 1914 to March 31st. 1914.

	Bal. Jan. 1914	Receipts	Disbursements	Bal. March 31st. 1914
	630.00	15.00		645.00

Receipts & Disbursements of Road Tax Special Deposit, County of Kauai, from Jan. 17th. 1914 to March 31st. 1914.

Districts	Bal. Jan. 1914	Receipts	Disbursements	Bal. March 31st. 1914	Overdrawn
Waimea	19.27	Taxes 324.00	1,205.37		858.10
		Material 4.00			
Koloa	260.46	Taxes 49.20	1,113.87		688.96
		Mulehire 115.25			
Lihue	69.66	Taxes 88.00	1,589.30		1,431.64
Kawaihau	32.94	Taxes 37.00	1,688.90		1,618.96
Hanalei	21.42	Taxes 98.00	1,501.20		1,381.78
Niihau	4.28			4.28	
	408.03		715.45	7,098.64	5,979.44

Lihue, Kauai, March 31st. 1914. C. MASER, Auditor, County of Kauai.

The Income Tax Law

Has doubtless become a reality to a large number of men and women in the past month than in any time since its enactment. The last day for filing the tax returns *without loss or penalty* has gone by.

There are many people who put off until the last minute--or later--the doing of things which are to their own profit. If you are not yet one of our patrons *your loss* though not imposed by law, is no less *real*.

While our merchandise and service are up-to-date as we can make them, we confess that our business principles are of the old fashioned variety, which places your satisfaction above the day's profit.

N. S. Sachs Dry Goods Co.
HONOLULU

Thurtells To Hills

Mrs. Ed Thurtell and daughter, Grace, have gone for a few weeks stay up in the mountains, at the tunnel, where Mr. Thurtell is engaged in putting in an electric line from the power house.

Theater has Piano

"Hale Hooni" now has a piano of its own. Manager Fernandez having purchased the fine instrument of the Fairview Hotel. It was installed last week, and is adding greatly to the current programs in the popular show house.

READ THE GARDEN ISLAND

SUPERVISORS MEET

Continued from page 1

Upon motion of Mr. McBryde seconded by Mr. Menefoglio the sum of sixty-six and 20-100 dollars (\$66.20) was appropriated as additional appropriations for the following purposes, same to be paid out moneys available in the County Treasury:

County Road Machinery \$56.20
District Courts and Jails:

Lihue 5.00
Water Works: Koloa 5.00

Financial reports for the month of March, viz: the Treasurer's (R 149), Auditor (R 149a), Auditor's Trial Balance etc. (R 149aa) and the Joint Report, and the Auditor's Quarterly Report (R 150) to March 31st, 1914 were received and referred to the Finance Committee, Mr. Gay, for report.

Financial reports No. 147, 147a, 147aa, and 147b, for the month of February, upon recommendation of the Finance Committee, were approved.

A petition (P 973) from Kawaihau for a water supply for the use of the residents at Waipouli, was received and upon motion of Mr. McBryde, seconded by Mr. Menefoglio, was referred to Mr. Moragne for a report and advice.

The report (P 974) of the poundmaster for Lihue for the quarter ending with March 31st, 1914, was received and referred to Mr. Menefoglio, committee, for report, and same was approved later upon favorable report by the committee.

A communication (P 978) from C. H. Alspaugh, vocational instructor, requesting material, etc for the use of his department was received and upon motion of Mr.

McBryde consideration was deferred by unanimous vote until the next meeting.

A requisition (P 975) from Miss Dorothy Whittington, principal, for repairs to the Kekaha school was received and referred to Mr. Moragne with full power to act.

A requisition (P 976) from John Bush, principal, for supplies for Koloa school, was received and referred to Mr. Moragne with full power to act.

Reports (P 977) on school buildings, etc. from Anahola, Haena, Hanalei, Hanamaulu, Kalaheo, Kekaha, Kilauea, Koloa, Lihue, Makaweli, Wailua and Waimea, were received and ordered placed on file.

Acting upon the report contained in the School Report (P 977) from Mrs. Chiffe, principal, the Board of its own motion instructed Mr. Moragne to give the school buildings at Hanalei the necessary repairs.

Mr. Menefoglio was by vote authorized to purchase a barrel of lime for the use of the Haena school.

The report (P 979) of the County Road Supervisor for the month of March was received and ordered placed on file. This report is in substance as follows:

"Some second coat oiling was done at Waimea and vicinity.

"Filling in, with boulders, of the approach to Waimea bridge was carried on during the month with a small force of men.

"The Lihue half of the shortcut road was repaired by the road machine.

"In Lihue District the Kapaa and Hanamaulu grades were spiked and resurfaced with coarse sand during Feb. and March, prison labor being employed. After finishing the above the force went to work on the Courthouse-Jail new grade, which grade is now more than half completed.

In both Kawaihau and Hanalei Districts the work of rounding up and draining was completed over the whole of the main road. This road was in a fair way of being in better condition than ever before but since the rains came they will all need to be shaved over with the road machines.

SCHOOLS

"A supply of the old desks of Kalaheo schools were hauled to the new school rooms at Koloa and Kapaa.

WATER WORKS

"The pipe of the new Kalaheo Water Works was laid to the distributing point at the gate to Kukulono Park; the flow of water at that point is from 22,000 to 29,000 gallons per 24 hours. Above \$600.00 worth of pipe is required to the home-steaders how ready for water."

Mr. McBryde to whom was referred petitions Nos. 947, and 962 respectively, received from J. W. Aka and Wm. Elliot for appointment to the office of Water Works for Lihue, advised the tabling of the petitions, which was done none dissenting.

Mr. McBryde moved for the appointment of one man as superintendent of the works at Kalaheo, Lihue, Oloa and Koloa and at the same time nominated A. J. Caldeira for the office, and being seconded by Mr. Menefoglio, the motion by a unanimous vote was carried.

Upon motion of Mr. Gay, Mr. Moragne was instructed to investigate the matter of land taken for County's road purposes in Waimea, situated near the residence of A. Hunt, to report at the next meeting.

Upon motion of Mr. Gay, Mr. Moragne was instructed to investigate and report upon the advisability of relocating the Mana road, in the Waimea district.

In pursuance to a request from the County road supervisor, upon motion of Mr. McBryde, that official was authorized to employ Mr. Fitzgibbon on the 1st. of May next.

Upon motion of Mr. McBryde, Mr. Moragne was empowered to purchase water pipe for use of the Kalaheo water works but at a cost not to exceed the sum of six hundred dollars.

Allowance for road work in the different districts for the next month were limited as follows:

Each of the districts except Koloa \$800.00

For the Koloa District 300.00

Mr. McBryde, for the committee, advised the indefinite postponement of bill No. 945, providing for the catching and impounding of strays; and at the same time requested leave for the committee to introduce a substitute or a new bill, which would cover the belt road extending from the Waimea district to Anahola, in the District of Kawaihau. Report accepted and the committee granted the privilege asked for.

At 12:00 m. the meeting adjourned, subject to call of the chair.

Our Stores will be closed on
Good Friday
April 10th

Orders received up to 5 p. m. will be filled the same day.

Make use of our phones:

141 Office and Manager
142 Grocery Dept.
143 Drygoods Dept.
144 Japanese Dept.
145 Hardware Dept.
323 Meat Market
354 Hanamaulu Store

KAUAI'S EMPORIUM
LIHUE STORE

BANNISTER SHOES

Large shipment just received and opened up, and they are beauties. Call and inspect them. You will find just what you have been looking for. All sizes.

The
Makaweli Store
Headquarters for Bannister Shoes.

The Easter Paradise

The April number of The Paradise Of The Pacific appears in a gorgeous covering of blue, green and gold, and contains a rich fund of matter on numerous Islands topics. There are four striking Kauai views, in the number being Waimea Canyon, Olokele Trail, Fairview Hotel and the residence of W. H. Rice, in Lihue.

Waimea Literary

A meeting of the Waimea Literary Club will be held next Saturday evening, Mrs. Hofgaard being the hostess. The subject will be "Hawaii's Legends", and the principal speaker will be Judge C. B. Hofgaard.

Honolulu Visitors

J. F. Hackfeld and George Rodeik, president and manager, respectively, of Hackfeld & Company, arrived on the Kinau, visiting the Isenbergs, at Lihue, and inspecting Lihue, Koloa and Kekaha plantations. E. Faxon Bishop and A. Gartley, of C. Brewer & Company, also arrived by the same boat and visited Kilauea.

Dr. Robert S. Norris, technical chemist of the Hawaiian Sugar Planters' experiment station, is making an inspection of the mills of Kauai.

An Extra Mail

An extra mail was brought to Kauai, including Lihue, on Saturday by the freighter Honolulu, which arrived at Port Allen early that morning.

Eleele Personals

Miss Shannon, formerly of Waimea, is the house guest of Mrs. Frank Alexander, of Eleele.

Mrs. R. D. Moler and Master Niel Moler visited their home on Kauai last week. Neil Moler is attending school in Honolulu.

Mr. and Mrs. Richard Hughes left for Honolulu last Saturday.

Capt George Leavitt entertained Mrs. Hastie, the Misses Hastie and Messrs Eby and Dillingham at dinner Thursday night.

Card Of Thanks

J. M. Souza, children and other relations take this means of thanking their friends for floral tributes and other tokens of sympathy in their recent sad bereavement. Eleele, April 6, 1914. Advt.

Mountain House Party

Misses Georgia Purcell, Ida L'Orange, Ella Rath, Etta Lee and Ella Lee form a party spending a few days at the Baldwin mountain house. They started from Makaweli last Saturday morning, and expect to return Wednesday.

New Zealand butter in one-pound blocks at Silva's Eleele store. Advt

Notice to Tourists

Port Allen is the best landing port on Kauai. Gomes' 1914 Cadillac and Chalmers 7 and 5 seater will meet you there with reliable chauffeurs to carry you to any points of interest on Kauai. Ring up 83 W. Day or night always ready.

STATEMENT OF THE OWNERSHIP, MANAGEMENT, CIRCULATION, ETC., REQUIRED BY THE ACT OF AUGUST 24, 1912, OF "THE GARDEN ISLAND" published weekly at Lihue, Hawaii, for April 1st, 1914.

Editor, L. D. Timmons, Lihue, Hawaii.

Managing Editor, L. D. Timmons, Lihue, Hawaii.

Business Manager, K. C. Hopper, Lihue, Hawaii.

Publisher, GARDEN ISLAND PUBLISHING CO., LTD.

Owners: (If a corporation, give its name and the names and addresses of Stockholders holding 1 per cent or more of total amount of stock. If not a corporation, give names and addresses of individual owners.)

Mrs. A. S. Knudsen, Kekaha, Hawaii; Aubrey Robinson, Makaweli, Hawaii; E. A. Knudsen, Kekaha, Hawaii; J. H. Coney, Lihue, Hawaii; G. N. Wilcox, Lihue, Hawaii; S. W. Wilcox, Lihue, Hawaii; A. S. Wilcox, Lihue, Hawaii; C. H. Wilcox, Lihue, Hawaii; Mrs. R. L. Wilcox, Lihue, Hawaii; R. P. Spalding, Kealia, Hawaii; C. S. Dole, Lihue, Hawaii; Francis Gay, Makaweli, Hawaii; Hans Isenberg, Lihue, Hawaii; A. F. Knudsen, Kekaha, Hawaii; H. P. Faye, Kekaha, Hawaii; T. Brandt, Waimea, Hawaii; C. A. Rice, Lihue, Hawaii; W. H. Rice, Lihue, Hawaii.

Known bondholders, mortgagees, and other security holders, holding 1 per cent or more of total amount of bonds, mortgages, or other securities: (If there are none, so state.)

W. H. Rice, Lihue, Hawaii; Hawaiian Trust Company, Honolulu, Hawaii; E. A. Knudsen, Kekaha, Hawaii; Hans Isenberg, Lihue, Hawaii; A. S. Wilcox, Lihue, Hawaii; S. W. Wilcox, Lihue, Hawaii; G. N. Wilcox, Lihue, Hawaii; Aubrey Robinson, Makaweli, Hawaii; A. F. Knudsen, Kekaha, Hawaii; Mrs. V. Knudsen, Kekaha, Hawaii; H. P. Faye, Kekaha, Hawaii; Francis Gay, Makaweli, Hawaii; R. P. Spalding, Kealia, Hawaii.

Average number of copies of this publication sold or distributed, through the mails or otherwise, to paid subscribers during the six months preceding the date shown above. (This information is required from daily newspapers only.)

[Sign] K. C. HOPPER, Business Manager.

Sworn to and subscribed before me this 1st. day of April, 1914.

[Seal] K. C. Ah Hana.

Notary Public, Fifth Judicial Circuit, Territory of Hawaii.

IN THE CIRCUIT COURT OF THE FIFTH CIRCUIT, TERRITORY OF HAWAII.

At Chambers In Probate.

In the Matter of the Estate of William Hastie, deceased.

Order of Notice of Hearing Petition for Administration.

On reading and filing the petition of Mary Jane Hastie of Eleele, Kauai, alleging that William Hastie of Eleele, Kauai died intestate at Eleele, Kauai, on the 21st. day April A. D. 1913, leaving property in the Hawaiian Islands necessary to be administered upon, and praying that Letters of Administration issue to Mary Jane Hastie.

It is ordered that Saturday, the 2nd day of May A. D. 1914 at 9:30 o'clock A. M., be and hereby is appointed for hearing said Petition in the Court Room of this Court at Lihue, Kauai, at which time and place all persons concerned may appear and show cause, if any they have, why said Petition should not be granted, and that notice of this order be published in the English language for three weeks.

Dated at Lihue, Kauai, March 26th, 1914.

Seal.

(Sgd.) LYLE A. DICKEY,

Judge of the Circuit Court of the Fifth Circuit.

Attest.

(Sgd.) D. W. DEAN,

Clerk of the Circuit Court of the Fifth Circuit.

March 31st.—April 7-14-21, 1914.

MENDES & SOUZA

Automobile
Rent Service
Day and Night

Tel. 600 Lihue

Koloa Plantation Store

Wholesale and Retail Groceries
Dry Goods of all Descriptions.
General Plantation Supplies.

CALIFORNIA FEED CO.

LIMITED.

Dealers in

HAY, GRAIN AND CHICKEN SUPPLIES.

Sole Agents for

International Stock, Poultry Food and other specialties. Arabic for cooling Iron Roofs. Petaluma Incubators and Brooders.

KING'S SPECIAL CHICK FOOD
P. O. Box 452, Honolulu

For Sale.

Palms

Boston Fern Balls

Maiden Hair Ferns.

JOHN P. KAMANUWAI
McBryde Home

L. Y. TIM

Has entered the rent service, and has provided himself with a big

Five-Seater Buick

Special attention paid to commercial travelers. Reasonable rates to all parts of the island.

'Phone 172

HOTEL WAIMEA

WAIMEA, KAUAI

Breakfast : : \$.50
Lunch : : : .75
Dinner : : : 1.00
Room : : : 1.00

DICK OLIVER, Manager

Manuel Silva

Homestead

Has added a new six-seater Studebaker to his garage and is in a position to give his patrons even better service than ever before. Careful drivers, comfortable cars, and always ready to start.

DAY OR NIGHT SERVICE
TELEPHONE 84L

If you wish to travel in comfort and safety

Tel. 225 L.

Kapaia Auto Stand

Reasonable Rates and Careful Driver

M. TOGO

Chauffeur

White Wings Soap

Pau Ka Hana Soap

Bar Soap

JapanSeed Rice

High Flight Flour

First Grade

White River Flour

First Grade

F. L. Waldron, Ltd.

Honolulu