

The Pacific Commercial Advertiser

U. S. WEATHER BUREAU, DECEMBER 27.—Last 24 hours' rainfall, .01.
Temperature, Max. 79; Min. 70. Weather, fair; valley showers.

SUGAR—96 Degree Test Centrifugals, 3.625c; Per Ton, \$72.50.
88 Analysis Beets 8s 1½d; Per Ton, \$74.50.

VOL. XLII, NO. 7297.

HONOLULU, HAWAII TERRITORY, THURSDAY, DECEMBER 28, 1905.

PRICE FIVE CENTS.

THE WHITE EAGLE IN THE STREETS OF WARSAW.



THE REVOLUTIONARY PROCESSION ON NOVEMBER 5.

It would be difficult to find a better proof of the strength of the revolutionary movement which has followed the Czar's manifesto than this procession in the streets of Warsaw. The manifestants carried openly the forbidden national symbol of the White Eagle, which since Poland passed under the Russian power has been under the strictest ban. Even to wear a brooch with this device meant arrest until a few days ago; but in the recent demonstrations the eagle appeared unchallenged even on banners. There was no military or police interference, although Cossacks, infantry, and artillery were massed in some of the squares. As the procession moved by with national songs and occasional halts before patriotic monuments, the guards are said to have been moved to tears. Half-a-million people took part in the demonstration. The promise of a constitution for Russia has revived in Poland the hope of national independence.

THE RUSSIAN PRISONERS REBELLIOUS

Repatriation Delays Arouse Revolutionary Spirit—Sara Complains to Ambassador.

(Associated Press Cablegrams.)

TOKIO, December 28.—Russian prisoners are becoming exasperated over the delay in their repatriation, and the revolutionary spirit is spreading among them.

RUSSIAN SITUATION IMPROVING.

BERLIN, December 28.—It is believed here that the Russian situation is improving, and securities are stronger.

WIRES TO MOSCOW CUT

ST. PETERSBURG, December 28.—Communication with Moscow has been severed.

A regiment of guards has been despatched.

Rebellion in Poland is planned.

SARA COMPLAINS TO AMBASSADOR.

WASHINGTON, December 28.—Sara Bernhardt, the French actress, has protested to M. Jusserand, the French Ambassador, against the discrimination shown by the theatrical syndicate.

MRS. "FITZ" WANTS A DIVORCE.

SIoux FALLS, December 28.—Mrs. Fitzsimmons has arrived here to sue for a divorce against Robert Fitzsimmons, the pugilist, who will contest the case.

ROOSEVELT PLANS STRENUOUS TIME.

WASHINGTON, December 28.—President Roosevelt has gone to Pine Knob to spend the remainder of the holidays.

AFTERNOON REPORT.

NEW YORK, December 27.—McClellan has been sworn in as mayor of New York City.

PUERTO PLATA, San Domingo, December 27.—The American gunboat Duquesne has been ordered to Monte Christi.

ODESSA, December 27.—The revolutionists are endeavoring to close the banks. The foreigners are leaving the city.

PUERTO PLATA, San Domingo, December 27.—It is reported here that President Morales has been seriously injured by a gunshot wound.

ST. PETERSBURG, December 27.—The government expects that the result at Moscow will soon be completely crushed by the government forces.

MOSCOW, December 27.—Troops and artillery are arriving here to cope with the revolt. The cannonading of the strongholds of the revolutionists continues. The casualties are swelling.

MEMPHIS, Tenn., December 27.—The Merchants' Trust Company, the American Savings Bank Trust Company and the Mechanics' Savings Bank have all suspended. They promise to pay in full. The cause of the suspensions was the overloans, it is alleged.

TO PUT TARIFF ON HAWAIIAN SUGAR?

WASHINGTON, December 16.—Sugar, the perennial bugaboo, has loomed up again as an issue. The attempt of the Administration to push the question of a tariff on Hawaiian raw sugar entering this country is a problem that will give much trouble for the Middle West and Coast States and has caused an alliance that means a portentous row and increases the chance for the Democrats to ally themselves with the malcontents and thus get in return, perhaps, a rate bill. It is unfortunate that Williams is the leader at such a crisis, for he is likely to fritter away the opportunity that is begging him to accept. One fact stands out boldly in the crisis—that the American consumer is paying \$40,000,000 a year more for his sugar than he was last year, and getting less sugar. This, of course, falls heaviest upon the small consumer.

PAN-AMERICAN RAILROAD PLAN

CITY OF MEXICO, December 16.—Charles M. Pepper, foreign trade commissioner of the United States, who is also interested in bringing about the building of a railroad that is to connect North America, Central America and South America, is here. Speaking of the railroad project, he said: "The plan of building a Pan-American railroad is in much more tangible form than most people imagine. In Mexico they are getting ahead from Tehuantepec down to Guatemala. Away down at the other end of the line in Argentina, Peru and Bolivia there is a remarkable railway movement, and it all bases on the Pan-American project. Senator Davis is just as active and enthusiastic as he was here at the Pan-American conference, when he did so much to secure its indorsement. He will have a very interesting report for the third Pan-American conference when it meets in Rio de Janeiro next July."

ART WORKS IN HOLY OF HOLIES

NEW YORK, December 16.—A special to the Sun from Rome says: An interesting discovery has been made in the Sanctum Sanctorum or chapel at the head of the holy stairs at the church of St. John Lateran, which, it was supposed, contained no secrets. The holy stairs lead to a tiny chapel, which was formerly for the private use of Popes. Here magnificent coffers have been discovered, which, on examination, proves to be most precious, antique and unique works of art, which have caused a stir in art circles. There are many articles of various sizes; all are made of solid silver and are deeply chiseled in the best manner, and date from the second to third century. One which formerly held a piece of the true cross is in the shape of a cross, and its value is inestimable.

THE FINAL SESSION

Supervisors Meet for Last Time This Year.

The Board of Supervisors held their last meeting of the present year last night.

The bulk of the business transacted consisted of the passing of the customary monthly appropriations. The employees of the road and garbage departments were made happy by the issuing of a blanket warrant through the medium of which they will be able to have their wages in time to properly celebrate New Year's Day.

It was decided to continue the employment of the house numbering department until the only uncovered section of the city, Kaimuki, be attended to.

Chairman Smith was granted a vacation of two months in order to enable him to take his Washington trip in the interests of the Territory.

Present were Chairman Smith, Supervisor-at-large Adams, Supervisors Lucas, Paole, Archer, W. Savidge, Stenographer Aea, Clerk Kalauokalani, Capt. Sam Johnson, Auditor Bicknell, A. E. Murphy, Joe Gilman, and representatives of the press.

The minutes of the last meeting were read and approved.

The following demands were approved and ordered paid:

Public expenditures, \$1,670.
County Attorney's office clerks, \$485.
Treasurer's office clerk, \$100.
Poundmaster, \$30.
House numbering department, \$125.
Auditor's office clerk, \$100.
County Clerk's office, \$195.
Road department, general expenses, \$1949.

Road department, payroll, \$2524.
Keepers of parks, \$200.
Koolauloa road district, \$590.75.
Kaplanani Park, \$332.
Ewa and Waiānae road district, \$1,402.20.

Koolauapoko road district, \$798.75.
Waiānae road district, \$355.50.
Police department, \$7165.
Fire department, \$3675.

Garbage department, \$651.90.
Electric light department, \$597.50.
Police and fire alarm system, \$191.50.
Hawaiian band, \$1550.

The Aala Park bandstand proposition was reported to be still in the air.

A statement from Road Supervisor Sam Johnson showing work done by the road department during the past six months was read and filed.

The report showed that 39,390 feet or

A SHOPLIFTER WHOM KING KALAKAUA ONCE KNEW

Daughter of One of Maximilian's Most Famous Generals Caught Stealing From a San Francisco Business House.

A well-born woman, who, as a child, was once held in the arms of one of Hawaii's kings, was arrested in San Francisco on December 16 for shoplifting. She was the daughter of one of Emperor Maximilian's most famous generals, educated in the best conservatories of Europe, at one time a favorite with royalty. She even sang with Patti. The San Francisco Bulletin tells the woman's history as follows:

The first to fall in the meshes of the law was Mrs. Guadalupe Benatti, the wife of a prosperous Italian, living at 2018 B Powell street. She was arrested at the Emporium with a dressful of small trinkets which she had succeeded in collecting during the afternoon.

At her home a trunk full of stolen property has been found by Detective Sergeants Charles L. Taylor and Harry P. Braig. Just how much the stolen articles are worth it will be impossible to determine until someone familiar with the prices has looked them over. The woman does not attempt to deny her guilt, but admits it. Moreover, her husband adds to her confession by admitting that the wife has been stealing from shops about town for more than two years. He has frequently warned her to desist, but the temptation was too much for her to withstand.

Something of the woman's antecedents are told in a newspaper clipping found in her possession which she seems to prize. It was written sometime before she married her present husband,

when she was the widow of a man named Nightingale. It reads: "Mrs. Nightingale of San Francisco was the guest Monday and Tuesday of this week of Dr. and Mrs. C. E. De Vinney. Mrs. Nightingale was the only child of General Mendosa, who was on the staff of Maximilian, the Mexican Emperor. He was one of those delegated to escort Maximilian back to Mexico and was one of the prominent Generals at the time of the downfall. General Mendosa was imprisoned at that time and sentenced to be shot with many others, but escaped by his wife paying a large ransom, after which he was exiled from Mexico for five years. While in exile his daughter, Mrs. Nightingale, accompanied him, his wife remaining in Mexico to attend to their large estate, part of which was confiscated by the Mexican revolutionists.

"While abroad the General placed his daughter for a year in the French Conservatory of Music and for a like period in the conservatory in Milan, where she studied music and Italian, and became a very noted and accomplished vocalist and musician. She also speaks several other languages fluently. While on their way back to Europe, General Mendosa visited the Hawaiian King and was entertained at the royal palace. Mrs. Nightingale was presented by the King with a beautiful gold dog's head set with diamonds, which with the passport signed by him she still retains.

"Several years ago the Hawaiian King died in San Francisco. A few days before his death he was visited by

(Continued on Page 4.)

SECLUDED SISTERS WILL TAKE RIDE ON THE CARS

The cloistered sisters of the Sacred Hearts, most of whom have not been outside their convent walls for years, will take a Rapid Transit car this morning about 9 o'clock and ride out Kalia way. It is said that one of the sisters has been indoors for nearly 30 years.

The sisters, with their pupils, go out to see the site where the ladies' boarding school, which they conduct, is to be housed.

They will spend the day on the site getting acquainted with the grounds and preparing for the completion of the detail of the plans outlined in the Advertiser some days since. The bishop has, of course, seen the place, but the

sisters have not and they desire to see the spot upon which their labors for their charges will be long begun.

As long as the order has been in Hawaii, this is the first time that they have broken through their local rule which requires that they remain within the walls of the convent night and day.

The Rapid Transit people are quite pleased at the prospect of the sisters building out Kalia way, as it will add a pretty penny to their coffers every day when the school is once started. The sisters are delighted with the prospect of having a suburban location and with the bishop are working hard to plan well for the future of their beloved church and its ever increasing family of children.

MAY YET STOP HERE

The New Steamer Line From San Pedro.

The Los Angeles Times says:

J. Flood, general manager of the new steamship line which is to ply between San Pedro and the Orient, with the backing of the Salt Lake railroad, is expected soon to return from New York, coming to the Coast in ample time to meet the first steamer over the new route, which is scheduled to arrive from the Orient in February.

This steamer will carry about 8000 tons of freight, the greater part of which already has been contracted to be hauled over the Salt Lake, and to be turned over to its connecting lines for delivery throughout the East.

Ostensibly the China and Java Export Company, a corporation having offices in San Francisco and London, is back of the enterprise, but as told by The Times recently, it has the backing of the Salt Lake railway, and behind that the direct encouragement of Senator Clark himself.

This company already is plying a string of four or five steamers between Calcutta and London and San Francisco, and has well-established connections in the Orient. It is proposed to put on one of their steamers for the San Pedro business exclusively, and to build up the trade through this port as rapidly as possible.

Much to the disappointment of Hawaii sugar planters who are more than ordinarily interested in the development of the harbor and the business of the port of San Pedro for their own good, the proposed itinerary of the steamer assigned to San Pedro does not contemplate any stops at the Hawaiian Islands. It is believed, however, that such inducements will be offered the company by the merchants and planters of Hawaii that they will be tempted to change the routing of their vessels and make regular stops at Honolulu.

The return of Mr. Flood is awaited with a great deal of interest, as with him lies the arranging of the details surrounding the entry of the first regular trans-Pacific steamer service into the harbor of San Pedro.

It is understood that arrangements already have been made for the unloading of shipments directly to bonded warehouses, whence they will be released by the government customs authorities.

C. J. Lehmann & Co. of this city have been made the local agents of the new line, and although the first cargoes will have to be lightered, it is hoped to have the harbor in such shape soon as to permit the big steamers to lie alongside the wharves.

Now is the time to wear

Dr. Deimel Underwear
(LINEN-MESH)

A great deal of the sickness in the world is caused by unsanitary woolen underwear. Most underwear is made of linen which while being clean has the great disadvantage of being cold and clammy.

By a special process of manufacture, a soft, warm, porous fabric has been evolved by Dr. Deimel, called Linen-Mesh, which is simply linen with the coldness taken out.

Dr. Deimel Underwear has obtained the unqualified endorsement of the foremost members of the Medical Profession and in every part of the globe gives health and comfort—summer, winter, spring and fall.

This underwear is made in such a wide variety of sizes that we can fit everybody.

M. Molnery, Ltd.,

FORT AND MERCHANT STREETS.

**The King of
CHAMPAGNES**

IS BEYOND DOUBT

**Moet & Chandon's
"White Seal"**

It is a ROYAL WINE and is found on the table of the best families in town. The health of the New Year can not be more honorably drunk than in this PEERLESS VINTAGE.

H. HACKFELD & CO., LTD.
AGENTS.

Avoid Heat and Worry!

**A
Gas
Range**

will go a long way toward securing a comfortable house.
No unnecessary heat in the house.
A saving in labor.
A clean kitchen.
Hot water at short notice, and many other comforts.

Gas Ranges and Water Heaters sold by Dealers and

HONOLULU GAS CO., LTD.


IT'S Rainier BEER

For it is on the top which proves its high grade

RAINIER BOTTL'G WKS.
Kewalo. Phone White 1331.

LOTSFor Sale or Lease in
GULICK TRACT**\$350.00 and Upward**Particulars of **MRS. S. A. GULICK.**
1030 GULICK AVENUE.**OPENED UP
YESTERDAY****Honolulu's Fifth Che-
Fa Bank Is Now
Operating.**

Who said hard times?

There are now five che-fa banks in Honolulu, running full blast every day and receiving an immense support from natives, Chinese and Japanese.

Heretofore there have been four banks but immunity from police interference has induced another not to get in on the good thing and make some of the easiest and surest money that it is possible to make.

The name of the new bank is Sul, and operations were commenced on Tuesday morning. The winning word in the morning was "kai," and in the afternoon the turn was called with "popoki".

The headquarters of the Sul bank are on River street above Kukui street.

A favorite Saturday evening game, patronized by the elite of the native gamblers, is run in a cottage on Kinau street and situated on the Punchbowl slope. The house is approached by a lane and is one of a row of three or four. This place has been running for about three months and the stakes are nearly always high. The cottage is admirably adapted for gambling purposes on account of its secluded location. Not even a Honolulu policeman would think of looking for a gambling game there, unless he wanted to play.

There is on School street, mauka of the school house, a long building used as a kind of camp. Various sorts and conditions of men camp here, and among them a select coterie whose delight it is to dabble with the dice and who would rather gamble for a living than work.

In the camp there are big doings on Saturday evenings. Crap is enthusiastically played all night long for "money or something of value," and every now and again a bottle of something warm is circulated to keep the spirits of the players up to the pitch necessary to ensure keen speculation. The camp has sheltered a crap game for half a year and will probably continue to do so for the best part of a year more, as far as police interference is concerned.

For a real, high-toned game one must repair to the Hustle tables on Makiki street. Play takes place upstairs and Sunday is the favorite day. The game is run by a Japanese and a would-be player must show the color of ten dollars before he is permitted to shake the dice. Some of the biggest Japanese gamblers in Honolulu patronize this game, but the ten dollar stipulation keeps the place from being uncomfortably crowded.

All the above-mentioned games are known to the habitual gamblers of the city and every Saturday night, back after hack drives up and, if the dice are being shaken at the time, deposits a gambler or two who join in the play. If, however, there be nothing doing at that particular house, the hack driver takes his fare to some other game on the circuit and sooner or later the entertainment sought is found.

**A QUEEN OF SIN
AT THE ORPHEUM**

"The Queen of the White Slaves" will mount her sin-stained throne at the Orpheum this evening and the Buhler Company of players will pay homage to her satanic majesty.

This is a peculiar melodrama. It almost baffles description. It deals with a phase of life in New York City, invisible but nevertheless terribly real. It deals with the traffic in human souls. Beautiful white girls are kidnapped and abducted in New York every day for lives of shame that are worse than death.

This powerful melodrama touches on this phase of metropolitan life.

"The Queen of the White Slaves" is no myth. At present she is safely ensconced behind prison bars where she can not reach her victims.

The company is evenly cast and a

**The Better
Way**

The tissues of the throat are inflamed and irritated; you cough, and there is more irritation—more coughing. You take a cough mixture and it eases the irritation—for a while. You take

**SCOTT'S
EMULSION**

and it cures the cold. That's what is necessary. It soothes the throat because it reduces the irritation; cures the cold because it drives out the inflammation; builds up the weakened tissues because it nourishes them back to their natural strength. That's how Scott's Emulsion deals with a sore throat, a cough, a cold, or bronchitis.

WE'LL SEND YOU
A SAMPLE FREE.**SCOTT & BOWNE, 400 Pearl Street
New York**

splendid performance may be expected. In the play vice falls and virtue is triumphant.

HAWAIIAN LODGE INSTALLATION

The installation of the following officers of Hawaiian Lodge No. 21, F. & A. M., took place last evening: Charles Sumner Hall, W. M.; Robert Hair, S. W.; Frank Edward Thompson, J. W.; Robert Cotton, Treasurer; K. R. G. Wallace, Secretary; Alexander Mackintosh, Chaplain; George Marshall Cook, Marshal; William Thomas Rawlins, S. D.; Love Moller Vetlesen, J. D.; Henry Albert Taylor, S. S.; Willis T. Pope, J. S.; Joshua Daniel Tucker, Tyler.

The installation was performed under John G. Rothwell, Past Master, assisted by J. D. Tucker, District Inspector.

**NEW WRINKLES
IN THE TAX LAW**

Owing to the change in the law relative to collection of taxes, coming into force next year, the assessors of the four divisions of the Territory are taking special pains to put taxpayers on the right track.

Taxes henceforth are payable in May and November, instead of once a year. Taxpayers are requested to file their returns for property taxes during the first two weeks in January. Income tax returns, to be filed at the same time, are for the period from July 1 to December 31, 1905, an exemption of \$500 being allowed.

Blanks for property and income taxes are ready for distribution at the tax office.

**THE CONFERENCE
THIS EVENING**

The program for this evening's session of the Hawaiian Mission Conference of the Methodist Episcopal church, under the direction of Bishop Hamilton, President, and Rev. John Wadman, superintendent, is as follows:

Union prayer service, 7:30 p. m., John W. Wadman in charge. Followed by the Lord's Supper, the Bishop presiding.

THURSDAY.

8:30 a. m.—Prayer Meeting, T. Takahashi, leader.

9:00 a. m.—An Address by the Bishop.

9:30 a. m.—Organization of the Conference, and Superintendent's Report.

2:00 p. m.—Committees in Session.

7:30 p. m.—Grand Missionary Rally: C. J. Day, presiding; Howard M. Chandler, Devotional Exercises; five-minute addresses by Peter Tosh (American); Dr. Burnham (Chinese); Miss Jayne (Susanna Wesley Home), Mrs. S. E. Damon (Hawaiian); C. H. Min (Korean); Peter Ryder (Settlement Work); G. Motokawa (Japanese); Mrs. Richards (All-round the World); and Bishop Hamilton, with a Message from the Home Churches.

THE FINAL SESSION.

(Continued from Page 1.)

7.45 miles of streets had been constructed and macadamized in that period.

Seventy-three hundred feet have been oiled by the road department on Pensacola, Iwilei road, Queen, Fort and South streets.

Numerous bitumen street crossings have been put in, also sanitary bitumen gutters. The dangerous parts of Diamond Head road have been fenced and numerous other road improvements effected.

Communications were read from Fire Chief Thurston, Superintendent of Public Works Holloway, Waterhouse Trust Company and the Hawaiian Pineapple Company.

In connection with Holloway's letter, Supervisor Lucas vouchsafed some interesting information with regard to the topography of Kakaako.

One hundred and seven voters employed in the Road and Garbage departments signed a petition praying for payment on the 29th inst., in order to be able to properly observe New Year's Day.

The necessary amount was appropriated by blanket warrant.

A petition signed by property-owners in the neighborhood of Hotel and Union streets stated that they have no objection to the Union street hack stand, occupying the place it does at present.

It appears that certain persons have objected to the stand. The matter was referred to the police department.

The chair drew the board's attention to Chapter 4, Section 6 of the County Act in reference to the county's understanding with the Rapid Transit Co. The latter's attorneys thought there seemed to be some ambiguity in the reading of the law as to whether or not bids should be called for in a contract of this nature.

It was decided to submit the matter to the county attorney for an opinion.

House Numberer Murphy gave some interesting details of his work. The city has been covered with the exception of the Kaimuki district. This latter work would take two months to complete. Murphy stated that houses were increasing rapidly in Kaimuki and that enquiries for numbering were frequent.

It was decided to continue the employment of the numbering department until the Kaimuki district had been completed. As soon as this numbering is done, Kaimuki will have a mail delivery.

Lucas stated that College Hills wanted to turn over its roads to the government for the county to care for. It was decided to notify the Public Works department that the county was ready to look after the roads whenever the department took them over from the Oahu College trustees.

Chairman Smith spoke of his having been selected to go to Washington and it was unanimously decided to allow him a two-months vacation, dating from January 19.

Adjourned until Tuesday, January 2, 1906.

**EMBROIDERY
SALE****Begins Next Week**Prices and qualities will be
announced later.**A. BLOM** PROGRESS BLOCK,
FORT STREET.

Now for the

HAWAIIAN ANNUAL**For 1906.**

Acknowledged to be the best number yet published of its 32 issues. Its usual Statistical and Reference tables have had revision and extension, while its special prepared articles embrace:—Estimating Honolulu's Population; Lessons from our Customs Tables; Goats in Hawaii; Board of Fire Underwriters; Extracts from Capt. Alex. Adams' Log; Haw'n Natnl. Reminiscences; Mamalahoa, an Ancient Haw'n Law; Kamehameha IV.—Neilson Tragedy; Reminis. of the Stage in Honolulu; Early Sandal-wood Trade; Burial Caves in Hawaii; Visit to Waimea, Oahu; Heiau of Kupopolo; Legend of Kaala and Kaaialii; Public Archives Commission; Papaya Culture; Nahu Rubber Co.; Local Office U. S. Weather Bureau; Hono. Symphony Society; Pictured Rocks of Naalehu; Arbor Day; Retrospect of Events of 1905, and Nationality and Population of Honolulu, with other interesting items; also an extended Register and Directory, showing Territorial, County and Federal Officials, corrected to Dec. 1, 1905.

Compiled and arranged for handy reference for home or office use, and unequaled as a handbook of information relative to Hawaii for readers abroad. An 8 vo. issue of 225 pages, paper cover, partly illustrated. Price, 75 cts. each, or \$8.00 per doz.; postage on mail orders extra.

THOS. G. THURM.

1063 Fort Street, Honolulu.

New Years Delicacies

The S. S. Sonoma will bring a fresh lot of goods just in time for "Merry Christmas."

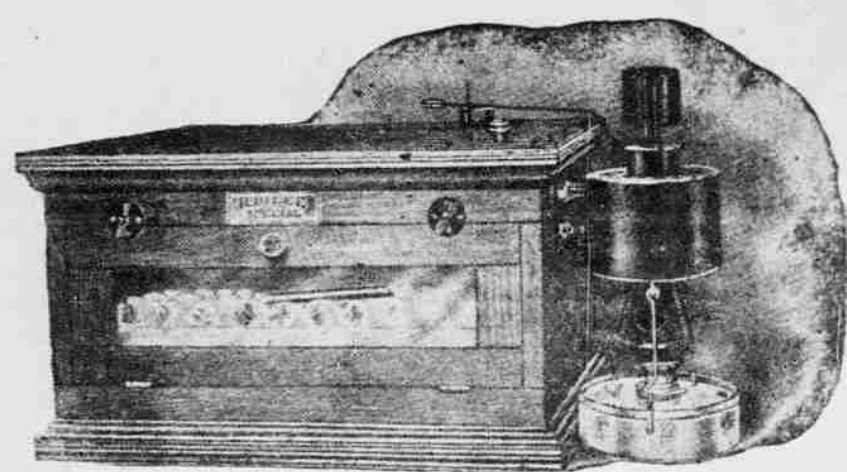
COAST TURKEYS, WILD DUCKS and all kinds of fresh fruits and vegetables in season.

Glaze Fruits, Stuffed Glaze Prunes, Stuffed Dates, Lowney's Celebrated Chocolate, Assorted Nuts and Raisins, Etc., as well as Suckling Pigs.

We invite everyone who is looking forward to a good New Year's dinner to call and see our goods.

C. Q. YEE HOP & CO.

TELEPHONE MAIN 251.

JUBILEE INCUBATORS

THE BEST ON THE MARKET: 60 EGGS, 108 EGGS, 216 EGGS. The principle of the single coil hot water pipe for heating the incubator has been thoroughly demonstrated to be the correct one as used in the JUBILEE.

No other incubator in the market will give such good results and such entire satisfaction.

CALL OR WRITE FOR CATALOGUES.

M. W. McCHESNEY & SONS, LTD.

35 Queen St., Honolulu.

QUALITY.

ECONOMY.

SOAP**Honolulu Soap Works Co.**

FRED. L. WALDRON,

Spreckels Block.

Sole Agent.



Vapo-Cresolene Cures While You Sleep.

For Whooping Cough, Croup, Coughs, Bronchitis, Influenza, Catarrh.

It cures because the air rendered strongly antiseptic is carried over the diseased surfaces of the bronchial tubes with every breath, giving prolonged and constant treatment. Those of a consumptive tendency, or sufferers from chronic bronchitis, find immediate relief from coughs or inflamed conditions of the throat.

CRESOLINE is a boon to ASTHMATICS.

ALL DRUGGISTS.

THE VAPOR-CRESOLINE CO., 180 Fulton St., New York City.

AT AUCTION BY WILL E. FISHER AUCTIONEER

Telephone Main 424.

Wednesdays and Saturdays

Are My Regular Sales Days.
Send in your goods to be properly classified and advertised.
Early returns will be the result.

WILL E. FISHER,
AUCTIONEER.

At Auction

Saturday, Dec 30, 1905

AT 10 O'CLOCK A. M.

At my salesroom, corner Queen and Fort streets, I will sell an

Elegant Side Board,

Chiffonier, Bureau,

4-post Bedstead, Tables, Chairs, Mirrors,
Large Engravings, Pictures, Mosquito Nets, Mattresses,
Kilns, Chinaware, Crockery, Glassware,
Lamps, Leather Sofa Cushions, and many useful household articles;
Show Case, Etc., Etc.; also
Fan-tail Pigeons.

WILL E. FISHER,
AUCTIONEER.

Foreclosure Sales

Tuesday, January 2, 1906,

AT 12 O'CLOCK NOON.

LAND at Kapaloa, Pauoa, Oahu, being 1-10 acres.

LAND at Kawela, Molokai, described in Royal Patent 4420, Kuleana 50023 and 4946.

LAND situate at Kawela, Molokai, described in Royal Patent 4431, Kuleana 160B.

Saturday, January 20, 1906,

AT 12 O'CLOCK NOON.

1045 Beretania street, just Waikiki of Victoria street. Lot and Improvements. Size of lot, 100x290 to Young street.

This property is situated in the center of good improvements, and upon the main boulevard of Honolulu. The lot has two frontages. Improvements consist of large cottage, etc., being the same property formerly occupied by the late J. W. Wilder, deceased.

This will afford the opportunity for a purchase of a home, or investment below its market value.

NOTE:—Further particulars and maps can be had upon application to
WILL E. FISHER,
AUCTIONEER.

RENT HOUSES,
COLLECT RENTS,
APPRAISE REAL ESTATE,
SELL REAL ESTATE,
Telephone No. 424.

WILL E. FISHER,
AUCTIONEER.

At Auction

Friday, January 5, 1906,

AT 10 O'CLOCK A. M.

Upon the premises No. 307 S. Queen street, between Richards and Millard streets, I will sell by order of Mr. F. R. Lucweiko, all the buildings upon the premises mentioned, consisting of

22

Buildings

Chicken House and Outbuildings, being

21

Cottages

and one 2-story building and many in good order covered with

Corrugated Iron Roofing

The cottages will be sold separately thereby giving every one an opportunity to purchase.
All must be removed previous to February 1, 1906.

WILL E. FISHER,
AUCTIONEER.

Smoke

GENERAL ARTHUR CIGARS
GUNST-EAKIN CIGAR CO.

Distributor.

FOREST RESERVES

Board of Agriculture Approves Oahu Lines.

The Board of Agriculture and Forestry met yesterday afternoon, the members present being C. S. Holloway, A. W. Carter, W. M. Giffard, J. F. Brown and L. A. Thurston, and also Forester Hosmer and Entomologists Craw and Kotinsky.

The committee on forestry reported on the recommendation of the forester for forest reserves at Keaau, Ohikilolo, Makua and Kahanahake, in the Waianae district, Island of Oahu. These lands comprise two valleys lying west of Waianae next to Kaena Point.

The committee after personal investigation and consultation with Land Commissioner Pratt recommended the adoption of the lines recommended by Forester Hosmer.

Mr. Hosmer presented the manuscript of a proposed circular offering the services of the forestry division to those desiring to propagate trees. The circular was referred to the forestry committee with power to act.

Mr. Hosmer reported that he had secured several hundred iron-wood ties which had been given to the Oahu Railroad to install in various localities under varying conditions to experiment with and see what kind of ties they would make. Mr. Hosmer was of the opinion that they would make very desirable ties. If this was found correct the Territory would furnish a good supply of home-grown ties and keep that much money from going away.

The forester also reported the receipt of a large number of vegetable seeds from Delegate Kuhio, which were available for distribution on application. A large number were being sent out to school teachers for distribution.

The same official reported that he had visited and was about to make recommendations for a forest reserve at Luualae on the Waianae mountains, east of Waianae.

C. C. Conradt of Kalaheo, Molokai, was appointed fire-warden for east Molokai.

The Board offered the position of forester for the district of North Kohala to T. S. Kay, manager of the Halawa plantation.

Reports of Dr. Norgaard, territorial veterinarian, concerning his recent trips to Hawaii and Maui, were read. The doctor returned to Hawaii on Tuesday and will be absent about three weeks, inspecting the state of stock in the Kau and Waimea districts.

EXEYBODY USES CHAMBER- LAIN'S COUGH REMEDY.

"Mothers buy it for croupy children, railroad men buy it for severe coughs and elderly people buy it for a gripe," say Moore Bros., Eldon, Iowa, U. S. A. "We sell more of Chamberlain's Cough Remedy than any other kind. It seems to have taken the lead over several other good brands." For sale by Benson, Smith & Co., Ltd., agents for Hawaii.

Begin the

New Year

At Haleiwa

The Haleiwa Limited will run on both Sunday, December 31 and Monday, January 1.

This two-hour train leaves Honolulu at 8:22 a. m., returning, arrives at 10:10 p. m.

Excursion Tickets \$2

Excursion tickets to all points along the line will be sold by the Oahu Railway on New Year's Day.

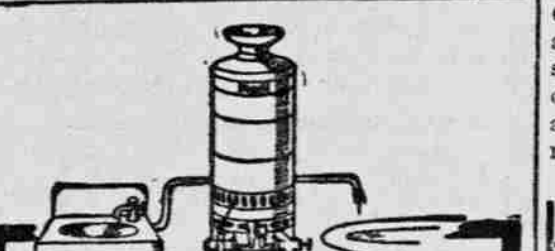
TRY OUR DELICIOUS

"Peach Mellow" and "Rasport

AT

CONSOLIDATED SODA WATER WORKS

PHONE MAIN 71.



RAPID BATH HEATERS

Can be installed anywhere. All they require is gas and water. Hot WATER in plenty for toilet and bath at a second's notice when you have the Rapid. Very economical—a bath for one cent—surely that is cheap enough.

Sold and installed by
BATH the Plumber
Phone M. 61, 165 S. King St.

LIEUT. LEONARD ON THE YOUNG COURT MARTIAL

Lieutenant Commander L. C. Leonard, the executive officer of the Lawton, has been in Honolulu before and is glad to get back here. He was Lieutenant Blue's predecessor as the executive officer of the Bennington, which blew up in San Diego harbor. Consequently he was called as a witness in the court martial of Commander Lucien Young.

He was in Honolulu on the Lawton just after the accident and received the first news of it here. As he knew every officer and most all of the men, it was a great shock to him. He said yesterday that when he heard the first news he did not dare ask questions for fear that many of his friends had been killed. He regards it as a great piece of good fortune that his transfer came before the terrible accident, as he feels sure that, as executive officer, he would have been among those who were right in the range of danger.

Speaking of the Young court martial, Mr. Leonard confirms the statement of Judge Gear, Commander Young's counsel, that no one knows what the findings of the court martial are save the officers of the court and the receiving authority. The story that Young had been reprimanded is therefore not correct, as there is nothing to base it on. There was a story current in San Francisco at the time the Lawton left that neither of the findings would be given out until both of the cases had been finally passed upon by the Secretary of the Navy. The officers on the Lawton seemed to think this quite a likely state of affairs.

Those aboard the Lawton spoke in the highest terms of the defense which Judge Gear put up in the Young trial. One of the officers who followed the case very closely and heard the closing address of both the Judge Advocate and the counsel for Commander Young, states that when Judge Gear finished, it seemed almost impossible that Young could be convicted on the evidence. The regulations, it is stated, point very plainly to the fact that the officer in charge of the engine rooms, Ensign Wade, in this case, is as directly responsible for that department of the ship as is the surgeon for the health of the ship and the officer in command of the ship is no more supposed to personally attend to the one than to the other.

It would appear, though the officers were careful not to say so in terms,

that if the responsibility for the accident is to be taken higher than the ensign in charge of the engine rooms, it would be just as logical, if the commander of the ship were to be held responsible, to hold also Admiral Goodrich, the commander-in-chief of the Pacific squadron, and the Secretary of the Navy, for the testimony showed that each of five quarterly reports sent to the Navy Department by the commander of the vessel previous to the accident had reported the boilers to be "poor" and each had pointed out in detail wherein the defects lay. These reports were made by the ensign in charge of the engine rooms, sent to the executive officer, endorsed, sent to the commander of the Bennington, endorsed by him and forwarded to Admiral Goodrich, who in turn endorsed the papers and sent them to the Navy Department.

That seems to be the last that was heard of them, so it might develop that the buck, if it does not belong to Ensign Wade, has been successively passed up from one grade to the next until it had reached the Secretary of the Navy himself, or at least the official directly in charge of such matters in the department. But, as one of the officers remarked, "the Secretary of the Navy prefers the charges and of course the Navy Department is not trying itself."

The President's action in the matter is claimed to have been perfunctory, in that no court martial can be held in American waters unless it is ordered with his personal sanction. On the foreign stations, however, admirals may convene courts martial, but their findings must go to Washington in the regular manner for review.

The Lawton's officers expected to hear of the result of the court martial on arrival here. There was a story current in San Francisco last week that the detention of all the members of the court on the mainland meant that the court would sit again, but there was no basis to the statement. It is thought that the order was merely a precautionary measure, as the Secretary has the right to request more exemplary punishment if the evidence, in the opinion of the Secretary of the Navy, warrants it. The court can then adhere to its findings or amend them. The Secretary has the right of approval or disapproval, but it would appear that he can not himself increase a sentence passed by a court martial. Instances have been known where courts refused to increase sentence and the department disapproved the whole thing and restored the officer to duty, which is considered a slam at the court.

LOVE-PATTERSON

Surrounded by beautiful flowers and in the midst of intimate friends, Miss Stella Love of Honolulu and Mr. S. J. Patterson of Seattle, Washington, were united in marriage last evening at 8:30 at the beautiful home of the bride's mother, Mrs. Fanny Love, Kewalo st. Rev. Dr. William M. Kincaid, pastor of Central Union church, officiated. Following the ceremony a brilliant reception was attended by hundreds of the young couple's friends.

It was a perfectly appointed wedding. The beautiful tropical home which is set in the midst of park-like premises was attractively decorated with the choicest of flowers and greenery, while the grounds resembled a fairyland with rows of Japanese and Chinese lanterns glowing in festoons from tree to tree. In fact, with the parti-colored electric gleaming on the branches, the trees appeared as if decorated for a Christmas celebration. Lanterns hung from the eaves of the house, giving a very pretty effect.

The large circular lanai, besides its garnishment of flowers and potted plants, was made still more charming with the subdued glow of Oriental lanterns.

The reception hall in which the marriage ceremony was performed was an artistically decorated conservatory. One corner was hung with feathery hug-me-tight branches, over which were sprayed jasmine blossoms. Potted plants and bowls of roses here and there formed a dainty picture. In the hallway were potted ferns, the staircase being hung with foliage of the pepper-tree. A huge knot of white satin adorned the newelpost.

At 8:30 the music of the Lohengrin Wedding March was heard, played by Miss Ada Rhodes. At that moment the ushers, Messrs. Harold Dillingham, C. Arthur Mackintosh, George Fuller and Robert McCarriston, came down the stairway and on reaching the hallway faced in, holding two satin ribbons to form a lane from the stair. Then came four little misses in white, two by two, serious of mien and stately of tread. Passing through the lane of ribbons they continued it until it almost reached the wedding bower. Mrs. Clarence H. Cooke, sister of the bride, and matron of honor, descended the stair alone. She was gowned in pink chiffon taffeta, trimmed with real lace, and carried a beautiful cluster of pink roses. Then as the guests eagerly watched

the stairway, the bride came, leaning on the arm of her brother, Mr. James Love. Her entry into the hallway was an auspicious moment, and she was declared a beautiful bride in her gown of pearly white chiffon taffeta, trimmed with choice real lace, and bearing a large bridal bouquet of bride's roses. The veil was caught with a diamond sunburst, the gift of the groom. The party was met at the bower by the minister and the groom who was supported by his best man, Mr. George Cooke.

The bride was given away in marriage by Mr. James Love, and while the minister pronounced the couple husband and wife, Mendelssohn's Spring Song fell softly upon the ear. The last sacred words said, the bride's veil was thrown back and she received the salutes of her intimates.

In the reception following, hundreds of friends trooped past the receiving line which was composed of the bride and groom, of course, Mrs. Fanny Love, Mrs. C. H. Cooke, Mr. James Love, Mr. George Cooke and Mrs. C. H. Smith, the latter attractively gowned in white.

Refreshments were served in a brilliantly illuminated tent on the lawn, hung with American and Hawaiian flags and festooned with malle, the tables bearing vases of carnations, roses and asters. The Ellis Quintet Club played throughout the evening.

The presents received by the couple were beautiful and ornamental as well as practical. The couple will probably depart for the mainland on the S. S. Siberia, January 5, and will journey direct to Seattle where they will make their future home. The groom is a prominent young business man of that bustling city.

MAY CHANGE BASE OF NEGOTIATIONS

Geo. H. Fairchild, manager of the Makee Sugar Co., called on Land Commissioner Pratt late yesterday afternoon. It is probable, though not yet decided, that Messrs. Pratt, Fairchild and James B. Castle will proceed to Los Angeles, Cal., shortly, with a view to effecting a satisfactory agreement with the Molokans there, whereby they will come here to settle on the Kapaa lands.

Chang Hing Kee, who had saved \$265 against a rainy day, left the door of his safe open on Christmas Day and on returning found that someone had abstracted all the gold, leaving only some silver. The police have been notified of the loss.

Clearing

Ladies' White

OUR ENTIRE STOCK OF SHIRTWAISTS WILL
BE CLOSED OUT REGARDLESS OF COST.

Great Bargains!

PACIFIC IMPORT CO.



Every New Year sees a batch of resolutions made, some of a fool nature and some otherwise. A wise resolve is to drink

PRIMO LAGER

regularly in 1906. There isn't a finer beer brewed anywhere and its use is highly conducive to health and happiness.



The best
in the
world

We handle TILLMANN'S preserved goods and make a specialty of them. Their excellence has become a household maxim in the best homes on the Pacific Coast. We are doing our best to make them as popular in Honolulu. Our assortment includes:

PEACHES, PEARS, CHERRIES, APRICOTS,
packed in 3-lb. tins and 26-oz. vacuum jars.
PEAS, CORN, SALMON, JAMS, JELLIES, PRESERVES and Tillmann's Aromatic Spices and Extracts.

USE ONLY TILLMANN'S IN THE NEW YEAR.

J. M. LEVY & CO.

King Street.

Phone, Main 149.

GOODS AT SPECIAL PRICES.

From now until JANUARY 1

Kimonos, Silks, Crash Linen and all
Oriental Goods at

SAYEGUSA,

1120 Nuuanu Street, just Mauka of Hotel.

FINE NEW LINE

SHIRTS, from 75c and up.

NECKWEAR, from 15c up to \$1.50.

CALL AND SEE OUR STOCK.

K. Isoshima

KING NEAR BETHEL.

Well Dressed Men

Wear Well Made Clothes

They are anxious to look as well as possible and we know how to make them look well.

AHANA COMPANY, LIMITED,

King Street.

Opposite Gazette Office.

Now is the time for a Commercial Advertiser

EDITOR: FRANK M. SMITH

PORTUGUESE IMMIGRATION.

It is to be hoped that the effort to bring a thousand Portuguese families to Hawaii may succeed. Naturally there are difficulties in the way, but they may not prove insuperable. There is no more desirable class of immigrants. Well trained at home, especially in agriculture, they carry with them the family idea and also their religious faith, which holds them to a moral standard, and they are industrious, economical, and prudently ambitious.

Nor are the Portuguese lacking in preparation for American citizenship. The many points of resemblance, especially in politics and the administration of the law, between Portugal and England, have been often observed by students of history. Equality before the law is practically understood and enforced in Portugal, where justice is administered with an even hand. The lower house of the Cortes is a representative body, the members of which are elected, and the qualification for the exercise of the suffrage is purely educational.

It is common knowledge, of a kind, however, to be well considered, that Portugal has been a great power in the seas, and now holds important possessions in the Atlantic, and in Asia and Africa. The Azores and the Madeiras are incorporated into the kingdom itself. But the Cape Verde Islands, Portuguese East Africa, Goa, Damao, Din, Macao, and other tributaries are colonially administered. Brazil was discovered by Cabral, in 1500, and settled by Portuguese. It was there that, during the Napoleonic regime, the royal family was sheltered. In 1822, the empire of Brazil was founded, and Dom Pedro, the last emperor held the throne, until the United States of Brazil was formed, and proved himself to be and was acknowledged as one of the most intelligent, liberal and advanced monarchs in the world. The vast area of Brazil, more than three millions of square miles, with its great diversity of productions and its innumerable opportunities for agriculture and mining, coupled with the fact that the Portuguese language is firmly established there, constitutes a great attraction to emigrants from Portugal. A population of only eighteen millions in that favored portion of the earth's surface is capable of almost indefinite increase.

The Portuguese government, unlike the government of Italy, does not encourage emigration, except to its own dependencies, which offer great inducements to Portuguese immigrants. Nevertheless there is a swift movement of settlers of that nationality to Brazil and to the Argentine Confederation. It may be safely anticipated that the thousand families required cannot be procured on the mainland. The number of Portuguese now in Hawaii, however, is about 14,000, and, while their experience has not been altogether satisfactory and many of the original Portuguese immigrants and their descendants have gone to California and to other parts of the republic, the connection between the resident Portuguese and the Azores, from which they were originally and chiefly obtained, is very close, and this fact may operate to aid the proposed effort to meet the labor demand of the plantations, without contravening American policy. The inhabitants of the Azores are now probably slightly in excess of 250,000, while the population of the Madeiras, chiefly devoted to wine and sugar, does not exceed 134,000. It is among these people, if anywhere within the Portuguese dominions, that "assisted" immigrants may be procured, but, in this special direction, the result of the experiment may be regarded as doubtful.

If compelled to turn to northern Italy to supply the labor demand, qualified laborers may be unquestionably induced to come, but, in reference to citizenship and the Americanization of the territory, the Portuguese are preferable.

The stories told about Miss Roosevelt's "hoydenish ways" do not impress Honolulu people who saw her here and remarked her simple, courteous manners. It is inconceivable that she should have made her adieu to the British governor of Hongkong by saying "Ta, ta, Gov.," or anything else not suited to the occasion. Yellow journalism commits no more serious affront than its malicious gossip about the family of a President. Mrs. Lincoln and "Tad" did not escape it; Andrew Johnson's family, "plain people from the Tennessee mountains," were constantly ridiculed; Jesse Grant was one of the victims of his day; Webb Hayes, though a sound and unassuming young fellow, was the perennial butt of the paragraphers; "Baby McKee," was never allowed to stay at peace in his nursery while his grandfather, Benjamin Harrison, was President; Mr. Cleveland's sister Rose, who presided over the White House for a short time, was the joy of the satirist and now Miss Alice has a turn. It is high time to stop with her and give Presidential families a chance to enjoy such measure of privacy as belongs to them.

That a vital change has come over Honolulu hospitality in the past twenty years has been noticed by others than naval officers. In the old days there was a center of generous hospitality in the royal court, which existed almost solely for pleasure and show. Every stranger who came here in uniform or with credentials or who had friends at court, was entertained most lavishly. To the common fund of festivity the Hawaiians and half-whites contributed very much, but since the overthrow their ability to keep open house has not been great, nor have they wholly overcome the social antipathy to whites that grew up in 1893. Among the white kamaainas a desire for exclusiveness began to appear when the stranger, ceasing to have the charm of novelty, became legion. Instead of taking in the thronging new-comers, as of old, these people entertain each other. Such changes always come to a town with growth and cosmopolitanism, but they have been accentuated here by the new classification of society along the color line and by other circumstances accruing from the change in government.

The news that Honolulu is wide-open has had the effect of bringing in a lot of sealy characters besides gamblers. Thieves and swindlers are flocking this way and seem to be doing well. Between the "indifference, incompetence or corruption" of the police and the bad quality of the liquor law, Honolulu is in need of a very drastic reform movement to begin with the purging of the police station and to end in the exodus of the unofficial blacklegs and a change in the saloon business. The decent public does not generally know that some of the saloons now run all night and Sundays, that they provide accommodations for women as well as for gamblers and that they are thronged by the worst classes in the small hours beyond the twelve. This is made possible by the restaurant license clause in the liquor act—a clause which is giving Honolulu Raines law hotels of the vilest class.

The Improvement Committee has done well to enlist the aid of Japanese residents in beautifying the town. As natural landscape artists the little brown men could do very much if they were encouraged and helped. For one thing they should be given land upon which to create a small Japanese public garden like the one in Golden Gate park, San Francisco—a place with a torii entrance, with small artificial hills and ponds, the latter spanned by semi-circular bridges, and with dwarf trees, stone lanterns, bamboo rest-houses and a tea house. Encouragement to build homes in the Japanese style would not come amiss, especially if this served to limit the number of shed-like wooden tenements. Perhaps a Japanese auxiliary to the Improvement Committee could be formed to take such things in hand.

The Governor of Moscow reports that fifteen thousand people were killed and wounded in the collision of troops and strikers there. This seems much more reasonable than the story that a fight between revolutionists and an army corps resulted in only a few hundred casualties. Civil war is proverbially bloody especially those phases of it that include street fighting between masses of combatants, armed with artillery. Ten men may be killed in a city street where all might escape in an open field in which advantage could be taken of natural cover.

Kamehameha turns out more statesmen than any other school in Hawaii. With that proud record it needn't mind the jeer that it is shy in the matter of artisans. What are brick-layers to statesmen, anyway?

A body without a brain was found in the bay yesterday. An autopsy quieted the rumor that it was the remains of a Home Rule statesman.

It is presumed that the Moscow promoters corrected that first dispatch about thousands killed and wounded for fear it would hurt the town.

BROKER KNIGHT ON OUR OUTLOOK

Fred S. Knight, member of the Stock and Bond Exchange of San Francisco, has just returned from an extended business trip to Hawaiian Islands. Mr. Knight is most favorably impressed with present conditions on the islands tending to their future development, and, in an interview, dwelt particularly upon their commercial prosperity. He said: "The pineapple industry is rapidly rising to prominence. During 1905 960,000 cans were packed, and from the present outlook the crop for 1906 will amount to about 2,400,000 cans. So great has been the development in these farms that the Oahu Railroad is building an extension of its lines to the colony on Oahu so that the product may be more readily marketed. The immense dam for the Waiialua plantation, which has been in process of construction for the past two years, is nearing completion and will give that property a water supply of 2,500,000 gallons. Many acres of the island that have never been cleared are now being freed from their wild growth and prepared for various farming projects, and colonization schemes are on foot to bring in white labor in the shape of settlers to own their own homes and to farm their own lands. The building construction by the Government of both naval and military character, is having a good effect, and prospects for a passenger steamer service between the islands and San Francisco to be established through local capital are becoming better every day. The tobacco and rubber industries are being fostered to a degree that ought to put them on a firm commercial basis. The diversified agriculture, the tourist travel and the revenues from a large military and naval establishment are sufficient, with the average sugar returns, to again make this community the most prosperous of its size in the world."—S. F. Finance and Trade.

A SHOPLIFTER.

(Continued from Page 1.) Mrs. Nightingale. On seeing her he remarked: "Can this be the little girl I held in my arms so many years ago?" "While his daughter was studying in Italy, General Mendez traveled over Europe, also being one of the Arctic exploring party. On his return he visited their old home in Seville, and then returned to Mexico, after his five years of exile had expired. Later, Mrs. Nightingale, owing to her wonderful musical abilities, was engaged by the manager of Adelina Patti for the chorus and appeared first at the Metropolitan Opera House in New York. Notwithstanding her age, Mrs. Nightingale still retains a sweet sympathetic voice and is a most interesting entertainer."

NEW FACULTY MEMBER.

Mrs. I. M. Cox has been chosen to fill the vacancy in the Oahu College faculty caused by the resignation of Miss S. G. Clark. Mrs. Cox will take all of Miss Clark's classes and the work will go on as heretofore. She is a graduate of Bryn Mawr and a teacher of experience.



Mothers,

we want you to know about our

Little Tudor Sleepers

made by the same firm that make the famous LITTLE TUDOR PLAY SUITS.

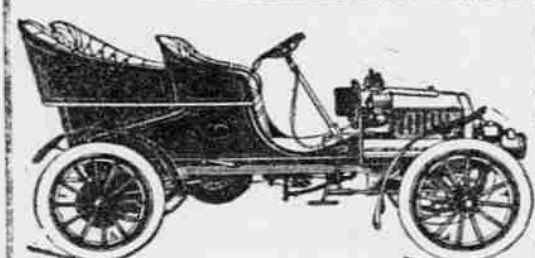
The LITTLE TUDOR SLEEPERS are made of pink and blue striped Outing flannel, style as per cut without the collar and are made in sizes 1 to 8 years.

We consider this a perfect sleeping garment for children and are confident that a trial will be most satisfactory.

PRICE 65 CENTS.

EHLERS

GOOD GOOD



Headquarters for Automobiles with a fully equipped fireproof garage.

VON HAM-YOUNG CO.



PENNYROYAL PILLS

Perfumery

No better selection of the most exquisite, suitable for Holiday gifts. Prices to suit all purses. Enough said.

Hollister Drug COMPANY.

AUTOMOBILE CLOCKS

WE HAVE JUST RECEIVED AN INVOICE OF

FINE AUTO CLOCKS

Mounted in heavy polished brass; they are in keeping with the trimmings of your car.

Neat and Reliable Time Pieces

They are fitted with lock and key making it impossible to have them stolen.

FROM \$7.50 UP

CALL AND SEE THEM.

H. F. Wickman & Co.

LIMITED. FORT STREET.

RUBEROID

is the best roofing in the world. Used on dwelling houses, poultry houses, stables or barns, it never fails to give the best results.

RUBEROID defies water, weather, fire and acid and can be used in winter or summer with equally satisfactory effect.

When buying RUBEROID see that the name is stamped on every strip. Otherwise you are liable to be imposed upon.

Lewers & Cooke, Ltd.

177 SOUTH KING STREET.

F. D. WICKE.

CONTRACTOR AND BUILDER. Store Fitting, Specialty. Repairing, Cabinet Work and Polishing. 1083 Alakea St., rear of Y. M. C. A. Phone M. 447, residence Phone W. 1611.

BERNICE PAUHAH BISHOP MUSEUM, KALIHI, OAHU.

Residents of Hawaii Territory, and strangers visiting Honolulu are hereby notified that the above named Museum will be open to inspection on FRIDAYS and SATURDAYS of each and every week of the year, and also upon ALL PUBLIC HOLIDAYS (Thanksgiving and Christmas excepted), between the hours of 10 o'clock a. m. and 5 o'clock p. m. from the 31st day of March to the 31st day of October, and from 10 o'clock a. m. to 4:30 o'clock p. m. from the 1st day of November to the 31st day of March of each year until further notice.

Tourists arriving in Honolulu by through steamers on other than the regular visitor's days hereinbefore designated (Sundays and Thanksgiving and Christmas excepted) and leaving prior to the days set apart as regular visitor's days may be admitted to the Museum on SPECIAL PERMITS, issued during office hours from the general office of the trustees, No. 77 Merchant street, next door to the banking house of Bishop & Co. ADMISSION TO MUSEUM FREE. Electric cars bound west on King street pass the Museum every ten minutes during the day.

Honolulu, T. H., June 12th, 1905.

PER ORDER.

BEAUTIFUL

Rich Cut Glass

AT PRICES WITHIN THE REACH OF ALL.

Time was when this beautiful ware was a luxury—but we are able to offer you the best selections of RICHLY CUT GLASS at prices which every household can avail itself of.

Every piece scintillating with beautiful cut sunburst and scroll designs. The most beautiful and appreciative Wedding and Holiday Presents—handsomest of House Furnitures.

Pacific Hardware Company, Ltd.

Fort and Merchant Streets.

AN ELECTRIC NEW YEAR

The new year is at hand and you want to start it well. Already you are thinking of resolutions which shall make the coming year better for you than the past has been. You cannot start the year more auspiciously than by having Electricity installed in your home. You will wonder how you have been able to get along without it. We shall be happy to furnish you with any information relative to Electricity that you may desire.

HAWAIIAN ELECTRIC CO. LIMITED.

Office, King St., near Alakea St. Phone, Main 390.

T. Cahalan

Formerly with E. R. Bath, has taken charge of the PLUMBING DEPARTMENT of JOHN NOTT, At 85 King Street.

J. HOPP & CO.

Furniture Dealers and Upholsterers

Our New Year Furniture

ALL HERE AND NOW ON DISPLAY.

J. HOPP & CO.

NEW YOUNG BUILDING STORES. 1053-1059 Bishop Street.

Did You Ever Investigate the Wabash Cabinet Filing System?

You are "onto your job," but could you drop out for a day or a week at any time?

SYSTEMATIZE

so that your right-hand man may double up if necessary and "keep things moving." We are ready to furnish the machinery—in fact would like to do so. An inquiry won't cost you a cent, unless you want it to, and may bring just what you desire.

Write us or ring us up, and we will call and see you.

Hawaiian Office Specialty Co.

72 KING STREET, WAITY BLOCK, PHONE MAIN 15.

J. Lando

Our Spring and Summer Stock	Belts Neck-wear Hats	Suspenders Hank's Duck Pants	Trunks and Valises Shirts	Gloves Underwear Etc.
-----------------------------	----------------------	------------------------------	---------------------------	-----------------------

2035 Fort Street, I. O. O. F. Building and 152 Hotel Street.

Don't neglect your cough. Stop it at once and drive away all thought of consumption. Begin as early as possible—the sooner the better—to take

Ayer's Cherry Pectoral

the most effective remedy for coughs and colds of every kind and in every stage.

One of the most annoying coughs is a throat cough, where you have that constant tickling in your throat. It comes on worse at night, keeps you awake, and makes you have that smothered feeling in the chest. Ayer's Cherry Pectoral quiets the cough, makes breathing easy, and heals the lungs. There is no other remedy so surely to be relied on.



There are many substitutes and imitations. Beware of them and of so-called "Genuine Cherry Pectoral." Be sure you get AYER'S Cherry Pectoral.

Put up in large and small bottles.

Prepared by Dr. J. C. Ayer & Co., Lowell, Mass., U.S.A.

HOLLISTER DRUG CO., AGENTS.

A Great Bargain

I offer the mauka half of Block 28, Kaimuki, 8 lots, for

\$2500 Cash

Ruling prices for single lots, in neighborhood, \$600 to \$800. They extend from 11th to 12th Avenue, which are being planted with Ponicanas, are well elevated, have fine view and are two blocks only from Rapid Transit. Situated near residences of Judge Gear, Mr. Clark and Mr. Bartlett.

For further particulars enquire of P. H. Burnette, R. H. Trent or C. H. DICKEY.

Densmore Typewriters

You can't find a better typewriter than the new ball-bearing Densmore. It represents the highest standard of typewriter construction.

HAWAIIAN NEWS CO., LTD.,
Alexander Young Building.

JOHN NEILL, Engineer.

Dealer in
NEW AND SECOND-HAND MACHINERY.
Repairing of All Kinds.
GASOLINE ENGINES A SPECIALTY.
135 Merchant Street, Tel. 116.

Dry Cleaning

Garments cleaned by this process at
Mrs. A. M. Mellis'
Dressmaking Establishment.
Sachs Block, Honolulu.
SATISFACTION GUARANTEED.

NOTICE.

ANY WOMAN OR GIRL NEEDING help or advice, is invited to communicate, either in person or by letter, with Ensign L. Anderson, matron of the Salvation Army Woman's Industrial Home, No. 1630 King street.

S. FUJIMURA

MASSAGE
Rheumatism, Bruises, Sprains, Tired Feeling and other Ailments QUICKLY RELIEVED.
444 King Street, Palama,
PHONE WHITE 1351.

THE FAVORITE GROTTTO.

Between Christmas and New Year the jaded appetite craves something good to eat. We aim to satisfy this perfectly legitimate longing and weigh in today with the following fine lunch and dinner menu:

POTAGE A LA HAMBURG
PICKLED LAMBS TONGUE
POTATO SALAD
BRAISED RIBS OF BEEF WITH MACARONI
MASHED POTATOES
KOHLEBARBEN CREME
WALDORF SALAD

25c
With Beer, Wine, Tea or Coffee.

FRED KILEY, Prop.,
Cor. Hotel and Bethel Streets.

THE CORWEB CAFE

Queen and Alakea Sts.

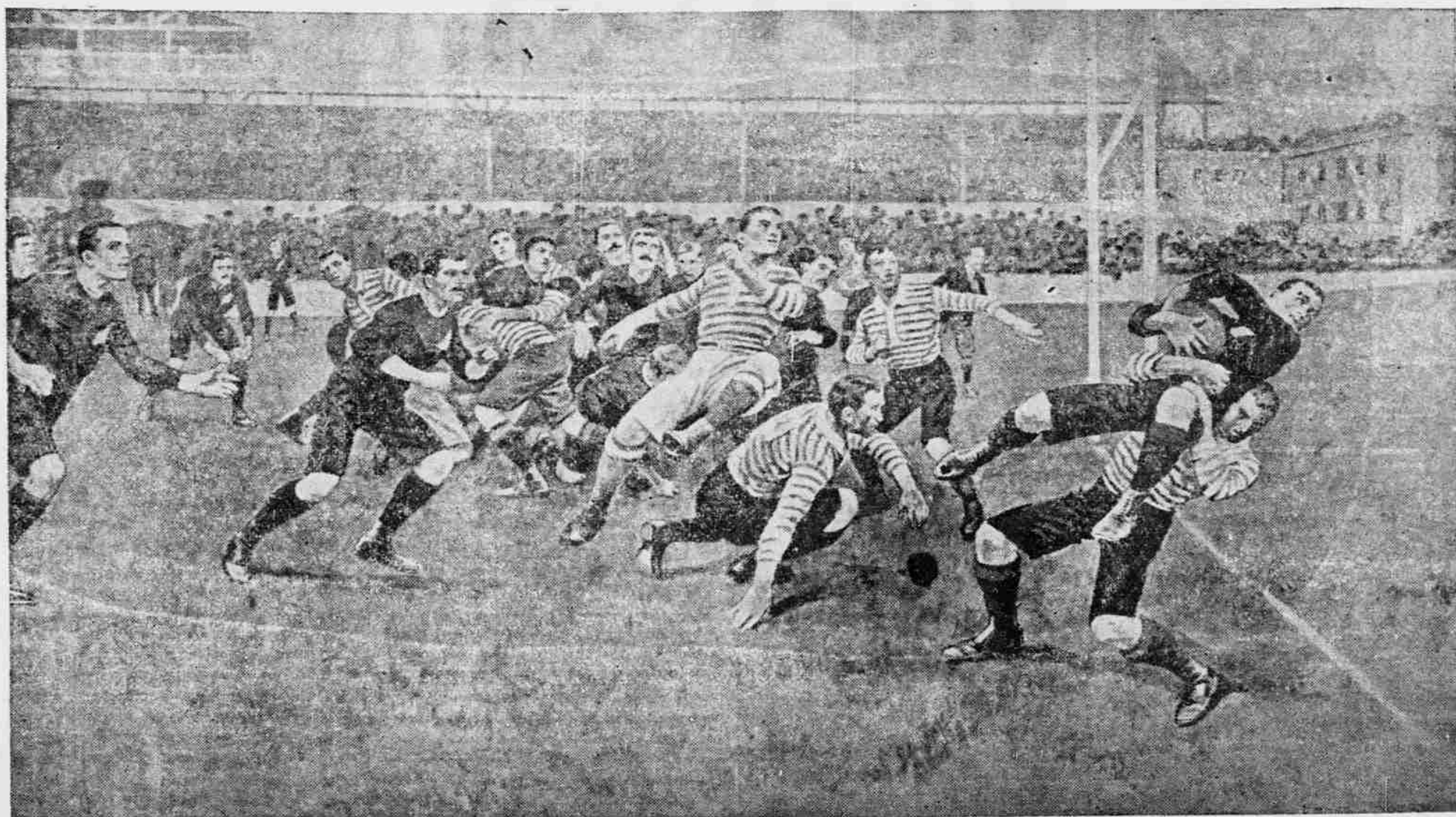
THE FINEST MEALS,
WINES, LIQUORS, ETC.
TO BE HAD IN THE CITY.

CAMARA & CO., Props

Pure Wines and Liquors

Family Trade Solicited.
Lovejoy & Co.
Nuuanu St. : : Phone 308.

SPORTS



NEW ZEALAND VS. MIDDLESEX, AT STAMFORD BRIDGE, LONDON: A DASH FROM A SCRUM ON THE MIDDLESEX GOAL.

The picture shows something of the dash and vim which the colonials put into the game. A few minutes after the start of the match Johnston (Otago) dashed over the Middlesex line from a scrum and scored the first try.

DAN RENEAR SWIMS FAST

Lowers Two Records in a Philadelphia Tank.

Dan Renear appears to be gradually swimming into form on the mainland, judging from news recently received from Philadelphia.

A few weeks ago the local man lowered the 100-foot record for the University of Pennsylvania tank, splashing through the distance in 17 2-5 sec. A week or so later he broke the two-length swimming record—200 feet—in the same pool, making the distance in forty seconds, two seconds faster than the previous mark.

The same night he played on the scrub water polo team which defeated the "Varsity" by the score of 3 to 0.

SIXTY LOCAL AUTO OWNERS

In accordance with a suggestion appearing in the Advertiser some time ago, the following roster of the automobile owners of the Territory has been compiled:

HONOLULU.

Mr. Andrew Adams, Mr. Albert Afong, Dr. R. W. Anderson.
Mr. W. H. Baird, Mr. J. J. Belser, Dr. W. D. Baldwin, Mrs. F. Bickerton, Mr. S. M. Ballou, Mr. Chas. Bellina, Mr. Barclay, Mr. Boyer.
Mr. J. P. Cooke, Dr. C. B. Cooper.
Mr. C. W. C. Deering, Mr. Geo. F. Davies, Mr. J. D. Doie, Mr. T. Clive Davies, Mr. R. A. Dexter, Mr. Geo. Denison.
Mr. N. H. Gray, Capt. Graham ("Erskine M. Phelps").
Dr. W. Hoffmann, Dr. Geo. Herbert, Mr. F. K. Howard, Mr. J. H. Hertsche, H. Hackfield & Co.
Mr. A. Irvine, Mr. D. P. R. Isenberg, David Kawanakoa.
Mr. E. H. Lewis.
Dr. W. L. Moore, Mr. Louis Marks, Mr. J. H. McKenzie, Mr. McCormick, Mr. J. A. McCandless, Mr. O. E. McCarthy.
Mr. Guy Owens.
Mr. F. E. Richardson.
Mr. Gus Schuman, Mr. R. C. Stackable, Mr. C. J. Schoening.
Mr. Albert Waterhouse, Dr. Waterhouse, Mr. L. M. Whitehouse, Mr. G. P. Wilder, Mr. S. G. Wilder, Mr. E. O. White, Mr. C. L. Wight, Mr. H. E. Walker.
Mr. Alex. Young, Mr. A. A. Young.

OTHER ISLANDS.

Mr. H. P. Baldwin, Maui; Mr. J. H. Coney, Kauai; Dr. Dinegar, Maui; Mr. John Hind, Hawaii; Mr. Hoog, Kauai; Mr. James, Hawaii; Mr. Randall Kennedy, Hawaii; Dr. Sandow, Kauai; Mr. C. B. Wells, Maui; Mr. John Watt, Hawaii.

NO BIFFING ON MONDAY

The fistic tournament planned for New Year's night is off, at least for the present, and Messrs. Duffey and McFadden will do no smiting with the gloved fist on that festive eve.

The trouble seems to be that the Chinese theater on Liliha street, where the bouts were to have taken place, can not be obtained on the night in question, and as the Orpheum is also engaged there is no suitable place for the various arguments to be decided.

Promoter Joe Cohen stated last night that the entertainment was indefinitely postponed.

SAM JOHNSON SHRUNK SOME

"Yes sir," said Professor Haley of the Y. M. C. A. to an Advertiser representative yesterday, "our gymnasium holds the record for weight-reducing."

"Meaning who?" interpolated the reporter.

"Captain Sam Johnson," replied Haley. "He came to us tipping the beam at 186 pounds a few weeks ago and today he scales barely 158 pounds."

"What's the receipt?" queried the scribe who has a tendency toward a stomach himself.

"Just systematic work with apparatus," said the physical culturist. "Jumping, running, bar, weights—a little of everything in the gym—why a person can see himself getting thinner."

"How much more is Mr. Johnson going to shrink?" queried the newspaperman.

"Oh, he's finished his course now," answered Haley. "He's what trainers would call in the pink of condition."

"Could you do the same with any overweighted individual?" asked the reporter.

"Well, it depends a good deal on the man himself," remarked Haley. "One man will work in a gymnasium day after day and not take off as much weight as another individual whose calisthenics are done in his bedroom. As in other things, mind concentration and an earnest striving after results are what count. Without them all the gymnasium apparatus in the world won't do any good."

A man, wishing admittance to heaven, knocked at the celestial port. St. Peter responded and demanded credentials. "Oh," said the applicant, "I am Mr. Johnson, of Johnstown flood fame." He was admitted, and in a few days St. Peter met Mr. Johnson again and asked him how he liked heaven and his neighbors. "All but the old party with the long white beard. Whenever I tell about the Johnstown flood he always says, 'Oh, rats!'" St. Peter smiled. "The bearded man," he said, "is Noah."

Offer to Men



PAY YOU \$1000

I know that no man remains a weakling because he wants to. I am sure that you want to overcome every indication of early decay that has shown itself on you. I don't think the man lives who would not like to feel as big and strong as a Sandow, and I know that if you have a reasonable foundation to build upon I can make you a bigger man than you ever hoped to be. I want you to know that, you who can't believe it, and I want you to have my book, in which I describe how I learned that strength was only electricity, and how I learned to restore it; also I want to tell you the names of some men who will tell you that when they came to me they were physical wrecks, and are now among the finest specimens of physical manhood.

I want you to read my book and learn the truth about my arguments. If you are not as vigorous as you would like to be, if you have rheumatic pains, weak kidneys, loss of vitality, prostatic troubles, nervous spells, or any ailment of that kind that weakens you, it would assure your future happiness if you would look into this method of mine. Don't delay it, your best days are slipping by. If you want this book I send it closely sealed, free, if you send this add. Call for free consultation.

DR. M. G. McLAUGHLIN,

906 MARKET ST.,
SAN FRANCISCO, CAL.

GOING! GOING!! GONE!!!



NEWBRO'S HERPICIDE
The Original Remedy that "Kills the Dandruff Germ."
QUITE HOMEY—QUITE ATTRACTIVE
The woman with homely features will not lack attractiveness if her hair is crowned with an abundance of beautiful hair. But, on the other hand, the finest contour of female face loses much of its attractiveness if the hair is scanty or looks diseased. The dandruff microbe causes dull, brittle or lustreless hair with later dandruff, itching scalp and falling hair. Newbro's Herpicide destroys this enemy of beauty and permits the hair to grow as nature intended. A delightful hair dressing. Gives wonderful results. No oil or dye.

Drug Stores, \$1.00. Send 10c, stamps, to HERPICIDE CO., Dept. H, Detroit, Mich., for a sample.

HOLLISTER DRUG CO., SPECIAL AGENTS.
Applications at Prominent Barber Shops.

PUNAHOU SAY NO MORE GAMES

There will be no more football. That is as far as the Punahou are concerned.

Manager John Marcellino of the Punahou made the following statement in the Advertiser office last night, which leaves no doubt that the team mentioned will not reconsider their decision:

"There was no truth in the statement appearing in an evening paper today that the Punahou would hold a meeting to decide whether they would play another game with the Males. Our team has broken training and we are through for the season. We claim that the schedule as arranged has been played out and that it leaves us champions, as we have defeated the Males once and tied with them on the other occasion."

"The watch you carry is an heirloom, isn't it?" "Yes, it was left me by my father." "May I see it?" "Well—er—you see, his brother has it now."

Sportlets.

Togo is coming to the United States and Bob Fitzsimmons contemplates a trip to the Orient. Looks like a pre-arranged affair to maintain a balance of fighting strength.

The President never mentioned football in his message. As he touched on almost everything else, it is obvious that he doesn't care how much roughness and brutality the congressional players use in tackling the rate problem and the overcapitalized corporations.

From the following brief quotation from newspaper reports you will be able to gather that a six-day bike race has just been pulled off:

Suddenly pitched unconscious from his wheel.

Fought wildly with his trainers. Jabbered incoherently while he rode. Succumbed to the strain and quit. Eyes starting from their sockets. Frequent spills maintained the excitement.

Remounted and rode madly on. Cheered on by a pale little woman and six children.

Doctors say his chances of recovery are slim.

Rode with tacks in the bike seat to keep himself awake.

Nothing more serious than a broken collar bone.

Was taken to Roosevelt Hospital in an ambulance.

Committing suicide slowly.

The football rules committee can be depended upon to at least view with alarm the tendency to brutality and roughness.

Chaufeurs in New York draw \$6000 a year, but they are compelled to pay their own fines, which makes it look different.

When the plan to use alcohol as fuel for automobiles comes into general use it will be possible to be fined twice in Evanston—once for exceeding the speed limit and once again for running a blind pig.

It will also be possible for a man to stand on Sheridan road of a Sunday afternoon and accumulate a fume jag.

Likewise the man who is run over and killed by a forty horse power machine will have a pleasant final feeling that nothing worse than a distillery has fallen on him.

And once more, it will be a mighty difficult thing for a chauffeur to throw a mounted cop off the scent.

DISCREET INVESTMENTS

Millionaires we cannot all expect to be. We can, however, assure ourselves a steady income if good judgment is used in our investments. The Hawaiian Trust Company undertakes the investment of money to the best possible advantage thereby relieving the owner from all worry incidental to its care and guaranteeing a profitable return in the shape of dividends.



WM. G. IRWIN & CO., LTD.

Wm. G. Irwin, President and Manager
John D. Spreckels, First Vice-President
W. M. Giffard, Second Vice-President
H. M. Whitney, Treasurer
Richard Ivers, Secretary
E. I. Spalding, Auditor

SUGAR FACTORS AND

COMMISSION AGENTS.

AGENTS FOR

Oceanic Steamship Co., San Francisco, Cal.
Western Sugar Refining Co., San Francisco, Cal.
Baldwin Locomotive Works, Philadelphia, Pa.
Newall Universal Mill Co., Manufacturers of National Cane Shredder, New York, N. Y.
Pacific Oil Transportation Co., San Francisco, Cal.

WM. G. IRWIN & CO., LTD.

AGENTS FOR THE

Royal Insurance Co., of Liverpool, England.
Alliance Assurance Co., of London, England.
Scottish Union & National Insurance Co., of Edinburgh, Scotland.
Fire Association of Philadelphia.
Alliance Insurance Corporation Ltd.
Wilhelma of Magdeburg General Insurance Co.

Fire Insurance.

THE B. F. DILLINGHAM CO. LIMITED.

General Agents for Hawaii.

Atlas Assurance Company of London.
Phoenix Assurance Company of London.
New York Underwriters' Agency.
Providence Washington Insurance Company.
Fourth Floor, Stangenwald Building.

HAWAII SHINPO SHA.

THE PIONEER JAPANESE PRINTING office. The publisher of Hawaii Shinpo, the only daily Japanese paper published in the Territory of Hawaii.
C. SHIOZAWA, Proprietor.
Editorial and Printing Office—1029 Smith St., above King, Phone Main 45.

C. BREWER & CO., LTD.

Sugar Factors and Commission Merchants.

LIST OF OFFICERS.

C. M. Cooke, President; George M. Robertson, Manager; E. F. Bishop, Treasurer and Secretary; F. W. Macfarlane, Auditor; P. C. Jones, C. M. Cooke, J. R. Galt, Directors.

Money to Loan

ON JEWELRY, ETC., ETC., AT
THE J. CARLO PAWNBROKING CO.

CORNER UNION AND HOTEL STS.

THE HAWAIIAN REALTY AND MATURITY CO.

Limited.
REAL ESTATE, MORTGAGE, LOANS AND INVESTMENT SECURITIES.

Office: McIntyre Bldg., Honolulu.
T. H. P. O. Box 255. Phone Main 141.

MIDWINTER MILLINERY

— at —

Madame Josephine's

PARLORS ON HOTEL STREET.

FINE RESIDENCE FOR SALE.

Situated on ear line in the most desirable resident locality of this city. The improvements consist of a cottage, containing parlor, reception hall, drawing room, large dining room, 3 bed chambers, kitchen, pantry and all modern improvements.

Large grounds improved with many valuable and rare fruit trees. Servants' quarters with stationary washstands and porcelain bath; large stable with box stalls.

Size of lot: 200x300 feet.
Price, very reasonable, much below its actual value.

Terms: Easy.

Further particulars upon application to

J. H. FISHER.

TRY OUR

Our Celebrated Bromo Pop, Peach Sounce, Bishops Tonic, Klondike Fizz, and many others.

ARCTIC SODA WORKS,

127 Miller St., Honolulu, H. T.

ORPHEUM THEATRE

J. C. COHEN - - - - - Manager

The Eminent Young Actor,

RICHARD BUHLER

Supported By the

NATIONAL STOCK COMPANY

Presenting a Repertoire of High Class Plays.

THURSDAY, FRIDAY and SATURDAY also SATURDAY MATINEE.

"THE QUEEN OF THE WHITE SLAVE"

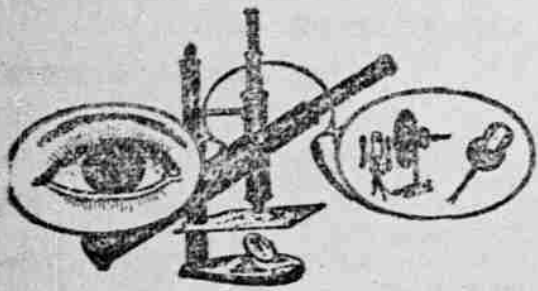
PRICES TO MATINEE, 25c.

"Why Women Sin"

Next Week

POPULAR PRICES: 25c., 50c., 75c.

ORPHEUM TELEPHONE, WHITE 681.



Thumping the keys of a piano is not music, and putting successively various lenses before the eyes is not an examination, even though certain improvements in vision are obtained.

Anybody can test your eyes—you can do it yourself, but the scientific use of lenses involves something more than experimenting.

Few can examine eyes and do it intelligently and satisfactorily—quite a difference between eye-tests and eye examinations. Did that fact ever occur to you?

A. N. SANFORD

OPTICIAN,

Boston Building, Fort Street, Over May & Co.

RICE & PERKINS,

ARTISTIC PHOTOGRAPHERS.

Studio: Hotel Street, near Fort.

YAMATOYA

MERCHANT TAILOR AND SHIRT MAKER.

Nuuanu Street, one door above Pauahi P. O. Box 822.

SHIRTS OF ALL KINDS, KIMONOS AND PAJAMAS MADE TO ORDER AND ON SALE.

DIARIES

FOR

1906

AT

WALL NICHOLS CO.,

Republic Block.



SPECIAL OFFER

Pyrographic Outfit B-250

For binding on Photo, Wood, Leather, etc.

Includes one fine Pyrographic Pen, Cork Handle, Rubber Tapping, Binding Machine, Hand Lettering Pen, Binding Machine, Metal Lamp, two pieces of Stamped Pyrographic Wood and full directions.

All in neatly designed, handsome box.

Handkerchief Box, No. 688

Size 4 1/2 x 7 1/2. Price, a new one, \$1.00. A set of four, \$3.50. Beautifully designed.

The above Pyrographic Outfit and Handkerchief Box together with one set of Pyrographic Pen and Rubber Tapping Machine will be sent to your address by prepaid express on receipt of money order for \$1.00.

Our latest catalogue and advance sheets of new and original designs for binding will be sent on request.

GALLAGHER BROS.

27 Grant Avenue, San Francisco, Cal.

QUALITY, STYLE AND FIT

IN OUR

\$25.00 SUITS

George A. Martin

Arlington Block, Hotel Street.

OPEN ON SATURDAYS TILL 9 P. M.

Pure Soda Water

You can't get better Soda Water than that bearing the FOUNTAIN brand, for the simple reason that there isn't any better made.

Fountain Soda Works.

Sheridan Street, near King.

Phone Main 270.

EAGLE CLEANING AND

DYEING WORKS.

Fort Street, opposite Star Block.

LADIES' AND GENTS' CLOTHING

CLEANED AT LOWEST PRICES.

Phone White 2362.

READ THE ADVERTISER

WORLD'S NEWS DAILY.

"KAM" GRADS
CRITICIZEDThe Immigration Board
Detects Some
Flaws.

The regular weekly meeting of the Board of Immigration was held yesterday morning at 8:30 in the board's office in the Magoon block. Commissioners Cooke, Craig and Carden and Clerk Crabbe were present.

Several letters from mainland people inquiring about the prospect of settling on public lands, were read. There were communications from Idaho, Oklahoma and Washington. It was suggested that such letters be turned over to the Promotion Committee, that organization being in the habit of receiving them continually. W. E. Armstrong of Boise City, Ida., wrote that he and his large family would be glad to settle here if the proper inducements were offered. A Polish resident of Oklahoma said he had between \$500 and \$1000 to invest and would like to come here if land conditions were favorable.

To this last inquiry Mr. Cooke thought it would be well to send the writer a copy of the proposition made by the plantations to men who wished to take up lands.

At this juncture Mr. Cooke said he would like to know what the government's policy would be for the next six months or a year as to the opening up of public lands. He did not believe in making any misrepresentations. He thought the Governor and the Land Commissioner should make some definite and authoritative statement in this regard.

Mr. Cooke suggested that at the close of the meeting the board call upon the Governor and get him to make some statement regarding his policy with regard to public lands. The board called upon Governor Carter shortly before 10 o'clock.

Clerk Crabbe read statements from various plantations as to the men he had sent out to work.

Kihei reported that of the twenty-four Porto Ricans received there, only four had stayed. Four men out of seventeen stayed with the Makae Sugar Company. Eight had been accused of holding up a Portuguese and had then vanished.

The commissioners agreed that this was a discouraging state of affairs. Olua, Kohala and Makaweli had similar complaints to make.

G. H. Robertson of Brewer & Co., wrote that the manager of Wailuku plantation had an unpleasant experience with fifteen Portuguese and Porto Ricans. A dozen were merely hoodlums, who dressed flashily and did not care to work. He thought it was folly to send such men to the plantations.

Mr. Robertson added that Wailuku was a bad place to send this class of young men to work as there were too many saloons about.

Mr. Crabbe said that all the men reported on as above, who had left the plantations, had been blacklisted.

During the meeting the young men graduates from Kamehameha School were given a scoring. It was agreed by some of the members that they were not practical when they left the school and could not "deliver the goods" when it came to real work. Commissioner Cooke thought they had too much book-learning and too little practical instruction. He brought on the discussion by stating that some young men from Kamehameha school had been offered a position in the mechanical department of a plantation.

One young fellow wrote a most wonderfully worded letter to show why he had not stuck to his job. Clerk Crabbe said the Kam boys could always show proficiency when it came to making a speech. He added that they were not doing practical work in the Kamehameha School. Mr. Craig said their instruction was not practical, although they had good instructors. He believed the system of instruction was wrong.

Mr. Cooke agreed with Mr. Craig in this.

FATHER TORE SON
AWAY FROM MOTHER

A little incident which occurred Saturday night on Fort and King streets, during the celebration, was in sad contrast to the prevailing merriment. A man and woman began quarreling. A crowd gathered and soon learned the story. They were a divorced couple and the court had awarded the boy to the father and the little girl to the mother. The boy had found his mother while watching the throng and the store windows, and clung to her. The father came upon the scene and demanded that the little fellow leave his mother and go with him. The boy protested and cried. The mother comforted the little fellow and asserted her maternal solicitude when the father attempted to carry the boy away. There was a quarrel which ended when the father forcibly took the boy from his mother and carried him down the street, the little fellow crying and fighting to be released.

Barber (with apologetic cough)—Which side shall I part your hair on? Customer (with no hair to speak of)—The middle will do as well as anywhere. It's about six on one side and half a dozen on the other.

VICTOR

For every purse

There's a real Victor to fit all circumstances. Beginning with Victor Z at \$19 and ranging in price (according to construction and finish) up to Victor the Sixth at \$105 every machine has the remarkable Victor tone-quality that has made the Victor what it is.

Give your friends for Christmas—the greatest musical instrument in the world. Nothing will create such unalloyed pleasure or more lasting joy.

The Victor is king among entertainers—a true delight indeed, to hear the most inspiring vocal and instrumental music ever rendered, as well as the funniest comic songs and recitations by high-class talent, without the scrappy, mechanical sound usually heard in talking machines.



RECORDS REDUCED

12-In. Victor Records, \$1

10-In. Victor Records, 60c

7-In. Victor Records, 35c

BERGSTROM MUSIC COMPANY, Ltd.

ODD FELLOWS' BUILDING.

OAHU INMATES SING "BLEST
BE THE TIE THAT BINDS."

The entertainment for the prisoners at Oahu Prison on Christmas Day was unusually interesting. About 225 prisoners were seated under the beautiful kamani tree in the prison yard. Fourteen boys from the Castle Home were seated on a carpet spread on the ground in front of the leader's table. Something over 40 visitors completed the audience. At 2 p. m. the genial and much-loved John M. Martin, who has charge of the Y. M. C. A. work in this institution, opened the exercises by calling for a song by the glee club, "supported by the government." The prison glee club responded with "Abiding in the Field." Scripture was then read by Mr. C. D. Mayfield, prayer

was offered by Mrs. Mayfield, and the song "Peacefully the Flocks are Sleeping" was sung by Kaulani Home Quartet.

The further program was as follows: Song, "Tell Mother I'll Be There," Prison Glee Club.

Then came the principal address of the hour by Bishop J. W. Hamilton. His theme was "The Perfect Man." He showed that neither physical, intellectual or spiritual development alone, but all combined were needed to secure the desired result. The address was enjoyed by all present.

Senator Dickey was called upon, and responded by saying some pleasant things. Song, "I Hear the Glad Song," Kaulani Home Quartet.

A Christmas story by Capt. W. J. Josselyn.

Song, "Christ the New-born King," Prison Glee Club.

Greeting to the Japanese prisoners in their own language by Rev. J. W. Wadman.

Greeting to Koreans, by one of a delegation from the Koreans of Ewa plantation.

Song, "Happy Day," by delegates from Ewa.

All joined in "Blest Be the Tie that Binds."

Benediction by a native minister.

Bags of candy and nuts were then distributed by the boys from the Castle Home. All were supplied and the people returned amid "Merry Christmas" and "Happy New Year" greetings.

REALTY TRANSACTIONS

Entered for Record December 27, 1905.

From 9 a. m. to 4 p. m.
S Tomikawa by Co Sher to Chr Castendyk D
Wm G Brash by atty to Edith M Carter R
McBryde Sugar Co Ltd to McBryde Est Ltd R
McBryde Estate Ltd to Palama (K) E D McBryde Estate Ltd to McBryde Sugar Co Ltd L
S M Damon and wf to T Clive Davies D
Humuula Sheep Station Co to Bishop & Co C M
William H Tell by mtgee to J J Byrne D
James J Byrne to G J Waller M

Recorded December 20, 1905.

R D Silliman by atty to Wm McCandless, Sur L, pe land and bldgs, corner King and Alakea Sts, Honolulu, Oahu. B 249, p 107. Dated Aug 28, 1904.

Waiialua Agretl Co Ltd to Oahu Railway & Land Co., Par Rel; por kul 722, Lelo, Honolulu, Oahu. \$2000. B 276, p 244. Dated Mar 30, 1900.

Kapahu Archer and hsb (F K) et al to Mary B Lyman, Oahu; 1 aer land, Kaulahole, Honolulu, Oahu. \$1800. B 277, p 254. Dated Dec 18, 1905.

C Brewer & Co Ltd by Regr. Notice; of decree of title in Land Reg Court Case No 52. B 274, p 411. Dated Dec 20, 1905.

Kaluka Manula (widow) et al to Harriet E Wight, D; water rights of ap 1 R P 4425, Nuuanu valley, Honolulu, Oahu. \$45. B 277, p 255. Dated Nov 20, 1905.

Julia Manula to Harriet E Wight, Rel Dow; int in water rights, Nuuanu valley, Honolulu, Oahu. \$1. B 277, p 257. Dated Nov 20, 1905.

Lau Shee (w) by atty to Chang Loy, A L; premises, Smith St, Honolulu, Oahu. \$1200. B 273, p 390. Dated Nov 14, 1905.

J Alfred Magoon to Kaloio, Rel; R P 850 kul 1905, Waialeale, Ewa, Oahu. \$300. B 244, p 366. Dated Dec 16, 1905.

Umi Kahoa and hsb (Kahoa) to John H Est Ltd, M; ap 2 and por ap 1 R P 1280 and por R P 849, Waialeale, Ewa, Oahu. \$300. B 276, p 246. Dated Dec 16, 1905.

Ethel K Abrams by Regr. Notice; of decree of title in Land Reg Court Case No 58. B 274, p 412. Dated Dec 20, 1905.

Mrs Sela N Sherman to Wong Chee, B S; rents, etc, on pc land, Kapahu, Kohala, Hawaii. \$250. B 274, p 412. Dated Dec 19, 1905.

Recorded December 20, 1905.
R D Silliman by atty to Wm McCandless, Sur L, pe land and bldgs, corner King and Alakea Sts, Honolulu, Oahu. B 249, p 107. Dated Aug 28, 1904.

Waiialua Agretl Co Ltd to Oahu Railway & Land Co., Par Rel; por kul 722, Lelo, Honolulu, Oahu. \$2000. B 276, p 244. Dated Mar 30, 1900.

Kapahu Archer and hsb (F K) et al to Mary B Lyman, Oahu; 1 aer land, Kaulahole, Honolulu, Oahu. \$1800. B 277, p 254. Dated Dec 18, 1905.

C Brewer & Co Ltd by Regr. Notice; of decree of title in Land Reg Court Case No 52. B 274, p 411. Dated Dec 20, 1905.

Kaluka Manula (widow) et al to Harriet E Wight, D; water rights of ap 1 R P 4425, Nuuanu valley, Honolulu, Oahu. \$45. B 277, p 255. Dated Nov 20, 1905.

Julia Manula to Harriet E Wight, Rel Dow; int in water rights, Nuuanu valley, Honolulu, Oahu. \$1. B 277, p 257. Dated Nov 20, 1905.

Lau Shee (w) by atty to Chang Loy, A L; premises, Smith St, Honolulu, Oahu. \$1200. B 273, p 390. Dated Nov 14, 1905.

J Alfred Magoon to Kaloio, Rel; R P 850 kul 1905, Waialeale, Ewa, Oahu. \$300. B 244, p 366. Dated Dec 16, 1905.

Umi Kahoa and hsb (Kahoa) to John H Est Ltd, M; ap 2 and por ap 1 R P 1280 and por R P 849, Waialeale, Ewa, Oahu. \$300. B 276, p 246. Dated Dec 16, 1905.

Ethel K Abrams by Regr. Notice; of decree of title in Land Reg Court Case No 58. B 274, p 412. Dated Dec 20, 1905.

Mrs Sela N Sherman to Wong Chee, B S; rents, etc, on pc land, Kapahu, Kohala, Hawaii. \$250. B 274, p 412. Dated Dec 19, 1905.

May's
Perfect Coffee

The BEST COFFEE on earth is MAY'S OLD KONA COFFEE. There are reasons for this which can be readily adduced.

In the first place we age our coffee systematically and thoroughly. Aging is a vital process if the valuable dietic qualities of the bean are to be brought out.

Then there's a whole lot in roasting and grinding. MAY'S OLD KONA COFFEE is freshly roasted and is ground fresh for every customer.

The beans are specially selected and are perfect in every respect.

If the cooking end of coffee-preparing be properly attended to, MAY'S OLD KONA COFFEE will make the best cup of coffee that it is possible to obtain.

Henry May & Co., Ltd.

Phones

Retail, Main 22 Wholesale, Main 92

OAHU ICE &
ELECTRIC CO

Ice delivered to any part of the city. Island orders promptly filled. Tel. Blue 611. P. O. Box 600. Office: Kewalo.

VISIT
THE
ZOO

A trip to the Zoo, at Kaimuki, is enjoyable to children and parents alike.

Besides the wonderful collection of animals and birds there are other delights too numerous to mention.

ADMISSION 10 CENTS.

Help the new
Promotion Man

BY PAINTING YOUR HOUSE.

The tasty appearance of Honolulu homes impress the tourists.

We are not only PAINTERS but COLORISTS and will be pleased to confer with you and give you color suggestions for your house.

Stanley Stephenson,

PAINTER AND COLORIST.

Phone 426 - - - 137 King Street.

S.S. SIGNS ARE PROMOTERS.

See Sharp the S.S. Sign Man.

I PAY CASH

FOR 1 TON OR 1000 TONS OF

OLD MACHINERY.

FENCING, COPING, REPAIRING

OF FAMILY BURIAL PLOTS.

A. C. Montgomery,

Queen St., near Maunakea.

GIVE ME A CALL

P. O. Box 152.

COTTON BROS. & CO.

ENGINEERS AND GENERAL CON-

TRACTORS.

Plans and Estimates furnished for all

classes of Contracting Work.

Boston Block. : : : Honolulu.

NOW LOCATED IN OFFICES 2 AND 3,

McIntyre Building.

J. S. MARTIN

MERCHANT TAILOR.

Fort Street - - - Honolulu, T. H.

GUY OWENS CO.

ELECTRICAL

ENGINEERS

Phone Main 315. Union Street.

HONOLULU IRON WORKS

COMPANY.

Machinery, Black Pipe, Galvanized

Pipe, Boiler Tubes, Iron and Steel,

Engineers' Supplies.

Office—Nuuanu street.

Works—Kakaako.

Frame the Xmas Pictures

If you have received PHOTOS FOR CHRISTMAS come and get one of OUR METAL PICTURE FRAMES. Or perhaps you were made a present of some drawings or paintings in which case their value will be greatly enhanced by having them appropriately framed. Bring them to us and we will please you. We have the biggest stock of mouldings in Honolulu and use the best of taste in framing.

Honolulu Photo Supply Co.
Fort Street

LEWIS & CO., LTD.

The Big Grocers

169 King Street - - - Telephone 240

THE Last Dance

THIS YEAR WILL BE GIVEN BY
OAHU CANTON NO. 1

PATRIARCH MILITANT

I. O. O. F.

AT

Progress Hall

DECEMBER 30, 1905.

TICKETS, 50c.
LATE CAR AT 12 P. M.

STILL A LOT OF

Holiday Goods

LEFT AT

FUKURODA'S.

28-32 HOTEL STREET.

RAFFIA IN INDIAN COLORS,
ALSO REEDS FOR SALE, AT

Mrs. E. M. Taylor

Alexander Young Building.

NETS

Art fishing nets for dens. Grass and Lauhala shopping bags. Brasses and pottery.

HAWAII AND SOUTH SEAS
CURIO COMPANY.

Alexander Young Building and
Royal Hawaiian Hotel.

Use
Novelty Mills
EXCELLENT FLOUR
CALIFORNIA FEED CO., Agents

KWONG YUEN HING CO.

WHOLESALE LIQUOR AND GROCERY DEALERS.
36-38 North King Street.

Jade Stones, Gold and Silver Jewelry.

READY MADE GOLD AND SILVER JEWELRY WITH JADE STONES.

***** LATEST STYLES *****
Any special design made to order on short notice at lowest prices. Call and see our stock.

TIN WO.
No. 1029 Maunakea St., P. O. Box 293.

Japanese Employment Office

450 KING ST., NEAR LILIHAI.
Help of all kinds furnished.
Clothes cleaned, dyed and pressed.
Orders over Telephone White 1251 promptly attended to.

Catton, Neill & Co., Ltd
ENGINEERS and MACHINISTS
QUEEN AND RICHARDS STREETS.

Boilers re-tubed with charcoal-iron steel tubes; general ship work.



It is rumored that the U. S. gunboat Concord will be here shortly en route to the China station. The little gunboat has threatened to visit Honolulu for some time and she will now doubtless carry out her design. The Asiatic fleet is to be both weakened and strengthened. The battleship Oregon is to be sent to the Coast for an overhauling. Admiral Sigsbee, with the flagship Brooklyn and the cruisers Chattanooga and Tacoma and another warship, is to visit the Mediterranean, and all but the Brooklyn and Tacoma are to leave the fleet at Suez and go on to Manila.

CHARGED WITH SMUGGLING COAL

TACOMA (Wash.), December 17.—Captain H. W. Burgess of the ship Abner Coburn is charged with smuggling coal from Newcastle, Australia, to Eagle Harbor by Frank Loftus, chief of the Custom-house inspectors, and Inspector Whaley. They found that on December 10th Burgess entered his ship at Port Townsend and that his manifest showed ballast and stores. When the inspectors went into the hold of the ship yesterday they found ten tons of coal in bulk, while 128 sacks were found on deck, where they had been placed apparently ready to be taken ashore. A number of these sacks had been sold to Hall Brothers, who were innocent purchasers. The inspectors say that they have evidence that Burgess offered coal for sale to several persons. The ship is liable to seizure and her master to prosecution for smuggling. Collector Ide will be notified of the facts and Captain Burgess will probably be given a hearing at once. The vessel is owned in San Francisco.

SATURN TO MIDWAY.

The naval auxiliary Saturn leaves this afternoon for Midway Island with twenty marines under the command of Lieut. Horton, U. S. M. C., and Dr. Miller, surgeon. They will replace the marine garrison now on the island, man for man. In addition, Mr. Evans, an employee of the cable company, will also be a passenger. The Saturn carries supplies for the marines as well as the cable colony.

CHICAGO LEAVES PORT.

Amid a farewell of music from the Hawaiian band, the flagship Chicago departed about 5 o'clock yesterday afternoon for San Francisco. Rear Admiral Goodrich departed with regret at leaving Honolulu, and his sentiment was voiced by many of the officers. The flagship was here only a few weeks, but her visit was greatly appreciated by Honoluluans. Quite a number of friends of the officers were on the dock to wave a farewell.

RESTORER GOES TODAY.

The cable steamer Restorer leaves about noon today for San Francisco there to undergo repairs and a general overhauling. It is likely that before the vessel drops anchor again in Honolulu harbor she will have sailed over the entire route of the cable, calling at Midway, Guam, Manila, China and Japan.

AMERICA MARU TODAY.

The T. K. K. America Maru is due this morning from Yokohama, and will doubtless leave in about six hours after her arrival. She has only 100 tons of freight for this port. She will, of course, carry only mail from Honolulu to the Coast.

SHIPPING NOTES.

The Mikahala leaves at 5 p. m. for Kauai ports.

The bark Kenilworth goes to Hilo after discharging here.

The Mauna Loa sails Friday noon for Kona and Kau ports.

The Mikahala brought 2500 bags of sugar yesterday from Kauai.

The steamer Maui after a thorough overhauling may be ready for duty in a few days.

Admiral Goodrich entertained at luncheon aboard the flagship Chicago yesterday.

An Olds railway auto, covered with a canopy, is to be shipped to the Kahului Ry., Maui.

The Oceanic S. S. Alameda is due from the Coast Friday morning with five days' later mail.

The bark Edward May left Makaweli Saturday for San Francisco with 18,000 bags of sugar aboard.

Lieut. Slattery may leave for Hilo shortly to make surveys and estimates on the proposed Hilo breakwater.

Diver Tyrrell and some divers went to Hilo yesterday to survey the wreck of the Martha Davis, considered a menace to navigation.

The Marine Park between Brewer's and the Inter-Island wharves is assuming fine shape. The coconut palms and lawns are doing nicely.

Purser Grube of the steamer Mikahala reports the following sugar list on K. S. M. 1900; V. K. 760; Mak. 178; G. & F. 845; MCB. 3175; K. S. Co. 3000; K. P. 2000; P. 845; H. M. 1920.

Of the 42,000 sacks of sugar which Capt. Colly expects to take away in the bark Kauai, over 5000 have already been loaded in. Capt. Colly expects to leave for San Francisco about the middle of January.

Chas. Smith, fireman, and Jos. W.

Weiber, both of the cruiser Chicago, deserted on Tuesday evening and were located yesterday morning by police officers Mulletter and Larsen. The captain paid \$10 reward for each prisoner.

The U. S. auxiliary Lawton will haul across the Naval ship and take the berth made vacant by the departure of the Saturn, giving room for the Dix to return and unload her coal cargo. The Dix has been at the Hackfeld dock.

Over five thousand sacks of sugar from Hutchinson plantation, Kau, Hawaii, which were brought here on the Mauna Loa, have been unloaded into cars of the Oahu Ry. and shipped to the Honolulu Sugar plantation to be refined.

The P. M. S. S. Siberia left Yokohama yesterday for Honolulu and San Francisco. She has 1500 tons of freight for this port, and will have accommodations for about fifty passengers from here. The vessel is due the morning of January 5.

The U. S. Shipping Commissioner yesterday paid off the crew of the American ship Kenilworth. Some received a good wage, others very little. The ship-chest, advances, fines, etc., cut down their wages materially. One young fellow who had been about fifteen months on board, came off with about \$128. He had received heavy advances at New York, Hongkong and Newcastle.

Commander C. F. Pond, U. S. N., commander of the U. S. Auxiliary Lawton, and his son, Ensign Pond of the Chicago, met here, both on duty. It is something of a coincidence, inasmuch as young Pond is accredited to Hawaii as its first naval cadet under the Territory, having been appointed through Robert Wilcox, during his first session as delegate to Congress. Commander Pond was at one time commander of the U. S. S. Iroquois, the local station ship.

WILL SPEND \$15,000 ON THE WAIALEALE

The Tacoma Ledger of December 15, says:

At the Old Town shipyards of Crawford & Reid \$15,000 will be expended in rebuilding the steamer Waialeale, which has arrived from Honolulu under command of Captain W. C. W. Renny, of Tacoma.

The alterations will consist of building new houses and installing quarters for a large number of passengers. The steamer was purchased in the Hawaiian Islands by Cook & Co. She will be placed on some route on the Sound but her run has not yet been announced. It will be two months before the trim little steamer is ready for service.

The steamer's net tonnage is 176 and for a number of years she has been used for freight and passengers between Hawaiian ports. She was built at Port Blakeley eighteen years ago by Hall Brothers. She is a wooden vessel but good for many years' service yet. She came from Honolulu in twelve days. Her crew of fifteen was paid off at the shipping commissioner's office yesterday.

Prior to leaving Honolulu the steamer was subjected to a thorough fumigation on account of the prevalence of bubonic plague in the islands. For forty-eight hours she was full of sulphur fumes while her crew was kept at the quarantine station and their baggage fumigated.

Captain Renny says he enjoyed his trip thoroughly. While in the islands he met many old friends. He was sent from Tacoma to Honolulu to bring the Waialeale back. The name is a com-



MISS SARAH BURNHARD.

"Nervousness"

More than half the time nervousness is called by other names.

"Nervousness" means "starved nerves,"—the disorganization of the nerve system, on which every organ in the body depends for its healthy and continued action. All the health of the human body depends upon this nerve force.

The nerves are starving and burning themselves up—every day the worn-out feeling comes—the courage of life is fainter—the mind is worn by its worried activity,—in a word, one is "run down," nervous.

When the worn out feeling cannot longer be thrown off,—when the courage of life is utterly gone,—we call this condition of diseased nerves by the given name of "nervous prostration."

Nervous people—"run down" or tired out, who can profit by the experience of thousands during the past 17 years, call into use a prescription that really gives to the nerve system food that is fitted to its needs—the famous formula, discovered by Professor Edward E. Phelps, the great Physician of Dartmouth University; the celebrated nerve vitalizer and tonic, now known throughout the world as Paine's Celery Compound.

Every physician knows the famous formula and uses it constantly in his practice.

We print some of the letters sent us by persons who let themselves sink into nervous prostration, and who—having been restored to health—are willing to let the world know their gratitude to Paine's Celery Compound.

"I was a complete wreck from nervous prostration; I could not even sit up when I began using Paine's Celery Compound. "At the end of two weeks I was able to go out, and in one month was able to go about my work with as much vim as I ever possessed, and this after an eighteen months' siege of prostration."

"I desire to put myself on record as a firm believer in the merits of Paine's Celery Compound."—Sarah Burnhard, 673 Sterling Place, Brooklyn, N. Y., Aug. 30, 1904.

"Nervousness," "nervous prostration," "nerve decline,"—that run-down, worn-out feeling,—nine times in ten are simply the result of prejudice, carelessness, or ignorance.

All that the starved nerves want is proper food.

Remember this,—Paine's Celery Compound is the prescription of one of the most famous physicians this country has ever known, and all reputable druggists sell and recommend it.

WELLS, RICHARDSON & CO.,
BURLINGTON, VERMONT.

HOLLY FLOUR

In some articles of household requirement, medium grade goods will answer the purpose as well as the best. Not so with flour. Your physical welfare and that of your family demand that only flour of the very highest quality be introduced in your kitchen. There is no purer, more economical or more uniform flour on the market than HOLLY FLOUR. You make no mistake in ordering it.

Theo. H. Davies & Co., Ltd.

Wholesale Agents.

Grocery Department 'Phone, Private Exchange 5.

bination of Hawaiian words, meaning "great waters."

BAD GROUND VISITED.

There was no inside meeting of the Board of Health yesterday, but President Pinkham and members of the board paid a visit to the "bad ground" at Waipahu. This place has been a hard problem for some months past.

WOMEN'S WOES.

It's Hard for Any Honolulu Woman To Keep Up and Around When Her Back Is Constantly Aching.

When a woman's back aches, When it throbs day and night; Or she is tired and worn out; Unable to stoop without pain. When urinary troubles annoy her, And she is nervous and irritable. It's hard to keep up. Can't be well until the kidneys are well.

Doan's Backache Kidney Pills cure these ills. Cure the kidneys and keep them well. Honolulu testimony proves it.

Mrs. N. Joseph lives at the corner of Liliha and King streets, this city. She says: "I was troubled for seven months with a lame back, and also suffered from occasional attacks of chills. These various complaints made my condition by no means a happy one, so that I much desired some remedy which would bring relief. This I found in Doan's Backache Kidney Pills, some of which I obtained at the Hollister Drug Co.'s store. I am pleased to say that they gave me not merely temporary but permanent relief and I have not the least hesitancy therefore in recommending Doan's Backache Kidney Pills. They are a good kidney medicine."

Doan's Backache Kidney Pills are for sale by all dealers at 50 cents per box, (six boxes \$2.50). Mailed by the Hollister Drug Co., Ltd., Honolulu, wholesale agents for the Hawaiian Islands.

Notice to Holders of Bonds of the Waialua Agricultural Company, Limited

Pursuant to a Resolution passed by the Directors of the Waialua Agricultural Company, Ltd., at a regularly called meeting held on October 24, 1905, and acting under authority of a Resolution passed by the Shareholders of the said Waialua Agricultural Co., Ltd., at a duly called special meeting held on October 19, 1905, the existing issue of Bonds for One Million Dollars in all, will be refunded on March 31, 1906.

Under authority of the said Resolutions a new issue of Bonds for One Million Five Hundred Thousand Dollars (\$1,500,000.00) in all will be made, said Bonds to be dated March 31, 1906 bearing interest at the rate of 5 per cent per annum, payable semi-annually on the last days of March and September of each year, for a term of 20 years, with the option reserved to the Waialua Agricultural Company, Ltd., of redeeming the whole or any part of said Bonds on March 31, 1916 or on any interest paying date thereafter; said Bonds to be secured by Deed of Trust on the property of the Company, which shall provide for the annual payment to the Trustee of 10 per cent of the net profits of the company, to be invested as a sinking fund for the redemption of said Bonds.

Holders of the existing issue of Bonds may exchange their holdings for an equivalent face-value of the new issue, on the basis of 98 for the latter, (difference to be paid to Bondholders either in U. S. gold coin or in additional Bonds at 98, or partly in Bonds and partly in U. S. gold coin, at Company's option) provided they execute an agreement to this effect, and deliver same, not later than January 6, 1906, to the Hawaiian Trust Company, Limited. Blank forms of this agreement will be furnished on application, or may be had at the office of the Hawaiian Trust Company, Limited.

Honolulu, November 2, 1905.

G. P. CASTLE,
Treasurer, Waialua Agricultural Co. Limited.

7251

NOTICE TO CREDITORS.

ESTATE OF JULIA ANTHON PATY.

The undersigned, L. A. Thurston, having been appointed Administrator with the Will annexed of Julia Anthon Paty, deceased, late of Honolulu, Territory of Hawaii, hereby gives notice to all creditors of the said deceased to present their claims duly authenticated and with proper vouchers, if any exist, even if the claim is secured by mortgage upon real estate, to him at his office in the Stangenwald Building, Merchant street, in said Honolulu, within six months from this date.

If any claim against the said deceased be not presented within six months from the date of this notice the same will be forever barred.

Dated, Honolulu, December 7, 1905.

L. A. THURSTON,
Administrator with the Will annexed of Julia Anthon Paty.

7250—Dec. 7, 14, 21, 28, Jan. 4.

NOTICE TO STOCKHOLDERS

OF THE
HONOLULU RAPID TRANSIT & LAND COMPANY.

Notice is hereby given that the stock books of the Honolulu Rapid Transit & Land Company will be closed to transfers from the 28th to the 30th days of December, 1905, both dates inclusive.

By order of the Board of Directors,
GEORGE P. THIELEN,
Secretary.

7297

BY AUTHORITY.

PAYMENT OF WATER RATES.

As provided for in Chapter 45 of the Revised Laws of Hawaii, 1905, all persons holding water privileges or those paying water rates are hereby notified that the water rates for the six (6) months ending June 30, 1906, will be due and payable on the first day of January, 1906.

On all such rates remaining unpaid on January 15, 1906, an additional charge of 10 per cent will be made.

All privileges upon which rates remain unpaid February 15, 1906, are subject to immediate shut off, without further notice.

Rates are payable to the Chief Clerk of the Department of Public Works at the office of the Honolulu Water Works.

J. H. HOWLAND,
Superintendent of the Honolulu Water Works.

Honolulu, T. H., December 14, 1905.

7287

NOTICE.

PAYMENT OF SEWER RATES.

In accordance with Chapter 84 of the Revised Laws of 1905, all those holders of sewer privileges or paying sewer rates are hereby notified that the sewer rates for the six (6) months ending June 30, 1906, will be due and payable, at the Office of the Superintendent of Public Works, on the 1st day of January, 1906.

A failure to pay such rates within fifteen (15) days thereafter will subject the holders 10 per cent additional.

C. M. WHITE,

Chief Clerk.

Approved:
C. S. HOLLOWAY,
Superintendent of Public Works.

7287

ESTATE OF WALAAULANI.

IN THE CIRCUIT COURT OF THE FIRST CIRCUIT, TERRITORY OF HAWAII, AT CHAMBERS—IN PROBATE.

In the Matter of the Guardianship of M. Kaopulupu Walaaulani (K) of Honolulu, Oahu, Minor. Order to Show Cause on Guardian's Application to Sell Real Estate.

On reading and filing the Petition of Thomas S. Kalama of Honolulu, Oahu, the Guardian of the person and estate of M. Kaopulupu Walaaulani (K), minor, praying for an order of sale of certain real estate belonging to his said ward, viz.: 1-2 of land at Waihole, Koolau, Oahu, described in Royal Patent (Grant) No. 2574, said half containing an area of 59.4 acres; and all of the land at said Koolau, described in Royal Patent No. 1094, L. C. Award No. 8235 containing an area of 3.05 acres, and setting forth certain legal reasons why such real estate should be sold, to-wit: That said property be sold to pay the debts of said estate and also for the maintenance and support of said minor, the income from said property being insufficient to pay the same.

It is Herby Ordered, That the heirs and next of kin of said ward and all persons interested in the said estate, appear before this Court on Monday, the 15th day of January, A. D. 1906, at 10 o'clock a. m., at the Court Room of this Court, in Honolulu, Oahu, and there to show cause why an order should not be granted for the sale of such estate.

And It is Further Ordered, That a notice of this order be published at least twice a week for two successive weeks before the said day of hearing, in the P. C. Advertiser, newspaper published in Honolulu.

Dated at Honolulu, Oahu, December 27, 1905.

Attest:

(Signed) J. T. DE BOLT,

First Judge of the Circuit Court of the First Circuit.

(Signed) JOE BATCHELOR,

Clerk of the Circuit Court of the First Circuit.

C. L. Peterson, attorney for petitioner.

7297—Dec. 28, 29, Jan. 4, 5, 11, 12.

NOTICE TO CREDITORS.

ESTATE OF JAMES WIGHT.

The undersigned, JANE WIGHT, executrix under the Will of James Wight, late of Kohala, County of Hawaii, and ROBERT WALLACE and ROBERT W. SHINGLE, administrators with the Will annexed of the estate of said James Wight, having been appointed such executrix and administrators by the Honorable J. A. Matthewsman, sitting at Chambers in Probate in the Circuit Court of the Third Circuit of the Territory of Hawaii, hereby give notice to all creditors of said decedent to present their claims duly authenticated and with proper vouchers, if any exist, even if the claim is secured by mortgage upon real estate to said executrix and administrators at their place of business in Honolulu by leaving the same at the Office of the Henry Waterhouse Trust Company, Limited, corner of Fort and Merchant Streets, Honolulu, within six months from this date. If any claims against said decedent be not presented within six months from the first publication of this notice, the same will be forever barred.

All debtors of the estate of said James Wight are hereby notified to make payment of such debts forthwith at said Office of the Henry Waterhouse Trust Company, Limited.

Dated, Honolulu, December 15, 1905.

JANE WIGHT,

Executrix of the Will of James Wight.

ROBERT WALLACE and ROBERT W. SHINGLE Administrators with the Will annexed of the Estate of James Wight.

7297—Dec. 28, Jan. 4, 11, 18, 25.

FRATERNAL MEETINGS.

NOTICE.



There will be a joint Masonic banquet held at Hawaiian Hotel FRIDAY EVENING, December 29, at 8 o'clock. All members and visiting brethren are cordially invited.

C. S. HALL,
GEO. C. BOCKUS,
CHAS. F. MURRAY,
Committee.

POLYNESIA ENCAMPMENT, NO. 1, I. O. O. F.

Meets every first and third FRIDAY of the month at 7:30 p. m. in Odd Fellows' Hall, Fort Street. Visiting brothers cordially invited to attend.

F. M. MCGREW, C. P.
L. L. LA PIERRE, Scribe.

EXCELSIOR LODGE NO. 1, I. O. O. F.

Meets every TUESDAY evening at 7:30, in Odd Fellows' Hall, Fort Street. Visiting brothers cordially invited to attend.

F. G. NOYES, N. G.
L. L. LA PIERRE, Secretary.

PACIFIC REBEKAH LODGE, NO. 1, I. O. O. F.

Meets every second and fourth THURSDAY, at 7:30 p. m., Odd Fellows' Hall, Fort Street. Visiting Rebekahs are cordially invited to attend.

LILLIE DUNN, N. G.
JENNY JACOBSON, Sec'y.

OLIVE BRANCH REBEKAH LODGE NO. 2, I. O. O. F.

Meets every first and third THURSDAY at 7:30 p. m., in Odd Fellows' Hall, Fort Street. Visiting Rebekahs are cordially invited to attend.

MARGARET SIMONTON, N. G.
THORA OSS, Secretary.

LEAHI CHAPTER NO. 2, O. E. S.

Meets every third Monday at 7:30 p. m. in the Masonic Temple, corner of Alakea and Hotel streets. INITIATION AND INSTALLATION OF OFFICERS.

Visiting Sisters and Brethren are cordially invited to attend.
EMMALONGSTREET RICH CRABBE,
P. W. M. Secretary.
ADELAIDE M. WEBSTER,
Worthy Matron.

HAWAIIAN TRIBE NO. 1, I. O. R. M.

Meets every second and fourth THURSDAY of each month, in I. O. O. F. Hall.
Visiting brothers cordially invited to attend.

T. P. MCGIE, Sachem,
E. V. TODD, C. of R.

WILLIAM MCKINLEY LODGE, NO. 8, K. of P.

Meets every SATURDAY evening at 7:30 o'clock, in Harmony Hall, King Street. Visiting brothers cordially invited to attend.

EDWIN FARMER, C. C.
E. A. JACOBSON, K. of R. & S.

HONOLULU TEMPLE NO. 1, RATHBONE SISTERS.

Meets every 2nd and 4th Monday, at 8 o'clock, in Pythian Hall, King street. All visitors cordially invited to attend.

SALLIE L. WILLIAMS, M. E. C.
GRACE O'BRIEN, M. of R. & C.

LODGE LE PROGRES DE L'OCEANIE.

Meets the last Monday in each month, at 7:30 o'clock in Masonic Temple, corner Alakea and Hotel streets. Visiting Masons cordially invited to attend.

C. J. DE ROS, Secretary.
W. R. FARRINGTON, W. M.

HONOLULU LODGE 616, B. P. O. E.

Honolulu Lodge No. 616, B. P. O. E., will meet in their hall, on Miller and Seretania streets, every Friday evening.

By order of the E. R.
HARRY H. SIMPSON, Secretary.
GEO. H. ANGUS, E. R.

COURT CAMOES, NO. 8110, A. O. F.

Meets every 2nd and 4th Tuesday of each month at 7:30 p. m. in San Antonio Hall, Vineyard street. Visiting brothers cordially invited to attend.

A. O. ROSA, C. R.
M. C. PACHECO, F. C.

HONOLULU AERIE 140, F. O. E.

Meets on 2nd and 4th WEDNESDAY evenings of each month at 7:30 o'clock in K. of P. Hall, King Street.

Visiting Eagles are invited to attend.

M. ROSENBERG, W. P.
H. T. MOORE, W. Secty.

THEODORE ROOSEVELT, Camp No. 1, U. S. W. V.

Department Hawaii.
Meets every first and third WEDNESDAY at Waverley Hall, at 7:30 p. m. Visiting comrades cordially invited to attend.

PAUL SMITH, Comdr.
H. H. LONG, Adjutant.

REBECCA'S LEASE VOID

Executions Returned--A Judgment--Court Jottings.

Judge De Bolt rendered a written decision in the case of Richard H. Trent, guardian of Rebecca K. Panee, vs. Chin Kee Kan and Ang Ton. It was an action to recover \$150 rent claimed for breach of covenant of lease. Judgment is given for defendants. E. M. Watson appeared for plaintiff, and Ballou & Marx for defendant.

It was agreed that the case depended on whether the guardianship of Rebecca was in existence when the lease was executed. A decree of February 19, 1902, terminated the guardianship. Notice of appeal from this decree was filed February 22, an unstamped bond for costs on appeal being filed the same day. Accrued costs were paid February 24 and the stamp on the bond was canceled February 26, the day on which the lease was executed.

"In my opinion," Judge De Bolt says, "the lease was null and void, it having been signed and delivered after the appeal was perfected and a good and sufficient bond filed. The fact that the stamp was not canceled until after the delivery of the lease, to my mind, is totally immaterial. (Tienan vs. Booth, 4 Fed. 620; McKinney vs. Hartman, 143 Ind. 227.) The fact remains that the bond was filed Feb. 22 and all costs, presumably for the stamp on the bond as well, were paid Feb. 24.

"Judgment may be entered for the defendants."

J. A. Magoon was the former guardian, who, after defeating the decree in question on appeal, resigned.

RETREATS FROM NOISE.
Judge Robinson yesterday afternoon transferred his court from the Judiciary building to the House of Representatives chamber in the Capitol, on account of the noise made by the workmen renovating the interior of the Judiciary building. Godfrey vs. Rowland is still on before Judge Robinson.

EXECUTIONS, ETC.
Execution for \$1861.96 in the suit of H. Hackfeld & Co., Ltd., vs. S. Tomikawa is returned as partly satisfied by Deputy Sheriff W. A. Fetter of South Hilo, who sold real property of defendant at Olua and realized a net amount of \$520.25 thereon, for which he returns a receipt from the attorneys for plaintiff.

Execution for \$815.09 in the suit of H. G. Middleitch, trustee in bankruptcy of Chas. F. Herriek Carriage Co., vs. David Kawanaakoa is returned unsatisfied by Deputy Sheriff Kalakiala, who could find no property of defendant on which to levy.

Judgment of default has been given by Judge De Bolt against defendant in the suit of P. E. Thompson vs. George P. McLeod for \$888.50 principal, \$33.65 interest and \$58.30 costs, a total of \$980.45.

NOMINAL DAMAGES.
In the damage suit of Y. Anin against Wm. Henry, High Sheriff, Judge De Bolt found for the plaintiff with damages at one dollar. He sued for \$300 on account of a breach made into his office on Maunakea street by Henry Vida, deputy of defendant, and other officers. The District Court granted a nonsuit, from which plaintiff appealed. W. C. Achi appeared for plaintiff, and Geo. A. Davis for defendant.

COURT NOTES.
Henry E. Highton for plaintiff withdrew the motion for a postponement of the trial of Laker vs. Humphreys, in the face of the objection that it was a term matter and should not be heard by a judge at chambers.

In the suit of Lahapa Ernsterberger vs. Kina Nahau and Nahau, plaintiff moves to strike from the files the answer of defendants and to enter against them a decree pro confesso.

Heen & Kaulukou file a motion for temporary alimony and attorney's fee on behalf of Martha Aina in her divorce suit against M. Mahoe Aina.

Hawaiian Hardware Co., Ltd., sues Hoe Fat for \$1200.64 on account of merchandise sold.

T. Hayashi sues S. Ozaki for a balance of \$621.30 on account of merchandise sold.

INFLUENZA.
Can be cured by commencing at the first symptoms to use Chamberlain's Cough Remedy. Thousands have used this remedy during the past year, and we have to learn of a single case where they were not pleased. For sale by Benson, Smith & Co., Ltd., agents for Hawaii.

ORDINANCES UNDER TEST

Why Chinese Don't Like One Against Mouth Spraying.

The appeal of Ah Choy and Ah Tuck on points of law to the Supreme Court from the Honolulu District Court, on being fined \$5 and costs each for spraying clothes with water from the mouth in laundry work for hire contrary to the county ordinance, has been perfected. Why the Chinese washermen object to the ordinance may be seen in the following transcript of the testimony of Wa Lee, a laundry man, on cross-examination:

"Our way of spraying is quicker work. It was usual way of spraying from the mouth, it is quicker. I don't know what methods they use in family, since I was in California this methods had been used. I have not practiced other way, since I was a boy. I have been practicing this way since I was a boy. If we adopt a new way, it will be slow, and we lose money. Now they forced us to use little tin and blow through it, it gives us headache."

ANTI-BARRICADE.
Tai Kong and forty-three others of celestial nomenclature appeal from fines of \$5 and costs each for violating the county ordinance against barricades to gambling places.

POISON LICENSE.
Yee Mei appeals to the Circuit Court from sentence of \$50 and costs in the Honolulu District Court for selling opium without a poisonous drug license. Tam Yau appeals from a similar judgment.

THE GILBERT WOOD-CUTTING CASE IS ON

The case of Territory of Hawaii vs. O. St. John Gilbert and two Japanese employes for cutting wood from government land came on for trial in the police court yesterday afternoon. The prosecution was represented by Attorney General Peters and Chester Doyle, the defense being backed up by A. S. Humphreys, W. T. Rawlins and C. F. Chillingworth.

The first move of the prosecution was to enter a nolle prosequi as to one of the Japanese, Sakamoto, and then proceed to call him as a witness for the prosecution against his fellow Jap and Mr. Gilbert. The case occupied all of the afternoon and will be resumed today at 2 o'clock. It is expected that the prosecution will finish with its side of the case by the time that court adjourns this afternoon.

SENTENCES CUT BY THE GOVERNOR

Governor Carter has granted commutations of sentences as follows, on the recommendations of boards of prison inspectors:

Yamani Nenchiro was convicted in the First Circuit Court of manslaughter in the second degree, and sentenced on May 22, 1899, to be imprisoned at hard labor for ten years; also convicted in the same court of manslaughter in the third degree, and sentenced on May 22, 1899, to be imprisoned at hard labor for the term of five years additional. Commutation of sentence, three years.

Chida Manzabara was convicted in the First Circuit Court of manslaughter in the first degree, and sentenced on May 22, 1899, to be imprisoned at hard labor for the term of twenty years. Commutation of sentence, five years.

Samuel Barney was convicted in the First Circuit Court of manslaughter in the first degree, and sentenced August 31, 1900, to be imprisoned at hard labor for the term of fifteen years. Commutation of sentence, two years.

Frank C. Henry was convicted in the Fifth Circuit Court of manslaughter in the first degree, and sentenced March 15, 1902, to be imprisoned at hard labor for the term of ten years. Commutation of sentence, two years.

Time for defendants to plead in the beef trust case has been extended by Judge Dole under a stipulation to February 2.

COURT FILES YIELD FUN

"Geyser" Girl's Hire--A Man of Mighty Thought.

Reminiscences of Mrs. Partington are suggested by the records of the Honolulu District Court. The "geyser girl" mentioned below might be taken to mean a female lawyer by anybody who had never heard of the "geisha" girls employed as entertainers at social functions in Japanese high life.

Defendant in the suit of M. Nagimori vs. Jintaro Kawasaki, and Yokohama Specie Bank, garnishee, appeals from judgment of \$254.24, for \$100 of which the garnishee is held. The plea was general issue and this was the plaintiff's case, entire, according to the record sent up from the Honolulu District Court:

"M. Nagimori, sworn: Know defendant. Brought action against him. I am asking for \$190.79. The amount is made up of business between his wife. Defendant asked me to advance money for his wife as geyser girl. Defendant admitted the debt to me about 5 or 6 times. He paid some on account. \$374.79 was total amount. \$184.00 was paid on account."

Defendant put on no evidence.

OTHER APPEALS.
Ah Poon appeals from District to Circuit Court on fine of \$50 and costs for assisting to maintain a lottery. Man Yock, sentenced to imprisonment of six months for the same offense, also appeals. Ah Yip, fined \$25, is another of the same kind.

Plaintiff in the suit of David Kanaha vs. G. M. Cook, and Auditor Fisher, garnishee, for \$15 rent, appeals from judgment for defendant with costs against plaintiff. A witness for defendant said that plaintiff told Mrs. Cook: "If you don't like the way I act you can move. Mr. Cook thinks he owns the world."

Auction Sale

DELINQUENT STOCK IN THE

Sun Chung Kwok Bo Co. Ltd.

DECEMBER 28, 1905

AT 12 O'CLOCK NOON.

At my salesroom, 845 Kaahumanu street, Honolulu, I will sell at public auction, by order of the Treasurer, Mr. Lau Tang, the following certificates of stock in the Sun Chung Kwok Bo Co., Ltd., unless the delinquent assessments with interest thereon and advertising expenses are paid on or before the day and hour of the sale at the office of Sun Chung Kwok Bo Co., Ltd., Honolulu, T. H.

No.	Shares.	No.	Shares.
7	1	76	1
11	5	77	5
12	2	78	1
14	2	81	1
15	1	85	1
17	3	87	1
18	3	89	2
19	2	91	1
20	2	92	5
21	2	93	2
23	1	94	1
34	1	95	1
35	1	96	1
36	2	99	1
37	1	100	1
38	2	102	1
39	2	104	2
42	2	106	2
43	1	108	2
44	2	109	2
45	1	111	1
46	1	113	2
47	1	115	2
49	1	116	1
51	2	117	1
52	2	118	2
54	5	119	1
55	1	121	1
56	1	122	2
59	1	124	1
60	2	127	2
61	1	128	2
62	1	129	2
66	2	130	3
67	1	131	1
68	1	134	2
69	1	137	1
70	1	138	1
73	1	139	1
75	1	141	4
		142	1

JAS. F. MORGAN, AUCTIONEER.



To Carpenters: Cottages at Auction

Friday, Dec. 29, 1905, 12 O'CLOCK NOON.

On the premises corner of South and King streets, I will sell at public auction

2 Wooden Cottages

To be removed.

JAS. F. MORGAN, AUCTIONEER.

FORECLOSURE SALES

Saturday, December 30, 1905, AT 12 O'CLOCK NOON.

At my salesroom, 847 Kaahumanu street, LANDS IN KAPIOLANI TRACT.

COMMISSIONER'S SALE

Saturday, January 6, 1906, AT 12 O'CLOCK NOON.

Front entrance Judiciary building, Honolulu, LANDS AT KAHALUU, KOOLAUPOKO.

JAS. F. MORGAN, AUCTIONEER.

An Income Producer

Auction Sale Valuable Taro Lands

Saturday, January 13, 1906, AT 12 O'CLOCK NOON.

At my salesroom, 857 Kaahumanu street,

19 Taro Patches

situated on School street extension, near Asylum.

For further particulars apply

JAS. F. MORGAN, AUCTIONEER.

Army Mules! Army Mules!

I'm ready now to show you mules. I believe they are the best I've sold yet. Have a good look; any time, sale soon.

JAS. F. MORGAN, AUCTIONEER.

Furnished House, Manoa.

THE HEALTHY DISTRICT.

THE HOME OF GOLF.

Every convenience.

Low rent.

Nicely furnished.

JAS. F. MORGAN.

View, Price, Location

For Sale AT MANOA

The choicest lots both as regards location and price. Let me show you.

JAS. F. MORGAN, AUCTIONEER.

Pretty Cottages

FOR RENT.

Corner Pensacola and Lunalilo sts.—Healthy locality, cool beautiful shade trees. Houses built from architect's approved plan of latest sanitation. Close to cars. Cheap rent.

JAS. F. MORGAN, AUCTIONEER.

Castle & Cooke, Ltd.

HONOLULU.

COMMISSION MERCHANTS, SUGAR FACTORS.

—AGENTS FOR—

The Ewa Plantation Co.
The Wailua Agricultural Co., Ltd.
The Kohala Sugar Co.
The Waimea Sugar Mill Co.
The Fulton Iron Works, St. Louis.
The Standard Oil Co.
The George F. Blake Steam Pump & Weston's Centrifugals.
The New England Mutual Life Insurance Co., of Boston.
The Aetna Insurance Co., of Hartford, Conn.
The Alliance Assurance Co., of London.

"HOW SAVINGS GROW."

Our little booklet with the above title free for the asking.

FIRST AMERICAN SAVING AND TRUST CO. OF HAWAII, LTD.

ALL KINDS OF RUBBER GOODS

Goodyear Rubber Co.

R. H. PEASE, President.

San Francisco, Cal., U. S. A.

Established 1858.

BISHOP & CO., BANKERS.

Cor. Merchant & Kaahumanu Sts.

HORSE SHOEING!

W. W. Wright Co., Ltd.

have opened a horse-shoeing department in connection with their carriage shop, etc. Having secured the services of a first-class shoer, they are prepared to do all work entrusted to them in a first-class manner.

Smoke H. J. N. PANETELAS CIGARS

BEAVER LUNCH ROOMS

H. J. NOLTE.

LIVE TURKEYS

JUST RECEIVED

PER S. S. NEBRASKAN.

CLUB STABLES.

Fort, above Hotel Street, Telephone Main 109.

Choose the Artistic

MANY NEW DESIGNS IN

Monuments

Can be seen at 1048-50 Alakea Street.

J.C. AXTELL & CO.

Phone Blue 1801. P. O. Box 642.

JAPANESE AND AMERICAN

Dry and Fancy Goods

Manufacturers of Straw Hats.

IWAKAMI & CO.

HOTEL STREET.

Christmas Soon Here!

And you will need a new suit of clothes. Our line of clothing has been selected for the Christmas Trade.

CALL EARLY!

Globe Clothing Company,

HOTEL STREET.

NOTICE.

At a meeting of the Board of Control of the Harrison Mutual Association held in the Townsend Undertaking Parlor, November 17, 1905, Assessment No. 3 was called, payable December 1 and delinquent December 31, 1905.

J. H. TOWNSEND, Secretary.

JNO. CASSIDY,

Electrical Worker.

159 KING ST. TEL. MAIN 158.

C. B. Reynolds & Co.

BAND TONIGHT AT HAWAIIAN HOTEL

The Hawaiian Band will give a concert tonight at the Hawaiian Hotel at 7:50. The program follows:

PART I.

March—"Governor Carter" Berger
Overture—"Birthdays" Rollinson
Ballad—"The Holy City" Adams
Selection—"La Traviata" Verdi

PART II.

Vocal—Hawaiian Songs, Ar. by Berger
Mrs. N. Alapai.
Selection—"The Musical Star" O'Hare
Waltz—"The Golden Shower"
March—"The Yankee Girl" Lampe
"The Star Spangled Banner."

LAWTON GIVES NAVAL HOP AT THE MOANA

The officers of the naval transport Lawton will give a dance this evening at the Moana Hotel, and have requested the management to extend a cordial invitation to all army and navy officers as well as the captain and officers of the Restorer and the townfolk in general. A special dinner will be served in honor of the occasion.

Ever feel like having a mixed drink?

The time will come when you do.

There's a world of joy in a craftily concocted beverage.

The CRITERION supplies the best mixed drinks in town.

The proof of the cocktail lies in the drinking!

C. J. McCABETHY, Proprietor,
Corner Hotel and Bethel Streets.

BUSINESS LOCALS.

Morgan's.
Houses to rent at Morgan's.
Buildings for sale at Morgan's.

Manoa home furnished, at Morgan's.

Two gentlemen desire room and board with private family.

At Morgan's this week—land sales, foreclosure and commissions.

Saturday—Fisher's busy day.

Every bread winner can enjoy Rainier beer—so can his wife and children.

Fine sideboard, suitable for residence, and a fine bar fixtures at auction Saturday by Fisher.

A party desires two furnished bedrooms or a small cottage, with board. See our "Want" ads. today.

The latest in millinery can always be found at Miss Power's millinery parlors, Boston Building, Fort Street.

A lot of good household furniture will be sold by Fisher Saturday.

A. Blom will hold a big embroidery sale next week. Prices, varieties and quantities will be announced later.

The Manufacturers' Shoe Co. is showing a new tan blucherette for ladies that is bound to be very popular. Price \$3.50.

There isn't a finer beer than Primo Lager brewed anywhere and its use is highly conducive to health and happiness.

There is no purer, more economical or more uniform flour on the market than Holly flour. Theo H. Davies & Co., agents.

A steady young man desires a situation as bookkeeper or to do clerical work of any kind. See our classified ads. on last page.

First-class tickets to all stations on the Oahu Railroad and Haleiwa coupon tickets are now on sale at the office of Trent & Co., 936 Fort Street.

Saturday—big auction sale by Fisher.

A bay horse with brand "A. S." on the neck has strayed from the owner. The finder will be rewarded by returning the same to 414 South Street.

The stockbooks of the Honolulu Rapid Transit & Land Co. will be closed to transfers from the 28th to the 30th of December, both dates inclusive.

Clothes sent to the Sanitary Steam Laundry are always returned to their owners as promptly as possible. Our perfect system renders vexatious delays impossible. Ring up Main 73.

That new vibrating facial massage at the Silent Barber Shop is a wonder. People come into the shop with splitting headache and forget they had it after the machine gets through with them.

THE ALAMEDA JAN. 3rd.

Takes the next shipment of Tropic Fruit Co.'s pineapples to the Coast. Address P. O. Box 50, Honolulu, or leave orders with Wells-Fargo, King Street.

DR. KINCAID'S ANNOUNCEMENT.

Rev. Dr. Kincaid states that he will preach next Sunday on the Future Work of Central Union Church and that, in this connection, he has a personal announcement to make. Dr. Kincaid desires a full attendance.

Owing to heavy shipments of sugar expected in next week at the railway wharves, Wharfinger Harry Denison has had the wharves put in first-class condition for the rush. The sugar will be coming in next week.

LOCAL BREVITIES.

Waiwala plantation will begin grinding about January 3.

The Y. M. C. A. educational classes will be resumed January 2, after the holiday vacation.

Don't forget the Oahu Canton dance at Odd Fellows' hall Saturday evening. There will be late cars.

Francis J. Berry, formerly a member of the Hawaiian bar, is a director of the Manila American newspaper.

James D. Dole, the pineapple planter, has been operated on for appendicitis at the Queen's Hospital, and is reported doing well.

First performance of "The Queen of the White Slaves" this evening at the Orpheum. Same play will be rendered at the matinee Saturday.

The Honolulu branch of the Theosophical Society meets every Tuesday and Thursday evening at 7:30—Kaplan Building, Thursday visitors' night.

The Thursday Club takes a week's vacation, postponing tonight's talk until later in the season. Postmaster Pratt will open the season of 1906 next week.

It was eight years ago yesterday that the Bank of Hawaii was started. The bank has doubled its capital from the original \$300,000, and has surplus and profits amounting to \$348,255.47.

Pacific Rebekah Lodge meets this evening at 7:30 o'clock in Odd Fellows' hall. As this is the last meeting of the year all members are requested to be present; also members of Olive Branch Lodge.

Patriarch Militant Canton, the Uniform rank of the Odd Fellows, will give the last big dance of the year at Progress Hall on Saturday evening. All Odd Fellows are expected to attend, as well as all their friends.

Through the Brazilian embassy in Washington, Governor Carter has been notified that Dr. L. Zehutner, director of the Institute of Agriculture, State of Bahia, Brazil, is coming here to study the production of sugar cane.

Supt. Babbitt of the Education department, Deputy Attorney General Prosser and Olaf Sorenson of the Survey department went to Waiwala yesterday to investigate a proposal for acquiring a schoolhouse site by exchange.

Miss Helen Wood and Miss Wagner, trained nurses from St. Luke's hospital, San Francisco, have joined the Queen's hospital staff. Dr. Sawyer, resident physician of the Queen's, has returned to his post from a vacation of three months on the mainland.

Leon Kissler, held at the police station on Tuesday for investigation in connection with the "rolling" of a clerk of the transport Buford, was given his freedom yesterday on his promise that he leave the islands within five days. Kissler pleaded guilty yesterday to being a vag.

A dance will be given by the Kamehameha Alumni Association on Saturday evening next, at its hall on Fort Street, commencing at 8 o'clock. Tickets are being sold at 50 cents apiece which will admit a gentleman and ladies. Refreshments will be served during the intermission.

There will be an initiation of candidates and an installation of officers on Saturday evening by the Lehi Chapter No. 2, O. O. of E. S., which all members are requested to attend. A cordial invitation is extended to Lei Aloha Chapter No. 3 and all visiting brothers and sisters of the order.

The Salvation Army gave a social last evening for the pleasure of sailors and soldiers. There was a general good time. Ice cream of real Philadelphia quality was served, and good, wholesome cake. About ten o'clock a nice lassie surprised the Advertiser staff with some of the refreshments, the first time in years that this fine old rural custom has been observed here. Come again, lassie.

The Sunday school children of the Christian church had a joyous Christmas celebration on Tuesday evening. There was a song by the children, marching through the aisles. Pastor Edwards offered a prayer between two hymns sung by the school. Madeline Burnette, Vera Harris, Aileen Bowman and Ethlyn Harris gave recitations. Willie Rasemann sang a solo, with chorus by the school, and Alice Hopper gave a song. Arthur Myhre acted Santa Claus in good style.

We are making preparations for our great

January Sale

OF

Ladies' Muslin Underwear

Look out for our announcement,

N. S. SACHS
DRY GOODS COMPANY, LIMITED

Corner Fort and Beretania Streets.

Why Don't You Get a Kodak for Your Friend?

We have the KODAKS and would like the fun of showing them any way to you. They are the acme of perfection—the new ones—and these are the kind we have.

And the price is the smallest thing about a KODAK when you investigate the up-to-date mechanism and finish of the instruments. If you only want to spend \$1 we have a BROWNIE that's just the thing to please a youngster. A 5 by 7 will cost you \$35, but it's worth the money. We sell at New York prices.

We do developing and printing. We have films, paper, plates, in fact everything for amateur or professional photographer.

Hobron Drug Co.

Ehlers' Block, Fort St.

Holiday Footwear

THE FINEST STOCK IN THE CITY NOW ON DISPLAY AT
McINERNEY SHOE STORE.

NEW Curtains Here

Handsome assortment of new silk, cotton and woolen tapestry curtains. Also Arabic, Irish Point, Nottingham and Madras lace curtains and rope portieres.

Porter Furniture Co.
LIMITED.

YOUNG BUILDING.

ALL KINDS OF BUILDING AND REPAIR WORK DONE ON SHORT NOTICE

by
Wm. T. Paty.

1048 ALAKEA STREET.

AUTOMOBILE PARTS.

We keep everything you may need for your auto, no matter what make of machine it is.

SCHUMAN CARRIAGE CO., LTD.
Garage, Merchant St.

THE LATEST AND MOST STYLISH MILLINERY AT

Miss Power's

MILLINERY PARLORS.
BOSTON BUILDING, FORT STREET.

The Breakfast Problem

The problem of what to have for breakfast is ever with the housewife. We can answer the question in two words:

Bloater Mackerel

than which there isn't a daintier breakfast dish imaginable. We have Mackerel in all sizes and of excellent quality and take great pleasure in recommending it as the piece de resistance of the morning meal.

METROPOLITAN MEAT CO.

Telephone Main 45.

Great Remnant Sale

On Monday next, 2nd January

We will commence a Clearing Sale of Remnants and Odd Accumulations left over from the Christmas Rush.

At the same time we will also offer unprecedented Bargains

in

Ladies' Muslin Underwear

The Lines will all be laid out on the Bargain Tables

At Prices That Will Pay

For a Visit to Alakea Street

L. B. KERR & CO., LTD.

What is the Roneo?

A duplicating apparatus so simple that a child can operate it, yet so effective that it actually equals the speed and capacity of a modern printing press.

It will produce from one handwritten or typewritten original up to 5,000 copies of any size, from a postcard to a sheet of brief, every copy having the exact appearance of the original and automatically register the number of copies printed.

The RONEO is warranted for 10 years.

PRICE \$65.00

J. A. M. JOHNSON CO., LTD.
FORT STREET, HONOLULU.

WHITNEY & MARSH

GRAND JANUARY SALE

OF

Muslin Underwear

Begins Tuesday, January 2nd

Great Values

BETHESDA

"The Water of Quality"

Waukesha's Original Mineral Water

Sparkling Natural

Quarts, Pints, Splits Crown Patent Corks

For Sale Everywhere

MACFARLANE & CO., Sole Agents.

Always On Time

Clothes sent to us are always returned to their owners as promptly as possible. Our perfect system renders vexatious delays impossible. A careful check is kept on every article entrusted to us and the possibility of loss is reduced to a minimum. Our patrons always receive their property back in the same or better condition of wear as when delivered to us. Deckle edges and torn fabrics are unknown.

SANITARY STEAM LAUNDRY.

Ring up Main 73 and our wagon will call for your work.

CHICAGO

IN LESS
THAN

3 DAYS

and over THE ONLY DOUBLE-T RACK RAILWAY between the Missouri River and Chicago.

THREE FAST TRAINS DAILY.

VIA

SOUTHERN PACIFIC, UNION PACIFIC AND CHICAGO & NORTHWESTERN RAILWAYS

Overland Limited. Vestibuled. Leaves San Francisco at 11 a. m. daily. The most Luxurious Train in the World. New Pullman Drawing-room and State-room cars built expressly for this famous train. Gentlemen's Buffet and Lady's Parlor Observation Car. Book Lovers Library, Dining Car, Meals a la Carte. Electric Lighted throughout.

Eastern Express. Vestibuled. Leaves San Francisco at 8 p. m. daily. Through Pullman Palace and Sleeping Cars to Chicago. Dining Cars. Free Reclining Chair Cars.

Atlantic Express. Vestibuled. Leaves San Francisco at 9 a. m. daily. Standard and Tourist Sleepers.

PERSONALLY CONDUCTED EXCURSIONS

Wednesdays, Thursdays and Fridays. The best of everything.

R. R. RITCHIE, G.A.P.C.

CHICAGO & NORTHWESTERN RY.

617 Market Street, (Palace Hotel) San Francisco or U. P. Company's Agent.

Ladies'

Blucherette

Tan Oxfords

Tan leathers are popular always. This is a new shade now in vogue. The style of this Oxford is the very latest, combining the grace of the three eylet blucherette with the utility of the Cuban heel with wide silk laces.

Price \$3 50

MANUFACTURERS SHOE Co., Ltd

1051 Fort St.

Sparklets

TRADE MARK

Small Steel Receivers or Capsules containing Chemically Pure Carbonic Acid Gas. This Gas is the cause of all Aeration. It makes all Liquids Sparkling.

FOR THE INSTANTANEOUS AERATION OF ALL LIQUIDS:

Water, Milk, Tea, Wine, Spirits, Invalid Drinks, Etc., Etc.

Restore life to boiled water. Give snap to still beverages.

FOR SALE BY.

W. C. PEACOCK & Co., Limited

Canadian-Australian Royal Mail Line AN ALLEGED INCREASE OF LEPROSY IN CHINA

Steamers running in connection with the Canadian Pacific Railway Co. call at Honolulu on or about the following dates:

FOR FIJI AND AUSTRALIA.		FOR VANCOUVER.	
1905	1905		
MOAHERA	JAN. 13	MOANA	JAN. 10
MOANA	FEB. 10	AORANGI	FEB. 7
AORANGI	MAR. 10	MOAHERA	MAR. 7

Through tickets issued to all points in Canada, United States and Europe.
THEO. H. DAVIES & CO., LTD.,
GENERAL AGENTS.

Pacific Mail S. S. Co., Occidental & Oriental S. S. Co., and Toyo Kisen Kaisha.

Steamers of the above companies will call at Honolulu and leave this port on or about the dates below mentioned:

FROM SAN FRANCISCO TO THE ORIENT.		FOR SAN FRANCISCO.	
KOREA	JAN. 6	AMERICA MARU	DEC. 29
COPTIC	JAN. 17	SIBERIA	JAN. 5
SIBERIA	JAN. 30	MONGOLIA	JAN. 19
AMERICA MARU	FEB. 3	CHINA	JAN. 25

For further information apply to

H. HACKFELD & COMPANY, LTD., AGENTS.

Oceanic Steamship Co. TIME TABLE

The fine passenger steamers of this line will arrive and leave this port as hereunder:

FROM SAN FRANCISCO.		FOR SAN FRANCISCO.	
ALAMEDA	DEC. 29	ALAMEDA	JAN. 3
VENTURA	JAN. 10	SIERRA	JAN. 9
ALAMEDA	JAN. 19	ALAMEDA	JAN. 24
SIERRA	JAN. 31	SONOMA	JAN. 30

In connection with the sailing of the above steamers, the agents are prepared to issue, to intending passengers, Coupon Through Tickets by any railroad, from San Francisco to all points in the United States, and from New York by any steamship line to all European ports.

FOR FURTHER PARTICULARS, APPLY TO
W. G. IRWIN & CO., LTD.

American-Hawaiian Steamship Company.

FROM NEW YORK TO HONOLULU.
S. S. Oregonian.....Jan. 15

Freight received at all times at the Company's wharf, 41st street, South Brooklyn.

FROM SAN FRANCISCO TO HONOLULU DIRECT.

S. S. Nevada	Dec. 28	FROM SEATTLE AND TACOMA TO HONOLULU.
S. S. Nebraska	Jan. 18	S. S. Alaskan (to sail direct).....Dec. 29
		S. S. Nebraska (via S. F.).....Feb. 2

And each month thereafter

H. HACKFELD & COMPANY, LTD., AGENTS.
C. P. MORSE, General Freight Agent.

Pacific Transfer Co.

WILL CALL FOR YOUR BAGGAGE

We pack, haul and ship your goods and save you money.
Dealers in stove wood, coal and kindlings.
Storage in Brick Warehouse, 126 King Street. Phone Main 58.

Union Express Co.

Branch of Hustace, Peck Co., Ltd.

63 Queen Street.

Having baggage contracts with the following steamship lines:
Oceanic Steamship Co. Pacific Mail Steamship Co.
Occidental & Oriental Steamship Co. Toyo Kisen Kaisha Steamship Co.

We check your baggage at your homes, saving you the trouble of checking on the wharf.

Piano and Furniture Moving
a Specialty. Telephone Main 86

Hustace-Peck Co., Ltd.

DRAYMEN, 63 Queen Street.

DEALERS IN

FIREWOOD, STOVE and STEAM COAL.

Also White and Black Sand. Telephone Main 295.

Commercial Advertiser

Entered at the Post Office at Honolulu, T. H., as second-class matter.

SUBSCRIPTION RATES:

One Year	\$12.00
Six Months	6.00

Advertising rates on application.

Published every morning except Sunday by the

HAWAIIAN GAZETTE CO., LTD.

Von Holt Block, No. 65 South King St.

C. S. CRANE - - - - - MANAGER

RAILWAY & LAND CO.

TIME TABLE

October 6, 1904.

OUTWARD.

For Waialea, Waialea, Kahuku and Way Stations—9:15 a. m., 3:20 p. m.
For Pearl City, Ewa Mill and Way Stations—17:30 a. m., 9:15 a. m., 11:30 a. m., 2:15 p. m., 3:20 p. m., 5:15 p. m., 7:30 p. m., 11:15 p. m.

INWARD.

Arrive Honolulu from Kahuku, Waialea and Waialea—8:30 a. m., 5:31 a. m.
Arrive Honolulu from Ewa Mill and Pearl City—17:45 a. m., 8:35 a. m., 10:35 a. m., 1:40 p. m., 4:31 p. m., 6:11 p. m., 7:30 p. m.

1 Daily.
2 Sunday Excepted.
3 Sunday Only.

The Hawaii, Limited, a two-hour train, leaves Honolulu every Sunday, at 1:15 a. m. Returning arrives in Honolulu at 10:10 p. m. The Limited stops daily at Pearl City and Waialea.

P. DENISON, F. C. SMITH, G. P. & T. A.

METEOROLOGICAL RECORD.

Issued Every Sunday Morning by the Local Office, U. S. Weather Bureau.

Day	Dec.	MEAN	THERM.			WIND		
		RANOM.	Max	Min	Rainfall S. p. in.	Humidity	Average Cloudiness	Direction Av. Vel
1	17	30 08	77	68	02	72	5	NNE
2	18	30 06	77	66	03	78	7	NNE
3	19	30 04	77	65	1.53	57	7	NNE
4	20	30 01	78	66	7	79	4	NNE
5	21	30 11	78	66	0	71	4	NNE
6	22	30 18	77	69	0	67	4	NNE
7	23	30 17	76	67	0	61	6	NNE

Note:—Barometer readings are corrected for temperature, instrument errors, and local gravity, and reduced to sea level. Average cloudiness state in scale from 0 to 10. Direction of wind is prevailing direction during 24 hours ending at 8 p. m. Force of wind is average velocity in miles per hour.

ALEX. MCC. ASHLEY,
Section Director.

Note:—Barometer readings are corrected for temperature, instrumental errors, and local gravity, and reduced to sea level. Average cloudiness stated in scale from 0 to 10. Direction of wind is prevailing direction during 24 hours ending at 8 p. m. Velocity of wind is average velocity in miles per hour.

ALEX. MCC. ASHLEY, Section Director.

TIDES, SUN AND MOON.

Day	Dec.	Jan.	High Tide	Low Tide	High Tide	Low Tide	Sun sets.	Moon sets.
1	25	3	12:12	5:13	8:41	10:25	6:35	5:28
2	26	4	12:05	5:04	8:34	10:19	6:30	5:25
3	27	5	11:58	4:55	8:27	10:12	6:25	5:22
4	28	6	11:50	4:46	8:20	10:05	6:20	5:19
5	29	7	11:43	4:37	8:13	9:58	6:15	5:16
6	30	8	11:36	4:28	8:06	9:51	6:10	5:13
7	31	9	11:29	4:19	7:59	9:44	6:05	5:10

New moon Dec. 25 at 5:32.

Times of the tide are taken from the United States Coast and Geodetic Survey tables.

The tides at Kahului and Hilo occur about one hour earlier than at Honolulu.

Hawaiian standard time is 10 hours 30 minutes slower than Greenwich time, being that of the meridian of 157 degrees thirty minutes. The time while the sun is above the horizon is the same as Greenwich, 0 hours 0 minutes. Sun and moon are for local time for the whole group.

CANTON, December 9.—It is believed that leprosy is increasing in China, despite the reports of the Chinese government that it is being stamped out by degrees. The claim is made that the reason the government is so industriously circulating reports that the dread disease is being rapidly extinguished is found in the fact that leprosy among coolies always has been a powerful argument used against Chinese immigration to the United States and other civilized countries.

Some 60,000 lepers are known to be congregated in villages surrounding Canton alone, and it is stated that Rev. Father Conrady, who assisted Father Damien among the lepers at Molokai, intends settling near that city. In the leper village of Fat Fung Yung, six miles east of Canton, where Father Conrady probably will start work, there are over 1000 lepers. Lepers are allowed to go to Canton, where they are often seen in the crowded streets.

DAMIAN COUNCIL.

Y. M. L. Damian Council, No. 563, last evening elected the following officers: J. Andrade, president; E. V. Todd, first vice president; T. McTighe, second vice president; executive committee, Messrs. J. A. Morgan, J. J. Hughes, Sylvester Crook; P. Miranda, outside sentinel; James Armstrong, inside sentinel; W. P. Fennell, treasurer; J. A. Hughes, financial secretary; C. K. Quinn, recording secretary; Dr. Pinto, medical examiner; Rev. Fr. Stephen, chaplain.

The following committee was appointed to arrange for the celebration of Y. M. L. day, February 22, with patriotic exercises, consisting of C. K. Quinn, J. A. Hughes, T. McTighe, P. Fitzgibbons, F. W. Weed.

A PROMINENT PUBLISHER ENDORSES CHAMBERLAIN'S COUGH REMEDY.

Mr. Leon C. Streeter, proprietor of the Worcester, Cape Colony, Standard, says: "For the past seven years, or since we have been in South Africa, Chamberlain's Cough Remedy has always been kept in our household. My wife has found it to be invaluable with the children and many symptoms have disappeared with astonishing but pleasing rapidity under its influence." For sale by Benson, Smith & Co., Ltd., agents for Hawaii.

Albert Oldberg, old and despondent, committed suicide in his room at the Pacific Hotel yesterday morning by hanging himself. The deed was deliberate. The body was found about 10 o'clock yesterday forenoon. A window cord had been tied about the head of the bed and the other end was noosed about the man's neck. The man had rolled out of bed. His head was but a few inches above the floor, the remainder of the body being entirely on the floor. He must have struggled to death slowly. Oldberg, last worked for the Hawaiian Electric Co. and lost his job through drink. He had had no money recently and was behind with his room rent. He had often said that he was better dead than alive.

The body of an infant, presumably an Oriental, was found in the harbor yesterday.

At a musical comedy in London, from his seat in the stalls, Clyde Fitch noticed a young man in one of the boxes laughing uproariously. His companion was a critic and Mr. Fitch said to him: "That chap in the box seems to be enjoying himself." "He is the author," said the critic. "Well, then," said Fitch, "I think he ought to have better taste than to laugh so loud." "Oh," said the critic, "he is the author, but he never heard these jokes before. They were put in by the comedian."

SHIPPING INTELLIGENCE.

ARRIVED.

Wednesday, December 27.
Stmr. Mikahala, Gregory, from Kailua ports, 5:55 a. m.

DEPARTED.

U. S. C. Chicago, Badger, for San Francisco, 4:30 p. m.
Stmr. Ke Au Hou, Tullett, for Kailua ports, 5 p. m.

DUE TODAY.

T. K. K. S. America Maru, going, from the Orient, a. m. (probably).
Stmr. Claudine, Parker, for Kahului, a. m.

SAILED TODAY.

T. K. K. S. S. America Maru, going, for San Francisco, p. m. (probably).
Stmr. Mikahala, Gregory, for Kailua ports, 5 p. m.
U. S. Aux. Saturn, Newell, for Midway Isle.

DUE TOMORROW.

O. S. S. Alameda, Dowdell, from San Francisco, a. m.

SAILED TOMORROW.

Stmr. Mauna Loa, Simerson, for Kona and Kau ports, 12 noon.
Stmr. Claudine, Parker, for Kahului, 5 p. m.

PASSENGERS.

Arrived.
Per stmr. Mikahala, Dec. 27, from Kailua ports.—W. F. Wilson, G. N. Wilcox, G. Spencer, Rev. H. Isenberger, Miss Dunn, Miss Seghoro, G. H. Fairchild, Col. Spalding, Mrs. C. Christian, Miss K. Christian, A. Schleber, Rev. S. Hyen, Miss A. Needham, Ah Moo, wife and child; K. C. Lee, and 55 deck.

SAILED FOR HONOLULU.

Yokohama, Dec. 19; due Dec. 28, a. m., sail p. m.
U. S. A. T. Sherman, from Manila, Dec. 16, via Nagasaki, Dec. 27; due Jan. 6.

O. S. S. Alameda, Dowdell, from San Francisco, 11 a. m., Dec. 23; due a. m., Dec. 29.
Stmr. Helene, Nelson, for Hamakua ports, 5 p. m.



FOR SALE

MAKIKI DISTRICT.

Six-room cottage; mosquito-proof; electric lights; connected with sewer; lot 60x90, fronting on two streets.
Price, \$2,100.00

HENRY WATERHOUSE TRUST COMPANY, LTD.

Port and Merchant Sts., Honolulu, Hawaii.

Houses For Rent

King St., 2 Bedrooms.....	\$25.00
Nonpareil Lane, 2 Bedrooms.....	17.00
1925 Young St., 3 Bedrooms.....	30.00
Puunui Ave., 2 Bedrooms.....	15.00
Young St., 2 Bedrooms.....	27.50
Lunalilo St., 4 Bedrooms.....	50.00
Beretania St., 4 Bedrooms.....	30.00
Kinai St., 3 Bedrooms.....	25.00
Kinai St., 4 Bedrooms.....	30.00
Beretania St., 3 Bedrooms.....	30.00
Pacific Heights, 2 Bedrooms.....	15.00
Thurston & Green Sts., 3 Bdrms	35.00
1704 King St., 3 Bedrooms.....	32.00
Aloha Lane, 2 Bedrooms.....	17.50
Lunalilo St., 4 Bedrooms.....	31.25
Middle & Ross Sts., 2 Bedrooms.....	8.25
"The Melrose," 50 Rooms.....	50.00
Miller St., near Hotel St., furnished, 4 Bedrooms.....	60.00
2 Stores, Nuuanu St.....	40.00
Waikiki Beach, 3 Bedrooms.....	50.00

TRENT & CO.,
938 Fort Street.

ALEXANDER YOUNG HOTEL

Absolutely fire-proof, finest cuisine, elegantly furnished and the best of service.

NOAH W. GRAY, Manager,
HONOLULU, T. H.

P. M. S. S. Siberia, Bent, from Yokohama, Dec. 27; due Jan. 5.

VESSELS IN PORT.

(Army and Navy.)

U. S. A. T. Dix, Ankers, from Nagasaki, Dec. 19.
U. S. R. C. Daniel Manning, Roberts, from San Francisco, Dec. 22.
U. S. S. Iroquois, Niblack, from Kailua, Dec. 24.
U. S. N. Aux. Lawton, Pond, from San Francisco, Dec. 26.
U. S. Aux. Saturn, Newell, Mare Island, Dec. 15.

(Merchant Vessels.)

Coronado, Am. bk., Potter, from San Francisco, Dec. 26.
Dumfriesshire, Br. bk., Taylor, from Leith, Dec. 26.
Erskine M. Phelps, Graham, from Manila, Dec. 11.
Gerard C. Tobey, Am. bk., Scott, from San Francisco, Dec. 22.
Kaulani, Am. bk., Colly, from San Francisco, Nov. 16.
Kendall, Am. sp., Corley, from Newcastle, Dec. 25.
Kikidat, Am. bk., Cutter, from Port Gambie, Dec. 18.
Morning Star, Am. s.s., Garland, Gilbert, Is., July 15.
Nuuanu, Am. bk., Josselyn, New York, August 2.
Olympic, Am. bk., Evans, from San Francisco, Dec. 24.
Restorer, Br. cable s.s., Combe, Midway I., April 24.

TRANSPORT SERVICE.

Buford, sailed from Honolulu for Manila, Dec. 26.
Ingalls, at Manila.
Lawton, at Honolulu (Naval wharf).
Logan, sailed from Honolulu for Guam and Manila, Dec. 5.
Seward, at Manila.
Sherman, sailed from Manila Dec. 15 for Honolulu via Nagasaki; Dec. 27; due Jan. 6.
Sheridan, at San Francisco.
Solace, at Mare Island (repairing).
Summer, at New York.
Thomas, arrived San Francisco, Dec. 13, 8 p. m.
Warren, at San Francisco.
Wright, at Manila.

THE MAILS.

Mails are due from the following points as follows:

San Francisco—Per Alameda, Dec. 29.
Victoria—Per Mowera, Jan. 13.
Colonies—Per Sierra, Jan. 9.
Orient—Per America Maru, Dec. 29.

Mails will depart as follows:

San Francisco—Per America Maru, Dec. 28.
Orient—Per Korea, Jan. 6.
Victoria—Per Moana, Jan. 10.
Guam and Manila—Per Lawton, Dec. 29.
Colonies—Per Ventura, Jan. 10.

HONOLULU STOCK EXCHANGE.

Honolulu, December 23, 1905.

NAME OF STOCK.	Capital Paid Up	Val.	Bid.	Ask.
MERCANTILE.				
C. BREWER & CO.	\$1,000,000	100		
SUGAR				
Ewa	5,000,000	50	27 1/2	27 1/2
H. W. Agr. Ind.	1,000,000	100		
H. W. & Sugar Co.	2,123,750	100		
Hawaiian Sugar Co.	2,000,000	100		33
Honolulu	750,000	100		
Honolulu	2,000,000	20	11	12 1/2
Kahuku	500,000	100		185 1/2
Kahuku	500,000	10		
Kahuku	500,000	5	7 1/2	
Kipahulu	100,000	100		
Koloa	500,000	100		5
McBryde Sug. Co. Ltd.	3,500,000	20	5	5 1/2
Oahu Sugar Co.	3,500,000	10	85	90
Oonomea	1,000,000	10		
Oonomea	500,000	10	5	5
Oloa Sugar Co. Ltd.	5,000,000	20	3	3 1/2
Oloa	150,000	100	80	85
Oloa	500,000	100		
Oloa	500,000	100		
Pala	750,000	100		165
Peepee	750,000	100		165
Pioneer	2,500,000	125	125	127 1/2
Waialua Agr. Co.	4,500,000	100	8 1/2	
Waialua	700,000	100		
Waialua Sugar Co.	100,000	100		
Waialua	250,000	100	160	
Waialua Sugar Mill	125,000			
MISCELLANEOUS.				
Inter-island S. Co.	5,000,000	100		125
Inter-island S. Co.	500,000	100	11 1/2	
H. R. T. & L. Co. Pfd	1,150,000	100	10 1/2	
H. R. T. & L. Co. C.	1,150,000	100	9 3/4	
H. R. T. & L. Co. C.	1,150,000	100		
H. R. T. & L. Co. C.	4,500,000	10	87 1/2	88 1/2
H. R. T. & L. Co. C.	1,000,000	20		
H. R. T. & L. Co. C.	1,000,000	20		
H. R. T. & L. Co. C.	400,000	20		24 1/2
BONDS.				
Haw. Terr. 4 p. c. (Ft. Stearns)	Amt. Out. \$15,000			
Haw. Terr. 4 p. c. (H. R. T. & L. Co.)	100		100	
Haw. Terr. 4 1/2 p. c. (H. R. T. & L. Co.)	60,000			
Haw. Terr. 4 1/2 p. c. (H. R. T. & L. Co.)	100,000			
Haw. Terr. 4 1/2 p. c. (H. R. T. & L. Co.)	1,000,000			
Haw. Gov't. 3 p. c.	209,000			100
Haw. Gov't. 3 p. c. (H. R. T. & L. Co.)	1,000,000			
Haw. Gov't. 3 p. c. (H. R. T. & L. Co.)	1,000,000			
Haw. Gov't. 3 p. c. (H. R. T. & L. Co.)	1,000,000			
Haw. Gov't. 3 p. c. (H. R. T. & L. Co.)	1,000,000			
Haw. Gov't. 3 p. c. (H. R. T. & L. Co.)	1,000,000			
Haw. Gov't. 3 p. c. (H. R. T. & L. Co.)	1,000,000			
Haw. Gov't. 3 p. c. (H. R. T. & L. Co.)	1,000,000			
Haw. Gov't. 3 p. c. (H. R. T. & L. Co.)	1,000,000			
Haw. Gov't. 3 p. c. (H. R. T. & L. Co.)	1,000,000			
Haw. Gov't. 3 p. c. (H. R. T. & L. Co.)	1,000,000			
Haw. Gov't. 3 p. c. (H. R. T. & L. Co.)	1,000,000			
Haw. Gov't. 3 p. c. (H. R. T. & L. Co.)	1,000,000			
Haw. Gov't. 3 p. c. (H. R. T. & L. Co.)	1,000,000			
Haw. Gov't. 3 p. c. (H. R. T. & L. Co.)	1,000,000			
Haw. Gov't. 3 p. c. (H. R. T. & L. Co.)	1,000,000			
Haw. Gov't. 3 p. c. (H. R. T. & L. Co.)	1,000,000			
Haw. Gov't. 3 p. c. (H. R. T. & L. Co.)	1,000,000			
Haw. Gov't. 3 p. c. (H. R. T. & L. Co.)	1,000,000			
Haw. Gov't. 3 p. c. (H. R. T. & L. Co.)	1,000,000			
Haw. Gov't. 3 p. c. (H. R. T. & L. Co.)	1,000,000			
Haw. Gov't. 3 p. c. (H. R. T. & L. Co.)	1,000,000			
Haw. Gov't. 3 p. c. (H. R. T. & L. Co.)	1,000,000			
Haw. Gov't. 3 p. c. (H. R. T. & L. Co.)	1,000,000			
Haw. Gov't. 3 p. c. (H. R. T. & L. Co.)	1,000,000			
Haw. Gov't. 3 p. c. (H. R. T. & L. Co.)	1,000,000			
Haw. Gov't. 3 p. c. (H. R. T. & L. Co.)	1,000,000			
Haw. Gov't. 3 p. c. (H. R. T. & L. Co.)	1,000,000			
Haw. Gov't. 3 p. c. (H. R. T. & L. Co.)	1,000,000			
Haw. Gov't. 3 p. c. (H. R. T. & L. Co.)	1,000,000			
Haw. Gov't. 3 p. c. (H. R. T. & L. Co.)	1,000,000			
Haw. Gov't. 3 p. c. (H. R. T. & L. Co.)	1,000,000			
Haw. Gov't. 3 p. c. (H. R. T. & L. Co.)	1,000,000			
Haw. Gov't. 3 p. c. (H. R. T. & L. Co.)	1,000,000			
Haw. Gov't. 3 p. c. (H. R. T. & L. Co.)	1,000,000			
Haw. Gov't. 3 p. c. (H. R. T. & L. Co.)	1,000,000			
Haw. Gov't. 3 p. c. (H. R. T. & L. Co.)	1,000,000			
Haw. Gov't. 3 p. c. (H. R. T. & L. Co.)	1,000,000			
Haw. Gov't. 3 p. c. (H. R. T. & L. Co.)	1,000,000			
Haw. Gov't. 3 p. c. (H. R. T. & L. Co.)	1,000,000			
Haw. Gov't. 3 p. c. (H. R. T. & L. Co.)	1,000,000			
Haw. Gov't. 3 p. c. (H. R. T. & L. Co.)	1,000,000			
Haw. Gov't. 3 p. c. (H. R. T. & L. Co.)	1,000,000			
Haw. Gov't. 3 p. c. (H. R. T. & L. Co.)	1,000,000			
Haw. Gov't. 3 p. c. (H. R. T. & L. Co.)	1,000,000			
Haw. Gov't. 3 p. c. (H. R. T. & L. Co.)	1,000,000			
Haw. Gov't. 3 p. c. (H. R. T. & L. Co.)	1,000,000			
Haw. Gov't. 3 p. c. (H. R. T. & L. Co.)	1,000,000			
Haw. Gov't. 3 p. c. (H. R. T. & L. Co.)	1,000,000			
Haw. Gov't. 3 p. c. (H. R. T. & L. Co.)	1,000,000			
Haw. Gov't. 3 p. c. (H. R. T. & L. Co.)	1,000,000			
Haw. Gov't. 3 p. c. (H. R. T. & L. Co.)	1,000,000			
Haw. Gov't. 3 p. c. (H. R. T. & L. Co.)	1,000,000			
Haw. Gov't. 3 p. c. (H. R. T. & L. Co.)	1,000,000			
Haw. Gov't. 3 p. c. (H. R. T. & L. Co.)	1,000,000			
Haw. Gov't. 3 p. c. (H. R. T. & L. Co.)	1,000,000			
Haw. Gov't. 3 p. c. (H. R. T. & L. Co.)	1,000,000			
Haw. Gov't. 3 p. c. (H. R. T. & L. Co.)	1,000,000			
Haw. Gov't. 3 p. c. (H. R. T. & L. Co.)	1,000,000			
Haw. Gov't. 3 p. c. (H. R. T. & L. Co.)	1,000,000			
Haw. Gov't. 3 p. c. (H. R. T. & L. Co.)	1,000,000			
Haw. Gov't. 3 p. c. (H. R. T. & L. Co.)	1,000,000			
Haw. Gov't. 3 p. c. (H. R. T. & L. Co.)	1,000,000			
Haw. Gov't. 3 p. c. (H. R. T. & L. Co.)	1,000,000			
Haw. Gov't. 3 p. c. (H. R. T. & L. Co.)	1,000,000			
Haw. Gov't. 3 p. c. (H. R. T. & L. Co.)	1,000,000			
Haw. Gov't. 3 p. c. (H. R. T. & L. Co.)	1,000,000			
Haw. Gov't. 3 p. c. (H. R. T. & L. Co.)	1,000,000			
Haw. Gov't. 3 p. c. (H. R. T. & L. Co.)	1,000,000			
Haw. Gov't. 3 p. c. (H. R. T. & L. Co.)	1,000,000			
Haw. Gov't. 3 p. c. (H. R. T. & L. Co.)	1,000,000			
Haw. Gov't. 3 p. c. (H. R. T. & L. Co.)	1,000,000			
Haw. Gov't. 3 p. c. (H. R. T. & L. Co.)	1,000,000			
Haw. Gov't. 3 p. c. (H. R. T. & L. Co.)	1,000,000			
Haw. Gov't. 3 p. c. (H. R. T. & L. Co.)	1,000,000			
Haw. Gov't. 3 p. c. (H. R. T. & L. Co.)	1,000,000			
Haw. Gov't. 3 p. c. (H. R. T. & L. Co.)	1,000,000			
Haw. Gov't. 3 p. c. (H. R. T. & L. Co.)	1,000,000			
Haw. Gov't. 3 p. c. (H. R. T. & L. Co.)	1,000,000			
Haw. Gov't. 3 p. c. (H. R. T. & L. Co.)	1,000,000			
Haw. Gov't. 3 p. c. (H. R. T. & L. Co.)	1,000,000			
Haw. Gov't. 3 p. c. (H. R. T. & L. Co.)	1,000,000			
Haw. Gov't. 3 p. c. (H. R. T. & L. Co.)	1,000,000			
Haw. Gov't. 3 p. c. (H. R. T. & L. Co.)	1,000,000			
Haw. Gov't. 3 p. c. (H. R. T. & L. Co.)	1,000,000			
Haw. Gov't. 3 p. c. (H. R. T. & L. Co.)	1,000,000			
Haw. Gov't. 3 p. c. (H. R. T. & L. Co.)	1,000,000			
Haw. Gov't. 3 p. c. (H. R. T. & L. Co.)	1,000,000			
Haw. Gov't. 3 p. c. (H. R. T. & L. Co.)	1,000,000			
Haw. Gov't. 3 p. c. (H. R. T. & L. Co.)	1,000,000			
Haw. Gov't. 3 p. c. (H. R. T. & L. Co.)	1,000,000			
Haw. Gov't. 3 p. c. (H. R. T. & L. Co.)	1,000,000			
Haw. Gov't. 3 p. c. (H. R. T. & L. Co.)	1,000,000			
Haw. Gov't. 3 p. c. (H. R. T. & L. Co.)	1,000,000			
Haw. Gov't. 3 p. c. (H. R. T. & L. Co.)	1,000,000			
Haw. Gov't. 3 p. c. (H. R. T. & L. Co.)	1,000,000			
Haw. Gov't. 3 p. c. (H. R. T. & L. Co.)	1,000,000			