

## THE DAILY BULLETIN

Is printed and published at the office, Queen Street, Honolulu, H. I., every afternoon (Sundays excepted).

Subscription, 50 cents per Month.

Address all Communications DAILY BULLETIN.

Advertisements, to ensure insertion, should be handed in before one o'clock P. M.

WALTER HILL, Editor and Proprietor

JAS. G. CLEVER, Manager

Bulletin Steam Printing Office.

Newspaper, Book and Job Printing of all kinds done on the most favorable terms.

Bell Telephone, No. 259

Mutual Telephone, No. 259

THE DAILY BULLETIN  
Weekly Summary.

An interesting and comprehensive publication, contains 23 columns of reading matter on local topics, and a complete resume of Honolulu and Island News. It is the best paper published in the Kingdom to send to friends abroad.

Subscription: Island \$4.00 year Foreign 5.00 "

## Commission Merchants.

## H. HACKFELD &amp; CO.,

General Commission Agents.

676 1/2 ly HONOLULU

## G. W. MACFARLANE &amp; CO.

IMPORTERS AND COMMISSION MERCHANTS.

Queen street, Honolulu, H. I. 1648

## C. BREWER &amp; COMPANY,

(Limited)

GENERAL MERCANTILE AND COMMISSION AGENTS.

LIST OF OFFICERS:

F. C. JONES, Jr., President & Manager

J. O. CARTER, Treasurer & Secretary

DIRECTORS:

Hon. C. H. Bishop, S. C. ALLEN, H. WATERHOUSE.

395 1/2

## JOHN T. WATERHOUSE,

Importer and Dealer in General Merchandise, Queen st., Honolulu. 1

## S. N. Castle—J. B. Atherton—G. P. Castle

CASTLE & COOKE, Shipping and Commission Merchants. Importers and Dealers in General Merchandise, No. 89 King st., Honolulu. 1

## Claus Spreckels. Wm. G. Irwin.

W. G. IRWIN & COMPANY, Sugar Factors and Commission Agents, Honolulu. 1

## WILDER &amp; CO.,

Dealers in Lumber, Paints, Oils, Nails, Sash and Building Materials of every kind, cor. Fort and Queen sts., Honolulu. 1

## M. S. GRINBAUM &amp; CO.,

Importers of General Merchandise and Commission Merchants, Honolulu, and 121 California street, San Francisco, Cal.

## R. Lewers, F. J. Lowrey C. M. Cooke.

LEWERS & COOKE, (successors to Lewers & Dickson,) Importers and Dealers in Lumber and all kinds of Building Materials, Fort street, Honolulu. 1

## GONSALVES &amp; CO.,

Wholesale Grocers & Wine Merchants 89 Beaver Block, Honolulu.

## Notice of Removal!

THOMAS LINDSAY, Manufacturing Jeweler & Watchmaker

Has removed to one of the New Stores in the

Thomas Block, King Street,

Three doors from Castle & Cooke's,

Where he is prepared to manufacture all kinds of Jewelry. 66

## O LUSO HAWAIIANO.

ALL persons who want to communicate with the Portuguese, either for business, or for procuring workmen, servants or any other helps, will find it the most profitable way to advertise in the Lus Hawaiiano, the new organ of the Portuguese colony, which is published on Hotel street, and only charges reasonable rates for advertisements.

## NOTICE.

MUSIC furnished, for balls, parties and serenades by Palmer's String Band. Orders left at C. E. Williams or ring up Mutual Telephone 336. 74 1/2

## Professionals.

## J. ALFRED MAGOON, ATTORNEY AT LAW.

173 42 Merchant street, Honolulu. 1y

## J. H. SOPER, M. D.

Consulting Physician and Surgeon. S. W. Corner Sixth and Market streets, opposite Hawaii Net Millinery Establishment, San Francisco. 23

## SAMUEL K. KAO, Attorney at Law.

Office, No. 9 Kaahumanu street. ap-24-88-1y

## J. M. MONSARRAT, Attorney and Counsellor at Law.

Notary Public and Commissioner of Deeds for the States of New York, California and Pennsylvania. Merchant street, "Gazette" Block, Honolulu, H. I. June 9-88

## PIONEER STEAM CANDY FACTORY AND BAKERY.

F. HORN, Practical Confectioner, Pastry Cook and Baker. 71 Hotel St. Telephone 74

## H. M. BENSON. G. W. SMITH.

BENSON, SMITH & CO., Manufacturing and Dispensing Pharmacists.

113 & 116 Fort Street, Honolulu.

Depot for Boericke & Seechurn's HOMOEOPATHIC MEDICINES, Ricksecker's Perfumes and Toilet Requisites. 12y

## HOLLISTER &amp; CO., Druggists &amp; Tobacconists.

WHOLESALE AND RETAIL, 109 Fort Street, William's Block, Honolulu, H. I. 216

## WENNER &amp; CO. Manufacturing Jewelers.

NO. 92 FORT STREET. Constantly on hand a large assortment of every description of Jewelry, Watches Gold and Silver Plated Ware, &c. 958 1/2

## MRS. M. B. CAMPBELL, Dressmaking, &amp;c., &amp;c.

Has commenced the business of Dress making, Cutting and Fitting, at her residence, No. 73 Beretania street, opposite the Hotel. The patronage of the ladies is respectfully solicited. Satisfaction guaranteed. sept-6-ly

## Hustace &amp; Robertson, DRAYMEN.

ALL orders for Carriage promptly attended to. Particular attention paid to the

## Storing &amp; Shipping of goods in transit to the other Islands.

Also, Black and White Sand in quantities to suit at lowest prices.

Office, adjoining E. P. Adams & Co's auction room. 932 1/2 Mutual Telephone No. 19.

## FRANCE, Continental and Colonial AGENCY.

36 Rue de Dunkerque, - - Paris.

Executes Indents for every description of French, Belgian, Swiss, German, and English Goods, at the best Manufacturers' Lowest Prices. Commission, Two-and-a-Half per cent. All Trade and Cash Discounts allowed to Clients. Original Invoices forwarded when requested.

Remittances, through a London or Paris Banker, payable on delivery of Shipping documents; or, direct to the manager.

The Agency Represents, Buys, and Sells, for Home and Colonial Firms.

Piece Goods, Cashmeres, Cambrics, Silks, Velvets, Lawns, Chintzes, Muslins, Carpets, Cloths, Millinery, Laces, Gloves, Fringes, Parasols, Haberdashery, Gold and Silver Lace, Flannels, Feathers, Pearls, Boots and Shoes, Glass, and China-ware, Clocks, Watches, Jewellery, Fancy Goods, Electro-plate, Musical Instruments, Fans, Ecclesiastical and Optical Goods, Mirrors, Toys, Perfumery, Wines, &c., Oilman's Stores, Books, Artistic Furniture, Stationery, Chromos, Machinery, &c., &c. 130 1/2

## THE WEEKLY BULLETIN—23 columns, purely local matter—Mailed 1 foreign countries, \$3 per annum.

## Sanders' Baggage Express Co.

M. N. SANDERS, Proprietors. F. I. CUTLER.

Office, 84 King street, Telephone No. 88. Residence Telephone No. 202.

Gen'l Expressing & Draying Piano and Furniture moving a specialty. Wagons meet all incoming steamers. July 25 1y

## FINE JEWELRY!

I beg to call the attention of my friends and the general public to my

## Fine Stock of Goods

Just received. A careful inspection will convince you that

## BETTER GOODS

In my line have never been offered in this city.

Please Give me an Early Call

## MAX ECKART, Bethel St.

91 3m

## Beaver Saloon

The Best Lunch in Town, Tea and Coffee at All Hours

The Finest Brand of Cigars, Tobacco

Always on Hand. H. J. NOBLE, Proprietor.

## Choicest Mutton!

Beef, Pork, Fish, Vegetables, &c., &c. Always on hand at the

## HONOLULU MARKET

(Successors to Wm. McCandless), No. 6 Queen St. : Fish Market. Honolulu, H. I.

Family and Shipping Orders carefully attended to. Live Stock furnished to vessels at short notice. my 17-88

## THE Metropolitan

Meat Company 81 KING STREET.

G. J. WALLER, - - Manager.

Wholesale & Retail Butchers -AND- NAVY CONTRACTORS. 1717 1/2

## MARINE Meat Market,

Fort St., oppo. O. S. S. Co's Wharf. P. MILTON, - - Proprietor.

Beef, Veal, Pork, Fish, Mutton, Sausage & Vegetables.

Also a supply of SALT MEATS

On hand at all times.

Shipping and Families supplied at shortest notice and with best attention.

## D. MCKENZIE, Manager.

95 1y

## WRIGHT BROS.,

Fort Street, next Lucas' Mill,

Ship's Blacksmithing, Carriage Building & Repairing.

Drays, Carts & Wagon Building a Specialty.

Every description of work in the above lines performed in a first-class manner and executed at short notice.

ALL WORK GUARANTEED.

Orders from the other Islands solicited. my-24-88

## NOTICE.

CUSTOMERS having our Soda Water or Lemonade Bottles (empty) on hand will greatly oblige by notifying us by telephone or otherwise, and they will at once be sent for. Bottles retained longer than one month will be charged for. Telephone: Bell, 172; Mutual, 260. J. E. BROWN & CO., Proprietors, Tahiti Lemonade Works. 29 1/2

## NEW GOODS! NEW GOODS!

—NOW BEING OPENED AT THE—

## Popular - Millinery - House

104 Fort Street, Honolulu.

N. S. SACHS, : Proprietor.

## New Dress Goods,

New Kid Gloves,

New Embroideries,

New Laces, &c., &c.

—AND LATEST STYLE—

## Ladies' Hats and Bonnets!

## HAWAIIAN BUSINESS AGENCY.

No. 95 FORT STREET, HONOLULU.

General Agents

Expert Accountants and Collectors, Real Estate, Fire & Life Insurance Agents, Custom-House, Loan and Exchange Brokers.

Departments of Business:

Books and Accounts accurately kept and properly adjusted.

Collections will receive special attention and returns promptly made.

Conveyancing a Specialty. Records searched and correct Abstracts of Title furnished.

Legal Documents and Papers of every description carefully drawn and hand somely engrossed.

Copying and Translating in all languages in general use in this Kingdom.

Real Estate bought and sold. Taxes paid and Property safely insured.

Houses, Cottages, Rooms, Offices and Land leased and rented, and rents collected.

Fire and Life Insurance effected in first-class Insurance Companies.

Custom-House Business transacted with accuracy and dispatch.

Loans negotiated at favorable rates.

Advertisements and Subscriptions solicited for Publishers.

Any Article purchased or sold on most favorable terms.

Inter-Island Orders will receive particular attention.

All Business entrusted to our care will receive prompt and faithful attention at moderate charges.

Having had an extensive business experience for over twenty-five years in New York City and elsewhere, we feel competent to attend to all business of an intricate and complicated nature, or requiring tact and discretion, and respectfully solicit a trial.

Bell Telephone No. 274. Hawaiian Business Agency. Jan. 7-88

## Just Received at Hollister &amp; Co.'s

—A large assortment of—

## PERFUMES! PERFUMES!

Comprising the well-known brands of

COLGATE & CO., LUNDBORGS,

LUBIN'S, ATKINSON'S,

EASTMAN'S ALOHA, HOYT'S COLOGNE

FARINA GERMAN COLOGNE, &c.

## For Sale at Reasonable Prices.

WHOLESALE AND RETAIL. 87

## TAHITI AERATED WATERS

Steam Works, Sunny South, Waikiki.

J. E. BROWN & CO., - - Proprietors.

Depot, 28 Merchant Street, Honolulu, Hawaiian Islands.

CAPACITY 1,000 DOZEN PER DAY.

The Only Apparatus making High Class

## TAHITI LEMONADE, GINGER ALE,

Hop Ale, Cream Soda,

Sarsaparilla, Grenadine, Raspberryade

And PURE, STRONG EFFERVESCING

## PLAIN SODA WATER.

Also, Genuine Apollinaris Water, 75 cents per dozen, delivered.

Latest Improved Machinery and Patent Glass-valve Bottles.

TELEPHONES—Bell, 172; Mutual, 360; Post Office Box, 469.

Orders delivered to any part of the city. Island orders solicited. April-13-88

## Royal Insurance Company.

Accumulation of Funds, - \$28,602,205.00

Fire risks taken at current rates and settlement made in Honolulu.

JOHN S. WALKER, Agent. July 26-88-1y

## Union Fire &amp; Marine Insurance Company of N. Z.

Capital, \$2,000,000; Unlimited Liability.

Fire and Marine risks, taken at current rates and settlement made in Honolulu.

JOHN S. WALKER, Agent. July 26-88-1y

## SUN Insurance Co. of San Francisco.

Marine risks on Hulls, Cargoes, Freight and Commissions at current rates.

JOHN S. WALKER, Agent. July 26-88-1y

## MEGDEBURG General Insurance Company.

Marine risks on Hulls, Cargoes, Freight and Commissions at current rates.

JOHN S. WALKER, Agent. July 26-88-1y

## THE NEW YORK Life Insurance Co.

Strictly Mutual—Organized 1845.

ASSETS OVER - \$85,000,000

The actual (not estimated) results of its matured Tontine policies exceed those of any other Company issuing similar policies.

—The Nonforfeiting—

## Free Tontine Policy

With Mortuary Dividend (returning all premiums in addition to face of policy should death occur during the Tontine period) as issued by this Company includes the advantages of Tontine accumulation, guaranteed options at the end of Tontine periods and perfect freedom after two years as to residence, travel and occupation, except service in war.

Nonforfeitable after 3 Years.

For full particulars and estimated results based upon actual results paid in 1888 apply to

## C. O. BERGER,

Honolulu, General Agent Hawaiian Islands. [21-88

## HONOLULU IRON WORKS.

Steam engines, sugar mills, boilers, coolers; iron, brass and lead castings; machinery of every description made to order. Particular attention paid to ship's black smithing. Job work executed at short notice. 1

## WALKER &amp; REDWARD, Contractors &amp; Builders.

Brick, Stone and Wooden Buildings; estimates given. Jobbing promptly attended to. 75 King street. Bell Telephone No. 2. P. O. Box, 423. ap-5-ly

## GEORGE LUCAS, Contractor and Builder.

Honolulu Steam Planing Mills, Esplanade, Honolulu.

Manufactures all kinds of Mouldings, Brackets, Window Frames, Blinds, Sashes, Doors, and all kinds of Wood-work finish. Turning, Scroll and Band Sawing. All kinds of Sawing and Planing, Moulding and Tenonating. Orders promptly attended to and work guaranteed. Orders from the other Islands solicited.

## ENTERPRISE PLANING MILL.

Alakea, near Queen St. Telephone 55.

## J. C. MARCHANT, (Successor to T. G. Thrum)

Book-binder, Paper-ruler & Blank-book Manufacturer.

Friend Building, Bethel street, Honolulu. 62

## THE BEST PAPER to subscribe for is the "Daily Bulletin." 50 cents per month.

## A. H. RASEMANN, Book-binder, Paper-ruler &amp; Blank-book Manufacturer.

No. 13 Kaahumanu street. Up stairs. oct-1-88-1y

## THE ONLY PAPER read by all classes. "The Daily Bulletin." 50 cents per month.

## FIRE, LIFE, AND MARINE INSURANCE.

Hartford Fire Insurance Co. Assets, \$5,288,000

Commercial Insurance Co. (Fire and Marine) Assets, \$450,000

Anglo-Nevada Assurance Corporation (Fire and Marine) Capital, paid up, \$2,000,000

South British Fire and Marine Ins. Co. Capital, \$10,000,000

New York Life Insurance Co. Assets, \$85,000,000

## C. O. BERGER HONOLULU.

General Agent, Haw'n Islands. 1653 1y

## EQUITABLE Life Assurance Society, OF the United States.

THE LEADING COMPANY.

New Business in 1887 - \$138,023



# BISHOP & Co., BANKERS

Honolulu, Hawaiian Islands.  
Draw Exchange on the  
Bank of California, S. F.  
And their agents in  
NEW YORK, BOSTON, LONG KONG.  
Messrs. N. M. Rothschild & Son, London  
The Commercial Bank Co. of Sydney,  
London.  
The Commercial Bank Co. of Sydney,  
Sydney.  
The Bank of New Zealand: Auckland,  
Christchurch, and Wellington.  
The Bank of British Columbia, Victoria,  
B. C., and Portland, Or.  
— AND —  
Transact a General Banking Business.  
659 1/2

# Daily Bulletin

Pledged to neither Sect nor Party,  
But established for the benefit of all.

MONDAY, OCT. 8, 1888.

## HILLEBRAND'S HAWAIIAN BOTANY.

A most valuable addition to the list of books on these islands is the "Flora of the Hawaiian Islands," prepared by Dr. William Hillebrand. The mechanical execution of the book, printing and binding, are evidently of the first class, and maintain the high reputation of the various publishers' names that appear on the title page, Winter, of Heidelberg; Williams & Norgate, of London; Westernman, of New York. It is the work of years of unrequited toil. It is also largely a posthumous work. We learn from the biographical preface that it has been brought to successful completion through the filial devotion of the son, whose name also appears on the title page, W. F. Hillebrand. He has not yet been gazetted, as decorated by the King with the Order of Kapiolani. This is perhaps because the book has not yet been brought to the knowledge of the Government of that Order. The book is very appropriately dedicated on behalf of the family to "The Hawaiian people, whose kindly traits of character the author warmly appreciated, and to whose welfare, during a sojourn of twenty years, his best energies were unselfishly devoted."

Dr. Hillebrand died suddenly, July 13, 1888, at Heidelberg, where he had resided for several years, while engaged on the work he had begun when he was a resident of these islands. It is a complete enumeration and description in scientific nomenclature, (English, not Latin) of all known Hawaiian flowering plants, with the addition of the ferns and a few other vascular cryptogamous plants. Mosses and lichens had been diligently collected, but are not included in this treatise which fills a portly volume, 6x8 1/2 in., 673 pp.

Born in Westphalia, Nov. 13, 1821, educated as a physician, Dr. Hillebrand was compelled by pulmonary ailments to seek a home in the warmer climate of the tropics. Taking a sea-voyage to Australia, passing thence to Manila, and from there to San Francisco, he was advised to try the climate of the Hawaiian Islands. Here he found his health fully restored. He made his home attractive with the plants he introduced from other lands. Strangers often ask now for the privilege of visiting Hillebrand's garden, which with its varied tropical vegetation now constitutes one of the charming features of Mr. S. C. Foster's beautiful residence, near the lower end of Nuunuu Avenue.

While a resident of Honolulu, Dr. Hillebrand was an acknowledged authority among the members of the medical profession. His departure in 1871 was deeply regretted by the whole community. He had filled important positions in connection with the Hospital, Insane Asylum, Board of Health, and the Agricultural Society. In 1865 and 1866, as Commissioner of Immigration for the Hawaiian Government, he visited China and the East Indies, and made large collections of plants, with a view to their introduction as an addition to the resources and attractions of these islands.

In the volume, that has recently been published, and put on sale here at the reasonable price of \$6.50, we have descriptions of 180 species and 6 genera, not before known to the scientific world. Dr. Hillebrand's collection of specimens is now in the Royal Botanical Museum of Berlin. It was presented to that institution by his family, in accordance with the wish he expressed on his dying bed. Of the 393 species described in the "Flora," 653 are peculiar to these islands, 231 are found in other similar localities, 115 have been introduced since Capt. Cook's first visit to the islands.

Dr. Hillebrand had prepared a very clear and succinct account of the geological and climatic features of the islands. He had made his botanical researches and facts, the basis of some very interesting discussions on the age of the various islands, the insular peculiarities of vegetation, the origin and development of species. It is greatly to be lamented that his sudden death abruptly terminated the elaboration of those points, which the fragmentary notes published, even in their disjointed collocation, indicate that the author was preparing to discuss

with remarkable lucidity and sagacity. Dr. Hillebrand's familiar knowledge of everyone of the islands gives a guaranty of accuracy to any statement made, and his well-known painstaking fidelity makes this book a reliable authority in regard to all matters of which it treats.

In the preface due acknowledgments are made to the various residents, whose knowledge of Hawaiian plants, and whose private collections have been generously put at Dr. Hillebrand's disposal in the preparation of this "Flora." J. M. Lydgate, (now of Lanai), V. Knudsen, E. Bailey, E. Johnson, E. Bishop, D. D. Baldwin, are local collectors and botanists, whose names frequently appear. The maps, specially prepared for this publication, are a valuable addition; and the general resume of the science of botany (Bentham's) makes the book specially serviceable to any of our young people who may wish to take up the study of this interesting department of knowledge. There ought to be many enthusiasts among us, who will gladly avail themselves of this means of perfecting their acquaintance with the wonders and wealth of vegetable life, as developed in these islands. In the "Enumeration of Hawaiian Plants," published by Horace Mann, Jr., in 1866, there are described only 620 species, of which 377 are those peculiar to these islands. Von Muller, in his seven volumes of the "Flora Australiensis," describes about 3,000 different species.

The Hawaiian names are given for 306 plants—about 200 more might have been given—but the young Hawaiians of this generation are woefully ignorant of the specific names in their own language even for the common plants to be seen by the roadside. The Hawaiian *uola* is called in Tahitian *umara*, in New Zealand *kumara*, and *cumar* by the Quichuas of Ecuador. For the coconut palm the Hawaiian Islands are said to be the northern limit, as also for the bread-fruit tree, which here never matures seeds being propagated only by suckers. One species of the native banana is said occasionally to produce seeds. The Chinese Banana, and the so-called Brazilian, (really from Java), were introduced in 1855. The *Kalo* is said to grow nowhere else in such perfection as in the Hawaiian Islands. The upper limit of profitable cultivation of the sugar cane is said to be 2,800 feet on the leeward and 1,800 feet on the windward sides of these islands. The *Drosera longifolia* is mentioned as a flesh-eating plant. Mr. Knudsen describing its leaves as covered with the dead bodies of flies in every stage of decomposition.

The book is exceedingly well indexed, but while frequent reference is made to Waiora, no such name appears in the list of books quoted. The economical uses of the plants, or their medicinal value are seldom mentioned. An interesting account of the cause of coffee-blight is given on page 176. The oil of our *Santalum* is said to be a remedy for rheumatism, and the juice of the *puaka* for chronic ulcers. The aesthetic student of our Hawaiian flora will not find much for his use, but that department is ably presented in Mrs. Shuler's "Indigenous Flowers of the Hawaiian Islands" with its colored lithographs of forty-five plants.

## FOR MR. CHUN HEE.

EDITOR BULLETIN:—The Chinese Theater may possibly be a nuisance, but not to Mr. Chun Hee, as he lives on the Waikiki side of Fort street. Nothing could better exhibit maliciousness than his contribution to the BULLETIN of Friday evening. Articles of this nature referring to a matter pending before the Courts intended to prejudice a fair trial, work do harm where there are fearless judges, as here, and judged by an intelligent community, but their sinister motives rather react upon the cause they attempt to serve; so I shall not attempt to refute the allegation of nuisance but leave it to an impartial court. I suggest, however, that the nuisance complained of by Mr. Chun Hee, undoubtedly exists in the fact that he may frequently have desired to obtain admission to the theater for half price, which would of course be refused. WONG DECK.  
Honolulu, Oct. 6, 1888.

## WRAPPERS WRITES.

DEAR MR. EDITOR:—Sir—I not for write last week because many friends been pleasure with me for visit the Kilauea. We find most fire the crater better than I see when visit other time. I read in the book at Volcano House many fine words for description the fire-hole but not more the words than the really "beautiful, grand, pretty, magnificent, gorgeous, activity, belch, boom, fizz, bang," and many other I forget, but I think it more pretty sight than many fireworks last Fourth of July at Hilo, only when smell the sulphur smoke I think more worse than smell for the fireworks. We have good time look at the wonder for Madam Pele and get back Hilo all right—but some party have use careful for sit down for few days after because the saddle very hard.

Some night when very few cloud then we look at shine on heaven from Kilauea to Hilo some time very bright. Not much rain for Hilo but Capt. Matson, he come with ship Lurline last week but not first Capt. Mat-

son, because he been stop San Francisco, but this one been No. 1 mate when real captain arrived. Lurline freight many swine also some bran and hay and other thing for Hilo stores for sell and only one passenger lady Miss Dio, who been go Papaikou for teach I hear.

I see Mr. Frank Austin been Hilo sometime often ride around all same much influence, with Englishman spy for look the plantations for buy of Hilo. I not see him for wear all same other times many wide ribbon for silk to his middle body. I think that for time dude, now been much travel and learn not much use that thing. I hear agent for plantations not much want for sell because now make plenty money for sugar of Hilo, but I only hear that, perhaps not true.

My friend been try for poetry but I afraid for not very good because he not well understand how rhyme words but I think this small poetry better:—

The Hilo Boy he smoke pipe,  
He smoke another cigarette,  
Then he stop smoke for gripe,  
Then say, "no more, you bet!"

Yours truly,  
J. R. WRAPPERS.  
Hilo, Oct. 4th.

## THE POLICY OF THE BOARD OF HEALTH.

EDITOR BULLETIN:—Koloa is not the only district suffering from the absence of a physician, many parts of the islands are in the same state. The policy pursued by the Board of Health in the matter of government physicians has been to reduce their salaries, under the plea of expense, but truly in order to maintain an expensive Health Bureau, the president of which has cost \$4,625 during the past twelve months, traveling expenses excluded. When Dr. Trousdale held the position, it cost the country nothing, furthermore he was an able man and possessed the confidence of the physicians on the islands, and the public. The present incumbent costs the country considerable, and has neither the confidence of the public, physicians, or officials in any health department and the only return one sees, for paying to the tune of \$4,625 for the past year, is a copious display of ink, and back fares, and innumerable quarantine fares.

The income of the President of the Board of Health would provide three, or at least two more physicians for districts on the islands, thereby serving the interests of the public in a greater degree.

TAX-PAYER.  
Oct. 6, 1888.

## HOMESTEADS AGAIN.

EDITOR BULLETIN:—The advice given by the newspapers to grow potatoes, bay, corn, coffee, ramie, cinchona, etc., would most willingly be followed by a good many people of small means, if they had the land, but where can they plant? Where can they try? Here in Koloa, it would be as easy to take the moon by the teeth, as the Frenchman says, as to buy a ten-acre lot. Once in a very great while, one can secure two or three acres, or tracts far too large for small purses, but none of medium size.

All the lands here belong to the Government, the Crown, Queen Emma's estate, and to a few large and small owners.

These last ones are not expected to sell, as they have barely room enough to put up a little house, keep a small pasture for their horses, and plant a few flowers and vegetables.

As for the large proprietors they always will try to increase their dominions; moreover they find a good profit, and little trouble, in leasing, (if not planters themselves) their lands in the sugar belt location, to the mills, and converting their highlands into prosperous ranches. If by chance they lease to a poor man, at a very remunerative rate, a lost corner, it will be only for a year at a time, very seldom for more. Well, I ask you, is a man expected to build, fence in, and break up, when Damocle's sword, under the shape of eviction is hanging over his head? Note well that I do not blame the landlords for acting in this way, every one tries to make as much as he can out of his properties, beside, I have to add in their behalf, that they did not till the present abuse of their rights, but who knows, what may happen under different circumstances.

If trusts or corners mean dear living, land monopoly means ruin in a small country. In fact it resuscitates the feudal regime of by-gone times, with its Lords and serfs, oppression and revolutions. Ancient and modern history teaches us how terrible agrarian questions have been, and still are. Heavens preserve! But if the sugar business was to fail, owing to a kind of blight or pyloxera as in Madeira, or to any other cause, what would become of our thousands of laborers without home, land or means? Would they not be a most serious danger for society?

May thus, as unique remedy, the Ministers, do all in their power to avert from our dear paradise, this dire event, by granting homesteads where and when possible.

## NOTICE.

MY office will be closed from September 22nd to October 27th, during my absence from the Kingdom.  
M. E. GROSSMAN.  
Dentist, 98 Hotel St.

## NOTICE.

DURING my absence from the Kingdom the Hon. W. C. Allen will act for me under a full power of attorney in all private matters, and also in all estates in which I am assignee or agent.  
W. C. PARKE.  
Honolulu, August 27, 1888.

## Steam Plough Engineer Wanted.

FOR a Plantation a thoroughly competent and sober man is required to take charge of the Steam Ploughs. Must be a good Blacksmith. Apply to 62 1/2 W. T. H. DAVIES & CO.

## SITUATION WANTED.

A GENTLEMAN of over 30 years' business experience with large firms in England and this Kingdom is open for a re-engagement as Book-keeper, Cashier and Correspondent. References and testimonials of the highest order. Address P.O. Box 476.

## Corporation Notice.

NOTICE is hereby given that at a meeting of the undersigned partners of the Hawaiian Fruit & Taro Co., it was resolved to accept the charter granted September 27, 1888, by the Minister of Interior for the incorporation of the Hawaiian Fruit & Taro Co., (Limited).  
W. H. DANIELS,  
A. N. KAPOKAI,  
J. D. HOLT.  
Waialuku, Maui, Oct. 4, 1888.

## Dissolution of Copartnership.

THE copartnership heretofore existing between the undersigned, constituting the firm of the Hawaiian Fruit & Taro Co., in Waialuku, Maui, has this day been dissolved by mutual consent; the assets and liabilities of said firm being transferred to the Hawaiian Fruit & Taro Co., (Incorporated).  
W. H. DANIELS,  
J. D. HOLT,  
A. N. KAPOKAI.  
Waialuku, Maui, Oct. 4, 1888.

## Election of Officers.

NOTICE is hereby given that at a meeting of the stockholders of the Hawaiian Fruit & Taro Co. held in Waialuku, Maui, October 4, 1888, the following officers were elected for the ensuing year:  
John Richardson.....President,  
J. D. Holt.....Vice President,  
W. H. Daniels.....Secretary,  
A. N. Kapokai.....Treasurer,  
A. N. Kapokai.....Auditor.  
W. H. DANIELS,  
Secretary.  
Waialuku, Maui, Oct. 5, 1888.

## FOR SALE

THE schooner "Waiehu," complete in every respect, with sails, boats, fittings, etc., and can be made ready for sea in a few hours. The schooner has recently been thoroughly overhauled, cleaned, coppered and renovated. For particulars apply to Mrs. CHAS. NELSON, 110 King street.

## FOR SALE

ONE fine Milch Cow, price, \$125. Apply at the BULLETIN Office. 91 8th ave.

## FOR SALE.

3 WHALE BOATS: 1 Deeked Whale Boat, 39 feet long, 3 feet deep; 8 feet wide; 222 feet Surf Boat; 118 feet Surf Boat; 2 Deeked Plunger, 16 feet long, 6 feet 6 inches wide, 2 feet 6 inches deep, with mast and sails all complete; 1 2-foot Sailing Scow, with mast and sails all complete. Apply to E. R. RYAN, Boat Builder and General Jobber. 51 ft

## JOS. TINKER, BUTCHER.

## City Market,

Nuuanu Street.

## Beef, Veal,

Lamb, Mutton, & Pork.

## Cambridge Pork Sausages!

Fresh Every Day.

His noted Sausages are made by the every best machinery, and all orders entrusted to his care will be delivered with promptness and dispatch, and his prices are as low as anywhere in the city.

Try his Bologna Sausages.

Oct. 5-88

## FOR SALE!

## El Capitan Flour!

(FANCY ROLLER.)

From the Golden Gate Flouring Mills.

## CROWN FLOUR

AND

## Golden Gate E. F. Flour!

In quantities to suit by

## H. HACKFELD & CO.

64 1/2

## Auction Sales by Lewis J. Levey.

## AUCTION SALE OF KAWAIOLOA RANCH STOCK!

By order of John H. Paly, mortgagee, I will sell at Public Auction

On Thursday, Oct. 11th—At 12 noon,

At my Salesrooms,

33 SHARES!

Of the Capital Stock of the

Kawailoa Ranch Co.,

Certificate No. 29.

Now held as a pledge against the Estate of Len R. Patten, deceased, to secure balance of note amounting to \$1440 and interest.

Default having been made in the payment of said note.

TERMS CASH.

LEWIS J. LEVEY,

66 St. Auctioneer.

## SPECIAL SALE OF Stationery, &c.

By order of A. M. Hewett I will sell at Public Auction, at his Store, Merchant street,

On WEDNESDAY, Oct. 10, '88,

AT 10 O'CLOCK A. M.,

The whole of his stock of

New Stationery!

Consisting of—

## BLANK BOOKS!

Letter Paper & Envelopes,

Index's Press Copying Books,

Shipping Tags, Card Albums,

Clips, Book & Stand Files,

Toy Books, Novels,

Invitation Cards & Envelopes,

Inks & Ink Stands,

Mucilage, etc.,

Pens, Pencils & Penholders,

Etc., Etc., Etc., Etc.

TERMS CASH.

LEWIS J. LEVEY,

64 St. Auctioneer.

## Valuable Horses & Carriages

AT AUCTION.

By order of John F. Colburn, Trustee for D. & S. K. Mahoe, I will sell at Public Auction

On THURSDAY, Oct. 11th, '88,

AT 12 O'CLOCK NOON.

In front of my Salesrooms, corner of Fort and Queen streets,

3 Hacks, 3 Set Harness,

5 Good Hack Horses,

1 Good Hack or Brood Mare,

— ALSO —

4 Hacks, 4 Horses,

Broken to Harness & Saddle.

Also, immediately after the above sale

1 Extra Fine Sulky, new;

1 Country Wagon, with Pole and Shaft;

1 Fine Driving Brake, 2 seated

— AND —

1 Breaking Cart!

1 Brood Mare, 1 Saddle Horse.

TERMS CASH.

LEWIS J. LEVEY,

63 St. Auctioneer.

## JAMES CARTY

Can be found next door to the P. C. A. Office, Merchant street.

Hacks Nos. 18, 37, 66, 75, 180

Wagonette 110.

Mutual 596 TELEPHONES Bell 204

Sept. 24-88

## H. HACKFELD & CO.

OFFER FOR SALE

## CHAMPAGNE:

Quarts & Pints.

Dentz & Geldermann, Carte Blanche, Chas. Farre, Extra Cuvee.

## Rhinewine:

Quarts & Pints.

From the Bremer Rathskeller & Ruedenheim.

## CLARET:

Pints.

Chateau la Rose.

## COGNAC:

From Bouteilleau & Co.,

From Bisquit, Dubouché & Co.,

From DeLaage & Co., &c., &c.

## BEER, ALE & LAGERBIER:

Quarts & Pints.

From St. Pauli Brewery and A. Mueller, Bremen.

## GUINNESS STOUT:

Quarts & Pints. Also

Port Wine, Sherry,

Keummel, Rum.

## CIN:

Old Tom, Keybrand, &c., &c.

## WHISKIES:

Scotch & Irish, &c., &c.

62 1/2

# B. F. EHLERS & COMPANY

HAVE JUST RECEIVED A COMPLETE LINE OF

Ladies', Gents', & Childrens' Bathing Suits,

IN COTTON & WOOL.

Also, Ladies' Black Diamond Dye Hose

INSPECTION INVITED.

1751 1/2

## A VAST PROJECT.

Constant Line of Schooners—Ample Opportunity for All.

OWING to our constantly increasing business and the great demand of an appreciating community, we have concluded to offer an opportunity to all parties having capital. Our Line of Schooners may be seen gliding over the "Bar" filled to their utmost carrying capacity of Clear, Cool and Invigorating

John Wieland's Philadelphia Lager Beer!

AT THE "CRITERION SALOON."

To accommodate our Vast Fleet of Schooners, our ice vaults are now being enlarged regardless of cost. The

"CRITERION"

Is the only place where a Cool Glass of PHILADELPHIA BEER, on Draught can be had in Honolulu. Step forward, Gentlemen, now's the time.

— JUST RECEIVED AT: —

## GOMES & WICHMAN'S

A LARGE INVOICE OF FINE JEWELRY

OF THE LATEST & PRETTIEST DESIGNS

## DIAMONDS IN SOLITAIRES & CLUSTER!

The Famous Gotham Solid Silverware & Finest Triple Platedware, in great variety.

## Waltham Watches, Elgin Watches, &c.,

At Exceedingly Low Prices.

Beautiful Marble Clocks!

Special Line of Alarm Clocks, at \$1 75.

These Goods have all been personally selected in the States, guaranteeing thereby a choice selection of the Newest and Latest Designs.

Sample Packages of Goods sent to any part of the Kingdom. Having every facilities requisite for a first-class jewelry manufacturing establishment, we feel confident that we can manufacture anything that may be required in the Jewelry or Silverware Line.

WATCH REPAIRING & ENGRAVING

In our well-known manner.

## GOMES & WICHMAN,

P. O. Box 342 (76 1/2) Fort Street.

## On Account of Removal!

## GENUINE CLEARANCE SALE.

OF

## BOOKS, STATIONERY & FANCY GOODS



HONOLULU CARRIAGE CO.  
Hack stand: Merchant and Fort  
street. Telephones, 335.  
mch 9-88-1y

## THE Daily Bulletin

MONDAY, OCT. 8, 1888.

### ARRIVALS.

Oct 7—  
Star Jas Makee from Kapaa  
Star Waleale from Kauai at 5 p m  
Star Kilauea from Hilo and way ports  
Star Viva from Molokai and Maui  
Brit ship Carnarvonshire, 63 days from  
Newcastle, N S W  
Oct 8—  
Schr W S Bowne from San Francisco

### DEPARTURES.

Oct 8—  
Star Likelike for Kahului and Hana at  
5 p m  
Star Lehua for Hamakua at 5 p m  
Star Mokuiki for Molokai at 5 p m  
Star Kilauea for Wailua and Wailane  
at 9 a m

### VESSELS LEAVING TO-MORROW.

Star Mikahala for Kauai at 5 p m  
Star Kilauea for Hilo and way ports at  
4 p m  
Star W G Hall for Lahaina, Maalea,  
Kona, Kau and the Volcano at 10  
o'clock a m  
Star Waleale for for Kauai at 5 p m

### PASSENGERS.

From Hawaii and Maui, per steamer  
Kilauea, Oct 7—C. L. Wight, wife and 4  
children and servant, W F Pogue, O P  
Downing, Mrs Geo Kihimani, Miss Ahe-  
ona, Mrs J N Wight, Mrs J Smith, Mrs  
S May, Miss Lewis, Koki and 3 child-  
ren, H Kihimani, W H Helstead, Z K  
Meyers and wife, S E Kake and wife,  
and 112 deck.  
From Kauai, per steamer Waleale,  
Oct 7—Mrs C Cooke and 2 children,  
Miss K Lucas, R N Webster, Miss M  
Brums, Misses Maria and Mollie Bush,  
Mr Falehild, Jas H Kawai and wife, 5  
Chinese and 77 deck.  
From San Francisco, per schooner W S  
Bowne, Oct 8—Capt Ackerman, F J  
Samner, John Anderson, L Hudmann,  
Jas De Angelino.

### CARGOES FROM ISLAND PORTS.

Kilauea—100 bags spuds, 60 bags corn, 1  
horse, 125 pkgs sundries.  
Waleale—1000 bags sugar and 60 bags  
rice.  
Jas Makee—531 bags sugar and 1939  
bags rice.

### VESSELS IN PORT.

Brit bk Carnarvonshire, Williams  
Schr W S Bowne, Blum  
H B M S Cormorant, Jasper Nicolls  
Bague W G Irwin, McCulloch  
Ship Daniel Barnes, Strover  
U S S Alert, Graham  
Hawaiian bk Lady Lampton, Sodergren  
BK C D Bryant, Lee

### SHIPPING NOTES.

The steamer Jas Makee will sail for  
Kapaa on Wednesday at 5 p m.  
The Kilauea took a boiler for Wailane  
this morning.  
The British ship Carnarvonshire, Capt  
Hugh Williams, arrived yesterday 63  
days from Newcastle, N S W, with  
1,880 tons of coal for P M S S Co.  
The steamer C R Bishop got aground  
at Hecla, Koolan, this morning. She  
was expected to float off at high tide  
this afternoon.  
Captain William Weisbarth, formerly  
master of the steamer Surprise, (now  
the Pele), bought the schooner Wailane  
for \$1,500 from Hon J I Dowsett, on the  
3rd inst. The Wailane was sold to Mr  
Dowsett in the Pacific Navigation  
company's sale of vessels, not long ago for  
\$1,000. Captain Weisbarth will employ  
the schooner in the inter-island trade.  
The schooner W S Bowne, Captain  
Blum, arrived this morning 20 days  
from San Francisco. The Bowne has  
N and W winds the first 6 days out  
from San Francisco, latter part of pas-  
sage had light southerly winds; ex-  
perienced several days of N W swells  
with no winds. The whole of the  
Bowne's freight, a large quantity of  
hay and grain, lime bricks, lumber,  
etc., and five large horses, one mule and  
one cow) came, with the exception of  
two cases of cartridges, to John F. Col-  
burn & Co. The Bowne is docked at  
Brewer's wharf.

### BORN.

October 6th, to the wife of A. W.  
Hedmann of Honolulu, a daughter.  
In Honolulu, Oct. 7, to the wife of  
John C Gail, a son.

### LOCAL & GENERAL NEWS.

Whooping cough is still prevalent.  
Dr. Charles Wetmore of Hilo, is  
seriously ill of fever.  
THERE was more drunkenness on  
the streets Saturday night than  
usual.  
THERE was a Chinese baptism at  
St. Andrew's Cathedral Sunday after-  
noon.  
SEVERAL of the officers of the U. S.  
S. S. Alert visited H. B. M. S. Cor-  
morant this morning.  
ON Thursday at noon Mr. L. J.  
Levey will sell thirty-three shares of  
Kawaloa Ranch stock.  
THE Hawaiian jurors will have to  
be in attendance in the Supreme  
Court at 10 o'clock to-morrow morn-  
ing.  
THE auction sale of horses and  
carriages advertised to be sold at  
auction by Mr. L. J. Levey on Oct.  
8, has been postponed till Thursday,  
October 11th, at 12 noon.  
THE Honolulu Social Club will  
have a dance this evening commencing  
at 8 o'clock. The semi-annual  
dance will be held on the 18th inst.,  
invitations to that effect having been  
sent out.  
THE temperance meeting for men  
at Brewer's Block, Saturday night,  
was addressed by Chief Justice Judd,  
Rev. H. H. Gowen, Dr. J. M. Whit-  
ney and Messrs. P. C. Jones, T. G.  
Gribble and S. D. Fuller. The meet-  
ing was good.

FURNISHED ROOMS at No. 8 Union  
street are to let.

THIRTY-ONE cases on the Police  
Court record to-day.

THE W. G. Hall, Kilauea and Mika-  
hala all leave to-morrow.

THE BULLETIN WEEKLY SUMMARY  
will be out to-morrow.

COMPANY No. 2 would like to have  
another contest with a half mile run.

J. F. COLBURN & Co. have for sale  
hay, grain, feed, flour, hard brick and  
lime.

A REPUBLICAN campaign handker-  
chief is on exhibition in Hewett's  
store window.

THE Amateur Minstrels promise  
an abundance of fun at their enter-  
tainment on the 20th.

MAJOR J. H. Wadehouse, H. B.  
M's Commissioner, visited the Cor-  
morant this morning, and lunched  
with Capt. Nicolls.

Mr. J. M. Vivas has been appoint-  
ed Portuguese Interpreter for the Su-  
preme Court, and received his com-  
mission this morning.

THE taking of the depositions in  
the matter of the will of S. G. Wil-  
der, deceased, was completed this  
morning and order reserved.

HAVE you caught on to what is  
it? and where is it? If not, it is a  
first class Coffee Saloon on Hotel  
street, opened by Harry Saylor.

THE Hon. W. O. Smith trustee,  
will receive tenders up to noon of  
Oct. 13th, for the supply of meat to  
the Lunatic Home for one year.

THE Ventures played their last  
game of baseball for the season on  
Saturday, when they defeated the  
Roads and Bridges by a score of 12  
to 6.

CHAS. Turner the hackman arrested  
for furious and heedless driving,  
has been released on bail. The pa-  
rents of the child still persistently re-  
fuse to have a doctor.

ELEVEN candidates for admission  
to the bar were examined in the Su-  
preme Court to-day, before the Chief  
Justice and Justices Preston, Bick-  
erton and Dole. A. P. Kalanika is one  
of them.

### EVENTS THIS EVENING.

Harmony Lodge No. 2, I. O. and  
O. F. at 7:30.  
Honolulu Social Club at 7:30.

### ATTEMPTED BURGLARY.

When Mr. Victor Fagerroos, watch-  
maker, entered his store on King  
street this morning, it was evident  
to him that someone had been trying  
to gain admittance in an illegal man-  
ner. The bolts on the back window  
were broken off and there was other  
indications that a burglary had been  
attempted. Probably the burglars  
were frightened off.

### THE HAWAIIAN DIRECTORY.

Advance sheets of McKenney's  
new Hawaiian Directory came on  
the last steamer. It is arranged in  
strictly alphabetical order and will  
be an exceedingly useful and valua-  
ble book. The directory will be  
ready for delivery about the middle  
of November. Any changes or re-  
movals since the census was made  
should be sent to Graenhalghs store,  
as there will be a too late list pub-  
lished in the first part of the direc-  
tory.

### TENDERS FOR SCHOOLHOUSE.

On Saturday the Board of Educa-  
tion received the following tenders  
for the erection of a new schoolhouse  
at Kalihi:

J. A. Palmer.....	\$1700
H. F. Bertelmann.....	1340
Peter High.....	1321
J. Cook.....	1245
James Wallace.....	1195
Smith and Mills.....	1096

The last named tender was ac-  
cepted.

### A VAST FLEET.

As our time is so completely occu-  
pied with filling the orders of our  
numerous patrons, we have not the  
required leisure to connect the  
"French Restaurant" that we had  
in contemplation, with our present  
business; in the meantime we will  
"mobilize" our arms of cooks, ste-  
wards and other assistants to fill our  
vast fleet of "schooners, yachts,  
etc.," with the John Wiedland's  
Celebrated Philadelphia Lager  
Beer, that is so cool and invigorat-  
ing to the system and to be had at  
the "CRITERION."

Respectfully yours,  
Dodd & MILLER.

### OVERRULED.

The challenge to the jury panel  
for the October term interposed by  
the Attorney-General, was overruled  
in the Supreme Court this morning.  
Mr. Justice McCully at the opening  
of the Court, announced that the  
justices had given all their time to  
the consideration of the challenge  
and were unanimous in its effect but  
not in all particulars. They would  
overrule the challenge, holding that  
the jury was legally drawn as it was  
drawn. The Court had not had time  
to put the decision in writing but  
would do so. His Honor then an-  
nounced that the Hawaiian jury  
would be required to be in attend-  
ance at 1 o'clock. The case of the  
King vs. Kakele, extortion was called  
at that hour but two important  
witnesses not being present, it was  
postponed for hearing until 10  
o'clock Tuesday morning.

## SUICIDE.

A Japanese shoots himself at  
Olowalu.

On Friday last Mr. T. E. Evans,  
Deputy Sheriff of Lahaina, Maui,  
acting as coroner, held an inquest  
at Olowalu, on the body of a male  
Japanese, Arima by name. It ap-  
pears that a day or so previous  
Arima attempted to rape Mrs. Oni-  
chi, wife of one of the laborers on  
the plantation. She told her hus-  
band of the affair. Arima also told  
another Jap of what he had done.  
Mr. Seya, Japanese interpreter cen-  
sured Arima for his bad conduct,  
and read the law to him, showing  
that he was liable to severe punish-  
ment. Arima got very frightened  
and told Seya he would shoot him-  
self.

Early Friday morning Arima was  
found dead in his room. A pistol was  
lying near the left shoulder the mu-  
zzle being close to the throat. The  
deceased's shirt and the pillow were  
stained with blood. On a table was  
found a letter in Japanese, the fol-  
lowing of which is a translation:

To the Japanese at Olowalu. I  
was discharged and I feel so shame-  
ful that I cannot see you again.  
Onishi and Kanemoto told Seya all  
about my conduct. I apologized to  
Seya, but he would not accept my  
apologized therefor.

Coroner Evans arrived on the  
spot soon after notified and held an  
inquest, the following jury being  
sworn: Matsura, W. Heine, Aug.  
Helmberg, T. E. Hartmann, F.  
Wolter and E. St. Mark. Several  
Japanese gave evidence, all of them  
being laborers on the plantation.  
Dr. Weddick said in his opinion the  
deceased died from the effects of a  
bullet wound, self inflicted. One  
chamber of the revolver was dis-  
charged. The jury returned a ver-  
dict in accordance with this opinion.

### ACCIDENT TO MR. S. SHAW.

Last Thursday, Mr. Seeley Shaw,  
of the Pantheon stables met with a  
rather severe accident at Wailua,  
on this island. He was one of the  
party that left town a few days be-  
fore that on a shooting expedition.  
It appears that Mr. Shaw was in the  
mountains near Wailua, riding  
after a wild boar when his horse  
fell, throwing him to the ground and  
rolling over him. Mr. Shaw's com-  
pansions, which included Dr. John  
Brodie, were soon on the spot and it  
was found that one of the shoulders  
was dislocated. On turning him  
over it went back into its place, and  
Mr. Shaw was carried to the camp.  
On Saturday he was driven to Dr.  
Brodie's ranch, and is getting along  
nicely. The rest of the party re-  
turn this evening, bringing Mr.  
Shaw with them in a brake. His  
many friends will wish him a speedy  
recovery.

### THE COMPETITIVE DRILL.

A very large crowd of people was  
in attendance on Saturday, to wit-  
ness the competitive drill between  
Engine Companies No. 1 and No. 2.  
Punctually at 5 o'clock, two taps  
on the Central Tower Bell started  
the two companies from their re-  
spective houses. No. 2 engine was  
drawn by horses and quicker than  
it takes to tell was on Fort street  
making for the Inter-island wharf  
at a great pace. As it passed King  
street, No. 1 was some fifty yards  
along the street coming at a lively  
rate in tow of a couple of saddle  
horses. Before the Honolulu Plan-  
ing Mills had been reached No. 1  
had gained considerably on No. 2  
and arrived at the wharf only twenty  
seconds behind. It was quite an  
exciting score as both engines sped  
down the street, looking almost as  
if there were on fire. Both com-  
panies had their hose quickly laid,  
and then came the suspense of wait-  
ing for the water which had to be  
got by suction from the harbor. At  
last it came and through the hose  
of No. 1. Cheers rent the air by  
the admirers of the winning  
company. No. 2 was only forty  
seconds behind in getting water  
and was applauded.

Unfortunately the proceedings  
were marred by several accidents  
but not of a serious nature. Fore-  
man Robt. More of No. 1 had his  
foot badly burned, and the wheel  
of the hose cart passed over Louis  
Toussaint's foot, bruising his ankle.  
Near the wharf a native fireman was  
knocked down by the engine but es-  
caped unhurt. The judges of the  
competition handed in the following  
report:—

To the Foreman of Engine Com-  
pany No. 1, Sir:  
The undersigned who were re-  
quested to act as judges of the com-  
petitive engine drill on Saturday  
evening beg leave to make this re-  
port:

Engine Co. No. 2 got to the wharf  
at foot of Fort street at 5h. 4m. 15s.  
Engine Co. No. 1 at 5h. 4m. 55s.  
Engine Co. No. 2 thus leading 20  
seconds.

Engine Co. No. 1 had the first  
stream of water on the time being  
as follows:

No. 1—5h. 7m. 55s.; No. 2—5h.  
8m. 15s. Difference of 40 seconds.

Very respectfully,  
R. W. LAISE,  
C. O. BERGER,  
W. F. ALLEN.

THE OLDEST DAILY in the  
Kingdom—"The Daily Bulletin."  
50 cents per month.

## POLICE COURT.

Monday, Oct. 8.  
Sixteen drunks had to pay the  
usual amount. William Crews  
for drunkenness forfeited \$25  
bail. Jno. Hagsten for the same  
offense pleaded not guilty but His  
Honor looked at the matter in a dif-  
ferent light and requested the de-  
fendant to drop \$12 into the coffers.  
Several cases of disturbing the  
quiet of the night were disposed of.

## ORGAN RECITAL.

The fifth organ recital at Kaumaka-  
pili church on Thursday evening  
next the 11th inst., promises to be a  
very interesting one. Miss Mabel  
Rhodes, Miss Frederica J. Nolte,  
and Rev. Arthur D. Bissell will ren-  
der vocal solos, and the Kaumaka-  
pili choir will sing an anthem. Han-  
dels celebrated Largo arranged as a  
trio for violin, violoncello and organ  
will be given Lieutenant Pears of H.  
B. M. S. Cormorant playing the  
violin part. Mr. Henry Berger will  
play Miss Nolte's accompaniment,  
and organ solos will be rendered by  
Messrs. Myron H. Jones and Wray  
Taylor. The admission will be  
twenty-five cents, and tickets are  
now for sale at A. L. Smith's store,  
Fort street.

## TO LET

1 or 2 Comfortably Fur-  
nished Rooms at \$2 per  
week. Also, 1 Elegantly Fur-  
nished Room suitable for two young  
men. Apply No. 8 Union street. 65 1w

## TENDERS

WILL be received by W. O. Smith,  
Trustee, up to SATURDAY  
NEXT, October 13th, at 12 o'clock noon,  
for the supply of Fresh Meat for the  
Lunatic Home for 1 year, from Nov-  
ember 1, 1888.

The Trustees do not bind themselves  
to accept the lowest or any tender.  
For further particulars apply to W.  
E. H. Dorell, at Lunatic Home.

W. O. SMITH, Trustee.  
Honolulu, Oct. 8, 1888. 66 1w

## NOTICE.

MR. Chas. Phillip is the authorized  
collector for "O Luso Hawaiiano."  
P. A. DIAS,  
64 3t Editor "O Luso Hawaiiano."

## Something New!

Whose "ag" is it? Why,  
HARRY SAYLOR'S  
Who has opened a  
Coffee Saloon, on Hotel Street.  
Come and try his Coffee, etc. 66 1w

## JUST RECEIVED

PER "W. S. BOWNE."

Hay, Grain, Feed & Flour.

ALSO—

Hard Brick & Lime!

FOR SALE CHEAP BY

J. F. COLBURN & CO.,  
65 Queen Street. 11w

Wm. O. Atwater,

Agent to—

Grant Marriage Licenses.

Office: Honolulu Iron Works Co.  
sept-29 1y

## Wall Paper!

JUST RECEIVED

A Large Assortment of the

Latest Styles in Wall Paper

ALLEN & ROBINSON,

60 Queen Street. 11w

H. C. CRABBE,

DEALER IN HAY and GRAIN,

81 King Street, opposite the Old Station  
House.

Mutual Telephone No.—

87 1f

V. G. FAGERROOS,

Practical Watchmaker & Jeweler.

Has removed to

Late Wm. Turner's Shop, 80 King St.

Satisfaction guaranteed or money  
refunded. 21 2m

FRANK J. KRUGER,

Practical Watchmaker & Repairer

Good work guaranteed. At present  
located at S. Roth's tailor shop.  
Aug-16m

IF YOU FIND ANYTHING,

advertise it in the DAILY BULLETIN.

The Inter-Island Steam

Navigation Co., Limited,

Keep constantly on hand for sale

Steam Family and Blacksmith Coal  
and a general assortment of

415.

Bar Iron.

IF YOU WANT A SITUATION

advertise in the DAILY BULLETIN.

## BUSINESS ITEMS.

Notices under this head are charged to cost  
per line for the first insertion, and a cent per line  
every additional insertion.

RYAN'S BOAT BUILDING  
SHOP. Rear of Lucas' Mill.

WILLIAM FOSTER, Notary  
Public, Honolulu. Marine and  
fire losses adjusted. 62 1w

## MEETING NOTICE.

THE regular quarterly meeting of the  
Press Publishing Co. will be held  
SATURDAY, October 13th, at 2 o'clock  
P. M. at its office, Friend Building,  
Bethel street. A. L. SMITH,  
65 7t Secretary.

## ANNUAL MEETING.

THE annual meeting of the stock-  
holders of the Wailane Company  
will be held on TUESDAY, October  
10th, at 10 o'clock A. M., at the office of  
Hon. H. A. Widemann.

C. O. BERGER,  
65 1d Secretary.

## MEETING NOTICE.

A SPECIAL meeting of the stock-  
holders of the Mutual Telephone  
Company will be held for the purpose  
of "Altering the By-Laws," at the Com-  
pany's Building, on WEDNESDAY,  
October 10th, at 10 o'clock A. M.

C. O. BERGER,  
51 1d Secretary.

## Absolutely Pure.

THE TAHITI AERATED WATERS have  
the greatest possible purity in the  
method of preparing the gas and the  
superior quality of the water used. The  
gas undergoes the purifying process of  
passing through the water of a 50 gal-  
lon tank, before being admitted to the  
silver-lined retort in which the liquors  
are confined; and the water is from an  
artesian well. There is no surface water  
used in the manufacture; no vegetable  
decay; no animal matter; no germs of  
disease; nor any impurity whatever.  
Absolute purity of gas and water make  
the liquors rest in the weakest of  
stomachs at all times; the machinery at  
the SUNNY SOUTH FACTORY is kept scrup-  
ulously clean, and operated by steam  
power; and, the bottles being on the  
valve principle requiring no corks, the  
use of corkscrews is avoided. Another  
important consideration in the use of  
valve-bottles is that no metal is used in  
their composition.  
Depot 25 Merchant Street, Hono-  
lulu. J. E. BROWN & CO. 64 1f

## BY THE S. S. ZEALANDIA

—DUE HERE—

THIS WEEK!

—FROM AUSTRALIA—

The Leading

Millinery House

—OF—

CHAS. J. FISHEL,

Will receive a fine line of

Surrah Silks,

Dress Silks,

Satins, Lawns,

Satteens,

Cretons,

Lace Curtains!

And a general assortment

of fine

Fancy

—AND—

Staple

DRY GOODS!

ETC., ETC.

Which we will offer at very

low prices.

CHAS. J. FISHEL,

The Leading Millinery House,

Corner of Fort & Hotel streets.

July 17-88

THE DAILY BULLETIN—The

most popular paper published

## "TEMPLE OF FASHION,"

63 and 65 FORT STREET.

Boys' School Shirts, Boys' School Hats, Boys' White Shirts,

AT VERY LOW PRICES

A full line of Gingham!

A full line of Batiste!

A Large Assortment of White Dress Goods!

We will close out at a

GREAT REDUCTION

SHOES! SHOES! SHOES! SHOES!

For Gents, Ladies, Misses & Children.

S. EHRLICH,

2034 63 & 65 Fort Street.

## THE

## 'ARCADE'

EGAN & COMPANY.



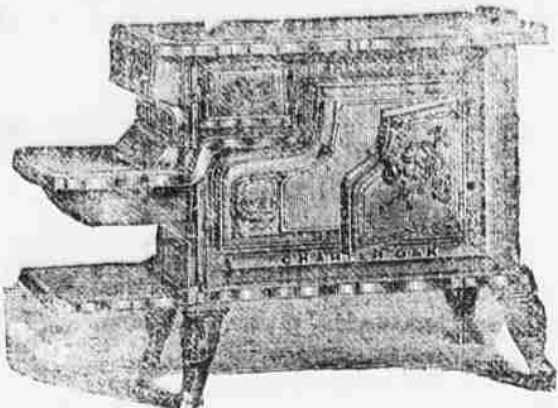
## UNION FEED CO.,

Telephones, No. 175.

Cor. Edinburgh & Queen Sts.

JOHN NOTT, No. 8 Kaahumanu Street.

STOVES!



RANGES!

Granite, Iron and Tin Ware!

Chandeliers, Lamps and Lanterns,  
WATER PIPE and RUBBER HOSE,  
House Keeping Goods,  
PLUMBING, TIN, COPPER AND  
993 SHEET IRON WORK.

H. E. MCINTYRE & BRO.,

IMPORTERS AND DEALERS IN

Groceries, Provisions and Feed,

EAST CORNER FORT AND KING STREETS.

New Goods received by every Packet from the Eastern States and Europe  
Fresh California Produce by every Steamer. All orders faithfully attended to  
and Goods delivered to any part of the city free of charge. Island orders soli-  
cited. Satisfaction guaranteed. Post Office Box 145. Telephone No. 93 [nov-4-85]

CHARLES HUSTACE,

KING STRE T.

HAS JUST RECEIVED:

Dupee Hams & Bacon, Kits Salmon Bellies, Kits Mackerel, Kegs  
Beef, Kegs Pork, Smoked Hamlets, Extra Select Oysters, Salmon,  
Cranberry Sauce, Boston Brown Bread, Table Fruits, German,  
Huckins & Franco American Feed Co.'s Assort'd Soups.

Ridges Food, Imperial Granum, Rolled Oats, Breakfast Food,  
Gem, Graham Wafers, Oaten Wafers, Snow Flake & Cream  
Crackers, Ginger Wafers, Chocolate Wafers, Pretzels, Prunes,  
Dates, Nuts, Apples, French Peas, Pop Corn, Garden Seeds,  
Wheat, Flour, Butter, Honey, Plum Pudding, etc., etc., etc.

And a General Assort of Staple & Fancy Groceries, at Prices to Suit the Times.  
[mh-9] Leave your orders, or ring up 119. [6a] [86]

Telephone 240. P. O. Box 297.

LEWIS & CO., 111 Fort Street,

IMPORTERS, WHOLESALE & RETAIL DEALERS IN GROCERIES & PROVISIONS.  
Frozen Oysters & Fresh Goods from California on ICE by each steamer of the O. S. S. Co.  
A complete line of Crosse & Blackwell's and J. T. Morton's English  
Canned Goods always on hand.

NEW GOODS

Smoked Salmon, Edam Cheese, Pineapple Cheese, Swiss Cheese, Oregon Cream  
Cheese, New York Cheese, Cal. Mild Cheese, New Zealand Cheese, Whisker  
Star Ham & Bacon, Cicely Lemons, Smoked Beef, Smoked Foiled Sausage, a few  
of the Celebrated Cassard Hams & Bacon, Cal. Roll Butter, Fard Dates, Sardines  
in Tomatoes, Queen Olives in kegs, Cal. Mixed Pickles in kegs, Wellington Egg  
Food, Maple Syrup in 5 gallon tins, Huckins Green Turtle Soup, Huckins Ter-  
rapin Soup, Cal. Kog Butter, New Zealand Reg Butter and a complete line of  
American Canned Goods always on hand; fine New Zealand Onion and Potatoes  
now on hand, by each arrival from New Zealand—SOMETHING FINE.

ap-16] Islands Orders Solicited. [87]

H. C. CRABBE,

DEALER IN HAY and GRAIN,

81 King Street, opposite the Old Station  
House.  
Mutual Telephone No. 87 1f

V. G. FAGERROOS,

Practical Watchmaker & Jeweler.

Has removed to  
Late Wm. Turner's Shop, 80 King St.  
Satisfaction guaranteed or money  
refunded.

FRANK J. KRUGER,

Practical Watchmaker & Repairer

Good work guaranteed. At present  
located at S. Roth's tailor shop,  
Aug-1-6m

The Inter-Island Steam  
Navigation Co., Limited,

Keep constantly on hand for sale  
Steam Family and Blacksmith Coal  
and a general assortment of  
Bar Iron.

415.

IF YOU WANT A SITUATION

advertise in the DAILY BULLETIN.

SUGAR PLANT!

FOR SALE

The Entire Plant of the  
Star Mill Company, Kohala,

Is offered For Sale. The Machinery  
is in perfect working order  
and consist of

One 26x48 Mill with Engine,  
Trash-carrier, Etc., complete,  
1 Pair of Boilers 6x20,  
1 Double Effect 6 and 7 feet Pans,  
1 Vacuum Pan 6 feet with Blake Pump,  
3 Weston Centrifugals and Engine.

Together with the usual assortment of  
Clarifiers, Clean'g Pans, Coolers

And other Machinery usually found  
in a well appointed mill.  
Also, a number of

California & Island Mules,  
Cane Carts & Gen'l Plantation  
Implements.

Delivery will be given after next crop  
has been harvested, say about July 1,  
1890.

For further particulars apply to  
JOHN HIND,

Manager Star Mill, Kohala, Hawaii.  
48 1f

IF YOU LOSE ANYTHING,

advertise in the DAILY BULLETIN

# THE DAILY BULLETIN WEEKLY SUMMARY

ISSUED ON OCTOBER 9th, IN TIME FOR THE ISLAND STEAMERS.

EXTENSIVELY CIRCULATED ON THE OTHER ISLANDS AND ABROAD.

Contains Twenty-Eight columns of interest-  
ing reading matter and a complete resume  
of Honolulu and Island News.  
Island Subscription, . . . \$4 per annum.  
Foreign . . . \$5

## G. WEST & CO.

Have the Largest Variety and Best Stock of

GUITARS.



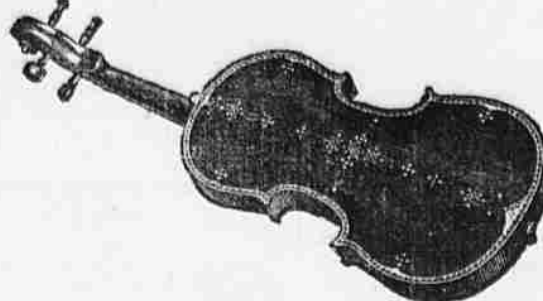
Ever exhibited in this country.

GUITARS.

Furniture of every description for Parlor, Bedroom,  
Dining-room, Library & Veranda.

They have the Best Assortment of

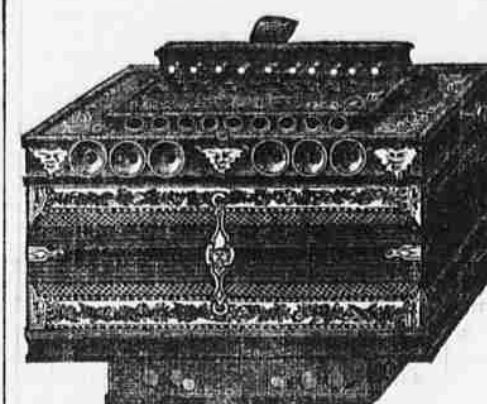
VIOLINS!



VIOLINS!

Chairs from 75 cents to \$50 each.

Toys of every description and price.



Accordeons!

FROM

\$2.00

TO

\$20.00

Accordeons!

Furniture Reupholstered!

Mattresses made to order!

CORNICE POLES & PICTURE FRAMES

Made in all Styles and Prices to suit everybody.

Pianos, Organs & Furniture!

Sold on the Instalment Plan.



DR. PARDEE'S  
REMEDY.

(THE ONLY RELIABLE BLOOD PURIFIER.)

A Specific for

RHEUMATISM,

Scrofula, Salt Rheum,

Neuralgia, Ring Worm,

And all other Skin & Blood Diseases.

It Regulates the

Liver & Kidneys

Cures Indigestion, and all Diseases

arising from an enfeebled con-  
dition of the system.

Dr. Martine, of London, the celebrated

specialist, says of PARDEE'S REMEDY:

"I have used it for twenty years for

Blood Diseases, such as Scrofula, Salt

Rheum, Tetter and Cancer, and I cannot

recommend it too highly."

The Rev. Dr. Thomas, of Hong Kong,

China, says: "PARDEE'S REMEDY is a

wonderful medicine for the blood. I

have prescribed it hundreds of times for

leprosy, and, when given in time it

always cures the patient. I can safely

say that leprosy will never break out on

persons who take PARDEE'S REMEDY

regularly, and I advise all persons liv-  
ing in countries where leprosy is pre-  
valent to take PARDEE'S REMEDY as a  
preventive."

For Sale by all Druggists in Honolulu.

Aug-23-88-3m

Corrugated Iron

Best Crown Brand.

6, 7, 8, and 9 Feet Lengths

Just landed Ex. Ship "Cookermouth"

For Sale in Quantities to Suit.

Also, 500 Bbls. White Bros.'

PORTLAND CEMENT

Full Weight.

At the Lowest Market Rates.

WILDER & CO.

08 1f

THE WORKINGMAN'S PAPER

"The Daily Bulletin." 50 cents

per month.

Bell Tel. 172. Mutual Tel. 360

P. O. Box 469.

J. E. BROWN & CO.

Fire Proof Stone Building,

42 Merchant Street.

ACCOUNTANTS

AND

General Commission Merchants

General Agency for Haw'n Islands

to the

Burlington and Chicago Railway

Across America.

Connecting at Boston with the Azores

and Madeira.

Through tickets granted from Honolulu

to all points East.

Merchandise stored and sold on com-

mission. Consignments solicited.

Shipping and Custom House Business

attended to.

Books and Accounts kept and audited.

Averages adjusted.

Properties leased, rented and sold.

Legal documents drawn.

Bell Tel. 348. Mutual Tel. 139

P. O. Box 415.

Office . . . 38 Merchant St., Honolulu

GULICK'S

General Business Agency.

NOTARY PUBLIC.

Conveyancing a Specialty—Records searched

and abstracts of title furnished on

short notice.

Copying, Translating, and engrossing in all

languages in general use in the King-

dom.

Custom House brokerage—Fire and Life

Insurance receive prompt attention.

Skilled and Unskilled Labor Furnished.

—Real Estate—

bought, sold and rented.

Several valuable properties in and

around the city now for sale on easy

terms.

Convenient Cottages in desirable healthy

locations in and near the city to let or

lease at reasonable rates.

Employment Wanted—by several men and

boys, who will make themselves use-

ful in performing the various offices

and chores required by private fami-

lies.

Full particulars given on application

at the agency.

Orders from the other Islands prompt-

ly attended to.

THE DAILY BULLETIN

"Weekly Summary."

28 Columns of Original Matter.

Is now issued and will be found to  
be an interesting and comprehensive  
number, containing 28 columns of  
reading matter on local topics, and  
a complete resume of Honolulu and  
island news. There is no better paper  
published in the Kingdom to send to  
friends abroad.

SUBSCRIPTIONS:

Island, . . . . . \$4 00 year

Foreign (mailed), . . . . . 5 00 year

To be had from

Hawaiian News Co., Merchant

street;

A. M. Hewett, Merchant street;

W. H. Graenhalgh, Fort street;

BULLETIN Office, Queen street.

O. S. S. CO.'S TIME TABLE.

Arrive at Honolulu from San Francisco.

Australia, . . . . . October 16

Zealandia, . . . . . October 25

Australia, . . . . . November 13

Alameda, . . . . . November 22

Australia, . . . . . December 16

Alameda, . . . . . December 18

Alameda, . . . . . January 13

Leave Honolulu for San Francisco.

Alameda, . . . . . October 21

Australia, . . . . . October 23

Mariposa, . . . . . November 18

Australia, . . . . . November 20

Zealandia, . . . . . December 16

Australia, . . . . . December 18

Alameda, . . . . . January 13

Australian Mail Service.

FOR SAN FRANCISCO.

The new and fine A1 steel steamship

"Alameda,"

Of the Oceanic Steamship Company, will

be due at Honolulu from Sydney

and Auckland on or about

October 21, 1888.

And will leave for the above port with

mail and passengers on or about that

date.

For freight or passage, having SU-

PERIOR ACCOMMODATIONS, apply

to

WM. G. IRWIN & CO., Agents

For Sydney and Auckland,

The new and fine A1 steel steamship

"Zealandia,"

Of the Oceanic Steamship Company, will

be due at Honolulu from San

Francisco on or about

October 25, 1888.

And will have prompt di-patch with

mail and passengers for the above ports.

For freight or passage, having SU-

PERIOR ACCOMMODATIONS, apply

to

WM. G. IRWIN & CO., Agents

Park Beach Hotel,

Opposite Kapiolani Park, Waikiki.

The Finest.

Bathing Place on the Island!

Elegant Rooms, Gas & Water in each.

Extensive Grounds, Well Shaded!

The Table is supplied with the

best the market affords.

BILLIARD ROOM

AND

Bowling Alley attached!

Full information given to tourists as

to the best routes of travel, for scenery

and curiosities; also current rates for

horse hire and guides on the other

Islands. Buses and Carriages will be

furnished at special rates for excursions.

Buses and Baggage Wagons will meet

every steamer. Special rates for perma-