

The Pacific Commercial Advertiser

ESTABLISHED JULY 2, 1856.

VOL. LI. NO. 8573.

HONOLULU, HAWAII TERRITORY, SATURDAY, JANUARY 29, 1910.

PRICE FIVE CENTS.

SUSPENSION IS NOT TO BE PRESSED

Delegate and McClellan Want to Await Fate of the Ship Subsidy Bill.

GOV. FREAR AND ROBERTSON

News of Hawaiian Colony at the Capitol—Island Well Represented.

By Ernest G. Walker.

(Mail Special to The Advertiser.)

WASHINGTON, January 13.—The Delegate and Princess Kuhio have arrived in Washington for the session and are quartered at the Arlington Hotel. Accompanying them were ex-Governor Liliuokalani, Col. Sam Parker, his son, and his daughter, Mrs. Wood. The Queen and the Parker family plan to remain in Washington for some time. Thus far the Queen has taken no action with reference to her claim, although it is well understood that she contemplates bringing a suit before the court of claims in this city.

The Delegate has resumed his work at the Capitol, which has chiefly been the arrangement of further hearings before the senate and house committees having to do with the enactment of the organic law amendments. Congress is drifting along just now, and it is not easy to interest the committees in legislation, but there are good prospects that the house will take up the organic law amendments after the rush with appropriation bills has passed.

Suspension Must Wait.

The Delegate and Mr. McClellan have decided not to press constructive suspension just at present, till it develops what will come of the ship subsidy bill now before the house committee on merchant marine. Hearings on that bill have already begun. The fate of it is still uncertain, but it is thought that it will materially help the Hawaiian situation or not—it would be exceedingly difficult to obtain any enactment suspending the provisions of the organic law.

The Delegate had a talk with Attorney General Wickham about the (Continued on Page Four.)

FLEET COMING ON LEISURELY

Will Be Off Port Monday Evening—Wireless Kept Busy in Pleasant Messages.

On Monday afternoon, toward evening, the Pacific fleet will arrive in the harbor from Yokohama. This is confirmed not only by the United States commandant of the naval station, but by reports of officers who have just returned from the ship. The wireless exchange of messages between the fleet and the station has been very active since the fleet's arrival. Messages have been received from the Japanese fleet, including the Japanese admiral, and from the United States fleet, including the United States admiral. The wireless station has been kept busy in sending and receiving messages. The fleet is expected to remain in the harbor for several days.

REFUSE TO ALLOW THE SALE OF HAWAIIAN PINEAPPLES

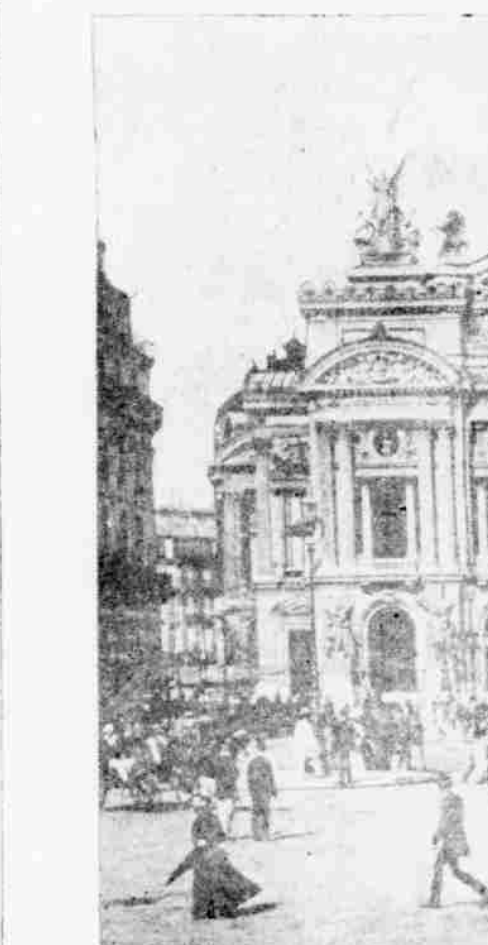
LOS ANGELES, January 25.—The United Fruit and Sugar Company has prohibited the sale of Hawaiian pineapples here until some action of the fruit growers is taken. Six hundred cases are held up here by the blockade of the consignment.

TWO HOMEWARD CRUISERS HERE

Denver and Galveston. With Big Gun Record. Arrive in Port.

While with the paint of peace times, rather old-fashioned in appearance, and clearly with their tall twin smokestacks, and flying long homeward-bound pennants, the United States cruisers Galveston and Denver arrived in port yesterday morning from Manila via Guam, both en route to the coast to go out of commission. Both cruisers will remain here until next Friday when they will leave for Mare Island conveying the United States station tug Frodo, which is to undergo extensive repairs at the Mare Island navy yard.

Those two vessels, which have formed part of Admiral Harber's division of the Pacific fleet at Manila, are in need of extensive repairs, and they have been sent home. They are small vessels in comparison with the big eight battleships, and while they carry ten 5-inch guns each and other artillery of smaller caliber, under the present rapid development toward big warships the Denver and Galveston can never form part of a battle line. The vessels are of a type known in the Navy as a cross between a gunboat and a protected cruiser. They (Continued on Page Two.)



THE GRAND OPERA HOUSE—WITHIN THE FLOODED DISTRICT.

- ### VESSELS TO COMPOSE NEW PACIFIC FLEET
- This will be the strength of the new Pacific fleet.
 - First Division.**
 - Battleships Oregon, Iowa, Utah and Massachusetts.
 - Second Division.**
 - Cruisers Tennessee, Washington, California and Pennsylvania.
 - Third Division.**
 - Armored Cruiser Virginia, and the destroyers Maine and South Dakota.
 - Fourth Division.**
 - Cruisers Montana, South Carolina, Charleston and St. Louis.

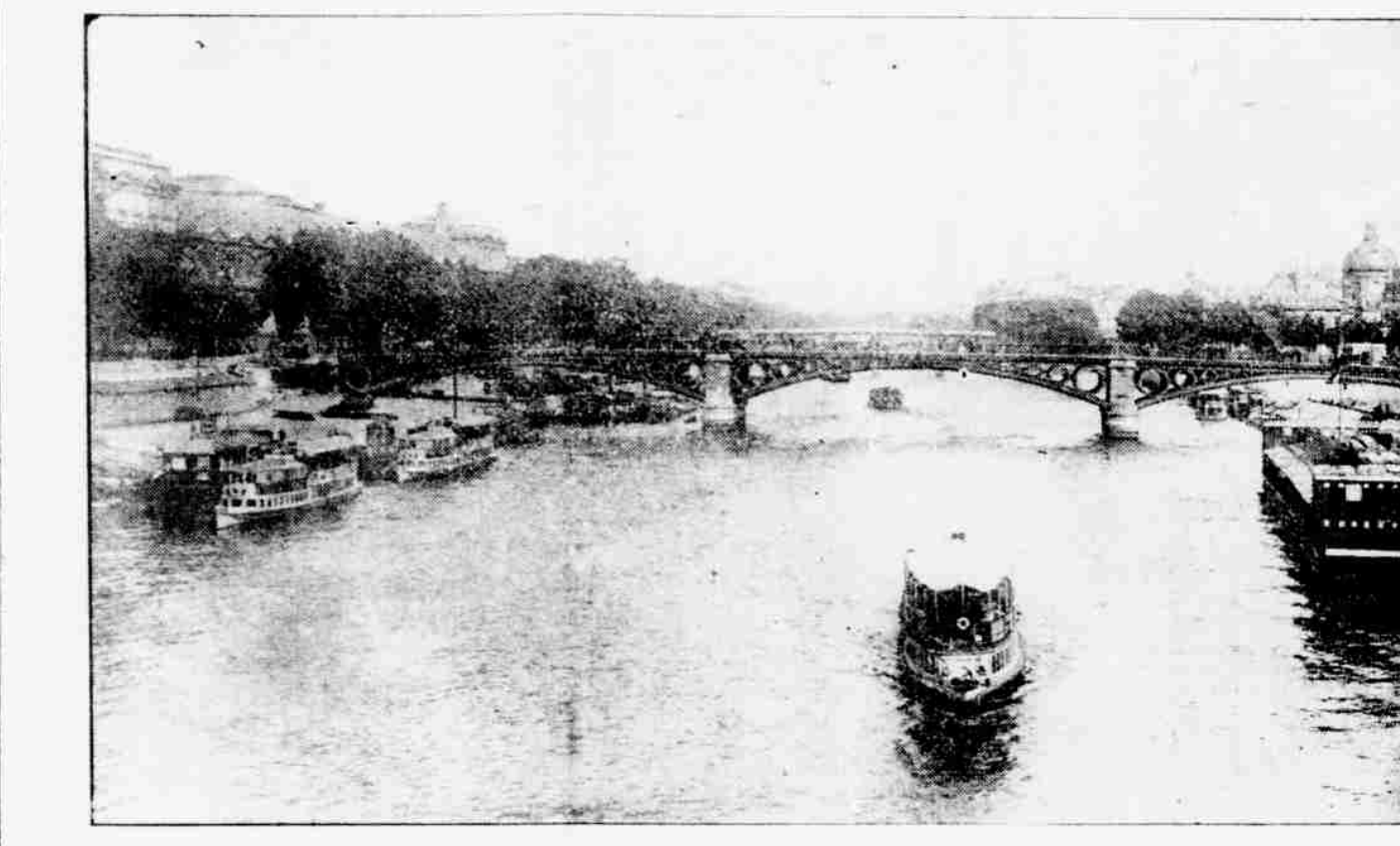
Messages between fleet and shore were frequent. The fleet will remain here a week, then they proceed to San Francisco where they will be detached and will go to the Hawaiian Islands for an cruise. The South American to Buenos Ayres, to participate in an Argentine celebration. Admiral Schervill has been ordered to the Tennessee to transfer his flag. Wireless arrangements have been made for the wireless station at the United States.

PROHIBITION BILL FOR THE CAPITAL

WASHINGTON, January 29.—On the ground of the South Carolina, the bill for the prohibition of the sale of alcoholic liquors in the District of Columbia.

CONDITIONS GROW WORSE IN STRICKEN CAPITAL OF FRANCE

NOW A SCENE OF RUIN AND DESTRUCTION



VIEW OF THE SEINE, IN THE HEART OF PARIS.

ANDREWS FOR PARTY ORGANIZER

Deputy Attorney General May Give Up Law for Politics for Time Being.

In all probability Lorrin Andrews, just retiring as deputy attorney general, will become territorial organizer of the Republican party and campaign manager for the city of Honolulu as soon as he steps out of the capitol. He has not as yet been formally offered the position, but he has been decided upon by the central executive committee of the party and will be asked to take charge if the replies received from the various chairmen of the county committee on the other islands show that the move will be popular.

(Continued on Page Five.)

AVIATOR CHAMPION WILL STAY ON COAST

LOS ANGELES, January 29.—Charles, the American aviator, has decided to locate permanently on the coast and will make his headquarters here and establish an experimental aviation station, providing the city agrees to furnish for his use some level testing course.

PRESIDENT CALLS MUCKRAKES USELESS

WASHINGTON, January 29.—President Taft, addressing a delegation of publishers of periodicals, gathered here to protest against any increase in the postal rates on second class matter, intimated that the muckraking articles published in so many of the periodicals of the day are accomplishing no good.

MAJOR CREE IS ORDERED TO COAST

Major Cree, commanding officer of Fort Rucker, has been ordered to report to the Pacific coast. The general hospital of the Pacific will report to the commanding officer in the department. The Pacific coast is a very important part of the United States. The Pacific coast is a very important part of the United States. The Pacific coast is a very important part of the United States.

SUN AND MOON ECLIPSED.

Sun and Moon were eclipsed in the Hawaiian Islands. The eclipse was visible in the Hawaiian Islands. The eclipse was visible in the Hawaiian Islands. The eclipse was visible in the Hawaiian Islands.

THREE HAWAIIAN FISHERMEN BELIEVED TO HAVE LOST THEIR LIVES BY DROWNING

Those of the finest fishermen in the Islands, so far as can be ascertained, to the fact of going to press, have lost their lives in a comparatively smooth water, somewhere between Waialeale and Hanalei Point. Last on Thursday night, just before midnight, the three men were seen. The three men were seen. The three men were seen.

The three men were seen. The three men were seen. The three men were seen. The three men were seen. The three men were seen. The three men were seen. The three men were seen. The three men were seen. The three men were seen. The three men were seen.

Officials Refuse to Estimate the Dead

REFUGEES MANY

Flood Conditions Change for Better

PARIS, January 29.—Conditions grow hourly worse throughout this city, although the Seine has ceased to rise and it is reported that the swollen tributaries are falling. Yesterday was one of terror, while to add to the scene of confusion, refugees from the surrounding country began to crowd into the upper sections of the city, demanding food and shelter.

The floods reached the heart of the city yesterday and the devastation of property was terrible. To such a height rose the water that the Palace of the Louvre had to be abandoned, with many of the art treasures left for destruction by the elements. The Champs Elysees is covered with water and the destruction along this magnificent boulevard, with its cafes, gardens, theaters, statuary and palaces is enormous.

The famous Luxembourg Gardens, high on the left bank of the Seine, have been reached by the flood and far and wide, throughout the Quartier Latin, the Quartier Germain, the Champ de Mars district and the western boulevards, destruction raged all day yesterday.

Refugees Flocking In.

Refugees by the thousands have been flocking into the city, many walking in from districts where railway traffic has been blocked on account of the floods. By last night thirty-six thousand, homeless and without food, had forced themselves upon the attention of the already distracted authorities.

Along the upper valley of the Seine, the valley of the French Rhine, the (Continued on Page Eight.)

SOLDIER, AMBASSADOR, CONGRESSMAN DEAD

WASHINGTON, January 29.—Brigadier General Draper, U.S.A., died at his home here yesterday, at the age of sixty-eight years. General Draper enlisted in the Twenty-fifth Massachusetts at the beginning of the Civil War and was quick promoted through bravery, being brevetted brigadier general at the conclusion of hostilities. He engaged in cotton manufacturing after the war and has served his country in Congress and as ambassador to Italy.

ARTIST WINS HIS SUIT.

KANSASVILLE, Mo., January 29.—Howard Chubb, an artist, has won his case in the Kansas circuit court brought against him by the heirs and the estate of Natalie, his twelve-year-old daughter, concerning whom the case was brought for the loss of her life. Chubb has been awarded his suit.

THE Pacific Commercial Advertiser

A MORNING PAPER.

RODERICK O. MATHESON

EDITOR

SATURDAY

JANUARY 29

CLEVELAND AND SHIP SUBSIDY.

The unfortunate predicament of the Hamburg American ship Cleveland is a direct result of the failure of the American people to support an American merchant marine, says the San Francisco Chronicle, taking advantage of the case to urge ship subsidy.

Continuing the Chronicle says: This ship is just now an excursion steamer with a load of passengers from New York who are traveling around the world, and will return to New York. If the ship were returning to New York, there would be no trouble, but, unfortunately, the last leg of the journey is by rail from this port. The ship will, therefore, have carried passengers from one American port to another and be subject to a fine of \$200 per passenger, amounting, it is said, to \$132,000. It is under contract with its passengers to return them to New York by this route, and is in "a fix." It can get out of it, if the passengers do not kick too vigorously, by taking them to British Columbia and thence by a northern route to New York, for such as accept that solution, and a ticket by rail to this city for those who insist. An alternative is a compromise with the treasury department, by which its fine shall be reduced to a nominal amount, in regard to which negotiations are now pending.

Nobody desires to see the ship penalized or the passengers inconvenienced, as the result of an enterprise undertaken in good faith. It would not prevent similar excursions in the future by foreign ships, but merely divert the return port from this city to a British Columbian or Mexican port, with the Canadian or Mexican railroads having the first call on the return trip to New York. The public would gain nothing except the penalty in this particular case. And yet the law is there. It will be violated if the passengers are landed here, and the laws ought to be enforced.

If the American people would consistently apply the protective principle to all industries which deserve protection, there would be American ships afloat to compete for such business, which is a growing one, and likely to greatly increase. As our laws stand now, we virtually prohibit American vessels from engaging in this traffic and penalize foreign ships which attempt to supply the demand. Modern economic science recognizes that there is no national asset more valuable than control of its own seaborne traffic—and as much more as it can get—and it would be inconceivable if it were not so plainly manifest that a nation so well situated as we for sea traffic, and once having possessed a great fleet of ships in all oceans, should permit its merchant marine to be almost entirely driven from the high seas for lack of the same measure of protection which it grants to all other industries.

COASTWISE SUSPENSION.

The decision of the Delegate and his adviser not to press the question of the temporary suspension of the coastwise law, as almost unanimously desired here, is regrettable. It is more than that. It is folly. Delegate Kaula and Mr. McClellan are on the ground and in a position to know what they are doing, but, in view of recent happenings, any hanging back at this time is throwing opportunity away.

An idea exists that McClellan is growing too cautious regarding coastwise suspension. The tenor of some of the letters received here from him lead to the belief that he is growing out of touch with the community on the subject, and that he has transferred a part of this to the Delegate.

It may be that since the Washington letter, published in this issue, was written, there has been another change of opinion, and the opportunity afforded by the Cleveland incident may be grasped. At any rate, no time should be lost in informing the Delegate and Mr. McClellan that Honolulu has had no change of heart; that this community sees no relief in the proposed ship subsidy law, and that the matter of the temporary suspension of the coastwise law is expected to be attended to.

PROHIBITION ARGUMENTS.

One of the main arguments being advanced by the local prohibitionists in their letter campaign and lobby with Washington on the Hawaii prohibition bill, an argument advanced against the home rule defense of present conditions, is in a review of liquor legislation here during the past five years. It is being pointed out that during the campaign of 1906, "booze, beer, and buncombe" were used as campaign material by one of the parties, and that the temperance people had to fight strenuously to defeat the main upholders of that style of campaigning. It is being pointed out that the allegedly good liquor law of the present was in danger of repeal at the last legislature, and that a law which would throw the liquor business into politics was fought for and nearly carried by the liquor ring in the legislature.

These things are advanced to show that the present state of the liquor traffic here was not arrived at until after a strenuous fight, and that it may be upset at the next session of the legislature.

GOVERNMENT BY COMMISSION.

The people of Honolulu do not want government by commission. Of course they don't, but some of them might show it in more ways than to simply talk against the idea. Actions speak louder than words, in a case of this kind. One thing is certain. Uncle Sam is not going to put millions in money and thousands of men in and around Honolulu and allow the government to remain in incompetent hands. Among those eligible for elective office in this community are many in whose hands any officials could trust the reins of local government, but in too many instances these have not been the ones selected to hold the reins. This is too important a place in a military and naval way, and too insignificant in a political way, to be governed as it has been, and should Washington decide to handle the administration of Hawaiian affairs by means of an appointed commission, no question of sentiment would be allowed to stand in the way.

The O. R. & L. Company is meeting the increased demands upon their system as fast as they arise. The company officials are proving as energetic as they are thorough, and their efforts to meet changing conditions should receive the hearty commendation of the business community of Honolulu as well as that of the officers and men at Lelehu.

CALVIN'S SYNDICATE OFF FOR MANILA

SAN FRANCISCO, January 21.—Among the passengers who sailed from San Francisco on the steamship Tongo Maru, which left here for the Orient on December 28, were a mysterious "Mr. and Mrs. William Hawley," who are now believed to have been Willard P. Calkins, formerly head of a syndicate of newspapers in various parts of the State, and a young woman, whose name did not appear in his wife's complaint for divorce, but who is supposed to have had much to do with their marital differences.

Friends of Calkins who have missed him from his accustomed haunts since the new case were surprised when one of their number yesterday made public the announcement that he had received a communication from Calkins dated at Honolulu on January 3. It was to the effect that "we have arrived safely on our way to Manila."

BROOKLYN CANINES ARE GOING TO THE DOGS

NEW YORK, January 29.—There is a new scandal in the Brooklyn Police Department. It has been discovered that six of the police dogs, which were added to the force a year ago, have become addicted to the use of intoxicants. Three times they have been found under the influence of liquor while on duty.

The dogs, it is said, made friends some time ago with a bartender in the district where they patrol. He offered them liquor and they soon acquired an appetite for it. Various suggestions for disciplining the canine guardians of the peace are under consideration.

SAYS HE SAT UPON A RED HOT CHAIR

PORTLAND, Ore., January 19.—George F. Scott today complained, said in the circuit court, that he had been injured by the injured Benecolent and Protective Order of \$2500. Scott says that he was injured to become a member of the organization, which is composed of Mrs. Americans, and as part of the initiation ceremony, he was forced to sit upon a red hot chair, thereby sustaining injuries for which he claims damages.

THE BUSINESS WORLD

Churchill Harvey Elder, Financial Editor.

U. S. WEATHER BUREAU, January 28.—Last 24 Hours' Rainfall, trace. Temperature, Max. 79; Min. 67. Weather, fair.

SUGAR.—96 Degree Test Centrifugals, 4.08c. Per Ton, \$81.60. 88 Analysis Beets, 13s. Per Ton, \$95.40.

Rather more boisterous times seem to be ahead for the holders of Mayflower Consolidated, according to San Francisco advice. A dispatch from the Bay City, dated January 15, reads as follows:

A telegram was received from Rhys today stating that Gas-Race, president of the Mayflower Consolidated, has received from his disaffected position and has agreed to meet the other stockholders next Monday. The telegram also stated that the lease which Eisen had made of the Mayflower Company to his own leasing company has been abandoned.

It is a well-known fact here that large Los Angeles stockholders and take steps to protect their interest in a most vigorous fashion provided Eisen continued to ignore the rights of the other stockholders. It seems that the differences will be adjusted amicably, in which case Mayflower will quickly sell back to its old inactive.

Bonds Inactive.

There were a few desultory bond sales yesterday, but the sum total of them was not enough to affect the price in any way. Ninety-five twenty-five was bid for Hilo extension bonds, but no one cared to let loose and in fact no selling quotation was made. Ninety-seven was the last quotation made and it is very doubtful if any of the securities can be had at a lower figure. Brokers yesterday were confidently expecting that the next sales would be made at that price or better.

Par was bid for the same company's issue of 1901, but there was none to be had at less than 100.25.

Before the session \$1000 worth of Kaimi railway bonds went at 101. This is twenty-five cents above the price at which the last sales were recorded and is the high mark reached. During the session bids of 100.50 went begging, but it is probable that 100.75 might secure a small amount. The securities are counted A No. 1, however, for they bear interest at the rate of six per cent and have prime backing.

O. R. & L. lives made their appearance on the sheet, \$2500 worth being sold during the session. The first lot, representing \$500 par value, went at 102.50, an advance of fifty cents over the figure of the last recorded sale. Two lots representing \$1000 went shortly after at 102. Bids of 102.25 failed to draw out any more, however.

McBride's were held yesterday at 100. Bids of 99.50, the price at which the last sales were recorded, did not look a bit good to the holders and in consequence no sales were made.

No bids were made on Oahu bonds so no price was quoted, but it is doubtful if the securities can be had at par. The advent of the new issue of Oahu bonds on Tuesday next is being looked forward to with some eagerness, for there are practically no bonds to be had in any quantities at the present time.

The Stock Market.

The stock market showed a tendency to brace up, though Ewa and Oahu still moved downward a little. During the session the former stock sold at 35, but later the price slipped down to 33.75 bid, 33.87 1/2 asked. There does not seem to be any reason to look for much further depreciation unless some one should begin unloading, which considering the condition of the plantation is extremely doubtful.

One twenty-five was the best bid recorded for Waiolu, but this failed to attract any sales. The asked price was 125.50 and holders do not show any anxiety because none has come forward to buy at that price. The last sale was made at 125 and purchasers seem pretty well satisfied with the buy.

Just how much the sale of 340 shares of Hawaiian Agricultural, made Wednesday at 225, affected the market was noticeable yesterday when a small block of twelve shares went at the rate of 240. No more were to be had even at that price, holders asking for 265. The closing quotations were 246 bid, 265 asked. As a matter of fact there is but little to be had of this stock, and the great majority of the holders are not prepared to sell at any price. The attempt to make capital out of Wednesday's sale failed miserably and those who expected that the price would be forced down were mightily disappointed.

The capital stock of this company is but \$1,200,000 and the assets on December 31, 1908, were reported as \$1,097,158.75. There are no outstanding bonds. The major portion of this year's crop will come from rations, though there is not a great variance between the ration and the plant area.

Hawaiian Commercial sold between 38.75 and 38.75, the price at which the side last previously reported was made. Fifty-five shares of Hawaiian Sugar sold between 53 and 53, an advance of one dollar over the figure of the side last previously recorded. This price did not secure any during the session, however, holders demanding 55.

One hundred and twenty shares of Hawaiian Commercial were sold between 28.75 and 28.75. Two hundred and fifty-five shares of Oahu were sold at 101. Fifty shares of Ewa were sold at 34.25 and 205 shares sold during the session at the same price.

Honolulu brought 22.50. Two hundred and forty-five shares sold during the session at that figure. Two hundred shares of Honolulu brought 18.75.

Papa brought 112.50 bid, the session an advance of two dollars and fifty cents over the price at which the last sale was made. During the session 140 was the highest bid recorded, but 145 was demanded.

Twenty-five shares of M. McBride sold at 7. The figure at which the last sale was made.

The following quotations were recorded:

Stocks.

Hawaiian Agricultural—127.24.
Hawaiian Commercial—100.20625.
Ewa—10.50.
Honolulu—17.50.

Hutchinson—2000.18.50.
Oahu—50.50.100.50.50.50.50.50.
Ewa—10.50.50.50.50.50.50.50.
Honolulu—100.15.50.50.22.50.
McBride—27.07.

Bonds.

Kaimi railway—100.25.
O. R. & L. 5—100.25.
100.25.

Letters From The People

PROHIBITION.

Editor Advertiser:—It seems to me that far from combating the passage of a law making Hawaii a prohibition Territory, the people of this Territory should support and welcome such a measure. Certainly Hawaii offers ideal ground for testing total prohibition and I hardly believe that the Territory would suffer any undesirable consequences were the sale of intoxicants to be stopped entirely.

I have never been a prohibitionist and have always combated, as far as it has been in my power, all efforts to secure either municipal, county or State prohibition in the places where I have lived. But it has always been my belief that prohibition, as enforced on some parts of the mainland, does not prohibit. Nothing short of a federal embargo on the manufacture, importation or possession of spirituous liquors will prohibit.

I am not one of those who think that the mere drinking of a glass of spirituous, vinous or malt liquor is a crime; I do not even consider the use of intoxicants a vice, so long as the drinker does not use liquor to excess. But we all know that there is a great army of persons to whom liquor is a curse and certainly those of us who can safely take our glass should be willing to forego the indulgence of an appetite which is expensive to say the least if thereby we can keep temptation out of the path of the man who needs help.

A territorial prohibition law would have no effect on Hawaii other than to close up the saloons and cafes and to place the selling of spirits in the hands of blind pigs. On the other hand, a federal law which would forbid the issuance of a federal liquor license, would make the importation of spirits a crime, and would render the men who have spirits in their possession liable to punishment, would speedily put a stop to the traffic.

It is urged that prohibition would be disastrous to the tourist traffic. I hardly believe that such would be the case, but if it be so, certainly Hawaii is not depending upon tourist trade as a means of securing future greatness. If she be, she is leaning upon a very frail reed. It was not tourists which made Southern California great, it was manufacturing, agriculture, horticulture. But I do not believe that prohibition would keep tourists away. Were there no saloons here much of the money now spent in the maintenance of the police department could be turned into other channels.

The argument has been advanced that the abolition of the liquor traffic would throw thousands of men now engaged in the business out of employment. To me that seems to be the weakest sort of an argument. If liquor selling were made a crime we should not give any more thought to the fact that those now employed in the trade can not follow their calling than we do to the inability of the burglar to pursue his undisciplined occupation.

I do not mean that the saloon man can now be classed with the murderer, for as long as the sale of liquor is legalized the liquor business must be as legitimate as any other field of activity. But if, as has been pretty clearly demonstrated, liquor be the agent which is slowly but surely sapping the life of the country, the traffic should be stopped and the dispenser of spirits should be placed on the same basis as the evildoer who in other ways prostitutes society.

PRO BONO PUBLICO.

FISHERMEN BELIEVED TO HAVE LOST THEIR LIVES

(Continued from Page One.)

The three started to swim to shore, they were either overwhelmed by breakers or attacked by sharks.

Because one of the missing men, is a well known character in Hawaii. He has fished off Lahaina for years and is looked on as the pastmaster expert in canoeing and fishing. There is still a possibility that the men have headed at some uninhabited spot, but no news of it has come to hand as yet and it is possible that their disappearance will remain one of those unsolved mysteries that arise everywhere where men go fishing in small boats.

IN THE DIAMOND FIELDS.

From the methods used to locate the stones the new diamond fields in German South Africa might very well be called "Tom Tiddler's ground," says the Wide World Magazine. The diamonds are very small, but are exceedingly plentiful.

They are found in the open desert, where nothing but sand, marked by the slightest sign of brush or shrub, is to be seen for vast distances. The men who search for the stones—needless to say, they are all natives—have ten inches to go every morning from camp to the searchers work on their hands and knees, apparently regardless of the sunburn, sitting the surface sand through their fingers. Most of them are all Kimberley boys and they are very keen on discovering stones.

WILL ADD TWO STARS TO FLAG

New Mexico and Arizona Will Become States in the Summer of 1911.

WASHINGTON, January 19.—No new stars will be added to the American flag before the summer of 1911, according to the plan under consideration in the senate committee on territories. The program is said to have the endorsement of President Taft. It provides for the reporting of an entirely new bill for the admission of New Mexico and Arizona as States.

The Hamilton bill which was passed by the house is declared to be objectionable to the senate committee on two grounds. First, it does not provide for sufficient lapse of time between the proposed territorial elections and the election of State officers and members of the senate and house of representatives. The other objection has to do with the protection of public interests in relation to existing and proposed land grants.

Under the terms of the Hamilton bill, elections of officials of the new States and representatives in congress could be held almost immediately after State constitutions were adopted and approved by the President. The new bill will authorize New Mexico and Arizona to hold elections for the adoption of constitutions, but no election for State officers and members of congress could be held until after the constitutions had been approved by the President and congress.

The effect of this provision would be to permit the Territories to hold constitutional conventions and elections for the adoption of the constitution during the present year, but the constitution could not be ratified until congress met next December. After ratification the State elections could be held.

Under the terms of the proposed senate bill the two Territories could not possibly be admitted before the summer of 1911. The Republican members of the senate committee headed by Senator Beveridge have conferred with President Taft and it is understood they are unanimous in favor of this program.

SUSPENSION IS NOT TO BE PRESSED

(Continued from page one.)

Hawaiian judgeships. Mr. Wickersham told him, as has been cabled to The Advertiser, that it was "practically decided" A. G. M. Robertson would be nominated for the second federal judgeship, that De Bolt would be named for the supreme bench, and Judge W. J. Robinson would be re-nominated.

Square Deal.

The attorney general squarely denied the reports that Governor Fear had discouraged the selection of Robertson for judge. Assertions have been flying thick and fast that the governor emphasized to the attorney general objections which had been raised heretofore to Mr. Robertson and suggested the wisdom of selecting some other man, although stating that in legal qualifications Mr. Robertson was worthy of a place upon the bench. The attorney general, however, says that the Governor not only formally endorsed Mr. Robertson, but stated in conversation that Robertson had the confidence of the community and would be entirely acceptable. The reports to the contrary have possibly been encouraged by some of the Governor's enemies.

There was a rehearing Tuesday before the board of army engineers of the Kaimali harbor project. The Delegate, Mr. McClellan, W. G. Cooke, and Captain Sweetser, the last two of New York, appeared to urge that there be no such delay as the former plans of sending the papers back to Honolulu would entail.

E. M. Watson, of Honolulu, is in town on business before the Supreme Court.

PROSPERITY DUE TO PROTECTION

BERLIN.—It is claimed by the Berliner Neueste Nachrichten that owing to a great measure to the establishment of the German system of protection in 1879 the production of the most important agricultural commodities has very nearly doubled during the last 30 years. Between 1879 and 1889 the average cereal harvest in Germany is said to have been: Rye, 5,500,000 tons; wheat, 2,250,000 tons; barley, 2,000,000 tons, and oats 4,000,000 tons. For 1907, which was a fair average of the last 10 years and as good as 1909, the harvest is given as: Rye, 9,750,000 tons; wheat, 3,500,000 tons; barley, 2,500,000 tons, and oats 9,000,000 tons. The production of potatoes has risen from 25,000,000 tons to about 45,000,000 tons, while the production of sugar beets has been quadrupled.

BLACK DIAMONDS FOUND IN BRAZIL

Miners can not explain why all the black diamonds in the world seem to be concentrated in an area of about 225 square miles in Brazil, says the Chicago Daily Journal. At the Kimberley mines in Africa none of the genuine black diamonds have been found, and in the Brazilian field none of the crystals have been found in the open.

FOR SALE

UPPER KALIHI VALLEY.
A tract of about 60 acres, nearly arable, with two constantly running streams. Will grow almost anything and you have a market right at your door. A delightful place to live.

Real Estate Department

Hawaiian Trust Co., Ltd.
923 Fort Street.

The Bishop Trust Co. Offer the Following Real Estate Bargains

6-room residence on Kianau St. in good condition and very good location \$4000.00
Story and half house on Lunalilo St. This is a snap at 2200.00
Fine 7-room house on College St. modern in every way. Also 3-room cottage in rear. 5300.00
House on Anapuni St. Very desirable house and elegant location. 4200.00
UNIMPROVED.
We also have vacant lots in Kaimuki, Waiialea Heights, Maunaloa Valley, and Kapiolani Park.

BISHOP TRUST CO. LIMITED Bethel Street.

The Yokohama Specie Bank, Ltd.

Capital (Paid up).....Yen 24,000,000
Reserve Fund.....Yen 15,000,000

HEAD OFFICE YOKOHAMA

The bank buys and receives for collection bills of exchange, issues Drafts and Letters of Credit, and transacts general banking business.
The Bank receives Local Deposits and Head Office Deposits for fixed periods.

Local Deposits \$25 and upwards for one year at rate of 4% per annum.
Head Office Deposits Yen 25 and upwards for one-half year, one year, two years or three years at rate of 4% per annum.

Particulars to be obtained on application.
Honolulu Office—67 S. King Street.
P. O. Box 168.
M. TOKIEDA, Manager.

A HABIT THAT YOU WILL BE GLAD TO HAVE

You can acquire the habit of saving and there is no better way of doing so than by depositing regularly your surplus cash in a Savings Bank.

You can open an account with one dollar or more and regular deposits will soon give you a good balance.

Interest paid at four and one-half per cent per annum.

Bank of Hawaii, Ltd.
Fort and Merchant Streets.
Capital and Surplus \$1,000,000

Interest paid at four and one-half per cent per annum.

Interest paid at four and one-half per cent per annum.

Interest paid at four and one-half per cent per annum.

Interest paid at four and one-half per cent per annum.

Interest paid at four and one-half per cent per annum.

Interest paid at four and one-half per cent per annum.

Interest paid at four and one-half per cent per annum.

Interest paid at four and one-half per cent per annum.

Interest paid at four and one-half per cent per annum.

Interest paid at four and one-half per cent per annum.

Interest paid at four and one-half per cent per annum.

Interest paid at four and one-half per cent per annum.

Orpheum Theatre

TONIGHT

Good Vaudeville

and the

JACK GOLDEN

MUSICAL COMEDY COMPANY

Matinees Wednesdays and Saturdays.

PRICES—Evening, 10, 20 and 30c.

Matinee—Reserved Seats, 10c.

The Bonine

SELECT VAUDEVILLE

and the choicest product of the Camera from all parts of the world.

FROM 7:30 O'CLOCK.

Admission—5c, 10c and 15c.

Park Theater

Best Program

—of—

MOTION PICTURES

In the City.

Admission 5c, 10c, and 15c.

GENTLEMEN'S FURNISHING GOODS

Low Prices. Big Stock.

C. K. CHOW & COMPANY

King and River Streets

PAPER

FOR ALL PURPOSES.

American-Hawaiian Paper and Supply Co., Ltd.

LOCOMOBILE

"The Best Built Car in America"

SCHUMAN CARRIAGE CO., LTD., Agents.

Choicest LUMBER

Put into all buildings for which we contract to build.

PRICES THE LOWEST.

City Mill Co., Ltd

KEKAULIKE STREET

Fire Insurance

THE B. F. DILLINGHAM CO., LTD.

General Agents for Hawaii:

Atlas Assurance Company of London
New York Underwriters' Agency.
Evidence Washington Insurance Company.

Choice Cut Flowers

MRS. E. M. TAYLOR

Tel. 339 Young Building.

HAWAIIAN DEVELOPMENT CO.

Limited

STANGENWALD BUILDING

V. B. McSTOCKER - Manager

P. O. Box No. 268 Cable: Develop

Wah Chong & Co.

WAVERLEY BLOCK

DRY GOODS

C. BREWER & CO., LTD.

AGENTS FOR THE

Royal Insurance Co., of Liverpool, Eng. and London Assurance Corporation.
Commercial Union Assurance Co., Ltd. of London.
Scottish Union & National Insurance Co. of Edinburgh, Scotland.
Caledonian Insurance Co.
The Upper Rhine Insurance Co., Ltd. (Marine).

Fraternal Meetings

POLYMERIA ENCAMPMENT NO. 1.
I. O. O. F.
Meets every first and third Friday of the month at 7:30 p. m. in Odd Fellows' Hall, Fort Street. Visiting brothers cordially invited to attend.

EXCELSIOR LODGE NO. 1, I. O. O. F.
Meets every Tuesday evening at 7:30 p. m. in Odd Fellows' Hall, Fort Street. Visiting brothers cordially invited to attend.

HAEMONY LODGE NO. 3, I. O. O. F.
Meets every Monday evening at 7:30 p. m. in Odd Fellows' Hall, Fort Street. Visiting brothers cordially invited to attend.

PACIFIC REBEKAH LODGE NO. 1, I. O. O. F.
Meets every second and fourth Thursday at 7:30 p. m. in Odd Fellows' Hall, Fort Street. Visiting Rebeekahs are cordially invited to attend.

OLIVE BRANCH REBEKAH LODGE NO. 2, I. O. O. F.
Meets every first and third Thursday at 7:30 p. m. in Odd Fellows' Hall, Fort Street. Visiting Rebeekahs are cordially invited to attend.

OCEANIC LODGE NO. 371, F. & A. M.
Meets on the last Monday of each month at Masonic Temple, at 7:30 p. m. Visiting brothers are cordially invited to attend.

LEAHI CHAPTER NO. 2, O. E. S.
Meets every third Monday of each month at 7:30 p. m. in the Masonic Temple. Visiting sisters and brothers are cordially invited to attend.

LEI ALOHA CHAPTER NO. 3, O. E. S.
Meets at the Masonic Temple every second Saturday of each month at 7:30 p. m. Visiting sisters and brothers are cordially invited to attend.

OHAI LODGE NO. 1, K. of P.
Meets every first and third Friday at 7:30 o'clock, Pythian Hall, corner Beretania and Fort streets. Visiting brothers cordially invited to attend.

WILLIAM MCKINLEY LODGE NO. 8, K. of P.
Meets every second and fourth Saturday evening at 7:30 o'clock, in Pythian Hall, corner Beretania and Fort streets. Visiting brothers cordially invited to attend.

COURT CAMOES NO. 810, A. O. F.
Meets every second and fourth Tuesday of each month at 7:30 p. m. in San Antonio Hall, Vineyard street. Visiting brothers cordially invited to attend.

CAMOES CIRCLE NO. 240, C. O. F.
Meets every first and third Tuesday of each month at 7:30 p. m. in San Antonio Hall, Vineyard street. Visiting companions are cordially invited to attend.

COURT LUNALILO NO. 6800, A. O. F.
Meets every first and third Wednesday evening of each month at 7:30 p. m. in Pythian Hall, corner Fort and Beretania streets. Visiting brothers are cordially invited to attend.

HONOLULU AERIE 140, F. O. E.
Meets on second and fourth Wednesday evenings of each month at 7:30 o'clock, in Pythian Hall, corner Beretania and Fort streets. Visiting Eagles are invited to attend.

HONOLULU HARBOR NO. 64, A. A. of M. & P.
Meets on the first Sunday evening of each month at 7 o'clock, in Odd Fellows' Hall. All sojourning brethren are cordially invited to attend.

THEODORE ROOSEVELT CAMP NO. 1, S. W. V.
Meets every second and fourth Saturday of each month at 8 o'clock, in Waverley Hall, corner Bethel and Hotel streets, at 7:30 p. m. By order of the Camp Commander.

HAWAIIAN TRIBE NO. 1, I. O. R. M.
Meets every first and third Thursday of each month at 7:30 p. m. in P. Hall, corner Fort and Beretania streets. Visiting brothers cordially invited to attend.

HONOLULU LODGE 616, B. P. O. E.
will meet in their hall, King street, near Fort, every Friday evening. Visiting brothers are cordially invited to attend.

HONOLULU SCOTTISH THISTLE CLUB
Meets on 2nd and 4th Fridays in the month at 8 o'clock, in Rooms 11 and 12, Alexander Young Building.

HAWAII CHAPTER NO. 1, ORDER OF KAMEHAMEHA
Meets every first and third Thursday evening of each month at 7:30 o'clock in Fraternity Hall, Odd Fellows' building, on Fort street.

DAMIAN COUNCIL NO. 563, Y. M. I.
meets every second and fourth Wednesday at 7:30 o'clock p. m. in St. Louis College Alameda Hall, corner Hotel and Union streets. Visiting members are always welcome.

THEOSOPHICAL SOCIETY.
Honolulu Branch, No. 1162, Miller street, ground floor, Kilauea Art League building. First Tuesday of every month at 7:45 p. m. Public Meeting. Visitors welcome. Other Tuesdays at 7:30 p. m., Lodge Meeting for Members.

Ohio Clothes Cleaning Co
HARRISON BUILDING

Members are privileged to have four suits cleaned per month and satisfaction guaranteed.

VICTOR RECORDS
Latest Productions on Sale.

JAS. W. BERGSTROM & BRO.
Masonic Temple, Alakea Street.

MERCY TEMPER JUSTICE OF LAW

Tillie Woolsey Escapes Any Punishment for Her Serious Offense.

Tillie Woolsey, the young girl whose newborn child was found concealed after its death and who was arrested and indicted by the grand jury on the charge of concealing the death of an illegitimate child, pleaded guilty before Judge De Bolt yesterday. But she will not be punished for her deed, which, in the opinion of the authorities, was more of a mistake than a crime. The judge suspended sentence for thirteen months; the deputy county attorney agreeing to this course and stating that he did not believe the poor girl had any criminal intent in what she did. She was merely trying to conceal her shame.

Peter Negels was indicted for an unmentionable crime. He was arraigned but his case was continued.

The matter of Jacintho Gomes, accused of assault with a dangerous weapon, was investigated by the grand jury but no true bill was returned.

Maggie Handorp has petitioned the courts to order her husband, C. Handorp, to provide for her support. In her complaint, filed yesterday, she says that on January 2 of this year Handorp came home and said that he was tired of living with her, and left the house, not returning until January 17, when he came home to get his clothes and again departed after reiterating his statement that he would live with her no longer. She says that she was then in a condition such that she demanded care and attention, not to speak of tenderness, but notwithstanding this fact, her husband left her penniless and destitute and entirely dependent upon charity.

Judge Robinson issued an order to Handorp to appear in court and show cause, if he can, why he should not be compelled to provide for the support of his wife.

J. Oliver and H. C. Carter, executors of the will of Joseph O. Carter, have filed a petition for the allowance of their final accounts and for the distribution of the estate. They charge themselves with \$83,768.45 and ask to be allowed \$82,613.63.

In the matter of the estate of Carl Heinrich August Lawditz Alkhorn, the widow, now living in Germany, has, by her attorney, filed her election to take under the will.

Quinn Demurs.

Tom Quinn has filed a demurrer to the suit brought against him by Andrew I. Bright for \$5,000 damages for injuries alleged to have been sustained by being run over by Quinn's machine.

Judgment Rendered.

In the matter of William Walters versus the Kona Vineyards Company, Judge Whitney has given judgment for the plaintiff in the sum of \$500 plus interest and costs, a total of \$612.93.

Wants a Divorce.

Tsuni Miyamoto Shichiro has filed suit for divorce from Miyamoto Shichiro on the grounds of extreme cruelty and non-support.

MILLS ACTUALLY LOSES A COLLECTION

It looked very much as though the Hawaiian Star company was unable to turn over an account to a collector yesterday afternoon, when the civil case of H. T. Mills vs. Lionel Mathews came up before Judge Andrade. The action, which was for a bill contracted for advertising while Mathews was owner, or supposed owner, of the San Francisco theater, and a decision was given in favor of the defendant by Judge Andrade.

The case is a complicated one and entails many intricate legal points. The whole thing seems to hinge on the fact that Mills is a disbarred lawyer and has no more right in court than that of any American citizen who wishes to represent himself.

Mills' method in collecting money is to take over an account by purchasing it outright for what he thinks it is worth. Then he takes legal action against the debtor and grabs what he can get. But, in this case he ran up against a snag.

The account against Mathews was sold to him in due form by the Hawaiian Star company. But Judge Andrade held that there was not sufficient evidence to show that the persons who sold the claim to Mills had a right to do so.

Seeing that Mills is not a lawyer, he has no right to have a claim assigned to him, but must buy it outright before he can bring action. The purchase was made in due form, but there was a lack of evidence as to whether the sellers had a right to sell.

Backer in this case is a tangled mass of legal intricacies in connection with the selling and reselling of the San Francisco open air theater. Twelve is said to have sold a share to Mathews, George Osborne is said to have been agent in the transaction. Mathews is said to have a charge of gross abuse against Osborne and the whole matter has been a 2000 foot long.

The case against Twelve has been postponed until some of these matters have been settled and the case of H. T. Mills vs. Lionel Mathews seems to be the last of a number of suits in the civil court, that will furnish the pockets of the lawyers and finally bring out a few abstract decisions that will go down on record in dusty tomes.

CITY AUCTION CO

J. W. SMITHIES, Manager.

THIS DAY

SATURDAY, JANUARY 29, 1910.

AT 10 O'CLOCK

AT CENTRAL BUILDING, EWA OF GUNST CIGAR STORE, KING ST.

Persian Rugs

Turkish Rugs

and

Damascus Brasses

JAS. W. PRATT, Auctioneer.

Sunday Church Services

Central Union Church.

Bible school at 9:50. Mr. Ed Towse, superintendent.

Men's League Bible class at 9:50. A final word on Mark 13. The assistant minister.

Morning worship at 11; sermon by the minister.

Christian Endeavor at 6:30. "The Most Stirring Events of Missionary History"; Mr. Harold Clarke, leader.

Evening worship at 7:30. The minister will continue the series on "Young America's Religious Questions"; "Life after body death."

The chorus choir will sing at both morning and evening services. In the morning the anthem, "The King of Love," Gounod; in the evening, "Peace I Leave with You," solo parts by Mr. Philip Hall.

A cordial welcome is extended to all to attend these services.

Doremus Scudder, minister; Amos A. Ebersole, assistant minister.

Christian Church.

A. C. McKeever, minister.

Bible school, 9:45 a. m., "A Study in the Life of Christ"; 6:30 p. m., Y. P. S. C. E., subject, "Foreign Missionary"; 11 a. m., sermon by the minister, "Steadfast, Unmovable, Always Abounding"; 7:30 p. m., sermon by Miss Mahelle Biggart, B.A., of New York, subject, "Go One More Mile."

In the East Miss Biggart is known as "Dinah, the Preacher," a preacher of sinners. She is an interesting and entertaining speaker, and all are invited to hear her upon this occasion. Especially are the young men invited. The music will be in charge of the young men of the congregation.

First Methodist Church.

First Methodist Episcopal church, corner of Beretania avenue and Miller street. John T. Jones, pastor; F. L. Lee, chorister; Miss Agnes Wigstrom, organist.

Sunday school, 10 a. m., R. H. Trent, superintendent.

Morning worship, 11 a. m.; sermon by the Rev. C. N. Pond, D.D., of Oberlin, Ohio; subject, "The Perfect Law." Epworth League, 6:30 p. m.; topic, "The New Acts of the Apostles" (missionary topic).

Evening worship, 7:30 p. m.; sermon by Rev. R. S. Gault, new secretary of Boys' Work, Y. M. C. A., in sermon to young people. Mr. Lee will sing.

Prayer meeting, Wednesday, 7:30 p. m.; subject, "The Christian in Society." Leader, Miss Carlota Meyer.

A very cordial invitation is extended to all who are not regular attendants at other churches in the city. Enlisted men receive a warm welcome.

Kaunakapili Church.

The regular monthly English service will be held at Kaunakapili church Sunday morning at eleven o'clock. Rev. W. B. Westervelt will speak. Special music will be given by the Girls' Guild of the church. Rev. Moses Nakamura will interpret the address at the close of the service.

PRINCE VICTOR ENGAGED TO WED

The Cousin of Italy's King Is to Marry Princess Clementine of Belgium.

BRUSSELS, January 18.—It is believed here that the engagement of Princess Clementine and Prince Victor Napoleon will be announced on February 20th, the date on which the court's official mourning for the late King Leopold will be ended. The Prince is a cousin of King Victor Emmanuel of Italy.

Leopold opposed the marriage five years ago on the ground that it might strain the relations between Belgium and France, but the political situation disappeared with the death of the father, when Clementine became the cousin of the reigning monarch of Belgium.

Prince Victor is regarded by the reviewers of France as the hope of a re-establishment of the monarchy, but has not concerned himself greatly with politics.

Jas. F. Morgan

STOCKS, BONDS AND REAL ESTATE

No. 857 Kaahumanu St.

A BARGAIN.

\$4500 will buy large house, stables and servant quarters. Lot 200x300; good marine and town view; fruit and shade trees; will make terms to you.

Finest lot in Honolulu, corner Prospect and Kapiolani streets. Very cheap.

The fine residence of Captain Soule on Lunalilo street. Price is right.

PUUNUI.

\$700 will buy about 1/2 acre lot with good view. Terms.

\$550 will buy a fine lot 83x170 ft.; good view. Terms.

\$3000 will buy a nice home on Matlock avenue.

A 3-bedroom home with garage, etc.; good and cheap.

\$2500 will get you the best bargain in town; 3 bedrooms; house in good condition; has a good tenant.

A furnished house on Tantalus; over 1 acre of ground; will sell, lease or rent.

Choice lots in Manoa on upper Manoa road.

KAIMUKI.

We still have a few good lots in Kaimuki; also a nice home, well planted with fruit trees.

Easy terms.

JAS. F. MORGAN.

THE HAWAIIAN ANNUAL FOR 1910

Is out, "bigger and better than ever." Price 75 Cents, or \$8.00 per dozen. Orders for mailing promptly attended to, postpaid, \$5 Cts.

Dibble's Hist. of Sandwich Is., long out of print, price \$1.75, or mailed to order, postpaid, \$1.90 each.

Hawaiian Folk Tales, comprising the largest collection of legends and traditions of the Islands yet compiled, price \$1.75, or mailed to any address at \$1.90 each.

THOS. G. THURM, Publisher, Honolulu

McCHESNEY COFFEE CO.

16 MERCHANT STREET.

Coffee Roasters

OLD

Kona Coffee

A SPECIALTY.

If you desire to send some choice old coffee to friends in the States, call on us. We can supply you.

William O. Smith

Trust Department

ESTATES MANAGED, REVENUES COLLECTED, LOANS AND INVESTMENTS MADE.

Fire Insurance

AGENT FOR ENGLISH-HAWAIIAN UNDERWRITERS.

Real Estate

FOR SALE.

House and lot on Quarry Street opposite Normal School.

Blank Books, 1910

OFFICE RECORD BOOKS

WALL, NICHOLS, CO., LTD.,

Castle & Cooke, Ltd.

SHIPPING AND COMMERCE MERCHANTS.

SUGAR FACTORS AND GENERAL INSURANCE AGENTS.

REPRESENTING

New England Mutual Life Insurance Company of Boston.

Aetna Fire Insurance Company.

National Fire Insurance Company.

Citizens' Insurance Company (Fire Insurance Company).

London Assurance Corporation.

"YAMATOYA" ALL KINDS OF SHIRTS, PAJAMAS and KIMONOS MADE TO ORDER

1246 Fort St., just above O'Connell

Rubber Goods

GOODYEAR RUBBER CO.

R. H. PEASE

573-575-577-579 Market Street, San Francisco, Cal., U.S.A.

Catton, Neill & Company, ENGINEERS AND MACHINISTS

Queen and Richards Streets.

Boilers re-tubed with charcoal-steel tubes. General ship work.

OUR MEATS ARE ALL RIGHT

PROMPT DELIVERY EVERY DAY

C. Q. YEE HOP & CO.

NEXT THE FISHMARKET

C. BREWER & CO., LTD.

SUGAR FACTORS AND COMMERCE MERCHANTS.

LIST OF OFFICERS

Z. F. Bishop, President.

George H. Robertson, Vice President and Manager.

W. W. North, Treasurer and Secretary.

George R. Carter, Auditor.

P. C. Jones, R. A. Cooke, C. B. Galt, Directors.

JOHN NEILL

Engineer

135 Merchant Street.

Machinery Repaired—Ship and General Blacksmith—GASOLINE ENGINES

PRECIOUS STONES

set in rings and brooches. Gold and silver jewelry made to order at reasonable prices. Your trade solicited.

SUN WO

CHAN CHEW - MANAGER

1805 Maunakea St., P. O. Box 100

ART LINEN GOODS

K. L. WONG STORE

32 HOTEL STREET, OPP. POST OFFICE

BOOKS BOOKS BOOKS

Go to—

BROWN & LYON CO., LTD.

Alexander Young Building.

RAMBLER and REGAL AUTOMOBILES

H. A. WILDER

- AT -

JORDAN'S

THIS WEEK

Special Sale of

Cotton and Wool

Blankets

- AND -

Comforters

See Our Window Display

Oceanic Steamship Co., Time Table

DIRECT SERVICE TO SAN FRANCISCO.

From San Francisco:	For San Francisco:
ALAMEDA JANUARY 28	ALAMEDA FEBRUARY 2
ALAMEDA FEBRUARY 18	ALAMEDA FEBRUARY 23
ALAMEDA FEBRUARY 11	ALAMEDA MARCH 16

RATES from Honolulu to San Francisco—First Class, \$65; Round Trip, \$110. Family Room, extra.

C. BREWER & CO., LTD., General Agents.

AMERICAN-HAWAIIAN STEAMSHIP COMPANY.

From New York to Honolulu, via Tehuantepec, every sixth day. Freight received at all times at the Company's Wharf, 41st Street, South Brooklyn.

FROM SAN FRANCISCO TO HONOLULU:

S. S. ALASKAN, via Puget Sound, to sail January 30th, 16 days in transit.
S. S. ARIZONAN, via Puget Sound, to sail February 11th, 16 days in transit.
S. S. NEVADAN, direct, to sail February 10th, 7 days in transit.
S. S. VIRGINIAN, via Puget Sound, to sail February 23rd, 16 days in transit.

FROM SEATTLE AND TACOMA TO HONOLULU DIRECT:

S. S. ALASKAN, to sail February 7th
S. S. ARIZONAN, to sail February 19th
S. S. VIRGINIAN, to sail March 3rd

FROM HONOLULU TO SAN FRANCISCO DIRECT:

S. S. NEVADAN—Carrying Passengers—to sail February 21st
For further information apply to

H. HACKFELD & CO., LTD., Agents, Honolulu.
C. P. MORSE, General Freight Agent.

CANADIAN-AUSTRALIAN ROYAL MAIL LINE.

FOR FIJI AND AUSTRALIA.	FOR VANCOUVER.
MOANA FEBRUARY 4	MAKURA FEBRUARY 1
MAKURA MARCH 4	MAITAI MARCH 2
MAITAI APRIL 2	MARAMA MARCH 29

*Will call at Fanning Island.

THEO. H. DAVIES & CO., LTD., General Agents.

PACIFIC MAIL S. S. CO. AND TOYO KISEN KAISHA.

Steamers of the above companies will call at Honolulu and leave this port on or about the dates mentioned below:

FOR THE ORIENT.

FOR THE ORIENT.	FOR SAN FRANCISCO.
SIBERIA JANUARY 31	CHIYO MARU JANUARY 28
CHINA FEBRUARY 8	ASIA FEBRUARY 4
MANCHURIA FEBRUARY 14	MONGOLIA FEBRUARY 18
CHIYO MARU FEBRUARY 22	TENYO MARU FEBRUARY 25

H. HACKFELD & CO., LTD., Agents.

MATSON NAVIGATION COMPANY'S SCHEDULE, 1910.

Direct service between San Francisco and Honolulu.

From San Francisco:	For San Francisco:
February 9 Lurline	February 15 Lurline
February 16 Wilhelmina	February 24 Wilhelmina
March 9 Lurline	March 15 Lurline
March 18 Wilhelmina	March 26 Wilhelmina
April 6 Lurline	April 12 Lurline

For further particulars apply to

CASTLE & COOKE, LTD., Agents, Honolulu.

Is the Wood-pile getting low?

You'll find the best place to buy wood is

HONOLULU CONSTRUCTION AND DRAYING CO., LTD.

Fort Street below Merchant. Phone 281.

Crushed Rock and Rock Sand

HUSTACE-PECK COMPANY, LTD.

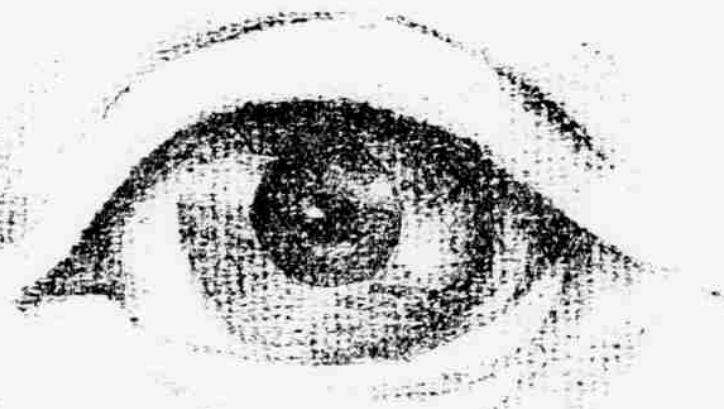
63 QUEEN STREET. PHONE 295.

We crush our own rock and deliver to all parts of the City.

Estimates given on all kinds of road work and grading.

Reasonable Prices.

GIVE US A TRIAL. WE GUARANTEE SATISFACTION.

LET US
KEEP
AN EYE

On Your BAGGAGE and See That it Goes RIGHT

We attend personally to the sealing of your trunks.

City Transfer Co., PHONE 152

Jas. H. Love

GENUINE NOVELTIES

FROM OLD JAPAN

SAYEGUSA

Nuuanu Above Hotel.

THE PACIFIC
Commercial Advertiser

Entered at the Postoffice at Honolulu, T. H., as second-class matter.

SUBSCRIPTION RATES:

One year \$12.00

Advertising Rates on Application.

HAWAIIAN GAZETTE CO., LTD.

Vol. 10th, No. 45, South King St.

S. S. CRANE, : : : : Manager

COLDS CAUSE HEADACHE

LAXATIVE BROMO-QUININE, removes the cause. Used the world over to cure a cold in one day. E. W. GROVE'S signature on each box. Made by

PARIS MEDICINE CO., Saint Louis, U. S. A.



BORN.

RATLI—In Honolulu, January 28, to the wife of James A. Rath, a son.

"Waterhouse Trust"

REAL ESTATE FOR SALE

A bargain at Kaimuki on Eleventh avenue, \$1600.

Lots in Kaimuki Park Tract, \$400 each, on easy payments. Three

acres, cleared and fenced in the Kaimuki Tract for \$2600. Acreage property in Palolo Valley.

These are a few of the opportunities we have to offer for investment in real estate.

"Waterhouse Trust"

Fort and Merchant Streets.

HONOLULU

NO STATION
SHIP TO TAKE
IROQUOIS' PLACE

After the U. S. Iroquois leaves for Mare Island to be overhauled the Honolulu naval station will be minus a station ship for probably a year.

The Iroquois will be at the navy yard undergoing repairs for possibly nine months and the local naval staff have no idea of the length of time it will take to turn the Iroquois out new again. While the authorities would like to send another vessel here to act as station ship in place of the Iroquois none is available. Outside of the vessels of the active Pacific fleet all others are practically out of commission or engaged elsewhere.

CONDITIONS
GROW WORSE

(Continued from Page One.)
Archie and the Gard, the flood damage has been immense, the overflowing rivers sweeping away houses and in places entire villages. Crops all along the rivers and their tributaries have been destroyed and all industries have come to a stop, throwing thousands out of employment.

Bridges Closed to Traffic.

Twelve of the twenty-six main bridges across the Seine within the city limits have been closed to traffic, being so undermined and damaged by the floods as to be unsafe, while others are submerged and impossible of crossing. This adds to the confusion, making communication between the various districts of the city most difficult.

Refuge to Estimate.

The government officials, harried with the work of the past few days, refuse to issue any estimate of the number who have lost their lives with in the city as a result of the floods.

Red Cross Issues Appeal.

WASHINGTON, January 29.—The Red Cross Society has issued an appeal for funds for the relief of the flood sufferers throughout East and Central France and Paris.

YUEN SUM TRIES HARD
TO BLEED TO DEATH

Yuen Sum and Ah Tai, two inoffensive Chinese, were walking down Hotel street yesterday afternoon on their way home. As they neared the Winston Block they passed a gang of tough Hawaiian youths. Yuen Sum had the misfortune to jog the elbow of one "Country Jack," a youth with a desire to be thought very tough.

Without a word this "Country Jack" turned and struck Yuen Sum a terrific blow on the nose. Then he ran and his companions with him. Ah Tai yelled for help and assisted his companion to his feet. The latter's nose was bleeding profusely so he put him in a hack and took him to Doctor Li.

Doctor Li bandaged up the disfigured face and sent Yuen Sum home. But the victim had been home only a short time when the bandages showed signs of becoming saturated with copious fluid and in great fear and trembling, the police were notified by his frightened relatives.

Yuen Sum was removed to the Queen's Hospital where he continued to bleed in a most refractory manner. His nose seemed to be the meeting place of all the arteries in his body, and the broken nasal bone pumped out dark blood at a pouring stream.

At first it looked as though he might bleed to death, but the doctors at once stopped the free flow and while he continued to bleed until nearly midnight, the latest report was that he had stopped bleeding and was resting easily.

Chief McDuffie sent out a squad of detectives to arrest Yuen Sum's assailant but he had flown. The whereabouts are not known at present but he will probably be arrested today.

THE ANSWER
is instantaneous if sent by the
WIRELESS

Your customers will appreciate such an answer to their request for prices.

On Sundays the office is open from eight until ten in the morning.

Stocks and Bonds
TRENT TRUST CO.
Member, Honolulu
Stock and Bond
Exchange

Classified Advertisements

Want Ads., two lines, one time, 10 cents.

SITUATIONS WANTED.

BY lady as stenographer. Best of references. Address M., this office. \$563

EMPLOYMENT OFFICE.

JAPANESE cooks, waiters, yardboys, etc., 1128 Union St. Phone 579, 8449

ROOM AND BOARD.

THE HAU TREE—on the beach at Waikiki—first-class apartments and board. 2199 Kalia road, end of Lewers road. 365

EGGS FOR HATCHING.

PRIZE winning Buff Wyandotte strain. C. J. Day & Co., Fort street. \$570

AUTOMOBILES.

RING Phone Six and ask for Fred Noyes' new seven passenger Kissel Kar No. 482. Jas. Piers, chauffeur. \$564

PROFESSIONAL CARDS.

VOCAL.

HUGO HERZER, Teacher of Singing. Studio, Love building, Fort street, opposite convent. Residence telephone 1301.

VETERINARIAN.

DR. L. E. CASE, office Hawaiian Stock Yards Co., Ltd. Phone 41.

DENTISTS.

A. B. CLARK—Room 311, Boston Building. 365

PIANO LESSONS.

PROFESSIONAL teaching on the Piano. Frank H. Anderson, Orpheum or Majestic Hotel. 368

THIS PAPER is kept on file at
THE DAKE AD

VERTISING AGENCY, INC., 427 South Main St., Los Angeles, and 12 Geary St., San Francisco, where contracts for advertising can be made for it.

A REMEDY FOR CROUP THAT IS
ABSOLUTELY SAFE.

Croup is the most prevalent during the dry cold weather of the early winter months. Parents of young children should be prepared for it. All that is needed is a bottle of Chamberlain's Cough Remedy. Many mothers are never without it in their homes. It is not only a safe and reliable medicine but the best in use for croup, whooping cough, and all other ailments of the throat. For sale by all dealers. Benson, Smith & Co., agents for Hawaii.

READ THE ADVERTISER

WORLD'S NEWS DAILY

HALSTEAD & CO.

Stock Brokers

221 FORT STREET

HONOLULU STOCK EXCHANGE

Honolulu, Friday, January 28, 1910.

NAM OF STOCK.	CAPITAL PAID UP	Vol	Bid	Ask
---------------	-----------------	-----	-----	-----

MERCANTILE	2,000,000	100	---	---
------------	-----------	-----	-----	-----

C. Brewer & Co.	500,000	20	24 1/2	25
-----------------	---------	----	--------	----

SEABOARD	1,000,000	100	24 1/2	25
----------	-----------	-----	--------	----

Haw. Agr. Cultural	1,000,000	20	24 1/2	25
--------------------	-----------	----	--------	----

Haw. Com. & Sugar Co.	2,000,000	20	24 1/2	25
-----------------------	-----------	----	--------	----

Haw. Sugar Co.	2,000,000	20	24 1/2	25
----------------	-----------	----	--------	----

Honolulu	2,000,000	20	24 1/2	25
----------	-----------	----	--------	----

Honolulu	2,000,000	20	24 1/2	25
----------	-----------	----	--------	----

Honolulu	2,000,000	20	24 1/2	25
----------	-----------	----	--------	----

Honolulu	2,000,000	20	24 1/2	25
----------	-----------	----	--------	----

Honolulu	2,000,000	20	24 1/2	25
----------	-----------	----	--------	----

Honolulu	2,000,000	20	24 1/2	25
----------	-----------	----	--------	----

Honolulu	2,000,000	20	24 1/2	25
----------	-----------	----	--------	----

Honolulu	2,000,000	20	24 1/2	25
----------	-----------	----	--------	----

Honolulu	2,000,000	20	24 1/2	25
----------	-----------	----	--------	----

Honolulu	2,000,000	20	24 1/2	25
----------	-----------	----	--------	----

Honolulu	2,000,000	20	24 1/2	25
----------	-----------	----	--------	----

Honolulu	2,000,000	20	24 1/2	25
----------	-----------	----	--------	----

Honolulu	2,000,000	20	24 1/2	25
----------	-----------	----	--------	----

Honolulu	2,000,000	20	24 1/2	25
----------	-----------	----	--------	----

Honolulu	2,000,000	20	24 1/2	25
----------	-----------	----	--------	----

Honolulu	2,000,000	20	24 1/2	25
----------	-----------	----	--------	----

Honolulu	2,000,000	20	24 1/2	25
----------	-----------	----	--------	----

Honolulu	2,000,000	20	24 1/2	25
----------	-----------	----	--------	----

Honolulu	2,000,000	20	24 1/2	25
----------	-----------	----	--------	----

Honolulu	2,000,000	20	24 1/2	25
----------	-----------	----	--------	----

Honolulu	2,000,000	20	24 1/2	25
----------	-----------	----	--------	----

Honolulu	2,000,000	20	24 1/2	25
----------	-----------	----	--------	----

Honolulu	2,000,000	20	24 1/2	25
----------	-----------	----	--------	----

Honolulu	2,000,000	20	24 1/2	25
----------	-----------	----	--------	----

Honolulu	2,000,000	20	24 1/2	25
----------	-----------	----	--------	----

Honolulu	2,000,000	20	24 1/2	25
----------	-----------	----	--------	----

Honolulu	2,000,000	20	24 1/2	25
----------	-----------	----	--------	----

Honolulu	2,000,000	20	24 1/2	25
----------	-----------	----	--------	----

Honolulu	2,000,000	20	24 1/2	25
----------	-----------	----	--------	----

Honolulu	2,000,000	20	24 1/2	25
----------	-----------	----	--------	----

Honolulu	2,000,000	20	24 1/2	25
----------	-----------	----	--------	----

Honolulu	2,000,000	20	24 1/2	25
----------	-----------	----	--------	----

Honolulu	2,000,000	20	24 1/2	25
----------	-----------	----	--------	----

Honolulu	2,000,000	20	24 1/2	25
----------	-----------	----	--------	----

Honolulu	2,000,000	20	24 1/2	25
----------	-----------	----	--------	----

Honolulu	2,000,000	20	24 1/2	25
----------	-----------	----	--------	----

Honolulu	2,000,000	20	24 1/2	25
----------	-----------	----	--------	----

Honolulu	2,000,000	20	24 1/2	25
----------	-----------	----	--------	----

Honolulu	2,000,000	20	24 1/2	25
----------	-----------	----	--------	----

Honolulu	2,000,000	20	24 1/2	25
----------	-----------	----	--------	----

Honolulu	2,000,000	20	24 1/2	25
----------	-----------	----	--------	----

Honolulu	2,000,000	20	24 1/2	25
----------	-----------	----	--------	----

Honolulu	2,000,000	20	24 1/2	25
----------	-----------	----	--------	----

Honolulu	2,000,000	20	24 1/2	25
----------	-----------	----	--------	----

Honolulu	2,000,000	20	24 1/2	25
----------	-----------	----	--------	----

Honolulu	2,000,000	20	24 1/2	25
----------	-----------	----	--------	----

Honolulu	2,000,000	20	24 1/2	25
----------	-----------	----	--------	----

Honolulu	2,000,000	20	24 1/2	25
----------	-----------	----	--------	----

Honolulu	2,000,000	20	24 1/2	25
----------	-----------	----	--------	----

Honolulu	2,000,000	20	24 1/2	25
----------	-----------	----	--------	----

Honolulu	2,000,000	20	24 1/2	25
----------	-----------	----	--------	----

Honolulu	2,000,000	20	24 1/2	25
----------	-----------	----	--------	----

Honolulu	2,000,000	20	24 1/2
----------	-----------	----	--------



ESTABLISHED JULY 2, 1856.

HONOLULU, HAWAII TERRITORY, SATURDAY, JANUARY 29, 1910.

Vapo-Cresolene

(Established 1877)
FOR WHOOPING COUGH, CROUP,
ASTHMA, COUGHS, BRONCHITIS, SORE
THROAT, CATARRH, DIPHTHERIA
Vaporized Cresolene stops the paroxysms of
Whooping Cough. Ever-drawn. Croup cannot
exist where Cresolene is used. It acts directly
on the nose and throat, making breathing easy in the
case of croup, soothes the sore throat and stops the
cough. It is a boon to sufferers from Asthma.
Cresolene is a powerful germicide, acting both
as a curative and preventive in contagious diseases.
Cresolene's best recommendation is its thirty
year record of successful use.
For Sale by all Druggists
Send Postal for Description
of the Goods
Cresolene, Antiseptic
Throat Tablets, simple
and soothing for the
inflamed throat.
The Vapo-Cresolene Co.
100 Fulton Street,
New York City.

TAPAS.
Exquisite Tapas.
Unique designs.
Largest Souvenir
Store in the Pacific.
Open Nights.
Hawaii & South
Seas Curio Co.,
Young Building,
Bishop Street. Next to Cable Office

Cleanliness

You should see where your bread
is manufactured. We invite our patrons
to visit our Bakery, No. 1136 Nuuanu
St. We bake daily and deliver.

FRESH BREADS
Varieties—Pan, Family, Twist,
French, Steam, Rye, Graham.
Also Soda Crackers, Water
Crackers, Saloon and Saloon
Pilot.

Love's Bakery

Phone 1431
New Shipment of—
"Bee" Brand Ceylon Tea
Packed in little gunny sacks.
HENRY MAY & CO., Ltd
Phone 22

Thomas Flyer

Seven-seater, Model 1910. Maximum
comfort and careful chauffeur.

Young Hotel Auto Stand

Phone 199.
J. C. CLUNEY, JR.

Mr. and Mrs. Hashimoto MASSEURS

Telephone 637
Rheumatism,
Bruises,
Sprains,
Tired Feeling
and other
Ailments
Quickly
Relieved.
VIBRATORY MASSAGE.
113 BETTANIA AVE. NEAR EMMA
EATH AND MANICURE.

WING ON CHONG

DO NOT PAY FANCY PRICES FOR
CHEAP NEW FURNITURE.
Beret opposite the Empire.
P. O. Box 771

BE MODERN

Specter Vacuum Cleaning for that New
Building. Install it in the present one.
WILSON FRAGLER, "AREO" Agent.
P. O. Box 101.

Oahu Ice & Electric Co.

ICE delivered at any part of the
Island orders promptly filled.
Telephone 525, P. O. Box 600. Office,
Kewalo.

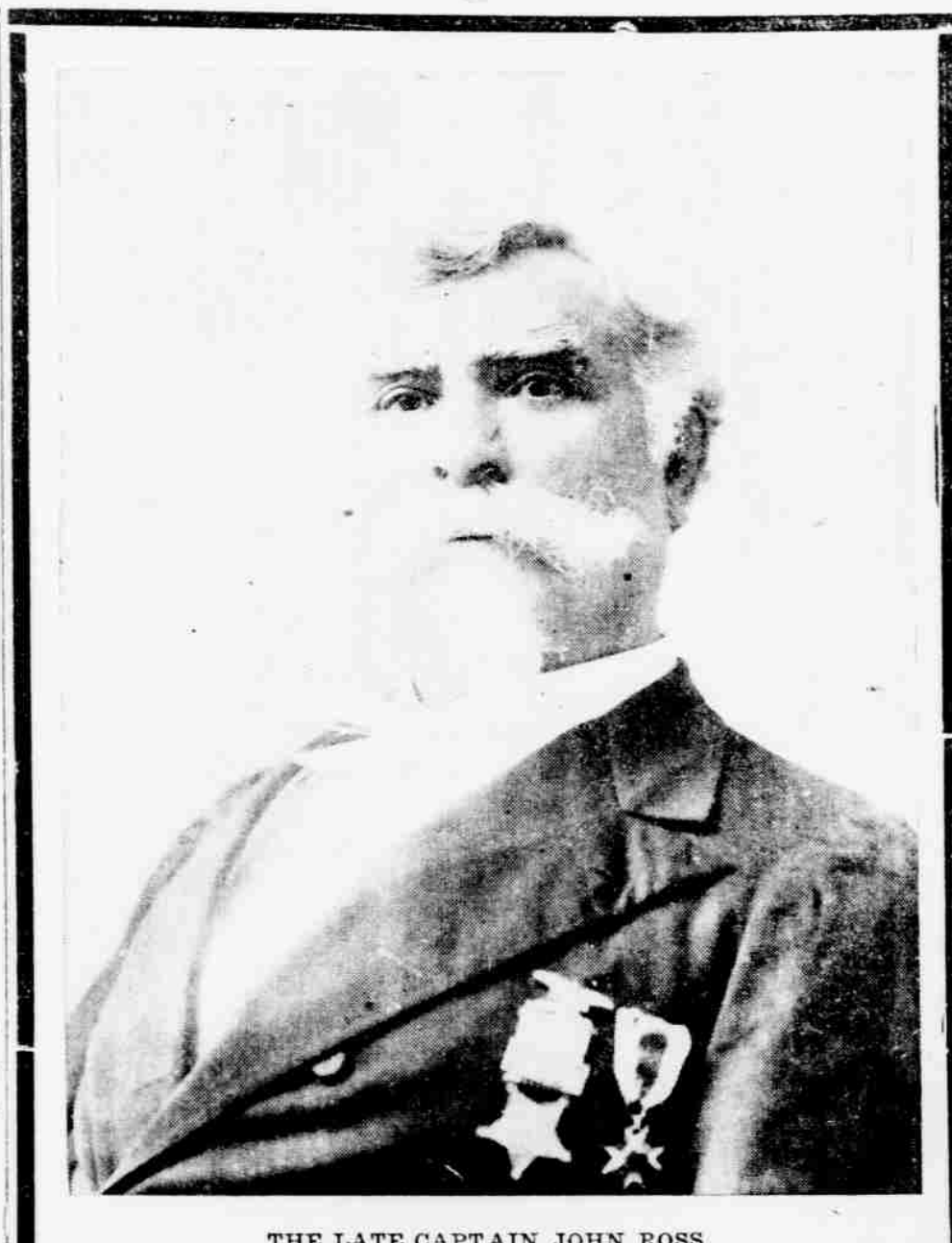
CHAN KEE

Waterbury Building Hotel Street
LADIES' UNDERWEAR
LARGE ASSORTMENT

David A. Dowsett

Real Estate and Insurance
205 Judd Bldg., Second Floor.

CAPTAIN JOHN ROSS FIGHTS AND LOSES LAST BATTLE



THE LATE CAPTAIN JOHN ROSS.

Conquered by a long illness from can-
cer of the stomach, Captain John Ross
died yesterday at the Queen's Hospital,
his death removing from the ranks of
well-known Honoluluans, one of the best
known and most highly-regarded of
them all. During the last twenty hours
of his life he was unconscious, succumb-
ing at noon after a long and hard-
fought battle with the disease.

Captain Ross was a veteran of the
Civil War in which conflict he had par-
ticipated as a volunteer officer in the
navy, being present at the hard and
determined fighting around Pittsburg,
Mississippi and at Charleston, South
Carolina. Last September he received
from the navy department a bronze
medal appropriately inscribed in recog-
nition of his services in those battles
and in the war in which they were
fought. He was among the last of the
navy veterans of that stirring time.

Shortly after the war, about forty
years ago, he came to the Hawaiian
Islands to take charge of the American
Guano Company, which was operating
on a number of the South Sea Islands
but towards the latter period of his
life he has been retired from active
business.

His personality at once made him a
factor in the affairs of the Hawaiian

Kingdom and his name figures in a
great many episodes connected with the
history of the Islands. In 1895 he was
among the revolutionists who were put
in jail for their supposed designs
against the government. During the
time that they were incarcerated they
heard that Emmelhuth and others of the
government were coming down with
expressed intention of shooting them.
Ross went to the jailer and promised
that none of their number would at-
tempt to escape if he gave them some-
thing to defend themselves with. The
jailer consented and placed a double
guard around the jail.

Up to within a few months of his
death he had been living at his home
on Leahi Avenue, in Kapiolani Park,
but later went to stay at the home of
Col. Sam Parker. He was Parker's
constant companion and the great
friendship that has existed between the
two men has been one of the most
prominent features of his later life. Col.
and Parker is now in Washington and
the news of the death of his friend
will come as a blow to him.

Captain Ross was a familiar figure
about the street, and not only a
familiar one, but a striking one as well.
His carriage and appearance brought
recollections of the "Old Guard," he
being of a type that is fast dying out.
His presence will be much missed and
the place he held in the regard of many
will be hard to fill.

Army and Navy News

PEARL HARBOR GUNS AWAIT OFFICIAL TEST

Pearl Harbor's two 12-inch guns for
harbor and channel defense have been
placed on the mounts and are ready for
the official test. The battery is known
as Battery Selfridge, and are the first
of the large types of guns to be placed
in position. When the test will take
place, or who will be sent here to make
it, is not known to Major Winslow,
chief of engineers, in charge of fortifi-
cation building. Major Winslow has
no information yet as to when troops
will be sent here to man the big guns.
No arrangements have been made so
far to prepare temporary camps for the
coast artillerymen who will look after
the guns. The water supply for that
section of the federal reservation has
not been developed.

"23" for Officers.

Major Ray, paymaster, U.S.A., and
Captain Ramsay, Marine Corps, finished
twenty-three miles of their walking test
yesterday. On Thursday they walked
twenty-one miles and today they will
complete the twenty-mile test. This will
be six miles. Major Ray has the best
of the bargain for he merely walks the
six miles, but Captain Ramsay has to
develop into a marathon runner and
endure a longer test for the last six hundred
yards. Five hundred of these yards
will have to be run off in double time,
into the last hundred yards must be
splintered. Captain Ramsay has been
studying college records for sprinters
and can find nothing under eighteen
seconds although there is a rumor that
it can be done in ten seconds or less.
Captain Ramsay has set his mind on
eighteen seconds.

Both officers walked up Nuuanu Val-
ley yesterday, then back to town and
out Waialae way, around Diamond
Head and back to the naval station.

They were preceded all the way by a
marine orderly on a bicycle, the latter
being fitted with a speedometer and
the orderly carried rain coats and other
marching impediments.

Want Big Dredge.

Requisition has been made for a 10-
yard dipper dredge, to be used by the
Pacific division in excavating in the
prism of the canal at the Pacific en-
trance, says the Ancon Canal Zone Re-
cord. The dredge will dig between the
depths of thirty and fifty feet and will
supplement the work now being done
by the dipper and ladder dredges of
the Pacific fleet.

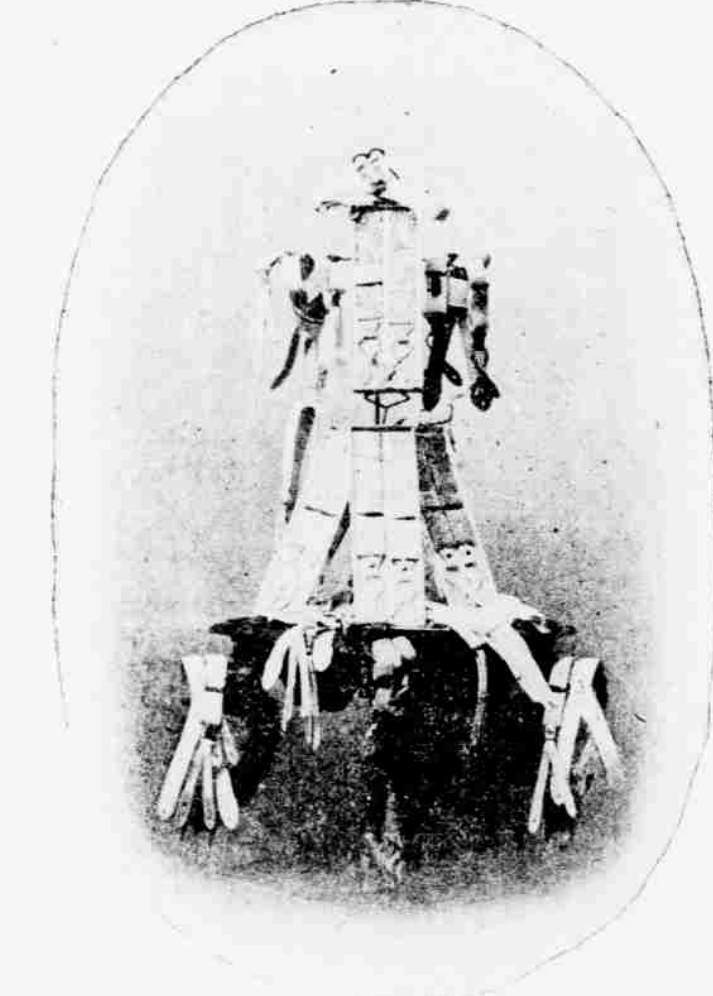
The specifications call for a hull 135
feet long, forty-three feet beam, four-
teen feet deep at the bow and twelve
feet deep at the stern, fitted with all
machinery, electric light plant, storage
for 1000 barrels of fuel oil, and bunkers
for 100 tons of coal.

It must be able to operate a 10-yard
bucket in stiff mud or clay at a depth
of fifty feet, but it will also be sup-
plied with 6-yard buckets for use in
digging rocks.

Doctor Fields' Panama Hat.

Among those passing through on the
Clava Maru was the wife of Surgeon
Fields, U. S. N., of the cruiser Wash-
ington. Doctor Fields is well known
in Honolulu and particularly because
of his famous "Panama hat." When
the gubboat Bennington was here a few
years ago Doctor Fields was among her
officers. At a reception held aboard the
vessel one Saturday afternoon, Doctor
Fields did much to enter into the guests.
Among the latter was Prince David,
a number of national guard officers and
government officials. Doctor Fields in-
vited the crowd of men below to look
at his Panama hat, "the finest and most
expensive ever brought out of Pan-
ama." There was considerable curi-
osity about this hat and everybody crowd-
ed to Doctor Fields' seat. Those in the
rear craned their necks to see the hat,
but all they could see was a part of
hands belonging to the surgeon hold-
ing two mixers, both being put through
visions of a dizzy kind, necessary to
the construction of a poi to form. There
was a Panama hat in a corner of the
room, but it was only incidentally to
the contents of the mixers. Doctor
Fields has achieved much fame over
his "Panama hats."

FLEXO BRACES



and all of the other standard makes.
Perfect in construction and absolutely
non-binding. Allow freedom to the arms
in any position. No straining, no stretch-
ing or breaking of rubber. Our braces
are the strongest and best made. The
Flexo is only one of the many in our
assortment.

From 75 Cents Up

M. McINERNY, Ltd
Fort and Merchant Sts.

When You See

SHARP SIGNS

You can tell at once that they are not designed or
painted by amateurs.

We have imitators but no leaders. Remember
the '3 big S's, the original imprint of

TOM SHARP, the Painter

SHOP AND OFFICE, ELITE BUILDINGPHONE 397

BE PREPARED FOR

FIRE

VISITS ARE UNEXPECTED. ARE YOU READY IF ONE SHOULD VISIT YOUR HOME?
IT IS SAID FIRE PROTECTION BY THE CITY IS INADEQUATE, AND THAT THE PUBLIC
IN SOME DISTRICTS MUST LOOK OUT FOR THEMSELVES.

GET A BADGER

CONSULT US AS TO THE EQUIPMENT YOU NEED.

J. A. GILMAN

ROOM 400, JUDD BUILDING.

The Daily Advertiser is so good that thirty-five
hundred people pay more for it every month than for
any other paper in Honolulu. That's going some.

Use It For Your Want Ads.

HAWAIIAN GAZETTE CO., LTD. Phone 88.

New Perfection Oil Stove



NO SMOKE, NO SMELL.

- 1 BURNER \$5.50
2 BURNERS \$8.50
3 BURNERS \$12.00
NEW PERFECTION
OIL HEATER \$3.50

E. O. HALL & SON, LTD.

SECOND FLOOR.

TAKE ELEVATOR.

One Cent Per Square Foot

Or a trifle over for home sites of more than one acre each, adjoining the celebrated Pu-kele Homestead in PALOLO VALLEY, ten minutes' walk from the car line.

These lots are adjoining the beautiful homes of Owen Williams, William A. Rideout, Charles J. Schoening, Edward F. Patten, and others.

The rear of these lots extends to the hill slopes, from which grand views are to be had. Correct soil for all kinds of fruit.

Let me show you this property.
\$500 per acre and up.

Chas. S. Desky

FORT STREET.

Close attention to the wants of our customers combined with the fact that we have the

Best Meats

in the country, is the real cause of our success.

Metropolitan Market,

W. F. Heilbron, Prop.
Telephone 45

Fine Wines and Liquors

QUALITY GUARANTEED.

SPECIAL ATTENTION TO FAMILY TRADE.

LOVEJOY & CO.

902 Nuuanu Street.

Telephone 308.

AUTO REPAIRS

WE HAVE FIRST-CLASS MECHANICS AND THE MOST MODERN EQUIPMENT. ALSO OUR CHARGES ARE MODERATE.

Royal Hawaiian Garage, Ltd.

Geo. S. Wells, Mgr.

Hotel St., opp. Hawaiian Hotel. Phone 191.

Read the "Advertiser," World's News Daily

MARINE INTELLIGENCE

PORT OF HONOLULU.

ARRIVED.

Friday, January 28.
P. S. S. Denver, from Yokohama.
U. S. S. Galveston, from Yokohama.
S. S. Santa Maria, from Port San Francisco, 9 p. m.
T. K. K. S. S. Manchu Maru, from Yokohama, a. m.
Str. Lakelake, from Kahului and Laysan, a. m.
Str. Naunau, from Kauai ports, a. m.
Str. Iwawani, from Hawaii ports, a. m.

DEPARTED.

T. K. K. S. S. Chiyo Maru, for San Francisco, p. m.
Str. Mauna Loa, Simerson, for Kona and Kauai ports, 12 noon.
T. K. K. S. S. Manchu Maru, for So. Am. ports, p. m.

DUE TODAY.

Str. Mauna Kea, from Hilo and way ports, a. m.

SAIL TODAY.

A. H. S. S. Nevada, for San Francisco, p. m.

DUE MONDAY.

P. M. S. S. Siberia, from San Francisco, a. m.
Pacific fleet from Japan, p. m.

DUE TUESDAY.

C. A. S. S. Makura from Sydney, p. m.

SAIL WEDNESDAY.

O. S. S. Alameda, Dowdell, for San Francisco, 10 a. m.

PASSENGERS.

Arrived.

Per O. S. S. Alameda, from San Francisco, January 28:—S. Annandale, J. G. Anthony, Mrs. Anthony, W. B. Austin, Mrs. Austin, C. R. Bailey, Mrs. S. K. Barker, E. M. Barton, Mrs. Barton and child, Wm. Bloch, Mrs. Bloch, Mrs. Salome Busey, Mrs. J. Don Cameron and two children, F. W. Carey, Mrs. Carey, J. R. Carpenter, Mrs. Carpenter, Eugene Carroll, Mrs. Carroll, John Crabtree, Mrs. Crabtree, Master Crabtree, F. W. Corp, Mrs. Corp, C. V. Daniel, Chaucy Dewey, Mrs. Dewey, C. J. German, Mrs. German, Mrs. John John Gillie, Miss Jeanette Gillie, Herman Goetz, Mrs. Goetz, Miss A. Harrington, E. Hodgkinson, Mrs. Theo. Hoffman, T. E. Hudson, Mrs. Hudson, E. Ingham, Dr. P. Irwin, Mrs. Irwin, Miss S. E. Karcher Chas. A. Le Count, Miss H. E. Metracken, A. H. Manning, Mrs. Manning, L. Meuller, Mrs. Meuller, Master Mueller, Hans Nussmann, Mrs. P. J. O'Connell, F. P. Prentiss, Geo. B. Prevost, Mrs. A. Ramsperger, P. G. Riley, Mrs. Riley, W. E. Rountree, F. N. Schroeder, Mrs. Schroeder, Mrs. C. Sewall, Miss E. Sewall, L. J. Shirley, Mrs. Shirley, A. D. Simmons, Mrs. Simmons, Miss Edith E. Smith, Mrs. S. A. Tolan, Miss E. Wall, Miss J. Wall, Mrs. O. B. Williams, Master Lloyd Williams, S. Wishart, J. W. Wood, Mrs. Wood.

Departed.

Per str. Claudine, for Maui and Hawaii ports, January 28:—A. Gartley, Mrs. Kalliohuohu, J. M. Manase, Mrs. Manase, Mrs. K. Hoquean, Mrs. M. Langs.

Per str. Mauna Loa, for Kona and Kauai ports, Jan. 28:—R. W. Smith, Mrs. Smith, Mrs. N. Kaunani, J. F. C. Hagens, L. H. Rodgers, Dr. W. A. Selwyn, R. Hind, Mrs. S. H. Little, J. D. Paris, Mrs. Paris, Bishop Restarick, Rev. A. S. Baker, H. R. Bryant, Mrs. Bryant, A. Dowsett, A. Mason, G. W. Peavey, Mrs. Peavey, Mrs. Murphy.

Booked to Depart.

Per O. S. S. Alameda, for San Francisco, Feb. 2:—Miss Mark, Mrs. N. Edlin, A. T. Ormsby, Mrs. Ormsby, Chaucy Dewey, Mrs. Dewey, H. T. Moore, Mrs. Moore, Mrs. A. F. Dixon, Mr. and Mrs. Germain, G. W. Brown, Mrs. Brown, Miss V. Macgregor, Mrs. E. Macgregor, Miss L. A. Williams, Rev. Westervelt, Mrs. Groos, Miss Cross, G. Douglas Jones.

VESSELS IN PORT.

(Army and Navy.)

Denver, U. S. cruiser, Yokohama, Jan. 28.
Galveston, U. S. cruiser, Yokohama, Jan. 28.
Troquois, U. S. station tug, Shepley.
Kokoi, U. S. lighthouse tender, Middleton.

(Merchant Vessels.)

Alden Bessie, Am. bk., Hilo, Jan. 28.
Borealis, Am. schr., Port Ludlow, Jan. 28.
Celtic Chief, Br. shp., Hamburg, Dec. 5.
Chiyo Maru, Jap. ss., Yokohama, Jan. 27.
Coronado, Am. bktr., Lawless, San Francisco, Jan. 21.
Eskine M. Phelps, Am. shp., Seattle, Dec. 30.
Flourish Ward, Am. schr., Piltz, Midway Is., Jan. 24.
H. Hackfeld, Ger. bk., Dickman, Rotterdam, Jan. 4.
Sanya Rita, Am. ss., Port San Luis, Jan. 27.

TRANSPORT SERVICE.

Bufoad, ar. S. F. from Hon., Oct. 13.
Dix, at Maui, Jan. 24.
Leam, from Nagasaki, ar. Hon., Jan. 21.
Thomas, from Hon. for Maui, Jan. 12.
Sheridan, ar. S. F. from Hon., Jan. 12.

THE MAILS.

Mails are due from the following points as follows:
San Francisco, for Honolulu, Monday.
Yokohama, for Honolulu, Feb. 1.
Yokohama, for Honolulu, Feb. 5.
Yokohama, for Honolulu, Feb. 1.
Mails will depart for the following points as follows:
San Francisco, for Honolulu, today.
Yokohama, for Honolulu, Jan. 31.
Yokohama, for Honolulu, Feb. 1.
Yokohama, for Honolulu, Feb. 5.

MOVEMENTS OF SHIPPING.

APWILAK, Am. schr., ar. Grays Harbor from Hon., Dec. 18.
M. J. GORR, Am. schr., Penhallow, ar. from London, Jan. 8, Jan. 10.
ALAMEDA, Am. S. S., Dowdell, ar. from San Francisco, Jan. 28.
ALASKA, Am. S. S., ar. S. F. from Seattle, Jan. 21.
ALBERT, Am. bk., from Port Ludlow, Knappton, Nov. 2.
ALVANDELL, ISNEE, Ger. bk., from Hon. for San Francisco, Dec. 17.

ALOKA, Am. schr., Westkunt, from Samoa for Hon., Dec. 2.
AMIRAL, CHILL, Fr. shp., from Tacoma for U. K., Oct. 17.
AMERHANA, Am. schr., ar. Sal. Cruz from Havana, Dec. 16.
ARIZONA, Am. S. S., from Salina Cruz for S. F., Jan. 27.
AORANGI, Br. S. S., from Vancouver for Hon. and Colon, Jan. 1.
ARAGO, Am. bktr., ar. Astoria from Hon., Dec. 12.
ASIA, Am. S. S., from Yokohama for Hon., Jan. 25.
ASGAR, S. S., ar. from Elede for Newcastle, Jan. 7.
ASTRAL, Am. shp., Dunham, from S. F. for N. Y., Sept. 18.
ATLAS, Am. shp., from Manila for N. Y., Sept. 21.
AMERICA MARU, T. K. K. S. S., from Hon. for Yokohama, Jan. 1.
ANNIE JOHNSON, Am. bk., ar. Hilo from S. F., Jan. 12.
ANDREW WELCH, Am. bk., Kelly, from Hon. for S. F., Jan. 20.
BALBOA, Am. schr., ar. San Pedro from Tacoma, Dec. 13.
BEN LEE, Br. shp., from Port Winslow for Melbourne, Nov. 17.
BENICIA, Am. bktr., ar. from South Bend for Guaymas, Nov. 30.
BOREALIS, Am. schr., ar. Hon. from Port Ludlow, Jan. 8.
CARRIER DOVE, Am. schr., ar. Hon. from Grays Harbor, Jan. 4.
C. A. THAYER, Am. schr., ar. S. F. from Portland, Dec. 18.
CELTIC CHIEF, Br. shp., James, ar. Hon. from Hamburg, Dec. 5.
CHINA, Am. S. S., ar. S. F. from Hon., Jan. 21.
CHIYO MARU, Jap. S. S., from Hon. for S. F., Jan. 28.
CHURCHILL, Am. schr., ar. Coos Bay from S. F., Jan. 10.
CLEVELAND, Ger. S. S., from Hon. for S. F., Jan. 24.
COLUMBIAN, Am. S. S., from Seattle for Hon., Jan. 27.
CORONADO, Am. bktr., ar. Hon. from S. F., Jan. 21.
DAUNTLESS, Am. schr., Jonsien, ar. Port Townsend from Hon., Jan. 28.
DEFENDER, Am. schr., ar. S. F. from Everett, Dec. 14.
DIRIGO, Am. shp., ar. Phila from Hon., Oct. 25.
DIX, U. S. A. T., from Hon. for Manila, Dec. 28.
DOLBARN CASTLE, Br. bk., ar. Rotterdam from Taita, Dec. 5.
DUNEDIN, Br. S. S., ar. Shanghai from Hon., Jan. 27.
EARL OF ELGIN, Br. S. S., from Hon. for S. F., Dec. 28.
E. F. WHITNEY, Am. bk., Jorgenson, ar. S. F., July 24.
E. K. WOOD, Am. schr., from Grays Harbor for Hon., Jan. 24.
EDWARD SEWALL, Am. shp., Quick, from Newport News for Hon., Oct. 2.
ENTERPRISE, Am. S. S., from Hilo for S. F., Jan. 24.
EISKINE M. PHELPS, Am. shp., ar. Hon. from Seattle, Dec. 30.
ESPADA, Am. schr., from Westport for San Diego, Dec. 16.
ETHEL ZANE, Am. schr., ar. Tacoma from S. F., Dec. 14.
EVA, Am. schr., ar. Humboldt from Mahukona, Jan. 28.
FALLS OF CLYDE, Am. shp., Ingalls, ar. Gaviota from Hon., Jan. 28.
FLAURENCE WARD, Am. schr., Piltz, ar. Hon. from Midway Is., Jan. 24.
F. M. SLADE, Am. schr., Johnson, ar. S. F. from Grays Harbor, Nov. 13.
FOONG SUEY, Am. bk., Willett, from N. Y. for Hon., Nov. 4.
FRIEDA, Ger. shp., Logeman, from Astoria for Europe, Oct. 15.
GAMBLE, Am. schr., at Port Gamble, Oct. 27.
GLENHOLM, Br. shp., Williams, from Portland for U. K., Oct. 9.
G. W. WATSON, Am. schr., from Grays Harbor for S. F., Nov. 12.
H. HACKFELD, Gr. shp., ar. Hon. from Rotterdam, Jan. 4.
HAWAII, Am. bktr., from Auckland for Hon., Jan. 6.
HAWAIIAN ISLES, Am. shp., ar. S. F. from Philadelphia, Oct. 28.
H. C. WRIGHT, Am. schr., from Guaymas for Everett, Dec. 14.
HELENE, Am. shp., from Port Ludlow for Hon., Jan. 6.
HILONIAN, Am. S. S., from Hon. for S. F., Jan. 25.
HONGKONG MARU, Jap. S. S., from Hon. for So. Amer. ports, Nov. 23.
GYADES, Am. S. S., from Kahului for S. F., Jan. 27.
HMGARD, Am. bktr., ar. S. F. from Hon., Oct. 26.
JAMES H. BRUCE, Am. schr., from S. F. for Sound, Dec. 16.
JAMES BOLPH, Am. schr., from S. F. for Hon., Jan. 24.
JOHN ENA, Am. shp., from Philadelphia for S. F., Oct. 19.
KATULANI, Am. bk., Kelly, ar. S. F. from Hon., Jan. 18.
KIRK DORRITSHIRE, Br. shp., ar. Vancouver from Seattle, Nov. 25.
KLIKITAT, Am. bktr., ar. Port Townsend from Hon., April 24.
KOKO HEAD, Am. bktr., ar. Sydney from Vancouver, Dec. 17.
KOKIA, Am. S. S., ar. Yokohama from Hon., Jan. 24.
KONA, Am. schr., ar. Port Townsend from Hilo, Jan. 28.
LA BLANCHE, Fr. bk., from Hon. for Nagasaki, Dec. 9.
LANSING, Am. S. S., ar. Port San Luis from Hon., Jan. 15.
LOMAN, Fr. S. S., ar. Williams, from Manila for Hong Kong, Jan. 15.
LOTTIE BENNETT, Am. schr., from Tongareva for San Pedro, Nov. 17.
LUREN, Am. S. S., ar. S. F. from Hon., Jan. 27.
MAKITA, Br. S. S., from Sydney for Hon., Jan. 17.
MAKAWILI, Am. bk., Nelson, from Hon. for Port Townsend, Jan. 18.
MARY WINKELMAN, Am. bktr., from Manila for Honolulu, Nov. 27.
MARAMA, Br. S. S., ar. Sydney from Hon., Nov. 27.
MAYNARD, Am. S. S., from Hon. for S. F., Jan. 21.
MAYNARD, Br. S. S., ar. Maui from Hon., Jan. 22.
MANSHU, WAMP, Jap. S. S., N444, from Hon. for S. S., ar. ports Jan. 28.
METHUEN, Am. schr., ar. Pa. from Grays Harbor, Oct. 13.
MIDIAN, Am. S. S., from Hilo for Salina Cruz, Jan. 24.
MOANA, Br. S. S., ar. Vancouver from Hon., Jan. 14.
MONGOLIA, Am. S. S., from Hon. for Yokohama, Dec. 28.
MISSOURI, Am. S. S., from Hon. for Kahului, Jan. 20.
MARY E. POSTER, Am. schr., ar. Grays

DANGER FROM CRUMP.

A few minutes delay in treating some cases of crump, even the length of time it takes to go for a doctor often proves dangerous. The safest way is to keep Chamberlain's Cough Remedy in the house, and at the first indication of crump give the child a dose. Pleasant to take and always cures. For sale by all dealers. Benson, Smith & Co., agents for Hawaii.

OAHU RAILWAY TIME TABLE.

OUTWARD.
For Wainane, Waihua, Kahuku and Way Stations:—9:15 a. m., 1:20 p. m.
For Pearl City, Ewa Mill and Way Stations:—9:30 a. m., 1:35 p. m., 1:45 a. m., 2:15 p. m., 3:20 p. m., 5:15 p. m., 9:15 a. m., and 5:15 p. m.
INWARD.
Arrive Honolulu from Kahuku, Waihua and Wainane:—8:30 a. m., 5:35 p. m.
Arrive Honolulu from Ewa Mill and Pearl City:—7:45 a. m., 8:30 a. m., 10:38 a. m., 1:40 p. m., 4:31 p. m., 5:31 p. m., 7:30 p. m.
Arrive Honolulu from Waihua:—8:30 a. m. and 5:31 p. m.
The Haleiwa Limited, a two-hour train (only first-class tickets honored), leaves Honolulu every Sunday at 8:22 a. m., returning, arrives in Honolulu at 10:10 p. m. The Limited stops only at Pearl City and Wainane.
*Sunday, 4:45 Sunday, 1:50 Sunday Only.
G. P. DENISON, E. C. SMITH, Superintendent, G. P. & T. A.

KOALAU RAILWAY TIME TABLE.

DAILY, EXCEPT SATURDAY, SUNDAY AND HOLIDAYS.
Leave Kahala for Punahoa, Hanalei, Laie, Kahuku and Way Stations:—12:00 M.
Arrive Kahala at:—1:00 P.M.
Leave Kahala for Laie, Hanalei, Punahoa, Kahuku and Way Stations:—1:45 P.M.
Arrive Kahala at:—2:45 P.M.
SATURDAY, SUNDAY AND HOLIDAYS.
Arrive Kahala at:—11:58 A.M.
Leave Kahala for Punahoa, Hanalei, Laie, Kahuku and Way Stations:—11:00 A.M.
1:20 P.M.
2:15 P.M.
Leave Kahala for Laie, Hanalei, Punahoa, Kahuku and Way Stations:—12:15 P.M.
3:00 P.M.
3:45 P.M.
Connections are made at Kahala with the O. R. & L. Co.'s 9:15 a. m. train from Honolulu, and the 2:20 p. m. train, which arrives in the city at 3:30 p. m.

JANUARY 1, 1909.

J. J. DOWLING, E. S. POLLISTER, Superintendent, G. P. & T. A.

SCROFULA

Scrofula disfigures and causes life-long misery. Children become strong and lively when given small doses of

Scott's Emulsion

every day. The starved body is fed; the swollen glands healed, and the tainted blood vitalized. Good food, fresh air and Scott's Emulsion conquer scrofula and many other blood diseases.

FOR SALE BY ALL DRUGGISTS.
Send the name of paper and this ad. for free beautiful Scrofula Book and Emulsion Book. Each book contains a Good Luck Book. SCOTT & BOWNE, 409 Pearl St. N. Y.

HOTEL STEWART

SAN FRANCISCO

Geary Street, above Union Square. Just opposite Hotel St. Francis.
European Plan \$1.50 a day up.
American Plan \$3.00 a day up.

Steel and brick structure, furnishings cost \$200,000. High class hotel at moderate rates. Center of business and retail district. Ocean view, all trains and steamers. Send for booklet with map of San Francisco. Hotel Stewart now recognized as Hawaiian Island headquarters. Cable address, "Trawets." A B C Code.

HOTEL STEWART

DELMONICO HOTEL

130 Secretaria Street, adjoining City and County Jail.
Fire Station.
Furnished rooms, mosquito proof. First class accommodation, en suite or single, for men only. Terms reasonable.

THE NUUANU

1634 Nuuanu Ave. near School St. Large and airy furnished rooms and cottages with or without board. A day; special rates by the month.

Apartment, Cuisine and Service Highest Standard

PLEASANTON HOTEL

Wilder Ave. and Panama

Exquisite Millinery

K. UYEDA

1028 Nuuanu Street.

Grocery Sale

At Lewis & Company's Store—

Conducted by

Theo. H. Davies & Co.

YOU CAN'T DO IT

with a comb! If you want to clean your scalp of the dandruff scale, you must do it with

PACHECO'S DANDRUFF KILLER

Sold by all druggists.

RUBEROID ROOFING

Get samples and prices at

LEWERS & COOKE, LTD.

Regal Shoes

ARE BEST

REGAL SHOE STORE

CORNER KING AND BETHEL

CALIFORNIA OIL DIVIDENDS

Buy listed, dividend-paying California oil stocks. Many of these stocks pay one and two per cent monthly dividends. By purchasing listed stocks you can sell any day you wish. You can invest large or small sums. We will gladly tell you all about these listed stocks, or any other California oil stocks. We are on the ground and operating in all the California oil fields. We handle only genuine propositions and have the most thorough investigation made today for list of dividend-paying oil stocks, which we will send free of charge for three months. LINCOLN MORTGAGE & LOAN CO. 106 Geary Street, San Francisco.

OIL STOCKS

Listed and unlisted Oil Stocks sold on Commission. Daily quotations.

Members of the Stock & Oil Exchange.

101 Bessie Building, San Francisco.

Honolulu Scrap Iron Co.

C. H. BROWN

HALOGRATWILL STREET

Highest price paid for Old Brass, Iron and all metals.

Dealer in Second-hand Machinery.

Tel. 612. P. O. Box 545.

READ THE ADVERTISER

WORLD'S NEWS DAILY

SELF CURE NO FICTION! MARVEL UPON MARVEL!

NO SUFFERER
NEED NOW DESPAIR.

THE NEW FRENCH REMEDY THERAPION

THERAPION No. 1—The Sovereign
Remedy for all diseases of the blood and skin, such as eczema, psoriasis, etc.

THERAPION No. 2—The Sovereign
Remedy for all diseases of the blood and skin, such as eczema, psoriasis, etc.

THERAPION No. 3—The Sovereign
Remedy for all diseases of the blood and skin, such as eczema, psoriasis, etc.

THERAPION No. 4—The Sovereign
Remedy for all diseases of the blood and skin, such as eczema, psoriasis, etc.

THERAPION No. 5—The Sovereign
Remedy for all diseases of the blood and skin, such as eczema, psoriasis, etc.

THERAPION No. 6—The Sovereign
Remedy for all diseases of the blood and skin, such as eczema, psoriasis, etc.

THERAPION No. 7—The Sovereign
Remedy for all diseases of the blood and skin, such as eczema, psoriasis, etc.

THERAPION No. 8—The Sovereign
Remedy for all diseases of the blood and skin, such as eczema, psoriasis, etc.

THERAPION No. 9—The Sovereign
Remedy for all diseases of the blood and skin, such as eczema, psoriasis, etc.

THERAPION No. 10—The Sovereign
Remedy for all diseases of the blood and skin, such as eczema, psoriasis, etc.

THERAPION No. 11—The Sovereign
Remedy for all diseases of the blood and skin, such as eczema, psoriasis, etc.

THERAPION No. 12—The Sovereign
Remedy for all diseases of the blood and skin, such as eczema, psoriasis, etc.

THERAPION No. 13—The Sovereign
Remedy for all diseases of the blood and skin, such as eczema, psoriasis, etc.

THERAPION No. 14—The Sovereign
Remedy for all diseases of the blood and skin, such as eczema, psoriasis, etc.

THERAPION No. 15—The Sovereign
Remedy for all diseases of the blood and skin, such as eczema, psoriasis, etc.

THERAPION No. 16—The Sovereign
Remedy for all diseases of the blood and skin, such as eczema, psoriasis, etc.

THERAPION No. 17—The Sovereign
Remedy for all diseases of the blood and skin, such as eczema, psoriasis, etc.

THERAPION No. 18—The Sovereign
Remedy for all diseases of the blood and skin, such as eczema, psoriasis, etc.

THERAPION No. 19—The Sovereign
Remedy for all diseases of the blood and skin, such as eczema, psoriasis, etc.

THERAPION No. 20—The Sovereign
Remedy for all diseases of the blood and skin, such as eczema, psoriasis, etc.

THERAPION No. 21—The Sovereign
Remedy for all diseases of the blood and skin, such as eczema, psoriasis, etc.

THERAPION No. 22—The Sovereign
Remedy for all diseases of the blood and skin, such as eczema, psoriasis, etc.

THERAPION No. 23—The Sovereign
Remedy for all diseases of the blood and skin, such as eczema, psoriasis, etc.

THERAPION No. 24—The Sovereign
Remedy for all diseases of the blood and skin, such as eczema, psoriasis, etc.

THERAPION No. 25—The Sovereign
Remedy for all diseases of the blood and skin, such as eczema, psoriasis, etc.

THERAPION No. 26—The Sovereign
Remedy for all diseases of the blood and skin, such as eczema, psoriasis, etc.

THERAPION No. 27—The Sovereign
Remedy for all diseases of the blood and skin, such as eczema, psoriasis, etc.

THERAPION No. 28—The Sovereign
Remedy for all diseases of the blood and skin, such as eczema, psoriasis, etc.

THERAPION No. 29—The Sovereign
Remedy for all diseases of the blood and skin, such as eczema, psoriasis, etc.

THERAPION No. 30—The Sovereign
Remedy for all diseases of the blood and skin, such as eczema, psoriasis, etc.

THERAPION No. 31—The Sovereign
Remedy for all diseases of the blood and skin, such as eczema, psoriasis, etc.

THERAPION No. 32—The Sovereign
Remedy for all diseases of the blood and skin, such as eczema, psoriasis, etc.

THERAPION No. 33—The Sovereign
Remedy for all diseases of the blood and skin, such as eczema, psoriasis, etc.

THERAPION No. 34—The Sovereign
Remedy for all diseases of the blood and skin, such as eczema, psoriasis, etc.

THERAPION No. 35—The Sovereign
Remedy for all diseases of the blood and skin, such as eczema, psoriasis, etc.

THERAPION No. 36—The Sovereign
Remedy for all diseases of the blood and skin, such as eczema, psoriasis, etc.

THERAPION No. 37—The Sovereign
Remedy for all diseases of the blood and skin, such as eczema, psoriasis, etc.

THERAPION No. 38—The Sovereign
Remedy for all diseases of the blood and skin, such as eczema, psoriasis, etc.

THERAPION No. 39—The Sovereign
Remedy for all diseases of the blood and skin, such as eczema, psoriasis, etc.

THERAPION No. 40—The Sovereign
Remedy for all diseases of the blood and skin, such as eczema, psoriasis, etc.

ROBERTS GETS A SALOON LICENSE

Liquor Board Permits Klemme
to Sell His Place to
Jack Roberts.

The board of liquor license commissioners at a postponed meeting held yesterday afternoon, decided to allow a saloon to be run in the old Kentucky saloon, which is on lower Alakea street, Jack Roberts being the man who gets the license.

The proposition was somewhat of a mixed one. Harry Klemme, holds a restaurant liquor license for the old Harry Jones premises at the corner of Beretania and King streets. But Harry has been going into the hole and has been for some time beseeching the board to let him make some kind of a change. He applied first for permission to transfer his license to Jack Roberts and to permit the license to apply to the old Anchor saloon. This was denied by the board. Klemme then asked permission to transfer his license to Roberts and Roberts applied for permission to transfer the license to the old Kentucky saloon, a house on the premises of which is held by James Thompson from Fred Harrison. This came up at the last regular meeting but no decision was reached and the matter went over until yesterday.

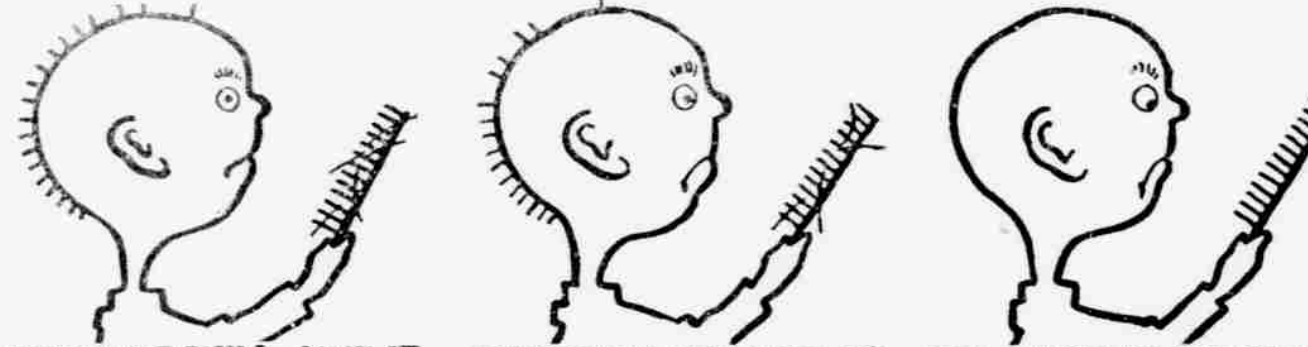
Klemme appeared before the board, supported by his attorney A. V. Gear, and told a tale of woe—how he had been unable to make a go of the business at King and Beretania, how his wife had smothered her jewelry to keep the wolf from the door and other painful details of the business that was a failure.

Gear urged the granting of the petition, telling what a good fellow Roberts is and how hard up Klemme is.

Fire Chief Thurston, who lives near the Kentucky saloon, appeared before the board and protested against the allowing of the proposed transfer. He said that for four years he had the Palace Cafe next door to him, and for four years he lived in hell, and he had had enough of it. Perhaps a saloon might not be as bad as a cafe. In fact he was sure nothing could be as bad. But he couldn't see the need of another saloon in that neighborhood. The one there now ought to be enough to supply the necessities of the neighbors. He was trying to raise a family in that part of the city and he thought he could do it better without any more saloons.

The board wanted to know what about the garnishee suit against Klemme. Gear replied that the plaintiff, H. Haekfeld & Co., will be able to get nothing out of the man they have jumped on, as arrangements have been made to have the sum to be paid by Roberts

GOING! GOING!! GONE!!!



HERPICIDE WILL SAVE IT HERPICIDE WILL SAVE IT TOO LATE FOR HERPICIDE

(N.B.—These drawings are protected by U. S. Trade Mark.)

SAVE YOUR HAIR WITH NEWBRO'S HERPICIDE

The time to save your hair, is while you have hair to save. Newbro's Herpicide kills the germ that causes dandruff itching scalp and falling hair, after which the hair is bound to grow as nature intended (except in cases of chronic baldness.) Herpicide stops itching of scalp almost instantly.

I find that Herpicide will do all you claim for it. I am now on my second bottle and it has cleansed my head nicely, and I can see new hair coming in. It also stopped my hair from falling out and I am well pleased with it and will do recommend it to all.

(Signed) R. L. LEIGH.
Hopkinsville, Ky.

I wish to say that I have used part of the bottle of Herpicide that you sent me and I think it is a good tonic and have recommended it to quite a number of my friends. I believe it will cure dandruff and it is a splendid and delightful hair dressing.

(Signed) H. J. FORSDICK.
Memphis, Tenn.

I have given your Herpicide a thorough test. I can cheerfully say that it is the best Hair Tonic I have ever used. It will be one of our household remedies from now on and will surely recommend same to all my friends and acquaintances.

(Signed) PETER PEHL.
Sedalia, Mo.

You very kindly sent me a bottle of your Herpicide and I gladly answer your inquiry as to its qualities. I have used it now for some time and know it to be the best thing for the hair I have ever used and it keeps my hair free from dandruff and soft as silk. I have induced several of my friends to use it and they are pleased with it.

(Signed) W. M. SHOOK.
Nashville, Tenn.

Two Sizes, 50c and \$1

At Drug Stores. Send 10c in Stamps to The Herpicide Co., Dept. N, Detroit, Mich., for a Sample

HOLLISTER DRUG CO., Special Agents.

Applications at Prominent Barber Shops.

Be sure you get Herpicide. Guaranteed under the Food and Drugs Act, June 30, 1906. Serial No. 915.

Pineapples and Bananas

are now
AT THEIR BEST

ISLAND FRUIT CO.
72 S. King St. Phone 15.

Drink
Rainier Beer
AND KEEP HEALTHY.

Pure Hawaiian Cream

Scrupulous cleanliness, plenty of ice and constant care make our cream satisfactorily. Our customers appreciate it, as some believe CHEMICAL PRESERVATIVES injurious.

Call up
THE POND DAIRY, TEL. 890,
or MAY, LEVY or DAY & CO.

Real Estate Exchange

LIMITED.
Have you found any
better flavored candy
than

RHINE'S?

PAWAA JUNCTION STORE

GRAVENETTE
COATS
BLOM'S

FOR GOOD RED LIQUOR AND
LAGER BEER
THE ORPHEUM SALOON.
Above the Theater.

RING UP
LEVY'S

FOR GROCERIES PHONE 76

Annual Sale
—of—
TABLE LINEN
—begins—
Tuesday, February First
EHLERS

NEW HAWAIIAN
PHONOGRAPH RECORDS
Call and hear them at
HAWAIIAN NEWS CO., LTD.,
Alexander Young Bldg.

MEDICAL BATTERIES
DIRECT CURRENT.
\$8.00 to \$12.00.
UNION ELECTRIC CO.
Harrison Bldg., Beretania Street.

FRAMING PICTURES
IS OUR BUSINESS.
PACIFIC PICTURE FRAMING CO.
Nuwana below Hotel St. Phone 222.

OVERTAXED

Hundreds of Honolulu Readers Know
What It Means.

The kidneys are overtaxed;
Have too much to do.

They tell about it in many aches and pains—

Backache, sideache, headache.

Early symptoms of kidney ills.

Urinary troubles, diabetes, Bright's disease follow.

The statement below shows you a certain cure.

A. T. Wildman, 1200 E. Ninth St.,

Oklahoma City, Okla., says: "Doan's

Backache Kidney Pills will always have

my praise, as they proved of the great-

est benefit to me. Several years ago I

was so bad off as the result of kidney

trouble and Bright's disease that I was

told by three physicians that I had not

long to live. My complaint was

brought on by hard work and exposure.

There were severe pains in my back

and loins both day and night and I lost

weight until I was but a mere shadow

of my former self. When Doan's

Backache Kidney Pills were brought to

my attention, I procured a box and

began their use. I soon noticed that

my condition was improving and thus

encouraged, I continued taking this

valuable remedy. The contents of six

boxes made a complete cure and I have

since been free from every symptom

of kidney trouble."

Doan's Backache Kidney Pills are

sold by all druggists and storekeepers

at 50 cents per box (six boxes \$2.50)

or will be mailed on receipt of price by

the Hollister Drug Co., Honolulu, whole-

sale agents for the Hawaiian Islands.

Remember the name, Doan's, and

take no substitute.

SAD SUDDEN DEATH OF AN ENGLISHMAN.

Visiting Briton (in swell dining room)

—Here, my good fellow, is a dollar.

Waiter (drawing himself up haughtily)—Pardon me, sir, I am paid for

my services by the manager. I accept

no tips. I am an American.

IN THE DAYS BEFORE THE FLOOD



PARISIANS ENJOYING THEMSELVES



FAMILIAR SCENE IN PARIS—A BOULEVARD CAFE.

A CYKO PRINT

has a quality and richness that puts it in a class by itself.
DEVELOPING—PRINTING—ENLARGING
and All Branches of Commercial Photography at

GURREY'S

FORT STREET, NEAR HOTEL STREET.

TUNGSTEN LAMPS

Householders and merchants who are interested
in reducing their light bills should not fail to try
these lamps. They give

Twice the Light for the Same Money

A clearer, brighter, whiter, steadier and better
light in every way than that obtained with the
ordinary lamps.

THE HAWAIIAN ELECTRIC CO., LTD.

VIBRATION IS LIFE

A representative of the

A VIBRATOR FOR \$15.

GOLDEN VIBRATOR CO.

will be in our store every day this week to DEMON-
STRATE THE EFFICACY of the famous Electrical
Vibrator. Come in and increase your circulation.

HOTEL AND FORT STREETS.

Benson, Smith & Co., Ltd.

Corner Hotel and Fort Streets.

Phone 297.

DISTILLED WATER

sold by us has the guarantee of
THOS. B. STILLMAN, M. S., PH. D.
ARCTIC SODA WATER WORKS.

1263 Miller Street.

Phone 557.

MEALS

Better cooked and served and for more reasonable prices
than you can get them anywhere in the city.

TRY LUNCHEON THERE TODAY.
HOTEL STREET NEAR UNION.

"Wants" Make them known
through the classi-
fied column.

Kodak Supplies

AND
Sundries

Big new shipment just arrived
and now ready.

**Honolulu
Photo Supply Co.**
FORT STREET

FRENCH AND EYELET

Embroideries

MRS. J. ROSENBERG
Second Floor, Young Building.

IF YOU CONTEMPLATE
BUYING A

PRIZE CUP

do not decide before seeing
our stock of them in Silver
and Silver Plate.

J. A. R. VIEIRA & CO.
Phone 512. 113 Hotel Street.

IN HONOLULU

Drink Primo

THE BEER THAT'S BREWED TO
SUITE THE CLIMATE.

**TRUNKS
and BAGS**

in endless variety at

YEE CHAN & CO.
Corner King and Bethel Streets.

TOWNSEND UNDERTAKING CO.

LIMITED.

MUTUAL BURIAL ASSOCIATION.
CITY MAUSOLEUM.

**POTTIE'S
Stock Remedies**

Office corner Hotel and Union.
H. M. AYRES - Manager
Phone 1189

The Star Dyeing and Cleaning Shop
221 Beretania Street, near Alakea.
Telephone 182.

MAKAI SIDE OF STREET

No connection with the place across
the street.

THE EAGLE

CLEANING, DYEING and
PRESSING WORKS
FORT AND KUKUI STREETS
Telephone 575

Iron Beds

Mattresses

Furniture

Coyne Furniture Co., Ltd.

Real Estate

MARTIN GRUNE
83 MERCHANT STREET.

Scandinavia Belting

**HONOLULU IRON WORKS
COMPANY**
AGENTS.

J. A. HASKELL

Safe and Lock

EXPERT
133 MERCHANT STREET
PHONE 146

COMMITTEES FOR THE FLEET BALLS

Chairman von Hamm Chooses
His Assistants for the
Coming Function.

C. C. von Hamm, chairman of the committee of the merchants' association on the entertainment of the Pacific fleet was an exceedingly busy man yesterday organizing for the various affairs and selecting assistants.

The ball for the warrant and chief petty officers will be held at the Alexander Young Hotel on Wednesday evening, February 2, and the dancing for the enlisted men at the Moana and Seaside hotels on Saturday night, February 5. For the first affair the Hawaiian band will give a concert in Bishop Park in the evening and for the dual service will play near the two beach resorts. Hawaiian orchestras will provide dances. Lists of patronesses for all three dances are being made out. About 1000 invitations will be issued for the Young Hotel affair.

As floor managers for the three balls Mr. von Hamm has made the following appointments:

Alexander Young Hotel, Wednesday evening: George H. Angus, Ed Towse, M. Brisch, F. H. Armstrong, A. Mackintosh, Wm. Thompson, Robert McCorriston, Loyd Childs, Ralph S. Johnstone, A. B. Clark, Jr., E. E. Cheatham, M. M. Johnson.

Moana, Saturday evening: Ed Towse, F. B. Angus, E. E. Cheatham, A. Mackintosh, W. F. Dillingham, Loyd Childs, A. B. Clark, Jr.

Seaside, Saturday evening: Geo. H. Angus, Robert McCorriston, F. H. Armstrong, M. Brisch, Wm. Thompson, Ralph S. Johnstone, M. M. Johnson.

Mr. von Hamm desires to meet all of these gentlemen in the mauka pavilion of the Alexander Young Hotel at four o'clock Monday afternoon next.

REAL ESTATE TRANSACTIONS

Entered of Record January 28, 1910.

Von Hamm-Young Co Ltd to J M Haruh. Rel Bruce McV Mackall to von Hamm-Young Co Ltd. CM A R Glaisyer to von Hamm-Young Co Ltd. CM Oahu College by Trs to Martha E Dillingham. D Tam You and wf to Tam Sing. D Harmon E Hendrick and wf to Henry E Kelsey. D Cyrus T Green to Lena R Marquez. M Cecil Brown Tr to Manoel B D'Arruda. D Mrs. Eugenie H. Emerson by Tr to Anastasia McDowell. Rel

Recorded January 29, 1910.

L Kirkpatrick et al to Thomas S Porter, D; Lot 37, "Waialae Heights," Honolulu, Oahu: \$2000. B 328, p 86. Dated Jan 19, 1910.

Nellie E Smith to Frank E Colby, Rel; Lot 29, Bk A, Kulaokahua, Honolulu, Oahu: \$1200. B 329, p 209. Dated Jan 13, 1910.

Bank of Hawaii Ltd to A H Dondero et al, Par Rel; Lots 7 and 37, "Waialae Heights," Honolulu, Oahu: \$250. B 329, p 209. Dated Jan 19, 1910.

Kaiala Maunakea (w) to Frank K Archer Tr, Rel Dow; real and personal property of Lila Maunakea: \$25. B 328, p 89. Dated Dec, 1909.

Bank of Hawaii Ltd to Walter E Wall, Rel; Lot 5-1, Gr 3757, rents, etc, cor Dominis and Keamoku Sts, Honolulu, Oahu: \$5000. B 329, p 210. Dated Jan 19, 1910.

American Board of Comrs for F M by Trs to Honolulu Rapid Transit & Land Co, D; int in par Grs 25, 73 and 11, Beretania and Young Sts, Honolulu, Oahu: \$18,300. B 328, p 90. Dated Jan 18, 1910.

Andre Silva to Solomon Moheula, Rel; Lots 3, 4 and 5, Bk 7, bldgs, etc, Kapahulu Lots, Honolulu, Oahu: \$90. B 329, p 211. Dated Jan 8, 1910.

L Kirkpatrick et al to Edna L Paxson, D; Lot 7, "Waialae Heights," Honolulu, Oahu: \$450. B 328, p 93. Dated Jan 19, 1910.

Mutual Bldg & Loan Socy of Haw Ltd to Charles S Crane, Rel; Lot 16 of Gr 3137, Kapihau Tract, Honolulu, Oahu: \$600. B 329, p 211. Dated Jan 20, 1910.

August Humburg and wf to R A Lucas, D; pe land, Waialae, Hilo, Hawaii: \$500. B 328, p 76. Dated Mar 1, 1909.

Ace Lake (widow) to Mrs Kim Cook et al, D; Lot 36, L P 5191, rents, etc, Oahu, Puna, Hawaii: \$1 etc. B 328, p 85. Dated Sept 2, 1909.

Kahaupio Jeremiah (k) to Jose G Paria, L; 3a of Gr 357, Kokee 2, S Kona, Hawaii: 15 yrs of \$30 per yr. B 320, p 497. Dated Jan 19, 1910.

Kahaupio Jeremiah (k) to Jose G Paria, L; por Gr 806, Hikal, S Kona, Hawaii: 5 yrs of \$60 per yr. B 320, p 499. Dated Jan 19, 1910.

Maria I Fernandez and hsh to Francisco Maldonado, D; 4a land, Kapaekua, Hamakua, Maui: \$200. B 328, p 77. B 328, p 77. Dated Aug 15, 1908.

Manoel P Grigolio to Wan H Sun, L; 6a land, bldg and eastern, Kaulahua, Kula, Maui: 5 yrs of \$50 per yr. B 320, p 493. Dated July 24, 1909.

Wan H Sun to D K Kapihau et al, A, premises, Kaulahua, Kula, Maui: \$1. B 320, p 495. Dated Dec 1, 1909.

Late Maunahi and hsh (k) to Jose P Philip, D; 1 lot 30 R P 1215, Kaulahua, Maunakea, Maui: \$150. B 328, p 78. Dated Dec 25, 1909.

S Ah Mo and wf to Sing Lee Yau, D; R P 1488, 2071, 2072 and R P 1449 and livestock, wagons, harness, etc, Kaulahua, Kula, Maui: \$1000. B 328, p 79. Dated Jan 10, 1910.

S Ah Mo to S Ah Pao, A; 12 premises, Waialeale, Kauai, Maui: \$25. B 329, p 497. Dated Jan 10, 1910.

John E Tavares and wf to John Crap, ex-parte. D; Gr 4289, Waialeale, Kula,

Maui: \$380. B 328, p 80. Dated Jan 17, 1910.

S Nakamura and wf to Manoel Barrios, D; 1 share in hui land, Puna, Hawaii: \$112. B 328, p 81. Dated Jan 17, 1910.

William Keana and wf to R A Wadsworth, D; int in 494-10000 land, Kapaekua, Waialeale, Maui: \$275. B 328, p 82. Dated Nov, 1909.

Wm T Robinson to Bismark Stables Co Ltd, Rel; leasehold, bldgs, misc, livestock, wagons, harness, etc, Waialeale, Maui: \$7000. B 329, p 208. Dated Dec 18, 1909.

C D Luffkin and wf to Rebecca Nieh, D; Lot 5, 6445 sq ft land, Kaulahua, Kula, Maui: \$400. B 328, p 87. Dated Dec 24, 1909.

Laney Seale and hsh (R C Jr) to La Haina Agri Co Ltd, D; per Ap 4, Kul 312, rents, etc, Lahaina, Maui: \$1000. B 328, p 91. Dated Jan 19, 1910.

Automobiles, \$4 per hour. We take you home in the back limit for 50 cents. Around the Island, \$6.50 per passenger. Auto Livery. Phone 6.

A PRELIMINARY STEP.

"Why in emigrating to America have you planned to leave your youngest son behind?"

"Oh, I guess he'll follow later. He has just been appointed cashier in a Berlin bank." - Mezzanotte's Blaster.

**Syrup of Figs
and Elixir of Senna**
acts gently yet promptly
on the bowels, cleanses
the system effectually,
assists one in overcoming
habitual constipation
permanently. To get its
beneficial effects buy
the genuine.

Manufactured by the
**CALIFORNIA
FIG SYRUP CO.**
SOLD BY LEADING DRUGGISTS - 50¢ per BOTTLE

ELECTION OF OFFICERS.

Hustace, Peck Co., Ltd.

At the regular annual meeting of the stockholders of Hustace, Peck Co., Ltd., held January 28, 1910, the following officers were elected to serve for the ensuing year:

E. F. BISHOP, President
C. H. ATHERTON, Vice President
A. F. CLARK, Treasurer
W. H. SMITH, Secretary
N. E. GEDGE, Auditor

Board of Directors—E. F. Bishop, C. H. Atterton, Frank Hustace, W. H. Smith, Cecil Brown.

Secretary, Hustace, Peck Co., Ltd.
January 28, 1910. 8573

NOTICE

The Sociedade Lusitana Beneficente de Hawaii, at its regular annual meeting, held at Honolulu, elected as its officers for the current year the following gentlemen:

J. D. MARQUES, President
VICENTE FERNANDES, JR., Vice President
M. J. COITO, First Secretary
M. D. ABREU, Second Secretary
Board of Directors—A. H. R. Vieira, chairman; M. I. Meneses, secretary; Abel A. Carneiro, treasurer, and Jose P. Dias and J. S. Nascimento.

Auditors—L. R. Medeiros, chairman; G. G. Andrade, secretary, and F. F. Branco, Jr., J. E. Goes and J. B. Elos.

M. J. COITO, First Secretary.
Honolulu, January 29, 1910.
8573—January 29, 30, 31.

ELECTION OF OFFICERS.

The Bank of Hawaii, Ltd.

Notice is hereby given that at the annual meeting of The Bank of Hawaii, Limited, held on January 26, 1910, the following Officers and Directors were elected to serve for the ensuing year.

OFFICERS.
C. H. COOKE, President and Manager
E. D. TENNEY, Vice President
A. LEWIS, JR., Vice President
F. B. DAMON, Cashier
G. G. FULLER, Assistant Cashier
R. McCORISTON, Assistant Cashier
E. C. ATHERTON, Secretary
ZENO K. MYERS, Auditor

DIRECTORS.
C. H. Cooke, C. H. Atterton, E. D. Tenney, Geo. R. Carter, A. Lewis, Jr., B. A. Cooke, F. W. Macfarlane, F. C. Atterton, E. F. Bishop, F. B. Damon, J. A. McWhandless.

F. B. DAMON, Acting Secretary.
Honolulu, January 27, 1910. 8572

ELECTION NOTICE.

Sociedade Sao Martinho B. de Hawaii. The above named society, at its annual meeting, elected the following officers:

JOSE P. REGO, President
JOAO P. SOUZA, Vice President
J. A. B. VIEIRA, Secretary
C. F. ALVIA, Treasurer

Who, with F. A. Ferreira, Joao da Silva and Joao Moniz constitute the Board of Directors.

Joao P. Dias, J. P. Rodrigues, and A. F. Centeno constitute the Board of Auditors.

J. A. R. VIEIRA, Secretary.
Honolulu, January 26, 1910. 8572

By Authority

NOTICE OF SALE OF GENERAL
LEASES OF PUBLIC LANDS SIT-
UATED ON THE ISLAND OF HA-
WAII.

At 12 o'clock noon, Monday, February 21, 1910, at the front door of the Capitol, Honolulu, there will be sold at public auction under provisions of Part V., Land Act 1895, Section 278-285, inclusive, Revised Laws of Hawaii, General Leases of the following described Lands:

(1) Government land at Kaulahua, Kau, Hawaii, containing an area of 224 acres, more or less; 160 acres of which is classed as agricultural land, and 64 acres as pastoral and waste land. Upset rental, \$400.00 per annum, payable semi-annually in advance. Term of lease, 10 years from June 15, 1910.

(2) Government land at Kaele, Hilo, Hawaii, containing an area of 335.52 acres, more or less; 250.20 acres of which is classed as agricultural land, and 85.32 acres as pastoral and waste land. Upset rental, \$1050.00 per annum, payable semi-annually in advance. Term of lease, 10 years from July 1, 1910.

Reservations regarding land required by the government for settlement and reclamation purposes will be embodied in these leases.

Cost of advertising to be paid by the purchaser.

For maps and full particulars, apply at the office of the Commissioner of Public Lands, Honolulu.

MARSTON CAMPBELL,
Commissioner of Public Lands.
Dated at Honolulu, January 19, 1910.
8566—Jan. 22, 29; Feb. 5, 12, 19, 21

TREE PLANTING AT PUPEKEA.

Sealed tenders will be received at the office of the Superintendent of Forestry until 12 noon of Wednesday, February 9, 1910, for planting with trees three Water Reserves, A, B, & C, on the Pupekea Homesteads, Koolaula, Oahu. The trees will be supplied by the Government at Oahu, at Waimea station. Bidders are required to estimate on transporting the trees from Waimea to the Reserves, making holes and planting; also caring for the trees until they reach a height of three feet. One-half of the contract price will be paid when all the trees are planted and the other half when the trees reach a height of three feet.

Detailed specifications are obtainable upon application at the office of the Superintendent of Forestry at the Government Nursery, King Street, Honolulu. Bidders will state sums for which they will plant each of the three reserves.

The Superintendent of Forestry reserves the right to reject any or all bids.

RALPH S. HOSMER,
Superintendent of Forestry.
Honolulu, T. H., January 25, 1910.
8570—Jan. 26, 27, 28, 29, 30, 31; Feb. 1, 2, 3, 4.

HIGH SHERIFF'S SALE NOTICE.

Under and by virtue of a certain Writ of Execution issued out of the District Court of Honolulu, City and County of Honolulu, Territory of Hawaii, by Hon. Frank Andrade on the 18th day of January, A. D. 1910, in the matter of Charles T. Wilder, Assessor of Taxes, First Division, Territory of Hawaii, plaintiff, v. Mark O'Donnell, nonresident, defendant, for the sum of Fifty and 20/100 (\$50.20) Dollars, I did, on the 22nd day of January, 1910, levy upon and in accordance with Section 1272 Revised Laws of Hawaii, applying to nonresidents, shall offer for sale and sell at public auction to the highest bidder all the property hereinafter referred to in order to satisfy the said Writ of Execution, at the City Auction Rooms, Merchant street, Honolulu, City and County of Honolulu, Territory of Hawaii, at 12 o'clock noon of Wednesday, the 23rd day of February, 1910, all the following described property of said defendant, unless the judgment and costs of said execution, amounting to Fifty and 20/100 (\$50.20) Dollars, together with interest, costs and my fee and expenses are previously paid:

Property to Be Sold.
Lot 8, Block 39, Kaimuki Tract, Honolulu.

Terms Cash, United States Gold Coin. Dated January 22, A. D. 1910, at Honolulu, City and County of Honolulu, Territory of Hawaii.

WM. HENRY,
High Sheriff, Territory of Hawaii.
8567—Jan. 22, 29; Feb. 21

SEALED TENDERS.

SEALED TENDERS will be received at the office of the Superintendent of Public Works until 12 m. of Tuesday, Feb. 8, 1910, for furnishing the Department of Public Works with truck, cast-ings, bolts and door hangers.

Plans on file in the office of the Superintendent of Public Works.

The Superintendent reserves the right to reject any or all bids.

MARSTON CAMPBELL,
Superintendent of Public Works.
Honolulu, January 26, 1910. 8571

SEALED TENDERS.

SEALED TENDERS will be received at the office of the Superintendent of Public Works until 12 m. of Wednesday, Feb.

The Young Hawaiian Loan & Saving Company LIMITED.

STATEMENT OF CONDITION. DECEMBER 31, 1909.

RESOURCES.	LIABILITIES.
Loans, demand and time, \$4,359.21	Capital paid in, 1,898.37
Due from banks, 1,898.37	Surplus fund, 557.65
Cash on hand, 557.65	
	\$6,815.93

I, Henry C. Hapai, Treasurer, do hereby certify that the foregoing statement is true and correct to the best of my knowledge and belief.

Subscribed and sworn to before me this 26th day of January, 1910.

Notary Public, First Judicial Circuit.

February 2, 1910, for furnishing the Department of Public Works, f. o. b., Liliue, Kauai, with ten horses, four mules, two buckboards, one wagon with top and curtains and four sets double harness.

Bidders will state in their proposals a lump sum for furnishing the above mentioned items.

The Superintendent of Public Works reserves the right to reject any or all bids.

MARSTON CAMPBELL,
Superintendent of Public Works.
Dept. of Public Works,
Jan. 19, 1910. 8565

IN THE CIRCUIT COURT OF THE FIRST JUDICIAL CIRCUIT, TERRITORY OF HAWAII.

At Chambers—in Probate.
In the Matter of the Estate of Joseph Oliver Carter (the elder), Deceased.
On reading and filing the petition and accounts of Joseph Oliver Carter (the younger) and Henry Cushman Carter, both of Honolulu, Island of Oahu, Territory of Hawaii, executors of the will of Joseph Oliver Carter (the elder), deceased, wherein they ask to be allowed the sum of \$82,613.43, and they charge themselves with the sum of \$83,548.45, and ask that the same may be examined and approved, and that a final order may be made of distribution of the property remaining in their hands to the persons thereto entitled, and discharging them from all further responsibility as such executors.

It is ordered that Monday, the 7th day of March, 1910, at ten o'clock a. m., before the Judge of said Court, at the courtroom of said Court at Honolulu, Island of Oahu, be and the same hereby is appointed as the time and place for hearing said petition and accounts, and that all persons interested may then and there appear and show cause, if any they have, why the same should not be granted, and may present evidence as to who are entitled to the said property.

By the Court:
V. M. HARRISON,
Assistant Clerk.
Holmes, Stanley & Olson, Attorneys for Petitioner.
8573—January 29; February 5, 12, 19

PROBATE NO. 4146.

IN THE CIRCUIT COURT OF THE FIRST CIRCUIT OF THE TERRITORY OF HAWAII.

AT CHAMBERS IN PROBATE.

In the Matter of the Estate of Francisco Freitas, Deceased.

On reading and filing the petition of Trent Trust Company, Limited, Administrator of the Estate of Francisco Freitas, Deceased, praying for an order of sale of certain real estate belonging to the estate of said decedent, consisting of,—

All that certain parcel of land situate at Kapihulu, Waikiki, Oahu, and more particularly described as Lots 1 and 2 of Block 18 upon a map or diagram of the Kapihulu Tract, together with the improvements on said land, consisting of a one-story house.

And it appearing to the Court from said petition that there are good and sufficient legal reasons why such real estate should be sold, to-wit: the insufficiency of the personal property of said decedent to pay the debts of said decedent;

IT IS HEREBY ORDERED that all persons interested in the said estate appear before this Court on Wednesday the 9th day of February, A. D. 1910, at 10 o'clock, at the court room of the Judge of this Court presiding at Chambers, in Honolulu, Territory of Hawaii, then and there to show cause, if any they have, why an order should not be granted to the Administrator of said estate for the sale of the real property belonging to said estate, as prayed for in the petition by it hereinbefore filed.

Dated, January 7, 1910.
By the Court:
(Sig.) J. A. THOMPSON, Clerk.

Thos. E. Robinson Attorney for Petitioner.
8555—Jan. 8, 15, 22, 29.

ANNUAL MEETING.

Consolidated Soda Water Works Co.
The annual meeting of the stockholders of Consolidated Soda Water Works Company, Limited, will take place at the office of Wade Warren Thayer, 603-604 Stangenwald building, on Saturday, the 29th day of January, 1910, at 10 o'clock a. m.

WADE WARREN THAYER, Secretary.
8502—January 17, 22, 29

ANNUAL MEETING.

Kohala Ditch Co., Ltd.

The annual meeting of the stockholders of the Kohala Ditch Co. Ltd. will be held at the office of the Henry Waterhouse Trust Co., Ltd., in Honolulu, on Monday, January 31, 1910, at 10 o'clock a. m.

A. N. CAMPBELL, Secretary.
8567

THIS