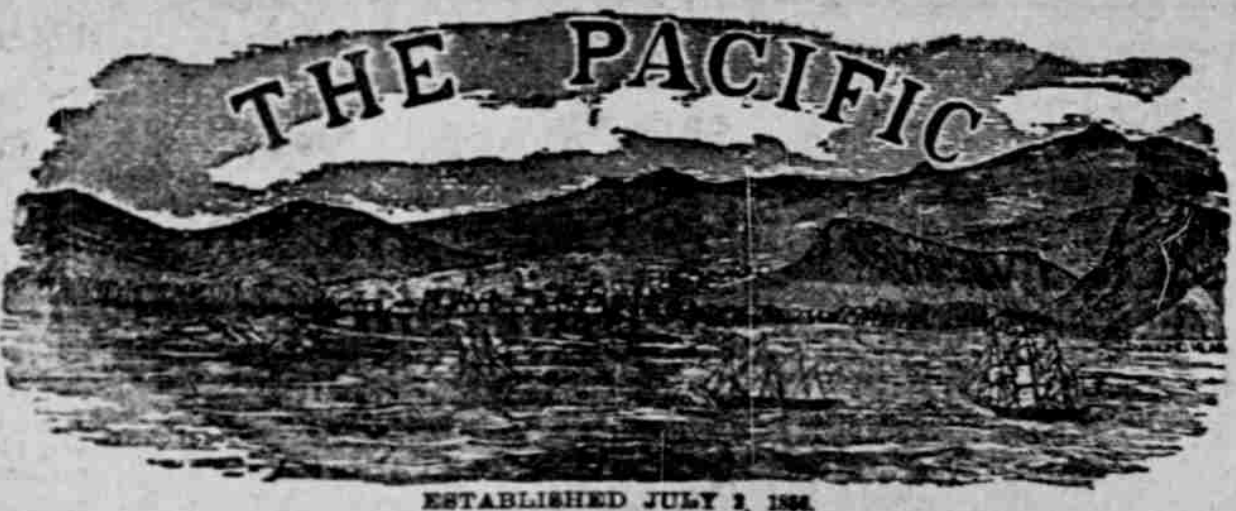


## Commercial



## Advertiser.

VOL. XXXV. NO. 6203

HONOLULU, HAWAII TERRITORY, TUESDAY, JUNE 24, 1902.

PRICE FIVE CENTS.

## KING EDWARD VII WHOSE SUDDEN ILLNESS HAS CAUSED MUCH WORRY TO HIS SUBJECTS



LONDON, June 15.—A dispatch to the Exchange Telegraph Company from Aldershot says:

"The King's illness has become of a much more serious nature than at first suspected."

Yesterday the King was in a low state and laudanum was administered to allay the pain. Complications were feared this morning."

LONDON, June 16, 3:43 p. m.—When questioned regarding the alarmist reports circulated about the health of King Edward, His Majesty's private secretary, Sir Francis Knollys, said:

"The best answer I can give is that the King is going to Windsor this afternoon."

LONDON, June 16.—King Edward, who was attacked yesterday by lumbago, following a chill contracted while reviewing the troops at Aldershot, passed a good night and is much better. Rain is falling, however, so he will not risk attending the grand review today. The Prince of Wales will receive the salute in the King's stead.

Lord Farquhar, master of the household, who is at Windsor Castle, said this evening that King Edward was much better and that he would arrive at the Castle from Aldershot, in accordance with his previous arrangements.

ALDERSHOT, England, June 15.—The indisposition of King Edward and the incessant downpour of rain combined to effectually spoil the grand review of troops here today. The King did not leave the royal pavilion and was represented by the Prince of Wales, who rode to the saluting point, accompanied by the Duke of Connaught and a brilliant staff, comprising several Indian Princes, the military attaches, Lord Roberts, the commander-in-chief, and the headquarters staff. Queen Alexandra drove to the parade ground in a closed carriage, with the Princess of Wales and the Princess Victoria. In other carriages at the saluting point were the Duchess of Connaught and many of the notabilities who are visiting England. More than 32,000 rain-soaked troops marched past the heir to the throne.

ALDERSHOT, England, June 16.—King Edward and Queen Alexandra started for Windsor at 4:15 this afternoon in a motor car. The King showed little trace of his recent illness.

REHEARSING THE CORONATION.

LONDON, June 12.—King Edward and Queen Alexandra were engaged today in what was practically a rehearsal of the coronation ceremonies. Accompanied by Princess Victoria and a suite their majesties drove to Westminster Abbey. They were quietly received by the Duke of Norfolk, earl marshal and chief butler of England, who escorted them through the abbey.

In order to prevent the possibility of a hitch in the proceedings on coronation day all the details were explained to them. The royal visit to the abbey was accomplished very quietly and but a few of the persons about the building were aware of their presence.

LONDON, June 12.—The final court of the season will be held at Buckingham Palace tonight. Their majesties will then go to Windsor and will not return to London until coronation week.

The program of functions for coronation week is as follows:

Monday, June 23, arrival in London of the royal representatives; dinner at Buckingham Palace; and reception of the suites.

Tuesday, June 24, their majesties will receive the special foreign envoys and deputations to the coronation and give a state dinner at Buckingham Palace.

Wednesday, June 25, reception of the colonial Premiers and other envoys; the Prince of Wales will give a dinner party at St. James' Palace to the Princes and envoys.

Thursday, June 26, the coronation.

Friday, June 27, the procession through London, which will be a military pageant some two miles long, representing every portion of the British dominion. In the evening their majesties will attend a reception at Lansdowne House.

Saturday, June 28, the royal party will leave London for the naval review.

Sunday, June 29, dinners to the foreign Princes by their respective Embassadors.

Monday, June 30, their majesties return to London; gala performance of opera.

Tuesday, July 1, garden party at Windsor Castle.

Wednesday, July 2, departure of the foreign Princes and envoys; their majesties dine at Londonderry House.

Thursday, July 3, their majesties attend the service at St. Paul's and lunch at the Guildhall.

Friday, July 4, their majesties attend the reception of the Indian Princes at the Indian office.

Saturday, July 5, King Edward's dinner to the poor.

### USED HONOLULU MADE BALLOON

It was a Honolulu-made balloon in which Aeronaut Leonard ascended to the upper atmosphere about 6 o'clock yesterday afternoon, and it was in a Honolulu-made parachute that he came back to terra firma—or rather to the United States Naval dock, where he surprised Lieutenant Rodman of the U. S. S. Iroquois, who hadn't expected a visitor to drop from the skies. The balloon, which has been christened the "Island Maid," was finished only a few days ago, and last evening in the presence of several hundred people, opposite the Hawaiian hotel, the big bag was filled with hot air. When Leonard gave the word to "Let Go," all hands scattered from its vicinity, and the bag shot upward rapidly. At an elevation of 1500 feet the balloon began to sail toward the ocean and the aeronaut then began to perform on his bar, doing a perilous ankle-drop act which was applauded, although the aeronaut probably could not hear the testimonial. He was seen to make two jerks on the cut-off rope, and suddenly he and his white parachute shot downward at a terrific rate for about 200 feet, when the chute filled out and he sailed downward easily. He steered himself over the top of a ship lying at the Naval dock, and almost descended upon the deck of the Iroquois, but deflected his air-ship so that he landed directly on the wharf. The bag fell into the ocean just within the reef, where it was picked up and brought to the Iroquois dock, Lieutenant Rodman offering to have his sailors dry it. Leonard will probably make another ascent on July 4.

### EWA'S GREAT SUGAR YIELD

Ewa plantation reports the greatest sugar yield per acre on record. The product of 148.4 acres is 2228 tons, 825 pounds.

The amount of tons of cane per acre is 112.23.

The amount of tons of sugar per acre is 15.2.

The average polarization of sugar is 97.02.

## SENATORS MAY COME TO LEARN

### Committee Must Decide on Course.

### MITCHELL WANTS INFORMATION

### Hoar Also Desires to Know All About Land Titles of the Ex-Queen.

WASHINGTON, June 13.—During the greater part of today the Senate was in executive session, the nomination of Captain Crozier to be Chief of Ordnance of the Army being the particular subject under discussion. The President's message urging the establishment of reciprocal relations between the United States and Cuba was received after the Senate had gone into secret session. The doors were opened, the message was read, and then the secret session was resumed.

Soon after the Senate convened the vote by which the resolution respecting the discharge of Miss Rebecca J. Taylor from the War Department was referred to the Committee on Civil Service and Retrenchment, at the instance of Platt of Connecticut, was reconsidered and the resolution was made subject to the call of Carmack of Tennessee.

A resolution was offered by Mitchell of Oregon directing the Committee on Pacific Islands and Porto Rico to inquire into the general condition of Hawaii, the administration of affairs there, the quality, condition and value of the public lands in Hawaii; the crown lands and the title of the former Queen therein; with power to sit during the recess, and by sub-committee to visit the Islands if necessary, and to report at the beginning of the next session.

Hoar proposed an amendment to the resolution, providing that the committee should inquire whether the ex-Queen has any claim against the United States, legal or equitable, by reason of having parted hitherto with her title.

Mitchell accepted the amendment and the resolution was referred to the Committee on Pacific Islands and Porto Rico.

### LILUOKALANI EN ROUTE HOME

WASHINGTON, June 15.—Former Queen Liliuokalani of Hawaii and party are preparing to return to their former home in the Islands of the Pacific. The date of departure has not been set, but it will probably be before July 1.

The former Queen has participated in the gayeties of the social season but lightly, but has spent a delightful winter in the national capital. Nothing but the intense heat of the past few days and the fear that it will be worse later drives her away. She will be accompanied by the several members of her suite. She expects to return next season.

### KIDNAPED BOY RETURNS.

#### Abe Lowenstein, Jr., Brought Home in Triumph.

NEW YORK, June 16.—Abe Lowenstein, Jr., four years of age, who was kidnapped from his home in Newark on May 24 by a "woman in black," has been restored to his parents. More than 5000 persons who thronged the streets leading to the police station shouted themselves hoarse. Then the father, clasping the child in his arms, was placed at the head of a great procession which marched to the Lowenstein home.

Abe disappeared while viewing a circus parade in company with his brother. The latter said a young woman dressed in black had taken Abe in her arms and held him above the crowd to see the paraders. A few moments later the woman and child had disappeared. No trace of the boy was found until a few days ago, when a lad answering his description was found in the streets of Paterson and was sent to the almshouse. His identification ensued.

## REV. H. B. RESTARICK WILL BE CONSECRATED JULY 2ND



REV. HENRY BOND RESTARICK is to be consecrated as Bishop of Honolulu in St. Paul's Church, San Diego, Cal., on the morning of July 2, and shortly after will leave for this city to take the position made vacant by the resignation of Bishop Willis. A number of people in the city received invitations by yesterday's mail to attend the consecration services. In addition, Wray Taylor received a letter from Bishop Nichols stating that the departure of Bishop Restarick would be delayed because of the consecration, but that he expected to sail a few days after that event. He writes further that Rev. Mr. Restarick has become much interested in the new work he will have in charge, and is obtaining much valuable information in regard to Hawaii, both by personal interviews with people from the Islands and by reading. The new bishop will probably arrive about the middle of July.

### CAPTAIN PHELPS MAY COMMAND

#### Popular Naval Officer Will Probably Succeed Admiral Merry.

According to reports brought by the City of Peking, Commander Thomas J. Phelps is likely to be the new commandant of the Honolulu Naval Station to succeed Admiral Merry. Captain Phelps is now stationed at the Mare Island Navy Yard in San Francisco, where he is at the head of the bureau of equipment. He is said to be one of the most efficient, as well as one of the most popular officers in the navy, and the appointment would meet with favor here. Nothing could be learned at the navy station yesterday in regard to the report brought by the Peking.

### PROBING THE CUBAN SCANDAL

WASHINGTON, June 16.—To furnish more time for the consideration of the Isthmian canal project the Senate session today began at 11 o'clock.

At the conclusion of routine business Mr. Teller of Colorado offered the following resolution:

"Whereas, it seems impracticable to prepare during this session of Congress an itemized statement showing the collection and disbursement of all funds for the whole period of the military occupation of Cuba; and

"Whereas, it is important that a statement be now made of the accounts hereafter named; therefore be it

"Resolved, that the Secretary of War be, and he is hereby directed to send to the Senate the following:

"A full, itemized statement of all payments made out of Cuban funds to any person or corporations, if any, for the purpose of promoting 'reciprocity' between the United States and Cuba, at any time during the military occupation of Cuba by the United States, and whether such payments were authorized or approved by the Secretary of War."

Mr. Keen of New Jersey objected to immediate consideration of the resolution and it went over.

Consideration was then resumed of the London dock charges bill.

Pending disposition of the bill, the Senate agreed to a conference on the bill for the protection of the President, and Messrs. Hoar, Fairbanks and Pettus were appointed as conferees.

Peruvian Sugar.

LIMA, June 16.—The government has appointed Senor Arturo Aspibaga, August Legula and Alexander Gariand to propose measures to improve the sugar industry, which is in a wretched condition.

### DID KINAU'S PEOPLE SEE KAUAI

#### Professor Lyons Says the Feat Could Not Have Been Achieved.

Editor Advertiser: Kauai seems to have been truly exalted to the very heavens by the blast of Captain Berger's band if we may take as trustworthy the visions of the Kinai passengers who saw the island from off Kaunakakai.

In fact, they saw double (in no doubtful sense). That is, the Konahuanui range and the Waianae mountains, both on Oahu, appeared as two separate islands, the saddle or ridge connecting the two being below the horizon from that point of view, on account of its moderate height. No matter how great the atmospheric refraction, Kauai could not have been visible, for the good reason that it is exactly in range with the Waianae mountains, and being behind them cannot be seen any way from that point. The Waianae range was mistaken for Kauai.

CURTIS J. LYONS.

### An Oregon Volcano.

LA GRANDE, Or., June 14.—For the past three days Mount Fanno, in the center of Union county, has been smoking and sending out steam, and at night a reflection of flames may be seen. There is a lurid cloud hanging over the mountain and rumbling in the earth, sounding like distant thunder. It is a small mountain and is the shape of a perfect cone. The people of the town of Cove, which is the nearest settlement, are much alarmed over the queer action of the mountain, but as it is so small no dangerous outbreak is feared. Since the rumblings were first heard the hot springs in the neighborhood have increased in heat several degrees. The geological formation of the mountain indicates that in remote ages there was a good deal of volcanic action.

### Cuba for State.

WASHINGTON, June 14.—Senator Filkins today introduced a joint resolution in the Senate providing for the annexation of Cuba and its admission as a state of the Union. The resolution grants the consent of Congress to the creation of the Republic of Cuba as a state of the Union, "to be called the State of Cuba, with a republican form of government, a constitution to be adopted by the people of said republic by deputies in convention assembled with the consent of the existing government."



## Going Hunting?

Dove Season Opens July 1st

100,000 SHOT GUN CARTRIDGES is the number we have opened to supply local sportsmen.

Good ammunition is one of the chief requisites to good hunting, and ours is the best. It was loaded specially for us. Also a new stock of Parker and L. C. Smith shot guns, and guns to rent.

**E. O. Hall & Son, Ltd.**

New Building, Corner Fort and King Streets.

Advertisement changed Mondays.

## Muslin Underwear Sale

You can't afford to overlook this sale. We bought the goods way below the regular wholesale price—they being a sample line. This week's bargains are of unusual importance—Materials are fine, garments are new and beautifully made. See them displayed in our windows with prices plainly marked.

### Special Sale of Shirt Waists

Prices cannot be told here for lack of space—All on display in our window. We promise you will not be disappointed.

### Childrens' Bonnets and Sun Hats

Handsome assortment in pretty shades and we have imported an elegant line of

Ladies' Fancy Neckwear and Fancy Dress Trimmings.

**A Blom,** **PROGRESS BLOCK**  
Fort Street.

## Pure Cane Sugar Only!

### NO SWEETENING SUBSTITUTES

Used in the manufacture of the high grade and popular products of the old reliable

## CONSOLIDATED Soda Water Works,

COMPANY, LTD.

Works—601 Fort St.

Telephone Main 71.

Prompt delivery anywhere in the city and Waikiki.

## Men's Flannel Summer Suits

Flannel summer suits are in vogue this year. We have a large new stock. Suits the same as those sold for \$12.00 last summer, but this year

**Our Price is \$7.50**

Coat and trousers constitute a suit—You wouldn't wear a vest if you had it, especially in summer weather. These suits are strongly made, latest cut, handsome material in colors to suit your taste. Full line of sizes. See display in our windows.

**Our Price is \$7.50**

## Kash Clothing Co.,

Limited

TWO STORES

Corner Hotel and Fort Sts., and Hotel St. near Bethel.

## Postponed to June 30.

Closing Out Sale

Go Kim, 116 Nuuanu St.

Fine Stock of Grass Linen Just Received

## RAILS GO DOWN FAST

### Working of Rapid Transit Road Gangs.

### WILL RUN CAR OUT FROM FORT

Plan to Operate Short Run Until the Entire Line Is Ready for Use.

Before the end of next week electric cars will be running Waikiki on King street from Fort, the car being a shuttle car running only to South street, where connection will be made with the through cars from Kalia to Waikiki turn. The tracks, the laying of which on King street was begun early yesterday morning, will be completed to Fort street today, whereupon the gangs of men will turn their attention to working out to South street, and the overhead line men will follow in their wake. Once this work is done the running of cars will be commenced and then the building of the line to Liliha street will be taken up.

Every phase of railroad construction was exhibited by the Rapid Transit Company yesterday in King street except the putting down of the top dressing, which restores the roadbed to as near its original shape as possible. The trenches for the line of the electric road were opened as far downtown as the Hall building last night, and rails now extend from the Executive building to a point Ewa of Alakea street.

Rapid work it was that the force of the Rapid Transit Company showed to crowds of people who gathered to see the laying of the quick travel rails. When work was begun shortly after midnight Monday morning there were something more than 100 Portuguese and about 50 Japanese, who made up the backbone of the gang which did things to Pain's tracks.

They worked well, too. To aid the moon, for the purpose of close inspection, there were lanterns on every hand, and the signs of the electric company and the lights in front of Camarinos' store, aided in the work of showing just how to dispose of the old rails. The trenching was rapid at first, for every man in the park was out with pick and shovel. But this did not last very long, as there was a necessity for disposing of the rails which were unearthed. This was a problem for a time, as there were presented the largest sections of rails that could be put down. Unlike the steel being laid by the Rapid Transit Company, the rails of Pain were made in 60-foot lengths, and are heavier, as they have a nine-inch bearing center. Some of the lengths were taken apart and the rails carried off to the side, but later the plan of rolling the sections away was tried and found to be successful, though the men crowded about to turn the great steel beams were almost as many as there were feet in the rails.

Very soon after daylight the work was varied by the commencement of laying iron in the trenches. The roller was at hand, and as speedily as a length of trench was dug it was filled as to foundation, and when rolled, sleepers were laid, iron put on and then the spikers, the tamperers, and finally the bonders, went to work putting in each of the rails. At the same time the completion of the road, meanwhile the lunks kept up the balance by spreading the workmen along the line so that there would be no congestion at any one point, and that the work would progress evenly. Thus it was that when work was stopped last evening at 5 o'clock the trenches were not more than 500 feet ahead of the rails, and the men were satisfied that there would be fine work ahead of them today in the very center of the city.

As soon as the track is completed to South street and the shuttle car put on the run, the work of extending the line Ewa on King street will begin, as it is intended to rush construction along the entire route as fast as possible, employing all the men that can be worked to advantage. There are some narrow squeezes along the line. At the Judiciary building switch there is clear space, but in the case of King street switch at Smith street, and in Aia, there are only inches between the two tracks.

That there was not greater apparent progress made yesterday, in that there was no closing up of the opened street, was due to the fact that the boss track layers were busily engaged in bending the curves which are to be laid today to continue the line Waikiki on King street, so as to connect at South with the line now in operation.

### INJUNCTION HEARING POSTPONED.

The application of the Hawaiian Tramways Company for an injunction to restrain the Rapid Transit Company from constructing and operating its cars upon King street, went over yesterday in the United States Court, for one week, upon the motion of the plaintiff. In the meantime the further work of construction upon King street is rapidly proceeding, and the tram car line will probably be paralleled for the entire distance before a hearing is had before Judge Estee. Attorney Breckons for the Tramways Company, stated yesterday that the injunction sought by Manager Pain was not to stop the construction but to prevent the operation of the lines, so the delay was immaterial. In the event of failure here no more suits will be commenced, under instructions to Pain from England.

In the showing of cause, made yesterday by L. A. Thurston, as president of the Honolulu Rapid Transit and Land Company, numerous reasons are set out why the injunction prayed for should not issue. The jurisdiction of the United States Court in the matter is denied, and the respondents then set out the submission on an agreed statement of facts to the Supreme Court, involving the very points raised in the present proceeding, with the decision of the court against the Tramways Company and a subsequent and similar ruling by Judge Estee upon the same questions. The question of the right of the Rapid Transit Company to lay tracks upon more than 1700 feet of King street, respondent alleges, was finally decided at that time, and it is further set out that the plaintiff in this case had never since notified respondent

that he objected to defendant's occupation of King street, nor had plaintiff given notification of further legal proceedings. Relying upon the decision of the Supreme Court and the United States Court, respondent has made large expenditures of money, and though plaintiff knew this he had "refused, neglected and failed to prosecute or avail himself of any legal right which it might have had from the said 26th day of April, 1901, to the 6th day of November, 1901." It is also set out that plaintiff admitted and recognized the validity of the corporate existence of respondent in the submission to the Supreme Court, and it is urged that by the decision of the United States Court the questions raised in this suit have already been adjudicated, and the petitioner is now estopped from again bringing up these matters. The fact of the appeal now pending in the Circuit Court of Appeals is also set out as an estoppel of the new suit.

Concluding, the respondent says: "As a further showing of cause this respondent avers that it is abundantly able to respond in damages to any temporary obstruction or interference with the operation on said King street of said car line of said petitioner, which may be caused through the construction of this respondent's said street car line, and that the issuance of a temporary injunction in this cause, if this Honorable Court is vested with jurisdiction in the premises, would work to your respondent a loss and injury far in excess of any possible loss or injury which might or could result to petitioner through a refusal so to issue said injunction."

"That respondent is advised by those learned in the law and upon such advice alleges, that the said petitioner, having heretofore as herein set forth submitted itself to the jurisdiction of the said Supreme Court of the Territory of Hawaii and having in said submission submitted for adjudication the right of this respondent to lay its railway track on said King street, and the said Supreme Court of the Territory of Hawaii having decided said question favorably to this respondent, and the said Supreme Court being then and there a court of competent jurisdiction and the said decision therein being final and decisive between the parties thereto, the said petitioner is estopped from further questioning the right of this respondent to lay its railway tracks on said King street."

"And this respondent is further advised by those learned in law, and upon such advice alleges, that the said petitioner, having heretofore on the 6th day of November, A. D. 1901, filed its complaint in this Honorable Court setting up a cause of action which had been adjudicated in the submission to said Supreme Court, and this Honorable Court having passed upon said question and dismissed the bill of said Hawaiian Tramways Company, Ltd., and rendered its decision, and being then and there a court of competent jurisdiction and the said decision therein being final and decisive between the parties hereto, the said petitioner is estopped from raising said question in the suit herein at this time brought."

"And your respondent further alleges and shows that by reason of the foregoing matters and things herein set forth, and by reason of the question of the right of this respondent to the use of King street for more than 1700 feet having heretofore been adjudicated and fully passed upon, it now does not in this suit lie within the right or the province of said petitioner to question collaterally the charter of this respondent or its right legally to act and carry on its business within the Territory of Hawaii."

"As a further and final showing of cause why the temporary injunction prayed for should not issue, this respondent alleges and shows that the Honorable Court that the construction of said railway on said King street complained of by said petitioner in its said complaint is at this time fully finished and completed and ready for the running of cars thereon, and cars are now being regularly operated thereon."

"Wherefore, for and by reason of the several showings of cause hereinbefore set out this respondent submits that cause has been shown in response to the order of this Honorable Court; that this Court has no jurisdiction in the premises; that said temporary injunction should not issue, and that petitioner's bill be dismissed with costs."

HONOLULU RAPID TRANSIT AND LAND COMPANY.

By its President, L. A. Thurston.

### FOR HILO SPORTS.

Many Visitors Will Attend the Races Next Week.

Many men interested in sports will leave today for Hilo, where they go to be present during the races of July Fourth. Prince David will head one party and there promises to be a full complement of local fanciers in the Krau.

Jack Weday, the pugilist who consented to a draw with Agnew, will make the trip. He will be accompanied by Joe Dexter, a pretty handy man of 135 pounds weight, and if there seems no chance for matches for them they will give an exhibition of the art.

The principal crowd to go will make the trip next week, when there will be special trips of the steamers to accommodate the passengers.

## SECOND ANNUAL Great American Sale

We propose to assist, in a very substantial manner, every woman and girl in Hawaii to celebrate the National Holiday, gowned in a proper and becoming manner.

This is our plan. We shall, during the six days beginning June 23 and ending June 28, offer ten thousand yards of choice washable dress goods, American made for American trade, at reductions averaging about 50 per cent. It should not be necessary to repeat the statement we have often made in these columns, that American looms produce the choicest, daintiest and best wearing cotton dress fabrics on earth. It is also well known that we carry a superb stock of these goods, and an opportunity to buy them for less than our prices, marked in plain figures, means money saved by you and makes new friends for us.

We intend that this "American Sale" shall take front rank among our famous Special Sales and have made plans accordingly. Each piece of goods offered bears the original price, also a Special Sale tag, showing the SALE price.

We quote a few examples:

15c Blondin Batistes for.....	5c Yard
15c Empire Foulards for.....	\$1-3c Yd
15c Haverville Batistes for.....	25c Yard
20c Fancy American Swisses for.....	10c Yard
25c Mognon Foulards for.....	15c Yard
25c Pongee Foulards for.....	15c Yard
25c Ondaline Brodes for.....	15c Yard
25c English Style Madras for.....	15c Yard
50c Silk Stripe Soft Mulls for.....	25c Yard
50c Embroidered Elamines for.....	25c Yard
60c Superfine Plummets for.....	25c Yard

BEAR IN MIND THE DATES—JUNE 23 TO 28 INCLUSIVE.

## Whitney & Marsh, Ltd.



And Still They Are Coming

CARLOAD AFTER CARLOAD of the Celebrated

Anheuser-Busch Brewing Association

## Premium Pale AND Pale Lager Beer

In cases and barrels, quart and pint bottles. AMERICA'S STANDARD BEER AT POPULAR PRICES. Don't let the warm weather find you without it.

**H. Hackfeld & Comp'y, Ltd.**

SOLE AGENTS for the Hawaiian Territory.

### IF YOU ARE



Call and See Us and We Will Enlighten You

**Bergstrom Music Co., Ltd.**

Fort Street, Honolulu

## HONOLULU BRANCH OF The Harrison Mutual Burial Association

This association so well known throughout the Mainland is now established in Honolulu. A Friend in need is a Friend indeed. This association is a friend to the family upon whom affliction and death has come.

Membership fee is only \$1.50. For particulars apply at office of secretary, 393 Beretania street, or any member of the association. Phone Blue 571.

## Epicurean Canned Soups

On your pantry shelf make a short notice dinner a success and your unexpected guest welcome.

Packed by H. LEVY & Co., San Francisco.

Sold by all First Class Grocers.

## California Calimyrna Figs

NOW ON SALE AT

**OCCIDENTAL FRUIT STORE**

521 King Street.

25c a Box.



# Oriental Bazaar

We have just received by last steamer 100 cases of hand decorated chinaware: there is none better anywhere.

Also 100 pieces of silk goods, pounce, pineapple and all colors.

By same steamer a large shipment of best Chinese teas, put up in pretty 1 cquer d boxes, one pound, and one-half pound sizes.

Come in and see our new goods in all departments.

66-72 King Street, corner of Smith.

115 N. KING ST.

PHONE MAIN 289.

## S. OZAKI

### Hardware, Glassware,

### Crockery, Paints, Oils, Etc.

### WHOLESALE AND RETAIL.

Call and Inspect our Complete Lines.

### SPECIAL SALE OF CREPES

AT OUR

### Hotel Street Store.

Just received a new consignment of CREPES, 20 inches wide, all Patterns and Shades; also 30 inches wide patterns.

178 Hotel Street.

'Phone Main 197.

Clinton J. Hutchins,  
INSURANCE.

Life

Ax

Fire

Marine

Molnery Block Fort Street.

James F. Morgan, President; Cecil Brown, Vice President; F. Hustace, Secretary; Charles H. Atherton, Auditor; W. H. Hoogs, Treasurer and Manager.

### Hustace & Co., Ltd.

WHOLESALE AND RETAIL DEALERS IN

### Firewood, Stove, Steam, Blacksmith's Coal

Also Black and White Sand. Telephone Main 295.

Special Attention Given to Draying.

Thos. G. Thrum's  
Imprint Stands  
For a Quality

### Wedding, Reception, Society Note Paper

AND

### High Grade Tablets

We are showing quite an extended line of handsome note paper with envelopes to match, six styles of which we ask your inspection. Engraving and printing done at short notice. Write for samples and prices.

Thos. G. Thrum,  
Box 206. HONOLULU.

### Summer Clothing

### LATEST PATTERNS

All the Desirable Shapes  
for Gentlemen, also  
Swell Neckwear

...AT...

### Lando's New Store,

Oregon Block, Hotel Street

"A SAFE THING TO TIE TO"

A Wrought Iron  
Hitching Post.

For sale by

J. C. Axtell,

393 Beretania Street.

Phone Blue 571.

P. O. Box 642

### YOSHINAGA

154 N. Hotel and  
163 S. King St.

Bicycles Exchanged, Repaired, Bought  
and Sold. Prices Reasonable.

## BOMBARD LA GUAYRA

### Venezuela Once Again In State of Crisis.

WILLEMSTAD, Island of Curacao, Monday, June 18.—Advises received today announce that the Venezuela revolutionists attacked La Guayra, the port of Caracas, Saturday, June 7. The government answered by shelling Matiquella, a suburb of La Guayra, from the forts ashore and from the Venezuelan warship Miranda. Only peaceful women were killed.

All the commercial houses at La Guayra were closed the day of the bombardment and the inhabitants were panic stricken. Eventually, the revolutionists, who numbered about 400 men, were repulsed. They destroyed the bridge at Boqueron, on the Caracas (English) railroad, and stopped traffic for twelve hours. They also cut the French cable and the telegraph wires.

The people of Caracas were thrown into a state of alarm and everyone began buying provisions, apprehensive of a siege.

The situation in Venezuela as these advices were sent, indicates that a crisis is near at hand.

A Dutch warship and the German cruiser Falke left Lu Curacao today for La Guayra.

NEW YORK, June 16.—General Pomilio Gutierrez, commander in chief of the army in operations on the Atlantic and Pacific Coasts and the Isthmus of Panama, in view of the special powers conferred upon him by the Vice President of the republic, has issued, says a Panama dispatch to the Herald, his first decree. It is to the effect that he practically assumes command of all the sea and land forces of this department.

The police force will continue under the command of the Governor of this department.

All future naval and military appointments will be made by separate decree.

COLOMBIAN LEADER TALKS.

NEW YORK, June 16.—General Gabriel Vargas Santos, head of the Liberal party of Colombia and leader of the Liberal army now engaged in trying to overthrow the Conservative party, which is in possession of the government, is in this city. The exact nature of the General's business here has not been definitely learned, but it is believed he came north to confer with his chief of staff, General Focion Soto, on the progress of the Illinois revolution in the Panama province and in the Casanare territory. Speaking of events in Colombia he said:

"If our troops can conquer in the Isthmus of Panama we shall be able to make much better progress against the Conservative forces. We have many armed men in the Casanare and San Martin territories in the Magdalena provinces. If we had Panama we would be able to raise sufficient funds to end the war in our favor. At present we need warships in the Atlantic in order to take Cartagena and Barranquilla. Now we can get arms and ammunition only through Venezuela and through the Orinoco river.

"We are suffering from some of the recent victories of our opponents, but their successes are only temporary and in no way disheartening to us. We are called rebels when we are real patriots who are fighting to obtain our share in the government and the initiation of reforms which would make our country progressive.

"We are fighting for principles. We do not wish completely to drive the Conservatives from power, but we insist that our party be allowed its proper representation in the Chamber of Deputies. Since 1885 we have not been represented, except by two men, though we are half the population. We advocate modern monetary standards. We have cried out for years for a system of education which will bring our children up to a higher appreciation of life. We have fought for improvement in our national life, and if we can gain adequate representation in our Parliament we shall begin at once on these changes. The foreigners with interests in Colombia and all the progressive people of the island are with us. Of course the Panama canal is a great factor in the present war."

General Santos is 70 years of age. He has been fighting since 1854 and has taken part in twenty-two battles.

### A FOURTH TRIAL IS NOW ASKED

Argument for a new trial in the case of Henry Smith vs. Hamakua Mill Co. was had before Judge Robinson yesterday afternoon. The case has already been tried three times, and the defendant now asks for a new trial on the ground that the last verdict was contrary to the evidence. The jury found for the plaintiff, and the Hamakua Mill Co. claims that it proved a clear title through adverse possession of the valuable property in question. Judge Robinson took the matter under advisement.

CASE NOLLE PROSSED.

Thomas Nash, a bartender, who was arrested Saturday upon information sworn to before Judge Humphreys by L. E. Twomey for selling liquor without a license, was released yesterday, the Attorney General entering a nolle prosequi. It developed that the arrest grew out of a disagreement between C. H. Brown, D. D. Holt and H. F. Lewis as to the ownership of the license under which the Maile saloon is operated, and Assistant Attorney General Doughitt, in dismissing the case, stated to the court that this was simply an attempt to use the criminal branch of the court to settle a civil dispute.

CIRCUIT COURT NOTES.

Mr. and Mrs. Edward W. Thwing yesterday filed application for adoption papers for Harold Knudsen, the parents of whom are dead. The child has been in the care of the Kindergarten and

Advertisement changed Mondays.

## Sale of Laces This Week

We expect every lady in Honolulu to be interested in our lace department this week—The laces are an entirely new importation and of exceptional value—About 75 different patterns in all to select from, and prices far below the regular values. You can buy very handsome laces at from 10c to 20c per yard.

### Black Cloth Capes

A large new shipment just opened. We will sell them at great bargains. We won't take the space to describe them here but invite you to see them.

### Sailor Collars for Children

150 attachable sailor collars in white materials all washable. On sale this week at exactly half price.

Entirely New Goods.

### Boys' Linen Knee Pants

45c per pair

Also new stock of wash suits, all sizes

### Jersey Ribbed Vests

Ladies' Jersey ribbed vests are just the thing for summer weather. We are offering them this week 4 doz. to the box @ 70c per box.

### Pearl Buttons

500 dozen, sizes 14, 16, 18 and 20. No second in the lot. 5c per doz.

### Crochet Cotton

500 boxes, silk finish, in all shades and colors. 5c per spool.

### Chateaines and Wrist Bags

Handsome stock just opened; also the new styles of pocket books and other Leather goods. Come and see them.



## Ladies' Shirt Waists

Our stock the most complete and finest in the city. Every lady who has seen this stock and purchased from it has been more than pleased, both in quality of goods and prices.

## PACIFIC IMPORT CO.

MODEL BLOCK, FORT STREET

Children's Aid Association, the boy being destitute. The petition was granted by Judge Gear.

A denial has been filed by the defendants in the case of Wilder's Steamship Company vs. Kamalo Sugar Company.

The accounts of George R. Carter as guardian of H. A. P. Carter and Grace Carter, were approved by Judge Robinson yesterday. The master's recommendation in regard to the reduction of commissions charged in the sum of \$1455 was disapproved.

W. E. Rowell was yesterday appointed administrator of the estate of Melvina J. Russell, upon giving bond of \$10,000.

Keki, widow of Kala Kanakole, was appointed administrator of the estate yesterday in a bond of \$100.

Bishop & Co. have asked for default against H. Klemme, suit on debt.

FEDERAL COURT NOTES.

The schooner Kawaiiani has been released pending an appeal to Washington for mitigation of sentence. The decree was filed yesterday fixing the amount of fine at \$1250, in default of which the vessel will be sold.

Louis J. Warren was admitted to practice in Federal Court by Judge Justice yesterday.

Discharges in bankruptcy were granted yesterday to Bailey's Honolulu Cylinders and to the Kwong Hip Chong Co.

WASHINGTON, June 16.—J. E. Profit of West Virginia has been decided upon as Consul to Pretoria, South Africa.

Telephone Main 396. P. O. Box 820.

### Hawaiian Japanese Ballasting Co.

Office:

1018 Smith St., near King.

Filling in material either earth or coral, furnished at a very low price, as we have a large stock on hand.

CONCRETE WORK guaranteed, and done at a very low price.

BLACK AND WHITE SAND sold from \$1.50 to \$1.75 per cubic yard, delivered.

Special low price on CRUSHED ROCK of all grades from No. 1 to No. 5, or rock sand.

COMMON DRAY, \$5.00 per day.

LARGE DRAY, \$8.00 per day.

### Honolulu Iron Works Co.

"STEAM ENGINES"

BOILERS, SUGAR MILLS, COOLERS, BRASS AND LEAD CASTINGS and machinery of every description made to order. Particular attention paid to ship's blacksmithing. Job work executed on shortest notice.

### Keystone-Elg WATCHES

DURABLE AND ACCURATE

The Keystone Watch Co.

ESTABLISHED 1888 Philadelphia, America's Oldest Largest Watch Factory

For sale by The Principal Watch Dealers in Hawaiian Islands

The "Dr. Aiden Electro" guaranteed to possess all attractive properties of the expensive watches now sold by doctors and gists. It gives a very strong current of electricity and is easily regulated to supersede others. Can be had from the undersigned only. AGENTS: NO DISCOUNT. C. free. Address PIERCE ELECTRO CO., 244 Post St., San Francisco. free to Hawaii on receipt of \$5.

\$2.00 for \$1.00

\$2.00 for \$1.00

\$2.00 for \$1.00

\$2.00 for \$1.00

\$2.00 for \$1.00

\$2.00 for \$1.00

\$2.00 for \$1.00

\$2.00 for \$1.00

\$2.00 for \$1.00

\$2.00 for \$1.00

\$2.00 for \$1.00

\$2.00 for \$1.00

\$2.00 for \$1.00

\$2.00 for \$1.00

\$2.00 for \$1.00

\$2.00 for \$1.00

\$2.00 for \$1.00

\$2.00 for \$1.00

\$2.00 for \$1.00

\$2.00 for \$1.00

\$2.00 for \$1.00

\$2.00 for \$1.00

\$2.00 for \$1.00

\$2.00 for \$1.00

\$2.00 for \$1.00

\$2.00 for \$1.00

\$2.00 for \$1.00

\$2.00 for \$1.00

\$2.00 for \$1.00

\$2.00 for \$1.00

\$2.00 for \$1.00

\$2.00 for \$1.00

\$2.00 for \$1.00

\$2.00 for \$1.00

\$2.00 for \$1.00

\$2.00 for \$1.00

\$2.00 for \$1.00

\$2.00 for \$1.00

\$2.00 for \$1.00

\$2.00 for \$1.00

\$2.00 for \$1.00

\$2.00 for \$1.00

\$2.00 for \$1.00

\$2.00 for \$1.00

\$2.00 for \$1.00

\$2.00 for \$1.00

\$2.00 for \$1.00

\$2.00 for \$1.00

\$2.00 for \$1.00

\$2.00 for \$1.00

\$2.00 for \$1.00

\$2.00 for \$1.00

\$2.00 for \$1.00

\$2.00 for \$1.00

\$2.00 for \$1.00

\$2.00 for \$1.00

\$2.00 for \$1.00

\$2.00 for \$1.00

\$2.00 for \$1.00

\$2.00 for \$1.00

\$2.00 for \$1.00

\$2.00 for \$1.00

\$2.00 for \$1.00

\$2.00 for \$1.00

\$2.00 for \$1.00



PACIFIC  
Commercial Advertiser  
WALTER G. SMITH - - EDITOR.  
TUESDAY : : : : JUNE 24

The friends of good government are always glad to welcome visiting Congressmen, either as individuals or as commissions. If a committee visits us to look into the crown lands it will see enough else to turn its members into useful allies of Hawaii.

Mr. Cayless' statement, printed in a Washington paper, that Hawaii is in peril of volcanoes, is quite excusable. Mr. Cayless has got so used to thinking that the islands will be destroyed by Gov. Dole and the missionaries, that even their most innocent phenomena excite his nerves.

King Edward is an elderly man who must begin to expect the ills that flesh is heir to. He cannot eat a daily banquet, ride out in the rain, entertain visiting princes and carry his share of the worries of an empire, without feeling his years. It will be remarkable if he gets through the coronation week without needing a doctor.

Hereafter saloon licenses will not be granted by the Executive Council until the Anti-Saloon League and other parties interested have a chance to scan them. In other words there will be no underground railroad. The public, which is getting sensitive on the beer saloon question, will welcome this move as one made in its own interests.

### THE BRITISH PACIFIC CABLE

VICTORIA, B. C., June 12.—C. Reynolds, chairman of the Pacific Cable Board, who has charge of the construction of the all-British cable from Hamfield Creek, on the west coast of Vancouver Island, to Australia and New Zealand, arrived here on the steamer Aorangi yesterday and proceeded to Hamfield Creek. Before leaving Suva he opened the three spurs which were laid by the steamer Anglia, connecting Suva and Norfolk Island, a distance of 100 miles; Norfolk Island and Queensland, a distance of 550 miles; and from Norfolk Island to New Zealand, a distance of 750 miles. All these lines are now being kept busy.

Reynolds says the cable will be completed by the latter part of November or early in December, a full month earlier than the contract calls for.

### Fast Railroad Service.

NEW YORK, June 16.—The new special train over the Pennsylvania road that is to make the trip from Chicago to Jersey City in twenty hours, arrived at the latter place at 3:35 o'clock this morning, three minutes ahead of schedule time.

The New York Central's first twenty hour train from Chicago arrived at the Grand Central station at 9:26 a. m. today, four minutes ahead of time. The train averaged forty-nine miles an hour for the entire trip of 940 miles.

The running of these two twenty-hour trains by the Pennsylvania and New York Central inaugurates the fastest regular service ever attempted between Chicago and New York.

CHICAGO, June 16.—New York to Chicago in nineteen hours and fifty-seven minutes—that is the record time made by the new fast trains put into service by the Pennsylvania and Lake Shore railroads yesterday. The twenty-hour schedule over both were more than equalled. The train of the former road that left New York yesterday at 10:55 p. m. arrived here three minutes ahead of time at 8:52 this morning. The Lake Shore train made exactly the same time, arriving three minutes ahead of the schedule at 9:54 a. m.

### Sixty Thousand Exiles.

ST. PETERSBURG, June 16.—An enumeration of the persons, including working people, expelled from various cities during the last two and a half years of the administration of the late M. Sipiaguine, the Minister of the Interior, who was assassinated April 15, drawn up by the instructions of M. von Plehwe, who succeeded M. Sipiaguine, shows the enormous total of 60,000. M. von Plehwe has decided to permit this state so far as possible and to permit the exiled people to return, as he does not desire to inherit the hatred inspired by M. Sipiaguine. It is said that Plehwe is inclined to adopt milder measures generally, but the reactionists, under the leadership of Count Sheremetiev, are still influential with the Czar.

### Austrian Steamer Ashore.

BLOCK ISLAND, R. I., June 14.—The steamer Frederica, from Palermo, bound for New York and Philadelphia with a cargo of lemons and puts, ran ashore on the southeast part of the island today in a dense fog. She lies in a bad position on the rocks. The Frederica is an Austrian steamer engaged in the Mediterranean freight-carrying trade. She sailed from Trieste on May 15th for Palermo, Sicily, and left the latter port for New York and Philadelphia on June 6.

### Against Sugar Rebate.

WASHINGTON, June 16.—President Palma of Cuba has indicated to President Roosevelt his conviction that the rebate proposition relative to Cuban sugar would be not only very objectionable in itself, but would be extensively expensive and almost impossible to carry out in the distribution.

### Killed Her Children.

JACKSON, Miss., June 16.—Mrs. L. Westrop, a white woman living near Martin, a small station several miles from here, last evening killed five of her children by shooting them to death in an outhouse and afterward burning the structure over their bodies. The woman escaped.

### PARDON FROM THE PRESIDENT

Manuel R. Casthana was released yesterday from Oahu prison, where he had been serving a seven months' sentence for illicit distilling. President Roosevelt has granted his first pardon in Hawaii, the subject for executive clemency being the old Portuguese who was convicted on two counts of manufacturing okolehao without first obtaining a license. His sentence of seven months, which was the minimum under the law, is commuted to one month, which has already been served. Judge Foster, who indicted the punishment, and United States Attorney Breckons, who secured the conviction, joined in the appeal to the President for clemency, representing that the ends of justice would be served just as well by a shorter sentence than the law allowed, as the prosecution was simply for the purpose of warning violators of the revenue law that Uncle Sam is not to be trifled with. The yesterday's mail from the United States Attorney Breckons received a telegram from Attorney General Knox saying that the sentence had been cut down to one month, and the order would follow by mail, and Judge Foster, thereupon ordered Casthana's release, he having already served that time. There was much rejoicing in the Portuguese colony over the action of President Roosevelt.

### WEIGHED 600 POUNDS.

Death of San Francisco's Heaviest Citizen, Henri Maurice Cannon.

SAN FRANCISCO, June 15.—Henri Maurice Cannon, well known in many cities as one of the heaviest men in the world, died suddenly early yesterday morning at 1233 Market street, where he lived and carried on his business.

Cannon was born in Germany in 1859, and as a young man was an athlete, having something of a reputation as a wrestler and lifter of heavy weights. Five years ago he came to this country. At that time he had acquired the greater part of the astonishing weight and size for which he was chiefly remarkable. Nearly six feet tall and weighing over 600 pounds, he attracted much attention. Three years ago he came to this city and began exhibiting at the Chutes. Cannon was always a genial, good natured man and had many friends among the children. Although he had been ailing for some time past he was not known to be seriously ill, and until Wednesday evening had been attending to his business as usual. Only an hour before his death he had balanced his books for the preceding day.

The doctor in attendance pronounced fatty degeneration of the heart and myocarditis to be the cause of his death. Cannon was a member of the California Schuetzen Verein, under whose auspices the funeral will be held. The deceased leaves a widow.

### John T. Woolley Dead.

LOS ANGELES, June 15.—John T. Woolley died of pneumonia at the California Hospital today. On the morning of June 4 Mr. Woolley was struck by a street car. He sustained a crushing blow in the back of the head and his skull was fractured. For three days the injured man lay unconscious at the California Hospital. Pneumonia, resultant from the accident, set in and caused the patient's death. Mr. Woolley was the general agent of the Western Masons' Mutual Association, with offices in San Francisco. He came to Southern California with his wife and daughter on a visit, and resided temporarily at 1207 West Twelfth street. No arrangements have been made for the funeral as yet, but it has been decided that the deceased will be buried here.

### Suicide from Brooklyn Bridge.

NEW YORK, June 16.—Thomas Disbrow of Richmond Hill, L. I., father of Louis Disbrow, who disappeared shortly after Miss Sarah Lawrence and Clarence Foster were reported missing from Good Ground, L. I., was asked today whether he thought it was his son that jumped from the Brooklyn bridge yesterday. Mr. Disbrow said that the description of the man who committed suicide answered in some respects to that of his son, but that he knew of no reason why he should have desired to end his life. It was possible, he thought, that his son's mind had become unbalanced on account of the notoriety brought upon him in his connection with the tragedy at Good Ground.

### Prince for God-Father.

NEW YORK, June 16.—Prince Henry of Prussia has made glad the hearts of Mr. and Mrs. Christopher Blume of Newark by consenting to act as godfather by proxy of their twins, who were born yesterday Emperor William's son that jumped from the Brooklyn bridge yesterday. Mr. Disbrow wrote to the Prince, saying that she would like to name the boy twins William and Henry, and asking if he would stand as sponsor. She has just heard from the German consul at this city that Prince Henry has consented and expressed the hope that the twins may some day do honor to their names. The Prince also sent a check for a good sum for each boy.

### Mysterious Murder.

KANSAS CITY (Mo.), June 16.—Bernhard Steinert, a slater, 40 years of age, was picked up on the sidewalk at the corner of Fourteenth street and Grand avenue at midnight, unconscious and with his skull fractured, and died soon afterward at the police station. Several boys told the police that they saw Steinert accosted by a man and woman whom he met at that corner, that the man at once felled Steinert with a club or slung-shot, kicked the prostrate form in the face, and fled with his female companion. The police have no clue to the murder.

### Divorce for an Actress.

LONDON, June 16.—Julie Opp, the American actress, was today granted a divorce on the ground of desertion and misconduct on the part of her husband, Robert Lorraine, an actor. The case was not defended. They were married in London November 5, 1897.

### Editor Dead.

NEW YORK, June 16.—James Edgerton Learned, author and newspaper writer and managing editor of the Evening Post from 1882 to 1892, is dead at his home in this city. He was 64 years of age and was born at New London, Conn.

### YOUNG MUSICIANS MAKE THEIR DEBUT

Pupils of Mrs. J. W. Yarnley's classes in music gave a recital last evening at the Y. M. C. A. hall which was a source of delight to the audience. Those who took part in the recital were for the most part quite young ladies, but all displayed considerable, and in some cases remarkable, musical talent. The instrumental selections on the piano were charmingly rendered throughout and there were surprises in the vocal numbers.

Miss Ethel Damon made her first public appearance and met with a favorable reception. Miss Damon possesses a voice of much promise and her selections were of a character to give just an idea of what she will be able to do. Her voice is sweet and her high notes, while not strong, were true in tone. Miss Elsie Smith played the "Valse Caprice" by Rubinstein in a capable manner. Miss Marjory Leaningham and Miss Ida Koepke both pleased the audience with pretty Spanish and English old-time dances. Miss Lizzie Whiting is a clever pianist, showing her ability at the keyboard in the recitation and arietta, "I Will Sing Thy Sweet Mercies." Miss Ethel Damon for the second time in the evening won much favor.

The program was one full of pleasing selections and was certainly one designed to please an audience. Many of the pupils made their bow before a public audience last evening, but all acquitted themselves with credit for their individual performances.

### Long Horseback Ride.

CHICAGO, June 16.—Dr. A. Donaldson Smith of Philadelphia, an African explorer who is crossing the continent on horseback, accompanied by his valet, also on horseback, has arrived here. They left Philadelphia May 17, and omitting periods of complete rest have averaged thirty miles a day. They will rest in Chicago four days and then resume their journey to the Yellowstone Park and thence either to Seattle or to Nevada.

### BABIES AND CHILDREN

should be fairly plump. They ought to put on fat as fast as they use it up; for fat is fuel, and the burning of it makes power and force. Thin children—even along to the age of eighteen or twenty—are in danger from consumption, and from other wasting complaints. The children who starve, and the young men and women who are consumed—why, the very idea of it is frightful. For such as they there is always what the Bible calls a "mighty famine" in the land. Food, though it may be taken plentifully, does not nourish them. It makes no fat; it gives no strength. To prevent this, to cure this, to save the young ones at the mother's knees, and the bright boys and girls who are just looking at the world with ambitious eyes, is the purpose of WAMPOLE'S PREPARATION.

Its success is decided and settled. Thousands owe to it life and health. It is palatable as honey and contains the nutritive and curative properties of Pure Cod Liver Oil, extracted by us from fresh cod livers, combined with the Compound Syrup of Hypophosphites and the Extracts of Malt and Wild Cherry. In building up pale, puny, emaciated children, particularly those troubled with Anemia, Scrofula, Rickets, and bone and blood diseases, nothing equals it; its tonic qualities are of the highest order. A Medical Institution says: "We have used your preparation in treating children for coughs, colds and inflammation; its application has never failed us in any case, even the most aggravated bordering on pneumonia. The children like it, they love the taste of it, it looks good to them, and it builds up their bodies; many little children owe their lives to it." Effective from the first dose. "You cannot be disappointed in it." Sold by chemists here and everywhere.

### PACIFIC LODGE NO. 822 A. F. & A. M.

THERE WILL BE A SPECIAL meeting of Pacific Lodge, A. F. & A. M., at Masonic Temple, this (Tuesday) evening, June 24, at 7:30 o'clock. WORK IN THE SECOND DEGREE. Members of Hawaiian Lodge, Lodge de Progress, and all surrounding brethren are fraternally invited to attend. By order of the R. W. M. C. F. MURRAY, Secretary.

### EXCELSIOR LODGE NO. 1, I. O. O. F.

There will be a regular meeting of Excelsior Lodge No. 1, I. O. O. F., at its hall on Fort street, this Tuesday evening, June 24, 1902. WORK IN THE THIRD DEGREE. Members of Harmony Lodge and all visiting brethren are cordially invited to attend. A. P. CLARK, N. G. L. L. LAPIERE, Secretary.

### Itching Skin

Distress by day and night — That's the complaint of those who are so unfortunate as to be afflicted with eczema or salt rheum — and outward applications do not cure. They can't.

The source of the trouble is in the blood — make that pure and this scaling, burning, itching skin disease will disappear.

"I was taken with an itching on my arms which proved very disagreeable. I concluded it was salt rheum and bought a bottle of Hood's Sarsaparilla. In two days after I began taking it I felt better and it was not long before I was cured. Have never had any skin disease since." MRS. IDA E. WARD, Cove Point, Md.

### Hood's Sarsaparilla and Pills

Rid the blood of all impurities and cure all eruptions. Take them.

### PALMERS' KING VIOLET

Although the most expensive Perfume in the world it is more sought after than any other product of Violet, because a single drop will perfume the handkerchief for many days and defy even the laundry. Sold the world over for \$1.50 per oz.

### PALMERS' GARLAND OF VIOLETS

A great favorite, fragrant and lasting. Sold at \$1.00 per oz.

### PALMERS' ROSE LEAVES

American Carnation Pink, Lilac Sweetie, White Heliotrope, Violet Leaves, Violet Bloom. Are among the latest Palmers' creations. Sold at 75c per oz.

### PALMERS' GARLAND OF VIOLET SACHET

Garland of Heliotrope Sachet, Garland of Rose Leaves Sachet, Garland of American Carnation Pink Sachet, sold at 50c per oz.

For sale only in Honolulu at the

### Hollister Drug Co.

FORT STREET.

### WM. G. IRWIN & CO., LTD

Wm. G. Irwin, President and Manager  
Claus Spreckels, First Vice-President  
W. M. Giffard, Second Vice-President  
H. M. Whitney Jr., Treasurer and Sec.  
George W. Ross, Auditor

### SUGAR FACTORS AND Commission Agents

AGENTS FOR THE  
Oceanic Steamship Company  
Of San Francisco, Cal.

### Mortgage Loans

We shall be pleased to receive applications for loans upon choice business or residence real estate security. In the scrutiny of such applications the following points will receive consideration: 1st—The Borrower. 2nd—The Security as to Title, Improvements, Margin of Protection, etc. The amount applied for must not be greater than 50 per cent of the value of the security conservatively estimated.

### Henry Waterhouse & Comp'y.

Stock, Bond, Insurance and Real Estate Brokers.  
PORT AND MERCHANT STS.  
Tel. Main 313.

**ANTI-TRUST**  
**OLD JAS. E. PEPPER**  
**WHISKEY**  
**HENRY CLAY RYE**  
**OLDEST, BEST, PUREST**  
DISTILLED ONLY BY  
**JAS. E. PEPPER & CO.**  
LEXINGTON, Ky.  
Established 1780  
Distilled under the same formula for over a hundred years  
**LOVEJOY & CO.**  
Sole Distributors for the Territory of Hawaii.

**El-Principe**  
**De Gales**  
**Havana Cigars**  
The Standard for Over Half a Century  
**Imperial Cigar Store**  
FORT STREET  
Distributing Agents

**Electric Fan Weather**  
The man who says whew! warm! and mops his face with a large size handkerchief could have cool comfort by investing \$15 in an electric fan. We have all sizes in desk and ceiling fans. Telephone and we will send one to you.  
**Hawaiian Electric Co., Ltd.**  
King Street near Alakea. Tel. Main 390.

**WORLD RENOWNED**  
**The Wines of Asti**  
ITALIAN SWISS COLONY  
Who own and conduct the  
**Largest Vineyard in the World**  
Have done more to make California famous than any other industry in the State.  
The wonderful success of  
**ASTI WINES**  
Is due to their UNIFORMITY, PURITY AND EXCELLENCE OF QUALITY. All varieties are bottled for family use and are justly acknowledged to be the  
**Best Table Wines**  
Are served in all the leading Hotels and Cafes of the world.  
**The Italian Swiss Colony Label**  
On each bottle guarantees the quality. Trade supplied by following jobbers:  
WOLTERS-WALDRON CO., LTD. JOS. HARTMANN & CO.  
GOMES & MCTIGHE. S. I. SHAW & CO.  
GONSALVES & CO. CAMARA & CO.  
**RISDON IRON WORKS**  
Mechanical and Hydraulic Engineers  
**E. P. JONES, Agent**  
Spreckels' Building HONOLULU



## THE V-A-S-E.

From the madding crowd they stand apart,  
The maidens four and the work of Art;  
And none might tell from sight alone  
In which had Culture ripest grown—  
The Gotham Million fair to see,  
The Philadelphia Pedigree,  
The Boston Mind of azure hue,  
Or the soulful Soul from Kalamazoo—  
For all loved Art in a seemly way,  
With an earnest soul and a capital A.

And they edged away from Kalamazoo.  
But Gotham's haughty soul was stirred  
To crush the stranger with one small word.  
Defiantly hiding reproof in praise,  
She cries: "Tis, indeed a lovely vase!"  
But brief her unworthy triumph, when  
The lofty one from the house of Penn.  
With a consciousness of two grandpapas,  
Exclaims: "It is quite a lovely vase!"  
And glances round with an anxious thrill,  
Awaiting the word of Beacon Hill.  
But the Boston maid smiles courteously,  
And gently murmurs: "Oh, pardon me!  
I did not catch your remark, because  
I was so entranced with that charming vase!"

—James Jeffrey Roche in Life.

The large demand for Vases has induced the Pacific Hardware Co. to place on sale at their Bethel Street Department, an invoice intended for the Holidays:

Fine Cut Glass, Bohemian Glass, Florentine Faience, Majolica, etc., etc., in every variety of design and shape.

**PACIFIC HARDWARE CO., Ltd.**  
BETHEL STREET, ABOVE CASTLE & COOK'S.

## Something New

In the furniture line—Wardrobes and Chiffoniers combined, with full length French plate mirrors in the doors. Also double door wardrobes, with full length French plate mirrors in the doors. While being useful, these wardrobes are a handsome piece of furniture, and add to the appearance of any well furnished house. They are of special construction, and are ABSOLUTELY INSECT PROOF.

Our stock of secretary bookcases and library cases was never as large as at present. We have the library bookcases in large and small, with one, two and three doors.

Gentlemen's shaving stands and chiffoniers—just the thing to fill in some unfurnished corner.

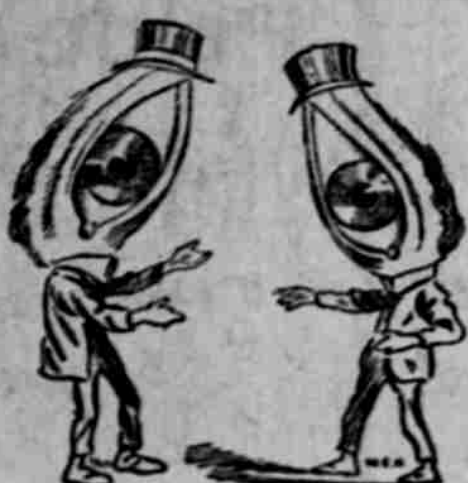
## Shoe Blacking Cases

Something neat and useful. By using one a short time it will pay for itself.

A full line of LINOLEUM, RUGS, MATTING and SHADES.

## J. Hopp &amp; Co.

LEADING FURNITURE DEALERS  
Corner King and Bethel Sts.



"IF YOUR EYES COULD TALK"  
—what a story of suffering, abuse and neglect would many tell.  
How they cry for help as you turn the pages of some interesting book, near the midnight hour.  
How they blink and wink as the bright sunlight traveling ten feet from the glaring pavement, or its 55,000,000 miles through space, hurls its rays upon a delicate and over-worked retina.  
If your eyes could talk they would lead you to our doors, and later thank you for the relief and comfort, and easy restful vision our glasses afford.  
In lieu of words they cry and ache—thus hint and warn—will you take the warning?

## A. N. Sanford,

Manufacturing Optician,  
Boston Building, Fort Street.

Over May &amp; Co.

Well done  
CLOTHES MADE  
— BY —  
W. W. AHANA & CO.  
Merchant Tailors,  
1038 Nuuanu Ave.  
You get latest styles,  
a good fit and the  
prices are right.

EIGHTEEN HEAD  
OF  
Riding and Driving Horses

To arrive per "S. C. Allen," due on or about the 15th.

CLUB  
STABLES

No. 616.

HONOLULU LODGE No. 616, B. P. O. E. will meet in their new hall, on Miller and Beretania streets, every Friday evening.  
By order of the E. R.  
D. L. CONKLING, Secretary.  
F. M. BROOKS, E. R.

## Wing Wo Chan &amp; Co

Shony Furniture,  
Cigars and Tobaccos,  
Chinese and Japanese Tea,  
Crockery, Mattings,  
Vases, Camphorwood Trunks,  
Rattan Chairs.

SILKS AND SATINS  
OF ALL KINDS.  
515-519 Nuuanu Street

If in Bad Humor  
DROP INTO THE  
HONOLULU  
BOWLING PARLORS

and chuck a few liguam vitae balls at our temples.

AUCTION SALE UNDER  
FORECLOSURE!

NOTICE IS HEREBY GIVEN THAT the undersigned, manager of the Territory Stables Company, Limited, will on the 2nd day of July, 1902, at 12 o'clock noon, cause to be sold at public auction, for cash, at the auction rooms of Jas. F. Morgan, No. 65 Queen street, Honolulu, Oahu, two bright bay horses, for the payment of the charges and expense of feeding and sheltering said horses and of the advertising and sale thereof, the Star Soda Water Works Company, Limited, having failed to pay said charges within thirty days after demand therefor.

J. C. QUINN,

Manager Territory Stables Co., Ltd.

6195

FLEUR-DE-LIS  
Ice Cream Parlors

Alakea St., between King and Hotel.  
G. E. MORSE & COMPANY.  
PHONE BLUE 1801.

Our wagon will deliver orders promptly without extra charge.

Special attention given to supplying Receptions, Parties, Weddings and Church Gatherings.

Theosophical Society  
MR. THOMAS PRIME

Will Lecture on

## Thought Power

Thursday, June 26, 1902, 8 P. M.

At ARION HALL (Back of Opera House.)

A cordial welcome extended to all.

MARY D. HENDRICKS,  
President, Aloha Branch, T. S.

## Desirable Home

Within easy walking distance of Honolulu Iron Works. Part of the price can remain on mortgage.

## Building Lots

Close to town, on installments.

R. R. REIDFORD  
Room 4, Campbell Block.HAWAIIAN ENGINEERING AND  
CONSTRUCTION CO.

Rooms 508-510 Stangenwald Bldg.  
ENGINEERS AND CONTRACTORS.

Box 587. Phone Main 50.  
GOTTON BROS. & CO.  
ENGINEERS AND GENERAL CON-  
TRACTORS.

Plans and Estimates furnished for all classes of Contracting Work.  
Boston Block, Honolulu

## The Silent Barber Shop

OUR RAZORS are thoroughly disinfect-  
ed before using.  
JOSEPH FERNANDEZ, Prop.,  
Arlington Hotel.

## NOTICE TO CREDITORS.

ALL BILLS AGAINST THE HAWAIIAN NAVIGATION CO., LTD., must be presented on or before July 1, 1902.

JAS. T. TAYLOR,  
Secretary, Hawaiian Navigation Company, Limited.

APPEAL IS  
ABANDONEDPearl Harbor Suit  
Will Soon Be  
Settled.

United States Attorney Breckons was notified yesterday by the attorneys for the Bishop estate that their appeal to the United States Circuit Court of Appeals at San Francisco would be abandoned, and the decision of a Federal jury awarding \$52,737.50 for their Pearl Harbor land was accepted.

The formal withdrawal of this appeal will leave the way open for a settlement of the Honolulu Plantation Co. case, and it would not be at all surprising if the appeal noted by the United States in this case should now be withdrawn. The principal reasons given by the Navy Department for not accepting the compromise arranged between Manager Low and Admiral Merry is that the fee to the land was still in litigation, and the fight on the lease held by the Honolulu Plantation Co. might be pushed without delaying action in obtaining possession of the land any further than if no appeal were taken. Upon this theory, then, the Navy Department may now accept the compromise agreed upon here, which was the payment to the Honolulu Plantation of \$90,000 for their leasehold interest. This, however, carried further concessions to the plantation at Pearl Harbor which the Navy Department might not care to agree to, and this is now the only possible reason for not accepting the terms made by Admiral Merry.

By the withdrawal of the appeal of the Bishop estate the United States obtains immediate possession of about seventy-five acres of Pearl Harbor land, upon payment of the judgment of \$52,737. Upon Kuaia Island and about fifty acres of the mainland the Bishop estate held the fee simple, unincumbered by a lease, and Admiral Merry can at once take possession of this portion of Pearl Harbor. Paymaster Hall has the funds on hand for the payment of the judgment in the Bishop estate case, at one time the money having been offered but refused by the trustees of the Bishop estate. The withdrawal of the appeal comes too late, however, for any action by Congress at this session, as an adjournment will be taken before the news reaches the Navy Department in Washington. The withdrawal of this appeal and the probable settlement of the Honolulu case will, however, leave the way open for action at the next session of Congress.

CORONATION DAY  
CRICKET MATCH

Coronation day cricket will be played at Punahou on Thursday between picked elevens, selected yesterday by the sports committee. The event will be made a sort of lawn party. There is a ladies' committee which has arranged for the service of luncheon and refreshments of every kind on the lawn during the afternoon, and there will be many special features.

The teams will be called together at 1:30 o'clock in the afternoon and play will commence at 2 o'clock sharply. There have been provided an ample number of substitutes, so that any player who is not present on time promises to have his place taken. The make up of the contesting elevens is as follows:

S. Beardmore (captain), L. G. Blackman, A. W. F. Bottomley, J. L. Cockburn, Prince Cupid Kalamianale, D. Glass, A. R. Hatfield, H. L. Herbert, Rev. V. H. Kitchat, J. C. McGill, W. L. Stanley.

C. P. Horst (captain), A. L. Ahlo, D. W. Anderson, H. Anderson, Hy. Glass, J. Harvey, R. A. Jordan, A. T. Miles, H. E. Picker, A. St. C. Pianaia, C. von der Heyde.

Reserves—J. L. Brett, T. Gill, C. W. Irish, M. R. Jamieson, Malcolm H. McIntyre.

Official scorer—Viggo Jacobsen. Two competent umpires will be chosen at the game.

YACHTSMEN TO  
RACE ON FOURTH

Yachtsmen will celebrate the Fourth at Pearl Harbor with races and a jolly good time. In fact the celebration will commence the night before at the club house. The most of the yachtsmen will make the run down to the club house during the afternoon of July 3. They will rendezvous there and the event of the evening will be a feast at which the club chowder will be a feature.

In the morning the ships will be trimmed and sail set for the run up to the Peninsula, where the races will be viewed. The yachts will lie along the course, and their appearance will add to the spectacle afforded to the hosts ashore. As soon as the boat races have concluded the yacht races will be on.

While the program has not been finished there promises to be a series of events for the boats of all classes. The probabilities are that the races will be made from a starting point opposite the railroad wharf at the Peninsula, twice around Ford's Island and finish at the starting point. This will furnish rare sport and keep the contestants most of the time in sight of the spectators on the peninsula. Some of the little boats will be in plain view all the time. The day will close with the run home. This will give a very full day of sports to those aquatically inclined.

## BY AUTHORITY.

## TENDERS FOR SUPPLIES.

Office of the Board of Health, Honolulu, H. T., June 23rd, 1902.  
Tenders for furnishing the Board of Health with supplies specified in the following schedules, for the period of six months ending December 31, 1902, will be received at the office of the Board until 12 o'clock noon, Wednesday, June 25th, 1902.

Bids for items of each schedule must be made separately, and each tender endorsed "Tender for Supplies." The Board does not bind itself to accept the lowest or any bid.

H. C. SLOGGETT,  
President Board of Health.

## SCHEDULE "A."

Materials and supplies of the best quality for the Leper Settlement, Molokai, to be delivered in quantities ordered, f. o. b., island steamers, and subject to inspection and approval by agents of the Board of Health.

## BUILDING MATERIALS.

Lumber, N. W. Rough, 2x4 up, per M.  
Lumber, T. & G. N. W., 1x6, per M.  
Lumber, N. W. Rough, below 2x4, per M.  
Lumber, R. W. Surfaced, per M.  
Shingles, R. W., per M.  
Battens, 1/2x3, R. W., per M.  
Doors, 2x6x8, 1 1/4 inch, each.  
Window Sash, 10x12, per pair.  
Window Sash, 10x14, per pair.  
Nails, Iron Cut, 8d basis, per keg.  
Nails, Galv'd, 8d basis, per keg.  
Nails, Galv'd, 2d, per keg.  
Boiled Oil, brand to be stated, per gal.

White Lead, brand to be stated, per lb.  
Turpentine, per gal.  
Lime, per bbl.  
Galv'd Iron Pipe, 1/2-in. to 4 ins., each size, per ft.

## PROVISIONS AND SUPPLIES.

Bread, Medium, sample to be furnished, per lb.  
Baking Powder, Royal, 4-oz. tins, per gross.  
Bran, Wheat, per ton.  
Beef, Extra Messed Corned, in 200-lb. barrels, per bbl.  
Coffee, Green Kona, per lb.  
Coffee, Roasted Kona, per lb.  
Charcoal, Guava, per bag.  
Coal, in bags, kind to be stated, per short ton.  
Flour, No. 1 Golden Gate, per ton.  
Matches, Boston Long Card, per gross.  
Milk, Condensed, Milk Maid, per case.  
Milk, Condensed, Eagle, per case.  
Oil, Kerosene, per case.  
Rice, Hawn, No. 1, per 100-lb. bag.  
Sugar, Raw No. 1, per bbl.  
Salmon, Best Red, per bbl.  
Soap, Brown, 100-lb. boxes, 2-lb. bars, per case.  
Salt, Coarse, per ton.  
Wheat, per ton.

## SCHEDULE "B."

Supplies of the best quality, to be delivered at the Insane Asylum in quantities required, and subject to inspection and approval of the Medical Superintendent.  
Beef, one fore quarter, rumps and rounds, per lb.  
Beefsteak, loin, per lb.  
Bread, Fresh, 1-lb. loaves, per loaf.  
Bread, Medium, per lb.  
Beans, Bayo, per lb.  
Beans, White, per lb.  
Baking Powder, Royal, 5-oz. tins, per doz.  
Brooms, Steamboat, per doz.  
Brooms, Mill, per doz.  
Brooms, Yard (state kind), per doz.  
Coal, kind to be stated, per long ton.  
Coffee, Green Kona, per lb.  
Flour, per bbl.  
Onions, per lb.  
Pork, Extra Clear, per 1/4-bbl.  
Rice, Hawn, No. 1, per 100-lb. bag.  
Salmon, Best Red, per bbl.  
Prunes, per lb.  
Sugar, No. 1 Raw, per lb.  
Tomatoes, Canned, per doz.  
Tea, China Pouchong, per lb. 6201

## WATER NOTICES.

In accordance with Section 1 of Chapter XXVI of the laws of 1890: All persons holding water privileges or those paying water rates are hereby notified that the water rates for the term ending Dec. 31, 1902, will be due and payable at the office of the Honolulu Water Works on the 1st day of July, 1902.  
All such rates remaining unpaid for fifteen days after they are due will be subject to an additional 10 per cent.  
All privileges upon which rates remain unpaid August 15, 1902 (thirty days after becoming delinquent), are liable to suspension without further notice. Rates are payable at the office of the Water Works, in the basement of the capitol building.  
ANDREW BROWN,  
Supt. Honolulu Water Works.

## SHERIFF'S SALE NOTICE.

Under and by virtue of a certain execution issued out of the Circuit Court of the First Circuit of the Territory of Hawaii, on the 8th day of April, A. D. 1902, in the matter of the Honolulu Stock Yards Company, Limited, a corporation, plaintiff, vs. W. C. Achi, defendant, I have, on this 6th day of June, A. D. 1902, levied upon and shall expose for sale and sell at public auction to the highest bidder, at the Police Station, Kalakaua Hale, in Honolulu, Island of Oahu, Territory of Hawaii, at 12 o'clock noon of Tuesday, the 8th day of July, A. D. 1902, all the right, title and interest of said defendant, W. C. Achi, in and to the following described property, unless the judgment and costs of execution, amounting to five hundred and fifty-nine and 1/100 dollars, interest, costs

and my expenses are previously paid:  
1—All that certain piece or parcel of land situated at Kewala, Honolulu, Oahu, described in Royal Patent No. 100, Land Commission Award No. 100, to Kamae Pihol, conveyed to said W. C. Achi by deed of George N. Wilson, dated December 15th, A. D. 1898, and recorded in the Registry Office in said Honolulu, in Liber 200, Page 331. Subject to the mortgage made by said W. C. Achi to Charles M. Cooke, Ltd., dated December 18, A. D. 1899, and recorded in said Registry Office in Liber 204, Page 63.

2—All that certain piece or parcel of land situated at Mokuauia, Honolulu, Oahu, known as "Mokuauia Tract," containing an area of 100 acres, and being a part of the premises described as Apana 2 of Land Commission Award 6450, Royal Patent 2509 to Kaunuuohua for Mochonua, and that being the same premises conveyed to said W. C. Achi by Kapilani Estate Limited, by deed dated October 3rd, A. D. 1899, and recorded in said Registry Office in Liber 200, Page 331. Subject to the mortgage made by said W. C. Achi to W. R. Castle, dated October 4th, A. D. 1899, and recorded in said Registry Office in Liber 200, Page 331, and by said W. R. Castle to Bank of Hawaii, Ltd., by assignment of mortgage, dated October 5th, A. D. 1899, and recorded in said Registry Office in Liber 194, Page 376.

3—All those certain pieces of land situated at Mokuauia, Kailua, Oahu, conveyed to said W. C. Achi by deed of Kapilani Estate Limited, dated February 5th, A. D. 1901, and recorded in said Registry Office in Liber 222, Page 349, now known as "Kailua Tract," and more particularly described as follows:

1st—Containing 182.2 acres, being a part of Apana 1 of Land Commission Award No. 6450 to Kaunuuohua for Mochonua.  
2nd—Loko of Pahouuni and Kaka, 20 acres of fish pond (Loko) and 12.7 acres of dry land (Kula), being part of Apana 1 of Land Commission Award No. 6450 to Kaunuuohua for Mochonua.  
3rd—The Loko of Pehouiki, containing 15.3 acres, part of Apana 1 of Land Commission Award 6450 to Kaunuuohua for Mochonua.  
4th—Portion of grant 2420, containing 4.7 acres.  
5th—A portion of the Kula of Mokuauia, containing 5.3 acres.  
6th—All that portion of the land conveyed by deed of Mary Auld and W. Auld to Kapilani in Liber 122, Page 341, and containing 1.36 acres and 1/100 acre.

Subject to mortgage made by said W. C. Achi and wife, Mary Achi, to Kapilani Estate Limited, dated February 5th, A. D. 1901, for \$300,000, and recorded in said Registry Office in Liber 221, Page 29.

CHAS. F. CHILLINGWORTH,  
Deputy Sheriff, Ter. of Hawaii,  
Honolulu, Oahu.  
6189—June 7, 16, 21, July 1, 2.

Go for the Mountains or  
the Seaside

## VACATION IS HERE

We furnish GROCERY  
CAMPING OUTFITS.

\$20.00

For two persons camping ten days; or, for three persons camping ten days; or, for four persons camping one week; or, for four persons camping ten days.

\$20.00

THE GROCERS.

## LEWIS &amp; CO.

240—Two Telephones—240  
1060 FORT STREET.

Blue and White  
Japanese Rugs

Those pretty rugs you have seen at your neighbor's. Now couldn't get them before because we sold out before you got around. We've got a new stock now, but they will be sold very quickly. Better come early before they're all gone. The price—we have many sizes so come to the store for prices.  
We are selling them very cheap.

Lewers & Cooke  
LIMITED.  
Fort Street.Loo Joe Co.  
Merchant Tailors  
AND IMPORTERS

1111 Nuuanu Avenue  
Opposite Goo Kim Near M. Ching  
Next to Corner Hotel and Nuuanu

Suits Made to Order in the Latest  
Styles and a Good Fit Guaranteed

Latest patterns and styles by  
Tailors' Goods  
Clothes Cleaned and Repaired

ALL KINDS OF  
Rubber Goods

Goodyear Rubber Co.  
J. A. CHASE, President,  
San Francisco, Cal. U.S.A.



# L. B. KERR & CO. LIMITED.

Cor. Hotel and Fort Sts.

## An Important Announcement

We take pleasure in informing the public that we have secured for this city the exclusive representation and selling rights of

*Queen Quality*  
THE FAMOUS  
SHOE FOR WOMEN

This announcement comes after a long continued effort on our part to secure for our own selling, that make of shoes that best combined the feature of "graceful and correct design, wide choice in styles, exquisite workmanship, greatest wear and durability," with a moderate price.



After a thorough search of the market we have found these factors so artistically united in the

**QUEEN QUALITY**

SHOE that we have no hesitation in assuring our customers that they will find it in all respects "the handsomest, the best fitting and the most generally satisfactory shoe that money will buy."

## HEAVY SOLES

THAT ARE  
**Not Clumsy**



We hear many women say they can't wear heavy-soled shoes; too stiff and clumsy they say. We change the minds of such women every time; we fit them with

*Queen Quality*

Queen Quality Shoes are always flexible, always comfortable. They make women forget their foot troubles and they don't cost any more than the common kinds.

Price for any style of	Price for any style of
<b>BOOT</b>	<b>OXFORD</b>
<b>\$3.25</b>	<b>\$2.75 AND \$3.25</b>

**L. B. Kerr & Co**  
LIMITED.

Cor. Fort and Hotel Streets

## KAMEHAMEHA CLASS DAY

The Boys Celebrate It  
Beneath the  
Trees.

"Kamehameha Manual,  
Hip Huroo!  
Long live the class of  
1902!"—Class yell.

Yesterday was the class day of the Kamehameha School for Boys, and the event was celebrated amid sylvan scenes, the exercises being given under kiawe trees upon a smooth carpet of lawn and almost in the shadow of the Bishop Memorial Chapel. An interesting program of exercises, including music by the glee club, recitations, addresses and scenes from Midsummer Night's Dream, was given, which was followed by refreshments served upon the lawn.

A very pretty feature of the exercises was the planting of the class vine. The eleven young men composing the graduating class planted eleven roots of a clinging vine at each corner formed by the buttresses of the chapel, and these will be the first to adorn the stone walls of the stately edifice.

The salutatory and class history were ably handled by David Cranswick Kamaooha, who told many humorous incidents that had occurred in the class in the past four years, and among these were references to raided watermelon patches and mysterious disappearances of fat pullets. Principal Charles Bartlett Dyke made an address in which he referred to the class of 1902 as one of the most manly that ever went forth from the school, and he knew that each one was well equipped to begin life and earn his way. He referred to the oft repeated question of whether it was worth while educating the Hawaiian boys and girls, and answered it emphatically in the affirmative. The thousands of dollars which had been spent in the name of Bernice Pauahi Bishop for the education of Hawaiian youths could not have been put to better use. Young men and women left the school eminently qualified to compete with anyone in business and other pursuits of active life. Principal Dyke quoted statistics showing where the graduates had gone and telling of their present occupations. They had become business men, ministers, trustworthy clerks, were in various branches of the governmental departments, and many were property owners. The average salary commanded by them was \$1000. These statistics spoke for themselves. Many were married and had comfortable homes.

Two scenes from Midsummer Night's Dream were presented in the open space beneath the trees under an awning formed of several large Hawaiian and American flags suspended canopy-like between the trees. The Grecian costumes were worn in a manner which created considerable amusement for the audience, and there were many situations which caused no end of fun for both actors and auditors. The young men acted their parts well, and made a very favorable impression. The characters were impersonated as follows:

Theseus, Duke of Athens	Daniel Pahu
Hyppolyta, his bride	John Kekuewa
Demetrius	Henry Aikue
Lysander	Ululani Lemon
Philstrate, Master of Revels	Kalei Puni
Prologue	David C. Kamaooha
Snug, the Joiner	Lion N. Komomua
Snout, the Tinner	Moonsine
Starveling, the Tailor	Wall
Quince, Carpenter	George Apela
Nick Bottom, the Weaver	Pyramus
Flute, the Bellows Mender	Thasbe
	Thomas Nahiwa

The singing of the class song was followed by the class yell as above, and refreshments were then served from a tent. The space where the exercises were given was made bright and attractive by the use of large flags, and light chairs were arranged in a semicircle before a scene thatched with palm leaves. The following young men are the graduates of this year's class: David Cranswick Kamaooha, James Alexander Cranswick Hattie, Daniel S. K. Pahu, Franklin Ululani Lemon, George Kahulu Nahiwa, Thomas Komealani Nahiwa, Ernest Kaleinani Puni, George Kaiminauau Apela, Henry K. K. Aikue, Niumalu Komomua, John Robert Kekuewa.

This evening in the Memorial Chapel the commencement exercises will be given.

## HAWAIIANS ARE IN MAJORITY

Over Two-Thirds in Employ of  
Attorney-General's Department  
Are Natives.

In response to the request of Governor Dole, Attorney General Dole yesterday submitted a statement of the nationality, number and pay of officers and employees in his department. Accompanying the statistics was the following brief note:

Office of the Attorney General.  
Honolulu, H. I., June 21, 1902.  
To His Excellency, Sanford B. Dole,  
Governor of the Territory of Hawaii.  
Sir:

I have the honor herewith to submit the statement which you requested relative to the nationality and rate of pay of officers and employees in my department.

The total number of officers and employees in the department is three hundred and fifteen, of whom two hundred and twenty-eight are of the Hawaiian race and eighty-seven are of other races. The eighty-seven includes all persons not of the Hawaiian race, whether born in these islands or not; they are in the main white persons born here or in the states. I have the honor to be, sir, with great respect, your obedient servant,

(Signed) E. P. DOLE,  
Attorney General.

Chamberlain's Pain Balm has no equal as a household liniment. It is the best known remedy for rheumatism, lame back, quinsy and glandular swellings, white for sprains, bruises, burns and scalds. It is invaluable. One application gives relief. Try it. Benson, Smith & Co., Ltd., wholesale agents, sell it.

## JAS. F. MORGAN, Auctioneer and Broker

65 QUEEN STREET,  
P. O. Box 594. Telephone 72

## THIS DAY. Auction Sale OF Household Furniture

ON TUESDAY, JUNE 24,  
AT 10 O'CLOCK A. M.

At the residence of Mr. J. H. Kohn, 208 School street, next to the bridge, I will sell at Public Auction the entire household furniture consisting of bedroom sets, wardrobes, center tables, rockers, chairs, square piano, sideboard, pictures, mirrors, curtains, rugs, portieres, hanging lamps, wood stove, oil stove, meat safe, ice box, ferns and plants and a few chickens.

## JAS. F. MORGAN, AUCTIONEER. Auction Sale OF Household Furniture

ON THURSDAY, JUNE 26,  
AT 10 O'CLOCK A. M.

At the residence of Miss Agnes McIntyre, Keaumoku street, corner of Young street, in the residence formerly occupied by Mr. J. A. Hasinger, I will sell at Public Auction the entire household effects, consisting of some very fine furniture. Upholstered parlor set, large center rug, pictures, large mirrors, lace curtains, matting, handsome Steinway square piano, heavy oak dining chairs, handsome heavy oak sideboard, oak china cabinet, cutlery, handsome black walnut bedroom sets, black walnut writing desk, book case, office desk, book rack, sofa, rockers and chairs, hair mattresses, wardrobes, towel racks, skin rug, hall carpet, letterpress, ice box, meat safe, filter, kitchen utensils, Jewel stove, water boiler, and ferns and palms.

JAS. F. MORGAN,  
AUCTIONEER.

## Auction Sale OF Groceries

ON FRIDAY, JUNE 27,  
AT 10 O'CLOCK A. M.

At my salesroom, 65 Queen street, I will sell at Public Auction, a very large quantity of an assorted line of groceries to close consignment. Goods consist of canned meats, fruits, vegetables, jams, jellies, etc.; are absolutely fresh, in good order and will be sold regardless of cost.

JAS. F. MORGAN,  
AUCTIONEER.

## Trustee's Sale in Bankruptcy

ON SATURDAY, JUNE 28,  
AT 12 O'CLOCK, NOON.

At my salesroom, 65 Queen street, I will sell at Public Auction, by order of Mr. Daniel Logan, Trustee for the Austin Publishing Co., Ltd., a bankrupt, the entire plant of the Austin Publishing Co. The stock consists of paper, a very large and splendid stock of job type; sufficient body type for two large weekly newspapers. Also a large stock of artistic and up-to-date type, some of which has hardly been ink. Also all the presses, tools, instruments, shafting, pulleys, belting, office desks, etc., etc.

The sale will also carry with it the name and good will of the "Paradise of the Pacific."

In case of the non-disposal of the stock as a whole the sale will be transferred to the premises of the Austin Publishing Co., and will be held on the same day.

JAMES F. MORGAN,  
AUCTIONEER.

## House For Rent

By order of Mr. H. E. Waity, I offer for rent the home formerly occupied by him on Beretania street, between Pikel and Keenauka streets.

JAS. F. MORGAN,  
65 Queen street.

## Do You Know S & W?

Heard of him perhaps! S. & W. isn't a him—it is the brand of the choicest canned fruits and vegetables on the market. Do you ever think to look at the label on the can when you open goods that are really choice and be careful to order the same kind again. S. & W. is a guarantee of quality. If you open a can that it not entirely satisfactory, send it back—we will stand the loss. This offer is always open to our customers, and we have never yet had a complaint. Here is a list of some of the S. & W. goods: White Cherries, Preserved Pitted Red Cherries, Preserved Raspberries and Strawberries, Sliced Lemon, Cling Peaches and Sliced Apricots, Yellow Crawford Peaches, Lemon Cling Peaches, Golden Drop Plums, Green Gage Plums, Bartlett Pears, Peeled Apricots. Jams: Strawberry, Raspberry, Blackberry, Plum, Pineapple, Currant.

Vegetables: Sugar Peas, and Corn, Succotash, Asparagus Tips, String Beans, Lima, etc.

**H. MAY & CO.**  
LIMITED.  
22--Telephones--24

## The Pride of the Home is a White Sewing Machine

A Combination of  
Art and Utility

Used by many in preference to other makes of the same price. It is demonstrating its merits:

Built to Sew Well and to Last

Call and inspect the different styles

**H. Hackfeld & Co.,**  
LIMITED.

Sole Agents for the Hawaiian Islands.

## At the Table

Whether at the tea table or at the dinner table, the quality of your butter is an important factor. Users of

**Crystal Spring Butter**



Are never disappointed in the quality. Why take chances when you get the best? Don't ask merely for the best—your dealer probably will give you the best—the best he has—insist on having Crystal Spring Butter. Costs no more than other good butter, and the quality is guaranteed. Get it at

Don't neglect asking for our booklet.

**Metropolitan Meat Co.**  
LIMITED.  
TELEPHONE MAIN 45.

**Japanese Goods  
American Goods  
and CURIOS**

**CHIYA'S**  
Corner of Nuuanu and Hotel Streets.

NEW GOODS received by every steamer from Japan.

New Store New Goods

**JAPANESE AND AMERICAN  
DRY GOODS**

MERCHANT TAILOR

**K. Fukuroda,**

Robinson Block. Phone White 2421. 14 Hotel Street.

The Uniformity of goods manufactured by the Hawaiian Soda Works insures the quality of FLAVOR and all other points combined in making a perfect drink, is found in the products of

**HAWAIIAN SODA WORKS**

Emma and Vineyard Streets. Phone Blue 1871.



WATCHMAN'S  
QUICK WORK

Serious Catastrophe Was Averted  
at Oceanic Ware-  
house.

After searching a lot of stored house-  
hold goods a blaze in the Oceanic dock  
warehouse was quickly subdued by the  
department last evening. An alarm  
sounded about 6:45 o'clock, and within  
a few minutes thereafter the danger  
was past. The watchman made his  
rounds at 6:15 and found all in order,  
but returning to the warehouses, dis-  
covered smoke issuing from the corner  
near the offices. He at once rang in  
the alarm.

Spontaneous combustion is said to  
have been the cause of the fire which  
broke out in a lot of household goods  
which had lain in the godown nearly  
a year. The fire department responded  
promptly and did excellent work.  
No stored goods were in any way dam-  
aged by either water or fire.

The fire had a straight way from the  
stored goods, through a bin containing  
mattresses, a section holding coal oil  
and then to the offices where the records  
of the firm are kept, the destruction  
of which would have proven of  
incalculable loss.

The warehouses contained about \$20-  
000 worth of sugar, \$3000 of feed, be-  
sides a large stored lot of harness and  
belting goods. The company suffered  
no appreciable loss owing to the watch-  
man's attention and the fire depart-  
ment's promptitude.

## BUSINESS LOCALS.

A lot of groceries will be sold at Mor-  
gan's saleroom next Friday.

Men's flannel summer suits \$7.50 at  
Kash Clothing Co.

Boys' goods are wanted in private fam-  
ily; good location. See wanted column.

A bright girl to assist in millinery is  
wanted. See classified advertisements.

Colored chignons, 40 inches wide, for  
Ge at M. Hensch & Co.'s. Formerly  
McC.

A gold pin set with rubies has been  
lost. Liberal reward if same is return-  
ed to this office.

A six-room cottage at 30 Vineyard  
street is offered for rent. Rent very  
reasonable. Good location.

The Golden Rule Bazaar publish in to-  
day's issue a list of new popular books  
received by the S. S. Sierra.

Vacation is made doubly pleasant if  
you are provided with a Kodak. Hon-  
eysuckle Drug Co. have Kodaks from \$1.00  
to \$25.00.

The French Laundry on Beretania  
and Punchbowl streets advertise for  
a number of girls to do the ironing at  
their laundry.

Rabcock carriages are original and a  
guarantee goes with every one. Sold  
The Pacific Vehicle and Supply Co. Ltd.  
have them for sale.

Those handsome blue and white Japa-  
nese cotton rugs at Lewers & Cooke.  
They are selling rapidly. Better come  
early if you want one.

One hundred thousand shotgun car-  
tridges is the number imported by J.  
H. Hall & Son to supply local sports-  
men for the close season opening July  
1st.

The latest novelty for the Fourth of  
July is called "Kongo Club." Wall,  
Nichols Co. have them for sale. If you  
want to be noisy on the Fourth, get  
one.

Party leaving the city advertises in  
our classified ads. today and desires to  
rent his eight-room furnished house.  
Rent only \$40.00 a month. Everything  
new and first-class.

Auction sale of household furniture  
today at the residence of Mr. J. H.  
Kohn, 208 Scholes street, near the  
bridge. List of articles to be sold is  
published today in Morgan's column.  
Sales takes place at 10 o'clock.

Get your soda water of the Hawaiian  
Soda Works if you want the best flavor  
and the purest drinks. Phone Blue 187.  
Summer heat avoided within doors by  
having your iron roofs covered with  
"Arabic." Try it and you will never  
regret it.

## PUBLIC CONCERT.

Hawaiian Band at the Hawaiian  
Hotel Tonight.

## PART I.

Overture, Light Cavalry ..... Suppe  
Chorus, Tannhauser ..... Wagner  
Grand Selection, Nabucco ..... Verdi  
Vocal—

(a) Hooheho, (b) Lili Kai o Opele  
Miss I. Kellias.

(c) Wai Mapuna, (d) Ahea Oei,  
Mrs. N. Alapai.

## PART II.

Two Marches—

(a) Britannia (new) ..... Cook  
(b) For King and Empire (new) ..... Hume

Two Fantasies—

(a) Springtime of the Heart (new) ..... Ganne  
(b) Honeysuckle and Bee (new) ..... Laps

Polka, Ping Pong (new) ..... Allan  
Galop, Motor Car (new) ..... Retford  
The Star Spangled Banner .....

## Campbell Goes to Hilo.

Marston Campbell, Assistant Super-  
intendent of Public Works, leaves to-  
day on the Kinau to look into several  
matters of public improvement in that  
city. The paving and macadamizing of  
Waiwae street, the construction of the  
water system are among the works un-  
der way which require his attention.  
He will return Saturday.

## In New Headquarters.

Chas. A. Bidingler, for a number of  
years in charge of the Criterion Shav-  
ing Parlors, wishes to notify his many  
friends and patrons that he is now lo-  
cated in the new Waverley parlors,  
corner of Hotel and Bethel streets,  
where he will be pleased to have them  
call.

## Thos. Fitch for Orator.

Colonel Thomas Fitch leaves for Hilo  
next week to deliver the Fourth of  
July oration there. Admiral Beckley,  
acting for the Hilo committee, saw  
Colonel Fitch yesterday and obtained  
his promise to speak. The Admiral  
will take him to the volcano.

## Gear Gets Another Vacation.

Judge Gear is booked to leave today  
for Hilo on the Kinau for another vaca-  
tion. Judge Little, who came over  
from Hilo Saturday, will also return  
home on the Kinau today. He opens  
court next week and the next Kinau  
will be too late for his return.

## LOCAL BREVITIES.

Miss M. B. Coombs has just returned  
from a trip to the volcano.

The Prussia is discharging lumber  
at the Allen & Robinson wharf.

Just the thing for the ball Thursday  
night—a locomobile. Tel. Blue 2425.

Mr. and Mrs. W. W. Taylor of Menlo  
Park have gone to Honolulu to reside.  
—Examiner.

Excelsior Lodge meets tonight in hall  
on Fort street. The work will be in the  
third degree.

The Pacific Lodge will hold a special  
meeting this evening for work in the  
second degree.

The Criterion and Waverley shaving  
parlors are under the joint manage-  
ment of Mrs. D. W. Hoach and Chas.  
A. Bidingler.

Miss Mary Gardner of Kohala is in  
the city en route to Cleveland, Ohio,  
her old home, where she will visit with  
her mother.

Joseph Humiller, Miss Edna Humiller  
and Miss May Gilmore will be here  
Sunday from Los Angeles en route to  
Honolulu. —Examiner.

Albert Maxfield Webster and Miss  
Clara Farrell De Cew were married  
yesterday. They will be at home after  
September 4 at No. 1955 Beretania ave-  
nue.

Work upon the ball room extension  
to the legislative hall is progressing  
rapidly and the hall will be completed  
in plenty of time for the Fourth of July  
celebration.

Leave your orders for reserved seats  
for the St. Louis College musical and  
dramatic entertainment for June 26th,  
at Territorial Messenger Service. Tele-  
phone Main 321.

The International Correspondence  
Schools of Scranton, Pa., are giving  
special discounts to students enrolling  
now. A. B. Arleigh, care Wall Nichols  
Co., is the local agent.

Auditor Austin is still at work upon  
the fire claims awards, but no report  
will be made to the Governor by the  
commission until a final adjustment of  
all the awards is made.

The wedding of Mr. Charles E. King  
of the Kamehameha Schools and Miss  
Jeanne T. Bates is to take place on  
Thursday evening at 8 o'clock in the  
chapel at Kamehameha. Friends are  
invited.

The annual meeting of the St. Clement's  
Provident Association for the transac-  
tion of other business is called for this evening  
at St. Clement's parish house at 3  
o'clock.

A small blaze at the Gregory resi-  
dence, corner of Kinau and Keeaomoku  
streets, called the fire department out  
yesterday morning. A gasoline stove  
exploded in the kitchen, but did little  
damage.

The Hillani Club is soon to give con-  
certs on Kauai for the benefit of the  
poor and suffering in the Hawaiian  
islands. This jolly club will give the  
melodious songs and music of Hawaii  
not in their progress.

Word was received here yesterday of  
the death in Mendocino, Cal., on June  
11, of Mrs. Henry M. Benson, wife of  
Major Benson, formerly a partner in  
the drug firm of Benson, Smith & Co.  
She died very suddenly. Her oldest  
son, Percy Benson, is a resident of Ho-  
nolulu.

The coroner's jury empanelled in the  
case of Sam Hiram, the Hawaiian who  
died recently at the Queen's hospital of  
injuries received during a collision with  
a hack driven by James Brown, met  
yesterday afternoon and brought in a  
verdict to the effect that Hiram came  
to his death from hemorrhage of the  
lungs due to an accident.

## TEN BOLD ASSERTIONS.

Regarding Chamberlain's Cough, Chol-  
era and Diarrhoea Remedy.

1. It affords quick relief in cases of  
cough, cholera morbus and pains in the  
stomach.

2. It never fails to effect a cure in  
the most severe cases of dysentery and  
diarrhoea.

3. It is a sure cure for chronic diar-  
rhoea.

4. It can always be depended upon  
in cases of cholera infantum.

5. It cures epidemic dysentery.

6. It prevents bilious colic.

7. It is prompt and effective in cur-  
ing all bowel complaints.

8. It never produces bad results.

9. It is pleasant and safe to take.

10. It has saved the lives of more  
people than any other medicine in the  
world.

These are bold assertions to make re-  
garding any medicine, but there is  
abundant proof of every one of the  
above statements regarding this reme-  
dy. Every household should have a  
bottle at hand. Get it today. It may  
save a life. Benson, Smith & Co. Ltd.,  
wholesale agents, sell it.

Typewriter desks, typewriter chairs,  
typewriter paper and supplies of all  
kinds at the Remington typewriter of-  
fice.

BOUNTEOUS  
DISPLAY OF  
Summer Goods

Unless you visit our store fre-  
quently you can scarcely know of the  
attractiveness of new arrivals in  
the different departments. There is  
not a steamer comes in, but  
what brings us new materials.  
This week we advertise

COTTON COVERT CLOTH  
FOR OUTFITTING AND  
VACATION SKIRTS.

We have it in Blue, Brown and  
Green, also in checks and stripes.  
28 inches wide.

7 yards for \$1.00.

New White Piques

Very best quality of goods in  
figures and plaids.

25c and 30c per yard.

All Wool Goods

Embroidered Stripes in Red,  
Green, Old Rose, Grey, Brown and  
Lavender. Width 28 inches. Special-  
ly beautiful for steamer waists.

\$1.00 per yard.

Quilts

You ought certainly to see these.  
Full sizes, good quality white  
quilts worth \$1.00.

Our price 35c.

We also have a complete line of  
French Flannels.

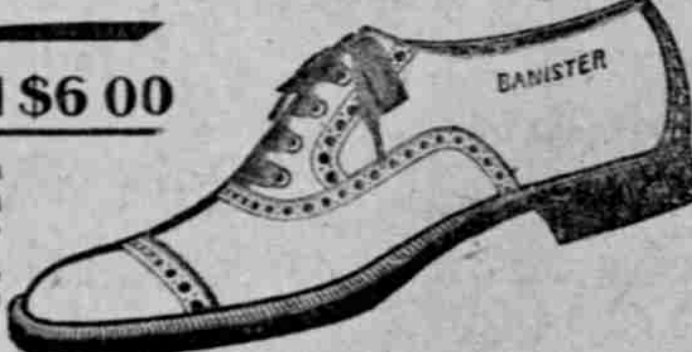
\*\*\*  
N. S. Sachs, DRY GOODS  
CO., LTD.

FORT STREET.

## This is 'It'

Prices  
\$5 00 and \$6 00

The BANISTER is  
the best shoe sold in  
Honolulu. Everybody  
knows that. For dress,  
there's nothing that quite  
compares with the



## James A. Banister Shoe

They are best in every sense of the word—best  
in quality, best in fit, best in style and as a  
natural consequence, best in value

Manufacturers' Shoe Co., Limited  
1057 FORT STREET.

The  
Lace  
House

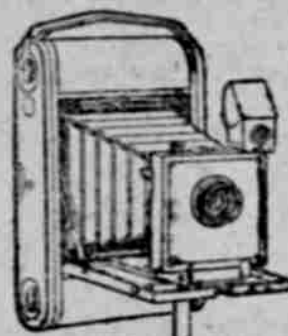
Cheaper Than  
Ever!

LACES  
LACES

We have a BIG STOCK of  
laces on hand yet and they  
must be SOLD, and so you can  
get the benefit of it if you come  
in time. We have made FUR-  
THER REDUCTIONS in order  
to CLOSE OUT on COTTON,  
AND LINEN TORCHONS,  
VALS, DUCHES and MAL-  
TESE.

M. BRASCH & CO.

Vacations Are Made  
Twice as  
Pleasant if You  
Have a Kodak



We have the Eastman Kodak.  
Now is the time to get them. We  
offer Kodaks at 20 per cent off  
regular prices. They will never  
be lower. You are going to have  
one someday. Why not now? We  
have them from \$1 to \$25. The  
\$4.80 folding pocket is just the one  
for mountain work. Fits the pocket  
and purse at same time.

If ambitions for bigger pic-  
tures, we have what you want. In  
fact if you will come in and let us  
show you what we have you'll get  
Kodak information of value to you.  
We like to show our Cameras.

If you do your own printing and  
developing we have the outfits you  
require. When you don't want to  
soil fingers we attend to developing  
and printing. Our work is said to  
be the best too. Prices right.

Fresh Films regularly by mail.  
See that you have the newest for  
best results.

Velo paper enables you to print  
by lamp light. Pleasant pastime  
for evenings. We are selling some  
choice Albums. Let us have op-  
portunity of showing them.

Hobron  
Drug  
Company

LOOK FOR THE YELLOW STORE.  
EHLERS' BLOCK, FORT ST.

AN  
ATTRACTIVE  
ARRANGEMENT

The possibilities of  
arrangement of the

Globe-  
Wernicke

Elastic Book Cases

are almost unlimited. This feature alone enhances the value  
of the Globe-Wernicke Case, as it can always be disposed of  
at nearly its face value.

Dust Proof, Insect Proof

Roller Bearing Retiring Door Feature. Call in and inspect  
them.

Pearson & Potter Co., Ltd.

Union and Hotel Sts.

Phone Main 317.

IN THE  
FAMILY  
CIRCLE

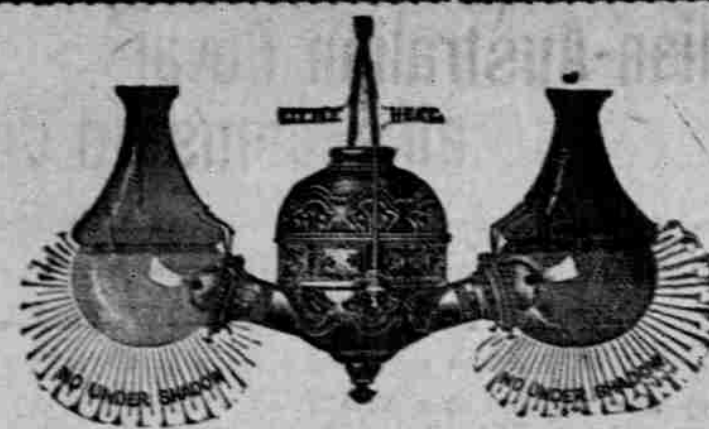
Telephone Main 341.

IN THE FAMILY CIRCLE  
there is constant need of a beverage  
that is also a tonic—that refreshes  
and vitalizes young and old. Just  
such a drink is

## Primo Lager

It is peculiarly rich in that pure  
hop flavor that makes it the most  
delightful and healthful of all  
beverages. Order from Brewery.

Don't  
Go on  
Worry-  
ing



With inferior or needlessly expensive illumination in your home,  
There is absolutely no occasion for it. Thousands of house-  
keepers throughout the islands have removed this annoying  
problem entirely by acquainting themselves with the ideal per-  
fect light for the home. It is as brilliant as gas or electricity,  
never smokes, smells or gives any trouble, is lighted and extin-  
guished as easily as gas, and burns but little kero-  
sene oil. Our catalogue shows all styles from \$1.80  
up, and is sent for the asking.

THEO. H. DAVIES & CO., Limited

Hardware Department.

WEDNESDAY, June 25 to Saturday  
Night, June 28 at

B. F. EHLERS & CO., FORT ST.

Stupendous Reduction in Price of  
Fans and Parasols

SALE BEGINS WEDNESDAY 25.

These are very saleable goods during the warm weather and  
we offer them at ridiculously low prices in order to give them an  
extra strong push.

WHY THE LOW PRICES? We want to dispose of this  
stock at any price to make room for a new lot now on the way.  
We would lose heavily on these goods rather than carry any of  
them over with the expected new goods. Note these prices:

## Fans, White and Black

All in perfect condition and beautiful assortment. See some  
of them displayed in our windows. No hesitation on our part  
about the price. We have marked them: \$6.00 kinds to \$1.50  
kinds.

All at \$1.00 Each

## Parasols

Some remarkable reductions in this line, average reduction of  
over 66 2-3 per cent. For example we have some \$12.00 Para-  
sols for \$4. Others that are very slightly shopworn, at  
25c. See display in window.

## Mosquito Netting Sale

We bought more than we need and in order to more rapidly  
reduce the stock we offer following reduction: 10 yard pieces,  
90 inches wide, regular price \$4.00; on sale at \$3.

10 yard pieces, 90 inches wide, better quality, regular \$5.00;  
sale price \$3.50.

## Novelty Dress Patterns

We have a limited number of latest novelties just opened.  
Some handsome Batiste with Persian stripes and Indian Madras  
with raised embroidered stripes:

Dress Lengths, \$6 00

Waist Patterns, \$1.25

## Traveling Shawls

Fine imported goods, attractively displayed in our show  
windows.

Prices \$6 and \$8.

## Rubens Infant Shirt

These are dainty shirts  
and our stock is complete.

Prices

65c

and

75c.

No Buttons No Trouble.

Pat. Nos. 528988, 550223

## Healthful and Invigorating

## RAINIER BEER

## A PURE BEER

## Japanese Silk AND Cotton Goods

Also new assortment of Gent's Furnishing Goods  
from the Coast. We also carry a Large Stock of  
Japanese Provisions—Wholesale Dealers. : : :

SAYEGUSA

1120 NUUANU AVENUE.

Branch Store: King and Liliha Streets.



## Canadian-Australian Royal Mail Steamship Company

Shippers of the above line running in connection with the CANADIAN PACIFIC RAILWAY COMPANY between Vancouver, B. C., and Sydney, N. S. W., and calling at Victoria, B. C., Honolulu, and Brisbane, Q., are

### Due at Honolulu.

On or about the dates below stated, viz.:

From Sydney and Brisbane, for Victoria and Vancouver, B. C., and from Vancouver, B. C., for Brisbane and Sydney:

MOANA	JULY 5	AORANGI	JULY 5
MOANA	JULY 20	MOANA	AUG. 2

Shippers now call at Suva, Fiji, on both up and down voyages. The winter service is now running daily BETWEEN VANCOUVER AND MONTREAL, making the run without change. The finest railway service in the world. Through tickets issued from Honolulu to Canada, United States and Europe. For freight and passage and all general information, apply to

Theo. H. Davies & Company, Ltd.  
GENERAL AGENTS.

## Oceanic Steamship Co.

### TIME TABLE

The two passenger steamers of this line will arrive and leave this port as follows:

FOR SAN FRANCISCO:	FROM SAN FRANCISCO:
ALAMEDA	JULY 27
SONOMA	JULY 27
ALAMEDA	JULY 30
SONOMA	JULY 30
ALAMEDA	AUG. 3
SONOMA	AUG. 3
ALAMEDA	AUG. 6
SONOMA	AUG. 6

In connection with the sailing of the above steamers, the Agents are prepared to issue, to intending passengers, Coupon Through Tickets by any railroad, from San Francisco to all points in the United States, and from New York by any steamship line to all European ports.

FOR FURTHER PARTICULARS, APPLY TO

WM. G. IRWIN & CO.  
LIMITED.  
GENERAL AGENTS OCEANIC S. S. CO.

## Pacific Mail Steamship Co.

Occidental & Oriental S. S. Co.  
and Toyo Kisen Kaisha.

Steamers of the above companies will call at Honolulu and leave this port on or about the dates below mentioned:

FROM SAN FRANCISCO:	FOR SAN FRANCISCO:
CHINA	JUNE 21
DORE	JUNE 21
PERU	JULY 16
COPTIC	JULY 16
AMERICA MARU	JULY 25
PEKING	AUG. 11
GAELIC	AUG. 20
HONGKONG MARU	AUG. 20

For general information apply to P. M. S. S. Co.

H. Hackfeld & Co., Ltd.  
AGENTS.

American-Hawaiian Steamship Company.

DIRECT MONTHLY SERVICE BETWEEN  
New York to Honolulu via Pacific Coast

THE SPLENDID NEW STEEL STEAMERS  
OREGONIAN, to sail about July 15  
ALASKAN, to sail about August 15  
NEBRASKAN (new), to sail about July 25  
Freight received at Company's wharf, Forty-second street, South Brooklyn, at all times.

From San Francisco  
NEVADAN, to sail July 5  
Freight received at Company's wharf, Stewart street, Pier 20.

FROM SEATTLE AND TACOMA  
AMERICAN, to sail June 15

For further particulars apply to  
H. Hackfeld & Co., Ltd.

C. P. MORSE, General Freight Agent.

GLOBE NAVIGATION COMPANY, LTD.  
PUGET SOUND-HONOLULU ROUTE

Without transfer, with the G. N. Ry., N. P. R. R., and A. T. & P. R. R. Lowest rates of freight from all Eastern ports; shortest possible

to Tampico, from Seattle, on or about July 1st.  
to Tampico, from Seattle on or about August 5th.

For further information address  
L. E. BEEBE,  
3 Brewer Building, Honolulu.

AGENT HAWAIIAN ISLANDS,  
Globe Navigation Company, Ltd., Seattle, Wash.; P. W. Rochester, 208 Market St., San Francisco, and agents of above railroads, will furnish information.

## THE PACIFIC Commercial Advertiser

Entered at the Postoffice at Honolulu, H. T., Second-class Matter.

Issued Every Morning Except Sunday by the HAWAIIAN GAZETTE COMPANY, Von Holt Block No. 6 South King St. A. W. PEARSON, Business Manager. SUBSCRIPTION RATES: For the United States (including Hawaii) 3 months \$2.00 6 months \$3.00 1 year \$5.00 Advertising rates on application.

## RAILWAY & LAND CO. TIME TABLE.

From and after Jan. 1, 1901.

Stations.	ex.	ex.	ex.	ex.
	Sun.	Sun.	Sun.	Sun.
Honolulu	7:10	9:15	11:55	2:15
Paia	8:00	9:45	11:55	2:45
Ewa Mill	8:35	10:05	12:00	3:10
Waiwae	10:50	11:55	1:45	4:45
Waiwae	10:50	11:55	1:45	4:45
Kahuku	12:25	1:25	2:15	5:15

INWARD.

Stations.	Sun.	Sun.	Sun.	Sun.
Kahuku	5:25	6:25	7:15	8:15
Waiwae	6:25	7:25	8:15	9:15
Waiwae	7:15	8:15	9:05	10:05
Ewa Mill	8:50	9:45	10:35	11:35
Paia	9:40	10:35	11:25	12:25
Honolulu	10:50	11:55	12:45	1:45

G. P. DENISON, Superintendent.

G. P. & T. A.

## METEOROLOGICAL RECORD.

By the Government Survey, Published Every Monday.

Day.	Barom.	Therm.	Humidity	Wind.	Force.
	6 a.m.	3 p.m.			
Mon. 23	30.15	81.0	88	SW	1-2
Tue. 24	30.15	81.0	88	SW	1-2
Wed. 25	30.15	81.0	88	SW	1-2
Thur. 26	30.15	81.0	88	SW	1-2
Frid. 27	30.15	81.0	88	SW	1-2
Sat. 28	30.15	81.0	88	SW	1-2
Sun. 29	30.15	81.0	88	SW	1-2
Mon. 30	30.15	81.0	88	SW	1-2

Barometer corrected to 32 F. and sea level, and for standard gravity of Lat. 45. This correction is -.06 for Honolulu.

## TIDES, SUN AND MOON.

Day.	High Tide	Low Tide	Sun Rises	Sun Sets	Moon Rises	Moon Sets
Mon. 23	5:25	1:55	5:58	6:45	5:50	11:45
Tue. 24	5:25	1:55	5:58	6:45	5:50	11:45
Wed. 25	5:25	1:55	5:58	6:45	5:50	11:45
Thur. 26	5:25	1:55	5:58	6:45	5:50	11:45
Frid. 27	5:25	1:55	5:58	6:45	5:50	11:45
Sat. 28	5:25	1:55	5:58	6:45	5:50	11:45
Sun. 29	5:25	1:55	5:58	6:45	5:50	11:45
Mon. 30	5:25	1:55	5:58	6:45	5:50	11:45

Last quarter of the moon on the 25th, at 11:22 a. m.

Times of the tide are taken from the United States Coast and Geodetic Survey tables.

The tides at Kahului and Hilo occur about one hour earlier than at Honolulu.

Hawaiian standard time is 10 hours 30 minutes slower than Greenwich time, being that of the meridian of 157 degrees 30 minutes. The time whistle blows at 1:30 p. m., which is the same as Greenwich, 9 hours 0 minutes. Sun and moon are for local time for the whole group.

## HAIR AND WAVE.

DIAMOND HEAD SIGNAL STATION. June 23, 10 p. m.—Weather clear, wind light northeast.

## WEATHER BUREAU.

Honolulu, Alexander St., June 23.

Mean temperature—76.

Minimum temperature—68.

Maximum temperature—82.

Barometer at 9 p. m.—29.99, rising.

Rainfall, 24 hours up to a. m.—0.

Mean dew point for the day—68.

Mean relative humidity—79.

Winds—Northeast, force 0 to 3.

Weather—Cloudy; light Mauna shows morning and evening.

Forecast for today—Light trades, variable winds.

CURTIS J. LYONS, Territorial Meteorologist.

## ARRIVED.

S. S. Peking, from San Francisco, at 7 a. m.

Am. schr. Alice Cooke, Penhallow, from Port Gamble with lumber.

## DEPARTED.

S. S. Peking, Smith, at 5 p. m., for the Orient.

Am. bktn. S. N. Castle, for San Francisco.

## PASSENGERS.

Per S. S. City of Peking, from San Francisco, June 22—For Honolulu: Miss Luit Baker, Miss M. M. Campbell, J. H. Meyer, Miss I. V. Copeland, A. W. Eckman, Mr. and Mrs. F. W. Everett and child, Miss Inez Morris, Mr. and Mrs. C. P. Ross, For Yokohama: Prof. G. Isabal, Capt. R. E. Warfield, Miss M. Veallanes, Mrs. R. H. Warfield, For Manila: R. Appleton, E. W. Suchet, J. P. Heibron, A. M. Mow, For Hongkong: D. J. Hauptman, W. G. Kost, Miss Leslie Smith, Miss Isabel Vernon, Miss F. I. Vernon.

## Shipping Notes.

The schooner Ariel, from this port, arrived at Astoria on the 14th inst.

The "Billie," a German bark, departed on the 10th instant from Hamburg for Honolulu.

The C. D. Bryant, with about 25,000 bags of sugar, reached San Francisco on the 13th inst.

A four-masted schooner, lumber laden, was sighted off Diamond Head, bound in, at midnight.

The schooners Otella Pederson and Robert Levers arrived at Port Townsend on the 14th inst. The Ivanhoe, from Honolulu, passed in at Neah Bay on the same day.

The transport Meade, due to leave San Francisco on the 14th inst., will not touch at this port on her trip out or returning. She will call at Nagasaki en route for Korea.

The barkentine Coronado, 21 days out from Honolulu, reached San Francisco on the 13th instant. The U. S. A. T. Warren is also reported at the same port, as well as the gunboat Manila.

## PUNCHBOWL WATER HOLE

Rain Water In a Little Low Spot.

Given a hole in the ground, five feet across and about the same in depth, a little water in the bottom, clearly the collections in the sand of rainfalls which sweep over the crater of Punchbowl, and there is provided the basis for the statement that boiling springs have been discovered about the old crater. This and nothing more, and yet there lies behind all the superstitious belief that the spirit of a wahine who passed away mauka of the old crater came back as the friend of the squatters and visitors and scooped out the opening and developed the water hole, which has been dignified as a spring.

It is hard to get at the history of the water hole in the center of Punchbowl crater. Months ago, perhaps during the first of the rainy period, the old native, whose hut, sided in great part by this straightened road of old canes, stands along the main road, found that water had collected in a straight depression in the center of the lava flow. It was close to the spot where he has cleared away the brush and planted his garden, in the course of the water flow which has been noted ever since any one took the trouble to observe Punchbowl at all. The rains washed out a slight course, which they followed to the break in the Waikiki side of the mud cone. This depression held the water for a time after the rains had been drained off. Then, according to the story told by the wahine whose home is at the old shack, too many visitors came and dug down and down until the old man had to walk out the sand and thus preserve the well. She said pathetically that whereas the water formerly had been close to the top now it was away down and an inspection proved this to be the case, for in the well, four feet down was the surface of the water, and at its deepest there was little more than a foot of it last evening.

The bottom of the well is in the black sand, indicating that by percolation through this stratum the water has brought into the hole. Quite close by is another hole which has been deepened at some time past to collect the water as well, but which now is dry, although the sand at its bottom is damp.

Professor Lyons, when shown some of the water last evening, said that it without doubt was what it seemed, rain water, as it had always been the case that water collected in the crater when there had been a wet spell. J. C. Quinn, who hearing the story, made an immediate investigation, found the water cold and clear, with every evidence that it was merely the collections from surrounding areas of black sand.

The squatter has cleared away much of the brush for the purpose of planting his garden. He has potatoes, tomatoes and some bananas and other things planted close to the waterhole. Also there has been cleared away quite a width of lava and there are evidences that many a luau has been held, and some recently, under the shade of the trees in close company to the water hole.

## THE MANILA'S ROUGH PASSAGE

The old Spanish transport Manila, which spent a week in port here in May, had a narrow escape from foundering while on her way to the Coast.

When five days out from this port her piston was completely shattered and the little steamer was completely disabled. Repairs were at once commenced and only two days later a terrific gale sprang up. Nearly everything on deck was washed away with the exception of the old heavy Spanish cannon and the newly fitted American six-pounders.

Repairs were finally effected by Chief Engineer Elston, under great difficulties, owing to the fact of the terrible rolling and tossing and the trouble the navigators found in keeping her head toward the storm. The engines were fixed up so she could make about a fifth of her regular speed. Two days after this she encountered another gale which blew her far out of her intended course and she was sighted by the Government tug Slocum, making about two knots an hour, headed for San Francisco. The Unadilla, a navy yard tug, took her in tow after docking and she started for Mare Island for repairs, and she may be entirely reconstructed there on deck with a few days' delay.

## Dewey Going to Sea.

NEW YORK, June 14.—A special to the Sun from Washington says: At the urgent personal request of President Roosevelt and Secretary Moody, Admiral Dewey has consented to take command of the big fleet which will engage in maneuvers in the West Indies next winter. The President and Secretary of the Navy regard it as appropriate that an officer of high rank should have charge of the fleet, and they are gratified over the enthusiastic interest shown by Admiral Dewey when it was suggested to him that he go to sea again.

## HONOLULU STOCK EXCHANGE.

Honolulu, June 23, 1902.

NAME OF STOCK	Capital	Val	Bid	Ask
MERCANTILE				
C. Brewer & Co.	1,000,000	100	400	
N. S. Sacks Dry Goods Co., Ltd.	50,000	100		
L. B. Kerr Co., Ltd.	200,000	50		
SUGAR				
Ewa	5,000,000	20	24	
Haw. Agricultural Co.	1,000,000	100	250	
Haw. Com. & Sug. Co.	2,312,750	100		
Haw. Sugar Co.	2,000,000	100	24	
Honolulu	750,000	100		
Honokaa	2,000,000	20	10	
Kahuku	500,000	100		
Kihel Plan, Co., Ltd.	2,500,000	50	10	
Kipahulu	100,000	100		
Koloa	300,000	100		
McBryde Sug. Co., Ltd.	3,500,000	20	55	
Oahu Sugar Co.	3,500,000	100	85	
Unonua	1,000,000	100		
Ookala	500,000	50		
Olaia Sug. Co., As.	812,000	20	34	
Olaia Paid Up	2,500,000	20	34	
Olowalu	150,000	100		
Panahou Sugar Plantation Co.	5,000,000	50		
Pacific	50,000	100		
Pala	750,000	100	170	
Popeo	750,000	100		
Pioneer	2,750,000	100		
Waialua Agr. Co.	4,500,000	100	55	
Waikuku	700,000	100		
Waianae	250,000	100		
Waimea	125,000	100		
STEAMSHIP CO'S				
Wilder S. S. Co.	500,000	100	100	
Inter-Island S. S. Co.	500,000	100	100	
MISCELLANEOUS				
Haw. Electric Co.	250,000	100	92 1/2	
Hon. E. T. & L. Co.	250,000	100		
Mutual Tel. Co.	35,000	100		
O. R. & L. Co.	2,000,000	100		
BONDS				
Haw. Govt. 5 p. c.			95	
Hilo R. R. Co. 6 p. c.				
R. & L. Co. 5 p. c.			100	
Ewa P. N. 6 p. c.				
R. & L. Co. 5 p. c.				
Oahu P. N. 6 p. c.				
Olaia P. N. 6 p. c.				
Waialua Ag. Co. 6 p. c.				

SALES.

Between Boards—Fourteen Kihel, \$10.

## Classified Advertisements.

### WANTED.

BRIGHT girl to assist in millinery store. American preferred. Apply A. A. Montano's millinery store, Hotel street, Arlington block. 6203

FIRST-CLASS girls for ironing at the French Laundry, Beretania and Punchbowl. 6203

BY single man, a small, unfurnished cottage, electric lights. Rent must be reasonable. Location no object. Address F. G., this office. 6189

### FOR RENT.

FURNISHED HOUSE—For 6 months. Eight rooms, electric lights. Matlock avenue. Rent \$40.00 per month. Address P. O. Box 82. 6203

A SIX-ROOM cottage at No. 30 Vineyard street. Apply on premises. 6203

ONE furnished room, or suite of rooms; also suitable for physician or dentist. Very centrally located, on car line. Address "M," this office. 6202

A FURNISHED house of 7 rooms in Punahou district. Address F., this office. 6202

FOUR rooms, furnished for housekeeping. 530 Young street. 6199

FURNISHED rooms, \$1.50 to \$3.00 per week. Also room for light housekeeping, \$10.00 per month, at Alakea House. 6195

FIVE-ROOM cottage with bath room and small kitchen. Modern plumbing. At "Little Village," Beretania street. Inquire at "Genesee," Beretania street, near German Lutheran Church. 6194

COTTAGE in Palama, near Rapid Transit Line. Apply to C. F. Peterson, 15 Kaahumanu street. 6155

### ROOM AND BOARD.

TWO boarders can find rooms and board in private family at reasonable rates. Apply, D. L., this office. 6203

### OFFICES FOR RENT.

A FEW choice offices in the Boston building, Fort street, with electric lights, elevator and janitor service. Apply to Hawaiian Trust Company, Ltd., agents, 223 Fort street. 6158

### FOR SALE.

TWO pool tables, at a bargain, at Brunswick Billiard Parlors. 6197



VOL. XXXV.

HONOLULU, HAWAII TERRITORY, TUESDAY, JUNE 24, 1902.

PRICE FIVE CENTS.

## TAKE RIGHT STEP.

Every ordinary cold is deserving of serious attention.

A step in one direction carries the system from an ordinary cold on into grippe, pneumonia, or consumption. A step in another direction carries the system back into good health.

Nature and Scott's Emulsion work hand in hand in their effort to make your system take the right step. Nature is working all the time. Scott's Emulsion can't work unless you take it. Scott's Emulsion then makes nature work harder than ever.

If you have only a cold and wish to ensure a favorable outcome, take Scott's Emulsion.

Send for Free Sample.  
SCOTT & BOWNE, Chemists, 409 Pearl St., N. Y.

Preserve Your  
Negatives

The most convenient and reliable means of the preservation of plates is by means of our indexed boxes and envelopes.

The cost is very little, but the saving to you inestimable.

Honolulu Photo Supply Co.  
LIMITED.  
Fort Street near Hotel.

Received Per  
"SIERRA" S. S.

PING  
PONG  
BALLS

Five different styles of  
Rackets.

Newest PING PONG  
Sets at all prices.

PICK UP3 --- PICK UP5

E. W. Jordan's

No. 10 STORE.

FORT STREET.

Order from  
J. E. Goas

Queen Taste Hams and Bacons  
Heinz's Relish  
Heinz's Jam  
Heinz's Sweet Pickles  
Stuffed Olives  
Pim Olas  
Olives  
Catsup. Tel. Blue 2312

Y. YUEN TAI.

No. 1272 Fort Street, near Kukui.

Dressmaker, Ladies' Underwear,  
Skirts, Chemises, Etc.

A large line of ready-made Mosquito  
Nets always on hand.

## WHILE PAIN WAS DREAMING

LEPERS ENJOYED SPORTS  
ON KAMEHAMEHA DAY

Kamehameha day at the Leper Settlement was celebrated in a style not hitherto attempted there and the racing propensities of the lepers were given free rein, a program of twenty-seven events being run off. One of the residents of the Settlement, who is something of an artist, has made some clever sketches of the various scenes of the day's sports, which The Advertiser will reproduce. Superintendent Jack McVeigh by dint of hard work both in Honolulu and at the Settlement, had money enough to make the day a financial success. The following letter from Kalaupapa is self-explanatory:

Kalaupapa, June 15, 1902.  
A. L. C. Atkinson, Honolulu.  
Dear Sir: In behalf of the entire settlement I desire to thank you for the interest you have manifested and the time you have devoted in collecting for us the sum of \$100 for the 11th of June sports, and I believe it is safe to say that never have a hundred dollars given more joy and pleasure to a multitude as it did to the inhabitants of this place on the aforesaid 11th of June. It was a day that will long be remembered by us of the committee who had

charge of the sports for the day, and those who came to see the fun but once more to thank you and those who contributed, and also our genial superintendent for making the day such a memorable one.

Long live Honolulu and her generous people. Respectfully yours,  
J. K. WAIMAU,  
Sec'y Com. on 11th of June Sports.

A report of the manner in which the money was expended accompanies the letter of thanks. It is as follows:

Prizes, total amount.....\$36.50  
One pig, \$3.50, less \$3. sold.....50  
Thirty pies.....2.25  
One tin lard.....45  
Thirteen lbs potatoes.....35  
One pkg. tacks.....10  
Five yards brown cotton.....25  
Four yards turkey red.....1.50

Balance on hand.....\$ 7.50

The program for the races and the results are given herewith:

First Race—1/4-mile dash, for pony. Free to all. Purse \$7.00. Entries: Bay View, by H. M. Pahau; Kau Ka Ohu, by Kekepa; Pakaia, by Jno. Bell; Pua Meia, by J. Kanani; Minnie, by Geo. Kaepa. Race won by Bay View.

Second Race—1/4-mile dash for bicycles. Free to all. Purse \$2.50. Entries: John Fernandez, Eli Waiwale. Race won by John Fernandez.

Third Race—1/4-mile dash for horses that never entered any race before. Free to all. Purse \$3.00. Entries: Mikimiki, by Hoside; Mallelaui, by J. Kanani; Manu, by Kaahiki; Mahuli, by J. Kaiwi; Letnaala, by Paliakapu; Grey, by J. Kapuni. Race won by Mikimiki.

Fourth Race—1/4-mile foot race. Purse \$3.00. Entries: Kalani Makini, Albert Galaspo, J. Pomaia, Kawohl. Race won by Kalani Makini. Time 2:11.

Fifth Race—1/4-mile dash, match race. Free to all. Purse \$2.00. Entries: Kau Ka Opua, by Jno. Bell; Midnight, by J. Maloni; Malle Lauli, by J. Kanani. Race won by Kau Ka Opua. Time 1:50.

Sixth Race—1/4-mile trotting race to saddle. Free to all. Purse \$5.00. Entries: Malle Lauli, by J. Kanani; Mariposa, by Paliakapu; B. H., by T. K. Nathaniel. Race won by B. H.

Seventh Race—1/4-mile relay race. Free to all. Purse \$4.00. Entries: First team—J. Kauhane, Alex. Smith, Geo. Kama, C. Travis. Second team—Kalaupapa, A. Galaspo, Hukia. Third team—D. Ku, Pauli, Kanani, J. Kaiwi. Race won by J. Kauhane and his team.

Eighth Race—1/4-mile handicap race. Purse \$10.00. Entries: Kau Ka Opua, by Jno. Bell; Midnight, by Jno. Maloni. Race won by Kau Ka Opua.

Ninth Race—50 yards foot race for boys. Purse \$1.50. Won by Keaka.

Tenth Race—200 yards foot race. Free to all. Purse \$2.50. Won by J. Kauhane.

Eleventh Race—100 yards barrel race. Free to all. Purse \$2.00. Won by Kaahiki.

Twelfth Race—50 yards leap frog race. Free to all. Purse \$2.00. Won by J. Kauhane and A. Galaspo.

Thirteenth Race—100 yards foot race. Free to all. Purse \$2.00. Won by C. Travis.

Fourteenth Race—50 yards barrel race for boys. Purse \$1.50. Won by Keaka.

Fifteenth Race—50 yards three-legged race. Free to all. Purse \$2.00. Won by C. Travis and J. Kauhane.

Sixteenth Race—Potato race. Free to all. Purse \$1.50. Won by Geo. Kama.

Seventeenth Race—50 yards wheelbarrow race. Free to all. Purse \$2.00. Won by Albert Galaspo.

Running long jump. Free to all. Purse \$1.50. Won by Kaahiki.

Standing long jump. Free to all. Purse \$1.50. Won by Kaahiki.

High jump. Free to all. Purse \$1.50. Won by Joe Mahoe.

STATISTICS OF AGRICULTURE  
IN THE HAWAIIAN ISLANDS

SAN FRANCISCO, June 16.—The Call says editorially:

Census Bulletin No. 169 gives the statistics of agriculture in the Hawaiian Islands, and they are the more interesting because this is the first time the census of the Islands has been taken by the United States. It is noted, however, that as the Census Bureau was unable to obtain reports of expenditures for taxes, insurance, feed of stock and similar expenses, no estimate of the net income of farms can be given. Furthermore, the bureau has been unable to get detailed statements as to irrigation, but the importance of it as a factor in the agricultural development of the Islands is plainly set forth in the report.

The Territory of Hawaii is composed of twenty islands, of which only seven are inhabited. On June 1, 1900, when the census was taken, the farms numbered 2273 and were valued at \$60,029,956. Of this amount, \$3,545,895, or 5.9 per cent, represents the value of buildings, and \$56,484,061, or 94.1 per cent, the value of land and improvements other than buildings. On the same date the value of farm implements and machinery was \$11,484,890, and of live stock, \$2,570,142. These values, added to that of farms, gives the "total value of farm property," \$74,084,988, an average agricultural investment per inhabitant of \$481.07.

In 1894 the Republic of Hawaii took possession of the crown lands and consolidated them with those previously known as "government lands," under the general designation of "public lands." For the purpose of promoting the settlement and cultivation of these lands the Government provides public lands may be acquired by individuals by homestead lease, right of purchase, lease, cash freehold, special agreement and cash sales.

The amount of public lands in the Islands is large, but not all of it is suitable for cultivation. The report says of the original "crown lands" there remain 929,583 acres, and of the "government lands" 789,832 acres, making a total of 1,719,415 acres, valued at \$3,480,400, now classed as "public land." According to the report of the Governor of Hawaii for 1901, only 1,371,222 acres are now under lease, from which the Government receives an annual rental of \$70,802. As this area contains many great expanses of mountainous and forest lands, unsuitable for agriculture, only 62 per cent of it is reported as being included in the Territory's 2273 farms.

The farms of the Islands are owned or operated by six classes of farmers: Whites, Hawaiians, Chinese, Japanese, South Sea Islanders and negroes. Only the first three classes are either numerous or important on account of their holdings. The total value of the farm property of the white operators constitutes 82.1 per cent of the total farm property of the Territory. The average area of their farms is 2328.4 acres in excess of that of the farms of the part Hawaiians, who have the next highest average. The Chinese farmers, 82.3 per cent of whom are tenants, operate less than one-sixteenth as much land as the Hawaiians, who rank second in the matter of total farm area, but the total value of their holdings, \$2,945,995, exceeds that of the Hawaiians by \$1,048,500. This total, however, is considerably in excess of the actual wealth of the Chinese farmers of Hawaii, as the actual value of the farm property of the 93 Chinese owners is but \$212,620.

As is well known, the sugar industry is the largest in the Islands. The 170 plantations engaged in sugar growing contain 1,943,117 acres of land, or 46 per cent of all the farm land. The estimate of the total cost of raising a ton of cane and converting it into sugar is \$5.46, while the average value of the sugar produced from that amount of cane is \$8.60, leaving a margin of \$3.14 per ton to cover interest on investment, maintenance of equipment and buildings, etc.

A curious illustration of the difference in the methods of the farming of the different races in the Islands is shown in the statement that the Chi-

nese farmers expend for labor \$21.45 per acre, the whites expend \$3.49 per acre and the Hawaiians \$0.11.

## Married in London.

LONDON, June 16.—Rutherford Stuyvesant of New York, a brother of Mrs. Henry White, wife of the secretary of the United States Embassy here, and the Comtesse de Wessenaer were married today. The ceremony, which was quiet, occurred at St. George's chapel, Albemarle street. United States Ambassador Choate and Mrs. Choate and members of the Embassy staff and their wives, besides several of the bride's relatives, attended. The bride is the widow of a Dutch Count.

## Cyclone and Tidal Wave.

BOMBAY, June 16.—A bad cyclone accompanied by a tidal wave has swept over Kurrachee, the principal seaport town of the Province of Sindh.

SEND FOR FREE  
ILLUSTRATED  
CATALOGUE OF  
LADIES', CHILDREN'S  
AND INFANTS'  
WEAR  
BOOKS OF QUALITY  
REASONABLE PRICES  
I. MAGNIN & CO.  
915-922 MARKET ST.  
SAN FRANCISCO, CAL.

## NOTICE

FRED PHILP & BRO. BEG TO NOTIFY their patrons and the public that they have purchased the stock in trade and good will of the Manufacturing Harness Co. and will continue their business at the old stand, corner of King and Fort streets, where they will be pleased to see old friends as well as new ones. All work entrusted to them will receive personal attention, and all goods sold will be guaranteed as represented. They will also continue at their present stand in the Wright building, No. 629 King street. Telephone 2651 Blue. P. O. Box 133.

## STOCKHOLDER'S MEETING.

## KOHALA SUGAR CO.

BY AUTHORITY OF THE PRESIDENT, a special meeting of the shareholders of the Kohala Sugar Company will be held in the assembly room of Castle & Cooke, Limited, on Tuesday, the 24th inst., at 10 a. m. Object of meeting, ratification of the charter extension, bonded issue, and any other matters that may be presented for consideration.

Honolulu, June 17, 1902.

J. B. ATHERTON,  
6197 Treasurer, Kohala Sugar Co.

## NOTICE TO SHIPPERS.

SHIPPERS OF FREIGHT BY Steamers of the Inter-Island Steam Navigation Company, Ltd., are hereby notified that a new form of shipping receipt has been adopted by the company to go into effect at once.

Freight will be accepted, however, on the old form of receipt up to October 1st, 1902, after which date freight will be received only on the new form of receipt, a copy of which can be seen at the office of the Company, Queen street. INTER-ISLAND STEAM NAVIGATION CO., LTD.

J. ENA, President.

## NOTICE TO SHIPPERS.

ON AND AFTER THIS DATE bills of lading will be issued by this company, instead of shipping receipts as heretofore.

Freight will be received under the old form of shipping receipt up to October 1st, 1902, but after that date the bill of lading only will be accepted.

WILDER'S STEAMSHIP COMPANY,  
C. L. WIGHT,  
President.

Honolulu, June 16th, 1902. 6192

## PROFESSIONAL CARDS.

## ARCHITECTS.

BEARDSLEE & PAGE, Architects and Builders.—Office, 3d floor, Elite building, Hotel street; sketches and correct estimates furnished at short notice; Tel. 228; P. O. box 773.

## ATTORNEYS.

THOMAS FITCH.—Offices 691 Stangenwald building, Honolulu, T. H. Will practice in all the courts.

THAYER & HEMENWAY.—Office 603 and 604 Stangenwald building; Telephone 398 Main.

## BROKERS.

E. J. WALKER, Coffee Broker. Highest prices paid for No. 1 Parehmen Coffee. Send samples.

## CHIROPODIST.

D. M. THOMSON.—Expert Chiropodist. No. 11 Garden Lane, between Union and Beretania streets.

DR. W. R. BOGLE.—Office, Oregon block, Hotel and Union Sts.

## CONTRACTORS.

WM. T. PATY.—Contractor and Builder, store and office fitting; shop Alaka St., between King and Hotel; res., 1641 Anapuni.

## DENTISTS.

DR. H. BICKNELL.—McIntyre bldg., rooms 2 and 14; office hours, 9 to 4.

ALBERT B. CLARK, D.D.S.—Beretania and Miller; office hours, 9 to 4.

I. E. GROSSMAN, D.D.S.—Alaka St., three doors above Masonic Temple, Honolulu; office hours, 9 a.m. to 4 p.m.

DR. A. C. WALL, DR. O. E. WALL.—Office hours, 8 a.m. to 4 p.m.; Love bldg., Fort St.; Tel. 424.

## ELECTRICAL ENGINEERS.

JAS. S. MCKEE.—Electrical, Mechanical and Consulting Engineer; office, rooms 11 and 12, Progress block.

## ENGINEERS.

ARTHUR C. ALEXANDER.—Surveyor and Engineer, 409 Judd bldg.; P. O. box 732.

JATTON, NEILL & CO., LTD.—Engineers, Electricians and Boilermakers, Honolulu.

E. TAPPAN TANNATT.—Civil and Electrical Engineer. Office, Room 4, Spreckels block. Residence, 1313 Wilber Ave. Telephone, Main 132.

JAMES T. TAYLOR, M. Am. Soc. C. E.—Consulting Hydraulic Engineer; 290 Judd bldg., Honolulu; P. O. box 739.

## ENGRAVERS.

W. BRACKBANE.—Card Engraving and Stamping; room 3, Elite building.

## INSURANCE.

THE MUTUAL LIFE INSURANCE CO. OF NEW YORK.  
S. B. ROSE, Agent, . . . Honolulu.

## MUSICIANS.

COOK'S MUSIC SCHOOL.—Love bldg., will hold summer term during July and August.

## PHYSICIANS.

DR. W. HOFFMANN.—Beretania St., opposite Hawaiian Hotel. Hours, 9 to 11 a. m.; 1 to 3, and 7 to 8 p. m. Phone White 481.

DR. T. MITAMURA.—Office, 1468 Nuuanu St.; residence near door. Tel. White 152; office hours, 9 to 10 a. m., and 6 to 8 p. m., except Sundays.

DR. J. UCHIDA.—Physician and Surgeon; office, Beretania, between Fort and Nuuanu streets; office hours, 8 to 12 a. m., 7 to 8 p. m.; Tel. 1211 White.

## NOTICE.

PERSONS needing or knowing of those who do need protection from physical or moral injury, which they are not able to obtain for themselves, may consult the Legal Protection Committee of the Anti-Saloon League, 9 McIntyre building. W. H. RICE, Supt. 6165

## THE

## First Consideration

When one decides to have their dental work attended to, is to have it done in the best possible manner, and the second consideration is the price.

The high class of work turned out at the NEW YORK DENTAL PARLORS every day counts, and more people are realizing that they can get better work done there and at lower prices than anywhere else.

Each department in charge of a specialist, our operators are graduate dentists of the best recognized schools in the United States, or the world. And have had many years of experience in their chosen profession.

NO PLATES  
REQUIRED

Full Plate of Teeth ..... \$5.00  
Gold Crowns ..... 5.00  
Bridge Work, per Tooth ..... 5.00  
Gold Fillings ..... 1.00  
Silver Fillings ..... 50

If money is an object to you, come and see us. We will tell you in advance exactly what your work will cost. No charge for examination.

All our instruments are thoroughly sterilized.

Hours, 9 to 6; Sundays, 9 to 12.

Ladies in attendance.

Room 4, Elite building, Hotel street.

## Hawaii Shingo Sha

THE PIONEER JAPANESE PRINTING office. The publisher of Hawaii Shingo, the only daily Japanese paper published in the Territory of Hawaii.

C. SHIOZAWA, Proprietor.  
Y. SOGA, Editor.

Editorial and Printing Office, 1039 Smith St., above King. P. O. Box 907.

Telephone Main 97.



## Lands For Sale.

LOTS IN KING STREET TRACT, from \$1,400 to \$1,250 a lot, formerly known as G. N. Wheeler's premises.

TWENTY LOTS IN MANOA VALLEY, formerly Montano's Tract, \$2,500 a lot.

FOUR HUNDRED LOTS IN KAIULANI TRACT, from \$200 to \$250 a lot.

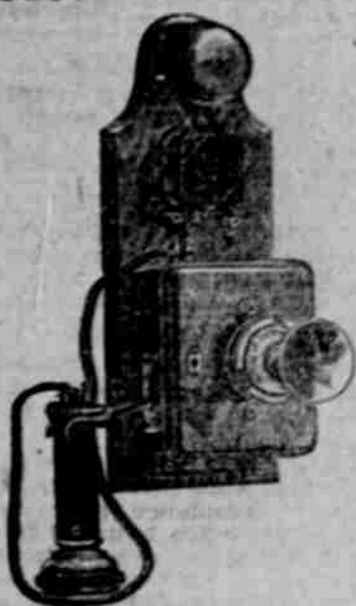
FIFTY LOTS IN KEKIO TRACT, opposite Makee Island \$600 a lot.

ONE HUNDRED LOTS IN KAPIOLANI TRACT, at \$500 a lot.

Etc., Etc.

For further particulars apply to

**W. C. Achi & Company**  
REAL ESTATE BROKERS.  
Campbell Block, Fort Street



Have you seen anything neater or more compact than this? It is never out of order and always ready for immediate use. Bear this in mind, WE INSTALL ALL OUR TELEPHONES UNDER A GUARANTEE FOR ONE YEAR. CAN YOU ASK MORE?

We have a number of other styles in stock, and you can choose which you like, they are uniform in service.

Will you not let us give you an estimate on a complete installation?

**The Oceanic Gas and Electrical Co.**

Contractors for everything electrical.  
Magoon Block, Merchant St. Phone Main 230.

You can't expect half starved hair to grow.  
Growth demands Food.  
Feed your hair with

**Pacheco's Dandruff : Killer**

Sold by all druggists and at the Union Barber Shop.

Tel. Main 232.

**The Pacific Hotel**

Fort Street, Opp. Pacific Club.  
Rooms, mess-table, hot and cold water, Board.  
J. A. Proprietor.

HURRAH for the GLORIOUS



Flags-Flags-Flags

ALL SIZES.

**Torpedoes**  
A LARGE VARIETY.

**Kango Clubs**  
SOMETHING NEW—MAKE BIG NOISE.

**Toy Pistols and Caps**

**Wall, Nichols Co., Ltd.**  
REPUBLIC BUILDING.

**Delightful Climate.**

**Lovely Views.**

**Pure Water.**

Kaimuki Tract offers the best inducements to all classes desiring good residence property.

Lots 75x200 and 100x150.

**Terms, \$20 cash and \$10 per month**

until fully paid, possession immediate. APPLY TO—

**Trustees: Gear, Lansing & Co.**  
Judd Bld., Fort St.

## Our Wines

ARE PURE

AND OUR

Prices Are Right

TOKAY  
SHERRY  
PORT  
RIESLING  
ZINFANDEL

75c per Gallon

**CHOICE TABLE CLARET**

50c per Gallon

**Hoffschlaeger Co.,**

LIMITED.

25 King near Bethel St.

## THE NEW ENGLAND BAKERY

is serving a light breakfast and lunch suitable for this climate, and costs only 10c up, according to the order.

Everything served in generous quantity, which only a first-class bakery could afford to do.

Our rooms are supplied with electric fans, electric lights, cool, clean and prompt service.

Doors open from 6 a. m. till 11 p. m.

You will meet all your friends at the

**New England Bakery**

**Tom Bean's Planing Mill**  
CONTRACTOR AND BUILDER.

Carpenter work of all kinds. Large assortment of brackets and mouldings always on hand.

Old Union Feed Co. warehouse.

**BEAVER LUNCH ROOMS**

H. J. NOLTE, Proprietor.  
Fort Street, Opposite Wilder & Co.  
FIRST-CLASS RESTAURANT SERVED.  
With Tea, Coffee, Soda Water, Ginger Ale or Milk.  
Open from 7 a. m. to 10 p. m.  
Schnitzers' Restaurant a specialty.

## WATER-FRONT NEWS



### PEKING HAS FEW PASSENGERS

The S. N. Castle Carries Good Sugar Cargo—Alice Cooke's Long Trip.

The City of Peking, Captain Smith, sailing from San Francisco on June 16, tied up at the Pacific Mail wharf at 7 o'clock yesterday morning. She was delayed at the Coast end owing to repairs in the engine room and she also went into dry dock. For two days after weighing anchor in San Francisco she had rough winds and a nasty sea. The remainder of the trip was made in good weather and smooth seas, though a head wind prevailed almost all the way.

The Peking had a light passenger list, bringing only twenty-six en route, ten being for Honolulu. Her hold was full up with freight and she dropped fifty tons at this port. She will go to Manila on her trip out. Captain Smith will go East to Newport News on the return voyage to San Francisco, where he will superintend the finishing of the new Pacific Mail steamer Siberia, a sister ship to the Korea, soon expected here.

Miss Baker is the only cabin passenger from this port for the Orient. The Peking got away for the Orient at about 5 o'clock.

#### The Korea En Route.

The magnificent new Pacific Mail steamer Korea is on her way from Newport News to join the Oriental fleet. The Korea will replace the Peru on her Eastern run. This new 19,000-ton steamer, it will be remembered, was launched March 23, 1901, and though her contract speed called for eighteen knots, she showed over twenty knots on her trial trip. She has accommodations for 200 first cabin passengers and over 1200 steerage. The Korea is a sister ship to the Siberia, now nearing completion, and cost about \$2,000,000. Her appointments are of the most up-to-date order and she will be a most valuable addition to the Pacific Mail fleet. She may be expected to arrive here about the 8th of August.

#### Light Winds for Alice Cooke.

After a monotonous voyage covering thirty-three days, the Alice Cooke, from Port Townsend, docked at 9:30 yesterday morning. She reports fine weather throughout the trip, with light, fair winds, and did not get the benefit of the trades. She sighted Maui on Friday morning last but the winds were so light she had to beat to make this port.

Captain Penhallow brought his wife, but had no passengers. The Alice Cooke brings 900,000 feet of lumber consigned to Levers & Cooke, from Port Gamble, where she loaded, and though no definite information can be given, it is said that she may go back in ballast.

#### S. N. Castle Sails.

The S. N. Castle, bound for San Francisco, left at about 3 o'clock, loaded with 14,000 bags of sugar. She also carried 1150 sacks of empty beer bottles and about eight tons of iron fittings. She carried only two passengers, Charles R. Roe, who is bound for the Coast to spend his vacation, and Miss M. L. Cregg, who is returning to the mainland after a pleasant visit to the Islands.

#### Colonial Steamers.

Owing to the fact that the New Zealand steamers leave Sydney a day ahead of time their punctual arrival at this port is practically assured, barring accidents and bad weather. These vessels will arrive on Tuesdays and Wednesdays and are booked to depart the same night.

#### A Shipping Convenience.

The Oceanic Steamship Co., in conjunction with their steamers, will probably keep a vessel on their loading berth in San Francisco for the convenience of shippers. It is reported that this benefit will begin at once and will continue for the balance of the year.

#### Mohican is Very Late.

The training ship Mohican, which was due here on the 20th, is now four days late, though naval officials are not worrying on that account. It is pointed out that the cadets aboard are probably taking things easy on the cruise and do not care whether they are tardy or not.

#### Coming Vessels.

The schooner Helene, due to leave San Francisco about the 15th for Honolulu, will be followed by the Coronado and the Alden Besse. The latter vessels will leave the Golden Gate between the 15th of June and the 1st of July.

Change of Water often brings on diarrhoea. For this reason many experienced travelers carry a bottle of Chamberlain's Colic, Cholera and Diarrhoea Remedy with them to be used in case of an emergency. This preparation has no equal as a cure for bowel complaints. It cannot be obtained while on board the cars or steamship, and that is where it is most likely to be needed. Buy a bottle before leaving home. Benson, Smith & Co., Wholesale agents, sell it.

The schooner Julia E. Whalen cleared yesterday for Honolulu, and will hereafter ply between that port and Marcus Island.—Examiner.

### THE FULLERTON IS LAUNCHED

SAN FRANCISCO, June 15.—"I name thee Fullerton!" said Miss Josephine Roller, as she dashed a beribboned bottle of wine against the bow of the largest wooden vessel ever built on the Pacific Coast.

The launching, which was most successful, took place from the shipyard of Hay & Wright, Oakland, at 5:30 o'clock yesterday afternoon. The whistles of all near-by ships and factories blew and several hundred spectators cheered as the great boat took her first dip into the water. Miss Roller, who cracked the bottle, is a daughter of F. R. Roller of the Union Oil Company, for which corporation the big craft was built.

The Fullerton is a four-masted barkentine and will ply between Ventura and Honolulu. Her measurements are: Length, 270 feet; beam, 42.5 feet; depth, 21 feet; displacement, 1800 tons. The interior of the hull is divided into sixteen large wooden tanks, each of which has capacity for 1000 barrels. She was named after the district in which her owners obtain their oil.

It was late in December of last year when the vessel's keel was laid. More than 1,250,000 feet of lumber has been used, and the total cost will reach \$140,000.

The Fullerton will be finished in the stream and within a month she will sail for Ventura to take in her first cargo of oil.

### READ ALL OF THIS

You Never Know the Moment When This Information May Prove of Infinite Value.

(From the Sydney, N. S. W., Herald.)

It is worth considerable to any citizen of Honolulu to know the value and use of a medicine, for if there is no occasion to employ it, in the meantime, frail humanity is subjected to so many influences and unforeseen contingencies that the wisest are totally unable to gauge the future. Know then that Doan's Ointment will cure any case of hemorrhoids, commonly known as piles, or any disease of the cuticle or skin, generally termed eczema. One application convinces—a continuation cures. Read this proof:

Mr. William Gilliver, of the well-known firm of Gilliver & Curtis, railway and general contractors, and whose private address is "Avoca," Bankstown, a suburb of Sydney, N. S. W., has written the following unsolicited letter, which we herewith publish in full:

Messrs. Foster, McClellan Co., 76 Pitt St., Sydney, N. S. W., February 14, 1899.

Dear Sirs:—In justice to you and suffering humanity I write to say that I suffered from itching piles for 22 years. I tried many doctors and pretty well all kinds of patent medicines, but got relief for a short time only. Seeing your Ointment advertised, I bought a pot and did not use more than one-half of it, not six months ago, and I am perfectly cured. You may use this as you wish.

Yours gratefully,

WILLIAM GILLIVER.

Doan's ointment is sold by all dealers at 50 cents per box or will be mailed on receipt of price by the Hollister Drug Co., Honolulu, agents for the Hawaiian Islands.

**AT AUCTION**  
BY WILL E. FISHER  
AUCTIONEER

### BOARDMAN LOTS

KINAU STREET, KAPIOLANI and LUNALILO STREETS.

**\$1500 and \$1700 EACH!**

**1-3 CASH**

Balances on time.

WILL E. FISHER.

Real Estate Agent and Auctioneer.

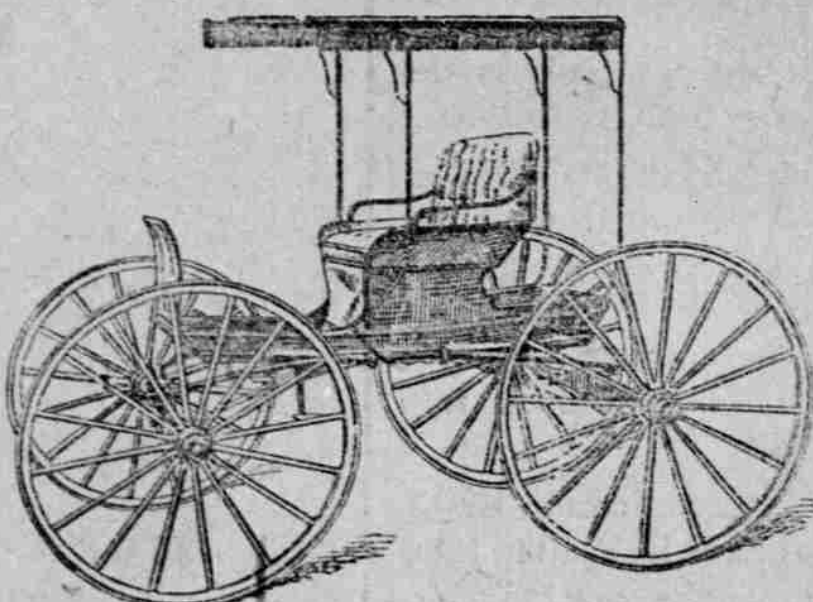
Cor. Merchant and Alakea Sts.

**Waverley Shaving Parlors**

Corner Bethel and Hotel Streets.

MRS. D. W. ROACH,  
CHAS. A. BIDDINGER,  
Proprietors.

## "Babcock" Carriages



**STILL THE BEST**

Also the cheapest, because they give better service than any other.

**All Babcock Styles are Original**

OUR GUARANTEE MEANS SOMETHING.  
WE WARRANT EVERY VEHICLE.

We have every description of vehicle used in this Territory, Carriage, Wagon and Truck Harness, Saddles, Whips, Robes, Oil, Dressing, Lamps, etc.

**Pacific Vehicle & Supply Co. Ltd.**  
Beretania St., Near Fort.

## Grand Reduction Sale

For 3 Weeks

**Every Article Reduced**

Beginning Saturday, June 7th

Don't Delay Come Early

See Our Windows

**IWAKAMI, HOTEL STREET.**

## ROACH SAULT

...DESTROYS ALL...

**ROACHES, WATER BUGS, ETC.**

CLEAN, ODORLESS, EFFECTIVE,

10c, 25c, 50c.

ONLY AT

**HONOLULU DRUG CO.**

926 Fort Street.

A. H. OTIS.

OTTO A. BIERBACH.

## Golf Shirts for Summer Wear

The cloth used in our shirts came from England and was made up here. All our custom made shirts—

**Lowest Prices**

Watches, Chains, Sterling Silver Knives, Nail Files, Charms, etc., sold for a short time only, 30 per cent off regular price.

**ASADA & CO. 28 HOTEL STREET.**

**THE VON HAMM-YOUNG Co. LIMITED.**

Have just received a full line of Trunks and Bags and can now fill your needs in these lines for the trip you are intending to make this summer.

**TRUNKS**

SQUARE  
SARATOGA  
STEAMER  
HAT

All Shoes and Prices.

**BAGS**

DRESS SUIT CASES  
COAT CASES  
CABIN BAGS  
GLADSTONE BAGS

Alligator and Best Tanned Leather.

LOOK AT THESE BEFORE BUYING ELSEWHERE.



**Bank of Hawaii**  
LIMITED.

Incorporated under the Laws of the Territory of Hawaii.

Paid-Up Capital . . \$600,000  
Reserve . . . . . 50,000  
Undivided Profits . . 163,000

## OFFICERS AND DIRECTORS.

Charles M. Cooke . . . . . President  
F. C. Jones . . . . . Vice President  
C. H. Cooke . . . . . Cashier  
F. C. Atherton . . . . . Assistant Cashier  
H. Waterhouse, F. W. Macfarlane,  
B. D. Tenney, J. A. McCandless and  
C. M. Atherton.

## Commercial and Savings Departments.

Strict attention given to all branches of Banking.

Judd Building . . . . . Fort Street

**Hawaii Land Co.**  
LIMITED.Capital Stock . . . \$100,000  
Capital, paid up . . \$58,080

## OFFICERS.

W. C. Achi . . . . . President and Manager  
M. K. Nakulua . . . . . Vice-President  
J. Makai . . . . . Treasurer  
Enoch Johnson . . . . . Secretary  
C. J. Holt . . . . . Auditor

## BOARD OF DIRECTORS:

Jonah Kumala, S. M. Kanakani,  
J. M. Kea.

The above Company will buy, lease or sell lands in all parts of the Hawaiian Islands, and also has houses in the city of Honolulu for rent.

**The Yokohama Specie Bank, Ltd.**Subscribed Capital, . . . \$24,000,000  
Paid Up Capital, . . . . . Yen 18,000,000  
Reserved Fund, . . . . . Yen 8,710,000HEAD OFFICE: YOKOHAMA.  
Interest Allowed.On fixed deposit for 12 months, 4 per cent per annum.  
On fixed deposit for 6 months, 3 1/2 per cent per annum.  
On fixed deposit for 3 months, 3 per cent per annum.  
The bank buys and receives for collection Bills of Exchange, issues Drafts and Letters of Credit, and transacts a general banking business.

Branch of Yokohama Specie Bank, New Republic Building, Honolulu, H. T.

Claus Spreckels. Wm. G. Irwin.

**Claus Spreckels & Co., Bankers**

HONOLULU, H. T.

SAN FRANCISCO AGENTS—THE NEVADA NATIONAL BANK OF SAN FRANCISCO.

DRAW EXCHANGE ON SAN FRANCISCO—The Nevada National Bank of San Francisco, LONDON—The Union Bank of London, Ltd., NEW YORK—American Exchange National Bank.

CHICAGO—Merchants' National Bank, PARIS—Credit Lyonnais, BERLIN—Dresdener Bank, HONGKONG AND YOKOHAMA—Hongkong and Shanghai Banking Corporation.

NEW ZEALAND AND AUSTRALIA—Bank of New Zealand, VICTORIA AND VANCOUVER—Bank of British North America.

Transact a General Banking &amp; Exchange Business. Deposits Received, Loans made on Approved Security, Commercial and Travelers' credits issued, Bills of Exchange Bought and Sold.

COLLECTIONS PROMPTLY ACCOUNTED FOR.

**C. BREWER & CO., LIMITED.**

Queen Street, Honolulu, H. I.

## AGENTS FOR

Hawaiian Agricultural Company, Onomea Sugar Company, Honoumuli Sugar Company, Wailuku Sugar Company, Makale Sugar Company, Haleakala Plantation Company, Kapapala Ranch, Planters' Line and Shipping Company, San Francisco Packets, Chas. Brewer &amp; Co's Line of Boston Packets, Agents Boston Board of Underwriters, Agents for Philadelphia Board of Underwriters, Standard Oil Company.

## LIST OF OFFICERS:

C. M. Cooke, President; George E. Robertson, Manager; E. F. Bishop, Treasurer and Secretary; Col. W. F. Allen, Auditor; P. C. Jones, H. Waterhouse, G. R. Carter, Directors.

**JOHEI ISHIZUKA**  
AGENCY OF**KEI HIN BANK, LTD**  
VINEYARD ST.

Transact General Banking and Exchange business.

HEAD OFFICE, TOKYO, JAPAN

DRAW EXCHANGE ON FIRST NATIONAL BANK, YOKOHAMA.

**BISHOP & CO., BANKERS**  
ESTABLISHED IN 1858.

## Banking Department.

Transact business in all departments of banking. Collections carefully attended to. Exchange bought and sold.

Commercial and Travelers' Letters of Credit issued on the Bank of California and N. M. Rothschild &amp; Sons, London. Correspondents: The Bank of California, Commercial Banking Co. of Sydney, Ltd., London.

Drafts and cable transfers on China and Japan through the Hongkong and Shanghai Banking Corporation and Chartered Bank of India, Australia and China.

Interest allowed on term deposits at the following rates per annum, viz: Seven days' notice, at 2 per cent. Three months, at 3 per cent. Six months, at 3 1/2 per cent. Twelve months, at 4 per cent.

## Trust Department.

Act as trustees under mortgages. Manage estates, real and personal. Collect rents and dividends. Valuable papers, wills, bonds, etc., received for safe keeping.

## Accountant Department.

Auditors for corporations and private firms. Books examined and reported on. Statements of affairs prepared. Trustees on bankrupt or insolvent estates.

Office, 924 Bethel street.

## Savings Department.

Deposits received and interest allowed at 4 1/2 per cent per annum, in accordance with rules and regulations, copies of which may be obtained on application.

## Insurance Department.

Agents for FIRE, MARINE, LIFE, ACCIDENT and EMPLOYERS' LIABILITY INSURANCE COMPANIES. Insurance office, 924 Bethel street.



## Proper Management

The proper management of an estate involves great care and responsibility, which the Trust Company is prepared to give.

**Hawaiian Trust Co., Ltd.**

923 Fort Street

**ALEXANDER & BALDWIN**  
LIMITED.

## OFFICERS.

H. P. Baldwin . . . . . President  
J. B. Castle . . . . . First Vice-President  
W. M. Alexander . . . . . Second Vice-President  
J. P. Cooke . . . . . Treasurer  
W. O. Smith . . . . . Secretary  
George R. Carter . . . . . Auditor**Sugar Factors****Commission Merchants**

## AGENTS FOR

Hawaiian Commercial and Sugar Co., Haiku Sugar Company, Puna Plantation Company, Nahu Sugar Company, Kihel Plantation Company, Haver Sugar Company, Kahului Railroad Company, and A. and B. Line, Edward May, Emily F. Whitney, W. B. Flint.

**THE FIRST**  
**American Savings & Trust Co.**

OF HAWAII, LTD.

Capital, \$250,000.00.

President . . . . . Cecil Brown  
Vice-President . . . . . M. P. Robinson  
Cashier . . . . . W. G. Cooper  
Principal Office: Corner Fort and King streets.

SAVINGS DEPOSITS received and interest allowed for yearly deposits at the rate of 4 1/2 per cent per annum. Rules and regulations furnished upon application.

**JOSEPH HARTMANN & CO.**

## WHOLESALE

**Wine and Liquor Dealers**

Waverley Block, BETHEL ST

**MERCHANTS**  
**FAIR WORK**Plan a Building on  
the Barracks  
Lot.

Steps looking to the Merchants' Fair end of the Agricultural Fair, to be given by the Territorial Government during the last week of July, were taken at the meeting of the committee of the Merchants' Association, held yesterday at the office of George W. Smith. Robert Catton of the committee has posted a request for plans and tenders for the construction of the building for the fair, at the Builders and Traders' Exchange, and it is expected that there will be no time lost in getting down to work upon lines which will lead to a most successful exhibition of Honolulu's trade possibilities.

George W. Smith, Robert Catton and W. W. Dimond were present at the meeting of the committee yesterday afternoon. The discussion was opened over the space which the building is to occupy at once, as there was read a letter from Governor Dole, in which was contained the reply of Captain Williamson to the request that the association be permitted to erect a building upon the ground in front of the Drill Shed. As there were at hand no figures upon which to base the plans, Mr. Catton was appointed a committee of one to secure data and ask for bids and plans. The consensus of opinion was that there should be a building as wide as the Drill Shed and extending to the street from it. The provisions as to the kind of building compel the necessity for entrance only at the street and this will give somewhere in the neighborhood of 15,000 square feet of floor space.

The committee will, as soon as plans are submitted, decide upon what shall be the general course in arrangement of displays and then undertake the matter of selecting the exhibits. It is expected that there will be in the neighborhood of forty exhibitors and that there will be a most comprehensive display of the lines carried and dealt in by local firms. The letter of Captain Williamson, granting the use of the site, is as follows:

Hon. S. B. Dole,  
Governor, Territory of Hawaii.

Sir: I have the honor to acknowledge receipt of your communication of this day requesting permission for the erection of a temporary building adjoining to the Drill Shed, to be used by the Merchants' Association of Honolulu on Merchants' Day, it being the intention to have that day a feature of the Agricultural Fair, to be held by the Territorial Government.

It gives me great pleasure to grant your request, with the understanding that no building is erected that will result in danger from fire. If it is to be lighted, electricity shall be used, and the use of gasoline or kerosene or the storage of inflammable material of any kind cannot be allowed. I must also stipulate that satisfactory arrangements be made so that the grass and young trees growing on the "Barracks" lot be not damaged.

It is my understanding that the proposed building is to be in front of and a continuation of the Drill Shed, to the sidewalk on Hotel street. Before the erection of the building in question, the representative of the Merchants' Association will orally or in writing, submit a rough plan of it to this office for approval. Very respectfully, your obedient servant,  
GEORGE MCK. WILLIAMSON,  
Captain and Quartermaster, U. S. A.**COUNCIL DOES**  
**LOTS OF WORK**Anti-Saloon League Will Be Given  
Chance to Object to  
Licenses.

Hereafter all applications for saloon licenses will be held up in Executive Council until the Anti-Saloon League has been notified and given a chance to make objection if it so desires. The rule, however, applies only to new licenses and the first result of it was postponement of action at yesterday's meeting of the Executive Council upon two applications from Wailua. These petitions for light wine and beer licenses came from A. F. Franco and Shimato Gotaro of Wailua, and both names were referred to the Anti-Saloon League for their consideration.

The Wailua Wine Co. was granted a renewal of its dealer's license at Wailua, Kauai. The application of two parties for licenses in the Kewalo district, but outside of the saloon limits, was denied, as there is no wish to extend the limits in the city.

It was decided to postpone repairs to the Royal Mausoleum until after the return of Queen Liliuokalani from Washington, as the plans for the work must be approved by her. As planned by Superintendent Boyd, the contemplated improvements will cost about \$16,000.

Admiral Merry's request for the use of a Territorial steam roller upon the streets of the navy station was granted. The petition of the Oahu Railway Co. for permission to change its tracks so as to keep further away from the oil tanks at Iwilei was granted.

Governor Dole also submitted a rough draft of civil service rules which he desires to inaugurate, but it was not given out for publication.

**MEN! DO YOU?**

Do you want to be strong? Do you want to feel the vim, the snap and fire of vigor? Do you want courage, energy and ambition to support you in your cares and troubles?

I have devoted my life to the development of manly and womanly vigor. I've made a great success. My methods are approved by the greatest doctors and copied.

I have proven that electricity is the basis of all animal life and that "weak men," dyspeptics, rheumatics, sufferers from lost energy, weak kidneys, pains in the back, head, chest and shoulders, from vertigo, and its allied weaknesses, etc., are weak in electricity. My Electric Belt restores this life in a few weeks and cures every time. If it fails I ask no pay.

Describe your case to me and if I say I can cure you I will guarantee to do so.

Drugs won't restore your strength. They only stimulate. If you have to take a stimulant take whisky. Taken in moderation it does less harm than the others.

"Every sign of pain and weakness has disappeared. I appreciate what your Belt has done for me," writes J. Schwarz Coleridge, Trinity county, Cal.

I will gladly send you my book on this subject. It has 82 pages of meat to people who want more "fire." Sealed, free.

I take imitations of my Belt in trade, just to show how much better mine is. Consultation free.

**DR. M. G. McLAUGHLIN,**

906 MARKET STREET, CORNER KEARNY, SAN FRANCISCO.

## EASY TO BUY

**"Yukon" Refrigerators**  
Sold on Installments

We sell them on easy payments. A little money down and small weekly payments soon pays for one. While it is being paid for you have the use of the refrigerator. The "Yukon" is the best refrigerator made. Preserves the food best with least ice. Made of thoroughly kiln dried wood, has moveable shelves and flues, larger ones with enameled lining and all sizes; some with water cooler.

## Prices from \$10.50 Upward

**Coyne Furniture Co., Ltd.**

Progress Block, corner Fort and Beretania.

**THE EMPORIUM** MAIL ORDER DEPARTMENT

**WEBSTER'S UNABRIDGED DICTIONARY**

**UNPARALLELED OFFER**

The dictionary that has for many years been the authority on the English language—complete with an extra supplement of more than 500 words, a new pronouncing vocabulary of the world, and a new book of 10,000 names of places, persons, and things, all of which are included in the new edition of Webster's Unabridged Dictionary. The new edition is now ready, and is being sold at a special price of \$5.25. The old edition is now sold at \$10.00. The new edition is a complete revision of the old edition, and is the most complete and authoritative dictionary ever published.

**Harvard Dictionary Stand**, as in picture—oak sides, nickel center—bright polished in either bright brass, as desired—only \$3.25.

**SPECIAL OFFER**

We make this wonderful offer good until Dec. 1, 1902. The Dictionary . . . \$5.25  
The Stand . . . \$3.25  
Total . . . \$8.50

Both for \$7.50

**SAN FRANCISCO**

Dictionary packed for shipment weighs 14 lbs.; Dictionary and Stand 40 lbs. In addition to special price, money enough to pay freight or express charge must accompany order.

Dictionary packed for shipment weighs 14 lbs.; Dictionary and Stand 40 lbs. In addition to special price, money enough to pay freight or express charge must accompany order.

**Oil and Steam**

**THE COMING FUEL IS OIL.**

The best burner for oil is that of the W. N. Best Oil Burning System.

Lambert's Steam Meter is ahead of the ordinary engine for convenience, simplicity and economy.

For particulars inquire of  
**W. E. ROWELL**  
Room 511 Stangenwald Bldg.

**Barnard's**  
**BEST**  
**Coffee**

E. J. WALKER, Agent

At Your Grocer's 35c Pound

**MILK** **MILK** **MILK**  
**CREAM** **AND BUTTER**

Milk supplied Wholesale and Retail from Principal Dairies on this Island. NOTE THE ADDRESS

**Honolulu Dairymen's Assn., Ltd.**  
Office, Shewman Street.  
Phone White 241.

**When You**  
**Call and**  
**Leave**  
**a Card . . .**

and that card is shoddy, one you should be ashamed of:

## WHAT IMPRESSION

do you leave behind?

You say you don't care; yes, but you should care.

You cannot afford to be careless about the kind of card you use; it does make a difference, whether you believe it or not.

Besides, there's no excuse for using the wrong kind; as the right kind, barring the first cost of the engraving costs no more than the wrong. We have two presses constantly going, doing nothing but turning out the RIGHT kind of card, the kind that will not be criticised.

You will have no reason to be ashamed or fear criticism if your cards are made by us.

J. J. WICHMAN

FORT STREET.

J. J. WICHMAN

FORT STREET.

J. J. WICHMAN

FORT STREET.

J. J. WICHMAN

FORT STREET.

J. J. WICHMAN

FORT STREET.

J. J. WICHMAN

FORT STREET.

J. J. WICHMAN

FORT STREET.

J. J. WICHMAN

FORT STREET.

J. J. WICHMAN

FORT STREET.

J. J. WICHMAN

FORT STREET.

J. J. WICHMAN

FORT STREET.

J. J. WICHMAN

FORT STREET.

J. J. WICHMAN

FORT STREET.

J. J. WICHMAN

FORT STREET.

J. J. WICHMAN

FORT STREET.

J. J. WICHMAN

FORT STREET.

J. J. WICHMAN

FORT STREET.

J. J. WICHMAN

FORT STREET.

J. J. WICHMAN

FORT STREET.

J. J. WICHMAN

FORT STREET.

J. J. WICHMAN

FORT STREET.

J. J. WICHMAN

FORT STREET.

J. J. WICHMAN

FORT STREET.

J. J. WICHMAN

FORT STREET.

J. J. WICHMAN

FORT STREET.

J. J. WICHMAN

FORT STREET.

J. J. WICHMAN

FORT STREET.

J. J. WICHMAN

FORT STREET.



