

From San Francisco:
Sierra November 18
For San Francisco:
China November 18
From Vancouver:
Manuka December 9
For Vancouver:
Marama December 6

EVENING BULLETIN

3:30 EDITION

Gives 16 ounces to the pound in local and world news

Advertising is the stepping stone to prosperity, and if done right and courageously, success will come to you.

ESTABLISHED 1882. NO. 4774.

12 PAGES.—HONOLULU, TERRITORY OF HAWAII, MONDAY, NOVEMBER 14, 1910.—12 PAGES.

PRICE 5 CENTS.

TENNEY TO HEAD PLANTERS IMMIGRATION PLAN FURTHER ENDORSED

Planters' President Is Strong For Immigration

W. Pfothenhauer Declares Territorial Action Should Be Continued --- Association Names Officers for 1911

Sugar Men of Islands Gather To Discuss Measures For Benefit of Industry

Measures to promote immigration and discussion of labor matters are likely to be the most important subjects taken up by the Hawaiian Sugar Planters' Association, which began its annual session at 10 o'clock this morning in its rooms in the Judd building.

The keynote of the situation was sounded in President W. Pfothenhauer's address, in which he declared strongly in favor of assisted immigration, and asserted that the legislature should not repeal the law enacted which allows immigration through the Territorial board and to which the planters of the Territory give their financial aid. His report was received at once and unanimously adopted.

Labor Matters Discussed

President Pfothenhauer's address is a vigorous discussion of labor matters. He deprecates the trouble with the Russian immigrants and the fact that so far they have not proved their desirability, declares that plantation life must be made more attractive for the laborers, advocates more work for the welfare of the immigrants and advocates also a continuance of present immigration policies.

He sounds a note of optimism for the future of sugar, by stating that the growing crops seem further advanced than similar crops of former years.

In fact, there is a good deal of optimism over the sugar situation apparent among the planters in attendance at the annual meeting. Two committee reports, one from the committee named to investigate the advisability of burning over cane before cutting it, and the other on the work of the experiment station, are important. The first points out a new method of harvesting that is safe, economical and rapid, and may revolutionize the harvesting of sugar in the Territory. The committee on the experiment station reports rapid progress toward exterminating the enemies of cane and brilliant work done by the entomologists of the station's staff.

President Pfothenhauer called the annual meeting to order this morning at 10 o'clock. His address and that of the secretary, W. O. Smith, were read and approved, and then the election of officers was taken up. Trustees Absent.

Four trustees were found to be now absent from the Territory—H. P. Baldwin, S. M. Damon, F. A. Schaefer and J. M. Dowsett. The first three have left proxies in the persons of J. P. Cooke, A. W. T. Bottomley and F. J. Waldron. The other five trustees—W. Pfothenhauer, E. D. Tenney, T. Faxon Bishop, W. Pfothenhauer, W. O. Smith, T. C. Davies, J. P. Cooke, A. W. T. Bottomley, F. J. Waldron and J. M. Dowsett, were present.

The new board of trustees now is E. D. Tenney, E. Faxon Bishop, W. Pfothenhauer, W. O. Smith, T. C. Davies, J. P. Cooke, A. W. T. Bottomley, F. J. Waldron and J. M. Dowsett.

This afternoon will be taken up with the report on the election of officers, which came immediately after the meeting reopened at 1:30 o'clock; committee reports and other routine business. Tomorrow will also be taken up with committee reports. On Wednesday afternoon the planters and forestry boards meet in joint session at the Capitol to discuss conservation, and on Thursday, probably in the afternoon, will visit the experiment station. President Gilmore of the College of Hawaii has invited the association to visit the college, and this will be done if time affords.

About sixty members of the association are in attendance, hardly more than half. The plantations are all represented, however, or will be before the sessions close.

PRESIDENT'S ADDRESS

President Pfothenhauer's address follows:

"To the Officers and Members of the Hawaiian Sugar Planters' Association.

"Gentlemen: Our meeting today completes the third decade of combined cooperation of the sugar planters of the Hawaiian Islands, and in reviewing the achievements attained during this period of thirty years, in all branches of the sugar industry, from the time of its crude methods to the present stage of scientifically highly developed efficiency, it affords me great pleasure to bid you welcome to the deliberations of our annual gathering.

"Owing to the amalgamation of his firm with Messrs. C. Brewer & Co., Mr. W. G. Friess, elected president of our association at the last annual meeting, early in the year tendered his resignation, and through appointment by the board of trustees I succeeded him from the vice-presidency; Mr. E. D. Tenney was elected vice-president and Mr. J. M. Dowsett to fill the vacancy on the board of trustees.

"Land Laws. "During the past year Congress has amended the Organic Act of the Territory with regard to the land laws. Preparatory thereto the local Legislature, in special session and by unanimous vote, recommended to Congress the passage of the certain bill prepared by the Governor of the Territory, and embracing the changes desired in the Organic Act, which bill was finally passed by Congress with a few amendments. The salient points covered by this amendment of the Organic Act, and pertaining to the land laws, are as follows:

"No sale of government lands for other than homestead purposes, and no change by which the Territory conveys land exceeding either forty acres in area or \$5000 in value, can be made without the approval of the new Land Board created by the act.

"No lease of agricultural lands exceeding forty acres, nor of pastoral or waste land exceeding 200 acres, can be made except upon approval of the Land Board.

"Sales of government lands may be made with the approval of the board when necessary to locate thereon railroad rights of way, tracks and

NEW PRESIDENT OF HAWAIIAN PLANTERS



E. D. Tenney

E. D. Tenney, vice-president of the Sugar Planters' Association for the year just closed, was elected president for 1910-1911 to succeed W. Pfothenhauer, at a meeting of the new board of trustees at noon today. T. C. Davies was elected vice-president, and T. O. Smith re-elected secretary and treasurer, and George H. Robertson re-elected auditor.

New members elected are John Waterhouse, L. A. Thurston, L. J. Warren and Edward Pollitz, the latter a well known San Francisco capitalist and heavily interested in Hawaiian sugar who is now visiting in Honolulu.

terminal facilities, pipe lines and irrigation ditches, pumping stations, reservoirs, factories, mills and apparatuses, including houses for employees, mercantile establishments, hotels, churches and private schools.

"Any twenty-five or more qualified persons may apply for the opening of agricultural lands for homestead settlement in any locality or district, and the Commissioner of Public Lands is required to survey and open such lands, whether they be under lease or not, or other lands as near as may be to the specified tract, the lease of any leased land so taken being protected, however, to the extent that growing crops may first be harvested.

"The Governor of the Territory, in due time, appointed the Land Board thus created. It is perhaps too early at this time to say whether the new land laws will work out as beneficially as is anticipated and hoped for, but the tendency of the law to provide, by virtue of the homestead clause, a stability of population by including desirable immigrants and residents to take up homesteads within the Territory, will, no doubt, in time prove a boon to our commonwealth, and the planters heartily cooperate with the government to bring about the salutary results which the law promises and which are of the greatest importance, not only to the sugar interests, but to other industries, for the future development of the resources of our Territory.

"Immigration and Labor. "The introduction of Russian immigrants from Manchuria by the Board of Immigration during the past year has not come up to expectations, and further attempts to obtain immigrants from that source have been abandoned for the present. It is regrettable, in my opinion, that this influx of an entirely

(Continued on Page 7.)

CAN'T HAVE BIG FLEET NOW ON PACIFIC

Secretary of Navy Says No Place to Handle More Vessels.

ADVOCATES BUILDING TWO NEW DRYDOCKS

Declares Atlantic and Gulf Coast Have Too Many Yards and May Abandon New Orleans and Pensacola Soon.

News was brought from the Coast by the Korea today that two huge drydocks, probably near San Francisco, will be recommended for the Pacific Coast by Secretary of the Navy Meyer, who has just returned to Washington after an inspection of naval facilities all over the country.

He announced there were too many navy yards on the Atlantic and Gulf coasts and that he expected to make some changes in the work of the Mare Island Navy Yard. He declined to discuss the Pacific Islands yards until he had consulted experts in the service.

He said that the naval requirements on the West Coast will receive extensive consideration in his next annual report and that he will urge the construction of adequate facilities. The present facilities could not care for the battleship fleet that the Coast has been demanding, he said.

Pacific Fleet Far Off. It will be impossible, he said, to maintain a battleship fleet on the Pacific before more adequate dock facilities are provided. At present he believes the Pacific Coast can not maintain a battleship fleet, and probably will not be able to before the completion of the Panama Canal.

Meyer believes that there are too many yards on the Atlantic and Gulf coasts. He believes that it would be more economical to concentrate naval work in a smaller number of larger yards.

May Abandon Two Yards. The yards at New Orleans and Pensacola will probably be abandoned, if Meyer's recommendations are carried out by Congress. On the Atlantic, Meyer favors concentration of naval work at Boston, New York, Philadelphia and Norfolk. If carried into effect, this policy will result in the abandonment of the yards at Portsmouth, N. H., and Charleston, S. C.

Meyer favors having, officially, one navy yard on the Gulf Coast of the United States, that to be supplementary to Guantanamo and to the Panama fortification. There is no intention to establish a base on the Isthmus, nor is there any intention of placing the construction and pay corps in the line of the navy.

CAISSONS FOR PEARL HARBOR

On December 22 there will be opened at Washington bids for furnishing three steel caissons for dry docks at Bremerton and New York dry docks and for the naval station at Pearl Harbor.

The notice of the proposals was received in Honolulu this morning from the Navy Department at Washington, and it is likely that a local firm will get the contract for furnishing the caisson at Pearl Harbor.

BORN.

STRANGE—At Kapoloani Maternity Home, November 13, 1910, to Mr. and Mrs. Harry L. Strange, a son.

M'QUAID NOT IN PLAN TO DROP CASE

W. M. McQuaid, who was seriously wounded in the gun fight with Volney C. Driver a week ago over Driver's alleged relations with Mrs. McQuaid, today declared to a Bulletin reporter that he has made no move looking toward dropping the case. Reports have been current that the matter will be dropped by the police and that Driver and McQuaid will both be allowed their liberty when they are well enough to leave the Queen's Hospital.

McQuaid stated today that so far as he knows there is no truth in the reports, nor in the rumor that there will be a reconciliation between the two men.

"I know nothing of what is being done," he said at the hospital this morning. "So far as I am concerned, not a move has been made toward letting the matter drop."

McQuaid is still very weak and is not inclined to discuss the shooting or its probable result.

BI-PLANE FLIES FROM CRUISER DECK

(Associated Press Cable.) NORFOLK, Va., Nov. 14.—Eugene Ely, the noted aviator, today accomplished a wonderful feat in making a flight from the deck of the scout cruiser Birmingham over the sea several miles and landing at the Norfolk Navy Yard a few miles away. The feat is the more remarkable because the usual run-way demanded for biplane flights was lacking, and he had to rise almost straight from the deck.

REBELS OF URUGUAY SURRENDER THEMSELVES

(Special Bulletin Cable.) MONTEVIDEO, Uruguay, Nov. 14.—The rebels who have been defying government troops today surrendered unconditionally, and the country is one more peaceful.

LYNCHING IS FEARED AS RESULT OF MURDER

(Associated Bulletin Cable.) ANADARKO, Ok., Nov. 14.—The Mexican who shot and killed the chief of police recently has not yet been captured. Feeling against him runs so high that if caught he will probably be lynched, and if not caught, other Mexicans may suffer.

LABOR CONVENTION IN SESSION AT ST. LOUIS

(Associated Press Cable.) ST. LOUIS, Mo., Nov. 14.—The National Convention of the Federation of Labor convened here today. Important labor questions will be discussed.

PRESIDENT TAFT IS NOW IN CANAL ZONE

(Associated Press Cable.) WASHINGTON, D. C., Nov. 14.—The cruiser Vicksburg, bearing President Taft on his Panama trip, arrived at Colon today and the President started at once for the Culebra cut.

NEW YORK DRIVERS RETURN TO WORK

NEW YORK, Nov. 14.—Four thousand striking expressmen returned to work today. They are showing their loyalty by wearing union buttons.

Nicaraguans In Serious Revolt

Government Troops Called To Stop Political Meeting, Get In Hot Battle

(Associated Press Cable.) SAN JUAN DEL SUR, Nov. 14.—Nicaragua again is in the throes of revolt. Today troops were called upon to suppress a political demonstration against the government in the town of Leon, a few miles inland, and a serious battle between the troops and the revolutionists occurred in the streets of the town. The troops swept the streets with snipe and canister, and many were killed and wounded on both sides. Sharp guerrilla fighting is reported almost continuously ever since. Nicaragua apparently is doomed to undergo another widespread revolution, and plots and counter-plots against the government and against the revolutionists are daily hatched.

INCORPORATE FOR ADMIRAL HARBER HERE ON VISIT

Company Is Formed by Men Well Known in Business Circles.

Papers of incorporation have been filed by the Island Investment Company, which purposes to engage in general promoting and financial activity in Honolulu and elsewhere. The incorporators of the company are well known in the business life of Honolulu, Robert Bond, E. M. Watson, C. A. Mackintosh and Robert Mier. The men identified with the company.

The capital stock of the company is set at \$1,000 with the privilege of extension to \$1,000,000. The stock is divided into twenty-five preferred and twenty-five common, Robert E. Bond being a holder of the majority of the shares.

BISHOP BACK ON THE KOREA

Rev. H. B. Restarick, Bishop of the Protestant Episcopal church in Hawaii, returned to Honolulu on the Korea this morning from an extended visit on the mainland. He is accompanied by two prominent members of his church, Bishop F. R. Graves and Rev. L. H. Root, of Shanghai, who are going out to the East to take up their posts there.

All three have been in attendance at the great Episcopal convention at Cincinnati, Ohio, where churchmen from all over the world were assembled.

From the dock this morning the three went direct to St. Andrew's Cathedral, where an open meeting was held, at which the three delivered addresses of the convention and its results. The Rev. Root and Bishop Graves spoke of the work in China, declaring that Chinese from Hawaii are doing splendidly in the Far East mission field.

Miss Restarick accompanied her father and returns with him. Out of sixteen Japanese gamblers who had been gathered in by the police on Saturday evening while engaged in the thrilling occupation of winning fickle fortune by the seven come eleven route, eleven forfeited bail to the amount of ten dollars each. Five defendants pleaded guilty before Judge Lymer and were assessed a fine of six dollars.

The Executive Committee of the Hawaiian Association Football League will meet at 7:30 o'clock this evening in the rooms of the Scottish Thistle Club. Captains and secretaries of each team are expected to be present.

One Story of Commander Who Is Loved in the Far East.

"I am just here for a short visit and to give Mrs. Harber a chance to see Honolulu, as she has never before been here," said Rear-Admiral Giles B. Harber this morning at the Young in response to a question in regard to his present trip.

Rear-Admiral and Mrs. Harber arrived by the Korea from San Francisco and will return on the Manchuria to the Coast, seeing as much of Hawaii as is possible in the time at their disposal before the sailing of the Manchuria on the 25th.

Rear-Admiral Harber has just been detached from duty in command of the Pacific fleet, with which he made a cruise to South American ports recently, and does not know to what duty he will be assigned upon his return to the Coast.

Without a uniform, the admiral looked little like a sailor, and as he stood in the lobby of the Young today he appeared much more like a prosperous business man than one who had spent his life in the service of Uncle Sam on the decks of fighting ships.

The admiral is one of the best liked men in the United States navy today, and out on the Asiatic station, at Manila, the whole city swears by him, for he stood by that town at one time when it meant much.

That occurred two years ago, when the big sixteen in command of Admiral Sperry arrived in Manila. Manila is the cleanest city in the Orient, but just at that time there was an outbreak of cholera, when there were from ten to thirty cases a day in a city of 250,000 persons.

Anxious mamma and relatives in the United States had seen press dispatches that there was cholera in Manila, and they got busy with their home Congressmen and others to have the fleet cut out that port and go on to Amoy, where they didn't know there was plague and smallpox nearly every mouth in the year, so that their boys would not die of cholera.

Admiral Sperry would not take the statement of the medical men of the United States Marine Hospital and Quarantine Service in Manila that there was no danger in his men going ashore in the city, nor would he take the word of his own medical officers on the fleet.

The officers could go ashore any time they wished, but the men were cooped up on the big fighting machines after a long cruise from Australia, and the big celebration and welcome planned by the citizens of Manila and the government, both

(Continued on Page 4.)

Masonic Temple



Weekly Calendar

MONDAY:
Pacific—Stated.
Honolulu—Stated.

TUESDAY:
Honolulu Commandery—
Order of the Temple.

WEDNESDAY:

THURSDAY:
Honolulu Chapter—Mark
Master.

FRIDAY:

SATURDAY:
Aloha Temple—Ceremonial
Session.

All visiting members of the
Order are cordially invited to
attend meetings of local lodges.

MEET ON THE
2nd and 4th
Mondays of
each month
at K. P. Hall
7:30 P. M.
Members of
other Associa-
tions cor-
dially invited.

HARMONY LODGE, No. 3, I. O. O. F.

Meets every Monday evening at
7:30 in I. O. O. F. Hall, Port Street.
E. R. HENDRY, Sec'y.
H. E. MCCOY, Noble Grand.

DAHU LODGE, No. 1, K. of P.

Meets every first and third Fri-
day evening at 7:30 in K. of P. Hall,
corner Port and Beretania. Visiting
brothers cordially invited to attend.
W. M. JONES, C. C.
O. E. HEINE, K. R. S.

HAWAIIAN TRIBE, No. 1, I. O. R. M.

Meets every first and third Thurs-
day of each month at Knights of
Pythias Hall. Visiting brothers cor-
dially invited to attend.
A. L. EAKIN, Sachem.
E. V. TODD, C. of R.

HONOLULU AEFIE, 140, F. O. E.

Meets on the 2nd and 4th WED-
NESDAY evenings of each month at
7:30 o'clock in K. of P. Hall, corner
Beretania and Port streets.
Visiting ladies are invited to at-
tend.
W. R. RILEY, W. P.
W. M. C. MCCOY, Sec.

HONOLULU LODGE, 616, B. P. O. E.

Honolulu Lodge No. 616, B. P. O. E.
Filks, m'vets in their hall, on King
Street, near Port, every Friday eve-
ning. Visiting Brothers are cordially
invited to attend.
J. S. D. DOUGHERTY, E. R.
GEO. T. KLUEGEL, Sec.

WM. MCKINLEY LODGE, NO. 8, K. of P.

Meets every 2nd and 4th Saturday
evening at 7:30 o'clock in K. of P. Hall,
cor. Port and Beretania. Visiting
brothers cordially invited to at-
tend.
H. A. TAYLOR, C. C.
E. A. JACOBSON, K. R. S.

TAPAS

Unique designs
just received.
HAWAII &
SOUTH SEAS
CURIO CO.
Young Bldg.

Dr. Hugh L. Dickey

Eye, Ear, Nose, Throat, (1150 Ala-
hwa street (opposite Royal Hawaiian
Hotel). Hours: 9-12:30 and 1-3:30-
4:30. Sunday, 10-11. Evenings by
appointment. Telephone 3024.
4765.3m

THE RENEAR CO.

ALGAROBIA BEAN MILLS
SEWER CONNECTIONS
JOHN NOTT
The Pioneer Plumber
183 MERCHANT STREET
HAWAIIAN FISHERY, LTD.
King Street Fish Market
Telephone 2565

2185 editorial rooms - 2256
business office. These are the tele-
phone numbers of the Bulletin.

REDS BEAT WHITES AT KAMEHAMEHA

Soccer Game Saturday After- noon Was Exciting.

There was a very exciting game
of soccer played on the school
grounds last Saturday afternoon be-
tween the Red and White first teams,
in which the Red won by the score
of 2 to 0. Both had their strongest
teams out, the Whites with a strong
bunch of backs, expecting to keep
the Red from scoring.

The Red team had a good line of
forwards. This being the last game
of soccer in the color series, the
whole school turned out to root for
their teams. At the beginning of the
game it was seen that the Red had
lost a few of their backs, but as the
forwards were strong, there was still
hope of winning the game.

During the first half of play the
Whites threatened the goal and it
looked as though they would score.
The Red held them down, however,
and in the middle of the half God-
frey made the first goal for the Red.
There was noise in the air then and
the Whites played for all they were
worth.

In the last part of the second
half another goal was added to the
Reds' score through combination
work by Kamaeopili and Godfrey.
The latter made the second goal for
the Red. During the last half the
Whites were outplayed, but by the
good work of their backs the Red
were prevented from further scor-
ing. Captain Winters refereed the
game.

The lineup: Reds—Forwards, H.
Godfrey, W. Kamaeopili, J. Milika,
W. Wainaleale, J. Kama; backs, Ben
Hussey (captain), E. Akiona, S. Lu-
hiau, G. Hewitt, S. Bush; goal, Ah
Leong. Whites: Forwards, W. Opu-
nui, K. Mackenzie, D. Kala (cap-
tain), A. Spencer, A. Alan; backs, J.
Lujan, R. Apau, H. Brandt, E. Hone;
goal, P. Kinau.

The junior members are anxious to
meet a picked team from the school
in a game of football on Thanksgiv-
ing Day. Captain Milika of the ju-
nior team has received a reply from
Ben Hussey of the senior class that
he will have a team ready to com-
pete.

A military field day will be held
at the schools next Saturday after-
noon between the Red and Whites.
Three men from each team will be
allowed to enter each event. The
sports will not include sprints, but
will have more to do with the hand-
ling of guns and running. Captain
Winters will publish the program.

The athletic committee of the
school is expected to meet this eve-
ning at 6:30 to decide on entering a
school soccer team in the big league.
Other matters of interest to the
school will be taken up at this time.

Drink
MAY'S OLD KONA COFFEE
Best in the Market

HENRY MAY & CO.
Phone 1271

Watch Our Windows
Made Exclusively for
Us
"In the Class That's
Right"

ONE OF OUR
NEW FALL STYLES

Black Satin
Pumps

A VERY SWAGGER
SHAPE not found
in other stores. A crea-
tion of shoe-making
art, for street and al-
ternate wear.

The Pair
\$5.00
Manufacturers'
Shoe Co., Ltd.
1051 FORT STREET

LOCAL AND GENERAL

Bethel St. Hack Stand, Phone 1432.
Try a case of Picnic. It is pure.
Phone 1557.

It goes without saying that every-
thing is Best at The Knave.

Six-chair shop; no long waits.
Silent Barber Shop, Hotel street.
If you want a good job done on an
auto or carriage take it to Hawaiian
Carriage Mfg. Co., 427 Queen St.

Friends of William Williamson ten-
dered him a farewell bachelor dinner
on Saturday evening. He is to be
married this week.

United States Commissioner Davis
this morning held Juan Correa and
Claudia Pousango to answer to the
Grand Jury on a charge of bigamy and
adultery respectively.

The second payment of Property,
Income and Special Income Taxes will
be subject to a ten percent penalty
after November 15. Better pay now
and save the penalty.

Six months imprisonment was the
sentence meted out by Judge Cooper
this morning to Jose Ferraz, who en-
tered a plea of guilty to a charge of
embezzlement. A charge of being
present at a gambling game against the
man was dropped.

Deeds have been filed in the Bureau
of Conveyances whereby the Territo-
rial government acquires the neces-
sary approaches to the new Kahului
wharf, the parties named being the
Hawaiian Commercial and Sugar Com-
pany, the Kahului railroad and the
Territory.

Hilo has at least one progressive
citizen, according to the following
from the Hilo Tribune: Manager
Wright of the Volcano Stables has of-
fered the Superiors to assist them
in their work on the road by the Vol-
cano by transporting prison laborers,
implements and machinery free of
charge, and to move the camps if
necessary. The Superiors passed a
vote of thanks for this generous offer.

PASSENGERS BOOKED

Per P. M. S. S. Korea, for Japan
ports and Hongkong, Nov. 14—C. M.
Robertson, Glenn Stewart, L. Spero,
J. M. Matthews, Mrs. D. M. Miller,
Mrs. Matthews, Miss R. B. Case, W.
H. Lambert, M. Bosville, J. E. Rod-
gers.

Per stmr. Mauna Kea, for Hilo and
way ports, Nov. 15—Miss L. d' Harne,
Mrs. A. Skinner, Mrs. E. E. Dyer, Mrs.
Richardson, Mrs. Newman, Mrs. E. A.
Nawahi, J. A. Maguire, John Watt, G.
C. Potter, Mrs. Potter, C. J. Bourke,
D. G. May, A. C. Baker, Mrs. Baker,
Rev. S. L. Desha, Mrs. Siemsen, Mrs. L.
Nao, Rev. C. H. M. W. L. Eaton,
Mrs. Eaton, Mrs. S. Skinner, D. Metz-
ger, Dr. A. B. Clark, A. Geisecke, R.
L. Little, S. Green, Mrs. Green, Mrs.
McWayne, M. R. Jamieson, R. T. Dur-
sten, E. A. Southworth, A. Mello.

Per stmr. Kinan, for Kaula ports,
Nov. 15—J. H. Hurd, C. B. Hall, J.
L. Friel, E. Lowell, H. Sumner, H. M.
Gittel, J. D. Dougherty, P. G. H. De-
verill, H. Asher, Geo. Maioho, Mrs.
Armstrong.

Per stmr. Mauna Loa, for Kona and
Kau ports, Nov. 15—G. Barker, A.
Hansberg.

Per stmr. W. G. Hall, for Kaula
ports, Nov. 15—W. Stoddart, Mrs.
Stoddart, F. Weber.

Per O. S. S. Sierra, for San Fran-
cisco, Nov. 22—J. H. Metcalf, M. Car-
dell, Mrs. Cardell, Mrs. W. G. Ashley,
Mrs. E. E. Dye, Mrs. Newman, Mrs.
J. L. Thomas, A. L. Derby, Maj. C. A.
Long, Mrs. Long, Mrs. A. Richardson,
Mrs. C. J. Barclay, W. E. Bruce, Mrs.
Bruce, Mr. and Mrs. Beckwith, W. C.
Baker, Mrs. Baker, Mr. and Mrs. Hea-
ley, Mrs. L. A. Wells, Mrs. J. J. Kear-
ney, A. G. Stoddart, H. Gorman.

Per stmr. Kinan, for Kaula ports,
Nov. 15—P. G. H. Dewarill, Geo.
Maeohi, D. P. Kalema, Mrs. Kalema.

Per stmr. Mauna Kea, for Hilo
and way ports, Nov. 15—Mrs. E. E.
Dye, Mrs. Siemsen, Mrs. E. A. Na-
wahi, Mrs. Alex. Nawahi, D. G. May,
R. L. Little, S. Green, Mrs. Green,
Mrs. McWayne, J. Oppergott.

WATERFRONT NOTES

Few Passengers for Lurline.
There is a rather light looking of
cabin passengers for the Matson Nav-
igation steamer Lurline that is ex-
pected to sail on or about Thursday for
San Francisco. The vessel will take
a fair shipment of Hawaiian products
including consignments of pineapples,
rice, bananas and sundries.

Wilhelmina Meets Fine Weather.
A wireless received at the office
of Castle & Cooke the local agents
for the Matson Navigation steamer
Wilhelmina announced that vessel as
1240 miles off the port and steaming
through smooth seas and light favor-
able winds.

Sierra Is Now On Her Way.
A cable from San Francisco an-
nounced the departure of the Oceanic
steamship Sierra from San Francisco
on Saturday noon. The vessel is due
to arrive here bright and early on
Friday morning.

IN FOREIGN PORTS

Monday, Nov. 14.
SEATTLE—Sailed Nov. 13: S. S. Hy-
ades, for Honolulu.

SAN FRANCISCO—Arrived Nov. 13:
1 p. m. U. S. A. T. Logan, from Ho-
nolulu, Nov. 5.

HIL O—Arrived, Nov. 13: S. S. Enter-
prise, from San Francisco.

"For Rent" cards on sale at
the Bulletin office.

Our New Phone Number Will Be
1281
City Transfer Co. (Jas. H. Love)

Shipping

ADDITIONAL SHIPPING ON PAGE EIGHT.

KEEN-EDGED AXE AGAIN FELT IN PACIFIC MAIL CIRCLES

"BILLY" ALLEN, A POPULAR PURSER IS REPORTED TO HAVE RESIGNED—TRANSPORT SHERIDAN TO SAIL FOR MANILA THIS EVENING—WINDJAMMERS ARE EN ROUTE WITH GENERAL CARGOES.

Has the keen-edged axe been taken
down from its temporary resting place
in the head office of the Pacific Mail
Steamship Company at San Francisco,
and placed in official hands, and been
swung upon the neck of one of the
most popular pursers that ever passed
through Honolulu?

The liner Korea arrived at Alaka
wharf about eleven o'clock this morn-
ing but W. A. Allen, who has been
identified with the steamship company
for many years was not numbered
with the ship's company.

A Morphy, an old hand in the pur-
ser's office of trans-Pacific steamers
has taken over the duties formerly
performed by Allen. Morphy formerly
passed through Honolulu, a number
of years ago as the purser of the Oc-
cidental and Oriental steamer Coptic.

When that line passed out of the
transportation scheme on the Pacific,
Morphy was transferred to a vessel
flying the Pacific Mail flag and one
that was operated between San Fran-
cisco and Panama.

While there is no one on board the
Korea in an official capacity that is
authorized to speak it is rumored
that Billy Allen was given the axe
during the stay of the Korea at the
port. There appears to be an air of
mystery connected with the sudden
determination upon the part of Mr.
Allen to leave the Korea and take a
journey to the Atlantic seaboard.

It was given out before the vessel
sailed that Allen had left the vessel
for one voyage but in view of the
fact that he has been home for so many
years, the former purser removed all
of his personal effects and belongings
from the office, many believe that he
has quit the service.

It is even hinted that there is a
woman at the bottom of the affair
but awaiting a confirmation or even
a more definite statement, Allen's
friends who are many at Honolulu re-
fuse to believe that he had been re-
moved from the service for any such
cause.

The Korea brought 57 cabin and 11
steerage passengers for Honolulu. In
her hold she has about two hundred
tons of freight to be left here includ-
ing three automobiles.

Through passengers are many and
they monopolize practically every
stateroom on the ship. For the Japan-
ese ports, Manila and Hongkong there
are 150 in the saloon 22 in the Euro-
pean steerage and 402 in the Asiatic
quarters.

The vessel will make a brief call at
Manila and will leave forty-five
hundred tons of freight, mainly consist-
ing of watermaster supplies for the
army station in the Philippines.

The vessel came down from San
Francisco a little under six days and
brought one hundred sacks of later
mainland mail.

One death occurred on the way
down that being a Chinese steerage
passenger who passed away as the
ship came to quarantine off Honolulu.
Death was due to tuberculosis.

Captain Sandberg who has been in
the employ of the Pacific Mail for a
quarter of a century has retired and
his place on the bridge of the Korea
has fallen to Captain J. W. Saunders.

It is reported that the command of
the Pennsylvania will be given to
Ryland Dremann, who has been on
the Panama and Oriental runs.

Chief Steward Thompson is back in
the Korea again after a brief absence
spent on shore.

Charles Frazier the local advertis-
ing man has returned from a very
successful business trip on the main-
land. Frazier declared that he left but
little business behind that had not
previously been nailed down. Mrs.
Frazier accompanied her husband to
Honolulu.

Admiral G. B. Harber is here on a
visit. He was met at the wharf by
Rear Admiral Rees and other naval
officials.

P. R. Isenberg is back from a visit
to the coast.

Among the passengers who left the
Korea at this port were Bishop Res-
tarick and Miss Rastarick.

P. Sheedy is prominently identified
with the Southern Pacific railway and
has been in charge of the motive
power for the system for years.

For the past several months the cus-
tomers quarters have been painfully
destitute of furniture and the force
of customs inspectors have been com-
pelled to perform their labors under
rather trying conditions upon the
main floor of the wharf where dust,
dirt and noise abound.

Spokane May Come to Marine Railway
After completing the discharge of a
shipment of lumber, the American
schooner Spokane may be brought to
Honolulu where the vessel may go on
to the marine railway for inspection and
possible repairs. The vessel with
lumber from Puget Sound arrived at
Hilo on last Thursday, but when off
the bell buoy that marks the bound-
ary of the harbor the breeze dropped
away and the schooner drifted to the
reef. The vessel came off soon after
and it is believed that little damage
was done as a result of the ground-
ing.

Enterprise Has New Skipper.
The Matson navigation company's
steamer Enterprise has sailed from
San Francisco for Hilo with 5,500 tons
of cargo. As the freight included no
passengers, Captain Youngren, the
regular master of the Enterprise, was
unable on account of illness to take
his ship out, so Captain R. O. Nelson,
formerly master of the bark Annie
Johnson, was appointed master for
the voyage in his place. Captain Nel-
son has been off duty for about four
months as the result of a broken leg
sustained on the last voyage he made
on the Annie Johnson.

Makura Carried Supplies for Fanning
Taking sixteen passengers and a
unit of supplies the Canadian-Aus-
tralian liner Makura sailed from Ho-
nolulu at one thirty of Saturday af-
ternoon destined for Australian ports
by the way of Fanning Island. The
passengers were bound for various
Colonial ports while the freight taken
on here will be discharged at the Brit-
ish cable station having been left
at Honolulu by the steamer Zealandia
for transshipment to Fanning Island.

Nocou Freight List.
Besides several cabin and seven
deck passengers, the steamer Nocou
from windward Kaula ports brought
cargo including 100 bags of rice, 225
bags of paddy, 25 hides and sundries.
Purser C. R. Hayden reports that
when the Nocou left Hanaula there
were 2000 bags of rice and paddy
awaiting shipment. The weather on
the windward side of the Garden Is-
land was reported to be good.

Mikahala from Maui.
Purser French of the Inter-Island
steamer Mikahala from Maui, Molo-
kai and Lanai reports fine weather
on the trip to and from Honolulu. The
schooner Columbian was reported to
be at Kahului. The Mikahala brought
in fourteen first-class and twenty-four
deck passengers. The freight consist-
ed of one automobile, two horses,
nearly pigs, crates of chickens, eggs,
corn, potatoes and empty bottles.

Rice Shipment from Kaula.
Rice made up a portion of the
freight brought to Honolulu by the
steamer Kinan. From Kaula ports
the vessel brought 1500 sacks sugar,
845 sacks rice, a quantity of cases of
pineapples and sundries. Fine was
there was experienced on the outward
and inward voyage.

Sheridan to Sail at Five This Evening
The United States Army transport
Sheridan, bound for Manila by the
way of Guam, is scheduled to sail at
five o'clock this evening. The vessel
has completed taking on coal to the
amount of six hundred and fifty tons.
The Sheridan is berthed at the Oceanic
wharf.

Alaskan Will Take First of Crop.
The American-Hawaiian steamer
Alaskan will take the first big ship-
ment of the new crop sugar. Some
12,000 tons are expected to be ship-
ped by the big freighter, which sails
on December 14.

Good Ship Albert Has Arrived.
The old reliable bark Albert has re-
turned in safety to Puget Sound af-
ter having left a shipment of lumber
at Kasaan. The vessel arrived at
Port Townsend on last Friday.

PASSENGERS ARRIVED

Per stmr. Mikahala, from Molo-
kai and Maui ports, Nov. 13—M. Macken-
zie, Mrs. Poole, Judge Wilder, A. M.
Brown, J. Foster, R. E. Church, W. B.
Penhallow, J. W. Ketchner, P. L.
Weaver, W. Coelbs, D. E. Metzger,
Rev. P. N. Kahokuoluna, Yack Kwan
Tan Sen.

PASSENGERS DEPARTED

Per C.A. S. S. Makura for Austr-
lian ports, Nov. 12—Dr. and Mrs.
Grate and infant, S. Grace, R. W. San-
ford, J. P. Topham, W. W. Rahn, Mr.
and Mrs. Harney, Mrs. Ellis, Mrs.
Painter, E. D. Birmingham, V. D. Har-
dy, Mr. and Mrs. J. W. Bamforth, M.
D. Shellmurger and C. Siboud.

Per P. M. S. S. Siberia, for San
Francisco, Nov. 12—Mr. and Mrs.
George M. Howley, Mr. and Mrs. E.
A. Mott-Smith, Francis Gay, Mrs. J.
Ward, Dr. D. Lee Hirschel, A. C.
Baumgartner, D. Bole, H. Hart, V.
Blumlein, J. Brady, W. R. C. Ewing,
H. Tash, C. Curtis, F. L. Oliver, R.
H. Snelling, Mr. and Mrs. H. Yoshida,
Mr. and Mrs. C. H. Wilson, H. E.
Stegensen, F. F. Wearner, Mr. and
Mrs. R. E. Plidson, G. H. Monroe, P.
B. Page and E. Lyons.

ARRIVED

Sunday, Nov. 13.
Kauaiha and Mahukona—Maui,
steamer, a. m.
Molokai, Maui and Lanai ports—Mi-
kahala, stmr., a. m.
Kauai ports—Kinan, stmr., a. m.
Hawaii ports—Waialeale, stmr., a. m.
Kauai ports—Nodun, stmr., a. m.
Monday, Nov. 14.
San Francisco—Korea, P. M. S. S.,
to a. m.

PASSENGERS ARRIVED

Per P. M. S. S. Korea, from San
Francisco, Nov. 13—For Honolulu:
A. W. Adams, Mrs. A. W. Adams, W.
H. Barringer, J. A. Barton, Wm. A.
Bowen, Mrs. Mary A. Burbank, Miss
H. E. A. Castle, C. R. Frazier, Mrs.
C. R. Frazier, Mrs. E. Frazier, E.
Freese, W. H. Freese, G. Glomottelli,
John L. Glison, Mrs. J. F. C. Hagens,
Admiral G. B. Harber, U. S. N., Mrs.
G. B. Harber, P. R. Isenberg, Miss K.
Kekela, Miss M. Kratzer, Geo. A. Lew-
is, Miss Lewis, J. Madison, Mrs. J.
Madison, Miss C. Madison, Mrs. Jas.
McAndrew, Mrs. E. A. McHyde, J.
D. McInerney, Mrs. F. Needham, Miss
G. F. Neuharth, Major W. C. Neville,
Mrs. W. C. Neville and maid, Miss F.
H. Neville, Bishop H. B. Rastarick,
Miss M. Rastarick, P. Sheedy, Miss
M. Sheedy, R. D. Shipman, Rev. A. G.
L. Trow, J. Frank Tritch, Mrs. J.
Frank Tritch, Theodore Vores, Mrs.
Theodore Vores, Mrs. S. H. Ware,
Miss Claire Williams, Mrs. Claire E.
Williams, Miss Edith B. Williams, Mrs.
R. A. Woodford, C. B. Wyman, F. F.
Woodford, Miss Josephine Dryer, R.
E. Herdman, Mrs. J. M. Huey, Miss
Francis Huey, Master James Huey,
Through: C. C. Campbell, Miss Theo-
B. Campbell, R. A. C. Hocking, K.
Iwamasa, Miss Mabel Lee, J. A. Rab-
bit, J. W. Sanny, Mrs. J. W. Sanny,
Mrs. Geo. Wallace, Langdon War-
ner, Mrs. Langdon Warner, I. Yama-
uchi, L. Foucher and wife, Miss M.
Beller, Miss R. Benedict, Miss Bertha
A. Blood, Miss R. B. Brownlee, Rev.
S. A. Moffett, Mrs. S. A. Moffett and
servant, Master J. Moffett, Master C.
Moffett, Miss Olga Shaffer, Miss R.
Storkey, E. Aandahl, Mrs. E. Aandahl
and infant, Master E. Aandahl,
Miss Lucy F. Baker, Miss Nellie
Bogert, Miss Gertrude Day, Miss E.
Eichenberger, Bishop F. R. Graves,
Rev. H. M. Harris, Mrs. H. M. Harris,
Rev. F. G. Henke, Mrs. F. G. Henke,
R. Kiten, Mrs. R. Kiten, Mrs. Martha
Kitten, Miss F. Thomas, Miss Annie J.
Low, Rev. John Murray, Mrs. E. E.
Rogers, Miss M. J. Rogers, Rev. Dr.
L. H. Root, Miss Lena Ryan, Mrs. M.
L. Sinking, Miss Ruth Smith, W. T.
Stewart, Mrs. W. T. Stewart, J. A. T.
Thomas, Mrs. J. A. T. Thomas, Percy
L. Urban, M. Werdal, Miss Mabel
Woodruff, C. V. Badger, J. A. Badger,
Mrs. J. A. Badger, Comdr. Harrison
A. Bingham, U. S. N., Major A. C. A.
Bortels, P. C., Mrs. M. A. Brown, Har-
ry B. Brush, Miss F. M. Chambers,
W. M. Chisholm, Dr. H. C. Drew, W.
D. Drewry, Jas. F. English, Mrs. Jas.
F. English, J. B. Frazier, Major N.
H. Hall, U. S. M. C., Edward O. Hen-
caway, H. C. Fraser, L. Col. T. P.
Kane, U. S. M. C., Miss L. P. Kellen-
barger, O. R. Kroell, Mrs. O. R. Kroell,
Master Donnelly R. Kroell, C. J. Kun-
owsky, C. M. Kuykendall, Mrs. Geo.
J. Muni, Chas. L. Osburn, Selby C.
Parker, Mrs. Selby C. Parker, J.
Schulthess, A. F. Stevens, Jr., Allan
T. Sylvester, O. A. Tomlinson, Major
Ole Waloe, Mrs. Ole Waloe, Thomas
Ware, Asst. Paymaster W. H. Witter-
dink, U. S. N., Rev. A. Alf, Mrs. A.
Alf, Master A. I. Alf, Master W. D.
Alf, Master R. M. Alf, Master W. E. Alf,
Miss M. E. Alf, Miss L. F. Alf, Mrs.
Erma F. Bauer, Miss C. Brown, Mrs.
R. H. Cameron and infant, D. B. Cam-
eron, I. Lai Yee Chang, Miss Louise Cou-
side, Franking Field, A. Geoke, T. J.
van Holckema, Mrs. L. M. Joblin, Rev.
J. P. Jones, V. F. Stanley Low, Miss
M. S. Marshall, Fritz Mason, Miss O.
V. Maxson, J. G. McClure, Miss Mar-
garet Mears, S. M. Mears, Mrs. S. M.
Mears, Miss Muspratt, Wm. H. Pick-
ard, Mrs. M. W. Reynolds, Mrs. Stuart
Rice, Miss C. Russell, Mrs. L. Russell,
W. Kellie Smith, Mrs. W. Kellie
Smith, C. Wagener, B. P. Yung, F.
Stevens.

Per stmr. Kinan, from Kaula ports,
Nov. 13—J. Ichinose, H. Onaka and
prisoner, J. Kapahu, Rev. J. A. Akina,
Mrs. W. E. Hall and child, Yacuda,
Miss M. Hips, Mr. Kana, Mrs. Ah
Sam, Mrs. M. Mahuka, K. L. Guer-
rero, D. Wilcox, G. N. Wilcox, Mr.
Weber, Francis Gay, G. Hansen, O.
Smith Hjorth, E. Mahlam, G. P. Thei-
sch, A. E. Minyelle, D. H. Young,
Farm Corrn. Officer Lovell, Officer
Malini and 3 prisoners, B. D. Bal-
win,

Thanksgiving Sale

Of World-Renowned

IRISH LINENS

We have received this week from Belfast one of the largest direct shipments of Table Linen ever imported in the Islands. These goods do not require to be "talked up"—they include the famous "Shamrock" brand manufactured by John S. Brown & Sons. Shamrock Linens have a popular reputation of over one hundred years, and good housekeepers everywhere are familiar with their excellence and beauty of design.

SALE BEGINS MONDAY, NOVEMBER 14, AND WILL CONTINUE UNTIL THANKSGIVING, NOVEMBER 24

LINEN NAPKINS—In Luncheon and Dinner Sizes.
LINEN DAMASK CLOTHS
FRINGED DAMASK DOYLIES—All Linen

Beautiful Linens such as we will offer at this sale, make handsome Christmas Gifts. They can be purchased in Sets—all to match—or Single Cloths, and Napkins by the Dozen. We have every standard size; also a fine line of

TABLE DAMASK, GLASS TOWELING, GLASS CLOTHS, DOYLIES, PANTRY CLOTHS, ETC.

SACHS' DRY GOODS CO.,
Corner Fort and Beretania Streets Opposite Fire Station

White Label Olives

Large, juicy, firm and delicious. The choicest Queen Olives—picked right, packed right, and so taste.

Your Grocer Has Them

Private Driveway Construction

Selection of the proper approach and grade. Capable workmen under the supervision of an experienced engineer. Full equipment for rapid execution of work.

Constructing Contractor **P. M. POND** Telephone 2800

For Thirty Days

we will take subscriptions for the

Columbian Magazine

at \$2.25 per annum and include one copy of Funk & Wagnall's

"COMPREHENSIVE STANDARD DICTIONARY" Flexible Binding, Thumb Indexed. (List Price, \$4.)

Hawaiian News Co.,

Limited
Alex. Young Building

Office Supply Co.,

LIMITED
Dealers in
REMINGTON TYPEWRITERS,
TYPEWRITER SUPPLIES,
GLOBE-WERNICKE FILING CABINETS
AND BOOKCASES,
GENERAL OFFICE STATIONERY.

931 FORT STREET



TOYS! TOYS!

CHILDREN HAPPY AGAIN
Our Toy Department now open.
with a Fresh Stock of TOYS, GAMES
and a splendid line of BOOKS.
WALL, NICHOLS CO., LTD.
King Street

Everything in Books!

BROWN & LYON CO., LTD.
Alex. Young Building

A SUGGESTION ON ECZEMA

It is suggested that eczema sufferers ask Honolulu Drug Co. of this city what reports they are getting from the patients who have used the oil of wintergreen liquid compound, D. D. D. Prescription.

GEN. GARCIA WORKS AS A DAY LABORER

Man Who Led Cuban Patriots
Forced to Return to Soil
for Living.

A story of the vicissitudes of the Cuban patriots who fought against Spain previous to the interference of the United States came to light when Mounted Patrolman Roger J. Harty, returning from a trip to Panama, brought a letter of greeting to Major T. Roser Roemer, drill-master of the St. Louis police force, from Gen. Jose Garcia, now earning his living as a laborer in an obscure town in Panama.

Garcia earned a name in his country's history when, as the leader of the insurrectionists, he fought relentlessly against Gen. Weyler, the commander of the Spanish forces in Cuba. He helped his country in the Spanish-American war, and it was in the army that he met Roemer. The two fought and lived together during the campaign and became fast friends. When the war was over and Roemer returned to the United States he lost track of his friend, and it was only a chance remark of Harty's that brought them into communication again.

He Comes Upon Garcia.

"I had to go to a small town in the Panama Canal zone on a matter for the New Orleans police force, which I undertook while I was in New Orleans August 12," related Harty. "In the course of my investigations I came to Gorgona, a small town 18 miles from the Pacific coast. I entered the Spanish settlement there one day, and as I didn't speak the language they sent for an interpreter. Garcia came. He could speak English so well that I asked him where he learned it. 'So many of the men in the army were Americans,' he answered, 'that I soon spoke it readily.'

"Then, perhaps, you know Roemer of St. Louis; he served in Cuba?" I asked.

Cuban Greatly Excited.

"Roemer! Do you know him? Where is he? Oh, my friend! And the excited Cuban, happy at finding the whereabouts of his friend, lapsed into his native tongue again, his words and questions falling over each other in his eagerness. I held up my hands in mock surrender, and Garcia, stopping short, apologized for his exhibition of feeling, and asked me if I would not take a letter to Roemer."

Garcia is living in exile as a result of the split which occurred among the Cuban Independents when they were freed from the domination of Spain. With every avenue of employment closed to him, whose only thought was for the welfare of his land, he was forced to seek a livelihood elsewhere. Harty says that Garcia, however, is contented for the time.

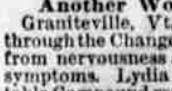
"It is not the first time that I have had to turn my hand to digging dirt to make a living," Garcia said, resignedly.

2185 editorial rooms — 2256 business office. These are the telephone numbers of the Bulletin.

HER PHYSICIAN ADVISED

Taking Lydia E. Pinkham's Vegetable Compound

Columbus, Ohio. — "I have taken Lydia E. Pinkham's Vegetable Compound during change of life. My doctor told me it was good, and since taking it I feel so much better that I can do all my work again. I think Lydia E. Pinkham's Vegetable Compound is a fine remedy for all women's troubles, and I never forget to tell my friends what it has done for me." — Mrs. E. HANSON, 304 East Long St., Columbus, Ohio.



Another Woman Helped. — "I was passing through the change of life and suffered from nervousness and other annoying symptoms. Lydia E. Pinkham's Vegetable Compound restored my health and strength, and proved worth mountains of gold to me. For the sake of other suffering women, I am willing you should publish my letter." — Mrs. CHARLES BARCLAY, R.F.D., Graniteville, Vt.

Women who are passing through this critical period or who are suffering from any of those distressing ills peculiar to their sex should not lose sight of the fact that for thirty years Lydia E. Pinkham's Vegetable Compound, which is made from roots and herbs, has been the standard remedy for female ills. In almost every community you will find women who have been restored to health by Lydia E. Pinkham's Vegetable Compound.

AGAINST FRIAR LAND SALES

Delegates Kalao and Apacible
Prepare Resolution to
That Effect.

Delegates Kalao and Apacible are to ask the Assembly to declare by resolution that the sale of the friar lands in large and unlimited areas is contrary to the will, the sentiments and the interests of the Filipino people, says the Manila Cable-news-American of Oct. 16.

Their proposed resolution is in part as follows:

"Whereas, the Filipino people consider that the acquisition of unlimited areas of land by great foreign corporations for the purpose of exploiting them may cause a disturbance of the peace and felicity so much desired in the country, in the belief that those corporations will establish a competition that will be ruinous to Filipino capitalists and producers and that they will invade and dominate with their powerful resources the field of exploitation of native energy, and will, once they become firmly rooted in the country, become a great obstacle to the political emancipation desired by the Filipino people in general; and

"Whereas, the transfer of the lands purchased from the friars to the said

Cluett Shirts

Our New Fall Styles of CLUETT SHIRTS are now on sale. Many added novelties in Fine Imported Madras in Plain and Fancy Negligee in both Cuff attached and French fold cuffs. All the colors are guaranteed FAST.

The Popular Price

\$1.50

Both Plain and Pleated Bosoms

The Clarion
FORMERLY THE KASH COR. HOTEL & FORT ST.



corporations may give rise to the same politico-social disturbances which were created by the ownership of the lands by the religious orders and which brought about the Filipino revolution; and

"Whereas, the Filipino republic of happy memory for all, in the epoch of its short existence, endeavored to avoid this fearful social evil by providing in its constitution for the seizure of the property and buildings of the religious orders and their transfer to the state; and

"Whereas, the present government of occupation acquired the friar

lands not to create new disturbances and protests but to contribute to the peace and welfare of the Filipino people;

"Be it therefore resolved; that the Philippine Assembly declare, without discussing the question of the legality of the sales, that such sales of unlimited areas of such lands to large corporations is contrary to the will, sentiments and interests of the Filipino people, and that all sales of public lands made in future be made in keeping with the provision of article 15 of the Philippine bill.

"Be it further resolved that copies

of this resolution be sent to the Congress of the United States and to the Secretary of War."

2185 editorial rooms — 2256 business office. These are the telephone numbers of the Bulletin.

PILES CURED IN 6 TO 14 DAYS.
PAZO OINTMENT is guaranteed to cure any case of Itching, Blind, Bleeding or Protruding Piles in 6 to 14 days or money refunded.—Made by PARIS MEDICINE CO., Saint Louis, U. S. of A.

Ladies' Lingerie Dresses

Expressed from New York. An elaborate assortment of LADIES' LINGERIE DRESSES is now on sale at prices ranging from \$3.50 to \$35 each.

Ladies' Lingerie Shirt Waists

Our Holiday Line of LADIES' LINGERIE WAISTS has just arrived and we are positive they are the prettiest Waists ever shown for the money. Prices, \$1.25 to \$4 each.

Ladies' Neckwear

New line of stylish JABOTS, DUTCH COLLARS and BOWS—all great values. 25c to 75c each.

A. Blom,

Fort Street, Opposite Catholic Church

BEER

Is the national beverage where vigor and health are the rule and nervousness the rare exception.

Malt is a food, half digested, hops are a tonic. A little alcohol---there is but a trifle in beer---is an aid to digestion.

But insist on a pure beer--a beer that is well aged. You will find this in

PRIMO---the true home beer



The Beer That's Brewed To Suit The Climate

EVENING BULLETIN

DAILY and WEEKLY Published by BULLETIN PUBLISHING CO., LTD.
At 120 King Street, Honolulu, Territory of Hawaii.

Daily every day except Sunday. Weekly issued on Tuesday of each week.

MEMBER OF THE ASSOCIATED PRESS.

Wallace R. Farrington, Editor

SUBSCRIPTION RATES PAYABLE IN ADVANCE.

EVENING BULLETIN	WEEKLY BULLETIN
Per Month, anywhere in U.S. 75c	Per Six Months, anywhere in U.S. \$4.00
Per Quarter, anywhere in U.S. 2.00	Per Year, anywhere in U.S. 7.50
Per Year, anywhere in U.S. 20.00	Per Year, anywhere in Canada 1.00
Per Year, postpaid, foreign 12.00	Per Year postpaid, foreign 2.00

CIRCULATION LARGEST OF ANY NEWSPAPER PUBLISHED
in the Territory of Hawaii.

Tel. Editorial Rooms, 2185
Business Office, 2256

Entered at the Postoffice at Honolulu in
as second-class matter.

MONDAY NOVEMBER 14, 1910

When you know a thing, to hold that you know it; and when you do not know a thing, to allow that you do not know it—this is knowledge.—Confucius.

When Roosevelt does talk, it will come like a kick from a mule.

All Mr. Commissioner Campbell has to do now in connection with immigration is to make good.

Take time by the forelock and shop early, else you'll have to grab it by the fetlock and be disappointed.

Honolulu greets Admiral Rees' successor with feelings of cordiality and regret. Good citizens are always welcome, but we hate to lose any.

First the politicians and now the plantation managers decorate the entrance to the Judd building. Neither has much use for the other, but we the common people have them all.

Football must have been revised downward indeed. Last year the victories were only subject to the undertaker. Now the game is not ended till the verdict of the criminal court has been rendered.

Where are the unselfish Christian women who voted to take off their hats in Church so that others might see and hear better?—Central Union Church Calendar.

Oh, Woman! Fickle Woman!!

When an applicant for a home presents a request that is not deserving the attention of the head of the Public Land Department there is something wrong, not with the applicant but with the administration of public office.

John Hughes says the politics of the municipality are in the hands of bosses. Well, that was true of one machine, the Democracy, and the people voted that they wanted none of the Boss or bossism. What more could be reasonably asked.

There was never a better time in the history of Honolulu to place the police department of the municipality under the strict civil service rule of a competent police commission. It hasn't been mentioned in any platform but it has got to come.

This is the Week of Prayer in the churches. If the people outside the church would pray for those in the church whom they criticize and those in the church pray for the sinners outside, it should be possible to strike a very fair average. The trouble is that most everyone spends too much time "cussin'" the other fellow.

Outgoing city supervisors could not mark their final official labors with a more commendable act than by passing an appropriation that will provide for enlisting the Hawaiian band to a membership that will make it in all particulars a first class military band. Don't let the tourist season come upon us with a band for which the apology has to be offered that we don't provide as liberally as in former days.

The time is not far distant in the progress of Hawaii's main industry when every task will have a definite rating, regardless of the race or nationality of the man who performs it, and the only preference will be that to which the efficient citizen workman is always entitled.

In view of the declaration of President Potentiauer, coupled with the verdict of the people at the polls last week, there are mighty few persons or interests in this Territory which are not in line for European immigration and conservation.

WHAT SUGAR MEN CAN DO.

Sugar plantation managers assembled in the city probably realize better than any of those who give them gratuitous instructions on how to run their plantations, that they have before them one of the most difficult years that a manager can experience.

Three years of good times, exceptionally prosperous times, have just come to a close.

The stockholders having become accustomed to comfortable regular dividends and pleasant extras, can't always understand why they should be brought down to the "regulars" and hardly that, despite the fact that the price of sugar for the coming campaign will be twenty-five dollars a ton less than in recent years. So the stockholders become fretful.

The men who toil will experience much of the same feeling as regards their wages. They will estimate the wage-paying capacity of the plantations on what was done in dividends during the last two years, rather than on the ability to pay on the present price of sugar in the world's market. Thus laborers may become an easy prey to demagogues.

In addition to this the managers must grapple with the problems that arise from the quiet revolution that is going on in the industry resulting from the passing of gang labor consequent to the change in the character of immigration.

Every man interested in the production of sugar in these islands realizes that the conditions of the industry are steadily changing, and in consequence of this there must be a constantly increasing spirit of cooperation between the "planters" and the people at large, the citizen community of this Territory.

Nearly all those who take a common sense view of the practical facts of the sugar industry will realize that this is no time to increase dividends, nor is it the time to increase wages.

But this is the day and the season when the plantation managers who can discern the drift of affairs will shape their policies so as to make life and labor on the sugar plantations more attractive to home makers and home builders.

The time has arrived in the history of this Territory and its main industry when it is good business to establish sugar plantation employees in homes rather than barracks; to create conditions that will bring more of citizen labor onto the plantations and enable those people to reside in houses that they will be glad to regard as permanent places of abode.

This matter of citizen labor is not entirely one in which distinctions are to be drawn between the Oriental and the European. The Japanese employed on the plantations are raising families, and with the proper surroundings there is no reason why the sugar properties should not appeal to the Japanese-American population that is growing up in the Territory, a people who have a natural aptitude for agriculture and have only to be inspired as other Americans have to be, with the dignity of labor in order that they shall become fixtures in the plantation community where they have grown up.

Of course all this sounds chimerical to the sugar men and the managers who don't want any d—ed interference from those outside their balliwick, but they will have to listen whether they like it or not.

One doesn't have to be a sugar plantation manager to know that one of the strongest holds the sugar industry could have on the American people—in whose hands rests the decision of whether our industry shall continue to be protected or not—would be to bring about such an improvement of conditions that the plantations of Hawaii will be communities of contented workmen housed in comfortable homes.

To divide up the lands as some of the idealists have suggested and demanded, is a very radical step, but to better the quarters and improve home-

City Property for Sale

122 feet by 265 feet—26,750 square feet of land. Large brick building on property. Property is near to center of town.

Price, \$12,000

Trent Trust Co., Ltd.

FOR SALE

Two Fine Lots in Puunui

A Big Bargain

Bishop Trust Co., Ltd.
BETHEL STREET

SEND A
Wireless
TO YOUR FRIENDS ON THE
STEAMERS
On Sunday Morning the Office
Is Open From 8 to 10

like surroundings of plantation workers is entirely practical even in a period of low prices.

Once this work is begun as a general and definite movement, the future period of higher prices and good times will find the people and the industry ready and in a condition to carry it forward as a matter of course.

ALL HAIL THE HEN,

So common and so individually uninspiring is the American hen that we rarely give her due meed of praise for the great part that she takes in furnishing the food products of the nation. The following figures, taken from a Western poultry journal, show that in giving honor for industry and usefulness we ought to take off our hats to the American hen:

In 1909 the poultry products marketed in the United States aggregated a value of \$600,000,000, which is \$119,000,000 in excess of the entire gold output of the country for the last ten years.



In Preparation

Original
Hawaiian
Craft Work
In Calendars,
Mottoes and Prints

When it is taken into consideration that these figures on poultry represent only the products marketed it can readily be seen that the entire poultry products of the nation would run into fabulous figures. It is estimated that American farmers and other poultry raisers consume three times as many eggs and fowls as they sell, and if that be the case the total value of poultry products would be \$2,400,000,000.

The lumber sold annually in this country is valued at \$500,000,000, or \$100,000,000 less than the poultry products marketed. Hog sales are the same as those of lumber, and cotton sales amount to \$400,000,000.

A wise man doesn't pay a young widow compliments unless he is matrimonially inclined and willing to pay her bills.

Too many statesmen love their country with the disinterested affection felt by a foreign nobleman for an American heiress.

Waterhouse Trust

Real Estate for Sale

Special Opportunity

Someone can secure a nice home in KAIMUKI at a discount of 10% on its actual cost, owing to the fact that the owner has left the country and wishes us to make a quick sale. Cash or instalments, Particulars at our office.

We have also a \$2000 bargain on Kalakaua avenue.

Waterhouse Trust

FORT AND MERCHANT STREETS HONOLULU, T. H.

REPUBLICANS SPENT MORE

The Republicans spent more than the Democrats during the course of the last campaign, according to the statements that are being filed in accordance with law in the office of Territorial Secretary Mott-Smith.

Cecil Brown, elected to the Senate on the Republican ticket, spent \$266.50 or nearly half of the amount he will receive for the first session.

On Hawaii H. L. Holstein spent \$143.40 and Alfonso \$75. On Maui, Naome spent \$25.50 and C. L. Kookoo \$28.95.

ADMIRAL HARBER HERE ON VISIT

(Continued from Page 1.)
civil and military and naval, could not be given.

At this time Admiral Harber was in command of the Asiatic station and his fleet was practically all in Cavite, just across the bay from Manila, the Charleston being the flagship of the squadron.

It is called the "bamboo fleet" in the navy, this small number of fighting ships in the Far East, but the officer in command of the bamboo fleet showed himself a much bigger man than the one who headed the big sixteen on that occasion.

The men of the smaller fleet had been coming ashore all the time, but when the great talk and discussion arose at the time the battleships arrived, Harber sent his own medical men to Manila to examine conditions and look into the situation with the Bureau of Health, which is in charge of Captain Victor G. Heiser of the Marine Hospital Service.

Their report was that there was absolutely no danger to the men in coming, provided they ate nothing but well-cooked food during the time they were on shore, and on this report the commander of the Asiatic squadron allowed his men shore liberty, as usual, while those on the big ships stayed on board their vessels the entire time they were in Manila waters before sailing for China and Japan.

This action on Rear-Admiral Harber's part won for him a warm place in the hearts of Manilans, and he is most certain of the warmest of warm welcomes at any time he goes to the Pearl City of the Orient.

DE MELLE DOGGIE CAUSED TROUBLE

Frank de Melle, steward of the Inter-island steamer Mauna Kea, has a dog that he might be induced to part with should some one come around who would guarantee to remove the canine from the neighborhood.

The police allege that the animal has been indulging in the reprehensible habit of scaring women and children and life in the vicinity of the dog has been anything but a long sweet dream of bliss.

De Melle has been called to police station and will have a hearing before Judge Lymer on next Monday morning.

Weekly Bulletin \$1 per year

ISLAND FRUIT CO.,

72 S. KING STREET

Phone 1515



Don't Neglect
Your Fine Watch

Many watches are ruined through lack of care and attention. Appoint us the caretakers of your timepiece.

Twenty years' experience as practical watchmakers places us in a position to guarantee good, honest work in the repairing of fine watches.

We charge no more for first-class work than you may pay for poor.

H. F. Wichman
& Co., Ltd.,
Lending Jewelers
FORT STREET

LYMER MATINEE BRIEF BUT BREEZY

Judge Lymer's matinee at police station this morning continued for less than a half hour owing to a number of continuances granted the several defendants represented by their attorneys.

E. J. Lord who is claimed to have disregarded the prescribed rules of the road in the manipulation of his automobile was given a further continuance until Wednesday morning.

On Wednesday morning, Joe Ferraji will present himself at police court where Judge Lymer has promised to pronounce sentence upon him. Ferraji has been found guilty of appropriating funds to the amount of \$12 the property of another person.

This defendant was sentenced to six months upon a charge of embezzlement at the Circuit Court this morning.

Wednesday will also probably determine the status of Yamashiro a Japanese woman who is alleged to have committed assault and battery upon a Hawaiian woman named Wai-nai.

WEEK OF PRAYER BEGAN YESTERDAY

Central Union Church Draws Attention to Program of Devotion.

This is the Week of Prayer, to which the Central Union church calendar draws attention as follows:

The men of the world are thanking God and praying together this week as follows:

Sunday, November 13—For the growth of the Young Men's Christian Associations in North America in material equipment, and spiritual power and effective service in God's kingdom. For the world's central and the thirty-two national Y. M. C. A. committees and officers.

Monday, November 14—For Christian unity, church brotherhoods and religious revival among the men of North America. For all men in Africa who are Christians, for the millions who are not Christians and for the Christian business men who are standing behind the work in that continent.

Tuesday, November 15—For the adult Bible classes of our continent. For the millions of irreligious men in South America.

Wednesday, November 16—For all work in North America that aims to bring Christ to men who are outside of the churches. For the 150 millions of young men in Asia who have not the Gospel and for those who are trying to reach them.

Thursday, November 17—For every form of Christian social service in America. For all who labor in the regions under the Southern Cross in the Pacific Ocean and for the men they are trying to reach.

Friday, November 18—For the Christianization of our civil life and our public servants, that every citizen may take his rightful place in the political life of the nation. For the men of Europe.

Saturday, November 19—For the vast army of immigrants crowding into North America. For the men of Mexico and Central America.

Sunday, November 20—For a great religious forward movement the world over.

The men of this church are asked to join with their fellows elsewhere in this week of united prayer and especially to—

1. Pray each day, using the suggestions in the enclosed leaflet. Tens of thousands of men will be using the same topics.

2. Come to a meeting for prayer each day, November 14 to 19 inclusive, from 12:10 to 12:25 noon, at the Association building.

3. Help make the men's meeting Sunday afternoon, November 20, at 4:30, a large and effective meeting. It will be held at the Association building, and be addressed by Rev. J. W. Wadman, one of Honolulu's best speakers.

Sincerely,
RELIGIOUS WORK COMMITTEE,
YOUNG MEN'S CHRISTIAN ASSOCIATION OF HONOLULU.

SCHOONER SPOKANE LUCKY

(Special Bulletin Correspondence.)

Hilo, Nov. 11.—The schooner Spokane went on that reef at the entrance to the harbor of Hilo last Thursday evening. She remained fast only for about half an hour, however, and managed to get clear by her own efforts, and owing to the favorable weather conditions it is considered certain that no damage was done.

The Spokane came from the Sound with a load of lumber, consigned to Blackfield & Co. Her former skipper, Captain Jamieson, died since the vessel was lost in this port, and her present master, Captain Simpson, had not visited Hilo for the past twenty-eight years.

Luckily there was hardly any wind at the time the Spokane went on the reef, and she therefore merely slid on very gently and did not

KUHIO'S LUAU GRAND SUCCESS

Puneliian, (The flowery wreath of heaven), the beautiful home of Prince and Princess Kahanianalo at Waikiki, was the scene of festivities last Saturday afternoon, when a grand luau was given for the benefit of the Republican workers, who were instrumental in making the recent campaign a success for the Republican party.

Prince Kuhio, the Delegate, and his charming wife, the Princess Kahanianalo, received the guests in their usual hearty manner, which, at once placed all callers at their ease.

The Princess was charmingly attentive to all guests and saw to it that they were escorted to their seats, which were arranged under the trees of this beautiful home.

The luau had been arranged for one hundred and fifty guests; but the arrivals far exceeded that number and the Delegate immediately arranged for all who came. More tables were placed and lauau and other Hawaiian delicacies placed on them for the people.

Large electric lights were suspended from the branches of the trees, for it was known that the luau would extend into the night.

At the conclusion of the feast those who had partaken of the Delegate's hospitality, thanked him and his wife for the good things they had enjoyed, and departed.

AUTO HITS CAR, OCCUPANTS HURT

There was a painful auto accident late Saturday afternoon. W. H. Drummond, while driving down King street, accompanied by Miss Teir, a Palama nurse, smashed into an Alaka street car. The impact was so severe that both occupants of the auto were thrown over the front of the machine. Miss Teir passing through the glass front, sustaining a number of bad cuts about the face. She was otherwise uninjured, but was taken to the Queen's Hospital, where the cuts were dressed.

Drummond got off with a few bruises, and is considered lucky, taking into account the nature of the accident.

HILO REPUBLICANS TALKING IT OVER

(Special Bulletin Correspondence.)

Hilo, Nov. 11.—The Republican ratification meeting which took place at the Armory last Thursday evening was not a particularly brilliant success, at least not in point of view of attendance. Only a few of the elected candidates showed up, and the majority of the audience was composed of young people, who evidently came mainly to enjoy the dancing. However, in staying away the voters evidently considered that they had done their full duty at the polls, which was undoubtedly true.

The candidates, on the other hand, could not be greatly blamed for enjoying a night's rest after the strenuous labors of the campaign. The meeting started with a concert by the Hilo band, which did excellently, and this was followed by some selections by a Hawaiian orchestra, while some of the young people danced. At about 8:30 o'clock John Kealoa, who acted as presiding officer, gathered together the few candidates who had shown up, and started the meeting proper.

WEED NABS FISH PEDDLER

Fred Weed, a special officer connected in a clerical capacity with the police department, made an important capture this afternoon.

Weed succeeded in placing under arrest a Japanese named Otano, who is charged with having engaged in the sale of fish at a place other than one of the authorized and recognized fish markets operated under the jurisdiction of the Territorial Board of Health.

A determined stand is being taken by the police against the discriminate sale of fish by Chinese and Japanese. The arrest made by Officer Weed today marks the commencement of a campaign that will result in protecting the public against the possible purchase of contaminated fish and other commodities.

Joe Costa a driver of a dray owned by the California Feed Company was injured by being hit by a car on the Oahu Railway this morning. Costa was picked up unconscious and given attention by Dr. Herbert. The horses and dray escaped injury.

"For Sale" cards at Bulletin... strain herself any. Captain Simpson sent word to the steamer Kaula to come to his assistance, and in the meantime he banded his sails, with the result that the schooner slid off into deep water and safety, just before the Kaula arrived on the scene.

HAWAII GAVE KUHIO BIG VOTE

CANDIDATES

DELEGATE:			
Kalaniana'ole, J. K.	1008	779	1787
McClintock, L. L.	444	298	742
Notley, C. K.	185	263	448
SENATORS:			
Fernandez, A.	742	240	982
Hewitt, Geo. C.	602	677	1279
Lewis, John G.	379	471	850
Maekawa, R. H.	678	606	1284
Metzger, Delbert E.	643	264	907
REPRESENTATIVES:			
Alonso, G. F.	748		
Campbell, Wm. K.	357		
Hale, John Faha	615		
Kahuna, Wm. Z.	159		
Kaina, Lord G.	155		
Kanahipaula, W. N.	262		
Kaukilihi, Joseph	318		
Kenelawa, M. K.	556		
Kelakolo, B. H.	525		
Kepoo, Jim M.	349		
Moanani, J. W.	634		
Nalelehu, T. N.	305		
Rickard, H. S.	691		
SUPERVISORS:			
Hanaka, S. H.	110		
Lyman, S. K.	205		
Austin, E. H.	318		
Irwin, Archer	280		
Koeki, Samuel K.	244		
Lewis, James D.	337		
Pacheco, M. S.	313		
Todd, W. A.	296		
Perez, Joseph, Jr.	102		
Pritchard, Joseph	124		
Purdy, William N.	148		
SHERIFF:			
Koolani, W. M.	613	471	1084
Paa, Samuel K.	988	821	1809
CLERK:			
Ewaliko, David K.	282	318	700
Hapai, A. A.	483	423	906
Kal, John K.	540	430	970
Kakae, John	194	55	249
AUDITOR:			
Maguire, C. K.	904	558	1462
ATTORNEY:			
Boers, William H.	1015	788	1803
Irwin, Harry	483	305	788
TREASURER:			
Lalakea, T. K.	426	442	868
Richardson, George J.	495	242	737
Swalu, Chas. H.	600	500	1100
REPRESENTATIVES:			
De Mello, M. C.	297		
Holstein, H.	703		
Ka, Charles	228		
Kanilo, H. M.	420		
Kaohi, J. K.	386		
Kaupiko, David K.	486		
Kawewehi, Henry L.	582		
Maekawa, M. K.	569		
Martin, J. H. S.	475		
Yates, Julian R.	497		
SUPERVISORS:			
Beckley, Henry P.	233		
Hussey, Joseph	50		
Kaulania, Joel	132		
Kaulawa, W. M.	220		
Keenaa, J. N.	383		
Kee'one, Samuel	108		
Pali, O. T.	91		

Rice-Sexton Wedding.
 "Hale Nani," the beautiful home of Hon. and Mrs. William Hyde Rice, was on Wednesday evening, October 26, the scene of a charming wedding when the youngest daughter of the family became the bride of Dr. Leo Lloyd Sexton of the United States Public Health and Marine Hospital Service. Owing to Dr. Sexton's sudden alteration of plans necessitating a change of residence to Hilo, instead of Honolulu, the arrangements for the wedding had to be deviated from, resulting in a quiet family wedding in place of the large one planned for the latter part of November.

Promptly at 8 o'clock, to the strains of the Lohengrin wedding march played sweetly by Mrs. Putman on the violin, accompanied by Mrs. Herman Rohrig on the piano, four fair little granddaughters of Mr. and Mrs. Rice entered the spacious drawing room and formed an aisle of white satin ribbons for the bride's party.

The bride, whose blonde loveliness was enhanced by her beautiful gown of real lace, and the becoming bridal veil caught with a wreath of orange blossoms, entered on the arm of her father, Hon. William H. Rice, and was preceded by her cousin, Miss Alice Cooke, as maid of honor, most becomingly gowned in white chiffon over satin with touches of rare lace, and carrying a shower bouquet of large pink carnations, only equalled in loveliness by that carried by the bride, of long-stemmed Madam Cochise roses.

The bridal party proceeded through the drawing rooms to where the groom, Dr. Leo Lloyd Sexton and his best man, Mr. Philip L. Rice, awaited them under the beautiful marriage bell of white asters and tulips, and were united in holy matrimony by the Rev. Hans Isenberg with the impressive marriage service of the Lutheran church. At the close of the service the young couple turned to receive the hearty congratulations and good wishes of all the gathered relatives and friends. The familiar but none the less beautiful song, "Oh, Promise Me," from Robin Hood, by De Koven, was then rendered by Mrs. W. H. Rice, Jr., with the accompaniment of violin and piano. After the reception a delightful repast was served at small tables on the large lanai and many toasts drunk to the future happiness and welfare of the young couple. Dr. Sexton is carrying away one of Lihue's fairest daughters, but a warm welcome awaits them in Hilo, their future home.

An account of this charming wedding would be incomplete without a description of the beautiful decorations, the artistic work of Miss Lillian Paty of Honolulu, who is visiting with the Rices. The color scheme chosen for the spacious drawing rooms was white and green and most effectively carried out with hanging baskets of ferns and choice potted palms and cut flowers from Honolulu and Lihue. The arches of the large doors through which the bridal party passed were outlined in white flowers and green vines, the room in which the ceremony was performed being done entirely in white jasmine and the long branches of the graceful asparagus sprengeri, and the second drawing room in white asters with banks of roses on mantles and book cases and trailing asparagus on the walls. A great bank of pure white calla lilies from the Luakaha home of Mrs. Charles M. Cooke was a feature of this room.

The dining room, connected with the drawing rooms by large sliding doors, and daintily decorated in pale yellow chrysanthemums and trailing vines, and the large hall on which the wedding supper was served was hung entirely in green vines and hanging baskets of graceful Boston fern, and the tables each held a bowl of beautiful roses.

The wedding guests, amongst whom were many nephews and nieces of the bride, had the pleasure at the close of the supper of showering the bridal couple with handfuls of rice as they hastened away to a waiting automobile.

Dr. and Mrs. Sexton leave Lihue October 29, and after a few days in Honolulu, will hasten on to Dr. Sexton's new post in Hilo.

The wedding gifts, as befitting such a charming young couple, were numerous and beautiful and consisted of cut glass, silver, and choice rugs and pictures.

Amongst the guests at the wedding were Mr. and Mrs. William Hyde Rice, Mrs. Charles M. Cooke, Rev. and Mrs. Hans Isenberg, Mrs. Margaret Christ, Miss Alice Cooke, Mr. and Mrs. B. D. Baldwin, Mr. and Mrs. C. H. Cooke, Mr. and Mrs. W. H. Rice, Jr., Mr. and Mrs. Charles A. Rice, Mr. and Mrs. Herman Rohrig, Dr. and Mrs. Frank Putman, Mr. and Mrs. S. W. Wilcox, Mr. G. N. Wilcox, Mr. and Mrs. R. L. Wilcox, Mr. and Mrs. Charles Wilcox, Mrs. W. H. Scott of Berkeley, Mr. and Mrs. Gaylord Wilcox, Miss Lillian B. Paty, Mr. and Mrs. Arthur Rice, Mr. and Mrs. Harold Rice of Maui, Mr. DeLacey, Mr. Philip Rice, and eight grandchildren of the bride's parents—Garden Island.

Sheep's milk to the amount of 42,267,000 quarts was consumed in France last year in making Roquefort cheese.

Wellman's kitty was one of the interesting members of the late lamented across the ocean balloon flight.

The man who does a lot of things is sure to do some of them right.

Only one man in 208 is over six feet in height.

MADAME
IRENE
CORSETS
ARE
ABSOLUTELY
THE BEST

The Popular Store

Up-To-Date Merchants

THE
HOME
OF
MADAME
IRENE
CORSETS

JORDAN'S

Novelties Pouring In By Every Steamer

Great Preparations for This Season's Holiday Trade

A Host Of Beautiful Merchandise ex Lurline

THE whole of our holiday lines have not yet arrived, but the snappy styles and values here already are winning trade for our store every day. We take pleasure in announcing the following new arrivals:

Ready-to-Wear Department

Advanced styles in Lingerie Dresses. We have these in every size from 34 to 44. These came by express in response to a cable order, and are what a leading manufacturer is making for next season—they're just as new as 5th Avenue will show next spring. [See our window.] The values are A1, and range in price as follows: \$17.50, \$24.00, \$32.50, \$35.00 and \$37.50 ALTERATIONS FREE.

FALL STYLES IN MILLINERY

We have just opened a choice line of Pattern Hats, reasonable price and exceedingly stylish.

CLOTH CAPES

New Capes again by Lurline, all colors, at prices wonderfully cheap. Style and economy here.

RIBBONS! RIBBONS! RIBBONS!

Tremendous large stock of New Ribbons bought from the makers direct. Novelty Persian Ribbons, Sash Ribbons in Floral and New Plaids, Hair Ribbons in Taffetta and Satin—every width. You can't go wrong by coming to JORDAN'S for Ribbons

OUR PIANO CONTEST

This Great Contest is growing more popular every day. Many of our customers are trying hard to get the Magnificent Piano as here pictured.

So me one will win. Who is it going to be?

Every 50c
Purchase
entitles the
buyer to a
Voting
Coupon



It is worth trying for. Save your Coupons. We want it distinctly understood that our employees under no circumstances are allowed any interest directly or indirectly. Please fill in your own Coupons and place them in the Ballot Box at the store.

The names of the First Six Leaders will be published Next Saturday in Evening Bulletin.

A Special in Umbrellas and Parasols

At our September Sale we did a very big Umbrella business. We picked up another line even cheaper. These will sell quickly.

\$1.50 values for 95c

\$2.00 values in Ladies' or Gentlemen's Umbrellas at \$1.25

Other qualities right up to \$15.00

Special Values in New Domestics, Pillow Slips and Sheets just opened
Our Thanksgiving Sale of Linens will continue until the 23d of November

McCALL'S PATTERNS

NEW CUSHION TOPS

JORDAN'S

All shades in SILKS for fancy work just arrived.
CHRISTMAS SUGGESTIONS in our Art Department.

REPORT GIVEN ON SUGAR CROP

11 was passing at the time.

a Seat



Startling Sale Prices

Half of \$60,000 Stock of Merchandise is being sold at Prices Unprecedented

WINDOWS, COUNTERS and CASES ARE FULL OF BARGAINS

SALE CLOSES SATURDAY, NOV. 19th

YEE CHAN & CO.

Corner King and Bethel Streets.

A World Beater

SHE SLEEPS ON A "LEGGETT"



Guaranteed for ten years. The only Sanitary Spring made.

COYNE FURNITURE CO.,
Limited, Local Agents

THE GRABOWSKY TRUCK

1, 1½, 2 AND 3 TONS 35 AND 45 HORSEPOWER
A REMOVABLE POWER PLANT; Hardened Steel BUSHINGS in every working part; EMERGENCY CONDENSING CHAMBER; POSITIVE MECHANICAL Oiling System.
HONOLULU POWER WAGON CO., Agents. W. M. MINTON, Mgr.
Phone 2166 875 South Street, Near King

Thanksgiving Proclamation

The Store where Bargain Prices and Bargain Values do the Talking

Dining Room Furniture

THANKSGIVING SUGGESTS IT---and naturally---for the furnishing of the dining room has great influence on the enjoyment of the dinner.

AND then after Thanksgiving will come Christmas and New Years---feast after feast. Surely now is the opportune time to add that new piece of furniture, or refurnish the dining room throughout. We are ready to serve you---splendidly so. Here are rich, beautiful pieces in golden, weathered and fumed oak, consisting of china closets, buffets, tables, chairs, specially priced for this occasion.

Solid Oak Pedestal Table

42-inch round top, extends 8 feet; rich golden oak finish. Regular price, \$20; special Thanksgiving price, \$15.

BUFFETS---\$25 to \$75.

CHINA CLOSETS---\$25 to \$70.

EXTENSION TABLES---\$8.50 to \$125.

CHAIRS---\$1.50 to \$9.

IT matters not how little or how much you want to pay. We believe you will surely find here what will suit your needs, and comparison will convince you that the values are not surpassed anywhere. We invite you to come and look whether you wish to buy or not. Our windows furnish some exceedingly interesting dining room suggestions and values.

Buy Here
and
Be Thankful

J. Hopp & Co.
LIMITED

Our Quality
Compels
Appreciation

AMUSEMENTS

NEW ORPHEUM BILL TONIGHT

The George B. Howard company will make a change of program this evening and present for the first time here at the New Orpheum one of the biggest present mainland successes, "Our New Minister." This piece played to top prices at the Princess Theatre in San Francisco last week and the week before and according to reports from there did capacity business during the first seven days of the run with indications which pointed to continued crowded houses for the balance of the season. When San Francisco, who are regarded the most critical theatrical people in the country, are willing to pay as high as one dollar for seats and crowd the theatre nightly to see "Our New Minister," Honoluluans are to be congratulated on having an opportunity to see successes of that caliber.

The story of the play concerns a ne'er-do-well of Hardscrabble and the life of New England and the simplicity and sweetness of New Englanders make up the theme. George B. Howard will assume the role of the new minister, a character entirely foreign to anything in which we have seen him here and according to his success in the part on the mainland is said to have created a new interpretation and incidentally made of it what the author originally intended.

All of the Howard favorites will be cast in "Our New Minister," including Robert McKim, James Norton, Arthur Elton, Oliver Bailey, Eva Martella, Marion Dunn and Betty Howard.

For the latter part of the week, including the usual matinee Saturday, "Other People's Money" will be offered. The success of the Howard company continues and the usual crowded house should be on hand during the week.

GREAT ATTRACTION AT PARK THEATRE.

A team of equilibrists, equalled by no other pair of acrobatic actors in the world will open at the Park Theatre tonight for a limited engagement. They are Wills and Hassan remembered wherever they have given exhibitions on account of the difficult and hazardous nature of their act. They have played in all the principal cities of the world and so successful have they been, that last year they sealed at an offer for a long time contract made to them by one of the great circus managers. Although the offer carried a promise of remuneration that would seem almost fabulous to many, they refused, claiming they could do much better by managing

their own act and traveling wherever they wished. That they were induced to stop over in Honolulu is the work of one who knows their real worth. But a long voyage without practice in respect, and the offer of Manager Congdon to pay what ever sum they asked, persuaded them to stop over here. They will give the same act here that has won them such renown in Europe, Australia, Canada and the United States.

THE NOVELTY.

The Musical Millers will repeat their opening week end success and continue the act they call "The Musical Mark t Mash." These people caught on from the very first at their work is full of humor and at the same time not lacking in musical ability. So many people wanted to see the donkey and the black cats dance, who could not get into the house Saturday night, that it was decided to give them another opportunity between Monday and Thursday evening.

Wise and Milton return tonight, after a few nights' vacation in which they delighted big audiences at the Novelty. Their act made the usual hit there. Wise will have two brand-new songs. Katie Milton will hand out another surprise in one of her own songs. The team is one of the most popular that has ever appeared in the city. George Stanley, the dago imitator, is a success beyond all expression. The entire bill at the Novelty is a good one, quite up to the standard of that house.

SEAT CHANGES AT THE SAVOY.

Patrons of the Savoy will find some improvements in the seating arrangements this evening. By dint of hard work, the entire pitch of the floor has been changed, the rear seats elevated and the front ones lowered. The obstructing post in the center of the house has also been taken out.

The Savoy picture films are the best procurable and each one is doubly censored before it is shown in public. It has to pass the eye of the official censor of New York before it is shipped to Honolulu, and it has to be run at a private view before the manager of the house before it goes on at a regular performance. Patrons of the Savoy may come assured of the fact that nothing objectionable in the picture or vaudeville line will be seen.

A Chinese named Leong Kum has been placed under arrest by Sheriff Jarrett's men upon a charge of attempting to dispose of a certain quantity of prepared opium. In tracing the sale of the dope to the doors of Leong Kum, Chief McDuffie and his men employed currency of the realm that had been previously marked. The Chinese will have a hearing before Judge Lymer at Police Court on Thursday morning.

CONSERVATION TO BE TALKED

Joint Meeting Next Wednesday
Interests Prominent Residents of Islands.

Very general interest is being manifested in the special meeting on Conservation that is to be held in the throne room at the Capitol on next Wednesday afternoon, November 16, at two o'clock, under the joint auspices of the Board of Agriculture and Forestry and the Hawaiian Sugar Planters' Association.

In addition to the general invitation to plantation managers and other members of the Hawaiian Sugar Planters' Association special letters of invitation have been sent to many men prominent in business and official life, so that the meeting could be a representative gathering. Several short addresses, limited to ten minutes each, will be made by Governor Frear, Messrs. Marston Campbell, R. S. Hosmer, Alonzo Gattley, Hon. W. O. Smith, Prof. C. H. Hitchcock, Dr. E. V. Wilcox and Dr. W. C. Hobbs on the cardinal points of Conservation as they effect local conditions.

The special object of this meeting is to direct attention to certain things that ought to be done to make the natural resources of Hawaii of greater value to the people of the islands, especially in the ways of preventing waste and encouraging wise use. It is probable that the discussion will be particularly directed toward the right use of waters, surface and underground.

This meeting is an important one which should be attended by all who wish to keep posted on the local aspects of a subject of national importance. The meeting is open to the public.

NOTICE

Deaths from kidney disease have frightfully increased---now nearly 50,000 a year.

If this is to be changed people should know---

1. That kidney trouble is INFLAMMATION OF THE KIDNEYS and that when it becomes chronic it is declared incurable.

2. Prof. Tyson says the incurable stage is established about the sixth month. Hence no part of that six months ought to be wasted.

3. Treatment of inflamed kidneys by excipients has broken down---Prof. Tyson declaring (with reference to agents to restore the normal condition of the kidneys), "I believe there are none," which cuts out at one sweep all the kidney medicines on druggists' shelves.

4. That these conditions gave rise to a search for something to palliate instead of excite inflamed kidneys.

5. That as the result of those researches a bland infusion was worked out that reduces inflamed kidney tissues and that a majority of cases now yield whether in the chronic stage or not.

Hence, there is only one agent that dares claim in print to cure chronic kidney disease.

Honolulu Drug Co. is the only drug store in your city that is permitted to carry the new kidney palliative, Fulton's Renal Compound. We desire to hear from and advise with cases not yielding. Ask for free literature.

WOMEN JOKE WITH AMATEUR ROBBERS

Bandits After Stopping Auto Party Are Caught by Posse of Farmers.

KANSAS CITY, Mo., Oct. 31.—Two farm hands, Fred Steiger and Lyman Ramsey, aged 18 and 19 years, respectively, yesterday held up and robbed four persons who were driving in an automobile in the country south of here. The victims of the robbery, which netted the youths but four dollars, were Harry C. Mosher and wife of Chicago and M. I. Mosher and Mrs. Ethel Allen of this city.

Although the robbers, with drawn revolvers, were extremely serious about their work, the occupants of the motor car refused to see the affair in the same light. While the women fested with the amateur desperadoes about the cruel business they were engaged in, the men pulled some small change from their pockets and handed it to the hold-up men. No attempt was made to search the passengers of the car. Both robbers were armed with 45-caliber revolvers, purchased here last Saturday, and wore red handkerchiefs as masks over their faces. Ramsey also added a pair of automobile's goggles to his disguise.

A posse of farmers captured the bandits shortly after the robbery had taken place. County authorities say the youths told them they had planned an invasion of the South, intending to commit robberies enough to pay their expenses and then go to Wyoming to establish a permanent haunt.

Whitney & Marsh

CLEANING-UP SALE

of

LADIES' WASH SUITS and LINGERIES

Broken Lines and Sizes, begins on
MONDAY MORNING, the 14th inst.

See window display for some of the bargains

Handsome assortment of
Parisian
Chiffon Scarves and Veils

We carry a full line of
"Redfern" and "Warner's"
Corsets
in all the latest models

Retiring Sale

OUR SALE is fast drawing to a close on account of lack of goods. But we still have a part of the LARGE CONSIGNMENT of READY-MADE DRESSES, which we are almost giving away.

We still have a large quantity of DRESS GOODS, DOMESTIC NOTIONS and LADIES' UNDERWEAR at PRICES THAT CAN NOT BE EQUALED elsewhere.

Call and Examine the Goods

L. B. KERR & CO., Ltd.
Alakea Street



Cascade
GINGER ALE
There's a Toast
in Every Glass

At All Fountains
and by the Case from
RYCROFT'S
FOUNTAIN SODA WORKS
PHONE 2270

ART GLASS DOMES and READING LAMPS

Specially Selected for the Holiday Trade

The Hawaiian Electric Co., Ltd.

As long as you are not a vegetarian buy your supply of meat where you know it is clean and good.

Metropolitan Meat Market

HEILBRON & LOUIS, Proprietors
Telephone 1814

If It's Paint

AND YOU WANT A GOOD JOB, SEE ME—TOM SHARP

SHARP SIGNS

PHONE 1697 ARE SEEN EVERYWHERE ELITE BUILDING

ABADIE'S FRENCH PROCESS USED IN CLEANING
Ball and Dinner Gowns and Evening Wraps

FRENCH LAUNDRY J. ABADIE, Proprietor 777 KING
Telephone 1491 No Branches

Time To Get Ready For THANKSGIVING

Preparations are being made to serve you here. Order your PIES and other TABLE DELICACIES NOW. Select from this list: MINCE, PUMPKIN, SQUASH and CRANBERRY PIES, and PLUM PUDDING.

PALM CAFE

ARE THE SOLE AGENTS

**Alexander Young Hotel
Laundry**

Our Parcel Delivery passes your door twice a day.



WEEKLY BULLETIN

\$1 a Year

CLEAN VICTORY IN MAUI COUNTY

McCandless' Speeches Against
Immigration Prove Boss'
Undoing.

(Special Bulletin Correspondence.)
WAILUKU, Maui, Nov. 11.—The Republicans made a clean sweep on Maui and Molokai. Rubio polled the immense vote of 1586, against 473 for M. Candless and 316 for Nottley, or a majority of 1113 over McCandless and Nottley. McCandless' immigration speeches killed him here, for even leading Democrats who stood ready to vote with their party could not vote for "Eliwal's" suicidal policy of keeping out laborers that are greatly needed for the development of industries. With the boss went down to defeat everyone who championed his cause, even the independent candidates who called themselves Republicans, but who espoused everything else Democratic, excepting the name.

Both Coe and Kopoika made a grand fight, but they could not win. Campaign Manager Samuel E. Kalamia and his associates have taught straight voting to all Republicans throughout the county, and even Coe and Kopoika have helped propagate this principle in years gone by, so when they came around this year telling the voters to change for them, the people voted as they did before—straight Republican. Wailuku, Waihee and Hana are the only big precincts which gave the independents big returns. This was because these are Democratic strongholds. Everybody knows Wailuku, the fighting fifth of Maui, has over three hundred on the Republican rolls, but Hon. Philip Pali, senatorial candidate, received but 108 votes, and over forty of these are Home Rule votes. In other words Wailuku is the only Republican precinct controlled by Democrats.

Many of the leading Democrats have made open declarations since election day of their intention to join the Republican party, for they are getting tired of belonging to a party that declines in strength from year to year, and these will be invaluable additions to the Republican ranks. Campaign Manager Samuel E. Kalamia is elated over the result of the election, but he prefers to celebrate in silence. However, the Wailuku Republicans will give a big luncheon at the Wailuku Armory tomorrow afternoon at two o'clock, and it is expected nearly a thousand will be there.

**WOLGAST-NELSON
FIGHT IN DECEMBER**
Matched for Twenty Rounds
On Afternoon of 24th.

Ad Wolgast and Bat Nelson have been matched for a go at San Francisco on December 24. Wolgast agreeing to fight on that date in a telegram to Louis Blot, which reads: "Cadillac, Mich., November 2. "Louis Blot, San Francisco: "Will box Nelson San Francisco December 24, \$7500 and \$500 expenses, with privilege of 40 per cent. Let me know quickly; vaudeville engagements.

"AD WOLGAST." Blot, with the telegram of Wolgast and the word of Nelson that he would sign articles for a return engagement with the present light-weight champion, is sure of a 20-round go at his arena on the afternoon of December 24.

BAND CONCERTS

FOR WHOLE WEEK

The Hawaiian band will play at Emma Square this evening, beginning at half-past seven o'clock. This is moonlight concert week, and the band will play every evening. Tomorrow night at Thomas Square; Wednesday evening at Ania Park and Thursday at the Seaside Hotel at Waikiki. Following is the program for this evening: Overture—Forest Storck The Monk's Dream Safroni Finale—The Huguenots Meyerbeer Reminiscences of Bellini Godfrey Vocal—Hawaiian Songs. As by Berger Selection—The Chocolate Soldier. Strauss Waltz—The Merry Widow (by request) Lehar March—The Merry Widow (by request) Lehar The Star Spangled Banner.

CASTORIA

For Infants and Children.
The Kind You Have Always Bought

Bears the Signature of *Dr. J. C. H. H. H.*

Do not think that because you have not paid your Personal Tax (Poll, Road and School) for this year or for several years, that the Tax Office is not aware of the fact. The Tax Office has a complete record of all persons subject to a Personal Tax and if not paid when due, it only means that interest at the rate of ten percent per annum is piling up against you.



A Family
Medicine
Without
Alcohol

Ayer's Sarsaparilla is a tonic and alternative, free from alcohol. What is a "tonic"? A medicine that imparts strength or tone; a medicine that builds up, gives vigor and power. What is an "alternative"? A medicine that alters or changes unhealthy action to healthy action. Ayer's Sarsaparilla does all this without stimulation. Ask your doctor if a family medicine, like Ayer's Sarsaparilla, is not vastly better without alcohol than with it.

Ayer's Sarsaparilla

LEGAL NOTICES.

IN THE CIRCUIT COURT OF THE First Judicial Circuit of the Territory of Hawaii.—At Chambers, in divorce, Ida Kekoa, Libellant, vs. Hialeka Kekoa, Libellee. Divorce. Order of Publication. On reading and filing the affidavit of said libellant herein, in which she deposes that said libellee has departed from the Territory of Hawaii and is now in parts unknown and that she has no information as to what is his post-office address or whether he has any such address or at which place letters addressed to him would most likely be received by him and that his last known place of residence was on the island of Oahu, City and County of Honolulu, Territory of Hawaii, and upon an inspection of the return of the High Sheriff of the Territory of Hawaii, who sought to make service of process upon him, the said libellee herein, to the effect that said libellee has departed from this Territory and can not be found herein and that for said reason no personal service has been had upon him of said libel and summons herein; Now, therefore, it is Ordered, that notice of the pendency of said libel be given to the libellee, by publication thereof, at least once a week for six successive weeks in the Evening Bulletin, a daily newspaper published in said Honolulu, Territory of Hawaii, and that said case shall be heard and determined at the courtroom of said Court on Monday, January 9, 1911, at the hour of 9 o'clock a. m. of said day, or as soon thereafter as counsel can be heard. Dated, Honolulu, City and County of Honolulu, Territory of Hawaii, this 31st day of October, A. D. 1910. (Sgd.) W. J. ROBINSON, Third Judge of the Circuit Court, First Judicial Circuit, Territory of Hawaii. 4762—Oct. 31; Nov. 7, 14, 21, 28; Dec. 5.

AGED RESIDENT OF MAUI DEAD

(Special Bulletin Correspondence.)

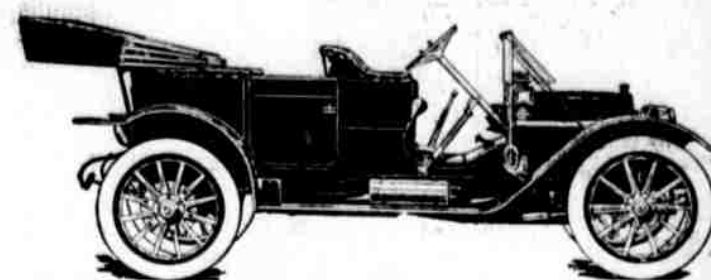
WAILUKU, Maui, Nov. 11.—Edward H. Bailey, one of Maui's most respected and oldest citizens, passed away at his home on Vineyard street in Wailuku at eight o'clock Saturday evening, Nov. 5, aged 73 years. He was born at Kohala, Hawaii, February, 1836. His father was Edward Bailey, who, with his wife, started the Wailuku Boarding School for Girls, the pioneer seminary for the Christian education of Hawaiian girls in the kingdom of the Kamehamehas. Mr. Bailey, Sr., was born in Massachusetts, and with his young bride came to Hawaii as a teacher. Five children were born of this union, all boys. The eldest was Edward H., and the other sons in order were: William H., Horatio B., Jas. B., and Chas. A. Bailey of Los Angeles, California, now critically ill in a hospital in that town. All the other brothers are dead.

Edward H. Bailey was married in Wailuku to Miss Emily Kane, widow, who now survives him, and who was one of the first pupils attending the Wailuku Seminary taught by the elder Bailey.

The funeral services were attended by one of the largest gatherings that ever turned out to pay its respects to a departed friend. Rev. R. B. Dodge of Wailuku and E. B. Turner of Paia conducted the services, assisted by Rev. Cannon W. S. Short of the Church of the Good Shepherd. A quartette consisting of Miss Carolyn Scholtz, Mrs. Kathryn Case, Rev. H. P. Judd and Mr. J. Rivers sang a beautiful funeral anthem during the services. Messrs. Kaunimahu and Wilbur were the other members of the choir who joined in singing other

Chalmers MOTOR CARS

Your neighbor who has a motor car will give you the straight tip if you can get him to stop enjoying himself in the fresh air long enough to do it.



CHALMERS "30" TOURING CAR

Don't Think Thoughts Six Years Old

Many a business man has said, "I'm not enough of a mechanic to run an automobile, and I can't afford to keep a chauffeur or pay big garage bills to keep my car in order."

The man who says that is thinking in terms of six years ago.

Six years ago such a statement would not have been so far afield. The world has moved in six years and the making of automobiles has shown more progress than nearly anything else.

You can buy a real automobile now for as low a price as \$1500. It is so simple to operate that you can, and should, drive it yourself. It is so trouble-proof you won't need to keep it in a garage and have high-priced mechanics tinkering with it all the time.

Six years ago there was scarcely a real automobile to be had at any price. But now—just look around you. See the thousands of men like yourself who use them constantly. Talk to your neighbor who has one. He will give you the straight tip, if you can ever get him to stop enjoying himself in the fresh air long enough to do it.

There are many good cars nowadays, and any good car made by one of the well established companies is a good investment.

We are not in sympathy with that sort of automobile advertising which insinuates that all other cars except the particular one advertised have untold features and aren't worth half their price. A hammer is a very useful thing in a carpenter shop, but it has always looked to us a little out of place in the hands of a salesman or advertiser.

You need a car and you won't make a mistake in buying any one of a number of makes.

Of course, we would like the privilege of showing you the Chalmers before you buy. We know that we have exact cars, yet if we can't convince you that we offer better value, dollar for dollar, than any one else, why that is our fault, not yours.

LICENSED UNDER SELDEN PATENT

Associated Garage, Ltd.,

Dealers in Motor Cars

J. A. GILMAN, Shipping and Commission

Agent for

Arthur Sewall & Co., Bath, Me.
Parrott & Co., San Francisco
Badger's Fire Extinguisher Co.
General Fire Extinguisher Co.
(BRINNELL AUTOMATIC SPRINKLER)
Neuman Clock Co.
(WATCHMAN'S CLOCK)
Royal Standard Typewriter
Aachen & Munich Fire Ins. Co.

FORT STREET, NEAR MERCHANT

AWAKES AS FROM A DREAM AFTER 40 YEARS

Victim of Explosion Asks About
It, and Is Dazzled By the
Modern Inventions.

KENTON, O., Oct. 22.—Waking as if from a long dream, John William Exline, whose mind was made a blank by an explosion forty years ago, is now trying to reconcile present day conditions with the world as he remembers it.

Forty years ago Exline was a sawyer in a mill at Findlay, O. An explosion wrecked the mill and injured all of the employees. Exline was hurled many feet, picked up unconscious, and after hovering many days between life and death, recovered from bodily ailments but was mentally deranged.

Now his mind has cleared and he is dazzled and amazed by telephones, automobiles and aeroplanes. To him all three are almost beyond belief. His astonishment is childlike. Exline says it seems that he has just awakened from a dream or a trance.

NO CHRISTMAS PRESENT SO PLEASING TO THE
RECEIVER AS A

ONOTO

**SAFETY SELF-FILLING
VACUUM
FOUNTAIN PEN**

This wonderful Fountain Pen has twelve distinct features which place it above all other pens.

Four Sizes and Prices.....\$2.50, \$3, \$4 and \$5

A. B. ARLEIGH & CO., Ltd.

HOTEL, NEAR FORT

Oceanic Steamship Company

Leave S. F. Arrive Hon. Leave Hon. Arrive S. F.
 November 12.....November 18.....November 23.....November 29
 December 3.....December 9.....December 14.....December 20
 December 24.....December 30.....January 4.....January 10
 \$85 first class, single, S. F.; \$110 first class, round trip, San Francisco.
 C. BREWER & CO., LTD., General Agents.

Pacific Mail Steamship Co., and Toyo Kisen Kaisha

Steamers of the above Companies will call at HONOLULU and leave this Port on or about the Dates mentioned below:

Leave Honolulu For Orient. Leave Honolulu For S. F.
 Korea.....November 14.....Siberia.....November 12
 Nippon amru.....November 22.....China.....November 19
 Asia.....November 29.....Manchuria.....November 26

For further information apply to

H. Hackfeld & Co., Ltd., agents

Matson Navigation Company

BETWEEN SAN FRANCISCO AND HONOLULU

From San Francisco For San Francisco
 S. S. Wilhelmina.....November 29.....S. S. Lurline.....November 17
 S. S. Lurline.....December 14.....S. S. Wilhelmina.....December 7
 S. S. Wilhelmina.....December 27.....S. S. Lurline.....December 20

S. S. NEVADAN of this line sails from San Francisco for Honolulu direct on NOVEMBER 15, 1910.

For further particulars, apply to
 CASTLE & COOKE, LTD., General Agents, Honolulu

Canadian-Australian Royal Mail

STEAMSHIP COMPANY

FOR FIJI AND AUSTRALIA: FOR VANCOUVER:
 MAKURA.....NOVEMBER 11.....MOANA.....DECEMBER 7
 ZEALANDIA.....DECEMBER 9.....MAKURA.....JANUARY 3

THEO H. DAVIES & CO., LTD., GENERAL AGENTS.

AMERICAN-HAWAIIAN STEAMSHIP COMPANY.

From New York to Honolulu, via Tehuantepec, every sixth day.
 Freight received at all times at the Company's wharf, 41st Street, South Brooklyn.

S. S. ARIZONAN, to sail.....DECEMBER 4
 S. S. VIRGINIAN, to sail.....DECEMBER 16
 FROM SEATTLE OR TECOMA TO HONOLULU DIRECT:
 For further information apply to H. HACKFELD & CO., LTD.
 agents, Honolulu.
 C. P. MORSE, General Freight Agent.

Furniture Moving

STORAGE SHIPPING PACKING

Union-Pacific Transfer Co.,
 King Street, next to Young Hotel Phone 1874

HUSTACE - PECK CO., LTD

35 QUEEN STREET PHONE 2295
 Estimates given on all kinds of Draying, Teaming, Road Building,
 Excavating, Filling,
 FIREWOOD AND COAL, WAIANAE SAND FOR SALE

FIRE INSURANCE

The B. F. Dillingham Co. LIMITED

General Agent for Hawaii:

Atlas Assurance Company of London,
 New York Underwriters' Agency,
 Providence Washington Insurance Co.
 1th FLOOR, STANGENWALD BLDG.

LIFE INSURANCE

Is not a Luxury; It is a Necessity.
 But you must have the BEST
 and that is provided by the famous
 and most equitable Laws of Massa-
 chusetts, in the

New England Mutual Life Insurance Co.

OF BOSTON, MASSACHUSETTS.

If you would be fully informed about
 these laws, address

CASTLE & COOKE,

GENERAL AGENTS,
 HONOLULU, T. H.

Bishop & Co.

Established in 1858

BANKERS

Commercial and Travelers'
 Letters of Credit issued on
 the Bank of California and
 The London Joint Stock Bank
 Ltd., London.

Correspondents for the
 American Express Company
 and Thos. Cook & Son.

Interest allowed on Term
 and Savings Bank Deposits.

BANK OF HONOLULU LIMITED

PAID CAPITAL, \$600,000

Successors to
 CLAU SPRECKELS & CO.

Invites your Account and
 offers satisfactory service.

Loans at market rates.

Exchange and Cable trans-
 fers.

Travelers' Credits and
 Checks available everywhere.

The Yokohama Specie Bank, Limited

Capital (Paid Up) Yen 24,000,000

Reserve Fund Yen 16,250,000

HEAD OFFICE, YOKOHAMA.

The bank buys and receives for
 collection bills of exchange,
 issues Drafts and Letters of
 Credit, and transacts a general
 banking business.

The Bank receives Local De-
 posits and Head Office Deposits
 for fixed periods.

Local deposits \$25 and upwards
 for one year at rate of 4% per an-
 num.

Head Office Deposits, Yen 25
 and upwards for one-half year, one
 year, two years, or three years at
 rate of 4% per annum.

Particulars to be obtained on
 application.

Honolulu Office—67 S. King St.
 P. O. Box 168.

Yu Akai.....Manager

Oahu Machine Shop

Manager.....H. L. ROSS

301 QUEEN AND RICHARDS STS.

Telephone 514

ENGINEERS AND GENERAL MACHINE REPAIRS

Automobiles, Motor Cycles, Gas Sta-
 tionary and Marine Engines, Rice
 Mill Machinery, Etc.

Honolulu Electric Co.

Engineering and Contracting
 House-Wiring Repairing Supplies
 1187 ALAKEA ST. Near Beretania

—PLANNED STEEL—
 A full assortment, sizes 24"x96"
 to 48"x120", and gauges No. 16 to
 No. 28 just to hand.

We do sheet metal work of all
 kinds, and guarantee satisfaction.
 Your patronage is solicited.

PROMPT ATTENTION TO JOBBING
 EMMELUTH & CO., LTD.

Phone 1511 145 King Street

BUILDING MATERIAL

OF ALL KINDS
 DEALERS IN LUMBER

ALLEN & ROBINSON.

Phone 1122 1111 Honolulu

Inter-Island and O. R. & L. Shipping
 books for sale at the Bulletin
 office, 50c each.

WOOD and COAL

The highest grades of fuel, in large or small amounts,
 promptly delivered.

TEAMING AND TRACTION ENGINE HAULING

Honolulu Construction & Draying Co., Ltd.,
 Queen Street, Opposite Kaahumanu Telephone 2281

Alexander & Baldwin, LIMITED.

OFFICERS AND DIRECTORS.
 H. P. Baldwin.....President
 W. O. Smith.....First Vice-President
 W. M. Alexander.....Second Vice-President
 J. P. Cooke.....Third Vice-President and Manager
 J. Waterhouse.....Treasurer
 E. E. Paxton.....Director
 J. B. Castle.....Director
 J. E. Galt.....Director
 W. R. Castle.....Director

Sugar Factors, Commission Merchants, and Insurance Agents

Agents for
 Hawaiian Commercial & Sugar Co.
 Hukui Sugar Company.
 Pala Plantation.
 Maui Agricultural Company.
 Hawaiian Sugar Company.
 Kahuku Plantation Company.
 Kahului Railroad Company.
 Haleakala Ranch Company.
 Honolulu Ranch.
 Melhyde Sugar Co.
 Kaula Railway Co.

Castle & Cooke, Ltd

Honolulu, T. H.

SHIPPING AND COMMISSION MER- CHANTS, SUGAR FACTORS and GENERAL INSURANCE AGENTS

Representing
 Ewa Plantation Co.
 Waihua Agricultural Co., Ltd.
 Kohala Sugar Co.
 Waimoa Sugar Mill Co.
 Apakaa Sugar Co., Ltd.

Puliton Iron Works of St. Louis.
 Babcock & Wilson Pumps.
 Green's Fuel Economizers.
 Matson Navigation Co.

C. Brewer & Co., Ltd.

SUGAR FACTORS AND COM- MISSION MERCHANTS

Officers and Directors:

E. F. Bishop.....President
 Geo. H. Robertson.....Vice-President and Manager
 W. W. North.....Treasurer
 Richard Ivers.....Secretary
 J. R. Galt.....Auditor
 Geo. R. Carter.....Director
 C. H. Cooke.....Director
 R. A. Cooke.....Director
 A. Gartley.....Director

C. Brewer & Co., Ltd.

FIRE AND MARINE INSURANCE AGENCIES

Royal Insurance Co. of Liverpool.
 London Assurance Corporation.
 Commercial Union Assurance Co.
 of London.

Scottish Union & National Ins.
 Co. of Edinburgh.

Caledonian Insurance Co. of Edin-
 burgh.

Upper Rhine Insurance Co. (Ma-
 rine)

Territorial Board of Immigration

Office 403 Stangenwald Bldg.
 Honolulu

SCANDINAVIA BELTING

HONOLULU IRON WORKS

Agents

Germany is OUT AFTER MORE TRADE

A remarkable example of the thor-
 ough manner in which Germany seeks
 business is provided by a circular just
 issued by the Export-Verein of Sax-
 ony, inviting its members to take part
 in a study trip through Canada for the
 purpose of gaining an idea of the pos-
 sibilities of that country as a market
 for Saxon goods.

The abolition of the Canadian super-
 tax, which practically closed Canada
 to German goods, has cleared the
 way, and this forthcoming tour serves
 to show how thoroughly Saxon manu-
 facturers mean to take advantage of
 the opportunity. The trip, adds the
 circular, will extend over several
 months, so that those taking part are
 evidently prepared to expend a con-
 siderable sum in the confidence that
 subsequent business with Canada will
 more than justify the initial outlay.

The fact that English goods, profiting
 by the super-tax imposed on German
 wares, have secured a powerful foot-
 ing in the Canadian market is evi-
 dently not regarded as an insuperable
 obstacle, and we may now expect to
 witness the inauguration of a wide-
 spread and scientific campaign having
 as its goal extensive German partici-
 pation in the Canadian import trade.

Chemical Engines and Watchman's Clocks

For Sale by
 J. A. GILMAN
 Fort Street

PACIFIC ENGINEERING COMPANY, LTD.

Consulting, Designing and Con-
 structing Engineers.

Bridges, Buildings, Concrete Struc-
 tures, Steel Structures, Sanitary Sys-
 tems, Reports and Estimates on Pro-
 jects, Phone 1045.

Inter-Island and O. R. & L. Shipping
 books for sale at the Bulletin
 office, 50c each.

REAL ESTATE TRANSACTIONS

Entered for Record Nov. 11, 1910.

From 10:30 a. m. to 4 p. m.

J. K. Kanama to Kaneohe Rice
 Co. Ltd.....Option

Est of B. P. Bishop by trs to
 Henry Holmes.....D

Amer Bd of Comm F. M. by trs
 to Hannah J. Hitchcock.....Exch D

William J. Forbes and wt et al
 to Joe de C. Pavao.....D

Est of B. P. Bishop by trs to E
 T. Winant.....D

E. T. Winant to Trs of Est of B
 P. Bishop.....D

H. Waterhouse Tr Co Ltd, trs to
 Mrs. Haleakala Hart et al.....Rel

Fred L. Leslie to W. A. Green-
 well.....D

W. A. Greenwell to Mary E. Les-
 lie.....D

Hawn Comrel & Sug Co et al to
 Territory of Hawaii.....Exch D

Entered for Record Nov. 12, 1910.

From 9 a. m. to 10:30 a. m.

Kesialama Johnson by tr to
 Hannah S. Kalani.....Rel

Hannah S. Kalani to M. W.
 To hudd.....M

Est of B. P. Bishop by trs to
 Frederick Harrison.....D

Fred Harrison and wt to Joseph
 T. Silva.....D

Joseph T. Silva and wt to Hono-
 lulu Brewing & M Co Ltd.....M

Howard D. Bowen and wt to
 Frank K. Howard.....D

Recorded Nov. 2, 1910.

Maui Auto Co Ltd to First Natl
 Bank of Waikuku, C. M.; 7 automo-
 biles, machinery, tools, supplies, etc.
 of Maui Auto Co Ltd; \$2200. B 334.
 p. 384. Oct 24, 1910.

Grace Pligim to William R. Cas-
 tie, trs; M. pe land, Palolo Rd, Ho-
 nolulu, Oahu; \$1800. B 334, p. 386.
 Aug 23, 1910.

J. H. Schuch & and wt to James E.
 Westbrooke, D; lots 5 and 6 of sub-
 div lots 1 and 2, Kapalama Tract,
 Honolulu, Oahu; \$500. B 332, p. 377.
 Nov 1, 1910.

E. M. Watson, trs, to Alexander Laz-
 arus, Rel; lot 502, gr 3506, Kinau
 and Lanailo Sts, Honolulu, Oahu;
 \$750. B 334, p. 388. Nov 2, 1910.

R. M. Overend to Trent Trust Co.
 Ltd, Addn Chge; int in lots 6 and
 8, blk 15, Kaimuki Tract, Hono-
 lulu, Oahu; \$250. B 334, p. 388.
 Nov 2, 1910.

Alexander Lazarus by mtgee to E.
 M. Watson, trs, Fore Adft; lots 502,
 gr 3506, Kinau and Lanailo Sts, Ho-
 nolulu, Oahu; \$7410. B 332, p. 389.
 Nov 2, 1910.

Henry Waterhouse Trust Co Ltd
 to Ellen O. D. Shaw, D; blk 302, Pa-
 lolo Valley, Honolulu, Oahu; \$600.
 B 332, p. 382. Nov 2, 1910.

Oluf Peterson et al by mtgee to
 John J. Grace, Fore Entry; lots 31
 and 32, L. P. 4419, Olua, Pana, Ha-
 waii. B 334, p. 383. Oct 31, 1910.

Olua Sugar Co Ltd to W. H. Ship-
 man, L; various lots of land, Volcano
 Rd, etc, Puna, Hawaii; 5 yrs at \$300
 per yr. B 330, p. 423. Sept 8,
 1910.

Joseph K. Kahoe to Francis Gay,
 D; int in R. P. 3669, kul 9267, ap-
 1 and 2, Wainiha, Halealea, Kaula;
 \$325. B 332, p. 375. Oct 31, 1910.

Anita to Hee Fat, D; R. P. 6755,
 kul 10449, Kealia, Puna, Kaula; 2
 shs in hui lands, Molokai, etc, Koo-
 lau, Kaula; \$400. B 332, p. 379.
 Nov 2, 1910.

Lum Ching and wt to L. Tsen
 Kong, D; 2 814-1000a land, Hono-
 lulu, Oahu; \$1900. C. L. R. Doc No
 244. Nov 1, 1910.

Joseph K. Kahoe to Francis Gay,
 D; int in R. P. 3669, kul 9267, ap-
 1 and 2, Wainiha, Halealea, Kaula;
 \$325. B 332, p. 375. Oct 31, 1910.

Anita to Hee Fat, D; R. P. 6755,
 kul 10449, Kealia, Puna, Kaula; 2
 shs in hui lands, Molokai, etc, Koo-
 lau, Kaula; \$400. B 332, p. 379.
 Nov 2, 1910.

Lum Ching and wt to L. Tsen
 Kong, D; 2 814-1000a land, Hono-
 lulu, Oahu; \$1900. C. L. R. Doc No
 244. Nov 1, 1910.

Joseph K. Kahoe to Francis Gay,
 D; int in R. P. 3669, kul 9267, ap-
 1 and 2, Wainiha, Halealea, Kaula;
 \$325. B 332, p. 375. Oct 31, 1910.

Anita to Hee Fat, D; R. P. 6755,
 kul 10449, Kealia, Puna, Kaula; 2
 shs in hui lands, Molokai, etc, Koo-
 lau, Kaula; \$400. B 332, p. 379.
 Nov 2, 1910.

Lum Ching and wt to L. Tsen
 Kong, D; 2 814-1000a land, Hono-
 lulu, Oahu; \$1900. C. L. R. Doc No
 244. Nov 1, 1910.

Joseph K. Kahoe to Francis Gay,
 D; int in R. P. 3669, kul 9267, ap-
 1 and 2, Wainiha, Halealea, Kaula;
 \$325. B 332, p. 375. Oct 31, 1910.

Anita to Hee Fat, D; R. P. 6755,
 kul 10449, Kealia, Puna, Kaula; 2
 shs in hui lands, Molokai, etc, Koo-
 lau, Kaula; \$400. B 332, p. 379.
 Nov 2, 1910.

Lum Ching and wt to L. Tsen
 Kong, D; 2 814-1000a land, Hono-
 lulu, Oahu; \$1900. C. L. R. Doc No
 244. Nov 1, 1910.

Joseph K. Kahoe to Francis Gay,
 D; int in R. P. 3669, kul 9267, ap-
 1 and 2, Wainiha, Halealea, Kaula;
 \$325. B 332, p. 375. Oct 31, 1910.

Anita to Hee Fat, D; R. P. 6755,
 kul 10449, Kealia, Puna, Kaula; 2
 shs in hui lands, Molokai, etc, Koo-
 lau, Kaula; \$400. B 332, p. 379.
 Nov 2, 1910.

Lum Ching and wt to L. Tsen
 Kong, D; 2 814-1000a land, Hono-
 lulu, Oahu; \$1900. C. L. R. Doc No
 244. Nov 1, 1910.

Joseph K. Kahoe to Francis Gay,
 D; int in R. P. 3669, kul 9267, ap-
 1 and 2, Wainiha, Halealea, Kaula;
 \$325. B 332, p. 375. Oct 31, 1910.

Anita to Hee Fat, D; R. P. 6755,
 kul 10449, Kealia, Puna, Kaula; 2
 shs in hui lands, Molokai, etc, Koo-
 lau, Kaula; \$400. B 332, p. 379.
 Nov 2, 1910.

Lum Ching and wt to L. Tsen
 Kong, D; 2 814-1000a land, Hono-
 lulu, Oahu; \$1900. C. L. R. Doc No
 244. Nov 1, 1910.

Joseph K. Kahoe to Francis Gay,
 D; int in R. P. 3669, kul 9267, ap-
 1 and 2, Wainiha, Halealea, Kaula;
 \$325. B 332, p. 375. Oct 31, 1910.

Anita to Hee Fat, D; R. P. 6755,
 kul 10449, Kealia, Puna, Kaula; 2
 shs in hui lands, Molokai, etc, Koo-
 lau, Kaula; \$400. B 332, p. 379.
 Nov 2, 1910.

Lum Ching and wt to L. Tsen
 Kong, D; 2 814-1000a land, Hono-
 lulu, Oahu; \$1900. C. L. R. Doc No
 244. Nov 1, 1910.

Joseph K. Kahoe to Francis Gay,
 D; int in R. P. 3669, kul 9267, ap-
 1 and 2, Wainiha, Halealea, Kaula;
 \$325. B 332, p. 375. Oct 3

Holiday Goods

ARRIVING BY
EVERY STEAMER

Special Christmas Purchases
for this season contain latest
mainland styles and novel-
ties.

J. A. R. Vieira & Co.
111 HOTEL STREET

**CLOTHING
ON CREDIT**
\$1⁰⁰ A WEEK
NO SECURITY
F. LEVY OUTFITTING CO.
SACHS BLDG. FORT ST.

**Automobile
Supplies & Repairing**
Associated Garage,
Limited

**Von Hamm - Young
Co., Ltd.**

Pioneers and Leaders in
the Automobile Business

Agents for such well-known cars
as Packard, Pope-Hartford, Stevens-
Duray, Cadillac, Thomas Flyer,
Buick, Overland, Baker Electric, and
others.

HERE!
PIERCE-ARROW MOTOR-CYCLE
Machines can be seen at Berger's
Electrical Shop.
R. C. AXTELL
Sole Agent - 1048 Alakea Street

LOCOMOBILE
"The Best-Built Car in America"
SCHUMAN CARRIAGE CO., LTD.
Agents
J. W. KERSHNER

Auto Tire Repairing
1177 Alakea St. Phone 2434

Poultry
Fine Lot of
CHICKENS, GEESSE AND DUCKS

CLUB STABLES
Telephone 1109

Y. Yoshikawa,
The BICYCLE DEALER and RE-
PAIRER, has moved to

180 KING STREET
New location—Red front, near
Young Building. Telephone 2518.

H. YOSHINAGA
Emma Street, above Beretania.
New BICYCLES arrived for racing
and general use. Prices, \$25 up to
\$35, without brakes. Repairing and
re-tiring done neatly.

S. MIYAMOTO
Contractor for Building, Stone and
Cement Work, Painting, Paperhang-
ing.
No. 1316 LILIHUA ST., Cor. Kukui,
Honolulu

San Francisco Hotels

HOTEL STEWART

SAN FRANCISCO

Geary Street, above Union Square

Just opposite Hotel St. Francis

European Plan \$1.60 a day up

American Plan \$3.00 a day up

Steel and brick structure, furnish-

ings cost \$200,000. High class

hotel at moderate rates. Omnibus

meets all trains and steamers.

Hotel Stewart now recognized as

Hawaiian Island headquarters.

Cable address, "Trawets" A. B. C.

Code. Reservations made through

Trent Trust Co., Fort Street,

Honolulu.

Hotel St. Francis

Union Square, San Francisco

Under the Management of

James Woods

FACING the beautiful park
in the heart of the city,
which is the theatre of
the principal events of
the famous festivals of San
Francisco, this hotel, in en-
vironment and atmosphere, ex-
presses most pleasantly the
comfortable spirit of old Cal-
ifornia.

The royalty and nobility of
the Old World and the Far
East and the men of high
achievement in America who
assemble here contribute to the
cosmopolitan atmosphere of an
institution which represents
the hospitality and individual-
ity of San Francisco to the
traveler.

The building, which marks
the farthest advance of science
in service, has now the largest
capacity of any hotel structure
in the West, and upon comple-
tion of the Post street annex
will be the largest caravansary
in the world.

WHILE THE SERVICE IS UN-
USUAL, THE PRICES ARE NOT.

European Plan from \$2.00 Up

TRY AND GET DOWN TO

Haleiwa

FOR THE DANCE NEXT SATUR-
DAY NIGHT

WAIKIKI INN

First-Class Family Hotel

Best Bathing on the Beach

W. C. BERGIN, Prop.

Hotel Majestic

Sachs Block, Fort and Beretania Sts.

Fine furnished rooms, \$1 per day

\$10 and upwards per month. Splen-

d accommodations.

MRS. C. A. BLAISZELL, Prop.

The New Phone Number

AT

Vienna Bakery

IS

2124

SUMMER DAYS AND

Pau Ka Hana

GOOD THINGS

F. E. DAVIS & CO.,

MERCHANDISE BROKERS

Merchant and Nuuanu Streets

FOR YOUR GROCERIES, SEE

AMERICAN BROKERAGE CO.

93-95 King Street, near Maunakea

Phone 2291 Daily Delivery

Weekly Bulletin \$1 per year.

What Every Woman Ought to Know

Every woman knows that nothing is more an-
noying or reflects more upon her reputation as
a careful housekeeper than rats, mice, cock-
roaches, water bugs, etc., in the house.

Every woman should know of the reliable ex-
terminator for all vermin of this nature—
Sears' Electric Rat and Roach Paste. This
paste is ready for use and drives rats and mice
out of the house to die. Put in sinks and on
shelves at night, cockroaches and water bugs
are dead in the morning.

Money refunded if it fails. 3 ounce box, 25c—10
ounce box, \$1.00. Sold by druggists everywhere,
or sent express prepaid on receipt of price.

Sears' Electric Paste Co., Chicago, Ill.

BIG VALUES

DURING SPECIAL SALE AT

BLOM'S

The very latest in RAIN COATS.

TAILORED GOWNS and LINGERIE

SHIRT-WAISTS. Also NOVELTIES.

Mrs. F. S. Zeave,

Rooms 67-68 Young Building

Phone 3998

STUNNING NEW MILLINERY

At

MISS POWER'S MILLINERY

PARLORS

Easton Building Fort Street

GILBERT CORSETS

Strictly custom made.

First in Model, Quality, Workman-

ship.

Requisite to Health, Beauty and

Style.

MISS WOODARD Fort Street

New Display of

CHILDREN'S and MISSES' HATS

Dunn's Hat Shop

LEADING HAT CLEANERS.

All kinds of Hats Cleaned and

Blocked.

No Acids Used. Work Guaranteed.

FELIX TURRO, Specialist.

1154 Fort Street. Opp. Convent.

Honolulu, T. H.

KAM CHONG CO.,

GENTS' FURNISHINGS

Fort and Beretania Streets

Harrison Block

WAH YING CHONG CO.,

King Street, Ewa Fishmarket

WING CHONG CO

KING ST., NEAR BETHEL

Dealers in Furniture, Mattresses,

etc., etc. All kinds of KOA and MIS-

SION FURNITURE made to order.

Grand Reduction Sale

SING CHAN CO.,

229 King Street, Opposite Aala Park

GENERAL HARDWARE

Fine Line of

Carpenter Tools

At the New Hardware Store

CITY HARDWARE CO.

King and Nuuanu Streets

IMPORTERS OF ORIENTAL

GOODS

WING WO TAI & CO.

941 Nuuanu Street Phone 1020

FINEST FIT

And Cloth of All Quality Can be

Purchased from

SANG CHAN,

MC CANDLESS BLDG.

P. O. Box 961 Telephone 1731

Meat Market and Importers.

Cable News

(Continued from Page 1)

PARIS FLOODED AGAIN BY SEINE

(Associated Press Cable.)

PARIS, Nov. 13.—The flood that

has threatened this city during the

past few days, the result of heavy

rain in the upper valleys of the

Seine, has reached the city, and

there are grave fears that the flood

days of last spring are to be again

experienced.

Already the river has overflowed

its banks in the lower sections, and

the east end quarters are inundated.

The waters have reached the Mu-

seum of Natural History building,

and the basements and lower floor

are under water.

Residents and storekeepers in

those sections of the city reached by

the high water of the last flood are

already making preparations to

move their goods to the safer sec-

tions, and steps are being taken to

protect some of the buildings un-

dermined in the last flood from further

damage this time. If the waters

should reach them.

MEXICANS STILL UGLY

CITY OF MEXICO, Nov. 13.—

With reports of Mexican mobs at-

tacking Americans in Mexican cities

and reports of the possibilities of

the Americans throughout the south-

western States and Texas retaliating

against the Mexican residents there,

President Taft, en route to Panama,

and President Diaz have been ex-

changing messages.

Each President has assured the

other that full protection to the citi-

zens of each will be afforded by the

government of each, that those who

have attacked the citizens of each

Republic while residing in the other

will be adequately punished.

Americans Crowding Together.

The reports received last night

from Guadalajara stated that the

American consulate was being guard-

ed by a strong force of cavalry. The

American residents have abandoned

their homes in the outlying country

districts and the suburbs and have

concentrated in the city, making

their homes at the hotels.

Police Chief Shot Down.

ANADARKO, Okla., Nov. 13.—An

unknown Mexican called at the

home of Chief of Police Temple of

this city last night and asked the

official for an interview. When Tem-

ple stepped from his doorway, the

Mexican pulled a revolver and shot

him down, death being instanta-

neous.

The killing of the official has

aroused the citizens to a dangerous

pitch, and the Mexican will assur-

edly be lynched if any of the various

posses searching for him should

catch him. As the man is unknown,

it is feared that vengeance for the

death of the chief will be wreaked

on some innocent Mexican.

FOOTBALLER UP FOR MURDER.

WHEELING, W. Va., Nov. 13.—

A tremendous sensation in athletic

circles was caused here today when

a warrant against Thomas McCoy

was sworn out, charging him with

the murder of Rudolph Munk, cap-

tain of the University of West Vir-

ginia football team, who died as the

result of injuries received in a re-

cent game with the team of the

Bethany College, of Bethany, W. Va.

McCoy played right end for the

Bethany team and was in the mix-

up from which Munk was taken, fatally

injured. The umpire made a state-

ment immediately after the affair in

which he accused McCoy of deliber-

ately striking Munk on the head in

the course of the scrimmage.

CATHOLICS AND SOCIALISTS RIOT

MODENA, Italy, Nov. 13.—Fierce

street riots occurred here today be-

tween Roman Catholics and Social-

ists, the latter making an attempt

to break up a religious parade. The

churchmen met the assault of the

Socialists with stones,

Flashlights

All sizes and styles, and the Batteries to use in them, just in fresh from the factory.

The handiest electric light made—the POCKET FLASHLIGHT.

Complete assortment at

E. O. HALL & SON, LTD.

PHONE 1854

Nasal Catarrh

Get rid of it quickly by using

Thymo-Borol

With Nasal Douche—Quick Action and Easy

25 AND 50 CENTS A BOTTLE

NASAL DOUCHE, 75 CENTS COMPLETE

Benson, Smith & Co.,

FORT AND HOTEL STREETS

W. C. Peacock & Co., Ltd.

WINES AND LIQUORS

FAMILY TRADE A SPECIALTY

SOLE AGENTS

MONT ROUGE WINES

Noon-time & Afternoon **Lunch** At The

CRITERION

ROSA & CO. WHEN YOU DRINK

Beers, Wines and Liquors

FAMILY TRADE GIVEN SPECIAL ATTENTION

DELIVERIES TO ALL PARTS OF THE CITY

Phone 3181

ROSA & CO.,

Alakes and Queen Streets

you want to drink the best, such as CRESTA BLANCA and INGLENOK WINES, KING WILLIAM SCOTCH WHISKY, MUMM'S CHAMPAGNE, which we carry.

We also carry a full line of other Wines and Liquors, and deliver to any part of the city.

MAGFARLANE & CO., LIMITED

Phone 2026 Queen Street

PICTURE MOULDING and FRAMES

In late and artistic designs, hand-toned and carved, for the autumn demand, have just been received.

Arts and Crafts Shop,

YOUNG BUILDING

NEW TRIMMED HATS

WERE RECEIVED ON THE WILHELMINA

K UYEDA 1028 Nuuanu St.

Dress Goods

AT REDUCED PRICES

MERCERIZED, 35c, NOW 25c YARD

DRESS GOODS, 30c, NOW 20c YARD

All kinds of Ladies' Wear now selling at low prices to make room for Holiday Goods.

YAT HING,

HOTEL STREET, NEAR FORT



EWA BASEBALL CHAMPS



Standing—Elias Meyer (captain), Macauley, Fernandez, Souza. Sitting—Grvin (manager), Rodrigues, Laing, Cordeiro, ravno, Philip Cordeiro, mascot.

MUHOCKS DEFEAT C. A. C. YESTERDAY

Both Tied for Second Place In the Junior League.

Yesterday afternoon at the Athletic Park, the Muhocks defeated the C. A. C. nine to the tune of 3 to 2, this being the last game to be played on the grounds, as the Kamehameha Alumni had closed the deal for the park and begin filling in today to make a fine athletic field. On this account the Junior League series will be finished at Aulua Park.

Palama nine forfeited their game with the Asahis, which was scheduled to be the second yesterday afternoon, thus giving the latter the lead for championship, with the Muhocks and C. A. C. tied for second place.

It was the sixth before the Muhocks got a man home, and then they made two tallies, with another in the ninth. The Chinese team scored only in the second and in the fifth, failing to do anything near home plate after that.

The summary and score:

C. A. C. JUNIORS.

	AB	R	B	H	SB	PO	A	E
Ah In, ss	3	0	0	1	0	3	0	0
Ahana, 2b	5	1	0	0	1	5	0	0
Tin Lo, rf	4	0	0	0	0	0	0	0
Kau Fu, lf	4	0	1	0	7	3	0	0
Tin Yen, cf	4	0	0	0	0	0	0	0
Ahong, 3b	2	1	0	0	3	4	1	0
Akin, lb	4	0	1	1	14	2	1	0
Ah Hoon, c	4	0	2	0	0	0	0	0
Luke Yee, p	4	0	0	1	0	6	0	0
Totals	34	2	4	3	25	28	2	0

MUHOCKS.

	AB	R	B	H	SB	PO	A	E
C. Duck, lf	4	1	1	0	0	0	0	0
Ah Hoon, cf	3	1	0	0	1	0	0	0
J. Xavier, 2b	4	0	1	0	1	4	0	0
Ah Tin, 3b	4	0	1	0	2	5	0	0
T. Akana, lb	3	0	0	1	9	0	0	0
M. Akoo, c	3	0	0	0	19	0	0	0
Mink Kee, ss	3	0	0	0	0	0	2	0
Wah Kai, p	3	0	0	0	2	2	0	0
Peter, rf	2	1	1	0	1	0	1	0
Totals	29	3	4	1	26	11	3	0

C. A. C. JUNIORS.

Runs.....010010000—2

Base hits.....021100000—4

MUHOCKS.

Runs.....000002001—3

Base hits.....000102001—4

Umpire, H. Gillingworth; scorer, Sam Hop. Time of game, 1 hour 16 minutes.

Sanding of Teams.

P. W. L. Pct.

Asahi.....5 4 1 .800

Muhock.....5 3 2 .600

C. A. C.....5 3 2 .600

Palama.....5 0 5 .000

When Baby was sick, we gave her Castoria.

When she was a Child she cried for Castoria.

When she became Miss, she clung to Castoria.

When she had Children, she gave them Castoria.

Inter-island and O. R. & I. Shipping books for sale at the Bulletin office, 5th each.

YACHT RACE WAS GREAT SUCCESS

Hawaii I Wins With Charlotte C Close Second.

Hawaii I, won the race of the Honolulu Yacht Club yesterday, the time being six hours and fifteen minutes, and the Charlotte C. finished second, but eight minutes behind the winner.

It was 10:50 when the yachts crossed the line manned by the younger members of the club, the Hawaii I. and Charlotte C. getting into the lead soon after leaving the starting line at the spar at the entrance to the harbor.

Out across the blue waters to the stake boat off Waikiki these two held close together, the Charlotte C. leading on the way out, but after the stake boat was rounded the Hawaii I. gradually drew into the lead and continued there until the finish.

The Hawaii I. struck a calm off the harbor when on the way to Pearl Harbor, but both she and Charlotte C. finished the course. The Kamehameha and the Helene struck a calm after turning toward home at Pearl Harbor and had to be towed home.

Sullivan sailed the Hawaii I. Campbell Crozier was at the helm of the Charlotte C. Gordon Sims navigated the Kamehameha, and Bill O'Brien handled the tiller of the Helene.

It was expected that the Gladys would be in the race also, but at the last minute she was not allowed to be sailed by the youngsters.

G COMPANY WERE WINNERS YESTERDAY

Howlers of Company G of the 20th Infantry were the high men on Fort Shafter alleys yesterday morning in the intercompany match being rolled off there, defeating the men of the H outfit by 134 plus.

The final score was 2260 for G team and 2072 for the H howlers.

There were a large number of town men out to see the match bowled yesterday morning, as in previous matches, and it is probable that another match will be on at the alleys next Sunday morning.

The individual scores were:

Company G—Froelich, 517; Berger, 451; Corp. Madison, 441; Henry, 124; Corp. Rowe, 368.

Company H—Painthowski, 486; Peterson, 434; Horton, 498; Grant, 379; Blang, 365.

The Malles, for seven years champion soccer players of Hawaii, will begin practice at the Makiki grounds this afternoon in preparation for entering the game in earnest this year.

There will be an executive meeting of the team at Thistle Club tonight.

Lightfoot brothers entertained about twenty members of the Hea-lani boat club at their home at Wa-lhe-wa on Saturday evening. A fine swim and a general good time were enjoyed.

COLLEGE WINS BY BIG SCORE

High School Team Failed to Cross Line of Opponents.

Thirty-six to nothing was the score in the final football game of McKinley High and College of Hawaii on Saturday afternoon, the High School eleven being disappointed that they were unable to score against the larger team.

It has been a bad year for the High men this year, and at the first of the season they decided not to go into the game, as nearly all the men on last year's team were out of school this year.

After considerable discussion it was decided to get into the game and make a try at developing a team, and considering the handicap that they were under, the work of the season looks up well.

Captain Rosa was out of the game for the High School, as he had not recovered from his injuries a week ago sufficiently to go on the field again.

Honors in scoring were about evenly divided in the college team, the back field and line both contributing to the tallies which made the total, and the forward pass being worked successfully time after time.

The lineup:

College of Hawaii—Amona, c.; Lemke, rg.; E. R. Tra y, lg.; Farmer Clark, rt.; Kuhua, lt.; Fook On Yap, re.; Bill Rice, le.; Marcellino, qb.; Birdseye, fb.; Fraser, lb.; Maruichi, rh.

High School—C. Littlejohn, c.; Kenneth Ables, rgv.; Josh Pratt, lg.; Nap Young, rt.; G. Awai, lt.; M. Monsarrat, re.; Tze Tau, le.; Nat Bart, qb.; Lester Marks, fb.; Sing Hung, lb.; Clarence Dyer, rh. Williams Rawlins refereed the game.

BIG FIGHT ON TOMORROW NIGHT

McCullough and McGurn Face Each Other at Leilehua.

Tomorrow night is the time the sports gather at Leilehua to see the big go between Soldier McCullough and Joe M. Gurn, and the bout promises to be one of the best fifteen-round exhibitions pulled off in Hawaii for some time.

Both men are in good condition, their backers state, and will give the crowd the worth of their money and more in the scientific work they will do in the squared circle at Leilehua.

Before the bout of the evening several minor scraps are billed to work up the enthusiasm of the audience to the right pitch to see the real work to be done by the principals in the event of the night.

This go on at the soldiers' camp was to have been on for last Saturday, but on account of pay day there not coming until the first of the week, it was postponed until tomorrow.

In addition to the large number of soldiers who are sure to be present at the go, a large number of town sports will wend their way to the scene of the scrap tomorrow evening.

D COMPANY ARE BATTALION CHAMPS

Saturday saw Company D of the Marines win the second series' championship of the battalion league, when the team of that outfit defeated Company B's aggregation of ball-tossers to the tune of five to three.

Pitching was the feature of the game between the marine teams, Davis of Company D retiring fourteen men and allowing but four hits during the game, and Thompson of the B outfit gave eight hits and retired eight batters.

There were big doings after the game, Company D supporters carrying their twirler off the field on their shoulders.

AMUSEMENTS.

NEW ORPHEUM

(Telephone 2300)

TONIGHT

Tuesday and Wednesday
GEORGE E. HOWARD AND COMPANY

"Our New Minister"

First Time Here
New Playhouse to Crowded Houses in San Francisco

Thursday, Friday and Saturday
Special Matinee Saturday at 2:30:
"OTHER PEOPLE'S MONEY"

A Laughing Hit

Prices.....25c, 35c and 50c

Savoy Theater

Whirlwind success of the Vaudeville Artists presented at the Grand Opening. Read their names—count them:

WILSON SISTERS

Premier Song and Dance Artists

FRANK FOSTER

Coon Dialect and Yiddish Impersonator

COUNTESS IRMA DE POMME

Vocalist

LATEST MOVING PICTURES

Frank Anderson's Orchestra makes the music.

Doors open at 6:30 o'clock; trouble begins a little later.

Admission.....10c

Reserved Seats.....15c

HOT PLAYING ON THE LINKS

Evans Low Man and Walker High at County Club Yesterday.

Although but few players in the Oahu Country Club tournament were on the links Saturday afternoon, yesterday was different, and sixteen men were out for play in the president's cup competition, John Evans being low man with 83 yesterday, and Sam Walker being high with 112 for the two rounds of nine holes each.

The tournament now on lasts during the present term of Walter Dillingham as president of the club, and the player having low score at the end of that time will be awarded the president's cup. Two days each month are the limit of playing in this event.

It was some warm up Nuuanu way yesterday, and the heat may have had something to do with the scores made, several of the players willing perceptibly before the course was covered.

December 10 and 11 are the next days when play in this tournament is scheduled, every second Saturday and Sunday of the month being the days set for the players to foregather.

The scores made yesterday were: J. Evans, 83; H. Giffard (scratch); G. Angus (scratch), 89; F. Halstead, 90; C. Weight, 91; R. Booth, 91; W. Woon, 92; O. Sorenson, 92; J. J. Belser, 94; M. Phillips, 95; P. Morse, 97; H. H. Walker, 99; F. Armstrong, 99; F. Klebahn, 103; R. R. Reidford, 109; S. C. Walker, 112.

MILD LIQUID CURES ECZEMA.

Skin sufferers! Drop greasy salves and nasty medicines. That mild, soothing liquid, D. D. D. Prescription, stops the awful itch with the first drops. A doctor's prescription of acknowledged value. Get a bottle at Honolulu Drug Co.

AMUSEMENTS.

THE EMPIRE THEATER

NEW VAUDEVILLE ARTISTS FROM THE COLONIES

Admission.....15c, 10c, 5c

Park Theater

WILLS & HASSAN
World's Greatest Equilibrist

And

Motion Pictures

NOVELTY THEATER

Corner Nuuanu and Pauahi Streets

THE MUSICAL MILLERS

GEO. W. STANLEY

Character Artist

And

LATEST MOTION PICTURES

PIERRE BARON

ALOHA BATH HOUSE.

School of Physical Culture, Scientific Massage, Medical Gymnastics (Swedish Movement). Ladies' Men's and Children's classes. Hours: a. m. to 10 p. m. and Private Instruction. Mr. Gustav Bjorkman (of Royal Swedish Gymn. Inst.) Masseuse and Instructor of Gymnastics.

Pacific Saloon

KING AND NUUANU STREETS

You'll find they're all good fellows here.

"It's the Fashion"

Hotel nr. Fort D. H. Davies, Prop.

PRIMO BEER

Order Cream Pure Rye

Sold by

LOVEJOY AND CO.

Rainier Beer

FOR SALE AT ALL BARS

Telephone 2131

QUARTER SIZES

at

Regal Shoe Store.

King and Bethel Streets

A MASQUERADE will be given by the ROYAL ACADEMY OF DANCING, Odd Fellows' Hall, November 24, 1910—Thanksgiving. Four prizes. Music by a Hawaiian quintet club. Admission 50c.