

From San Francisco: August 2
For San Francisco: July 29
From Vancouver: August 19
For Vancouver: August 16

EVENING BULLETIN

3:30 EDITION

Gives results, hence has high rank among advertisers.

YOUR STORE GROWS, OR GOES
BACKWARD EVERY DAY—AND
THE ADVERTISING DECIDES!

ESTABLISHED 1882. NO. 4613.

10 PAGES.—HONOLULU, TERRITORY OF HAWAII, FRIDAY, JULY 29, 1910.—10 PAGES.

PRICE 5 CENTS

MAHUKA SITE CONDEMNATION UNDER WAY GEOLOGISTS FAIL TO REACH SUMMIT

349,000 Tons Are Marketed

Sugar Factors Record Shows
Season Is Nearly Finished
---79,000 To Go

Three hundred and forty-nine thousand tons of Hawaii's sugar crop, handled by the Sugar Factors company, has, up to the present day, been landed in the market or is now on the water.

This shows that a very large share of the 1910 crop of the islands has been sold at very good prices and the campaign now closing will go down in industrial history as the best average return of recent record.

Under the latest revised estimate, the Sugar Factors Company will handle

four hundred and twenty-eight thousand tons this year. With 349,000 tons in the market or on the way, there remains only seventy-nine thousand tons to be shipped.

Of the total shipped, three hundred and eight thousand tons have reached the market and forty-one thousand tons are now on the way.

The great majority of the plantations have finished grinding and are getting in shape for the new crop, that generally speaking, promises

(Continued on Page 5)

Roosevelt M'Kinley Ready For Politics Peak Still Mystery

NEW YORK, July 29.—The campaign plans of Colonel Roosevelt have been so far completed that he has finally given out one of the dates when he is to speak.

Mr. Roosevelt will speak for Senator Beveridge at Indianapolis on October 15. The Senator is having a hard fight of it, running on what is practically an insurgent platform.

The colonel refuses to express his preference among the candidates in California, where Pinchot is at work. Eram Johnson, the Roosevelt League candidate for Governor, and William Kent, who aims to succeed Congressman McKinley, are both friends of Roosevelt's, but he is not yet willing to enter the contest in their behalf.

(Special Bulletin Cable.)

SEWARD, Alaska, July 29.—It is reported that the American geological expedition which attempted the ascent of Mt. McKinley, under the most favorable auspices, has also failed to reach the summit and is returning. This follows close upon the failure of a newspaper party of explorers, who gave it up and returned a number of days ago.

Wireless In Control of Gov't

WASHINGTON, D. C., July 29.—Government control of the wireless systems of the country has again been brought to the attention of the authorities through the recommendation of Admiral Schroeder. The admiral declares that government control is necessary in order to prevent interference with legitimate business and official messages by experimenters and irresponsible persons.

Order To Condemn Expected Soon

Treasury Department Promises
Prompt Action On
Mahuka Site

According to a letter received by E. O. Hall & Son from George H. McClellan, secretary to the Delegate, orders will soon be issued by the Treasury department for the necessary steps to acquire the increased land called for under the new scheme for enlarging the Federal building site.

Hall & Son being very much interested in the proceedings have kept in close touch with the situation, although there is no present fear of the Fort street business houses having to move in the immediate future.

Mr. McClellan in his letter of July 10 says:

"The Treasury Department have to get out orders and plans for the six hundred or more buildings and sites covered by the bill that has been enacted, but they advise me that it is their expectation to have the orders for acquiring the remainder of the Mahuka block go forward to Honolulu in the very near future."

"I am just leaving for New England for a month's stay, and shall hope to return in the near future."
(Continued on Page 5)

NO MEETING OF LAND BOARD

Many Propositions On
File For Early
Consideration

On account of the illness of Member Trent and other duties demanding the attention of Member Andrade, there was no meeting of the Land Board at 8 last evening as scheduled.

There are a number of matters to come before the board for early action, and it may be that another meeting will be called before the regular meeting next week.

Land Commissioner Campbell has been up to his ears in work for the past few weeks in regard to the homestead plans, and applications are coming in on every mail, besides many applications which are made personally to the Commissioner.

The office was besieged this morning with men come on land matters for consultation with the Commissioner, and there was a waiting line outside the door which occupied many chairs.

In addition to the many applications for land on Oahu, other islands are sending in their quota, and the work cut out for surveyors to run lines on land which has been applied for will last for many months.

The notices to be published will be issued by Commissioner of Lands and the pamphlet will be compiled in his office. Both of these will be issued next week.

PORTO RICANS AND SALVATION

Army Workers Report On
Their Operations
On Plantations

The latest issue of the War Cry gives the following account of Salvation Army work among the Porto Ricans:

HONOLULU, H. I.—After a ride of one and a quarter hours' duration on the train through beautiful sugar plantations and green rice fields, with a magnificent view of Pearl Harbor, destined to be one of the strongest fortified United States naval stations, Major Willis and the writer arrived at Ewa Mill, about eighteen miles from Honolulu. We were met by Ensign Thimberman at the station. The ensign has charge of the work at Ewa, being, as it is, an outpost to Ala, his headquarters. The meeting was to be held in the Korean M. E. church, which had kindly been loaned us for the occasion. Of course a Salvation Army meeting includes an open-air, so at about 7 p. m. the ensign blew a few notes on his cornet, and soon a goodly number of soldiers—Porto Ricans, as this is a Porto Rican camp—came around, and then we marched to our open-air stand, all prepared for battle, the worthy D. O. swinging a lantern in his hand and shouting, "Everybody!" We held our open-air under a large tree and had a fine congregation. Ensign Thimberman started some choruses in Spanish.

(Continued on Page 4)

SPAIN VERGES ON RUPTURE

MADRID, Spain, July 29.—Rupture between the government of King Alfonso and the Vatican is imminent.

Don Jamie, pretender to the throne of Spain, has issued a manifesto in which he promises to lead the Carlists in battle.

\$600,000 THIEF IS CAUGHT

NEW YORK, July 29.—Cashier Wider of the Russo-Chinese bank has been captured.

Wider disappeared a few days ago and it was discovered that six hundred thousand dollars of the bank's funds had been stolen.

ELDORADO IS NEW RESERVE

WASHINGTON, D. C., July 29.—The Eldorado national forest has been created by the Government. The national preserve includes 809,810 acres of forest lands.

WALL CUP PLAY IS POSTPONED

It has been decided to start the Wall Cup tennis tournament on Wednesday next instead of on Monday as at first suggested. The first of the month is a bad day to begin the tennis as many of the players are exceptionally busy just then. The entry book will be kept open till Monday at 5 o'clock, and by that time it is thought that there will be a number of names down on the list.

McKreer and Greenfield, of Ewa plantation, have decided to make the trip to Punahoe on August 12 and much interest is added to the annual tournament by that fact. For years there has been a kindly rivalry between the two big mills as to tennis, and time after time an attempt has been made to have a match between the best players of Punahoe and Ewa. Sports always interfered with the schemes and nothing was done till now.

The Ewa men will complete the seven teams that are to visit Maui, and besides the regular tournament there will be special matches between Ewa and Maui. It may happen that in the near future an Ewa team of six pairs will meet Punahoe on the courts.

To Hold Up Bonilla

WASHINGTON, D. C., July 29.—The British cruise-ship has been dispatched with orders to attempt to intercept the Honduran revolutionary expedition which recently sailed from Belize under General Bonilla.

AFTER WATER IN MAUNALEI GULCH SOURCES

Twenty men are now at work developing the water of the Maunalei gulch on Kaula, and it is expected that a good flow of water will be secured in the comparatively near future.

This work is being done under the direction of John T. McCrossen, head of the syndicate that is developing the island of Kaula.

Maunalei has of late years been associated with one of the plantations of the boom period, a property that failed on account of lack of water.

Asked whether he thought he could get water, Mr. McCrossen said: "I don't think I know. Of course, the amount we seek is for stock purposes, cattle and horses, not watered stock. We have a number of our best tunnel men in the gulch, and we expect good results."

JUMPED FOR BALL WENT UNDER AUTO

Jumping directly in front of an approaching automobile to catch a ball thrown by his fellows, a small boy was struck yesterday by an automobile driven by Mrs. Wm. Heilbron.

The boys were playing ball in the street. As Mrs. Heilbron approached, she sounded the warning horn and slowed down. The boys left the street and went to the sidewalk, but just as the machine came upon them one threw the ball to the lad farthest out. He grabbed for it and in so doing jumped directly in front of the auto. Had the machine been running rapidly the blow would have killed the lad. As it was he caught the fender, swung under the machine and was not touched by the wheels.

The boy got up quickly and declared that he was not hurt. Mrs. Heilbron went to his house with him, but he persisted that he was not hurt and the parents refused to send for a doctor.

The first Mrs. Heilbron knew of the boy being in the hospital was on reading the statement in the paper.

DAILY SCORES OF BIG LEAGUES

(Special Bulletin Cable.)

SAN FRANCISCO, July 29.—The scores in the big leagues' play today are:

American—Philadelphia 4, Washington 0; Boston 1, New York 3; Chicago 0, Detroit 1.

National—Pittsburgh 7, Cincinnati 3; Brooklyn 2, Philadelphia 5.

| Club | W | L | Pct. |
|--------------|----|----|------|
| Chicago | 52 | 27 | .658 |
| New York | 46 | 35 | .567 |
| Pittsburgh | 45 | 34 | .569 |
| Cincinnati | 41 | 39 | .512 |
| Philadelphia | 39 | 43 | .475 |
| Brooklyn | 33 | 48 | .407 |
| St. Louis | 36 | 47 | .433 |
| Boston | 43 | 52 | .385 |

| Club | W | L | Pct. |
|--------------|----|----|------|
| Philadelphia | 56 | 30 | .651 |
| New York | 51 | 35 | .594 |
| Boston | 52 | 37 | .582 |
| Detroit | 48 | 39 | .551 |
| Cleveland | 37 | 43 | .462 |
| Washington | 37 | 49 | .430 |
| Chicago | 33 | 50 | .397 |
| St. Louis | 28 | 55 | .337 |

SUGAR

SAN FRANCISCO, July 29.—Beets: 88 analysis, 14s. 83-4d.; parity, 5.15c. Previous quotation, 14s. 9d.

VASILIEFF TO BE RELEASED

That exceedingly slippery customer Vasilieff will be set at liberty on August 7. His three months' sentence for vagrancy expires next Sunday week, and he will then be free once more to start up his agitation among the Russians who, for some time past, have been working quietly on the plantations.

It is definitely stated that Vasilieff and his partners can not be deported and that they will be free to go and come as they please. The other three Russians who were jailed at the same time as Vasilieff are thought to be about his class. It will be remembered that the whole party tried the starvation stunt for a few days, but one by one gave in and asked for food.

The prisoners have given no trouble in jail, but have been incessant in their demands to be sent out with the grass-cutting gangs. This was never done, however, and the men have been kept within the jail walls all the time.

Jailor Asch reports that the Russian (Continued on Page 2)

ENGAGEMENT ANNOUNCED.

Mr. and Mrs. C. J. Ludwigen announce the engagement of their daughter Ethel, to Mr. Caleb B. Dickson.

TAFT'S WARDS FLOCK HERE

Mongolia Brings Nearly
One Hundred And
Fifty

One hundred and forty-two "little brown brothers," the special wards of President William H. Taft, have come to join the Filipino colony that is fast becoming a factor in the development of the sugar industry of the Hawaiian Islands.

The Filipinos were included in the motley but picturesque array of Orientals who swarmed the decks of the Pacific Mail liner Mongolia this morning as that vessel appeared off the harbor after her very pleasant voyage from Japan.

The Mongolia had no sickness on board and the local quarantine officials found it quite a simple matter to grant her pratique.

The vessel appeared off the quarantine shortly after 8 o'clock and by 10:30 she was alongside the Alaka wharf, her hatchets off and the steam turned into the winches preparatory to removing the eleven hundred tons of freight.

In addition to seven lay-over passengers and the large delegation of Filipinos, sixty-two Japanese, forty-one Chinese and one lone Hindu were ticketed to leave the vessel at Honolulu.

According to the officers of the liner, the Mongolia is carrying a large cargo to the mainland. A large (Continued on Page 4)

LOVER WOULD SHOOT GIRL

Broken-hearted Japanese
Wants To Wipe Out
Family

Tokunaga Suetoku is under bonds of \$500 to appear at the Circuit Court next session, and it is all on account of unrequited affection. It appears that Tokunaga fell passionately in love with a Japanese maiden of thirteen summers; and he pushed his suit with fervor. The dainty little daughter of Nippon had, however, other ideas on the subject, and her young fancy had already been caught by another young Japanese, who appealed to her as more prepossessing than the older Tokunaga.

The parents of the girl refused to coerce their daughter, and Tokunaga became desperate. He took to hanging around the home of Miss Chrysanthemum and forcing his attentions on her whenever she appeared in the street. This was annoying enough, but when Tokunaga took to packing a huge revolver around and began to threaten to shoot the object of his affections and her parents, the police were informed of the matter. The fact that Tokunaga also threatened to kill himself did not worry the girl much, but as the lover said he would first wipe the family out, it was thought to be better to have him arrested.

Tokunaga appeared in court this morning and was remanded for trial to the Circuit Court.

COST OF COLLECTING TAXES DECREASED AS VALUATION AND COLLECTIONS INCREASE

During the past ten years the cost of collection of taxes in Hawaii has decreased one-half and the amount of money has increased materially.

In 1901 the cost of collecting each hundred dollars of taxes was four and fifty-two hundredths per cent and last year the average cost of collecting a much large amount of taxes than were collected in 1901 was but two and fifty-six hundredths per cent.

Material decrease in the cost of collecting taxes for the past two years was made by Treasurer Conkling. For 1909 the cost was three and eight (Continued on Page 5)

GOOD SHIP MONGOLIA IS SOUND AS A DOLLAR SO SAY HER OFFICERS

Pacific Mail officers from Captain E. P. Kitt down the line scout the idea that the fine commodious liner Mongolia sustained any damage through her rather unfortunate experience of going aground near the tea port of Shimidzu, Japan, during the early morning hours of July 15th.

From what can be gleaned from those who went through the brief period of detention to which the Mongolia was subjected because of her going on the mud bank, the cable reports received at Honolulu and other places were highly colored and shot far and wide from the mark of veracity.

A positive statement comes from the Mongolia this morning that the vessel has not received the slightest damage through her grounding. Two experienced divers from Yokohama, Japan, made a lengthy and careful investigation of the bottom of the vessel after she had cleared the bank and their report is said to have proved conclusively that the bottom had suffered no damage whatsoever.

It was shortly after two o'clock on the morning of July 15th that the Mongolia shoved her nose into a bank near Okitsu. It is claimed that (Continued on Page 5)

Masonic Temple

Weekly Calendar

MONDAY:

Oceania—Stated.

TUESDAY:

WEDNESDAY:

THURSDAY:

FRIDAY:

SATURDAY:

Advising members of the order are cordially invited to attend meetings of local lodges.



MARINE ENGINEERS' BENEFICIAL ASSOCIATION, divisions cordially invited.

HARMONY LODGE, No. 3, I. O. O. F.

Meets every Monday evening at 7:30 in I. O. O. F. Hall, Fort Street. E. R. HENDRY, Secretary. H. E. MCCOY, Noble Grand. All visiting brothers very cordially invited.

OAHU LODGE, No. 1, K. of P.

Meets every first and third Friday evening at 7:30 in K. of P. Hall, corner Fort and Beretania. Visiting brothers cordially invited to attend. W. M. JONES, C. C. O. F. HEINE, K. R. S.

HAWAIIAN TRIBE, No. 1, I. O. R. M.

Meets every first and third Thursday of each month at Knights of Pythias Hall. Visiting brothers cordially invited to attend. A. L. EAKIN, Sachem. E. V. TODD, C. of R.

HONOLULU AERIE 140, F. O. E.

Meets on the 2nd and 4th Wednesday evenings of each month at 7:30 o'clock in K. of P. Hall, corner Beretania and Fort streets. Visiting Eagles are invited to attend.

W. R. RILEY, W. P. W. M. C. MCCOY, Sec.

HONOLULU LODGE 616, B. P. O. E.

Honolulu Lodge No. 616, B. P. O. E. Meets in their hall, on King Street, near Fort, every Friday evening. Visiting Brothers are cordially invited to attend.

JAS. D. DOUGHERTY, E. R. GEO. T. KLUEGEL, Sec.

WM. MCINLEY LODGE NO. 8, K. OF P.

Meets every 2nd and 4th Saturday evening at 7:30 o'clock in K. of P. Hall, cor. Fort and Beretania. Visiting brothers cordially invited to attend.

H. A. TAYLOR, C. C. E. A. JACOBSON, K. R. S.

Complete Variety Popular Prices Up-To-Date Designs

Our wall papers embrace full lines of Domestic and Foreign wall hangings. Ask to see the new WOOD-KRUSTA—the latest material for halls, dining rooms, dens, libraries and grill rooms. The most perfect wood effect ever produced.

Lewers & Cooke, Limited.
177 S. KING ST.

M. E. Silva,

UNDERTAKER AND EMBALMER
Prompt and Polite Attention
CHAPLAIN LANE, OPPOSITE
CATHOLIC SISTERS
Phone 179 Night Call 1014

ASSESSMENT NO. 12

Honolulu Branch of the Harrison

Mutual Association

Has been called and is DUE JUNE 15 and DELINQUENT ON JULY 15.

AFTER FOUR YEARS OF MISERY

Cured by Lydia E. Pinkham's Vegetable Compound

Baltimore, Md.—"For four years my life was a misery to me. I suffered from irregularities, terrible dragging sensations, extreme nervousness, and that all gone feeling in my stomach. I had given up hope of ever being well when I began to take Lydia E. Pinkham's Vegetable Compound. Then I felt as though new life had been given me, and I am recommending it to all my friends."—Mrs. W. S. Ford, 1028 Lansdowne St., Baltimore, Md.

The most successful remedy in this country for the cure of all forms of female complaints is Lydia E. Pinkham's Vegetable Compound. It has stood the test of years and to-day is more widely and successfully used than any other female remedy. It has cured thousands of women who have been troubled with displacements, inflammation, ulceration, fibroid tumors, irregularities, periodic pains, backache, that bearing-down feeling, flatulency, indigestion, and nervous prostration, after all other means had failed. If you are suffering from any of these ailments, don't give up hope until you have given Lydia E. Pinkham's Vegetable Compound a trial. If you would like special advice write to Mrs. Pinkham, Lynn, Mass., for it. She has guided thousands to health, free of charge.

Travelers' Writing Pads

Just a pad of fine linen bond writing paper attached to a wide shallow box of envelopes. The box serves as a writing desk.

TWO SIZES

Hawaiian News Co., LIMITED
Alex. Young Building

Office Supply Co., LIMITED

Dealers in
REMINGTON TYPEWRITERS,
TYPEWRITER SUPPLIES,
GLOBE-WERNICKE FILING CABINETS AND BOOKCASES,
GENERAL OFFICE STATIONERY.

931 FORT STREET

Subscribe for the CALL, CHRONICLE or EXAMINER, and get the news of the world.
WALL NICHOLS CO., LTD., Agents

Books! Books! Books!

Go to

BROWN & LYON CO., LTD.
Alexander Young Bldg.

MEMORANDUM BOOKS

Loose-leaf and pocket memorandums of every description. Best assortment and lowest prices in the city.
A. B. ARLEIGH & CO.
Hotel, opp. Union

No Preservatives In Our Cream

Special care to keep it cold and protect it from contamination assure ample keeping qualities.

THE POND DAIRY.
Tel. 890.

New Post Cards
HAWAII & SOUTH SEAS
CURIO CO.
Young Bldg.

"For Sale" cards at Bulletin, the Bulletin Office.

LOCAL AND GENERAL

Up till noon today there had been 367 automobiles registered at the Police Station.

Mike Patton will referee the main boxing event tomorrow night between Jack Cordell and Pat Cornyn.

W. H. Kaiwai, has been arrested and charged with an assault on an inmate of the home for old men at Makiki.

The advance sale for the boxing show tomorrow night at the Aloha Park has been good and a big crowd is assured.

David Kakalia, who assaulted another man had a sentence of thirty days registered at the police court this morning.

It is expected that a report will shortly be received from Mr. Jorgensen on the water possibilities of the Koolau range.

M. S. Pacheco, who has been a member of the Hilo Board of Registration has resigned. His successor has not been appointed yet.

Chung Toi, the Japanese who committed a terrible crime on two young girls, has been charged with an offense that carries a death sentence.

United States Attorney Brockhouse will return tomorrow from Maui where he has been for the last week recuperating and doing some light work.

Secretary Mott-Smith was back at his desk today after one day vacation at his home where he remained yesterday recuperating after the strenuous days of the plebiscite.

Antone Bothelo was tried at the police court this morning for having assaulted his cousin. He was found guilty of the offense and fined \$10; the judge remitted the costs.

Eugene Murphy was today admitted to practice by Supreme Court of Hawaii. He is a graduate of Columbia Law School and was admitted to the New Jersey Bar in February 1898.

Her Majesty Queen Liliuokalani, who was reported ill a few days ago was out driving last Wednesday in company with Mrs. Clark and Mr. John Alimoku Dominis. The Queen is quite well.

Sau Chin, who is accused of assaulting another Celestial, was tried at the police court this morning. Judge Andrade heard all the evidence and then said that he would give a decision tomorrow morning.

Mayor Fern will preside over the political meeting to be held tomorrow evening at Waiwahu. Link McCandless, the Democratic candidate for Delegate to Congress will also make a political speech there.

At four o'clock this afternoon there will be a meeting of the License Board when two applications will be considered and a hearing will be given Joe Silva on the disturbance in the Pantheon Saloon on election night.

Governor Frear has stated that there will be no proclamation issued but that notices will be published and a pamphlet issued giving attending homesteaders all the information about the lands to be opened for homesteading.

John Nakookoo, the prohibition agent and John H. Wise, who led the Hawaiian anti-prohibition army to victory, yesterday patched up their differences during the lunch-hour. The two Johns promised to be good to each other in the future.

Captain Hamilton of the British Army, who has been visiting in the Orient is a passenger on the steamship Mongolia which arrived from Yokohama, Japan, this morning. He said he was present at the military inspection of the Chinese army.

Nothing doing in court circles was the order today at the judicial building. Judge Robinson's court was the only one in session and a recess was declared there waiting for some witnesses in the Mary Ho Leong case who were coming in on the Mongolia.

A most interesting lecture on the Yellowstone National Park will be given tonight before the Summer school gathering of teachers. Professor F. M. Fultz, superintendent of schools at Santa Barbara will give the lecture and it promises to be quite entertaining and instructive. The public is invited to attend.

GOES ON LEAVE

Among the passengers leaving on the Mongolia for San Francisco is Lieutenant H. B. Robinson of the revenue cutter Thetis, who has been granted twenty days leave of absence.

It was not until the Mongolia came in sight this morning that Lieutenant Robinson received a cable granting his leave, but he is accustomed to making quick trips and will get away on the ship when she sails.

He will spend his leave on the Coast, returning about September 1.

Bulletin Business Office Phone 255
Bulletin Editorial Room Phone 183

WANTS

FOUND.

Toledo bicycle No. 1516. Owner can get same by calling at 246 Kukui and paying for this ad.

4893-2t

1281

Our New Phone Number Will Be

City Transfer Co. (Jas. H. Love)

RECREATIONS

"THE WRONG MR. SMITH."

The new piece at the Orpheum has the merit of having a real plot and is interspersed with some very pretty vocal numbers. Maud Rockwell sings "Lonora," and for an encore sings "Tipperary." Olga Stech has a very pretty song, "Pansies Bring Thoughts," and a duet with Carlton Chase, "Chingaring," which received a merited encore. Elise Schuyler gives one of her eccentric character songs, and Vilma Stech, who is rapidly blossoming out into a full-fledged soubrette, sings "Whistle and I Will Wait," with a pretty chorus effect. Harry Stuart and Harry Garrity add to the amusement with comical songs, and Harris McGuire sings "He Will Come Back." Ethel Canfield is an eccentric genius. She was on the bills to play a solo, "Ligunde," by Winiawski, but her first piece was "Believe Me, If All Those Endearing Young Charms," and as an encore "Silver Threads Among the Gold." Everything she plays is beautifully rendered, but why deceive the poor public? Miss Atkins fainted at the close of the first act, and at a moment's notice Miss Rita Abbott assumed the part and acquitted herself admirably.

The cast and musical program is as follows:

Tobias O'Toole, a retired janitor
Harry Garrity
Sydney Smith, his nephew
Horatio Titus Smith, a tailor
Carlton Chase
Maybelle, Tobias's ward
Olga Stech
Aunt Carrie, Tobias's sister
Fredericka, the servant
Elise Schuyler
Musical Program.

"We Are the Principals"

Opening Chorus

"What's the Matter with Father?"

Harry Garrity and Chorus

"Dinah"

Harry Stuart and Chorus

"What's the matter with the Moon?"

Carlton Chase and Chorus

"Whistle and I'll Wait for You"

Vilma Stech and Chorus

"Ching-a-ring-a-ree"

Carlton Chase and Olga Stech

"Remorse"

Harry Stuart

"She Borrowed My Only Husband"

Elise Schuyler

"You'll Come Back"

Harris McGuire

"Lonora"

Maud Rockwell

"Pansy's Mean Thoughts"

Olga Stech

"Follow the Man from Cook's"

Sextette

Elise Schuyler, Olga Stech, Carlton Chase, Laurel Atkins, Harry Garrity, Harris McGuire.

During the performance Miss Ethel Canfield will render "LIGUNDE," by H. Winiawski.

NEW RULE AT THE PARK.

The management of the Park has finally come to a realization that a change in the arrangement is necessary to accommodate the patrons of that most popular amusement ground. A rule that will go in force on Saturday nights, and which should be enforced every night, provides that the first show will begin at half-past six, and an extra picture, "Fishing Industry in Massachusetts," will be shown in addition to the regular program, and not again. When the house is full the gate will be closed and no more persons admitted until the performance ends at seven-fifty. Then the house will be emptied and the program, with the exception of the fishing picture, will be repeated for the show which begins at 8 o'clock. This will afford an opportunity for those coming late to get seats. The demand for standing room has been so great during the engagement of the Croftons and the other Park artists that in order to give every one a chance radical methods have to be adopted.

THE CIRCUS IN TOWN.

The Princess Rink maintains its distinction as a place of popular resort, and the reason for this is to be found in the excellent programs that are nightly submitted. The items are bright and sparkling and judiciously varied, so that there is no monotony. The chief attraction this week is Professor Antonio's dog and monkey show, but the result of the program is well up to the average—and this is praise. The moving pictures are good and some new films were shown last night. All of the specialties are worth seeing. The change of program last night drew out another large crowd.

THE EMPIRE THEATER.

Beginning with the Saturday matinee, two clever little singers will appear at this theater—the Adair Sisters. Carl Walner will make his first appearance here this evening.

DEMOCRATS ARE HUSTLING

Tomorrow night there will be some thing doing at Waiwahu to keep the voters there from wondering outside of their political fence. Mayor Fern and Link McCandless and probably a few other Democratic leaders will be there to preside at a political meeting.

This is something unusual, there having been few such meetings held there formerly. The Chief Executive of Honolulu, who has been establishing sub-precinct clubs in all the small villages on this island will be the main speaker of the night. He will tell the Waiwahuans that it is their interest to re-elect him to office.

"Let them chase me up," said Mayor Fern this morning when told of the number of the Republicans who are trying to get the support of their political co-workers.

"The more they get in line and endeavor to chase me out of my job, the merrier it will be for the people to watch the outcome of the matter. I am simply doing my best, not only for myself, but for the party which I represent," said Fern.

His Honor said afterwards that he had organized sub-precinct clubs throughout the island of Oahu. He did this in order to get some understanding as to the real strength of the party in those places. All these sub-precinct clubs have headquarters in Waiwahu, Waimanalo, Aiea, Kailua, Koolau, and other small villages, where the majority of the people mix very little in politics.

Since the return from Washington of Prince Kuhio, the Delegate, Link McCandless has devoted much more of his time than formerly in endeavoring to assure the Hawaiians of his fitness for the position now held by the Prince. The Democrats are moving along actively all the time. The Home Rulers are simply waiting for their conventional date, which is August 15.

The Honolulu and Island delegates will convene at Kahili Hall at 10 o'clock in the morning. President Nottley will unquestionably preside and there will be speech making before the actual issues are brought to the attention of the convention.

Companies E, F and G returned to the post yesterday after a three-day practice march. Last Tuesday morning at 10:30, the companies fell in on the parade grounds. Company E was in the lead all the way to Pearl City, and Company G the first company in the return hike to the post.

The companies started out in the hottest part of the day, and the hiking was very hard. They made four stops on the way going out, arriving at the camping place at 3:15 p. m. Then they pitched shelter tents and rested until next morning, when at 7:30 assembly was sounded and all had to fall in. Companies E and G made out for Waiwahu, arriving there at 9:30. The men were rested for an hour and then marched back to camp, down the railroad track, arriving back at camp by 11:50 a. m. Company F took a trip towards Ewa and stayed out until 1 o'clock. First Lieutenant John S. McClery was in command of the troops for the three days. At 8:30 yesterday morning the general was sounded for breaking camp, and at 8:45 the companies were on the way home. There were very few men who fell out. It was expected that over half would fall by the wayside. The following men from the three companies were excused from the practice march: Quartermaster-Sergeant, March of Company G, Corp. James Reed of Company E, Corp. George Smith of Company F, Privates Herd and Paul of Company G, and Pvt. Dunlap of Company E.

Company H expects to make its trip in seven days. The men will take one of the hardest trips that has ever been taken on this island.

The post gymnasium was pretty well filled up yesterday afternoon by the boys of the battalion and a few from town. Pat Cornyn has been training in the post gymnasium for some time. Dick Sullivan had the gloves on with Cornyn for two exciting rounds.

SUSPECTED CHINESE ARE RELEASED

Three of the Chinese who were apprehended in connection with the alleged murder and attempted cremation of a Chinaman at Kahuku, have been released by the Sheriff. In the opinion of Deputy County Attorney Milverton, there was not sufficient evidence to hold any of them on a murder charge.

Two men have, however, been held for further investigation, and they will be examined tomorrow morning. The men who were released all suggested that the deceased had committed suicide by stabbing. This, in the opinion of the police, might be so, but there are several features of the case that make it improbable that Chung killed himself.

THIRTY-THREE days ago the American barkentine Makuwell sailed from Newcastle, N. S. W., with a shipment of coal destined for Honolulu.

Shipping

ADDITIONAL SHIPPING ON PAGE EIGHT.

ARRIVED

Friday, July 29.
Hongkong via Japan ports—Mongolia, P. M. S. S. S. a. m.

IN FOREIGN PORTS

Friday, July 29.
Yokohama—Arrived July 29: S. S. Manchuria, hence July 18, SAN FRANCISCO—Sailed July 29: Schur, Muriel, for Honolulu. KANAPALA—Sailed July 29: S. S. Nevada for San Francisco. Special Aerogram to Honolulu Shipping Guide.
MAHUKONA—Sailed July 29: Barkentine S. G. Wilder for San Francisco with sugar from Hawaii Railway Ltd.

WATERFRONT NOTES

THE JAPANESE liner Tenyo Maru will arrive at Honolulu on or about two o'clock tomorrow afternoon according to the latest wireless received at the agency of H. Hackfeld and Company. The vessel will discharge nearly thirteen hundred tons of Oriental cargo while at the port. The Tenyo will in all probability sail for San Francisco about ten o'clock on Sunday morning. The Tenyo will go to the Alakea wharf to discharge.

ACCORDING to advices received here the cable supply ship Florence Ward sailed from Midway Island nine days ago. The vessel is returning for another consignment of supplies for the little colony stationed in the mid-Pacific.

THE HAWAIIAN Fertilizer Company expect a shipment of fertilizer from European ports by the British ship Dunfreeshire. This vessel sailed from Hamburg ninety three days ago.

THE AMERICAN schooner Helene is fourteen days out from Grays Harbor with a full shipment of lumber consigned to the local agency of Allen and Robinson.

FORT SHAFER NEWS FIELD AND BARRACKS.

Companies E, F and G returned to the post yesterday after a three-day practice march. Last Tuesday morning at 10:30, the companies fell in on the parade grounds. Company E was in the lead all the way to Pearl City, and Company G the first company in the return hike to the post. The companies started out in the hottest part of the day, and the hiking was very hard. They made four stops on the way going out, arriving at the camping place at 3:15 p. m. Then they pitched shelter tents and rested until next morning, when at 7:30 assembly was sounded and all had to fall in. Companies E and G made out for Waiwahu, arriving there at 9:30. The men were rested for an hour and then marched back to camp, down the railroad track, arriving back at camp by 11:50 a. m. Company F took a trip towards Ewa and stayed out until 1 o'clock. First Lieutenant John S. McClery was in command of the troops for the three days. At 8:30 yesterday morning the general was sounded for breaking camp, and at 8:45 the companies were on the way home. There were very few men who fell out. It was expected that over half would fall by the wayside. The following men from the three companies were excused from the practice march: Quartermaster-Sergeant, March of Company G, Corp. James Reed of Company E, Corp. George Smith of Company F, Privates Herd and Paul of Company G, and Pvt. Dunlap of Company E.

MAILS.

Mails are due at Honolulu from points as follows:
San Francisco—Per Asia, Aug. 2.
Colonies—Per Zealandia, Aug. 16.
Yokohama—Per Mongolia, July 28.
Vancouver—Per Makura, Aug. 19.
Mails will depart for the following points as follows:
San Francisco—Mongolia, July 29.
Vancouver—Per Zealandia, Aug. 16.
Yokohama—Per Asia, Aug. 2.
Colonies—Per Makura, Aug. 19.

TRANSPORT SERVICE.

Dix, from Seattle for Hon.
Logan from Manila July 14. Due Honolulu, Aug. 3.
Sheridan, arrived at San Francisco, July 21.
Sherman, for Manila sailed from Hon. July 14.

WATERFRONT NOTES


AMONG the windjammers making rather long passages to Honolulu from European ports is the Danish bark Denmark which vessel is reported one hundred and thirty days from the port of Leth. The vessel is understood as bringing fertilizer to the order of the Hawaiian Fertilizer Company.

THE UNITED States army transport Logan with officers, enlisted men and casuals for the homeland is out fourteen days from Manila. The vessel is due to arrive here on or about August 3rd. The troopship will be given a prompt dispatch for San Francisco.

THE NORWEGIAN ship Lady Elizabeth from Bremerhaven destined for Honolulu is out one hundred and forty five days from the German port. The vessel is bringing general cargo to the agency of H. Hackfeld and Company and should arrive here at any day.

THE PACIFIC Mail steamer Mongolia taking a number of saloon passengers from Honolulu will be dispatched for San Francisco at ten o'clock tomorrow morning. The vessel is discharging eleven hundred tons of general cargo at Alakea street wharf.

THE ONLY freight steamer thus far reported as having left Newport News with coal destined for Honolulu naval station is the British steamer Nevada. This vessel is now out twenty-nine days from the Atlantic coast port.



50/40 DONT

TOOTH POWDER

Cleanses and preserves your teeth.

SPECIALS FOR SATURDAY MORNING

RED LINEN TABLE DAMASK—60 inches wide. Regular 60c per yard; special 40c.

FINE LINEN INITIAL HANDKERCHIEFS—Beautifully embroidered. Regular \$2.25 per box of half dozen; special \$1.50 per box.

PLAID DRESS MATERIAL—In woolen mixture, 36 inches wide. Regular 75c per yard; special 50c per yard.

COLORS EGYPTIAN TISSUE—Checked and striped. Only a few patterns left. Regular value 30c per yard; special 20c per yard.

GERMAN TORCHON LACE—Three inches wide. Regular 10c per yard; special 5c per yard.

FINE WHITE PEARL BUTTONS—One dozen on card. Regular 10c to 20c per card; special 5c per card.

CHILDREN'S SKELETON WAISTS AND SUPPORTERS—Regular price 30c; special 15c. They keep the body cool and comfortable.

Sachs' Dry Goods Co.

Corner Fort and Beretania Streets—Opposite Fire Station

Gillette Blades COST TOO MUCH TO THROW AWAY

BUY A "KING OF ALL" OR A "RESH" STROP AND KEEP A KEEN EDGE ON THE OLD BLADES.

Benson, Smith & Co.,
FORT AND HOTEL STREETS

Reduction Sale

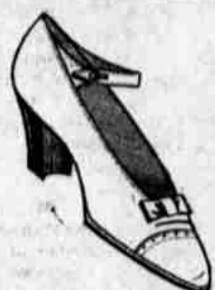
For Four Weeks on Complete Hat Stock

K. UYEDA
1028 Nuuanu St.

MEN'S LAUNDRY WORK

J. ABADIE, Prop. TELEPHONE 1491
FRENCH LAUNDRY - 777 KING

Last Week—\$2.50 Shoe Sale



LAIRD, SCHOBBER & CO.
\$4.50, \$5 and \$5.50
OXFORDS, BLACK and TAN
\$2.50

Many New Lines

Have Been Added to Those Now on Sale

A SAVING OF FROM \$1 to \$2.50 ON EVERY PAIR

\$3.50, \$4 and \$5 Values

Now \$2.50



E. P. REED & CO.
\$3.50, \$4 and \$4.50
OXFORDS, SUEDE, PATENTS, TAN LEATHER
\$2.50

Manufacturers' Shoe Co.

GRIM REAPER ON MONGOLIA

An Oakland Capitalist Died Enroute To San Francisco

The Grim Reaper paid a visit to the Pacific Mail liner Mongolia while that vessel was steaming between the Japanese ports of Nagasaki and Kobe, on the homeward voyage, and this time he called William E. Barnard, a well-known Californian and resident of Oakland.

The death of Mr. Barnard was not unexpected by the Mongolia officers. He was making a round trip to the Far East by the Mongolia, in company with his daughter. Upon arrival at Manila, Mr. Barnard, whose age was given at 77 years, complained of illness. He gradually became worse, and his complaint was diagnosed as pneumonia. He rallied at the Philippine capital to some extent and left for Hongkong. At the China coast port Mr. Barnard rapidly failed, and he was conveyed to the Mongolia, prior to her departure for San Francisco, on a stretcher.

Every possible attention was bestowed upon the sick man by the obliging staff of officers who assisted in making the Mongolia a popular vessel with the traveling public. The remains of the deceased were embalmed and will be brought to San Francisco for interment.

OZAWA ADMITTED TO PRACTICE

Arthur K. Ozawa was admitted to practice before the Supreme Court this morning, and he will be associated with the firm of Thompson, Clemons & Wilder in the practice of law in this city.

Ozawa is a Japanese born in Hawaii and the second Japanese to be admitted to the bar here. The only other one was admitted in 1884 on a certificate from the University of Tokyo.

The young attorney is a graduate of the University of Michigan law school, in the class of 1910, and was admitted to practice before the Supreme Court of Michigan just after his graduation.

A SUGGESTION ON ECZEMA.

It is suggested that eczema sufferers ask the Honolulu Drug Co., of this city what reports he is getting from the patients who have used the oil of wintergreen liquid compound, D. D. D. Prescription.

Charlie Lambert Is Now at ANCHOR SALOON

CURIOS will be there after the Plebiscite.

PRIMO BEER

Order Cream Pure Rye Sold by LOVEJOY AND CO.

Rainier Beer

FOR SALE AT ALL BARS TELEPHONE 1331

WELCOME NEWS FOR SUFFERERS FROM RHEUMATISM

The Disease Is Permanently Cured by Dr. Williams' Pink Pills and Complete Information Is Free for the Asking.

Every one who suffers from rheumatism will recognize the description of a genuine case at sight.

In the following brief statement are vividly described the symptoms which every patient will recognize and the means by which a cure was effected in this case is described with equal fidelity.

If you are suffering from any form of rheumatism with loss of flesh and strength, and thinning of the blood, the remedy that was so effective here deserves a thorough trial.

Mr. George C. Long, a farmer, whose address is Box 43, R. F. D. No. 1, Oakland, Ore., says:

"When I was quite young, I was a sufferer from rheumatism for nearly two years. The pains were in my neck and back and were so intense that my neck was drawn back. My mother was afraid that I would be a cripple for life. I became pale, weak, and thin."

"I was treated by doctors for over a year and tried numerous remedies but received no benefit. Then my mother decided to have me try Dr. Williams' Pink Pills. The first few boxes helped me and I began to gain in flesh and strength. A thorough trial of the pills entirely cured me and I have never had the slightest return of the disease."

That the ordinary medical treatments of rheumatism are far from satisfactory is known by every one who has ever suffered from the disease. To every sufferer, therefore, the fact that Dr. Williams' Pink Pills cure rheumatism, as hundreds of cases like Mr. Long's prove, will be welcome news. Some of these cures are given in our booklet, "Diseases of the Blood," which will be sent free upon postal card request.

Dr. Williams' Pink Pills are also highly recommended for chlorosis or green sickness, general debility, anemia, stomach trouble, and the after-effects of the grip and fevers.

Dr. Williams' Pink Pills are sold by all druggists, or will be sent, postpaid, on receipt of price, 50 cents per box; six boxes for \$2.50, by the Dr. Williams' Medicine Company, Schenectady, N. Y. Always insist upon getting the genuine pills which are sold only in packages bearing the full trade-mark, "Dr. Williams' Pink Pills for Pale People."

San Francisco Hotels

HOTEL STEWART

SAN FRANCISCO

Geary Street, above Union Square Just opposite Hotel St. Francis

European Plan \$1.50 a day up

American Plan \$3.00 a day up

Steel and brick structure, furnishings cost \$200,000. High class hotel at moderate rates. Center of theatre and retail district. On car lines transferring all over city. Omnibus meets all trains and steamers. Send for booklet with map of San Francisco. Hotel Stewart now recognized as Hawaiian Island headquarters. Cable address, "Travelers." A B C Code.

HOTEL STEWART

No Prohibition

That is the vote of the patrons of the

CRITERION

who are accustomed to only first-class beverages.

HOTEL AND BETHEL

C. J. MCCARTHY, Prop.

SPEND THE REST OF THE WEEK AT

HALEIWA

GOOD BOATING AND SWIMMING GOOD GOLF AND TENNIS

WAIKIKI INN

First-Class Family Hotel Best Bathing on the Beach

W. C. BERGIN, Prop.

Hotel Majestic

Sachs Block, Fort and Beretania Sts. Fine furnished rooms, \$1 per day \$10 and upwards per month. Splendid accommodations.

MRS. C. A. FLAISELL, Prop.

THE PIONEER PLUMBER

JOHN NOTT

182 MERCHANT STREET

Boys' Clothing

WE carry the largest and best assortment of BOYS' CLOTHING in the city. We make a specialty of

our **\$5.00** Knickerbocker Suits.

These suits come in all the new shades and all sizes from four years to seventeen years of age.

Boys' Blue Serge Bloomer Pants, full lined, \$1.75.

Boys' Khaki Bloomer Pants, 65c
Boys' and Children's Straw and Felt Hats



ROYAL BRAND



ROYAL BRAND

The Clarion
FORMERLY THE KASH COR. HOTEL & FORT STS.

Look for the Egg

IT HAS BEEN SUGGESTED THAT IT IS A WASTE OF TIME FOR ONE TO TRY AND DISCOVER WHY A BLACK HEN LAYS A WHITE EGG. GET THE EGG. IT IS LIKEWISE A WASTE OF TIME FOR THE OWNER OF A BURROUGHS ADDER OR A NATIONAL CASH REGISTER TO LOOK FOR A DISCONNECTION WHEN EITHER MACHINE GETS OUT OF ORDER. AN EXPERT CAN DO THE WORK IN LESS THAN HALF THE TIME, AND AT THE SAME RATIO OF EXPENSE.

THE WISE MAN HAS HIS CASH REGISTER AND HIS BURROUGHS ADDER GONE OVER, BY ONE WHO UNDERSTANDS, ONCE IN SO OFTEN. WE HAVE THE MAN AND WILL EXECUTE ANY INSPECTION ORDER ENTRUSTED TO US. YOUR MACHINES WILL HAVE LONGER LIFE AND WILL GIVE ALL THE SATISFACTION THE MANUFACTURERS GUARANTEE IF OUR EXPERT EXAMINES THEM. HE IS NOT LOOKING FOR JOBS; HE IS LOOKING FOR POSSIBLE DEFECTS SO HE MAY PLUG THE GERM IN ITS HABITAT. WE WANT TO LOOK OVER YOUR CASH REGISTER, IF YOU HAVE ONE, OR SELL YOU ONE IF YOU ARE TAKING CHANCES ON YOUR CASH. WE WANT YOU TO LET US LOOK OVER YOUR BURROUGHS, IF YOU HAVE ONE, OR SELL YOU ONE, AND HELP YOU TO GET THROUGH WITH YOUR WORK, IF YOU HAVE NOT.

The Waterhouse Co.,

FACTORY AND SALESROOMS—QUEEN, NEAR NUUANU STREET
OFFICE—JUDD BUILDING

EVENING BULLETIN

LY and WEEKLY Published by BULLETIN PUBLISHING CO., LTD.
120 King Street, Honolulu, Territory of Hawaii.

By every day except Sunday. Weekly issued on Tuesday of each week.

MEMBER OF THE ASSOCIATED PRESS.

Editor: Wallace R. Farrington.

SUBSCRIPTION RATES PAYABLE IN ADVANCE.

| EVENING BULLETIN | WEEKLY BULLETIN |
|---|--|
| Per Month, anywhere in U.S. \$.75 | Per Six Months, anywhere in U.S. \$.50 |
| Per Quarter, anywhere in U.S. 2.00 | Per Year, anywhere in U.S. 1.00 |
| Per Year, anywhere in U.S. 8.00 | Per Year, anywhere in Canada 1.50 |
| Per Year, postpaid, foreign 12.00 | Per Year, postpaid, foreign 2.00 |

CIRCULATION LARGEST OF ANY NEWSPAPER PUBLISHED
in the Territory of Hawaii.

Editorial Rooms, - 185
Business Office, - 562

Entered at the Postoffice at Honolulu
as second-class matter.

FRIDAY JULY 29, 1910

Our character is but the stamp on
souls of the free choice of good
evil we have made through life.
Gleikie.

Dr. Crippen couldn't lose himself.
t Dr. Cook seems to have done it
aim.

It is apparent that the authorities
reason to be more on their
and against illegal voting than
the past.

Amateur Vaniloff will find that
Honolulu is a very warm spot for
itators who haven't enough sense
behave themselves.

With four vacancies to fill for this
and, there should be enough open-
ings to give every aspirant to the
per house a good run for his
money.

Secretary Wood must have been
telling the high spots when he wrote
a recommendation for establishing
time routes for the tourists in
Hawaii.

Now that the Government is
rough with the Sugar Trust, the
or leaders seem to think they
ve a right to whack it and no one
ll care.

No steamer in the service has
ch a penchant for going overland
the Mongolia, nor indulges in
in pleasure with less injury to it
f and passengers.

Excuse us while we smile at the
lantic City complaint that things
on Hawaii are not up to the high
indard of that highly classical and
real community.

Democrats are making a great
stle for the good will of the voter.
publicans will do well to not wait
l the last minute before they begin
stir themselves.

Not the candidate you and the
ses want, but the candidate who
s the confidence of the people will
ll up figures that amount to some-
ing on election day.

It is time to look forward to Ha-
ll's next sugar income. Give thanks
at the prospect is for good crops
d good prices. And invest your
oney in the securities of Hawaii
d.

Pennsylvania needs regeneration
more ways than one, but the third-
rty movement has never accom-
ished anything toward worryin-
e party bosses who are primarily
y and for the railroads.

Honolulu can't help believing that
e Hawaiian music on the Atlantic
ty Board Walk disturbs the hotel
ers than it does the guests. The
ys must be drawing trade away
om the other fellow.

Of course, there is no telling what

the Treasury Department may do,
but its previous record for speed has
not been such as to make any Ho-
nolulu people think they need get off
the track to escape being run over
by the expansion of the Mahukia site.
Honolulu would be pleased indeed to
experience a surprise in this in-
stance.

Colonel Bryan most always con-
tinues contesting, but never gets any-
where until another takes hold of his
idea and revamps it so as to give
it some practical value.

When Madam Pele smokes up it is
a sure sign that everything is all
right and everyone will live happy
ever after. With this assurance, the
Promotion Committee can continue
to class the volcano as a community
asset.

Tantalus residents complain that
work on the roads of that beauti-
ful summering spot is done at the
time of year when no one is there
to share the improvement. They
want good roads in the good old sum-
mer time, and it seems like they
ought to have them.

Workmen think first of their
food, while teachers devote much
money to their clothes, according to
the record secured from an investiga-
tion of the cost of living among fam-
ilies of moderate income in Ger-
many. The bulletin issued by the
Bureau of Labor says the highest
proportion of expenditure for food
was shown for families of workmen
not classified, namely 55.9 per cent.
of all expenditures, while the lowest
was for those of teachers, 34.7 per
cent. On the other hand, teachers'
families devoted 2 per cent. of their
expenditures to rent, as opposed to
17 per cent. paid by families of
workmen of all classes. Teachers
also showed the highest proportion
of family expenditures for clothing,
14.8 per cent., as against 10.7 per
cent. for workmen not classified and
10.6 per cent. for unskilled work-
men. Officials of secondary rank de-
voted 26 per cent. and teachers 25.8
per cent. of their family expendi-
tures to social, educational and other
miscellaneous purposes, while for
workmen not classified only 11.4
per cent. was so expended.

FRIAR LAND INVESTIGATION.

According to the New York World
we are to know the truth about the
Friar lands of the Philippines, when
the investigating committee appointed
at the instance of Senator Gore gets
through with its work.

Apparently from the way the World
puts it the handling of these lands is
to be made a feature by the Democr-
atic side of the House, and there are
a great many people who would like to
know just what the situation is re-
garding the large areas the disposal
of which will have an important bear-

EVENING SMILES

A Baptist minister, fishing near
ape Cod, caught a strange fish, and
asked of the skipper: "What manner
fish is this, my good man? It has a
vicious appearance."
"Yess! Only been round here this
year."
"What do you call it?"
"We call them Baptists."
"Why so?"
"Cause they spile so quick arter
em come out of the water."

A woman with a basket full of laun-
dry made a little delay on trying to
get on the street car the other day.
The conductor was up in the fore part
of the car collecting fares, stopped
or an instant and cried out to those
standing in the vestibule, "All right
ack there?" as he was about to ring
the bell.
"No, for pity sakes wait till this
oman puts her clothes on," cried a
car passenger.

George Ade, the humorist and play-

wright, recently told a story of a
farmer who went to a large city to see
the sights. The rural visitor engaged
a room at a hotel and before retiring
asked the clerk about the hours for
dining.
"We have breakfast from 8 to 11, din-
ner from 11 to 3 and supper from 3 to
8," explained the clerk.
"Wa-al, say," inquired the farmer in
surprise, "what time air I goin' ter
git ter see the town?"
A former Bishop of the Episcopal
church of Indiana once preached to a
black congregation. At the conclusion
of the discourse, several of the
negroes crowded about the preacher
and praised his sermon, saying it
was the best they had ever heard. One
enthusiast exclaimed: "Bishop, you
tol' us things we neva' knew befo'."
"Indeed," said the bishop, gratified
at the praise. "What was it I told you
tha you never knew befo'?"
"Bout Sodom an' Gomorrah. Why,
bishop, I always thought they was a
man an' his wife."

Houses To Let

| FURNISHED | | | UNFURNISHED | | |
|---------------------------|-------|-------|-----------------|-------|-------|
| | B. R. | | | B. R. | |
| Pacific Heights | 4 | \$ 40 | Aiea | 3 | \$ 50 |
| Prospect St. | 4 | 75 | Kaimuki, 7th | 6 | 45 |
| Piikoi & Young | 3 | 50 | Beretania St. | 2 | 25 |
| Peninsula | 4 | 100 | Thurston Ave. | 4 | 40 |
| Pensacola St. | 3 | 75 | Kam. IV. Rd. | 4 | 25 |
| Waialae Rd. | 4 | 65 | Matlock Ave. | 2 | 25 |
| College Hills | 3 | 40 | Lewers Rd. | 3 | 30 |
| Kaimuki, 13th | 3 | 60 | Christley Lane | 2 | 15 |
| Young St. | 4 | 60 | Kaimuki, 11th | 2 | 32 |
| Piikoi and Hassin- ger | 2 | 45 | Emma Lane | 2 | 12 |
| Kināu St. | 3 | 25 | Kaimuki, 9th | 2 | 35 |
| | | | Kam. IV. & Rose | 3 | 25 |
| | | | Kaimuki, 9th | 2 | 12 |
| | | | Piikoi St. | 3 | 30 |
| | | | Kināu St. | 6 | 40 |
| | | | Beretania St. | 2 | 26 |
| | | | Waipio | 3 | 12 |

Trent Trust Co., Ltd.

FOR SALE

MANOA VALLEY

Seven acres. House with
large living room, two bed-
rooms, garage, servants' quar-
ters, etc.
All modern conveniences.
Frontage on upper Manoa
road.

Price \$5500

Terms Can Be Arranged

Bishop Trust Co., Ltd.

BETHEL STREET

ing on the progress of our islands of
the Orient.

The World in its statement of the
case, says: "What information on the
subject has so far been made public
has been extracted bit by bit from the
Administration with the greatest diffi-
culty. But for the persistence of
Representative Martin of Colorado in
calling for the truth the whole busi-
ness would have remained clothed in
secrecy."

"By the act of Congress approved
July 1, 1902, which is the organic law
of the Philippines, it was provided
that not more than fifty acres of pub-
lic land should be sold to an individ-
ual and not more than 2500 acres to
a corporation or association. This
was done at the instance of Senator
Hoar and with the express approval
of Mr. Taft, then Governor-General
of the Philippines, to prevent the ex-
ploitation of the islands and to pro-
tect the interests of the Filipinos."

"The friar lands, which are mostly
in large tracts were not secured
until later, at a cost of about \$7,000-
000. Nothing was publicly known in
this country about the sale of any of
these lands until last December, when
a cablegram to the press announced
the sale of the 56,000-acre San Jose
friar estate in Mindoro to one Poole,
said to represent the Havemeyer sug-

DON'T WAIT FOR THE MAIL

Use the

WIRELESS

Office open Sunday mornings from
eight to ten.

ar interests. It was then discovered
that for months negotiations had been
carried on at this end and in the Phil-
ippines, and that after the announce-
ment of the sale of the San Jose es-
tate Attorney-General Wickersham
had rendered an opinion that the lim-
itations on the sale of public land in
the act of July 1, 1902, did not apply
to the friar lands.

The War Department and the Bu-
reau of Insular Affairs sent to the
House the correspondence with New
York attorneys in which on October
22, 1909, two months before Attorney-
General Wickersham gave his opinion,
the attorneys were officially advised
from the Bureau of Insular Affairs in
Washington that "two acts of the
Philippine Legislature amending the
'Friar Lands act' * * * make it
clear that the unoccupied lands on
the friar estates may be sold to indi-
viduals without any limitation as to
area." Three months later, January
28, 1910, the War Department stated
that "the first information concerning
the sale of the San Jose friar estate
was received through the public
press." Its own records prove the in-
correctness of the statement, says the
World.

"So far the only warrant offered for
the sale of large tracts of friar lands
is the passage of two large tracts of
friar lands is the passage of two ac-
t Nos. 1847 and 1953, by the Philippine
Legislature, overruling the plain in-
tent of Congress as to the disposal of
public land, and a ruling after the
act by Attorney-General Wickersham
likewise setting aside the act of Con-
gress which is the organic law of the
Philippines."

"On the strength of these acts, two
formally adopted at Manila without
the knowledge of most if not all the
members of Congress, and of another,
a secret ruling of the Attorney-Gen-
eral at Washington, tens of thousands
of acres of friar lands in the Phil-
ippines have been sold or leased to
private individuals in disregard of the
act of Congress of July 1, 1902."

"Following the sale of the San Jose
friar estate the Lambela friar estate of
49,000 acres was transferred last Jan-

uary to private parties. Other Sugar
Trust representatives have secured
leases of tracts of a similar nature
by the same quiet methods. It can-
not only go on quietly, but it can
W. Carpenter, Executive Secretary of
the Philippine Commission, and J. L.
Worcester, a nephew of Deas, C. Wor-
center, a member of the commission,
who is also Secretary of the interior
in the Philippines, had been in favor
to the extent of a lease of 5000 acres
of friar lands at eight cents an acre,
with a right to all the rest of the es-
tate as fast as it becomes vacant and
with the option to purchase the land."

It is this alleged state of affairs
that has made necessary the investi-
gation that the House has ordered.

PORTO RICANS
AND SALVATION

(Continued from Page 1)
ish, and the life those Porto Ricans
put into the singing would put to
shame the singing of quite a few
mainland corps officers. After Major
Willis had closed in prayer we pro-
ceeded to the church, where we had
a large crowd of people present. The
first on the program was the ded-
ication service, when four babies were
presented to God and The Army.
Next was the enrollment of five re-
cruits, and these new soldiers are
surely a welcome addition to the
outpost. Last was the wedding cer-
emony; the parties concerned had
lived together as man and wife for
twenty-five years, although not mar-
ried. They got converted a short
time ago, and evidently God revealed
to them that their living together
without being legally married was
not in accordance with His law, so
they decided to have Major Willis
tie the knot, and he did a good job.
All through the meeting a deep in-
terest was shown by all present, and
undoubtedly some good was done for
eternity. Ensign Timmerman has
things well in hand on his clerical,
and God is wonderfully blessing him
in his work.—Alex. Nelson, Lieu-
tenant.

TAFT'S WARDS
FLOCK HERE

(Continued from Page 1)
portion of her freight consists of
ten * * *
Nineteen cabin passengers are
travelling through. In the steerage
department San Francisco are twen-
ty-two Japanese, 176 Chinese and 110
Indians.
The Mongolia is scheduled to de-
part for San Francisco at 10 o'clock
tomorrow morning. A number of

passengers have been booked by the
local agents for transportation to the
Coast.

Five passengers from the Mongo-
lia have decided to go over to Ho-
nolulu. They include Mrs. A. C.
Baldwin and Mr. and Mrs. E. F. Cat-
lett and child.

Of the through passengers, Captain
Hamilton is a British officer who has
completed an extensive tour of duty
throughout the Far East, including
India, China and Japan. He is ac-
companied by Lady Hamilton, and
they are proceeding to England.

William P. Newson is a valued
member of the staff of the Shanghai
office of the Pacific Mail. Mr. New-
son is on a trip to the homeland.

O. Moller is a member of the firm
of Moller Brothers, well-known ship
and sharebrokers of Shanghai. Mr.
Moller, in addition to his prominence
in business circles in the Model Set-
tlement, is also a keen sportsman,
and has figured lately in interpor-
t cricket matches along the China
coast.

Arthur Murda is connected with
the American consular corps, with
headquarters at Kobe. He is on
leave.

STEADY MOVE
OF LOCAL STOCKS

The lesser stocks figured in the
business done this morning, both at
session sales and between boards, and
although there were no exception-
ally heavy transactions, the prices
held firm, with a tendency to an up-
ward trend.

Between boards, Melbyde and
Olau commanded the same figure,
6.25, seventy-four shares of the for-
mer and one hundred and sixty of
the latter moving. Melbyde figured
at session sales in a small block of
fifteen at 6.375.

Seventy Hon. B. & M. Co. changed
hands between boards at 22.125,
and at session sales five shares
brought 22.25. This is a good
boost over the last previous sale,
which was at 22.

Oahu Sug., a block of thirty mov-
ing at 31.625, appears to be a trifle
weak.

Honokaa shows a slight upward
move, one hundred shares at session
sales being taken at 18.125 and 75
shares bringing 18.25. \$1000 of
Waialua 5a closed the session, at
101.75.

Over 300 wholesale tea merchants
are doing business in the city of Lon-
don alone. This does not include the
dealers that are listed as tea brokers,
but does include the packers of tea
from bulk into small packages.

London's newest music hall seats
four thousand persons. St. Peter's
Cathedral in Rome can hold at a pinch
54,000 persons. Milan Cathedral holds
40,000. St. Peter's, in London, has
seen 26,000 within its walls.

Brigade last year used 11,375,000 gal-
lons of water.

No trouble at all
to brighten an
oil painting, the
colors of which have
grown dingy by age and
exposure.

With a clean sponge
apply cold water in
which a little Ivory Soap
has been dissolved.

The same treatment
will materially improve
the appearance of the
frame.

Ivory Soap
99¹/₁₀₀ Per Cent. Pure



AS AN
INVESTMENT

you want an umbrella that
will give you good returns for
your money.

A good umbrella will outlast
half a dozen cheap ones.

Our umbrellas always wear
well and look well.

H. F. Wichman
& Co., Ltd.,
LEADING JEWELERS 11
FORT STREET

CASTORIA

For Infants and Children.

The Kind You Have Always Bought

Bears the
Signature of J. C. Fitcher

Suffragettes are new women in dis-
guise.

FOR the stomach's sake an
occasional glass of beer is
very good. It is a well estab-
lished fact that

PRIMO BEER

contains corrective and tonic
qualities which make it inval-
uable to the run-down system.
Apart from its medicinal prop-
erties PRIMO is an ideal
beverage, well-suited to the
requisitions of this climate.



The Beer That's Brewed
To Suit The Climate

Waterhouse Trust

For Sale

The only available Beach Prop-
erty on the car line.

We have for sale at Waikiki 400
feet of Beach Property, a portion
well improved with a large and com-
fortable house.

We are authorized to offer this
property as a whole or in fifty to a
hundred-foot strips to suit the pur-
chasers.

Particulars and terms at our of-
fice.

Waterhouse Trust

Fort and Merchant Streets

For Dress Affairs

we offer the celebrated

Laird, Schober & Co.'s
Shoes for Ladies

Hanan & Company's
Shoes for Men

We have other and less expensive shoes that are satisfactory as to style and quality.

Get your feet ready for the reception

M'Inerny Shoe Store
Fort St., just above King

For Bargains

IN REAL ESTATE, IMPROVED and UNIMPROVED, IN HONOLULU and NEAR HONOLULU, ON THE BEACH and ON THE HILLS, for cash or partial payments;

O R

If you want to rent your place or somebody else's place

O R

Borrow or loan money,

SEE

Pratt, the Land Man
125 MERCHANT STREET

Make your future secure by a savings account in this bank.

We pay 4 1/2% interest, compounded twice annually.

Bank of Hawaii, Ltd.
Capital and Surplus: \$1,000,000

P. H. BURNETTE
Com'r. of Deeds for California and New York; NOTARY PUBLIC; Grant Marriage Licenses; Draw Mortgages, Deeds, Bills of Sale, Leases, Wills, Etc. Attorney for the District Courts. 79 MERCHANT ST. HONOLULU. PHONE 310

Vienna Bakery

1129 Fort St.
FINE ROLLS AND BUNS.
BOSTON BAKED BEANS.
BOSTON BROWN BREAD.
BEST HOME-MADE BREAD IN TOWN.
Ring up 197

Drink
MAY'S OLD KONA COFFEE
Best in the Market
HENRY MAY & CO.
Phone 22

FOR YOUR GROCERIES, SEE
AMERICAN BROKERAGE CO.

93-95 King Street, near Maunakea
Phone 291 Daily Delivery

BULLETIN ADS PAY

WHEN IN NEED OF Paper

of any description
Phone 410

HONOLULU'S LARGEST
PAPER HOUSE

AMERICAN-HAWAIIAN
PAPER & SUPPLY CO., LTD.
Fort and Queen Streets
GEO. G. GUILD - Manager

Per Cent Profit

That is what you are looking for on your

Investments

Our knowledge of financial conditions will bring you that result, if it is possible.

Stock and Bond Dept.

Hawaiian Trust Co., Ltd.
923 FORT STREET

MARTIN GRUNE,
REAL ESTATE AGENCY

83 Merchant Street Telephone 786

Stop Paying Rent
See the
HAWAIIAN REALTY CO.
Phone 553. 83 Merchant St.
\$500 to \$15,000

CALIFORNIA OIL MAP FREE
We are giving away free to those answering this advertisement before July 31st, a map of all the California oil fields; also a free subscription to our trade journal, "California Oil Fields." Sagar-Loomis Co., 833, 834, 835 Phelan Bldg., San Francisco, California.

185 editorial rooms—250 business office. These are the telephone numbers of the Bulletin office.

Alfred D. Cooper
Hawaiian Stocks and Bonds
Bought and Sold
307 JUDD BUILDING
Telephone 489 P. O. Box 607

Wm. Williamson,
Stock and Bond Broker,
63 MERCHANT ST.

PHONE 412 P. O. BOX 524

Honolulu Stock Exchange
Friday, July 29.

| NAME OF STOCK | Bid | Asked |
|-----------------------------|---------|---------|
| MERCANTILE | | |
| C. Brewer & Co. | 150 | 150 |
| SUGAR | | |
| Ewa Plantation Co. | 34 1/2 | 34 3/4 |
| Hawaiian Agric. Co. | 40 1/4 | 40 3/4 |
| Haw. Com. & Sug. Co. | 42 | 43 |
| Hawaiian Sugar Co. | 150 | 150 |
| Honolulu Sugar Co. | 150 | 150 |
| Honokaa Sugar Co. | 18 1/2 | 18 3/4 |
| Hulu Sugar Co. | 17 1/2 | 18 |
| Hutchinson Sugar Plant. | 17 1/2 | 18 |
| Kahuku Plantation Co. | 19 1/2 | 20 |
| Kekaha Sugar Co. | 19 1/2 | 20 |
| Kolon Sugar Co. | 19 1/2 | 20 |
| McBryde Sugar Co. | 6 1/2 | 6 3/4 |
| Oahu Sugar Co. | 31 1/2 | 31 3/4 |
| Oahu Sugar Co. Ltd. | 4 1/2 | 4 3/4 |
| Olowalu Co. | 6 1/2 | 6 3/4 |
| Panama Sugar Plant. Co. | 26 | 27 |
| Pacific Sugar Mill | 150 | 150 |
| Pala Plantation Co. | 150 | 150 |
| Pepee Sugar Co. | 150 | 150 |
| Pioneer Mill Co. | 22 1/2 | 22 3/4 |
| Waialua Agric. Co. | 128 | 129 1/2 |
| Waialua Sugar Co. | 128 | 129 1/2 |
| Waianae Sugar Co. | 128 | 129 1/2 |
| Waimea Sugar Mill Co. | 128 | 129 1/2 |
| MISCELLANEOUS | | |
| Inter-Island Steam. N. Co. | 122 1/2 | 123 |
| Hawaiian Electric Co. | 105 | 106 |
| Hon. R. T. & L. Co. Pref. | 105 | 106 |
| Hon. R. T. & L. Co. Com. | 105 | 106 |
| Mutual Telephone Co. | 15 | 15 |
| Nabiku Rubber Co. | 104 | 104 |
| Nabiku Rubber Co. A.S. | 104 | 104 |
| Oahu R. & L. Co. | 141 1/2 | 142 |
| Hilo R. R. Co. Pfd. | 12 1/2 | 12 3/4 |
| Hilo R. R. Co. | 12 1/2 | 12 3/4 |
| Hon. B. & M. Co. | 22 1/2 | 23 |
| Hawaiian Pineapple Co. | 31 1/2 | 32 |
| Taniguchi Okok R. Co. 2d up | do | do |
| do 65% p | do | do |
| BONDS | | |
| Haw. Ter. 4 1/2% (Fire Cl.) | 99 1/2 | 100 |
| Haw. Ter. 4 1/2% | 99 1/2 | 100 |
| Haw. Ter. 4 1/2% | 99 1/2 | 100 |
| Haw. Ter. 3 1/2% | 99 1/2 | 100 |
| Cal. Beet Sug. & Ref. Co. | 99 1/2 | 100 |
| Hamilton Ditch Co. | 104 | 104 |
| Upper Ditch Co. | 104 | 104 |
| Haw. Irr. Co. 6 1/2% pfd. | 102 1/2 | 103 |
| Haw. Irr. Co. 6 1/2% | 102 1/2 | 103 |
| Haw. Com. & Sug. Co. 5 1/2% | 105 | 106 |
| Hilo R. R. Co. 1st 100 | 100 | 100 1/2 |
| Hilo R. R. Co. 2d 98 | 98 | 98 1/2 |
| Honokaa Sugar Co. 6 1/2% | 103 | 103 1/2 |
| Hon. R. T. & L. Co. 6 1/2% | 99 | 99 1/2 |
| Kauai Ry. Co. 5 1/2% | 99 | 99 1/2 |
| Kohala Ditch Co. 6 1/2% | 98 1/2 | 99 |
| McBryde Sugar Co. 6 1/2% | 98 1/2 | 99 |
| Oahu R. & L. Co. 5 1/2% | 102 1/2 | 103 |
| Oahu Sugar Co. 5 1/2% | 94 1/2 | 95 |
| Oahu Sugar Co. 6 1/2% | 94 1/2 | 95 |
| Pac. Sug. Mill Co. 6 1/2% | 101 1/2 | 102 1/2 |
| Pioneer Mill Co. 6 1/2% | 101 1/2 | 102 1/2 |
| Waialua Agric. Co. 4 1/2% | 101 1/2 | 102 1/2 |

SALES—Between Boards: 39 McBryde, \$6.25; 35 McBryde, \$6.25; 160 Olua, \$6.25; 30 Hon. B. & M. Co., \$22.12 1/2; 30 Oahu Sug. Co., \$31.62 1/2; 20 Hon. B. & M. Co., \$22.12 1/2.
Session Sales: 100 Honokaa, \$18.12 1/2; 50 Honokaa, \$18.25; 25 Honokaa, \$18.25; \$1000 Waialua 5 1/2, \$19.75; 15 McBryde, \$6.37 1/2; 5 Hon. B. & M. Co., \$22.25.

Latest sugar quotation 4.36 cents or \$87.20 per ton.

Sugar. 4.36 cts
Beets, 14s 8 3-4d

HENRY WATERHOUSE TRUST CO.
Members Honolulu Stock and Bond Exchange
FORT AND MERCHANT STS.
TELEPHONE 736

Harry Armitage
Stock and Bond Broker
Member of Honolulu Stock and Bond Exchange
Campbell Block, Merchant Street

Roth & Giffard
STOCK AND BOND BROKERS
Members Honolulu Stock and Bond Exchange
848 KAAHUMANU STREET

Trent Trust Co., Limited
MEMBER HONOLULU STOCK AND BOND EXCHANGE

F. E. DAVIS,
WHOLESALE CANDY
Merchant and Nuuanu Streets

LOCAL AND GENERAL

A new supply of the huge nickel pads has just come in. Two hundred sheets for five cents, at the Bulletin office.

One—Two—Eight—One.
Autos, \$1 per hour, Lewis Stables.
Arctic Soda Water has snap to it. Phone 557.

It goes without saying that everything is best at The Encore.
Seated Auto for hire. Phone 199 James Baker, Young Hotel Stand.

Do you want a clean comfortable room \$1.50 or \$2 week? Call 1281 Fort St.

Henry Walker, the rice merchant, has donated a gold medal to the best batter on the Waseja team.

If you want a good job done on an auto or carriage take it to Hawaiian Carriage Mfg. Co., 427 Queen St.

For distilled water, Hire's Root Beer and all other popular drinks. Ring up phone 71. Consolidated Soda Works.

Pay cash and ask for green stamps. They're free. Call at the show rooms and see what you get free for stamps.

Jerry Rooney is now at the Auto Livery Co. with his Packard car, No. 270. Hotel and Union streets; phone 6.

The Wall Cap tennis entries close on Saturday afternoon at the Beretania Club, and play will start on Monday next.

Union-Pacific Transfer Co. supplies family trade with the best grades of wood and coal at the lowest market prices. Phone 58.

The final game in the marine first series was played yesterday, when the lads from Company A beat the Company C team by a score of 9 to 4.

Company A won the first series of the marine baseball games, and the standing of the teams is as follows: Company A, 666; Company B, 500; Company C, 500; Company D, 533.

Groninger leads in the batting averages of the Military Baseball League, and his figures are .500. Ahana of the Hospital Co. is second, with .428, and Williams of the same team is third, with .424.

The weekly dance of the "Royal Academy of Dancing" takes place this evening at the Odd Fellows Hall. Instruction 7 p. m. to 8 p. m. From 8 p. m. to 10:30 p. m. a social is held for members and their friends. Membership cards permitting the holder to invite a friend can be obtained at the door.

In response to a cable just received by Mr. Luttid, stock in Lakeview Oil Co. No. 2 will positively be 20 cents per share after July 31.

Another big gusher having come in within half mile of Lakeview No. 2. It is a mine to one proposition in your favor, don't neglect it. Come and see me at once. J. Oswald Luttid, next to Convent, Fort St. Phone 690.

349,000 TONS OF CROP MARKETING

(Continued from Page 1)

Ewa plantation finished its crop last week, closing with a record of 32,392,370 tons; this includes the sugar from Apokaa, that is handled at the Ewa mill.

Oahu will finish late in August and its crop will be 29,350 tons.

Waialua will finish grinding about the fifteenth of August, and its crop will probably go over thirty thousand tons, but not up to thirty-two thousand as some have figured. It is now generally accepted that Waialua will not pay the extra three per cent dividend that was expected earlier in the season. The twelve per cent profit will be earned but three per cent of this, that stockholders had been expecting as dividends, will be paid out on permanent improvements.

Kahuku finished some time ago. Nearly all the Maui plantations have finished grinding, but there are some late ones on Hawaii. There are also a few still grinding on Kauai.

ORDERS FOR CONDEMNATION

(Continued from Page 1)

see you in Honolulu in September." It is presumed that the action of the Treasury Department will be to instruct the United States District Attorney to proceed with the condemnation.

It is not often that vigorous contests are made against the condemnation of land taken over by the Government for public purposes, as it is usually possible to come to an amicable understanding as to the price, and the time required is only that consumed by the necessary period of advertising and legal detail.

Whether the way will be as easy in connection with the Mahuka site business, remains to be seen.



The more discussion the better. Truth doesn't mind being talked about.

IMPERIALES
MOUTHPIECE
CIGARETTES

are discussed because they're worth discussion. The blend of fine tobaccos—the mouthpiece—the main paper—no wonder they're talked about.

10 for 10 cents

THE JOHN BOLLMAN CO., Mfrs.

MONGOLIA IS SOUND AS DOLLAR

(Continued from Page 1)

There was not the slightest jarring noticeable because of the grounding. To those officers who have been with the larger Pacific Mail vessels during the past few years the experience at the Japanese port was in every way similar to a grounding at Manila or Honolulu harbor.

Capitain Kitt was an officer on a liner that went aground near Manila a year or so ago and the sensation produced at Shimidzu by the accident that befel the Mongolia, was not a new experience to the officers.

The harbor is small and one difficult of manipulation for large vessels. It is one much dreaded by the skippers of the big liners. The vessel had called at Shimidzu for a large shipment of tea. This being one of the principal ports from which this product is shipped from Japan.

The dawn of July 15th showed the true position of the Mongolia. All attempts to move the vessel while her cargo remained below hatches proved unavailing. Captain Kitt then ordered lighters and before the vessel was lightened sufficiently to remove her, between three and four hundred tons of freight had been removed.

The ship was successfully refloated on the following Sunday and her cargo was then reloaded. The vessel proceeded to Yokohama and left that port for Honolulu on July 20th.

According to all statements given this morning, the Mongolia was ashore but once.

It is now believed that the Mongolia will not be subjected to a survey upon arrival at San Francisco. The claim was first made that this would prove a necessity.

More MONEY LESS EXPENSE

(Continued from Page 1)

cific property, income tax, insurance, penalties, costs and interest.

The assessed valuation of property in the Territory for two years past has increased considerably. In the fiscal year 1910 the valuation was \$150,269,367 and in the previous year it was but \$138,910,820.

By districts the valuation for the past year was: Oahu, \$75,494,470; Maui, \$28,971,665; Hawaii, \$30,928,541; and Kauai, \$15,774,691, showing that the valuation of property on Oahu is larger than on all other islands combined.

Financial condition of the Territory is gratifying as yesterday there was on deposit in the different banks and held in the treasury \$1,125,548.80.

There has been paid to the Counties from the Treasury \$140,086.10 for road tax and in addition each County has received the following: County of Honolulu \$502,519.56, County of Hawaii \$215,459.09, County of Maui \$190,316.43 and County of Kauai \$111,192.26.

INCREASED CAPITAL

Kona Tobacco Company has increased its capital stock from \$50,000 to \$75,000, papers having been filed with Treasurer Conkling to this effect.

The increase is made at this time for further development work on the property.

Blank books of all sorts, ledgers etc. manufactured by the Bulletin Publishing Company.



Boys' Wash Suits

A NEW LOT of nobby little suits in sailor blouses, knickerbocker styles and plain, in handsome striped percales, linen, duck, pique, etc. The swellest lot we have yet carried.

Mothers and Fathers should see these suits.

Silva's Toggerly,
Elks' Bldg King near Fort

Iron Where It's Cool

ALL THE DISCOMFORTS OF IRONING VANISH BEFORE

The Electric Iron

IT IS AS ESSENTIAL IN THE MODERN HOME AS LIGHT ITSELF.

TELEPHONE 390 AND OUR SOLICITOR WILL CALL.

The Hawaiian Electric Co., Ltd.

The "Grabowsky Truck"

1, 1 1/2, 2 AND 3 TONS

The result of inaccessible power plant is neglect. The quick detachable power plant is a decided innovation in commercial cars. The removal of engine and transmission is a one-man operation, and requires but a very few minutes.

HONOLULU POWER WAGON CO.

W. M. MINTON, Mgr.
Office—875 South Street, Near Corner of King Street.

Big Sale

of

Muslin Underwear

for

3 Days Only

Beginning MONDAY, Aug. 1st

FULL PARTICULARS, SATURDAY'S BULLETIN

JORDAN'S

Plantation and Country Stores Take Notice

BADGER'S EXTINGUISHERS and CHEMICAL ENGINES, with a WATCHMAN and WATCHMAN'S CLOCK should be in every store.

This equipment will protect you from fire. Extinguishers, Chemical Engines and Watchman's Clocks for sale by

J. A. Gilman

Fort Street, Honolulu

Phone No. 50

Go ye therefore into the land of Kaimuki, and say thou unto Mr. Pessimist that I shall buy a lot and profit thereby, and upon that lot shall I build a house, and in that house shall I dwell, high above the sea, and enjoy the Koko Head breeze forever more.

--Kaimuki Land Co., Ltd.

QUEEN MARY AND HER NEEDLE.

Queen Mary of England is an expert needlewoman. She is not only an able dressmaker, but is wonderfully clever at lace-making. She has taught her daughter the way of making lingerie gowns, and has insisted that the princess be trained in the same severe school as herself. Her training was most rigorous. She was taught the value of practical arts, and, despite her royal position, she never was led to believe she should fritter away her time. Her husband has been serious in that respect, for he is earnest and fond more of solemn pursuits than society affairs. The Queen has met many American women, but she has made warm friends only with those who are interested in charities, literature or have some special aim. To such women the Queen often has said she wished society women would give up high heels and long earrings and learn needlework. In fact, she even has said that learning to cook was much better than spending an afternoon at the races.—Exchange.

CHINA'S ARMY HAS BIG FUTURE

British Army Officer
Tells Of Advance
Made

"The Chinese army is a growing institution. It is being trained by about eighty Japanese officers. No one knows its actual strength, but it will surely develop with such rapidity that the whole world will be surprised to find that the Chinese army will be one of the greatest and strongest military organizations in the world."

The Hon. Captain Hamilton of the British army, who has been visiting in the Orient, made the above statement this morning when interviewed on board the steamship Mongolia, which arrived from Yokohama, Japan. He has been traveling by way of India and other countries in the Orient, and is now returning to his homeland, England.

Captain Hamilton is practically a young man, but he is considered one of the brightest officers in the British army. While visiting in China, not in official capacity, he watched and sized up the military condition of the imperial army. As a result of his investigation he found that the Chinese were ably following the military systems as adopted by other military powers of the world.

He stated that the Chinese army authorities are employing only Japanese officers to train the men. No white officers are employed, and it is expected that before long the Chinese Government will be prepared to run its military department without the assistance of the Japanese officers.

During the recent military maneuvers, Captain Hamilton watched the Chinese army with interest. While there were certain things which did not meet with his approval, yet he believes that by steady and untiring efforts China will become one of the greatest military powers in the world.

BORN.

SIMPSON—In Honolulu, at Kapioleli Maternity Home, July 27, 1910, to Mr. and Mrs. Herbert S. Simpson, a son.

"For Rent" cards on sale at the Bulletin office.

WOULD FLY TO VOLCANO

Wood Proposes Airship
Flights For
Tourists

Promotion Secretary H. P. Wood, writing from Atlantic City tentatively proposes airship trips from Honolulu to other points of interest in the islands as a drawing card for tourists.

It was at the conclusion of the aviation meet held in Atlantic City that Secretary Wood wrote this letter and he was quite taken away with the performances of the airships which he witnessed.

On account of the absence of contrary winds and other impediments of successful flight in Hawaii Secretary Wood deems it possible that flights could be made from Honolulu to different parts of the islands, the volcano for instance being the most promising goal for which to fly.

As an advertisement for tourists to visit the Territory he thinks that trips through the air to the slopes of the volcano would be a great drawing card.

BOY'S TERRIFYING BALLOON ASCENT

LINCOLN, Neb., June 12.—Clyde Heckle, an 18-year-old Lincoln boy, made a terrifying 6000-foot balloon ascension this afternoon, clinging for a part of the time to the clutch rope of the air craft. He landed half an hour from the start in the middle of a shallow lake at a summer resort near the city.

Adolph Weilberg, an aeronaut, who makes parachute jumps at the resort, had made preparations for his regular trip, and young Heckle, with others, was holding the ropes. The boy had asked to be allowed to make the ascent, but was refused. Just as the aeronaut called to his assistants to let go, Heckle with a knife severed the two ropes holding the parachute, and as the air bag leaped upward he grasped the clutch rope of the balloon. Weilberg and his parachute were left on the ground.

For possibly a thousand feet Heckle went upward almost like a rocket, clinging only with his hands. Then he managed to swing himself astride the clutch rope, and after an ascent of over a mile, came down without mishap.

WHITNEY & MARSH, I.O.

Big Remnant Sale

MONDAY, AUGUST 1st
of
WOOLEN GOODS,
SILKS, LAWNS,
and WASH GOODS
of all kinds

Roads

EXCAVATING, FILLING, STONE WALL, CURBING, SIDEWALKS, FLOWING, ETC., ETC.

I will give you low figures on any one of above different kinds of work that you may want figures on. Give me a chance.

ISLAND TRANSFER

VINEYARD STREET, EWA NUUANU STREAM

Office Hours—5:30 p. m. to 6:30 p. m.

Phone 588

We have just received from the S. S. Wilhelmina a Splendid Line made up of Best Qualities in

EMBROIDERIES and LACES

They are all well-made, handsomely-finished, strictly high-grade goods.

ALL AT 5c AND 10c A YARD

Come early and pick the best patterns.

The Yat Hing Store

HOTEL BETWEEN RETHEL AND FORT STREETS

1/4, 1/3, and 1/2 SAVED

THE GREATEST SALE THIS CITY HAS EVER KNOWN
COMMENCING SATURDAY, JULY 30th, AND CONTINUING FOR ONE WEEK ONLY

LOT NO. 1
50 MEN'S SUITS, of latest shades, reduced to.....\$4 A SUIT
LOT NO. 2
65 MEN'S SUITS, Mixed Tweeds, reduced to.....\$5 A SUIT
LOT NO. 3
90 Latest Cut and Style MEN'S SUITS, reduced to.....\$6 A SUIT
LOT NO. 4
40 2 and 3-Piece MEN'S SUITS, reduced to.....\$7 A SUIT
LOT NO. 7
50 Pair of MEN'S MIXED PANTS, reduced to.....\$1.25 A PAIR
LOT NO. 8
Large Assortment of MEN'S PANTS, reduced to.....\$1.50 A PAIR
LOT NO. 9
Extra Fine Assortment MEN'S PANTS, reduced to.....\$2 A PAIR
LOT NO. 10
Best Quality TWEED MEN'S PANTS, reduced to.....\$2.50 A PAIR

A SPLENDID ASSORTMENT OF
SILKOLINES, ART MUSLINS, FANCY SCRIMS, STRIPED SWISS, ETC., AT GREATLY REDUCED PRICES
—8 1/2c UP

LADIES' SHIRT WAISTS

Up-to-Date styles and qualities; LINGERIE, BATISTE, FLAXON, PERSIAN LAWN, SILK, etc.; sale price.....\$1 UP

Also, a nice range of LADIES' WOOLEN and COTTON SKIRTS, worth double the money. SALE PRICE 60c and upward

NO. 506
"WALK-OVER" Glaze Kank, Button Bals, now.....\$3.25 PAIR
NO. 509
"WALK-OVER" Box Calf Lace Bals, now.....\$3.25 PAIR
NO. 1334
"WALK-OVER" Vici Calf, Welt-Sole Bals, now.....\$3 PAIR
NO. 522
"WALK-OVER" Patent Leather Oxfords; formerly \$5, now.....\$3.25 PAIR
NO. 3
"SOROSIS" Vici Kid, Pat-Tip Bals; formerly \$3.50, now.....\$3 PAIR
NO. 4
"SOROSIS" Vici Kid Button Bal; formerly \$3.50, now.....\$2.95 PAIR
NO. 3109
"SOROSIS" Tan Button Bal; formerly \$5, now.....\$3.75 PAIR
NO. 909
"SOROSIS" 3-Strap Patent Slipper; formerly \$3.50, now.....\$2.95 PAIR

VICTORIA LAWN—Worth 10c a yard; during sale.....15 YARDS FOR \$1
MADRAS—All white; several patterns; sale price.....10c YARD
MERCERIZED POPLINS—Beautiful variety of shades; sale price.....20c YARD
PERSIAN LAWNS—Tan, Lavender, Nile, Pink, etc.; sale price.....20c YARD
INDIA LINONS—A complete range of qualities; sale price.....8 1/2c TO 25c YARD
LINEN and SILK RAJAH—Changeable effects; all latest shades; sale price.....40c YARD
REPP—A complete assortment of colors; sale price.....20c YARD
PERSIAN LAWNS—Tan, Lavender, Nile, Cream, Alice, etc.; sale price.....20c YARD
NEW LINEN SUITINGS—Sky, Pink, Copenhagen, Champagne, etc.; sale price.....15c YARD

LADIES' MUSLIN SKIRTS

Trimmed with HIGH-GRADE EMBROIDERIES, DEEP FLOUNCES and TUCKS; sale price, from.....\$2.75 TO \$5 EACH

LADIES' NIGHT GOWNS

HIGH and LOW NECK, LONG and SHORT SLEEVE, PLAIN and FANCY; sale price.....75c TO \$2.25 EACH

L. B. KERR & CO., LTD.

Alakea
Street

WOULD STOP THE TOURISTS

Atkinson Tells of Hundreds Passing Honolulu By—Singing of Hawaiian Boats—Lovers' Love of Atlantic City.

Jack Atkinson made a strong talk to the Promotion Committee at yesterday afternoon's meeting for some arrangement to be made whereby tourists from the Orient could stop over here and continue their voyage to San Francisco by one of the local steamers without the necessity of waiting for a steamer of the Pacific Mail company.

He said that throughout Japan the steamship agents and Cook's people all told tourists not to stop here, that no accommodations could be promised them if they took a lay-over at Honolulu, and that there was nothing much to see here anyway.

Fifty people on the Chiyo would have stayed here if they had known about things here when they left Yokohama on the trip that brought our Jack back to Hawaii net. They were discouraged there from any thought of staying over here.

Jack suggests that a branch of Cook's be opened here and in that way the whole of the Cook system will be in line to boost Honolulu.

This matter was taken up with the London office of Cook's, who referred it to New York, and New York referred it to San Francisco, R. H. Trent being the man who took it up on his recent trip.

With the reported break with the T. K. K. which has occurred, Jack thought the Pacific Mail might consider favorably some plan of an interchange of tickets with the local lines. It has never been possible in the past with the two lines, as it was reported that Schwerin told the Matson people he wouldn't ask his passengers to ride on freight boats.

"These people are right here in the harbor and passing us by all the time," said Jack. "It is a pity we can't corral those within our borders for a few days to make the volcano trip, when we are going half way around the world to bring scattered tourists here. On these steamers we have them in bunches, and yet they get by us."

"Honolulu has done much to help the Pacific Mail in building wharves and perfecting a good harbor, and it is now about time the Pacific Mail did something for Honolulu," was the opinion of Atkinson.

The point was brought up that officers of Pacific Mail boats always had had hammers out for Honolulu, because they said that Honolulu had hammers out for the Pacific Mail. Many a time, it was stated, tourists were prevented from staying here at the last moment by unfavorable comment by one of the officers of the steamer upon which they were traveling.

W. H. Baugh, who came before the committee on behalf of Hawaiian coffee and pineapples, said in his remarks the same thing of Coast agents as Atkinson said of those in the Orient. They either knew nothing of Honolulu, or if they did they kept their information to themselves instead of giving it to intending passengers.

From Atlantic City came a wall in the shape of a letter from the manager of the Marlborough-Blenheim Hotel, who said that the Hawaiian boys were not musical and forbade Wood to have them sing any more, as the singing lowered the tone of the community and made the hotel more like a cheap restaurant than like the exclusive place that it really was. In the warm weather, the manager told Mr. Wood, the music drifted in from the exhibit over the transoms of the rooms in the hotel, making anything but a pleasant effect.

J. J. White of the hotel company was the signer of the letter, and he sure must have had a grouse on when he wrote explaining why he refused Wood the privilege of having the music given in the Hawaiian exhibit.

In a letter dated July 13, Secretary Wood stated that business had fallen off some and would be that way until after the sixteenth, when it would pick up for two months. He was optimistic in his views of the good accomplished by the exhibit, and publicity which the islands had obtained through Atlantic City, and told of several European trips thrown over in favor of trips to Hawaii on information given by himself.

As to the financial end of the experiment, it was of great value to the islands, but there would be no direct return from it this year, in his opinion. Another year would be necessary before direct returns could be looked for.

Pineapple juice was the coming drink, he said, throughout the East, and the future of this industry was assured.

The Arizona Gazette, printed at Phoenix, has written to the Promotion Committee of a trip to be taken by subscribers of that paper to Honolulu. Enclosed was a letter sent

Enormous Clearance Sale

to begin Monday Morning, August 1st

Every article in our store reduced. No sale like this anywhere this year. Ladies, if you have been waiting for real bargains here they are, and here's your chance. Values almost given away.

WASH DRESS GOODS

| | Regular Price, 35c | Sale Price, 20c Yd. |
|-----------------|--------------------|---------------------|
| SOIESETTES | " | " |
| VOILS | " | " |
| REPPS | " | " |
| POPLINS | " | " |
| THISTLE SILKS | " | " |
| CHIFFON BATISTE | " | " |
| SILK ORGANDIES | " | " |
| HIMALAYA CLOTH | " | " |
| SHANTUNG | " | " |
| SWISS MUSLIN | " | " |
| FIG. LAWNS | " | " |

STAPLES

| | Sale Price, 12 Yds. \$1.00 |
|---------------------------|----------------------------|
| A. F. C. GINGHAMS | " |
| FLANNELETES | " |
| PERCALES—36 inches wide | " |
| FRUIT OF THE LOOM | " |
| FARWELL | " |
| FOREST MILLS | " |
| INDIAN HEAD—33-inch | " |
| PRIDE OF THE WEST | " |
| CRESCENT CAMBRIC | " |
| STARK MILL DRILLING—White | " |

SHEETING

| | Regular Price, 40c | Sale Price, 30c Yd. |
|---------------|--------------------|---------------------|
| 10-4 SHEETING | " | " |
| 8-4 | " | " |
| 8-7 | " | " |
| 7-4 | " | " |

SHEETS

| | Regular Price, \$1.10 | Sale Price, 85c Ea. |
|--------------|-----------------------|---------------------|
| 90-90 SHEETS | " | " |
| 81-90 | " | " |
| 72-90 | " | " |

PILLOW CASES

| | Regular Price, \$2.75 | Sale Price, \$2.00 |
|--------------------|-----------------------|--------------------|
| 45x36 PILLOW CASES | " | " |
| 45x36 | " | " |

LADIES' MUSLIN UNDERWEAR

| CORSET COVERS | MUSLIN SKIRTS | NIGHT GOWNS | MUSLIN DRAWERS |
|---|--|---|--|
| Regular, \$1.75; Sale Price, .90c | Regular, \$7.00; Sale Price, \$4.00 | Regular, \$2.25; Sale Price, \$1.25 | Regular, \$3.00 Pair; Sale Price, \$1.75 |
| " 1.50 " " .80c | " 4.50 " " 2.75 | " 2.00 " " 1.10 | " 2.50 " " 1.50 |
| " 1.00 " " .60c | " 4.00 " " 2.25 | " 1.90 " " 1.00 | " 2.00 " " 1.15 |
| " .75 " " .40c | " 3.00 " " 1.90 | " 1.75 " " .90 | " 1.50 " " 1.00 |
| " .50 " " .30c | " 2.25 " " 1.40 | " 1.50 " " .85 | " 1.00 " " .60 |
| " .40 " " .20c | " 2.00 " " 1.15 | " 1.00 " " .60 | " .75 " " .40 |
| COMB. CHEMISES | " 1.75 " " .90 | " .75 " " .40 | " .50 " " .30 |
| Regular, \$3.00; Sale Price, \$1.75 | " 1.50 " " .85 | " .65 " " .35 | " .40 " " .20 |
| " 1.75 " " 1.00 | " 1.00 " " .60 | | |
| " 1.50 " " .85 | " .75 " " .40 | | |
| " 1.25 " " .75 | | | |
| " .85 " " .50 | | | |
| BOYS' COL. WASH SUITS | LADIES' SKIRTS | LACE CURTAINS | LADIES' SHIRT WAISTS |
| Regular \$4.00 Suits; Sale Price, \$2.50 | In Vail, Panama, Serge, Alpaca. Sale Price, \$2.75 | \$1.25 Reduced to, .90 | Regular \$5.50 Waists; Sale Price, \$3.90 |
| " 3.50 " " 2.00 | Regular \$4.75 Skirts; Sale Price, \$2.75 | 1.50 " " 1.00 | " 4.50 " " 2.50 |
| " 3.25 " " 1.90 | " 5.00 " " 3.00 | 1.50 " " 1.15 | " 4.00 " " 2.25 |
| " 3.00 " " 1.75 | " 6.00 " " 3.50 | 1.65 " " 1.20 | " 3.50 " " 1.90 |
| " 2.50 " " 1.60 | " 6.50 " " 3.90 | 1.75 " " 1.25 | " 3.00 " " 1.75 |
| " 1.75 " " .90 | " 7.50 " " 4.00 | 1.90 " " 1.35 | " 2.50 " " 1.65 |
| " 1.65 " " .85 | " 8.00 " " 4.50 | 2.50 " " 1.75 | " 2.25 " " 1.50 |
| | " 9.00 " " 5.00 | 2.75 " " 1.90 | " 2.00 " " 1.25 |
| | " 9.50 " " 5.25 | 3.00 " " 2.00 | " 1.65 " " 1.00 |
| | " 10.00 " " 5.50 | | " 1.50 " " .90 |
| QUILTS | LINGERIE DRESSES | TOWELS | CHILDREN'S WASH DRESSES |
| \$1.00 Reduced to, .75 | \$ 5.00 Lingerie Reduced to, \$2.90 | \$.75 Dozen, Reduced to, .50 | Regular \$3.90 Dresses; Sale Price, \$2.50 |
| 1.25 " " .90 | 6.00 " " 4.00 | 1.00 " " .75 | " 2.25 " " 1.25 |
| 2.25 " " 1.65 | 6.50 " " 4.50 | 1.50 " " 1.15 | " 2.00 " " 1.15 |
| 2.50 " " 1.75 | 7.00 " " 5.00 | 2.00 " " 1.50 | " 1.75 " " 1.10 |
| 2.75 " " 2.00 | 7.50 " " 5.25 | 2.50 " " 1.75 | " 1.50 " " .90 |
| 3.00 " " 2.25 | 11.00 " " 7.75 | 3.00 " " 2.00 | " .85 " " .50 |
| 3.50 " " 2.50 | 14.00 " " 9.50 | 4.50 " " 3.00 | |
| 4.00 " " 2.75 | | 5.00 " " 3.50 | |
| | | 8.00 " " 5.90 | |
| LINEN SHEETING | PILLOW CASING | RIBBONS | TORCHON LINEN LACES |
| 2 1/2 Yards Wide; Regular \$1.75 Yard, Sale Price, \$1 Yard | 90c Quality; Sale Price, .65c Yard | In all widths and colors. PRICES CUT IN HALF. | Regular \$1 Dozen; Sale Price, .50c Dozen |
| | 75c " " .50c " | | |
| | 65c " " .45c " | | |
| | | LADIES' AND CHILDREN'S HOSIERY | |
| | | Plain and Fancy; in Cotton, Lisle and Silk. GREAT REDUCTIONS. | |

1180-1184
FORT STREET

A. BLOM

opp. Catholic Church
NEAR BERETANIA

WHITE LABEL Olives

Compare them with other brands of olives in the market and you will be instantly convinced of their superiority.

Sold by All Grocers

Yosemite Valley

OPEN ALL YEAR

The Scenic Attraction of California

A valley of great beauty and grandeur, unique in its assemblage of sheer walls of great height, imposing peaks, and the number of its stupendous waterfalls.

Now Reached by Rail—A Quick, Comfortable Trip

Daily train service from Merced to the Park Line, connects at Merced with Southern Pacific and Santa Fe. O. W. LEHMER, Traffic Manager, Y. V. R. R., Merced, Cal.

WOULD HELP BAD BOYS

Governor Frear Brings Home Ideas From Successful Eastern Institutions—Accommodations and Food According to Behavior.

While Governor Frear was on the mainland he looked into the workings of an institution which is known as the George Junior Republic. It is in reality an industrial school for bad boys.

Its workings have proved a success and the Governor is of the opinion that if such a method was inaugurated in the Boys' Industrial School at Wai-alee it would prove a big step in the right direction.

The boys have their own courts, their own magistrates, schools, work shops, governing assemblies and methods of punishment. Nobody is under restraint except that imposed by his own comrades. Nobody is required to remain unless he wants to and none is followed if he runs away. The self-government principle is followed throughout.

The boys, Governor Frear says, are encouraged to work, and upon their industry depends their comfort. If they are lazy, their food and accommodations are comparatively poor. If they are industrious, they are able to afford better quarters and better fare.

While it is true that this system is in effect in a small way in our local institutions of reformation Governor Frear thinks that the system could be enlarged upon and the results would show wonders.

SPORTS

DANCE, SMOKE AND LUAU
FOR VISITING YACHTSMEN

Crews to Have Good Time Saturday, Monday and Tuesday—A Huge Crowd to Attend Ball.

Yesterday afternoon the crew of the Sweetheart were taken down to Oahu mill, and shown all over the big factory where the sugar that most of the mainland yachtsmen use is made. The visitors were much interested in the process and listened to all the explanations with great attention.

The crew of the Mollitout went down to Pearl Harbor in the latest addition to the local yacht fleet. The Mollitout behaved beautifully, and the trip around the lochs was much enjoyed. Commodore Ward, Judge Dole and Charles Wilder went on the cruise and the beauties of Pearl Harbor were pointed out to the visitor.

Tomorrow night at the Moana Hotel the ball of the year will be given in honor of the visiting yachtsmen, and over six hundred invitations have been sent out to all the society folk.

The Myrtle Boat Club will give a smoker on Monday night and it promises to be one of the most pleasant features of the stay of the visiting yachtsmen in our midst.

On Tuesday, August 2, a grand luau will be given at the Seaside Hotel, and during the evening the distribution of prizes won in the trans-Pacific race will be made. The officers of the Hawaii Yacht Club are in charge of the affair, and it promises to be a huge success. Invitations are being sent out and a big attendance is expected.

WASEDAS TO VISIT
HAWAII AND MAUI

Japanese Will Show the Big Island Players What They Can Do on the Diamond.

As soon as the present series of the Wasedas is finished in Honolulu, the team will pay a visit to Hawaii and Maui, and the Japanese residents of those islands will be able to see their countrymen in action. The Wasedas will leave Honolulu on Tuesday, August 9, and will go direct to the volcano.

On their return from the volcano they will play three games with the pick of the Hilo teams and a great trio of matches is expected. From Hilo they will go to Kailua, Maui, and there they will tackle the flower of the Valley Island at baseball.

On August 29 the Wasedas will play another game in Honolulu, and on August 31 they will leave for Japan. The St. Louis College nine is anxious to play a game with the Wasedas before the Japanese leave and there may be a chance of seeing the match come off.

(Additional Sports on Page 10.)

Oceanic Steamship Company

SCHEDULE S. S. SIERRA, 10,000 TONS DISPLACEMENT

| Leave S. F. | Arrive Hon. | Leave Hon. | Arrive S. F. |
|-------------|-------------|------------|--------------|
| JULY 30 | AUGUST 5 | AUGUST 10 | AUGUST 15 |
| AUGUST 20 | AUGUST 25 | AUGUST 31 | SEPTEMBER 5 |

\$65 first class, single, S. F.; \$110 first class, round trip, San Francisco.

C. BREWER & CO., LTD., General Agents.

Pacific Mail Steamship Co., and Toyo Kisen Kaisha

Steamers of the above Companies will call at HONOLULU and leave this Port on or about the Dates mentioned below:

| Leave Honolulu For Orient | Leave Honolulu For S. F. |
|---------------------------|--------------------------|
| Chiyo Maru July 26 | Mongolia July 30 |
| Tenyo Maru July 30 | Korea August 7 |

For further information apply to
H. Hackfeld & Co., Ltd., agents

Matson Navigation Company

BETWEEN SAN FRANCISCO AND HONOLULU

| From San Francisco | For San Francisco |
|---------------------------|----------------------------|
| S. S. Lurline August 3 | S. S. Lurline August 9 |
| S. S. Wilhelmina August 9 | S. S. Wilhelmina August 17 |
| S. S. Lurline August 31 | S. S. Lurline September 13 |

S. S. HYADES of this line sails from Seattle for Honolulu, direct, JULY 16.

For further particulars, apply to
CASTLE & COOKE, LTD., General Agents, Honolulu

Canadian-Australian Royal Mail

FOR FIJI AND AUSTRALIA: FOR VANCOUVER:

| MAKURA | ZEALANDIA | ZEALANDIA | MARAMA |
|-----------|-----------|--------------|--------------|
| AUGUST 19 | AUGUST 19 | SEPTEMBER 16 | SEPTEMBER 13 |

THEO H. DAVIES & CO., LTD., GENERAL AGENTS.

AMERICAN-HAWAIIAN STEAMSHIP COMPANY.

From New York to Honolulu, via Tehuantepec, every sixth day. Freight received at all times at the Company's wharf, 41st Street, South Brooklyn.

FROM SEATTLE AND TACOMA TO HONOLULU DIRECT:
S. S. MEXICAN, to sail AUGUST 6

For further information apply to **H. HACKFELD & CO., LTD.** agents, Honolulu.
C. P. MORSE, General Freight Agent.

WOOD and COAL

Family trade supplied at lowest market prices

UNION - PACIFIC TRANSFER CO.

PHONE 58

"WE NEVER FAIL"

HUSTACE - PECK CO., LTD

33 QUEEN STREET PHONE 295
Estimates given on all kinds of Draying, Teaming, Road Building, Excavating, Filling.
FIREWOOD AND COAL, WAIANAE SAND FOR SALE

FIRE INSURANCE

The B. F. Dillingham Co. LIMITED

General Agent for Hawaii:

Atlas Assurance Company of London.
New York Underwriters' Agency.
Provident Washington Insurance Co.
4th FLOOR, STANGENWALD BLDG.

LIFE INSURANCE

Is not a Luxury; It is a Necessity.
But you must have the BEST
and that is provided by the famous
and most equitable Laws of Massachusetts, in the

New England Mutual Life Insurance Co.

OF BOSTON, MASSACHUSETTS.

If you would be fully informed about these laws, address

CASTLE & COOKE

GENERAL AGENTS.

HONOLULU, T. H. Bulletin Business Office Phone 256
Bulletin Editorial Room Phone 185

BISHOP & CO.

ESTABLISHED IN 1888.
BANKERS
Commercial and Travelers' Letters of Credit issued on the Bank of California and The London Joint Stock Bank Ltd., London.
Correspondents for the American Express Company and Thos. Cook & Son.
Interest allowed on term and Savings Bank Deposits.

Bank of Honolulu

San Francisco Agents - The Nevada National Bank of San Francisco.
Draw Exchange on the Nevada National Bank of San Francisco.
London - The Union of London and Smith's Bank, Ltd.
New York - American Exchange National Bank.
Chicago - Cora Exchange National Bank.
Paris - Credit Lyonnais.
Hongkong and Yokohama - Hongkong-Shanghai Banking Corporation.
New Zealand and Australia - Bank of New Zealand and Bank of Australia.
Victoria and Vancouver - Bank of British North America.
Deposits received. Loans made on approved security. Commercial and Travelers' Credits issued. Bills of Exchange bought and sold.

Collections Promptly Accounted For.

The Yokohama Specie Bank, Limited

Capital (Paid Up) Yen 24,000,000
Reserve Fund Yen 16,250,000
HEAD OFFICE, YOKOHAMA.

The bank buys and receives for collection bills of exchange, issues Drafts and Letters of Credit, and transacts a general banking business.
The Bank receives Local Deposits and Head Office Deposits for fixed periods.
Local deposits \$25 and upwards for one year at rate of 4% per annum.
Head Office Deposits, Yen 25 and upwards for one-half year, one year, two years, or three years at rate of 4% per annum.
Particulars to be obtained on application.
Honolulu Office - 67 S. King St. P. O. Box 168.
Yu Akai Manager

Oahu Machine Shop

Manager - H. L. ROSS
301 QUEEN AND RICHARDS STS.
Telephone 514

ENGINEERS AND GENERAL MACHINE REPAIRS

Automobiles, Motor Cycles, Gas Stationary and Marine Engines, Rice Mill Machinery, Etc.

BUILDING MATERIAL

OF ALL KINDS.
DEALERS IN LUMBER.

ALLEN & ROBINSON,
1200 Queen Street Honolulu

—PLANISHED STEEL—
A full assortment, sizes 24"x36" to 48"x120", and gauges No. 16 to No. 26 just to hand.
We do sheet metal work of all kinds, and guarantee satisfaction. Your patronage is solicited.
PROMPT ATTENTION TO JOBBING
EMMELUTH & CO., LTD.
Phone 211. 145 King St.

SAND SOIL CORAL

We deliver these materials in any quantity at the lowest market prices.

HONOLULU CONSTRUCTION & DRAYING

COMPANY
PHONE 281 OFFICE—QUEEN STREET

Alexander & Baldwin, LIMITED.

OFFICERS AND DIRECTORS.
H. P. Baldwin President
W. O. Smith, First Vice-President
W. M. Alexander Second Vice-President
J. P. Cooke Third Vice-President and Manager
J. Waterhouse Treasurer
E. E. Paxton Secretary
J. B. Castle Director
J. R. Galt Director
W. R. Castle Director

Sugar Factors, Commission Merchants, and Insurance Agents

Agents for
Hawaiian Commercial & Sugar Co.
Haku Sugar Company.
Pala Plantation.
Maui Agricultural Company.
Hawaiian Sugar Company.
Kahuku Plantation Company.
Kahului Railroad Company.
Haleakala Ranch Company.
McBryde Sugar Co.
Kauai Railway Co.

Castle & Cooke, Ltd

Honolulu, T. H.

SHIPPING AND COMMISSION MERCHANTS, SUGAR FACTORS

and
GENERAL INSURANCE AGENTS
Representing

Ewa Plantation Co.
Waialua Agricultural Co., Ltd.
Kohala Sugar Co.
Waimea Sugar Mill Co.
Apokaa Sugar Co., Ltd.
Fulton Iron Works of St. Louis.
Babcock & Wilson Pumps.
Green's Fuel Economizers.
Matson Navigation Co.

C. Brewer & Co., Ltd.

SUGAR FACTORS AND COMMISSION MERCHANTS

Officers and Directors:
E. F. Bishop President
Geo. H. Robertson Vice-President and Manager
W. W. North Treasurer
Richard Ivers Secretary
J. R. Galt Auditor
Geo. R. Carter Director
C. H. Cooke Director
R. A. Cooke Director
A. Galtley Director

C. Brewer & Co., Ltd.

FIRE AND MARINE INSURANCE AGENCIES

Royal Insurance Co. of Liverpool.
London Assurance Corporation.
Commercial Union Assurance Co. of London.
Scottish Union & National Insurance Co. of Edinburgh.
Caledonian Insurance Co. of Edinburgh.
Upper Rhine Insurance Co. (Marine)

Territorial Board of Immigration

Office 403 Stangenwald Bldg. Honolulu

SCANDINAVIA BELTING

HONOLULU IRON WORKS

Forcegrowth

Will do it

PACIFIC ENGINEERING COMPANY, LTD.

Consulting, Designing and Constructing Engineers.
Bridges, Buildings, Concrete Structures, Steel Structures, Sanitary Systems, Reports and Estimates on Projects. Phone 145.

145 editorial rooms—256 business office. These are the telephone numbers of the Bulletin office

DR. SCHURMANN

Osteopath
175 BERETANIA STREET
Phone 33

"For Sale" cards at Bulletin.

LEGAL NOTICES.

MORTGAGEE'S NOTICE OF INTENTION TO FORECLOSE AND OF SALE.

Notice is hereby given that by virtue and in pursuance of the power contained in that certain mortgage made by Elmer J. Breckenridge and wife, of Honolulu, Territory of Hawaii, to Cecil Brown, dated December 4, 1906, and recorded in the Hawaiian Registry of Conveyances in Liber 289 on pages 116-119, the said Cecil Brown, mortgagee, intends to foreclose said mortgage for breach of the conditions in said mortgage contained, to wit: the non-payment of the principal and interest when due.

Notice is also hereby given that all and singular the lands, tenements and hereditaments in said mortgage described will be sold at public auction at the auction room of James F. Morgan, on Kaahumanu street, in Honolulu, City and County of Honolulu, Territory of Hawaii, on Saturday, the 20th day of August, A. D. 1910, at 12 o'clock noon of that day. The property covered by said mortgage are as follows:

1. All that certain piece or parcel of land situate at Kalahele, Waikiki, Honolulu aforesaid, on the Leeward side of Kapahulu Road, being Lot 13, Block 6-E, of Kalahele Tract, and more particularly described as follows: Beginning at the north corner of this lot, being the west corner of Lot 11 on Hoolulu Road, and running by true bearings as follows:

1. S. 74° 34' W. 50 feet along Hoolulu Road;
2. S. 15° 26' E. 100 feet along Lot 15;
3. N. 74° 34' E. 50 feet along Lot 14;
4. N. 15° 26' W. 100 feet along Lot 11 to the initial point, containing an area of 5000 square feet; the same being the premises conveyed to the said Elmer J. Breckenridge by deed of E. C. Hobron, dated November 5, 1902, and of record in the Hawaiian Registry of Conveyances in Liber 286, page 275 et seq.

2. All that certain piece or parcel of land situated at Kapahulu, Honolulu aforesaid, being known as Lot 11, Block 6-E, Kapahulu Tract, and more particularly described as follows:

1. S. 74° 34' W. 50 feet along Lot 12, Block 6-E;
2. N. 15° 26' W. 100 feet along Lot 13, Block 6-E;
3. N. 74° 34' E. 50 feet along Hoolulu Road;
4. S. 15° 26' E. 100 feet along Lot 9, Block 6-E; containing an area of 5000 square feet; same being the premises conveyed to said Elmer J. Breckenridge by deed of E. C. Hobron and wife dated December 1, 1906, and recorded in said Registry in Liber 286, on pages 277-279.

Terms: Cash in U. S. gold coin. Deeds at the expense of purchaser. Dated, Honolulu, July 21, 1910.
CECIL BROWN,
Mortgagee.

IN THE CIRCUIT COURT OF THE First Judicial Circuit, Territory of Hawaii.—At Chambers. In Probate. In the matter of the Estate of Lillie Leonora Bird, Deceased. Notice to Creditors. Notice is hereby given that Letters of Ancillary Administration with the Will annexed have been issued to Hermann Focke of the City and County of Honolulu, Territory of Hawaii, as Ancillary Administrator with the Will annexed of the Estate of Lillie Leonora Bird, late of South Kensington, in the County of London, England, deceased. All creditors of the said estate are hereby notified to present their claims against the said estate, duly authenticated, and with proper vouchers, if any exist, even though the said claims be secured by mortgage upon real estate, to the undersigned Hermann Focke, at his office, care Hoffschlaeger Company, Ltd., on King and Bethel streets, in said Honolulu, within six (6) months from the date hereof (which is the date of the first publication of this notice); otherwise such claims, if any, will be forever barred. And all persons indebted to the said estate are hereby notified to make immediate payment to the undersigned as such Ancillary Administrator at the above address. Dated at Honolulu, T. H., July 15, 1910. HERMANN FOCKE, Ancillary Administrator with the Will annexed of the Estate of Lillie Leonora Bird, Deceased. Holmes, Stanley & Olson, attorneys for Ancillary Administrator.

4671—July 15, 22, 29; Aug. 5, 12, 19.

IN THE CIRCUIT COURT OF THE First Judicial Circuit, Territory of Hawaii.—At Chambers. In Probate. In the matter of the Estate of Lillie Leonora Bird, Deceased. Notice to Creditors. Notice is hereby given that Letters of Ancillary Administration with the Will annexed have been issued to Hermann Focke of the City and County of Honolulu, Territory of Hawaii, as Ancillary Administrator with the Will annexed of the Estate of Lillie Leonora Bird, late of South Kensington, in the County of London, England, deceased. All creditors of the said estate are hereby notified to present their claims against the said estate, duly authenticated, and with proper vouchers, if any exist, even though the said claims be secured by mortgage upon real estate, to the undersigned Hermann Focke, at his office, care Hoffschlaeger Company, Ltd., on King and Bethel streets, in said Honolulu, within six (6) months from the date hereof (which is the date of the first publication of this notice); otherwise such claims, if any, will be forever barred. And all persons indebted to the said estate are hereby notified to make immediate payment to the undersigned as such Ancillary Administrator at the above address. Dated at Honolulu, T. H., July 15, 1910. HERMANN FOCKE, Ancillary Administrator with the Will annexed of the Estate of Lillie Leonora Bird, Deceased. Holmes, Stanley & Olson, attorneys for Ancillary Administrator.

4671—July 15, 22, 29; Aug. 5, 12, 19.

IN THE CIRCUIT COURT OF THE First Judicial Circuit, Territory of Hawaii.—At Chambers. In Probate. In the matter of the Estate of Lillie Leonora Bird, Deceased. Notice to Creditors. Notice is hereby given that Letters of Ancillary Administration with the Will annexed have been issued to Hermann Focke of the City and County of Honolulu, Territory of Hawaii, as Ancillary Administrator with the Will annexed of the Estate of Lillie Leonora Bird, late of South Kensington, in the County of London, England, deceased. All creditors of the said estate are hereby notified to present their claims against the said estate, duly authenticated, and with proper vouchers, if any exist, even though the said claims be secured by mortgage upon real estate, to the undersigned Hermann Focke, at his office, care Hoffschlaeger Company, Ltd., on King and Bethel streets, in said Honolulu, within six (6) months from the date hereof (which is the date of the first publication of this notice); otherwise such claims, if any, will be forever barred. And all persons indebted to the said estate are hereby notified to make immediate payment to the undersigned as such Ancillary Administrator at the above address. Dated at Honolulu, T. H., July 15, 1910. HERMANN FOCKE, Ancillary Administrator with the Will annexed of the Estate of Lillie Leonora Bird, Deceased. Holmes, Stanley & Olson, attorneys for Ancillary Administrator.

4671—July 15, 22, 29; Aug. 5, 12, 19.

IN THE CIRCUIT COURT OF THE First Judicial Circuit, Territory of Hawaii.—At Chambers. In Probate. In the matter of the Estate of Lillie Leonora Bird, Deceased. Notice to Creditors. Notice is hereby given that Letters of Ancillary Administration with the Will annexed have been issued to Hermann Focke of the City and County of Honolulu, Territory of Hawaii, as Ancillary Administrator with the Will annexed of the Estate of Lillie Leonora Bird, late of South Kensington, in the County of London, England, deceased. All creditors of the said estate are hereby notified to present their claims against the said estate, duly authenticated, and with proper vouchers, if any exist, even though the said claims be secured by mortgage upon real estate, to the undersigned Hermann Focke, at his office, care Hoffschlaeger Company, Ltd., on King and Bethel streets, in said Honolulu, within six (6) months from the date hereof (which is the date of the first publication of this notice); otherwise such claims, if any, will be forever barred. And all persons indebted to the said estate are hereby notified to make immediate payment to the undersigned as such Ancillary Administrator at the above address. Dated at Honolulu, T. H., July 15, 1910. HERMANN FOCKE, Ancillary Administrator with the Will annexed of the Estate of Lillie Leonora Bird, Deceased. Holmes, Stanley & Olson, attorneys for Ancillary Administrator.

4671—July 15, 22, 29; Aug. 5, 12, 19.

IN THE CIRCUIT COURT OF THE First Judicial Circuit, Territory of Hawaii.—At Chambers. In Probate. In the matter of the Estate of Lillie Leonora Bird, Deceased. Notice to Creditors. Notice is hereby given that Letters of Ancillary Administration with the Will annexed have been issued to Hermann Focke of the City and County of Honolulu, Territory of Hawaii, as Ancillary Administrator with the Will annexed of the Estate of Lillie Leonora Bird, late of South Kensington, in the County of London, England, deceased. All creditors of the said estate are hereby notified to present their claims against the said estate, duly authenticated, and with proper vouchers, if any exist, even though the said claims be secured by mortgage upon real estate, to the undersigned Hermann Focke, at his office, care Hoffschlaeger Company, Ltd., on King and Bethel streets, in said Honolulu, within six (6) months from the date hereof (which is the date of the first publication of this notice); otherwise such claims, if any, will be forever barred. And all persons indebted to the said estate are hereby notified to make immediate payment to the undersigned as such Ancillary Administrator at the above address. Dated at Honolulu, T. H., July 15, 1910. HERMANN FOCKE, Ancillary Administrator with the Will annexed of the Estate of Lillie Leonora Bird, Deceased. Holmes, Stanley & Olson, attorneys for Ancillary Administrator.

4671—July 15, 22, 29; Aug. 5, 12, 19.

MOVEMENTS OF STEAMERS

VESSELS TO ARRIVE

Saturday, July 30.
Hongkong via Japan ports—Tenyo Maru, Jap. strmr.
Hilo via way ports—Mauna Kea, strmr.

Sunday, July 31.
Maui, Molokai and Lanai ports—Mikahala, strmr.
Kauai ports—Kinau, strmr.

Tuesday, Aug. 2.
San Francisco—Asia, P. M. S. S.
Kona and Kau ports—Mauna Kea, strmr.

Wednesday, Aug. 3.
San Francisco—Lurline, M. N. S. S.
Kauai ports—W. G. Hall, strmr.
Hawaii via Maui ports—Claudine, strmr.

Friday, Aug. 5.
San Francisco—Sierra, O. S. S.
Sunday, Aug. 7.
Hongkong and Japan ports—Korea, P. M. S. S.
Hilo via way ports—Mauna Kea, strmr.

Saturday, Aug. 13.
Hilo via way ports—Mauna Kea, strmr.
Maui, Molokai and Lanai ports—Mikahala, strmr.
Kauai ports—Kinau, strmr.

Tuesday, Aug. 9.
San Francisco—Wilhelmina, M. N. S. S.
Wednesday, Aug. 10.
Kauai ports—W. G. Hall, strmr.
Hawaii via Maui ports—Claudine, strmr.

Saturday, Aug. 13.
Hilo via way ports—Mauna Kea, strmr.
Sunday, Aug. 14.
Kauai ports—Kinau, strmr.
Maui, Molokai and Lanai ports—Mikahala, strmr.

Monday, Aug. 15.
San Francisco—Mongolia, P. M. S. S.
Tuesday, Aug. 16.
Australian ports via Suva—Zealandia, C. A. S. S.

Friday, Aug. 19.
Victoria and Vancouver—Makura, C. A. S. S.
Saturday, Aug. 20.
Hongkong and Japan ports—Nippon Maru, T. K. K. S. S.

Tuesday, Aug. 23.
San Francisco—Tenyo Maru, T. K. K. S. S.
Friday, Aug. 26.
San Francisco—Sierra, O. S. S.

Sunday, Aug. 28.
Hongkong via Japan ports—Siberia, P. M. S. S.
Monday, Aug. 29.
San Francisco—Korea, P. M. S. S.

Wednesday, Aug. 31.
San Francisco—Lurline, M. N. S. S.

VESSELS TO DEPART

Friday, July 29.
Hawaii via Maui ports—Claudine, strmr., 5 p. m.

Saturday, July 30.
San Francisco—Mongolia, P. M. S. S.
San Francisco—Tenyo Maru, T. K. K. S. S.

Monday, Aug. 1st.
Kauai ports—Noue, strmr., 5 p. m.
Tuesday, Aug. 2.
Hongkong via Japan ports—Asia, P. M. S. S.

Hilo via way ports—Mauna Kea, strmr., 10 a. m.
Kauai ports—Kinau, strmr., 5 p. m.
Maui, Molokai and Lanai ports—Mikahala, strmr., 5 p. m.

Thursday, Aug. 4.
Kauai ports—W. G. Hall, strmr., 5 p. m.
Friday, Aug. 5.
Kona and Kau ports—Mauna Kea, strmr., noon.

Hawaii via Maui ports—Claudine, strmr., 5 p. m.
Sunday, Aug. 7.
San Francisco—Korea, P. M. S. S.

Monday, Aug. 8.
Kauai ports—Noue, strmr.
Tuesday, Aug. 9.
San Francisco—Lurline, M. N. S. S.

Hilo via way ports—Mauna Kea, strmr., 10 a. m.
Maui, Molokai and Lanai ports—Mikahala, strmr.
Kauai ports—Kinau, strmr., 5 p. m.

Wednesday, Aug. 10.
San Francisco—Sierra, O. S. S.
Thursday, Aug. 11.
Kauai ports—W. G. Hall, strmr.

Friday, Aug. 12.
Hawaii via Maui ports—Claudine, strmr.
Monday, Aug. 15.
Hongkong via Japan ports—Mongolia, P. M. S. S.

Tuesday, Aug. 16.
Vancouver and Victoria—Zealandia, C. A. S. S.
Wednesday, Aug. 17.
San Francisco—Wilhelmina, M. N. S. S.

Friday, Aug. 19.
Australian ports—Makura, C. A. S. S.
Saturday, Aug. 20.
San Francisco—Nippon Maru, T. K. K. S. S.

Tuesday, Aug. 23.
Hongkong via Japan ports—Tenyo Maru, T. K. K. S. S.
Sunday, Aug. 28.
San Francisco—Sierra, O. S. S.

Monday, Aug. 29.
Hongkong via Japan ports—Korea, P. M. S. S.
Wednesday, Aug. 31.
San Francisco—Sierra, O. S. S.

Bulletin Business Office Phone 256
Bulletin Editorial Room Phone 185

CORPORATION NOTICES.

Territory of Hawaii, City and County of Honolulu.

Cecil Brown and M. P. Robinson each being duly sworn depose and say that they are respectively President and Assistant Cashier of The First American Savings & Trust Co. of Hawaii, Ltd., and that the following schedule is a full, true, just and accurate statement of the affairs of the said The First American Savings & Trust Co. of Hawaii, Ltd., to and including the 30th day of June, 1910, such schedule being required by Section 2585 of the Revised Laws of the Territory of Hawaii.

The authorized capital of the company is \$200,000.00, divided into 2000 shares of the par value of \$100 each. The number of shares issued is 2000, fifty per cent. equal to \$100,000 has been paid in on the stock, leaving \$100,000 subject to be called in.

The liabilities of the Company on the first day of July, 1910, were as follows:

| | |
|--|--------------|
| Capital paid up | \$100,000.00 |
| Deposits | 704,647.11 |
| Undivided profits | 21,356.54 |
| The assets of the Company on the first day of July, 1910, were as follows: | |
| Bills receivable | \$517,431.48 |
| Bonds | 246,272.00 |
| Real estate | 41,300.00 |
| Cash on hand and in the bank | 13,217.96 |
| Interest accrued | 7,781.21 |
| | \$826,002.65 |

(Signed) CECIL BROWN, President;

M. P. ROBINSON, Assistant Cashier.

Coyne

For Good Furniture

Furniture Co.,

LIMITED

JULY SPECIALS
Beautiful New Model Hats at Bargain Prices
DUNN'S HAT SHOP
Fort Street - Above Hotel

A. BLOM,
Dry Goods
Fort Street, Opposite Catholic Church

ORDERS TAKEN
TROUSSEAU
Miss Kate Woodard
1141 Fort Street

FINE MILLINERY
Exclusive Designs and Reasonable Prices, at
MISS POWER'S MILLINERY
PARLORS
Boston Building - Fort Street

LEADING HAT CLEANERS.
All Kinds of Hats Cleaned and Blocked.
No Acids Used. Work Guaranteed
FELIX TURRO, Specialist,
1154 Fort Street. Opp. Convent
Honolulu, T. H.

New Shipment
Steamer Trunks and Bags
YEE CHAN & CO.
Bethel and King Streets

FANCY DRY GOODS
Wah Ying Chong Co.,
King St., Ewa Fish Market

WING CHONG CO
KING ST. NEAR BETHEL
Dealers in Furniture, Mattresses, etc., etc. All kinds of KOA and MISION FURNITURE made to order.

You'll Find
FRAMED PICTURES
for Gifts at
Wing On Chong's,
Bethel St., Between King and Hotel

IMPORTERS OF ORIENTAL
GOODS
WING WO TAI & CO.
641 Nuuanu Street Phone 266

FINEST FIT
And Cloth of A1 Quality Can be Purchased from
SANG CHAN,
MC CANDLESS BLDG.
P. O. Box 961 Telephone 931
Meat Market and Importers.

C. Q. Yee Hop & Co.
S. MIYAMOTO
Contractor for Building, Stone and Cement Work, Painting, Paperhanging.
No. 1316 LILHA ST., Cor. Kukui, Honolulu

H. YOSHINAGA
Emma Street, above Beretania
New BICYCLES arrived for racing and general use. Prices, \$25 up to \$35, without brakes. Repairing and re-tiring done neatly.

ICE
Manufactured from pure distilled water. Delivered to any part of city by courteous drivers.
Oahu Ice & Electric Co.,
Kewalo. Telephone 528.

Delivered to residences and offices at 25c. per hundred in 10-lb. lots or more.
W. O. BARNHART,
133 Beretania St.,
Tel. 148.

Ice
Bottled by
HAWAIIAN SODA WORKS
Phone 516

"1835

R. Wallace"

STAMPED ON ANY
PIECE OF FLATWARE
MEANS THE BEST
FLATED FLATWARE.

WE ARE AGENTS—SEE THE
PATTERNS—COMPARE PRICES

J. A. R. Vieira & Co.,
113 HOTEL STREET Phone 512

CLOTHING ON CREDIT
\$1.00 A WEEK
NO SECURITY
F. LEVY OUTFITTING CO.
345 King Street, Honolulu

Automobile Supplies
Automobile Repairing
Associated Garage,
Limited

Autos Repaired
Your machine will be ready for you when we say it will be. We don't experiment on autos; we repair them.

Von Hamm - Young Co., Ltd.
ALEXANDER YOUNG BUILDING.

LOCOMOBILE
"The Best-Built Car in America"
SCHUMAN CARRIAGE CO., LTD.
Agents

J. W. KERSHNER
Auto Tire Repairing
1177 Alakea St. Phone 434.

PIGS
FINE BERKSHIRE—ALL SIZES
Telephone 109

CLUB STABLES
Telephone 109

Chas. R. Frazier Company
FOUR ADVERTISERS
Phone 371 122 King St.

THE RENEAR CO.
LIMITED
ALGEROBA BEAN MILLS

GEO. A. MARTIN,
FASHIONABLE TAILOR.
Business Suits for \$25.
Hotel St.

For the Best SODAS, GINGER ALE and DISTILLED WATER, telephone 270.

Rycroft's Fountain Soda Works

COCA-COLA REFRESHES
Bottled by
HAWAIIAN SODA WORKS
Phone 516

LEGAL NOTICES.

No. 183. TERRITORY OF HAWAII. COURT OF LAND REGISTRATION. TERRITORY OF HAWAII TO H. FOCKE, TRENT TRUST COMPANY, LIMITED, Trustee of Cummings Minors; C. F. PETERSON; MID-PACIFIC INSTITUTE (by F. W. Damon, President); WOODLAWN DAIRY AND STOCK CO. (by F. N. Parker, Manager); CITY AND COUNTY OF HONOLULU (by Joseph J. Fern as Mayor and President of the Board of Supervisors); and to ALL whom it may concern:

Whereas, a petition has been presented to said Court by THE TERRITORY OF HAWAII to register and confirm its title in the following-described land:

Land situate at Kaula, Manoa Valley, Kona, Oahu, Territory of Hawaii, being Grant 118 to T. Metcalf, and more particularly described as follows:

Beginning at the north corner of this piece at the junction of the stone walls, said point being by true azimuth 281° 16' and being distant 867.5 feet from an iron pin at the south corner of land described in Land Registration Court Certificate No. 87 to W. A. Kinney, said iron pin being also the initial point in the notes of survey accompanying Land Registration Court Certificate No. 108; J. Kidwell, Petitioner, and the coordinates of said point of beginning referred to Government Survey Trig. Station "Rocky Hill" being 287.4 feet south and 3537.8 feet east, and running by true azimuth:

(1) 294° 45', 115.8 feet along stone wall along land described in Court of Land Registration Petition No. 117 (Henry Peters, Petitioner);

(2) 291° 20', 234.5 feet along same;

(3) 284° 57', 73.0 feet along same;

(4) 201° 00', 17.0 feet along same;

(5) 301° 40', 74.0 feet along stone wall along Grant 3693 to Kaula; and

(6) 296° 40', 74.0 feet along stone wall along Grant 3698 to H. Focke;

(7) 309° 05', 173.0 feet along same;

(8) 270° 09', 21.0 feet along same;

(9) 299° 20', 107.0 feet along same;

(10) 267° 40', 145.0 feet along stone wall along Grant 3695 to H. Focke to the center of the stream;

(11) 21° 26', 783.1 feet down along the center of the stream;

(12) 82° 45', 139.0 feet along the Government land of Puahia;

(13) 88° 20', 99.0 feet along stone wall along the Government land of Puahia;

(14) 102° 15', 143.0 feet along same;

(15) 124° 10', 61.0 feet along same;

(16) 128° 25', 126.0 feet along same;

(17) 147° 15', 127.0 feet along same;

(18) 128° 20', 137.0 feet along same;

(19) 141° 05', 105.0 feet along same;

(20) 143° 10', 17.9 feet along land described in Court of Land Registration Petition No. 115 (H. Focke and W. E. Wall, Petitioners), to a pipe;

(21) 222° 52', 81.0 feet along stone wall along L. C. A. 1828; to Ewa; and

(22) 223° 10', 129.0 feet along stone wall along land described in Court of Land Registration Petition No. 108 (John Kidwell, Petitioner);

(23) 163° 45', 72.1 feet along same;

(24) 171° 45', 169.0 feet along same;

(25) 260° 30', 39.0 feet along same;

(26) 165° 05', 128.0 feet along same;

(27) 99° 20', 60.0 feet along same;

(28) 200° 20', 89.0 feet along same;

(29) 216° 20', 27.3 feet along same;

(30) 221° 22', 61.2 feet along stone wall along L. C. A. 1827 to Wabae to point of beginning. Area, 16 9-10 acres.

You are hereby cited to appear at the Court of Land Registration, to be held at the City and County of Honolulu, on the 2nd day of August, A. D. 1916, at 10 o'clock in the forenoon, to show cause, if any you have, why the prayer of said petition should not be granted. And unless you appear at said Court at the time and place aforesaid your default will be recorded, and the said petition will be taken as confessed, and you will be forever barred from contesting said petition or any decree entered thereon.

Witness the HONORABLE W. J. ROBINSON, Judge of said Court, this 7th day of July, A. D. 1916.

Attest with Seal of said Court: M. T. SIMONTON, Registrar.

1916—July 1, 8, 15, 22, 29; Aug. 5, 12, 19.

"For Rent" cards on sale at the Bulletin office.

Cable News

(Continued from Page 1.)

NEW PARTY ON NEW LINES

PHILADELPHIA, July 28.—Declaring that the Republican and Democratic parties were completely dominated in this State by the liquor interests, a hundred and seventy delegates representing fifty-two counties convened here today and founded the Keystone party.

William Berry was nominated for Governor, and candidates for other State offices will be selected. The new party is composed of persons bitterly opposed to the saloon interests, and who have thus far failed to influence the leaders of either of the old political parties.

The convention was a gathering of enthusiastic men, and a lively campaign is planned by the leaders.

REFUSES TO ACCEPT HIGH HONOR

MINNEAPOLIS, July 28.—The Democrats of this State, in convention here, today nominated ex-Governor Lind for the office of Governor, and Lind refused to accept the honor.

GREAT FLOODS DESTROY CROPS.

OWENSBORO, Ky., July 28.—Unprecedented rainfall in this section of the State has damaged growing crops to the extent of a million dollars.

Railroad traffic on the three trunk lines running through this city has been abandoned.

The damage is estimated at half the amount reported in the Henderson district, thirty miles west of Owensboro, where the country was swept by a cloudburst last week.

JAWBONE BROKEN IN FIGHT.

OGDEN, Utah, July 28.—Joe Thomas tonight broke Terry Keller's jaw in the twelfth round of a bout in this city.

JOE GANS IS DYING.

PRESCOTT, July 28.—It was announced here tonight that Joe Gans, the pugilist, was dying of tuberculosis.

BY AUTHORITY.

NOTICE.

Board of Public Lands.

Notice is hereby given that the following proposed land transactions are before this Board for consideration. All persons desiring to object because the land should be homesteaded or otherwise are requested to present such objection to this Board, in writing, or in person, on Monday, August 29, at 2 p. m., at Executive Building, Honolulu, T. H.

ISLAND OF OAHU.

Sale for Cash.

Government Remnant at Mooki, Ewa 1.20 Ac.

Government Remnant at Paweowee, Ewa 5.68 "

Government Remnant at Mananaiki, Ewa 4.30 "

Government Remnant at Waima, Wailua 2.20 "

Government Remnant at Kahana, Koolauloa 2.00 "

Land at Kaula, Koolauloa, Pololo Valley (to be divided) 18.84 "

Lot No. 1, at Kepuhi, Palolo Valley 1.60 "

Lot No. 2, at Kepuhi, Palolo Valley 1.70 "

Lot No. 3, at Kepuhi, Palolo Valley 2.70 "

ISLAND OF KAUAI.

General Lease of the Government lands of Waipouli, North and South Oloheua and Kepaa, other than the homestead tract, containing an area of 3679 acres, more or less, of grazing and waste lands.

Upset rental: \$300.00 per annum. Applicants for above lease: CHAS. A. Rice and Makee Sugar Co.

J. F. BROWN, Secretary, Board of Public Lands.

June 30, 1916. 4659-St

4659—July 1, 8, 15, 22, 29; Aug. 5, 12, 19.

When your eyes tire after reading a short time, they need attention. See

ALFRED D. FAIRWEATHER

MANUFACTURING OPTICIAN

Fort Street Harrison Block

SUMMER DAYS AND

Pau Ka Hana

GOOD THINGS

LEGAL NOTICES.

COMMISSIONER'S SALE OF VALUABLE REAL ESTATE SITUATE AT HONOKUA, DISTRICT OF SOUTH KONA, ISLAND OF HAWAII.

Pursuant to a Decree of Foreclosure and Sale made by the Honorable W. J. Robinson, Third Judge of the Circuit Court of the First Judicial Circuit of the Territory of Hawaii, at Chambers, in Equity, on the 25th day of March, A. D. 1916, in an action entitled, "Paul Muhlenhoff, Mark P. Robinson, James E. Jaeger and Mrs. B. M. Allen, Trustees under the last Will and Testament of S. C. Allen, deceased, complainants, vs. Hawaii Land Company, Limited, respondent, Bill to Foreclose Mortgage;" (Equity Division No. 1676), and pursuant to the further order of the Court, duly given and made on the 7th day of June, A. D. 1916, directing and ordering a RE-SALE of the property described in the Decree of Foreclosure and Sale herein, and pursuant to the further order of the Court, duly given and made on the 21st day of July, A. D. 1916, directing and ordering a RE-SALE of the property described in the Decree of Foreclosure and Sale herein, the undersigned, as Commissioner, duly appointed and constituted as such by said decree of Foreclosure and Sale, will sell, at Public Auction, to the highest and best bidder for cash, subject to confirmation of the Court, on

SATURDAY, THE 13TH DAY OF AUGUST, A. D. 1916.

At 12 o'clock Noon of Said Day, at the front (mauka) entrance of the Judiciary Building, in the City and County of Honolulu, Territory of Hawaii, all and singular the property described in that certain Indenture of Mortgage dated the 31st day of August, A. D. 1899, made and executed by the respondent Hawaii Land Company, Limited, to Samuel C. Allen, and recorded in the Office of the Registrar of Conveyances, at Honolulu, in Liber 196 of Conveyances, at pages 242-244; said property being situate at South Kona, Island of Hawaii, Territory of Hawaii, and being more particularly bounded and described as follows, to-wit:

1st: All those premises in the deed of the Trustees of Kalakaua to T. K. R. Amalu, dated June 13, 1888, and recorded in Liber 116, page 392, containing an area of 1 4-100 acres, and duly conveyed to said E. K. Amalu by deed of D. P. Namauu, recorded in Liber 118, page 326, together with all houses on it;

2nd: All the undivided 340 acres of said E. K. Amalu in the Ahupuaa of Honokua, S. Kona aforesaid, being the same premises conveyed to said E. K. Amalu by deed of Kalkaina and Kawai, his wife, dated March 1, 1899, and recorded in Liber 191, page 173.

Said property will be sold in two parcels.

Terms of Sale: Cash in United States Gold Coin; ten (10%) per cent. of the purchase price to be paid on the fall of the hammer; balance to be paid upon confirmation of sale by the Court and execution and delivery of deed or deeds by the Commissioner. Deed or deeds at expense of purchaser or purchasers.

For further particulars apply to Messrs. Kinney, Ballou, Prosser & Anderson, attorneys for complainants, at their offices, 303 Stangenwald Building, Honolulu, or to the undersigned at his office, in the Judiciary Building, in Honolulu aforesaid.

M. T. SIMONTON, Commissioner.

Dated, Honolulu, July 22, 1916.

4676—July 22, 29; Aug. 5, 12.

NOTICE TO CREDITORS.

Estate of Dang Young, Alias Dang Chock Quon, Deceased.

The undersigned having been duly appointed executor of the last will and testament of Dang Young, alias Dang Chock Quon, deceased, by the Honorable W. J. Robinson, Presiding Judge of the Circuit Court of the First Judicial Circuit, Territory of Hawaii, on the 27th day of June, A. D. 1916, notice is hereby given to all creditors of the said Dang Young, alias Dang Chock Quon, deceased, to present their claims duly authenticated and with proper vouchers, if any exist, even if the claim is secured by mortgage on real estate, at the undersigned, at their office, at the Oahu Rice Mill, on Beretania street, Honolulu, within six months from the first publication of this notice or within six months from the date they fall due, or they will be forever barred.

CHING SHAL (Per G. S. C.)

DANG POI, Executors of the Last Will and Testament of Dang Young, Alias Dang Chock Quon, Deceased.

Dated, Honolulu, June 30, 1916.

4659—July 1, 8, 15, 22, 29.

REGAL SHOES

REGAL SHOE CO.

King and Bethel.

BULLETIN ADS PAY

WANTS

ONE CENT A WORD

WANTED

Position as overseer, take charge of cutting or planting field, or division water lunak. 20 years' experience. Address "Overseer," this office. 4672-St

Everybody to use the large nickel pad for school and figuring use. Two hundred sheets of good paper for five cents, at this office. 4673-St

Have your hat cleaned by the Expert Hat Cleaners, 1123 Fort St., opp. Club Stables. Best workmanship; no acids used. 4669-St

Position on books by energetic young man. Address "B. B.," this office. 4678-St

A second-hand Surrey. State price. Apply "A. B.," P. O. Box 749. 4681-St

Oahu sugar stock. Address "Stock," this office. 4680-St

Clean wiping rags at the Bulletin office.

MALE HELP WANTED.

WANTED—REPRESENTATIVE IN HONOLULU.

A Los Angeles building and investment institution, with assets of \$750,000, is looking for a representative in Honolulu and vicinity, for the purpose of selling its stock and securities. At the present time its common stock is paying 16% per annum to nearly two thousand stockholders on the mainland, and it believes that there is in Honolulu a considerable amount of capital desirous of earning this magnificent dividend—paid 4% every three months. A representative must be a good salesman, and have bank and other responsible references, as to integrity, ability and standing. If acceptable, permanent connections will be made on a commission basis, and bank and other references will be established. If interested, address H. C. Galloppe, Asst. Gen. Agent, 129 So. Broadway, Los Angeles, Cal. 4679-St

SITUATION WANTED.

Situation wanted as wholesale and retail general merchandise salesman by a Japanese who in three years has gathered a complete knowledge of the principles of selling merchandise and the handling of a sales force; has the proper training. Address "C. K.," 1475 So. King street. 4674-St

Capable experienced lady stenographer wishes position in Honolulu. Can act as assistant bookkeeper and do general office work. Also expert multigraph operator. Best of references. B. E. Quade, 1813 Derby street, Berkeley, California. 4672-St

Japanese Cooking School. Families or hotels supplied with cooks. C. M. Matsie, 1457 Auld Lane. Tel. 1564.

FOUND

Near the road to Haleiwa—a place where motorists can get finest beverages and tobaccos—Waipahu Exchange.

EMPLOYMENT AGENCY

Japanese Employment Association. Maunakea near Asai Taxider. Call up phone 697 if you want a cook, good boy or servants.



Even the little children can make good pictures with a

BROWNIE CAMERA

IT WORKS LIKE A KODAK

Ask us for a copy of "The Book of the Brownies."

Honolulu

Photo Supply Co.,

FORT STREET, BELOW HOTEL

TO LET

Furnished room; cool; private entrance; nice lamp; electric light; phone; board if desired. Rent low to permanent boarder. 471 Beretania avenue. 4669-St

Furnished rooms—cool and pleasant—in private family. Apply Mrs. F. L. Schmidt, prop. Alapai St., No. 1038, near King. 4629-St

Cottage on Liliha street, next corner of Kaula; seven rooms; lot 159 by 100; \$20. Jos. P. Mendonca, 849 Kaulamannu St. 4678-St

Furnished cottage at Waikiki Beach. Rates reasonable. Good bathing. Cressaty, next to Cassidy's, 2011 Kalia road. 4680-St

Two furnished rooms. Apply Mrs. D. McConnell, 1223 Emma St.

ROOMS AND BOARD.

Cool furnished rooms and cottage, with or without board. 1634 Nuuanu Ave., near School St. Prices moderate. 4180-St

Neatly furnished rooms and board, 1550 Emma street, opposite Royal School. Mrs. Annie Gabe, prop. 4624-St

FOR SALE.

GAS ENGINES

We have in stock the well-known OTTO, also the GORPAM, both high-grade engines. When you want an engine for pumping, hoisting, running electric lighting plants or any other machinery, or if you wish an engine for a fast launch or for a freight boat, call on us and let us show you what we have and quote you prices.

Supplies of all sorts for the engine room.

E. O. HALL & SON, LTD.,
Agents

If It's Paint

AND YOU WANT A GOOD JOB, SEE ME—TOM SHARP

SHARP SIGNS

PHONE 397 ARE SEEN EVERYWHERE ELITE BUILDING

J. A. GILMAN,

Shipping and Commission

Agent for

Arthur Sewall & Co., Bath, Me.
Parrott & Co., San Francisco
Badger's Fire Extinguisher Co.
General Fire Extinguisher Co.
(GRINNELL AUTOMATIC SPRINKLER)
Neuman Clock Co.
(WATCHMAN'S CLOCK)
Royal Standard Typewriter
Aachen & Munich Fire Ins. Co.

FORT STREET, NEAR MERCHANT

BOILING?

An Ice-Cold Beer
Will FIX YOU

PACIFIC SALOON

KING AND NUUANU

DICK SULLIVAN, Prop.

GOOD BUTTER

IF YOU LIKE BUTTER THAT IS PURE—THAT REMINDS YOU OF THE DAIRY—ORDER YOURS FROM US.

Metropolitan Market
W. F. HEILBRON, Proprietor PHONE 45

W. C. Peacock & Co., Ltd.

WINES AND LIQUORS

SOLE AGENTS

MONT ROUGE WINES

THE WINES OF CONNOISSEURS
We deliver to all parts of the city twice daily.
FAMILY TRADE A SPECIALTY
WE GUARANTEE OUR GOODS

Honolulu Institute for Physiotherapy
CORNER BERETANIA AND RICHARDS STREETS P. O. BOX 440
Open From 8 A. M. to 7 P. M., Except Sunday

All kinds of Electric Light Baths (blue, red, white and violet).
Steam Baths; Turkish, Russian, Pine Needle, Nauheim, Carbonic Acid
and Oxygen, or Medical Baths; Massage, X-Rays and High Frequency,
etc.

Special attendant for ladies.



MILITARY LEAGUE.

CAVALRY NINE ARE CHAMPIONS

MARINES FINISH SECOND IN
SERIES AND N. G. H. THIRD

Barry's Beauts (1) Way Down in
List—The Leilehua Men Elated
Over Victory—Fort Shafter and
Ruger, Fifth and Sixth.

It seems strange to see the two teams drawn from the National Guard occupying such a low position at the finish of the Military League series. The Hospital Co., once Barry's Invincible Beauts—are fourth on the list, and the regular N. G. H. team is third. The Fifth Cavalry won out in the competition, and the Marines got into second place. Fort Shafter and Fort Ruger finished fifth and sixth, respectively.

The final standing of the teams was as follows: Cavalry, 733; Marines, 625; N. G. H., 571; Hospital Corps, 461; Fort Shafter, 352; Fort Ruger, 266. Thus have the mighty Beauts fallen, and from occupying the position of champions, now rank away down in the list.

Last year the Hospital Co. won all before them, and they certainly played great ball. None of the other teams had a chance against them, and they walked away with every match. This year they never got going properly, and owing to a number of reasons did not show up well at the finish.

The Fifth Cavalry did well from the start, and during the whole season only lost four games. They won eleven out of fifteen, and played good ball all the time. In Bell and Robinson the Cavalry have a fine battery, and much of the credit of their winning the championship must be given to these two men.

The Marines, in getting second in the Service series, did remarkably well, and the showing they made is a credit to them. Peyton did a lot of pitching during the season, and he also played on the Marine nine in the Athletic Park series. He has improved a lot in his box work and is getting better every day, and the half-wits are lucky to have a man like he to take the place of Gibson and Hines.

There was great rivalry between the Hospital Co. and the N. G. H. nines. At first it was thought that the Beauts would easily beat the regular Guard nine, but as the season went on it was seen that the Harry bunch had not much chance of climbing high up in the list.

Fort Shafter did not intend to take part in the series at first, but after a while were induced to come in. Boloun, their pitcher, did good work for his side, but try as they could, the Shafter's could not do any better than win six and lose eleven games.

The Shafter's are noted for their "never say die" spirit, and they deserved a better fate than to finish fifth in the competition. Fort Ruger showed pluck in getting into the series, and they will do better next season, when they have more

COMING EVENTS.

Secretaries and managers of athletic clubs are invited to send in the dates of any events which they may be getting up, for insertion under the above head. Address all communications to the Sporting Editor, Bulletin.

BASEBALL.
International Games.
July 30.—O. C. Alumni vs. Waseda.

Oahu League Series.
July 30.—J. A. C. vs. Marines.
July 31.—P. A. C. vs. J. A. C.

July 31.—C. A. C. vs. Waseda.
Oahu Juniors.
July 31.—Asahi vs. Palamas.

July 31.—Mu Hooks vs. C. A. C.
Golf.
July 31.—Novelty Tournament.

August 21.—Foursome, Country Club.
Cricket.
July 30.—Match.

Tennis.
August.—E. O. Hall Cup.
August 1.—Wall Cup.

August 13.—Maul vs. Honolulu.
(Punnett).
Boxing.
July 30.—Cordell vs. Cornyn.

Polo.
August 10.—Kauai vs. Fifth Cavalry.
August 13.—Oahu vs. Kauai.

Basketball.
August 2.—Y. M. C. A. vs. Fort Shafter.

Time to practice. They won four games and lost eleven.

The Military boys play clean ball, and it is to be hoped that next season they get down to work early, and that the public patronize the games better than they did during the past season.

There is some talk of a Married vs. Single cricket match to be played on August 6 at Makiki. Such a match would be interesting, and some good play should be seen.

Tomorrow afternoon at the Athletic Park, the Wasedas will go up against the Oahu College Alumni, and a great game should result.

AMUSEMENTS.

ALOHA PARK

Saturday, July 30

BOXING CONTEST

PAT CORNIN of San Francisco

vs.

JACK CORDELL

Fifteen—Rounds—Fifteen

Championship of Hawaii

Preliminary

BUGLER SARCONI vs. ED MADISON

Camp Very San Francisco

Time Called Eight-Thirty

PRICES—Ringside, \$3; Reserved Seats, \$2 and \$1; General Admission, 50c.

Tickets at Fitzpatrick Bros., Hotel and Fort Streets.

GETTING READY FOR REGATTA

BIG PROGRAM FIGURED
ON FOR SEPTEMBER

Healan's and Myrtles Will Once
More Try Conclusions—A New
Barge Has Not Arrived for Healan's—Old One to Be Used.

There are signs of great activity in rowing circles and a strong revival in both the Myrtle and Healan boat clubs. The regatta which is to come off in September is the cause of the stir, and on Monday next the crews of the two clubs will start active training.

The Healan's turned the tables on their old opponents last time they met and the Myrtles are determined to reverse the decision at their next meeting. The Healan's have lost the services of their captain, Lloyd Conkling, and he will be much missed. It was he that took charge of things some time ago and quickly got the younger members of the club going well. It was a great scene when the Healan's won last time and Conkling came in for a lot of congratulations from friends and supporters of the Healan's.

Bert Heilbron will hold down the position of captain of the Healan's, and a real good man he is for the job. He was captain in 1906, and has always been a prominent member of the club.

The Healan's will rely upon their old six-oar barge as the new one will not be here in time for the regatta. However, the old Healan has been remodeled and is expected to carry the Healan's boys to victory.

There is a strong probability of the shell races being revived also, and it is to be hoped that they are, as they are most interesting. There are a large number of men in training at present and every afternoon a bunch of oarsmen are out on the water. Over thirty freshmen are taking to the game like ducks to water, and a fine lot of young men will soon be ready to throw down the gauntlet to the Myrtles.

The regatta is always a great day's sport, and the scene on the harbor and at the two boatsheds a beautiful one. The Myrtles won everything for a number of years, and the public got tired of seeing the broom elevated on the flag pole at the Myrtle shed. Then the last time some races were brought off, the Healan's came out and won. There was joy at the headquarters, and it was then that Lloyd Conkling was overwhelmed with congratulations.

Rowing is the most healthful sport of all, and once upon a time there used to be much more done than there is at present. Still, there has been a revival of the sport, and the men who have taken hold of it have indeed done a lot to keep things going in good shape.

INTERNATIONAL GOLF WILL BE PLAYED

Australian Experts to Visit United States—The Tennis Men to Go, Also.

International golf will receive a great boom in this country next season, when a team representing Australia, headed by Dr. F. G. Brathwaite, the American vice-consul, who will act in the capacity of manager, visits here. In addition to the golfers there will be at least two lawn tennis players in the party.

Considerable correspondence has gone on between the two countries, and a warm welcome for the visitors is assured. The United States Golf Association was communicated with, and Robert C. Watson, the secretary, has written Dr. Brathwaite proposing that the Australians compete against an American team the week immediately preceding the amateur championship tournament of 1911. That this proposal will meet with favor there can be no doubt, for Dr. Brathwaite has written to know when and where next year's fixture will be held.

It is now planned for a team to visit this country early next summer and tour America from coast to coast, taking part in team matches and tournaments, but arranging the schedule so as to take in both the amateur and open championships. The personnel of the Australian team as made up at present consists of eight golfers and two lawn tennis players, but it is possible that this number may be increased.

Among the visitors will be Michael Scott, the amateur champion of Australia and open champion of New South Wales and Victoria. He is a brother of O. Scott, who has been runner-up in the amateur championship tournament of Great Britain. Next on the list is Clyde Pearce, who has been both open and amateur title holder of Australia.

A left-handed golfer named Felstead, who recently broke the record for the course of the Royal Melbourne Club, will also come. Last year Felstead won the open championship tournament of Australia, beating all the professionals. Another equally well known golfer booked for the trip is Duncan, five times champion of New Zealand and runner-up in the Australian amateur tournament in 1908.

Bruce Pearce, an 18-year-old lad with many victories to his credit, will be a member of the team. He is champion of Tasmania and South Australia, and altogether he holds no less than 13 minor championship titles.

CORDELL AND CORNIN BOX TOMORROW NIGHT

Both Men in the Pink of Condition and Ready for Contest—Two Preliminaries Arranged For.

Tomorrow night at the Aloha Park three fine boxing bouts will be pulled off, and the main event, between Jack Cordell and Pat Cornyn, should be one of the best ever brought off in this Territory. Both men are anxious for the fray, and both think that they can win. That is a good sign, and the result should be a fine contest that will please the fans.

Cordell has eased up in his work and today will only do some shadow sparring and medicine-ball throwing. He looks in the pink of condition and is ready to fight for his life. Cordell wants to make good this time, and he will certainly make Cornyn extend himself.

Pat has also wound up his hard work and will take things easy today. He feels fit as possible and will step into the ring tomorrow night as well as hands can make him. The go should be a beauty, and it will be willing from the first tap of the gong.

There will be two preliminaries, and the first will be between two unknowns, who will hit it up for four rounds. Then Bugler Sarconi and Madison will step into the ring, and a fine battle should be fought. Sarconi is putting on weight and is stronger now than he used to be. Madison is a clever boxer and he will make things interesting for the Bugler while he is in the ring.

RECREATIONS.

New Orpheum

(Phone for Good Seats, 660)

CASINO MUSICAL COMEDY CO.

The
Wrong Mr. Smith
NEW MUSIC! NEW NOVELTIES!
Thursday, Friday and Saturday:

SPECIAL MATINEE, SATURDAY
Any Seat in the House, 25c

EVENING PRICES.... 25c, 50c, 75c

Baseball

Honolulu Athletic Park

SPECIAL SERIES

SATURDAY, JULY 30:
J. A. C. vs. U. S. M. C.
O. C. ALUMNI vs. WASEDA
SUNDAY, JULY 31:
P. A. C. vs. J. A. C.
C. A. C. vs. WASEDA

Admission.... 25c, 50c, and 75c.

Princess Rink

POSITIVELY TONIGHT!
SIGNOR ANTONIO'S

Surprise Circus

Wonderful Troupe of Performing
Dogs and Monkeys
Special Ladies' and Children's Matinee, Saturday, 2:15. Admission, 10c.
THE MARVELOUS TYLER
Balances Mattresses, Casks, Japanese Screens, Etc.
OTHER FEATURES
Latest Moving Pictures
PRICES..... 10c and 15c

Park Theater

MISS ETHEL MAY—Soprano Soloist from Keith's
GEORGE GARDNER—America's Favorite Irish Dialect Comedian
The Great CROTTONS—Marvels of Strength
DYSO—World's Great Ventriloquist
GUNHA'S ORCHESTRA
AND MOTION PICTURES
Admission..... 5c, 10c, 15c

EMPIRE THEATER

HOTEL STREET

The Best
Motion Pictures
in the city
Admission..... 15c, 10c, 5c.

DANCE

—The—
ROYAL ACADEMY OF DANCING
will hold its first quarterly dance on
THURSDAY EVENING, AUGUST 4,
at 8 o'clock. Odd Fellows Hall.
GOOD MUSIC AND A GOOD TIME
"For Rent" cards on sale at the Bulletin office.

ON A DAY

like this, a man can do more and
better work for a cool, refresh-
ing drink.

COME AND SEE US---

"It's The Fashion"

The Two Jacks.

Hotel near Fort