

MUST HAVE BEEN AN ERROR

DOUBLE BREACH OF THE MARITIME RULES

TUG CAPTAIN'S CLAIM THAT GERMAN CRUISER DID NOT OBSERVE THE LAW OF THE SEA—EXCITEMENT ON THE FRONT.

Island captains are discussing a double breach of the maritime laws committed by the German cruiser Cormoran yesterday afternoon as she was entering the harbor. In fact, the masters think that the Cormoran was guilty of quite a serious omission. She failed to answer the signals of two tugs which were towing out of the harbor at the time and as a result, there was not a little excitement along the front as the various craft passed each other.

The first breach of the rules occurred just makai of the lighthouse. The cruiser was in the fairway while the tug was approaching on the right hand side of the channel, towing the garbage scows. Captain McAllister of the Eleu decided to follow Article 18 Rule 1 of rules to prevent collisions of vessels. He gave one toot of his whistle which signified that he wanted to pass the port side of the cruiser or, in other words on the right hand side of the channel. Although the rule which governs vessels in this situation provides that an answer shall be given to the signal, absolutely no answer was given by the Cormoran. The cruiser was in the fairway. There was ample room in which the Eleu could pass as McAllister had signalled he would do so, both vessels kept their course and no trouble ensued.

Immediately behind the Eleu was the tug Fearless towing the barkentine James Johnston. The Fearless was on the left side of the harbor. Captain Olsen saw that he would not be able to pass the port side of the Cormoran so he decided to remain where he was and not alter his course. He gave two toots of his whistle. This signal indicated that the tug intended passing the starboard side of the cruiser but on the port side of the harbor. According to the rules, the cruiser should have answered this signal but she failed to do so. As in the case of the Eleu, the Cormoran was mute and continued on her course along the fairway.

Captain Olsen was not certain exactly what the German vessel proposed to do, so he repeated the signal several times. Many people thought the Fearless was saluting the German cruiser. No attention whatever was paid to the volley of signals, so, in order to take special precautions against the possibility of being run down by the cruiser the tug had to take extra risks by lurching the left hand side of the harbor. This necessitated the Fearless making a sharp turn this side of the light house in order to head out to sea. No damage resulted however and the vessels passed safely.

The particular part of the American maritime laws that seems to apply to the present case is article 18 rule 1 of the rules to prevent collisions. It reads as follows:

"When steam vessels are approaching each other head and head, that is, end on, or nearly so, it shall be the duty of each to pass on the port side of the other; and either vessel shall give, as a signal of her intention, one short and distinct blast of her whistle, which the other vessel shall answer promptly by a similar blast of her whistle, and thereupon such vessels shall pass on the port side of each other. But if the courses of such vessels are so far on the starboard of each other as not to be considered as meeting head and head, either vessel shall immediately give two short and distinct blasts of her whistle, which the other vessel shall answer promptly by two similar blasts of her whistle, and they shall pass on the starboard side of each other."

The local captains think that the Cormoran should have answered the signals of the two tugs. By failing to do so considerable confusion occurred. The rules call for such answer and they should be followed, it is declared. The harbor channel is very narrow at best and when three vessels are passing at the same time, as occurred yesterday, special precautions against collision should be taken, the captain argue.

WIDENING ROAD.

The work of widening the Waikiki road just at the turn off King street is going on. The Chinese store at the makai corner has been moved back a little and a few feet nearer town. The space thus cleared is being leveled off and added to the road.

THESE HAVE PAID THEIR MONEY

VOTERS CAN NOW TAKE THEIR CHOICE—LEGISLATIVE NOMINATIONS CLOSE TOMORROW.

Tomorrow is the last day for filing nominations with the Secretary of the Territory for the legislative and congressional election from all the islands except Oahu. A good many have been filed already, some being filed yesterday and the day before. It is expected that the steamers arriving tomorrow will bring the last of the nominations from the other islands.

Nominations from this island do not have to be filed until ten days before the election which in this case will be October 25, or three weeks from tomorrow. No nominations from this island, however, have been filed at all, everybody, presumably wanting to hold on to their money till the last minute, so as not to lose the interest on their money if they really do determine to go on the ticket, or their principal, if at the last minute they decide that they won't go on the ticket.

These have filed their nominations and paid their \$25 entrance fee for the grand legislative sweepstakes.

From Hawaii, for Representatives: Charles H. Puloa, Frank K. Greenwell, Basil Apiki, William J. Wright, Joseph W. Keiloku, Julian Monsarrat, J. N. Keouli, Robert Makahalupa, W. M. Kauliwa, John K. Kekaula, S. L. Laro, David Ewald, J. M. Kauliwa, James D. Lewis, William B. Nallima, George W. Paty, Joseph Pritchard, H. M. Kaniho, H. P. K. Malulani, M. Keiko, Keolu.

From Hawaii, for Senators: O. K. Apiki, Stephen L. Desha, John D. Paris Palmer P. Woods, Samuel K. Pua. From Maui for Representatives: Louis von Tempy, Joel Nakaleka, W. P. Hala, Samuel Kalama, Philip Pali, Samuel Keiloku, G. P. Kaaimakaoe, George P. Waihehu. From Maui for Senator: C. H. Dickey. From Kauai, for Representatives: J. Apukali Akina, J. K. Gandali, H. A. Jaeger, E. O. Knudsen, S. W. Kalli, G. W. Mahikoa, J. H. Kakuwai. From Kauai, for Senators: S. W. Wilcox, J. H. Kahlina.

AN OFFICIAL CALL. Korvetten Kapitän von Burski, commandant of S. M. S. Cormoran, called on Governor Dole at the Capitol this forenoon. He was accompanied by H. A. Isenberg, the Imperial German Vice Consul.

NEIGHBORS HAD A ROW. The little sons of Mrs. Annie Ringer and Mrs. Pomliam Kalama got into a dispute which assumed such gigantic proportions that the mothers had to take part. The result was a row which was aired in the police court this morning. Mrs. Ringer was charged with assault and battery on the other woman. Judge Wilcox gave both women some good advice and discharged the defendant.

CHARGED WITH LARCENY. Lee Hon, a Chinese, was arraigned before Judge Wilcox this morning on a charge of having stolen some clothes belonging to a Japanese. The clothes were alleged to have been stolen during a fire on Liliha street. The case was continued until October 4.

THE WEATHER. Weather Bureau, Punahou, 1 p. m. Morning minimum temperature, 72; midday maximum temperature, 83; barometer, 9 a. m., 30.03 falling, (corrected for gravity); rainfall, 24 hours ending 9 a. m., .33; dew point, 9 a. m., 67; humidity 9 a. m., 66 per cent.

CURTIS J. LYONS, Observer.

FRUITS AND VEGETABLES. Don't forget Camarinos of the California Fruit Market when you want fruit and vegetables. He always has on hand a fresh supply of both California and Island fruits. Telephone Main 374.

FISHERMEN

Would do well to inspect our line of tackle. The most complete line of anglers and fishermen's supplies in the city. Surf Rods, 21 feet, etc.

PEARSON & POTTER CO., LIMITED. UNION AND HOTEL STS. PHONE MAIN 317.

ONE APPLICANT HAS NO FAITH IN GOVERNOR

MCCLELLAN ASKED TO SIGN PETITION FAVORING DOLE—REFUSED BECAUSE HE DID NOT BELIEVE GOVERNOR HONORABLE.

There are two applications before the Republican Central Committee for endorsement for the office of Treasurer of the Territory. A. J. Campbell, the stockbroker, and G. E. McClellan, employed by the Dillingham Company, are the men. Mr. Campbell is well known and has many friends. McClellan is not well known and has not many friends. The requests of both men were laid on the table by the committee. It is understood that the members of the committee do not care to name any particular person for the position. They may endorse several names and they may not. It is generally accepted as a fact that F. W. Macfarlane can have the position if he will accept. Thus far Macfarlane has not agreed to take the office, but strong influence is being brought to bear and he may change his mind.

McClellan is working hard for the job. In fact he has developed into a job-hunter. His present employers are the men who started him on the wild-goose chase and unkind people have said that there is a method behind their madness.

McClellan is button-holing people to sign his petition. In some instances he has met with success—in others, a chilling reply was given. The cold reception is accorded by college men and for a good reason. Some time ago when it was considered that Governor Dole's position was in jeopardy, the college graduates decided to send a signed petition to President Roosevelt, expressing confidence in Governor Dole and in his administration. The petition was generally signed. The only opposition met with has in the case of McClellan. He was asked to sign but refused. He said he could not sign it because he believed Governor Dole was not an honorable man. Now he wants Governor Dole to give him a fat office.

KENTWELL RETIRES. The Executive Committee of the Home Rule Party, Honolulu.

Gentlemen: Owing to the onerous nature of my business engagements, I am compelled to tender you my resignation as a nominee of the Home Rule Party for the Legislature. I cannot possibly spare the time necessary to make a canvass for the office named, nor can I if elected devote the time and attention which my constituents would have the right to demand to the duties of the office. Please consider this decision as irrevocable, and permit me to assure you that the party has my best wishes for success, which I am sure will come to it when the votes are counted in November. Yours very truly,

L. K. KENTWELL.

TOTAL REGISTRATION

The Board of Registration for the Island of Oahu held sessions this week from 7 to 10 o'clock in the morning, and from 4 to 7 o'clock in the afternoon.

Next week the sessions will be from 8 to 10, 12 to 1, and 4 to 7, until Thursday, which is the last day of registration when the Board will sit from 8 a. m. to 8 p. m.

The total registration to date is 5491, which is within 213 of the total registration for this island of two years ago, the registration at that time being 5704 of which 4996 voted.

NEW CITIZENS. The following were made citizens of the United States by Judge Estee this morning: Manuel Souza, a native of the Azores; John Correa, J. A. Vierra, John Castro and Thomas Castro, natives of the Madeira Islands, and William A. Roberts a native of England.

ASKS FOR DAMAGES. Edward Campbell injured on the Norwegian Bark Aeolus.

Edward Campbell, a stevedore has filed a libel in personam against H. Hackfeld and company in the United States District Court. He sues for \$7,500 damages and \$117.50 wages lost, for injuries received July 26, 1922 on board the bark Aeolus by reason of being struck by a truck falling from a sling while being hoisted from the hold to the deck of the vessel. It is alleged that the sling broke by reason of being made of a piece of rotten rope picked up for the purpose by one of the employees of the defendant. Philip J. Farley is the Proctor for Campbell. Campbell alleges that he was seriously injured and had to remain in the hospital for a long time and that his foot has been permanently weakened and misshapen.

HYGIENIC UNDERWEAR. L. B. Kerr & Co. have received a special purchase of Men's summer weight, natural wool underwear. All sizes, and only \$1.25 a garment.

PROTECT YOUR FAMILY. Under the profit-sharing contracts of the Prudential Insurance Company, the cost of insurance does not average higher than the tax-rate on real estate. Prudential policies protect wives and families at a minimum cost. The many policies issued by this company explained and interesting literature furnished by the Hawaiian Trust Co., agents.

Insure your life while you can. Tomorrow you may be incapacitated. The Original Life Insurance Company wants you.

BRILLIANT DISPLAY OF ST. ELMO FIRE

A TALL BANANA TREE, THE HEAVY RAIN OF YESTERDAY AND AN ELECTRIC WIRE COMBINE FOR A BRIGHT SPECTACLE

The people on Kinohao street near Ala-pai witnessed an unusual and brilliant electrical display yesterday afternoon. It was a great ball of light on a wire of the electric light company, brilliant as an exhibition of St. Elmo fire, and incidentally pointing the moral and adorning the tale of the necessity of trimming trees along electric light wires told in an interview in the Star a few days ago by Electrical Inspector Hason. Incidentally also a wire burnt out and people on that circuit were without light until the break could be repaired.

The brilliant electrical display part of the incident occurred on the Hawaiian Electric Company's wire along Kinohao street near the property of J. H. Taylor. A tall banana tree, it seems, had by constant friction on the wire worn away the insulation. When the heavy rain came yesterday afternoon the water collecting on the broad leaves of the banana tree weighted them down until, as it is supposed, the water or the wet foliage of the tree itself made a short circuit, causing some disturbance of the circuit, manifesting itself in a great ball of flame, described as being as large as a football, which burned with a hissing sound and blue and lurid flame for several minutes. It shone unceasingly in the falling rain until the wire burned in two and the ends dropped to the ground.

E. S. Gill, who lives nearby and was one of those who saw the unusual electrical display says the sight was a striking one, and aside from the sense of apprehension of danger it created was one well worth seeing. He notified the police and the electric company by telephone of the accident. The police sent a man to stand guard to prevent accident to passersby. The electric company sent men to repair the break but it was not until after 8 o'clock that this was completed and the householders served by this wire had lights.

Electrical Inspector Hason says this incident accounts and emphasizes exactly the danger that he has pointed out as coming with the rainy season. Unless a careful lookout is kept, he says, by both the electric light company and the public, and vigorous trimming of trees is carried on, the heavy rains that are sure to come will, as in this instance, create ground and short circuits, resulting in a serious chance and in some cases positive danger.

IN DEFAULT.

M. S. Grinbaum and Company by Holmes and Stanley, have filed a motion for default against the Kapiolani Estate company, and ask that one of the clerks of the court assess the amount of the plaintiff's claim interest and costs. Judge Robinson allowed the default and appointed George Lucas to assess the claim.

The monthly meeting of the Young Men's Republican club will be much in the nature of a rally meeting on Monday next. The club is also getting out a meeting, which will be abbreviated, arrangements have been made whereby Prince Kuhio will address the meeting, followed by others.

The headquarters of the club, opposite the Club stables on Fort street, will heretofore be open every night in the week. The club is also getting out a great deal of literature on current political topics which will be distributed among the precincts.

The campaign committee consisting of the following, Lorrin Andrews, Kenakenui, Marques, George R. Carter, W. W. Harris, W. E. Jochee, A. W. Anderson, P. R. Helm, C. Ramsey, S. A. Amarill, J. Kumalae and D. H. Case are hard at work keeping up the enthusiasm of the younger voters.

The ways and means committee are now discussing the possibility of getting sufficient funds to carry through the campaign. A very modest sum is being asked for as sufficient and this will be sought to be raised from members in subscriptions varying according to their means. The Central Committee will also be asked to help in some measure. In some cases subscribers towards the fund have expressed their willingness to give a part of their central subscription towards the Young Men's club, providing the central committee is willing.

WAIHEA ARRANGEMENTS.

At the meeting of the Waimea Sugar Company yesterday W. E. Rowell offered to build the necessary ditch for the sum of \$25,000. The ditch will not be a lengthy one and run up to a very slight elevation only. \$15,000 of this is pledged by the larger stockholders. A new committee, consisting of W. E. Rowell, J. R. Galt and W. L. Howard were appointed in lieu of the old one, resigned, to report again in two weeks. The wells which were producing salty water have been rewelled and the supply is said to be much fresher in consequence.

STRICKEN WITH PARALYSIS. Henderson Grimmett, of this place, was stricken with partial paralysis and completely lost the use of one arm and side. After being treated by an eminent physician for quite a while without relief, my wife recommended Chamberlain's Pain Balm, and after using two bottles of it he is almost entirely cured.—Geo. R. McDonald, Man. Logan Co., W. Va., U. S. A. Several other very remarkable cures of partial paralysis have been effected by the use of this liniment. It is most widely known however, as a cure for rheumatism, sprains and bruises. Sold by all druggists. Benson Smith & Co., general agents.

AUTHORITIES AFTER WRIGHT

MARRIED LAST NIGHT.

Quite a pretty little romance was culminated last night when Charles A. Cash, foreman at the telephone office, led Miss Leal to the altar at the Catholic Cathedral. Miss Leal had been a "Hello Girl" and it was while she was occupied at her work that Mr. Cash met her.

STRANGE FISHES FOR PROF. JORDAN

A FISH NOT UNLIKE A FROG CAPTURED—DISCOVERY OF MANY RARE SPECIMENS.

Fish Inspector Louis Berndt has continued to glean fishes from the loads brought in by the Japanese fishermen which are rare and, many of them, altogether unknown to science. These he has sent to Doctor Starr Jordan or else hands them over to Thompson the artist and plaster cast maker for the Bishop Museum Ichthyological Department. The authorities at the museum have named one of the new discoveries unearthed by Mr. Berndt after him, in recognition of his services.

The discovery of rare pediculate fish-ot in these waters by the Albatross, fishes with fins ending in claw like terminals like the toes and fingers of a frog and thought to be used in crawling over the reefs and rocks at great depths has resulted in a particular look out being kept for such kinds by Inspector Berndt.

Several varieties have been found, one of a bright vermilion hue coming into market last week. The fish is in many respects, a miniature edition of the bigger "fishing frog" or "angle fish" of northern seas. Above the big mouth, of all proportion to the body, and between two heavy eyes, waves a slender filament with a fleshy appendage at the end, a natural fishing rod, line and bait in one. Down in the rocky crevices the scarlet fish crawls on his foot like fins and attracts the smaller fry with his vivid color as the antelope hunter brings the game within range by displaying a scarlet rag tied to his ramrod.

Up comes a school of little fry, the angler itself is only some six inches long with a girth greater than its length and sees the dangling bait, smells at it, attempts to taste and the next moment is emulating Jonah without the prophet's hope of escape.

Four new fish came into the inspector's preserving tin of formalin solution last week and now are being immortalized as colored statuary in the little shack behind the Healan Boat House where artist Thompson holds sway with plaster of Paris and paint box.

BASKET BALL GAME. The "Reds" won the first basket ball match of the season yesterday afternoon by a score of 6-6. The rain came down before the game was over and the contestants got a good wetting but played despite the weather until the ball became too sticky to catch or hold. The game was played at the Giffard residence under the coaching of Miss Lillian Bacon. Another match is announced for the near future.

S. N. CASTLE SAILS TOMORROW. The barkentine S. N. Castle will sail tomorrow at noon for San Francisco. She will take about 800 tons of sugar and general cargo.

ECLIPSE IS EXPECTED. The gasoline schooner Eclipse is expected tonight from a special run to Maui and Molokai ports. She left out her usual Kona ports this week as it was desired to get her back earlier than usual in order to put her on the Marine Railway.

REUCE ARRIVED TODAY. The American ship Reuce arrived this morning from Newcastle after a fair passage of 45 days. She has coal for W. G. Irwin & Company. The vessel is anchored in the stream, but will haul over to the Pacific Mail wharf tomorrow after the S. S. Doric sails for the Orient. The Reuce will take enough coal out of her to lighten her sufficiently to go into the slip at the coal wharf and there discharge.

MILLINERY. In our millinery department we have a choice assortment of the newest novelties. An up-to-date hat trimmed to order costs just half of what it would elsewhere. L. B. Kerr & Co., Queen street.

ROYAL Baking Powder
Made from pure cream of tartar.
Safeguards the food against alum.
Alum baking powders are the worst menaces to health of the present day.

POLICE OFFICER ON HIS WAY TO COAST

SAILED ON THE SIERRA LAST TUESDAY—THE SECRET OF HIS MISSION LEAKED OUT TODAY. SPECIAL McDUFFIE THE MAN.

The authorities have sent an officer to the Coast for the purpose of arresting William H. Wright, the absconding treasurer. The officer left Honolulu last Tuesday on the S. S. Sierra. The latest effort of the police to secure the absconding treasurer has been kept a secret and not until today were facts of the case ascertained.

Officer McDuffie, one of the special officers of the police department, is the man who was dispatched after Wright. The circumstances of McDuffie's departure bear, by a strange coincidence, some similarity to the escape of W. H. Wright last week aboard the Alameda.

McDuffie boarded the vessel in a much more open fashion however than did Wright. It was shortly before the Sierra sailed that the officer boarded the vessel. He was dressed in an ordinary blue serge suit and carried no valise or parcel. One of the special officers had gone aboard the vessel a minute before McDuffie appeared, and when the latter approached the gangway and passed aboard nothing unusual was surmised. It was supposed at that time that McDuffie was merely going aboard to search the vessel for the purpose of finding J. Gomez, who was the defendant in a civil suit. The officers were desirous of securing service on Gomez and, as an uniformed officer had gone aboard, McDuffie was supposed to have followed to assist him in locating Gomez. This surmise proved entirely incorrect, however, for McDuffie did not leave the Sierra and sailed away in her for San Francisco.

It is not positively known what character of paper was given McDuffie for the arrest of Wright. It is said to be unnecessary to have a warrant based on an indictment in such a case. It is reported that McDuffie was given a warrant issued from the Circuit Court calling for the arrest of Wright. Embarrassment is understood to have been the charge preferred in the warrant against Wright.

Whether McDuffie has been sent on a wild goose chase or the police authorities have secured information which caused them to believe that they could lay their hands on Wright, is not certain. It seems hardly probable that an officer would be dispatched to the Coast and the Territory put to a useless expense especially with the treasury in such a precarious and piffling condition, unless there was some strong prospect of catching the fugitive. Such things have happened in other pieces of course. It is understood that the authorities think they will be able to effect the apprehension of the absconding treasurer.

Wright left here September 24 and the officer sent in pursuit of his departed September 30. Wright has therefore a start of six days over his pursuer. It is not improbable that Wright will hunt up James H. Boyd, the Superintendent of Public Works, who is now in San Francisco on a visit, and McDuffie may be able to secure from Boyd some information which will lead to the apprehension of the fugitive. Those who are acquainted with Wright are inclined to think that he will believe himself secure from any danger of extradition and will wait around San Francisco indefinitely. In such an event his capture seems certain. On the other hand those who have watched the progress of the entire affair of Wright and detect some "funny" features to his escape think that there is little danger of Wright

(Continued on page five.)

DRESSY SHOES FOR LADIES

Just received, a beautifully, graceful and stylish shoe of the finest kid and patent tip is the Imperial.

PRICE \$4.00.

Another style of the same make with elk-hide sole.

PRICE \$4.50.

Come and try them on.

MANUFACTURERS' SHOE COMPANY, LIMITED

1061 FORT ST.

Accident Insurance, Helps the Pain

You won't suffer so much if you have a good policy to think about while you are recovering from the accident. Help you pay the Doctor's Bill and have necessary things too. Take out a policy in the Standard Accident Company.

HAWAIIAN TRUST CO., LTD.
General Agents for the Hawaiian Islands.
923 FORT STREET

Canadian-Australian Royal Mail STEAMSHIP COMPANY

Steamer of the above line, running in connection with the CANADIAN PACIFIC RAILWAY COMPANY between Vancouver, B. C., and Sydney, N. S. W., and calling at Victoria, B. C., Honolulu and Brisbane, Q.

Due at Honolulu on or about the dates below stated, viz:

FOR AUSTRALIA.		FOR VANCOUVER.	
MOANA.....	OCT. 25	MIOVERA.....	OCT. 22
MIOVERA.....	NOV. 22	AORANGI.....	NOV. 19
AORANGI.....	DEC. 20	MOANA.....	DEC. 17

Calling at Suva, Fiji, on Both Up and Down Voyages

THEO. H. DAVIES & CO., Ltd., Gen'l Agts.

Pacific Mail Steamship Co. Occidental & Oriental S. S. Co. and Toyo Kisen Kaisha.

Steamers of the above Companies will call at Honolulu and leave this port on or about the dates below mentioned:

FOR CHINA AND JAPAN.		FOR SAN FRANCISCO.	
DORIC.....	OCT. 4	COPTIC.....	OCT. 7
NIPPON MARU.....	OCT. 14	AMERICA MARU.....	OCT. 14
PERU.....	OCT. 22	KOREA.....	OCT. 22
COPTIC.....	OCT. 29	GAELIC.....	NOV. 1
AMERICA MARU.....	NOV. 6	HONGKONG MARU.....	NOV. 8
PEKING.....	NOV. 14	CHINA.....	NOV. 18
GAELIC.....	NOV. 22	DORIC.....	NOV. 25
HONGKONG MARU.....	DEC. 2	NIPPON MARU.....	DEC. 5
CHINA.....	DEC. 10	PERU.....	DEC. 13
DORIC.....	DEC. 18	COPTIC.....	DEC. 19
NIPPON MARU.....	DEC. 26	AMERICA MARU.....	DEC. 27

For general information apply to

H. Hackfeld & Co.

Oceanic Steamship Company.

TIME TABLE

The fine Passengers Steamers of this line will arrive at and leave this port as hereunder:

FROM SAN FRANCISCO.		FOR SAN FRANCISCO.	
*ALAMEDA.....	OCT. 10	*ALAMEDA.....	OCT. 15
SIERRA.....	OCT. 22	SONOMA.....	OCT. 21
*ALAMEDA.....	OCT. 31	*ALAMEDA.....	NOV. 5
SONOMA.....	NOV. 12	VENTURA.....	NOV. 11
*ALAMEDA.....	NOV. 21	*ALAMEDA.....	NOV. 26
VENTURA.....	DEC. 3	SIERRA.....	DEC. 2
*ALAMEDA.....	DEC. 12	*ALAMEDA.....	DEC. 17
SIERRA.....	DEC. 24	SONOMA.....	DEC. 23
*ALAMEDA.....	JAN. 2	*ALAMEDA.....	JAN. 7

*Local Boat.

In connection with the sailing of the above steamers, the Agents are prepared to issue, to intend passengers coupon through tickets by any railroad from San Francisco to all points in the United States, and from New York by steamship line to all European Ports.

W. G. Irwin & Co. (LIMITED)

General Agents Oceanic S. S. Company.

AMERICAN HAWAIIAN STEAMSHIP COMPANY.

DIRECT MONTHLY SERVICE BETWEEN NEW YORK AND HONOLULU, VIA PACIFIC COAST.

FROM NEW YORK.	
S. S. "CALIFORNIAN" to sail about September 30th.	
S. S. "AMERICAN" to sail about October 25th.	
S. S. "TEXAN" to sail about November ..	

FROM SAN FRANCISCO:

S. S. "NEVADAN" to sail October 9th.	
S. S. "NEBRASKAN" to sail October 30th.	

Freight received at Company's wharf, Stewart Street, Pier No. 20.

FROM HONOLULU TO SAN FRANCISCO:

S. S. "NEVADAN" to sail November 1st.	
---------------------------------------	--

FROM SEATTLE AND TACOMA:

S. S. "ALASKAN" to sail November 25th.	
--	--

H. Hackfeld & Co.

C. P. MORSE, General Freight Agent. AGENTS.

Oriental Bazaar.

Hand Decorated China Dinner and Tea Sets, Carved Ebony Furniture, Carved Ivory, Carved Sandal Wood, Camphor Wood Chests, Rattan Goods, Embroidered Silks and Paper Screens, Bamboo Furniture.

All kinds of Rich Silk Goods, such as Pongee and Pine Apple Linens, White and all colors, Embroidered Silks and Linen Goods, Mattings, Lacquered Ware, Silver Ware, China Parfumeurs and Vases, Beaded Portieres, Chinese Gongs, all sizes, Curios, Etc.

66-72 King Street, corner of Smith.

Phone Blue 3581. P. O. Box 947.

St. Louis **A.B.C. BEERS**
The Highest Priced but the Best Quality.
SOLD EVERYWHERE.

SHIPPING INTELLIGENCE

(For additional and later shipping see pages 4, 5, or 8.)

ARRIVING.

Thursday, October 2.
Schr. Ka Moi, from Paauilo at 4:30 p. m.
Schr. J. A. Cummins, Searle, from Kona at 12:30 p. m.

Friday, October 3.
Am. ship Renee, Whitmore, 46 days from Newcastle at 5 a. m.

Schr. Charles Levi Woodbury, Harris from Hilo at 6 a. m.

Schr. Ke Au Hou, Tullett, from Kapa, Anahola, Kilauea, Hanalei and Kailiawai at 1 a. m.

Schr. Kaula, Bruhn, from Ahukini at 5:30 a. m.

S. S. Doric, Smith, from San Francisco, probably arrive in afternoon.

Saturday, October 4.
Schr. Claudine, Parker, from Hilo and way ports, due about noon.

Schr. Lehua, Napala, from Lanai, Maui and Molokai ports, due in afternoon.

Schr. Helene, Nicholson, from Hawaii ports, due in morning.

Sunday, October 5.
Schr. W. G. Hall, S. Thompson, from Kaula ports, due early in morning.

Schr. Maui, F. Bennett, from Maui ports, due early in morning.

DEPARTING.

Thursday, October 2.
Am. bktn. Kikikat, Cutler, for Port Townsend, at 10:40 a. m.

Saturday, October 4.
Am. bktn. S. N. Castle, Nilson, for San Francisco at noon.

S. S. Doric, Smith, for the Orient, probably sail about noon.

Schr. Nihau, W. Thompson, for Ahukini and Hanamaulu, at 5 p. m.

PASSENGERS.

Arriving.
Per schr. Kaula, October 3, from Ahukini—Donald J. McKay, E. Simons.

ELEELE.

Arriving, September 30. Am. bktn. Lahaina, Carlson, from Newcastle via Honolulu.

GALT'S HOUSE ROBBED.

The mountain residence of J. R. Galt was broken into last week by unknown parties. Some clothes belonging to a Japanese were stolen. The police investigated the robbery, but no arrests were made.

ISLAND SCHOONER ARRIVES.

The schooner Ka Moi arrived yesterday afternoon from Paauilo. Rough weather has been prevailing about the Hamakua coast. The schooner Charles Levi Woodbury arrived this morning from Hilo with firewood. The Woodbury will sail next Tuesday for Hilo and the Ka Moi will probably get away Monday for Paauilo.

SUGAR LEFT ON KAUALA.

Purser E. Deverill of the steamer Ke Au Hou reports the following sugar left on Kaula, K. S. M. 1,000 bags, N. K. 300 bags, Diamond W. 200 bags, Mak. 225 bags, G. & R., 450 bags, total 8,200 bags.

CORMORAN IS COALING.

The German Cruiser, Cormoran which arrived yesterday from Apia began coaling this morning. She is anchored in the stream.

ROUGH WEATHER ABOUT KAUALA.

Rough weather is reported as prevailing about the island of Kaula. There were rough seas at Hanalei yesterday and on Friday the rain fell so heavily at Anahola that Captain Tullett of the steamer Ke Au Hou had to discontinue discharging his vessel.

LAHAINA AT ELEELE.

The barkentine Lahaina reached Eleele last Tuesday from Honolulu. She is discharging coal for McBryde Plantation.

AMELIA FROM EUREKA.

The barkentine Amelia arrived yesterday afternoon from Eureka, after a 16 day passage. She brought 512,000 feet of redwood lumber.

PROTECT ISTHMIAN TRAFFIC.

SAN FRANCISCO, September 24.—The United States Government is determined to have a sufficient force on the isthmus to protect the traffic. Secretary Moody has issued orders to Commander Pillsbury of the United States steamer Prairie, now at Boston to proceed with his ship to Norfolk, where 600 marines will be in readiness to take ship if Secretary Moody receives advice from Commander McLean that the men are needed. The marines of the Cincinnati have been landed at Colon; the Panther, with 350 marines aboard is due at that place, and with the additional 600 men of the Prairie the United States will have an ample force to protect the traffic across the isthmus. Orders were sent yesterday to the San Francisco now at Norfolk, to coal and provision and proceed to San Juan, Porto Rico, thence to remain awaiting developments.

ADMIRAL WATSON DEAD.

VALLET (Island of Malta), September 21.—The death is announced of Rear-Admiral Burgess Watson, Royal Navy. He died on Board the British battle-ship Ramacallis.

WHITE APPOINTED.

Clarence M. White, formerly cashier for the Oahu Railway and Land Company has been temporarily appointed chief clerk of the Department of Public Works by Special Agent Cooper, pending the return of Superintendent Boyd from the coast. This appointment is in succession to R. Hayward Wright now in jail awaiting the action of the grand jury.

DORIC EXPECTED TODAY.

The S. S. Doric is expected this afternoon from San Francisco with two days later mail and news files. She will sail for the Orient tomorrow, probably at noon.

AMOUNT OF WAR COSTS.

NEW YORK, September 21.—A cable to the Sun from London says The Daily Mail announces that the Government has decided that the Transvaal and Orange River Colony shall pay £100,000,000 toward the cost of the South African war and the cost of administration.

An account has been opened at the Treasury and the colonies have been debited to that amount. The loan will probably be raised. Taxation of the mining industry, concessions for the sale of dynamite, etc., will contribute materially to the payment of the £100,000,000.

The next time you have a Want, try the Star's columns. Bargain rates.

NEW CANVASES BY HITCHCOCK

THE HAWAIIAN ARTIST WILL LEAVE FOR THE VOLCANO TO COMPLETE ANOTHER PAINTING

Howard Hitchcock leaves for Hawaii next week with the intention of painting the volcano while the outbreak lasts. Mr. Hitchcock has not been to the volcano since 1896 and thinks that he can handle its phases with a much freer hand than formerly. His many careful studies when first attempting to portray Madame Pele have to a great extent familiarized him with the necessary palette and his last six years work and improvement of technique will, he thinks, enable him to treat the subject in a broader and more satisfactory manner than heretofore.

Mr. Hitchcock has been spending the summer on the other side of the island and comes back from his camping with a number of canvases that bespeak earnest endeavor, close attention and a use of imagination and individualism that is far in advance of his earlier work. Mr. Hitchcock has made big strides in the last few months and his work exhibits a breadth of technique, mastery of selection and treatment of the subject that will surprise even the many who have hoped for big things from Mr. Hitchcock's brush.

As most of the canvases will be exhibited at the Kilauea fall exhibition but passing mention at the present time is in order. The canvases portray the peculiar, pinnated formations of the peaks on the other side, the bizarre formations of the landscape, glimpses of sunny sand and emerald seas with one or two important studies of the Fall.

One canvas will challenge the attention when seen. The subject is a pass in the mountains with the foreground aglow in the harsh, strident sunlight that shines through gathering clouds. Volcanic, tortuous peaks show above the gray storm clouds in infinite perspective whirl and wreath. The artist has achieved more than a clever picture study. There is a vastness, an impression of brooding nature where primeval forces are at work that arrests the attention before the eye takes in the cleverly painted details and carefully thought out composition. It is the best thing that the artist has ever painted.

NO TANKS FOR HONOLULU.

Although the steamships of the American-Hawaiian S. S. Company are to burn oil as fuel, Honolulu will not be utilized as a fuel port. It was thought that probably oil tanks would be erected at this port by the company but no such action will be taken. Oil can be loaded aboard the vessels much cheaper at San Francisco, than it could at Honolulu so there is no necessity for hauling the oil to this port. The steamers on the local run can carry more than enough oil fuel for the round trip while the through steamships can carry enough oil to get them from San Francisco to the oil fuel port in the West Indies.

SPECKELS' INTEREST WANTED.

MARSHFIELD, Or., Sept. 17.—W. S. Chandler, manager for the J. D. Speckels & Bro. Company interested in this country, including the Coos Bay, Roseburg & Eastern railroad, and Beaver Hill coal mines, left tonight for San Francisco, accompanied by the company's attorney, J. S. Coke. The supposition is that they have gone to the head office to confer with the Speckels people in regard to the sale of their interests to J. D. Kinney, who is at the head of the Great Central Railroad projected between Salt Lake City and Coos Bay.

PAYMASTER AN EMBEZZLER.

WASHINGTON, September 24.—The Secretary of the Navy has received the record of the court-martial in the case of Paymaster's Clerk Walter H. Warner, who was tried on the battle-ship Wisconsin at Bremerton, Wash., on the charge of embezzling funds of the Government in connection with the purchase of commissary supplies for the ship's company. He was found guilty and sentenced to dismissal and to imprisonment at hard labor for one year. The findings and sentence were approved by Rear-Admiral Casey, commanding the Pacific Station.

SAN FRANCISCO FOR PANAMA.

NORFOLK, Va., September 24.—The cruiser San Francisco sailed today for Panama to protect American interests on the isthmus. Besides her regular complement of marines and sailors, the San Francisco carries thirty-five marines from the barracks at the navy yard, who will be detailed for garrison duty on the isthmus.

MANY PRISONERS TO GO FREE.

CAPE TOWN, September 23.—The first report of the Royal Commission on the effects of martial law in South Africa recommends the immediate release of 115 prisoners.

EMBEZZLER ON SOLACE.

VALLEJO, September 24.—A warrant was issued last evening for the arrest of Fred Meyers, late of the Solace, charging him with the embezzlement of \$1200. A constable went to San Francisco today to locate Meyers. When the Solace was here on her last trip and was being stored previous to her departure Meyers made contracts for stores to the amount of over \$1200 and was given the money to pay. The accounts are still unpaid, and immediately on the arrival of the Solace at San Francisco Meyers deserted the ship.

NO "RAGGING" IN BRITISH ARMY.

LONDON, September 23.—As an outcome of the recent Gregson incident, Earl Roberts, commander in chief of the force, has notified all commanding officers of the necessity of suppressing with a strong hand any such practices as "ragging" which he declares to be a disgrace to the army and most pernicious and prejudicial to the whole spirit of discipline.

MAGNIFICENT GIFT.

BOMBAY, September 22.—A prominent Bombay Parsee named Nowrojee Manockjee Wadia has announced his intention of devoting his fortune of nearly \$5,000,000 to charity. He will give his property in trust for the benefit of persons in any country deprived of their means of subsistence by sudden calamities.

GENIUS.

"Genius," quoted Smuthers, "is an infinite capacity for taking pains." "Then," remarked Smuthers, "old Groanache must be a genius. He gets every ailment he hears any one else has." —Cincinnati Commercial Tribune.

THE WEIR SELF-SEALING STONE FRUIT JARS

THESE JARS HAVE BEEN ON THE MARKET FOR A NUMBER OF YEARS, AND HAVE GIVEN THE BEST OF SATISFACTION. THEY ARE A PERFECT SELF-SEALING JAR, ARE PRACTICALLY UNBREAKABLE, WILL EXCLUDE THE LIGHT AS WELL AS AIR, AND YOU CAN TELL IN ADVANCE WHETHER FRUIT WILL KEEP. THE JAR CAN BE OPENED AND CLOSED BY A CHILD WITHOUT BURNING OF FINGERS OR SCALDING OF HANDS. NO SLIVERS OF GLASS CAN GET INTO THE FRUIT. NO METAL COMES IN CONTACT WITH THE FRUIT. NO CORROSIVE SUBSTANCE CAN GATHER IN THE LIDS OR THREADS OF THE JAR. THE MOST PERFECT SANITARY JAR MADE. THESE JARS MAKE AN EXCELLENT CONTAINER FOR MILK AND BUTTER, AS THEY CAN BE PLACED IN THE REFRIGERATOR AND THE CONTENTS OF THE JAR ARE ABSOLUTELY PROTECTED FROM TAIN.

Theo. H. Davies & Co., LIMITED

Hardware Department

Crystal Springs Butter

Crystal Springs Butter is made in California's finest creamery and is everywhere conceded to be the best in the market. Has that delicacy of flavor that the richest pasture lands of the west produce. New shipment just received on the Ventura, in perfect condition pure and sweet. Order from

Metropolitan Meat Co., Ltd Telephone Main 45

WON & LOUI CO.

Hotel street, near Smith.

Sanitary Plumbers, Tinsmiths, and Sheet Iron Workers. Water Pipe and Gutter Work in all its branches. Orders filled with dispatch.

OHTA,

Contractor and Builder, House Painter

Kewalo, Sheridan Street, near King Honolulu, H. I.

S. Kojima.

IMPORTER AND DEALER IN

LIQUORS,

Japanese Provisions.

General Merchandise.

AND PLANTATION SUPPLIES.

10. 45 HOTEL STREET, HONOLULU.

Telephone White 2411.

P. O. Box 906.

Furniture

Our stock is complete in every particular. We can suit you, whether you want CHEAP, MEDIUM OR FINE GRADES. GOODS IN MAHOGANY, OAK, BIRDS' EYE MAPLE, IMITATION MAHOGANY, and other choice woods. LATEST DESIGNS WINDOW SHADES, MATTING, LINOLEUM AND PORTIERS. Our REPAIR AND UPHOLSTERY DEPARTMENT is first class in every way.

Hopp & Co.,

KING & BETHEL STREETS

Telephone Main 111.

Twenty-five cents pays for a Want ad in the Star. A bargain.

25c

DOES THE BUSINESS

A Three-Line Advertisement (18 words) will be inserted in the STAR'S classified columns for 25 cents. Each additional line at the rate of 10c. extra.

ADVERTISEMENTS IN THE CLASSIFIED COLUMNS OF THE

STAR

BRING QUICK AND SURE RESULTS.

If it is help wanted, or house for rent, or boarding, 25 cents covers the investment.

THEO F. LANSING,

INSURANCE AND COMMISSION AGENT
Temporary Office in Former Office of First National Bank, Campbell Block.

DR. J. M. WHITNEY, DENTIST.

Boston Building, Fort Street Over H. May & Co.
Hours: 9 to 5. Tel. Main 277.

DR. A. C. WALL, DR. O. E. WALL, DENTISTS.

LOVE BUILDING, FORT STREET, Telephone 494.
OFFICE HOURS, 8 a. m. to 4 p. m.

Lands For Sale!

To be sold at auction at Honolulu on Monday October 20, 1902, at 12 o'clock noon, unless previously disposed of.

Table with columns: Acres, No., R. P., No. for AT MAKAAALAE.

Table with columns: Acres, No., R. P., No. for AT KAWALOA.

Table with columns: Acres, No., R. P., No. for AT MUOLEA.

Table with columns: Acres, No., R. P., No. for AT KAUUKUHALAHALA.

Table with columns: Acres, No., R. P., No. for AT POHAKANELE.

Table with columns: Acres, No., R. P., No. for AT KOALL.

Table with columns: Acres, No., R. P., No. for AT KAWAIPAPA.

Table with columns: Acres, No., R. P., No. for AT POHAKUULA.

Table with columns: Acres, No., R. P., No. for AT MOKAE.

Table with columns: Acres, No., R. P., No. for AT PUKULUA.

Table with columns: Acres, No., R. P., No. for AT KAPOHUE.

Table with columns: Acres, No., R. P., No. for AT PUEOKAUIKI.

Table with columns: Acres, No., R. P., No. for AT WAIKONUU.

Table with columns: Acres, No., R. P., No. for AT HAMOA.

Table with columns: Acres, No., R. P., No. for AT HULIHANA.

Table with columns: Acres, No., R. P., No. for AT KIHAPUHALA.

Table with columns: Acres, No., R. P., No. for AT PAPAHAWAHAWA.

Table with columns: Acres, No., R. P., No. for AT PUIKI.

And in District of Kaupo, at WAI-AHOLE 12 Acres more or less in R. P. No. 2674.

A total of 477 acres more or less for sale as a whole or in part.

For further particulars apply to C. Brewer & Company, Agents of the Hamoa Plantation Company, Queen street, Honolulu.

Dated Honolulu, September 5, 1902.
Jan. F. Morgan, President; Cecil Brown, Vice-President; F. Hustace, Secretary; Chas. H. Atherton, Auditor; W. H. Hoogs, Treas. and Mgr.

TELEPHONE MAIN 295.
Hustace & Co., Ltd
QUEEN STREET

DEALERS IN Firewood, Stove, Steam and Blacksmith Coal

Special attention given to DRAYING ALSO, WHITE AND BLACK SAND

L. KONG FEE, Merchant Tailor, Fort St., opposite Club Stables.

Paralysis

comes as a climax to over-taxed and run-down nerves. It is a breaking down, a wearing out of the forces which regulate and control every organ and every tissue of the body.

Dr. Miles' Nervine.

"I was paralyzed and was so nearly helpless for nine years that I had to be lifted from the bed to my invalid chair. During all that time I was doctoring with various physicians and trying different remedies; but all to no purpose, for I seemed to grow weaker instead of stronger.

CORPORATION NOTICES.

DIVIDEND NOTICE.

A Dividend is due and payable to the Stockholders of the Inter-Island Steam Navigation Co., Ltd., at the office of the Company, Queen street, on Thursday, October 2nd 1902.

TO WHOM IT MAY CONCERN.

Notice is hereby given that all persons having claims against the former Oahu Carriage Manufacturing Co., Ltd., on River street, are requested to present their claims to said concern; claims will not hold good later than Oct. 1.

MEETING NOTICE.

An adjourned special meeting of the Waimea Sugar Mill Company will be held in the assembly hall over the offices of Castle & Cooke, Ltd., in Honolulu, on Thursday, October 2, 1902, at 10 o'clock a. m., the above meeting being an adjournment of an adjourned special meeting held August 28, 1902.

ASSESSMENTS.

The twenty-third assessment of 10% or two dollars (\$2.00) per share has been called to be due and payable October 21, 1902.

The twenty-fourth and final assessment of 10% or two dollars (\$2.00) per share has been called to be due and payable December 29, 1902.

Interest will be charged on assessments unpaid ten days after the same are due at the rate of one per cent (1%) per month from the date upon which such assessments are due.

The above assessments will be payable at the office of The B. F. Dillingham Co., Ltd., Stangenwald building. (Signed) ELMER E. PAXTON, Treasurer Oia Sugar Co. May 12, 1902.

For Sale or Rent.

Recently built house in excellent condition on Young street, near Alexander street.

First floor: Large double parlors, dining room, 2 bed rooms, bath room and kitchen.

Second floor: 5 bed rooms and large hall.

Third floor: Large finished attic.

Large lanai, cool and shady. Servant's quarters, stable, carriage house and fine stable yard. Nice lawn and all buildings in good repair. Lot 75x140.

Price, \$5250. Rent, \$50 per month.

For Sale. Cottage on Young street, near Alexander. Cool and pleasant. Parlor, dining room, 5 bed rooms, bath and kitchen.

Excellent neighborhood. Lot 75x140. Price, \$2900. Enquire of

LEWERS & COOKE, LIMITED

FORT STREET, - HONOLULU

EMBARRASSMENT OF LEGAL RICHES

SO MANY REMEDIES FOR THE LOSS OF AUSTIN'S JOB IT IS HARD TO SELECT.

Formal demand was made on behalf of Herbert C. Austin, the suspended auditor, for the auditor's salary for the last five days of September, the five days following his suspension by Governor Dole.

The auditor's salary warrant is paid only on the approval of the Governor, the law directing a different procedure for the salary warrants of the auditor and deputy auditor than for the salary warrants of all other government employees.

"All warrants for permanent settlements, stated and all other salaries, excepting that of the Auditor-General and Deputy Auditor-General, shall be drawn by the Auditor-General, payable to each individual to whom the Government is directly indebted."

"The salaries of the Auditor-General and Deputy Auditor-General shall be paid by the Minister of Finance when due, as hereinbefore provided; upon warrants approved by the president."

It appears from this that Austin in order to get his salary for the time he is suspended must not only get warrants for them, but must get those warrants approved by the governor.

Austin's attorneys say that proceedings to determine Austin's rights and to reinstate him are being considered. C. W. Ashford said that they were in the position of a man embarrassed with riches; there were so many remedies given them by law, that it became a question which one to select.

KING OF TRAMPS. REDLANDS, September 20, 1902.—The "King of Tramps," Oliver Bainbridge, of London, England, visited Redlands Tuesday. He is a highly educated gentleman and is making a trip around the world afoot.—The Clitograph.

CRICKET AND BASEBALL. The cricket game between the local team and an eleven from the cable ship Anglia will take place at Makiki tomorrow afternoon immediately after the conclusion of the baseball game of the Mid-winter League which will start at 1 o'clock to accommodate the cricket stars.

BOXERS DEPOSIT FORFEITS. A forfeit was put up yesterday for both "Useless" Harris and Bennett to ensure their meeting for a contest to a decision on November 1. Kiley put up \$50 for Harris and a similar amount was deposited by Bennett. J. C. Cohen states that "Soldier" Greene is willing to box Weday and may come down here for that purpose.

THE TUA TUA. Superintendent McVeigh of the leper settlement says that the lepers there do not take to the tua tua remedy. Of six lepers who agreed to take the remedy faithfully under the direction of the settlement physician, only two have persevered.

TO DISINTER SOLDIERS. A special corps will arrive here on the transport Thomas this month, for the purpose of disintering the bodies of the dead soldiers and sailors who are buried in Honolulu. The bodies will be returned to the United States for burial.

TOURIST TRAVEL. Joint Discussion Yesterday on Means To Provide Money.

Discussion of tourist travel and ways and means for encouraging the same was discussed at the joint meeting of the trustees of the Planters' Association and the Merchants' Association yesterday afternoon.

ONE CENT FINE. An Alabama millionaire has appealed from a one-cent fine imposed in the police court on a charge of refusing to pay a licensed restaurant bill.

BANK OF HAWAII LIMITED.

Incorporated under the Laws of the Territory of Hawaii.

PAID-UP CAPITAL - \$600,000.00 SURPLUS - 200,000.00 UNDIVIDED PROFITS - 35,000.00

OFFICERS AND DIRECTORS. Charles M. Cooke, President; P. C. Jones, Vice-President; C. H. Cooke, Cashier; F. C. Atherton, Assistant Cashier.

COMMERCIAL AND SAVINGS DEPARTMENTS. Strict attention given to all branches of Banking.

JUDD BUILDING, FORT STREET.

CLAUS SPRECKELS, WM. G. IRWIN. Claus Spreckels & Co. BANKERS.

HONOLULU, H. I. San Francisco Agents—The Nevada National Bank of San Francisco.

DRAW EXCHANGE ON SAN FRANCISCO—The Nevada National Bank of San Francisco. LONDON—The Union Bank of London, Ltd.

NEW YORK—American Exchange National Bank. CHICAGO—Merchants' National Bank. PARIS—Credit Lyonnais. BERLIN—Dresdner Bank. HONGKONG AND YOKOHAMA—The Hongkong and Shanghai Banking Corporation.

NEW ZEALAND AND AUSTRALIA—Bank of New Zealand. VICTORIA AND VANCOUVER—Bank of British North America.

TRANSACTION A GENERAL BANKING AND EXCHANGE BUSINESS. Deposits Received. Loans Made on Approved Security Commercial and Travelers' Credits Issued. Bills of Exchange Bought and Sold.

COLLECTIONS PROMPTLY ACCOUNTED FOR.

ESTABLISHED IN 1858.

BISHOP & CO. BANKERS

BANKING DEPARTMENT. Transact business in all departments of Banking. Collections carefully attended to. Exchange bought and sold.

Commercial and Travelers' Letters of Credit issued on the Bank of California and N. M. Rothschild & Sons, London.

Correspondents: The Bank of California, Commercial Banking Co. of Sydney, Ltd., London.

Drafts and cable transfers on China and Japan through the Hongkong & Shanghai Banking Corporation and Chartered Bank of India, Australia and China.

Interest allowed on term deposits at the following rates per annum, viz: Seven days' notice, at 2 per cent. Three months at 3 per cent. Six months, at 3 1/2 per cent. Twelve months, at 4 per cent.

TRUST DEPARTMENT. Act as Trustees under mortgages. Manage estates (real and personal). Collect rents and dividends. Valuable Papers, Wills, Bonds, Etc., received for safe-keeping.

ACCOUNTANT DEPARTMENT. Auditors for Corporations and Private Firms. Books examined and reported on. Statements of Affairs prepared. Trustees in Bankrupt or Insolvent Estates. Office, 924 Bethel Street.

SAVINGS DEPARTMENT. Deposits received and interest allowed at 4 1/2 per cent per annum, in accordance with Rules and Regulations, copies of which may be obtained on application.

INSURANCE DEPARTMENT. Agents for FIRE, MARINE, LIFE, ACCIDENT AND EMPLOYERS' LIABILITY INSURANCE COMPANIES. Insurance Office, 924 Bethel Street.

THE YOKOHAMA SPECIE BANK LIMITED.

Subscribed Capital.....Yen 24,000,000 Paid Up Capital.....Yen 18,000,000 Reserved Fund.....Yen 8,710,000

HEAD OFFICE, YOKOHAMA. The Bank buys and receives for collection Bills of Exchange, issues drafts and Letters of Credit, and transacts a general banking business.

INTEREST ALLOWED: On fixed deposits for 12 months, 4 per cent per annum. On fixed deposits for 6 months, 3 1/2 per cent per annum. On fixed deposits for 3 months, 3 per cent per annum.

Branch of the Yokohama Specie Bank. New Republic Building, Honolulu, H. I.

Note Heads, Bill Heads, Letter Heads and all kinds of Job and Commercial Printing neatly and promptly executed at the Star Office.

Just Received New Goods EX ALAMEDA Full line Gentlemen's Furnishing Goods such as fancy Socks, Neck Wear, Suspenders, Etc., Etc. Also new lot of Japanese Dress Goods. In our Hat Department we are showing Straw Hats in the latest styles, also Panama Hats at all prices. Iwakami & Co., 36 AND 42 HOTEL STREET, ROBINSON BLOCK.

If you want the best store or plantation lighting for the least money, call and see the Adams-Bagnall arc lamps at Hawaiian Electric Co.

C. Commichau's LINEN-HOSIERY Hygienic Underclothing Hardens the Body and Strengthens the Nerves. PROMOTES GOOD HEALTH Energy and Vigor. Approved and Recommended by None Genuine, Unless Bearing our Trade-Mark.

DO IT NOW... Insert Your Want Adv't In the STAR

The Hawaiian Star, DAILY AND SEMI-WEEKLY.

Published every afternoon (except Sunday) by the Hawaiian Star Newspaper Association, Limited.

Frank L. Hoogs, Manager

FRIDAY, OCTOBER 3, 1902

GET CONFIDENCE.

The defalcations of the two Wrights in the Executive building and of Walter Wright on Kaunoi has shaken confidence from one end of the Islands to the other. That they should have occurred without the knowledge of the Auditor seems very remarkable. B. H. Wright's trial will bring out much which cannot be understood now, or which can only be surmized. The case against William Wright seems to grow darker and more inexplicable. It was thought that he had been tempted to use the public funds in his hands in order to assist his brother in extricating himself from his trouble. But he did nothing of the kind. Mr. Conant, the tax assessor in chief of his district, as soon as he heard of the Treasurer's flight, immediately came up to Honolulu to announce the delinquency of Walter Wright, whose shortage the ex-Treasurer had agreed to pay, but had not, while some six hundred dollars which had been received by him on account of his brother, had never been turned in.

In such a condition of affairs it is absolutely necessary to restore confidence, and that can only be gained by putting a man in the Treasury in whom the public have absolute confidence. The present plan of having a locum tenens in is only a makeshift, and cannot be continued for any length of time. The Treasury Department needs a man who can give his entire thought to it, and must be a man of wide and accurate business training. As matters stand today, especially should the Treasurer be a man of estate to whom the mere salary of the department is no consideration or at least of secondary consideration. This reply is that few if any men of experience in financial affairs would care to burden themselves with what must prove a thankless task. The position, as far as salary is concerned, may be an attraction to either second rate men, or to men of broken fortune, but to the successful man the salary has absolutely no temptation. This may be true, and yet we want and must have a first rate man.

The citizens of a Territory or a State owe service to their state. It's welfare, political and material, are his welfare. That is why men take so much interest in elections, and urge the success of their candidates, while they supply the sinews of war, in the shape of campaign funds. But there comes a time when personal work is required, when the work cannot be delegated to others, and when the call of duty to his fellow citizens must find some prominent man, who will take up a burden which may be irksome, but which must be carried for the good of all. Political place is by no means always sought

SUGAR PROSPECTS.

Writing in August, Consul-General Mason of Berlin foreshadowed the present great shortage in sugar and he came very near the actual truth. He calculated the whole beet sugar output of Europe as between 6,500,000 and 6,130,000 tons. But this assumed that the weather in late August and early September, until the beets were gathered, should be sufficiently warm and bright to develop in the growing beets the normal percentage of saccharine matter. If this did not prove the case the consul-general foresaw a falling off of ten, fifteen and even twenty per cent. This is just what happened. A falling off of twenty per cent upon the estimate of 6,500,000 tons would be a reduction of 1,312,000 tons. The actual falling off is given by Licht, the great sugar statistician, at 1,000,000 tons. This shortage will eat up the surplus stock of beet sugar and still draw largely upon the cane growing countries, and it is this which makes our prospects so good.

We were only saved, practically, by the lack of a few weeks of warmth and sunshine. On August 21 of this year the promise was that the beet crop would be the largest on record in proportion to the area of cultivation. The month of September swept these hopes

Paying off the men quickly, whose salaries were tied up through the sudden departure of W. H. Wright, has had a good effect. There were some people who thought the whole treasury had been swiped by Wright.

Before going to Maui, Prince Kuhio will spend a few days in Honolulu. This will enable him to get into touch with headquarters and to arm himself with fresh arguments against his opponents. The Prince's campaign is gaining in strength daily, and those who doubted of his success have changed their opinion very materially.

There is dissatisfaction in Spain over young Alfonso, if a boy is set to do a man's work, what can be expected. A strong party in Spain want Prince Luigi of Savoy to take the throne. Luigi is something of a man and has distinguished himself as a mountaineer and explorer. Few, however, would

after, it sometimes seeks the proper and capable man, instead of the man seeking it.

It is to this position we have now come. To restore confidence we must have a citizen as Treasurer who will command confidence. Such a man must be sought among the business men of the community. We have many men with the requisite attributes both of ability, integrity, honor and wealth, but the question is which of them will be patriotic enough to serve. It is not the lack of the material, but it is the self-diffidence, and the fear of adverse criticism, as well as the hesitancy about leaving private affairs under less competent management that makes men chary of doing their bounden duty.

In looking round, no man more thoroughly fulfills the requirements of Treasurer than F. W. Macfarlane. He has the confidence, the entire and complete confidence, of his fellow citizens. There are other gentlemen who might fill the Treasury, as ably as Mr. Macfarlane, but there is no one who would command the united confidence of the community as he does. That he would be pleasing himself, were he to take the position, is undoubtedly not a fact. Mr. Macfarlane would have to make many sacrifices in order to do his duty. But when duty calls he should make those sacrifices, however hard and unpleasant they may be.

In the present situation it is not a party matter which is under consideration. It is a question of restoration of confidence. The defalcations which have occurred have shaken confidence and we must have some one in charge of the Territorial finances who is of such a character that he can completely restore confidence. Mr. Macfarlane especially unites in himself the attributes which are calculated to bring about thorough and complete confidence. He has been remarkably successful in business, and yet he has been most conservative. He is one of our leading men in financial thought. He is a most able organizer, and his power of work and influence over other minds has been shown by the manner in which he handled the fire claims matter. He is acceptable, moreover, to all classes. He is a son of the soil, who has spent his life in the Territory. He is married to one of the most prominent and most charitable of our Hawaiian ladies. But whatever social, racial, and other qualities he may possess are all overshadowed by the one great quality, confidence. It is Mr. Macfarlane's duty as a citizen and as a son of the soil, to sacrifice his own comfort and his own ease, to restore the confidence in Territorial finance, and his presence at the Treasury would do so.

completely away. Had there been a phenomenal beet crop, this together with the large surplus that was on hand would have fairly swamped the sugar market, and we should have continued to suffer depression. People have been apt to think that local conditions have brought about the depression in sugar. Local conditions had nothing to do with it. The beet sugar crop of Europe, however has had everything to do with it.

It is a curious thing that the great beet sugar producing countries consume very little of their own crop. The consumption of sugar per capita in Germany, is only 28 lbs, and in Austria 17.6 lbs, which are both meager and insignificant when compared with the per capita rate of consumption in Great Britain and the United States. The effect of the export bounty system has been to tax sugar out of the reach of a large proportion of the working classes in Europe, and the two most important results aimed at by the Brussels conference were to repeal the cause of countervailing duties and to reduce the retail price of home-grown sugar in the European markets. The sugar markets of the world are going to be in favor of the cane producer for some time to come.

care to undertake the government of the treacherous yet haughty Spaniard. Exploring the Arctic is better than ruling Spain. The latter has the heat of Hell.

The last vestige of Finnish liberty will shortly be swept away and Finland will become a mere province instead of loyal state. With the Russian Czar preaching universal peace to Europe on the one hand, and trampling out every vestige of Finnish liberty on the other, the semi-oriental Empire does not inspire much trust in the value of its sentiments. However the Finns are coming over to the United States in large numbers and they form the most thrifty and law-abiding of citizens. So what Russia loses we gain.

Hunting Moros does not seem to be all beer and skittles. The expedition that was sent out to bring the Moro chiefs to order, has had to return, be-

People Most

Know of PALMER'S PERFUMERY; which does not need much advertising. THESE GOODS advertise themselves; give them a trial and you will assist their advertising. Prices are right.



We have been appointed Sole Agents for this elegant line, consisting of PERFUMERY, SACHET POWDER, TOILET POWDER, SOAPS, ETC., and consider these the finest in their line ever imported in this Territory.

HOLLISTER DRUG CO. FORT STREET

ing unable to penetrate to the Moro stronghold. We shall again hear of outposts cut off, and sentinels chopped up, till another expedition is sent forth, when the Moros will again withdraw. The game, however, will be played once too often, and Uncle Sam's soldiers will find a way to get at the festive Moro. Guerrilla fighting of this kind, however, is very trying on troops.

IN RE HENDERSON.

It looks as if Speaker Henderson desires to be recognized as the Mount Pelee of his party.—Boston Herald.

Perhaps Congressmen Henderson is merely trying to make one of those "rather be right than Speaker" finishes.—Atlanta Journal.

Having published his little letter and had his say, perhaps Speaker Henderson will now quietly tell us what he really did it for.—New York Mail and Express.

Speaker Henderson is about the first statesman who declined to run for office because he did not hold the same view as his constituents.—Baltimore American.

The gentleman who withdraws from a race and looks round to see its effect on the Republican party might have an excellent illustration by jabbing his finger in a tub of water and pulling it out to observe the effect.—Cincinnati Commercial Tribune.

TOUCHING VARIED TOPICS.

The discovery that Michigan is the first dried bean state in the Union is likely to arouse the ire of Massachusetts.—Pittsburg Chronicle Telegraph.

San Francisco society folks are not like those of New York. In San Francisco they shoot editors who print their scandals.—Baltimore American.

When Peffer of Kansas completes the novel which he is writing, other remedies for insomnia will probably be driven from the counter.—Hartford Post.

A photograph taken on the royal yacht shows the Shah of Persia sitting beside Queen Alexandra, but the Prince of Wales is watching him.—Boston Globe.

It may be that the Indian banker who gave a woman a silk handkerchief for saving his life felt that he did not have long to live anyhow.—Washington Post.

A Philadelphian has finally succeeded in running down and killing a man with his automobile. The future of this automobile is now secure.—Washington Post.

The price of tobacco made a new record in Cincinnati yesterday, which probably means that cabbage will sell high the balance of the year.—Pittsburg Times.

Candidly, we do not believe that George Fred Williams had anything to do with the running down of that party of imperialists at Pittsfield.—Kansas City Journal.

Now that he has a little patch of 90-99 acres in the Adirondacks, Mr. Rockefeller may keep a few chickens and have a spring wagon and be quite independent of the world.—Washington Star.

So far neither the Commoner nor the Courier-Journal has accused Mr. Cleveland of placing the rock in Buzzard bay

All Few Cold Facts

The superiority of the Gurney Refrigerator is accounted for by the following: 1.—Cleanliness. 2.—Free Circulation. 3.—Economy in the use of ice. 4.—Condensation and dry air. 5.—Low average temperature. 6.—Freedom from condensation on inner walls. 7.—Freedom from damage by the use of ice picks. 8.—Proper location of drip pan. 9.—Long life.

It is the only refrigerator that can be kept absolutely pure and clean for all time. We have over thirty different styles and sizes, and are selling them on very easy terms. You will find the samples displayed on our second floor. TAKE THE ELEVATOR. You are welcome to inspect these goods whether you are ready or not.

W. W. DIMOND & CO., LIMITED

Sole agents for the Hawaiian Territory.

Nos. 53, 55 and 57, King Street HONOLULU.

Classified Ads in Star.

A Three-Line Advertisement (15 words) will be inserted in the STAR'S Classified Columns for 25 cents. Each additional line at the rate of 10 cents extra.

Ads under "Situations Wanted," inserted free until further notice.

For Sale

Building lot corner King and McCully streets, Pawa tract. Rapid Transit line will pass the door. Apply at Star office.

A magnificent building site on the Trenchbow slope, near Thurston avenue. Particulars at Star office.

Building lot corner King and Kamehameha road. Palama terminus of Rapid Transit road. Apply at Star office.

Unfurnished Cottage to Lease.

A very desirable unfurnished cottage of 7 rooms to lease for short or long term on College street, Puhou. Address N. P. O. Box 347.

Carriage Horse Wanted

Wanted, a good safe and sound family horse. Not afraid of electric cars or automobiles, and no stumblers. A bay preferred, but white objectionable. Offer by letter to this office, stating where the animal may be seen and tried.

Furnished Rooms To Let

Furnished rooms in the central part of the city. "Arlington" Hotel street. A nicely furnished room. Apply at 348 Beretania street.

For Rent.

A cottage, unfurnished, of 4 rooms, kitchen, pantry and bath. Apply at 1533 Fort street.

Room and Board

Nicely furnished room with board in private family. Apply 404 Beretania street.

Wanted

To lease house with six bedrooms, parlor, dining room, kitchen, pantry and proper out-buildings. Rent must be moderate. Apply by letter to X. Y., Star office.

on which the Brooklyn stranded. Are the editors of these enterprising sheets 900 acres in the Adirondacks, Mr. Rockefeller man shot nine skunks in his piazza the other day no board of trade on earth could have prevented the inhabitants from driving the atmosphere out of town.—Lynn (Mass.) Evening Item.

The next time you have a Want, try the Star's columns. Bargain rates.

The Exhibit

OF THE

Pacific Hardware Co., Ltd

At the Merchants' Fair was a surprise to many who did not know of the choice stock of

Fine Cut Glassware, China, Table Cutlery and Pictures

carried at their Household Department, Bethel Street, and their Art Room, on Fort Street. Space did not admit of a display of the

Garland Stoves

which took the First Prize at the Paris Exposition; of the EDDY REFRIGERATORS and ICE CHESTS which have proved the best in the world, and many other articles of household utility.

A large assortment of these will be found at the Bethel Street store, while at Fort Street will be found ART GOODS, ARTISTS' SUPPLIES, and a PICTURE FRAMING DEPARTMENT fully up to date.

PACIFIC HARDWARE COMPANY, LIMITED,

SOLE AGENTS FOR THE TERRITORY OF HAWAII.

SAN FRANCISCO, 215 Front St. HONOLULU, Queen St. NEW YORK, 43 Leonard St.

M. S. GRINBAUM & CO., LTD.,

Importers and Commission Merchants

Sole Agency FOR...

Blanche Bates Cigar

AGENTS FOR

British America Assurance Comp'y, of Toronto, Ontario. Philadelphia Underwriters

Special attention given to consignments of coffee and rice

Castle & Cooke, Ltd

Life and Fire

Insurance Agents

AGENTS FOR

New England Mutual Life Insurance Co., OF BOSTON.

Aetna Fire Insurance Co., OF HARTFORD, CONN.

CASTLE & COOKE, LTD.,

Commission Merchants, Sugar Factors.....

AGENTS FOR

The Ewa Plantation Company. The Waiulus Agricultural Co., Ltd. The Kohala Sugar Company. The Waimea Sugar Mill Company. The Fulton Iron Works, St. Louis, Mo. The Standard Oil Company. The George F. Blake Steam Pumps. Weston's Centrifugals. The New England Mutual Life Insurance Company of Boston. The Aetna Fire Insurance Company of Hartford, Conn. The Alliance Assurance Company of London.

Health, Cleanliness AND Happiness

Our Porcelain Enamelled Ware with their moderate cost furnish many reasons why every home should have the constant comfort and protection of a sanitary modern bathroom, furnished with fixtures that combine the purity of China and the durability of iron.

E. R. BATH,

155 King Street, Opposite Young Building, Telephone 41.

MORE LIGHT, LESS EXPENSE,



Can be obtained by using our old reliable M. & M. Arc Portable Lamps for Stores, Street Lighting, Churches, Halls, and in fact, any place where you want light of 600 Candle-power.

One M. & M. Arc Lamp gives more light than one electric Arc Light at cost of only one-half cent per hour.

This lamp is sold on trial subject to perfect satisfaction; is fully guaranteed for one year; over 30,000 in actual commercial use in the U. S. today.

If you want MORE LIGHT, do a little figuring. Note how many hours you burn your Gas, or Electric Lights, then figure cost of our Gasoline Arc Lamps, which are ABSOLUTELY non-explosive. They meet in every way the requirements of the National Board of Fire Underwriters. You will be astonished at the CUT IN YOUR LIGHT BILLS, and you will be MORE astonished at the INCREASE of your light.

Don't turn us down because you have had some other lamp that did not work satisfactorily, but GIVE US A TRIAL; if not perfectly satisfactory IT COSTS YOU NOTHING TO FIND IT OUT. Write for particulars. Agents wanted for all unoccupied territory. Dept. 3. CHICAGO, ILL.

Before going to the Coast this Summer look over the line of

Trunks and Bags SARATOIA DRESS SUIT CASES SQUARE COAT CASES STEAMER CABIN BAGS HAT GLADSTONE BAGS JUST RECEIVED BY

The Von Hamm-Young Co., Ltd.,

QUEEN STREET.

Exactly what you need and at the lowest possible prices.

Wm. G. Irwin & Co., Ltd.,

FIRE AND MARINE INSURANCE AGENTS

..AGENTS FOR THE..

Scottish Union National Insurance Company of Edinburgh. Wilhelma of Magdeburg General Insurance Company. Associated Assurance Co., Ltd., of Munich and Berlin. Alliance Marine and General Assurance Co., Ltd., of London. Royal Insurance Company of Liverpool. Alliance Assurance Company of London.

Chicago

In Less Than

3 Days

From San Francisco at 10 a. m.

CHICAGO, UNION PACIFIC & NORTHWESTERN LINE

Pullman fourteen-section Drawing-Room and Private Compartment Observation Sleeping Cars, with Telephone, Electric-reading Lamps in every Berth, Compartment and Drawing-Room. Buffet, Smoking and Library Cars, with Barber and Bath, Dining Cars—meals a la carte. Electric-lighted throughout.

Daily Tourist Car Service at 6 p. m. and Personally Conducted Excursions every Wednesday and Friday at 8 a. m. from San Francisco. The best of everything.

R. R. Ritchie, Gen. Agent Pacific Coast San Francisco.

617 Market Street. Palace Hotel.

Twenty-five cents pays for a want ad in the Star. A bargain.

Big Stock OF Rent Pianos ON HAND.

PRICES TO SUIT THE TIMES

Bergstrom Music Co., Ltd
PROGRESS BLOCK HONOLULU.

Immense Reductions.

For one month only commencing Tuesday, August 26, our entire stock of Crockery, Glassware, Cutlery, Tinware, Oil Stoves, Chinaware, Agateware, hanging and Table Lamps, Carpenter Tools, Etc., will be sold at greatly reduced prices.

LAI SING KEE,
Nuuanu Street near Beretania.

S. SAIKI, Bamboo Furniture AND PICTURE FRAMES

Neat and Handsome Designs, made to order.
663, Beretania Street, near Punchbowl.
Advertise your wants in the Star.

Hawaiian Curios

Kapa, Calabashes, Lels, Native Hats, Hula Skirts, Nihau Mats, Fans, Shells, Seeds, Etc. Hawaiian Stamps and Home Made Poi constantly on hand at

WOMEN'S EXCHANGE,
Arlington Block, Hotel Street.

S. K. AKI & CO., SANITARY PLUMBER.

Has removed from Alakea street to Maunakea street, below King, and will be pleased to see his old customers as well as new ones.

L. J. SUN, DRESSMAKER

Nuuanu Street, - - - Near Pauahi.
Dresses, Ladies' Underwear, Mosquitto Netting, Pillow Cases, Underwear, Skirts and Chemises always on hand.
FIRST CLASS WORK.

Now is the time to use the Star's classified columns.

Waikiki Inn ON THE BEACH.

SPECIAL RATES FOR TOURISTS. A FAMILY RESORT.

L. H. Dee, proprietor.
Ring up Phone Red 71.

Fatigue AND Weakness

Yield to the Persuasive Powers of

Royal Malt Extract

Strength comes with the first bottle. You can sleep soundly after taking it. It lifts the system into a robust condition that defies the enervating heat of summer. If your appetite is poor this is the tonic you require. It tones the digestive apparatus.

Royal Malt Extract is malted from the finest barley and new hops and stands at the top of the list of malt extracts. One bottle will convince anyone of the claims we make. Try it.

25c. the Bottle
\$2.50 the Dozen

HOBRON DRUG CO.

FORT STREET, EHLERS' BLOCK.

NOTICE.

Persons needing, or knowing of those who do need protection from physical or moral injury, which they are not able to obtain for themselves, may consult the Legal Protection Committee of the Anti-Saloon League, 9 McIntyre Building.

W. H. RICE, Supt.

P. O. Box 16 Phone Blue 933.

WING SANG CO.

WHOLESALE AND RETAIL DEALERS IN Groceries and Fresh Fruits. Commission Merchants.

46 Hotel Street, Honolulu, H. T.
Star want ads pay at once.

POLICE AFTER WRIGHT

(Continued from page one.)

remaining on the Coast where he can be apprehended.

McDuffie has been provided with a photograph and detailed description of the absconding treasurer, and will no doubt, call on the San Francisco authorities for assistance in running the fugitive down. Chief of Police Wilmann is an efficient officer, so there seems an excellent prospect of Wright being placed under arrest, if the fugitive remains in San Francisco any time after the arrival of McDuffie.

Unless the fact of extradition proceedings having been learned before the departure of the Sierra last Tuesday, the Honolulu friends of Wright will be helpless to send warning to him to lay low. The Captive which leaves here next Tuesday will be the first boat to sail from Honolulu for San Francisco. This will be seven days later than the day that McDuffie will reach San Francisco, so if no warning were sent Wright on the same steamship that carried McDuffie, the prospects of the officer getting on Wright's trail seem reasonably bright.

HONOLULU STOCK EXCHANGE.

Between Boards—250 Ewa, \$20; 30 Ewa, \$20; 50 Ewa, \$20; 10 Ewa, \$20; 10 Ewa, \$20; 7 H. A., \$250.

Session Sales—10 Ewa, \$20.

Quotations. Bid. Asked.

C. Brewer & Co.	400.00	
Ewa	19.875	21.00
Haw. Agricul.	259.00	265.00
Haw. Com.		34.00
Hawaiian Sugar	21.00	23.00
Honolulu		115.00
Honokaa	11.00	
Hauku		115.00
Kihel		7.50
Kipahulu		70.00
McBryde		3.00
Oahu Sugar Co.	66.00	
Olaa, as	4.00	
Olowalu		125.00
Pauahau	11.50	
Pepeekeo		120.00
Pioneer		65.00
Waianua		40.00
Waianalo		170.00
Wildier S. S. Co.		100.00
Hawaiian Electric	85.00	90.00
Hon. Rapid Transit	60.00	62.50
Mutual Telephone		10.50
Oahu R. & L. Co.	85.00	90.00
Ewa Plan, '68		102.90
Oahu Railway, '68	101.00	104.50

RESPECT TO THE OATH.

Judge Estee has promulgated the following as Rule 2A of the rules of court of the United States District Court for the Territory of Hawaii.

"It is hereby ordered that when the oath of citizenship is being administered to any applicant for naturalization under the laws of the United States, that all persons in the court room, including the officers of the court, shall rise and remain standing until the applicant has been sworn in as a citizen of the United States."

Furnished Home at the Beach

For rent to right parties, a very choice place on the beach beyond Diamond Head.

A very complete, well-built three-bedroom house, with bath, kitchen, lanais, etc. Fine Servant's quarters and stable.

Will rent together with stove fuel and the services of Japanese caretaker for \$75 per month.

Also houses to rent in all parts of the city.

HENRY WATERHOUSE & CO

Fort and Merchant Sts.
Tel. Main 813.

SUPERS AFTER M'KEE RANKIN

THE O'NEILL SEASON IN LONDON WAS A FROST AND THE THEATRE CLOSED.

McKee Rankin is "up against it" in London with a crowd of clamoring supers looking for their wages. The reason is the failure of Nance O'Neill's season. The clever Californian girl who made a fortune out west and in Australia by the intensity of her acting found her career "damned with faint praise" by London press and public and the season closed \$20,000 to the bad. This does not necessarily mean that Manager McKee has lost \$20,000 however. The "clamoring super" situation is not a new one to Mr. Rankin. The change of scene is the only variety to him.

McKee Rankin, admittedly a good actor of his time and prime, was wise in his generation and forsook the footlights for the foyer after experience of managerial methods. He belonged to the school that held for their motto, "Pay nothing and nobody. We need it worse than they do." A slang professional term for them was that of "spectacle" managers, not from the nature of their show, but from the reason that local and confiding creditors required spectacles after the performance to find the manager or their money.

McKee Rankin has had many ups and downs. Up to the time of his discovery of Nance O'Neill they were principally downs. He had worked hard and had worked everybody. His ventures were numerous and scattered. It was hard matter to find a travelling company which did not boast at least one member who held a note of hand against McKee or who had dispensed with that attribute and merely cherished the memory. Young actors would claim that Rankin owed the money in an endeavor to show themselves full fledged professionals. Supers, electricians, stage hands, actors from stars to utility men, theater managers, printers, railroad companies, all were creditors of Rankin.

The payment of an actor would have been criminal from Rankin's standpoint. Timorous members of his company would approach him for cigarette and laundry money and if their bill for the latter necessity was more than fifty cents, the manager would be likely to reproach them for their extravagance, though many weeks in arrears with their salary. He always affected a generous air however and would pull out from a pocket, carefully prepared beforehand, what he declared was the extent of the treasury. The amount was usually about eighty cents and from it he would tell the applicant for a dollar to help himself. He would tell a star playing under his management, that all he had in the world after paying expenses was \$2 and generously offer to share with him.

But with all this Rankin accumulated nothing but fat as the years rolled by. He attempted Tribby in Denver and his death across the table with his fat stomach rising behind his staring eyes like a mountain convulsed the audience. The company was composed of 10 and over actors trying to get back to Chicago or San Francisco.

Then for a brief space he went on the vaudeville stage with an act taken from the telegraph scene in the "Long Strike" in which Rankin played very successfully the part of old Money-penny, a big hearted lawyer, the very antithesis of his own nature.

Then he found Nance O'Neill. She was an actress of merit and untrained force and the public liked her. All went well for a while. Lines and scenes gradually with a Rankin company however there was no means of judging the financial success. To those he had to pay, business with McKee was always "rotten" to the outside public "booming." At all events he was strapped in San Francisco several years ago at the time he was wished to come to Honolulu. Manager Stockwell put up the fares. The company was recruited from the "snakes and coffee" actors of the "Paris of America," so called because their usual diet consists of snakes, and coffee, and the combination came down here. Nance O'Neill's undoubted cleverness caught the Honolulu public and the management made money. True to his adage however, the actors got just what he chose to give them. To his manager, MacVieker, he gave nothing until the latter applied to a local law firm which out-bluffed Rankin. Then the company went out to Australia.

Nance O'Neill went well in the colonies though McKee had many troubles with his managers and exchanged various compliments with them. In London "Magda", "Camille" and "Elizabeth of England" failed to draw. Stage hands wanted money between acts and supers appeared for glory only. The London super does not take to glory as a diet and kicked. It is safe to say that costumers, actors, and a long list of others are also kicking. And it is safe to say that McKee, corpulent and serene, minds their clamors no more than the "mouthings of petulant babes" He is in his element. He is the Colonel Sellers of theatrical life in many particulars. If McKee lost money he stopped with his fare to America still in his pockets.

The general sympathy of the profession extends to Nance O'Neill, who is recognized as a clever actress who will eventually make her way, but few are wasting sympathy over Rankin who for his part cares as little for it. The announcement from London that "McKee is engaged in settling the claims of the supers" will raise many a smile to the lips of members of the theatrical profession from Maine to California. Rankin will "need the money more than they do."

OLD SLEUTH AT WORK HERE

IMPORTANT WITNESS IN CASE TRACED THROUGH MARSHAL HENDRY'S INFORMATION.

What George W. Hazen of the United States Secret Service considers a very valuable piece of secret service work, is acknowledged by him in a letter to United States Marshal Hendry. This consisted in securing and furnishing to Hazen by Hendry, of information which enabled Hazen to locate and secure what was considered a very important witness on the trial of Dimmick, formerly cashier of the United States Mint at San Francisco, who is charged with the embezzlement of \$30,000.

This important witness was Andrew J. Headrick, who was in Honolulu for a time and worked for the Honolulu Rapid Transit and Land Company. Headrick was a street car conductor in San Francisco and Dimmick frequently rode on his car. Dimmick had attracted Headrick's attention by the fact that he nearly always carried a dress suit when he rode on the car, and on one occasion, perhaps more, Headrick had had occasion to lift this dress suit case, to move it out of the aisle, or out of the way of other passengers, and had found it exceedingly heavy. The theory of the prosecution was that Dimmick, who as cashier, had access to the vaults of the mint, removed bags of coin from the vault, and carried them away in the dress suit case, and in support of this theory, Headrick's testimony was very important.

Some time before the second trial of Dimmick, Headrick disappeared from San Francisco, and United States Marshals in various places were requested to be on the lookout for him. Marshal Hendry located him as having been employed by the Rapid Transit Company, but at this time had sailed for Victoria, giving out the name of going with a railroad survey party into the mountains. Hendry secured a San Francisco address which Headrick had given an acquaintance here, and from this information Chief Hazen traced him to Boston and secured his attendance and testimony at the trial.

WILL ASK FOR TIME.

The Merchants' Association were to have held a meeting this afternoon but the members were unable to get together. The meeting will be held in all probability tomorrow morning and will virtually be the conclusion of the last meeting which adjourned subject to call. The directors will ask the association at large to grant them a continuance of time in which to take further steps in securing premises of suitable size for the tourist question. The original two weeks allowed the committee expires tomorrow October 4.

YIM YOU DEAD SURE.

In the case of Hoffschlager vs. Yim You, Judge Robinson today entered the following order:

"The motion to amend by inserting the names of Yim You etc, composing the firm of Yim You, so called, and also to insert in the complaint sufficient allegations to charge them is denied. The motion to dismiss the action is granted. This is not a dismissal of the appeal it is a dismissal of the entire action."

Yim You is dead and has been for sixteen years, but Ah Paek and a native have been doing business under his name ever since. They were served with process, but there was nothing in the complaint to show that they were doing business under the name of Yim You. They were sued the same way once before and the Supreme Court said that the Circuit Court properly dismissed the action. Judge Robinson dismissed it this time.

PELL FROM A CAR.

J. Johnson a negro fell from an electric car near the corner of Vineyard and Liliha streets this afternoon and sustained a severe contusion of the left limb. His knee cap was reported to have been broken. He was removed in the patrol wagon to the Queen's Hospital.

KINDERGARTEN WORK.

Annual Meeting of the Association This Morning.

The eighth annual meeting of the Free Kindergarten and Children's Aid Society was held this morning at ten o'clock in the assembly room of the Y. M. C. A., following a business meeting of the board of directors and other officials. There was a large attendance at the open meeting over which Mrs. Hyde presided. The session commenced with opening remarks of Mrs. Hyde who asked those assembled not to lose sight in these hard times of the importance of the Kindergarten movement.

"Do not belittle this task of ours," said the speaker, "do not look upon it as something good but not of vital importance, as a fad. It is a duty and when you make your retrenchments which many of you are perforce contemplating, do not make them along lines that will dwarf our efforts for those who will some day control the destinies of these fair islands."

Miss Coan then led in prayer after which the financial secretary made a statement in which she cited September with an expense of \$995, as the highest month so far experienced. Salaries were increased, she explained, of those who continued with the kindergarten and thus expense necessarily increased with the growth and added utility of the work. The receipts for last year amounted to something over \$5,000. The outlook at present was satisfactory although it was now harder than ever to raise money.

Announcement of committees for the year followed with reports of the year's work in the various branches of the association.

Star want ads pay at once.

CONSUMPTION OF SUGAR GROWING

PER CAPITA IN THE UNITED STATES IS GREATER THAN THAT OF ANY OTHER COUNTRY.

The people of the United States now consume eight times as much sugar per capita as they did in the first quarter of the last century, four times as much as the average per capita during the decade ending with 1850, and twice as much as they did in any year prior to 1870. In the years immediately prior to 1825 the average consumption of sugar was about 8 pounds per capita in the decade 1840-50, about 19 pounds per capita. In the years immediately prior to 1870 the average was about 32 pounds per capita, omitting the war years, in which the consumption was light, from 1870 to 1880 it averaged about 40 pounds per capita from 1880 to 1890, 50 pounds per capita; in 1891 the figure was 66 pounds per capita, and has ranged from 62 to 68 pounds per capita since that time. The figure for 1901 being 63.4 pounds. The steady growth in the per capita consumption of sugar is shown by some figures which the Bureau of Statistics will present in the next issue of its annual volume, the Statistical Abstract. The per capita consumption has been a matter of record during recent years, but it has not been before practically to compare the per capita consumption of recent years with that of earlier years and to note the very rapid increase in the quantity consumed by each individual of the country.

This growth in the consumption of sugar is, evidently, not confined to the people of the United States. The increase seems to have been equally rapid in other parts of the world, judging from the figures of total production. Figures recently published by the Bureau of Statistics in its monograph "The World's Sugar Production and Consumption," showed that the sugar production of the world was eight times as great as in 1840, the figure for 1840 being 1,500,000 tons and that for 1900, 8,800,000 tons. This increase in production, and consequently in consumption, has come largely through the development of the beet sugar industry, which increased from a production of 50,000 tons in 1840 to 200,000 tons in 1850, 531,000 tons in 1870, 1,402,000 tons in 1880, 3,533,000 tons in 1890, and 5,550,000 tons in 1900. During the same time cane sugar production increased from 1,100,000 tons in 1840 to 2,350,000 tons in 1900. Beets in 1840 supplied 4.35 per cent of the total sugar product of the world; in 1850 they supplied 14.20 per cent; in 1860, 20.53 per cent; in 1870, 24.40 per cent; in 1880, 43.70 per cent; and in 1900 67.71 per cent.

The per capita consumption of sugar in the United States is greater than that of any other country, except the United Kingdom, in which the consumption ranges from 85 to 91 pounds per capita, against from 60 to 68 pounds in the United States, the figures of consumption for 1900 in the United Kingdom being 91.6 pounds per capita.

The following table shows the per capita consumption of sugar in the United States and the principal European countries in 1880, the latest available year:

Countries	Pounds Per Capita
United Kingdom	91.6
United States	65.2
Switzerland	60.3
Denmark	54.8
Sweden & Norway	38.2
France	37.0
Germany	33.9
Netherlands	32.5
Belgium	23.3
Austria-Hungary	17.6
Portugal and Madeira	14.7
Russia	14.0
Spain	10.6
Turkey	8.0
Roumania	7.8
Greece	7.2
Italy	6.1

Star Want ads pay at once.

NEW ADVERTISEMENTS

Hawaiian Lodge No. 21, F. & A. M.

There will be a special meeting of Hawaiian Lodge, No. 21, F. & A. M., at its hall, Masonic Temple, corner of Hotel and Alakea streets this FRIDAY EVENING, October 3, at 7:30 o'clock.

WORK IN THIRD DEGREE.

Members of Pacific Lodge, Lodge La Progres, and all sojourning brethren are fraternally invited to be present By order of the W. M.,

K. R. G. WALLACE, Secretary.

MEETING NOTICE.

WAIMEA SUGAR MILL CO.

An adjourned special meeting of the shareholders of the Waimea Sugar Mill Company will be held in the assembly hall over the offices of Castle & Cooke Ltd., in Honolulu, on Thursday, October 16th, 1902, at 10 o'clock a. m., the above meeting being an adjournment of a special meeting, duly called and held on August 14th, 1902.

E. D. TENNEY, Secretary, Waimea Sugar Mill Co.

DRS. DAY & WOOD,

166 Beretania Street.

Office Hours:
DR. DAY, 10 a. m. to 2 p. m.
DR. WOOD, 9 to 11 a. m., 2 to 4 p. m.
7:30 to 8:30 p. m.
7:30 to 8:30 p. m.

THELEPHONE BLUE 991.

NOTICE.

The Oahu Carriage Manufacturing Co., Ltd., having this day sold out their interest in the carriage business, the public is hereby notified that they are no longer in the carriage manufacturing business and have no connection with any other carriage company.

OAHU CARRIAGE MANUFACTURING CO., LTD.
Henry Leo Kong, Secretary.
Honolulu, Oct. 1, 1902.

Telephone White 3171 P. O. Box 484

The Planters' Favorite

Our High Grade Cane Fertilizer Brand "A"

Soluble, Dry and Fine, Sure, Quick and Reliable

Manufactured from the Best Materials. Few are as Good, None Better on the Market

Pacific Guano and Fertilizer Co.

C. HAGENS, Manager

If you want as good work as any Dentist can produce, and at very low prices, have the Skilled Expert Dentists, in the Arlington block, 215 Hotel street, opp. Union, do your Dental work. NO CHARGE FOR EXAMINATIONS.

Gold Crowns \$5
White Crowns \$5
Bridge Work \$5
Per Tooth

Silver Fillings 50c. No More
Gold Fillings 1.00 And Up
Full Set Teeth \$5.00

Painless Extraction

ALL OUR WORK FULLY GUARANTEED. LADY ASSISTANT.
All our instruments are thoroughly sterilized before being used.

Star want ads pay at once.

A Summer Proposition.

ICE QUESTION!

You know you'll need ice; you know its a necessity in hot weather. We believe you are anxious to get that ice which will give you satisfaction, and we'd like to supply you. Order from

ICE OHU ICE & ELECTRIC CO., HOFFMAN AND MARKHAM. Telephone 3151 Blue, Postoffice Box 606.

Celebrated W B Corsets

JUST RECEIVED FROM ALAMEDA.

Craze Game Ping Pong Just Received

E. W. JORDAN, 10 FORT STREET

W. G. IRWIN & CO., LTD.

W. G. Irwin, President and Manager; Charles Sprackels, First Vice-President; W. M. Giffard, Second Vice-President; E. M. Whitney, Jr., Sec'y and Treasurer; Geo. J. Ross, Auditor.

Sugar Factors, Commission Agents

AGENTS OF THE OCEANIC STEAMSHIP COMPANY OF SAN FRANCISCO, CAL.

Hirose Shoten,

1679 AALA STREET. JAPANESE PROVISIONS AND DRY GOODS

NEW GOODS BY EVERY STEAMER.

TEL. BLUE 332. P. O. BOX 885.

Oahu Tailoring Company,

MERCHANT TAILORS. Suits Made To Order. Cleaning, Repairing and Pressing a Specialty.

Corner Beretania and Emma Streets.

3x6 Sizes 6x9

MATTINGS.

FINEST QUALITIES RICH DESIGNS LATEST STYLES

Direct from the Factory.

Now Displayed AT

S. OZAKI.

HOTEL STREET STORE. 178 HOTEL STREET. PHONE MAIN 197.

Silent Barber Shop

HOT AND COLD BATHS, BEST BARBER SHOP IN HONOLULU.

Want ads in Star cost but 25 cents.



We are old friends, this bottle and I. We have known each other for over sixty years. When a boy I was always taking cold, but a few doses of this medicine would at once set me right.

Ayer's Cherry Pectoral greatly strengthened my throat, cleared up my voice, and took away the tendency for every cold to go to my lungs. "Last year I had a bad attack of la grippe. The only medicine I took was from this bottle, and I came out all right. I know it's good, too, for asthma, bronchitis, pneumonia, croup."

BEFORE BUYING

LUMBER, DOORS, SASH, BLINDS, GLASS, PAINTS, WALL PAPER, OILS OR COAL.

SEE WILDER & CO., LTD.,

THE GOLDEN RULE BAZAAR

156 HOTEL STREET.

Has just received a New Line of Papereries and Tablets, in dainty tints and odd shapes, which have been MARKED DOWN from 25% to 33% BELOW THE REGULAR PRICE.

35c. and 50c. Papereries, now 25c. and 35c. 40c. Tablets now 25c. 25c. Tablets now 15c. and 20c.

NEW BOOKS BY EVERY LOCAL STEAMER.

DANDRUFF IS A DISEASE

Not a natural condition of the scalp. The itching, the irritation, the white flakes on the clothes, the rapid loss of hair—each indicate the disorder and its end—baldness. No matter what caused you dandruff, how long you have had it, or how severe it is. Pacheco's Dandruff Killer is a positive cure. Tested on supposed hopeless or stubborn cases, which for years had refused to yield to any treatment, this remedy has cured.

PACHECO'S DANDRUFF KILLER

For sale by all druggists and at the Union Barber Shop. Tel. Main 232.

WAS A YARN.

There is no truth, the Associated Press says, in the report that Dakota populists set their dogs on young Teddy Roosevelt and his hunting party. Many have posted their property, however, and they say they will not be respecters of persons in the enforcement of their rights.

ECONOMY. Economy may be wealth, but it doesn't cut much ice in a will.

Want ads in Star cost but 25 cents.

CRIME AND WRECK IN SOUTH SEAS

LUISEA D. BRINGS NEWS FROM MARSHALL AND CAROLINE ISLANDS—MAN KILLED BY SHARK

SAN FRANCISCO, September 24.—The schooner Luisea D. arrived yesterday morning fifty-one days from Jaluit, Marshall Islands, in ballast. Thirteen months ago the Luisea D. went down to the South seas to trade, and was chartered by a German company having its headquarters at Jaluit to cruise among the islands of the Marshall and Caroline groups. When the charter expired a few weeks ago Captain Moore failed for this port. He brings news of a tidal wave that flooded some of the islands in that part of the world early this year, causing the loss of much property and several lives.

Just before the Luisea D. sailed from Jaluit a native of the Caroline Islands murdered a Marshall Islander for stealing his wife. The crime was committed on the beach, the murderer stabbing his victim repeatedly in the back with a large knife. The man was acquitted at his trial before the German Commissioner.

Ernest Wenzel a sailor of the Luisea D., accidentally fell overboard while the schooner was cruising among the islands last January, and was caught by the ferocious sharks that infest those waters. Before his shipmates could lower a boat Wenzel was seized by the monsters and dragged beneath the surface.

SHIP COMBINE NOW COMPLETE

NEGOTIATIONS FOR GIGANTIC MERGER ARE ENDED—A LARGE COMPANY CAUSED LONG DELAY

NEW YORK, Sept. 23.—Every material detail of the great steamship combination has been completed. The merger of interests is so complete, through the signing of important papers in the last few days, that none of the parties to the combination could withdraw even with years of legal complications.

There was a delay in effecting the concluding negotiations, and many reasons are given for this delay, but the one generally believed is that the management of one of the largest lines involved in the combination tired of the negotiations at the eleventh hour, and resorting to technical excuses as to the transfer of certain funds, was willing to withdraw, but could not do so with honor.

There may be denials of the score, but all the negotiations have been concluded, and the whole thing has been finished, after several months of preliminary work. Every official in the company will be notified before September 25 of the concluding terms. As a result of the completion of the arrangements Bruce Ismay, manager of the White Star Line, will not postpone his departure for England, but will leave on the steamer Celtic, October 3.

Since the arrival last week of Ismay, he has been constantly in communication with Clement Griseom, who is to be president of the new combination. As a result of the successful termination of the negotiations it was announced today that all that is now necessary to be accomplished is to appoint the chief officials and make them acquainted with the policy of the firm. Wilding, of Richardson, Speer & Co., who is to be the European manager of the combination, is due here next Saturday on the steamer St. Louis. He comes over simply to get instructions.

Another step taken by the infant combination is the placing of certain ships it owns in more satisfactory fields of labor than they are now employed in. An official of the new combination said today that the Holland-American Line, of whose position there was some doubt, is in the combination body and soul. A printed announcement of the successful end of the negotiations is being prepared and will be issued in about five days.

VESSEL WINS A BIG BOUNTY.

PHILADELPHIA, September 23.—The first of a big fleet of French sailing vessels has arrived here to load oil for Japan. The vessel is the ship Paulconiere, launched only a few months ago at St. Nazaire. The bounty given by the French Government has resulted in many sailing vessels being built in that country. A number of these are bound to the United States to compete for the trade to the Far East. An interesting point in connection with the Paulconiere's passage was that she earned 12,750 francs without having taken on board a pound of cargo, that sum being the amount of bounty for the voyage.

RARE VOLUMES.

There was a certain seller of second-hand books named Tomlins, who kept a shop near the British museum, who had picked up many rare volumes. It is told of him that he loved his books so well that he once roundly abused a customer who wanted to buy one. The customer called at the shop and asked for a particular book marked in the catalog. The book-seller mounted a ladder, picked out a book from the upper shelves, and began reading it. And he stood reading it for so long a time that the other had to remind him that he was waiting below. Then Tomlins replaced the book, descended the ladder and told the customer that he was impudent to want to rob him of such a treasure!

Star Want ads pay at once.

THE FRAM FROM THE ARCTIC

STAVANGER (Norway), September 19.—The Fram arrived here at 3:30 p. m. Captain Sverdrup, who received an enthusiastic welcome from the large crowd present, looked well.

For three years the Fram lay nearly motionless, imprisoned in the ice in Jones sound, a channel between Baffin bay and the Arctic ocean. All the attempts to blow up the ice around the Fram proved fruitless, but in July of 1902 a heavy southern stream loosened the vessel from the ice.

The Fram left Gotharb, Greenland, August 16, 1902, but an accident to her machinery compelled her to make the homeward passage entirely under sail. Members of the expedition shot 100 musk oxen which were eaten.

Captain Sverdrup has telegraphed to the Government as follows: "The districts explored were the south and west coasts of Ellesmere Land and the hitherto unknown districts to the west of that region. The boiler of the Fram shows signs of usage, but everything is in good order."

CLASSIC MUSIC.

Prof. Von Note—You have a fine collection of classic music here. Music Dealer—That's for young ladies to look over previous to asking for a copy of "The Honey-suckle and the Bee."—New York Weekly.

MANY REMAIN HOME.

Of the nearly two million people of Chicago, it is estimated that two-thirds stay at home Sunday, neither attending church nor going to any of the many resorts. About 150,000 go to church or Sunday school regularly.

TYPICAL SOUTH AFRICAN STORE.

O. R. Larson, of Bay Ville, Sundays River, Cape Colony, conducts a store typical of South Africa, at which can be purchased anything from the proverbial "needle to an anchor." This store is situated in a valley nine miles from the nearest railway station and about twenty-five miles from the nearest town. Mr. Larson says: "I am favored with the custom of farmers with a radius of thirty miles, to many of whom I have supplied Chamberlain's Remedy. All testify to their value in a household where a doctor's advice is almost out of the question. Within one mile of my store the population is perhaps sixty. Of these, within the past twelve months, no less than fourteen have been absolutely cured by Chamberlain's Cough Remedy. This must surely be a record." For sale by all druggists. Benson Smith & Co., general agents.

BY AUTHORITY

SHERIFF'S SALE NOTICE.

Under and by virtue of a certain Execution issued out of the Circuit Court of the First Circuit of the Territory of Hawaii, on the 15th day of August, A. D. 1902, in the matter of John Kaikeiki vs. Nalelehua, I have, on this 22nd day of September, A. D. 1902, levied upon, and shall offer for sale and sell at public auction, to the highest bidder, at the Police Station, Kalakaua Hale, in Honolulu, Island of Oahu, Territory of Hawaii, at 12 o'clock noon of Thursday, the 23rd day of October, A. D. 1902, all the right, title and interest of the said Nalelehua in and to the following described property, unless the judgment for One Hundred and Eighteen and 95-100 Dollars, interest, costs and my expenses are previously paid:

All that land situated at Hakepu, Koolau-poko, Oahu, described in Land Commission Award 6118, Royal Patent 1128 to Naholowaa, and containing an area of 1.4 acres.

CHAS. F. CHILLINGWORTH, Deputy Sheriff, Territory of Hawaii.

SHERIFF'S SALE NOTICE.

Under and by virtue of a certain Execution issued out of the Circuit Court of the First Circuit of the Territory of Hawaii, on the 22nd day of September, A. D. 1902, in the matter of W. W. Graham vs. Orpheum Company, Limited, I have, on this 1st day of October, A. D. 1902, levied upon, and shall offer for sale and sell at public auction, to the highest bidder, at the Police Station, Kalakaua Hale, in Honolulu, Island of Oahu, Territory of Hawaii, at 12 o'clock noon of Saturday, the 1st day of November, A. D. 1902, all the right, title and interest of the said Orpheum Company, Limited, a Corporation, in and to the following described property, unless the judgment and cost of execution amounting to One Hundred and Six and 36-100 Dollars, interest, costs and my expenses are previously paid:

All that certain tract of land on the North side of Fort street, above Beretania, in Honolulu, Island of Oahu, containing 35-100 of an acre, more or less, conveyed by deed of Chas. S. Desky and wife, Minnie Desky, to the Orpheum Co., Ltd., in Liber 208, Page 82. Subject to mortgage to the German Savings and Loan Society of San Francisco, for \$32,500, of record in Liber 232, Page 107.

CHAS. F. CHILLINGWORTH, Deputy Sheriff, Territory of Hawaii.

NOTICE.

Doctors Day and Wood will resume their professional partnership at their former office, 166 Beretania street, on October 1st.

NOTICE

Notice is hereby given to all persons having horses in the pasture known as the Palama pasture mauka of Kamehameha school, that unless the pasturage on same is paid within 15 days from date they will be sold at auction.

ANTONE COSTA. Dated September 30, 1902.

Within Reach. Sometimes it is hard to get dollars and after you have them you want them to go as far as they will. We want to help you scheme to get the greatest value for what you spend. Our plan insures satisfaction in the buying. You can get cash worth here in exchange for your money. Try it on. HARDWARE, SPORTING GOODS, BICYCLES, S. W. P. Or any of the various lines we handle. E. O. HALL & SON, LTD

Denman Creamery Butter. From the pasture to the churn and throughout the whole process of making, only the most approved methods are employed and every precaution is taken to ensure and maintain without variation the highest possible quality in Denman Creamery Butter. It is the finest butter in the Honolulu market today. New stock received by the Ventura. Telephone: H. MAY & CO., Ltd Boston Block, Fort St. THE POPULAR GROCERY. 22, 24, 92

PANAMA HATS. Genuine Article. SOLD AT LOWEST PRICES. CALL AND SEE OUR STOCK AT K. ISOSHIMA. KING STREET, NEXT TO CASTLE & COOKE. Sayegusa Shoten, 1121 NUUANU ST. AND COR. KING AND LILIHA. Importer and Dealer in JAPANESE SILK GOODS, HANDKERCHIEFS, KIMONAS, MATTING, BAMBOO WARE AND AMERICAN DRY GOODS. Wholesale Japanese Provisions. Fancy Goods Received by Every Steamer and Island Orders Promptly Attended to. TELEPHONES WHITE 3271 and BLUE 1561. P. O. BOX 882.

Arrived on "Doric" SILK AND COTTON KIMONAS, SCREENS OF ALL KINDS, SMOKING JACKETS, FANCY JAPANESE GLOVE AND HANDKERCHIEF BOXES, TRAYS, JEWELRY BOXES, ETC. K. FUKURODA. ROBINSON BLOCK, PHONE WHITE 2421, 14 HOTEL STREET.

A Feast of New Books. New stories by well known authors just received. Olympian Nights... Bangs The Vultures... H.S. Merriman Out of the West... Elisabeth Higgins The Fortunes of Oliver Horn... F. Hopkinson Smith The One Before... Barry Pain The Maid at Arms... R. W. Chambers The Ship of Dreams... Louise Forslund Ransom's Folly... Richard Harding Davis Captain Macklin... Richard Harding Davis A Pastboard Crown... Clara Morris The Shadow of the Rope... Hornung All for sale by Hawaiian News Co., Limited Merchant Street. Star Want ads pay at once. Want ads 1/2 Star cost but 25 cents.

FLOR DE LA ISABELA.....

5 Cent CIGAR

MANILA LONDRES

THERE IS NOW ON HAND A PLENTIFUL SUPPLY OF

White Rock Lithia Water

ORDER THROUGH YOUR DRUGGISTS, OR FROM

W. C. PEACOCK & CO., AGENTS.....

BOTTLED PRIMO LAGER

JUST A TELEPHONE MESSAGE TO THE BREWERY, MAIN 341, AND WE WILL SEND YOU A CASE OF THIS SPARKLING BEVERAGE. HEALTH IN EVERY DROP.

DELIVERED IN THE CITY

C. BREWER & CO., LIMITED

QUEEN STREET, HONOLULU, H. T.

...AGENTS FOR...

Hawaiian Agricultural Company, Onomea Sugar Company, Honomu Sugar Company, Wailuku Sugar Company, Wahee Sugar Company, Makee Sugar Company, Haleakala Ranch Company, Kapapaia Ranch.

Planters' Line and Shipping Co. Charles Brewer & Co.'s Line of Boston Packets.

Agents Boston Board of Underwriters.

Agents Philadelphia Board of Underwriters.

LIST OF OFFICERS.

Charles M. Cooke.....President. Geo. H. Robertson.....V-Pres. & Mgr. E. Faxon Bishop.....Treas. & Sec'y. W. F. Allen.....Auditor. P. C. Jones.....Director. H. Waterhouse.....Director. C. R. Carter.....Director.

All of the above named constituting the Board of Directors.

M. PHILLIPS & CO.,

Wholesale Importers And Jobbers of

AMERICAN AND EUROPEAN DRY GOODS

Corner of Fort and Queen Sts

HAU RAILWAY AND LAND CO'S



WINE TABLE

FROM AND AFTER JANUARY 1, 1901

TRAINS

STATIONS.	Daily		Daily	
	Outward	Inward	Outward	Inward
	ex. Sun.	Dly	ex. Sun.	Dly
	A.M.	A.M.	P.M.	P.M.
Honolulu	7:10	9:15	11:05	8:15
Pearl City	8:05	9:45	11:40	8:47
Ewa Mill	8:55	10:35	12:30	9:35
Wahiawa	9:50	11:30	1:25	10:30
Waiuku	10:45	12:25	2:20	11:25
Kahuku	11:40	1:20	3:15	12:20

G. P. DENISON, Superintendent. F. C. SMITH, Gen. Pass. & Tkt. Agt.

CONTEST OF TIME VS. SCHEDULE

WHY THE KING STREET ELECTRIC CARS HAVE NOT ALWAYS BEEN ON TIME LATELY.

The operating department of the Rapid Transit Company is just now engaged in a contest of "Schedule vs. Time." The contest has been going on for the past two or three days, during which time got the best of it for a while but "Schedule" has been winning out today.

The contest arose in this way. A schedule for the running of the cars has been in force on the King street line for some time by which a car is due at Fort street going toward Waikiki on the hour and every ten minutes thereafter, and cars leaving the McCully terminal are to leave at three minutes after the hour and every ten minutes. Included in the operating rules is one limiting the speed at which motor men are allowed to operate their cars between Richards and Liliha streets. This regulation is one intended to guard against accidents on a part of the line running through the busiest part of the city. The motormen have constantly claimed that they could not comply with this rule and still keep their schedule, so that for some time there have been many violations of this rule.

A few days ago one of the motormen was discharged for violation of this rule, and immediately every motorman on the line began rigid compliance with this speed limit rule. At once the cars began to drop behind schedule. It was claimed by the motormen that it was impossible to make the schedule and keep down speed. The company insisted on compliance with the speed rule. Carrying this matter further and further behind, so that it is claimed that during one twenty-four hour period the King street line got twenty minutes behind time.

Today, the cars have been running almost exactly on time though at times a little late. It is claimed however that traffic is a little lighter than usual enabling this to be done.

While apparently it is a contest between the management and the motormen as to whether the schedule can be maintained with this speed limit rule in force, there is no hostility or bad feeling between them. The motormen are apparently striving sincerely to comply with the rules and the management determined that its cars shall run with due regard to public safety.

SARDINES! SARDINES!

Alberts, Bezers, Albert Roche, La Marchand (boneless), Du Canis Club, Trocadero, Yacht Club (boneless), Peeled in Oil, Denarnez (boneless), Extra Choix (in glass), Kieler Derotzen in Oil.

Peeled Sardines in Oil are the most delicious fish in tin. They are the finest fish, and will tickle the palate of any lover of good eating.

LEWIS & CO., LTD.

THE CROCERS.

1069 FORT STREET.

320-TWO TELEPHONES-210.

W. G. IRWIN & CO. (Limited.)

...AGENTS FOR...

Western Sugar Refining Company of San Francisco, Cal. Baldwin Locomotive Works of Philadelphia, Penn.

Newell Universal Mill Company, (National Cane Shredder), New York, U. S. A.

N. Ohlandt & Co.'s Chemical Fertilizers.

High Grade Fertilizers for Cane and Coffee.

Alex. Cross & Son's High Grade Fertilizers for Cane and Coffee.

Reed's Steam Pipe Cars.

Also Offer for Sale

Paraffine Paint Co.'s P. & B. Paints and Papers.

Lucol and Linseed Oils, raw and boiled. Indurine (a cold water paint) in white and colors.

Filter Press Cloths, Cement, Lime and Brick.

C. Q. Yee Hop & Co.

Kahikini Meat Market And Grocery

Fruits and Vegetables

BERETANIA ST., COR. ALAK

Also at the

Fish Market, Stalls 19 and 20 Phone Blue 511.

FLEES WITH COIN OF HIS FIANCEE

LEAVES HONOLULU WITH \$1700 AND IS ROBBED OF GREATER PART—CANADIAN SUSPECTED.

SAN FRANCISCO, Sept. 29.—W. H. Clive, who claims to have been attached to a Canadian regiment during the war in South Africa, is wanted by the police on a charge of stealing \$1,700 from Mrs. Mary Simpson, who alleges she was engaged to marry him.

The woman says she met Clive in South Africa a year ago and accompanied him to Sydney, Australia, and then to this country. While at Honolulu she deposited \$1,700 in bank, accepting a draft on San Francisco for that sum, and after their arrival here Clive induced her to draw the money and keep it in her room. She locked it in a trunk, and yesterday, during her absence, Clive broke open the receptacle, took \$1,100 and fled.

Mrs. Simpson admits that Clive was several years her junior when she consented to his proposal that they marry and settle down in California.

BY AUTHORITY Proclamation.

WHEREAS, the Act to provide a Government for the Territory of Hawaii, provides that a general election shall be held on the Tuesday next after the first Monday in November, A. D. 1922, and that at least forty days before any election the Governor shall issue an election proclamation.

NOW, THEREFORE, in accordance therewith, I SANFORD B. DOLE, Governor of the Territory of Hawaii, hereby give notice that a general election for a Delegate to the House of Representatives of the United States to serve during the Fifty-Eighth Congress, and for Senators and Representatives of the Legislature of the Territory of Hawaii will be held on Tuesday, November 4th, A. D. 1922, throughout the Territory between the hours of eight o'clock A. M. and five o'clock P. M.

The Senatorial Districts are as follows:

FIRST DISTRICT.—The Island of Hawaii.

SECOND DISTRICT.—The Islands of Maui, Molokai, Lanai and Kahoolawe.

THIRD DISTRICT.—The Island of Oahu.

FOURTH DISTRICT.—The Islands of Kauai and Niihau.

The Representative Districts, Registration Precincts and Polling Places are as follows:

FIRST DISTRICT. Puna, Hilo and Hamakua, Island of Hawaii.

First Precinct.—All of Puna except Keauau and Oiaa.

Polling Place.—Kalapana School-house.

Polling Place.—Road Board Stables at 1 1/4 miles Volcano Road.

Third Precinct.—That portion of Hilo lying between Puna and Ponehawai Street and Road and the line of its extension to the sea.

Polling Place.—Government Warehouse and lighter landing.

Fourth Precinct.—That portion of Hilo lying between the Third Precinct and the Honouliuli Stream.

Polling Place.—Circuit Court-house at Hilo.

Fifth Precinct.—That portion of Hilo lying between Honouliuli Stream and the land of Makahanaloa.

Polling Place.—Papaikou School-house.

Sixth Precinct.—That portion of Hilo lying between the Fifth Precinct and the bed of the Waikamao Gulch.

Polling Place.—Honoumu Court-house.

Seventh Precinct.—That portion of the First Election District lying between the Sixth Precinct and the bed of the Kaula Gulch.

Polling Place.—Laupahoehoe Court-house.

Eighth Precinct.—That portion of the First Election District lying between the Seventh Precinct and the land of Kalopa.

Polling Place.—Kaohu School-house.

Ninth Precinct.—That portion of the First Election District lying between the Eighth Precinct and the bed of the Malanahae Gulch.

Polling Place.—Honokaa Court-house.

Tenth Precinct.—That portion of the First Election District lying between the Ninth Precinct and Kohala.

Polling Place.—Kukuihaele School-house.

SECOND DISTRICT. Kohala, Kona and Kau, Island of Hawaii.

First Precinct.—North Kohala.

Polling Place.—Circuit Court-house.

Second Precinct.—South Kohala.

Polling Place.—Waimea Court-house.

Third Precinct.—That portion of North Kona lying north of the northerly boundary of Hoiulaoa and a line running from the north corner of Hoiulaoa to the south corner of Puunahulu.

Polling Place.—Circuit Court-house at Kaunaloa.

Fourth Precinct.—That portion of the Second Election District bounded by the Third Precinct, Hamakua, Kau, the boundary of Keauhou from Kau to Honanau the north boundary of Honanau and the sea.

Polling Place.—Kona-waena School-house.

Fifth Precinct.—That portion of South Kona lying between Keel and Oleloimama.

Polling Place.—Hookena Court-house.

Sixth Precinct.—That portion of South Kona lying between the Fifth Precinct and Kau.

Polling Place.—Papa School-house.

Seventh Precinct.—That portion of Kau lying between South Kona and Punauiu.

Polling Place.—Waiohinu Court-house.

Eighth Precinct.—The remainder of Kau.

Polling Place.—Pahala School-house.

THIRD DISTRICT. Islands of Maui, Molokai, Lanai and Kahoolawe.

First Precinct.—That portion of Molokai consisting of Kalawao and Kalapapa.

Polling Place.—Kalaupapa Store-house.

Second Precinct.—The remainder of the Island of Molokai.

Polling Place.—Pukoo Court-house.

Third Precinct.—That portion of West Maui lying between the lands of Waikapu and Honokaa.

Polling Place.—Circuit Court-house at Lahaina.

Fourth Precinct.—That portion of West Maui lying between the lands of Hanakooa and Wahee, known as Kaunaloa.

Polling Place.—Honokaa School-house.

Fifth Precinct.—The Island of Lanai.

Polling Place.—Kahaialoala Store-house.

Sterling The Painter

HAS ADDED TO HIS PAINT SHOP A LARGE STOCK OF

Wall Paper

Also an experienced Paper Hanger as salesman who will be pleased to give information about paper hanging and decorating. Competent Paper Hangers employed and always on hand.

REASONABLE PRICES.

Same Old Stand Union Street

Polling Place.—Honouuaia Court-house.

FOURTH DISTRICT.

All that portion of the Island of Oahu lying east and south of Nuuanu Street and a line drawn in extension thereof from the Nuuanu Fall to Mokapu Point.

First Precinct.—All that portion of the said District comprised in the District of Honolulu and lying east of a line running from the long bridge on Ala Moana to the north angle of King and Punahou Streets, the true bearing being N. 30° 30' E. thence along Punahou Street to the foot of Manoa Road; thence mauka to and along the western edge of Manoa Valley to the head of the same.

Polling Place.—Near the foot of Punahou Street.

Second Precinct.—All that portion of the said District lying between the westerly boundary of the First Precinct and a line running from the sea-shore along Sheridan Street, Piikoi Street extension and Piikoi Street, to and along the western boundary of the Lunallo Home premises to the south corner of Kalawaho, and along the eastern boundary of Kalawaho until it strikes the western side of the First Precinct at a point about 1400 feet mauka of Tantalus.

Polling Place.—Makiki Park.

Third Precinct.—That portion of the said District bounded by the westerly boundaries of the First, Second and Eighth Precincts, Nuuanu and School Streets, a line running from the junction of School and Punahou Streets, to the old flag pole crest of Punahou and the summit of the Kona-nuuanu range.

Polling Place.—Polling booth at junction of Pacific Heights trolley road with Nuuanu Avenue.

Fourth Precinct.—All that portion of the said District bounded by the Third and Eighth Precincts and Beretania and Nuuanu Streets.

Polling Place.—Emma Square.

Fifth Precinct.—All that portion of the said District bounded by the Eighth Precinct and Beretania, Punahou, King and Milliani Streets and the water front.

Polling Place.—Kapuaia Building.

Sixth Precinct.—All that portion of the said District bounded by Milliani, King, Punahou, Beretania and Nuuanu Streets and the Harbor.

Polling Place.—Honolulu Hale, Merchant Street.

Seventh Precinct.—All that portion of the said District lying outside of the District of Honolulu.

Polling Place.—School-house, Waimanalo.

Eighth Precinct.—All that portion of the said District lying between the westerly boundary of the Second Precinct and a line running from the shore along South, King and Alapai Streets, and from the head of Alapai Street to the old flag pole crest of Punahou; thence to and along easterly edge of Puoua Valley until it strikes the westerly line of the Second Precinct at a point just mauka of the hog back at foot of Tantalus cone.

Polling Place.—Kindergarten School-house on Beretania Street.

FIFTH DISTRICT.

All that portion of the Island of Oahu lying west and north of Nuuanu Street and a line drawn in extension thereof from the Nuuanu Fall to Mokapu Point.

First Precinct.—All that portion of the Judicial and Taxation District of Koolau-poko lying west and north of a line drawn from the Nuuanu Fall to Mokapu Point.

Polling Place.—Kaneohe Court-house.

Second Precinct.—The Judicial and Taxation District of Koolauloa.

Polling Place.—Koolauloa Court-house.

Third Precinct.—The Judicial and Taxation District of Waialua.

Polling Place.—Waialua Court-house.

Fourth Precinct.—The Judicial and Taxation District of Waianae.

Polling Place.—Waianae Court-house.

Fifth Precinct.—All that portion of the Judicial and Taxation District of Ewa comprised in the lands of Hoaaee and Honouliuli.

Polling Place.—Railroad Station, Ewa Plantation.

Sixth Precinct.—All the remaining portion of the Judicial and Taxation District of Ewa.

Polling Place.—Ewa Court-house.

Seventh Precinct.—All that portion of Honolulu or Kona, lying mauka of the King Street Road from the Ewa line to the King Street bridge, and all mauka of said Road from the Ewa line to the main Road up Kalia Valley.

Polling Place.—Polling Booth Reform School premises.

Eighth Precinct.—All that portion of Honolulu or Kona lying mauka of the King Street Road from the main Road up Kalia Valley to Liliha Street, and a line drawn from the head thereof, in extension of the line of Judd Street, to and along the ridge forming the westerly border of Nuuanu Valley.

Polling Place.—W. C. Ach's warehouse near north corner of Liliha and King Streets.

Ninth Precinct.—All that portion of

Honolulu or Kona lying between the Eighth Precinct and Nuuanu Street, and mauka of a line drawn along School Street, the Nuuanu Stream and Beretania Street.

Polling Place.—Polling Booth at junction of Kuakini and Nuuanu Streets.

Tenth Precinct.—All that portion of Honolulu or Kona bounded by King, Liliha and School Streets, the Nuuanu Stream, Beretania and Nuuanu Streets and the Harbor.

Polling Place.—Aala Warehouse.

SIXTH DISTRICT. Islands of Kauai and Niihau.

First Precinct.—The Island of Niihau.

Polling Place.—School-house.

Second Precinct.—That portion of the District of Waimea extending from the Third Precinct to the Puanaaua Point.

Polling Place.—Kekaha School-house.

Third Precinct.—That portion of the District of Waimea extending from Hanapepe to the boundary line between Waimea and Kekaha Plantations and extending along a line in continuation of the said boundary to the sea.

Polling Place.—Waimea Court-house.

Fourth Precinct.—From and including Kalaheo, to and including Hanapepe.

Polling Place.—Hanapepe School-house.

Fifth Precinct.—The District of Koloa from its junction with Lihue, to and including the land of Lalau.

Polling Place.—Koloa Court-house.

Sixth Precinct.—The District of Lihue.

Polling Place.—Lihue Court-house.

Seventh Precinct.—Extending from the land of Papaa to and including the land of Wailua.

Polling Place.—Court-house, Kapaa.

Eighth Precinct.—Extending from Kaliahwa River to and including the land of Papaa.

Polling Place.—Government School-house, Kilauea.

Ninth Precinct.—Extending from Kaliahwa River to the north boundary of the District of Waimea.

Polling Place.—Waioli Court-house.

The electors are entitled to elect Senators in the Senatorial Districts as follows:

In the First District—Two.

In the Second District—One.

In the Third District—Three.

In the Fourth District—One.

The electors are entitled to elect Representatives in the Representative Districts as follows:

In the First District—Four.

In the Second District—Four.

In the Third District—Six.

In the Fourth District—Six.

In the Fifth District—Six.

In the Sixth District—Four.

IN TESTIMONY WHEREOF, I have hereunto set my hand and (SEAL) caused the seal of the Territory of Hawaii to be affixed, DONE AT THE CAPITOL IN HONOLULU this 15th day of September, A. D. 1922.

SANFORD B. DOLE, By the Governor, HENRY E. COOPER, Secretary of the Territory.

LEGAL NOTICES.

IN THE CIRCUIT COURT OF THE First Circuit, Territory of Hawaii, At Chambers—In Probate.

In the matter of the Estate of Harriet Carter late of Honolulu, Oahu.

A petition praying for the Probate of the Last Will and Testament of said deceased, having on the 11th day of September, A. D. 1922, been presented to said court together with a Petition for the Probate thereof, and for the issuance of letters of Administration with the will annexed to Alfred W. Carter having been filed notice is hereby given that Monday, the 26th day of October, A. D. 1922 at 10 o'clock a. m. of said day, at the Court Room of said Court, at Honolulu, Oahu, he and the same hereby is appointed the time and place for proving said will and hearing said application.

Honolulu, September 11, 1922.

By the Court: GEORGE LUCAS, Clerk.

IN THE CIRCUIT COURT OF THE First Circuit Territory of Hawaii, At Chambers—In Probate.

In the matter of the Estate of George Edgar Boardman late of Honolulu, Oahu.

The Last Will and Testament of said deceased, having been presented to said court together with a Petition for the Probate thereof, and for the issuance of Letters Testamentary to W. Austin Whiting and S. B. Rose having been filed notice is hereby given that Monday the 27th day of October, A. D. 1922 at 10 o'clock a. m. of said day at the court room of said Court, at Honolulu, Oahu be and the same hereby is appointed the time and place for proving said Will and hearing said application.

Honolulu, September 19, 1922.

\$2750

WILL BUY YOU A HOME. SIZE OF LOT 50x110 FEET. COTTAGE IS NEW AND UP-TO-DATE.

Location, Makiki. TERMS, EASY.

L. C. ABLES, Real Estate Agent

TELEPHONE MAIN 139 P. O. BOX 243

Fire Insurance!

THE B. F. DILLINGHAM CO., LIMITED, General Agents for Hawaii.

Atlas Assurance Company of London. Phoenix Assurance Company of London. New York Underwriters Agency. Providence Washington Insurance Company. Phoenix Insurance Company of Brooklyn.

Albert Raas, Manager Insurance Department office Fourth Floor, Stangenwald building.

On hand the following plantation shares: Hawaiian Agricultural Co., Ewa, Onu, Waialua, Kahuku, Pioneer Mill, Haiku, Pala, Koloa, McBryde, Hawaiian Sugar, Kekaha.

Harry Armitage, STOCK AND BOND BROKER

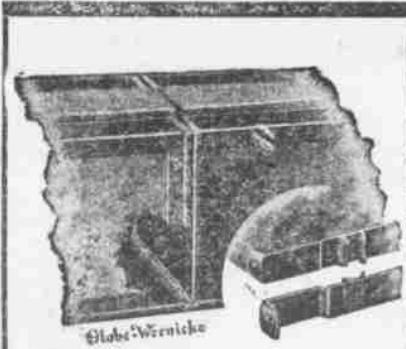
Member Honolulu Stock and Bond Exchange

Office, Campbell Block, Merchant Street Honolulu, T. H. Telephone Main, 101 P. O. Box 883.

HART & CO., LTD THE ELITE ICE CREAM PARLORS

Chocolates and Confections Ice Cream and Water Ices Bakery Lunch.

THE FINEST RESORT IN THE CITY



GLOBE-WERNICKE

Book Cases are all equipped with the special interlocking device shown above



COMBINATION UNITS The use of combination units allows books of all sizes to be put in the same case.

GLOBE-WERNICKE Book Case units are INSECT PROOF DUST PROOF ATTRACTIVE AND THE BEST BOOK INSURANCE.

PEARSON & POTTER CO., LIMITED UNION AND HOTEL STS. Phone Main 317

NEW ADVERTISEMENTS.

Hawaiian Lodge Page 5 Waimea Sugar Mill Co. Page 5 Hawaiian News Co. Page 6 Hawaiian Electric Co. Page 3 Iwakami & Co. Page 2 Metropolitan Meat Co. Page 2 H. May & Co. Page 4 Hollister Drug Co. Page 4 W. W. Dimond & Co. Page 4

NEWS IN A NUTSHELL

Paragraphs That Give Condensed News of the Day.

Ewa was strong on the Board today. A. J. Campbell is an applicant for the office of treasurer.

Hawaiian Lodge meets this evening. Work in Third Degree. Charles Cash and Miss Bella Leal were married last night.

Iwakami & Co. have a full line of gentlemen's furnishing goods.

New popular books just received at Hawaiian News Co. See advertisement.

The adjourned meeting of the Waimea Sugar Mill Co. will be held October 16.

Manufacturers' Shoe have the regulation football shoe on sale. See ad, on 1st page.

Large fresh stock of Crystal Spring Butter just received in the Ventura for Metropolitan Meat Co.

Denman Creamery Butter is the best in the Honolulu market. May & Co. received a large new supply on the Ventura.

If you want the best store lighting for the least money, call at Hawaiian Electric Co., and see the Adams-Bagnall arc lamps.

Jesse Makaihalu has filed exceptions to the order of Judge Robinson allowing all the items in the plaintiff, L. J. Sun's bill of costs.

W. W. Dimond & Co. give nine reasons of the superiority of the "Gurney" over any other refrigerator. Thirty styles on hand to select from.

The Hawaiian Electric Company is notifying customers of the new schedule of rates now in force. A material reduction is made in residence rates.

Cammichan's Hygienic Underclothing promotes good health. Just the kind to wear during the hot weather. H. Hackfeld & Co., Ltd., sole agents for the Territory.

Clarence M. White took his position as chief clerk of the Public Works Department yesterday, and made his first return of moneys collected, about \$1600, the receipts of the office for one day.

Hollister Drug Co. carry now a complete stock of the justly celebrated line of Palmer's Perfumery, Sachet Powders, Soaps, etc. They claim these goods to be the finest in their line ever imported here.

The Honolulu Engineering Association will be held next Monday evening. A paper by Mr. Cannon on "Some Comparative Tests of Bagasse Burning Furnaces" will be read; and Mr. Skinner will present some facts regarding Steam Turbines.

THE ART LEAGUE.

The "At Home" of the Kiloahana Art League will take place tomorrow afternoon at 3 o'clock. Mrs. William M. Graham will take charge of the decorations, and Miss Charlotte Hall the tea tables. The ladies who will pour tea are: Mrs. Clive Davies, Mrs. Harry von Holt, Mrs. Fred Lowrey, Mrs. William M. Graham, Mrs. Helen Kelley.

MARY GREEN'S WILL.

The will of the late Mary Elizabeth Green was filed for probate today by her sister Laura C. Green. The will was made January 4 1891 and is witnessed by W. O. Smith, R. D. Mead and William J. Forbes. It is short and leaves everything to her sister Laura who is made executrix of the will. The estate is valued at \$5,700 of which \$5,500 is in real estate in Honolulu. Besides the petitioner, the heirs at law and next of kin are Frank C. Green, a brother in Medford, Mass, and Henry W. Green a nephew, and Carrie C. Green, Rhodes H. Green, Emeline R. Green and May T. Wilcox, nieces November 10 was set by Judge Robinson for proving the will.

COFFEE AND SUGAR.

NEW YORK, Sept. 26.—Dun's Review says: A featureless market exists. Speculators have apparently abandoned the attempt to secure fictitious prices on cables of frosts, but on the other hand the coffee range of quotations is too low to stimulate any aggressive selling for the accounts of shorts, especially in this era of high prices and liberal consumption. Domestic visible supplies are still about a million bags larger than at this date last year, and there is undoubtedly a big excess in the invisible supplies.

Importers have been able to secure the desired prices of 3 1/2 for centrifugal and 3 cents for Muscovado, and even at this advance there is little offering. List prices for standard granulated are now 4 7/8, with few sales reported any lower. The market is decidedly firm and withdrawals large.

DEPARTING.

Friday, October 3. Am. schr. Esther Buhne, Olsen, for Gray's Harbor, at 3 p. m.

Want ads in Star cost but 25 cents.

Attention!

If you want good Groceries of all descriptions at reasonable prices, call at the Grocery Store of

L. F. STERNEMANN, Fort Street, opposite Club Stables, Telephone 511 Blue.

All Goods Delivered Free of Charge in Town.

Honolulu Iron Works.

STEAM ENGINES, SUGAR MILLS BOILERS, COOLERS, IRON, BRASS AND LEAD CASTINGS.

Machinery of Every Description Made to order. Particular attention paid to ship's Blacksmithing. Job Work Executed on Short Notice.

JAS. F. MORGAN, Auctioneer and Broker, 65 Queen Street, P. O. Box 594 Telephone 72

JAS. F. MORGAN, Auctioneer and Broker 65 Queen Street P. O. Box 594 Telephone 72

★ PING PONG SETS

We have just opened a new line of the most up to date sets.

10 VARIETIES TO SELECT FROM.

"INDIVIDUAL RACKETS" a fine Assortment.

PING BALLS PONG of the best make.

WALL, NICHOLS CO., LTD. (The Trade Supplied.)

A Nice Thing To Do

When you are invited anywhere, carry along your Kodak or Poco Camera, and take a set of pictures of the trip. After you return, get a small album, paste in the pictures, and send to your hostess as a souvenir, showing her your appreciation of her hospitality. It'll make her "yours for life."

We supply all Photo apparatus and materials. Developing and Printing a specialty. Come and talk it over. You can't imagine the pleasure there is for yourself and your friends in a Camera!

Hobron Drug Co., Ehlers' Block Fort Street, Honolulu.

THE MERITS OF

Primo Lager

HAVE STOOD THE TEST. THOSE THAT DRINK IT SAY IT IS ABSOLUTELY PURE.

Kept on Ice

FOR THE CONVENIENCE OF CUSTOMERS BY

CAMARA & CO., S. E. Corner Queen and Alakea Streets.

DEALERS IN WINES, BEERS AND LIQUORS. P. O. Box 644. Telephone Blue 492.

\$2.00 A DOZEN QUARTS.

DELIVERED TO ALL PARTS OF THE CITY.

BEAVER LUNCH ROOM, Fort Street. Opposite Wilder & Co. H. J. NOLTE, Prop'r.

First-Class Lunches served with tea, coffee, soda water, ginger ale or milk. Smokers Requisites a Specialty.

CONSOLIDATED SODA WATER WORKS (COMPANY, LTD.) Esplanade, cor. Allen and Fort Sts.

Manufacturers of Soda Water, Ginger Ale, Sarsaparilla, Root Beer, Cream Soda, Strawberry, Etc., Etc.

Men! Lend Us Your Ears We'll Return Them With Interest

IT HAS BEEN SAID THAT MEN ARE NOT AMENABLE TO BARGAINS. NEVER WAS A GREAT FALACY. WE'VE PROVEN IT OVER AND OVER AGAIN BY THE SALES OF FOUR DOLLAR SHIRT, AND THIS WEEK WE EXPECT TO PROVE IT ONCE MORE, WITH A BRAND NEW SPIC AND SPAN LOT RIGHT FROM THE FACTORY, ADVANCED STYLES, SPRING OF 1902, HAND MADE, OF STANDARD MADRAS, CUT FULL LENGTH, REINFORCED FRONT AND BACK, EXTENSION FACING, TWIN NEEDLE WORK ON ALL SEAMS, WELT PLAITS ON EITHER SIDE OF BUTTON HOLES, PATENT UNSHRINKABLE NECKBANDS; IN FACT ALL THE LITTLE THINGS THAT MAKE THE DIFFERENCE BETWEEN GOOD SHIRTS AND POOR ONES.

EQUAL IN EVERY WAY TO SHIRTS SOLD BY FURNISHERS AT FROM 25c. TO 75c. A PIECE MORE.

ARE YOU ONE OF THE MEN WHO HAVE BEEN PAYING THESE EXTRA "BITS" FOR YOUR SHIRTS? DON'T KEEP ON. IN THE VERNACULAR OF THE RING:—"BREAK AWAY."

Wachusett Shirts

\$1.00

Whitney & Marsh, Ltd

SPECIAL SALE

HATS, SHIRTWAISTS AND COLLARS COMMENCING, MONDAY, AUGUST 18

A choice line of trimmed hats at \$1.50, \$2 and \$3. Untrimmed shapes and Sailor Hats at 25 and 50 cents. Flow ers, all kinds, 10 and 15 cents bunch. Trojan brand shirtwaist now 50 cents, all sizes, all colors. Former price \$1.50 and \$2.00.

Linen Collars. Linen Collars. All sizes and styles, 4 for 25c. Regularly \$5 cents each.

Montano's Store HOTEL STREET, ARLINGTON BLOCK.

REDUCTION SALE

Japanese Kimonos TEA SETS, ETC.

ALSO

American Goods and Curios at M. CHIYA

Telephone 3311 White. Corner of Nuuanu and Hotel Streets.

NEW GOODS RECEIVED BY EVERY STEAMER FROM JAPAN

HAWAIIAN CONSTRUCTION AND ENGINEERING COMPANY

ROOMS 508-510, STANGENWALD BUILDING.

Engineers and Contractors

P. O. BOX 537, PHONE MAIN 50.

ALEXANDER & BALDWIN, LTD.

OFFICERS.

H. P. BALDWIN, President J. B. CASTLE, First Vice President W. M. ALEXANDER, 2d Vice-President J. P. COOKE, Treasurer W. O. SMITH, Secretary GEORGE R. CARTER, Auditor

Sugar Factors and Commission Merchants

AGENTS FOR

Hawaiian Commercial and Sugar Company, Haiku Sugar Company, Pala Plantation Company, Nahiku Sugar Company, Kihel Plantation Company, Hawaiian Sugar Company, Kahului Railroad Company.

The California and Oriental Steamship Company

IN GOOD COMPANY

Many dollars are turned away annually by The Star in rejecting offensive and improper advertisements offered for insertion in its columns.

This is a cogent reason why The Star's advertising columns are so generally used and so widely read.