

From San Francisco: June 24  
 For San Francisco: June 25  
 From Vancouver: June 25  
 For Vancouver: June 23

# EVENING BULLETIN

3:30 EDITION The best tonic for summer illness in business is liberal Bulletin advertising

Every day Bulletin Want Ads are helping people correct the mistakes they have made in selecting places to live.

Only one cent a word one time.

VOL. XI. NO. 4340.

8 PAGES.—HONOLULU, TERRITORY OF HAWAII, FRIDAY, JUNE 18, 1909.—8 PAGES.

PRICE 5 CENTS.

## PRISON LOOMS BEFORE STRIKE AGITATOR UYENO AND THAT TOKIO DESPATCH

### PRISON DOORS FACE MAKINO

**Inability To Furnish Bonds May Force Strike Leaders To Go To Jail Pending Date Of Trial--Outlook Dark For Trouble-Makers**

Makino and his strike agitators may soon be committed to jail. Their attorney admits it is almost impossible to furnish additional bonds. New indictments are to follow those already found. The strike leaders will again be arrested on other charges. With the dawn of each day comes the handwriting on the wall, the dreaded shadow of prison walls for the alleged conspirators, the men who have headed an unrighteous movement that has brought disorder, riot, bloodshed, poverty, distress and tears to their countrymen.

With the continued number of arrests, the new indictments resulting daily, and the fixing of bonds in the many cases, Makino, the Japanese strike leader, and his associates are now face to face with the most serious predicament that has yet made its appearance—the inability to furnish additional bonds. None of the agitators look forward with much pleasure to the thought of being placed behind jail bars.

Makino, Negoro, Tashka, Kawamura and Yamashiro were arraigned before Judge De Bolt in the Circuit Court on the indictments returned against them yesterday by the grand jury, charging them with conspiracy to murder and conspiracy to commit assault and battery.

When it came to the matter of fixing bond in the new indictment cases, Attorney Lightfoot, representing the strike leaders, said that it was exceedingly difficult to secure additional bonds for his clients, that they were already under \$1,000 and \$250 bonds, and that there was no possibility of their running away. He referred to them as "all being citizens of good business standing in the community."

Attorney Prosser, deputy to the Attorney General, and assisting the prosecution, declared that owing to the seriousness of the indictments brought, the nature of the evidence, and the numerous charges brought against the strike agitators, he felt that they should be required to give additional bond.

"When a number of charges are brought against a person he is liable to take the first opportunity to make his escape, and under the circum-

stances I think we ought to insist on new bonds being furnished in these cases."

Attorney Lightfoot took vigorous exceptions to furnishing additional bond, and then thundered:

"I wish to take exceptions to the remarks of Mr. Prosser, who says these defendants are liable to run away under the pressure of the charges brought. I want to say that they are all reliable persons in good standing in the community, and will be here until the last—until, I hope, the fearful acts against these Japanese can be righted."

Judge De Bolt weighed the matter carefully and said:

"It strikes me that the seriousness of the charge would not justify the court in allowing them to go without a reasonable bond. However, we must not forget that these people are entitled to exactly the same rights as all other persons; I wish that to be distinctly understood at the very beginning of the trial, and to prevail throughout. There may be more or less feeling brought about by these arrests and various charges made under present circumstances, but there is a duty which devolves upon the prosecution—a very important one—as well as upon the court, to deal with these Japanese in a way so that they will be made to feel and know that in an American court they can get justice, and such justice as will punish the guilty according to the crime committed, and which will allow the innocent to go free. All persons, however, must respect and obey the law."

"No person, no matter what his rank, is above the law."

(Continued on Page 4)

### British Warships May Come

LONDON, June 18.—It is possible that the British warships on the China station will be sent to the Pacific Coast in October to participate in the great Portola Festival.

WASHINGTON, June 7.—Announcement was made at the White House today that President Taft will open the Portola festival on October 19. This news was given out in person to Robert A. Roos, Jr., special commissioner of the festival committee, who was presented to the President by Senator Flint.

The President has modified his plans within the last few days by abandoning the trip to Alaska. This was done on account of the health of Mrs. Taft, who has been advised by her physician against taking so long a journey.

The President and Mrs. Taft, however, will attend the Alaska-Yukon-Pacific Exposition at Seattle and time their visit so as to reach San Francisco on October 19.

The idea of the national toast to be drunk at noon on that day all over the world has caught the fancy of the President.

He promised Senator Flint and Mr. Roos today that he would himself compose the toast and give it to Senator Flint within a day or two. This will give ample time for its dissemination all over the world in order that everyone, everywhere, may familiarize themselves with it and be prepared to use it at the decisive moment.

### For Wrights

DAYTON, Ohio, June 18.—The Wright brothers were today presented with medals of the Nation, the State and the City in honor of their achievements in the successful construction and operation of aeroplanes.

HENEY STILL TALKING.

SAN FRANCISCO, June 18.—Prosecutor Henevy continued his argument in the Calhoun case through the day. He is expected to finish tomorrow.

OUR NEXT FRUIT boat will be the Lurline, about June 30.

Island Fruit Co., 72 S. KING. PHONE 15.

### SMALL ESTATES

Do not think that your estate is too small for us to handle. The same care and attention is given to every estate placed with us, irrespective of size.



Investigate our methods and you will be satisfied. Hawaiian Trust Company, Ltd.

### Lorimer Is Senator



WASHINGTON, June 18.—Ex-Congressman William Lorimer was today sworn in as United States Senator from Illinois, succeeding Senator Hopkins.

William Lorimer, who will succeed Senator Hopkins of Illinois, is serving his sixth term in the lower house of congress. He is a native of Manchester, England, and came to America in 1870. He is forty-eight years old. When he was twelve years old his father died, and the lad became a sign painter's apprentice. Later he was employed in Chicago packing houses and then became a street car conductor, graduating from that sphere into the real estate and general contracting business. Twenty years ago he was a power in ward politics. Personal magnetism, loyalty to his political friends and a keen knowledge of the game have kept him in the public eye ever since.

### SUGAWARA LEFT TO SHIFT FOR SELF

Makino unch R pudiates Man Accused Of Assault

Alone, abandoned, ragged and miserable, Sugawara, the alleged collector of the Higher Wage Association of the Japanese strike leaders, who recently assaulted with a knife Numata, who refused to contribute to the funds, appeared before Judge De Bolt this morning and was arraigned.

He is the only one of the agitators not out on bond, and the fact is a peculiar one, in view of the manner in which the leaders stand together. Makino firmly denies any connection with Sugawara, and no attorney has been secured for him.

That the assault was unwarranted and despicable, Makino and his followers realize, and it is a move on their part to keep the public from connecting the incident of the assault with the other cases, is the opinion of the officials. Sugawara will be allowed to enter his plea on Monday next.

John R. Bergstrom, piano tuner and repairer. Formerly with Bergstrom Music Co. P. O. Box 49. Phone 581.

### SEE THAT BOY?

He is one of ours: one of the kind you read about, and SEE, when you patronize the

TERRITORIAL MESSENGER SERVICE. Telephone 361.

### Japanese Killed At Ewa

Another fatality occurred at Ewa this morning, when a Japanese laborer fell from a cane car and was instantly killed. The unfortunate man lost his hold in some way and fell directly under the wheels. His head was badly crushed and his body otherwise cut. Deputy Sheriff Fernandez is holding an enquiry into the accident this afternoon.

### Millions from Alaska

SEATTLE, June 18.—There was received here today the largest single shipment of gold that has ever come to this port from Alaska. The gold landed is valued at \$3,200,000.

### Deficit for France

PARIS, June 18.—The Government budget today shows a deficit for the fiscal year 1910 of twenty-one millions of dollars.

SENATE'S NEW CHAPLAIN. WASHINGTON, June 18.—Ulisses Grant Pierce was today named as chaplain of the United States Senate in place of the late Edward Everett Hale. Mr. Pierce is a Unitarian-born in Providence, R. I., July 17, 1865. He was educated in Michigan and took post-graduate studies at Harvard. He was ordained in 1891 and has held pastorates in Pomona, Cal., Ithaca, N. Y., and All Souls Church in Washington.

### THIRD DEGREE

After reviewing the indictments brought against Makino and his associates, Judge De Bolt discovered that they had been returned in the third degree instead of the first, as had been thought. This reduces the bond from \$1,000 to \$400. M. Ohta, a Jap contractor, went bond for four of the agitators and O. Okazaki went bond for the other two. The men were released, but are expected to be arrested at once on another charge.

### FLOWER SEEDS

HOLLISTER DRUG CO. Established 1879

THE PALM stands for the best only in all things to eat.

Hotel, nr. Union

### "RIDICULOUS," SAYS UYENO

Says He Has Not Advised Planters What To Do With Strikers As Stated In Tokio Dispatch--'Tis Outside His Province--His Statement to Press

"In regard to the report of the Associated Press, alleging that I have advised the planters not to yield to the demands of the striking Japanese plantation laborers, I would say that it is unfounded and is not within my knowledge."

Japanese Consul General Uyeno, this morning authorized the Japanese newspapers in Honolulu to publish the above statement, contradicting the truth of the Tokio cablegram which appeared in this morning's paper.

The Japanese Daily Chronicle this morning issued extras, which contained the official statement of Consul General Uyeno, contradicting this morning's cablegram from Tokio.

The Hawaii Shampo and the Nippo Jiji also gave prominent place to the statement.

Consul General Uyeno, when seen at his office this morning, by the Bulletin man, stated that the cablegram was certainly news to him. He was at a loss to know where the news came from.

"I don't understand how this cablegram," pointing at the newspaper, "could have originated," said Mr. Uyeno. "It is most ridiculous. It is unfounded."

"Just think. How can I, as Consul General of Japan, do such a thing?" continued he. "I cannot advise the planters to do anything. It is outside of my sphere."

"As to the report of an anarchistic element among the Hawaiian Japanese I have no knowledge of that fact."

Consul General Uyeno seemed greatly puzzled. Neither he nor the planters know anything of "advice" he is said to have given them regarding the strike.

Foreign Office Cable.

The local sizing up of the Tokio telegram is quite different from the Consul's. It is believed the statement issued from the Foreign Office was deliberately shaped, as the Associated Press would not lend itself to an exaggerated fake. The Consul has not advised the planters and he may not know whether there are any anarchists in the Territory, but his denial lacks a definite statement as to the position of the Japanese Government based on his reports. It is apparent to anyone that no government official can support the methods that have been adopted by the Agitator crowd.

General Sentiment.

The Japanese community was puzzled with the Tokio cablegram. Especially the Japanese of the better class do not believe that their Consul

General has done anything of the kind. The laborers, of course, do not know of the cablegram, except what is told them by their gang-bosses who read the newspapers. Some are inclined to think that there may be some truth in the report.

Lightfoot to Japanese Government.

Attorney Lightfoot, representing the Japanese strike leaders and the Higher Wage Association, is at present busily engaged in preparing official documents, relative to the strike, to be submitted to the Japanese Government. The documents will show how the strike originated here. They will also show the action of the Territorial High Sheriff in breaking into the office and taking away certain articles, belonging to Makino and Negoro.

Lightfoot claimed yesterday that he was quite certain his clients would not be treated right, when put on trial. He will, therefore, submit the detailed circumstances of the cases of the Japanese government, for consideration.

Strike Breaker Killed.

The accidental death of a Porto Rican strike breaker on Cuba plantation yesterday was promptly and carefully investigated by Deputy Sheriff Fernandez and a verdict of accidental death returned.

The man was engaged with a party of six in pushing loaded cane cars up a slight slope. They had run those to the top of the slope and were pushing the fourth when a car at the top started back and was followed by the other two. The men pushing the car saw the others coming toward them and a general shout of warning was raised. All the others jumped to safety in simple time. The man killed appears to have jumped away from the track and then in some way slipped back so that his head fell near the track and the arteries and veins of the throat were severed by some projection of the passing car. His body was not otherwise severely bruised.

Deputy Sheriff Fernandez called a jury and after some delay the inquest was held, all the witnesses being present. It was clearly an accidental death.

Nothing to Smith.

Secretary W. O. Smith of the Planters' Association stated this morning

(Continued on Page 4)

Wear  
**Alfred Benjamin Clothes**  
 "Correct Clothes for Men."  
 Made in New York and the styles are the latest. Fine new stock of summer fashions.  
**The Kash Co., Ltd.**  
 Corner Fort and Hotel Sts.

**SMALL ESTATES**  
 Do not think that your estate is too small for us to handle. The same care and attention is given to every estate placed with us, irrespective of size.  
 Investigate our methods and you will be satisfied.  
**Hawaiian Trust Company, Ltd.**

**SEE THAT BOY?**  
 He is one of ours: one of the kind you read about, and SEE, when you patronize the  
**TERRITORIAL MESSENGER SERVICE.**  
 Telephone 361.

**FLOWER SEEDS**  
**HOLLISTER DRUG CO.**  
 Established 1879  
**THE PALM stands for the best only in all things to eat.**  
**Hotel, nr. Union**

**HOME OF THE CROSSETT SHOE.**  
 See our Men's CROSSETT WINDOW.  
 Prices \$3.50 to \$5.00.  
**MANUFACTURERS' SHOE CO., LTD.,**  
 1051 Fort Street.

MASONIC TEMPLE

WEEKLY CALENDAR

MONDAY Pacific—Stated.

TUESDAY

WEDNESDAY Hawaiian—First Degree.

THURSDAY Honolulu Chapter—Regular and Mark Master, 7:30 p. m.

FRIDAY

SATURDAY

All visiting members of the order are cordially invited to attend meetings of local lodges

HARMONY LODGE, No. 3, I. O. O. F.

Meets every Monday evening at 7:30 in I. O. O. F. Hall, Fort Street.

All visiting brothers very cordially invited.

OAHU LODGE, No. 1, K. of P.

Meets every first and third Friday evening at 7:30 in K. of P. Hall, corner Fort and Beretania.

HONOLULU LODGE 616, B. P. O. E.

Honolulu Lodge No. 616, B. P. O. E., meets in their hall, on King Street, near Fort, every Friday evening.

Wm. M. KINLEY LODGE No. 8, K. of P.

Meets every 2nd and 4th Saturday evening at 7:30 o'clock in K. of P. Hall, cor. Fort and Beretania.

HONOLULU AERIE 140, F. O. E.

Meets on the 2nd and 4th WEDNESDAY evenings of each month at 7:30 o'clock in K. of P. Hall, corner Beretania and Fort streets.

HAWAIIAN TRIBE No. 1, I. O. O. M.

Meets every first and third Thursday of each month at Knights of Pythias Hall. Visiting brothers cordially invited to attend.

A Watch

Being made up of the most delicate and complicated machinery, always requires the best of attention from a man who is an expert at it.

J. A. R. Vieira & Co. 113 HOTEL ST. JEWELERS.

KEYSTONE-ELGIN WATCHES

INGERSOLL WATCHES At All Watchdealers.

Jos. Schwartz,

Agent for Hawaiian Islands, Cor. FORT and KING Sts., Honolulu

WANT A WIRE BED? Go to

Honolulu Wire Bed Co.,

Kapiolani Bldg.

OWL

5-CENT CIGAR

M. A. Gunst & Co.

FORT AND KING STREETS.

BOOKS BOOKS

WALL NICHOLS COMPANY, LTD. Fort and Merchant Sts.

BULLETIN ADS PAY

We are in line with the best assortment of

Talcum Powders

In the market. All makes. Perfumed and Plain. Just ask for the kind you want.

CHAMBER'S DRUG CO., Ltd.

King and Fort Sts. Phone 131.

Dr. F. SCHURMANN

Osteopathic Physician and Oculist. 222 Emma Square.

Hours:—Consulting, 2-3 p. m., excepting Saturdays. Operating, 8-12 a. m., including Saturdays; 3-6 p. m., excepting Saturdays.

JOHN BURROUGHS

New Edition of Complete Works.

Brown & Lyon Co.

Merychant St.

Conkling Fountain Pen

The original and best self-filler. Many pen makers have tried to imitate the Conkling but none have succeeded in keeping up to the Conkling standard.

Oat & Mossman,

76 Merchant St. near P. O.

GOOD SERVICE

IS A BUSINESS ASSET

Health and Economy Promote Wealth.

COOK WITH GAS

See the

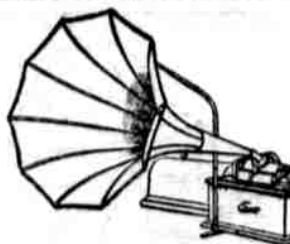
Honolulu Gas Co., Ltd.,

BISHOP STREET.

RING UP

Levy's for Groceries

Phone 76.



You haven't heard the best unless you've heard the new

Edison phonograph

Hawaiian News Co., Ltd. Alexander Young Bldg.

LOCAL AND GENERAL

Twelve hundred sheets of good paper for twenty-five cents at the Bulletin office.

Ten good auto-hacks. Phone 6. The Royal Annex is the place to get the best meal in town.

Take your carriage or automobile to Hawaiian Carriage Manfg. Co. for up-to-date repairs.

The Industrial Edition of the Evening Bulletin, wrapped ready for mailing, 50 cents at Bulletin office.

The demurrer filed in the Circuit Court in the case of Archer against S. Takekaro, was today overruled by Judge Whitney.

Judge Andrade was not on the bench this morning, but a namesake of his appeared in court and had to pay \$2 for a booze act.

There will be a meeting of the Kamehameha Alumni tonight at 8 o'clock in the clubhouse to discuss the organization of a baseball team.

Kaale swamped one drink too many yesterday and consequently was run in. Judge Long estimated the damage done at \$4, and Kaale had to dig.

Judge Robinson this morning appointed Kanohi, administrator in the estate of Hana, on the petition of Al Kaunani, bond fixed at \$500. There are six heirs.

The Board of Public Works yesterday advertised for bids to be submitted for the building of the Teacher's cottage at Kapaa, Kauai, the tender to be opened on June 24.

The Hawaiian News Company is suing Makino for \$11.70 due for stationery supplied. Lightfoot is appearing for Makino and the case went over till June 21.

Dickie Davis, the well-known Maui sport, came in on the Mauna Loa and intends staying a few days.

Fred Wadron was operated on today at the Queen's Hospital for aneurism of a vein in the neck. The operation was an unusual one and eleven physicians were present when it was performed. The patient is doing well.

Fred J. Asch was omitted in the bonds of matrimony last night to Miss Alice W. Todd. After the ceremony, which was performed by Father Stephen, a reception was held at the residence of the bride's parents on Beretania street.

The replevin suit brought by Makino et al. against High Sheriff Henry to recover the papers taken from the safe of the Nippon Jiji's office, was dismissed on jurisdictional grounds yesterday afternoon by Judge Carlos Long.

Money is already being received at the office of the County Treasurer for the licenses to do business required by law. The licenses will be issued on July 1, and all are coming early that they might be delivered as early as possible after the date of issuance.

Chief Leal arrested five Porto Ricans for gambling yesterday and the bunch were fined \$3 each this morning by Judge Long. That the fine was thought light was shown by one of the accused remarking as he left the Police Station: "Ma pay three dollars every day, suppose can shoot craps."

Judge Robertson of the Circuit Court has issued an order commanding W. G. Irwin, a representative of Claus Spreckels, to appear before him on June 22 and show cause why he should not pay a judgment debt due from Irwin to Harvey Hitchcock. The action was taken incidental to proceedings in the case of the Territory by W. O. Aiken, sub-agent of the public lands in district 4, Hawaii, against Hitchcock.

Ah Sam, an elderly Chinese who had been working on the Wainaku plantation, last Sunday morning made a desperate attempt at ending his life by cutting his throat, but did not succeed. He came from the plantation about a week ago, and settled down at the Ah Hi pool shop at Puuoa, where he is reported to have been acting very queerly. He complained that he had been obliged to leave the plantation owing to the fact that some of the other laborers there had tried to poison him because he had been working much better than they did.—Hilo Tribune.

The demand for chafing dishes seems to have fallen off with the use of gas stoves. The Honolulu Gas Co., Ltd., Bishop street, can give you the information you are after.

The Alexander Young Cafe, when remodeled, will be cooler and more attractive than ever. In the meantime take your meals on the sixth floor of the Young building. Same prices as cafe.

The lamb and mutton sold at the Metropolitan Market is the best flavored that has been obtainable here for a long time. This came from Australia in cold storage and is exceptionally tender and juicy.

The Empire Theatre has a hair-raising film on for Friday and Saturday nights. "The Hand" is the title and the mysterious appearance of a hand through the portieres of a private dressing room cause all kinds of trouble.

The Allan Herbert place at Waihee, Kalihii Valley, will be for rent during the summer by the day, week or month. Particulars at Henry Waterhouse Trust Co. It's a great place to spend a summer vacation and at the same time attend to business.

THE STEAMER NOEAU arrived this morning with three deck passengers and the following freight: 1570 bags, K. S. Co. sugar, 1000 bags H. sugar, 30 bags rice and 12 packages sundries.

THE MAUNA LOA reports the following sugar on Hawaii: Honolulu, 4193, Punahoa, 6700; Honokaa, 1,000; Kukuhaele, 11,700; Paauhau, 1,300; Panulua, 2,000; Kukui, 650.

ACCORDING TO the Mauna Loa's report, the steamer Helene has been at Mahukona loading sugar, and expected to be at Kawahae yesterday at 2 p. m.

ASCH-TODD—At the Catholic church, June 17, 1909, by Rev. Father Stephen, Fred J. Asch to Alice W. Todd.

Bulletin Business Office Phone 256. Bulletin Editor's Room Phone 185.

FIREWORKS ON FIFTH

The Fourth of July will be celebrated officially by the people of Hawaii on Monday July 5, on account of the Fourth coming on Sunday. Governor Proear will issue a By Authority notice to that effect, and said that unless there is a demonstration to the contrary, the fifth will be the date set for the celebration.

SALVATION ARMY IN CAMP

Oakland, June 5.—The Salvation Army annual camp meeting will be held at Beulah Park from June 15 to June 28. Colonel Miles and Mrs. Miles will have charge of the grounds. Commissioner Estill of Chicago will conduct the closing meetings.

STORAGE

THE BEST IN THE CITY. NO DAMPNESS—FIREPROOF—NO BUGS.

CITY TRANSFER CO.,

JAS. H. LOVE. 82 King St., opp. Union Grill. Phone 152.

CONSUL UYENO'S REPORT

TOKIO, June 17.—Consul General Uyeno of Honolulu reports to the Japanese Foreign Office that he has advised the planters of Oahu not to yield to the demands of the striking Japanese plantation laborers.

He declares in his report that the agitation for higher wages is the work of an anarchistic element among the Hawaiian Japanese.

The Japanese government will not interfere in the Hawaiian strike.

Japanese Journalist Coming

SAN FRANCISCO, June 17.—K. Kiyono, a Japanese journalist, sailed for Honolulu today on the steamer China to make an investigation of the Oahu strike question on behalf of the Japanese of the Pacific Coast.

FIGHT FOR FREE PULP.

WASHINGTON, June 17.—The fight for free wood pulp for the manufacture of printing paper has been begun in connection with the tariff revision in the Senate.

BLOWN UP BY BUNKER HILL.

BOSTON, June 17.—Sixty-five persons were injured here today in an explosion of fireworks, intended to be used in the celebration of Bunker Hill Day.

The Standard Office Filing Cabinet is the GLOBE-WERNICKE

It is used in every office and known to be the BEST. OFFICE SUPPLY CO., LTD., Agents

SHOPPING NEWS AND BUSINESS REMINDERS

Pastry from the Palm Cafe, Hotel street near Union, is quite the best there is to be had in the city. There is a fresh supply on the counters every day.

The demand for chafing dishes seems to have fallen off with the use of gas stoves. The Honolulu Gas Co., Ltd., Bishop street, can give you the information you are after.

The Alexander Young Cafe, when remodeled, will be cooler and more attractive than ever. In the meantime take your meals on the sixth floor of the Young building. Same prices as cafe.

The lamb and mutton sold at the Metropolitan Market is the best flavored that has been obtainable here for a long time. This came from Australia in cold storage and is exceptionally tender and juicy.

The Empire Theatre has a hair-raising film on for Friday and Saturday nights. "The Hand" is the title and the mysterious appearance of a hand through the portieres of a private dressing room cause all kinds of trouble.

The Allan Herbert place at Waihee, Kalihii Valley, will be for rent during the summer by the day, week or month. Particulars at Henry Waterhouse Trust Co. It's a great place to spend a summer vacation and at the same time attend to business.

THE STEAMER NOEAU arrived this morning with three deck passengers and the following freight: 1570 bags, K. S. Co. sugar, 1000 bags H. sugar, 30 bags rice and 12 packages sundries.

THE MAUNA LOA reports the following sugar on Hawaii: Honolulu, 4193, Punahoa, 6700; Honokaa, 1,000; Kukuhaele, 11,700; Paauhau, 1,300; Panulua, 2,000; Kukui, 650.

ACCORDING TO the Mauna Loa's report, the steamer Helene has been at Mahukona loading sugar, and expected to be at Kawahae yesterday at 2 p. m.

ASCH-TODD—At the Catholic church, June 17, 1909, by Rev. Father Stephen, Fred J. Asch to Alice W. Todd.

Bulletin Business Office Phone 256. Bulletin Editor's Room Phone 185.

IT IS IN THE CUTTING!

The STYLE, FIT and COMFORT OF CLOTHES depends on the CUTTING. Try us.

W. W. AHANA CO., TAILORS King Street.



IN FOREIGN PORTS

Friday, June 18.

YOKOHAMA—Arrived June 18: S. S. Nippon Maru, hence June 7.

SAN FRANCISCO—Arrived June 18: S. S. Chiyo Maru, 7 a. m., hence June 12.

KAANAPALI—Sailed June 17: S. S. Pleiades, for San Francisco.

Thursday, June 17.

PORT SAN LUIS—Sailed June 16: S. S. Washtenaw, for Kahului.

SAN FRANCISCO—Sailed June 17: S. S. China, 1 p. m., for Honolulu.

ELIZABETH—Sailed June 17: S. S. Lord Derby, for Newcastle.

HANA—Sailed June 17: S. S. Virginian, for Salina Cruz.

HILO—Arrived June 17: S. S. Metha Nelson, which had sailed same day for Honolulu, there being no berth at that port, returned for orders.

HILO—Arrived June 17: S. S. Robert Lewers, hence June 3.

HILO—Arrived June 17: S. S. Virginius, from Kahului.

HILO—Sailed June 16: S. S. Virginian, for Salina Cruz.

Wednesday, June 16.

SAN FRANCISCO—Sailed June 15: S. S. Lurline, 7 p. m., for Honolulu.

SEATTLE—Arrived June 15: S. S. Hyades, from San Francisco.

LATEST STORY OF THE ERSKINE M. PHELPS

The Norfolk (Va.) Landmark of April 23 has the following regarding the latest trip of the great "White Flyer," so well known in this port:

After a voyage of over three months' duration, during which she was never reported, the full-rigged sailing ship Erskine M. Phelps, Captain Robert J. Graham, one of the few vessels of her class now afloat, passed in Cape Henry yesterday morning and was towed into port by the tug Edna V. Crew.

January 6th last the Phelps, with a large cargo, sailed from Port Townsend, Wash., for New York. From the date named until she have in sight off the Cape yesterday, all trace of the big sailor was lost, as not one word was received from her through passing vessels.

The Phelps is one of the Sewell fleet of fast deep-water, long-distance vessels, which trade almost entirely with the eastern countries.

The Phelps is consigned direct from Seattle, Wash., by Deming & Gould Co. and Kelly-Clark Co., jointly to T. S. Southgate & Co., Inc., of Norfolk, who are busy arranging for the unloading and storing of her record cargo of miscellaneous canned fruits, salmon and milk, the first shipment of its kind to be boated around Cape Horn in a sailing vessel.

The route of the Phelps was from Cape Hattery in Cape Henry, covering a distance by the sailing ship route of 16,500 miles in the wonderful fast time of 104 days, which is but thirty days longer than the fast steamships of the American-Hawaiian line, who make the trip by the shorter route of the Straits of Magellan, which is usually considered but 12,750 miles.

It is said by those on the water front that this trip of the Phelps has established a new record for the Pacific Coast.

It was learned that the arrival of this cargo at Norfolk instead of New York, where they usually go, has a peculiar significance and bearing on the future of this port as a competitor for the great trade of the West and South, which has hitherto been handled by large brokers and commission interests in New York.

It is understood that this cargo will demonstrate the superiority of the terminal facilities of this port vs. New York, as also the traffic economies in getting the product finally in the hands of consumers.

MESSAGES HAVE been received regularly from the Hawaiian since her departure from this port and when last heard from yesterday evening, was 800 miles out. She reports the very best of weather with an unusually smooth sea and also that all passengers are well.

THE STEAMER NOEAU arrived this morning with three deck passengers and the following freight: 1570 bags, K. S. Co. sugar, 1000 bags H. sugar, 30 bags rice and 12 packages sundries.

THE MAUNA LOA reports the following sugar on Hawaii: Honolulu, 4193, Punahoa, 6700; Honokaa, 1,000; Kukuhaele, 11,700; Paauhau, 1,300; Panulua, 2,000; Kukui, 650.

ACCORDING TO the Mauna Loa's report, the steamer Helene has been at Mahukona loading sugar, and expected to be at Kawahae yesterday at 2 p. m.

ASCH-TODD—At the Catholic church, June 17, 1909, by Rev. Father Stephen, Fred J. Asch to Alice W. Todd.

Bulletin Business Office Phone 256. Bulletin Editor's Room Phone 185.

REPLEVIN AGAIN

Attorney Lightfoot, whose replevin proceedings were dismissed by Judge Long, has again instituted suit to recover the books and papers which are held by High Sheriff Henry. The case came up this afternoon and was continued till June 21st.

PARK THEATRE

"Which was the happiest time of your life," the greatest film ever shown, Saturday night Mr. Shaw will sing "Sing Me to Sleep." Mr. Geo. Milne "Bonnie Jean" and the Melotte sisters "What's the Use of Dreaming." Another rousing week-end program.

The Bulletin Publishing Co., Ltd., is agent for the best engraving and lithographing company on the Pacific Coast and is prepared to give estimates on high-grade printing of every kind. Also prices and samples of the Very Latest in Engraved Cards, Announcements, and Invitations, in the best of form for smart functions.

SEA WRENS, \$100

18-foot Motor Launch with 4-Cycle Motor, \$175, Complete. THE CHARLES D. WALKERS, BOAT AND MACHINE WORKS King St. opp. v'te South St.

TIDES

Table with columns for High Tide, Low Tide, and Moon Rise and Sets. Includes data for Friday, June 18.

Now moon June 17 at 9:57 p. m. Hawaiian standard time is 10 hours 30 minutes slower than Greenwich time, being that of the meridian of 157 degrees 30 minutes. The time whistle blows at 1:30 p. m., which is the same as Greenwich, 0 hours 0 minutes. Sun and moon are for local time for the whole group.

ARRIVED

Friday, June 18. Steer. Mauna Loa, Simerson, from Kona and Kau, 5:05 a. m. Steer. Helene, Nelson, from Hawaiian ports, a. m. Steer. Noena, Sachs, a. m.

SAILING TODAY

Steer. Claudine, Bennett, for Hawaiian ports, 5 p. m.

PASSENGERS ARRIVED

Per steer, Mauna Loa, Simerson, from Kona and Kau, June 18: J. G. Smith, J. A. Combs, W. J. Pratt, W. L. Stanley, Governor W. F. Proar, J. H. S. Martin, J. A. Maguire, Miss A. W. Cockcroft, Mrs. Joseph Grube, J. Cowper, G. F. Maydwell, C. W. Ashford, Geo. K. Mills, D. H. Davies, J. Araki, H. T. Brodick, C. Buchholz and 55 deck passengers.

PASSENGERS BOOKED

Per steer, Claudine, for Hawaiian ports, June 18—Dr. J. J. Grace and wife, Francis Marshall, Miss Chalmers, Alice Ayers, Miss D. Engle, Miss E. Baldwin, Margaret Cook, Cleo Case, Dorothy Hoop, Stella Hoops, Alfred Taylor, David Wordsworth, Ernest Baldwin, Miss M. Hocking, Miss R. Hocking, Miss R. Cummings, J. Mair, S. Mair, W. Harris, Hong Chock, Geo. Murray, W. H. Smith, Mrs. Grace G. Powell, Miss Taylor, Miss Alice Smith, Miss M. Thurston, Miss Gibb, Miss M. Quirion, Chas. Gay, Miss Townsend, Miss Rosecrans, Mary Schultz, Anna Richards, Alex. Richards, Nellie Richards, Prof. Digham, Jenny Hua, Miss S. J. Ho, Dr. Jagger, R. S. Hoerner, Mrs. Anselm, Eudine Anselm, J. K. Waiata, Jim Waiata, S. Kanakani and family, Sam White, C. J. Schoening.

IRIS DUE

The U. S. S. Iris, which has been posted due here today has not yet been sighted. She is not equipped with wireless telegraph apparatus and local land stations are thus unable to ascertain her position. It is not known here what her exact object in coming to the islands is, but it is probable that she brings supplies. It is also thought that it is possible she has been sent here to be placed out of commission, but there is nothing definite in the rumor.

PINEAPPLE MEETING

The annual meeting of the Hawaiian Pineapple Association will be held tomorrow. The Association has been spending a large amount of money in advertising Hawaiian pineapples, and it is expected that some interesting facts will be brought out at the meeting.

Anderson, the catcher of the Marine baseball team, is laid up in the hospital suffering from a badly twisted foot. It is hoped that he recovers quickly, as his services on the team will be greatly missed.

MUST LEAVE OAKLAND—Oakland, June 5.—Ollie Snedigar, a probation officer of this county, had a new duty imposed on him by Police Judge Smith, who this morning deputed him to see that Margaret Smith, an habitual drunkard, leaves the city.

Judge Lorigan Better.—San Jose, June 8.—Supreme Court Judge W. G. Lorigan, who has been critically ill during the last five months, and whose life for a time was despaired of by his friends, has returned from a stay at Paso Robles. He was greatly benefited by treatments there.

Well Known Woman Dies—Vallejo, June 8.—Mrs. Duncun McLean, wife of a well known Mariposa Island navy yard foreman, and mother in law of City Treasurer George Warford and Pay Inspector E. D. Ryan of the navy, died in this city last evening after a short illness of pneumonia. She was 42 years of age and widely known in this section.

Saturday Morning

# Specials

June 19th

INFANTS' CRIB BLANKETS—Colors: Cream and Pink, Cream and Blue. From 90c to 65c each.

LINEN GLASS TOWELING—32 inches wide, reduced from 20c a yd. to 8 yds for \$1.

BLUE AND WHITE TABLE DAMASK—38 inches wide, from 40c to 25c a yd.

COLORED TAFFETA SILKS—In all colors, from 65c to 40c a yd.

ALL-WOOL CHALLIES—30 inches wide, from 75c to 50c a yd.

ALL-WOOL CHALLIES—28 inches wide, from 60c to 40c a yd.

FANCY VALENCIENNES LACES—Very wide, from 25c to 6 yds for \$1.00.

ENGLISH LONG CLOTH—12 yds to the piece, from \$2.25 to \$1.90 a piece.

FANCY DRESDEN RIBBONS—In stripes and plaids, from 65c to 45c a yd.

## Sachs' Dry Goods Co.

Cor. Fort and Beretania Sts. Opp. Fire Station.

Level Up Your Lot  
Phone 890

Soil, black or Waianae sand, coral or rock furnished to fill up depressions or build up terraces.  
**P. M. POND**

### Autos Repaired

Your machine will be ready for you when we say it will be. We don't experiment on autos; we repair them.

**Von Hamm-Young Co., Ltd.**

ALEXANDER YOUNG BUILDING.

AUTOMOBILE ACCIDENTS.

After the accident bring the machine to us.

All repairs except the engine.

**W. W. WRIGHT & CO.,**  
King and South Sts.

### Royal Hawaiian Garage

GEO. S. WELLS, Mgr.  
HOTEL ST. PHONE 191.  
Prices Reasonable.

### Ford

TOURING CAR, \$1185.

SCHUMAN CARRIAGE CO., LTD.  
MERCHANT ST. NEAR ALAKEA

BAMBOO RAFFIA  
Fibres for Weaving hats, mats, fans and baskets. HAWAII & SOUTH SEAS CURIO CO., Young Building, (Under the Electric Sign) Bishop St.

Received ex Alameda a New Ship ment of Latest Styles in LADIES' HATS.

**K. UYEDA,**  
1028 NUUANU ST.

Blank books of all sorts, ledgers, etc., manufactured by the Bulletin Publishing Company.

On Display at our Garage

## Franklin

1909 MODEL "G" RUNABOUT.

FRANKLIN "D" TOURING CAR.

AGENTS FOR THE KISSEL KAR AND CHALMERS-DETROIT.

Repairing by Expert Mechanics.

**ASSOCIATED GARAGE, Ltd**  
Merchant St.

## C. H. BEHN

Car No. 184 can now be found at

TEL. 199

## Work Horses

Large imported work horses for sale.

**CLUB STABLES**  
Fort St.  
TEL. 109.

"For Rent" cards on sale at the Bulletin office.

Beautify Your Home  
With Good Pictures from

# Gurrey's

## MORE GRADUATES FROM OAHU COLLEGE

### Class Exercises Take Place On Steps Of College Hall

The assemblage of the class of 1909 at Oahu College last night was witnessed by a representative body of those interested in the education of their children. Harry Lucas, president of the class, had charge of the program.

The exercises took place on the steps of the college hall, the audience sitting in chairs, placed on the terrace in front.

Maudie de Bretteville read the class history, while Marguerite Ashford's prophecy, presented in an accomplished manner, was listened to with interest by the audience.

Around the class tree, planted near the entrance of the college, where President Griffiths made an able address.

The music, rendered by the college club, was in charge of Miss Rogers. Light refreshments were served after the closing of the exercises.

## FLORAL PARADE POSTER FOR 1910 IS ADOPTED

Harry Mist's design for a Floral Parade poster for 1910 has been accepted by the Hawaii Promotion Committee. The design, exhibited at yesterday's meeting of the Committee, met with general approval and was adopted without opposition.

W. H. Hoogs made an encouraging report in regard to the probability of the committee's receiving some assistance from the City and County. He stated that the Mayor was favorably disposed to the plan and that he believed that some of the \$40,000 balance might be available for promotion work.

## ST. ANDREW'S BUSY

A week of activities is at hand for the various associations of the St. Andrew's Cathedral. A meeting of the local assembly of the Brotherhood of St. Andrew's will be held in the Davies Memorial Hall this evening at 7:30. Dr. Brinckerhoff will address the meeting.

Tomorrow, the Sunday school will hold its annual picnic at the peninsula, a special train leaving the depot at 9:15. Those missing the special will be able to take the regular train at 11:05.

A meeting of the Men's Club of the St. Andrew's parish will be held next Thursday night and will be addressed by Dr. Thomas Green, a well known lecturer on the Chatauqua circuit. Dr. Green remained over from the Chiyu Maru, owing to injuries received by his wife in an automobile accident.

Good Roads Bonds Voted.—Santa Barbara, June 8.—After a bitter campaign this city today voted in favor of \$43,000 good roads bonds. Of this sum \$28,000 for improvement of the main artery through the city and \$15,000 for the Booths Point road at the eastern entrance to the city.

For Rent  
\$15—Cottage with two bedrooms at Puunui, close Liliha St. car. Electric Light, cool and healthy. Fine view. Large yard.

## P. E. R. Strauch

Real Estate Agent.  
Waity Bldg. 74 S. King St.  
"For Sale" cards at Bulletin.

Bulletin Business Office Phone 256.  
Bulletin Editorial Room Phone 185.

## KINNEY IS EASY ON LEADERS' DUPES

### No Increase In Bonds Of the Indicted Underlings

Jotario Mikawa and twelve others were yesterday indicted by the Grand Jury for riot, were arraigned before Judge De Bolt this morning. A striking statement in these cases was made by Deputy Attorney General Kinney, when the matter of fixing bond came up.

"We are willing that these men be allowed to go on the bonds already furnished. We do not consider the men who have done the actual rioting as those who incited the assaults and disturbances."

Mr. Kinney afterwards said that it was the work of the leaders with their incendiary literature, publications, and agitators that cause the acts of the more ignorant, and he did not hold them so much to blame as the instigators.

Mikawa and his friends were given their liberty, and Monday morning set for pleading.

In the cases of Mitsuhi and eleven others, Jotario Mikawa, Mitsuhi and two others, the former charges against them for rioting, assault and battery and disturbance, were nolle prosequi, on a motion of Attorney Prosser before Judge Whitney this morning, as the indictments now take the place of the early charges.

## SETTLERS TO CONTEST LAND DEPT' ORDER

Hilo—June 15.—The residents of the Makoou tract in Waikoa whom Land Commissioner Pratt said he would have ordered to move on, intend to put up a fight in the courts, at least, T. A. Dranga, the plumber, who is one of them, states that it is his intention to do so, as well as that of some of the others who are affected by the action of the Land Department.

"The ones who are occupying land in the tract are I. Erickson, George Duncker, Antone Gomez, Adolph Corcoran, Charles Alden, a number of Hawaiians and myself," said Mr. Dranga to the Tribune. "And A. M. Cabrera and Mr. McGill have houses therein which they have rented to other parties. Some of the Hawaiians have ninety-nine year leases on their lots. The rest of us, some of whom have been living there for up to ten years, formerly paid rent to the Public Works Department, but later, when it was decided to open the tract, we were told to stop paying, and we have not paid since. The opening of the land fell through, as nothing was done by the government, beyond getting some of the brush out."

"Now we would be willing enough to buy or pay rent, but we certainly object to being fired off the place for no purpose at all. We will fight the proposition of firing us off like this through the courts, and I am willing to contribute my share to pay a good lawyer to take our case for us, and the others feel the same way."

Land Agent George Williams stated that the residents of the tract whom he would order off at present would be Dranga, Alden, Alohiaka and a Hawaiian occupying the old Peter Lewis home, as those were living on land which had been set aside for park purposes; and a Hawaiian, names Park Nanihoo, who had recently squatted on part of the kerosene warehouse lot. The rest of the land was under the Public Works Department, and Williams had nothing to do with it.

That some financial provision should be made for the commissioning of the hook and ladder truck belonging to the fire department is the general sentiment among insurance men, and others interested in fire protection. The truck is now reposing in the Beretania street engine house, but owing to a lack of men and horses, has never been placed in commission.

The truck was purchased in San Francisco several years ago by the Territory, at a cost of something like \$2700. There have never been the men or horses needed for it, available, however, and it has been left to graze the engine house.

Two horses and nine men would handle the truck easily, allowing a margin for a "liberty man," which must always be counted on in any well-equipped engine or truck company. Without these men and horses, the truck is practically worthless.

Though not of the most modern pattern, the truck at the Beretania street house is thoroughly efficient, and would, it is claimed, meet all demands in this city. The truck is in excellent condition, Chief Thurston having seen to it that the equipment has been kept up and the apparatus not allowed to decay even though not in use.

With something in excess of \$40,000 coming from the Territory to the county at the end of this month, the suggestion is made that the Supervisors might very well make some provision for the manning of the hook and ladder truck.

A fire in any of the older downtown buildings might prove a very serious affair, owing to the inability of the fire-fighters to reach the seat of the trouble with efficient streams of water. The commissioning of the truck would greatly increase the provision against a disastrous conflagration, it is felt.

The fire department has come in for much favorable comment, on the manner in which it handled the fire in Allen & Robinson's lumber yard on Memorial day. But for the prompt and able work of Chief Thurston's men it is conceded that a disastrous holocaust might have resulted, and that the losses would have been computed in hundreds of thousands of dollars instead of hundreds.

The Honolulu fire department at present owns five steamers, of which four are kept in commission all of the time. Two are in the Beretania street house, one is at Palama and the other in Makiki. The department has the advantage of ample taps and a sufficient water supply in the business districts, but alarm boxes are badly needed, claim those in a position to know.

## HOOK AND LADDER MAY GET A CREW

### Apparatus Now Idle In Beretania Engine House

That some financial provision should be made for the commissioning of the hook and ladder truck belonging to the fire department is the general sentiment among insurance men, and others interested in fire protection. The truck is now reposing in the Beretania street engine house, but owing to a lack of men and horses, has never been placed in commission.

The truck was purchased in San Francisco several years ago by the Territory, at a cost of something like \$2700. There have never been the men or horses needed for it, available, however, and it has been left to graze the engine house.

Two horses and nine men would handle the truck easily, allowing a margin for a "liberty man," which must always be counted on in any well-equipped engine or truck company. Without these men and horses, the truck is practically worthless.

Though not of the most modern pattern, the truck at the Beretania street house is thoroughly efficient, and would, it is claimed, meet all demands in this city. The truck is in excellent condition, Chief Thurston having seen to it that the equipment has been kept up and the apparatus not allowed to decay even though not in use.

With something in excess of \$40,000 coming from the Territory to the county at the end of this month, the suggestion is made that the Supervisors might very well make some provision for the manning of the hook and ladder truck.

A fire in any of the older downtown buildings might prove a very serious affair, owing to the inability of the fire-fighters to reach the seat of the trouble with efficient streams of water. The commissioning of the truck would greatly increase the provision against a disastrous conflagration, it is felt.

The fire department has come in for much favorable comment, on the manner in which it handled the fire in Allen & Robinson's lumber yard on Memorial day. But for the prompt and able work of Chief Thurston's men it is conceded that a disastrous holocaust might have resulted, and that the losses would have been computed in hundreds of thousands of dollars instead of hundreds.

The Honolulu fire department at present owns five steamers, of which four are kept in commission all of the time. Two are in the Beretania street house, one is at Palama and the other in Makiki. The department has the advantage of ample taps and a sufficient water supply in the business districts, but alarm boxes are badly needed, claim those in a position to know.

## CASTORIA

For Infants and Children.  
The Kind You Have Always Bought

Bears the Signature of *Dr. J. C. Watson*

BORN.

DOWNING—In this city, June 17, 1909, to Mr. and Mrs. H. F. Downing, a son.

McCALL—At Hakalau, Hawaii, June 8, 1909, to the wife of Wm. W. McCall, a daughter.

SYLVESTER—June 18, 1909, to Mr. and Mrs. E. T. Sylvester, a daughter.

185 editorial rooms—256 business offices. These are the telephone numbers of the Bulletin office.

## HER PHYSICIAN ADVISED

### Taking Lydia E. Pinkham's Vegetable Compound

Columbus, Ohio.—"I have taken Lydia E. Pinkham's Vegetable Compound during change of life. My doctor told me it was good, and since taking it I feel so much better that I can do all my work again. I think Lydia E. Pinkham's Vegetable Compound is a fine remedy for all women's troubles, and I never forget to tell my friends what it has done for me."

—Mrs. E. HANSON, 304 East Long St., Columbus, Ohio.

### Another Woman Helped.

Graniteville, Vt.—"I was passing through the change of life and suffered from nervousness and other annoying symptoms. Lydia E. Pinkham's Vegetable Compound restored my health and strength, and proved worth mountains of gold to me. For the sake of other suffering women I am willing you should publish my letter."—Mrs. CHARLES BARCLAY, R.F.D., Graniteville, Vt.

Women who are passing through this critical period or who are suffering from any of those distressing ills peculiar to their sex should not lose sight of the fact that for thirty years Lydia E. Pinkham's Vegetable Compound, which is made from roots and herbs, has been the standard remedy for female ills. In almost every community you will find women who have been restored to health by Lydia E. Pinkham's Vegetable Compound.

Sealed tenders, in duplicate, endorsed "TENDERS FOR BEEF CATTLE," will be received at the office of the Board of Health, until 12 o'clock, noon, Tuesday, June 22d, 1909, for supplying the Leper Settlement, Moloai, with beef cattle for the period of six months from July 1st, 1909, to December 31st, 1909, under the following conditions, namely:

1. The bidder must offer to furnish beef cattle to weigh not less than 350 pounds net when dressed, in lots averaging about 60 head per month, more or less, as may be specified by the Superintendent of the Leper Settlement, and to accept the dressed weights ascertained at the Settlement by said Superintendent.

2. The bidder must specify whether he proposes to deliver the cattle (1) at the Settlement, or (2) r. o. b. steamer, or (3) at a landing specified by the bidder. Any bidder may offer delivery in any or all of the foregoing methods.

3. Hides, tallow and offal to be the property of the Board of Health.

4. Each bid must be for the price per pound dressed weight, with an alternative offer of the price per head.

5. The successful bidder must agree that all cattle are offered for delivery subject to the right of the Superintendent of the Leper Settlement to reject any or all unfit for use, in which event other cattle must be forthwith furnished to make up the required number, and those rejected forthwith removed at the expense of the bidder.

All bids must be submitted in accordance with and be subject to the provisions and requirements of Act 62, Session Laws 1909.

For further information apply at the office of the Board of Health.

THE BOARD OF HEALTH.  
E. A. MOTT-SMITH,  
4234-10 By Its President.

Office of the Board of Health, Honolulu, Hawaii, June 10, 1909.

## TENDERS FOR SUPPLIES—INSANE ASYLUM

Sealed tenders, in duplicate, endorsed "TENDERS FOR INSANE ASYLUM," for furnishing the Insane Asylum, Honolulu City and County of Honolulu, with supplies for the period of six months from July 1, 1909, to December 31, 1909, will be received at the office of the Board of Health until 12 o'clock, noon, Tuesday, June 22d, 1909.

Specifications and a list of the kind of supplies required, and other information, may be had upon application at the office of the Board of Health.

All bids must be made on forms furnished by the Board of Health and must be submitted in accordance with, and be subject to, the provisions and requirements of Act 62, Session Laws 1909.

THE BOARD OF HEALTH.  
E. A. MOTT-SMITH,  
4234-10 By Its President.

Office of the Board of Health, Honolulu, Hawaii, June 10, 1909.

## Pau Ka Hana

THE ENEMY TO DIRT.  
At Your Grocer's.

## Wah Ying Chong Co.

King Street, Ewa of Fisamarket.  
DRY GOODS AND FURNISHING GOODS OF EVERY DESCRIPTION

SAVE TIME.  
Let us connect the different departments of your store or office by a private telephone.

## Union Electric Co.

HARRISON BLOCK.

## Use Centennial's Best Flour

HENRY MAY & CO., LTD.

## GEO. A. MARTIN,

FASHIONABLE TAILOR.  
Business Suits for \$25.  
Hotel St.

Mr and Mrs. Hashimoto, MASSEURS.

Telephone 637.  
Rheumatism, Bruises, Tired Feeling, and other Ailments Quickly Relieved.

178 BERETANIA AVE., near EMMA Bath and Electrical Treatment.

THE EXCELLENCE OF THE CUISINE AND APPOINTMENTS AT

## HALEIWA

BRING PLEASURE TO THE GUESTS. ST. CLAIR BIDGOOD, MANAGER.

Make a musical instrument out of your piano by attaching to it a **Pianola**

BERGSTROM MUSIC CO., LTD. Agents.

BOSTON RESTAURANT. GOOD MEALS FOR 25 CENTS. NEW AND EXPERIENCED COOK. Everything in Season. Hotel Street, near Fort. We want to see all our old customers come back.

## BY AUTHORITY

Office of the Board of Health, Honolulu, Hawaii, June 10, 1909.

## TENDERS FOR BEEF CATTLE

Sealed tenders, in duplicate, endorsed "TENDERS FOR BEEF CATTLE," will be received at the office of the Board of Health, until 12 o'clock, noon, Tuesday, June 22d, 1909, for supplying the Leper Settlement, Moloai, with beef cattle for the period of six months from July 1st, 1909, to December 31st, 1909, under the following conditions, namely:

1. The bidder must offer to furnish beef cattle to weigh not less than 350 pounds net when dressed, in lots averaging about 60 head per month, more or less, as may be specified by the Superintendent of the Leper Settlement, and to accept the dressed weights ascertained at the Settlement by said Superintendent.

2. The bidder must specify whether he proposes to deliver the cattle (1) at the Settlement, or (2) r. o. b. steamer, or (3) at a landing specified by the bidder. Any bidder may offer delivery in any or all of the foregoing methods.

3. Hides, tallow and offal to be the property of the Board of Health.

4. Each bid must be for the price per pound dressed weight, with an alternative offer of the price per head.

5. The successful bidder must agree that all cattle are offered for delivery subject to the right of the Superintendent of the Leper Settlement to reject any or all unfit for use, in which event other cattle must be forthwith furnished to make up the required number, and those rejected forthwith removed at the expense of the bidder.

All bids must be submitted in accordance with and be subject to the provisions and requirements of Act 62, Session Laws 1909.

For further information apply at the office of the Board of Health.

THE BOARD OF HEALTH.  
E. A. MOTT-SMITH,  
4234-10 By Its President.

Office of the Board of Health, Honolulu, Hawaii, June 10, 1909.

## TENDERS FOR SUPPLIES—INSANE ASYLUM

Sealed tenders, in duplicate, endorsed "TENDERS FOR INSANE ASYLUM," for furnishing the Insane Asylum, Honolulu City and County of Honolulu, with supplies for the period of six months from July 1, 1909, to December 31, 1909, will be received at the office of the Board of Health until 12 o'clock, noon, Tuesday, June 22d, 1909.

Specifications and a list of the kind of supplies required, and other information, may be had upon application at the office of the Board of Health.

All bids must be made on forms furnished by the Board of Health and must be submitted in accordance with, and be subject to, the provisions and requirements of Act 62, Session Laws 1909.

THE BOARD OF HEALTH.  
E. A. MOTT-SMITH,  
4234-10 By Its President.

Office of the Board of Health, Honolulu, Hawaii, June 10, 1909.

## TENDERS FOR SUPPLIES—INSANE ASYLUM

Sealed tenders, in duplicate, endorsed "TENDERS FOR INSANE ASYLUM," for furnishing the Insane Asylum, Honolulu City and County of Honolulu, with supplies for the period of six months from July 1, 1909, to December 31, 1909, will be received at the office of the Board of Health until 12 o'clock, noon, Tuesday, June 22d, 1909.

Specifications and a list of the kind of supplies required, and other information, may be had upon application at the office of the Board of Health.

All bids must be made on forms furnished by the Board of Health and must be submitted in accordance with, and be subject to, the provisions and requirements of Act 62, Session Laws 1909.

THE BOARD OF HEALTH.  
E. A. MOTT-SMITH,  
4234-10 By Its President.

Office of the Board of Health, Honolulu, Hawaii, June 10, 1909.

## TENDERS FOR SUPPLIES—INSANE ASYLUM

Sealed tenders, in duplicate, endorsed "TENDERS FOR INSANE ASYLUM," for furnishing the Insane Asylum, Honolulu City and County of Honolulu, with supplies for the period of six months from July 1, 1909, to December 31, 1909, will be received at the office of the Board of Health until 12 o'clock, noon, Tuesday, June 22d, 1909.

Specifications and a list of the kind of supplies required, and other information, may be had upon application at the office of the Board of Health.

All bids must be made on forms furnished by the Board of Health and must be submitted in accordance with, and be subject to, the provisions and requirements of Act 62, Session Laws 1909.

THE BOARD OF HEALTH.  
E. A. MOTT-SMITH,  
4234-10 By Its President.

Office of the Board of Health, Honolulu, Hawaii, June 10, 1909.

## TENDERS FOR SUPPLIES—INSANE ASYLUM

Sealed tenders, in duplicate, endorsed "TENDERS FOR INSANE ASYLUM," for furnishing the Insane Asylum, Honolulu City and County of Honolulu, with supplies for the period of six months from July 1, 1909, to December 31, 1909, will be received at the office of the Board of Health until 12 o'clock, noon, Tuesday, June 22d, 1909.

Specifications and a list of the kind of supplies required, and other information, may be had upon application at the office of the Board of Health.

All bids must be made on forms furnished by the Board of Health and must be submitted in accordance with, and be subject to, the provisions and requirements of Act 62, Session Laws 1909.

THE BOARD OF HEALTH.  
E. A. MOTT-SMITH,  
4234-10 By Its President.

Office of the Board of Health, Honolulu, Hawaii, June 10, 1909.

## TENDERS FOR SUPPL

# EVENING BULLETIN

DAILY and WEEKLY Published by BULLETIN PUBLISHING CO., LTD.  
At 120 King Street, Honolulu, Territory of Hawaii.

Daily every day except Sunday. Weekly issued on Tuesday of each week.

MEMBER OF THE ASSOCIATED PRESS.

Office R. Farrington, Editor

SUBSCRIPTION RATES PAYABLE IN ADVANCE.

EVENING BULLETIN		WEEKLY BULLETIN	
Month, anywhere in U.S.	\$ .75	Per Six Months	\$ 4.50
Quarter, anywhere in U.S.	2.00	Per Year, anywhere in U.S.	1.00
Year, anywhere in U.S.	8.00	Per Year, anywhere in Canada	1.50
Year, postpaid, foreign	12.00	Per Year postpaid, foreign	2.00

CIRCULATION LARGEST OF ANY NEWSPAPER PUBLISHED in the Territory of Hawaii.

Editorial Rooms, - 185  
Business Office, - 256

Entered at the Postoffice at Honolulu as second-class matter.

FRIDAY JUNE 25, 1909.

In proportion as we love truth more, and victory less, we shall become anxious to know what it is that leads our opponents to think as they do.—Herbert Spencer.

Work before wages can be discussed.

Let full justice be done, and promptly.

Would strikers know how the strike may be settled? Go to work!

The Grand Jury is doing well its part in bringing criminal agitation to a speedy accounting.

Japanese laborers loitering about the hotels and camps where they are being fed while awaiting the "settlement of the strike" are asking how they will be received if they return to the plantations where they were formerly employed.

There is but one answer to this question: Go back and learn for yourself! It is highly probable that every plantation manager will make a distinction between a misguided laborer and a trouble maker, a faithful worker and the man who received \$18 a month and earned \$19.

The Bulletin would expect a manager to retain a first-class workman who has been employed as a strike breaker in preference to one who has left the employ of the plantation at the call of an agitator or because of the threat of a Thug.

There is plenty of work on the sugar plantations at good wages. No one will make faces at any man who wants to work and is brave enough to ask for it. Each applicant will undoubtedly be dealt with fairly, according to his merits.

It should be always borne in mind, however, that come what may in the way of refusals to work, the main industry of this Territory cannot and will not be conducted according to the commands of agitators responsible for criminal organizations and widespread intimidation that is part and parcel of conspiracies to murder.

While the lamp holds out to burn the vilest sinner may return, but the industrial safety of Hawaii demands that he shall give evidence that he has seen the light.

The attorney for the agitators says he is quite certain his clients will not be treated fairly on their trial here. That's the way they usually talk.

If there is a prospect of growing onions on the lands of Kapaun, that long-drawn-out problem of what to do with the lands should be promptly solved with Col. Souding in the role of defeated Molokan leader, but victorious Kapaun Onion King.

Most everyone has a solution for the strike problem. But until the community is rid of the attempted rule by agitators and thugs the discussion of wages is like a shot in the air.

When the main industry reaches the point where it is subservient to the dictation of agitators, thugs and their secret allies, it will be time for Government by Military Commission in Hawaii.

If the Japanese laborers secure freedom from the mosquito pest for humanity's sake they will have accomplished more than the first citizens of Honolulu.

Most everyone has a solution for the strike problem. But until the community is rid of the attempted rule by agitators and thugs the discussion of wages is like a shot in the air.

When the main industry reaches the point where it is subservient to the dictation of agitators, thugs and their secret allies, it will be time for Government by Military Commission in Hawaii.

If the Japanese laborers secure freedom from the mosquito pest for humanity's sake they will have accomplished more than the first citizens of Honolulu.

Most everyone has a solution for the strike problem. But until the community is rid of the attempted rule by agitators and thugs the discussion of wages is like a shot in the air.

When the main industry reaches the point where it is subservient to the dictation of agitators, thugs and their secret allies, it will be time for Government by Military Commission in Hawaii.

If the Japanese laborers secure freedom from the mosquito pest for humanity's sake they will have accomplished more than the first citizens of Honolulu.

Most everyone has a solution for the strike problem. But until the community is rid of the attempted rule by agitators and thugs the discussion of wages is like a shot in the air.

## RETURN OF STRIKERS.

Japanese laborers loitering about the hotels and camps where they are being fed while awaiting the "settlement of the strike" are asking how they will be received if they return to the plantations where they were formerly employed.

There is but one answer to this question: Go back and learn for yourself! It is highly probable that every plantation manager will make a distinction between a misguided laborer and a trouble maker, a faithful worker and the man who received \$18 a month and earned \$19.

The Bulletin would expect a manager to retain a first-class workman who has been employed as a strike breaker in preference to one who has left the employ of the plantation at the call of an agitator or because of the threat of a Thug.

There is plenty of work on the sugar plantations at good wages. No one will make faces at any man who wants to work and is brave enough to ask for it. Each applicant will undoubtedly be dealt with fairly, according to his merits.

It should be always borne in mind, however, that come what may in the way of refusals to work, the main industry of this Territory cannot and will not be conducted according to the commands of agitators responsible for criminal organizations and widespread intimidation that is part and parcel of conspiracies to murder.

While the lamp holds out to burn the vilest sinner may return, but the industrial safety of Hawaii demands that he shall give evidence that he has seen the light.

The attorney for the agitators says he is quite certain his clients will not be treated fairly on their trial here. That's the way they usually talk.

If there is a prospect of growing onions on the lands of Kapaun, that long-drawn-out problem of what to do with the lands should be promptly solved with Col. Souding in the role of defeated Molokan leader, but victorious Kapaun Onion King.

Most everyone has a solution for the strike problem. But until the community is rid of the attempted rule by agitators and thugs the discussion of wages is like a shot in the air.

When the main industry reaches the point where it is subservient to the dictation of agitators, thugs and their secret allies, it will be time for Government by Military Commission in Hawaii.

If the Japanese laborers secure freedom from the mosquito pest for humanity's sake they will have accomplished more than the first citizens of Honolulu.

Most everyone has a solution for the strike problem. But until the community is rid of the attempted rule by agitators and thugs the discussion of wages is like a shot in the air.

When the main industry reaches the point where it is subservient to the dictation of agitators, thugs and their secret allies, it will be time for Government by Military Commission in Hawaii.

If the Japanese laborers secure freedom from the mosquito pest for humanity's sake they will have accomplished more than the first citizens of Honolulu.

Most everyone has a solution for the strike problem. But until the community is rid of the attempted rule by agitators and thugs the discussion of wages is like a shot in the air.

When the main industry reaches the point where it is subservient to the dictation of agitators, thugs and their secret allies, it will be time for Government by Military Commission in Hawaii.

If the Japanese laborers secure freedom from the mosquito pest for humanity's sake they will have accomplished more than the first citizens of Honolulu.

Most everyone has a solution for the strike problem. But until the community is rid of the attempted rule by agitators and thugs the discussion of wages is like a shot in the air.

## Small Bungalow

FOR SALE—On Prospect street—House of 4 rooms; modern sanitary plumbing; porcelain; electric lights; gas for cooking; one bedroom. Price \$1,800.

KAIMUKI LOTS—We have two improved lots; curved; water laid on in lawn; alligator pear trees 3 years old are planted on property. Price \$1,350 for both; may be sold separately at \$650 and \$750.

Trent Trust Co., Ltd.

Congress of as much importance as appropriations for the rat campaign. Attendance at such a Congress is a liberal education for the trained and experienced physician. He gains much and gives not a little through personal contact with the world's greatest specialists.

Better appropriate for the expenses of three delegates than have none.

### HONOLULU EVENING BULLETIN.

(Louisiana Planter.)

We have had the pleasure of receiving from the Honolulu Evening Bulletin its illustrated industrial edition, in which it gives a history of the progress of the sugar industry of Hawaii since the reciprocity treaty of 1876, when the total export was but 13,000 short tons, up to 1907, when it reached 440,000 tons. Royal D. Mead, editor of the Hawaiian Planters' Monthly, has written the opening historical article in this beautiful edition of the Bulletin, and begins with the sugar industry way back in 1837, when the estimated export was but 4,286 pounds. The increase from that time was comparatively constant, varying, however, at times from some unstatesd cause, reaching over a million pounds in 1843 and eight years later, 1851, falling to 21,000 pounds. The fertility or resourcefulness of the Hawaiian Islands is indicated even in the estimate of the average yield from 1835 up to say 1850 or '55, it being placed at a ton of sugar per acre, whereas the old Louisiana estimate was a hoghead of sugar per acre on an average, the hogheads weighing about 1,100 pounds net.



## FOR SALE

The Fleker property on East Maunaloa Road. These premises consist of a lot of 12,500 sq. ft. and bungalow containing living room, dining room, two bedrooms, kitchen, pantry, bath, etc., servants' quarters and out buildings. Two minutes' walk from car line. Price \$4,250.

## FOR RENT

The Allen Herbert premises at Waialeale. By the month, week or day. Particulars at our office.

## Waterhouse Trust

Fort and Merchant Streets.

1000

MILES OF SEA BRIDGED BY ONE

Wireless



## The Alexander Young

# Cafe

when REMODELED will be COOLER and more inviting than ever.

the title page is a beautiful panoramic view of Honolulu harbor and the city front is given. Honolulu is reputed to have one of the finest harbors in the world and the view given seems to justify that statement.

"RIDICULOUS," SAYS UYENO.

(Continued from Page 1) that he has received no communication from the Japanese laborers of Hawaii plantation and has no authentic information of the managers having received any demands or requests.

The talk of how the Japanese laborers may go back to work is still general among the strikers. Many of these men boast of the great fund they have for supplies to hold out for months, but the greater part would gladly be out of the strike camps and back on the plantations. What they are now seeking is a "request" from the planters that they return. But since the men have been discharged on two plantations the occasion for a "request" is not obvious at the present moment. As a matter of fact each striker who wants to return will probably be treated on the merits of his claim. He may get the same house and the same job and he may not. It all depends on what the situation is when he applies for reinstatement.

## PRISON DOORS FACE MAKINO.

(Continued from Page 1) nationality may be, should feel that by reason of his nationality or by reason of his position in life, or by reason of any peculiar circumstances attending him, that that has anything to do with the trial and hearing of his case in court. The law knows no man; it knows no race, no color, nor creed, and we can only deal with these Japanese as we would with any nationality. We look upon them as units, each as a man. We don't know his nationality as far as the law is concerned. "It may be unnecessary for me to say, but I would suggest that the prosecution should prosecute vigorously and properly, presenting all the evidence they have, and presenting it with all the force with which they can possibly present it, but in the utmost fairness, and the defendants have the same right to present a vigorous and proper defense; but let it all be tempered with justice, common sense and reason, and let these people, being citizens or subjects of another nation, feel that, though they are in a foreign court, they will have justice. "It seems to me, Mr. Lightfoot, that a thousand dollar bond is not unreasonable under the circumstances. The bond was fixed at \$1,000 in each case, and the prisoners released on their own recognizance until 2 o'clock this afternoon in order to secure bond. If they fail the court will commit them to prison. Monday morning next has been fixed for the date of pleading.



## Be Correct In Card Etiquette

The price of a copper card plate is very little. After you have one your engraved cards will cost you no more than common printed ones. Ask to see our samples.

H. F. Wichman & Co. LIMITED LEADING JEWELERS.

## SALE OF REMNANTS OF

# RIBBONS

MONDAY, JUNE 21ST.

Store opens at 8 o'clock.

EHLERS

## GOVERNOR BACK FROM HAWAII

Inspects Kapapala Ranch — Visits Volcano — Given Luau

Concluding a general inspection tour overland of Hawaii from Hilo to Kailua, and an investigation of the great Kapapala ranch, where the Territorial Government has over a hundred thousand acres leased, Governor Frear returned yesterday on the Moana Loa, somewhat weary, but tanned and enthusiastic over his trip.

The principal object of the Governor's visit to Hawaii was for the purpose of going over the Kapapala lease, to ascertain whether all its terms had been strictly complied with or not. In the matter of fences, all of which the Governor inspected, some changes will be made, while others are correctly built. It is understood that the ranch management has in general complied with the lease in a satisfactory manner. The Governor went from Hilo to Maunaloa on the railroad for Volcano House, and stopped with Julian Monsarret, manager of Kapapala ranch. From there he crossed the Kau desert to Manna Loa, and visited the crater of Mokuawewe.

In the party were Land Commissioner J. W. Pratt, Land Agent T. C. White and Dr. Tempest Anderson, the noted British volcanic expert. The party journeyed through Hoopa, Waahahu, Waiohulu, thence to the Kahuku ranch. The Governor was met at Kona by a delegation of citizens at the Hookena Courthouse and treated to a luau in his honor. Speeches followed and the children sang patriotic songs. The Governor also lunched at the house of Thomas Haue, principal of the Hookena school. Governor Frear and his party were entertained by Miss Ella Paris at Kealahouka.

In his visit to the crater of Mokuawewe, the Governor said he found vapors rising in various places, but no molten lava, also a cinder cone in the center of the crater. He also visited some of the tobacco plantations and spoke enthusiastically of the outlook for that industry on Hawaii. Governor Frear called attention to the fact that there was a luxuriant growth of young trees and ferns within the forest reserve lines, also in many places where cattle had overrun the hills, they had done but little damage to the forest or undergrowth.

## PROSPEROUS YEAR FOR OLD SOCIETY

Descendants of Patriots In Hawaii Increase Their Ranks

The annual meeting and installation of officers of the Hawaiian Society of the Sons of the American Revolution was held yesterday afternoon.

All old officers were re-elected and are as follows: President, Geo. B. Carter; vice president, Dr. Chas. B. Cooper; secretary, Lyle A. Dickey; treasurer, R. J. Pratt; registrar, Sidney Ballou. The members of the board of managers are G. P. Willey, C. H. Atherton and F. J. Lowrey.

The total membership at present of the society is 101, there being eight new members during the year, and one death. S. E. Bishop is the member mourned and the society passed a resolution offering sympathy to his family. The treasurer reported \$41.29 in the treasury and the various other reports were read and entered.

## RENTON REAPPOINTED

Governor Frear today announced the re-appointment of Henry H. Renton of Kohala, as a member of the prison board for West Hawaii.

## LOST

English bulldog; half brindle. Reward if returned to George Beckley, Diamond Head. 4340-11



## Monuments Safes, Iron Fence

Hawaiian Iron Fence and Monument Works

NEXT TO YOUNG BLDG., 176-190 KING ST. PHONE 237.

## MURDER INQUEST LONG DRAWN OUT

Evidence Obtained Points To Cummings And McCandless

The adjourned inquest into the death of Henry Wetherill was again continued last evening, and the greater part of the evidence obtained seemed to point to the two suspected men, Tom Cummings and Jim McCandless, being the authors of the crime.

No less than four witnesses swore that McCandless, Cummings and Wetherill were together in Mary McCandless' room within a few minutes of midnight on Monday.

The evident anxiety of the suspected men to prove an alibi is telling against them. They arrived at the Pleades about 1 o'clock on Tuesday morning and at once asked if Wetherill had returned to the ship. On being informed that the negro had not come back, both McCandless and Cummings told the watchman that they had left Wetherill at 10:30 o'clock and that they had not seen him later.

Last night Kaheana, alias "Waikiki," swore that he left Cummings, McCandless and Wetherill together at Mary McCandless' place shortly before midnight, thus corroborating the evidence given by several others. "Waikiki" at first denied that he knew anything about the matter, but broke down under cross-examination and told a straight story. He testified that he had met George Harbottle and Dan Kaal on Monday evening, and that they had consumed a bottle of gin at Aala Park.

"Waikiki" also testified that he and George Harbottle had a row over the "drinks," they having taken a couple of bottles of gin to the house with them, and that one of the women told him he would have to leave the place, his noise being too much to be borne. This was about half past eleven in the evening. "Waikiki" left the room and went downstairs, where he met Cummings and McCandless on the sidewalk. George Harbottle also came down, but Wetherill stood at the head of the stairs. After a short conversation with Cummings and McCandless, with whom he was acquainted, "Waikiki" said good-night and started for his home. Before he left, however, he saw the three sailors, Wetherill, McCandless and Cummings, go into Mary McCandless' room. This was a short while before midnight. This evidence has been corroborated in every witness who was present that night, save Cummings, yet the latter and McCandless state that they left Wetherill Monday evening not later than 10:30.

Jacob Richter, watchman on the Pleades, was recalled to give evidence on one of the minor points he had sworn to before.

Dr. McDonald gave his testimony regarding the examination of the body of the deceased, and named the wounds received. On account of the lateness of the hour, McCandless was not called as a witness. He will be heard this evening. The Coroner's Jury is expected to bring in a verdict tonight.

## DEATH AT SEA

One of the crew of the Mauna Loa, which arrived this morning, died as the vessel was approaching McGregor's landing on Maui. The deceased, who was a Chinese, had been engaged as a fireman and had been ill for a few days.

The man was confined to his bunk for a couple of days prior to his decease, and had been very weak. He expired shortly after the Mauna Loa reached Maui. A doctor was summoned from Waialua and he made an examination of the body and reported that the Chinese had died from heart failure.

The remains were brought on to Honolulu and, as no inquest was deemed necessary, will be buried today.

## BORN.

VON HAMM—June 17, 1909, to the wife of Conrad C. von Hamm, a daughter.

Bulletin Business Office Phone 256. Bulletin Editorial Room Phone 185.



# Oceanic Steamship Company

## TIME TABLE S.S. ALAMEDA

The steamers of this line will arrive and leave this port as hereunder:

Leave S. F.	Arrive Hon.	Leave Hon.	Arrive S. F.
JUNE 26	JULY 2	JUNE 16	JUNE 22
JULY 14	JULY 21	JULY 7	JULY 13
AUG. 7	AUG. 13	JULY 28	AUG. 3
		AUG. 18	AUG. 24

Rates from Honolulu to San Francisco—First class \$65; Round Trip \$110; Family Rooms extra.

### Wm. G. Irwin & Co., Ltd

OCEANIC S. S. CO. GENERAL AGENTS.

### PACIFIC MAIL STEAMSHIP Co. & TOYO KISEN KAISHA

Steamers of the above companies will at Honolulu and leave this port on or about the dates below mentioned:

FOR JAPAN AND CHINA:		FOR SAN FRANCISCO:	
SHIRAZA	JUNE 16	MONGOLIA	JULY 6
CHINA	JUNE 24	TENYO MARU	JULY 10
MANCHURIA	JULY 1	KOHKA	JULY 20
CHYO MARU	JULY 8	SHIRAZA	AUG. 7
ASIA	JULY 17	CHING	AUG. 17
MONGOLIA	JULY 28	MANCHURIA	AUG. 21

FOR GENERAL INFORMATION APPLY TO  
**H. Hackfeld & Co., Ltd.,** Agents

### AMERICAN-HAWAIIAN STEAMSHIP COMPANY.

Weekly Sailings via Tehantepec.  
FROM NEW YORK TO HONOLULU.  
Freight received at all times at the Company's Wharf, 41st Street, South Brooklyn.

FROM SAN FRANCISCO TO HONOLULU.  
MISSOURIAN, to sail JUNE 24  
Freight received at Company's wharf, Greenwich Street.

FROM SEATTLE AND TACOMA TO HONOLULU DIRECT.  
COLUMBIAN, to sail JULY 8  
For further information apply to  
**H. HACKFELD & CO., LTD.,**  
Agents Honolulu.  
C. P. MORSE,  
General Freight Agent.

FROM HONOLULU TO SAN FRANCISCO.  
PLEIADES, TO SAIL JUNE 15

### Canadian-Australian Royal Mail Steamship Company.

Steamers of the above line, running in connection with the CANADIAN PACIFIC RAILWAY CO. between Vancouver, B. C., and Sydney, N. S. W., and calling at Victoria, B. C., Honolulu and Suva, Fiji, and Brisbane, are DUE AT HONOLULU on or about the dates below stated, viz:

FOR FIJI AND AUSTRALIA:		FOR VANCOUVER:	
MAKURA	JUNE 27	AORANGI	JUNE 23
AORANGI	JULY 21	MARAMA	JULY 29
MARAMA	AUG. 29	MAKURA	AUG. 17

\*Will call at Penning Island.

Through Tickets issued from Honolulu to Canada, United States and Europe. For Freight and Passage and all general information, apply to  
**Theo. H. Davies & Co., Ltd. General Agents**

### Matson Navigation Company

Schedule S. S. HILONIAN, in the direct service between San Francisco and Honolulu:

ARRIVE HONOLULU		LEAVE HONOLULU	
JULY	7, 1909	JULY	13, 1909
AUGUST	4, 1909	ANGUST	10, 1909
SEPTEMBER	1, 1909	SEPTEMBER	7, 1909
SEPTEMBER	29, 1909	OCTOBER	5, 1909
OCTOBER	27, 1909	NOVEMBER	3, 1909
NOVEMBER	24, 1909	NOVEMBER	29, 1909
DECEMBER	22, 1909	DECEMBER	28, 1909

Passenger Rates to S. F.: First Cabin, \$60; Round Trip First Class \$110.00

The Steamship "LURLINE" of this line, carrying both Freight and Passengers, sails from San Francisco for this Port DIRECT on or about June 11th, 1909.

For further particulars apply to  
**CASTLE & COOKE, LTD., Agents.**

### Union-Pacific Transfer Co., Ltd.

Baggage Shipping  
Storage Wood  
Packing Coal

**PHONE 58**

Furniture and Piano Moving.

### Hustace-Peck Co., Ltd.

Phone 295. DRAYMEN 63 Queen Street. P. O. Box 212.  
Estimates Given on all kinds of teaming.

Dealers in  
FIREWOOD, STOVE, STEAM AND BLACKSMITH COAL.  
CRUSHED ROCK, BLACK AND WHITE SAND, GARDEN SOIL.  
HAY, GRAIN, CEMENT, ETC.

### Joseph A. Gilman,

SHIPPING AND COMMISSION MERCHANT.  
INSURANCE—FIRE AND MARINE.

Agent for ARTHUR SEWALL & CO., Bath, Maine;  
PARROTT & CO., San Francisco.

**FINEST FIT**  
and cloth of A-1 quality can be purchased from  
**SANG CHAN,**  
McCANDLESS BLDG.,  
P. O. Box 981. Telephone 831.

**McTighe Favorite**  
The Best Whiskey on the Market  
**THOS. F. MCTIGHE & CO., AGENTS.**  
101-105 KING ST.  
PHONE 140. P. O. BOX 755.

### BISHOP & CO.

ESTABLISHED IN 1858.  
BANKERS

Commercial and Travelers' Letters of Credit issued on the Bank of California and The London Joint Stock Bank, Ltd., London.

Correspondents for the American Express Company and Thos. Cook & Son.

Interest allowed on term and Savings Bank Deposits.

Claus Spreckels. Wm. G. Irwin.

### Claus Spreckels & Co.

BANKERS.  
HONOLULU, T. H.

San Francisco Agents—The Nevada National Bank of San Francisco. Draw Exchange on the Nevada National Bank of San Francisco.

London—The Union of London and New York—American Exchange National Bank.

Chicago—Corn Exchange National Bank.

Paris—Credit Lyonnais. Hongkong and Yokohama—Hongkong-Shanghai Banking Corporation.

New Zealand and Australia—Bank of New Zealand and Bank of Australasia.

Victoria and Vancouver—Bank of British North America.

Deposits received. Loans made on approved security. Commercial and Travelers' Credits issued. Bills of Exchange bought and sold.

### The Yokohama Specie Bank, Limited

Capital (Paid up) Yen 24,000,000  
Reserve Fund Yen 15,940,000

HEAD OFFICE, YOKOHAMA.

The bank buys and receives for collection bills of exchange, issues Drafts and Letters of Credit, and transacts a general banking business.

The Bank receives Local Deposits and Head Office Deposits for fixed periods.

Local Deposits \$25 and upwards for one year at rate of 4% per annum.

Head Office Deposits, Yen 25 and upwards for one-half year, one year, two years, or three years at rate of 5% per annum.

Particulars to be obtained on application.  
Honolulu Office—67 S. King Street, P. O. Box 168.

### The First AMERICAN SAVINGS AND TRUST CO

OF HAWAII, LTD.

SUBSCRIBED CAPITAL, \$200,000.00  
PAID UP CAPITAL, \$100,000.00  
President, Cecil Brown  
Vice President, M. P. Robinson  
Cashier, L. T. Peck

Office: Corner Fort and King Sts.  
SAVINGS DEPOSITS received and interest allowed for yearly deposits at the rate of 4% per cent. per annum.

### FIRE INSURANCE

THE B. F. DILLINGHAM CO LIMITED.

General Agent for Hawaii: Atlas Assurance Company of London, New York Underwriters Agency, Providence Washington Insurance Co. 4th FLOOR, STANGENWALD BLDG.

AGENTS FOR THE  
Royal Insur. Co. of Liverpool, Eng.  
Commercial Union Assurance Co., Ltd., of London, England.  
Scottish Union & National Ins. Co. of Edinburgh, Scotland.  
The Royal Rhine Ins. Co., Ltd.

### Alexander & Baldwin LIMITED.

OFFICERS AND DIRECTORS.  
H. P. Baldwin, President  
J. B. Castle, Vice President  
W. M. Alexander, Second Vice Pres.  
J. P. Cooke, Third Vice Pres. and Manager  
J. Waterhouse, Treasurer  
E. E. Paxton, Secretary  
W. O. Smith, Director  
J. R. Galt, Director  
W. R. Castle, Director

### SUGAR FACTORS, COMMISSION MERCHANTS AND INSURANCE AGENTS

Agents for  
Hawaiian Commercial & Sugar Co. Haiku Sugar Company.  
Paia Plantation.  
Maui Agricultural Company.  
Hawaiian Sugar Company.  
Kahuku Plantation Company.  
Kahului Railroad Company.  
Halekala Ranch Company.  
Honolulu Ranch.

### Castle & Cooke, Ltd

Honolulu, T. H.

### SHIPPING AND COMMISSION MERCHANTS, SUGAR FACTORS

and GENERAL INSURANCE AGENTS

representing  
Ewa Plantation Co.  
Waiulua Agricultural Co., Ltd.  
Kohala Sugar Co.  
Waimea Sugar Mill Co.  
Apolaha Sugar Co., Ltd.

Fulton Iron Works of St. Louis  
Blake Steam Pumps  
Weston's Centrifugals  
Babcock & Wilcox Boilers  
Green's Fuel Economizers  
Marsh Steam Pumps  
Matson Navigation Co.  
Planters' Line Shipping Co.

### Wm. G. Irwin & Co. LIMITED.

SUGAR FACTORS and COMMISSION AGENTS.

Wm. G. IRWIN, President  
JNO. D. SPRECKELS, 1st V. Pres.  
W. M. GIFFARD, 2d V. Pres.  
H. M. WHITNEY, Treasurer  
RICHARD IVERS, Secretary  
D. G. MAY, Auditor

Agents for  
Oceanic Steamship Co., San Francisco, Cal.  
Baldwin Locomotive Works, Philadelphia, Pa.

Hakalua Plantation Co., Hilo Sugar Co., Honolulu Plantation Co., Hutchinson Sugar Plantation Co., Kilauea Sugar Plantation Co., Olowalu Company, Paauhau Sugar Plantation Co., Waimanalo Sugar Co.

### C. Brewer & Co., Ltd.

QUEEN STREET, HONOLULU, T. H.

AGENTS FOR:  
Hawaiian Agricultural Co., Ooakala Sugar Plant Co., Onomea Sugar Co., Honoumou Sugar Co., Waiuku Sugar Co., Pepeekeo Sugar Co., The Planters' Line of San Francisco Packets.

LIST OF OFFICERS:  
C. M. Cooke, President; George Robertson, Vice President and Manager; E. F. Bishop, Treasurer and Secretary; F. W. Macfarlane, Auditor; P. C. Jones, C. M. Cooke and J. R. Galt, Directors.

### LIFE INSURANCE

Is not a Luxury; it is a Necessity. But you must have the BEST and that is provided by the famous and most equitable Laws of Massachusetts, in the

### New England Mutual Life Insurance Co.,

OF BOSTON, MASSACHUSETTS.

If you would be fully informed about these laws, address

### Castle & Cooke,

GENERAL AGENTS, HONOLULU, T. H.

### DAVID DAYTON

137 MERCANT STREET.

LOTS FOR SALE  
ON KAPIOLANI PARK ADDITION and other desirable localities.

For Sale at a Bargain—Premises at Hanalei on the beach, a two-story house and furniture, at a bargain.

### Miss Kate Woodard

1141 Fort Street.

Stamping, Embroidery and Notions. Shirtwaists, Gloves and Underwear. Orders taken for all kinds of fancy work. Telephone 357.

### Corporation Notices

#### NOTICE OF COPARTNERSHIP.

The undersigned, G. Nakamura, I. Yamamoto, M. Komeya, Y. Ishii, E. Iwashita, T. Mitamura, and U. Kobayashi, all of the City and County of Honolulu, Territory of Hawaii, and S. Koshima, of Hilo, Hawaii; M. Oyama, of Wailuku, Maui, and S. Kobayashi, of Kahului, Maui, hereby give notice that they have entered into and formed a general partnership; that the names and residences of each of the members of said co-partnership are as aforesaid; that the nature of the business of such co-partnership is to maintain and carry on a banking business in all its branches except as a bank of issue; that the firm name of said co-partnership is

#### "THE JAPANESE BANK"

and that the place of business of said co-partnership is at the mauka-awa corner of Smith and Hotel streets in the District of Honolulu, Island of Oahu, and City and County of Honolulu, Territory of Hawaii.

Dated at Honolulu this 15th day of June, A. D. 1909.

G. NAKAMURA, I. YAMAMOTO, M. KOMIYA, Y. ISHII, E. IWASHITA, T. MITAMURA, U. KOBAYASHI, S. KOSHIMA, M. OYAMA, S. KOBAYASHI, of Honolulu, Territory of Hawaii, and S. KOBAYASHI, of Kahului, Maui, and S. KOBAYASHI, of Wailuku, Maui, hereby give notice that they have entered into and formed a general partnership; that the names and residences of each of the members of said co-partnership are as aforesaid; that the nature of the business of such co-partnership is to maintain and carry on a banking business in all its branches except as a bank of issue; that the firm name of said co-partnership is

#### "THE JAPANESE BANK"

and that the place of business of said co-partnership is at the mauka-awa corner of Smith and Hotel streets in the District of Honolulu, Island of Oahu, and City and County of Honolulu, Territory of Hawaii.

Dated at Honolulu this 15th day of June, A. D. 1909.

G. NAKAMURA, I. YAMAMOTO, M. KOMIYA, Y. ISHII, E. IWASHITA, T. MITAMURA, U. KOBAYASHI, S. KOSHIMA, M. OYAMA, S. KOBAYASHI, of Honolulu, Territory of Hawaii, and S. KOBAYASHI, of Kahului, Maui, and S. KOBAYASHI, of Wailuku, Maui, hereby give notice that they have entered into and formed a general partnership; that the names and residences of each of the members of said co-partnership are as aforesaid; that the nature of the business of such co-partnership is to maintain and carry on a banking business in all its branches except as a bank of issue; that the firm name of said co-partnership is

#### "THE JAPANESE BANK"

and that the place of business of said co-partnership is at the mauka-awa corner of Smith and Hotel streets in the District of Honolulu, Island of Oahu, and City and County of Honolulu, Territory of Hawaii.

Dated at Honolulu this 15th day of June, A. D. 1909.

G. NAKAMURA, I. YAMAMOTO, M. KOMIYA, Y. ISHII, E. IWASHITA, T. MITAMURA, U. KOBAYASHI, S. KOSHIMA, M. OYAMA, S. KOBAYASHI, of Honolulu, Territory of Hawaii, and S. KOBAYASHI, of Kahului, Maui, and S. KOBAYASHI, of Wailuku, Maui, hereby give notice that they have entered into and formed a general partnership; that the names and residences of each of the members of said co-partnership are as aforesaid; that the nature of the business of such co-partnership is to maintain and carry on a banking business in all its branches except as a bank of issue; that the firm name of said co-partnership is

#### "THE JAPANESE BANK"

and that the place of business of said co-partnership is at the mauka-awa corner of Smith and Hotel streets in the District of Honolulu, Island of Oahu, and City and County of Honolulu, Territory of Hawaii.

Dated at Honolulu this 15th day of June, A. D. 1909.

G. NAKAMURA, I. YAMAMOTO, M. KOMIYA, Y. ISHII, E. IWASHITA, T. MITAMURA, U. KOBAYASHI, S. KOSHIMA, M. OYAMA, S. KOBAYASHI, of Honolulu, Territory of Hawaii, and S. KOBAYASHI, of Kahului, Maui, and S. KOBAYASHI, of Wailuku, Maui, hereby give notice that they have entered into and formed a general partnership; that the names and residences of each of the members of said co-partnership are as aforesaid; that the nature of the business of such co-partnership is to maintain and carry on a banking business in all its branches except as a bank of issue; that the firm name of said co-partnership is

#### "THE JAPANESE BANK"

and that the place of business of said co-partnership is at the mauka-awa corner of Smith and Hotel streets in the District of Honolulu, Island of Oahu, and City and County of Honolulu, Territory of Hawaii.

Dated at Honolulu this 15th day of June, A. D. 1909.

G. NAKAMURA, I. YAMAMOTO, M. KOMIYA, Y. ISHII, E. IWASHITA, T. MITAMURA, U. KOBAYASHI, S. KOSHIMA, M. OYAMA, S. KOBAYASHI, of Honolulu, Territory of Hawaii, and S. KOBAYASHI, of Kahului, Maui, and S. KOBAYASHI, of Wailuku, Maui, hereby give notice that they have entered into and formed a general partnership; that the names and residences of each of the members of said co-partnership are as aforesaid; that the nature of the business of such co-partnership is to maintain and carry on a banking business in all its branches except as a bank of issue; that the firm name of said co-partnership is

#### "THE JAPANESE BANK"

and that the place of business of said co-partnership is at the mauka-awa corner of Smith and Hotel streets in the District of Honolulu, Island of Oahu, and City and County of Honolulu, Territory of Hawaii.

Dated at Honolulu this 15th day of June, A. D. 1909.

G. NAKAMURA, I. YAMAMOTO, M. KOMIYA, Y. ISHII, E. IWASHITA, T. MITAMURA, U. KOBAYASHI, S. KOSHIMA, M. OYAMA, S. KOBAYASHI, of Honolulu, Territory of Hawaii, and S. KOBAYASHI, of Kahului, Maui, and S. KOBAYASHI, of Wailuku, Maui, hereby give notice that they have entered into and formed a general partnership; that the names and residences of each of the members of said co-partnership are as aforesaid; that the nature of the business of such co-partnership is to maintain and carry on a banking business in all its branches except as a bank of issue; that the firm name of said co-partnership is

#### "THE JAPANESE BANK"

and that the place of business of said co-partnership is at the mauka-awa corner of Smith and Hotel streets in the District of Honolulu, Island of Oahu, and City and County of Honolulu, Territory of Hawaii.

Dated at Honolulu this 15th day of June, A. D. 1909.

G. NAKAMURA, I. YAMAMOTO, M. KOMIYA, Y. ISHII, E. IWASHITA, T. MITAMURA, U. KOBAYASHI, S. KOSHIMA, M. OYAMA, S. KOBAYASHI, of Honolulu, Territory of Hawaii, and S. KOBAYASHI, of Kahului, Maui, and S. KOBAYASHI, of Wailuku, Maui, hereby give notice that they have entered into and formed a general partnership; that the names and residences of each of the members of said co-partnership are as aforesaid; that the nature of the business of such co-partnership is to maintain and carry on a banking business in all its branches except as a bank of issue; that the firm name of said co-partnership is

#### "THE JAPANESE BANK"

and that the place of business of said co-partnership is at the mauka-awa corner of Smith and Hotel streets in the District of Honolulu, Island of Oahu, and City and County of Honolulu, Territory of Hawaii.

Dated at Honolulu this 15th day of June, A. D. 1909.

G. NAKAMURA, I. YAMAMOTO, M. KOMIYA, Y. ISHII, E. IWASHITA, T. MITAMURA, U. KOBAYASHI, S. KOSHIMA, M. OYAMA, S. KOBAYASHI, of Honolulu, Territory of Hawaii, and S. KOBAYASHI, of Kahului, Maui, and S. KOBAYASHI, of Wailuku, Maui, hereby give notice that they have entered into and formed a general partnership; that the names and residences of each of the members of said co-partnership are as aforesaid; that the nature of the business of such co-partnership is to maintain and carry on a banking business in all its branches except as a bank of issue; that the firm name of said co-partnership is

#### "THE JAPANESE BANK"

and that the place of business of said co-partnership is at the mauka-awa corner of Smith and Hotel streets in the District of Honolulu, Island of Oahu, and City and County of Honolulu, Territory of Hawaii.

Dated at Honolulu this 15th day of June, A. D. 1909.

G. NAKAMURA, I. YAMAMOTO, M. KOMIYA, Y. ISHII, E. IWASHITA, T. MITAMURA, U. KOBAYASHI, S. KOSHIMA, M. OYAMA, S. KOBAYASHI, of Honolulu, Territory of Hawaii, and S. KOBAYASHI, of Kahului, Maui, and S. KOBAYASHI, of Wailuku, Maui, hereby give notice that they have entered into and formed a general partnership; that the names and residences of each of the members of said co-partnership are as aforesaid; that the nature of the business of such co-partnership is to maintain and carry on a banking business in all its branches except as a bank of issue; that the firm name of said co-partnership is

#### "THE JAPANESE BANK"

and that the place of business of said co-partnership is at the mauka-awa corner of Smith and Hotel streets in the District of Honolulu, Island of Oahu, and City and County of Honolulu, Territory of Hawaii.

Dated at Honolulu this 15th day of June, A. D. 1909.

### MAY BE CLASH ON ACCOUNT OF ORDER

### Federal Authorities Claim Control, Decisions

If it should be decided in the Circuit Court tomorrow that the United States Government has committed an error in issuing a deportation order for Shigenatsu Umemo, the Japanese woman who was to have sailed for her home country on the Siberia, it will start the biggest kind of a row between the Federal and County authorities.

Hackfeld & Co., agents for the Pacific Mail, on one hand are deeply involved, because the failure to execute a deportation order issued by the Department of Immigration means a monetary fine, unless the circumstances are beyond question of doubt as to the cause. And yet when Attorney Simons, counsel for the steamship company, appeared before Judge De Bolt he was emphatic in not wanting to assume responsibility in the woman's detention.

United States District Attorney Breckons holds that the writ of habeas corpus issued after the woman had been turned over to Captain Zeeder, and a receipt issued for her, is invalid and has no weight in the case. Therefore he refuses to appear again. Attorney Peters, acting for the woman's husband, insists the writ was perfectly legal, and no matter what the charges are relative to a violation of the Edmunds Act, the Government, he says, cannot deport an alien who has been a citizen of the United States for three years. He refers to the treaty between the United States and Japan as upholding him.

Inspector Halsey has nothing to say, but merely acted on the regulations of the Immigration Department, and will not resign. In fact he is a disgusted party, to think outside parties would dare to interfere with the government orders. It looks serious for somebody at least, and those who are well informed appear to think that the deportation order will stand, in which case the woman's support until the next vessel sails will be up to her attorney, and perhaps the steamship company will be called upon for an explanation.

It is understood Attorney Peters will make his plea on the grounds of recent decisions of the United States Supreme Court declaring part of the law covering deportation as unconstitutional. The reason given that the writ was not made returnable to a Federal court is that United States District Judge Dole is out of the city at present and could not hear the case. This involves another constitutional point of law, one which makes Judge De Bolt feel very dubious as to his jurisdiction in the case.

The Supreme Court of the United States has rendered a decision in two recent cases, U. S. vs. Joseph Kelleher and U. S. vs. Joseph Ullman, which both in its immediate and ultimate effects appears likely to be disastrous. A United States statute prohibits the importation into the United States of any alien woman for immoral purposes, provides for her deportation if found an inmate of a house of such a character, and provides for her deportation within three years after entering the United States, which offense is made a felony. It is the last clause which the Supreme Court has held unconstitutional on the ground that punishment of vice and the protection of the community belongs to the States, and that for the Federal Government to undertake this function is to usurp powers which under the Constitution do not belong to it.

IN THE CIRCUIT COURT OF THE First Circuit, Territory of Hawaii, In Probate, at Chambers. In the matter of the estate of John Marks Alexander, deceased. Before Judge Robinson. Order of Notice of Petition for Allowance of Final Accounts and Discharge of this Estate. On reading and filing the petition and accounts of Joseph Gomez, executor of the will of John Marks Alexander of Honolulu, T. H., deceased, wherein he asks to be allowed \$117.10 and he charges himself with \$261.41, and asks that the same may be examined and approved, and that a final order may be made of Distribution of the property remaining in his hands to the persons thereto entitled, and discharging him and his sureties from all further responsibility as such executor. It is ordered that Saturday, the 24 day of July, A. D. 1909, at 10 o'clock A. M. before the Judge of said Court at the court room of the said Court at Honolulu, Island of Oahu, he and the same hereby is appointed as the time and place for hearing said petition and accounts, and that all persons interested may then and there appear and show cause, if any they have, why the same should not be granted, and may present evidence as to who are entitled to the said property. And that notice of this order, in the English language, be published in the Evening Bulletin, a newspaper printed and published in Honolulu, for three successive weeks, the last publication to be not less than two weeks previous to the time therein appointed for said hearing. Dated at Honolulu this 27th day of May, 1909.

(Signed) WM. L. WHITNEY, Second Judge of the Circuit Court of the First Circuit.

Attent: L. P. SCOTT, Clerk of the Circuit Court of the First Circuit, 3223—May 28; June 4, 12, 18.

# BUSINESS DIRECTORY

**CONTRACTOR.**  
Otto Oss, Carpenter, Jobber and Contractor, Phone 1593, 1420 Victoria St. 4321-1m

**PLUMBING.**  
Yee Sing Kee—Plumber and Tinsmith, Smith St., bet. Hotel and Pauahi.

Bulletin Business Office Phone 256, Bulletin Editorial Room Phone 185.

**EMPLOYMENT AGENCY.**  
Japanese Employment Association, Nuunuu and Pauahi Sts. Call up phone 697 if you want a cook, good boy or servants.

**REPAIRING.**  
Woven Wire Mattresses repaired at the Factory Honolulu Wire Bed Co., 1250 Alapai St. Telephone 635. 3945-1f

## Oahu Railway Time Table.

**OUTWARD.**  
For Waianae, Waiaina, Kahuku and Way Stations—9:15 a. m., \*3:20 p. m.  
For Pearl City, Ewa Mill and Way Stations—7:30 a. m., \*9:15 a. m., \*11:05 a. m., \*2:15 p. m., \*3:20 p. m., \*5:15 p. m., \*9:30 p. m., \*11:00 p. m.  
For Wahiawa—9:15 a. m. and \*5:15 p. m.

**INWARD.**  
Arrive Honolulu from Kahuku, Waiaina and Waianae—\*8:36 a. m., \*5:31 p. m.  
Arrive in Honolulu from Ewa Mill and Pearl City—7:46 a. m., \*8:36 a. m., \*10:38 a. m., \*1:40 p. m., \*4:31 p. m., \*5:31 p. m., \*7:30 p. m.  
Arrive Honolulu from Wahiawa—\*8:26 a. m. and \*5:31 p. m.

\* Daily.  
† Ex. Sunday.  
‡ Sunday Only.

The Haleiwa Limited, a two-hour train (only first class tickets honored), leaves Honolulu every Sunday at 8:22 a. m.; returning arrives in Honolulu at 10:10 p. m. The Limited stops only at Pearl City and Waianae.  
G. P. DENISON & C. SMITH.

## Fast Schooner CONCORD

Sailing for  
KAPUNA, HONOPIU, KAILUA and HOOKENA  
From Sorenson's Wharf.  
Apply on Board or to  
HAWAIIAN BALLASTING CO., Agt.  
Telephone 280, Maunakea St., below King. P. O. Box 820.

**Wong Wong,**  
CONTRACTOR and BUILDER.  
PLUMBING and PAINTING.  
Office: Honolulu Painting Co., 221 King St.; P. O. Box 914.

**The Encore Saloon**  
Try a drink at the new place and have MIKE PATTON serve you.  
COR. HOTEL and NUUANU.

**ICE**  
manufactured from pure distilled water. Delivered to any part of city by courteous drivers.

**OAHU ICE AND ELECTRIC CO.,**  
Kewalo. Telephone 628.

**Ice**  
Delivered to residences and offices at 25c per hundred in 10-lb. lots if more.  
W. O. BARNHART,  
133 Merchant St.,  
Tel. 146.

**BUILDING MATERIAL**  
OF ALL KINDS.  
DEALERS IN LUMBER.

**ALLEN & ROBINSON,**  
Queen Street :: :: Honolulu.

**M. Phillips & Co.**  
Wholesale Importers and Jobbers  
EUROPEAN AND AMERICAN DRY GOODS  
FORT and QUEEN STS.

**S. SAIKI,**  
Bamboo Furniture Made to Order.  
Picture Framing a Specialty.  
563 S. BERETANIA ST.  
TELEPHONE 497.

**HONOLULU IRON WORKS**  
Improved and Modern SUGAR MACHINERY of every capacity and description made to order. Boiler work and RIVETED PIPES for irrigation purposes a specialty. Particular attention paid to JOB WORK, and repairs executed at shortest notice.

**Steinway**  
AND OTHER PIANOS  
THAYER PIANO CO.  
164 HOTEL STREET.  
Phone 718.  
TUNING GUARANTEED.

**The J. CARLO**  
LOAN OFFICE  
Fort Street near Hotel

"For Rent" cards on sale at the Bulletin office.

### AMUSEMENTS

## ALOHA PARK

OPEN AIR

## Motion Pictures

OPPOSITE THE EMPIRE.

Admission ..... 10c  
Reserved ..... 15c

## ART THEATER

New Feature Film.

## The Octoroon

Change of program three times a week—Monday, Wednesday and Friday.

## THE EMPIRE

## MOTION PICTURES

Thorough ventilation, comfortable chairs.

TWO SHOWS DAILY.

Admission 10c, 15c, 25c.

## Park Theater

Fort Street and Chaplain Lane  
Open Air Motion Pictures

FORT, BELOW BERETANIA ST.  
Program Changed

3—TIMES A WEEK—3

Admission ..... 10 cents  
Children ..... 5 cents  
Reserved Seats ..... 15 cents

## Savings Grow Rapidly

Put a few dollars from your earnings each month into our savings department and you will reap a rich harvest for the autumn days. We pay 4 1/2 per cent.

## Bank of Hawaii, Ltd.,

Fort and Merchant Sts.  
Capital and Surplus,  
\$1,000,000.



Genuine Swedish and Electrical Massage

**K. SASAI,**  
Fukuokayo Hotel, Liliha Street.  
Telephone 505.

**THE Chas. R. Frazier Company**  
FOUR ADVERTISERS  
Phone 371. 122 King St.

## BENNY & CO., Ltd.,

AGENTS FOR THE

## WHITE Sewing Machine

1266 Fort St. Phone 488.

## WAIKIKI INN

"The Finest Bathing on the Beach."  
Meals At All Hours.

WINES, LIQUORS, AND CIGARS.  
W. C. BERGIN, Proprietor.

## The Manhattan Cafe

Meals and Short Orders at All Times of the Day and Night. We Never Sleep.  
FORT ST. NEAR HOTEL.  
R. Wm. WARHAM, Prop.

**P. H. BURNETTE**  
Counr. of Deeds for California and New York; NOTARY PUBLIC; Grant Marriage Licenses; Draws Mortgages, Deeds, Bills of Sale, Leases, Wills, Etc. Attorney for the District Courts. 79 MERCHANT ST. HONOLULU; PHONE 310.

We have for sale—Back Set Ranges, size 4 to 9 ft.; Bridge & Beach "Superior Stoves;" Quick Meal and Perfection oil stoves; Farmer's Brothers, Camp and Laundry stoves. Phone 211. EMMELUTH & CO., LTD., 145 King St.

**The J. CARLO**  
LOAN OFFICE  
Fort Street near Hotel

"For Rent" cards on sale at the Bulletin office.

### AMUSEMENTS

HAWAIIAN OPERA HOUSE.  
June 14, 18, and 22.

## WITHERS,

"THE JOACHIM OF THE CELLO."  
WITH HIS COMPLETE COMPANY OF EUROPEAN CONCERT CELEBRITIES, INCLUDING  
Madame SOBRINO, Prima Donna Soprano, Covent Garden;  
Mr. CHARLES BENNETT, The Eminent American Baritone;  
Mme. MARGUERITE ELLZ, F. R. A. M., Solo Pianiste.  
Seats on sale at Bergstrom Music Co. Prices, \$1.50, \$1.00, 75c, and 50c.

## EXERCISES HELD AT ST. ANDREWS

## Salutarian Of Class Speaks In Hawaiian Before Audience

Another interesting and well prepared program was given through last night in St. Andrew's Priory, where five graduates were given diplomas. Miss Fannie Kalekua, the salutarian, spoke in Hawaiian, and won the admiration of those who understood the language. Miss Cummins read a well-written paper. In the paper of the valedictorian, appeared the motto of Kamehameha the Great, which reads, "Imua e na Poiki a Ima i ka Wai Aawa," which, translated, reads as follows: "Forward, brethren, till ye drink the bitter waters." Before closing Bishop Rastarick outlined the work and the intention of the Priory school in the education of young women of the islands. Light refreshments were served in the Priory, after which a dance was in order.

## OPERA HOUSE TONIGHT

PROGRAM.

1. Introduction and Polonaise (Chopin (For violoncello and Piano.)  
Mme. Elzy and Mr. Withers.
  2. Recitative and Air, "O Rudder Than the Cherry".....Handel  
Mr. Charles Bennett.
  3. Aria from "Ernani".....Verdi  
Madame Sobrino.
  4. Sonata in A Minor.....Beethoven (1746-1805)  
(Violoncello)  
Mr. Herbert Withers.
  5. Piano Solo:  
(a) "Prelude".....Blumenfeld  
(b) "Papillons".....M. Rosenthal  
Mme. Marguerite Elzy.
  6. Two Songs:  
(a) "Forethought".....Lambert  
(b) "Rolling Down to Rio".....German  
Mr. Charles Bennett.
  7. Songs:  
(a) "Swan".....Greig  
(b) "Love Me".....Chopin viardot  
Madame Sobrino.
  8. Cello Solo:  
(a) "Romance".....Arensky  
(b) "Am Springbrunnen".....Davidoff  
Mr. Herbert Withers.
- Seats on sale at Bergstrom Music Co.

## CRICKETERS TO MAKE TOUR OF MAUI IN AUGUST.

The meeting of the Cricketers which was held at the Scottish Thistle Club yesterday afternoon was well attended and the greatest interest was shown in the scheme to send a team to Maui.

Most of those present wanted to make the trip, and if all the players who are keen on the proposition can arrange for leave, there will be a big bunch of Honolulu cricketers on the steamer passenger list in the near future.

Although no definite date was fixed for the trip it is understood that the team will leave here early in August, and it will be arranged so that the least time possible will be spent on the excursion. The Maui people are very keen on the idea, and many of those who do not play tennis or polo think that the good old English game should be played at the same time that the valley island.

And if it could be arranged so, a special steamer would be in order, as the cricketers and racket men will form a very large party of sports, who, with their friends, would pretty well fill up one of the smaller boats. Then, if the local gunners could only arrange to send a team along, the joy would be complete, and Maui from one end to the other would be en fête.

The local cricketers are going in for hard practice from now on, and as the team will be picked on present form, as far as possible, there should be keen competition among the players to make the team.

A strong team will have to be selected to make the trip, as some of the Maui bats take a lot of getting out, and it would never do for the Honolulu men to be beaten.

185 editorial rooms—256 business office. These are the telephone numbers of the Bulletin office.

# WANTS

ONE CENT A WORD

**WANTED**  
Wanted to Rent—Furnished cottage with three bed rooms; responsible party. Address C. G. Clean wiping rag at the Bulletin office.

**SITUATION WANTED**  
Japanese Private Cooking School—Families or hotels supplied with cooks. C. M. Matzie, 1457 Auld Lane. Phone 1264.  
Young man, experienced stenographer, desires position; no objection to country. Address J. M., this office. 4337-4f

**LOST**  
Certificate of deposit No. C3104 on Bishop & Co's Bank, Honolulu, in favor of On Lee for \$1,000. Payment on same has been stopped. 4338-3f  
Watch fob; elk's tooth, engraved L. H. U. Return to this office and receive reward. 4337-1f  
Lady's gold watch; fob ribbon; return Quinn's plumbing shop and receive reward. 4336-1w

**FOR SALE**  
Ninety-Eighth Birthday.—Los Angeles, June 8.—Mrs. Rebecca Spring, prominent in Los Angeles society and woman's club work, today celebrated her ninety-eighth birthday, receiving her friends. She is said to be the woman who first gave aid to John Brown at Harper's ferry.  
Work For Hains—Osaling, N. Y., June 8.—Captain Peter C. Hains, Jr., serving a sentence in Sing Sing prison for killing William E. Annis, has been assigned to the position of accountant in the tin shops.

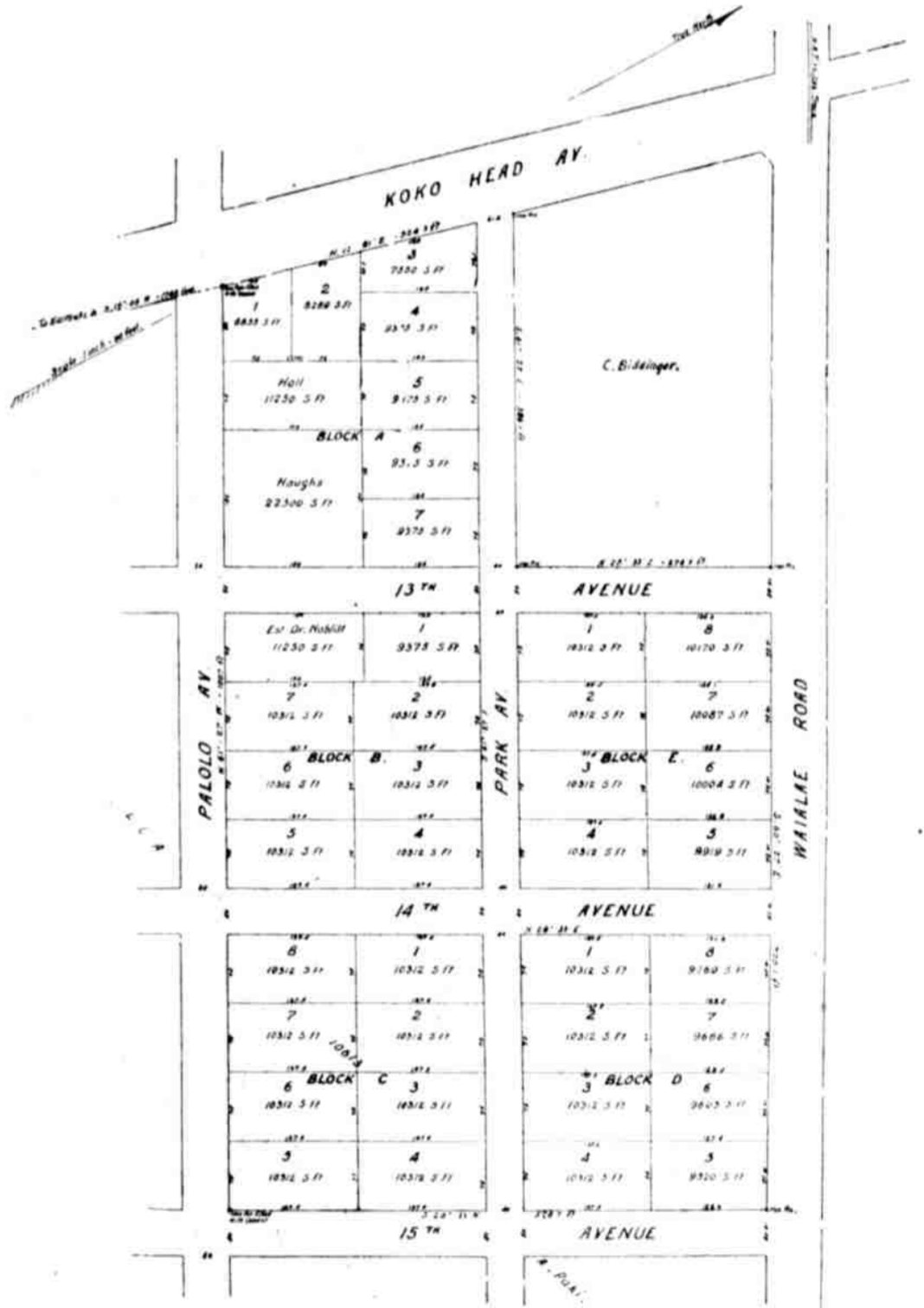
**TO LET**  
Comfortable, quiet room, well ventilated; cold and hot water; electric light; reasonable. Richard St., next to Dr. Murray's. 4338-1f  
Vineyard St.; 7-room cottage; electric lights. Only \$17.50. Apply 1280 Fort St. 4338-3f

**FOR SALE**  
Electric massage machine; operates on dry batteries; also gives Faradic and Galvanic current; full set of applicators. Inquire Vibrator, Bulletin. 4338-1w  
One and two-thirds acres of coffee land, with improvements thereon, situated in Houloua Kona, Hawaii. Address Mrs. H. Bell, Gen. Delivery, Honolulu. 4318-1m-wkly-1m  
One two-wheel cart, iron tire; one trap, four seater; one Studebaker buggy, ball-bearing, with rubber tires. Address A. B. C., this office. 4327-1f  
A fine business opportunity for business men. Address H. A., Bulletin office. 4337-3w  
The Weekly Edition of the Evening Bulletin gives a complete summary of the news of the day.

**TO LET**  
K. of P. cottages, 2 story, new, Union street and Garden lane; close to business; no yard to keep up; no car fare. Electric lights and gas. Apply to J. M. McChesney, 16 Merchant street. 4319-1f  
At the end of car line on the beach, furnished house, four bed-rooms; electric lights. Address "N," Bulletin office.  
Desirable, cool, mosquito-proof rooms. Apply 236 King st., bet. Alakea and Richards sts. 4305-1f  
Room and board in private family. Inquire at 732 Kinnou street, near Alapai. Terms reasonable. 4340-1m  
Two furnished rooms, 1071A Likehike St., near Campbell Lane.  
Two furnished rooms. Apply Mrs. D. McConnell, 1223 Emma St.

**FOR SALE**  
A large property at the entrance to beautiful Pauao Valley, with clear stream of mountain water running through it; one 8-room dwelling; one five-room cottage; electric lights and modern plumbing; both houses thoroughly renovated. Entire property will be sold for less than the cost of the buildings. Address "Home," this office. 4331-1f  
20,000 Coconuts just arrived on schooner Concord, from Fanning Island. Miller Salvage Co. P. O. Box 527. 4285-1f  
Choice collection of stamps (about 3,000). Address 1941 Bulletin office.

## Kaimuki Park Tract



SOLD—Block A—Lots 1, 2, 3, 4, 5, 6, 7. Block B—Lots 5, 6, 7. Block C—Lots 5, 6. Block D—Lots 1, 2. Block E—Lots 1-8.

Lots for Sale. \$400 Each. Easy Terms  
Real Estate Exchange, Ltd., 82 South King St.