

What is Best for
HAWAII
Is Best for Hilo

Hilo Tribune.

What is Best for
HILO
Is Best for Us

VOL. 8. HILO, HAWAII, HAWAIIAN ISLANDS, FRIDAY, OCTOBER 23, 1903. No. 51.

The Hilo Tribune.
PUBLISHED EVERY FRIDAY
OFFICE, KING STREET, HILO, HAWAII.
TRIBUNE BLOCK.
Hilo Tribune Publishing Company, Ltd.
Publishers and Proprietors.
President.....C. C. KENNEDY
Vice-President.....E. E. RICHARDS
Secretary-Treasurer.....L. W. HAWORTH
Editor.....A. E. SUTTON
Directors.....W. S. MCKENZIE, D. W. MARRIS
Advertisements accompanied by specific instructions inserted until ordered out.
Advertisements discontinued before expiration of specified period will be charged as if continued for full term.
Address all communications either to the Editorial or Business Departments of THE HILO TRIBUNE PUBLISHING COMPANY.
The columns of THE HILO TRIBUNE are always open to communications on subjects within the scope of the paper. To receive proper attention, each article must be signed by its author. The name, when desired, will be held confidential. THE HILO TRIBUNE is not responsible for the opinions or statements of correspondents.

ATTORNEYS-AT-LAW.
Wise & Ross,
ATTORNEYS-AT-LAW
Will practice in all Courts of the Territory, and the Supreme Court of the United States.
Office: TRIBUNE BUILDING, Bridge Street, HILO, HAWAII
C. M. LEBLOND W. H. SMITH
LeBlond & Smith
ATTORNEYS-AT-LAW
Hawaiian, Japanese, and Chinese Interpreters, and Notary Public in Office.
Office: SEVERANCE BUILDING, Opposite Court House, HILO, HAWAII
J. CASTLE RIDGWAY THOS. C. RIDGWAY
Ridgway & Ridgway
ATTORNEYS-AT-LAW
Collectors of Patents General Law Practice HILO, HAWAII.
Notary Public in Office.
OFFICE: Waianuenu and Bridge Streets

PHYSICIANS.
Dr. Henry Hayes
PHYSICIAN AND SURGEON
Diseases of the eye
Hours: 8:00 to 10:00 a.m. 4:00 to 5:00 p.m. 7:00 to 8:00 p.m.
Sunday: 10:00 a.m. to 12:00 noon.
Telephone 193.
Waianuenu Street

Milton Rice, M. D.
PHYSICIAN AND SURGEON
Office, Waianuenu St.
Hours: 8:30 to 10:30 a.m.; 2-4 and 7-9 to 8:30 p.m. Sundays, 9 to 11 a.m.

REAL ESTATE, ETC.
I. E. RAY
ATTORNEY-AT-LAW AND NOTARY PUBLIC
Waianuenu St. Hilo, Hawaii

DENTISTS.
M. Wachs, D. D. S
DENTIST
Office Hours: 9 to 12, 1 to 4.
HILO, HAWAII

HOW TO MAKE MONEY.
We offer you an investment guaranteed by two Trust Companies. It may make you rich. This is no scheme or fake. Send \$2.00 for INVESTMENT CERTIFICATE. If you are not satisfied upon investigation we give you your money back. WELTNER & DUNN, Fiscal Agents, 60 Broadway, New York.

A. H. JACKSON
FIRE AND LIFE INSURANCE
AGENT FOR NEW YORK LIFE
WAIANUENU STREET, HILO
ESTABLISHED 1858.

BISHOP & CO.
Bankers.
HONOLULU OAHU, H. I.
Transact a General Banking and Exchange business
Commercial and Traveller's Letters of Credit issued, available in all the principal cities of the world.
Special attention given to the business entrusted to us by our friends of the other Islands, either as Deposits, Collections Insurance or requests for Exchange.

LEGAL NOTICES.
United States of America } ss.
Territory of Hawaii }
In the Circuit Court of the Fourth Circuit.
AT CHAMBERS—IN PROBATE.
In the matter of the estate of JOHNSON NICKEUS, deceased.
The petition and accounts of the Administrator of the estate of said deceased having been filed wherein he asks that his accounts be examined and approved, and that a final order be made of distribution of the property remaining in his hands to the persons thereto entitled; that the heirs of said estate may be ascertained and declared, and discharging him from further responsibility as such Administrator.
It is ordered that Tuesday, the 10th day of November, 1903, at 9 o'clock a. m., at Chambers, in the Courtroom of this Court, at South Hilo, Hawaii, be and the same is appointed as the time and place for hearing said petition and accounts, and that all persons interested may then and there appear and show cause, if any they have, why the prayer of the petition should not be granted.
Hilo, Hawaii, Oct. 6, 1903.
By the Court:
DANIEL PORTER, Clerk.
By Chas. Hitchcock, Deputy Clerk.
WISE & ROSS,
Attorneys for Petitioner. 49-4

United States of America } ss.
Territory of Hawaii }
In the Circuit Court of the Fourth Circuit.
TERM SUMMONS.
J. V. RAY, Plaintiff, vs. M. R. HIROCHI, Defendant.
The Territory of Hawaii; to the High Sheriff of the Territory of Hawaii, or his Deputy, the Sheriff of the Island of Hawaii, or his Deputy:
You are commanded to summon M. R. Hirochi, of Hilo, Hawaii, defendant, in case he shall file written answer within three months of the date of this summons, to be and appear before the said Circuit Court at the February Term thereof, to be held at South Hilo, Island of Hawaii, on Wednesday, the 17th day of February next, at 10 o'clock a. m., to show cause why the claim of J. V. Ray, plaintiff, should not be awarded to him pursuant to the tenor of his annexed petition.
And have you then and there this writ with full return of your proceedings thereon.
Witness the HON. GILBERT F. LITTLE, Judge of the Circuit Court of the Fourth Circuit at South Hilo, Hawaii, this 18th day of August, 1903.
DANIEL PORTER, Clerk.
By Chas. Hitchcock, Deputy Clerk.
I certify the foregoing to be a true copy of the Summons in said cause and that said Court ordered publication of the same for three months from the date hereof and continuance of said cause until the February Term of this Court.
Dated Hilo, Hawaii, Oct. 13, 1903.
DANIEL PORTER, Clerk.
By Chas. Hitchcock, Deputy Clerk.
WISE & ROSS,
Attorneys for Plaintiff. 50-310.

Trade Unions Meetings.
FEDERATION NO. 1—1 and 3 Monday each month.
FEDERATION NO. 2—2 and 4 Monday each month.
LABOR COUNCIL—1 and 3 Friday each month.
CARPENTERS—2 and 4 Friday each month.
HACKMEN and TEAMSTERS—1 and 3 Thursday each month.
PAINTERS and DECORATORS—2 and 4 Thursday each month.
LONGSHOREMEN—2 and 4 Wednesday each month.
H. KENDAL,
President Hilo Trades and Labor Council, Hilo, Hawaii, Oct. 2, 1903.
Catholic Services.
CATHOLIC CHURCH, BRIDGE STREET.
Sundays—Holy Mass at 7, 9 and 10:30 a. m.
At 7 a. m. Portuguese sermon.
At 9 a. m. English sermon.
At 10:30 a. m. Hawaiian sermon.
At 7 p. m., Rosary, Portuguese sermon and Benediction.
Week Days—Holy Mass every day at 6 a. m.
Every Sunday afternoon English instruction for boys and girls at Brother's and Sister's schools respectively, from 2 to 3 p. m.
Day or night the Catholic clergy will attend to the wants of the faithful.
FATHER OLIVER,
Parish Rector.

Hilo Electric Light Co., Ltd.
Houses Wired and Lights Installed
In accordance with the rules of the National Board of Fire Underwriters.
A complete stock of
ELECTRICAL SUPPLIES
Fixtures, Shades, Table, Bed and Desk Lamps, etc., always on hand.
Fan Motors . . . \$15
Fan Motors, swivel frame, 18
Sewing Machine Motor 20
Power for operating them \$1 a month
Price of Lamps Reduced.
16-C. P. Lamps, 25c Each
Estimates furnished on all classes of Electrical Work and Contracts taken to install apparatus complete.

Notice to Creditors.
United States of America } ss.
Territory of Hawaii }
In the Circuit Court of the Fourth Circuit.
AT CHAMBERS—IN PROBATE.
In the matter of the Estate of LILIHANA I. (w.), deceased.
Notice is hereby given that the undersigned has been appointed Administrator of the estate of Lilihana I. (w.), of Puuoe, Hilo, Hawaii, deceased.
All creditors of said deceased are hereby notified to present their claims, whether secured or unsecured, duly verified and with proper vouchers, if any, to the undersigned in Hilo, Island and Territory of Hawaii, within six months from the date of this notice, or such claims, if any, will be forever barred.
Hilo, Hawaii, T. H. Oct. 2, 1903.
W. GEO. KAIHENUI,
Administrator.
F. S. LYMAN & R. A. LYMAN,
Attorneys. 48-4

Olelo Hoolaha!
Owau o Kalua Holi, o Kukuihaele, Hamakua, Mokupuni o Hawaii, Teritori o Hawaii. Ke kua loa nei ana ma ke akea, i ke kua kudala a Hope Makai Nui J. W. Moanani, i kua aina hoolimalima, e waiho nei ma Waikoeke, Hamakua. Oia, aole loa he kuleana o Aona (pake) i ua aina nei, a maluna iho o ka mea nana e koho no pako, no ke komohewa me ke kuleana ole ke hiki aku i ka la 31 o October, A. D. 1903.
I. KALUA HOLL,
Kukuihaele, Oct. 5, 1903. 49-3
Lost.
Hilo Electric Light Co's certificate of stock No. 123, dated Nov. 26, 1901, for twenty-five shares, in the name of Robert Duncan. Transfer of same stopped.
HILO ELEC. LIGHT CO.
Per N. C. WILLFONG, Treasurer.

Mortgagee's Notice of Foreclosure and Sale.
In accordance with the provisions of a certain mortgage made by Manoel Gonsalves Serrao and Maria Gonsalves Serrao of Paailo, in the Island and Territory of Hawaii, to Joao Antonio, of Hilo, in the Island and Territory of Hawaii, bearing date the 20th day of September, A. D. 1899, and recorded in the Office of the Registrar of Conveyances at Honolulu, T. H., on the 27th day of November, A. D. 1899, in Volume No. 199 at Pages 344 and 345 thereof, and which said mortgage has been for value duly assigned to the undersigned, notice is hereby given that the undersigned assignee of said mortgage intends to foreclose the same for a breach of the conditions thereof, to-wit: The non-payment of the principal sum and interest secured thereby when the same became due and payable.
Notice is also hereby given that on Tuesday, the 17th day of November, A. D. 1903, at 10 o'clock a. m. on said day, at the front door of the Court House, in the Town of Hilo, Island and Territory of Hawaii, the following real property conveyed by said mortgage, to-wit: All and singular that certain piece or parcel of land situate at Paailo, known as Lot No. 12 of Homestead Map No. 3, the same having been granted to the said Manoel Gonsalves Serrao by the Hawaiian Government by Patent No. 4241, dated the 21st day of September, A. D. 1898, and containing an area of 25.6 acres more or less, will be sold at Public Auction to the highest bidder for cash in U. S. Gold Coin to satisfy said mortgage.
JOSE G. SERRAO,
Mortgagee.
WISE & ROSS,
Attorneys for Mortgagee. 49-4

Hoolaha Hoopaa a Kua Molaki.
E like me na mea i ae like ia maloko o kekahi molaki i hana ia mawaena o Manoel Gonsalves Serrao me Maria Gonsalves Serrao o Paailo o ka Mokupuni a Teritori o Hawaii, a me Joao Antonio o Hilo o ka Mokupuni a Teritori o Hawaii, i hana ia ma ka la 20 o September, A. D. 1899, a i hoookomo ia i ke Keena o ka Luna Kakau Palapala ma Honolulu, T. H., ma ka la 27 o November, A. D. 1899, Buke Helu 199 aole 344 ame 345 oia Buke, a i hooolilo ia hoi ua Molaki nei i ka mea malalo iho nei; a nolaila ke hoolaha aku nei ka mea i hooolilo ia aku ia ua Molaki nei o hoopaa ana oia iua Molaki nei no ka uhaki ia ana o na ae like e like me na mea e hoike ia ana malalo iho nei.
No ka hoookaa ia ole o ke kumupaa a uku panei i ka manawa e like me ka mea i hoike ia i loko o ka Molaki.
Nolaila ke hoolaha ia aku nei ma ka Poalua ia 17 o November, A. D. 1903, ma ka hola 10 a. m., ma ka Puka o ka Hale Hoookoloko ma ke Kaona o Hilo, Mokupuni a Teritori o Hawaii, e kukaia ia i kekahi aina i hooke ia malalo iho nei i ka mea e koho kiekie ana no ke Dala Kuike no ka hoolaha ana hoi i ka Molaki; a o ka aina penei ka wehewehe ana: O kela aina apau e waiho ala ma Paailo, nona ka Helu 12 o na home hoookoonoona i hoike ia ma ka Palapala Aina Hoookoonoona Helu 5, a i hooolilo ia mai hoi ia Manoel Gonsalves Serrao e kua Apunui Hawaii ma ka Palapala Sila Helu 4241 ia 21 o September, A. D. 1898, a nona ua Eka he 25.6, oi aku paha a emi mai paha.
JOSE G. SERRAO,
Mea Paa Molaki.
WISE & ROSS,
Na Lolo o ka mea Paa Molaki.

Notice to Creditors.
United States of America } ss.
Territory of Hawaii }
In the Circuit Court of the Fourth Circuit.
AT CHAMBERS—IN PROBATE.
In the matter of the Estate of LILIHANA I. (w.), deceased.
Notice is hereby given that the undersigned has been appointed Administrator of the estate of Lilihana I. (w.), of Puuoe, Hilo, Hawaii, deceased.
All creditors of said deceased are hereby notified to present their claims, whether secured or unsecured, duly verified and with proper vouchers, if any, to the undersigned in Hilo, Island and Territory of Hawaii, within six months from the date of this notice, or such claims, if any, will be forever barred.
Hilo, Hawaii, T. H. Oct. 2, 1903.
W. GEO. KAIHENUI,
Administrator.
F. S. LYMAN & R. A. LYMAN,
Attorneys. 48-4

Olelo Hoolaha!
Owau o Kalua Holi, o Kukuihaele, Hamakua, Mokupuni o Hawaii, Teritori o Hawaii. Ke kua loa nei ana ma ke akea, i ke kua kudala a Hope Makai Nui J. W. Moanani, i kua aina hoolimalima, e waiho nei ma Waikoeke, Hamakua. Oia, aole loa he kuleana o Aona (pake) i ua aina nei, a maluna iho o ka mea nana e koho no pako, no ke komohewa me ke kuleana ole ke hiki aku i ka la 31 o October, A. D. 1903.
I. KALUA HOLL,
Kukuihaele, Oct. 5, 1903. 49-3
Lost.
Hilo Electric Light Co's certificate of stock No. 123, dated Nov. 26, 1901, for twenty-five shares, in the name of Robert Duncan. Transfer of same stopped.
HILO ELEC. LIGHT CO.
Per N. C. WILLFONG, Treasurer.

WOMEN MAKE THE ASCENT TO TOP OF MAUNA LOA

First to Make the Trip Return Satisfied, But Advise Their Sisters Not to Make the Jaunt.

The Crater Was Active as Ever Last Tuesday Night, With Lava Spreading on Main Crater Floor—Generally Believed There Will Be No Outbreak on the Mountain Side This Year.

Wednesday morning at seven o'clock, this week, the Mokuaweo-weo crater was still leading a strenuous life. At that hour the latest party to make the ascent of the mountain, including two ladies, Mrs. Q. H. Berry and Mrs. W. L. Howard of Honolulu, started on their home trip. At 5 o'clock Wednesday evening they were at the Volcano House, having been in the saddle eight hours, and having ridden over a trail, a large part of which was as the anarchy of countless volcanic eruptions had left the scorched and seamed and pitted sides of Mauna Loa. The eight hours' ride represented a descent of nearly 10,000 feet in altitude, and covered a winding course of perhaps forty-five miles altogether. The home ride followed the ascent of the mountain the day before, the hard part of which was included in the journey, from the Monday night camp, about twenty miles from the summit. This trip on Tuesday required a ride of over six hours. The splendid Hawaiian ponies, which were above the timber line for the first time, stepped the trackless wilderness of lava with the sure foot intuition of the mountain goat. Not a single misstep was made in the journey either going up or coming down, where a thousand chances lay in wait to undo both horse and rider. The down trip followed a night on the brink of the crater nearly 14,000 feet above the sea, where the party watched the playful antics of molten fire in a temperature midway between zero and freezing. Depending on a supply of wood previously taken up by the guide, but burned by another party which arrived at the summit Monday, the night was an unusually severe one for both men and women. By searching diligently enough sticks were found to boil beef tea on Tuesday evening and enough to make a pot of coffee next morning.

The party included the two ladies above mentioned, Dr. M. Wachs, Geo. M. Robertson, R. B. Knight and the editor of the TRIBUNE. They left the Volcano House Sunday afternoon and camped that night at Ainapou, where Julian Monsarrat, manager of the Kapapala ranch had ordered that the comforts of the dairy station be placed at the disposal of the ladies. A short ride Monday brought the party to the last camp within six hours ride of the summit. Here tents were pitched. Next morning early, everything was packed and the start was made for the crater at 6:25. At 12:25 the camp at the summit was reached. The climb up the mountain was one that will repay any one who enjoys a rough outing, whether the crater is active

or inactive. In many places the mountain side appears so rough and steep and so cut up with every form and shape of lava, as to be impassable for any beast except the mountain goat. Yet the trip is made with comfort and in our case was not marred by the slightest accident. The ladies rode the tortuous path with consummate grit. They soon learned to trust their steeds which could stick to pahoehoe as a fly sticks to a pane of glass.
Upon arrival at the summit the guide announced that the wood supply, including a tent pole, had been burned. This left us in what seemed at the moment a hopeless plight. Between glimpses at the spouting lava the wood proposition was variously discussed. Quick in the afternoon, the cold wind begins to get the best of the sun and by three o'clock some idea had been formed of what the night would be on the rocks with neither tent nor fire. The women folks were counselled and they said "we can stand it if the thermometer goes to zero." The men in the party then piled up lava stones, making a wall, over which was drawn the canvas to keep out the wind. The main lanai of this charming piece of tropical architecture was three feet from the big crater's edge and overlooked the flowing fountains of indescribable red fluid fire below. Everything in the outfit, including saddle blankets, boots and slickers, were spread upon the stones. The idea was to secure some of the effect and comfort obtainable from a Turkish divan and ameliorate to a degree the disturbing hardness and sharpness of a-a and pahoehoe, when used in place of a mattress. Rolled up in blankets the spectators viewed the scene of fire through the night.
The general picture was as has been described in this paper and others. The main action was in the center where the heaviest fountains were hurling to great heights their burden of hot boulders and molten lava. In this center was an enormous cone behind which, the fiery forces played as gunners behind impregnable barricades. At the left, near the edge of the lake of fire was a small volcanic cone in process of formation. To the extreme right was a still smaller cone, whose peculiarity was that it belched fire of an entirely different color from the others. This fire was like molten silver while the spray of the fountains was like red blood under a light.
During the night, a tremendous explosion occurred, completely demolishing the large central cone which was so conspicuous the evening before. The effect of this ex-

(Continued on page 4.)

A HOME COMPANY
CAPITAL \$50,000
Organized Under the Laws of the Territory of Hawaii.
The Hawaiian Realty and Maturity Co., Ltd.
Loans, Mortgages, Securities, Investments and Real Estate.
Homes Built on the Installment Plan
HOME OFFICE: McINTYRE BUILDING HONOLULU, T. H.
The Hawaiian Realty and Maturity Co., Ltd.
L. K. KENTWELL,
General Manager

Drink Budweiser

America's Greatest Favorite

H. HACKFELD & CO.,
Limited
SOLE AGENTS

The Pacific Guano Fertilizer Company

of Honolulu

are the manufacturers of the well known



FERTILIZERS

Fertilizers made to Order
Analysis Guaranteed

H. HACKFELD & CO.,
Limited
SOLE AGENTS

The Liederkrantz Cigar

Is To Be Had at All Dealers

THEO. H. DAVIES & CO., Ltd.
Wholesale Distributors.

THE HAWAIIAN FERTILIZER CO., Ltd.

SPECIAL FERTILIZER

For Cane, Vegetable and Banana Fields.

Soil Analysis Made and Fertilizer Furnished Suitable to Soil, Climate and Crop

FOR THE LAND'S SAKE USE OUR FERTILIZERS

Sulphate of Ammonium Nitrate of Soda
Bone Meal H. C. Phosphates
Sulphate of Potash Ground Coral

Fertilizers for sale in large or small quantities. Fertilize your lawns with our Special Lawn Fertilizer.

OFFICE: Brewer Block, Queen Street | P. O. BOX 767, HONOLULU | FACTORY: Beyond Prison

C. M. COOKE, President. G. R. CARTER, Vice-Pres. and Manager.
E. F. BISHOP, Treasurer. J. P. COOKE, Secretary.
G. H. ROBERTSON, Auditor. E. D. TENNEY, C. H. ATHERTON, Director.

WANT WHOLE BOND ISSUE.

Bid for Five Per Cents at Par With Two Per Cent Commission.

Honolulu, October 16.—Edward Pollitz & Co., of San Francisco, want the entire issue of the Territorial bonds at par, less two per cent commission, this being their bid in response to the advertisement of the bonds at five per cent interest. Their sealed bid arrived in the Doric's mail and it is still sealed, but two letters from the firm have been received by which the wishes of Edward Pollitz & Co., relative to the Hawaiian loan, are plainly revealed.

One of these letters came in the China's mail last week, but being mistaken for the sealed bid, which the Pollitzes had announced by cable as being sent by that steamer, it lay unopened in Treasurer Kepoikai's safe until the bid itself, identifiable by a large red seal, arrived in the Doric's mail on Wednesday. After holding a consultation with Governor Dole over the correspondence, the Treasurer yesterday afternoon gave it out for publication.

"This offer of Messrs. Edward Pollitz & Co. is better than the sale of the bonds at four and a half per cent in New York," Mr. Kepoikai said to an Advertiser reporter.

"There is a difference of one-half of one per cent in favor of San Francisco against New York in the rate of exchange. Besides there is a charge of one-quarter of one per cent for handling the payments in New York. These two items make three-fourths of one per cent difference, which wipes out the advantage of one-half per cent in the rate of interest.

"It would be a good thing to have all of the bonds taken outside of the Territory, because it would be so much fresh capital brought into the islands.

"That is perfectly right, too, what the Pollitzes say about their friendliness to Hawaii. If the bonds were held in San Francisco it would tend to increase the interest of the Pacific coast in Hawaiian affairs and secure favorable influence from that quarter for us in Washington.

"It is true also that the Eastern capitalists are not our friends. They would rather help Cuba and Porto Rico than Hawaii. The New York steamers come here and take away our sugar, but do not leave a dollar behind. This is not felt so much in Honolulu as at Kahului. They bring all their supplies along and do not buy even tobacco or so much as a pair of socks at the store. No, they come and go on schedule time and, from the captain to the oiler do not spend a bean ashore.

"Kahului had better times when the sugar was shipped in schooners."

Treasurer Kepoikai has hopes that Edward Pollitz & Co. will make relatively as earnest an effort to obtain the bonds at four and a half as they have done to secure the entire loan at the rate of five originally advertised.

Emissary With Canal Plan.

New York, Oct. 19.—The special emissary of the Colombian Government to conduct further negotiations for the construction of the Panama Canal arrived in New York today.

The Colombian proposition assures a favorable conclusion for American construction of the Panama Canal provided the United States pays \$25,000,000 and agrees that the territory through which the canal passes shall remain a part of Colombia. The Colombian representative will proceed immediately to Washington, where he will take up the discussion of the canal situation with the Federal authorities.

Cresceus Trots Mile in 1:59 3-4.

Wichita, Kan., Oct. 19.—The stallion Cresceus in a trial against time today trotted a mile in 1:59 3-4, thereby lowering his own mark of 2:02 1-4, made in 1901 and eclipsing the two-minute record made by Lou Dillon this season.

Aberdeen, Oct. 17.—A fire here caused the loss of \$1,000,000 and four lives.

F. W. BECKLEY VOTED OUT.

Action of Home Rulers at Meeting Held in Honolulu.

Honolulu, Oct. 16.—Fred W. Beckley, Speaker of the House of Representatives of the last Legislature, stated to a Bulletin reporter this morning that at a meeting of the Home Rule Executive Committee yesterday he had been voted out of that body and also out of the party. He presumed that this had been done because of his having given advice to the voters at a meeting of the Republicans in Kakaako Monday night to vote for the best men.

Said Mr. Beckley: "I am a Home Ruler and such I intend to remain, notwithstanding the efforts on the part of the present leaders to read me out of the party. The Home Rulers of Maui put me up and sent me to the Legislature, and until they cry quits and put me out I am with the party and working for its best good.

"As to being voted out of the Executive Committee that is a farce. I was never a member. While in the Legislature my name was proposed for membership. Bipikaue said I was a consulting member already, being a Representative and Speaker of the House. I told the members of the committee then that if they did not care to allow me to have a vote in the Executive Committee well and good. They were the bosses of the situation.

"It was not long before Robert W. Wilcox, at a meeting of the Executive Committee, declared me a member of that body without even consulting me and without the formality of a vote. You can therefore see that not having been a member of the committee I could not very well be read out. As to the action of reading me out of the party I care not one snap of my fingers. I am still a Home Ruler and that cannot take that away from me. I am not responsible to these men here. I have dared to stand up and tell the voters to vote for the best men, and I suppose this is why the action has been taken.

"I understand there is now being made an attempt to cover up this matter, but I have the information of the action taken yesterday and am not at all adverse about giving it out for publication. I am perfectly willing to stand on my own foundation as I have always done."

American Alaskan Claims Conceded.

London, England, Oct. 17.—The Alaskan Boundary Commission has verbally agreed to grant all the American contentions except that regarding the Portland Canal and a few small islands. The two principal points under discussion have been, first: which of several fjords marking the entrance to the Portland Channel was the Portland Channel meant in the boundary agreement of 1823 between Russia and England. Second: the summits of the coast mountains marking the boundary may not in some cases be less than thirty miles from the coast, in which case, according to the wording of the treaty, their summits would be the boundary line.

Although this leaves the status of important towns in doubt, the result is considered a victory for the American claimants. The formal agreement will be drawn later.

Washington, Oct. 17.—Secretary of the Navy Moody in his annual report stands sponsor for the broadest Naval program in the history of the country. He approves of Naval estimates for the coming fiscal year calling for an expenditure of \$102,500,000.

BABy'S COUGH MUST NEVER LINGER.—Nothing is more distressing than to see a helpless little infant suffering with a cough, and to be fearful of using a remedy which may contain some harmful ingredient. The makers of Chamberlain's Cough Remedy positively guarantee that this preparation does not contain opium in any form, or any other harmful substance. Mothers may confidently give this remedy to their little ones. It gives prompt relief and is perfectly safe. It always cures and cures quickly. The Hilo Drug Co. sells it.

Fresh Films Printing Paper and Photo Supplies

Received each month

We will develop your Plates or Films and print them for you. we are making a specialty of this work, and endeavor to give you the best possible results.

Kodaks and Cameras
at Eastern prices

And anyone purchasing a Camera from us will be instructed how to take and make a picture

HILO DRUG CO., Ltd., Hilo

SVEA INSURANCE COMPANY

Of Gothenburg, Sweden

Assets (Home Office) \$7,322,063.36
Assets in U. S. (for Additional Security of American Policy Holders) 656,678.43

Pacific Coast Department: EDWARD BROWN & SONS, General Agents
411-413 California St., San Francisco.

H. HACKFELD & CO., Ltd., Resident Agents. HILO

PRINTING

In printing the best results are obtained in a shop where the most skilled workmen are supplied with the best printing facilities . . . A greater variety of modern type faces cannot be found in any other print shop in the Hawaiian Islands than is carried by the Hilo Tribune . . . Nobody knows how to do better printing than is executed by the Hilo Tribune workmen

Your work is solicited whether it be a dozen cards for your vest pocket or a carload of supplies

TELEPHONE 21
HILO, HAWAII

HILO TRIBUNE PUBLISHING Co.

PLANTERS, ATTENTION!

SPECIAL ATTENTION IS CALLED TO THE FACT THAT

THE ONLY ORIGINAL AND CELEBRATED



FERTILIZER

Is that which has been manufactured for the past fifteen years exclusively by the

California Fertilizer Works
SAN FRANCISCO, CAL.

When purchasing be sure that in addition to the brand the name of the California Fertilizer Works is on every sack, otherwise you will not be getting the genuine article.

A large stock of Diamond A and our

XX HIGH-GRADE FERTILIZER

Is kept constantly on hand and for sale at San Francisco prices, plus only freight and actual expenses,

By Our Hilo Agents,

L. TURNER CO. LIMITED

Watches and Jewelry REPAIRED
ALL KINDS OF JEWELRY MADE TO ORDER AT

M. J. De Gouvea's Jewelry Store

JAS. M. SEAMANS, the well-known watchmaker, is to be found here, and will turn out all work in up-to-date manner. ALL WORK GUARANTEED.

BRIDGE STREET
Opposite Peacock & Co., - HILO

FIRST BANK OF HILO LIMITED.
Incorporated Under the Laws of the Territory of Hawaii.

CAPITAL, \$200,000.
PEACOCK BLOCK, HILO.

P. PECK, President.
C. C. KENNEDY, Vice-Pres.
JOHN T. MOIR, and Vice-Pres.
C. A. STORIE, Cashier.
A. E. SUTTON, Secretary.

DIRECTORS:
J. S. Canario, John J. Grace,
F. S. Lyman, H. V. Patten,
Wm. Pullar, W. H. Shipman.

Draw Exchange on
HONOLULU—The Bank of Hawaii, Ltd.
SAN FRANCISCO—Wells Fargo & Co. Bank
NEW YORK—Wells Fargo & Co's Bank.
LONDON—Glyn, Mills, Currie & Co.
Hongkong and Shanghai Banking Corporation: Hongkong, China; Shanghai, China; Yokohama, Japan; Hiogo, Japan.

Solicits the accounts of firms, corporations, trusts, individuals, and will promptly and carefully attend to all business connected with banking entrusted to it. Sells and purchases Foreign Exchange, issues Letters of Credit.

HILO MARKET CO., LIMITED.

Telephone No. 39.
BRIDGE ST. HILO, H. I.

Pacific Meat Market
FRONT ST., HILO, H. I.

Choice Cuts of
Beef, Mutton, Pork, Veal.

POULTRY of all Kinds

FRESH ISLAND BUTTER

Fine Fat Turkeys.
Sucking Pigs.

THE
Hilo Bakery

Makes Finest Bread.
Fresh Rolls and Buns always on hand : : :
Ice Cream for families

Wedding and Party Cakes a Specialty

PLANTERS' LINE
—OF—
SAILING VESSELS

Direct Line between SAN FRANCISCO AND HILO.

Bark St. Catharine, Capt. Saunders
Bark Amy Turner, Capt. Warland
Bark Martha Davis, Capt. McAllman

QUICK DISPATCH

For freight and passage apply to
WELCH & CO., Agents, San Francisco
C. BREWER & CO., Ltd., Agents, Honolulu, or

H. Hackfeld & Co., Ltd.
AGENTS, HILO.

E. WERY

Stone Mason and Brick Layer

is ready to take contracts for work in any part of the Island

Boiler Setting a Specialty...

E. WERY
Hilo, - - - Hawaii

PACIFIC TRANSFER CO.
Handle and Store **BAGGAGE**
126 KING ST. HONOLULU
Phone, Main 5

SAFE DEPOSIT BOXES
Rented by the Month or Year. Particulars on Application.

Oval Mats Oval Glass

We have added a Starr Oval and Circle Machine to our Framing Department... Over one hundred styles of Moulding constantly carried in stock

Wall, Nichols Co. Limited
Waianuenu Street

Matson Navigation Co.
The only Direct Line between San Francisco and Hilo, comprising the following Fast Sailors

Steamer ENTERPRISE
Bark ANNIE JOHNSON
Bark SANTIAGO
Bark RODERICK DHU
Bark MARION CHILCOTT
Ship FALLS OF CLYDE
Tug CHAS. COUNSELMAN
Launch LURLINE

and other Specially Chartered vessels makes this trip with at least one of these boats each month, carrying both Freight and Passengers.

For dates of sailing and terms, Call upon,
Wm. D. Spreckels & Bros. Co.,
Agents,
327 Market St., San Francisco.
R. T. GUARD, Agent,
HILO, HAWAII



KAMEHAMEHA CIGARS
LA PALMERA

Uncle Sam's Cigar Store
Waianuenu Street
HILO, - - - HAWAII

ROBERT INNES LILLIE
WHOLESALE
COMMISSION MERCHANT
AND BROKER
Exporter of Island Produce.
Books Kept and Audited.
Room 1, Spreckels' Block, Hilo

BUG THAT PREYS.

Lantana Patches Thoroughly Inoculated and Spread Arrested.
Honolulu, Oct. 14.—The paper on "Lantana Bugs," which is being prepared by R. C. L. Perkins, the government entomologist, for reading before the annual meeting of the Live Stock Breeders' Association, will contain many facts that will be hailed as harbingers of better days to come for graziers and agriculturists generally throughout the Territory.

It will be remembered that the first progenitors of the predatory insects were imported into Hawaii through the efforts of Professor Koehle, and represented the pith of his arduous work in Mexico along these lines. The insects arrived here in a desperate condition of vitality. Many were beyond resurrection or repair and only a scant half dozen or so showed signs of life.

The survivors were given the greatest attention by Mr. Perkins, who realized their possible value, and little by little they became, first convalescent but listless, then healthy, and at last voracious, their appetites turning aside, greatly to the entomologist's delight, from any diet but a constant one of lantana blooms.

Luckily among these founding malibinis both sexes were represented, and the multiplication of species, so rife among insect life, speedily took place. As fast as a new brood, if that be a correct term, became able to find for themselves, Mr. Perkins started out with a selection of the lustiest and carefully distributed them around the city and environs. Soon they were seen to be properly acclimated and ready to thrive in their new home and propagation at headquarters ceased. The introduction was effected.

The result within six months is patent to anybody who cares to pick a spray of lantana anywhere within a limit of three miles from the post-office, while in certain directions the radii of search may be considerably extended. The bug, a dark-colored fly about the size of an ordinary house fly, but less gauzy and infinitely more business-like in appearance, may readily be found in almost every sprig. It is a sluggish insect and does not readily leave the plant on which it dwells, lives and raises a predacious maggot which promptly attacks the plant from birth with a sublime and useful disregard of gratitude toward the author of its nourishment.

Every flower will be seen to have been attacked, its pistils and stamens demolished and its organs of reproduction destroyed or paralyzed. The leaves also show a brownish blight.

The lantana bug does not kill the plant, but it destroys the generative action of the flowers and absolutely prevents propagation. The plants affected will live for several years unless cut down and ploughed up, but they will be barren and the spread of the scourge is absolutely arrested in districts where the bug has started its work. 'All the grazer, planter or general culturist has to do to reclaim land, once the bug is established, is to demolish the lantana crop then growing on the land.

The bug multiplies rapidly and there is said to be no danger of its attacking other plants, there being no other growth of the verberna species on the islands, and the bug having been adapted or evolved precisely to meet the exigencies of the case. When all the lantana has ceased to flower the bug itself will be exterminated, its work completed.

It is Mr. Perkins' opinion that there cannot be examined a patch of lantana or a plant within Honolulu and its environs that is not infested and is not being rendered non-productive. Mr. Perkins' paper will treat the subject in exhaustive fashion when it is presented, which depends upon the return to health of the entomologist.

Dowie Forces Arrive.
New York, Oct. 17.—The trains bringing Dowie and his thousands of followers arrived today and the forces were at once distributed through the city. Meetings will be held at Madison Square Garden.

HOMESICK ISLANDERS.

Gilbertese People Have Left For Their Homes.
Honolulu, Oct. 17.—The British ship Isleworth, due to leave for Ocean Island via the Gilbert group this afternoon at 5 o'clock, will carry on board at least fifty homesick Gilbert Islanders, the happiest crowd that has ever left these Islands.

After an absence from their native sands of nearly twenty years the heart's desire of these poor people, many of whom are halt and maimed and nearly blind with old age and the colder temperature of Hawaii, many of whom had lost almost their last hope of seeing their "ain coun-tree" once more, they return with rejoicing, many of them helped by the generosity of their fellows who have been so fortunate as to scrape together more than they need for their own fare.

It seems that some must be left behind and the scenes of separation will be intensely pathetic. Those who must wait for public or private bounty to determine their lot of going or staying are making desperate efforts to raise the necessary \$5. For some time the Gilbert Islanders have controlled the industry of making so-called "native" hats, and today many of them have tried to sell their stock. The women are frantically endeavoring to finish partly braided hats, while their fingers, trembling with excitement, can hardly ply their task, while the men are vending their wares.

Most of the poor fellows have but little English at their command and wander through private gardens carrying their hats at a loss how to get rid of them. Three or four sold means all the world to them, the realization of a hope as great as that of a man liberated from prison, and their mute look of appeal should tempt many a dollar from sympathetic pockets.

Waiting on Diplomacy.
Yokohama, Japan, Oct. 14.—A conference of statesmen, including the Marquis Ito, was held here today. The crisis over the Japanese relations with Russia was fully canvassed, but it has been announced that the meeting brought out no fresh developments.

Cheefoo, China, Oct. 14.—There is an exodus of Chinese and Japanese from Manchuria, owing to the threatened war.

The population of Manchuria has been estimated at 15,000,000, made up of Chinese, Japanese, Koreans, Manchus and semi-savages. Of this number 700,000 are Manchus, whose chief occupation has always been as soldiers, and many of them are now in the employ of Russia as local police.

Sarafoff Killed.
Salonica, Oct. 17.—Boris Sarafoff, the Macedonian leader, has been killed.

Boston, Oct. 14.—The Americans today defeated the Pittsburg Nationals, thus gaining the world's baseball championship.

Fayal, Azores, Oct. 14.—A vessel arriving here today brings news of the loss of an American whaling bark. Fifteen of the crew were lost.

Yokohama, Japan, October 17.—Japan is determined to have a treaty with Russia setting forth its position in the Orient. This is delaying the agreement and promises new dangers for the already serious complications. Both countries are making active preparations for hostilities, though assurances are given that war will be averted.

NO OPIUM IN CHAMBERLAIN'S COUGH REMEDY.—Many cough cures contain opium. The effect of this drug is to diminish secretion of the mucus, and the relief afforded is only temporary. As soon as the effect of the opium passes off, the malady returns in a more severe form. The system is also weakened and rendered more susceptible to cold. Chamberlain's Cough Remedy does not contain opium in any form. It affords relief and leaves the system in a healthy condition. It always cures and cures quickly. The Hilo Drug Co. sells it.

BREAKFAST FOODS

MALTA VITA FORCE
CREAM WHEAT CRACKED WHEAT
GRAPE NUTS A. A. ROLLED OATS
ROYAL SEAL ROLLED OATS in 2-lb. tins

AGATE NICKEL STEEL WARE
WHITE ENAMEL WARE

HORNER'S BUTTER
L. TURNER CO. Ltd

Canadian-Australian Royal Mail S.S. Co.

Steamers of the above line running in connection with the Canadian Pacific Railway Company, B. C., and Sydney, N. S. W., and calling at Victoria, B. C., Honolulu, Suva and Brisbane, Q.; are **due at Honolulu** on or about the dates below stated, viz:

From Vancouver and Victoria B. C. For Brisbane, Q., and Sydney:	From Sydney, Brisbane (Q). For Victoria and Vancouver, B. C.:
MOANA.....SEPT. 26	AORANGI.....OCT. 21
AORANGI.....NOV. 21	MOANA.....NOV. 18
MOANA.....DEC. 19	MIOWERA.....DEC. 16

The magnificent new service, the "Imperial Limited," is now running daily BETWEEN VANCOUVER AND MONTREAL, making the run in 100 hours, without change. The finest railway service in the world.

Through tickets issued from Honolulu to Canada, United States and Europe For freight and passage, and all general information, apply to

Theo. H. Davies & Co., Ltd., Gen'l Agts.

WE WILL BOND YOU

Henry Waterhouse Trust Co., Ltd.
General Agents for
The United States Fidelity and Guaranty Co.
ASSETS OVER \$3,000,000.00.

Issues Surety Bonds for Federal and Territorial Office Holders, Bank Cashiers and Clerks, Mercantile Employees, Contractors, Administrators, Guardians, and General Judicial Bonds.

P. O. BOX 346, - - - HONOLULU

N. OHLANDT & CO.
MANUFACTURERS AND DEALERS IN
FERTILIZERS
Of Every Description.

Bone Meal, Sulphate of Potash, Sulphate of Ammonia, Alaska Fish Scrap,
Hoof Meal, Muriate of Potash, Nitrate of Soda, Double Superphosphate

High Grade Tankage.

Office: 127 Market Street. SAN FRANCISCO, CAL. Factory: Indiana & Yolo Sts.

Certificate of Analysis accompanies our shipments, which we guarantee to be correct.

R. T. GUARD,
Agent for the Hawaiian Islands

ORDERS FILLED AT SHORT NOTICE.

WE DESIRE..

To call your attention to a new collection of Hawaiian Songs just published by us entitled

"SONGS OF HAWAII"

This collection contains a number of old Songs and Hulas never previously published. This book is beautifully illustrated. Price \$1.50 postpaid. Order direct of the

BERGSTROM MUSIC CO., Honolulu
Box 576, Honolulu, T. H.

UP-TO-DATE PRINTING

NEW STYLES NEW TYPE FRESH INKS
THE HILO TRIBUNE
JOB PRINTING DEPARTMENT

The Hilo Tribune.

FRIDAY, - OCTOBER 23, 1903.

Entered at the Postoffice at Hilo, Hawaii, as second-class matter.

L. W. HAWORTH - Editor.

COUNTY REPUBLICAN TICKET.

- For Sheriff L. A. ANDREWS
For Clerk NORMAN K. LYMAN
For Auditor NATHAN C. WILLFONG
For Treasurer C. A. STORIE
For Assessor and Tax Collector GEORGE H. WILLIAMS
For County Attorney W. H. SMITH
For Surveyor THOS. E. COOK
For Members of the Board of Supervisors E. N. HOLMES, S. L. DESHA, JOSEPH VIERRA, W. G. WALKER, W. H. LAMBERT

THE burning of wood, even a tent pole, at the summit of Mauna Loa is as natural as rolling down hill. Especially is this true if night is at hand and the mercury hovers around the freezing point at sundown and one is blanketless and roofless and breadless.

THE LOST VOUCHERS.

Entire House of Representatives Will be Compelled to Testify.

Honolulu, Oct. 16.—Whoever is or are responsible for the custody and care of the vouchers of the expenses of the House of Representatives will now have an opportunity of giving an account of the documents which may acquit him or them of their criminal disposal.

Upper Oloa Plantation.

Dr. Nicholas Russel leaves by the Kinaiu today for Russia, where he will endeavor to raise money for the promotion of a large sugar plantation in upper Oloa.

(Continued from page 1.)

great flashes of light which have entranced Hilo observers.

Sometimes there would be a simultaneous upshoot of big geysers, which in their combinations gave suggestions of architectural design.

The pity of the whole display is that it must be witnessed after a laborious journey and from a height which produces a sickness in most people, more fierce than mal de mer.

After her return to Hilo, Mrs. Q. H. Berry said: "I am glad I made the trip to the summit. I am not sure that I would have gone had I known before hand the difficulties to be encountered."

Mrs. W. L. Howard said: "I consider the trip to Mauna Loa crater one of the most interesting I have ever taken. The hardships are nothing when the weather is favorable as on this trip."

There is no reason, say old timers, to expect an outbreak on the mountain side this time.

Canadians Refused to Sign Treaty.

London, Oct. 20.—The majority of the Alaskan Boundary Commission have signed the treaty. The Canadian members refused to sign.

St. James' Mission.

Twentieth Sunday after Trinity, 7:30 a. m., Holy Eucharist; 11 a. m., Matins and Sermon; 7:30 p. m., Evensong and Sermon.

SURETY ON BONDS

The Fidelity Insurance Company
CAPITAL STOCK, \$100,000
This Company Will Act as Your Bondsmen Surety Bonds on All Approved Plans
HONOLULU INVESTMENT CO., Ltd.
General Agent.

Hard Times on Rich.

In these days of complaint of hard times and reverses in business, it is interesting, says the New York Evening Post, to consider the possible vicissitudes in a millionaire's credit.

Jay Gould's famous exhibit of securities which he held in his vault on March 11, 1882, comprised, at face value, \$12,000,000 Missouri Pacific stock, \$6,000,000 Manhattan Elevated, \$23,000,000 Wabash common, \$10,000,000 New York and Metropolitan Elevated bonds and \$30,000,000 other bonds.

These instances only show how the fortunes of the very rich are affected by the fluctuations in prices, which cause as much worry as smaller losses suffered by the ordinary business.

Japan and Russia Active.

London, Oct. 20.—Eight steamers have been chartered from British ship-owners to carry coal to Japan. Peking, China, Oct. 20.—Most of the large Russian fleet has left Port Arthur.

St. Petersburg, Oct. 20.—Vice-Admiral Alexieff, Russia's viceroy in the Far East, is said to have demanded 50,000 more troops to strengthen Russia's position in Manchuria.

"SOLACE"
Is the name of a nice Bourbon Whiskey that will suit your taste. Try it.
Hilo Saloon and Liquor Co.
Sole Agents Island of Hawaii

G. W. Lockington
UNDERTAKING and FURNITURE
FRONT STREET, - HILO

PROCLAMATION.

WHEREAS, Act 31 of the regular session of 1903 of the Legislature of the Territory of Hawaii provides that an election shall be held on November 3rd, A. D. 1903, for the purpose of electing County officers, and that at least sixty days prior to the 3rd day of November, A. D. 1903, the Governor shall issue a proclamation for such election.

Now, therefore, in accordance therewith, I, Sanford B. Dole, Governor of the Territory of Hawaii, hereby give notice that a special election for County officers of the several Counties of the Territory of Hawaii, will be held on Tuesday, the 3rd day of November, A. D. 1903, between the hours of 8 o'clock a. m. and 5 o'clock p. m., in each County throughout the Territory, except the County of Kalawao, including Kalanapapa, Kalawao and Waikolu, on the Island of Molokai.

COUNTY OF OAHU—Including the Island of Oahu and all other Islands of the Territory not included in any other County.

COUNTY OF MAUI—Including the Islands of Maui, Molokai, Lanai and Kahoolawe and all other Islands within three nautical miles of the shores thereof, but not including that part of the Island of Molokai known as Kalaupapa, Kalawao and Waikolu.

COUNTY OF WEST HAWAII—Including the Districts of Kau, North Kohala, South Kohala, North Kona and South Kona, upon the Island of Hawaii, and all other Islands within three nautical miles of the shores thereof.

COUNTY OF EAST HAWAII—Including the Districts of Hilo, Puna and Hamakua, upon the Island of Hawaii, and all other Islands within three nautical miles of the shores thereof.

COUNTY OF KAUAI—Including the Islands of Kauai and Niihau, and all other Islands within three nautical miles of the shores thereof.

County officers to be elected:

FOR THE COUNTY OF OAHU
Seven Supervisors, two of whom shall be elected from the Fourth Representative District, two from the Fifth Representative District and three from the County at large.

Sheriff, who shall be Coroner ex officio.
County Clerk, who shall be Recorder ex officio.
Auditor.
Assessor and Tax Collector.
District Attorney.
Treasurer, who shall be License Collector ex officio.
Surveyor.

FOR EACH OF THE COUNTIES OF MAUI, WEST HAWAII, EAST HAWAII AND KAUAI.

Five Supervisors.
Sheriff, who shall be Coroner ex officio.
County Clerk, who shall be Recorder ex officio.
Auditor.
Assessor and Tax Collector.
District Attorney.
Treasurer, who shall be License Collector ex officio.
Surveyor.

The Registration Precincts are as follows:

FIRST DISTRICT.
Puna, Hilo and Hamakua, Island of Hawaii.

First Precinct—All of Puna except Keau and Oloa.

Second Precinct—The lands of Keau and Oloa.

Third Precinct—That portion of Hilo lying between Puna and Ponehahawai street and road and the line of its extension to the sea.

Fourth Precinct—That portion of Hilo lying between the Third Precinct and the Honoliuli stream.

Fifth Precinct—That portion of Hilo lying between Honoliuli stream and the land of Makahanaloa.

Sixth Precinct—That portion of Hilo lying between the Fifth Precinct and the bed of the Waikamalo Gulch.

Seventh Precinct—That portion of the First Election District lying between the Sixth Precinct and the bed of the Kaula Gulch.

Eighth Precinct—That portion of the First Election District lying between the Seventh Precinct and the land of Kalopa.

Ninth Precinct—That portion of the First Election District lying between the Eighth Precinct and the bed of the Malanahae Gulch.

Tenth Precinct—That portion of the First Election District lying between the Ninth Precinct and Kohala.

SECOND DISTRICT.

Kohala, Kona and Kau, Island of Hawaii.

First Precinct—North Kohala.

Second Precinct—South Kohala.

Third Precinct—That portion of North Kona lying north of the northerly boundary of Holuaoloa and a line running from the north corner of Holuaoloa to the south corner of Punaahulu.

Fourth Precinct—That portion of the Second Election District bounded by the Third Precinct, Hamakua, Kau, the boundary of Keaunohu from Kau to Honanuanu, the north boundary of Honanuanu and the sea.

Fifth Precinct—That portion of South Kona lying between Keel and Olelo-moana.

Sixth Precinct—That portion of South Kona lying between the Fifth Precinct and Kau.

Seventh Precinct—That portion of Kau

lying between South Kona and Punahele.

Eighth Precinct—The remainder of Kau.

THIRD DISTRICT.

Islands of Maui, Molokai, Lanai and Kahoolawe.

Second Precinct—That portion of the Island of Molokai excepting Kalaupapa, Kalawao and Waikolu.

Third Precinct—That portion of West Maui lying between the lands of Waikapu and Honokawai.

Fourth Precinct—That portion of West Maui lying between the lands of Hanakao and Wahee, known as Kaanapali.

Fifth Precinct—The Island of Lanai.

Sixth Precinct—That portion of the District of Waialuku lying west and north-west of a line running from the mouth of Waialuku stream southerly along the sand hills to Maalea Bay and including the Island of Kahoolawe.

Seventh Precinct—That portion of the District of Waialuku bounded by the Sixth Precinct, the lands of Pulehnnui, Keltalina, Kailua, Hokuula and Hamakunapoko and the sea.

Eighth Precinct—All that portion of Kula on East Maui lying west of a line running from Honuaulu to the north boundary of Pulehnnui on the line of the two hills Pua o Kali and Pua o Koha.

Ninth Precinct—The remainder of Kula and that portion of Hamakunapoko lying south-west of the Maliko Gulch and mauka of the road running from Kalanui to the Makawao Jail and a line in extension thereof.

Tenth Precinct—The remainder of Hamakunapoko and that portion of Hamakunapoko lying west of the Kahalehaku stream.

Eleventh Precinct—That portion of East Maui lying between Halehaku and Opuola streams.

Twelfth Precinct—That portion of East Maui lying between Opuola and Kapaula streams.

Thirteenth Precinct—All that portion of East Maui lying between the Twelfth Precinct and Kipahulu.

Fourteenth Precinct—Kipahulu and Kaupo.

Fifteenth Precinct—That portion of East Maui lying between the Fourteenth Precinct and the Eighth and Ninth Precincts, including Kahakinui and Honuaulu.

FOURTH DISTRICT.

All that portion of the Island of Oahu lying east and south of Nuananu street and a line drawn in extension thereof from the Nuananu Pali to Mokapu Point.

First Precinct—All that portion of the said District comprised in the District of Honolulu and lying east of a line running from the long bridge on Ala Moana to the north angle of King and Punahele streets, the true bearing being N. 30 deg. 30 min. E., thence along Punahele street to the foot of Manoa Road; thence mauka to and along the western edge of Manoa Valley to the head of the same.

Second Precinct—All that portion of the said District lying between the westerly boundary of the First Precinct and a line running from the seashore along Sheridan street, Piikoi street extension and Piikoi street, to and along the western boundary of the Lumaililo Home premises to the south corner of Kalawahine and along the eastern boundary of Kalawahine until it strikes the western side of the First Precinct at a point about 1400 feet mauka of Tantalus.

Third Precinct—All that portion of the said District bounded by the westerly boundaries of the First, Second and Eighth Precincts, Nuananu and School streets, a line running from the junction of School and Punchbowl streets, to the old flag pole crest of Punchbowl and the summit of the Konahuani range.

Fourth Precinct—All that portion of the said District bounded by the Third and Eighth Precincts and Beretania and Nuananu streets.

Fifth Precinct—All that portion of the said District bounded by the Eighth Precinct and Beretania, Punchbowl, King and Mililani streets and the water front.

Sixth Precinct—All that portion of the said District bounded by Mililani, King, Punchbowl, Beretania and Nuananu streets and the harbor.

Seventh Precinct—All that portion of the said District lying outside of the District of Honolulu.

Eighth Precinct—All that portion of the said District lying between the westerly boundary of the Second Precinct and a line running from the shore along South, King and Alapai streets, and from the head of Alapai street to the old flag pole crest of Punchbowl; thence to and along easterly edge of Puna Valley until it strikes the westerly line of the Second Precinct at a point just mauka of the hog back at foot of Tantalus Cone.

FIFTH DISTRICT.

All that portion of the Island of Oahu lying west and north of Nuananu street and a line drawn in extension thereof from the Nuananu Pali to Mokapu Point.

First Precinct—All that portion of the Judicial and Taxation District of Koolau-poko lying west and north of a line drawn from the Nuananu Pali to Mokapu Point.

Second Precinct—The Judicial and Taxation District of Koolau-poko.

Third Precinct—The Judicial and Taxation District of Waialua.

Fourth Precinct—The Judicial and Taxation District of Waianae.

Fifth Precinct—All that portion of the Judicial and Taxation District of Ewa, comprised in the lands of Hoaeae and Honouliuli.

Sixth Precinct—All the remaining portion of the Judicial and Taxation District of Ewa.

Seventh Precinct—All that portion of

Honolulu or Kona lying mauka of the King street road from the Ewa line to the King street bridge, and all mauka of said road from the Ewa line to the main road up Kahihi Valley.

Eighth Precinct—All that portion of Honolulu or Kona lying mauka of the King street road from the main road up Kahihi Valley to Liliha street and a line drawn from the head thereof in extension of the line of Judl street, to and along the ridge forming the westerly border of Nuananu Valley.

Ninth Precinct—All that portion of Honolulu or Kona lying between the Eighth Precinct and Nuananu street, and mauka of a line drawn along School street, the Nuananu stream and Beretania street.

Tenth Precinct—All that portion of Honolulu or Kona bounded by King, Liliha and School streets, the Nuananu stream, Beretania and Nuananu streets and the harbor.

SIXTH DISTRICT.

Island of Kauai and Niihau.

First Precinct—The Island of Niihau.

Second Precinct—That portion of the District of Waimea extending from the Third Precinct to the Punahele Point.

Third Precinct—That portion of the District of Waimea extending from Punahele to the boundary line between Waimea and Kekaha Plantations and extending along a line in continuation of the said boundary to the sea.

Fourth Precinct—From and including Kalahoa to and including Hanapepe.

Fifth Precinct—The District of Koloa from its junction with Lihue to and including the land of Lawai.

Sixth Precinct—The District of Lihue.

Seventh Precinct—Extending from the land of Papea to and including the land of Waialua.

Eighth Precinct—Extending from Kaliahawai river to and including the land of Papea.

Ninth Precinct—Extending from Kaliahawai river to the north boundary of the District of Waimea.

In testimony whereof, I have hereunto set my hand and caused the [SEAL] seal of the Territory of Hawaii to be hereto affixed.

Done at the Capitol in Honolulu this 31st day of August, A. D. 1903.

(Signed) SANFORD B. DOLE.

By the Governor, (Signed) G. R. CARTER, Secretary of the Territory. 45-8

W. A. TODD'S
NEW HARNESS SHOP

I have opened a shop on Waiannu street, next to Demosthenes' Cafe, where I am ready to make

GOOD HARNESS and FINE SADDLES

English Saddles a Specialty

HARNESS REPAIRED REASONABLE CHARGES

W. A. TODD.

Mountain View Saloon

New location at Mountain View next to Depot

Wines Beers and Liquors

Mineral Water Soda Water Cold Drinks

Tourist parties supplied in quantities to order

J. R. CASPAR Proprietor

AT THE BAY CITY SODA WORKS

PURE SODAS

ARE MADE FROM PURE EXTRACTS

Prompt Delivery for

25c per Doz.

Please Ring Up Phone 117.

Office and Factory: WAIANUANUE STREET Opposite Dr. Rice's

S. DECKER, Mgr.

LOCAL ITEMS.

Weber piano for sale, at Dr. Russell's, Mountain View. 51-1f

Aloha Collection Hawaiian Songs \$1.50—Wall Nichols Co. 50-4

E. E. Richards leaves by the Kinau this morning for Honolulu on business.

Order periodicals at publishers prices through Wall Nichols Co. 50-2

Mrs. Jules Richardson and daughter Ruth are home from a three weeks visit to Honolulu.

Keep your clothes in shape. Set of six wire hangers with rod for 50c.—Moses & Raymond.

A. H. Jackson, representing the New York Life Insurance Co., is on a business tour through Kau.

A. Haneberg, plantation auditor for H. Hackfeld & Co., Ltd., is in the city on his tour of inspection.

The largest assortment of sewing machines on record have just been received by Moses & Raymond.

During my absence Doctor John J. Grace will take charge of my patients.—DR. NICHOLAS RUSSEL. 51-4

M. V. Holmes and A. B. Lindsay, the Honokaa merchants and C. B. Fisher are in the city this week on business.

W. G. Irwin and John Buck, who are interested in the Hilo Sugar Co. were guests of John A. Scott this week.

Summer house for rent, formerly occupied by Mr. Vanatta at 3 miles, Kaunama road, partly furnished.—A. OAK.

Robert Innes Lillie, the local commission agent returned from a business trip to San Francisco by the S. S. Rosecrans.

Mr. and Mrs. C. H. Bentley of California are guests of Philip Peck, who returned from Honolulu on the S. S. Rosecrans.

Mrs. Philip Peck and daughters who have been spending several weeks at their country home in Olaa returned yesterday to Hilo.

Mr. and Mrs. John Hall, who have been visiting W. S. McLean in Puueo leave today by the ship Falls of Clyde for San Francisco.

Theo. Wolff, the travelling representative of M. Phillips & Co. of Honolulu has been in the city for the past ten days on business.

The schooner Aloha, Fry, master, has been successfully unloading lumber consigned to H. Hackfeld & Co. at the new railroad wharf.

J. C. Evans of Honolulu, who has been sojourning for the last two weeks at the Volcano House and Hilo, returns to the Capital by today's Kinau.

Mrs. Holland of Kapoho, Puna, has been the guest of Mr. and Mrs. A. W. Richardson during the week, returning on Wednesday to her home.

U. S. Immigration Inspector R. C. Brown from Honolulu, accompanied by his wife, is in the city on official business. They expect to spend a week at the Volcano House.

C. P. Benton leaves this morning for Honolulu to be married. He has rented the John Kai cottage on Church street, where he and his bride will take up their residence on their return.

J. Mann, of the Rainbow House, is slowly recovering from injuries received in the runaway which occurred two weeks ago at the Fish-market. He is about with the aid of crutches.

The band will go to Pahoa Sunday on an excursion where it will give a public concert. The Hilo Railroad is making price of one dollar for round trip tickets, trains leaving at the usual hour.

On the return trip from Mauna Loa Franklin Howland's mule got away at Ainahou, compelling him to foot it into town. He arrived at 8:30 Wednesday night having made the trip from the summit in two days.

E. L. Poole of Mountain View, accompanied by his wife and family, left on the Falls of Clyde for San Francisco. Mr. Poole has resigned his position with the Olaa Sugar Co. to accept a place as overseer on an extensive sugar plantation at Trinidad, Cuba.

TO CRATER IN 55 HOURS.

Party of Hiloites Make Record Time from This Side.

The return of Jack Easton, James Sisson and Franklin and Hastings Howland from a trip to Mokuaweweeo Wednesday night ended the first successful effort to reach the summit from Hilo.

The party left Hilo at 2:20 a. m. last Saturday. They rode to Ainahou by 1:30 that afternoon and made the balance of the trip on foot. They left Ainahou at 3 o'clock p. m. Saturday and camped that night within six miles of Dewey crater. Sunday they tramped all day through aa and slept that night in a steam cave about four and one-half miles from the crater. Monday morning they arrived at the crater at 9:50, having made the trip from Hilo in just fifty-five hours, the record time to the top from this place.

Jack Easton said the walking was tough and that all the latter end of the trip must be made through the fiercest kind of aa. In the cave a few miles from the summit Mr. Easton said their slumbers were disturbed in the night by ominous sounds from the interior of the mountain. The sounds were as of heavy rocks falling and the whole neighborhood was covered with steam cracks which were new to some of the party who were familiar with the country.

Rosecrans Arrives.

The S. S. Rosecrans, P. Johnson master, arrived from San Francisco via Honolulu on Wednesday afternoon with a cargo of general merchandise amounting to \$7,750.77. The steamer is somewhat larger than the Enterprise and built on handsomer lines. She is specially fitted up to carry oil, and her cargo for Honolulu consisted of 24,000 barrels of crude oil, the residue of cargo being consigned to this port. She made the run to Honolulu in ten days, and overtook the Kinau in her trip to Hilo. The only passengers from Honolulu were P. Peck, Ronald Kennedy, R. I. Lillie and C. H. Bentley and wife. Captain Johnson was formerly in command of the Roderick Dhu, making regular runs between Hilo and the Coast. This is his first visit to this port in the Rosecrans, and his many friends miss his genial smile and presence. He is much pleased with his new ship and prefers life aboard a steamer to a windjammer. The Rosecrans leaves today at noon with a cargo of bananas, and expects to make a quick trip to Frisco.

Beamer Party Returns.

P. C. Beamer, John Janeway and C. D. Chadd left Hilo Wednesday, October 14, for the crater, and after a seven-day trip arrived again in Hilo. This party had a splendid view of the crater by descending to the lower slopes or floors which circle the north side of the crater. The round trip was made in seven days at an expense of not more than \$1 per day for each of the party. They camped Wednesday night at Kaumana, Thursday at Haleahoha, Friday at the Koa Grove, Saturday night near the Dewey crater, and landed at the summit Sunday afternoon at 4:30. Mr. Janeway, who is an experienced surveyor, estimated the lava to be shooting to a height of 350 to 450 feet.

If you want to drink pure soda water ring 117. Prompt delivery.

B. L. Jones, H. Gerlach, Carl Giddings and P. Dorland of Olaa returned last Monday from a trip to the crater. On their way up the slope they encountered a heavy rain and snow storm but made the trip without mishap. The Jones party left wood on the summit.

Captain P. Johnson of the S. S. Rosecrans entertained a small party of friends at dinner at Demosthenes Cafe on his arrival in port last Wednesday evening. Those present were R. T. Guard, Captain Wm. K. Freeman, Captain J. Fitzgerald, Captain Chas. Matson, Captain Kelly and E. E. Richards.

Bert Wilson, the eleven year old son of H. E. Wilson of Kalapana, after braving the hazardous trip to the volcano last week, suffered a painful accident upon his return home, by falling from the railing of the school house and breaking his collar bone, besides other fractures. Dr. Holland was called in and succeeded in setting the broken bones. The boy is now resting quietly although in a weakened condition. His father who had undertaken to guide a large party of tourists to the crater was compelled to give up the project and return to Kalapana.

REPUBLICAN RALLY.

Rousing Meeting Held in Hilo Saturday Night.

Fully five hundred people gathered at the corner of Church and Front streets last Saturday evening to hear the principles of Republicanism expounded by the candidates for various county offices and other campaign speakers. The Hilo band, led by a flaming transparency bearing the party mottoes, paraded the main streets and played selections before and between speeches. Mr. W. C. Cook of Papaikou presided as chairman of the meeting and in turn introduced the several candidates and speakers, among whom were the following: Representative Jas. D. Lewis; George H. Williams, candidate for County Assessor; C. A. Stobie, candidate for County Treasurer; Jos. Vierra, W. H. Lambert and S. L. Desha, candidates for Supervisors; all of whom spoke briefly and to the point. Mr. Chas. M. LeBlond made a telling speech, sparkling with wit and wisdom, acquired from long years of experience as a political stump speaker. As a Democrat, however, he said he felt it his duty to vote and support the ticket which stood for stability, honesty and integrity—which the Republican nominees in this campaign represented. His remarks were listened to closely and were received with a round of applause. Other speakers on the platform were Sheriff Andrews, E. N. Holmes, W. S. Wise, W. H. Smith and Ben Brown.

To Establish Fruit Cannery.

Mr. C. H. Bentley of San Francisco, representing the California Fruit Cannery Association, is in the city canvassing the possibilities of the establishment of a fruit cannery in Hilo or vicinity. The association already has over thirty factories in the State of California and seeks a location in the islands, where pineapples, guavas and other tropical fruit can be successfully put up. They are prepared, provided they receive the proper encouragement and support, to build a cannery with an output of 50,000 cases. He finds the climate and soil adapted to growing pineapples and the pines grown here are of a fine flavor and quality as can be found anywhere.

If he can make contracts with growers for a term of five or more years the association will feel warranted in going to the expense of erecting a factory. This is one of the fields open to the small farmer, and there are many individual growers of this and other island fruits whose products could be utilized if such a factory were established.

Mr. Bentley is brimming over with facts and figures in regard to the industry, which has been to a great extent neglected in the islands.

A meeting of the Hilo Agricultural Society will be held at the office of Mr. Chas. Furneaux on Saturday at 1 p. m. when all members are invited to attend and meet Mr. Bentley.

The Elks' Dance.

The Elks' Club, B. P. O. E., opened their clubroom doors to the ladies and friends of the lodge on last Friday evening by giving a select dance. The hall was tastily decorated with bamboo, palms and sumac blossoms, and when the white smooth canvas was stretched over the floor it proved to be a delightfully cool and pleasant place for dancing. The Hawaiian quartette club furnished music for the evening and lovers of dancing tripped to tuneful measures until the small hours of the night. For those who preferred cards an innovation in the shape of a pedro tournament was introduced and the contest for prizes waxed warm and long. Mr. and Mrs. E. D. Baldwin proved an invincible team and succeeded in overcoming all other players, respectively carrying off the gentleman's and lady's prize. Delicate fruit and wine punches were conveniently placed in a recess in the main hall, where the dancers and others could find refreshment and rest from the merry whirl of feet. Sandwiches were served during the evening, which closed as the Elks' affairs usually do as another success added to the list of their hospitable entertainments.

Mackie Entertains.

A very pleasant little dancing party was given by Mr. and Mrs. Keith F. Mackie at their residence on Pitman street last Monday evening. Mrs. Tracy presided at the piano and the dancing occupied the evening until a late hour. Sandwiches and punch were served, besides other refreshments. Among those present were Mesdames Stacker, Pearson, Mumby, Fitzgerald, Hall, Loebenstein and McQuaid of Olaa. Misses Crow, Mocine, Pedro, Canario, McKenzie and Sousa. Messrs. Day, Wm. Weight, McLean, Souza, Clarke, Mumby, Stacker, Pearson, Fitzgerald, Hall, Mocine, Loebenstein, McQuaid, Capt. Chas. Matson and Frye.

First Foreign Church.

Services at 11 a. m. and 7:30 p. m. Rev. Dr. Scudder will preach in the morning. Evening subject: "The Turning Point." Everybody welcome.

REV. F. L. NESH.

CATARH IS ALWAYS THE RESULT of a neglected cold. Chamberlain's Cough Remedy will not cure catarrh, but will cure the cold and so prevent that disagreeable malady. This remedy not only relieves the local irritation of the throat and lungs, but removes the causes of the diseased condition. It leaves the system in a natural and healthy condition. It always cures and cures quickly. The Hilo Drug Co. sells it.

BEACON TO SHIPWRECKED.

Sailors From Lost Ship Follow Light to Harbor.

Attracted by the fire of the volcano of Mauna Loa, eight shipwrecked men in a small boat put into port at Kailua on the west coast of Hawaii at 2:15 o'clock Wednesday afternoon. They were part of the crew of the French sailing ship Counteable de Richemont which they report grounded and went to pieces on the rocks of the French Frigate Shoals on October 10th. The crew, consisting of the captain, mate and twenty-two men, seeing they must abandon the vessel, after provisioning three ships boats, put to sea at 4 o'clock in the afternoon of the 10th. There were eight men assigned to a boat, and by rowing and with the aid of an improvised sail the three small craft were able to keep together until the second night out when a blinding storm separated them, and the tempest tossed boat and seven seamen in command of the first mate made land at Kailua Tuesday afternoon, after being eleven days at sea. Owing to the fact that all those who arrived at Kailua spoke only French, and were more or less exhausted from their long journey in an open boat, the details are somewhat meagre.

The French Frigate Shoals are near Laysan Island, northwest by north of Hawaiian Islands and distant from Kailua about thirteen hundred miles. Fortunately they were well supplied with food and water and arrived in fairly good condition, with no casualties.

Of the two other boats, the one in charge of the Captain is reported to have arrived safely at Honolulu. The third boat has not yet been seen or heard from, but since the conditions were the same, no great apprehension is felt as to the safety of the remainder of the crew. The steamer Iwiliama called yesterday at Kailua and has taken the eight men to Honolulu, where they expect to join their captain and await the arrival of the balance of the crew. It appears the light of the volcano, which is visible many miles at sea, acted as a beacon to guide the drifting crew to safety.

Falls of Clyde.

The Ship Falls of Clyde, C. P. Matson, master, now loading for San Francisco, owing to delays growing out of the arrival and departure of the S. S. Rosecrans, will not get away before Saturday. The Falls of Clyde besides taking a consignment of sugar and general merchandise, carries 200 cords of fire wood. Agent Guard forwarded a sample shipment of ohio wood recently on the Bark Roderick Dhu, which proved so satisfactory for fuel purposes that he has received this larger order for island wood. Mr. Guard is encouraged to believe that the sale of fire wood to buyers at the coast will develop into a good business, and expects hereafter to make regular shipments of cord wood. The list of passengers booked to leave by the Falls of Clyde are as follows: Mr. and Mrs. John Hall, Mrs. Geo. Mumby, E. L. Poole, wife and two children; A. J. Patterson, wife and two children; Miss Elsa Grubb, Evan Robertson, R. McKenzie of Papaaloa and G. D. Supe of Olaa.

U. S. Takes Over Lighthouses.

Washington, Oct. 18.—The United States Government will take over the lighthouses upon the coasts of the Territory of Hawaii in January, 1904, and thenceforth relieve the Territory from the cost of their maintenance which Hawaii has sustained since annexation notwithstanding the Federal nature of the service.

It is also the intention of the Federal Government soon to provide a revenue cutter for service in the coast waters of the Territory of Hawaii.

Both of these actions now being taken were among the recommendations of the sub-committee of the Senate Committee on Foreign Relations which visited Hawaii last year.

Candidates Speak in Puna.

Last week candidates Holmes, Desha, W. H. Smith, Williams and Andrews, under the management of Representative Jas. D. Lewis, made an extended tour through the country, holding big meetings from Waipio to Hilo. This week the party of spellbinders have been addressing crowds of voters in Olaa and Puna. W. G. Walker, the North Hilo candidate for Supervisor, who has just returned from an extended visit to the Coast, is now with the party assisting in the work of making converts to the Republican cause. They report attentive and enthusiastic audiences all along the route.

Kinau Passenger List

W. H. Fetter, J. E. Gamaitelson, E. M. Watson, F. Santos, Y. Hamada, H. A. Collin, R. C. Brown and wife, Miss R. Richardson, Mrs. J. L. Richardson, H. M. Dinson, H. Fricke, H. J. Sullivan, Mrs. B. M. Brown and child, J. L. Frank, E. L. Keeney, Charles Pechlaisinger, A. J. Cass, Miss W. Robertson, Mrs. Black, Miss M. Keefe, H. Mocine.

Subscribe for the TRIBUNE, Island subscription \$2.50.

Notice.

I will not be responsible for any debts contracted in my name after this date without my order.

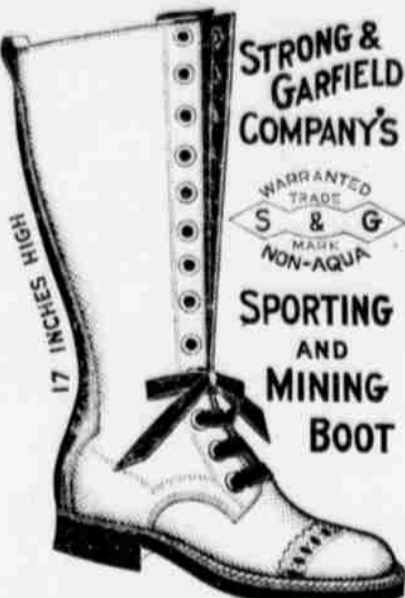
W. DOWNER.
Hilo, October 14, 1903. 50-2



"IMPERIAL."

This illustration shows a new style in the "Imperial" felt hats. It can be worn in a creased shape with marked effect. Its proportions are evenly and gracefully balanced. Colors: Black and Pearl. Price, \$3.50. A printed guarantee with every "Imperial" hat. Come here for your next hat.

The Premier Haberdashery, M. F. McDonald, Hilo



PRICE \$9.50

Delivered on receipt of \$10.00 to any post-office address on condition that they may be returned and the money refunded if found not satisfactory.

NO OTHER BOOT HAS AS MANY WATER-PROOF QUALITIES.

ECONOMIC SHOE CO., Ltd. HILO

E. N. HOLMES

Is now displaying a large and varied line of JOHN B. STETSON and LYON BRAND HATS

Four of the best and most popular makes of Men's Hats on the market at \$1.25 to \$6.00 prices ranging from..

STYLISH BLOCKS AND GOOD VALUES

Hilo Wine and Liquor Co.

Wholesale P. O. Box 396 Telephone 90 Front Near Church St.

Hilo Saloon

Retail P. O. Box 396 Telephone 41 King Near Front St.

Choicest American and European Wines, Beers, Whiskies, Gins, Brandies, Liquors, Etc.

J. S. CANARIO, Manager.

Four-in-Hand

Midgets Tecks Band Bows Shield Bows Tubulars

We have just opened a large line of the above styles of Men's Neckties in all the newest color combinations.

L. TURNER CO., Ltd.

J. G. SERRAO

Serrao Block Shipman Street

Wholesale Liquors

WHISKIES BRANDIES GINS BEERS AND WINES

I am ready to meet the wholesale demands of the trade with a new and large stock of the best brands of...

Sole Agents for the

CELEBRATED PRIMO BEER

J. G. SERRAO

Wholesale Liquor Merchant, - Hilo, Hawaii

THE TWO GREAT SALESMEN
QUALITY AND PRICE
Are at your service.

Our Six Years Old Sherry
AT 75c PER GALLON

Is a good tonic and food for everybody Sold at a bargain.

Hoffschlaeger Co., LIMITED.
PIONEER WINE AND LIQUOR HOUSE
TEL. 23 CHURCH STREET

THE OLD RELIABLE ROYAL BAKING POWDER
Absolutely Pure
THERE IS NO SUBSTITUTE

J. D. KENNEDY

WATCHES
CLOCKS
JEWELRY

Elegant Line of
New Cut Glass

Fine Watch and Clock Repair-
ing Solicited.
Satisfaction Guaranteed.

SPRECKELS' BLOCK
Front Street, Hilo.

Waiakea Boat House

R. A. LUCAS & CO., Prop'rs.
WAIAKEA BRIDGE, HILO
HAVE NOW A FLEET OF

**Gasoline Launches
and Small Boats**

FOR PUBLIC HIRE
Passengers and baggage taken to and
from vessels in the harbor at reasonable
rates. Launches and rowboats to hire
for private picnics and moonlight rides.

RING UP ON TELEPHONE

AGENTS FOR

Wolverine Gasoline Engine

Self-starter and reversible engine. In
practicability it is equal to the steam en-
gine. Sizes from 1 1/2 h. p. upwards.
Boats fitted with this engine or frames of
any size to order. For particulars apply
to R. A. LUCAS, Manager.

UNION SALOON

SHIPMAN STREET
Open from 5 A.M. to 11 P.M.

First Class
**LIQUORS
WINES AND
CORDIALS**

At Moderate Prices.

MIXED AND FANCY DRINKS
Concocted by
EXPERIENCED MIXOLOGISTS

The Celebrated
Honolulu Primo Beer
and
Rainier Beer
On Draught.
Ten Cents a Glass
FREE LUNCH

J. G. SERRAO,
Proprietor.

WM. G. IRWIN & CO., Ltd.

Sugar Factors,
Commission Agents.

Sole Agents for
National Cane Shredders,
Baldwin Locomotives,
Alex. Cross & Sons' Sugar Cane
and Coffee Fertilizers.

SPICES

Many who read this advertisement
have never seen any **PURE
BLACK PEPPER**. In its
pure state it is a most pleasing,
fragrant, pungent condiment, but
the article commonly sold—a little
black pepper and a lot of roasted
peanut shells, cannot appeal to any
one. Our **PEPPER** comes in
15c, 25c, 40c and 75c tins, and it
will be a lesson to you to try a tin
of it and learn how little you have
known of **BLACK PEPPER**.

In future advertisements we will
speak of Red Pepper, White Pepper,
English Mustard, Leaf Sage,
Allspice, etc. In the meantime we
want to show you the goods at our
store.

The Owl Drug Co., Ltd.
Hilo, Hawaii

A Bad Skin

Prick your skin with a needle. You
will see it is full of blood, full all the
time. But what kind of blood? Rich
and pure? Or thin and impure? Pure
blood makes the skin clear, smooth,
healthy. Impure blood covers the skin
with pimples, sores, boils, eczema,
eruptions, tetter, salt-rheum.



Mr. Frank Hewitt, of Kaloortie, W. A.,
sends his photograph and tells what cured him.
"When a boy my skin broke out in bad sores
about my hands. After trying a great many
remedies in vain, I took Ayer's Sarsaparilla
and was quickly cured. Recently I was
troubled again with severe boils, but one bot-
tle of the same old remedy completely cured
me. It's the greatest blood-purifying medi-
cine in the world."

AYER'S Sarsaparilla

There are many imitations "Sarsaparillas."
Be sure you get Ayer's.

And Ayer's Sarsaparilla by keeping your bowels
in good condition with Ayer's Pills.

Prepared by J. C. Ayer & Co., Lowell, Mass., U.S.A.

For Sale by HILO DRUG COMPANY.

KEYSTONE SALOON

Draught Beer 10 Cents

When you need a drink call
at the KEYSTONE, corner
Front and Ponohawai streets.
A first class line of

**WINES
LIQUORS
BEERS**

always on hand.

Telephone 10

W. DOWNER

Proprietor.

KINAU.. SALOON

C. Baddaky, Prop.

**Rainier and
Primo Beer**
bottled and
on draught

**Best Wines
and Whiskies**

Beer, 10c a Glass

Call and examine our stock

Telephone 38

If you want to
Advertise in newspapers
anywhere at anytime
call on or write
E. C. Dake's Advertising Agency
61 1/2 Merchant's Exchange
SAN FRANCISCO CAL.

SOME FIGURES.

Economic Government Will Carry
Territory and Counties Through.

Honolulu, Oct. 14.—It is rather
a poor advertisement to go with the
call for bids for bonds, a statement
of Territorial finances which would
indicate a bankrupt state of the
Territory when county government
comes into operation the first of
1904. It might be honest if true,
though hard to represent things
that way. Taking the financial
affairs of the Territory for the two
years ended December 31, 1902,
and comparing them with the ap-
propriations for the two years end-
ing June 30, 1905, no such lugub-
rious prospect as that just men-
tioned is to be apprehended. On
the contrary, a Territorial adminis-
tration as economical as that of the
two years ended December 31, 1902,
together with an honest and intelli-
gent administration of affairs by
the counties, ought to bring the
taxpayers through upon smooth
seas in the initial experience of
county government. It is to be
taken for granted that the current
revenue for the present biennial
period will not fall below that of the
two years with which comparison is
being made. Then let figures talk.

The current revenue for the two
years ended December 31, 1902, was
\$5,655,811.07. For the same period
the current expenditures were \$5,-
144,411.31. Thus a snug balance
of \$511,399.76 was left in the treas-
ury. It is to be remembered that
there was no loan money to spend
in those two years, which would
naturally cause a greater drain than
usual upon current revenue.

The appropriations under current
revenue for the present biennial
period, beginning July 1, 1903,
amount to \$4,992,051.51 all told.
Supposing the current revenue does
not exceed that for the two years
here compared the expenditure of
these appropriations would leave a
surplus of \$663,759.56 at the end of
this period. It is said there is a
floating debt of about \$750,000.
Much of this came over from the
previous period, but, allowing that
it all came over and were added to
the appropriations for this period,
its payment would make the aggre-
gate expenditure but \$86,240.44 in
excess of the sum of current re-
venue for the two years ended De-
cember 31, 1902.

Another thing to be remembered
is that a large proportion of the ap-
propriations on current revenue ac-
count are for the benefit and use of
counties, while the counties are to
assume burdens that the Territory
had previously sustained. It is
probably too much to expect that
the Territory will be saved as much
expense as the counties are to as-
sume. Two sets of governments
will not merely divide the cost of a
single set, as there must be consid-
erable duplication and overlapping
of similar functions. Yet, with
economy and business judgment in
both establishments, the excess of
the combined expenditures over the
present cost of government ought
not to spell bankruptcy.

Want Our Mosquitoes.

Honolulu, Oct. 17.—A circular
letter has been received by the local
United States Quarantine Station
from the Surgeon General of the
Marine Hospital Service asking for
a collection of specimens of mosqui-
toes in Honolulu to be forwarded to
Washington in franked envelopes.

The object is to make a thorough
study of the various kinds of mos-
quitoes to determine the nature and
extent of their instrumentality in
conveying dangerous or deadly dis-
eases. The specimen mosquitoes
will be submitted to Dr. L. C.
Howard, entomologist of the De-
partment of Agriculture, for exam-
ination.

The Experiment Station has been
giving the matter a thorough sci-
entific investigation, under D. L. Van
Dine, and it may be called upon to
furnish specimens.

Berlin, Germany, Oct. 12.—The
crisis in the Eastern situation is the
leading feature in German diplo-
matic circles, but all the Embassies
assert that they have no definite
information on the progress of
events.

CENTRAL AMERICAN TROUBLES.

Guatemala and Nicaragua Plan War
on Salvador and Honduras.

Panama, Oct. 14.—The Repub-
lics of Guatemala and Nicaragua
have combined and are making
preparations for a war on Salvador
and Honduras.
A plan to invade San Salvador
has been under consideration for
some time by President Manuel Es-
trada Cabrera of Guatemala, who
in pursuit of this idea endeavored
to enlist the aid of the Honduran
Government in war. Honduras lies
on the south and east of San Salva-
dor and Guatemala on the north,
and an expedition from each of
these countries would catch San
Salvador between two fires and
place the Republic in an interesting
predicament.

According to the plans it was in-
tended that Guatemala was to have
moved on San Salvador at the close
of the rainy season, which would
have made the date for the move
some time this month. However,
the contemplated combine with
Honduras appears to have fallen
through, owing to the refusal of
the President of that Republic to
join hands with Guatemala in the
attempt. The project has by no
means been abandoned by President
Cabrera of Guatemala, and conse-
quently news of his combination
with Nicaragua was expected.

San Salvador is more closely con-
nected with Guatemala than any
other Central American country,
and is most easily reached by troops,
thus making it the natural objective
point for expeditions from that
country. Honduras is separated
from Guatemala by a range of
mountains, which would render the
transport of soldiers a matter at-
tended by much difficulty, but in
the case of San Salvador only a
tableland about thirty miles in width
separates the two countries. It is
possible to travel in a day on horse-
back from the capital of Guatemala
into Salvadorian territory, and there
would be no trouble attendant upon
the entrance of an army into the
latter Republic.

Dr. Stanley sat directly across the
table from Major Cerf, quietly smok-
ing his cigar as Cerf abused him,
and held him up to ridicule.

Cerf went on and on, glaring at
Stanley, and piling on invectives.

Stanley looked at the end of his
cigar, and seemed to be wondering
whether he should let the ash re-
main or flick it off.

Mortification and distress were
written on every face in the room.

At last Cerf paused. Then Stan-
ley rose slowly, and, with a puzzled
expression, said inquiringly, "What
is the wild Cerf saying?"

Instantly the table was in a roar.

Cerf stood for a moment in a daze.
Then he left the room, and Stanley,
flicking the ash from his cigar, went
on smoking.

Yokohama, Oct. 13.—The Rus-
sian force at Newchwang has been
increased.

London, Oct. 13.—The alarmist
rumors from the Far East, predict-
ing war between Russia and Japan,
are unconfirmed.

Washington, Oct. 13.—The Rus-
sian embassy is not alarmed over
the situation and believes that the
dispute with Japan will be settled
amicably.

Volcano Stables & Trans. Co.

TIME TABLE OF STAGE ROUTES.

This is the only line of stages making regular trips between Kau and Hilo and
taking in the Volcano of Kilauea.
On Thursday and every alternate Tuesday passengers or express leaving Hilo at
7:00 a. m. are landed in either Pahala or Honouapo the same evening.
Through connections with the steamers Kinau and Mauna Loa are made both on
arrival and departure.

STAGES FOR VOLCANO OF KILAUEA AND KAU

Via Hilo Railroad and Volcano Stages			
Thursday and Tuesday, when Mauna Loa is leaving Honouapo on Wednesday.	Thursday, when Mauna Loa is leaving Honouapo on Wednesday.	Saturday, when Mauna Loa is leaving Honouapo on Sunday.	Monday, when Mauna Loa arrives in Honouapo on Sunday.
A. M.	P. M.	A. M.	P. M.
7:00	3:00	7:00	3:00
7:30	3:30	7:30	3:30
8:30	4:30	8:30	4:30
11:30	7:30	11:30	7:30
P. M.	A. M.	A. M.	A. M.
12:15	5:00	6:00	5:00
5:00	10:30	11:00	10:30
6:00	P. M.	12:30	P. M.
7:00	2:00*	2:00*	12:30

*Connecting with Mauna Loa. **On arrival of Mauna Loa.

TIME TABLE OF STEAMER MAUNA LOA:

Arrives Honouapo		Leaves Honouapo	
Thursday	Aug. 13	Sunday	Aug. 16
Sunday	Aug. 23	Wednesday	Aug. 26
Thursday	Sept. 3	Sunday	Sept. 6

Time Table of Volcano Stables Stage for LAUPAHOEHOE, HONOKAA AND KAWAIHAE

Every Day	Friday	Wednes'day	P. M.	Other days
A. M.	A. M.		P. M.	P. M.
8:00	4:30	iv.....Volcano Stables.....ar	3:00	4:30
9:00	5:30	ar.....Papaikou.....ar	2:00	3:30
10:15	6:45	ar.....Pepeekeo.....ar	1:00	2:30
11:30	7:30	ar.....Honouapo.....ar	12:15	1:45
			A. M.	
12:00	8:30	ar.....Hakalan.....iv	11:30	1:00
				M.
1:00	9:30	ar.....Honohina.....ar	10:30	12:00
				A. M.
1:30	10:00	ar.....Waikamalo.....ar	10:00	11:30
2:15	10:45	ar.....Papaaloa.....ar	9:15	10:30
3:00	11:30	ar.....Laupahoehoe.....iv	8:00	10:00
Mon. and Wed. P. M.				Mon. and Friday A. M.
3:00	12:30	iv.....Laupahoehoe.....ar		10:00
4:00	1:30	ar.....Ookala.....ar		9:00
5:00	2:30	ar.....Kukaiaia.....ar		8:00
6:00	3:30	ar.....Pauiilo.....ar		7:00
7:00	4:30	ar.....Honokaa.....ar		5:30
Tues. and Fri. A. M.				Wed. and Sat. P. M.
7:00		iv.....Honokaa.....ar		3:15
8:45		ar.....Kukuihaele.....ar		1:35
2:00		ar.....Waimea (Kamuela).....ar		9:45
4:00		ar.....Kawaihae.....iv		7:00

When the weather is too rough for the Kinau to land at Laupahoehoe Wednesday the leaving time of stage from Hilo is changed to 4:00 a.m. on Thursday morning, and the Wednesday stage from Laupahoehoe to Honokaa will be held to connect with it.
On Mondays following the arrival of the Mauna Loa in Honouapo on Sundays, the leaving time of the stage for Laupahoehoe from Hilo is changed to 10:00 a. m., and the Honokaa stage is held at Laupahoehoe to connect with it.
Aside from carrying of express matter and passengers these stages carry U. S. Mail, so patrons may rest assured of prompt connections.

C. E. WRIGHT, Manager.

C. LEHMANN THE ARTISTIC TAILOR

Will produce a garment upon order that will satisfy the most fastidious wearer of clothes. The

Latest in Spring Suitings and Trouserings

Are now arriving. Nearly all the Spring Patterns will be found exclusively at Lehmann's.

Call and Look at the Goods

C. LEHMANN, WAIANUENUE ST.

I HAVE A BEER OF QUALITY

IT'S Rainier BEER

RAINIER BOTTLING WORKS AGENTS, HONOLULU

RUBBER GOODS GOODYEAR RUBBER CO.

R. H. PEASE, President
San Francisco, Cal., U. S. A.

NOTICE—Neither the Masters nor Agent of vessels of the "Matson Line" will be responsible for any debts contracted by the crew. R. F. GUARD, Agent.
Hilo, April 16, 1901.

Koa! Koa!!

Koa Lumber in small and large quantities; well seasoned.

Furniture made to order, any style wanted. Repairs made on any kind of furniture. Prices moderate.

Serrao Cabinet Shop.
Apply to JOSE G. SERRAO.

Latest Arrivals—
Cavendish Tom Gin
Sweet and Dry
Pure, Refreshing and
Invigorating
Hilo Saloon
Hilo Wine and Liquor Co.
Sole Agents Island of Hawaii

Marie Brizard and Rogers' Brandies

Products of 1820 1832 1848

S.V.F.V.O. and V.O. Fine Pale and Three Star

W.C. PEACOCK & CO., LIMITED

Sole Agents for the Territory of Hawaii



Ayer's Cherry Pectoral

It will prove a good friend when you have a fresh cold, bringing immediate relief. You will find it equally true in old colds, bronchitis, whooping-cough, asthma.

And you will declare it "the best friend in the world" if you will use it for an irritable throat or weak lungs. It acts as a strong tonic, clearing up the throat, giving tone to the relaxed tissues, and greatly strengthening the lungs.

There are many substitutes and imitations. Beware of them! Be sure you get Ayer's Cherry Pectoral.

Two sizes. Large and small bottles.

Prepared by Dr. J. C. Ayer & Co., Lowell, Mass., U.S.A.

For Sale by HILO DRUG COMPANY

FIVE BILLION POUNDS SUGAR.

Total Imports of Sugar Into United States for One Year.

Honolulu, Oct. 12.—Over 5,000,000,000 pounds of sugar, valued at \$100,000,000, was brought into the United States in the fiscal year just ended. This is a larger importation of sugar than in any preceding year in the history of the country. The total number of pounds of sugar brought into America during the year was, as shown by the records of the Department of Commerce and Labor, 5,217,770,065, while in no earlier year in the history of the country has the importation of sugar ever reached 5,000,000,000 pounds.

The largest importation in any earlier year was that of 1897, when the total was 4,918,905,733 pounds. Adding to the enormous production of 1903 6,000,000,000 pounds as the domestic production would give a total sugar supply of 11,217,000,000 pounds for the year, or sufficient to furnish an average of seventy two pounds for each individual in the United States, estimating the population at 80,000,000.

The record of sugar importations for the year differs materially in certain aspects from that of earlier years. The total importation of beet sugar during the year was 87,000,000 pounds against 255,000,000 in the fiscal year 1902, and 903,000,000 in the fiscal year 1901. Cane sugar, of course, composed the remainder and the cane sugar importations of the fiscal year, exclusive of that brought from Porto Rico and the Hawaiian Islands, amounted to 4,075,000,000 pounds, against 2,685,000,000 in the fiscal year 1902 and 2,965,000,000 in 1901. From Porto Rico the total sugar brought into the United States amounted to 226,143,508 pounds, valued at \$7,466,579, and from the Hawaiian Islands 774,825,420 pounds, valued at \$25,310,684. Thus the total quantity of sugar supplied by Porto Rico and the Hawaiian Islands amounted to 1,000,000,000 pounds, or about one-fifth of the total brought into the country, its value being nearly \$33,000,000. It would seem that, as a nation, we are fond of sweetmeats.—Harpers Weekly.

KOHALA DITCH.

Public Sale Advertisement May be Held Up.

Honolulu, Oct. 17.—But a few days remain before the Kohala ditch franchise, according to a majority decision of the executive council, will be advertised for sale at public auction, the sale to take place on November 28.

It was said today that, inasmuch as it was the province of the Land Commissioner to authorize the advertisement of the sale and he had dissented in the meeting of the executive council to the auction decision, objecting to certain clauses in the license as adopted by Governor Dole and others of the council, there was a strong possibility of his refusing to be responsible for the publication of the notice of public sale.

Land Commissioner Boyd was seen on the subject and asked whether he intended advertising the sale of the Kohala ditch franchise. Mr. Boyd replied that he was not prepared to say anything on the subject just now, one way or the other. The advertising of the public sale of the privilege was business belonging to his department and at the proper time he would act as he believed was right. He might give notice of the sale and he might not.

"I would like you to say," said Mr. Boyd, "that the base insinuations made by the Advertiser yesterday morning while referring to Mr. A. C. Gehr and myself dining together, endeavoring to make capital of the incident for its own low ends, were noted by me with more amusement than anger, although in some places such deliberate misrepresentations would be the beginning of a shooting affair."

He Met His Match.

"Never cross-question an Irishman from the old sod," advises one of the foremost railroad attorneys of the age, says the Detroit Free Press. "Even if he does not think of an answer, he will stumble into some bull that will demoralize the court and jury, and whenever a witness tickles a jury his testimony gains vastly in its influence."

"Yes, I'm speaking from experience. The only witness who ever made me throw up my hands and leave the court room was a green Irishman. A section hand had been killed by an express train and his widow was suing for damages. I had a good case, but made the mistake of trying to turn the main witness inside out."

"In his quaint way he had given a graphic description of the fatality, occasionally shedding a tear and calling on the saints. Among other things he swore positively that the locomotive whistle was not sounded until the whole train had passed over his departed friend. Then I thought I had him."

"See here, McGinnis," said I, "you admit that the whistle blew?"

"Yis, sor; it blew, sor."

"Now, if that whistle sounded in time to give Michael warning, the fact would be in favor of the company, wouldn't it?"

"Yis, sor; and Mike would be testifyin' here this day." The jury giggled.

"Never mind that. You were Mike's friend, and you would like to help his widow out; but just tell me now what earthly purpose there could be for the engineer to blow that whistle after Mike had been struck."

"I presume tho' the whistle wore for the next man on the thrack, sor."

"I left and the widow got all she asked."—Ex.

London, Oct. 13.—Vice Admiral Noel has been confirmed as commander of the British naval forces on the China station.

Browning, Mont., Oct. 12.—A terrible tragedy was enacted yesterday in a colony of Flat-head Indians in this section. The Indians had been indulging in an orgie and, crazed by whiskey, got into a murderous altercation. Several Indians were murdered in their beds and a large number wounded in the melee.

Subscribe for the TRIBUNE Island subscription \$2.50.

"Old Valley Whiskey" is the Finest Bourbon in the Market You Should Have It

RETAIL: Hilo Saloon
WHOLESALE: Hilo Wine and Liquor Co.
Sole Agents Island of Hawaii

Hilo Railroad Co.

Short Route to Volcano TIME TABLE

In effect July 13, 1903. Passenger Trains, Except Sunday.

A.M.	P.M.	STATIONS	A.M.	P.M.
7:30	3:00	Hilo	9:30	6:00
7:50	3:20	Olaa Mill	9:10	5:30
8:00	3:40	Keaau	9:00	5:15
8:15	4:00	Ferndale	8:45	5:00
8:30	4:30	Mount. V.w.	8:30	4:45

A.M.	P.M.	SUNDAY	A.M.	P.M.
8:00	3:30	Hilo	10:30	5:30
8:20	3:50	Olaa Mill	10:10	5:10
8:30	4:00	Keaau	10:00	5:00
8:45	4:15	Ferndale	9:45	4:45
9:00	4:30	Mount. V.w.	9:30	4:30

A.M.	P.M.	FOR PUNA	A.M.	P.M.
10:30	3:00	Hilo	3:50	5:30
10:50	3:20	Olaa Mill	3:30	5:10
11:30	3:40	Pahoa Junction	3:00	4:40
12:40	4:00	Pahoa	2:40	4:20
12:00	4:20	Pahoa Junction	2:20	4:00
12:20	4:40	Puna	2:00	3:40

Excursion tickets between all points are sold on Saturdays and Sundays, good returning, until the following Monday noon.

Commutation tickets, good for twenty-five rides between any two points, and thousand mile tickets are sold at very low rates.

W. H. LAMBERT, Superintendent.

CRESCENT & CITY BARBER & SHOP

CARVALHO BROS., Proprietors.

The Old Reliable Stand is still doing

UP-TO-DATE WORK

Razors honed, Scissors and all edged tools perfectly ground.—Satisfaction Guaranteed.

FRONT STREET.

JAS. M. CAMERON,

Plumber, Tinner, Metal Worker.

Mr. Cameron is prepared to give estimates on all kinds of Plumbing Work and to guarantee all work done.

Oceanic S.S. Company

Time Table

The steamers of this line will arrive and leave this port as hereunder:

FROM SAN FRANCISCO.

Alameda	Oct. 23
Sierra	Nov. 4
Alameda	Nov. 13
Sonoma	Nov. 25
Alameda	Dec. 4
Ventura	Dec. 16

FOR SAN FRANCISCO.

Alameda	Oct. 28
Sonoma	Nov. 3
Alameda	Nov. 18
Ventura	Nov. 24
Alameda	Dec. 9
Sierra	Dec. 15

In connection with the sailing of the above steamers the agents are prepared to issue, to intending passengers **Coupon Through Tickets** by any railroad from San Francisco to all points in the United States, and from New York by any steamship line to all European ports. For further particulars apply to

Wm. C. Irwin & Co. LIMITED

General Agents Oceanic S. S. Co.

Union Barber Shop.

GARCIA & CANARIO, Props.

We Shave, Cut Hair and Shampoo at **Five Cents** Rates.

We also take particular pains with Children's Haircutting.

UNION BUILDING, Waianuene St.

Hilo Mercantile Company, Ltd. DEALERS IN

Plantation Supplies of All Descriptions

Builder's Hardware
Plumbing Goods
Paints and Oils
Fertilizers
Iron and Steel
Lumber
Windows
Blinds
Doors

A Full and Complete Line of Groceries

SOLE AGENTS FOR HAWAII
KEEN CUTTER KNIVES AND HOES



P. O. BOX 94

TELEPHONE 4A 4B

Ladies' Stocks

Grass Linen Drawn Work.

Linen and Lace

Silk Embroidered in black, white and colors. Tailored Stocks in all colors and in all the newest designs.

In fact, all the latest fads in this particular line.

L. TURNER CO., Ltd.

Hand Made Saddles and Harness

CARRIAGE TRIMMING.

—AT—

RICHARDS & SCHOEN, Hilo Harness Shop, Hilo, H. I.

Enterprise Planing Mill Company.

GEO. MUMBY, Mgr. FRONT ST., in rear of Hilo Mercantile Co's Building

Planing, Moulding, Scroll Work and all kinds of Turned Work, Window Frames, etc. WATER TANKS A SPECIALTY. Household and all kinds of Furniture, Store Fittings, Counters, etc., made to order. Cross-cut Saws re-toothed and made as good as new, at easy rates.

Manufacturer of School Seats, Church Pews, and Redwood Gutters, all sizes

NEW YORK SAN FRANCISCO HONOLULU

M. S. GRINBAUM & CO., LIMITED.

BROKERS and COMMISSION MERCHANTS

...FIRE INSURANCE...

Dealers in Dry Goods, Notions, Cigars and Tobacco. Special attention given to consignments of coffee and sugar.

HOP WAIN CO.

Cor. King and Front Streets.

Dealers in Dry Goods, Japanese and Chinese Goods.

RATTAN FURNITURE.



Rupture White Horse

Dr. Pierce's Electric Press is a Marvel. Nothing like it. Best Retainer on earth and a Genuine Cure for Rupture. World-renowned. If improved. If ruptured investigate at once. Call or write for "Bottle No. 1." MAGNETIC T. TRUSS CO., 33 West 24th Street, New York, N. Y. or 206 Post Street, San Francisco, Cal.

The Corner Restaurant

FRONT AND CHURCH STS.

If you appreciate a good meal nicely prepared call and see me.

Meals 25c Up

C. SHIMAMOTO, Prop.

Late Suppers from 8 p. m. to 1 a. m.

REPUBLICAN CANDIDATES

Again the TRIBUNE presents to the voters of Hawaii the candidates the Republican party has selected to fill the county offices. They are men who will do nothing in official life to cause a voter to regret having supported them.

LORRIN A. ANDREWS

L. A. Andrews, the Republican candidate for Sheriff, is known as the man who early in life was taught to ride, to shoot and to tell the truth. He carries those early acquired qualities with him today. He comes from one of the best families in Hawaii and was born in Lahaina on Maui in 1857. He was reared and educated in these islands, and since the death of Judge Wilcox in Honolulu recently there is, perhaps, not in all Hawaii a man who better understands the character of the Hawaiian people than Lorrin A. Andrews. While still a young man he held several important positions on his native island and at the time of the revolution was invited by Marshal Hitchcock to go to Honolulu, where he was made a captain of police. For "meritorious conduct and efficient service" he was promoted to the office of Sheriff of Maui. Seven or eight years ago Mr. Andrews was transferred to this island and has been at the head of the police department here ever since. During all his public career L. A. Andrews has never asked for office until the present time, when as the nominee of the Republican party he expects the voters of this county to honor him with their support.

NATHAN C. WILLFONG

Nathan C. Willfong, Republican candidate for the office of Auditor, was born in the Hawaiian Islands, and for faithfulness in the public service has a record that cannot be assailed or discredited. Mr. Willfong combines the best personal virtues with thorough official competency, and with the people of Hawaii, among whom he is well known, there will be little hesitation as to how to vote on the question of the Auditorship.

He was Deputy Assessor for North and South Hilo Districts from 1891 to 1898. Since the latter date he has held the office of Assessor for the Third Division, which embraces the entire Island of Hawaii. His work has brought him not only into close touch with the people, but has enabled him to accumulate a fund of knowledge of the affairs of the county which will make him an almost indispensable officer.

CHARLES A. STOBIE

Charles A. Stobie, the Republican nominee for Treasurer of the County of East Hawaii, and who will bring into that office, if elected, qualities and capabilities superior to any bond, was born in Quincy, Ill., in January, 1850. He was a Republican before he was old enough to vote and celebrated his majority by voting for Gen. U. S. Grant for President. He has been an active Republican worker all his life, and while opportunity to hold office was many times his for the asking, he has never been a candidate until the present time. Mr. Stobie's life career has been that of a banker. He has had thirty-five years' experience in banking and other financial institutions, and has been connected with some of the strongest financial houses in the States.

Mr. Stobie has been in Hawaii almost five years and has been connected with the First Bank of Hilo since its organization. A better man for Treasurer cannot be found in the limits of the county.

GEORGE H. WILLIAMS

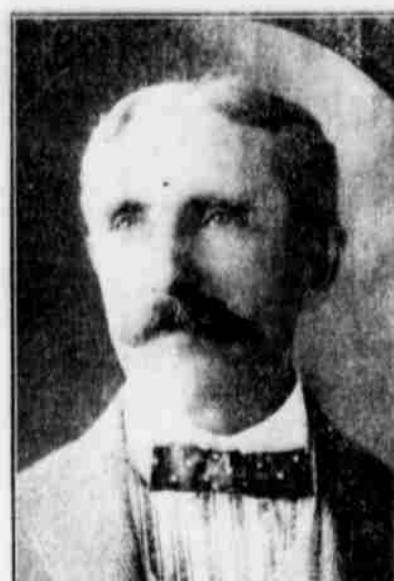
George H. Williams, Republican candidate for the office of Tax Assessor for the County of East Hawaii, is an old-timer in the Islands. For a number of years previous to 1890 he held responsible positions with plantations on this and other islands. In 1892 he was made Deputy Sheriff on this island and subsequently held the office of Sheriff. During the past four years Mr. Williams has held the office of Tax



LORRIN A. ANDREWS



NATHAN C. WILLFONG



CHARLES A. STOBIE



GEORGE H. WILLIAMS



NORMAN K. LYMAN



W. H. SMITH



THOS. E. COOK



W. H. LAMBERT



STEPHEN L. DESHA



JOSEPH VIERRA



EVERETT N. HOLMES

Collector and has made a commendable record. He has been strict in following the lines of his duty, but has also been one of the most liberal and accommodating of men when the tax he had to collect came from the light pocketbook of the poor. Mr. Williams is perhaps the most painstaking official in the employ of the Territory of Hawaii.

NORMAN K. LYMAN

Norman K. Lyman is one of the younger generation of Hawaiian born young men, and as a candidate for the office of County Clerk he is asking for nothing he does not deserve. He is experienced in business affairs and knows a good deal about the inside working of a public office. For three years he has been cashier and chief clerk in the Sheriff's office and has shown himself capable and reliable in every respect. That these qualities are recognized generally is proved by the fact that he has the endorsement of both parties for the office to which he aspires.

W. H. SMITH

W. H. Smith, whom the Republicans have named for the office of County Attorney, is a man thoroughly equipped for the position. He acquired a classical education at Amherst College and came to the practice of law with the broadest foundations of education and experience. He was born in Massachusetts and comes from the best New England stock. He came to Hawaii ten or twelve years ago, after having successfully held a prominent chair in the faculty of a leading Eastern college. Here he engaged in coffee planting under the firm name of Smith & Amber-

crombie. After his essay with tropical farming he turned his attention to the more congenial pursuits of journalism. He was at one time editor of the Hilo Herald and as managing editor of the Hilo Tribune, he brought this paper to the fore as the exponent of good government for Hawaii. Retiring from the newspaper field, Mr. Smith took up the study of law and in April, 1902, was admitted to practice by the Supreme Court of the Territory of Hawaii. He associated himself in a partnership with Chas. M. LeBlond and has taken a place in the front ranks of the Hilo bar. Mr. Smith bears his attainments modestly, but old lawyers pay him the rare compliment of having distinguished himself at the bar and in law in Lou Dillon time, which is the record clip. Such ability is needed by the County of East Hawaii as it launches into history.

THOS. E. COOK

Thos. E. Cook, Republican nominee for the office of Surveyor of the County of East Hawaii, was born thirty-four years ago on the Island of Molokai. He was educated at Iolani College. After leaving school he was a student of surveying under M. D. Monsarrat and worked for a few years at his profession in Honolulu. Five years ago he came to Hilo as assistant to E. D. Baldwin, Government Surveyor in charge of the Hilo office. Mr. Cook has filled this position with credit and holds it now. Three years ago the first surveyor of the County of East Hawaii was married. He has a sturdy son who already knows how to shoot the transit.

W. G. WALKER

W. G. Walker, whose picture could not be secured to add to the group, is a candidate for Supervisor on the Republican ticket. He is manager of the Ookala plantation and has been on the Island so long that there is not a voter who does not know he is a proper man to aid in starting our county government right. He is especially well qualified in road matters and such business as would come under the head of county public work.

W. H. LAMBERT

When asked to tell something about himself W. H. Lambert, a Republican nominee for Member of the Board of Supervisors, submitted the following interesting facts:

"I was born in Rochester, N. Y., August 15, 1849, and went to Minnesota August 19, 1862. There I went through the Indian massacre and was shot by the Indians. Between that time and 1868 I learned the carpenter trade, and in 1869 went into the construction department of the C. & N. W. R. R. For three years I was purchasing agent for this company. I have taken an active part in the construction of nearly all of the Northwestern roads between Chicago and the Pacific Coast, and saw the first locomotive landed west of the Mississippi river. In 1892 I built a sawmill on Puget Sound and shipped the first cargo of cedar lumber and the first cedar shingles used in the Hawaiian Islands. I came to the islands in 1894 and built the railroad for Brewer & Co. on the Wailuku plantation on Maui. I was master mechanic for the Kahului railroad for Wilder & Co., and for

three years was roadmaster for the O. R. & L. Co. at Honolulu. Since 1898 I have been connected with the H. R. R. as superintendent. In politics I have always been a Republican, and while always taking an active part in politics have never aspired to office. I took part in the organization of two new counties, one of which, in Minnesota, was organized and run on business principles. Today it stands financially at the head of the leading counties in the State and does not owe one dollar. The other, in Washington, fell into bad hands, and was run on the boodle system. I know the contrasts between good and bad county government.

"My only object in entering the field as Supervisor is to help to the best of my ability in promoting the interests of East Hawaii, and shall insist, if elected, on a clean administration that will leave the county at the end of our first year with a record not to be ashamed of. I promise positively no favors will be granted, but equal justice will be meted out to rich and poor alike. I am not and will not be committed to any individual or corporation. I ask the people at the polls on election day to see that they vote for the very best men who will support these principles, and I have every confidence to think that this can best be done by supporting the straight Republican ticket. All the men on the ticket are well qualified to fill the different positions for which they are nominated."

STEPHEN L. DESHA

Stephen L. Desha, candidate on the Republican ticket for Member of the Board of Supervisors, was

born at Lahaina, Maui, in July, forty-five years ago, and is known throughout the islands for his energy in work in behalf of the Hawaiian people. Mr. Desha, while devoted to the ministry, has ever taken an active interest in secular affairs, especially in all questions affecting the interests of Hawaiians. His eloquence, for which he is noted, has been heard in every town and hamlet of the islands in behalf of good life and good government.

His father was a Kentuckian, who located in these Islands in the practice of medicine and the tireless Stephen L. possesses the indomitable traits of the Kentucky publicists combined with the sympathy of the Hawaiian. He was educated in Hawaiian schools and entered the ministry when a very young man. He lived in Kona a number of years and fourteen years ago came to Hilo. The Haili church is a monument to his influential labors. He stands for fair and honest government.

JOSEPH VIERRA

Joseph Vierra landed in Honolulu in 1872, then a lad but 15 years of age. Like a good many other wide awake boys, "Joe," as he is familiarly known to his friends, and their name is legion, one day in old Flores, Azores, went aboard a whaling bark and forgot to go ashore again. When he landed in Honolulu he was cabin boy on the whaler Onward. His love of adventure was again proven for here he went ashore and forgot to return though the bark left a few days afterwards for the Arctic. Young and alone Joe was taken into the family of old man Pereira, father of Associate Justice Antonio Perry of the Supreme Court of the Territory. Mr. Vierra after attending school in Honolulu for a year or two, in 1874 came to Hilo and here and hereabouts he has remained, excepting for a short sojourn some years ago in the capital city, where he was running the celebrated old White House on Nuuanu avenue. For some years he was a cane planter and sugar boiler for the old Paukaa plantation, now a part of the Onomea Sugar Co. The Hilo Hotel was first opened up by him, and though his fine hotel building on Waianuenue street was burnt to the ground one night, still he persevered and went into the old hotel building on Pitman street. He later sold out to other parties. Mr. Vierra married one of Hawaii's fairest daughters and she, together with a large number of fine healthy lads and one lassie, form an interesting family. His sons Frank and George are now attending Whipple Academy in Jacksonville, Ill.

In 1893 Mr. Vierra was appointed Road Supervisor for this district and from a number of crooked and rough trails, under his supervision the road system of this district has been brought up to such a state that, considering the few "crumbs" allowed Hilo by our centralized government, it is a credit to us and speaks well for Mr. Vierra's genius and enterprising ability. Mr. Vierra as a member of our County Board of Supervisors will be in a position to give the Board all the figures and data it will require in the consideration of road matters.

Joseph Vierra has for his many years of hard work amassed considerable property, all in this district, and is today considered one of the most solid of our citizens.

EVERETT N. HOLMES

E. N. Holmes, candidate for Member of the Board of Supervisors on the Republican ticket, is a man whom men of all parties who know him desire to see elected. His business career in Hilo and Hawaii has brought him into close relations with all classes. He possesses the qualifications that make good public officials, as well as good business men. His interests are such that good county government to him is as desirable as good management in his own affairs. He is in the race neither for glory nor pay. He was the choice of men who want things run right and is asking for votes because his friends want him to and because good citizens want him on the county board.