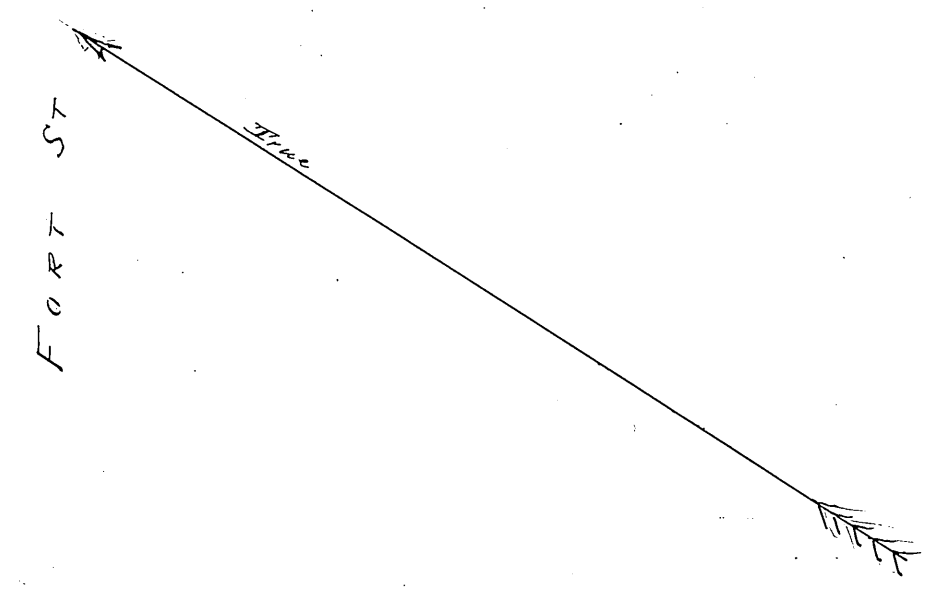
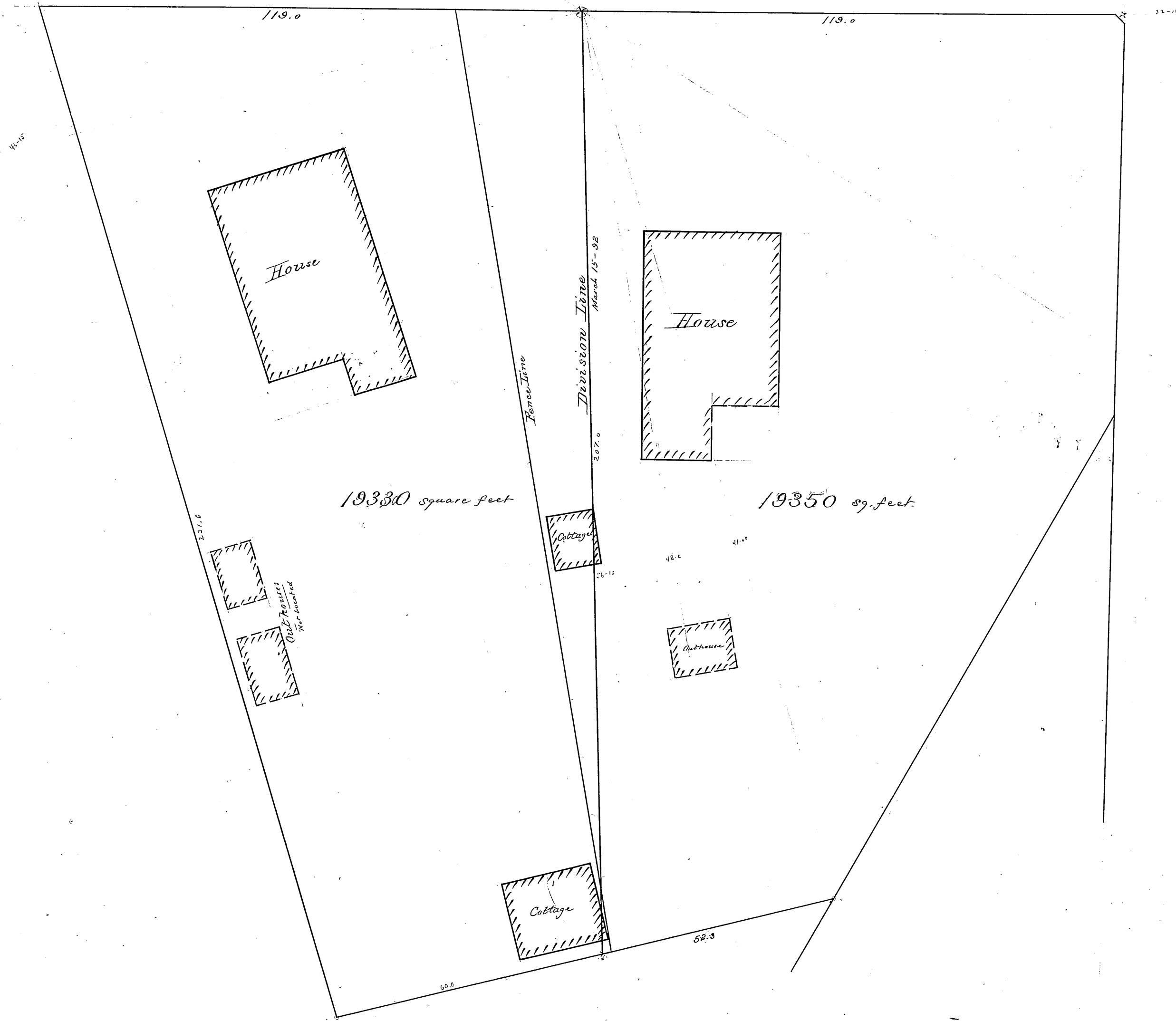


K U K U I S T



DIVISION
 OF
 EMMES LOT
 Kukui St.
 1:240
 Mar. 15-02
 F.S.D.

Mem. see Reg. 1599 "Kaakopua" for basis of this
 The work in red by F.S.D. for the division per
 order of court, also the houses.

PELEULA
 Keone Ans etc to
 H. Smith Lib 6 P 9 JRT

Reg. No. 1594

~~10 25 76 28~~