

THE HAWAIIAN STAR.

PUBLISHED EVERY AFTERNOON
EXCEPT SUNDAY
BY THE HAWAIIAN STAR NEWS-
PAPER ASSOCIATION, Ltd.

ED. TOWSE, EDITOR
F. L. HOGGINS, BUSINESS MANAGER

SUBSCRIPTION RATES:
Per Year in Advance, \$5.00
Per Month in Advance, .50
Foreign, per Year in Advance, \$12.00

ADVERTISING RATES:
Rates for transient and regular advertising
can be obtained at the publication office.
To secure prompt insertion all advertise-
ments must be delivered at the Business
Office before 10 A. M.

TUESDAY, SEPTEMBER 17, 1895.

IF KNOWN NOT FEARED.

In the Review of *Reviews* recently
cholera was mentioned a number of
times in an account of diphtheria
and other infectious diseases. Some
of the expressions in this article will
have a strong tendency to allay fear
and apprehension here. Those who
are acquainted with cholera from
study or observation of it have no
horror of the malady. "Cholera is a
disease whose actual ravages and
possible dangers dwindle into
insignificance in comparison with so
ever-present and frightful a scourge
as diphtheria. Happily stalwart
measures of quarantine, isolation,
water-supply purification and the
like, have driven the cholera back
to oriental confines where such ad-
ministrative precautions are non-
existent. * * While smallpox
has never been suppressed beyond
the possibility of its reappearance,
with occasional threat of epidemic
virulence, there is today very little
fear of it in highly civilized coun-
tries. Aged men and women re-
member well how fearful and im-
minent a scourge the smallpox
was in their youth. Nowadays, in
the homes of well-to-do (cleanly?)
people, smallpox is regarded as
practically an extinct malady."

The High Sheriff of Hawaii
recently met his Waterloo.

In cholera also, an ounce of
prevention is worth a pound of
cure.

It will not do to relax for some
days yet. We are not entirely out
of the woods.

Work is being pushed on the
extension of Queen street along the
stream to King.

The officers and men at the
garrison are pleased to be able to
assist the community in the battle
against the plague.

With the stone walls up and the
flats raised and the boulevards
built, Nuuanu stream in town will
be part of a beauty spot instead of
a source of disease.

There will be some building to
be done after the campaign against
cholera is concluded. About a
score of houses have been destroyed
already.

W. O. Smith has adopted a wise
course in sending to officials and
prominent men on the other islands
a plain, clear statement on cholera
contagion and the precautions that
are taken here.

Hilo's barber distinguished him-
self by suggesting a Provisional
Government as a precaution against
cholera. This is the very highest
compliment the Provisional Govern-
ment has yet received.

While it is true that the Govern-
ment wash house is an eyesore
and perhaps a common nuisance,
the general supposition that the
establishment is an especial menace
to health, is scarcely correct.
Water is boiled there and carries
plenty of alkali into the stream.
However, the house should have
disappeared long ago. Two other
locations are mentioned. One is in
Iwilei. The other is Kakaako.
The first is objected to by the Chi-
nese on account of its distance from
town. The second would present
the wash house to the first view of
visitors. If Kakaako seems better
a building could be provided that
would please rather than offend the
artistic eye. The Kakaako land-
scape is open to improvement.

Granada's Song.
In the corner, softly rocking,
With her knitting, Granada sat;
At her feet before the fender
Purred the household cat;
Soft and sweetly flowed the dirge,
Reflecting on the polished tongue,
As Granada gazed her needles stirred,
And crooned the tenderest of songs:
"Ye larks and larks of lonely doom,
How can ye bloom so fresh and fair?
How can ye chant, ye little birds,
And I so weary, fit of care?"
There beside her on a hassock
Sat her darling golden head,
Little Mabel, with her doll,
Nodding ready for her bed.
Through the thoughts of that was maiden
Rang the notes of that old dirge,
And between her childish fancies
Swooped the dreary, tender rhyme:
"Ye larks and larks of lonely doom,
How can ye bloom so fresh and fair?
How can ye chant, ye little birds,
And I so weary, fit of care?"
To Granada's lap-climbed little Mabel,
Lying to her grandma's knee,
And the bright dawn upon them
As they sat in the sunny room,
And by and by the golden tresses
Lay damp and soft on Granada's dress,
While the dirge softly dropped
In slumber sweetly lightly pressed:
"Ye larks and larks of lonely doom,
How can ye bloom so fresh and fair?
How can ye chant, ye little birds,
And I so weary, fit of care?"
Still crooned the gentle, loving grandma,
While slower, slower moved her hands,
And lower bent the head of old,
Till gold and silver mingled through
And fell upon the sunny floor;
The song in silence left its note:
"Ye larks and larks of lonely doom,
How can ye bloom so fresh and fair?
How can ye chant, ye little birds,
And I so weary, fit of care?"
Departed never to return.
—Olive Harper.

Timely Topics.

September 16, 1895.

PUNCTUALITY—I owe everything in
the world to being always a quarter of
an hour beforehand. —Lord Nelson.

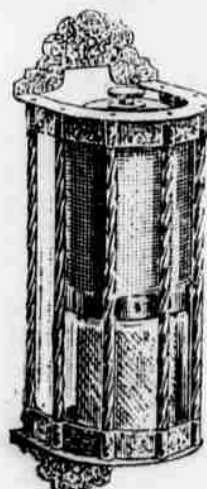
What a lot of sorrow and
misery would have been saved if
Lord Nelson's practice had
been carried out in Honolulu,
had the disease breeding place
known as Kapukolo and the
Nuuanu stream both been look-
ed after by the authorities
some months ago, we might
have been spared the present
visitation. We have always
boasted of our climatic con-
ditions, depending on the winds
to sweep disease into the sea.
Up to a few weeks ago, the
Trades did their work nobly,
but we now find that it requires
more than a breeze to disinfect
a tainted atmosphere. Every
man, woman and child who has
crossed the King street bridge
at low tide will recall a very
unpleasant odor, an odor that
seemed to impregnate every
thing in the vicinity. None
would admit that such a condi-
tion was beneficial to the health
of the community, but nothing
was done. We depended on
the winds and a water-flow
from the mountains to accom-
plish what man neglected and
we let it go at that. It is now
proposed to do something in
regard to the Nuuanu stream.
One man wanted to disinfect
it, another thought if it was
walled in, danger would be re-
duced to a minimum. The
latest scheme is to divert the
course in the direction of Iwilei.
An engineer says the
latter idea is not a good one for
the reason that the water could
be made to run over the course
proposed on account of the bed
of the stream being very low.
Another objection has been
made by some bright mind.
Mr. Bright Mind states that
the fresh water from the stream
flows out into the ocean. This
is not news, but the same man
goes farther and claims that
the said fresh water prevents
the formation of coral at the
entrance to the harbor. He
does not state how the fresh
water drops to the bottom and
then flows out. Perhaps he
has it all figured out in his own
brilliant mind and we must be
satisfied if he does not take us
into his confidence.

We have a plan to purify
the stream. It is both good
and inexpensive. We have in
stock a number of Roberts'
Ozonators, a handy little ma-
chine that can be fastened any-
where. It is made in compact

form and throws out a con-
tinual odor that neutralizes un-
pleasant smells. If a string of
these germ destroyers was
placed along the banks of the
stream Mr. Conna would be
himself back to Kobe without
waiting for his valise. What
is good for the stream is good
for ill-smelling places about the
house. Place an Ozonator in
the closet, another in the
kitchen, near the foul-smelling
sink, and the result will please
you so much that you will run
down to Fred Macfarlane's and
immediately put your name
down for a hundred to help out
the relief work. Disinfection
to be effective must be continu-
ous; the Ozonator will do the
work of 1400 barrels of lime
and other disinfectants and not
half try. It is a prevention of
disease, will make your home
healthy, it is self-acting, con-
tinuous and effective. Call in
and examine one. Their ap-
pearance and price both please.

One morning last week the
water supply was dark, in fact
it was quite muddy, so much
so that if one took a bath, he
would come out of the tub ap-
pearing like a cheap circus look-
ing Turk. If housekeepers
would have a World's Water
Filter fastened the tap, clear
water would flow. The price is
nothing. We also have a nickel
plated tap filter that fastens
on both ends; the advantage
being that when the germ cell
is full of little snakes, you re-
verse the filter and the water
cleans it.

THE HAWAIIAN HARD-
WARE COMPANY.
307 Fort Street.



DISINFECT

and does it thoroughly too. It is the most
effective and at the same time the least expensive of
all the disinfectants. A bottle that only
Costs a QUARTER
is amply sufficient to make from Two to
Twenty Gallons,
of strong disinfecting fluid.

FOR SALE ONLY BY THE
HOLLISTER DRUG CO., Ltd.
523 FORT STREET.

THE WOMAN ON A WHEEL.

Chicago women are very daring and
perform many tricks on their wheels.
The well informed wheelwoman keeps
eye and ear alert and touches her bell
rarely.

One-third of the numerous women at
the National L. & W. meet in Ashbury
Park recently wore the bloomer costume.
"The bloomer and the bike are in per-
fect harmony and the bike and the skirt
are at loggerheads," according to the
bloomer girl.

Never criticize a fellow bicyclist, par-
ticularly if she is a woman inclined to
stoutness. In a few years you may be
stout yourself.

The model wheelwoman dresses daintily
and inconspicuously—effaces her-
self, in fact, as much in this exercise as
she does in all public places.

A Florida woman who wears bloomers
recently compelled a man who had
spoken, sneeringly to apologize at the point of a pistol.

Always keep to the right in riding
except in passing a vehicle or wheel
ing in the same direction, when it is
usually safest to go by it on the left.

Two women of the society of fashion
lately competed in a ten mile bicycle
run at Newport, and that society has
set the stamp of its approval on the
sport.

Miss Agnes Reilly and Miss Kate Mc-
Donald of New York raced on bicycles
recently for sale claim on the affections
of William Feltz, whom they both
loved, and Miss Reilly won.

The "form" of bicycling is beginning
to be studied. Grooms on wheels must
follow their mistresses, as they did on
horseback. In a short time the lady's
maid will have to include wheeling
with her other accomplishments to re-
tain a situation.

A Surgeon Says—
Never ride within half an hour of a
meal, which means neither before nor
after.

Wheel the machine up any hill the
mounting of which on the wheel causes
any real effort.

See that the clothing round the stom-
ach, neck and chest is loose.

Have the handle bar sufficiently raised to
prevent stooping.

Be sparing of taking fluids during a
long ride. Rinsing the mouth through-
ly with cold water will quench the
thirst as well as taking fluids into the
stomach in large quantities.

Except the wind, road, etc., be favor-
able never ride more than ten miles an
hour, except for very short distances.

Never smoke while riding.

Attention to these points will tend to
relieve the pressure on the right side of
the heart, breathlessness will largely be
prevented, and even persons with cer-
tain forms of heart disease may ride
with safety.

Two Persons Injured on Bicycles.
A reporter visited a score of the promi-
nent hospitals in Chicago recently,
where he learned that only five cases of
injury in any way connected with bicy-
cling have been reported since the first
of the year. A careful inquiry was
then extended through 4,000 reports of
accidents by the police from all the pre-
dicts of the city, and the total number
of bicycle accidents, including the hos-
pital reports, is 41. Of these only one
was proved fatal, and the cause of death
in that case is questioned, as the cause
that led to the accident have not been
positively laid to bicycling.—Chicago
Tribune.

Wheels, Trailers and Horses.
Far more work people earn their
weekly wages through the trolley, the
steam engine and the bicycle than ever
earned them through the driving and
the shoeing of the horse or by horsepow-
er. The new agencies which are driving
out the older ones are, therefore, advan-
tageous to wage earners, as they are to
business men and to the whole com-
munity.—New York Sun.

Two Cycling Prescriptions.
"My doctor ordered me to ride a wheel
in order to grow fat."
"And mine to make me thin."
"Who is your doctor?"
"Hunted!"
"Ah, bah! He is mine too!"—New
York Recorder.

Why French Girl Cyclists Are Skirtless.
In Paris they do away with skirts al-
together and wear knickerbockers, but
they have no Puritan ancestry there and
no shocked living parents and grand-
parents to interfere—at least who do in-
terfere.—Chicago Times-Herald.

WHEELING WIT AND WISDOM.
A painter's dashboard makes easy the
cleaning of a machine.
Sprains and bruises yield quickest to
applications of hot, not cold, water.
A great many racing costumes re-
semble summer vacations inasmuch that
they begin to late and end too soon.
Moderate cycling, it is now claimed,
is a cure for varicose veins, where for-
merly it was thought to aggravate this
complaint.
If we could live our cycling lives over
again, we would no doubt avoid a great
many of our mistakes and replace them
by an entirely different assortment.
The man who can smile and look
pleasant when a pretty girl discovers by
sticking a halpin in a pneumatic that it
is hollow has the disposition of a diplo-
mat.

Be sure your wheel is in perfect shape
before you take it out to ride upon. It
is better to be sure than sorry. But if
you are too blamed sure you are sure to
be sorry.

Wear low shoes, not high ones. Have
the shoes fitted enough to prevent being
gripped out of shape by the pedal. Last,
but not least, the fit both on the foot
and on the pedal must be perfect.—
Wheel.

A Liberal Education.
A wealthy old farmer, as close as the
park to a tree, had sent his only son to
a country academy to educate him.
The son, who was a very bright boy,
reconstructed a friend.

"What's the matter with the place?"
asked the old man testily.
"It's too little and poor. You ought
to send him to one of the big colleges
and give him a liberal education."

"Liberal! Liberal!" squeaked the
farmer excitedly. "Why, man, ain't it
liberal enough when I allow him \$25 a
month for his schooling and living ex-
penses?"—Detroit Free Press

There is no success so sweet as the
success achieved by acting against the
advice of our friends.

can be quenched at
our fountain without
swallowing a lot of
cholera germs.
All water used for
carbonating comes from
the People's Ice Co.
This artesian water is
distilled and filter-
ed several
times. It
is subjected
to a heat of
about 300
degrees and
all disease
germs killed
and the or-
ganic matter
is eliminated
by filtra-
tion. Thus
treated, it is
as pure as
water can be
rendered.
"No harm
in any a-
mount of our
soda."
The Al-
hambra is a new drink.
Ten people out of every
ten who try it pronounce
it delicious.
Remember we are
headquarters for
Boiled Soda Water.
HOBSON DRUG CO.
DRUGGISTS.

THIRST

can be quenched at
our fountain without
swallowing a lot of
cholera germs.
All water used for
carbonating comes from
the People's Ice Co.
This artesian water is
distilled and filter-
ed several
times. It
is subjected
to a heat of
about 300
degrees and
all disease
germs killed
and the or-
ganic matter
is eliminated
by filtra-
tion. Thus
treated, it is
as pure as
water can be
rendered.
"No harm
in any a-
mount of our
soda."
The Al-
hambra is a new drink.
Ten people out of every
ten who try it pronounce
it delicious.
Remember we are
headquarters for
Boiled Soda Water.
HOBSON DRUG CO.
DRUGGISTS.

can be quenched at
our fountain without
swallowing a lot of
cholera germs.
All water used for
carbonating comes from
the People's Ice Co.
This artesian water is
distilled and filter-
ed several
times. It
is subjected
to a heat of
about 300
degrees and
all disease
germs killed
and the or-
ganic matter
is eliminated
by filtra-
tion. Thus
treated, it is
as pure as
water can be
rendered.
"No harm
in any a-
mount of our
soda."
The Al-
hambra is a new drink.
Ten people out of every
ten who try it pronounce
it delicious.
Remember we are
headquarters for
Boiled Soda Water.
HOBSON DRUG CO.
DRUGGISTS.

can be quenched at
our fountain without
swallowing a lot of
cholera germs.
All water used for
carbonating comes from
the People's Ice Co.
This artesian water is
distilled and filter-
ed several
times. It
is subjected
to a heat of
about 300
degrees and
all disease
germs killed
and the or-
ganic matter
is eliminated
by filtra-
tion. Thus
treated, it is
as pure as
water can be
rendered.
"No harm
in any a-
mount of our
soda."
The Al-
hambra is a new drink.
Ten people out of every
ten who try it pronounce
it delicious.
Remember we are
headquarters for
Boiled Soda Water.
HOBSON DRUG CO.
DRUGGISTS.

can be quenched at
our fountain without
swallowing a lot of
cholera germs.
All water used for
carbonating comes from
the People's Ice Co.
This artesian water is
distilled and filter-
ed several
times. It
is subjected
to a heat of
about 300
degrees and
all disease
germs killed
and the or-
ganic matter
is eliminated
by filtra-
tion. Thus
treated, it is
as pure as
water can be
rendered.
"No harm
in any a-
mount of our
soda."
The Al-
hambra is a new drink.
Ten people out of every
ten who try it pronounce
it delicious.
Remember we are
headquarters for
Boiled Soda Water.
HOBSON DRUG CO.
DRUGGISTS.

can be quenched at
our fountain without
swallowing a lot of
cholera germs.
All water used for
carbonating comes from
the People's Ice Co.
This artesian water is
distilled and filter-
ed several
times. It
is subjected
to a heat of
about 300
degrees and
all disease
germs killed
and the or-
ganic matter
is eliminated
by filtra-
tion. Thus
treated, it is
as pure as
water can be
rendered.
"No harm
in any a-
mount of our
soda."
The Al-
hambra is a new drink.
Ten people out of every
ten who try it pronounce
it delicious.
Remember we are
headquarters for
Boiled Soda Water.
HOBSON DRUG CO.
DRUGGISTS.

can be quenched at
our fountain without
swallowing a lot of
cholera germs.
All water used for
carbonating comes from
the People's Ice Co.
This artesian water is
distilled and filter-
ed several
times. It
is subjected
to a heat of
about 300
degrees and
all disease
germs killed
and the or-
ganic matter
is eliminated
by filtra-
tion. Thus
treated, it is
as pure as
water can be
rendered.
"No harm
in any a-
mount of our
soda."
The Al-
hambra is a new drink.
Ten people out of every
ten who try it pronounce
it delicious.
Remember we are
headquarters for
Boiled Soda Water.
HOBSON DRUG CO.
DRUGGISTS.

can be quenched at
our fountain without
swallowing a lot of
cholera germs.
All water used for
carbonating comes from
the People's Ice Co.
This artesian water is
distilled and filter-
ed several
times. It
is subjected
to a heat of
about 300
degrees and
all disease
germs killed
and the or-
ganic matter
is eliminated
by filtra-
tion. Thus
treated, it is
as pure as
water can be
rendered.
"No harm
in any a-
mount of our
soda."
The Al-
hambra is a new drink.
Ten people out of every
ten who try it pronounce
it delicious.
Remember we are
headquarters for
Boiled Soda Water.
HOBSON DRUG CO.
DRUGGISTS.

can be quenched at
our fountain without
swallowing a lot of
cholera germs.
All water used for
carbonating comes from
the People's Ice Co.
This artesian water is
distilled and filter-
ed several
times. It
is subjected
to a heat of
about 300
degrees and
all disease
germs killed
and the or-
ganic matter
is eliminated
by filtra-
tion. Thus
treated, it is
as pure as
water can be
rendered.
"No harm
in any a-
mount of our
soda."
The Al-
hambra is a new drink.
Ten people out of every
ten who try it pronounce
it delicious.
Remember we are
headquarters for
Boiled Soda Water.
HOBSON DRUG CO.
DRUGGISTS.

can be quenched at
our fountain without
swallowing a lot of
cholera germs.
All water used for
carbonating comes from
the People's Ice Co.
This artesian water is
distilled and filter-
ed several
times. It
is subjected
to a heat of
about 300
degrees and
all disease
germs killed
and the or-
ganic matter
is eliminated
by filtra-
tion. Thus
treated, it is
as pure as
water can be
rendered.
"No harm
in any a-
mount of our
soda."
The Al-
hambra is a new drink.
Ten people out of every
ten who try it pronounce
it delicious.
Remember we are
headquarters for
Boiled Soda Water.
HOBSON DRUG CO.
DRUGGISTS.

can be quenched at
our fountain without
swallowing a lot of
cholera germs.
All water used for
carbonating comes from
the People's Ice Co.
This artesian water is
distilled and filter-
ed several
times. It
is subjected
to a heat of
about 300
degrees and
all disease
germs killed
and the or-
ganic matter
is eliminated
by filtra-
tion. Thus
treated, it is
as pure as
water can be
rendered.
"No harm
in any a-
mount of our
soda."
The Al-
hambra is a new drink.
Ten people out of every
ten who try it pronounce
it delicious.
Remember we are
headquarters for
Boiled Soda Water.
HOBSON DRUG CO.
DRUGGISTS.

can be quenched at
our fountain without
swallowing a lot of
cholera germs.
All water used for
carbonating comes from
the People's Ice Co.
This artesian water is
distilled and filter-
ed several
times. It
is subjected
to a heat of
about 300
degrees and
all disease
germs killed
and the or-
ganic matter
is eliminated
by filtra-
tion. Thus
treated, it is
as pure as
water can be
rendered.
"No harm
in any a-
mount of our
soda."
The Al-
hambra is a new drink.
Ten people out of every
ten who try it pronounce
it delicious.
Remember we are
headquarters for
Boiled Soda Water.
HOBSON DRUG CO.
DRUGGISTS.

can be quenched at
our fountain without
swallowing a lot of
cholera germs.
All water used for
carbonating comes from
the People's Ice Co.
This artesian water is
distilled and filter-
ed several
times. It
is subjected
to a heat of
about 300
degrees and
all disease
germs killed
and the or-
ganic matter
is eliminated
by filtra-
tion. Thus
treated, it is
as pure as
water can be
rendered.
"No harm
in any a-
mount of our
soda."
The Al-
hambra is a new drink.
Ten people out of every
ten who try it pronounce
it delicious.
Remember we are
headquarters for
Boiled Soda Water.
HOBSON DRUG CO.
DRUGGISTS.

can be quenched at
our fountain without
swallowing a lot of
cholera germs.
All water used for
carbonating comes from
the People's Ice Co.
This artesian water is
distilled and filter-
ed several
times. It
is subjected
to a heat of
about 300
degrees and
all disease
germs killed
and the or-
ganic matter
is eliminated
by filtra-
tion. Thus
treated, it is
as pure as
water can be
rendered.
"No harm
in any a-
mount of our
soda."
The Al-
hambra is a new drink.
Ten people out of every
ten who try it pronounce
it delicious.
Remember we are
headquarters for
Boiled Soda Water.
HOBSON DRUG CO.
DRUGGISTS.

can be quenched at
our fountain without
swallowing a lot of
cholera germs.
All water used for
carbonating comes from
the People's Ice Co.
This artesian water is
distilled and filter-
ed several
times. It
is subjected
to a heat of
about 300
degrees and
all disease
germs killed
and the or-
ganic matter
is eliminated
by filtra-
tion. Thus
treated, it is
as pure as
water can be
rendered.
"No harm
in any a-
mount of our
soda."
The Al-
hambra is a new drink.
Ten people out of every
ten who try it pronounce
it delicious.
Remember we are
headquarters for
Boiled Soda Water.
HOBSON DRUG CO.
DRUGGISTS.

can be quenched at
our fountain without
swallowing a lot of
cholera germs.
All water used for
carbonating comes from
the People's Ice Co.
This artesian water is
distilled and filter-
ed several
times. It
is subjected
to a heat of
about 300
degrees and
all disease
germs killed
and the or-
ganic matter
is eliminated
by filtra-
tion. Thus
treated, it is
as pure as
water can be
rendered.
"No harm
in any a-
mount of our
soda."
The Al-
hambra is a new drink.
Ten people out of every
ten who try it pronounce
it delicious.
Remember we are
headquarters for
Boiled Soda Water.
HOBSON DRUG CO.
DRUGGISTS.

can be quenched at
our fountain without
swallowing a lot of
cholera germs.
All water used for
carbonating comes from
the People's Ice Co.
This artesian water is
distilled and filter-
ed several
times. It
is subjected
to a heat of
about 300
degrees and
all disease
germs killed
and the or-
ganic matter
is eliminated
by filtra-
tion. Thus
treated, it is
as pure as
water can be
rendered.
"No harm
in any a-
mount of our
soda."
The Al-
hambra is a new drink.
Ten people out of every
ten who try it pronounce
it delicious.
Remember we are
headquarters for
Boiled Soda Water.
HOBSON DRUG CO.
DRUGGISTS.

can be quenched at
our fountain without
swallowing a lot of
cholera germs.
All water used for
carbonating comes from
the People's Ice Co.
This artesian water is
distilled and filter-
ed several
times. It
is subjected
to a heat of
about 300
degrees and
all disease
germs killed
and the or-
ganic matter
is eliminated
by filtra-
tion. Thus
treated, it is
as pure as
water can be
rendered.
"No harm
in any a-
mount of our
soda."
The Al-
hambra is a new drink.
Ten people out of every
ten who try it pronounce
it delicious.
Remember we are
headquarters for
Boiled Soda Water.
HOBSON DRUG CO.
DRUGGISTS.

can be quenched at
our fountain without
swallowing a lot of
cholera germs.
All water used for
carbonating comes from
the People's Ice Co.
This artesian water is
distilled and filter-
ed several
times. It
is subjected
to a heat of
about 300
degrees and
all disease
germs killed
and the or-
ganic matter
is eliminated
by filtra-
tion. Thus
treated, it is
as pure as
water can be
rendered.
"No harm
in any a-
mount of our
soda."
The Al-
hambra is a new drink.
Ten people out of every
ten who try it pronounce
it delicious.
Remember we are
headquarters for
Boiled Soda Water.
HOBSON DRUG CO.
DRUGGISTS.

can be quenched at
our fountain without
swallowing a lot of
cholera germs.
All water used for
carbonating comes from
the People's Ice Co.
This artesian water is
distilled and filter-
ed several
times. It
is subjected
to a heat of
about 300
degrees and
all disease
germs killed
and the or-
ganic matter
is eliminated
by filtra-
tion. Thus
treated, it is
as pure as
water can be
rendered.
"No harm
in any a-
mount of our
soda."
The Al-
hambra is a new drink.
Ten people out of every
ten who try it pronounce
it delicious.
Remember we are
headquarters for
Boiled Soda Water.
HOBSON DRUG CO.
DRUGGISTS.

can be quenched at
our fountain without
swallowing a lot of
cholera germs.
All water used for
carbonating comes from
the People's Ice Co.
This artesian water is
distilled and filter-
ed several
times. It
is subjected
to a heat of
about 300
degrees and
all disease
germs killed
and the or-
ganic matter
is eliminated
by filtra-
tion. Thus
treated, it is
as pure as
water can be
rendered.
"No harm
in any a-
mount of our
soda."
The Al-
hambra is a new drink.
Ten people out of every
ten who try it pronounce
it delicious.
Remember we are
headquarters for
Boiled Soda Water.
HOBSON DRUG CO.
DRUGGISTS.

can be quenched at
our fountain without
swallowing a lot of
cholera germs.
All water used for
carbonating comes from
the People's Ice Co.
This artesian water is
distilled and filter-
ed several
times. It
is subjected
to a heat of
about 300
degrees and
all

REAL ESTATE

FOR SALE

BRUCE WARING & CO.,
503 Fort Street, near King Street.

LOT 192 & 200 feet, on Punaloe, on Alahe road. Price, \$1000.

ONE HALF ACRE, TARO PATCHES, at Punaloe, very cheap.

FOR LEASE, FOR A PERIOD OF FIVE YEARS, House and lot, nine rooms, on Nuuanu Street, near Beretania.

CORNER LOT ON KISAU AND PIKOLI, \$500.

LARGE LOT NEAR CHINESE THEATRE, \$1000.

LEASE PROPERTY ON NUUANU STREET, with several cottages. This will be sold at a very reasonable price.

9 YEARS LEASE ON GROUNDS AND 2 COTTAGES - Waikiki Beach, \$1000.

1 ACRE PLANTATION AT KOOLAHI, containing 10 acres.

3 ACRES AT KAHULU, SUITABLE FOR gardening, \$2000.

LOT ON QUEEN STREET, OPPOSITE the Tax Office. Price, \$1000.

2 LOTS ON WAIKIKI ROAD, VERY reasonable and on easy payment.

1 ACRE WITH LOTS ON KISAU STREET, \$1000.

LOT WITH 2 LARGER HOUSES - on Punaloe, \$1000.

HOUSE WITH COTTAGE AND KAHULU, \$500.

SEVERAL LOTS AT PEARL CITY, cheap.

LOT OPPORTUNITY FOR GOOD HOTEL, near Alahe road. Price, \$1000.

1 ACRE WITH NEW COTTAGE AND 130 X 100 FEET ON AYLUM ROAD, \$1000.

50 X 150 FEET WITH NEW COTTAGE, \$1000.

LOT WITH 2 LARGER HOUSES - on Punaloe, \$1000.

HOUSE WITH COTTAGE AND KAHULU, \$500.

SEVERAL LOTS AT PEARL CITY, cheap.

LOT OPPORTUNITY FOR GOOD HOTEL, near Alahe road. Price, \$1000.

1 ACRE WITH NEW COTTAGE AND 130 X 100 FEET ON AYLUM ROAD, \$1000.

50 X 150 FEET WITH NEW COTTAGE, \$1000.

LOT WITH 2 LARGER HOUSES - on Punaloe, \$1000.

HOUSE WITH COTTAGE AND KAHULU, \$500.

SEVERAL LOTS AT PEARL CITY, cheap.

LOT OPPORTUNITY FOR GOOD HOTEL, near Alahe road. Price, \$1000.

1 ACRE WITH NEW COTTAGE AND 130 X 100 FEET ON AYLUM ROAD, \$1000.

50 X 150 FEET WITH NEW COTTAGE, \$1000.

LOT WITH 2 LARGER HOUSES - on Punaloe, \$1000.

HOUSE WITH COTTAGE AND KAHULU, \$500.

SEVERAL LOTS AT PEARL CITY, cheap.

LOT OPPORTUNITY FOR GOOD HOTEL, near Alahe road. Price, \$1000.

1 ACRE WITH NEW COTTAGE AND 130 X 100 FEET ON AYLUM ROAD, \$1000.

50 X 150 FEET WITH NEW COTTAGE, \$1000.

LOT WITH 2 LARGER HOUSES - on Punaloe, \$1000.

HOUSE WITH COTTAGE AND KAHULU, \$500.

SEVERAL LOTS AT PEARL CITY, cheap.

LOT OPPORTUNITY FOR GOOD HOTEL, near Alahe road. Price, \$1000.

1 ACRE WITH NEW COTTAGE AND 130 X 100 FEET ON AYLUM ROAD, \$1000.

50 X 150 FEET WITH NEW COTTAGE, \$1000.

LOT WITH 2 LARGER HOUSES - on Punaloe, \$1000.

HOUSE WITH COTTAGE AND KAHULU, \$500.

SEVERAL LOTS AT PEARL CITY, cheap.

LOT OPPORTUNITY FOR GOOD HOTEL, near Alahe road. Price, \$1000.

1 ACRE WITH NEW COTTAGE AND 130 X 100 FEET ON AYLUM ROAD, \$1000.

50 X 150 FEET WITH NEW COTTAGE, \$1000.

LOT WITH 2 LARGER HOUSES - on Punaloe, \$1000.

HOUSE WITH COTTAGE AND KAHULU, \$500.

SEVERAL LOTS AT PEARL CITY, cheap.

LOT OPPORTUNITY FOR GOOD HOTEL, near Alahe road. Price, \$1000.

1 ACRE WITH NEW COTTAGE AND 130 X 100 FEET ON AYLUM ROAD, \$1000.

50 X 150 FEET WITH NEW COTTAGE, \$1000.

LOT WITH 2 LARGER HOUSES - on Punaloe, \$1000.

HOUSE WITH COTTAGE AND KAHULU, \$500.

SEVERAL LOTS AT PEARL CITY, cheap.

LOT OPPORTUNITY FOR GOOD HOTEL, near Alahe road. Price, \$1000.

1 ACRE WITH NEW COTTAGE AND 130 X 100 FEET ON AYLUM ROAD, \$1000.

50 X 150 FEET WITH NEW COTTAGE, \$1000.

LOT WITH 2 LARGER HOUSES - on Punaloe, \$1000.

HOUSE WITH COTTAGE AND KAHULU, \$500.

SEVERAL LOTS AT PEARL CITY, cheap.

LOT OPPORTUNITY FOR GOOD HOTEL, near Alahe road. Price, \$1000.

1 ACRE WITH NEW COTTAGE AND 130 X 100 FEET ON AYLUM ROAD, \$1000.

50 X 150 FEET WITH NEW COTTAGE, \$1000.

LOT WITH 2 LARGER HOUSES - on Punaloe, \$1000.

HOUSE WITH COTTAGE AND KAHULU, \$500.

SEVERAL LOTS AT PEARL CITY, cheap.

LOT OPPORTUNITY FOR GOOD HOTEL, near Alahe road. Price, \$1000.

1 ACRE WITH NEW COTTAGE AND 130 X 100 FEET ON AYLUM ROAD, \$1000.

50 X 150 FEET WITH NEW COTTAGE, \$1000.

LOT WITH 2 LARGER HOUSES - on Punaloe, \$1000.

HOUSE WITH COTTAGE AND KAHULU, \$500.

SEVERAL LOTS AT PEARL CITY, cheap.

LOT OPPORTUNITY FOR GOOD HOTEL, near Alahe road. Price, \$1000.

1 ACRE WITH NEW COTTAGE AND 130 X 100 FEET ON AYLUM ROAD, \$1000.

50 X 150 FEET WITH NEW COTTAGE, \$1000.

LOT WITH 2 LARGER HOUSES - on Punaloe, \$1000.

HOUSE WITH COTTAGE AND KAHULU, \$500.

SEVERAL LOTS AT PEARL CITY, cheap.

LOT OPPORTUNITY FOR GOOD HOTEL, near Alahe road. Price, \$1000.

1 ACRE WITH NEW COTTAGE AND 130 X 100 FEET ON AYLUM ROAD, \$1000.

50 X 150 FEET WITH NEW COTTAGE, \$1000.

LOT WITH 2 LARGER HOUSES - on Punaloe, \$1000.

HOUSE WITH COTTAGE AND KAHULU, \$500.

REAL ESTATE

BROKERAGE, INSURANCE,

G. D. CHASE,

Safe Deposit Building,
406 Fort St. Telephone 184

FOR SALE.

1000 BUILDING LOTS, CHINESE, green, blackfield and open areas, near Punaloe, on Alahe road. Price, \$1000.

1000 BUILDING LOTS, CHINESE, green, blackfield and open areas, near Punaloe, on Alahe road. Price, \$1000.

1000 BUILDING LOTS, CHINESE, green, blackfield and open areas, near Punaloe, on Alahe road. Price, \$1000.

1000 BUILDING LOTS, CHINESE, green, blackfield and open areas, near Punaloe, on Alahe road. Price, \$1000.

1000 BUILDING LOTS, CHINESE, green, blackfield and open areas, near Punaloe, on Alahe road. Price, \$1000.

1000 BUILDING LOTS, CHINESE, green, blackfield and open areas, near Punaloe, on Alahe road. Price, \$1000.

1000 BUILDING LOTS, CHINESE, green, blackfield and open areas, near Punaloe, on Alahe road. Price, \$1000.

1000 BUILDING LOTS, CHINESE, green, blackfield and open areas, near Punaloe, on Alahe road. Price, \$1000.

1000 BUILDING LOTS, CHINESE, green, blackfield and open areas, near Punaloe, on Alahe road. Price, \$1000.

1000 BUILDING LOTS, CHINESE, green, blackfield and open areas, near Punaloe, on Alahe road. Price, \$1000.

1000 BUILDING LOTS, CHINESE, green, blackfield and open areas, near Punaloe, on Alahe road. Price, \$1000.

1000 BUILDING LOTS, CHINESE, green, blackfield and open areas, near Punaloe, on Alahe road. Price, \$1000.

1000 BUILDING LOTS, CHINESE, green, blackfield and open areas, near Punaloe, on Alahe road. Price, \$1000.

1000 BUILDING LOTS, CHINESE, green, blackfield and open areas, near Punaloe, on Alahe road. Price, \$1000.

1000 BUILDING LOTS, CHINESE, green, blackfield and open areas, near Punaloe, on Alahe road. Price, \$1000.

1000 BUILDING LOTS, CHINESE, green, blackfield and open areas, near Punaloe, on Alahe road. Price, \$1000.

1000 BUILDING LOTS, CHINESE, green, blackfield and open areas, near Punaloe, on Alahe road. Price, \$1000.

1000 BUILDING LOTS, CHINESE, green, blackfield and open areas, near Punaloe, on Alahe road. Price, \$1000.

1000 BUILDING LOTS, CHINESE, green, blackfield and open areas, near Punaloe, on Alahe road. Price, \$1000.

1000 BUILDING LOTS, CHINESE, green, blackfield and open areas, near Punaloe, on Alahe road. Price, \$1000.

1000 BUILDING LOTS, CHINESE, green, blackfield and open areas, near Punaloe, on Alahe road. Price, \$1000.

1000 BUILDING LOTS, CHINESE, green, blackfield and open areas, near Punaloe, on Alahe road. Price, \$1000.

1000 BUILDING LOTS, CHINESE, green, blackfield and open areas, near Punaloe, on Alahe road. Price, \$1000.

1000 BUILDING LOTS, CHINESE, green, blackfield and open areas, near Punaloe, on Alahe road. Price, \$1000.

1000 BUILDING LOTS, CHINESE, green, blackfield and open areas, near Punaloe, on Alahe road. Price, \$1000.

1000 BUILDING LOTS, CHINESE, green, blackfield and open areas, near Punaloe, on Alahe road. Price, \$1000.

1000 BUILDING LOTS, CHINESE, green, blackfield and open areas, near Punaloe, on Alahe road. Price, \$1000.

1000 BUILDING LOTS, CHINESE, green, blackfield and open areas, near Punaloe, on Alahe road. Price, \$1000.

1000 BUILDING LOTS, CHINESE, green, blackfield and open areas, near Punaloe, on Alahe road. Price, \$1000.

1000 BUILDING LOTS, CHINESE, green, blackfield and open areas, near Punaloe, on Alahe road. Price, \$1000.

1000 BUILDING LOTS, CHINESE, green, blackfield and open areas, near Punaloe, on Alahe road. Price, \$1000.

1000 BUILDING LOTS, CHINESE, green, blackfield and open areas, near Punaloe, on Alahe road. Price, \$1000.

1000 BUILDING LOTS, CHINESE, green, blackfield and open areas, near Punaloe, on Alahe road. Price, \$1000.

1000 BUILDING LOTS, CHINESE, green, blackfield and open areas, near Punaloe, on Alahe road. Price, \$1000.

1000 BUILDING LOTS, CHINESE, green, blackfield and open areas, near Punaloe, on Alahe road. Price, \$1000.

1000 BUILDING LOTS, CHINESE, green, blackfield and open areas, near Punaloe, on Alahe road. Price, \$1000.

1000 BUILDING LOTS, CHINESE, green, blackfield and open areas, near Punaloe, on Alahe road. Price, \$1000.

1000 BUILDING LOTS, CHINESE, green, blackfield and open areas, near Punaloe, on Alahe road. Price, \$1000.

1000 BUILDING LOTS, CHINESE, green, blackfield and open areas, near Punaloe, on Alahe road. Price, \$1000.

1000 BUILDING LOTS, CHINESE, green, blackfield and open areas, near Punaloe, on Alahe road. Price, \$1000.

1000 BUILDING LOTS, CHINESE, green, blackfield and open areas, near Punaloe, on Alahe road. Price, \$1000.

1000 BUILDING LOTS, CHINESE, green, blackfield and open areas, near Punaloe, on Alahe road. Price, \$1000.

1000 BUILDING LOTS, CHINESE, green, blackfield and open areas, near Punaloe, on Alahe road. Price, \$1000.

1000 BUILDING LOTS, CHINESE, green, blackfield and open areas, near Punaloe, on Alahe road. Price, \$1000.

1000 BUILDING LOTS, CHINESE, green, blackfield and open areas, near Punaloe, on Alahe road. Price, \$1000.

1000 BUILDING LOTS, CHINESE, green, blackfield and open areas, near Punaloe, on Alahe road. Price, \$1000.

1000 BUILDING LOTS, CHINESE, green, blackfield and open areas, near Punaloe, on Alahe road. Price, \$1000.

1000 BUILDING LOTS, CHINESE, green, blackfield and open areas, near Punaloe, on Alahe road. Price, \$1000.

1000 BUILDING LOTS, CHINESE, green, blackfield and open areas, near Punaloe, on Alahe road. Price, \$1000.

1000 BUILDING LOTS, CHINESE, green, blackfield and open areas, near Punaloe, on Alahe road. Price, \$1000.

1000 BUILDING LOTS, CHINESE, green, blackfield and open areas, near Punaloe, on Alahe road. Price, \$1000.

1000 BUILDING LOTS, CHINESE, green, blackfield and open areas, near Punaloe, on Alahe road. Price, \$1000.

1000 BUILDING LOTS, CHINESE, green, blackfield and open areas, near Punaloe, on Alahe road. Price, \$1000.

1000 BUILDING LOTS, CHINESE, green, blackfield and open areas, near Punaloe, on Alahe road. Price, \$1000.

1000 BUILDING LOTS, CHINESE, green, blackfield and open areas, near Punaloe, on Alahe road. Price, \$1000.

1000 BUILDING LOTS, CHINESE, green, blackfield and open areas, near Punaloe, on Alahe road. Price, \$1000.

1000 BUILDING LOTS, CHINESE, green, blackfield and open areas, near Punaloe, on Alahe road. Price, \$1000.

1000 BUILDING LOTS, CHINESE, green, blackfield and open areas, near Punaloe, on Alahe road. Price, \$1000.

1000 BUILDING LOTS, CHINESE, green, blackfield and open areas, near Punaloe, on Alahe road. Price, \$1000.

1000 BUILDING LOTS, CHINESE, green, blackfield and open areas, near Punaloe, on Alahe road. Price, \$1000.

1000 BUILDING LOTS, CHINESE, green, blackfield and open areas, near Punaloe, on Alahe road. Price, \$1000.

1000 BUILDING LOTS, CHINESE, green, blackfield and open areas, near Punaloe, on Alahe road. Price, \$1000.

1000 BUILDING LOTS, CHINESE, green, blackfield and open areas, near Punaloe, on Alahe road. Price, \$1000.

1000 BUILDING LOTS, CHINESE, green, blackfield and open areas, near Punaloe, on Alahe road. Price, \$1000.

1000 BUILDING LOTS, CHINESE, green, blackfield and open areas, near Punaloe, on Alahe road. Price, \$1000.

1000 BUILDING LOTS, CHINESE, green, blackfield and open areas, near Punaloe, on Alahe road. Price, \$1000.

1000 BUILDING LOTS, CHINESE, green, blackfield and open areas, near Punaloe, on Alahe road. Price, \$1000.

1000 BUILDING LOTS, CHINESE, green, blackfield and open areas, near Punaloe, on Alahe road. Price, \$1000.

1000 BUILDING LOTS, CHINESE, green, blackfield and open areas, near Punaloe, on Alahe road. Price, \$1000.

1000 BUILDING LOTS, CHINESE, green, blackfield and open areas, near Punaloe, on Alahe road. Price, \$1000.

1000 BUILDING LOTS, CHINESE, green, blackfield and open areas, near Punaloe, on Alahe road. Price, \$1000.

1000 BUILDING LOTS, CHINESE, green, blackfield and open areas, near Punaloe, on Alahe road. Price, \$1000.

1000 BUILDING LOTS, CHINESE, green, blackfield and open areas, near Punaloe, on Alahe road. Price, \$1000.

1000 BUILDING LOTS, CHINESE, green, blackfield and open areas, near Punaloe, on Alahe road. Price, \$1000.

1000 BUILDING LOTS, CHINESE, green, blackfield and open areas, near Punaloe, on Alahe road. Price, \$1000.

1000 BUILDING LOTS, CHINESE, green, blackfield and open areas, near Punaloe, on Alahe road. Price, \$1000.

1000 BUILDING LOTS, CHINESE, green, blackfield and open areas, near Punaloe, on Alahe road. Price, \$1000.

1000 BUILDING LOTS, CHINESE, green, blackfield and open areas, near Punaloe, on Alahe road. Price, \$1000.

1000 BUILDING LOTS, CHINESE, green, blackfield and open areas, near Punaloe, on Alahe road. Price, \$1000.

1000 BUILDING LOTS, CHINESE, green, blackfield and open areas, near Punaloe, on Alahe road. Price, \$1000.

1000 BUILDING LOTS, CHINESE, green, blackfield and open areas, near Punaloe, on Alahe road. Price, \$1000.

1000 BUILDING LOTS, CHINESE, green, blackfield and open areas, near Punaloe, on Alahe road. Price, \$1000.

1000 BUILDING LOTS, CHINESE, green, blackfield and open areas, near Punaloe, on Alahe road. Price, \$1000.

1000 BUILDING LOTS, CHINESE, green, blackfield and open areas, near Punaloe, on Alahe road. Price, \$1000.

1000 BUILDING LOTS, CHINESE, green, blackfield and open areas, near Punaloe, on Alahe road. Price, \$1000.

1000 BUILDING LOTS, CHINESE, green, blackfield and open areas, near Punaloe, on Alahe road. Price, \$1000.

NEWS IN A NUTSHELL.

Volunteers still guard the valleys.

A chart of Necker Island has been lost.

Two more houses were burned at Kakaako yesterday.

The dredger may be started up again in a few days.

The condition of Mr. E. B. Giffard is much improved today.

Nothing further has been learned of the alarming placards of Sunday.

There has not been a cholera case outside the hospital in twenty-four hours.

The general cleaning up cannot be undertaken till there is more time available.

There is now quite a large group of quarantine buildings at the old sailing station.

For over a week there has not been a cholera case on the town side of Liliha street.

There is still a very general desire to hear band concerts at the Executive Building grounds.

Wm. R. Sims of Wilder's S. S. Co., will build himself a residence in Kalihi so soon as the trouble ends.

George Houghtaling was arrested again on Wednesday last on the charge of selling liquor without a license.

An effort is being made to devise a plan that will provide work for a lot of men on the rolls of the Hawaiian Relief Society.

