

From San Francisco:
 Nevada ... Apr. 25
 Hongkong Maru ... May 2
 For San Francisco:
 American Maru ... May 2
 Nevada ... May 2
 From Vancouver:
 Marana ... May 2
 For Vancouver:
 Anraugi ... Apr. 29

A Stunner for this summer is the Bulletin Vacation Trip Offer

EVENING BULLETIN

3:30 O'CLOCK

Details of this Splendid Plan Next Saturday

EDITION

Estimate A Newspaper's Advertising Efficiency By Its Popularity With Advertisers.
 Merchants who use a newspaper continuously have tested its powers as a result-getter, and are satisfied with it.
 The Evening Bulletin, as shown by actual records of the amount of advertising published, has more satisfied customers than any other Honolulu newspaper.
 Use A Tried Medium

VOL. X, NO. 3987

HONOLULU, TERRITORY OF HAWAII, MONDAY, APRIL 27, 1908

PRICE 5 CENTS

FLEET DATE CHANGED---STAY SHORTENED ACHI EXPOUNDS GOVERNMENT DOCTRINE

May Condemn Half A Block In Palama To Enlarge Aala Park

Governor Peary before his departure to the mainland promised to consider a plan to have the Aala Park enlarged by adding to it the rest of the block lying between the river, Aala lane, Beretania and King streets. He promised to refer the matter to Land Commissioner Pratt and Superintendent of Public Works Campbell, and it is expected that the project may be taken up.

The scheme was first suggested to the Governor by Chairman Hueston of the Board of Supervisors and Chas. Achi, who called on him together and laid their plan before him. Achi stated in substance that the park had been an immense success; so much so, in fact, that more room was

FLORAL PARADE FOR THE FLEET

Suggestions Are Made For Program Of One Day

"I am looking at the old Pacific Hardware store as a headquarters for the distribution of literature, a reading-room and writing-room for the boys of the Fleet," said Fred Waldron this morning. Mr. Waldron is the head of the Entertainment Committee.

The suggestions for the program of the Fleet entertainment are coming in rapidly. John Guild proposed this morning that on one day during the stay of the ships in port a general public holiday be declared and the display of the Floral Parade repeated. This he believes is one of the features that cannot be duplicated anywhere the men of the Fleet may go.

"It could, I think, be made specially interesting to the sailors by giving each ship a car to be decorated and entered by the men of that ship. Prizes might also be given," said Mr. Guild in support of his plan.

"The officers as well as the men would get great pleasure out of a day of that kind.

"If the day could be a public holiday and the people were out in holiday attire, as on Washington's birthday at our regular parade, what an impression our visitors would get of our outdoor life here in Hawaii, and I think it should be kept in mind in all our arrangements that we want to give the Fleet corps of entertainment and sport here that are peculiar to these islands rather than trying to follow what we hear has been done for them on the mainland.

"As the Fleet will be here while the schools are closed, there would probably be no difficulty in getting the use of the Oahu College campus as before, for the finish up of another Floral Parade, and nothing they will see anywhere else, I think, be more beautiful or afford the visitors more pleasure in the way of sending back photographs than this would, especially as the officers and men would themselves be participating."

Pogue Is Appointed

Acting Governor Mott-Smith this morning dictated acceptance of the resignation of T. M. Church as a member of the Board of Supervisors of the County of Maui, and named W. F. Pogue, who has the support of a great many of the people there, for the place. In his letter of acceptance to Mr. Church, he states that his good work has been so well known on Maui as well as here that it needs no comment.

W. F. Pogue will take his new office on April 30th, from which date Church's resignation takes effect.

BABY BORN AT SEA

The barkentine Benicia, Captain Trainor, 59 days out from Newcastle, came into port early this afternoon with one more soul aboard than she carried out of the Australian port. The addition to the ship's company is George Benicia Meridian Trainor, six weeks old son of the proud captain and his wife. The baby was born in latitude 35:26 south, longitude 148:25 west, on March 14th, in stormy weather. He is a hearty youngster, and now weighs twelve pounds. He is to be christened by a priest in this port.

The Benicia had a terribly rough passage from the day she left Australia, losing staves and canvas.

The American barkentine Aurora, Capt. Simonson, 54 days out from Newcastle, arrived in port shortly before noon today. At the time she was being towed through the channel the barkentine Benicia, also from Newcastle, 59 days out, was sighted off the heads. The R. M. Slade, another barkentine which left Newcastle with the Benicia, five days ahead of the Aurora, was passed three days ago by the latter vessel, becalmed near Hilo. In fact, the vessels, all coal-laden, are just in off a trans-ocean race, in which the Aurora wins by five days. The men aboard did not know of the whereabouts of the Benicia, after passing her at sea, until they made port here. Surprised was expressed that the craft was so close astern. The Aurora is a rakish craft with big spars, which would be expected to shine in such a speed rivalry.

MANY TEACHERS TO THE COAST

Method Of Selecting 30 Who Will Travel Free

A meeting of the Board of Education has been called for 3:30 this afternoon at the office of the Board. There will be a number of important matters brought to the attention of the members by Superintendent Babbitt, among which will be the distribution of the McKinley Memorial Fund for the new High School. The other matter to be decided will be the method of selecting the teachers who will be given transportation to the Coast in the United States Army transports.

Judging by the number of names that has been submitted, there are a great many teachers who will take advantage of the summer-vacation and opportunities offered on the Coast for entertainment and knowledge, and go up whether or not they are chosen to go on the transport or not. Mr. Babbitt has been racking his brain lately to select a method of selecting the lucky teachers who will travel free to the Coast. Several methods of selecting have been discussed, but they have been put aside on account of the fact that by using them a certain class of teachers would be given preference over others. This is the very thing that Mr. Babbitt wishes to avoid. Every teacher will be given the same chance to make the trip with as little expense as possible.

The list of names of applicants will be open to addition until around the first of June. Those who have already sent in their applications are as follows:

Miss A. Stephenson, Miss M. Paty, Miss L. Whitford, Miss E. MacGregor, Mrs. J. N. Bell, Miss M. Bell, Miss M. Kluge, Miss Alice Greene, Miss M. Ladd, Mrs. S. H. Douglas, Miss J. Tauer, Miss E. F. Porter, Mrs. J. B. Alexander, Miss M. Woods, J. B. Alexander, Miss Nora Keawe, Miss M. Franz, A. K. Cathart, Miss C.

(Continued on Page 2)

Fleet Will Stay One Week Only

WASHINGTON, D. C., April 27.—The great Battleship Fleet will arrive at Honolulu on July 16 and remain seven days.

This schedule makes the Fleet come later than was anticipated and make a shorter stay. Evidently Coast influences have been at work to keep the ships in Pacific Coast ports for a longer period than first planned.

FLOWER FESTIVAL AT SANTA BARBARA
 SANTA BARBARA, Calif., April 27.—The Fleet is being entertained here with an elaborate flower festival.

EVANS TO REJOIN FLEET
 PASO ROBLES, Calif., April 27.—Rear Admiral Evans will rejoin the Fleet at Monterey.

J. DALZELL BROWN TO STATE'S PRISON

SAN FRANCISCO, Cal., April 27.—J. Dalzell Brown of the California Savings and Trust Company today pleaded guilty of embezzlement and was sentenced to eighteen months in the penitentiary.

BOYCOTT CHECKS JAPANESE LINE

HONGKONG, China, April 27.—The Toyo Kisen Kaisha has abandoned its South American service on account of the boycott of Japanese enterprises by the Chinese.

FILIPINO LOST \$60,000.

MANILA, P. I., April 27.—Banco Espanole, a Filipino, has been defrauded of \$60,000 gold by employees.

RAISULI KILLED

LONDON, England, April 27.—It is reported that the famous bandit Raisuli has been assassinated by his tribesmen.

BRITISH STEAMER BURNED

GUAYAQUIL, April 27.—The British steamer Cacique was burned here today.

Fleet Committees Work

What suggestion have you to offer for the entertainment of the great fleet while it is here?

This is the all-absorbing question that is occupying the mind of not only Mr. Mott-Smith, but also a large number of business men to whom the duty of preparing all arrangements has fallen.

C. C. Jones called at the Governor's office this morning, and notified the Governor that he would not be physically able to serve as chairman of the committee-at-large, being willing, however, to serve as a member of the committee.

C. G. Ballentine also gave notification that he would not be able to serve as chairman of the committee on transportation, being also willing to serve as a member of the committee. Chairman Mott-Smith has called a meeting at 4 o'clock of the chairman of all the committees, when the work will be so arranged that two committees will not conflict.

The Committee on Decoration got together this noon in the Executive chambers, and outlined their plans for putting a festive aspect on the city present at the meeting were: Col. Jones, chairman, R. J. Bushy, George King, G. Kam Fook, W. A. Lewis, Albert Atong, Chuck Hoy, Roscoe Perkins and Senator John Lane.

Discussion as to the best manner in which to keep the city illuminated and decorated was general at first, Chairman Jones appointed the following men on sub-committees: Committee to see the business men with regard to window and store decorations: Bushy, Love, Atong, Chuck Hoy, Sana, and Kojima; Committee on Flags and Emblems: King, Perkins, McInerney and G. Kam Fook; Committee on Groceries and Palms, Lane, Chiu Chee Yee and Kobokashi; Committee on electric lighting, Jones, Mote Johnson and George King.

HUTCHINS' RESIGNATION ACCEPTED BY GOVERNOR

Clinton J. Hutchins' resignation as a member of the Board of Education has been accepted by Acting Governor Mott-Smith, but the latter has not as yet made any selection of a man to take his place. William Williamson's term is up on June 25, while Hutchins' expires on April 30.

A petition has been filed to admit the will of Jose Silva to probate. His real property is valued at \$1750 and his personal at \$152.

THE PAPERS

the day after a big fire, say either, "The property was a total loss," or "The loss was fully covered by insurance."

Those few words mean a great deal to the owner of the property, and they mean, too, that he has either protected or neglected his interests.

Which are YOU doing now?

We represent reliable, dollar-for-dollar companies.

Hawaiian Trust Company, Ltd.
 Fort St. Honolulu

FOR THE BEST FRUIT

place your order with us.

Island Fruit Co.,
 72 S. King St. Phone 15.

Chocolates
Glace Figs
 All Our Own Make
Alexander Young Cafe

FOREIGN LEPERS GET PERMISSION TO LEAVE

Permission has been received by the Chief Executive to allow two lepers, a Korean woman and a Japanese, to leave the country. The necessary permission came from the Secretary of the Interior of the United States. The reason why these two were allowed to leave has not been specified by him, but it is believed that other lepers who are foreigners may be allowed to return to their native strand.

Back up this movement to improve the streets and sidewalks.

Hollister's Cold Chocolates

Cure Colds, Coughs, and Grippe Safely, Surely, and Quickly.

25c per Bottle

COLLEGE HILLS

We have included College Hills in our parcels delivery route. Our wagon leaves town for Waikiki and College Hills at 10:30 a. m. every day.

TERRITORIAL MESSENGER SERVICE

Achi On Municipality

Editor Evening Bulletin: According to the American custom there are many kinds of government in this island, to-wit: the Territorial Government, a State or Territorial, a Municipal, Counties, Towns, Villages, School Districts and other divisions of States.

See Page 14 of Lincoln's Fundamentals of American Government.

If Mr. Emmeluth's idea to have a municipal government for Honolulu alone is correct and proper, the people in Ewa might as well start a Town or Village Government for themselves, and if that would be good for Ewa it would also be good for Waialua, Lala, Watanae or Kaneohe to start Town or Village Government for themselves.

The whole thing then means several sets of officers and several taxes it means more taxes to be paid.

(Continued on Page 4)

SWELL SUMMER SUITS

The ALFRED BENJAMIN suit, while designed for men who are conservative in their dress, clearly defines all the style features that the best-dressed men in New York demand in their clothes.

We offer them to you in staple Blue and Black Serge, Chevots, Worsted, Cassimeres, and the popular shades of Brown, at the most modest of prices. Single or double breasted.

Stop awhile and see our window display.

THE KASH CO., LTD.,

CORNER OF FORT AND HOTEL STREETS.

Stands The Knocks

This "Diamond" No. 321 Box Calf Bal is made and built to stand the knocks and rough usage that a heavy shoe generally gets.

It never skuffs, like the kid, and it is strong and comfortable—a very popular shoe with those who are looking for shoe value and wearing quality in a heavy shoe.

We solicit and attend promptly to all island orders.

PRICE—\$3.00.

Manufacturers' Shoe Co., Ltd.

P. O. Box 469. Phone 282

MASONIC TEMPLE WEEKLY CALENDAR MONDAY Oceanic—Stated and Third Degree. TUESDAY WEDNESDAY THURSDAY FRIDAY SATURDAY

HARMONY LODGE, No. 3, I. O. O. F. Meets every Monday evening at 7:30 in I. O. O. F. Hall, Fort Street.

MYSTIC LODGE, No. 2, K. of P. Meets every Tuesday evening at 8:00 o'clock in K. of P. Hall, corner Fort and Beretania.

OAHU LODGE, No. 1, K. of P. Meets every Friday evening at 7:30 in K. of P. Hall, corner Fort and Beretania.

HONOLULU LODGE 616, B. P. O. E. Honolulu Lodge No. 616, B. P. O. E., will meet in their hall on King near Fort street every Friday evening.

HONOLULU LODGE 616, B. P. O. E. Meets every Saturday evening at 7:30 o'clock in K. of P. Hall, corner Fort and Beretania.

HONOLULU AERIE 140, F. O. E. Meets on the 2nd and 4th WEDNESDAY evenings of each month at 7:30 o'clock in K. of P. Hall, corner Beretania and Fort streets.

HAWAIIAN TRIBE No. 1, I. O. O. M. Meets every first and third Thursdays of each month at Knights of Pythian Hall.

MILLINERY Spring Flowers, New Ribbons, Feathers and Hats Arrived. Wire frames made by order.

K. ISOSHIMA. 30 KING ST. NEAR BETHEL. LEIS

Woman's Exchange Vienna Bakery is making the Best Home-made Bread in town.

LUNCHES and DRINKS The most popular place in town. The Fashion Saloon, Hotel St. near Fort.

McTighe Favorite The Best Whiskey on the Market. THOS. F. MCTIGHE & CO., AGENTS.

Baby Carriages Go Carts Folding Carts Koffschlaeger Co., Limited, King and Bethel Sts.

IF YOU AUTO You should carry with you a package of RED + FIRST AID TO THE INJURED. It is a convenient thing to carry and is useful.

Benson, Smith & Co., Ltd., FORT AND HOTEL STS.

RUN DOWN! OVERWORKED! TRY SOME Koenig's Malt Extract It will build you up again. CHAMBERS DRUG CO., FOR. FORT AND KING STS. PHONE 131.

Associated Garage, LIMITED AGENTS FOR WINTON, CADILLAC, FRANKLIN, PIERCE-ARROW and CAMERA TOURING CARS and RUNABOUTS. MERCHAND ST. PHONE 388. Prettiest Hats OF THE SEASON. YOUR General Arthur Always Has The Same Fine Flavor. M. A. Gunst & Co. EXCELLENT LAUNDRY WORK Done by the FRENCH LAUNDRY with their new FRENCH dry cleaning process. 258 Beretania St. Phone 1491.

LOCAL AND GENERAL Not a single cent need be spent for this summer's vacation by any person who tries the Bulletin Vacation Plan. Auto at hack fare. Tel. 361. The Fleet is coming. Let us clean up the City. Get ready for Blom's big shirt waist sale today morning.

IN FOREIGN PORTS CABLE REPORT OF SAN FRANCISCO MERCHANTS' EXCHANGE. MONDAY, APRIL 27. VICTORIA, April 26. S. S. Maratua, hence for Honolulu returned, air pumps broken.

HONOLULU MAY GET NEW STEAMSHIP LINE Alexander Hume Ford, secretary of the transportation committee appointed by Governor Frazier, has received an answer to a letter he wrote to a friend who has a controlling interest in the Texas-Tehuantepec S. S. Co.

MAY CONDEMN (Continued from Page 1) is sought for the Allen estate. Governor Frazier and a few Chinese and Portuguese. Achi and Hustace when seen this morning confirmed the truth of the facts stated above.

MANY TEACHERS (Continued from Page 1) A. Mumford, Miss Eva Shaw, Mrs. G. Cathcart and child, Miss Jane Winne, Miss E. Sobey, Miss Harriet Walker, Miss A. P. Chung, Mrs. L. M. Walker, Miss M. A. Smith, Miss M. Mossman, Miss I. Ziegler, Mrs. L. G. Marshall, Miss A. E. Mudge, Mrs. J. Vincents, Mr. Vincents, Mrs. L. Sobey, Mrs. O. L. Holland, Mrs. C. T. True, Miss Louise Gulick, Mrs. J. W. Marcell, Mr. J. V. Marcell, Miss A. C. Hadley, J. N. Taggard, Miss M. K. Pihoi, Miss B. W. Stevens, Miss K. Trowbridge, Miss L. M. Nicholson, F. J. Nuhrija, Moses Kaunimahu, C. E. Copeland, Mrs. C. E. Copeland, Mrs. H. L. Lewis, Miss Payne, Miss Elsie Fleming, Thos. Nahiwa, Miss Nellie McLain, Miss Mollie Grace, Miss Nedie McLain, Miss Allie M. Felker, Mrs. L. L. Creighton, Miss Bernice Cook, Miss Emma Lyons, Miss J. M. Weight, Mrs. E. Deacon, Mrs. Lillian Bleckford, Miss N. Adams, Miss M. Angus, Miss J. Angus, Miss M. Deane.

THE WORK Your Eyes Can Do depends upon how you treat them. They'll do all for you that they can't, don't you owe them something for THAT? A. N. SANFORD, OPTICIAN, BOSTON BUILDING.

THE STEAMER MAUNA LOA, Steamer, sails at noon tomorrow for Honolulu. BARKENTINE IRONWORKS is about due to arrive at San Francisco this port. THE STEAMER KAUAI BOG, Tug boat, sails today at 5 p.m. on her regular run.

THE STEAMER MAUNA LOA sails at noon tomorrow for Hawaii ports and way ports. PASSENGERS BOOKED Per steamer, Mauna Kea, Freeman, for Hawaii and Maui ports, April 28: C. Mactrean, C. E. Phillips, Miss Phillips, Miss M. R. Phillips, Mrs. E. J. Walker and child, Mrs. Ahrens, Mrs. Mayors, J. Dyer, C. Hedemann, Bishop Restarick and wife, H. L. Marx, A. C. Alexander, Rev. Kroll, wife and 2 children, Mr. H. M. La Rue, Jr., C. J. La Rue and wife, Mrs. H. M. La Rue, Mrs. J. K. La Rue, Mrs. E. K. Freeth.

THE STEAMER MAUNA LOA Shimomura for Kauai, April 28, 12 m.—J. A. Magoon and wife. REV. DR. BING IAN ILL. Dr. J. T. McQuinn, who is leaving the physician of the Rev. Dr. Henry Stinson, stated last night that his patient, Miss Elizabeth Jones, who had been ill since she was 12 years of age, had died of pneumonia.

STOLEN FROM MAIL LONDON, Eng., April 26.—The Postoffice authorities have just made public the fact that two mail bags, containing securities to the value of half-a-million dollars and other valuables, have been stolen. DEATH-DEALING WINDS OF SOUTH NEW ORLEANS, La., April 25.—Estimates of the number of fatalities due to the series of tornadoes that swept over the States of Mississippi, Alabama, and Louisiana on Saturday bring the dead up to while 100 others are injured so seriously that their deaths will probably occur. THE UNION OIL S. S. Landing which arrived Friday night from Port San Luis, entering port Saturday morning, yesterday morning left for Kihiti to complete the discharge of her fuel oil cargo.

THE STEAMER MAUNA LOA, Steamer, sails at noon tomorrow for Honolulu. BARKENTINE IRONWORKS is about due to arrive at San Francisco this port. THE STEAMER KAUAI BOG, Tug boat, sails today at 5 p.m. on her regular run. THE STEAMER MAUNA LOA sails at noon tomorrow for Hawaii ports and way ports. PASSENGERS BOOKED Per steamer, Mauna Kea, Freeman, for Hawaii and Maui ports, April 28: C. Mactrean, C. E. Phillips, Miss Phillips, Miss M. R. Phillips, Mrs. E. J. Walker and child, Mrs. Ahrens, Mrs. Mayors, J. Dyer, C. Hedemann, Bishop Restarick and wife, H. L. Marx, A. C. Alexander, Rev. Kroll, wife and 2 children, Mr. H. M. La Rue, Jr., C. J. La Rue and wife, Mrs. H. M. La Rue, Mrs. J. K. La Rue, Mrs. E. K. Freeth.

THE STEAMER MAUNA LOA Shimomura for Kauai, April 28, 12 m.—J. A. Magoon and wife. REV. DR. BING IAN ILL. Dr. J. T. McQuinn, who is leaving the physician of the Rev. Dr. Henry Stinson, stated last night that his patient, Miss Elizabeth Jones, who had been ill since she was 12 years of age, had died of pneumonia.

STOLEN FROM MAIL LONDON, Eng., April 26.—The Postoffice authorities have just made public the fact that two mail bags, containing securities to the value of half-a-million dollars and other valuables, have been stolen. DEATH-DEALING WINDS OF SOUTH NEW ORLEANS, La., April 25.—Estimates of the number of fatalities due to the series of tornadoes that swept over the States of Mississippi, Alabama, and Louisiana on Saturday bring the dead up to while 100 others are injured so seriously that their deaths will probably occur. THE UNION OIL S. S. Landing which arrived Friday night from Port San Luis, entering port Saturday morning, yesterday morning left for Kihiti to complete the discharge of her fuel oil cargo.

THE A. H. S. S. NEVADAN left at 5 p. m. yesterday to discharge freight at Kahului, and take on sugar there. She carried several passengers. The boat is expected back Wednesday morning, and will sail for San Francisco Thursday.

Men's Shoes Best line of \$3.50 Shoes in the city. New Spring Style Just Arrived Yee Chan & Co., PHONE 627. KING AND BETHEL STS.

CROOK ARRIVES; IS ORDERED TO ALASKA The U. S. A. T. Crook arrived in port shortly after 2 o'clock Saturday, with nearly a hundred cabin passengers aboard, and something over 300 crew of the Second Infantry, 11 and 12 batteries of the 5th Artillery, and a number of casuals in the baggage. He left Manila on the 26th and Nagasaki on the 12th. The boat will be in port until Thursday, when she proceeds to San Francisco. The delay is made in accordance with a telegram from San Francisco.

DEPARTED Saturday, April 26. U. S. A. T. Crook, Williams, from Manila and Nagasaki, 4:15 p. m. Sunday, April 26. Star, Maui, Bruhn, from Hawaii, 2 p. m. Star, W. G. Hall, Thompson, from Kauai ports, 4:24 a. m. Star, Iwahiko, Self, from Maui and Molokai ports, 7:20 a. m. Star, Heimo, Nelson, from Hawaii ports, 8 a. m. Monday, April 27. Blake, Arrera, from New York, 4:11 a. m. Blake, Deakin, from New York, 4:11 a. m.

DEPARTED Saturday, April 26. Star, Nihau, Owsen, for Kauai, 3 p. m. Sunday, April 26. U. S. S. Lanina, Thomson, for Kihiti, 8 a. m. A. H. S. S. Nevada, Greene, for Kahului, 5 p. m. A. H. S. S. Despatch, Kona, for Kahului, 5 p. m.

DEPARTED Saturday, April 26. U. S. S. Lanina, Thomson, for Kihiti, 8 a. m. A. H. S. S. Nevada, Greene, for Kahului, 5 p. m. A. H. S. S. Despatch, Kona, for Kahului, 5 p. m.

Charles D. Walker, Boat and Machine Works, King near Alapai.

TIDES Table with columns for High Water, Low Water, and Moon. PASSENGERS DEPARTED Per U. S. A. T. Crook, from Manila for San Francisco, April 26: J. H. Cassidy and wife, Mrs. T. H. Carron and child, Daniel Mett, Crowley, J. C. Dow, Miss J. L. Durbin, Miss G. F. Finley, Mrs. Chas. G. Judge, W. L. Galloway, Mrs. C. M. Galloway, W. B. Gorman, C. J. Gull, G. C. Lowry, Miss Catherine Liddell and child, Honney G. Marsh and wife, H. B. McCay and wife, W. E. Stafford, wife and son, W. H. Penney, C. E. Pihana, Mrs. Ida Pittsford, four Sisters of the Sacred Heart, Major R. H. Stevens, Capt. W. Weigel, Miss Wilson, Lt. Col. G. St. J. Clubb, Med. Lt. H. Brown and wife, Capt. J. H. Wholley, Capt. A. J. Harris, H. H. Watkins and wife, Lt. J. M. Gullison, Lt. D. D. Mitchell, Lt. J. L. Craig, Lt. G. Matthews, wife and child, Lt. O. H. Simpson and wife, Lt. H. W. Fleet, Lt. L. W. Moseley, Lt. P. Cook, Lt. R. H. Gibson and wife, Capt. H. H. Scott, wife and child, Lt. W. Benson, Lt. R. M. Dunford, Lt. E. L. Draber, Lt. C. H. Paine, Lt. W. C. Potter, Dr. W. A. Spry, wife and child, Mrs. R. W. Creable, Mrs. J. E. Little and child, Norman Johnson, Mrs. G. P. Beale and child, George S. Blake, James R. Cutler, Mrs. Delbour and child, E. S. Ewing, Mrs. G. O. Corton, H. J. Hunt, Will Joseph, S. S. Leunberry, Miss Ida Minto, T. S. Stanton, Richard Padlock, E. A. Parker, J. H. Pent, Walter Strawn, 151 colored men of the Second Infantry, 150 colored men of the 25th Field Artillery, 106 casuals, etc. Nagasaki to San Francisco: Mrs. H. H. and child, Master H. Best, ex-Sergeant Gustave Glibbehaus. Per steamer, W. G. Hall, from Kauai ports, April 26.—W. C. Stockman, C. W. Hudson, Miss Kuhlmann, Mr. Kuhlmann, Rev. W. B. Olson, Rev. J. H. Gulleh, S. Spitzer, Chong Kii, Y. Q. Kwok, Lon Lu, Miss G. Melchior, R. W. T. Purvis, 25 deck. Per steamer, Iwahiko, from Maui and Molokai, April 26.—W. C. Hitchcock and 8 deck.

ORIENTAL GOODS

New importation direct from the Orient.

- GRASS LINENS, EMBROIDERED LINENS,
- PINEAPPLE SILK, Hand-Embroidered GRASS LINEN SQUARES, in two different sizes, 27-inch and 34-inch; Cherry Blossom, Rose Pattern, Wisteria, Chrysanthemum, and Dragon.
- TEA CLOTHS—40 inches square, Cherry Blossom, Rose, Wisteria, and Dragon.
- SIDEBEARD RUNNERS—Size 18x54. Wisteria, Cherry Blossom, Rose, and Chrysanthemum.
- TABLE CENTERS—Scalloped Edge, Cherry Blossom, Dragon, and Rose Pattern.
- TABLE COVERS—Beautifully embroidered, square, oblong, and round, in all sizes, with Napkins to match.
- EMBROIDERED PLATE and GLASS DOYLIES—White and Blue Grass Linen, by the piece and yard, extra good value.
- PINEAPPLE SILK—In Leading Colors.

A SMALL AMOUNT OF
GRASS LINEN EMBROIDERED
Shirt-Waist Patterns

Children's Black Ribbed Hose

Extra value, fine gauze, lisle finish, fast black, all sizes. 20¢ a pair.

Cravenette Cloth

Absolutely waterproof, 50 and 52 inches wide, navy, black, tan, and Oxford. \$2.50 a yard.

New Madras Curtains

Cross stripes, tassled ends, red and green stripes. \$1.25 a pair.

Cotton Toweling

Twilled Toweling, 15 yards for \$1.00
Birds-Eye Toweling, g. 12 1/2¢ a yard.

N. S. Sachs Dry Goods Co., Ltd.
THE STORE WITH THE MONEY-BACK POLICY!

FORESTERS COURT CELEBRATES IN STYLE

**Court Camoes Rounds
Out 15 Years Of
Success**

Court Camoes No. 8119, Ancient Order of Foresters, celebrated its fifteenth anniversary on Saturday evening with a splendid banquet at the Alexander Young Hotel. The large attendance and the enthusiasm of the members was the best evidence to the outsider that the Court Camoes is an aggressive organization. The members are nearly all young men and of high standing in the community.

The large dining-room was tastefully decorated for the occasion and at each diner's place was a large blue lei bearing the insignia of the Order. The best of good-will prevailed and it was heightened when the prominent members of the Order told of the steady progress of this, the third largest Court in America. The presiding officer of the evening was Chief Ranger Dr. John F. Cowles, who first called upon A. V. Peters, P. C. R., one of the organizers of the Court, who told the history of its progress in a most interesting manner. From three members and no treasury balance on April 23, 1893, the Court has now a membership of over two hundred and a treasury balance of \$8,000.

L. R. Medeiros spoke in his usual happy style on "Fraternalism," pointing to the practical benefits of treating man as a brother.

Daniel Logan supplied the response of Dr. Murray to the toast "Ancient Forestry," and did it very well, although his knowledge of the Order is limited to a very brief experience.

H. H. Williams spoke of "Kindred Societies." He called attention to the great good done by fraternal organizations and the misfortune that had been softened by the fore-handness of becoming associated with some organization. Dr. Mackall spoke briefly for the "Ladies"; W. R. Farrington and R. O. Matheson responded with expressions of good-will; Hon. A. D. Castro gave a short address, and the program closed with a few vigorous remarks from M. C. Pacheco, who has been one of the moving spirits of the Order, and was the successful manager of the Fifteenth Anniversary banquet.

Those present were: Jno. F. Cowles, W. T. Raposo, J. P. Rego, A. de S. Canavaro, A. D. Castro, H. V. Murray, M. D. Bruce McV. Mackall, H. H. Williams, Louis R. Medeiros, J. A. R. Vieira, John P. Dias, A. V. Peters, Louis A. Perry, A. W. Seabury, Gaspar Silva, Capt. Moses Napolitano, H. Pereira, A. S. Nascimento, M. E. Silva, N. K. Hoopli, John Gomez, R. J. Borges, J. A. Gonsalves, T. P. Mellis, J. D. Ponte, M. Gomez, Manuel Abreu, Jr., M. D. Abreu, John Frank, Jr., Frank Machado, J. P. Rodrigues, J. R. Joseph, W. A. Vieira, M. J. Coito, J. P. Souza, Joaquim Silva, Joao Montz, M. R. de Sa, M. C. Guindinho, M. Felix, M. D. Freitas, Alex. Nahaolelua, Antone Grace, K. J. Mahoe, Wm. Perry, Chas. Jones, M. C. Lindo, C. Medeiros, John Bolster, J. S. Almeida, Antone Fernandes, F. I. Souza, Louis S. Alves, Ed. Medeiros, Wm. W. Marshall, Ernest Enos, E. J. Rego, Frank R. Silva, Manuel Rocha, John Machado, M. R. Freitas, C. Pereira, Antone M. Souza, Wm. Keawebwi, M. P. Rego, M. S. Pregana, C. K. Winchester, Sr., S. V. Simao, Joe Leal, John Rodrigues, W. R. Chilton, W. R. Farrington, Daniel Logan, R. O. Matheson, M. C. Pacheco.

Wailuku, Maui, April 24.—Chas. H. Broad, who left Kahului in 1894 for Japan, paid Kahului and Wailuku a visit this week and left again last Wednesday by the Claudine for Honolulu en route to Yokohama, where he has been employed as head stevedore for the Pacific Mail Steamship Company for many years.

Little - At - A - Time

THIS is a new Department opened by J. HOPP & CO., the largest furniture house in the islands. In their "LITTLE-AT-A-TIME" Department this well-known furniture house has made arrangements whereby almost anyone of reliable habits can furnish one item for a house or all the items needed to furnish a house or cottage complete by making a small advance payment and then making many small weekly or monthly payments. It is the same idea and system which has assisted many householders in securing from the jewelers their silver services. The only difference is that in the



jewelry clubs one does not get the articles until a large number of payments have been made, and in the case of J. HOPP & CO. they permit one to have immediate delivery of the furniture and then to make their "Little-At-A-Time" payments while they are enjoying the use of it. Why not have your home well furnished at once and enjoy the use of the goods during the time one ordinarily has to wait until one can save the money to furnish a house? Other people have their homes well furnished on this basis, why cannot you?

J. HOPP & CO. have a large portion of the massive LEWERS & COOKE BUILDING, on King St., filled with furniture which they offer to you on this basis. Such liberal accommodation as this costs the customer only a little more than it would were he to buy the goods for cash. Drop into the J. HOPP & CO. store and enquire into the details of this offer.

FURNITURE on the "LITTLE-AT-A-TIME" BASIS

J. HOPP & CO.

**The Torch
The Candle
The Lamp
The Gas Light
The Electric Light**



These are the steps in the development of the lamp, and a marvelous growth it is. Are you using the latest and best light, ELECTRICITY? If not, consult without further delay

Hawaiian Electric Co., Ltd.

KING ST. NEAR ALAKEA. P. O. BOX 144.

Wah Ying Chong Co., April Records

King Street, Ewa of Fishmarket.
DRY GOODS AND FURNISHING
GOODS OF EVERY DE-
SCRIPTION.

NEW VICTOR CATALOG.

Bergstrom Music Co., Ltd.

Bread

The Best In Town.

SINGER'S BAKERY,

TEL. 527.

KING ST.

J. A. GILMAN

Shipping and Commission Merchant

INSURANCE:

FIRE AND MARINE

AGENT FOR

Arthur Sewall & Co., Bath, Maine

Parrott & Co., San Francisco

Aachen and Munich Fire Insurance Co.

Mannheim Insurance Co.

**LAY CORNER STONE
OF COLLEGE LIBRARY**

On Wednesday, May 13th, at 4 o'clock, the cornerstone of the Cooke Library, at Oahu College, will be laid under the direction of the Library Committee of Oahu College. The chief address will be delivered by W. A. Kinney, a former Punahou student, Judge Antonio Perry, president of the Alumni Association, will speak for the students, past, present and future. Dr. W. D. Alexander will give a brief history of the Library at Punahou. W. F. Dillingham, chairman of the Buildings and Grounds Committee, will represent the corporation and will give a brief statement in regard to the gift from Mr. and Mrs. Cooke of this library and the building plans.

Miss Dorothea Cooke, the oldest grand child of Mr. and Mrs. Cooke, will lay the cornerstone, while the Preparatory School and the College students will appear in two choirs numbers.

Nine students from the college will also present an interesting and unique part of the program, entitled "In Praise of Books." These students are Edith Smith, Charles Davie, Reynold McGrew, Watson Galentine, Helen North, Vera Damon, Alice Hopper, Alice Spaulding, Rexford Hitchcock. The Alumni will also furnish one piece of music. The new Librarian, Ernest J. Reece, a graduate of Western Reserve University and of its Library School, will arrive in May to take up the work of cataloguing the books, preparatory to putting them into the new building.

PRACTICE FOR MATCH.

Col. Sam Johnson, accompanied by about fifty of the men of the National Guard, had a test shoot at the Kakaako rifle range yesterday. The men made good showings on the six hundred yard targets, scoring forty out of fifty. From now on it is expected that the marksmen of the regiment will be here at practice, first to qualify for the team and secondly to shoot straight when in the big competition for the honor of Hawaii and.

185 editorial rooms—256 business office. These are the new telephone numbers of the Bulletin office.

**TRANSPORT DANCE
AT THE SEASIDE**

There will be a dance at the Seaside Hotel tonight in honor of the officers and ladies of the transport Crook.

Excellent music by Kaul's Glee Club will be furnished and an all-round good time is promised.

All Army and Navy people and the public generally are cordially invited to be present.

KUBLIK WILL BE DELAYED

The news received by cable yesterday to the effect that the Marana would be delayed in leaving Vancouver was disappointing to a large number of persons here. The steamer got away on time but an accident to her pumps necessitated her return for repairs after being out more than a day. Manager Adams expects definite information of her sailing date before the day is out. In any event it means only a postponement of the date of the concert; it will be given and all who have bought seats may be assured of this fact. Her date of arrival here according to the schedule was on the 24 of May, with a possibility of reaching port a day earlier. It may be that she will not arrive before the 5th or 6th, and the concert will be given, as previously announced, three hours after the steamer is docked.

89TH ANNIVERSARY.

The members of the Odd Fellows and their friends celebrated the eighty-ninth anniversary of the institution in hearty manner last Saturday night, a program of addresses and music being rendered. The most interesting oration of the night was delivered by Judge P. R. Quarles.

C. T. Rodgers was presented with a handsome gold jewel as a recognition of the good work he had done for the order and as an expression of aloha from the Odd Fellows of the city.

The latter part of the program was devoted to dancing.

DIED.

JOHNSON — In Honolulu, Sunday, April 26, Mrs. Margery Catherine Johnson, aged seventy-three years, a native of Elgin, Scotland.

There's No Chance

of its becoming affected in any way from the time it is milked from the cow till you open the can in your kitchen.

Every process it undergoes is thoroughly hygienic, everything that touches it is sterilized

Alpine Milk

IS ABSOLUTELY PURE.

You can't afford to use another kind of milk. For tea, coffee and all other uses of rich milk.

Ask your grocer for it.

H. HACKFELD & CO., LTD.,

WHOLESALE DISTRIBUTORS.

For Over 60 Years

**Mrs. Winslow's
Soothing Syrup**

has been used for over SIXTY YEARS by MILLIONS of Mothers for their CHILDREN while FEVERING, with perfect success. IT SOOTHES the CHILD, SOFTENS the GUMS, ALLAYS all pain, CURES WIND COLIC, and is the best remedy for DIARRHOEA. Sold by Druggists in every part of the world. Be sure and ask for Mrs. Winslow's Soothing Syrup and take no other kind. 25 Cents a Bottle.

An Old and Well-tried Remedy

BAMBOO FURNITURE

Of All Kinds And Descriptions At

Reasonable Prices. SEE OUR DISPLAY.

S. TATANI

Emma St. near Beretania

Fashionable Dressmaking

Reasonable Prices.

MADAME LAMBERT.

Fort Street near Beretania.



This is Only One of Those BEAUTIFUL WATCHES we are offering at \$1.00 PER WEEK

J. A. R. Vieira & Co.
113 HOTEL ST., HONOLULU.

Smokers

SUPPLIES OF ALL KINDS The Best Cigars and Tobacco.

FRYPATRICK BROS. and MYRTLE CIGAR STORE.

EVENING BULLETIN

DAILY and WEEKLY Published by BULLETIN PUBLISHING CO., LTD.
At 120 King Street, Honolulu, Territory of Hawaii.

Daily every day except Sunday. Weekly issued on Tuesday of each week.

MEMBER OF THE ASSOCIATED PRESS.

Wallace R. Farrington, Editor

SUBSCRIPTION RATES PAYABLE IN ADVANCE.

EVENING BULLETIN		WEEKLY BULLETIN	
Per Month, anywhere in U.S.	\$ 75	Per Six Months	\$ 4.00
Per Quarter, anywhere in U.S.	2.00	Per Year, anywhere in U.S.	7.00
Per Year, anywhere in U.S.	8.00	Per Year, anywhere in Canada	1.50
Per Year, postpaid, foreign	11.00	Per Year, postpaid, foreign	2.00

CIRCULATION LARGEST OF ANY NEWSPAPER PUBLISHED in the Territory of Hawaii.

Tel. Editorial Rooms, - 185
Business Office, - 256

Entered at the Postoffice at Honolulu as second-class matter.

MONDAY APRIL 27, 1908

To repeat the Floral Parade would be to give the visitors from the Fleet the best that Honolulu has ever produced.

Lorrin Andrews has never made a distinct success of impressing judges. His greatest virtue during his residence in Hawaii was that he belonged to the family and therefore could not sin.

We hasten to record the motion of Theodore Richards for a re-election of the Congress of King while the Fleet is in port. At no other place on this earth can anything like it be found, and it is always interesting and instructive for residents and visitors.

Democrats urge the governor to give the Maui minority representation by appointing their candidate to the Board of Supervisors. But the people voted that the minority candidate should remain at home. Why should the Governor oppose them?

California's Promotion Committee intends to attempt to secure the cooperation of commercial bodies in Hawaii, Alaska and the Philippines, in persuading Congress that a strong naval fleet should be kept in the Pacific. The response from Hawaii should be prompt and vigorous.

President Roosevelt writing to the tariff-reform club stated that he is a Republican before he is a reformer. There's a wealth of sound Rooseveltian sense in this, and it may well be taken home by alleged reformers whose aim is personal aggrandizement or wreck the whole business.

Stanford University professors expect students to recognize proper rules of discipline. People who wish their children educated on that plan will continue to patronize the University, and the proportion of such parents in California alone is large enough to keep the institution well supplied with students.

The New York Republican convention that endorsed Hughes for President and instructed its delegates to vote for the "favorite son" of New York, was entirely at the beck and call of the Roosevelt men of the State. In other words, Governor Hughes' Presidential future is in the hands of the Taft combination. And doesn't that jar "the allies"!

The Honolulu Hen has temporarily lost its prestige. Statistics of the Department of Commerce and Labor show that during the month of January Hawaii did not import a single egg. This led to the supposition that the Honolulu hen was supplying the home market. This, however, was not to be for a long period. During February last Hawaii imported 1,770 dozen eggs valued at \$133. This is almost double the amount of eggs brought in February, 1907, -- 999 dozen, valued at \$261. It may be said with truth that the Hawaii hen is making steady gain.

Constant Reader:—The Bulletin certainly has not any objection to the selection of Mr. Van Dine and his associates to take up the public lands on which it is proposed to surrender the lease. We do not see, however, that it is possible for the Territorial land authorities to parcel out any given section of land for particular persons, to the exclusion of others who may be ready to operate in equally good faith. This paper has been informed that this same land was refused a few years ago to a contemplated settlement association made up of young Portuguese-Americans, and, if this be the truth, the present plan, so far as it has been made known to the public, bears the suggestion of favoritism—a policy the Territory should carefully avoid. Furthermore, we must remember that Governor Frear in his public comment on the shortcomings of the land law said, "And the Settlement Association is the worst of all." From all appearances, Mr. Van Dine and his associates are the most "likely" combination in sight for bringing

this land to a first-class state of productivity and we hope, establishing permanent homes. Nevertheless the officials should be assured that there are no others, and play an open game throughout.

HAWAII TRADE GROWING.

If it be true that the falling off in the value of merchandise Hawaii shipped from mainland ports during the month of January last was due to the financial panic of October, the record for the month of February shows that our business made a very quick recovery. According to the figures published by the Statistical Bureau of the Department of Commerce and Labor, the total value of shipments of domestic merchandise from the mainland to Hawaii in the month of February was \$1,114,571. For the month of February, 1907, the total was \$758,567. This gain is greater than is represented in the mere figures, since the purchasing price of a dollar in mainland markets has increased in the last few months.

There was also a distinct gain for the eight months ending with February. Our shipments from the mainland during that period were valued at \$9,829,895. For the eight months ending February, 1907, the total

Kilauea Volcano

Another Popular Excursion To This Great Natural Wonder. Leaving Honolulu by the fine, new steamer "MAUNA KEA" Tuesday noon, April 28th, the party will arrive at the Volcano the next evening, where it will remain until Sunday morning, when stages will convey the visitors across the old lava flows, to Honouliuli, where the fine steamship MAUNA LOA awaits them and which will arrive in Honolulu Tuesday morning, May 5th.

The Volcano is now more active than it has been for years. Visitors are appalled by the awful grandeur which the scene presents. The pit is filling rapidly and local residents are flocking to the crater to view this unusual eruption. Don't miss this great opportunity to see the Burning Mountains.

Round trip fare only \$51.00. For information regarding the trip apply to

HENRY WATERHOUSE TRUST COMPANY, Cor. Fort and Merchant Sts., Honolulu.



For Sale

Punahou District, Obblege Street, Lot 75 x 125, three bedroom modern cottage\$3200.

Makiki District, Kinau Street, Lot 50 x 90, two bedroom cottage\$1500.

Pacific Heights, modern bungalow\$1100.

ALL BARGAINS. Cash or Installments.

Waterhouse Trust Corner Fort and Merchant Streets.

Trust Trust Co. Ltd

TO LET:

Morris Lane, 3 bedrooms	\$10.00
Middle Street, 2 bedrooms	\$10.00
School Street, 2 bedrooms	\$13.00
School Street, 3 bedrooms	\$15.00
Kamehameha IV Rd., 3 B. R.	\$15.00
Gandall Lane, 2 bedrooms	\$15.00
Punchbowl St., 2 bedrooms	\$18.00
Wilder Ave., 4 bedrooms	\$18.00
Fensicola St., 3 bedrooms	\$20.00
Gandall Lane, 3 bedrooms	\$22.00
Young St., 2 bedrooms	\$22.50
Emma St., 3 bedrooms	\$25.00
Beretania St., 4 bedrooms	\$50.00

FURNISHED HOUSES:

Settlement Rd., 2 bedrooms	\$12.00
Sereno Lane, 2 bedrooms	\$18.00
Pacific Hts., 2 bedrooms	\$25.00
Manoa, 2 bedrooms	\$27.50
Young St., 2 bedrooms	\$30.00
Greene St., 4 bedrooms	\$35.00
Prospect St., 4 bedrooms	\$50.00
Pacific Hts., 4 bedrooms	\$50.00
Manoa, 2 bedrooms	\$50.00
Waikiki, 4 bedrooms	\$80.00
Manoa, 3 bedrooms	\$80.00
Manoa, 4 bedrooms	\$60.00
Ainaha, Waikiki	\$75.00

value was \$8,817,565, and for 1906, \$7,824,112. This means that Hawaii is keeping up the march forward and was continuing in the favored way at a time when all the mainland centers were reporting a reduction of purchases necessitated by the general curtailment of business and "hard times."

The cause for the good showing for this Territory may be found in the record of the values which we shipped to the mainland. Our purchasing power increased. For the month of February, 1908, this Territory shipped domestic merchandise to the mainland valued at \$3,482,877, and for the same month of 1907 the total was \$2,674,885. In the eight-months period ending last February our total shipments to the mainland were valued at \$21,091,565. For the same period of 1907 it was \$16,529,456. The greater part of this total is of course made up of sugar exports, and while the size of the crop and high price have some influence, the principal factor is the speed with which the crop has this year gone forward to the markets.

The balance of trade is not only strongly in favor of the islands but it is increasingly so at a time when all other sections of the country are months period ending last February showing more adverse conditions. This record is highly gratifying, and the result is reported to be showing locally in increased deposits in the banks. This is the test which tells the story for or against property, and, happily for this Territory, the showing is on the right side. When the funds float into the islands so freely that the bank balances rise to the point of liberal surpluses, the people will feel the full force of the "good times" which appear to be inevitable.

ACHI ON MUNICIPALITY

(Continued from Page 1)

It was a foregone conclusion that some day we should have a Municipal Government in this island, whether to include Honolulu alone or the whole island; so I believe that the Legislature was right in their making a Municipal Government to include the whole island, because the interests of all who are living in this island are similar.

For instance, it is right for the Supervisors to spend more money for making the roads in Koolau or Koolauloa than the money the County is receiving from those districts, because the owners of automobiles who are living in Honolulu have to use the roads in those districts, for their fun or pleasure; and it is not proper for the people in those districts to make those roads for other people, and they would not be able to do it.

The income of the County from the District of Koolau is about \$9,000 a year; it costs the County for police alone about \$4,000.00 a year, which leaves about \$5,000 a year for roads; in that case it would be impossible for the people in Koolau to make roads for the benefit of the owners of automobiles in Honolulu. It costs now

FILIPINO

For Your Next Evening Gown. Made of Pineapple Fibre and Silk, in stripes only. We have two patterns in each of the following colors: WHITE WITH PINK; WHITE WITH BLUE; WHITE WITH LAVENDER; WHITE WITH BLACK; and ALL WHITE. 36 inches wide, 85c. Yard.

EHLERS

to the County about \$20,000 a year in Koolau. The above statement in regard to Koolau would also apply to Koolauloa and other outside districts with perhaps the exception of Ewa. In making a Municipal Act for the whole island it was thought that the belt road around the island of Oahu should be macadamized. There is nothing expressed by Mr. Emmeluth to show that the new Act means Grant, but the Act means less officers and less taxes.

Respectfully,
W. C. ACHIL
April 27, 1908.

MACKALL REGITAL

As has been announced in the papers in the past few days, Mrs. Mackall's song recital is to be given two days prior to the date first set for it. Owing to the fact that the management of the "Mason" dated their first performance for the same evening which had been announced for the recital, Mrs. Mackall has courteously made this change out of deference to the wishes of her many friends. The program for this delightful affair, which five ladies are to participate, is now prepared and looks most interesting.

The recital, which is attracting much interest and for which the demand for seats is already far in excess of all expectations, will occur in the Alexander Young hotel ballroom Tuesday evening, April 28, at 8.15 o'clock.

REAL ESTATE TRANSACTIONS

Entered for Record April 25, 1908, Sallie H. Barnes and her husband John D. McCarty. D. Hew Shoung to Mow Yuen Ken. D. H. A. Banker and her husband Thomas M. Kelly. D. Joshua Waihoahu and wife to Francis M. Swamy. D. Kaiyoshi and her husband to Henry H. Ren-ton et al. D.

Entered for Record April 27, 1908, From 9 a. m. to 10:30 a. m. Noa W. Aluli to Frank Medeiros. D. J. E. Higgins called on Acting Governor Mott-Smith this morning and talked Kamehameha lands. He wants to get a piece of land consisting of about 20 acres near the shore in the Kaneohe district, which is already cut up into homesteads, and which is now probably not leased. He is not connected with Van Dine, and his application for lands is a personal matter. He will take them, if possible, under the new conditional sales agreement.



A COLLAR BUTTON is an insignificant article, yet it is a very necessary one. There is a great difference in collar buttons; the cheap, flimsy one is an abomination, but the strong, heavy, well-made, solid gold button is a pleasure to use and wear.

Our are the kind that LAST A LIFETIME and GIVE SATISFACTION TO THE WEARER. H. F. Wichman & Co. LIMITED. LEADING JEWELERS.

White Leghorns

FINE BRED Just Arrived per Nevada. Club Stables Tel. 109

Bulletin Vacation Trips

YOU CAN SPEND YOUR VACATION ANYWHERE At any Hotel in the Territory of Hawaii or take a trip to any part of the world at the expense of the EVENING BULLETIN, and NO ONE WILL KNOW THAT THIS PAPER IS PAYING YOUR EXPENSES.

Not a Contest In the first place, this offer is positively not a contest. You are working for yourself alone and not contesting with anybody. Every one who desires can win a vacation trip with board and a round-trip fare paid, to any point in Hawaii or a trip to any other place in the United States, Europe, or Asia, and the winning of a vacation trip entails absolutely no publicity as far as you are concerned. No one need know either before, during, or after that you have been a guest of the BULLETIN on your vacation, unless you tell them yourself. YOU CAN GO ANYWHERE YOU PLEASE AT ANY TIME YOU PLEASE. THERE IS NO PUBLICITY. WE WILL POSITIVELY NOT PUBLISH YOUR NAME OR ANYONE ELSE'S NAME IN CONNECTION WITH THIS OFFER. EVERYBODY WINS! THERE ARE NO LOSERS! PARTICULARS READY SATURDAY, MAY 2.

Bulletin Publishing Co., Ltd.

BAND CONCERT At the Emma Square band concert tonight the following program will be played: PART I March, "The Potentate" (new). Sanford Caprice, "The Awakening of the Lion".....Kontski Intermezzo, "Russian".....Linke Selection, "The Rose Maiden".....Cowen

PART II Vocal, Hawaiian Songs, ar. by Berger Selection, "Lady Tattlers" (new).....Slaughter Waltz, "The Merry Widow".....L. Har Finale, "Pickles and Peppers" (new).....Shepherd "The Star-Spangled Banner" The band will play tomorrow (Tuesday) evening at Ala Park, and not at Thomas Square.

IN THE CIRCUIT COURT OF THE First Circuit, Territory of Hawaii, In Probate; at Chambers, In the Matter of the Estate of Susan Brash, deceased. Order of Petition for Allowance of Final Accounts and Discharge in This Estate. On reading and filing the petition and accounts of Patrick Gleason, administrator of the estate of Susan Brash, wherein he asks to be allowed \$373.88 and he charges himself with \$1,716.99, and asks that the same may be examined and approved, and that a final order may be made of distribution of the property remaining in his hands to the persons thereto entitled, and discharging him and his sureties from all further responsibility as such administrator, it is ordered that Tuesday, the 2nd day of June, A. D. 1908, at 9 o'clock a. m. before the Judge of said court at the court room of the said court at Honolulu, Island of Oahu, be and the same hereby is appointed as the time and place for hearing said petition and accounts, and that all persons interested may then and there appear and show cause, if any they have, why the same should not be granted, and may present evidence as to who are entitled to the said property. And that notice of this order, in the English language, be published in the Evening Bulletin newspaper printed and published in Honolulu, once a week for three successive weeks, the last publication to be not less than two weeks previous to the time therein appointed for said hearing.

Dated at Honolulu, this 27th day of April, 1908. Sgd. ALEXANDER LINDSAY, II, Second Judge of the Circuit, Court of the First Circuit.

Attest: Sgd. JOHN MARCALLINO, Clerk of the Circuit Court of the First Circuit. 1907-Apr. 27; May 4, 11, 18.

Library Bureau Outfits of Index Card Systems, Filing Cabinets and Units, Office Fittings and Supplies; also New Jersey School-Church Furn. Co.'s International, Trenton, Simplex, and Improved Trenton Combination - Adjustable Desks and Seats, latest improved designs. Estimates given. Imports to order. Thos. G. Thrum. Agent for Hawaiian Islands.

White Leghorns

FINE BRED Just Arrived per Nevada. Club Stables Tel. 109

White Leghorns

FINE BRED Just Arrived per Nevada. Club Stables Tel. 109

White Leghorns

FINE BRED Just Arrived per Nevada. Club Stables Tel. 109

White Leghorns

FINE BRED Just Arrived per Nevada. Club Stables Tel. 109

White Leghorns

FINE BRED Just Arrived per Nevada. Club Stables Tel. 109

Club Stables Tel. 109

The Fat and the Lean
The Tall and the Short
ALL WILL BE INTERESTED IN
Mr. CHARLES H. COCHRANE'S Article
"Common Sense in Exercise"
IN THE MAY
METROPOLITAN
MAGAZINE
15c. a copy All Newsdealers
THE METROPOLITAN MAGAZINE
3 West 29th Street, New York

KODAK
Velox
Besides the Regular and Special we have the Glossy and Royal--both new grades in the islands.
VELOX, W. D. PLATINUM FILMS, FILM PACKS
All Sizes
Hawaii Photo & Art Co., Ltd.
Fort below King Phone 52

Accept No Substitutes
CLOTHING made by manufacturers who are willing to stake their reputations and money on the quality of the goods we offer you through our advertisements in this paper, are prima facie goods of true value.
When you are offered substitutes for such goods you may be sure there is a reason, and this reason generally is—more profit to the one who offers the substitutes, and in many instances means inferior goods.
Remember all goods branded with the Stein Bloch trade-mark and advertised to the public at large have generally gone through the process of being tried and not found wanting.
WHEN YOU ASK FOR STEIN BLOCH CLOTHING INSIST ON GETTING IT.
Refuse All Substitutes
M. McINERNEY, LTD., Agents, Fort and Merchant Streets

Oceanic Steamship Company TIME TABLE

The steamers of this line will arrive and leave this port as hereunder:

FROM SAN FRANCISCO:		FOR SAN FRANCISCO:	
S. S. ALAMEDA	MAY 8	S. S. ALAMEDA	JUNE 3
S. S. ALAMEDA	MAY 29	S. S. ALAMEDA	JUNE 24
S. S. ALAMEDA	JUNE 19		

In connection with the sailing of the above steamers, the agents are prepared to issue the intending passengers, coupon through tickets, by any railroad from San Francisco to all points in the United States, and from New York by any steamship line to all European ports. FOR FURTHER PARTICULARS APPLY TO

Wm. G. Irwin & Co., Ltd

OCEANIC S. S. CO. GENERAL AGENTS.

Pacific Mail Steamship Co.

Occidental and Oriental Steamship Co., and Toyo Kisen Kaisha

Steamers of the above companies will call at Honolulu and leave this port on or about the dates below mentioned:

FOR JAPAN AND CHINA:		FOR SAN FRANCISCO:	
HONGKONG MARU	MAY 2	YAMATO MARU	MAY 2
KOREA	MAY 15	YAMATO MARU	MAY 9
AMERICA MARU	MAY 26	YAMATO MARU	MAY 19
SIBERIA	JUNE 1	YAMATO MARU	MAY 23

FOR GENERAL INFORMATION APPLY TO

H. Hackfeld & Co., Ltd., Agents

AMERICAN-HAWAIIAN STEAMSHIP COMPANY. FROM NEW YORK TO HONOLULU.

Weekly Sailings via Tehuantepec.

Freight received at all times at the Company's Wharf, #1st Street, South Brooklyn.

FROM HONOLULU TO SAN FRAN-FROM SEATTLE AND TACOMA TO CISCO.

NEVADAN	MAY 2	ALASKAN	APR. 29
NEBRASKAN	MAY 19	TEXAN	MAY 13

FROM SAN FRANCISCO TO HONOLULU DIRECT.

NEBRASKAN	MAY 1	For further information apply to
NEVADAN	MAY 19	H. HACKFELD & CO., LTD.,

Agents Honolulu, C. P. MORSE, General Freight Agent.

Canadian-Australian Royal Mail Steamship Company.

Steamers of the above line, running in connection with the CANADIAN PACIFIC RAILWAY CO. between Vancouver, B. C., and Sydney, N. S. W., and calling at Victoria, B. C., Honolulu and Suva, Fiji, and Brisbane, are DUE AT HONOLULU on or about the dates below stated, viz:

FOR FIJI AND AUSTRALIA:		FOR VANCOUVER:	
MARAMA	MAY 2	AORANGI	APR. 29
AORANGI	MAY 30	MANUKA	MAY 27
MANUKA	JUNE 27	MARAMA	JUNE 24
MARAMA	JULY 25	AORANGI	JULY 22

Through Tickets issued from Honolulu to Canada, United States and Europe. For Freight and Passage and all general information, apply to

Theo. H. Davies & Co., Ltd. General Agents.

Matson Navigation Company

The S. S. "HILONIAN" of this line, carrying passengers and freight, will run in a direct service between this port and San Francisco, sailing and arriving on or about the following dates:

LEAVE S. FRAN.	ARRIVE HONOLULU	LEAVE HONOLULU
MAY 6th	MAY 13th	MAY 19th
JUNE 3rd	JUNE 10th	JUNE 16th

Passenger Rates to S. F.: First Cabin, \$60; Round Trip First Class \$110.00. For further particulars apply to

CASTLE & COOKE LTD., Agents.

Union-Pacific Transfer Co., Ltd.

Furniture and Piano Moving.

Baggage Shipping
Storage Wood
Packing Coal

PHONE 58

Hustace-Peck Co., Ltd.

Phone 295. DRAYMEN 63 Queen Street. P. O. Box 212. Estimates Given on all kinds of teaming.

Dealers in
FIREWOOD, STOVE, STEAM AND BLACKSMITH COAL.
CRUSHED ROCK, BLACK AND WHITE SAND, GARDEN SOIL.
HAY, GRAIN, CEMENT, ETC.

Weekly Bulletin \$1 Per Year

Fast Schooner CONCORD

Sailing for KAPUNA, HONOIPU, KAILUA and HOOKENA. From Sorenson's Wharf. Apply on Board or to HAWAIIAN BALLASTING CO., Agt. Telephone 396, Maunakea St., below King. P. O. Box 820.

SUN CHOY SING,

BUILDING CONTRACTOR, REPAIRING, PAPER HANGING, AND PAINTING. Brick Laying. Cement Work. No. 1135 FORT ST., opp. Club Stables. TEL. 431. KIN SUT Prop.

Alexander & Baldwin LIMITED.

J. P. COOKE, Manager
OFFICERS AND DIRECTORS:
H. P. Baldwin, President
J. B. Castle, Vice President
W. M. Alexander, Second Vice Pres.
J. P. Cooke, Third Vice Pres.
J. Waterhouse, Treasurer
E. E. Paxton, Secretary
W. O. Smith, Director
G. R. Carter, Director
W. R. Castle, Director

SUGAR FACTORS, COMMISSION MERCHANTS and INSURANCE AGENTS

Agents for Hawaiian Commercial & Sugar Co. Haiku Sugar Company. Paia Plantation. Maui Agricultural Company. Kihai Plantation Company. Hawaiian Sugar Company. Kahuku Plantation Company. Kahulu Railroad Company. Halekaha Ranch Company. Honolulu Ranch.

Castle & Cooke, Ltd

Honolulu, T. H.
SHIPPING AND COMMISSION MERCHANTS, SUGAR FACTORS and GENERAL INSURANCE AGENTS

Agents for Ewa Plantation Co. Wai'anae Agricultural Co., Ltd. Kohala Sugar Co. Waimea Sugar Mill Co. Apokaa Sugar Co., Ltd. Fulton Iron Works of St. Louis. Blake Steam Pumps. Weston's Centrifugals. Babcock & Wilcox Boilers. Green's Fuel Economizers. Marsh Steam Pumps. Matson Navigation Co. Planters' Line Shipping Co.

Wm. G. Irwin & Co., Ltd

Wm. G. IRWIN, President and Mgr. JNO. D. SPRECKELS, 1st Vice Pres. W. M. GIFFARD, 2d Vice Pres. W. M. WHITNEY, Treasurer. RICHARD IVERS, Secretary. W. F. WILSON, Auditor.

SUGAR FACTORS and COMMISSION AGENTS

Agents for Oceanic Steamship Co., San Francisco, Cal. Western Sugar Refining Co., San Francisco, Cal. Baldwin Locomotive Works, Philadelphia, Pa. Newell Universal Mill Co. Manufacturers of National Cane Shredder, New York, N. Y. Pacific Oil Transportation Co., San Francisco, Cal.

C. Brewer & Co., Ltd.

QUEEN STREET, HONOLULU, T. H.
AGENTS FOR: Hawaiian Agricultural Co. Ooaka Sugar Plant. Co. Onomea Sugar Co. Henomu Sugar Co. Wailuku Sugar Co. Peapeke Sugar Co. The Planters Line of San Francisco Packets.
LIST OF OFFICERS: C. M. Cooke, President; George Robertson, Vice President and Manager; E. F. Dishop, Treasurer and Secretary; F. W. Macfarlane, Auditor; P. C. Jones, C. M. Cooke and J. R. Galt, Directors.

FIRE INSURANCE THE B. F. DILLINGHAM CO LIMITED.

General Agent for Hawaii: Atlas Assurance Company of London. New York Underwriters' Agency. Providence Washington Insurance Co. 4th FLOOR, STANGENWALD BLDG.

LIFE INSURANCE

Is not a Luxury; it is a Necessity. But you must have the BEST and that is provided by the famous and most equitable Laws of Massachusetts, in the

New England Mutual Life Insurance Co.,

OF BOSTON, MASSACHUSETTS. If you would be fully informed about these laws, address

Castle & Cooke, GENERAL AGENTS, HONOLULU, T. H.

Wm. G. IRWIN & CO., LTD.

AGENTS FOR THE Royal Insur. Co. of Liverpool, Eng. Commercial Union Assurance Co., Ltd., of London, England. Scottish Union & National Ins. Co. of Edinburgh, Scotland. Wilhelm of Magdeburg General Insurance Company.

Corporation Notices

NOTICE TO KIHAI STOCKHOLDERS.

Definite arrangements having been made for the sale of the property of Kihai Plantation Co., Ltd., on July 1st, 1908, the Agents of said Company, Messrs. Alexander & Baldwin, Limited, beg to announce that on and after the 1st day of May, 1908, they are willing to purchase any and all shares of stock of said Kihai Plantation Company, Limited, at the rate of \$10.00 per share, said sum being the estimated amount per share which it is expected will be realized as net proceeds from the sale of said property.

J. WATERHOUSE, Treasurer. Alexander & Baldwin, Limited. 3983-1f

KIHAI PLANTATION CO., LTD.

NOTICE TO STOCKHOLDERS.

All persons holding certificates of stock in the Kihai Plantation Company, Ltd., in names other than their own and who may wish to dispose of said stock are urgently requested to have same transferred in order to avoid delay if payment is made on July 1st, 1908. No stock can be purchased except from stockholders of record on that date.

J. P. COOKE, Treasurer Kihai Plantation Co., Ltd. Honolulu, March 26th, 1908. 3960-1f

STOCK BOOKS CLOSED

The Stock Books of Pioneer Mill Co., Ltd., will be closed to transfers from April 27th to May 1st, 1908, both dates included. (S.) W. PFOTENHAUER, Treasurer Pioneer Mill Co., Ltd. 3986-1f Apr. 25, 27, 28, 29, 30.

Don't Delay Measures

When the Fleet is in port there will be times when a quick meal will be necessary. Nothing will enable you to get it as well as a

Gas Stove

Consult us now and have one installed and figure on lights.

HONOLULU GAS CO., Ltd.

BISHOP STREET.

K. Daimaru,

First-Class Furniture Store

134 Beretania near Fort St. Telephone 214.

FINEST FIT

and cloth of A-1 quality can be purchased from

SANG CHAN, McCANDLESS BLDG., P. O. Box 961. Telephone 931.

Japanese Curios, Silk Kimonos, Shirts, Pajamas, Shirt Waists, Fancy Embroidered Goods.

K. Fukuroda,

HOTEL STREET NEAR BETHEL.

Unique Chinese Goods

Wing Wo Tai & Co.

941 NUUANU ST. Kodak Developing, Printing, Enlarging and Interior Photo-graphing.

F. S. Nagami.

HOTEL ST. bet. Nuuanu & Bethel.



Ayer's Hair Vigor

It will remove all dandruff, and will give you thick, long, glossy, and beautiful hair. Accept no substitute. Be sure you get Ayer's Hair Vigor, and preserve the richness and luxuriance of your hair to an advanced period of life.

Notice

On and after June 24th, 1908, the SALOON RATES between Honolulu and San Francisco per S. S. "ALAMEDA" will be as follows:

Single Fare, \$65
Round Trip, \$110

Family Rooms extra.
WM. G. IRWIN & COMPANY, LTD. General Agents, Oceanic Steamship Company.

VETERINARY INFIRMARY AND HOSPITAL FOR DOGS.

777 KING ST. PHONE 1429.

A. R. Rowat, D.V.S.

HALEIWA

for a good meal and a comfortable room.

St. Clair Bidgood, Mgr.

PINK PEARLS

We have pink pearls and some of the finest of the white variety in the Orient; also gold, silver, diamonds and jewelry. Remember, we buy as well as sell.

J. CARLO,

1018 NUUANU near KING.
HONOLULU IRON WORKS

Improved and Modern SUGAR MACHINERY of every capacity and description made to order. Boiler work and RIVETED PIPES for irrigation purposes a specialty. Particular attention paid to JOB WORK, and repairs executed at shortest notice.

JUST LOOK

in Our Windows and see the Fine Souvenirs of Atlantic Fleet of Battleships

PRICES—5cts., 20cts., and 25cts.

Wall, Nichols Co., Limited

Visit WEEDON'S CURIOSITY BAZAAR

for all kinds of Curios; the best in the city; Island Views in Pastel, Alakea Building, Alakea St., between King and Merchant.

El Palencia

Cigar for Particular People.
HAYSELDEN TOBACCO CO., LTD.

The Weekly Edition of the Evening Bulletin gives a complete summary of the news of the day.

SPORTS

KAMS BEST OAHU

For the first time in three years the Kanehameha School baseball team won their first game of baseball Saturday afternoon on their own grounds from Oahu College. For the past two weeks it looked to the boys as if their team could not stand with the Puns, but fortunately they showed what they could do by trying their best. The Puns have always had the habit of losing the first game when they play with the Kams and always come back stronger in the second meet. So the Kams must brace up and do a little harder work these coming days. The game Saturday was one with a good many errors. There was some hard hitting done on the part of the Kams. They found Davis easily. A. Lota, captain of the Kams, played a fine game for his team, both at bat and in the box. He struck out eight men to Davis' one. In the first inning the Kams made two runs by good batting and base-running. In the third both sides scored and in the fifth each team got another run to their credit, making the score 4 to 3. In the last part of the sixth the Kams started to bat well. This shows that the boys were not coached well to steal or run bases, for they had a chance to make about three runs in that inning. The Puns saw that it was dangerous to leave Davis in the box, so they took him out. Lyman took his place with Chi Bui behind the bat. Lyman pitched well for the rest of the game, keeping the Kams down without a run. For scoring honors for the Kams Mackenzie has it, for he made two runs for his team. The Kam heavy hitters were Lota, Naeole and Jehia. While the Puns had Jack Desha and Lyman as hard smashers, it looked as though Akani of the Puns had a hole in his bat—the way he missed the ball.

Score by Innings:

Oahu	1 2 3 4 5 6 7 8 9
Kams	0 1 1 0 1 0 0 0 0

Struck out: By Lota, 8; by Davis, 2. Bases on balls: Off Lota, 3. Umpire: Louis Lemon. Time of game: 1h. 30m.

BASEBALL THIS AFTERNOON

The Kam-High School baseball contest will take place on the Kam campus this afternoon. The game will be called at 3:15 o'clock.

The St. Louis nine will meet a team from the transport Crook at Aala Park this afternoon.

The Kam line-up this afternoon against the High School will be "different."

SHAMROCK WINS MATCH

Shamrock won easily over Launiluna at Kapiolani Park Saturday in a three-eighths match for a side bet of \$25, the winner leading from the start and finishing in a canter, four lengths to the good in the time of 39 1/2. Oplolo piloted the mare and Lewis was leg up on the gelding. H. J. Grindell was starter and Louis Warren and H. M. Ayres judges.

Shamrock is doped out as a strong rival of Mailet.

Sunrise, Sonny Gay's gelding, won the other event of the day, a quarter sprint, from Henry Vierra's Never-sleep, by the safe lead of two lengths.

BOYS FROM CROOK VS. SAINTS

The soldier boys who came in aboard the Crook Saturday evening are baseball fans of the first water, as the vessel had hardly come alongside the wharf when the manager of the nine was out looking for a game, with the result that the St. Louis College boys toss the horseshoe with the men from the transport at Aala Park this afternoon. Both crowds are confident and have a loyal support from their respective followings.

The Crook's team is composed of the following players, drawn from the Second Infantry and Batteries E and G of the Fifth Artillery: Turner, c; Hart, p; Marshall, 1b; Bensing, 2b; Walters, 3b; Bunge, ss; "Cy" Johnson, rf; Tom Johnson, cf; Right-mire, lf.

Additional Sports on Page 7

DAVIS WILL RUN

Geo. A. Davis has announced himself as a candidate for Senator. He will run independently. His platform includes the repeal of the law providing for a penalty of 10 per cent. and an additional 10 per cent. interest upon all delinquent taxes, and 10 per cent. penalty upon delinquent water rates payable in advance; an amendment of the liquor law placing the power to grant liquor licenses with the mayor, and the passage of an act giving full power to assess and levy taxes by the several boards of supervisors upon the people for municipal purposes, and other amendments to the County Act.

BUSINESS DIRECTORY

PIANO TUNING.
Having engaged Mr. Geo. L. Lenord, the expert piano tuner and piano repairer, we are now prepared to attend to all piano tuning and repairing. All work guaranteed. WALL, NICHOLS CO., LTD., Telephone 261, 3949-4f

PIANO AND ORGAN.
Prof. N. M. Lewis, teacher of Piano and Organ; twenty-five years in New York; will give instruction to a limited number. Special attention given technique, style and expression. 1462 Euana, 3980-4f

UMBRELLAS
Umbrellas re-covered. T. Takata, Fort St. near Kukul.

EMPLOYMENT OFFICE.
For house-help, phone White 2591, Ma Hill. General Employment Office for Honolulu and Beretania.

PLUMBING.
Yee Sing Kee—Plumber and Tinmith, Smith St., bet. Hotel and Panahi.

PENINSULA
Completely Furnished House for Rent
For Summer Months.
Immediate possession. 2 large bedrooms, dining-room, living-room, bathroom, etc. Use of row-boat.
\$30.00 per Month

Bishop Trust Co. Ltd.
924 Bethel Street,
DAVID DAYTON
137 MERCHANT STREET.
LOTS FOR SALE
IN KAPIOLANI PARK ADDITION and other desirable localities.
For Sale at a Bargain—Premises at Lanuula on the beach, a two-story house and furniture, at a bargain.

Hallwood,
The
Cash Register
Hawaiian Office Specialty
SEWING LIMITED
Co., 931 Fort St.
PHONE 143.

Meats
Fresh, wholesome, and of every variety at

THE PARAGON
Beretania, Alakea, and Union.
Phone 104.

Carpentering
Masonry Draying
NANIWA & CO.,
Alakea and Merchant Sts., Magoon Bldg., P. O. Box 775; Tel. 327.
For Expert Repairs on Bicycle, Motorcycle, Automobiles, etc., call on

J. E. Santos,
Back of Peter's,
PHONE 301, UNION ST.

PAINTING, PAPERHANGING AND TINTING.
General Jobbing A Specialty.
Dealers in Wall Paper, Paints, Oils, Etc. P. O. Box 914, 208 Beretania St. near Emma W. B. KAM, Mgr.

Sweet Violet Butter
The Best Made.
2 Lbs. for 75c
C. Q. YEE HOP & CO.,
TELEPHONE 251.

LOOK
at the automobiles, buggies and carriages we have recently overhauled and painted.
THEN SEE US.

W. W. Wright Co.
King Street near South
Tel. 262

PAPER
All kinds in rolls and sheets.
AMERICAN-HAWAIIAN PAPER & SUPPLY CO., LTD.
Fort and Queen Sts., Honolulu. Tel. 410. George G. Guild, Gen. Mgr.

P. L. PETERS
NOTARY PUBLIC
at
BULLETIN OFFICE.
Phone 256.

M. Phillips & Co.
Wholesale Importers and Jobbers
EUROPEAN AND AMERICAN DRY GOODS
FORT and QUEEN STS.

ICE
manufactured from pure distilled water. Delivered to any part of city by courteous drivers.

OAHU ICE AND ELECTRIC CO.,
Kewala, Telephone 523
BOOT and SHOE MANUFACTURER
By the Latest Improved Machines.
Men's shoes, 75 cents (sewed);
Men's Heels, 25 cents.
Repairing Neatly Done.

Lin Hop,
Corner King and River Sts.
Sanitary Steam Laundry
PHONE 71.

Branch: TERRITORIAL MESSENGER SERVICE. PHONE 361
Suits Pressed
At Short Notice and Quick Delivery.

EAGLE DYEING AND CLEANING WORKS
Fort Street. Phone 576.

BUILDING MATERIAL
OF ALL KINDS.
DEALERS IN LUMBER.
ALLEN & ROBINSON,
Queen Street :: :: Honolulu.

KEYSTONE-ELGIN WATCHES
INGERSOLL WATCHES
At All Watchdealers.
Jos. Schwartz,
Agent for Hawaiian Islands,
Cor. FORT and KING Sts., Honolulu.

Steinway
AND OTHER PIANOS.
THAYER PIANO CO.
156 HOTEL STREET.
Phone 218.
TUNING GUARANTEED.

Vapo-Cresolene
(Established 1873)
An Inhalation for
Whooping-Cough, Croup, Bronchitis, Coughs, Diphtheria, Catarrh.
Cresolene is a Boon to Asthmatics.
Does it not seem more difficult to breathe in a remedy for disease of the breathing organs than to take the remedy into the stomach?
Cresolene cures because the air, rendered strongly antiseptic, is carried over the diseased surface with every breath, giving prolonged and constant treatment. It is invaluable to mothers with small children.
Those of a Consumptive Tendency will find immediate relief from Coughs or Inflamed Condition of the Throat.
ALL DRUGGISTS.
Send postal for descriptive booklet.
Vapo-Cresolene Co., 100 Fulton Street, New York.

THE DUNN HAT
Distinguished for Quality and Design

NOTICE.
DEAR SIR:—In reply to the question put to me today by your Mr. Wight, I have to say that I have no reason to think that the fire which destroyed my residence on the night of the 14th inst., was caused by gas. I will rebuild on the site of my former residence at once, and it is my intention to use your product in the new house for illuminating as well as for fuel. For either purpose I regard gas as BETTER and, when used with discretion, CHEAPER and quite as SAFE as any other product.
Yours truly,
A. S. HUMPHREYS.
Messrs. Honolulu Gas Co., Ltd.

Rainier Beer
is the near friend of Prohibition
because it has in it so little alcohol.
WHOLESALE.
Rainier Bottling Works
PHONE 1331.

FOR SALE
4000 Green Roofing Slate 10"x16".
500 One and Two Prong Iron Fence Posts.
1 25-gallon Drum Commercial Ether.
1 Castiron Fitting with Flanges, for 12" Wrought Pipe.
EMMELUTH & CO., LTD.
145 King Street. Phone 211.

Hats
For Ladies and Gentlemen. Latest shapes and stylish trimming. Cleaning of all kinds of hats.
UYEDA,
1028 NUUANU AVENUE.
HOLLYWOOD PRINT PICTURIS
Just Arrived.
PACIFIC PICTURE FRAMING CO.
1050 Nuuanu.

SPORTS
SEASIDE LEAGUE GAMES
The Star Lines won from the Sweet Violets at the opening game of the Seaside League schedule yesterday, by a score of 12 to 11, the game being hotly contested, and marked by a 3-base hit by Peter Fern.
The line-ups follow:
Star Lines—Ah Ahn, ss; Peter Fern, c; Hwa, p; Eliza, cf; C. Aloy, 3b; Ah Chuck, rf; C. L. Hook, 2b; Lui Kapua, 1b; Kalehu, lf.
Sweet Violets—Waf Wing, cf; Luis, 2b; Joe Gans, p; Joe Pua, lf; Peter Frank, c; Peter Halli, Bert MeShane, lf; P. Guerrero, ss; Waka, rf; Ah Fong, 3b.
Score by Innings:
1 2 3 4 5 6 7 8 9
Star Line 0 0 2 0 2 3 2 7—42
S. Violets 3 1 3 0 0 2 1 1 0—11
Summary.—Struck out: By Hwa, 4; by Gans, 3. Three-base hit: Peter Fern. Two-base hits: Eliza, Chaki.
The Starlights won the second game from the Okuwans. The game was a lopsided affair from the first inning, when the Starlights crossed the plate eight times. The losers scored their one run in this inning.
The teams trotted onto the field in the following order:
Starlights—John Asing, cf; H. Lum Lee, David Sam, cf; Ah Toon, 2b; Peter Luis, p; Chun Tuck, rf; Sing Tai, 2b; K. Lee, ss; P. Asan, lf; Chas. Yee Hoy, lf.
Okuwans—Kawa, c; Yashiro, 1b; Noda, 2b; B. Kuramoto, lf; Araki, 3b; B. Yoshikawa, ss; L. Woods, ss; and p; Togo, p and 2b; Sawat, cf.
The score was:
1 2 3 4 5 6 7 8 9
Starlights 8 3 0 0 5 2 0 7—48
Okuwans 1 0 0 0 0 0 0 0—1
Struck out: By P. Luis, 2; by Togo, 2; by L. Woods, 1. Three-base hit: Lum Lee, John Asing.

COUNTRY CLUB FOURSOME
The golf foursome played at the Country Club yesterday resulted in A. Ewart and Emil Waterman defeating W. Woon and J. O. Young, by 2 up and 1 to play.
The day was fine and a good day's sport was enjoyed by a large number of golfing enthusiasts.

SPORTIVE SPLURGES
Chi Bai, the best catcher of the Riverdale League, has been unanimously elected captain of the Chinese Athletic Club. He is a hard-working man and very cool-headed. By electing him as captain, the C. A. C. has made a good choice, and under his good judgment he will no doubt bring his team to victory.

Ludwigen and Jungulus, backing Candy Boy with \$500, want a three-eighths mile match with H. Lewis Malet. The challengers will put up a forfeit of \$100 if the match is made, and be ready to race in 48 hours. The horses are old rivals, Malet having the best two out of three matches run.

Practice for the cricket match with men aboard the S. S. Aorangi, due in port Wednesday, began last Saturday. Among those who showed up well were Robert Anderson, L. G. Blackman, J. H. Fiddes, K. Cotton, J. R. M. Maclean and C. F. Morse.

The Valley Side Baseball League will meet Wednesday night for the purpose of deciding the protest filed by the Leilehua against the Kalia, regarding the last Valley Side Baseball League game for the championship.

It is estimated there were over seven thousand people present at Kaala Park yesterday afternoon to see the opening of the Riverside League.

Henry Walker had a day off with the umpire. He did not like the way Barney Joy was umpiring the game, and he ought to thank the umpire for not being benched or fined.

The Diamond Head team is ordered out for practice at the League grounds this afternoon at 5 o'clock.

Murray, one of Kam's best sprinters, is laid up with a sprained ankle, the result of Saturday's ball game.

Healanis, Kahulu, Stars and Wai kapua are the teams composing the Maul Baseball League.
Makanui and Hooipi were the star players of the Kaalas; also Chillingworth and Freitas.
Josiah will be in the box for the Kams this afternoon.
The Hawaiian Kennel Club meets tomorrow night.
(Additional Sports on Page 8)
One hundred officers of the battleship fleet are given an auto outing as guests of San Diego.

THE PREMO CAMERA
for the Amateur Photographer, has no peer. It's the lightest, most easy to operate, most convenient, and the best constructed, and the most reasonable in price. We have them in every size.
HONOLULU PHOTO SUPPLY CO.
"Everything Photographic,"
Fort Street.

Hawaiian Opera House
"The Mascot"
By An All-Star Cast of Local Amateurs Under Direction of
MR. HUGO HERZER.
Benefit of
THE KUNALU ROWING CLUB,
on
THURSDAY and SATURDAY EVENINGS,
APRIL 30TH and MAY 2ND
GORGEOUS COSTUMING!
BEAUTIFUL SINGING!
FROLIC! MIRTH!
MUSIC and FUN!!!!
Tickets for sale at Wall, Nichols Co., Ltd.

THE "GUNN" OF GRANDPIDS
SECTIONAL BOOKS
THE RIGHT SIZE NOW AND ALWAYS

Coyne Furniture Co. LIMITED.

P. E. R. Strauch
For Sale
Several Fine Lots at Kaimuki and Palolo. Cleared and free of stone. Marine View. Good neighborhood. Easy terms. Apply
WAITY BLDG. 74 S. KING ST.

Ask Your Grocer FOR
Pau-Ka-Hana Soap
HONOLULU SOAP WORKS CO., Ltd.
FRED. L. WALDRON, Agt.

Majestic Amusement Co.
IN THE ORPHEUM THEATER.
EVERY AFTERNOON, 2:30 to 5.
EVENINGS, 6:30 to 10:30.
Continuous Performance, Comic Pictures, Illustrated Songs.
ADULTS, 10c. CHILDREN, 5c.

Decorate FOR THE Fleet
TOM SHARP CAN HELP YOU

The Orpheum
SALOON is right close to the theater, where you can get the Best of Everything to drink.

WANTS

ONE CENT A WORD

One Cent a Word Results

One Cent a Word Results

WANTED
Advertisements Under this Heading One Cent Per Word Each Day. No Advertisements inserted for Less Than Ten Cents.

FOR SALE
Advertisements Under this Heading One Cent Per Word Each Day. No Advertisements inserted for Less Than Ten Cents.

STENOGRAPHER WANTED.
The office of Stenographer and Assistant Clerk for the Second Circuit Court being vacant, applications for the same will be received by the Judge of said Court; such application to be accompanied with a certificate of proficiency issued by J. W. Jones, Esq., or some other stenographer of the Judiciary Department, Territory of Hawaii. By the Court: Edmund H. Hart, Clerk. 3978—T.S.T.

Three fine building lots, each 100x200 feet, best residence sections of city; convenient to car line; cheap. Apply to W. M. Graham, 942 Green St. 3987-4f

SITUATION WANTED
By German woman; housework or cooking. Address "S," this office. 3968-4f

Three fine residence lots on Pearl City peninsula. Apply to W. M. Graham, 942 Green St. 3987-4f

A general representative for the Hawaiian Islands. A good proposition for a gentleman that is willing and has some business ability. Full contract given. Address Freeman Drug Co., Altoona, Penna., U. S. A. wk15-2f

A valuable collection of stamps. This collection is the property of the widow of the late H. W. Bowen, and is the result of his effort in many years of labor; they can be seen at the Hawaiian News Co., Young building. 3911-4f

A quantity of second-hand corrugated iron in good condition. Address "E," this office. 3983-1w

Camera made from koa wood, plateholders and a complete outfit. Can be seen at Hawaiian News Co.'s store, Bishop St. 3957-4f

Second-hand flat-top desk; must be reasonable. Address "L.P.," this office. 3955-4f

1-2 acres near Haleiwa, Waialua, for sale, lease or exchange, by Harry Roberts, Palama, Honolulu. 3986-4f

A second-hand showcase, about 6x24 feet. Address with price "P.," this office. 3961-4f

Gentleman's full dress suit, almost new, size 36. Call 239 Majestic Hotel between 4 and 6 p. m. 3984-3f

Clean wiping rags at the Bulletin office.

New season's Tamarinds, at Mrs. Kearns, 25c per jar. Don't go to sea without tamarinds. 3985-4f

TO LET
Advertisements Under this Heading One Cent Per Word Each Day. No Advertisements inserted for Less Than Ten Cents.

House, eight rooms, with modern conveniences; pleasant grounds. In Punahou District, convenient to car line. Inquire W. C. Woodson, Stangerwald Bldg., or P. O. Box 658.

Large house on Beretania St. next to Queen's Hospital; rent very cheap. W. W. Chamberlain, Judd Building. 3849-4f

Furnished cottages and housekeeping rooms; gas stoves; \$12 to \$25. F. E. King, Cottage Grove, King St. 3967-4f

Furnished cottage at the beach, opposite the switch near the bridge. Apply on premises or L. B. Kerr & Co. 3980-5f

Large, airy, furnished rooms, \$10 a month. Mrs. F. D. Wicke, 1245 Beretania Ave. 3976-4f

Nicely furnished rooms, cool and airy, at 1157 Union, corner Ad-ams lane. 3981-1w

Furnished room; central; private entrance. Address "K.," this office. 3981-1w

ROOM AND BOARD.
Single rooms or en suite, with or without board; forty dollars, seventy-five per couple. Address "8133," this office. 3976-4f

CHINESE JEWELRY
Bracelets, Rings, Brooches, Etc., ready-made or carved and designed in preferred styles.
You are cordially invited to call and we shall be pleased to show you our goods.

FURNISHED ROOMS.
The Arlington, Hotel Street near Fort. 3963-4f

Bo Wo Jewelry Co.
S. SAIKI,
Bamboo Furniture Made to Order. Picture Framing a Specialty.
563 S. BERETANIA ST.
TELEPHONE 497.

CHOICE CUT ROSES, CARNATIONS VIOLETS, ETC., ETC.
Mrs. E. M. Taylor,
YOUNG BUILDING
TEL. 359

WHEN
You Want Electric Wiring Done or Private Telephone Installed or Dry Batteries, call the
UNION ELECTRIC CO.,
59 Beretania St. Phone 515.
Fine Job Printing at the Bulletin.

R. MIYATA & CO.,
CONTRACTORS, BUILDERS, PAINTERS, PAPER HANGERS and MASON WORKERS.
Second Hand Lumber, Doors and Sashes Bought and Sold.
A1N3 ST., PALAMA JUNCTION
PHONE 594.

BULLETIN ADS. PAY

FRANKLIN AUTOMOBILES

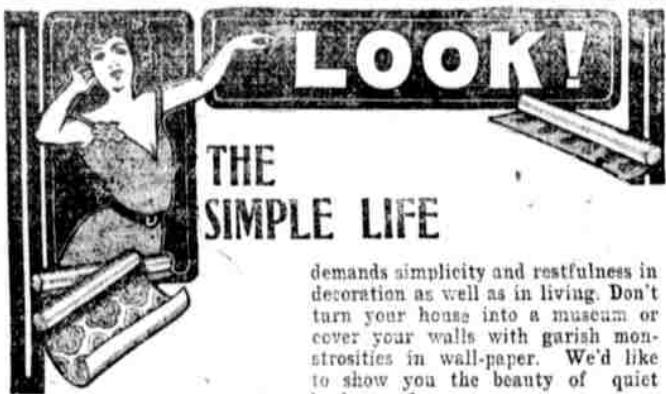
CONVINCING testimony on what an automobile will do—to gasoline and tires and your pocketbook—is the actual scale-weight, seen with your own eyes. Weigh a Franklin. Demonstration on request. See

E. O. HALL & SON, LTD.
OR ASSOCIATED GARAGE.

Value Shoe Repairing

If you want value for value in Shoe Repairing now, as ever, you will go to the Home of Good Shoemaking. A few of our Specialties—Worn Out Soles, Run Down Heels, Fitches, Rips, Lining, Welts, Rubber Heels, Making New Heels, New Counters in Soles.—In Fact Everything known in Shoemaking. We do it Quickly, Neatly and Cheaper Island Orders Solicited.

VICKERS' SHOE REPAIR SHOP,
1119 UNION STREET, NEAR HOTEL.



LOOK!

THE SIMPLE LIFE

demands simplicity and restfulness in decoration as well as in living. Don't turn your house into a museum or cover your walls with garish monstrosities in wall-paper. We'd like to show you the beauty of quiet backgrounds.

STANLEY STEPHENSON,

PHONE 426. DECORATOR. 137 KING ST. S-S-SIGNS. SELL GOODS

CLARENCE W. MACFARLANE
STILL STOCKS

POTTIE'S MEDICINES
IN THE MAGOON BLOCK.

ANY COFFEE
isn't good enough for you. Get **May's Old Kona Coffee**

WATCHMAKER and JEWELER.
Charges Reasonable.

E. MORITA,
128 Hotel Street.

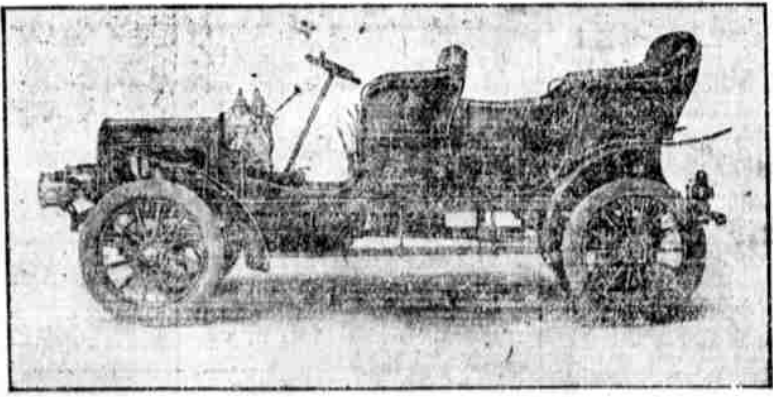
LOVEJOY & CO.
WHOLESALE DEALERS AND IMPORTERS OF WINES AND LIQUORS.
TEL. 308. 902 NUUANU.

DRINK PABST BEER
W. C. Peacock & Co., Ltd., Agts.

Auto for Hire

MANUEL KEIS.—Call up at any time by telephone any one of these numbers: 290, 200, 1097.

AUTOS
Repaired by our Auto Expert.
Schuman Carriage Co.,
LIMITED.
MERCHANT STREET.



The Incomparable White Steamer

The White has proved the best car on the level stretch, on the hill, for touring, and for fast travel. The wonderful simplicity of its mechanism, and its perfect safety enable anyone to operate it. It's the care you need.

The von Hamm-Young Co., Ltd.

LOCAL

SPORTS

NATIONAL

RIVERSIDE LEAGUE HAS BIG OPENING

Kaalas And Alohas Win From Palamas And Japanese

Good baseball, lots of ginger, music, and a big crowd characterized the opening of the Riverside League at Aala Park yesterday, when the Kaalas won over the Palamas, 10 to 7, and the Alohas captured a very close game with the Japanese by a score of 8 to 7. Elaborate opening exercises began the fun at 1:30 p.m., and both games followed. The crowd was a record-breaker.

President A. L. C. Atkinson of the League pitched the first ball, with Robert Asam at the receiving end. Vice President A. K. Vierra at bat, S. P. Correa, president of the Palama A. C. first base; W. Tin Chong, second base, and John W. Akana, president of the Chinese Aloha Club, third base.

The Palamas and Kaalas played the opening game. The Palamas, last year's champions, led off with Bailey at bat. He fanned the air three times. Kealoa flew out to Freitas, and Walker was retired at first, on a throw from second. Chillingworth made things lively in the second half of the inning by smashing the sphere on the nose and beating it to first, after which he sneaked two sacks in succession. He failed to come across the pan, however.

Through the course of the game the Kaalas batted heavily, both R. Parker and Chillingworth making three safe hits, the latter out of four times at bat. Medeiros, of the winners, pitched a nice game, striking out seven, and not permitting anyone to stroll to first off his delivery.

All the scoring for the winners was done in the second and fifth innings. Great baseball was put up by the Chinese Alohas and the Japanese A. C. in the second game of the afternoon, both men on the mound working in the best shape, and the play being both close and brilliant all through. The game was won by the Alohas in a whirlwind finish, just at the last, when the Japanese, playing a winning game, seemed to have the long end of the score corralled. Akana opened the way to victory by leaping against the ball for a 3-bagger, which, coupled with a passed ball, did the act.

The scores of the games were:
FIRST GAME
PALAMAS

	A	R	B	S	O	A	E
B. Bailey, ss	5	1	2	1	2	1	2
Kealoa, 3b	3	1	0	2	1	2	1
Walker, cf	2	4	0	1	1	0	0
Pauluhl, p	3	0	1	0	0	0	0
Espinda, p	1	2	0	1	0	0	0
Clement, lf	3	0	2	2	0	1	1
Zerbe, lf	2	1	0	3	0	0	0
Honnan, 2b	4	1	1	1	3	7	0
Hoopl, s	2	1	0	9	1	1	1
Kahalewal, c	1	0	0	2	0	0	0
Kana, 1b	1	0	0	1	0	0	0
Correa, 1b	2	0	0	4	1	0	0

Totals 31 7 5 12 24 12 7

KAALAS

	A	R	B	S	O	A	E
Kupa, lf	3	0	1	0	0	0	0
Medeiros, p	2	0	0	0	0	2	0
Chillingworth, 2b	5	1	3	2	1	5	1
Freitas, 2b	5	1	1	0	2	1	0
Smith, 1b	4	1	0	1	4	1	0
Hoopl, N/K, cf	5	2	2	1	1	0	0
Makanaui, c-1b	4	1	2	0	1	1	0
Parker, s	4	2	2	0	1	3	0

BASEBALL RESULTS

Riverside League:
Kaalas 10, Palamas 7.
Alohas 8, Japanese A. C. 7.

Seaside League:
Star Lines 12, S. Violets 11.
Starlights 18, Okuwas 1.

Kapiolani Park:
Highlands 7, Reliance 1.
Leahis 14, Y. T. W. 8.

Parker, R. cf . . . 4 2 3 0 0 0 1
Butler, p-c 4 0 2 0 7 1 1

Totals 40 10 16 4 27 14 3

Score by innings:
1 2 3 4 5 6 7 8 9
Palamas 0 0 0 4 0 0 0 1 0 2—7
B. H. 0 0 1 3 0 0 1 0 0—5
Kaalas 0 8 0 0 2 0 0 0—19
B. H. 1 8 1 0 3 1 2 0—16

SECOND GAME

JAPANESE A. C.

	A	R	B	S	O	A	E
Flores, p	6	0	3	0	1	1	0
Notley, 2b	5	2	3	1	1	2	0
Ross, 3b	6	1	4	1	0	1	1
Kalpo, c	4	0	0	1	1	0	0
Pickard, 1b	6	0	2	0	5	0	0
S. Maruyama, lf	5	0	0	1	2	0	0
M. Suenaga, ss	5	0	1	0	0	1	1
Steer Hoda, cf	2	2	0	2	0	0	0
T. Matsui, rf	3	2	1	2	0	0	1

Totals 42 7 14 8 24 5 2

C. ALOHAS

	A	R	B	S	O	A	E
McShane, rf	4	0	0	0	1	0	0
Engleth, lf	4	0	1	1	5	0	0
Ayau, ss	2	2	0	1	2	6	1
Akana, 3b	5	1	3	3	3	4	2
Townsend, 1b	3	1	0	0	9	0	0
Kala, 2b	1	2	1	2	0	1	0
Brito, c	3	1	1	2	7	0	0
Aukai, cf	1	0	0	0	0	0	0
Zerbe, cf	2	0	0	0	0	0	0
Ho Yui, p	4	1	0	1	0	3	0

Totals 29 8 6 9 27 14 3

SPORTS CALENDAR

April 27—Baseball at Kamehameha; Kams. vs. Highs. Baseball, St. Louis vs. transport Crook, Aala Park, 3 p. m. Baseball at Aala Park, Pacifics vs. Waileles.
April 28—Kenneb Club meeting.
April 29—Kapiolani Baseball League meeting.
April 29—Cricket, H. C. C. vs. M. C. C.
April 30—Boxing, Fort Zhafer.
April 30—Annual meeting, Berea Tennis Club.
May 1—Meeting, Outrigger Club.
May 2—Boys' Clubs field meet.
May 2—Senior League baseball season opens.
May 2—Wrestling carnival, Orpheum theater.
May 2—Concert and dance, Kalihui Athletic Club.
May 2—Portuguese "Hawaii" benefit dance, Lusitana Hall.
May 10—Newspaper Baseball League season opens.
May 13—Invitation journey, Berea Tennis Club.
May 17—Waialua Golf Club tournament.
June 4—Y. M. C. A. gymnasium contests.
June 10—Hawaiian Gun Club's shoot for club championship.
June 11—Hawaiian Gun Club's semi-annual prize shoot.
June 17—Hawaiian Gun Club's unknown angles shoot.
July 3—Hilo races.
July 4—Maui races.

GOOD BASEBALL AT KAPIOLANI PARK

Hylands Defeat Reliance And Leahis Win From Waves

Seven to one is the tune to which the Reliance nine suffered defeat by the Highlands yesterday at Kapiolani Park. With timely hits, good fielding, and all-around good playing the victorious Highlands played a winning game all through. John Sylvia's reds played a good game but they were up against the real thing, for the Highlands had Joe Ornelias of Kaula fame on third sack and George Pio of the Kalihis was slab artist, the former noted for his batting ability, and the latter for coolness and control. After an absence from the diamond for some time, and for the first time playing with this league, Joe came to bat five times, got four safeties, stole two bases, and, by accurate throwing, assisted in retiring ten runners at the initial bag. Pio, on the other hand, atoned but four passes and kept hits well scattered.

Score by innings:
1 2 3 4 5 6 7 8 9
Highlands 2 0 0 0 0 1 3 0 1—7
Reliance 0 0 0 0 0 0 0 1 0—1

Summary.—Bases on balls: Off Pio 4. Struck out: By Pio, 3; by Sylvia, 1. Two-base hits: Sacramento, Chiul, Mike Freitas. Passed balls: Chiul, 2; Joseph, 2. Hit by pitched ball, Kua. Time of game, 1h. 23m. In the second game, the Leahis and Young Tidal Waves crossed bats, and, were it not for the crippled state of the Waves nine, the tale might have been different. But, as it is, the Leahis got even and defeated the Waves 14 to 8. It seems that every Wave player had an off-day. Some were sick and others were absent. Pitchers and catchers are at a premium, for this team had none. Pitcher Freitas was sick; Catcher Enos had a sprained wrist. Aylett pitched and Fernandez caught. Shortstop Pedro played third, and the vacancy at short was filled by Gomes, a midget of the "peanut" type, the smallest league player in the islands and perhaps in the baseball world, but he wielded the wood like the big fellows. Out of five times up he got four hits, stole three bases, and crossed the pan twice.

Score by innings:
1 2 3 4 5 6 7 8 9
Y. T. W. 2 0 0 0 0 0 0 5 1—8
Leahis 2 0 2 0 5 3 0—14

MEETING OF TRACK TEAM

Notification that a meeting of the Y. M. C. A. field and track team will be held on Wednesday has been sent out by Physical Director Dr. E. H. Hand. The purpose of the meeting is to elect officers and organize for the purpose of entering a team to compete against the Fleet. The letter reads:
Honolulu, T. H., Apr. 25, 1908.
Dear Sir:—There will be a meeting of the Y. M. C. A. field and track team Wednesday, April 29th, 8 p. m., Y. M. C. A.
Be sure to be on hand, as we will elect officers and will discuss entering a team to compete against the U. S. S. Fleet during July, which must be attended to as early as possible, in order to notify the Fleet and arrange a date on city program.
Yours truly,
E. H. HAND,
Physical Director.

WAIULELES DEFEAT PAGIFIGS

The Waileles put it over the Pacifics at Iwilei grounds yesterday by a score of 7 to 5, the game going ten innings:
The score by innings:
1 2 3 4 5 6 7 8 9 10
Waileles 1 1 0 1 0 0 1 0 1 2—7
Pacifics 1 1 0 0 1 0 2 0 0—5

K. Yagumori ought to be proud the way his boys played; and that, too, his boys were "H" with the tender sex.
Additional Sports on Pages 6 and 7

WHITNEY & MARSH

Monday Special

1000 Yards Genuine Indian Head

Soft Finish, 33 inches wide

10c yard

No telephone orders taken for this special

Pastry

Butternut Bread

Palm Cafe

YOU LOVE MUSIC

Then why do without it in your home? An

Edison Phonograph

in your home means that you can always have the world's best singers, players, composers, and directors at your disposal. The tones of the Edison Phonograph are clear, pure, and strong, and it runs noiselessly.

Call and hear it at the
HAWAIIAN NEWS COMPANY, Ltd.,
YOUNG BUILDING.

Good Things

Ask the man who drinks it and then telephone to us for a case. We do not claim to be makers of the best soda water in the Territory; the distinction is conferred upon us by a discriminating public. Are you one?

CONSOLIDATED SODA WORKS CO., LTD.
TELEPHONE 71. G. S. LEITHEAD, Manager.

MILLINERY

Hats Flower and Ribbons

Just received the latest and most up-to-date styles and shapes.

We are also showing a new line of Black Voil Skirts, these are right from the factory and are chip and natty.

L. B. KERR & CO., LTD.,
Alakea Street

BERKELEY BOYS WON

BERKELEY, Calif., April 25.—Berkeley won the university baseball championship today, defeating the Stanford nine by 2-to-1 score.