

MAP OF THE ESTATE

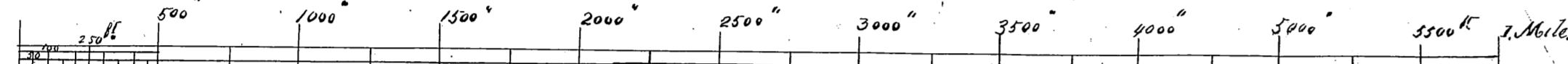
OF

JOANE II.

IN

PAWAA OAHU.

TOTAL AREA, Surveyed - 1874. - 250⁺ ACRES.



SCALE 500 FEET = 1 INCH

Land Commission Award 8241. Royal Patent 5704.

Description of Boundaries.

Section I, KANAHĀ. Area 174⁺ Acres.

- Beginning at a corner post at Moopili, at the head of an ancient *Hakuaiaia*, adjoining *Hakuaiaia* and *Hakuaiaia* from which the true bearing of the corner post of *Hakuaiaia* Station 422 is South 91° 51' West.
- I North 45° 10' East 744 feet to a red iron post, along *Hakuaiaia*.
 - II North 30° 34' East 2032 " along *Hakuaiaia* to a post.
 - III North 41° 19' East 1795 " " " " " "
 - IV North 28° 5' East 1826 " " " " " "
 - V North 53° 25' East 707 " " " " " "
 - VI South 36° 11' East 1602 " across the gulch, along *Opu*, to a red iron post - thence
 - VII South 42° 2' West 1420 " along the ridge, along *Pohoke* to an iron stake.
 - VIII South 43° 16' West 806 " " " " " "
 - IX North 62° 35' West 775 " partly across the gulch, along a division of *Opu*, called *Waha*, to a marked rock, near end of stone wall
 - X South 24° 16' West 736 " along *Opu* to *Kauhikio* 3rd to the upper end of a boundary wall.
 - XI South 31° 30' West 875 " " " " " " "
 - XII North 49° 15' West 560 " " " " " " "
 - XIII South 5° 01' East 454 " " " " " " "
 - XIV South 51° 15' East 570 " R.R. 4579 to a marked rock.
 - XV South 48° 57' West 98 " " " " " " "
 - XVI North 36° 53' West 160 " " " " " " "
 - XVII North 57° 51' West 2004 " " " " " " "
 - XVIII South 17° 7' West 139 " " " " " " "
 - XIX South 21° 17' West 206 " " " " " " "
 - XX North 57° 6' West 254 " " " " " " "
 - XXI South 56° 6' West 213 " " " " " " "
 - XXII South 58° 40' East 550 " " " " " " "
 - XXIII South 47° 59' East 285 " " " " " " "
 - XXIV South 17° 37' West 1037 " " " " " " "
 - XXV North 15° 20' West 122 " " " " " " "
 - XXVI South 77° 47' West 189 " " " " " " "
 - XXVII North 37° 47' West 1550 " " " " " " "
- N.B. The above are True and not Magnetic Bearings.

Section II, ANAPUNI. Area 36⁺ Acres.

- Beginning at the large rock on the road to Moorea, opposite the Punahou Gate, the corner of this
- I North 64° 5' West 239 feet, along school lot 4, R.R. 2270, along shore wall.
 - II South 31° 30' West 218 " " " " " "
 - III North 61° 10' West 209 " " " " " "
 - IV North 31° 7' East 171 " " " " " "
 - V North 62° 57' West 182 " " " " " "
 - VI North 64° 30' West 212 " " " " " "
 - VII North 41° 29' East 274 " " " " " "
 - VIII North 42° 14' East 294 " " " " " "
 - IX South 48° 47' East 219 " " " " " "
 - X North 60° 30' East 125 " " " " " "
 - XI South 48° 16' East 64 " " " " " "
 - XII North 47° 51' East 495 " " " " " "
 - XIII North 48° 23' East 1118 " " " " " "
 - XIV South 44° 5' West 1866 " along *Castle's* land, to corner of stone wall on *Moorea* road.
 - XV South 44° 7' West 1879 " " " " " "
- N.B. The above are True and not Magnetic Bearings.

Section III, MIKI. Area 34⁺ Acres.

- Beginning at corner of *King* and *Waikele* road, the boundary runs.
- I North 64° 45' West 200 feet 77⁺ West 233 feet, along *King* to thence.
 - II South 24° 4' West " " " " " "
 - III South 21° 56' East " " " " " "
 - IV South 29° West " " " " " "
 - V North 62° 12' West " " " " " "
 - VI North 38° 38' West " " " " " "
 - VII South 16° 14' West " " " " " "
 - VIII North 19° 47' West " " " " " "
 - IX South 5° 52' West " " " " " "
 - X South 19° 25' West " " " " " "
 - XI South 15° 12' West " " " " " "
 - XII South 3° 46' East " " " " " "
 - XIII North 57° 9' West " " " " " "
 - XIV South 48° 17' East 385 feet, along Grant 2790 to *L. M. Collyer*.
 - XV South 10° 23' East 204 " " " " " "
 - XVI South 10° 50' East 531 " " " " " "
 - XVII North 76° 57' East 200 " " " " " "
 - XVIII North 58° 11' East 118 " " " " " "
 - XIX North 48° 37' West 705 " " " " " "
 - XX North 55° 01' East 80 " " " " " "
 - XXI North 15° 34' West 62 " " " " " "
 - XXII North 19° 04' East 119 " " " " " "
 - XXIII North 31° 16' East 510 " " " " " "
 - XXIV North 0° 28' West 495 " " " " " "
- The mean Magnetic declination being 9° East

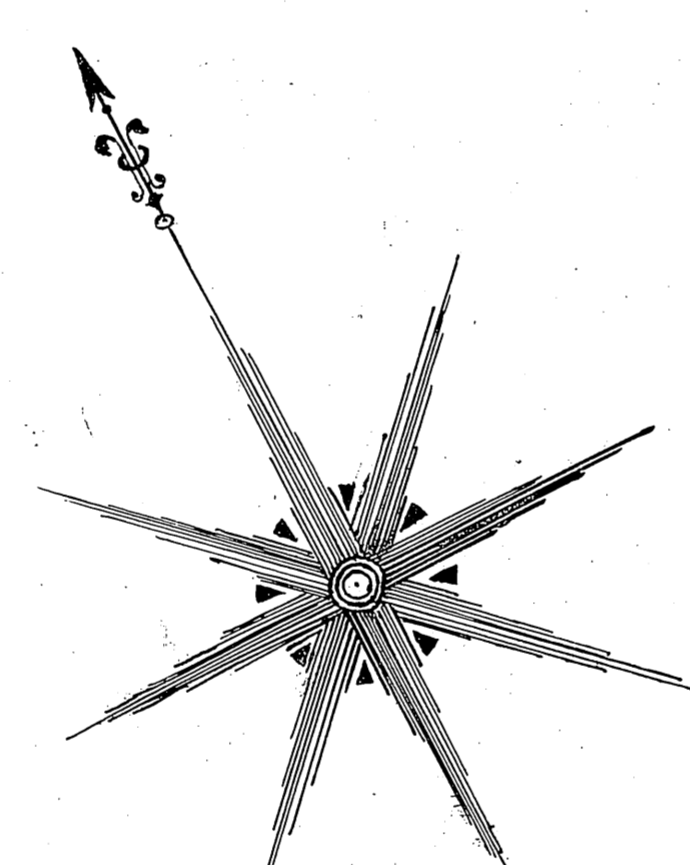
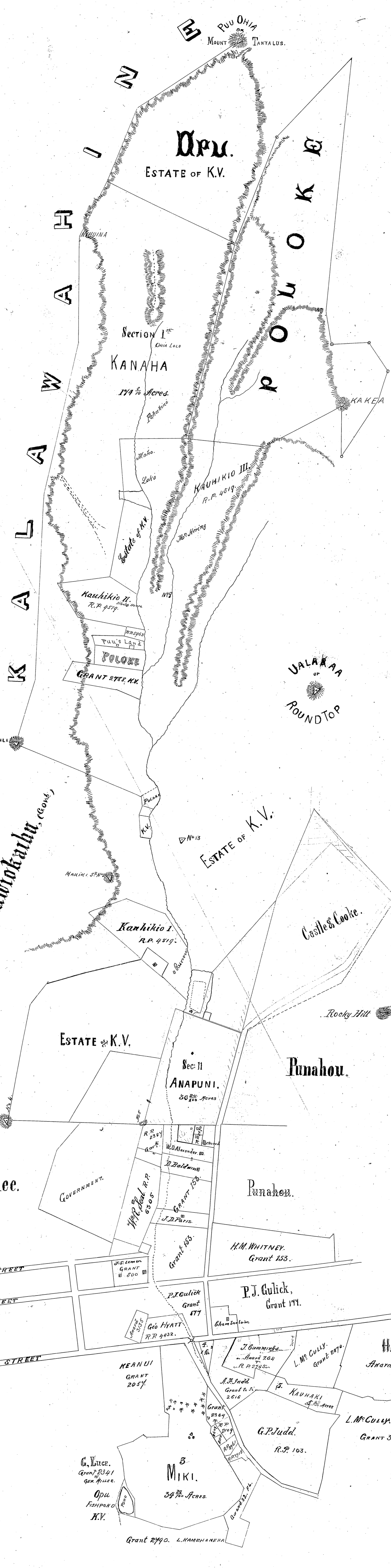
Description of Boundaries Contd.

Section IV, long portion MIKI. Area 15⁺ Acres.

- Beginning at a corner post on the lower side of *King* street, adjoining Grant 266 to
- I North 61° 56' West 225 feet, along *King* street to stream *Kaunaloa* N. 74° W.
 - II South 6° 14' West 921 " " " " " "
 - III North 35° 17' East 418 " " " " " "

Section V, KAUIHĀKI. Area 9⁺ Acres.

- Beginning at the corner of Grant 266 and Grant 2770 the boundary runs,
- I South 28° East *Magneto* S. 57° East 89 feet, along Grant 2770 to *L. M. Collyer*.
 - II South 6° East " " " " " "
 - III South 59° 30' East " " " " " "
 - IV South 78° 17' East " " " " " "
 - V South 23° 30' West " " " " " "
 - VI North 28° 6' West " " " " " "
 - VII North 41° 4' West " " " " " "
 - VIII North 65° 17' East " " " " " "



The Boundaries of the four sections of land of the Estate of Joane II. in
Pawaa, settled and certified according to the survey and plans of the map
Lawrence M. Collyer
Surveying Commissioner
P. Clarke
Witness
July 15th 1874