

Every mercantile business in Honolulu has been built up by women customers

EVENING BULLETIN

3:30 O'CLOCK The Bulletin has no Competitor as Hawaii's Home Paper EDITION

The value of advertising to any business continuously in the field is shown by results. It widens the entire scope of a merchant's trade, and when he casts up his balance sheets he finds that there has been increased activity in every line. The daily advertiser in the Evening Bulletin establishes his house in the public mind as a fixed institution to which one feels he or she may always go and secure the best at the most reasonable prices.

STEAMER TABLE

From San Francisco:
Alameda Aug. 30
For San Francisco:
Hongkong Maru Aug. 27
Alameda Sept. 4
From Vancouver:
Manuka Aug. 24
For Vancouver:
Aorangi Aug. 21

VOL. IX No. 3777

HONOLULU TERRITORY OF HAWAII, FRIDAY, AUGUST 23, 1907

PRICE 5 CENTS

BUSINESS BACKING FOR PEARL HARBOR

Starbuck Lost; Nuuanu Leaks

The waterfront and business circles were this morning deeply stirred with the news of marine disaster, affecting two of the vessels best known in the local service. One of these pieces of news was that the ship Tillie Starbuck had been abandoned off the Coast of Chile, where her crew had landed in safety, while the other was that the bark Nuuanu had put back to New York in a leaking condition.

Davies & Co., who are the consignees of the Starbuck, received a cable from Chas. Brewer & Co. of Boston stating that the vessel had been abandoned, and that the captain and the crew had landed safely at Coquimbo, Chile. No cause for the abandoning of the vessel had been ascertained.

Castle & Cooke, who are part owners of the vessel, also received a cablegram regarding the Starbuck this morning. It was to the same effect as that of Davies & Co., but added that the vessel was a total loss.

The Starbuck left New York April 10 for this port. She had on board a cargo of general merchandise consigned to Davies & Co., this including about 1500 tons for the Honolulu Iron Works.

The Starbuck was built in 1883 by John Roach & Son in Chester, Pa., at the same time as the Clarence S. Bement and the City of New York. These three were the first three steel vessels built in the United States. The Bement was lost by fire off Cape Horn about three years ago. The City of New York was lost near San Francisco about three years ago.

(Continued on Page 5)

FREAR'S LAND POLICY

Governor Frear has not outlined his land policy in words, but he has apparently done so in action. Yesterday he spent several hours with Land Commissioner Pratt going over land matters and disposing of a number. Several others were considered but no definite action was taken on account of the fact that more information was wanted.

Governor Frear's land policy, it appears from these transactions, is to dispose of the land as fast as possible to those who will live on the land. Few or no absolute sales are to be made, the general idea being to rent the land with right of purchase, or to lease it on the 999 year plan. This will prevent the land eventually falling into the hands of big corporations.

(Continued on Page 7)

PRISONERS RIOT AND WRECK JAIL.

Dannemora, New York, Aug. 22.—Three hundred and twenty convicts confined in the state penitentiary here, rioted today and attempted a wholesale escape. The interior of the penitentiary was wrecked by the maddened prisoners and to put down the riot the guards were forced to fire upon them, killing one of the rioters and wounding others.

MAY LET HOLLOWAY OUT IN NOVEMBER

Frear Going Thoroughly Into Nuuanu Dam Matter

Governor Frear and Secretary Mott-Smith are up to the ears in the Nuuanu dam plitika. Not that they have struck trouble yet themselves, but they are investigating the troubles of those who are connected with the construction of the dam.

All yesterday Secretary Mott-Smith was taking the evidence of contractor Whitehouse, going into the matter from his standpoint. The Governor has so far confined himself principally to hearing the side of the Public Works Department. When the evidence is all in it is his intention to take it all together and try to sift the grain of truth out of it.

The general impression is that if there is to be a shake-up it will not come until November 23, when Superintendent Holloway's commission expires. In case Holloway is let out, it will mean that both the Howlands will have to sever their connection with the job. Those who have expressed themselves on the subject are generally inclined to the belief that Holloway is being made a fool of by Howland. Holloway steadfastly backs Howland up and says that with all the criticism directed at the engineer no proof has yet been adduced that points to the fact that he is incompetent or that there is any graft going on.

Efforts are undoubtedly being made to have Holloway removed at the expiration of the term of his commission if not before. This is largely on account of the fact that this seems to be the only way to get rid of Howland who sticks to the job like a leech in spite of all the efforts that have been made to dislodge him. The Legislature tried its best to get rid of him, but in the end Howland stuck, at the same salary and with less responsibility and work.

The Governor has as yet expressed no opinion as to the merits of the controversy but states that he is going into the matter thoroughly and will get to the bottom of it before he takes any action.

TRANSPORT DANCE AT SEASIDE

In honor of the officers and ladies of the transport Buford—one of the merriest crowds that ever come to Honolulu. Bright moonlight. Best quiet club in town and a Royal good time. THE TRANSPORT DANCE WILL BE AT THE SEASIDE.

In an automobile smashup in Oakland recently four persons were badly injured.

Visit Hill's new souvenr store at the post office.

Integrity and Justice

A trust Company represents the highest development of these qualities and on this account renders the best of services as executor, guardian or trustee.

Never out of town; never sick; and employs the most approved business methods.

Hawaiian Trust Company, Ltd. Fort St. Honolulu

All Pull Together

MERCHANTS' OPINION WILL HAVE MUCH WEIGHT

"We must all pull together to get something done with that magnificent harbor of ours."

This was the text of the speech which Admiral Very made this afternoon to the assembly of prominent men who had accepted his invitation to attend a meeting for the purpose of giving an expression of their views in regard to the proposed Pearl Harbor improvements.

The meeting took place in the large coal shed, which had been decorated with flags and bunting so that it formed quite a pleasant meeting place.

Admiral Very said that the reasons for the meeting were contained in a letter which he had received from a friend who was a member of the General Board. This Board wanted to recommend the deepening of the Pearl Harbor channel, but to do this the commercial needs should be demonstrated, as this would greatly facilitate the securing of the necessary appropriation. Captain Niblack had reported that the sugar interests intended to make it a commercial port. The facts in this matter would be very valuable, as it could be employed as an argument before Congress.

The Admiral stated that he had had rather discouraging replies in his correspondence with Washington. He had for many years been interested in the development of Pearl Harbor, but in spite of the fact that the importance of that plan had long been recognized, very little had been done to improve it.

The difficulty was to get a large ship through the tortuous channel. He illustrated the space which vessels needed to maneuver by a sketch on a blackboard, and pointed out the improvements which would have to be made to straighten the channel to make it practicable for ships of large size. Before an estimate of the cost could be made it had to be ascertained what the nature of the bottom was. The Army engineers could not take the initiative unless so instructed by Congress. All the visiting Congressmen with whom the Admiral had spoken had been in favor of making a \$15,000 appropriation for this purpose. A rough estimate by an army engineer stated that there would be about 1,750,000 cubic yards of material to remove, which would cost about \$450,000 if the material were soft; more if it were hard.

Steamers like the Mongolia and Manchuria would require about 35 feet depth and to have the channel twice as wide as at present. It would be hopeless to attempt to have this

(Continued on Page 7)

SEATS SELL WELL

From all indications there will be a big house at the Hotel Batha tomorrow night to see San Francisco in the greatest disaster of modern times. The whole trouble that this grand city went through during this time will be shown by the motion picture machine. Admission, 25c. Reserved seats, 50c.

Be sure and engage your tables for dinner at the Seaside tonight.

MESSANGER BOY

INTERNATIONAL MESSANGER SERVICE Tel. Main 361

SEARIE WILL NOT ACCEPT PRESIDENCY

So College Regents Are To Go Ahead Anyway

Regents of the College of Agriculture held a meeting yesterday afternoon, and after viewing the prospects decided that if any thing was to be done this year the Regents would have to do it themselves. So they have set about doing it.

The situation comes about through the decision of Professor Searie to not take the position of President of the institution unless he is given \$5000 a year.

The Regents have ten thousand dollars for salaries, and they do not see the value of paying out that amount for one man's salary. Something must be done if the college is to be opened this fall and anything of particular value accomplished this year.

It has therefore been decided to abandon the idea of a high priced president for the first year. The Regents will run the institution and do the preliminary work themselves. In one of their members, C. F. Eckart, head of the Planters' Experiment Station, they have one who is fully capable, and it is only a question of whether he will sacrifice himself and with others put in the time to outline the general plan of the institution in order that the secondary schools may be fully informed as to the requirements of the College and prepare candidates for entry at the opening of the next school year.

This does not mean that Mr. Eckart will do all the work. Under the scheme of management by the Regents they will seek a less expensive head of the College and this man will take active charge. It is entirely possible that this man with a salary at the start of \$2000 to \$3000 a year and enough in the appropriation to hire others may develop into just the man for the place and be worthy the higher salary of a man with a reputation already made. At all events the scheme laid down provides for immediate steps in establishing the College, a steady movement towards permanent plans and something doing all the time. Unless this is done, the institution is likely to lay dormant for a year, and that is not what the Regents were named for.

TRANSPORT DANCE AT THE YOUNG TONIGHT

The officers and ladies of the transport Buford will be the guests of the Young Hotel management at a dance to be given on the roof garden of the hotel tonight. Ernest Kaal's orchestra will supply the needed seductive touch to make the pleasures of the dance alluring and memorable. Local Army and Navy people and all city dancers will be welcomed and entertained.

A CRATE OF CHOICE FRUIT

Will please your mainland friends immensely. Leave your order with ISLAND FRUIT CO. 72 S. King. Phone Main 15.

Try Sal Hepatica The ideal saline laxative. Pleasant to take and better than ordinary salts or mineral waters. Sold by Hollister Drug Co., Fort Street.

J. HOPP & CO. FURNITURE and MATTRESSES 185 King Street

Hold Up Lanai Lands

Texas Is Trust Busting

DALLAS, Tex., Aug. 23.—The Attorney General has sued the International Harvester Company, known as the Harvester Trust, for violations of the anti-trust law. He demands penalties amounting to \$110,000.

SHIPS SUFFER DISASTER.

PORTLAND, Ore., Aug. 23.—The ship John Currier is ashore at Nelson's Lagoon. The crew is safe.

STARBUCK DISASTER. SAN FRANCISCO, Aug. 23.—The ship Tillie Starbuck, from New York to Honolulu, has been abandoned at sea. The crew is safe.

GAYNOR VERY SICK.

MADISON, Ga., Aug. 23.—Gaynor, convicted of defrauding the Government in the famous Caster-Greene-Gaynor contracts, is critically ill.

JAIL FOR ZIMMER.

SAN FRANCISCO, Aug. 23.—Vice President Zimmer, who was convicted of a misdemeanor for refusal to answer questions in the Louis Glass trial, was today sentenced to three months in jail.

KILLED BY EXPLOSION.

NEW YORK, Aug. 23.—Seven men were killed today by a boiler explosion on board a barge.

TRAIN OFF RAILS.

BIRMINGHAM, Ala., Aug. 23.—A train was derailed here today and eight injured.

TAFT STARTS THE BALL ROLLING

Lexington, Kentucky, Aug. 22.—Secretary Taft opened the state campaign in a speech here tonight. The election in this state occurs on November 5.

Link McCandless in his capacity as trouble maker may yet succeed in blocking the wheels of progress and making the Lanai deal the lever with which to pry loose a big bunch of trouble for the Territory by preventing the erection of the new high school.

It is proposed to erect the high school on the Maertens property, which is one of the pieces of land acquired by the Territory in the contested Lanai deal. McCandless, who brought a bill to have the deal set aside on the ground that the Government had no right to make such an exchange, and who lost in the Territorial courts, has appealed his case to Washington.

This puts the matter in an unsettled condition, and although it is generally supposed that the Federal Supreme Court will sustain the Territorial courts in their decision that the Territory had the right to make the exchange, there is no definite assurance that such will be the case. It would be an awkward situation if, after the Territory had gone ahead and used part of the land acquired by the exchange for a high school site the United States Supreme Court should declare that the deal was illegal and must be made null and void and the land reconveyed to the original owners.

Governor Frear stated this morning that he had not yet fully made up his mind what to do. It is possible that the Lanai case will come up in the Federal Supreme Court next October, but this is not certain, as the case would have to be advanced considerably on the calendar to be heard then. And in any case, it has been the intention to commence work on the new high school before October. The plans have been drawn up and approved, and yesterday Superintendent Babbitt discussed them with the Governor. The specifications are expected to be received from the architect within a few days, and it was the intention to go ahead with the work of construction as soon as the money could be provided, which would not be, the Governor says, until bonds could be issued, as the \$50,000 provided by the Legislature for the new high school is included in the authorized bond issue.

From what the Governor says, it is probable that he will hold up the high school proposition until the Federal Supreme Court has passed on the Lanai case. There was a rumor this morning that the Governor had issued orders that nothing should be done with any of the lands acquired by the Lanai exchange until the decision should be received from Washington, but the Governor says that he has not yet taken any action as a result of that, though he may issue such orders in the case of the proposed high school site. The building now on the Maertens property.

(Continued on Page 4)



Double Breasted Summer Suits

Being absolutely all-wool, you get the double-breasted style in our extremely light weight summer suits.

And all in handsome materials finely built by the celebrated tailors.

Alfred Benjamin & Co., New York

They're all ready to try on at

The Kash Co., Ltd., Everything For Men and Boys Telephone Mair 25 Cor. Fort and Hotel Sts.

Solid Wear

reveals the shoe quality in our great ALL AMERICA SHOES for men. Every pair is built to wear and made of the strongest materials.

ALL AMERICA SHOES are the most economical shoes for men because quality is throughout. A large variety of styles and popular leathers just arrived and are ready for your inspection.

Manufacturers' Shoe Co., Ltd., 1051 Fort St.

MASONIC TEMPLE

WEEKLY CALENDAR

MONDAY Leahi Chapter—Regular... TUESDAY Rose Croix—Special 7:30 p. m... WEDNESDAY Hawaiian—First Degree... THURSDAY Perfection—Regular, 7:30... SATURDAY Pacific—First Degree.

HARMONY LODGE, No. 3, I. O. O. F.

Meets every Monday evening at 7:30 in I. O. O. F. Hall, Post street. E. R. HENDRY, Secretary. F. W. GEHRING, N. G.

MYSTIC LODGE, No. 2, K. of P.

Meets every Tuesday evening at 7:30 o'clock in K. of P. Hall, cor. Fort and Beretania. Visiting brothers cordially invited to attend.

OAHU LODGE, No. 1, K. of P.

Meets every Friday evening at 7:30 in K. of P. Hall, cor. Fort and Beretania, at 7:30. Members of Mystic Lodge No. 2, Wm. McKinley Lodge No. 8, and visiting brothers cordially invited.

HONOLULU LODGE 616, B. P. O. E.

Honolulu Lodge No. 616, B. P. O. E., will meet in their hall on King near Fort street every Friday evening. By order of the E. R. HARRY H. SIMPSON, Secretary. F. E. RICHARDSON, E. R.

Wm. M'KINLEY LODGE No. 8, K. of P.

Meets every Saturday evening at 7:30 o'clock in K. of P. Hall, cor. Fort and Beretania. Visiting brothers cordially invited to attend.

HONOLULU AERIE 140, F. O. E.

Meets on the 2nd and 4th WEDNESDAY evenings of each month at 7:30 o'clock in K. of P. Hall, corner Beretania and Fort streets. Visiting Eagles are invited to attend.

HAWAIIAN TRIBE No. 1, I. O. O. R. M.

Meets every first and third Thursdays of each month at Knights of Pythian Hall. Visiting brothers cordially invited to attend.

E. J. LORD, SUCCESSOR TO

Lerd and Belser,

GENERAL CONTRACTOR. Dredging, Sewers, Grading, Paving, Teaming, Crushed Rock, Black and White Sand and Soil for Sale.

MAGOON & LIGHTFOOT,

ATTORNEYS-AT-LAW AND NOTARIES PUBLIC. Cor. Alakea and Merchant Streets. Special Attention Given to Trusts and Real Estate.

HONOLULU IRON WORKS

Improved and Modern SUGAR MACHINERY of every capacity and description made to order. Boiler work and RIVETED PIPES for irrigation purposes a specialty.

Church Bells

Small and Medium Sizes, Complete. A. FERNANDEZ & SON, Nos. 44-50 King St., Katsey Bldg., br. Nuuanu & Smith Sts.; Tel. Main 189.

COAT AND PANTS CLEANED AND PRESSED FOR

50 CENTS

Sun Rise Dyeing House

1844 FORT STREET.



10 Years Old

Hoffschlaeger Co., Limited, King and Bethel Sts.

NOW!

Our Suits made to your measure for

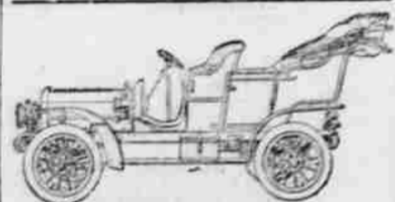
\$25.00

are guaranteed to give satisfaction, so that you get your money's worth.

Geo. A. Martin,

HOTEL ST.

Open Until 5:30 P. M.



AUTOMOBILES We sell the leading makes and maintain a first-class repair department. Call at our garage on Alakea St., above King.

Van Hamm-Young Co., Ltd.

Pure Soda with Ice Cream

many flavors.

Honolulu Drug Co., FORT STREET.

New Millinery

Miss Power's MILLINERY PARLORS

BOSTON BLDG., FORT STREET.

WHAT YOU WANT AND WHEN YOU WANT IT ALWAYS

J. M. LEVY & CO.

Family Grocers. Phone Main 149.

Hee Kau Kee,

CONTRACT PAINTER No. 1320 Nuuanu St., near Kukui, Honolulu.

WALL PAPER FOR SALE

DO YOU WANT KOA FURNITURE?

You Get It Here as You Want It.

Wing Chong Co

KING, CORNER BETHEL STREET.

Dr. T. Uemura,

Physician and Surgeon; Specialist eye diseases. Office, Beretania near Nuuanu. Hours: 8 to 11 a. m., 7 to 9 p. m. Telephone Main 420. Office King st. Alapai; hours: 1 to 3 p. m. Telephone White 466.

LOCAL AND GENERAL

Comfort, economy and results are all secured by letting a Bulletin Want Ad do it for you.

Panama hats cleaned at the Globe. Best cup of coffee in the city. New England Bakery.

Rally of Young People's Societies tonight at the Central Union Church. If your plants look feeble get some food for them at Benson, Smith & Co's.

A big special in Ladies' Gloves at Sachs' for tomorrow only. See ad on page 2.

Hawaiian enameled jewelry, souvenir spoons, etc., at Hill's P. O. Souvenir store.

Benny & Co., Ltd., agents for the White sewing machine, 1296 Fort street, Main 448.

Honolulu Lodge No. 616, B. P. O. E., will meet in their hall, King street, at 7:30 this evening.

The Honolulu Symphony Orchestra will rehearse this evening. The full orchestra will be present.

H. Focke and F. Klamp will be among the outgoing passengers on the Claudine this afternoon at 5 o'clock.

The Lawrence Barrett 10c Cigar makes a delightful mild Havana smoke. Try one. Ask your dealer. Don't forget that the transport dance will be at the Seaside. You know where all the transport dances are.

Try the Lawrence Barrett 10c Cigar. A mild Havana smoke that never fails to please the most fastidious smoker. Theo. H. Davies & Co., Distributors.

A chance for the boys and girls to make money. We will pay 10c per pound cash for small, red, ripe Chile peppers. Any quantity. New England Bakery.

Governor Freat yesterday approved of two applications for transportation on the Army transports. They both came under the War Department regulations.

Everybody likes Butternut Bread. The secret of its making is known only to the Palm Cafe. Phone to them, Main 311, and they'll deliver you a trial order.

Californians are asked to call at J. M. Levy & Co., King street, for invitations to the anniversary ball which will be given at the Young Hotel on September 9.

If you want the best Old Kona coffee go to Henry May & Co. Kona coffee is a hobby at May's. Roasted and ground fresh every day and sells for 25c the pound.

The winners of the polo games "C. Maui no Ka oi" will return to their homes on the Claudine this evening. While here they were royally entertained and lauded.

Several new styles of Prema Cameras just unpacked at Honolulu Photo-Supply Co. You can use either plates or films when you have a Prema. Call and see them.

When you see a Hart, Schaffner & Marx label on a suit of clothes you know its all wool, all right in style and tailoring; and we'll guarantee a fit. Silva's Toggery, King street, Elk's building.

The Rev. Wilber F. Crafts is a passenger in the Aorangi bound for the Coast. Rev. Crafts was in Honolulu last March and aroused considerable feeling by his statements regarding the increased use of opium among the Hawaiians in a speech before the Senate.

There will be a meeting of the Board of License Commissioners at 4 o'clock this afternoon. Two applications will come up for hearing. One of them is that of John D. Holt for a license for the premises formerly occupied by the Asahi saloon at King and River streets.

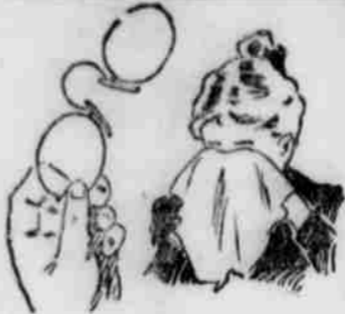
The meeting under the auspices of the Young People's Union tonight in Central Union church will be of especial value to all interested in Christian work among young people. M. K. Nakuna will give a report of the great C. E. convention recently held in Seattle. Special music rendered.

After the annual meeting of the Commercial Club this evening a musical program will be rendered which will include vocal solos by H. F. Michelson and Arthur Wall. R. J. Buckley will give some selections on the violin, while Mr. Caceres will perform on the piano. Harry Macfarlane will play the accompaniments.

Among the prominent passengers who are booked to depart on steamer Claudine this evening will be Congressman and Mrs. Longworth and A. L. C. Atkinson. They will spend a few days on Maui, where they will ascend the largest extinct volcano in the world, "Haleakala." From there they will go to Hawaii and visit Pele.

Bishop and Mrs. Henry B. Restarick have issued invitations for the marriage of Miss Alice Edgerton Shipman to Rev. William Edward Potwine, to take place Thursday evening, September 5, 1907, at St. Andrew's cathedral, Honolulu. Miss Shipman has been a teacher at St. Andrew's Primary school. She is at present visiting on the Coast.

The meeting of the committee which has charge of the twentieth anniversary of the opening of the Kaneohe technical schools held a meeting last night. A discussion was held on the probability of Rev. W. B. Olson being on hand at the opening of the schools. Nothing has been heard from Mr. Olson, although he had promised to arrive by letter. A catalogue will be sent to Mr. Olson asking his intentions in the matter. The money which has been collected for the anniversary fund will be turned over to Treasurer Pulu.



Weeping eyes and aching head, Smarting lids a fiery red, Eyes so weak can barely see— Think you're on a nightly spree. Can neither read, nor think, nor sew, Go to church, nor shop, nor show.

WELL THEN

Relief is in our hand above.

A. N. SANFORD,

GRADUATE OPTICIAN BOSTON BUILDING, FORT STREET Over May & Co.

MADE IN HONOLULU

THE H. C. LINE

HAWAIIAN SOUVENIRS

Jewelry and Curios

H. Culman,

1064 Fort St

VARY YOUR MEATS

We have something besides beef and mutton. The cold storage department contains some choice tid bits for the table; and you can get them by asking for a list when you are ordering, the cutter will tell you what the walls of the cold room shut from your view.

Metropolitan Meat Co. Limited.

LIEUT. HANNAH

ON N. G. H.,

REPORTS CAMP LIFE

"Territory of Hawaii. The Adjutant General's Office, Honolulu.

"August 22, 1907. Circular No. 2.—Extract from Report of First Lieutenant James G. Hannah, U. S. Tenth Infantry.

"Pursuant to Section 19, General Orders 7, A. G. O. 1902, and letter A. O. O. May 31st, 1907, I have the honor to report as follows on encampment of National Guard of Hawaii in February, 1907:

"Detailed per S. O. 20, Camp McKinley, H. T., 1907, joining at railroad station, Honolulu, about 5 a. m., February 29, 1907. Arrived at Wahiawa about 8:30 a. m. and marched to camp site about five miles.

"Camp had been made by details the day preceding and was in compliance with Field Service Regulations as to form in every respect.

"Immediately upon arrival, points for securing drinking water were selected and guard mounted over it. Other points, below, on stream were designated for laundry and bathing purposes, and company sinks and also sinks for kitchen refuse were dug and sentries placed over them to see that earth was thrown in whenever sinks were used.

"The troops were subsisted on practically the ration with salmon (whole), and 'poi,' a native dish, extra.

"Private McCarthy cooked the first day for whole command, the company cooks assisting. After the first day, each company ran its own mess, Private McCarthy visiting the different messes during preparation of meals.

"First Sergeant Banner instructed the First Sergeants in preparing reports, etc., and also assisted and coached the noncommissioned officers in general.

"Lieutenant Cooper was given charge of range work and devoted most of his time to this part of the work, especially pit work.

"A copy of list of calls is attached. The firing on range would be by company, another company doing oil work and other companies being available for drill and instruction at any time between 6:20 a. m. and 11:30 a. m., and 1 p. m. and 4:45 p. m.

"After parade there would be battalion drill, after which the officers would assemble for purpose of discussing any points that may have arisen during the day. From this it

Own A Good Piano

The best piano you can buy is the Fischer. It is not so expensive as some others, but you are not paying a premium for a name.

The Fischer is as good a piano as can be made and it is especially suited to this climate.

Sold on the easy payment plan at

Alexander Young Bldg. Hawaiian News Co., Ltd., YOUNG BLDG.

Brasses

Exquisite Russian Brasses. Teco Pottery. Coarse Lauhala Mats. Tapes, Fans, Baskets, Hawaii & South Seas Curio Co., Alexander Young Building.

SHIPPING INTELLIGENCE

TIDES

Table with columns for High Tide, Low Tide, Sun Sets, Moon Rises and Sets. Includes dates for August 23, 24, 25.

Full moon Aug. 23, at 1:44 a. m. Times of the tide are taken from the United States Coast and Geodetic Survey tables.

Hawaiian standard time is 10 hours 36 minutes slower than Greenwich time, being that of the meridian of 157 degrees 30 minutes. The time whistle blows at 1:30 p. m., which is the same as Greenwich, 0 hours 0 minutes. Sun and moon are for local time for the whole group.

ARRIVED Thursday, August 22. R. M. S. S. Aorangi, Phillips, from the Colonies, 5 p. m. U. S. A. T. Buford, from San Francisco, 7:15 a. m., August 23.

DEPARTED Thursday, August 22. Str. Mikahala, Gregory, for Kauai ports, 5 p. m. Str. Maui, Bruhn, for Hawaii ports, 5 p. m.

Friday, August 23. R. M. S. S. Aorangi, Phillips, for Vancouver, 3 a. m.

SAILING TOMORROW U. S. A. T. Buford, Hall, for Manila, 11 a. m.

DUE TOMORROW Saturday, August 24. Str. Kinau, Freeman, from Hawaii and Maui ports, a. m.

PASSENGERS ARRIVED Per U. S. A. T. Buford, Hall, from San Francisco, 7:15 a. m.—For Honolulu: Lieut. W. Garland Fay and wife. For Guam: Lieut. Robert Y. Rhea and wife, Lieut. Frederick A. Gardner, John J. Ballinger. For Manila: Capt. E. A. Shuttleworth and wife, Capt. D. W. Kilburn, Capt. Geo. P. Howell and wife, Capt. L. B. Moody, wife and infant, Lieut. L. E. Hanson, Lieut. R. E. Brooks, wife and child, Miss E. M. Rumsey, Lieut. John J. Kingham, Lieut. Henry H. Robert, Lieut. H. S. Kilbourne, Jr., Lieut. Robert E. Danford, Lieut. C. G. Mettler and wife, Lieut. Guy V. Rukke and wife, Lieut. Henry C. Pillsbury, Lieut. Edgar King, Lieut. A. C. Christie, wife and 2 children, Lieut. Howard H. Johnson, Lieut. Ray W. Bryan, wife and 2 children, Lieut. B. S. Gostin, wife and 2 children, Lieut. W. H. Richardson and wife, Lieut. W. K. Bartlett and wife, Lieut. J. P. Castellan and wife, Lieut. Joseph C. King, Lieut. Charles Kehler and wife, Franklin F. Wing and wife, Mrs. R. L. Douglass and sister, J. A. Watson, Mrs. H. F. Ford, Mrs. N. O. S. Ford, Miss Susie Thompson, Mrs. L. M. Kyle, H. L. Simpson, wife and 4 children, Mrs. A. C. Derkum and two children, Miss Morgan, B. F. Hastings, wife and 2 children, Mrs. Geo. H. Shall and infant, Mrs. H. J. Silger, J. D. Lane, Thomas L. Helm, Miss Eloise Rosenberg, female servant, 24 Philippine Government students; 25 enlisted men, Signal Corps U. S. Army; 2 enlisted men, Hospital Corps; 1 enlisted man, 26th Infantry.

Per R. M. S. S. Aorangi, Phillips, from the Colonies, August 22, 5 p. m.—Mr. and Mrs. F. Halstead and child, A. Jordan, J. McInerney, Miss S. Cooke, A. F. Cooke, Mrs. M. Cooke, L. Lane-mann, Mrs. Knight, child and infant, W. Woon.

PASSENGERS DEPARTED Per R. M. S. S. Aorangi, Phillips, for Vancouver, August 23, 3 a. m.—Dr. L. E. Cofer, K. W. Heye, Mrs. and Miss Gurney, A. C. Bowleys, T. J. Murray, W. E. Kimball, Admiral Stevens and wife, Miss B. Annis, Mrs. A. Wilson and infant.

At a celebration of the Mine Exchange, Mayor Taylor of San Francisco made a speech in which he advised strongly the thorough cleaning of the city.

NEW MACHINE SHOPS FOR LOCAL FIRM. The block of land on the corner of South and Second streets, owned by the Bishop estate, has been taken on a long lease by the firm of Canton Neil & Co. This firm, which has been doing business in this city for the past nine years, has prospered to such an extent that expansion is necessary. On their newly acquired land they are erecting an enlarged plant at a cost of \$50,000, the extensiveness of which will permit of this firm manufacturing sugar mill machinery. The power for the entire plant will be furnished from a separate building twenty by fifty-five feet.

The lease on the present buildings will expire the end of this year, but it is said that the building comprising the offices and salesroom will be retained as formerly.

At a celebration of the Mine Exchange, Mayor Taylor of San Francisco made a speech in which he advised strongly the thorough cleaning of the city.

For Sale Eight room house, well built, 32x42. Large verandah, 4 bedrooms, toilet, bath. Newly painted. 150 ft. frontage on Kuakini St. Cool and healthy. In walking distance to center of town. Near Liliha and Nuuanu cars. Only \$1500. Certainly a bargain.

P. E. R. Strauch 74 S. KING STREET. WAITY BLDG., ROOM 1.

Distinct Directions Order your new suit here. Then you will get a fit of style and be satisfied. Come in and pick out the cloth you prefer. There are many different kinds to select from.

W. W. Ahana & Co., MERCHANT TAILORS 62 King St. PHONE BLUE 2741. P. O. Box 981

ser, C. W. Baldwin, N. Longworth and wife, A. L. C. Atkinson, H. Focke, F. Klamp, Miss C. Baldwin, Miss V. Rice, W. J. Coelho, J. M. Vivas, H. Rice, Dr. Raymond, Manuel Dutra and son, S. A. Baldwin, W. D. Baldwin, Ed. Peck, Jim Ahoj, J. A. Medeiros, J. Vincent, J. Schwartz, Jno. Douglas, Rev. A. S. Baker, Agnes Pieper, Mary Vincent, J. S. Maloney, W. A. Ramsal, H. McCubbin, Miss Alice Macfarlane, Mrs. V. Medeiros, A. Enos, Dr. Dinegar, A. L. Lauson, H. R. Macfarlane, Jr.

HONOLULU WEATHER August 23.

Temperatures—6 a. m., 75; 8 a. m., 80; 10 a. m., 80; noon, 82; morning minimum, 75; Barometer, 8 a. m., 29.96; absolute humidity, 8 a. m., 6.779 grains per cubic foot; relative humidity, 8 a. m., 62 per cent; dew point, 8 a. m., 66.

Wind—6 a. m., velocity 9, direction S. E.; 8 a. m., velocity 6, direction S. E.; 10 a. m., velocity 13, direction E.; noon, velocity 10, direction N. E.

Rainfall during 24 hours ended 8 a. m., trace. Total wind movement during 24 hours ended at noon, 188 miles.

WM. B. STOCKMAN, Section Director, U. S. Weather Bureau.

TOYO KISEN KAISHA WILL HAVE

TURBINE STEAMERS

"We are building two more giant steamers for our company," said Mr. Mijasaki of the Toyo Kisen Kaisha (his forenoon). "They are both 14,000-ton boats with first class passenger accommodations. When completed, they will be the floating palaces of the Pacific. Their names will be Tenyo Maru and Chyo Maru. They will consume oil fuel and be fitted with turbine engines. The Manchuria, Mongolia and the other big steamers which are plying between the American and the Oriental ports will not be in it when our new steamers are completed. They are being built by the Mitsubishi Dock Yard, at Nagasaki. The materials are partly imported from America and England. The captains will be foreigners, of course. Some of the masters of the Marus, probably Captains Going and Filmer, will be promoted to command the Tenyo Maru and Chyo Maru. They have rendered valuable services to the company, and in recognition to which I am sure they will be given commands of those new steamers."

Mr. Miyasaki has been a supervising accountant of his company at the San Francisco steamship office and is returning in the Nippon Maru to accept a higher position in the main office.

TROPICAL BOOK-PEST

For several years past William C. Lyon and Arthur Johnstone of this city have been experimenting to find a way whereby libraries in the islands might be protected from tropical book-pests. The conclusions which they have reached thus far will soon be laid before the public in a small preliminary volume, nicely bound, which is now being prepared for the press by Arthur Johnstone. As soon as the manuscript is ready the book will be published by the William C. Lyon Co., Ltd. It will contain a brief resume of the facts collected in higher latitudes concerning bookworms, after which it will deal more fully with our various island book-pests, besides giving—as far as at present known—the means necessary for the prevention of their ravages in the lower latitudes.

NEW COMMITTEES.

James F. Morgan, president, has appointed the following standing committees of the Chamber of Commerce for the year 1907-1908:

Finance—E. D. Tenney, W. Pfenhauer, A. Garvie.

Membership—J. A. Kennedy, A. N. Campbell, A. Garvie.

Arbitration—W. Pfenhauer, E. D. Tenney, B. F. Dillingham, G. H. Robertson, J. A. Kennedy.

Commerce, Manufacture and Agriculture—T. C. Davies, J. P. Cooke, A. Garvie.

Harbor, Shipping and Transportation—E. I. Spalding, J. A. Kennedy, A. N. Campbell.

Legislation and Public Improvements—B. F. Dillingham, G. H. Robertson, E. I. Spalding.

Reception and Entertainment—A. N. Campbell, T. C. Davies, J. P. Cooke.

RUSSIAN FRANK'S WILL.

The will of Frank Lucweiko, better known as "Russian Frank," was offered for probate yesterday by Father Valentin with a petition that a temporary administrator be appointed.

The will was made the day before the testator's death. With the exception of payments of \$50 each to John A. French and Maria M. Smith, it is directed that the property be equally divided between the widow and the Roman Catholic church. It consists of land at Moiliili, a claim against the Territory for \$1500 and certain personal property.

Judge De Bolt appointed O. A. Steven temporary administrator.

SPECIAL FOR SATURDAY ONLY

A BIG CUT IN

Gloves

LADIES' 2 CLASP BERLIN LISLE GLOVES, in White, Black, Gray and Moles, Regular 40c. pair,

Special 25c pair

LADIES' 2 CLASP BLACK COTTON TAFFETA GLOVES, Regular 35c,

Special 25c pair

LADIES' LISLE SUEDE GLOVES, Black and Gray, Regular 60c,

Special 50c pair

LADIES' LACE SILK GLOVES, 12 button length, in White and Black, Regular \$1.00 pr.,

Special 75c pair

LADIES' 2 CLASP, LACE SILK GLOVES, in Black and White, Regular 75c.,

Special 50c pair

LADIES' LISLE LACE GLOVES, in White and Tan, Regular, 65c pair,

Special 50c pair

THESE PRICES ARE FOR SATURDAY ONLY.

STORE CLOSSES AT 1 P. M.

N. S. Sachs Dry Goods Co., LIMITED

WOULD KEEP FLEET ON ATLANTIC COAST

Hope Expressed That Ships will Not Go West

Sen. Eugene Hale was asked by a New York Herald correspondent in Ellsworth, Maine, his opinion as to whether the Atlantic fleet should be sent to Manila or to stations on the Pacific coast.

"I hope and believe that the fleet will not be moved in the direction indicated," the Maine senator replied. "I have seen nothing that leads me to believe Pres. Roosevelt has ordered or intends to order a great fleet of warships into Japanese or contiguous waters. The scheme had its birth with the general board of the navy, which for three or four years in order to magnify the navy exploited a war scare with Germany. When the people got tired of this they tried the same performance with Japan."

"Many, but by no means all, naval officers, approve of it and probably the general staff of the army. The two military branches of the government live and thrive upon war, but there never has been a day when it was safe to leave to them the policies that make for peace or war. The army and navy do not view war as a danger or calamity, but as an opportunity."

"I look to see Pres. Roosevelt take a broader and wiser and what in the building up of her peaceful interests, but these happy influences are opposed in Japan by a war or jingo party that at any moment, by appealing to the passion and resentments of the people may upset the ministry and substitute for it a jingo or war government."

"There is no pretence whatever that Japan in any way threatens us or any of our possessions. Our wise secretary of state is at this moment trying to negotiate a treaty with Japan that will settle all controversies and silence all war alarms. Does anybody believe the despatch of a great war fleet into Asiatic waters would help the secretary in his efforts to preserve peace."

"Congress has been generous in its appropriations and under them we have built what is today, with the ships now building, probably the second naval force in the world. Senators and members would have looked twice before voting these appropriations had they supposed that when a great force of war ships had been assembled the first enterprise would be an expedition into Asiatic waters upon the other side of the globe, carrying with it the imminent danger of arousing the resentment of a great people with whom we are at peace and with whom a war would be a wickedness almost past human conception."

"I do not believe either now or in the near future the President will issue any such order or commit his administration to a course which from the moment the order is issued is likely to turn the people of a great empire, who are now our friends, and with whom we are at peace into a condition of mind that will leave them now and hereafter as our enemies."

Miss Jeanette Gamble of Riverside, Cal., saved the life of Arthur Traynor for drowning in Donner lake after the boat they were rowing in capsized.

Secretary of Agriculture Wilson says that Government experts are at work in the Orient developing a market for American dairy products.

"For Rent" cards on sale at the Bulletin office.

VIOLINIST CHARMS RESPONSIVE CROWD

Music Of Marie Hall Revelation To Honolulu

On the stage of the opera house last night stood a slight, girlish looking figure, slender almost to the point of thinness, wearing in her hair an immense white bow that added yet more to her youthful appearance, and holding in her hands a bow and violin from which came melodies that it seemed incredible wood and catgut could produce.

The figure was that of Marie Hall, the English violinist whom music loving Honolulu had an opportunity to hear for the first time. And music loving Honolulu adds its enthusiastic praises to those of the rest of the world. All that had been told in advance concerning this artist seemed weak and in adequate.

Marie Hall is young, and on the stage appears still younger than her years. And her youth is evident in her playing. She has not the power and volume that comes from a violin played by a man of equal attainment and facility of expression. Her music has the purity of womanhood. There is in it no suggestion of the seamstress of life, nor of the hot blood of passion. She has evidently no acquaintance with profound sorrow nor deep misery. Love as expressed by her art is rather that of a mother for her child, or if it be the love of youth, it is a love that has flowed smoothly and equably along pleasant paths, love that has in it nothing of fierceness or passion.

As for technique—what need to mention that. It is enough to say that one forgets there is such a thing in listening to Marie Hall. Her playing is so smooth, so effortless, so natural that one almost believes she must have been born fully endowed with a mastery of bow and violin that enables her to use them for the expression of her idea without conscious effort or thought. One never thought of the bow. It performed its work so easily that the music might have come spontaneously from the violin.

The program was excellently chosen for the occasion. One number seemed to glide smoothly into another. She attempted nothing that called for more than she had in her to give.

Nor is all the praise due to the violinist. Lonie Basche, the pianist, is a fit running mate for Marie Hall. Her playing showed extraordinary delicacy of touch, feeling and facility of expression, while as an accompanist she is everything that could be desired.

Honolulu audiences are always inclined to be enthusiastic, and sometimes a trifle indiscriminate. But their applause last night was genuine and of a kind to make any artist do her best. At the conclusion of the last number on the program the audience did something that was never seen in Honolulu before. It sat absolutely still for a moment, without any wild reaching for wraps or shuffling of feet; then burst into crashing applause that would not stop until Marie Hall came out and played as an encore what was, with possibly one exception, the best selection of the evening, Dvorak's Humoresque.

The opening selection was the Concerto in E major by Vieuxtemps, a number well calculated to give the artist opportunity to bring out all that was in her. Her playing was absolutely faultless and the tones she brought from the instrument were as clear, as sweet, as effortless as those that ripple from the throat of Tetrazzini. It was as if a lark, awakened by the first suggestion of the sun's rising, had suddenly sprung from the earth with a few clear, sharp notes and mounted up into the sky, pouring out its soul in perfect music. The lark mounted higher and high, but still the notes came down to earth clear and entrancingly sweet, until reaching a height from which he could catch the first sight of the sun, still below the horizon to those on the earth, the lark broke into a perfect ecstasy of melody; then dropping again it poured out a volume of rich, low tones and again shot up into the sky its notes clearer and sweeter, with no loss of volume or of richness.

Suddenly the music stopped. The audience sat absolutely motionless and silent for a few seconds, then broke out into a thunderous crash of applause that would not cease until the musician came back and gave as an encore a Bach aria that was hardly less excellent than the original selection.

Lonie Basche played three selections on the piano, each of a kind by itself.—Nachtstuck by Schumann, Menuett by Schumann and Esplanade by Emil Sauer. The two last named were played with extraordinary feeling and showed what the pianist could do. Marie Hall's second program number was Bach's Chaconne, a difficult selection for a woman, but excellently rendered. If anything, her rendition lacked a little in power and volume. But the music was characterized by the same flawless purity, ease and sweetness as in the first number. The artist's playing is of the kind that

Old Band Leader Heads Parade at 84



MR. G. I. PARTRIDGE.

This is one of the thousands of cases where Duffy's Malt Whiskey drives out the germs of decay, and renders the system as healthy as that of a boy of twenty. This great tonic stimulant and elixir of life has been the means of prolonging the lives of thousands of men and women, who cannot say too much in praise of it.

Mr. G. I. Partridge, of Franklin, Mass., who is in his 84th year, led his famous band through the streets of Cambridge at the head of the Knights Templar Parade.

Mr. Partridge has played the fife since he was 13 years old, and at the time of the Civil War was appointed to recruit the regimental band of the 18th Massachusetts Regiment, and had charge of the field music. Later he helped to recruit Neal Dow's famous regiment.

In an interview Mr. Partridge said:

"Last April I took a sudden cold, and I was laid up with a urgia in my shoulder, which brought on fever and took away my appetite, but by using Duffy's Pure Malt Whiskey I came out all right, and on Memorial Day I was leading my band and playing, as well. I think your Malt Whiskey is just the medicine to tone up and keep up the strength of old people."

"Hoping your medicine will prove beneficial to others, I can truly recommend it as a valuable help."—G. I. PARTRIDGE, Franklin, Mass., Sept. 1st, 1906.

Despite his advanced age, Mr. Partridge can still do as good work as men two score years younger.

Duffy's Pure Malt Whiskey

If you wish to keep strong and vigorous and have on your cheeks the glow of perfect health, take Duffy's Pure Malt Whiskey regularly, according to directions, and take no other medicine. It is dangerous to fill your system with drugs, they poison the body and depress the heart, while Duffy's Pure Malt Whiskey tones and strengthens the heart and purifies the entire system. It is recognized as a medicine everywhere. This is a guarantee. Duffy's Pure Malt Whiskey has stood severe tests for fifty years and has always been found absolutely pure and to contain great medicinal properties.

CAUTION.—When you ask your druggist, grocer or dealer for Duffy's Pure Malt Whiskey be sure you get the genuine. It's the one absolutely pure medicinal malt whiskey and is sold only in sealed bottles; never in bulk. Look for the trade-mark, the "Old Chemist," on the label, and make sure the seal over the cork is unbroken. Price \$1.00. Illustrated medical booklet and doctor's advice free. Duffy Malt Whiskey Co., Rochester, N. Y.



PICTURE FRAMING

Specialty of this business

No artist would think of showing one of his pictures without a frame; and no dealer would attempt to sell an expensive painting unless suitably framed. Because a frame "makes" a picture.

Have an enlargement made of one of your favorite kodak snap-shots and bring it here to be framed. You'll have a picture that will be a surprise.

We will do the work promptly and in an artistic manner. Our stock of mouldings, made-up frames and French ovals now ready. Also gold metal frames for photographs.

Hawaii Photo & Art Co., FORT STREET, BELOW KING.

Tight-fitting underwear

in hot weather creates unnatural warmth.

WEAR LOOSE-FITTING

B.V.D.

Trade-Mark Reg. U.S. Patent Office.

Coat-Cut Undershirts and

Knee-Length Drawers

and be cool and comfortable

Accept no imitation, we sell the original.

(Identified by B. V. D. red woven label)

A complete selection of all sizes and styles for sale by us.



An Ideal Covering For Your Body

B.V.D. Underwear

Covers just the right part of your body and feels so 'comfy'.

You can't appreciate the finest outer garments if your underwear isn't the best. And by the best is meant the kind that fits easily, keeps you cool, and gives absolute freedom to every action. This is

B. V. D.

M. McINERNEY, Ltd.,

HABERDASHER AND CLOTHIER

FORT AND MERCHANT STS.

WE HAVE COME TO STAY

Demand is the only true index of Popularity. The L. C. SMITH & BROS. Typewriter Solicits Judgment by this rule.



Writing Visible At All Times.

With more than double the daily output of any other typewriter concern, at the same period of its growth, L. C. Smith & Bros. Typewriter Co. has been utterly unable to keep pace with the demand. Why?

Because users, who appreciate its advantages of speed, easy operation and lasting service, would rather wait their turn for the L. C. SMITH & BROS. typewriter than buy of makers who have no difficulty in filling orders.

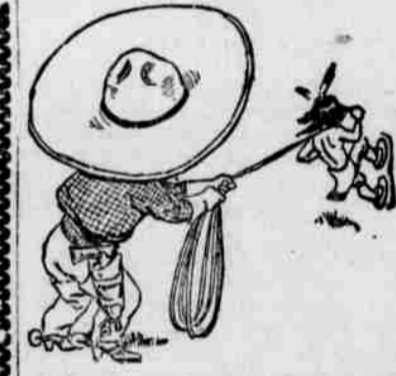
C. W. MACFARLANE, Agt, MAIN 145

Because you are not in the dry goods line do not suppose for an instant you are not interested in appealing to ladies. Who buys the furniture, the stoves, the tinware, the pianos, the carpets, the groceries, and often decides on the gentleman's necktie and suit of clothes? Who buys most of the boys' clothing, and takes the children to have their pictures made? The wife or the elder sister, of course, and they read the Evening Bulletin six days a week.

brings up pictures and forgotten scenes, hopes, ideals, ambitions. One hears the solemn sound of wind pouring into ocean caverns, the sighing of the breeze in forest tree tops, the long, slow murmur of great rivers, the rippling of meadow brooks. The forgotten ideals and hopes of youth come to life again, the scars of passion are forgotten, the petty trivialities of life fade away. Of such kind is Marie Hall's art.

Lonie Basche gave two more piano selections, one Schubert's Standchen; the other the familiar Schubert-Tausig Marche Militaire. She was enthusiastically applauded, and she gave as an encore McDowell's Shadow Dance.

The last number on the program was five selections by as many composers. These were excellently arranged and shaded off one into the other most delightfully. There was only a second or so between each two, and the accompaniment of one merged imperceptibly into that of the next. The five were:



LIFE ON THE FARM

is not always spent in a bed of roses. There's chores to do and cows to herd and milk. But if it were not for the farm we would not be able to sell you

Sweet Violet Butter

This is conceded to be the best table butter sold in the city. It is as good as the best island dairy product, is carefully made and kept here in cold storage. Your order for a block will have prompt attention.

Ring up Main 251.

C. Q. Yee Hop & Co.

King Street.

Woman's Exchange

FOR

Calabashes

FORD AUTOMOBILES

These are proving the most popular runabouts in this field. We are willing to demonstrate.

SCHUMAN CARRIAGE CO. YOUNG BLDG.

Ohla Cord Wood For Sale

HONOLULU FIRE WOOD CO. 93 King St. and Hotel and Smith Sts. Tel. White 1698.

EL PALENCIA CIGAR

A mild Havana cigar that never fails to please. Sold by

HAYSELDEN TOBACCO CO., LTD. Alexander Young Bldg.

WALDRON CHAIRMAN.

The Promotion Committee held its first meeting with its new membership yesterday afternoon. Captain A. South, who was appointed to represent the Merchants' Association, has found it impossible to serve and another member will be appointed in his place. The committee has organized, Fred L. Waldron being elected as chairman, Willard E. Brown as treasurer and H. P. Wood as secretary.

EVENING BULLETIN
Published Every Day Except Sunday
at 120 King Street, Honolulu,
T. H., by the

BULLETIN PUBLISHING CO., LTD.
WALLACE R. FARRINGTON, Editor
Entered at the Postoffice at Honolulu as second-class matter.

SUBSCRIPTION RATES.
Payable in Advance.
Evening Bulletin.
Per month, anywhere in U. S. \$.75
Per quarter, anywhere in U. S. 2.00
Per year, anywhere in U. S. 8.00
Per year, postpaid, foreign... 11.00
Weekly Bulletin.
Six months \$.50
Per year, anywhere in U. S. 1.00
Per year, postpaid, foreign... 2.00

**Territory of Hawaii, } ss:
Honolulu, }
First Judicial Circuit.)**
C. G. BOCKUS, Business Manager of the Bulletin Publishing Company, Limited, being first duly sworn, on oath deposes and says: That the following is a true and correct statement of the circulation for the week ending Friday, August 16, 1907, of the Daily and Weekly Editions of the Evening Bulletin:—
Circulation of Evening Bulletin
Saturday, Aug. 10. 2806
Monday, Aug. 12. 2715
Tuesday, Aug. 13. 2910
Wednesday, Aug. 14. 2740
Thursday, Aug. 15. 2856
Friday, Aug. 16. 2659

Average Daily Circulation . . . 2781
Circulation of Weekly Bulletin
Tuesday, Aug. 13, 1907. 2942
Number of weeklies delivered on the island of Hawaii alone. 1310
Combined guaranteed average circulation 5723
BULLETIN PUBLISHING CO., LTD.,
by C. G. BOCKUS,
Business Manager.
Subscribed and sworn to before me this 17th day of August, (SEAL) Anno Domini, 1907.
P. H. BURNETTE,
Notary Public, First Judicial Circuit.
FRIDAY, AUG. 23, 1907.

HONOLULU AND THE NAVY

The meeting of Honolulu's selected business men with Admiral Very this afternoon will be watched with much interest.
The inspiration and the purpose of the meeting are at present as much an unknown quantity as the result.
It is a new move for selected business men of the city to be invited to a conference with the commander of the Naval Station. On the face of it, the idea of the Navy Department thus testing the temper of the community is a good one.
It will be possible to discuss the subject when the people know the drift of events which the officers of the station wish discussed. Citizens of Hawaii are not disposed to stand in the way of the development of naval strength in the Pacific and especially on the island of Oahu. The questions at issue seem more matters for the action of the American Government.

COLLEGE PROGRESS

Regents of the College of Agriculture and Mechanic Arts have made a good move by deciding to go ahead with what offers, provided they cannot obtain just what they want in the way of a President for the institution.
The man who is offered the responsibility of starting this institution, at a salary lower than the high priced professor with a reputation, may not feel highly complimented. Nevertheless a man with the right spirit, who recognizes that he has a reputation to make and this is a first class place to lay the foundations and build the structure, such a man may prove to be the best in the end.
The college should at all hazards go forward. Moth and rust will corrupt the best scheme on earth that remains inactive, waiting for things to come its way.

NUUANU DAM MANAGEMENT

Are they making Howland the "goat" of the Nuuanu dam?
This is a natural query arising from the renewal of the Nuuanu dam campaign and the published conclusion of one contractor that the man in charge of the work is of no use anyway.
The Bulletin is not in a position to dispute the word of the contractor. This paper is forced to agree with most any man who says that the Nuuanu dam has not been a success. Yet two experts have been paid a high price to look over the job and the criticism has not been serious. Again when the contractor interviewed lauds a former officer of the Public Works department to the skies, it recalls the fact that when the man referred to was in office, he was the object of very generous criticisms from many sides. It is therefore necessary to stop and think a moment on whether the Public Works department is especially incompetent as at present officered, or

It is impossible to obtain officers to suit.
The more this dam business is discussed the more one is reminded that there are four sides to some questions—the inside and the outside, as well as the right side and the wrong side.

In the present phase of criticism, this paper believes that it is unjust and evidence of personal favoritism to hold one officer of the department more at fault than another for the failures scored against the Nuuanu dam. There can be no just division of responsibility between Howland and Holloway. Howland is the engineer in charge but he is subject to the orders of Superintendent Holloway.
Any fair minded man would hold that either the present team should carry the work to completion or a clean sweep should be made of the whole outfit, and a new Public Works administration put in charge.
If the project were in the hands of a private corporation, it would go forward right or the managers would know the reason why.
There is no good reason for the Nuuanu dam construction being handled with less speed and competence than would be required and secured by a private corporation.

MAY NOT BUILD

(Continued from Page 1)
Tens property, which is to be used as the temporary quarters for the Agricultural College, and which it is proposed to move over onto the lots of Cecil Brown adjoining, will be moved as previously decided, the Governor says. This is probably on account of the fact that the moving of the building would not be an action which could not be remedied in case the decision of the United States Supreme Court was adverse to the Territory. In such case, the building could be moved back again.
But it looks very much as if Honolulu will have no new high school this year.

PROFESSOR CRAWLEY HAS MANY ASSISTANTS.

Professor J. T. Crawley, for many years well and favorably known in these islands but at present director of Cuba's Agricultural Experimental Station at Santiago de las Vegas, has gathered about him six assistant experts on the line of work in which he is engaged. It is the intention of the Provisional Government to raise the standard of the Experimental Station in Cuba to the highest degree attainable.

That Tired Feeling

will leave you if you will follow our suggestion; YOU make us your agent; WE will do the rest. We will attend to all your property; invest your cash; collect your rents, dividends, interest, etc.; we will pay your insurance, taxes, assessments, dues and bills, and we will keep your valuables in our Safety Deposit Vault. Half your ills are due to worry. Drop in and talk it over with us.
HENRY WATERHOUSE TRUST COMPANY, LTD.



Real Estate Dep't.
FOR SALE.

- Bargain No. 1. Eight minutes' ride on electric cars. Lot 120x120. Three bedroom cottage, built five years ago. Price \$1500.00. Easy terms.
 - Bargain No. 2. Property situated near town—five minutes walk from center of city. Three cottages bringing a monthly rental of \$22. Price \$2500.00. Easy terms.
 - Bargain No. 3. A Beach property at Waialae cheap for cash. Particulars at our office.
- FOR RENT.**
- King Street \$25.00
 - Beretania Street \$25.00
 - Waikiki Beach \$40.00
 - Beretania Street \$40.00
 - Pensacola Street \$20.00
 - Wilder Avenue \$35.00
 - Lunalilo Street \$25.00
 - Lunalilo Street \$30.00
 - Matlock Avenue \$25.00
- FURNISHED:**
- King Street \$40.00
 - Makiki Street \$50.00
 - Pearl City \$25.00
 - Prospect Street \$45.00
 - Kinaiu Street \$35.00

Henry Waterhouse Trust Co., LIMITED
Corner Fort and Merchant Sts.

If Wishes Were Horses

Everyone would ride, and everyone would own a home. Everyone wishes to own a home, but wishing will never secure it for you. After you have been wishing for a home call and see us, and let us tell you what the next step in securing a home is. It is an easy step and far better than paying rent. We have some nice homes in different parts of the city. Some of them will be sure to suit.

Trent Trust Co.

Brown Declares For Transportation

"Honolulu should own its own passenger steamer, and transportation is the thing."
This is the opinion of W. E. Brown, whom President Morgan has appointed as the new member of the Hawaii Promotion Committee to represent the Chamber of Commerce.
"I would like to have the Honolulu community own its own steamer," said Mr. Brown.
"The city of Honolulu has money enough and business enough to control its own steamship line and I think that is the end towards which we all ought to work. We need the people here and they will come if we give them the transportation."
"It pays to be careful, just the same. When Honolulu goes into a steamship proposition, it should be certain of having the right steamer. An error at the start would ruin the whole thing and keep it dead for a good many years to come."

KAU LAND TROUBLE FINALLY SETTLED

On account of the settlement of the difficulties previously existing between Land Commissioner Pratt and the Thompson Settlement Association the suit of L. S. Thompson et al., members of the association, has been discontinued. The trouble arose over some Kau lands which Pratt wanted to cut up into 25-acre tracts while the association demanded that the parcels be of 100 acres each. Pratt visited Hawaii recently and a compromise was arrived at by which the Land Commissioner agreed to divide the land into parcels of about 40 acres each.
The famous Walter art collection, valued at \$100,000, is being brought from the East and will be exhibited in the museum at Golden Gate park.

SALE OF
Laces, Embroideries, Appliques, etc.,
NOW GOING ON

From our Window Display you can get an idea of the low prices that will prevail. Net Top LACES, APPLIQUES—REDUCED 50 per cent. EMBROIDERIES at Cost.
The Embroideries offered will include many choice patterns in SWISS, NAINSOOK and CAMBRIC in all widths and at prices from 5c. per yard up to \$1.
Also about 20 dozen pieces of NARROW VALENCIENNES LACE AND INSERTION.
Remember, Good Things don't last long at an Ehlers Sale.

EHLERS,
Whose Sales ARE Sales.

OLD KAIMILOA BELL WILL SOUND WAILUKU FIRE ALARM

The old "Kaimiloa bell" will resound the echo of long ago.
W. J. Coelho, who has been in town on business connected with the fire department of Wailuku, will return to his home on the Claudine this evening at 5 o'clock. He succeeded in getting the famous bell of the old Hawaiian war ship "Kaimiloa" for the tower of his fire department.
President Kennedy of the Inter-island and Navigation Company was approached by Coelho with a request that the Kaimiloa bell be given for the use of the Wailuku fire department. It has been under consideration for some time, and Kennedy, who saw that the request was for a good purpose consented and gave the bell to Coelho.
"I am going away today with my old and historic bell," said Coelho this morning. "I have about thirty boys who are always ready to respond to the fire calls. While here I spent some of my time in getting instructions from fire chief Thurston. I am thankful that many generous Honolulu people have assisted me in my effort to get some things for my district.
Among other things, I have been very fortunate in getting from Governor Frear and Superintendent Holloway the consent of extending our water main at Wailuku. This has been a great plikika with us over there. The appropriations for such purpose which passed the previous Legislatures were for some unknown reasons held up and hence the Wailukuans were greatly inconvenienced. As soon as I found that Frear had taken office I came down here immediately, knowing fully well at the time that he would judiciously consider our proposition. After he had carefully looked into the whole thing he agreed with me and promised to utilize the appropriation provided for the extension of the water main. This is great news to the Wailukuans, and I am glad to say that we have a good governor who can look to the needs of the poor as well as the rich."

YOUNG FILIPINOS COMING BACK FROM COLLEGE

The U. S. A. T. Buford, Captain P. hall, came into port this morning and docked at naval wharf at half-past seven. She left San Francisco August 15 at 12 o'clock, noon, and made a pleasant trip down. The only passengers for this port were Lieutenant W. G. Fay of the United States Marine Corps and his wife. There are on board many United States army officers going to Manila. They are accompanied by their families. B. F. Hastings of the Bureau of Education, Philippine Island, is returning to his post with his wife and children. Supervising teacher, H. L. Simpson and wife, accompanied by four children, are among the passengers.
There are twenty-four Philippine Government students returning to serve under their Government. Three of them are lawyers and the rest teachers. It was reported on board the transport this morning that many of them while in college won prizes in debates. Joaquin Ramos, L. L. B., is a graduate of Georgetown University. G. Espinola, L. L. B., is from the National University and J. Valdes, L. L. M., who has charge of the party of students, is a graduate of the Catholic University of American.
Ramos said this morning that the Americans have been very kind to them since the islands became part of the United States.
Among the officers of the Buford are R. P. Chesney, formerly the officer on the steamship Mongolia. He is serving in the same capacity on the Buford. He said that many steamer officers are entering into the U. S. transport service on account of the better salaries paid there.
Former Chief Officer L. C. Drewson

Coffee— Real Kona Coffee

Our Old Kona Coffee is the kind that sends a rich, nose-tickling aroma through the house of a morning and whets the appetite for a good enjoyable breakfast.
It is all coffee—crisp and pungent—and we grind it fresh every day.
Stored while green until it reaches a ripe old age and then browned in our own special roaster.
No one else takes the same care and gives so much attention to having it good as we do. Because its our hobby.
If you want the best Kona Coffee take ours 25c the pound. Fresh ground or whole beans as you prefer.

Henry May & Co., Ltd., Leading Grocers. Phones Main 22

TREASURE IN GARBAGE

A Japanese reported to the police this morning that he had lost \$75 in an odd manner. He had hidden the money in two bundles, one containing \$25 and the other \$50, in a pile of garbage, and this had been taken away by the garbage wagon this morning. He had gotten into the equipment and had succeeded in finding the \$25 package but the other one he could not locate. A police officer was detailed to go with the man and the two followed the wagon to the dumps, where they are now searching for the lost treasure.
Another Chinese tong war has started across the bay from San Francisco. Several shots were exchanged between two tong men recently.
Two Italians on the Coast recently fought a duel with revolvers. During the shooting three persons were wounded and two of them will die.

BY AUTHORITY

Holiday Notice.
All Territorial Offices will be closed on Monday, September 2nd, Labor Day, which is a legal holiday.
E. A. MOTT-SMITH,
Secretary of Hawaii.
The Executive Building, Honolulu, August 22nd, 1907. 3777-1tt
Office of the Board of Health, Honolulu, Hawaii, August 23, 1907.

RATS WANTED.

The Board of health will pay fifteen cents each for rats alive or dead, delivered at its office in condition for examination. Each rat must be tagged noting the locality in which found.
THE BOARD OF HEALTH,
By its President: L. E. PINKHAM. 3777-1w

How's Your Plants?

Unless properly cared for they will wither and die. Ordinary soil is not always what is wanted and the average fertilizer is made for something more hardy.

OUR PLANT FOOD

is especially prepared for flowering plants and ferns. It will give new life to them and you will see the difference after the first application. The method of treatment is simple and direct.

A BOTTLE 25 CENTS.

Benson, Smith & Co., Ltd.

LAWRENCE BARRETT CIGAR

A Mild Havana Smoke

THEO. M. DAVIES & CO., Ltd. DISTRIBUTORS

CREAM PURE RYE THE WHISKEY

AMERICA'S FINEST PRODUCTION
Rich and Mellow

LOVEJOY & CO., Agents
IMPORTERS AND DEALERS IN FINE WINES & LIQUORS. 902-904 NUUANU STREET. PHONE MAIN 308.

Don't Walk

on your uppers. Come to us and have that pair of old shoes resoled and reheelled in twenty minutes. We have the most modern machinery and an experienced operator to attend. Eight different machines, each to do separate, and distinct work. Your work will be done better and cheaper than ever before. All materials the very best.

VICKERS' SHOE REPAIR SHOP,
Union St., near Hotel St.

QUALITY COUNTS

If you want only the best and freshest in the candy line always get the "A. Y. C." goods.
Our chocolates are unequalled and our French mixed are the kind that melt in your mouth.

Manoa Home
is for Sale—Lease—hold or fee simple.
Possession Given Sept. 1st

E. B. McCLANAHAN, Judd Building.
NEW VICTOR RECORDS.
Records made during July, 1907, by the world's most famous singers. Hear them and you'll want them. BERGSTROM MUSIC CO., LTD. ODD FELLOWS BLDG.

Alexander Young Cafe,
Cor. Hotel & Bishop Sts.

Getting in a New Stock of SCHOOL SHOES

Are now opening another lot of "BUSTER BROWN" CHILDREN'S SCHOOL SHOES.



Many grades; prices to suit. An exceptional school shoe.

McInerny Shoe Store

Stunning Summer Suits For Men and Boys

They are of substantial quality and have all of the late style qualifications. The prices are the kind that don't leave a purse blankness.

Wah Ying Chong Co.,

KING STREET, Ewa Side Market

We are displaying in our window a new stock ex S. S. Alameda, of

Taffeta, Satin and Silk RIBBONS

L. AHOY,

NUU ANU STREET.

Light Luncheons

Exquisite Salmon Steaks from Columbia River; Whole Cooked Ham; Oxford Sausage, Canned Shrimps; Deep Sea Crab Meat; Tunny Fish in Oil; Fillet of Anchovies; Capons in Jelly; Champignons Farcies; English Stewed Mushrooms.

Lewis & Co., Ltd.,

Purveyors to Yourself and Food Specialists. 169 King Street. Telephone Main 240.

TRY A LOAF OF OUR

Butternut Bread

You'll pronounce it the best bread you ever ate. Phone us Main 311 and we'll deliver you a trial order.

The delivery man has bright, new, clean aluminum bread checks. 26 for \$1.

The Palm Cafe,

"THE HOME OF GOOD THINGS" 116 HOTEL STREET.



It Won't Go

Home decoration not in harmony with other appointments won't go in this century of refinement.

You ought to advise with men of experience—men who have made a study of home decoration.

S. STEPHENSON,

DECORATIVE PAINTER

BUSINESS BRIGHTENERS—S-S. PHONE 426 MAIN.

SIGNS!

SUGAR

Willett & Gray's Sugar Journal for August 8 says of the sugar markets: RAWS—The week has been extremely dull, with scarcely any demand.

On one day, a cargo of Centrifugals, in port, was sold at the equivalent of last quotations, basis of 3 15-16c landed for 96 test, otherwise little interest in offerings was shown by the refiners.

With the movement in refined smaller than the production and reports showing an improvement in the prospects of the growing crops, and, without any stimulating advices from European markets, the refiners considered it best to adopt a waiting policy.

Holders remained firm in their views until toward the end of the week, when they began to show some anxiety to obtain 2-9-16c & f. for 35 test Cubas, equal to 3.95c landed 96 test, but withdrew them on finding that the sugars were not wanted at the moment.

Europe opened 3/4d higher, at 9s 9 3/4 for Beet, but closed at 9s 9d, with futures quoted at 9s 7 3/4 for October-December, 9s 8 1/4 for January-March and 9s 10d for May.

Javas are still quoted, without reported business, at 10s 4 1/2 c. & f. for August shipment and at 10s 6d c. & f. for floats.

Our special cable from Java advises exports during July of 75,000 tons to Europe and America, of which the charters covering 70,000 tons have U. S. option, and the message reported the harvesting of the crop as proceeding favorably.

Our weekly Cuba cable reports no receipts, but a reduction of 15,000 tons in the stocks, and states that the growing crop is now favored with heavy rains in some parts, after two weeks of dry weather.

Receipts at the U. S. Four Ports for the week were 31,887 tons, being double those of last week, but considerably less than the meltings, which were slightly reduced to 44,000 tons. With refiners' product accumulating it is probable that the meltings will be further reduced next week.

PRESENT INDICATED YIELDS OF GROWING CROPS.—It is much too early to estimate the out turn of the growing crops, as the weather and other conditions during the next few months may cause great changes in their prospects. Operators, however, wish to know what yields may reasonably be expected, based on reports received to date. We therefore give the following as the present indications only and not as close estimates:

BEET.—In Europe there is an increased acreage of 2 1/2 per cent. The season has been backward, with two months of wet and cold weather. Fields show small roots, but luxuriant growth of leaves. Conditions now are improving and weather more favorable. The probability is for a late harvest. The outturn last season was 6,700,000 tons. Present indications point to a crop of 6,600,000 tons, provided conditions continue favorable.

In the United States generally the beet crop is two to three weeks late, but with the exception of California, all important sections report improving conditions and much depends upon the length of the growing season. Acreage shows an increase of 3.06 per cent, but last season's exceptionally favorable yield can hardly be expected to be repeated. The present outlook points to a crop of 425,000 tons if favored with a late autumn, against the last crop of 433,010 tons.

CANE.—In Louisiana the cane crop has done well generally since the beginning of the season and is now making rapid progress. If the crop escapes damage, an outturn of 350,000 tons will not be surprising. Last year the yield was exceptionally poor, amounting to only 230,000 tons.

In Cuba a few canes were left in the fields at the end of the grinding season. Plantings were small. The young canes were stunted by the drought. The weather since grinding ceased, except for a few weeks, has been and is now generally favorable for the growing cane, which is recovering to some extent from the damage done earlier in the year. It is expected that the harvest will be late. From present indications a possible outturn, with a normal grinding season, would be 1,200,000 tons against the last crop of 1,425,000 tons.

The widow of Hugh Tevis who married Millionaire McKee of Pittsburg, is now seeking a divorce.

HONOLULU STOCK EXCHANGE

HONOLULU, Aug. 23, 1907

NAME OF STOCK	PAID UP	BID	ASKED
MERCANTILE			
Brewer & Co.	1,000,000	100	
SUGAR			
Kawa Plantation Co.	1,000,000	25	27 1/2
Haw Com & Sug Co.	1,000,000	100	114
Hawaiian Sugar Co.	2,112,755	30	32
Honolulu Sugar Co.	2,000,000	100	120
Honolulu Sugar Co.	2,000,000	100	120
Kahuku Plantation Co.	500,000	100	107 1/2
Kihoe Plantation Co Ltd	500,000	50	6 1/2
Koloa Sugar Co.	100,000	100	100
McBryde Sugar Co.	1,000,000	30	4 1/8
Okala Sugar Plant Co	1,000,000	20	24
Oloa Sugar Co Ltd	500,000	20	24
Olowalu Co.	1,000,000	20	1 1/2
Panama Sugar Plant Co	1,000,000	50	16
Papa Plantation Co.	500,000	100	110
Papa Plantation Co.	500,000	100	110
Pepee Sugar Co.	750,000	100	100
Pioneer Mill Co.	2,750,000	100	100
Waialua Agric Co.	1,000,000	100	1 1/4
Waialua Sugar Co.	700,000	100	1 1/2
Waialua Sugar Co.	700,000	100	1 1/2
Waialua Sugar Mill Co	1,250,000	100	65
MISCELLANEOUS			
Hawaiian Electric Co.	500,000	100	130
Hon R T & L Co Pres	1,150,000	100	
Hon R T & L Co Comm	1,150,000	100	
Mutual Telephone Co	350,000	100	
Nabiku Rubber Co.	50,000	100	
ANOTHER			
Calumet & L Co.	4,000,000	100	99
Hilo R R Co.	1,000,000	20	
Hon R R Co.	400,000	20	25 1/4
BONDS			
Haw Ter 4 p c (Fire Cl)	100		
Haw Ter 4 p c	100		
Haw Ter 4 1/2 p c	100		
Haw Ter 4 1/2 p c	100		
Haw Govt 5 p c	100		
Cal Beet Sug & Ref Co	100		
Halei Sug Co	100		
Haw Com & Sug Co 5 p c	100		
Haw Com & Sug Co 6 p c	100		
Hon R T & L Co 6 p c	100		
Kahuku Plant Co 6 p c	100		
Koloa Sugar Co 6 p c	100		
Oloa Sugar Co 6 p c	100		
Oloa Sugar Co 6 p c	100		
Papa Plantation Co 6 p c	100		
Pioneer Mill Co 6 p c	100		
Waialua Agric Co 5 p c	100		
Waialua Agric Co 5 p c	100		
McBryde's Co's 6 p c	100		

Sales—Between Boards: 100 Oahu Sug. Co., \$24; \$5000 McBryde 6s, \$96.50.

Latest sugar quotation 3.89 cents of \$77.80 per ton.

LONDON BEETS, - 9s 11 1/4 SUGAR, 3.89

Henry Waterhouse Trust Co., Stock and Bond Department

Members Honolulu Stock and Bond Exchange.

WILLIAM WILLIAMSON, Manager, FORT AND MERCHANT STS. TEL. PRIVATE EXCHANGE 4.

RICE MARKET

Williams, Dimoné circular under date of Aug. 14 reports as follows on the rice market:

RICE: The market for Sandwich Island Rice is in an unfortunate condition as no one appears to take responsibility as to making market price on same. It has appeared so irregularly the past few years that the trade has almost entirely turned to Japan Seed Rice, (except strictly fancy Honduras for family trade). It is impossible to interest jobbers in quantity lots, even at 4 5-8 San Francisco. A careful canvass of the trade shows indifference of buyer, but at 4 3-8 San Francisco, a considerable amount might be sold, this is of course under present conditions, but should new crop domestic Japan come in quantities with a drop, in price, island rice would have a corresponding differential decrease.

China Seed will of course hold its own proper value in relation to China No. 1, which is at present 5 5-8c duty paid, with China Seed selling today at 5 1-4c. We quote Hawaiian Japan Seed Rice at 4.80c San Francisco. Imported Japan, 5.40c duty paid San Francisco.

Business generally is extremely dull, and which has a marked effect on the present conditions, due especially to the uncertainty of the opening prices of the new Southern crop, due next September.

The Royal Mail steamship Aorangi, Captain Phillips, was so crowded that only eleven Honolulu people were able to get away on first class accommodations. Many booked to depart but few went.

Has Made Honolulu Famous

No one thing has contributed so much to Honolulu's fame as

Primo Beer

It is among the first demands of the tourist.

Mr. Dooley

Will Discuss

"POLITICS"

in

Saturday's Bulletin

LOCAL AND GENERAL

Don't take it out in wishing; let a Bulletin Want Ad do it for you.

Order your polo rigs. Stockyards Stables.

Go to Blom's for ladies' shirtwaists. New line just unpacked.

Moonlight bathing tonight at the Seaside after the dance.

Souvenir postals in large variety at Hill's souvenir store at post office.

Take your carriage or automobile to Hawaiian Carriage Manfg. Co., for up-to-date repairs.

L. E. Pinkham, president of the Board of Health, is advertising in this issue for rats.

Oahu Lodge, No. 1, K. of P., will meet tonight at 7:30 o'clock in K. of P. Hall, King street.

Governor Frear and Admiral Very lunched today with Secretary Mott-Smith at the University Club.

Coat your iron roofs with "Arabic." You will be surprised at its cooling and preservative properties. California Feed Co., agents.

The entertainment which was to have been given by the Hawaiian Historical Society at the Hawaiian Opera House is postponed until Aug. 30th, 1907.

Von Hamm-Young Co. sell the leading makes of automobiles and maintain a first-class repair department. Call at their garage on Alieka street above King.

Watch the papers. The Royal Hawaiian Hotel will give a farewell dance and reception to the Bulletin girls. Mrs. Edyth Tosier Weatherred will announce the date.

John Bacheus was fined \$10 today for carrying a revolver. He said that someone was going to kill him and that he carried the gun to protect himself, but no stock was taken in this excuse.

Secretary Mott-Smith this morning returned the calls of W. Lanz, consul for Mexico, and F. A. Schaefer, representing the Italian government. W. Protenhauer, Imperial German Consul, called on the Governor.

If you live in a country district, ask your storekeeper for the candies of the Alexander Young Cafe. If he hasn't got them, he'll get them for you. Insist upon these, and no others. They're the best.

Marcelino de Cambra of the Flag of All Nations, a saloon which failed to obtain a license, was this morning dismissed by Judge Whitney on a charge of selling liquor without a license. The defense proved that he gave liquor to an employee who was in the habit of getting a drink with his meals.

Fanny Zeave was this morning granted a divorce from Nathan Zeave on the grounds of non-support and desertion. On accounts of the property interests involved the suit was vigorously contested, and Zeave moved that his wife be ordered to make an accounting of the community property in her possession.

In the matter of the estate of Robert William Holt, Carlos A. Long, administrator, moves in the Supreme Court that the appeal of James L. and James R. Holt from the decree of the Circuit Judge be docketed and dismissed upon the ground that the appeal was not noted and perfected within the time allowed by law.

STARBUCK LOST

(Continued from Page 1)

she was commanded by Captain Winn.

The Starbuck was owned by the Planters' Line, of which Castle & Cooke, Brewer & Co. and Welch & Co. are the owners, the latter firm being the managers. She was of 1829 tons net and 2033 tons gross capacity. The loss was covered by insurance.

The news of the trouble of the Nunanu was received last evening by Davies & Co. It stated that the vessel had left New York with a cargo of general merchandise for this port on August 13 and had put back leaking Aug. 21. It is hoped that she can be repaired in short order so that the trouble will not cause very great delay. Captain Josselyn, one of the best known ship masters of this port, was in command.

The extensive organization of juvenile courts has been completed in Alameda County, California.



In buying clothes, or anything else, it's a good thing to know exactly what you are getting; the ignorance of the buyer is often a great source of profit to some merchants. . . . When you see a Hart, Schaffner & Marx label in a garment, you're at once in possession of all the knowledge you need; it tells you everything; we don't need to say a word.

You know it's all-wool, all right in style and tailoring; and we'll guarantee a fit.

Silva's Toggery,

Elks Bldg., King nr Fort.

Copyright 1907 by Hart Schaffner & Marx



A Rainier Toast

Laysan Island, where art thou? Out of sight, they say, Like all pleasant pastimes, you Didn't come to stay; Kisses are but fleeting joys, Sugar melts away, RAINIER still is with us, so Drink it while we may.

PROST! RAINIER FOREVER!

C. A. Nelson, Agt.

AGENT FOR RAINIER BEER.

Phone White 1331.

J. LANDO'S

Hotel Street Store

HAS A NEW LINE OF Collegian Clothes AND THE DEPOT FOR BOSS OF THE ROAD OVERALLS.



Monuments, Safes, Iron Fence

Hawaiian Iron Fence and Monument Works

NEXT TO YOUNG BLDG., 76-100 KING STREET.

PHONE 287.

THIS SKIRT



Will go well with SHIRT WAISTS. We are selling for

\$1.75 and \$2.00

WORTH \$3.50 and \$4.00 FOR ONE WEEK

E. W. Jordan & Co., Ltd.

Oceanic Steamship Company TIME TABLE

The steamers of this line will arrive and leave this port as hereunder:

FROM SAN FRANCISCO:	FOR SAN FRANCISCO:
SIERRA AUG. 30	SIERRA SEPT. 4
SIERRA SEPT. 20	SIERRA SEPT. 25
ALAMEDA OCT. 11	

In connection with the sailing of the above steamers, the agents are prepared to issue to intending passengers coupon through tickets, by any rail-road from San Francisco to all points in the United States, and from New York by any steamship line to all European ports.

FOR FURTHER PARTICULARS APPLY TO

Wm. G. Irwin & Co., Ltd
OCEANIC S. S. CO., GENERAL AGENTS.

Pacific Mail Steamship Co. Occidental and Oriental Steamship Co., and Toyo Kisen Kaisha

Steamers of the above companies will call at Honolulu and leave this port on or about the dates below mentioned:

FOR JAPAN AND CHINA:	FOR SAN FRANCISCO:
ASIA SEPT. 3	HONGKONG MARU AUG. 27
PERSIA SEPT. 11	KOREA SEPT. 6

H. Hackfeld & Co., Ltd., Agents

AMERICAN-HAWAIIAN STEAMSHIP COMPANY.
FROM NEW YORK TO HONOLULU.
Weekly Sailings via Tehuantepec.

Freight received at all times at the Company's Wharf, 41st Street, South Brooklyn.

FROM HONOLULU TO SAN FRANCISCO DIRECT.
S. S. NEVADAN, TO SAIL SEPT. 13
FROM SAN FRANCISCO TO HONOLULU DIRECT.
S. S. MISSOURI, on or about SEPT. 4

FROM SEATTLE AND TACOMA TO HONOLULU.
S. S. MISSOURI, on or about SEPT. 4

For further information apply to H. HACKFELD & CO., LTD., Agents Honolulu.
C. P. MORSE, General Freight Agent.

Canadian-Australian Royal Mail Steamship Company.

Steamers of the above line, running between San Francisco, B. C. and Sydney, N. S. W., PACIFIC RAILWAY CO. between Vancouver and Suva, Fiji, and Brisbane, are and calling at Victoria, B. C., Honolulu and other ports below stated, viz:

DUE AT HONOLULU on or about the date:

FOR FIJI AND AUSTRALIA:	FOR VANCOUVER:
MANUKA AUG. 24	AORANGI AUG. 21
AORANGI SEPT. 21	MOANA SEPT. 18

Through Tickets issued from Honolulu to Canada, United States and Europe. For Freight and Passage and all general information, apply to

Theo. H. Davies & Co., Ltd. General Agents.

Matson Navigation Company

The S. S. "HILONIAN" of this line, carrying passengers and freight, will run in a direct service between this port and San Francisco, sailing and arriving on or about the following dates:

LEAVE S. F.	ARRIVE HONOLULU.	LEAVE HONOLULU.
AUG. 29th	SEPT. 5th	SEPT. 10th
SEPT. 26th	OCT. 3rd	OCT. 8th
OCT. 24th	OCT. 31st	NOV. 5th

Passenger Rates to S. F.: First Cabin, \$60; Round Trip First Class \$110.00

For further particulars apply to **CASTLE & COOKE, LTD., Agents.**

J. F. Morgan, President; C. J. Campbell, Vice President; J. L. McLean, Secretary; A. F. Clark, Treasurer; N. E. Gedge, Auditor; Frank Hustace, Manager.

Hustace-Peck Co., Ltd. DRAYMEN, 63 QUEEN ST.

DEALERS IN Firewood, Stove and Steam Coal. ALSO WHITE AND BLACK SAND. TELEPHONE MAIN 298.

PACIFIC TRANSFER CO.
WILL CALL FOR YOUR BAGGAGE

We pack, haul and ship your goods and save you money.

Dealers in STOVE WOOD, COAL and KINDLINGS.

Storage in Brick Warehouse, 126 King St. Phone Main 58

Fast Schooner CONCORD

Sailing for KAPUNA, HONOIPU, KAILUA and HOOKENA

From Sorenson's Wharf. Apply on Board or to HAWAIIAN BALLASTING CO., Agt Telephone Main 396, Maunakea St., below King. P. O. Box 620.

BULLETIN ADS. PAY

Bishop & Co. BANKERS.

Commercial and Travelers' Letters of Credit issued on the Bank of California and The London Joint Stock Bank, Ltd., London.

Correspondents for the American Express Company and Thos. Cook & Son.

Interest allowed on term and Savings Bank Deposits.

Claus Spreckels & Co. BANKERS.

HONOLULU, : : : T. H.

San Francisco Agents — The Nevada National Bank of San Francisco. Draw Exchange on the Nevada National Bank of San Francisco. London—The Union of London and Smith's Bank, Ltd. New York—American Exchange National Bank. Chicago — Corn Exchange National Bank. Paris—Credit Lyonnais. Hongkong and Yokohama — Hongkong-Shanghai Banking Corporation. New Zealand and Australia — Bank of New Zealand and Bank of Australasia. Victoria and Vancouver — Bank of British North America. Deposits received. Loans made on approved security. Commercial and Travelers' Credits issued. Bills of Exchange bought and sold.

Collections Promptly Accounted For.

The First AMERICAN SAVINGS AND TRUST CO. OF HAWAII, LTD.

SUBSCRIBED CAPITAL...\$200,000.00
PAID UP CAPITAL...\$100,000.00
President..... Cecil Brown
Vice President..... M. P. Robinson
Cashier..... L. T. Peck

Office: Corner Fort and King Sts. SAVINGS DEPOSITS received and interest allowed for yearly deposits at the rate of 4 1/2 per cent. per annum. Rules and regulations furnished upon application.

The Yokohama Specie Bank, Ltd ESTABLISHED 1880.

Capital Subscribed...Yen 24,000,000
Capital Paid Up...Yen 12,000,000
Reserved Fund...Yen 13,700,000

HEAD OFFICE, YOKOHAMA

BRANCH AGENCIES — Antung, Hsien, Hang Kau, Chefoo, Dabay, Bombay, Hongkong, Honolulu, Kobe, Leoyang, London, Lyons, Mukden, Nagasaki, Newchwang, New York, Peking, San Francisco, Shanghai, Tientsin, Tokio, Osaka.

The bank buys and receives for collection Bills of Exchange, issues Drafts and Letters of Credit and transacts a general banking business.

HONOLULU BRANCH, 67 KING ST.

Oahu Railway Time Table.

OUTWARD.
For Waianae, Waiaina, Kahuku and Way Stations—9:15 a. m., *3:20 p. m.
For Pearl City, Ewa Mill and Way Stations — 7:40 a. m., *3:15 a. m., *11:05 a. m., *2:15 p. m., *3:20 p. m., *5:15 p. m., *9:30 p. m., *11:00 p. m.
For Wahiawa—9:15 a. m. and *5:15 p. m.

INWARD.
Arrive Honolulu from Kahuku, Waiaina and Waianae—*8:35 a. m., *5:31 p. m.
Arrive in Honolulu from Ewa Mill and Pearl City—*7:46 a. m., *3:36 a. m., *10:38 a. m., *1:40 p. m., *4:31 p. m., *5:31 p. m., *7:39 p. m.
Arrive Honolulu from Wahiawa—*8:36 a. m. and *5:31 p. m.

* Daily.
† Ex. Sunday.
‡ Sunday Only.

The Halewa Limited, a two-hour train (only first-class tickets honored), leaves Honolulu every Sunday at 8:22 a. m.; returning, arrives in Honolulu at 10:10 p. m. The Limited stops only at Pearl City and Waiaina.

G. P. DENISON, F. C. SMITH, Supt. G. P. & T. A.

Blank books of all sorts, ledgers, etc. manufactured by the Bulletin Publishing Company.

Fine Job Printing at the Bulletin Office.

Alexander & Baldwin LIMITED.

J. P. COOKE, Manager

OFFICERS.
H. P. Baldwin, President
J. B. Castle, Vice President
W. M. Alexander, Second Vice Pres.
L. T. Peck, Third Vice Pres.
J. Waterhouse, Treasurer
E. E. Paxton, Secretary
W. O. Smith, Director

SUGAR FACTORS, COMMISSION MERCHANTS and INSURANCE AGENTS

Agents for
Hawaiian Commercial & Sugar Co. Haiku Sugar Company. Paia Plantation. Maui Agricultural Company. Kihei Plantation Company. Hawaiian Sugar Company. Kahuku Plantation Company. Kahului Railroad Company. Halekala Ranch Company. Honolua Ranch.

Castle & Cooke, Ltd HONOLULU:

Commission Merchants SUGAR FACTORS

AGENTS FOR—
The Ewa Plantation Co. The Waiaina Agricultural Co. The Kohala Sugar Co. The Waimea Sugar Mill Co. The Ewa Iron Works, St. Louis. The Wahiawa Water Co., Ltd. The Geo. F. Blake Steam Pumps. Weston's Centrifugals. The New England Life Insurance Co. of Boston. The Aetna Fire Ins. Co. of Hartford, Conn. National Fire Insurance Co. of Hartford. The American Steam Pump Co.

Wm. G. Irwin & Co., Ltd

WM. G. IRWIN, President and Mgr. JNO. D. SPRECKELS, 1st Vice Pres. W. M. GIFFARD, 2d Vice Pres. H. M. WHITNEY, Treasurer RICHARD IVERS, Secretary W. F. WILSON, Auditor

SUGAR FACTORS and COMMISSION AGENTS

Agents for
Oceanic Steamship Co., San Francisco, Cal. Western Sugar Refining Co., San Francisco, Cal. Baldwin Locomotive Works, Philadelphia, Pa. Newall Universal Mill Co. (Manufacturers of National Cane Shredder, New York, N. Y. Pacific Oil Transportation Co., San Francisco, Cal.

C. Brewer & Co., Ltd. QUEEN STREET, HONOLULU, T. H.

AGENTS FOR:
Hawaiian Agricultural Co., Ooakala Sugar Plant Co., Onomea Sugar Co., Honomu Sugar Co., Wailuku Sugar Co., Pepeekeo Sugar Co., The Planters Life of San Francisco Packets.

LIST OF OFFICERS:
C. M. Cooke, President; George Robertson, Vice President and Manager; E. F. Bishop, Treasurer and Secretary; F. W. Macfarlane, Auditor; P. C. Jones, C. M. Cooke and J. R. Galt, Directors.

FIRE INSURANCE THE B. F. DILLINGHAM CO LIMITED.

General Agent for Hawaii:
Atlas Assurance Company of London. New York Underwriters' Agency. Providence Washington Insurance Co. 4th FLOOR, STANGENWALD BLDG.

New England Mutual Life Insurance Co., OF BOSTON, MASSACHUSETTS.

If you would be fully informed about these laws, address
Castle & Cooke, GENERAL AGENTS, HONOLULU, T. H.

WM. G. IRWIN & CO., LTD.

AGENTS FOR THE
Royal Insur. Co. of Liverpool, Eng. Commercial Union Assurance Co., Ltd., of London, England. Scottish Union & National Ins. Co. of Edinburgh, Scotland. Wilhelma of Magdeburg General Insurance Company.

Corporation Notices.

SPECIAL MEETING OF STOCK-HOLDERS OF ALEXANDER & BALDWIN, LTD.

By order of the 1st Vice-President, a special meeting of the Stockholders of Alexander & Baldwin, Limited, is hereby called, to be held at the office and principal place of business of the Company, Stangenwald Building, in Honolulu, on Wednesday the 28th day of August, 1907, at 2 P. M. for the object of amending Article X of the By-Laws of the Company and for such other business as shall come before said meeting.

J. WATERHOUSE, Secretary.

Business Notices.

NOTICE.
Notice is hereby given that T. Ah-king, doing business in the name of Fong Kee, has this day sold all his right, title, etc., in that certain merchandise business situate at the corner of Kuakini and Liliha Streets, Honolulu, T. H., and heretofore under the name of Fong Chee, to S. Young. Dated at Honolulu this 17th day of August, 1907. 3773-3t

All Kinds SUPPLIES

Cash Register, Typewriter, Adding Machine, Mimeograph and Globe Wernicke Supplies; CARD - SYSTEMS

Hawaiian Office Specialty Co., 931 Fort St

Starching Negligeé Shirts

You know how your negligee shirts ought to be starched, and so do we. We starch them just that way. We starch on the neck and wristbands and down the front pleat very lightly. Do it upon a machine which does not daub or streak starch over other parts of the garment too.

Sanitary Steam Laundry

IF YOU PLAY

GOLF GO TO HALEIWA.

The links were never in better condition than at this season.

St. Clair Bidgood, Manager.

Now's the Time

to have your automobile, buggy or carriage painted and overhauled.

W. W. Wright Co., King St., near South Tel. 252.

Albert F. Afong, Telephone Main 407. P. O. Box 795. 832 FORT ST.

STOCK AND BOND BROKER. MEMBER HONOLULU STOCK AND BOND EXCHANGE.

Real Estate S. SAIKI,

Bamboo Furniture Made to Order. Picture Framing a Specialty. 563 S. BERETANIA ST. TELEPHONE BLUE 881

Blank books of all sorts, ledgers, etc. manufactured by the Bulletin Publishing Company.

SOZODONT Tooth Powder



is a beautiful polisher, absolutely free from grit and acid. Are you using it. You ought to be. Ask your dentist.

WORK IN COMFORT



A COOL head always wins. A thermometer is sometimes an ungovernable creature. This is especially true in the hot summer months.

Electric Fans prevent heat, prostration and fatigue. Always at your command. Just turn the switch—that's all.

Hawaiian Electric Co., Ltd. Telephone, Main 390



The R. M. S. S. Aorangi came in from the Colonies late yesterday afternoon. She brought thirteen passengers and about fifty tons of freight for this port. Her stay in port was quite short, as she pulled out for the Coast at 3 o'clock this morning. A number of passengers departed by the Aorangi, among whom were Rear Admiral and Mrs. Stevens, who have been stopping at the Moana for about three weeks. Dr. Cofer, the head of the U. S. Marine Hospital Service in this port, was also a passenger. He goes on a two months' vacation.

On the way up the Aorangi called at the Fanning Islands and put off supplies for the cable station at that point. Two Stanford students who have been in Australia for the express purpose of getting onto the finer points of Rugby football, are also on their way home on the Canadian steamer. Miss Maria Hall, a noted violinist, and Miss Lonie Basche are passengers to the Coast on the Aorangi. During the trip up these two artists gave a recital for the benefit of the Shipwreck Relief Society, and it is reported that quite a sum was raised. "Crossing the line" was strictly observed on board, King Neptune coming up over the side of the ship in full regalia.

Mrs. Knight, the wife of Captain Knight of the American-Hawaiian line, was among the passengers for this city, as were A. F. Cooke, Miss M. Cooke and Miss G. Cooke, all of Honolulu.

The big freighter Misourian, which arrived recently at San Francisco from Salina Cruz, will proceed to Bremerton, on the Sound, and go on the big drydock for repairs. She will be turned over to the American-Hawaiian Steamship Company after repairs are completed. Captain Lyons will be in command.

With Captain Rosehill in command the schooner Luka departed for Laysan Island yesterday afternoon. She carried a good supply of stores and will return loaded with guano. Mr. Brown, local agent for Max Schlemmer, gives out the information that that gentleman may come to Honolulu on the Luka.

The steamer Queen Helena has been chartered to bring 375 tons of Pocahontas coal from Baltimore to Honolulu. Her cargo will be used by the navy.

Two fishermen who were forced to abandon a sinking boat, clung to a barren rock in the upper bay of San Francisco for thirty-six hours.

The Cruiser Buffalo has been ordered to sail for the Pribilof Islands and disperse the Japanese who are seal poaching in that vicinity.

Explorer Peary says that the boilers of his vessel will not be completed in time for him to make a trip to the north this year.

The little coast steamer Bonita ran ashore near Ventura but was floated again with but little damage to her

BIGGEST BATTLESHIP.

London, July 28.—The battleship Bellerophon, a sister ship of the Dreadnought, but 700 tons larger and containing several important improvements without alteration of the general type, was launched at Portsmouth yesterday, having taken nine months to build.

The displacement of the Bellerophon is 18,600 tons, as against the Dreadnought's 17,900. Her length is 490 feet and her maximum beam is 82 feet. Her machinery, which is of the turbine type, is expected to give her a speed of 21 knots. The Bellerophon's horsepower will be 23,000. Her main armament will be similar to that of the Dreadnought. Her hull has been so constructed as to minimize the force of a torpedo or mine explosion. She is expected to be ready for sea within two years from the time of her laying down. The authorities have issued no description of her, and the same secrecy which prevailed in the case of the Dreadnought as to construction and equipment has been observed in regard to the Bellerophon. It is understood that the principal improvements in the Bellerophon as compared with the Dreadnought consist of an increase in the depth of the armor belt and changes in the position of the turrets so as to increase the arc at which the guns can be trained.

MINES FOR MANILA.

Omaha, July 29.—A detachment of 129 army engineers, electricians and sappers passed through Omaha today under rush orders to proceed to Manila to mine Manila bay.

Blank books of all sorts, ledgers, etc. manufactured by the Bulletin Publishing Company.

Hot Baths and Hot Meals — Use a Gas Stove

Talk To Honolulu Gas Co.

BUSINESS DIRECTORY

MUSIC
Mr. Jas. Sheridan, pianoforte tuner. All orders should be left at the Hawaiian News Co., Young bldg. Phone 294 or cor. Alakea and Hotel Sts.

EMPLOYMENT OFFICE.
For house-help, phone White 2891, Makiki. General Employment Office, cor. Pensacola and Beretania.

DRESSMAKING.
Mme. Lambert, the Parisienne Dressmaker, has removed to 452 Miller St. nr. Kinohi. Stylish dresses, reasonable prices. 3697-1m

PAPER-HANGER
For first-class paper-hanger and house painter. Wm. E. Palkui, Phone White 271.

PLUMBING.
Yee Sing Kee—Plumber and Tinsmith, Smith St., bet. Hotel and Pauahi.

LOCKSMITH.
See Hastings for repairs of Locks, Keys, Music Boxes, Sharpening of Fine Cutlery. Rear Union Grill.

REPAIRING.
Umbrella recovered and brass polished. Takata, 1284 Fort St. 3487-1f

BARBER SHOP.
For a nice, smooth shave call at the Criterion Shop, 1111 Fort St.

Real Estate Transactions

Recorded Aug. 13, 1907.
Lee Tai Kong to Lee Sing Chew; B S; 1-2 share in Hop Truck Wai Co, Heela, Koolau, Oahu; \$700. B 294, p 214. Dated July 10, 1907.
J Alfred Magoon to Kaipo Kuehukukona (k) et al; Rel; R P 912, Kul 6950, Makana, Koolau, Oahu; \$800. B 290, p 429. Dated Jan. 24, 1903.
Morris Rosenblett to Anna P Bourke; D; Lot 28, Gr 595, Ap 1 in Bellair, Kailhi Valley, Honolulu; \$382.50. B 292, p 422. Dated Aug. 13, 1907.
Lawaina and hsb et al to Kahoia (k); D; int in Lot 10, blk B, Minton Tract, Honolulu; int in cash in Bank of Hawaii, Ltd; \$20. B 292, p 425. Dated Aug 1, 1907.
Daniel P K McGregor and wf to James B Castle; Ex D; R P 5078, Kul 6950, Kapuka, Koolau, Oahu; \$1. B 292, p 426. Dated July 25, 1907.
J B Castle and wf to Daniel P K McGregor; Ex D; R Ps 1526, 1515, Ap 4 and 318, Ap 1 and por Ap 2, Haunaha, Koolau, Oahu. B 292, p 426. Dated July 25, 1907.
Kaloa (w) to James B Castle; D; int in R P 5078, Kul 6950, Kapuka, Koolau, Oahu; \$1. B 292, p 428. Dated Aug 12, 1907.
Wong Yin Wa to Lum Kong; B S; int in 1 share in Chong Sing Wai Co; \$1000. B294, p 215. Dated Aug 13, 1907.
J Alfred Magoon to Mary Reyes; Rel; Lot 2 of Machado subdiv, Ass-jum Rd, Honolulu; \$600. B 290, p 440. Dated Aug 10, 1907.
Henry Waterhouse Trust Co Ltd to Dixie P Owen; Rel; por Lot 499, Gr 3626, Prospect St, Honolulu; \$600. B 290, p 440. Dated July 3, 1907.
Eugenia K Reis and hsb (M) to Supt of Pub Works of Ter of Hawaii; D; 50 foot strip for rd thro R P 2152, int 4140, Kahahia, Kona, Hawaii; \$100. B 292, p 429. Dated Aug 9, 1907.
German Sava and Loan Soey by Atty et al to Kapiolani Est Ltd et al; Par Rel; Ap 27, R P 8126, Kul 9971, rents and income of same, Moanana, N. Kona, Hawaii; \$2000. B 290, p 441. Dated Aug 12, 1907.
Kapiolani Est Ltd to Bathsheba M Allen; D; Ap 27, R P 8126, Kul 9971, Moanana 2, N Kona, Hawaii; \$2750. B 292, p 430. Dated Aug 12, 1907.

ALL PULL TOGETHER

(Continued from Page 1)
done simply as a military necessity. To effect this it must be shown that there were commercial reasons for doing it.
The agitation for a drydock in the Islands had been hurt by the suggestion that it should be built in Honolulu. The Government would not build one in so exposed a place. A drydock which could contain vessels like the Manchuria, would occupy five acres, without the shops, and it would be hard to get that space at Honolulu. With the shops, 20 acres would be needed, and this no private concern could afford to go into without Government assistance. The Government would build drydocks only in protected places, such as at Pearl Harbor, where there were already basins for them. It had been proposed to have six drydocks there, two big ones for battleships and vessels like the Manchuria, and four small ones for smaller vessels. It would be impossible to place such a plant in Honolulu. Talk about doing so should be abandoned.
"We must pull together for the purpose," he said, "or we will never get anything done for that magnificent naval station."
Admiral Very offered to answer any questions, and in this connection he pointed out in a map the position of the proposed coal wharves, sheds, etc.
He asked that a chairman be nominated. McCandless nominated Verv. He begged to be excused and Geo. R. Carter was chosen.
Secretary Mott-Smith read letters from C. M. Cooke, E. D. Tenney and others, who expressed their regret at not being able to be present at the meeting, but stated that they were greatly in favor of the proposed Pearl Harbor improvements.
Carter said that his own opinion in regard to the matter might not be in conformity with those of others, and might be wrong. The community at the time of annexation had been unable to cope with the demands of the increase of shipping. He had until then been in favor of Government ownership of the waterfront, but the Government always secured improvements only after needs had arisen while private concerns often anticipated the needs. Plans for the improvement of Honolulu harbor had been delayed; for instance no definite date could be set for the completion of the new slips, but a date could quite easily be set for the time when the harbor facilities would be inadequate, and that would be quite soon. Now the question was whether the Federal Government would be more forthcoming. Honolulu harbor could not be extended much and it was a good thing that Pearl Harbor existed, as it could take care of the overflow traffic. Space would be required for several Federal purposes, and a satisfactory allotment could not be made unless commerce gave up some of the space it now occupied, or the Navy moved to Pearl Harbor.
Those invited to attend the meeting were:
E. D. Tenney, J. B. Castle, J. P. Cooke, Geo. Renton, Geo. Robertson, F. M. Swanzy, T. Clive Davies, Cecil Brown, S. M. Damon, C. M. Cooke, W. G. Irwin, J. M. Dowsett, E. A. Melnerny, W. Melnerny, F. M. Hatch, Robert W. Shingle, Hong Quon, J. R. Galt, L. G. Kellogg, C. L. Wight, F. L. Waldron, Willard E. Brown, J. A. Hopper, J. D. Dole, F. T. P. Waterhouse, W. O. Smith, P. C. Jones, J. A. McCandless, W. Pfoth-hauer, E. K. Bull, R. H. Trent, C. J. Hutchins, W. C. Peacock, Ching Shai, C. S. Desky, J. O. Carter, C. Bolte, F. A. Schaefer, L. A. Thurston, B. F. Dillingham, E. H. Paris, Geo. W. Smith, J. G. Pratt, J. A. Kennedy.

PAIA PEOPLE BUSY

MARTIN RESIDENCE WAS MYSTERIOUSLY BURNED

News Notes in General—Luau and Birthday Parties—Water Pipe System for Drainage.
(Special to the Bulletin.)
Paia, Maui, Aug. 20.—The Hon. John Kalama gave an elaborate luau at his Paia residence on Saturday the 17th instant in honor of his youngest daughter's first birthday.
Mr. George Wilbur, for a number of years, employed as head overseer on the Kailua division of the Paia plantation, leaves for the Coast early in September to join his father in a business venture near Los Angeles. All his furniture and horses, etc., will be auctioned.
G. A. Hanson, from Punene plantation, with half a dozen of his pet mollies came thundering through Paia last week to help the Hamakua boys turn over a few acres of soil.
An enjoyable party to children was given at the beach residence of W. G. Scott of Paia in honor of his son Walter on the 20th inst. The day Mr. Walter passed the tenth mile stone. A large number of children spent the day in a very delightful way between swimming and all kinds of sports, and last but not least the feasting, at which all declared the day a thorough success, and all bid adieu to mine host, hoping he would return for another vacation next year.
M. A. Martin's residence in the Kailua camp was burned to the ground Friday night. But for the suffocating cry of the children in bed wailing the matron the three little tots would have been burned to death. The cause of the fire is a mystery.
The management of Paia plantation is considering the proposition of laying a water pipe system from the mill to Paia. If it goes through this will be one of the most beneficial acts that could be done, as in bad weather (like the late Kona storm) many of the wells of lower Paia were flooded with ruddy water and were out of service for a month or so, owing to no drainage from the government roads into the sea. This caused the flood to back up and in some cases a number of families had a foot of water in their houses. The County Supervisors are now taking up the drainage matter, and together with Harry Baldwin putting in a water system, both of which will likely be put through. Life will be worth living yet.
Mr. Gittel of Hoopschlaeger & Co. is stocking up the Paia merchants this week.
Mr. Tanaka has bought out the merchandise business of Mr. Kouziki, who returns to Japan next month.
The tennis court near Paia depot are now getting to look in fine shape, a great contrast to its former appearance.
M. Medeiros, for years head clerk for A. M. Fernandez of Paia, is soon to take a similar position in the Kihel store.
Paia residents are rejoicing over full clemens as a result of last week's storm.

During their conference the Governor and the Land Commissioner resolved to open up about 160 acres additional of pineapple lands at Kailua, Kona. This land will be divided into six and eight acre tracts and disposed of to the Portuguese and Hawaiians of that district who wish to acquire homes of their own where they can both raise pines and work on the neighboring plantation.
This land adjoins that recently opened up for similar purposes there.
It was also decided to take similar action with regard to 106 acres of land at Kaupoko near Honolulu, Hawaii. This land will be divided into ten lots and disposed of on the right of purchase plan.
The Wilanne company applied for the lease of 157 acres of cane land and 862 acres of waste land lying between the forest line and the holdings in Waianae. The upset offer was accepted for advertisement purposes.
A kamaaina of Puna applied for a license to dig awa root on the unoccupied Government land in that district. Action on the matter was deferred until more information should be obtained as to the reasonableness of the offer made, but the Governor was favorable to granting the license.
Blank books of all sorts, ledgers, etc. manufactured by the Bulletin Publishing Company.

WANTS

The Little Ads. with the Big Results

WANTED
By an American couple, room and board. In private family preferred. All rejected answers treated confidentially. Answer stating terms, locality, etc., L. this office. 3773-1f

Agents to sell our \$5.00 Graphophone, \$3.00 to \$10.00 a day easily made in commissions. Call at our Hotel St. store opposite Palm Cafe. Benson, Smith & Co., Ltd. 3758-1f

Two young women, to cooperate with two other young women, who are at present housekeeping in a very desirable location. Address A. D. T., Bulletin office. 3774-1f

Young lady clerk and bookkeeper. Permanent position. Address A. B., this office 3771-1w

Press feeder wanted at Bulletin office. 3771-1f

Clean wiping rags at the Bulletin office. 3771-1f

SITUATION WANTED.
Colored man wants to do house or porter or stable work. Apply, W. Brooks, care Bulletin office. 3770-1w

TO LET.
Large two-story house at Punahou. Nine bedrooms, parlor dining-room, kitchen, bath, servants' house, chicken yard, etc. L. C. Ables, Judd building. 3738-1f

Nicely furnished rooms, with all modern improvements, cool and central. The Majestic, corner Fort and Beretania St. 3696-1f

A pleasant home on Tantalus, well located; temperature ten degrees less than that of the city. Inquire A. V. Gear. 3696-1f

Rooms and House-keeping rooms to let. "eFm Place," 1516 Emma St. 3771-1w

6-room cottage 1618 College St. Inquire at 34 Beretania St. 3728-1f

Newly furnished mosquito proof rooms at 84 Vineyard St. 2728-1f

2 furnished front rooms at 1223 Emma St.; rent reasonable. 3401-1f

FOR SALE.

Mrs. Kearns—Fresh Chutney and New Season's Jams. 3755-1m

Fine corner lot in Makiki. Curbing, water, fruit and ornamental trees and all improvements. Two minutes' walk from cars and Punahou College. Address R. F., this office.

Wm. Penn and Adelini Patti, the king and queen of Havana cigars, at all leading hotels and cigar stores. Myrtle Cigar Store, agents.

Beef cattle for sale at Kahuku, Hawaii. Apply Col. Sam Norris, Waiohina.

LOST.
A red dog, white and dark spots. Answers to name of Becker. Return to K. Ono, Campbell Block, for reward. 3751-1f

A very large Dane dog, dark gray color, with nickle collar. Answers to the name of "Jim." Reward if returned to 1459 Liliha Street. 3771-1f

Bay pacing mare, in the neighborhood of College Hills. J. H. Enos, Union St. 3775-1w

For Sale
A well built modern house on Gulick Avenue, Kailhi, a short distance from the King Street car line. Contains seven rooms, including two large bedrooms. The interior is finished in natural wood and the ceilings are unusually high. The entire house is mosquito proof.
All the outbuildings—servants' quarters, stables, and chicken run—are in good condition.
The lot is 50x190.
PRICE \$3,000.00
Cash or Time.

Bishop Trust Co., LIMITED.
924 BETHEL ST.

BO WO
Jade Jewelry
We pay special attention to the stylish work. Call and inspect our new lines.
HOTEL ST. bet. SMITH and MAUNAKEA STS.

DAVID DAYTON
137 MERCHANT STREET.
LOTS FOR SALE
IN KAPIOLANI PARK ADDITION and Other Desirable Localities.
HOMES FOR SALE
ON WILDER and GULICK AVES.
No Reasonable Offer Refused.

THE JAPANESE Labor Union
Employment Office supplies all Nationalities to plantations, contractors and shipping.
YOSHIKAWA,
163 KING ST.
ICE
manufactured from pure distilled water. Delivered to any part of city by courteous drivers.

OAHU ICE AND ELECTRIC CO.,
Kowalo. Telephone Blue 3151.
William T. Paty,
CONTRACTOR AND BUILDER, ALAKEA STREET.
All classes of Building Work promptly and carefully executed. Office Phone Blue 1801. Residence Phone Blue 2332.

P. H. Burnette,
Attorney-at-Law and Notary Public. Real Estate, Loans, Collections. Agent to Grant Marriage Licenses. Phone: Office Main 310; Res. Wh. 1341.
"FOR RENT" cards on sale at the Bulletin office.

Shirts For Men
Save money by buying your negligee and full dress shirts from us. We have a splendid assortment in tasty, attractive designs.
Also: collars, cuffs and neckwear.

Yee Chan & Co., KING AND BETHEL STS.

A Really New Photograph Gallery
Monday we opened a gallery that is up-to-date in every particular. Special department for finishing Kodak Films, and making enlargements and films. Special care given work done for amateurs. We give you settings in Japanese costumes, if you wish. A guarantee of first class work is given.

FUJI Photograph Gallery,
Upstairs.
Union Street, corner Hotel.

Dr. J. E. Santos,
the BICYCLE DOCTOR.
Phone Main 361.

For Rent
A REO AUTOMOBILE
L. HOP,
Phone White 541.

Steam Bread
The largest loaf and the BEST in town. White Baker.

Vienna Bakery
PHONE MAIN 197.

STEINWAY, STARR AND OTHER PIANOS.
THAYER PIANO CO.
156 HOTEL STREET.
Phone Main 218.
TUNING GUARANTEED.

FRESH CUT FLOWERS ON HAND AT ALL TIMES. SEED FOR SALE.
Mrs. E. M. Taylor
YOUNG BUILDING TEL. MAIN 339.
MANICURING, SCALP TREATMENT AND FACIAL MASSAGE.
MRS. DORIS E. PARIS
1156 FORT ST.
BULLETIN ADS. PAY

Recorded Aug. 10, 1907.
Daniel Paloka to Chas. Kane; D; int in R P 64, Kul 717, Ap 2, Kapulama, Honolulu; \$1. etc. B 296, p 21. Dated Aug 12, 1907.
Chas Kane and wf to Samuel Andrew; D; int in R P 64, Kul 717, Ap 2, Kapulama, Honolulu; \$75. B 296, p 22. Dated Aug 13, 1907.
Namokueono Ewaliko et al by Comr to Fanny Strauch; D; lots 26, 27 and 28, Kailua Tract, Honolulu; \$700. B 296, p 23. Dated July 27, 1907.
Ellen L B Atherton by Atty to Matilda B Sackwitz; D; lots 25 and 26, blk 107, Palolo Valley, Honolulu; \$1000. B 296, p 25. Dated Aug 9, 1907.
Bishop of Zeugma to Exors and Trs of Est of John Ena; Agrmt; to correct description in lease of Grs 14, 154 and 294 and sec 2 part 2 Kul 11029, Manoa Valley, Honolulu. B 294, p 316. Dated July 31, 1907.
Sing See Sang to Ah Oi; L; 1-2-10 a. land, Waialua, Ewa, Oahu; 13 yrs at \$35 per yr. B 293, p 38. Dated Aug 14, 1907.

Recorded Aug. 10, 1907.
The decision in the famous van Horn divorce case has been upheld by Judge Ogden of the Supreme Court.

Only One "BROMO QUININE"
That is LAXATIVE BROMO QUININE. Used the world over to Cure Colds in One Day. E. W. Grove's signature on box.—Made by PARIS MEDICINE CO., Saint Louis, U. S. of A.

For Vancouver S. S. Indiana
SAILING ON OR ABOUT SEPTEMBER 2, 1907.
Graham, Master, will have room for about 77 first class passengers for Vancouver and Victoria, B. C. Rates of passage \$60. Apply at office of Hind, Roloh & Co., Campbell Block, corner Fort and Merchant Streets.

FREAR'S LAND POLICY
(Continued from Page 1)
chase plan.
The Governor's disinclination to dispose of Government land by absolute sale was demonstrated by his turning down two applications for the purchase of tracts of land. One was from an applicant who wanted in the neighborhood of 450 acres; the other from a man who wanted to buy about 600

Recorded Aug. 10, 1907.
The decision in the famous van Horn divorce case has been upheld by Judge Ogden of the Supreme Court.

Only One "BROMO QUININE"
That is LAXATIVE BROMO QUININE. Used the world over to Cure Colds in One Day. E. W. Grove's signature on box.—Made by PARIS MEDICINE CO., Saint Louis, U. S. of A.

For Vancouver S. S. Indiana
SAILING ON OR ABOUT SEPTEMBER 2, 1907.
Graham, Master, will have room for about 77 first class passengers for Vancouver and Victoria, B. C. Rates of passage \$60. Apply at office of Hind, Roloh & Co., Campbell Block, corner Fort and Merchant Streets.

FREAR'S LAND POLICY
(Continued from Page 1)
chase plan.
The Governor's disinclination to dispose of Government land by absolute sale was demonstrated by his turning down two applications for the purchase of tracts of land. One was from an applicant who wanted in the neighborhood of 450 acres; the other from a man who wanted to buy about 600

FREAR'S LAND POLICY
(Continued from Page 1)
chase plan.
The Governor's disinclination to dispose of Government land by absolute sale was demonstrated by his turning down two applications for the purchase of tracts of land. One was from an applicant who wanted in the neighborhood of 450 acres; the other from a man who wanted to buy about 600

Recorded Aug. 10, 1907.
The decision in the famous van Horn divorce case has been upheld by Judge Ogden of the Supreme Court.

Only One "BROMO QUININE"
That is LAXATIVE BROMO QUININE. Used the world over to Cure Colds in One Day. E. W. Grove's signature on box.—Made by PARIS MEDICINE CO., Saint Louis, U. S. of A.

For Vancouver S. S. Indiana
SAILING ON OR ABOUT SEPTEMBER 2, 1907.
Graham, Master, will have room for about 77 first class passengers for Vancouver and Victoria, B. C. Rates of passage \$60. Apply at office of Hind, Roloh & Co., Campbell Block, corner Fort and Merchant Streets.

FREAR'S LAND POLICY
(Continued from Page 1)
chase plan.
The Governor's disinclination to dispose of Government land by absolute sale was demonstrated by his turning down two applications for the purchase of tracts of land. One was from an applicant who wanted in the neighborhood of 450 acres; the other from a man who wanted to buy about 600

FREAR'S LAND POLICY
(Continued from Page 1)
chase plan.
The Governor's disinclination to dispose of Government land by absolute sale was demonstrated by his turning down two applications for the purchase of tracts of land. One was from an applicant who wanted in the neighborhood of 450 acres; the other from a man who wanted to buy about 600

Wall Paper Effects
INGRAINS. SILKS. GILTS. SPECIALS. TILES.
Wilder & Co.

J. M. Davis, Sewing Machine Repairer
Tel. Main 117, or 1256 Fort Street, near Orpheum.
Repairs made at your home and immediate use of machine guaranteed.
SEWING MACHINES TO RENT.

BASEBALLS, GOLF BALLS AND SPORTING GOODS.
WALL, NICHOLS CO., Ltd

Leading Grocers
Phone Main 22.
Henry May & Co., Ltd.
'Phone 315
FOR WIRING, BATTERIES, SUPPLIES, TELEPHONES and GENERAL REPAIRING, RING UP 315.

Fine Pasture
NEAR TOWN.
Best of care given to stock.

Club Stables.
Tel. Main. 109.

For Over 60 Years
Mrs. Winslow's Soothing Syrup
has been used for over SIXTY YEARS by MILLIONS of Mothers for their CHILDREN while TEething, with perfect success. IT SOOTHES the GUMS, SOFTENS the GUMS, ALLAYS all pain, CURES WIND COLIC, and is the best remedy for DIARRHOEA. Sold by Druggists in every part of the world. Be sure and ask for Mrs. Winslow's Soothing Syrup and take no other kind. 25 Cents a Bottle.

An Old and Well-tried Remedy
To Let
apply to
L. C. Ables,
Judd Bldg.,
This is the sign on a warehouse, the size of which is 25x45 ft. adjoining the Oahu Ice Co., Huxtable avenue.

KEYSTONE-ELGIN WATCHES
INGERSOLL WATCHES
At All Watchdealers.
Jos. Schwartz,
Agent for Hawaiian Islands, Cor. FORT and KING STS., Honolulu.
Unique Chinese Goods
Wing Wo Tai & Co.
941 NUUANU ST.
SING WO HING & CO.,
Dealers in
CHINESE, JAPANESE AND AMERICAN GROCERIES. HAWAIIAN CURIOS. Cor. Hotel & Smith Sts., Honolulu.
K. FUJITA & CO.
CONTRACTORS, BUILDERS AND CARPENTRY WORK.
Bamboo Furniture Made To Order. NUUANU ST. COR. KUKUI. PHONE WHITE 901.
The Weekly Edition of the Evening Bulletin gives a complete summary of the news of the day.

Don't Blame the Hens

Now this is YOUR fault. Don't blame the hen. She is a natural egg-machine whose desire, whose every inclination is to lay. Furnish proper food and surroundings and she will lay just as readily in August and September as in November or December.

We can not make favorable surroundings. YOU must attend to that. But we can, AND DO, with LEE'S EGG MAKER, provide the requisite so far as food is concerned. The basis of our poultry food is granulated blood (deodorized), one pound of which is equal to 16 pounds of fresh beef. It is essentially a food for winter egg-production, supplying better than anything else the requisites for the formation of egg and shell.

You can coax, drive, and "hopper feed" until doomsday, but that won't make hens lay unless food and surroundings are RIGHT.

E. O. Hall & Son, Ltd.,

Agents for Poultry Supplies. FORT AND KING STREETS

Try Heinz' Prepared Mustard

Nothing lost of its fire and pungency, because we grind without exposure to air. Seasoned to a smooth, mild stimulant after the French.

You'll appreciate its excellent quality soon as you taste it.

Sold By All Grocers.

H. HACKFELD & CO., Ltd.

Distributors.

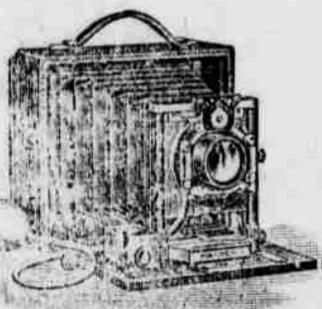
SWIM HOTEL BATHS

NO STRIKES! NO CORAL! NO SUNBURN!
TURKISH BATHS. BOWLING. SHOOTING.

Do You Drink?

Every man and woman needs a stimulant and it need not be alcoholic. We have what you want for the summer season and you will find it the most refreshing beverage you ever drank. Call for Iron Port.

Consolidated Soda Works Co., Ltd.,
TELEPHONE 71. G. S. LEITHEAD, Manager.



New Premo Cameras

You can work with either films or plates when you have a Premo and a perfect picture is assured. We have all the new styles. Just unpacked. Come and see them. Also new Kodaks.

HONOLULU PHOTO-SUPPLY CO.,
Fort St., near Hotel

National Cash Register

from us for less money and on easy payments, without interest, or liberal discount for cash. There is no cash register so absolutely certain of results as a National. Every National is guaranteed as to workmanship, durability and repairs.

WE ARE SOLE AGENTS.

The Waterhouse Company,
JUDD BUILDING.

SPORTS

BALL TOSSERS TO JAPAN

What a grand trip that would be. Why it would almost equal the trip of the lucky seven Bulletin girls. Now if those Japanese really want to learn baseball they could make no better move than to import Pat Gleason and his tribe of leather chasers. These lads are capable of showing the little men across the pond some of the fine points of the game, and when that string of south hand hitters came to the plate with the big stick those brown men would think that a Russian attack was in order. The chances are that the St. Louis team could make the players of Kelo and Waseda Universities look foolish in a game of ball. Still it is claimed that the players of Japan are fast.

Now, if the game of baseball at Tokio will draw 50,000 people at 25c a head, as the report states, there would not be the slightest trouble in defraying the expenses which is stated would be \$3000. Just think, 50,000 people at 25c each would mean \$12,500. All that the boys would have to do would be to play one game of ball and they would get enough coin to travel around the world. If these figures are true little or no trouble will be found in getting expense money. It is a wonder that John McGraw don't get wise to those big gates in Japan.

Talk about promotion work. It seems as though baseball is the real thing just now. With a big team coming from the Coast and a team of our own going to Japan, the sporting writers all over the land must work over time to keep the public in line with Hawaiian baseball. Barney Joy has done much to put Hawaii on the map. The managers on the Coast are beginning to open their peepers and have a look out for Dick Reuter. If we are not sadly mistaken you will soon see something drop in regard to Hampton and Evers the two best ball players on Hawaiian soil today. Here are two lads that would be valuable men to any team.

To come back to that trip of the local St. Louis team to Japan. If this comes to pass the boys will certainly have the trip of their lives, and they would all like to go. It might be hard for some of them to get away from their positions but the chances are that a good strong team could be gathered that would well represent Hawaii. The proposition should be boosted right down the line and everything done to help the boys make the trip.

FAST TENNIS PLAYED

Al Castle and R. Cooke took A. T. Brock and W. Williamson down the line yesterday 6-1, 6-4. The game was very well contested throughout and proved to be exciting. The last set particularly was real warm tennis. Castle and Cooke won easily in the first five games and then Brock and Williamson took a brace. They ran the score to 5-4.

The Ewa cracks, F. E. Greenfield and A. McKeever, received a shock at the hands of C. G. Bockus and H. Grey. These latter two players played very steady tennis and outplayed the plantation boys, who drove the ball too many times into the net. Bockus had a serve that kept the Ewa lads in the air and did much to win the match. Grey and Bockus won 6-3, 6-4.

The finals will be played this afternoon on the Pacific courts at 4:15. Castle and Cooke will meet Bockus and Grey in this match.

Honolulu, T. H., Aug. 23, '07. Sporting Editor Bulletin: Permit me to submit the following names of a committee to select the All-Hawaiian baseball team: Harry Whitney, Frank Richardson and F. E. Steers. These boys know the game and the players and would not pick favorites. They are surely as good as could be chosen.

Very truly,
JOHNNIE BUNT.

BASEBALL DOPE

Tomorrow: Kams vs. Puns. Saints vs. Diamonds.

Charlie Street, who is catching Barney Joy, has been purchased by the Washington National team.

The San Francisco team is now in third place in the Coast League.

Bill Devereaux, the "Red Dog" says that he will come to Hawaii with "Mique" Fisher's team or the ship will never get out of Frisco harbor.

The drafting season begins tomorrow, says a San Francisco Exchange, and the major leagues will have two weeks to look over the talent of the minor leagues to see what they want. Of course the Coast League will contribute its usual quota. The present outlook is ten or twelve men will graduate into fast company either by

sale or draft. The league bids to lose Joy, Street, Bliss, Heitmuller, Cravath, Groom, Donahue, Cates, Smith, Carlisle and a couple others.

Bill Lange, whom Fisher writes about in his last letter, was at one time the fastest outfielder who ever pulled on a baseball mitt. For years he was the champion base runner of the world.

MANILA STUDENTS VS. Y. M. C. A. TEAM

There will be a rousing exhibition game of basketball this evening at the Y. M. C. A. gymnasium between 8 and 9 o'clock between the Filipino students, now passing through on the Buford, en route for Manila, and a picked squad from the members of the Y. M. C. A.

WHO IS HAL CHASE?

"Mique" Fisher writes that Hal Chase may come with that Coast team to Hawaii. Here is how Chase is written up in Eastern papers:

Hal Chase first and the rest nowhere. This is the way critics classify him when they dope up the first basemen of the major leagues. Chase is the Peter Pan of baseballdom. No player outclasses his rivals like Hal. If you ask who is the champion pitcher, or the best catcher, or the fastest shortstop, you raise an argument anon. But if you mention first base, all voices chorus one name—Hal Chase. A writer on the New York Evening World says:

"Were it not for Hal Chase the Highland infield would have a record for long-distance throwing instead of banging at a bull's eye. If there ever was a ball-player who worked to save his fellow-man that player is none other than Harold Chase of San Jose. He takes throws on the ground, in the air and with English on either side that would make many a first baseman look like ocko, of the Zoo, in action."

"Lose Chase and Griffith would have to reorganize the entire infield. Day after day his wonderful stops keeps names out of the error column, and all the time he never says a word. He is the keystone of the American League team, and when Griffith granted him a few added shekels he got nothing more than was coming."

"The marvelous playing of Chase at first made Eberfield a great shortstop. It helped both Laports and Moriarty to hold their jobs, and Jimmy Williams has been given many a life. As a rule Williams makes few wild throws, but from the others wild heaves come shooting from all points of the compass, and Chase must help them out."

"A man like Chase is often a detriment to a team, strange as it may sound. The other fielders get in the habit of throwing them any way and take a chance on the Californian pulling them down. Had there been another man on first base Saturday Cleveland would have piled up a score of runs long before the ninth inning. It might have been merciful at that, for it was a long, sad affair. When these fellows drift to another team accuracy may be found wanting, as a matter of habit."

"Eberfield told me last spring that Chase was such a wonderful fielder of thrown balls that he often threw without looking."

EXPERTS DIFFER

MATERIALLY ON SOIL THEORIES

Berkeley, Aug. 7.—Prof. E. W. Hilgard, the soil expert, who for more than 30 years directed the destinies of the university's department of agriculture, has punctured a bubble put forth by Dr. Milton Whitney of Washington, declaring in a few well chosen words today that Dr. Whitney's recent announcement of a discovery revolutionizing all theories of soil fertilization is absurd, untenable, dangerous and futile.

Doctors do not always agree, and in this instance two of the most able soil experts of the land have locked horns in dealing with a problem of vital importance to agriculturists. Dr. Whitney is at the head of the Bureau of soils of the department of agriculture in Washington, D. C. He contends that the old theory about the exhaustion of soil by successive growths of crops is erroneous; that plants merely leave a toxic substance in the soil, which sometimes operates disastrously to other plants; that it is nonsense to suppose that successive crops taken from the soil such chemical elements as phosphates, nitrate or potash. Professor Whitney's words on the subject, which have

Whitney & Marsh

Grand Showing This Week

Wash Goods

- 27 inches wide HENLEY SERGE 25¢ YARD
- 36 inches wide PERCALES 20¢ YARD
- 30 inches wide FIGURED ORGANDIES 20¢ YARD

and many others.

COME AND SEE THESE GOODS!

WHITNEY & MARSH

aroused Dr. Hilgard to combat, are in part as follows:

It is evident that the mere addition or subtraction of chemical elements from the soil will not determine the fertility of the soil.

In plain and unscientific language the new theory of soil fertility is that plants secrete their own poison. That is to say, every plant leaves behind it in the soil some sort of soil which is injurious to its own growth, and another crop coming along in the same place has to fight with this substance. These substances are called toxic substances, which is only another word for poison.

Replying to Dr. Whitney's strange theory, Professor Hilgard said today:

This theory, which Professor Whitney seems to think is new, was advanced years or so ago. This is not the only time that Professor Whitney has advanced a new theory calculated to upset and overthrow everything that has been learned up to the present time regarding soils, their nutrition, chemical constituents and physical conditions in relation to the part they play in connection with the life and growth of plants.

Professor Whitney has been proved wrong so often that the farmers in the Mississippi valley and the West no longer take him seriously. He seems to be afflicted with a burning desire to prove everybody and everything else wrong. His narrow views are unfortunate because the publication of his official bulletins, which are supposed to be law and gospel with the farmers, can and do work incalculable harm.

This theory of the plants poisoning themselves is utterly absurd, and for the same reasons that proved Professor Whitney's hypothesis, advanced some fifteen years ago, to the effect that fertilizers act, not by conveying nourishment to plants, but by modifying the physical texture of the soil.

The works board of San Francisco has refused to endorse illegal appointments made by the last board of supervisors, of twenty architects for new school buildings.

The Spring Valley officials state that they cannot take money to properly supply San Francisco with water.

Dance and Card Party

To Be Given By

POLYNESIA ENCAMPMENT

NO. 1, I. O. O. F.

Odd Fellows' Hall

Thursday Eve., Aug. 29, 1907

Tickets will be fifty cents each. To be obtained from members.

POSTPONED GAME

SATURDAY, AUGUST 24, 1:45 P. M.

KAMEHAMEHA VS. PUNAHOU

AT 3:15 P. M.

SAINT LOUIS VS. DIAMOND HEADS

FOUR GOOD TEAMS!
TWO GOOD GAMES!

PICTURES

Travellers' Samples bought at extraordinarily low figure. See our window display of Cheap Pictures.

Coyne Furniture Co., LIMITED

The Weekly Edition of the Evening Bulletin gives a complete summary of the news of the day.

Our Red Ticket Sale

- DRY GOODS
- HOUSE FURNISHING GOODS
- HOSIERY, MILLINERY, RIBBON, LACES, EMBROIDERY,
- MEN'S CLOTHING, SHIRTS, COLLARS, CUFFS, NECKWEAR, HATS and CAPS

WILL BE CONTINUED THIS WEEK

L. B. KERR & CO., LTD., Alakea St.



For Sale The Cruising Yacht Spray

Length 31 feet over all; waterline, 28 ft. Draught, 4 ft. 6 in. Outside lead, copper bottom and fastened. Re-timbered, 1903; re-decked (cedar), 1907; sails, 1904, complete sets; new running gear. Built by Stone of San Francisco; sails by Hopkins of New York. Elegantly fitted interior of polished native woods. Superbly found in every respect; owner leaving for Coast sole reason for selling. Price, \$1500.

JAS. F. MORGAN,

Special This Week

LARGE TRACT, 8 ACRES NUUANU VALLEY Big House, Outbuildings, Lots of Large Trees. Water on it. ALREADY SUBDIVIDED

Adjoining saw land, without improvements, selling for \$1500 an acre. Property within a stone's throw you can't buy for less than \$2000 an acre. SOIL SUITABLE FOR

VINES, PINEAPPLES, MARKET GARDENS, NURSERY, ETC. I have been given permission to accept \$1000 cash; balance 6 per cent. long time.

SEE THIS!
JAS. F. MORGAN, AUCTIONEER.

Ice Cream Soda Talk

It is Useless For Us To Make a Talk. OUR CUSTOMERS DO IT FOR US! One Trial Will Be Sufficient To Make You one. REMEMBER, ONLY THE BEST

CHAMBERS DRUG CO.,
Cor. Fort and King Sts. PHONE MAIN 13'

Instead

of each day signifying what meat you are going to eat, phone us, and we will let you know our continued varieties.

THE PARAGON

Beretania, Alakea and Union. "The Home of Expert Meat Cutting" Phone 104.

C. Nishikawa, JAPANESE EMPLOYMENT OFFICE

Best services guaranteed. Telephone Blue 1311. King street near Liliha.

FRENCH LAUNDRY.

Phone Blue 3352, 255 Beretania St. Ladies: Your old dresses can be made to look like new by our new French dry cleaning process. See some samples in our window. Work called for and delivered. Phone Blue 3552.