

L.C. 1082. Kekuanani
for Kaha Kahi - From orig survey.

1. S. 60° 30' W. 0.75 Kaulua
2. S. 20° E. 2.27 (to McCann's house)
3. S. 62° W. 1.28 "
4. N. 41° 30' W. 2.64 Pa Sipi Pupuani
5. N. 58° E. 1.05 to old wall.
6. N. 27° 30' W. 0.26 Kaha Kahi
7. N. 57° E. 1.54 Kaha Kahi
8. S. 47° E. 0.98 Queen St

S.P.K. '53. - 708 Feet -
Aimaka

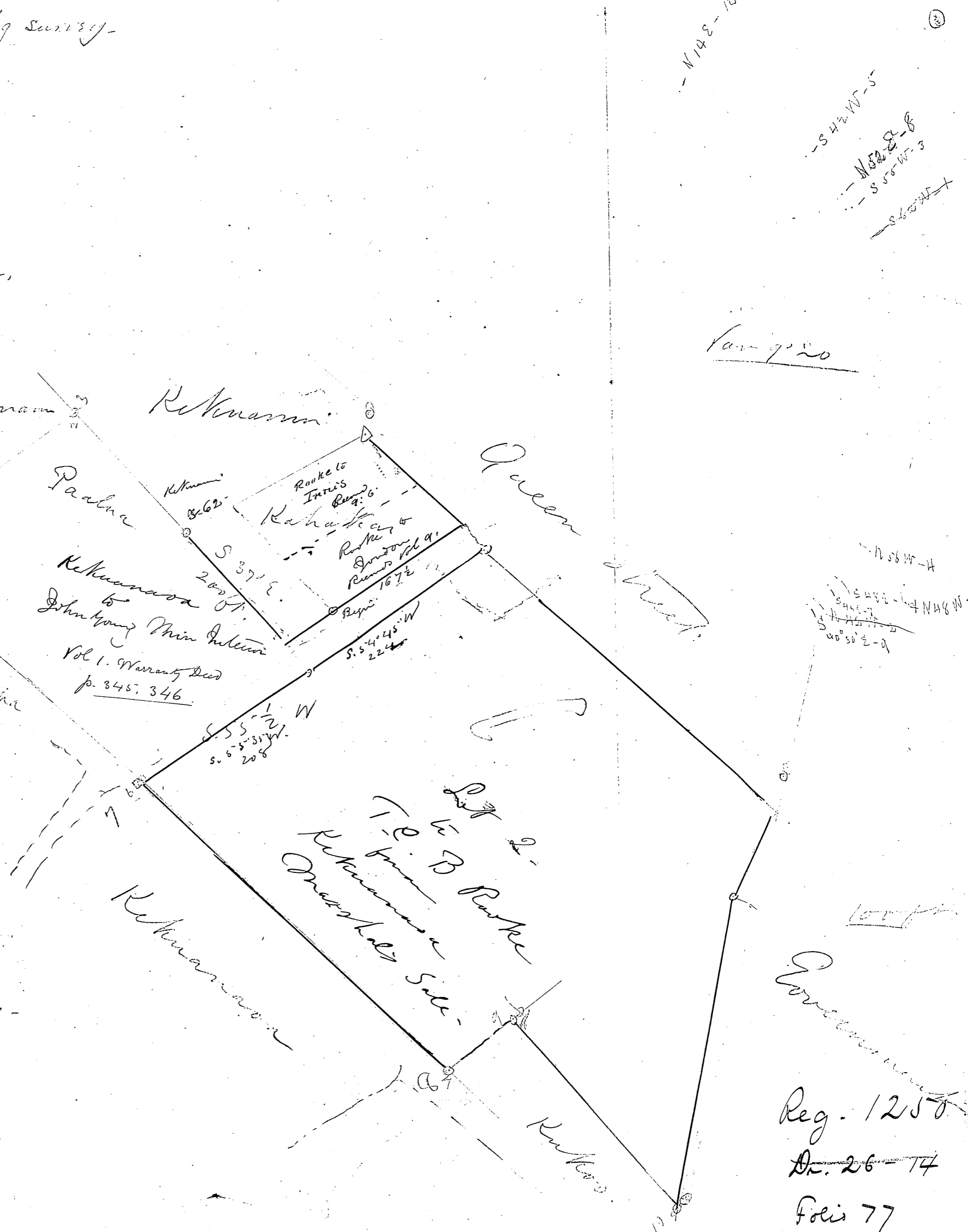
L.C. 677
Kekuanani

- S. 67° W. 3.24
- N 47° W. 2.61
- S 55° W. 2.70
- N 56° W. 1.17
- S 42° W. 0.93
- S 48° E. 6.42
- S. 46° E. 6.73
- N 52° E. 1.37
- S 40° 30' E. 4.00
- N 14° E. 7.08
- N 48° W. 8.82

S. 58° W.	2.64	= 174.2
N 38° W.	1.18	78.
S. 42° 45' W.	1.32	87.
S 47° 45' E.	6.50	429
N. 56° 15' E.	3.17	209.
N 41° 15' W	5.48	361.7

2nd Area
with little road
24 feet wide -

C. J. H.
1851



Reg. 1250
Dr. 26-74
Folio 77
Du 20(36)