

EVENING BULLETIN

Register Your Votes for Your Favorite!



VOL. VIII. No. 1456

HONOLULU, H. I., THURSDAY, FEBRUARY 15, 1900.

PRICE 5 CENTS.

\$200.00 IN PRIZES

The BULLETIN offers to the persons who, between February 1st and July 31st, shall send in the largest number of new subscribers...

1st Prize Cleveland Bicycle, \$70.

The winner of the 1st prize is at liberty to choose between models 99, 97 and 94 of the 1900 Cleveland Bicycle...

2nd Prize, Singer Sewing Machine, \$60.00.

The winner of this prize may choose between three styles of machines: that with oscillating shuttle...

3rd Prize, Premo Senior Camera, 4x5, with outfit, \$40.00.

The Premo, Sr., has Double Swing Back, Double Sliding Front, and Rack and Pinion for focusing...

4th Prize, a Zonophone, the Latest Improvement on the Gramophone, with 6 Records, \$30.00.

This is the loudest and most natural talking machine yet invented. It is to be selected from the stock of the Bergstrom Music Co...

The following conditions of the contest must be observed:

- 1. All subscriptions must be prepaid at least three months in advance.
2. No renewals or transfers of subscriptions will be counted in this contest...

4 Any person in the Hawaiian Islands is eligible to try for these prizes.

During the continuation of the contest for the Most Popular Captain, copies entitling the holder to cast so many votes for the Captain of his choice...

THE MOST POPULAR CAPTAIN

The captain who shall have the largest number of votes on Saturday, March 31, will be given an elegant pair of Binoculars...

In addition to the votes which appear each day in the upper right hand corner of the first page, which are to be filled out and deposited at this office...

Subscription Rates: \$8.00 per year, \$2.00 for three months; strictly in advance.

The standing of the contest Friday, Feb. 8, was as follows. This list will be changed every Saturday.

Table with 2 columns: Name and Votes. Capt. Simerson: 1230, Capt. Cameron: 1100, Capt. Clarke: 1027, Capt. Pedersen: 444, Capt. Tullett: 197, Capt. Bruhn: 117, Capt. Freeman: 110, Capt. Nigholsen: 9, Capt. Weisbarth: 9, Capt. Samson: 8, Capt. Thompson: 6.

Hack Was Saved.

Walluku, Feb. 13.—The hack of Jno. de Rego in which Ah Sam rode from the Japanese barber shop opposite Iao saloon to Dr. Armitage's office last Saturday morning, has been ordered to be disinfected and will not be condemned.

Three Hundred Guards.

Walluku, Feb. 13.—Kahului is still under a strict guard, there being about 300 special guards put on to see that no one from Kahului passes beyond the lines.

CHANNEL WHARF BUSINESS

Chamber of Commerce Appoints Directing Committee of Shipping Houses.

Tender of Heanani Clubhouse for Quarantine Purposes Gratefully Accepted—Proceedings of Monthly Meeting of the Chamber.

The monthly meeting of the Chamber of Commerce was called for 2 p. m. yesterday. Those attending were: T. R. Walker, president; James G. Spenser, secretary; Henry Waterhouse, H. Foeke, F. B. Auerbach, W. F. Allen, J. F. Hackfeld, H. A. Isenberg, W. M. Giffard, John Ena, C. L. Wright, J. B. Atherton, F. M. Swanzy, and H. A. Parmelee.

The secretary read the minutes of last monthly meeting and special meeting since, which were approved. J. M. Dowsett and W. H. Hoogs were, on suspension of the rules, unanimously elected by a ballot to be cast by the secretary.

Mr. Giffard presented a report from the special committee on the Channel quarantine wharf, comprising the resolution of the Executive Council, already published in this paper, stating the conditions under which the wharf could be used by the Chamber of Commerce. He also read a letter from C. B. Gray, secretary of Heanani Yacht and Boat Club, for the directors, in reply to a request for the use of the clubhouse for quarantine purposes.

The directors said that, recognizing the liberality with which the merchants of Honolulu had always patronized aquatic sports, they offered the use of their buildings to the Chamber for quarantine purposes, on condition only that the premises be restored to the club in the same condition as they were now received.

Mr. Giffard, just before the meeting adjourned, moved, seconded by Mr. Atherton, that the letter from the Heanani Club directors be referred to the committee on wharf and that the secretary convey to the directors the cordial thanks of the Chamber.

President Walker, referring to the Government's answer, asked why pay blanks were to be submitted to the Legislature. Mr. Giffard replied that the Chamber was to pay for maintenance of labor, as the Government had no appropriation for the purpose.

Mr. Allen moved, seconded by Mr. Atherton and carried, that the report be accepted with thanks to the committee for its effective services. Mr. Atherton asked if the committee had investigated the probable cost of guards, inspectors, etc.

Mr. Giffard replied that they had only talked over the staff likely to be required, concluding there should be a general superintendent, two dock clerks and 25 to 30 laborers. Any laborers sent on the dock by firms would be paid by their employers.

President Walker said he had been glad to hear the other day that the committee was willing to continue its services with the addition of perhaps two members.

Mr. Ena said he was willing enough, but his health had been failing lately.

(Continued on page 6.)

BOUG IT HAWAII STOCKS

While Hon. Arthur Sewall was in Honolulu he made investments in local securities, variously estimated on the street from \$50,000 to \$100,000. The exact amount of his purchases is not known except that \$30,000 of securities was handled for him by one concern. The securities bought included stock in Olan, Oahu and Hilo railway bonds.

Many False Rumors.

Walluku, Feb. 13.—False reports were very rife yesterday. There were unfounded reports of plague cases at Makawao and also at Lahaina.

One of the Walluku inspectors saw a suspicious case on his rounds yesterday and immediately reported the matter to Chief Inspector Kepoikal. Dr. Armitage was hurried over to the place and found the Japanese woman suffering from an abscess in her stomach. She was, however, only discharged from the Malulani hospital that morning, as she had no means of undergoing an operation.

NEW PUBLIC BUILDINGS

The Government May Have Them Constructed By Day Labor.

Strong Desire to Extend Vineyard Street to Liliha Street—Would Make the Nucleus of a New Chinatown.

Minister Young was asked if anything was being done about the Kaihi pumping station and the postoffice extension tenders for construction. He replied that they thought the bids in each case were too high. They were investigating to see what the buildings would cost erected by day labor.

The Minister of the Interior said further he did not suspect a combination among the contractors. At the same time the Beretania street pumping station only cost \$9,000, the land costing the remainder of \$12,000. That was a presentable looking building, but there was a big difference between its cost and the range of bids for the Kaihi station from \$35,000 to \$75,000.

The Minister changed the subject to that of the Vineyard street relief camp, saying:

"We are putting a sewer down in the street to carry off washing water for the present, but which will as soon as practicable be connected with the permanent sewerage system. This is part of the work authorized by the Council of State for enlarging that camp, but at the same time we are making vigorous efforts at arranging for the extension of Vineyard street from River to Liliha street. We are trying to get satisfactory terms with property owners."

"As to the funds we are seeking how to squeeze enough out of roads and bridges, although it will be hard to do so when the pro rata of that appropriation is but \$5,000 a month. I regard that section as the nucleus of a new Chinatown. It is a magnificently healthy locality, yet removed out of the city proper, and if built up would enable the Chinese storekeepers and artisans to do business within easy reach of their usual patrons. The extension of Vineyard street as proposed would admit of two considerable rows of business structures."

HAWAIIAN BRICK MAKING

By the steamer Australia from San Francisco yesterday there arrived the machinery complete for manufacturing brick of Hawaiian clay. The making of the article will begin whenever the plant can be set up, which will be done without any avoidable delay. It is the Honolulu Clay Company that is starting this new local enterprise, the partners in it being H. L. Kerr, M. L. Smith, C. G. Ellison and F. R. Litherland. The deposits of clay to be worked are up Nuuanu valley, where the brickyard is to be established. In actual substance the raw material is decomposed volcanic rock.

At the office of H. L. Kerr & Co., architects, in Progress block, are shown specimens of brick made on the Coast from the Nuuanu valley deposits mentioned. One article is pressed brick of apparently as fine a texture as any imported. Another is vitrified brick. This is harder than Hawaiian stone and deemed an excellent material for street paving.

It is estimated that the deposits in sight are of sufficient quantity for the making of one hundred million brick. Probably other deposits can be found in the Islands. The made specimens contradict a statement that has often been repeated, that there is no clay suitable for brick making in the group. Mr. Hutchinson, the sculptor who produced a great deal of work here, found an excellent clay at Palama for his modeling purposes. He believed it would make a fine brick. This clay experts assert, however, does not burn well.

In view of the enormous demands New Honolulu will soon be making upon both building and paving material, the establishment of the brick-making industry here at this juncture seems highly opportune.

A Hawaiian girl about 17 years of age was thrown from her buggy in a runaway accident near the receiving station in Kaihi this forenoon, with the result of a broken leg and several severe bruises. She was removed to the Queen's hospital by the patrol wa-

GOOD RECORD CONTINUES

No New Cases Discovered By Physicians This Day.

Chinese Child at Magoonville Worse—South Street Tenement House Burned—Specimen From Wailuku.

2 p. m.—No cases today. A specimen taken from the body of a person who died in Wailuku last night under what Dr. Hubert Wood of that place considered rather suspicious circumstances, was sent up on the morning train. Secretary Wilcox received the package and placed it in the laboratory of the Board of Health office for Dr. Hoffman to examine but up to this hour he has not made his appearance. It will not be until late this afternoon that the result of the examination will be known.

Death Record.

Lelehana, male Hawaiian, aged 29, tuberculosis pulmonum, Kewalo, Feb. 13. Manoel P. Silva, male Portuguese, aged three months, congenital syphilis, Kinau and Alapai streets, Feb. 13.

K. Muranaka, male Japanese, aged 26, diarrhoea, Japanese theater, Feb. 13. Leong Chou, male Chinese, aged 40, consumption, Chinese hospital, Feb. 13.

Lilla Keakahaumia, female Hawaiian, aged 5 days, tetanus, Punchbowl street, Feb. 14. Hanna Keliikuewa, female Hawaiian, aged 1 1/2 months, dysentery, Kauluwela, Feb. 14.

Ah Ni or Quong Hse, male Chinese, aged 56, pneumonia, Chinese hospital, Feb. 14. Malukia, female Hawaiian, aged 50, rheumatism, kerosene warehouse detention camp, Feb. 14.

Helena Nohokau, female Hawaiian, aged 20, nephritis, post mortem, Kaihi valley, Feb. 14.

King Street Opened.

At a meeting of the Board of Health yesterday afternoon the report of Prof. Ingalls on King and Nuuanu streets in Chinatown was read. He stated that as far as his work as disinfecter and fumigator was concerned, there was no reason why King, Nuuanu and Hotel streets should not be opened today. However, there was still work to be done by another department. A bad water closet on the Waikiki side of Nuuanu street was mentioned. Other insanitary places on Nuuanu street were mentioned. The only objection Prof. Ingalls offered to the opening of Hotel was the fact that a lot of burnt matting, etc., was to be found Ewa of Nuuanu on that thoroughfare.

In accordance with the report of Prof. Ingalls it was voted that King street be opened to public traffic. At 12 o'clock last night, the guards on this thoroughfare were removed.

Distribute Poison Saturday.

At a meeting of the Citizens' Sanitary Committee yesterday it was unanimously voted at the sense of the meeting, first, that in order to thoroughly distribute the poison and issue instructions by circular, the beginning of the distribution take place on Saturday, February 17, and that the poison be continued to be put out thereafter each night for one week; second, that employers of inspectors and sub-inspectors be requested to allow them to take all the necessary time on Saturday next for the distribution and placing of poison.

Weaver Block Burned.

The Weaver block and outhouses were burned this forenoon, the whole fire department being in attendance. The fire was started in the wing on South street from which the plague stricken Japanese was taken. It was not long before this part was gone. Then came the longer wing on Kawalahao lane. By 12 o'clock the whole building had been levelled to the ground. The fire commissioners hope that this is the last fire in connection with the plague.

Chinese Child Worse.

The Chinese child at Magoonville is much worse today. This morning the temperature was 104. The doctors do not know whether the case is plague or not. However, a strict guard is being kept about the place until something definite can be arrived at.

Freight Agent Morton.

H. C. Morton, formerly Custom House gauger, is now freight agent of the Board of Health with headquarters in the general office.

Mail For Hilo.

The S. S. Katulani, Parker master, sails for Ookala, Papaaloa, Pepeekeo, Honoumou, and Papaikou at 5 p. m. Saturday next, taking mail for Hilo.

DON'T PASS our OPERA GLASSES for the World. They're made by Le Maître. "Nuff said." A. F. WICHMAN

MAUI'S FIGHT PROGRESSES

Infected Buildings Burned And Quarantine Maintained.

Senator Kepoikal Leader of the Inspectors—Incidents of the Fire Many Wanderers From Kahului to Be Brought Back.

Walluku, Maui, Feb. 13.—At this writing the plague scare has almost subsided in Walluku. Since the seven deaths already reported no more cases have been discovered.

The fifty or sixty sanitary inspectors in Walluku are still making house to house visitations twice a day, and in the evenings they all make their reports to Chief Inspector A. N. Kepoikal. The inspectors are doing a good work for the community and whatever unhealthful spots they discern they order immediate destruction by fire. Lots of Chinese and Japanese refugees from Kahului, even tiny footed Chinese ladies, the wives of rich Kahului merchants have been found in different parts of Walluku being harbored by their respective friends and all have been returned to the Kahului detention camp located in the grandstand at the Kahului race track.

BURNING INFECTED BLOCKS.

At 12 o'clock noon yesterday the small frame building near the railroad depot in which the first case, Ning You, died, was burned. As this house was distant from other buildings in the locality the volunteer firemen did not experience much difficulty.

Three hours later, at 3 o'clock sharp yesterday afternoon, the big block of Japanese and Chinese stores at Kahului, bounded by the Custom House building on the Paia side, and by W. J. Bal's saloon and the blacksmith shop on the extreme Kahului side, were burned down. The Kahului jail being all of wood was also destroyed and today nothing remains of the entire block save the Custom House building.

GOODS APPRAISED.

During the morning a committee with Mr. Kirkland at the head, appraised the stores and the goods that were in the places ordered condemned by Dr. Wood, president of the Board of Health. All the inmates, Chinese and Japanese of both sexes and the children were not permitted to take away any of their belongings. All were subjected to a fumigation bath before they were removed to the detention camp.

NEW CLOTHES FOR ALL.

By order of the Board of Health, all men, women and children of both nationalities were supplied with new hats, shoes and clothing procured from the H. C. & S. Co.'s Kahului store. It was a sight to see the people under quarantine appear in apparel of various lines.

When all were carefully removed to the detention camp, came the order to apply the torch to the condemned buildings.

OPIUM DESTROYED.

Some of the stores in the burned block contained as much as \$2,000 worth of goods. It is supposed that one of the rich Chinese storekeepers in the condemned block lost 40 pound tins of opium valued at \$880.

SHOOTING THE RATS.

While the fire was raging at its highest, the guards around the block were furnished with guns and revolvers with which to shoot down rats.

(Continued on page 5.)

Thanks to the Guard.

Col. J. W. Jones, Commanding 1st Regt., N. G. H.

Sir:—I have to inform you that I have this day received a communication from the Acting President of the Board of Health to the effect that at a meeting of the Board of Health held on the 13th inst., the following resolution was passed:

"Resolved, That the Board of Health convey through the Minister of Foreign Affairs to the Colonel, officers and men of the N. G. H. its appreciation of the efficient service rendered by them during the past few weeks. I have the honor to be, sir,

Your obedient servant, "E. A. MOTT-SMITH," Minister of Foreign Affairs, Honolulu, Feb. 15, 1900.

Fort Street Runaway.

One of Nelper's express wagons was quite badly smashed outside Spreckel's bank this forenoon. It seems that Nelper left his seven-year-old son in charge of his wagon up town. The horse became unmanageable and ran down Fort street, bumping into the sidewalk outside the place mentioned. The boy was not seriously hurt, but he sustained a number of injuries. Nelper and his son were both taken to the police station, the former being asked for an explanation of his conduct in allowing such a small boy to hold his horse.

DITCH STAYS DISGRACEFUL

Kr. Desky Speaks His Mind Upon Declared But Unabated Nuisance.

Kewalo Ditch Needs Cleaning and Deepening—Results of Neglect—Its Present Condition a Danger to Residents of District.

C. S. Desky, on being struck for news this morning, promptly replied to a Bulletin reporter:

"Yes, take out your notebook, and I'll give you a column if you like to take it."

That Kewalo ditch that the Citizens' Sanitary Committee has condemned, instead of being cleaned out as ordered by the Board of Health, is getting filthier and filthier every day. When I had to do with it, whenever it got filled up I always cleaned it out. "Kewalo does not alone mean the Kewalo tract, but all the country Waikiki of South street to Kalia. Some parts of Kewalo district are perfectly sanitary."

"That Government ditch must be lowered to keep the whole district clean. When Hustace's artesian wells are flushed the ditch overflows. At present the ditch is stopped near its mouth with the sewerage works. Portuguese residents of the district have their house drains discharging into the ditch, which are therefore backed up with foul matter whenever the ditch is clogged."

"Where the ditch passes through Magoonville it is all choked up and grown over with bulrushes. The ditch is Government property, and you may quote me as saying that it is a disgrace to the Government. "When the ditch is cleaned up, the water level sinks a foot and a half. So I say it ought to be lowered, or deepened, and then no water would stand in the district that it drains."

A Kaihi Camp Problem.

Some 240 people finished their quarantine at the Kaihi detention camp this morning. When a canvass of these people was made it was found that but fifty had accommodations outside the camp. Therefore, there is nothing to do but to allow the remainder to live at the camp until they locate themselves outside. On Sunday morning 1,900 people will have finished the quarantine and there is no doubt whatever that the majority of these will be thrown back upon the camp as they are no better circumstanced than the people whose period of quarantine was finished today.

Some 240 people finished their quarantine at the Kaihi detention camp this morning.

The very first lot freed from camp was on Tuesday morning. Of these there were nine. Miss Macdonald and Miss Robertson will finish their quarantine on Sunday.

About Opening of Stores.

A person interested asked the following question this morning: "Would it not be well for the convenience of the ladies who have household matters to supervise, if business should now be opened at 9 a. m. and close at 4 p. m. instead of the present plan? The inspectors finish their rounds long before 9 o'clock and ladies who have buying down town do like to do it in the cool of the day. By 10 o'clock it is very warm and, besides that, this hour makes it too late for the ladies to get luncheon in time."

Dr. Boote Volunteers.

Walluku, Feb. 13.—Dr. R. W. Boote has rendered very good service to the Board of Health since last Saturday, he having volunteered his services that morning to Sheriff Baldwin. He has been on guard at Kahului ever since.

WEDDING STATIONERY, Engraved Cards, Embossing.

H. B. JACOBSON

Just received the very thing to gladden the hearts of the ladies.

The most acceptable Xmas gift your wives, sisters or daughters—a pair of our BEADED STRAP SHOES

These are included in the 7000 pairs of shoes just opened ex S. S. Australia and hold premier place for beauty

The Manufacturers' Shoe Co

THE MANUFACTURERS' SHOE CO

THE MANUFACTURERS' SHOE CO

THE MANUFACTURERS' SHOE CO

THE MANUFACTURERS' SHOE CO

THE MANUFACTURERS' SHOE CO

THE MANUFACTURERS' SHOE CO

THE MANUFACTURERS' SHOE CO

THE MANUFACTURERS' SHOE CO

THE MANUFACTURERS' SHOE CO

THE MANUFACTURERS' SHOE CO

THE MANUFACTURERS' SHOE CO

THE MANUFACTURERS' SHOE CO

THE MANUFACTURERS' SHOE CO

# HENRY B. WORTHINGTON,

(INCORPORATED).

Engineers and Builders of High Duty Pumping Engines for Water Works and Irrigation.

THE SPECIAL ATTENTION OF PLANTATION MANAGERS AND AGENTS is called to the fact that we carry in stock at our Queen street warehouse a large assortment of pumps for all kinds of sugar house service, including vacuum pumps, air pumps, condensers, feed pumps, juice pumps, molasses pumps, etc., together with a complete stock of spare parts for all sizes. Careful attention given all orders, and prompt shipment.

Office: Cor. Fort & Queen Sts., Honolulu, H. I.

Warehouse: Cor. Queen & Cook Sts. Telephone 595.

# RISDON IRON WORKS,

San Francisco, California.

ENGINEERS AND BUILDERS.

High Duty Pumping Machinery,

Heise Boilers, Plain Tubular Boilers, Corliss Engines, Cane Cars, Vacuum Pans, and all machinery for the complete equipment of Sugar Mills.

Office: Progress Block,

FORT AND BERETANIA STREETS. HONOLULU, H. I.

### Fraternal Directory.

**HARMONY LODGE No. 3,**  
I. O. O. F.

Meets every Monday evening at 7:30 in Harmony Hall, King street.  
J. D. McVEIGH, N. G.  
E. R. HENDRY, Secretary.

All visiting brothers very cordially invited.

**MYSTIC LODGE No. 2, K. of P.**

Meets every Wednesday evening at 8:00 o'clock, Castle Hall, Fort street. Visiting brothers cordially invited to attend.  
S. J. SALTEK, C. C.  
A. E. MURPHY, K. R. S.

**HONOLULU CHAPTER No. 1,**  
R. A. M.

Meets every third Thursday evening in Masonic Temple. All visiting companions cordially invited.  
A. F. GILFILLAN, H. P.  
J. D. TUCKER, Secretary.

**HONOLULU COMMANDERY**  
No. 1, K. T.

Meets in Masonic Temple on the second Thursday evening of each month. All visiting Sir Knights courteously invited.

**HENRY E. COOPER, E. C.**  
J. D. TUCKER, Recorder.

**OAHU LODGE No. 1, K. of P.**

Meets every Thursday evening at 8:00 o'clock, Castle Hall, 429 1/2 Fort street, at 8:00. Members of Mystic Lodge No. 2, and visiting brothers, cordially invited.  
A. N. SINCLAIR, C. C.  
M. ROSENBLIED, K. of R. and S.

**NUUANU CHAPTER ROSE**  
CROIX.

No. 1, A. & A. S. R.

Meets the first Thursday in each month, at Masonic Temple. Sojourning and visiting brothers cordially invited to attend all meetings.  
W. M. FRANK B. AUERBACH,  
WLAN B. SCRIMGEOUR, Secretary.

**LODGE LE PROGRES DE**  
L'OCEANIE.

No. 121, A. & A. S. Rite.

Stated meetings on the last Monday of each month, in its hall, Masonic Temple.

C. M. WHITE, W. M.  
E. B. FRIEL, Secretary.

**GEO. W. DeLONG POST No.**  
45, G. A. R.

Department of California and Nevada, meets at Harmony Hall, King street, first Thursday evening of every month. Sojourning comrades are cordially invited to attend.

W. L. EATON, P. C.  
JAS. T. COPELAND, Adj.

**HAWAIIAN LODGE No. 21,**  
F. AND A. M.

Stated meetings, first Monday each month. Special meetings, when called (will be noted in this space).

Members Lodge Le Progres, Pacific Lodge, and all sojourning brethren cordially invited.

ED. I. SPALDING, W. M.  
V. R. G. WALLACE, Secretary.

**ENSIGN WORTH BAGLEY**  
GARRISON,  
No. 171.

Regular Army and Navy Union of the United States of America, meets at Harmony Hall, King street, every second and fourth Friday in each month at 7:30 p. m. Visiting comrades are cordially invited.

All honorably discharged soldiers or sailors, etc., or volunteers, are eligible to membership.

E. J. WILSON,  
Commander.

J. E. SHEAHAN, Adjutant.

**THE WAVERLY CLUB.**

Waverly Block, Bethel street. Standard magazines and periodicals; library; billiard, pool and card tables for free use of members. Arrangements for transient visitors. Entrance fee \$1.25, monthly dues \$1. Open from 8 a. m. to 11 p. m.

A. V. GEAR, President.

JAMES T. COPELAND, Recording Sec.  
ALLEN J. SCRIMGEOUR, Fin. Sec'y

**The Mercantile Printing Co.**  
(Limited).

**FINE**

**JOB**

**PRINTING.**

119 King St.

CHURCH AND SOCIETY WORK.

The Evening Bulletin, 75 cents per month.

### LOCAL AND GENERAL.

Orpheum tonight.

T. R. Robinson has returned from Ohio.

The band gives a concert in Thomas Square this evening.

George Haffner, Jeweler, has moved to Vineyard street near the Queen hotel.

Bring up 191 when you want a reliable driver, a good hack and no over charging.

Horses and rigs may be kept now at Walkiki now in the stables at Long Branch.

The schooner John G. North sailed from Honolulu for San Francisco February 10.

Nicely furnished rooms at the Poplar House, 154 Fort street, from \$1.00 per week up.

W. O. Smith was a guest at the annual banquet of the Gridiron Club, Washington.

Does your electric light bill vary? If so read the Oceanic Gas & Electric Light Co., Ltd., ad on page 8.

Captain Simerson is a favorite at Pihala, Hawaii. So says a bunch of Bulletin Popular Captain votes from that place.

There will be a rehearsal of the Amateur Orchestra at the usual time this evening. Every member is requested to be present.

Patrick Gleason, bookkeeper at Oahu jail and Miss Jarrett were married at the Catholic Cathedral last evening. The Bishop of Panopolis officiating.

The Washington Post states that Hon. Gilbert F. Little of Hilo, Hawaii, will deliver an essay on "Hawaii and Her People" before the Unity Club of Washington.

F. J. Lowrey has been appointed by the Board of Health to make an inspection of the new fence at the corner of Kukui and River streets and make whatever changes he may think necessary where the Pauoa stream was crossed imperfectly by the stream.

"The Hawaiian Scenic Calendar" for 1900, published only by the Golden Rule Bazaar, 316 Fort street, is a beautiful work of art. It eclipses all previous efforts in this line and nothing would be more appropriate at this time than to mail one of these to the "folks at home." Price 50 cents.

The use of the Singer in millions of homes shows the unpreceded success of these ideal sewing machines. It is convincing proof that the Singer excels in all kinds of family sewing and art needle work. All our sewing machines are of the best construction, beautifully decorated, and are mounted on selected woods in finely finished cabinets of artistic design. B. Bertensen, agent, 16 1/2 Bethel street.

**CHINESE FOOD.**

The Citizens' Sanitary Committee yesterday adopted the following resolution and forwarded it to the Board of Health:

"Resolved, That it is the opinion of this committee that as a means of suppressing the plague and preventing a further outbreak thereof, all foodstuffs imported from or originating in China or Hongkong and now in any part of the Hawaiian Islands, should be immediately destroyed; such compensation therefor to be made to the owners as the proper authorities may decide; and also

"That until the plague entirely ceases in China and Hongkong all foodstuffs originating in either of said places should be declared to be infected with plague and dangerous to the public health, and their importation into this country prohibited."

Fish Inspector Berndt has come across some very curious and beautiful fish lately which are being painted by KING BROS. artist. A very peculiar crab is on view in KING BROS. window, Hotel street.

**CHAS. D. WALKER,**  
Designer and Builder of High-Grade Yachts, Boats and Launches!  
Waiwai, 679 KING ST.  
P. O. Box 613 Telephone 760

### REPORT OF MAUI PLAGUE CASES.

Wailuku, Maui, Feb. 13.

Feb. 4.—Ning You, male Chinese from Chinese washhouse at Kahului, died on Sunday, Feb. 4 in a small wooden house back of Nawai's, near Wailuku depot. Post mortem examination made by Dr. Weddick, Government Physician same day. Buried same day at Walehu cemetery.

Feb. 6.—Sam Ying, male Chinese, aged 54, died at Chinese washhouse at Kahului. No post mortem examination made. Buried at Walehu cemetery.

Feb. 7.—Kara (w.) Japanese woman, and her eight-months-old baby, Sa Kara, both died at Kahului in the Japanese barber shop two doors below the Chinese washhouse. No post mortem made. Both buried.

Feb. 9.—Ah Ming, male Chinese, died at Kahului in Sam Sing's store, Kahului. Autopsy made by Dr. Weddick and a portion cut from his left leg sent to Honolulu for examination by Dr. Hoffman, government bacteriologist, and by him declared to be a sure case of plague. Buried same day at Walehu cemetery.

All the above four dead bodies will be exhumed sometime during this week and will be cremated by order of the Board of Health.

Feb. 10.—Ah Sam, male Chinese, from the Kahului washhouse, reported today to Dr. Armitage at his office at Wailuku, and the doctor declared him to be a sure case of plague. Patient taken down to Kahului pest house per order of Sheriff Baldwin. Died same day at 11 o'clock p. m. Post mortem examination made by Drs. Wood and Garvin on Sunday 11th inst., and germs of bacilli found in large quantities cremated.

Feb. 11.—Male Chinaman, also from Chinese washhouse at Kahului, found sick by one of the guards in the morning and died the same day within three hours of his discovery. Bacilli of black plague found by the examining physicians; the bacilli declared to be larger than any case yet that had succumbed from the disease in Honolulu. Cremated the same day.

From the 11th to date, no more cases reported.

## Royal Here and Everywhere

You are worn out, tired, can't put the energy you desire into your duties. Well, then, you must try something that will overcome this feeling and restore you to perfect health.

### Pleasant

From childhood we are taught to respect the curative features of herbs. Our grandmothers used them, and were, as a rule, versed in the art of preparing remedies from various plants

as

We have a preparation that is of the old-fashioned type—purely vegetable, made of herbs with wine. For a general tonic to produce vigor and strength, you cannot find a better one.

### Wine.

For malarial disorders, loss of appetite, that tired feeling, loss of energy, it is a true panacea.

Royal Bitters is the name,  
They gave me at my birth,  
From Royal no one need refrain,  
Its use will surely bring mirth.

Put up in pint bottles at 50 cents. Only of

**Hollister Drug Co.**

## DIAMOND

And other Rings, Watches, Bracelets, Pins, and an extensive variety of Jewelry.

**H. G. BIART,**  
Manufacturing Jeweller,  
404 1/2 FORT STREET

### SPECIAL NOTICE.

H. H. Williams, furniture dealer and undertaker, can be found at his residence, Fort street, below Fort Street House. Tel. 849. 1452-1W



Photographers.

**J. J. WILLIAMS,**  
Photographer.

**PORTRAIT**  
**WORK**  
**A SPECIALTY.**

Visitors are cordially invited to call and inspect our gallery of life-size royal photos, from Kamehameha I. to date.

At the Old Stand  
On Fort Street

# BASEBALL TRACT

Bounded by Keekaumoku, Kinau, Piikoi and Lunaliilo streets; only one block from the Beretania street car line

This tract is situated in one of the finest residence portions of Honolulu, and in a direct line with the cooling breezes of Makiki.

Lots 50 x 90 feet will be sold for the reasonable price of \$1,250. Terms, \$250 cash, balance on installments, payments to suit purchaser.

This land has a very gentle slope, and purchasers can immediately commence building operations. Early purchasers can secure choice locations.

For further particulars apply to

**GEAR, LANSING & CO.,**

Judd Building.

## HONOLULU COFFEE MILLS

Headquarters

— FOR —

## PURE HAWAIIAN COFFEES,

Green or Roasted

Large stock of Coffees from the Kona, Hamakua, Oloa Districts always on hand. Old Coffees a specialty.

**H. HACKFELD & CO., LTD.**

## New Goods!

VAN CAMP'S BEANS, VAN CAMP'S MACARONI and CHEESE, COOKED SAUERKRAUT, CORN, PEAS, SARDINES IN MUSTARD, VESTIBULE PARLOR MATCHES DRIED FRUITS FULL VARIETY, CAVIAR, Etc., Etc.

## Salter's Grocery

Telephone 680. Fort street Orpheum Block.

## HENRY MAY & CO., Ltd.

Wholesale and Retail Grocers. . . .

2—Big Stores—2

The Waterhouse Store, The Mc Intyre Store,  
Bethel street. Telephone 24. Cor. King and Fort streets. Telephone 22.

### Just Received:

- Cape Cod Cranberries,
- Atmore's Mince Meat,
- Condensed Mince Meat,
- Apples, Turnips, Hams,
- New Crop Nuts and Raisins,
- Cream Chocolate Tablets, Jams,
- Jellies, Shrimps, Table Fruits, Olives,
- Oregon Burbank Potatoes, Crackers and Cakes, &c., &c.

**Chas. Hustace,**

Telephone 119. 212 King street, next to the Arlington.

The swellest line of golf capes and traveling rugs ever imported, are now being displayed by

## N. E. SACHS DRY GOODS COMPANY, LTD.,

THE PEOPLE'S PROVIDERS.

Ladies contemplating taking a trip to the coast should avail themselves of the choice assortment.

**Benson, Smith & Co., Ltd**  
**WHOLESALE & RETAIL**  
**DRUGGISTS.**

**Baldwin Celery Soda**  
 For  
**Headache, Nervousness and**  
**Seasickness**

..... Pleasant and Refreshing .....

**SOLE AGENCY,**  
**FORT AND HOTEL STS.**

**Honolulu Drug Co.,**  
**HEADQUARTERS FOR DISINFECTANTS:**

**ELECTROZON,**  
**CHLOROZONE,**  
**PURIFINE,**  
**CHLORIDE OF LIME,**  
**&C., &C.**

**Honolulu Drug Co.,**  
 Von Holt Block, King st.

**DO YOU DRINK AERATED WATERS?**

If so, make them AT HOME with pure water from your own filter, by means of .....

**Sparklets**

The latest scientific method, simple to operate, perfect in result, absolute purity guaranteed.  
 Every home should have them

**HAWAIIAN SONGS**

40 Selected ones for \$3.00

—FOR SALE AT THE—  
**HAWAIIAN BAZAAR, MASONIC TEMPLE.**  
 Corner Hotel and Alakea Streets.

**Just Landed,**  
 EX MOHICAN,  
 A Splendid Consignment of Surreys, Phaetons,  
 Buggies, Road Carts, and Harness.  
 Specially Selected for Local Requirements.

**Honolulu Carriage Manufactory**  
**W. W. WRIGHT, Prop'r.**  
 FORT STREET, ABOVE HOTEL.

**Horses, Cattle, Sheep and Dogs**  
**ALL HAVE THEIR ILLS.**  
**REMEDIES MADE BY JOHN POTTIE & SONS,**  
 Veterinary Surgeons of World-wide Fame, will  
**CURE: THOSE ILLS.**

Money is Saved by Investing in Pottie's Remedies.  
 Black Oils for Sprains, Gall Salve for Sore Necks, White Oils for Swollen Glands  
 Green Lotion, great healing agent, Soothing Oils for Skin Eruptions,  
 Black Ointment for Horses' Feet, Electric Oils, a mild blister,  
 Pottie Eye Salve for Sore Eyes,  
 Vermin Soap for Dogs, Sheep, Cattle, Horses, Shrubs and Tree  
 This is only a partial list; if you don't see what you want ask  
**C. W. MACFARLANE,**  
 Agent for the Hawaiian Islands.

**CARRIAGE, WAGON AND TRUCK**  
**Repairing, Painting, Trimming and Manufacturing**  
 Fine Horseshoeing a Specialty.

**Agency Rubber Tire Wheel Company.**  
**HAWAIIAN CARRIAGE MANUFACTURING CO.**  
 Queen Street near Fort.

**Consult WANTS in To-day's Bulletin**

**Hotels and Restaurants.**

**CIVIL SERVICE RULES**  
 IN OUR RESTAURANT.

It has to. Our waiters are trained to be civil, quick and attentive to our guests. Our chef is unrivaled in preparation of luscious and appetizing dishes. Everything is scrupulously clean, everything as comfortable as we can make it. And the prices are always in reason.

**Home Bakery Cafe.**  
**The Best Meal Cafe.**  
**WE OFFER YOU THE**

**Best 5c. Cigar**

There had for the money.  
 CLOSING OUT ALL OUR DOMESTIC CIGARS

**Beaver Lunch Rooms**  
 H. J. NOLTE.

**Metropolitan Meat Co.**  
 108 KING STREET.  
 G. J. VALLER, : : MANAGER

Wholesale and Retail  
**BUTCHERS**  
 —AND—  
 Navy Contractors

**Oregon and Tamales**  
**Burbank Potatoes**  
**Fresh Ranch Eggs**  
**Naval Oranges**

Per Australia

**J. R. MILLS**  
 Lincoln Block, King street.

**BREAKFAST**

Is the foretaste of the whole day. Spoon that and we probably spoil it. Be sure the coffee is good, and—that it is from

**LEWIS & CO.,**  
 LEADING GROCERS

Beer and Wine Dealers.

**LOVEJOY & CO.**  
 IMPORTERS, AND WHOLESALE  
**Wine and Liquor Dealers.**

Agents for the Bottled Kaiser Beer of Seattle.  
 No. 19 NUTMAN STREET  
 Foster Block, HONOLULU, HAWAIIAN ISLANDS.  
 P. O. Box 117. Mutual Telephone 108.

**CONSALVES & CO., Ltd**

WHOLESALE GROCERS AND WINE MERCHANTS.

325 Queen Street, Honolulu, H. I.

**Consolidated Soda Water Co., Ltd**  
**Esplanade,**  
 Corner Allen & Fort Sts., Honolulu.

**HOLLISTER & CO.,**

**ED. A. WILLIAMS**  
**Has Temporarily Removed**

—His Undertaking Parlors to Six Hundred and Fifteen and a Half, Fort street, directly opposite the old stand. ....

1452-11W

**H. F. BERTELMAN'S**  
**Carpenter Shop**  
 .... IS REMOVED

To rear of old stand. Entrance on King street. Orders left at either shop, or office, at Jas. Nott's store, King street, will receive prompt attention.

**CHARLES CRAMER,**  
 Tailor.

Is now located with C. Grotte, tailor, Union Street.

**HEALTH BOARD MEETING**

At a meeting of the Board of Health yesterday afternoon Minister Cooper presided in place of Dr. Wood. The others present were: Dr. Day, Geo. W. Smith, F. J. Lowrey and F. M. Hatch. Minister Cooper stated that Messrs. Arthur Wilder, Lyle Dickey and himself would constitute the Board's investigating committee.

Minister Cooper read a communication from J. Alfred Magoon, Dr. Day and W. F. Allen, arbitrators in the Queen hotel matter, recommending the payment to Mr. Azbill, proprietor, of \$1,800 for the use of the hotel one month. Mr. Azbill asked for \$1,850, the extra \$50 being for arbitration expenses, but this was not allowed. Two arbitrators at least served gratis.

Minister Cooper announced the appointment of Wm. Smithies, superintendent at the kerosene warehouse detention camp in place of A. L. C. Atkinson.

Alex. Dowsett's request to be allowed to go to Puloa to round up cattle for transportation to Honolulu was granted.

Minister Cooper reported that he had prevented N. F. Burgess from removing portions of his building on King street after the whole row had been condemned by the Board as unsanitary and an auction sale of the same stopped. Engineer Cousins had made another investigation and reported that the building next to the Metropolitan Market belonged to Mr. Waller whose special request was to the effect that none of the rotten lumber of the houses in the row be allowed to be carted away. As President Wood had distinctly refused Mr. Burgess permission to carry away anything from the rotten row the Board passed the following resolution:

Whereas, the frame buildings situated on King street on land belonging to the Austin Estate, between the Metropolitan Meat Market and Chisholm's shop, having been declared insanitary by the sanitary engineer of the Board; therefore, be it

Resolved, That the said material of the buildings be declared a menace to public health and that the owners be required to remove such material to a place designated by the Board, there to be destroyed by fire.

Judge Perry, of the Citizens' Sanitary Committee sent in a list of the premises and buildings considered insanitary by the inspectors. It was voted that these with the exception of the Kewalo district and ponds be referred to Sanitary Engineer Cousins.

The Board spent some time in the discussion of meat from Sydney, a place now infected with plague, but no conclusion was arrived at. The matter will be referred to a special committee.

Messrs. Peacock & Co. sent in a sample of corrugated paper to be used instead of straw in the shipment of liquor. The Board sanctioned its use.

It was voted that the merchandise of the South street tenement house be removed to the Aala warehouse before setting fire to the place.

Mrs. Atcherley and others were given permission to go into quarantine at the Brown place, Koko Head.

It was voted that the guards be removed from Aluli's place in Kailih, it having developed that this man did not die of plague.

The request of Henry Smith, clerk of the Supreme Court, to send several record books to clerks of the court on the other islands, was granted.

**INSANITARY LOCALITIES.**

Following is a list of unsanitary spots turned in at the Board of Health office by the Citizens' Sanitary Committee yesterday:

1. Chinese stables, Waikiki side of Liliha street, near King. Great lack of ventilation for those who room in the structure.
2. Japanese publishing house on Fort street.
3. Shack on Aala lane, opposite Joss house; might be mistaken for a woodshed. Exceedingly filthy. Occupied by about a dozen persons.
4. Premises southwest corner Queen and Alakea streets, used as a Chinese restaurant, and adjoining premises makai. Location of cesspool.
5. Closet on Pacific Mail wharf.
6. Public urinals are badly needed along the waterfront to relieve lumber yards and other premises from nuisances.
7. Kewalo district.
8. Chinese camp mauka side of Beretania street, between Keamoku and Piikoi streets.
9. Fire department at head of Piikoi street. Dumps all its swill and rubbish in the small gulch at side of building. This is offensive to the neighbors.
10. Campbell block rear of Phillips & Co. and of Frank Brown. Closets are insanitary. They are old fashioned and so constructed that they are not (and cannot be) flushed after use. New closets should be supplied. Nolte's kitchen. Cement floor should be laid down.
11. Premises southwest corner of Nuuanu and Wylie streets.
12. Lodging house of Lun Leong, corner of Beretania and Artesian streets.
13. Portugueseville on Beretania street, opposite H. W. Schmidt's residence.
14. Old Chinese theater, stagnant pool in the rear, into which all kinds of filth is being thrown.
15. In the Chinese bakery on King street two of the laborers sleep in apartments to which daylight has no access, there being no windows.
16. A new Chinese livery stable on the Waikiki side of Liliha street, said building is set back from the street about 100 yards, has apartments on the upper floor destined for bedrooms.

The rooms on one side of the corridor are provided with small windows opening up into the corridor. Another set of rooms on the opposite side has no windows whatever.

17. Pond lying between O. R. & I. Co.'s depot and Oahu prison. Bad odor therefrom at times. Pond should be filled up.

Real Estate and Insurance.

**CASTLE & COOKE, Ltd**  
 IMPORTERS

**LIFE and FIRE INSURANCE AGENTS.**

AGENTS FOR ..

**NEW ENGLAND MUTUAL LIFE INSURANCE CO. OF BOSTON.**

**ETNA FIRE INSURANCE COMPANY OF HARTFORD.**

HENRY ST. GOAR,  
 EDWARD POLLITZ.

Members Stock and Bond Exchange.

**EDWARD POLLITZ & CO**

COMMISSION BROKERS AND DEALERS IN INVESTMENT SECURITIES .....

Particular attention given to purchase and sale of Hawaiian Sugar Stock.  
 Loans Negotiated. Eastern and Foreign Stock and Bonds.

403 California St.,  
 San Francisco, Cal.

**W. C. ACHI & CO.**  
 Brokers & Dealers

**REAL ESTATE**

We will buy or sell Real Estate; if parts of the group.  
 We will sell Properties on Reasonable Commissions.

OFFICE, 10 WEST KING STREET

**DAVID DAYTON,**  
 Real Estate Broker.

223 MERCHANT ST.

FOR SALE.  
 Twelve Chinese Granite Bitchin Posts, \$5 each.  
 Property in town.  
 HOUSES TO LET.

**T. R. MOSSMAN**  
 Real Estate Agent.

Abstractor and Searcher of Titles.  
 Loans negotiated.  
 Rents collected.

Campbell Building,  
 Merchant street.

**JOHN H. SOPER**

**Stock and Bond Broker**

116 Merchant Street.

**CHAS. J. FALK,**  
**STOCK AND BOND BROKER**

Member Honolulu Stock Exchange.  
 Room 301, Judd Building.  
 1250

**JAS. F. MORGAN,**  
 STOCK AND BOND BROKER

Member Honolulu Stock Exchange.  
 Room 301, Judd Building.  
 1250

**Expert Appraisement of Real Estate and Furniture**

**WILLIAM SAVIDGE,**  
 Stock and Bond Broker

Member of Hawaiian Stock Exchange.  
 McInerney Block, Fort Street.

**P. E. R. STRAUOH,**  
 Real Estate Broker

Financial Agent and Collector.  
 Lincoln Block, 639 King street.  
 Telephone 941.

**A. J. CAMPBELL,**  
 Stock and Bond Broker

Member of the Honolulu Stock Exchange.  
 Office Queen street, opposite Union Feed Company.  
 Telephone 506. P. O. Box 171.

**JAN. F. MORVAN,**  
 Real Estate and Stock Broker

Member of Honolulu Stock Exchange.  
 Queen street.  
 Telephone 78. P. O. Box 591.

Agents, Brokers and Jobbers.

**W. G. Irwin & Co.**  
 Limited

AGENTS FOR—  
 Western Sugar Refinery Co., of S. Francisco.  
 Baldwin Locomotive Works of Philadelphia Penn. U S A  
 Newell Universal Mill Co. (National Case Shredder) New York U S A  
 N. Onlandt & Co's Chemical Apparatus  
 Alex. Cross & Sons, high grade mill utilizers for Cane and Coffee.  
 Reed's Steam Pipe Machinery.

ALSO OFFER FOR SALE  
 Paraffine Paint Co's P & R Paints and Papers, Lucol and Lisam.  
 Oils, raw and boiled.  
 Indurine (a cold water paint, in white and colors  
 Filter Press Cloths, Cement, Bricks and Bricks.

**CASTLE & COOKE,**  
 LIMITED,  
 HONOLULU,  
 Commission Merchants  
**SUGAR FACTORS.**

AGENTS FOR

The Ewa Plantation Co.  
 The Waialua Agricultural Co., Ltd.  
 The Kohala Sugar Co.  
 The Waialae Sugar Co.  
 The Koloa Agricultural Co.  
 The Fulton Iron Works, St. Louis, Mo.  
 The Standard Oil Co.  
 The Geo. F. Blake Steam Pumps, Weston, Conn.  
 The New England Life Insurance Co. of Boston  
 The Aetna Fire Ins. Co. of Hartford, Conn.  
 The Alliance Assurance Co. of London.

**Alexander & Baldwin**  
**SUGAR FACTORS AND COMMISSION MERCHANTS**

Agents for the California and Orient Steamship Company.

**JUDD BUILDING,**  
 FORT STREET.

**Wm. G. Irwin & Co.**  
 (LIMITED).

Wm. G. Irwin, President and Manager.  
 Claus Spreckels, Vice President.  
 W. J. Giffard, Second Vice President.  
 I. M. Whitney, Jr., Treasurer and Cashier.  
 Geo. J. Ross, Auditor.

**Sugar Factors**  
 —AND—  
**Commission Agents**

AGENTS OF THE  
**OCEANIC STEAMSHIP COMPANY**  
 OF SAN FRANCISCO, CAL.

**BREWER & CO., LTD.,**  
 Queen Street, Honolulu, H. I.

Agents for—  
 Hawaiian Agricultural Company, American Sugar Company, Okala Sugar Plant Co., Onomeo Sugar Co., Honouliuli Sugar Co., Waialae Sugar Co., Maunaloa Sugar Co., Haunalea Par a Co., Molokai Sugar Co., Kona Sugar Co., Kona Coffee Co., Kona Tea Co., Kona Fruit Co., Kona Cattle Co., Kona Horses Co., Kona Poultry Co., Kona Fish Co., Kona Produce Co., Kona Groceries Co., Kona Hardware Co., Kona Lumber Co., Kona Building Co., Kona Carpentry Co., Kona Painting Co., Kona Drapery Co., Kona Upholstery Co., Kona Furniture Co., Kona Antiques Co., Kona Jewelry Co., Kona Watches Co., Kona Clocks Co., Kona Toys Co., Kona Games Co., Kona Books Co., Kona Stationery Co., Kona Printing Co., Kona Advertising Co., Kona Real Estate Co., Kona Insurance Co., Kona Law Co., Kona Medicine Co., Kona Surgery Co., Kona Dentistry Co., Kona Optics Co., Kona Photography Co., Kona Music Co., Kona Art Co., Kona Science Co., Kona Education Co., Kona Religion Co., Kona Philosophy Co., Kona History Co., Kona Geography Co., Kona Astronomy Co., Kona Meteorology Co., Kona Botany Co., Kona Zoology Co., Kona Geology Co., Kona Anthropology Co., Kona Archaeology Co., Kona Ethnology Co., Kona Linguistics Co., Kona Philology Co., Kona Papyrology Co., Kona Epigraphy Co., Kona Numismatics Co., Kona Heraldry Co., Kona Genealogy Co., Kona Onomastics Co., Kona Bibliography Co., Kona Librarianship Co., Kona Archival Science Co., Kona Museology Co., Kona Nematology Co., Kona Oology Co., Kona Ichthyology Co., Kona Malacology Co., Kona Conchology Co., Kona Mollusca Co., Kona Crustacea Co., Kona Arthropoda Co., Kona Insecta Co., Kona Entomology Co., Kona Mycology Co., Kona Botany Co., Kona Fungi Co., Kona Lichens Co., Kona Algae Co., Kona Cyanophyta Co., Kona Protozoa Co., Kona Microbiology Co., Kona Bacteriology Co., Kona Virology Co., Kona Immunology Co., Kona Pathology Co., Kona Pharmacology Co., Kona Therapeutics Co., Kona Hygiene Co., Kona Public Health Co., Kona Epidemiology Co., Kona Preventive Medicine Co., Kona Clinical Medicine Co., Kona Surgery Co., Kona Obstetrics Co., Kona Gynecology Co., Kona Pediatrics Co., Kona Geriatrics Co., Kona Ophthalmology Co., Kona Otorhinolaryngology Co., Kona Dermatology Co., Kona Venereology Co., Kona Neurology Co., Kona Psychiatry Co., Kona Psychology Co., Kona Anthropology Co., Kona Sociology Co., Kona Political Science Co., Kona Economics Co., Kona Law Co., Kona Jurisprudence Co., Kona Criminology Co., Kona Forensic Science Co., Kona Archaeology Co., Kona Ethnology Co., Kona Linguistics Co., Kona Philology Co., Kona Papyrology Co., Kona Epigraphy Co., Kona Numismatics Co., Kona Heraldry Co., Kona Genealogy Co., Kona Onomastics Co., Kona Bibliography Co., Kona Librarianship Co., Kona Archival Science Co., Kona Museology Co., Kona Nematology Co., Kona Oology Co., Kona Ichthyology Co., Kona Malacology Co., Kona Conchology Co., Kona Mollusca Co., Kona Crustacea Co., Kona Arthropoda Co., Kona Insecta Co., Kona Entomology Co., Kona Mycology Co., Kona Botany Co., Kona Fungi Co., Kona Lichens Co., Kona Algae Co., Kona Cyanophyta Co., Kona Protozoa Co., Kona Microbiology Co., Kona Bacteriology Co., Kona Virology Co., Kona Immunology Co., Kona Pathology Co., Kona Pharmacology Co., Kona Therapeutics Co., Kona Hygiene Co., Kona Public Health Co., Kona Epidemiology Co., Kona Clinical Medicine Co., Kona Surgery Co., Kona Obstetrics Co., Kona Gynecology Co., Kona Pediatrics Co., Kona Geriatrics Co., Kona Ophthalmology Co., Kona Otorhinolaryngology Co., Kona Dermatology Co., Kona Venereology Co., Kona Neurology Co., Kona Psychiatry Co., Kona Psychology Co., Kona Anthropology Co., Kona Sociology Co., Kona Political Science Co., Kona Economics Co., Kona Law Co., Kona Jurisprudence Co., Kona Criminology Co., Kona Forensic Science Co., Kona Archaeology Co., Kona Ethnology Co., Kona Linguistics Co., Kona Philology Co., Kona Papyrology Co., Kona Epigraphy Co., Kona Numismatics Co., Kona Heraldry Co., Kona Genealogy Co., Kona Onomastics Co., Kona Bibliography Co., Kona Librarianship Co., Kona Archival Science Co., Kona Museology Co., Kona Nematology Co., Kona Oology Co., Kona Ichthyology Co., Kona Malacology Co., Kona Conchology Co., Kona Mollusca Co., Kona Crustacea Co., Kona Arthropoda Co., Kona Insecta Co., Kona Entomology Co., Kona Mycology Co., Kona Botany Co., Kona Fungi Co., Kona Lichens Co., Kona Algae Co., Kona Cyanophyta Co., Kona Protozoa Co., Kona Microbiology Co., Kona Bacteriology Co., Kona Virology Co., Kona Immunology Co., Kona Pathology Co., Kona Pharmacology Co., Kona Therapeutics Co., Kona Hygiene Co., Kona Public Health Co., Kona Epidemiology Co., Kona Clinical Medicine Co., Kona Surgery Co., Kona Obstetrics Co., Kona Gynecology Co., Kona Pediatrics Co., Kona Geriatrics Co., Kona Ophthalmology Co., Kona Otorhinolaryngology Co., Kona Dermatology Co., Kona Venereology Co., Kona Neurology Co., Kona Psychiatry Co., Kona Psychology Co., Kona Anthropology Co., Kona Sociology Co., Kona Political Science Co., Kona Economics Co., Kona Law Co., Kona Jurisprudence Co., Kona Criminology Co., Kona Forensic Science Co., Kona Archaeology Co., Kona Ethnology Co., Kona Linguistics Co., Kona Philology Co., Kona Papyrology Co., Kona Epigraphy Co., Kona Numismatics Co., Kona Heraldry Co., Kona Genealogy Co., Kona Onomastics Co., Kona Bibliography Co., Kona Librarianship Co., Kona Archival Science Co., Kona Museology Co., Kona Nematology Co., Kona Oology Co., Kona Ichthyology Co., Kona Malacology Co., Kona Conchology Co., Kona Mollusca Co., Kona Crustacea Co., Kona Arthropoda Co., Kona Insecta Co., Kona Entomology Co., Kona Mycology Co., Kona Botany Co., Kona Fungi Co., Kona Lichens Co., Kona Algae Co., Kona Cyanophyta Co., Kona Protozoa Co., Kona Microbiology Co., Kona Bacteriology Co., Kona Virology Co., Kona Immunology Co., Kona Pathology Co., Kona Pharmacology Co., Kona Therapeutics Co., Kona Hygiene Co., Kona Public Health Co., Kona Epidemiology Co., Kona Clinical Medicine Co., Kona Surgery Co., Kona Obstetrics Co., Kona Gynecology Co., Kona Pediatrics Co., Kona Geriatrics Co., Kona Ophthalmology Co., Kona Otorhinolaryngology Co., Kona Dermatology Co., Kona Venereology Co., Kona Neurology Co., Kona Psychiatry Co., Kona Psychology Co., Kona Anthropology Co., Kona Sociology Co., Kona Political Science Co., Kona Economics Co., Kona Law Co., Kona Jurisprudence Co., Kona Criminology Co., Kona Forensic Science Co., Kona Archaeology Co., Kona Ethnology Co., Kona Linguistics Co., Kona Philology Co., Kona Papyrology Co., Kona Epigraphy Co., Kona Numismatics Co., Kona Heraldry Co., Kona Genealogy Co., Kona Onomastics Co., Kona Bibliography Co., Kona Librarianship Co., Kona Archival Science Co., Kona Museology Co., Kona Nematology Co., Kona Oology Co., Kona Ichthyology Co., Kona Malacology Co., Kona Conchology Co., Kona Mollusca Co., Kona Crustacea Co., Kona Arthropoda Co., Kona Insecta Co., Kona Entomology Co., Kona Mycology Co., Kona Botany Co., Kona Fungi Co., Kona Lichens Co., Kona Algae Co., Kona Cyanophyta Co., Kona Protozoa Co., Kona Microbiology Co., Kona Bacteriology Co., Kona Virology Co., Kona Immunology Co., Kona Pathology Co., Kona Pharmacology Co., Kona Therapeutics Co., Kona Hygiene Co., Kona Public Health Co., Kona Epidemiology Co., Kona Clinical Medicine Co., Kona Surgery Co., Kona Obstetrics Co., Kona Gynecology Co., Kona Pediatrics Co., Kona Geriatrics Co., Kona Ophthalmology Co., Kona Otorhinolaryngology Co., Kona Dermatology Co., Kona Venereology Co., Kona Neurology Co., Kona Psychiatry Co., Kona Psychology Co., Kona Anthropology Co., Kona Sociology Co., Kona Political Science Co., Kona Economics Co., Kona Law Co., Kona Jurisprudence Co., Kona Criminology Co., Kona Forensic Science Co., Kona Archaeology Co., Kona Ethnology Co., Kona Linguistics Co., Kona Philology Co., Kona Papyrology Co., Kona Epigraphy Co., Kona Numismatics Co., Kona Heraldry Co., Kona Genealogy Co., Kona Onomastics Co., Kona Bibliography Co., Kona Librarianship Co., Kona Archival Science Co., Kona Museology Co., Kona Nematology Co., Kona Oology Co., Kona Ichthyology Co., Kona Malacology Co., Kona Conchology Co., Kona Mollusca Co., Kona Crustacea Co., Kona Arthropoda Co., Kona Insecta Co., Kona Entomology Co., Kona Mycology Co., Kona Botany Co., Kona Fungi Co., Kona Lichens Co., Kona Algae Co., Kona Cyanophyta Co., Kona Protozoa Co., Kona Microbiology Co., Kona Bacteriology Co., Kona Virology Co., Kona Immunology Co., Kona Pathology Co., Kona Pharmacology Co., Kona Therapeutics Co., Kona Hygiene Co., Kona Public Health Co., Kona Epidemiology Co., Kona Clinical Medicine Co., Kona Surgery Co., Kona Obstetrics Co., Kona Gynecology Co., Kona Pediatrics Co., Kona Geriatrics Co., Kona Ophthalmology Co., Kona Otorhinolaryngology Co., Kona Dermatology Co., Kona Venereology Co., Kona Neurology Co., Kona Psychiatry Co., Kona Psychology Co., Kona Anthropology Co., Kona Sociology Co., Kona Political Science Co., Kona Economics Co., Kona Law Co., Kona Jurisprudence Co., Kona Criminology Co., Kona Forensic Science Co., Kona Archaeology Co., Kona Ethnology Co., Kona Linguistics Co., Kona Philology Co., Kona Papyrology Co., Kona Epigraphy Co., Kona Numismatics Co., Kona Heraldry Co., Kona Genealogy Co., Kona Onomastics Co., Kona Bibliography Co., Kona Librarianship Co., Kona Archival Science Co., Kona Museology Co., Kona Nematology Co., Kona Oology Co., Kona Ichthyology Co., Kona Malacology Co., Kona Conchology Co., Kona Mollusca Co., Kona Crustacea Co., Kona Arthropoda Co., Kona Insecta Co., Kona Entomology Co., Kona Mycology Co., Kona Botany Co., Kona Fungi Co., Kona Lichens Co., Kona Algae Co., Kona Cyanophyta Co., Kona Protozoa Co., Kona Microbiology Co., Kona Bacteriology Co., Kona Virology Co., Kona Immunology Co., Kona Pathology Co., Kona Pharmacology Co., Kona Therapeutics Co., Kona Hygiene Co., Kona Public Health Co., Kona Epidemiology Co., Kona Clinical Medicine Co., Kona Surgery Co., Kona Obstetrics Co., Kona Gynecology Co., Kona Pediatrics Co., Kona Geriatrics Co., Kona Ophthalmology Co., Kona Otorhinolaryngology Co., Kona Dermatology Co., Kona Venereology Co., Kona Neurology Co., Kona Psychiatry Co., Kona Psychology Co., Kona Anthropology Co., Kona Sociology Co., Kona Political Science Co., Kona Economics Co., Kona Law Co., Kona Jurisprudence Co., Kona Criminology Co., Kona Forensic Science Co., Kona Archaeology Co., Kona Ethnology Co., Kona Linguistics Co., Kona Philology Co., Kona Papyrology Co., Kona Epigraphy Co., Kona Numismatics Co., Kona Heraldry Co., Kona Genealogy Co., Kona Onomastics Co., Kona Bibliography Co., Kona Librarianship Co., Kona Archival Science Co., Kona Museology Co., Kona Nematology Co., Kona Oology Co., Kona Ichthyology Co., Kona Malacology Co., Kona Conchology Co., Kona Mollusca Co., Kona Crustacea Co., Kona Arthropoda Co., Kona Insecta Co., Kona Entomology Co., Kona Mycology Co., Kona Botany Co., Kona Fungi Co., Kona Lichens Co., Kona Algae Co., Kona Cyanophyta Co., Kona Protozoa Co., Kona Microbiology Co., Kona Bacteriology Co., Kona Virology Co., Kona Immunology Co., Kona Pathology Co., Kona Pharmacology Co., Kona Therapeutics Co., Kona Hygiene Co., Kona Public Health Co., Kona Epidemiology Co., Kona Clinical Medicine Co., Kona Surgery Co., Kona Obstetrics Co., Kona Gynecology Co., Kona Pediatrics Co., Kona Geriatrics Co., Kona Ophthalmology Co., Kona Otorhinolaryngology Co., Kona Dermatology Co., Kona Venereology Co., Kona Neurology Co., Kona Psychiatry Co., Kona Psychology Co., Kona Anthropology Co., Kona Sociology Co., Kona Political Science Co., Kona Economics Co., Kona Law Co., Kona Jurisprudence Co., Kona Criminology Co., Kona Forensic Science Co., Kona Archaeology Co., Kona Ethnology Co., Kona Linguistics Co., Kona Philology Co., Kona Papyrology Co., Kona Epigraphy Co., Kona Numismatics Co., Kona Heraldry Co., Kona Genealogy Co., Kona Onomastics Co., Kona Bibliography Co., Kona Librarianship Co., Kona Archival Science Co., Kona Museology Co., Kona Nematology Co., Kona Oology Co., Kona Ichthyology Co., Kona Malacology Co., Kona Conchology Co., Kona Mollusca Co., Kona Crustacea Co., Kona Arthropoda Co., Kona Insecta Co., Kona Entomology Co., Kona Mycology Co., Kona Botany Co., Kona Fungi Co., Kona Lichens Co., Kona Algae Co., Kona Cyanophyta Co., Kona Protozoa Co., Kona Microbiology Co., Kona Bacteriology Co., Kona Virology Co., Kona Immunology Co., Kona Pathology Co., Kona Pharmacology Co., Kona Therapeutics Co., Kona Hygiene Co., Kona Public Health Co., Kona Epidemiology Co., Kona Clinical Medicine Co., Kona Surgery Co., Kona Obstetrics Co., Kona Gynecology Co., Kona Pediatrics Co., Kona Geriatrics Co., Kona Ophthalmology Co., Kona Otorhinolaryngology Co., Kona Dermatology Co., Kona Venereology Co., Kona Neurology Co., Kona Psychiatry Co., Kona Psychology Co., Kona Anthropology Co., Kona Sociology Co., Kona Political Science Co., Kona Economics Co., Kona Law Co., Kona Jurisprudence Co., Kona Criminology Co., Kona Forensic Science Co., Kona Archaeology Co., Kona Ethnology Co., Kona Linguistics Co., Kona Philology Co., Kona Papyrology Co., Kona Epigraphy Co., Kona Numismatics Co., Kona Heraldry Co., Kona Genealogy Co., Kona Onomastics Co., Kona Bibliography Co., Kona Librarianship Co., Kona Archival Science Co., Kona Museology Co., Kona Nematology Co., Kona Oology Co., Kona Ichthyology Co., Kona Malacology Co., Kona Conchology Co., Kona Mollusca Co., Kona Crustacea Co., Kona Arthropoda Co., Kona Insecta Co., Kona Entomology Co., Kona Mycology Co., Kona Botany Co., Kona Fungi Co., Kona Lichens Co., Kona Algae Co., Kona Cyanophyta Co., Kona Protozoa Co., Kona Microbiology Co., Kona Bacteriology Co., Kona Virology Co., Kona Immunology Co., Kona Pathology Co., Kona Pharmacology Co., Kona Therapeutics Co., Kona Hygiene Co., Kona Public Health Co., Kona Epidemiology Co., Kona Clinical Medicine Co., Kona Surgery Co., Kona Obstetrics Co., Kona Gynecology Co., Kona Pediatrics Co., Kona Geriatrics Co., Kona Ophthalmology Co., Kona Otorhinolaryngology Co., Kona Dermatology Co., Kona Venereology Co., Kona Neurology Co., Kona Psychiatry Co., Kona Psychology Co., Kona Anthropology Co., Kona Sociology Co., Kona Political Science Co., Kona Economics Co., Kona Law Co., Kona Jurisprudence Co., Kona Criminology Co., Kona Forensic Science Co., Kona Archaeology Co., Kona Ethnology Co., Kona Linguistics Co., Kona Philology Co., Kona Papyrology Co., Kona Epigraphy Co., Kona Numismatics Co., Kona Heraldry Co., Kona Genealogy Co., Kona Onomastics Co., Kona Bibliography Co., Kona Librarianship Co., Kona Archival Science Co., Kona Museology Co., Kona Nematology Co., Kona Oology Co., Kona Ichthyology Co., Kona Malacology Co., Kona Conchology Co., Kona Mollusca Co., Kona Crustacea Co., Kona Arthropoda Co., Kona Insecta Co., Kona Entomology Co., Kona Mycology Co., Kona Botany Co., Kona Fungi Co., Kona Lichens Co., Kona Algae Co., Kona Cyanophyta Co., Kona Protozoa Co., Kona Microbiology Co., Kona Bacteriology Co., Kona Virology Co., Kona Immunology Co., Kona Pathology Co., Kona Pharmacology Co., Kona Therapeutics Co., Kona Hygiene Co., Kona Public Health Co., Kona Epidemiology Co., Kona Clinical Medicine Co., Kona Surgery Co., Kona Obstetrics Co., Kona Gynecology Co., Kona Pediatrics Co., Kona Geriatrics Co., Kona Ophthalmology Co., Kona Otorhinolaryngology Co., Kona Dermatology Co., Kona Venereology Co., Kona Neurology Co., Kona Psychiatry Co., Kona Psychology Co., Kona Anthropology Co., Kona Sociology Co., Kona Political Science Co., Kona Economics Co., Kona Law Co., Kona Jurisprudence Co., Kona Criminology Co., Kona Forensic Science Co., Kona Archaeology Co., Kona Ethnology Co., Kona Linguistics Co., Kona Philology Co., Kona Papyrology Co., Kona Epigraphy Co., Kona Numismatics Co., Kona Heraldry Co., Kona Genealogy Co., Kona Onomastics Co., Kona Bibliography Co., Kona Librarianship Co., Kona Archival Science Co., Kona Museology Co., Kona Nematology Co., Kona Oology Co., Kona Ichthyology Co., Kona Malacology Co., Kona Conchology Co., Kona Mollusca Co., Kona Crustacea Co., Kona Arthropoda Co., Kona Insecta Co., Kona Entomology Co., Kona Mycology Co., Kona Botany Co., Kona Fungi Co., Kona Lichens Co., Kona Algae Co., Kona Cyanophyta Co., Kona Protozoa Co., Kona Microbiology Co., Kona Bacteriology Co., Kona Virology Co., Kona Immunology Co., Kona Pathology Co., Kona Pharmacology Co., Kona Therapeutics Co., Kona Hygiene Co., Kona Public Health Co., Kona Epidemiology Co., Kona Clinical Medicine Co., Kona Surgery Co., Kona Obstetrics Co., Kona Gynecology Co., Kona Pediatrics Co., Kona Geriatrics Co., Kona Ophthalmology Co., Kona Otorhinolaryngology Co., Kona Dermatology Co., Kona Venereology Co., Kona Neurology Co., Kona Psychiatry Co., Kona Psychology Co., Kona Anthropology Co., Kona Sociology Co., Kona Political Science Co., Kona Economics Co., Kona Law Co., Kona Jurisprudence Co., Kona Criminology Co., Kona Forensic Science Co., Kona Archaeology Co., Kona Ethnology Co., Kona Linguistics Co., Kona Philology Co., Kona Papyrology Co., Kona Epigraphy Co., Kona Numismatics Co., Kona Heraldry Co., Kona Genealogy Co., Kona Onomastics Co., Kona Bibliography Co., Kona Librarianship Co., Kona Archival Science Co., Kona Museology Co., Kona Nematology Co., Kona Oology Co., Kona Ichthyology Co., Kona Malacology Co., Kona Conchology Co., Kona Mollusca Co., Kona Crustacea Co., Kona Arthropoda Co., Kona Insecta Co., Kona Entomology Co., Kona Mycology Co., Kona Botany Co., Kona Fungi Co., Kona Lichens Co., Kona Algae Co., Kona Cyanophyta Co., Kona Protozoa Co., Kona Microbiology Co., Kona Bacteriology Co., Kona Virology Co., Kona Immunology Co., Kona Pathology Co., Kona Pharmacology Co., Kona Therapeutics Co., Kona Hygiene Co., Kona Public Health Co., Kona Epidemiology Co., Kona Clinical Medicine Co., Kona Surgery Co., Kona Obstetrics Co., Kona Gynecology Co., Kona Pediatrics Co., Kona Geriatrics Co., Kona Ophthalmology Co., Kona Otorhinolaryngology Co., Kona Dermatology Co., Kona Venereology Co., Kona Neurology Co., Kona Psychiatry Co., Kona Psychology Co., Kona Anthropology Co., Kona Sociology Co., Kona Political Science Co., Kona Economics Co., Kona Law Co., Kona Jurisprudence Co., Kona Criminology Co., Kona Forensic Science Co., Kona Archaeology Co., Kona Ethnology Co., Kona Linguistics Co., Kona Philology Co., Kona Papyrology Co., Kona Epigraphy Co., Kona Numismatics Co., Kona Heraldry Co., Kona Genealogy Co., Kona Onomastics Co., Kona Bibliography Co., Kona Librarianship Co., Kona Archival Science Co., Kona Museology Co., Kona Nematology Co., Kona Oology Co., Kona Ichthyology Co., Kona Malacology Co., Kona Conchology Co., Kona Mollusca Co., Kona Crustacea Co., Kona Arthropoda Co., Kona Insecta Co., Kona Entomology Co., Kona Mycology Co., Kona Botany Co., Kona Fungi Co., Kona Lichens Co., Kona Algae Co., Kona Cyanophyta Co., Kona Protozoa Co., Kona Microbiology Co., Kona Bacteriology Co., Kona Virology Co., Kona Immunology Co., Kona Pathology Co., Kona Pharmacology Co., Kona Therapeutics Co., Kona Hygiene Co., Kona Public Health Co., Kona Epidemiology Co., Kona Clinical Medicine Co., Kona Surgery Co., Kona Obstetrics Co., Kona Gynecology Co., Kona Pediatrics Co., Kona Geriatrics Co., Kona Ophthalmology Co., Kona Otorhinolaryngology Co., Kona Dermatology Co., Kona Venereology Co., Kona Neurology Co., Kona Psychiatry Co., Kona Psychology Co., Kona Anthropology Co., Kona Sociology Co., Kona Political Science Co., Kona Economics Co., Kona Law Co., Kona Jurisprudence Co., Kona Criminology Co., Kona Forensic Science Co., Kona Archaeology Co., Kona Ethnology Co., Kona Linguistics Co., Kona Philology Co., Kona Papyrology Co., Kona Epigraphy Co., Kona Numismatics Co., Kona Heraldry Co., Kona Genealogy Co., Kona Onomastics Co., Kona Bibliography Co., Kona Librarianship Co., Kona Archival Science Co., Kona Museology Co., Kona Nematology Co., Kona Oology Co., Kona Ichthyology Co., Kona Malacology Co., Kona Conchology Co., Kona Mollusca Co., Kona Crustacea Co., Kona Arthropoda Co., Kona Insecta Co., Kona Entomology Co., Kona Mycology Co., Kona Botany Co., Kona Fungi Co., Kona Lichens Co., Kona Algae Co., Kona Cyanophyta Co., Kona Protozoa Co., Kona Microbiology Co., Kona Bacteriology Co., Kona Virology Co., Kona Immunology Co., Kona Pathology Co., Kona Pharmacology Co., Kona Therapeutics Co., Kona Hygiene Co., Kona Public Health Co., Kona Epidemiology Co., Kona Clinical Medicine Co., Kona Surgery Co., Kona Obstetrics Co., Kona Gynecology Co., Kona Pediatrics Co., Kona Geriatrics Co., Kona Ophthalmology Co., Kona Otorhinolaryngology Co., Kona Dermatology Co., Kona Venereology Co., Kona Neurology Co., Kona Psychiatry Co., Kona Psychology Co., Kona Anthropology Co., Kona Sociology Co., Kona Political Science Co., Kona Economics Co., Kona Law Co., Kona Jurisprudence Co., Kona Criminology Co., Kona Forensic Science Co., Kona Archaeology Co., Kona Ethnology Co., Kona Linguistics Co., Kona Philology Co., Kona Papyrology Co., Kona Epigraphy Co., Kona Numismatics Co., Kona Heraldry Co., Kona Genealogy Co., Kona Onomastics Co., Kona Bibliography Co., Kona Librarianship Co., Kona Archival Science Co., Kona Museology Co., Kona Nemat

**EVENING BULLETIN.**  
 Published Every Day, except Sunday,  
 at 219 King street, Honolulu, H. I.,  
 by the  
**BULLETIN PUBLISHING COMPANY**  
 R. FARRINGTON, Editor  
 DANIEL LOGAN, City Editor

**SUBSCRIPTION RATES:**  
 Per month, anywhere in H. I., \$ .75  
 Per year, in H. I., 8.00  
 Per year, postpaid, U. S., Canada  
 or Mexico, 10.00  
 Per year, postpaid, other foreign  
 countries, 13.00  
 Payable invariably in advance.

**THURSDAY, FEBRUARY 15, 1900.**

**Kill the rats.** If your conscience will not allow the distribution of poison, use another method equally effective. But kill the rats.

The British War Office announces that Buller will not be heard from again till he reaches Ladysmith. Judging from past history the public will have time to forget Buller.

Special Agent Hartwell reports on none of the important subjects on which answers are desired from the Federal authorities. This is probably another evidence of Hartwell's powerful influence in Washington.

California has elected to the United States Senate a man who was born in Pennsylvania. If Hawaii's official circle were in control of California politics, the cry of carpet bagger would probably be raised against Senator Bard.

The energy with which Nicaragua canal legislation is being forced ahead should suggest to Honolulu the necessity of building for the future on broad lines. Opening the canal means more to Honolulu than to any other port of the Pacific.

A few days respite from the plague has given Maui new confidence. This is all right if it does not lead to carelessness. The history of the past in Honolulu is such as to warrant Maui citizens in renewing the vigor of their effort during the first lull in the excitement.

One day the government organ announces that Col. Little has received the well recognized honor of thirty-third degree Masonry. The next day the organ states that Little is a spiteful, unsophisticated "IT." In other words anyone who attempts to voice the sentiments of the people of Hilo is, in the estimation of our local officials, "Nit."

The views expressed by Hon. Arthur Sewall relative to conditions in Hawaii are of special value at this time when sensational reports are being sent broadcast through the States. Arthur Sewall's statements carry weight with business men of the United States whose favorable consideration is an important factor in the future of these islands.

**KILL THE RATS.**

Volunteers for the campaign against the rats should include every householder and business man of the city. Some objections have been made to the system of rat poisoning proposed by the Citizens' Committee, but this ought not to prevent the good work of destroying rats going on at the date named by the men in charge. If any householder believes that he can kill more rats, with less danger to himself and the community, by some other method than that proposed by the Committee, he is free to go ahead.

The object of the campaign is to kill rats, not to waste time discussing the best methods of dealing out the rodent death rate. The success of the effort depends largely on the degree of cooperation from every portion of the city. Any method which might drive the carriers of the pest from one place to another is worse than useless. The plan of the Committee may not be the best on earth, but it is the best thus far brought to notice. The critics have proposed nothing better, and if any considerable benefit is to be derived from rat extinction, the measures must be carried out by an immediate and concerted attack all along the line.

It is to be hoped that no citizen will act indifferently, thereby lessening the effectiveness of work of paramount importance to the future safety of the community.

**NO GAG LAW IN WASHINGTON.**

It is interesting to note the outburst of local government wrath occasioned by the disposition of Congressional committees to listen to the arguments of anyone outside the locally preferred circle of officials. Our local saints of the earth, who run things now, fail to appreciate, that

the situation is vastly changed in Washington so far as Hawaii was concerned. In the days of Hawaiian independence the "government" and diplomatic representatives controlled the situation at Washington. With Hawaii part and parcel of the United States, this advantage of official control is lost. Our official circle has now the same right to declare a citizen of Hawaii unworthy of a hearing at Washington as the representatives of the Trusts have to question the right of the labor lobby to be heard. Any and every citizen of the United States, whether from Hawaii or Florida, naturalized or native born, has the right to a hearing before any and every Congressional committee. The committees and Washington officials pass judgment on the credentials which the citizen holds. That authority is not possessed in Hawaii as in years gone by.

The fact that Hawaii's government in the past has been one of minority rule should not lead the ruling official circle to believe that this is to be continued under American administration. Congressional effort is centered on giving Hawaii a government that shall be acceptable to the people. The misfortune is that there are not more citizens of Hawaii ready to take the trouble to personally present their views on the local situation before the Congressional committees. That the ruling faction gets angry because these committees do not apply the gag rule is a fair demonstration of how our local saints would handle the people if given a free hand.

**PHILIPPINE GOVERNMENT**

Washington, Feb. 2.—The President today transmitted to Congress the first volume of the report of the Philippine Commission. It is a volume of 264 pages, including the appendix, and is signed by Professor Schurmann, Admiral Dewey, Colonel Denby and Professor Worcester. The principal subject dealt with is the plan of the Government proposed by the Commission, which includes a discussion of the Spanish Government existing prior to the war, the various reforms desired by the Filipinos and the constitutions proposed by them, together with the conclusions and plan suggested by the commission.

The report also covers many other matters connected with the social administration of the island, racial characteristics, education, secular and religious orders; the Chinese in the islands; public health; currency, etc., as well as the condition and needs of the United States in the Philippines from a naval and maritime standpoint. The second volume of the report, which will not be ready for several weeks, will contain a detailed description of the climate and natural resources of the islands.

The chief interest in the report naturally centers in the plan of government proposed by the Commission. The Commission announces itself unqualifiedly in favor of a government of the Philippines analogous to that of a Territory of the United States, with a Governor appointed by the President. They say it is desirable that the inhabitants of the archipelago should enjoy a large measure of home rule in local affairs, their towns to enjoy substantially the rights and privileges of towns in a Territory.

The provinces should be vested with substantially the same functions of a county in a territory; this system might be applied to Luzon and the Visayan Islands at once, and a beginning might be made on the coast of Mindanao. The Sulu archipelago calling for special arrangements with the Sultan, the Commission says need not be considered in this connection.

The Filipinos could manage their own town and county affairs through their own officers, whom they could elect with no help from American officials except such as would be involved in control from the central Government at Manila. The suffrage should be restricted by educational or property qualifications, or both. This system would necessitate a small body of American officials of great ability and integrity and of patience and tact in dealing with other races, and on this account the commission recommends that they should be paid high salaries.

**TRUST REFINERIES CONTINUE**

New York, Feb. 7.—President Havemeyer of the American Sugar Refining Company, was questioned regarding reports that the leading refineries of the company had been closed down as a result of loss of business, particularly because the loss of large confectionery and condensed milk contracts.

"The reports are totally untrue," said Mr. Havemeyer. "We have lost no business and we do not intend to lose any."

"The only refineries that have been closed down are the Spreckels Refinery in Philadelphia and the Jersey City Refinery. These have closed down to take account of stock and to clean up. This is usual at the end of the year, but the demand during the holidays and continuing through January was so unusual that the closing was deferred until now. The refineries will resume on Saturday. The Boston refinery may also close for a day or two, but the Williamsburg refinery will not be closed."

The effect on the stock market of the reports referred to was a decline of about 5 points on Sugar Trust stock.

**ART GOODS - -**

Just opened, direct shipments from the manufacturers. An invoice of

**French White China for Decorating.**  
 The finest assortment ever exhibited in Honolulu, direct from France.  
 Direct from the Fry Art Co.,  
**Fry's Vitrifiable Colors in Powder. Lustre Paint.**

Thirty thousand feet of  
**Picture Mouldings in the Latest Patterns.**  
 Our selection of **Pictures are the Latest from Art Centres.**  
**Howard Hitchcock's Oils, Water Colors, of Island Scenery and Fruits.**  
**China Firing a specialty, at reduced rates.**  
**The Latest in Lamp Goods.**

**The Pacific Hardware Co., LIMITED**

**Art Rooms, - - Fort Street.**

**Thomas Square Music.**  
 The band will play the following selections at a concert in Thomas Square at the usual time this evening:

**PART I.**  
 Overture—"Story City".....Fernandez  
 Finale—"Lucia".....Donizetti  
 Selection—"Mariana".....Wallace  
 Songs—  
 (a) "Lei Poi Moi" "Sweet Lei Mamo."  
 Miss J. Kelliaa.  
 (b) "Ku'i Wehiwehi" "Kokohi"  
 Mrs. N. Alapai.

**PART II.**  
 Selection—"The Winner".....Mackie  
 Waltz—"Paradise of the Pacific".....Berger  
 Two New Marches—"Ka Leo" and "Kuwilwili".....Berger  
 "The Star Spangled Banner."

**Contempt of Court.**  
 M. C. Fernando, steward of the bark Hollywood, was sentenced to six hours' imprisonment yesterday by Judge Wilcox for contempt of court. Fernando became obstreperous over a case in which he was the complainant and was told by Judge Wilcox to be quiet. Instead of doing this he arose and shook his fist at the judge. In an instant he had been sentenced as above and policemen were hurrying him below. Fernando will be tried on another charge this afternoon.

**Police Court Notes.**  
 In the Police Court this forenoon the following cases were disposed of: F. Montresor, intending to commit an offense, reprimanded and discharged; nine boys charged with gambling, nolle pro'd; A. Wolf, cruelty to animals, reprimanded and discharged; C. Tobin, heedless driving, \$10 and costs; Otani, vagrancy, three months' imprisonment at hard labor.

If you are fond of pictures, drop in and look over the fresh lot of Copley Prints, Ca bons, and London Prints, covering over fifty subjects of the very latest publications.  
**KING BROS.,**  
 110 Hotel street.

Ethel—"What foolish things a young man will do when he is in love!" Edith (breathlessly)—"Oh, Ethel! Has he proposed?"

**TAKE - IT - EEZY - SWING**



—FOR—  
**Veranda, Lawn and Lanai.**  
**Pacific Cycle & M'fg Co.**  
 R. A. DEXTER, Manager.  
 EHLERS' BLOCK, - - FORT ST.

**Valentines**

**Valentines!**  
**Saint Valentine's Day**  
**WEDNESDAY,**  
**February 14th!**

**The Golden Rule Bazaar**

Is Displaying a Large Line of Valentines varying in prices from **5 Cents to \$2.50 Each**  
**816 FORT STREET.**

**We Are Still In the Swim!**

That's an old saying, yet true, and when we say we are in the swim, why we mean every word of it.

We have the swiftest TIES for the Holidays that you want to buy—eyes on, in all of the Latest Styles and Shapes. We have just replenished our stock of **GOLF SHIRTS**, and are strictly speaking right up-to-date in as complete a line of men's and boys' **FURNISHINGS** as can be shown in the largest city of the Mainland.

At our Hotel Street Store, Nos. 9 and 11, Waverley Block, we are going to give you a chance to win a fine **BICYCLE**. For every purchase of 50c. the customer is entitled to one ticket. The first who has the greatest number of tickets in Christmas morning at 12 o'clock wins the wheel.

**"The Kash,"**

TELEPHONES 679 and 96.  
**Two Stores.**  
**Two Large Stocks**  
**Of the Best Furnishings.**  
 Mechanic's Home, corner Hotel and Nuuanu streets, judging by day, week or month. Terms: 25 and 50 cents per night. \$1 and \$1.25 per week.

**Good Air. Good View. Good Health.**

A special invitation is extended to everybody to visit Honolulu's most delightful residence site

**PACIFIC HEIGHTS.**

Kaiulani Drive aptly termed, the Via Maxima or Grand Boulevard, and in itself an artistic piece of engineering—affords easy access to all points, as also scenic and marine views of exquisite grandeur at every turn.

**Electric Railway.**

Contracts have been let for material, and the work of construction, equipping and installation placed in the hands of a competent electrical engineer to be fully completed by June 1st. Having an independent power plant we are prepared to furnish electric power for lighting, heating and other purposes, to our home builders at most reasonable rates.

**As Promised.**

Our reservoirs are now completed and water mains laid so as to supply each lot. Permits for making water connections will be granted on application.

An inspection of the attractive homes now building, or the names of purchasers of lots, will convince anyone that **PACIFIC HEIGHTS** is the choicest and most select of all the residence sites of Honolulu.

For further information, prices, terms, etc., apply at the office of

**BRUCE WARING & CO. Progress Block.**

This space reserved for the **TEMPLE OF FASHION**

**INSURE YOUR LIFE**

**The : Germania : Life**  
 Insurance Company of New York.  
 The **GOLD BOND ENDOWMENT POLICY** is BETTER than U. S. Government Bonds.  
 Merchant Street Side Judd Building  
**EMMETT MAY, Manager.**

**Assessment Notice Waialua Agricultural Company, Limited.**  
 Notice is hereby given that an assessment of 60 per cent has been levied upon the 10,000 shares, new issue, of the Waialua Agricultural Co., Ltd., and that the same will be due and payable at the office of Castle & Cooke, Ltd., Jan. 15, 1900.  
 E. D. TENNEY,  
 Secretary Waialua Agr'l Co., Ltd.

**Notice of Assessment.**  
 Notice is hereby given that the eighth assessment of ten (10) per cent on the 100,000 stock of the HONOLULU RAPID TRANSIT AND LAND CO. will be due and payable to J. H. Fisher, treasurer, 411 Fort (upstairs), Honolulu, on the 1st day of February. The shares upon which assessment may remain unpaid after thirty days from said date, will be declared delinquent.  
 J. A. GILMAN,  
 Secretary H. R. T. & L. Co.  
 Honolulu, Feb. 1, 1900.

**GET IT! SOMETHING NEW!!**  
**Hawaiian Souvenir China**  
 (Nine Different Views.)

**Children's Books and Toys at Reduced Rates.**  
**Hawaiian News Co., Limited.**  
 Merchant Street

Per Cyrus Wakefield, JUST ARRIVED FROM SAN FRANCISCO. A Large Assortment of

GENERAL MERCHANDISE

Perfect Barker & Rice Plows, assorted sizes; Perfect Double Mould Board Plows, assorted sizes; Subsoil and Side-hill Plows, assorted sizes; Blacksmith Anvils, assorted sizes; Blacksmith, Carpenter and Pipe Vises, assorted sizes; Blacksmith Drilling Machines and Portable Forges, Baldwin's and Dr. Bailey's Ensilage Cutters, by hand or power—just the thing for stock; Galvanized Wire Netting, from 2 to 6 feet wide; Green and Brass Wire Cloth, 2 to 3 feet wide; Anti-Caloric Sectional Pine Coverings, and Plaster; Long and Short-handle Shovels, Long and Short-handle Spades, Axes from 3 to 4 1/2 in., Bush Hooks, Ax Handles, Black and Galvanized Cut Nails, assorted sizes, 3 to 60d.; Black and Galvanized Wire Nails, assorted sizes, 3 to 90d.; Black and Galvanized Fence Wire, Nos. 4 to 6; Black and Galvanized Fence Staples, 1 1/2 to 2 1/2; Pioneer White Lead, Boiled and Raw Linseed Oil, both in Barrels and Drums; Dry Red Lead, and Zinc, Mixed Paints, assorted colors, in Oil and Japan; Paint Brushes, White-wash Brushes, Carriage and Furniture Varnish, Kerosene, Gasoline and Crude Petroleum, Blacksmith, Machinist, Plumbing and Carpentering Tools, of various kinds and sizes; Packing for Machinery, viz: Asbestos, Pure Gum, Sheet Rubber, Usudurian, Rainbow, Square Plush, Italian Flax, Peerless and Amazon Spiral, Round and Square Fucker's Packing; Suction and Steam Rubber Hose, assorted sizes.

The Hawaiian Hardware Co. Fort street opposite Spreckels' Bank

THE TRIBUNE.



THE CALCIUM KING.



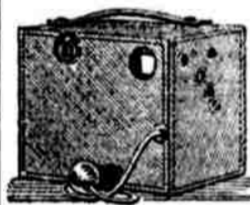
Repairing a Specialty. Bicycle Sundries. Renting.

WHITMAN & CO., Sole Agents for the Hawaiian Islands.

Now is Your Chance.

AT HALF PRICE. We close out our CYCLONE CAMERAS.

Improved Magazine Cyclone



The most complete and reliable Magazine Camera ever produced. We call your particular attention to the following new and exclusive features: Detachable Bulb Release, Automatic Register, Aluminum Holders, Diaphragm, Automatic Shutter, Unloading Attachment, etc.

Also a full line of PHOTOCRAPHIC SUPPLIES. WALL, NICHOLS CO., LIMITED.

LOCAL AND GENERAL.

The Cabinet was not convened today. The Queen hotel has now resumed business. The bark Albert from San Francisco was off Koko Head at 2 p. m. Two choice lots in Manoa, also four room house on Makiki street for sale. See For Sale column. Waikiki Inn. Pleasant rooms, fine bathing, excellent table and service. Henry N. Almy, manager. King street from Nuuanu to River is now open for traffic. See Board of Health ad in New Today. Whitney & Marsh have just landed a splendid assortment of ladies' muslin underwear in original designs. See ad on page 8. Lian Pow, a Chinaman from Bere-tania street, was adjudged insane by Judge Wilcox this morning and sent to the insane asylum. Armstrong Smith has so far recovered from his recent attack of bronchitis that he is now able to be up out of bed a few hours each day. The Nippon Maru with two days' later news should be in this afternoon or evening. The America Maru should be in some time tomorrow. A Hawaiian girl, aged 14 years, died at her home on the Asylum road, Kapalama this morning, the complaint being cirrhosis of the liver. A dead horse from Lishman's quarry on Punchbowl and another from the Hawaiian Hotel Stables were removed by a local transfer company today. Sub-inspectors are not required to pack around poison to houses. They are authorized to employ carts for distributing the lethal medicine for rats. With the exception of the sketch "Brown," which will be continued during this week, tonight an entire change of program will take place at the Orpheum. Enoka, male Hawaiian, aged 45 years, died at the kerosene warehouse detention camp last night. A post mortem examination showed death from pneumonia. Geo. Houghtaling has appealed to the Circuit Court against his latest conviction for unlicensed liquor selling. He has a similar case on the present term's calendar. Yamamoto and Kimorayaso, the two Japanese from the Japanese hospital who were taken to the pest house on the night of the 13th inst., are no longer considered as suspects. Ten more Niolopa hoodlums and gamblers were rounded up by the police last night. Their cases came up in the Police Court this morning but were continued until tomorrow. Two Chinese in a most deplorable state for want of proper medical attendance are reported at the Chinese hospital. One has dropsy and the other a broken leg that has never been attended to. Members of Hawaiian Tribe, No. 1 I. O. R. M., will please call on Bro. I. Levinston, corner Fort and Hotel streets, for invitations for the dance to be given by the Tribe on the night of the 22nd inst. The services of five active men are urgently required to act as volunteer sub-inspectors at Pawaia, Moiliili and Waikiki. It is to be hoped that the appeal will not remain long unanswered. See New Today. Hiram Bingham, Jr., now taking a post graduate course in the University of California, was recently appointed to take charge of President Wheeler's course in Greek history and institutions during his absence of three or four weeks. Cyclomere Park has been subdivided into lots which are now offered for sale. These lots are particularly suitable for manufacturing sites, storage warehouses and residence purposes, parties seeking locations conveniently near to the business portion of the city will find this a most desirable property. For terms and particulars, apply at the office of Bruce, Waring & Co., Progress block.



Style, : Comfort : and : Neatness.

AN ELEGANT SOFT VICI KID BALMORAL FOR \$4.00—ONE OF THE NEW POPULAR-PRICED SHOES

Per the last Australia, we received a grand line of new styles in Men's, Women's and Children's. Just in season for the Holiday trade. The Children's White Canvas Slippers, Men's House Slippers, and Ladies' Evening Slippers, are especially nice, and are selling readily. Our stock is complete. We are in position to fit you.

M'INERNEY SHOE STORE.

LADIES MUSLIN UNDERWEAR,

From "MARTINE" the Celebrated New York Maker

Original Designs. Beautiful Trimmings. Superior Workmanship.

Those who purchased

MUSLIN UNDERWEAR

from us will remember the PRICES.

WHITNEY & MARSH, Ltd.,

Importers of Dry Goods. 519 Fort street. SOLE AGENTS.

LAMP SHADES MADE TO ORDER

Having engaged the services of MISS E. SCHNOOR, late of San Francisco, manufacturer of Artistic Lamp Shades of all kinds we are now prepared to take orders in this line and invite our customers to call and inspect samples of her work. ELECTRIC SHADES, CANDLE SHADES and LAMP SHADES, made on short notice. We carry a large stock of LAMPS and LAMP FITTINGS. Have you tried our special brand of CHIMNEYS? You are spending more time in your kitchen and now than usual and you find that many improvements are needed. We have a complete stock of utensils, including many novelties and labor-saving devices. Does your stove sput you? Are you burning too much wood? Does it smoke? Does it bake well? Perhaps we can help you. No charge is made for advice. We are sole agents for "JEWEL" STOVES, for wood or coal; "GURNEY" CLEANABLE REFRIGERATORS, "NEW WICKLESS" BLUE FLAME OIL STOVES. Housefurnishing Goods Department is on the second floor. Take the safety elevator. Stores is open from 10 a. m. to 3 p. m., until the quarantine is raised. After that we will be looking for business from 7 a. m. to 5:30 p. m.

W. W. Dimond & Co., Ltd. Importers of Crockery and Glass and House Furnishing Goods.

AMERICAN-MADE TREATY.

Washington, Feb. 7.—It is learned that the text of the Hay-Pauncefote treaty was the work of the State Department, the British Government accepting the document just as it was drawn, so the responsibility for whatever is contained in the treaty, and the form in which it is expressed is chargeable to the Department. Department officials are surprised at the amount of criticism that has been directed against the treaty, but feel confident that it will be consummated, providing it is not amended, especially as to the fortification clause. It is insisted by the officials that an amendment on that point would completely defeat the treaty, and it is intimated that the objection will be two fold, first from the British Government, and second from the President himself. The President is said to regard the neutralization scheme as completely obviating the necessity for any fortifications for the canal, for by the terms of that arrangement, every one of the maritime powers will pledge itself to use its army and navy if need be, to preserve the absolute neutrality of the canal and fortifications will be unnecessary.

At the Photographer's—"Now, sir, if you want a good photograph, put on a pleasant expression. Think of something agreeable. Think of your wife." The Victim (soberly, but without changing his pose)—"I have just been divorced, sir." "Ah, is that so? Well, then, think of the divorce."



PIANOLA

Self playing Piano Attachment. Can be used on any Piano.

FOR SALE BY

Bergstrom Music Co.

LADIES

I have a stock of

SWELL IMPORTED WAISTS

Unequaled for elegance of style which I am closing out at

Bargain Prices

ORDERS FOR

Spring Costumes. Evening and Dinner Gowns. Tailor Made Suits, Opera Caps, Etc.

Executed at the shortest notice possible.

MISS M. E. KILLEAN. Hairdressing and Manicuring Parlors. Arlington Block, 205-207 Hotel St.

I AM OPENING

A splendid assortment of Unbleached, Bleached and Colored Linen Table Damask, with Napkins and Doilies to match.

E. W. Jordan, Fort Street.

**Attorneys.**  
**ATKINSON & JUDD,**  
 A.L.C. Atkinson and Albert F. Judd, Jr.  
 Attorneys and  
 Counsellors at Law.  
 Office over Bishop & Co.'s Bank, cor.  
 Kaahumanu and Merchant streets.

**T. McCANTS STEWART,**  
 Attorney and  
 Counsellor at Law.  
 Congress Block, opposite Catholic Church  
 Fort street, Honolulu, H. I.  
 Telephone 1122

**R. D. SILLIMAN,**  
 LAWYER.  
 308 Judd Building. Telephone 213.

**CHARLES F. PETERSON**  
 Attorney at Law and  
 Notary Public.  
 Kaahumanu Street.

**J. M. KANEAKUA,**  
 Attorney and Counsellor at  
 Law.  
 Office: In the Occidental Hotel,  
 corner of King and Alakea Streets,  
 Honolulu. 1442

**W. C. ACHI, ENOCH JOHNSON.**  
**ACHI & JOHNSON,**  
 Attorneys and Counsellors  
 at Law.  
 Office No. 20 West King street.  
 Telephone 884.

**F. M. BROOKS.**  
 Attorney at Law  
 Spreckels Building, Fort Street,  
 Honolulu.

**E. A. MOTT-SMITH,**  
 ATTORNEY,  
 145 MOVED to the Judd  
 Block, Fort St.

Surgeons, Physicians and Dentists.

**A. C. WALL, D. D. S.,**  
**O. E. WALL, D. D. S.,**  
 DENTISTS.  
 Removed to Dav Building, Beretania  
 Street.  
 TELEPHONE 434.

**Dr. W. J. Galbraith.**  
 Practice limited to Surgery and  
 Gynecology.  
 OFFICE AND RESIDENCE: HAWAIIAN  
 HOTEL. 1436

**DR. WALTER HOFFMANN.**  
 BERETANIA STREET, (opposite the  
 Hawaiian Hotel).

**DR. A. N. SINCLAIR**  
 School street, between Emma and Fort.  
 Hours: 9-10 a. m., 2-4 p. m., 7-8 p. m.;  
 Sundays 9-10 a. m. 1416

**DR. I. MORI,**  
 136 Beretania Street, between Emma  
 and Fort streets.  
 Telephone 277. P. O. Box 513.

**HONOLULU**  
**EYE AND EAR INFIRMARY**  
 Supported by Voluntary Contributions.  
 FREE TREATMENT to the poor of  
 all nations.  
 For information as to care, ad-  
 mission and to the service, etc., etc.,  
 apply at the  
 Infirmary.  
 Third Floor, Progress Block.  
 Subscriptions may be left with J. F.  
 Hackfeld, L. C. Sibles or Dr. Stoggett.  
 1396-600

**Mercantile Agencies.**  
 Telephone 1086 & 956. P. O. Box 704

**HAWAIIAN**  
**Mercantile Agency**  
 O. H. BERREY, Manager.  
 Judd Building.

Difficult Collections a Specialty.

**Honi Iala Mercantile Agency**  
 Room 10, Spreckels Building,  
 Fort street.

— Collections a specialty. Prompt re-  
 mitances. No fee charged unless col-  
 lection is made. 1442

# Kaiulani Tract

Situated on the east side of  
 Kalihi Valley. The view to  
 Pearl Harbor is the best in  
 the city of Honolulu. The  
 soil is very deep; no stones  
 or rocks on the place.

Water will be laid before  
 purchasers are ready to build.  
 A space will be set apart,  
 in memory of the Princess  
 Kaiulani, for a park.

The lots will be sold at the  
 lowest prices in the market,  
 with which other real estate  
 agents will not afford to com-  
 pete.

Applications for lots will  
 be received at our office, and  
 will be given preference of  
 choosing lots in the order they  
 are received.

For further particulars apply to

**W.C. ACHI & CO.**

**Real Estate  
 Brokers**  
 10 WEST KING ST.  
 October 4th, 1899. 1343

**Coney Estate  
 LANDS.**

A FEW VERY DESIRABLE BUILD-  
 ING LOTS on Nuuanu Avenue, at Nio-  
 lopa, Nuuanu Valley, for sale. Apply to  
**J. M. MONSARRAT,**  
 Cartwright Block, Merchant street.  
 1428

**BY AUTHORITY.**

**IRRIGATION NOTICE.**

Holdes of water privileges, or those  
 paying water rates, are hereby notified  
 that the hours for irrigation purposes  
 are from 6 to 8 o'clock a. m. and from  
 4 to 6 o'clock p. m.

**ANDREW BROWN,**  
 Superintendent Water Works.  
 Also served by **A. YOUNG,**  
 Minister of Interior.  
 Honolulu, June 14, 1899.  
 1244-1f

**Werwicke Book Cases**

CAN BE PURCHASED IN UNITS  
 AND ENLARGED AT ANY  
 TIME.

**Insect and Dust Proof**  
 —FOR—

**Home,  
 Libraries,  
 Doctors,  
 Lawyers and  
 Business Men's  
 Offices.**

.....A Stock on hand and your in-  
 spection is invited.

**Henry Waterhouse & Co.**

**Thirty Head  
 Of Fine  
 Buggy and  
 Draft Horses**

—Just received ex Mauna  
 Ala. To be seen at the Sale Yards.

**ALAKEA AND  
 QUEEN STREETS.**

**Gus. Schuman.**

**CHANNEL WHARF BUSINESS.**  
 (Continued from page 1.)

and he feared he would be a poor mem-  
 ber. He suggested that men be en-  
 gaged at once, so as to go into quaran-  
 tine and be ready to go upon the wharf  
 whenever it was completed, which he  
 was informed would be in about two  
 weeks.

Mr. Swanzy suggested that the com-  
 mittee select suitable men for the work.  
 The committee was sufficiently numer-  
 ous to direct the work, but its mem-  
 bers were not expected to do any work  
 themselves—such as keeping accounts,  
 recording goods received and deliv-  
 ered, etc.

Mr. Giffard observed that no mem-  
 ber of the committee had time to at-  
 tend to the ordering of supplies of  
 food, etc., or to run down to Kakaako  
 on every complaint, or hold confer-  
 ences there with the superintendent  
 through a grating.

Mr. Swanzy asserted that such was  
 precisely what he had been contend-  
 ing for. The committee men should,  
 however, be ready to give advice to  
 the superintendent or others doing the  
 work. They might select the men for  
 the service. He did not mean to have  
 a new committee, but had no objec-  
 tion to an addition to its numbers.

President Walker had understood  
 that Mr. Giffard's idea was that the  
 chairman of committee should be  
 someone who could devote some time  
 to the business.

Mr. Auerbach suggested a paid offi-  
 cial.

President Walker thought some  
 large shipping house might have a  
 man conversant with shipping matters  
 who could be engaged.

Mr. Giffard recommended a com-  
 mittee of five from shipping houses to  
 have executive and advisory functions.  
 Mr. Atherton agreed with this propo-  
 sition, and went over a list of officials  
 required, including a commissary gen-  
 eral.

President Walker named several as  
 efficient men connected with different  
 firms.

Mr. Auerbach moved for a com-  
 mittee of five according to the sugges-  
 tions just heard. Later, when the subject  
 had been thrashed out by Messrs.  
 Hackfeld, Walker, Ena, Giffard, Ath-  
 erton and Wight, Mr. Auerbach accept-  
 ed the following amendment offered by  
 Mr. Swanzy, seconding it as the main  
 motion, which was carried unanimously.

That the following firms and com-  
 panies, namely—H. Hackfeld & Co.,  
 Ltd., Castle & Cooke, Ltd., C. Brewer  
 & Co., Ltd., W. G. Irwin & Co., Ltd.,  
 Schaefer & Co., Ltd., Alexander &  
 Baldwin, and Theo. H. Davies & Co.,  
 Ltd.—be appointed a committee for the  
 purpose of carrying on the business of  
 the quarantine wharf and warehouse,  
 each of the said firms or companies to  
 have the power of naming one of its  
 members or directors to act for it on  
 said committee. The committee to  
 have the power of appointing its own  
 chairman and such sub-committee or  
 sub-committees as may be necessary  
 for conducting its work, of engaging  
 such paid assistance as may be re-  
 quired, and of transacting all busi-  
 ness and making all disbursements and  
 collections connected with the quaran-  
 tine wharf and warehouse.

It had early been proposed to allot  
 one representative to the two inter-  
 island steamship companies, but Mr.  
 Ena with the assent of Mr. Wight  
 waived this privilege, on the ground  
 that the companies would each require  
 a man constantly on the wharf, which  
 would be all the representation they  
 needed.

Secretary Spencer reported contri-  
 butions amounting to \$277 from all  
 the members of the Chamber, except-  
 ing two who could not be reached,  
 for the General Lawton's widow's fund.  
 The amount voted was \$259 and, after  
 payment of charges of remittance to  
 General Shafter, there was a surplus of  
 \$25.20, for the disposal of which the  
 secretary asked instructions. It was  
 voted to put the surplus in the treasury.

Amendments to the bylaws were  
 passed, relative to the calling of spe-  
 cial meetings and providing for the  
 election of a temporary chairman when  
 both the president and vice president  
 are absent.  
 Adjourned at 3:35.

**THE LAST CAR.**  
 The last cars of the King street line  
 going to Waikiki and Palama pass the  
 Anchor Saloon. The cleverest mixolo-  
 gists in the city are there always to  
 put you up anything you may desire  
 Drop in and take a drop before you  
 take the car. The celebrated sea-  
 iver is to be had here on draught  
 all line of liquors, including the fine  
 Jesse Moore Whiskey, etc., a  
 ways on hand. Received per War-  
 ren, Rainier Beer on draught  
 the Anchor Saloon is here to please a  
 patrons.

**PER S. S. AUSTRALIA.**  
 Just landed a full line of grapes,  
 plums, peaches, apples, Bartlett pears,  
 oranges, lemons, celery, cabbage, etc.,  
 hiflowers, cranberries, burbank  
 potatoes, dates, salmon founders, but-  
 ter, erabs, eastern and California's op-  
 teters (in tin and shell), turkeys, chick-  
 ens, ducks, quail, chestnuts. A full  
 line of canned goods. CAMARINOS  
 REFRIGERATOR.

**SEATTLE BEER.**  
 The ever popular Rainier beer is be-  
 coming a household word and "will  
 you have a glass of Seattle," is more  
 often heard than anything else. The  
 Criterion Saloon has the beer on tap or  
 in bottles.

**American Messenger Service, Mo-  
 sonic Temple. Tel. 444.**  
 For rough sailor hats, ribbons, etc.,  
 try Mrs. Hanna, Fort street.

There is only one Jesse Moore Whis-  
 key in the world and that is cold and  
 pure. Lovejoy & Co. are distributors  
 for the Hawaiian Islands.

**COMMISSIONER'S SALE OF REAL  
 AND PERSONAL PROPERTY.**

Pursuant to an order made by Hon-  
 orable A. P. First Judge of the Cir-  
 cuit Court in First Judicial Circuit,  
 filed the 3<sup>rd</sup> of January, A. D.  
 1900, I am directed to sell at public  
 auction, subject to confirmation by the  
 Circuit Court.

ON SATURDAY, MARCH 3d, 1900,  
 At 12 o'clock noon of that day, all the  
 right, title and interest of Genevieve  
 Dowsett, Marion C. Dowsett, being an  
 undivided one-twelfth interest each of  
 said minors, and also the one-twelfth  
 interest of Madeline C. K. Dowsett and  
 Annie H. K. Dowsett, Minors, in the  
 Estate of James I. Dowsett, deceased,  
 in and to all those certain pieces and parcels  
 of land situate on the Islands of  
 Oahu, Maui, Hawaii and Molokai, and  
 more particularly described as follows:

1. The land situated in Nuuanu Val-  
 ley, Island of Oahu, described in deed  
 from John H. Wood to the Honolulu  
 Dairy Company, dated April 30th, 1892,  
 and recorded in the Registry of Convey-  
 ances in Honolulu in Liber 136, at  
 pages 174 to 177. Containing an area  
 of 271 acres more or less.

2. The land situated at Kapalama,  
 in Honolulu, Island of Oahu, known as  
 the Akepo lot, being a part of Royal  
 Patent No. 5572, and described in deed  
 made by Kamea and J. W. Akepo to  
 James I. Dowsett, dated the 3d day of  
 February, 1882, and recorded in Liber  
 73, on pages 210 to 212. Containing an  
 area of 113 acres.

3. The land situated at Apua, in Hon-  
 olohu, described in deed from A.  
 Francis Judd to David Kahanu, dated  
 March 21st, 1879, recorded in Liber 29,  
 on pages 424 and 425, and the land de-  
 scribed in the deed from John O. Dom-  
 inis and E. Mahia, Administrators of the  
 estate of Josia Kaaukai, to David Ka-  
 hanu, dated June 7th, 1866, and re-  
 corded in Liber 21 on pages 313 and 316,  
 and in a deed from Kahananui and  
 Keohokii, her husband, and Kaluahine  
 to David Kahanu, dated September  
 14th, 1866, and recorded in Liber 22, on  
 pages 106 and 107.

4. The land situated at Kakaako, in  
 Honolulu, described in the deed from  
 Mookolohe and Nainoaheua to David  
 Kahanu, dated March 30th, 1880, and  
 recorded in Liber 63 on pages 415 and  
 416. Containing an area of 1-5 of an  
 acre.

5. The land at Aala, on Liliha street,  
 in Honolulu, described in the deed from  
 Nika and Punialakala, his wife, and  
 Keaka to David Kahanu, dated October  
 9th, 1869, and recorded in Liber 29, on  
 pages 49 and 41; also the land de-  
 scribed in the deed from John Thomas  
 Waterhouse and Eleanor, his wife, to  
 David Kahanu, dated January 25th,  
 1878, and recorded in Liber 56, on pages  
 63 and 64; also land described in the  
 deed from Kia Nahaolelua and Naha-  
 le to David Kahanu, dated January 10th,  
 1876, and recorded in Liber 49, on  
 pages 385 and 386. Containing an  
 area of 3.03 acres.

6. The land situate on King street,  
 in Honolulu, described in the deed  
 from F. M. Hatch to James I. Dowsett,  
 dated October 18th, 1888, and recorded  
 in Liber 115, on pages 166 and 69. Con-  
 taining an area of 17-100 acres.

7. The land situate at Kapahaha,  
 Kapalama, in Honolulu, being a portion  
 of Apana 1, Royal Patent No. 2256, L. C.  
 A. 21401; described in the deed from  
 Thomas Carry and Mary, his wife, to  
 James I. Dowsett, dated June 14th,  
 1887, and recorded in Liber 106, on  
 pages 193 and 194. Containing an area  
 of 1900 square feet.

8. The one undivided half of the  
 lands situated in Honolulu, known as  
 the land of Kahaohoa and Kaho-  
 loloa, L. C. A. 153 to Wm. Sumner, dated  
 March 5th, 1849.

9. The land situated at Puhawai,  
 Waianae, Island of Oahu, described in  
 Royal Patent 1073, L. C. A. 7465, and  
 in the deed of Pine and Kiniakua to  
 James I. Dowsett, dated April 30th,  
 1888, and recorded in Liber 110, on  
 page 256. Containing an area of 6.74  
 acres.

10. The land situated on Pearl River  
 Bay near Honolulu, known as Puloa,  
 containing an area of 2224 acres, and  
 described by metes and bounds in the  
 deed from Kekanonohi to Isaac Mont-  
 gomery, dated September 7th, 1849, and  
 recorded in Liber 4, on page 4.

11. The land situated at Honouliuli,  
 at Ewa, on the Island of Oahu, com-  
 prising 86 acres, more or less, now un-  
 der lease to Sing Chong & Co.

12. The land situated at Kapalama,  
 Island of Oahu, described in Royal  
 Patent 2386 issued to John Meek, and  
 comprising 9 58-100 acres; and also  
 the land situated at the same place part  
 of the III of Kahuopa described in L. C.  
 A. 8515, Apana 1, Part 1, and com-  
 prising 1 28-1000 acres, more or less,  
 which said two last mentioned parcels  
 of land are now held under lease dated  
 September 15, 1896, by Y. Ah In.

13. The land situated on the Island of  
 Maui, known as Rose Ranch, compris-  
 ing all the lands described in certain  
 Royal Patents and deeds as follows:  
 all the land described in the deed from  
 Parker N. Makee and others to James  
 I. Dowsett, dated March 3d, 1886, and  
 recorded in Liber 101, on pages 200 et  
 seq.; also the leasehold estates in the  
 following lands: Lease of the Hawa-  
 iian Government of the Ahupuaa of  
 Kanaana to Catherine N. Makee, No. 292,  
 dated February 9th, 1881; Lease from  
 John M. Kapena to James Makee dated  
 December 22d, 1876, and recorded in  
 Liber 47, on page 498. Containing an  
 area of 21,650 acres.

14. The land known as Kaula situate  
 at Ewa, Island of Oahu, being part of  
 Hoaeae. Containing an area of about  
 1 acre.

15. The land with an orange grove  
 situated at Hana, Island of Maui,  
 known as Dowsett's land. Containing  
 an area of 1 1/2 acres.

16. The two land situated on the Is-  
 land of Molokai, described in Royal  
 Patent 2330.

17. The land situated at Waipio, on  
 the Island of Hawaii, known as Dow-  
 sett's land.

18. The land situated at Kapulona,  
 in Honokaa, Island of Hawaii, formerly  
 leased to J. M. Horner & Sons and now  
 occupied under said lease by the Pa-  
 cific Sugar Mill. Containing an area  
 of 17 1/2 acres.

Also the leasehold estates in the fol-  
 lowing lands: The land of Halawa,  
 the land of Kahaui, the land of Lalehua,  
 the land of Mikilua, the land of Nana-  
 kul and the land of Aiea, all situated  
 on the Island of Oahu.

Also all the live stock belonging to  
 the Estate of James I. Dowsett, de-  
 ceased, comprising: 6000 head of cat-  
 tle, more or less, 60 head of oxen and  
 bulls, and 213 head of horses and  
 mules.

Also all and singular, the lands, chat-  
 tels, choses in action, and property,  
 real and personal, belonging to the  
 Estate of James I. Dowsett, deceased,  
 or to which said Estate may be en-  
 titled, whether herein enumerated and  
 specified or not.

Terms of sale are Cash in U. S. Gold  
 Deed at the expense of purchaser. For  
 further particulars, apply to Paul Neu-  
 mann, Esq., or

**GEORGE LUCAS,**  
 Commissioner.

**Bankers.**  
**THE BANK OF HAWAII, Ltd.**  
 JUDD BUILDING.  
 (INCORPORATED UNDER THE LAWS  
 OF THE HAWAIIAN REPUBLIC.)  
 Capital.....\$400,000

**OFFICERS AND DIRECTORS:**  
 CHAS. M. COOKE, President.  
 P. C. JONES, Vice-President  
 C. H. COOKE, Cashier.  
 F. C. ATHERTON, Assistant Cashier.  
 Henry Waterhouse,  
 Tom May,  
 F. W. Macfarlane,  
 E. D. Tenney,  
 J. A. McCandless.

Solicits the Accounts of Firms, Cor-  
 porations, Trusts, Individuals, and will  
 carefully and promptly attend to all  
 business connected with banking en-  
 trusted to it. Sell and purchase Foreign  
 Exchange, issue Letters of Credit.

**SAVINGS DEPARTMENT!**  
 Ordinary and Term Deposits received,  
 and interest allowed in accordance with  
 rules and conditions printed in Pass  
 books, copies of which may be had upon  
 application.

**The First American Bank**  
**OF HAWAII, LTD.**  
 Incorporated Under the Laws of the  
 Republic of Hawaii.  
 Authorized Capital, \$1,000,000  
 Subscribed Capital, 750,000  
 Paid Up Capital, 500,000

**OFFICERS AND DIRECTORS.**  
 Cecil Brown, President  
 M. P. Robison, Vice-President  
 W. G. Cooper, Cashier  
 E. M. Boyd, Secretary  
 Directors—Cecil Brown, Mark P.  
 Robison, Bruce Cartwright, W. G.  
 Cooper and H. M. Von Holt.

**DRAW EXCHANGE ON:**  
 San Francisco—The Anglo-California  
 Bank, Limited.  
 Chicago—The Merchants Loan and  
 Trust Company.  
 New York—J. & W. Seligman & Com-  
 pany.  
 London—The Anglo-California  
 Bank, Limited.  
 Paris—Societe Generale.  
 Hamburg—M. M. Warburg & Com-  
 pany.  
 Hongkong and Yokohama—The  
 Chartered Bank of India, Australia  
 and China.  
 Australia—The Union Bank of Aus-  
 tralia, Limited.  
 Canada—Bank of Montreal.  
 Berlin—Gerbruder Meyer.

Exchange bought and sold Letters  
 Credit issued on all parts of the  
 world.

**PARQUET Y,**  
 THE.....  
**Sanitary Flooring,**  
 Harbors no germs. It is the only floor  
 suitable for residences, and its cleanli-  
 ness and moderate cost recommend it to all  
 householders  
 Plans and estimates cheerfully furnished  
 upon application to

**Lewers & Cooke,**  
 —Sole Agents for—  
 Johnson's Celebrated Parquetry,  
 Johnson's Floor Wax,  
 Johnson's Floor Brushes,  
 Johnson's Restorer,  
 Johnson's Solvent.

**Bouquets!**  
**FINKE & CO.,**  
**Florists.**

Supply every variety of Cut Flowers and  
 Growing Plants, Sprays, Bouquets and  
 Funeral and Wedding Floral Designs sup-  
 plied on short notice.  
 Office, corner Fort street and Chaplain  
 street, opposite the Catholic Mission.  
 1317

**Bankers.**  
**Haus Spreckels & Co.**  
**BANKERS.**

**San Francisco Agents—THE NEVADA**  
**NATIONAL BANK OF SAN FRANCISCO.**  
**SAN FRANCISCO—The Nevada National**  
**Bank of San Francisco**  
**LONDON—The Union Bank of London**  
**Ltd.**

**NEW YORK—American Exchange Na-**  
**tional Bank.**  
**CHICAGO—Merchants National Bank**  
**PARIS—Credit Lyonnais.**  
**BERLIN—Dresdner Bank.**  
**HONGKONG AND YOKOHAMA—Hongkong**  
**Shanghai Banking Corporation.**  
**NEW ZEALAND AND AUSTRALIA—Bank**  
**of New Zealand**  
**VICTORIA AND VANCOUVER—Bank of**  
**British North America.**

**Transact a General Banking and Exchange Business**  
 Deposits Received. Loans made on Ap-  
 proved Security. Commercial and Travelers  
 Credits Issued. Bills of Exchange bought  
 and sold.  
**COLLECTIONS PROMPTLY ACCOUNTED FOR**

**BISHOP & CO.**

**Savings Bank**  
 Savings Deposits will be  
 received and interest allowed by this  
 Bank at four and one-half per cent.  
 per annum.  
 Printed copies of the Rules and Reg-  
 ulations may be obtained on applica-  
 tion. Office at bank building on Merchant  
 street.  
**BISHOP & CO.**  
 —Established 1860—

**BISHOP & Co.**  
**BANKERS.**

Transact a General Banking  
 and Exchange Business.  
 Commercial and Traveler's  
 Letters of Credit issued, avail-  
 able in all the principal cities  
 of the world.

Interest allowed after July  
 1, 1898, on fixed deposits 3  
 months 3 per cent., 6 months  
 3 1/2 per cent., 12 months 4  
 per cent.

**Pioneer Building and  
 Loan Association.**

**ASSETS, DEC. 31, 1899, \$112,677.57.**

Money loaned on approved security.  
 A Savings Bank for monthly deposits.  
 Houses built on the monthly install-  
 ment plan.  
 Twentieth Series of Stock is now  
 opened.

**OFFICERS—T. F. Lansing, Presi-  
 dent; S. B. Rose, Vice**

Lines of Travel.

Oceanic Steamship Company.

TIME TABLE.

The Fine Passenger Steamers of This Line Will Arrive at and Leave This Port as Hereunder.

From San Francisco: For San Francisco. ALAMEDA... FEBRUARY 25. AUSTRALIA... FEBRUARY 26. MARIPOSA... MARCH 2.

In connection with the sailing of the above steamers, the Agents are prepared to issue, to intending passengers, coupon through tickets by any railroad from San Francisco, to all points in the United States, and from New York by any steamship line to all European ports.

Wm. G. Irwin & Co., Limited

General Agents Oceanic S. S. Co.

Pacific Mail Steamship Co.

Occidental and Oriental Steamship Co. Toyo Kisen Kaisha

Steamers of the above companies will call at Honolulu and leave this port on or about the dates below mentioned.

Table with columns for destination (Japan and China, For San Francisco) and ship names (Nippon Maru, America Maru, etc.) with dates.

H. Hackfeld & Co., Ltd., Agents.

Canadian-Australian Royal Mail Steamship Company.

Steamers of the above line, running in connection with the CANADIAN PACIFIC RAILWAY CO., between Vancouver, B. C., and Sydney, N. S. W., and calling at Victoria, B. C., Honolulu and Brisbane are DUE AT HONOLULU on or about the dates below stated, viz:

Table with columns for destination (FROM VANCOUVER AND VICTORIA, B. C., FROM SYDNEY AND BRISBANE) and ship names (Mowera, Warrimoo, etc.) with dates.

Through tickets issued from Honolulu to Canada, United States and Europe. For Freight and Passage and all general information, apply to

Theo. H. Davies & Co., Ltd., Gen'l Agents.

Wilder Steamship Co., Ltd.

TIME TABLE. S. S. Kinau, FREEMAN, Master. MOLOKAI, MAUI, HAWAII.

Change in Sailing of Strmr. "Kinau."

On and after Tuesday, Nov. 6, the steamer KINAU will sail from Honolulu on Tuesdays at 12 noon, for Kaunakakai, Lahaina, Maunaloa Bay, Kihel, Makana, Kawaihae, Mahukona, Laupahoehoe and Hilo.

Returning, will sail from Hilo on Fridays at 2 p. m. for above named ports, arriving in Honolulu on Saturdays.

Passengers and freight will be taken for Makana, Mahukona, Kawaihae, Hilo, Hakalau, Honoumama, Papeete, and Pepeekeo.

Passengers and PACKAGES ONLY will be taken for Kaunakakai, Lahaina, Maunaloa Bay, Kihel and Laupahoehoe.

S. S. Claudine, CAMERON, Master. MAUI.

Will leave Honolulu every Tuesday at 5 P. M., touching at Lahaina, Kaula, Nabiku, Hana, Hamoa and Kihel, Maui. Returning, touches at above named ports, arriving in Honolulu Sunday mornings.

Will call at Nuu, Kaupo, once each month.

S. S. Lehua, BENNETT, Master. MOLOKAI, MAUI, LANAI.

Sails every Monday for Kaunakakai, Kamalo, Maunaloa, Kalaupapa, Lahaina, Honolulu, Olowalu. Returning arrives at Honolulu Saturday mornings.

This company reserves the right to make changes in the time of departure and arrival of its steamers WITHOUT NOTICE, and it will not be responsible for any consequences arising therefrom.

Consignees must be ready to receive their freight. The company will not hold itself responsible for freight after it has been landed.

Live stock received only at owner's risk.

This company will not be responsible for money or valuables of passengers unless placed in the care of the stewards.

Passengers are requested to purchase tickets before embarking. Those failing to do so will be subject to an additional charge of twenty-five per cent.

The company will not be liable for loss of, or injury to, nor delay in, the delivery of baggage or personal effects of the passenger beyond the amount of \$100.00, unless the value is same be declared, at or before the time of the ticket, and freight paid

Chinese and Japanese Firms.

W. W. AHANA Merchant Tailor

323 Nuuanu Street.

Fine Suitings in English, Scotch and American Goods made to order.

Telephone 668. Postoffice box 986.

IWAMOTO, Watchmaker and Jeweller.

GOLD AND SILVER PLATING. 213 1/2 King street. 1277

Y. MAN SING

Has Removed From Fort Street to 311 Nuuanu Street, opp. Goo Kim's.

LADIES' UNDERWEAR. Dresses Made To Order.

HOP HONG, Merchant Tailor,

HAS MOVED From 314 Nuuanu street to larger premises, No. 319, on the opposite side of the street. 1283

L. CHONG, MERCHANT TAILOR.

No. 6 Nuuanu St., below Merchant, Honolulu. Suits guaranteed to fit and in latest styles. Clothing made to order. Uniforms a specialty. Clothes cleaned and repaired at reasonable rates.

Architects, Contractors and Builders.

G. A. HOWARD, JR. ROBT. F. TRAIN HOWARD & TRAIN, Architects.

Suite 7, Model Block, - HONOLULU, OAHU, H. I. P. O. Box 705. Telephone 959

H. L. KERR & CO., Architects and Builders

1 Rooms 11-12, PROGRESS BLOCK. Telephone 131.

BEARDSLEE & PAGE, Architects & Builders

Office: Rooms 2-4, Arlington Annex, Honolulu, H. I. Sketches and Correct Estimates furnished at Short Notice. 1441

BUILDING MATERIALS OF ALL KINDS. Dealers in Lumber and Coal.

ALLEN & ROBINSON, Queen street, Honolulu

The World Register

Keeps the Cash while you are busy. Try one - Rock Prices

On Marble and Granite, MONUMENTS and CEMETERY WORK.

Fences and Lawn Furniture. Haw'nd Iron Fence and Monumental Co. 641 King Street.

When You Want a Rig

...RING UP THE... C-L-U-B Livery, Boarding and Sales Stables, : : : 518 FORT STREET. Stable Phone, 47. Hook Stand Phones, 319 and 7. C. H. BELLIS

DAIRYMEN'S ASSOCIATION

111 FORT STREET, NEXT TO LUCAS MILK.

PURE MILK PURE CREAM

Best on the Islands. Delivered twice daily to any part of City. 1385

A GOOD THING 4-U-2-C

Algeroba and Pine Firewood Cut and Split (ready for the Stove). Also, TOVE, STEAM & BLACKSMITH COA WHITE AND BLACK BAND Lowest Prices, delivered to any part of the City. 414

HUSTACE & CO., 31 Queen Street

SHIPPING NEWS

Additional, and the latest Shipping News, will be found on the eighth page.

TIDES.

Table with columns for DAY, High Tide, Low Tide, High Tide, Low Tide, High Tide, Low Tide.

Full moon on the 15th at 3:20 a. m. Tides from the United States Coast and Geodetic Survey Tables.

The tides at Kahului and Hilo occur about an hour earlier than at Honolulu.

Hawaiian Standard Time is 10h. 30m slower than Greenwich time, being that of the meridian of 157 30. The time whistle blows at 1:30 p. m., which is the same as Greenwich 0h. 0m.

MOVEMENTS OF STEAMERS.

Steamers due and sailing today and for the next six days are as follows:

ARRIVE

Table with columns for Steamers, From, Due. Nippon Maru-S. F., Feb. 16. America Maru-Yokohama, Feb. 17. Mowera-Victoria, Feb. 17. Rio Janeiro-S. F., Feb. 24. Alameda-S. F., Feb. 28.

DEPART

Table with columns for Steamers, For, Due. Nippon Maru-Yokohama, Feb. 16. America Maru-S. F., Feb. 17. Mowera-Sydney, Feb. 17. Anstralia-S. F., Feb. 20. Rio Janeiro-Yokohama, Feb. 24. Alameda-Sydney, Feb. 28.

News of the Transports.

San Francisco, Feb. 5.—The transport Benmohr arrived yesterday, after a trip of 23 days from Manila, 21 from Nagasaki and 19 from Kobe.

The Missouri is not expected here for several days. She has small coal bunkers and it is expected that she will stop at Honolulu to coal.

Mrs. Storrs, wife of Captain Storrs of the Leelanaw, well known here, is dead.

San Francisco, Feb. 7.—The transport Conemough will probably sail tomorrow with mails for Manila. She will stop at Hilo for a reasonable time before continuing on the journey. The Leelanaw will follow in a few days, and proceed in the same way. The Thomas is scheduled to sail February 19th, with casuals and recruits awaiting transportation. The charters of the Manauense, Benmohr, and Ohio having expired, these transports will be discharged from the service. The Thomas will probably take a large amount of freight. No disposal has yet been made of the Meade, which is now taking coal at the transport dock.

Merchandise for Hawaii.

San Francisco, Feb. 3.—The barkentine Planter was cleared yesterday for the Hawaiian Islands with a general merchandise cargo. Among the principal shipments were the following: 750 bbls flour, 500 lbs dried fruits, 800 bales hay, 11,288 lbs beans, 600 ccs coal oil, 240 lbs hops, 8,806 lbs sugar, 140 kegs lead, 6 bxs raisins, 45,350 lbs coal, 77 ccs hardware, 70 kegs nails, 87 pkgs groceries and provisions, 55 cts corn, 26 cts paints and oils, 6 bales dry goods, 475 bbls lime, 801 cts barley, 160,000 lbs rice, 1,300 lbs hams and bacon, 2,275 lbs cracked corn, 24,948 lbs rolled barley, 150 ccs and 95 bbls salmon, 45 bales salt, 740 ccs canned goods, 608 cts oats, 52 ccs meal, 55 bxs candles, 1,816 lbs starch, 27,000 bricks, 2 pkgs machinery, 500 lbs dried peas, 50 bxs paste, 10 crates potatoes, 5 crates onions, 150 sks middlings, 1,500 sks bran, 400 lbs and 3 ccs manufactured tobacco, 1,300 gals and 10 ccs wine, 225 ccs soap, 52 coils rope, 66 cts wheat, 20,650 lbs bread, 96 pkgs beer, 2 horses.

Arrivals and Departures.

Arrivals—San Francisco, Feb. 2. Annie Johnson from Hilo and schr. Ruby A. Cousins from Honolulu; Feb. 3. S. S. Manauense, bk. Diamond Head bk. Mohican, bk. W. G. Irwin from Honolulu; schr. Jennie Wand from Hana; Feb. 4. S. S. Cleveland from Kahului; schr. Robert Hind from Mahukona; Feb. 5. S. S. Lady Jolee and bk. Alden Heaso from Honolulu.

Port Townsend, Feb. 5. schr. Lottie Bennett from Hilo and schr. Winslow from Honolulu. Astoria, Feb. 5. bk. Gulf Stream from Honolulu. Nainaimo Feb. 1. bk. Onaway from Honolulu.

Departures—Eureka, Feb. 1. schr. Helen N. Kimball for Hilo; Feb. 2. schr. Jessie Minor for Honolulu. San Francisco, Feb. 3. bk. Planter for Kaula.

Per Br. ship Lytton—Oct. 21. In 5 5 N. long 23 13 W. ship Henry F. Hyde from Norfolk for Honolulu; Dec. 10. lat 51 S. long 55 W. Br. sp. Amphirite from Oregon for Queenstown.

Fight Over Baggage.

San Francisco, Feb. 4.—The baggage of M. B. Curtis, the actor, who returned from Honolulu on the steamer Australia, was claimed by two transients yesterday on Pacific street wharf and to preserve the peace Sergeant Tom Mahoney was compelled to put them off the wharf.

TO CURE A COLD IN ONE DAY

Take Laxative Bromo Quinine Tablets. All druggists refund the money if it fails to cure. W. Grove's signature is on each box. 25 cents.

THEO. H. DAVIES & CO., Ltd

Merchants and Commission Agents.

Carry a Complete Line of Hardware, Crockery, Saddlery, &c. Paints Oils and White Lead.

GENERAL PLANTATION SUPPLIES.

Agents for Clariphos & Dick's Balata Belting.

This Belting is acknowledged by several of the most expert engineers on the Islands to be the best, most durable, and least expensive.

Also Agents for Keicnefer Bros.' GRAY AGATE WARE, of which a full list is carried.

A good selection of IRON BEDSTEADS, MATTING, LINOLEUM, LAWMOWERS, GARDEN HOSE AND FITTINGS.

Lime, Cement, Fire Clay and Fire Bricks.

Honolulu Tobacco Co., Limited,

IMPORTERS OF HAVANA AND MANILA CIGARS, SMOKERS' ARTICLES, Fine Grades of Smoking Tobacco.

Cor. Fort and Merchant Streets, Honolulu.

Our Trade With China.

Washington, Jan. 28.—A report prepared by Frank H. H. Hitchcock of the Agricultural Department shows there has been a great development of our trade with China and Japan during the past decade.

In the fiscal year 1899 the value of the merchandise exchanged with these two countries, including the port of Hongkong, reached \$87,395,688, against only \$46,294,167 in 1889.

Figures given show that in the decade there was a gain of \$28,393,156, or 256 per cent in exports, while the increase in imports amounted to \$21,618,365, or 36 per cent.

During the last few years, in fact, the imports disclosed an actual falling off, the value for 1899 being \$1,164,131 less than that for 1896, which was recorded at \$48,979,166.

Our exports, on the other hand, more than doubled during the three years succeeding 1896.

Our exports to the countries mentioned consisted chiefly of cotton, cotton goods, kerosene, oil, wheat, flour and manufactures of iron and steel, the value of these five classes of articles exported aggregating in 1898 nearly 80 per cent of the total exports of China, Japan and Hongkong.

Japan took nearly all the raw cotton, while cotton manufactures went quite as largely to China. All three took kerosene oil in large quantities. The export of wheat flour almost trebled during the decade.

Generally speaking it may be stated that the figures show that the gain in our Asiatic exports has been nearly all made in the last five years. Aside from the five classes mentioned, the chief exports have been paper, alcohol, tobacco, leather, lubricating oils, lumber and scientific apparatus.

Of the imports silk and tea made up 70 per cent of the total, Japan sending most of the former and China most of the latter.

Croix du Sud.

San Francisco, Feb. 4.—The little missionary schooner La Croix du Sud, sailed yesterday for Tahiti in company with the mail packet City of Papeete. The schooner is only forty-five tons register. She was loaded down with lumber and merchandise.

Musicians.

W. H. SEA, TEACHER OF

Guitar, Mandolin, Zither, and Ukulele.

During my absence at Omaha Ames, of Wall, Nichols Co. have charge of my pupils.

PIANO TAUGHT

By a New, Quick Method!

Proficiency guaranteed in six months terms. \$5.00 monthly. Special attention adult beginners. Address PIANO, Bulletin office. 1414

Paul Egly, VIOLINIST.

16 Beretania Street.

Can receive a limited number of pupils music furnished for concerts, afternoon of evening parties.

Music.

ANNIS MONTAGUE TURNER-Vocal Studio. "Mignon," 720 Beretania Street. Tel. 1114. 1374

E. K. KAAI,

Teacher of Guitar, Mandolin, Zither, Ukulele and Taro Patch.

Orders to be left care of Wall, Nichols Co., and at Bergstrom Music Co.'s, 1266

Barbers.

Silent Barber Shop.

Arlington Block, - Hotel Street. Joseph Fernandez, Prop'r



Pacheo's Dandruff Killer

For sale by all druggists, and at the Union Barber Shop. Telephone 696.

Plumbers, Etc.

John Nott, PLUMBER,

75 and 79 King Street TELEPHONE NO. 31.

NOW is the time to get leaks and breakages seen to, and your

Roofs Put in Order

By competent workmen H. T. SHAW & CO.

Sanitary Plumbing and Tinsmithing.

Old Fire Tower, Union Street. We figure on nothing but the best of work and material, testing all work, has insuring you against all sewer gas. Estimates carefully given. Jobbing promptly attended to.

For the Plumbing

On that new house that you are about to build or the alterations you are intending to make on our property. Call and see me and get an estimate.

JAS. NOTT, Jr.

Practical Tinsmith and Plumber. Shop: Beretania street, 4 doors east of Punchbowl. Phone 844. Hour 7 a. m. to 5 p. m. Jobbing promptly attended to.

Honolulu Sheet Metal Works.

Galvanized Iron Skylights and Ventilators, Metal Roofing, Conductor Pipe and Gutter Work. Richards Street, bet. Queen and Merchant, Honolulu. Jobbing promptly attended to.

BEK HAAHEO,

King street, near Railroad Depot, Plumber—and—Tinsmith

Satisfaction guaranteed. All work prompt and carefully attended to. 1977

Real Estate Transactions.

Subscribers are furnished with from five to six lists per week, giving an accurate record of all deeds, mortgages, leases, releases, powers of attorney, etc., etc., which are placed on record.

Subscription Price, \$2.00 per Month

A. V. GEAR

Judd Building, Honolulu.

### The 1900

Columbia, Rambler & Hartford bicycles seem to be just about the right thing. We have had samples of these wheels and will have a big stock by the "Australia" in two weeks. Most of the Chainless Columbias are sold to arrive there is such a demand for this wheel. They are 4 pounds lighter this year and are fitted with the **SPECIAL TROPICAL TIRE** which makes them a perfect mount for these Islands. The Columbia Chainless weighs less than 25 pounds and we guarantee it for any rider weighing up to 300 pounds. Our HARTFORD and RAMBLER chain wheels are beauties, call and see the samples. We have as complete repair shop as ever, though it is not conveniently located at present. During this year we expect to get back to the old corner, where a fine modern department is to be fitted up in our new store. At present we sell, rent and repair wheels in the brick building on the upper side of King street opposite to where our old stand was and are able to do the best repair work done in town, rent the well known Columbia Chainless, and sell any model of Columbia, Rambler or Hartford for cash or on easy instalments. We want your custom.

**E. O. HALL & SON, Ltd.**  
Cor. Fort and King Sts.

TRY **ROYAL TASTE HAMS**  
High grade & Up-to-Date  
COAST AGENTS **FRANK B. PETERSON & CO.** SAN FRANCISCO

### ADVICE TO THE JAPANESE

The following circular has been sent to all the Japanese of the plantations:—You are no doubt aware that the bubonic plague has been existing in Honolulu since November last and has caused many deaths. The Hawaiian Government, with the cooperation of citizens, has adopted strict measures to prevent its spread and to stamp it out.

We hear that cases of plague have appeared in Kahului, Maui, and also a case in Hilo, Hawaii. This is very serious and is causing us great anxiety. If the disease should reach the plantations it will bring disaster and ruin to the Hawaiian Islands and will cause you all to suffer.

You are requested to read the following carefully and observe same:

1. The managers and health authorities in order to prevent the disease from spreading and reaching the plantations, have adopted strict regulations. This is not only for your interests, but for yours as well, as your health and welfare are concerned. You are urgently requested to obey and carry out their instructions and not to interfere in any way whatever.
2. There will be rumors of all kinds emanating from different irresponsible parties. You are requested not to believe in any of them. In order to get authentic news or information, we would advise you to go to the plantation office and enquire through the interpreter. You are requested not to go in numbers, but to send a delegate or delegates.
3. It is very unwise for you to desert or leave the plantation. Much more so is it at this time of distress and sickness.
4. If you desert or leave the plantation, you will be not only endangering your own lives, but will be the means of spreading the sickness to other localities.
5. If you should leave the plantation by infringing the health regulations you will have to suffer and endure great hardship. You will not be able to go much further than the plantation you are working on as the other districts will prevent people from entering. After you have once left the plantation you may not be given permission to return until the disease has entirely disappeared.
6. For sanitary purposes, houses, personal belongings, etc., that are considered dangerous and infected with disease by the health authorities may be destroyed by fire. You are requested to submit to their destruction as justice will be done in all cases.
7. We have positive assurances from the plantations that you will be furnished with sufficient food and other necessary supplies. You are requested to purchase and eat food, etc., that is recommended by the plantation and health authorities.
8. The strict regulations and rules that have been or may be adopted will no doubt cause you a great deal of inconvenience but we would request you to submit peacefully as your own interests are best served by complying. We hand you copies of sanitary instructions issued by the Japanese Medical Association. You are requested to read them carefully and take precautionary measures accordingly.

**THE JAPANESE EMIGRATION ASSOCIATION.**  
By the Japanese Emigration Co. of Hiroshima.  
By the Kumamoto Emigration Co. by Morioka & Company.  
By the Japan Emigration Company of Osaka.  
By the Tokio Emigration Company, Honolulu, Feb. 14, 1900.

The difference between greedy folk and others is not so much in what they want as in the eagerness with which they try to get it.

### THE ORPHEUM

FAMILY THEATRE.

## Grand Reopening Performance

WEEK OF FEB. 12.

MINISTREL FIRST PART.  
Thirty-five People on the Stage.  
The Misses Beresford, Leicester, Dixon, Richards, Oakley and Gale.  
Messrs. Rockwell, Richards, Baxter, Koogle, Antonio, Livingston, Adams and Brown.

HAWAIIAN QUINTETTE CLUB.  
In Native Melodies and Folk-Songs.

THE ORPHEUM MALE QUARTET.  
THE ORPHEUM LADY QUARTET.  
Choruses—Popular Melodies and Original Stories.

"BROWN,"  
An Original Comedy Sketch, Written by Allan Dunn Expressly for the Re-opening Bill; Presented by Miss Almee Leicester, and Messrs. Lovette Rockwell and Allan Dunn.

THE RICHARDS.  
In High-Class Comedy Specialties.

SID BAXTER,  
Juggler and Wire-Walker.

SIGNOR ANTONIO,  
The Modern Samson.

JONE BERESFORD,  
In Ragtime Coon Melodies.

**JUST LANDED,**  
Ex Australia.

### Prime Beef and Pork, Poultry and Game.

**Metropolitan Meat Co.**

**Delinquent Notice, Waiialua Agricultural Co., Ltd.**  
Holders of assessable stock in this Company will please take notice that all assessments due and remaining unpaid on February 15th will become delinquent and subject to penalty from and after that date. **WAIALUA AGRICULTURAL CO., LTD.** 1452-1W W. A. Bowen, Treasurer.

**To Shareholders Nahiku Sugar Co., Ltd.**  
Notice is hereby given that the THIRD ASSESSMENT of 10 per cent, or \$2 per share, will be due and payable at the offices of Alexander & Baldwin, Judd building, on the 1st day of March, 1900. **J. P. COOKE,** Treasurer. Honolulu, Feb. 10, 1900. 1453-1W

**Meeting Notice.**  
Special Meeting of the Stockholders of the UNION FEED COMPANY, Limited will be held at the Company's office Judd Building, on FRIDAY, the 16th inst. at 10 o'clock a. m., to consider important business. **F. R. VIDA,** Secretary Union Feed Co., Ltd. Honolulu, Feb. 8, 1900. 1450-7

### WANTS.

WANTED—Position as HO-SER-LEPER or as NURSE, invalid or children. A competent person with best references. Also good secretarial. Address: M. J. this office. 1451-10

WANTED—FURNISHED or UNFURNISHED ROOMS with or without board, suitable for two young men. Must be within one and one-half miles from Post Office. Address M. G., Box 612. 1449

WANTED—FIVE MESSENGER BOYS at once, American Messenger Service, Hotel and A. A. Streets. 1449

WANTED—N. F. BURGESS does all kinds of small repairing, Lawn Mowers and Garden Hose, are specialties. Lawn Mowers will be called for, by ringing up 223. Also a few for rent Pensacola street. 1467

WANTED—Men to know that they can get shaved by a white barber for 15 cents at H. JEFFS, 615 1/2 Fort street, opp Club Stables. 1409-11

WRITING and ACCOUNTING DONE accurately, moderate rates. MR. MUM, care People's Express Co., or General Delivery, P. O. 1408-11

COMPETENT GERMAN GIRL WANTED for general housework and care of children. References required. Apply G. M., Bulletin office 1459

**FOR SALE.**

FOR SALE—Neat, cosy FOUR-ROOM HOUSE on Makiki street, opposite the old baseball grounds. Will give possession March 1. Terms very reasonable. P. M. POND, Room No. 403, Judd Building. 1455-1W

FOR SALE—Two Choice LOTS in Maunaloa, commanding view of Waikiki and Diamond Head. Superb view, fresh air, pleasant neighbors. The proposed Rapid Transit line will come within a block of it within a year. P. M. POND, Room No. 403, Judd Building. 1455-1W

FOR SALE—Choice POTTED PLANTS for sale next door to Mr. J. H. Boyd's Waikiki Road. 1451-1W

ATTENTION! GREAT BARGAIN. Beautiful Mexican Needlework Center-pieces, etc. Magnificent presents for ladies. Apply H. Ossig, Alaha House, Fort street. 1452-1W

FOR SALE—Good REGALIA H. HENRI, 7508-10-11, Set of Harness, Surtex with rubber tips. Call on O. H. BERREY, Rooms 205-204, Judd B. 1451-1W

FOR SALE—\$2500. Lease in a large beautiful house situated near the heart of the town. Present Net Monthly Income \$100. Apply to **WILLIAM SAVIDGE,** No. 310 Fort street. 1443

FOR SALE—\$1000. Lease of Cottage centrally, 10 years to run. Ground rent \$12 per month. Apply to **WILLIAM SAVIDGE,** No. 310 Fort street. 1443

FOR SALE—\$3000. New Modern Cottage and lot at Keolu. Lot 20000. A bargain as a home. Apply to **WILLIAM SAVIDGE,** No. 310 Fort street. 1443

FOR SALE—A 3rd Anthony Camera, reversible back, with wide angle Morrison lens. Inquire at this office. 1451-11

FOR SALE—LANDS IN ALL PARTS OF THE CITY. By J. M. V. VAS. 1452

**TO LET.**

COTTAGE TO LET mauka of Emma Square. Enquires on the premises. 1451-11

TO LET—FURNISHED COTTAGE. Party leaving for the Coast wishes to sell the furniture of a 5-room cottage with privilege of renting cottage. Rent \$20.00, price of furniture \$100.00. Close in town. Apply J. P. this office. 1450-1W

**THE ALOHA ROOMING HOUSE, Fort St. Best rooms and attendance in city. 1451**

**LOST.**

LOST—Will the gentleman who picked up a ladies' GOLD WATCH, on Fort street, near Holston's Drug Store, please leave same at Willard Brown's office, F. 21 street, and receive reward. 1445-1W

### NEW TO-DAY VOLUNTEERS WANTED AT ONCE.

FIVE ACTIVE MEN are urgently needed at once to act as Volunteer Sub-Inspectors in Mr. J. Lightfoot's district at Pawaa, Moiliili and Waikiki. February 15th. **CITIZENS' SANITARY COMMITTEE.** 1456-1t

**LIGHT WISDOM - - -**

Let us tell you something about Electric Incandescent Lamps. Perhaps you have noticed that your bill for electric lighting has varied peculiarly from month to month. When it is large you say bad words about your meter and you think that the Light Company is cheating you. The Company is not cheating you—YOU ARE CHEATING YOURSELF. A lamp which has lived its normal number of amperes hours, though it may not be dead, consumes nearly twice as much current as when it is first used. If when your lamps show signs of having burned too long you would take them out and purchase new lamps you would find that the saving in your monthly bill would more than compensate for the price of the new lamps.

**Oceanic Gas and Electric Co., Ltd.**

**ON ICE.**  
EX "AUSTRALIA."  
**FROZEN**

**Eastern Oysters**  
IN CANS, AT THE **BEAVER LUNCH ROOMS.**  
H. J. NOLTE, Proprietor. 1454

### SHIPPIER INTELLIGENCE

For additional Shipping News see seventh page.

Weather Bureau, Punahou, Feb. 15.  
Temperature—Morning minimum, 65; Midday maximum, 72.  
Barometer at 9 a. m. 30.05. Irregular.  
Rainfall 0.  
Dew Point 58 F.  
Humidity at 9 a. m. 70 per cent.  
Diamond read Signal Station, Feb. 15.—Weather cloudy, wind light NE.

**ARRIVALS.**  
Wednesday, Feb. 14.  
Br. sp. Aspice, Bremner, 60 days from Newcastle, with coal.  
Stmr. J. A. Cummins, Searle, from Oahu ports.

**DEPARTURES.**  
Wednesday, Feb. 14.  
Stmr. Maui, Bennett, for Molokai, Maui and Hawaii.  
Stmr. James Drake, Tullett, for Kapaau.  
Stmr. W. A. Hall, Thompson, for Kauai ports.  
Am. schr. Golden Shore, Rasmussen, for the Sound, in ballast.  
Stmr. Nihau, Thompson, for Lahaina and Kaaanapali.

**TO SAIL TOMORROW.**  
Schr. Golden Gate, Naopala, for Kaaunakakai and Maunaloa at 5 p. m.

### ITEMS FROM HARBOR FRONT

The John McDonald from Hongkong is anchored off port. She hove in sight yesterday afternoon.

The Claudine from Maui and the Lehua from Molokai should be back on either Friday or Saturday.

The Mikahala is about ready to sail and it is expected that she will sail for all Kauai ports at 4 p. m. tomorrow.

The British ship Aspice, John R. Bremner master, arrived off port with 3,012 tons of coal last evening. She came in this morning. The Aspice was 60 days on her trip.

W. F. Drake, formerly a Custom House inspector, has been employed as an officer of the Custom House aboard the Australia. W. G. Irwin & Co. to pay his wages.

The Evening Bulletin, 75 cents per month.

### BY AUTHORITY.

Honolulu, Feb. 14, 1900.  
By order of the Board of Health, on and after midnight, February 14th, 1900, King street, from Nuuanu to River street, is hereby opened for public traffic.  
**HENRY E. COOPER,**  
Acting President Board of Health. 1456-3t

Honolulu, Feb. 14, 1900.  
The Board of Health hereby requests that the public of Honolulu carry out the suggestions of the Citizens' Sanitary Committee in regard to the poisoning of rats and the subsequent disposition of the same.

The Board further suggests that the poison shall be placed in suitable localities each night for one week, beginning Saturday night, February 17.  
By order of  
**HENRY E. COOPER,**  
Acting President Board of Health. 1456-1W

### Notice to Shippers.

In the matter of disinfection or fumigation of freight, shippers will make no distinction between that destined for points on the Island of Oahu and that destined to points on other islands.

The original cases must be opened and the straw or loose paper wrapper or sawdust, or other packing material, removed from each bottle or tin; each bottle or tin is then to be dipped in an approved disinfecting solution; the interior of the original case is then to be washed out with disinfectant; in repacking the already disinfected bottle or tin, no wrapper may be used unless same has first been fumigated or disinfected; the filled case is to be closed up and the entire exterior is to be disinfected.

In cases where the tinned or bottled goods have no loose paper or straw wrapping, or where they are not packed in sawdust or any similar substance, the entire original package, after two or more large openings have been made in it, may be dipped in a disinfecting solution; but great care must be exercised to insure the thorough disinfection of each tin or bottle, and the whole interior of the original package as well as the whole exterior surface of such original package.

Shippers having the interests of the entire island community at heart will exercise very carefully every precaution, and assist rather than impede the efforts of the Board of Health in preventing a further spread of Bubonic Plague in these Hawaiian Islands.

Willful infringement or careless disregard of these or other regulations of the Board of Health on the part of shippers, will be followed by the immediate withdrawal of privilege of shipment of any goods whatever by those engaging in such infringement or carelessness.

**BOARD OF HEALTH,**  
A. B. INGALLS,  
Superintendent of Disinfection and Fumigation.  
Honolulu, Oahu, Feb. 15, 1900. 1456-1t

### Jas. F. Morgan

**AUCTIONEER AND BROKER**

11—33 Queen Street

THIS SPACE RESERVED FOR **JAS. F. MORGAN.**

### MAUI'S FIGHT PROGRESSES.

(Continued from page 1.)

and cats trying to escape from the fire. It is believed that not a rat escaped. Some of the guards shooting at random at the rats not a few of the shots passed within an uncomfortable distance of the heads of Senator A. N. Kopolka and also Representative W. F. Pogue and it is a surprise that no very serious accident happened judging from the reckless use of fire arms in the hands of inexperienced men.

**BRAVE SAILOR FIREMAN.**  
A sailor from one of the vessels in port was praised very much for the daring way in which he tried to save the Custom House. Wet bags were thrown around him and a gang of men stood a little distance off hurling buckets of muddy water on him, while he boldly held the hose for extinguishing the flying sparks that came within reach of the building. That not a single accident occurred is a good report of the work of those in charge of the fire. All the residences near the burning block were saved.

**IN THE DETENTION CAMP.**  
By evening, all those in quarantine—138 men and 36 women—were comfortably quartered in the detention camp. The stalls of the track had new floors put in, and those with families and some women were quartered there. The single men were placed in the grandstand which was boarded all around. The Kahului ladies are sending clothing and food to those in quarantine. Senator Baldwin sent down a bullock for them. Mr. Jem Smith of Kihui, in charge of the camp, and all the inmates are in good spirits, there being not a single complaint made of their treatment. Although the Chinese and Japanese are the heavy losers, they are all looking on the bright side of life. There is only one white man in the camp.

W. J. Ball, manager of the Kahului saloon, and his wife, are quarantined in a separate house by themselves, and during the fire yesterday they watched from their new quarters the passing away of their old home which was above the saloon.

**POPULATION IS SCATTERED.**  
W. T. Robinson claims that between 1,500 and 2,000 Chinese and Japanese were quartered a month ago in the burned block, but yesterday from the census made there were only 174 left. This means that over 1,000 left that block for various parts of Maui soon after the death of Sam Ying and the Japanese woman and her child. Many are reported to have gone to Kula, some in Paia and Makawao, some in Waihe, and some have even left for Lahaina.

This makes the situation a very serious one should the plague break out beyond the limits of Kahului. The small number of doctors is a fact to be deplored. Drs. Garvin and Weddick are the only ones attending those in quarantine, while Dr. Armitage has enough to occupy all his spare moments for of late he has been subject to calls from the outside districts as well as Wailuku and vicinity.

### Pacific Import Co.

(INCORPORATED),

**PROGRESS BLOCK.**

## Great News!

We beg to inform the Ladies that we have just opened out five cases of Embroideries, Insertions, and All-Over Embroideries—1,000 pieces of Embroideries of all grades in widths and qualities to select from, high novelties in new patterns that must be seen to be appreciated. Having imported the same direct from the largest manufacturer in Switzerland, we are able to sell the same at very reasonable prices.

We invite inspection.

**PACIFIC IMPORT CO.**  
S. EHRLICH, Manager.