

If you want today's News, to-day you can find it in THE STAR

# THE HAWAIIAN STAR.

SECOND EDITION

Report on Equitable Society Is Continued To-Day

VOLUME XIII.

HONOLULU, HAWAII, FRIDAY, JUNE 30, 1905.

No. 4142

## FINDING BAD MONEY

THE CAMP MCKINLEY COUNTERFEITING OUTFIT IT FOUND AND THE WHOLE PLAN REVEALED WITH THE ASSISTANCE OF PRIVATE COOPER, WHO CONFESSES TO HAVING MADE THE COINS—COOPER, BOLTON AND JACKSON IN THE TOILS.

Picking ten-dollar pieces from among the leaves of a palm tree and seeking for them in the mud of a Waikiki fish pond, District Attorney Breckons and Marshal Hendry this morning completed their investigations of the counterfeiting operations which have been going on at Camp McKinley. The plaster of Paris cast which were used in making the coins, a large number of the coins, and plenty of evidence to show that the manufacturing of the bogus money was done at Camp McKinley, or rather close to the camp, are in the possession of the authorities, and Private Cooper this morning took Hendry and Breckons to the cottage where he made the coin and to the duck pond

where he claims to have thrown most of it away. Private Jackson took them to the palm tree where he hid nine ten-dollar pieces among the leaves, and he found eight of them.

In confessing his guilt yesterday afternoon Cooper agreed to show the federal officers where he had made the coin and where he had thrown a lot of it away. As far as the making is concerned, his story was absolutely corroborated. The duck pond proposition remains to be further investigated. A search will be made in the mud of the pond for the \$300 odd dollars in gold tens which Cooper claims to have

(Continued on page 5.)

## Inauguration Of County Government

A celebration of the inauguration of county government is to begin at the Capitol at half past eleven this evening when the band will give a concert and the heads of Departments and Acting Governor Atkinson and the supervisors and other county officials will meet. The commissioners who drew the

county act have also been invited by the acting governor, and there will be a general celebration. This will precede the meeting of the board of supervisors which has been called for midnight. The Territory will relinquish its hold on the matters turned over to the county with a concert and a celebration.

## M'BRYDE BOND ISSUE

The McBryde bond issue matter is practically arranged. The first issue of \$750,000 which may be paid after tomorrow are to be called in. The Bank of Hawaii agrees to take \$750,000 of the \$2,000,000 of the second issue and retire the first issue. This will make the second issue then practically a first mortgage bond. All that remains to be done is for the directors of McBryde to ratify this agreement, which it is believed they will undoubtedly do.

The market responded this morning to reports that the bond issue had been settled.

With the bonds floated the unfunded debts of the plantation will be paid, and the plantation put in a first-class financial condition.

"We were approached," said C. M. Cooke president of the Bank of Hawaii "by some of the stockholders of McBryde Plantation and asked upon what terms we would finance the second bond issue of that plantation. I stated upon what terms the bank would take up this matter and a new

condition with some modifications was submitted by the other side. Although nothing definite has been determined about the matter, the bank is ready to take up the matter upon the terms that were agreed upon. We have not the say in the case however for the directors have not taken any action upon the matter and not until they do, will the matter be determined one way or the other.

"The bonds concerned are the second issue of \$2,000,000. Under this issue the sum of \$750,000 is reserved to take up the first bond issue of \$750,000. Under the terms which were discussed we will finance the entire issue and attend to taking up the first issue. The matter is entirely unsettled however and is being considered."

W. A. Kinney stated that the deal had not been consummated. The negotiations for taking up the first issue, he said, were still in progress and the indications now were more favorable for placing them, than at any recent time.

**CABLE CODE BOOKS.**  
Save money by using a code for your messages. We have in stock the Western Union, Lieber and A. B. C. latest editions. Wall, Nichols Co.

### Classified Advertising

**Lost**  
Letters of introduction and recommendation of no use except to undersigned. Reward. Address G. P. O.—J. W. Finning.

road, Magoonville, Lili by name, 8-year boy strayed from home, Emily

## Once Too Often

a man is careless in the bestowal of his valuable documents and the thief in the night carries away that which may make the lawful owner poor indeed.

Such unfortunate contingencies may be guarded against by securing a safe-deposit box in our fire-proof vault. The price is nominal—\$5.00 per year and you are furnished with a key. Also there is a private room for your benefit when you wish to examine your papers.



**HAWAIIAN TRUST CO., LTD**  
Fort Street, Honolulu

**PIRE WORKS.**  
Assorted in cases from \$7.50 up to \$50.  
New England Bakery.

**BEWARE OF A COUGH.**  
Now is the time to get rid of that cough, for if you let it hang on no one can tell what the end may be. Others have been cured of their coughs very quickly by using Chamberlain's Cough Remedy. Why not you? For sale by all dealers. Benson Smith & Co., agents for Hawaii.

**CALIFORNIA OLIVE OIL.**  
is considered the best because unadulterated as most of the imported oils are lathered with. Purita Olive Oil is made from ripe California olives and is a delicious table oil. Sold by Hobson Drug Co.

Star Want Ads pay 25 cent.

## TO THE County Officials and Office Men

Do you realize the satisfaction, economy and the advantages there are in using UNDERWOOD TYPEWRITERS, and GLOBE-WERNICKE BOOK-CASES and FILES?  
Your advice that you are interested in these lines will bring you our catalogs and full information.

**PEARSON & POTTER CO.**  
Limited  
P. O. BOX 754.  
PHONE MAIN 317.  
HONOLULU, T. H.

## Norwegian Army Being Mobilized

(Associated Press Cable to The Star).

STOCKHOLM, June 30.—The Norwegian army has been mobilized and is moving toward the Swedish border.

## NINE SHIPS BURNED

ODESSA, Russia, June 30.—Nine ships have been burned by the revolutionists. The mutineers surrendered the battleship Kniaz Potemkin in the arrival of the Russian Black Sea fleet.

THOUSANDS RIOTING IN LIBAU.

LIBAU, June 30.—Five thousand sailors here revolted and were pursued by government troops. One thousand of the rioters surrendered to the soldiers.

ROCKEFELLER LOOSENING UP.

NEW YORK, June 30.—John D. Rockefeller, president of the Standard Oil, has given an endowment of \$10,000,000 for the cause of higher education.

NEW PANAMA ENGINEER CHOSEN.

WASHINGTON, D. C., June 30.—John F. Stevens a railroad man, has been chosen chief engineer of the Panama Canal Commission to succeed J. F. Wallace who recently resigned.

PEACE NEGOTIATIONS PROGRESSING FAVORABLY.

WASHINGTON, D. C., June 30.—Negotiations looking to the peace conference are progressing. An armistice between Oyama and Lihuevitch for the forces in Manchuria will be drawn.

## TO ORGANIZE AT MIDNIGHT

SUPERVISORS DRAFT OUT THE PROGRAM BY WHICH THE COUNTY OF OAHU WILL BE CONSTITUTED A FEW MINUTES AFTER THE HOUR OF TWELVE STRIKES TONIGHT—A MINOR TROUBLE ARISES OVER THE POLICE TRANSFER.

The Board of supervisors of the County of Oahu that is to be met again this morning and wasted the greater part of two hours in a squabble over the exact manner in which the police department should be started when midnight strikes tonight.

One thing that they did decide upon was that no sooner do the clock hands close one upon the other at midnight than the Board of Supervisors will constitute itself a governing body in its new quarters in the McIntyre block. Oddly enough the Supervisors Room in the building bears the sign "Headquarters, Anti-Saloon League" but it is to be presumed that this is merely a relic left by former occupants.

There were present at this morning's meeting Acting Chairman Smith, Supervisors Adams, Moore, Lucas, Paels Archer and Cox Sheriff Brown, Clerk Kalauskaland, Treasurer Trent, Auditor Eicknell and Attorney Douthitt. Handmaster Berger appeared with a pay-roll of the band, wished the supervisors joy and hoped that they and the band would ever be in harmony, with which he was not without. Upon the chair's suggestion the question of holding the first meeting of the board was taken up and it was unanimously decided that at one minute

past twelve tonight—or rather, tomorrow morning—the board would be called to order in its new quarters.

It was arranged that business should proceed in the following manner: Presentation of certificates of election; Taking of the oath of office, before Justice Wilder; Presentation of the bonds, approved by Judge De Bolt; Organization by the election of permanent chairman and vice-chairman; Presentation of the oaths and bonds of County officers—Sheriff, Auditor, Clerk, Attorney, Treasurer and Deputy Sheriff.

This matter was soon disposed of and the departments were taken up in detail.

The Treasurer's wants were few after he had secured the concession that business of the County Treasury should be carried on in his own office. He merely wanted an assistant, not a deputy, at a salary of \$100 a month, he said, there would be no funds to handle everything involving money being transferred by check. Supervisor Lucas had an attack of generosity and wanted to give the Treasurer's clerk \$125 instead of \$100 but the motion lost.

(Continued on page eight)

## YACHT RACES ON THE FOURTH

HAWAII YACHT CLUB ARRANGES TWO TO FOLLOW THE HEALANI-MYRTLE BOAT RACES.

The Healani and Myrtle Boat Clubs will unite with the Hawaii Yacht Club in an endeavor to make this year's boat races the most successful which have ever been held at Pearl Harbor. After the boat races, senior and junior, there will be two yacht races for which the following yachts have entered: First class, La Paloma, Spray, Kapelei; third class, Irish, Malolo, Maggie, Myrtle and Princess. Each race will be sailed over the same course, starting at the Hawaii Yacht Club's headquarters to the mouth of Pearl Harbor rounding the entrance buoy keeping same on the port side, thence to Ford's Island, around same, keeping the island on the starboard side, and finish at the starting point. The Yacht Club is issuing invitations to its members and friends to view the races from the club verandah where luncheon will be served to the club's guests.

### INHERITANCE TAX LAW.

Registrar Henry Hapai is preparing to collect the inheritance tax called for by the law passed by the legislature. A system has been prepared whereby clerks of the Circuit Courts all over the Territory will send to the Treasurer detailed reports of all estates which are probated.

**THEY ARE SO GOOD.**  
Tillmann's food products are world-famous for excellence. "Tillmann" on a label indicates that the contents of the can are perfect. J. M. Levy & Co., carry a complete fresh stock.

**DRY GOODS SALE.**  
Great dry goods clearing sale at Pacific Import Co. will begin Saturday, July 1st, at 8:30 a. m.

Lutted's Hawaiian Food in Pound Cans for sale by all druggists and grocers.

Automobiles can be hired day or night at Club St. Stee, Fort street.

**NEW ANIMALS AT THE ZOO.**  
The Kaimuki Zoo has just received per S. S. Alameda the following new animals: Wild Cat, Ring Tail Possum, Storks, Coyote, Crows, etc. Take a trip to the Zoo and see the animals and birds and get some fresh, cool breezes.

Star Want Ads pay 25 cents.

## SHERIFF HI GOES TO THE CAPITOL BUILDING

WILL HAVE AN OFFICE IN THAT PLACE, ATTENDED BY A CLERK—WILL SURRENDER PROPERTY.

"There is to be no friction of any kind," said High Sheriff Henry today in speaking of the transfer of the property to the County Sheriff tonight. "There was never danger of any trouble ensuing. There are so many technical points that have to be considered however in the matter of government property, that I naturally have exercised the utmost care in this case. The property will all be turned over to County Sheriff Brown, subject to withdrawal on demand, and I will take a receipt from him for the stuff. The receipt will be made on a blank form drawn up by the Acting Governor.

"In regard to the location of the office of High Sheriff, it was thought better that it be located in the Capitol Building, so I will therefore go with my clerk. The County Sheriff will have charge of the police station building."

## WANT TO "TURN THE RASCALS OUT"

DEMOCRATIC-HOME RULE FUSIONISTS PROPOSE TO PROTEST ENTIRE RESULT OF ELECTION.

If the bug which at present has its habitat in the heads of the Democratic-Home Rule organization should reach maturity, a general protest will be entered against the return of all of the Republican officers who were returned at the last election and also against the return of Adams as supervisor at large.

The protest will be on the ground that numerous ballots were thrown out as spoiled because different of the voters, principally natives, it is asserted, voted for four supervisors in Honolulu instead of three. This, so the Fusionists claim, did not spoil the whole ballot, but only the vote for supervisors.

"It is like this," said Abraham Forsman, who was Fusion candidate for supervisor-at-large in opposition to Adams, "the men were under the impression that four supervisors were to be voted for not three and they so marked their ballots in Honolulu. These ballots were cast in good faith and were an expression of opinion on the choice for other officers as well. Still they were all declared void. I think that we will get a recount on the other officers on this showing in which event there will be several of those who now think they are elected will find themselves left. There were about six hundred votes thrown out and most of these were Fusion votes. Our lawyers have the matter in hand now."

Chief Clerk Backlund who was seen down town this afternoon was not able to recall the exact number of spoiled ballots but thought that they amounted to about 400.

### EXCEPTIONS FILED.

The Hawaiian American Steamship Company has filed exceptions to the complaint filed against it by the Rapid Transit Company, for damages on account of the breaking of glass shipped in one of the steamship company's vessels from New York and consigned to the Rapid Transit Company.

### HO FOR THE FOURTH!

Torpedoes, Torpedo Cans, Caps and Cap Pistols, Flags, and a new lot of Lunch Sets just received at Arleigh's.

**A MATTER OF HEALTH**  
**ROYAL BAKING POWDER**  
Absolutely Pure  
HAS NO SUBSTITUTE

## BOND PAYMENTS AND DIVIDENDS

THE LAST OF THE EWA BONDS WILL BE PAID TOMORROW—THOUSANDS IN DIVIDENDS.

The last \$100,000 of Ewa bonds will be paid tomorrow. After that Ewa will have no bonded indebtedness. The issue which is now being paid off was made January 1, 1900, and was for \$500,000, six per cent redeemable after 1903 and payable January 1, 1910. The redemption of these bonds began July 1, 1902.

Including this redemption of \$100,000 and the dividends payable today, tomorrow and July 5 about \$400,000 will be disbursed. A great deal of this will seek re-investment. This fact, probably had something to do with the avidity with which the report that the McBryde bond issue had been settled, was accepted. The market is practically bare of bonds for investment, and investors are bidding against each other for the issues that still offer investment qualities. In this state of the market it was reckoned that the psychological moment had arrived for putting a new issue on the market, and as it is recognized that the McBryde second issue of bonds would be unassailable if the first issue were out of the way, there was a prevailing opinion that some strong interest would seize the opportunity to arrange for the retirement of the first issue which can now be redeemed, or can be after tomorrow, and make the profit which it is believed is sure to follow, by putting the new bonds on the market as an investment.

## COUNTERFEIT CASES HEARING

COMMISSIONER MALING TAKING TESTIMONY REGARDING THE DISPOSAL OF BOGUS COIN.

The hearing of the counterfeiting cases began this afternoon before United States Commissioner Maling, the case of W. R. Bolton being the first to be taken up. Bolton failed to produce the bogus coin said to have been delivered to him, as he is said to have promised, and the case against him was proceeded with. He was allowed to have a conference with his wife, who is also under arrest, for having the counterfeit coin in her possession, but the meeting failed to develop the expected result of production of the coin.

Private Cooper, who made the coins, was the first witness called. He testified that he met Bolton a package containing some of the counterfeit money, last Saturday. He said that he didn't think Bolton knew what was in the package.

Jackson was next called. He testified that he met Bolton on Saturday evening, and that Bolton gave him nine ten-dollar pieces which were bogus. Bolton told him to pass them, said the witness, and said that if he did so they would share even on the result.

C. W. Ashford and C. Creighton appeared as attorneys for Bolton. In answer to questions by Ashford Jackson said he was pretty drunk when given the coin. When asked if he was very drunk, he replied that he was "drunk enough."

The other cases are to follow that of Bolton.

Fine Job Printing, Star Office.



The "Pike"  
Price \$4.00

Patent Colt, Mat Top, Balmoral Good-year Welt.

IF YOU DESIRE FINE WEARING QUALITY, GOOD LOOKS AND COMFORT IN SHOES PURCHASE THE "PIKE"

MANUFACTURERS' SHOE CO., LIMITED.  
1051 FORT STREET

# Oceanic Steamship Company.

## TIME TABLE

The five Passenger Steamers of this line will arrive at and leave this port as hereunder:

FROM SAN FRANCISCO.		FOR SAN FRANCISCO.	
*ALAMEDA	JUNE 23	*ALAMEDA	JUNE 28
*VENTURA	JULY 5	*SIERRA	JULY 4
*ALAMEDA	JULY 14	*ALAMEDA	JULY 19
*SIERRA	JULY 28	*SONOMA	JULY 25
*ALAMEDA	AUGUST 4	*ALAMEDA	AUGUST 9
*SONOMA	AUGUST 18	*VENTURA	AUGUST 15
*ALAMEDA	AUGUST 25	*ALAMEDA	AUGUST 20
*VENTURA	SEPTEMBER 1	*SIERRA	SEPTEMBER 5
*ALAMEDA	SEPTEMBER 15	*ALAMEDA	SEPTEMBER 20
*SIERRA	SEPTEMBER 27		
*ALAMEDA	OCTOBER 6		

\* Local Boat.

In connection with the sailing of the above steamers, the Agents are prepared to issue to intending passengers coupons through tickets by any railroad from San Francisco to all points in the United States, and from New York by Steamship line to all European ports. For further particulars apply to:

# W. G. Irwin & Co.

General Agents Oceanic S. S. Company.

# Canadian-Australian Royal Mail STEAMSHIP COMPANY

Steamers of the above line, running in connection with the CANADIAN-PACIFIC RAILWAY COMPANY between Vancouver, B. C., and Sydney, N. S. W., and calling at Victoria, B. C., Honolulu and Brisbane, Q.

Due at Honolulu on or about the dates below stated, viz:

FOR AUSTRALIA.		FOR VANCOUVER.	
MANUKA	JUNE 3	AORANGI	MAY 31
AORANGI	JULY 1	MIOWERA	JUNE 23
MIOWERA	JULY 29	MOANA	JULY 26
MOANA	AUG. 26	AORANGI	AUG. 23
AORANGI	SEPT. 20	MIOWERA	SEPT. 20
MIOWERA	OCT. 21	MOANA	OCT. 18
MOANA	NOV. 18	MIOWERA	DEC. 13

CALLING AT SUVA, FIJI, ON BOTH UP AND DOWN VOYAGES.

# THEO. H. DAVIES & CO., Ltd., Gen'l Agts.

## AMERICAN HAWAIIAN STEAMSHIP COMPANY.

DIRECT MONTHLY SERVICE BETWEEN NEW YORK AND HONOLULU, VIA PACIFIC COAST.

FROM NEW YORK TO HONOLULU.

S. S. "OREGONIAN"	July 8th
S. S. "AMERICAN"	July 25th
FROM SAN FRANCISCO TO HONOLULU.	
S. S. "NEVADAN"	July 13th
S. S. "NEBRASKAN"	August 3rd
FROM HONOLULU TO SAN FRANCISCO.	
S. S. "NEBRASKAN"	July 2nd
S. S. "NEVADAN"	July 23rd
FROM SEATTLE AND TACOMA TO HONOLULU.	
S. S. "NEVADAN"	July 7th
S. S. "NEBRASKAN"	July 28th

H. Hackfeld & Co., Agents.

C. P. MORSE, General Freight Agent.

# Pacific Mail Steamship Co. Occidental & Oriental S. S. Co.

Steamers of the above Companies will call at Honolulu and leave this port on or about the dates below mentioned:

FOR CHINA AND JAPAN.		FOR SAN FRANCISCO.	
COPTIC	MAY 18	MONGOLIA	MAY 19
SIBERIA	JUNE 3	CHINA	MAY 30
MONGOLIA	JUNE 14	DORIC	JUNE 13
CHINA	JUNE 24	MANCHURIA	JUNE 19
DORIC	JULY 8	KOREA	JULY 4
MANCHURIA	JULY 15	COPTIC	JULY 11
KOREA	JULY 25	SIBERIA	JULY 28
COPTIC	AUG. 9	MONGOLIA	AUG. 8
SIBERIA	AUG. 23	CHINA	AUG. 18
MONGOLIA	SEPT. 2	DORIC	SEPT. 1
CHINA	SEPT. 13	MANCHURIA	SEPT. 8
DORIC	OCT. 4	KOREA	SEPT. 23
KOREA	OCT. 17	COPTIC	OCT. 7
COPTIC	OCT. 25	SIBERIA	OCT. 27
SIBERIA	NOV. 11	MONGOLIA	OCT. 27

For general information apply to

# H. Hackfeld & Co.

# Outing Dainties

This is the season of the year for outings and picnics and we are prepared to supply you with many choice delicacies in this particular line, all of them fresh and in the best of condition. It doesn't matter if you are going for a picnic of a day or a camping trip of a week's duration, a selection from the following will materially add to the pleasure of the trip:

- SARDINES, PATE DE FOIES GRAS, PUREE DE FOIES GRAS, GAME PATES SARDELLEN, ANCHOVIES, BISMARCK HERRING, CAVIAR, FANCY IMPORTED CHEESE (in jars), COOKED PICKLED PIGS FEET (in jars), OLIVES STUFFED WITH CELERY PIMOLAS, CRACKERS of all descriptions.

# Henry May & Co., Ltd., BOSTON BLOCK

Retail Main 22—TELEPHONES—Wholesale Main 92.

# SHIPPING INTELLIGENCE

(For additions and later shipping see pages 4, 5 or 8.)

TIDES, SUN AND MOON.

Now Moon July 3 at 1:16 a. m.

Date	High Tide	Low Tide	High Tide	Low Tide	Sun	Moon
26 12.12 1.2	11.42	4.45	6.49	5.30	6.45	1.03
27 12.34 1.4	5.25	7.44	5.20	6.45	1.43	
a. m.						
28 1.32 1.4	6.01	6.07	5.34	5.30	6.45	2.20
29 2.07 1.5	6.52	6.10	5.17	5.21	6.46	3.02
30 2.42 1.9	7.44	5.28	5.52	5.21	6.46	3.46

July

1	2.18	2.0	8.03	10.35	5.21	6.46	4.34
2	3.53	2.0	9.17	11.00	5.22	6.46	5.23
3	4.92	2.0	10.00	11.59	5.22	6.46	7.49

Times of the tide are taken from the U. S. Coast and Geodetic Survey tables. The tides at Kahului and Hilo occur about one hour earlier than at Honolulu, Hawaiian standard time is 10 hours 30 minutes slower than Greenwich time, being that of the meridian of 157 degrees 30 minutes. The time whistle blows at 1:30 p. m., which is the same as Greenwich, 9 hours, 6 minutes. The Sun and Moon are for local time for the whole group.

## U. S. DEPARTMENT OF AGRICULTURE, WEATHER BUREAU.

The following data, covering a period of 30 years, have been compiled from the Weather Bureau and McKibbin records at Honolulu, T. H. They are issued to show the conditions that have prevailed during the month in question, for the above period of years, but must not be construed as a forecast of the weather conditions for the coming month.

Month—July, for 30 Years.

### TEMPERATURE (1870-1894.)

Mean or normal temperature, 78 deg. The warmest month was that of 1890, with an average of 79 deg. The coldest month was that of 1894, with an average of 75 deg. The highest temperature was 88 deg. on July 25, 1890.

The lowest temperature was 63 deg. on July 1, 1890.

### PRECIPITATION (rain) (1877-1894.)

Average for the month, 1.48 inches. Average number of days with .01 of an inch or more, 14.

The greatest monthly precipitation was 5.93 inches in 1880.

The least monthly precipitation was 0.34 inches in 1882.

The greatest amount of precipitation recorded in any 24 consecutive hours was 3.17 inches on July 12, 1880.

### CLOUDS AND WEATHER (1890-1894.)

Average number of clear days, 12; partly cloudy days, 17; cloudy days, 1.

### WIND (1875-1894.)

The prevailing winds have been from the northeast.

Station: Honolulu, T. H.

Date of issue: June 29, 1905.

ALEX. MCK. ASHLEY, Section Director.

### ARRIVING.

Friday, June 30.

Stmr. Mauna Loa, Simerson, from Hawaii and Maui ports at 4:45 a. m. with 2908 bags sugar, 63 sacks coffee and 42 head cattle.

Saturday, July 1.

Stmr. Kinau, Freeman, from Hilo and way ports, due.

Stmr. Likelike, Naopala, from Maui, Lanai and Molokai ports, due.

Sunday, July 2.

Stmr. Maul, Parker, from Maui ports due early in morning.

Stmr. W. G. Hall, S. Thompson, from Kaula ports, due early in morning.

### DEPARTING.

Saturday, July 1.

Stmr. Claudine, F. Bennett, for San Francisco at 10 a. m.

### PASSENGERS.

#### Arriving.

Per stmr. Mauna Loa, June 30, from Kau ports—Miss L. C. Ayres, Miss O. Ayres, B. C. Ingram and wife, J. Lino and son, R. H. Morris; Kona ports, Miss Brehman, Miss Denzer, Miss H. Taylor, J. Cooper, Misses Chapool (2), F. Gouveia and wife, Abol, Aho, Miss Hesse, Mrs. J. A. Curtis, Miss C. Paul, Miss A. Greenwell; Miss P. Rathburn, Miss Kamaoaha, Miss Elizabeth Iona; from Maui ports, Lee Sheong, J. M. Hoge and wife, John Richardson, A. J. Spitzer, C. F. Peterson, L. M. Lovsted, P. A. Alexander and wife, Henry d Fries, Miss A. C. Mossman, Mrs. S. M. Damon, W. J. Coelho, L. M. Baldwin, J. T. Taylor, W. G. Scott and wife and 24 deck.

#### Corpus Christi Procession.

WAILUKU, June 29.—The procession at the Catholic church in Wailuku, on last Sunday, in celebration of Corpus Christi festival, was a complete success, a very large crowd having arrived from the country districts by the trains of the Kahului Railroad Co. In fact, it was about the largest crowd that has ever come from the country. The church was filled with the faithful, there being only standing room; it was not enough to accommodate the very large gathering of Catholics. After mass the procession formed outside of the church, marched to the cemetery, and then to the hospital.

#### NO COMPETITION.

The uniform success of Chamberlain's Colic, Cholera and Diarrhoea Remedy in the relief and cure of bowel complaints both in children and adults has brought it into almost universal use, so that it is practically without a rival, and as everyone who has used it knows, is without an equal. Sold by all dealers. Benson Smith & Co., agents for Hawaii.

#### Only the chemistry of nature is employed in the manufacture of Rainier Beer. It is wholesome, invigorating and genuine.

Fine Job Printing, Star Office.

# WHAT NEW PROCESS GAS RANGES

Are Doing For Others, They Will Do For You

## Time - Money - Patience

If you can save a little of each of these, to say nothing of comfort and convenience, by using a NEW PROCESS GAS RANGE, isn't it worth your while?

WHEN YOU ARE READY

the gas range is ready; as much heat or as little as you like, no more no less and for as long a time as required. If a hot fire is desired on top and a slow fire in the oven, you may have both sorts, simultaneously. You do not BURN FUEL BEFORE AND AFTER, consequently there is no expense incurred except during the actual operation of cooking.

SEE DISPLAY.



DAILY DEMONSTRATION.

No Dirt,  
No Smoke,  
No Trouble

Kool Kitchen,  
Little Expense,  
Happy Home

# W. W. DIMOND & CO.,

Pioneer Gas Range House

53, 55, 57 King Street,

Honolulu, Hawaii

# FOREIGN NEWS BY CABLE

## BOMBARDING ODESSA.

LONDON, June 30.—An Odessa special says that the battleship Potemkin is bombarding the town. The authorities have ordered that the city shall be kept in total darkness.

Large bodies of troops are arriving. The foreign consuls are invoking the protection of warships, and it is thought this may cause a revision of the treaty of the Dardanelles. Agrarian riots extend over the empire, the governments of Ekaterinaslov and Cherson being particularly affected.

The treaty of 1841, confirmed at the close of the Crimean war, provided that the strait leading from the Sea of Marmora into the Aegean Sea should be closed to the warships of all nations save the Turks, thereby shutting off Russia from the Mediterranean. It has often been threatened, but never actually broken although a Russian auxiliary cruiser is said to have passed the Dardanelles early in the war with Japan. This, however, was never clearly established.

## QUIET IN POLAND.

LODZ, June 30.—Under the operation of martial law, matters here are rapidly getting back to the normal state.

## A SEMBLANCE OF ORDER.

ODESSA, June 30.—A state of siege has been declared here, and a semblance of order restored. It is reported that hundreds were killed on Wednesday night.

## ORDERED TO SINK POTEMKIN.

ST. PETERSBURG, June 30.—It is reported that the volunteer cruiser Saratoff has been burned at Odessa. Admiral Kruger's squadron, which is expected at Odessa tonight, has been ordered to sink the Potemkin unless she surrenders.

## ENGINEER WALLACE PUBLICLY CENSURED.

WASHINGTON, June 30.—Secretary Taft, with the sanction of President Roosevelt, has publicly censured Chief Engineer Wallace of the Panama Canal for resigning his position at a critical juncture to accept a more lucrative place.

John F. Wallace, Chief Engineer of the Panama Canal and a member of the Canal Commission, resigned both positions a few days ago to accept from a New York corporation a place that would pay him \$60,000 a year.

## PLAGUE AT PANAMA.

GUAYAQUIL, Ecuador, June 30.—The authorities here declare that Panama is infected with bubonic plague.

## NEW CHARLESTON VERY FAST.

PROVINCETOWN, Mass., June 30.—The new cruiser Charleston has made a speed of twenty-two and three-tenths knots on her trial trip, exceeding the contract requirement.

## REALTY TRANSFERS

Entered for Record June 29, 1905.

Geo. C. Allen to Trs of Est of S C Allen ..... R R

William R. Castle Tr to George A. Howard ..... P R

Geo. A. Howard Jr and wf to Goldie G. Gurney ..... D

Wm. M. Minton and wf to Hugh M. Tucker ..... D

Hugh M. Tucker and wf to Bank of Hawaii Ltd. .... M

G. W. Mahama to Ah Leona ..... L

Elizabeth S. Beckwith by atty to S. J. Harris ..... Rel

W. Matlock Campbell to W. M. Minton ..... P A

Joseph Paiko Sr to Richard H. Trent ..... P A

Almira V. Stratemeyer to Tr of Est of George C. Stratemeyer ..... D

## ANOTHER DEMOCRAT WON.

David Baker Democratic candidate for deputy sheriff of South Kona, was elected in the recent county election over Kokuewa the Republican candidate.

## NAKED NERVES.

Cover 'em up quick with Dr. Miles' Nerveine, or they will suffer from exposure and friction, and will ache and pain you. Dr. Miles' Nerveine will make you fat, strong, hearty, and oblivious to nerve trouble. At druggists. Money back if first bottle fails to benefit.

# ALEXANDER & BALDWIN LTD.

J. P. Cooke, Manager.

## OFFICERS:

H. P. Baldwin.....President

J. E. Castle.....First Vice-President

W. M. Alexander.....Second Vice-President

L. T. Peck.....Third Vice-President

J. Waterhouse.....Treasurer

G. M. Rolph.....Secretary

W. O. Smith.....Auditor

## Sugar Factors and Commission Merchants

### AGENTS FOR

Hawaiian Commercial & Sugar Company,

Haku Sugar Company,

Paia Plantation,

Maui Agricultural Company,

Kihai Plantation Company,

Hawaiian Sugar Company,

Kahuku Plantation Company,

Kahului Railroad Company,

Haleakala Ranch Company.

# BANK OF HAWAII

LIMITED.  
Incorporated Under the Laws of the Territory of Hawaii.

PAID-UP CAPITAL.....\$600,000.00  
SURPLUS.....290,000.00  
UNDIVIDED PROFITS.....192,617.80

**OFFICERS.**  
Charles M. Cooke.....President  
F. C. Jones.....Vice-President  
F. W. Macfarlane.....2nd Vice-President  
C. H. Cooke.....Cashier  
C. H. Hustace Jr.....Assistant Cashier  
F. B. Damon.....Assistant Cashier  
F. B. Damon.....Secretary  
**DIRECTORS:** Chas. M. Cooke, F. C. Jones, F. W. Macfarlane, E. F. Bishop, E. D. Tenney, J. A. McCandless, C. H. Atherton, C. H. Cooke.

COMMERCIAL AND SAVINGS DEPARTMENTS.  
Strict attention given to all branches of Banking

JUDD BUILDING. FORT STREET.  
Claus Spreckels. Wm. G. Irwin.

## Claus Spreckels & Co.

BANKERS

HONOULULU, I. I.  
San Francisco Agents—The Nevada National Bank of San Francisco.  
DRAW EXCHANGE ON SAN FRANCISCO—The Nevada National Bank of San Francisco.  
LONDON—Union of London & Smith's Bank, Ltd.  
NEW YORK—American Exchange National Bank.  
CHICAGO—Corn Exchange National Bank.  
PARIS—Credit Lyonnais.  
BERLIN—Dresdner Bank.  
HONGKONG AND YOKOHAMA—The Hongkong and Shanghai Banking Corporation.  
NEW ZEALAND AND AUSTRALIA—Bank of New Zealand, and Bank of Australasia.  
VICTORIA AND VANCOUVER—Bank of British North America.

TRANSACT A GENERAL BANKING AND EXCHANGE BUSINESS.  
Deposits Received. Loans made on Approved Security. Commercial and Travellers' Credits issued. Bills of Exchange Bought and Sold.

COLLECTION PROMPTLY ACCOUNTED FOR.

ESTABLISHED IN 1858.

## BISHOP & CO.

BANKERS

**BANKING DEPARTMENT.**  
Transact business in all departments of banking.  
Collections carefully attended to.  
Exchange bought and sold.  
Commercial and Travellers' Letters of Credit issued on the Bank of California and N. M. Rothschilds & Sons, London.  
Correspondents for the American Express Company, and Thos. Cook & Son.

Interest allowed on term and Savings Bank Deposits.

**TRUST DEPARTMENT.**  
Act as Trustees, collect Rents and Dividends.  
Safety Deposit vault.

**ACCOUNTANT DEPARTMENT, 925 Bethel Street.**  
Auditors and Trustees in Bankruptcy Books examined and reported on.

**INSURANCE DEPARTMENT, 924 Bethel Street.**  
Agents for Fire, Marine, Life, Accident and Employers Liability Insurance Companies.

## THE YOKOHAMA SPECIE BANK

Limited.  
ESTABLISHED 1850.  
Capital Subscribed.....Yen 24,000,000  
Capital Paid Up.....18,000,000  
Reserve Fund.....9,750,000

**HEAD OFFICE, YOKOHAMA.**

**Branches:**  
Honolulu, New York, San Francisco, London, Lyons, Bombay, Hongkong, Newchwang, Peking, Shanghai, Tientsin, Kobe, Nagasaki, Tokio.

The Bank buys and receives for collection Bills of Exchange, issue Drafts and Letters of Credit, and transacts a general banking business.

Honolulu Branch 67 King Street

## T. HAYASHI, TAILOR.

Clothes Cleaned, Dyed and Repaired.  
537 Beretania Street.  
Opposite Queen's Hospital.

## CHEE HOON KEE,

Hotel Street near Maunakea.

## Plumber

LOUI CHEE, MANAGER.

Want ads in the Star bring quick returns. Three lines three times for 25 cents.

# ALL SICK WOMEN SHOULD READ MRS. FOX'S LETTER

In All Parts of the United States Lydia E. Pinkham's Vegetable Compound Has Effected Similar Cures.

Many wonderful cures of female ills are continually coming to light which have been brought about by Lydia E. Pinkham's Vegetable Compound, and



Mrs. Fannie D. Fox

through the advice of Mrs. Pinkham, of Lynn, Mass., which is given to sick women absolutely free of charge.

Mrs. Fannie D. Fox, of 7 Chestnut Street, Bradford, Pa., writes:  
Dear Mrs. Pinkham—  
"I suffered for a long time with womb trouble, and finally was told by my physician that I had a tumor on the womb. I did not want to submit to an operation, so wrote you for advice. I received your letter and did as you told me, and to-day I am completely cured. My doctor says the tumor has disappeared, and I am once more a well woman. I believe Lydia E. Pinkham's Vegetable Compound is the best medicine in the world for women."

The testimonials which we are constantly publishing from grateful women establish beyond a doubt the power of Lydia E. Pinkham's Vegetable Compound to conquer female diseases.

Women suffering from any form of female weakness are invited to promptly communicate with Mrs. Pinkham, at Lynn, Mass. She asks nothing in return for her advice. It is absolutely free, and to thousands of women has proved to be more precious than gold.

## GIVE HIM THY CLOAK ALSO

GOVERNMENT EMPLOYEE WHO OWES \$300 AFTER PAYING \$1,100 ON \$300 BORROWED.

There is a government employe in the Board of Health office who has not drawn a cent of his own salary for nearly two years, according to his statement to the attorney general, and who after borrowing \$300 from a money lender and paying back over \$1,100 still owes him \$300 on the original account of \$300 and interest. He is considering the bankruptcy proposition as a means of getting free of the burden.

According to the investigations of the attorney general's department, the money-lenders reign in all the departments. It is said that not any of the garbage laborers draw a cent this month. It all goes on assigned warrants to the money lenders. Employees of all sorts are in the same fix, says Andrews, and he has announced that the department will take cases free, to defend government employes who are sued on extortionate notes.

One case was about to be taken to the courts when the victim compromised. He made a settlement with the money lender. Then he wrote to Andrews, telling about it and saying that he objected to the notoriety a contest would cause. He also objected to fighting on religious grounds. In his letter he quoted the Bible: "If any man shall sue thee for thy coat, give him thy cloak also," and now he is supposed to be getting rid of the cloak.

## TO HURL BLAZING BRANDS OF FIRE

FAMOUS FIREWORKS OF NATIVES WILL BE GIVEN AT MOUNTAINS NEAR HANALET JULY 22.

Reports from Kaaui brought by Purser McNamara of the steamer Keahou are to the effect that the display of Hawaiian fire works is to take place on the night of July 22 at Hanalet. This display which occurs every ten years is one of the ancient customs of natives and on the edge of a high cliff and at a given signal throw down the precipice, brands of blazing fire. This operation is kept up for a long time and is said by those who have witnessed it, to be a magnificent and even awe inspiring sight. It is expected that a number of people from Honolulu will make a special trip to Hanalet to witness the display.

Admiral Enquet may yet enjoy Rojastevensky his comfortable cot in a Japanese hospital.

Persons of discrimination are always on the alert for quality—Rainier Beer was awarded gold medal at the Paris Exposition for purity, quality and excellence of flavor.

Want ads in the Star bring quick returns. Three lines three times for 25 cents.

# "ALABAMA" IS PRETTILY SHOWN

PERFORMANCE FOR THE KUNALU BOATING CLUB WAS A DISTINCT SUCCESS LAST EVENING.

Beautifully staged, prettily costumed and acted with ability far superior to that of the average amateur theatrical performance, last night's presentation of "Alabama" was in every sense a most creditable production and the large audience left the Opera House with nothing but praise for the talented people who had taken part.

The performance was for the benefit of the Kunalu Boat club, the young ladies' organization which has existed for several seasons past and is now anxious to have a boat and best house of its own. A novelty was introduced by the appearance of the young ladies of the club as ushers. All were dressed alike in the club colors. The house was prettily decorated with flags, pom-poms and palms while the upper boxes on either side were gay in the scarlet of the Myrtles and the blue of the Heulands. The Hungarian Orchestra furnished the incidental music and played between the acts and the Dillingham quartette sang plantation melodies.

The cast of "Alabama" was as follows:

- Colonel Preston, an old planter.....Colonel A. J. Blackman
- Colonel Moberly, a relic of the Confederacy.....A. E. Murphy
- Squire Tucker, a Talladega County Justice.....Allison Jordan
- Captain Davenport, a northern railroad man.....Raymond C. Brown
- Mr. Armstrong, Capt. Davenport's agent.....Harry Jeffrey
- Lathrop Page, a southern boy.....Lathrop Page
- James D. Dougherty
- Raymond Page, a party of business.....A. S. Brown
- Deatur, an ante-bellum servant.....Deatur
- Colman Schwartz.....Colman Schwartz
- Mrs. Page, a widow who thinks twice.....Mrs. B. S. Wotkyns
- Mrs. Stockton, a rich young widow.....Miss Imgard Schaefer
- Carrey Preston, an Alabama blossom.....Miss Charlotte Hall
- Atlanta Moberly, Col. Moberly's daughter.....Mrs. Dougherty

It is a pretty play, as all theater goers know, for with all its strong situations there is an undercurrent of love-making which anyone can see is due to turn out all right in the last act. It is consistent throughout and the book is full of bright things.

A. J. Blackman appeared as the old Southern planter, "unreconstructed" and nursing his wrath against the North to keep it warm, but still retaining all the courtesy of the Southern gentleman. He gave an excellent presentation which thoroughly deserved the warm commendation that was given it.

Col. Moberly, in the hands of A. E. Murphy, was a finished production. His thorough knowledge of stage "business" was to be observed in his every movement.

Raymond C. Brown's conception of the part of Captain Davenport was another excellent feature, though its dressing was perhaps a trifle too young.

Allison Jordan as Squire Tucker, Harry Jeffrey as Mr. Armstrong, and Colman Schwartz were all acceptable. James Dougherty as Lathrop Page was decidedly in his element.

As there is only one villain in the piece, he has to be a particularly objectionable person and "Ray" Brown furnished the part admirably. His appearance was sufficiently villainous to have played the part for itself. His acting is of the repressive style but he played a thankless part with a good deal of intelligence.

Mrs. B. S. Wotkyns as Mrs. Page and Miss Charlotte Hall as Carrey Preston had the bulk of the ladies' work to do and they did it in an entirely satisfactory manner. Miss Imgard Schaefer as Mrs. Stockton and Mrs. Dougherty as Atlanta Moberly had little to do beside looking pert and pretty and it was no trouble at all for them to do this.

The stage management of W. D. Adams is to be especially commended and the setting was extremely well and artistically arranged.

Of course there were minor defects. In the first act especially some of the performers had a trick of speaking with their backs to the footlights and others could hardly be heard at all but the second act improved on this. A little practice in making up might help also, but these were mere details and the play fully deserves the warmest commendation. It will be repeated on Saturday night.

The patronesses were: Mrs. G. R. Carter, Mrs. H. W. Lyon, Mrs. A. T. Hays, Mrs. A. G. Hawes, Mrs. F. M. Swamy, Mrs. C. E. Camp, Mrs. E. D. Tenney, Mrs. Francis Judd, Mrs. C. Montague Cooke, Mrs. Robert Catton, Mrs. C. B. Cooper, Mrs. S. B. Dole, Mrs. E. Waterhouse, Mrs. Gerrit Wilder, Mrs. W. W. Hall, Mrs. Cornelia Damon, Mrs. A. Hocking, Mrs. Laura White, Mrs. Andrew Fuller, Mrs. Walter Hoffmann.

Following are the members of the Kunalu Club:  
Senior Crew—Margaret Catton, Julie Damon, Margaret Waterhouse, Ella Wight, May Kuechel, Elizabeth Josselyn, Sophie Judd, Elsie Waterhouse, Marion Waterhouse, Elsie Werthmuller, Eunice Pratt, Florence Hall.

Junior Crew—Alfred Roth, Renny Catton, Alice Hedemann, Sara Lucas, Belle McCorriston, Helen Greiv.

When you feel that usual attack of Spring fever coming on, don't punish yourself with unpleasant medicines, just order a case of Rainier Beer and be comfortable.

Fine Job Printing, Star Office.

# Clothes Perfect

A best ever is always the grand marshal of a parade of "Just as Goods." That's been our experience with Stein-Bloch Smart Clothes. They are the Man on Horseback, and the procession tags after. Mr. Clothes Wearer, are you going to mix with the fall-in-behinders?

Security gives men the contented face.

Come over. The Stein-Bloch Summer Styles are here.

M. MCINERNEY, LTD.  
MERCHANT AND FORT STS.

## FOREIGN STEAMER TIMETABLE

STEAMERS TO ARRIVE.

Date	Name	From
May 2	Sierra	Colonies
3	Manuka	Colonies
3	Ventura	San Francisco
6	Mlowera	Victoria, B. C.
9	Siberia	Yokohama
10	Korea	San Francisco
12	Alameda	San Francisco
13	Nebraska	San Francisco
19	Mongolia	Yokohama
19	Coptic	San Francisco
23	Sonoma	Colonies
24	Sierra	San Francisco
26	China	Yokohama
31	Avrangi	Colonies
June 2	Alameda	San Francisco
3	Siberia	San Francisco
3	Manuka	Victoria, B. C.
9	Nevada	San Francisco
13	Ventura	Colonies
13	Manchuria	Yokohama
14	Sonoma	San Francisco
20	Doric	Yokohama
23	Alameda	San Francisco
24	China	San Francisco
28	Mlowera	Colonies
30	Nebraska	San Francisco

STEAMERS TO DEPART.

Date	Name	For
May 2	Sierra	San Francisco
3	Manuka	Victoria, B. C.
3	Ventura	Colonies
6	Nevada	San Francisco
6	Mlowera	Colonies
9	Siberia	San Francisco
10	Korea	Yokohama
17	Alameda	San Francisco
19	Mongolia	San Francisco
19	Coptic	Yokohama
23	Sonoma	San Francisco
24	Sierra	Colonies
27	Nebraska	San Francisco
28	China	San Francisco
31	Avrangi	Victoria, B. C.
June 2	Siberia	Yokohama
3	Manuka	Colonies
7	Alameda	San Francisco
13	Ventura	San Francisco
13	Manchuria	San Francisco
14	Mongolia	Yokohama
14	Sonoma	Colonies
17	Nevada	San Francisco
20	Doric	San Francisco
24	China	Yokohama
28	Alameda	San Francisco
28	Mlowera	Victoria, B. C.

\* Calling at Manila.  
† Date of Departure from Kahului. U. S. A. Transports will leave for San Francisco and Manila, and will arrive from same ports at irregular intervals.

## A CHARMING MEDICINE.


It charms away your pain. No matter what ails you; a headache, a toothache, a sprain, a stomach ache, neuralgia, rheumatism, and all pain, Dr. Miles' Anti-Pain Pills will charm it away in a few minutes. Never sold in bulk. First package benefits, or money back.

Purity, Wholesomeness and Flavor are the principal requirements of a successful beverage—the United States Government spots vouchers for the first two and the verdict of the consumer for the last is—Rainier Beer.

Fine Job Printing, Star Office.

## BUDWEISER

"King of Bottled Beers"



WHOLESALE  
SPARKLING  
CLEAR  
PALATABLE

Has a flavor peculiarly its own and is the highest grade beer brewed.

Despite the fact that BUDWEISER is dearer than other beer its consumption is ever on the increase.

**H. HACKFELD & CO., Ltd.**  
AGENTS

## How To Light Your Home

USE INCANDESCENT LIGHT AND SAVE EXPENSE, TROUBLE AND WORRY.

## ELECTRICITY

IS BUT LITTLE DEARER THAN KEROSENE AND THE LIGHT IS NEXT TO DAYLIGHT IN QUALITY.

Hawaiian Electric Co., Ltd.      223-227 King Street

## MUSIC THAT CHARMS

WE HAVE RECEIVED A LOT OF NEW MUSIC FOR THE CELEBRATED Angelus Piano Player

AND IF YOU OWN ONE OF THESE DELIGHTFUL INSTRUMENTS IT WILL PAY YOU TO INSPECT OUR NEW STOCK.

**HAWAIIAN NEWS CO., LTD**  
YOUR BUILDING STORE.

## CHOICE GOODS

Ladies' Silk Kimonos.....\$6.50  
Children's Silk Kimonos.....2.75  
Silk Short Kimonos.....3.25  
Japanese Silks (in all colors) per yard.....40c  
Silk Cushion Covers with Coat of Arms, Silk Linen and Cotton Handkerchiefs, Japanese Purse for ladies, Japanese Screens and latest styles of Vases at very low prices.

**K. FUKURODA,**  
25 and 32 Hotel St. Robinson Block.

# CHICAGO...

IN LESS THAN 3 DAYS

and over The Only Double-Track Railway between the Missouri River and Chicago.

**Three Fast Trains Daily**  
VIA  
SOUTHERN PACIFIC, UNION PACIFIC AND CHICAGO & NORTHWESTERN RAILWAYS.

**Overland Limited. Vestibuled.** Leaves San Francisco at 11:00 a. m. Daily. The most Luxurious Train in the World. Electric Lighted Throughout. Double Drawing-Room, Sleeping Cars, Composite, Observation, Buffet Smoking and Library Car. Dining Cars, Meals a la Carte. Less than three days to Chicago without change.

**Eastern Express. Vestibuled.** Leaves San Francisco at 6:00 p. m. Daily Through Pullman Palace and Tourist Sleeping Cars to Chicago. Dining Cars. Free Reclining Chair Cars.

**Atlantic Express. Vestibuled.** Leaves San Francisco at 9:00 a. m. Daily. Standard and Tourist Sleepers.

PERSONALLY CONDUCTED EXCURSIONS  
Wednesdays, Thursdays and Fridays. The best of everything.

**Chicago & Northwestern Ry.**  
R. R. RITCHIE, G. A. P. C.  
or S. P. Company's Agent      617 Market St. (Palace Hotel) San Francisco.

## REMINGTON Standard Typewriter

PAPERS, RIBBONS, CARBONS, LETTER BOOKS, EYELET PRESSES, PENCILS, ERASERS, PAPER FASTENERS, ETC., ETC., ETC.

OFFICE SUPPLIES OF ALL DESCRIPTION. REPAIRING A SPECIALTY.

**HAWAIIAN OFFICE SPECIALTY COMPANY**  
Tel. Main 15.      72 King St., "Waity Block."

## Fire Insurance!

Atlas Assurance Company of London.  
Phoenix Assurance Company of London.  
New York Underwriters Agency.  
Providence Washington Insurance Company.

**THE B. F. DILLINGHAM CO., LIMITED**  
General Agents for Hawaii.  
Fourth Floor, Stangenwald Building.

**CONSOLIDATED SODA WATER WORKS COMPANY, LTD.**  
Esplanade, cor. Allen and Fort Sts.  
Manufacturers of Soda Water, Ginger Ale, Sarsaparilla, Root Beer, Cream Soda, Strawberry, Etc. Etc.

**The Hawaiian Star,**  
DAILY AND SEMI-WEEKLY.  
Published every afternoon (except Sunday) by the Hawaiian Star Newspaper Association, Limited.

**SUBSCRIPTION RATES.**  
Local, per annum.....\$ 8.00  
Foreign, ".....12.00  
Payable in advance.

**FRANK L. HOOGS.....MANAGER**  
**FRIDAY.....JUNE 30, 1905**

**The Royal Hawaiian Band**

This is the last day of the Hawaiian Band as a Territorial organization. It is nearly thirty-five years since this band had its beginnings. The inception of the idea of a Hawaiian National Band is curious and interesting. In 1869 or 1870, probably during a part of each year, the Austrian man-of-war Danube was in this port. The Danube carried a band which during the stay of several months of the vessel in port, gave many public concerts and concerts on occasions of ceremony. The interest shown by the public in these concerts and the addition the band made on occasions of ceremony, suggested the idea of a Hawaiian National Band, and a man by the name of Northcote, an American, was engaged to train a band. He succeeded so well that later in the year 1870 when the German residents of the islands celebrated the fall of Sedan in the course of the Franco-Prussian war, this band took part, supplying a part at least of the music for that occasion.

Soon afterwards Northcote grew tired of the job and quit it, and a man by the name of Medina, a musician or actor, who had been on tour in Australia and was returning to the States, was engaged to take his place. Medina was an instructor of fair ability, and played the cornet very well. But the band for some reason did not make much progress at that time, and Mr. Hecht, Prussian and then German Consul to Hawaii, being about to return to Germany, advantage was taken of his good offices, and his knowledge of conditions here, to make a request through him to the German Government for an army band-master, competent to organize and instruct and conduct a band. Minister Mott-Smith was one of those most active in the effort to have a band, and he was seconded in his efforts by John O. Dominis.

When the request was made of the German Government, a competitive examination was held and twelve regimental bandmasters competed. Henri Berger was chosen and arrived here June 3, 1872. He found eleven members of the Household Guard who had constituted the band. They had received some instruction, and had some knowledge of music and some skill in its execution, but they were far from that proficiency needed for concerted music and the requirements of a band. The Eleventh of June was approaching, and it was intimated to the new bandmaster that it would please the King, Kamehameha V, very much, if the band could make its first public appearance on that day. It seemed like an impossibility, but Berger undertook it. He saw the limitation of possibilities of the material he had, within the time limit imposed on him. What was needed was simple, but appropriate music, within their capacity to execute. It was not to be had in Honolulu, and so Berger set to work to create and prepare it. From his scrap book and his richly stored memory, he selected, arranged, composed—in a word, created, the necessary and appropriate music. Little of it, in the form in which it was used, had ever been played before. Then he had to orchestrate these compositions, and prepare the musical score for each instrument of his band. He began with his musicians at 5 o'clock in the morning and kept them steadily at practice almost throughout the day, often as late as 8 o'clock in the evening. As for himself, he began work earlier than 5, kept at it without intermission until midnight, for the mere manual labor of transcribing the needed music was a task requiring hours.

However, he succeeded in his efforts, and he had the pleasure of being able to gratify the King with a creditable appearance of the band at the Kamehameha Day races, of that day, which happened to be the occasion of the opening of a new track on the plains on Beretania street beyond Thomas Square. The next public appearance of the band was on July Fourth, and following that was the celebration of the Fall of the Bastille on July 14, for the Hawaiian Band has ever been catholic and impartial in its services.

From that day to this the Hawaiian Band has been a source of pleasure, education and benefit in innumerable ways to the people of these islands. It is an institution whose real worth and value lies deeper than the surface. Because it is a band and discourses music, it is apt to be looked on, as music is, as a luxury. But like music, at least in the conditions that have prevailed here and still prevail, it is in a true and genuine sense, not only a necessity, but one of the most practically useful institutions that we have. The Supervisors are wise in their intention to continue it. There are many things which we can better get along without. Though in name it has descended from a National Band to a County Band, it is simply because the political status of the Islands has changed. The Band itself during all its years has been ministering to the best instincts of our people, fostering them, and working out, who can say what benefits?

**Our Duty To The National Guard**

The arguments for a National Guard which apply to the States do not necessarily reach Hawaii where the militia ranks are filled with non-combatants.—Advertiser.  
If the Advertiser is right in thinking the Hawaiian soldiery is so bad that there is little use in organizing it, the arguments reach Hawaii all the more. If our militia is the worst in the country, as the Advertiser seems to think, we had better try to improve it. It might be remarked, however, that the regular army officers of the United States who have inspected the Hawaiian National Guard, have made reports highly complimenting it. Nothing has ever occurred to justify the Advertiser's insinuation that the Hawaiian National Guard is composed of men who will not fight. It is to be hoped that the test will never come, but if the test does come, there is every reason to believe that the men who compose the National Guard of Hawaii will be found to average well with the other non-professional fighters of the nation. The arguments for a National Guard which apply to the states apply here just the same. If the Advertiser were right in charging that our soldiers will not fight the argument would apply with double strength, for it would be time the islands removed the disgrace of having such a citizenship by training a militia which would fight.

**Mutineers Get a Good Vessel**

The Russian mutineers have in possession one of the finest battleships in the world. The Kniaz (Prince) Potemkin Tavrichesky is one of the newest and strongest battleships of the Black Sea fleet. She is substantially a duplicate of the U. S. S. Ohio which passed through Honolulu some months ago, the Russians having copied the main features of the American design. Both vessels have a displacement of 12,600 tons, and carry a main battery of four 12-inch guns in turrets and sixteen 6-inch guns in a battery amidships. Both have three funnels and have the forward turret higher than the after one, giving them the same general appearance. Both are designed for a speed of 18 knots. The Russian carries more small guns at the expense of slightly thinner armor. Her main belt is 9 inches of Krupp steel.

**NOW**

IS THE TIME TO DO YOUR

**Planting**



FRESH

Flower and Vegetable

Seeds in 5c.

Packages ...

Just Received ex.

"Sierra."

**HOLLISTER DRUG CO.**  
Fort Street

And still one hears it said that it is hard for a soldier to make any money!

The Civic Federation accomplished all that it had any legitimate reason to expect in the County election. It did not however defeat Quinn, Booth or Lane. They would have been defeated anyhow. The opposition to them among the Republican rank and file was voted before the Civic Federation entered the arena. Above all it is untrue to say that the election of Brown was achieved by a trick, or by falsehood.

A number of members of the National Guard of Hawaii enlisted in the American army and fought in the Philippines. There have never been any intimations come back from there that they were "non-combatants."

If the mutineers on the battleship Potemkin can't shoot any better than their compatriots in Rojestvensky's fleet, Odessa is in no danger from bombardment. By the same token the Potemkin is in no danger of being sunk by Admiral Kruger's squadron which is said to have orders to sink her unless she surrenders.

Chief Engineer Wallace's employees will not think any the worse of him or his abilities because of the censure Secretary Taft has administered.

The Advertiser says: "Nothing is more simple than making bogus money." Is this an expert opinion?

The Hawaiian Forester and Agriculturist for June has just been issued. Among other interesting matter it contains a compilation of all the acts of the last legislature relating to agriculture and forestry. Editorially there is a very careful and judicial discussion of the movement toward civic improvement shown in Honolulu during the past few years.

So after all that it has been said that Hi Henry has said about the control he would exercise over the appliances of the police department, when the time comes he will be ordered to turn them over to the County Sheriff—and he will turn them over.

Secretary Taft has admonished Engineer Wallace for throwing up his Panama canal job and accepting a \$60,000 a year billet. Of course Wallace may be wrong but how many of us would feel inclined to forsake our present jobs in a terrible hurry if \$60,000 a year were dangled before us? Come now, don't all speak at once, how many of us?

W. R. Castle in his communication to the Civic Federation relative to the part the Federation took in the County campaign, says: " \* \* \* It appearing that Mr. William Henry, the present High Sheriff, was to be nomi-

**Classified Ads in Star.**

**To Lease or Rent**

The premises opposite Rapid Transit Office, 1108 Alapai Street, consists of house and 2 cottages and affording good opportunities to start rooming house business. Inquire on premises.

**Furnished Room To Let**

Large front room in private family. Nuuanu and School streets. Address "O" this office.

**Wanted**

A book-keeper, to take charge of an easily kept set of books and to take general charge of the office affairs. Only an active hustler required. Address, P. O. Box 192.

A second hand water tank; wooden one preferred. B. Star office.

**Employment Office**

Demura 520 King street near Punchbowl. Bicycles repaired, clothes cleaned and dyed also employment office.

**For Sale**

One first-class guitar; almost new. Will be sold cheap. Apply corner Union and Hotel streets in grocery store.

Building lot corner King and Kamehameha road. Palama terminus of Rapid Transit road. Apply at Star office.

**"Procrastination is the Thief of Time"**

DON'T put off starting that savings account. We pay 4 1/2 per cent per annum and your money is withdrawable on demand. \$1.00 to \$5,000.00 on one account. Further particulars, apply

**PHENIX SAVINGS, BUILDINGS AND LOAN ASSOCIATION**  
Judd Building, Honolulu.  
Guarantee Capital.....\$2,000,000  
Paid in Capital.....1,500,000  
HENRY E. POCOCK.....Cashier.

**M. PHILLIPS & CO.,**  
Wholesale Importers  
And Jobbers of  
**AMERICAN AND EUROPEAN DRY GOODS**  
Corner of Fort and Queer Sts.

**THOSE TIRED EYES**

THEY ARE SURELY CAUSED BY YOUR NEGLIGENCE. WHY RUIN YOUR EYES BY LACK OF CARE AND ATTENTION. CONSULT US: WE GUARANTEE INSTANT RELIEF. NO CHARGE FOR EXAMINATION. DR. JOHN GODDARD.

With H. F. Wichman & Co., Ltd

inated by some of his friends in accordance with the law requiring a nomination to be filed containing the signatures of not less than twenty-five voters, the Committee (of the Federation) thereupon endorsed him." High Sheriff Henry said at the time that if the Federation had not endorsed him he would not have accepted the nomination of his friends. These two statements are brought together here, not because there is necessarily any conflict between them, but for the same reason that Mr. Castle made his statement to the Federation, in the interest of historic accuracy.

If the Odessa Promotion Committee has any enterprise at all it will flood the world with literature explaining the advantages of visiting the place just now. The novelty of being in a city so menaced by the mutinous crew of a Russian warship is not a matter to be overlooked.

For many years past the Government of New Zealand has maintained provision depots at various places in the small and dangerous groups of islands in its portion of the Pacific, with the result that many lives have been saved. In the Auckland islands, where the French bark Anjou recently met her fate, depots of this description have been established at Port Ross, Norman Inlet and at Carolely Harbor, and finger-posts at outlying points show the position of these depots. For the use of shipwrecked people there are boats at the north-west end of Adam's Island at Camp Cove, at Rose and Enderby islands, and also in Erebus Cove. Twice a year the Government steamer Hinemoa visits all these places to ascertain whether there are any castaways from wrecked vessels and also to renew the stores and to effect repairs to the provision stations. It was while on this half-yearly cruise that the Hinemoa rescued the shipwrecked crew of the Anjou and conveyed them back to New Zealand after they had been castaways on the island for 91 days.

Fine Job Printing, Star Office.

**UTILIZE..**

**The Present ample water supply...**

**BY BUYING A SUPPLY OF**

**Garden Hose, Etc., Etc.**

(The shortage having been neutralized, now is the time to utilize.)

**Pacific Hardware Company, Ltd**  
FORT AND MERCHANT STREETS.

**Honolulu Iron Works. CASTLE & COOKE, LTD.**

STEAM ENGINES, SUGAR MILLS, BOILERS, COOLERS, IRON, BRASS AND LEAD CASTINGS.

Machinery of Every Description Made to order. Particular attention paid to Ship's ladders, etc. Job Work Executed on Short Notice.

**HUSTAGE PECK CO., LTD**  
QUEEN STREET DEALERS IN  
**Firewood, Stove, Steam and Blacksmith Coal**  
WHO ARE A RETAIL  
Special Attention Given to DRAYING  
ALSO, WHITE AND LOCK SAND.

**LORD & BELSER,**

General Contractors and Teaming. Bridges, Steel and Concrete, and Sewer Work. Guarantee first-class work at low prices.

Also Curbing, Crushed Rock, Black and White Sand, Soil or Filling Material at lowest rates.

Office and yards, South and Kawala-hao Street, Telephone Main 128.

**THE HAWAIIAN REALTY AND MATURITY CO. Ltd.**  
Real Estate, Mortgages, Loans and Investment Securities. Homes built on the installment plan.  
Home Office: McIntyre Building, T. H. L. K. KENTWELL, General Manager.

**The Pacific Hotel,**  
118 1/2 Union Street.  
Rooms, first-class, Meals 25c., or Board \$4.00 per Week and Meal Tickets \$4.50.

**Best Meal In Town**  
COME AND TRY IT.

Want ads in the Star bring quick returns. Three lines three times for 25 cents.

**Shipping Receipt Books**

SOLD AT  
**STAR OFFICE**

OAHU RAILWAY & LAND CO.  
WILDER'S S. S. COMPANY  
INTER-ISLAND S. N. COMPANY

**Delicatessen**

Light Entrees for the Summer Season. Olives, Parsies, Thon a la Bernaise, Queenies a la Financiere, Tunny Fish in La Maitre Sause, Truffle Liver Sausage, Roast Pigeon, Mulsow's Famous Leberwurst Ritz de Veau, Champignons Parsies.  
The things for light Luncheons and Teas.

**LEWIS & CO., LTD**  
109 KING STREET.  
240-3-TELEPHONES-3-240

**W. G. Irwin & Co.**  
AGENTS FOR THE  
Royal Insurance Co., of Liverpool, Eng.  
Alliance Assurance Co., of London, ENG.  
Scottish Union & National Ins. Co., of Edinburgh, Scotland.  
Fire Association of Philadelphia.  
Alliance Insurance Corporation Ltd.  
Wilhelms of Magdeburg General Ins. Company.

# GIGANTIC ANNUAL Clearance Sale!

## TWO WEEKS ONLY Commencing Thursday Morning, June 29 THE GREATEST BARGAIN EVENTS

The Entire Stock at Marked Down Prices. From Silk down to Cotton Prints, Real Laces down to Imitation Torches, Housekeeping Goods, Millinery and Ready-to-Wear Apparel. In fact ALL GOODS in Every Department will be Sold at CUT PRICES.

ALL GOODS WILL BE MARKED IN PLAIN FIGURES AND SOLD FOR CASH ONLY.

UNVARNISHED FACTS: No matter how ridiculously low our prices may seem, there will be no misrepresentation.

### N. S. SACHS' DRY GOODS COMPANY, LTD.

CORNER FORT AND BERETANIA STREETS.

## CHINESE TO RETALIATE

BIG MEETING HAS BEEN CALLED FOR SATURDAY NIGHT TO AID IN THE WORK OF EXCLUDING AMERICAN GOODS FROM THE CELESTIAL EMPIRE UNLESS THE RIGORS OF THE EXCLUSION TREATY ARE RELAXED BY UNCLE SAM.

"On account of the enforcing of exclusion laws by the United States against the Chinese, we the Chinese of the Territory of Hawaii will hold a big speech meeting on Saturday night July 1, at 7:30 o'clock, at the Liliha street Chinese theater. Speeches will be made to assist the merchants now in China to maintain the boycott against American goods. All are invited to come.

"I do not know exactly what form Saturday night's meeting will take," said an educated Hawaiian-born Chinese this morning, "but certainly the merchants here are very much interested in the whole matter and recent advices received from China indicated that the boycotting movement is gaining great force in the empire, especially in the south. The fact is that people of my race are tired of being treated as inferiors and while they recognize the right of the Americans to keep them out of the United States, they reason as you put it in English, that it is a poor rule which does not work both ways.

Flaming red posters were posted about Chinatown and in other centers of Chinese life yesterday afternoon bearing the announcement which when translated, runs as above. This is carrying the war into Africa, but the movement is simply in line with the general advance in thought in China which has followed the Japanese successes in destroying the power of China's most dreaded foe.

### THEY SAW A VERY STRANGE SIGHT

LARGE PATH OF PECULIAR STUFF SEEN FLOATING OFF KAU COAST BY MAUNA LOA.

The steamer Mauna Loa arrived this morning from her run to Maui and Hawaii ports, with a large crowd of passengers and a large assortment of freight. The vessel made a special trip to Lanai to land H. P. Baldwin and Francis Gay. Pursing Conkling reports fine weather during the outward and inward trips.

There have been good showers of rain in the maha districts of Hawaii. Honouliuli and Naalehu mills are grinding steadily and Pahala Mill is grinding every other day.

Last Wednesday off the Kauai coast, the vessel passed through many patches of what appears to be rice husks. One patch was a mile wide and extended in the other direction as far as the eye could reach. The steamer stopped at Mahukona and Kawahine for passengers and to land mail.

The Hawaiian Planters' Monthly for April has just been issued. It contains a great deal of matter that is of special interest to the plantation manager. Among other articles is one by C. F. Eckart of the Planters' Experiment Station giving the results of some of the field experiments with sugar cane carried on at the station. The Monthly also begins the republication in this issue of a treatise on "Irrigation in Hawaii" by Dr. Walter M. Maxwell, formerly in charge of the experiment station in Honolulu, which was originally published as a bulletin of the Experiment of the Station.

## PICKING GOLD TENS FROM PALMS

(Continued from page one.)

throw into the pond last Monday night. He says that he stood at the edge of the pond and threw the money in, most of it loose coin but some of it wrapped up in packages. Breckons is arranging for a search of the pond. Private Cooper has been a Christian Endeavor leader and has many friends in Honolulu. He expressed himself this morning as especially regretting what he had done "on account of these friends. I would rather serve all the time I shall have to serve in jail," he said, "than go to Camp McKinley this morning." Cooper is popular at the camp, and felt keenly his position, but he was apparently very frank with the federal officers in guiding them about the place. In an automobile he went with the district attorney and marshal, and on arriving at the camp he willingly showed them just how he had made the coins.

"I have always lived as a gentleman up to this time, and have never been arrested before," said Cooper. "But this counterfeiting idea has been in my head for a long time. Nine years ago a friend with whom I was stopping told me how it could be done, and I have been thinking of it ever since. I tried it here, and I have had an experience that will teach me. I shall have to serve a term for it but when I come out I shall be better fitted than ever to live the life of a gentleman and an honest man, for the idea given to me so many years ago, of making coins, will not be in my head any more. I am sorry for what I have done on account of my friends in Honolulu."

The palm-tree discoveries were an unexpected development. All the soldiers under arrest were taken to Camp McKinley this morning in order that they might report on duty, by way of saving for them their June salaries. Suddenly Jackson called United States Marshal Hendry aside and offered to take him to where some of the bad money was hidden. It was known that Jackson had received ten of the counterfeit ten-dollar pieces and only one of them was on his person when arrested, and the officers were very anxious to get hold of the rest.

Jackson led the officers through the grounds of the camp to a cocoanut palm tree. Reaching up he drew forth a small paper package from among the leaves. In it were five counterfeit ten-dollar pieces, which Cooper acknowledged as his make. It took quite a long time to find the next package, but after pulling back a lot of leaves Jackson discovered it. It contained three more of the bogus tens. They were wrapped in a leaf torn from a magazine of the Camp McKinley library. One was still to be accounted for. Jackson said it was in the tree somewhere, but a long search failed to reveal it, and the search was abandoned. Hendry took the \$30 in "queser" gold and returned to camp. A large crowd of soldiers who were not on duty followed the officers around and watched the investigations.

The actual work of making the coin was done in a cottage owned by W. D. Smith. Under the federal law, property which is used for such purposes is under certain circumstances liable to be forfeited to the government, just the same as property on which an illicit still is conducted. Cooper says that he tried to rent the cottage from Smith, but did not do so. Incidentally, Cooper said that the cottage was formerly used as a gambling resort and that he went after it when it became vacant. Smith had told him he didn't want to rent it, and then Cooper proceeded to use it anyway, as it was not booked in. Cooper led to a small room where he had made the plaster of Paris casts,

and showed the window through which he had thrown the casts after using them, first breaking them up. A dozen pieces of the casts were found and taken for evidence. Some of them are clear evidence that they were used for coin-making. The impressions of the coin were not wholly destroyed. A bottle of alcohol, some of the material used in mixing the plaster of Paris and the utensil in which it was mixed were all found and taken as evidence. They were enough to conclusively show how and where the bad gold coins were made, without Cooper's confession. The officers at Camp McKinley and a large crowd of the soldiers followed the officers to the cottage and helped in the search. Then all went back to the camp, Hendry retaining possession of the coins. Jackson had followed Cooper's example and confessed. He hid the coin in the tree when it began to appear that they would not pass.

Cooper expressed anxiety about the fate of Private Bolton, to whom he had given a lot of the money. Bolton claims to have given it to his wife. Bolton was arrested yesterday afternoon, and absolutely denied having any of the coin or knowing anything about it, but Bolton confessed. He promised to produce the coin if allowed to see his wife, and an interview was arranged. Mrs. Bolton was not kept in jail, but was released on her own recognizance. She was strenuous in her denials and emphatic in accusing the confessing soldiers of "lying."

Breckons and Hendry are lending every effort to get hold of what coins are out and may possibly be circulated. This afternoon it is expected that Bolton and his wife will produce what they obtained from Cooper, and this practically accounts for it all, if Cooper's story of throwing away coin in the duck pond is believed, and there is every reason to credit his statements. Out ten-dollar piece was either passed by Jackson or is among the leaves of the now much torn-up palm tree from which he produced eight other coins that were meant to pass for \$10 each. Four five-dollar pieces and nine tens are in Hendry's possession. The rest of the \$500 which Cooper admits having made is to be found through Bolton and in the duck pond. Four of the soldiers arrested were released this morning. They are Privates Longley, Peterson, Colwell and Abbott. Their arrests were due to suspicious circumstances indicating their having handled some of the money. All are innocent, however.

Cooper will plead guilty when his case comes up. Jackson will have to stand a trial if he does not do likewise, and Hilson is probably in the same box. Hilson is alleged to have passed one of the bad five-dollar pieces on a Rapid Transit conductor and will have to stand trial for so doing. Jackson had some of them in possession, one on his person, and eight which were so dramatically taken from a palm tree at the camp today.

The case appears to be complete and the federal officers are congratulating one another on having nipped the scheme in the bud and landed all the coin before the public was imposed upon by the counterfeiters.

### FOURTH OF JULY.

Oahu Railway & Land Company, Ltd. The HALEIWA LIMITED leaving Honolulu at 8:22 a. m. will run on July 4th. This train will stop only at Waipahoehoe. Round Trip Tickets, \$2.00. Passenger trains leaving Honolulu at 7:30 a. m. and 11:05 a. m. and arriving in Honolulu at 10:25 and 1:40 p. m. will not be run on July 4th. Special train for the Boat Races will leave at 9 o'clock returning immediately after the races. Round Trip Tickets, 75 cents.

### WOODBURY SAILS TOMORROW.

The schooner Clara Lee Woodbury will sail tomorrow morning for Laysan Island, after a load of guano. Captain Harris will take four tons of stock and a piano to Laysan.

## DAILY STOCK REPORT

Between Boards—Silk 49; Tanning 112.50; 10 McBryde 7.75; 50 McBryde 47.25; 10 McBryde 48; 50 McBryde 48; 50 McBryde 48; 50 McBryde 48. On the Board: 10 Onomea 234.00.

Last installment of \$100,000 of Ewa bonds will be paid July 1.

Dividends: June 26, Brewer & Co., 2 per cent; Ewa 2 1/2 per cent; Honouliuli 2 per cent; Kahuku 1 per cent; Waimanalo 2 per cent; Wailuku, 0 per cent; Hawaiian Electric 1/2 per cent; Olowalu 1 per cent; Rapid Transit common, quarterly 1 per cent; preferred semi-annual 3 per cent; July 1, Haku 10 per cent; Pala 1 1/2 per cent; Pioneer 2 per cent; Honolulu 1/2 percent; July 5, H. C. & S. Co., 5c; Onomea 2 per cent.

Stocks	Bid.	Asked.
C. Brewer & Co.	34.00	42.00
Ewa	28.50	29.00
Hawaiian Agri.	36.00	37.50
Hawaiian Com.	55.00	55.00
Hawaiian Sugar	34.50	35.50
Honouliuli Sugar Co.	100.00	100.00
Honouliuli	18.00	18.00
Haku	200.00	200.00
Kahuku	21.00	21.00
Kihel	9.75	10.00
Kipahulu	30.00	30.00
Koloa	150.00	150.00
McBryde	8.00	8.50
Oahu Sugar	110.00	110.00
Onomea	37.00	38.00
Ookala	7.50	8.50
Oahu Sugar Co.	5.00	5.25
Olowalu	75.00	75.00
Pacific Sugar	250.00	250.00
Peepeekeo	150.00	150.00
Pioneer	155.00	155.00
Wailuku Agri.	75.00	75.00
Waimanalo	160.00	160.00
Waimea	42.50	42.50
Wilder's S. S. Co.	150.00	150.00
Inter-Island	140.00	140.00
Hon. R. T. Co. pfd.	101.00	101.00
Hon. R. T. com.	67.50	67.50
Mutual Telephone	9.50	9.50
Oahu Railway	78.50	80.00
Fire Claims	100.00	101.00
Cal. & Haw. Sug. Ref.	100.25	100.25
Haw. Govt. 5s.	99.00	99.00
Haw. Com. 5s.	102.00	102.00
Haku 6s.	102.00	102.00
Hawaiian Sugar 6s.	102.00	102.00
Hon. R. T. Co. 6s.	106.50	106.50
Kahuku 6s.	100.00	100.00
Oahu R. & L. Co. 6s.	104.50	104.50
Oahu Sugar 6s.	101.00	101.00
Oahu Sugar Co. 6s.	98.00	98.00
Pala 6s.	102.00	102.00
Pioneer 6s.	103.50	103.50
Wailuku Agri. 6s.	101.00	101.75



### WHY NOT RENT A SAFE DEPOSIT BOX

In a modern steel vault and feel that your valuables are secure?

FIVE DOLLARS a year pays for one. Call and see us about it.

### NEW ADVERTISEMENTS.

### NOTICE.

The Stock Books of the Inter-Island Steam Navigation Co., Ltd., will be closed to transfers from July 1st to July 10th, 1905, inclusive.

C. H. CLAPP, Secretary.  
Honolulu, June 30th, 1905.

### NOTICE TO CREDITORS.

### ESTATE OF WILLIAM KAMANA.

The undersigned William O. Smith having been appointed Administrator of the Estate of William Kamana, late of Honolulu, Oahu, deceased, hereby gives notice to all persons having claims against the Estate of said William Kamana to present the same to him at his office, Room 206 Judd Building, Honolulu, within six months from the date of the first publication of this notice or they will be forever barred.

Dated Honolulu, April 28, 1905.

WILLIAM O. SMITH,  
Administrator Estate of William Kamana deceased.  
5th—June 9, 16, 23, 30, July 7.

### BY AUTHORITY

### NOTICE TO CANDIDATES FOR ELECTION.

The attention of all Candidates at the County Election held on June 20th, 1905, is drawn to Sections 31, 32 and 33 of the Rules and Regulations for Holding Elections, which Sections relate to the filing of an itemized sworn statement by each Candidate of his Expenses incurred for such Election.

A. L. C. ATKINSON,  
Secretary of Hawaii.  
Per C. R. Buckland.  
Dated, June 20th, 1905.  
4th—June 21, 23, 26, 30.

### Office of the Board of Health.

Honolulu, Hawaii, June 28, 1905.

All bills against the Board of Health must be delivered at its office by July 10th.

Appropriations for the period 1904-1905 lapse July 20th, 1905.

L. E. PINKHAM,  
President, Board of Health.

### HOLIDAY NOTICE.

Tuesday, July 4th, being a legal holiday, all offices of the Territorial Government will be closed on that day.

G. R. CARTER,  
Governor.  
Executive Building, June 16th, 1905.  
5th—June 24, 28, 30.

## HANDSOME DROP CURTAIN

St. Clement's Parish House has just been presented with a very handsome drop curtain for its stage. It was painted by Mr. Schultz, and presented by him to the Parish House. It has been very much admired.

Fine Job Printing, Star Office.

### NEW ADVERTISEMENT

## HAWAIIAN Rowing Association

### TENTH ANNUAL CHAMPIONSHIP RACES ON

## July 4th, 1905

### OVER THE PEARL HARBOR COURSE.

### FIRST RACE.

Senior.

Myrtle Crew. Heolani Crew.  
F. Beckert.....Stroke.....John Clark  
Ned Crabbe.....No. 3.....E. K. Allen  
E. Kopke.....No. 2.....H. McCriston  
L. King.....Bow.....W. Rycroft  
L. Hough.....Coxswain.....H. Steiner

### SECOND RACE.

Junior.

Myrtle Crew. Heolani Crew.  
A. Ewart.....Stroke.....Wm. Dickson  
B. Johnson.....No. 3.....V. Fernandez  
E. Underwood.....No. 2.....M. Robinson, Jr.  
R. Hughes.....Bow.....A. J. Blackman  
L. Hough.....Coxswain.....H. Steiner

Judges—A. A. Wilder, C. L. Crabbe, H. G. Dillingham.

Timekeepers—Leslie Scott, F. B. Damon, George Crozier.

Regatta Committee—C. C. Rhodes, W. Harris, Wm. Soper.

Races will start immediately after arrival of train at the Peninsula.

Special train will leave Honolulu at 9 a. m., running direct to the Peninsula and returning immediately after the finish of the races.

### ROUND TRIP TICKET 75 CENTS.

Regatta Committee.  
C. C. RHODES,  
Chairman.

## Opera House

### June 29 and July 1

The successful four-act drama by Augustus Thomas

## "ALABAMA"

presented by the members of the Kula Ladies' Rowing Club for the Benefit of the new Boathouse Fund.

Stage Manager, W. D. Adams.

### PRICES:

Down Stairs .....\$1.50  
Balcony ..... 1.00  
G. Bery ..... .50

Box Office opens at Wall, Nichols' Co. on the 26th inst.

Fine Job Printing, Star Office.

A Summer Proposition.

Well now, there's the ICE QUESTION! You know you'll need ice, you know it is a necessity in hot weather. We believe you are anxious to get that ice which will give you satisfaction, and we'd like to supply you. Order from THE OAHU ICE & ELECTRIC CO., Telephone 1131 Blue, Postoffice Box 606.

W. G. IRWIN & CO., LTD., Wm. G. Irwin, President and Manager John D. Surocheta, First Vice-President W. M. Giffard, Second Vice-President H. M. Whitney, Treasurer Richard Lynn, Secretary A. C. Lovelock, Auditor

SUGAR FACTORS, COMMISSION AGENTS

AGENTS FOR Oceanic Steamship Co., San Francisco, Cal. Western Sugar Refining Co., San Francisco, Cal. Baldwin Locomotive Works, Philadelphia, Pa. Newall Universal Mill Co., Manufacturers of National Cane Shredder, New York, N. Y. Pacific Oil Transportation Co., San Francisco, Cal.

HART & CO., LTD

The Elite Ice Cream Parlors, Chocolates and Confections Ice Cream and Water Ices Bakery Lunch.

THE FINEST RESORT IN THE CITY

Union Pacific

Railroad SUGGESTS Speed and Comfort

Three trains daily through cars, first and second class to all points. Reduced rates take effect soon. Write today.

S. F. Booth, General Agent.

No. 1 Montgomery Street, San Francisco.

Travellers Agree THAT

The Overland, Limited

IS Quickest, Finest, Best A Train that Supplies All Demands

To St. Louis or Chicago IN 3 DAYS from San Francisco. ELECTRIC LIGHT READING LAMPS, CLUB CARS, ALL GOOD DININGS

Southern Pacific

Information Bureau 613 Market Street, San Francisco.

OAHU RAILWAY AND LAND CO'S TIME TABLE

OCTOBER 6, 1904.

OUTWARD. For Waialua, Waialua, Kahuku and Way Stations—9:15 a. m., 1:20 p. m. For Pearl City, Ewa Mill and Way Stations—17:30 a. m., 9:15 a. p., 11:05 a. m., 2:15 p. m., 3:20 p. m., 5:14 p. m., 10:30 p. m., 11:15 p. m.

INWARD. Arrive Honolulu from Kahuku, Waialua and Waialua—8:30 a. m., 6:31 p. m. Arrive Honolulu from Ewa Mill and Pearl City—17:46 a. m., 8:36 a. m., 10:25 a. m., 1:40 p. m., 4:31 p. m., 6:31 p. m., 8:50 p. m. Daily. Sunday Excepted. Sunday only. The Limited Limited, a two hour train, leaves Honolulu every Sunday at 8:25 a. m. returning arrives in Honolulu at 10:10 p. m. The Limited stops only at Pearl City & Waialua.

F. DEKINSOHN Supt. F. C. SMITH, G. P. A. T. 4.

Doctors, lawyers, ministers, bankers, merchants, business men everywhere, all rely upon Ayer's Cherry Pectoral. Whenever they have a cough or a cold, they keep it on hand, at their home, at their place of business. They carry it with them when they travel. They say there is nothing so bad for a cough as coughing, and there is nothing so good for a cough as



Ayer's Cherry Pectoral

It is the best remedy in the world for coughs, colds, croup, whooping-cough, influenza, and all throat and lung troubles. There are many substitutes and imitations. Beware of them and of so-called "Genuine Cherry Pectoral." Be sure you get AYER'S Cherry Pectoral. Put up in large and small bottles.

Prepared by Dr. J. C. Ayer & Co., Lowell, Mass., U. S. A.

Castle & Cooke, Ltd

Life and Fire

Insurance Agents

AGENTS FOR New England Mutual Life Insurance Co OF BOSTON. Aetna Fire Insurance Co., HARTFORD, CONN.

C. BREWER & CO., LIMITED

QUEEN STREET, HONOLULU, H. T.

AGENTS FOR Hawaiian Agricultural Company, Ono-mea Sugar Company, Honoumua Sugar Company, Alukou Sugar Company, Uukoula Sugar Plantation Company, Haleskela Ranch Company, Kapapala Ranch. Planters' Line Shipping Company. Charles Brewer & Co's Line of Boston Packets.

LIST OF OFFICERS. Charles M. Cooke, President Geo. H. Robertson, V. Pres. & Mgr. E. Faxon Bishop, Treas. & Secy. F. W. Macfarlane, Auditor P. C. Jones, Director C. H. Cooke, Director J. R. Galt, Director

All of the above named constitute the Board of Directors.

20 per cent. Discount on Print LINOLEUMS

THIS WEEK

LEWERS & COOKE, LTD., 177 S. KING STREET

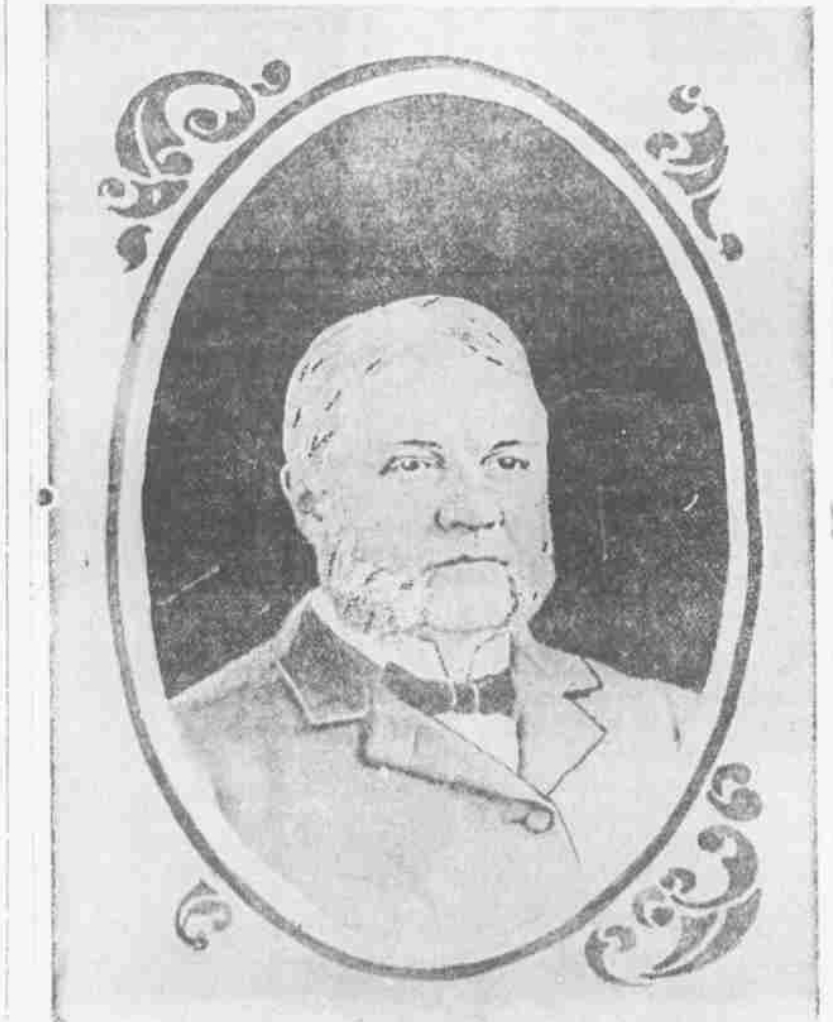
BOWEL COMPLAINT IN CHILDREN. During the summer months children are subject to disorders of the bowels, and should receive the most careful attention. As soon as any unnatural looseness of the bowels is noticed, Chamberlain's Colic, Cholera and Diarrhoea Remedy should be given. For sale by all dealers. Benson Smith & Co., agents for Hawaii.

This is what the United States Health Bulletin meant when they recommended Rainier Beer for purity and wholesomeness.

THE FRICK REPORT

The report of the Frick Committee on the management of the Equitable Life Assurance Society of the United States, is the key to an understanding of the most remarkable controversy that has ever raged within a financial institution of its character. No controversy within such an institution has ever received the widespread interest and discussion that this has. The keenest interest in it has been manifested in this community. The Star will therefore publish this report in full, in convenient installments from day to day.

The first step, therefore, is to determine how, under the charter and by-laws of the society, the exercise of the corporate powers and the assets incident thereto have been distributed and exercised. In order that such specific cases of wrong-doing may be referred easily to the individual or body immediately responsible. The charter of the society provides that the board of directors shall consist of fifty-two persons, each of whom shall be the proprietor of at least five shares of the capital stock of said society, but it contemplated that the board might diminish its number to not less than twenty-four members. The power to reduce its number was never exercised, and from the organization of the society to this time the board of directors has been composed of fifty-two persons. The charter also empowers the board to declare, by by-laws, what number of directors, not less than seven, shall constitute a quorum for the transaction of business. Pursuant to this authorization, the board has provided by a by-law that nine directors shall constitute a quorum for the transaction of business. The charter vested all the corporate powers in the board of directors, but provided that such powers should be exercised by them and by such officers and agents as they might appoint, and from time to time empower. Pursuant



CORNELIUS N. BLISS, ONE OF THE MEMBERS OF THE SO-CALLED FRICK COMMITTEE WHICH INVESTIGATED AND REPORTED ON THE MANAGEMENT OF THE EQUITABLE ASSURANCE SOCIETY OF THE UNITED STATES, AND RESIGNED AS A DIRECTOR OF THE SOCIETY WHEN THE BOARD OF DIRECTORS REFUSED TO ACCEPT THE REPORT.

hereto the board created five standing committees, namely: (1) A finance committee. (2) An executive committee. (3) A committee on agencies. (4) A committee on insurance. (5) A committee on accounts. By-laws 19 provided that the finance committee should consist of ten directors and the president (six of whom should be a quorum), and should superintend the making of investments by the executive committee, and it required the executive committee to report to the finance committee at each meeting the investments made in the interval, and authorized the finance committee to direct a change of investments or securities. It also required the finance committee to superintend the manner in which the accounts should be kept, and all matters connected with the finances and expenses of the society; and that it, or through the executive committee, or through such persons as it might designate, audit all bills and examine and check the cash payments with the vouchers. By-law 20 provided that the executive committee should consist of the president, the vice-president, the controller, the chairman of the finance committee, and not less than five other directors (four of whom should constitute a quorum) to act as an advisory committee to the president in all of the affairs of the society and to have special charge of the investment of its funds, including the purchase and sale of securities, and loans on the same, and investments on bond and mortgage, and should during the intervals when the finance committee was not in session have all the powers of the board of directors, in supervising the collection, receipt, and productive character of assets, in providing against danger of loss, in invest and reinvest in productive assets; to meet three times in each week for the purpose of

New Lines of Panama And Ladies' Trimmed Hats

K. ISOSHIMA OUR OWN LINE

San Francisco to Chicago (WITHOUT CHANGE).

STANDARD AND TOURIST SLEEPERS DAILY



One way rate for Round Trip Tickets to all Eastern points. Tickets good for three months. Stopovers allowed en route.

SEE DATES. June 28, 29, 30, July 4, 5, 6, 24, 25, 26

Passenger Agent, W. G. Irwin & Co., Office

Hurrah FOR THE 4th July FIREWORKS FLAGS, BALLOONS TORPEDO CANES Wall, Nichols Company, Ltd

Information, relevant to the scope of the committee's powers, touching the management of the society.

Since April 8 certain other charges and countercharges have been made by and against officers and directors, concerning which the committee pursued its original course of demanding the proofs. In the letter of April 8 to Mr. Alexander he was requested to send a copy of the letter "to all the officers and heads of departments of the society," and by letter of the chairman of the committee of April 12, Mr. Alexander was requested to instruct those preparing information to furnish such information directly to the chairman.

The committee early determined that the gravest charges affecting the management of the society were those affecting its higher, and, therefore, more responsible, officers, and the committee therefore decided to first secure information showing or intending to show, misfeasance, or nonfeasance upon the part of any director or high official of the Equitable Society, and such information as might discover radical faults, if any, in the practices and theory of the conduct of the society's business.

Up to April 25 no specific information of value having been furnished in response to the letter of April 8, the committee directed its chairman to call Mr. Alexander's attention to that fact by transmitting to him the committee's resolution of April 25. This the chairman did. The resolution was as follows:

"Resolved, That the committee view with surprise and regret the fact that to this date none of the information asked for from the officers of the Equitable Society, in the letter addressed to the president of the society by the chairman of the committee on April 8, 1905, has been furnished to the committee; and be it further

"Resolved, That this committee meet on Friday, April 28, at 10:45 a. m., at which time the committee hopes and expects to be in receipt of definite answers to at least a part of the questions asked in its letter of April 8, 1905."

The response to this was two letters from Mr. Alexander, one dated April 26 the other April 27, both explanatory of the delay. These replies not being satisfactory, the chairman, on April 27, addressed to Mr. Alexander a letter in which he said:

"Your letters of April 26 and 27 are so indefinite as to the time when your own statement affecting the management of the society will be forthcoming, that I am constrained to again

direct your attention to the pressing necessity of something material being furnished. Delay in the work of this committee must inevitably result in harm to the interests of the society, and it seems reasonable that those making serious charges against any part of its management should immediately respond by furnishing the data upon which such charges rest. The committee feels that the gravest charges are those affecting the higher and therefore more responsible branches of the management, and, therefore, without abating or withdrawing any of the requests for information covered by the committee's letter of April 8, 1905, I earnestly desire you to at once put the committee in possession of all information you now have showing, or tending to show, misfeasance or nonfeasance upon the part of any director or high official of the Equitable Society."

To Be Continued DEATH AT FALL RIVER. A letter from Mrs. Jennie Estes Marr dated Fall River, Mass., June 11, announces the death of her little son, Walter Ling Marr, who was born in Honolulu at the Hall cottage near the Honolulu dairy, June 27, 1902, and died the first day of this June at Fall River. At the child's birth his father was a clerk in the office of the Metropolitan Meat Co. here. Shortly before that his mother was engaged at the Young Women's Christian Association rooms. The cause of the little fellow's death was tubercular cerebral meningitis, following an attack of acute gastritis.

NERVOUS PROSTRATION. You can't sleep; you feel tired, irritable, dizzy at times; have headache, backache, and are nervous and excitable. You are on the verge of nervous prostration, which means a general breakdown. Dr. Miles' Nervine will build up your nervous system to its natural strength, and all this misery will disappear. The first bottle will cost you nothing if it fails to help you.

Half the pleasure in dining is in congenial company—order Rainier Beer and your joy will be complete.

Want ads in the Star being quick results. Three lines three times for 25 cents.

CORPORATION NOTICE

NOTICE

Wilder's Steamship Company will not be responsible for any debts contracted in its name on or after July 1st, 1906, without written authority from its President or Treasurer.

Notice is hereby given that the stock books of the Honolulu Rapid Transit & Land Company will be closed to transfers from the 25th to the 30th days of June, 1906, both dates inclusive.

NOTICE

Notice is hereby given that a new Telephone Directory will shortly be published, and all persons intending to have new telephones installed are requested to make applications at an early date.

Subscribers desiring any changes to be made in their names or places of residence etc, will please notify the office before July 20th next, after which date no new names will be added, or changes made in the new book.

MUTUAL TELEPHONE CO., LTD. Honolulu, June 27th, 1906.

A special meeting of the Stockholders of McCabe, Hamilton & Renny Co., Ltd., will be held on Saturday, July 1, 1906, at 10 o'clock a. m., at the office of the company, No. 20 Queen street, Honolulu, for the purpose of considering a proposed amendment to the articles of association of said corporation.

A Pure, Wholesome tonic has been prescribed by your Doctor. Order a case of Rainier Beer. After the first case it will not be necessary for your Doctor to prescribe.

Notice is hereby given that the stock transfer books of Wilder's Steamship Co., will be closed from and including the 1st day of June, 1906, to and including the 30th day of June, 1906, inclusive.

Notice is hereby given that the stock transfer books of Wilder's Steamship Co., will be closed from and including the 1st day of June, 1906, to and including the 30th day of June, 1906, inclusive.

Notice is hereby given that the stock transfer books of Wilder's Steamship Co., will be closed from and including the 1st day of June, 1906, to and including the 30th day of June, 1906, inclusive.

Notice is hereby given that the stock transfer books of Wilder's Steamship Co., will be closed from and including the 1st day of June, 1906, to and including the 30th day of June, 1906, inclusive.

Notice is hereby given that the stock transfer books of Wilder's Steamship Co., will be closed from and including the 1st day of June, 1906, to and including the 30th day of June, 1906, inclusive.

Notice is hereby given that the stock transfer books of Wilder's Steamship Co., will be closed from and including the 1st day of June, 1906, to and including the 30th day of June, 1906, inclusive.

Notice is hereby given that the stock transfer books of Wilder's Steamship Co., will be closed from and including the 1st day of June, 1906, to and including the 30th day of June, 1906, inclusive.

Notice is hereby given that the stock transfer books of Wilder's Steamship Co., will be closed from and including the 1st day of June, 1906, to and including the 30th day of June, 1906, inclusive.

Notice is hereby given that the stock transfer books of Wilder's Steamship Co., will be closed from and including the 1st day of June, 1906, to and including the 30th day of June, 1906, inclusive.

Notice is hereby given that the stock transfer books of Wilder's Steamship Co., will be closed from and including the 1st day of June, 1906, to and including the 30th day of June, 1906, inclusive.

Notice is hereby given that the stock transfer books of Wilder's Steamship Co., will be closed from and including the 1st day of June, 1906, to and including the 30th day of June, 1906, inclusive.

Notice is hereby given that the stock transfer books of Wilder's Steamship Co., will be closed from and including the 1st day of June, 1906, to and including the 30th day of June, 1906, inclusive.

Notice is hereby given that the stock transfer books of Wilder's Steamship Co., will be closed from and including the 1st day of June, 1906, to and including the 30th day of June, 1906, inclusive.

Notice is hereby given that the stock transfer books of Wilder's Steamship Co., will be closed from and including the 1st day of June, 1906, to and including the 30th day of June, 1906, inclusive.

Notice is hereby given that the stock transfer books of Wilder's Steamship Co., will be closed from and including the 1st day of June, 1906, to and including the 30th day of June, 1906, inclusive.

Notice is hereby given that the stock transfer books of Wilder's Steamship Co., will be closed from and including the 1st day of June, 1906, to and including the 30th day of June, 1906, inclusive.

Notice is hereby given that the stock transfer books of Wilder's Steamship Co., will be closed from and including the 1st day of June, 1906, to and including the 30th day of June, 1906, inclusive.

Notice is hereby given that the stock transfer books of Wilder's Steamship Co., will be closed from and including the 1st day of June, 1906, to and including the 30th day of June, 1906, inclusive.

Notice is hereby given that the stock transfer books of Wilder's Steamship Co., will be closed from and including the 1st day of June, 1906, to and including the 30th day of June, 1906, inclusive.

BRECKENRIDGE BADLY HURT

TRIPPED OVER A PILE OF ROCK ON KING STREET AND GASHED HIS HEAD.

Motorman Breckenridge of the Rapid Transit Company's employ met with a nasty accident while on his way home last evening. He had turned his car in at the Alapai street car barn and proceeded down Alapai to catch the last car for Waikiki as he lives out near Camp McKinley.

There was no light on the trench at the crossing though there was a red lantern some twenty or twenty-five feet further along.

Breckenridge fell face downwards on the road metal with stunning force and lay quite still. He was picked up and was found to be bleeding freely from an ugly triangular gash exactly in the middle of his forehead where the corner of a broken rock had evidently entered.

He was taken on the car but was quite incoherent for a time and grew worse after a little. The men on the car stopped at the Moana hotel where Dr. Humphris was sent for and Breckenridge's injuries attended to.

Want ads in the Star bring quick returns. Three lines three times for 25 cents.

A Pure, Wholesome tonic has been prescribed by your Doctor. Order a case of Rainier Beer. After the first case it will not be necessary for your Doctor to prescribe.

Notice is hereby given that the stock transfer books of Wilder's Steamship Co., will be closed from and including the 1st day of June, 1906, to and including the 30th day of June, 1906, inclusive.

Notice is hereby given that the stock transfer books of Wilder's Steamship Co., will be closed from and including the 1st day of June, 1906, to and including the 30th day of June, 1906, inclusive.

Notice is hereby given that the stock transfer books of Wilder's Steamship Co., will be closed from and including the 1st day of June, 1906, to and including the 30th day of June, 1906, inclusive.

Notice is hereby given that the stock transfer books of Wilder's Steamship Co., will be closed from and including the 1st day of June, 1906, to and including the 30th day of June, 1906, inclusive.

Notice is hereby given that the stock transfer books of Wilder's Steamship Co., will be closed from and including the 1st day of June, 1906, to and including the 30th day of June, 1906, inclusive.

Notice is hereby given that the stock transfer books of Wilder's Steamship Co., will be closed from and including the 1st day of June, 1906, to and including the 30th day of June, 1906, inclusive.

Notice is hereby given that the stock transfer books of Wilder's Steamship Co., will be closed from and including the 1st day of June, 1906, to and including the 30th day of June, 1906, inclusive.

Notice is hereby given that the stock transfer books of Wilder's Steamship Co., will be closed from and including the 1st day of June, 1906, to and including the 30th day of June, 1906, inclusive.

Notice is hereby given that the stock transfer books of Wilder's Steamship Co., will be closed from and including the 1st day of June, 1906, to and including the 30th day of June, 1906, inclusive.

Notice is hereby given that the stock transfer books of Wilder's Steamship Co., will be closed from and including the 1st day of June, 1906, to and including the 30th day of June, 1906, inclusive.

Notice is hereby given that the stock transfer books of Wilder's Steamship Co., will be closed from and including the 1st day of June, 1906, to and including the 30th day of June, 1906, inclusive.

Notice is hereby given that the stock transfer books of Wilder's Steamship Co., will be closed from and including the 1st day of June, 1906, to and including the 30th day of June, 1906, inclusive.

Notice is hereby given that the stock transfer books of Wilder's Steamship Co., will be closed from and including the 1st day of June, 1906, to and including the 30th day of June, 1906, inclusive.

Notice is hereby given that the stock transfer books of Wilder's Steamship Co., will be closed from and including the 1st day of June, 1906, to and including the 30th day of June, 1906, inclusive.

Notice is hereby given that the stock transfer books of Wilder's Steamship Co., will be closed from and including the 1st day of June, 1906, to and including the 30th day of June, 1906, inclusive.

Notice is hereby given that the stock transfer books of Wilder's Steamship Co., will be closed from and including the 1st day of June, 1906, to and including the 30th day of June, 1906, inclusive.

Notice is hereby given that the stock transfer books of Wilder's Steamship Co., will be closed from and including the 1st day of June, 1906, to and including the 30th day of June, 1906, inclusive.

Notice is hereby given that the stock transfer books of Wilder's Steamship Co., will be closed from and including the 1st day of June, 1906, to and including the 30th day of June, 1906, inclusive.

Notice is hereby given that the stock transfer books of Wilder's Steamship Co., will be closed from and including the 1st day of June, 1906, to and including the 30th day of June, 1906, inclusive.

BY AUTHORITY RESERVATION OF LAND

FOR THE PURPOSE OF ESTABLISHING AND MAINTAINING THEREON A HOSPITAL STATION AND LABORATORY OF THE PUBLIC HEALTH AND MARINE HOSPITAL SERVICE OF THE UNITED STATES, FOR THE STUDY OF THE METHODS OF TRANSMISSION, CAUSE AND TREATMENT OF LEPROSY.

Whereas it is provided by Section 21 of an Act to Provide a Government for the Territory of Hawaii, passed by the Fifty-sixth Congress of the United States of America on the 27th day of April, A. D. 1909, and approved on the 30th day of April, A. D. 1909, "That the public property ceded and transferred to the United States by the Republic of Hawaii, under the joint resolution of annexation, approved July 7, 1898, shall be and remain in the possession, use and control of the Territory of Hawaii, and shall be maintained, managed and cared for by it, at its own expense, until otherwise provided for by Congress, or taken for the uses and purposes of the United States by direction of the President, or the Governor of Hawaii," and

Whereas it was enacted by the Senate and Representatives of the United States of America in Congress assembled, by any Act thereof duly approved by the President of the United States of America on the 3rd day of March, A. D. 1895, "That when the Territorial Government of Hawaii shall cede to the United States in perpetuity a suitable tract of land one mile square, more or less, on the Leper Reservation at Molokai, Hawaii, there shall be established thereon a hospital station and laboratory of the public health and Marine Hospital Service of the United States, for the study of the methods of transmission, cause and treatment of Leprosy," and

Whereas in pursuance of the foregoing Act of the Congress of the United States of America a tract of land situated on the Leper Reservation at Molokai, Hawaii, in area one mile square, more or less, has been found suitable for the purpose in said last named Act contemplated and set forth;

Now, therefore, I, George R. Carter, Governor of the Territory of Hawaii, by virtue of the authority in me vested by law, do hereby declare and proclaim that the following described pieces of land (the Territory reserving the ownership of, and right to remove such buildings as may be on the date hereof upon the granted premises), be and the same are hereby taken for the uses and purposes of the United States saving and reserving therefrom a right of way forty (40) feet in width along and over the line of the present road or trail over the granted premises, for the purposes of a road, for the exclusive and joint use of the Board of Health of the Territory of Hawaii, and its successors, and the United States authorities having the charge and control of said hospital station and laboratory; and granting to the United States a like exclusive right of way upon and over that part or portion of the public lands of the Territory of Hawaii lying between the parcels of land hereby separately granted, now used as a public road or trail, such rights of way as are hereby granted and reserved being indicated upon certain maps of the United States Leprosy Station Sites, dated June, 1895, and traced from Government Survey Registered Maps Nos 2369 and 3728.

1. 187° 21' 182.2 feet; 2. 227° 21' 692 feet to high water mark at sea coast; 3. Thence along sea coast, along high water mark, the direct azimuth and distance being: 336° 19' 372 feet; 4. 47° 21' 350 feet to Hawaiian Government Survey Trig. Station "Kaupikiawa"; the true azimuth and distance to "Leinaopalo" being: 312° 12' 7" 1164.5 feet; 5. 47° 21' 350 feet to an iron bolt on the North side of main Government road; 6. 127° 21' 1869 feet to the point of beginning. Area 502.6 acres.

1. 254° 23' 385 feet up ridge; 2. 251° 09' 750 feet along Territorial Government Water Reserve; 3. 117° 23' 468 feet down ridge to + on stone in trail; 4. Thence along East side of trail, the direct azimuth and distance being: 215° 40' 90 feet; 5. 154° 57' 227 feet; 6. 136° 09' 168 feet to the point of beginning. Area 4.5 acres.

1. 254° 23' 385 feet up ridge; 2. 251° 09' 750 feet along Territorial Government Water Reserve; 3. 117° 23' 468 feet down ridge to + on stone in trail; 4. Thence along East side of trail, the direct azimuth and distance being: 215° 40' 90 feet; 5. 154° 57' 227 feet; 6. 136° 09' 168 feet to the point of beginning. Area 4.5 acres.

1. 254° 23' 385 feet up ridge; 2. 251° 09' 750 feet along Territorial Government Water Reserve; 3. 117° 23' 468 feet down ridge to + on stone in trail; 4. Thence along East side of trail, the direct azimuth and distance being: 215° 40' 90 feet; 5. 154° 57' 227 feet; 6. 136° 09' 168 feet to the point of beginning. Area 4.5 acres.

1. 254° 23' 385 feet up ridge; 2. 251° 09' 750 feet along Territorial Government Water Reserve; 3. 117° 23' 468 feet down ridge to + on stone in trail; 4. Thence along East side of trail, the direct azimuth and distance being: 215° 40' 90 feet; 5. 154° 57' 227 feet; 6. 136° 09' 168 feet to the point of beginning. Area 4.5 acres.

1. 254° 23' 385 feet up ridge; 2. 251° 09' 750 feet along Territorial Government Water Reserve; 3. 117° 23' 468 feet down ridge to + on stone in trail; 4. Thence along East side of trail, the direct azimuth and distance being: 215° 40' 90 feet; 5. 154° 57' 227 feet; 6. 136° 09' 168 feet to the point of beginning. Area 4.5 acres.

1. 254° 23' 385 feet up ridge; 2. 251° 09' 750 feet along Territorial Government Water Reserve; 3. 117° 23' 468 feet down ridge to + on stone in trail; 4. Thence along East side of trail, the direct azimuth and distance being: 215° 40' 90 feet; 5. 154° 57' 227 feet; 6. 136° 09' 168 feet to the point of beginning. Area 4.5 acres.

1. 254° 23' 385 feet up ridge; 2. 251° 09' 750 feet along Territorial Government Water Reserve; 3. 117° 23' 468 feet down ridge to + on stone in trail; 4. Thence along East side of trail, the direct azimuth and distance being: 215° 40' 90 feet; 5. 154° 57' 227 feet; 6. 136° 09' 168 feet to the point of beginning. Area 4.5 acres.

1. 254° 23' 385 feet up ridge; 2. 251° 09' 750 feet along Territorial Government Water Reserve; 3. 117° 23' 468 feet down ridge to + on stone in trail; 4. Thence along East side of trail, the direct azimuth and distance being: 215° 40' 90 feet; 5. 154° 57' 227 feet; 6. 136° 09' 168 feet to the point of beginning. Area 4.5 acres.

1. 254° 23' 385 feet up ridge; 2. 251° 09' 750 feet along Territorial Government Water Reserve; 3. 117° 23' 468 feet down ridge to + on stone in trail; 4. Thence along East side of trail, the direct azimuth and distance being: 215° 40' 90 feet; 5. 154° 57' 227 feet; 6. 136° 09' 168 feet to the point of beginning. Area 4.5 acres.

1. 254° 23' 385 feet up ridge; 2. 251° 09' 750 feet along Territorial Government Water Reserve; 3. 117° 23' 468 feet down ridge to + on stone in trail; 4. Thence along East side of trail, the direct azimuth and distance being: 215° 40' 90 feet; 5. 154° 57' 227 feet; 6. 136° 09' 168 feet to the point of beginning. Area 4.5 acres.

1. 254° 23' 385 feet up ridge; 2. 251° 09' 750 feet along Territorial Government Water Reserve; 3. 117° 23' 468 feet down ridge to + on stone in trail; 4. Thence along East side of trail, the direct azimuth and distance being: 215° 40' 90 feet; 5. 154° 57' 227 feet; 6. 136° 09' 168 feet to the point of beginning. Area 4.5 acres.

1. 254° 23' 385 feet up ridge; 2. 251° 09' 750 feet along Territorial Government Water Reserve; 3. 117° 23' 468 feet down ridge to + on stone in trail; 4. Thence along East side of trail, the direct azimuth and distance being: 215° 40' 90 feet; 5. 154° 57' 227 feet; 6. 136° 09' 168 feet to the point of beginning. Area 4.5 acres.

1. 254° 23' 385 feet up ridge; 2. 251° 09' 750 feet along Territorial Government Water Reserve; 3. 117° 23' 468 feet down ridge to + on stone in trail; 4. Thence along East side of trail, the direct azimuth and distance being: 215° 40' 90 feet; 5. 154° 57' 227 feet; 6. 136° 09' 168 feet to the point of beginning. Area 4.5 acres.

1. 254° 23' 385 feet up ridge; 2. 251° 09' 750 feet along Territorial Government Water Reserve; 3. 117° 23' 468 feet down ridge to + on stone in trail; 4. Thence along East side of trail, the direct azimuth and distance being: 215° 40' 90 feet; 5. 154° 57' 227 feet; 6. 136° 09' 168 feet to the point of beginning. Area 4.5 acres.

1. 254° 23' 385 feet up ridge; 2. 251° 09' 750 feet along Territorial Government Water Reserve; 3. 117° 23' 468 feet down ridge to + on stone in trail; 4. Thence along East side of trail, the direct azimuth and distance being: 215° 40' 90 feet; 5. 154° 57' 227 feet; 6. 136° 09' 168 feet to the point of beginning. Area 4.5 acres.

1. 254° 23' 385 feet up ridge; 2. 251° 09' 750 feet along Territorial Government Water Reserve; 3. 117° 23' 468 feet down ridge to + on stone in trail; 4. Thence along East side of trail, the direct azimuth and distance being: 215° 40' 90 feet; 5. 154° 57' 227 feet; 6. 136° 09' 168 feet to the point of beginning. Area 4.5 acres.

1. 254° 23' 385 feet up ridge; 2. 251° 09' 750 feet along Territorial Government Water Reserve; 3. 117° 23' 468 feet down ridge to + on stone in trail; 4. Thence along East side of trail, the direct azimuth and distance being: 215° 40' 90 feet; 5. 154° 57' 227 feet; 6. 136° 09' 168 feet to the point of beginning. Area 4.5 acres.

1. 254° 23' 385 feet up ridge; 2. 251° 09' 750 feet along Territorial Government Water Reserve; 3. 117° 23' 468 feet down ridge to + on stone in trail; 4. Thence along East side of trail, the direct azimuth and distance being: 215° 40' 90 feet; 5. 154° 57' 227 feet; 6. 136° 09' 168 feet to the point of beginning. Area 4.5 acres.

1. 254° 23' 385 feet up ridge; 2. 251° 09' 750 feet along Territorial Government Water Reserve; 3. 117° 23' 468 feet down ridge to + on stone in trail; 4. Thence along East side of trail, the direct azimuth and distance being: 215° 40' 90 feet; 5. 154° 57' 227 feet; 6. 136° 09' 168 feet to the point of beginning. Area 4.5 acres.

1. 254° 23' 385 feet up ridge; 2. 251° 09' 750 feet along Territorial Government Water Reserve; 3. 117° 23' 468 feet down ridge to + on stone in trail; 4. Thence along East side of trail, the direct azimuth and distance being: 215° 40' 90 feet; 5. 154° 57' 227 feet; 6. 136° 09' 168 feet to the point of beginning. Area 4.5 acres.

1. 254° 23' 385 feet up ridge; 2. 251° 09' 750 feet along Territorial Government Water Reserve; 3. 117° 23' 468 feet down ridge to + on stone in trail; 4. Thence along East side of trail, the direct azimuth and distance being: 215° 40' 90 feet; 5. 154° 57' 227 feet; 6. 136° 09' 168 feet to the point of beginning. Area 4.5 acres.

BY AUTHORITY RESERVATION OF LAND

FOR THE PURPOSE OF ESTABLISHING AND MAINTAINING THEREON A HOSPITAL STATION AND LABORATORY OF THE PUBLIC HEALTH AND MARINE HOSPITAL SERVICE OF THE UNITED STATES, FOR THE STUDY OF THE METHODS OF TRANSMISSION, CAUSE AND TREATMENT OF LEPROSY.

Whereas it is provided by Section 21 of an Act to Provide a Government for the Territory of Hawaii, passed by the Fifty-sixth Congress of the United States of America on the 27th day of April, A. D. 1909, and approved on the 30th day of April, A. D. 1909, "That the public property ceded and transferred to the United States by the Republic of Hawaii, under the joint resolution of annexation, approved July 7, 1898, shall be and remain in the possession, use and control of the Territory of Hawaii, and shall be maintained, managed and cared for by it, at its own expense, until otherwise provided for by Congress, or taken for the uses and purposes of the United States by direction of the President, or the Governor of Hawaii," and

Whereas it was enacted by the Senate and Representatives of the United States of America in Congress assembled, by any Act thereof duly approved by the President of the United States of America on the 3rd day of March, A. D. 1895, "That when the Territorial Government of Hawaii shall cede to the United States in perpetuity a suitable tract of land one mile square, more or less, on the Leper Reservation at Molokai, Hawaii, there shall be established thereon a hospital station and laboratory of the public health and Marine Hospital Service of the United States, for the study of the methods of transmission, cause and treatment of Leprosy," and

Whereas in pursuance of the foregoing Act of the Congress of the United States of America a tract of land situated on the Leper Reservation at Molokai, Hawaii, in area one mile square, more or less, has been found suitable for the purpose in said last named Act contemplated and set forth;

Now, therefore, I, George R. Carter, Governor of the Territory of Hawaii, by virtue of the authority in me vested by law, do hereby declare and proclaim that the following described pieces of land (the Territory reserving the ownership of, and right to remove such buildings as may be on the date hereof upon the granted premises), be and the same are hereby taken for the uses and purposes of the United States saving and reserving therefrom a right of way forty (40) feet in width along and over the line of the present road or trail over the granted premises, for the purposes of a road, for the exclusive and joint use of the Board of Health of the Territory of Hawaii, and its successors, and the United States authorities having the charge and control of said hospital station and laboratory; and granting to the United States a like exclusive right of way upon and over that part or portion of the public lands of the Territory of Hawaii lying between the parcels of land hereby separately granted, now used as a public road or trail, such rights of way as are hereby granted and reserved being indicated upon certain maps of the United States Leprosy Station Sites, dated June, 1895, and traced from Government Survey Registered Maps Nos 2369 and 3728.

1. 187° 21' 182.2 feet; 2. 227° 21' 692 feet to high water mark at sea coast; 3. Thence along sea coast, along high water mark, the direct azimuth and distance being: 336° 19' 372 feet; 4. 47° 21' 350 feet to Hawaiian Government Survey Trig. Station "Kaupikiawa"; the true azimuth and distance to "Leinaopalo" being: 312° 12' 7" 1164.5 feet; 5. 47° 21' 350 feet to an iron bolt on the North side of main Government road; 6. 127° 21' 1869 feet to the point of beginning. Area 502.6 acres.

1. 254° 23' 385 feet up ridge; 2. 251° 09' 750 feet along Territorial Government Water Reserve; 3. 117° 23' 468 feet down ridge to + on stone in trail; 4. Thence along East side of trail, the direct azimuth and distance being: 215° 40' 90 feet; 5. 154° 57' 227 feet; 6. 136° 09' 168 feet to the point of beginning. Area 4.5 acres.

1. 254° 23' 385 feet up ridge; 2. 251° 09' 750 feet along Territorial Government Water Reserve; 3. 117° 23' 468 feet down ridge to + on stone in trail; 4. Thence along East side of trail, the direct azimuth and distance being: 215° 40' 90 feet; 5. 154° 57' 227 feet; 6. 136° 09' 168 feet to the point of beginning. Area 4.5 acres.

1. 254° 23' 385 feet up ridge; 2. 251° 09' 750 feet along Territorial Government Water Reserve; 3. 117° 23' 468 feet down ridge to + on stone in trail; 4. Thence along East side of trail, the direct azimuth and distance being: 215° 40' 90 feet; 5. 154° 57' 227 feet; 6. 136° 09' 168 feet to the point of beginning. Area 4.5 acres.

1. 254° 23' 385 feet up ridge; 2. 251° 09' 750 feet along Territorial Government Water Reserve; 3. 117° 23' 468 feet down ridge to + on stone in trail; 4. Thence along East side of trail, the direct azimuth and distance being: 215° 40' 90 feet; 5. 154° 57' 227 feet; 6. 136° 09' 168 feet to the point of beginning. Area 4.5 acres.

1. 254° 23' 385 feet up ridge; 2. 251° 09' 750 feet along Territorial Government Water Reserve; 3. 117° 23' 468 feet down ridge to + on stone in trail; 4. Thence along East side of trail, the direct azimuth and distance being: 215° 40' 90 feet; 5. 154° 57' 227 feet; 6. 136° 09' 168 feet to the point of beginning. Area 4.5 acres.

1. 254° 23' 385 feet up ridge; 2. 251° 09' 750 feet along Territorial Government Water Reserve; 3. 117° 23' 468 feet down ridge to + on stone in trail; 4. Thence along East side of trail, the direct azimuth and distance being: 215° 40' 90 feet; 5. 154° 57' 227 feet; 6. 136° 09' 168 feet to the point of beginning. Area 4.5 acres.

1. 254° 23' 385 feet up ridge; 2. 251° 09' 750 feet along Territorial Government Water Reserve; 3. 117° 23' 468 feet down ridge to + on stone in trail; 4. Thence along East side of trail, the direct azimuth and distance being: 215° 40' 90 feet; 5. 154° 57' 227 feet; 6. 136° 09' 168 feet to the point of beginning. Area 4.5 acres.

1. 254° 23' 385 feet up ridge; 2. 251° 09' 750 feet along Territorial Government Water Reserve; 3. 117° 23' 468 feet down ridge to + on stone in trail; 4. Thence along East side of trail, the direct azimuth and distance being: 215° 40' 90 feet; 5. 154° 57' 227 feet; 6. 136° 09' 168 feet to the point of beginning. Area 4.5 acres.

1. 254° 23' 385 feet up ridge; 2. 251° 09' 750 feet along Territorial Government Water Reserve; 3. 117° 23' 468 feet down ridge to + on stone in trail; 4. Thence along East side

Souvenir Leather Posters... Enamelled Hawaiian Jewelry, Cat Eye's Lids, Home-made Mango Chutney, All kinds of Chutneys.

WOMAN'S EXCHANGE



Don't Starve Your Hair! Pacheco's Dandruff Killer

is a natural hair-food and stimulates its growth wonderfully. Sold by all Druggists and at the Union Barber Shop, Telephone Main 522.

Italy's Famous Cheese

The rich ripe Gorgonzola is beloved by gourmets the world over. They enjoy its full, peculiar flavor and the delightful finishing touch it imparts to a well-enjoyed meal.

METROPOLITAN MEAT CO. Limited

Telephone Main 45

NEW Tennis Goods

FOR THE Coming Season

JUST RECEIVED INCLUDING

WRIGHT & DITSON

1905 Balls and Rackets

We are also prepared to furnish New Awnings and Verandah Curtains, or Recover Your Old Awning Frames.

New Underwood

AND MANY MAKES OF SECOND-HAND

Typewriters

AND ALL VARIETIES OF

T W Papers and Supplies

Pearson & Potter Co., Ltd. 931 Fort Street.

NEW ADVERTISEMENTS.

E. O. Hall & Son... Page 4, Jas. F. Morgan... Page 5, Hawaiian Bowling Assn... Page 5, Inter-Island S. N. Co... Page 5

NEWS IN A NUTSHELL

Paragraphs That Give Condensed News of the Day.

WEATHER REPORT.

U. S. Weather Bureau Office, Young Building.

Temperature, 8 a. m., 71; 8 a. m., 78; 10 a. m., 80; noon, 85. Morning minimum, 71. Humidity, 8 a. m., 80.64; absolute humidity, 8 a. m., 4.84 grains per cubic foot; relative humidity, 8 a. m., 61 per cent; dew point, 8 a. m., 63.

Winds: Velocity, 8 a. m., 1; NE, 3 a. m., 6; NE, 10 a. m., 14; R: noon, 12; NE. Rainfall during 24 hours ended 5 a. m., trace inches.

Total wind movement during 24 hours ended at noon, 150 miles.

ALB. Mc. ABLE, Section Director.

Beets: June 28, 11 shillings, 5 pence; last previous quotations, June 26, 11 shillings, 3 1/2 pence.

Vaudeville at the Orpheum tonight. 'The Planers' Monthly for April has just been issued.

Letters of introduction and recommendations are lost.

There will be horse racing on the Fourth at Waialua.

The S. S. Stanley Dollar has hailed to anchorage in the stream.

A towel window at Pacific Import Co. Prices indicate a clearing sale.

Zenoleum is just the thing for your dog. E. O. Hall & Son keeps a supply on hand.

The steamer Keahou will go out at 5 p. m. Monday to Kaula ports, on her regular run.

The M. B. Curtis Novelty Company closes its engagement at the Orpheum on Saturday evening.

The Tenth Annual championship races will be held on July 4th over the Pearl Harbor course.

On Monday the steamer Kaula will depart for Hamakua ports on the run of the steamer Nona.

Central Union Church C. E. society will hold a business meeting at 7:30 this evening to be followed by a social.

Children's white dresses at your own price at Pacific Import Co. Goods marked in plain figures. See window display.

The Bar Association dinner takes place this evening at 7 o'clock at the Young Hotel. A. G. M. Robertson will preside.

During the dry goods clearing sale of Pacific Import Co., every yard of goods has been reduced, the stock is clean and fresh.

A tramping party will leave town tomorrow at 8 a. m. to go up Palolo valley as far as the volcano. Mr. Law will act as guide.

The tournament announced by the Mauna Golf Club, begins a week from tomorrow and not tomorrow as has been erroneously announced.

Primo Lager is the best beer brewed and the rush for it during the hot weather indicates the hold that it has upon the affections of the community.

A. K. Jones who for many years was in the employ of M. McHenry Ltd., has accepted the management of the Dovesett Co., Ltd., ranches on this island.

The Kau Weekly says there is a rumor among the Naelehu Japs that J. C. Searle, Sheriff of Hawaii, and formerly manager of Hilea plantation may again become a plantation manager.

Dr. C. T. Rodgers who resigned the office of secretary to the Board of Education some months ago, has reconsidered his action. He will continue in the position.

Great values in Peau de Soie silk, Surah silk and Taffeta silk will be offered during the clearing sale at Pacific Import Co., silk on sale guaranteed or money back if not satisfactory.

Sachs' store is the Mecca of shoppers. The great annual clearance sale is now well under way and bargains are being eagerly snapped up.

New lines of goods are being opened up every day and there will be fresh attractions added until the sale ends two weeks from now.

FOURTH AT WAIALUA

Big preparations for the Fourth are being made at Haleiwa. There will be a dance at the hotel on the evening of the third. On the Fourth there will be a luau, a golf tournament for a special cup offered by the hotel and there will be local horse racing.

There are a great many horses individually owned at Waialua, and in the old days Waialua was the sportiest place in the islands—the Terra Haute, Indiana of Hawaii. Some of the spirit is said to linger still and will be exhibited in the horse races July 4.

On Sunday there will be play in the Golf tournament for the Haleiwa cup.

Want ads in the Star bring quick results. Three lines three times for 25 cents.

CHOICE ALGAROBA

FIRE WOOD

SAWED AND SPLIT OR IN 4 FEET LENGTHS

DELIVERED TO ANY PART OF THE CITY. LEAVE ORDERS WITH

W. W. DIMOND & CO.

Agents for East Niu Ranch.

RAPID TRANSIT DAMAGE SUIT

TEN THOUSAND DOLLARS CLAIMED BY MAN WHO SAYS HE WAS THROWN OFF CAR.

John M. Kingham has brought suit against the Rapid Transit Company for \$10,252.25, on account of damages alleged to have been sustained by him on May 7 last. The plaintiff claims to have been knocked off a car at the Melrose, by a conductor of the company.

Kingham says that he has long been a sufferer from chronic asthma, and that he boarded the car at the Melrose on the date mentioned and that while he was attempting to pay the conductor the sum of five cents, demanded as car fare, the conductor "willfully, carelessly, maliciously, forcibly and wantonly and with gross negligence, and without just or any cause or excuse, and while said car upon which plaintiff was then riding as a passenger as aforesaid was in motion, tripped, threw, hurled, knocked and precipitated plaintiff from said moving car to the street beneath."

Kingham naturally left the car hurriedly, and he says that he struck the sidewalk with great violence and suffered severe injuries, by reason of which his chronic malady was made worse.

E. A. Douthitt is attorney for the plaintiff.

TO ORGANIZE AT MIDNIGHT

(Continued from page one)

And then came the police department.

County Attorney Douthitt had prepared a series of resolutions to be adopted at the midnight meeting by which the county is to take over the different departments. That respecting the police department differed from the others in that it authorized Sheriff Brown to take over the department and make such changes as he saw fit, subject to the confirmation of the board of supervisors but several members, headed by Supervisor Adams thought that this gave too much power to the sheriff. Their idea was that the present establishment should be taken over as it is and that such windings out as might be necessary should be accomplished under their own watchful eye.

There was a long discussion on the point but finally Sheriff-elect Brown made the statement that he did not wish to interfere at all with the uniformed men of the force but he did propose to drop "ten or fifteen, specials, sleuths and informers" who, he said, are hanging on and drawing down from \$60 to \$70 a month each.

Lucas believed in giving Brown a free hand and moved the adoption of the resolution drawn by Douthitt. The motion was lost, the mover with Archer and Cox voting for it while Smith, Adams, Moore and Paole voted "Nay."

Noth having been reached, Chairman Smith suggested the naming of a special committee to draw up a resolution regarding the talking over of the police, which would be presented for approval this afternoon.

The meeting adjourned to meet again at 2 1/2 o'clock.

The supervisors continued their preliminary session this afternoon at 2 o'clock when the following items of expenditure were decided upon:

Auditor's department: Auditor's salary, \$199; clerk's, \$75.

County Attorney's department: Attorney's salary, \$266; Salary of Deputy for police work, \$175; Clerk's salary, \$75; Stenographer's, \$100.

SATURDAY RECEPTION AT THE ORPHEUM

The Princess Chingulilla, with the M. B. Curtis Novelty Company at the Orpheum, will give a reception to the ladies upon the stage directly after the performance tomorrow afternoon. The seat sale is large and there is every indication that the house will be crowded.

The Curtis Company will close its engagement here on Saturday evening. The attendance has been good from the start, and from the present outlook Saturday night will be even greater than any evening heretofore.

STANLEY DOLLAR UP AGAINST IT

LOCAL AUTHORITIES WILL PROBABLY BE UNABLE TO INSPECT THE VESSEL EVEN IF ORDERED.

The status of the S. S. Stanley Dollar remains unchanged today. The vessel hauled into the stream this morning where she now lies at anchor awaiting the settlement of the troubles that are detaching her in this port.

Al though application was made by the captain of the vessel to the Federal inspectors of hulls and boilers for an inspection, such inspection can not be given as there are no Federal inspectors at this place. Collector Stackpole is required in the absence of inspectors to enforce the laws on this score but even if an order should be received from Washington to have him make an inspection of the vessel, it is doubtful if such inspection could be made. The rules governing inspection

James F. Morgan, AUCTIONEER AND BROKER.

117-357 Kaahumanu St. Tel. Main 75. P. O. Box 194.

AUCTION SALE

At my Land Salesroom, 357 Kaahumanu Street.

ON SATURDAY, JULY 1, AT 12 O'CLOCK NOON.

T. MCGANTS STEWART'S RESIDENCE

on Beckley street, Kailhi.

LOT-1 1-3 acre, fruit, ornamental and shade trees. Vegetable garden, sorghum lot, chicken houses and out-buildings.

RESIDENCE-1 1-2 story, 3 rooms, 2 enclosed Janals, library, store room, observatory, 2 bath rooms, screened and electric lighted throughout.

Also a guest cottage, servants' quarters, 2 carriage houses and large hot house with ferns and plants.

Cash arrange for a Loan on this property of \$3000.

ALSO

A choice lot, 256x125 on the Waialae road, at terminus of Rapid Transit, fronting on two streets. Can arrange for loan of \$1000 on this lot

For further particular apply to

JAS. F. MORGAN, AUCTIONEER.

AUCTION SALE

ON SATURDAY, JULY 1, AT 12 O'CLOCK NOON.

Fox Terrier Pups

At my salesroom, 317 Kaahumanu street.

ST. CLAIR'S DUBLIN, IRELAND STOCK.

SIRE, DEUCE, DAM, IRISH KATE, DUBLIN KATE, CHIN, DUBLIN KATE, DOTTY, FIRE, DOTTY.

2 PUPPIES FOR SALE.

JAMES F. MORGAN, AUCTIONEER.

of vessels for freight differ from those for in spections for passenger license.

A higher rate of steam pressure will be permitted in the boilers with a freight license than those with a passenger license. There are not in the possession of the local Federal authorities any appliances with which to make the tests during the course of such inspection, so the indications this morning were that the Federal authorities would be helpless to act, however desirous they might of exorcising the vessel from her present plight.

It was understood that application was to be made to the Washington authorities for permission to have the vessel receive a license but no information on this score had been received up to noon today.

STOCKS THIS AFTERNOON.

The following transactions and notice of dividend were reported at the afternoon session of the Stock Exchange today: Between Boards, 10 McBryde, \$8; 4 McBryde, \$8.25. Dividend, Pacific Sugar Mill, 5 per cent.

MOVED IMMIGRATION OFFICES.

The immigration offices have been moved to the new building on the naval grounds, near the Esplanade. The old offices on Allen street will be occupied by Dr. Ramus of the Marine Hospital Service. There will be a reception at the new immigration building Monday afternoon.

RECEPTION ON BENNINGTON.

Lieutenant Commander Victor Blue, the executive officer of the gunboat Bennington, has issued invitations for a reception aboard the vessel from 5 to 7 o'clock this afternoon.

AOLANGI SIGHTED.

The S. S. Aorangi from Victoria and Vancouver was sighted off Kokohead at 3:20 p. m. today. She may sail tonight for the Colonies.

MRS. JUDD GOES TO KAUALA.

Mrs. A. Francis Judd and daughter left by the steamer Mikahala Thursday for Kaula where they will visit Gay and Robinson for two weeks.

A PECULIAR THEORY.

"Uncle Rufus," said the man who takes an interest in everybody, "what is your idea of emancipation?" "Well, suh," was the answer, "some of dem farm hands wasn't carnin' deir salt, an' 'manicipation were jes' a p'lase way of tellin' 'em dat de white folks woudn't be 'sponsible for deir board an' keep no longer."

THE LAST WORD.

"Does your wife insist on having the last word?" said the man who asks impertinent questions. "Certainly not," answered Mr. Meekton. "She doesn't have to insist."

A PROFITABLE VACATION.

To learn how to speak French or German in 5 weeks. Attend the free lectures at the Y. M. C. A. today and Saturday, at 4:30 and 8 p. m.

HOT WEATHER TONIC.

Hot weather brings on lassitude and fatigue. One needs a tonic to keep up mental strength. Royal mint extract is an invigorating, health restoring tonic. It gives vim and snap. Try it. At Hologan's.

ZENOLEUM

FOR THE HOME, THE HOSPITAL, THE KITCHEN, THE STABLE.

It will kill the ticks and fleas on your dog and will positively cure the mange or any other skin disease.

We now have Zenoleum in 16-ounce bottles with screw cap in the cork, which makes a very handy container for family use.

We also have a good stock in gallon cans for use on Ranches, in Dairies, &c. For Horn Flies use 1 part Zenoleum, 1 part Cotton Seed Oil and 15 parts of Water and you have the best spray ever made to keep cattle free from Horn or other Flies. Zenoleum is NON-TOXIC.

16-ounce bottles 40 cents each. Try one.

E. O. HALL & SON, LTD

On the Glorious Fourth echoes of the celebration of American Independence will resound throughout the world.

The fame of

Primo Lager

is ever spreading. The beer is a potent factor in the pursuit of happiness.

JAMES F. MORGAN, AUCTIONEER.

To Have AND To Hold

After courtship come the home and to make it beautiful and cozy is a matter of importance. Consult us and let us talk it over with you.

Stanley Stephenson Painter and Decorator

PHONE 425. 137 KING STREET. S. S. SIGNS - That's all.

Fresh Bottled Bock Beer

\$2.00 PER DOZEN QUARTS.

CAMARA & CO., LIQUOR DEALERS.

MERCHANT AND ALAKEA STREETS. TEL. MAIN 492

A 'Range' That 'Saves' Money

THE NEW PROCESS GAS RANGE

It possesses that quality which guarantees convenience, durability and Low Gas Bills.

Call at Store and see demonstration.

ALL RANGES SOLD ON EASY TERMS.

W. W. Dimond & Co., Ltd

Pioneer Gas Range House

