

2-1-10

26.9
22.9
248.9
Av = 244.5
109.3
109.3
Av = 109.3

57.5
57.7
Av = 57.6
46.5
288.0
348.6
236.4
2678.40

27.5
27.5
Av = 27.5
160.5

87.2
160.5
247.7
485.4
970.8

1678
4352
6030
7708
9338
11036
12794
14602
16460
18368
20326
22344
24412
26540
28728
30976
33284
35652
38080
40568

2678.00
2678.00
5356.00

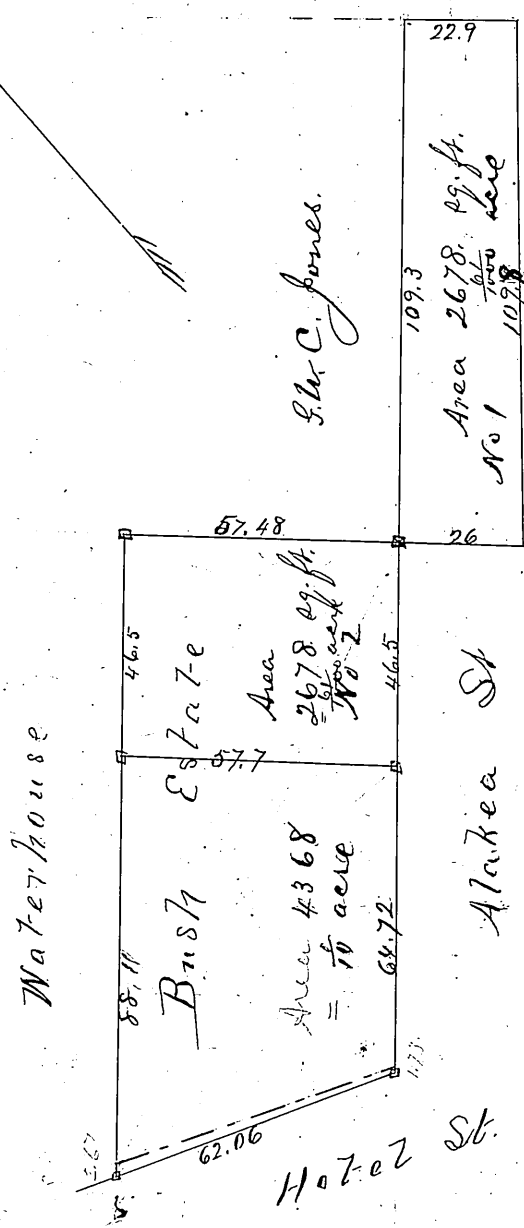
43560
43560
87120

Register 624
 Folio 72-26
 19

Plan showing strip of land
 taken from land of B. W. C. Jones
 by Govt. to widen Alakea St & piece
 marked off from the Bush Estate on
 Alakea St as proposed equivalent
 No. 2 in exchange of No. 1
 Scale 20 ft to an inch

J. D. Emerson
 Surveyor

E. W. C. Jones - Alakea St
 Portfolios 6
 Map 11



The line of Hotel
 St has been
 changed
 See later plan

24.61
29.60
54.21