

CALENDAR NEWS *Honolulu Academy*

*Dvarapala, Indian, 10th century
granite, 36" high
Gift of Mrs. Charles M. Cooke, 1930*



19TH ANNUAL ARTISTS OF HAWAII

Gerald Nordland, Director of the San Francisco Museum of Art, is serving as juror for this important event in the Academy's yearly schedule of temporary exhibitions. All artists residing or visiting in the State are invited to submit work executed in various media including painting, sculpture, printmaking, drawing and photography. The exhibition will serve to document local art production as it is represented by the juror's selections from among the works submitted.

Prior to assuming his present position in San Francisco, Mr. Nordland was director of the Washington Gallery of Modern Art. He has organized major exhibitions for a number of important American museums and is a writer and lecturer and frequent contributor to such publications as *Art News*, *Arts* and *Art International*. He has been Advisor on Art at Johns Hopkins School for Advanced International Studies. He is a Member at Large of the Joint Committee on the National Capital and is a former dean of the Art History Department of Chouinard Art Institute in Los Angeles.

Artists of Hawaii will open with a preview for Members and the public, honoring all participating artists, November 21 from 8:00 to 10:00 p.m.

PAN-PACIFIC ARCHITECTURAL CITATION EXHIBITION

As in years past the Academy will again be the scene of this exhibition which is devoted to the work of the architect who is to receive the Pan-Pacific Citation. The award is given annually by the Hawaii Chapter of the American Institute of Architects to individuals who are judged to have made substantial and exciting contributions in the field of architectural design in the vast region involved. The winner of the 1968 Citation will be Harry Seidler, F.R.A.I.A., M.R.A.I.C., of Harry Seidler Associates in Sydney, Australia.

SIGNALS IN THE 'SIXTIES AND ART/PARK

The ART/PARK opening of the *Signals* exhibition was a spectacular success which should provide a legacy of interest and awareness to be built upon for similar projects in the future. During the two days of the "celebration" in Thomas Square and the Academy courtyards, 42,000 people visited the galleries containing the

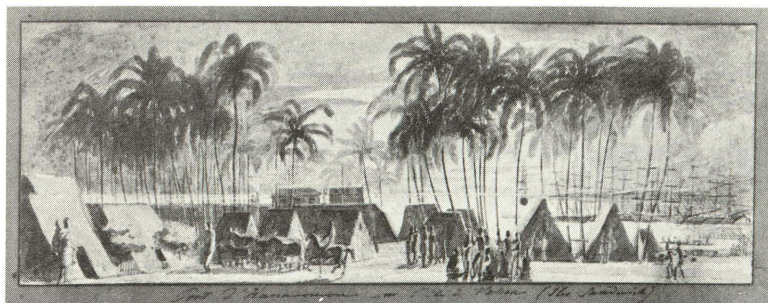
thirty-one contemporary works selected for *Signals* by James Johnson Sweeney. The public response has been generally enthusiastic with particularly positive comment from teachers, students and practicing artists in the community. The Academy Education Department has a heavy schedule of tours for young people of all ages. The exhibition continues through November 10.

On November 7, at 8:00 o'clock in the evening, Murray Turnbull, Educational Consultant to the Academy and Professor of Art at the University of Hawaii, will repeat his illustrated talk on the paintings for a sizeable group of students from Punahou. The *Signals* exhibition will be open for the general public from 7:00 to 10:00 on that evening.

CHRISTMAS AND THE ACADEMY SHOP

The Academy Shop announces that it has acquired a large inventory of fine material which will be of interest to selective holiday shoppers. In addition to the latest titles in the field of art books, the Shop handles reproductions of paintings, sculpture and particularly of jewelry from several outstanding museum collections. Notepaper with reproductions of the works of Choris and Webber, artists who early visited the Sandwich Islands, has also been made from examples in the Academy's permanent collection. A fine selection of Christmas cards is available and may be purchased directly or ordered with whatever imprinting is desired. Academy Members receive a ten percent discount on most purchases.

"Port of Honolulu with Grass Houses," wash drawing, 1816
by Louis Choris, Russian, 1795-1825
Honolulu Academy of Arts' Collection





900 South Beretania Street
Honolulu, Hawaii 96814
Telephone 583-693

NON-PROFIT
ORGANIZATION
U. S. POSTAGE

PAID
HONOLULU, HAWAII
PERMIT NO. 119

CALENDAR OF EVENTS

NOVEMBER 1968

Through November 10 *Signals in the 'Sixties*

Through November 10 *Hawaiiana Exhibition*

Through November 24 *Ancient Egypt and Mesopotamia and Colonial America* (Education Department)

November 15 *Pan-Pacific Architectural Citation Exhibition*: opening, from 4:30 to 6:30 — co-sponsored by the Academy and the Hawaii Chapter of the American Institute of Architects.

November 21 *19th Annual Artists of Hawaii Exhibition*: opening and preview for Members and the public, honoring all participating artists. 8:00 to 10:00 p.m. The exhibition continues through January 5, 1969.

November 7, 8 and 9 Pick-up of works not accepted for *Artists of Hawaii*. Please see rules of entry for time and place or call the Academy for information.

November 7 Lecture on *Signals in the 'Sixties* by Murray Turnbull for Punahou students — 8:00 p.m. The exhibition will be open to the general public from 7:00 to 10:00 p.m.

November 28 The Academy will be closed for the Thanksgiving Holiday.

HONOLULU ACADEMY OF ARTS

GALLERIES OPEN *Tuesday through Saturday, 10 a.m.-4:30 p.m. Sunday, 2-5 p.m.*
Closed Monday.