

# Blue-collar worker survey

Senator Daniel K. Inouye Papers

House records, Central files, B, Box HR1, Folder 18

<https://hdl.handle.net/10524/81493>

---

Items in eVols are protected by copyright, with all rights reserved, unless otherwise indicated.

*UHM Library Digital Collections Disclaimer and Copyright Information*

Room 6  
8 N. School Street



P. O. Box 957  
Honolulu 8, Hawaii

## HAWAII FEDERAL LODGE 1998

Affiliated with AFL - CIO

March 10, 1961

### N E W S L E T T E R

Dear Sir and Brother:

This newsletter will cover the following subjects which we will touch upon lightly, as more information is available first-hand at your lodge meetings the first and third Thursdays of each month:

1. Open meeting and Family Night, Thursday, March 16, 1961.
2. Election of Grand Lodge Officers at April 6th meeting.
3. Excerpts from a brief filed by the Metal Trades Council of Honolulu with the Joint Navy-Army-Air Force Wage Survey Subcommittee, 1961.
4. Changes in Grand Lodge Constitution re finances and dues.
5. Other miscellaneous items.

#### OPEN MEETING & FAMILY NIGHT

The second meeting in March (the 16th) has been designated by the Executive Board as an open meeting and Family Night. This is to familiarize the member's family with his union. Friends, relatives and potential members are also invited to attend. Refreshments will be served plus door prizes.

#### ELECTION OF GRAND LODGE OFFICERS

From Elmer E. Walker, General Secretary-Treasurer, IAM, Official Circular No. 626 on the subject: Election of Grand Lodge Officers, Committee on Law, Delegates to the AFL-CIO and Canadian Labour Congress, these revisions in our Constitution are presented:

ARTICLE III, Place of Voting. Sec. 9. The election of Grand Lodge officers, committee on law, delegates to the AFL-CIO, delegates to the Central Labor Council, or other bodies with which the IAM is, or may be, affiliated shall be held on the 1st regular meeting of each Local Lodge in April, in the Local Lodge room where the regular Local Lodge meetings are held, excepting in those Local Lodges, where circumstances require some other arrangement, the Local Lodge may, through its by-laws, provide other method subject to the approval of the International President.

Sec. 10. Only members who are in good standing and free from delinquency of any nature to the Local Lodge, District Lodge or Grand Lodge, shall be allowed to vote at any election.

*File  
Hawaii Blue Collar  
Wage Survey*



Don't fail to attend the April 6th meeting and vote for the candidates whom you think will look after the interests of the International.

#### JOINT NAVY-ARMY-AIR FORCE WAGE SURVEY

The Honolulu, Hawaii Metal Trades Council, submitting a brief to the Joint Navy-Army-Air Force Wage Survey Subcommittee, 1961, represented Lodge 1998, Machinists' Union; Local Union 1186, International Brotherhood of Electrical Workers and the Council itself, in a statement of position regarding the 1961 locality wage survey for the Hawaiian area.

The underlying reasons for the Act of 16 July 1862 (the Act which mandates the fixing of wage rates for the Navy's ungraded employee) and the Classification Act of 1949 (the Act which mandates the fixing of wage rates for the Army's ungraded or wage board employees) are as follows:

(1) That by periodic surveys of wage levels prevailing in comparable job duties in private industry, the wage level in the area will be ascertainable and it will reflect the cost of living in that particular area thereby allowing the recruitment of manpower from the local area and the maintenance of morale among the employees of the armed forces;

(2) That the Federal government, when it enters into the field as an employer, should compete with private industry in employing tradesmen and should not, by paying substantially higher wages, deprive private industry of tradesmen.

The validity of the survey is necessarily premised on: (1) the existence of comparable job duties in private industry; (2) a representative sampling of private industries; and (3) a reliable method of data collection.

The following are reasons for our position on the wage survey:

- a. The job duties of the firms surveyed are not comparable with the job duties of the employees in the Armed Forces.
- b. There is not representative sampling of private industry.
- c. The method of collecting data is not reliable.
- d. The elimination of the construction industry in Hawaii will not present a true picture of the wage level for skilled tradesmen.
- e. Some of the firms should be eliminated on the basis of the policies expressed in both the Navy and Army instructions.

Both the Army and Navy policies eliminate from consideration by the survey wholesale and retail outlets, banks, insurance companies, construction companies, and job shops.

The argument that there does not exist sufficient wage data in Hawaii is supported when consideration is given to the reason why the Army has seen fit to consider the wages of job shops and construction companies even if

they are being used "only for study". The Navy does not have valid grounds for the elimination of job shops or construction companies since the repair facilities found in Pearl Harbor, the area where the bulk of tradesmen are used, are actually job shops and the positions involved may be most favorably compared with jobs in the construction industry. Consider for a minute the operations found in Shops 67, 06, 07, 99 and the District of Public Works and our arguments will be obvious.

For the foregoing reasons, it is the contention of the Unions that the findings of the joint area wage board will not be valid and thus will not truly represent the present wages currently paid to tradesmen within the Hawaiian area. It is also evident that the purposes for which the wage acts were passed are not being met by the way the present surveys are being conducted. It is further the contention of the Unions that:

- (1) Since there are insufficient companies for sampling, wages in the Hawaiian area should relate back to the West Coast; or
- (2) If wage rates are to be fixed from data gathered from these companies which should not qualify under both the Army and Navy policies, then job shops and construction industries should be considered when setting wages administratively.

Unless either alternative is adopted, it is the feeling of the Unions that the purposes for both wage acts will not be met.

This, then, is our position on the wage survey. Brother William H. Ryan, President of District Lodge No. 44, Government Employees, IAM, in his letter of 27 February 1961 states that "you may be assured that this office and the Metal Trades Department will again actively pursue the project of trying to correct the Honolulu, Hawaii wage inequity at the next Central Wage Board meeting covering that wage schedule".

CHANGES IN GRAND LODGE CONSTITUTION RE FINANCES & DUES  
-by Walter G. S. Ho, Lodge 1998 Secretary-Treasurer

Effective January 1, 1961, the following changes in our Grand Lodge Constitution will be in force:

1. Minimum Dues--Raised from \$2.00 to \$3.00 which means Apprentices will have to pay \$3.00 instead of \$2.50 as in 1960.
2. Unemployment Stamps--It is required that the Local Lodge records show a transaction of 50¢ for each stamp issued which means that we will have to charge 50¢ for unemployment stamps.
3. Retirement Stamps--Charge will be \$2.00 instead of \$1.00.
4. Death Benefits--Will be credited up to March 31, 1961 and frozen as of that date. Members will not accrue additional credits after that date.

The Executive Board of your lodge has recommended that a committee of three be selected to visit persons in arrears; their operating expenses (gas) to be paid for by the lodge.

## IMPORTANCE OF ATTENDING UNION MEETINGS

An Associated Press dispatch from Los Angeles, Calif. February 18, 1961 revealed that members of Plasters Local Number 2 rejected a 12½-cent-an-hour wage increase offered by employer! The plasterers, who are now earning \$4.25 an hour turned down the extra money "in order to support President Kennedy's plea to hold the line on inflation", said Burt Chapman, president of the local.

The vote was taken at a membership meeting attended by only 20 of the union's 1,376 members (there was a quorum present) and the decision will be binding.

Let us multiply 12½¢ by an eight-hour day and the product will be \$1.00. One dollar times 1,376 members equals \$1,376 a day or on a monthly (4-week) basis, at five days a week, \$27,520! Would YOU turn down a wage increase of \$20.00 a month? Your organization needs you to complete its meetings so why not come and help the business along?

## GOOD AND WELFARE

I. Enclosed is a sheet on the Sears, Roebuck boycott from the Central Labor Council of Honolulu which is self-explanatory.

II. Brothers, if you are caught in a reduction-in-force, check with the Industrial Relations Office on the matter. You may not be the person that should be RIF'ed!

III. Take your grievances to the Craft Committee. They are there to help resolve your problems, if possible.

IV. A welcome is extended to these new members of our fraternity: Frank W.K. Tom, Mariano R. Torres, Frank H. Lake, Frank Bajadali, Alexander C. Apana, Paul K. Kahoe, Alphonso Fontanilla, and Manuel Goes of PWCEN; Richard G. Schroeder of PHNSY; Robert Foster, Francis T.F. Yee and William Cambra, ARMY.

## WRITE YOUR CONGRESSMEN AND LEGISLATORS.

More and more, political action governs our everyday life. The laws that we live under are passed by representatives elected to office by the community. Let them know your stand on bills, housing, health, welfare, schools, etc. by writing or calling by telephone or in person. They are your representatives and deserve to know what you want. Incidentally, Senator Oren E. Long publishes an interesting newsletter on the doings in Washington, D.C. each month, entitled "Capitol Comment". You can get on his mailing list by sending in your request on a card to Senator Oren E. Long, New Senate Office Building, Washington 25, D. C.

It's THIRTY for this newsletter. Attend Family Night next Thursday night, March 16th at the V.F.W. Clubhouse, 1812 Kalakaua Ave. Bring your friends!

Respectfully submitted,  
/s/ Kenneth K.L. Mun  
Recording Secretary

MAR 23 1961

DEPARTMENT OF THE NAVY  
OFFICE OF INDUSTRIAL RELATIONS  
WASHINGTON 25, D. C.

IN REPLY REFER TO  
OIR 410:ajt  
16 Mar 1961

*Blue Collar  
Wage Rates*

From: Chief of Industrial Relations  
To: Selected Addressees

Subj: New Schedule of Wages for the Honolulu, Hawaii Area

Ref: (a) NCPI 531

Encl: (1) Honolulu, Hawaii Area Schedule of Wages superseding  
schedule dated 29 February 1960

1. Enclosed is a new Schedule of Wages for the Honolulu, Hawaii Area.
2. Enclosure (1) provides rates of pay by level. In deriving a rate of pay for a rating, both enclosure (1) and reference (a) must be consulted. If reference (a) does not contain a pay level or a pay formula for a rating which is in use in the area, both the rating title and rate of pay will be listed in enclosure (1).
3. An employee being paid a frozen rate will retain it unless the new schedule provides a rate higher than his frozen rate.
4. Wage rates in enclosure (1) shall be placed in effect at the beginning of the first pay period after 1 April 1961.

*R. E. Cronin*  
R. E. CRONIN

N A V Y   D E P A R T M E N T

Enclosure (1)

OIR 410:ajt

WASHINGTON 25, D. C.

HONOLULU, HAWAII  
AREA SCHEDULE OF WAGES

Applicable at:

Bureau of Naval Weapons Representative, Honolulu, Hawaii  
Commandant, Fourteenth Naval District, Pearl Harbor,  
Hawaii  
Marine Barracks, U. S. Naval Base, Pearl Harbor, Hawaii  
Marine Corps Air Station, Kaneohe Bay, Oahu, Hawaii  
Military Sea Transportation Service Office, Honolulu, Hawaii  
Naval Air Station, Barber's Point, Hawaii  
Naval Air Station, Ford Island, Pearl Harbor, Hawaii  
Naval Ammunition Depot, Oahu, Hawaii  
Naval Communication Station, Pearl Harbor, Hawaii  
Naval Degaussing Station, Pearl Harbor, Hawaii  
Naval Dental Clinic, Pearl Harbor, Hawaii  
Naval Reserve Training Center, Pearl Harbor, Hawaii  
Naval Shipyard, Pearl Harbor, Hawaii  
Naval Station, Pearl Harbor, Hawaii  
Naval Submarine Base, Pearl Harbor, Hawaii  
Naval Supply Center, Pearl Harbor, Hawaii  
Navy Commissary Store, U. S. Naval Station, Pearl Harbor,  
Hawaii  
Public Works Center, Pearl Harbor, Hawaii  
Publications and Printing Service Office, Fourteenth Naval  
District, Pearl Harbor, Hawaii

Enclosure (1)  
Honolulu, Hawaii

SERVICES

LABORER, HELPER, AND MECHANIC  
(See NCPI 531.6 Enclosure 1  
for Published Levels)

PRINTING AND LITHOGRAPHIC (FIELD)  
(See NCPI 531.6 Enclosure 10  
for Published Levels)

Non-Supervisory Schedule

Non-Supervisory Schedule

<u>Level</u>	<u>Step Rates</u>		
	<u>1st</u>	<u>2nd</u>	<u>3rd</u>
1	\$1.66	\$1.73	\$1.80
2	1.72	1.79	1.86
3	1.79	1.86	1.93
4	1.85	1.93	2.01
5	1.92	2.00	2.08
6	2.05	2.14	2.23
7	2.19	2.28	2.37
8	2.32	2.42	2.52
9	2.45	2.55	2.65
10	2.58	2.69	2.80
11	2.72	2.83	2.94
12	3.00	3.13	3.26
13	3.06	3.19	3.32
14	3.12	3.25	3.38
15	3.18	3.31	3.44
16	3.24	3.37	3.50

<u>Level</u>	<u>Step Rates</u>		
	<u>1st</u>	<u>2nd</u>	<u>3rd</u>
4	\$1.92	\$2.00	\$2.08
5	2.01	2.09	2.17
6	2.09	2.18	2.27
7	2.18	2.27	2.36
8	2.27	2.36	2.45
9	2.35	2.45	2.55
10	2.45	2.55	2.65
11	2.53	2.64	2.75
12	2.62	2.73	2.84
13	2.71	2.82	2.93
14	2.79	2.91	3.03
15	2.88	3.00	3.12
16	2.97	3.09	3.21
17	3.05	3.18	3.31
18	3.14	3.27	3.40

Supervisory Differentials for the  
LH&M and the P&L (Field) Services  
(See NCPI 531.4-6b)

Additional Pay Differentials  
(See OIR Notice 12531 of  
28 April 1960)

<u>Level</u>	<u>Value of</u>	<u>LH&amp;M Only</u>
	<u>Differential</u>	<u>Floor Rates</u>
	<u>Per Hour</u>	<u>2nd Step Hourly</u>
5	\$1.56	\$3.50
4	1.13	3.09
3	.71	2.69
2a	.34	
2b	.23	

<u>Pay Level</u>	<u>Per Hour</u>
A	\$ .11
B	.23
K	1.42
2nd Shift	.09
3rd Shift	.12

Enclosure (1)  
Honolulu, Hawaii

Non-Supervisory Schedule for Laborer, Helper, and Mechanic Service  
(Ratings Paid Exception Rates or Levels Not Published)

<u>Title</u>	<u>Step Rates</u>		
	<u>1st</u>	<u>2nd</u>	<u>3rd</u>
Patternmaker	\$3.18	\$3.31	\$3.44

COMMISSARY SERVICE

Non-Supervisory Schedule  
(See NCPI 531.6 Encl. 5  
for Published Levels)

Supervisory Differentials  
(See NCPI 531.4-6b)

<u>Level</u>	<u>Step Rates</u>			<u>Level</u>	<u>Value of Differential - Per Hour</u>
	<u>1st</u>	<u>2nd</u>	<u>3rd</u>		
1	\$1.66	\$1.73	\$1.80	5	\$1.25
2	1.72	1.79	1.86	4	.91
3	1.79	1.86	1.93	3	.57
4	1.92	2.00	2.08	2a	.27
5	2.19	2.28	2.37		
6	2.32	2.42	2.52		
7	2.45	2.55	2.65		

LAUNDRY SERVICE

Non-Supervisory Schedule  
(See NCPI 531.6 Encl. 7  
for Published Levels)

Supervisory Differentials  
(See NCPI 531.4-6b)

<u>Level</u>	<u>Step Rates</u>			<u>Level</u>	<u>Value of Differential - Per Hour (Exception to NCPI 531.4-2e)</u>
	<u>1st</u>	<u>2nd</u>	<u>3rd</u>		
1	\$1.07	\$1.11	\$1.15	5	\$ .98
2	1.13	1.18	1.23	4	.72
3	1.25	1.30	1.35	3	.45
4	1.42	1.48	1.54	2a	.21
5	1.61	1.68	1.75		
6	1.74	1.81	1.88		

Enclosure (1)  
Honolulu, Hawaii

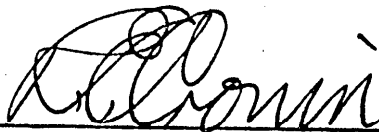
Non-Supervisory Schedule for Laundry Service  
(Ratings Paid Exception Rates or Levels Not Published)

<u>Title</u>	<u>Step Rates</u>		
	<u>1st</u>	<u>2nd</u>	<u>3rd</u>
Tumblerman	\$1.42	\$1.48	\$1.54

INSPECTION SERVICE

(See NCPI 531.6 Enclosure 11 for Rating Titles and Pay Formulas)

APPROVED: \_\_\_\_\_



R. E. CRONIN

Chief of Industrial Relations

Effective first  
pay period after  
1 April 1961

DATE: \_\_\_\_\_

3/16/61



DEPARTMENT OF THE NAVY  
OFFICE OF INDUSTRIAL RELATIONS  
WASHINGTON 25, D. C.

IN REPLY REFER TO  
OIR 410:ajt  
16 Mar 1961

From: Chief of Industrial Relations  
To: Selected Addressees

Subj: New Schedule of Wages for the Honolulu, Hawaii Area

Ref: (a) NCPI 531

Encl: (1) Honolulu, Hawaii Area Schedule of Wages superseding  
schedule dated 29 February 1960 .

1. Enclosed is a new Schedule of Wages for the Honolulu, Hawaii Area.
2. Enclosure (1) provides rates of pay by level. In deriving a rate of pay for a rating, both enclosure (1) and reference (a) must be consulted. If reference (a) does not contain a pay level or a pay formula for a rating which is in use in the area, both the rating title and rate of pay will be listed in enclosure (1).
3. An employee being paid a frozen rate will retain it unless the new schedule provides a rate higher than his frozen rate.
4. Wage rates in enclosure (1) shall be placed in effect at the beginning of the first pay period after 1 April 1961.

R. E. CRONIN

Enclosure (1)

N A V Y   D E P A R T M E N T

OIR 410:ajt

WASHINGTON 25, D. C.

HONOLULU, HAWAII  
AREA SCHEDULE OF WAGES

Applicable at:

Bureau of Naval Weapons Representative, Honolulu, Hawaii  
Commandant, Fourteenth Naval District, Pearl Harbor,  
Hawaii  
Marine Barracks, U. S. Naval Base, Pearl Harbor, Hawaii  
Marine Corps Air Station, Kaneohe Bay, Oahu, Hawaii  
Military Sea Transportation Service Office, Honolulu, Hawaii  
Naval Air Station, Barber's Point, Hawaii  
Naval Air Station, Ford Island, Pearl Harbor, Hawaii  
Naval Ammunition Depot, Oahu, Hawaii  
Naval Communication Station, Pearl Harbor, Hawaii  
Naval Degaussing Station, Pearl Harbor, Hawaii  
Naval Dental Clinic, Pearl Harbor, Hawaii  
Naval Reserve Training Center, Pearl Harbor, Hawaii  
Naval Shipyard, Pearl Harbor, Hawaii  
Naval Station, Pearl Harbor, Hawaii  
Naval Submarine Base, Pearl Harbor, Hawaii  
Naval Supply Center, Pearl Harbor, Hawaii  
Navy Commissary Store, U. S. Naval Station, Pearl Harbor,  
Hawaii  
Public Works Center, Pearl Harbor, Hawaii  
Publications and Printing Service Office, Fourteenth Naval  
District, Pearl Harbor, Hawaii

Enclosure (1)  
Honolulu, Hawaii

SERVICES

LABORER, HELPER, AND MECHANIC  
(See NCPI 531.6 Enclosure 1  
for Published Levels)

PRINTING AND LITHOGRAPHIC (FIELD)  
(See NCPI 531.6 Enclosure 10  
for Published Levels)

Non-Supervisory Schedule

Non-Supervisory Schedule

Level	Step Rates		
	1st	2nd	3rd
1	\$1.66	\$1.73	\$1.80
2	1.72	1.79	1.86
3	1.79	1.86	1.93
4	1.85	1.93	2.01
5	1.92	2.00	2.08
6	2.05	2.14	2.23
7	2.19	2.28	2.37
8	2.32	2.42	2.52
9	2.45	2.55	2.65
10	2.58	2.69	2.80
11	2.72	2.83	2.94
12	3.00	3.13	3.26
13	3.06	3.19	3.32
14	3.12	3.25	3.38
15	3.18	3.31	3.44
16	3.24	3.37	3.50

Level	Step Rates		
	1st	2nd	3rd
4	\$1.92	\$2.00	\$2.08
5	2.01	2.09	2.17
6	2.09	2.18	2.27
7	2.18	2.27	2.36
8	2.27	2.36	2.45
9	2.35	2.45	2.55
10	2.45	2.55	2.65
11	2.53	2.64	2.75
12	2.62	2.73	2.84
13	2.71	2.82	2.93
14	2.79	2.91	3.03
15	2.88	3.00	3.12
16	2.97	3.09	3.21
17	3.05	3.18	3.31
18	3.14	3.27	3.40

Supervisory Differentials for the  
LH&M and the P&L (Field) Services  
(See NCPI 531.4-6b)

Additional Pay Differentials  
(See OIR Notice 12531 of  
28 April 1960)

Level	Value of	LH&M Only
	Differential	Floor Rates
	Per Hour	2nd Step Hourly
5	\$1.56	\$3.50
4	1.13	3.09
3	.71	2.69
2a	.34	
2b	.23	

Pay Level	Per Hour
A	\$ .11
B	.23
K	1.42
2nd Shift	.09
3rd Shift	.12

Enclosure (1)  
Honolulu, Hawaii

Non-Supervisory Schedule for Laborer, Helper, and Mechanic Service  
(Ratings Paid Exception Rates or Levels Not Published)

<u>Title</u>	<u>Step Rates</u>		
	<u>1st</u>	<u>2nd</u>	<u>3rd</u>
Patternmaker	\$3.18	\$3.31	\$3.44

COMMISSARY SERVICE

Non-Supervisory Schedule  
(See NCPI 531.6 Encl. 5  
for Published Levels)

Supervisory Differentials  
(See NCPI 531.4-6b)

<u>Level</u>	<u>Step Rates</u>			<u>Level</u>	<u>Value of Differential - Per Hour</u>
	<u>1st</u>	<u>2nd</u>	<u>3rd</u>		
1	\$1.66	\$1.73	\$1.80	5	\$1.25
2	1.72	1.79	1.86	4	.91
3	1.79	1.86	1.93	3	.57
4	1.92	2.00	2.08	2a	.27
5	2.19	2.28	2.37		
6	2.32	2.42	2.52		
7	2.45	2.55	2.65		

LAUNDRY SERVICE

Non-Supervisory Schedule  
(See NCPI 531.6 Encl. 7  
for Published Levels)

Supervisory Differentials  
(See NCPI 531.4-6b)

<u>Level</u>	<u>Step Rates</u>			<u>Level</u>	<u>Value of Differential - Per Hour (Exception to NCPI 531.4-2e)</u>
	<u>1st</u>	<u>2nd</u>	<u>3rd</u>		
1	\$1.07	\$1.11	\$1.15	5	\$ .98
2	1.13	1.18	1.23	4	.72
3	1.25	1.30	1.35	3	.45
4	1.42	1.48	1.54	2a	.21
5	1.61	1.68	1.75		
6	1.74	1.81	1.88		

Enclosure (1)  
Honolulu, Hawaii

Non-Supervisory Schedule for Laundry Service  
(Ratings Paid Exception Rates or Levels Not Published)

<u>Title</u>	<u>Step Rates</u>		
	<u>1st</u>	<u>2nd</u>	<u>3rd</u>
Tumblerman	\$1.42	\$1.48	\$1.54

INSPECTION SERVICE

(See NCPI 531.6 Enclosure 11 for Rating Titles and Pay Formulas)

APPROVED: \_\_\_\_\_



R. E. CRONIN

Chief of Industrial Relations

Effective first  
pay period after  
1 April 1961

DATE: \_\_\_\_\_

3/16/61



DEPARTMENT OF THE NAVY  
OFFICE OF INDUSTRIAL RELATIONS  
WASHINGTON 25, D. C.

IN REPLY REFER TO  
OIR 410:ajt  
16 Mar 1961

From: Chief of Industrial Relations  
To: Selected Addressees

Subj: New Schedule of Wages for the Honolulu, Hawaii Area

Ref: (a) NCPI 531

Encl: (1) Honolulu, Hawaii Area Schedule of Wages superseding  
schedule dated 29 February 1960

1. Enclosed is a new Schedule of Wages for the Honolulu, Hawaii Area.
2. Enclosure (1) provides rates of pay by level. In deriving a rate of pay for a rating, both enclosure (1) and reference (a) must be consulted. If reference (a) does not contain a pay level or a pay formula for a rating which is in use in the area, both the rating title and rate of pay will be listed in enclosure (1).
3. An employee being paid a frozen rate will retain it unless the new schedule provides a rate higher than his frozen rate.
4. Wage rates in enclosure (1) shall be placed in effect at the beginning of the first pay period after 1 April 1961.

  
R. E. CRONIN

Enclosure (1)

N A V Y   D E P A R T M E N T

OIR 410:ajt

WASHINGTON 25, D. C.

HONOLULU, HAWAII  
AREA SCHEDULE OF WAGES

Applicable at:

Bureau of Naval Weapons Representative, Honolulu, Hawaii  
Commandant, Fourteenth Naval District, Pearl Harbor,  
Hawaii  
Marine Barracks, U. S. Naval Base, Pearl Harbor, Hawaii  
Marine Corps Air Station, Kaneohe Bay, Oahu, Hawaii  
Military Sea Transportation Service Office, Honolulu, Hawaii  
Naval Air Station, Barber's Point, Hawaii  
Naval Air Station, Ford Island, Pearl Harbor, Hawaii  
Naval Ammunition Depot, Oahu, Hawaii  
Naval Communication Station, Pearl Harbor, Hawaii  
Naval Degaussing Station, Pearl Harbor, Hawaii  
Naval Dental Clinic, Pearl Harbor, Hawaii  
Naval Reserve Training Center, Pearl Harbor, Hawaii  
Naval Shipyard, Pearl Harbor, Hawaii  
Naval Station, Pearl Harbor, Hawaii  
Naval Submarine Base, Pearl Harbor, Hawaii  
Naval Supply Center, Pearl Harbor, Hawaii  
Navy Commissary Store, U. S. Naval Station, Pearl Harbor,  
Hawaii  
Public Works Center, Pearl Harbor, Hawaii  
Publications and Printing Service Office, Fourteenth Naval  
District, Pearl Harbor, Hawaii

Enclosure (1)  
Honolulu, Hawaii

SERVICES

LABORER, HELPER, AND MECHANIC  
(See NCPI 531.6 Enclosure 1  
for Published Levels)

PRINTING AND LITHOGRAPHIC (FIELD)  
(See NCPI 531.6 Enclosure 10  
for Published Levels)

Non-Supervisory Schedule

Non-Supervisory Schedule

<u>Level</u>	<u>Step Rates</u>		
	<u>1st</u>	<u>2nd</u>	<u>3rd</u>
1	\$1.66	\$1.73	\$1.80
2	1.72	1.79	1.86
3	1.79	1.86	1.93
4	1.85	1.93	2.01
5	1.92	2.00	2.08
6	2.05	2.14	2.23
7	2.19	2.28	2.37
8	2.32	2.42	2.52
9	2.45	2.55	2.65
10	2.58	2.69	2.80
11	2.72	2.83	2.94
12	3.00	3.13	3.26
13	3.06	3.19	3.32
14	3.12	3.25	3.38
15	3.18	3.31	3.44
16	3.24	3.37	3.50

<u>Level</u>	<u>Step Rates</u>		
	<u>1st</u>	<u>2nd</u>	<u>3rd</u>
4	\$1.92	\$2.00	\$2.08
5	2.01	2.09	2.17
6	2.09	2.18	2.27
7	2.18	2.27	2.36
8	2.27	2.36	2.45
9	2.35	2.45	2.55
10	2.45	2.55	2.65
11	2.53	2.64	2.75
12	2.62	2.73	2.84
13	2.71	2.82	2.93
14	2.79	2.91	3.03
15	2.88	3.00	3.12
16	2.97	3.09	3.21
17	3.05	3.18	3.31
18	3.14	3.27	3.40

Supervisory Differentials for the  
LH&M and the P&L (Field) Services  
(See NCPI 531.4-6b)

Additional Pay Differentials  
(See OIR Notice 12531 of  
28 April 1960)

<u>Level</u>	<u>Value of</u>	<u>LH&amp;M Only</u>
	<u>Differential</u>	<u>Floor Rates</u>
	<u>Per Hour</u>	<u>2nd Step Hourly</u>
5	\$1.56	\$3.50
4	1.13	3.09
3	.71	2.69
2a	.34	
2b	.23	

<u>Pay Level</u>	<u>Per Hour</u>
A	\$ .11
B	.23
K	1.42
2nd Shift	.09
3rd Shift	.12

Enclosure (1)  
Honolulu, Hawaii

Non-Supervisory Schedule for Laborer, Helper, and Mechanic Service  
(Ratings Paid Exception Rates or Levels Not Published)

<u>Title</u>	<u>Step Rates</u>		
	<u>1st</u>	<u>2nd</u>	<u>3rd</u>
Patternmaker	\$3.18	\$3.31	\$3.44

COMMISSARY SERVICE

Non-Supervisory Schedule  
(See NCPI 531.6 Encl. 5  
for Published Levels)

Supervisory Differentials  
(See NCPI 531.4-6b)

<u>Level</u>	<u>Step Rates</u>			<u>Level</u>	<u>Value of Differential - Per Hour</u>
	<u>1st</u>	<u>2nd</u>	<u>3rd</u>		
1	\$1.66	\$1.73	\$1.80	5	\$1.25
2	1.72	1.79	1.86	4	.91
3	1.79	1.86	1.93	3	.57
4	1.92	2.00	2.08	2a	.27
5	2.19	2.28	2.37		
6	2.32	2.42	2.52		
7	2.45	2.55	2.65		

LAUNDRY SERVICE

Non-Supervisory Schedule  
(See NCPI 531.6 Encl. 7  
for Published Levels)

Supervisory Differentials  
(See NCPI 531.4-6b)

<u>Level</u>	<u>Step Rates</u>			<u>Level</u>	<u>Value of Differential - Per Hour (Exception to NCPI 531.4-2e)</u>
	<u>1st</u>	<u>2nd</u>	<u>3rd</u>		
1	\$1.07	\$1.11	\$1.15	5	\$ .98
2	1.13	1.18	1.23	4	.72
3	1.25	1.30	1.35	3	.45
4	1.42	1.48	1.54	2a	.21
5	1.61	1.68	1.75		
6	1.74	1.81	1.88		

Enclosure (1)  
Honolulu, Hawaii

Non-Supervisory Schedule for Laundry Service  
(Ratings Paid Exception Rates or Levels Not Published)

<u>Title</u>	<u>Step Rates</u>		
	<u>1st</u>	<u>2nd</u>	<u>3rd</u>
Tumblerman	\$1.42	\$1.48	\$1.54

INSPECTION SERVICE

(See NCPI 531.6 Enclosure 11 for Rating Titles and Pay Formulas)

Effective first  
pay period after  
1 April 1961

APPROVED: \_\_\_\_\_



R. E. CRONIN

Chief of Industrial Relations

DATE: \_\_\_\_\_

3/16/61

(dictated 1/27/61)  
February 4, 1961

*Blue Collar  
Wage Survey*

Mr. George B. Marks  
846 Hao Street  
Honolulu 16, Hawaii

Dear Mr. Marks:

Receipt of your letter of January 24, 1961, calling my attention to the proposed wage survey to be conducted for ungraded employees in Hawaii, is gratefully acknowledged.

I am very much concerned with the wage circumstances of the ungraded employees in Hawaii and have been so for a very long time.

Last Year I was one of those involved in the successful effort to obtain an increase for the blue collar workers in Hawaii on an administrative level. Realizing that the wage increase was not entirely satisfactory, I immediately introduced a bill in this session of Congress to effectuate the desires of our workers (HR 1796). I am hopeful that this piece of legislation will meet with favorable consideration in the 87th Congress.

I will, however, continue to work for the benefit of our federal employees on an administrative level.

Your letter is deeply appreciated.

Sincerely,

DANIEL K. INOUE  
Member of Congress

DKI:sb.

*Similar letter sent to all -*

JAN 27 1961

January 24, 1961  
Honolulu 16, Hawaii

Honorable Daniel K. Inouye  
House of Representatives  
Washington 25 D.C.

Dear Daniel K. Inouye:

Your attention is brought to the wage survey which is about to be conducted for federal (ungraded) employees in Hawaii. I'm sure you are aware that there is no heavy industry here in the islands of which a survey could justify wages for Hawaii's federal workers employed in similar capacities. Pearl Harbor Naval Shipyard, which is composed of heavy industry, also employs the greatest number of ungraded federal workers in the islands. As an employee of the shipyard and a member of the planner's

and estimator's association I  
would appreciate any effort on  
your part to correct this injustice  
to Hawaii's ungraded federal worker  
as stated in the association's letter  
dated Jan. 19, 1961.

Respectfully yours  
George B. Marks

January 27, 1961

The Honorable Daniel K. Inouye  
House of Representatives  
Washington 25, D.C.

Dear Dan;

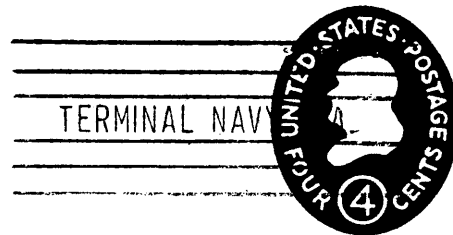
My family & I heartily concur with the proposal set forth in the Planners & Estimators Association letter of 19 January regarding the wage survey being conducted for Federal employees in Hawaii.

Any Legislative action that you may be empowered with to bring about altering our wage scale to be on an equal level with and/or comparable to the "Big Island" Naval Ship yards will be greatly appreciated at this time.

Thank you -

Paul G.K. Low

3439 Paty Dr.  
Honolulu, Hawaii



The Honorable Daniel K. Inouye  
House of Representatives  
Washington 25, D.C.

Ray

Oahu, Oahu

31 Jan '61

The Honorable Daniel K. Inoué  
House of Representatives  
Washington 25, D.C.

Dear Mr. Inoué:

I concur with the letter of the  
Planners & Estimators Association of  
the Pearl Harbor Naval Shipyard  
regarding the wage survey now  
being conducted here.

I'd appreciate your look  
in the matter.

Aloha

Edmund K. O'Sullivan

E. K. O'SULLIVAN  
99-1238 NAAPUANANI  
HIGA, OAHU, HAWAII



**VIA AIR MAIL**

CONGRESSMAN DANIEL K. INOUYE  
HOUSE OF REPRESENTATIVES  
WASHINGTON, 25, D. C.

The Honorable Daniel K. Inouye  
House of Representatives  
Washington 25, D.C.

Bob

Dear Dan:

I agree with the Planners and Estimators Association letter of 19 January 1961, informing you of the wage survey being conducted in Hawaii. Any effort on your part to change the wage survey system will be appreciated by my family and me.

Aloha,  
Robert P. D. Lee

ROBERT P. D. LEE

711 HOOPUNI DR.

KAILUA, OAHU, HAWAII



**VIA AIR MAIL**

The Honorable Daniel K. Inouye  
House of Representatives  
Washington 25, D.C.

27, January 1961.

The Honorable Daniel K. Inouye,  
House of Representatives,  
Washington 25, D.C.

(Dan)

Dear Dan:

My family and I would appreciate any effort on your part to change the wage survey system as per Planners and Estimators Association letter dated 19, January 1961.

Respectfully,

Walter Oadweep  
41-042 Alaiki St.,  
Waimanalo, Oahu, Hawaii  
Planner and Estimator  
Naval Shipyard, Pearl Harbor

Mr. Francis Chang

4143 Pahoa Ave.

Hon. 16, Hawaii

January 26, 1961

JAN 30 1961

The Honorable Daniel K. Inouye  
House of Representatives  
Washington 25 DC

*Row*

Dear Dan:

My family and I concur wholeheartedly with the views expressed in the letter of January 19 by the Planners and Estimators Association.

Any effort on your part to change the present survey system would be greatly appreciated.

Aloha

*Francis Chang*

The honorable Daniel K. Inouye  
House of Representatives  
Washington 25, D.C.

JAN 26 1961

Dear Dan:

In concurrence with the Planners &  
Estimators Association letter of 19 January 1961,  
my family & I request your help in getting  
a just and compatible wage survey for  
federal blue collar employees in Hawaii.

Sincerely,  
Koboru Yoshimoto.

Koboru Yoshimoto  
914-A Coolidge St.  
Honolulu, Hawaii

Mr Albert M. Souza  
3554 Lihini ST.  
Honolulu 18, Hawaii

23 January 1961

Srouye

JAN 26 1961

Washington ---

Dear Mr. Daniel K Srouye

My family and I concern with  
the Planners and Estimators Association  
letter of 19 January 1961, informing you  
Sir, of the wage survey being conducted  
in Hawaii. We would appreciate  
anything you could do Sir to help  
us in this situation.

Thanking you in Advance

Albert M. Souza & Family

23 January 1961

The Honorable Daniel K. Inouye  
House of Representatives  
Washington 25, D.C.

JAN 26 1961

Dear Mr. Daniel K Inouye

My family and I concur with  
the Planners and Estimators Association  
letter of 19 January 1961, informing you  
Sir, of the wage survey being conducted  
in Hawaii. We would appreciate  
anything you could do Sir to help  
us in this situation.

Thanking you in Advance

Albert M. Souza & Family

Kenneth Ho

518 Kiholo St.

Honolulu, 16, Hawaii

JAN 27 1961

*For*

25 January 1961

Sir:

My family and I would appreciate any effort on your part to change the wage survey system as per Planners and Estimators Association letter dated 19 January 1961.

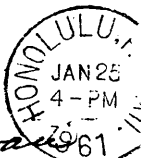
Thank You

*K. Ho*

R. Hee

1147 PINKHAM ST.

Honolulu, 17 Hawaii



Jan 25, 1961

Orange  
lines

PH

Washington, D.C.

Dear Dan:

JAN 27 1961

I Concur with the Planners & Estimators Association letter of 19 January informing you of the wage survey being conducted in Hawaii. Anything you may do to help us will be appreciated by my family and myself.

Aloha  
Richard W. Hee

Jan 25, 1961

The Honorable Daniel Inouye  
House of Representatives  
Washington, 25, D.C.

RW

JAN 27 1961

Dear Dan:

I Concur with the Planners & Estimators Association letter of 19 January informing you of the wage survey being conducted in Hawaii. Anything you may do to help us will be appreciated by my family and myself.

Aloha  
Richard W. Bee

A. R. Trucera

534A Kaulaue Hwy  
Kailua/Oahu, Hawaii

January 24 1961

Enoye

JAN 26 1961

Peace

representatives  
Washington 25 D.C.

Dear Dan:

I concur with the Planners & Estimators Association letter of 19 January informing you of the wage survey being conducted in Hawaii. Any action may take during the next session of Congress and with the Navy Department and Office of Industrial Relation to rectify this discriminatory and demoralizing situation will be very much appreciated by my family and myself.

Thank you in advance, we remain your constituent.

Aloha  
Antonio Trucera

January 24 1961

The Honorable Daniel K. Inouye  
House of Representatives  
Washington 25 D.C.

JAN 26 1961

*Joe*

Dear Dan:

I concur with the Planners & Estimators Association letter of 19 January informing you of the wage survey being conducted in Hawaii. Any action may take during the next session of Congress and with the Navy Department and Office of Industrial Relation to rectify this discriminatory and demoralizing situation will be very much appreciated by my family and myself.

Thank you in advance, we remain your constituent.

Aloha  
Antonio F. Tencura

James Chun

JAN 26 1961

1248 Ainakoa Ave

Jan. 24, 1961

Honolulu 16, Hawaii

My;

I received your letter from the Planners & Estimators Association  
letter of 19 January informing you of the wage survey  
being conducted in Hawaii. Anything you may do to  
help us will be appreciated by my family & myself.

Aloha

*James Chun*

JAN 26 1961

Jan. 24, 1961

Dear Mr. Daniel K. Inouye;

I agree with the Planners & Estimators Association letter of 19 January informing you of the wage survey being conducted in Hawaii. Anything you may do to help us will be appreciated by my family & myself.

Aloha

*James Chan*

Paul  
JAN 30 1961

26 January 1961

Dear Mr. Grouse,

I would like to add my voice of protest to the Area Wage Survey now being undertaken by the Navy Department on Oahu. I concur wholeheartedly with the Planners & Estimators Association's letter of 19 January to you pointing out the lack of comparable industries in Hawaii and requesting the inclusion of the Hawaiian Area wage scales with that of West Coast Shipyards.

Sincerely yours,  
Paul L. Schum  
926 20th Ave

JAN 30 1961

*Paul*

January 26, 1961

The Honorable Daniel K Inouye  
House of Representatives  
Washington 25, D.C.

Dear Mr. Inouye:

RE: Planners & Estimators letter of 19 January 1961

Every effort made by you and your colleagues to resubmit  
"HB 9277", or one that is similar in scope, i. e.,  
"Comparable Wage Scale to the West Coast Shipyards", will be  
appreciated by all ungraded employees and their families.

Thank you,

*Henry R. Souza*

Henry R. Souza  
Planner & Estimator  
P. H. Naval Shipyard

Address:  
Henry R. Souza  
527 Uluhala Street  
Kailua, Hawaii

JAN 30 1961

Pam

2656 Aaliamanu Pl.  
Honolulu, 13, Hawaii

January 26, 1961.

The Honorable Daniel K. Inouye  
House of Representative  
Washington, 25, D.C.

I concur with the Planners &  
Estimators Association letter of  
19 January 1961, informing you  
of the wage survey being conducted  
in Hawaii. Anything you may  
do to help us will be appreciated  
by my family and myself.

mahalo,

Ah Ito Lam

Raymond Triple  
3604 Kaniina Ave  
Honolulu 15 Hawaii

Honolulu Hawaii

1-26-61

The Honorable Daniel K Inouye  
House of Representatives  
Washington D. C.

Paul

JAN 30 1961

Dear Dan

My family & I, & my fellow workers, would appreciate any effort on your part, & that of your colleagues, to change the wage survey system presently in effect, to comply with Planners & Estimators Association letter dated 19 January.

Thank You

Raymond Triple.

Nelson A. Ahina  
45-831 Luana Place  
Kaneohe, Oahu

26 Jan 61

JAN 30 1961

Paul

Dear Dan.

My family and I agree with the Planner and Estimators Association's letter of 19 Jan. Any effort on your part to change the Wage Survey System in Hawaii to coincide with the above letter will be much appreciated

Aloha  
Nelson A. Ahina

January 23, 1961

Mr. Antone R. Teixeira  
534-A Kaulani Way  
Kailua, Oahu, Hawaii

Dear Mr. Teixeira:

Thank you very much for your letter of January 19, 1961, calling my attention to the pending wage survey to be jointly conducted by the Army, Air Force, and Navy in the very near future and requesting my re-introduction of House Bill 9277.

Being deeply concerned with the situation confronting the blue collar workers in Hawaii, I make it a point to re-introduce HR 9277 at the first opportunity in the 87th Congress. On January 4, a day after Congress convened, I, therefore, introduced HR 1796 which is the same bill I had introduced in the 86th Congress. You may be assured that I will do all I possibly can to enhance its early and favorable consideration by Congress. In the meantime, I would endeavor to work on this matter on an administrative level in the hopes that the wage adjustments being sought by the workers in Hawaii may be obtained administratively.

With all best wishes, I am

Sincerely,

DANIEL K. INOUE  
Member of Congress

DKI:ls

*Planners and Estimators Association* (SHIPBUILDERS)

PEARL HARBOR NAVAL SHIP YARD

PEARL HARBOR, HAWAII

LOCAL 15

JAN 23 1961

19 January 1961

9

The Honorable Daniel K. Inouye  
House of Representatives  
Washington 25, D. C.

My dear Mr. Dan Inouye:

The Planners and Estimators Association, Pearl Harbor Naval Shipyard wishes to express our thanks for introducing House Bill 9277 during the last session of Congress and also to call your immediate attention to the pending wage survey to be jointly conducted by the Army, Air Force and Navy in the very near future.

Naval Shipyards are classed as Heavy Industry and National surveys are conducted in Heavy Industrial areas which in effect result in compatible wage scales. This Organization feels that a wage survey conducted in Hawaii which has no comparable Heavy Industry would only foster continuance of the injustice toward ungraded Federal employees in Hawaii. We therefore feel that this Community wage survey will not justify any wage disparity and that our wage scale should be in concurrence with House Bill 9277.

The Federal Government has recognized the high cost of living in Hawaii in relation to the Continental United States and has found it to be justified to compensate the graded Federal Employment Branches with a cost of living differential. However, this cost of living differential was not allocated to the ungraded employees. It is also our contention that the high cost of living in Hawaii is sufficient evidence to warrant wage parity. We believe the cost of living differential allocated to the graded employees is justified and we do not wish to do anything to lunder this benefit.

Naval Shipyard employees are highly skilled technicians and must keep up with the ever-changing technical procedure and requirements for our new Navy with its guided missiles and nuclear powered vessels which constitute the Atomic Age. This in itself is sufficient evidence to warrant wage parity.

We fully realize that wage fixing actions are governed by legislation enacted on 16 July 1862 (12 Stat. 587; 34USC 505). However to overcome this formidable barrier, legislation would have to amend the present law or enact a new bill similar to your House Bill 9277.

Knowing this will take time to accomplish and with the wage survey at its present stage, we wish to solicit the powers of your office to enlighten the Secretary of the Navy and Chief of Industrial Relations, Admiral R. E. Cronin, that an administration adjustment is the proper thing to do to alleviate this situation.

We believe that the only solution to rectify this discriminatory and demoralizing situation is for you and the power of your office use every effort to have a legislation similar to House Bill 9277. Any other action you may take that will help this situation will also be appreciated by this Association.

Thanking you in advance, we remain your constituents.

Very truly yours,



Antone R. Teixeira  
Secretary

Antone R. Teixeira  
534A Kaulani Way  
Kailua/Oahu, Hawaii

Copy to:  
Senator Oren E. Long  
Senator Hiram L. Fong

Dear Alan.

Enclosure is a copy of Naval Shipyard Pearl Notice 12531 which announces the coming wage survey, rights of employees or employees groups etc. (Info extracted from Department of the Navy Policies and Procedures for Wage Fixing NAVEXOS P-1417 Enclosure (2) lists the firms from which wage data will be collected)

Enclosure (3) are news clippings of some of the various works being done by Pearl Harbor Naval Shipyard.

You are well aware of the functions of these companies listed on enclosure (2) and realize that these companies are not capable nor have the technical abilities and facilities to accomplish shipyard operations

Aloha  
Antonio Teixeira

PEARL HARBOR NAVAL SHIPYARD  
Pearl Harbor, Hawaii

NAVSHIPYDPEARL <sup>1253/</sup>12250  
Code 171  
9 January 1961

NAVSHIPYDPEARL NOTICE <sup>1253/</sup>12250

From: Commander, Pearl Harbor Naval Shipyard  
To: Distribution List I thru XIV

Subj: Wage Survey - Honolulu, Hawaii Labor Market Area

Ref: (a) NAVSHIPYDPEARLNOTE 12250 of 5 January 1961

Encl: (1) Tentative list of LH&M occupations on which wage data will  
be collected  
(2) Tentative list of firms from which wage data will be collected

1. Purpose. To promulgate additional information to Shipyard employees and employee group representatives concerning the 1961 Wage Survey of the Honolulu, Hawaii Labor Market Area scheduled to commence in the near future as previously announced by reference (a).

2. Action.

a. Employees or employee groups who desire to offer amendments to enclosures (1) and (2) should submit such amendments by written memorandum to the Shipyard's representative on the Navy Sub-Committee, Mr. A.T. Collins, Head, Employment and Wage Division, Industrial Relations Office (Code 170). Proposals to amend lists of occupations and firms should be submitted as soon as possible, but not later than 16 January 1961. In requesting additions to the lists of occupations, information as to the best possible source of wage data should be included.

b. Employees, employee groups, and labor union representatives who desire oral hearings before the Navy Sub-Committee should also submit their written requests to the Shipyard's representative. Such requests will be accepted throughout the period of the wage survey. However, those desiring hearings prior to the data collection period should submit their requests as soon as possible.

c. Questions regarding the wage survey shall be referred to the Shipyard's representative, Mr. Collins (extension 24131 or 21186).

3. Cancellation. This Notice is to be posted on all official Bulletin Boards throughout the Shipyard and will remain in effect until the completion of the wage survey, at which time it will be cancelled. For record purposes, this Notice will be cancelled on 1 April 1961.

J. V. BEWICK  
By direction

9 January 1961

TENTATIVE LIST OF LH&M OCCUPATIONS  
ON WHICH WAGE DATA WILL BE COLLECTED

1961 WAGE SURVEY

Aircraft Mechanic (General)	Machinist
Automotive Equipment Operator	Machinist (Maintenance)
Automotive Mechanic	Machinist (Marine)
Blacksmith (Other Fires)	Molder
Boilermaker	Oiler
Bridge Crane Operator	Painter
Bridge Crane Operator (Heavy)	Patternmaker
Buffer and Polisher	Pipefitter
Carpenter	Puncher and Shearer
Diesel Engine Mechanic	Refrigeration and Air Conditioning Mechanic
Electrician	Rigger
Flame Cutter	Sheetmetal Worker
Heavy Duty Equipment Mechanic	Shipfitter
Helper (Trades)	Shipwright
High Lift Truck Operator	Toolmaker
Joiner	Truck Driver
Laborer	Truck Driver (Heavy)
Laborer (Cleaner)	Welder
Laborer (Heavy)	

Additional A-AF Jobs

Aircraft Attendant  
(Ground Servicing)  
Boiler Fireman  
Packer (Shipping)  
Plumber  
Warehouseman

9 January 1961

TENTATIVE LIST OF FIRMS  
FROM WHICH WAGE DATA WILL BE COLLECTED

1961 WAGE SURVEY

Aloha Airlines, Inc.  
American Can Company  
California Packing Corporation  
California & Hawaiian Sugar Refining Corporation, Ltd.  
Dole Corporation (formerly known as Hawaiian Pineapple Co.)  
GASPRO, Ltd.  
Dairymen's Association, Ltd.  
Hawaiian Airlines, Ltd.  
Hawaiian Dredging and Construction, Ltd. (Kapalama Plant)  
Hawaiian Electric Company, Ltd.  
Hawaiian Telephone Company  
Hawaiian Tuna Packers  
Love's Biscuit and Bread Company, Ltd.  
Lockheed Aircraft Service, Inc.  
Honolulu Construction and Draying Company  
Honolulu Gas Company, Ltd.  
Honolulu Rapid Transit Company  
Honolulu Sash and Door Company, Ltd.  
Libby, McNeill and Libby  
Pan American World Airways  
Cahu Transport Company  
Qantas Airways, Ltd.  
United Airlines

NOTE

The Navy Wage Survey Sub-Committee is currently conducting a study of new firms which have been established since the last full scale survey for possible inclusion in the 1961 Wage Survey.

PEARL HARBOR NAVAL SHIPYARD  
Pearl Harbor, Hawaii

NAVSHIPYDPEARL 12250 <sup>12531</sup>  
Code 171  
5 January 1961

NAVSHIPYDPEARL NOTICE <sup>12531</sup> ~~12250~~

From: Commander, Pearl Harbor Naval Shipyard  
To: Distribution List I thru XIV

Subj: Wage Survey - Honolulu, Hawaii Labor Market Area

Ref: (a) COMFOURTEENNOTE 12531 of 29 Dec 1960

1. Purpose. To promulgate information concerning a proposed wage survey of the Honolulu, Hawaii labor market area.

2. Background.

a. This Shipyard has been advised that, in accordance with the Department of Navy policy to conduct periodic wage reviews, a wage survey of the Honolulu Labor Market Area is tentatively planned to begin in the near future. This survey will be conducted jointly by the Navy, Army and Air Force. Participation will consist of representatives of the Area Wage and Classification Office, Pearl Harbor, the Wage and Classification staffs of the Army and Air Force services in Honolulu and the field activities of the military departments involved. Data collectors will visit private employing establishments for the purpose of obtaining wage rates and other data. Upon completion of the survey, the data will be forwarded to the Office of Industrial Relations in Washington, D.C., where it will be used in compiling a new schedule of wages for Navy ungraded employees in this area.

b. The results of this survey will not affect the salaries of graded employees who are paid in accordance with the salary schedules contained in the Classification Act of 1949 as amended.

3. Action.

a. Department of Navy policies governing employee participation in wage surveys are set forth below for the information of all concerned:

(1) Lists of the ratings to be surveyed and the firms to be contacted for data will be posted for employees' perusal prior to the beginning of the data collection period.

(2) Employees are advised of their right to offer amendments to both of the above lists. Suggested amendments will be considered by the Navy Wage Survey Sub-Committee on the basis of instructions contained in wage survey procedural instructions issued by the Office of Industrial Relations.

ENCLOSURE (2)

5 January 1961

(3) Employees are advised of their right to submit factual data to the Navy Wage Survey Sub-Committee, but are also advised that submission of data is not compulsory, since the Sub-Committee will secure wage data from an adequate number of representative private employing establishments in order to insure equitable wage treatment of all employees concerned.

(4) Employees and employee organizations desiring oral hearings before the Navy Wage Survey Sub-Committee will be granted ample time for this purpose.

(5) Employees, other than data collectors and members of the Navy Wage Survey Sub-Committee, will not be permitted to see wage data collected from private employing establishments. This restriction is necessary since wage data are obtained under a promise that all information provided by cooperating firms will be treated as confidential. However, employees will, upon request, be advised of the companies from which data on each occupation were obtained.

b. Mr. A.T. Collins, Head, Employment and Wage Division, Industrial Relations Office, has been appointed as this Shipyard's representative on the Navy Wage Survey Sub-Committee. The names of employees selected as data collectors will be announced at such time as these appointments are made. Both graded and ungraded employees will be considered for appointment as data collectors in accord with the following criteria. Data collectors should:

(1) Be sufficiently balanced and mature to talk intelligently to private industrial management on an equal footing.

(2) Be amiable, personable and of even disposition.

(3) Be able to accomplish the collection of data objectively.

(4) Have broad occupational knowledge of Navy ratings.

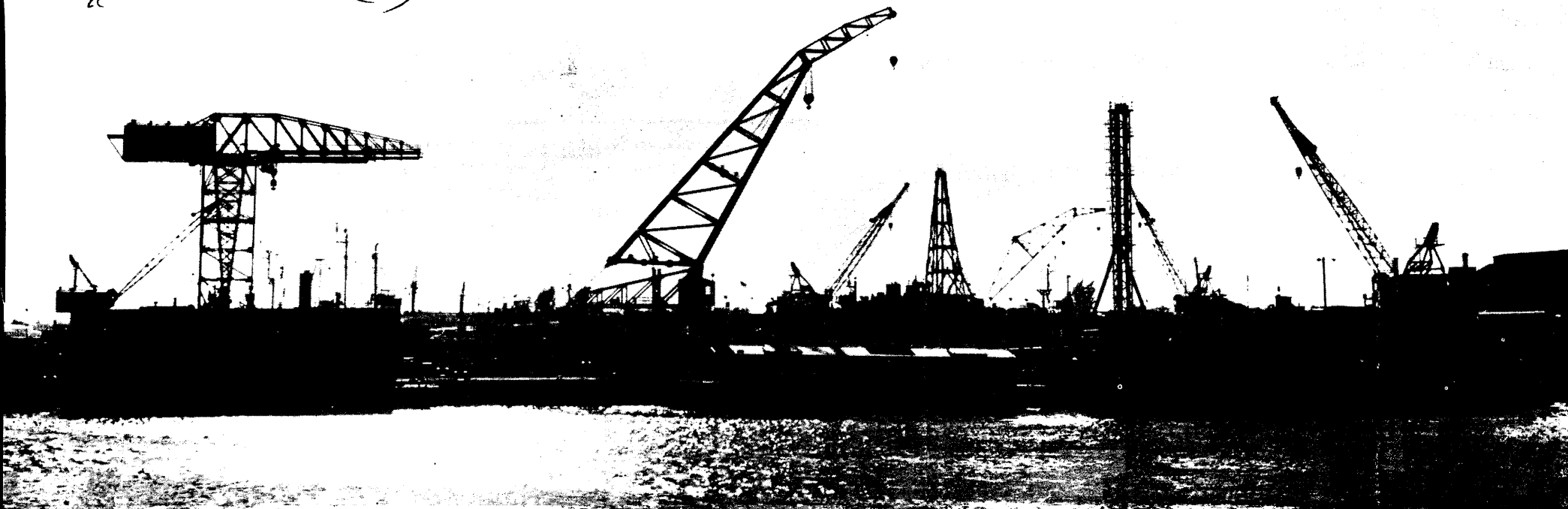
(5) Be reasonably well acquainted with Navy industrial organization and wage administration procedures.

c. Employees who desire to offer amendments to the lists referred to in paragraph 3a(1), above, to submit data to the Navy Wage Survey Sub-Committee, or to appear before the Navy Wage Survey Sub-Committee should contact Mr. Collins, extension 24131 or 21186.

4. Cancellation. This Notice is canceled on 31 March 1961.

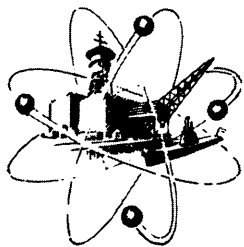
J. V. BEWICK  
By direction

Enclosure (3)



'DINOSAURS TRUDGING THROUGH A FOREST' is the first impression that runs through my mind whenever the Arikara arrives at Pearl in the early morning hours and the Shipyard's portal cranes are silhouetted by a warm Hawaiian sunrise,' remarked HMI Benn Jackson. Stationed aboard the Pearl-based Ari-

kara, Jackson is the ship's acting medical officer, journalist, photographer and ship's store operator. Impressed with the Shipyard's intriguing skyline, the versatile hospital corpsman has photographed the Shipyard from a customer's view on every trip through the channel.



# SHIPYARD LOG

# Retired Shipfitter's Family Accumulates More than a Century of Shipyard Service

With more than 100 years of Shipyard employment already under its belt, the Kwong Sung Ching family is busily working on the second hundred.

The century of Shipyard service began in 1911 when Mr. Ching, today a spry 78, came to the Shipyard as a shipfitter in Shop 11. Four years later his brother, Hoy Sung Ching, joined him in Shop 11. Both were experienced boiler-makers and riveters. Kwong Sung had gained his experience at the Catton Neil Iron Works and Hoy Sung at Oahu Railway and Land Company.

Not satisfied with having only a brother working in the Shipyard, Mr. Ching patiently waited for his son Harry to graduate from McKinley High School. Encouraged by his father and uncle, Harry joined Shop 11 as a ship-



total of 87 years in Shop 11. They are, ng and Norman. Kwong Sung is the of Hoy Sung.

the four shipfitter Chings together with their many friends. In Shop 11 alone, they represent 87 years of service to Pearl Harbor.

Harry, the last of the shipfitter

## John Holton Starts New Year Right With \$85 Award

Thirty-one energetic Shipyard workers got a head start on the seasonal rush for extra cash during income tax time by submitting beneficial suggestions before 1961 arrived.

Along with the arrival of the New Year, they shared a total of \$740 in beneficial suggestion checks for their ideas which will save the Shipyard \$11,579 during the next 12 months.

Top man in the group is John Holton, Shop 67, whose improved method of potting AT186/UQC-1 transducers will save the Shipyard \$2,304 and put an extra \$85 in his wallet.

Another big money winner is Shop 23's Antone Gonzales who earned \$70 for designing an improved die to stamp and punch slots on corrosion-resistant steel hinges.

Other winners and their earnings are:

Shop 02—Frank Leong, \$15.

Shop 03—Lawrence Cambra, Troy Ricks, \$10.

Shop 06—Beatrice Garcia, Mariano Salvador, \$5.

Shop 07—Theodorice Ventula, \$50.

Shop 17—Francis Tom, \$55.

Shop 26—Mariano Chang, \$15; Ancid Carreiro, \$10.

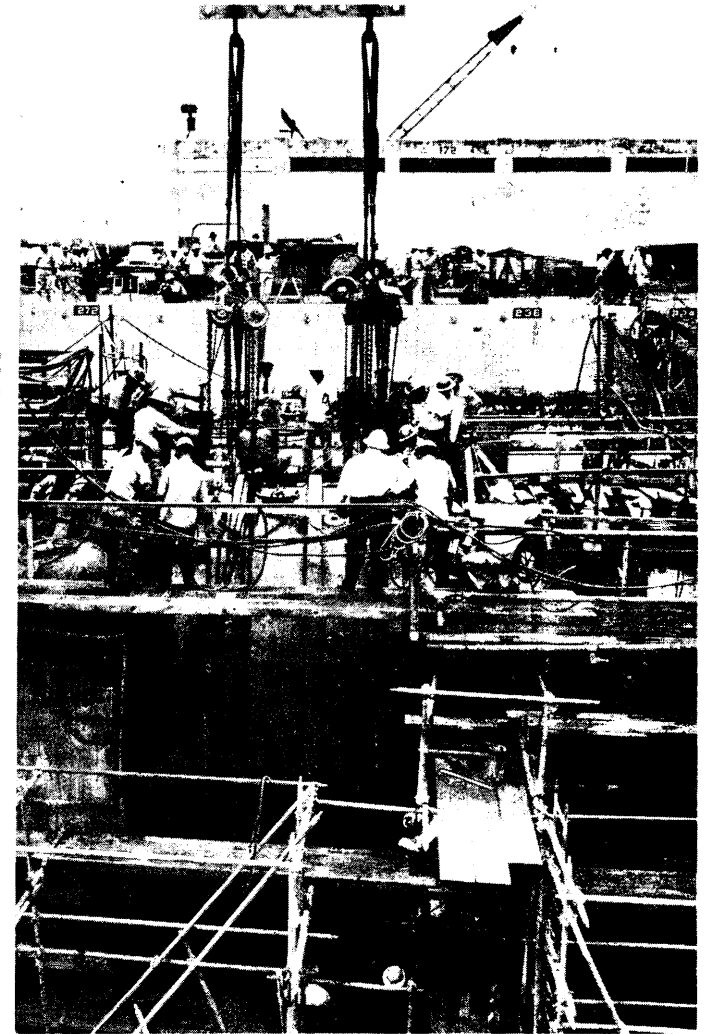
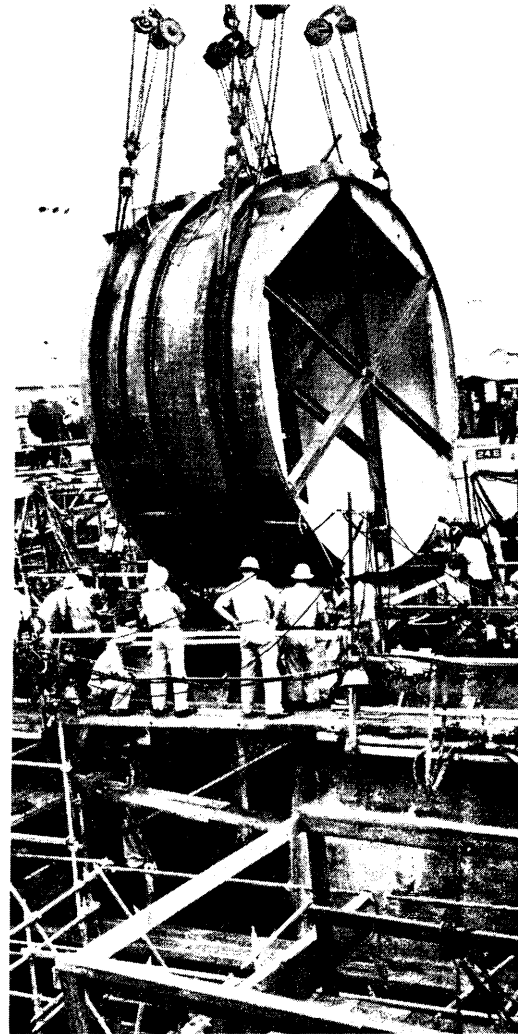
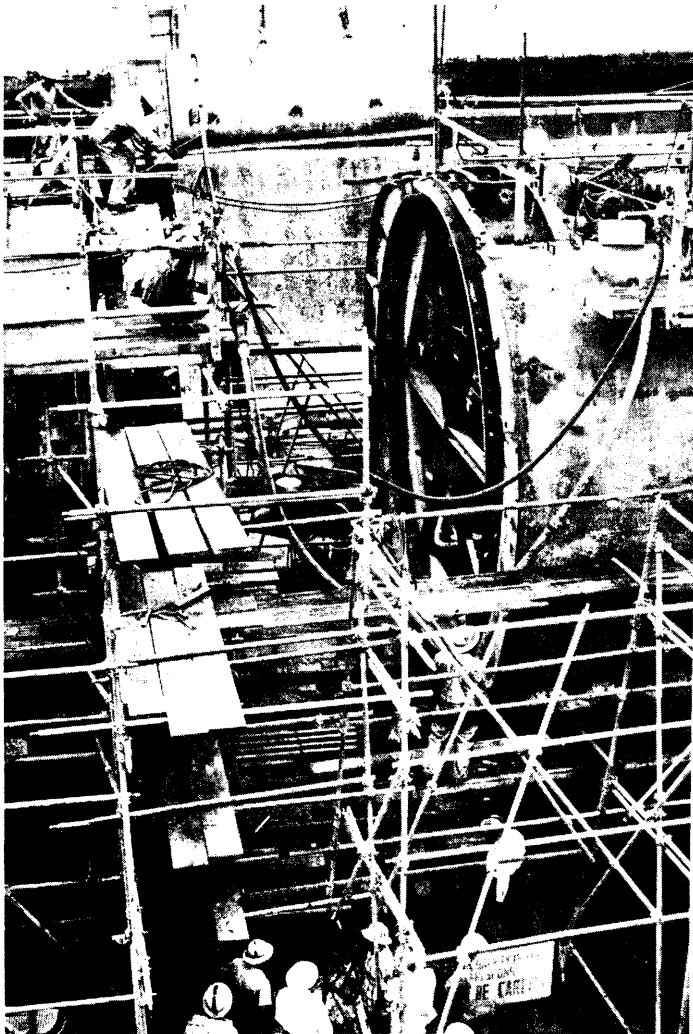
Shop 31—King Sing Wong, \$75 (two awards); Jack Hicks, Walter Ho, \$15.

Shop 38—Francis Yee, \$10.

Shop 41—Wayne Middleton, \$50.

Shop 51—George Chang, James Chang,

# Wahoo Cut Successful



Working together the shipyard completed the difficult task of cutting the Wahoo in two and placing the hull extension section between the two sections of the ship.

The new section, which increased the overall length of the ship by 9 feet, was inserted to enlarge the engine room to

accommodate the Wahoo's new engines.

Following the careful specifications laid down by the Design Division, Shop 11-26 burned through the hull of the submarine, then stood by while Shop 38 moved the stern half back 3 inches with hydraulic jacks. Shop 11-26 again stepped into the picture to bevel the

edges to prepare for the placement of the new section. The stern was moved 10 feet by Shop 72 and 02. Using a 450 foot length of steel cable and five snatch blocks, the portal crane pulled the stern with no apparent strain.

The extra hull section which was made in Shop 11-26 was lowered in place Mon-

day and the marine machinists then jacked the stern back into place.

CAPT H. A. Arnold, repair superintendent, said the operation went smoothly and he was proud of the yard's work.

The above pictures show some of the phases which were necessary to do the job with such speed and precision.



## Conservation-Minded Shop 56 Finds Use For Piping Ends

The small ends of copper and copper-nickel piping which were formerly treated as scrap in Shop 56 are now expanded into sleeves, enabling the shop to save money by using all of the scrap ends, even those which are two inches long.

This not only puts all the scrap piping to use but also eliminates the purchase of silver braze couplings and results in further savings.

Used for joining two pieces of piping together, the small ends are expanded by forcing them through a tapered mandrel with a 50-ton press. To reduce friction, each piece is greased before being placed on the mandrel.

Salvaging the scrap pieces is the idea of conservative-minded Dick Atkinson, master pipefitter of Shop 56. He feels that there is always room for improvement in his shop and is always on the look-out for better methods.

In the photo at left, Mr. Atkinson watches Richard Hayashida and Joseph Metzger enlarge small ends of copper-nickel piping using the hydraulic press.

## Children Misbehave On HRT Busses Commandant Asks Parents' Aid

"It is the responsibility of all parents to impress upon their children that proper conduct on public carriers is absolutely necessary."



clearing up what he called "a serious disciplinary problem" on school busses operated by the Honolulu Rapid Transit Company.

HRT has advised him, the admiral said, that the conduct of school children on the busses in the Pearl Harbor area has been most unsatisfactory.

The complaint cited cases of skylarking, throwing objects out of windows, fighting, and general disorder. At times the situations have endangered the lives

## LOG Splinters

### SCHOOL CHILDREN VISIT

Recently two bus loads of sixth grade children from the Kailua Elementary School came to visit Pearl Harbor.

Walt Schaeffer, master of Shop 72, whose daughter was in the group was responsible for arranging the trip, and to him went the bouquets in form of thank you notes from the children.

The youngsters amazed Mr. Schaeffer by asking intelligent, adult-level questions like "How big is the largest dry-dock?" "How are vessels docked?" "Who is the head of the shipyard and what's his rank?"

In return they were impressed with the shipyard. Their letters said so. One letter said, "We want to thank you for making the arrangements for us to visit Pearl Harbor. We had a wonderful time looking at all the ships and the many activities. We learned so much. The boat ride was most enjoyable. Thank you again."

### RANDY HEARS FROM ROGER

Randy Borges, an engineering draftsman in the Design Division, has been hitting the droodle on the nose, so to speak. A letter from Roger Price, the Droodle King, puts the matter nicely: "Thanks for sending in the Droodles," says Price. ". . . all of them are obviously the products of a superior type (Droodle type) brain. I am sending along extra tremendous inflationary five dollars to encourage you. Who knows with concentration (and your ability to think askew) you may become a professional cookoo. Like me."

(Editor's Note: Becoming a professional cookoo, Randy, is a dubious distinction, they tell me, but five bucks is five bucks!)

## Congratulations On Your Promotion

## Former Yarder Now Travels With Carnival

Until a month ago Robert Pope was a warehouseman in Supply. Now he's tending Shetland ponies with a traveling carnival in Los Angeles.

He plans to work at his new-found job for nine months so that he can ac-



Mr. Pope

cumulate enough years of service to reap benefits under the Social Security Program.

The friendly retiree, who started wearing a mustache on his 65th birthday last February 24, retired at the end of March after 16½

years at Pearl Harbor.

Before leaving for California on the MSTs ship Aultman, Mr. Pope said, "Pearl Harbor is the grandest place in the world and I shall never forget the friendships I have made here. When I get my social security, I'm coming back to Hawaii. This is home for me!"

His work with the pony concession will be more like play, Mr. Pope said, as he has worked as a cow puncher for many years in Texas, New Mexico and Arizona.

## Bustamante Wins Benny Suggs Award

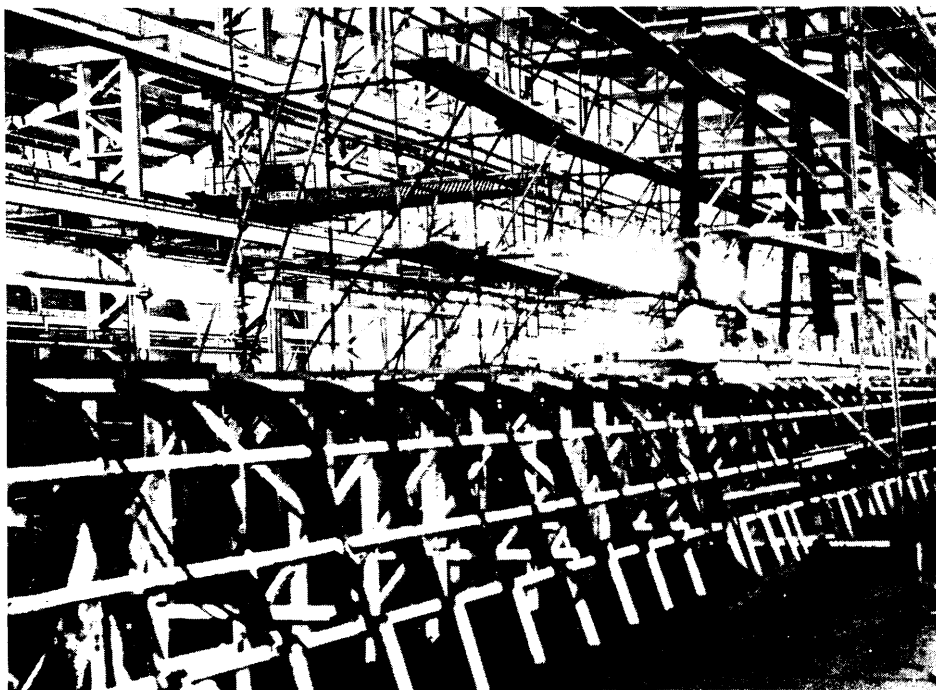
Lawrence Bustamante of Planning is used to large Benny Suggs awards. He has received among others a \$300 award, one for \$275 and another for \$135.

This week he takes home \$180 for his idea on manufacturing submarine exhaust piping flanges from flat bar stock.

Next in line is See Yeu Chu, Shop 41, who received a check for \$80 for sug-



**THOUSANDS OF PLASTIC PIECES** for the Tiru, which will fit together like a giant jig saw puzzle, are checked by shipfitters against the specifications list.



**THIS ISN'T A KING SIZE JUNGLE GYM** for Shipyard workers to toughen their muscles on. It's the 137-foot framework of the Tiru's superstructure. Seventy-five percent of this framework will be covered with fiberglass laminate. The upright braces will serve as a form for the new sail which will be made entirely of plastic.

# Ironworkers Have New Role With Tiru's Plastic Fairwater

A giant do-it-yourself kit containing more than 1,400 pre-formed plastic pieces arrived last week to start Shop 11-26 on one of the biggest and most complex jobs since World War II.

The plastic is being used to construct a fairwater and to cover 75 percent of the superstructure on the USS Tiru now undergoing FRAM conversion in the Shipyard. This is the largest single job using plastic ever undertaken by the Shipyard.

The fairwater, also called the sail, will be made entirely from plastic and will weigh about 14,000 pounds when completed. The plastic is made up of 27 to 40 layers of glass cloth laminated with a polyester resin and was pre-formed commercially on the Mainland.

On a comparative weigh basis, plastic fairwaters are about the same as aluminum but the maintenance costs should

be considerably reduced since plastic is corrosion resistant.

Work on the 137-foot superstructure skeleton started in late June. The deck will be covered with fiberglass laminate and CRES (corrosion resistant steel). All exposed surfaces of the metal framing in the superstructure will be fiberglass and resin coated by Shop 71.

Since glass-reinforced plastics have no yield point or ductile range, the plastic fairwater must be closely faired into the hull. The plastic cannot be forced or sprung into place during assembly. To insure an even and smooth surface, all bolts must be tightened to the same amount of pull. Shops 11-26 and 06-99 teamed up to develop a method of controlling the torque in inch pounds by carefully regulating air pressure used to power the ½ inch impact wrenches.

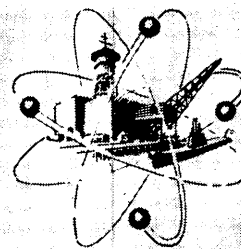
An average of 10 men working on an assembly line basis will bolt the plastic together with more than 15,000 CRES bolts and 10,000 Huck bolts. Huck bolts are similar to those used in Kaiser's aluminum dome.

Because of the properties of plastic laminate, special drills were designed and manufactured by Shop 06. Ordinary high speed twist drills were ground flat at the cutting edge and specially shaped carbide tips brazed on. Cutting speeds are held below 500 RPM to avoid overheating of the plastic.

A \$250 diamond blade on a portable circular saw is used to cut the plastic. The blade is made of diamond chips impregnated on a 7-inch circular metal disc.

Preliminary work began last January when the Shipyard was assigned the Tiru job. Vernon Hargrave, head of the Shipyard's plastic lab, experimented with sample sheets sent from the manufacturer. He then started to train Shop 11-26 personnel in the proper methods of working with plastic.

Although the Tiru is the sixth submarine to be outfitted with a plastic sail, the use of reinforced plastics in shipboard structural work is a comparatively new development. The second job of this type is scheduled for early next year on the pickerel.



## SHIPYARD LOG

# Navy Experiments With New Radar That 'Looks' Beyond Horizon

An experimental new radar believed capable of spanning thousands of miles to spot a missile launching almost immediately after blast off has been announced by the Navy. It may double the warning time allowed by present day surveillance devices.

Attesting to the importance of this disclosure is the fact that it would take only 30 minutes for an intercontinental ballistic missile to travel from Russia to the United States and conventional radar allows just 15 minutes of warning time.

## INTERCONTINENTAL RANGE

Known as high frequency ionospheric back scatter radar, the new device has already detected Cape Canaveral missile firings from an undisclosed U. S. location. It also has detected the Project Argus nuclear blasts fired in the South Atlantic as well as earlier, more powerful atomic explosions in the mid-Pacific at "intercontinental ranges." Thus naval authorities believe that it might offer a method for detecting violations of nuclear test ban agreements.

Conventional radar is generally limited to line-of-sight or the horizon range because the waves travel in straight lines and cannot "look" beyond the horizon. The new method will enable detection of targets, such as missile firing or nuclear detonations, 5,000 or more miles away.

The reason is this: the ionospheric back scatter radar bounces radio waves off the ionosphere—the thick layer of

charged particles extending about 250 miles above the earth's surface. When a large rocket is fired, hot gases from its exhaust also are ionized and reflect radar waves back to the device's oscilloscope in a distinctive pattern that discloses the missile's location.

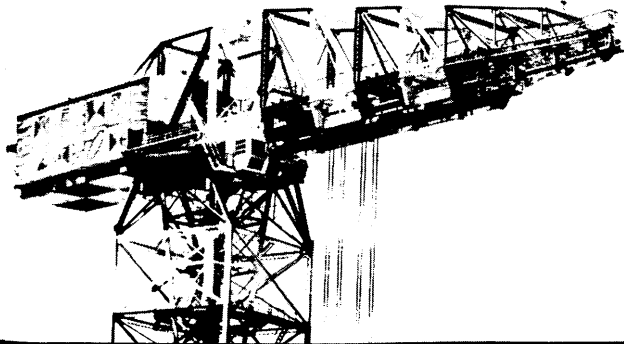
Dr. William J. Thaler, 33, of the Office of Naval Research conceived the new method in the summer of 1957, and heads the experiments which make up Project Tepee. Though proven a success, Dr. Thaler said that it will require a few years to develop the new radar into an operational defense warning system against ballistic missile attack.

He said that at the present time it is desirable to aim the device's antenna directly at the launching pads or nuclear bursts, but he believes that it will be possible to develop the principle into a system capable of spanning hundreds of thousands of square miles.

## SIMPLE AND INEXPENSIVE

The equipment is relatively simple and inexpensive, said the young scientist. As to development expense, Project Tepee was allowed \$10,000 in 1957, but early experiments were so promising, the Navy allotted it \$400,000 the next year. This year it has been granted \$1.5 million.

Cooperating with the Navy on Project Tepee are scientists from Yale and Stanford universities.



## Kaiser Plan Offers Free Pre-School Physical Exams

Kaiser Health Plan officials have announced that free pre-school physical examinations are now offered to members and dependents attending schools within the State of Hawaii.

This provision, effective August 22, includes students attending the University of Hawaii and those applying for an FAA flying license. For those going to Mainland schools, a minimum of \$5 will be charged, possibly more, depending on the time and the extent of the physical examination required, a Health Plan spokesman said. Appointments should be made by calling the Kaiser Medical Center at Hon. 995-811.

For Windward Oahu residents, the Kailua Medical Office of the Kaiser Plan will open October 1 with one doctor and a part-time pediatrician. The office will be located at 420 Uluniu Street. Details of its services will be announced later.

## LOG Splinters

### TIME TO RELAX

Vacation's over for two gals in Shop 51 but they're still swapping stories of the fun they had away from the Isles. *Mary Myers* went "Latin" in Cuba and Mexico while *Elizabeth Lee* and her family returned from a "see-all" trip through the United States and Canada. *Alton Kirkconnell* of the Instrument Shop and his wife left the first of the month to visit their two sons in Orange, California.

*Mary Au's* visit with her daughter—a teacher in Omaha, Nebraska—was the highlight of the Supply employee's six-week tour of the Mainland.

### HOME AGAIN

*Amy Uyema* is back with Supply's Technical Division after 2½ years in Chicago. She worked for the Inspector of Naval Material there and enjoyed her stay in the windy city, but like all good

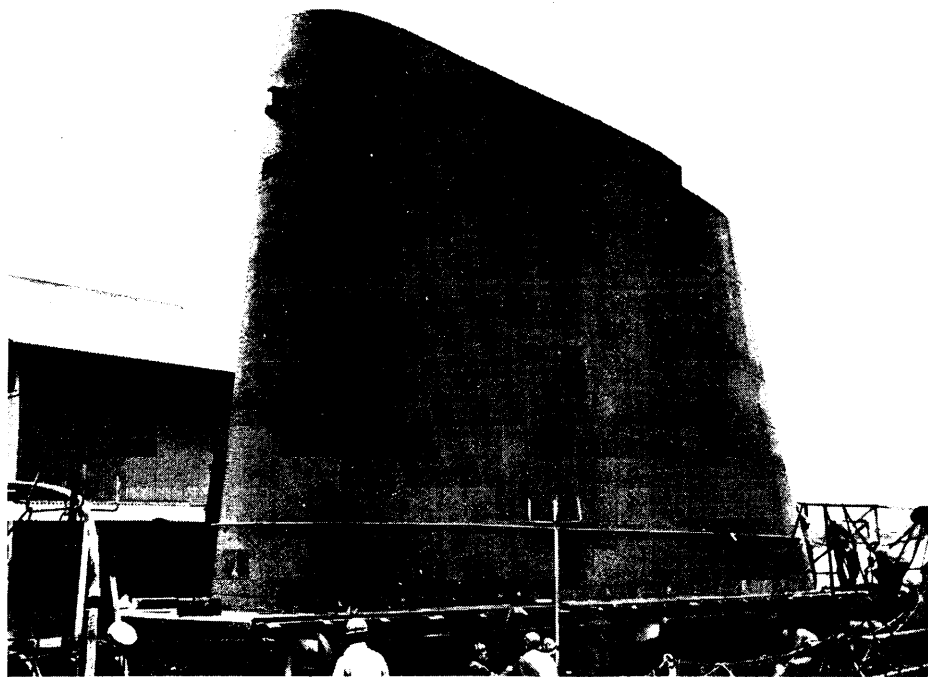
## Henry Kialoa Of Shop 11-26 Dies

Funeral services were held Monday for Henry Kialoa, 55-year-old flange turner in Shop 11-26, who died August 20 in Honolulu. Mr. Kialoa had been employed in Shop 11-26 for 18 years and also worked with the U.S. Engineers and the Naval Supply Center.

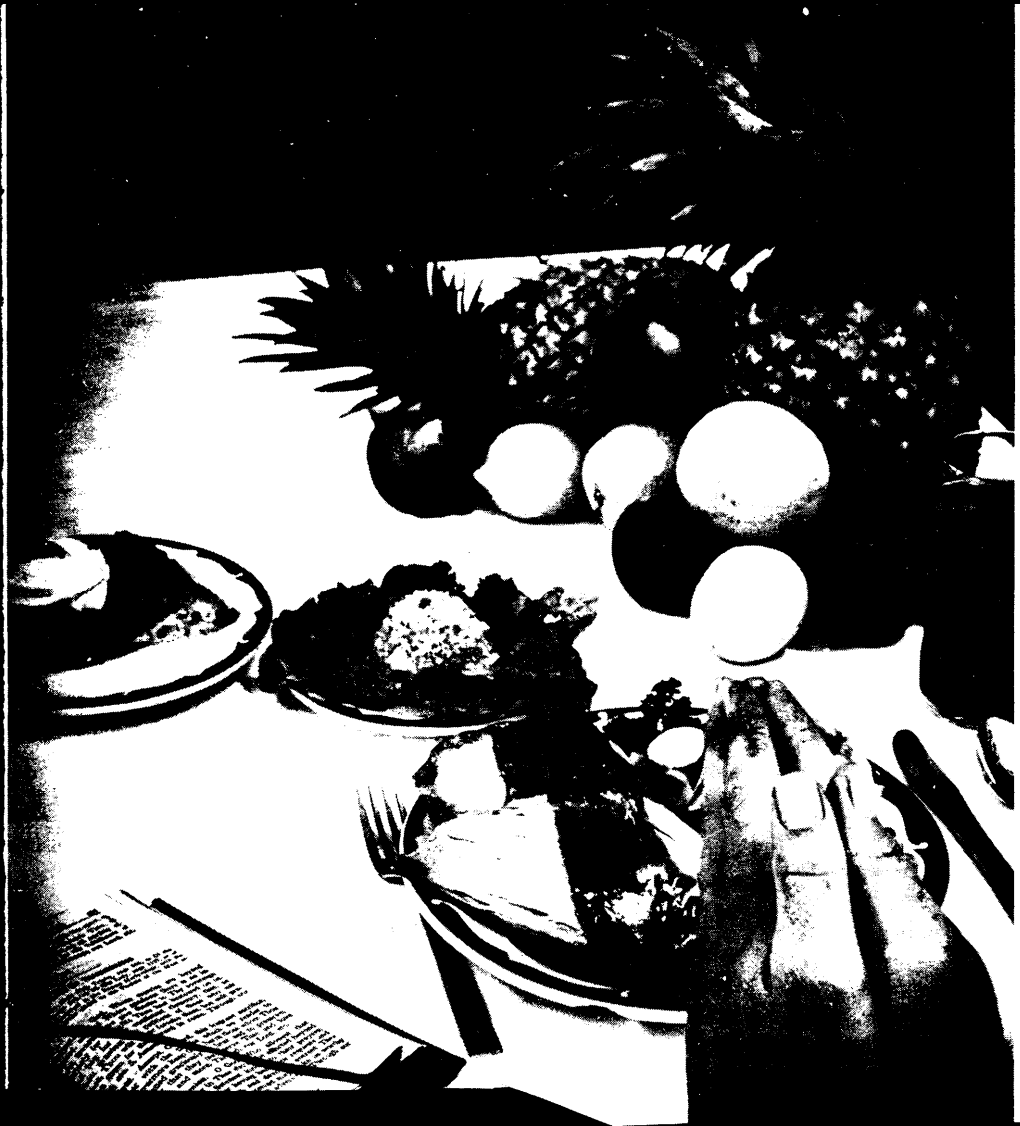


Mr. Kialoa

Described as a friendly and helpful man, Mr. Kialoa was a member of the Hawaiian Club and the Honolulu Club. He was born in Honolulu and was a graduate of the University of Hawaii.



**DWARFED BY** the imposing, black Pearl Harbor-made plastic sail are Shop 11-26 workers, busily completing the installation of the 12,000 lb. structure on the USS Tiru at 1010 docks. The 24-foot plastic sail is the first of its kind built at Pearl Harbor and represents six months of work by the Shipfitting and Welding Shop. The Tiru is entering the last phase of her extensive Fleet Rehabilitation and Modernization overhaul with harbor trials scheduled for next Wednesday and sea trials on December 1. She is expected to complete on New Year's Eve.



the plan of his choice.

Before going to the Governor's office Tuesday morning, Kaleiopu and his family were interviewed on the J. Akuhead Pupule radio program. The Kaleiopus reside at 2274-D Kaiuanunu Street.

● *Working with People* — Tuesday-Thursday, Sept. 13 to Oct. 31, \$45.

● *Writing Skills Improvement*—Tuesday-Thursday, Sept. 13 to Oct. 20, \$36.

Deadline for registration with the Hawaii Employers Council is September 12. For more information, call Edward Freyer or Carol Sander at Hon 59-971.



**'IT'S MY FIRST GOLF AWARD,'** Marian Harris tells other golf winners as she holds the Sportsmanship trophy which she received at last week Wednesday's Awards ceremony. Other winners are, from left, Art Pacheco, Shipyard champion; Mrs. Harris; James Kalei, championship flight winner, and Obed Mansfield, A flight winner. Missing are Kiyoso Kobayashi and Jacob Shin, B and C flight winners.

Thousands of books, priced 5 cents and up, will be sold to raise the \$1,000 needed for a library school scholarship.

Textbooks, current fiction, children's books, biographies, German books, sets of nicely bound classics and a large collection of records will be offered in this year's sale.

## Crash Helmets Become Mandatory

Starting next Thursday, September 1, crash helmets will be required for all persons operating motor scooters, motor bicycles, and motorcycles while on Navy property or on official business off the station.

Shipyard workers using their privately-owned motor bicycles and scooters in industrial areas may wear crash helmets in place of hard hats, but helmets must be painted to conform to the hard hat color code.

Operators without crash helmets after September 1 will receive citations. Violations may result in the suspension of driving privileges on the Naval Base.

### For Ex-HMSA Members

## Here's What To Do To Claim Refunds On July Premiums

# Touchy Job Tests Ingenuity of Machinists

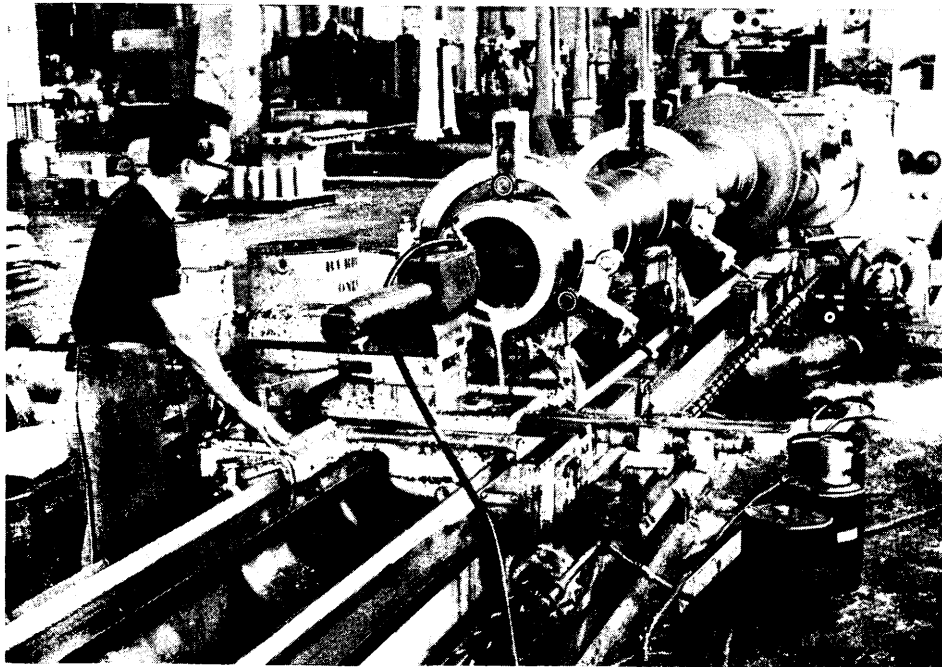
Shop 31 machinists marked another first last week as work began on two replacement missile launching cylinders for the Pearl-based submarines Tunny and Barbero.

Cast on the Mainland, the cylinders are 13 feet long and made of corrosive resistant steel. Along with the cylinders, Shop 31 is manufacturing the pistons, piston rods, stuffing boxes and inclosed vent valves for each launcher. All parts must be machined to within .003 thousandths of an inch tolerance.

"This is the longest and most critical inside bore I've tackled since coming to the Shipyard 24 years ago," remarked leadingman Frank Machado. A leadingman for the past 15 years, Machado is in charge of all machining operations on the launching units.

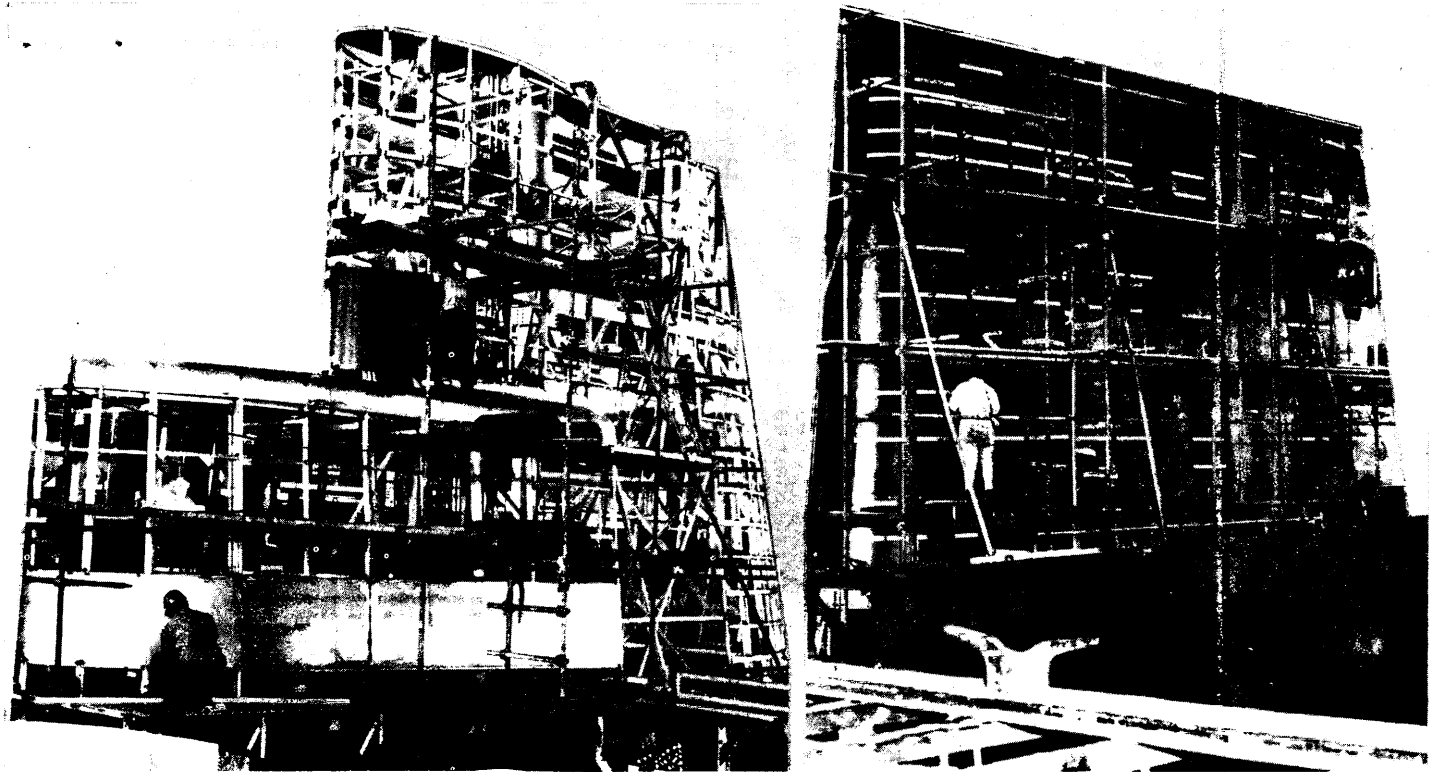
"Boring the inside diameter to within .003 thousandths of an inch for a short length is a cinch," he said, "but it's a different matter when the cylinder is 13 feet long. Normal wear of the cutting tool will change the inside diameter before the tool reaches the other end."

To hold the entire length of the bore true and to prevent the cutting tool from chattering, the ingenious leadingman, who has received almost 50 cash awards for



**MACHINIST MITSURU MIYAMOTO** bores out the first 12 inches of a missile launching cylinder with a conventional boring bar so that the eight guide rods on a special 13-foot bar may be inserted. This is the longest inside bore ever machined in Shop 31.

(Continued on Page 4)



**SIDE BY SIDE** yet completely different are these two submarine sails now under construction in Shop 11-26. The one at left is being constructed entirely of aluminum and will be installed on the Bashaw which is now undergoing overhaul in the Shipyard. The sail at right is being made of plastic for the Greenfish which comes into the Shipyard for her FRAM overhaul on December 15.

# Leadingman Retires

"As laborers, we were assigned to cut down all the shrubs, trees and weeds to make way for the new air base at Ford Island. The task was an easy one but for one thing — yellow jacket hornets. The hornets found Ford Island an ideal place to build their nests.

## ROUGH SUPERVISOR

"Our supervisor was of the type that could never win a popularity contest and had been giving us a rough time. One day he noticed that the crew was avoiding a particular cluster of shrubs. Unable to get the men to cut it down, the supervisor grabbed one of the cane knives and moved in towards the bushes with full steam and vinegar.

"The supervisor took several healthy hacks at the shrubs then all hell broke loose. All that we were able to see was a ball of yellow jackets rolling on the ground. What we heard you can't print. The supervisor didn't show up for work for the next two weeks."

## DRAFT BEER AVAILABLE

After five years at Ford Island, Correia left for the Mainland. Six months later he was back at Pearl, only this

time in the Shipyard and in a shop that is now non-existent—Shop 53.

"We had several shops operating under one roof at that time," he recalled. "In Building 2, we had Shops 11, 56, 17 and 53. There was also one famous building in the Shipyard. It was called the 'Tin Roof' and was on the spot now occupied by the Shipyard Museum. A Yard worker was able to drink draft beef at the 'Tin Roof' during his lunch hour. Some of us oldtimers sure long for the 'Tin Roof' days."

## HERE ON DECEMBER 7

On the morning of December 7, 1941, Correia was about to complete the midnight shift when Pearl Harbor was attacked. Like the thousands of other Shipyard workers, he helped put out fires and assisted in rescue operations.

In 1944 he was promoted to leading-man pipefitter in Shop 56 and transferred to Shop 06-99 in 1957.

Before punching out for the last time, Correia said, "I leave the Shipyard with some of the fondest memories of shop activities, especially the shop's Christmas party for children from the Salvation Army Homes."

## SHIPYARD

Electronic Technician (Instrumentation) GS-6

Feb. 28

## OTHER LOCAL AGENCIES

Realty Officers GS-11, 14ND  
DPWO

Dec. 5

Clerk-Stenographer GS-3,  
Barber's Point

Nov. 18

Construction Estimator GS-9,  
Schofield Barracks

Nov. 18

## CIVIL SERVICE EXAMS

Diesel Electric Plant Operator

Open

## CAFETERIA MENU

The price below is for the main dish only.

*Monday*—breaded veal cutlets, 60 cents; diced pork with Chinese squash, 45 cents.

*Tuesday*—char siu, 60 cents; beef stew with fresh garden vegetables, 45 cents.

*Wednesday*—roast young Tom turkey with holiday dressing, giblet gravy, whipped potatoes, buttered green peas and cranberry sauce, \$1; braised short ribs of beef, 60 cents; knockwurst with sauerkraut, 45 cents.

*Thursday*—Holiday.

*Friday*—shrimp egg foo yung, 60 cents; macaroni au gratin with diced ham, 45 cents.

*Saturday*—roast loin of pork, 60 cents; Salisbury steak with brown gravy, 45 cents.

# Electricians Crawl on All Fours To Install New Miniaturized Degaussing System on Wahoo

Shop 51 electricians making the first naval installation of a new miniaturized automatic degaussing system on the USS Wahoo do not feel there is anything miniature about the job. In fact, they believe that there has never been an electrical job which presented as many new problems requiring on-the-job solutions as this one.

When the Shipyard agreed to tackle this difficult job, a "Pearl can do it" spirit prevailed from top management to every journeyman who crawled on all fours through a submarine's tanks and spaces they had never seen before.

The degaussing system neutralizes the submarine's magnetic field, making the

ship operational in mined areas. To accomplish this, rigid copper cable is wound around and into the pressure hull at predetermined locations vertically and horizontally. The cable is connected in the proper polarity and energized to neutralize the magnetic field created by the ship.

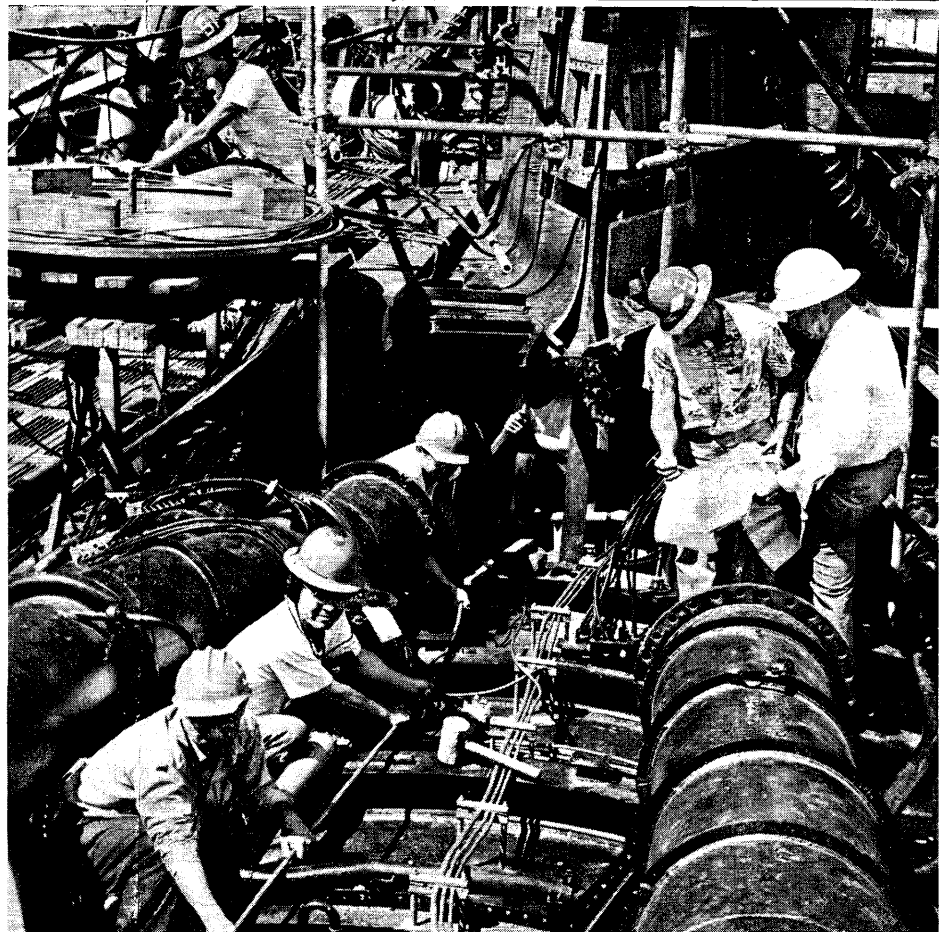
The degaussing cable used is unlike other electrical cable. The electrical conductor is positioned in the center of copper tubing and the space between completely packed with an insulating material of magnesium oxide. This cable has unique qualities not found in other electrical cables. It can be subjected to extreme temperature changes and can withstand extreme pressure and mechanical abuse.

With most of the cable at least 1/2 inch in diameter, Shop 51's electricians must use brawn as well as brains to twist and turn the cable around the submarine.

Proud of his men and the way they are accomplishing the job, master electrician August Perry mentioned an incident which illustrates the "can do" spirit prevalent on the Wahoo.

In an extremely cramped and difficult area near the torpedo tubes, a small group of electricians were getting discouraged with the slow rate of progress being made on the job. To boost their morale and get the hard part over with, the lead mechanic of the gang offered to buy his gang a case of soda if they whipped the job within a hour. With renewed vigor the boys tackled the job, and had it done in short order. "This is the kind of spirit that gets jobs for Pearl," Mr. Perry pointed out.

This being the pilot installation—completely different from anything in the Fleet today—the Shipyard is taking movies and color slides to assist other shipyards in the future.



**BRUTE STRENGTH** and close coordination are required as Shop 51 electricians twist and turn the stiff degaussing cable around the Wahoo's pressure hull. Feeding the cable from a turntable at the upper left corner is Henry Van Gieson. Pushing the cable through a tight spot area, from front to back, Ernest Morimoto, Roy Afuso, James Chang and Yoshiro Wakumoto. Leading-man Damien Tavares and master electrician August Perry study the plans to overcome a problem area under the sail.

# Homeward-Bound Korean Chiefs Cherish Friendships Made at Pearl Harbor

"I felt very awkward when I first came to Hawaii. . . but now that I have come to know the people, I like this country very much," shyly confessed Korean chief Tu Sun Yi to a small group of friends at the home of Shop 38 fire control mechanic Hiroto Nishita.

"We have learned much about Western living, about your Island customs, and community associations. We have received many kind invitations. These have all made our stay in Hawaii a memorable one."

Fire Control Chiefs-Yi and Kae Chae Cho will end their Island stay June 30 when they leave for home after five months of training in Shop 38's Gun Sight Shop. On their return to Chin-hae Shipyard, they will establish a gun sight repair shop where they will teach Korean technicians what they have learned at Pearl, so that they can do the repairs themselves without U.S. technical support.

To the two boyish-looking Korean chiefs, meeting and talking with Americans of the 50th State have been their most enriching experience.

"I am particularly glad to see first hand, people of many different races mixing happily together," remarked

Chief Cho, who thinks Hawaii is an ideal site for the international center. "I feel at home while walking on the streets, and I see so many familiar faces that I don't feel I'm in a foreign country." For the duration of their Hawaiian stay, Nishita's 21st Avenue home in Kaimuki has been the chiefs' "home away from home." Besides home cooking, their gracious hostess, Dorothy Nishita, has always included kim chee, taegu and fice on the menu. "This we enjoy very much because we miss our Korean foods," they said.

The after-dinner discussions at the Nishitas prove so stimulating, that guests and hosts, stay up to 2 or 3 o'clock in the morning exchanging views on economics, politics, international relations, sociological problems and communism.

"They are eager to learn our Western



A NEWS STORY on the rousing welcome President Eisenhower received in Hawaii sparks the interest of the Hiroto Nishitas and their three guests from Korea. From left, Chief Yi; Yun Kwang II, an ex-Korean Navy petty officer 1/c now studying government at the University of Hawaii; Chef Cho, and the Nishitas—Jean, Hiroto, Carol

ways, and vitally interested in international affairs. There is much we have learned from Chiefs Yi and Choe through those thought-provoking discussions," commented vivacious Mrs. Nishita, a supervisory clerk at the Board of Health.

The Korean chiefs' dedication to making their country a progressive nation, and their earnest concern for improving the national economy and raising the standard of living in Korea have made their Island friends more aware of the problems facing this Asian nation. Their memories of Hawaii will not be so much of the tropical breeze, the hula girls and Waikiki Beach, but of, the people-to-people friendships they have cultivated during their stay.

While in Hawaii they have attended church services, a circus and picnic with the Dick Hamadas, enjoyed a cook-out and country living with the Jerome Cooks in Makaha, joined the Korean University Club one evening as Matthew Nahm's guests, learned folk dances with Hon Wa Wat's group and sang Hawaiian songs with the Nishitas' ukelele-strumming friends. Their friendliness and eagerness to meet Island people have brought invitations from many other Shipyard employees, including Charles Wayton, Tamu Kang, and Shop 02 supervisors and speakers club members.

January 5, 1961

Mr. Joseph H. Silva  
Box 351  
Nanakuli, Oahu, Hawaii

Dear Mr. Silva:

Thank you very much for your letter of December 29, 1960 calling my attention to the need for assistance to the blue collar workers in Hawaii. Your enclosed wage scales comparing Hawaii to San Francisco is most helpful.

One of the first bills I introduced in the 87th Congress was H.R. 1796 entitled "A bill to provide a method of regulating and fixing wage rates for ungraded employees in the State of Hawaii." I am hopeful that this bill will be met with favor in this session of Congress.

You may be assured that I will do all I can to promote the passage of this bill.

With all best wishes and aloha, I am

Sincerely,

DANIEL K. INOUE  
Member of Congress

DKI:sb

The American Federation of Government Employees  
Naval Air Station Barbers Pt.Lodge # 1783.

Box 351  
Nanakuli,Oahu,  
Hawaii.  
Dec.29 1960

The Honorable Daniel K.Inouye  
House of Representatives.  
Washington 25,D.C.

My Dear Congressman:

The "Blue Collar Worker" in the Honolulu area has been a very much forgotten employee of the U.S.Civil Service for a number of years,and the following data will show this to be true.

The cost of living was deleted from the "Blue Collar Workers" pay in 1946,and it took from 1947 through 1950 to regain this pay loss.

From Oct.31.1952 to Dec.27 1957 a period of over five years,the only increase in wages was on Feb.10 1956,when a one to three cents per hour was given caused by the reclassified status from fourth to third step rates.

Wage surveys made in the Honolulu area contact thirty-seven firms,none of which are the trade unions or the general contractors,which would give a truer survey,because the largest percent of "Blue Collar Workers" are craftsman of the building trades.

Included in these contacted firms are the "I.L.W.U." pineapple and suger companies of which the building trades have nothing in common.

The cost of living in Honolulu is much higher than in the SanFrancisco area,therefore the wage scale for "Blue Collar Workers" in Honolulu should be the same as the Bay area.

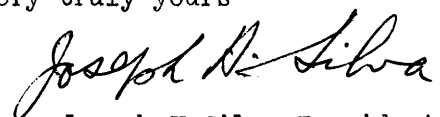
This difference in wages has been brought to the attention of the U.S.CivilService and Congress in Washington in past years by Delegates,a number of trade unions of the "A.F.L.-C.I.O."and the Quartermans and Leadingmans Assoc.but these conditions still exist.

A condition of this nature which has over twelve years duration should be rectified as soon as possible,from both a moral as well as an economic standpoint.

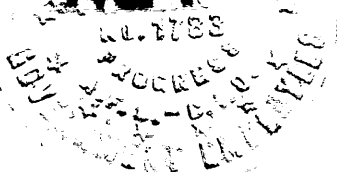
Enclosed are a number of wage scales for San Francisco and Honolulu,showing the difference in wages for the crafts.

Sincerely hoping that you will give the above your most careful thought and consideration,

I remain  
very truly yours



Joseph H.Silva.President.  
A.F.G.E.Lodge # 1783



Title.	3rd step Hawaii.	3rd step San Francisco.	Dif.
Laborer - - - - -	1.74	2.53	.79
" (Cleaner)	1.67	2.46	.79
" (Heavy)	1.81	2.57	.76
Warehouseman - - - - -	1.96	2.65	.69
Armature Winder - - - - -	2.82	3.15	.33
Automotive Equip.Operator - - - - -	2.53	2.98	.45
" Mech - - - - -	2.67	3.07	.40
Boilermaker - - - - -	2.82	3.15	.33
Carpenter - - - - -	2.67	3.07	.40
Cement Finisher - - - - -	"	"	"
Crater & Packer - - - - -	2.39	2.90	.51
Electrician - - - - -	2.82	3.15	.33
" (Lineman)	"	"	"
" (Power Plant)	"	"	"
Electronics Mech. - - - - -	2.88	3.31	.43
Gardener - - - - -	1.96	2.65	.69
Letterer & Grainer - - - - -	2.82	3.15	.33
Machinist - - - - -	"	"	"
" (Maint.)	"	"	"
Mobile Equip.Dispatcher - - - - -	2.39	2.90	.51
<del>Painter</del> - - - - -	<del>2.67</del>	<del>3.07</del>	<del>.40</del>
Painter - - - - -	2.67	3.07	.40
Pipefitter - - - - -	2.82	3.15	.33
Plumber - - - - -	"	"	"
Refer. & Air Conditioning Mech. - - - - -	"	"	"
" (Mech.)	"	"	"
Rigger - - - - -	"	"	"
Saw Filer - - - - -	2.67	3.07	.40
Sheetmetal Worker - - - - -	2.82	3.15	.33
Stockman - - - - -	2.10	2.74	.64
Truck Driver - - - - -	"	"	"
" " (Heavy) - - - - -	2.25	2.82	.57
" " (Heavy Trailer) - - - - -	2.53	2.98	.45
Upholsterer - - - - -	2.67	3.07	.40
Welder - - - - -	2.82	3.15	.33
Differential 2nd & 3rd Shifts - - - - -	.09 & .10	-.27 & .27	.18 & .17

Data on San Francisco Wage Scale

Effective Date Nov.27.1960

Wage & Classification Div.

Industrial Relations Dept.

San Francisco Naval Shipyard.

Data on Hawaii Wage Scale.

Salary & Wage Administrator.

Effective Date March 14.1960.

Industrial Relations Dept.

Naval Air Station, Barbers Point.

Honolulu, Oahu, Hawaii.

10  
FEB 10 1961

February 9, 1961  
446 Olohana Street  
Honolulu 15, Hawaii

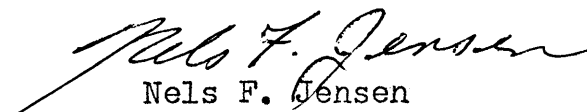
Honorable Daniel K. Inouye  
U.S. House of Representatives  
Washington, D.C.

Dear Representative Inouye;

As you probably know there is a pay wage survey about to be undertaken in Hawaii, and I feel this would be an opportune time to press the matter of a pay raise for Pearl Harbor Navy Yard workers. I hope you will do everything possible to help Pearl Harbor get the same wages as the West coast navy yard workers. In addition I am sure you realize our cost of living over here is higher, thus providing us with an extra burden.

I am also enclosing three newspaper clippings, including one about the thirty year retirement plan regardless of age. I have not seen or heard any more about this and if you receive any additional information on any of these matters I would appreciate you forwarding it to me.

Thank You Very Much,

  
Nels F. Jensen

NFJ:dj  
encl..

*Jan 6, 1961*

## **Navy Plans**

# **Wage Survey**

# **In Near Future**

In line with the Navy Department's policy of conducting periodic wage reviews, a wage survey of the Honolulu labor market area is tentatively planned to begin in the near future, RADM E. A. Solomons, 14th Naval District Commandant, announced last week.

The survey will be conducted jointly by the Navy, Army and Air Force. Participation will consist of representatives of the Area Wage and Classification Office, Pearl Harbor, the Wage and Classification staffs of the Army and Air Force services in Honolulu, and the field activities of the military departments involved.

Data collectors will visit private employing establishments for the purpose of obtaining wage rates and other data. When the survey is completed, the information will be sent to the Office of Industrial Relations in Washington, D. C., where it will be used in compiling a new schedule of wages for Navy blue collar workers in this area.

Shipyard Commander RADM E. C. Holtzworth this week appointed Alfred Collins, head of the Employment and Wage Division of the Industrial Relations Office, to serve as Shipyard representative on the Navy Wage Survey Sub-Committee. The first meeting of the Navy sub-committee was held Wednesday afternoon.

As the LOG went to press, the starting date of the wage survey had not been announced.

... employees are outstanding  
their effort to prevent injuries to them-  
selves and others. But this can never as-  
sure us that safety will automatically  
continue.

Some who are whole and happy now  
will be disabled in the coming year. No  
one can say at this time who they will  
be, but it could be one of us, and for  
whoever it is, 1961 will not be a safe  
year at this Shipyard regardless of what  
the record says.

The beginning of a new year is an  
ideal time to once again think of the im-  
portance of safety in our work, to redou-  
ble our efforts, and improve our skills in  
preventing painful injuries and disabili-  
ties.

*Dodo . . .*

*As long as letters keep coming in  
which meet the test of general interest,  
"Dear Dodo" will remain open for bus-  
iness. Hauoli Makahiki Hou!*

*Dodo*

Dear Dodo:

When are we going back to 40 hours  
per week? I haven't had a day off for a  
long time.

Is there a law that you cannot work  
more than 13 days straight? If so, how  
come it is not used?

*Tired of OT*

*Dear Tired:*

*The 13-day regulation you have in  
mind is the one that says no employee  
can work more than 13 consecutive days  
without the specific approval of the  
Shipyard Commander. This is based on  
management's recognition of the fact  
that even in a high workload period,  
every employee needs a day off now and  
then.*

*Nevertheless, the workload pressure  
occasionally becomes so great that an  
employee with the needed skills must be  
required to work more than 13 days  
straight. As noted above, the Shipyard*

19 FEB 15 1960

# Many Civilian Employee Bills Await Congressional Action

Washington (AFPS)—More than a score of bills affecting government workers—including Armed Forces civilian employees at home and overseas—await Congressional action this session.

Since the current session is a continuation of the 86th Congress, preliminary action on the legislation was initiated last year and will not have to be repeated, a Civil Service spokesman said. The following is a rundown of the major bills:

- HR-8738 is designed to amend the Performance Rating Act of 1950. It provides a more flexible system for performance evaluation of federal employees, removing the statutory requirement for adjective rating. Introduced at the first session, no further action has been taken.

- HR-766 alters present penalty provisions for use of government-owned motor vehicles and aircraft for other than official use and is on the pending House calendar.

- HR-796 would establish a central security office to coordinate a Federal personnel loyalty and security program.

- HR-5196 was introduced to increase Federal employees' per diem allowance when performing official travel in the U. S. from \$12 to \$15 and lifts the mileage for official use of personal automobiles from 10 to 12 cents. This

bill passed the House in September and awaits hearings in the Senate.

- HR-7758 establishes a coordinated and uniform system for temporary lodging allowances—up to three months on arrival and for one month upon separation—for overseas employees. The bill also provides for storage and official residence expenses, refurbishing allowances and transportation of motor vehicles. This bill cleared the House Sept. 8, 1959, and is now pending before the Senate Post Office and Civil Service committees.

Also pending are a number of other Federal employee bills on which no action was taken during the first session of the present Congress. Included are measures to grant annual step increases to all Classification Act employees; permit retirement after 30 years service regardless of age and grant service credit for unused sick leave upon retirement.

# Basketball Crown



**10 BASKETBALL CHAMPS!** Front row, Richard Grady, Charles Inomoto, Ronald John Sampaio, Raymond Chock, Ralph William Villa, manager Miguel Toro, and Roger Wong.



**SHOUTS OF 'SHOOT, SHOOT'** echoed throughout the gym as Joe Heyck made his leap to send the ball soaring towards the basket.

In the curtain raiser, the Engineering Co-ops scored a 32 to 21 victory 'over

## Notices

# Wage Survey Group Issues Lists of Firms, Occupations

While the starting date has not been set for the 1961 Army-Navy-Air Force Wage Survey of the Honolulu-Hawaii Labor Market, plans for the first full-scale wage survey since 1957 are moving along. This week tentative lists of ratings to be surveyed and the firms to be contacted for data were posted on bulletin boards throughout the Shipyard.

These lists are for the employees' perusal. Individuals or employee groups desiring to offer amendments to the lists should submit them in writing to the Shipyard's representative on the Navy Sub-Committee, Alfred T. Collins, head, Employment and Wage Division, Industrial Relations Office, Code 170. He may be reached by calling PH 24-131 or 21-186. Amendments should be submitted not later than 3:35 p.m., Monday, January 16. In requesting additions to the lists of occupations, information as to the best possible source of wage data should be included.

Mr. Collins will also accept written requests for oral hearings of individual employee groups or labor union organizations. Requests will be accepted throughout the wage survey period. Those desiring hearings before the data collection period should submit requests as soon as possible.

Here are the tentative lists of Laborer, Helper and Mechanic occupations and the firms to be surveyed:

## OCCUPATIONS

Aircraft mechanic (General), automotive equipment operator, automotive mechanic, blacksmith (other fires), boiler maker, bridge crane operator, bridge crane operator (heavy), buffer and polisher, carpenter, diesel engine mechanic, electrician, flame cutter, heavy duty equipment mechanic, helper (trades), high lift truck operator, joiner, laborer, laborer (cleaner), laborer (heavy).

Machinist, machinist (maintenance), machinist (marine), molder, oiler, painter, patternmaker, pipefitter, puncher and shearer, refrigeration and air conditioning mechanic, rigger, sheetmetal worker, shipfitter, shipwright, toolmaker, truck driver, truck driver (heavy), welder.

Additional jobs for the Army and Air Force to be surveyed include aircraft attendant (ground servicing), boiler fireman, packer (shipping), plumber and warehouseman.

## FIRMS

Aloha Airlines, American Can Company, California Packing Corporation, C & H Sugar Refining Corporation, Dole Corporation  
(Continued on Page 3)

## Wage Survey

(Continued from Page 1)

tion, Gaspro, Dairymen's Association, Hawaiian Airlines, Hawaiian Dredging and Construction, Hawaiian Electric Company, Hawaiian Telephone Company, Hawaiian Tuna Packers

Love's Biscuit and Bread Company, Lockheed Aircraft Service, Honolulu Construction and Draying Company, Honolulu Gas Company, Honolulu Rapid Transit Company, Honolulu Sash and Door Company, Libby, McNeill and Libby, Pan American World Airways, Oahu Transport Company, Qantas Airways, and United Airlines.

The Navy Wage Survey Sub-Committee is currently conducting a study of new firms which have been established since the last full scale survey for possible inclusion in the 1961 Wage Survey.

*These ones I have under hand what have they on ship yard now.*