

SPECIAL ❁ INDUSTRIAL ❁ EDITION

OF THE

EVENING BULLETIN

THE OLDEST AND
MOST PROGRESSIVE
AMERICAN DAILY
PAPER PUBLISHED
IN THE
HAWAIIAN ISLANDS.

TAXABLE PROPERTY

Territory of Hawaii.

\$121,172,928

Hawaii Purchased in American Markets—1901
Goods Valued at

\$20,000,000

Hawaii Sold in American Markets, Produce Valued at

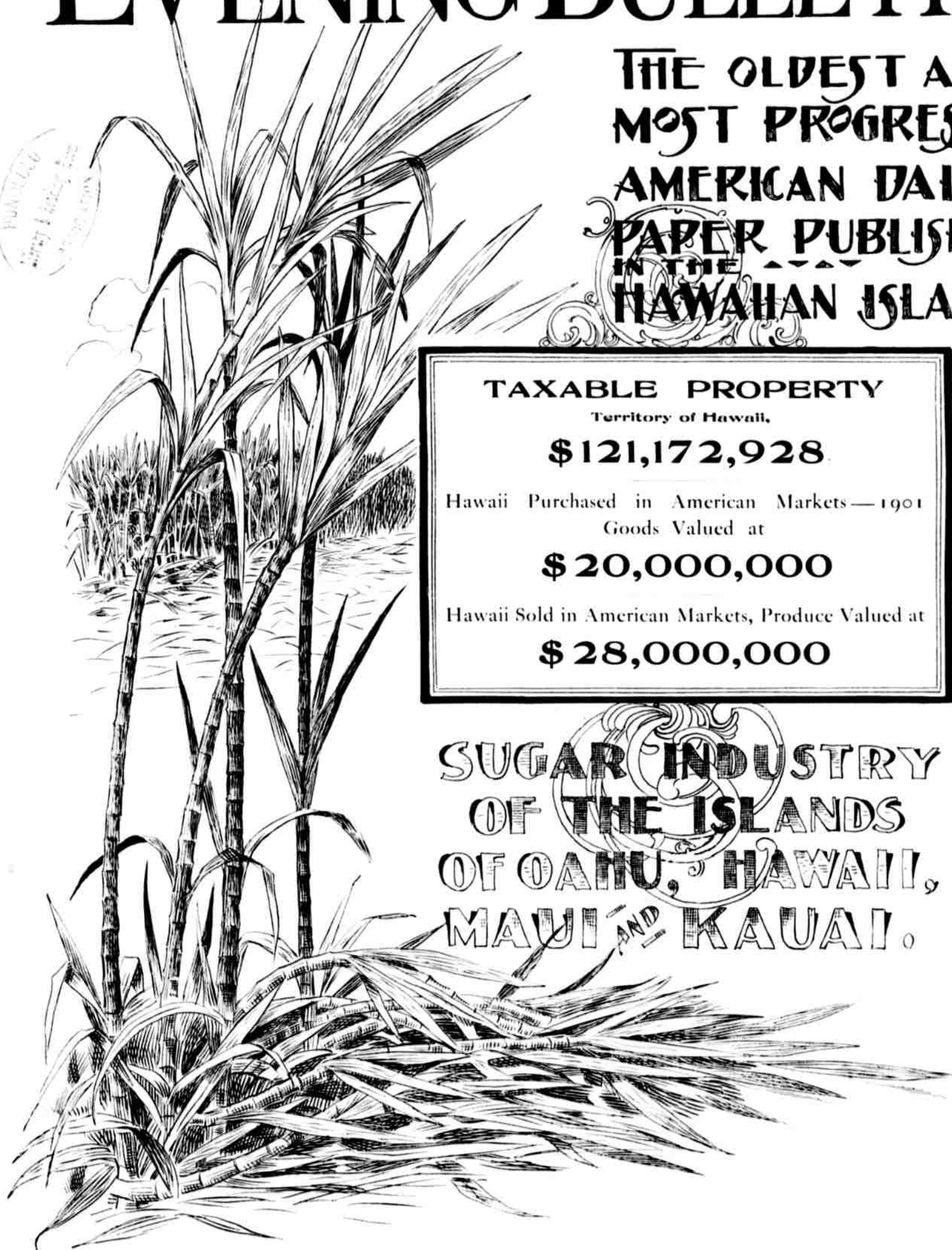
\$28,000,000

SUGAR INDUSTRY
OF THE ISLANDS
OF OAHU, HAWAII,
MAUI AND KAUAI.

❁ ❁ ❁ HONOLULU, NOVEMBER, 1901

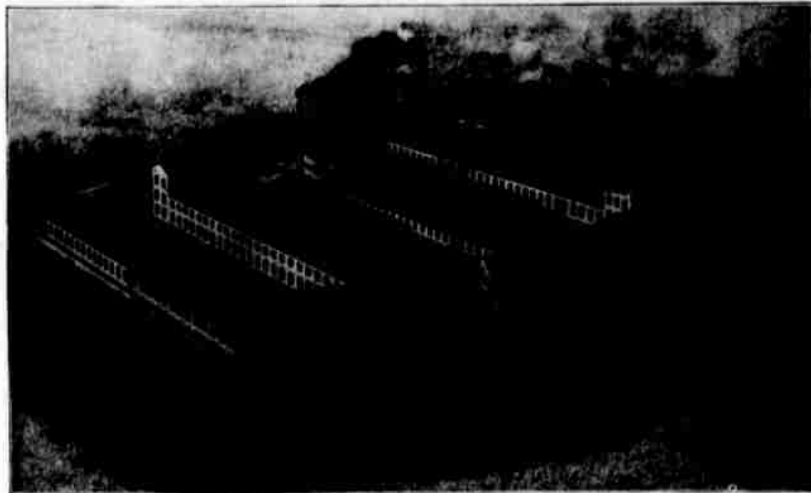
HONOLULU
Library & Reading Room
1901

HONOLULU
Library & Reading Room
1901



HONOLULU IRON WORKS

ESTABLISHED 1852



New Works built 1900, covering 6 1/2 acres. Consulting Engineers and designers of several of the large new sugar factories erected in the Hawaiian Islands, including the Hawaiian Commercial & Sugar Co. [capacity 500 tons sugar in 24 hours], the Olaa Sugar Co. [capacity 300 tons sugar in 24 hours], and others.

Manufacturers of Sugar Machinery in all its Branches, from the Largest to the smallest description, such as ❁ ❁ ❁

SUGAR MILLS, up to the largest size, either single or nine-roller; Vacuum Pans; Evaporators, Standard or "Lillie" Film Evaporator, both single and multiple; Mill Gearings, either completely or partially of steel of the heaviest description; Corliss Engines; Filter Presses of various designs and capacities; Sand Filters of various descriptions; Bag Filters; Mechanical Filters; Improved Cooler Cars and Sugar Coolers; Tank Work of all descriptions; Riveted Irrigation Pipes of any diameter and to stand any pressure; Steam Boilers, marine, land and portable, of any description; Centrifugal Mixers; Oil Tanks of any capacity; Oil Tank Cars, Cane Cars; Forgings of the heaviest description for marine work, well drilling tools, etc.; Castings, in iron and composition, up to 15 tons; Patterns of all descriptions; Coppersmith Work, such as pipes, tanks, etc.

SOLE AGENTS FOR:

Krajewski-Pesant Co.--Patent Cane Crushers. "Lillie" Automatic Film Evaporators. Sugar Machinery built by the Kilby Manufacturing Co. Link-Belt Machinery Co., Chicago, Conveyors and Hoists of all descriptions. National Tube Co., New York. "Valvoline" Oils. Henshaw, Bulkley & Co., San Francisco, Hoisting Engines, Portable Boilers, Horizontal and Vertical Steam Engines, Rock Crushers and Drills, Machine Tools, such as Lathes, Planers, Shapers, Drilling Machines, Emery Grinders, Etc. ❁ ❁ ❁ ❁ ❁ ❁ ❁ ❁

STORE DEPARTMENT, HONOLULU IRON WORKS

In the store on the site of the old shops is carried a large stock of Engineer' Supplies, such as "Valvoline" Oils, all brands of Packing, Steam and Water Fittings, Brass and Iron Valves of any size, common and Norway Iron, Tool, Angle and Machine Steel, Black, Galvanized, Brass and Copper Pipe, Machine and Carriage Bolts, Steel Plates, Hand Tools, Well Casing, etc., etc. An extensive line of Lathes, Lathe Chucks, Engines, Boilers, Hoisting Engines, Shapers, Drills, Emery Grinders, Washing Machines, etc., is also carried at the store. It is the aim of the Company to dispose of this machinery at San Francisco prices, plus the freight to Honolulu, saving the customer the time usually lost when goods such as these are ordered from the Mainland. In the Plumbing Supply Department is kept a large stock of the latest improved Porcelain and Enameled Bath Tubs, Lavatories, Sinks and Plumbing Fittings, together with a large stock of Cast Iron Soil Pipe and Sanitary Fittings.

HONOLULU, T. H.