

What is Best for Maui  
is Best for the News

# Maui News.

If you wish Prosperity  
Advertise in the News

VOLUME XIX

WAILUKU, MAUI, H. T., SATURDAY, FEBRUARY 17, 1912

NUMBER 1

## Tragic Death.

Niagara Falls Treacherously Claims  
Three More Victims.

The great ice bridge that has choked the river channel between the cataract and the upper steel-arch bridge below the falls for the last three weeks has broke from its shoring and went down the river, taking with it to their death a man and woman said to be Mr. and Mrs. Eldridge Stanton of Toronto, Canada, and Burrell Heacock, 17 years old, of Cleveland, O.

The bridge was considered safe. For weeks the great fields of ice had been coming down the river, piling up against the barrier until it was from sixty to eighty feet thick, and under the influence of zero weather the great mass had become anchored firmly to the shore. The jam was about 1000 feet wide, and in some places a quarter of a mile in breadth.

For two weeks it had offered safe passage to the hardy, and an immense crowd of excursionists came to view the winter wonder of the river. Had the accident happened an hour later, hundreds would have lost their lives. Somewhere deep in the great whirlpool sleeps the man, partly identified as Stanton, who twice put aside his chances of rescue in order to remain with his terror-stricken wife, and who, in the shadow of death—just at the break in the rapids, spurned assistance for himself and attempted to bind about the woman's body a rope dangling from the lower steel arch bridge.

The lad, Burrell Heacock, was of the same mold. Had he not turned back on the ice to give assistance to the man, he, too, might have made the shore.

The man and woman started first toward the American shore, but they were stopped by a lane of open water. Back they ran again toward the Canadian side, turned about and made for the American side. When hardly more than fifty yards from the rocky shore, the woman fell on her face, utterly spent.

"I can't go on; I can't go on," she cried. "Let us die here."

All the time the great field of ice went on, breasting the terrible out-rush of the Niagara Fall Power Company's tunnel outflow, the mightiest current in all the river, without being broken. As the woman fell, the man tried to get her to her feet again and tried to drag her along the ice, calling for assistance to Roth and Heacock.

Heacock turned back to the couple, and helped support the woman. The act cost him his life.

The men on shore made an effort to reach the three on the ice floe, but at a point about 600 feet below the upper steel arch bridge the ice field broke into two great fields. One section anchored near the hydraulic power-house.

The moving floe with the three helpless beings passed slowly down the river.

Meantime Niagara Falls firemen were sent to the lower steel arch bridge, and there took station with a rope. Canadian firemen had two ropes down from the cantilever bridge, which is about 300 yards above the other structure.

A quarter of a mile from the whirlpool rapids, the floe on which the three were borne broke into two sections, the man and woman on one, Heacock on the other.

Heacock saw the ropes dangling from the bridge and made ready to

## The Latest In Sports

What the Wrestlers, Boxers and Base  
Ball Artists Are Doing.

George Hildebrand, who was for many years one of the fastest ball players on the Pacific Coast, and who is now an umpire in the Pacific Coast League, has the following to say about umpiring:

In many ways the life of an umpire is lonesome. He doesn't make any friends and he can't afford to talk about his business. You are never applauded, and if you have a poor day you are roasted. In fact, the best you get is the worst of it. It is always harder for an umpire toward the close of the season, for usually the race is closer and the excitement more tense.

One thing the players ought to learn is to do less kicking. If it should ever be my fortune to go back into the game I would never kick at an indicator man. They used to call me a crab, but I know how tough it is for the umpire.

The New York American League baseball team will go through the season of 1912 with the highest average—in one respect, at least—of any big league club. It will include more tall players than any other team. As Manager Wolverton figures it, there are eleven men in the Yankee squad who stand over six feet in height. The giants of the squad, and their heights, are: Shears, 6.4; McConnell, 6.3; Sweeney, 6.2; Knight, 6.2; Vaughn, 6.2; Caldwell, 6.1; Appleby, 6.1; Stump, 6.1; Clark, 6 feet; Upham, 6 feet; Williams, 6 feet.

Did you ever hear of the pitcher who begged an umpire to give him all the worst of it while pitching? Well, it's hard to believe, but it actually happened one day while the Reach-All team was touring Japan a few years back. You see it was like this: The Reach-All were defeating the Japanese team so badly that it was decided to try a plan of letting the Japs have the American battery and the Americans the Japanese pitcher and catcher. This was done to even up the comparative strength of the two teams, but it worked out badly.

Mikey Graney, with his tendency to be wild, suffered one of his bad days when he started to hurl for the Jap team and the experienced American players waited him out with the result that walks were frequent. It got so bad that there was an awful holler from the big crowd of Japanese present. The Americans thought they were rooting, but finally one of the Japs who understood English explained the situation, saying that the little Brown men were thinking that Graney was not pitching his best against the Americans. It got so bad that the batteries were switched back and there was more trouble.

The Japanese would swing at the wild tosses which Graney was making and he was striking out the Japs right and left. The crowd did not "savvy" that the Americans' experience made the difference and set up a greater howl. Graney was "in bad" for fair and begged Hildebrand, who was umpiring, to please call some balls so that he could walk some of the Japs and prove that he was doing his best.

The big steam shovel for Contractor Wilson arrived on the Misourian.



Professor Veditz of Georgetown university says the trusts are as white as snow when compared with the small dealers.  
—Caine in St. Paul Pioneer Press.

## Honolulu News.

HONOLULU, Feb. 16.—A wealthy British Columbian has been arrested by United States marshal Hendry, on a warrant from the mainland charging him with complicity in the Alaskan frauds.

E. O. Hall & Son now want \$135,000 for their corner. A murderer who was supposed to be on the Cleveland, and for whom the ship was searched, could not be found.

Kuhio now says he wants to see Taft elected and forgets about writing to Desha.

HONOLULU, Feb. 15.—Kuhio returned yesterday, and was met outside by Shingle. He had nothing to say to the reporters other than that he could not remember having written to Desha.

The Chinese will celebrate the birth of the new republic today. Frank Thompson was fined \$10 for contempt of court by Judge Monsarrat. He refuses to pay the fine.

Capt. Pise will pilot the cable ship which will go to repair the damage to the cable.

Marston Campbell expresses surprise at the action of the Maui Chamber of Commerce relative to the wharf. He says he will show them.

The governor speaks of plans for a pineapple cannery for homesteaders on Kauai.

## More Sensations.

INDIANAPOLIS, Feb. 16.—The greatest sensation since the confession of the dynamiters, was sprung today when a local paper began publishing a number of letters and telegrams captured by Burns, and used as evidence before the grand jury. Ryan, Hocking, Webb, Young, and a score of others are implicated.

WASHINGTON, Feb. 16.—Adjutant-General Ainsworth has been stripped of power and ordered court-martialed by President Taft for insubordination in a letter written to Secretary Stimson.

NEW YORK, Feb. 16.—Two messengers in a taxi were robbed of \$25,000 on the bank of the East river yesterday.

WASHINGTON, Feb. 16.—The Democrats have been urged to consider the wool schedule before tackling sugar.

## Indicted Men Arrested.

INDIANAPOLIS, Feb. 15.—Thirty-nine arrests have been made in 19 cities. Among those arrested is Cal Ryan, president of the bridge worker's union. The department of justice says there was no evidence to connect Gompers, Mitchell or Morrison with the dynamiters.

WASHINGTON, Feb. 15.—The president signed the Arizona Statehood bill this morning. The governor will be inaugurated at 10 o'clock.

NANKING, Feb. 15.—Considering his work accomplished, Dr. Sun Yet Sen has stepped down. His resignation is a surprise to the people. When elected he declared he would resign when his task was completed, but even his closest friends would not believe him.

## Men Return to Work.

The longshoremen who left the employ of the Kahului Railroad some time ago, went back to work Thursday morning. A deputation representing the men waited upon Mr. Williams on Tuesday, and asked if they would be taken back. Mr. Williams assured them that they would be taken back and put to work wherever he could find room for them. They were given to understand they would be treated

the same as other men so long as they were willing to abide by the rules of the company. The company had a full gang of men at work loading the ships, and therefore none of the men will be put to work on the waterfront. With the strikers back working the railroad now has considerably over 300 men at work.

Dr. Raymond and Jim Coke made a flying trip last week. They arrived Saturday morning and returned Saturday evening.

## Opening More Land

Heirs of Late H. P. Baldwin Carry  
Out His Wishes.

Alexander & Baldwin have practically turned over to the land department of the government about a thousand acres of land adjoining the homestead lands at Haiku, leaving it to the public lands department to manage the opening of the lands. This unusual step is a result of plans considered long ago by the late H. P. Baldwin, and there are sentimental as well as other reasons why the present members of the firm are watching the scheme with unusual interest.

"As long ago as 1908 Mr. Baldwin had in mind the plan now being carried out by the settlement of homesteaders on this land," said J. P. Cooke. "There could hardly be a more favorable homesteading proposition, for the land is proved pineapple land, and J. D. Dole has offered a good marketing plan. The proposition has been all worked out very carefully and I am glad to know that Mr. Dole has seen his way to make a good offer for the product."

"The land department of the government, I understand, is willing to undertake the opening of the Alexander & Baldwin lands, taking the matter out of our hands. This is better than any other arrangement, for it places the settlers who may take our private lands on exactly the same basis as those who take public land. Carrying out plans cherished by Mr. Baldwin for many years, we stand ready to offer the lands. There are about a thousand acres in the tract to be opened. Of course, we stand the expenses of advertising, etc."

### WILL EXTEND RAILROAD.

The Kahului Railway Company has surveyors at work on an extension of its road from Paia in the direction of the new farms. It is planned to have the road extended within a year to the Haiku cannery site, which is only three miles from the land. Surveys will also be made beyond there, with a view to possible further extension.

Mr. Cooke says the homesteading enterprise at Haiku was one of the most interesting and important yet made here. "I cannot see any reason why these settlers should not make a success," he said, "and hope they will all do so. It should be realized, of course, that it will take some time to get any returns, and I hope that all the homesteaders have the capital to carry them through until they can realize on crops."

The banks here on Maui are willing to aid the new homesteaders in every way possible, that is consistent with conservative banking. As everyone with common sense knows, however, they have no intention of advancing money to homesteaders to the full valuation of the property, as one paper had it last week.

## Maui Racing Association.

The Maui Racing Association held their annual meeting in the Town Hall last Friday evening.

The old officers were elected with the exception of the Secretary. Mr. C. E. Meyers was elected to that office in place of Mr. J. J. Walsh, who was too busy to accept the office for another year.

## Loan Fund Commission

Meet and Hear Objections to Proposed  
Extensions.

Dr. J. H. Raymond and J. L. Coke as his attorney appeared before the Loan Fund Commission at its meeting Saturday to file an objection against the intention of the commission to put in an extension for a pipeline to Paia, which will draw the water away from Kula. Dr. Raymond contended the legislature specially provided an appropriation for an extension to the Kula pipeline, and that the money should be spent for that purpose.

Marston Campbell explained that the amount available for the pipeline extension is \$35,000, and that the estimated cost for the reservoir at Waiakamoi, with flumes and trails for extending the line to Puohokamoa gulch is \$18,785. Dr. Raymond said since the legislature made an appropriation for an extension to the Kula pipeline a reservoir at Keokea would be proper in order to keep the pipeline supplied with water; that any proposition tending to divert the water from Kula, as it would be if the extension to Paia is laid, would be contrary to the legislative enactment. Mr. Campbell added that the commission had reconsidered letting the contract for water pipes for the Paia extension and had postponed the matter for forty days.

The commission also agreed to go right ahead with the proposed new school buildings, and bids will be called for at once.

## Luau and Dance.

The Puunene Athletic Club is planning a real novelty tonight. A luau and dance at Puunene is in itself inducement enough to draw a big crowd, but the novel idea of having the luau in the swimming tank will cause some people to gasp with astonishment, but they need not worry, it will be a tank without water, and if the weather is fine such an arrangement as the boys have planned, will be a genuine treat. After the luau a dance will follow in the club house.

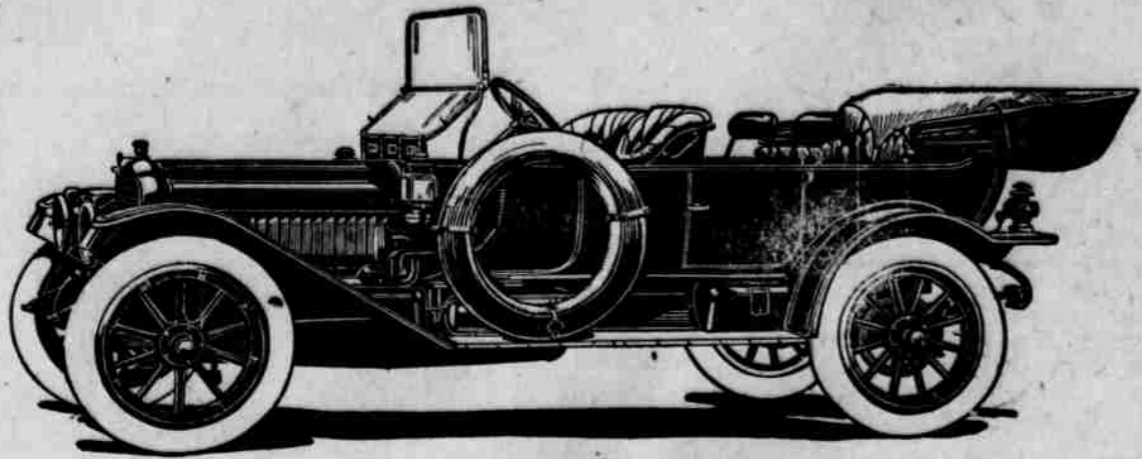
The proceeds of this affair is to go towards defraying the cost of the new practice barge. The boys are making great plans for turning out a champion crew next year, and everyone who attends the luau tonight can feel that they have contributed their mite towards helping the good cause, and incidentally boosting Maui.

## Teachers Meet.

The semi-annual meeting of the Wailuku-Makawao Teachers' Association will be held at the Paia school, Friday, February 23, at 10 a. m. The following program has been arranged and should prove both interesting and instructive.

The Relation of the School to the Home.....Mrs. Austin  
Class Demonstration in Arithmetic.....Miss Richardson  
Ideas Rather Than Words.....  
.....Miss Misener  
School Attendance.....H. M. Wells  
Geography.....Miss Hilen  
How to Make Physiology a Live Subject.....Miss Couch  
Vacations.....Mr. Bowman  
Recitation.....Miss Mauerman  
The Personality of the Teacher.....Mrs. Boyum

All interested in education are invited to attend.



THE WHITE "SIX"

A man doesn't have to be a mechanic to recognize the simplicity of the WHITE motor. If he is at all familiar with the appearance of motors he will be likely to think, looking at a WHITE, that some parts are missing. It is all there, however, and whatever parts have been eliminated result in its efficiency, simplicity and economy of operation. To the average man the WHITE motor is the most attractive part of the car; because its probability to need repairs is minimized, and, if it does need adjusting its construction is not so bewildering that he cannot make minor repairs himself, however little he may know of mechanics.

Five Important Features of White Motors

First of all, the four cylinders are cast en bloc—that is in one piece. This construction gives a rigidity to the crank case and keeps the bearings in alignment.

The cylinders each have a three and three-fourth inch bore and five and one-eighth inch stroke. The stroke is very long in proportion to the bore, resulting in increased power with less effort, which means maximum efficiency and gasoline economy.

There are four forward speeds, with direct drive on the third, which means a speed for every condition, giving greater road efficiency, and making it unnecessary to overtax the engine at any time.

WHITE motors are equipped with a honeycomb radiator in which the cooling surface is practically twice that of an ordinary kind. This radiator is the most efficient of which we know, and, because of its high cost, is used only in the better grade of cars.

A double oiling system is used. After lubricating the connecting rod bearings, the oil drops into the crank case, where it is used in the regular splash system. Besides being a very effective means of lubrication, the economy of using the oil twice is apparent. The crank shaft casing and the side plates on the motor, which when removed make the crank shaft accessible, confines the oil to the inside of the motor, preventing a general besmearing with oil which would otherwise occur.

**VOLCANO STABLES & TRANSPORTATION CO., LTD.**

AGENTS HILO, HAWAII



"I have lost a dollar."  
"Here is another one. Now dry your tears."  
"I can't afford to. Boo, boo! The suckers are too thick. You're the fourth one."

Not Material.

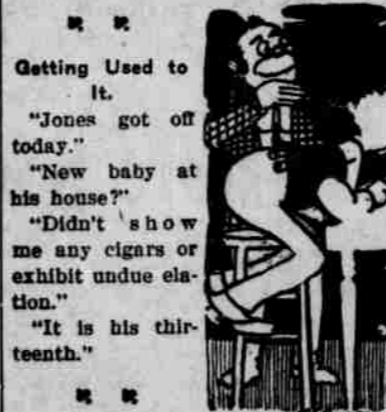


"Prisoner, have you anything to say why sentence should not be passed?"  
"Judge, you had a mother once."  
"Yes, and I have her yet. Ten dollars and costs. Call the next case."

Not a Turner.



"Tommy?"  
"Yessum."  
"If any one should smite you on the right cheek what should you do?"  
"Me?"  
"You, Tommy?"  
"Hand him an uppercut."



Variable; turning to light.



"John, do you love me as much as when we were married?"  
"Oh, much more."  
"How could you love me any more?"  
"See how much I have invested in you!"

**ORDERS FOR  
Rexall Remedies**

Amounting to Five Dollars and accompanied with cash will be delivered to any port on Maui free.

**Benson, Smith, & Co., Ltd.**

HONOLULU



**We Sell These.**

You want the best. Are you ready for it this season?

We are prepared as never before to give you what you want in vehicles and harness. There is nothing superior to what we are showing, in taste, style and service. Absolute honesty in make and material. You will agree when we tell you

**IT'S THE FAMOUS  
Studebaker Line  
WE CARRY.**

No matter what you want—if it's a harness or something that runs on wheels, we've got it or will quickly get it.

Come in and figure with us. Everybody knows the place.

**DAN T. CAREY**

WAILUKA, MAUI, T. H.

P. S. The Studebaker nameplate on a vehicle is its guarantee. Don't forget this.

This Space for

**THE LAHAINA STORE**

**THE HENRY WATERHOUSE TRUST CO. Ltd**

BUYS AND SELLS—REAL ESTATE, STOCKS & BONDS

WRITES FIRE AND LIFE INSURANCE

NEGOTIATES LOANS AND MORTGAGES

SECURES INVESTMENTS

A List of High Grade Securities mailed on application

CORRESPONDENCE SOLICITED

HONOLULU, HAWAII

P. O. Box 346

**PAPER**

OF EVERY DESCRIPTION

**PAPER BAGS . . . STATIONERY**

**The Largest Exclusively Paper House in the Territory.**

**American-Hawaiian Paper and Supply Co., Ltd.**

CORNER FORT AND QUEEN STREETS  
HONOLULU

**GEO. G. GUILD, Vice Pres. and Mgr.**

**Sweeping Offer**

**YOU CANNOT DUPLICATE IT!**

The MAUI NEWS combination will put enough reading matter into your home to keep the family busy.

We will supply you with any combination of Magazines you wish, in connection with the MAUI NEWS, at a less price than you can get them from the publishers. We treat old subscribers and new ones alike. The only thing we require is that the money comes with the order. Here is three of our combinations:

**McClure's Magazines,  
Woman's Home Companion,  
Review of Reviews,  
MAUI NEWS, all one year for . . . \$ 5.75**

**Everybody's Magazine,  
Delineator,  
McClure's,  
MAUI NEWS, . . . \$ 4.75**

**Review of Reviews,  
Youth's Companion,  
MAUI NEWS, . . . \$ 5.25**

Any reader wishing a certain Magazine, will be supplied with it in connection with the MAUI NEWS at a reduced price. This offer applies to anyone. It does not matter whether they are old subscribers or new ones, all they have to do is send in the money.

In addition to the above offer the "Youth's Companion" and the "Review of Reviews" will be sent free for the balance of the year. Subscriptions all dating from January 1, 1912.

**Annual Report of the Receipts and Expenditures of the County of Maui for the Fiscal Year 1911.**

RECEIPTS:	
Cash Balance, 1910	
Current Account	\$ 20,414.21
Road Tax Account	1,513.18
	21,927.39
COUNTY CLERK'S ACCOUNT.	
Bond premiums returned	15.28
HEALTH DEPARTMENT.	
Board of Health expense refunded	9,446.33
Malulani Hospital	2,504.00
AUDITOR'S OFFICE.	
Pay Roll overdrafts refunded	62.50
Unclaimed Treasury Warrants	26.40
TREASURY DEPARTMENT.	
Fees examining Chauffeurs	156.00
Hunting Permits	235.00
Licenses fees delinquent	26.00
Licenses fees general	16,515.18
Licenses fees liquor	4,385.00
Pounds & Estrays	22.00
Treasury overcash	10.21
Territory of Hawaii taxes	190,124.92
Water Rates Wailuku	4,726.77
Water Rates Lahaina	4,172.95
Water Rates Makawao	40.54
DEPARTMENT OF JUSTICE.	
Fines & Costs, Circuit Court	738.30
"    Wailuku	6,875.35
"    Makawao	3,773.10
"    Lahaina	1,738.25
"    Hana	1,643.00
"    Molokai	155.62
SHERIFF'S OFFICE.	
Fines & Costs collected in jails	1,206.43
Evidence money gambling cases	139.35
Registration on motor cars	47.00
WAILUKU DISTRICT OVERSEER.	
Garbage removal, etc.	412.50
Town Hall	35.00
Water Taps	15.00
Wailuku Fish Market	346.30
LAHAINA DISTRICT OVERSEER.	
Garbage & Sprinkling	295.25
Makawao District Overseer	10.00
Hana District Overseer	52.50
Molokai District Overseer	10.00
SPECIAL FUNDS	
Improvement Tax	23,885.32
Hunting Permits	420.00
School Fund	4,500.00
Road Tax Wailuku	12,237.00
"    Makawao	6,778.00
"    Lahaina	4,491.00
"    Hana	1,728.20
"    Molokai	576.00
	304,547.55
EXPENDITURES:	
Salaries Supervisors	\$ 2,991.90
Incidentals Supervisors	2,318.80
	5,310.70

Subsidy Militia	600.00
"    Fire Department	275.00
"    Wailuku Band	50.00
	925.00
Fire Station Lot Market Street	1,200.00
HEALTH & SANITATION.	
Salaries County Physicians	1,660.00
Salaries Food & Sanitary Inspectors	2,380.00
Salary District Nurse Kula	325.16
Support County Farm & Sanitarium	2,556.58
County Farm Improvements	2,050.17
Malulani Hospital operating room	42.96
Maintenance Malulani Hospital	5,701.22
Incidentals Sanitation	7,818.81
Support & Maintenance Indigents	117.00
Molokai Hospital	3,137.19
	25,789.09
COUNTY CLERK'S OFFICE.	
Salary County Clerk	1,500.00
Salary Deputy County Clerk	565.00
Salary Assistance Clerk	735.00
Incidentals County Clerk	25
Furniture & Office Supplies	1,884.41
Bond County Officers	518.79
Telephones & Wireless	3,063.55
Rent	1,442.85
Printing	2,037.95
Incidentals Registering voters	192.10
	11,939.90
FINANCE DEPARTMENT.	
Salary Treasurer	1,800.00
Salary Deputy Treasurer	1,140.00
Incidentals Treasurer	236.51
Examining Chauffeurs	117.50
Interests & Sinking funds	8,990.86
Expense Liquor Commission	581.50
Salary Auditor	1,800.00
Salary Deputy Auditor	1,140.00
Incidentals Auditor	153.00
	15,959.37
DEPARTMENT OF JUSTICE.	
Salary County Attorney	2,100.00
Salary Deputy County Attorney	1,500.00
Salary Clerk County Attorney	900.00
Salary Stenographer	900.00
Incidentals County Attorney	1,373.05
Salary District Magistrates	5,580.00
Expenses District Courts	277.23
Salary Circuit Court's Clerk	900.00
Salary Clerk and Stenographer	900.00
Expenses Circuit Court	961.52
Witnesses Circuit Court	850.80
	16,242.60
POLICE DEPARTMENT.	
Salary Sheriff	2,100.00
Salary Deputy Sheriffs	5,232.25
Salary Sheriff's Clerk	900.00
Jailors & Prison Guards	2,718.65
Pay of Police Wailuku	8,420.30
"    Lahaina	3,341.60
"    Hana	4,709.85
"    Molokai	3,364.15
"    Molokai	2,452.30
Detective Funds Wailuku	1,046.90
"    Makawao	160.15
"    Lahaina	79.30
"    Hana	200.30
"    Molokai	35.00
Coroners Inquest	294.25
Support and Maintenance Prisoners	4,689.12
Incidentals Sheriff	3,630.25
	43,374.37
DEPARTMENT PUBLIC WORKS.	
Salary Clerk Public Works	500.00
Salary County Engineer	1,012.50
Salary Clerk County Engineer	375.00

Incidentals County Engineer	438.47
Engineering Library	136.70
Salaries District Overseers	5,636.78
County Parks	1,023.94
County Buildings	2,388.45
Public Schools Wailuku	1,820.07
"    Makawao	2,136.04
"    Lahaina	766.44
"    Hana	1,045.21
"    Molokai	1,380.83
Moving Kaluaaha School	500.00
	7,648.59
Roads & Waterworks Wailuku	19,145.47
Reconstruction Roads Wailuku	2,298.40
Oiling Streets Wailuku	2,200.85
	23,644.72
Roads, etc., Makawao	18,381.79
Relocating Roads Makawao	1,026.85
Oiling Paia Roads	3,267.15
Belt Road Makawao	1,671.37
	24,347.16
Roads & Waterworks Lahaina	13,344.50
Reconstruction Roads Lahaina	4,582.56
Oiling Roads Lahaina	1,235.85
Belt Road Lahaina	5,247.09
	24,410.00
Roads, etc., Hana	8,429.84
Reconstruction Roads Hana	5,872.43
	14,302.27
Roads, etc., Molokai	2,286.89
Reconstruction Roads Molokai	2,496.05
	4,782.94
Extension Waterworks Wailuku	1,539.70
Water Investigation Hana	89.50
Branches Kula Pipe Line	5,403.95
Belt Road Surveys	1,185.95
Stock and Machinery	9,884.85
	128,751.47
CASH BALANCE,	
Current Account	47,050.12
Improvement Tax Fund	23,885.32
Road Tax Account	5,561.44
Hunting Fund	420.00
School Fund	65.56
	76,982.44
TREASURY PAYMENTS:	
Outstanding Warrants	7,737.32
Warrants drawn 1911	240,501.64
Interest sinking fund	8,990.86
Warrants redeemed, 1911	224,133.17
Bond payments	8,990.86
Unpaid Warrants	24,105.79
	257,229.82
Wailuku, Maui, Jan. 24, 1912.	257,229.82

(Signed) CHAS. WILCOX, County Auditor.

When in need of an Automobile, either for pleasure or business, call up

**E. A. WATSON**  
MAUI STABLES.

# Home Insurance Co. OF HAWAII, Limited

**CAPITAL STOCK \$100,000**

CECIL BROWN	President
J. A. McCANDLESS	Vice-President
NORMAN WATKINS	Secretary
ZENO K. MYERS	Treas. and Mgr.
F. D. LOWRIE	Auditor
A. S. WILCOX	Director
CHU GEM	Director

We handle all kinds of Insurance

We Represent Over \$50,000,000 of Re-Insurance Protection

Good Agents wanted in every District

FIRST NATIONAL BANK OF WAILUKU, Agents for Maui

# THE MAUI NEWS

Entered at the Post Office at Wailuku, Maui, Hawaii, as second-class matter

A Republican Paper Published in the Interest of the People  
Issued Every Saturday.

Maui Publishing Company, Limited.  
Proprietors and Publishers

SUBSCRIPTION RATES, IN ADVANCE \$2.00 per Year, \$1.25 Six Months  
\$2.50 per year when not in advance

Chas. C. Clark Editor and Manager  
SATURDAY, FEBRUARY 10, 1912

## Arbitration Treaties.

CHARLES C. HYDE in the North American Review, speaking in a general way, says the cause of peace has been so persuasively advocated by President Taft that it is unnecessary to dwell upon the desirability of enlarging the scope of the existing treaties of 1908. One aspect, however, of the present movement deserves attention. It has not been the fear of war that has led statesmen in Europe and America to favor general agreements for the arbitration of grave differences. It has rather been a sense of the folly of war, if justice could be obtained without it. The experience of states within recent years has given solid proof that justice may be had by amicable as well as warlike means, even when controversies affect vital interests and national honor. The solution of the disputes concerning Behring sea, the Alaskan boundary, the North sea incident and the North Atlantic fisheries may be cited as instances. Justice has been obtained in these and numerous other cases because of the existence of a body of law generally accepted by the family of nations, the rules of which have been well known to the courts, and upon which, therefore, aggrieved states have found it possible to rely. According to The Hague convention for the pacific settlement of international disputes of 1907 respect for law is said to be the basis of international arbitration. It is respect for law as a vital force regulating the conduct of states and determining the propriety of their acts that is the foundation of the new treaties. Arbitration is contemplated, not with a view to delegating to neutral judges the task of compromising differences on grounds of expediency, but for the adjustment of controversies susceptible of decision by the application of those legal principles that the signatory powers have themselves labored to establish. The signing of the new conventions is an expression of the faith of the governments of Great Britain and France, as well as of President Taft, in the efficiency of these principles for the adjustment of grave controversies that may endanger peace. It is, furthermore, a token of confidence in the pledge of the signatory powers to have recourse to arbitration when such differences arise.

Marston Campbell seems to be peeved because the Maui Chamber of Commerce demanded action. He is reported as declaring that "he will show them." That is just what the people of Maui want.

## I. O. O. M.

(By Chas. F. Lund.)

Our lodge like our country, finds its strength and stability in the fact that its memberships is composed of the common people.

On every hand is heard the great success and growth of the Loyal Order of Moose.

We are living in an area of intense organization. Nearly every eligible person belongs to one or another association. Yet in spite of the fact that the Loyal Order of Moose is comparatively in its infancy outside of the States, and has had to contend with opposition and competition from older organizations, it has advanced with such giant strides that already it is denominated one of the largest fraternal and beneficial orders in existence. Never in the History of Honolulu has any Secret or Fraternal Order had such a wide spread influence or met with such enthusiastic support as the Loyal Order of Moose. More than 1200 members have already affiliated with the Order and it is expected that the memberships will surpass the 1500 mark before long.

There is a reason, and this reason is apparent to every member of the order.

Its motto is: "Purity, aid and protection," and this motto is lived up to in the daily experience of the order, officers and members alike not only preach but practice the virtues extolled in the Ritual; they live and act fraternally.

In the lodges of the Loyal Order of Moose is found true charity and benevolence, not that kind which climbs to the roof and prates of good deeds done, but that silent christian charity which "lets not its left hand know what its right hand doeth."

Fraternity in the broad sense of the word is to aid and assist your brothers with your advice and subsistence, to speak a good word for him, to warn him of any danger that you know may befall him.

Fraternity in the Loyal Order of Moose means all this and more, it means that you must be true and loyal to your self, your home, your country and your order, and when you meet a Moose that does this

greet and treat him as a brother, for on this great principle of Fraternity we stand. A kind word a pleasant smile or a bit of good advice are never amiss.

The Loyal Order of Moose was organized in Louisville, Kentucky, April 12th, 1888. It was founded by some of the most prominent business and professional men of that city. Dr. John H. Wilson was instrumental in the foundation of the order and to him is due the credit for the first Moose Ritual. Some beautiful lectures of the original Ritual are still in use.

The growth of the lodge in its early history was slow, and not until the 18th annual convention at Crawfordsville, Ind., in 1906, did the lodge assume a natural growth. At that time James J. Davis of Pittsburg, Pa., was given the toga of supreme organizer, and since then its growth has been a rapid one.

It is estimated that 25,000 members of the order attended the 22nd annual convention at Baltimore, held in August of last year. One thousand one hundred and fifty-four delegates from all over the States assembled there at that time.

The Loyal Order of Moose is purely a Fraternal organization, it carries no insurance, but pays a benefit of seven dollars a week together with a funeral benefit, each subordinate lodge provides for free medical attention to members and their families.

One of the important things of the Loyal Order of Moose is the athletic features. To show their interest, and to give encouragement, the Supreme Lodge, at the last annual convention held in Baltimore gave away \$7,500 in cash prizes to the Moose Athletes.

It is the aim of every chapter of this order to have in connection with their well equipped club room, a gymnasium, where young and old alike can participate in gymnastic sports, and where those interested in boxing and wrestling or other sports, may prepare themselves, not only for the entertainment to be given at each regular meeting, but for the future.

College buildings located at Muncie, Ind., valued at \$125,000, have been given to the lodge, free.

Thorough business and industrial courses will be taught, as well as a four-year college course. The boys in the industrial department will be paid when learning their trades at full union rates.

The Loyal Order of Moose does not tolerate interference with one's religious or political views. Political or sectarian discussions are not countenanced in the lodge rooms, but Patriotism, Obedience to Law, Equal Rights and Respect for the opinions of others insisted upon. As one enters the lodge, so he departs—a free man.

The organizing Headquarters of the lodge is in the Maui Hotel, where we will be glad to meet and explain in detail all particulars of the lodge.

## Electricity in Sight.

Slowly but surely the work of establishing an electric light plant in Wailuku is progressing, and now that a definite contract has been signed by the company and the supervisors, providing for street lighting, the work of putting up the pole line and wiring can go ahead rapidly. The contract for setting the poles was let this week to the Maui Stables, and bids are called for, for putting in a foundation and building for the new machinery which is to arrive shortly. This machinery has been coming by way of the Isthmus, and was shipped from New York on the 15th of December. The contractor who gets the work of putting in the foundation will be obliged to start at once on the work, and it is expected to have it completed in less than a month. To a representative of the MAUI NEWS Mr. Bond, who is the moving spirit in this enterprise, said that no matter how pessimistic the people may be regarding the inauguration of an electric lighting system, it is coming, and coming as quickly as it is possible to get it in. He has promised the people that he will put in an electric plant, and he is going to do it, no matter what obstacles he has to overcome. There is no doubt but that the obstacles already overcome have been great. Now that this matter of electricity for Wailuku and Kahului has become almost a fact, it might be well for the citizens to get together and prepare for some fitting celebration when the time comes to first turn on the juice.

## A Favorite in Washington.

Princess Kalaniana'ole, the charming wife of the Delegate from Hawaii, has become a great social favorite during her residence in Washington, and by reason of her gracious personality has become a leader among the Congressional social set. A pretty instance of the affection in which she is held by the Congressional ladies occurred recently just before she left for Hawaii. The Prince and Princess make their home while in Washington at the Dewey Hotel, which is also the temporary home of a large number of Representatives and their families. One of the delightful customs at the Dewey is to devote each Sunday evening to an informal concert, guests of the hotel and their families making up the participants. These affairs are very informal but correspondingly delightful inasmuch as there is no little musical talent among those who usually take part. Princess Kalaniana'ole has several times favored with some of her beautiful Hawaiian songs and was again called upon on this occasion. She responded by singing a number of fascinating ballads, including the exquisite "Like no a Like" to her own accompaniment on the banjo. As usual she received enthusiastic applause, but was exceedingly surprised when, upon the conclusion of her songs, Mrs. Crumpacker, the wife of the Representative from Indiana, arose and in a few appropriate words voiced the sentiment of the entire assemblage in her regret at the Princess's departure and her

expression of the esteem and affection in which the charming Hawaiian lady is held by her hosts of friends. After Mrs. Crumpacker had paid this pretty tribute to the Princess, all present joined in singing "God be With You Till We Meet Again."

Before leaving the city the Princess was showered with magnificent floral tributes from her many Washington friends. — *Hawaiian Star.*

## BY AUTHORITY.

Sealed tenders will be received by the Board of Supervisors of the County of Maui at the office of the County Clerk, Wailuku, Maui, until 5:00 o'clock P. M. Thursday, March 7, 1912, for furnishing pipe and fittings and water meters to be delivered on Kahului wharf.

Specifications and list of pipe and fittings and water meters required, and other information may be had upon application to the County Clerk.

Tenders must be made on forms furnished by the County Clerk, and accompanied by a certified check in an amount equal to 5% of tender made payable to the order of Wm. F. Pogue, Chairman of said Board.

The Board of Supervisors reserves the right to increase or decrease the amount not to exceed 30%, and also the right to reject any and all bids.

WM. FRED. KAAE,  
County Clerk.

Feb. 17, 24, Mar. 2.

Sealed tenders will be received by the Board of Supervisors of the County of Maui at the office of the County Clerk, Wailuku, Maui, until 5:00 o'clock P. M. Thursday, March 7, 1912, for furnishing the following supplies to be delivered to the Malulani Hospital, or the Wailuku Jail, District of Wailuku, or the Lahaina Jail, District of Lahaina:

Poi, Salt Salmon (Red), Brown Sugar, Butter, Coffee (Ground), Potatoes, Sagoon Pilot, Hawaiian Salt, Sago, Tapioca, Oysters, Raisins, Currants, Baking Powder, Cream of Wheat, Rice (Japan), Rice (Hawaiian), Lucky Oats, Assorted Fruits, Jams, Prunes, Onions, Codfish, Peas (Canned), Corn (Canned), Olive Oil, Condensed Milk, Pearl Barley, Germea, Table Salt, Shaker Salt, Crackers, Ivory Soap, Bon Ami, Laundry Soap, House Brooms, Yard Brooms, Mop Heads, Mop Handles.

No tender will be entertained unless accompanied by a certified check in the amount of Fifty (\$50.00) Dollars made payable to the order of Wm. F. Pogue, Chairman of the Board of Supervisors.

The Board of Supervisors reserves the right to reject any and all bids.

WM. FRED. KAAE,  
County Clerk.

Feb. 17, 24, Mar. 2.

## Advertisement.

Sealed tenders will be received by the Island Investment Company, Limited, at their office, at the corner of Main and High Streets, in Wailuku, up to twelve o'clock noon, Saturday, March 2, 1912, for the construction of power house building and engine foundations. Plans and specifications may be had at the office of the company in Wailuku, or Stangenwald Building Honolulu.

ISLAND INVESTMENT CO., LTD.

## AT AUCTION

Lots of 5 to 11 acres in the village of Makawao, Maui, suitable for grape culture and general farming. These lots will be sold by auction at 1 p. m. Saturday the 9th of March, 1912.

The auction will take place in front of the Catholic church in Makawao.

Terms: Half cash, the balance at one and two years with interest at 7 per cent.

Per order,

HALEAKALA RANCH.

## VENDA DE TERRAS EM LEILAO.

Em lotes de 5 a 11 alqueires (acres) na villa de Makawao, Maui. Bons terrenos para a cultura de uvas e outras culturas.

Trez lotes serao vendidos em leilao no dia 9 de Marco de 1912 a uma hora da tarde.

O leilao tera lugar em frente da igreja Catholica de Makawao.

Termos da venda, metade do dinheiro a vista e o resto em um e dois annos com juro a 7%.

Por ordem da,

HALEAKALA RANCH.

## FOR SALE.

One Model 10 Buick Runabout, in first class condition. Enquire

C. D. LUFKIN.

## Report of the Receipts and Expenditures of the County of Maui for Three Months Ending December 31, 1911.

RECEIPTS:	
CASH BALANCE.	
Current Account.....	\$ 60,713 41
Road Tax Account.....	11,366 60
School Fund Account.....	1,937 95
Hunting Fund Account.....	150 00
Sundry Realizations.....	194 47
Fines & Costs.....	6,339 08
Licenses.....	1,395 29
Malulani Hospital.....	550 50
Road Department Wailuku.....	164 25
Road Department Lahaina.....	84 00
Territory of Hawaii, taxes.....	58,239 04
Wailuku Fish Market.....	120 40
Water Rates Wailuku.....	1,477 45
Water Rates Lahaina.....	211 90
Water Rates Makawao.....	40 54
Hunting Fund Special.....	270 00
Improvement Tax Special.....	23,885 32
Road Tax Special Wailuku.....	923 00
" Makawao.....	254 00
" Lahaina.....	54 00
" Hana.....	74 00
" Molokai.....	78 00
	94,355 24
	168,523 10
EXPENDITURES:	
Supervisors' salaries & incidentals.....	1,674 80
Subsidies, militia & fire department.....	275 00
COUNTY CLERK'S OFFICE	
Salary County Clerk.....	600 00
Salaries Deputy & Clerk.....	615 00
Furniture & office supplies.....	643 44
Bonds County officers.....	25 00
Telephones & Wireless.....	1,006 50
Rents.....	772 00
Printing.....	730 10
Incidentals registering voters.....	106 50
	4,498 54
HEALTH DEPARTMENT.	
Salaries County Physicians.....	560 00
Salary district nurse, Kula.....	325 16
Salaries Food & sanitary inspectors.....	780 00
Support & maintenance indigents.....	43 00
Malulani Hospital operating room.....	42 96
Malulani Hospital maintenance.....	1,949 98
County Farm improvements.....	1,906 04
Support County Farm & Sanitarium.....	1,000 00
Incidentals sanitation.....	200 10
Molokai Hospital.....	925 94
	7,733 18
FINANCE DEPARTMENT.	
Salaries Treasurer & deputy.....	1,100 00
Incidentals Treasurer.....	182 30
Expenses Liquor Commission.....	431 50
Salaries Auditor & deputy.....	1,100 00
Incidentals Auditor.....	30 55
Interest & sinking funds on bonds.....	7,240 86
	10,085 21
DEPARTMENT OF JUSTICE.	
Salary County Attorney.....	800 00
Salaries assistants.....	1,200 00
Incidentals County Attorney.....	313 50
Salaries District Magistrates.....	1,960 00
Expenses district courts.....	85 70
Salaries 2nd Circuit Court.....	1,200 00
Expenses 2nd Circuit Court.....	917 16
Witnesses 2nd Circuit Court.....	135 60
	6,611 96
POLICE DEPARTMENT.	
Salary Sheriff.....	800 00
Salaries deputy sheriffs.....	1,960 00
Salary sheriff's clerk.....	300 00
Jailors & prison guards.....	897 90
Police pay rolls.....	7,815 05
Detective Funds.....	580 50
Coroner's Inquest.....	143 50
Support maintenance prisoners.....	1,492 07
Incidentals sheriff.....	1,377 38
	15,336 40
DEPARTMENT PUBLIC WORKS.	
Salaries district overseers.....	1,880 00
County buildings & parks.....	735 11
Public schools.....	2,843 24
Roads & Waterworks Wailuku.....	10,630 78
Roads & Waterworks Makawao.....	9,800 06
Roads & Waterworks Lahaina.....	7,561 11
Roads etc. Hana.....	4,357 90
Roads etc. Molokai.....	1,427 31
Extension waterworks Wailuku.....	334 71
Water Investigation Hana.....	40 00
Branches Kula pipeline.....	1,013 76
Stock & machinery.....	4,621 69
	45,295 67
	91,540 76
CASH BALANCES.	
Current Account.....	47,050 12
Improvement tax.....	23,885 32
Road tax special.....	5,561 44
Hunting Funds.....	420 00
School Funds.....	65 56
	76,982 44
	\$168,523 20

CHAS. WILCOX,  
County Auditor.

Feb. 10, 17.

## Get Ready For Christmas:

New Photographic Outfits and Materials Received.  
Handsome Designs and Shapes in Woodwork for Burning. Beautiful-Colored Leathers. Island Orders Promptly Filled.

HONOLULU PHOTO SUPPLY CO.  
"EVERYTHING PHOTOGRAPHIC"

**Orpheum Improvements.**

The management of the Orpheum Theatre are always spreading themselves in an endeavor to please their patrons. The theatre has been closed since Monday evening, and when it is opened tonight every seat in the house will be a good one. The back seats have been elevated so those in the rear will have just as good a view as those in front.

But for a genuine innovation in Moving Pictures, Mr. Thompson has proved that he is equal to any emergency when he transferred his Electric light pictures and all the paraphernalia to the residence of Mr. E. H. Hart last Wednesday night. Using his spacious lawn for an open-air theatre; beautifully lit up with electric light, where a few friends had met to celebrate Mr. Hart's birthday, amongst whom was his father-in-law Mr. Love who even at his advanced age had never seen moving pictures. It proved to be a genuine surprise. This ideal method of entertaining your friends at your own residence with electric and interesting pictures should prove a strong drawing card in the social engagements of the people of Maui.

**Republican County Committee**

The Republican county committee held a meeting this week, and discussed plans for party organization on Maui, preparing for the fall elections.

It was decided to favor sending a Taft delegation to the National Convention.

The matter of selecting a suitable candidate to receive the Republican nomination for Chairman of the Board of Supervisors was discussed, and while nothing definite was decided upon the qualifications of different men were discussed. W. F. Pogue, D. C. Lindsay, Capt. Bal, Sam. Keliinoi and Chas. Wilcox were all mentioned, but the candidate will have to be picked later.

**Plan of Battle of Flowers.**

The battle of flowers that will end the big Washington's birthday Floral Parade will add the last touch to the day's carnival spirit. It will be a spirited innovation in the Floral Parade program, and likely to be a repeated feature in other years.

The battle will take place on Punahou street between Beretania and Wilder avenues, and will not start until after the Floral Parade itself is all over, the judging finished and the cars ready to be dismantled. The entire street from Beretania to Wilder avenue will be brilliantly decorated and space left for cars to be banked on the side so that every occupant can watch the battle as it progresses.

It will be a sort of go as you please affair, and anybody can enter, whether or not his car was in the Floral Parade itself, so long as it is dressed out in flowers or colored bunting. However, Director-General Wall is anxious that every decorated car be entered in the Floral Parade.

A number of inquiries have been received as to the program after the cars leave Alexander Field. It is planned to make the awards of prizes within a few minutes after the judges have finished their work so that all the cars carrying spectators, as well as those who have entered the parade, may leave Alexander Field at once.

Floral Parade matters generally speaking are progressing faster than they were at a corresponding time last year. Admission tickets for the Colonial ball will be placed on sale within a short time. The tickets will be \$1.50, each entitling a lady and gentleman to the privileges of the floor.

Tom Birmingham who was with E. O. Hall & Son before he went to Australia, is back on the old trail again, but this time he is traveling for the Von Hamm Young Co.

**Locals**

Mr. Edmund Hart went to Honolulu last night on the Mauna Kea.

Harry Rosenberg was on his regular Maui trip this week. He left on the Mauna Kea last night.

Work has been begun on a new operating room for the Malulani hospital. When this is completed it will add greatly to the efficiency of the institution.

The Woman's Guild of the Church of the Good Shepherd will hold a Sewing Meeting at the residence of Mrs. C. C. Campbell, Puunene, on Wednesday, February 21st, at 2:30 p. m.

Mr. Robert Bond, President of the Island Investment Company came over from Honolulu on the Mauna Kea Tuesday. He is looking after the new electric lighting plant which his company is installing here.

Mrs. Harvey and her little daughter arrived on the Mauna Kea Tuesday. They will spend a couple of months at Olinda in an endeavor to bring the bloom of health back to the face of the little girl, who has been quite ill.

Four thousand three hundred tons of sugar and 4500 cases of pineapples were put about the Missouriian in three days this week. In addition to this three lighter loads of freight were unloaded.

Mr. J. N. S. Williams in company with Mr. Pogue and Mr. Harvey went over the wooden pipe of the Kula pipe line this week, to examine that part of the line and determine whether it is holding water since the new bands were put on.

Three cruisers of the fleet passed Lahaina the other day. When they were sighted the whole population flocked to the waterfront. The Japanese youngsters immediately began building forts in the sand along the beach, and in some instances planted the Japanese flag on top.

Honolulu has its Floral Parade, but Maui has a Masquerade Ball, the first given in years. It is to be on one of the best floors on Maui—the Wailuku Gymnasium, where the dances in the past have been so popular. The tickets will be only fifty cents apiece. Get your suit early, and don't forget to get your ticket. The patronesses will be announced later.

Mr. W. Dingle who has done such an excellent job on the Puunene alleys is now putting the Wailuku alleys into first class shape. As soon as he has finished his work, a bowling tournament of twenty games will be run off. The men winning the three highest averages will be given prizes. All who wish to get in on the tournament who are not already members of the gymnasium should at once see Mr. W. H. Dingle, who is in charge.

The Maui ministers meeting was held on Thursday, at the Paia Hawaiian Church. There was not the usual large attendance, because the Kula men did not come. The drought there has so affected their horses. The usual programs of these meetings was followed out. The lunch was served by the ladies of the church. The committee of nine met afterwards and decided that the next association meeting should be held at Lahaina, on Mar. 20th.

Arrivals at Maui Hotel: C. P. Beebe, Portland, Ore.; Louis R. Wallace, Morence, Arizona; Miss A. M. Pendergast, Boston; S. V. Chandler, Knoxville, Tenn.; J. C. Penny, Queensland, Australia; M. C. Meyer, Chicago, Ill.; Thos. A. Birmingham, A. L. Gurrey, H. Rosenberg, J. L. Coke, Marston Campbell, Thos. A. O'Brien, Chas. F. Lund, James B. Melton, Dr. J. H. Raymond, Eben P. Low, Wm. Knight, Robert E. Bond, Honolulu; E. J. Lord, A. A. Wilson, Hilo.

**The Haiku Extension.**

The contract for building the Haiku extension of the railroad has been given to Wilson and Bauman. Work will begin on this part of the road on March 1, and it is expected it will be completed in six months.

**Notice of Stockholders Annual Meeting.**

The annual meeting of the stockholders of the Maui Publishing Company, Limited, will be held in the office of D. H. Case, on Thursday, February 29, 1912, at 3:00 P. M.

D. H. CASE,  
Secretary  
Feb. 17, 24.

# Kahului Railroad Co.

**MERCHANDISE DEPARTMENT****DEALERS IN****Gasoline and Distillate in Drums****ENROUTE**

A large consignment of the following:

Doors, Sash, Glass, Barol, Oak, Roofbestos, Galvanized Corrugated Iron, Galvanized Pipe and Fittings, Galvanized Fence Wire, Galvanized Barbed Wire, National Farm Fence, Stretchers for Woven Fence, Plain Galvanized Iron, Gutters and Accessories, Galvanized Ridge Roll, Redwood Posts and Battens.

1 Cargo Northwest Lumber in February.

Cargo Northwest Lumber in April.

**Kahului Railroad Co.****Merchandise Department**

# DELINQUENT TAX LIST 1911.

Second Taxation Division, Territory of Hawaii.

In accordance with Section 1268, Revised Laws of Hawaii, as amended by Section 1 of Act 89 S. L. 1905, the following list of Delinquent Taxpayers is hereby published, comprising Taxes for the year 1911 remaining unpaid on Dec. 31, 1911 including 10 per cent. Penalty and Advertising Costs. Interest at the rate of 1 per cent. per month on Income and Special Income Taxes and 10 per cent. per annum on all other Taxes, not included.

WAILUKU DISTRICT.		Income Tax.		Special Income Tax.		DISTRICT OF MAKAWAO.		Income Tax.		Special Income Tax.		DISTRICT OF HANA.		Income.		All Other Taxes.	
Ah Puna, Gdn.	2 70	Widemann, Mrs. Helen Parker	6 00	Wong In	6 00	Achuna Akina	19 85	Alkai, S.	12 75	Anderson, A. T.	7 10	Akai, S.	12 75	Bethe, Herman	3 75	Alkai, S.	12 75
Ah Kau, W.	1 60	Yoshida, Keichi	6 55	Ah Su Lum Yum Mrs.	7 10	Ah Leong	3 80	Holani, J. Kalewe	15 52	Asahi Fishery Co.	7 10	Holani, J. Kalewe	15 52	Gienn, Jno.	5 57	Holani, J. Kalewe	15 52
Ah Le, Dang Lock	1 60	Yasumori, C.	17 00	Ah Siu Mrs.	11 50	Mahoe, P. Kalel	1 04	Hucwa, S. Nauauo	2 48	Bunker, J. K.	7 70	Kahana, Est.	2 70	Roendahl, K. W. H.	3 80	Holani, J. Kalewe	15 52
Akuna, G.	60 00	Yamashta, Yohaahiro	2 70	Alana Est.	4 35	Murakami	5 67	Hooillamanu	1 38	Carrillo, Mrs. Mary	12 60	Kido	2 70	Unknown owner land at Hao-u	6 80	Hooillamanu	1 38
Asahi Fishery Co. No. 1	20 30			Akuna, G.	28 76	Matsuko	4 25	Hana Church	2 99	Conway, Mrs. Mary Ann	7 10	Kitoda	3 80	Unknown owner Int. land at	2 70	Hooillamanu	1 38
Ah Kee	20 30			Ah Luna	2 70	Mukul	11 50	Hana, Pupuhl	3 58	Caswell, Mrs. Kenhula	2 70	Komang	9 30	Kapohue Pt. 2547	2 70	Hooillamanu	1 38
Bal, Mrs. Mary	57 70			Ah Pook	4 90	Matsumago, S.	16 66	Ullamako, Imi	35 22	Cockett, Jos.	29 65	Kusumoto	37 19	Kaleo, Jas. H. S.	7 10	Hooillamanu	1 38
Bunker, J. K.	3 52			Ah Sam J. C.	28 38	Mendonza, John	12 10	Kahoopl (w)	11 50	Cummins, Mrs. Rose	3 58	Kekapai, E. H.	48 63	Kauau, K.	15 26	Hooillamanu	1 38
Carrillo, Mrs. Mary	12 60			Apele & Meleana Hoopii	2 80	Mahua, B. Est.	8 86	Kule, K.	2 70	Flint, Susan Mrs.	2 70	Kekapai, E. H.	48 63	Kauau, K.	15 26	Hooillamanu	1 38
Conway, Mrs. Mary Ann	7 10			Awakoolani, J. D.	1 60	Mederios, M. S.	3 26	Kaleo, J. M.	2 70	Gohler, Nancy (Trustee)	4 90	Keelinoi, S.	12 38	Kauau, K.	15 26	Hooillamanu	1 38
Caswell, Mrs. Kenhula	2 70			Aea, Mrs. L. K.	2 58	Mederios, M. S.	3 26	Kaleo, J. M.	2 70	Hauki, Nancy (Trustee)	4 90	Kimura, S.	9 30	Kaleo, J. M.	2 70	Hooillamanu	1 38
Cockett, Jos.	29 65			Asui, Manuel	4 57	Miodik	6 00	Kaleo, J. M.	2 70	Hauki, Nancy (Trustee)	4 90	Landgraf, A. H.	37 19	Kaleo, J. M.	2 70	Hooillamanu	1 38
Cummins, Mrs. Rose	3 58			Abreu, J. F.	4 55	Mitson, Mary	9 30	Kaleo, J. M.	2 70	Heleikalani	20 30	Maul Drug Co., Ltd.	44 50	Kaleo, J. M.	2 70	Hooillamanu	1 38
Crawford, Kalei (Miss)	8 20			Akimoto	8 20	Nagel	11 50	Kaleo, J. M.	2 70	Hoe, R. P.	8 20	Oyama, Dr. M.	4 62	Kaleo, J. M.	2 70	Hooillamanu	1 38
Clark, Thos.	12 60			Abrew, J. Sr.	8 20	Namakoalani, Kealoa	8 20	Kaleo, J. M.	2 70	Hihl, Becky	4 35	Parker, Capt. E. H.	19 07	Kaleo, J. M.	2 70	Hooillamanu	1 38
Carter, A. W., Gdn A. T. K. Parker	6 00			Amano	11 50	Nakayama	8 20	Kaleo, J. M.	2 70	Kaae, Alice Mrs.	4 90	Shoemaker, H. I.	13 70	Kaleo, J. M.	2 70	Hooillamanu	1 38
Cardozo, Manuel	6 00			Ashiyama	12 71	Nakia, J. K.	3 80	Kaleo, J. M.	2 70	Kaae, Alice Mrs.	4 90	Wichert, C.	6 99	Kaleo, J. M.	2 70	Hooillamanu	1 38
Decker, Mrs. Dorcas	40 10			Kaillwa, D.	19 20	Nakamura	11 50	Kaleo, J. M.	2 70	Kaae, Alice Mrs.	4 90	Yasumori, G.	9 30	Kaleo, J. M.	2 70	Hooillamanu	1 38
Davis, Rose	2 70			Kaleleia, J. Kaina	3 80	Naukana	19 20	Kaleo, J. M.	2 70	Kaae, Alice Mrs.	4 90			Kaleo, J. M.	2 70	Hooillamanu	1 38
Daniels, W. H.	12 60			Kahookano, Mrs. Ellen	3 25	Nuema, Mrs. Hopoe	3 90	Kaleo, J. M.	2 70	Kaae, Alice Mrs.	4 90			Kaleo, J. M.	2 70	Hooillamanu	1 38
Fook Lin, Mrs. Keahemakani	3 25			Kahoolani, Mrs. Fannie	8 20	Notley, Mrs. David	2 92	Kaleo, J. M.	2 70	Kaae, Alice Mrs.	4 90			Kaleo, J. M.	2 70	Hooillamanu	1 38
Fitzgerald, J. C.	7 20			Kalahela, S. P.	7 10	Nawahineokalani, Est.	13 97	Kaleo, J. M.	2 70	Kaae, Alice Mrs.	4 90			Kaleo, J. M.	2 70	Hooillamanu	1 38
Fugimoto	11 50			Kahookano, Mrs. Ellen	3 25	Naola, Makali Est.	17 00	Kaleo, J. M.	2 70	Kaae, Alice Mrs.	4 90			Kaleo, J. M.	2 70	Hooillamanu	1 38
Ge Kung Tong Socy	19 75			Kahookano, Mrs. Ellen	3 25	Oelo	1 60	Kaleo, J. M.	2 70	Kaae, Alice Mrs.	4 90			Kaleo, J. M.	2 70	Hooillamanu	1 38
Halama, Kaleianneue (w)	7 10			Kahookano, Mrs. Ellen	3 25	Okamoto	11 50	Kaleo, J. M.	2 70	Kaae, Alice Mrs.	4 90			Kaleo, J. M.	2 70	Hooillamanu	1 38
Holstein, Thos.	11 50			Kahookano, Mrs. Ellen	3 25	Oshimura	7 10	Kaleo, J. M.	2 70	Kaae, Alice Mrs.	4 90			Kaleo, J. M.	2 70	Hooillamanu	1 38
Hihio, Mrs. J. K.	4 35			Kahookano, Mrs. Ellen	3 25	Paleka, K.	5 45	Kaleo, J. M.	2 70	Kaae, Alice Mrs.	4 90			Kaleo, J. M.	2 70	Hooillamanu	1 38
Hooana, Harry	8 75			Kahookano, Mrs. Ellen	3 25	Plohia, Jack	9 6	Kaleo, J. M.	2 70	Kaae, Alice Mrs.	4 90			Kaleo, J. M.	2 70	Hooillamanu	1 38
Hoomana	2 70			Kahookano, Mrs. Ellen	3 25	Poulo	11 50	Kaleo, J. M.	2 70	Kaae, Alice Mrs.	4 90			Kaleo, J. M.	2 70	Hooillamanu	1 38
Heleikalani	4 90			Kahookano, Mrs. Ellen	3 25	Papu, Est.	8 96	Kaleo, J. M.	2 70	Kaae, Alice Mrs.	4 90			Kaleo, J. M.	2 70	Hooillamanu	1 38
Haena, Mrs. Malie Pawale	2 70			Kahookano, Mrs. Ellen	3 25	Perreira, Est.	3 80	Kaleo, J. M.	2 70	Kaae, Alice Mrs.	4 90			Kaleo, J. M.	2 70	Hooillamanu	1 38
Hing Sec.	13 70			Kahookano, Mrs. Ellen	3 25	Pa, Mrs. M. Est.	5 45	Kaleo, J. M.	2 70	Kaae, Alice Mrs.	4 90			Kaleo, J. M.	2 70	Hooillamanu	1 38
Hirai, G.	7 10			Kahookano, Mrs. Ellen	3 25	Pico, M. P.	4 90	Kaleo, J. M.	2 70	Kaae, Alice Mrs.	4 90			Kaleo, J. M.	2 70	Hooillamanu	1 38
Ishizu, G.	11 50			Kahookano, Mrs. Ellen	3 25	Perreira, Ant.	4 90	Kaleo, J. M.	2 70	Kaae, Alice Mrs.	4 90			Kaleo, J. M.	2 70	Hooillamanu	1 38
Jackson, Mrs. Hans	3 80			Kahookano, Mrs. Ellen	3 25	Puupu, Est.	1 05	Kaleo, J. M.	2 70	Kaae, Alice Mrs.	4 90			Kaleo, J. M.	2 70	Hooillamanu	1 38
Kekuahilo, Uhane (w)	4 90			Kahookano, Mrs. Ellen	3 25	Pipili, Jane	7 10	Kaleo, J. M.	2 70	Kaae, Alice Mrs.	4 90			Kaleo, J. M.	2 70	Hooillamanu	1 38
Kekua, Iokama	4 90			Kahookano, Mrs. Ellen	3 25	Reis, Mrs. Eugenia K.	10 45	Kaleo, J. M.	2 70	Kaae, Alice Mrs.	4 90			Kaleo, J. M.	2 70	Hooillamanu	1 38
Kekua, D. Kupau	2 70			Kahookano, Mrs. Ellen	3 25	Rodriguez, John	13 70	Kaleo, J. M.	2 70	Kaae, Alice Mrs.	4 90			Kaleo, J. M.	2 70	Hooillamanu	1 38
Kapibe	4 90			Kahookano, Mrs. Ellen	3 25	Sakata	7 45	Kaleo, J. M.	2 70	Kaae, Alice Mrs.	4 90			Kaleo, J. M.	2 70	Hooillamanu	1 38
Kaanaana, Hao	15 90			Kahookano, Mrs. Ellen	3 25	Shimizu	7 75	Kaleo, J. M.	2 70	Kaae, Alice Mrs.	4 90			Kaleo, J. M.	2 70	Hooillamanu	1 38
Kaillwa, D.	9 30			Kahookano, Mrs. Ellen	3 25	Shibui, L. R.	8 8	Kaleo, J. M.	2 70	Kaae, Alice Mrs.	4 90			Kaleo, J. M.	2 70	Hooillamanu	1 38
Kaleleia, J. Kaina	3 80			Kahookano, Mrs. Ellen	3 25	Santos, John	2 92	Kaleo, J. M.	2 70	Kaae, Alice Mrs.	4 90			Kaleo, J. M.	2 70	Hooillamanu	1 38
Kahookano, Mrs. Ellen	3 25			Kahookano, Mrs. Ellen	3 25	Santa, Jose	11 50	Kaleo, J. M.	2 70	Kaae, Alice Mrs.	4 90			Kaleo, J. M.	2 70	Hooillamanu	1 38
Kahoolani, Mrs. Fannie	8 20			Kahookano, Mrs. Ellen	3 25	Saia, R.	1 60	Kaleo, J. M.	2 70	Kaae, Alice Mrs.	4 90			Kaleo, J. M.	2 70	Hooillamanu	1 38
Kalahela, S. P.	7 10			Kahookano, Mrs. Ellen	3 25	Sniffen, N. K.	7 10	Kaleo, J. M.	2 70	Kaae, Alice Mrs.	4 90			Kaleo, J. M.	2 70	Hooillamanu	1 38
Kahookano, Mrs. W. H.	8 20			Kahookano, Mrs. Ellen	3 25	Sato, T.	10 18	Kaleo, J. M.	2 70	Kaae, Alice Mrs.	4 90			Kaleo, J. M.	2 70	Hooillamanu	1 38
Kapohul, P.	2 15			Kahookano, Mrs. Ellen	3 25	Sasaki	6 00	Kaleo, J. M.	2 70	Kaae, Alice Mrs.	4 90			Kaleo, J. M.	2 70	Hooillamanu	1 38
Kalaniookala, Wm.	9 85			Kahookano, Mrs. Ellen	3 25	Souza, Flavio De	15 90	Kaleo, J. M.	2 70	Kaae, Alice Mrs.	4 90			Kaleo, J. M.	2 70	Hooillamanu	1 38
Kahi, Mary Solomon	3 25			Kahookano, Mrs. Ellen	3 25	Santiago, Gabriel	3 80	Kaleo, J. M.	2 70	Kaae, Alice Mrs.	4 90			Kaleo, J. M.	2 70	Hooillamanu	1 38
Kapula, Manu	3 25			Kahookano, Mrs. Ellen	3 25	Sing Loy Yoo	35 70	Kaleo, J. M.	2 70	Kaae, Alice Mrs.	4 90			Kaleo, J. M.	2 70	Hooillamanu	1 38
Kapewa, Kamala	2 15			Kahookano, Mrs. Ellen	3 25	Sniffen, Laika E.	8 20	Kaleo, J. M.	2 70	Kaae, Alice Mrs.	4 90			Kaleo, J. M.	2 70	Hooillamanu	1 38
Kapewa, Emily	2 15			Kahookano, Mrs. Ellen	3 25	Sholtz, F. Est.	11 50	Kaleo, J. M.	2 70	Kaae, Alice Mrs.	4 90			Kaleo, J. M.	2 70	Hooillamanu	1 38
Kahakua (k)	4 35			Kahookano, Mrs. Ellen	3 25	Tam See & Co.	4 18	Kaleo, J. M.	2 70	Kaae, Alice Mrs.	4 90			Kaleo, J. M.	2 70	Hooillamanu	1 38
Kahala, Wm.	2 15			Kahookano, Mrs. Ellen	3 25	Tong Lee	5 45	Kaleo, J. M.	2 70	Kaae, Alice Mrs.	4 90			Kaleo, J. M.	2 70	Hooillamanu	1 38
King, Mrs. Mary	5 45			Kahookano, Mrs. Ellen	3 25	Toyama, I.	4 46	Kaleo, J. M.	2 70	Kaae, Alice Mrs.	4 90			Kaleo, J. M.	2 70	Hooillamanu	1 38
Kawahoa, Mrs. Mookkeahi	46 70			Kahookano, Mrs. Ellen	3 25	Tavares, M. M. Jr.	13 81	Kaleo, J. M.	2 70	Kaae, Alice Mrs.	4 90			Kaleo, J. M.	2 70	Hooillamanu	1 38
Keenu, A. E.	13 70			Kahookano, Mrs. Ellen	3 25	Takahashi	6 00	Kaleo, J. M.	2 70	Kaae, Alice Mrs.	4 90			Kaleo, J. M.	2 70	Hooillamanu	1 38
Kahoele, Mrs. Likapa	23 05			Kahookano, Mrs. Ellen	3 25	Tagushi	18 10	Kaleo, J. M.	2 70	Kaae, Alice Mrs.	4 90			Kaleo, J. M.	2 70	Hooillamanu	1 38
Kaushine, Keaka (w)	3 80			Kahookano, Mrs. Ellen	3 25	Tahara	6 00	Kaleo, J. M.	2 70	Kaae, Alice Mrs.	4 90			Kaleo, J. M.	2 70	Hooillamanu	1 38
Keanini, Mrs. Melemele	15 90			Kahookano, Mrs. Ellen	3 25	Takahashi	11 50	Kaleo, J. M.	2 70	Kaae, Alice Mrs.	4 90			Kaleo, J. M.	2 70	Hooillamanu	1 38
Kamaka, Jno. A. K. Est.	2 15			Kahookano, Mrs. Ellen	3 25	Takashi	11 50	Kaleo, J. M.	2 70	Kaae, Alice Mrs.	4 90			Kaleo, J. M.	2 70	Hooillamanu	1 38
Kamaka, Julia Keliwahine	3 80			Kahookano, Mrs. Ellen	3 25	Takashi	11 50	Kaleo, J. M.	2 70	Kaae, Alice Mrs.	4 90			Kaleo, J. M.	2 70	Hooillamanu	1 38
Kaehele, Wm.	10 40			Kahookano, Mrs. Ellen	3 25	Takashi	11 50	Kaleo, J. M.	2 70	Kaae, Alice Mrs.	4 90			Kaleo, J. M.	2 70	Hooillamanu	1 38
Kabele, Noeau	9 30			Kahookano, Mrs. Ellen	3 25	Takashi	11 50	Kaleo, J. M.	2 70	Kaae, Alice Mrs.	4 90			Kaleo, J. M.	2 70	Hooillamanu	1 38
Keelen, Mrs. Emily	9 30			Kahookano, Mrs. Ellen	3 25	Takashi	11 50	Kaleo, J. M.	2 70	Kaae, Alice Mrs.	4 90			Kaleo, J. M.	2 70	Hooillamanu	1 38
Kaaliau, Emily	2 70			Kahookano, Mrs. Ellen	3 25	Takashi	11 50	Kaleo, J. M.	2 70	Kaae, Alice Mrs.	4 90	</					

**THE FIRST NATIONAL BANK OF WAILUKU.**

Statement of Condition.  
Wailuku, Maui, T. H., Sept. 30th, 1911.

RESOURCES		LIABILITIES	
Loans, Discounts, Overdrafts	\$186,130 47	Capital Stock	\$ 35,000 00
United States Bonds	25,000 00	Surplus & Profits	37,045 48
Other Bonds	72,726 25	Due to Other Banks	9,688 68
Real Estate Owned	1,160 85	Circulation	24,997 50
Cash & Due from Banks	87,743 83	Deposits	274,117 74
Banking House, Furniture, etc.	6,838 00		
Five Per cent. Fund	1,250 00		
	\$380,849 40		\$380,849 40

E. & O. E.  
C. D. LUFKIN, Cashier.  
TERRITORY OF HAWAII,  
County of Maui,  
I, C. D. Lufkin, Cashier of the above named bank, do solemnly swear that the above statement is true to the best of my knowledge and belief.  
C. D. LUFKIN, Cashier.

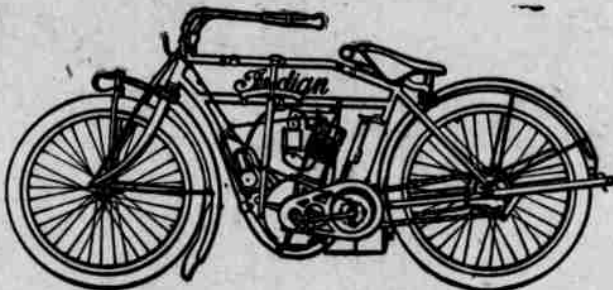
**NICHOLSON FILES**

Their hard cutting surface and perfect temper give them a lasting quality.

**HONOLULU IRON WORKS CO.**

Agents for the Hawaiian Islands.

**E. O. HALL & SON LTD.**  
Agents for the celebrated  
**INDIAN MOTORCYCLE**



The 1911 INDIAN with its free engine and clutch is the most up-to-date motorcycle made and the greatest hill climber known. Send to us for Catalogue and Prices.

**E. O. HALL & SON, Ltd.**  
HONOLULU.

**Time Table--Kahului Railroad Co.**  
The following schedule will go into effect July 1st, 1911.

CLASS	Pass.	Pass.	Pass.	Pass.	Pass. & Frt.	Freight	Freight
Kahului	Lv.	A. M.	P. M.	P. M.	A. M.	P. M.	A. M.
	Ar.	6 15	.....	.....	3 10	.....	9 45
Puunene	Lv.	6 25	.....	.....	3 20	.....	10 00
	Ar.	6 30	.....	.....	3 25	.....	10 30
Kahului	Lv.	6 40	.....	.....	*3 35	.....	10 45
	Ar.	6 50	.....	.....	2 00	.....	.....
Wailuku	Lv.	7 02	.....	.....	2 12	.....	.....
	Ar.	7 10	.....	.....	2 20	.....	.....
Kahului	Lv.	7 22	.....	.....	2 32	.....	.....
	Ar.	7 25	.....	.....	2 40	.....	.....
Spreckelsville	Lv.	7 37	.....	.....	2 52	.....	10 00
	Ar.	7 50	.....	.....	3 05	.....	10 15
Paia	Lv.	8 00	.....	.....	3 15	.....	10 45
	Ar.	8 15	.....	.....	3 30	.....	.....
Spreckelsville	Lv.	8 27	.....	.....	3 42	.....	11 15
	Ar.	8 30	.....	.....	3 45	.....	1 00
Wailuku	Lv.	8 45	.....	.....	4 00	.....	1 15
	Ar.	9 00	.....	.....	4 05	.....	1 45
Kahului	Lv.	9 15	.....	.....	4 17	.....	2 15
	Ar.	.....	.....	.....	4 20	.....	.....
Spreckelsville	Lv.	.....	.....	.....	4 32	.....	.....
	Ar.	.....	.....	.....	4 45	.....	.....
Paia	Lv.	.....	.....	.....	4 50	.....	.....
	Ar.	.....	.....	.....	5 03	.....	.....
Spreckelsville	Lv.	.....	.....	.....	5 15	.....	.....
	Ar.	.....	.....	.....	.....	.....	.....

\*This train from Puunene connects with trains leaving Kahului for Wailuku at 3:45 P. M.

**Kahului Railroad Co.**  
AGENTS FOR  
ALEXANDER & BALDWIN, LTD.;  
ALEXANDER & BALDWIN, LTD., Line of Sailing Vessels between  
San Francisco and Hawaiian Ports;  
AMERICAN-HAWAIIAN STEAMSHIP CO.

Subscribe for the  
**Maui News Combination**

**TELEGRAPHIC NEWS**

**The New Republic.**

WASHINGTON, Feb. 14.—The State department has been formally notified that China has adopted the name of Ching Wa republic, under which it will take its place among the nations.

NANKING, Feb. 14.—Sun Yet Sen and his ministers have requested the assembly that they be allowed to resign, in order that the republic may elect a president.

PEKIN, Feb. 14.—Yuen Shi Kai has cabled a request that the powers recognize him as president plenipotentiary of the republic. He claims to have command of the army and navy.

INDIANAPOLIS, Feb. 14.—Fifty-four arrests of dynamite conspirators followed the indictments of the grand jury.

ROCHESTER, Feb. 14.—Clarence Dowd was the first to be arrested following the indictments at Indianapolis.

TORREAN, Mexico, Feb. 14.—Rebels are gathering in strength in Lazuna province. They have elected Emil Gomes president and demanded the immediate surrender of the city.

SAN FRANCISCO, Feb. 14.—Prohibition will lose its vote at the presidential primaries, because it failed to pole 3 per cent at the last general election.

**Republic Recognized.**

NANKING, Feb. 13.—Sun Yet Sen received a communication from Yuen Shi Kai formally acknowledging the existence of the republic. He expressed the hope that he and the chief executive should soon meet.

WASHINGTON, Feb. 13.—The Department of Commerce and Labor has officially declared Dr. Sun Yet Sen a native born American citizen.

WASHINGTON, Feb. 13.—Taft is reported to be negotiating a reciprocity treaty with Cuba.

CHICAGO, Feb. 13.—Woodrow Wilson opened his campaign for the presidency here last night.

**Riots in Paris.**

PARIS, Feb. 12.—Serious riots followed a clash between anarchists and police yesterday. Many were injured. It was the most remarkable demonstration ever made against law and order.

SHANGHAI, Feb. 12.—The two factions dominating China now seem to be in full accord.

MUKDEN, Feb. 12.—The viceroy has sent his family out of the city, to seek safety in Japan.

MANILA, Feb. 12.—Collector of Customs Cromwell died suddenly of heart disease.

WASHINGTON, Feb. 12.—Secretary Knox is planning a visit south to the countries bordering on the Caribbean sea.

SEATTLE, Feb. 12.—Seattle suffragists have forwarded a petition to Taft asking the appointment of a woman to the place on the federal bench vacated by Dunworthy.

**Financiers to Lead.**

LONDON, Feb. 10.—Recognition of the Republic of China by a group of American financiers has been foreshadowed by telegrams from China.

WASHINGTON, Feb. 10.—The Engineers have been ordered to begin at once on the fortifications on the Pacific side of the Panama canal.

MUKDEN, Feb. 10.—The rebels have bombarded and set fire to Kaiping. Twenty-three officers of imperial troops have been executed, being suspected of collusion with the rebels.

LOS ANGELES, Feb. 10.—Lieut-Commander Thomas was married here on Wednesday and died today from pneumonia.

MAXWELL, Iowa, Feb. 10.—A mysterious explosion set fire to a farm house, and five persons were burned and injured. The farmer was fatally and his wife seriously burned.

**Honolulu News.**

HONOLULU, Feb. 14.—It is rumored that the man who is to be the next Collector of Customs is coming on the Lurline with Prince Cupid, and will arrive today.

The Cleveland tourists had a strenuous time yesterday. Bert Colburn, a son of John Colburn, died suddenly yesterday of heart failure.

HONOLULU, Feb. 13.—Stock market strong. H. C. & S. Co. selling at 45; Pioneer, 252½; Oahu, 40¾; Waiatua, 137½; Honokaa, 18¼.

The fleet will probably be in Hilo on the evening of the 15th, and at Kahului on the 19th.

A deserter from the cruiser California was arrested on the Phelps. The mate and steward were also arrested for concealing him.

Frear's reply to Kuhio was published in full this morning. He charges the delegate with evading the truth.

Secretary Fisher may come here after his trip to Panama. Honolulu republicans led by J. P. Cooke, formed a Taft league yesterday to oppose the plan of the delegate to send an anti-Taft delegation to the convention in case Frear is reappointed.

The attorney general's department is preparing to take the Henderson case to the Supreme Court.

Over 500 tourists arrived on the Cleveland this morning. A series of entertainments have been prepared for them by the citizens.

HONOLULU, 12.—Hawaii is paying \$600 a day interest and very little belt road work is being done.

The navy may be absent on the 22nd. Some members of the crews will be left ashore to man the floats for the parade.

The West Virginia is staying at her dock today waiting orders to leave on a secret mission, supposedly to the South.

HONOLULU, Feb. 10.—The cable is broken west of Midway. All cables for Japan and the Philippines must go by way of Europe.

Link McCandless suggests that the democratic candidate for delegate be named at the same time as the delegate to the national convention.

Carl Smith, the convicted smuggler learned of the death of his child immediately after being sentenced to eight months imprisonment.

The West Virginia hurriedly coaled last night and left early on a secret mission. Supposedly for Palmyra.

The road commission will appeal to the Supreme Court in the Wilson case.

**MATSON NAVIGATION CO.**

1912 CASTLE & COOKE, LIMITED, Agents, HONOLULU 1912  
FREIGHT AND PASSENGER SERVICE

San Francisco Puget Sound Hawaiian Islands

Steamer	Leave S. F.	PUGET SOUND Arrive Leave	Hawaiian Islands Arrive Leave	Arrive S. F.	Voyage
Lurline	Jan. 10	.....	Jan. 17 Jan. 23	Jan. 31	42
Enterprise	Jan. 13	.....	Jan. 21 Jan. 31	Feb. 10	90
Wilhelmina	Jan. 17	.....	Jan. 23 Jan. 31	Feb. 6	26
*Hyades	Jan. 18	Jan. 21 Jan. 27	Feb. 6 Feb. 14	Feb. 24	25
Honolulan	Jan. 24	.....	Jan. 30 Feb. 7	Feb. 14	12
Lurline	Feb. 7	.....	Feb. 14 Feb. 20	Feb. 28	43
*Hilonian	Feb. 8	Feb. 11 Feb. 17	Feb. 26 Mar. 6	Mar. 14	58
Wilhelmina	Feb. 14	.....	Feb. 20 Feb. 28	Mar. 5	27
Enterprise	Feb. 17	.....	Feb. 25 Mar. 6	Mar. 18	91
Honolulan	Feb. 21	.....	Feb. 27 Mar. 6	Mar. 13	13
*Hyades	Feb. 29	Mar. 3 Mar. 9	Mar. 19 Mar. 27	Apr. 6	26
Lurline	Mar. 6	.....	Mar. 13 Mar. 19	Mar. 27	44
Wilhelmina	Mar. 13	.....	Mar. 19 Mar. 27	Apr. 2	28
Honolulan	Mar. 20	.....	Mar. 26 Apr. 3	Apr. 10	14
*Hilonian	Mar. 21	Mar. 24 Mar. 30	Apr. 8 Apr. 17	Apr. 25	59
Enterprise	Mar. 23	.....	Mar. 31 Apr. 10	Apr. 20	92
Lurline	Mar. 30	.....	Apr. 10 Apr. 16	Apr. 24	45
Wilhelmina	Apr. 10	.....	Apr. 16 Apr. 24	Apr. 30	29
*Hyades	Apr. 11	Apr. 14 Apr. 20	Apr. 30 May 8	May 18	27
Honolulan	Apr. 17	.....	Apr. 23 May 1	May 8	15
Enterprise	Apr. 27	.....	May 5 May 15	May 25	93
Lurline	May 1	.....	May 8 May 14	May 22	46
*Hilonian	May 2	May 5 May 11	May 20 May 29	June 6	60
Wilhelmina	May 8	.....	May 14 May 22	May 28	30
Honolulan	May 15	.....	May 21 May 29	June 5	16
*Hyades	May 23	May 26 June 1	June 11 June 19	June 29	28
Lurline	May 29	.....	June 5 June 11	June 19	47
Enterprise	June 1	.....	June 9 June 19	June 29	94
Wilhelmina	June 5	.....	June 11 June 19	June 25	31
Honolulan	June 12	.....	June 18 June 26	July 3	17
*Hilonian	June 13	June 16 June 22	July 1 July 10	July 18	61
Lurline	June 26	.....	July 3 July 9	July 17	48

**PORTS OF CALL.**

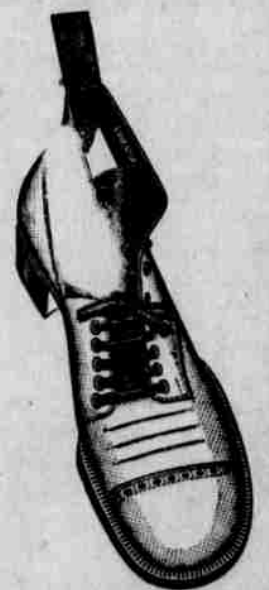
S. S. Wilhelmina...From San Francisco to Honolulu, to Hilo, to Honolulu and thence to San Francisco.  
S. S. Lurline...From San Francisco to Honolulu, to Kahului, to Honolulu and thence to San Francisco.  
S. S. Honolulan...From San Francisco to Honolulu, to Kahului, to Honolulu and thence to San Francisco.  
\*S. S. Hilonian...From San Francisco to Puget Sound, to Honolulu, to Island Ports thence to San Francisco.  
\*S. S. Hyades...From San Francisco to Puget Sound, to Honolulu, to Island Ports thence to San Francisco.  
S. S. Enterprise...From San Francisco to Hilo and Return.

\*Freight Steamers only. Combustibles and Explosives Carried.

The S. S. HILONIAN and S. S. HYADES leave outside Ports on dates above given. For sailing dates from HONOLULU apply to Agent.

**Subject to Change**

**Educator**  
**\$4.00 shoe**



A Home for the Feet—not a Prison.  
Has room for all five toes to lie perfectly in their natural positions.

**MANUFACTURER'S SHOE COMPANY, Ltd.**  
1051 FORT STREET, HONOLULU.

**IT IS THE BEST**

**BLUE LABEL CATSUP**

Your Grocer Sells It.

## Tragic Death

(Continued from page 1.)

catch one. Coolly, he took off his overcoat and poised himself on the tossing floe. In his course there dangled one rope and a second was moved toward him. He caught that held by Pat Kelly, an Ontario police officer, and about twenty railroad men, and jumped free of the ice.

The sag of the rope let him into the chilly water up to his waist and he was battered frightfully by three successive floes of jutting ice.

Not content with the efforts of the men above to draw him up, he tried to assist himself hand over hand. The icy ducking had sapped his strength. He stopped trying to pull himself up and hung limp on the rope, which spun him around like a top. Kelly and his men pulled steadily. Ten feet, twenty feet, twenty-five feet up he came. The great crowd on the bridges cheered.

The boy hung on, trying always to get himself or his leg wound around the rope. Then his hands began to slip. He sought to get hold of the rope with his teeth, but could not. Finally, just as he was about sixty feet clear of the water, his head fell back. He was utterly spent. He lost his grip and plunged far down into the stream. When he came up, his face turned toward the great wave and he feebly moved his arms in the breast stroke.

The rush of water was too much for him, and he was sent racing on into the seething waters. For half a minute he was in view, and then he disappeared in the spume.

Heacock's failure was witnessed by the man on the other ice floe. The woman apparently dared not look. The man appeared calm, as he in turn prepared to make a play against death.

As the couple swung under the cantilever bridge the man grasped a rope and tried to put it about the woman's waist. The force of the current was too much and the rope parted.

There was still another chance—the rope that was dropped from the lower steel arch bridge by the Niagara-avenue firemen. As the floe went into a swift drift the man caught it and hung on. He was given slack and he tried to wind the rope about the woman's waist. He fumbled as though his hands were numb. When he could not tie the rope about the woman he let it go.

Apparently there was no thought of himself. He raised the woman to her feet, kissed her and clasped her in his arms. The woman made as if to cross herself, and then sank to her knees. The man knelt beside her, his arms clasped close about her.

The ice held intact until it struck the great wave. There it was shivered, and the gallant man and the woman at his side disappeared from view.

### ALOHA LODGE NO. 3 KNIGHTS OF PYTHIAS.



Regular meetings will be held at the Knights of Pythias Hall, Wailuku, on the second and fourth Saturdays of each month.

All visiting members are cordially invited to attend.

C. H. HANSEN, C. C.  
ARTHUR BETTS, K. R. & S.

### LODGE MAUI, No. 984, A. F. & A. M.



Stated meetings will be held at Masonic Hall, Kahului, on the first Saturday night of each month at 7:30 P. M.

Visiting brethren are cordially invited to attend.

HUGH HOWELL, R. W. M.  
BENJAMIN WILLIAMS,  
Secretary

SUBSCRIBE FOR THE  
MAUI NEWS COMBINATION

### Notice to Taxpayers.

Notice is hereby given that in accordance with the provisions of Section 5 of Act 145 of the Session Laws of 1911, the TAX RATE on all real property and all personal property (not otherwise taxed or exempted) within the Second Taxation Division of the Territory of Hawaii, comprising the Counties of Maui and Kalawao, has been fixed at 1.15% for the year 1912.

J. H. KUNAWA,  
Assessor, Second Taxation Division,  
Wailuku, Maui, February 3, 1912.

IN THE CIRCUIT COURT, SECOND JUDICIAL CIRCUIT, TERRITORY OF HAWAII.

At Chambers.

VIRGINIA MEDEIROS SOUZA, Libellant, vs. PETER SOUZA, Libellee, Libel for Divorce.

NOTICE.

TERRITORY OF HAWAII:

To PETER SOUZA, Libellee.

You are hereby notified that the above entitled suit, the same being for a divorce from you on the grounds of desertion and non-support, is now pending in the above entitled Court, and that the same will be heard and determined on Thursday, the 15th day of April, A. D. 1912, at 10 o'clock in the forenoon of said day, or as soon thereafter as may be by the Judge of said Court, at Chambers.

Dated at Wailuku, Maui, this 2nd day of February, A. D. 1912.

(Seal) (Sd.) EDMUND H. HART,  
Clerk.

W. F. CROCKETT,  
Attorney for Libellant.

Feb. 3, 10, 17, 24, Mar. 2, 1912.

IN THE CIRCUIT COURT, SECOND JUDICIAL CIRCUIT, TERRITORY OF HAWAII.

In Probate—At Chambers, No. 1633.

In the Matter of the Estate of TAM AWANA, Late of Makawao, Maui, Deceased.

Order of Notice of Petition for Allowance of Accounts, Determining Trust and Distributing the Estate.

On Reading and Filing the Petition and accounts of Lucinda C. K. Carter, George Groves and Antone F. Tavares, Executrix and Executors of the Last Will and Testament of Tam Awana, deceased, wherein petitioners ask to be allowed \$7111.84 and charged with \$7742.96, and ask that the same be examined and approved, and that a final order be made of Distribution of the remaining property to the persons thereto entitled and discharging petitioner and sureties from all further responsibility herein:

It is Ordered, that Monday, the 18th day of March, A. D. 1912, at 10 o'clock A. M. before the Judge presiding at Chambers of said Court at his Court Room in Wailuku, Maui, be and the same hereby is appointed the time and place for hearing said Petition and Accounts, and that all persons interested may then and there appear and show cause, if any they have, why the same should not be granted, and may present evidence as to who are entitled to the said property. And that notice of this Order, be published in the MAUI NEWS, a weekly newspaper printed and published in said Wailuku, Maui, for three successive weeks, the last publication to be not less than two weeks previous to the time therein appointed for said hearing.

Dated the 8th day of February, 1912.  
(Sd.) S. B. KINGSBURY,  
Judge of the Circuit Court of the 2nd Circuit.

Attest: (Sd.) EDMUND H. HART,  
Clerk of the Circuit Court of the 2nd Circuit.

Feb. 10, 17, 24, Mar. 2.

### PUBLIC AUCTION.

Saturday, February 17, at 1 P. M.

All the household and personal effects of Rev. E. B. Turner, at Sunnyside adjoining Mannaolu Seminary.

Terms Cash:

W. O. AIKEN,  
Auctioneer.

### STOCKHOLDERS' MEETING.

The annual stockholders' meeting of the Keahua Ranch Co., Ltd., will be held at the office of the company at Paia, Maui, on Wednesday, February 28th, at 2:30 P. M.

STANLEY RICHARDSON,  
Secretary.

Feb. 10, 17, 24.

IN THE CIRCUIT COURT OF THE SECOND JUDICIAL CIRCUIT, TERRITORY OF HAWAII.

In Probate—At Chambers, No. 1575.

In the Matter of the Estate of HIKI ONA NAKI, Late of Wailan, Molokai, Deceased.

Order of Notice of Petition for Allowance of Accounts, Determining Trust and Distributing the Estate.

On Reading and Filing the Petition

and accounts of Paia Naki, Administrator of the Estate of Hikiona Naki, deceased, wherein petitioner asks to be allowed \$568.30 and charged with \$568.30, and asks that the same be examined and approved, and that a final order be made of Distribution of the remaining property to the persons thereto entitled and discharging petitioner and sureties from all further responsibility herein:

It is Ordered, that Wednesday, the 20th day of March, A. D. 1912, at 2 o'clock P. M. before the Judge presiding at Chambers of said Court at his Court Room in Wailuku, Maui, be and the same hereby is appointed the time and place for hearing said Petition and Accounts, and that all persons interested may then and there appear and show cause, if any they have, why the same should not be granted, and may present evidence as to who are entitled to the said property. And that notice of this Order, be published in the MAUI NEWS, a weekly newspaper printed and published in said Wailuku, Maui, for three successive weeks, the last publication to be not less than two weeks previous to the time therein appointed for said hearing.

Dated the 8th day of February, 1912.  
(Sd.) S. B. KINGSBURY,  
Judge of the Circuit Court of the 2nd Circuit.

Attest: (Sd.) EDMUND H. HART,  
Clerk of the Circuit Court of the 2nd Circuit.

Feb. 10, 17, 24, Mar. 2.

### Special Excursion to Honolulu.

The S. S. "Mauna Kea" will call at McGregors and Lahaina on Wednesday evening Feb. 21st, arriving at Honolulu early Thursday morning Feb. 22nd, giving passengers from Maui an opportunity to see the Military Parade and Floral Parade Festivities.

Passengers can also come from Kahului and Lahaina, per S. S. "Claudine" arriving at Honolulu on Wednesday morning, Feb. 21st.

Special Round Trip Tickets, limited to return from Honolulu not later than Tuesday Feb. 27th, will be issued at the following rates:

From McGregors to Honolulu and return, \$9.00 each.

From Kahului to Honolulu and return, \$9.00 each.

From Lahaina to Honolulu and return, \$8.00 each.

INTER-ISLAND STEAM NAVIGATION COMPANY, LTD.

### STOCKHOLDERS' MEETING.

The annual stockholders' meeting of the Haleakala Ranch Co., will be held at the office of the company at Paia, Maui, on Wednesday, February 28th, at 2 o'clock P. M.

STANLEY RICHARDSON,  
Secretary.

Feb. 10, 17, 24.

IN THE CIRCUIT COURT, SECOND JUDICIAL CIRCUIT, TERRITORY OF HAWAII.

At Chambers.

LIZZIE HOLAU, Libellant, vs. EDDIE HOLAU Libellee, Libel for Divorce. No. 317.

NOTICE.

TERRITORY OF HAWAII:

To EDDIE HOLAU, Libellee.

You are hereby notified that the above entitled suit, the same being for a divorce from you on the grounds of desertion and non-support, is now pending in the above entitled Court, and that the same will be heard and determined on Thursday, the 8th day of April, A. D. 1912, at 10 o'clock in the forenoon of said day, or as soon thereafter as may be, by the Judge of said Court, at Chambers.

Dated at Wailuku, Maui, this 25th day of January, 1912.

(Seal) (Sd.) EDMUND H. HART,  
Clerk.

ENOS VINCENT,  
Attorney for Libellant.

Jan. 27, Feb. 3, 10, 17, 24, Mar. 2.

### Notice of Special Meeting.

There will be a special meeting of stockholders of the Maui Wine & Liquor Co., Ltd., on Wednesday, February 28th, 1912, at 7:30 p. m., to consider an increase in the Capital Stock of said Corporation.

J. GARCIA,  
Secretary.

Feb. 3, 10, 17, 24.

### Notice to Annual Meeting.

The regular annual meeting of Shareholders of the NAHIKU RUBBER COMPANY, LTD., will be held at the Baldwin National Bank, Kahului, Maui, T. H., on Saturday, February 17th, 1912, at 10 o'clock A. M.

Shareholders unable to be present will please send proxies to friends who can represent them.

By Order of the Board of Directors.

F. P. ROSECRANS,  
Secretary.

Jan. 27, Feb. 3, 10, 17.

### Honolulu Music Co.

Jas. W. Bergstrom, Manager.  
88 King Street, Honolulu.

Latest Hawaiian Records,  
Victor and Columbia Talking  
Machines, Primatone and  
Autopiano Players, Knabe  
Pianos. Latest Popular Music,  
etc.

# KAHULUI STORE

Kahului, Maui

# Michelin

## TIRES, TUBES

and

## ACCESSORIES

# KAHULUI STORE

Kahului, Maui.