


When you buy War Savings Stamps you do two things, you help your country and yourself. Put your money in the government's hands.

# The Garden Island.

While Some One gives His LIFE -- what are YOU giving?  think a minute All of the Red Cross War Fun. 4 goes for War Relief

ESTABLISHED 1904. VOL. 14. NO. 40.

LIHUE, KAUI, TERRITORY OF HAWAII, TUESDAY, OCTOBER 8, 1918

SUBSCRIPTION RATES, \$2.50 PER YEAR 5 CENTS PER COPY

## FILIPINO FOOTPAD GETS LEFT

Blas Garcia, a Filipino of Camp 2, Makaweli, created a little excitement last Friday evening when he decided to play highway robber. Garcia met the Japanese minister, who was driving along the road in a buggy with his wife. Seeing his opportunity, Garcia grabbed the horse's bridle, and asked the minister for money. Wishing to accommodate the needy Filipino, the minister handed him a dollar. The Filipino, seemingly satisfied, started to walk away, but upon second thought, he discovered that a dollar would not finance him sufficiently, so he came back and demanded all the minister's money. To avoid any further controversy, the minister handed him the rest of his change; but the Filipino took strangely to the minister's generosity, and decided he wanted to take a ride along with him and his wife. Crowding into the buggy, Garcia took the reins, and headed for the mountains.

Meanwhile, the minister was getting angry, and waited his chance to take his man by surprise. Both were soon grappling in the dust by the road-side. The Filipino, evidently getting the worst of it, soon made his escape in the buggy, leaving the minister and his wife on the road.

The Hanapepe police were notified by telephone, and after a hard chase, they brought back the man, who was still in possession of the horse and buggy. Garcia is now stopping at the Waimea jail. It is generally known that Garcia is insane.

## District Court News

Francisco Prasko, Filipino gay Lathario of Elele, and Ann Mira, Filipino belle belonging to Kapaa, charged with the commission of a statutory offense, were brought up in the Lihue District Court on Wednesday last.

Both pleaded guilty to the charge and the Court imposed a fine of thirty dollars and costs on Francisco. Unhappily Francisco was without kale to meet the demand of stern justice, so he has taken apartments at the County Hotel, where, in the tender care of Peter Malina, he will spend the next thirty days in meditation.

Ann fared better however, tearfully promising the Court that she would speedily join her own hubby, the Court took a milder view of her short comings and let her off with a three months suspended sentence.

## A COMPLIMENTARY DINNER

The Portuguese committee of the Republic Day celebration gave a dinner to Prof. E. de Costa, the speaker of that occasion, and Mrs. F. C. Stone, the soloist, at the Tip Top dining parlors on Monday evening, to which some twenty guests were invited, including the members of the committee and their wives. It was a festive occasion replete with good fellowship and good humor.

Some of the toasts were as follows: J. A. Souza proposed "Prof. de Costa and the Academic Professors;" John Rapoza gave "Mrs. Stone, the sweet singer of Hawaii," M. A. Fernandez, "The Portuguese Merchants and the big business they do,—and may it be more;" John Fernandez, "The Younger Generation,—up and coming;" M. F. Rapoza, "The Laboring Classes,—the key of the situation"; M. G. Santos, "The Portuguese Republic, and its able representative on this occasion," to which Prof. de Costa replied. And finally Mrs. M. B. Fernandez, Jr., with the grace and charm of the best of her sisters and the ability of the coming woman, got in ahead of the dilatory men and proposed "The Ladies," which was responded to with enthusiasm.

## THE DEATH OF L. J. MUNDON

After a brief immediate illness of only a few days, Lawrence J. Mundon died at his home at Kapaa in the early hours of Monday morning and was buried from the Kapaa church that same afternoon. Revs. Kaauwai and Pulke officiating.

Lawrence Mundon was a Hawaiian of uncommon intelligence and ability, with all the kindly graces and charm of the Hawaiian, fortified by some of the endowments of the white race, making a very happy combination. He was a most faithful and loyal supporter of every good cause, and a leader in church, Sunday School, Christian Endeavor and other Christian and philanthropic work.

He will be very much missed in that community, where he has spent most of his life. He was thirty-seven years old. He leaves a widow and six children to mourn his premature death. To them the Garden Island tenders its sympathy and regret.

## Local News

Gathered from here and there

Mrs. L. Mesick week ended with Mrs. Moragne.

J. H. Moragne went to town by the Kinohiwa and is absent a few days.

Malcom Coney returned home this morning on a month's leave of absence.

The Waipa taro growing enterprise is off; the land having been leased for rice.

Rev. Mr. Carver returned to Waimea on Friday and resumed church services on Sunday.

Mrs. C. B. Makee has been appointed post master for Hanalei, in the place of Mrs. Deverill, resigned.

Mr. John Waterhouse will spend a few days on Kauai looking over Alexander and Baldwin interests.

Chas. A. Horswill of Honolulu, has bought one of the Hanalei Beach lots and is occupying the same, camping and preparing to build. He is most enthusiastic about the place.

Chas. Hemanway, attorney at law, and special confidential attorney for the Alexander and Baldwin interests arrived this morning and will spend a few days on the island.

Miss Jeanette Searlight, well known to many of our readers has secured a position as private secretary to Dr. Eoremus Scudder and will accompany him to Siberia in Red Cross work.

The main thoroughfares throughout the Hanalei district are being asphalted and sanded over the macadam which renders them much more durable and gives them a very fine smooth surface.

The Waipa valley, in Hanalei, has been leased to a Chinese corporation, Wing Sing Wai, which will conduct it as a rice plantation as heretofore. It consists of about 100 acres of good rice land with a good power mill and other equipment.

Mrs. W. F. Sanborn has accepted a position in the Hanalei public schools to have charge of the lower grades. She begins work this week with some twenty-five children. The late start has been consequent on the delay in the erection of the additional school building.

Mrs. Maddox, Miss M. E. Bentley and Miss G. Shannon of the Honolulu Y. W. C. A. arrived by the Kinohiwa this morning and will spend a few days on Kauai in the interests of that organization. They will address audiences in Lihue, Waimea and perhaps elsewhere.

Kim Lai is fond of coconuts and is also a chicken fancier, especially other people's chickens. Just out of jail after having served a year for larceny, Kim raised a thirst and went after some nuts belonging to G. N. Wilcox. Now Kim is back in jail again serving six months.

## PORTUGUESE REPUBLIC GIVEN ALL HONORED

The eighth anniversary of the foundation of the Portuguese republic was celebrated at Lihue Sunda yesterday noon by a patriotic rally that appealed mightily to the public interest, especially that of the large Portuguese element of our population. Crowded truck loads of enthusiastic participants rolled in one after another from the outer districts, until the Armory was more than taxed to its utmost seating capacity.

Prof. E. de Costa of the National School in Honolulu, spoke in Portuguese on "Portugal and the War."

In this address, which was in classic Portuguese of a fine literary quality, he dwelt on the glories of the national history, and recalled the various magnificent contributions which this country had made to the civilization of the world along the various lines of human progress. Her great navigators, Visco di Gama, Magellan, Dias Cabral, and others, who sailed to distant and unknown quarters of the earth and discovered new lands. Her great empire beyond the seas, in every quarter of the globe—in India, China, Africa, South America and the South Seas. Those were the days of Portuguese greatness, of Portuguese world power. Now we know that you have gone from us, that you are Americans, and we would not try to win you back; and we recall to your memory the bygone glories of your fatherland in order that in your new allegiance you may be worthy of your high descent and your noble inheritance.

Mr. M. G. Santos told very interestingly of the formation of the Republic and of the facility with which the change was made because of intelligent development of the Portuguese people and their inherent love for free institutions. He dwelt at some length on the progressive qualities of the people and their ready appreciation of and desire for the best conditions of life. This took them naturally to all parts of the earth where there was privilege and opportunity, especially to America. From some of these countries they drifted back, not quite satisfied with the exchange, but not from America. They were there to stay—for their own good, and for the good of their adopted country.

Mr. H. D. Wishard, representing the Liberty Loan Committee, assured the Portuguese people of the community of his high respect and regard for them. He had known them more or less intimately for thirty years or more and had found them as a class, strong in the three cardinal qualities of character—industry, honesty and sobriety. These qualities made them a very desirable acquisition to any country, and we were highly favored to have this sturdy element in our population.

He made a strong appeal for the help of the Portuguese people in the present Liberty Loan Drive, congratulating them on what they had done on former occasions, and resting in the confident assurance that they would do as well this time.

Rev. Father Huber of Kealia, made a brief prayer suitable to the occasion and the audience.

There was some very effective singing in connection with the celebration. Mrs. F. C. Stone, nee Canario, of Hilo, sang the very fine Portuguese national anthem as a solo, with a choir of children singing the chorus, and later also the solo "Dear Heart." Mrs. Rice sang "The Long, Long Trail" very effectively. A chorus of the Hanamaulu school children, under the leadership of Miss Haslop, rendered a very beautiful children's hymn.

It was a warm afternoon, especially under the iron roof of the Armory, and with a big crowd, so that the distribution of cornucopias of ice-cream at one of the warmest junctures was most welcome.

At the close of the meeting a picture was taken of the great audience, and everybody went home with a more intelligent appreciation, and a more kindly feeling of fellowship for the Portuguese people here in our midst.

## Gamblers Caught

Saturday and Sunday nights were bad nights for the Wailua Chinese. Sixteen celestials took a chance on Saturday eve and were nabbed by the Lihue police. In court on Monday fifteen forfeited bail of ten dollars each, and Ah Fong, an old offender, is mourning a fifty dollar bill.

Sunday night north of the river, fifteen Chihamen and one Japanese were rolling the seductive bones when the police again inconveniently appeared to relieve the gentry of ten dollars each for their appearance in court. The amount of \$150 was forfeited in court, making a total of \$350.00. Not bad at all.

## The Mokihana Resumes

The adjourned meeting of the Mokihana Club will be held at the Lihue Social Hall on Wednesday at 2 p. m. The subject will be "The Call of the U. S. Government Upon the Y. W. C. A.," with Mrs. Maddox, Miss Bentley and Miss Channon to present the same.

Hostesses, Mrs. Swan, Mrs. W. H. Rice, Jr., Mrs. R. L. Wilcox and Mrs. Crawford. This will be the first meeting of the year and a large attendance is expected.

E. W. Broadbent returned to Kauai this morning from the Coast where he has spent a very interesting and enjoyable vacation which has done him a world of good every way. "But," he says, "beware of poison ivy!"

there was privilege and opportunity, especially to America. From some of these countries they drifted back, not quite satisfied with the exchange, but not from America. They were there to stay—for their own good, and for the good of their adopted country.

Mr. H. D. Wishard, representing the Liberty Loan Committee, assured the Portuguese people of the community of his high respect and regard for them. He had known them more or less intimately for thirty years or more and had found them as a class, strong in the three cardinal qualities of character—industry, honesty and sobriety. These qualities made them a very desirable acquisition to any country, and we were highly favored to have this sturdy element in our population.

He made a strong appeal for the help of the Portuguese people in the present Liberty Loan Drive, congratulating them on what they had done on former occasions, and resting in the confident assurance that they would do as well this time.

Rev. Father Huber of Kealia, made a brief prayer suitable to the occasion and the audience.

There was some very effective singing in connection with the celebration. Mrs. F. C. Stone, nee Canario, of Hilo, sang the very fine Portuguese national anthem as a solo, with a choir of children singing the chorus, and later also the solo "Dear Heart." Mrs. Rice sang "The Long, Long Trail" very effectively. A chorus of the Hanamaulu school children, under the leadership of Miss Haslop, rendered a very beautiful children's hymn.

It was a warm afternoon, especially under the iron roof of the Armory, and with a big crowd, so that the distribution of cornucopias of ice-cream at one of the warmest junctures was most welcome.

At the close of the meeting a picture was taken of the great audience, and everybody went home with a more intelligent appreciation, and a more kindly feeling of fellowship for the Portuguese people here in our midst.

## Found Dead in Canefield

John Morich, a seventeen year old youth of Kekaha, was found dead in a cane field, having been shot in the head with a 45-70 calibre rifle that lay at his side. The boy had been in the habit of taking the gun to work with him. His parents, who were against this practice, had forbidden him to take this gun, and had hidden it away from him. On last Monday morning he managed to get possession of the gun, and unknown to his parents, took it along with him when he left home to go to work in the field.

When Morich did not return for his breakfast at the usual time, his parents expressed anxiety for his safety. Meanwhile some laborers who were applying fertilizer in the cane field, came across his body. The bullet, which had gone through the top of his head, made it difficult to identify the youth, but upon inquiring at the camp who was missing, Morich's identity came to light. It is believed the gun was accidentally discharged.

## A NOTABLE VISITOR

Prof. Euclides de Costa, the main speaker at the Armory meeting on Sunday, came to Honolulu a couple of years ago from the University of Oporto, Portugal, where he was professor of Portuguese history and literature, of which he is a recognized master. During his stay on the Islands he has organized a National School for the education of the more intelligent and ambitious of the Portuguese youth, who have cared to know something of the classic language and literature of the Fatherland. He has recently been promoted to the inauguration of the same kind of work in New England, and will shortly move to Boston.

## NEARING TOP IN LOAN DRIVE

The latest figures available as we go to press give \$352,200 as the aggregate amount of subscriptions to the Fourth Liberty Loan, so that we are pretty well assured of going over the top again, even though the top be so much higher this time.

## Y. M. C. A. Night School

Plans are under way for the Y. M. C. A. night school classes to be conducted under the auspices of the local Y. M. C. A. There has been some necessary delay on account of the change in secretaries and the effects of the draft upon former teachers and students.

The need for English instruction was never more apparent however, than now. The officers at Schofield Barracks, having in charge the training of Hawaii's national guardsmen were exasperated at the first because of the inability of the troops to understand the "English" of their orders. The same difficulty is found in non-English speaking troops on the mainland so that the Government has appointed Boards of instruction in the various localities for the purpose of teaching military English and also to impart information to the men of class 1 and other prospective soldiers regarding the causes and history of the war, the distinctive features of the various governments involved and the meaning of the term "Democracy."

Sheriff Rice, representing the local draft board has appointed J. O. Warner, chairman of the Kauai board of instruction for the members of class 1 and it is probable some of the work to be done may be adapted so as to make the night school classes available as centers of information.

At all events the cooperation of the community is solicited in helping to promote public instruction in the English language as a patriotic duty. A number of public school teachers have offered their services for this work and inquiries are being made by the young men enrolled in the classes last year. It is hoped that the interest will increase and that the night school will soon be under way. De finite announcement of the schedule and teachers will be made later.

## EVENING SERVICE

The special evening service at the Lihue Hawaiian church was a gratifying success. There was a goodly proportion of the younger H. Wailua in the audience, who sang a good singing, more especially "Dear Heart," more efficiently than ever before. Rev. H. P. Judd presided and addressed in English on "Meeting Democracy safe for the World," in which he emphasized the absolute importance of Christian standards and ideals, and the large measure of responsibility resting on churches and Christian people to make these ideals and standards effective. Mr. A. G. Kaulukou acted as chairman of the meeting.

## CHILD DROWNED AT WAIMEA

Kinichi Sato, a seven year old boy of Waimea, was accidentally drowned at the mouth of the Waimea river last Tuesday afternoon. Sato went swimming at the mouth of the river with some older boys who later left him alone on the beach while they went to catch fish. When the older boys returned, Sato was missing, and an investigation proved that he had gone out over his head and had drowned. His body was recovered that evening.

## SPECIAL MEETING

There will be a special public meeting at the Lihue Union Church on Thursday evening at 7:30 preliminary to the coming Y. M. C. A. drive, at which time the visiting Y. W. C. A. delegation from Honolulu will set forth the interests and claims of the work. The public are cordially invited to be present.

## ALL RAIL ROUTE TO HANAMAULU

One of the problems, during all these years of the existence of the Lihue Plantation, has been the rendering in twain of the two halves of the estate by the Hanamaulu valley and the group of ravines tributary thereto. Some years ago this problem was partially solved by the building of the great trestle bridge which spans the valley near its mouth. But for the transportation of cane from one section to another, this is a long, round-about haul.

Another line of communication is now in process of construction up mauka. Starting at the foot of the German Forest, by a series of heavy cuts and fills across the intervening ridges and ravines, this line will effect a junction with the Hanamaulu railway system near the road to the Waialua Falls, and will involve some three miles of new road. The work is being most substantially and carefully done according to the best standards of high class engineering, with a view to permanency, and economy of running expense, and will be one of the finest and most expensive pieces of railway in the islands.

In addition to its importance as a bond of union for the two sections, it will also furnish a ready means of transportation for much mauka land which has been difficult to reach heretofore. The work has been in process for a couple of years now, and it looks as though it would require at least as much longer to finish it.

## Hall for Employees

Kilauea Plantation is to build a fine, new, commodious hall for the plantation employees. In these times of high priced material, this is a generous policy, which will be very much appreciated by those who will use the hall.

Attorney General Irwin, accompanied by private secretary Bailey of the Governor's staff, spent a few days on Kauai last week looking into Hanapepe land matters.

Kilauea will put in a potato molasses burning plant for the coming crop, for then it will furnish the double advantage of potato and power.

## The Primary Returns

The figures for the primary election in Lihue, Honolulu, and not N. H. H., which is still to be heard from, for the Republican ticket are as follows:

|         |     |
|---------|-----|
| Fulio   | 227 |
| Rice    | 194 |
| Pereira | 75  |
| Kaahu   | 35  |
| Werner  | 18  |
| Aguilar | 28  |
| Wilcox  | 24  |

Well-informed and pretty reliable opinion puts it down as pretty certain that Niihau will put Wilcox into the third place and Werner into the fourth, and will thus assure them the nomination.

## RED CROSS NOTES

| Number | Articles            | Value      |
|--------|---------------------|------------|
| 9      | Packing Cases       | \$ 45.00   |
| 22,203 | Gauze Wipes 4x4     | 1,119.15   |
| 80     | Man Tailed Bdgds.   | 16.00      |
| 730    | Bed Shirts          | 912.50     |
| 281    | Handkerchiefs       | 14.95      |
| 12     | Wash Cloths—knitted | 1.80       |
| 149    | Sweaters            | 745.00     |
| 212    | Pr. Socks           | 530.00     |
| 23,676 |                     | \$3,374.50 |

251 Registered Workers  
GRACE KING RICE,  
(Mrs. Chas. A. Rice)  
Vice-Chairman K.B.H.C.A.R.C.

|  |   |   |                           |
|--|---|---|---------------------------|
| SUPPORTS<br>ANY AND<br>ALL<br>GOVERNMENT<br>MEASURES<br>AT ALL<br>TIMES. | <b>THE GARDEN ISLAND</b><br>Kauai First, Last and all the time. | PUBLISHED<br>EVERY<br>TUESDAY<br>LIHUE<br>KAUAI |                           |
|  | KENNETH C. HOPPER,<br>E. CHESTER ROBERTS,                       |   | Managing Editor<br>EDITOR |
|  | TUESDAY   |   | OCTOBER 8, 1918           |

OUR FELLOW CITIZENS THE PORTUGUESE

ONE of the oldest elements of our composite citizenship here on the Islands is the Portuguese element. They have been here in numbers for some thirty-five years or more. And during all this time they have demonstrated the sturdy and stirring quality of their virtues, and have proved themselves in many ways a most valuable element in the development of our prosperity. Thrift, industry, sobriety and morality, these are qualities which signalize them as very important factors in the development of our resources, and of our social and moral life. Less facile, less brilliant, and also less volatile, than some other elements of our body politic, they have tended to give weight, stability and conservatism to our civilization, and in so doing they have played a very important part.

Furthermore, they are here to stay, and to take a hand in the development of the country. No one of them dreams of making a competence in a few years, and then returning to enjoy his money in San Miguel or Madeira. San Miguel to them is a vanishing dream, so dim and illusory that not one in a thousand cherishes even the hope or desire to go back for a visit. Hawaii is good enough for them, and American methods, American ideals, American education and the American outlook on life, these are the things they are working toward, none the less surely and safely because cautiously and carefully.

It is fitting enough for them to stir up a little enthusiasm over the Portuguese Republic, and warm up a little over their great navigators and literature and empire, but after all, this doesn't mean very much to them. It is all vague and dim and far away for they are Americans, with all their interests and well-being bound up tight here with the rest of a land ready to put their shoulders to the wheel of all our common problems, and we believe them as very desirable partners in all these things.

A SERIOUS MENACE

THE rules and Regulations of the Fire Marshal to which we refer elsewhere, may

REV. J. FONTANA, of a German Church in Dakota, has been sentenced for using seditious language. The following is in part the address of the Judge in passing sentence:

"You received your final papers as a citizen in 1898. By the oath you then took you renounced and abjured all allegiance to Germany and to the Emperor of Germany, and swore that you would bear true faith and allegiance to the United States. What did that mean? That you would set about earnestly growing an American soul and put away your German soul. That is what your oath of allegiance meant. Have you done that? I do not think you have. You have cherished everything German, read German, sung German. Every thought of your mind and every emotion of your heart through all these years has been German. Your body has been in America, but your life has been in Germany. If you were set down in Prussia to-day, you would be in harmony with your environment. It would fit you just as the flower fits the leaf and the stem of the plant on which it grows. You have influenced others who have been under your ministry to do the same thing. You said you would cease to cherish your German soul. That meant that you would begin the study of American life and history, that you would open your mind and heart to all of its influences, that you would try to understand its ideals and purposes and love them, that you would try to build up inside of yourself a whole group of feelings for the United States the same as you felt towards the fatherland when you left Germany. There have been a good many Germans before me in the last month. It has been an impressive part of the trial. They have lived in this country, like yourself, ten, twenty, thirty, forty years; and they had to give their evidence through an interpreter. And as I looked at them and tried as best I could to understand them, there was written all over every one of them, 'Made in Germany.' American life had not dimmed that mark in the least. It stood there as bright and fresh as the inscription upon a new coin. I do not blame you and these men alone. I blame myself. I blame my country. We urged you to come. We welcomed you; we gave you opportunity; we gave you land; we conferred upon you the diadem of American citizenship—and then we left you. We paid no attention to what you have been doing.

"I am not so simple as to entertain the idea that racial habits and qualities can be put aside by the will in a day, in a year, in a generation; but because that is difficult is all the more reason why you should get about it and quit cherishing a foreign life. If half the effort had been put forth in these foreign communities to build up an American life in the hearts of these foreign born citizens that has been put forth to perpetuate a foreign life, our situation would have been entirely different from what it is to-day. You have violated your oath of allegiance in this: You have cherished foreign ideals and tried to make them everlasting. That is the basic wrong of these thousands of little islands of foreigners that have been formed through our whole life, that instead of trying to remove our foreign life out of their souls and to build up an American

seem in some respects trivial or unimportant, but there is one ordinance at least that deserves the most serious consideration, and that is the one which relates to moving picture machines and the booths in which they are placed. In order to guard against the danger of fire the following precautions must be taken:

The booth in which the machine is placed must not be directly over an exit from the building. Such booth or enclosure must be constructed entirely of fire-proof material, brick, iron, concrete or their equivalent. Proper ventilation openings must be provided for these booths, which shall automatically close in case of fire, by means of gravity sliding doors; and there are various other detailed specifications to render them safe from the danger of fire.

Now, we venture to say that there is only one moving picture theatre on this Island which anywhere near conforms to these requirements, and that one is the Tip Top theatre in Lihue, and we most heartily commend the same. There the audience may rest easy and enjoy the show in quiet assurance that everything is all right. But at every other place on the Island a man, woman or child takes his life in his hand when he sits through a show there; and one of these days there will be a terrible tragedy and perhaps great loss of life. Some of the halls where these shows are given are mere rattle trap structures at best, tinder boxes, that would go up like smoke, with inadequate provision for emptying the hall quickly, and generally with the main, if not the only, exit right under the moving picture machine.

The easy assurance "Oh well, nothing ever has happened here" is a fallacious and a dangerous one. Things have happened elsewhere, and the very fact that these elaborate and explicit ordinances and specifications have been issued with the force and penalty of law, is sufficient evidence of their importance.

In view of the menace which this whole matter of moving picture halls and moving picture equipment imposes upon crowds of unsuspecting people from night to night, we would call upon the proper authorities to make an investigation of the actual conditions and see to it that proper safeguards are enforced.

life in them, they have striven studiously from year to year to stifle American life and to make foreignness perpetual. That is disloyalty. And the object, one of the big objects, of this serious proceeding in this court, and other like proceedings in other courts, is to give notice that that must be stopped.

"I have seen before my eyes another day of judgment. When we get through with this war and civil liberty is made safe once more upon this earth, there is going to be a day of judgment in these United States. Foreign-born citizens and the institutions which have cherished foreignness are going to be brought to the judgment bar of this Republic. That day of judgment looks more to me to-day like the great Day of Judgment than anything that I have thought of for many years. There is going to be a separation on that day of the sheep from the goats. Every institution that has been engaged in this business of making foreignness perpetual in the United States will have to change or cease. That is going to cut deep, but it is coming.

"I recognize the right of foreign-born citizens to bear their religion, if they cannot understand it in English, spoken to them in the tongue that they can understand. If they have not yet acquired enough English to read, they are entitled to have a paper that shall speak to them the language that they can understand. If they have not yet acquired enough this is the capital thing that is going to be settled on that day of judgment, namely, that the rights to these things is temporary, and it cannot be enjoyed by anybody who is not willing to regard it as temporary and to set about earnestly making the time of that enjoyment as short as possible. That means a fundamental revision of these foreign churches. No freedom of the press will protect a perpetual foreign press in these United States. It won't protect any press or any church which, while it is trying to meet a temporary need, does not set itself earnestly about the business of making that temporary situation just as temporary as possible, and not making it, as has been true in the past, just as near perpetual as possible. Men who are not willing to do that will have to choose. If they prefer to cherish foreign ideals, they will have to go to their own. If it is necessary, we will cancel every certificate of citizenship in these United States. The Federal Government has power to deal with that subject and it is going to deal with it. Nothing else than that can be possible. And the object of the sentence which I pronounce upon you to-day is not alone to punish you for the disloyalty of which you have been guilty, but to serve notice upon you, and the like of you, and all of the groups of people in this district who have been cherishing foreignness, that the end of the regime has come. It is a call to every one of you to set about earnestly the growing of an American soul inside of you.

"The Court finds and adjudges that you are guilty under each count of the indictment, and as a punishment therefor it is further adjudged that you be imprisoned in the Federal Penitentiary at Leavenworth for the term of three years. The sentences under the three counts of the indictment are to run concurrently and not successively."—The Outlook.

**CIVILIAN RELIEF**  
Anyone in or around about Lihue District wishing help from the Civilian Relief will find someone connected with this department at the Red Cross rooms on Monday and Friday afternoons from two until four.

**CIVILIAN RELIEF OFFICIALS**  
The officers of the Civilian Relief are: C. H. Wilcox, chairman, Mrs. C. H. Wilcox, Executive Secretary; K. C. Hopper, Dr. E. N. Young, J. M. Lydgate, C. B. Hofgaard, A. G. Kaulukou and L. A. Dickey constitute the consultation committee. District visiting committee chairmen: for Hanalei and Haena, Mrs. S. B. Deverell; Kilauea, Mrs. Chamberlain; Kealia, and Kapa, Mrs. E. Kopke; Kapaia Homesteads, Mrs. R. D. Israel; Hanamaulu and Lihue, Mrs. Ralph Wilcox; Koloa, Mrs. Jacobs; Eleele, Mrs. Alexwin, Waimea to Kekaha, Mr. C. B. Hofgaard.

**ELECTION OF OFFICERS**  
At the annual meeting of the Hui Aina o Haena, on the 6th day of Sept., 1918, at Haena, Kauai, T. H., the following officers were elected for one year:  
James K. Apolo President  
R. W. Kahea Vice-President  
Wm. Werner Secretary  
Upai Napuonole Treasurer  
A. Menefoglio Manager  
Wm. Hyde Rice Director  
W. F. Sanborn Director  
Wm. WERNER, Secretary Hui Kua'i Aina o Haena.

**ELECTION OF OFFICERS**  
At the annual meeting of the Hui Kua'i Aina o Wainiha, on the 5th day of Sept., 1918, at Wainiha, Kauai, T. H., the following officers were elected for the term of one year, to wit:  
James K. Apolo President  
Wm. Hyde Rice Vice-President  
Hiram K. Kanehe Secretary  
Henry Birkmyre Treasurer  
Wm. Werner Manager  
A. Menefoglio Auditor  
R. W. Kahea Director  
S. K. Kapua Director  
HIRAM K. KANEHE, Secretary Hui Kua'i Aina o Wainiha.

**NOTICE**  
Anyone found shooting on any of the Lihue Plantation lands will be prosecuted to the fullest extent of the law.  
R. D. MOLER, Manager.  
PAUL R. ISENBERG, Lessee.  
Lihue, July 16, 1918. Advertisement

M. Nakita, chauffeur, formerly of Lihue, is now with the Irona Auto Stand, on Beretania St., near Nuuanu. He has a seven-passenger Pierce-Arrow car, and respectfully solicits the patronage of the Kauai people while in Honolulu. Telephones 196-5050.—Adv.

**FOR SALE—THREE MILCH COWS** and two calves. Apply at the Lihue Hospital.

**W. H. ZIMMERMAN**  
Manufacturer



JOHN, RA'U'U, Lihue, Kauai  
Kauai Agent.

**War Savings Stamps**

Lihue Branch  
**Bank of Hawaii, Ltd.**

**Thrift Stamps**

**Waimea Stables**  
LIMITED  
Up-to-date Livery, Draying and Boarding Stable and Auto-Livery Business.  
**AUTOMOBILE STAGE-LINE**  
BETWEEN LIHUE and KEKAHA  
Leaving Lihue every Monday, Wednesday and Friday.  
Leaving Kekaha every Tuesday, Thursday and Saturday.  
ARRIVING AT THEIR DESTINATION IN THREE HOURS  
ALFRED GOMEZ, Manager.  
Telephone 43 W Waimea P. O. Box 71

**PUMPS**  
\$7.50



Henne's exclusive pumps for discriminating women—always correct in design.

In beautiful black gun metal . . . \$7.50  
In Patent Leather . . . \$7.50

WE CAN FIT YOU BY MAIL.

**Manufacturers' Shoe Store**  
P. O. Box 469 Honolulu

**ELEELE STORE**  
J. I. SILVA, Prop.

ALWAYS LEADS IN LOWEST PRICES ON  
Dry Goods, Boots and Shoes,  
Mens Furnishings, Cigars and  
Tobacco, Notions of all kinds.

MAIN STORE, ELEELE, PHONE 72 W.  
BRANCH STORE, KALAHEO HOMESTEAD

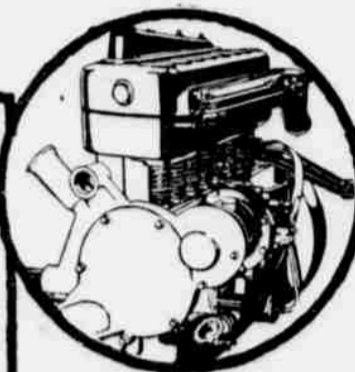
**Henry Waterhouse Trust Co., Ltd.**  
Honolulu, T. H.

THE LEADING TRUST COMPANY IN THE TERRITORY OF HAWAII

Let our years of experience be of assistance to you in the selection of your investments.  
CALL—OR—WRITE

The World's best investment: War Saving Stamps, for September \$4.20.

**"Proven Entirely Satisfactory"**



Only perfect satisfaction can account for the use of ZEROLENE by the majority of automobile owners.

Leading coast distributors also testify that it is "a satisfactory motor oil."

They know from the records of their service departments—and we know from exhaustive tests—that ZEROLENE, correctly refined from selected California asphalt-base crude, gives perfect lubrication with least carbon deposit. Get our lubrication chart showing the correct consistency for your car.

At dealers everywhere and Standard Oil Service Stations.  
**STANDARD OIL COMPANY (California)**

**ZEROLENE**  
The Standard Oil for Motor Cars

Correct Lubrication for the "L"-Head Type Engine  
This, the "L"-Head type of automobile engine, like all internal combustion engines, requires an oil that holds its lubricating qualities at cylinder heat, burns clean in the combustion chambers and goes out with exhaust. ZEROLENE fills these requirements perfectly, because it is correctly refined from selected California asphalt-base crude.

"We have not studied cost nor economy as we should, either as organizers of industry, statesmen, or as individuals."

---President Wilson.

But there is yet time to start to save--and that time is NOW.

**Bishop & Company**

Savings Department  
WAIMEA BRANCH  
KAUAI

**An Ounce of Prevention**

Is better than

**Tons of Cure**

Section 947, R. L. 1915, prohibits the use of Public Drinking Cups in public places, and carries a fine of not less than \$100 for violators.

Why Run the Risk?



Sanitary Paper Drinking Cups

are only 3/4 of a cent each, or 75c per 100

W. W. Dimond & Co., Ltd.  
House of Housewares  
HONOLULU

**Make the old clothes do**

Old Clothes are the order of the day

**French Cleaning and Dyeing**

will make them look like new. We help you get many more months' wear out of them.

**French Laundry**

J. ABADIE, Proprietor  
Honolulu, T. H.

**Koloa Plantation Store**

Wholesale and Retail Groceries  
Dry Goods of all Descriptions.  
General Plantation Supplies.



**Souvenirs**

We neatly pack and mail Hawaiian Souvenirs, Hawaii & South Seas Curio Co.  
HONOLULU.

**An Old Landmark**

The old Princeville Plantation house at Hanalei is being dismantled and torn down—the material to be used for more plebian purposes elsewhere on the estate.

This famous old house, in its various stages, has played an important part in the social and economic development of the Island and deserves a parting word of notice.

More than most houses, even old ones, it has gone through various changes, additions and reconstructions, that make its later aspect almost unrecognizable to its earlier occupants. But there is no difficulty about detecting the older parts, since they were built of stone and have resisted the influences of time and decay.

The original house was built by Rhodes about 1845. It was a two room stone structure, with heavy walls and deep embrasured windows and doors, plastered within and without. This is the part recently used as a dining room, store rooms, etc. Along in the '80s the Koellings built on a top story of wood. Sometime later the Willis' tore off the old kitchen and removed other stone out-buildings. Later still the Sanborns made important additions and improvements which made it as nearly as possible a modern house.

If the old house could speak for itself it could tell a story of rare interest and vivacity, with very much of humor and pathos, and with many spicy passages.

Among the occupants of the historic old house the following may be mentioned. Beginning with the Rhodes, whose occupancy was extended to a decade or so, the Wandenburgs followed, and lived there for many years, the story of which Mrs. King has told very entertainingly in her Historical Society paper, published a year or so ago in the Garden Island. Following them there were various short occupancies until the Koellings came. They occupied the place for a dozen years or so and were followed by the Willis', and they in turn by the Sanborns.

Especially in the palmy days of the Wyllie ownership it was a place of much social distinction and a good many distinguished people were entertained there in princely fashion and with lavish generosity in spite of rural limitations. Among these were the royal party including Kamehameha Fourth and Queen Emma with their little son the Prince of Hawaii, after whom Princeville was named, and the princess Namakeha, who was governess guardian to the little Prince, and who later became Kahakaua's Queen, Kapiolani. The Princess Ruth Keelikolani was also a guest at the home. But the most distinguished guest of all was lady Franklin, who spent a couple of months there and enjoyed it very much as a restful change from an anxious and strenuous life seeking for traces or information of her lost husband.

The following names should have appeared on the Honor Roll:

- Au Hoy
- W. F. Sanborn
- Princeville Plantation Co.
- Mrs. John Akana
- Mrs. C. Akana
- Enoka Kawika
- I. Kuniyuku
- K. Mitsui
- Ninimoto
- R. K. Nahea
- Kodama
- Dr. Cyril Golding
- Chong Hing
- Ching Young
- Kamioshi
- Too Le
- Shing Shai
- C. Poo Leong
- L. Paulel
- Sehiro
- Mrs. H. Birkmyre

**THE CATPILLAR BEATS OUT THE STEAM PLOW**

It seems that the jaunty little caterpillar with its wobbly, crawling ways bids fair to run the old fashioned, ponderous, slow-going steam plow out of business. The reason is that it is more economical—in labor, in fuel and in mechanical equipment.

The caterpillar has increased greatly in the land, there being over 100 on the Islands, and the number of them is increasing rapidly. The high price of coal, and the high price of labor both count heavily for the caterpillar.

**HIGH-GRADE LIVE STOCK SHIPPED TO PRINCEVILLE**

Twenty-five head of live stock valued at \$32,500 have been shipped from a Pacific port to the Princeville plantation. The shipment was made under the direction of CHIEF Harris of the Hereford cattle breeding firm of Harris & Sons. In the shipment were five bulls, the average price of which was \$2500, and twenty heifers valued at \$1900 each. The heifers are bred to the \$20,000 bull Repeater. Two of the bulls are classed by cattlemen as being of as high grade as any ever shipped from a Pacific port.

**Lihue Union Picnic**

The Lihue Union Sunday School and their friends, to the number of about sixty, enjoyed a picnic at Niumalu beach on Saturday, which claims to be the best thing in its line in all these years.

Promptly at 10 o'clock, the scheduled time, almost everyone was there, and in the mood to enjoy the outing to the full. For an hour or two the main interest centered on the swimming, either in the river or the sea, and seldom has that region presented so much color, vivacity, and good humor.

At noon every one was ready for the picnic lunch, which was most delicious and most varied, with all kinds of salads, sandwiches, baked beans, etc., as well as four large freezers of ice cream, every bit of which disappeared, with many exclamations of "Gee, but this is good ice cream!"

Some of the youngsters ate their lunch in their bathing suits and hiked right back to the water for another swim, which lasted most of the afternoon.

The afternoon was greatly enlivened by a huki-lan in which seven big nets joined together were pulled in and a great showing of fine fish was made, including two big turtles and two stingarees.

Through the generosity of Mr. and Mrs. Coney, some of the choicest of the fish was distributed among the picnickers. To many of the guests, including the new teachers, many of whom were there, this was all a new and most interesting experience.

Between times, it was most comfortable and enjoyable under the trees, and in groups on the lawn, on rugs and in hammocks. All this by the kindness and courtesy of Mr. and Mrs. Coney.

Very reluctantly the affair broke up about the middle of the afternoon, everyone carrying away the pleasantest conviction of a good time, and most of them, two or three layers of tan and sunburn.

Mrs. Lydgate and Mrs. Wood were hostesses.

**An Emergency Ration**

The Quartermaster Corps has worked out a special reserve emergency ration for the army consisting of hard bread, corn beef, corn beef hash, roast beef, salmon, sardines, soluble coffee, sugar and salt, to be packed in a moulaged galvanized iron tins and hermetically sealed against gas as well as moisture.

This announcement carries two important messages for the American people. It teaches the necessity for saving certain foods and it also emphasizes the necessity for building up a national reserve ration.

Wheat, meat and sugar make up most of the menu of this "lunch between shots" for our boys. That is the reason civilians are asked to eat war bread, to save the heavier cuts of beef and to make our national allotment of sugar go around.

The abundant American harvests have brought rifts in the food cloud, it is true. But now is the time for a national reserve ration to make impossible any such dire conditions as faced the Allies early last spring. Remember these words of Lord Rltonnda, when he heard our wheat supplies had been eaten up: "The war is over, we are beaten."

America did her part then and she must do her part now by preparing against any possible repetition of that call of distress.

**A Threatening Pest**

Grove Farm Plantation has been doing a good deal of burning off and plowing on the uplands of the western slopes of Kihobana, partly with a view to planting valuable ranch grasses, but also partly to wage war against the spreading maze of Melastoma which is invading and ruining all that region.

The Melastoma bears a very pretty lavender flower, somewhat like a pretty single rose. It was introduced a good many years ago, presumably because of the flower, and has taken very kindly to that upland region, and has quietly taken possession of it, and now it will not leave it until it is forcibly driven out.

**LIBERTY LOAN DAY OBSERVED**

Sunday was Liberty Loan Day at the Lihue Union Church, with an address suitable for the occasion, on the widow and her mites.

Two new members were received into the church, and the Sacrament of the Lord's supper was celebrated. Mrs. F. C. Stone sang "The Clean Heart" as a solo, rendering it very effectively with sympathetic voice and graceful charm. There was a large and very attentive audience.

**TIP TOP THEATRE**

Tuesday, Oct. 8

A. H. WOOD PRESENTS HIS BROADWAY SUCCESS

**"THE GUILTY MAN"**

THE GREATEST SENSATION OF THE MOMENT. A POWERFUL CAST, WITH GLORIA HOPE AND VIVIAN REED. INTENSE GRAPHIC, BUT MELO DRAMATIC.

Thursday, Oct. 10

**Louise Glaum**

—IN—

**GOLDEN RULE KATE**

THE STORY OF A COWGIRL WHO CLEANED UP A WESTERN TOWN SINGLE HANDED.

ALSO

"A ROYAL ROGUE"

A RIB-BUSTING MACK SENNETH COMEDY



Louise Glaum in Triangle play, "Golden Rule Kate"

Saturday, Oct. 12

**Miss Billie Burke**

—IN—

**"Eve's Daughter"**

A Peppery Picture Dominated by the Piquant Personality of Miss Burke. Thomas Meighan Gives Strong Support. An Up-to-the-Minute American Play—Too Good to Miss!



BILLIE BURKE in "Eve's Daughter" A Paramount Picture

SIXTH CHAPTER OF



"The Guilty Man" program will be also shown at

ELEELE, WED., OCT. 18; MAKAWELI, THUR., WAIMEA, FRI., KEKAHA, SAT., KAPAA, MON.

"Eve's Daughter" program will be also shown at

WAIMEA, MON., OCT. 14; MAKAWELI, TUES. KOLOA, WED. HOMESTEAD, THU. KAPAA, FRI.



**A REAL PLEASURE TO USE IT**

Webster's New International Is a Necessity in Every Well-Equipped School, Cultured Home and Up-To-Date Business Office.

Every day in your talk and reading, at home, in the office, shop, and school you question the meaning of some new word. A friend asks: "What is white coal?" sabotage? gantry? Who was Becky Sharp? Is Hongkong a city or an island? etc., etc. This New Creation is far more than a dictionary, being equivalent in type matter to that of a 15-volume encyclopedia. It answers with final authority all kinds of questions in language, history, geography, biography, trades, arts, and sciences, sports, foreign phrases, abbreviations, etc. **Get the Best.** Supreme Court Judges concur in its favor. The government Printing Office at Washington uses it as the authority. These statements can be made of no other dictionary.

KENNETH C. HOPPER, Agent  
Lihue.

K. C. HOPPER, Lihue, Hawaii:

Sir:  
Please send me sample pages and terms of Webster's New International Dictionary.  
Name .....  
Address .....

**A Lost Art Revived**

The old-time canoe builder is a thing of the past, obsolete and extinct like the dodo or the moho. And yet, it seems, not absolutely so. In a very secluded corner, far from the haunts of men, we recently ran across an old one-armed man, laborously chip-

ping away on a canoe which he was making out of a nor-west log that the ocean currents had kindly drifted to his door. His only tools were two little old-fashioned Hawaiian adzes tied onto short natural wooden handles. With these he was slowly and painfully worrying out the interior of his craft, being especially bothered by the great knots which here and

there almost defied his crude tools. All alone he had been working on it for months, and it will be a red letter day, now not far away, when he has his launching, and demonstrates its sailing qualities. The victim of a giant powder fishing accident some years ago he lost his right hand, but not his grit, and not his skill.

# "J-M"

Exterior

## Washable Paint

Especially efficient and economical for mill work  
Sanitary—weatherproof—fireproof.  
A high grade cold water paint for exterior and interior work.  
Put up in 350 pound barrels. "A reputation behind it" and  
approved by the National Board of Fire Underwriters.

**Honolulu Iron Works Co.**  
Honolulu, T. H.

## Order It By Mail!

Our MAIL ORDER DEPARTMENT is exceptionally well equipped to handle all your Drug and Toilet wants thoroughly and at once.

We will pay postage on all orders of 50¢ and over, except the following:

Mineral Waters, Baby Foods, Glassware and articles of unusual weight and small value.

Non-Mailable: Alcohol, Strychnine, Rat poisons, Iodine, Ant poison, Mercury Antiseptic Tablets, Lysol, Carbolic Acid, Gasoline, Turpentine, Benzine and all other poisonous or inflammable articles.

If your order is very heavy or contains much liquid, we suggest that you have it sent by freight.

**Benson, Smith & Co., Ltd.**  
"Service Every Second"

The Rexal Store Box 426 Honolulu

## Theo. H. Davies & Co., Ltd.

HONOLULU and HILO

### Sugar Factors and Commission Merchants

IMPORTERS OF GENERAL MERCHANDISE

#### GENERAL HARDWARE

|                    |                |             |             |
|--------------------|----------------|-------------|-------------|
| Builders' Hardware | Crockery       | Glassware   | Silverware  |
| Sporting Goods     | Fishing Tackle | Firearms    | Ammunition  |
| Saws               | Refrigerators  | Spark Plugs | Flashlights |
| Paints             | Varnishes      | Brushes     | Oils        |
| Harness            | Saddlery       | Roofing     | Trunks      |
|                    | etc.           | etc.        | Suit Cases  |

#### GROCERIES

Fancy and Staple Lines, Etc., etc.

#### DRY GOODS

Shoes Toilet Supplies Stationery etc., etc.

#### INSURANCE AGENTS

Writers of Fire, Marine, Compensation, Automobile and Miscellaneous Insurance Policies.

#### AGENTS FOR

Canadian, Australian, Royal Mail Steamship Line

Upon application information will be cheerfully furnished in regard to any of our lines in which you may be interested.

**E. O. HALL & SON Ltd.**  
HONOLULU  
Distributors  
for the  
TERRITORY OF HAWAII  
Get our latest prices

## Plans for Pig Club Under Way

There is going to be a pig club, and in all probability there will be several pig clubs on this island before many months have passed. Mr. E. A. Creevey, Vocational instructor, is at present organizing a pig club at Elesee. He gives out the following information for those interested:

"The purpose of the pig club is to stimulate interest among children, in agriculture, especially stock raising. It is also a means of distributing better live-stock throughout the community, and it fits very nicely into our war time conservation program. The pig club also presents limitless educational advantages.

In order to become a member of a pig club the applicant must be over 12 years old. Upon becoming a member, each individual member must become the owner of a pig which must be less than three months old, and must be of good stock.

The member of the club must take upon himself or herself the responsibility of feeding and caring for the pig, and must keep all records, such as the weight of the pig at time of purchase, and the cost of labor and food required for raising and fattening the pig.

The club member who raises a pig of a weight of 150 pounds live weight, at the least cost per pound, shall be entitled to a prize, and a second and third prizes will also be given, provided funds are available.

All members must attend meetings of the club, which will be called from time to time, for the discussion of matters pertaining to pig raising.

#### MECHANICAL EDUCATION

With the introduction of gasoline tractors and numerous other mechanical devices that are being used more and more in Hawaiian industries, there is going to be an increasing demand for people who can operate this machinery intelligently. It is now the general opinion of tractor experts all over the mainland, that the greater part of the trouble met with in the use of gasoline tractors is due to the unintelligent operation of same.

With these two points in view, it seems that we could do more along the lines of mechanical education in our schools than has been done. On the other hand, it would be unwise to sacrifice any of the good work being done in agricultural and manual training. It would be unnecessary to train boys at school to repair gasoline engines, in order to accomplish mechanical education, but our youngsters could obtain at school an understanding of the underlying principles of gasoline motive power, we would be preparing them to better understand work that they would be very likely to come in contact with later on.

A step along this direction might be accomplished by changing the old symbols of instruction for our babies, from the old code of G stands for Giraff and Z stands for Zebra, to G stands for Gears and Z stands for Zeroline.

Canada has gone us one better on the sugar ration and is down to one and one-half pound a month.

The Kauai Fair Price Committee, appointed by the United States Food Administration, issues the following and highest cost and selling prices were compiled from lists sent in by

| Commodity                               | Cost Delivered at Store | Selling Price |
|---|-------------------------|---------------|
| Wheat Flour, 49 lb. bag.....            | 3.18                    | 3.40          |
| Wheat Flour, bulk, lb.....              | .065                    | .07           |
| Barley Flour, bulk, lb.....             | .06                     | .08           |
| Corn Flour, 49 lb. bag.....             | 3.15                    | 3.75          |
| Corn Flour, bulk, lb.....               | .065                    | .09           |
| Rice Flour, 49 lb. bag.....             | 4.81                    | 5.15          |
| Rice Flour, bulk, lb.....               | .085                    | .12           |
| Corn Meal, bulk, lb.....                | .07                     | .09           |
| Crackers, saloon pilot, lb.....         | .115                    | .14           |
| Crackers, cream, lb.....                | .135                    | .15           |
| Rolled Oats, Stand, pkg. (not H.O.)     | .15                     | .18           |
| Rolled Oats, bulk, lb.....              | .0925                   | .095          |
| Japanese Rice, bulk, lb.....            | .1051                   | .113          |
| Hawaiian Rice, bulk, lb.....            | .085                    | .087          |
| Sugar, granulated, lb.....              | .07725                  | .095          |
| Sugar, mill, lb.....                    | .05                     | .0625         |
| Beans, white, navy or pea (not lima)    | .085                    | .16           |
| Beans, red, colored or Maui, lb.....    | .0925                   | .11           |
| Potatoes, Irish, lb.....                | .0346                   | .0475         |
| Onions, lb.....                         | .0278                   | .045          |
| Raisins, seeded, lb.....                | .11                     | .17           |
| Prunes, med. size.....                  | .10                     | .15           |
| Canned Tomatoes, Stand, 24 oz. tins..   | .08                     | .15           |
| Canned Corn, Stand, 29 oz. tin.....     | .10                     | .20           |
| Canned Peas, Stand, 29 oz. tin.....     | 10                      | .1833         |
| Canned Salmon, tall pink Alaska, 16oz.  | .125                    | .24           |
| Canned Salmon, tall red Alaska.....     | .146                    | .21           |
| Evap. Milk, unsweetened 6 oz. tin.....  | .054                    | .07           |
| Evap. Milk, unsweetened 16 oz. tin..... | .1183                   | .135          |
| Butter, print, lb.....                  | .625                    | .71           |
| Cheese, American full cream, lb.....    | .27                     | .34           |
| Lard Compound, 3 lb. tin.....           | .65                     | .75           |
| Lard Compound, 5 lb. tin.....           | 1.15                    | 1.25          |
| Lard Compound, 10 lb. tin.....          | 2.37                    | 2.40          |
| Lard Compound, bulk, lb.....            | .225                    | .265          |
| Crisco, 1 lb. tin.....                  | .30                     | .325          |
| Crisco, 1 1/2 lb. tin.....              | .458                    | .56           |
| Crisco, 3 lb. tin.....                  | .90                     | .98           |
| Crisco, 10 lb. tin.....                 | 1.81                    | 2.00          |
| Bacon, sliced, 9 oz. jar.....           | .4125                   | .50           |

## The Public Take Notice

Most every one has received a little pamphlet of Rules and Regulations of the Fire Marshal. Mostly these rules and regulations apply to public garages, dry cleaning establishments, moving picture theatres, etc., but there are two or three which concern the general public and the every day man.

One is to the effect that every private garage must have always on hand two iron buckets of dry sand for the purpose, presumably of extinguishing fire.

It is probably safe to say that not one garage in a hundred observes this requirement or knows anything about it.

Another is to the effect that no smoking shall be allowed in any building used as a garage, and that a "No Smoking" sign must be displayed.

Still another is to the effect that all public schools are required to have a fire drill at least once a month, and must have a fire gong expressly and solely for use on these occasions.

It is to be hoped the schools are complying with these regulations.

Public buildings such as theatres, schools, churches, factories, etc., shall have one approved fire extinguisher for each 2500 feet of floor space, which presumably means that each school building must be thus outfitted.

Another provision strictly prohibits any smoking upon any wooden wharf, pier, quay or bulkhead within the Territory.

The penalty for the contravention of these rules shall be a fine of not less than \$10, nor more than \$500.

## Crop Reports

The following is the acreage and estimated yield of some of the main crops other than pineapples and cane, under cultivation on Sept. 30, 1918, as reported by the county agent. This is a bad time of the year for diversified crops, therefore the acreage and yield are comparatively small, compared with other seasons. Much of the rice has been harvested, and the report includes only the crop still standing or lying in the fields on Sept. 30th:

|                     |      |                     |
|---------------------|------|---------------------|
| Rice.....           | 1760 | 37000 bags          |
| Taro.....           | 135  | 20250 bags          |
| Beans.....          | 65   | 1900 bags           |
| Irish Potatoes..... | 7    | 280 bags            |
| Sweet Potatoes..... | 70   | 5250 bags           |
| Corn.....           | 35   | 525 bags            |
| Alfalfa.....        | 25   | 500 tons            |
| Cassava.....        | 35   | 3500 bags           |
| Peanuts.....        | 11   | 275 bags of 10 lbs. |

#### A PROLIFIC FRUIT TREE

The VI apple is an astonishingly productive tree, beyond that of almost any other fruit tree here. We know of a tree that is strongly shored up to prevent the heavily laden branches from breaking off, and in addition to this, some of the branches are suspended by chains slung from the crotch of the tree higher up. While not particularly nice to eat raw, the apples make a delicious apple sauce. So housekeepers who know are glad to get them.

appointed by the United States Food Administration, issues the following list of commodities showing the lowest and highest cost and selling prices of the stores on the island. The prices fourteen different stores.

| Commodity                               | Cost Delivered at Store | Selling Price |
|---|-------------------------|---------------|
| Wheat Flour, 49 lb. bag.....            | 3.18                    | 3.40          |
| Wheat Flour, bulk, lb.....              | .065                    | .07           |
| Barley Flour, bulk, lb.....             | .06                     | .08           |
| Corn Flour, 49 lb. bag.....             | 3.15                    | 3.75          |
| Corn Flour, bulk, lb.....               | .065                    | .09           |
| Rice Flour, 49 lb. bag.....             | 4.81                    | 5.15          |
| Rice Flour, bulk, lb.....               | .085                    | .12           |
| Corn Meal, bulk, lb.....                | .07                     | .09           |
| Crackers, saloon pilot, lb.....         | .115                    | .14           |
| Crackers, cream, lb.....                | .135                    | .15           |
| Rolled Oats, Stand, pkg. (not H.O.)     | .15                     | .18           |
| Rolled Oats, bulk, lb.....              | .0925                   | .095          |
| Japanese Rice, bulk, lb.....            | .1051                   | .113          |
| Hawaiian Rice, bulk, lb.....            | .085                    | .087          |
| Sugar, granulated, lb.....              | .07725                  | .095          |
| Sugar, mill, lb.....                    | .05                     | .0625         |
| Beans, white, navy or pea (not lima)    | .085                    | .16           |
| Beans, red, colored or Maui, lb.....    | .0925                   | .11           |
| Potatoes, Irish, lb.....                | .0346                   | .0475         |
| Onions, lb.....                         | .0278                   | .045          |
| Raisins, seeded, lb.....                | .11                     | .17           |
| Prunes, med. size.....                  | .10                     | .15           |
| Canned Tomatoes, Stand, 24 oz. tins..   | .08                     | .15           |
| Canned Corn, Stand, 29 oz. tin.....     | .10                     | .20           |
| Canned Peas, Stand, 29 oz. tin.....     | 10                      | .1833         |
| Canned Salmon, tall pink Alaska, 16oz.  | .125                    | .24           |
| Canned Salmon, tall red Alaska.....     | .146                    | .21           |
| Evap. Milk, unsweetened 6 oz. tin.....  | .054                    | .07           |
| Evap. Milk, unsweetened 16 oz. tin..... | .1183                   | .135          |
| Butter, print, lb.....                  | .625                    | .71           |
| Cheese, American full cream, lb.....    | .27                     | .34           |
| Lard Compound, 3 lb. tin.....           | .65                     | .75           |
| Lard Compound, 5 lb. tin.....           | 1.15                    | 1.25          |
| Lard Compound, 10 lb. tin.....          | 2.37                    | 2.40          |
| Lard Compound, bulk, lb.....            | .225                    | .265          |
| Crisco, 1 lb. tin.....                  | .30                     | .325          |
| Crisco, 1 1/2 lb. tin.....              | .458                    | .56           |
| Crisco, 3 lb. tin.....                  | .90                     | .98           |
| Crisco, 10 lb. tin.....                 | 1.81                    | 2.00          |
| Bacon, sliced, 9 oz. jar.....           | .4125                   | .50           |

## Nawiliwili Garage

C. W. SPITZ, Prop.

NAWILIWILI, KAUAI TELEPHONE 494

Automobiles to all Parts of Kauai,  
all hours, Day and Night

### AUTOMOBILES AND LIGHT MACHINERY REPAIRED

FORD CARS, McFARLAN, STANLEY STEAMER, LOCOMOBILE, COLE, REO, CHEVROLET (except Model "490") AND SAJON, also REO, COMMERCE, LOCOMOBILE AND MORELAND TRUCKS. We carry a complete stock of U. S. L. Batteries and Battery Parts also Automobile and Tire Accessories. A COMPLETE LINE OF FORD PARTS

Goodyear Tires and Tubes  
The best in the Market for the Money.

GOOD YEAR  
AURON



NAWILIWILI GARAGE, Agents for Kauai.



Silva's Toggery, Honolulu.

## VULCANIZING

Tire and Tube  
Repairing

TOMINATSU  
PAKALA  
P. O. BOX 28 : WAIMEA

## REGAL SHOE

are made of all leather  
We do not carry footwear containing substitute leather. Real leather means long wear, hence economy. Mail orders a specialty  
REGAL SHOE STORE  
HONOLULU

### Danger of Food Shortage Passed

Universal war bread of better quality than last year for all the nations fighting Germany, practically without rationing, will be one of the results of the food controller's conference at London. Herbert C. Hoover says there will be ample supplies of fats and meats if the populations are economical and avoid waste.

"The danger of privation is now passed," said Mr. Hoover.

#### PROGRAM AGREED UPON

He said a program had been agreed upon regarding different commodities required to maintain health and comfort. He appealed to the United States for continued economy to meet the increased demands of Europe and carry over a stock of foodstuffs that will form positive insurance against climatic eventualities. The text of Mr. Hoover's statement follows:

"I am well satisfied with results from the conferences of food controllers. These conferences were called

at my request with a view to the formulation of policies and a program with regard to the entire import of food supplies to the countries at war with Germany. An agreement has been reached as to policies which will effect a greater measure of coordination in the purchase and transportation of supplies during the coming year and their equitable distribution between all the countries; and a program has been agreed upon as to the different commodities that are required not only to maintain the health but the comfort of the armies and civil populations.

#### EFFECT SAVING IN TONNAGE

"The people of North America are this year able to take upon their shoulders the movement of the great bulk of food supplies required, and it will therefore be possible to curtail the total length of voyage necessary to bring these supplies to the European allies, thus effecting a considerable saving in tonnage as well as contributing a material factor of safety

on account of the comparative immunity of the Atlantic lane over all others from interference by the enemy. "The great transportation problem within the next year is to move sufficient American troops into Europe to give an over-powering strength against any forces the Germans may be able to bring together, and in order to accomplish this economy in consumption is imperative in all the allied countries.

#### FOOD COUNCIL IN CONTINUOUS SESSION

"Arrangements have been made by the four food controllers not only to cover these matters of policy, but also to provide for the erecting of machinery for continual supervision of the necessary operations. The food council, which is a body that has just been created, will be maintained in continuous session by means of having representatives of each government with their headquarters in London.

"With the consummation of the work initiated at this conference there will

be a universal war bread of better quality than last year for all those fighting Germany, and this bread practically without rationing. There will be ample supplies of fats and meats if our populations are economical and avoid waste. We will be able to build up some stocks of cereals against the next harvest, and we shall save tonnage over last year by the shorter voyage upon which food ships must be sent.

"The coal miners of Europe are now at the front; consequently this next winter will be a period of great suffering in Europe through a shortage of coal. If the people can have liberal supplies of breads, meats, and fats there can be no fear of the morale among the civil populations of the European allies. The promise of this has lifted a load of fear off the minds of the people on this side, particularly in France and Italy. It now remains for our people to make good, and as usual, we have the resources to do it."

We've just received a new and complete stock of

## Klein Pliers & Mechanics' Tools

A high grade line recommended by first-class mechanics throughout the mainland

- CLIMBERS
- BELTS
- CONNECTORS
- SAFETY STRAPS
- PLIER POCKETS
- TOOL BAGS
- OF CANVAS OR LEATHER.

MAIL ORDERS FILLED PROMPTLY

### Lewers & Cooke, Ltd.

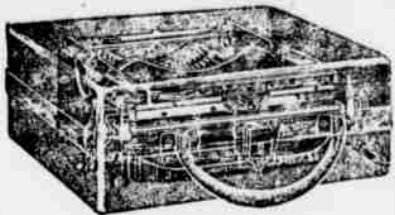
Lumber and Building Materials 169-177 So. King Street

#### JEWELERS

EVERYTHING IN THE SILVER AND GOLD LINE, RICH CUT GLASS AND ART GOODS. MERCHANDISE OF THE BEST QUALITY ONLY.

#### H.F. WICHMAN & CO., LD.

LEADING JEWELERS. P. O. Box 342 Honolulu



The personal writing machine

#### CORONA TYPEWRITER

Strong, light, convenient. Weight without carrying case, 6 lbs. Price \$50.

#### Hawaiian News Co., Ltd.

Honolulu Young Hotel Bldg.

## JAS. F. MORGAN

Co. Ltd. Stocks, Bonds, Real Estate and Insurance NO. 125-131 MERCHANT ST. P. O. Box No 594 Honolulu

## AUTOMOBILE

Painting and Varnishing

ALL WORK GUARANTEED FIRST CLASS

### NOSAKI

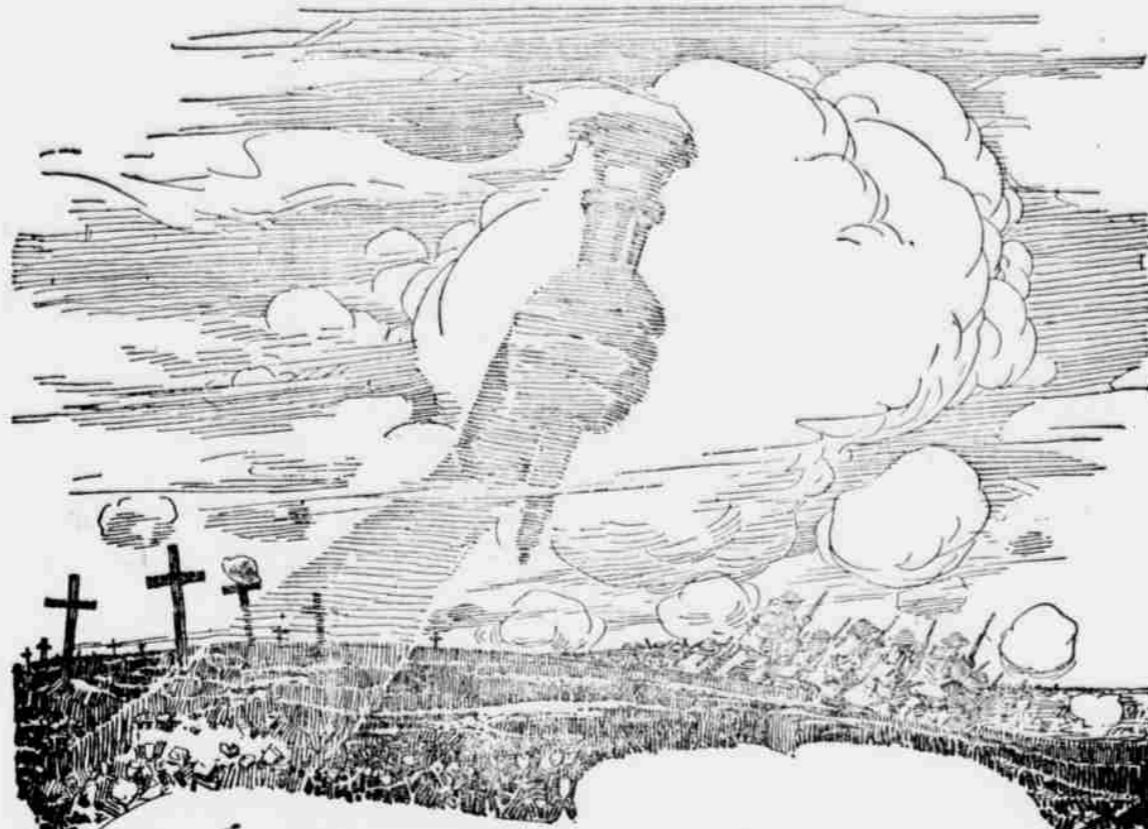
Back of Bishop Bank WAIMEA

### Kauai Steam Laundry

FIRST CLASS WASHING AND IRONING

HATS CLEANED

Kapaa : : P. O. Kealia



## IN FLANDERS FIELDS

BY COL. JOHN F. McCRAE, DIED AT BOULOGNE, JANUARY 28, 1918.

In Flanders fields the poppies blow  
Between the crosses, row on row,  
That mark our place, and in the sky  
The larks still bravely singing fly,  
Scarce heard amidst the guns below.  
We are the dead. Short days ago  
We lived, felt dawn, saw sunset glow,  
Loved and were loved, and now we lie  
In Flanders fields.

Take up our quarrel with the foe,  
To you from falling hands we throw  
The torch -- be yours to hold it high.  
If ye break faith with us who die,  
We shall not sleep tho poppies grow  
In Flanders fields.

BUY Fourth Liberty Bonds Any Bank Will Help You

THIS ADVERTISEMENT CONTRIBUTED THROUGH THE PATRIOTIC CO-OPERATION OF

Loan Committee of the Kauai Chamber of Commerce and the Kauai Planters Association.

LET US DO ALL YOUR

## Laundry and Dry Cleaning

WE ARE STILL IN THE BUSINESS

Address

## Territorial Messenger Service

HONOLULU

## Ransome Concrete Machinery

- Concrete Mixers
- Buckets
- Grout Mixers
- Hoists
- DISTRIBUTORS

## Caiton, Neill & Co., Ltd.

ENGINEERS

Has a very Creamy Lather as a result of scientific Soap-making. Does not waste.

### IMPERIAL PEROXIDE SOAP

# 10¢

Each cake is wrapped to insure delivery to you in a sanitary condition and to retain its original delicate perfume. Made in the cleanest most sanitary factory in the world.

Imperial Peroxide is an antiseptic soap, made for Nursery, Toilet and general purposes. Has a most pleasing effect on delicate skin, besides making it healthy and clean.

For Sale at **Libbe Store**

A PURE WHITE TOILET AND BATH SOAP

# MICHELIN

**The Combination that Means Tire Satisfaction**

**Michelin Universal Treads**  
As good tires as money can make or buy. Not only contain the very best of rubber and fabric, but so much more of each that they weigh from 12 to 15% heavier than the average.

**Michelin Red Inner Tubes**  
Made on a circular mandrel producing a truly ring-shaped tube which fits the casing perfectly without stretching or wrinkling. Michelin Tubes do not grow brittle or porous with age.

*In justice to yourself, give these moderate-priced, high-quality tires a trial.*

**Kauai Garage**  
W. J. A. H.

Michelin Red Tubes are often imitated in color but never in quality.

BY-AUTHORITY
In the District Court of Lihue, Island and County of Kauai, Territory of Hawaii

J. K. FARLEY, Assessor of Taxes, Fourth Taxation Division, Territory of Hawaii.

PLAINTIFF, vs. JOHN DOE, unknown owner of land at Wailua, described in L.C.A. 3238. DEFENDANT.

ASSUMPSIT

NOTICE OF PENDENCY OF ACTION

IN ACCORDANCE WITH AN ORDER made and entered in the above entitled court and cause by the District Magistrate of said court on the 2d day of October, 1918,

NOTICE IS HEREBY GIVEN that said action, in which J. K. Farley, Assessor of Taxes, Fourth Taxation Division of the Territory of Hawaii, as plaintiff, claims of John Doe, unknown owner of land at Wailua, described in L. C. A. 3238, the sum of \$11.10, together with interest, penalty and costs, the same being the amount of taxes due and unpaid upon said land for the years 1916, 1917 and 1918, will be tried before Hon. J. L. Hjorth, District Magistrate of Lihue, Island and County of Kauai, on Monday, the 28th day of October, 1918, at the hour of 10 o'clock in the A. M., of said day.

NOTICE IS LIKEWISE GIVEN to all parties in interest to appear and defend said action.

DATED, Lihue, Island and County of Kauai, October 2d, 1918.

J. L. HJORTH, District Magistrate of Lihue, Island and County of Kauai Territory of Hawaii.

In the District Court of Hanalei, Island and County of Kauai, Territory of Hawaii.

J. K. FARLEY, Assessor of Taxes, Fourth Taxation Division, Territory of Hawaii.

PLAINTIFF, vs. JOHN DOE, unknown owner of land at East Waialua, described in R.P. 4035 L. C. A. 3404. DEFENDANT.

ASSUMPSIT

NOTICE OF PENDENCY OF ACTION

IN ACCORDANCE WITH AN ORDER made and entered in the above entitled court and cause by the District Magistrate of said court on the 3rd day of October, 1918,

NOTICE IS HEREBY GIVEN that said action, in which J. K. Farley, Assessor of Taxes, Fourth Taxation Division of the Territory of Hawaii, as plaintiff, claims of John Doe, unknown owner of land at East Waialua, described in R. P. 4035 L. C. A. 3404, Granted to Adamu Apana 1, One Rood 36 Perches, Kalo and Kula land near Sea Apana 2, pahale One Rood 5 Perches, mauka of Gov't road, the sum of \$7.45, together with interest, penalty and costs, the same being the amount of taxes due and unpaid upon said land for the years 1916, 1917 and 1918, will be tried before Hon. Wm. Huddy, District Magistrate of Hanalei, Island and County of Kauai, on the 25th day of October, 1918, at the hour of 10 o'clock in the A. M., of said day.

NOTICE IS LIKEWISE GIVEN to all parties in interest to appear and defend said action.

DATED, Hanalei, Island and County of Kauai, October 3rd, 1918.

Wm. HUDDY, District Magistrate of Hanalei, Island and County of Kauai, Territory of Hawaii.

In the District Court of Hanalei, Island and County of Kauai, Territory of Hawaii.

J. K. FARLEY, Assessor of Taxes, Fourth Taxation Division, Territory of Hawaii.

PLAINTIFF, vs. JOHN DOE, unknown owner of land in Hii o Kamoana, in Ahupuaa of East Waialua, described in R. P. 4044, L.C.A. 6645. DEFENDANT.

ASSUMPSIT

NOTICE OF PENDENCY OF ACTION

IN ACCORDANCE WITH AN ORDER made and entered in the above entitled court and cause by the District Magistrate of said court on the 3rd day of October, 1918,

NOTICE IS HEREBY GIVEN that said action, in which J. K. Farley, Assessor of Taxes, Fourth Taxation Division of the Territory of Hawaii, as plaintiff, claims of John Doe, unknown owner of land in Hii o Kamoana in Ahupuaa of East Waialua, described in R.P. 4044, L.C.A. 6645, Granted to Uka, the sum of \$3.65, together with interest, penalty and costs, the same being the amount of taxes due and unpaid upon said land for the years 1916, 1917 and 1918, will be tried before Hon. Wm. Huddy, District Magistrate of

Hanalei, Island and County of Kauai, on the 25th day of October, 1918, at the hour of 10 o'clock in the A. M. of said day.

NOTICE IS LIKEWISE GIVEN to all parties in interest to appear and defend said action.

DATED, Hanalei, Island and County of Kauai, October 3rd, 1918.

Wm. HUDDY, District Magistrate of Hanalei, Island and County of Kauai, Territory of Hawaii.

In the District Court of Hanalei, Island and County of Kauai, Territory of Hawaii.

J. K. FARLEY, Assessor of Taxes, Fourth Taxation Division, Territory of Hawaii.

PLAINTIFF, vs. JOHN DOE, unknown owner of land at Kalalau, described in Grant 2172. DEFENDANT.

ASSUMPSIT

NOTICE OF PENDENCY OF ACTION

IN ACCORDANCE WITH AN ORDER made and entered in the above entitled court and cause by the District Magistrate of said court on the 3rd day of October, 1918,

NOTICE IS HEREBY GIVEN that said action, in which J. K. Farley, Assessor of Taxes, Fourth Taxation Division of the Territory of Hawaii, as plaintiff, claims of John Doe, unknown owner of land at Kalalau, described in Grant 2172 to S. Kala, area Five Acres and 06/100 Acres (5.06), the sum of \$19.70, together with interest, penalty and costs, the same being the amount of taxes due and unpaid upon said land for the years 1912, 1913, 1914, 1915, 1916, 1917 and 1918, will be tried before Hon. Wm. Huddy, District Magistrate of Hanalei, Island and County of Kauai, on the 25th day of October, 1918, at the hour of 10 o'clock in the A. M., of said day.

NOTICE IS LIKEWISE GIVEN to all parties in interest to appear and defend said action.

DATED, Hanalei, Island and County of Kauai, October 3rd, 1918.

Wm. HUDDY, District Magistrate of Hanalei, Island and County of Kauai, Territory of Hawaii.

In the District Court of Hanalei, Island and County of Kauai, Territory of Hawaii.

J. K. FARLEY, Assessor of Taxes, Fourth Taxation Division, Territory of Hawaii.

PLAINTIFF, vs. JOHN DOE, unknown owner of land at Pilaa, described in L.C.A. 6529 Granted to Holokukini. DEFENDANT.

ASSUMPSIT

NOTICE OF PENDENCY OF ACTION

IN ACCORDANCE WITH AN ORDER made and entered in the above entitled court and cause by the District Magistrate of said court on the 3rd day of October, 1918,

NOTICE IS HEREBY GIVEN that said action, in which J. K. Farley, Assessor of Taxes, Fourth Taxation Division of the Territory of Hawaii, as plaintiff, claims of John Doe, unknown owner of land at Puaa Ahupuaa of Pilaa, described in L. C. A. 6529, to Holokukini the sum of \$21.10, together with interest, penalty and costs, the same being the amount of taxes due and unpaid upon said land for the years 1910, 1911, 1912, 1913, 1914, 1915, 1916, 1917 and 1918, will be tried before Hon. Wm. Huddy, District Magistrate of Hanalei, Island and County of Kauai, on the 25th day of October, 1918, at the hour of 10 o'clock in the A. M., of said day.

NOTICE IS LIKEWISE GIVEN to all parties in interest to appear and defend said action.

DATED, Hanalei, Island and County of Kauai, October 3rd, 1918.

Wm. HUDDY, District Magistrate of Hanalei, Island and County of Kauai, Territory of Hawaii.

In the District Court of Hanalei, Island and County of Kauai, Territory of Hawaii.

J. K. FARLEY, Assessor of Taxes, Fourth Taxation Division, Territory of Hawaii.

PLAINTIFF, vs. JOHN DOE, unknown owner of land at Pilaa, described in L.C.A. 6646. DEFENDANT.

ASSUMPSIT

NOTICE OF PENDENCY OF ACTION

IN ACCORDANCE WITH AN ORDER made and entered in the above entitled court and cause by the District Magistrate of said court on the 3rd day of October, 1918,

NOTICE IS HEREBY GIVEN that said action, in which J. K. Farley, Assessor of Taxes, Fourth Taxation Division of the Territory of Hawaii, as

plaintiff, claims of John Doe, unknown owner of land at Pilaa, described in L. C. A. 6646, Granted to Upal, in Ahupuaa of Pilaa makai, Area 1 Rood and 25 Perches, the sum of \$3.65, together with interest, penalty and costs, the same being the amount of taxes due and unpaid upon said land for the years 1916, 1917 and 1918, will be tried before Hon. Wm. Huddy, District Magistrate of Hanalei, Island and County of Kauai, on the 25th day of October, 1918, at the hour of 10 o'clock in the A. M., of said day.

NOTICE IS LIKEWISE GIVEN to all parties in interest to appear and defend said action.

DATED, Hanalei, Island and County of Kauai, October 3rd, 1918.

Wm. HUDDY, District Magistrate of Hanalei, Island and County of Kauai, Territory of Hawaii.

IN THE CIRCUIT COURT OF THE FIFTH JUDICIAL CIRCUIT, TERRITORY OF HAWAII

At Chambers—In Divorce.

JOHN FIGUEIRA, Libellant, vs. MARY SILVA FIGUEIRA, Libellee: To Mary Silva Figueira, the above named libellee:

You are hereby notified that the libel of the above named libellant praying for an absolute divorce upon the grounds of willful desertion and extreme cruelty is now pending in the above entitled court and that the said cause has been set down for hearing before the undersigned judge of said court, at his chambers, at Lihue, County of Kauai, on the 16th day of December, A. D. 1918, at the hour of 9:30 A. M., o'clock of said day.

By the Court: (Seal) D. Wm. DEAN, Clerk of the Circuit court of the Fifth Circuit.

BY--AUTHORITY

FOUND NOTICE

In accordance with a vote of the Honorable Board of Supervisors of the County of Kauai, Territory of Hawaii, and with the law, notice is hereby given that the POUND for the impounding of estrays heretofore set apart, declared, and established at NIHOKE in Kilauea for the Koolau and Kilauea section of the Hanalei District, Kauai County, has been abolished, and that the said Honorable Board of Supervisors has set apart, declared and established, and does hereby set apart, declare and establish that lot or piece of land situated at the South west corner of the Belt road and the Kilauea Post Office road in Kilauea aforesaid as the POUND from this date for the impounding of estrays for the said Koolau and Kilauea section of the Hanalei District.

BOARD OF SUPERVISORS, County of Kauai (Seal) H. D. WISHARD, Chairman.

Attest: J. MAHAI KANEAKUA, County Clerk, County of Kauai, Lihue, Kauai, Oct. 2nd, 1918.

MA KE KAUOHA

HOOLAHA PA AUPUNI - I kuli ke al me ke koho ana a ka Papa Lunakiai Hanohano o ke Kalana o Kauai, Teritoro o Hawaii, ame ke kamaewai no hoi, ke hoolahaia aku nei o ka PA AUPUNI no ka hoopaa ana i na hooloholona aea i hooakaawaleia i kela mamua aku nei ma NIHOKE i Kilauea, a no ka mahele o Koolau ame Kilauea o ka Apana o Hanalei, Kilauea o Kauai nei, ua hoopaa loa ia, a ua hooakaawale ae, kukulu a hoolaha kulu a hoolaha aku nei ua Papa Lunakiai Hanohano ia i kela apana aina e kahi Hanohano ia i kela apana aina e waiho la ma ke kahi Komohana Hema o ke Alanui Holopuni ame ke alanui o Kilauea e holo la i ka Hale Lota o Kilauea no, oia ka PAA AUPUNI mai kela la aku no ka hoopaa ana i na hooloholona aea no ua mahele la o Koolau ame Kilauea o ka Apana o Hanalei i oleloia.

PAPA LUNAKIAI, Kalana o Kauai. (S. la) H. D. WISHARD, Lunahoomalu.

Ikea: J. MAHAI KANEAKUA, Fakaulelo, Kalana o Kauai, Lihue, Kauai, Oct. 2nd, 1918.

OFFICIAL NOTICE

The Board of Registration for the Islands of Kauai and Niihau will sit in the County Building at Lihue on Wednesday, Oct. 16th from 10 A. M. to 4 P. M. to hear such appeals as may properly come before the Board. J. L. HJORTH, Chairman Board of Registration, Islands of Kauai and Niihau.

NOTICE

I desire to thank the voters of Kauai for the generous support given me at the Primary Election, and trust they will give me the same support at the coming General Election. M. J. PEREIRA, Advt.

HIGH SCHOOL SCIENCE COURSE

Lihue High School is presenting a very strong science course this year, which is carried through the entire four years' course of study. Miss Wood, who has charge of the science course, was formerly a teacher in the Hilo High School and is a graduate of the University of California.

The course as outlined, is very valuable, and, with the addition of a few years of practice, should enable graduates to conduct work in sugar mill laboratories and other local industries. Throughout the entire course of training practical points relating to local subjects are dwelt upon with emphasis.

General science is the subject studied the first year, and the topics included under this heading are, proper use of food, the nutrition of the body, agriculture, elementary physics and hygiene. Biology, including both botany and zoology is studied the second year. In this work local topics will be adhered to almost entirely, to make the work as practical as possible. Regular periods will be conducted in the school laboratory, and a good deal of outdoor laboratory work will be carried on from time to time, especially in the school gardens where many examples for practical demonstration will be dealt with. Chemistry and Physics are being taught in the third and fourth year, respectively. The school has a fair laboratory, well equipped for conducting ordinary experiments. Matters relating to local conditions will be the main topics dealt with in both these subjects. A good deal of work relating to commercial tests will be included in the chemistry course.

New Loading Method.

The Makee Sugar Company is practicing a unique method of loading cane, which, according to manager H. Wolters, is very practical, for harvesting fields that are difficult to approach with portable track. Wagons are used to haul the cane to the track, where the load of cane is slung onto the cane car with a sling and derrick operated by the same caterpillar that is used to haul the wagons. It is necessary to place the sling on the wagon bed before the cane is loaded on.

F. H. Schreiner, formerly of the Kapaa Auto Service Company, has now gone into the auto repair business for himself, across the street from the old smoke stack in Kapaa.

Au Hoy, a Hanalei rice planter, lost a part of his crop during the recent heavy rains. Au Hoy had cut his rice and left it lying on the ground to dry. Meanwhile heavy rains inundated some of his patches and as there was no means of draining off the water, the rice sprouted, and became a total loss. Fortunately only a few acres suffered.

The labor shortage is very acute in Hanalei rice growing districts, and very high wages are being offered to hold the men.

LOST

Between Waimea Stables and Waimea Canyon or vicinity, via horseback trail, box containing ring, two pendants and two brooches. Reward for return to this office.

Boys' and youths' straw hats, valued at \$1.50, will be sold out at 50 cents each at J. I. Silva's Elesee Store.—Advt.

For Sale Dodge Touring Car in first-class condition, for sale cheap. See F. W. Wolf, Lualai Cannery.

FOR SALE Ford Touring Car Body, set of 33x4 Non-Skid Chains. Enquire at this office.

CALIFORNIA FEED CO LIMITED, Dealers in HAY, GRAIN AND CHICKEN SUPPLIES. Sole Agents for International Stock, Poultry Food and other specialties. Arabic for cooling Iron Rools, Petaluma Incubators and Brooders. KING'S SPECIAL CHICK FOOD P. O. Box 452, Honolulu

CRISCO For Frying-For Shortening For Cake Making
Frying There is no smoke nor odor. Fried foods are free from the taste of grease. They now are tasty and crisp. They are made more digestible, for Crisco is all vegetable. The same Crisco can be used to fry fish, onions, doughnuts, etc., merely by straining out the food particles after each frying.
Shortening Crisco gives pastry a new flakiness and digestibility. Crisco always is of the same freshness and consistency. It's uniform quality makes for uniform results.
Cake Making Crisco gives richness at smaller cost. It brings cake making back to popularity. Butter bills are reduced and cakes stay fresh and moist longer.

Save Money by Using FEDERAL Double-Cable-Base TIRES WE RECOMMEND THEM A full stock in all styles and sizes RUGGED and PLAIN TREADS McBryde Store Agents For Kauai.

LIHUE HARNESS SHOP MAKER OF Automobile Tops, Sofas, Harness and Saddles. Shoe Repairing PRICES REASONABLE CHANG HING KEE, Prop.

Boiling Points are vaporizing points. In Red Crown gasoline they form a continuous, uniform chain—giving steady, dependable power. Look for the Red Crown sign. STANDARD OIL COMPANY (California) The Gasoline of Quality

DELCO-LIGHT The complete Electric Light and Power Plant An electric fan brings summer comfort to the country home. HAWAIIAN ELECTRIC CO., LTD. Honolulu Distributors

FOR SALE 5 inch Buff 2 Buff Transits... \$200.00 Drawing Instruments and supplies 15.00 Mexican Saddle 50.00 "White" Sewing Machine 40.00 Graflex Camera, 2 1/2 x 4 1/2 40.00 Miscellaneous Household Furnishings. Wm. E. DAVIS Grove Farm. HOTEL LIHUE (The Fairview) Twenty-two elegant rooms in Main Building Three Airy Cottages Cuisine unequalled in country districts V. H. Rice, Jr., Proprietor