

Best Advertising Medium.
If you Don't Read the Bulletin
you Don't Get ALL the News.
It Reaches ALL the People.

EVENING BULLETIN

The Oldest & Page
Evening Paper Published
on the Hawaiian Islands.
Subscription 75c. a month.

Vol. III. No. 508.

HONOLULU, H. I., FRIDAY, JANUARY 15, 1897.

PRICE 5 CENTS.

THE EVENING BULLETIN.

Published every day except Sunday at
210 King Street, Honolulu, H. I.
SUBSCRIPTION RATES.
For Month, anywhere in the Hawaiian Islands.....\$ 75
For Year.....\$ 7.00
For Year, postpaid to America, Canada, or Mexico.....\$ 10.00
For Year, postpaid, other Foreign Countries.....\$ 13.00
Payable Invariably In Advance.
Telephone 256. P. O. Box 89.
B. L. FINNEY, Manager.



The best preparation for preserving, restoring, and beautifying the hair is

Ayer's Hair Vigor.

It keeps the scalp free from dandruff, heals troublesome humors, and prevents the hair from falling out. When the hair becomes dry, thin, faded, or gray, it restores the original color and texture and promotes a new and vigorous growth. Wherever used, Ayer's Hair Vigor supplants all other dressings, and becomes at once the favorite with ladies and gentlemen alike.

Ayer's Hair Vigor.

PREPARED BY
DR. J. C. AYER & CO., Lowell, Mass., U.S.A.
GOLD MEDALS at the World's Chief Expositions.

Hollister Drug Co., Ltd.
Sole Agents for the Republic of Hawaii.

MR. J. W. YARNDLEY

Will hereafter make his HEAD-QUARTERS at the

HAWAIIAN NEWS COMPANY'S STORE

He will resume teaching in the special branches of his profession—VIOLIN and the CULTIVATION of the VOICE on MONDAY, Jan. 11, 1897. Any communication addressed to above mentioned firm will receive prompt attention. Mr. Yarnley will also take charge of all Piano Tuning for Hawaiian News Company's Store, where he will be pleased to receive orders for all such work. Telephone No. 190.

The KING BROTHERS will also receive orders at their Art Store, No. 110 Hotel St. Telephone 907. 403 1w

Piano Tuning and Repairing.

Having secured the services of G. R. HARRISON as an attaché to our music department, we are prepared to execute orders for Piano Tuning and Repairing of Pianos and Organs. Mr. Harrison's experience and ability as a first class artist in his line of work is too well known to need further comment; suffice to say that we fully guarantee all work entrusted to us. Orders left at our office will receive prompt attention.
Telephone, 442.
Faithfully Yours,

WALL, NICHOLS CO.

The Republic : : King Street.
The Honolulu Sanitarium
1082 King Street.

A Quiet, Homelike Place, where Trained Nurses, Massage, "Swedish Movement," Baths, Electricity and Physical Training may be obtained.
P. S. KELLOGG, M. D.,
Telephone 639. Superintendent.

CLOSING IN ON BUTLER

ELABORATE PLANS TO PREVENT HIS ESCAPE.

The San Francisco Police Say There Are Many Ways By Which He May Yet Escape.

The United States, Canadian and Mexican authorities are all on the watch for the big four-masted vessel *Swanhilda*, which is supposed to have the fourteen-fold murderer Frank Butler among her crew. The Coast papers contain columns about the man, his crimes and the possibilities of his escape. The last issue of the Examiner has the following: "The man-hunters who have tracked Frank Butler across the Pacific ocean from Australia will arrive in the city tonight, many days if not weeks before the human monster they have chased. These Colonial officers will be given every possible assistance by the local police. They will be warned that the capture of the murderer will not be the simple matter they seem to think. They will be advised of the many avenues of escape that will open themselves to the fiend as the *Swanhilda* nears her destination at this port.

"Nothing will be left undone to bring to justice the man whose awful crimes sent horror to whole communities. The English government has spared no expense in placing its agents on their guard, and the Consul at this city will be ready to render whatever aid he may. The officers of the Merchants' Exchange will be on the watch for the approaching vessel, and if possible her presence will be heralded long before she reaches the port and Butler has an opportunity to jump overboard into the waters of the bay.

"The record of Butler's crimes has made a deep impression upon many people in San Francisco and there is a general desire to see the fiend caught and punished just as the highway of escape opens before him. The officers who are coming south from Tacoma can do little more than wait for developments.

"The signal officers of the Merchants' Exchange will play an important part in the dramatic incidents that will end the long chase across the seas. There is the greatest danger that, if the opportunity presents itself, Butler will jump overboard after the vessel enters this harbor. He is probably a swimmer and would find no difficulty in reaching shore and disappearing in the city. It is to lessen this danger as much as possible that every precaution will be taken.

"If the weather be clear the *Swanhilda* may be seen as far as twenty five miles out to sea. If she be seen, the information will be telegraphed into the city and the Australian officers will have several hours in which to prepare and go out to sea to meet the vessel. If the weather be foggy or the ship approaches in the night, she will be close to the harbor when the warning is given. She may then have an opportunity to slip into the bay before Butler has been placed under arrest.

"There is also another danger. The Captain of the *Swanhilda* may have a fair wind when he reaches the port and may enter the harbor without a pilot or the services of a tug. He may choose to take a tug and no one can tell which one. The Australian officers may see their game slip through their fingers at the very end of the chase. All of these contingencies have suggested precautions, but it is quite evident that the manhunters from the Antipodes have no easy task before them."

The Hollister Drug Company are selling a positive specific for the epidemic of coughs among horses. Price 50c. a box.

PARDON GRANTED.

Proceedings of Meeting of Council of State This Afternoon.

There was a meeting of the Council of State in the assembly hall of the Executive building at 2 o'clock. Present: President S. B. Dole; Geo. W. Smith, secretary; Cecil Brown, John Eas, John Nott, P. C. Jones, J. A. Kennedy, C. Bolte, E. C. Winston, Mark P. Robinson, S. K. Kane, members; W. O. Smith, Attorney General. The secretary read the minutes of previous meeting, at which the full pardon of ex Queen Liliuokalani, under restraint on charge of misprision of treason, was granted.

President Dole administered the oath to Mr. Jones.

Mr. Brown read the report of committee, recommending a pardon to Niemann, serving sentence for assault with deadly weapon. His wife was in a delicate condition and his family destitute. The prisoner's conduct had been good in confinement.

The Attorney General confirmed all the statements of the committee.

The report was unanimously adopted.

Niemann is the volunteer who while in drink shot a comrade while returning home late at night after drill about a year ago, and was sentenced on conviction to nine months' imprisonment.

The next case submitted for consideration was that of W. H. Coulter. He was sentenced to six months' imprisonment for larceny, and after serving his time was in 1894 sentenced to six years' imprisonment for robbery. It was left to the Council whether he should be pardoned, on account of his wife and family of whom a clergyman on the Coast gives a high opinion, but upon condition he leave the country.

The Attorney General made remarks, saying he did not wish to influence the decision, but he drew a distinction between a conditional pardon, such as that recommended, and an unconditional one. It was not altogether on account of his wife and family, but because the prisoner had displayed good conduct in prison and of other extenuating circumstances.

Mr. Jones was dubious as to the responsibility being taken by the Council without a recommendation by the inspectors. He did not want, as a private citizen, to be too ready to release criminals from motives of sympathy.

Mr. Kennedy moved that the matter be laid on the table until such time as a recommendation for pardon shall have been received from the prison inspectors. If a man is fit to live at liberty in another country, he is fit to live at liberty in this country.

Mr. Winston moved in amendment that a committee of three be appointed to confer with the prison inspectors and report at next meeting. Seconded by the Attorney General but lost.

The motion to postpone to await report carried.

The Attorney General said it was not necessary to submit two cases in which the inspectors reported against pardon.

Adjourned.

The Y. M. C. A. Orchestra.

About eight members of the old Y. M. C. A. orchestra attended the meeting called last evening for the purposes of reorganization. After a full discussion of the prospects of the orchestra it was decided to meet again next Thursday evening at the same time and in the meantime extend an invitation to all amateur musicians in town to join the new orchestra.

Water colors and Oil colors in sets suitable for Xmas presents. King Bros., Hotel street.

Kroeger Pianos, sweetest in tone, Jas. W. Bergstrom, sole agent, cash or installments. Warerooms at G. West's, Masonic Temple. Office at Thrum's Book Store. Tuning and repairing. Telephone 347.

SPORTS FOR TOMORROW

FIELD DAY OF THE HONOLULU ATHLETIC ASSOCIATION.

Races at Kapiolani Park Commence at 1:30—The Band Will be Present—Events and Entries.

The field day of the Honolulu Amateur Athletic Association tomorrow bids fair to be the most successful yet given under its auspices. The sports will commence at half past one and the grand stand and enclosures will be free to all. Through the courtesy of Minister Cooper the band will be present to play between the races. It is hoped that those in charge of the arrangements will not permit any tedious waits between the events, of which there are twenty on the program, as follows:

1. One mile novice bicycle race, with four entries.
2. One hundred yard dash, with thirteen runners entered.
3. Half-mile handicap bicycle race, with thirteen entries.
4. Broad jump. Thirteen entries.
5. Two hundred and twenty yard dash; also thirteen entries.
6. One mile novelty wheel race (open), with nine entries.
7. Four hundred and forty yard dash, with nine entries.
8. One mile bicycle race, 3 minute class, five entries.
9. One hundred and twenty yard hurdle race, nine entries.
10. Half mile dash, eleven entries.
11. One mile invitation wheel race, with five entries.
12. Throwing the hammer, thirteen entries.
13. One mile handicap bicycle race, eleven entries.
14. Pole vaulting, eight entries.
15. Putting the shot, twelve entries.
16. Three mile lap [open] bicycle race, six entries.
17. One mile running race, eleven entries.
18. High jumping, thirteen entries.
19. One mile tandem wheel race, four entries.

If time will allow there will be a ring tournament to finish up with, to which entries may be made up to 3 p. m. tomorrow. Entries to other events are closed.

The officers of the day are:
Judges: Tom Wright, Dr. Wagon and D. W. Corbett.

Referee: J. Walter Jones.
Timekeepers: Tom Hollinger, W. F. Love and Charles Bellina.
Clerks of Course: Geo. Angus and Charles Crane.

Handicappers: Tom Wright, George Angus.
Starter: James L. Torbet.

Company A Meeting.

At the annual meeting of Company A, N. G. H., it was decided to give a dance in the drill shed on the evening of February 22. The following officers and committees were chosen for the year: Lieut. W. Fetter, secretary and treasurer. Finance Committee: Lieutenant Klemme, George Tietjen and George Milton. Investigation: Sergeant R. Parker, Corporal Peterson and Private Edmann. Range: Sergt. J. Duschalsky, Sergt. A. Meine and Musician Bordfeld. Armory: Private Mills.

Must Be Appropriate.

To the person suggesting the most appropriate name for the lake now in course of construction at Kewalo, Messrs. Bruce Waring & Co. will give a deed in fee simple. Send in your guess to their office.

Sterling, the painter, is prepared to quote prices on roof painting. He uses a composition of coal tar and cement. Cheapest and best roof preparation in Honolulu.

SHARPSHOOTERS' MEETING.

Discussion of Conditions of Match With the Military.

The Sharpshooters met last evening to consider the challenge from the military for a thirty man shoot and such other business as might come up. In reference to the challenge the following resolution was unanimously adopted: "Resolved, That in all future shooting contests the Sharpshooters' Company will use the guns now in its possession, with a minimum trigger pull of three pounds."

Captain Wall was elected captain of the team to meet the military and to arrange the details of the match.

C. C. Rhodes, F. C. Atherton, J. A. Johnson and J. Kidwell were elected to membership.

In accordance with the authority granted him by the meeting, Captain Walter E. Wall this morning sent Col. McLean an acceptance of the challenge from the military in which, after stating that he had been authorized to confer with the captain of their team to make the necessary arrangements for the match, he concludes in these words: "In accepting this challenge I desire to express the company's pleasure in the spirit that calls forth the challenge from your command. The Regiment's team captain will find me ready, at any time, to give this proposed match further consideration."

Col. McLean has informed the BULLETIN that the Military will meet the Sharpshooters on the latter's own terms as to rifles, sights and trigger pulls. He has turned the matter of arrangements over to Col. Fisher.

Captain Wall said to a reporter that there were only fifteen globe sights used in his entire company. As to the talk about the pick of good shots composing his company, he said that most of the good shots were "made" in the company. For instance, when Lieut. McLean joined his initial score was only 17. Generally a body of sharpshooters is drafted from the different companies of a military organization, but such was not the case with his company.

"When Denver challenged us," Capt. Wall said, "knowing we had military guns, they offered us a handicap, which we refused, but we found they were a rifle association although we shot them an even match."

Regarding the kind of weapons, Capt. Wall thought the Sharpshooters did not have so very great an advantage as had been represented. They used light guns of large caliber, which were less steady to shoot with than the heavy military rifles.

THE 17TH OF JANUARY.

Foreign Representatives Officially Notified of the Anniversary.

The 17th of January falling on Sunday this year, the official celebration will take place tomorrow, which has been designated as a holiday by the Minister of the Interior in all departments of the government.

The anniversary of the overthrow of the monarchy will be very quietly celebrated this year, the idea of a state ball, advocated some time since, having been abandoned on account of the death of Minister Willis. A national salute of twenty-one guns will be fired at noon at military headquarters and flags will be displayed from all government buildings.

Official notification of tomorrow's holiday and its occasion has been sent by the Foreign Office to all the foreign representatives and consuls and the Commander of the U. S. S. Alert, with a polite request that the event be recognized by them in such manner as may seem best, which will probably result in a general display of legation and consular flags and the decoration of the war vessel.

There will be no official reception of any kind, unless some function should be arranged during the afternoon.

BOUNTY FOR BEET SUGAR

MR. OXNARD FOR IT AND AGAINST HAWAIIAN RECIPROcity.

Claim that United States Can Raise Her Own Sugar—Heavy Protection Needed.

There was a hearing before the Ways and Means Committee of the House of Representatives at Washington, lately, of the beet sugar interest. Below is a report of the proceedings:

Henry T. Oxnard, of Grand Island, Neb., president of the American Beet Sugar society, in behalf of the industry, charged that the present tariff not only failed to give protection to the sugar raisers, but discouraged the investment of additional capital. It had been predicted that under the McKinley law the beet sugar industry would grow rapidly and three refineries had been built during the administration of the tariff; but the change had deterred new investments. Any schedule on sugar which had been in force since 1860, except that of the Wilson tariff, would permit the spread of the beet sugar growing. Beet sugar could be produced in 20 states, and under a proper tariff the United States could in 15 years raise all the sugar necessary for home consumption. The beet industry protested against rates less than from 13-4 to 31-2 cents a pound. Mr. Oxnard delivered an argument in favor of a bounty, and proceeded to quote departmental reports and other authorities to show that this country had the climate and capital required for the production of its own sugar. Every other nation, even Sweden, which could supply itself with sugar, had taken every measure to do so.

Cost of labor, uncertainty as to legislation, export bounties in other countries and decline in prices were all operating to keep capital out of investment in beet sugar. Germany now pays 27.32 1-2 and 38.3 cents per hundred pounds export bounties, according to the quality of the sugar, and could afford to sell sugar in New York at 13 1-2 cents per hundred pounds less than American producers, and occasionally to sell surplus products below the cost. Give Americans a reasonable bounty, guaranteed to continue for a reasonable time, and they would work wonders. The American was now obliged to compete with African cheap labor, as Egypt in the last fiscal year had sent \$3,257,000 worth of sugar to the United States in British bottoms which carried no return cargo. With war in Cuba and the Philippines cutting off supplies from those islands, Germany was endeavoring to capture the American market. For reasons supposedly commercial, congress had in 1876 legislated for free entry of sugar from Hawaii. This treaty never met favor with the people, had cost \$48,000,000, and had not greatly increased our exports to that country.

The estimated duties remitted by the United States on Hawaiian sugar are \$61,000,000. He thought it was unjust to encourage these importers at the expense of revenue and our home producers. He urged the abrogation of the agreement.

Speaking of the conflicting interests involved in giving adequate protection to the sugar growers, he pointed to the sugar refiners who bought and refined the foreign product and to the millers of flour and others who desired to use sugar in reciprocity agreements, to obtain concessions for themselves. The refiners wanted the lowest possible duty on raw and the highest on refined. While, owing to the condition of the treasury, it might not be feasible to re-enact the bounty scheme of 1890, he thought the dual scheme proposed by the

New Goods

MURATA & CO.

— JUST ARRIVED —

Fine Japanese Matting, Rugs, &c

Fine Crepe Shirts Any Style!

— Cheapest in the City. —

MURATA & CO., 301 Nuuanu & 2 Hotel Streets.

CLAUS SPRECKELS, Wm. G. IRWIN.
Claus Spreckels & Co.
BANKERS.

HONOLULU — — — H. I.

San Francisco Agents—THE NEVADA BANK OF SAN FRANCISCO.

DRAW EXCHANGE ON SAN FRANCISCO—The Nevada Bank of San Francisco.

LONDON—The Union Bank of London, Ltd.

NEW YORK—American Exchange National Bank.

CHICAGO—Merchants National Bank.

PARIS—Comptoir National d'Escompt de Paris.

BERLIN—Dresdner Bank.

HONGKONG AND YOKOHAMA—Hongkong & Shanghai Banking Corporation.

NEW ZEALAND AND AUSTRALIA—Bank of New Zealand.

VICTORIA AND VANCOUVER—Bank of Montreal.

Transact a General Banking and Exchange Business Term and Ordinary Deposits Received. Loans made on Approved Security. Commercial and Travelers Credits Issued. Bills of Exchange bought and sold.

COLLECTIONS PROMPTLY ACCOUNTED FOR.

—Established 1838—

BISHOP & Co.
BANKERS.

Transact a General Banking and Exchange Business. Commercial and Traveler's Letters of Credit issued, available in all the principal cities of the world.

Building Lots!

At WAIKIKI on car line and on PALAMA ROAD near Fertilizing Plant.

These Lots are Very Cheap and Sold on Easy Terms.

Desirable Acre Tracts near the city and other Properties for sale.

BRUCE, WARING & CO.,
Dealers in Lots and Lands,
312 Fort Street, near King.
TELEPHONE 607. P. O. Box 321.

W. C. ACHI & CO.,
Brokers & Dealers

REAL ESTATE

We will Buy or Sell Real Estate in all parts of the group.
We will Sell Properties on Reasonable Commissions.

OFFICE, 10 WEST KING STREET

FOR SALE.

1 House on Kinau street.

FOR RENT.

1 House on Kinau street.

1-2 Story Cottage on Fort street

2 Cottages on Fort street.

1 Furnished House, Emma Square.

G. E. BOARDMAN,
477-4f Agent.

For Sale or To Let.

Three Houses near Punahou College, containing from seven to nine rooms, bath-room, halls, closets, etc. New, modern and convenient. Good view, healthy locality. Apply to

J. A. BUTTERFIELD,
Anapuna street.

J. A. BUTTERFIELD,
Contractor & Builder
Estimates given. Repairs and alterations made. Work given prompt attention.
Telephone 851. 434-3m

TO LET.

The Residence of E. R. Hendry, corner Kinau and Pensacola streets. House contains Eight Rooms and has all the modern conveniences. Large grounds. Tel. 301.

FOR SALE.

Corner of Luualilo and Pensacola streets. Five Lots, 75 feet by 125 feet each. The most desirable residence property for sale on the plains. For terms apply to

MRS. E. R. HENDRY,
485-4f Telephone 301.

The Yokohama Specie Bank

LIMITED.
Subscribed Capital.....Yen 12,000,000
Paid Up Capital.....Yen 4,500,000
Reserve Fund.....Yen 4,130,000

HEAD OFFICE, YOKOHAMA.

BRANCHES AND AGENCIES.
Kobe, London, Lyons, New York, San Francisco, Shanghai, Bombay, Hong Kong.

Transacts a General Banking and Exchange Business.

Agency Yokohama Specie Bank

New Republic Building, 111 King St., Honolulu.

S. KIMURA,

Wholesale Dealer in Japanese Wines.

Liquors and Provisions, Saki a specialty.
108 Kekuanaoa Street. Telephone 703.

W. W. Ahana

Makes Clothing to ORDER of the very best materials and in the very latest style.

A Perfect Fit Guaranteed

ALL OF MY WORKMEN ARE THOROUGH MECHANICS

Cleaning and Repairing a Specialty

W. W. AHANA,
TIM KEE,
MERCHANT TAILOR

Suits to order. Fit Guaranteed. Fine Duck Suit, \$5 up; Fine Tweed Pants, \$4.50 up; Fine suit, \$18 up. Clothes cleaned and repaired.
200 KING STREET.
P. O. Box 1441

C. T. AKANA.

No. 324, Nuuanu street.
MERCHANT TAILOR.

Fine Suitings made to order at lowest prices
145 Clothes cleaned and repaired.

SHUN LOY,

623 1/2 Fort Street, Yee Sing Tai Building.
Ladies Dress Maker.

Fine work a specialty. Also, very fine Underwear made to order. All work guaranteed.
447-6m

L. AHLO,

No. 337 Nuuanu street.
Has just received a new line of DRY GOODS, LADIES AND GENTS SHOES AND GENERAL MERCHANDISE.

Agent for the following rice plantations—Waipio, Waiawa, Waimala, Waiakua, Kaneohe and Kapalama.
My rice from Kaneohe is marked L. A. and is guaranteed A1.
P. O. Box 114. Telephone 199.

FOR . . .

Best Imported Chinese Tea,
TINWARE, CROCKERY, HARDWARE, CIGARS, ETC.
Fine Chinese Teas freshly imported. Very low prices. Go to

WING TAI LUNG,
331 Nuuanu street.

TOM CHUNG KEE,

218 Nuuanu Street.
Dealer in Ladies' and Gentlemen's Shoes.

Boots and Shoes to order. I use the best material. Goods warranted to wear well. 142-143

QUONG SAM KEE & CO.

Importers and Dealers in
General Merchandise.

145-4f Corner King and Maunakea Sts.

YEE SING TAI CO.,

Contractors, Builders,
Furniture Dealers and Painters.
SATISFACTION GUARANTEED.
Fort Street, opposite Club Stables.



When we see the perfection of our clothes for the youngsters, we almost wish ourselves boys again to enjoy the wearing.
Poems in cloth; Giants in strength.

— AT —

"The Kash."

9 Hotel Street : : Waverley Block

Where Can I Get the

Cheapest and Best

Straw Hats?

WHY?

At Iwakami's,

Hotel St., Robinson Bk.

Any Style Manufactured.

WRIGHT BROS.

125 FORT STREET,
next to Lucas' Mill

Ships' Blacksmithing,
Carriage Building
and Repairing
Drays, Carts and
Wagon Building

WINDLASSES
For PULLING UP Trees
A SPECIALTY

HONOLULU

Carriage Manufactory

613 to 621 Fort Street.

Carriage Builder

AND REPAIRER.

Blacksmithing in All Its Branches.

W. W. WRIGHT, Proprietor.
(Successor to G. West.)

CHARLOTTE H. PARMELEE,

TEACHER OF THE

PIANOFORTE

493] 220 Beretania Street. [1m

JOHN PHILLIPS,

PLUMBER,

Hotel St., near Fort. Tel. 322

GILBERT F. LITTLE,

ATTORNEY AT LAW

HILO, HAWAII.

Evening Bulletin 75c per month.

AMERICAN EMPIRE FURNITURE.

Some of the Features That Entitle This Style to Notice.

The French revolution of a century ago was responsible for many things, good and bad. Among the pleasing items the birth of the empire style may be reckoned. Among the many decorations in this style quivers, torches and armorial trophies were freely made use of. The following illustrations of empire will demonstrate a few of the features which entitle this style of furniture to notice.

The broad backed chair makes a fine looking, comfortable seat. Cleverly hollowed out to catch the back and support the shoulders, it proffers the acme of comfort, without, at the same time, being stuffy.

Passing to the couch, we find a form which is very popular. It reminds one of the old "high low" designs which used to be the fashion, and there is no



POPULAR EMPIRE DESIGNS.

don't that this choice of a resting pad doubt a comfort to the sitter who is dainty in the matter of position. This design, which is without a back, is evidently for use rather than display.

The small table is for decorative rather than useful purposes. The design, if well executed, adds unusual classic dignity to the center of a room, or as a choice corner piece. It is in vogue in its larger forms as a dining table, and those who possess one will enthusiastically tell you that for a small dinner party there is nothing comparable with our circular friend. The outward bend and consequent placing of one's neighbors right and left, in a position where conversation is enjoyable, render the round table unrivaled for the party of six or eight.

For Evening Parties.

Small cakes are no longer in demand at evening parties. Dainty fruit sandwiches have taken their place. Bread is cut very thin and lightly buttered and then spread with raisins, dates or candied cherries that have been chopped fine and moistened with orange juice, sherry or madeira. Roll and tie with baby ribbons. Lemonade or punch is served with these, says the New York Sun.

What the Spanish Need.

A group of men were talking over the Spanish anti-American riots yesterday in front of the Bailey block, and the war spirit ran pretty high. As usual with sidewalk statesmen, each knew just what should be done by the United States. There was one suggestion made that "brought down the house." A wag said that what the Spanish needed was something to cool them off and he suggested sending them a cargo of Rainier Beer, and added, "when the Spanish find what good beer the Rainier Beer is, they would not want to fight with the country where it is made." On tap or in bottles at the Criterion.

A Panic Prevented.

What the consequences might have been if the Palama Grocery had not received another large invoice of the justly celebrated Salvation Army Tea, is something awful to contemplate. When we first advertised it, we expected quite a run on it, but the demand lately has far exceeded our expectations. However, in time to prevent a panic we are in receipt of another large invoice. H. Cannon, sole agent for the Islands, Palama Grocery, Tel. 755.

Nicely furnished rooms at the Popular House, 154 Fort street, from \$1.00 per week up.

Water colors and Oil colors in sets suitable for Xmas presents. King Bros., Hotel street.

Dr. C. B. High, dentist, graduate Philadelphia Dental College, 1892. Masonic Temple.

The Hollister Drug Company are selling a positive specific for the epidemic of coughs among horses. Price 50c. a box.

The Artograph is a valuable aid to anyone wishing to learn to sketch from nature without an instructor. Price \$8.00. King Bros. have them for sale.

Sterling, the painter, is prepared to quote prices on roof painting. He uses a composition of coal tar and cement. Cheapest and best roof preparation in Honolulu.

FOOD for INFANTS!

We have received an immense stock of Infants and Invalids Foods, consisting in part of

**Mellins', Nestle's, Horlicks',
Murdock's, Ridges',
Lactated, Imperial Granum,**

And last, but not least, the only

MALT NUTRINE

We haven't any particular hobby to force on you, but if you want food for Infants or Invalids, the place to get it is at the

HOLLISTER DRUG CO.,

Fort Street.

THEO. H. DAVIES & Co.,

LIMITED.

IMPORTERS

— AND —

Commission .: Agents!

Dry Goods,

Hardware AND

Groceries.

H. HACKFELD & CO.

—Importers and Dealers in—

GENERAL MERCHANDISE

—AND—

Plantation Supplies.

H. HACKFELD & CO.

201 to 215 Fort Street.

H. E. McINTYRE & BRO.,

— IMPORTERS AND DEALERS IN —

Groceries, Provisions and Feed.

New Goods Received by Every Packet from the Eastern States and Europe
FRESH CALIFORNIA PRODUCE BY EVERY STEAMER!
All Orders faithfully attended to and Goods Delivered to any Part of the City FREE.

ISLAND ORDERS SOLICITED, SATISFACTION GUARANTEED
EAST CORNER FORT AND KING STREETS

COAL

For Family Use!

Just Received, ex "C. C. Funk," a cargo of
Wellington, Departure Bay, Coal

Which is offered in quantities to suit.
2240 lbs. to the Ton.
DELIVERY FREE.

WILDER & CO., L'D.

301 & 303 Fort street.
HAWAIIAN

Mercantile Agency

210 King street.
Difficult Collections a Specialty

A GOOD THING

4--U--2--C
Ohio, Algeroba and Pine Firewood
Cut and Split (ready for the Stove).
Also,
STOVE, STEAM & BLACKSMITH COAL
WHITE AND BLACK SAND
At Lowest Prices, delivered to any part of the City.
TELEPHONE 414
HUSTACE & CO.,
31 Queen Street.

Hawaiian Fertilizing

COMPANY
Is prepared to furnish
4000 Tons Cane Fertilizer
To order for 1896.

In Quantities to Suit.

Orders solicited for a future delivery.
A. F. COOKE, Manager.

The Evening Bulletin.

DANIEL LOGAN, Editor.

FRIDAY, JAN. 15, 1897.

NEW TRADE OPENING.

An important change in the trade connections of Honolulu is almost certain to take place in the near future, and, although the steamship interests chiefly involved have their headquarters at San Francisco, the EVENING BULLETIN has the honor of making the first definite announcement of preliminaries already settled. For some time past the French Government has been anxious to have steam communications established between Tahiti and San Francisco, with Honolulu a port of call, and it will be remembered that within a few years past rumors were frequent that the Messageries Maritimes, one of the largest steamship concerns in the world, was likely to provide such a new line of Pacific commerce. Negotiations with that company by the French colonial bureau evidently came to naught, for there is evidence that the contractors for carrying the British mails between San Francisco and the Colonies will shortly inaugurate the desired steam traffic between San Francisco and Tahiti. The contractors, as is well known, are the Oceanic Steamship Company of San Francisco and the Union Steamship Company of New Zealand, performing the service jointly in voyages each way every four weeks. Samoa is to be dropped out of the route in favor of Tahiti. The traffic given the line by Samoa has been only slight, and the calling at Apia harbor is attended with peril in the winter season. On the other hand Tahiti is enjoying a high degree of prosperity and its commerce is becoming increasingly important. Its trade with San Francisco has for many years sustained a fast sailing line of packets, and it has long been seen would be greatly developed by a steam service. For some time past the Union Steamship Company has been conducting negotiations with the French authorities looking to a contract for the Tahiti service. Lately the negotiations hung at a proposal for a doubling of the originally offered subsidy. What has not until this moment been published in the press of any country interested, so far as yet known in Hawaii, is the fact that the French Government has agreed to the proposal. The news was carried from Tahiti to Auckland by the local steamer that connected at the latter port with the steamer Monowai that passed through here only last week. There is therefore a strong probability that Honolulu is shortly to be put in direct steam communication with the rich group of the Society Islands. Our enterprising leaders will doubtless make good use of the advantages thus conferred on this mid-ocean entrepot of commerce.

MISINFORMATION.

It is hard to see what ultimate advantage can be gained by any party, faction or interest from misrepresentation of current events in public print. A police case arising in Kaneohe is in point. Marshal Brown is represented as lowering the dignity of his office by hurrying across the island to compose trouble originating from the cutting of wood on Sunday by a plantation laborer, and then it is insinuated that the plantation manager successfully used some extrajudicial influence to change the ordinary course of the law. The facts belie the report in question. Mr. Stanley of Thurston & Stanley, attorneys for the plantation,

happened to beat Kaneohe on other business when the arrest was made, and the matter was placed in his hands by the manager. When the attorney had failed to induce the magistrates to accept less than \$1000 bail, he telephoned a statement of the case to the Marshal. As it was a case particularly involving the rights of the subject, the Marshal went to Kaneohe to investigate the matter. He found it demanded his interference and, putting an end to the original prosecution, he had the laborer rearrested and brought to Honolulu for trial. This action was taken without any consultation or even interview with Mr. Bull, manager of the plantation. As the case developed in the Honolulu magistrate's court, it proved to be a ridiculous one for the bail demanded by the rural magistrate. It is a pity that the Marshal is not within so easy call of the country districts of the island of Hawaii, to check the persecution of poor Chinese and Japanese by brutal and corrupt officers with the assistance of mutton-headed magistrates of the Dogberry persuasion.

Should the sugar influence in the United States succeed in abolishing Hawaiian reciprocity Hawaii—in the event of annexation being delayed—can meet the action by paying a bounty to her sugar producers. She can do it, too, at the expense of American commerce and give American sugar producers all the competition from this quarter—with some added—which they are getting under reciprocity. We can give them a new kind of reciprocity, only its name in international parlance may be "retaliation."

That secret circular issued in Canada, warning the public against disloyalty and Roman influence, may safely be set down to the bitterness of Conservatives over being dislodged from the preserves of power in which they had revelled for eighteen long years.

LAND SALE ORDERED.

Decree on Commissioner's Report—Ejectment Case on Trial.

Judge Carter has signed a decree confirming the report of Joseph S. Emerson, commissioner on partition of property in the equity suit of Maria C. Ramos and others vs. Nicholas and Enos. Part of the report involves the sale by auction of certain land at Kalihi. Magoon & Edings for plaintiffs; Enoch Johnson for defendants.

The amended account of Ahoi, guardian of Lanhu w., a minor, showing a balance of \$125.45 for the ward, has been approved by Judge Carter. Bareaba for guardian.

Judge Carter has allowed the bill of costs, on motion of A. G. M. Robertson for plaintiff, in Mary Rose vs. S. M. Knaukai.

Judge Perry is hearing the ejectment case of C. H. Rose vs. Lau Chong and others. At a previous hearing the complaint was allowed to be amended. Robertson for plaintiff; Castle and Johnson for defendants. W. C. Achi is an important witness.

Danger of Fads in Education.

While this age is fortunate in the enjoyment of advanced theories and methods of education, there is danger of the movement degenerating into a mere pursuit of fads—a striving for external ornament at the expense of internal worth, flowers without fruit, husks without kernels. The primary end of education is to fit the child for life's duties. That end cannot be attained by smoothing away every difficulty that lies before him nor by diluting his mental power with a multitude of accomplishments merely ornamental.—Detroit Free Press.

The Artograph is a valuable aid to anyone wishing to learn to sketch from nature without an instructor. Price \$8.00. King Bros. have them for sale.

Timely Topics

We have an immense consignment of new goods on the way which will make quite a sensation when we expose them for sale. In the meantime, we desire to call your attention to a few little articles which are indispensable in all well-regulated households.

The GEM ICE SHAVER is just what you want. After you have used it once you will realize how much ice you might have saved in the days gone by, not including the wear and tear of your temper. The Gem Ice Shaver is handy, cheap, economical and labor saving. Get one.

FISH SCALERS.—Many housekeepers object to preparing fish for the table, because of the bother of scaling them. We have a handy little instrument for the purpose which does the work quickly without scattering the scales all over the house. They are cheap. Get one.

FRENCH SLICERS.—These are light carvers, sharp and flexible as Chinese razors, just the thing for choice undercuts and tenderloin steaks. We have them in several styles.

CARVERS.—We have them in sets, all styles, ivory, bone, wood and metal handles at prices ranging from \$4 to \$15.

BREAD KNIVES.—All kinds in ivory, wood or metal handles, including the celebrated Clauss bread knife.

Silver Plated Spoons and forks in great variety.

Most of the above you can put in one of our metal fork and spoon baskets, which must be seen to be appreciated. They are cheap, durable and indispensable.

THE HAWAIIAN HARDWARE CO. LIMITED,

Opposite Spreckels' Bank NO. 307 FORT STREET.

THE CELEBRATED

Departure Bay

Wellington Coal

Now Landing from Bark "B. P. Cheney."

KIVETON PARK

Best South Yorkshire Hard Steam Coal

Suitable for all Steam purposes. This Coal is also a favorite for DOMESTIC USE!

Newcastle Coal

In quantities to suit.

2240 Lbs. to the Ton!

Full Weight guaranteed. Delivered free to any part of the city.

INTER-ISLAND

Steam Navigation Comp'y

502-41

Office To Let,

At 207 Merchant Street.

Peerless Preserving Paint Company.

502-41

The Evening Bulletin, 75 cents per month.

Auction Sales by Jas. F. Morgan.

Administrator's Sale

VALUABLE PROPERTY!

In pursuance of an order of the Circuit Court of the First Circuit, the undersigned will sell at public auction at the auction rooms of J. F. Morgan, Honolulu,

TO-MORROW, Jan. 16th, AT 12 O'CLOCK NOON.

The following described premises situate on the southeast corner of Spencer Avenue and Magazine Road, and being more particularly described as follows:

Beginning at the southeast corner of Spencer Avenue and Magazine Road and running S. 15 deg., 45 min. E. true 100 ft. along Magazine Road; N. 75 deg., 15 min. E., 100 ft. along lot 448; N. 15 deg., 45 min. W. true 100 ft. along lot 448; S. 75 deg., 15 min. W., true 75 ft. along Spencer Avenue to initial point. An area of 7500 square feet.

Together with a WOODEN BUILDING and all improvements thereon; the grounds are well planted with fruit and ornamental trees.

The sale is subject to an unexpired lease assigned to Dr. N. Russell, the same ending on the 4th day of August, 1897, at a monthly rental of \$20.

TERMS: Cash in U. S. Gold Coin.

Conveyance at the expense of the purchaser. J. M. CAMARA, Jr. Administrator or Estate of Querino Fernandes.

Sale subject to approval of the Court.

JAS. F. MORGAN,

507 21 Auctioneer.

Castle & Cooke

(Limited.)

Sole Agents for the Hawaiian Islands.



"Crown Flour

makes sweeter

and whiter

Bread than

any other."



The Manufacturers' Shoe Co., Exclusively Shoe.

Auction Sales by W. S. Luce.

— 1897 —

MAMMOTH

LAND SALE

Waikiki Beach

I am instructed by Mrs. F. S. Pratt, to dispose of her Waikiki Property at Public Auction, at my Salesrooms, corner of Fort and Queen streets,

On MONDAY, Jan. 18, 1897,

AT 12 O'CLOCK NOON.

This opportunity of securing a magnificent Waikiki Beach Lot is undoubtedly the finest ever offered and most certainly the best chance to obtain a superb Seaside Residence. The location and Bathing are par excellence. The Property is thickly planted with well-grown coconut and other trees, and well-covered with nonnie grass.

The Property has been wisely divided to suit the requirements of any intending purchaser or can be disposed of in toto.

A Plan of same may be seen at my Auction Room.

For further particulars, apply to

W. S. LUCE,

490-1m Auctioneer.

David Dayton, Real Estate Broker.

209 Merchant Street.

FOR SALE AND TO LET.

House on School street; parlor, several bedrooms, kitchen, pantry, outhouses and stable formerly occupied by Hon. W. H. Rice.

House on Robello lane, Palama, 3 bedrooms, dining room, kitchen, bathroom, carriage house and stable, large yard.

House on Young street; parlor, 2 bedrooms, kitchen, pantry, patent closet, etc. Lot opposite Lanalilo Home; healthy and fine location.

Furnished Rooms; Property in all parts of the city.

Annual Meeting.

The Annual Meeting of the Stockholders of the Capital Coffee & Commercial Company, Limited, will be held on Tuesday, the 21st inst., at 10 o'clock a. m., at the office of the Hawaiian Safe Deposit and Investment Company.

ROBT. CATTON, Secretary U. C. & C. Co., Ltd. Honolulu, Jan. 9, 1897. 503-101

Auction Sales by W. S. Luce.

Another MAMMOTH

LAND SALE

By order of Mrs. W. H. Smith, I shall sell at my Auction Rooms

On MONDAY, Jan. 18, '97,

AT 12 O'CLOCK NOON.

1st.—Valuable piece of land on Mauka side of Beretania street close to residence of T. R. Lucas, Esq., having a frontage on Beretania street of 100 feet and running through to Kinohi street 290 feet with a frontage of 100 feet on Kinohi street. There are three Houses on the property bringing in a yearly rental of \$690 and room for more dwellings.

2.—Valuable Homestead on Alapai street, corner Quarry and Lanalilo streets, one block from residence of J. F. Backfield, Esq., at present occupied by F. E. Nichols, Esq. The House is new with most modern improvements and appliances. Elegantly finished. Cathedral and plate glass throughout, something novel and grand.

3.—Most valuable property on Fort street adjoining High School grounds with 2 fine dwellings on same, always occupied and commanding fine rentals owing to the nearness to the city and unequalled locality, being on high ground and drained to the street.

This is undoubtedly the finest offer made to the public for some time past, giving anyone a chance for a Town or Suburban residence, or a speculator a surety of handsome returns on his investments, especially as the localities are of the best and none other available in the vicinities. Insurance is prepaid on all buildings for 2 1/2 years to come and Water rates to July 1st. Titles perfect.

Terms Cash in U. S. Gold Coin. Deeds at expense of purchaser

For further particulars, apply to

W. S. LUCE,

498-td Auctioneer.

H. W. Schmidt & Sons

Invites to Select from the Following:

French Silks and Satins, Japanese Silk Handkerchiefs, Silk Ribbons, Velvets, Dress Goods of every description, Flannels in all colors, Skirting, Serges, Lining, Cottons, Linens, Blankets, Quilts, Sheetings, Curtains, Towels, etc.,

Tailoring Goods,

Clothing, Shoes, Fancy and White Over-shirts, Sweaters, Socks, Collars, Cuffs, Neckties, Umbrellas, Handkerchiefs, etc.

At Ridiculous Low Prices

LOCAL AND GENERAL.

Murata & Co. have received new goods.

The Council of State had a meeting at 2 p. m.

Board of Health meeting at 3 o'clock this afternoon.

The races at Kapiolani park tomorrow afternoon commence at 1:30.

Judge de la Vergne has eight civil suits on this afternoon's calendar.

The ladies will have possession of the Beretania tennis courts this afternoon.

Mrs. R. C. Spalding and O. B. Spalding Jr. came over from Kapa yesterday.

The band will play at Kapiolani park tomorrow afternoon instead of Emma square.

The wife of Captain Simerson is dead. She died a few days ago at Keaunoh, Kau.

The Christian Workers have a meeting at the Y. M. C. A. hall this afternoon at 3.

The first drugstore was opened for business by Al Mansur, the Arabian, 744 A. D.

Another large crowd was present at the band concert at Thomas square last evening.

The police medal shoot is on again this afternoon. So far officer Chamberlain is ahead.

The Sharpshooters are taking in quite a number of new members, some of them from the military.

Giarelli of Rome has discovered the germ of yellow fever and hopes to show how to combat the disease.

Capt. F. W. Fehlbehr, the veteran court bailiff, is sitting up in bed, but he is very weak although conscious.

The steamer Noeau may leave for Lahaina and Hamakua on Monday, but nothing definite is known about it yet.

G. McNicoll, who lately opened a French boss candy factory on King street near Fort, manufactures fresh boss candy daily.

The floor of the building on King street, occupied by the Cingalese jewelers, is being reduced to the level of the street.

It is generally hoped that the usual custom of having long and tedious waits between the races will not be in vogue tomorrow.

C. A. Peacock leaves for the Colonies by the Zealandia to inaugurate some business enterprises. He may be absent a year.

R. W. Wilcox will give a luncheon at Maunahala tomorrow afternoon and evening in honor of the birthday of his son. The National band will attend.

Those desiring a supply of Guatemala coffee seed can hear of something to their advantage by applying to the Commissioner of Agriculture.

All the government buildings will be closed tomorrow. The postoffice will be opened after the arrival of the Zealandia for a reasonable time.

Lieutenant Bergstrom is the only candidate for first lieutenant of Company D and will probably be re-elected at the company meeting tonight.

The Hawaiian Hardware Company has a change of ad. in this issue in which attention is called to a number of useful articles and novelties for the kitchen.

Plates will be laid for one hundred at the police luncheon in the station house tomorrow. Turkeys, chickens, ducks and sucking pig will be among the delicacies provided.

In the police court this morning Quong Chong and Loek Ung were fined \$50 each for opium in possession; Ah Keo \$3 for violating hack regulations, and five drunks \$2 each.

George C. Ross, who holds down a desk in the Interior Office, was married to Miss Carrie Siemsen at St. Andrew's Cathedral last evening. A reception was held at the priory afterward.

At noon tomorrow James F. Morgan will sell at auction by order of J. M. Camara, administrator of the estate of Querino Fernandes, the premises situate on the southeast corner of Spencer avenue and Magazine street, now occupied by Dr. N. Russel under lease.

The BULLETIN will be issued at noon tomorrow.

Amateur players are invited by notice in this paper to join the Y. M. C. A. orchestra.

W. S. Luce will hold a judiciary sale of property in the Wm. R. Parker estate at noon of the 21st inst.

The range of the Sharpshooters will be open to members for practise from 8 o'clock until the afternoon tomorrow.

The arrests this morning consisted of two Chinese opium fiends, one truant and twelve native gamblers who were caught playing Russian war.

By the Mauna Loa reports will be received of Annexation Club meetings at Wailuku, Lahaina and Makawao, Maui, to have been held in the past week.

This being the last day for paying water rates, under penalty of ten per cent addition for delinquents, Major Pratt has been kept busy since 9 o'clock at the paying wicket.

The annual meeting of the Central Union church came off last evening. The usual reports of officers and committees were presented, which will be presented in pamphlet form for the use of members.

The dance at the Healani Boat Club's quarters is the principal event of this evening. It is asked to be said that this is a subscription dance, and anybody wishing to attend can secure a ticket from the treasurer, F. B. Oat, or any member of the club.

J. A. Hughes, foreman car builder for the O. R. & L. Co., has in hand five 20-ton box cars, required on the line in view of increasing traffic. They are to have the latest style of steel trucks. He is also building ten 30-ton platform cars for heavy machinery, coal, etc.

Ed. Towse, lately editor of the Hawaiian Star, today disposed of his stock in the Hawaiian Star Association, at a rate approaching eighty per cent of par value. The block of stock consisted of 300 shares, and the deal was made through Harry Armitage, accountant with James F. Morgan.

MAMMOTH LAND SALES.

At Auction by W. S. Luce on Monday Next.

W. S. Luce has some important land sales on hand for Monday, January 18, at noon, when he will dispose of the Pratt premises at Waikiki, either as a whole or in subdivisions to suit purchasers, according to the plans to be seen in his office.

He will also sell three valuable pieces of residence property belonging to Mrs. W. H. Smith, which are more fully described in another column.

Both sales will take place at the auction rooms on the corner of Queen and Fort streets.

"Home Port" Defined.

The Treasury Department has issued a circular amending the customs regulations of 1892, wherein the term "home port" is defined. The regulations were not in accordance with the statutes and their ambiguity has misled customs officers in some instances. The amended regulations read as follows:

"A vessel's home port is that port established by law at or nearest to which the husband or managing owner resides. It is also the port at which a vessel's permanent marine papers issue, and its name must be specified in all marine documents. But, in reference to the painting of the name of a port of call on the stern of a vessel, the word 'port' may be construed to mean either the port where the vessel is registered or enrolled or the place in the same district where the vessel was built, or where one or more of the owners reside."—S. F. Chronicle.

To Let

Two Nicely Furnished Rooms in private residence. Apply No. 62 Printers' Lane. 508 3t

Orchestra Notice.

The Y. M. C. A. Orchestra being about to resume practice, invites Amateur Players in the city to join its ranks, more particularly those who play Violin, Cornet and Flute. Apply to H. F. Wichman, President; W. A. Love, treasurer; Wray Taylor, secretary, or any member of the orchestra. 508-1w



Celebrated for its great leavening strength and healthfulness. Assures the food against all forms of adulteration common to the cheap brands. ROYAL BAKING POWDER CO., NEW YORK.

After La Grippe Food-Emulsion

Cures the racking cough, relieves the soreness and overcomes the weakness and lassitude.

For warding off pneumonia, bronchitis, consumption and other dangers that follow this insidious disease, thousands of physicians in every land testify that cod-liver oil is the most effective.

Food-Emulsion is as palatable as milk. It contains also the valuable hypophosphites of Lime and Soda.

HOBRON DRUG CO.

King and Fort.

Sale of Valuable Real Estate.

In pursuance of an order of the Circuit Court of the First Circuit of the Hawaiian Islands, the undersigned will sell at public auction, at the auction rooms of W. S. Luce, Honolulu, Thursday, January 21st, 1897, at 12 o'clock noon, all of the following described Real Estate.

Apiana I E hoomaka ana ma ke kahi H. k. e pili ana me ke kahi Akau o ka pa o Kaka ma ana o ke kowa o na pohaku out eloa o ka Pa Halepule, a e holo Hem 73 1/2 Kom 252 pauku ma ko Kaka, atalia holo Akau 25 1/2 Kom. 191 pauku ma ko Lima, atalia holo Akau 73 1/2 Hk. 203 pauku ma ke Alanui, atalia holo Hem. 212 Hk. 190 pauku ma ka Pa-Halepule a hiki i kahi i hoomaka at Ma kela apiana ana pihale be 33-100 Eka. The same being Apiana I of Royal Patent 1791 Kuleana 3696 to Loe situated at Aowatohou, Paoua, Oahu.

On this Land there is a large dwelling house. In the yard and grounds there are numerous fruit trees in bearing, ornamental trees, flowers and shrubs.

Being situated at the entrance of Paoua Valley, the climate is delightfully cool and healthy.

Terms, Cash, United States Gold Coin.

Conveyance at expense of Purchaser. ROSE PARKER, Administratrix of the Estate of Wm. R. Parker, deceased. 508 5t

J. J. WILLIAMS

Art :- Fotos The Most Complete and Artistic Series of Island Views Ever Exhibited.

The Latest Applications for Fine Work pertaining to Photography.

521 1/2 Fort St. - - Tel. 151

LYLE A. DICKEY, Attorney at Law

14 Kaahumanu Street. Telephone No. 682. 498-6m

Goods For Every Day In the YEAR

Are the kind of goods we handle. Whilst the holidays have made great gaps in some lines, most of our lines will still be found very complete, notably that of Watches. It takes a good many sales to make an impression in our stock, we carry so many.

Watches for \$3 For men and boys, and

Watches for \$300

For those with a longer purse and an inclination for something out of the ordinary.

We want to add you to our list of pleased watch customers, no matter how little or how much you have to spend for the purpose. We have the goods, and our many years of experience will be gladly given to aid you in selecting one which will be best for you.

H. F. Wichman

Mortgagee's Notice of Intention to Foreclose and of Sale.

Notice is hereby given that by virtue of a power of sale contained in a certain mortgage dated the 13th day of September, 1888, made by Keawekane [w] and Kalua [k] her husband, of Lahaina, Island of Maui, to Jose Espinda of said Lahaina, recorded in the office of the Registrar of Conveyances in Liber 112 on pages 197, 198 and 199, I, Ellen G. Lyman, of Hilo, Island of Hawaii, the assignee of said mortgage by various mesne assignments, intend to foreclose the said mortgage for a breach of the conditions in said mortgage contained, to wit: the non-payment of both the principal and interest when due.

Notice is also hereby given that all and singular the lands, tenements and hereditaments in said mortgage deed contained and described will be sold at public auction at the auction room of James F. Morgan on Queen street, Honolulu, Island of Oahu, on Monday the 18th day of January, A. D. 1897, at 12 o'clock noon of said day.

The property in said mortgage is thus described, viz: A certain parcel of land situate in Lahaina on the Island of Maui, together with all the privileges and appurtenances to the same belonging, and all the buildings thereon, and bounded and described as follows:

"E hoomaka ana ma ke kahi Hikina o keia ma kahi e pili ana uo ka alanui aupuni a me ko Makalele ana, a e holo ana; He 42 1/2. Ko 1 kaul ma ko Makalele; Ak 54 1/2. Ko 1.20 kaul ma ko Kahakai; Ak 42 1/2. Hi 1-18 kaul ma ko Lipi; He 47 1/2. Hi 120 kaul ma ka Alanui a hiki i kahi i hoomakau, a maloko o maia 18 eka, a oi iki aku paha emiki mai paha."

ELLEN G. LYMAN, Mortgagee.

Terms Cash. Deeds at expense of purchaser. For further particulars apply to the Mortgagee or her attorneys, Thurston & Stanley. Dated, Honolulu Dec. 16th, 1896.

N. FERNANDEZ, NOTARY PUBLIC and TYPEWRITER

Office: 208 Merchant street, Campbell Block (rear of J. O. Carter's office). P. O. Box 336.

Ladies Muslin Underwear OUR OWN MAKE Best - Value - Ever - Offered AT N. S. SACHS' 520 Fort Street : : Honolulu.

Ladies Night Gowns at 50cts. Ladies Night Gowns with Embroidery Yoke, Sleeves Trimmed for \$1.00. Ladies Skirts with Ruffle, 50cts. Ladies Skirts Embroidery Ruffle at \$1.00. Ladies Chemises, 3 for \$1.00. Ladies Drawers, Embroidery Trimmed, good cotton and well made for 50cts. Corset Covers from 60cts. upward.

EVERY - MAN - HIS - OWN - HORSE - DOCTOR. DR. POTTIE'S CELEBRATED - LIVE - STOCK - REMEDIES

FOR THE CURE OF DISEASES OF Horses, Cattle, Sheep, Dogs, Swine, and Poultry. ALSO LILY HAIR OIL The Marvelous Hair Remedy which prevents HAIR FALLING OUT. FOR SALE BY C. W. MACFARLANE, Sole Agent, Honolulu. Neat pamphlet free on application. P. O. Box 292, Telephone 26. Honolulu, April 21, 1896. Mr. C. W. MacFarlane:—It affords me pleasure to recommend, to any one whose hair is falling out, the use of DR. POTTIE'S HAIR OIL. My hair was coming out at such a rate as led me to believe that I would soon become bald. After using the oil for five weeks this ceased entirely; none whatever is now falling out. I consider it the best and only worthy remedy for this trouble and also recommend it as a stimulant to new growth. 565 tf Yours truly, J. B. DANIELS.

J. T. WATERHOUSE LEWIS & Co.

Families will find it to their interest to buy canned goods or bottled delicacies by the case. They keep as well in the pantry as on our shelves and the purchaser gets the benefit of the wholesale rate. The saving is considerable and our prices are as low, if not lower than any place in Honolulu. There's no question about the quality. Think it over and let this be one of your 1897 resolutions.

Among the many relishes for use on the table every day and for hot or cold meats Chutney ranks first. It is essentially East Indian and the flavor of the spices gives zest to the appetite. Some of the brands are from formulas evolved in the brains of English army officers who have campaigned in India. The aptitude of the English to cotton on to good things for the table is proverbial and the "designing" of Chutney has not weakened their reputation in this respect.

We have seven different brands of Cocoa; Gheradelli's; Phillips Digestible; Van Houtens; Epps Homeopathic; Walter Bakers Breakfast; Cracked in bulk and Cocoa Shell in bulk. Persons finding Chocolate too heavy for them experience only pleasant results from the use of cocoa. We are certain of the quality of the goods and do not hesitate to recommend them. We believe we carry the largest stock of groceries in Honolulu and our facilities for supplying customers is unsurpassed.

J. T. WATERHOUSE Queen Street.

Subscribe for the EVENING BULLETIN, 75 cents per month.

Fort Street - - Honolulu

Insurance Notice.

Notice is hereby given that the General Agency of The Germania Life Insurance Co. of New York, has been placed in the hands of Messrs. J. Alfred Magoon and A. V. Gear.

J. Alfred Magoon will have charge of the collection of renewal premiums and will act as the Company's attorney.

A. V. Gear will act as agent for the Company in securing new business.

J. ALFRED MAGOON and A. V. GEAR,

General Agents of the Germania Life Insurance Co. of New York for the Hawaiian Islands. 486-1m

HAWAIIAN Business Agency

L. C. Ames & Co. A. V. Gear & Co. Office 207 Merchant St. Office 210 King St.

REAL ESTATE

General Business Agents Loans Negotiated and Collections Made.

Stocks Bought and Sold.

Books Audited and Accounts Adjusted. Bills Bought and Notes Discounted.

Fire and Life Insurance Agents

M. LANCASTER,

Horse Jewelry

Of Every Description

At T. B. MURRAY'S CARRIAGE MANUFACTORY.

I have just opened my New Shop and am prepared to suit my old and new patrons. M. LANCASTER.

Henry Davis,

320 Fort street, near Merchant.

Merchandise Broker, COMMISSION AGENT,

Custom House Broker and Statistician EXPERT ACCOUNTANT

General Business Agent

W. H. RICKARD,

General Business Agent

Will attend to Conveyancing in all its Branches, Collecting and all Business Matters of trust.

All Business entrusted to him will receive Prompt and Careful Attention. Office: Honokaa, Hamakua, Hawaii.

A New Abstract Office.

As a result of 15 year's experience in the Abstract Business, I am prepared to make Abstracts of Title in a most thorough accurate and complete manner, and on short notice.

F. W. MAKINNEY, In W. O. Smith's Office, 318 Fort Street. 215-1f

Administrator's Notice.

The undersigned having been duly appointed Administrator of the Estate of Charles Hammer, late of Honolulu, Island of Oahu, deceased, notice is hereby given to all creditors of the deceased to present their claims, whether secured by notes, mortgages or otherwise, duly authenticated and with ten per centum, if any exist, to the undersigned within six months from the date hereof, or they will be forever barred. And all persons indebted to the said deceased are requested to make immediate payment to the undersigned at his office, No. 269 1/2 Merchant street, Honolulu.

DAVID DAYTON, Administrator of the Estate of Charles Hammer, deceased. Honolulu, Dec. 18, 1895. 487-10f

Consolidated Soda Water Co., Ltd Esplanade, Corner Allen & Fort Sts., Honolulu.

HOLLISTER & CO., Agents.

A. V. GEAR,

Notary Public

Telephone 266. No. 210 King St.

IT MAY GIVE YOU A PAIN

As many good things are likely to be tried before you find the one that will give you relief, it is well to have a bottle of Perry Davis' Pain Killer at hand. It is a never-failing antidote for many of all sorts.

Perry Davis' Pain Killer

is the UNIVERSAL PANACEA for all kinds of ACHES and PAINS. Do not accept any but the GENUINE. If your dealer does not have it, call on or address the

Hollister -:- Drug Company, Sole Agents for the Islands.

The ... Hawaiian Electric Company,

Cor. Alakea & Halekuanua Sts.

Has a large assortment of Chandeliers and Electrical Goods

Constantly on hand. Estimates given for house wiring and Electrical plants.

Marine Wiring a specialty.

THEO. HOFFMANN, Manager.

IF YOU WANT

A Clean Shave

Late Style Hair Cut

Go to the CRITERION

Barber - Shop,

Fort street, near Hotel.

VETERENO CARREIRO,

Hotel Street Shaving Parlor.

Three Chairs. First-class Work. PRICES REDUCED.

Hair Cutting 15 c. Shaving 15 c.

Hotel street opposite Bethel, 425-6m

JAS. F. MORGAN,

AUCTIONEER AND STOCK BROKER No. 45 Queen Street.

Expert Appraisal of Real Estate and Furniture.

ROBERT GRIEVE,

Book and Job Printer

Merchant Street, Honolulu, H. I.

Over Hawaiian News Company's Book Store.

my 13.

DAVID K. BAKER,

Florist, Nuuanu Valley, above the Mausoleum.

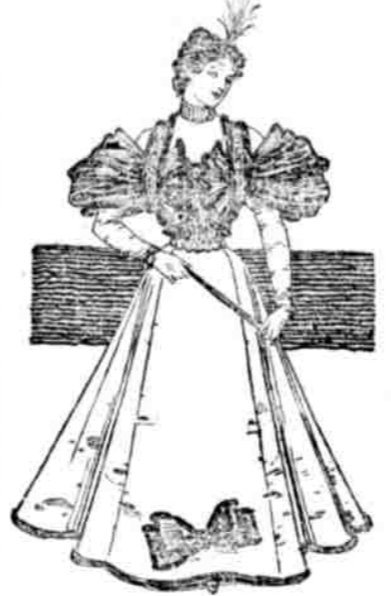
All orders given prompt and faithful attention. No extra charge for delivering flowers to any part of the city. Leis, Mountain Greens and Carnations a specialty. 265-1f

ALLEN & ROBINSON.

Dealers in Lumber and Coal and Building Materials of all kinds. Queen Street, Honolulu.

FASHIONABLE MATERIALS.

Exquisite Grenadines With Silk Linings. Silk Canvases and Changeable Alpines. Amid the large variety of dress materials prepared for summer wear the most fashionable and the most expensive are the transparent canvases and grenadines, which not only cost a great deal of money in themselves, but necessitate a silk lining. Silk linings are light of weight and therefore desirable, but they are not durable unless the silk is of very good quality. The cheaper grades, as well as the silk faced cotton linings, are mere traps for the unwary, for they split and pull apart almost at once. A dollar a yard or a little less for skirt lining is rather an extravagant expenditure, especially when the narrow width of silk is considered. Yet a durable silk lining can hardly be obtained for less. China silks for gowns are well liked. Many colors are often shown in the floral design with which they are covered, but the tints are harmonious and the general effect artistic. Silk canvases, which border very closely on grenadines, are in flavor. These are charming over a silk lining, the latter being often supplied by a last season's gown, which is rather too brilliant in tone to be worn now. The grenadine over it tones it



EVENING GOWN.

down sufficiently to make it satisfactory. Black gauze, chiffon and mousseline de sole are largely used over bright colored silks, but sometimes a darker shade of the same color is preferred to black. The new alpines are very pretty, some of the shot effects being almost as rich and glossy as silk. The broche and goat's hair varieties are equally attractive. The evening gown illustrated has a skirt of white satin very much rippled. It is bordered with a narrow band of silk beaver, and the bodice has a large bow of ruby satin edged with beaver near the foot. The corselet bodice is of embroidery, the décolletage being very decided. A drape of ruby satin is carried across the back and over the upper part of the arms to form sleeves, ending in two fans in front. The drape is held in place by broches of embroidery edged with beaver. JUDIC CHOLLET.

Somewhat Talkative. Bacon—Did you know there were over 735,013,559,600 different whist hands in a pack of cards? Egbert—Yes. My wife tells me about each one nearly every time we play. —Yenkers Statesman.

He Didn't Specify. "I tell you," cried the author, "I'm going to rise in this world." The editor eyed him doubtfully for five seconds and then asked: "Balloon or elevator?" — Atlanta Constitution.

An Appropriate Emblem.

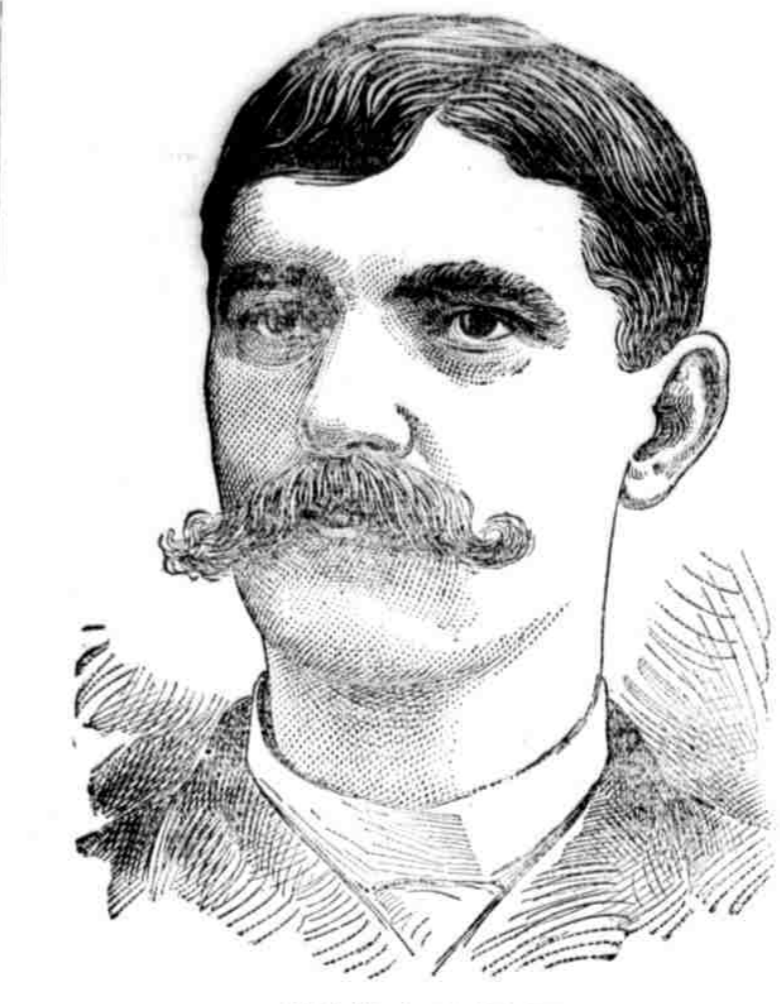
The American buffalo exemplifies to the fullest extent the elements of hearty rugged strength in animal life, and the Buffalo Brewery Co. have made a peculiarly appropriate selection of a trademark in choosing this animal to represent its productions, in that the tonic and refreshing properties of the Buffalo Beer promote health and invigorate the system, producing a similar condition of hardy strength in the human frame. The Royal, Cosmopolitan and Pacific saloons are the media of distribution for this famous brew to an appreciative public, and the interchangeable check is the passport at any of these favorite resorts. Drink "Buffalo" only.

Mechanics' name, corner Hotel and Nuuanu streets, lodging by day, week or month. Terms: 25 and 50 cents per night. \$1, and \$1 25 per week.

City Carriage Co., J. S. Anderson, manager. If you want a hack with good horse and careful driver ring up Telephone 113, corner of Fort and Merchant streets. Hack at all hours.

Kroeger Pianos, sweetest in tone, Jas. W. Bergstrom, sole agent, cash or installments. Warerooms at G. West's, Masonic Temple. Office at Thrum's Book Store. Tuning and repairing. Telephone 347.

The Vacuum oils are sold in the Hawaiian Islands by the Pacific Hardware Co., Ltd., of Honolulu, and are delivered to the purchaser in original packages as shipped from our works. Vacuum Oil Co., Edward Prizer, Secretary.



REV. W. L. WILLIAMS.

409 MASON AVENUE, CANON CITY, COL., Jan. 13, 1894.

WELLS, RICHARDSON & Co.,

DEAR SIR:—We use Paine's Celery Compound in our family and could not keep house without it. Mrs. Williams thinks there is nothing equals Paine's Celery Compound to cure nervous headaches and the like. Success to you in every way.

Respectfully, Pastor of Cumberland Presbyterian Church. W. L. Williams.

HOLLISTER DRUG Co.,

Wholesale Agents for the Hawaiian Islands



SAY ?

You ought to see my best fellow. He just got a New Suit of Clothes from

Medeiros & Decker, The Hotel Street Tailors.

The fit is something fine. No, it's not chance, Medeiros & Decker always give a good fit.

Closing Them Out

We are Closing Out Our Stock of

Furnishing Goods

Our Regular Tailoring Business has grown so large that it requires all our attention.

Bargains in Neckwear!

CALL AND SEE! H. S. TREGLOAN, Fort and Hotel Streets.



FRANK LILLIS'

ALL NIGHT Hack No. 14

TELEPHONE 176

Stand: Bethel and K. ng streets.

J. J. SULLIVAN, President. J. BUCKLEY, Sec'y.

Fashion Stables Co., Ltd.

Honolulu, H. I. SULLIVAN & BUCKLEY, Man'g'rs.

FINEST EQUIPPED CARRIAGES in the City, with Competent and Careful Drivers.

Stand at the Pantheon Stables, Corner of Fort and Hotel Streets.

TELEPHONE: Haw'k Hotel Stables, 82. Pantheon Stables, 34. Fashion Stables, 148.

AMERICAN Livery and Boarding Stables

Corner Merchant and Richards Sts. LIVERY and BOARDING STABLES. Carriages, Surreys and Hacks at all hours. TELEPHONE 490.

NOTICE.

All tenants and others indebted to Liliuokalani will please take notice that the undersigned has been appointed Agent of her Estate, under full Power of Attorney. Prompt payment of indebtedness is requested. J. O. CARTER, 208 Merchant street, Honolulu, Dec. 4th, 1896. 475 1m

A Pastor's Story.

Rev. Mr. Williams Could Not Keep

House Without Paine's Celery

Compound.

His Wife Strongly Recommends It to Cure

Sick Headache.

409 MASON AVENUE, CANON CITY, COL., Jan. 13, 1894.

WELLS, RICHARDSON & Co.,

DEAR SIR:—We use Paine's Celery Compound in our family and could not keep house without it. Mrs. Williams thinks there is nothing equals Paine's Celery Compound to cure nervous headaches and the like. Success to you in every way.

Respectfully, Pastor of Cumberland Presbyterian Church. W. L. Williams.

HOLLISTER DRUG Co.,

Wholesale Agents for the Hawaiian Islands

John Nott,

Importers and Dealers in



Steel and Iron Ranges,

STOVES, AGATEWARE,

DIMOND BLOCK.

121 & 123 King Street.

CAN'T BE BEAT!

WHAT? My \$10.00 Bath Tubs, lined with best quality, No. 10 zinc, 6 in. Pipe, Chain and Plug, with wood in all complete. Other dealers are dumfounded, and resort to all manner of Tricks and Excuses.

Be not deceived, these Bath Tubs have been sold for \$14 until I reduced the price. I am prepared to do all work in my line and guarantee satisfaction. Estimates furnished.

If you want a good Job done for Cash, ring up Telephone 844, and I am your man.

JAS. KOTT JR., Tinsmith & Plumber

REOPENED!

Sailors' Home Restaurant Lu Hong Co., Proprietors.

Chicken and Ice Cream Sundays. All new, neat and clean.

Board (per month).....\$17.00 21 Meal Tickets..... 4.00 Single Meal..... .25

487 33m

H. HACKFELD & CO.

GENERAL COMMISSION AGENTS. Cor. Fort and Queen Streets, Honolulu.

M. PHILLIPS & CO., Wholesale-Importers and Jobbers of European and American Dry Goods. Fort and Queen Streets.

DO YOU LIKE CURRY?

TRUE INDIAN CURRY

NOT THE STUFF USUALLY SOLD AS CURRY

Curry Powder as made by us is prepared after the Original Recipe from the Purest Ingredients.

TRY IT ONCE

BENSON, SMITH & CO.

527 Fort Street, corner Hotel.

ED. A. WILLIAMS,

(Successor to C. E. Williams, H. H. Williams & Co. and Williams Bros.

Undertaker and Embalmer,

REMOVED TO

516 Fort Street.

Telephone 179.

Night Telephone 815.

METROPOLITAN MEAT CO.

108 KING STREET.

G. J. WALLER - - - MANAGER.

WHOLESALE AND RETAIL BUTCHERS

Navv Contractors.

Refrigerated Poultry

Fresh Salmon

CONSTANTLY ON HAND.

Metropolitan Meat Co.

Telephone 45.

RING UP 104!

The Central Meat Market

214 NUUANU STREET.

For Your Choice Orders

The Finest

Refrigerated .-. Meats

Always on Hand Orders promptly and carefully attended to.

WESTBROOK, GARES & SCHLEIF.

Proprietors.

LUXURIES

For the Equine Table in the way of all kinds First Class

HAY, GRAIN & FEED

Are on sale by the

WASHINGTON FEED COMY

138 Fort St Tel. 422.

CITY FEED STORE,

Old Armory, Beretania Street.

L. H. Dee & Co.

Hay, Oats, Bran, Middlings, Chop Feed, Oil Cake Meal, Rock Salt, Alfalfa Hay, Flour, Rotted Barley, Rotted Oats, Cooked Corn and Wheat, Oregon Burbank Potatoes shipped from California and Oregon regularly.

DROP IN SUGAR.

Caused by Over Supply and Competition of Hongkong article.

The Western Sugar Refining Company, of which John D. Spreckels is president and Robert Oxnard is secretary, announced yesterday a reduction of half a cent per pound in the eight marketable classes of the article, the Examiner says: The reduced price affects California and Pacific Coast in general. The circular which is brief, gives the new reduced prices per pound as follows:

Subject to change without notice—Cube A Crushed, 5½; Fine Crushed, 5½; Dry Granulated, 4½; Confectioners' A, 4½; Magnolia A, 4; Extra C, 3½; Golden C, 3½; Powdered, 5.

The drop in the price is due to large over-production of the world's supply during the year just closed, and Secretary Robert Oxnard, in explaining the matter in detail, said last night:

"There has been a terrific over-production of beet sugar in Europe during the past year, and it is now affecting the market price of the refined article. The destruction of the sugar cane plantations in Cuba on account of the rebellion in progress there made many people believe the world's supply would fall off greatly and give sugar a very high price. This was the general opinion in Europe, and, together with the bounties offered in some parts of Europe for the production of beet sugar, it resulted in a yield unprecedentedly large and more than enough to make up the Cuban deficit. Under the present tariff laws of the country this European sugar is now coming into this country at prices which force us to make a reduction.

"There is a second factor which has also influenced our action of today in cutting the price of sugar half a cent on the pound. Hongkong shipments of sugar are coming here to an extent that makes their competition felt. The Hongkong article is made from sugar cane by the very cheap labor of Chinese. Just enough of it is coming here to disturb the market."

Mr. Oxnard did not think the price of sugar would decline much from the present figures. Inquiry of Honolulu sugar men elicits the fact that the fall in price had not extended to raw sugars up to the sailing of the Peru.

Nansen's Curious Discovery.

The return of Nansen from the Arctic and his great achievements are still the wonder of the scientific world. Nansen's theory of the movement of the ice pack and the experience of the Fram have been a revelation to the Arctic experts. When the expedition started out it was considered a foolhardy venture, but it now seems Nansen was right. Among the many things found to confirm his theory of the movement toward the pole was a wooden box, which was picked up near the farthest point reached. This box was opened and to the delight of the entire expedition was found to contain two dozen bottles of Rainier Beer. It was found to be cool, sparkling and refreshing. It is likely Nansen's testimonial to the superior qualities and taste of Rainier Beer may be added to the many already given by prominent men of the Northwest. On top or in bottles at the Criterion.

Information for Tourists.

A passenger by the last Colonial steamer was met on the dock by a Milesian American friend, who resides in Honolulu. As the pair waited for the newcomer's gripsack scrawled over with chalk marks by the Customs Inspector at the gate the stranger remarked to his friend "Do you have much rain here?" RAINIER me boy, gallons of it, just come up to the Anchor Saloon where they keep it always, clear and cool. We'll just be in time for lunch too and that's the only place in town where they serve it up in proper style with a glass of RAINIER BEER to equilibriate the solids—They went!

Singers lead the world. Over 13,000,000 made and sold. Highest awards at the World's Columbian Exposition for excellence of construction, regularity of motion, ease of motion, great speed, adjustability, durability, ease of learning and convenience of arrangement. B. Bergersen, agent, 16½ Bethel streets.

To Citizens of Hawaii!

I take pleasure in announcing to you that I have removed to my new quarters at NO. 416 FORT STREET and am prepared to execute all orders pertaining to my business. Jewelry Repairing, Watch Repairing, Fine Engraving, etc., etc. I have a handsome stock of Watches and Jewelry to show you including a large variety of valuable Island Curios. Your patronage is respectfully solicited.

G. HAFFNER. 364-41

To My Patrons:

It gives me much pleasure to announce that MR. M. R. COUNTER, one of the most skilled watchmakers ever in these Islands, is now managing my repairing department. No watch is so complex in its mechanism but we can give perfect satisfaction in correcting the evils to which watches are heir. Watches are delicate things to handle. We guarantee that they will receive no injury at our hands and will leave our store in perfect repair.

Respectfully,
E. A. JACOBSON,
507 Fort Street.

H. G. BIART.

404½ Fort Street.
Mea Hana Wati a me Hana Gula!
O na Puna Makana
Ka Hiwahiwa oi loa aku o ka Nani Makamae.
E Hiki ke Hoomaemae pu ia na Wati poino a me ka haki o ke A-u.
Alunui Papu, kokoke alunui Moi.

THE LOUVRE

608 NUUANU STREET.

Harry Klemme, - - Prop.

SEATTLE BEER

The Best in the World - - -

Best of Liquors & Wines.

Our Saloon is thoroughly renovated and refurbished and we trust that our stock will please every taste.

COME AND SAMPLE IT.

Empire Saloon

A general stock of Liquors, Ales and Wines.

FRESH BEER ALWAYS ON DRAUGHT.

OUR PORT AND SHERRY,

Are of the finest and come to us direct from Europe.

OUR MCBRAY WHISKEY

Imported straight from Louisville, Ky.

JAMES OLDS, Prop.

MERCHANTS' EXCHANGE

KING AND NUUANU STREETS.

The celebrated ENTERPRISE BEER on Draught and in Bottles

GONSALVES & CO.,

WHOLESALE GROCERS AND WINE MERCHANTS.

225 Queen street, Honolulu, H. I.

F. H. REDWARD,

Contractor and Builder.

Offices and Stores fitted up and Estimates given on

ALL KINDS OF WORK

Office and Shop: No. 619 Fort street, adjoining W. W. Wright's Carriage Shop.

FRANCIS DUNN, Architect and Superintendent

Office: 305 Fort street, Spreckels' Block, Room 5. Residence: Hawaiian Hotel.

LEWERS & COOKE

DEALERS IN

LUMBER,

Builders' Hardware

Paints, Oils and Glass

Wall Paper, Mattings,

Etc., Etc., Etc.

LEWERS & COOKE,

473 Fort Street, - - - Telephone 20.

Wm. G. Irwin & Co.

(LIMITED).
Wm. G. Irwin, - President and Manager
Claus Spreckels, - - - Vice-President
W. M. Giffard, - Secretary and Treasurer
Theo. C. Porter, - - - Auditor

Sugar Factors

Commission Agents.

AGENTS OF THE OCEANIC STEAMSHIP COMPANY OF SAN FRANCISCO, CAL.

C. BREWER & COMPANY, LIMITED,

Queen street, Honolulu, H.I.

AGENTS FOR

Hawaiian Agricultural Company, Onomua Sugar Company, Honouliuli Sugar Company, Waialua Sugar Company, Waialeale Sugar Company, Makalea Sugar Company, Haleakala Ranch Company, Kapaemahu Ranch, - Planters' Line, San Francisco Packets, Chas. Brewer & Co.'s Line of Boston Packets, - Agents Boston Board of Underwriters, Agents Philadelphia Board of Underwriters.

LIST OF OFFICERS:

P. C. Jones, President; George H. Robertson, Manager; E. F. Bishop, Treasurer and Secretary; Col. W. F. Allen, Auditor; C. M. Cooke, H. Waterhouse, A. W. Carter, Directors.

Beaver Saloon,

H. J. NOLTE, Proprietor.

The Best Lunch in Town

Tea and Coffee

AT ALL HOURS.

THE FINEST BRANDS OF

Cigars and Tobacco

ALWAYS ON HAND.

Eagle -:- House

Nuuanu Avenue.

CARL KLEMME, Proprietor.

New management. Commodious rooms. Table Board the finest, including many Palatable German Dishes.

Board and Room, per week. . . . \$6.50 to \$7.50
Table Board, per week. \$5.00

THE "ARLINGTON"

A FAMILY HOTEL.

T. Krouse, - - - Prop.

Per Day. \$ 2.00
Per Week. 12.00
Special Monthly Rates!

The Best of Attendance, the Best Situation and the Finest Meals in this City

ORIGINAL

SINGER'S -:- BAKERY

Established 1874.

King St. near Thomas Square

Home-Made BREAD, Cakes and Pies

Served Fresh Every Day.

H. F. SINGER, Sole Prop'r.

Telephone 872.

F. HORN BAKERY I Hotel street, near Fort.

BREAD, PIES AND CAKES Of all kinds, The Finest Imported and Home-made Confectionery.

The Elite Ice Cream Parlors

From 6 A. M. to 11 P. M. you can get a Cup of Real Kona Coffee at the "Elite" Ice Cream Parlors.

Real Estate

For Sale.

1--Sold.

2--Sold.

3--Two Stores on Nuuanu street.

4--Lot on Magazine Hill, 120x204 feet, commanding an excellent view of the city and harbor.

5--Lot on Hackedfield street, 80x100.

6--A Choice Residence on Lanialoa street, having all modern improvements.

7--Sold.

8--Four Houses and Lots on Punchbowl street, all rented at a monthly rental of \$183.

This property is 240 feet on Punchbowl street, with a depth of 222 feet running to the drill grounds or armory, with a frontage on some for 4 or 5 more cottages. The central location of the property makes it most available.

9--House and Lot on Kaiman street, 1-4 70x150 ft. This property will be sold at cost and is an excellent bargain for a home seeker. The house is elegantly finished and of the best workmanship and materials. There is a carriage house and barn on the premises and the yard is well laid out with fruit and ornamental trees.

10--A Fine Residence centrally located, containing 15 rooms. Lot 120x200 ft. Two small cottages on the lot bringing in good rental.

11--29 Acres of Land in Kailua valley, (Waikiki side). A stream of water flows along this land. A bargain.

12--Sold.

13--Sold.

14--A Commodious Residence on Haneling street, fitted with all modern conveniences. It will trade for suburban property.

15--Sold.

16--House and Lot on Beretania street. House contains 9 rooms, and all modern conveniences. Lot 80x145.

17--Fine Residence on Beretania street. For further particulars inquire at my office.

18--A House and Lot on Young street.

19--House and Lot corner Victoria and Beretania streets, opposite Thomas square. House contains 6 rooms. Size of lot 100x200.

20--Sold.

21--House and Lot on Young street near the residence of the Rev. Mr. Hyde. Lot 110x140. House contains eight rooms.

22--Sold.

23--Pearl City Property.

24--Desirable Tract of Coffee Land on Hawaii.

25--A most Desirable Home on Thurston avenue. Large grounds and beautiful flower garden; house furnished throughout in hard wood with all latest improvements. Excellent view of the city and ocean, and one which cannot be out of.

26--A Large Lot and Commodious Dwelling on Green Street, commanding an unobstructed view of the city and harbor. No choicer residence is to be had in the city even by the most fastidious.

27--A New House of seven rooms with electric lights throughout, bath, patent W. C. servants' quarters and stables. One block from car line at Punahoa.

28--Only 4 of those Lots left near Kaimanua school.

29--Two Houses and Lots on Liliha street.

30--An 18-Acre Tract of Land at Kailua suitable for dividing up into building lots.

31--A House and Lot on Alakahe street.

32--A Beautiful Building Lot at Kailua, 100x200, cleared, fenced and water laid on.

33--A Gently Sloping Lot on Thurston avenue, 250x125, having a frontage on Green street of 125 feet, and commanding a bird's-eye view of the city and harbor.

34--Sold.

35--Elegant Beach Property at Waikiki.

36--Sold.

37--The only CHOICE LOT left at Makiki. It adjoins the residence of A. Gilman and the residence sites of W. L. Hopper, H. Lewis, and Dr. Wood.

38--Sold.

39--Sold.

40--Sold.

41--Lot on Makiki street, 75x110. Cheap.

42--House and Lot on Peterson Lane, Palama. House contains 6 rooms. Lot 75x140.

43--Dwelling House of 9 rooms, fitted with all modern conveniences. Lot 125x110. Situated at Palama.

44--Vacant Lot on Waikiki Road, 100x110.

45--House and Lot on Nuuanu street. House contains eight furnished rooms. Very conveniently located near the business center of the city.

46--Elegant Residence at Punahoa. House of 7 rooms with all modern conveniences. Lot 100x200, nicely planted with fruit and ornamental trees.

47--12 Suits of Furniture complete and the rental of the most desirable and centrally located Lodging House in the city.

48--Pineapple Ranch, 25,000 fruiting plants, 500 lime trees, 50 Avocado pear trees, peach trees and Abutilo crop. Two Dwellings, barn, etc. An AI investment.

49--50 Acres Coffee land in fee simple, and 100 acres, on a 30 years lease with a privilege of fifteen years more, situated at Puna. Hawaii, near Gouddie's coffee plantation. No fine coffee land to be had.

50--A Lodging House on Fort street consisting of twenty furnished rooms, all occupied by lodgers. A bargain for the right person.

51--A House and Lot on Beretania street between Punchbowl and Richards streets. House contains seven rooms, beside bathroom and kitchen. Lot 75x110, and well laid out with grass and ornamental trees.

NOTICE--I can Negotiate Loans on any of the above property for purchasers desiring same at from 50 to 75 per cent of the value.

For Rent.

1--Warehouse on Esplanade.

2--Rentals.

3--A Furnished Cottage in a good location for two or three months.

4--A Beautiful Summer Residence at the Peahi, Pearl City, completely furnished five rooms and servant's quarters. Will rent cheap to a desirable tenant. The lot is over an acre in size and well laid out, and commands a beautiful view of the harbor.

5--Store Room, 60x85, \$25 per month, driveway into it. Beretania street, rear of City Feed Store.

6--Piece ground 50 feet front, on Beretania street, next to City Feed Store. Will meet good store on ground and lease 3 years at \$4 per month.

7--Rented.

8--Rented.

9--Furnished Cottage for couple at Waikiki, servants' quarters, stables, etc. \$25 per month, long lease.

10--Rented.

Hawaiian Business Agency,

410 King street and 307 Merchant street.

Real Estate Transactions.

Subscribers are furnished with from five to six lists per week, giving an accurate record of all deeds, mortgages, leases, releases, powers of attorney, etc., etc., which are placed on record. Also a list of all district court judgments.

Subscription Price, \$2.00 per Month.

A. V. GEAR,
210 King St, Honolulu.

TODAY'S MARINE NEWS

THE SHIP HENRY B. HYDE FROM SAN FRANCISCO.

Bark Samoa Bound for New York—Island Steamers Inward—Other News Notes.

The steamer Mikahala will go to Kauai tomorrow.

The Lehua was telephoned at 12:20 p. m., 20 miles east.

The Keanohou brought sugar for F A Schaefer & Co today.

A supply of coal for the S S Zealandia is on Oahu wharf.

The J A Cummins takes a load of coal to Waimanalo this trip.

The schooner W F Jewett is unloading lumber at Custom House wharf.

The British bark Samoa was towed out at 1 p. m., bound for New York.

The schooner Ka Moi may bring a cargo of circle D sugar from Hamakua, shortly.

Freight left by the S S Monmouthshire has all been cleared from Pacific Mail wharf.

The German bark Ardgowan is about through discharging coal. She will leave here in ballast.

Three police officers rounded up a dozen of natives on Pacific Mail dock this forenoon for gambling.

The barkentine W H Dimond has finished discharging. Capt Nilson will await his turn to load for the Coast.

Tomorrow, high tide large 2:40 a. m.; high tide small 2:10 p. m.; low tide large 7:20 p. m.; low tide small 9:45 a. m.

The bark B P Cheney was towed to sea yesterday. She will load lumber on Puget Sound for the Orient or Australia.

The BULLETIN marine scribe is glad to see Capt. Goodman back again. He has been absent from this port quite a long while.

The Kaui arrived at 1 pm with sugar, rice and passengers from Kauai. The Hull will be in on Sunday with Hauamaui sugar.

The steamer James Makee put sugar in the S G Wilder today, and the steamer Mikahala put her sweet stuff into the C D Bryant.

A few thousand bags of sugar and rice remain in Oceanic warehouse. When the sugar season gets in full blast, the warehouse will be quickly filled.

The S. N. Castle loaded rice at Oceanic dock yesterday. Captain Hubbard expects to complete his vessel's cargo with sugar, and leave on Monday for San Francisco.

The ship May Flint, soon to arrive here to load for New York was formerly a steamer of the Monarch line, plying between America and Great Britain on the Atlantic. She is as large as or larger than the Roanoke.

The Hawaiian bark Diamond Head was run on the ways at the Merchants' Dry Dock yesterday and the water drained from her hold. She must undergo extensive repairs before she is ready for sea.—S F Chronicle.

The Kaala brought in sugar and rice yesterday afternoon from windward Oahu. The sugar was for M S Grinbaum & Co, the Jas Makee brought sugar for C Brewer & Co, and the Mikahala sugar for H Hackfeld & Co, both from Kauai.

The American ship Henry B. Hyde, D. A. Scribner master, arrived in at noon, 14 days from San Francisco. Her skipper reports having left port on Dec. 31. She has 850 tons of ballast. The Hyde was in sight of this island for two days, but could not make Honolulu on account of light wind. She will load sugar for New York.

S C Allen's fleet of schooners are being put into service again, after being idle a short time. The Kaniakaouli sailed for Paauilo this morning with a general cargo. On account of the light wind, she came near going ashore on the Ewa side of the channel near the last piles.

The German Emperor proposes to celebrate the sixtieth year of his grandmother's reign in a very handsome way, says the Illustrated London News. He will give a silver cup three feet high to the winner of a race of British yachts from Dover to Holyhead and will present the cup himself at Kiel.

Sir Alexander Milne, who died this week at the ripe age of 90, was the oldest Admiral in the British navy. He entered it eighty years ago and served longest of any Admiral ever in the British service. Now Sir Henry Keppel, who is eighty-six years of age, is the senior Admiral in the British navy list.—Exchange.

It is said that after leaving the Golden Gate, the wild waves tossed the new little steamer "Scray" about so roughly that every one aboard, except the chief officer, was seasick. It might have been the name of the boat that sickened them, but as she has received another name—"Noenu"—future travelers on the craft may not have such unpleasant feelings as those who experienced the maiden voyage.

The German bark H Hackfeld, Captain Barber, arrived in port yesterday after a most trying passage of thirty-one days from Honolulu and just in time to save her charter, which expires today at noon. The Hackfeld experienced all sorts of disagreeable weather. When she left the islands the winds were favorable, but at a distance of 120 miles from port the bark was becalmed and remained in practically the same position fourteen days. Later on she experienced heavy squalls and gales, but Captain Barber kept on all the canvas she could stand and by good fortune made port in time to save his charter. S F Chronicle.

VOYAGE OF THE ROBERT LEWERS.

The schooner Robert Lewers arrived yesterday, 53 days from Newcastle, N. S. W., with 1258 tons of coal for Wilder & Co. Captain Goodman handed in the following report at the BULLETIN office, a little late for publication yesterday: Left Newcastle Nov. 22, '96. Passed between Three Kings and the North Cape of New Zealand on the 10th day out. Have had head winds with rough head seas nearly the whole passage with the exception of about two days of light winds and calm. The only time we were able to steer a course during the whole passage has been within the last 24 hours. Crossed the Equator on January first, 40th day out, and passed the parallel of the South Cape of Hawaii on 50th day, Jan. 11. Was becalmed for 36 hours 76 miles west of Hawaii; got the trades again in the forenoon of 13th and arrived off Diamond Head at midnight.

On Dec. 7, Lat. 33° 27' South, Lon. 179° 31' East, was in company with ship "Sterling" from Newcastle to San Francisco, and again on Dec. 22 was in company with the same ship.

Dec. 21, Lat. 12° 49' South, Lon. 160° 54' West exchanged signals with British ship "Blairgowrie" from San Francisco to Australia. Dec. 27, Lat. 8° 35' South, Lon. 155° 56' West spoke Am. bark "Oregon" from San Francisco to Brisbane. He had lost the head of his mizzenmast, but was going along very well under a temporary rig. He desired to be reported.

PASSENGERS ARRIVED.

From Kauai, per stmr James Makee, Jan. 14.—Mrs R C Spalding, O B Spalding, C H Fisher and 15 deck passengers.

From Kauai, per stmr Kaui, Jan. 15.—V Knudsen, Dr Derby, Miss C Grube, Miss L Goodwin and 18 deck passengers.

SHIPPING INTELLIGENCE.

ARRIVALS.

THURSDAY, JAN. 14. Stmr J A Cummins, Seale, from Oahu ports. Stmr Kaala, Thompson, from ports on Oahu. Stmr James Makee, Peterson, from Kauai.

FRIDAY, JAN. 15.

Stmr Mikahala, Thompson, from ports on Kauai. Stmr Kaui, Bruhn, from Kauai ports. Stmr Lehua, Everett, from Kahului. Stmr Kaniakaouli, Parker, from Hawaii. Am ship Henry B Hyde, Scribner, from San Francisco. Stmr Mauna Loa, Simerson, from Hawaii and Maui.

DEPARTURES.

THURSDAY, JAN. 14. P M S S Peru, Friele, for Japan and China. Am bk B-P Cheney, Haskell, for Puget Sound.

FRIDAY, JAN. 15.

Schr Kaniakaouli, for Paauilo. Bk bk Samoa, Fretwurst, for New York. Stmr Kaala, Thompson, for Oahu ports. Stmr James Makee, Peterson, for Kapaa.



"FOLLOWING OUT HIS OWN IDEAS."—St. Louis Post-Dispatch.



A TEN SHIRE.—Truth.

Delayed the Ship.



Company the Cause.

Captain Cross (to passenger)—Now, see here, sir! No more of your practical jokes, or I'll have you put in irons. You yelled "Man overboard!" and we stopped the ship and fished for ten minutes, only to pull out a dude.—Chicago Record.



Hard Luck.

Jones—Well, Bridget, why are you leaving? Can't you and your mistress agree? Bridget (sorrowfully)—Ah, yis, indeed, so, but Oi can't bear the policemen on this bate.—Up to Date.



Pat—To think that he's thar was man on the hill that Oi don't know.—Truth.

Singers lead the world. Over 13,000,000 made and sold. Highest awards at the World's Columbian Exposition for excellence of construction, regularity of motion, ease of motion, great speed, adjustability, durability, ease of learning and convenience of arrangement. B. Bergersen, agent, 164 Bethel streets.

MUSIC . . . For Everybody.

The only complete line of

MUSIC GOODS!

In the Islands A few of our specialties . . .

Kingsbury Pianos!

The perfection of art in Piano making.

CHICAGO COTTAGE ORGANS, Un equaled in tone, beauty and construction.

REGINA MUSIC BOXES, the King of all, plays over one thousand tunes.

AUTOHARPS, everybody's instrument, a child can play it.

GUITARS, we carry the celebrated E. Mason, Harwood and other makes, from \$4 up.

BANJOS, Saws, Fairbanks & Co. and other wellknown makes.

ACCORDIONS, the celebrated "Imperial" and other good lines.

And a thousand and one other smaller instruments too numerous to mention.

Our celebrated Wall, Nichols Co. "STAR" Brand of

GUITAR, VIOLIN and

PIANO STRINGS.

Are the best made. Use no other.

Sheet Music, Music Books, INSTRUCTION BOOKS

For all instruments.

Our stock is the most varied to be found this side of Frisco, and the prices are same as you pay in the States.

All instruments sold on easy monthly payments.

WALL, NICHOLS CO.,

The money savers for you.

NEW FIRM!

Having purchased the Stock and Fixtures of the Golden Rule Bazaar, I will continue the Stationery, Book and Musical Merchandise Business at the old stand No. 316 Fort Street. It will always be my aim by fair and honorable dealing and courteous treatment to merit a share of the patronage of the public. My terms will be CASH, and I propose to put you in a position in 1897 (if you will give me your trade in this line) to declare a larger dividend on the amount invested than you got out of your sugar stocks in 1896. Just do a little "shopping"—that will prove it. "The Miller-Megee" Patent Back Blank Books carried in stock at the same prices as the old style books.

J. M. WEBB, Prop. Golden Rule Bazaar. 503-3m

Just Received

Gold and Silverware, Crockery and Ivoryware, Embroidered Fans, Silk Handkerchiefs, Shawls, Screens, White Grass Cloth, Mattings, Wicker and Steamer Chairs, Cigars, Etc., Etc.,

WING WO TAI & CO., 214 Nuuanu Street, Honolulu.

C. B. DWIGHT

Takes contracts for all kinds of STONE WORK, monument work, cement and stone sidewalks and curbing. I have on hand the best Hawaiian stone, Chinese granite, etc. Fine stone for monumental work. Estimates given and lowest prices assured. Telephone 833.

FRANCIS DUNN, Architect and Superintendent

Office: 305 Fort street, Spreckels' Block, Room 5. Residence: Hawaiian Hotel.

Canadian-Australian Steamship Line



Steamers of the above Line running in connection with the CANADIAN PACIFIC RAILWAY

Between Vancouver, B. C., and Sydney, N. S. W., and calling at Victoria, B. C. Honolulu and Suva (Fiji).

ARE DUE AT HONOLULU

On or about the dates below stated, viz:

Table with columns for ship names and dates: Stmr 'WARRIMOO' Jan 20, Stmr 'MIOWERA' Feb 24, Stmr 'WARRIMOO' March 24, Stmr 'MIOWERA' April 24.

Through Tickets issued from Honolulu to Canada, United States and Europe.

FREIGHT AND PASSENGER AGENTS: D. McNICOLL, Montreal, Canada. ROBERT KERR, Winnipeg, Canada. M. M. STERN, San Francisco, Cal. G. McL. BROWN, Vancouver, B. C.

For Freight and Passage and all General Information, apply to THEO. H. DAVIES & CO., Ltd Agents for the Hawaiian Islands.

Oceanic Steamship Co.



Australian Mail Service.

For San Francisco:

The New and Fine A1 Steel Steamship "Alameda"

Of the Oceanic Steamship Company will be due at Honolulu from Sydney and Auckland on or about

Feb. 4, 1897.

And will leave for the above port with Mails and Passengers on or about that date.

For Sydney and Auckland:

The New and Fine A1 Steel Steamship "Mariposa"

Of the Oceanic Steamship Company will be due at Honolulu from San Francisco on or about

Jan. 14, 1897.

And will have prompt despatch with Mails and Passengers for the above ports.

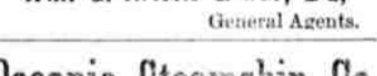
The undersigned are now prepared to issue

Through Tickets to All Points in the United States.

For further particulars regarding Freight or Passage apply to

WM. G. IRWIN & CO., Ltd, General Agents.

Oceanic Steamship Co.



Time Table LOCAL LINE

S. S. AUSTRALIA.

Arrive Honolulu Leave Honolulu from S. F. for S. F.

Feb. 2, 1897.....Feb. 11, 1897

March 2, 1897.....March 11, 1897

THROUGH LINE

From San Francisco For Sydney for San Francisco.

Arrive Honolulu. Leave Honolulu.

Mariposa, Jan 14, '97 Alameda, Feb 4, '97

Monowai, Feb 11, '97 Mariposa, M=4, '97

Dr. W. L. Moore

Physician and Surgeon.

Hilo, Hawaii.

Special attention given to diseases of the eye and ear.

Office hours 9 to 12 a. m., 2 to 4 and 7 to 8 p. m. Telephone 752. 467-2m

Waianuenu Ave. near Court House. 163-1f

DR. C. A. PETERSON

REMOVED TO . . . No. 28 Emma Street.

Office Hours: 8 to 10 a. m., 2 to 4 and 7 to 8 p. m. Telephone 752. 467-2m

DR. BERT F. BURGESS,

Physician and Surgeon

TELEPHONE 852.

Hours: 8:30 to 10 a. m., 1:30 to 4 p. m., and 7 to 8 p. m.

445 Punchbowl street or 143 Miller street, Honolulu, Oahu. 466-1f

A. C. WALL, D. D. S.,

DENTIST.

New Love's Building, Fort Street. TELEPHONE 434.

Wilder's Steamship Co's

TIME TABLE.

C. L. WIGHT, Pres. S. B. ROSE, Sec. Capt. J. A. KING, Port Supt.

Stmr. KINAU, CLARKE, Commander,

Will leave Honolulu at 10 A. M., touching at Lahaina, Maui, and 31 kema the same day; Mahukona, Kawaihau and Lanipahocho the following day, arriving at Hilo the same evening.

LEAVES HONOLULU. ARRIVES HONOLULU.

Friday.....Jan. 22 | Tuesday.....Jan. 19

Tuesday.....Feb. 2 | Friday.....Jan. 29

Tuesday.....Feb. 12 | Tuesday.....Feb. 9

Tuesday.....Feb. 23 | Friday.....Feb. 19

Returning, will leave Hilo at 1 o'clock P. M., touching at Lanipahocho, Mahukona and Kawaihau the same day; Mahukona, Maui and Lahaina the following day; arriving at Honolulu the afternoon of Tuesday and Fridays.

Will call at Nuu, Kaupo, on second trip of each month.

No Freight will be received after 12 noon on day of sailing.

Stmr. CLAUDINE, CAMERON, Commander,

Will leave Honolulu Tuesday at 5 P. M., touching at Kahului, Hona, Hana and Kipahulu, Maui. Returning arrives at Honolulu Sunday mornings.

Will call at Nuu, Kaupo, on second trip of each month.

No Freight will be received after P. M. on day of sailing.

This Company will reserve the right to make changes in the time of departure and arrival of its steamers without notice and it will not be responsible for any consequences arising therefrom.

Consignees must be at the Landings to receive their Freight; this Company will not hold itself responsible for freight after it has been landed.

Live Stock only at owner's risk.

This Company will not be responsible for Money or Valuables of passengers unless placed in the care of Purser.

Passengers are requested to purchase tickets before embarking. Those failing to do so will be subject to an additional charge of twenty-five per cent.

New Ewa Plantation Co. Stock

In Blocks to suit purchasers. Will deliver after January 2, 1897.

Inquire of

The Hawaiian Safe Deposit & Investment Company,

408 Fort Street Honolulu

Honolulu : Coffee : Mills

HAVING ESTABLISHED A MODERN plant for hulling, polishing and assorting coffee, we are prepared to buy and clean coffee in the parchment.

MODERATE CHARGE MADE FOR CLEANING

Coffee!

Apply to

H. HACKFELD & CO.

85-3m

CENTRAL

Kona Sanatorium.

Situated on a Beautiful Hillside Overlooking the Ocean, and 1300 feet above Sea Level.

Only 24 hours' sail from Honolulu. Climate mild, clear dry atmosphere, free from fogs and malaria, especial provision for quiet and rest as well as for amusement and outdoor life. Rates \$2 per day or \$10 per week. Medical attendance extra.

Address

DR. H. A. LINDELEY, Prop.,

325-1f Kona, Hawaii.